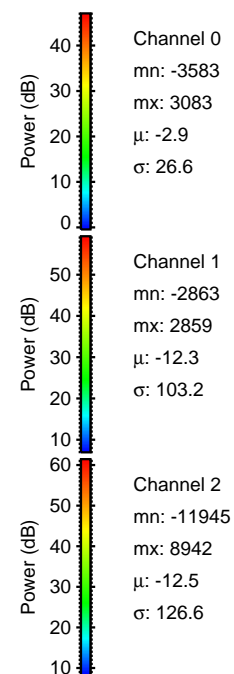
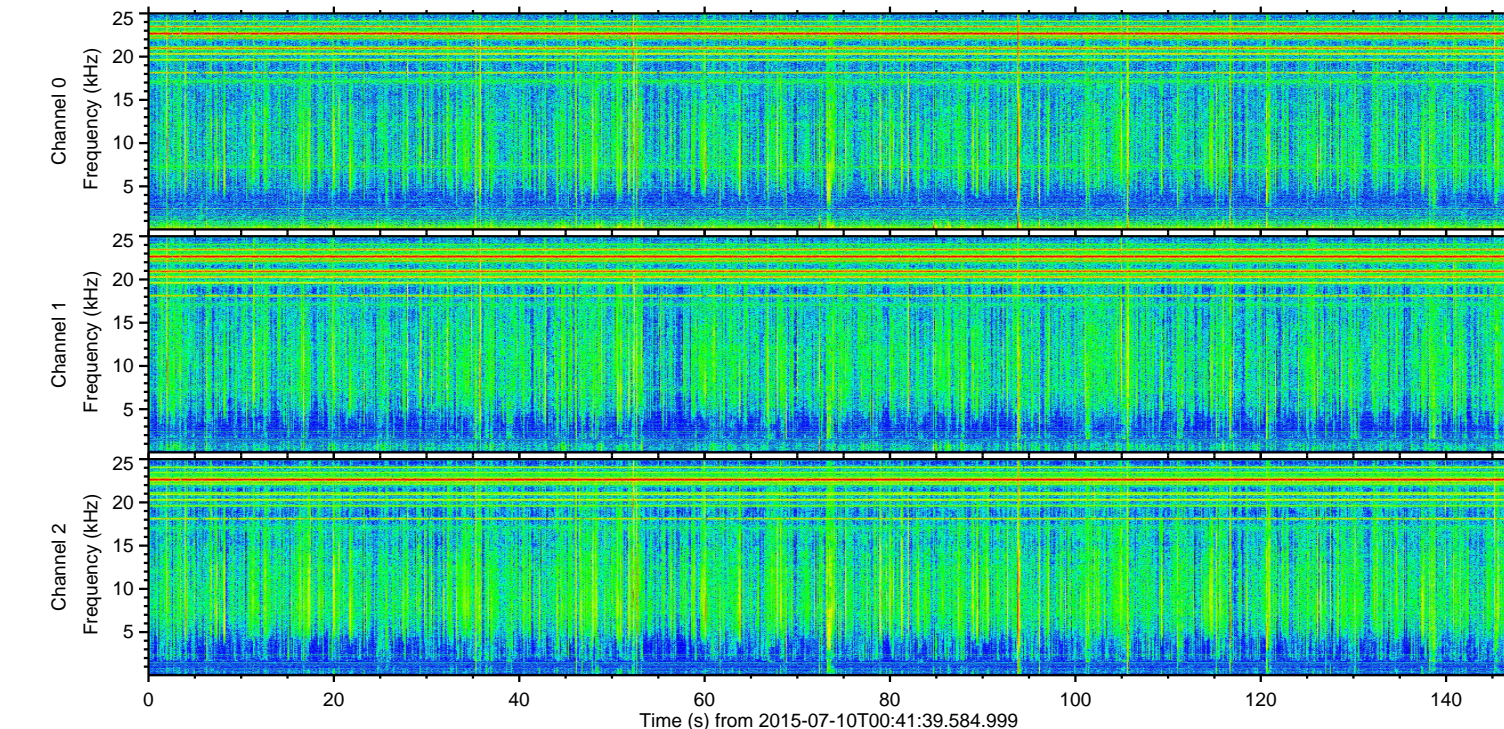
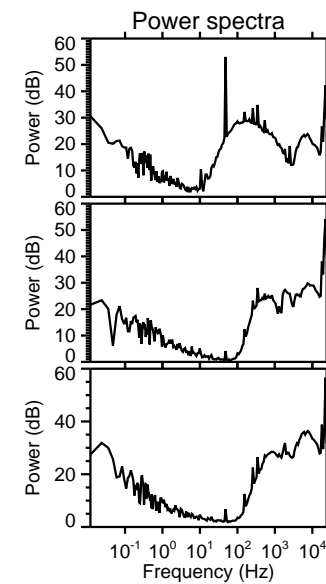
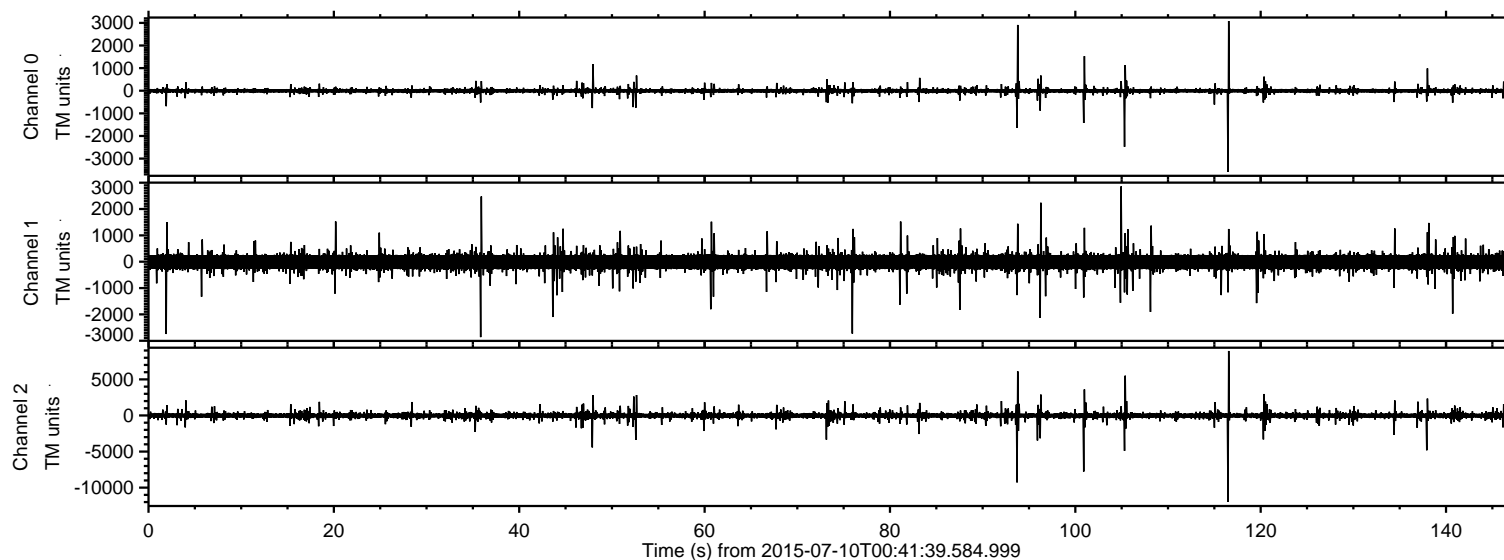


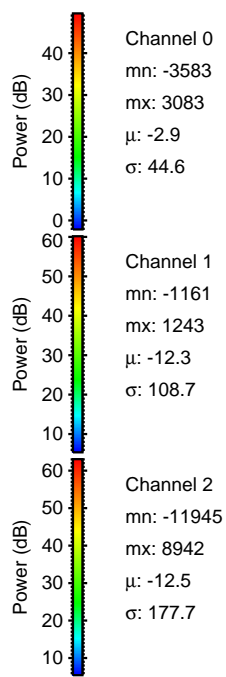
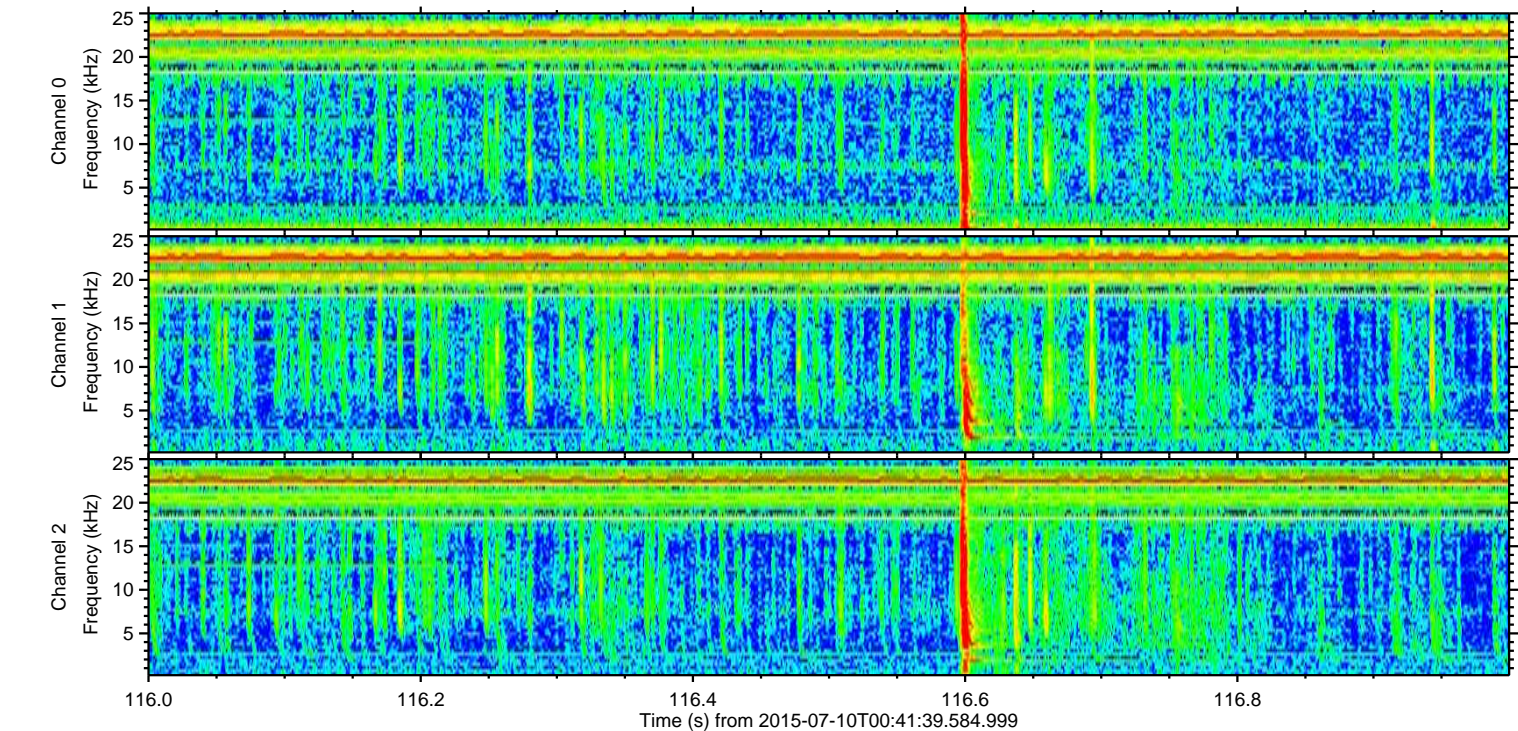
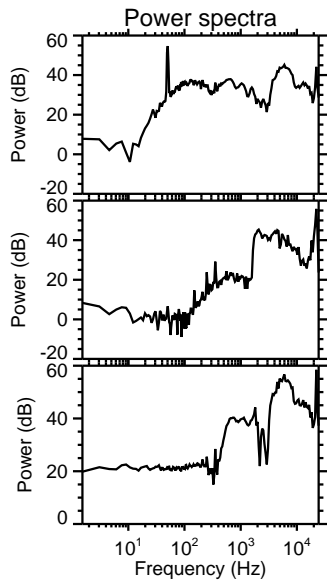
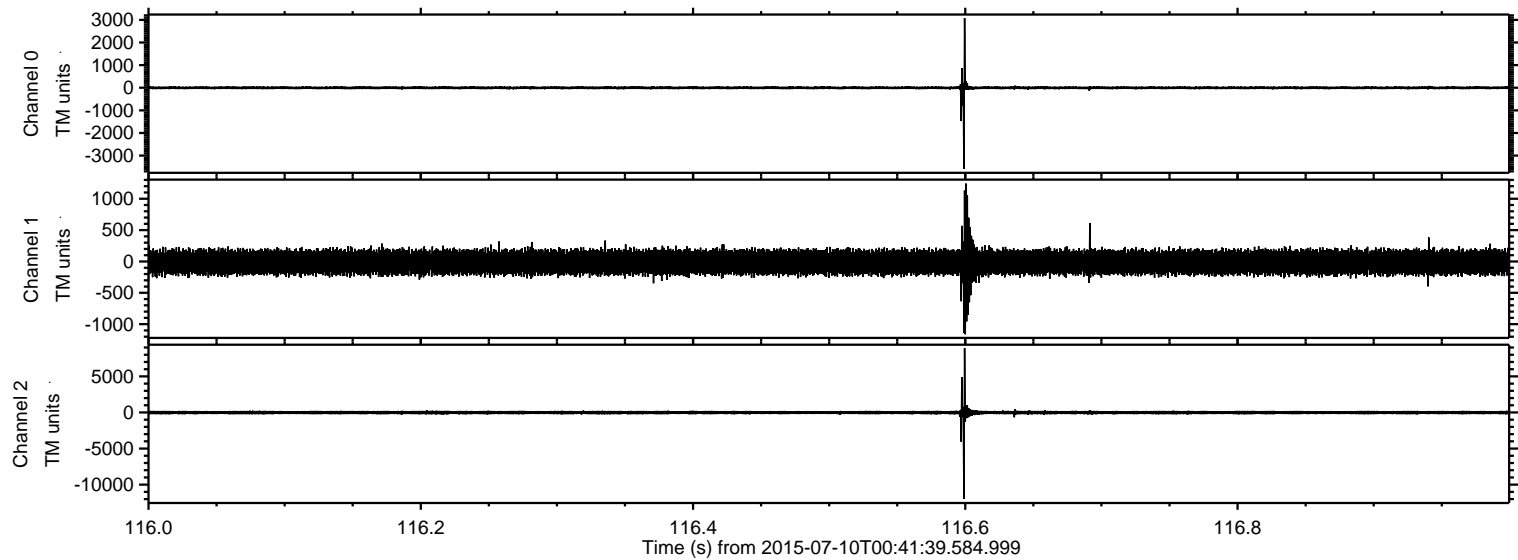
ELMAVAN 3D WAVEFORMS (Measured data sampled at 50 kHz) 51000 packets of 144 samples from 2015-07-10T00:41:39.584.999.

Processed Fri Jul 10 02:47:42 2015 by ELM ver.2012-10-06 from 001__elm20150710_004138__dat00.bin

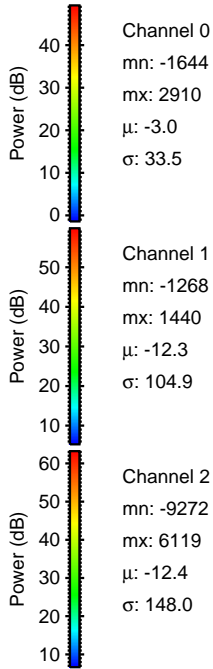
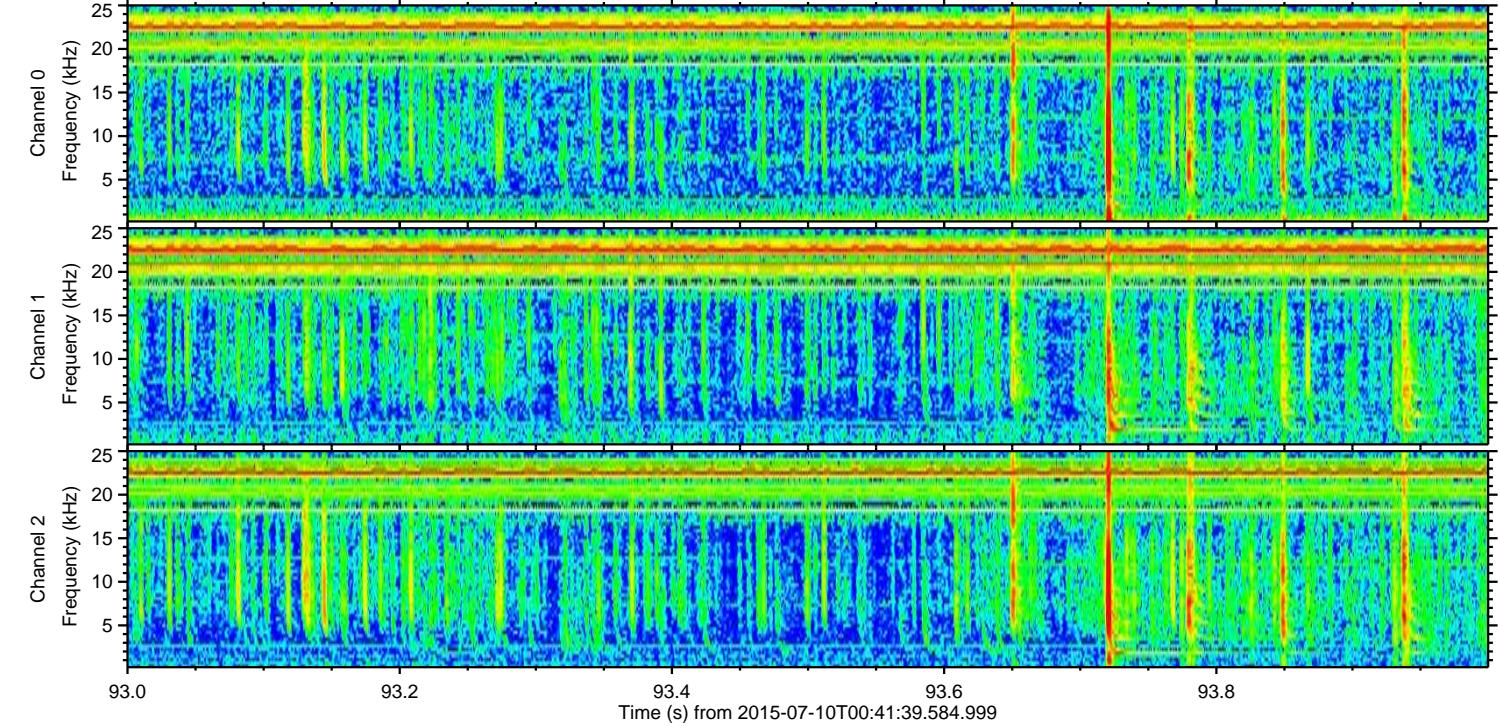
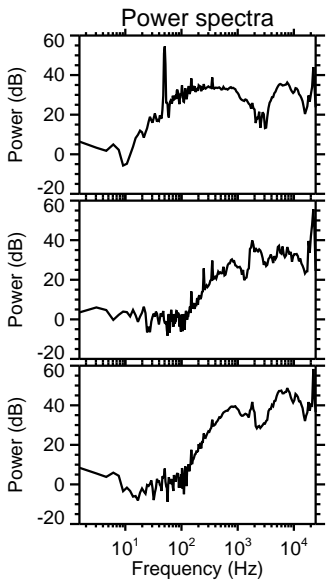
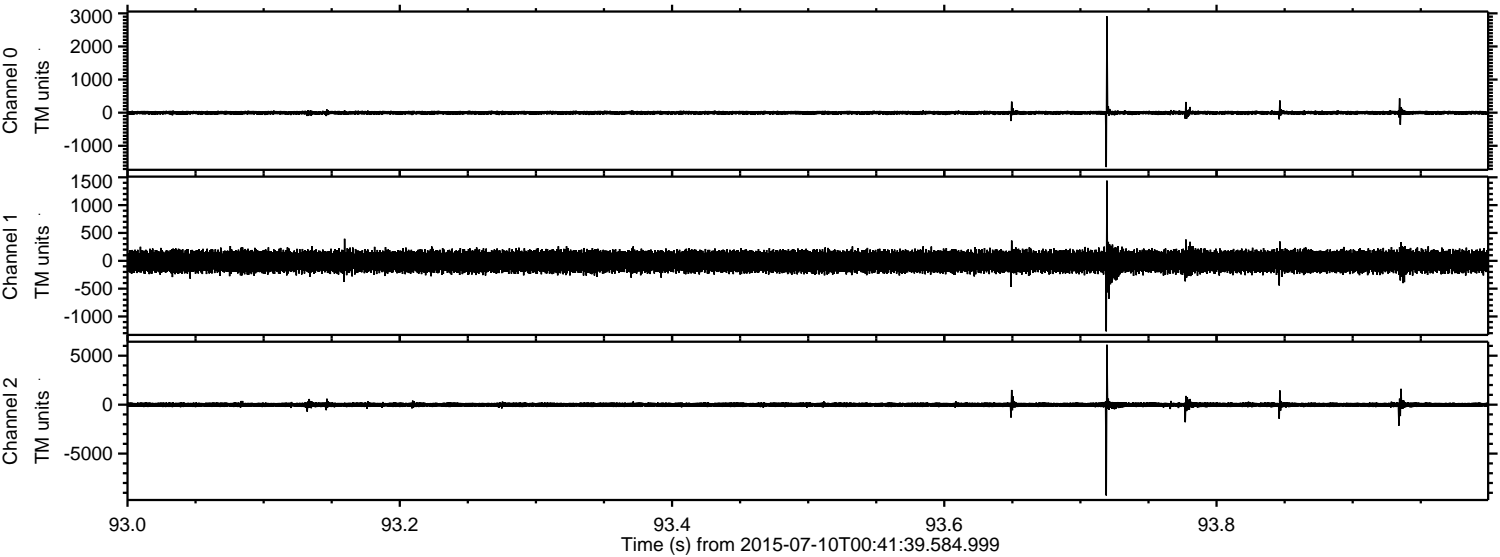


ELMAVAN 3D WAVEFORMS (Measured data sampled at 50 kHz) 51000 packets of 144 samples from 2015-07-10T00:41:39.584.999. Part 117/147

Processed Fri Jul 10 02:48:00 2015 by ELM ver.2012-10-06 from 001__elm20150710_004138__dat00.bin

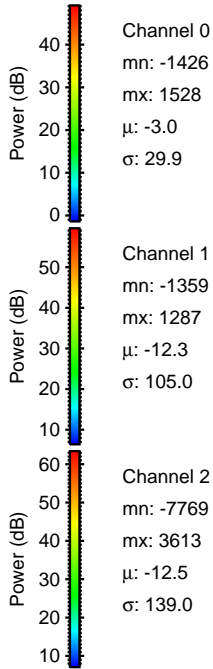
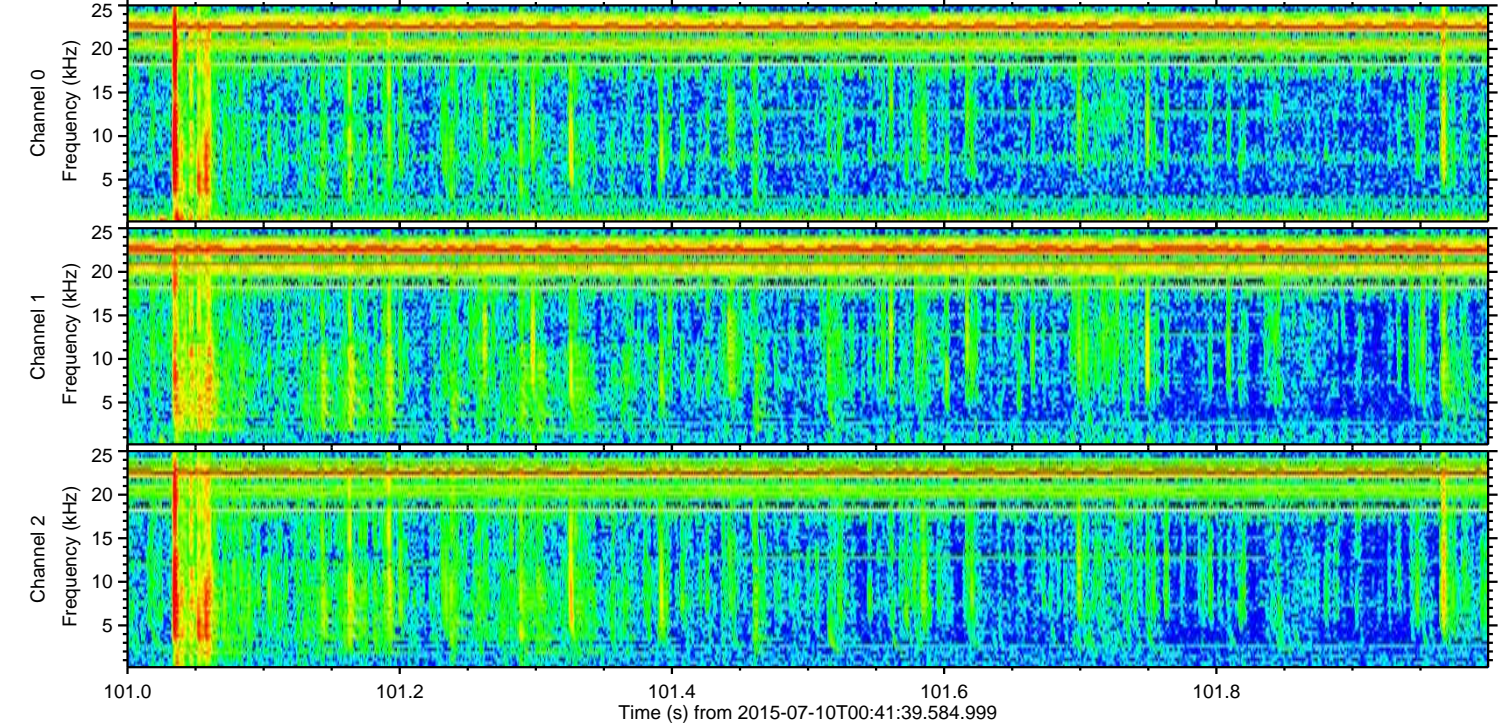
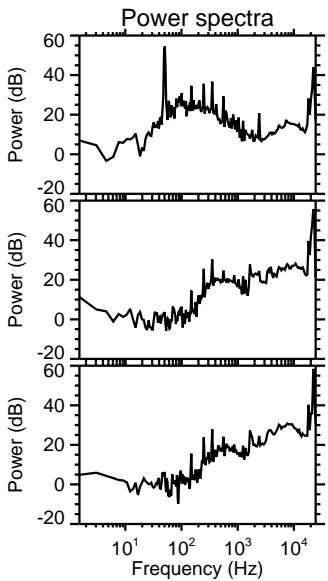
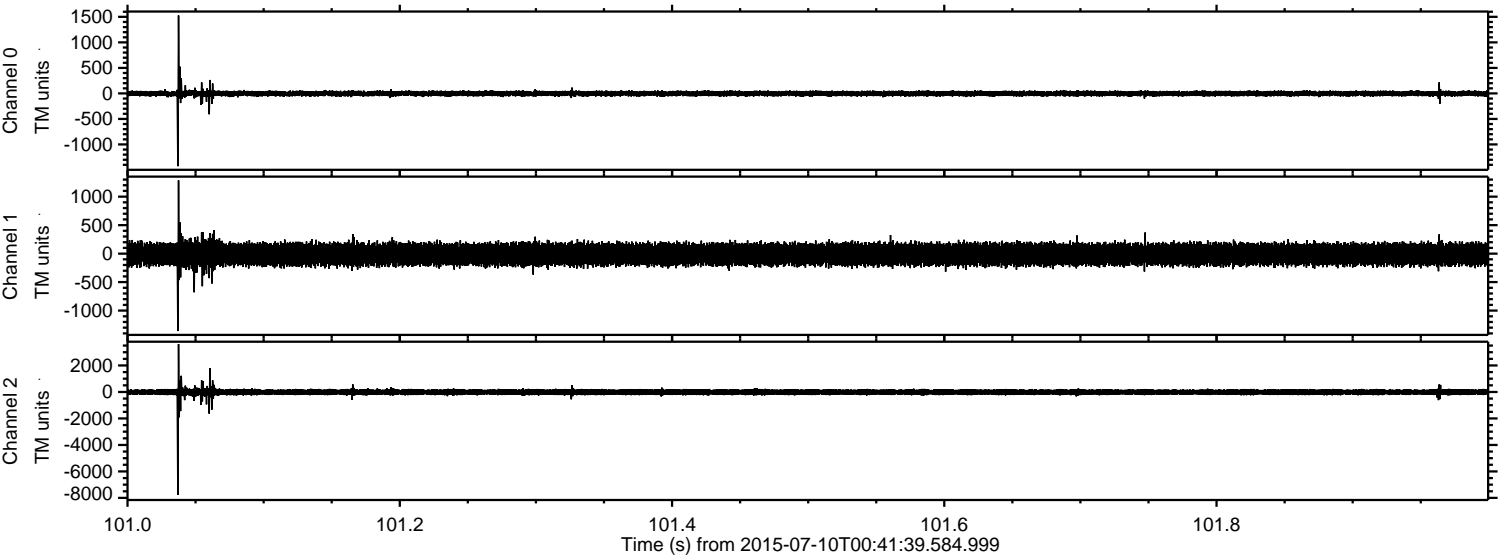


Processed Fri Jul 10 02:48:01 2015 by ELM ver.2012-10-06 from 001__elm20150710_004138__dat00.bin



ELMAVAN 3D WAVEFORMS (Measured data sampled at 50 kHz) 51000 packets of 144 samples from 2015-07-10T00:41:39.584.999. Part 102/147

Processed Fri Jul 10 02:48:02 2015 by ELM ver.2012-10-06 from 001__elm20150710_004138__dat00.bin



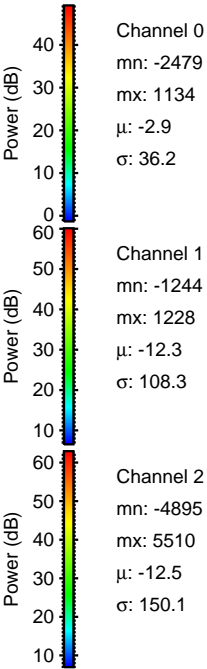
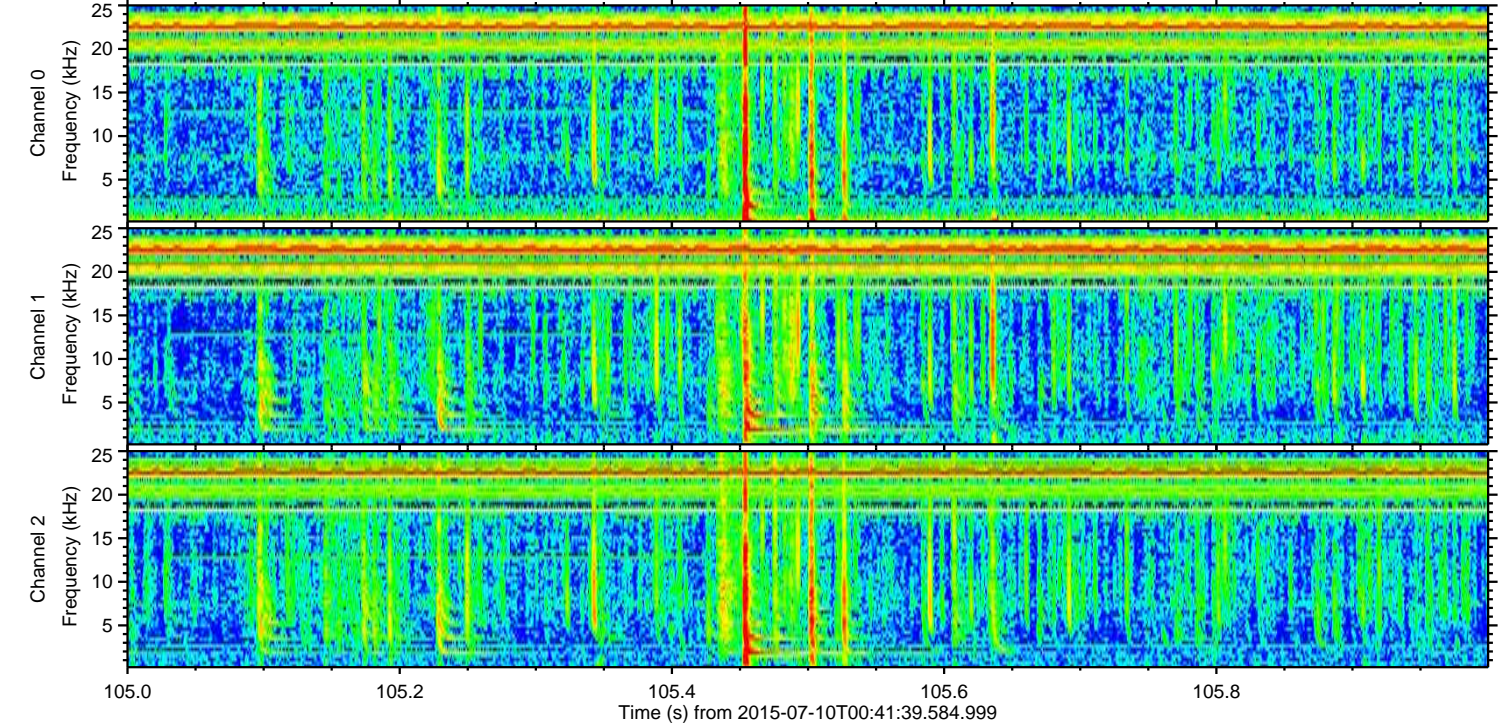
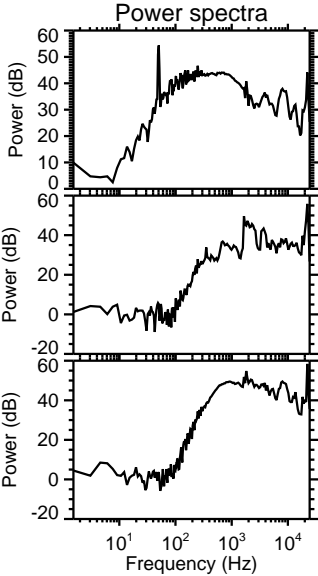
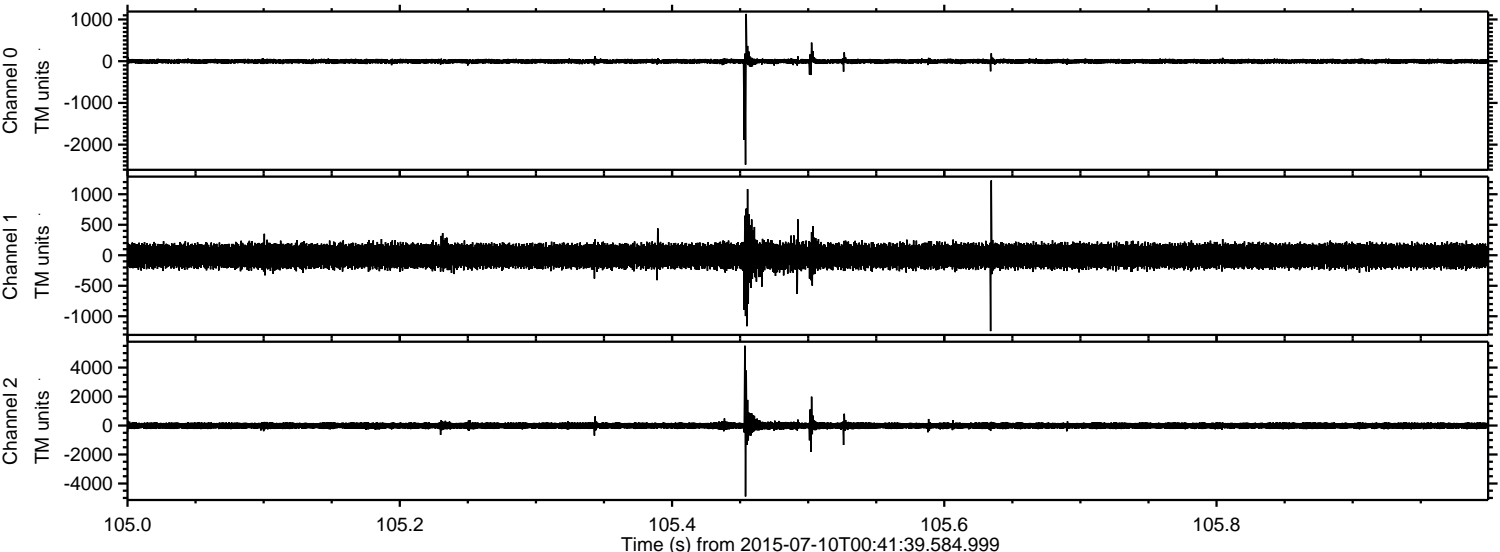
Channel 0
mn: -1426
mx: 1528
 μ : -3.0
 σ : 29.9

Channel 1
mn: -1359
mx: 1287
 μ : -12.3
 σ : 105.0

Channel 2
mn: -7769
mx: 3613
 μ : -12.5
 σ : 139.0

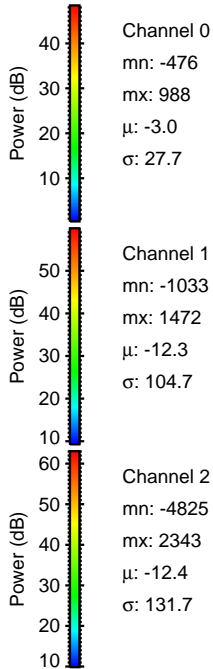
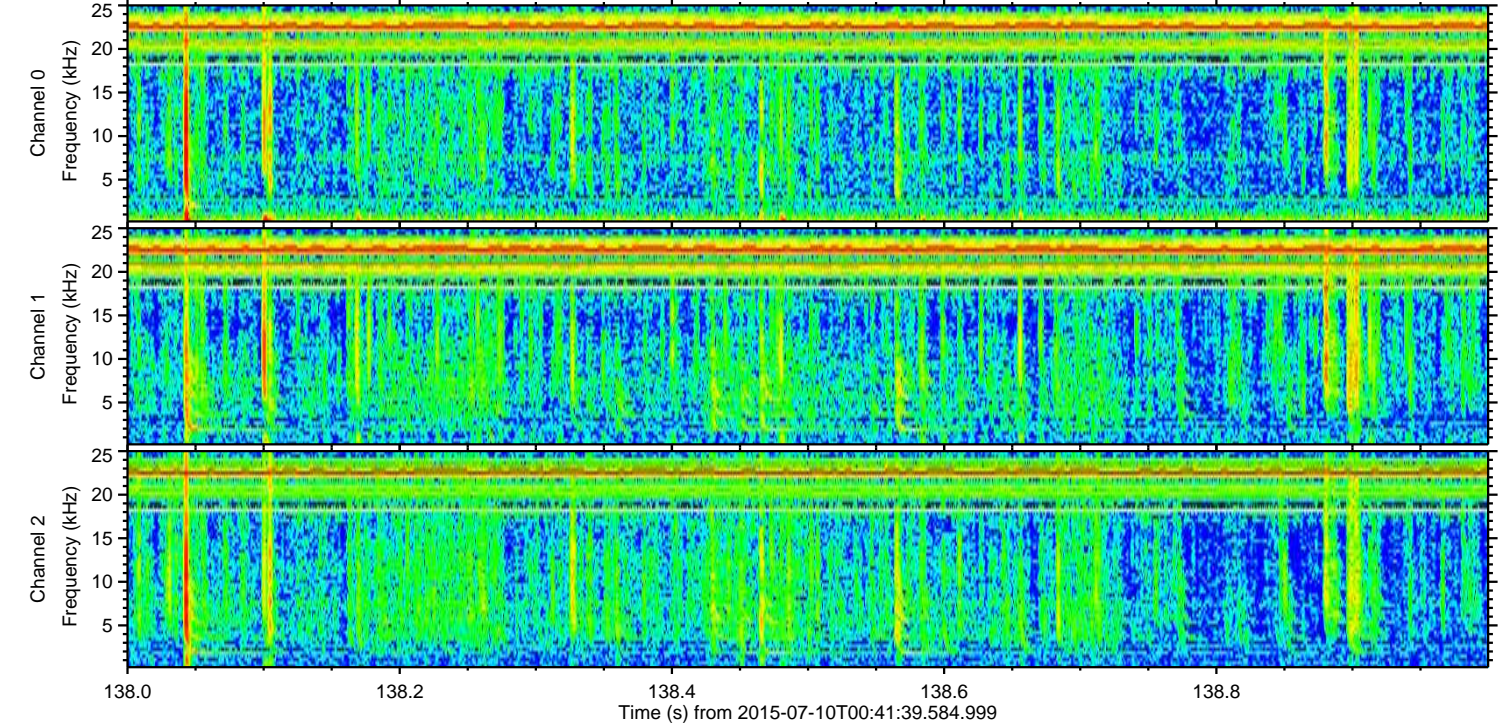
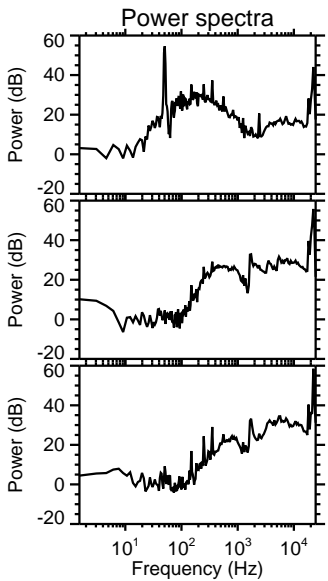
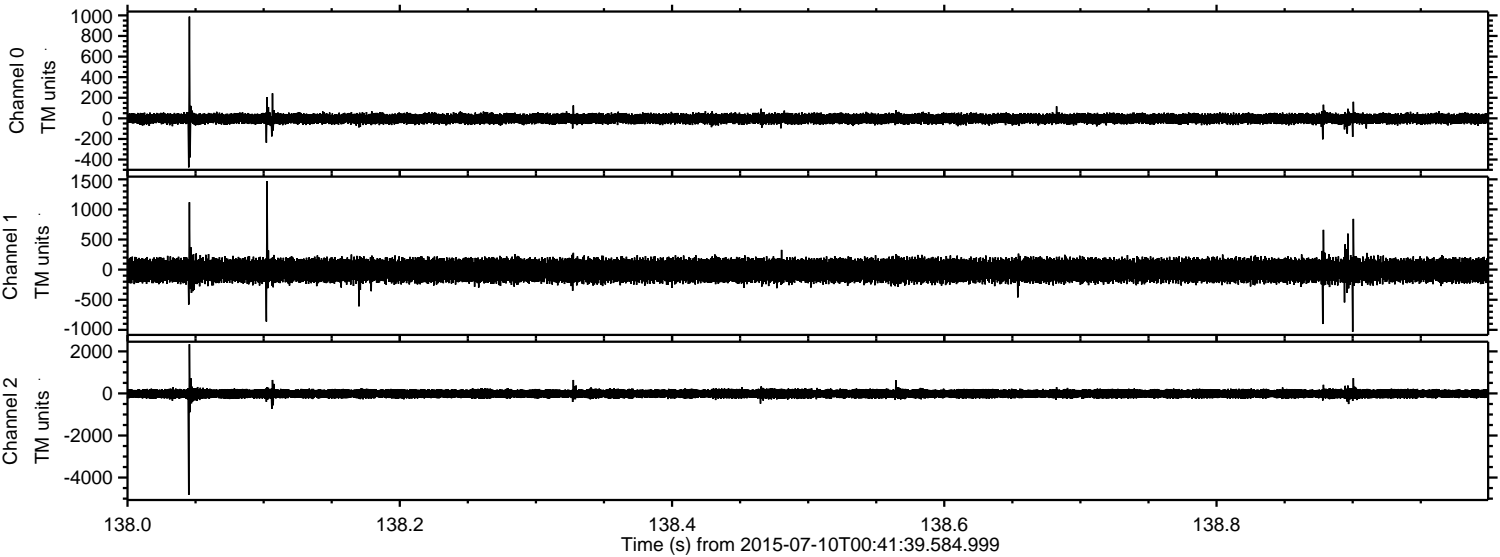
ELMAVAN 3D WAVEFORMS (Measured data sampled at 50 kHz) 51000 packets of 144 samples from 2015-07-10T00:41:39.584.999. Part 106/147

Processed Fri Jul 10 02:48:03 2015 by ELM ver.2012-10-06 from 001__elm20150710_004138__dat00.bin

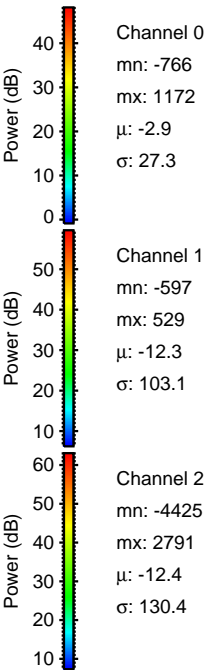
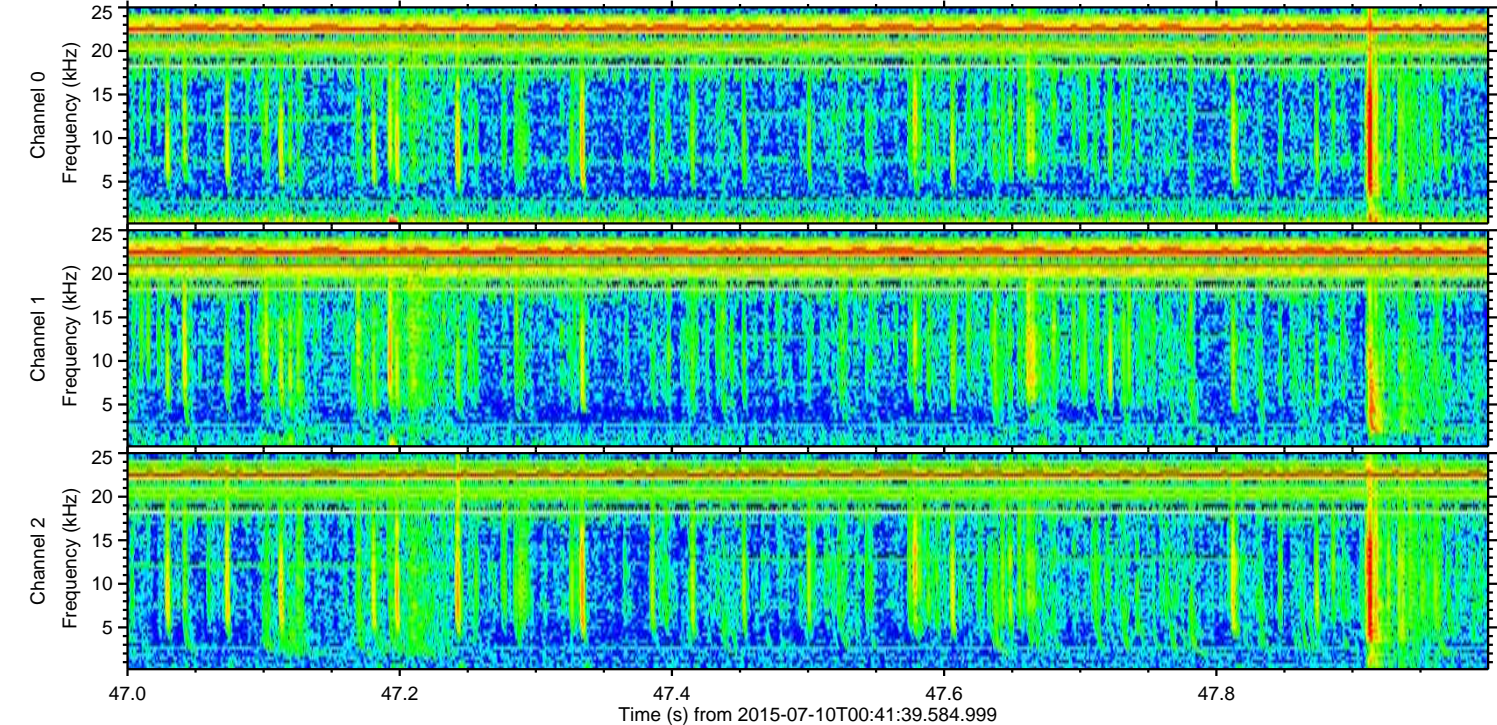
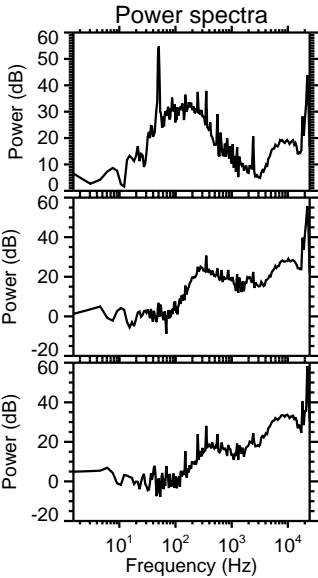
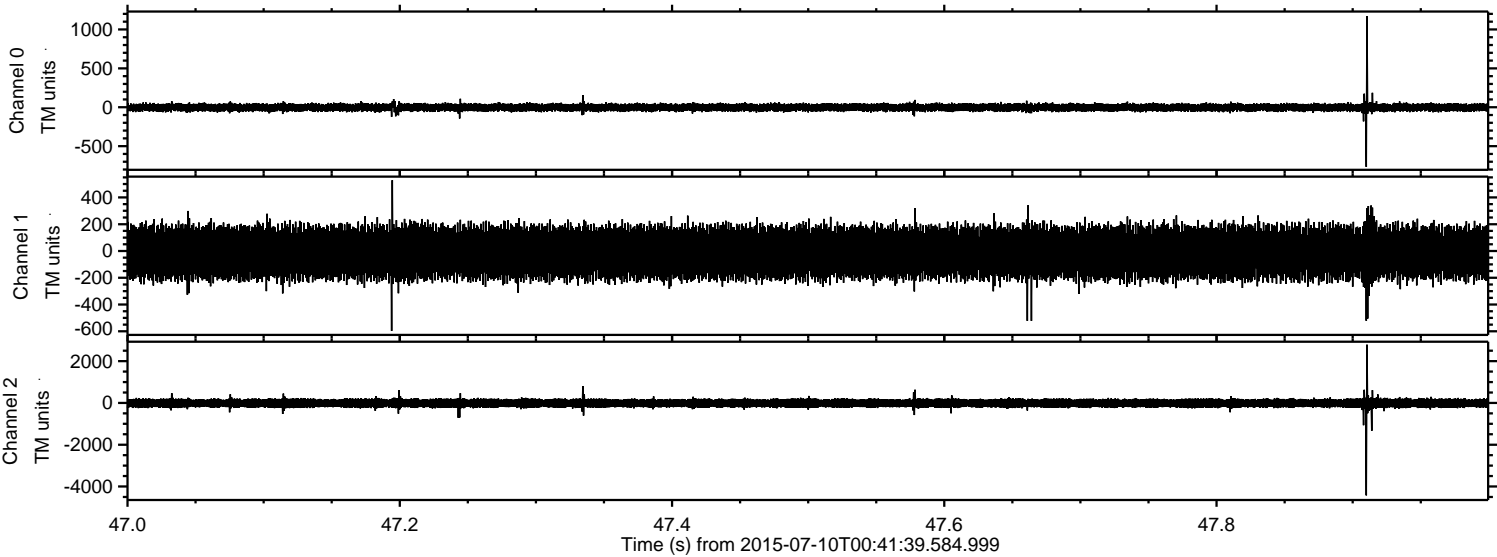


ELMAVAN 3D WAVEFORMS (Measured data sampled at 50 kHz) 51000 packets of 144 samples from 2015-07-10T00:41:39.584.999. Part 139/147

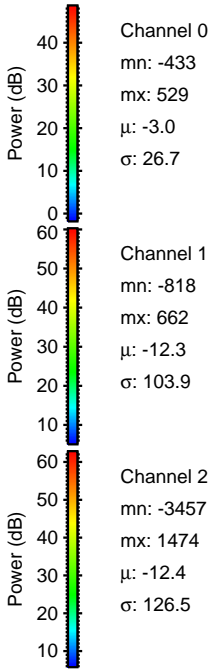
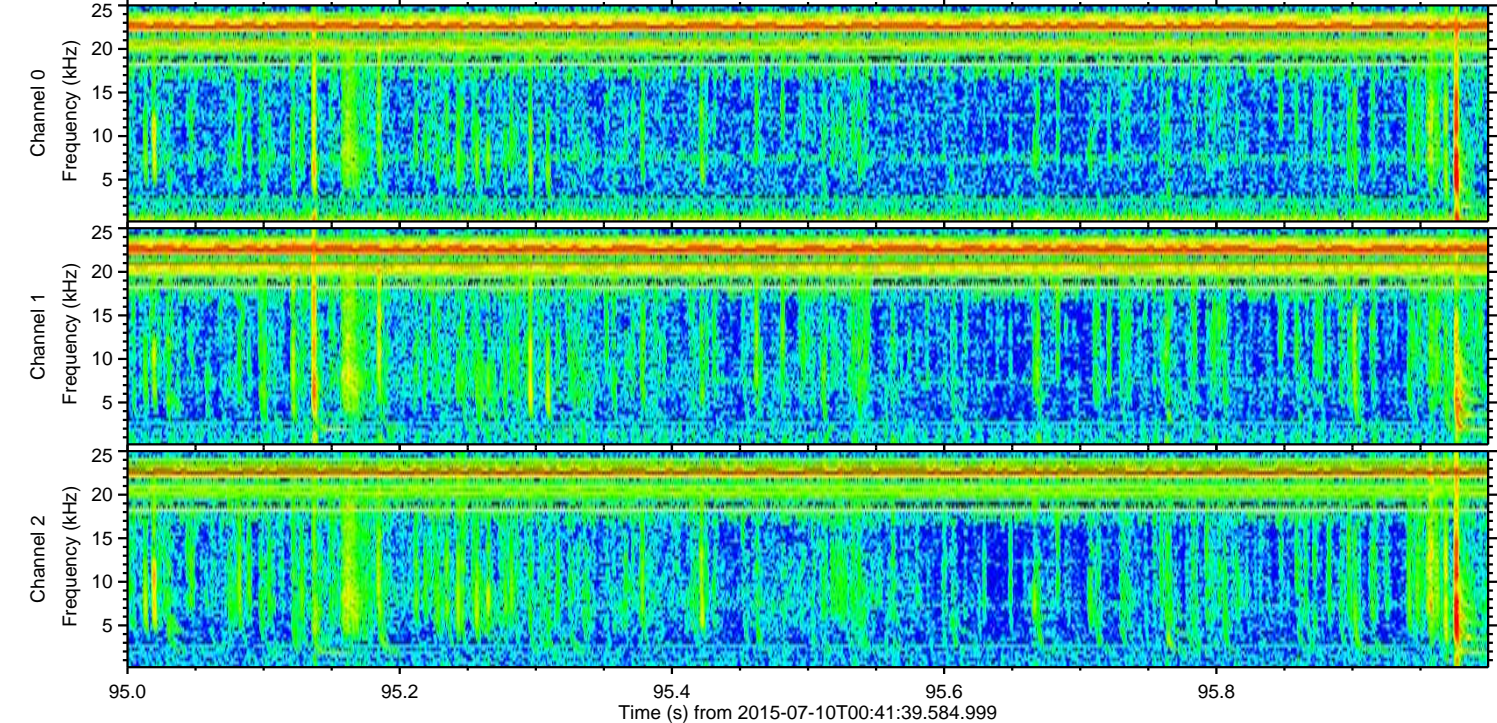
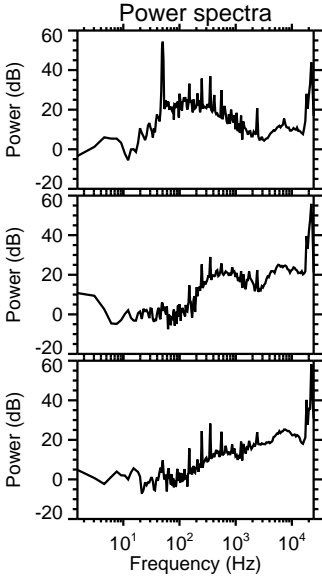
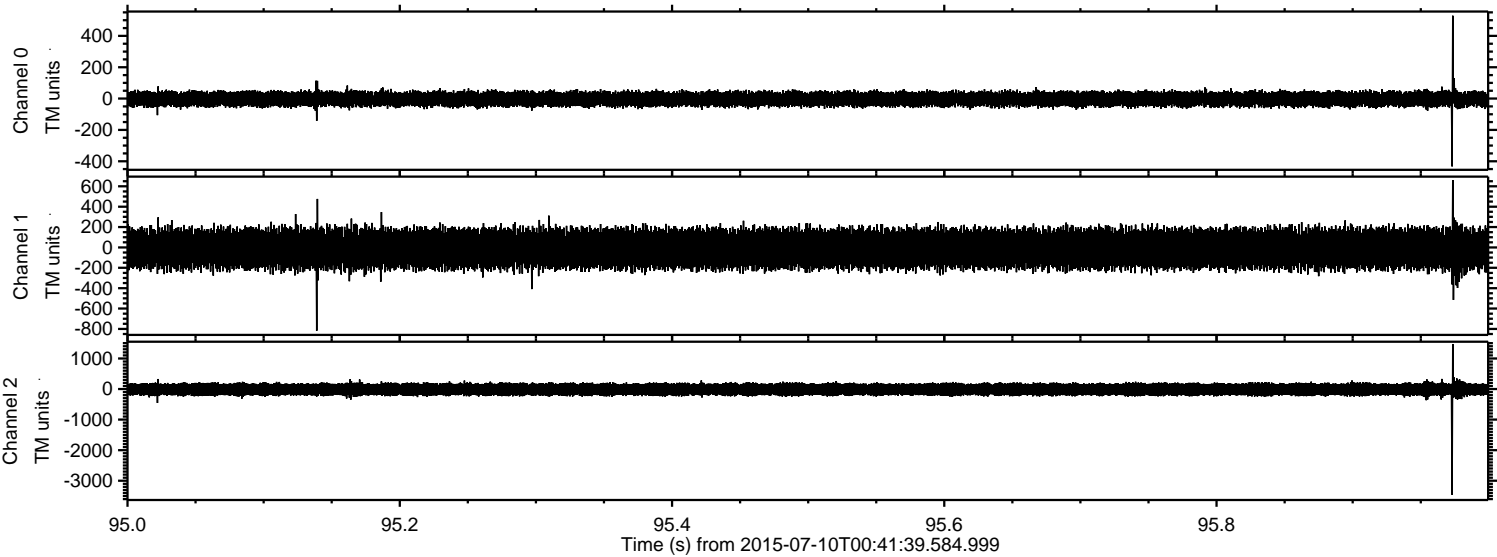
Processed Fri Jul 10 02:48:04 2015 by ELM ver.2012-10-06 from 001__elm20150710_004138__dat00.bin



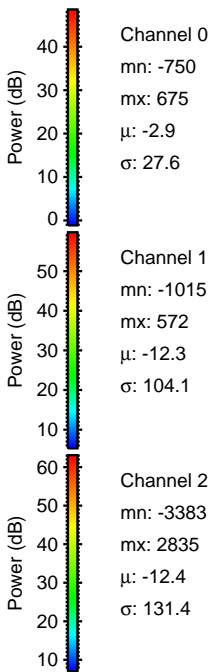
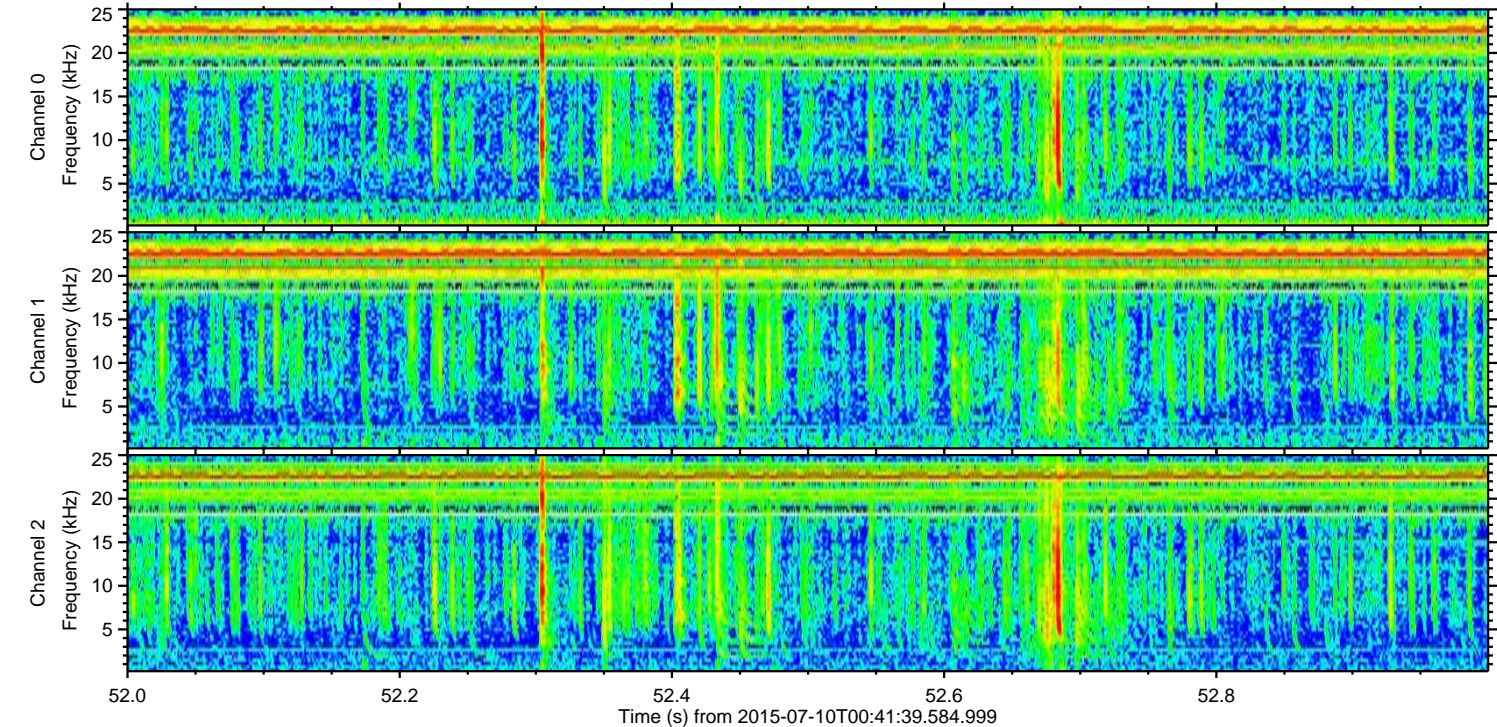
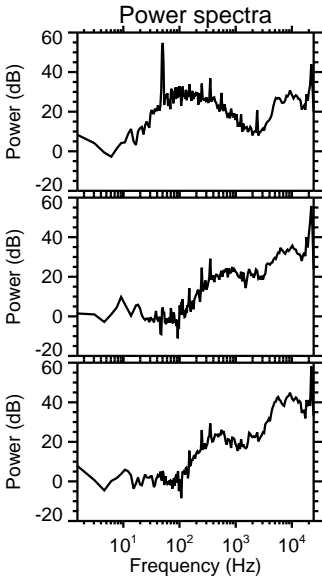
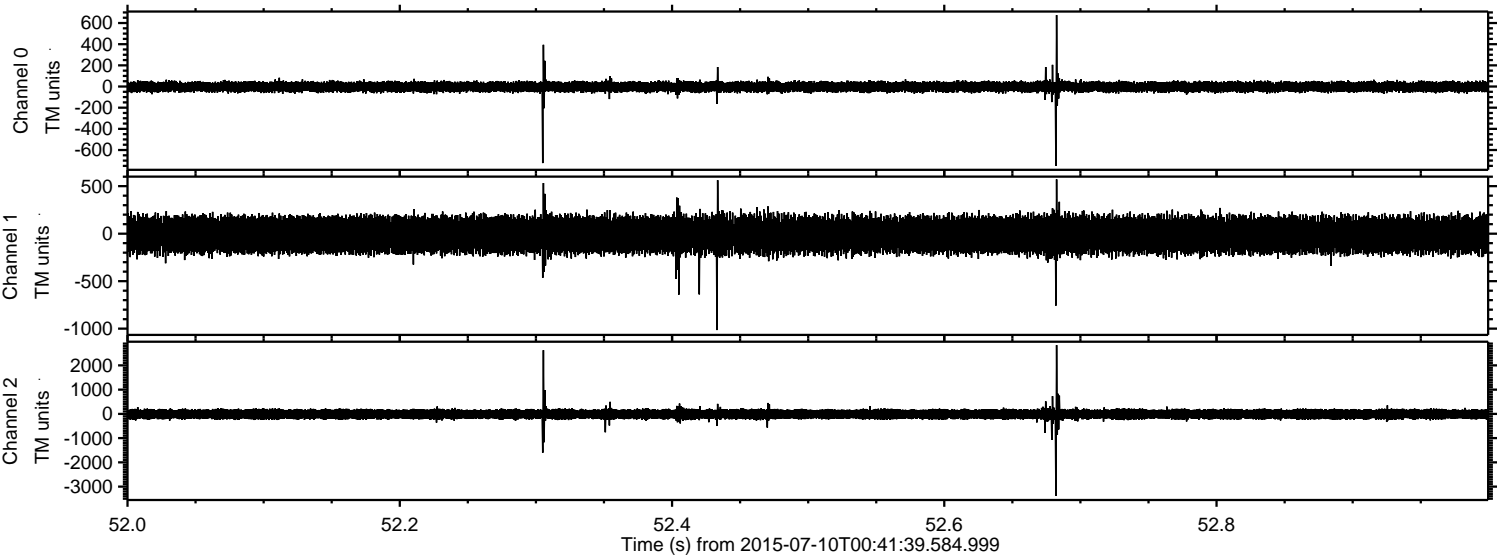
Processed Fri Jul 10 02:48:05 2015 by ELM ver.2012-10-06 from 001__elm20150710_004138__dat00.bin



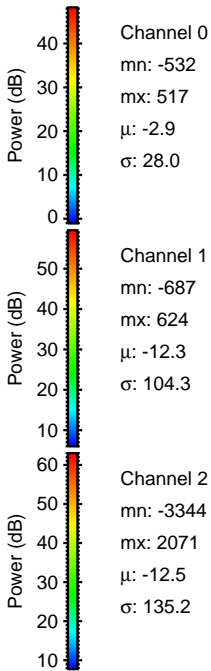
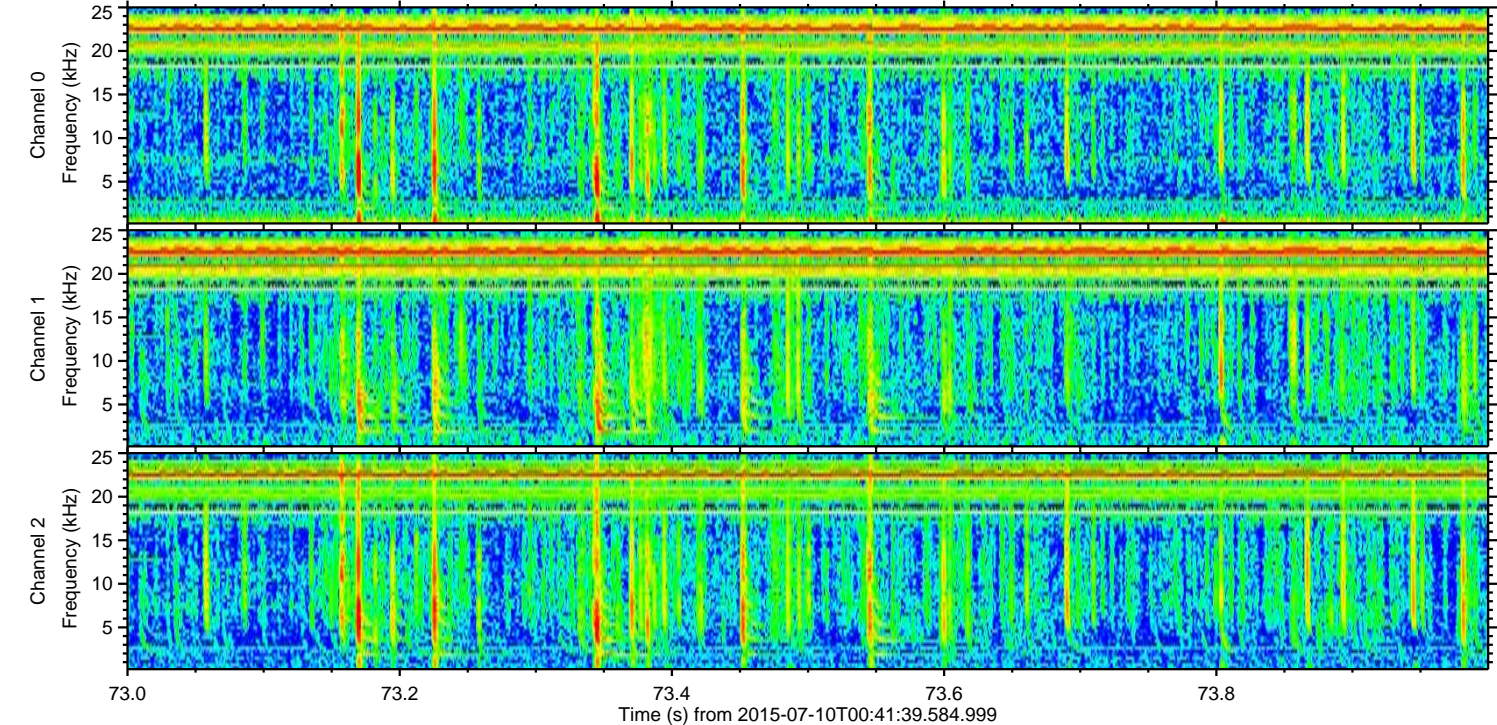
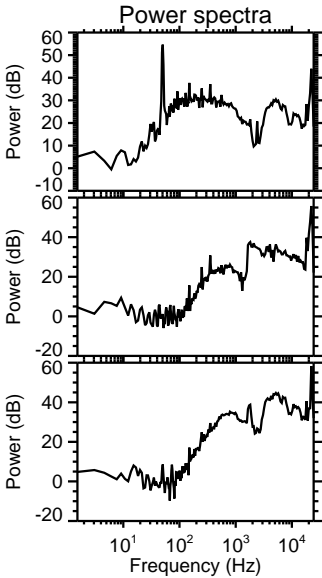
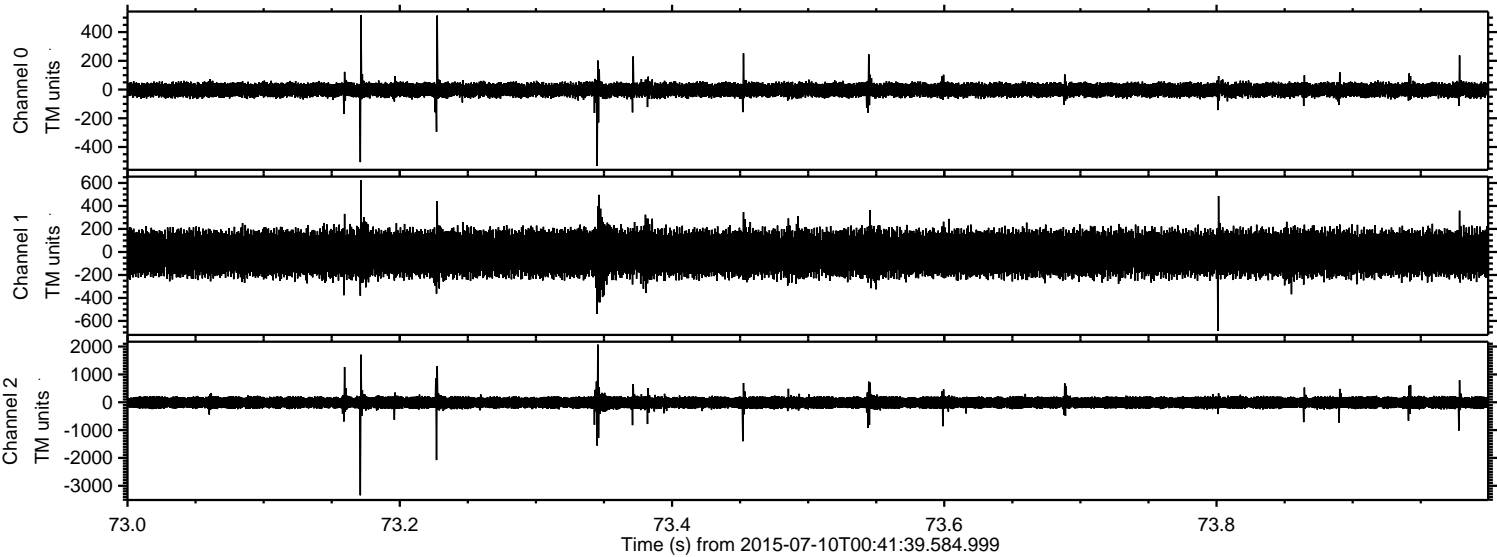
Processed Fri Jul 10 02:48:06 2015 by ELM ver.2012-10-06 from 001__elm20150710_004138__dat00.bin



Processed Fri Jul 10 02:48:07 2015 by ELM ver.2012-10-06 from 001__elm20150710_004138__dat00.bin



Processed Fri Jul 10 02:48:08 2015 by ELM ver.2012-10-06 from 001__elm20150710_004138__dat00.bin



Processed Fri Jul 10 02:48:09 2015 by ELM ver.2012-10-06 from 001__elm20150710_004138__dat00.bin

