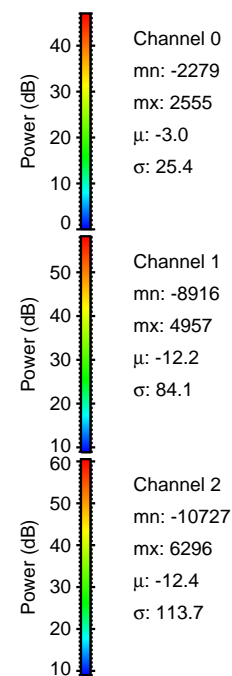
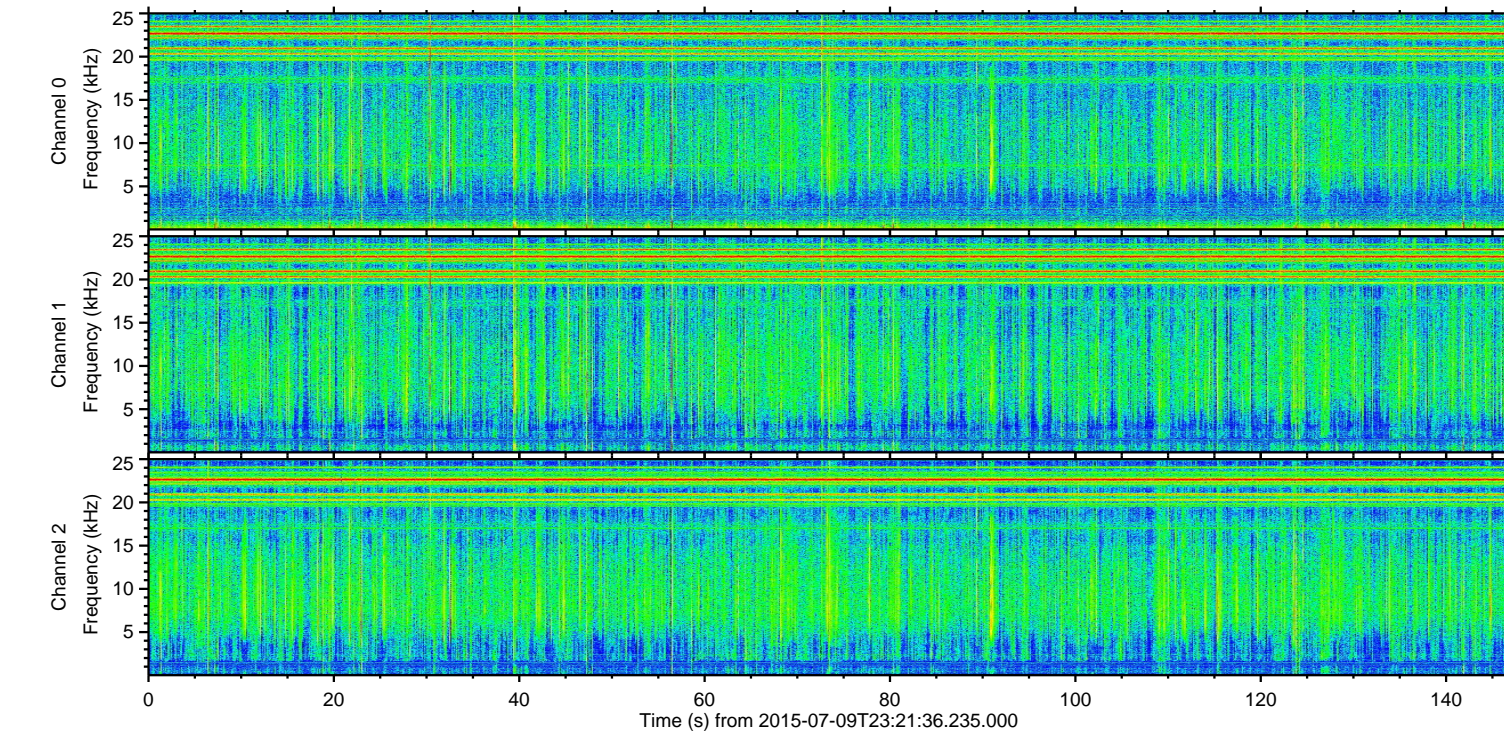
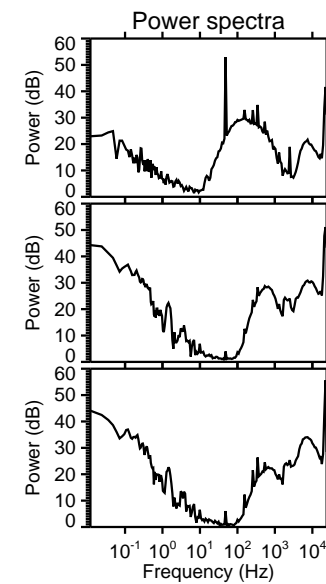
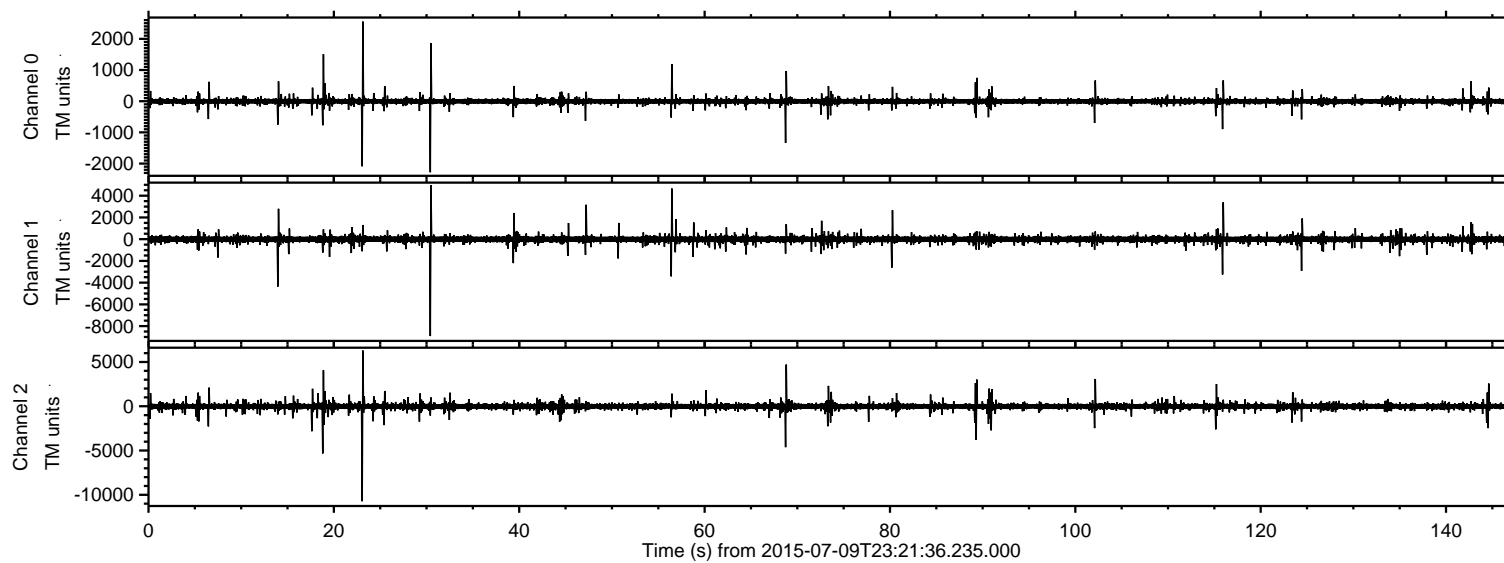
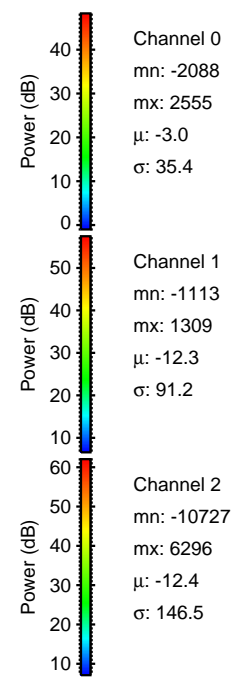
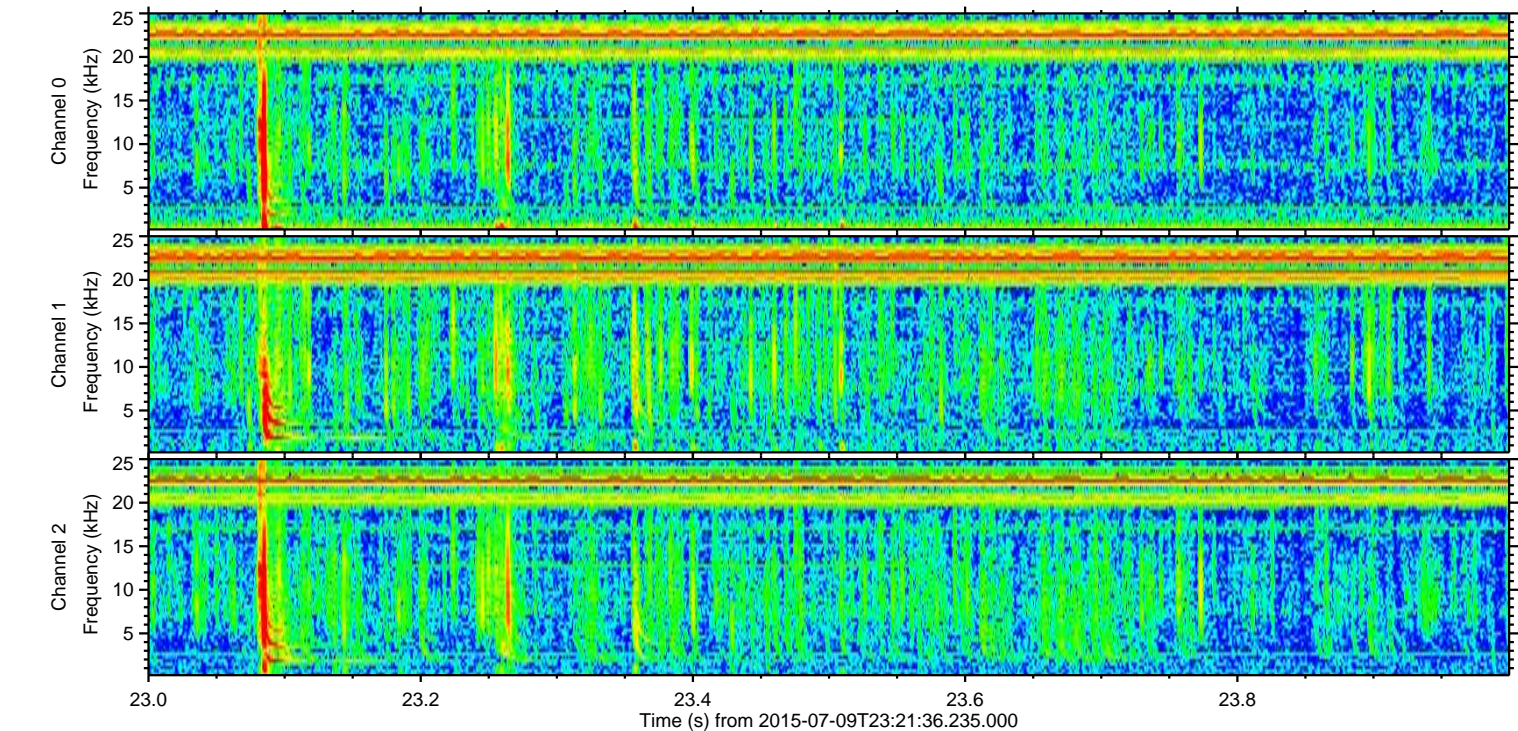
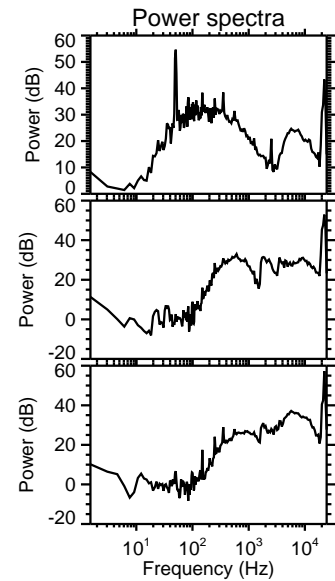
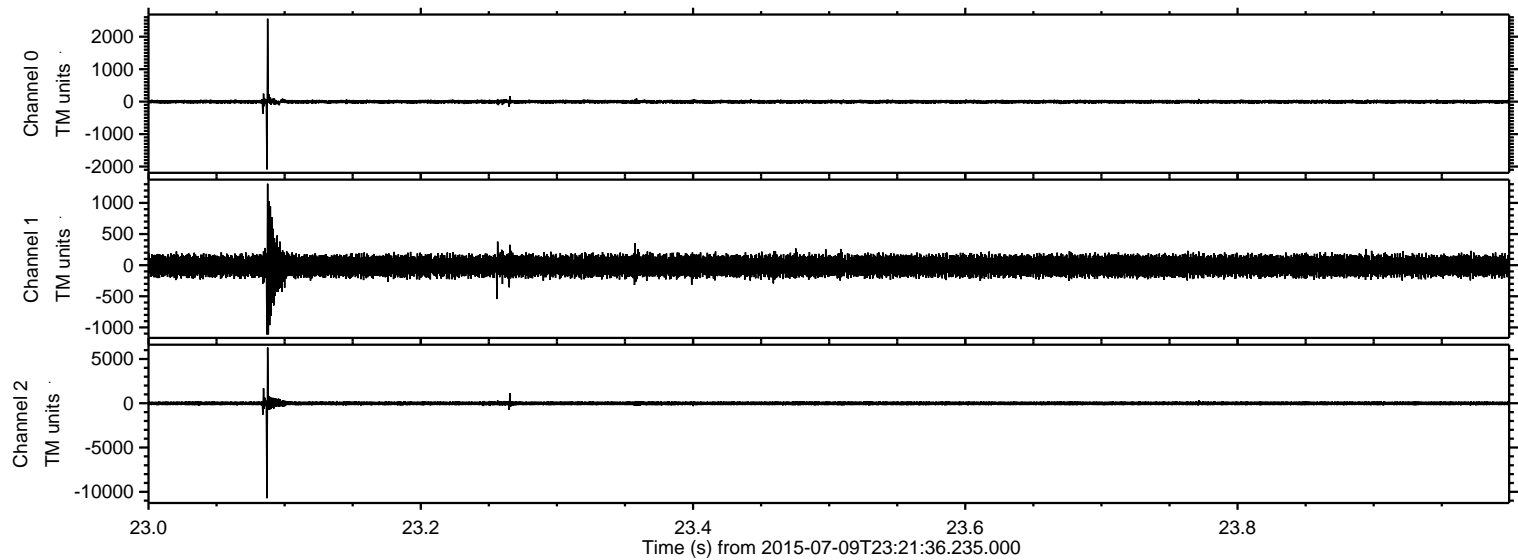


ELMAVAN 3D WAVEFORMS (Measured data sampled at 50 kHz) 51000 packets of 144 samples from 2015-07-09T23:21:36.235.000.

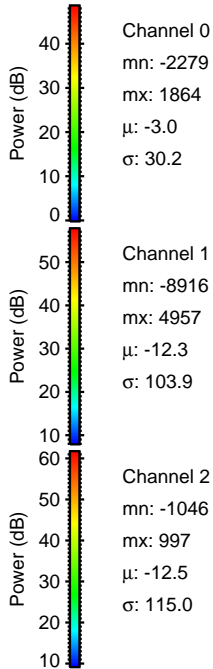
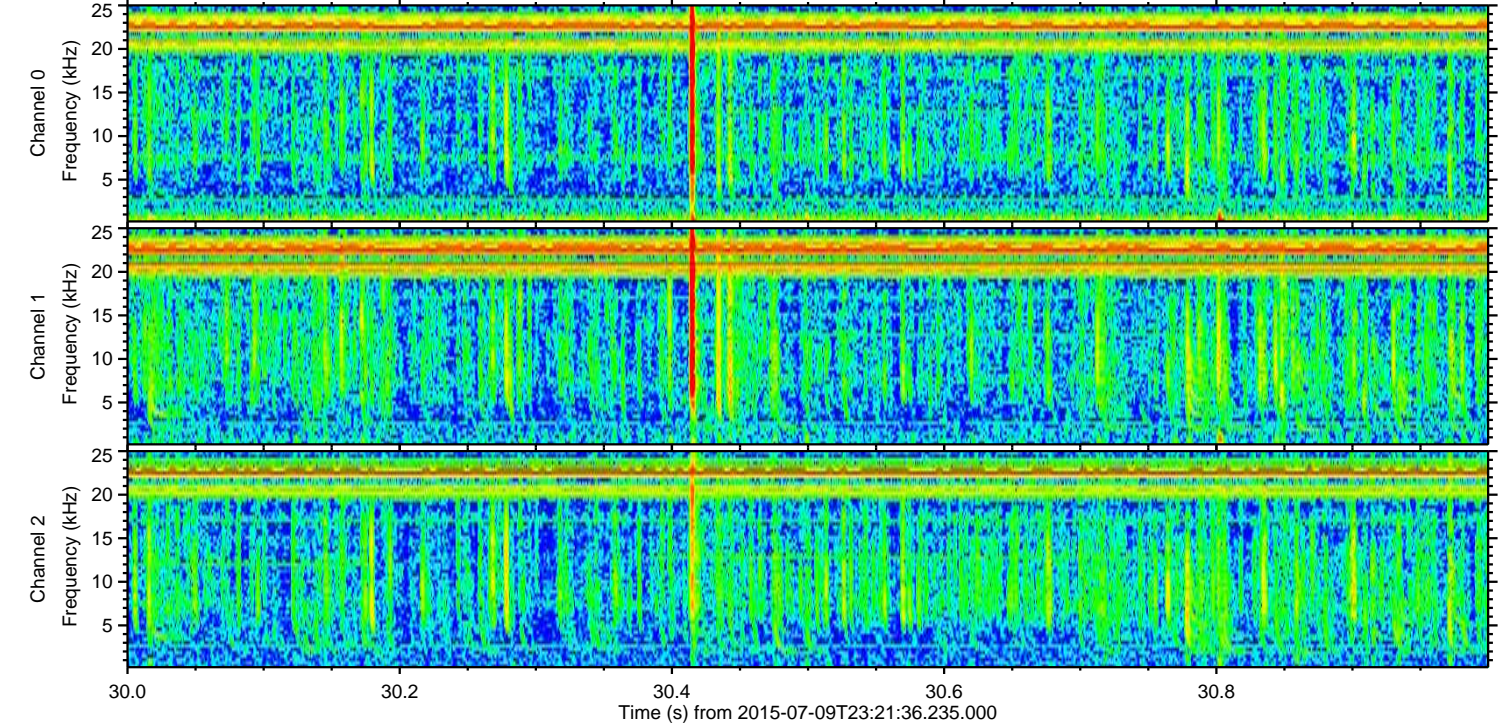
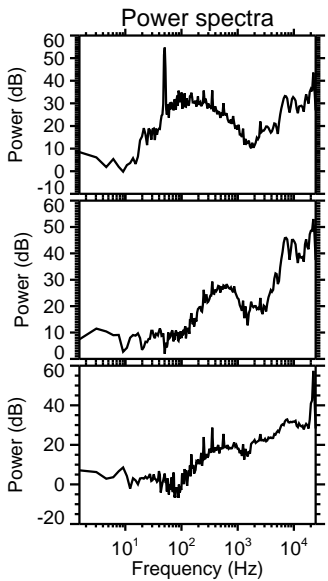
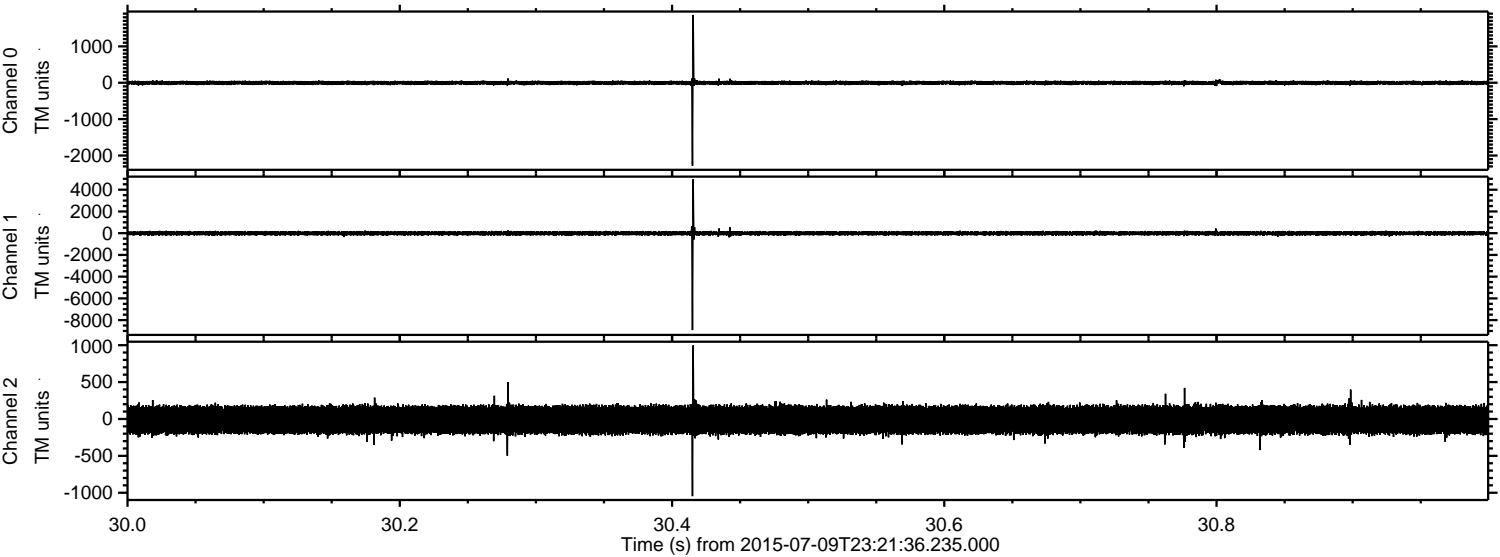
Processed Fri Jul 10 01:28:18 2015 by ELM ver.2012-10-06 from 001__elm20150709_232135__dat00.bin



Processed Fri Jul 10 01:28:34 2015 by ELM ver.2012-10-06 from 001__elm20150709_232135__dat00.bin

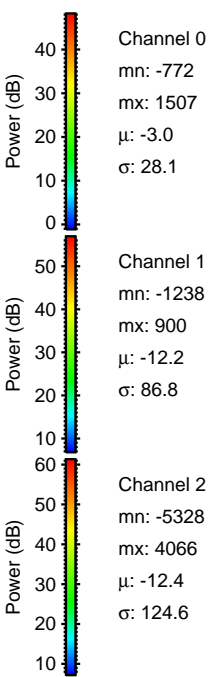
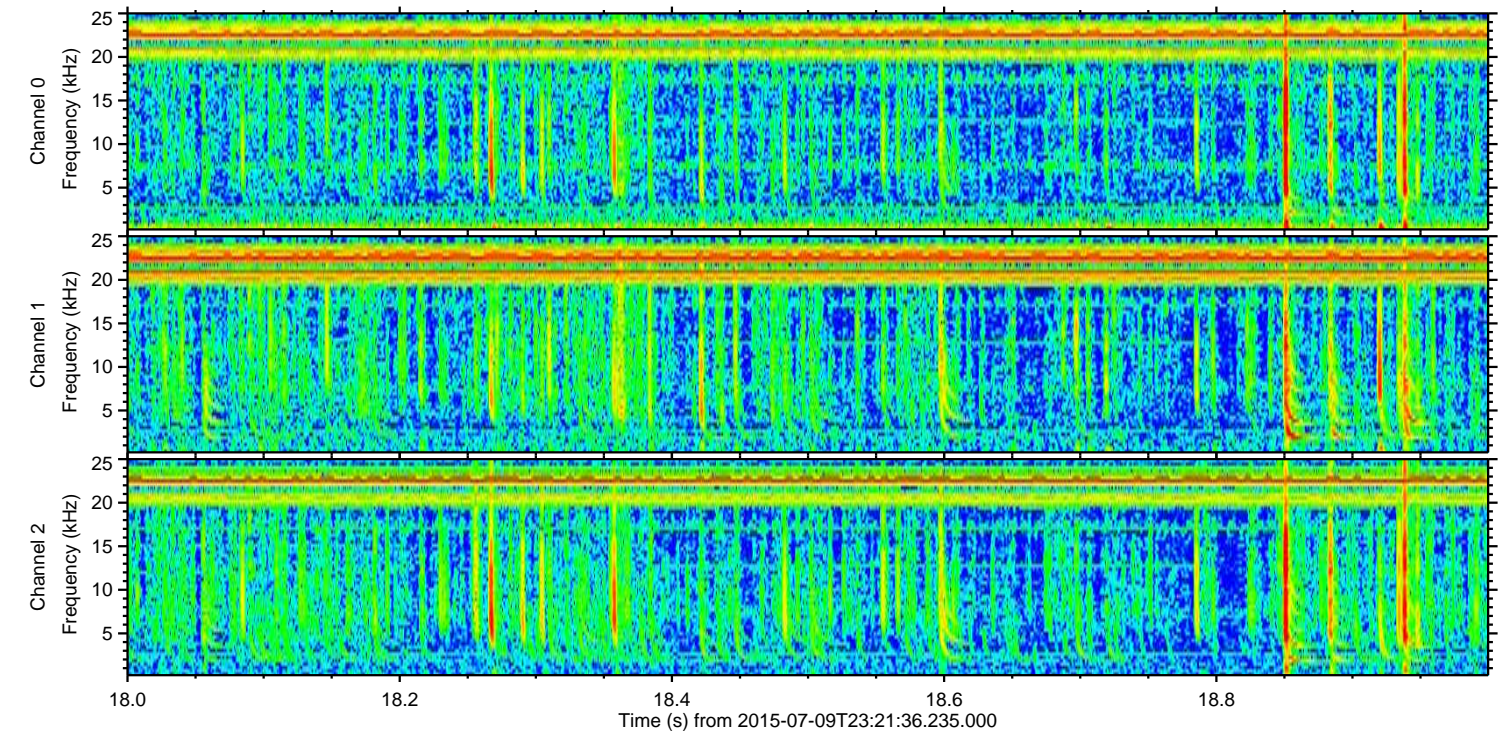
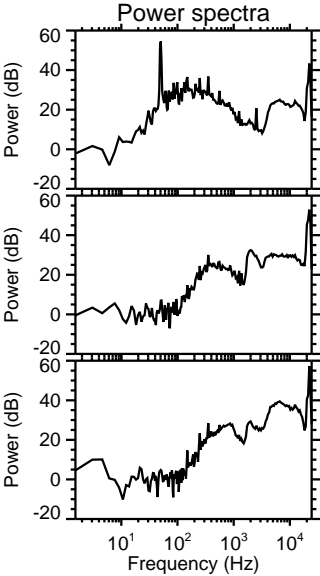
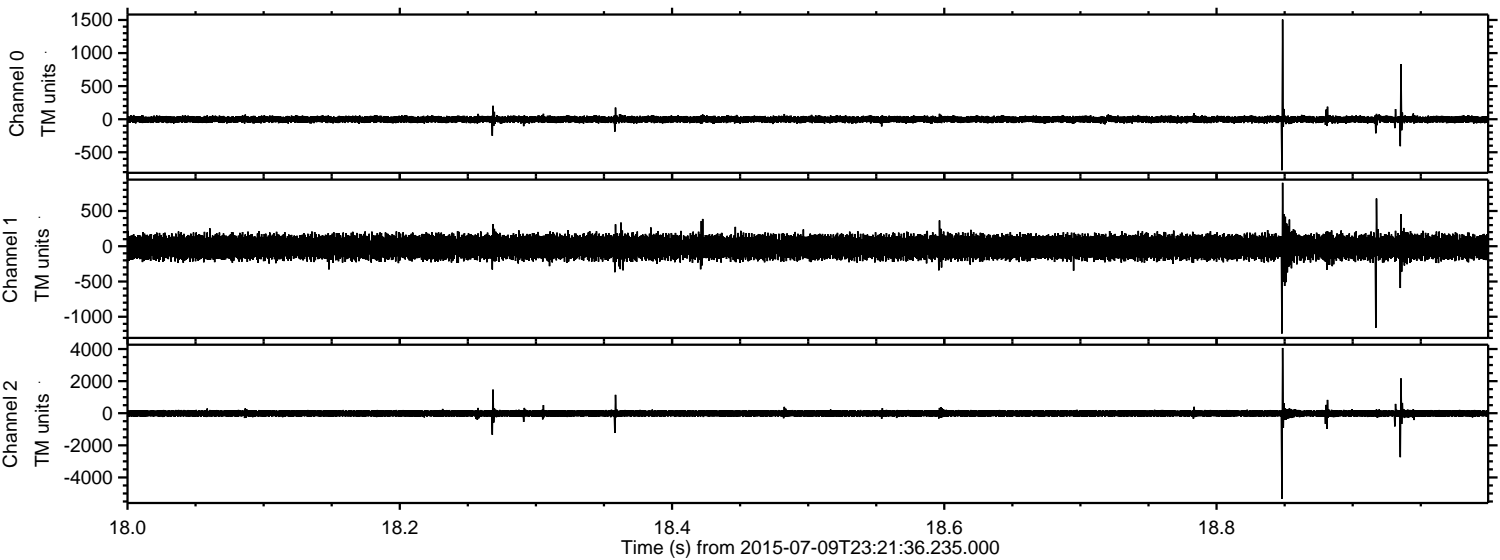


Processed Fri Jul 10 01:28:35 2015 by ELM ver.2012-10-06 from 001__elm20150709_232135__dat00.bin

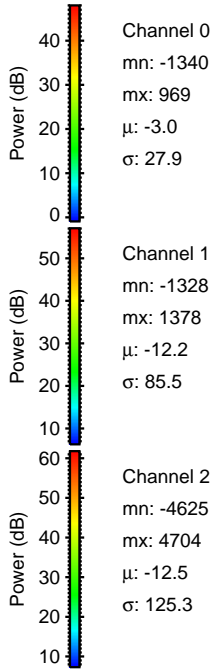
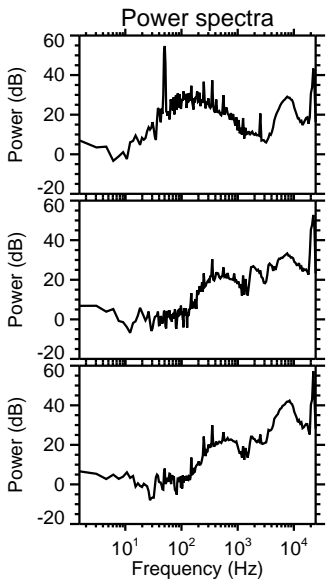
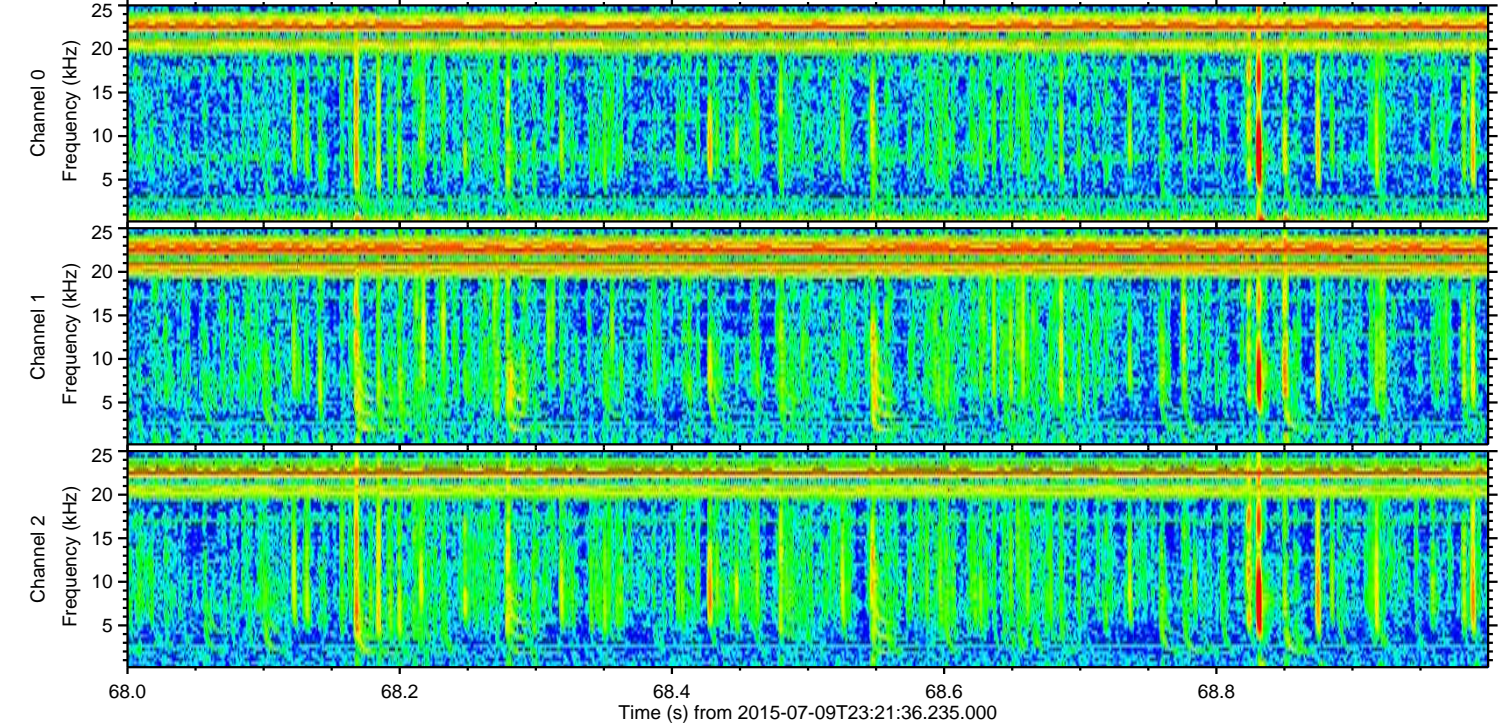
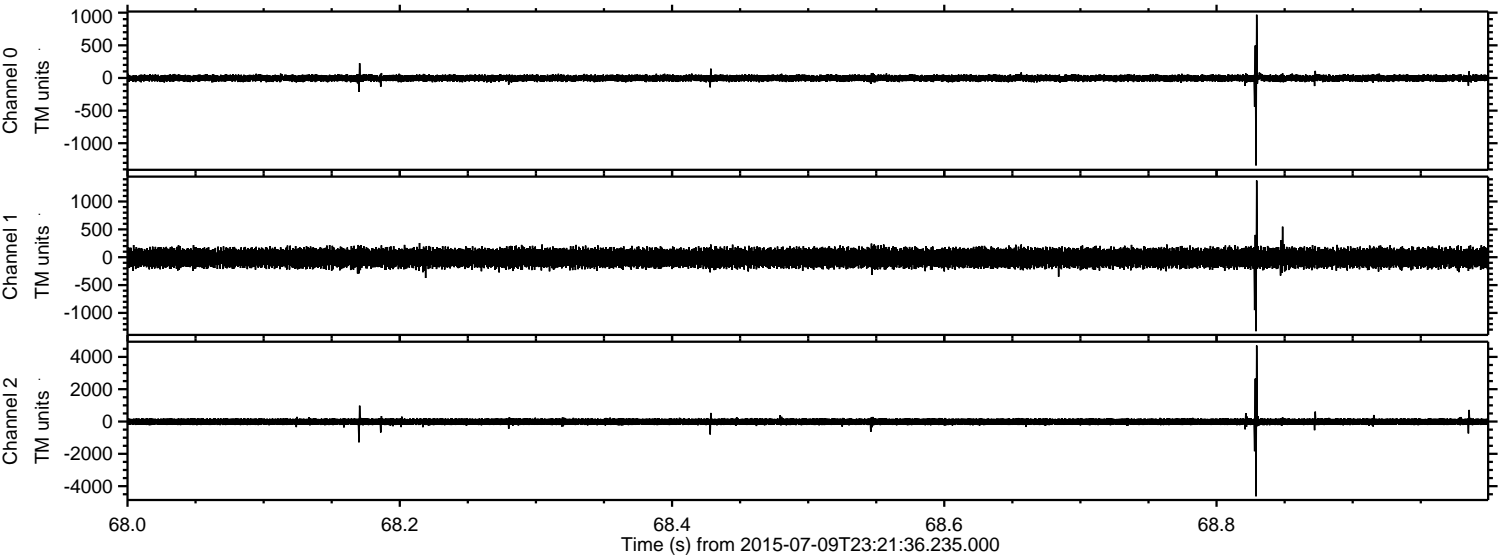


ELMAVAN 3D WAVEFORMS (Measured data sampled at 50 kHz) 51000 packets of 144 samples from 2015-07-09T23:21:36.235.000. Part 19/147

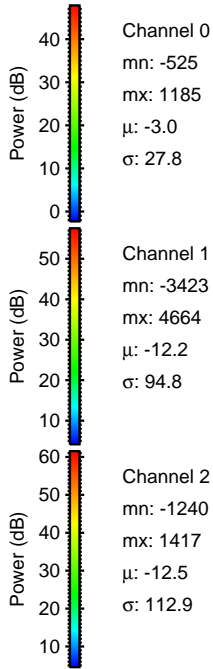
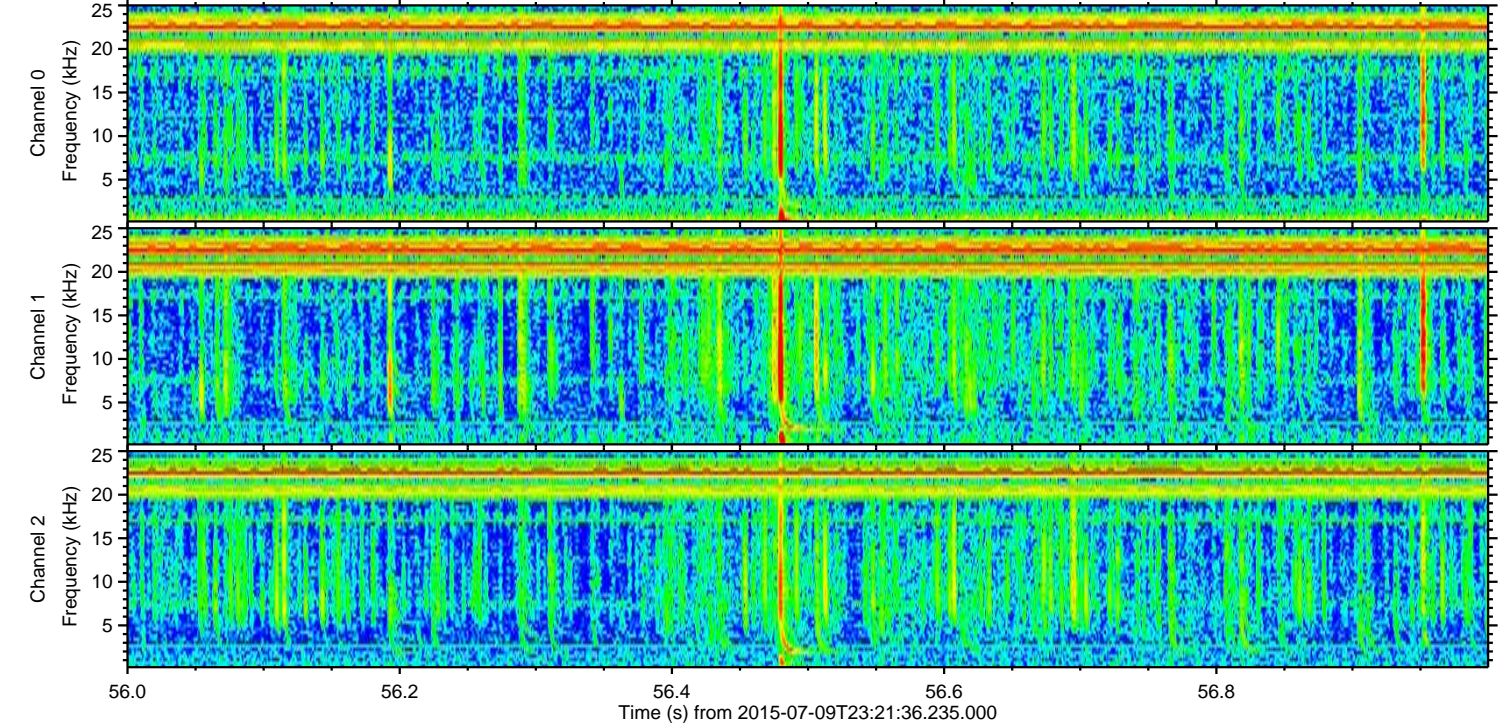
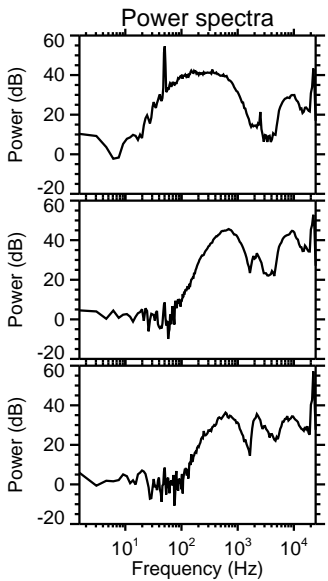
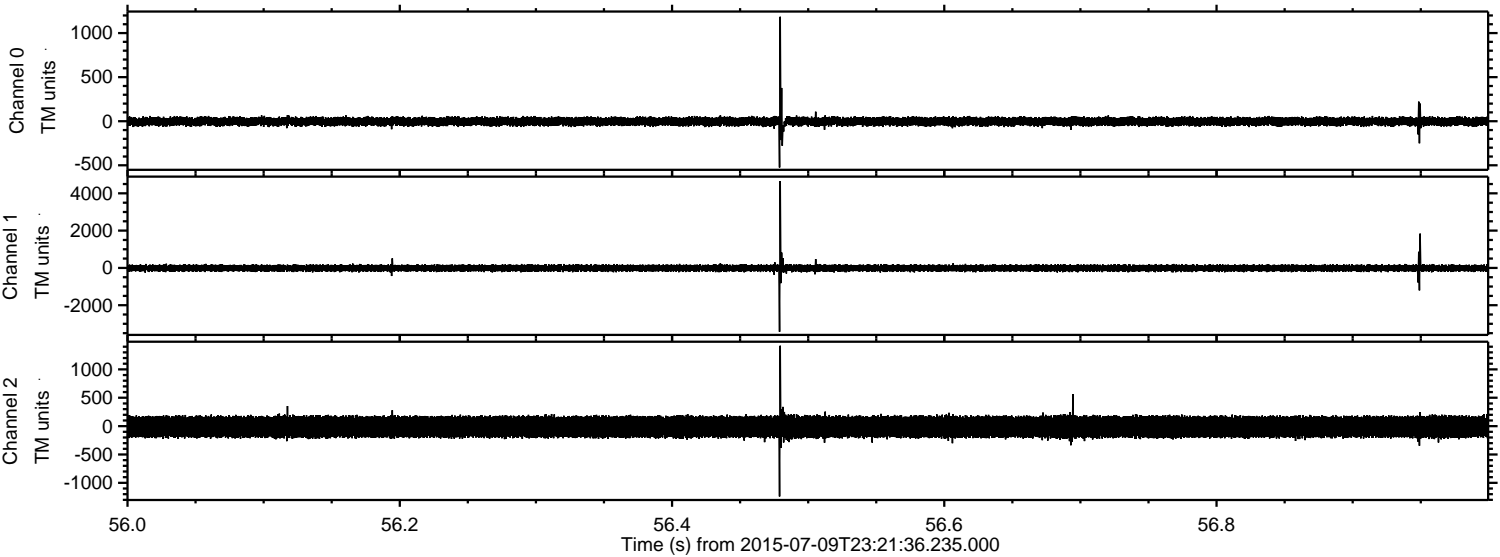
Processed Fri Jul 10 01:28:36 2015 by ELM ver.2012-10-06 from 001__elm20150709_232135__dat00.bin



Processed Fri Jul 10 01:28:37 2015 by ELM ver.2012-10-06 from 001__elm20150709_232135__dat00.bin

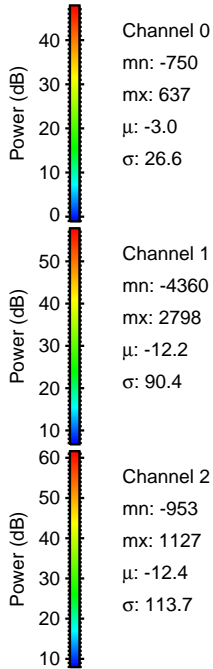
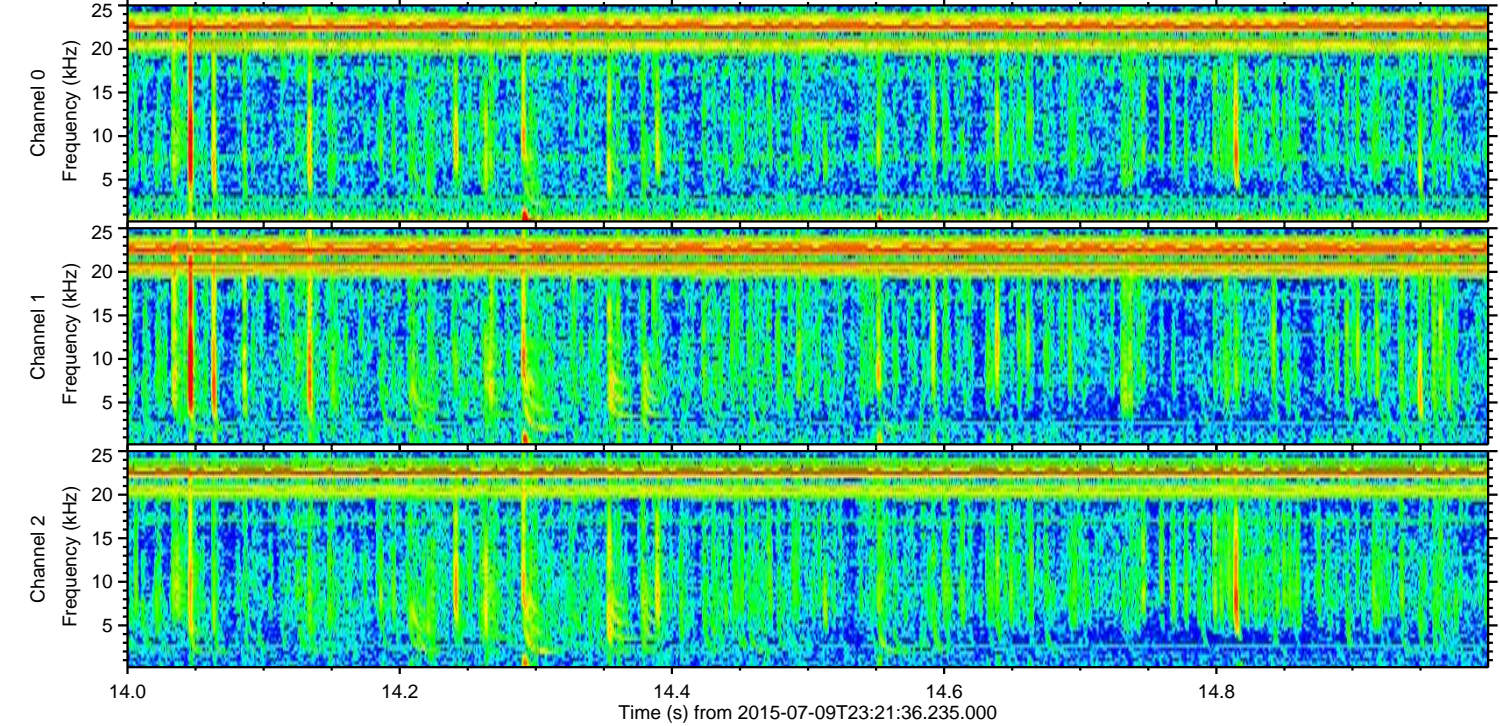
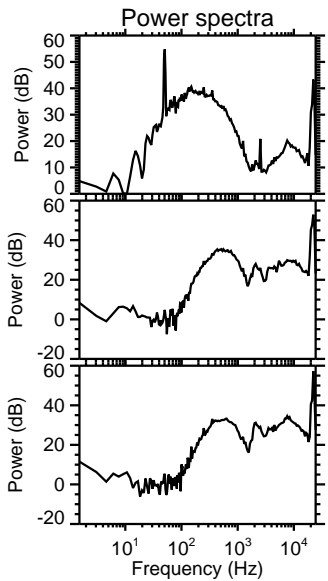
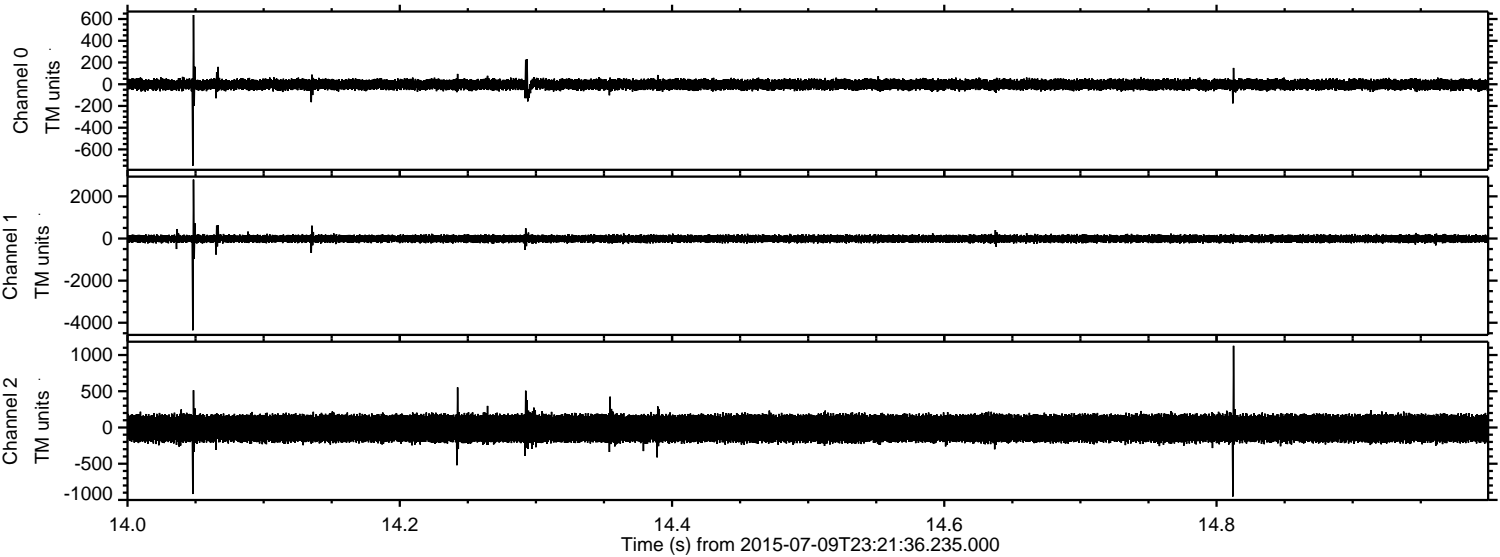


Processed Fri Jul 10 01:28:38 2015 by ELM ver.2012-10-06 from 001__elm20150709_232135__dat00.bin

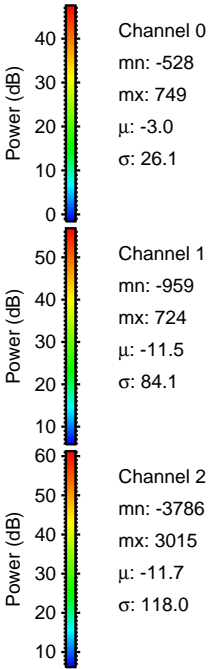
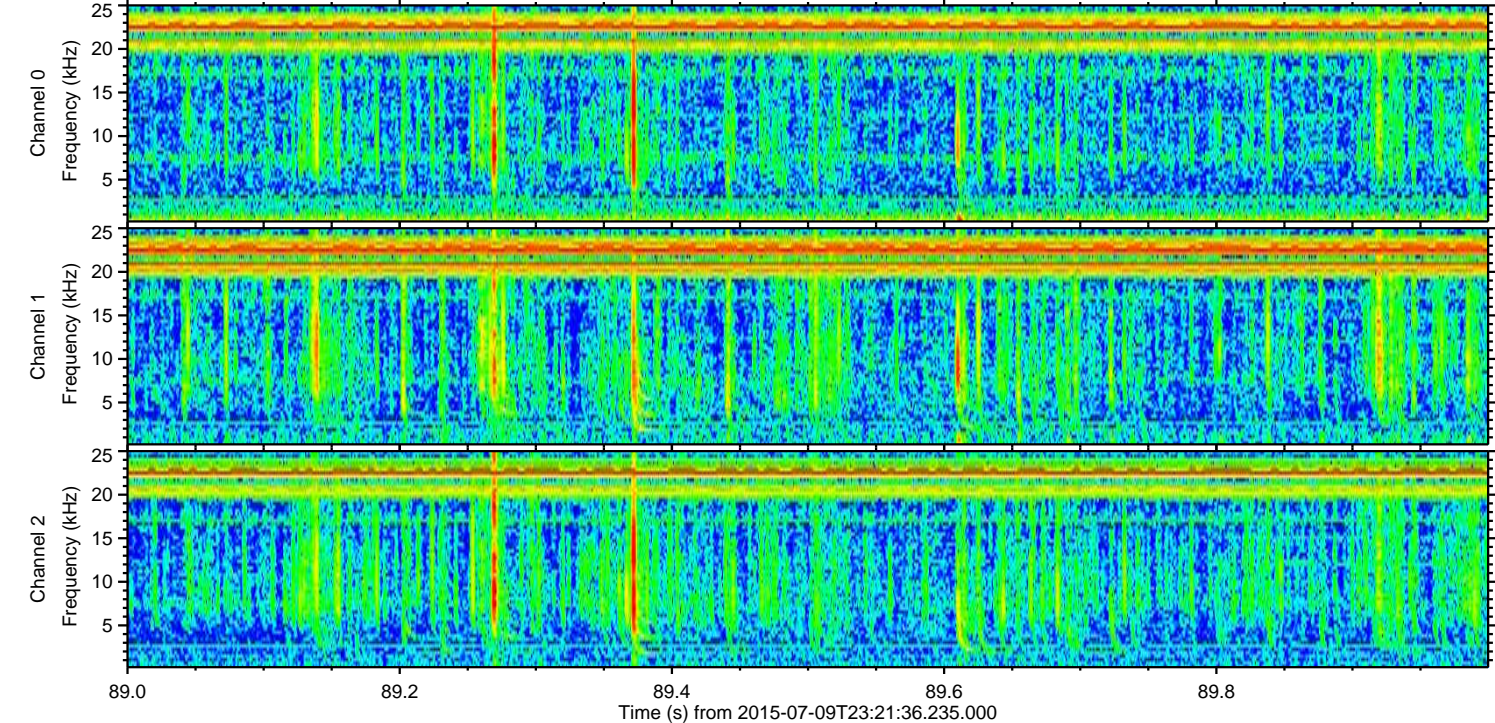
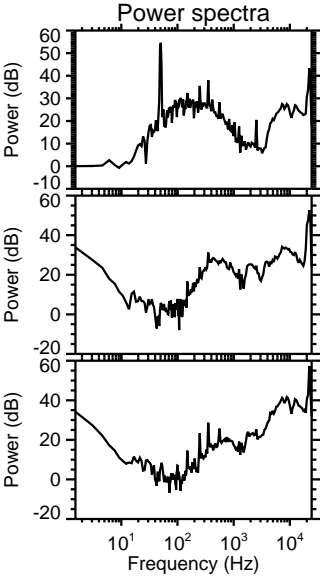
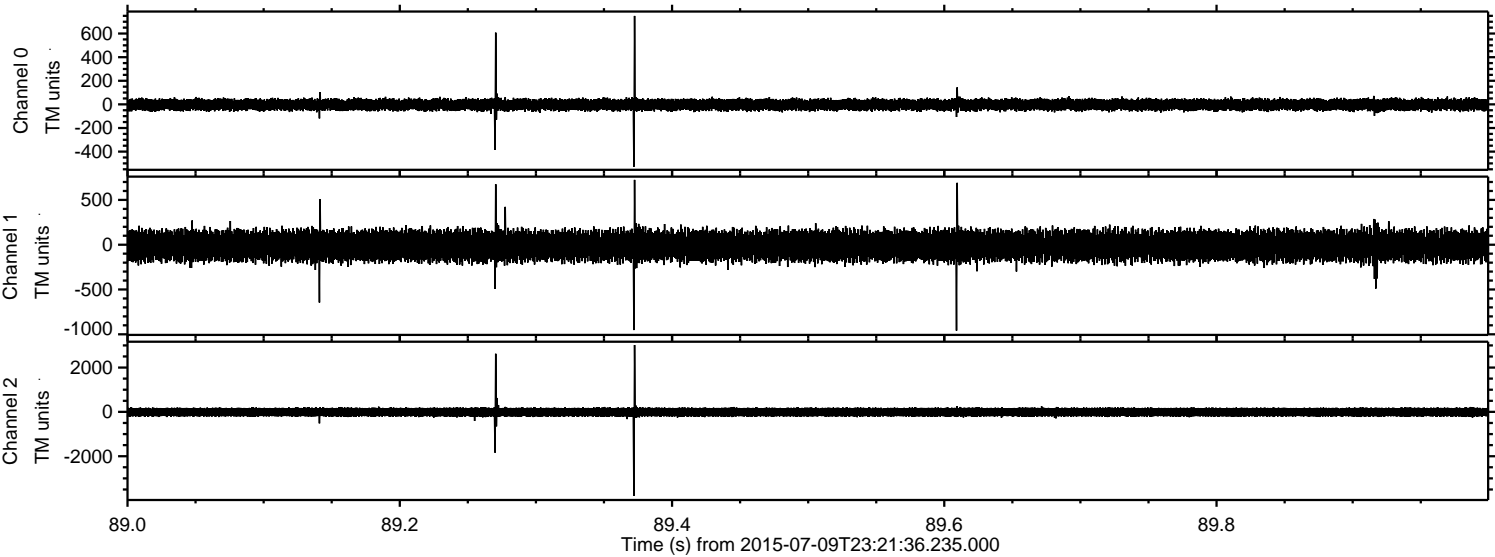


ELMAVAN 3D WAVEFORMS (Measured data sampled at 50 kHz) 51000 packets of 144 samples from 2015-07-09T23:21:36.235.000. Part 15/147

Processed Fri Jul 10 01:28:39 2015 by ELM ver.2012-10-06 from 001__elm20150709_232135__dat00.bin

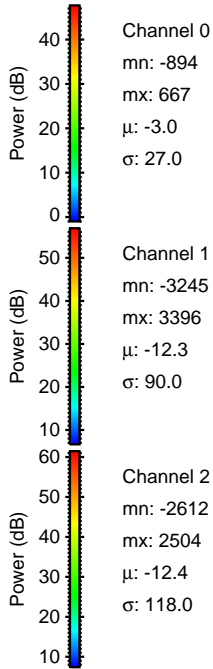
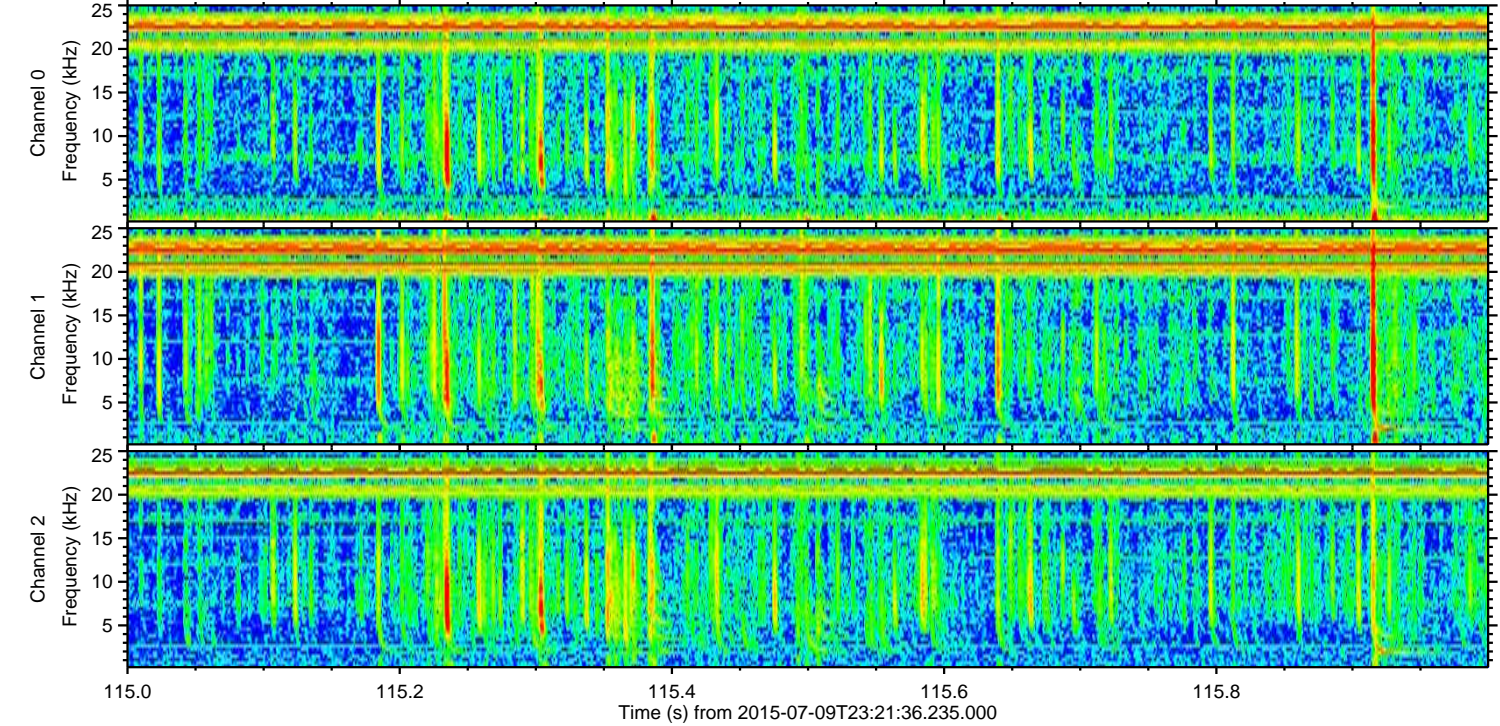
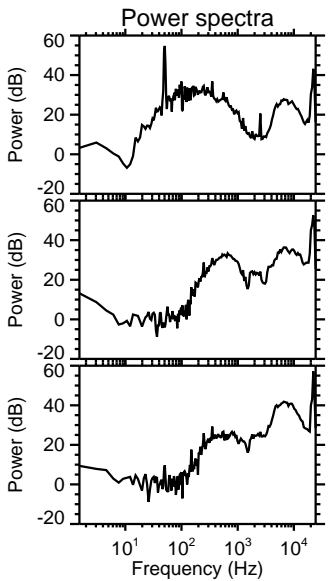
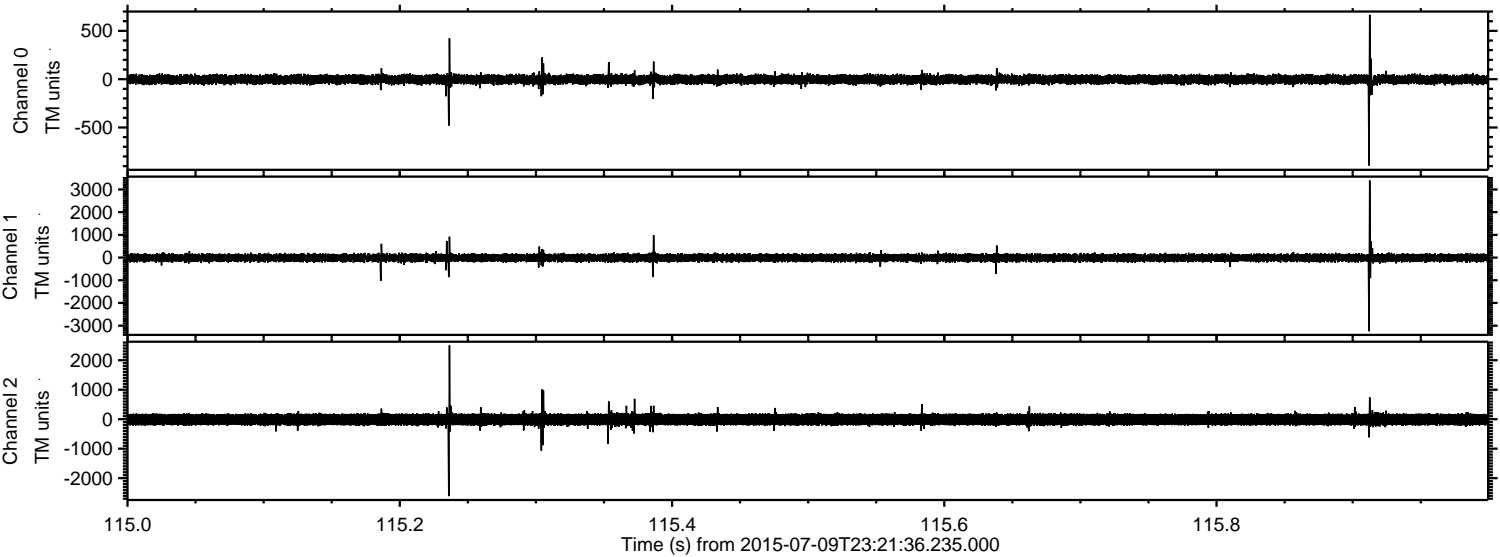


Processed Fri Jul 10 01:28:40 2015 by ELM ver.2012-10-06 from 001__elm20150709_232135__dat00.bin



ELMAVAN 3D WAVEFORMS (Measured data sampled at 50 kHz) 51000 packets of 144 samples from 2015-07-09T23:21:36.235.000. Part 116/147

Processed Fri Jul 10 01:28:41 2015 by ELM ver.2012-10-06 from 001__elm20150709_232135__dat00.bin



Channel 0
mn: -894
mx: 667
 μ : -3.0
 σ : 27.0

Channel 1
mn: -3245
mx: 3396
 μ : -12.3
 σ : 90.0

Channel 2
mn: -2612
mx: 2504
 μ : -12.4
 σ : 118.0

Processed Fri Jul 10 01:28:42 2015 by ELM ver.2012-10-06 from 001__elm20150709_232135__dat00.bin

