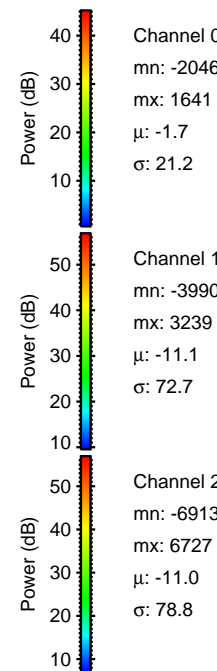
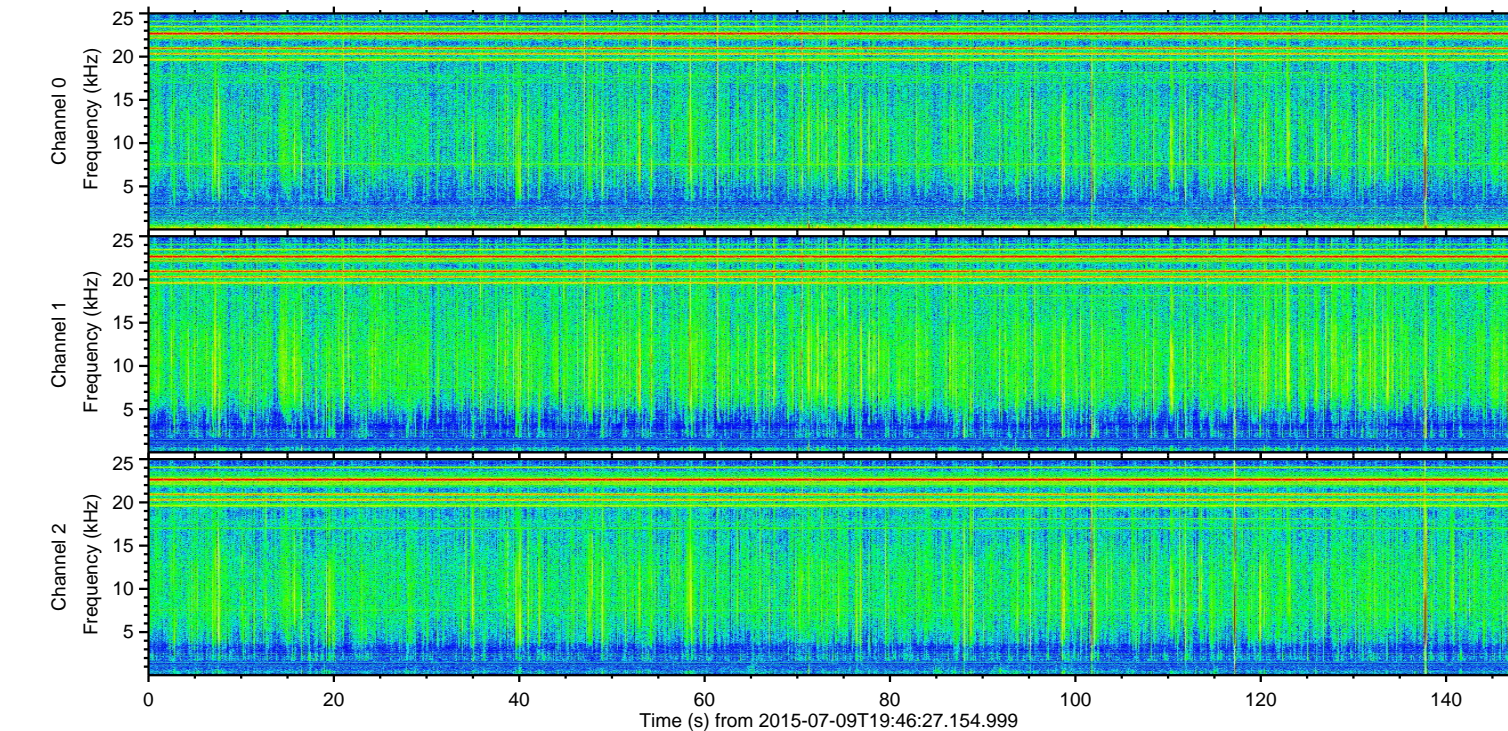
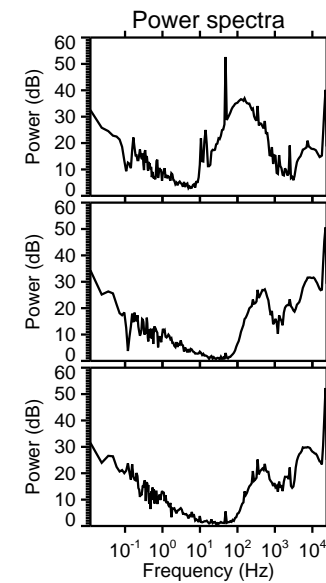
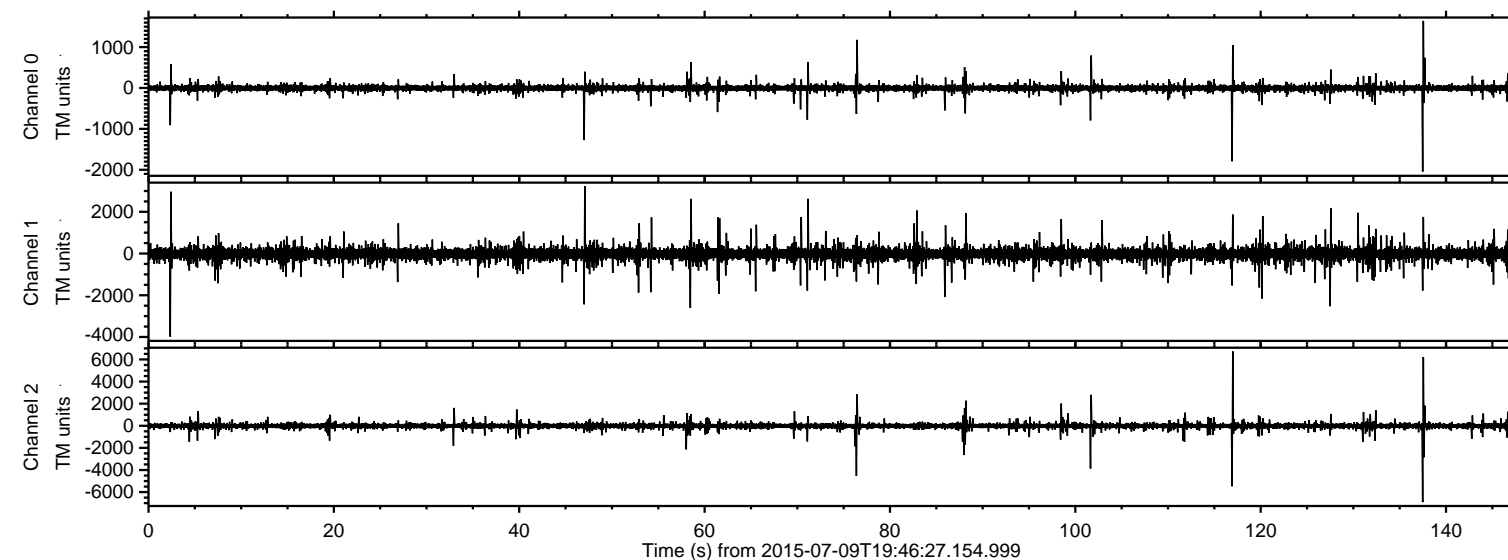


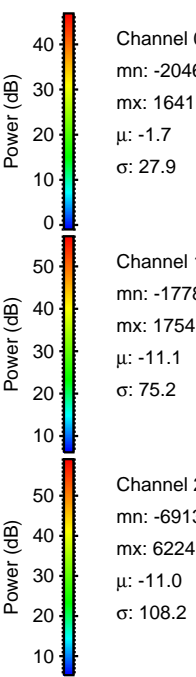
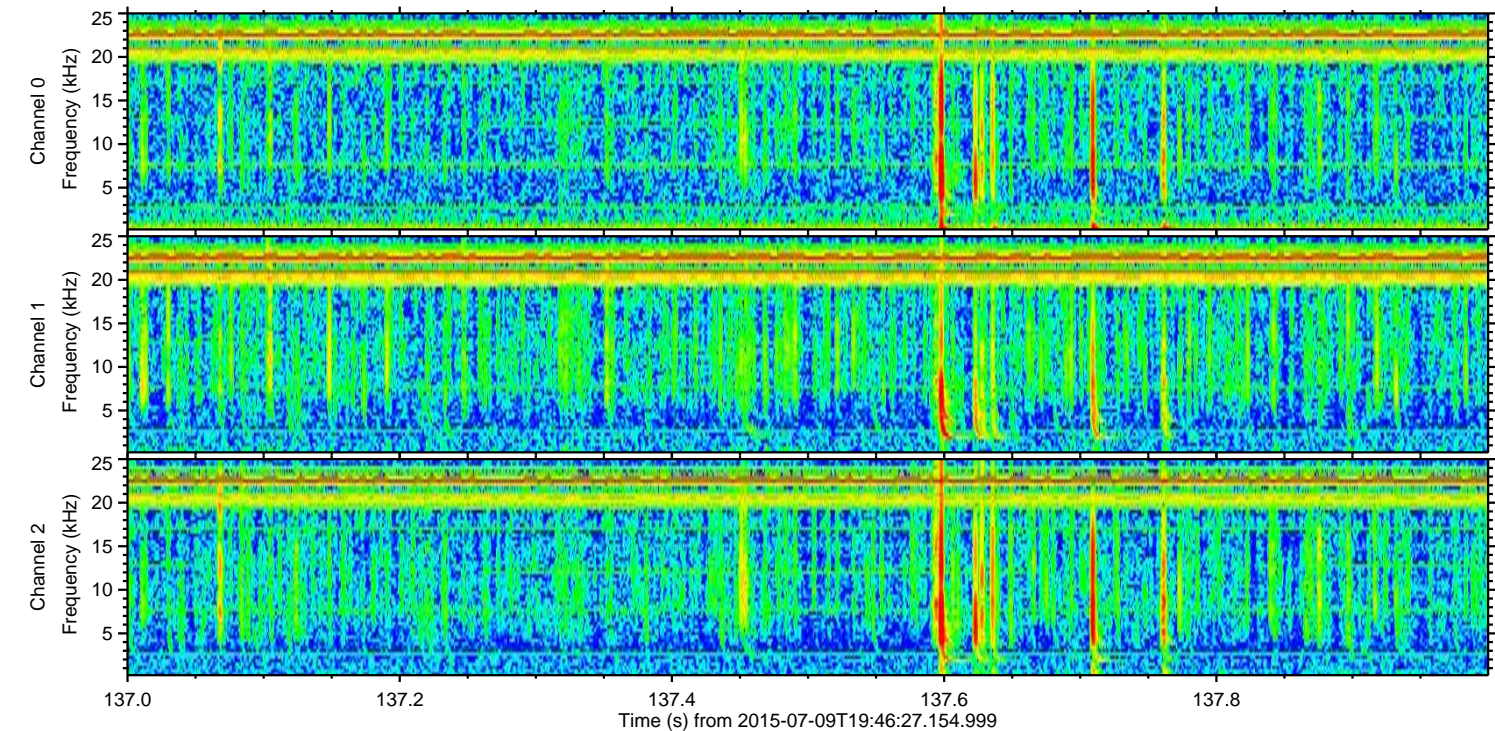
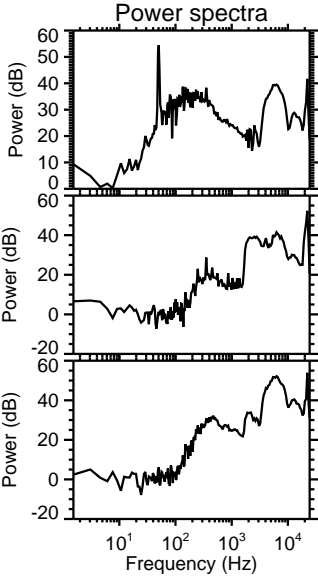
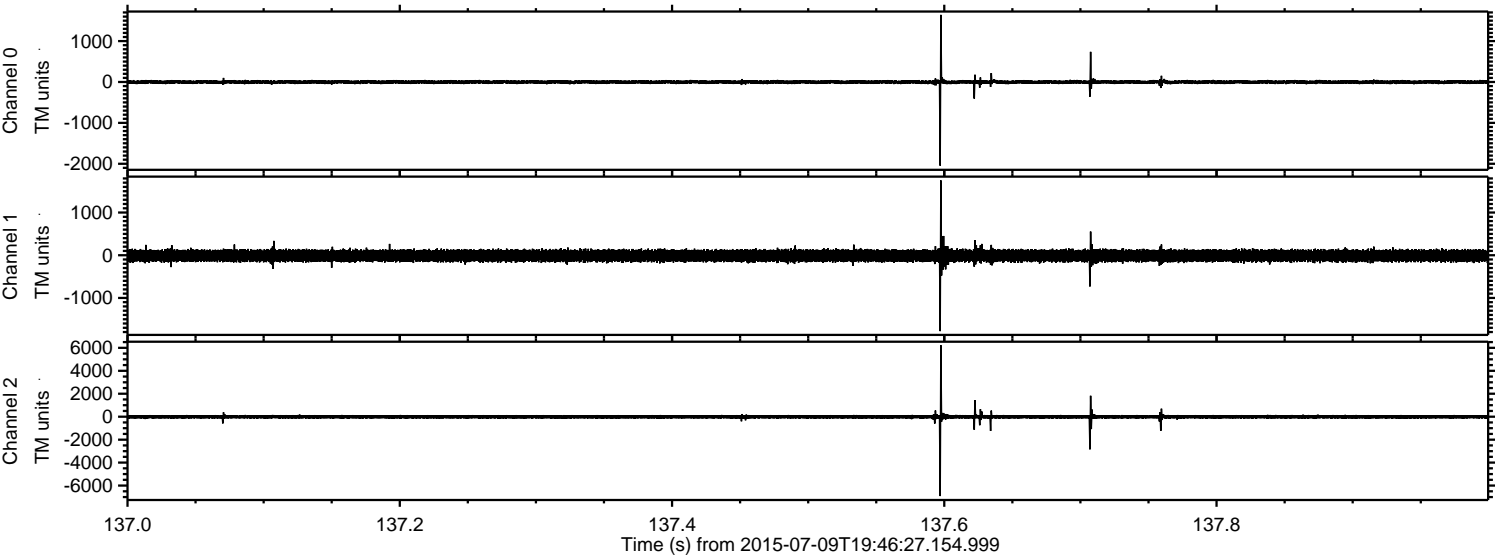
ELMAVAN 3D WAVEFORMS (Measured data sampled at 50 kHz) 51000 packets of 144 samples from 2015-07-09T19:46:27.154.999.

Processed Thu Jul 9 21:52:55 2015 by ELM ver.2012-10-06 from 001__elm20150709_194626__dat00.bin



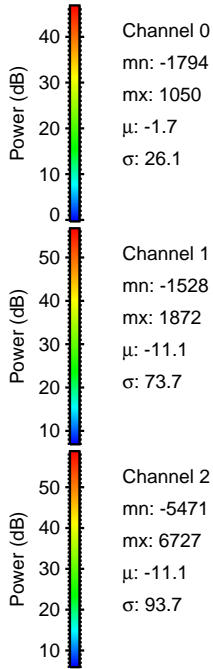
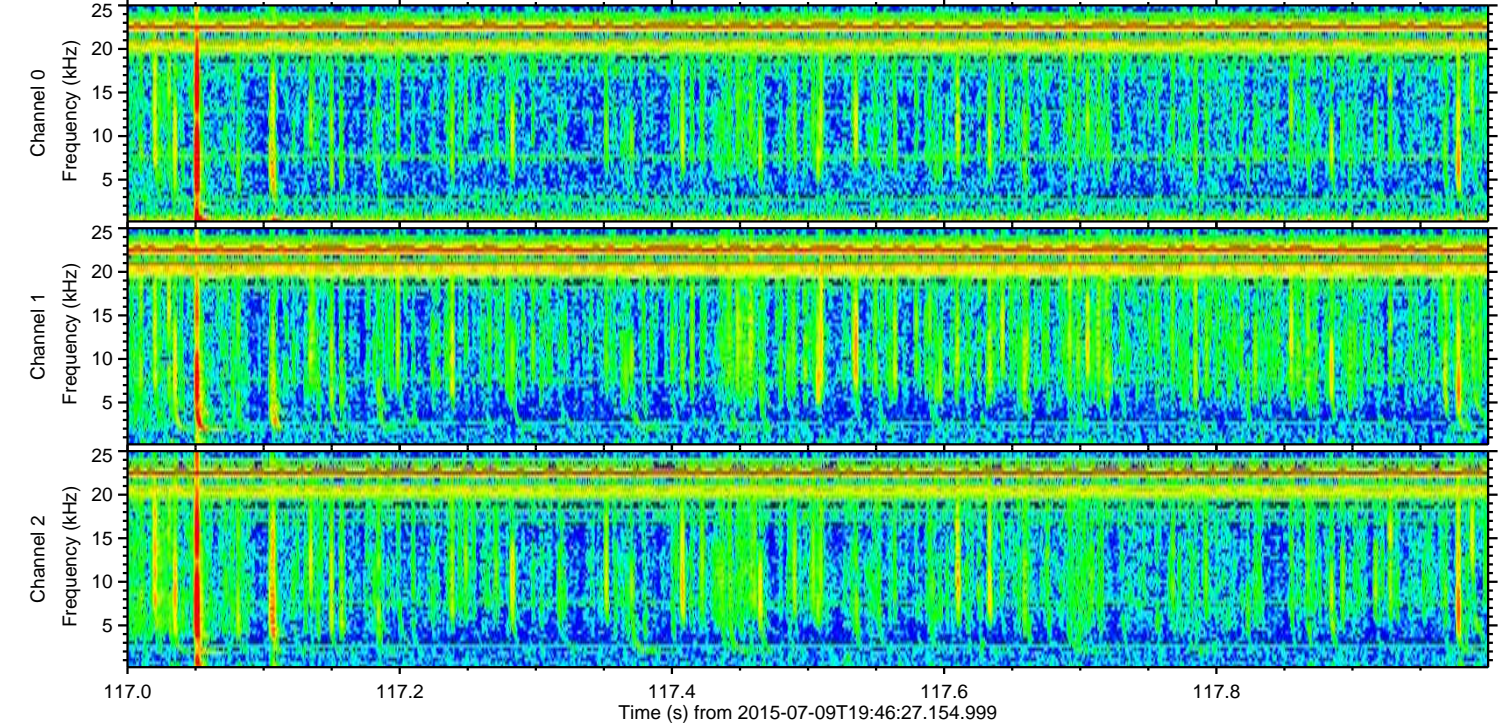
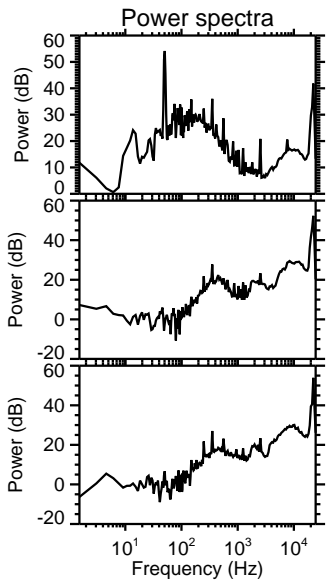
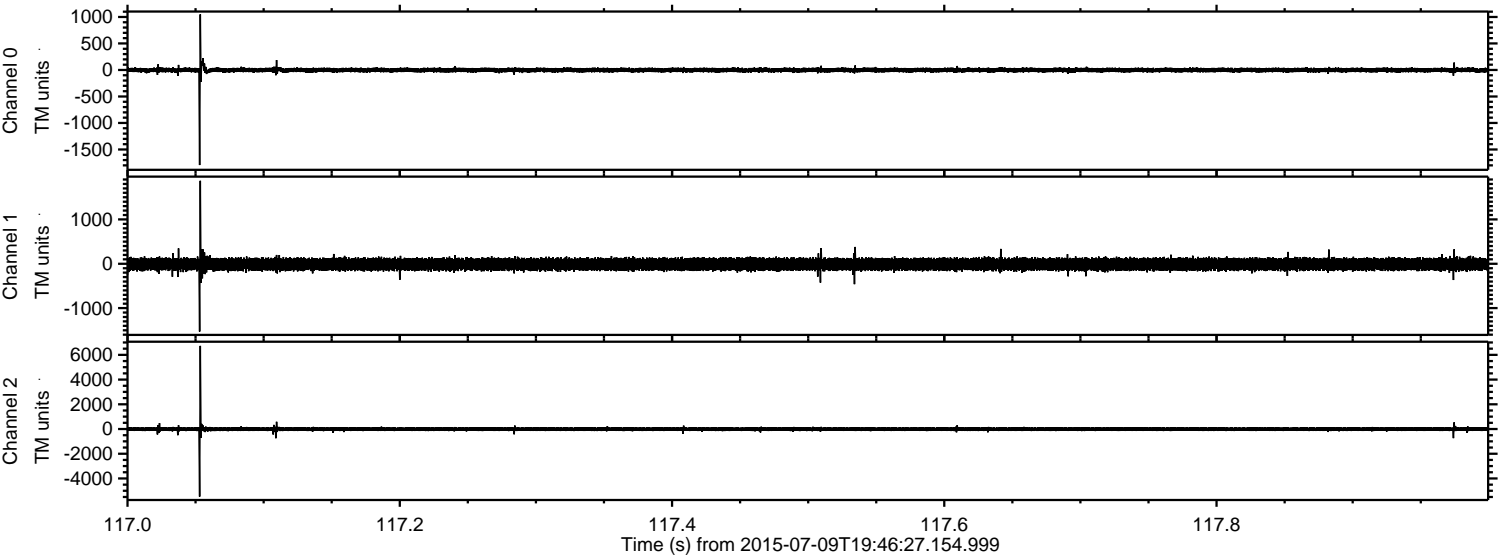
ELMAVAN 3D WAVEFORMS (Measured data sampled at 50 kHz) 51000 packets of 144 samples from 2015-07-09T19:46:27.154.999. Part 138/147

Processed Thu Jul 9 21:53:12 2015 by ELM ver.2012-10-06 from 001__elm20150709_194626__dat00.bin

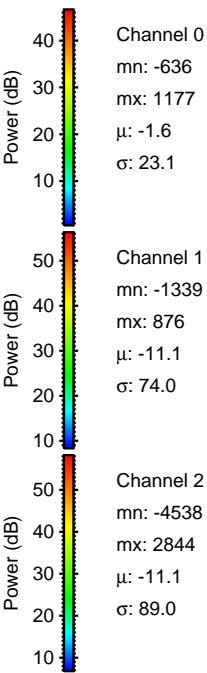
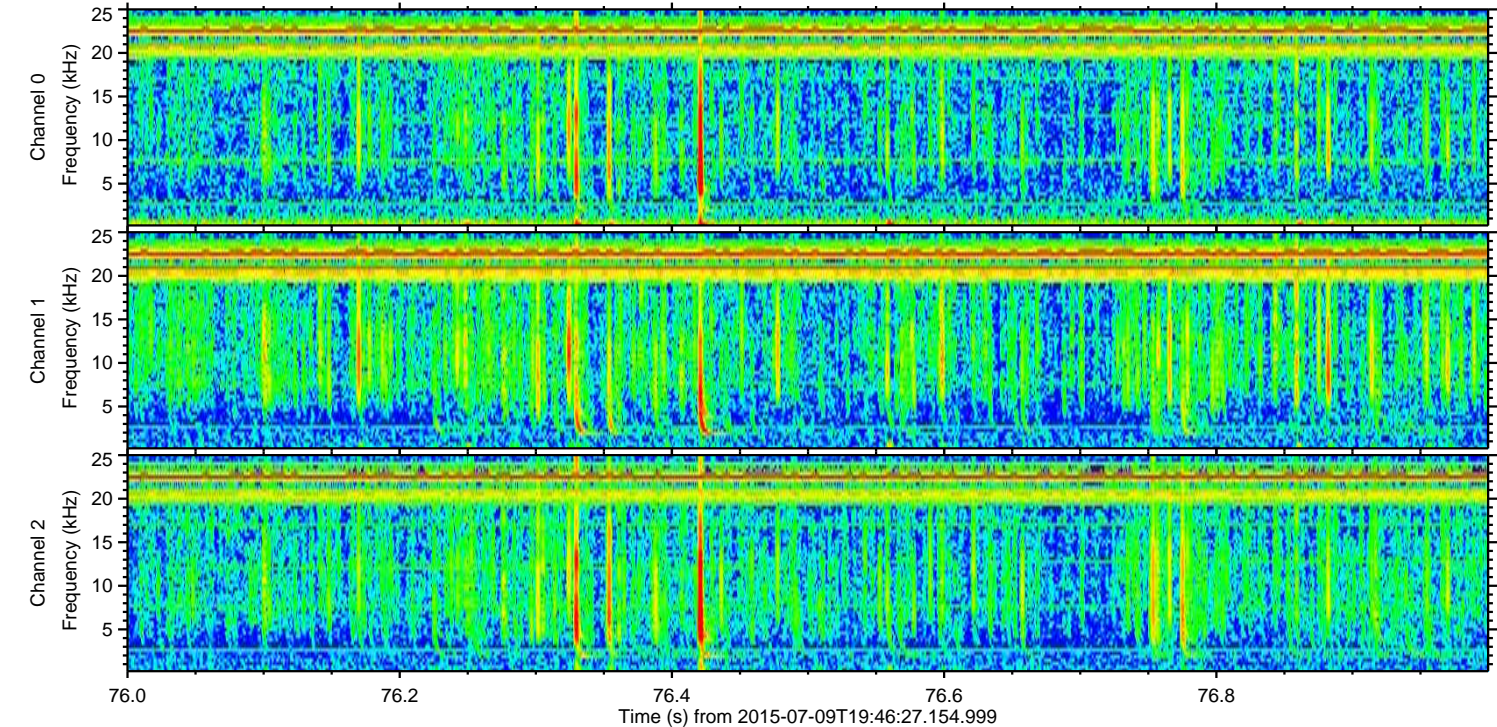
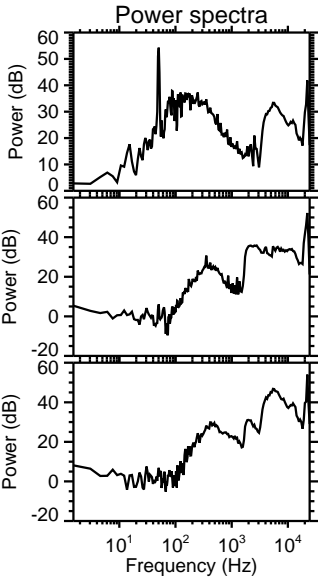
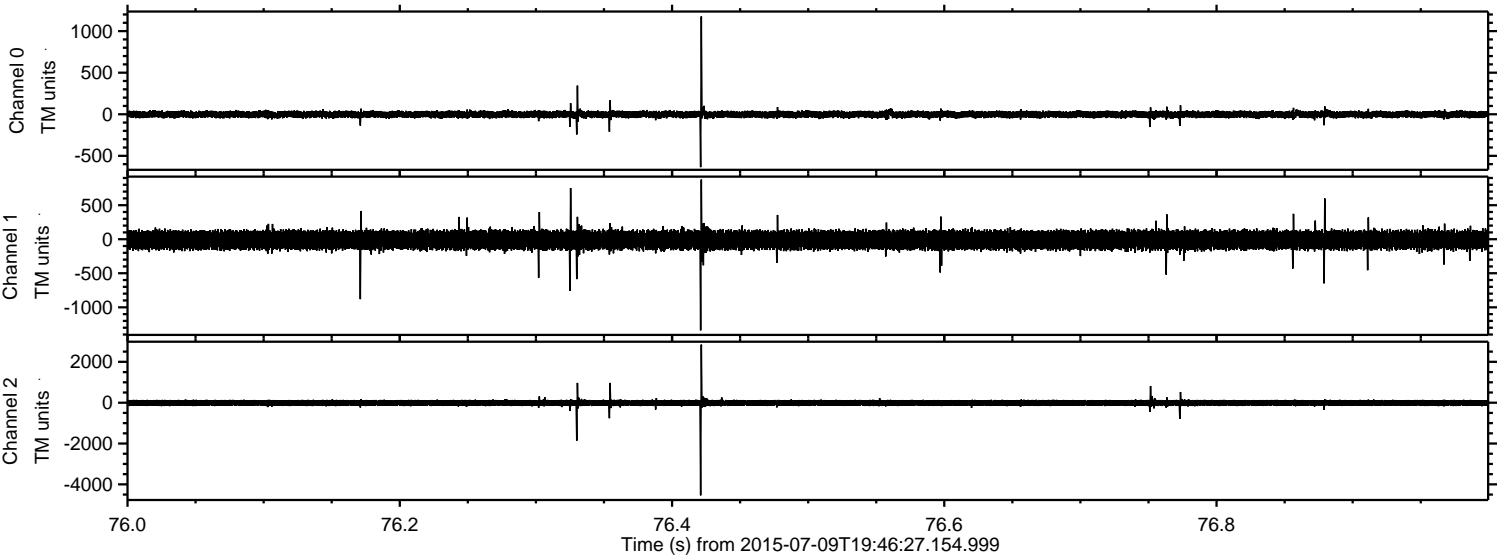


ELMAVAN 3D WAVEFORMS (Measured data sampled at 50 kHz) 51000 packets of 144 samples from 2015-07-09T19:46:27.154.999. Part 118/147

Processed Thu Jul 9 21:53:13 2015 by ELM ver.2012-10-06 from 001__elm20150709_194626__dat00.bin

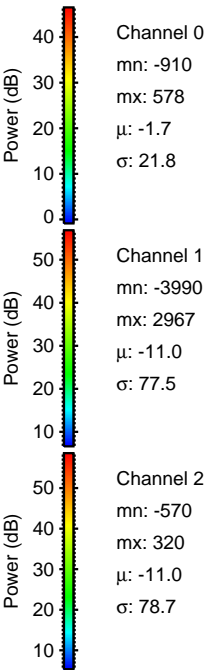
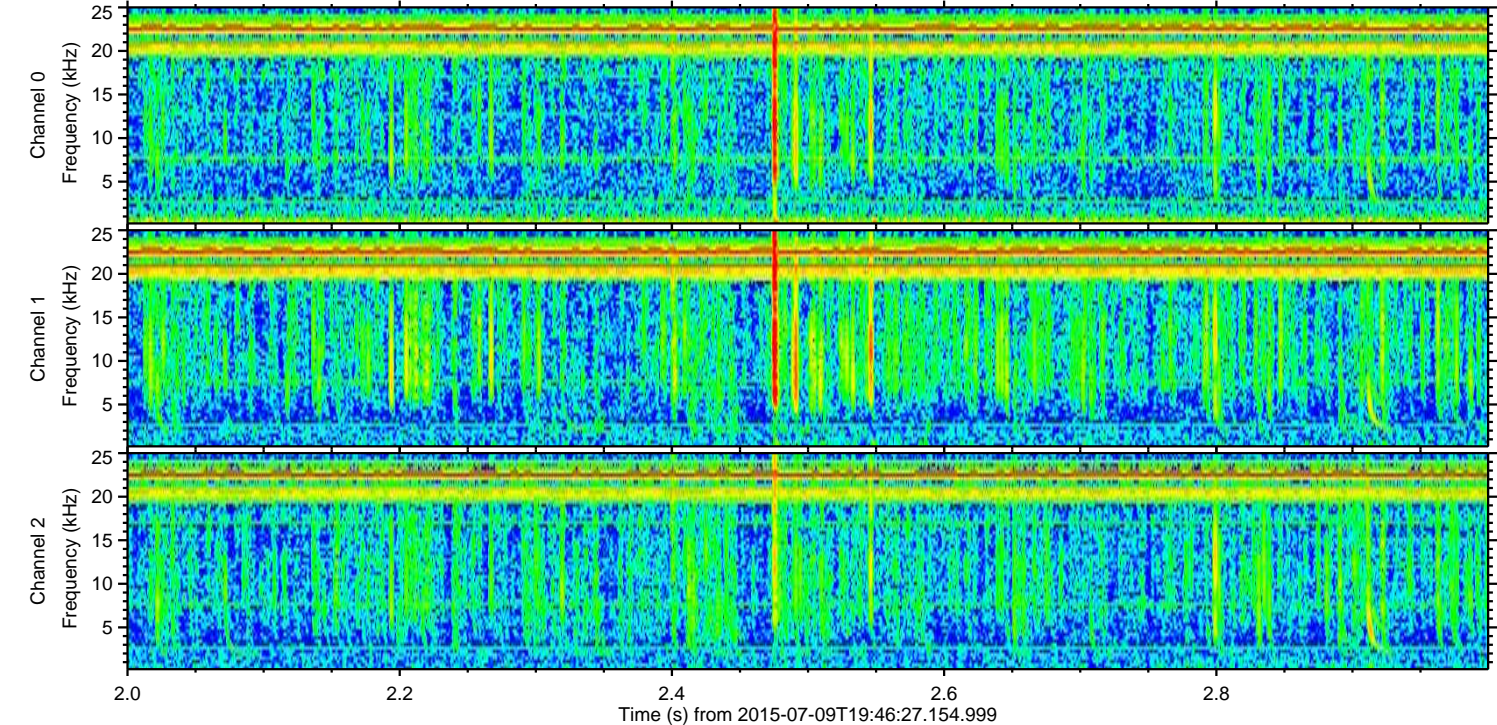
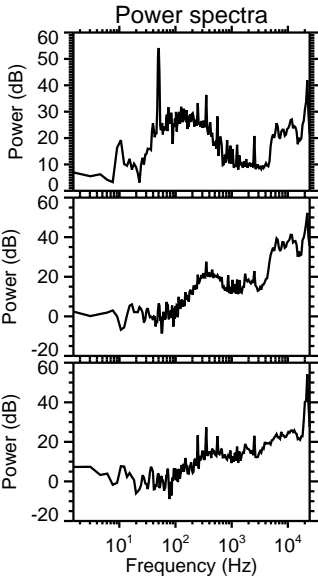
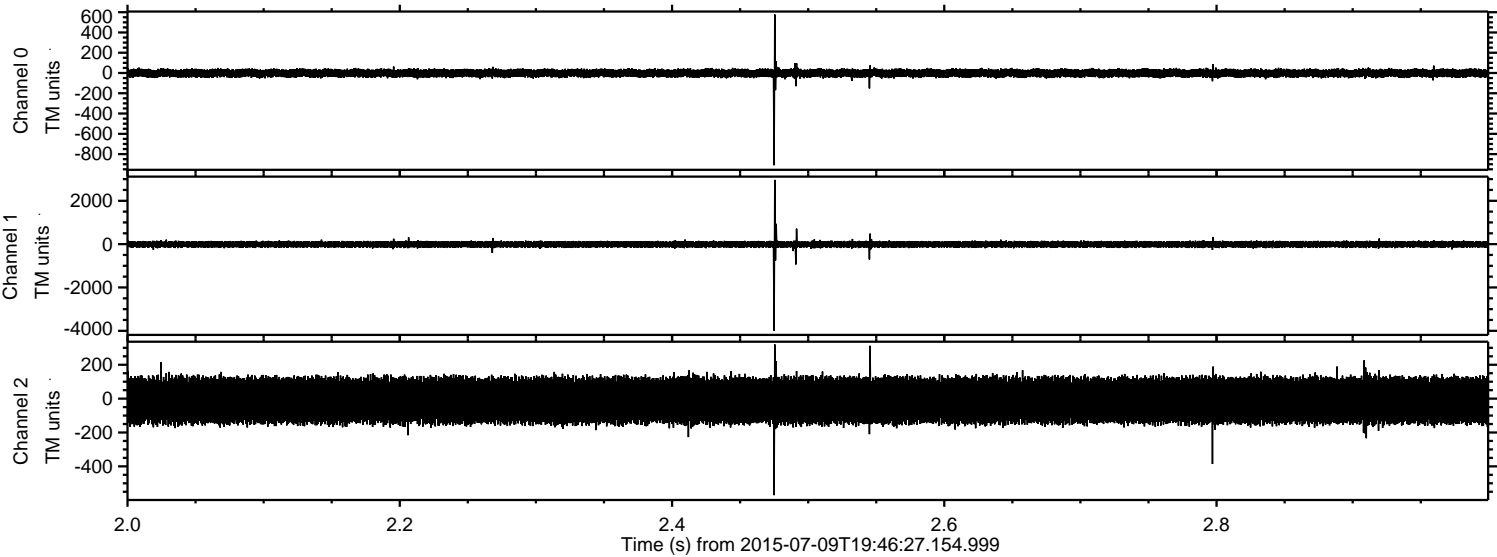


Processed Thu Jul 9 21:53:14 2015 by ELM ver.2012-10-06 from 001__elm20150709_194626__dat00.bin



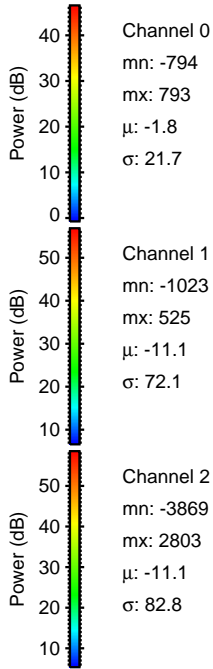
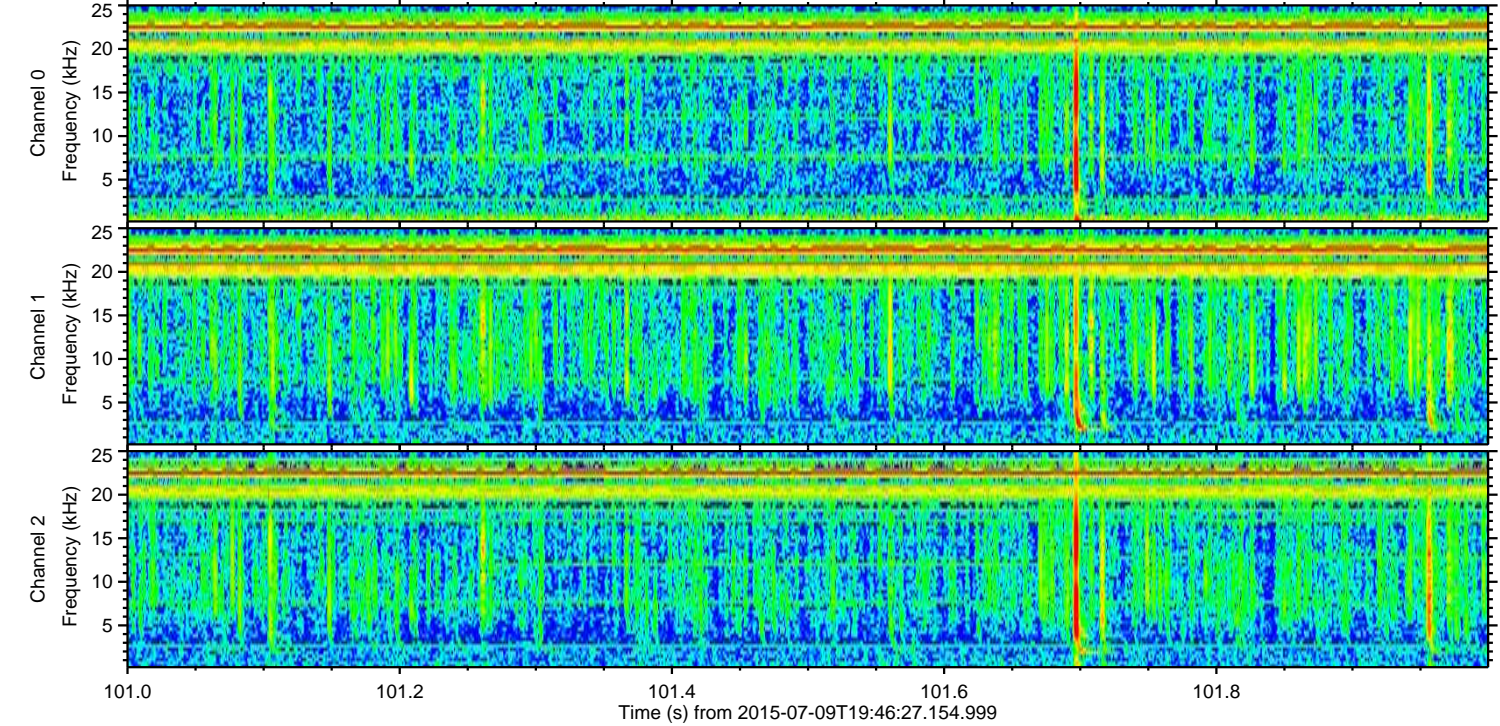
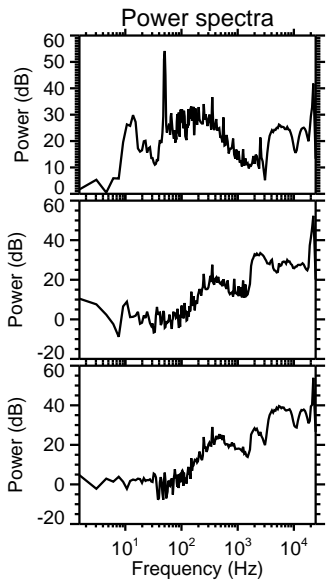
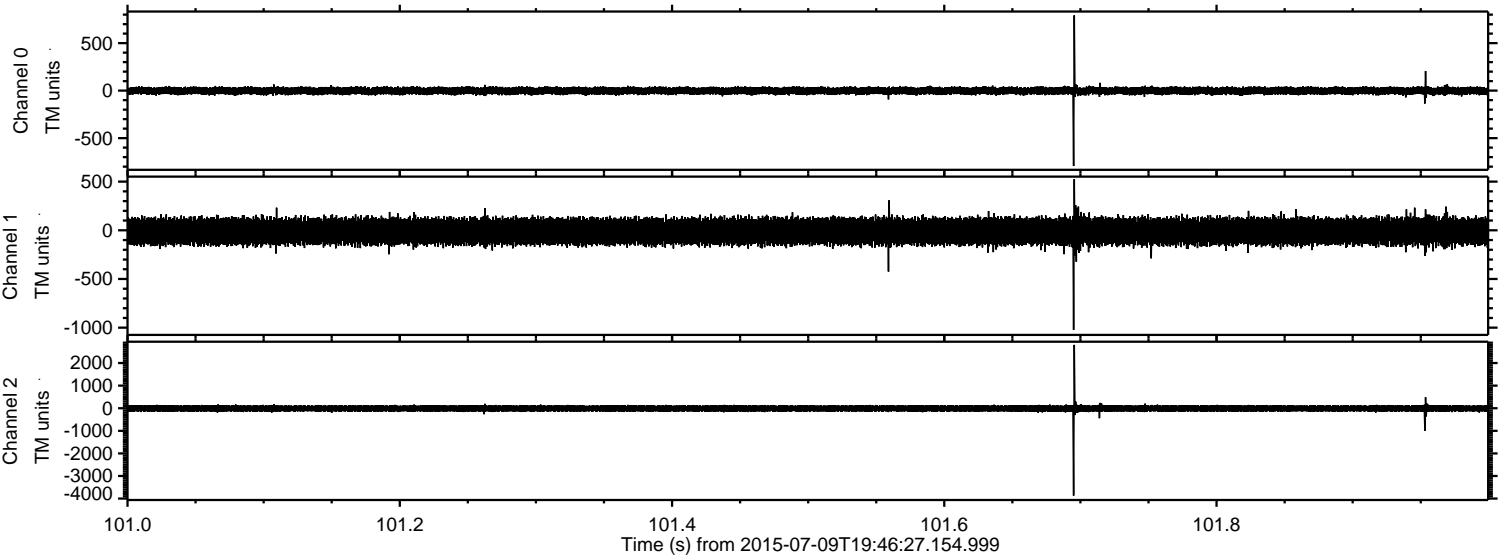
ELMAVAN 3D WAVEFORMS (Measured data sampled at 50 kHz) 51000 packets of 144 samples from 2015-07-09T19:46:27.154.999. Part 3/147

Processed Thu Jul 9 21:53:15 2015 by ELM ver.2012-10-06 from 001__elm20150709_194626__dat00.bin



ELMAVAN 3D WAVEFORMS (Measured data sampled at 50 kHz) 51000 packets of 144 samples from 2015-07-09T19:46:27.154.999. Part 102/147

Processed Thu Jul 9 21:53:17 2015 by ELM ver.2012-10-06 from 001__elm20150709_194626__dat00.bin

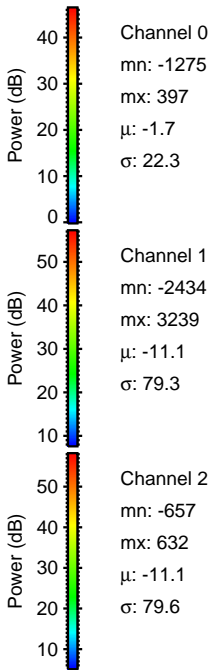
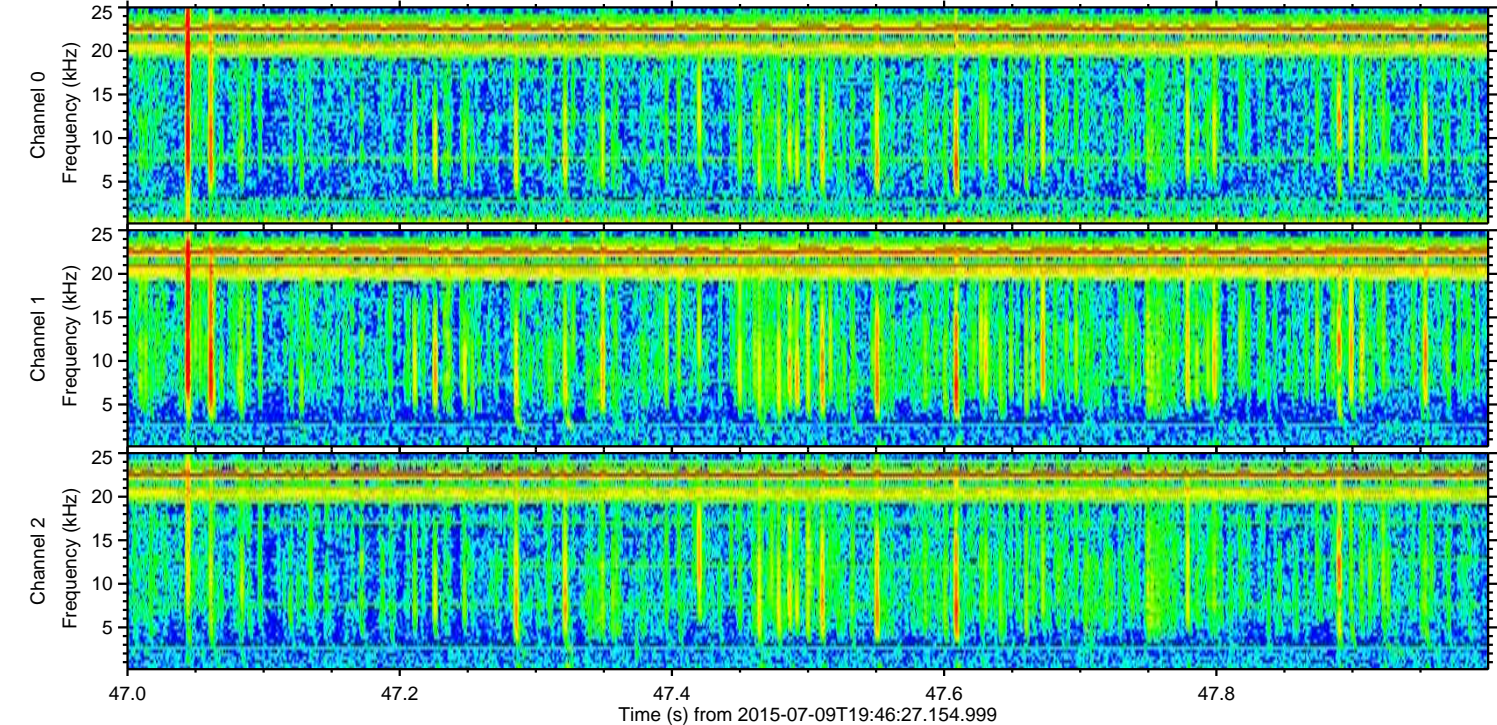
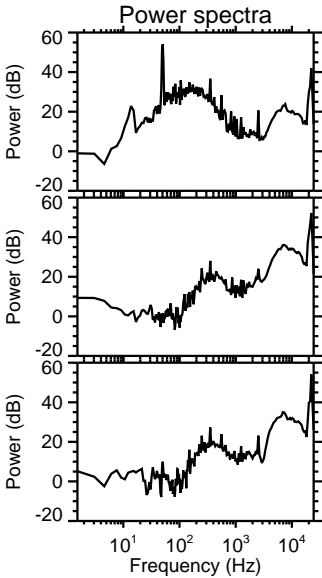
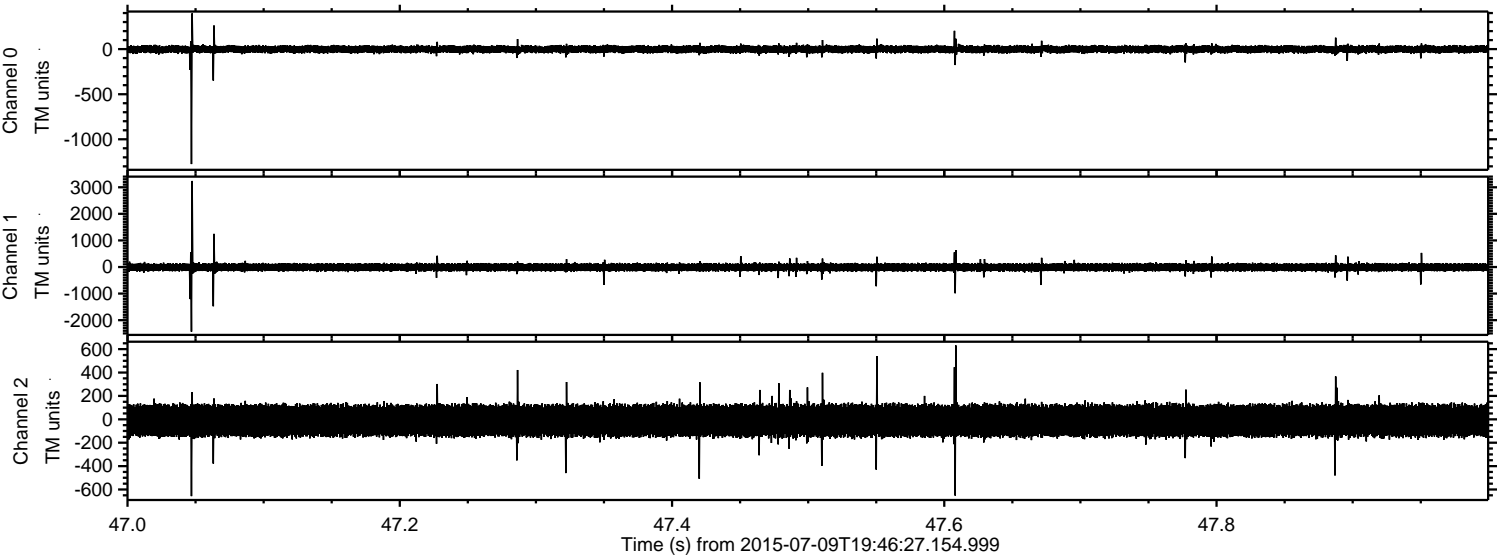


Channel 0
mn: -794
mx: 793
 μ : -1.8
 σ : 21.7

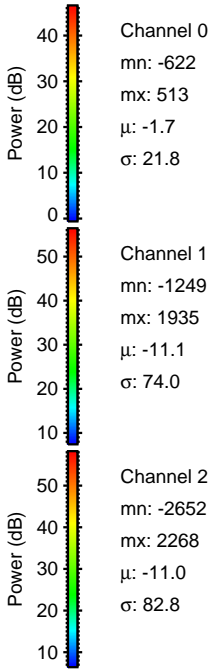
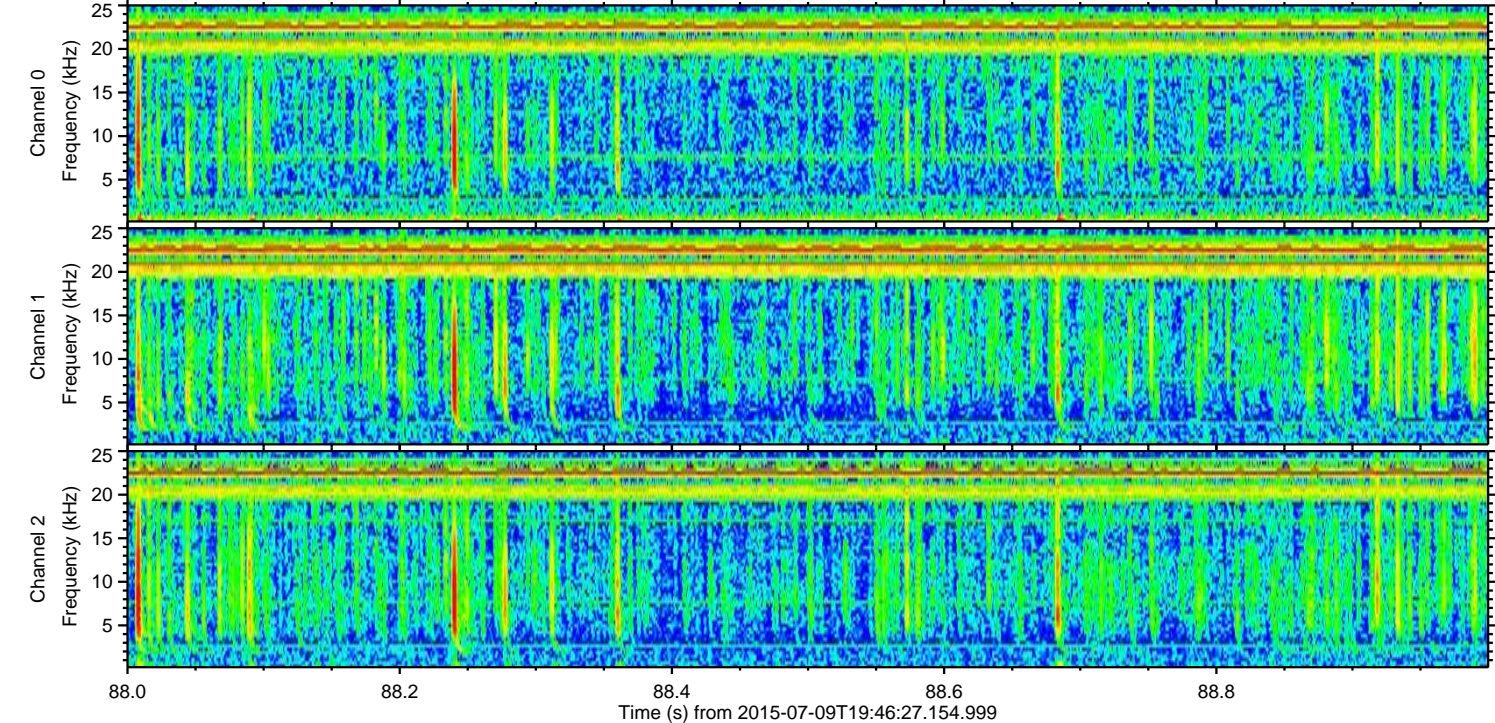
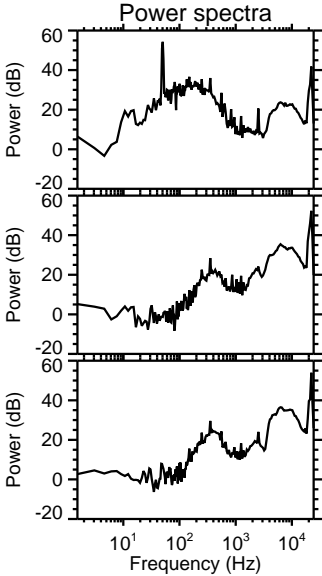
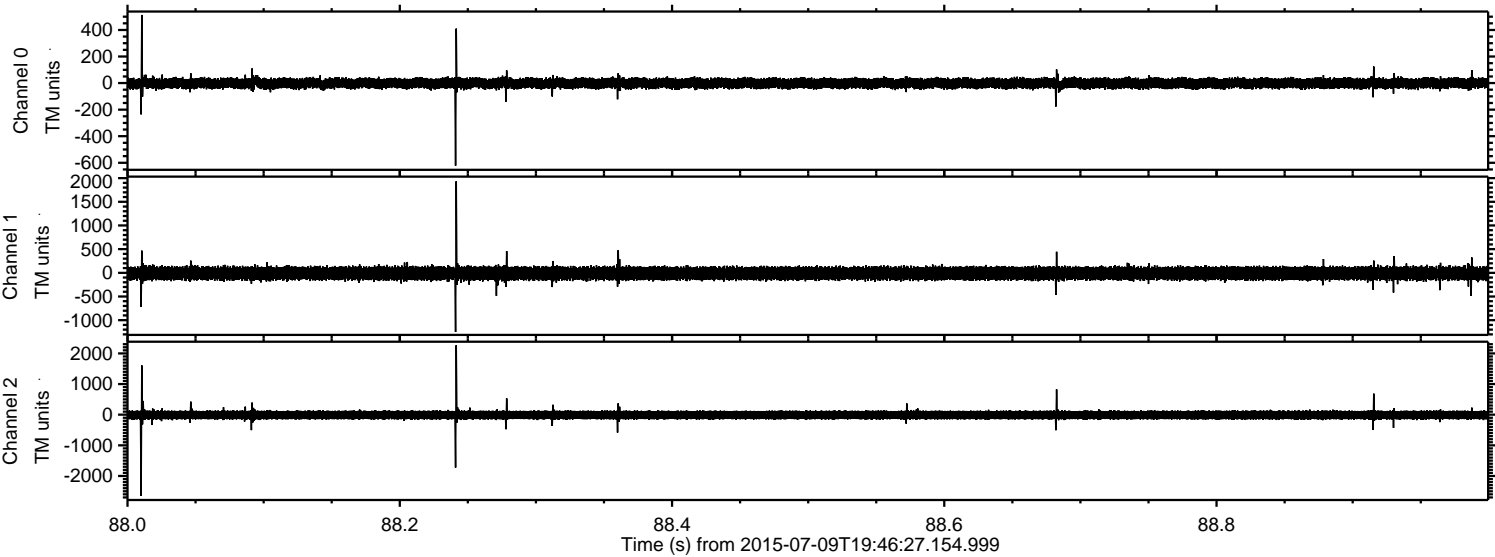
Channel 1
mn: -1023
mx: 525
 μ : -11.1
 σ : 72.1

Channel 2
mn: -3869
mx: 2803
 μ : -11.1
 σ : 82.8

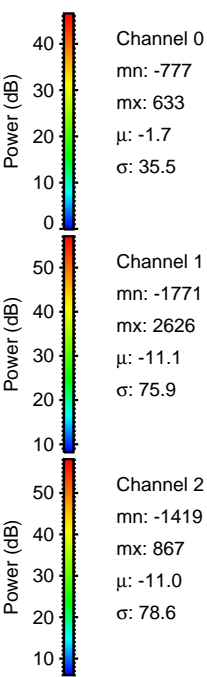
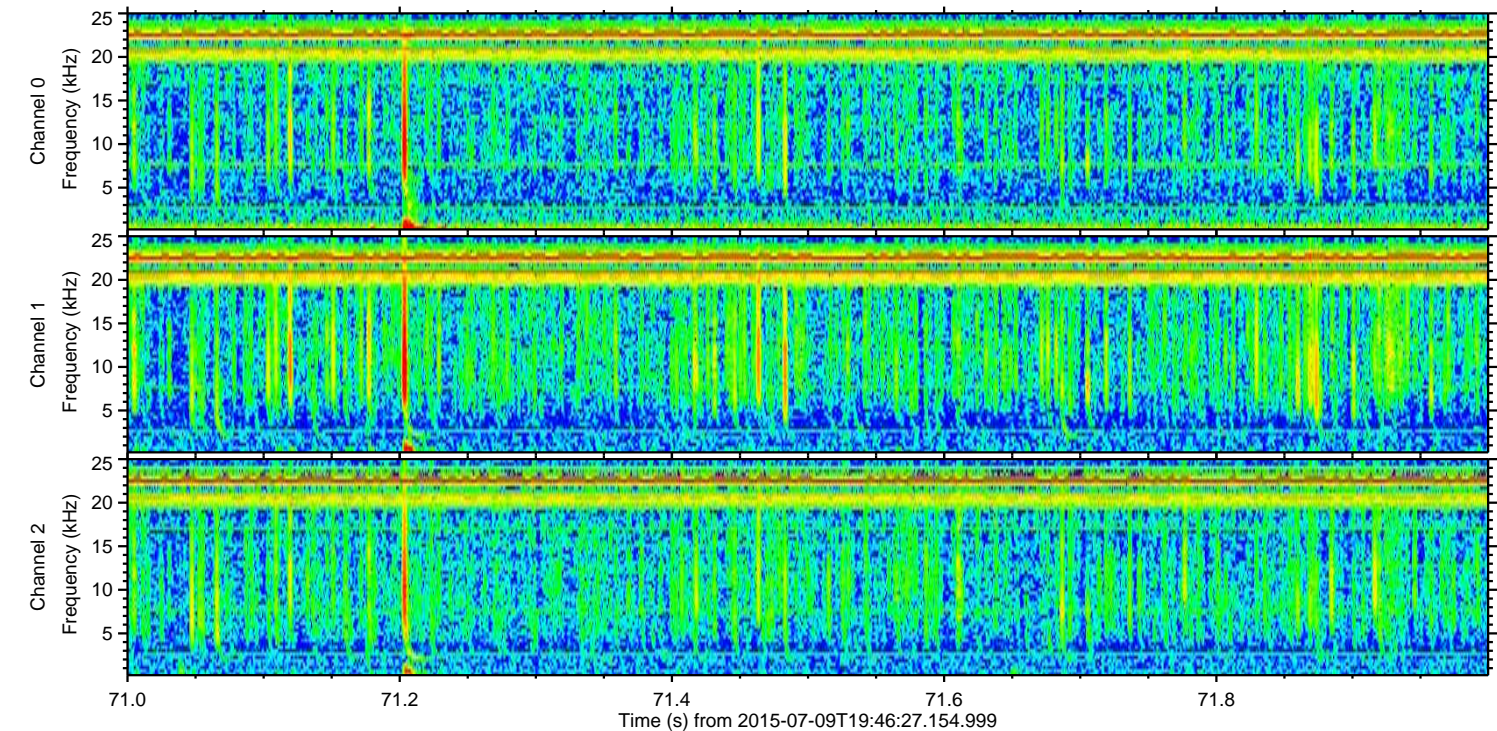
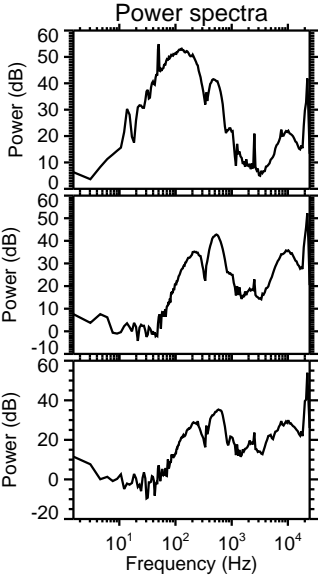
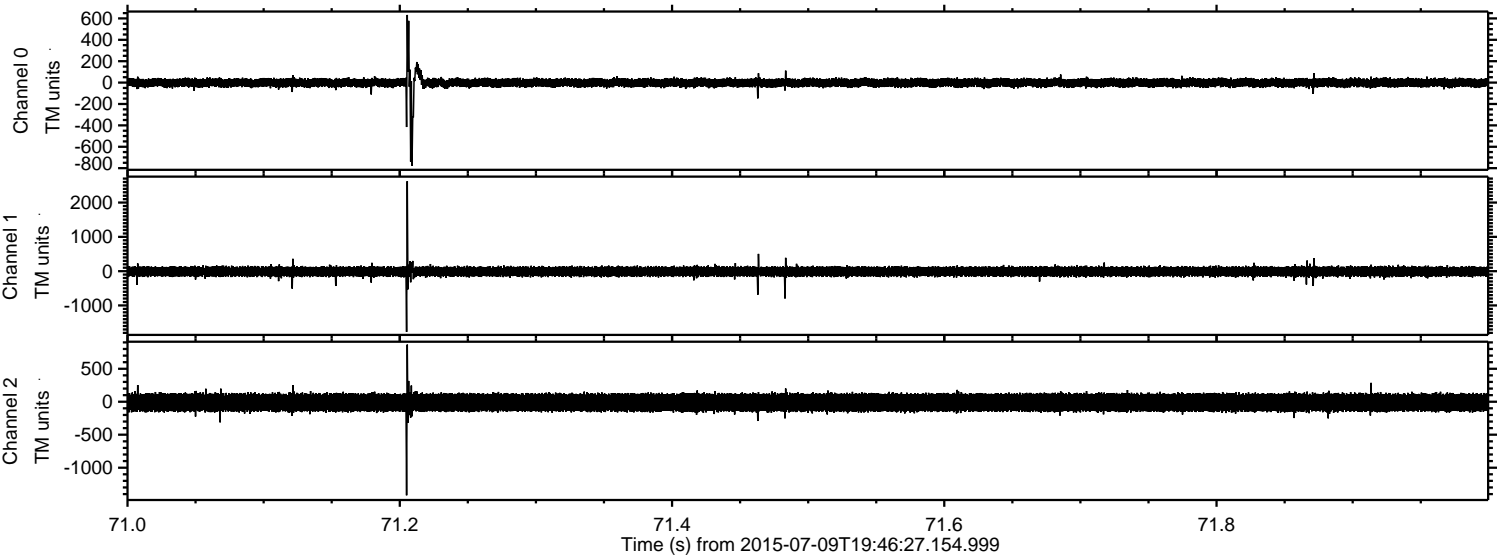
Processed Thu Jul 9 21:53:18 2015 by ELM ver.2012-10-06 from 001__elm20150709_194626__dat00.bin



Processed Thu Jul 9 21:53:19 2015 by ELM ver.2012-10-06 from 001__elm20150709_194626__dat00.bin



Processed Thu Jul 9 21:53:20 2015 by ELM ver.2012-10-06 from 001__elm20150709_194626__dat00.bin



Processed Thu Jul 9 21:53:22 2015 by ELM ver.2012-10-06 from 001__elm20150709_194626__dat00.bin

