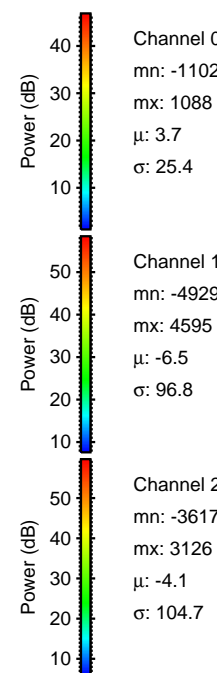
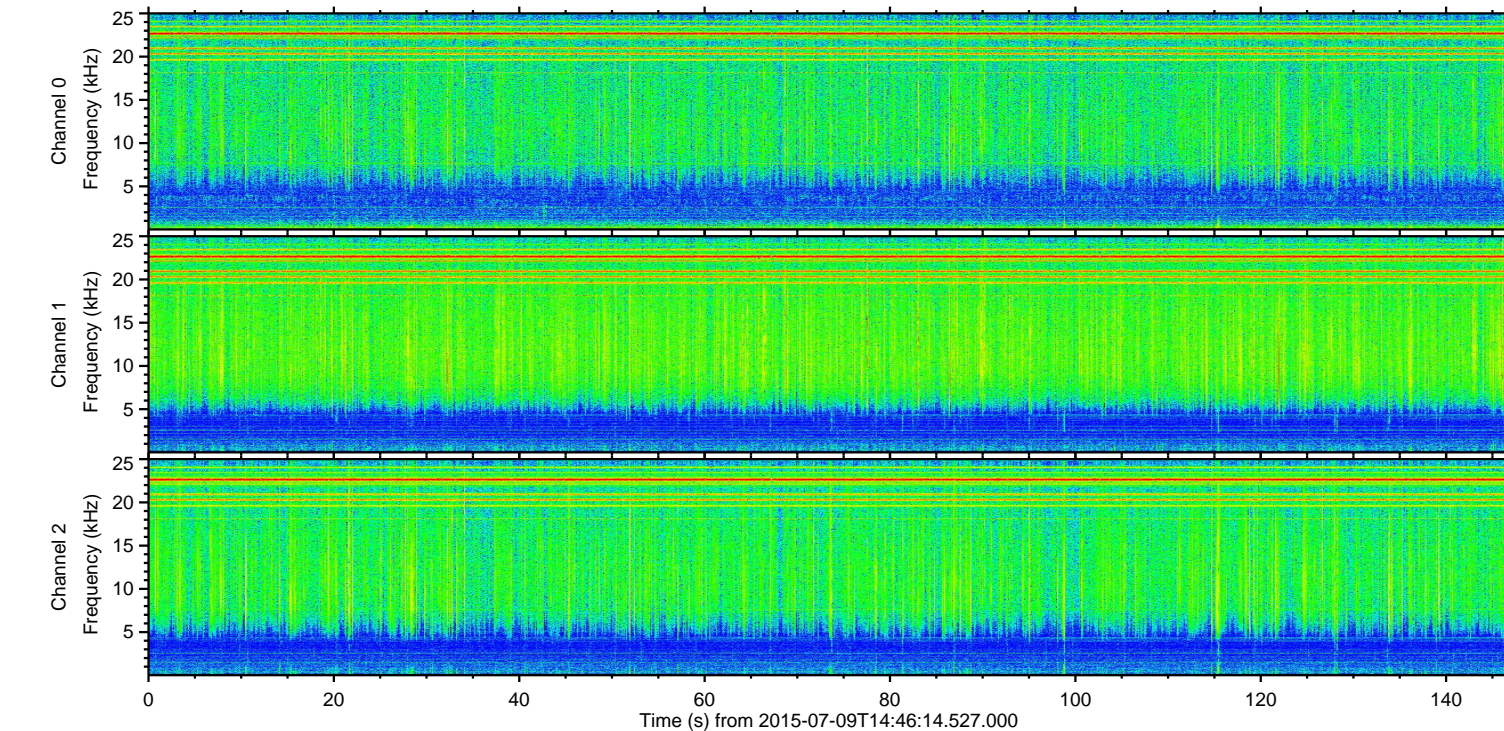
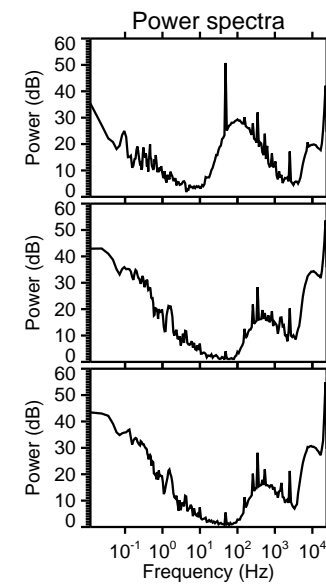
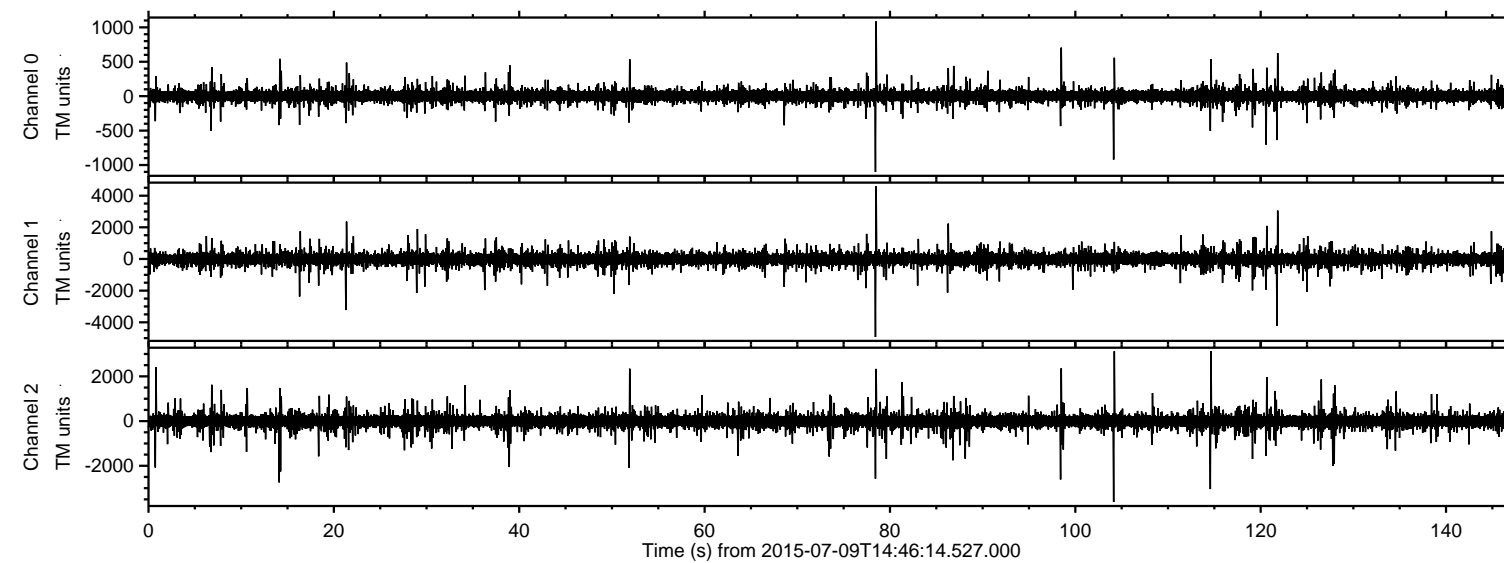
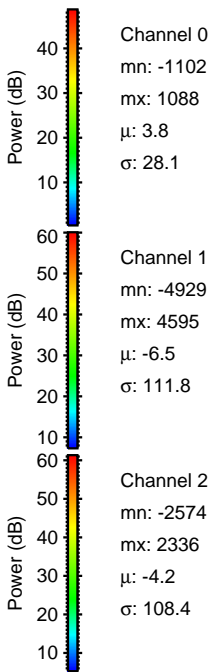
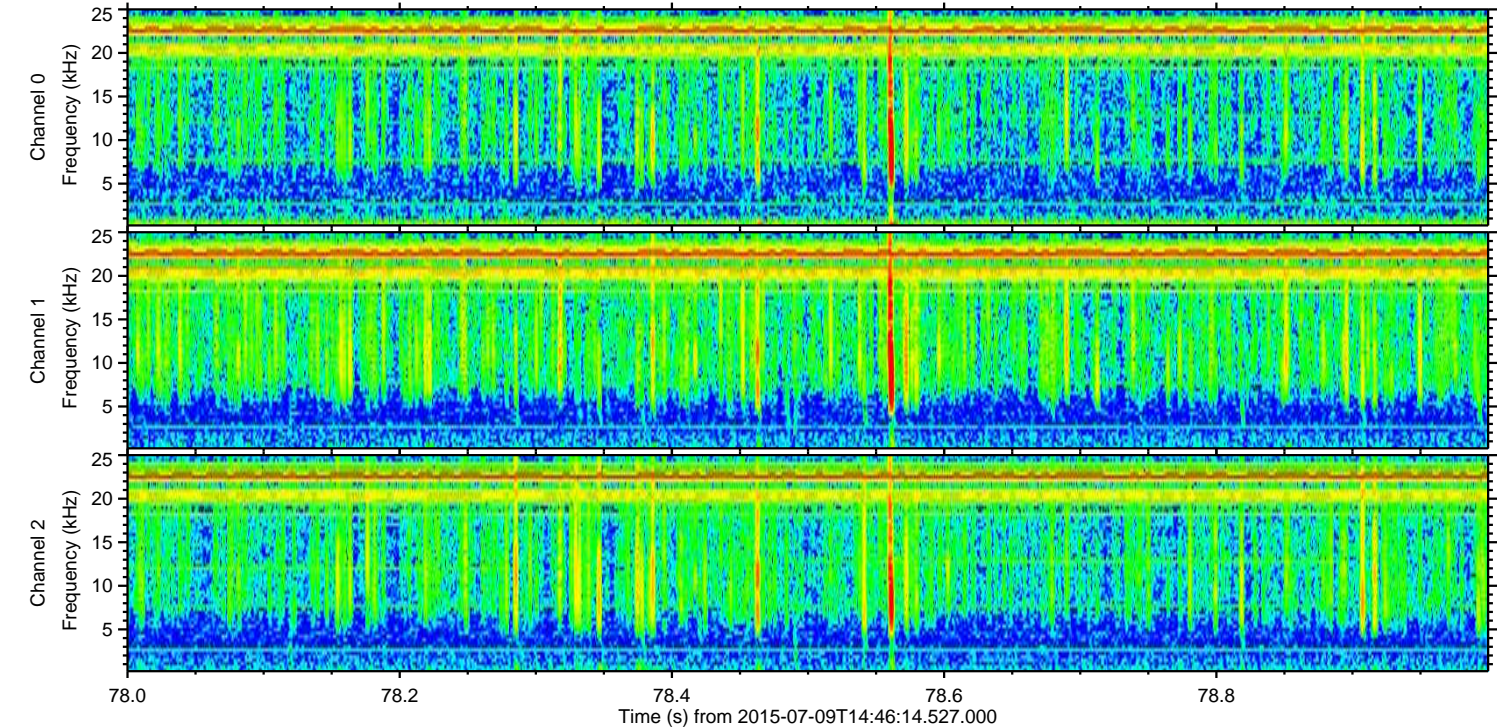
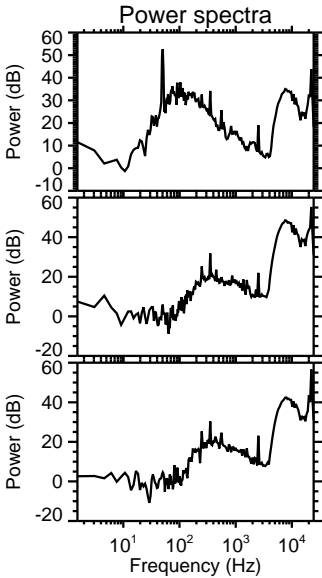
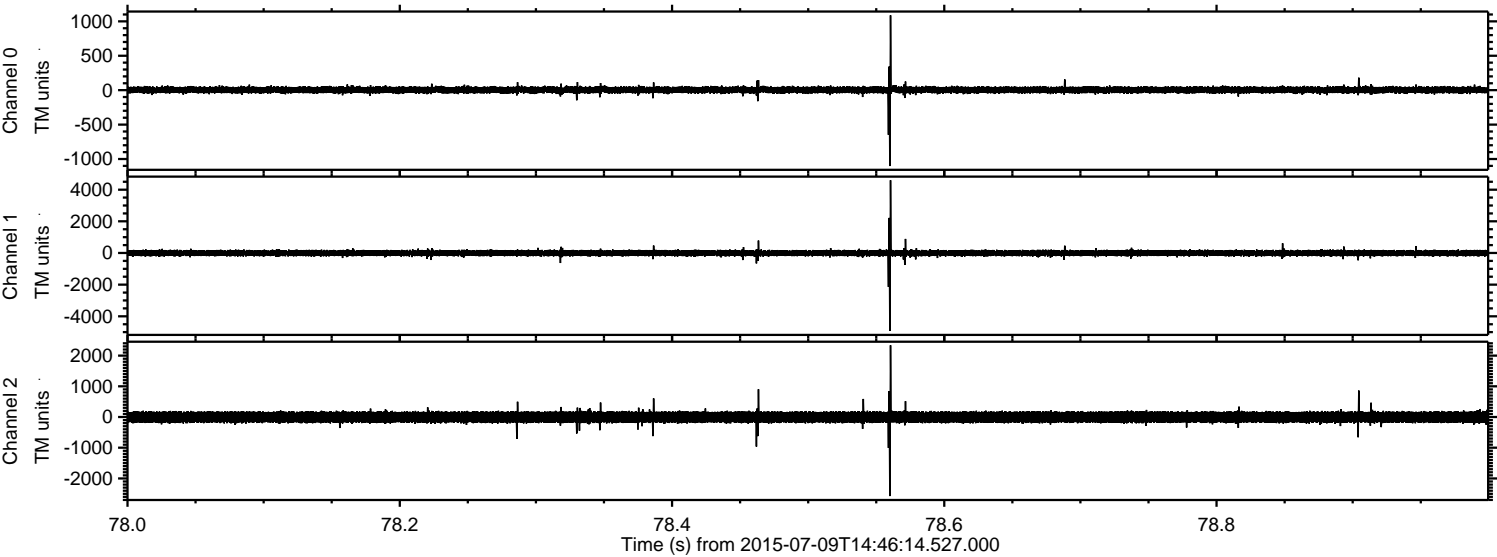


ELMAVAN 3D WAVEFORMS (Measured data sampled at 50 kHz) 51000 packets of 144 samples from 2015-07-09T14:46:14.527.000.

Processed Thu Jul 9 16:53:02 2015 by ELM ver.2012-10-06 from 001__elm20150709_144613__dat00.bin

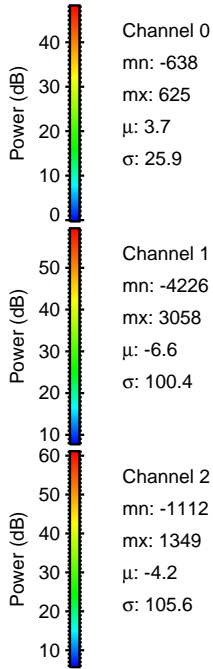
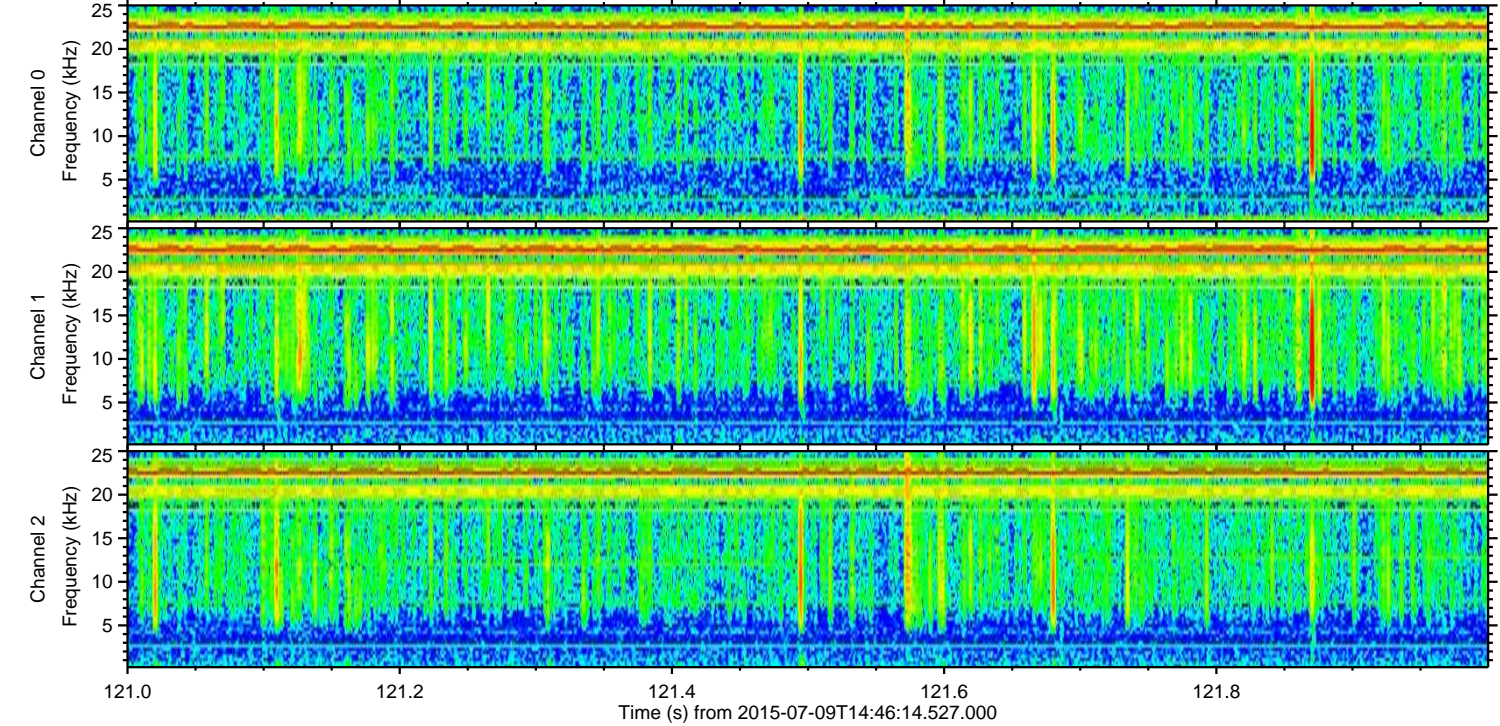
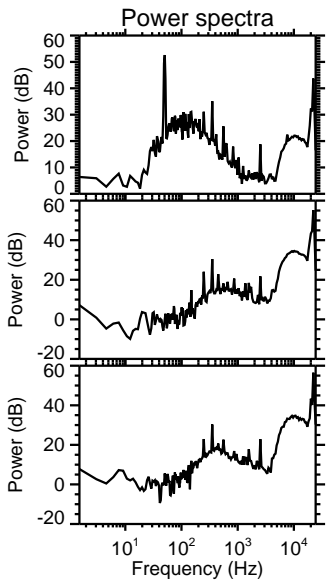
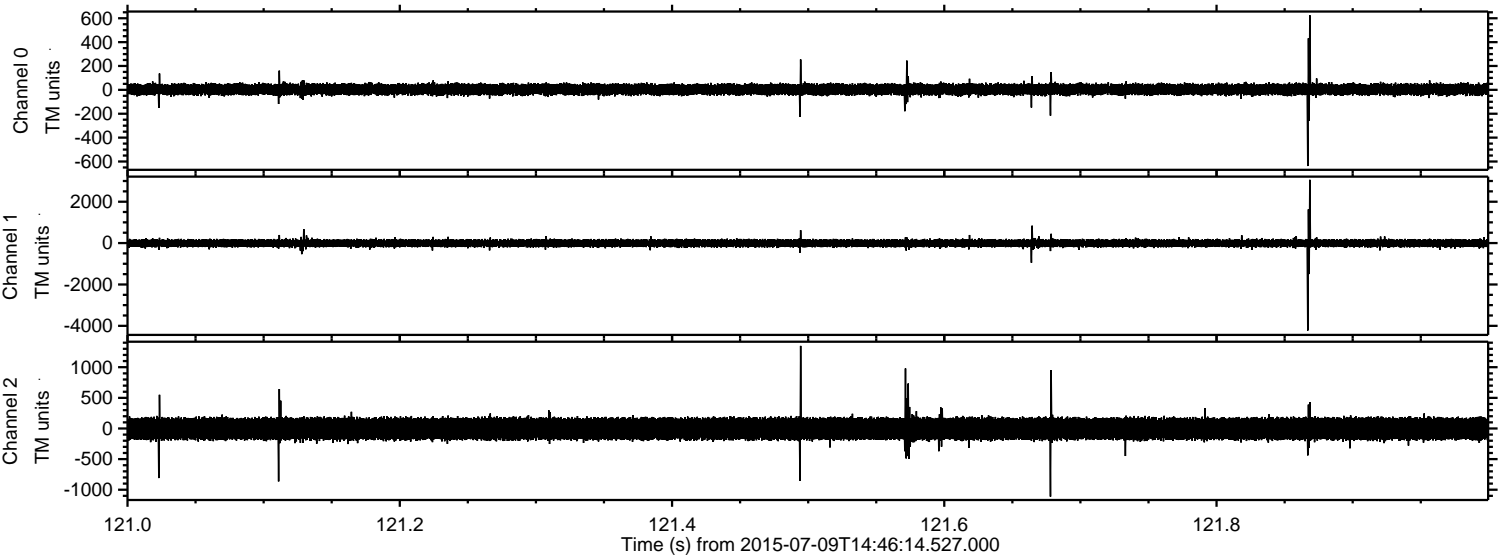


Processed Thu Jul 9 16:53:18 2015 by ELM ver.2012-10-06 from 001__elm20150709_144613__dat00.bin



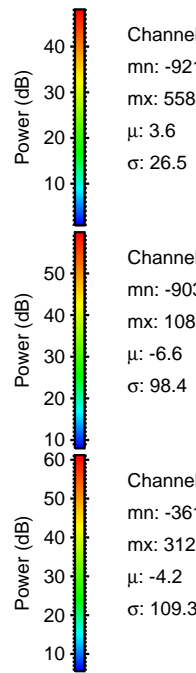
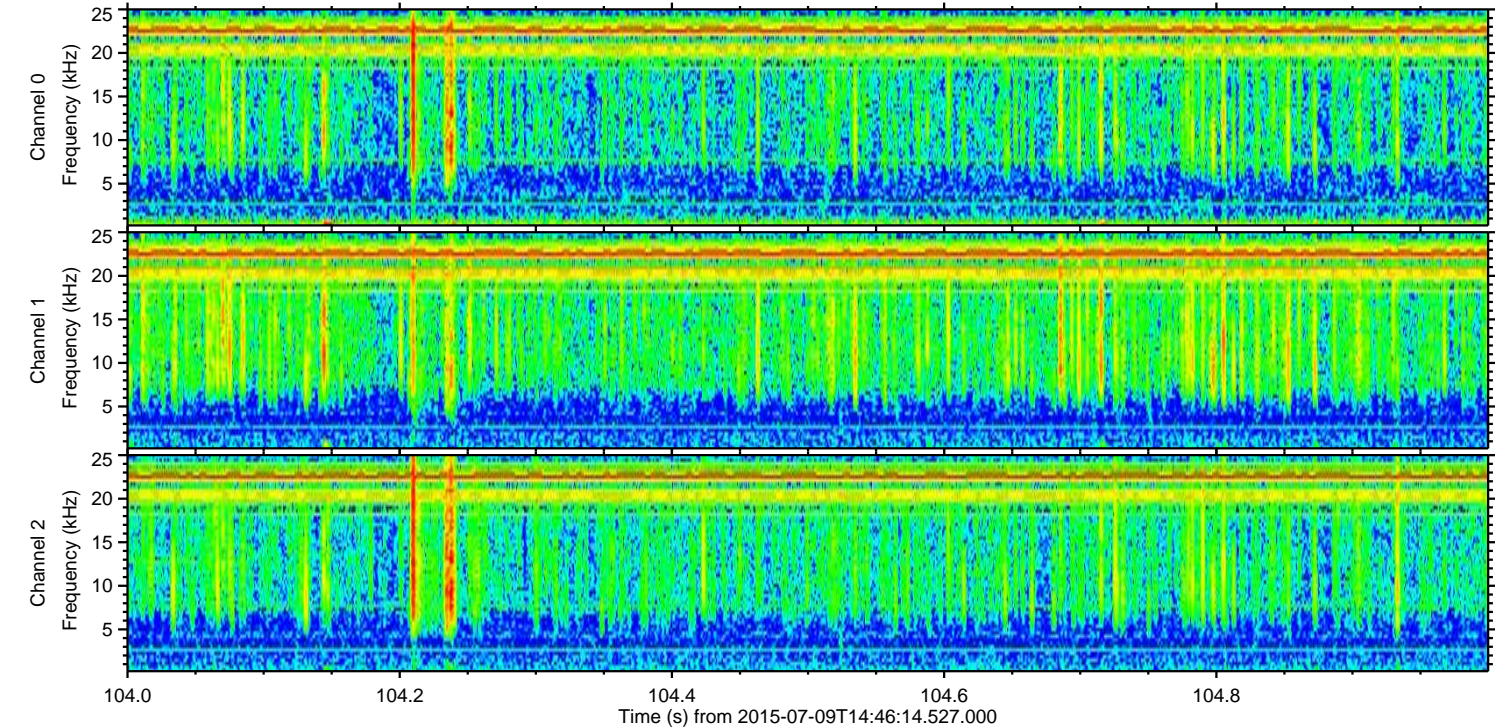
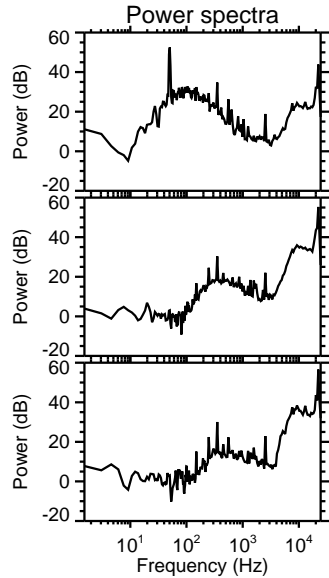
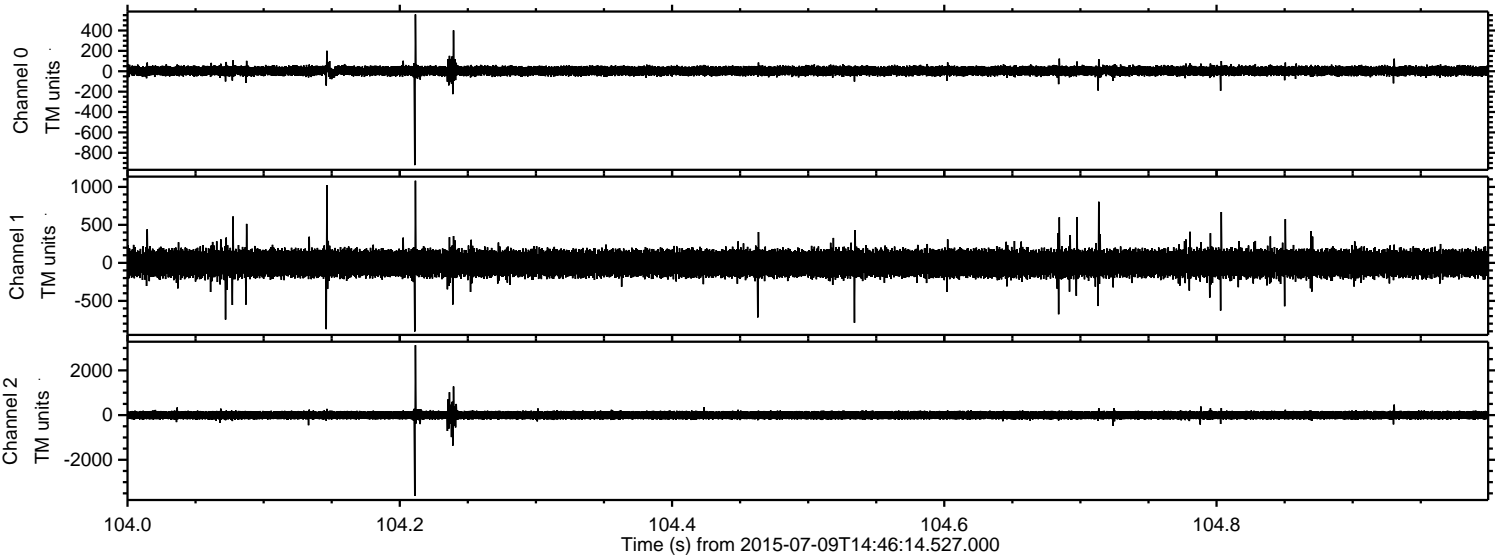
ELMAVAN 3D WAVEFORMS (Measured data sampled at 50 kHz) 51000 packets of 144 samples from 2015-07-09T14:46:14.527.000. Part 122/147

Processed Thu Jul 9 16:53:19 2015 by ELM ver.2012-10-06 from 001__elm20150709_144613__dat00.bin



ELMAVAN 3D WAVEFORMS (Measured data sampled at 50 kHz) 51000 packets of 144 samples from 2015-07-09T14:46:14.527.000. Part 105/147

Processed Thu Jul 9 16:53:20 2015 by ELM ver.2012-10-06 from 001__elm20150709_144613__dat00.bin

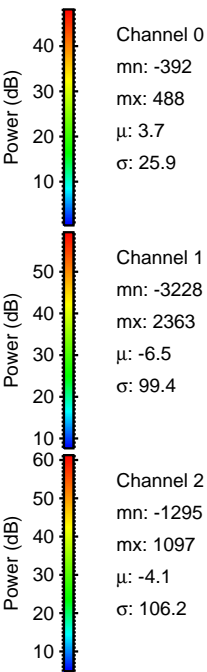
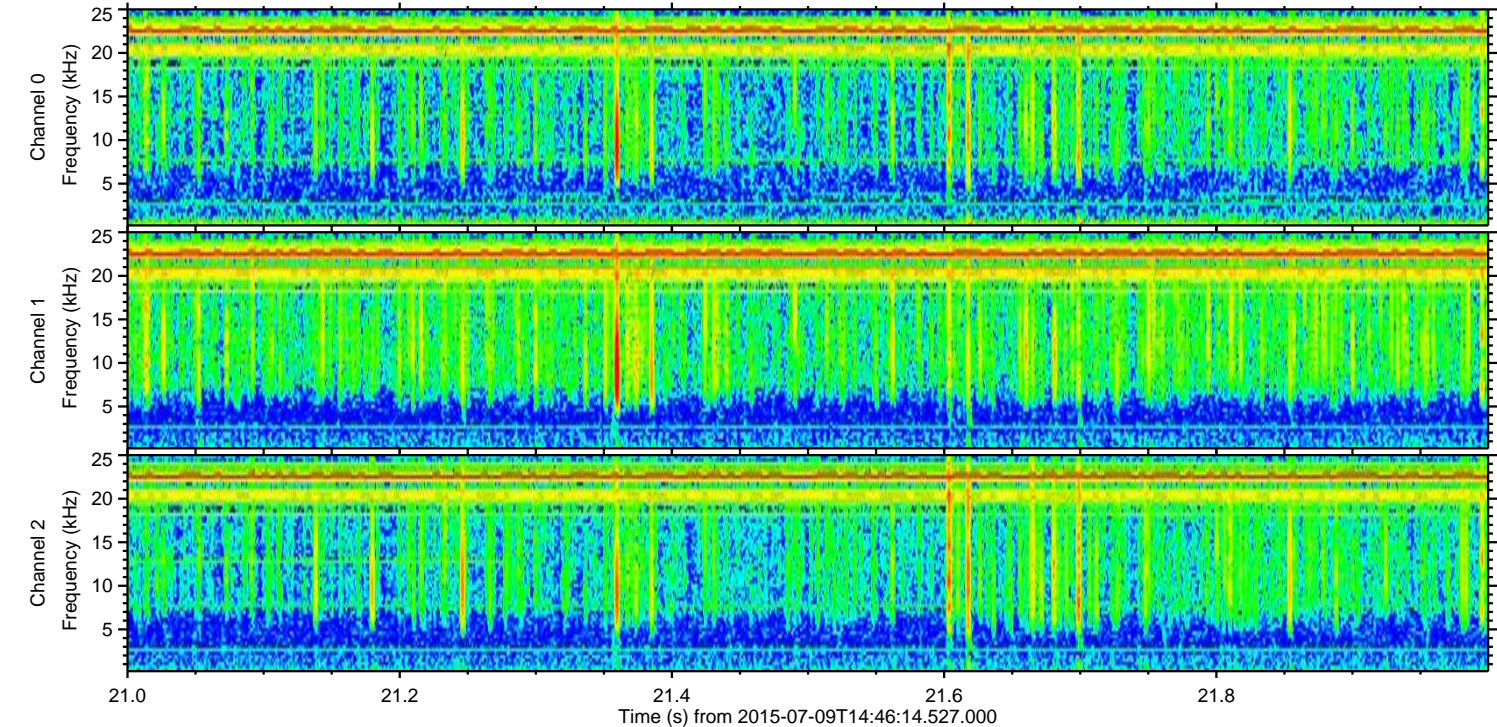
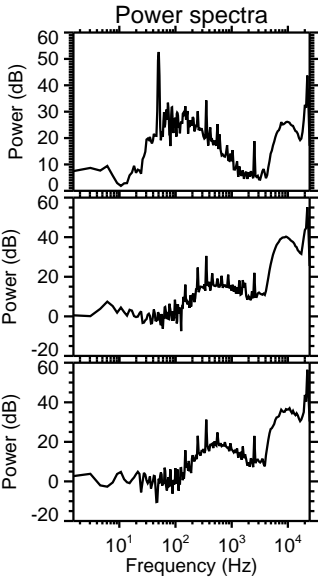
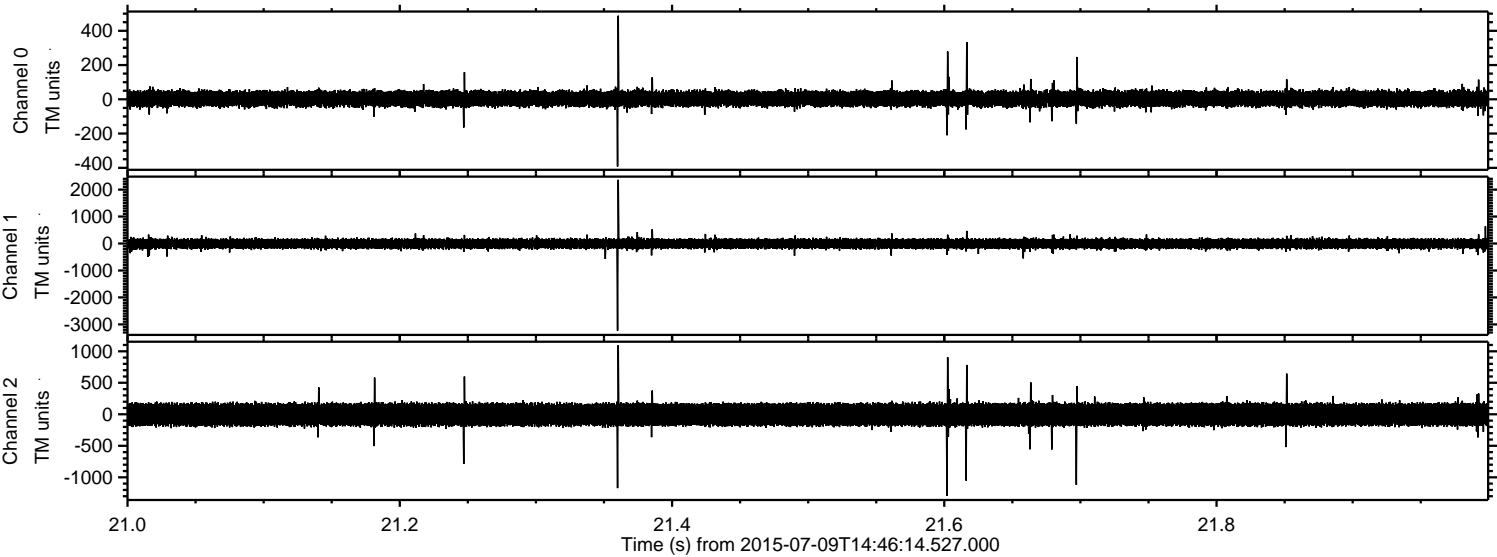


Channel 0
mn: -921
mx: 558
 μ : 3.6
 σ : 26.5

Channel 1
mn: -903
mx: 1081
 μ : -6.6
 σ : 98.4

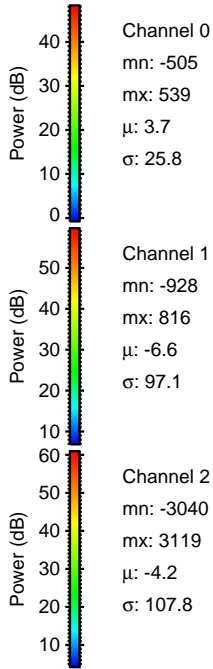
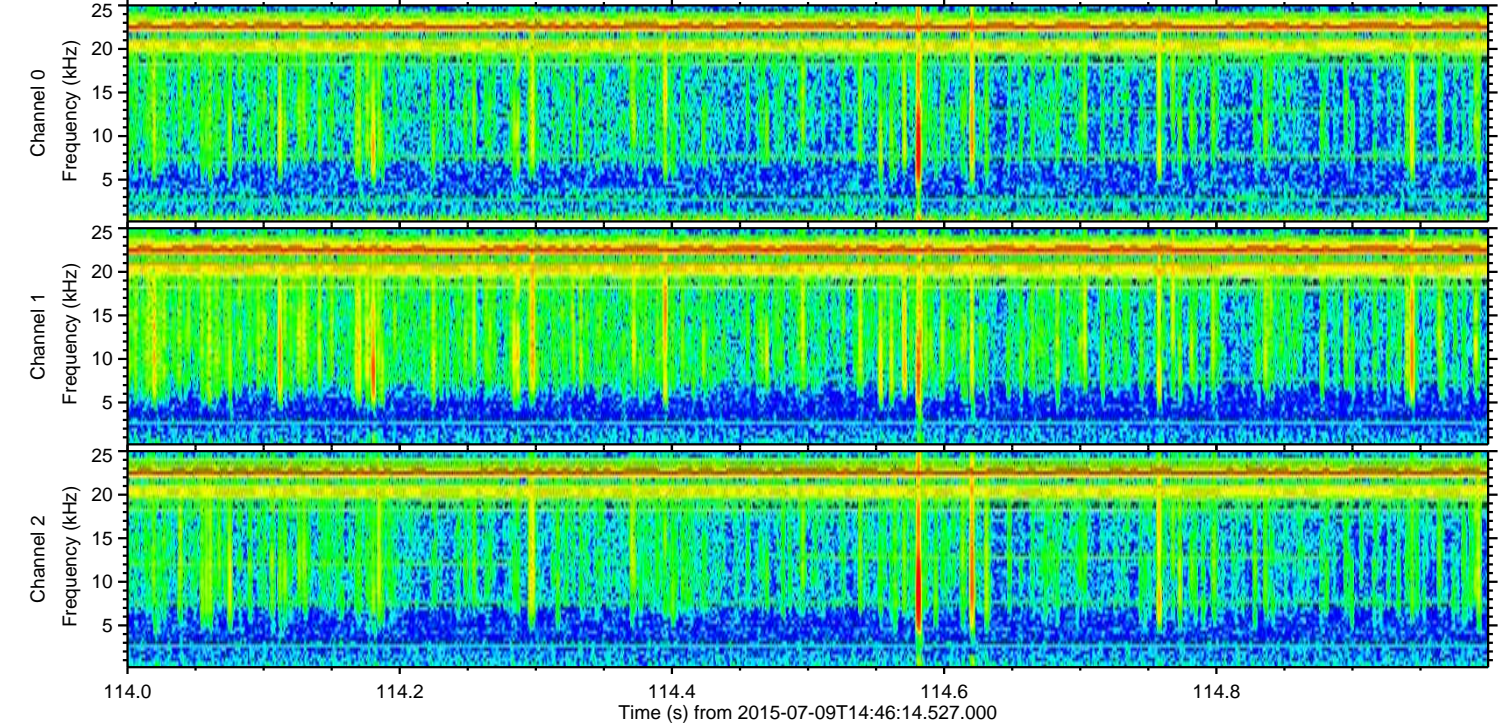
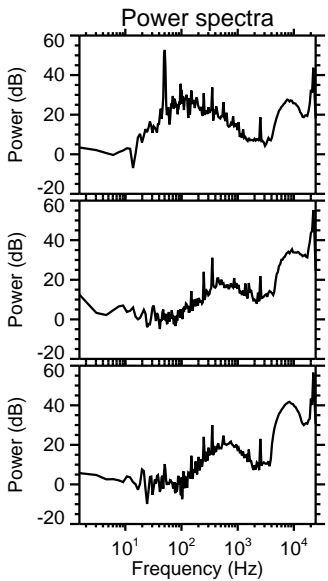
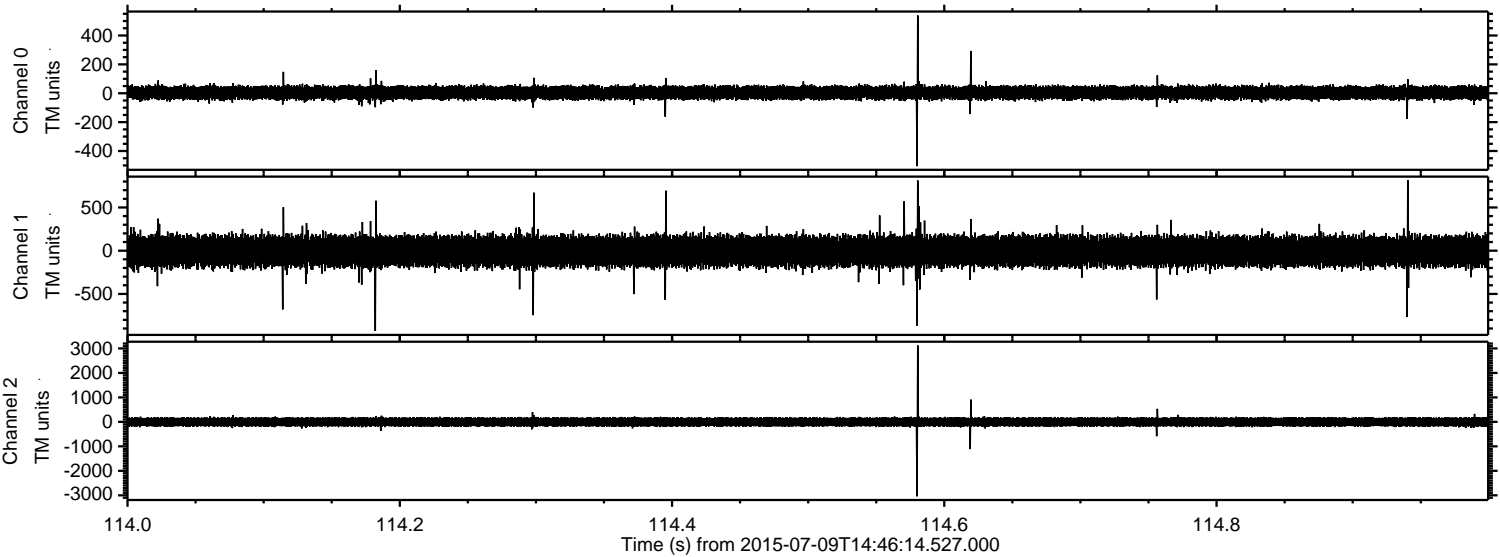
Channel 2
mn: -3617
mx: 3126
 μ : -4.2
 σ : 109.3

Processed Thu Jul 9 16:53:21 2015 by ELM ver.2012-10-06 from 001__elm20150709_144613__dat00.bin

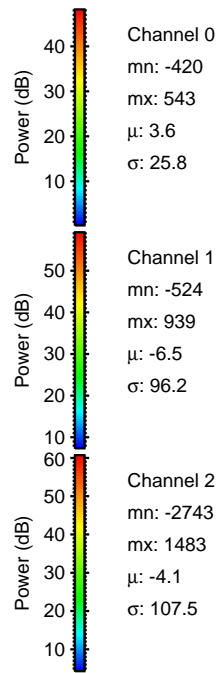
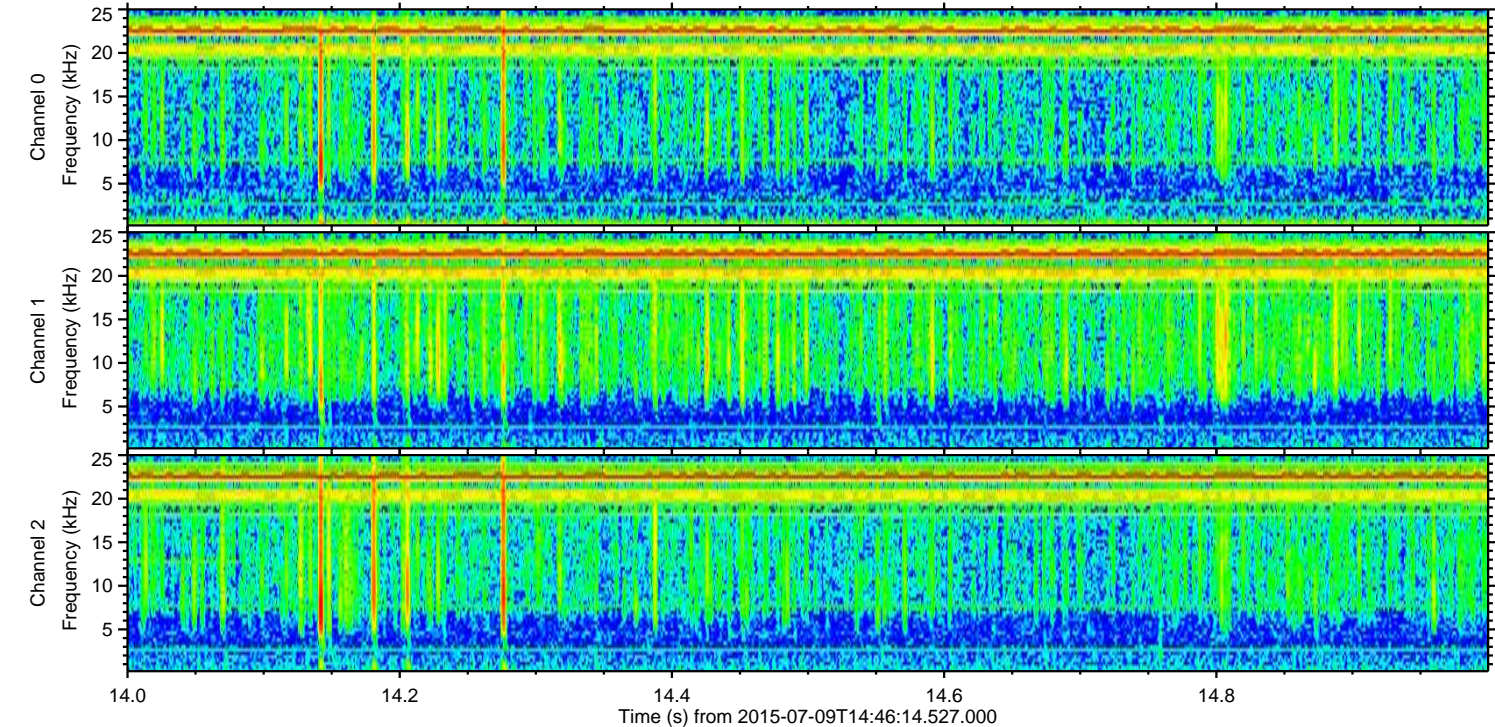
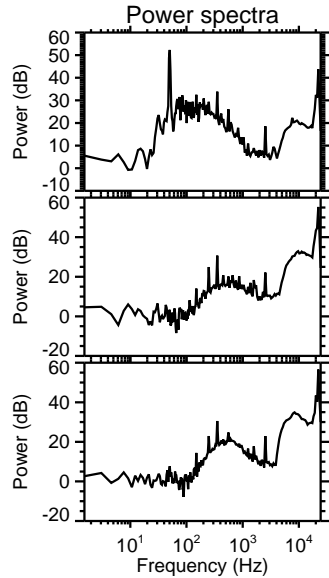
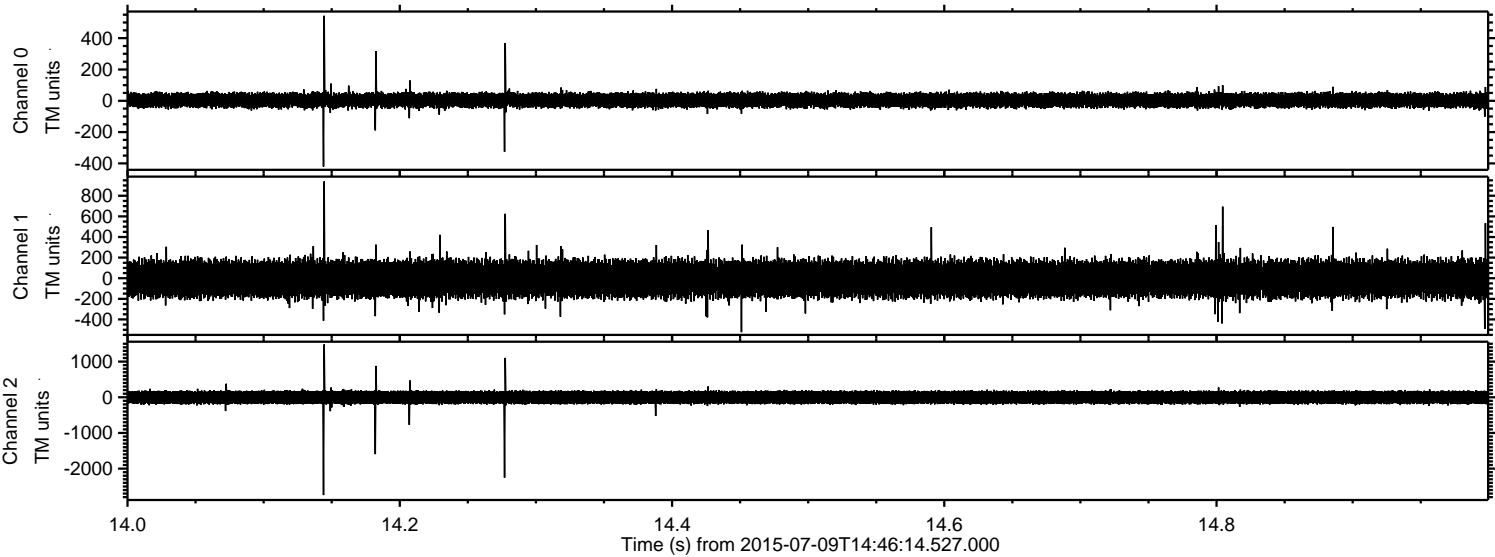


ELMAVAN 3D WAVEFORMS (Measured data sampled at 50 kHz) 51000 packets of 144 samples from 2015-07-09T14:46:14.527.000. Part 115/147

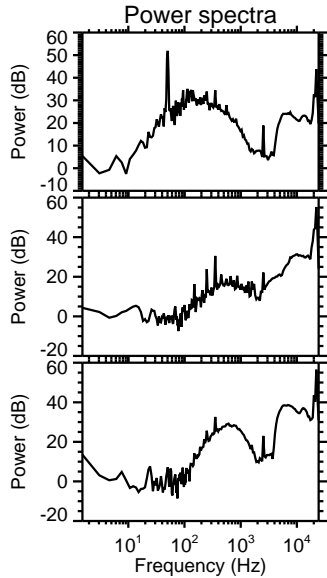
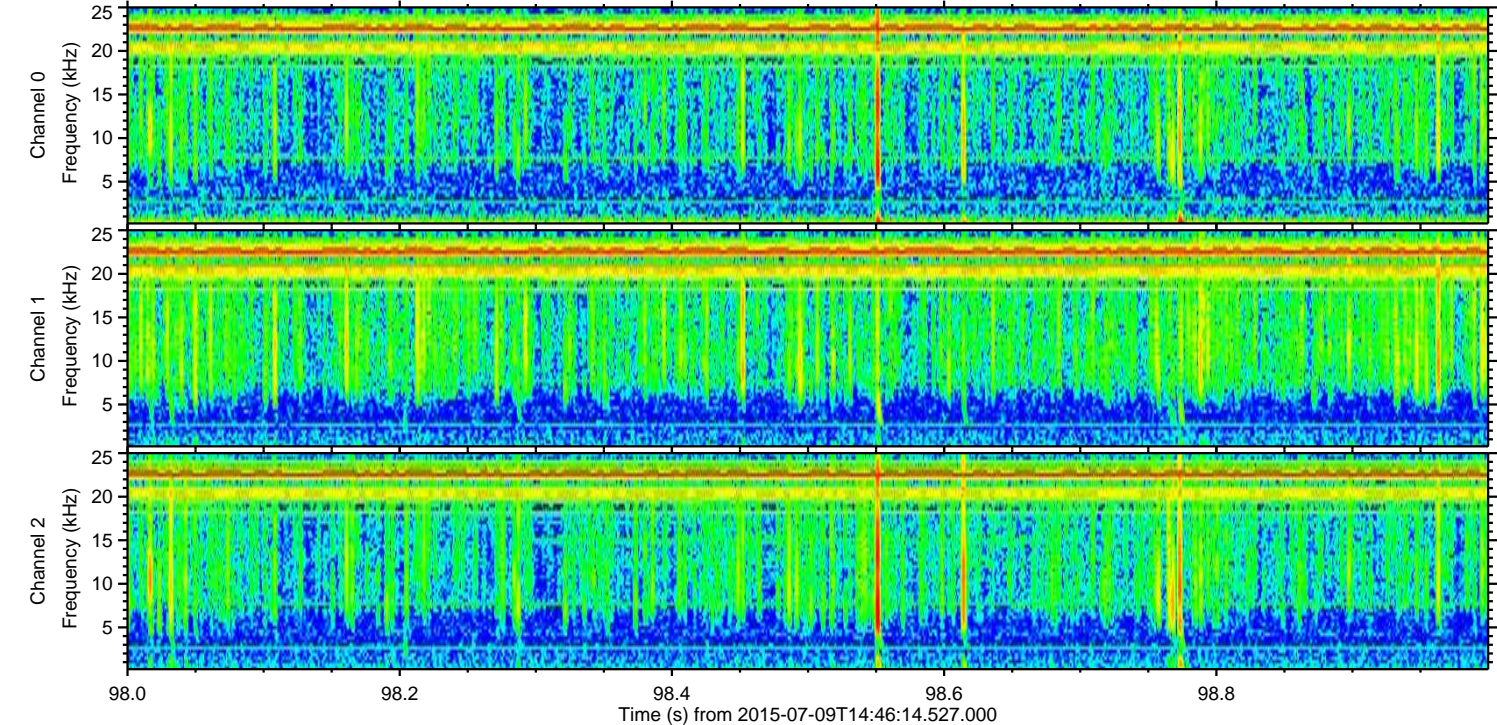
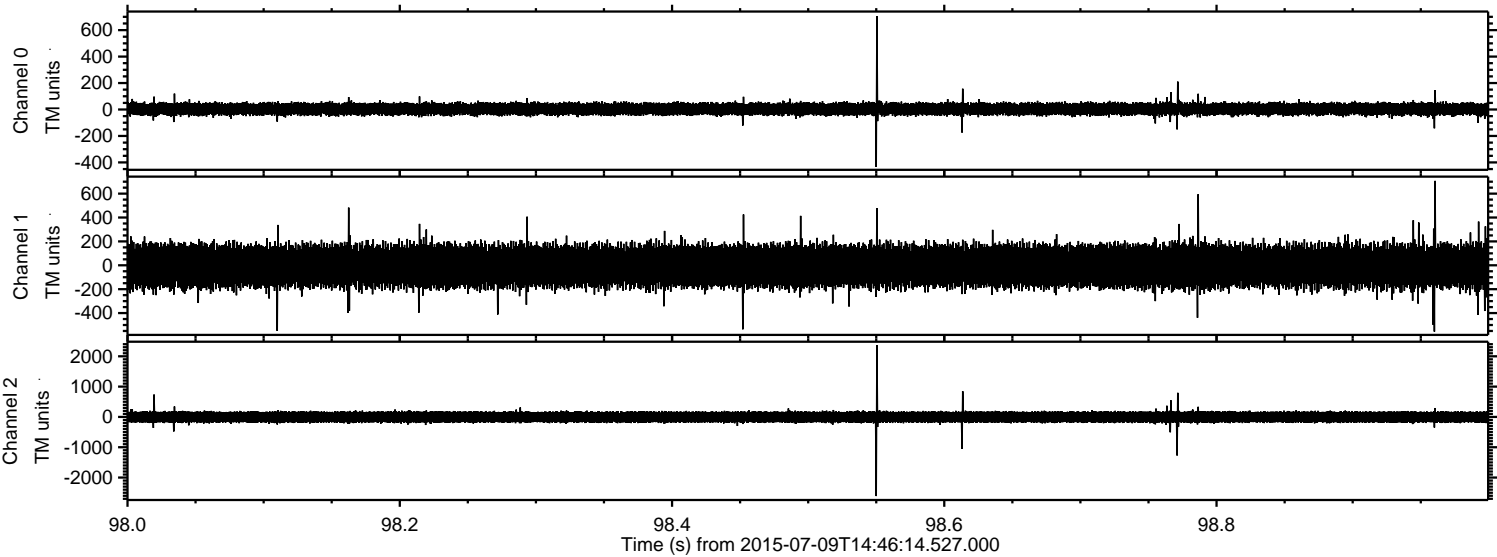
Processed Thu Jul 9 16:53:22 2015 by ELM ver.2012-10-06 from 001__elm20150709_144613__dat00.bin



Processed Thu Jul 9 16:53:23 2015 by ELM ver.2012-10-06 from 001__elm20150709_144613__dat00.bin



Processed Thu Jul 9 16:53:24 2015 by ELM ver.2012-10-06 from 001__elm20150709_144613__dat00.bin

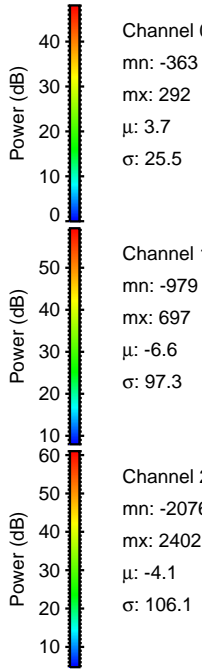
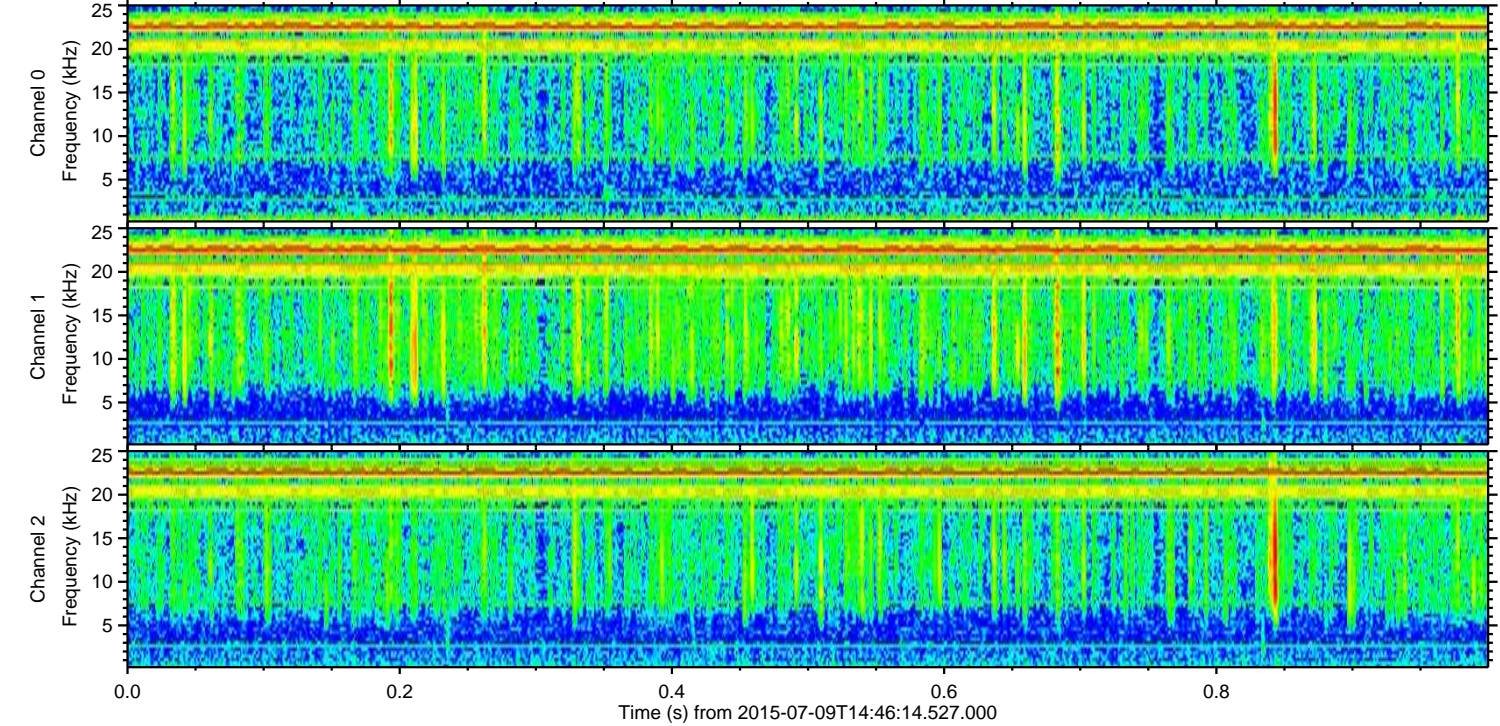
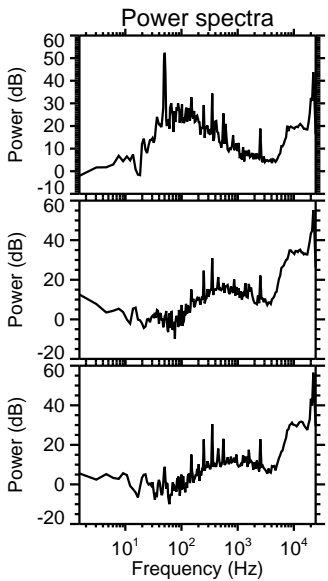
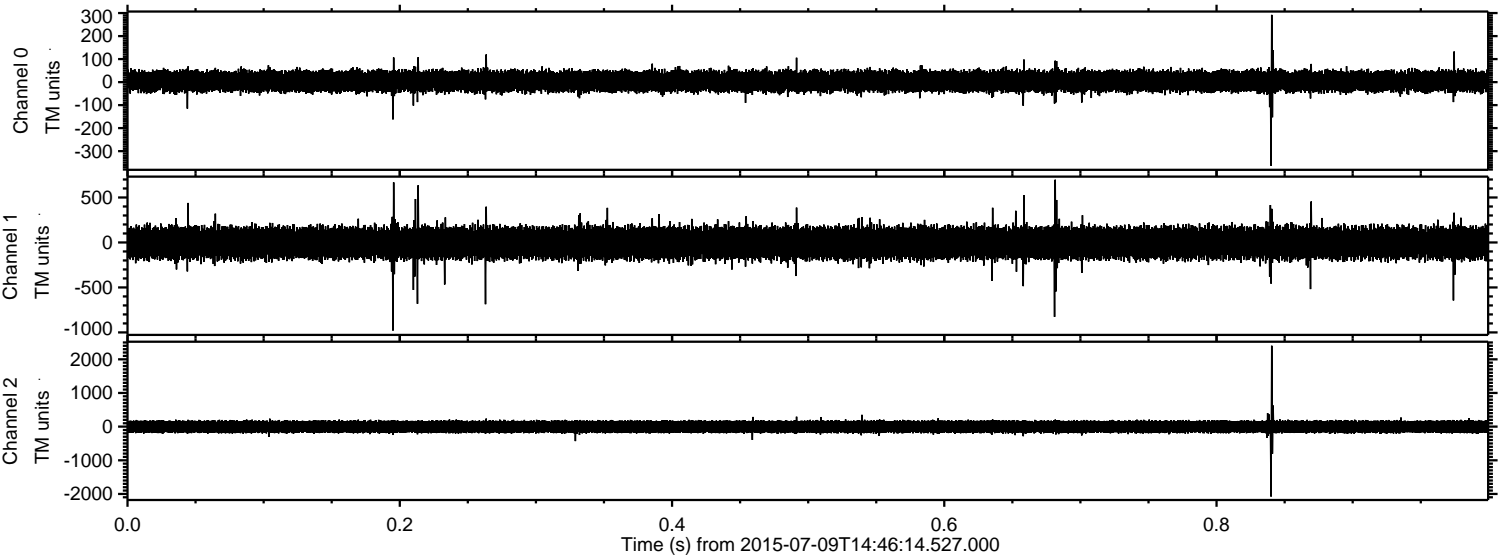


Channel 0
mn: -434
mx: 705
 μ : 3.7
 σ : 25.9

Channel 1
mn: -555
mx: 707
 μ : -6.6
 σ : 96.0

Channel 2
mn: -2610
mx: 2363
 μ : -4.1
 σ : 107.0

Processed Thu Jul 9 16:53:25 2015 by ELM ver.2012-10-06 from 001__elm20150709_144613__dat00.bin

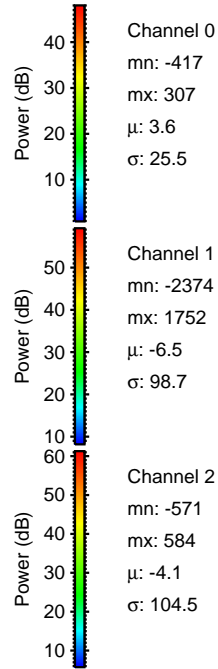
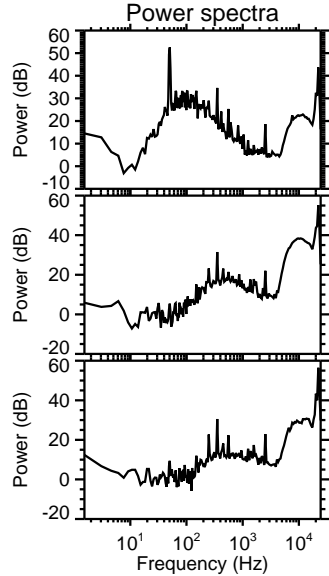
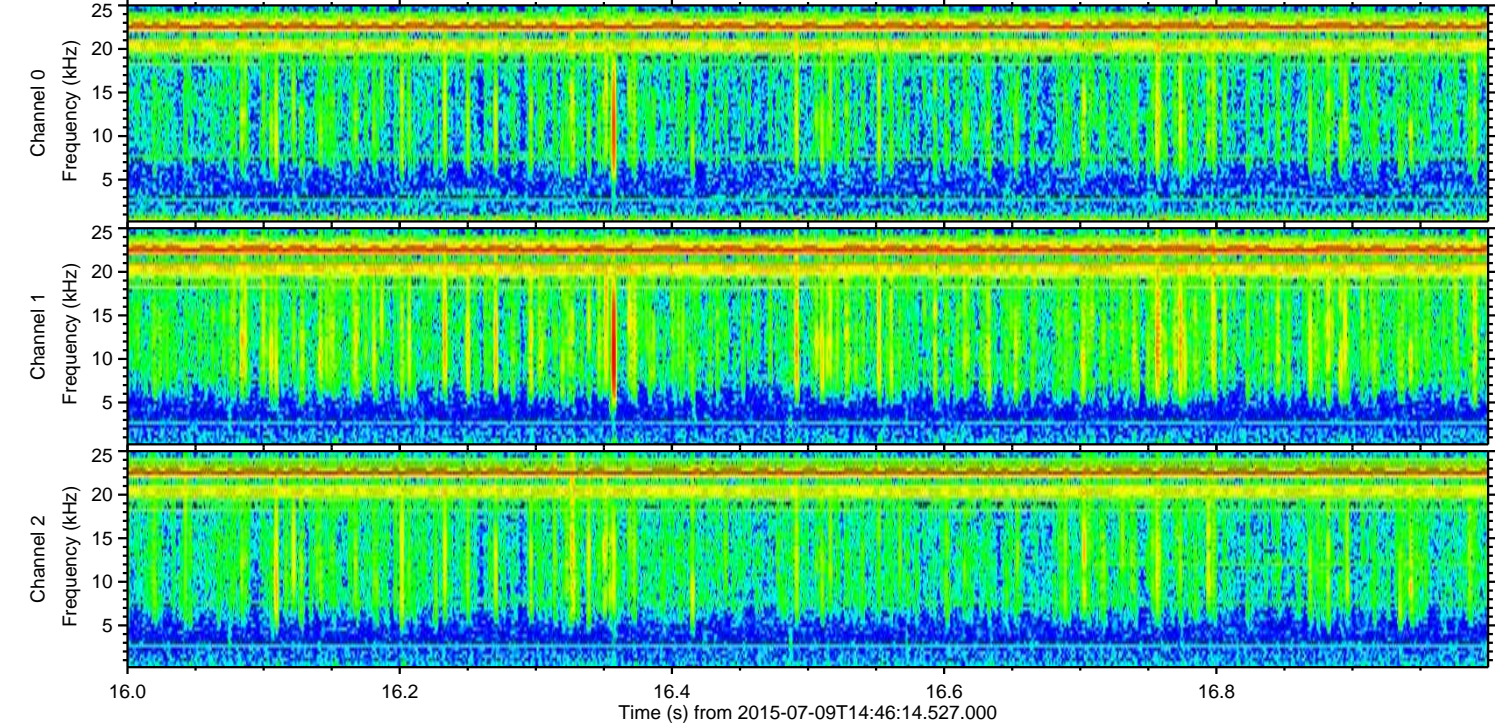
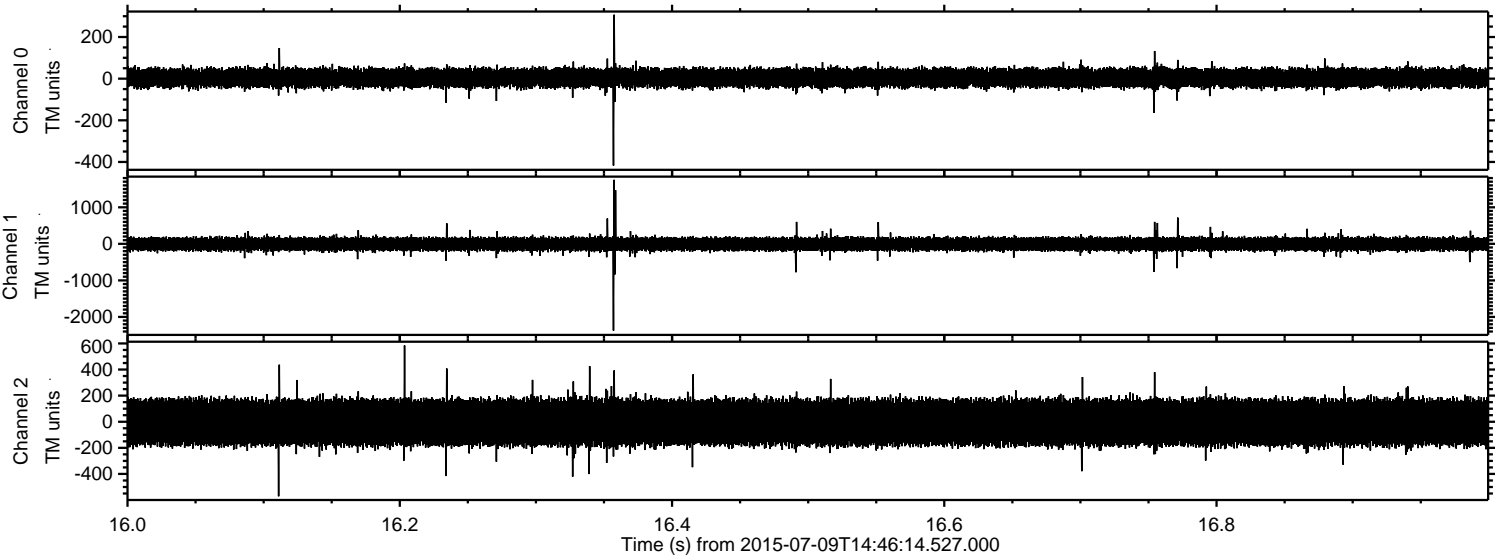


Channel 0
mn: -363
mx: 292
 μ : 3.7
 σ : 25.5

Channel 1
mn: -979
mx: 697
 μ : -6.6
 σ : 97.3

Channel 2
mn: -2076
mx: 2402
 μ : -4.1
 σ : 106.1

Processed Thu Jul 9 16:53:26 2015 by ELM ver.2012-10-06 from 001__elm20150709_144613__dat00.bin



Processed Thu Jul 9 16:53:27 2015 by ELM ver.2012-10-06 from 001__elm20150709_144613__dat00.bin

