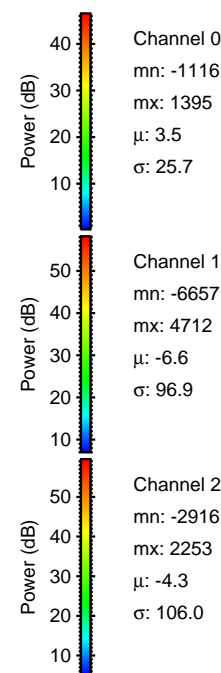
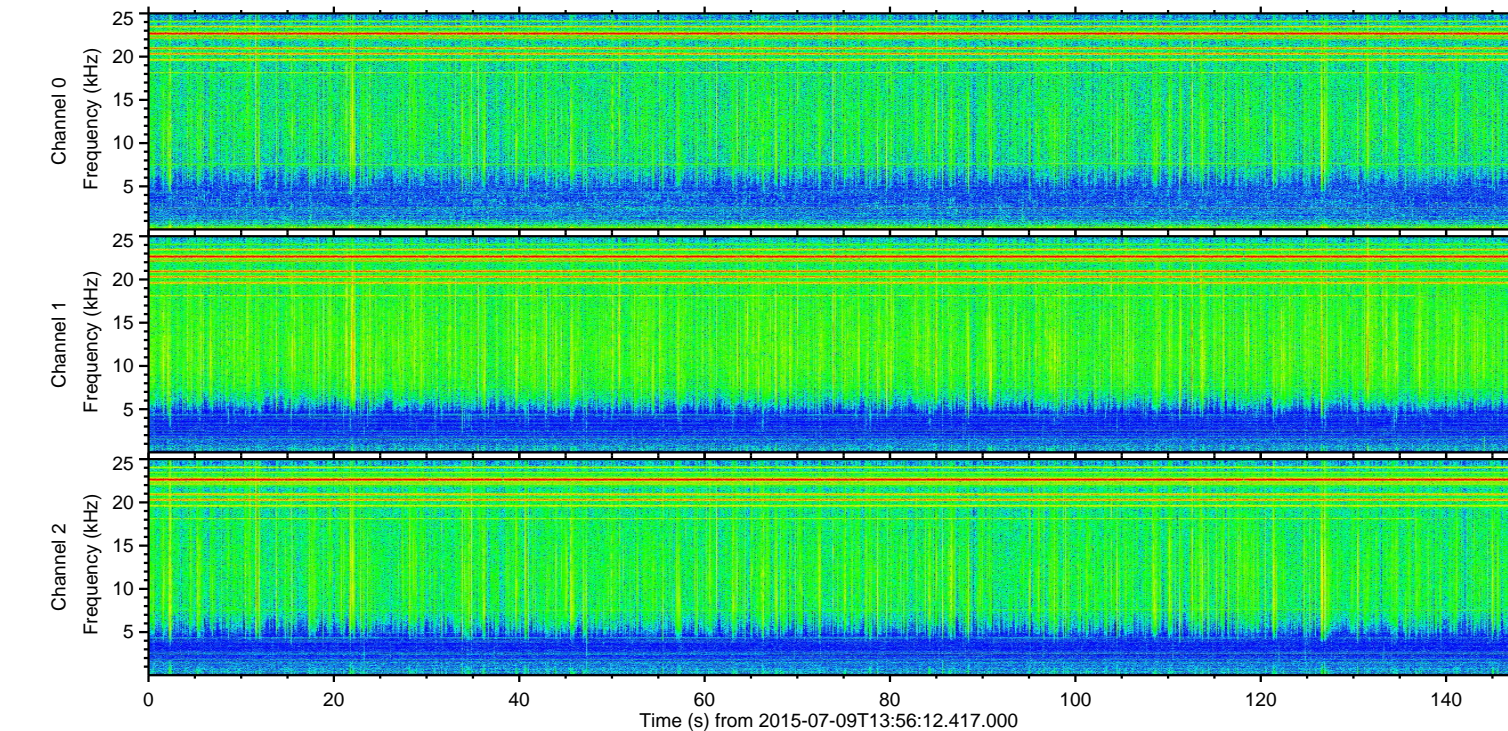
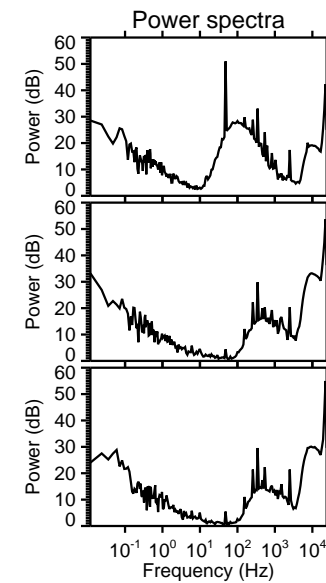
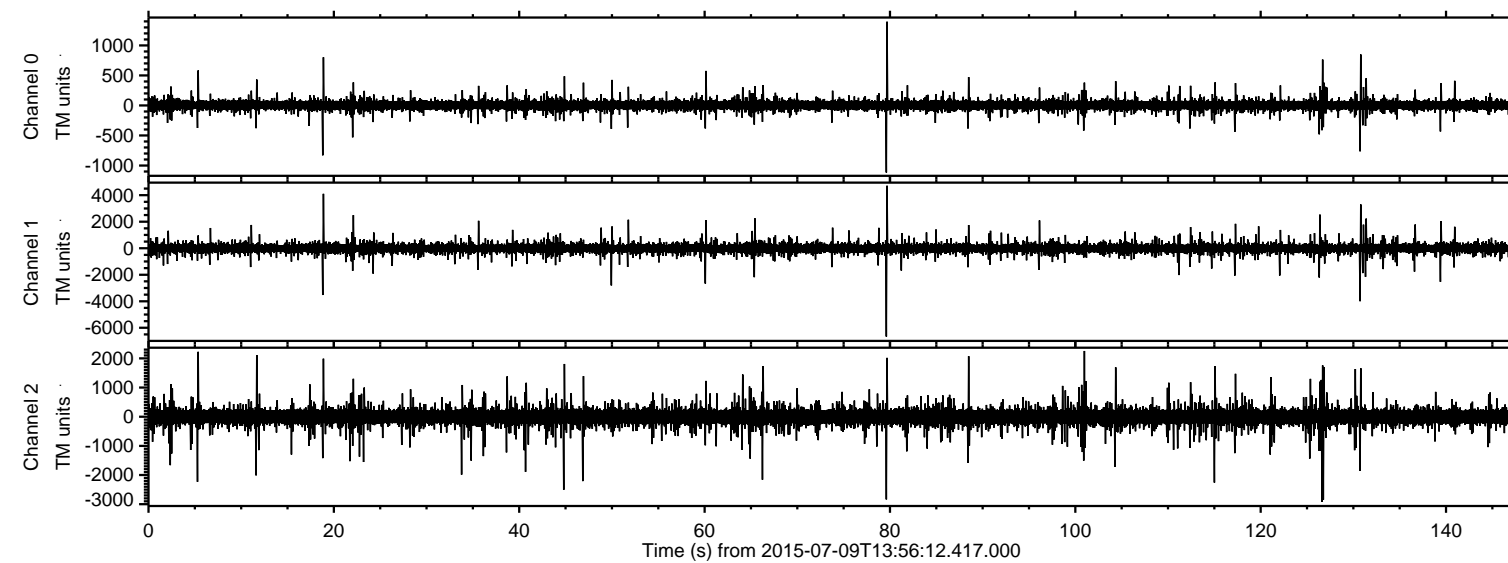


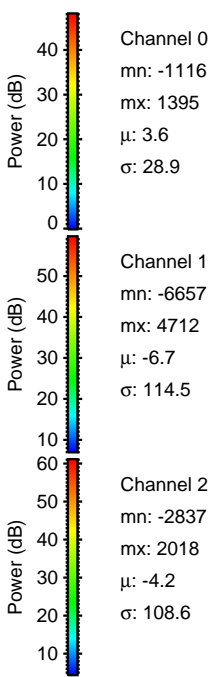
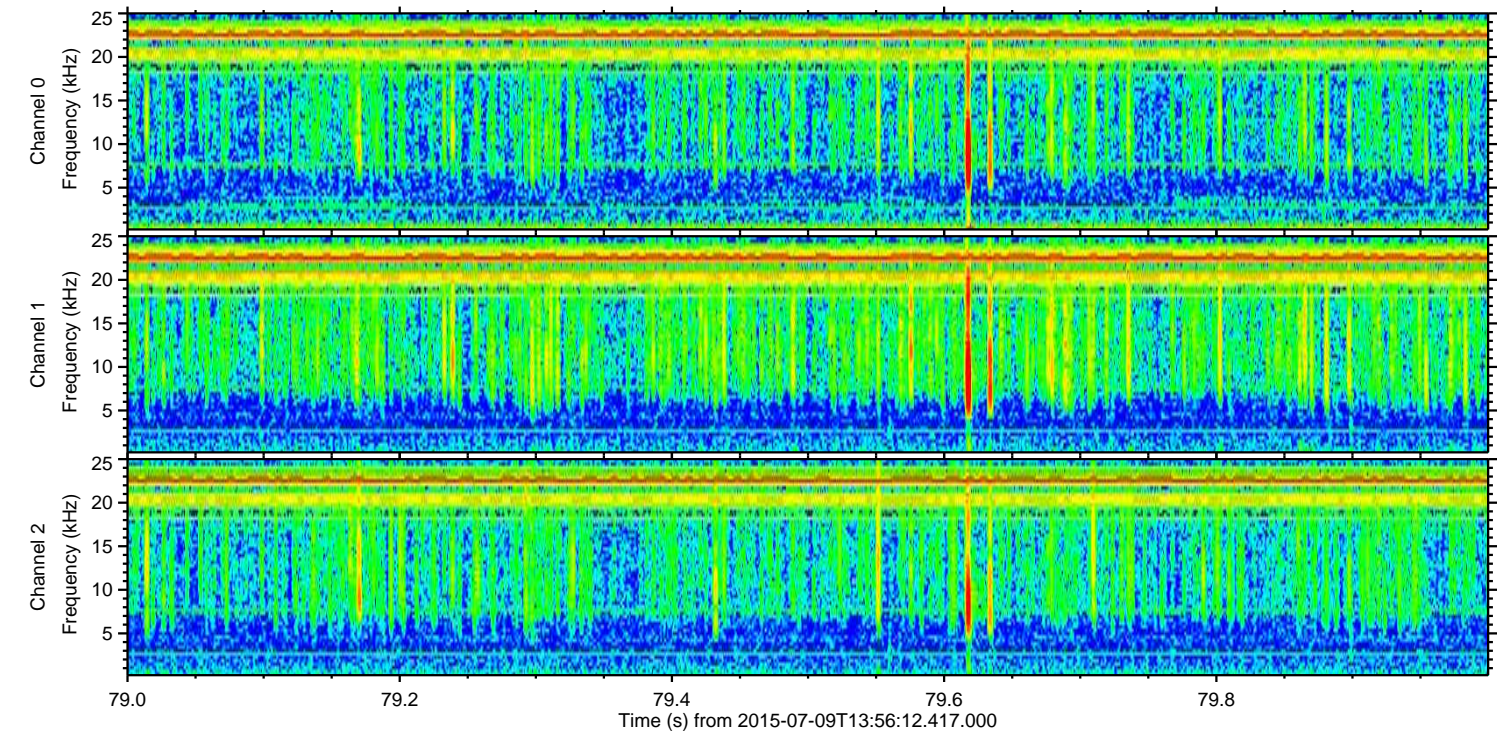
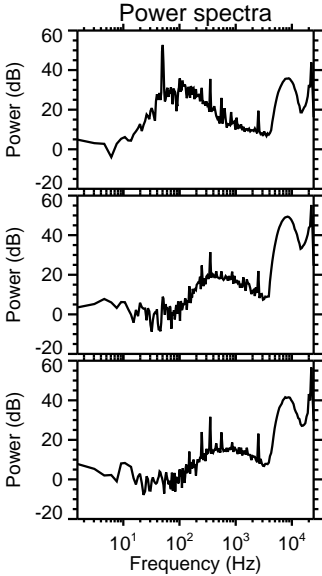
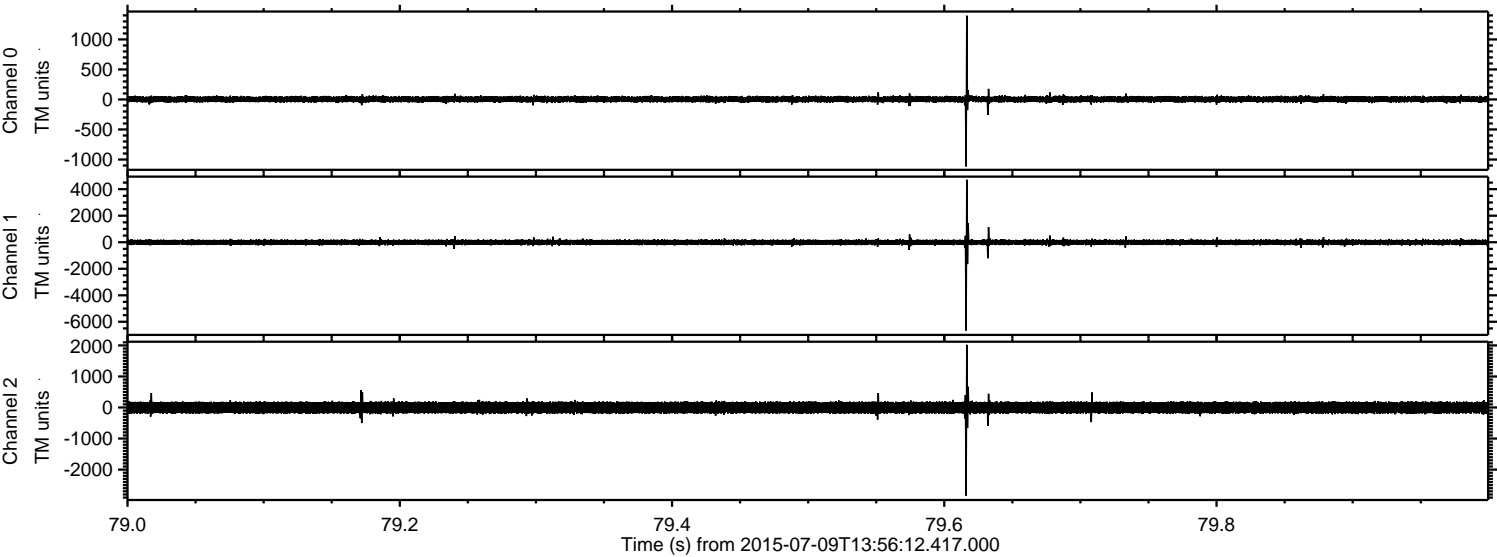
# ELMAVAN 3D WAVEFORMS (Measured data sampled at 50 kHz) 51000 packets of 144 samples from 2015-07-09T13:56:12.417.000.

Processed Thu Jul 9 16:03:09 2015 by ELM ver.2012-10-06 from 001\_\_elm20150709\_135611\_\_dat00.bin

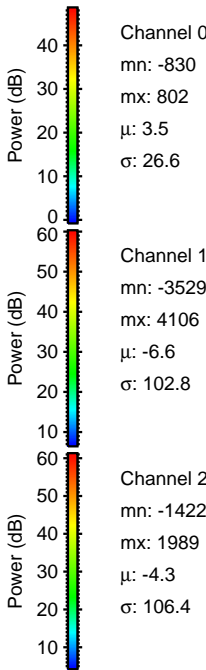
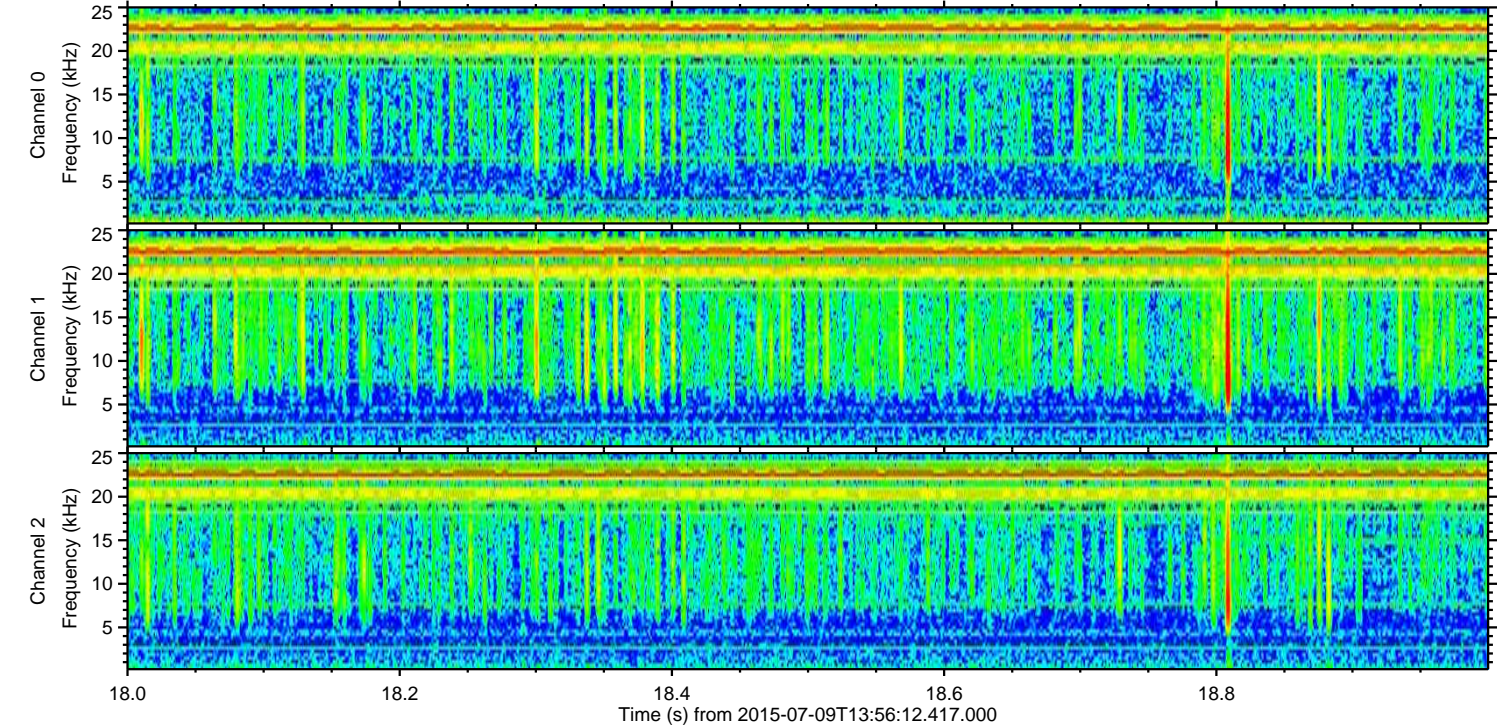
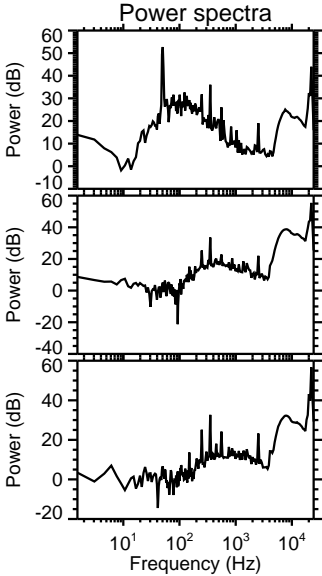
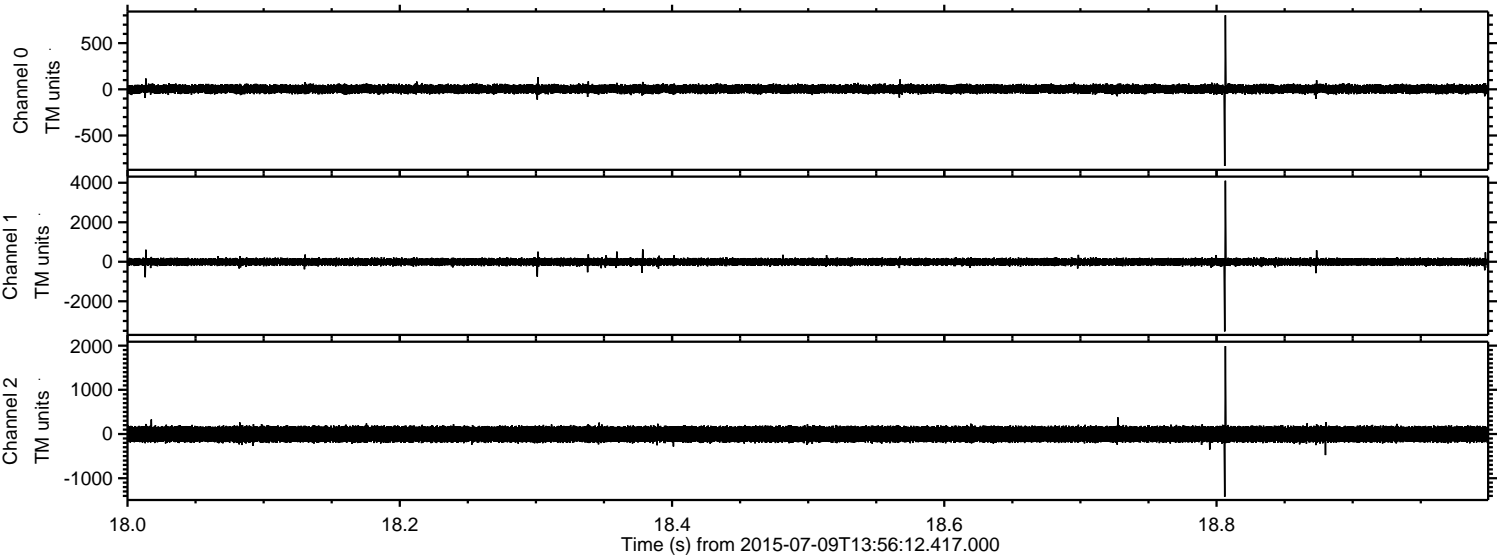




Processed Thu Jul 9 16:03:25 2015 by ELM ver.2012-10-06 from 001\_\_elm20150709\_135611\_\_dat00.bin



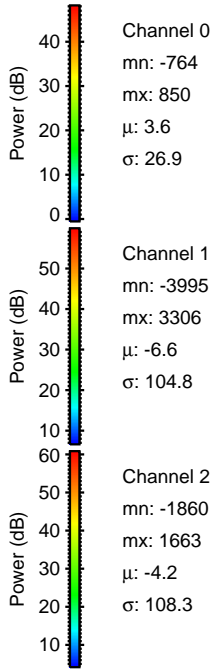
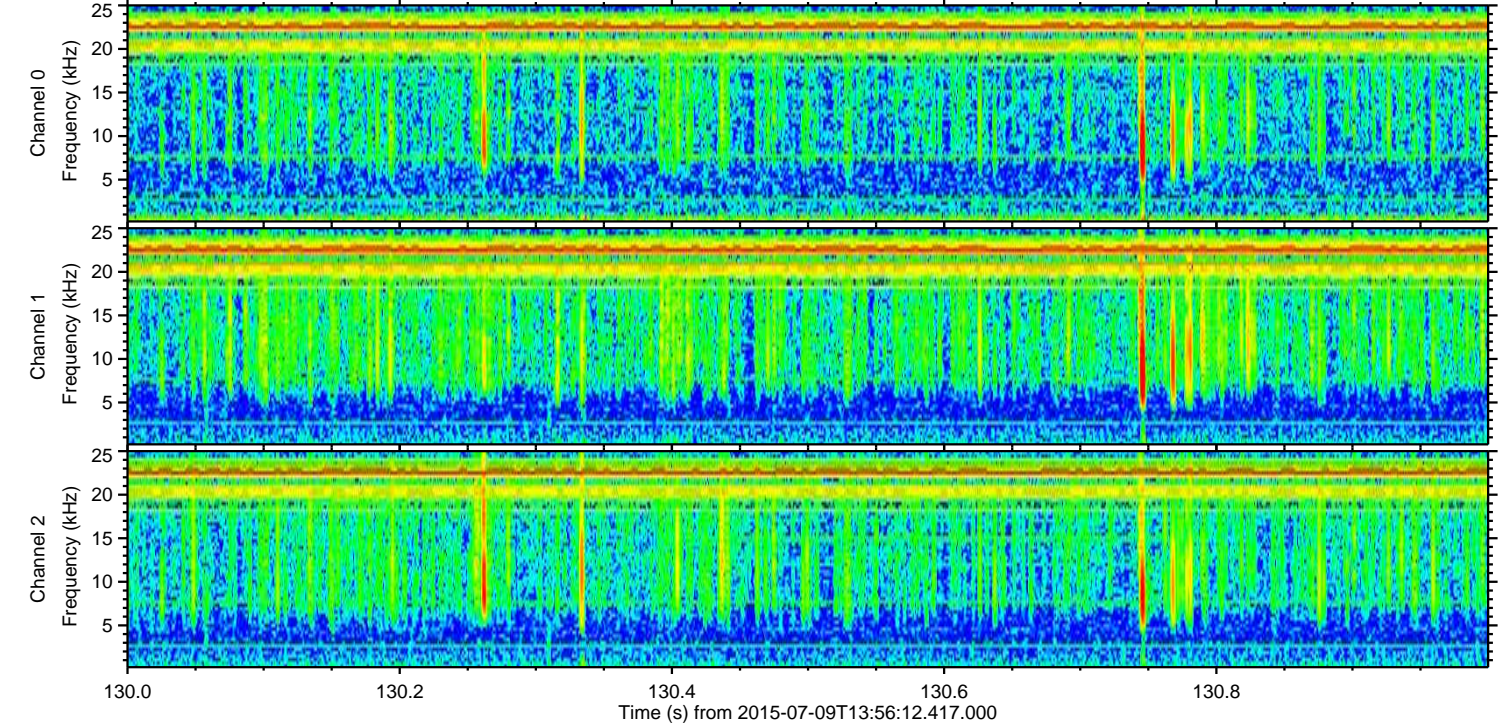
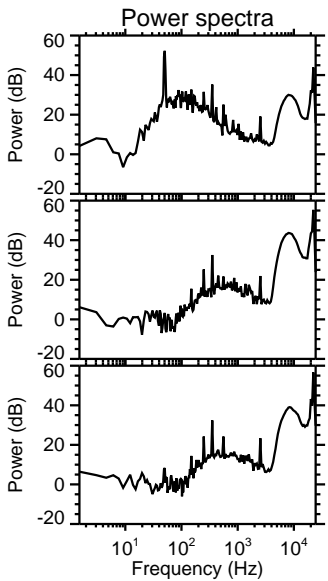
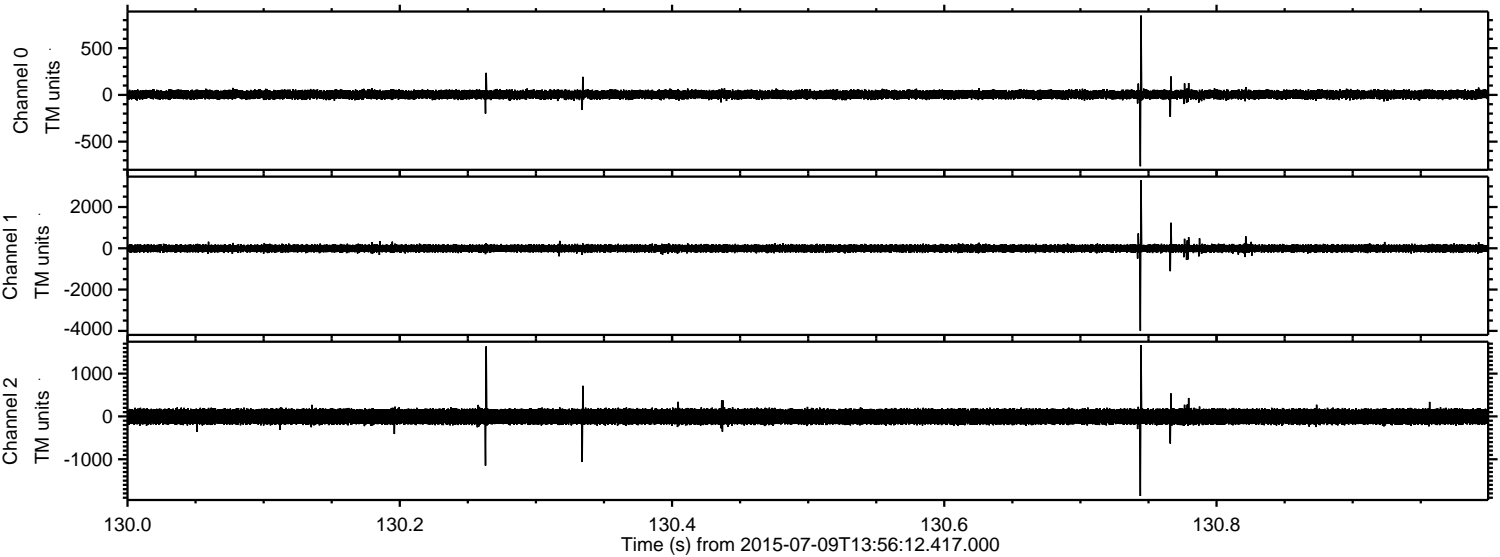
Processed Thu Jul 9 16:03:26 2015 by ELM ver.2012-10-06 from 001\_\_elm20150709\_135611\_\_dat00.bin





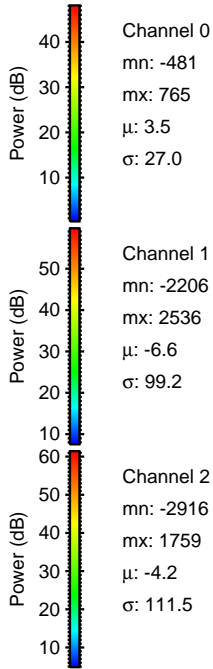
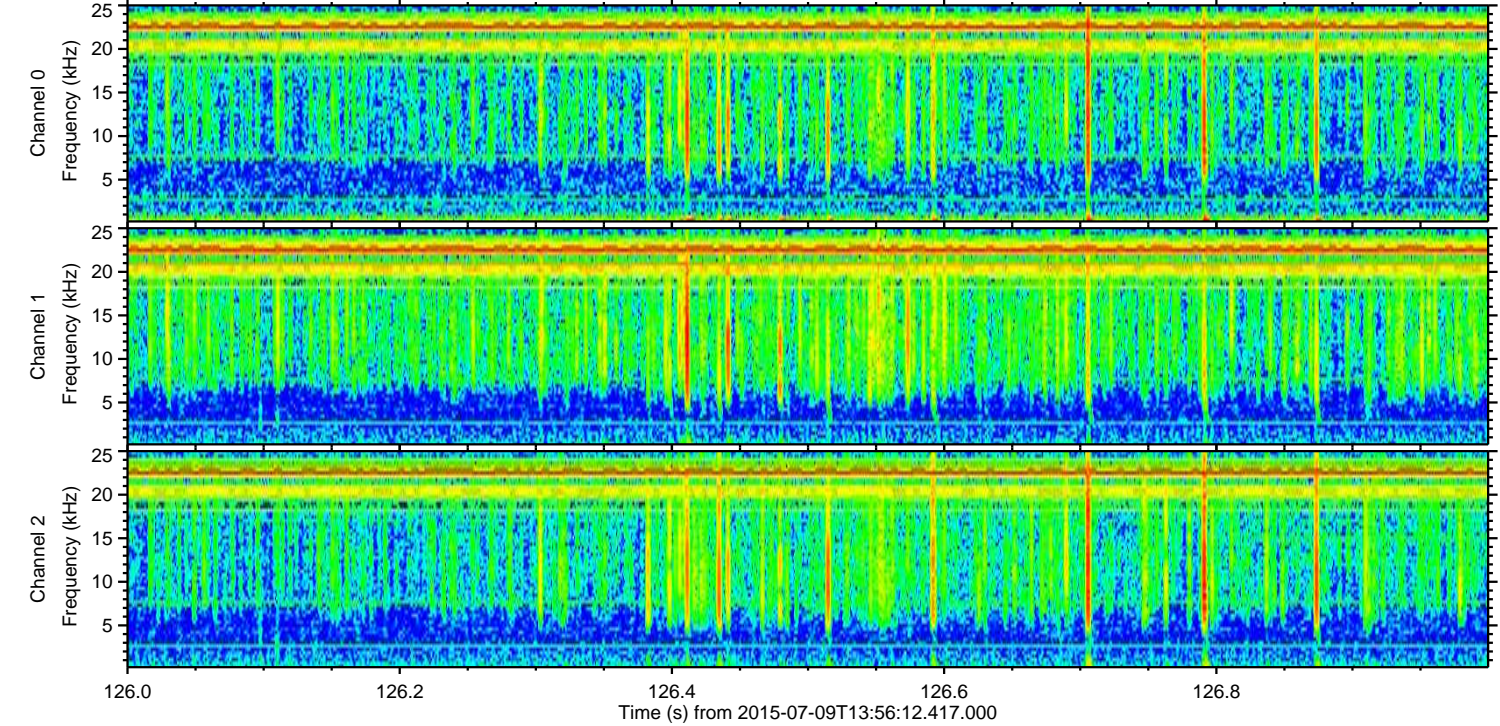
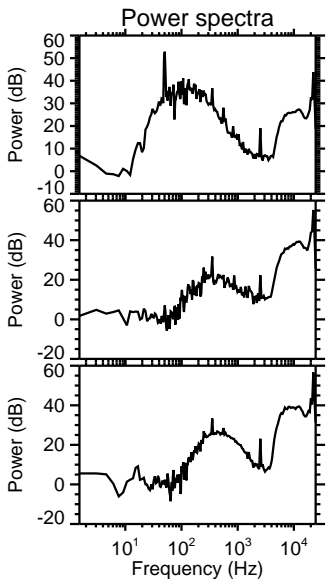
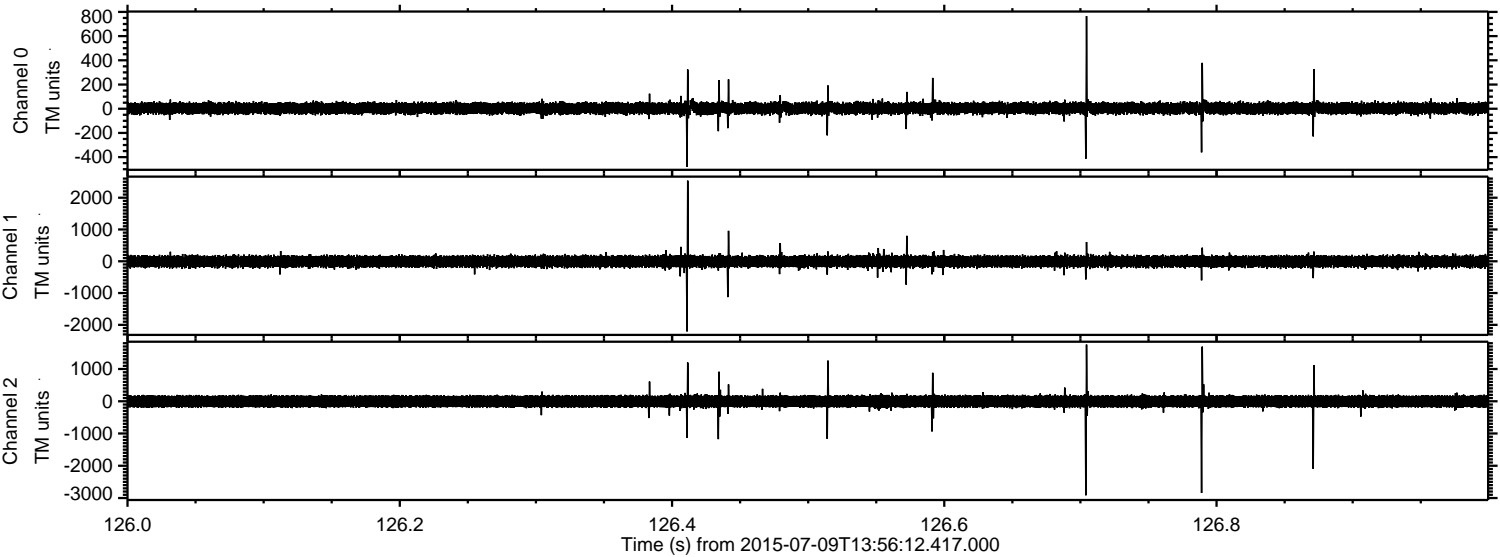
ELMAVAN 3D WAVEFORMS (Measured data sampled at 50 kHz) 51000 packets of 144 samples from 2015-07-09T13:56:12.417.000. Part 131/147

Processed Thu Jul 9 16:03:27 2015 by ELM ver.2012-10-06 from 001\_\_elm20150709\_135611\_\_dat00.bin



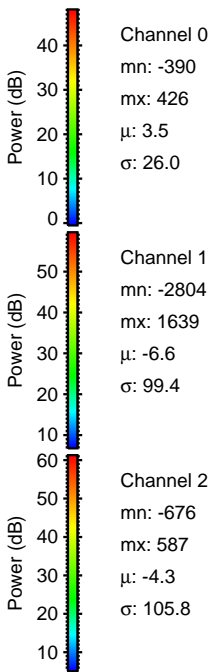
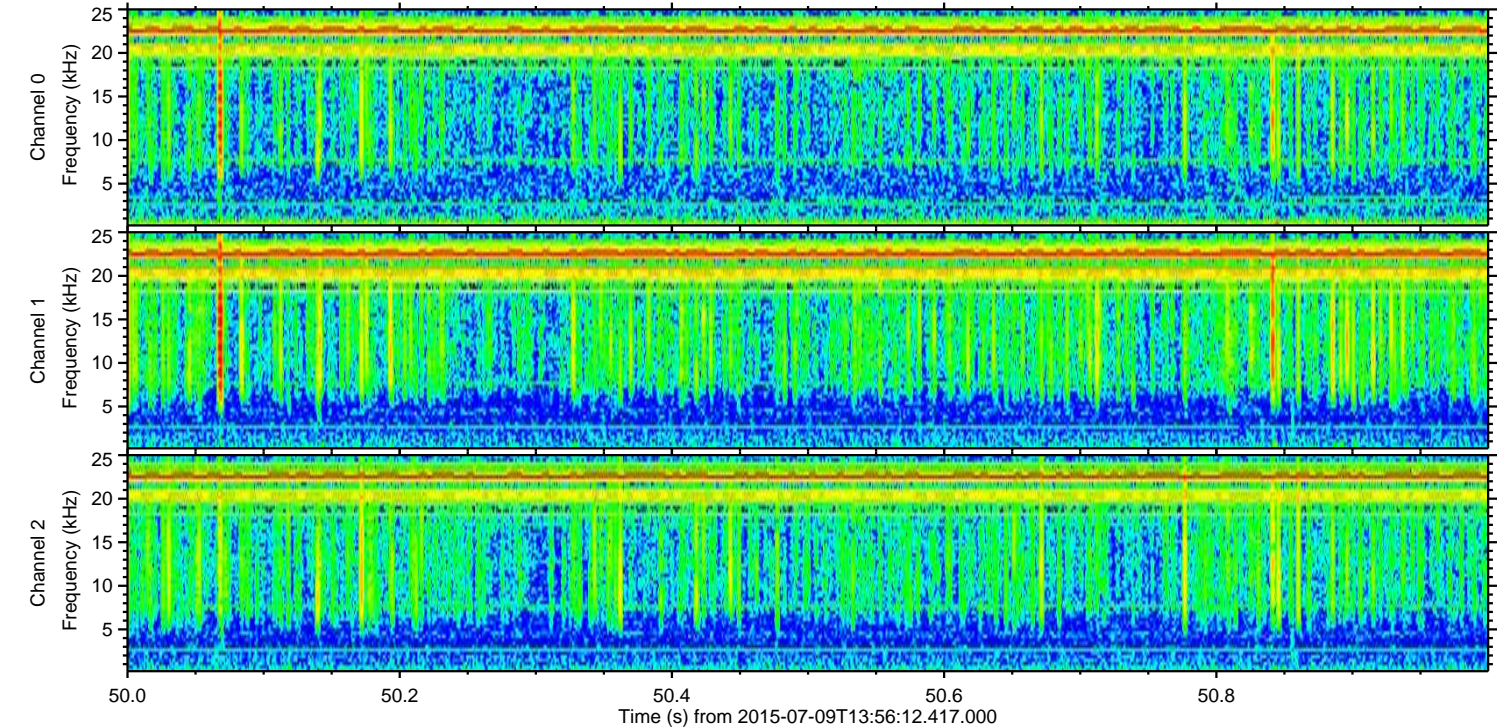
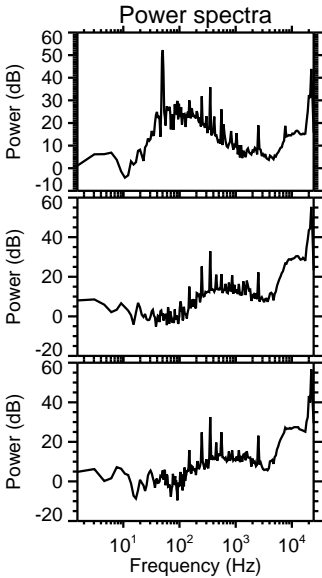
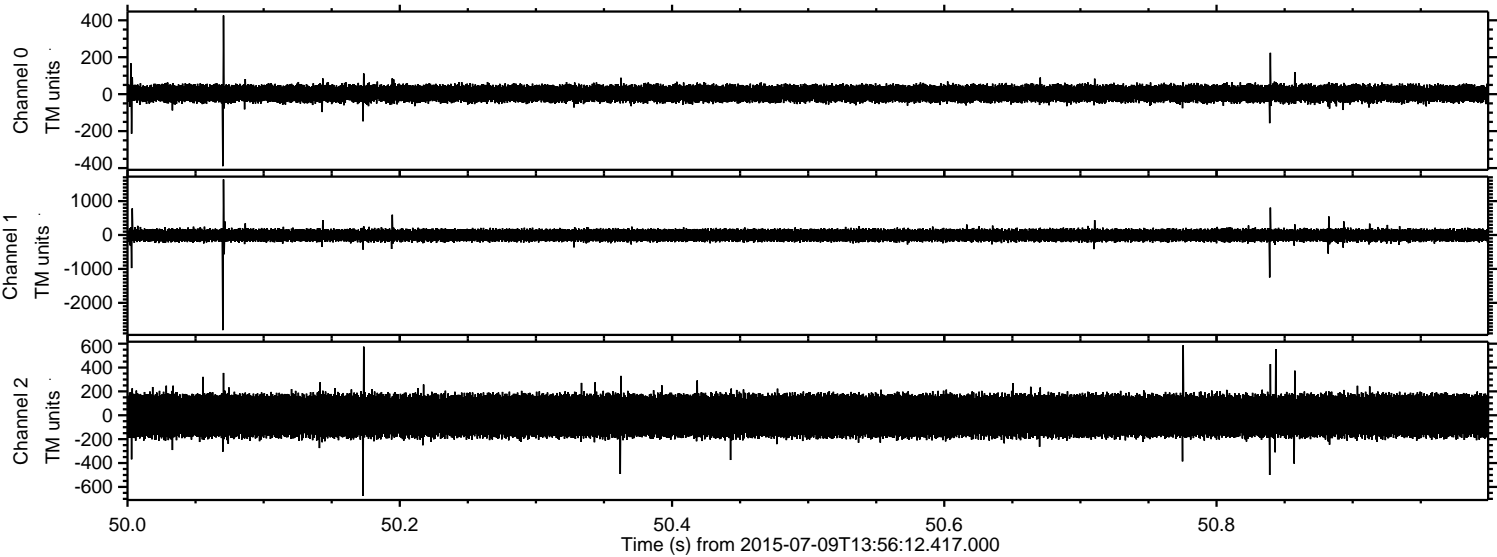
ELMAVAN 3D WAVEFORMS (Measured data sampled at 50 kHz) 51000 packets of 144 samples from 2015-07-09T13:56:12.417.000. Part 127/147

Processed Thu Jul 9 16:03:28 2015 by ELM ver.2012-10-06 from 001\_\_elm20150709\_135611\_\_dat00.bin

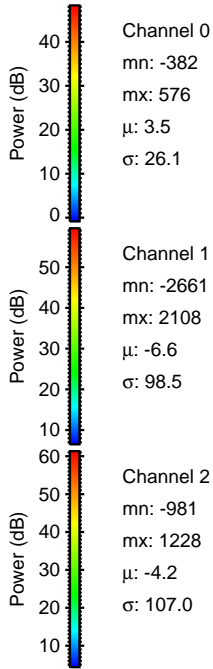
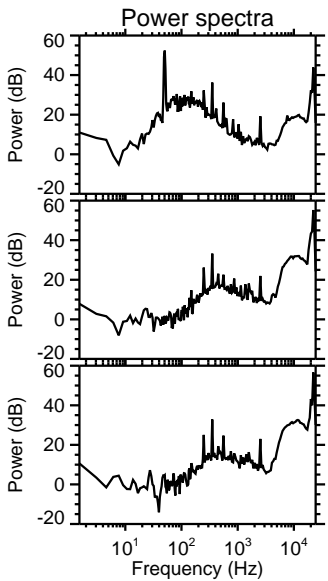
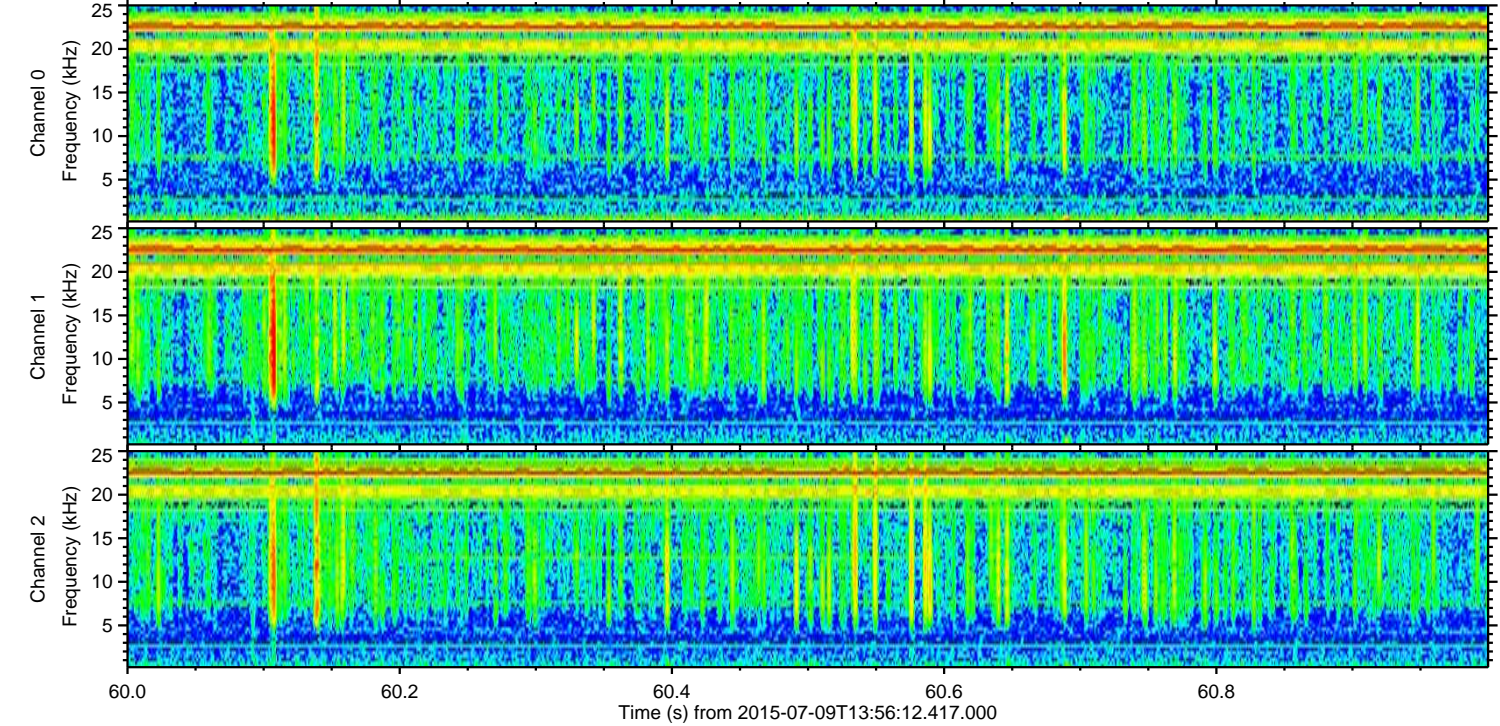
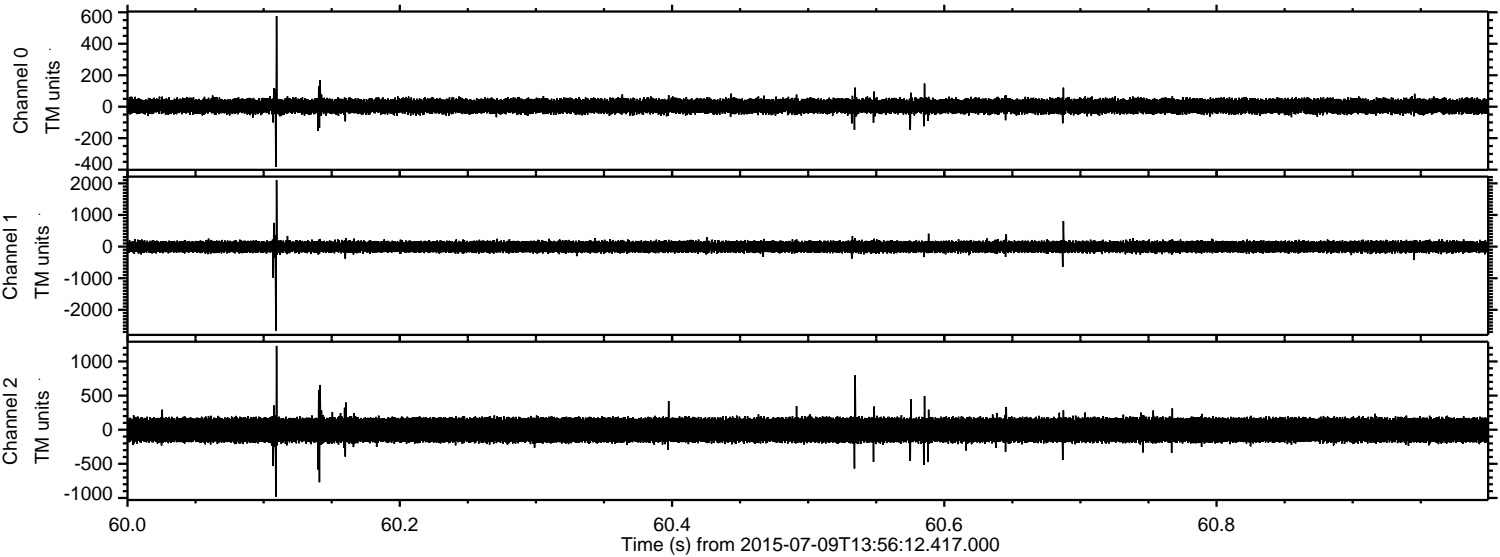




Processed Thu Jul 9 16:03:29 2015 by ELM ver.2012-10-06 from 001\_\_elm20150709\_135611\_\_dat00.bin



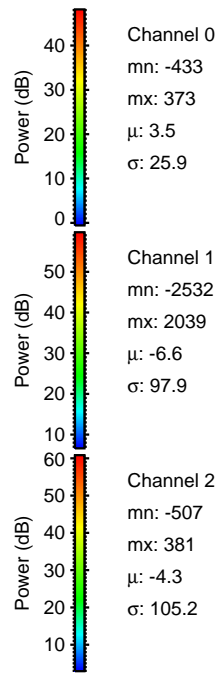
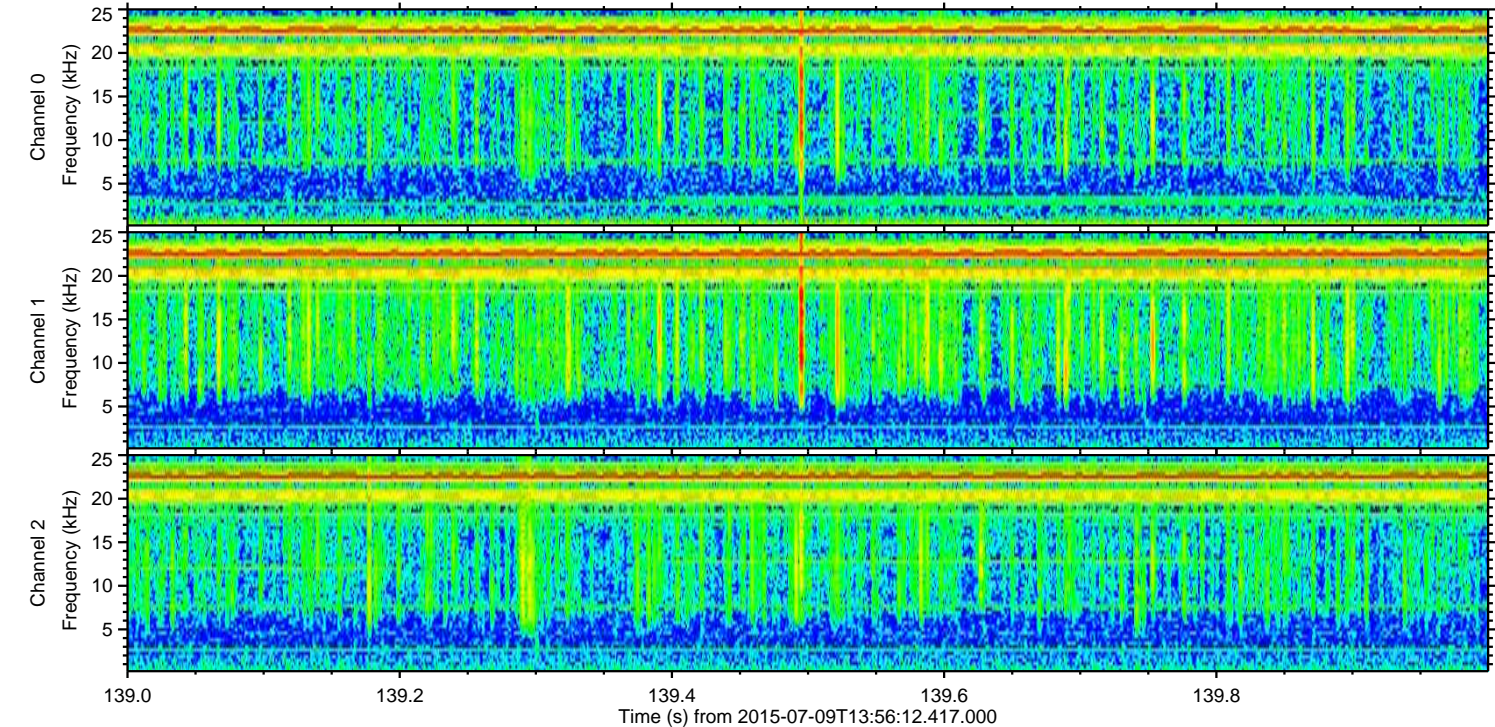
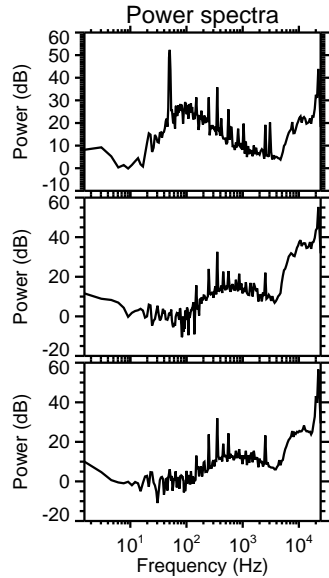
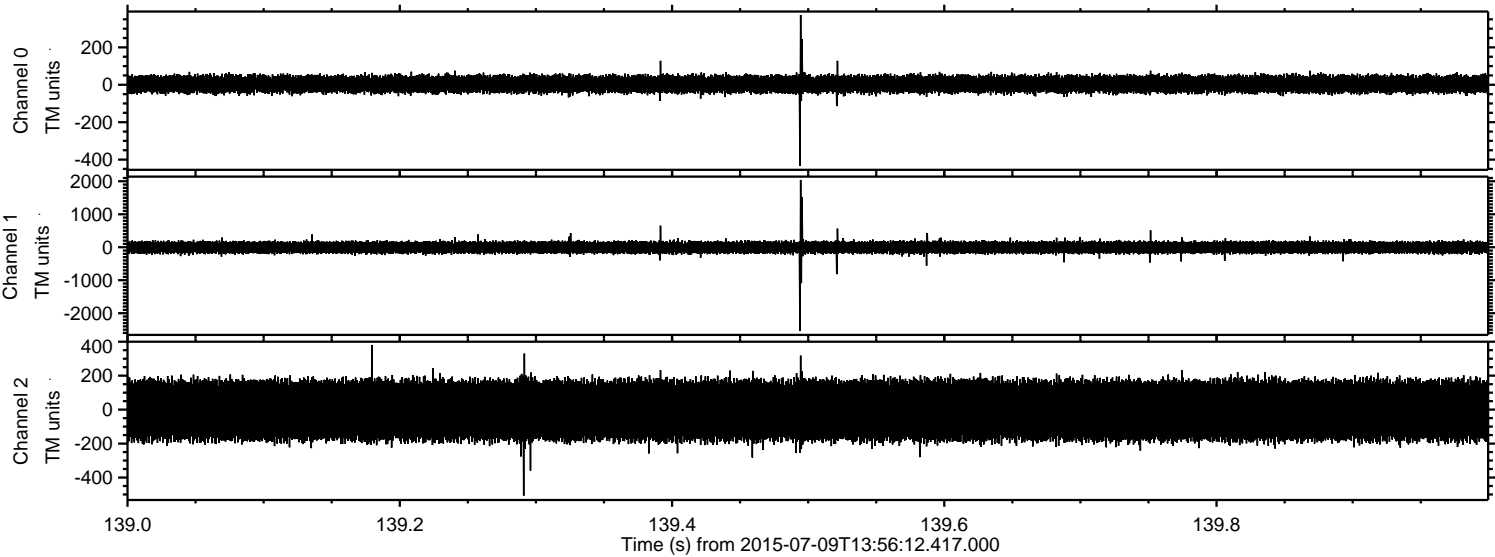
Processed Thu Jul 9 16:03:30 2015 by ELM ver.2012-10-06 from 001\_\_elm20150709\_135611\_\_dat00.bin





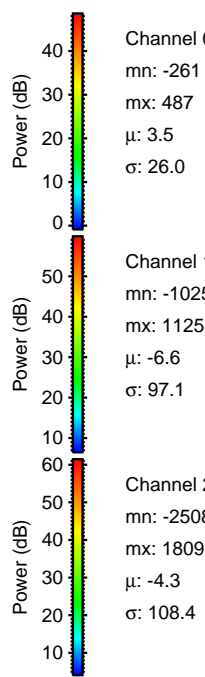
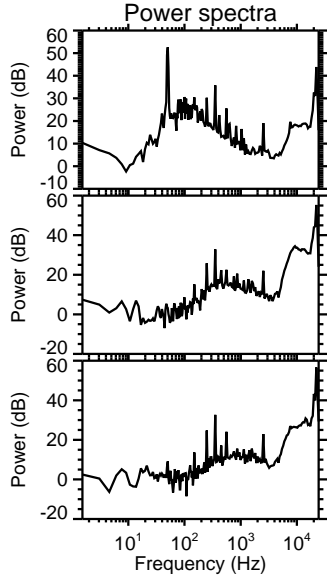
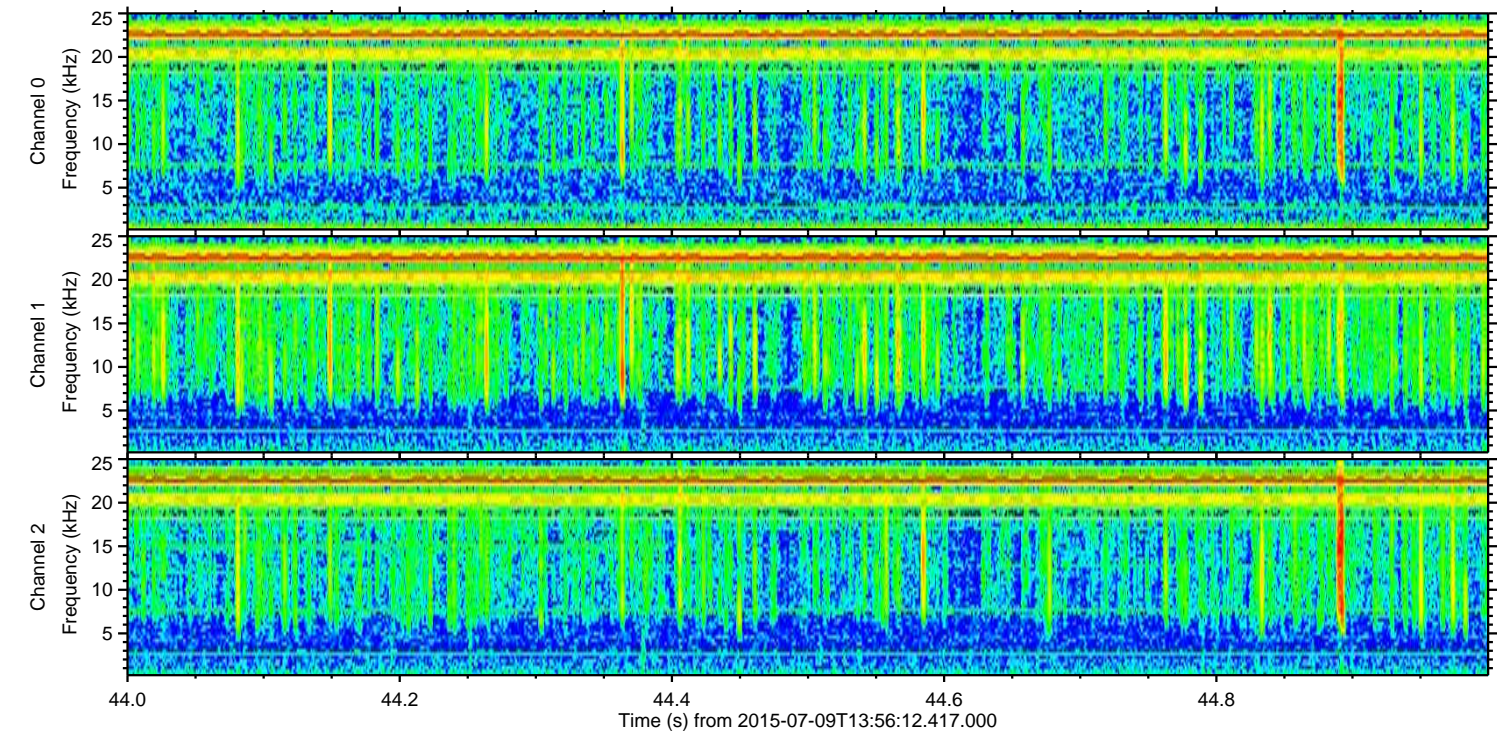
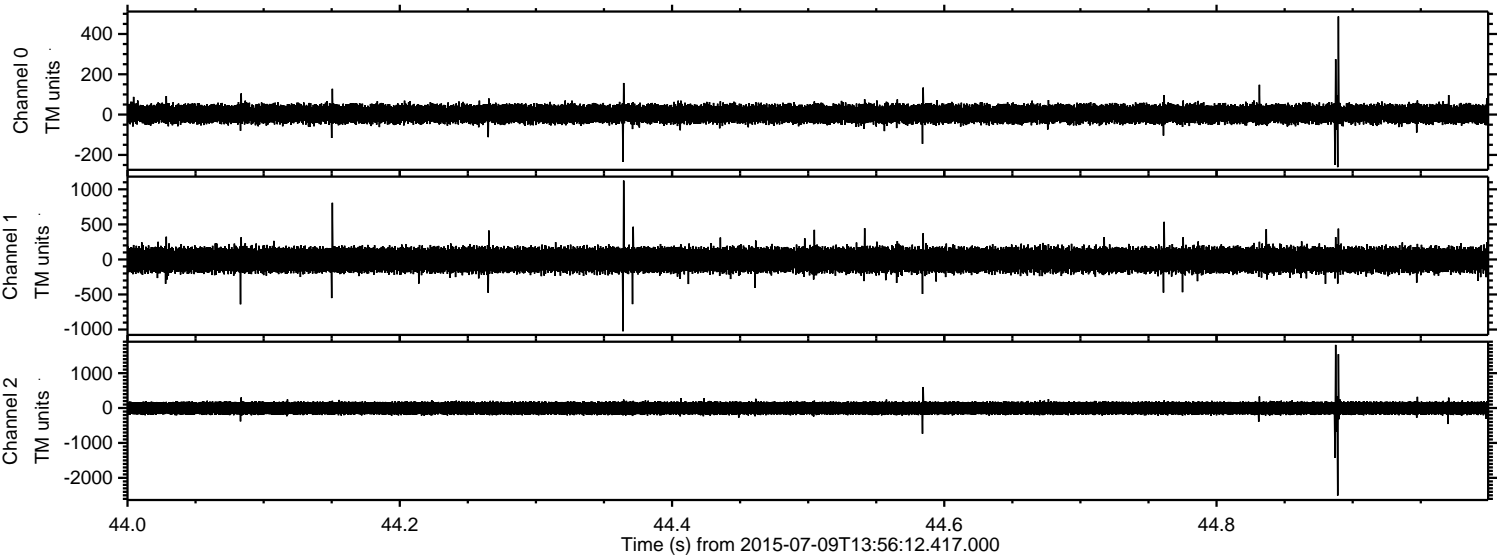
ELMAVAN 3D WAVEFORMS (Measured data sampled at 50 kHz) 51000 packets of 144 samples from 2015-07-09T13:56:12.417.000. Part 140/147

Processed Thu Jul 9 16:03:31 2015 by ELM ver.2012-10-06 from 001\_\_elm20150709\_135611\_\_dat00.bin



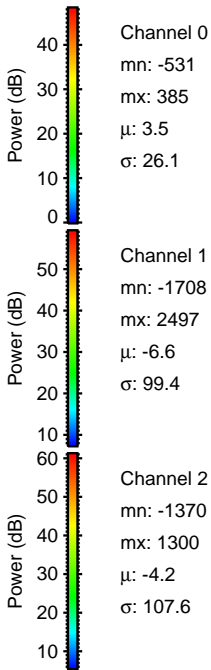
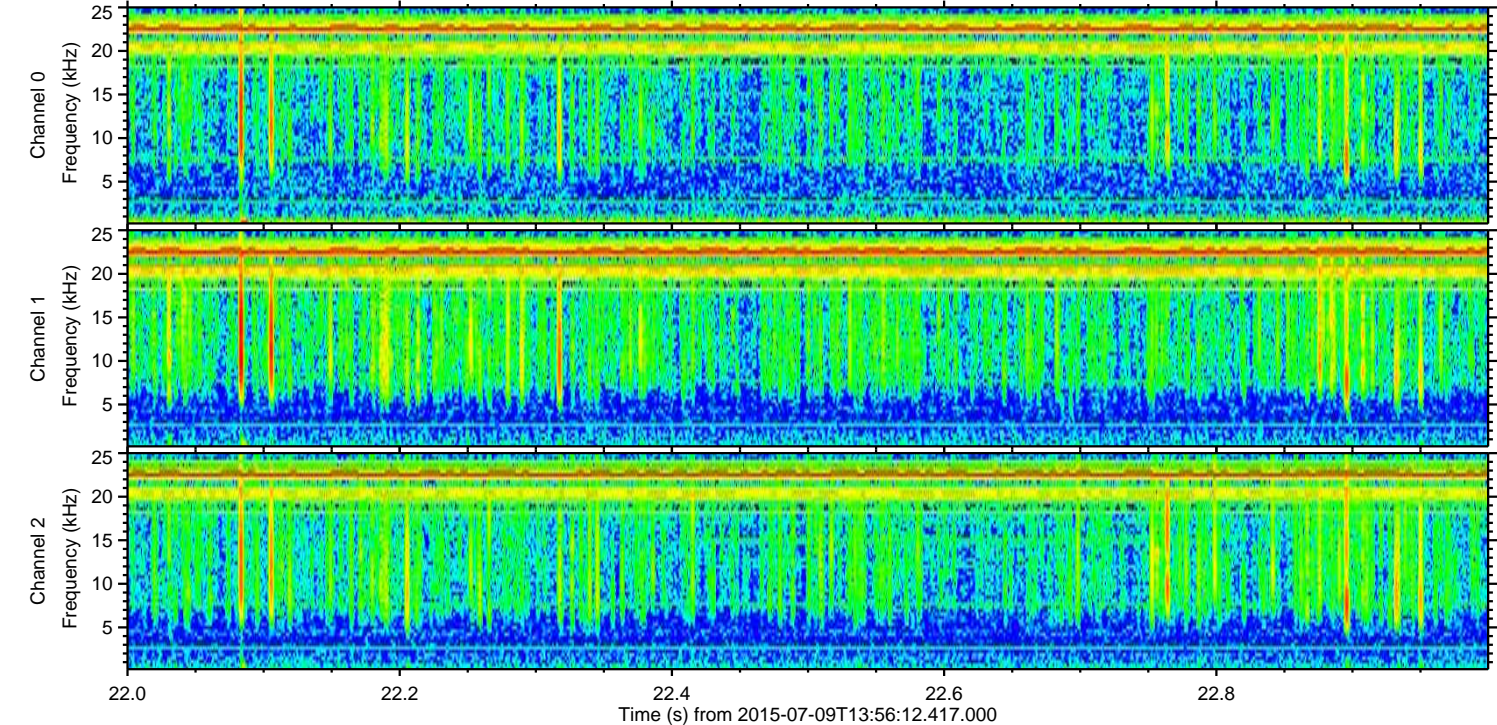
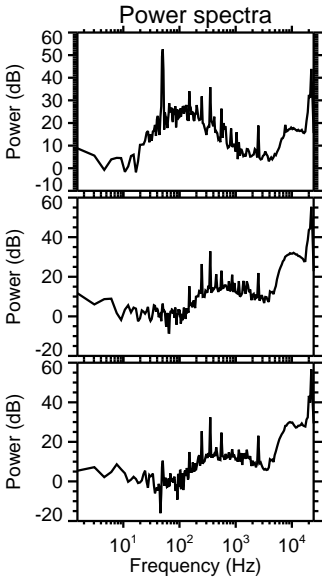
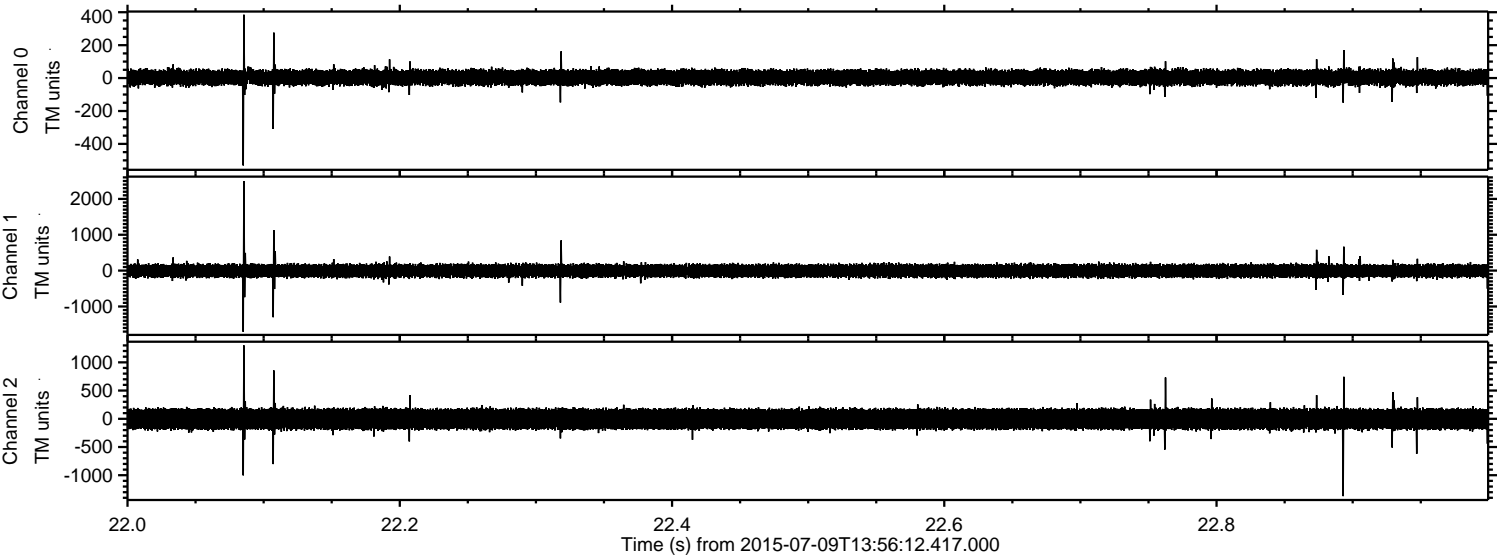


Processed Thu Jul 9 16:03:32 2015 by ELM ver.2012-10-06 from 001\_\_elm20150709\_135611\_\_dat00.bin





Processed Thu Jul 9 16:03:33 2015 by ELM ver.2012-10-06 from 001\_\_elm20150709\_135611\_\_dat00.bin



Channel 0  
mn: -531  
mx: 385  
 $\mu$ : 3.5  
 $\sigma$ : 26.1

Channel 1  
mn: -1708  
mx: 2497  
 $\mu$ : -6.6  
 $\sigma$ : 99.4

Channel 2  
mn: -1370  
mx: 1300  
 $\mu$ : -4.2  
 $\sigma$ : 107.6



