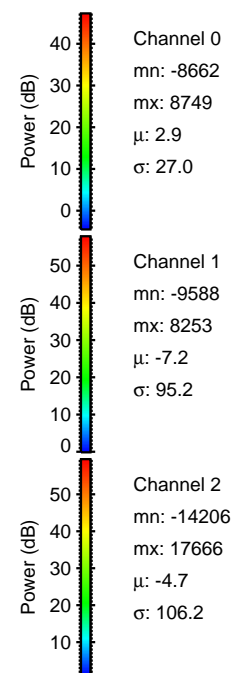
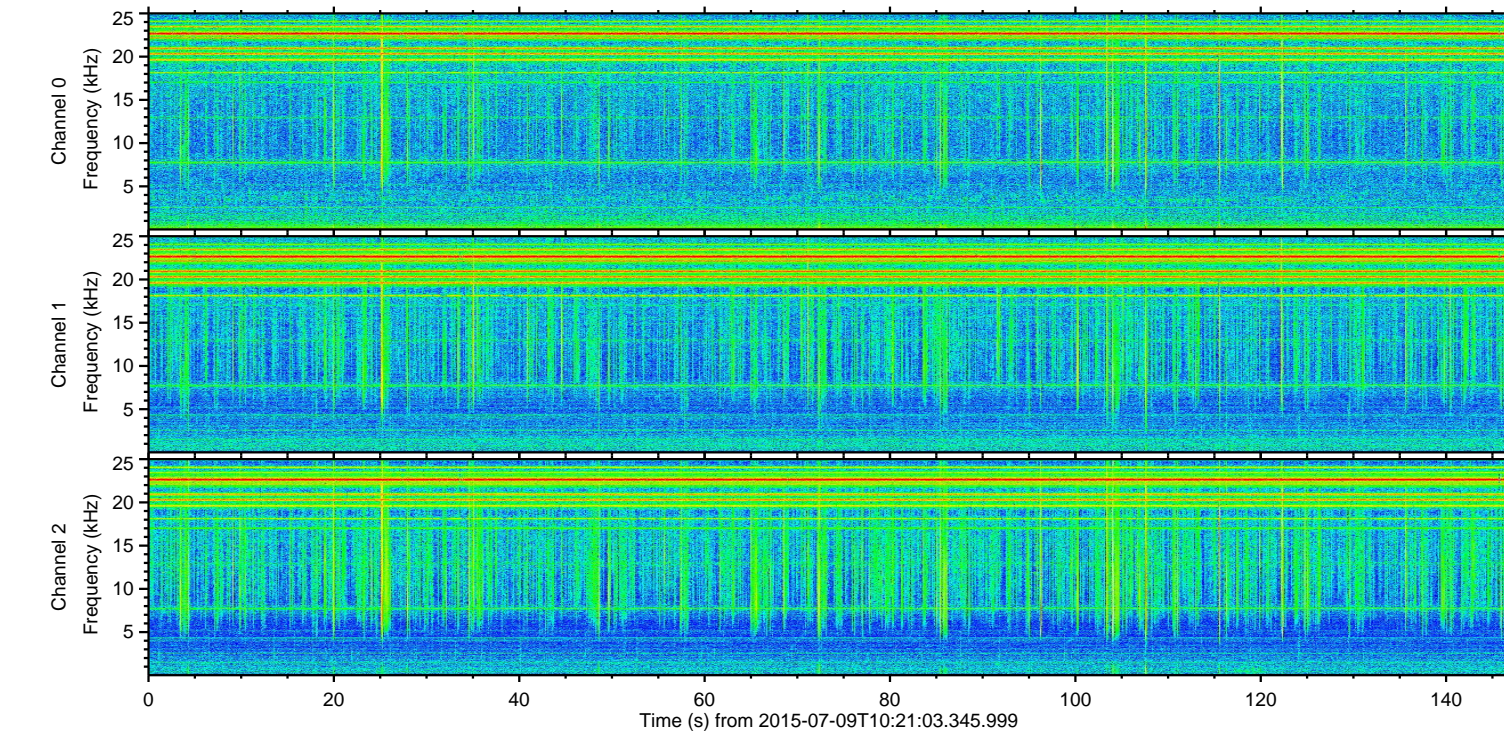
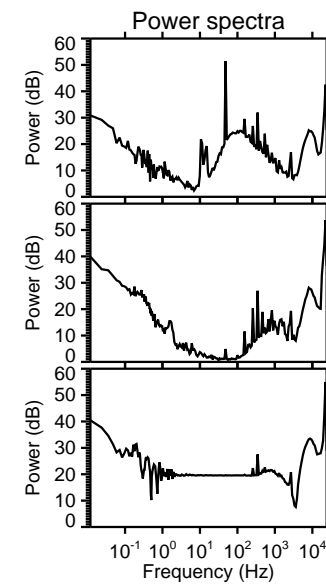
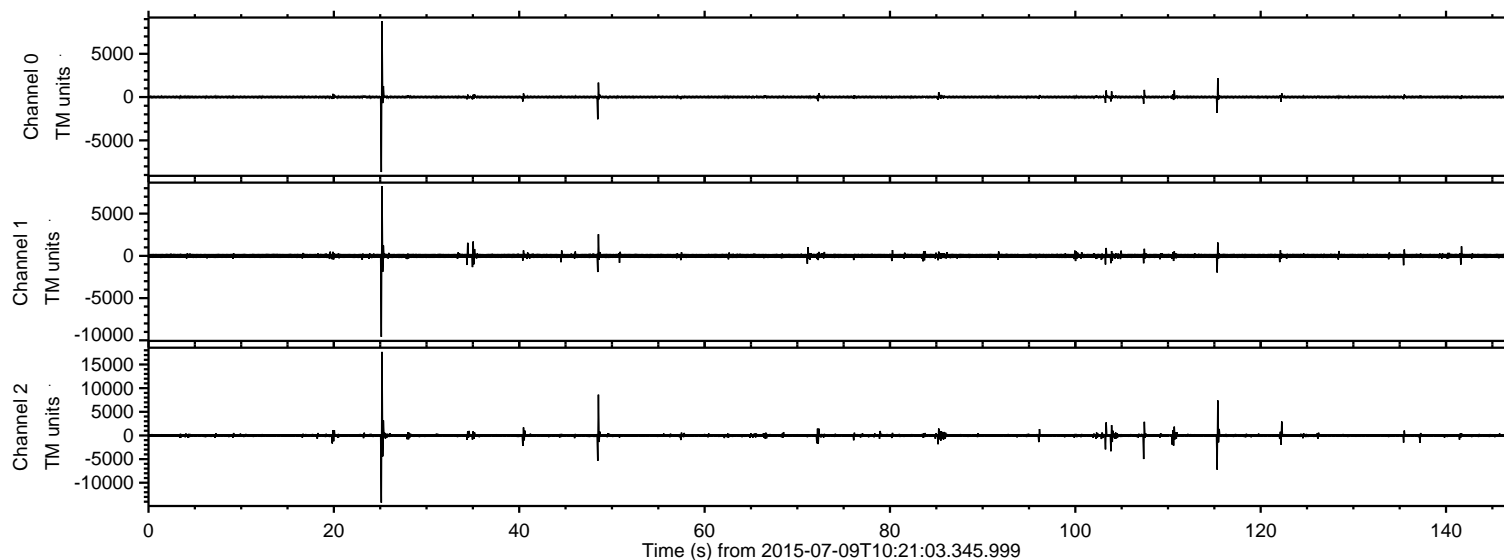
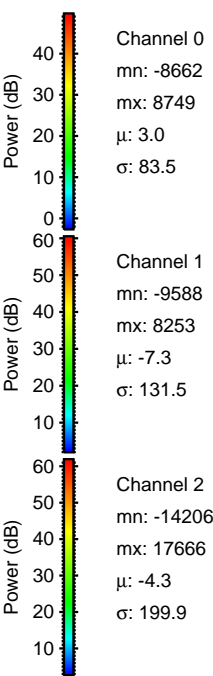
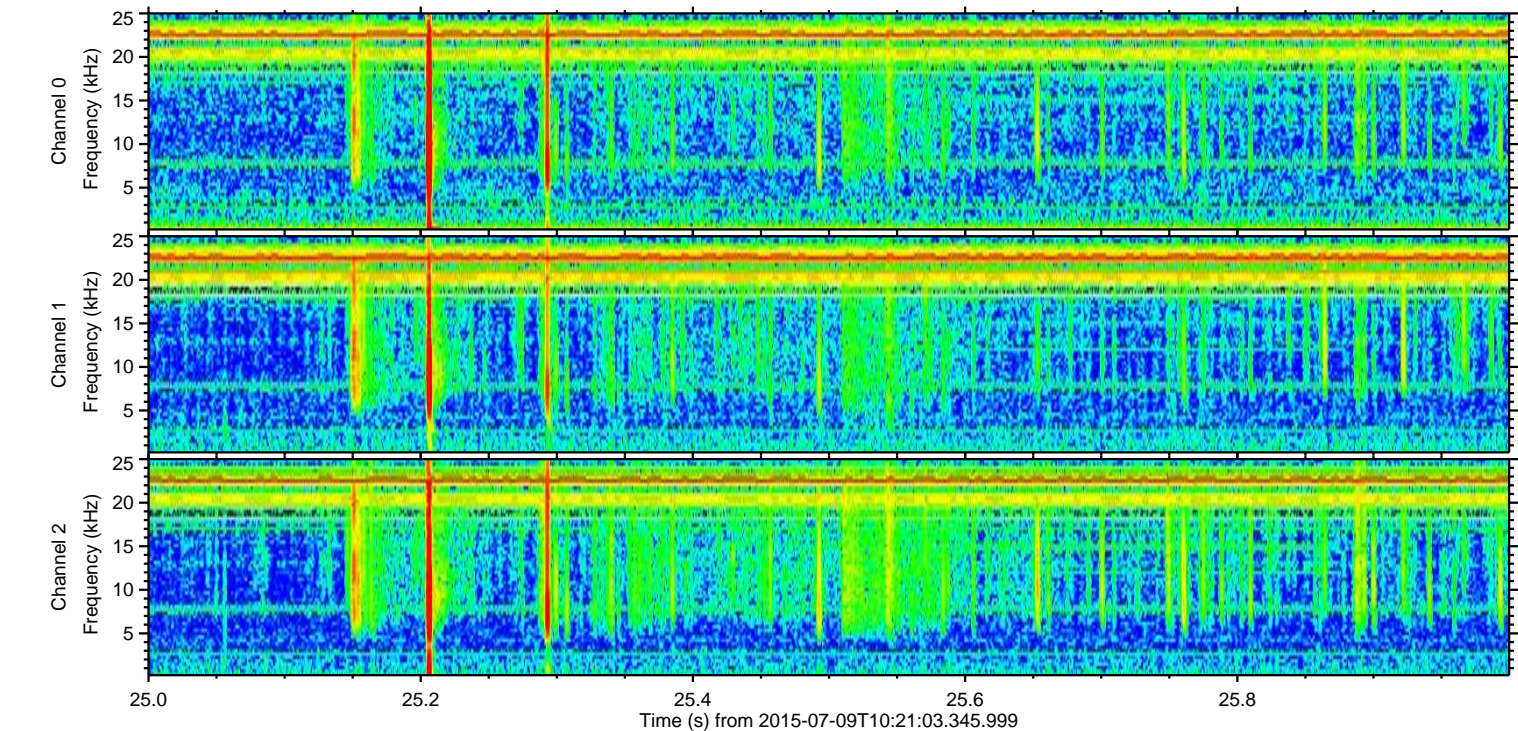
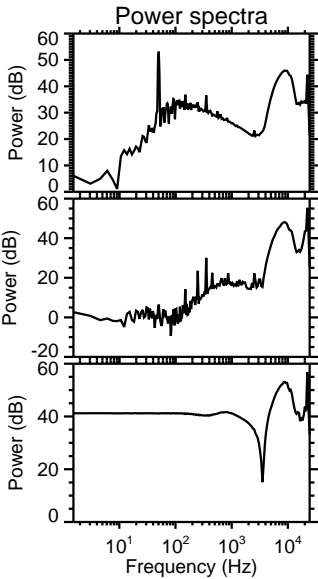
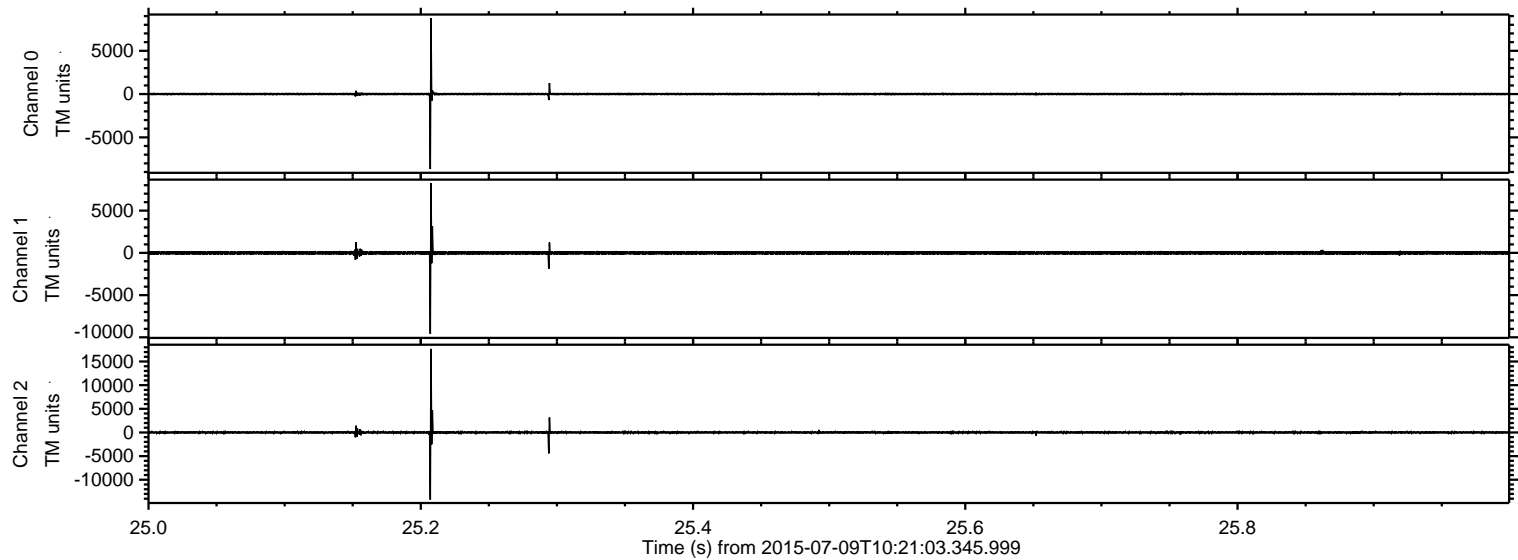


ELMAVAN 3D WAVEFORMS (Measured data sampled at 50 kHz) 51000 packets of 144 samples from 2015-07-09T10:21:03.345.999.

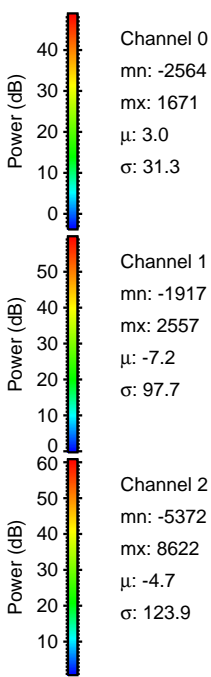
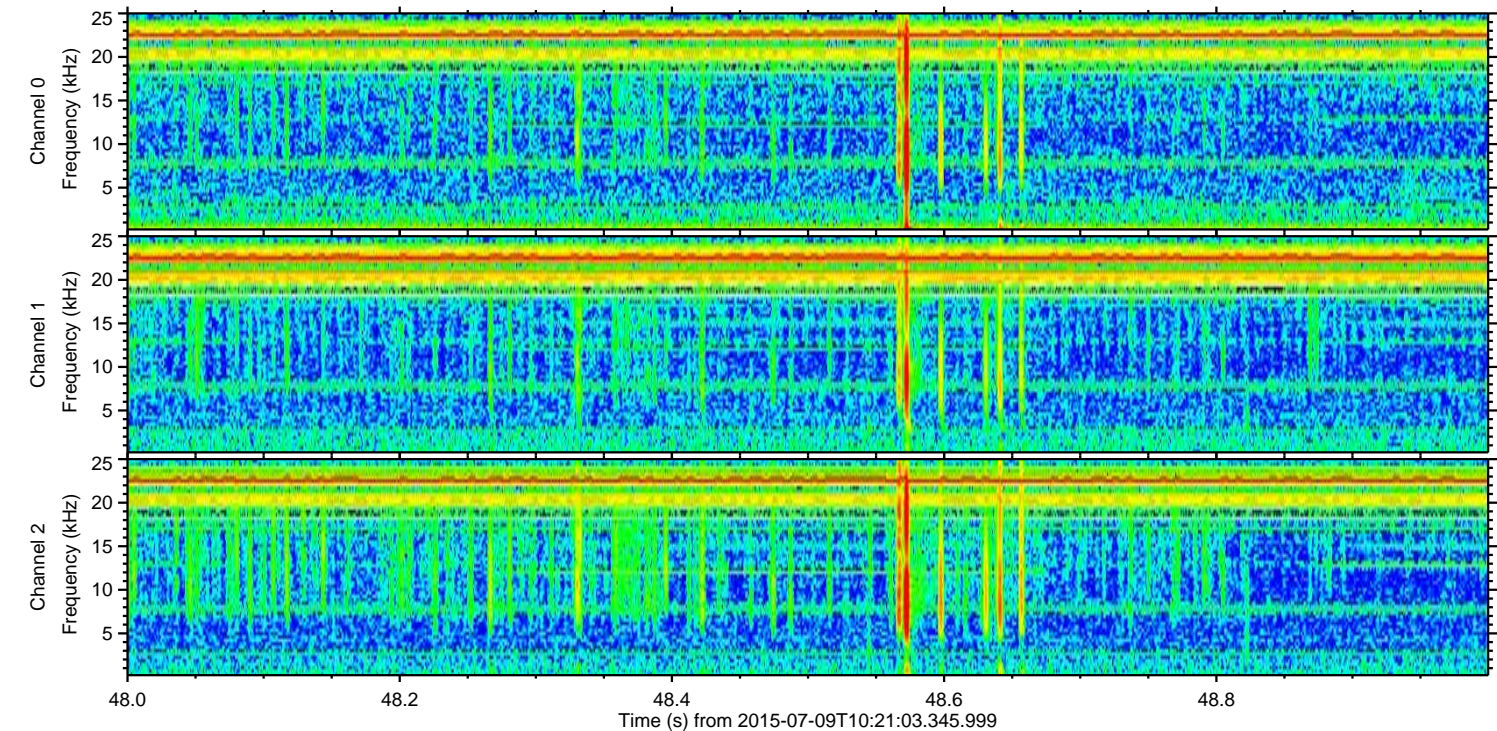
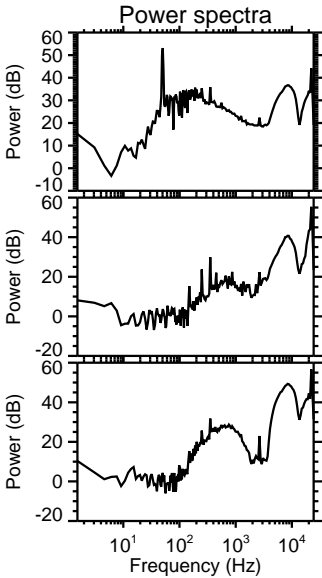
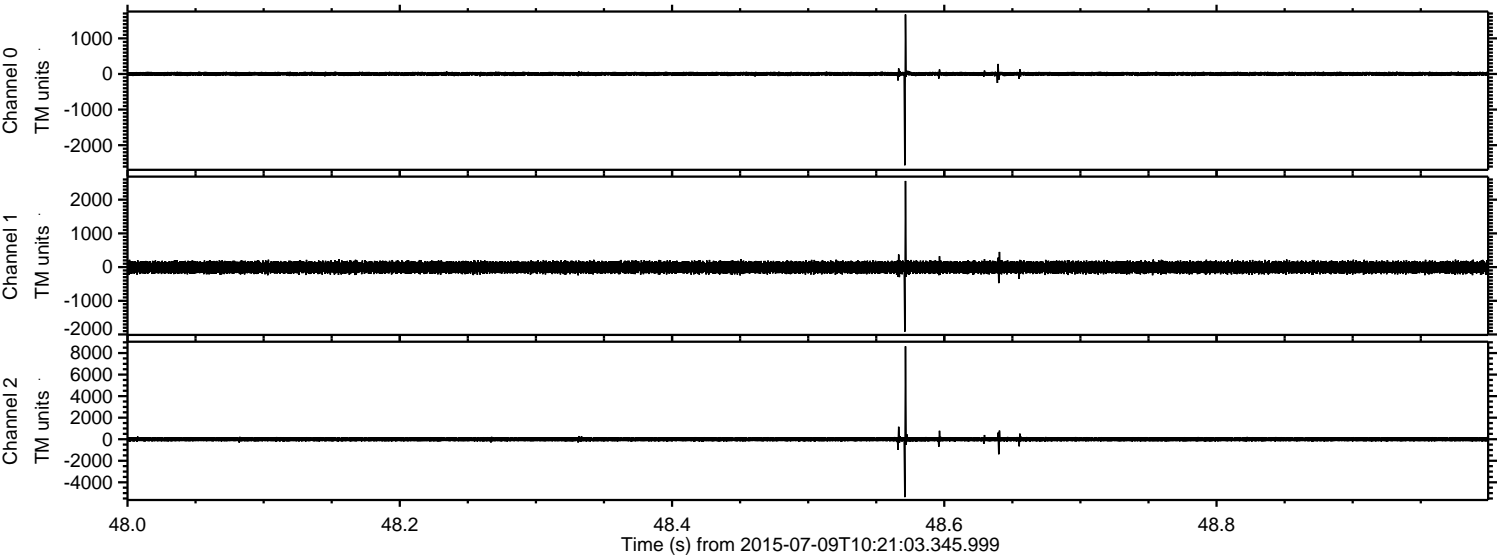
Processed Thu Jul 9 12:27:33 2015 by ELM ver.2012-10-06 from 001__elm20150709_102102__dat00.bin



Processed Thu Jul 9 12:27:48 2015 by ELM ver.2012-10-06 from 001__elm20150709_102102__dat00.bin

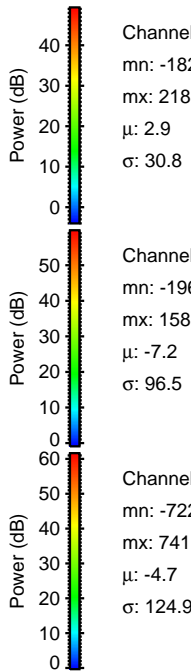
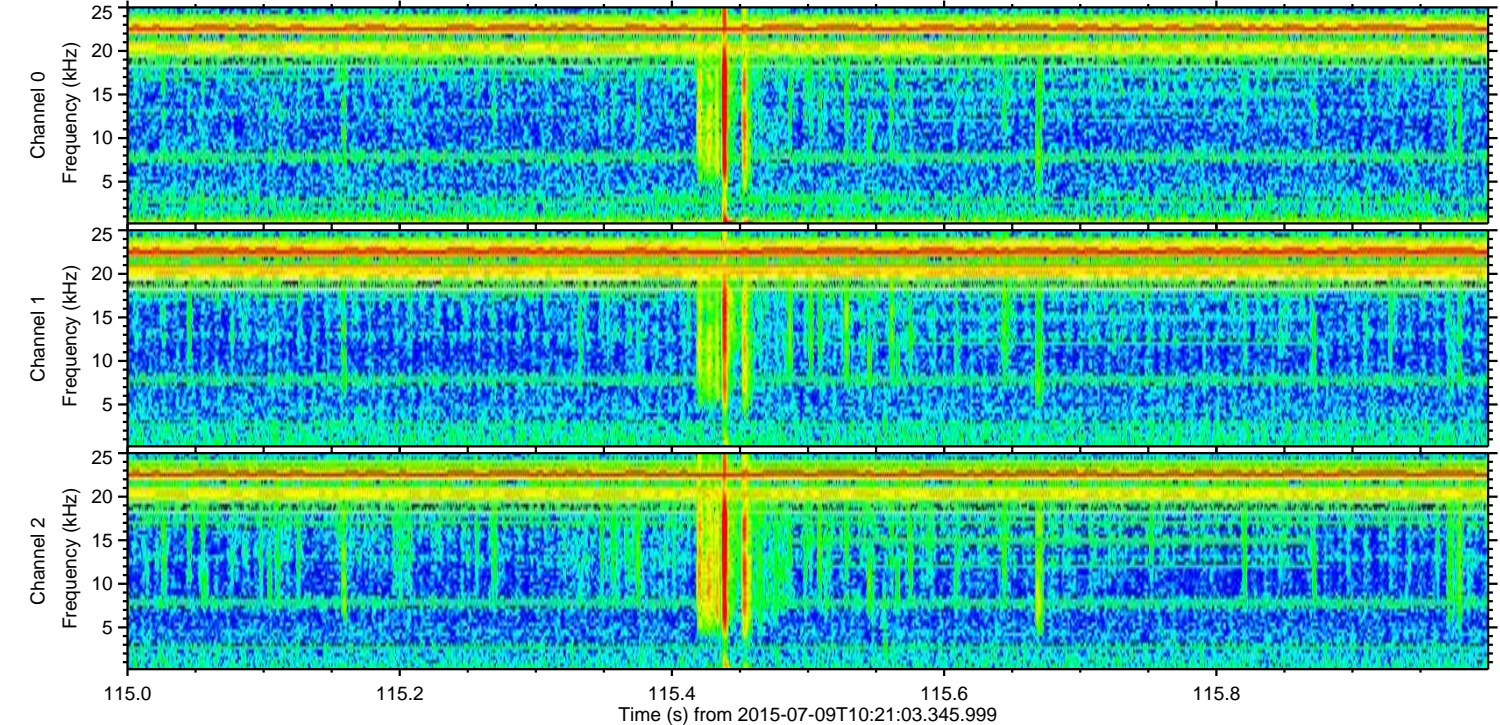
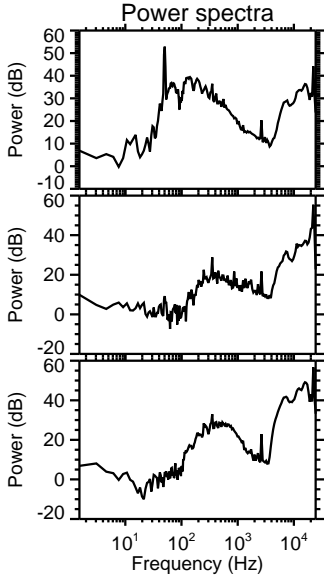
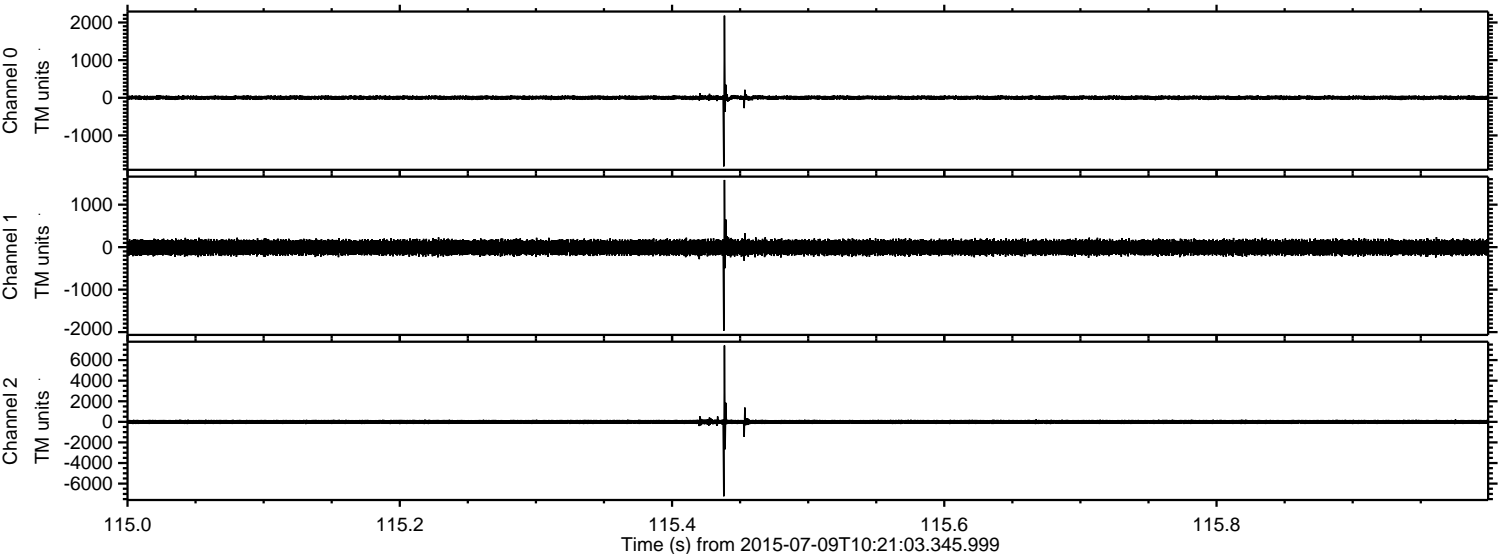


Processed Thu Jul 9 12:27:49 2015 by ELM ver.2012-10-06 from 001__elm20150709_102102__dat00.bin

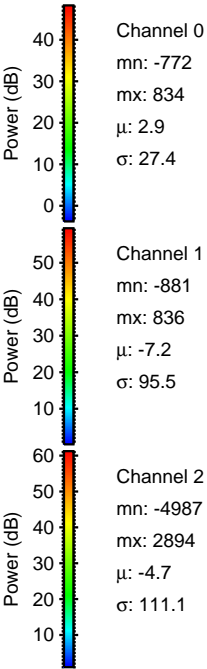
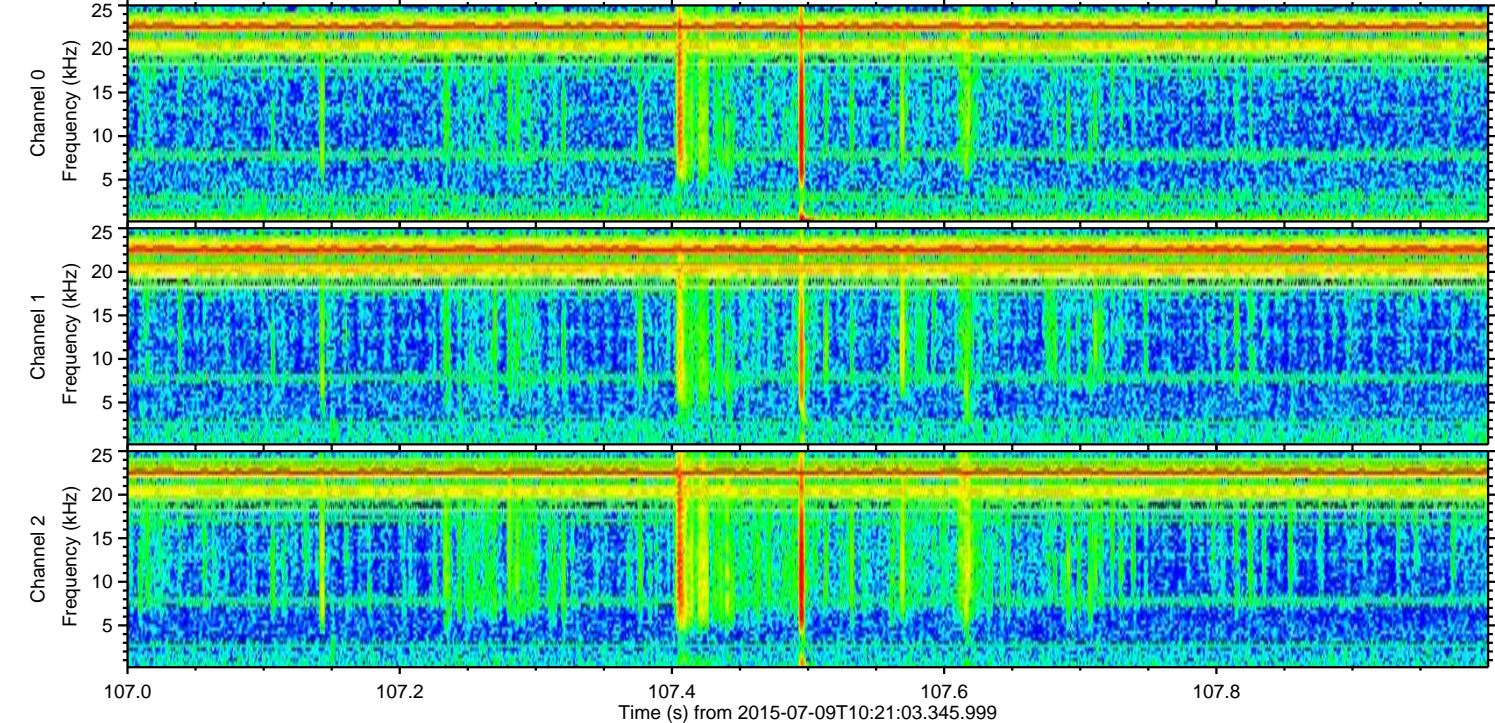
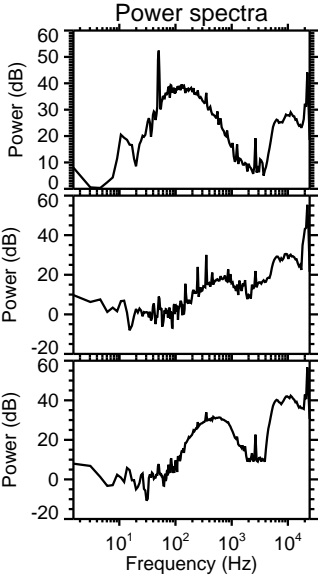
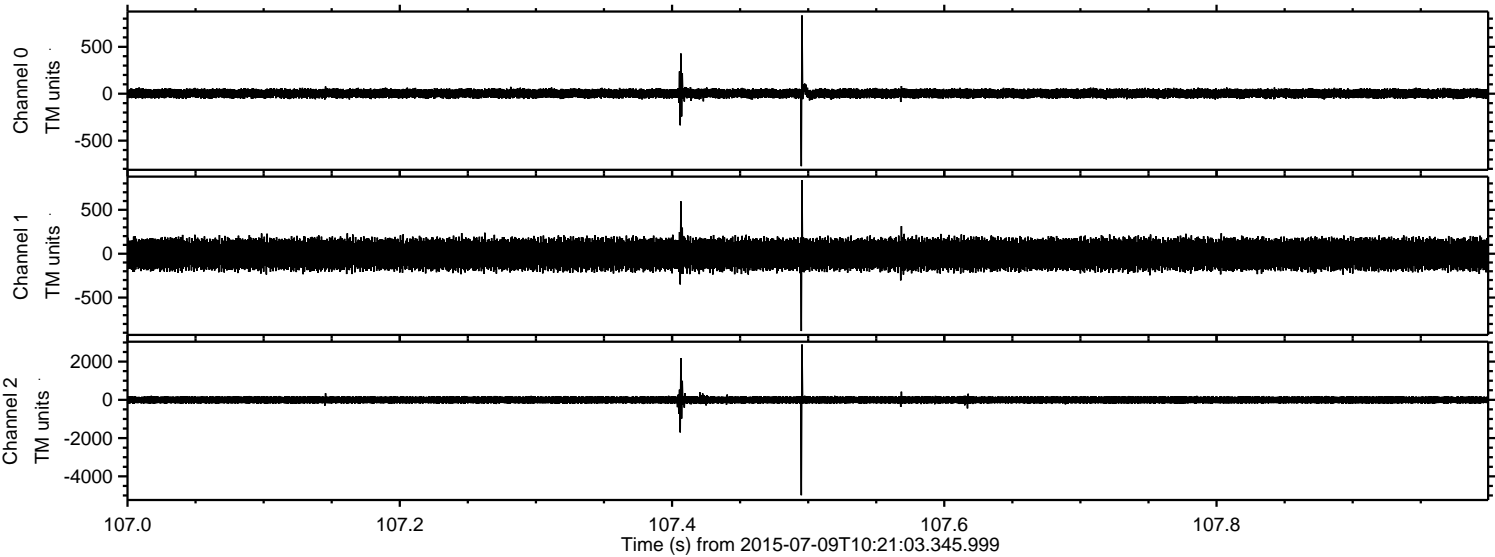


ELMAVAN 3D WAVEFORMS (Measured data sampled at 50 kHz) 51000 packets of 144 samples from 2015-07-09T10:21:03.345.999. Part 116/147

Processed Thu Jul 9 12:27:50 2015 by ELM ver.2012-10-06 from 001__elm20150709_102102__dat00.bin

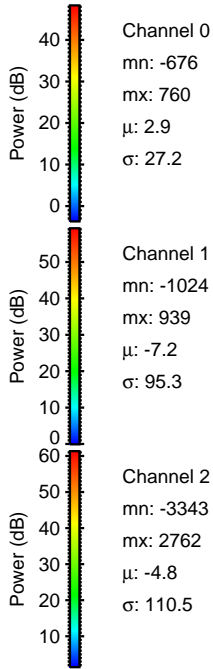
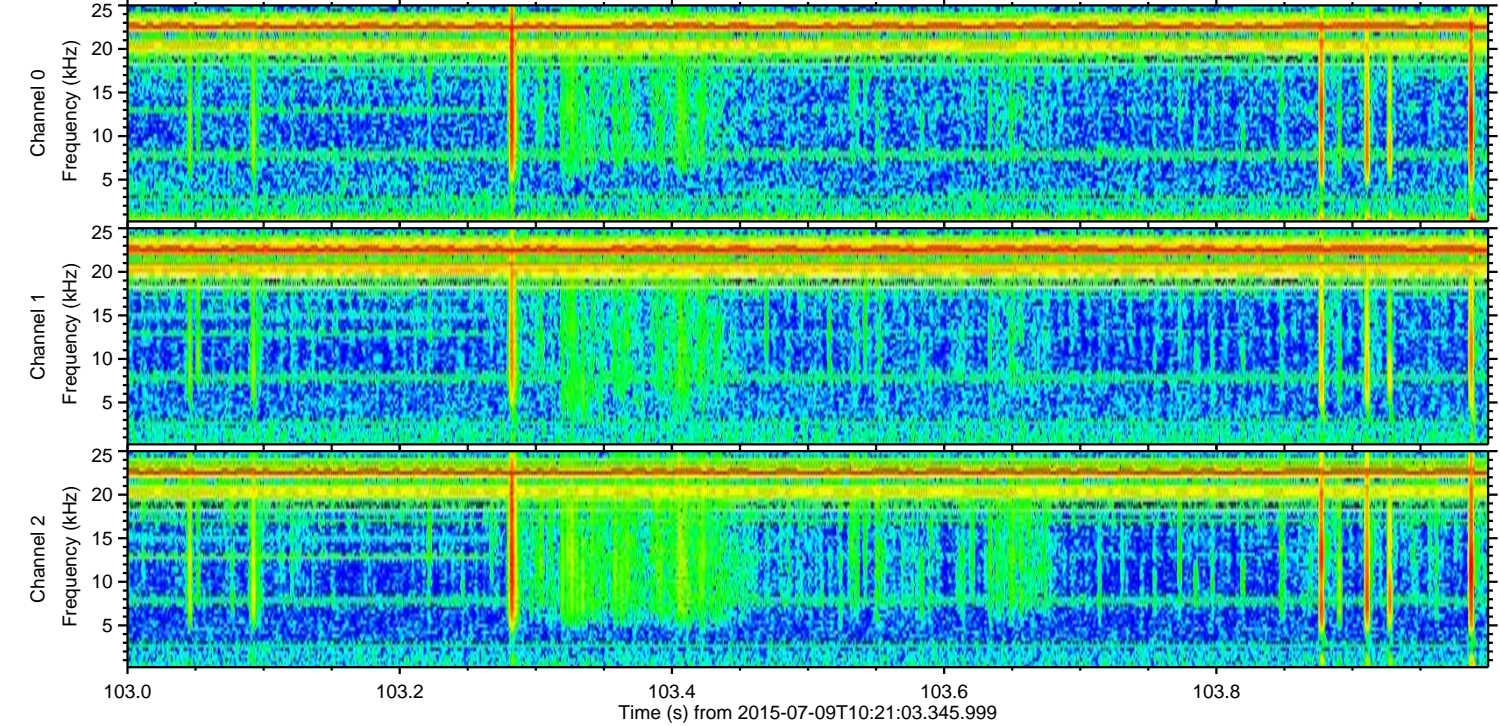
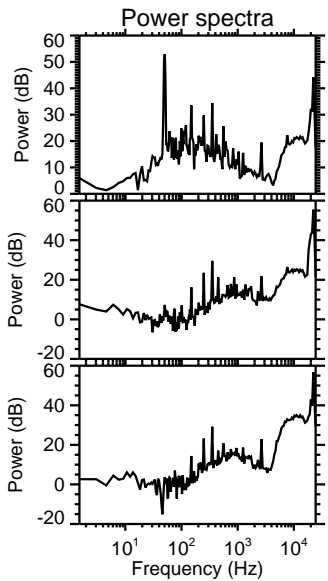
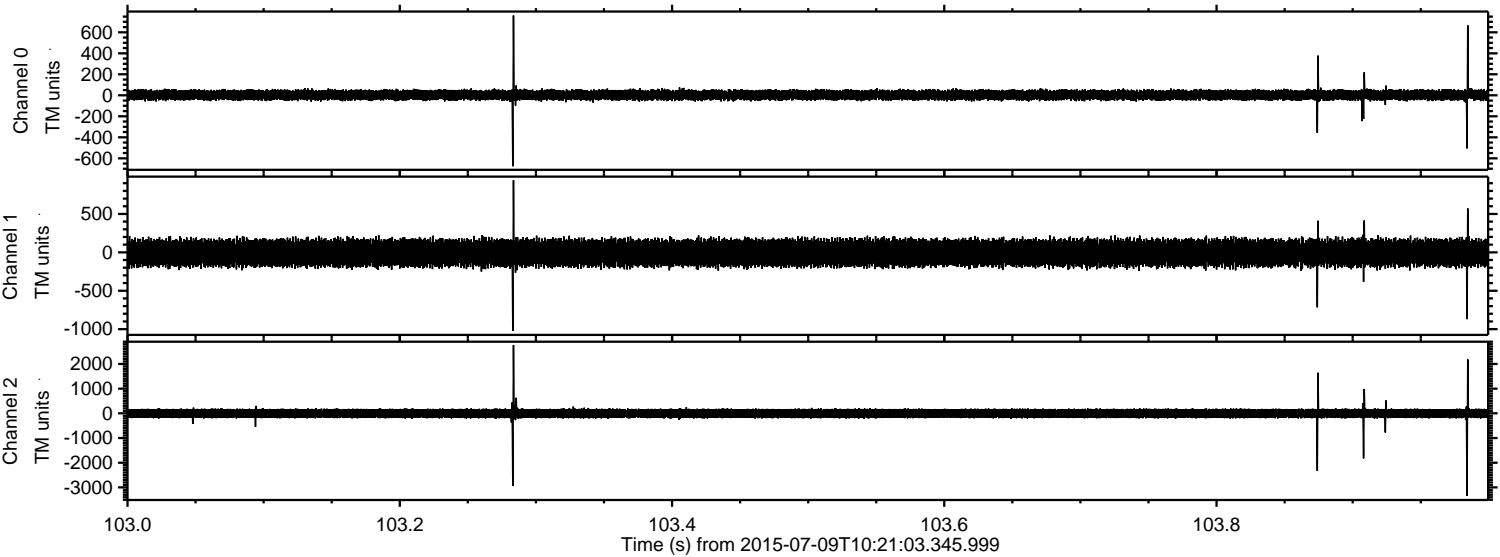


Processed Thu Jul 9 12:27:52 2015 by ELM ver.2012-10-06 from 001__elm20150709_102102__dat00.bin



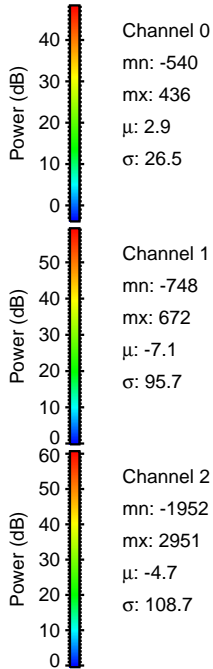
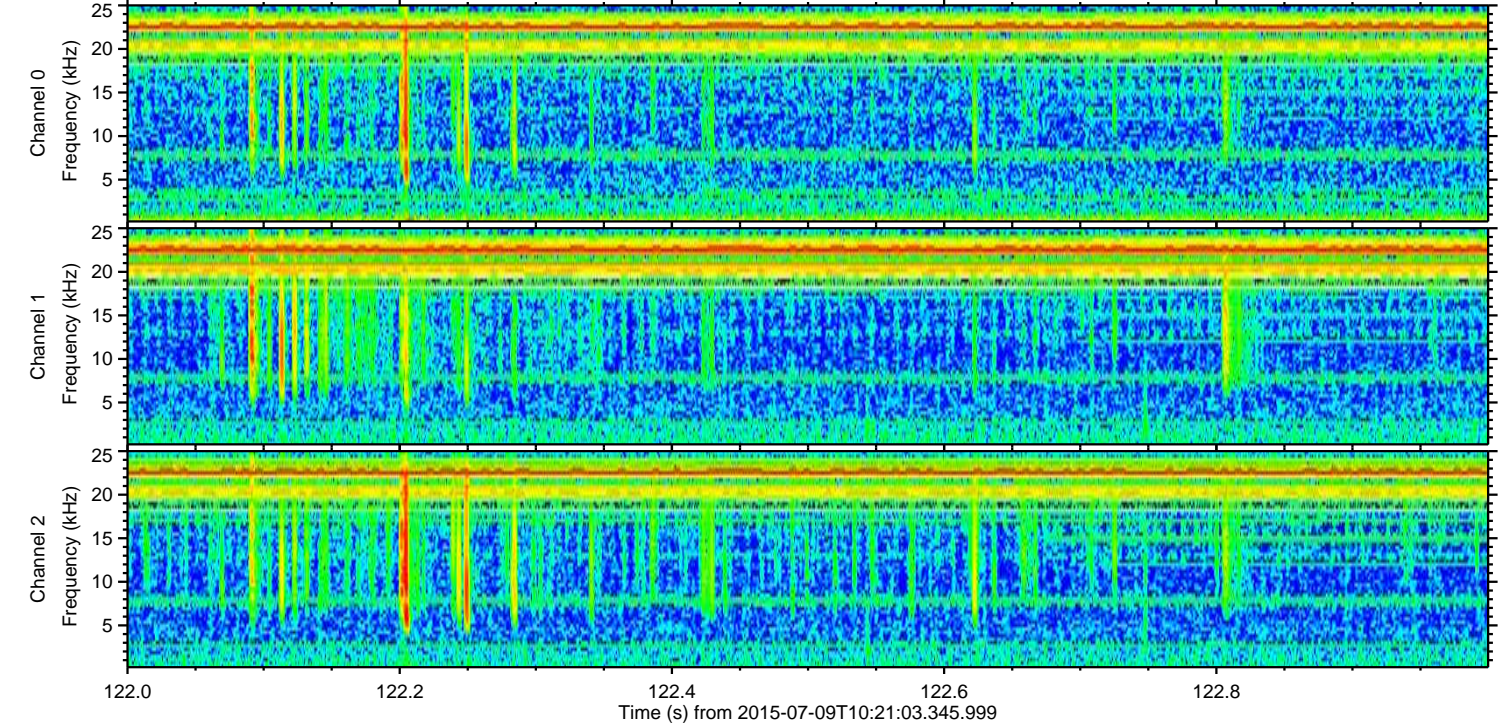
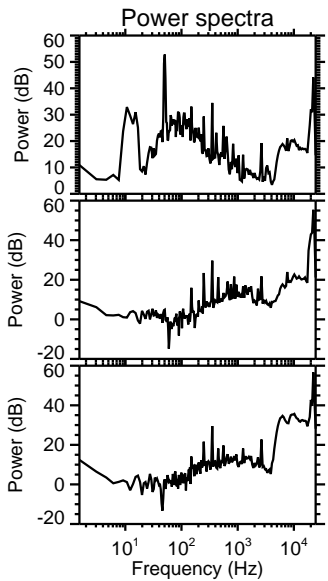
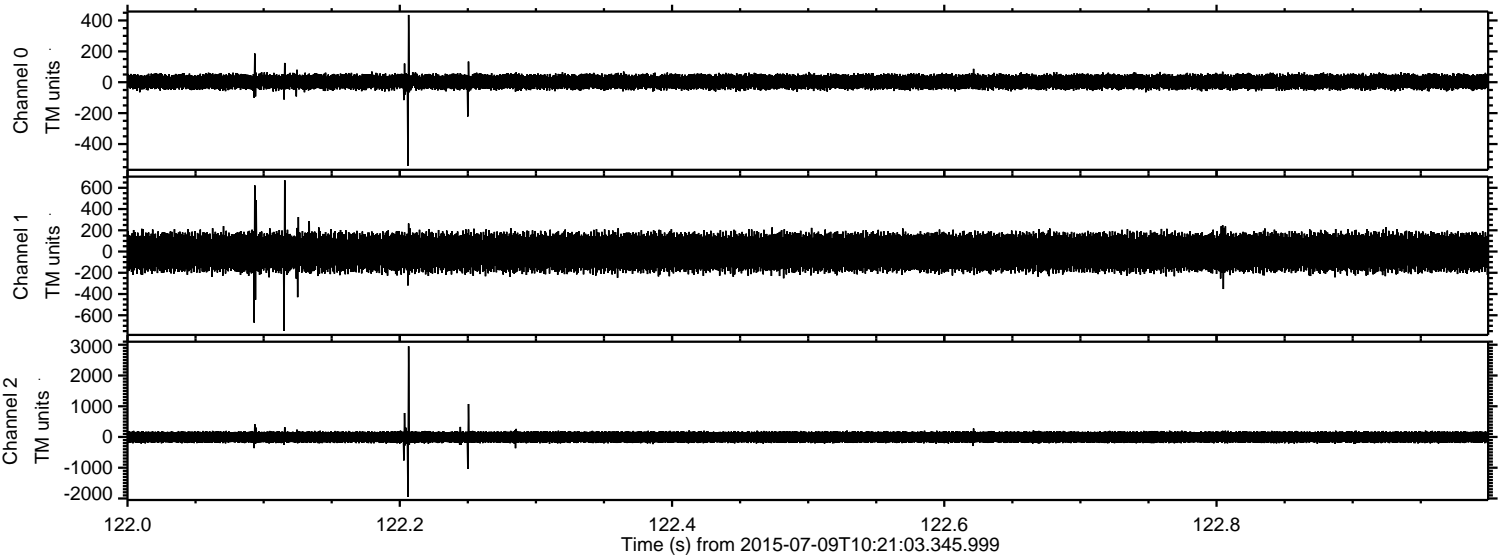
ELMAVAN 3D WAVEFORMS (Measured data sampled at 50 kHz) 51000 packets of 144 samples from 2015-07-09T10:21:03.345.999. Part 104/147

Processed Thu Jul 9 12:27:53 2015 by ELM ver.2012-10-06 from 001__elm20150709_102102__dat00.bin

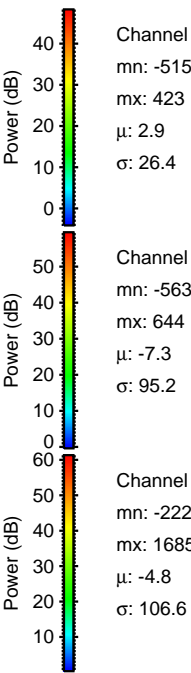
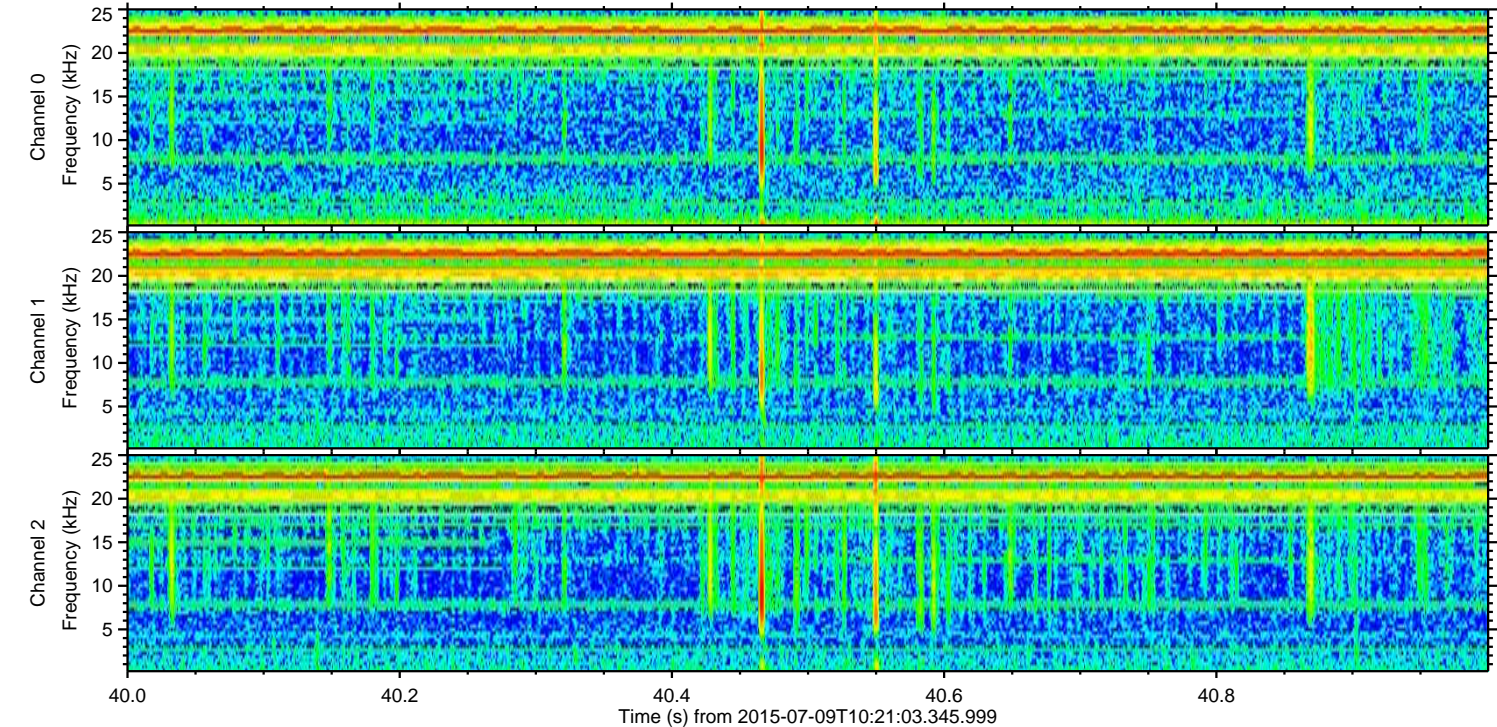
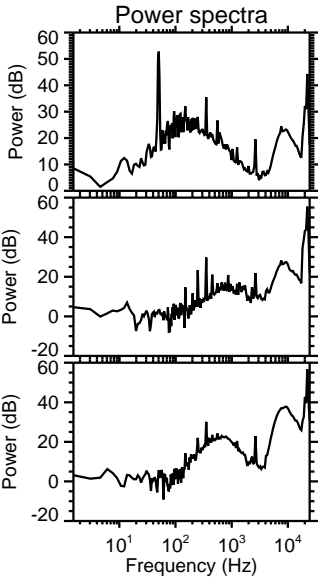
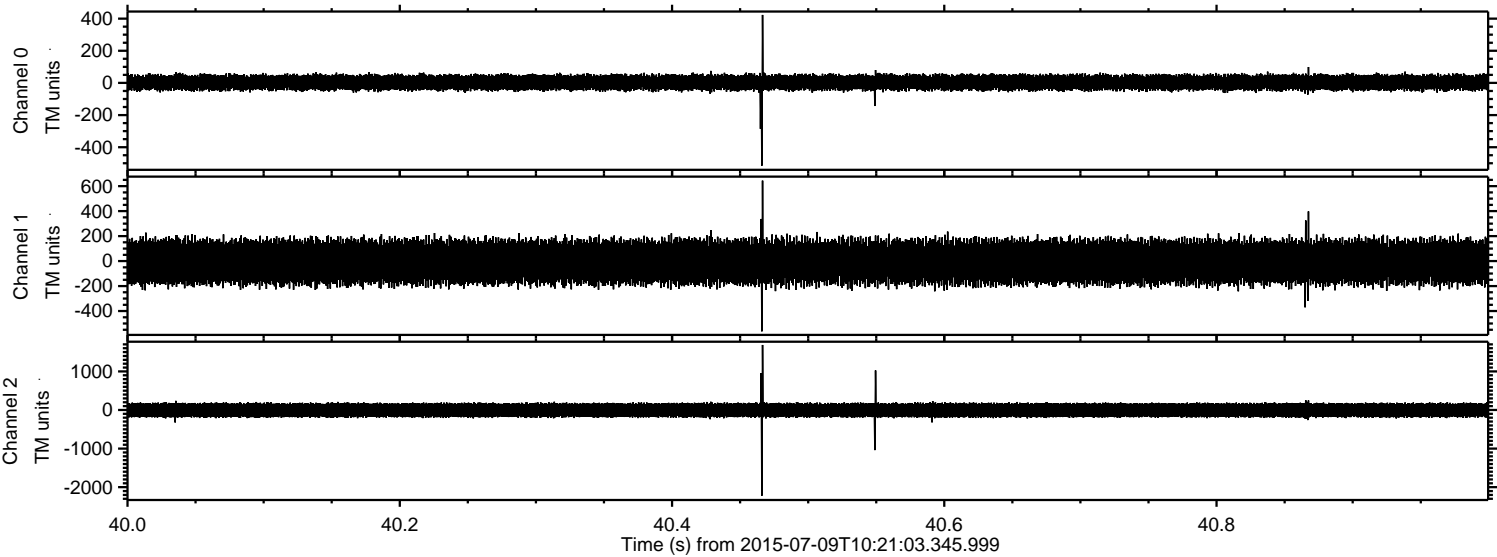


ELMAVAN 3D WAVEFORMS (Measured data sampled at 50 kHz) 51000 packets of 144 samples from 2015-07-09T10:21:03.345.999. Part 123/147

Processed Thu Jul 9 12:27:54 2015 by ELM ver.2012-10-06 from 001__elm20150709_102102__dat00.bin

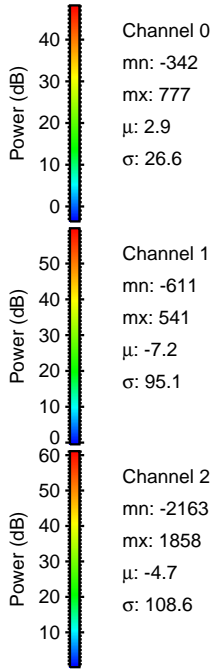
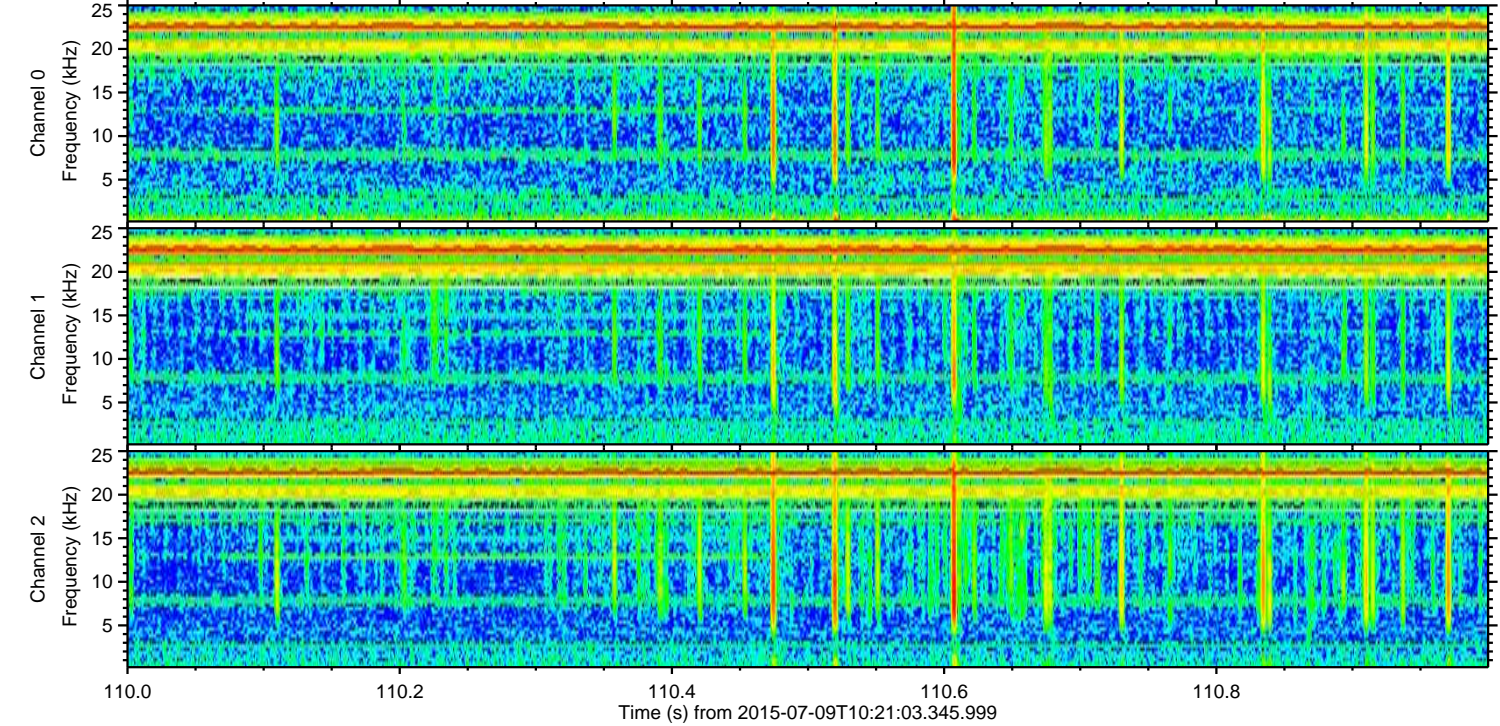
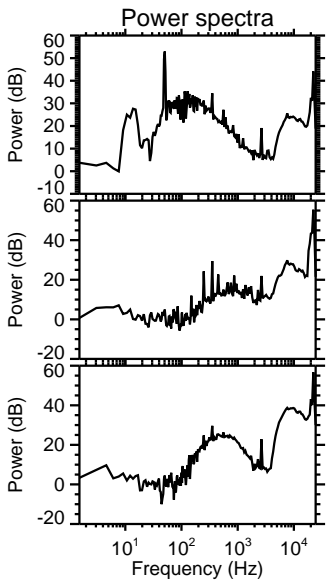
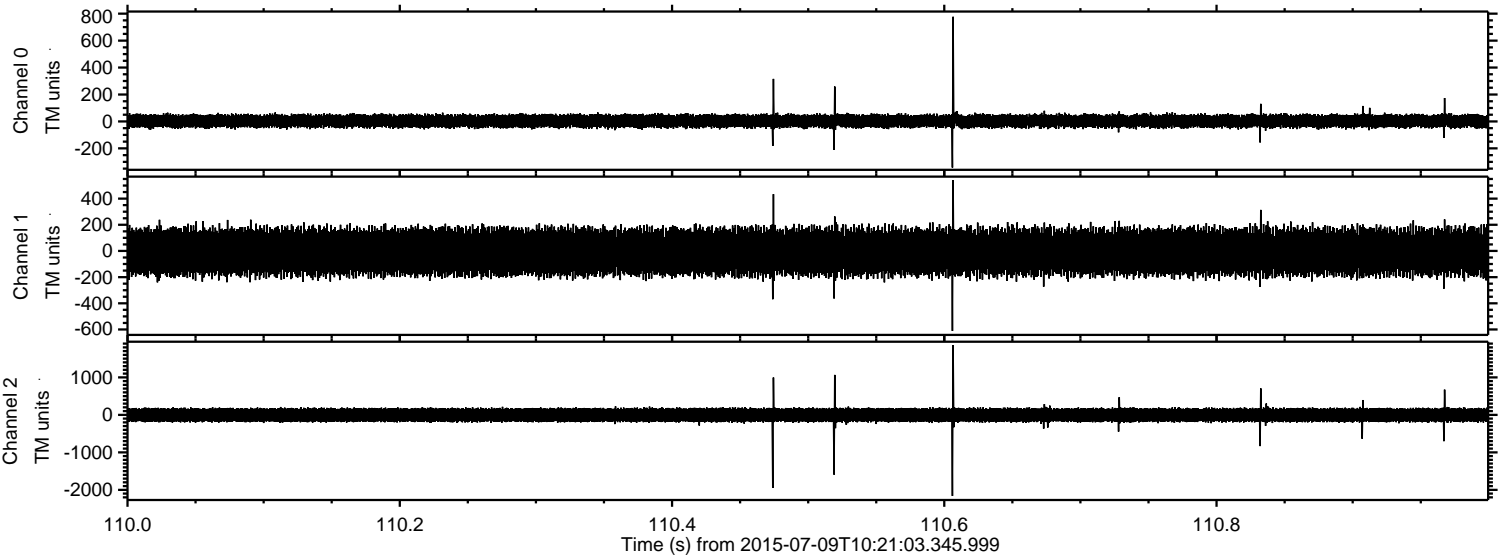


Processed Thu Jul 9 12:27:55 2015 by ELM ver.2012-10-06 from 001__elm20150709_102102__dat00.bin



ELMAVAN 3D WAVEFORMS (Measured data sampled at 50 kHz) 51000 packets of 144 samples from 2015-07-09T10:21:03.345.999. Part 111/147

Processed Thu Jul 9 12:27:56 2015 by ELM ver.2012-10-06 from 001__elm20150709_102102__dat00.bin

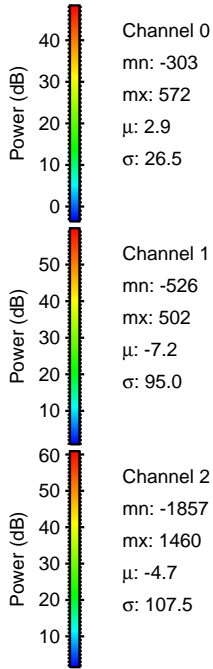
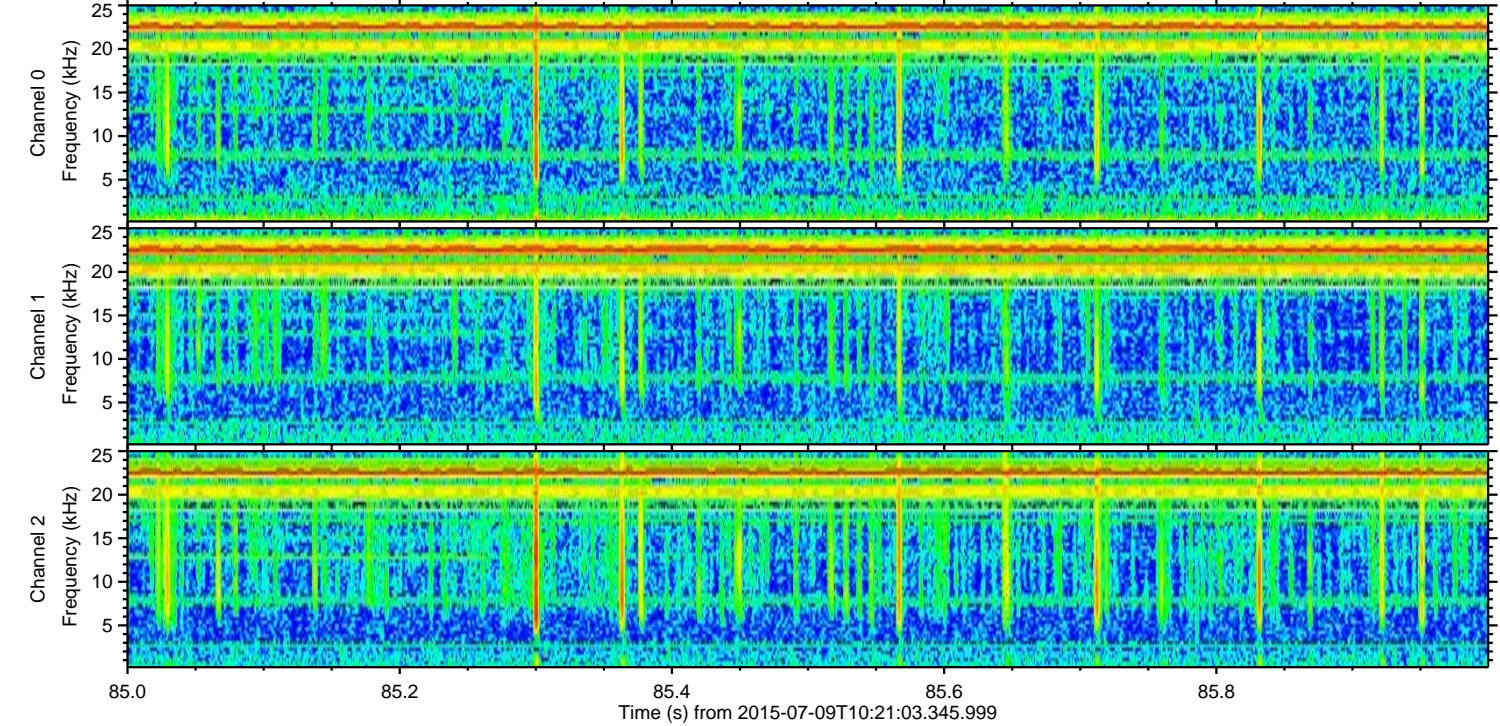
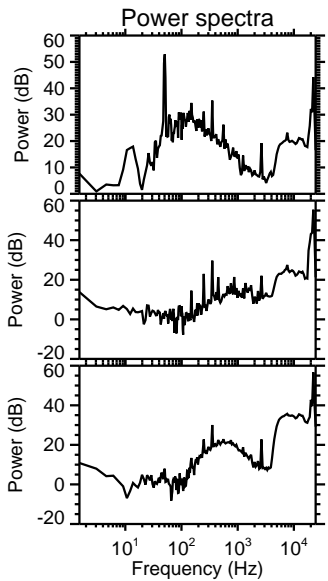
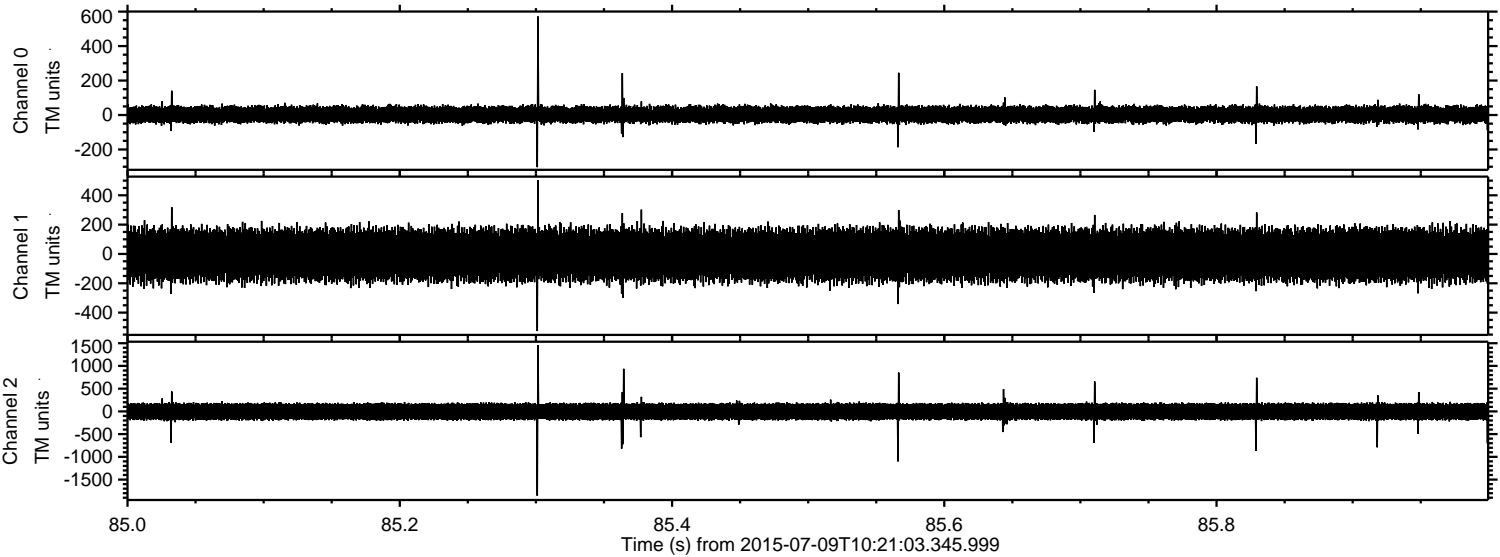


Channel 0
mn: -342
mx: 777
 μ : 2.9
 σ : 26.6

Channel 1
mn: -611
mx: 541
 μ : -7.2
 σ : 95.1

Channel 2
mn: -2163
mx: 1858
 μ : -4.7
 σ : 108.6

Processed Thu Jul 9 12:27:57 2015 by ELM ver.2012-10-06 from 001__elm20150709_102102__dat00.bin



Channel 0
mn: -303
mx: 572
 μ : 2.9
 σ : 26.5

Channel 1
mn: -526
mx: 502
 μ : -7.2
 σ : 95.0

Channel 2
mn: -1857
mx: 1460
 μ : -4.7
 σ : 107.5

Processed Thu Jul 9 12:27:58 2015 by ELM ver.2012-10-06 from 001__elm20150709_102102__dat00.bin

