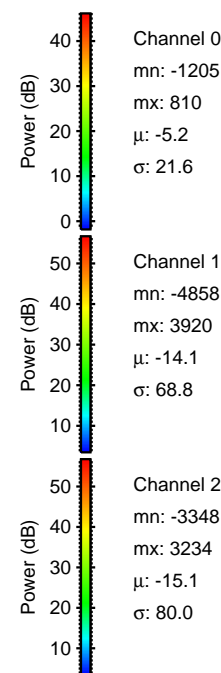
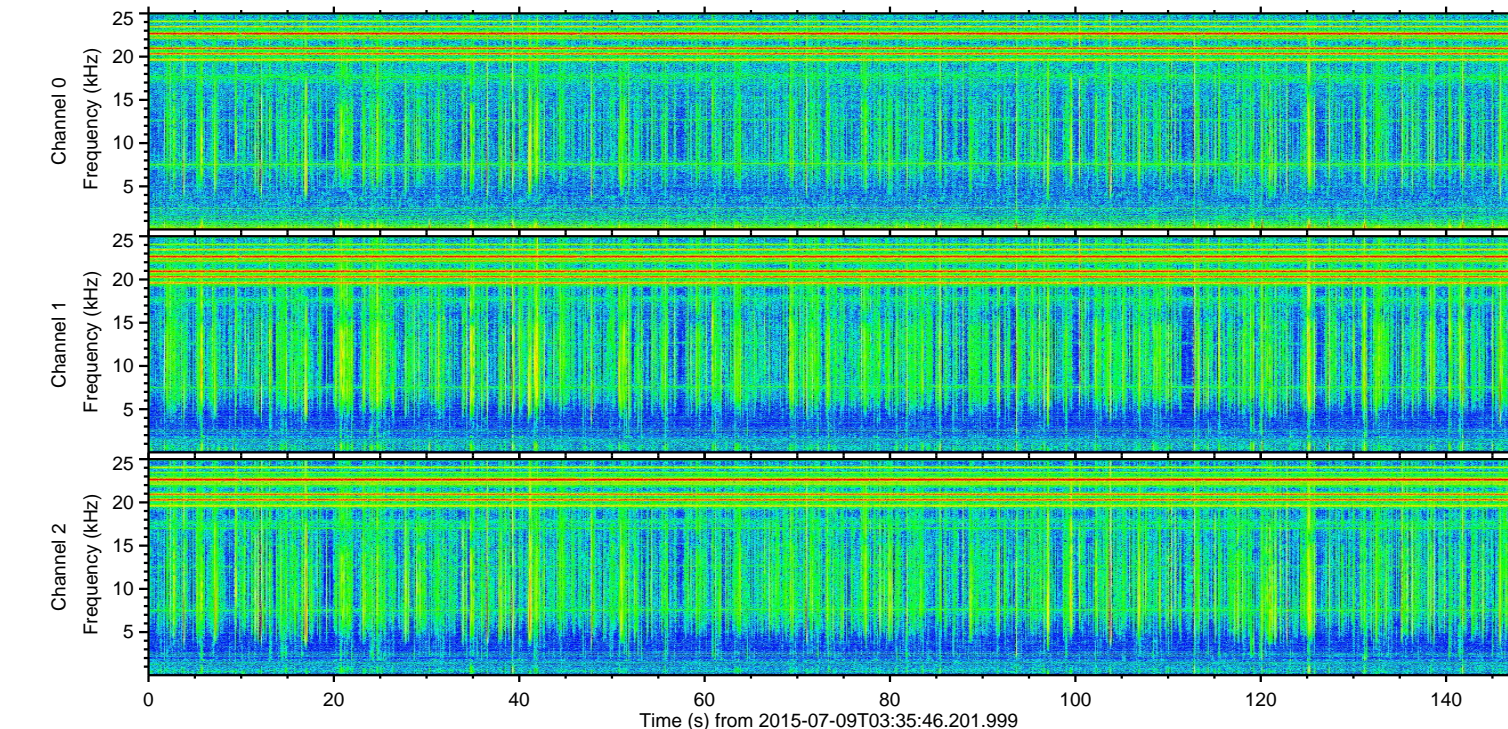
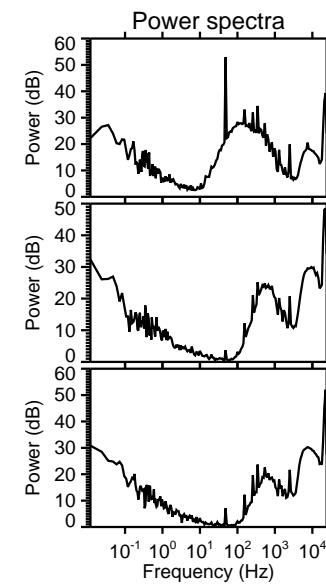
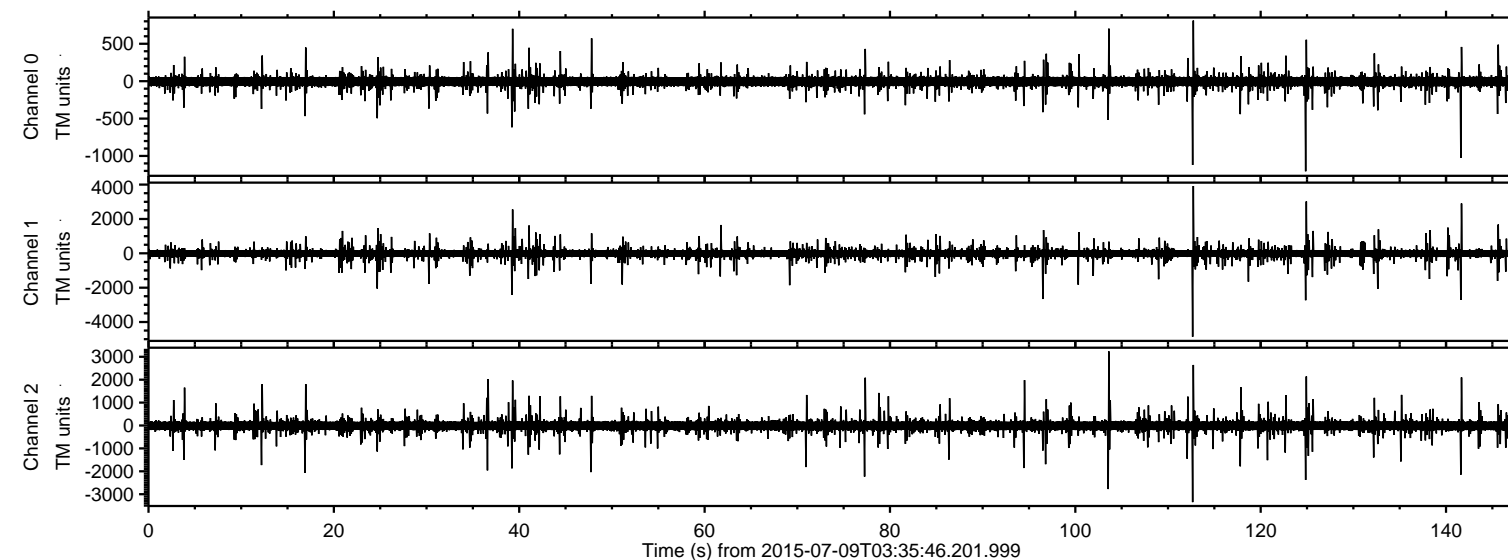


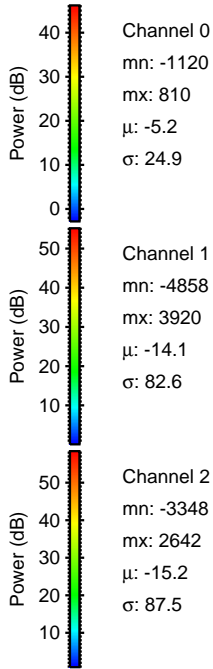
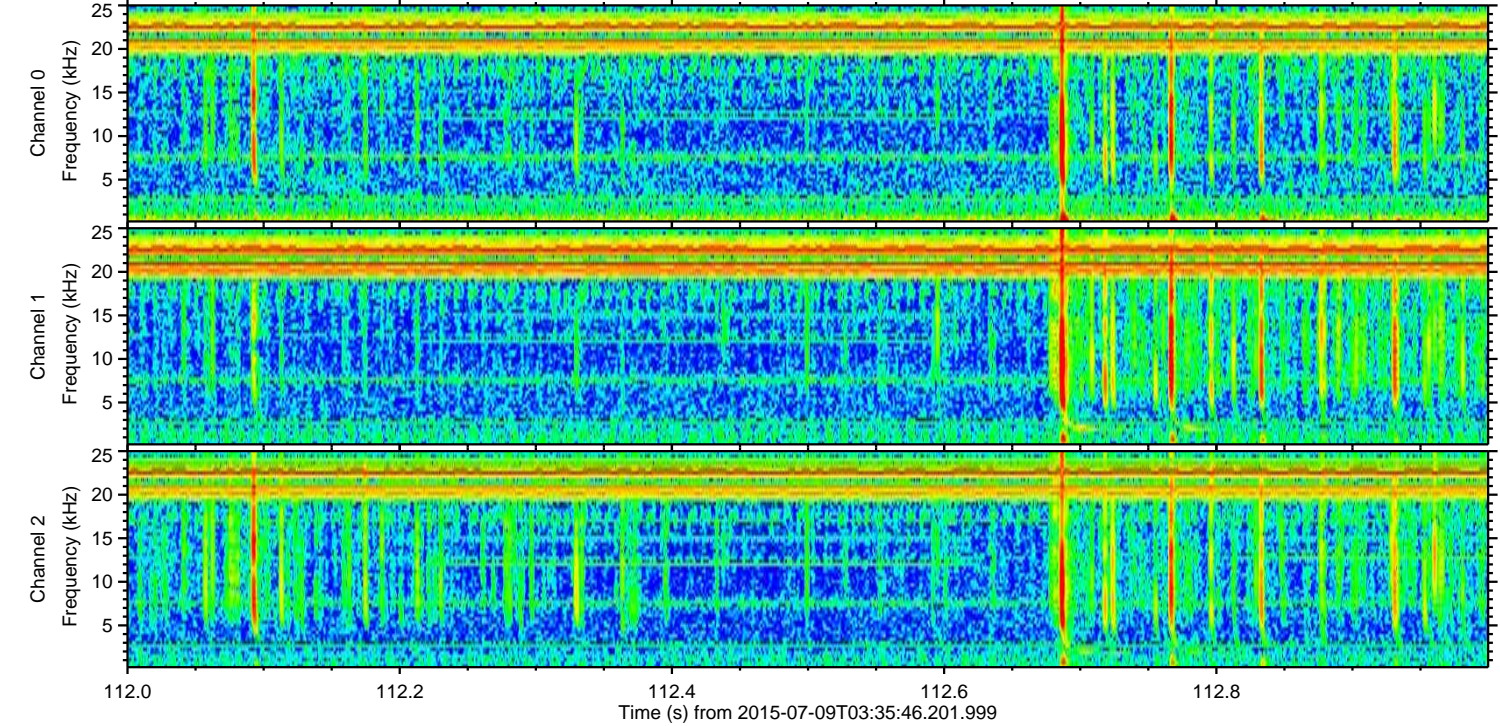
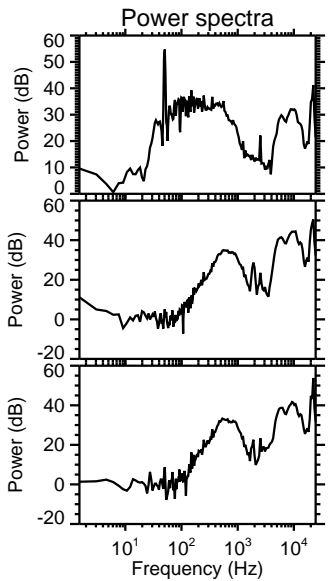
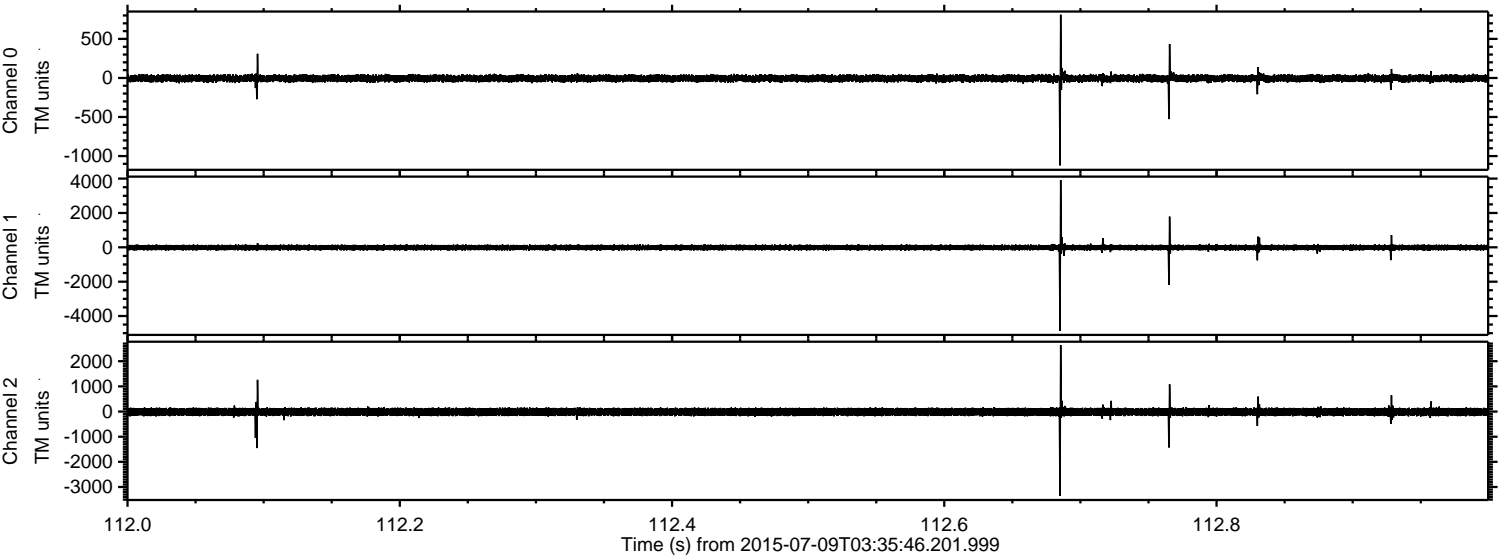
ELMAVAN 3D WAVEFORMS (Measured data sampled at 50 kHz) 51000 packets of 144 samples from 2015-07-09T03:35:46.201.999.

Processed Thu Jul 9 05:41:53 2015 by ELM ver.2012-10-06 from 001__elm20150709_033545__dat00.bin

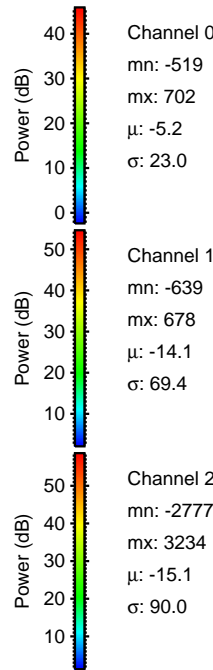
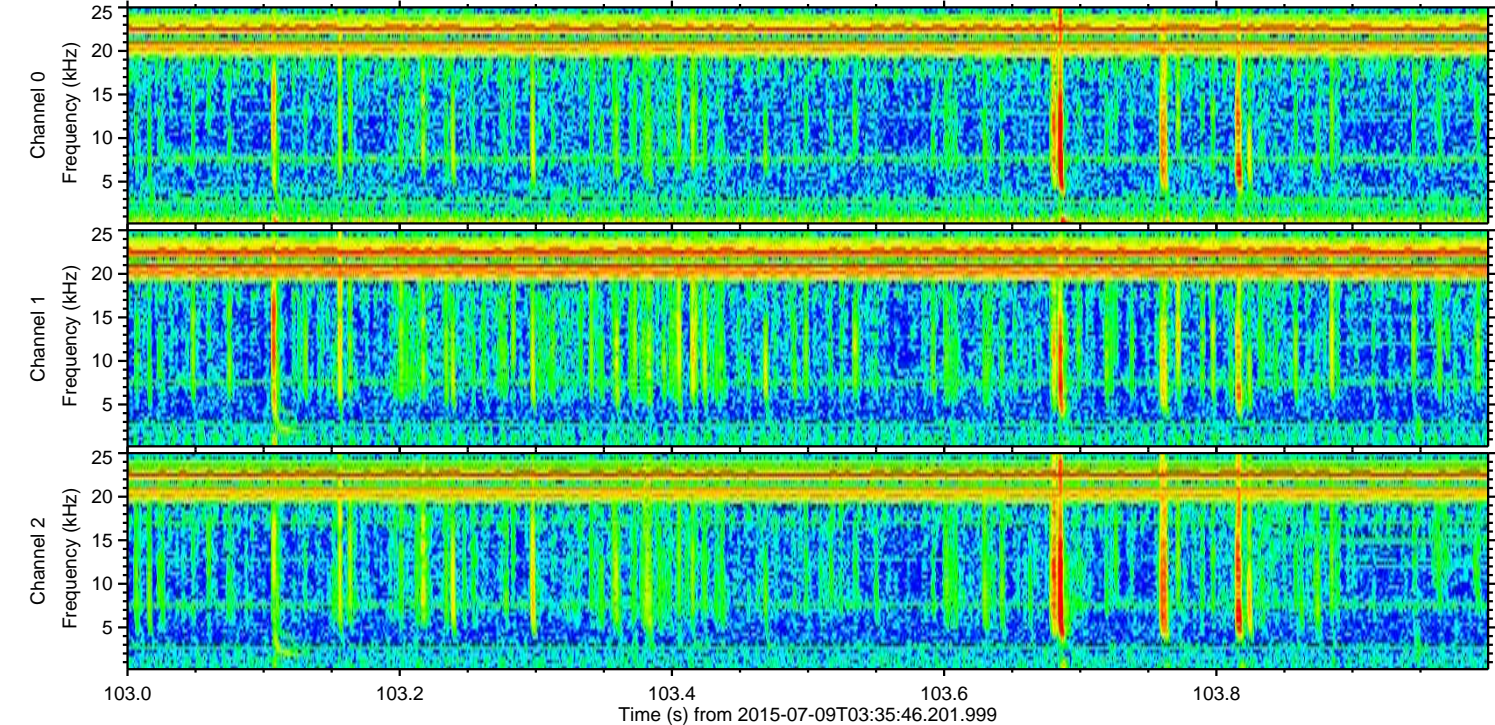
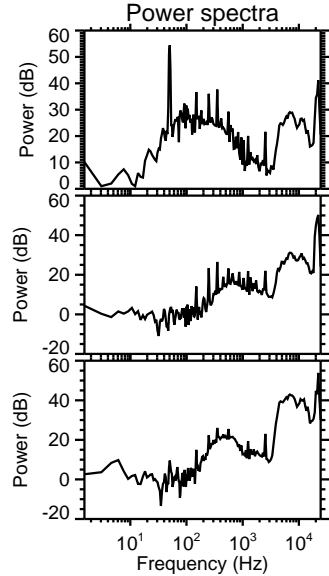
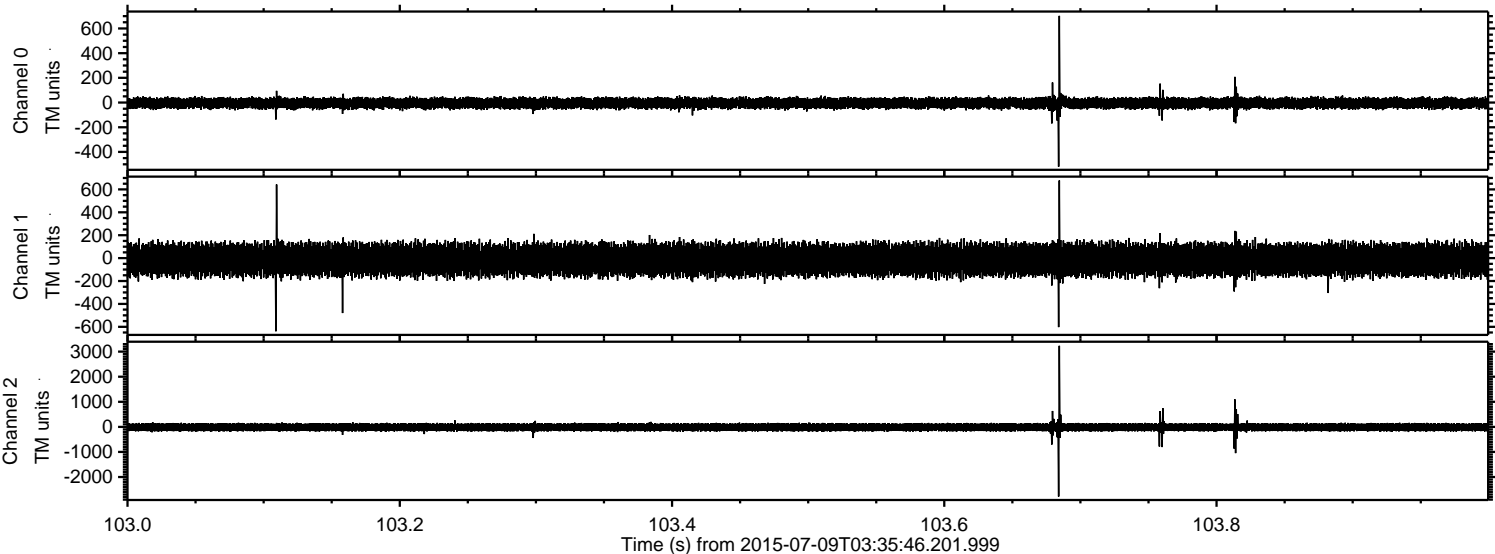


ELMAVAN 3D WAVEFORMS (Measured data sampled at 50 kHz) 51000 packets of 144 samples from 2015-07-09T03:35:46.201.999. Part 113/147

Processed Thu Jul 9 05:42:09 2015 by ELM ver.2012-10-06 from 001__elm20150709_033545__dat00.bin

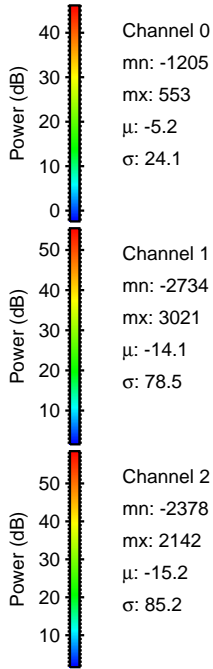
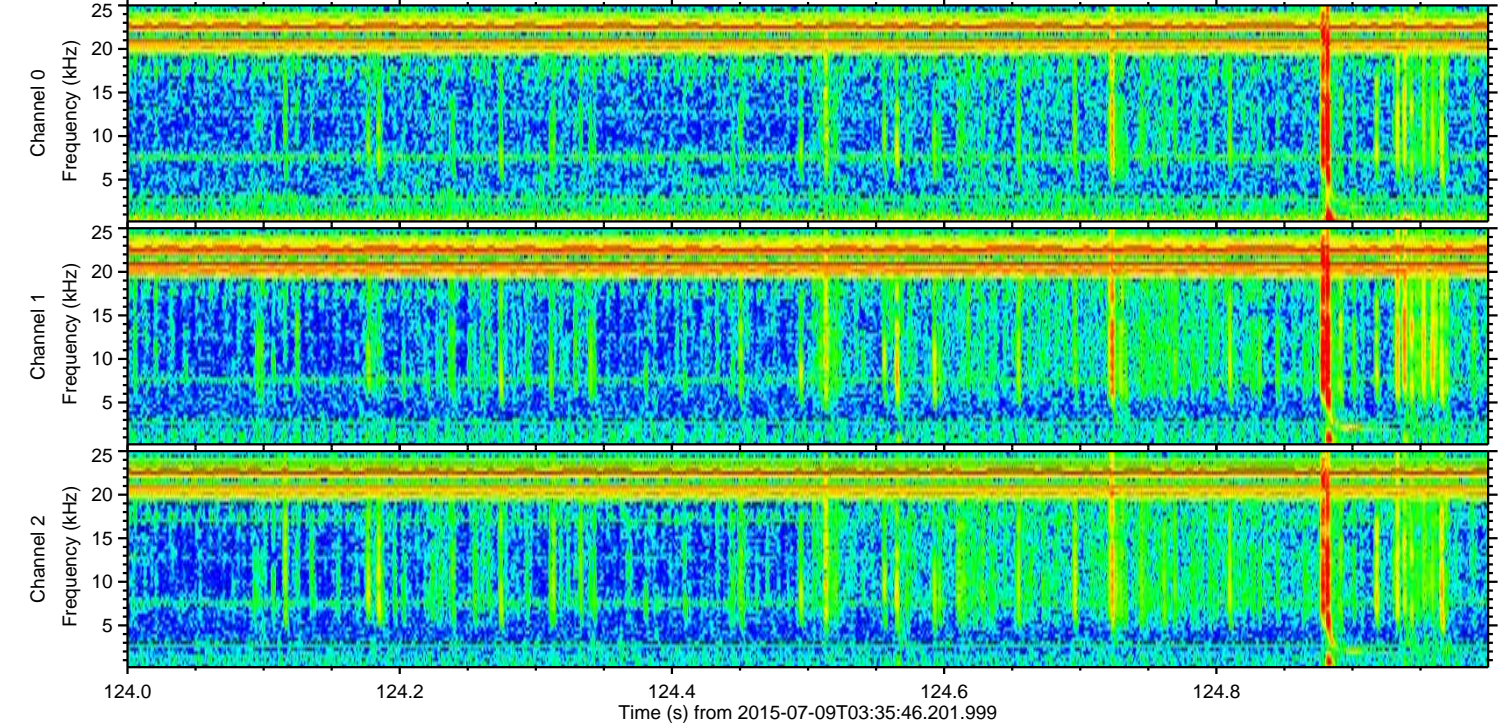
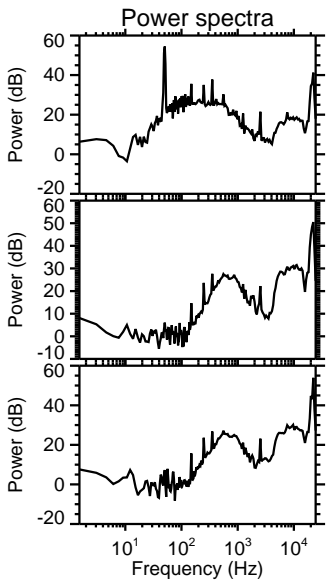
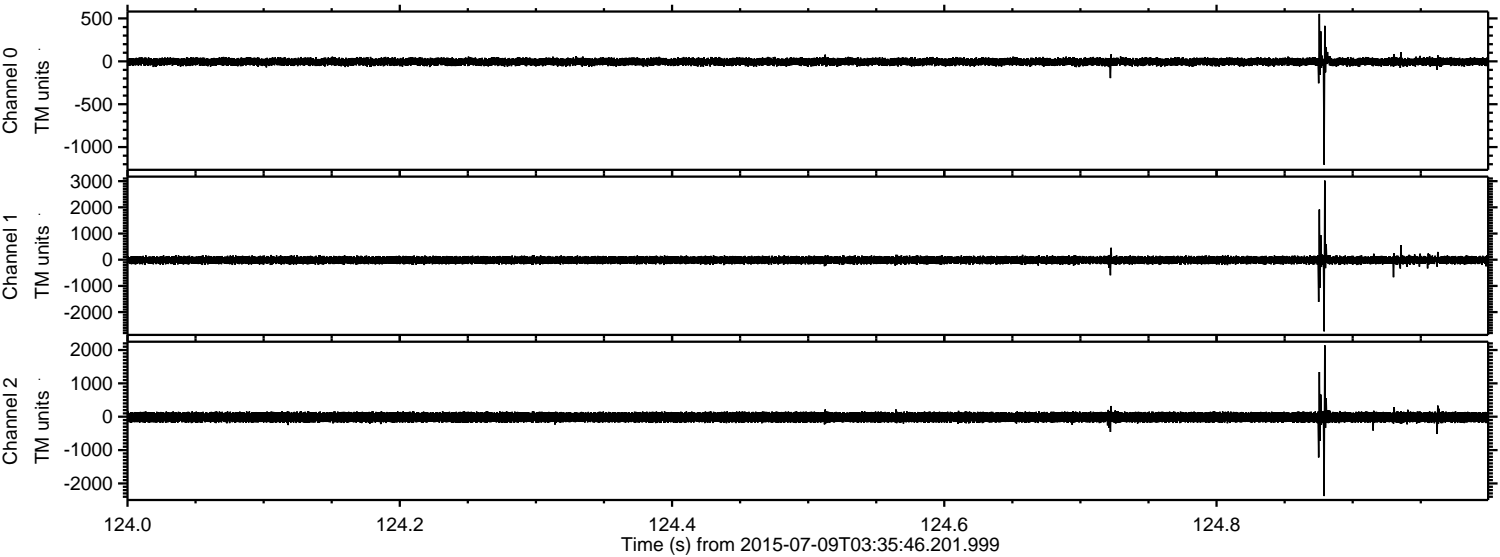


Processed Thu Jul 9 05:42:10 2015 by ELM ver.2012-10-06 from 001__elm20150709_033545__dat00.bin



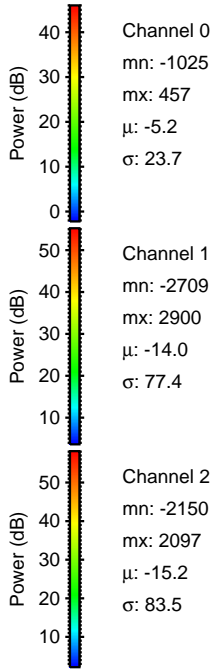
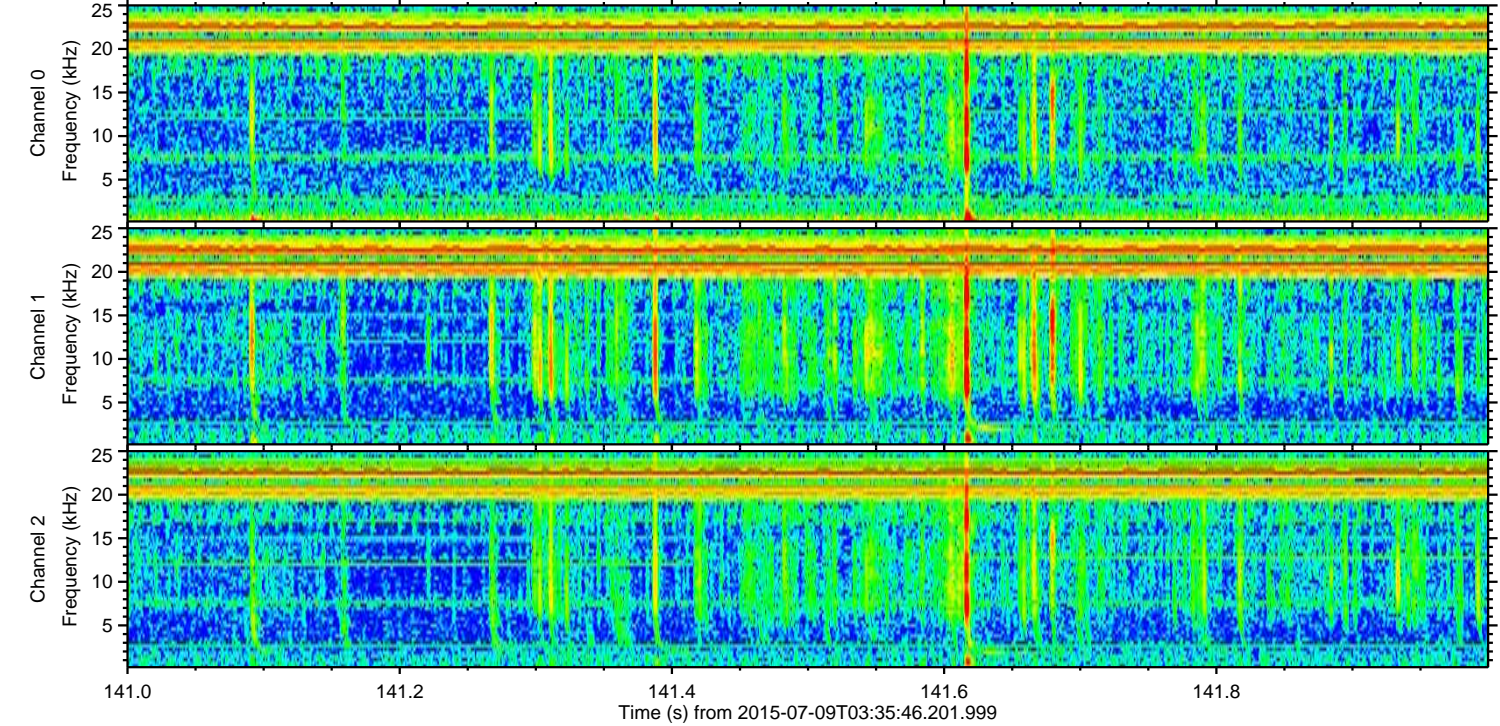
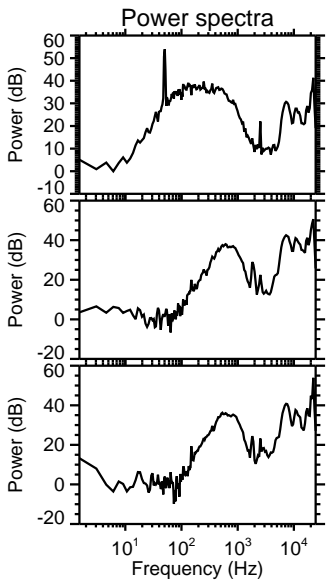
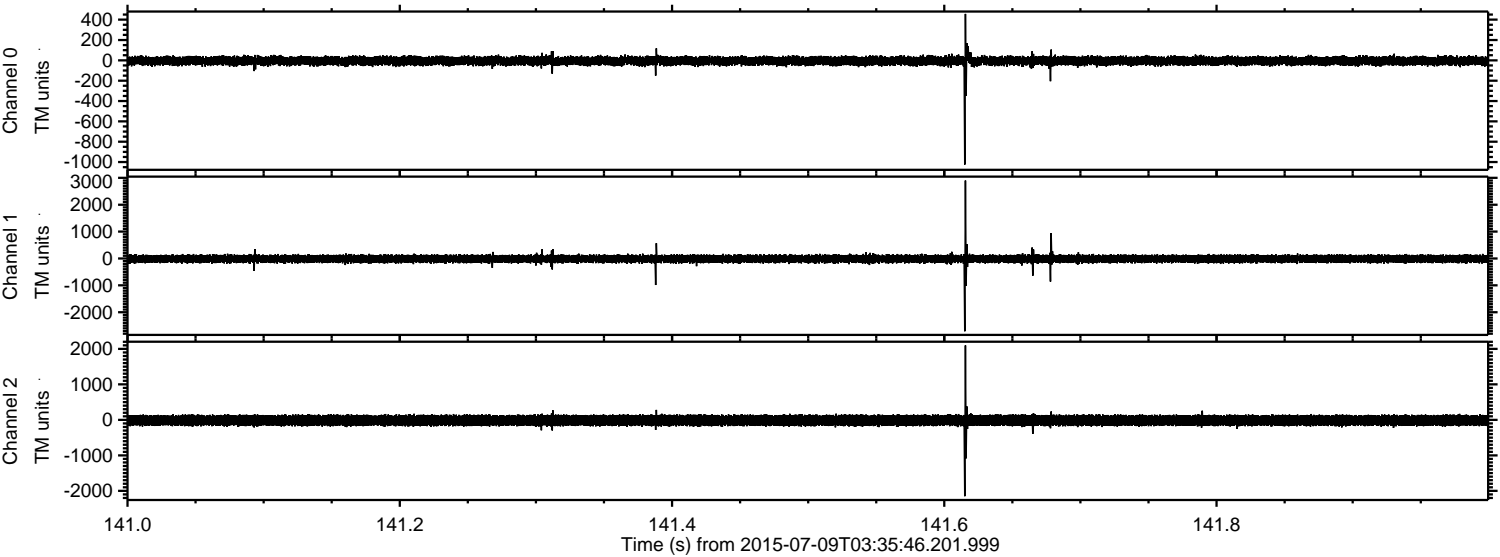
ELMAVAN 3D WAVEFORMS (Measured data sampled at 50 kHz) 51000 packets of 144 samples from 2015-07-09T03:35:46.201.999. Part 125/147

Processed Thu Jul 9 05:42:11 2015 by ELM ver.2012-10-06 from 001__elm20150709_033545__dat00.bin

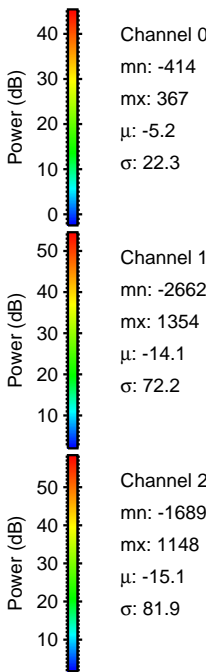
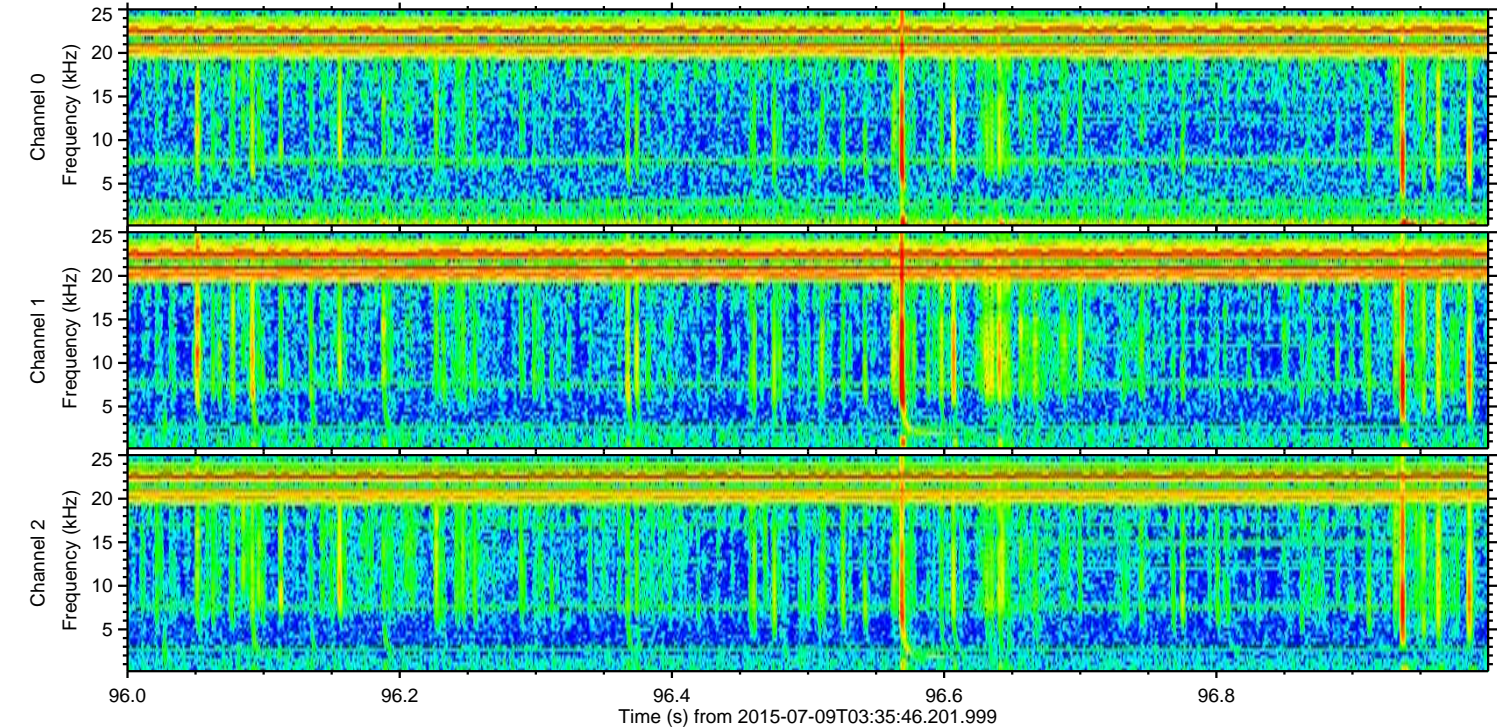
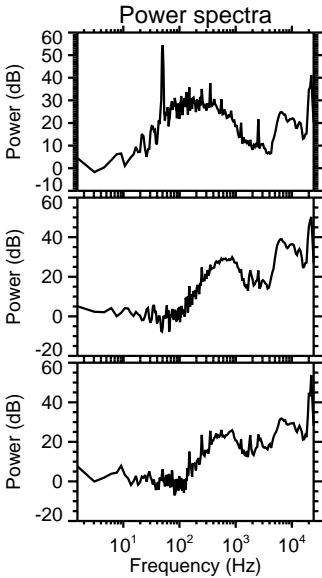
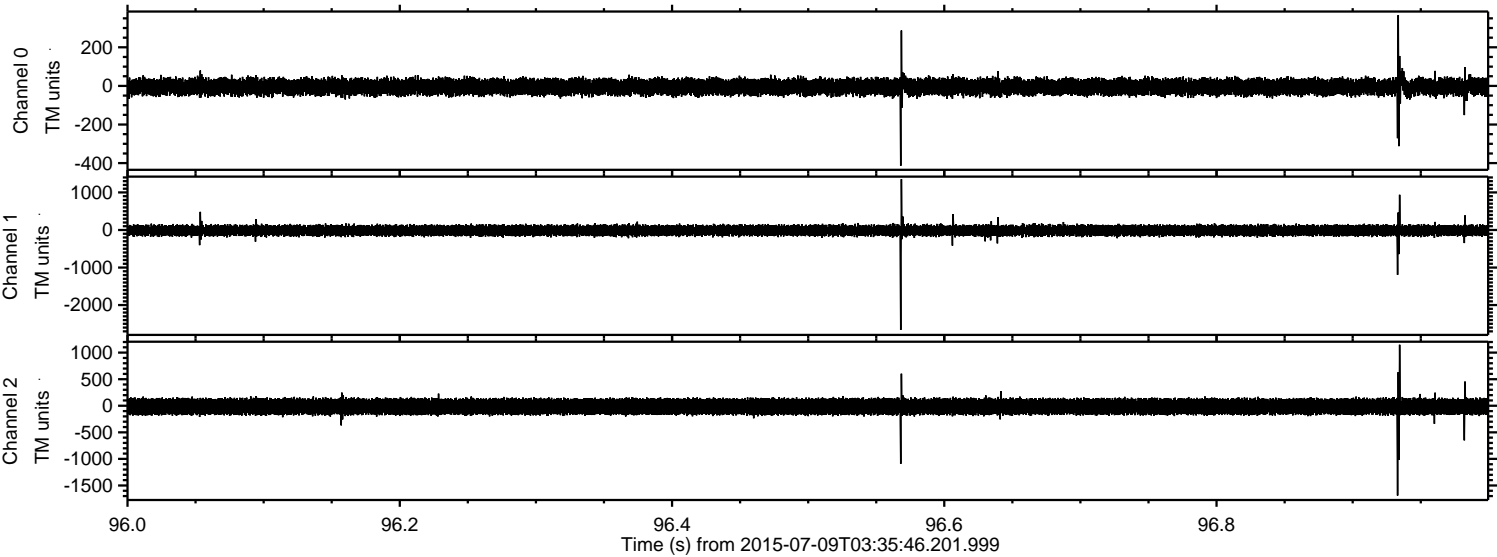


ELMAVAN 3D WAVEFORMS (Measured data sampled at 50 kHz) 51000 packets of 144 samples from 2015-07-09T03:35:46.201.999. Part 142/147

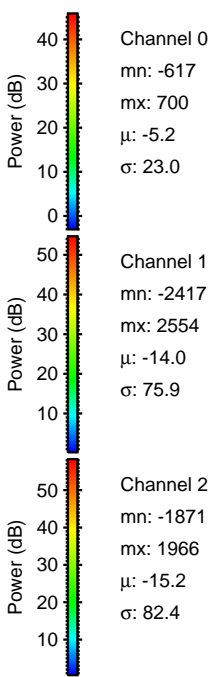
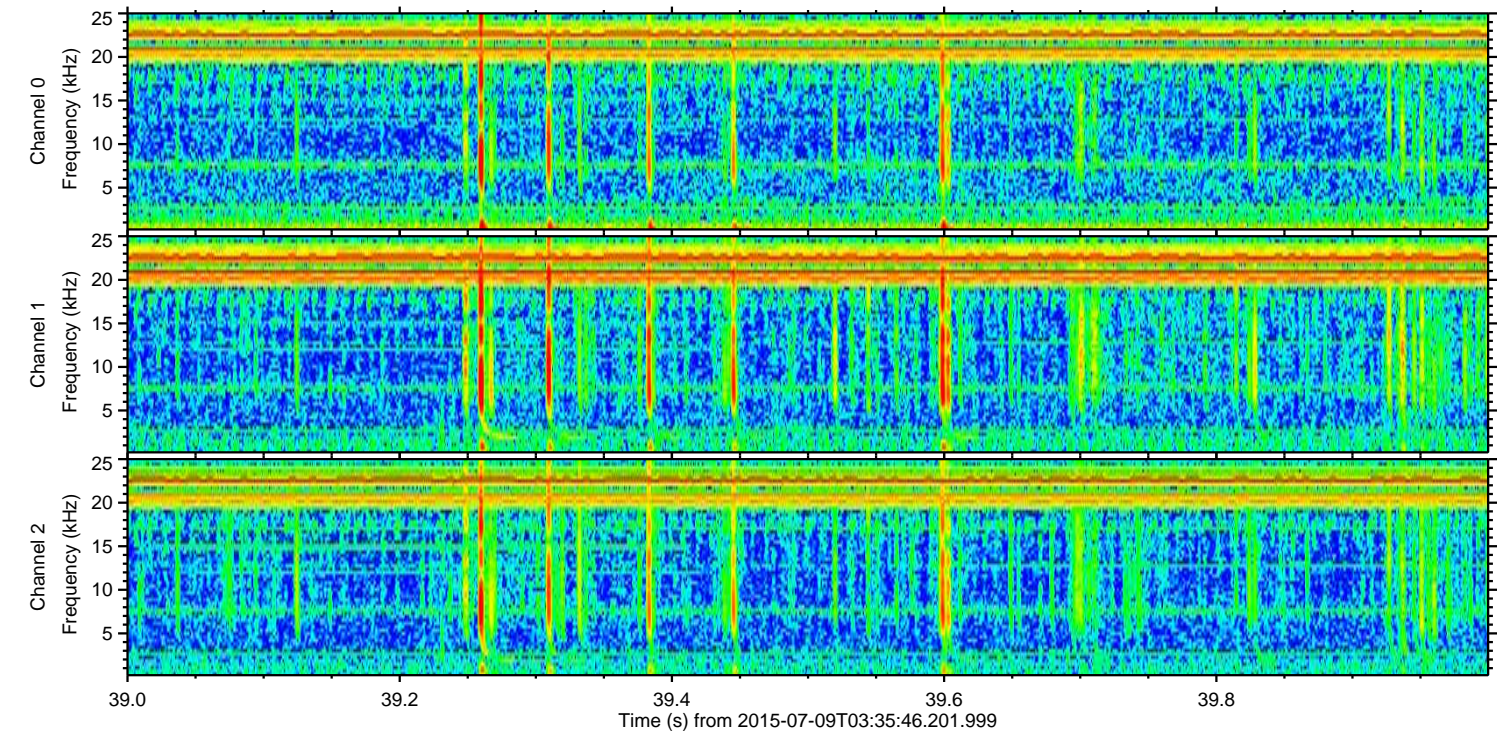
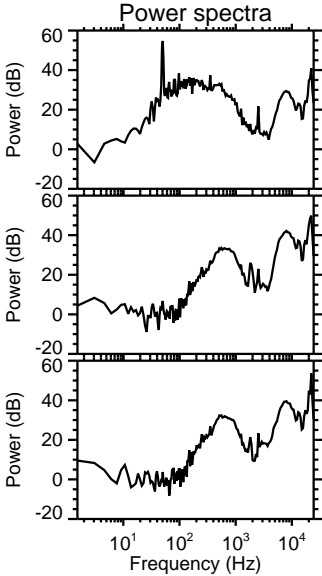
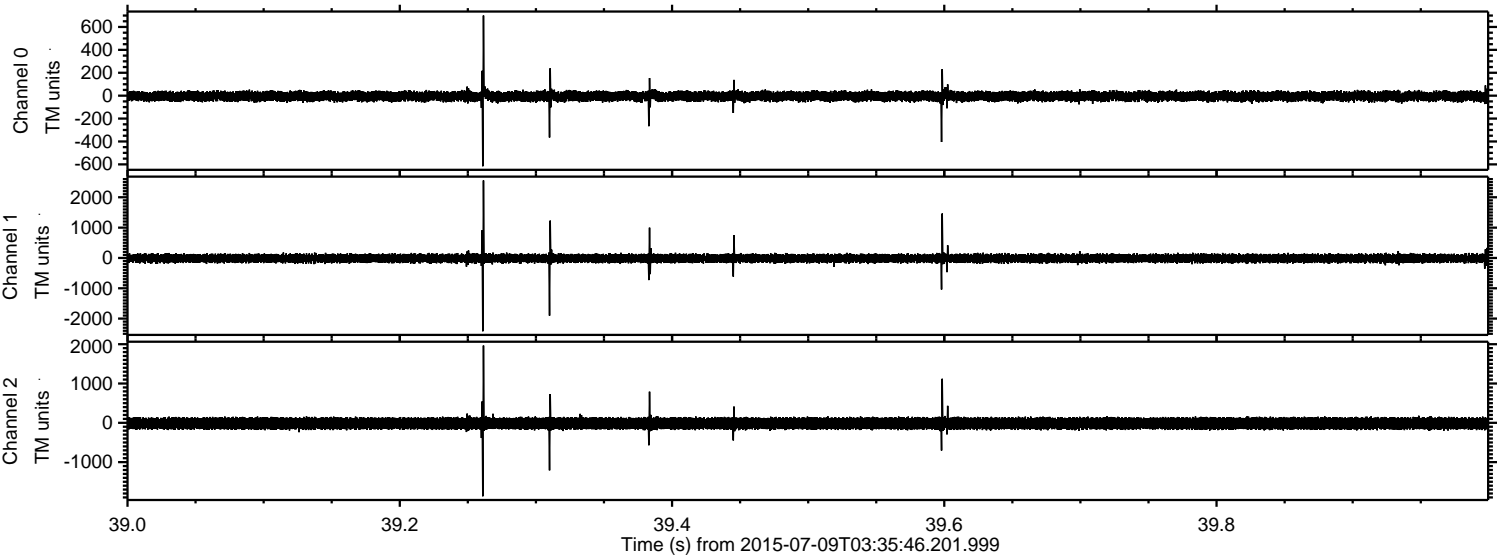
Processed Thu Jul 9 05:42:12 2015 by ELM ver.2012-10-06 from 001__elm20150709_033545__dat00.bin



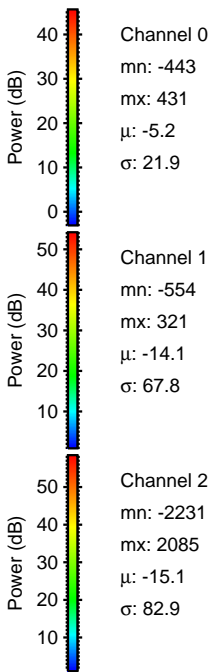
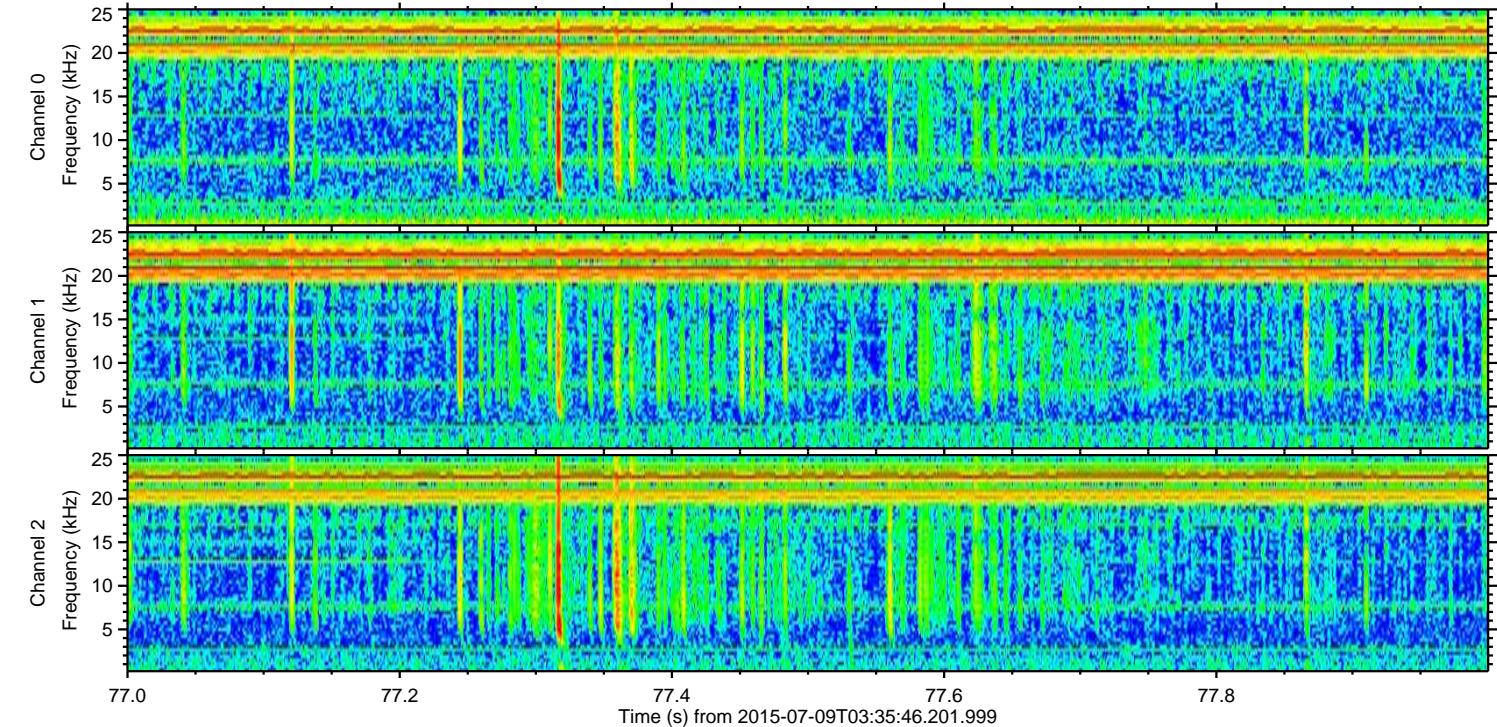
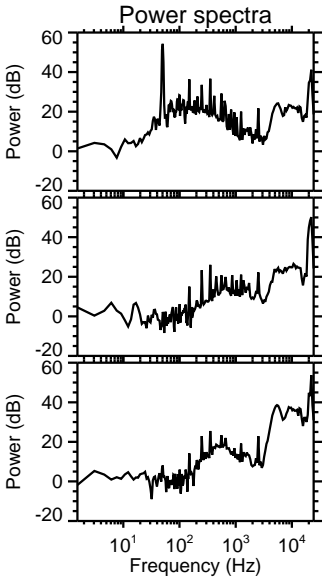
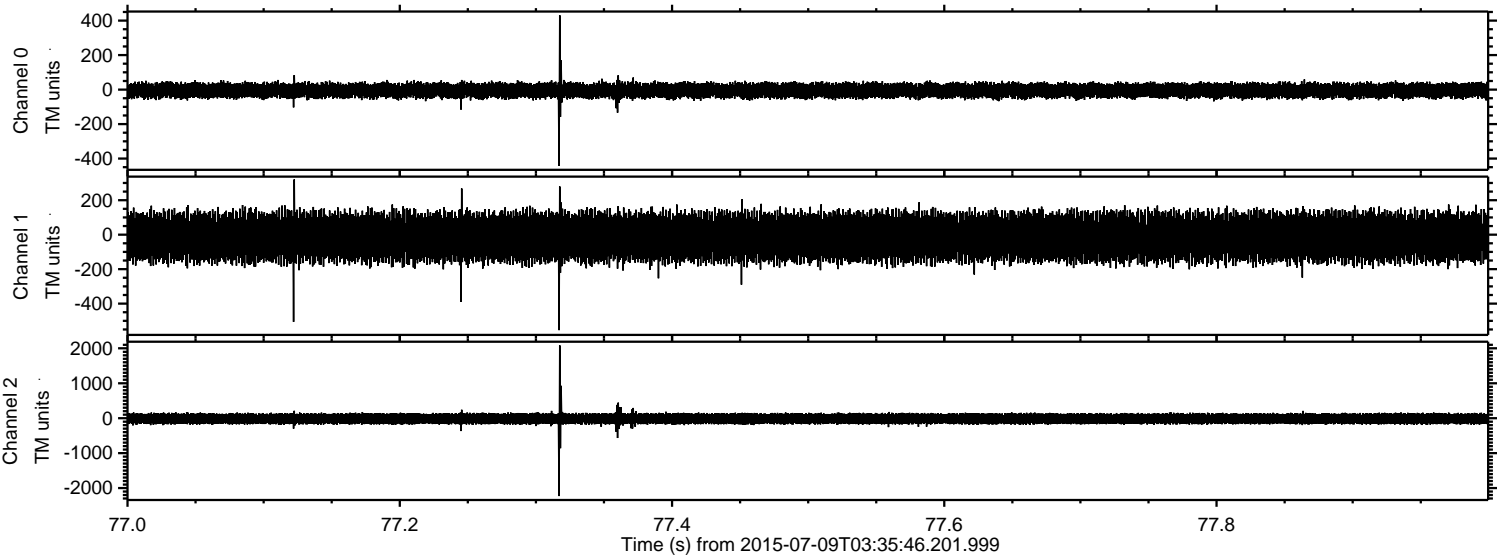
Processed Thu Jul 9 05:42:13 2015 by ELM ver.2012-10-06 from 001__elm20150709_033545__dat00.bin



Processed Thu Jul 9 05:42:14 2015 by ELM ver.2012-10-06 from 001__elm20150709_033545__dat00.bin



Processed Thu Jul 9 05:42:15 2015 by ELM ver.2012-10-06 from 001__elm20150709_033545__dat00.bin

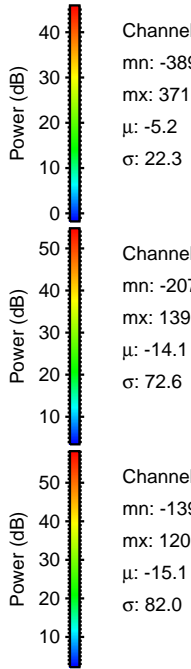
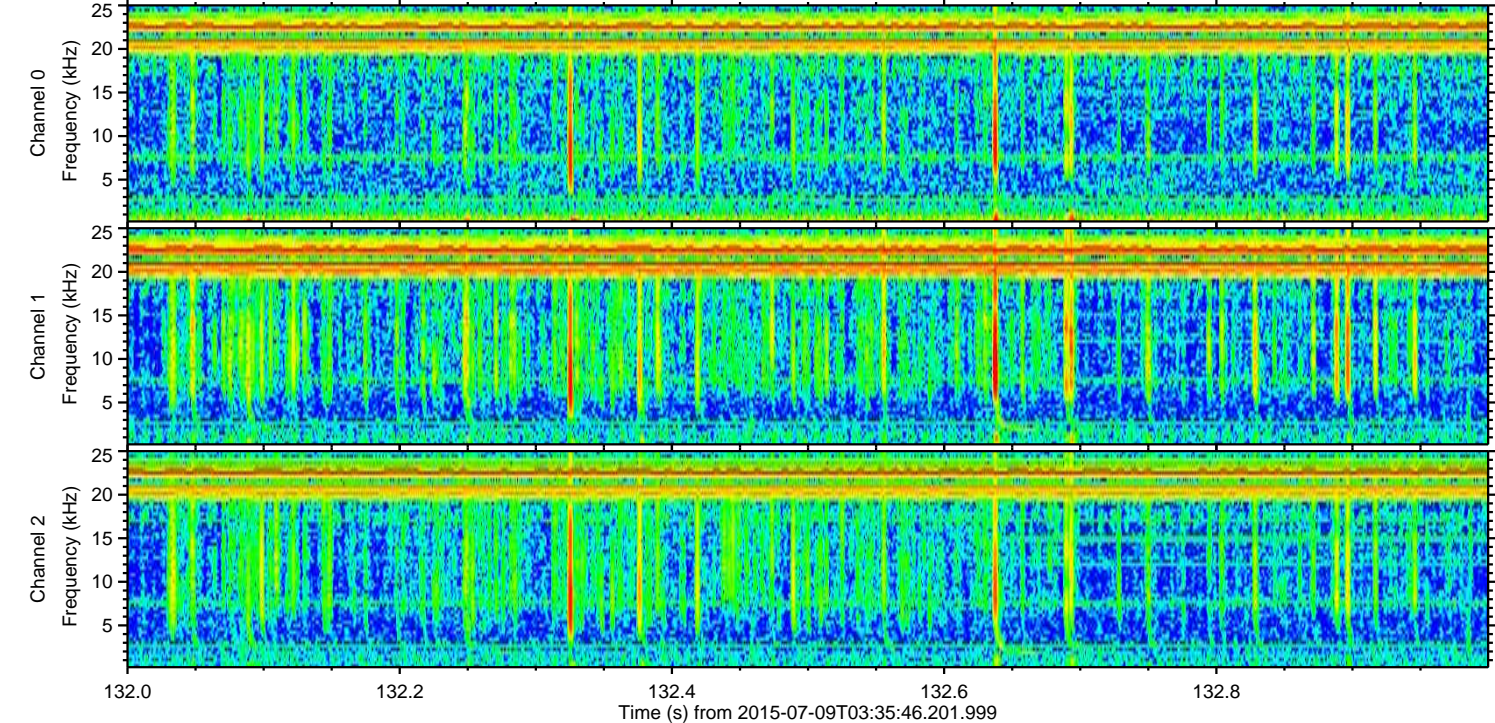
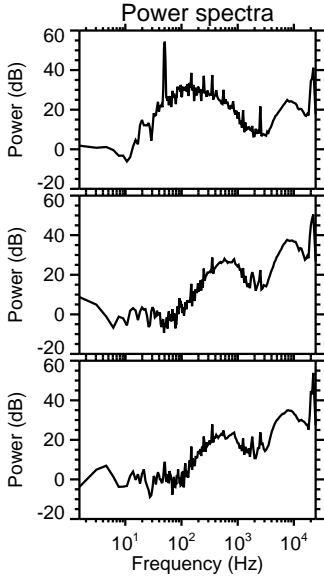
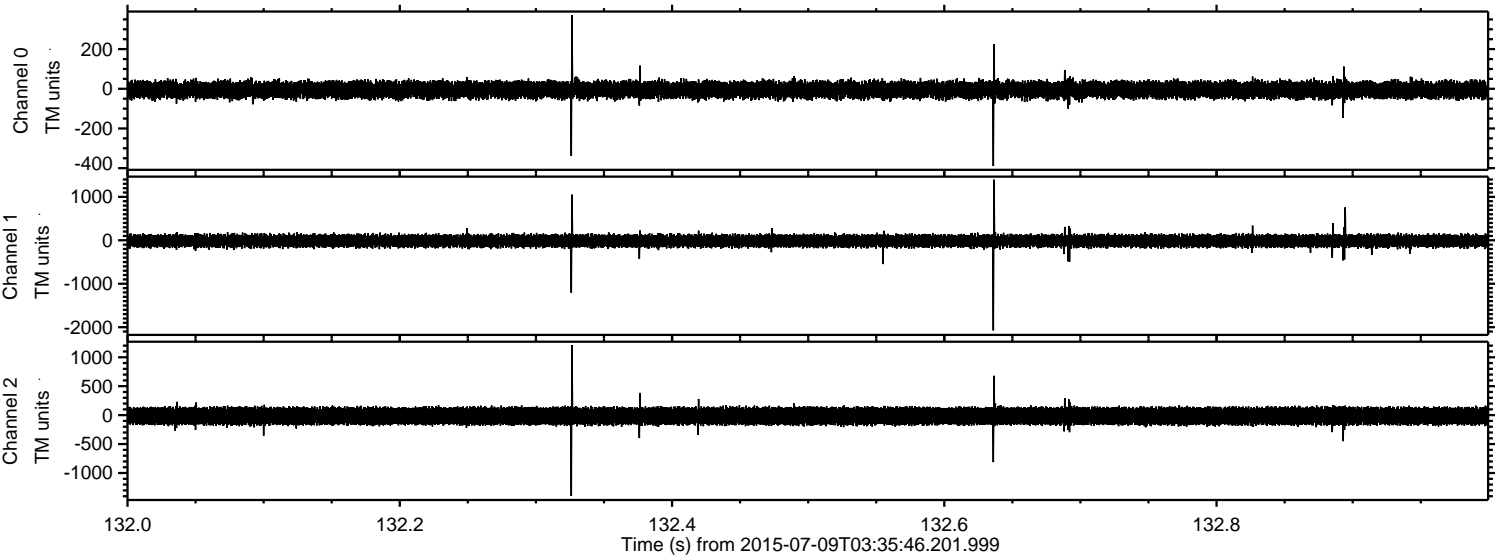


Channel 0
mn: -443
mx: 431
 μ : -5.2
 σ : 21.9

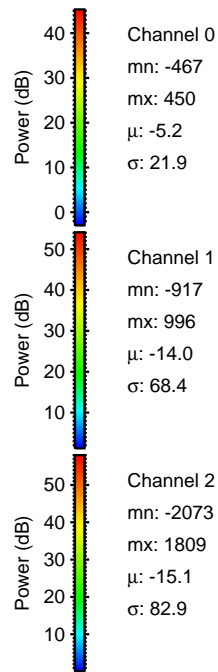
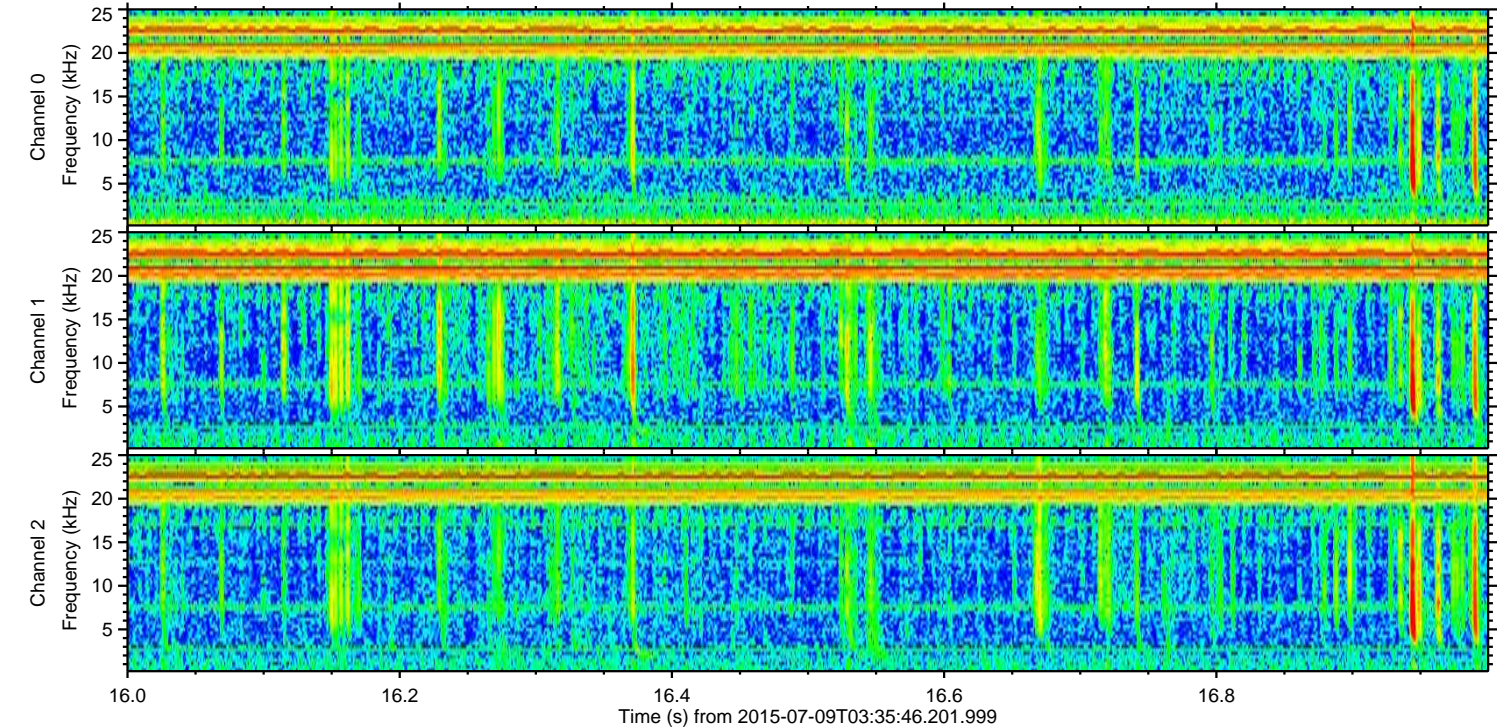
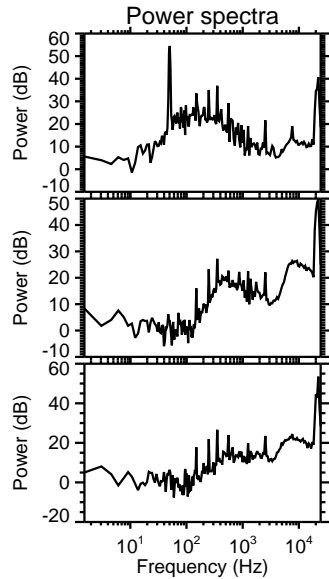
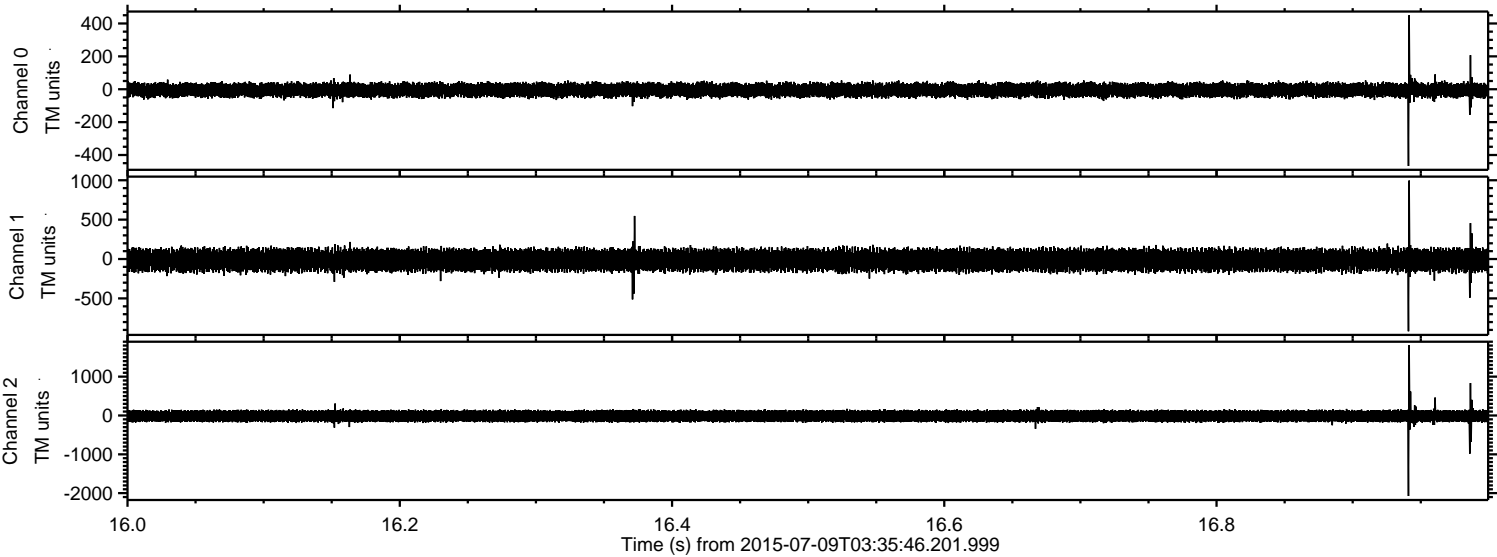
Channel 1
mn: -554
mx: 321
 μ : -14.1
 σ : 67.8

Channel 2
mn: -2231
mx: 2085
 μ : -15.1
 σ : 82.9

Processed Thu Jul 9 05:42:16 2015 by ELM ver.2012-10-06 from 001__elm20150709_033545__dat00.bin



Processed Thu Jul 9 05:42:18 2015 by ELM ver.2012-10-06 from 001__elm20150709_033545__dat00.bin



Processed Thu Jul 9 05:42:19 2015 by ELM ver.2012-10-06 from 001__elm20150709_033545__dat00.bin

