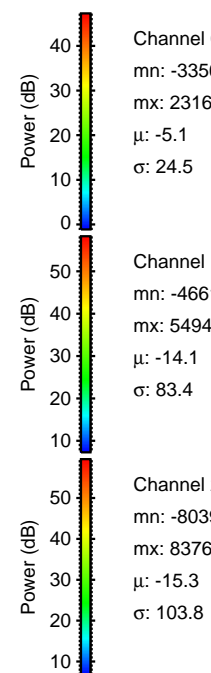
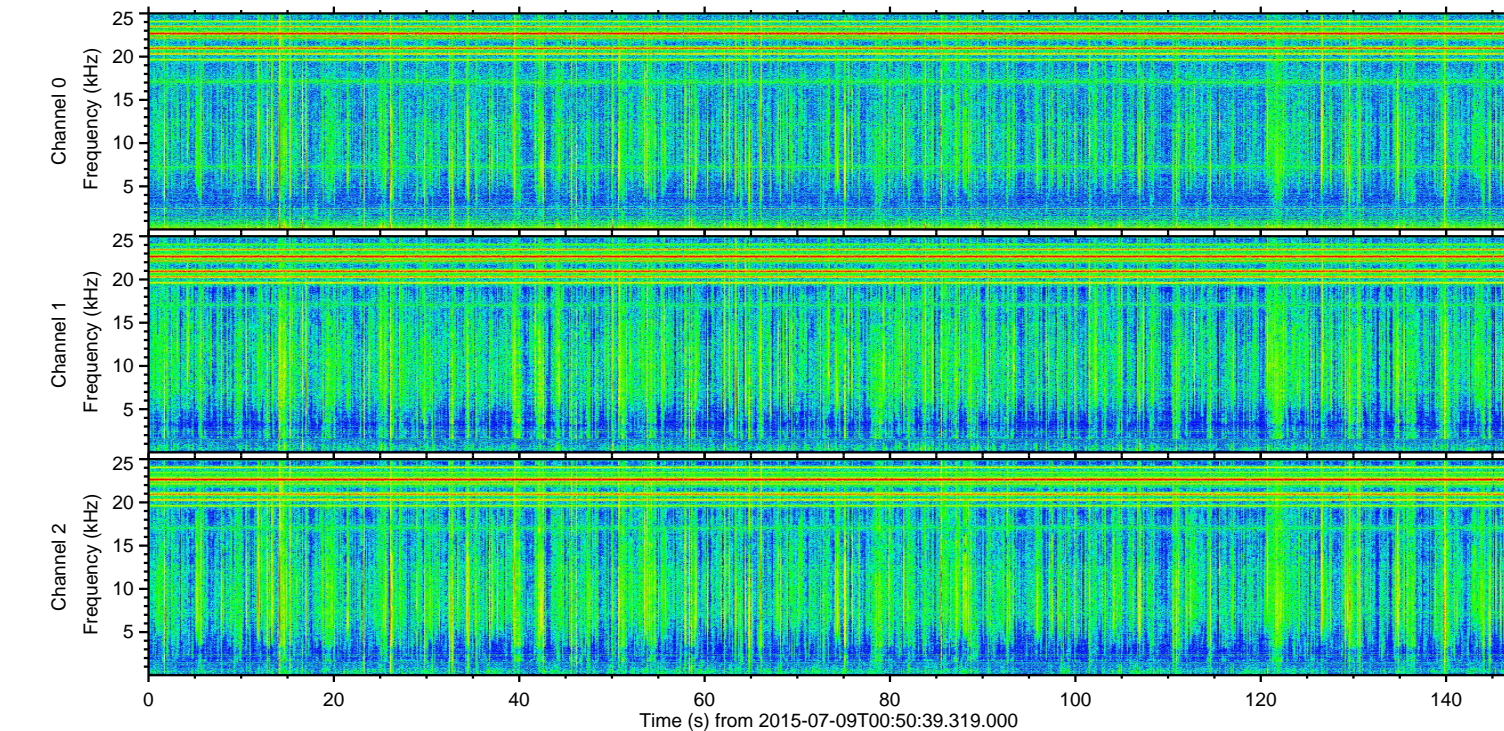
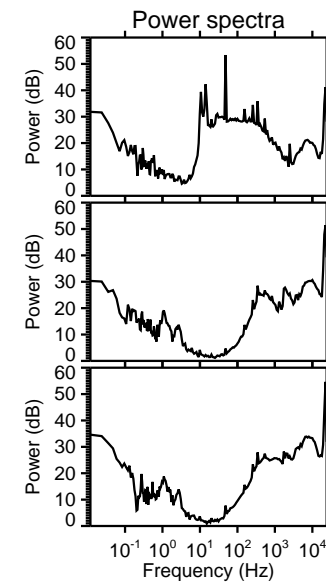
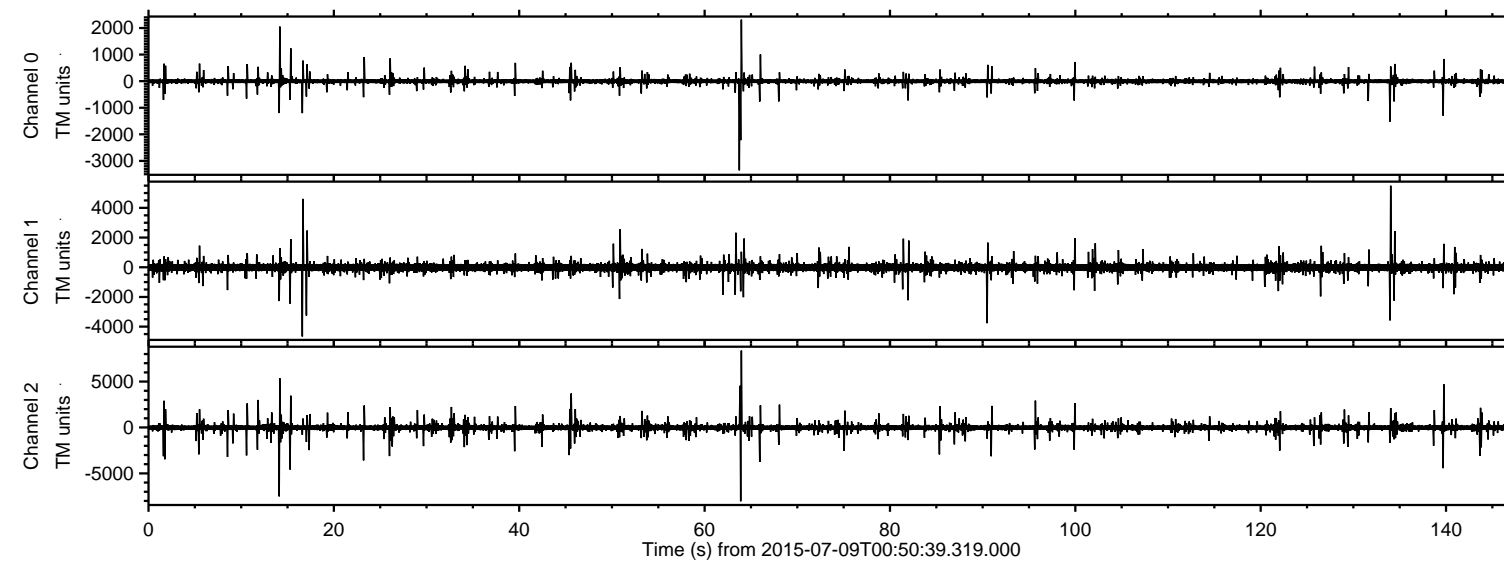
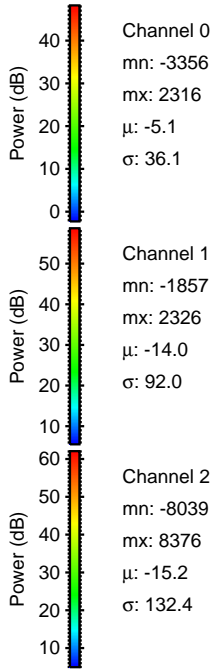
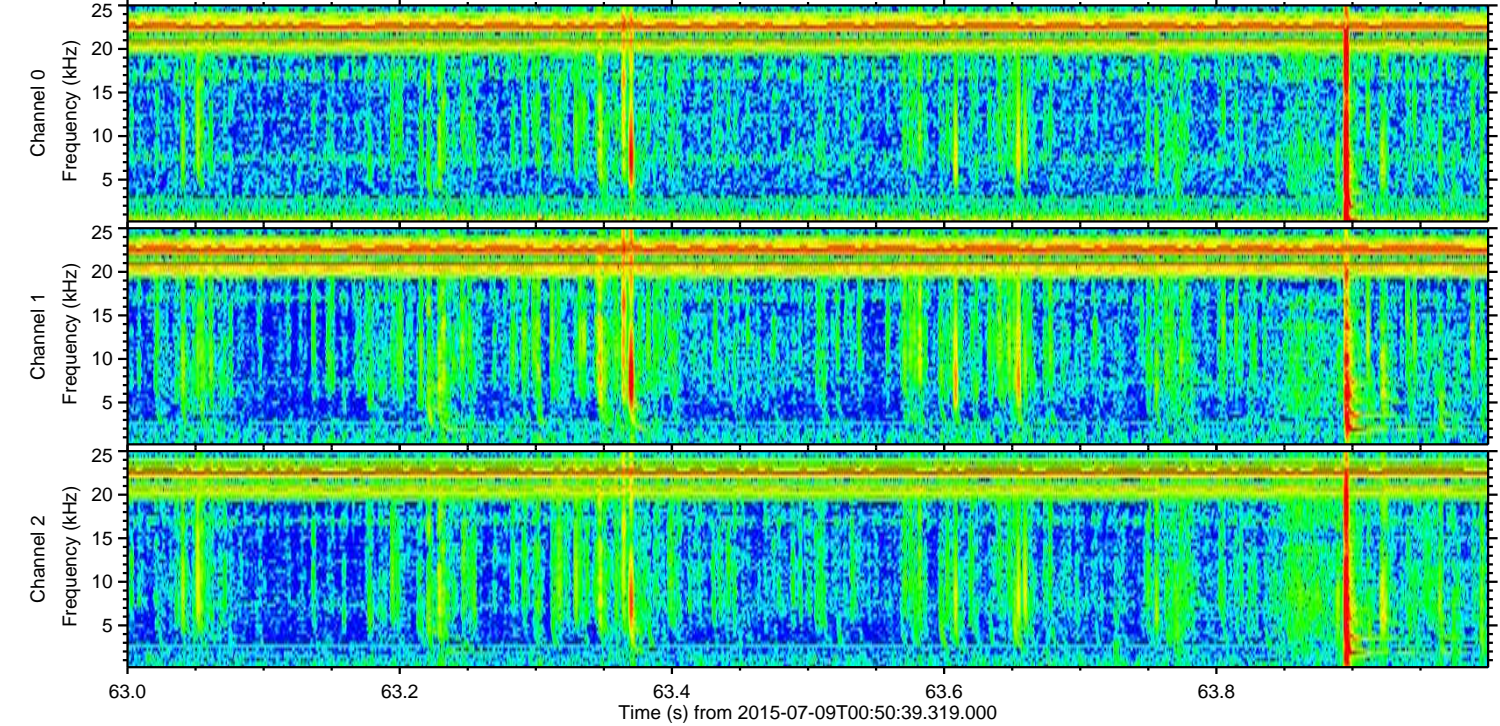
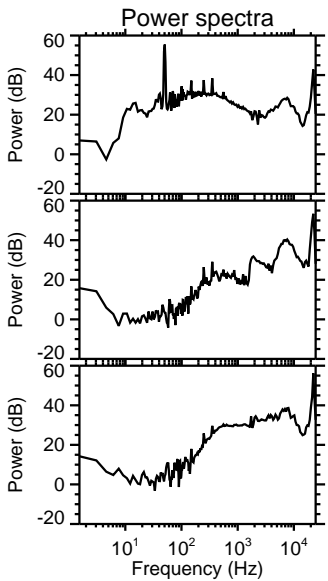
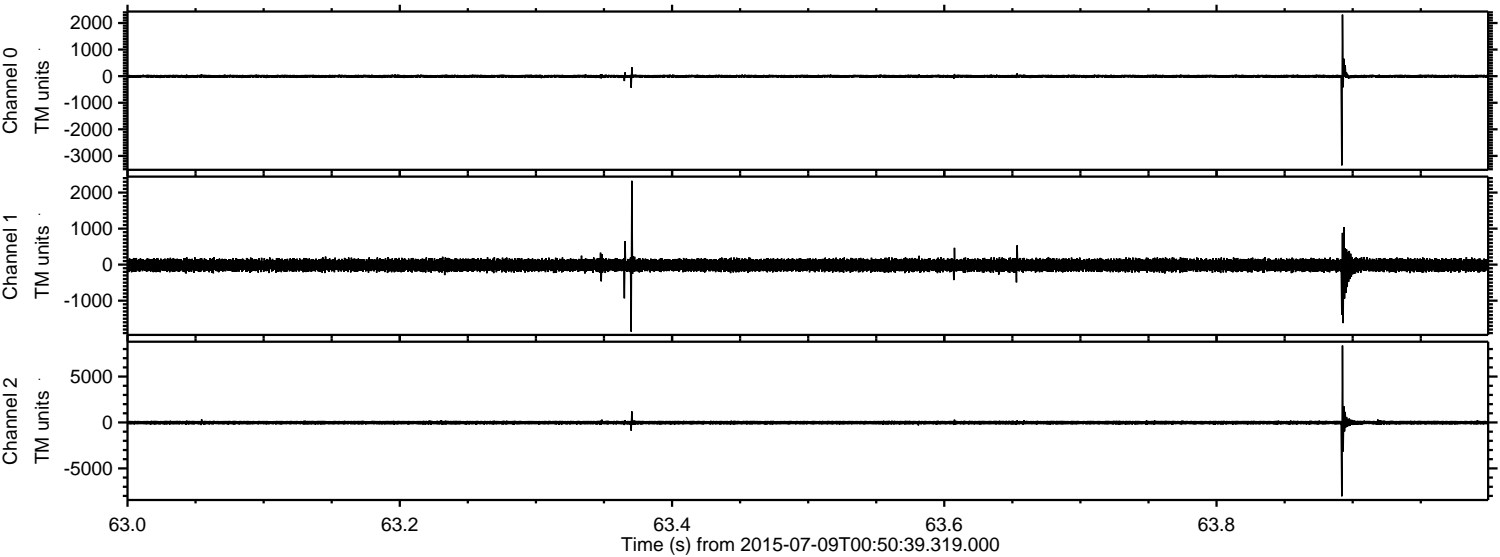


ELMAVAN 3D WAVEFORMS (Measured data sampled at 50 kHz) 51000 packets of 144 samples from 2015-07-09T00:50:39.319.000.

Processed Thu Jul 9 02:56:55 2015 by ELM ver.2012-10-06 from 001__elm20150709_005038__dat00.bin



Processed Thu Jul 9 02:57:11 2015 by ELM ver.2012-10-06 from 001__elm20150709_005038__dat00.bin

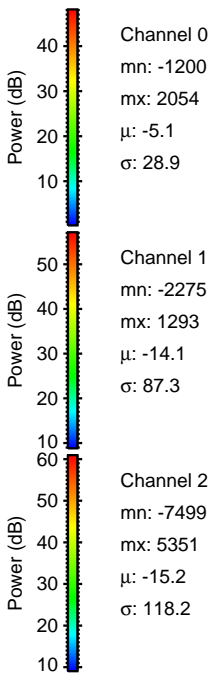
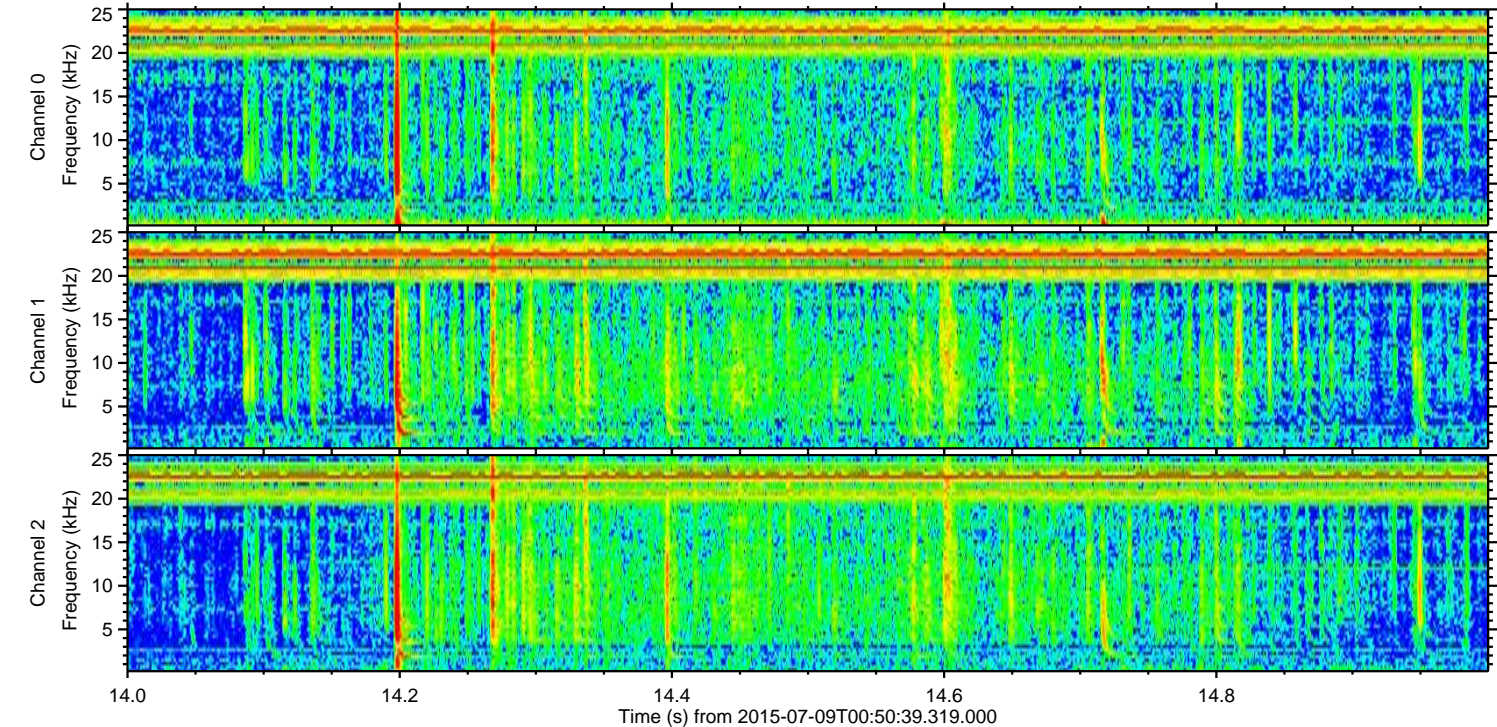
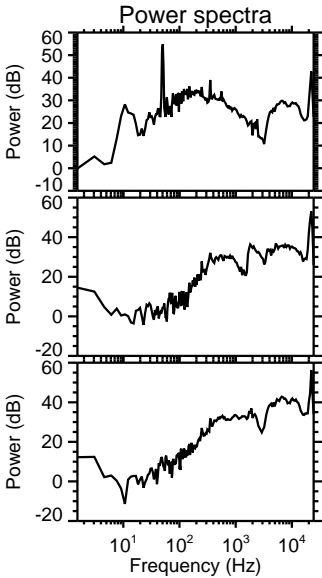
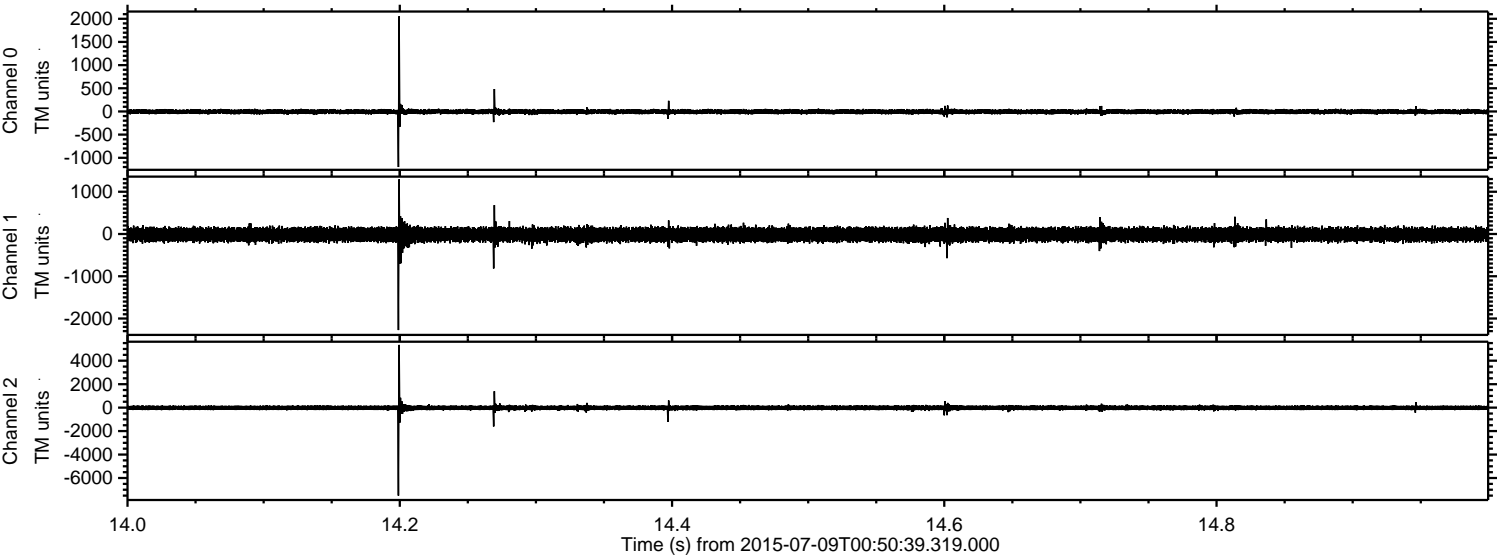


Channel 0
mn: -3356
mx: 2316
 μ : -5.1
 σ : 36.1

Channel 1
mn: -1857
mx: 2326
 μ : -14.0
 σ : 92.0

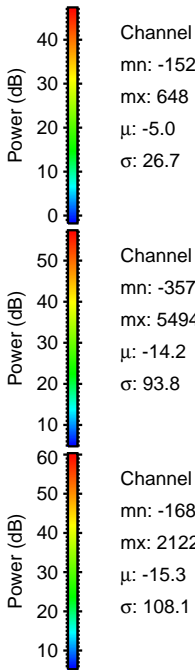
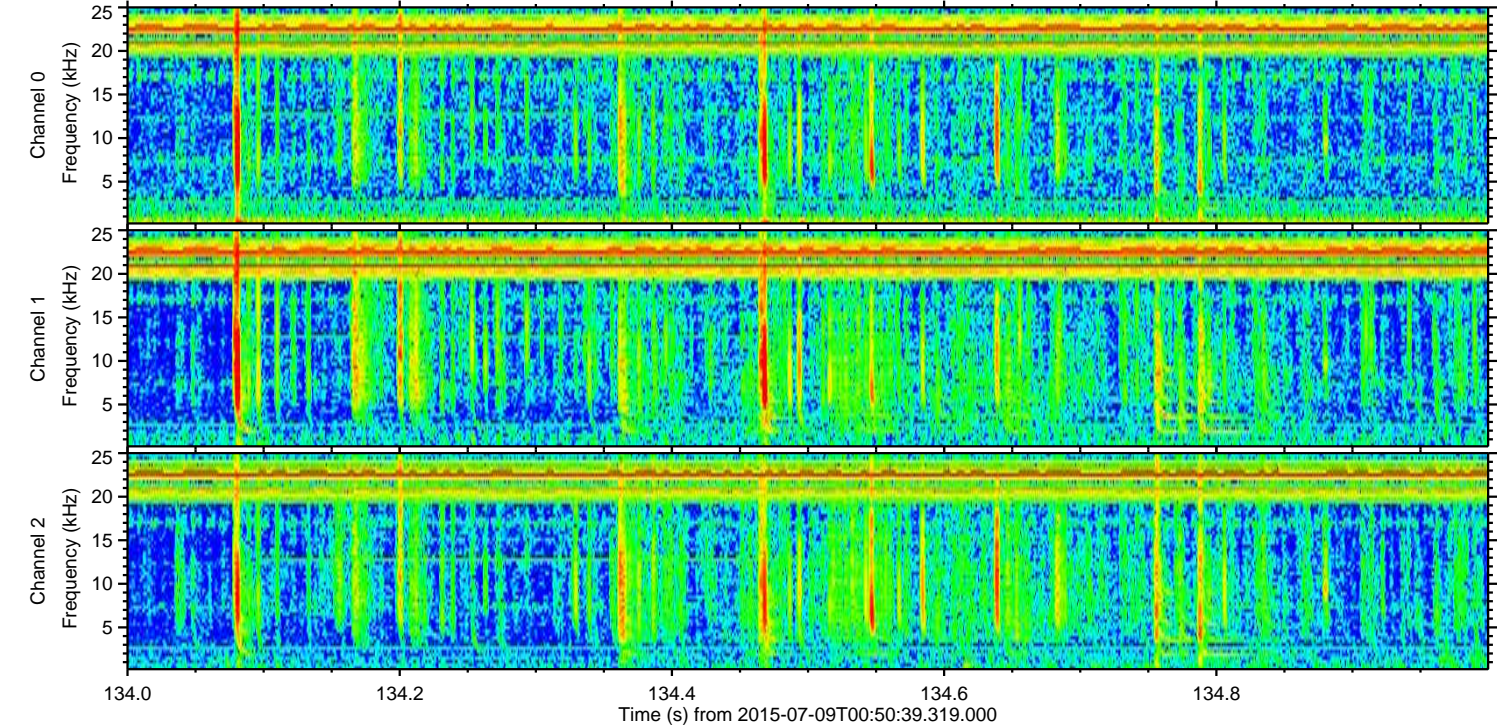
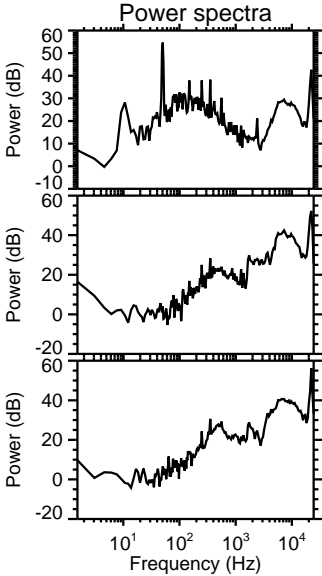
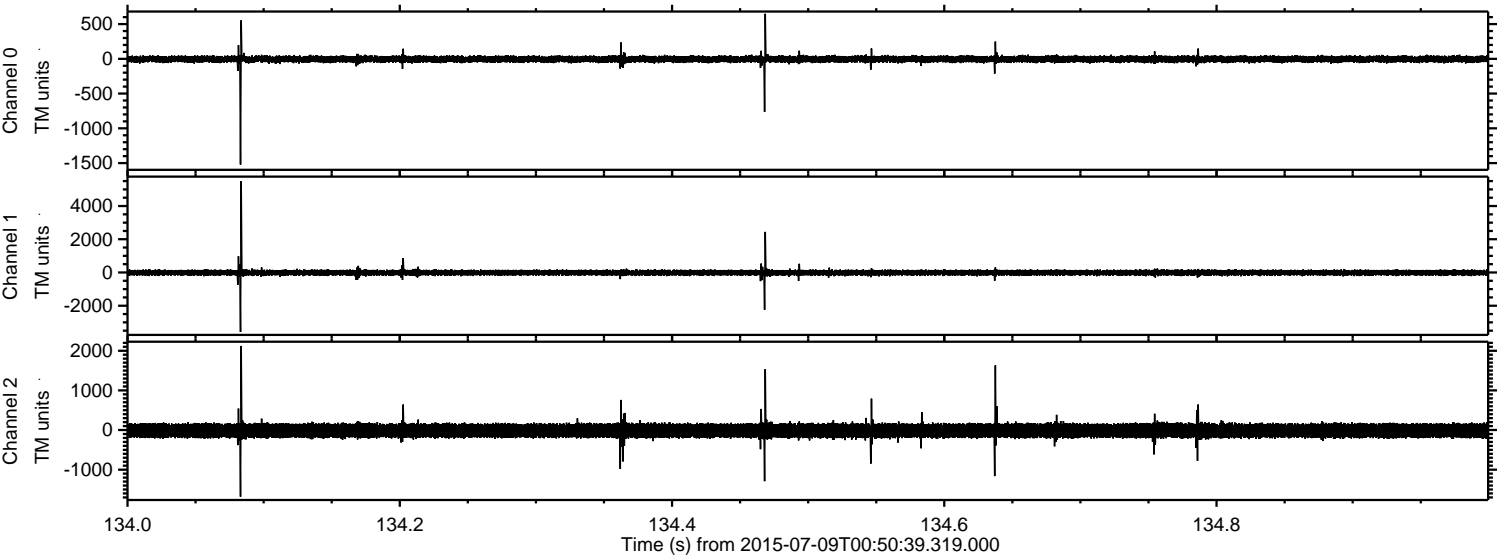
Channel 2
mn: -8039
mx: 8376
 μ : -15.2
 σ : 132.4

Processed Thu Jul 9 02:57:12 2015 by ELM ver.2012-10-06 from 001__elm20150709_005038__dat00.bin



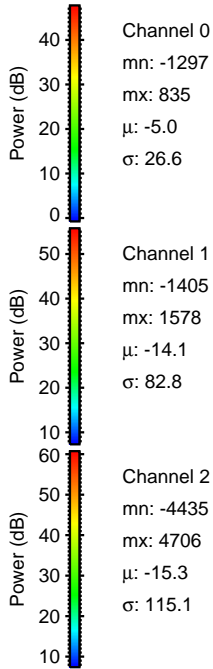
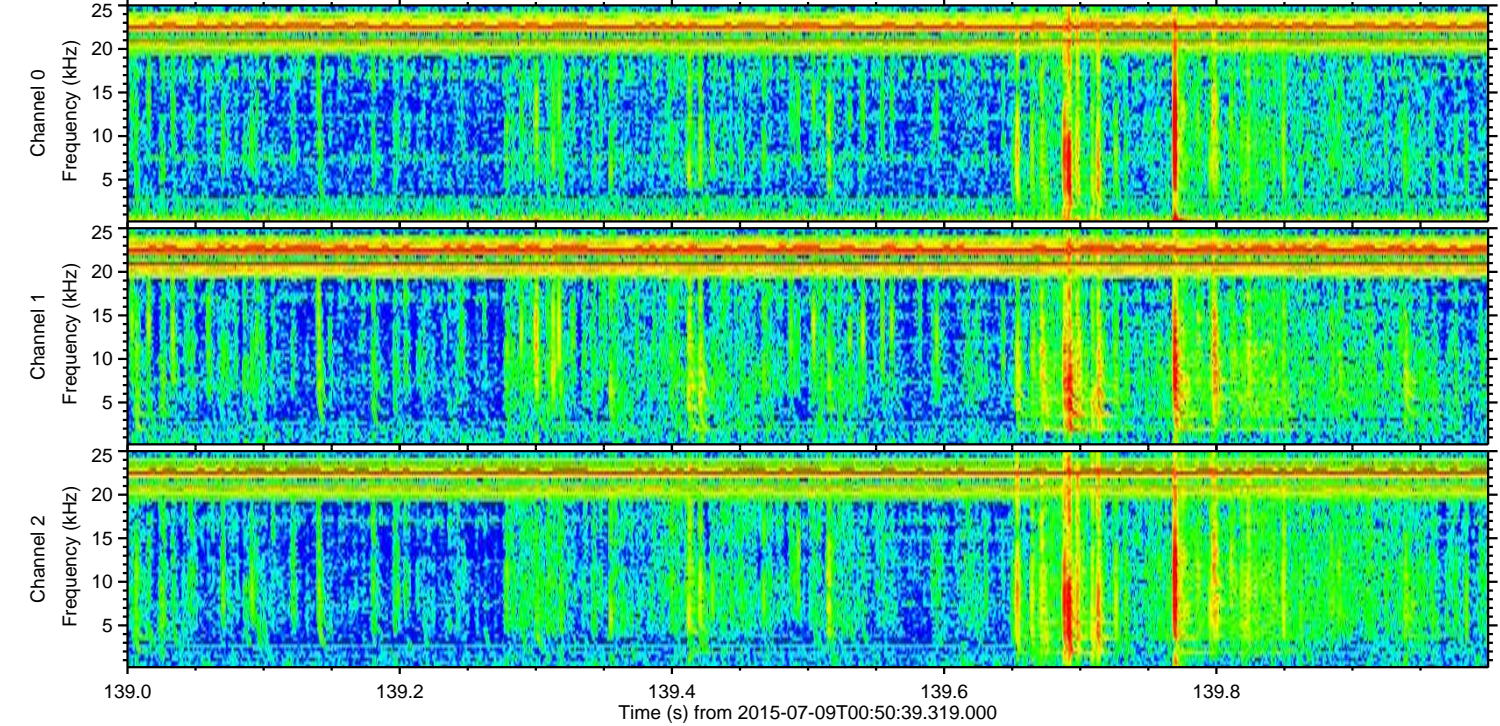
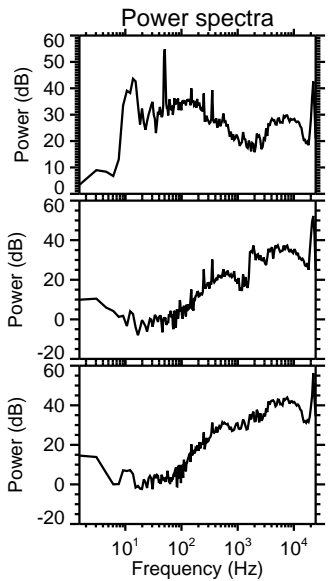
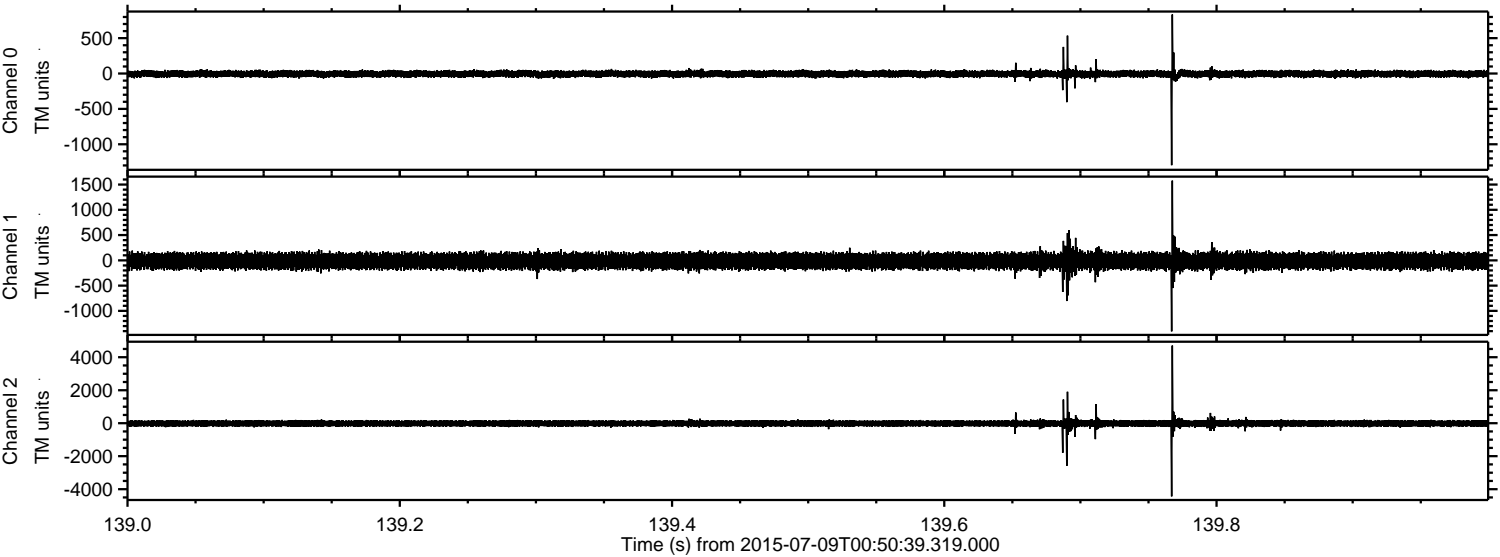
ELMAVAN 3D WAVEFORMS (Measured data sampled at 50 kHz) 51000 packets of 144 samples from 2015-07-09T00:50:39.319.000. Part 135/147

Processed Thu Jul 9 02:57:13 2015 by ELM ver.2012-10-06 from 001__elm20150709_005038__dat00.bin

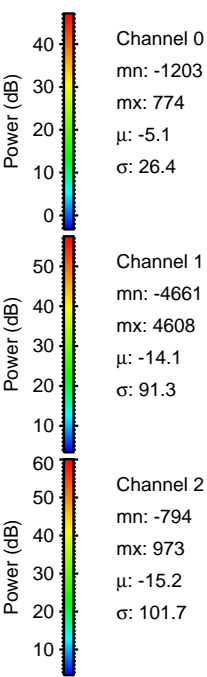
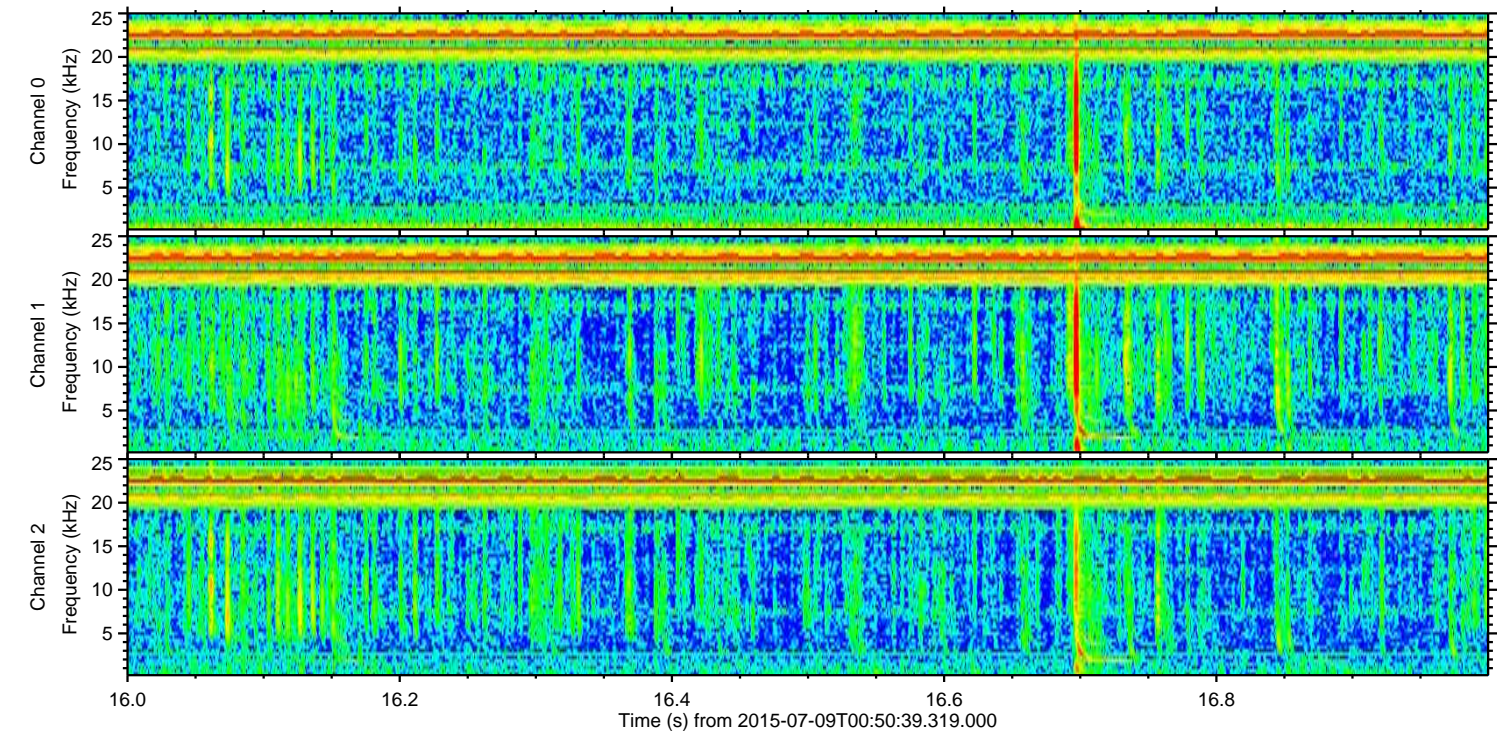
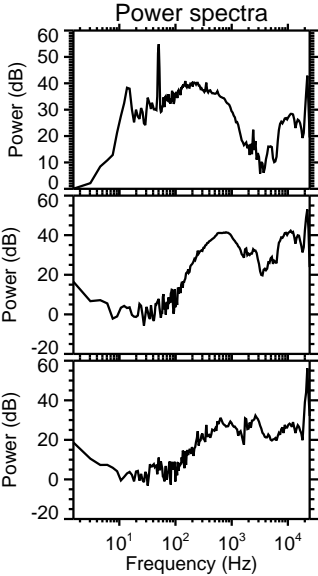
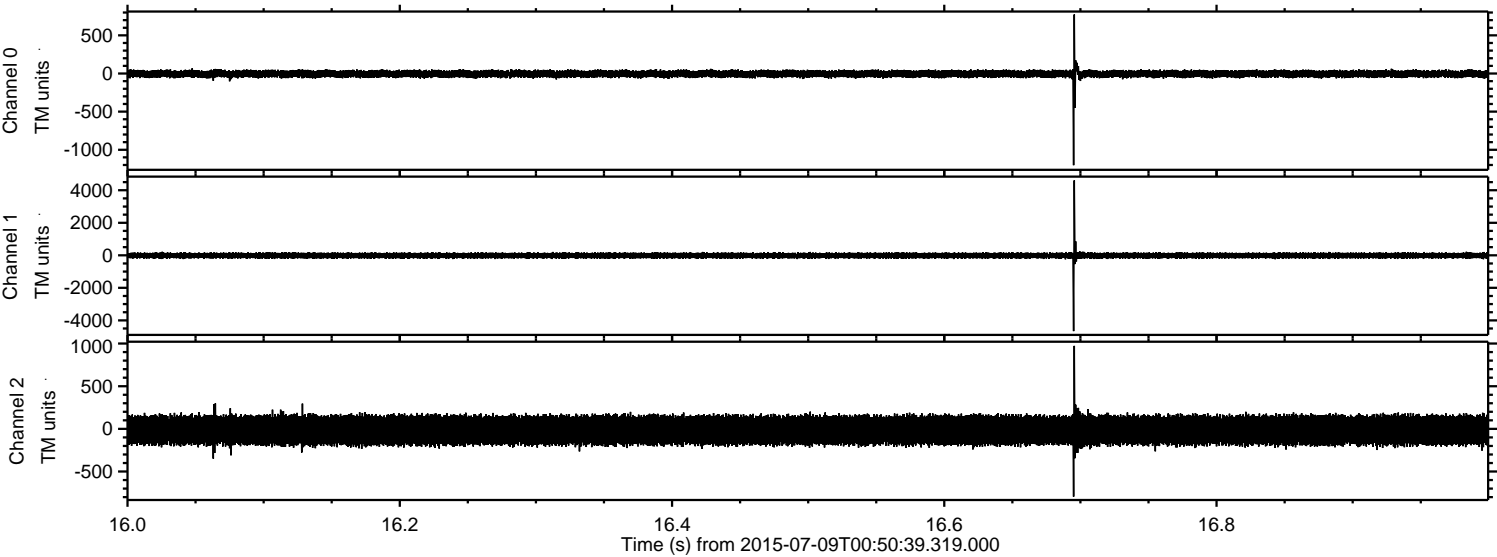


ELMAVAN 3D WAVEFORMS (Measured data sampled at 50 kHz) 51000 packets of 144 samples from 2015-07-09T00:50:39.319.000. Part 140/147

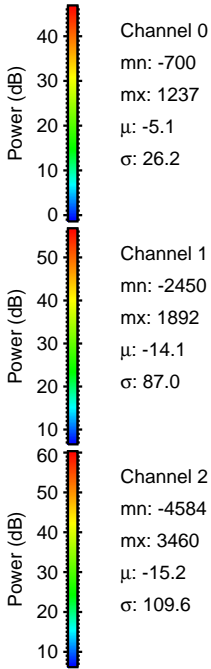
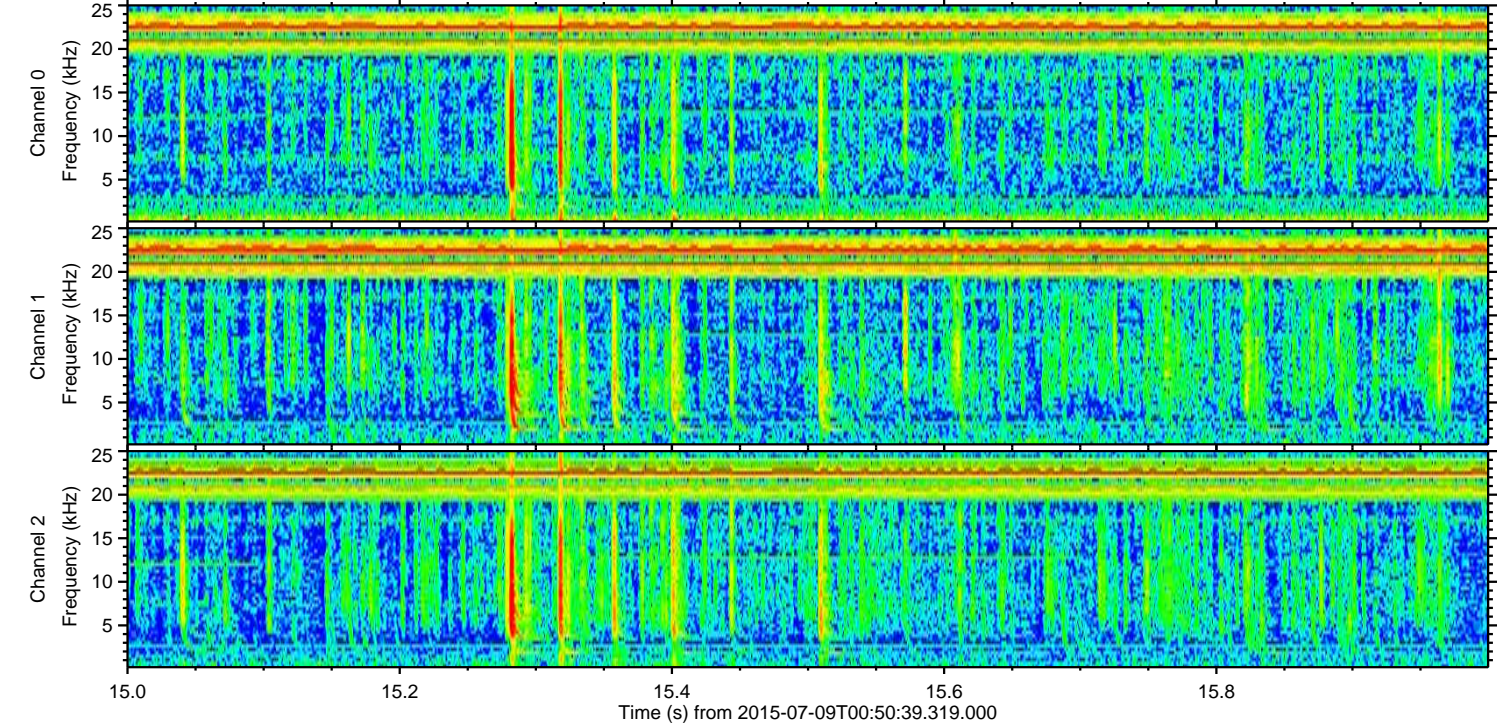
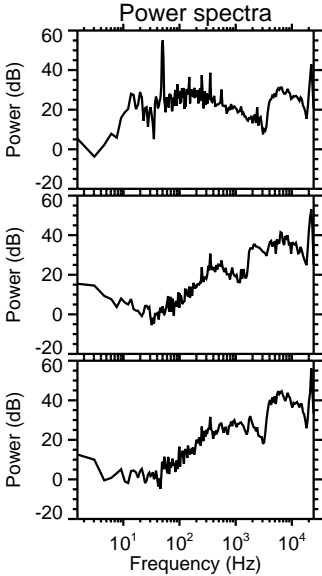
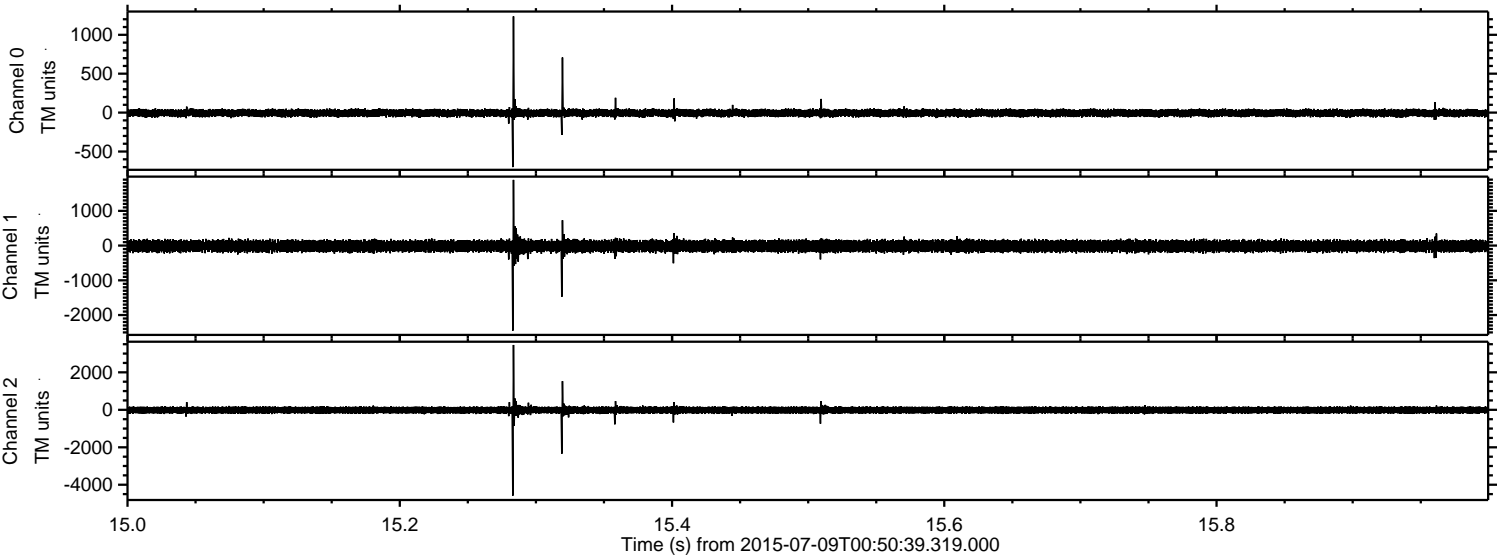
Processed Thu Jul 9 02:57:14 2015 by ELM ver.2012-10-06 from 001__elm20150709_005038__dat00.bin



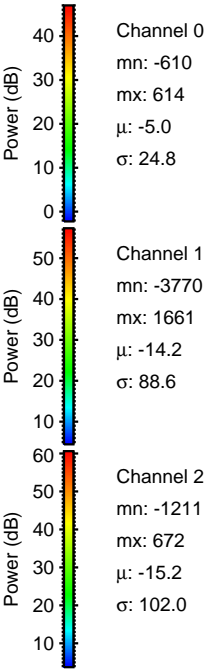
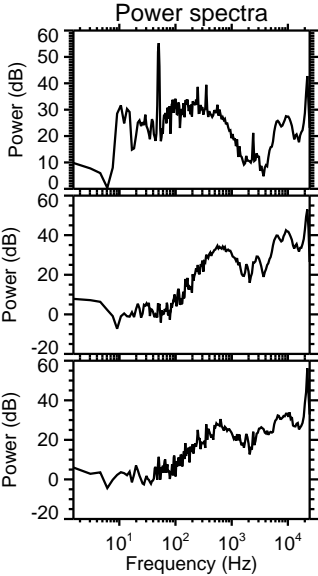
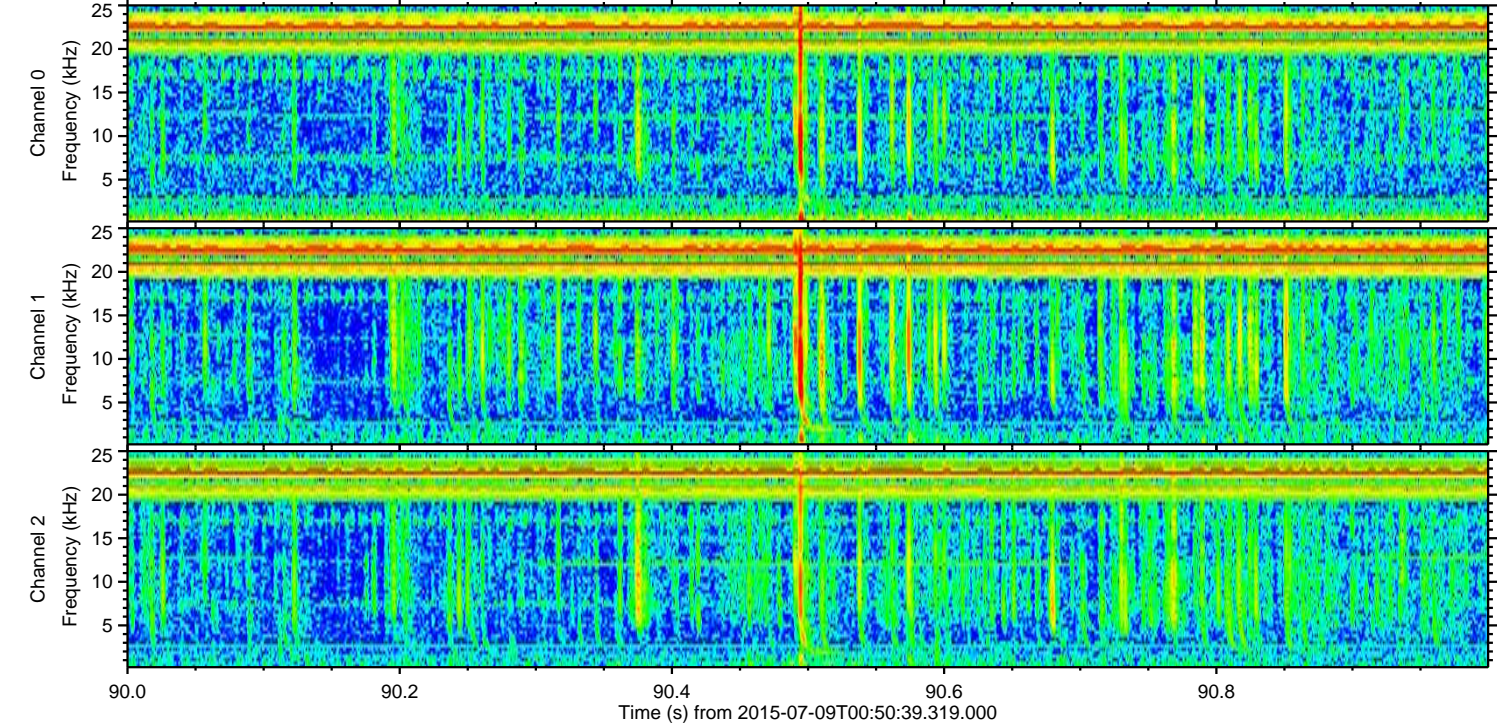
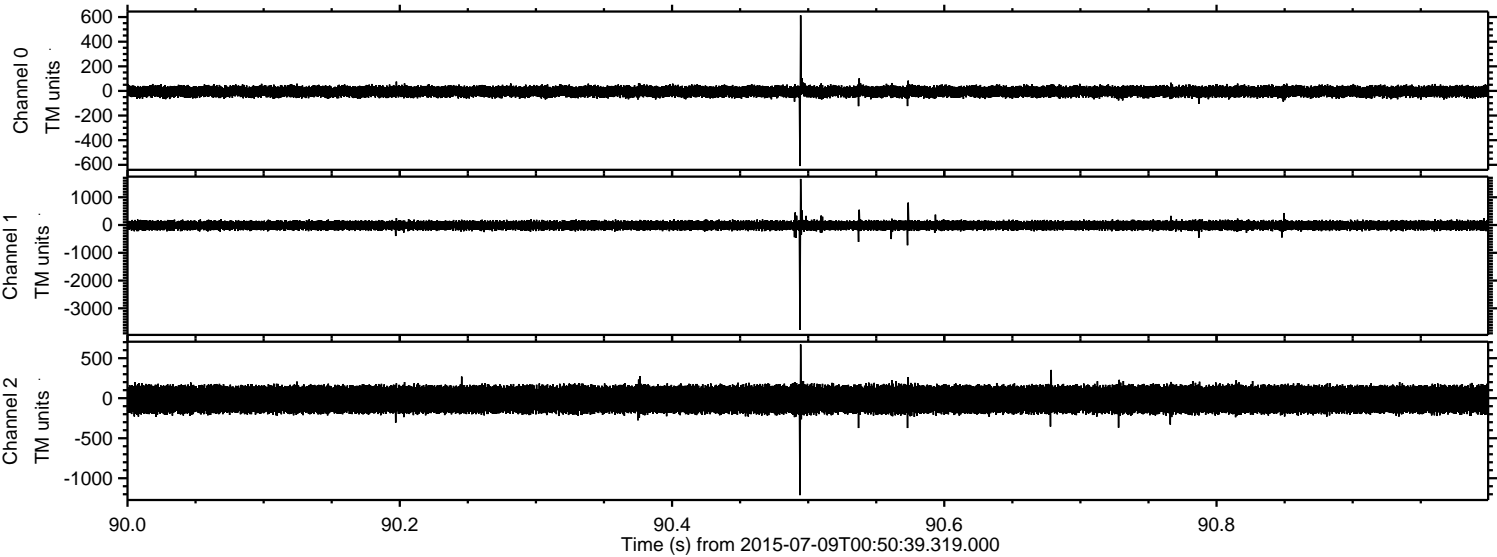
Processed Thu Jul 9 02:57:15 2015 by ELM ver.2012-10-06 from 001__elm20150709_005038__dat00.bin



Processed Thu Jul 9 02:57:16 2015 by ELM ver.2012-10-06 from 001__elm20150709_005038__dat00.bin



Processed Thu Jul 9 02:57:18 2015 by ELM ver.2012-10-06 from 001__elm20150709_005038__dat00.bin

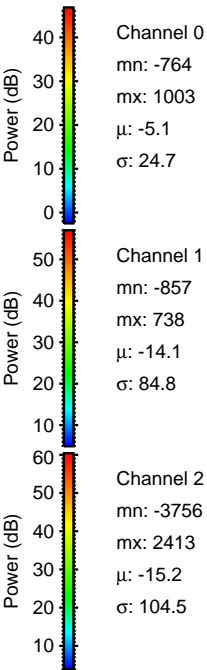
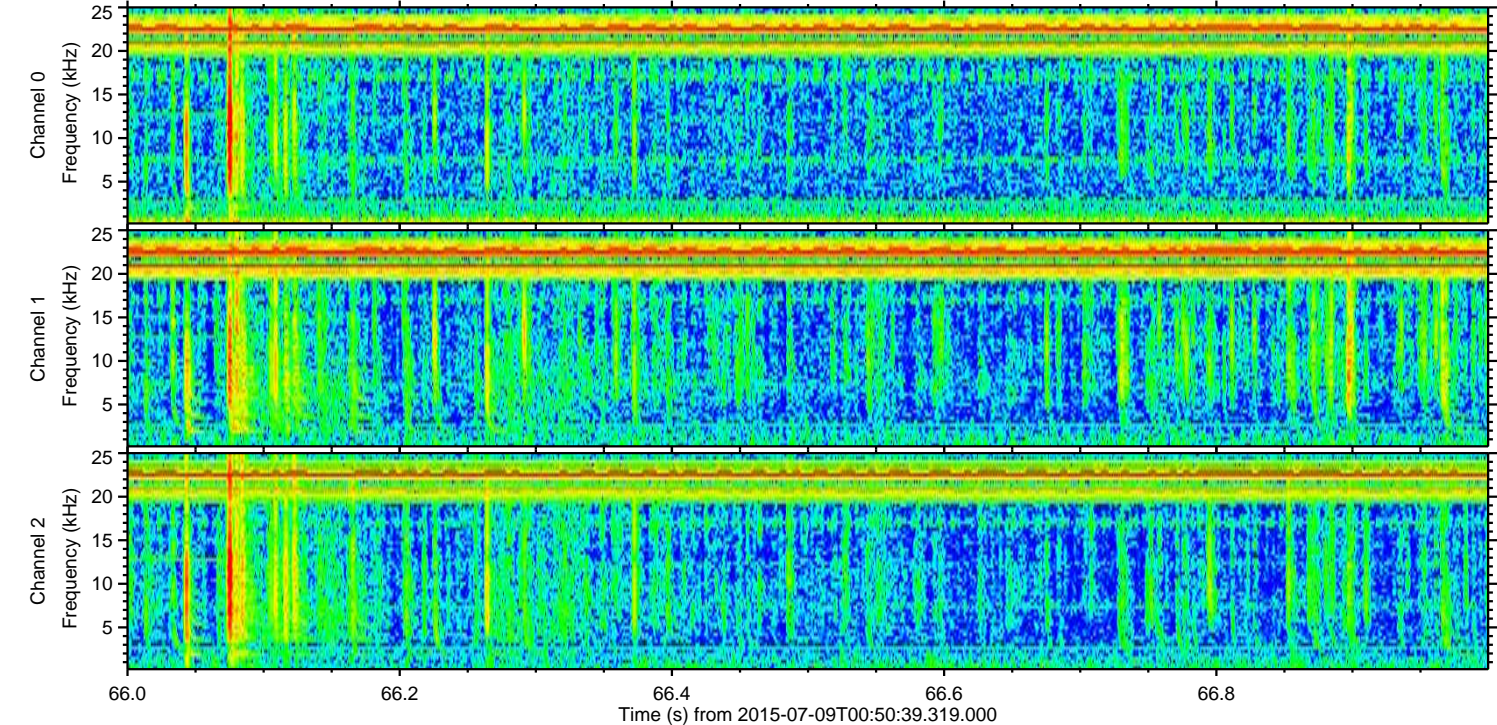
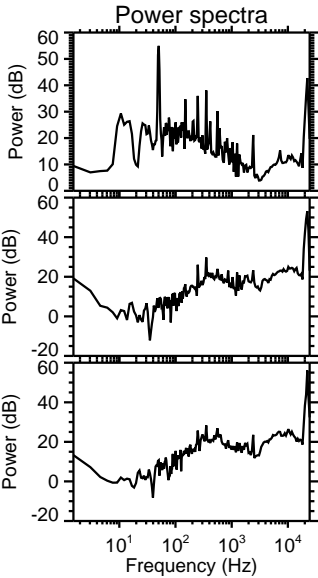
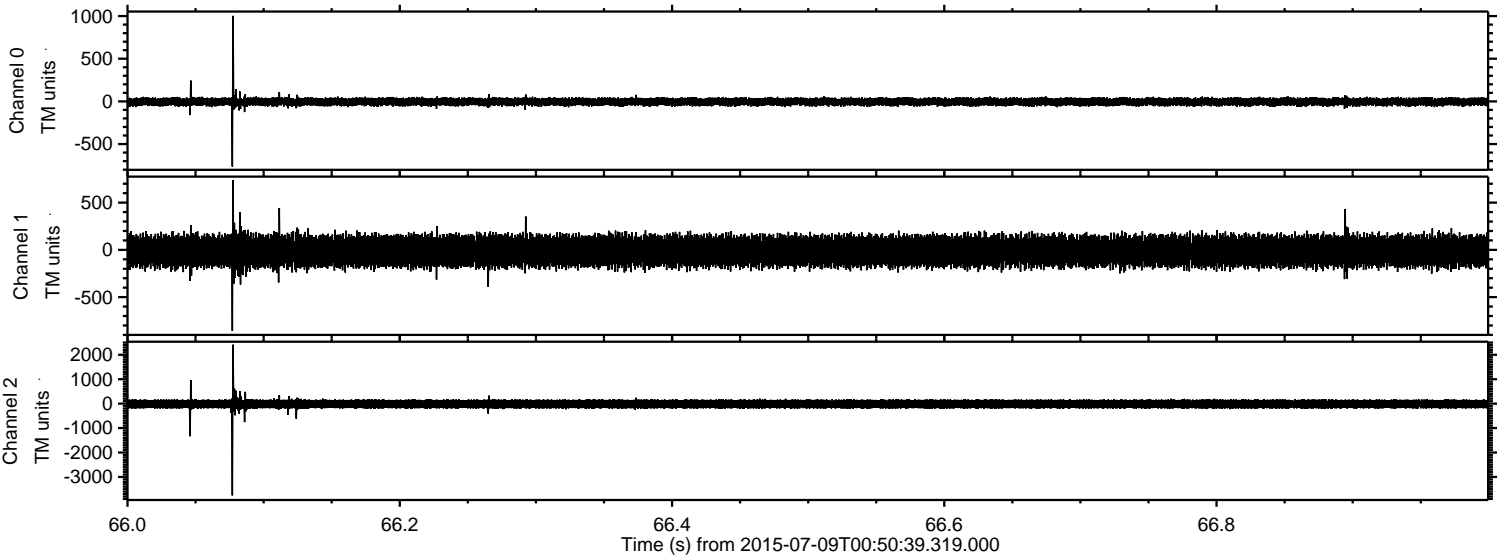


Channel 0
mn: -610
mx: 614
 μ : -5.0
 σ : 24.8

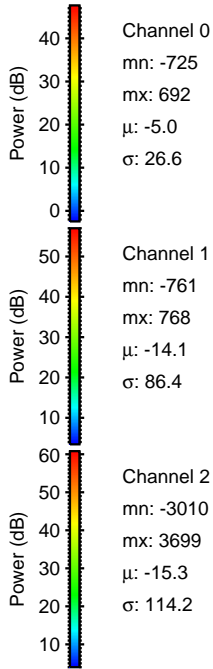
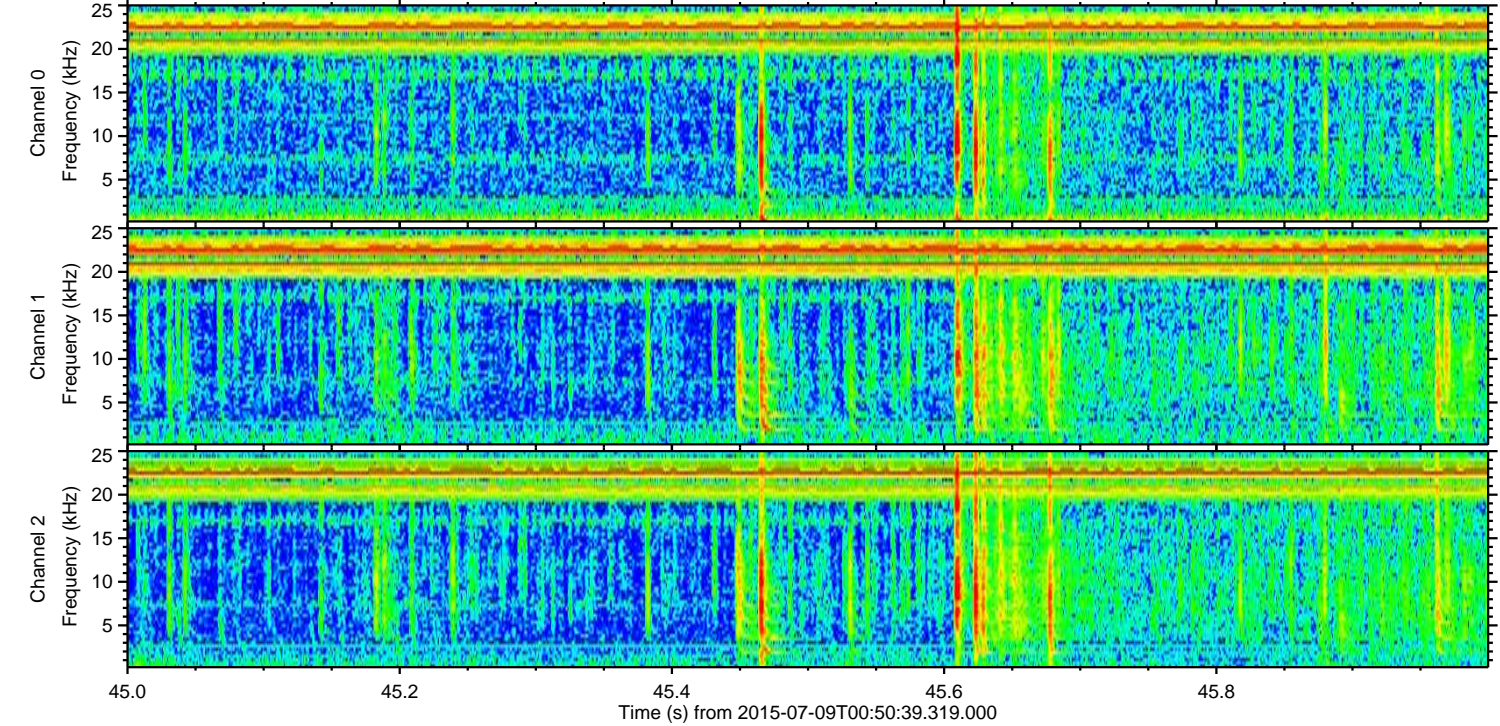
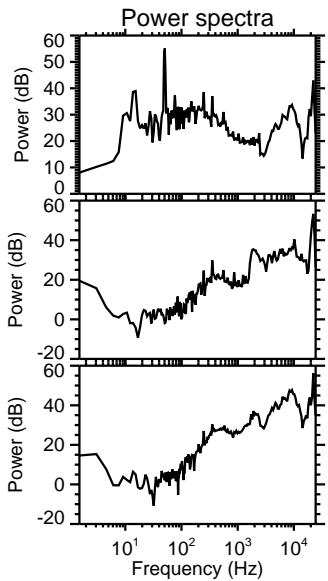
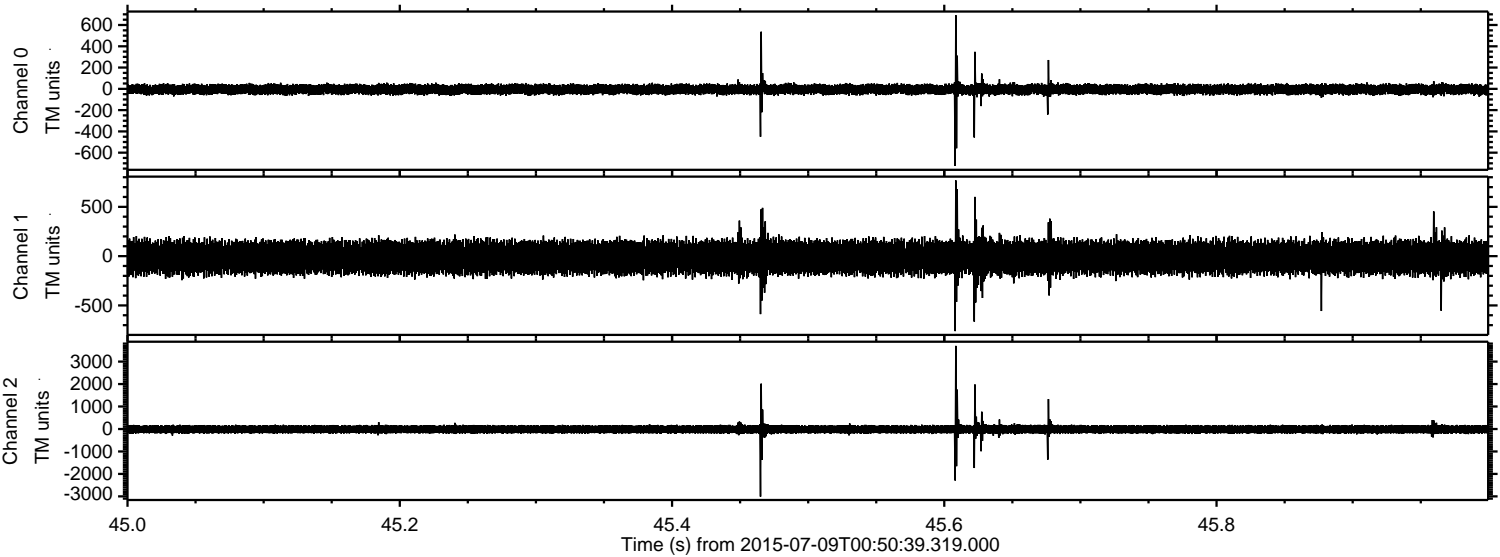
Channel 1
mn: -3770
mx: 1661
 μ : -14.2
 σ : 88.6

Channel 2
mn: -1211
mx: 672
 μ : -15.2
 σ : 102.0

Processed Thu Jul 9 02:57:19 2015 by ELM ver.2012-10-06 from 001__elm20150709_005038__dat00.bin



Processed Thu Jul 9 02:57:20 2015 by ELM ver.2012-10-06 from 001__elm20150709_005038__dat00.bin



Processed Thu Jul 9 02:57:21 2015 by ELM ver.2012-10-06 from 001__elm20150709_005038__dat00.bin

