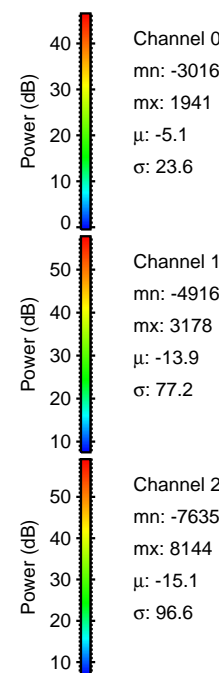
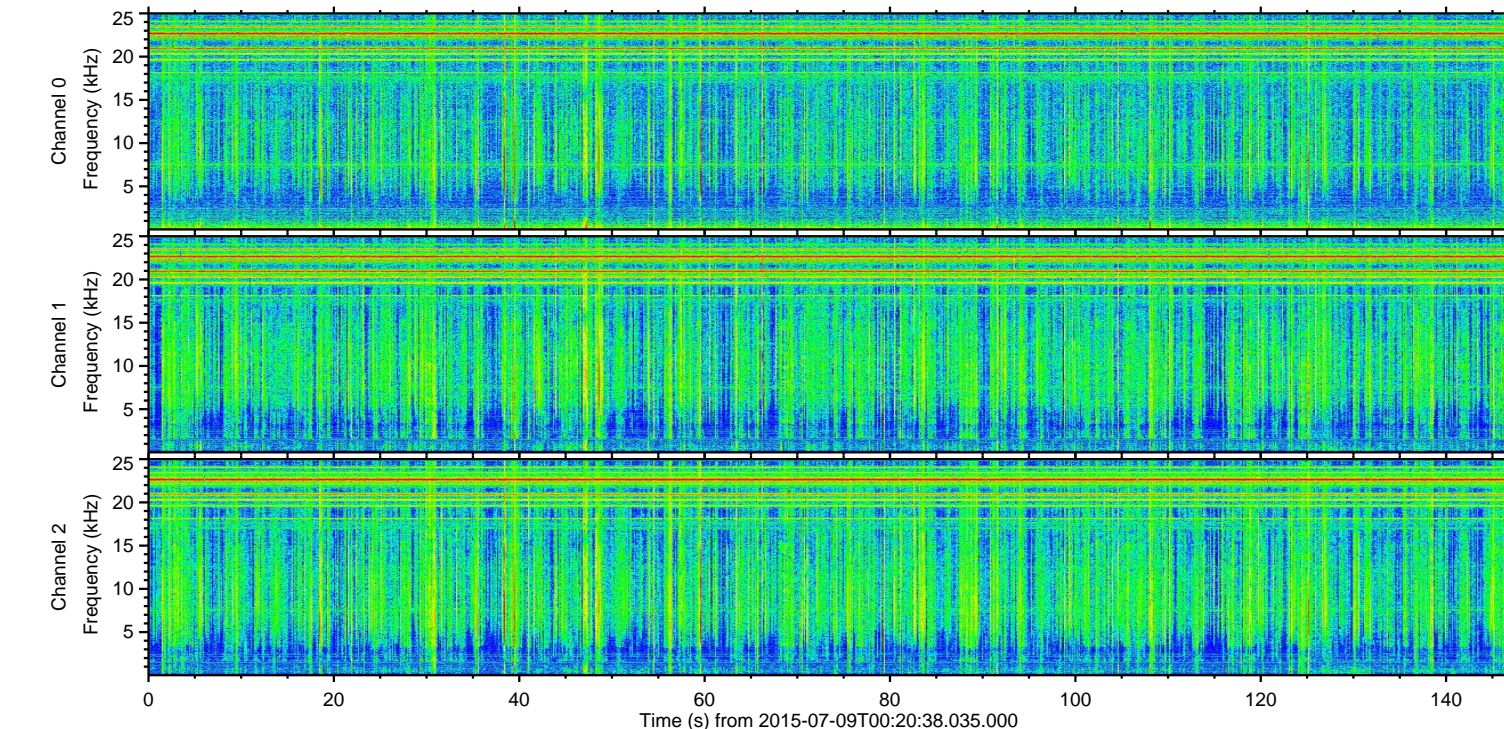
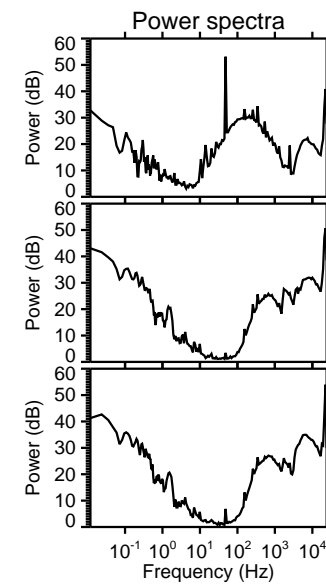
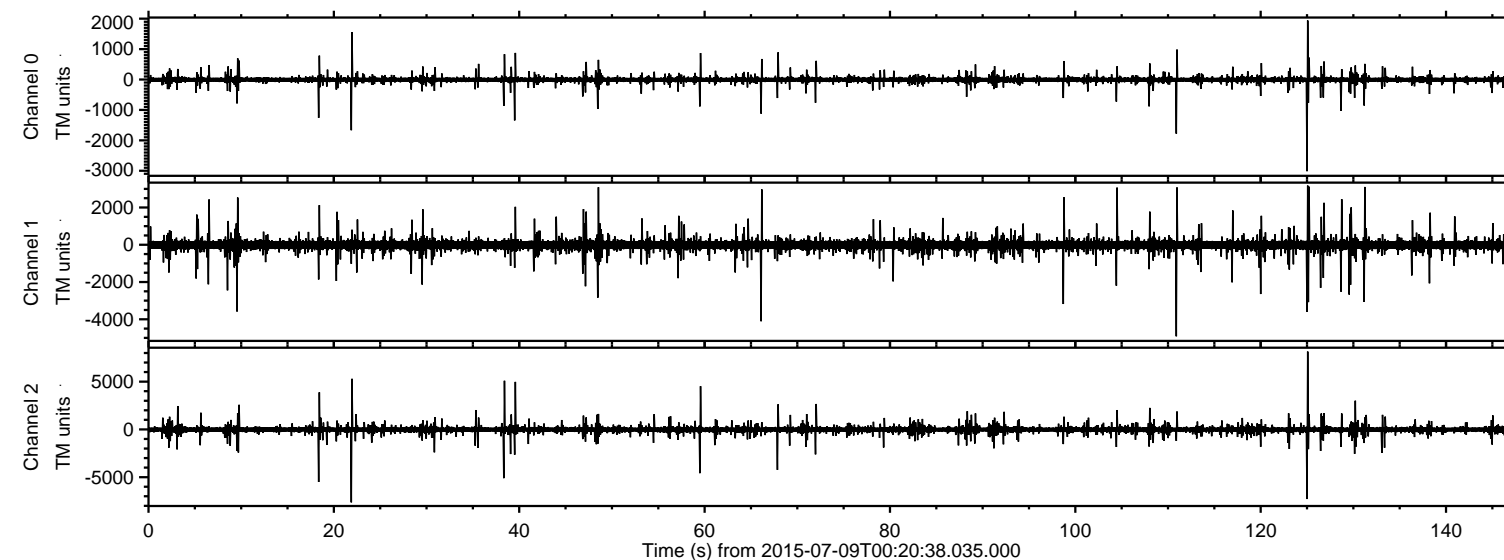


ELMAVAN 3D WAVEFORMS (Measured data sampled at 50 kHz) 51000 packets of 144 samples from 2015-07-09T00:20:38.035.000.

Processed Thu Jul 9 02:27:30 2015 by ELM ver.2012-10-06 from 001__elm20150709_002037__dat00.bin



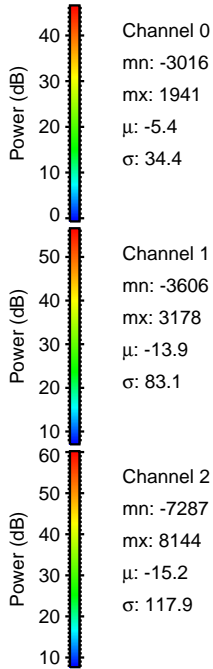
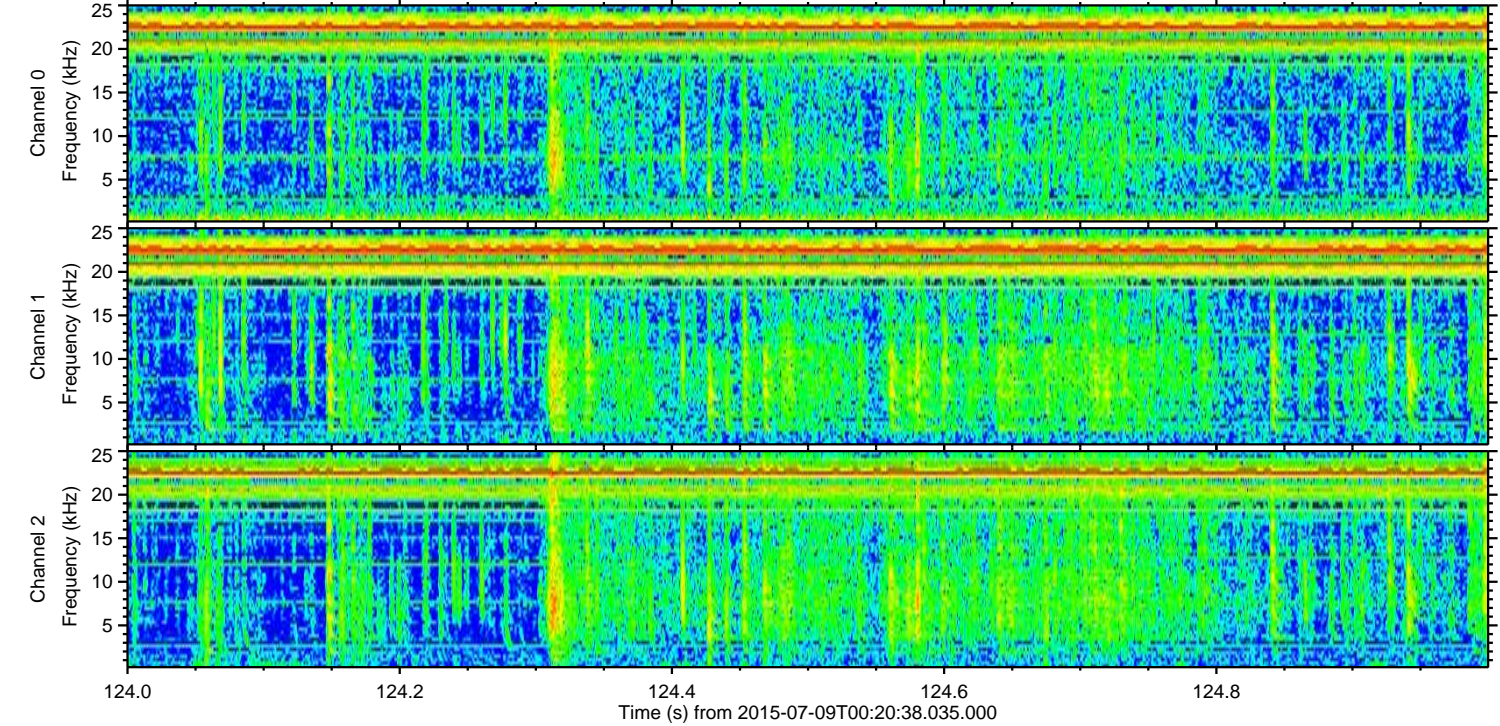
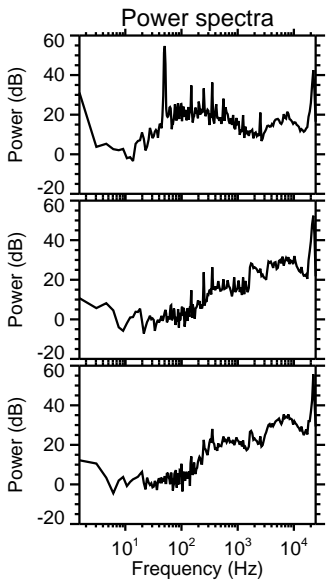
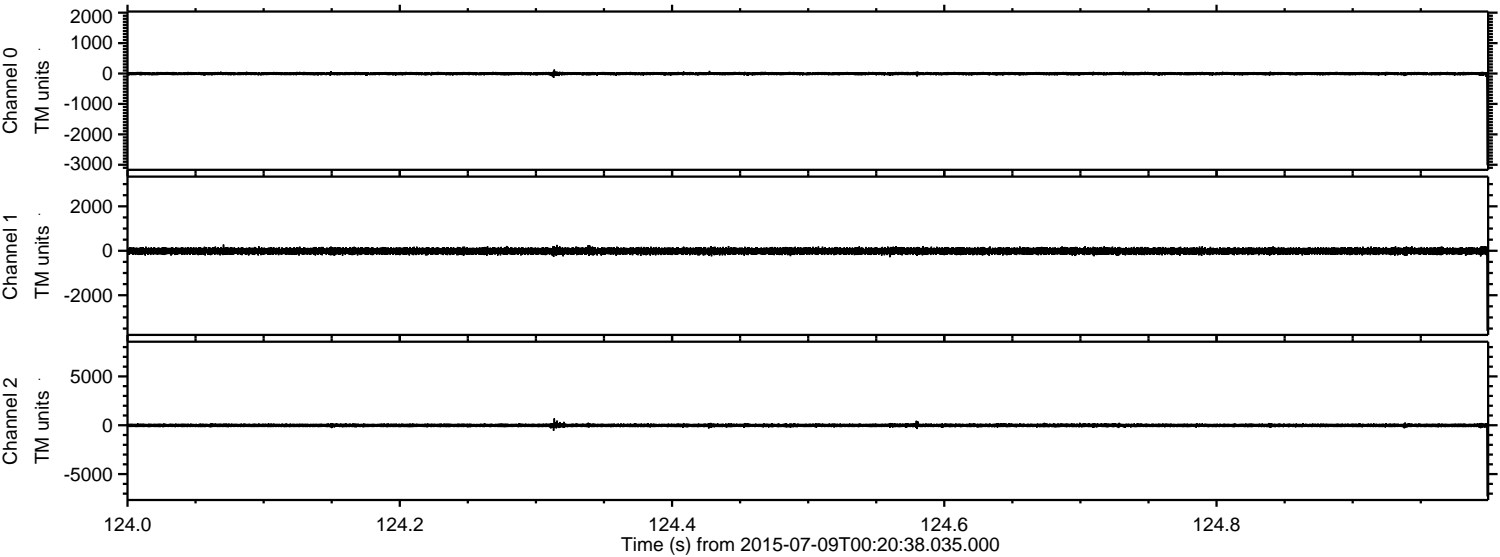
Channel 0
mn: -3016
mx: 1941
 μ : -5.1
 σ : 23.6

Channel 1
mn: -4916
mx: 3178
 μ : -13.9
 σ : 77.2

Channel 2
mn: -7635
mx: 8144
 μ : -15.1
 σ : 96.6

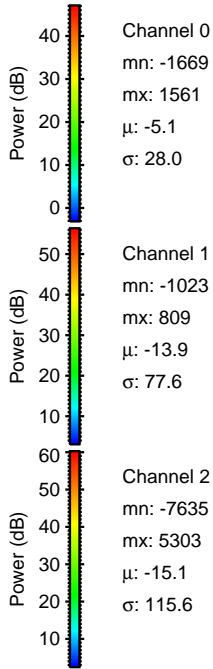
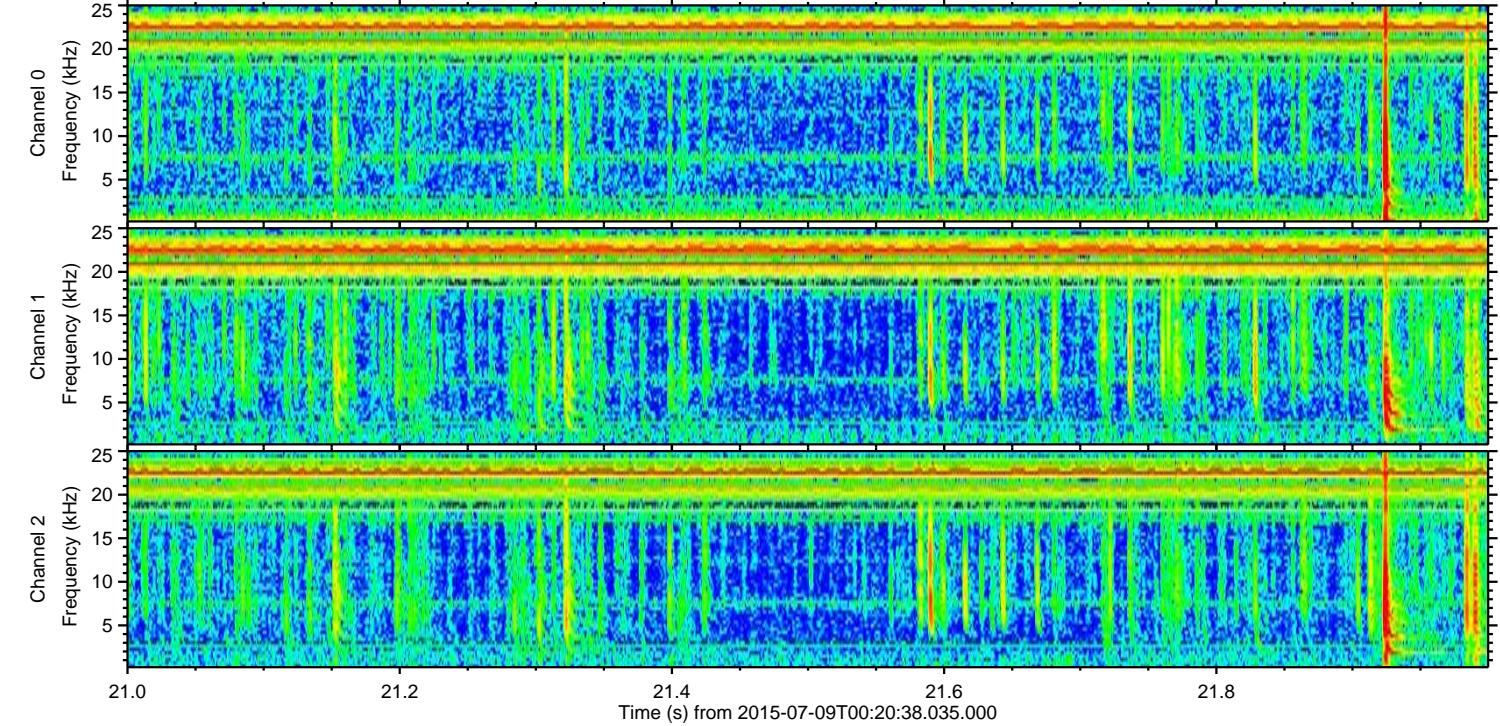
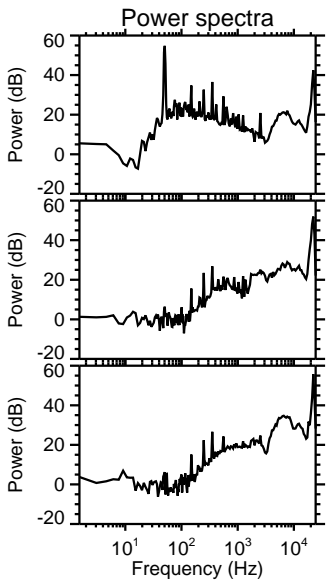
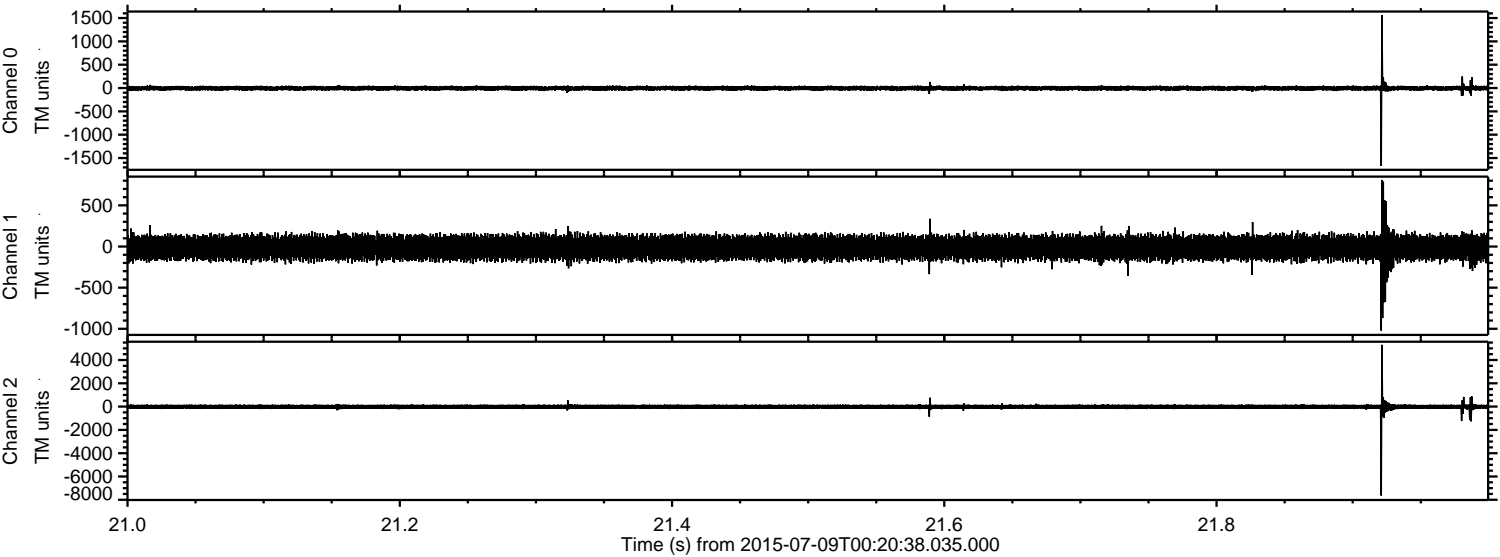
ELMAVAN 3D WAVEFORMS (Measured data sampled at 50 kHz) 51000 packets of 144 samples from 2015-07-09T00:20:38.035.000. Part 125/147

Processed Thu Jul 9 02:27:46 2015 by ELM ver.2012-10-06 from 001__elm20150709_002037__dat00.bin

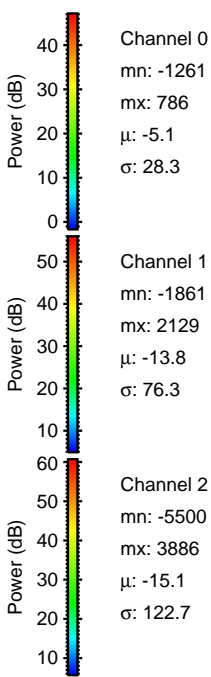
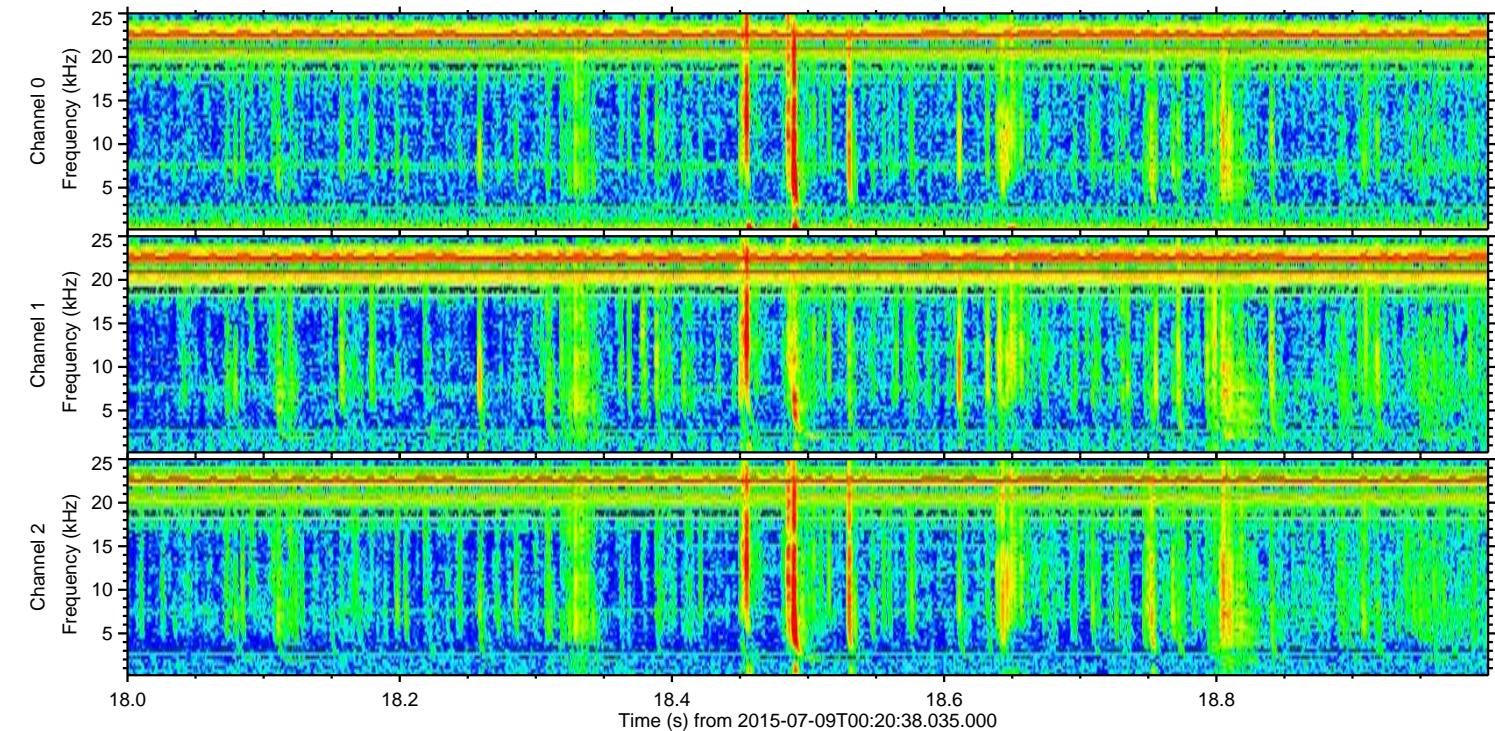
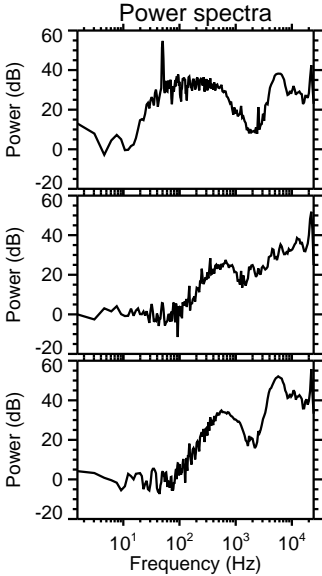
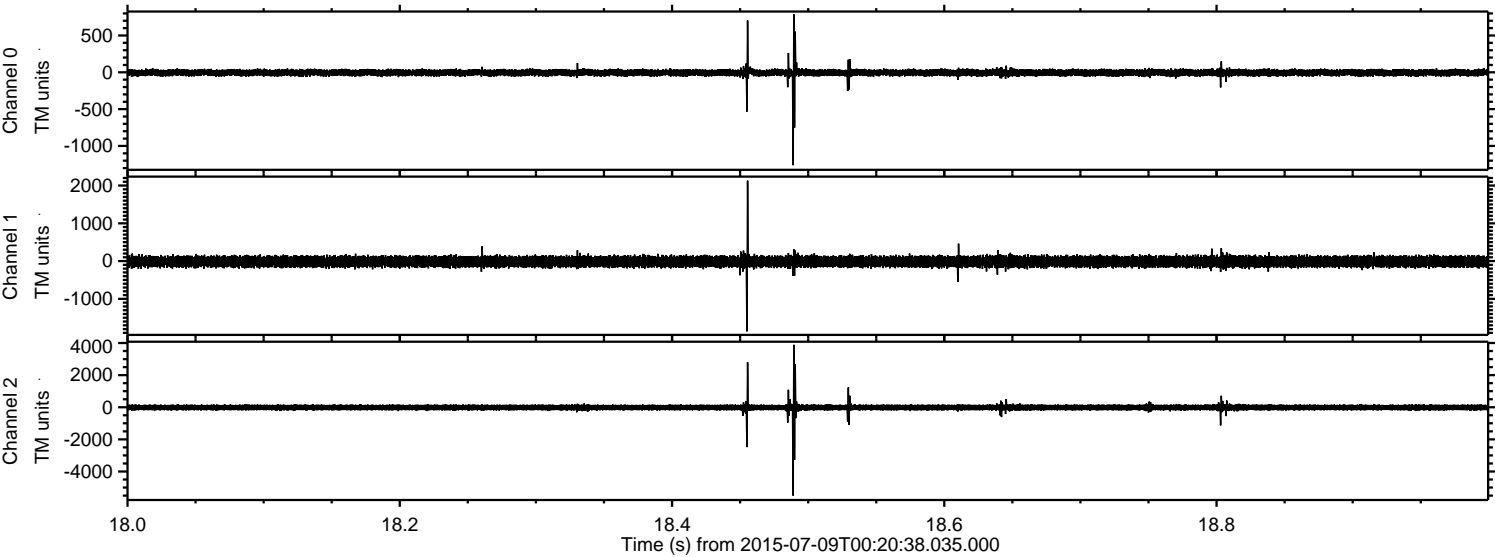


ELMAVAN 3D WAVEFORMS (Measured data sampled at 50 kHz) 51000 packets of 144 samples from 2015-07-09T00:20:38.035.000. Part 22/147

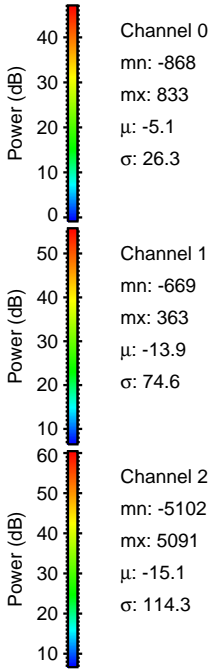
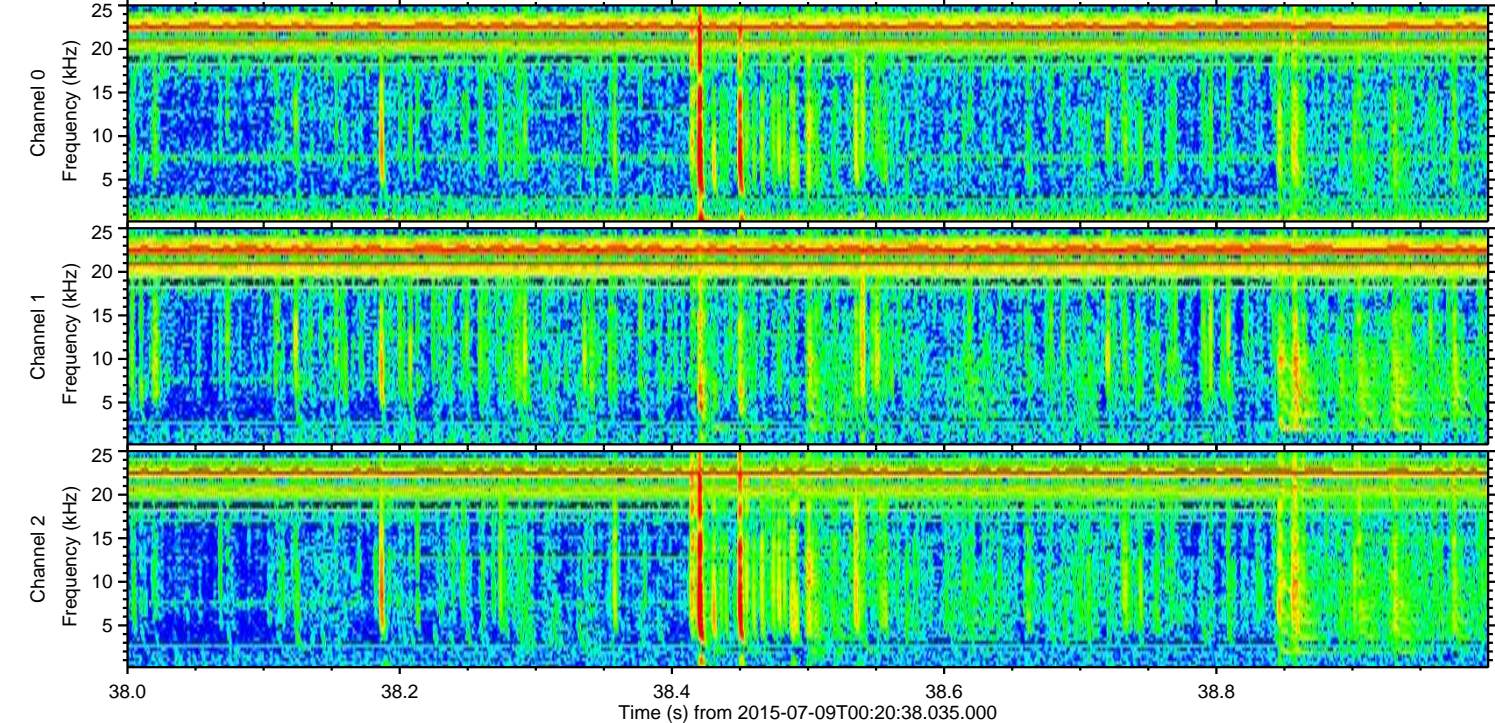
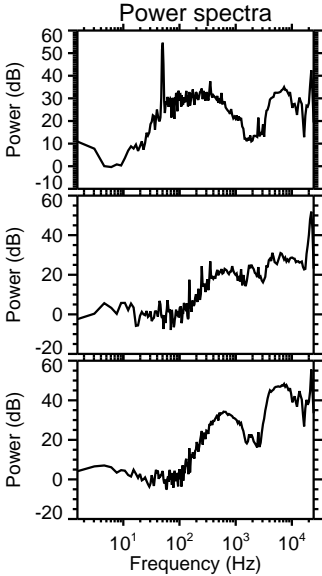
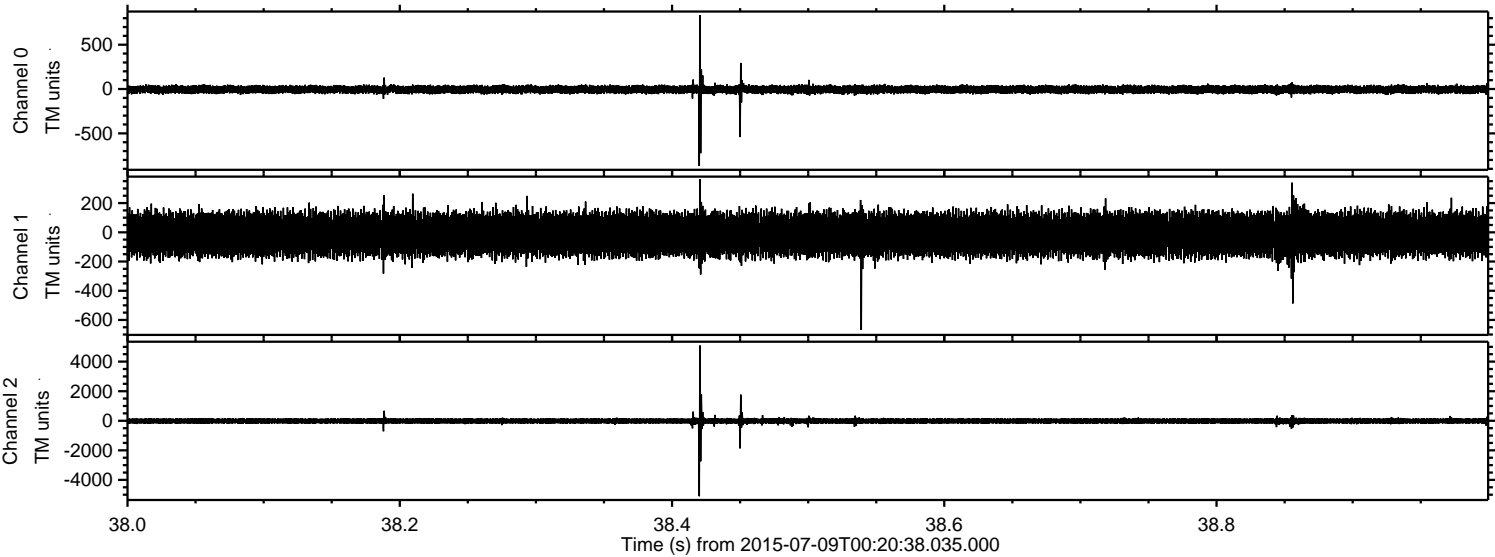
Processed Thu Jul 9 02:27:47 2015 by ELM ver.2012-10-06 from 001__elm20150709_002037__dat00.bin



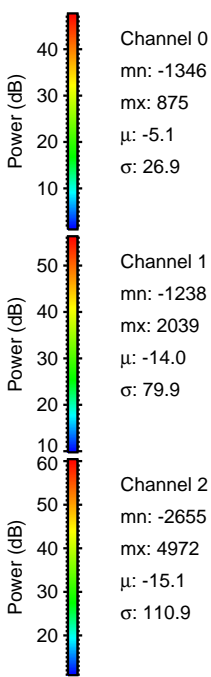
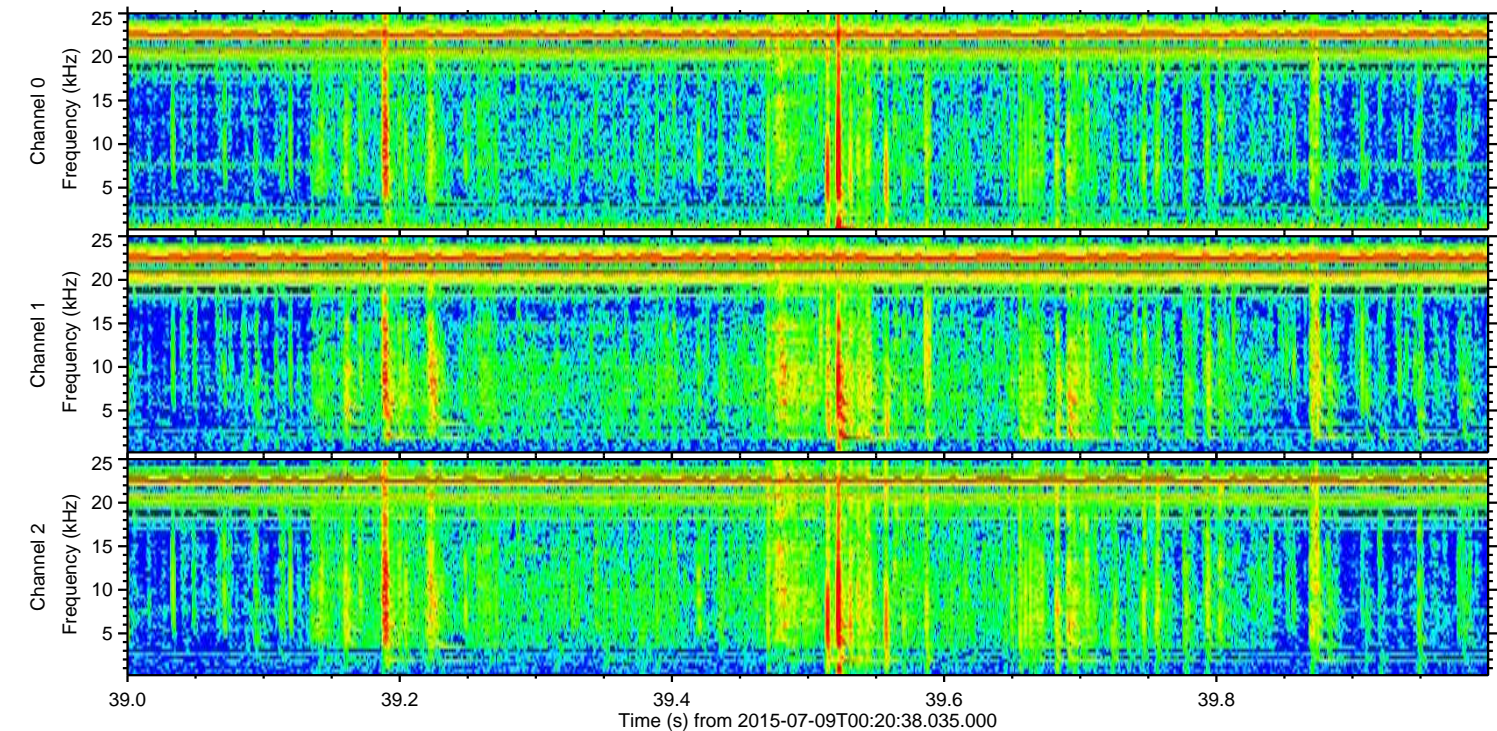
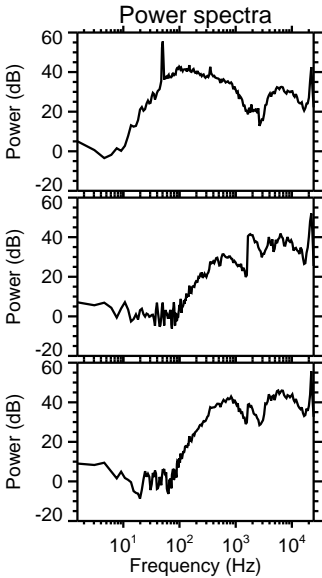
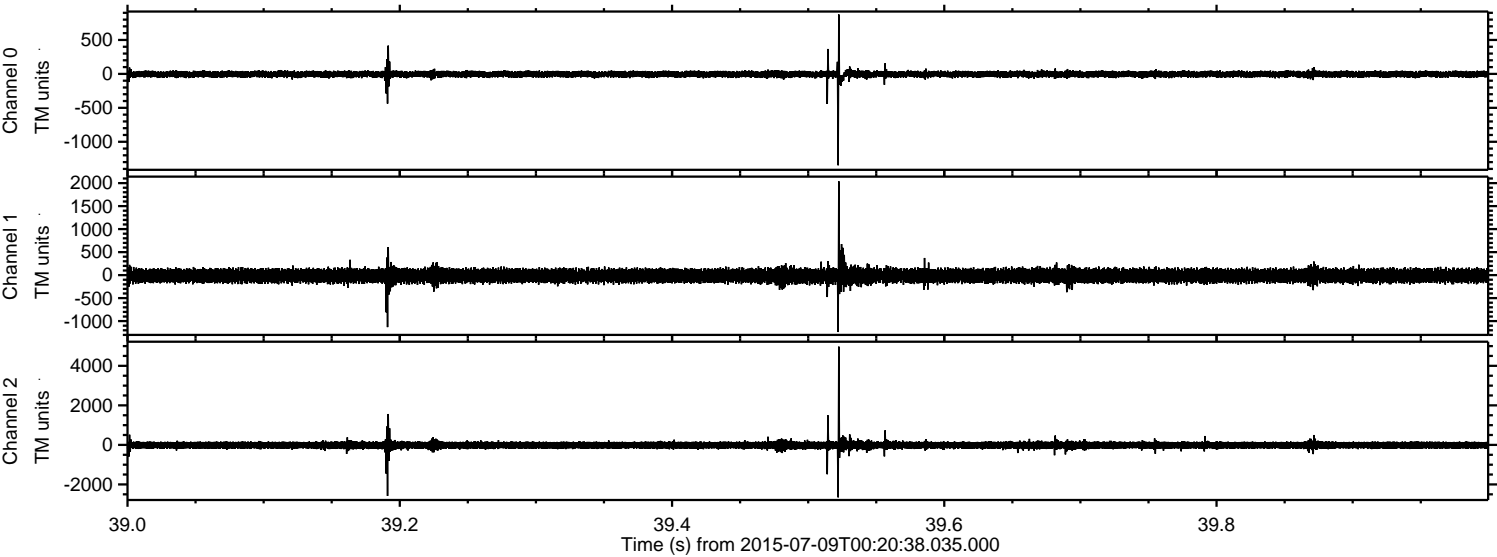
Processed Thu Jul 9 02:27:48 2015 by ELM ver.2012-10-06 from 001__elm20150709_002037__dat00.bin



Processed Thu Jul 9 02:27:49 2015 by ELM ver.2012-10-06 from 001__elm20150709_002037__dat00.bin

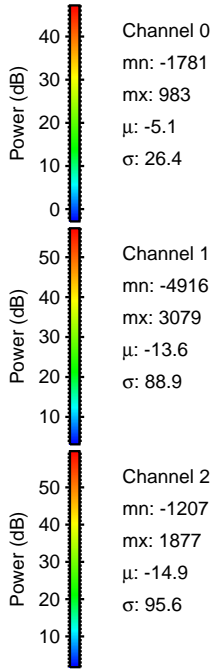
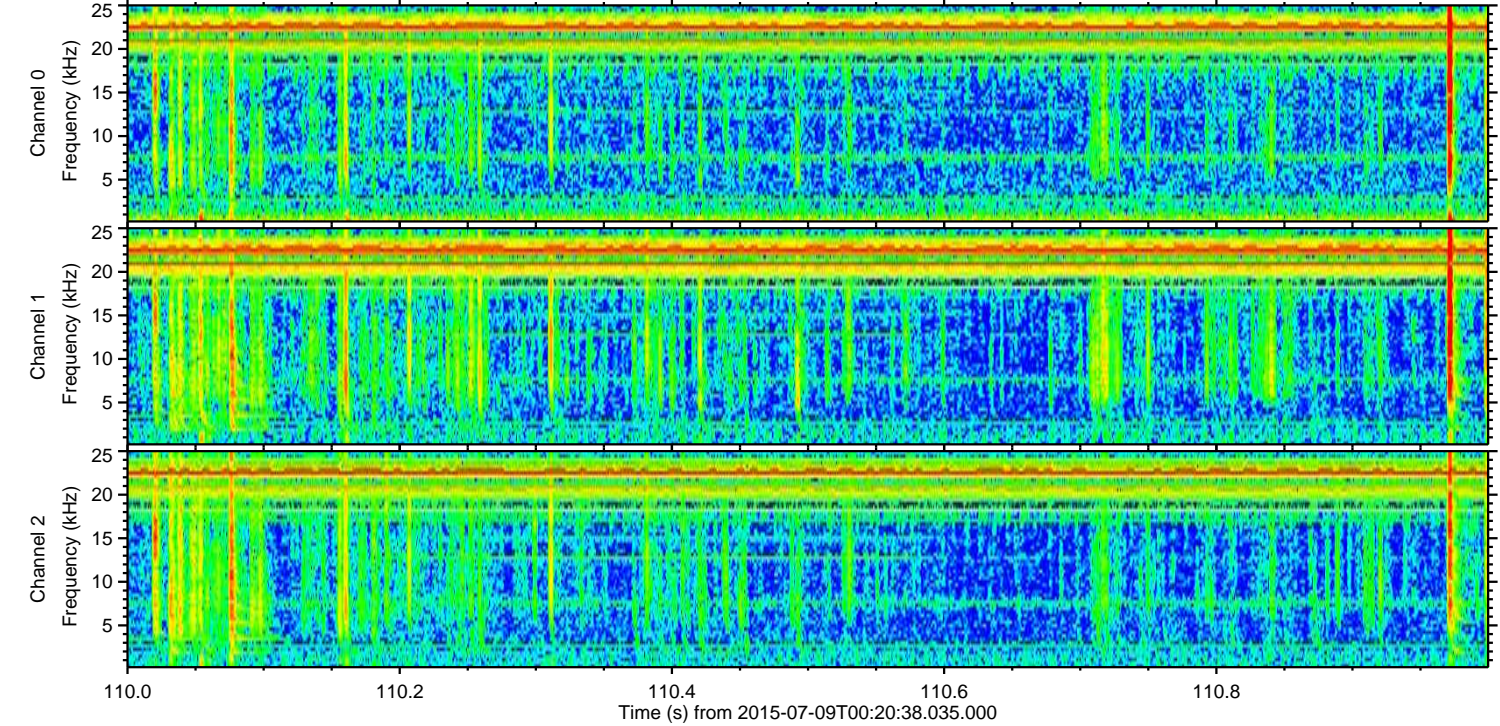
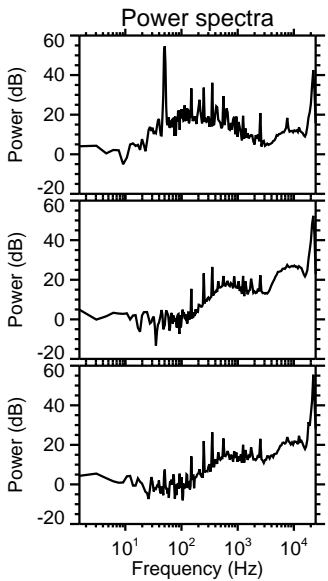
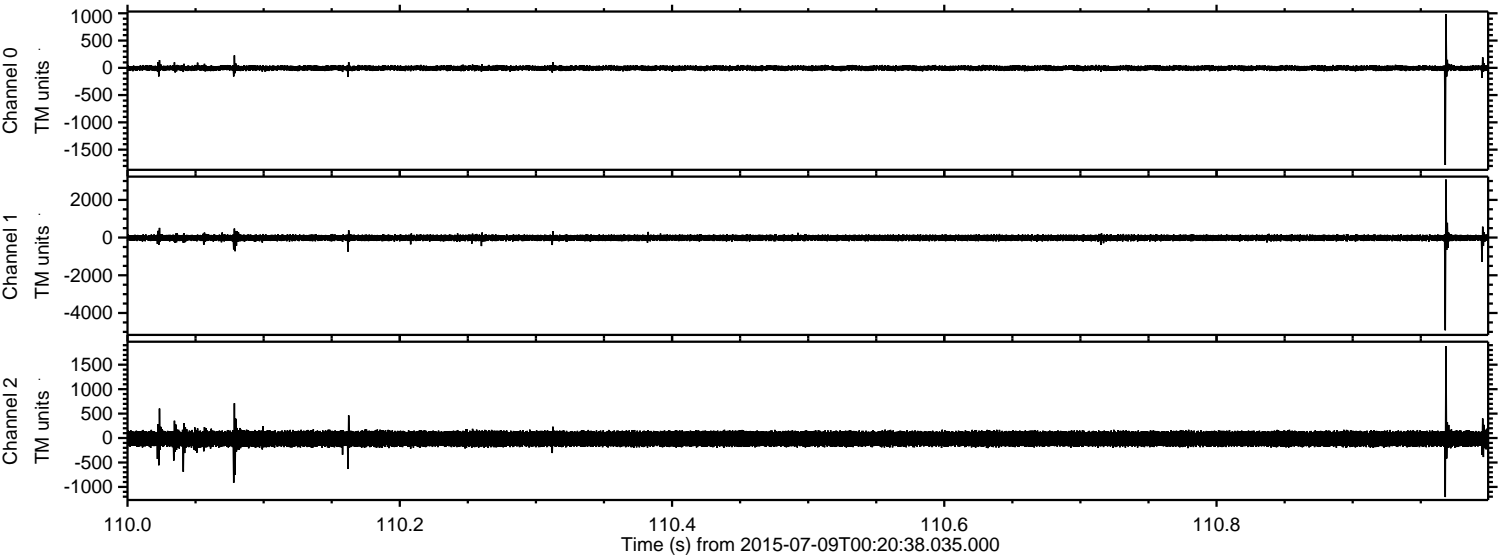


Processed Thu Jul 9 02:27:50 2015 by ELM ver.2012-10-06 from 001__elm20150709_002037__dat00.bin



ELMAVAN 3D WAVEFORMS (Measured data sampled at 50 kHz) 51000 packets of 144 samples from 2015-07-09T00:20:38.035.000. Part 111/147

Processed Thu Jul 9 02:27:52 2015 by ELM ver.2012-10-06 from 001__elm20150709_002037__dat00.bin

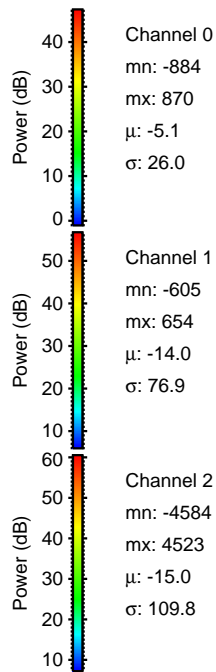
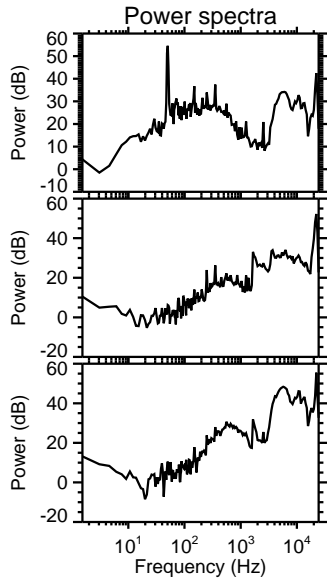
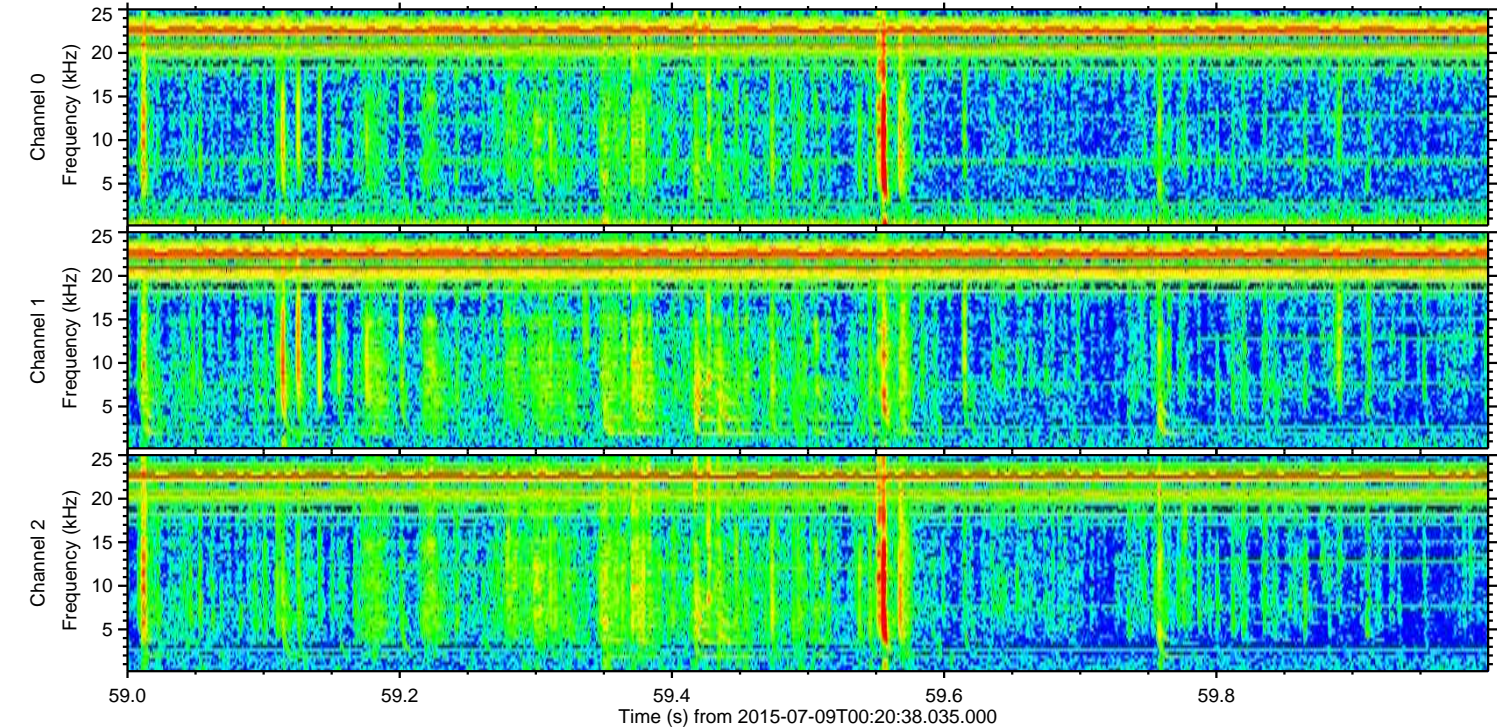
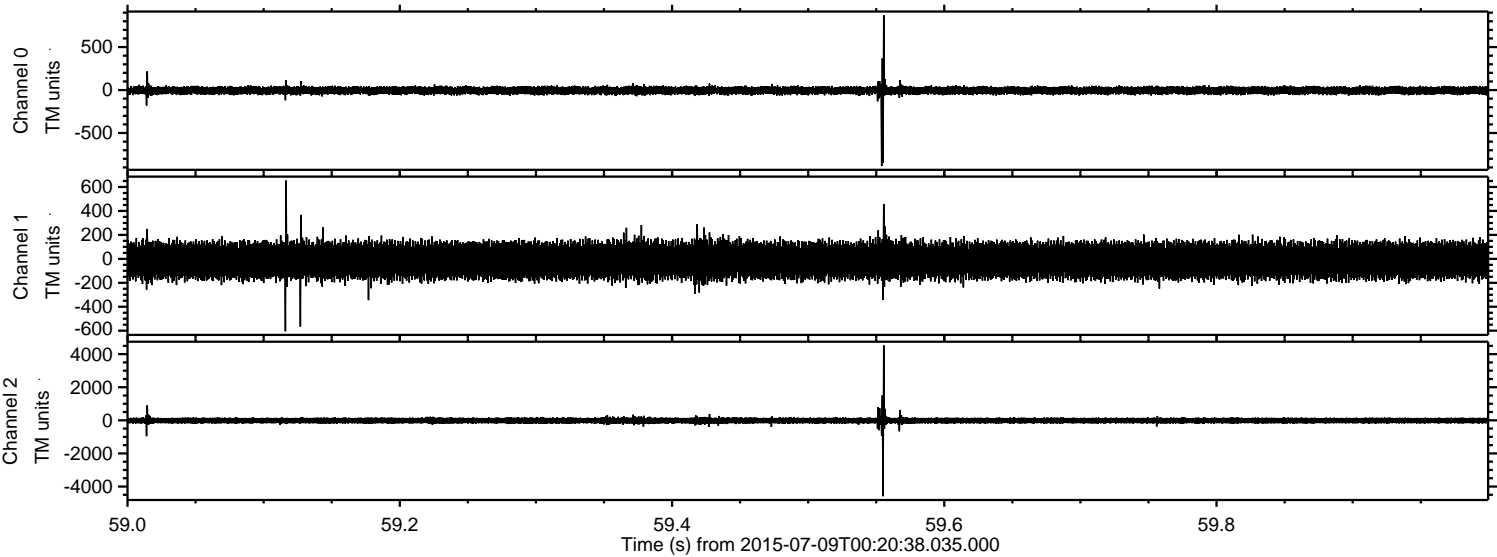


Channel 0
mn: -1781
mx: 983
 μ : -5.1
 σ : 26.4

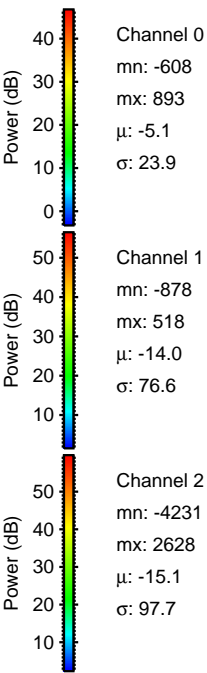
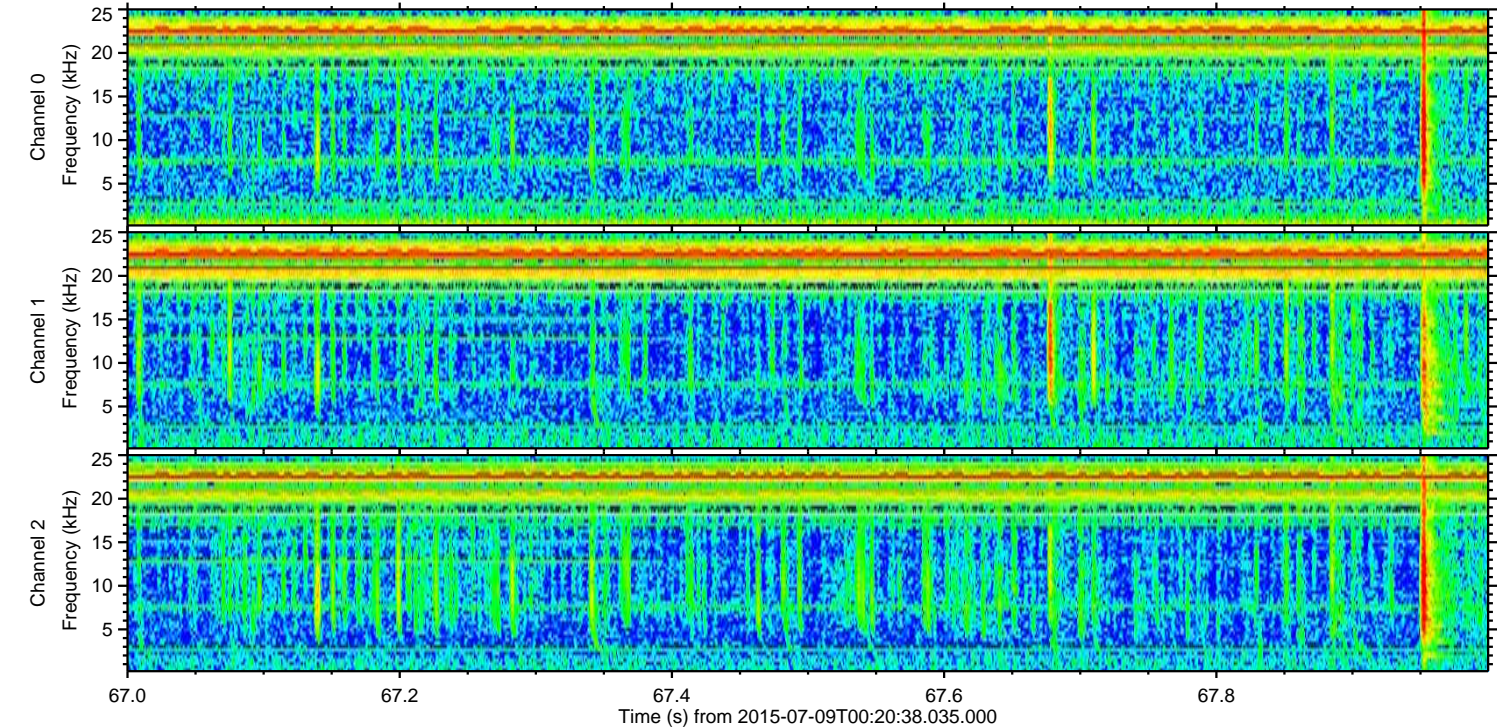
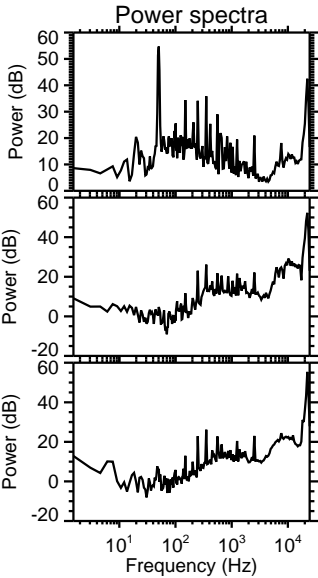
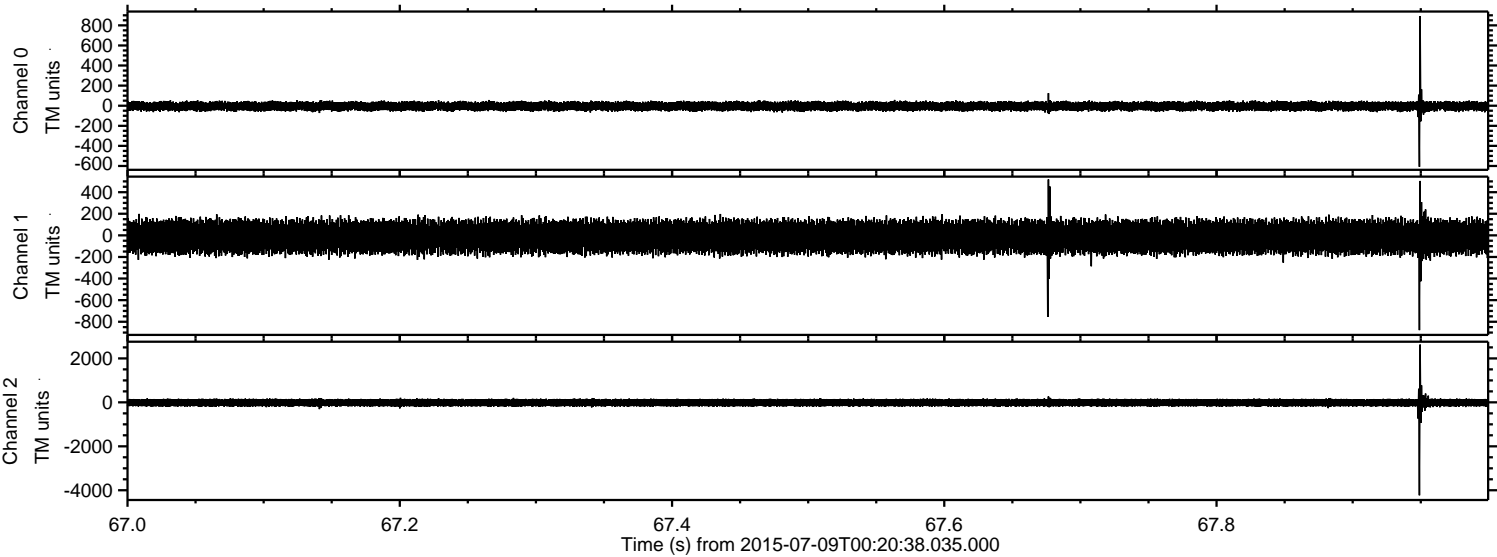
Channel 1
mn: -4916
mx: 3079
 μ : -13.6
 σ : 88.9

Channel 2
mn: -1207
mx: 1877
 μ : -14.9
 σ : 95.6

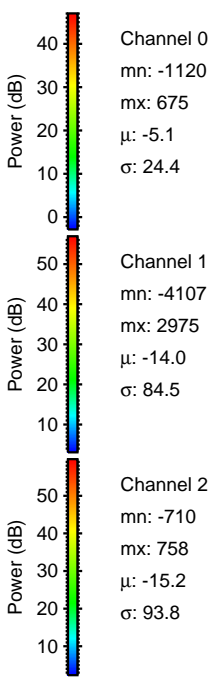
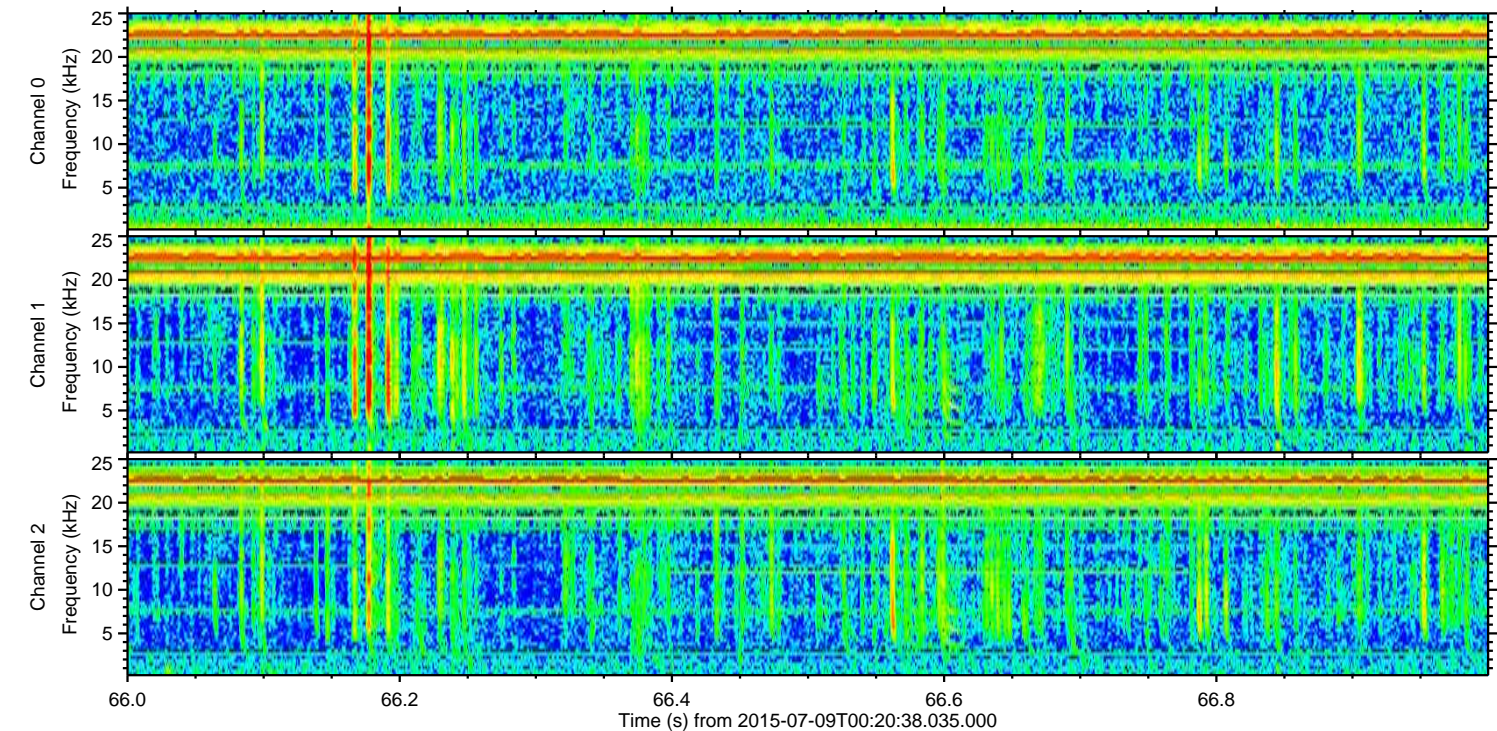
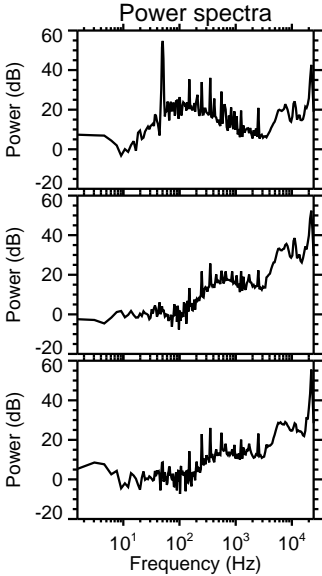
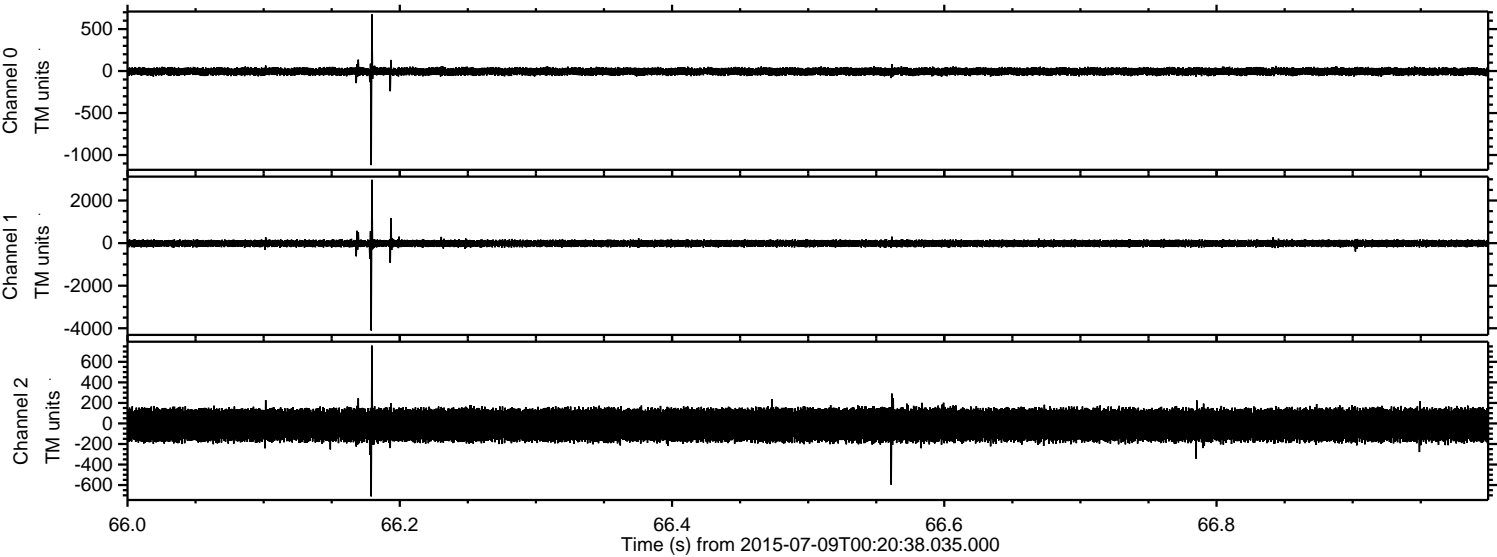
Processed Thu Jul 9 02:27:53 2015 by ELM ver.2012-10-06 from 001__elm20150709_002037__dat00.bin



Processed Thu Jul 9 02:27:54 2015 by ELM ver.2012-10-06 from 001__elm20150709_002037__dat00.bin



Processed Thu Jul 9 02:27:55 2015 by ELM ver.2012-10-06 from 001__elm20150709_002037__dat00.bin



Processed Thu Jul 9 02:27:56 2015 by ELM ver.2012-10-06 from 001__elm20150709_002037__dat00.bin

