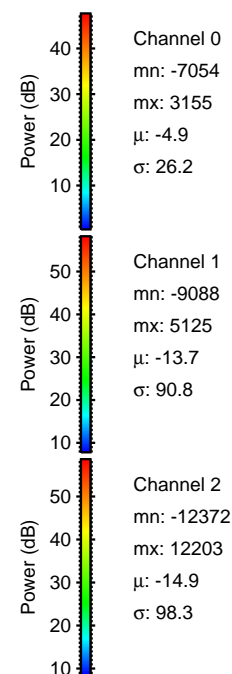
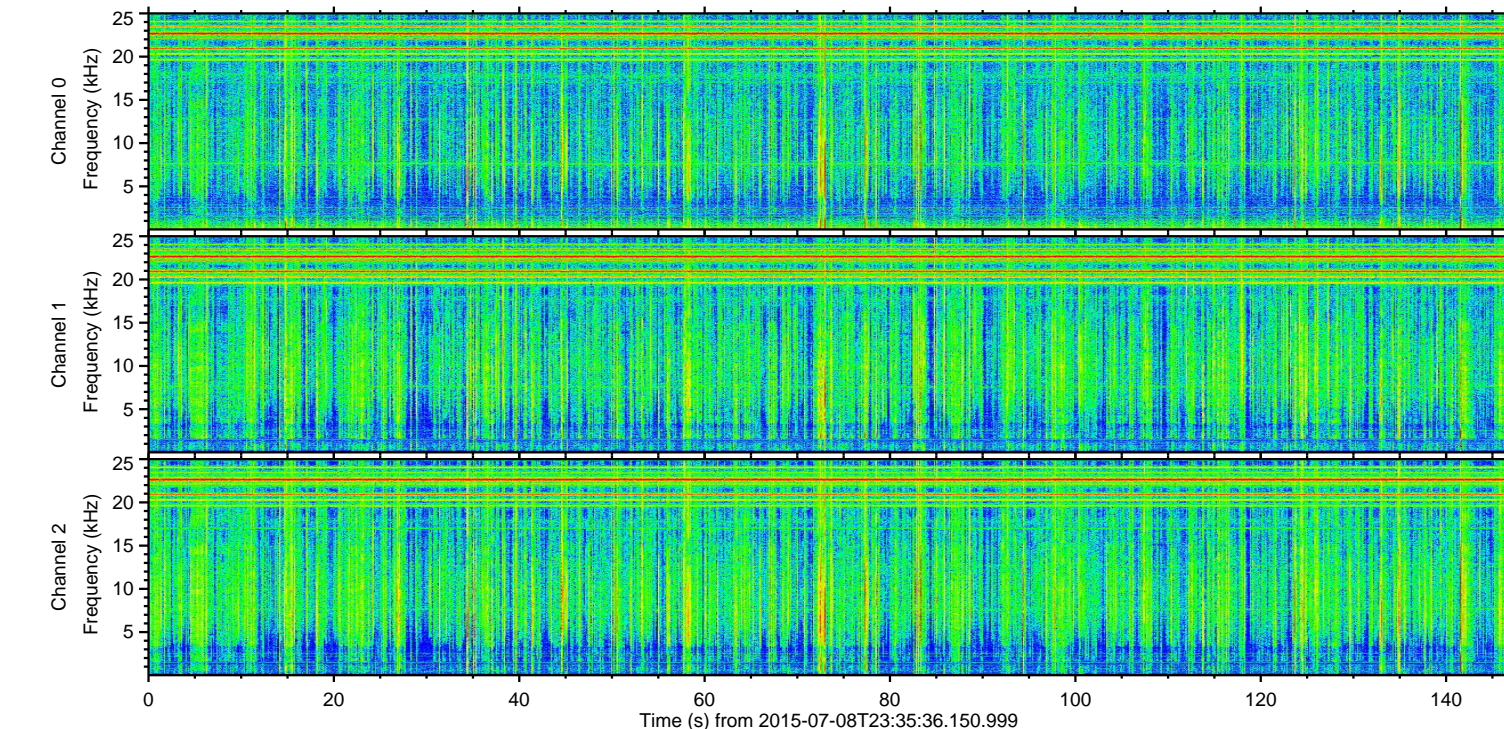
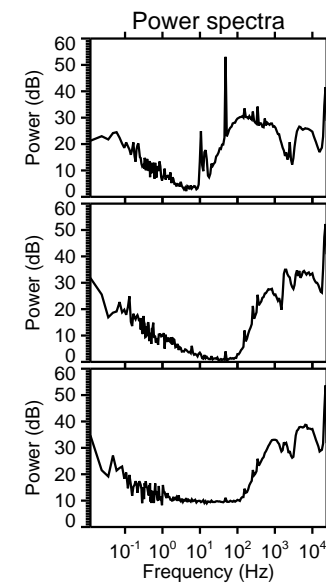
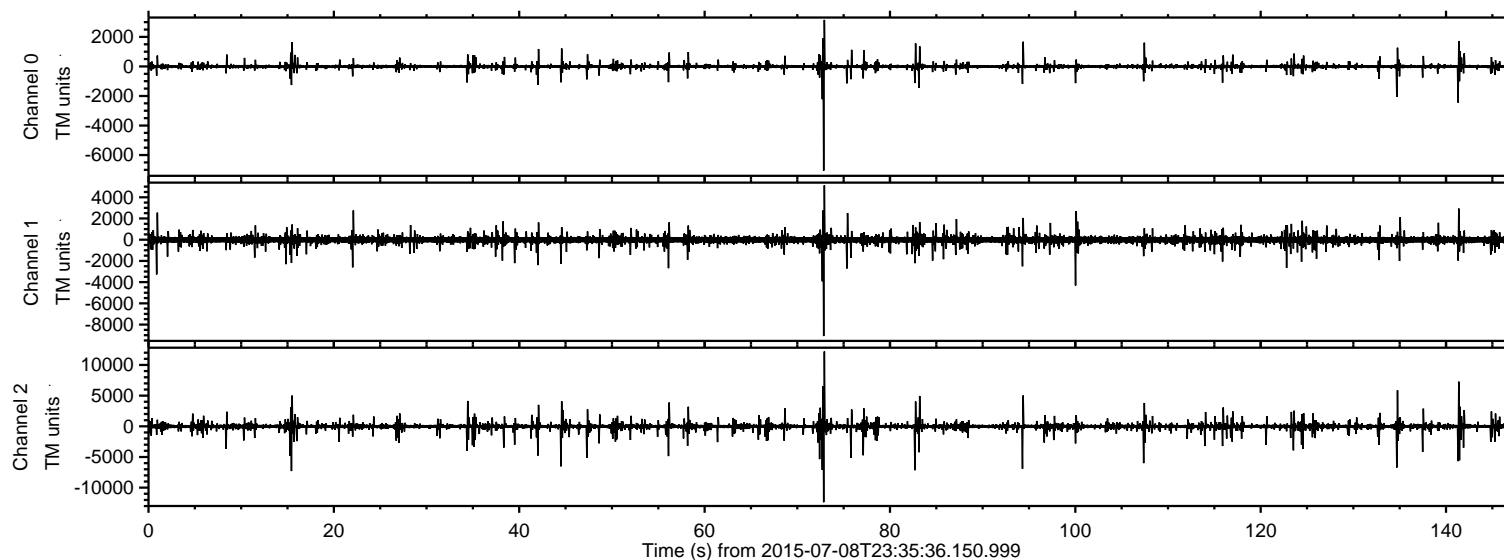
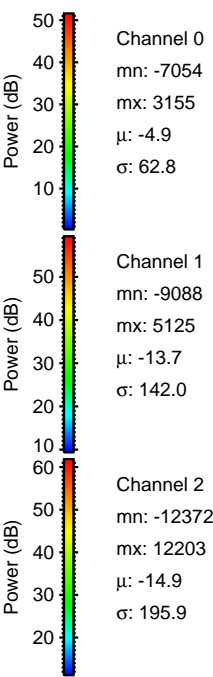
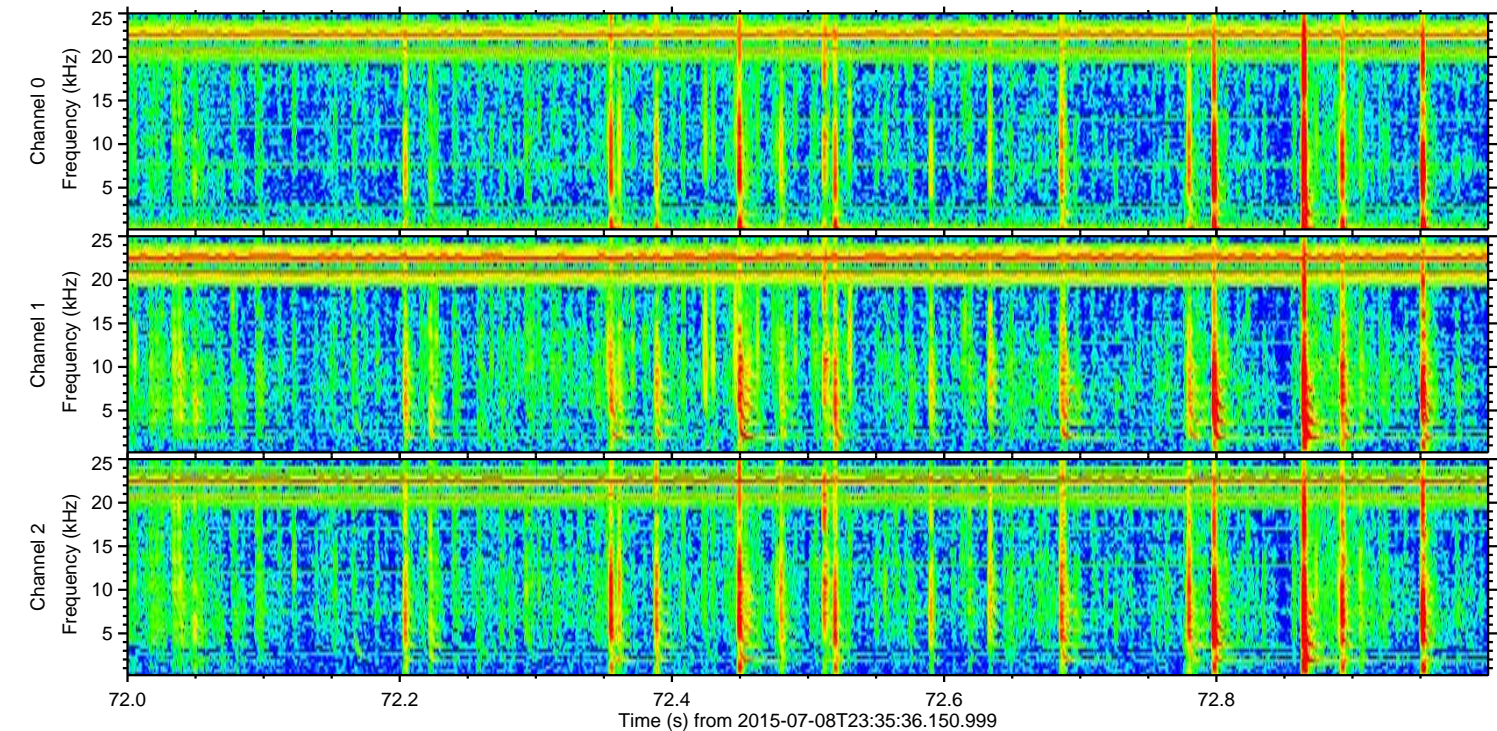
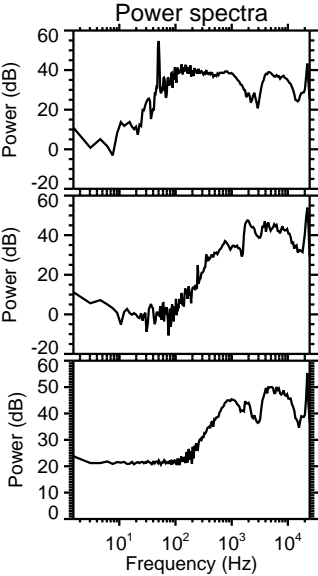
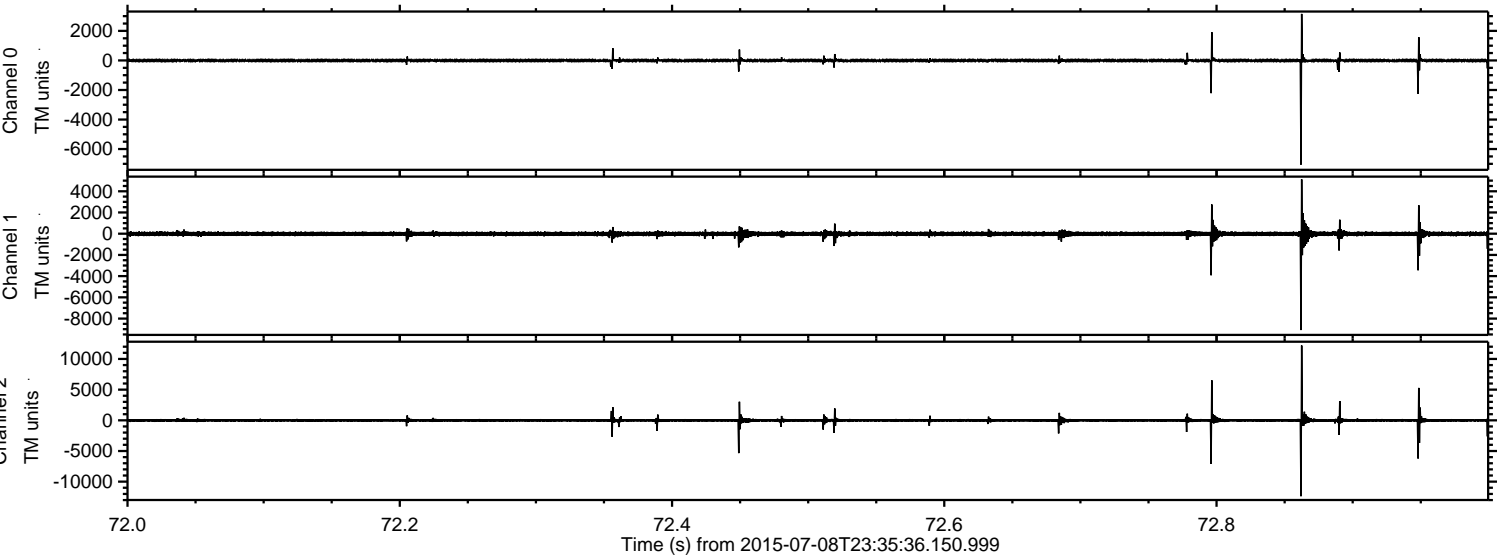


ELMAVAN 3D WAVEFORMS (Measured data sampled at 50 kHz) 51000 packets of 144 samples from 2015-07-08T23:35:36.150.999.

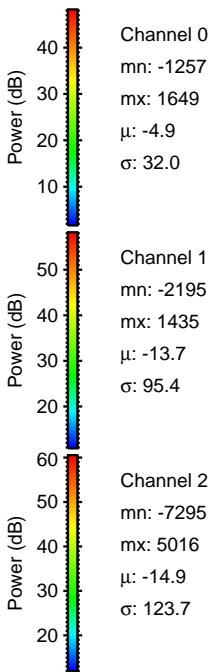
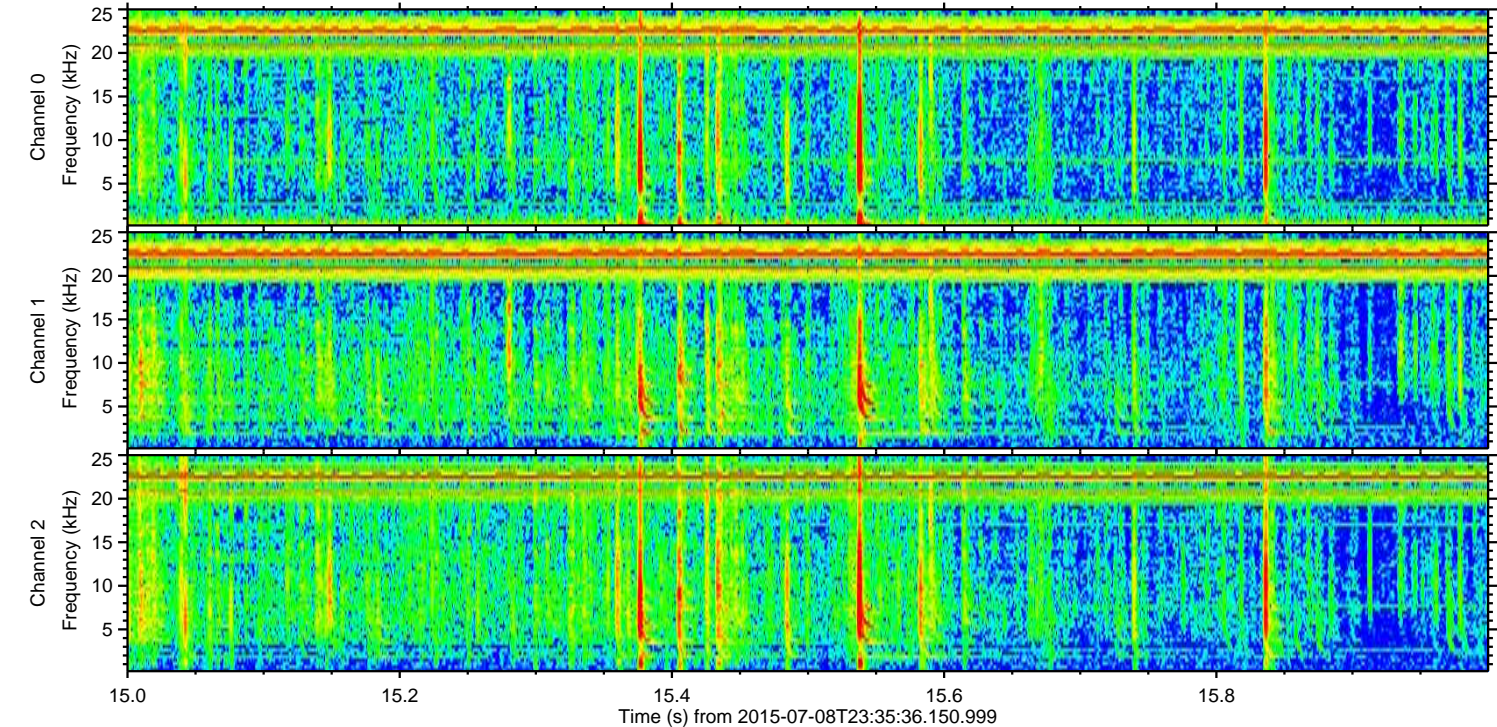
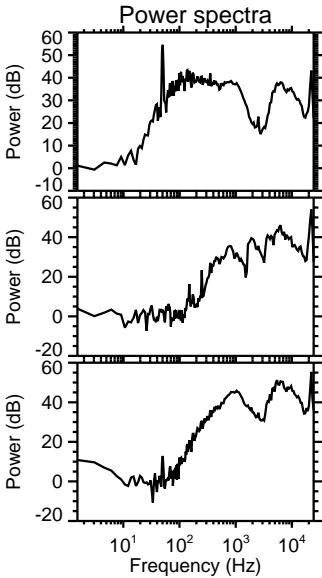
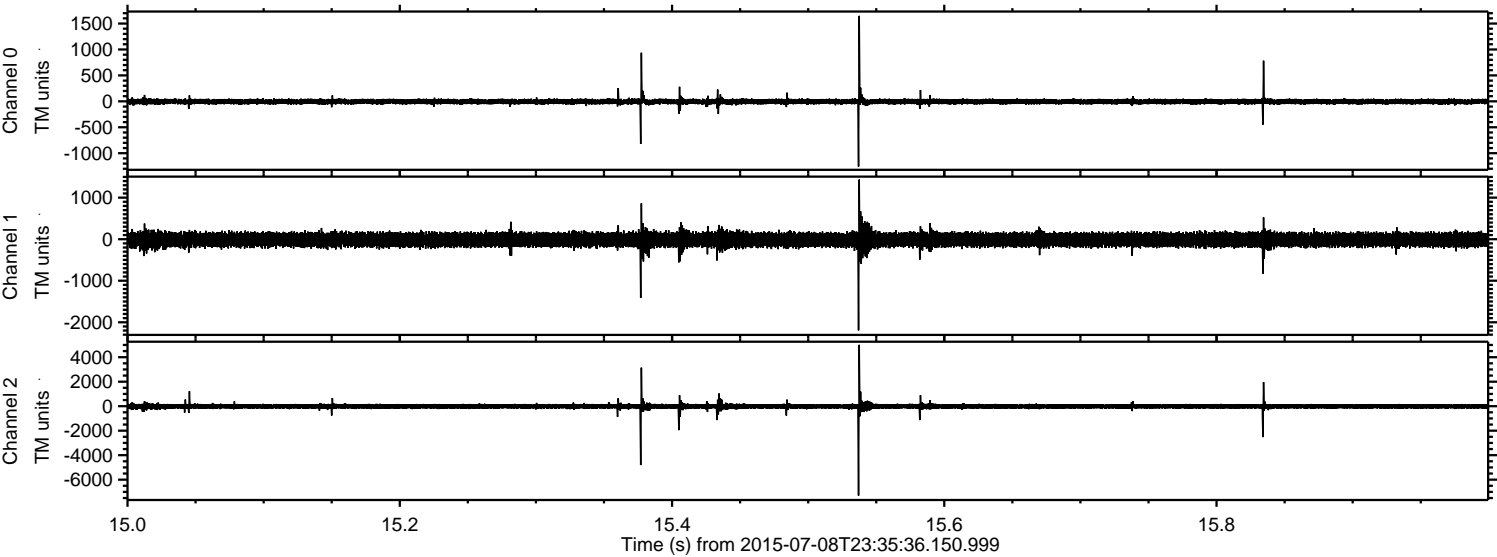
Processed Thu Jul 9 01:42:10 2015 by ELM ver.2012-10-06 from 001__elm20150708_233535__dat00.bin



Processed Thu Jul 9 01:42:25 2015 by ELM ver.2012-10-06 from 001__elm20150708_233535__dat00.bin

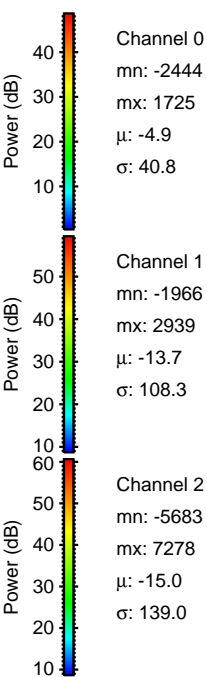
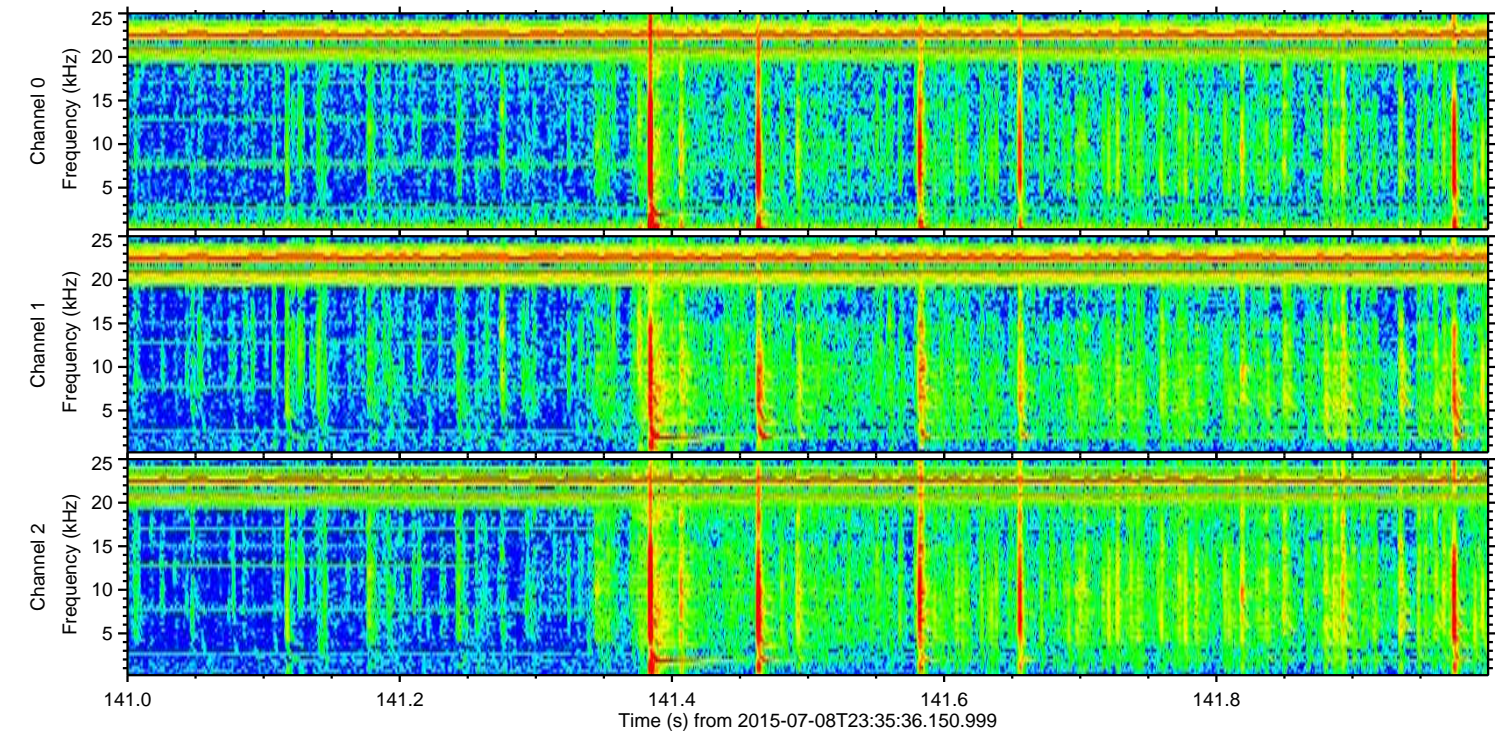
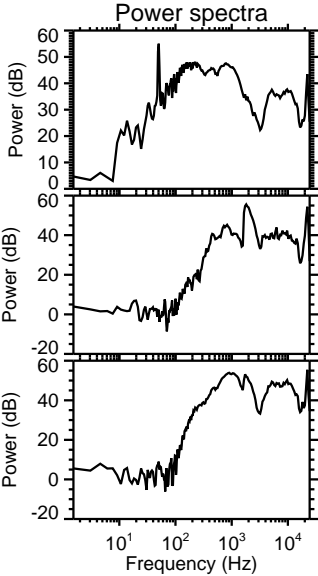
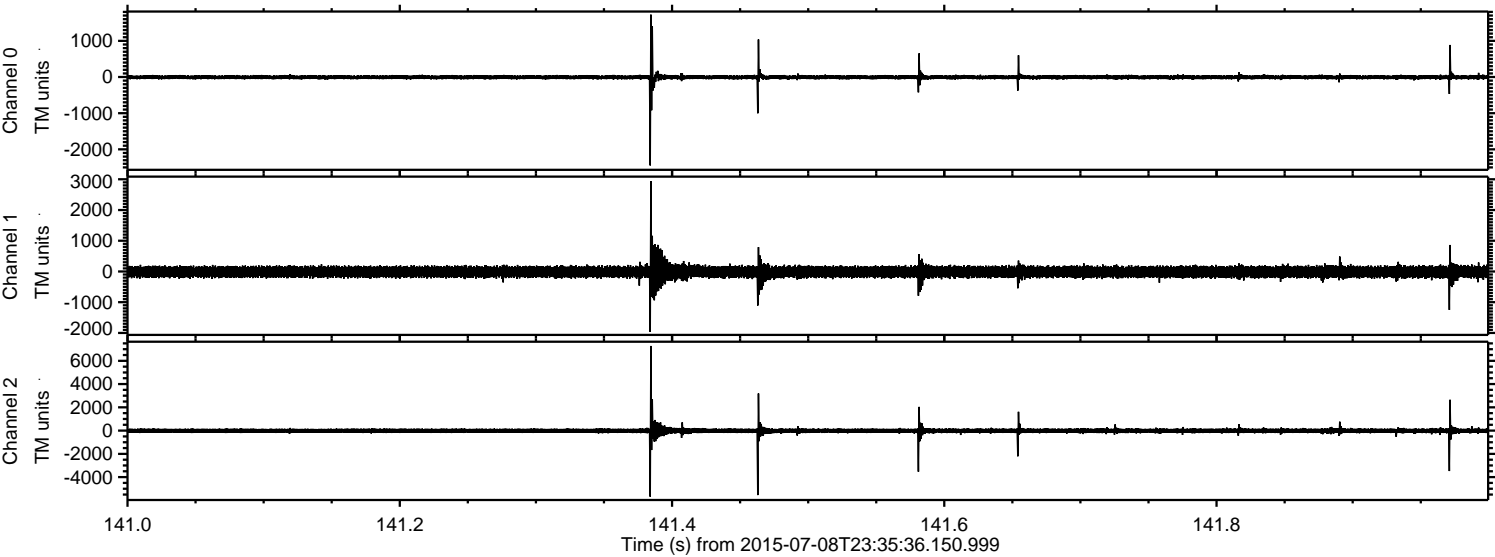


Processed Thu Jul 9 01:42:26 2015 by ELM ver.2012-10-06 from 001__elm20150708_233535__dat00.bin

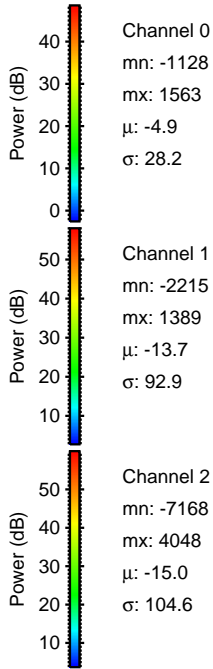
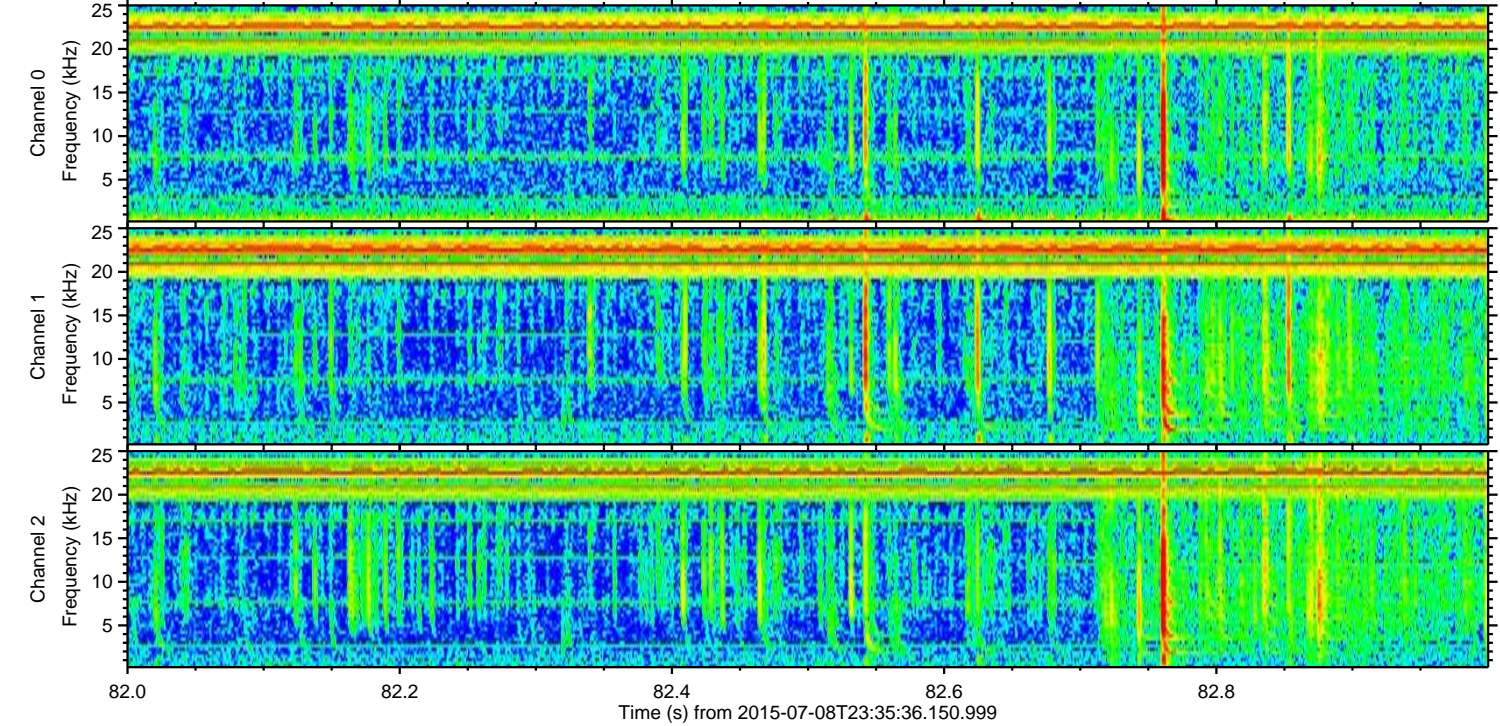
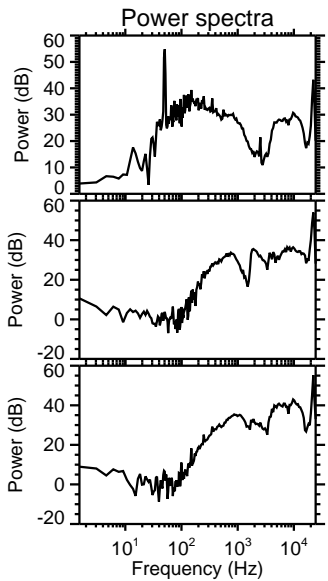
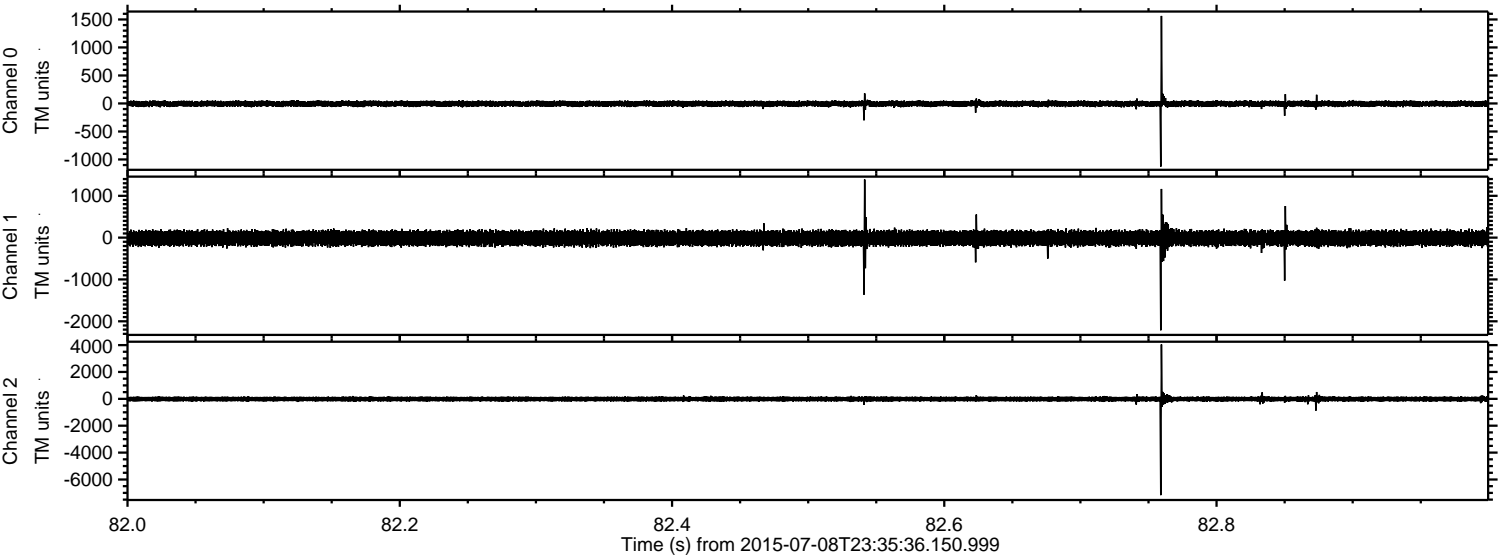


ELMAVAN 3D WAVEFORMS (Measured data sampled at 50 kHz) 51000 packets of 144 samples from 2015-07-08T23:35:36.150.999. Part 142/147

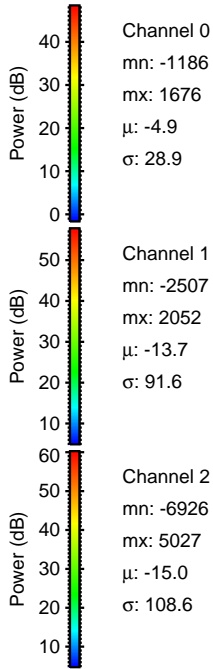
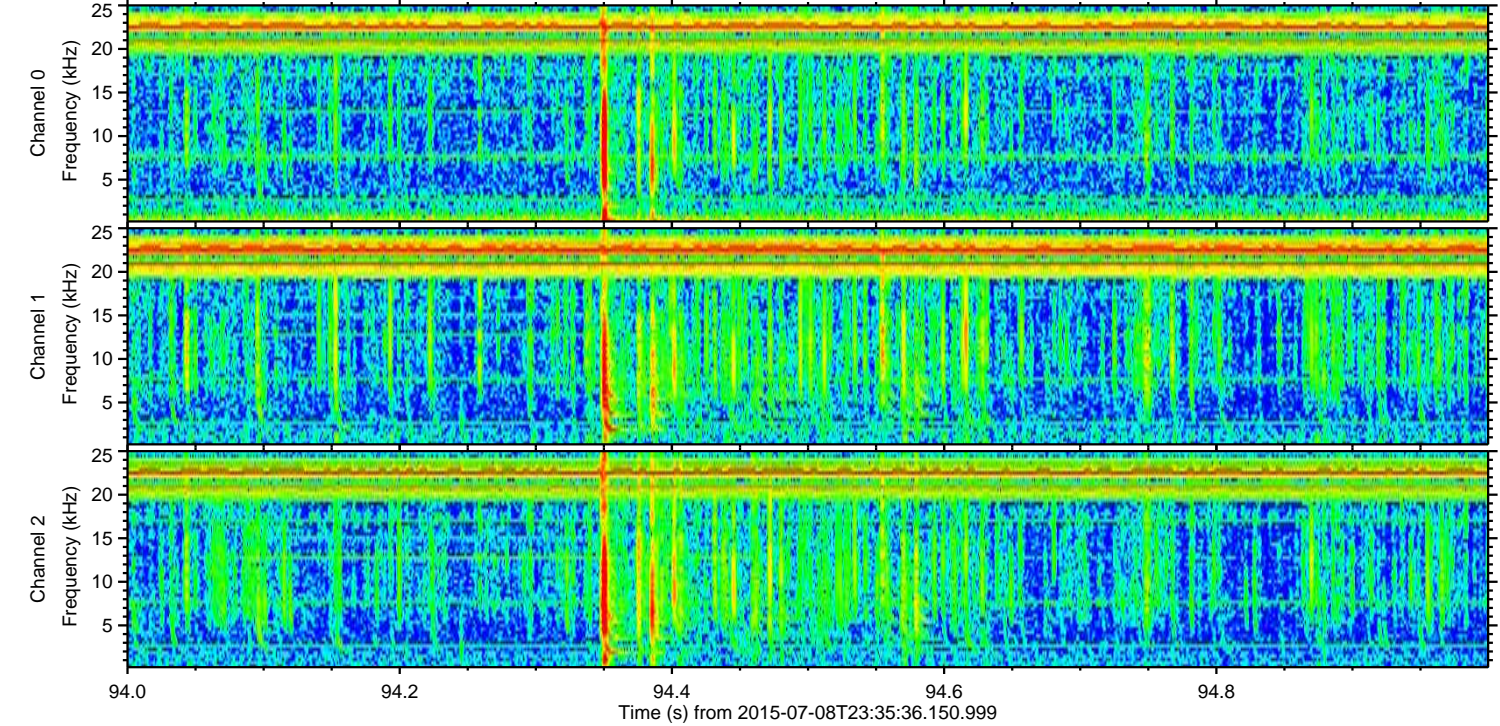
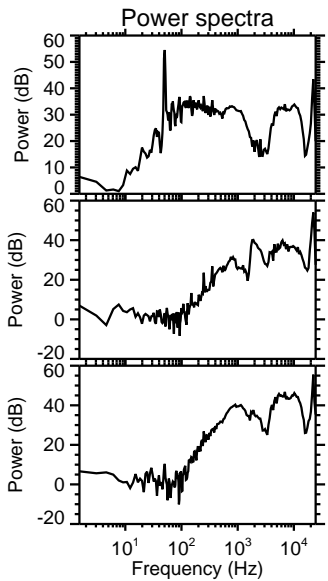
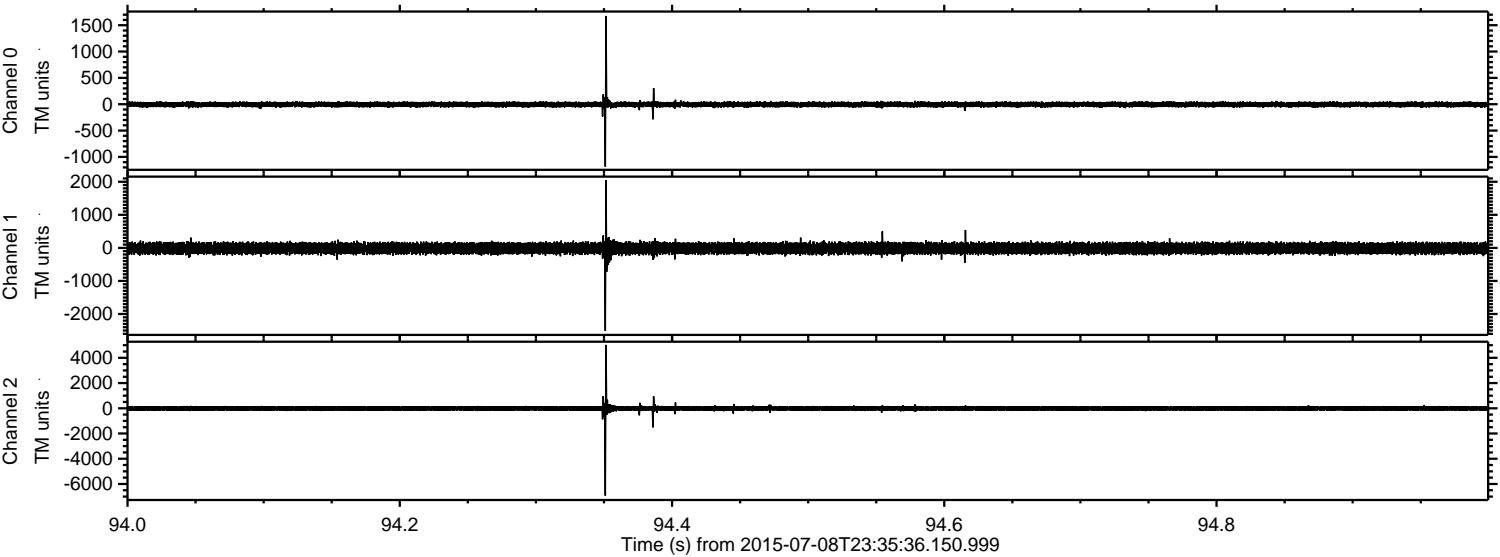
Processed Thu Jul 9 01:42:27 2015 by ELM ver.2012-10-06 from 001__elm20150708_233535__dat00.bin



Processed Thu Jul 9 01:42:28 2015 by ELM ver.2012-10-06 from 001__elm20150708_233535__dat00.bin

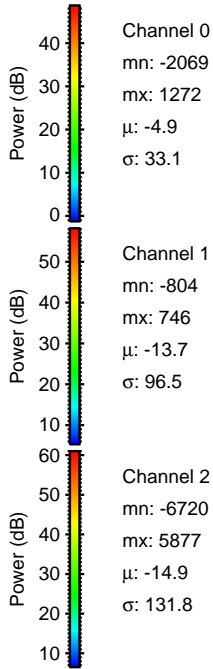
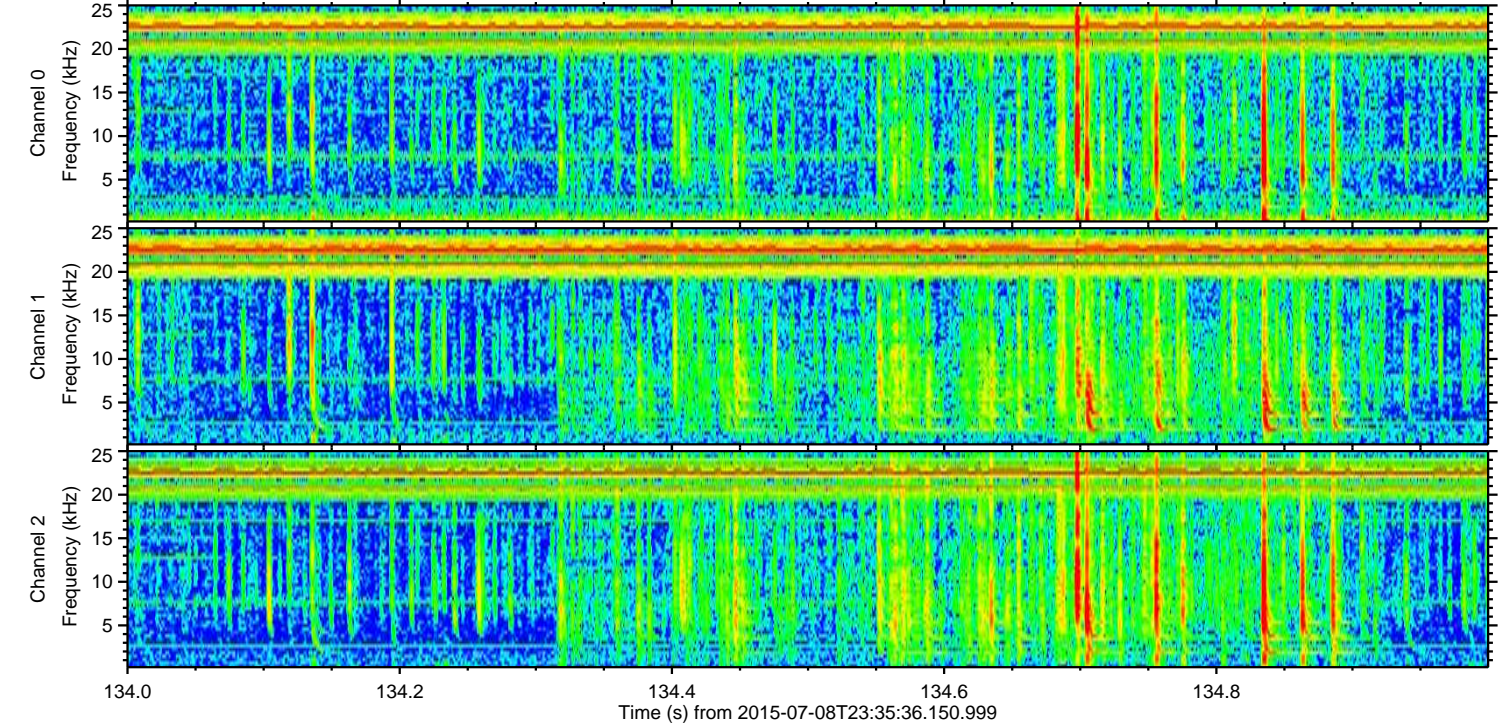
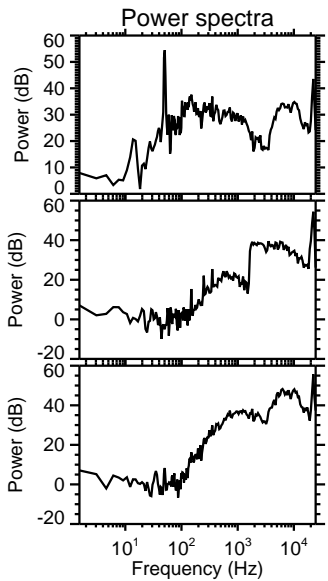
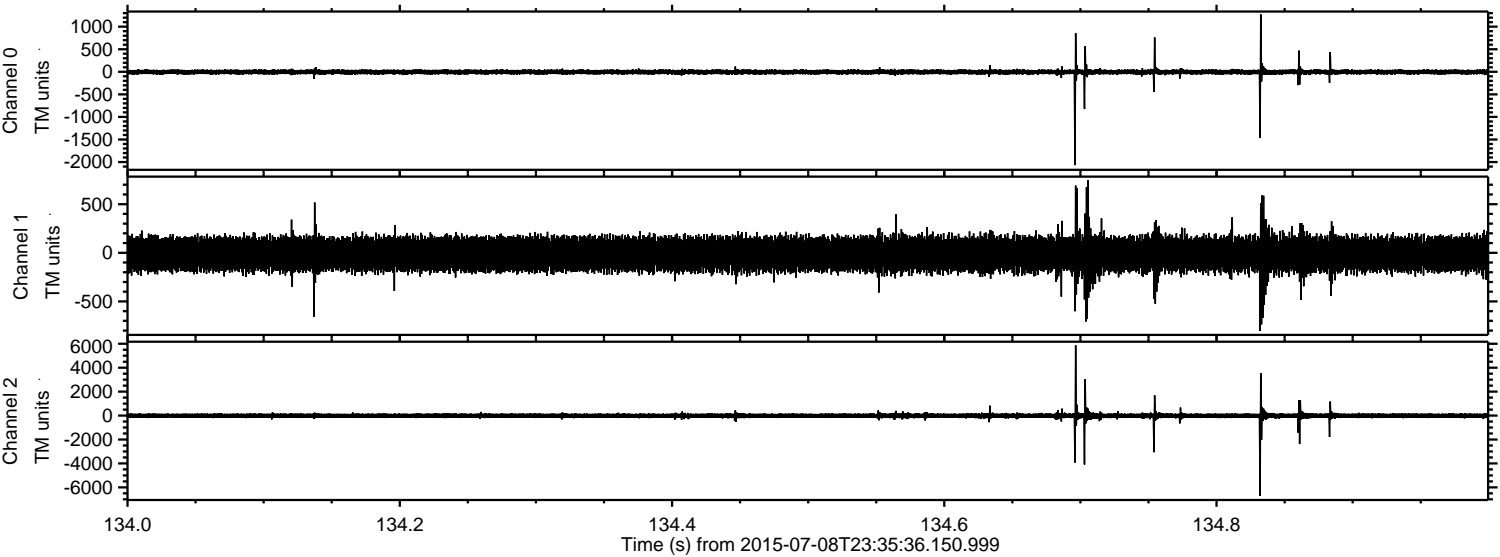


Processed Thu Jul 9 01:42:29 2015 by ELM ver.2012-10-06 from 001__elm20150708_233535__dat00.bin

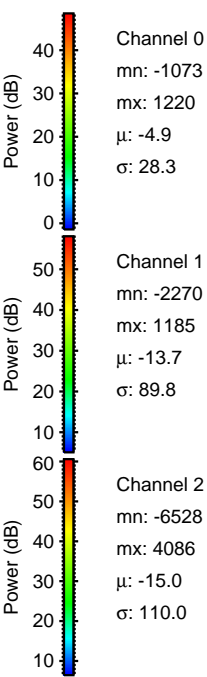
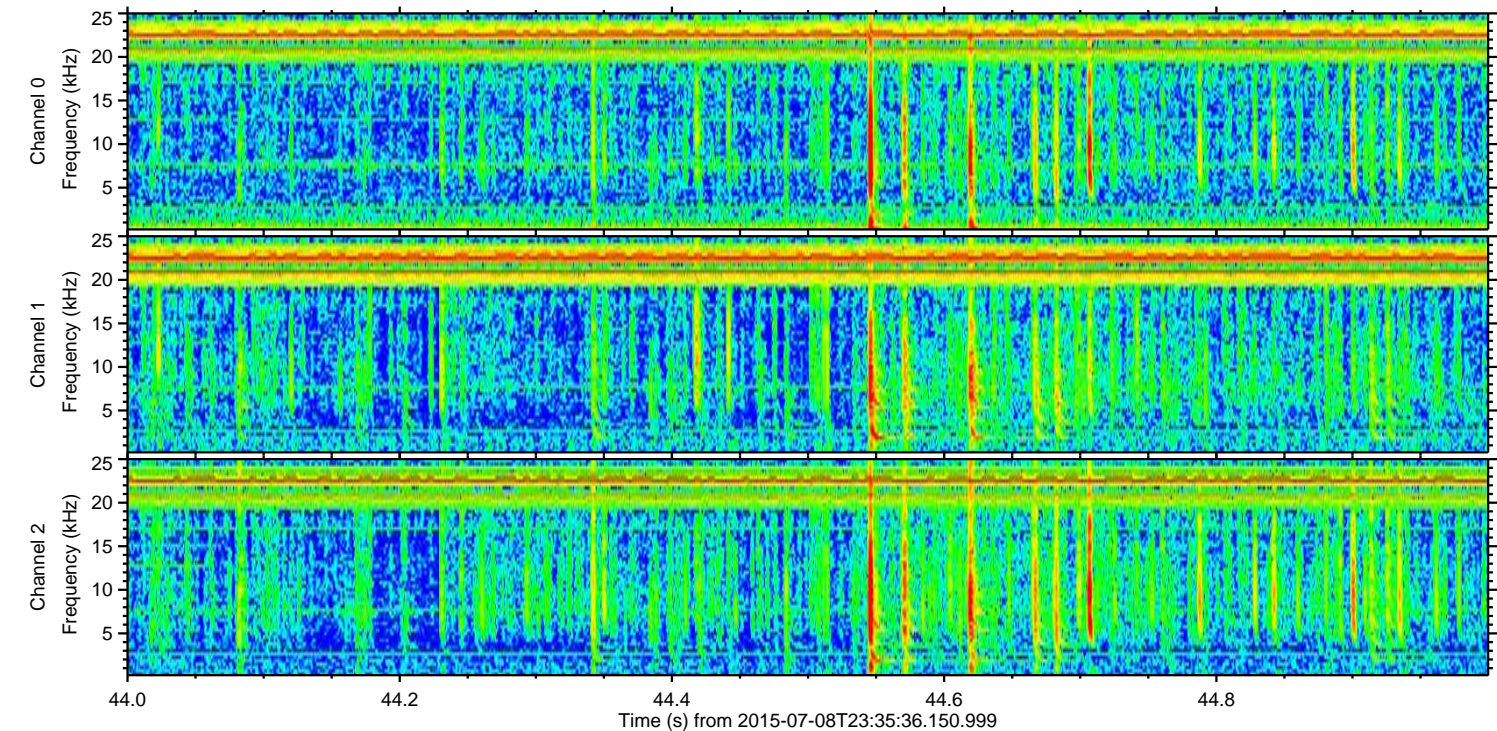
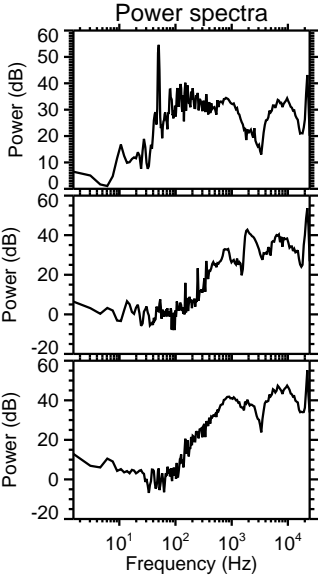
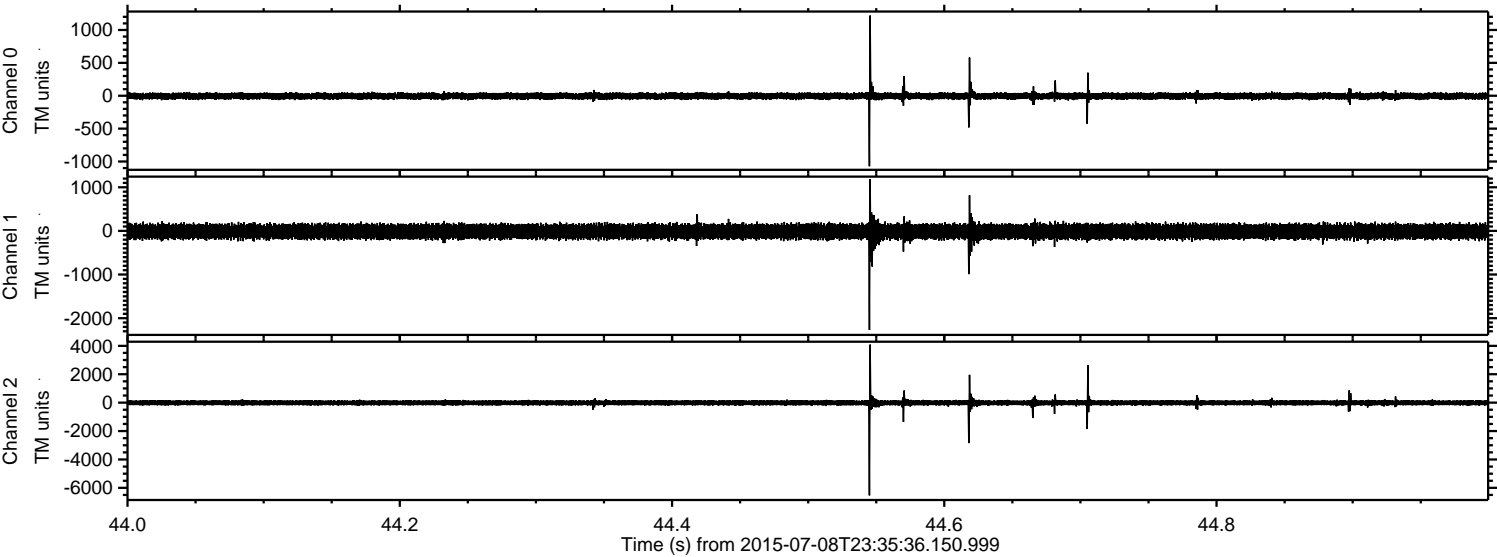


ELMAVAN 3D WAVEFORMS (Measured data sampled at 50 kHz) 51000 packets of 144 samples from 2015-07-08T23:35:36.150.999. Part 135/147

Processed Thu Jul 9 01:42:30 2015 by ELM ver.2012-10-06 from 001__elm20150708_233535__dat00.bin

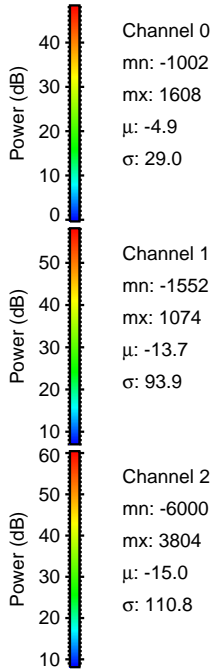
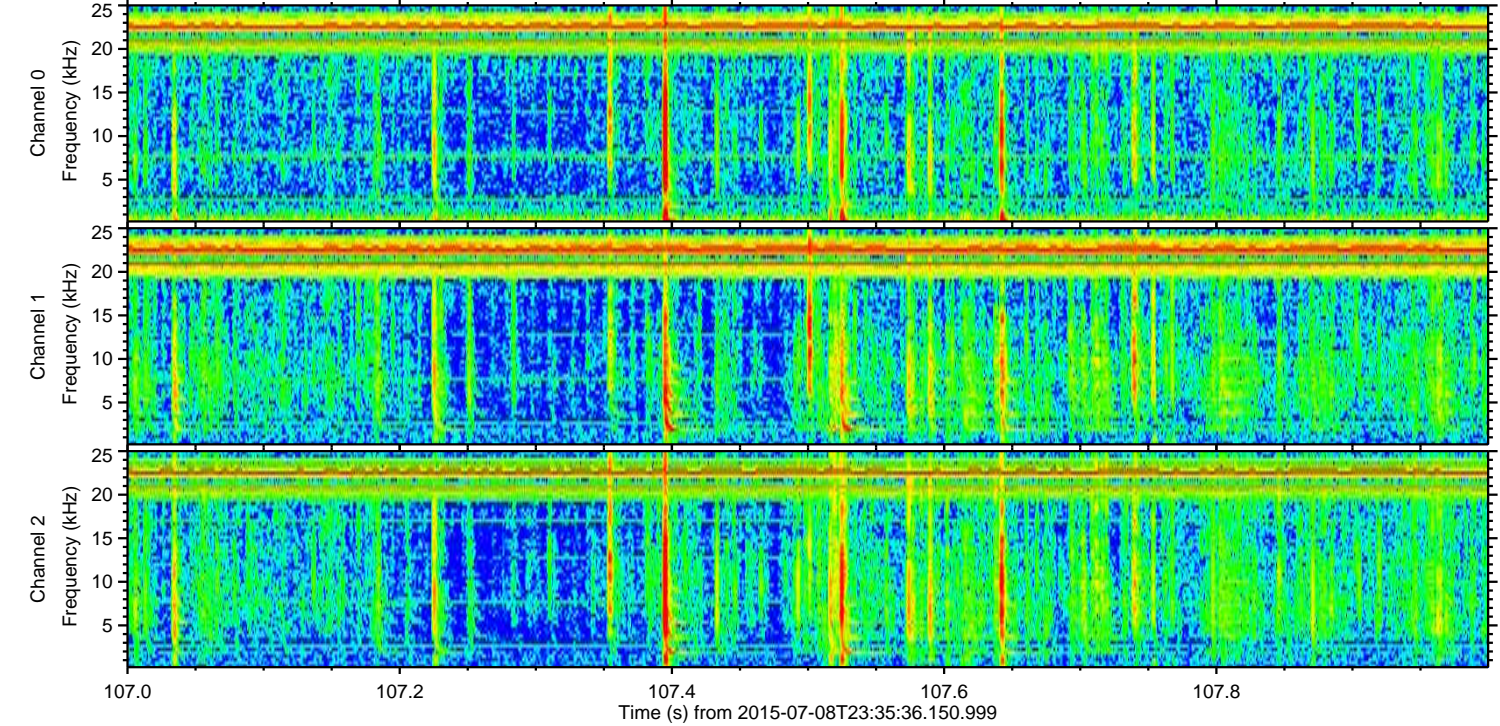
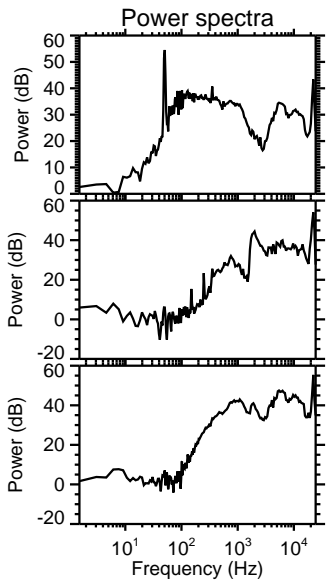
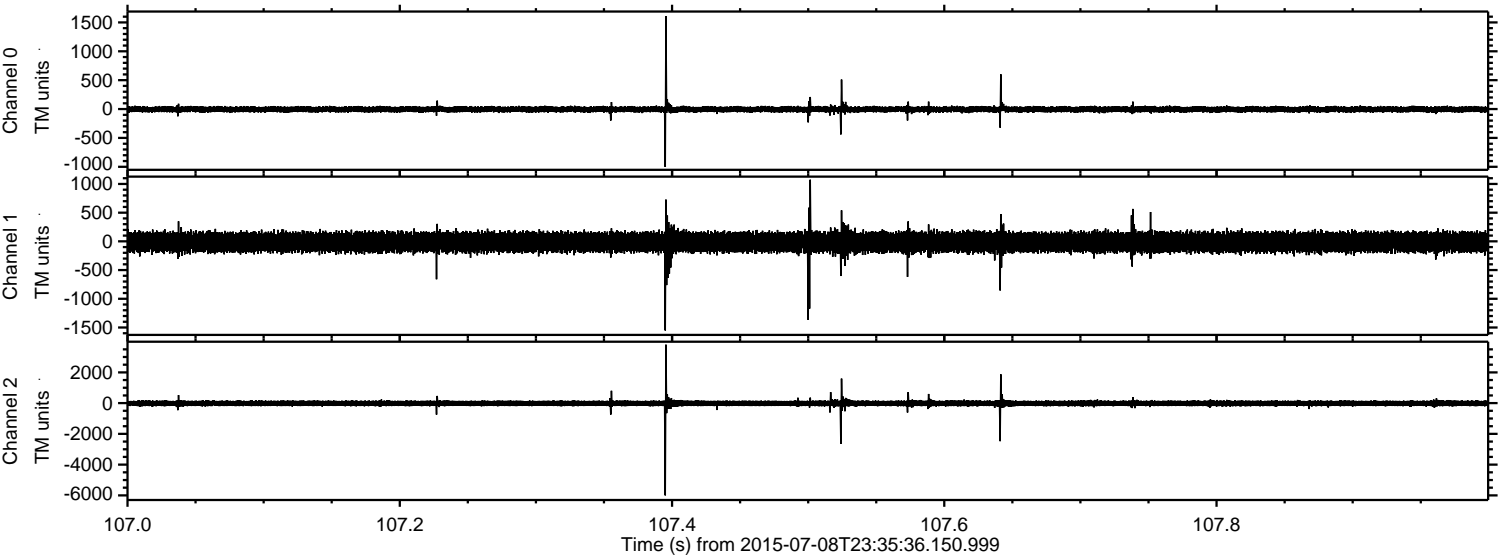


Processed Thu Jul 9 01:42:31 2015 by ELM ver.2012-10-06 from 001__elm20150708_233535__dat00.bin



ELMAVAN 3D WAVEFORMS (Measured data sampled at 50 kHz) 51000 packets of 144 samples from 2015-07-08T23:35:36.150.999. Part 108/147

Processed Thu Jul 9 01:42:32 2015 by ELM ver.2012-10-06 from 001__elm20150708_233535__dat00.bin



Channel 0
mn: -1002
mx: 1608
 μ : -4.9
 σ : 29.0

Channel 1
mn: -1552
mx: 1074
 μ : -13.7
 σ : 93.9

Channel 2
mn: -6000
mx: 3804
 μ : -15.0
 σ : 110.8

Processed Thu Jul 9 01:42:33 2015 by ELM ver.2012-10-06 from 001__elm20150708_233535__dat00.bin

