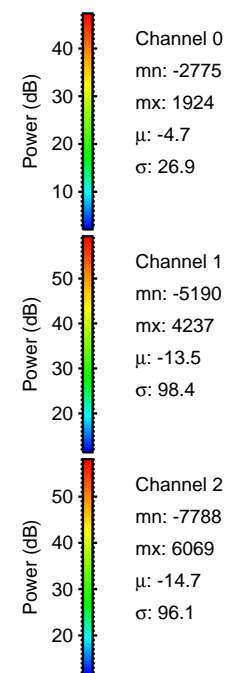
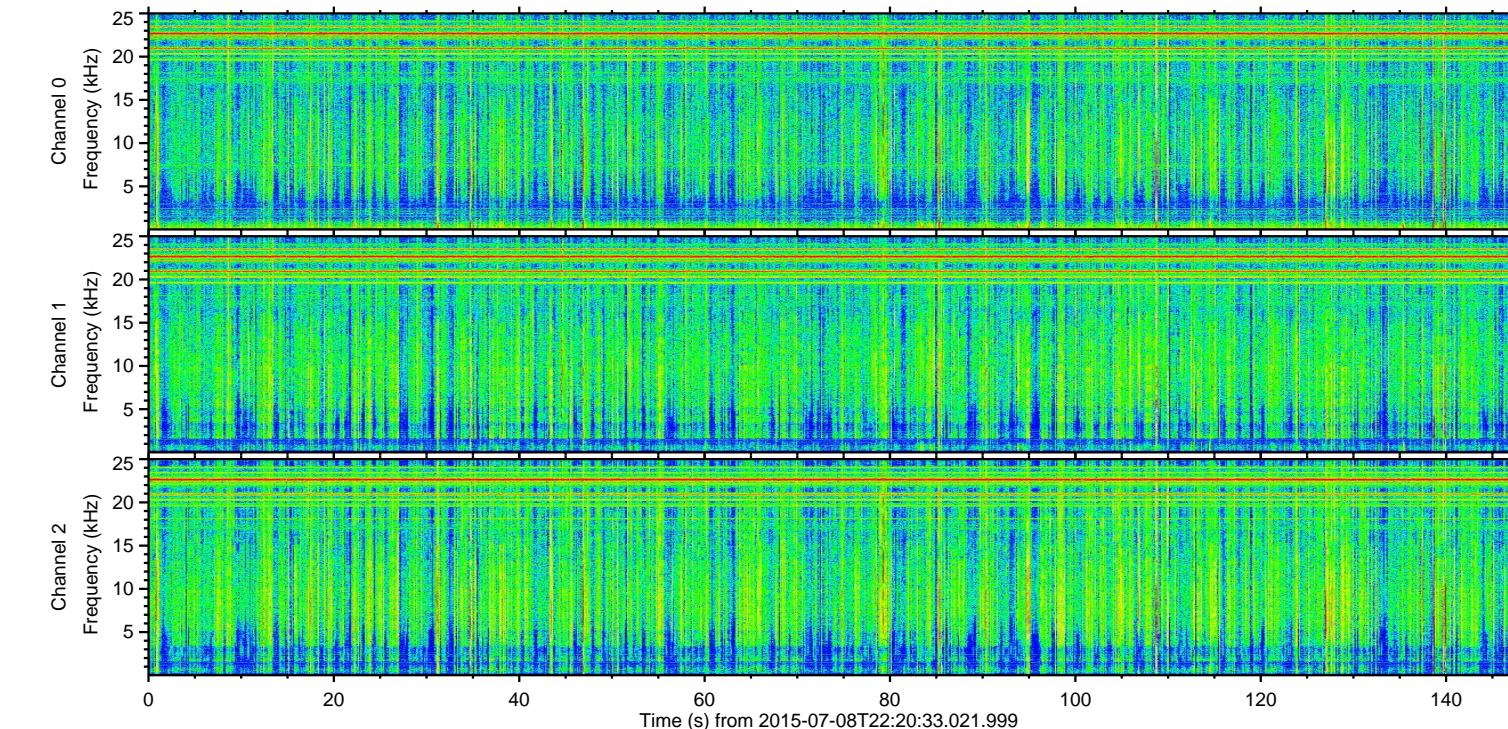
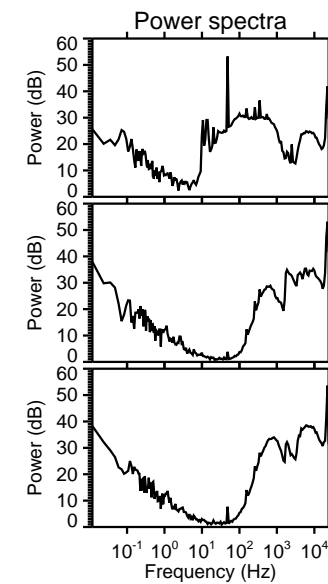
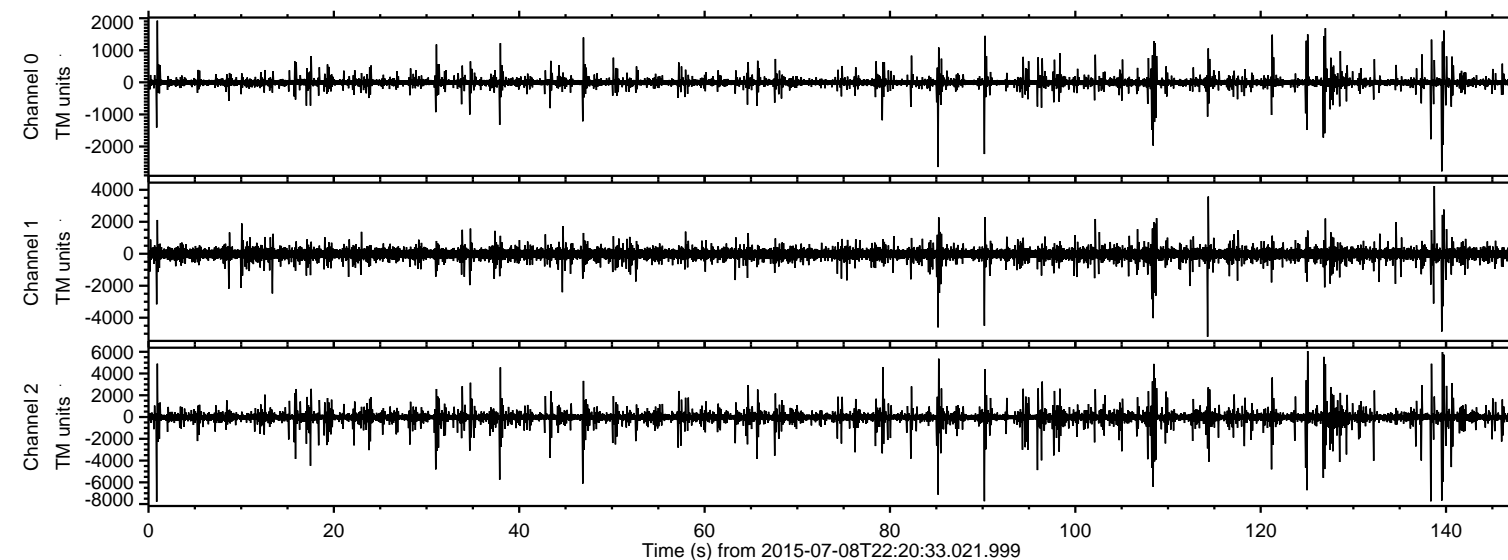


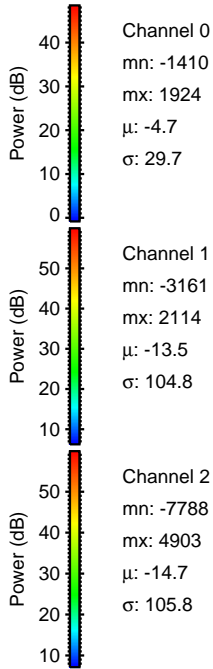
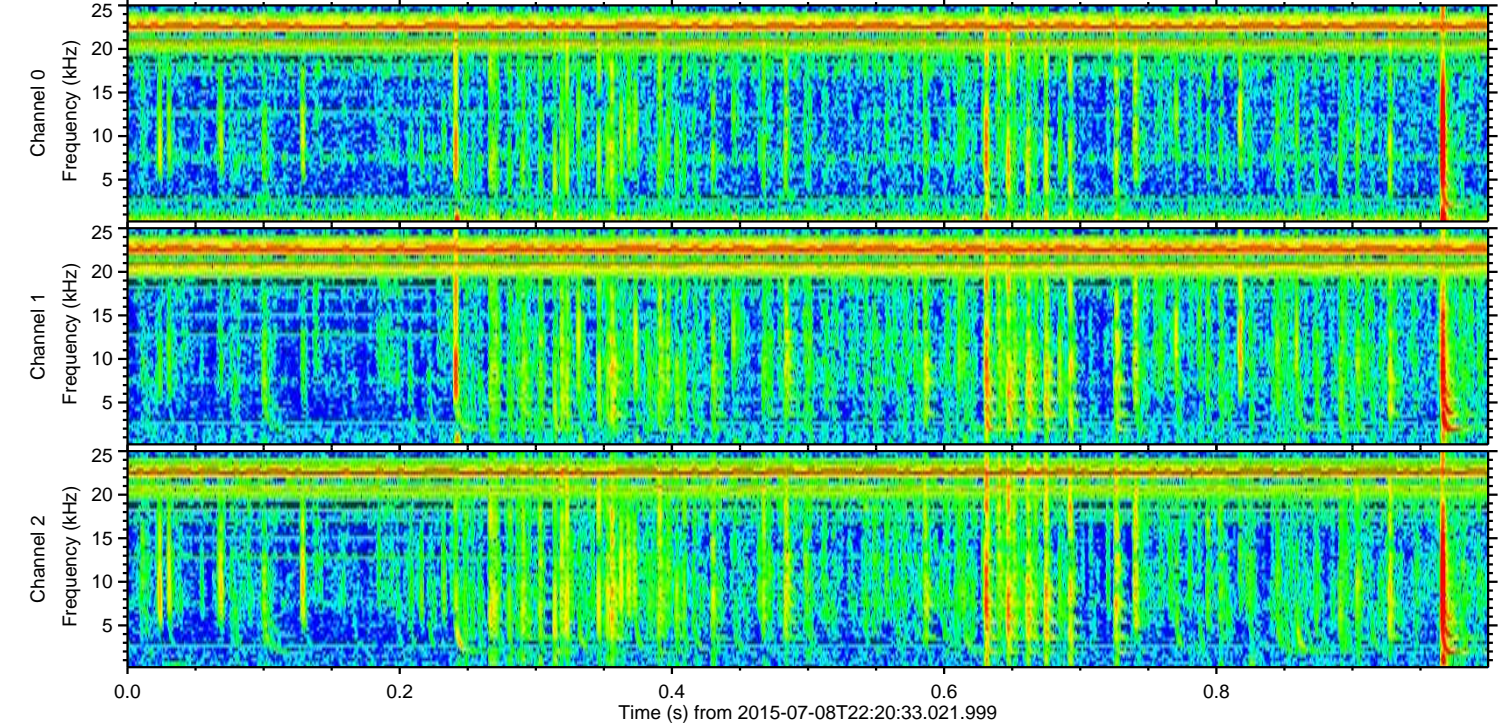
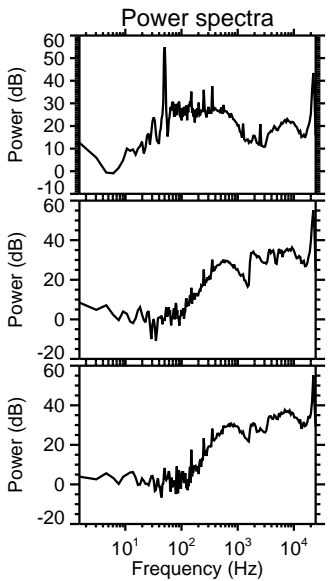
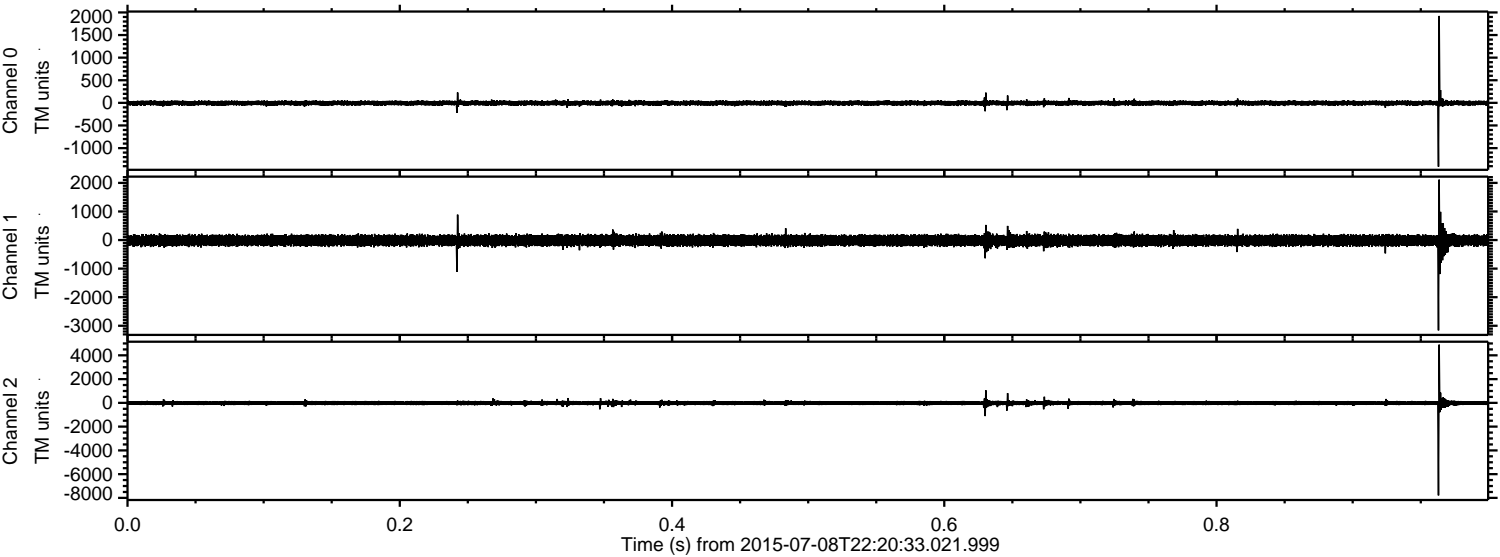
ELMAVAN 3D WAVEFORMS (Measured data sampled at 50 kHz) 51000 packets of 144 samples from 2015-07-08T22:20:33.021.999.

Processed Thu Jul 9 00:26:52 2015 by ELM ver.2012-10-06 from 001__elm20150708_222032__dat00.bin



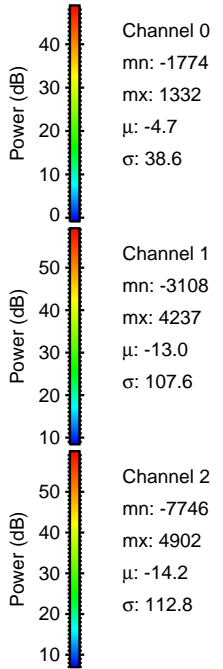
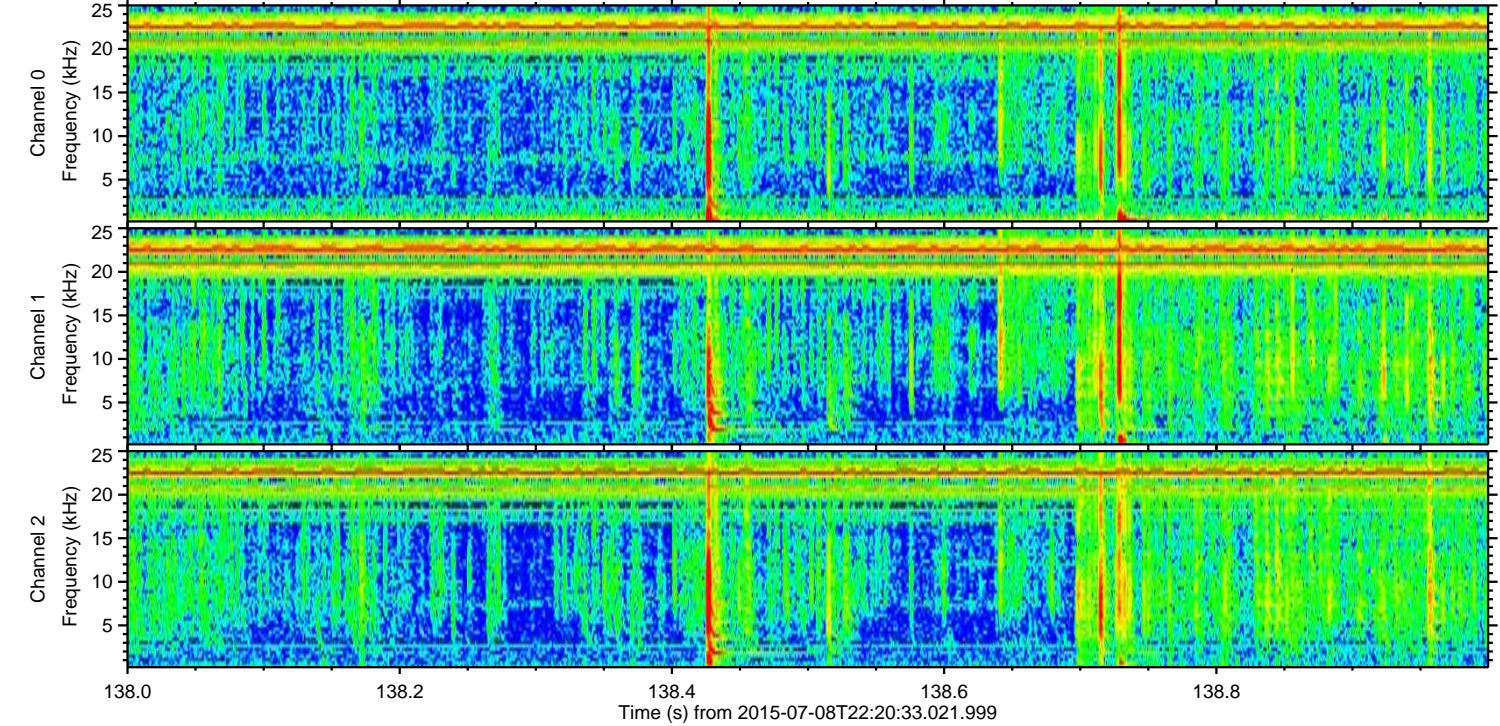
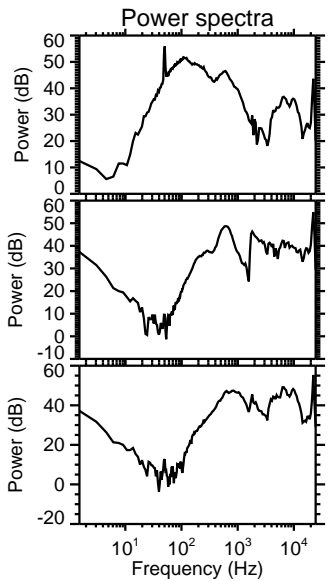
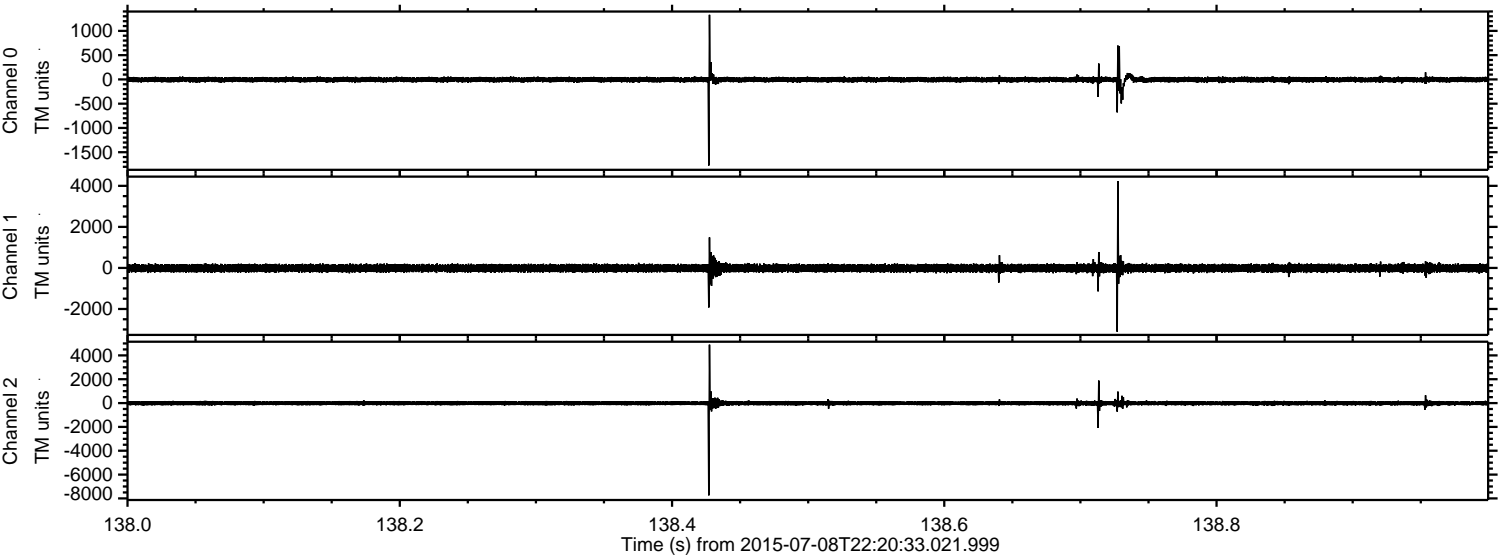
ELMAVAN 3D WAVEFORMS (Measured data sampled at 50 kHz) 51000 packets of 144 samples from 2015-07-08T22:20:33.021.999. Part 1/147

Processed Thu Jul 9 00:27:07 2015 by ELM ver.2012-10-06 from 001__elm20150708_222032__dat00.bin

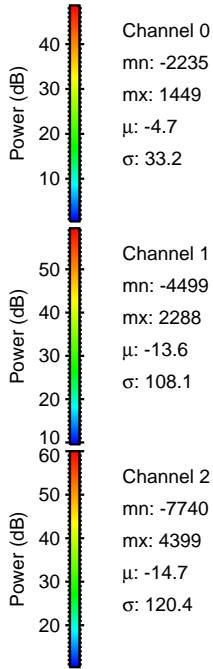
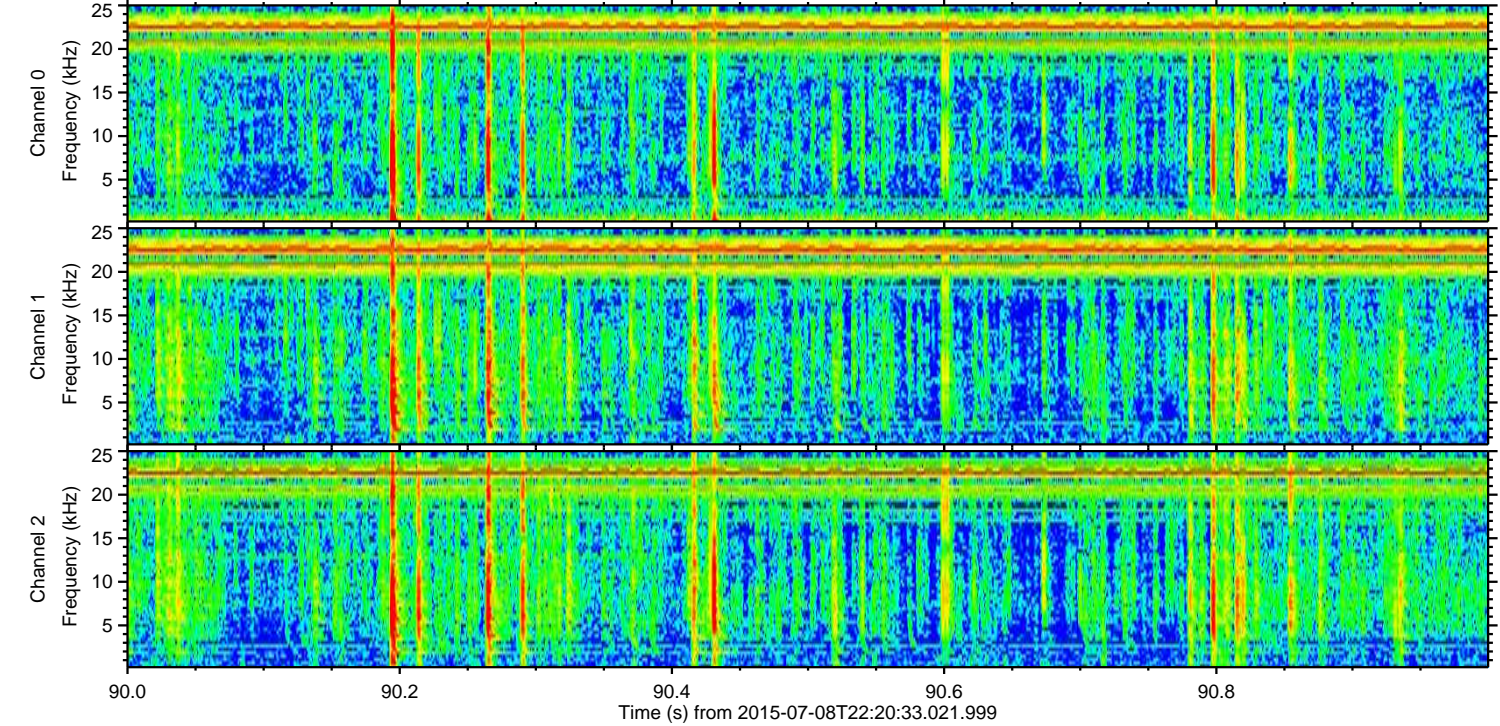
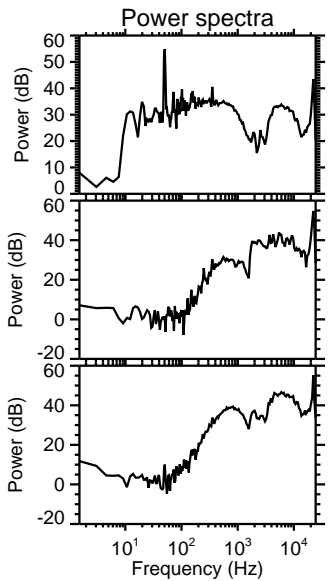
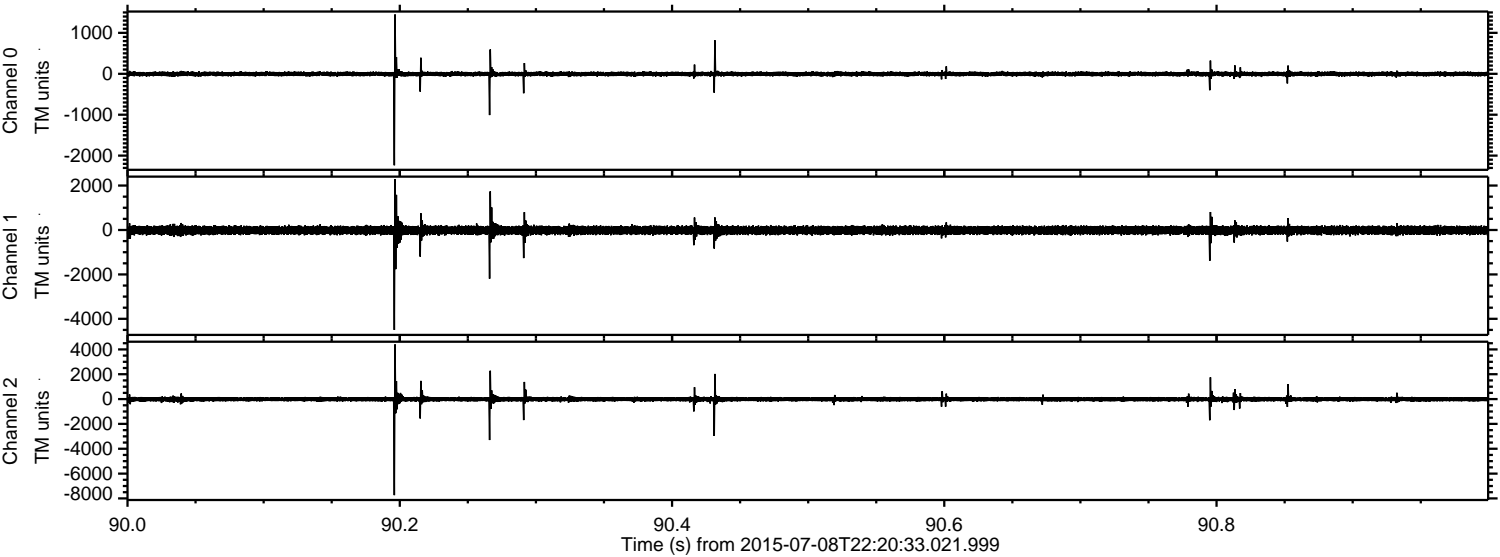


ELMAVAN 3D WAVEFORMS (Measured data sampled at 50 kHz) 51000 packets of 144 samples from 2015-07-08T22:20:33.021.999. Part 139/147

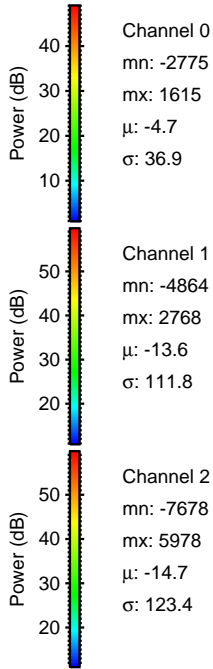
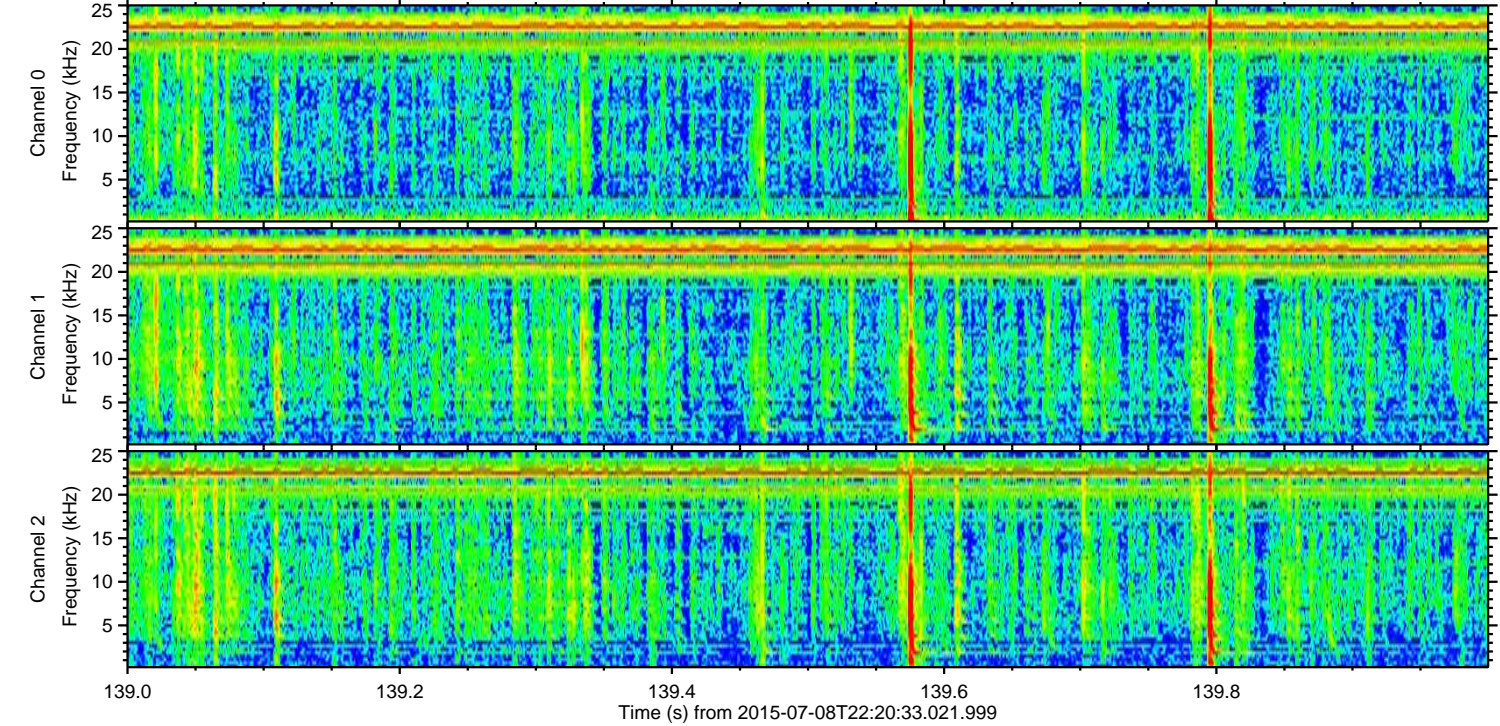
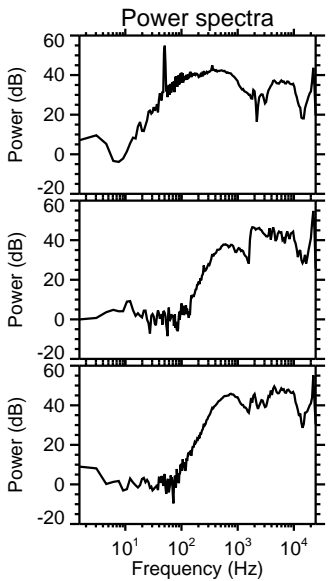
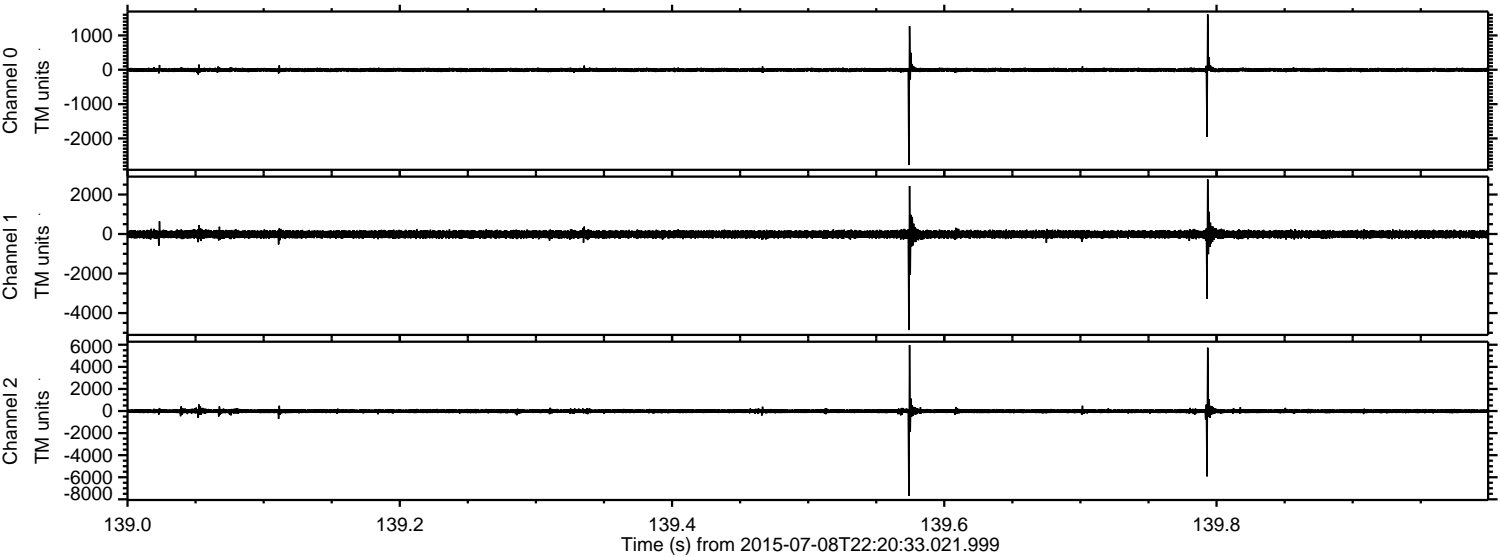
Processed Thu Jul 9 00:27:09 2015 by ELM ver.2012-10-06 from 001__elm20150708_222032__dat00.bin



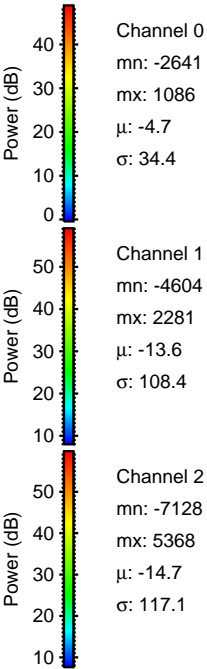
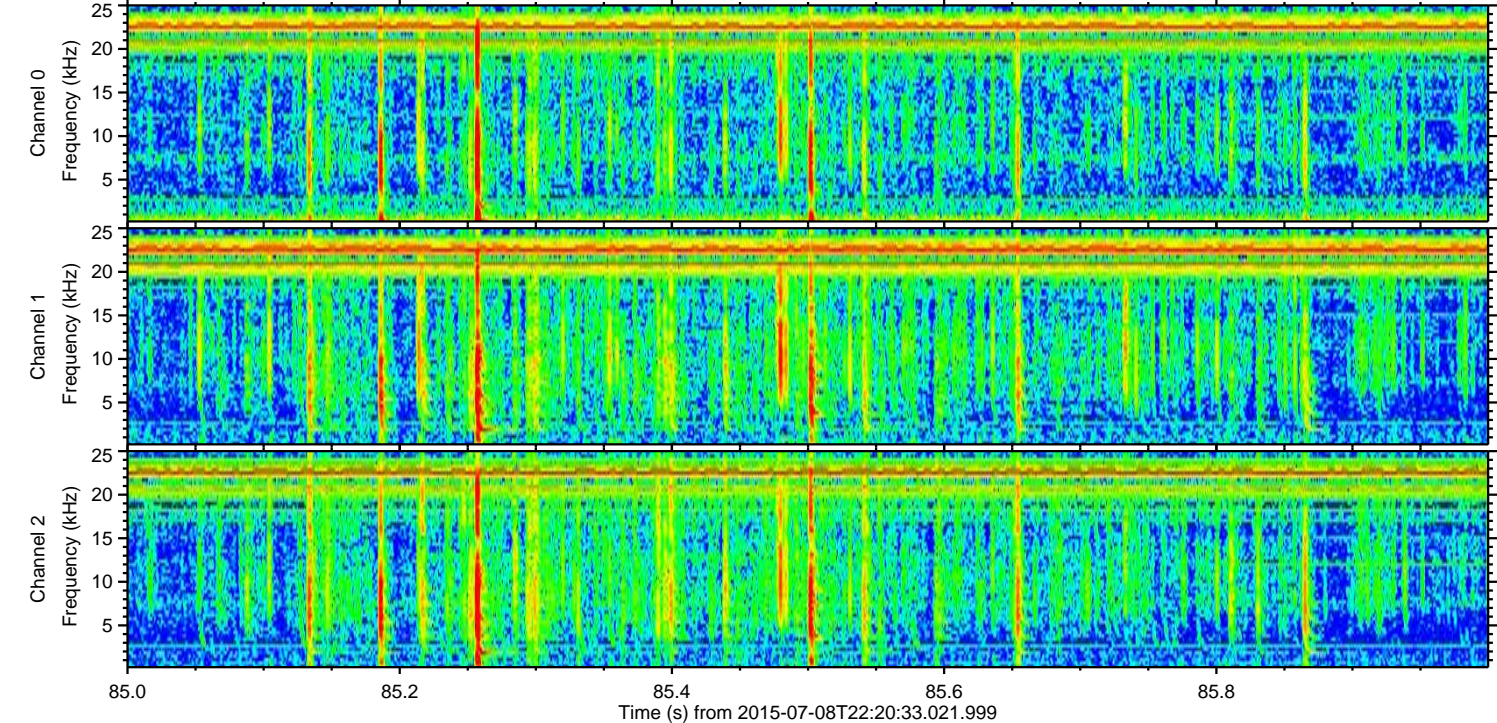
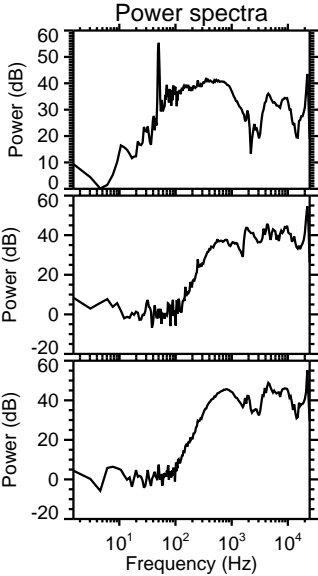
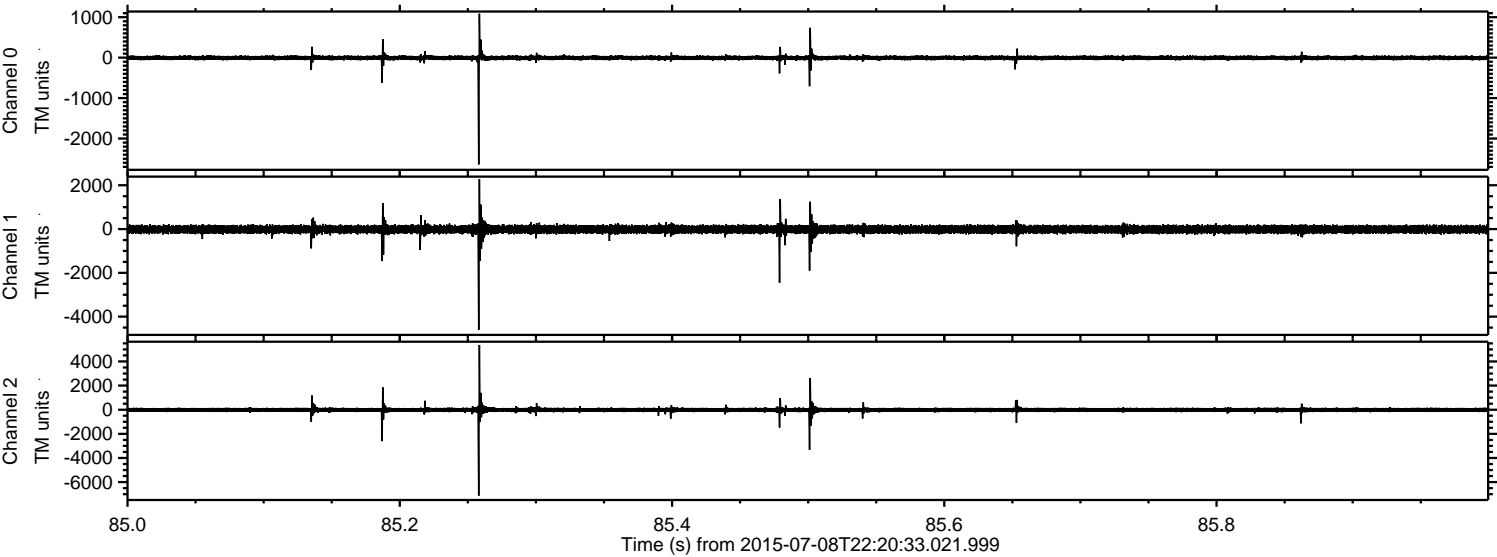
Processed Thu Jul 9 00:27:10 2015 by ELM ver.2012-10-06 from 001__elm20150708_222032__dat00.bin



Processed Thu Jul 9 00:27:11 2015 by ELM ver.2012-10-06 from 001__elm20150708_222032__dat00.bin

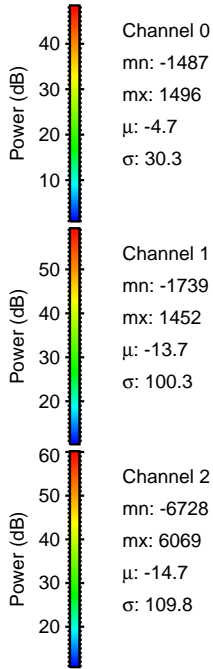
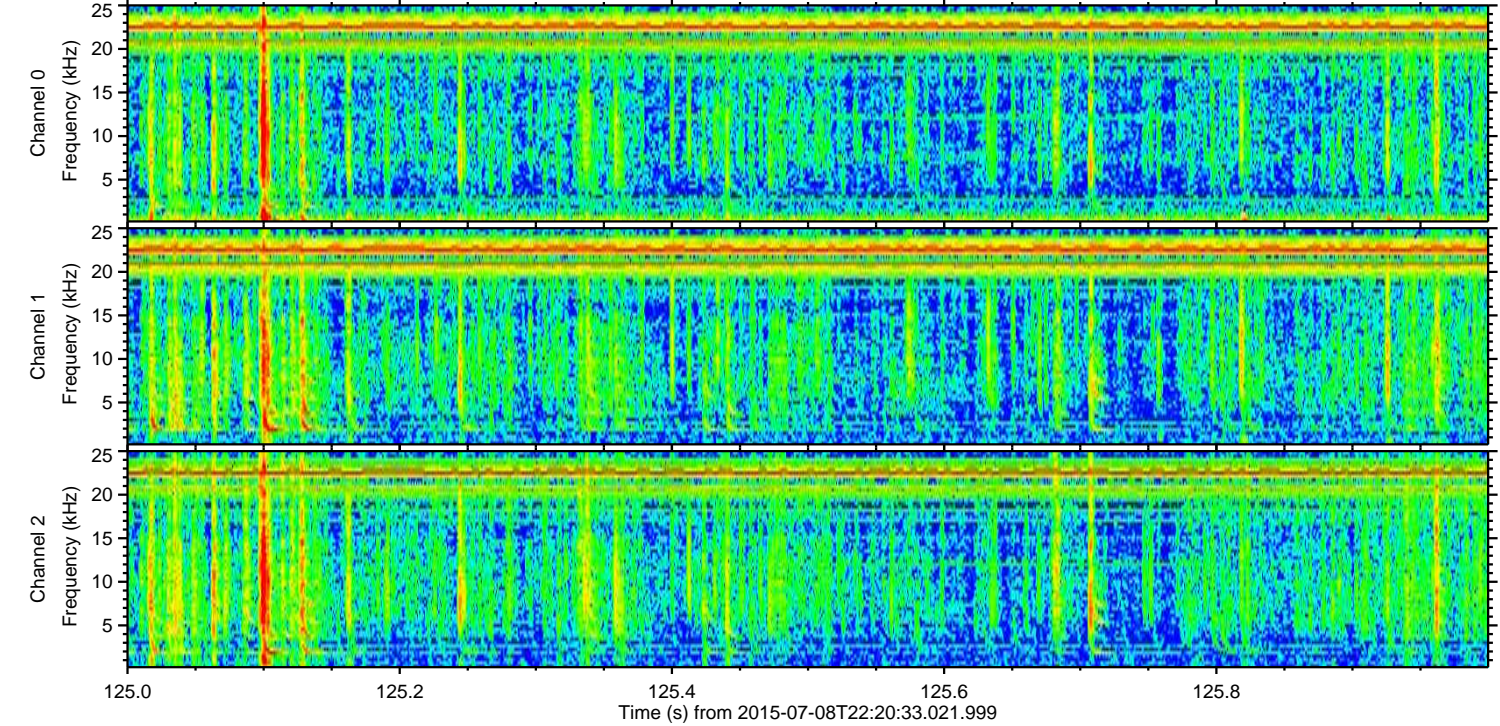
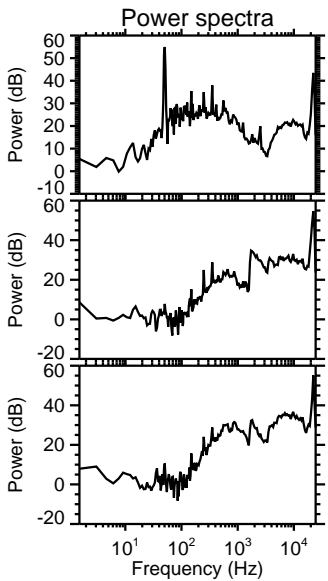
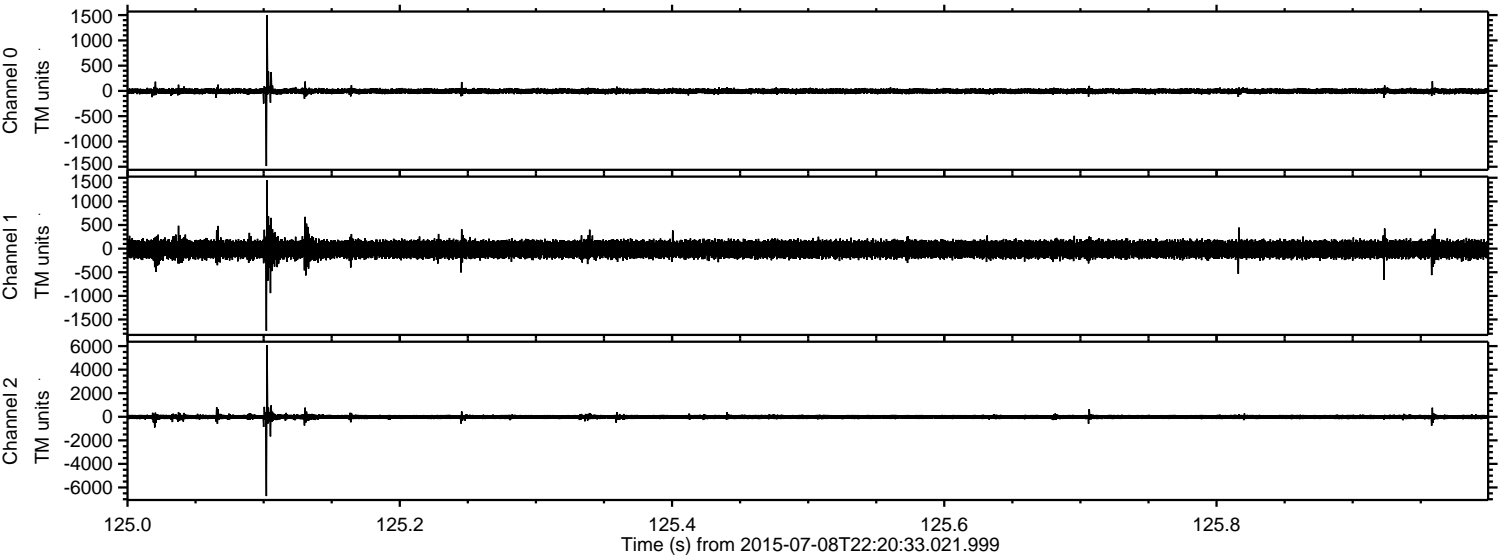


Processed Thu Jul 9 00:27:12 2015 by ELM ver.2012-10-06 from 001__elm20150708_222032__dat00.bin

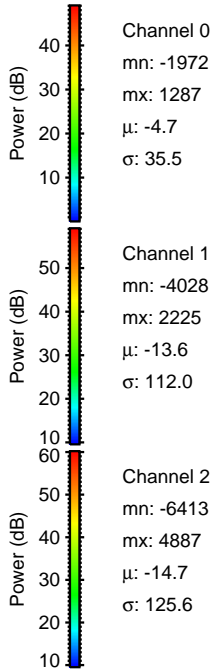
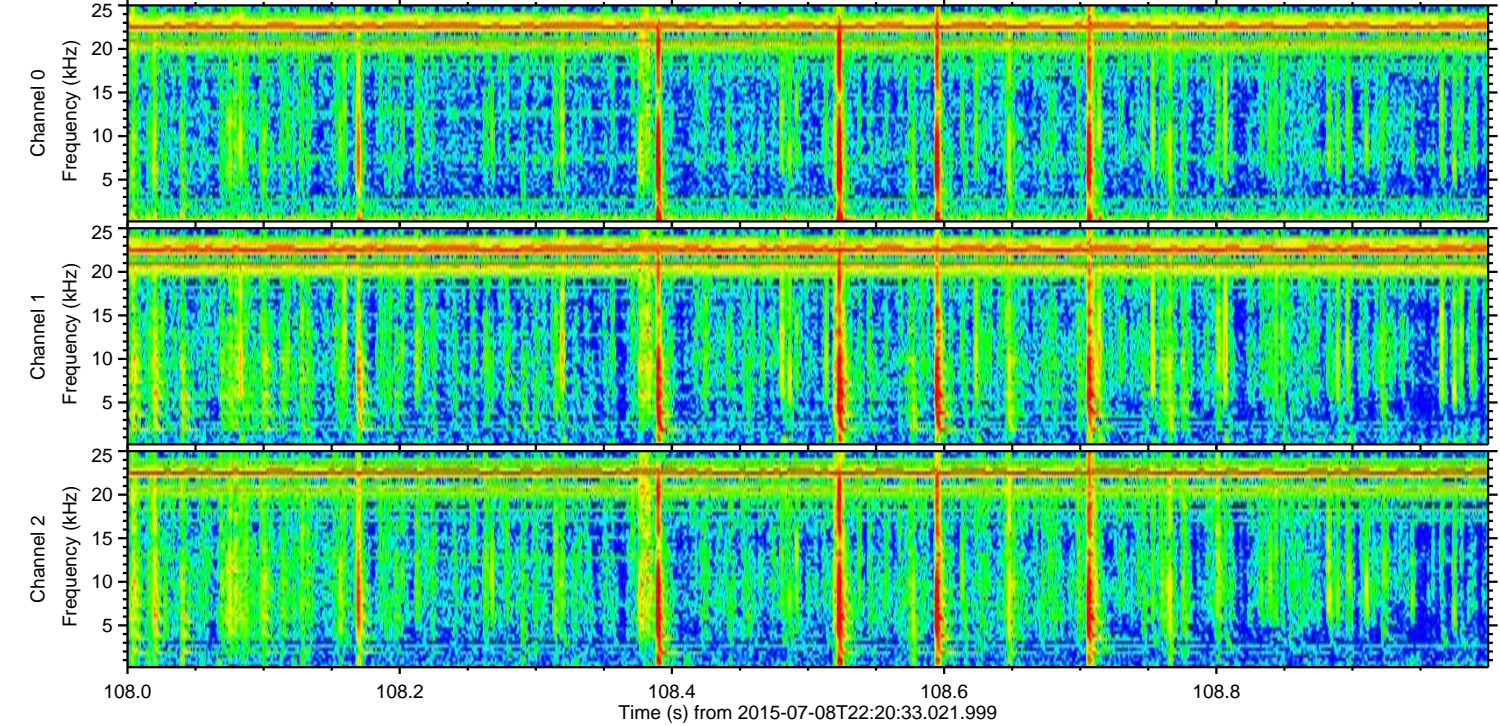
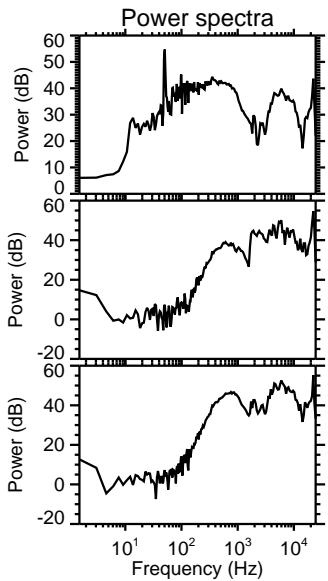
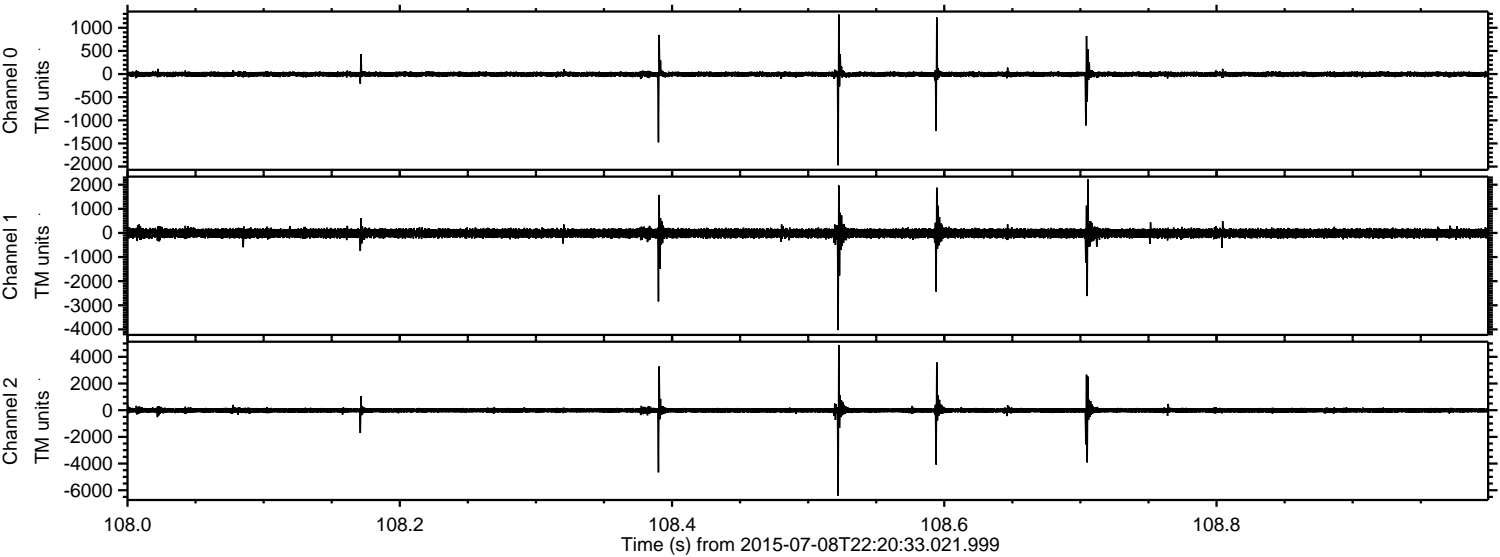


ELMAVAN 3D WAVEFORMS (Measured data sampled at 50 kHz) 51000 packets of 144 samples from 2015-07-08T22:20:33.021.999. Part 126/147

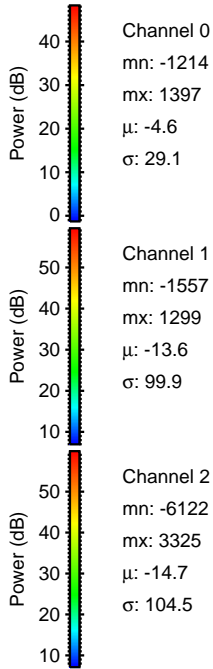
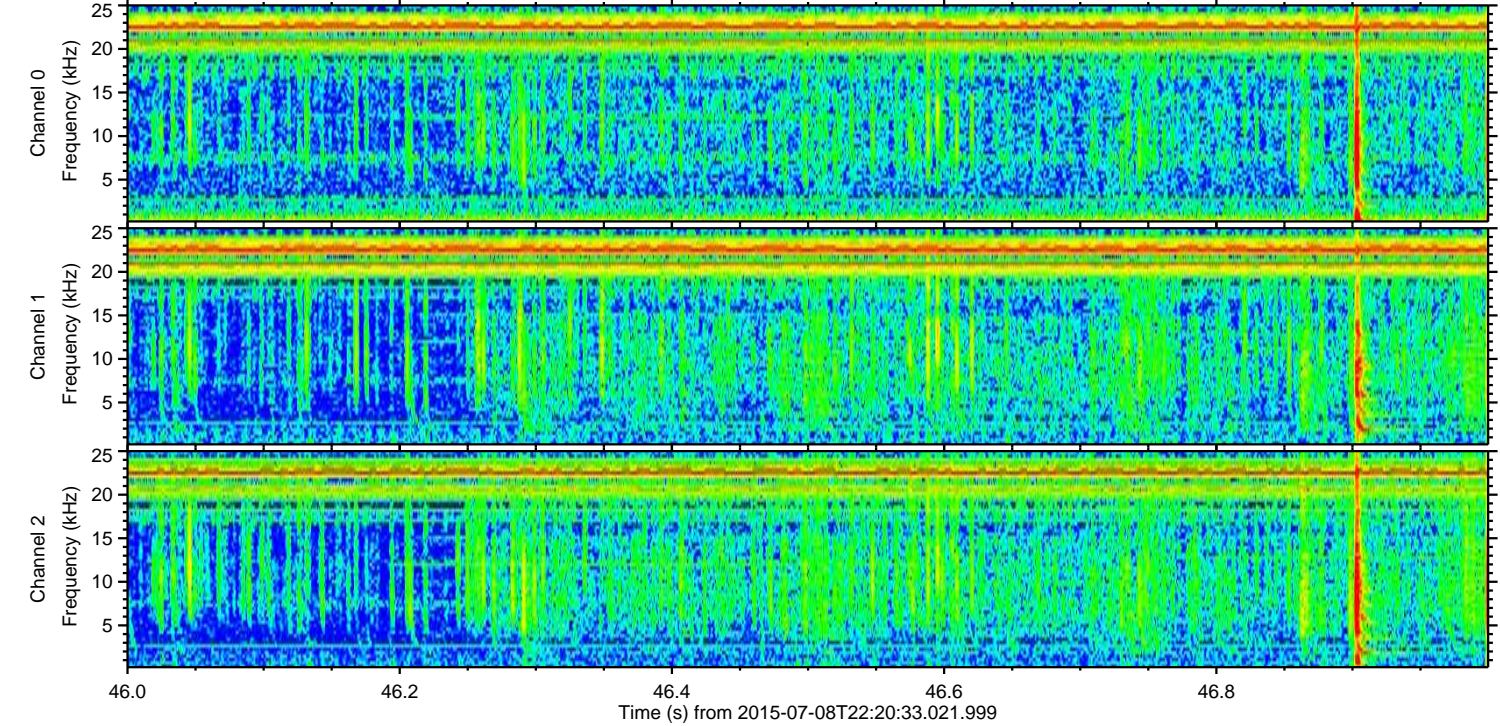
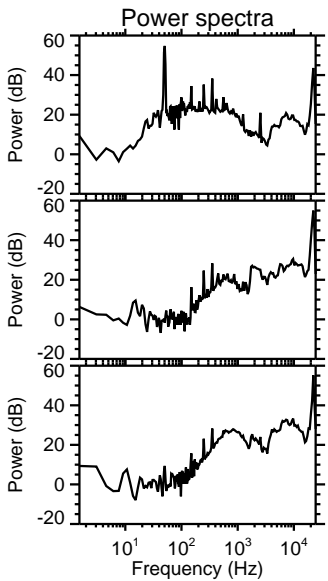
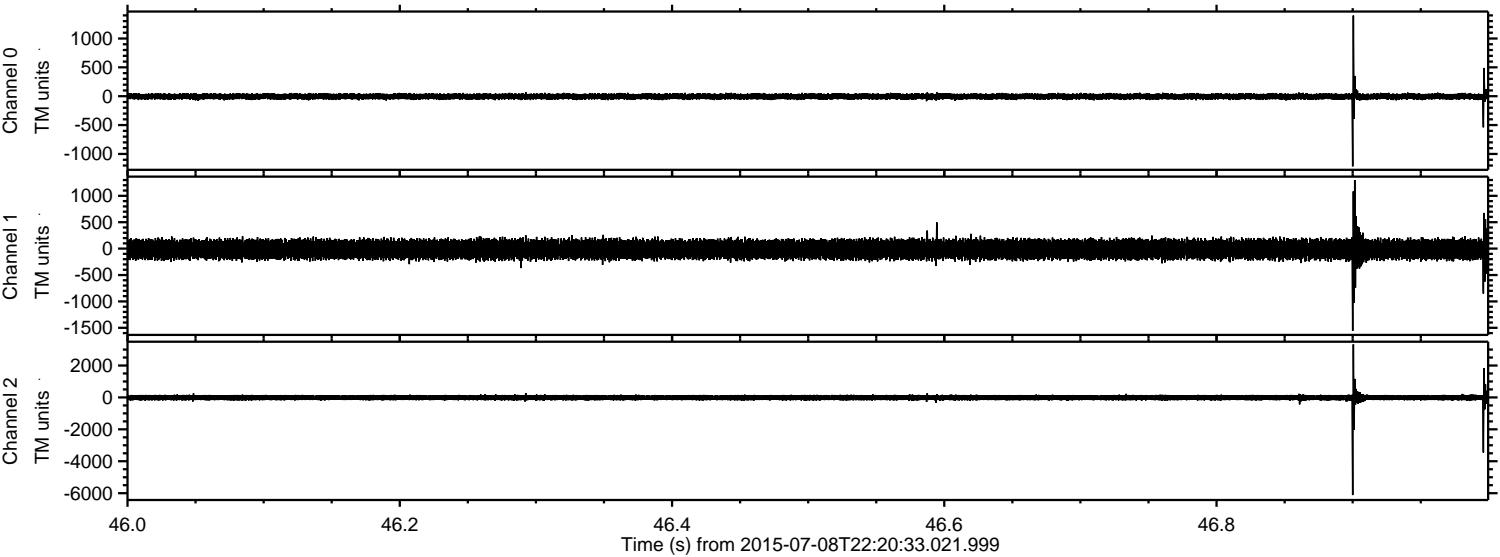
Processed Thu Jul 9 00:27:13 2015 by ELM ver.2012-10-06 from 001__elm20150708_222032__dat00.bin



Processed Thu Jul 9 00:27:14 2015 by ELM ver.2012-10-06 from 001__elm20150708_222032__dat00.bin



Processed Thu Jul 9 00:27:15 2015 by ELM ver.2012-10-06 from 001__elm20150708_222032__dat00.bin

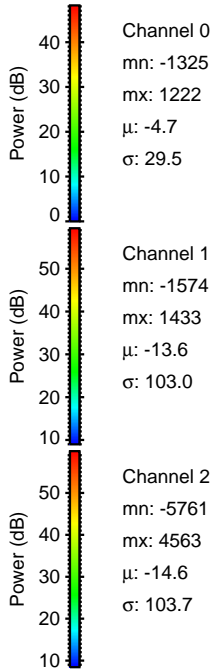
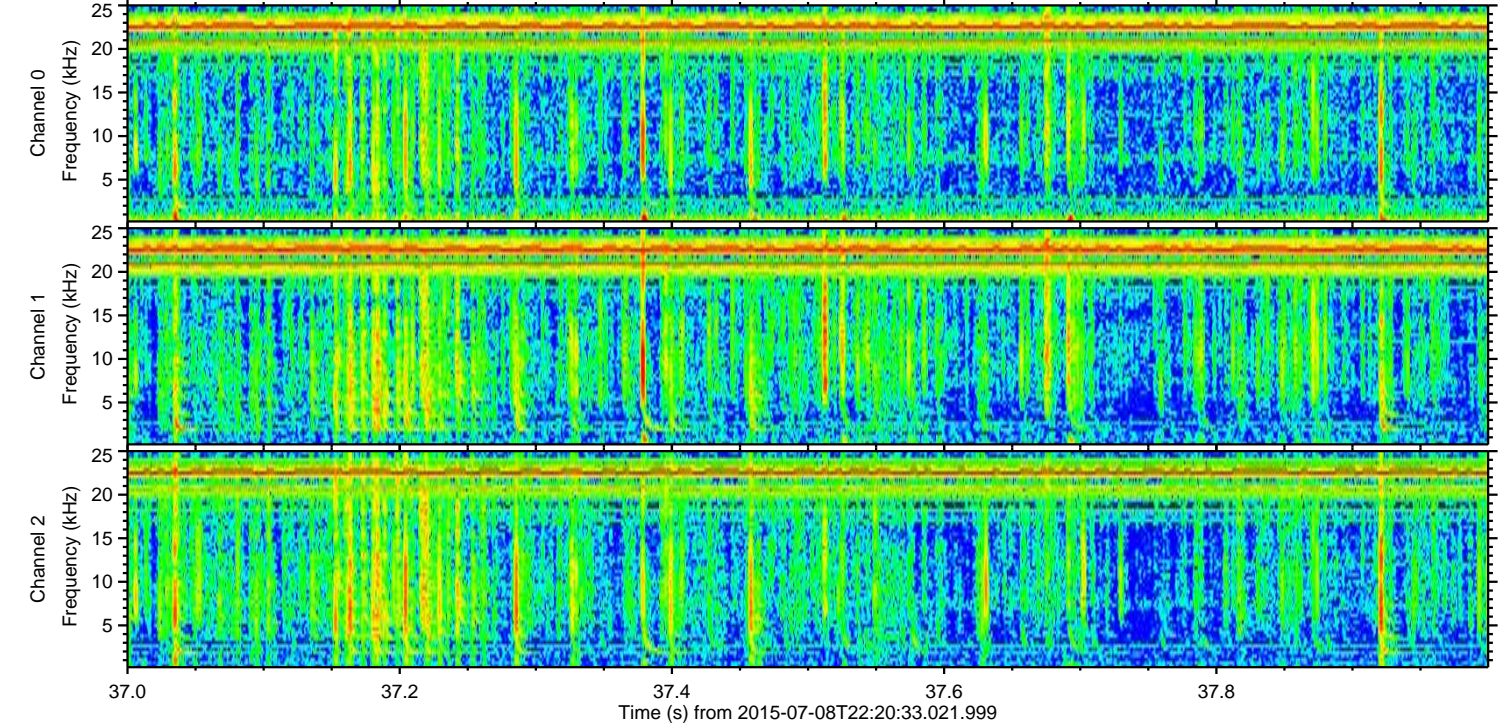
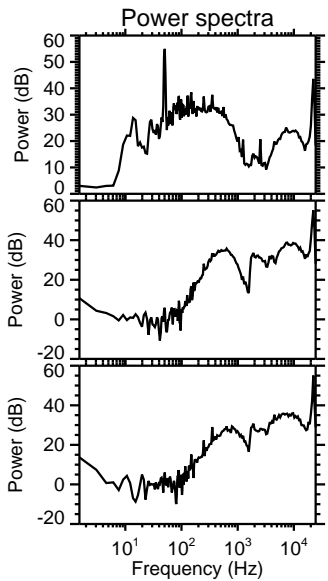
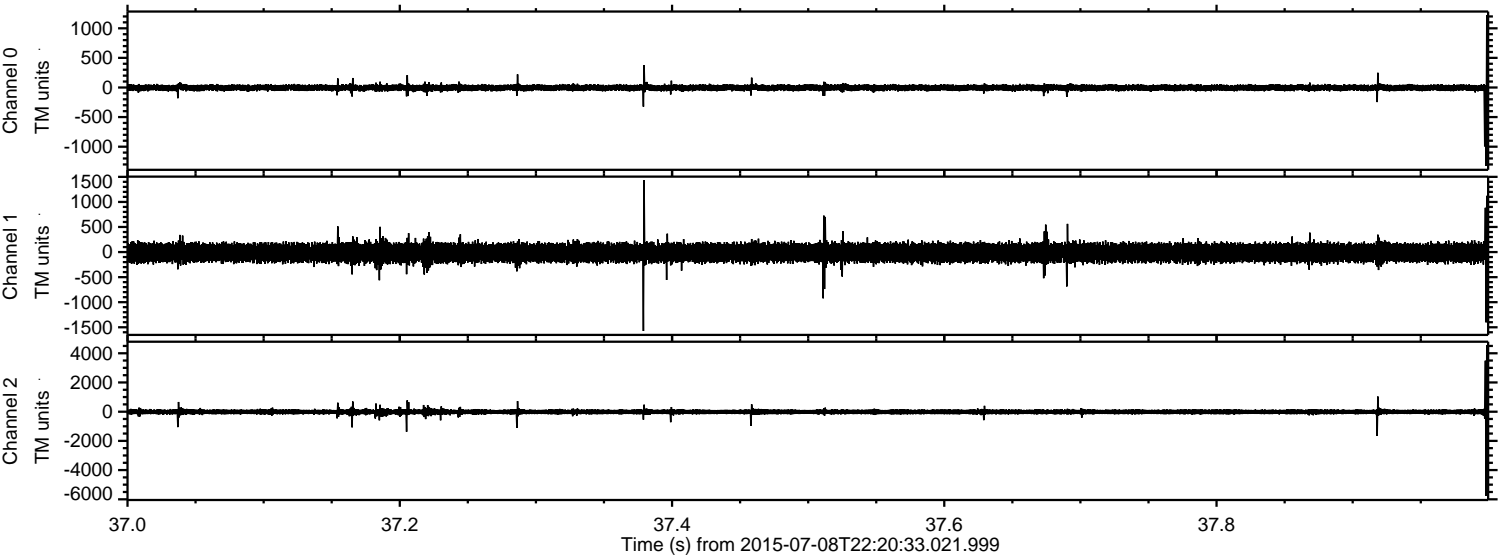


Channel 0
mn: -1214
mx: 1397
 μ : -4.6
 σ : 29.1

Channel 1
mn: -1557
mx: 1299
 μ : -13.6
 σ : 99.9

Channel 2
mn: -6122
mx: 3325
 μ : -14.7
 σ : 104.5

Processed Thu Jul 9 00:27:16 2015 by ELM ver.2012-10-06 from 001__elm20150708_222032__dat00.bin



Channel 0
mn: -1325
mx: 1222
 μ : -4.7
 σ : 29.5

Channel 1
mn: -1574
mx: 1433
 μ : -13.6
 σ : 103.0

Channel 2
mn: -5761
mx: 4563
 μ : -14.6
 σ : 103.7

Processed Thu Jul 9 00:27:17 2015 by ELM ver.2012-10-06 from 001__elm20150708_222032__dat00.bin

