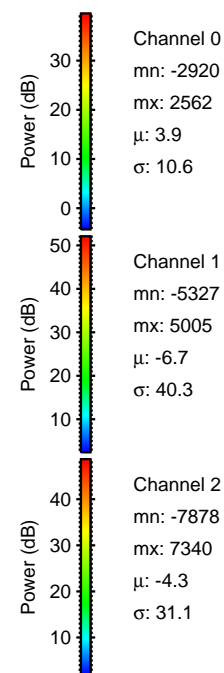
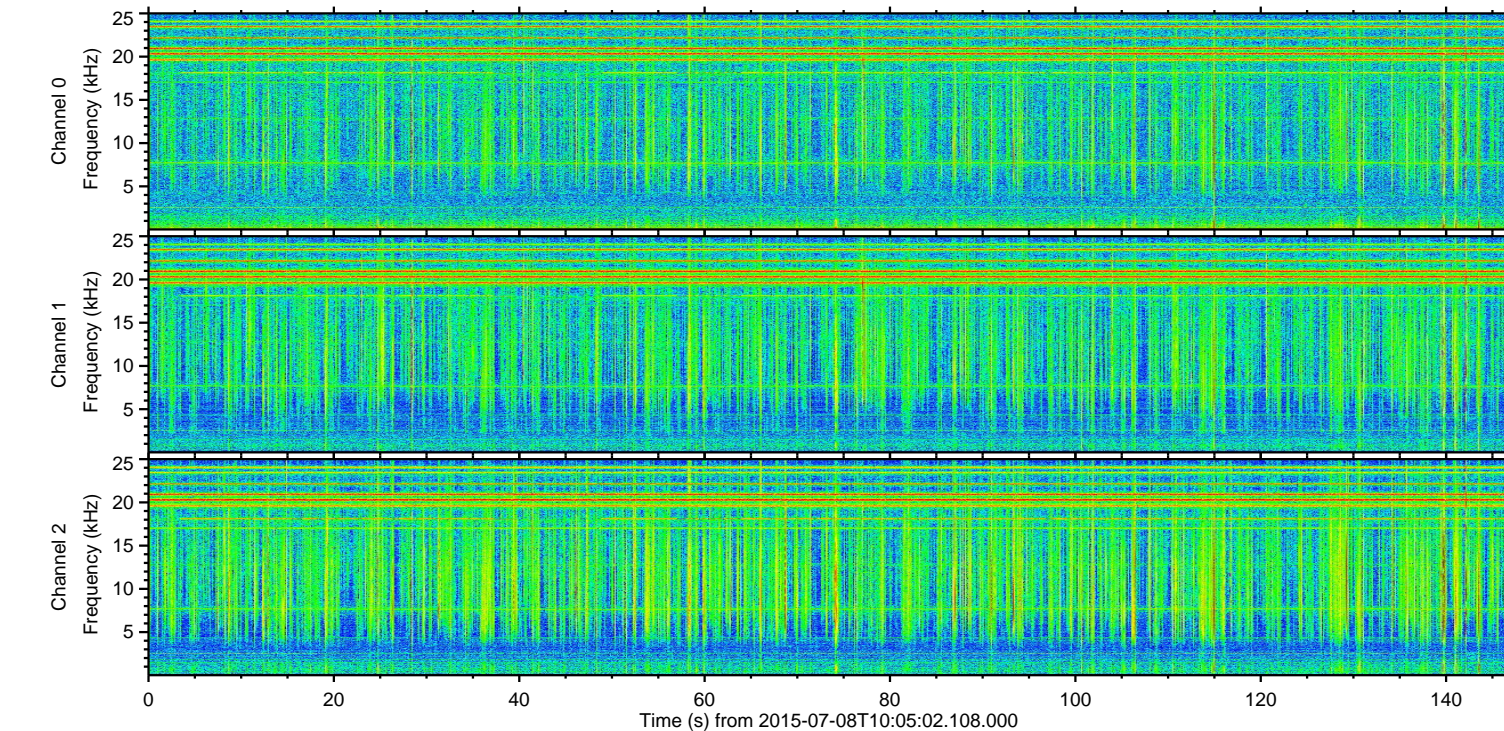
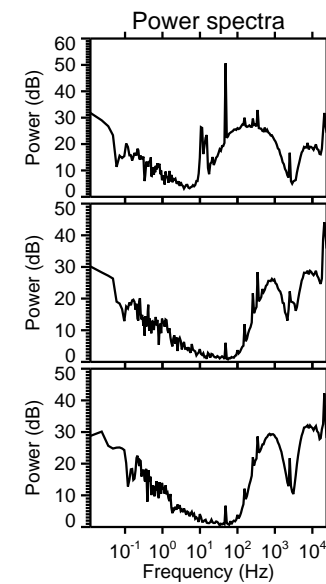
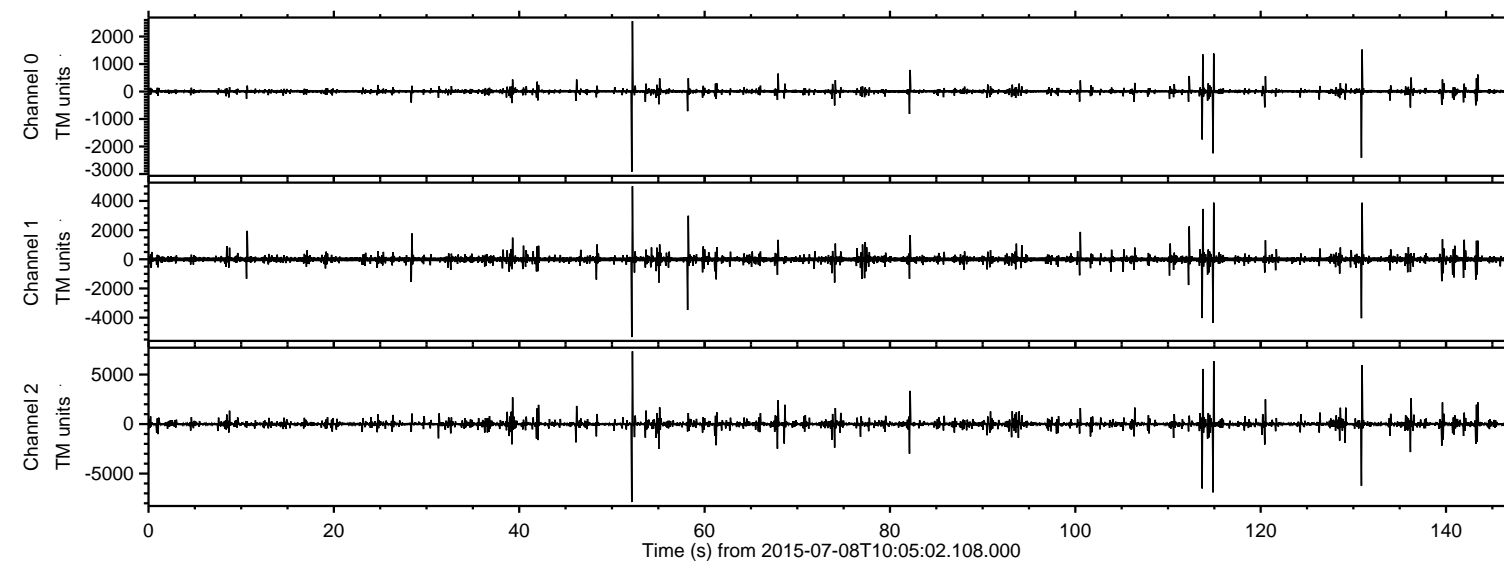


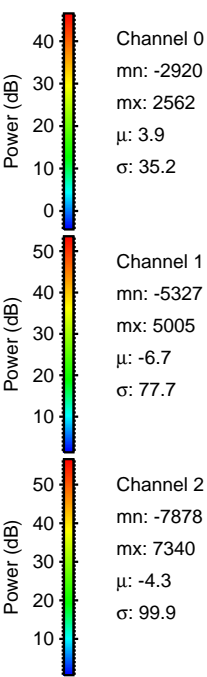
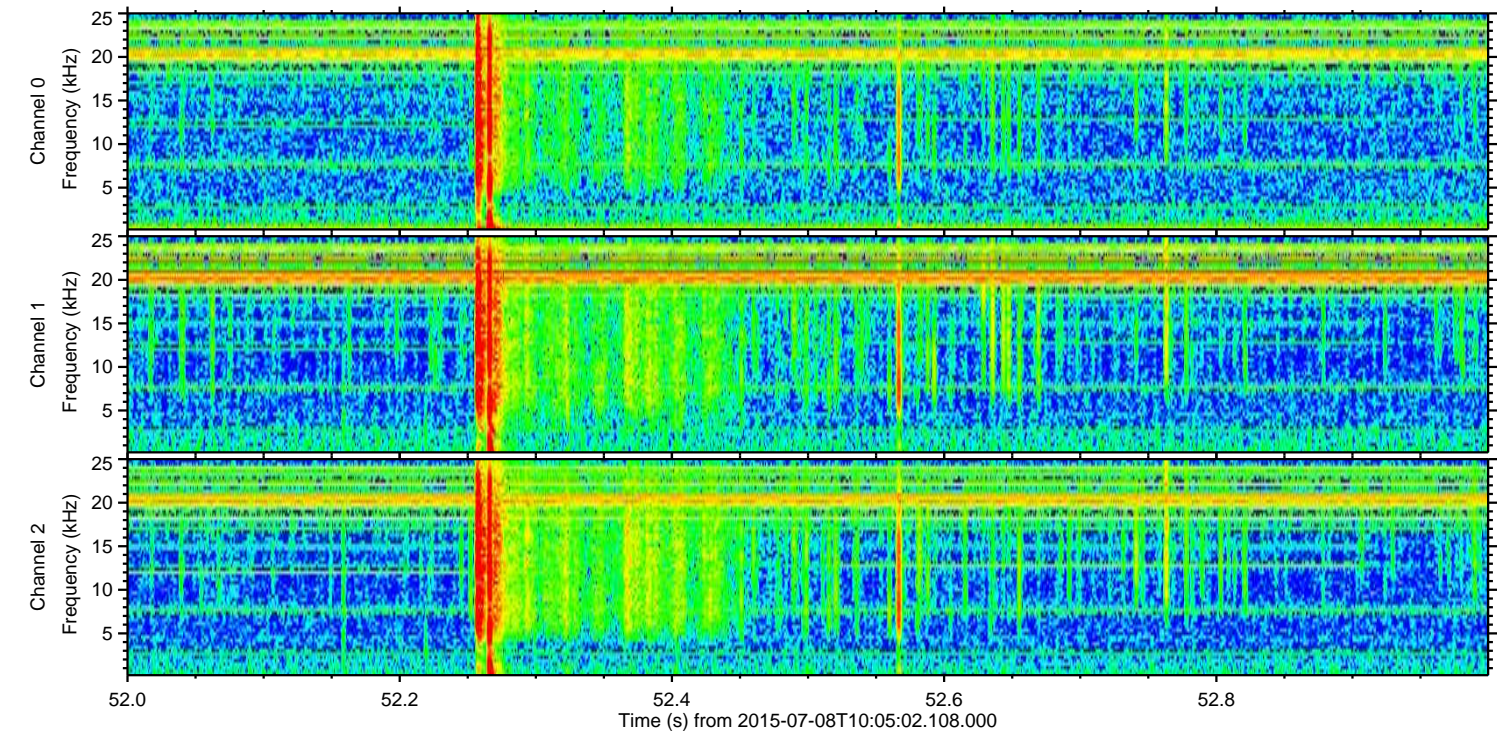
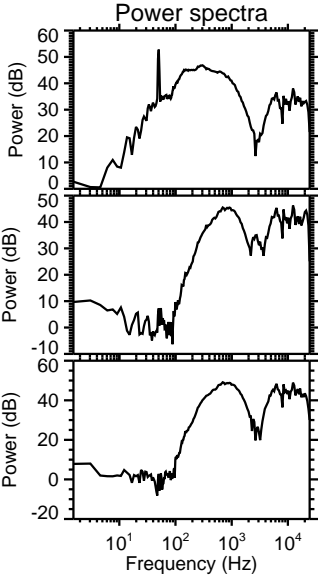
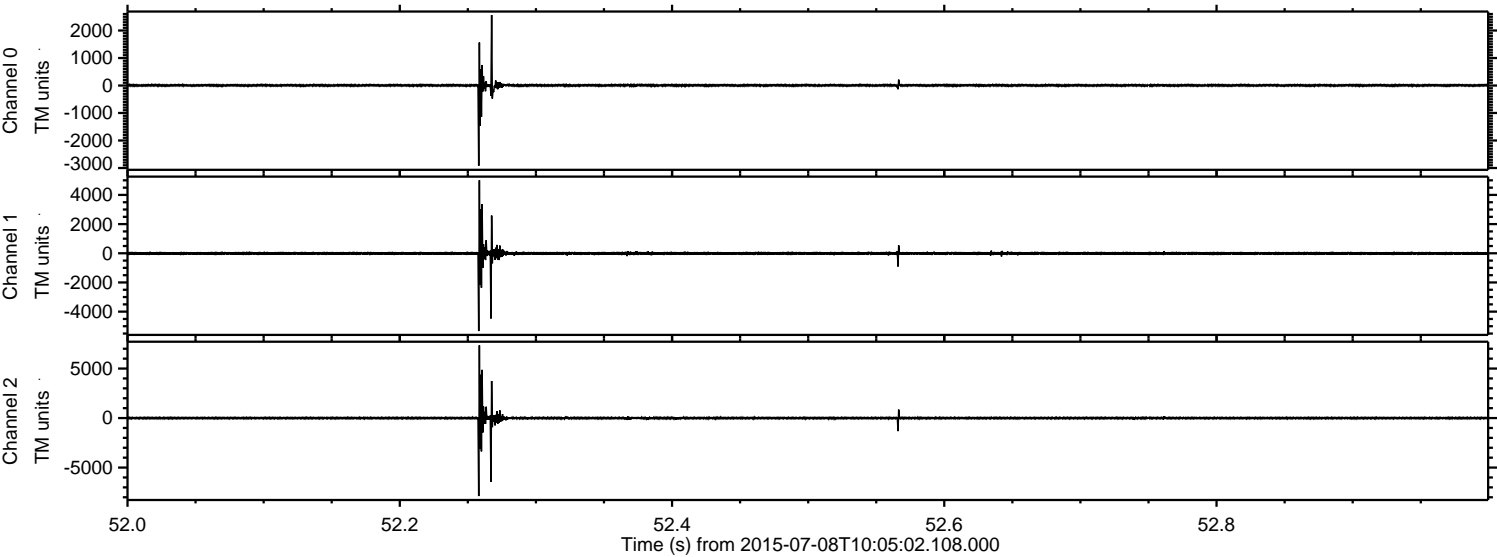
ELMAVAN 3D WAVEFORMS (Measured data sampled at 50 kHz) 51000 packets of 144 samples from 2015-07-08T10:05:02.108.000.

Processed Wed Jul 8 12:11:25 2015 by ELM ver.2012-10-06 from 001__elm20150708_100501__dat00.bin



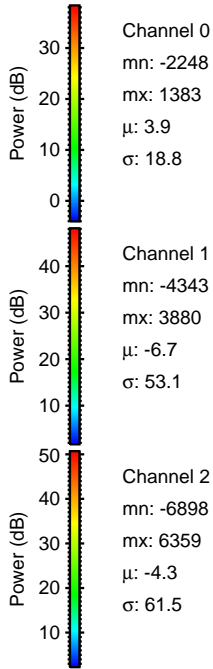
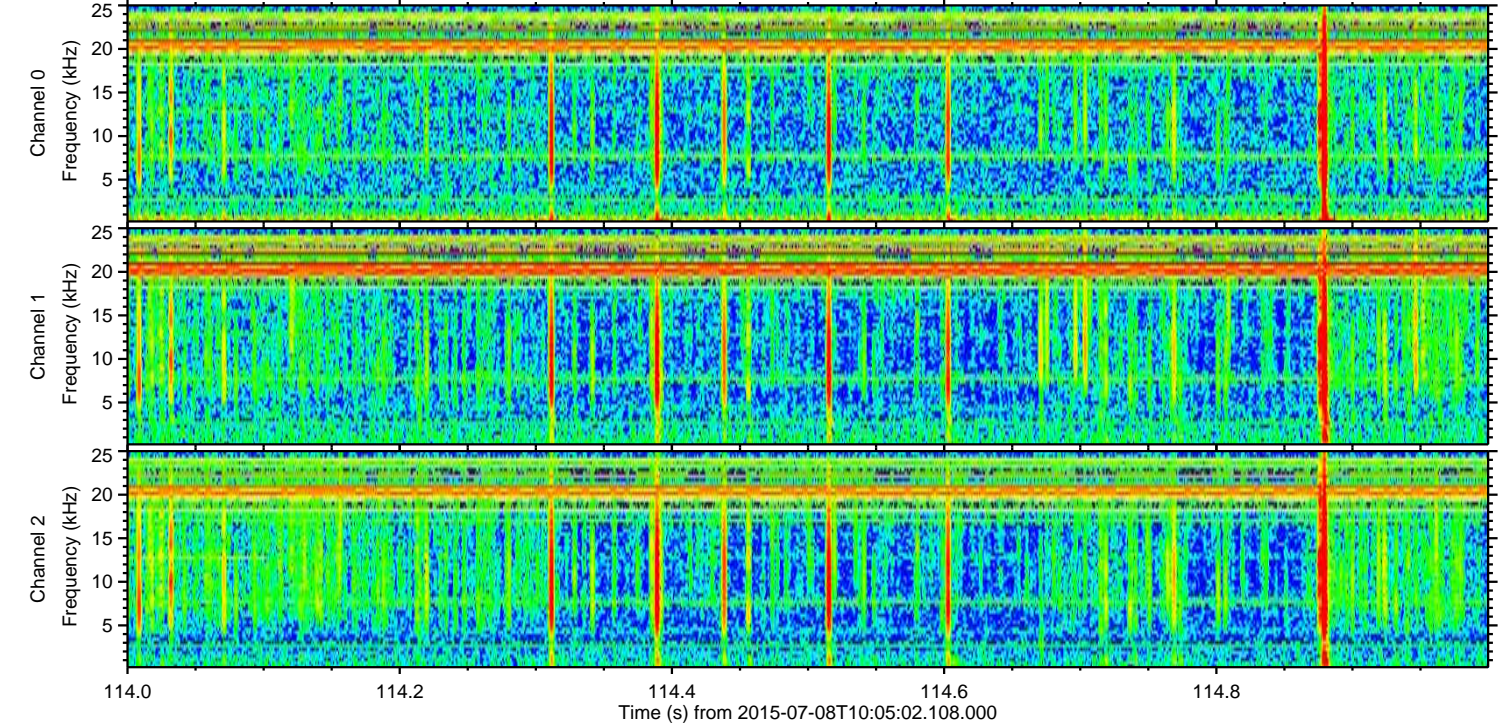
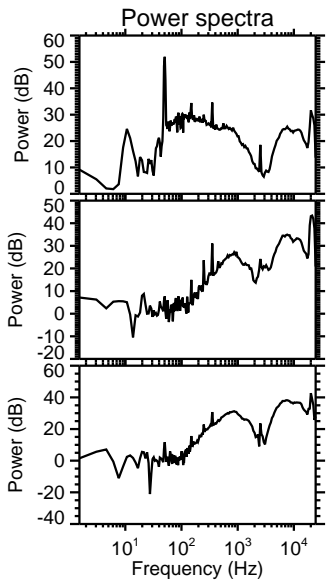
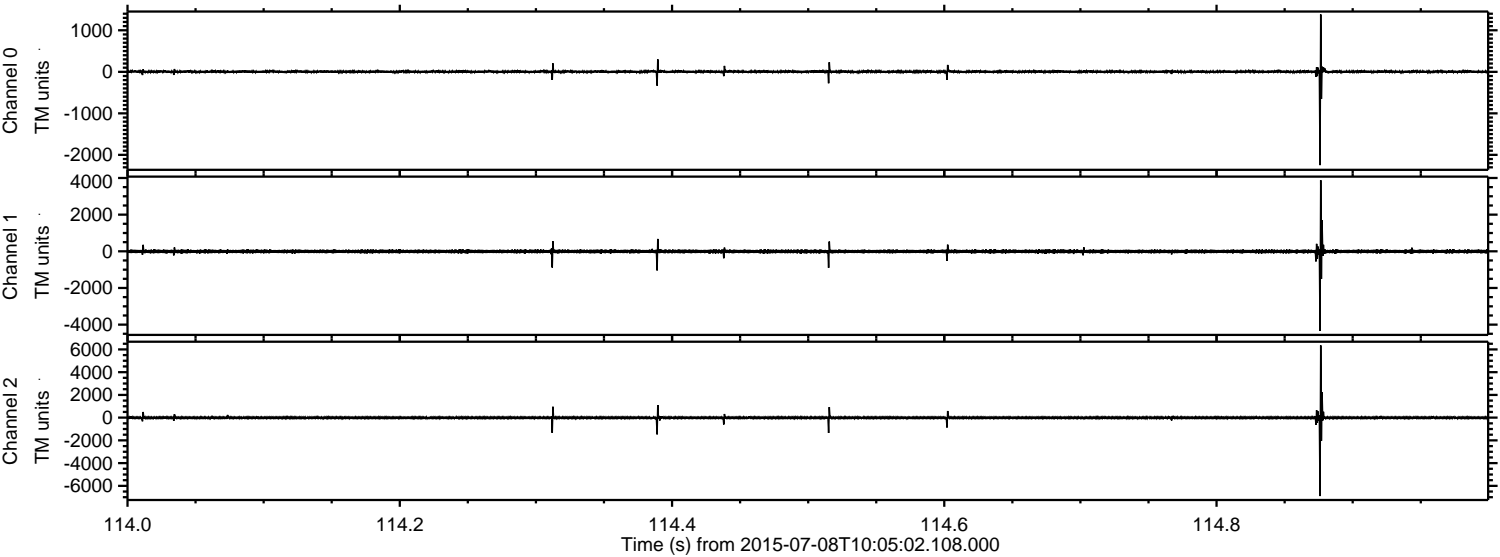
ELMAVAN 3D WAVEFORMS (Measured data sampled at 50 kHz) 51000 packets of 144 samples from 2015-07-08T10:05:02.108.000. Part 53/147

Processed Wed Jul 8 12:11:40 2015 by ELM ver.2012-10-06 from 001__elm20150708_100501__dat00.bin



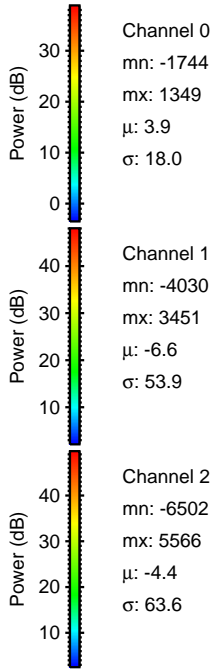
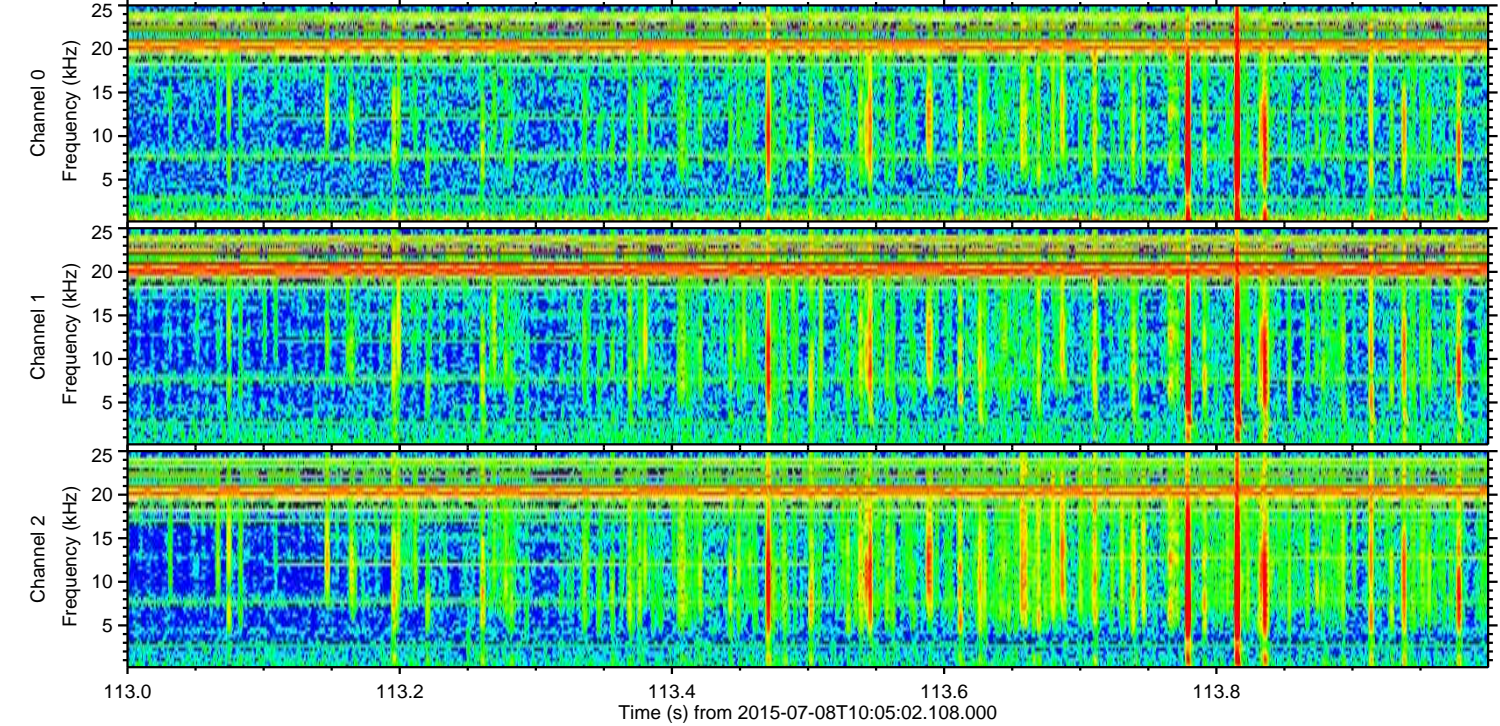
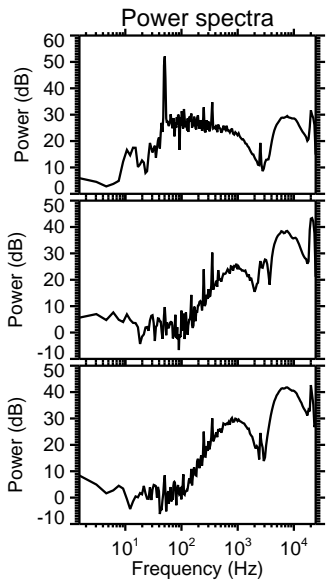
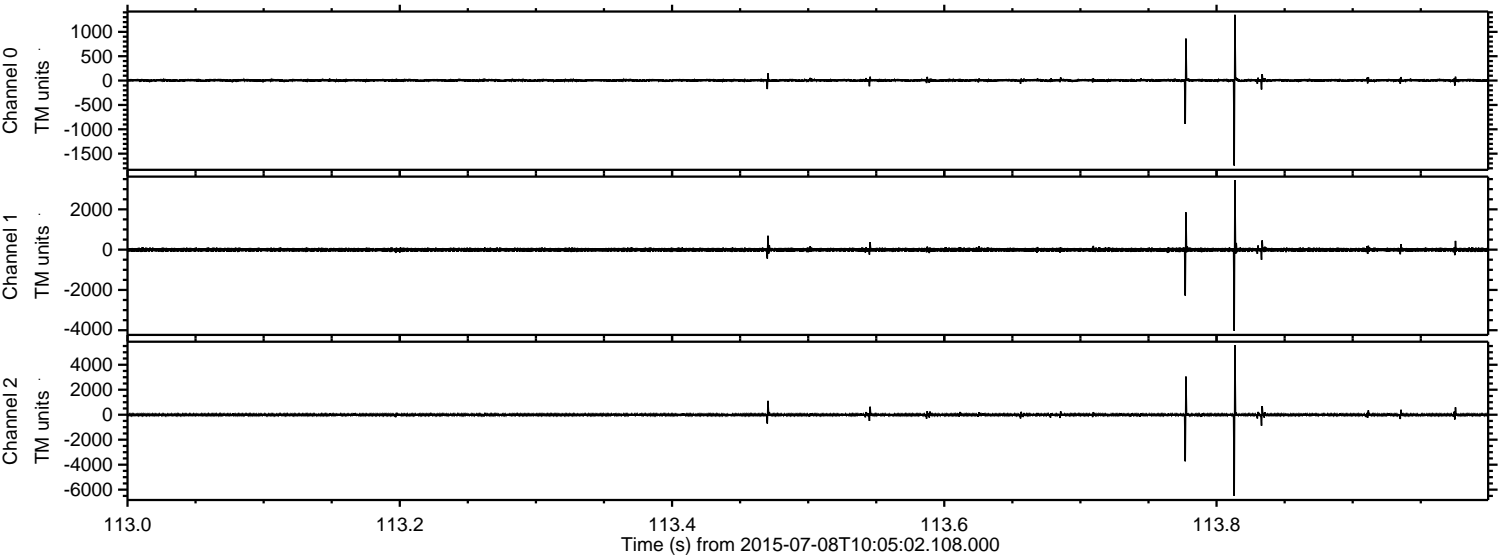
ELMAVAN 3D WAVEFORMS (Measured data sampled at 50 kHz) 51000 packets of 144 samples from 2015-07-08T10:05:02.108.000. Part 115/147

Processed Wed Jul 8 12:11:42 2015 by ELM ver.2012-10-06 from 001__elm20150708_100501__dat00.bin



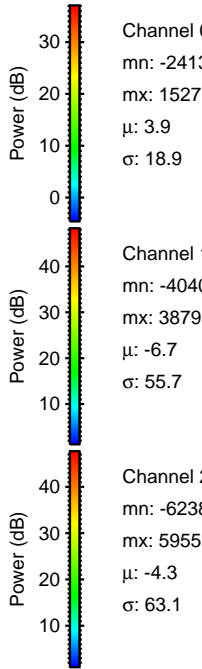
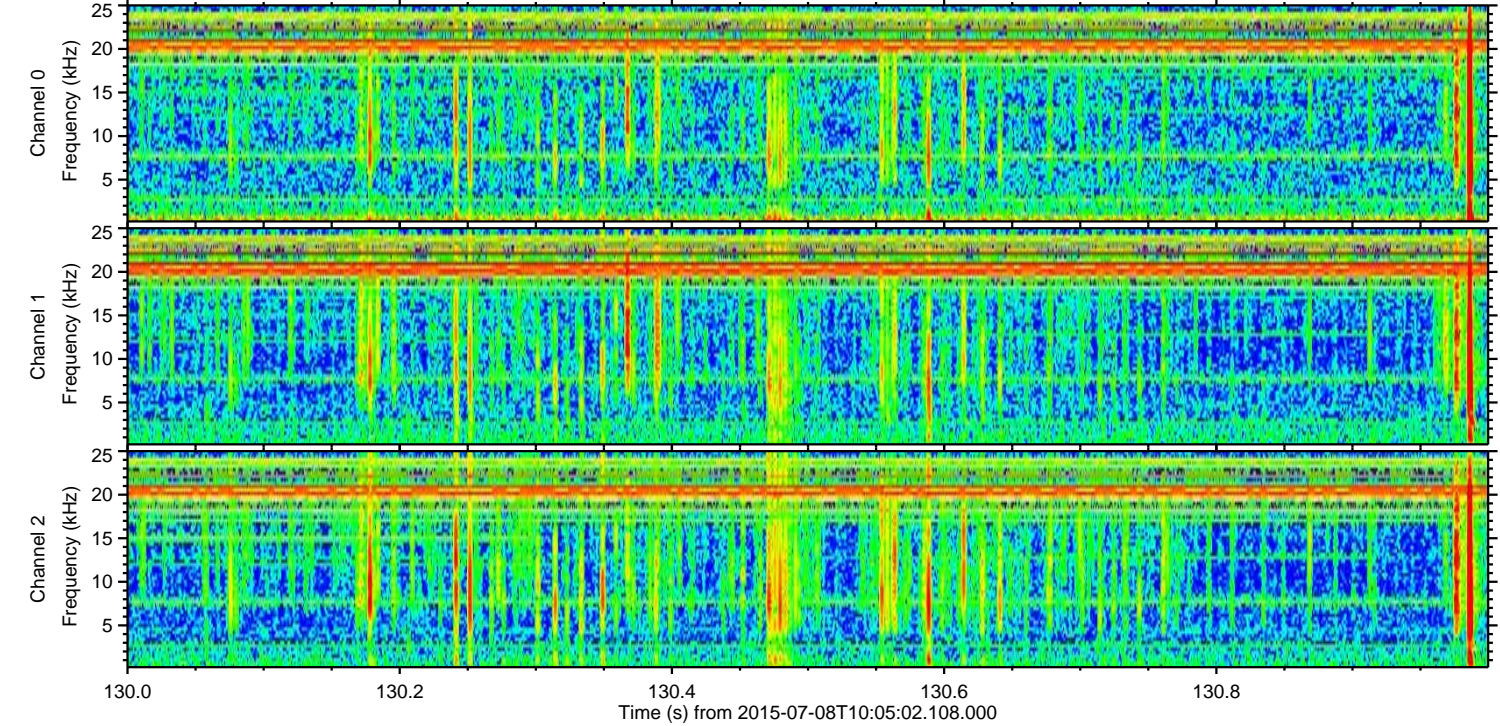
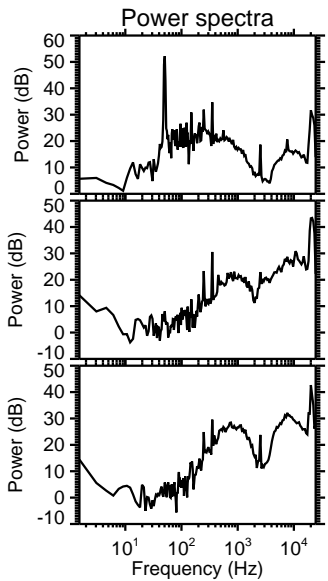
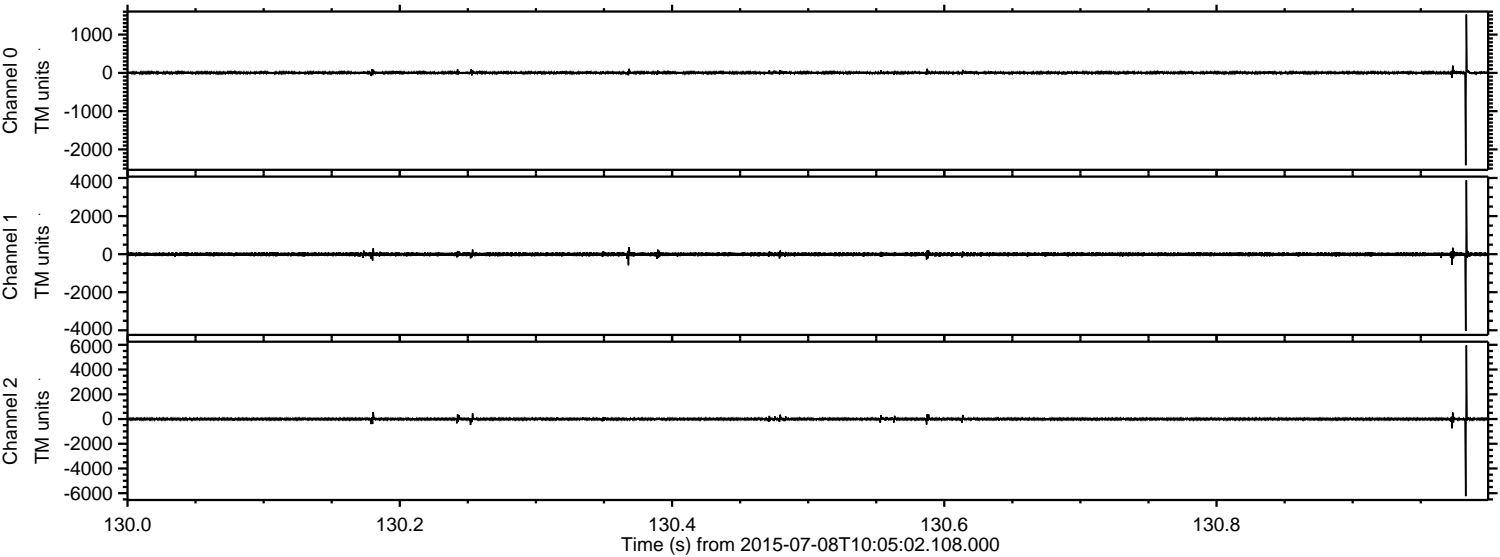
ELMAVAN 3D WAVEFORMS (Measured data sampled at 50 kHz) 51000 packets of 144 samples from 2015-07-08T10:05:02.108.000. Part 114/147

Processed Wed Jul 8 12:11:43 2015 by ELM ver.2012-10-06 from 001__elm20150708_100501__dat00.bin

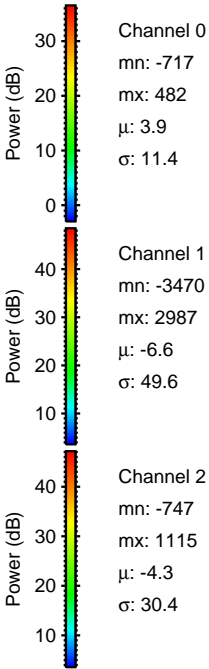
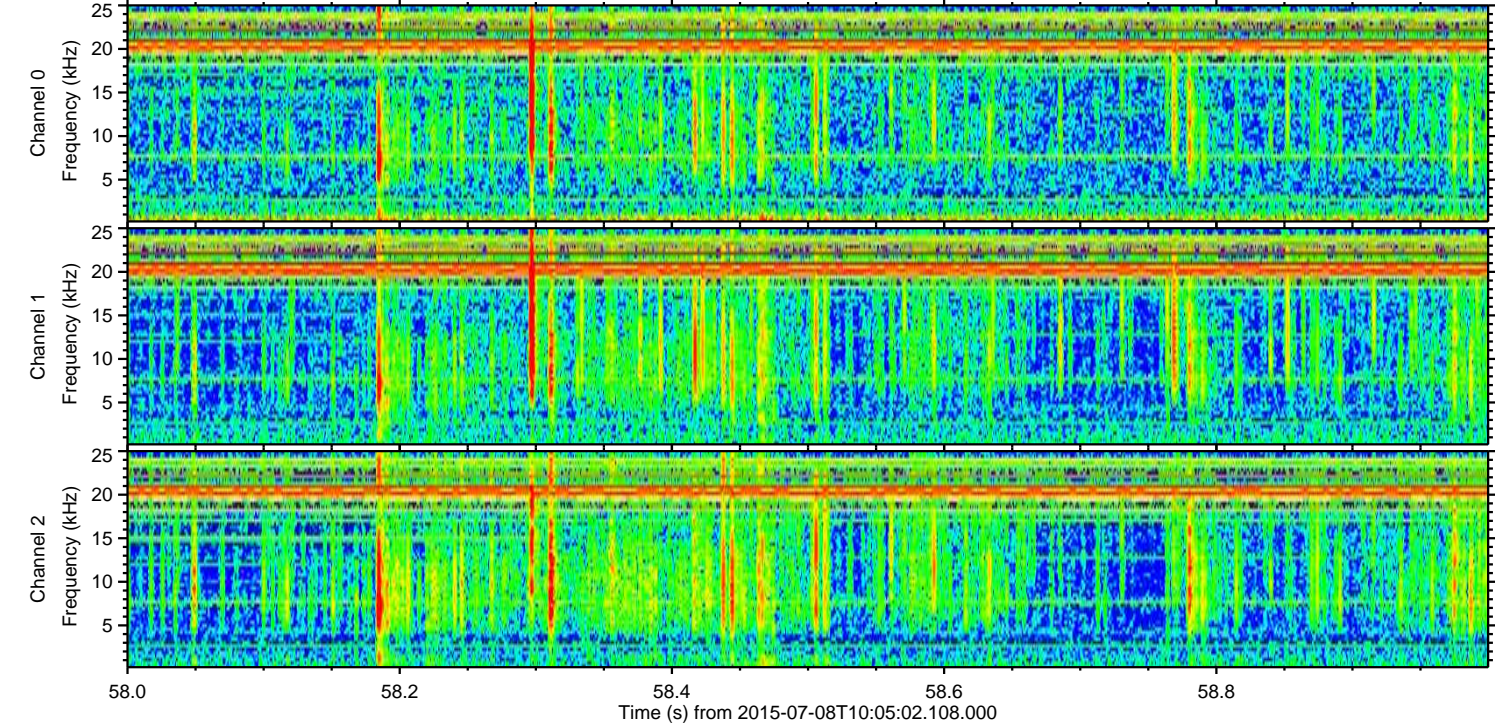
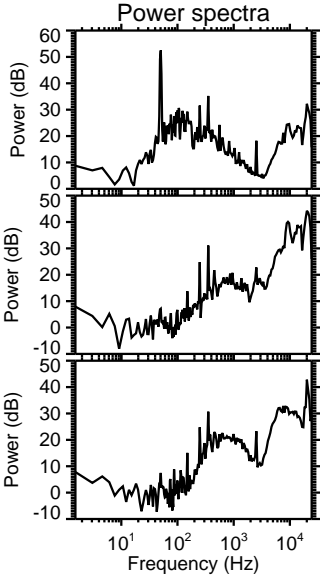
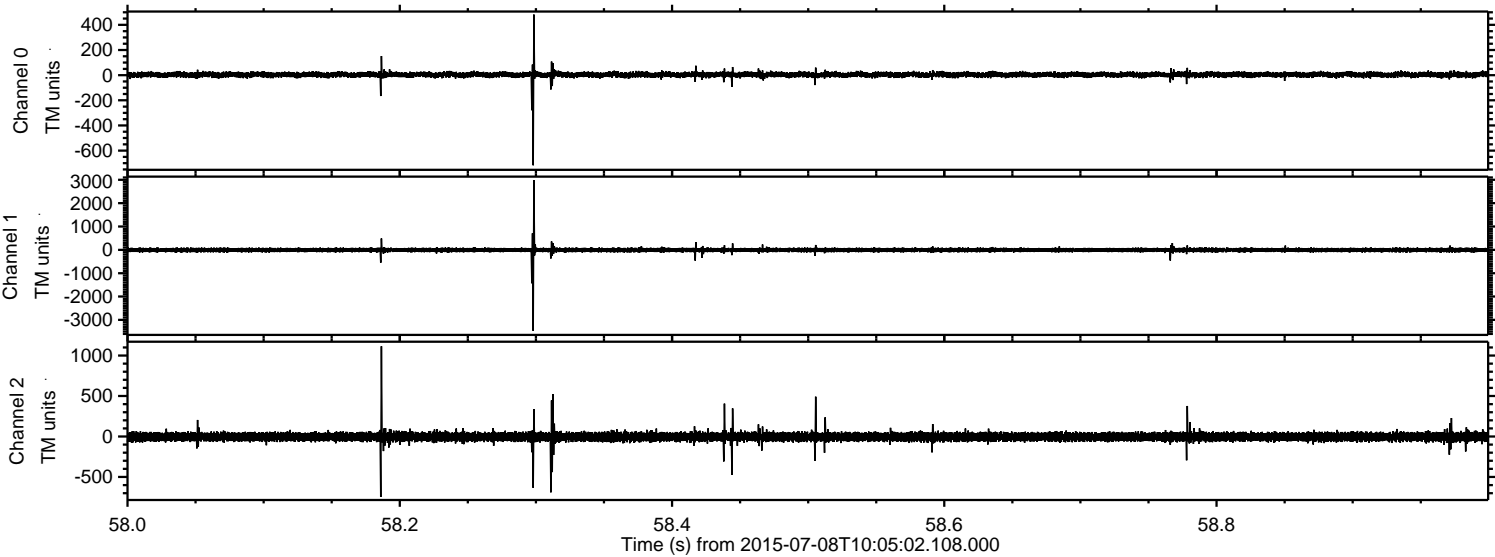


ELMAVAN 3D WAVEFORMS (Measured data sampled at 50 kHz) 51000 packets of 144 samples from 2015-07-08T10:05:02.108.000. Part 131/147

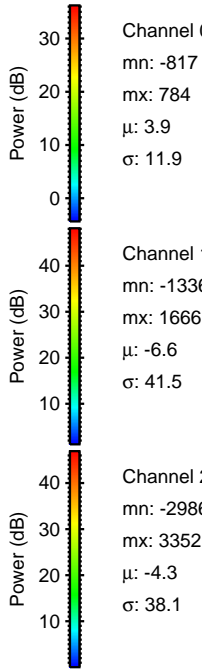
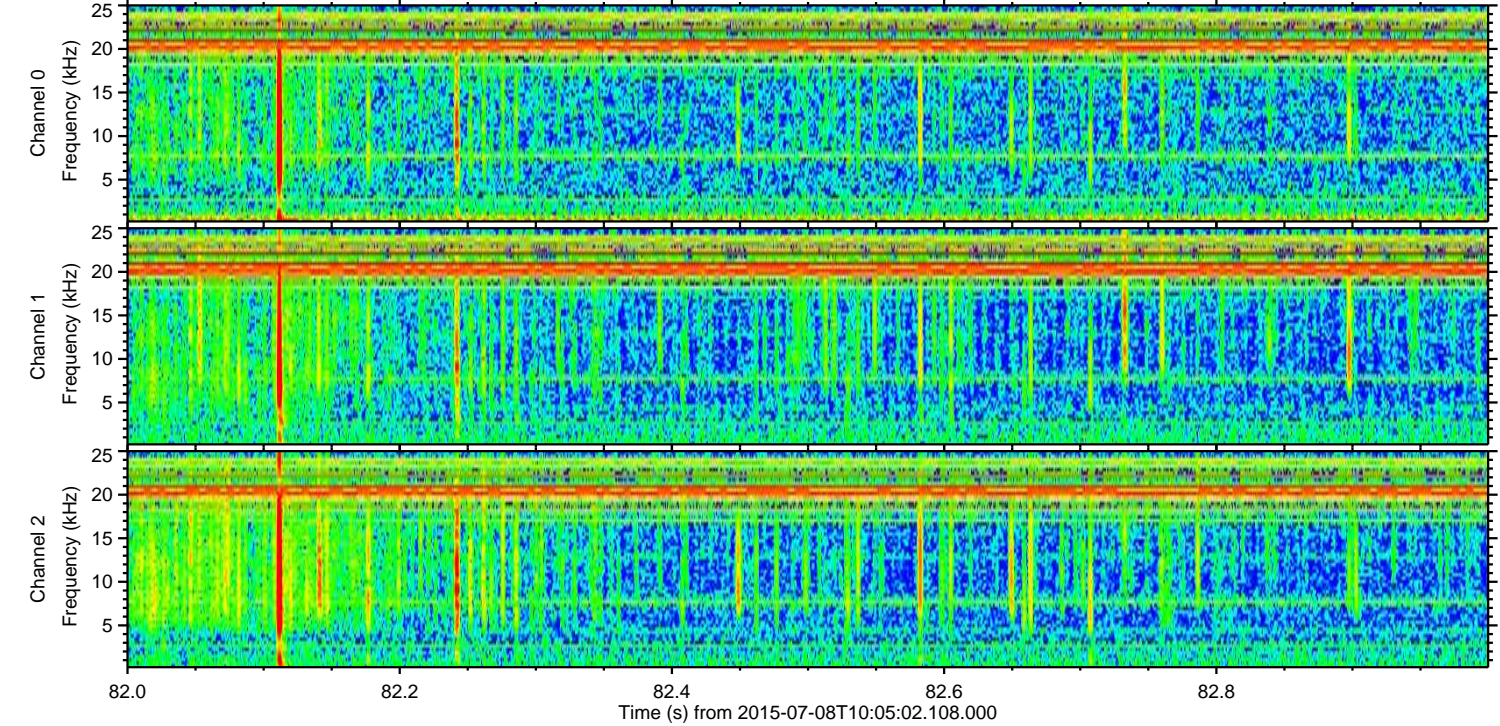
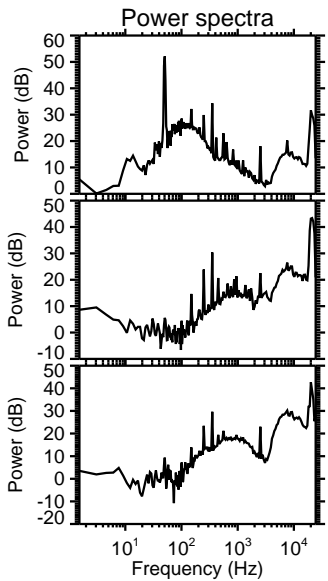
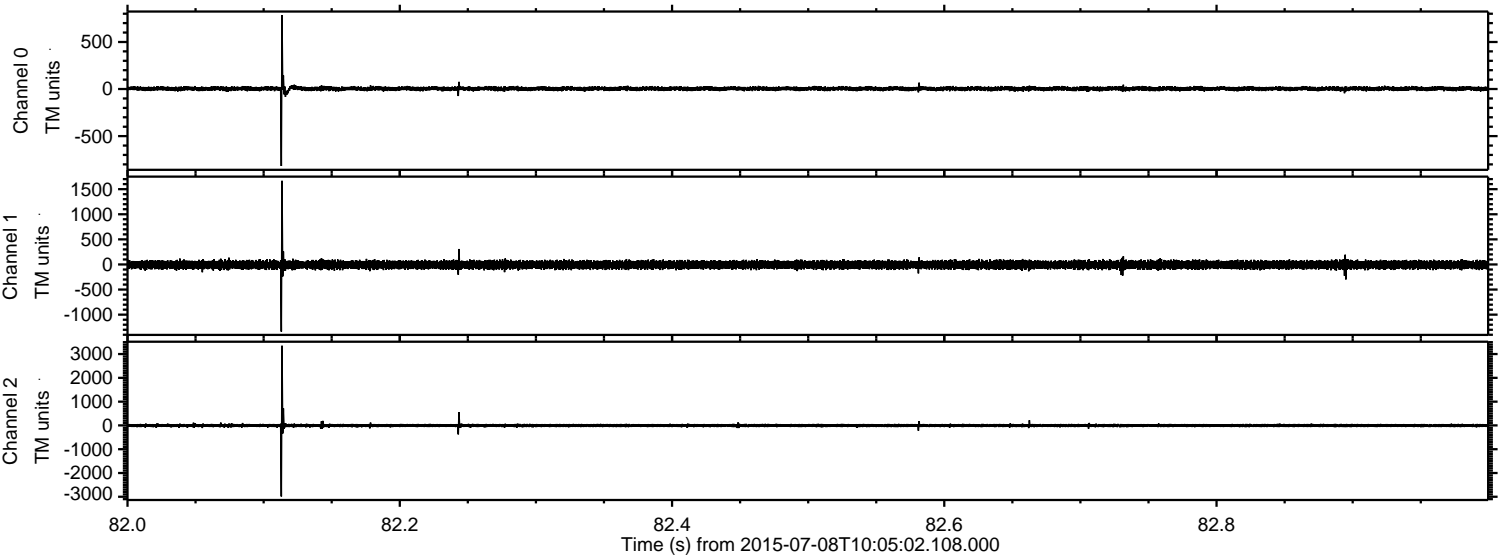
Processed Wed Jul 8 12:11:44 2015 by ELM ver.2012-10-06 from 001__elm20150708_100501__dat00.bin



Processed Wed Jul 8 12:11:45 2015 by ELM ver.2012-10-06 from 001__elm20150708_100501__dat00.bin

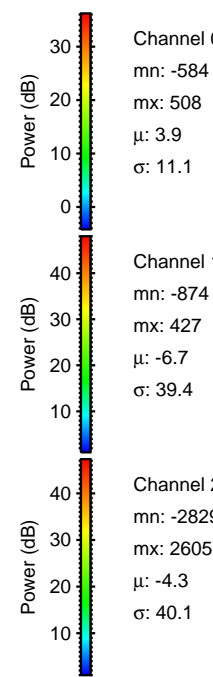
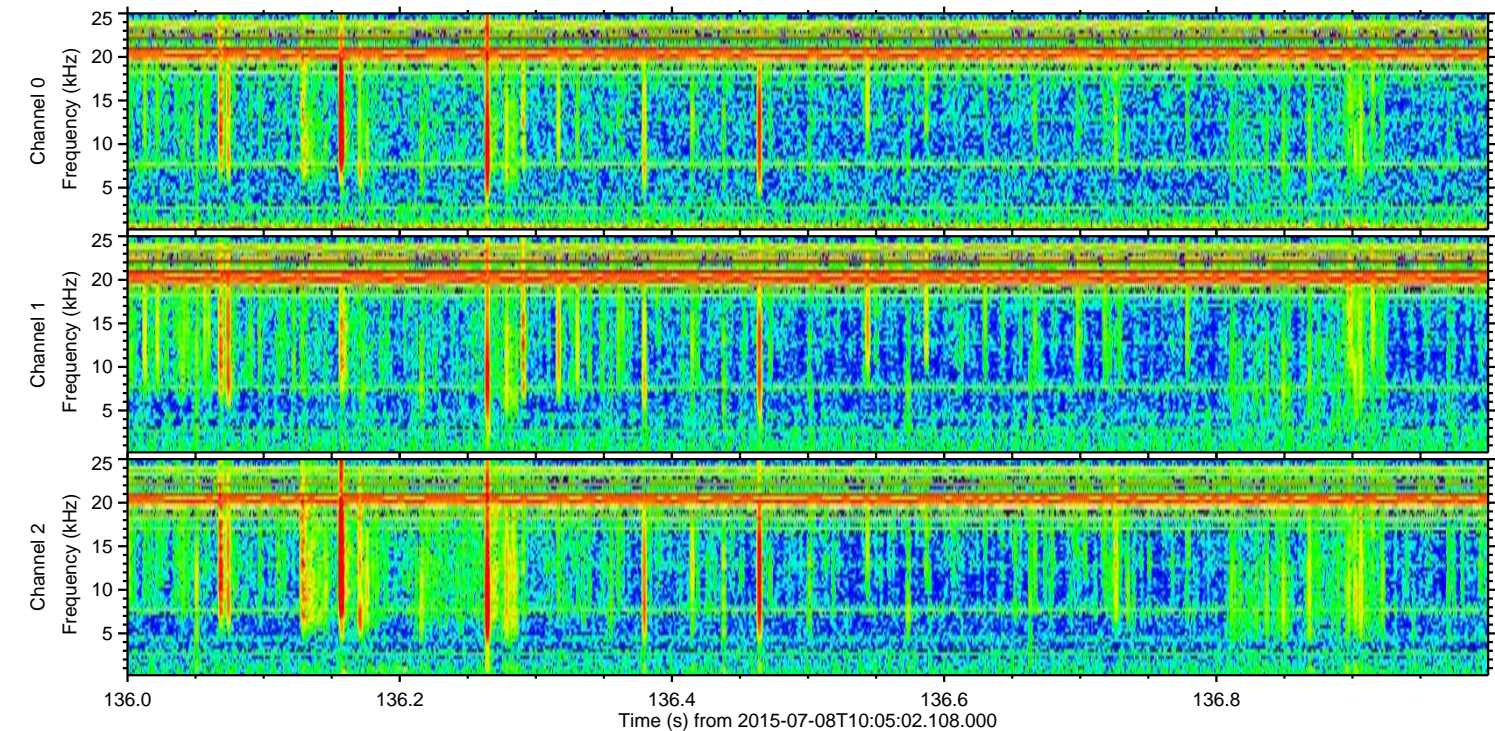
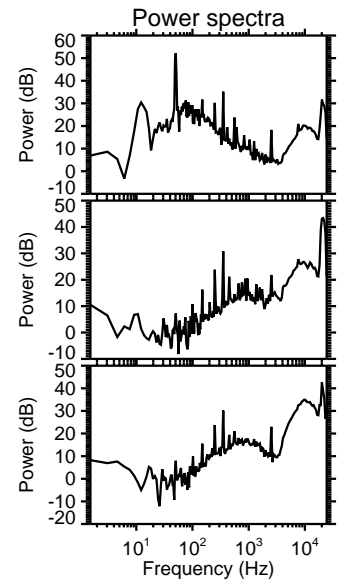
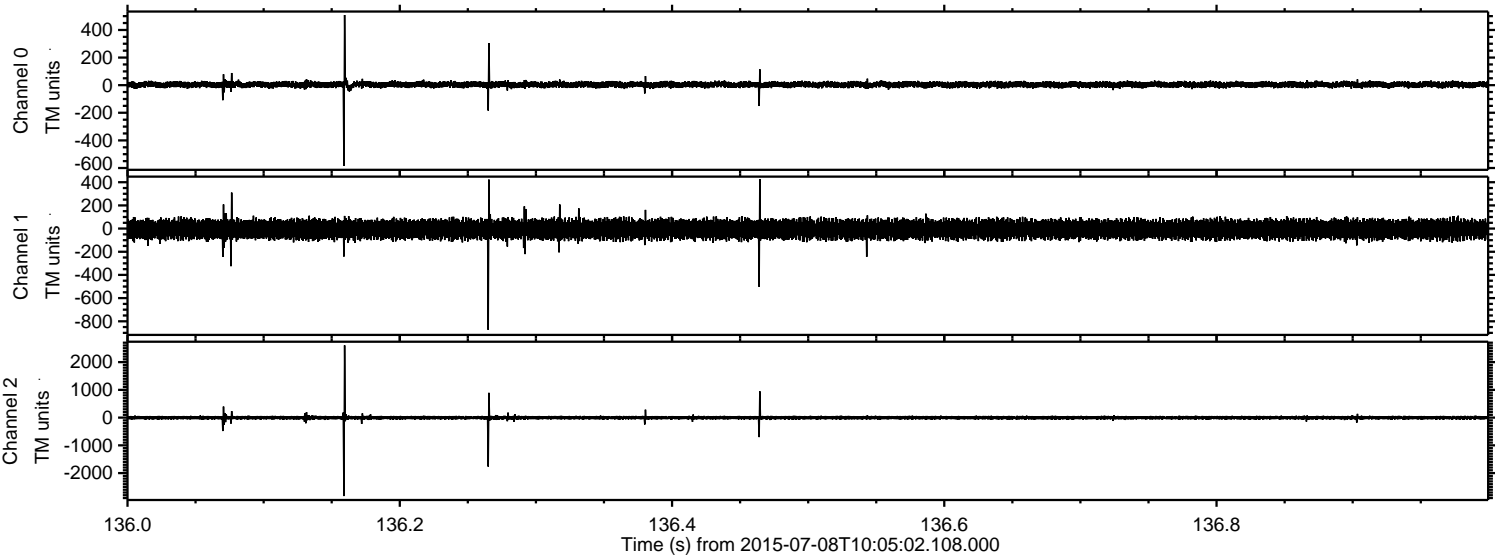


Processed Wed Jul 8 12:11:46 2015 by ELM ver.2012-10-06 from 001__elm20150708_100501__dat00.bin



ELMAVAN 3D WAVEFORMS (Measured data sampled at 50 kHz) 51000 packets of 144 samples from 2015-07-08T10:05:02.108.000. Part 137/147

Processed Wed Jul 8 12:11:47 2015 by ELM ver.2012-10-06 from 001__elm20150708_100501__dat00.bin

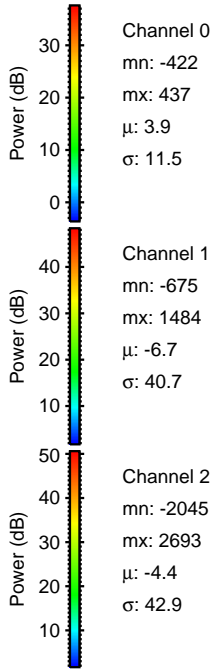
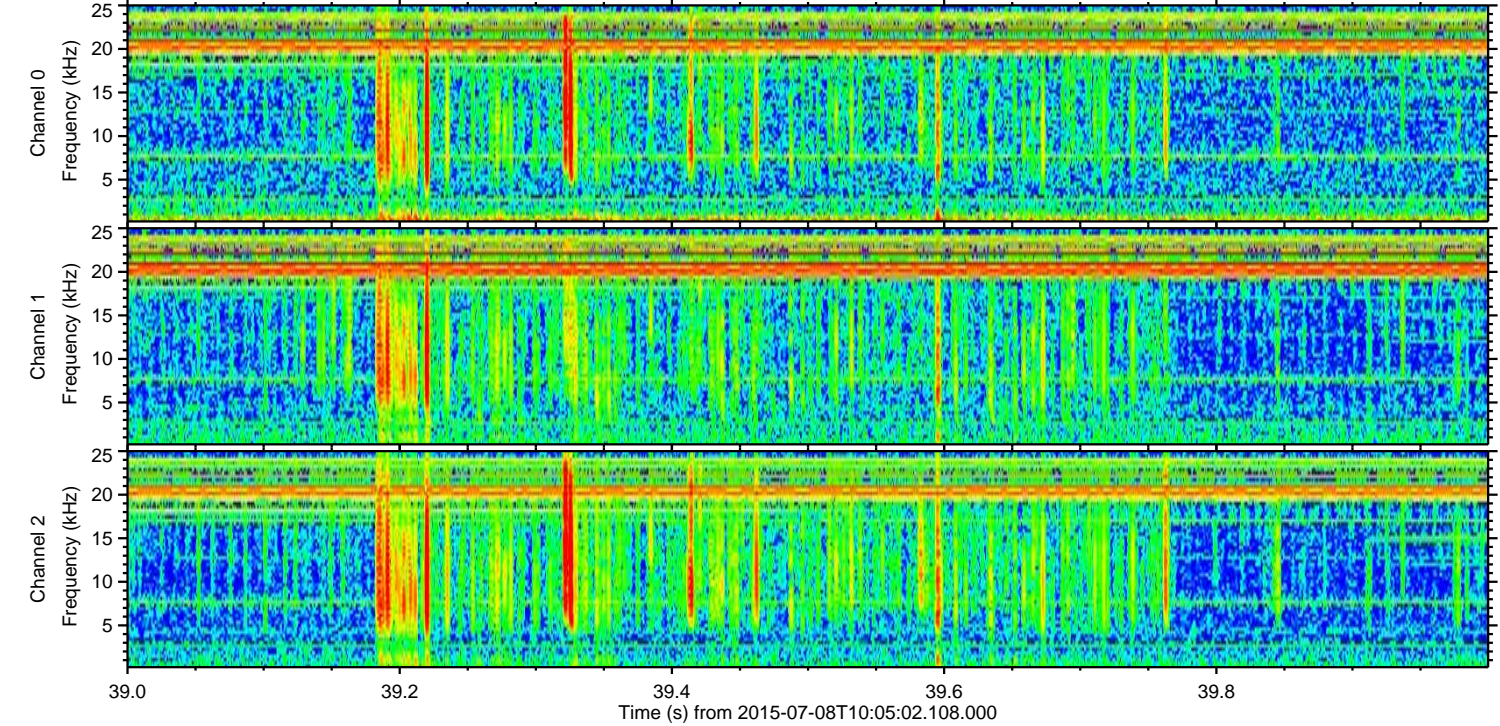
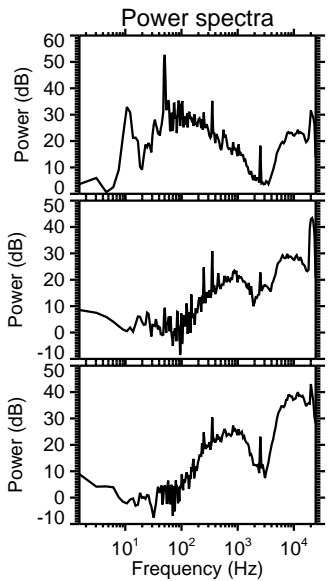
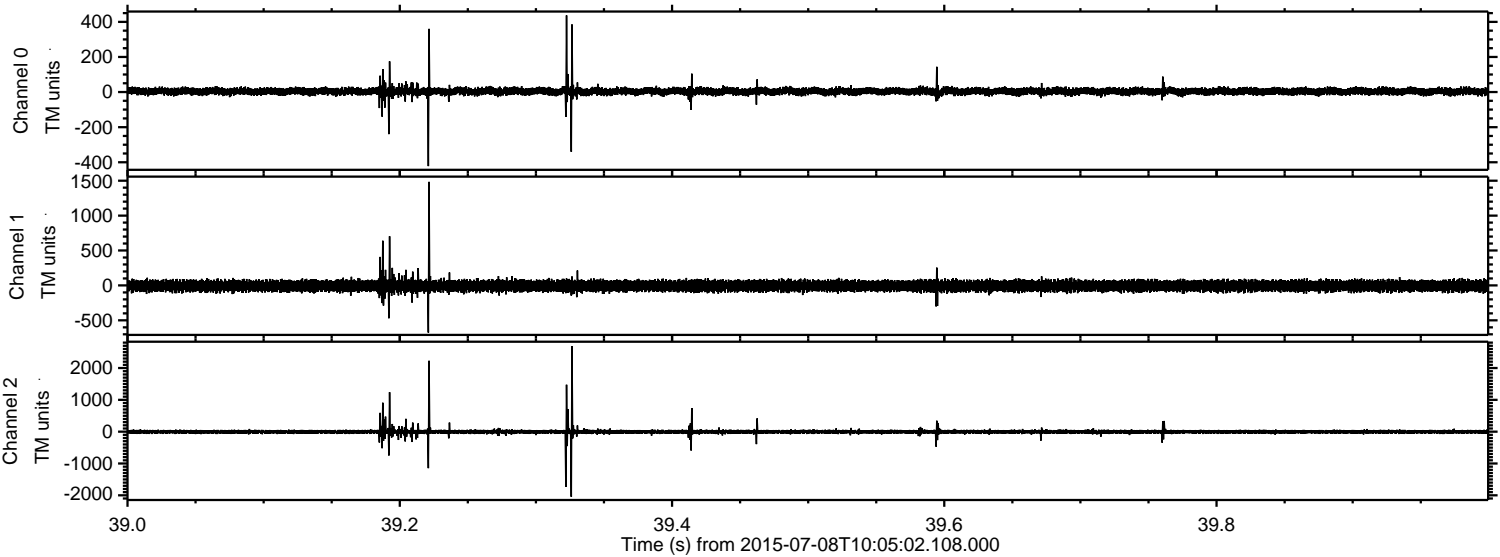


Channel 0
mn: -584
mx: 508
 μ : 3.9
 σ : 11.1

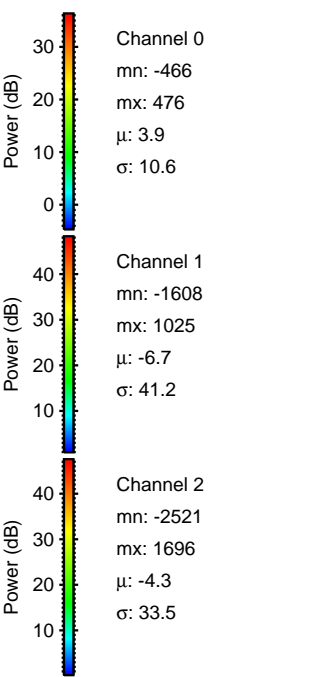
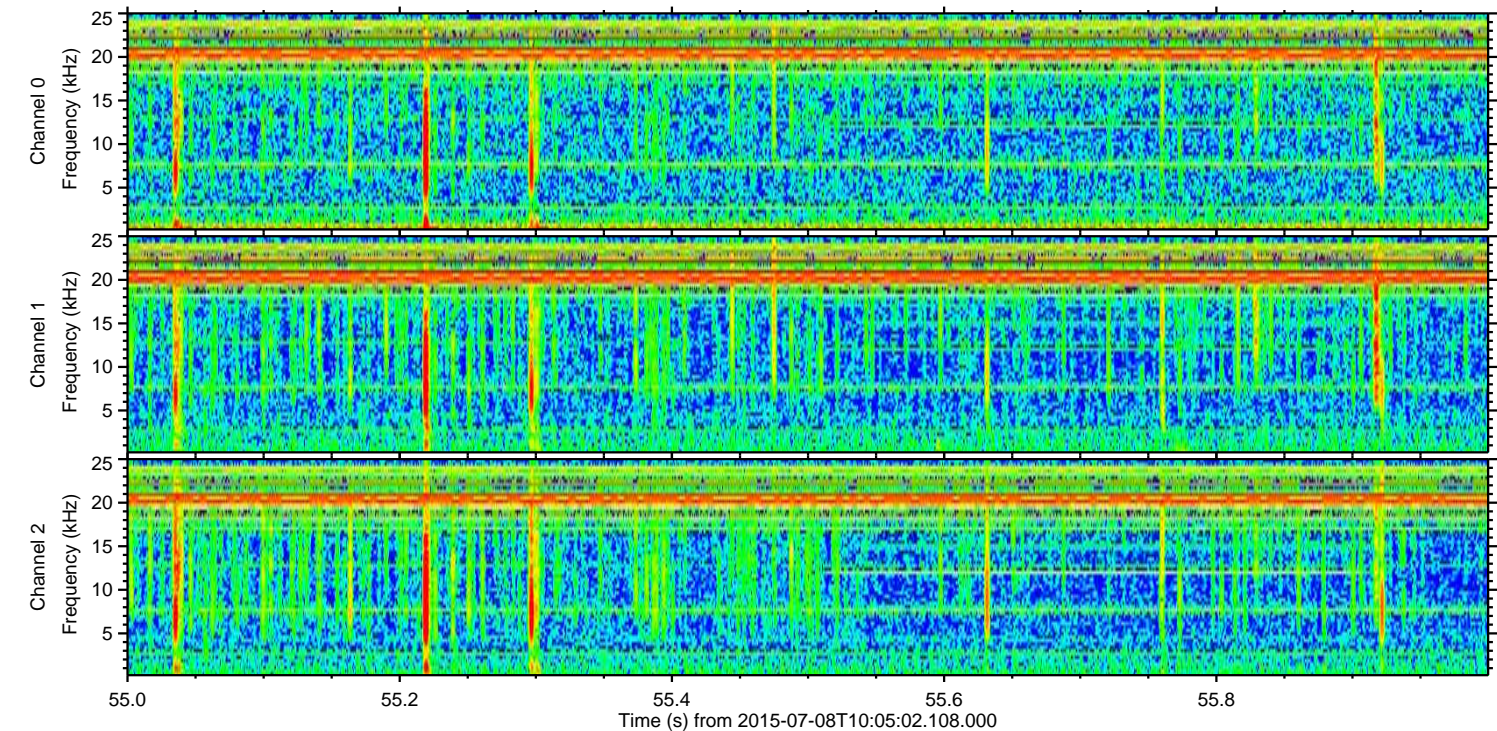
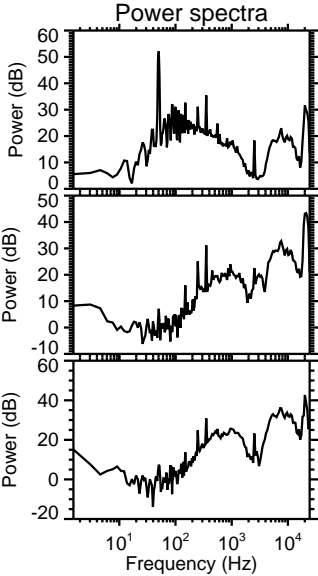
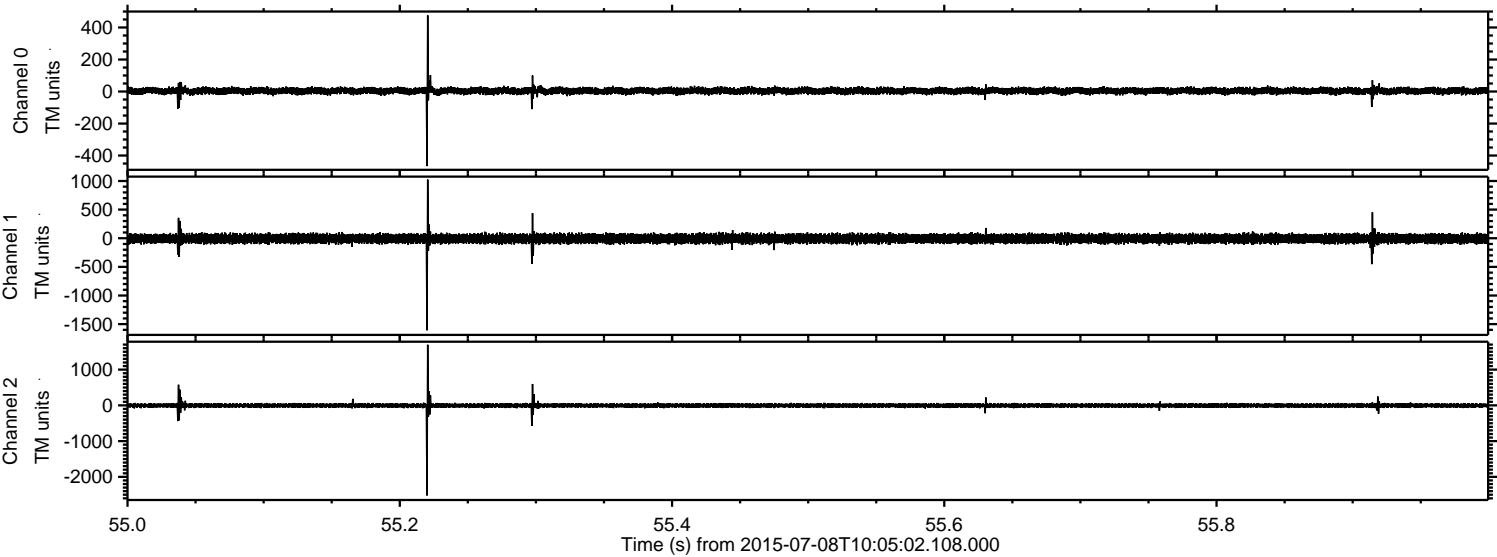
Channel 1
mn: -874
mx: 427
 μ : -6.7
 σ : 39.4

Channel 2
mn: -2829
mx: 2605
 μ : -4.3
 σ : 40.1

Processed Wed Jul 8 12:11:48 2015 by ELM ver.2012-10-06 from 001__elm20150708_100501__dat00.bin



Processed Wed Jul 8 12:11:49 2015 by ELM ver.2012-10-06 from 001__elm20150708_100501__dat00.bin



Processed Wed Jul 8 12:11:50 2015 by ELM ver.2012-10-06 from 001__elm20150708_100501__dat00.bin

