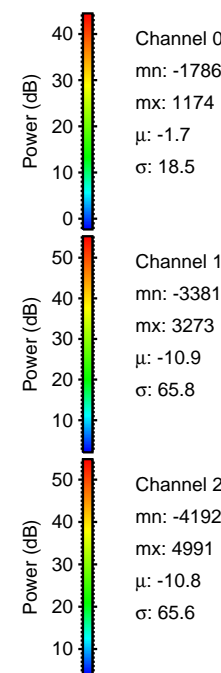
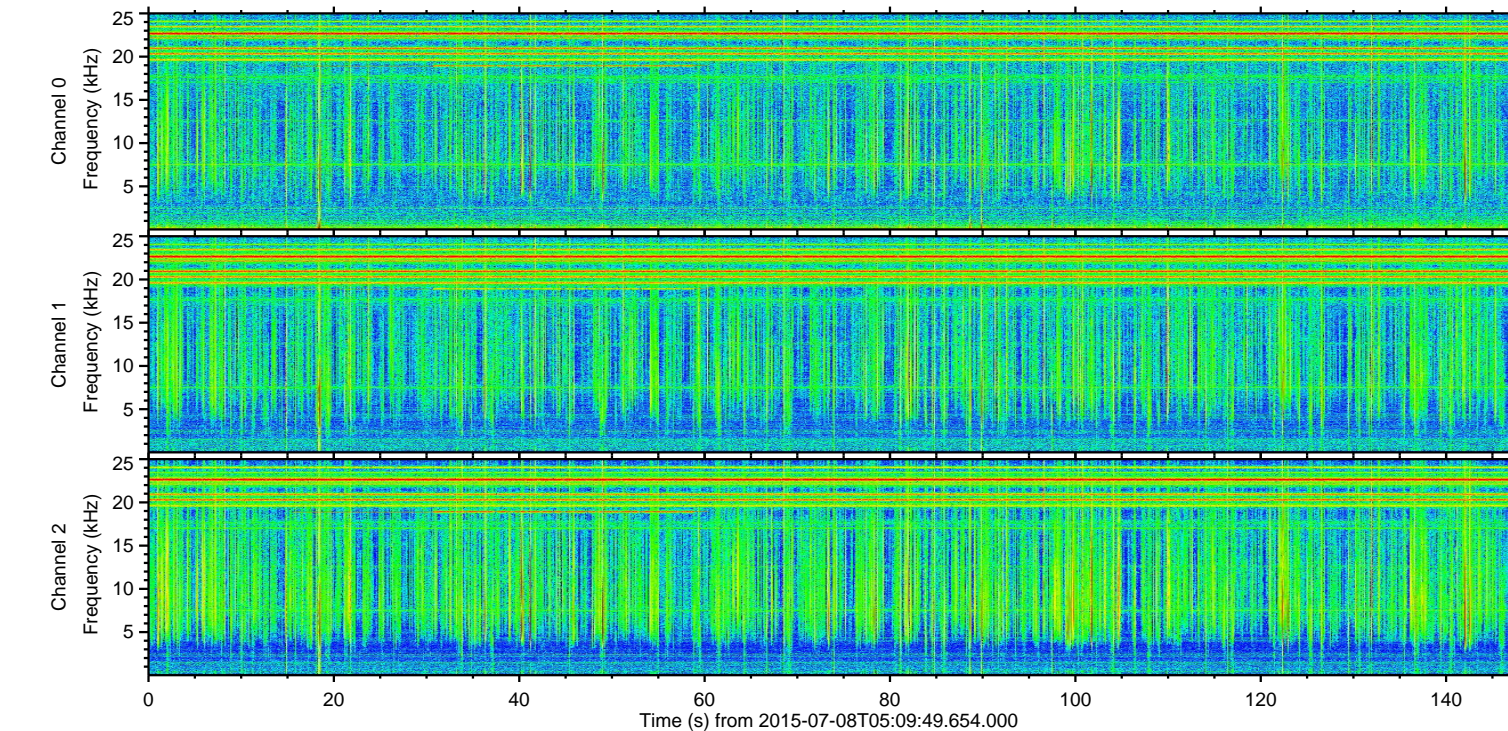
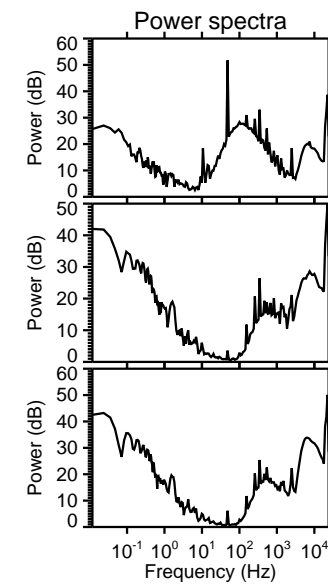
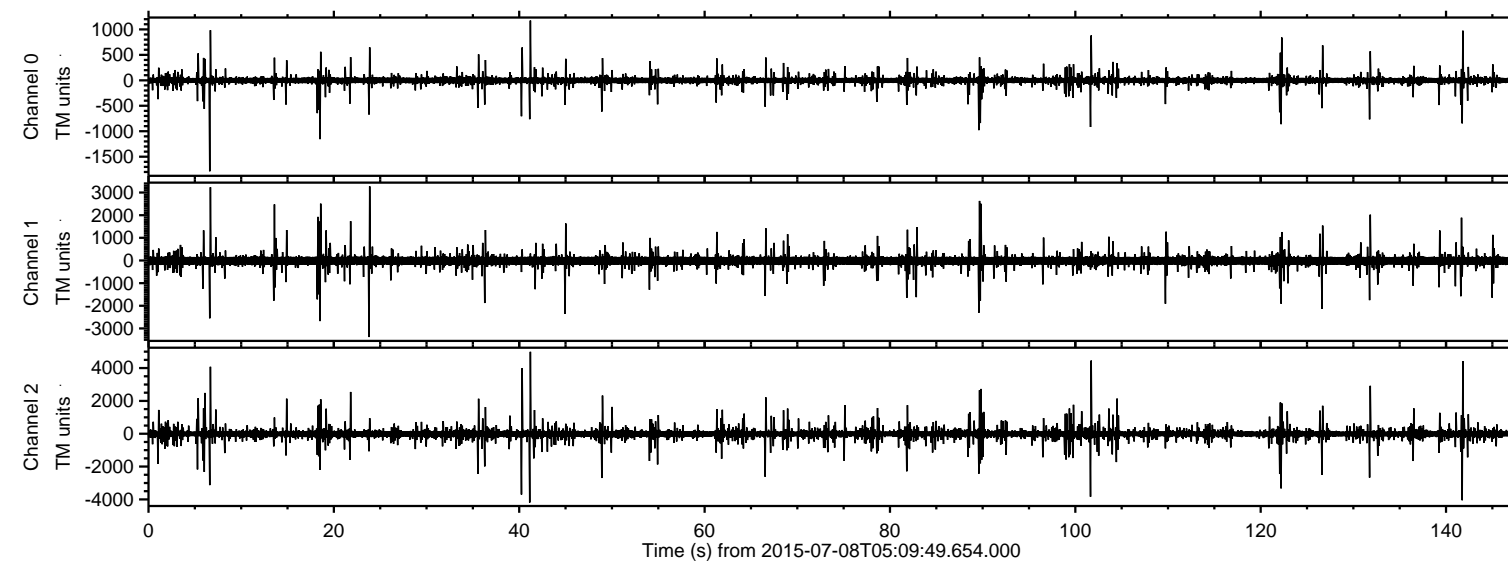


ELMAVAN 3D WAVEFORMS (Measured data sampled at 50 kHz) 51000 packets of 144 samples from 2015-07-08T05:09:49.654.000.

Processed Wed Jul 8 07:16:35 2015 by ELM ver.2012-10-06 from 001__elm20150708_050948__dat00.bin

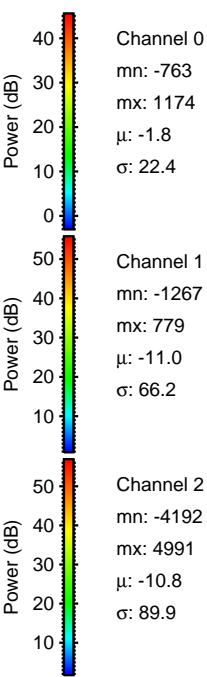
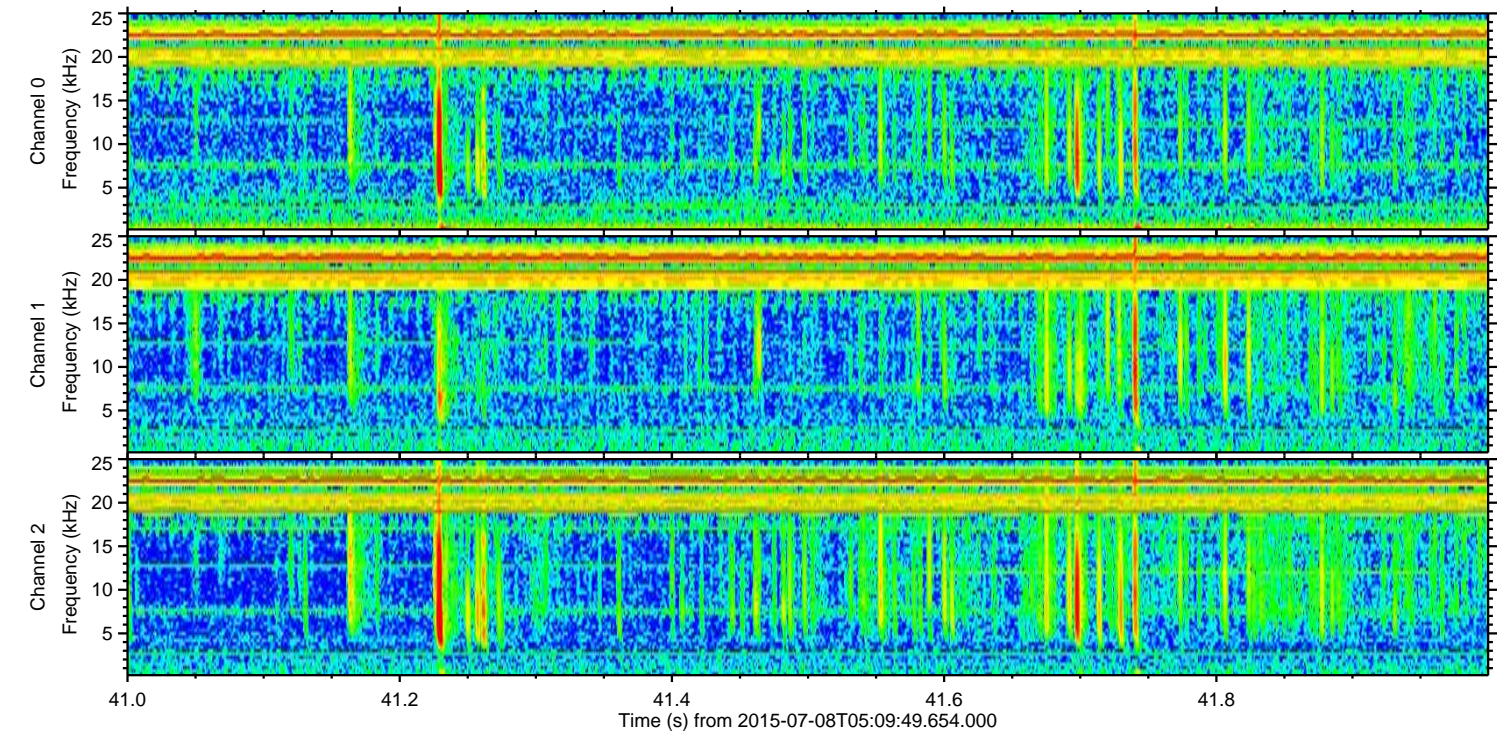
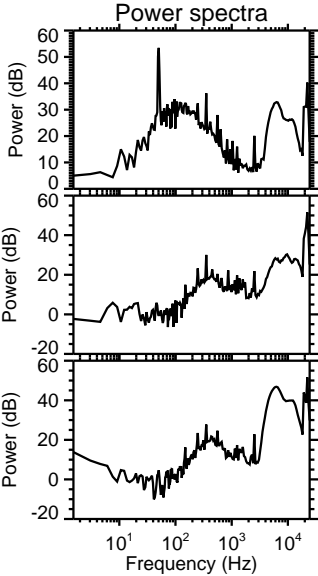
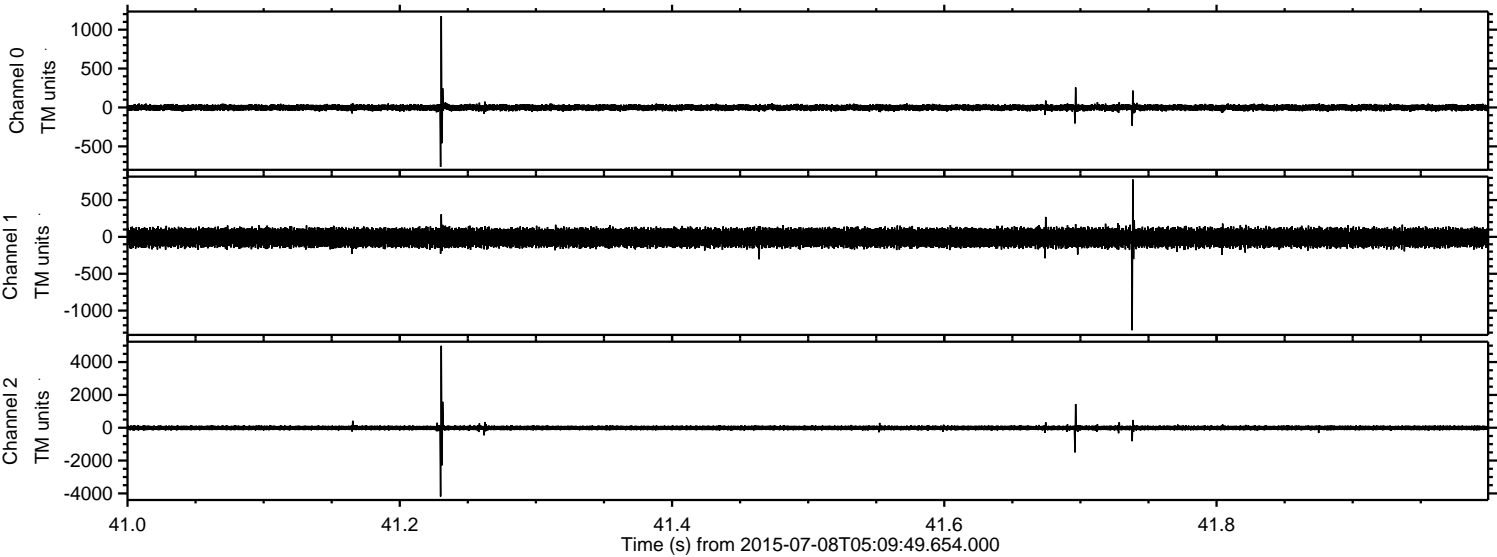


Channel 0
mn: -1786
mx: 1174
 μ : -1.7
 σ : 18.5

Channel 1
mn: -3381
mx: 3273
 μ : -10.9
 σ : 65.8

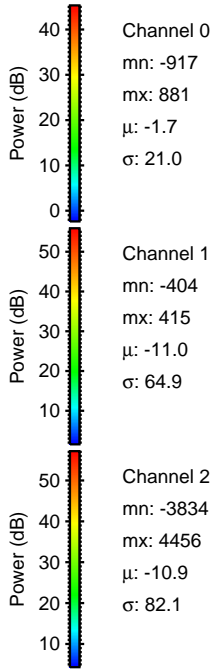
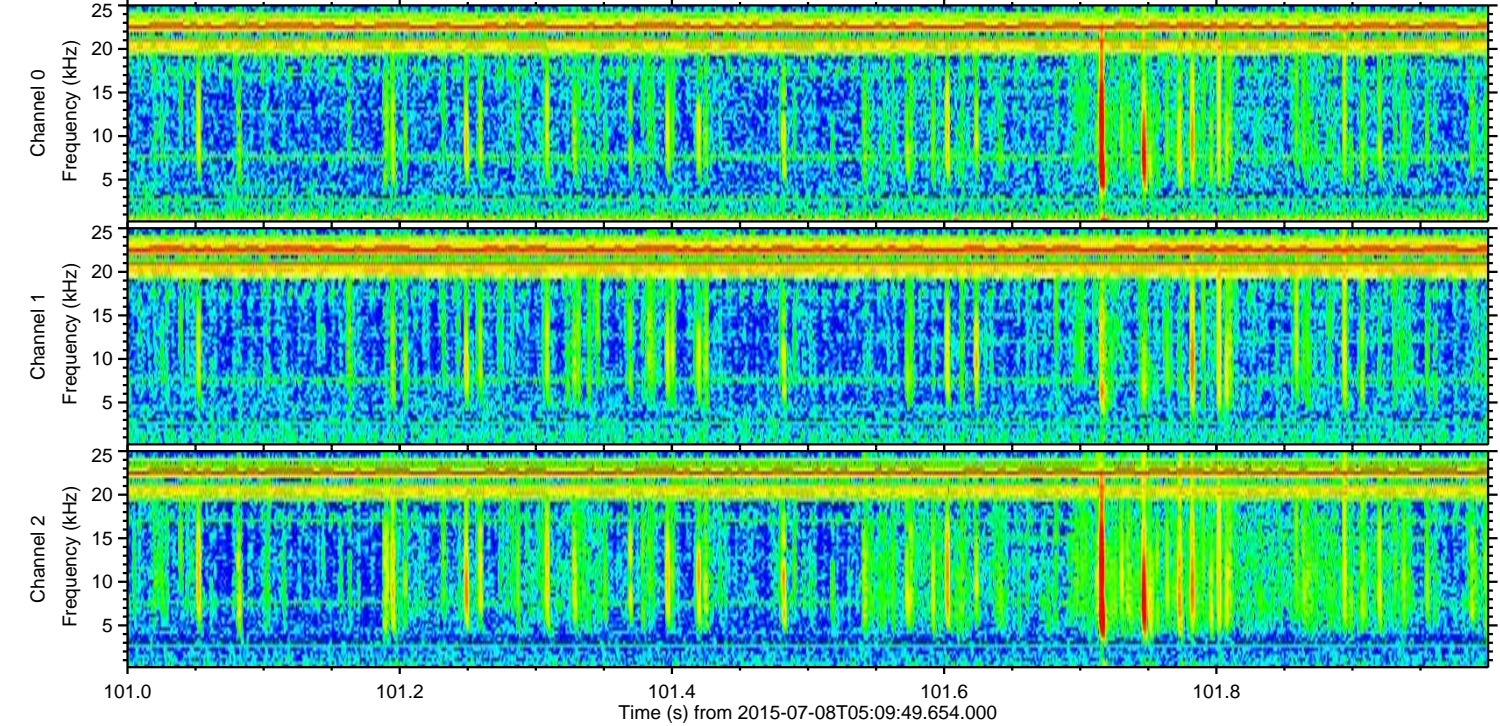
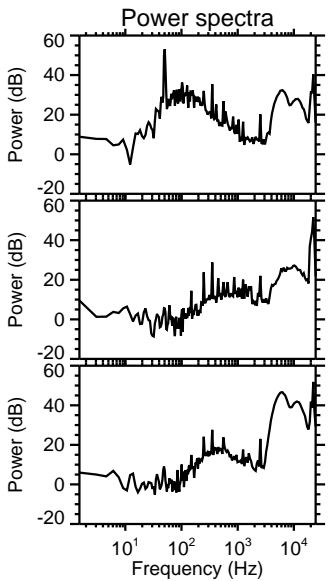
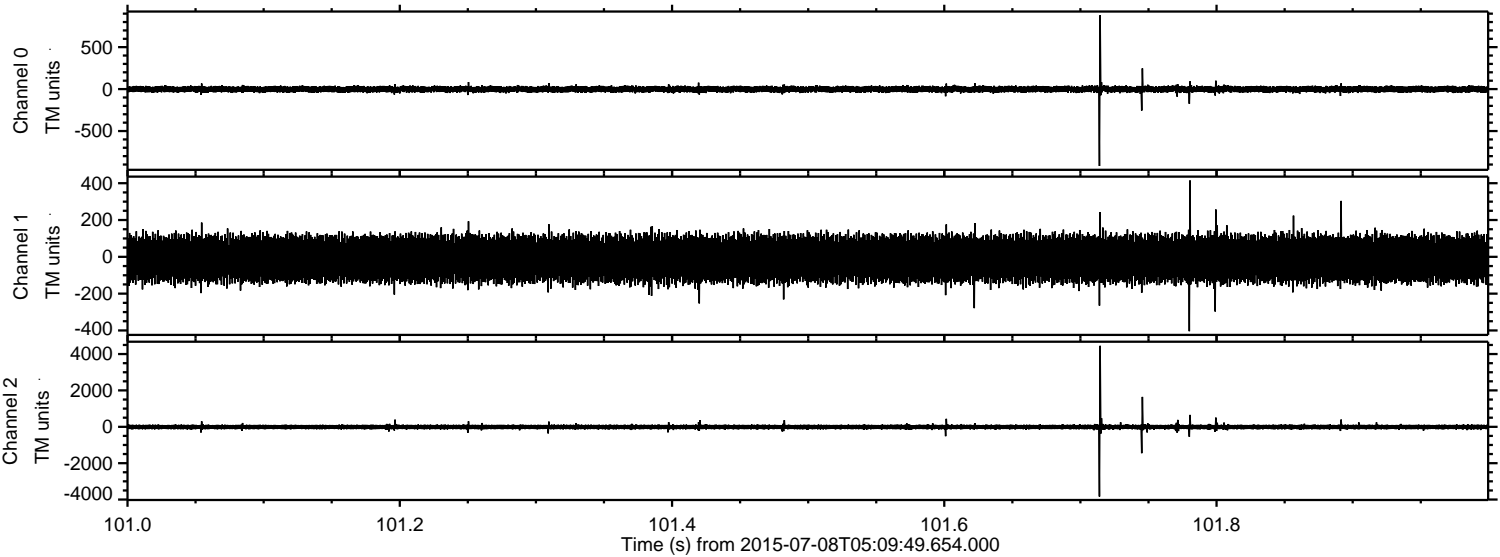
Channel 2
mn: -4192
mx: 4991
 μ : -10.8
 σ : 65.6

Processed Wed Jul 8 07:16:51 2015 by ELM ver.2012-10-06 from 001__elm20150708_050948__dat00.bin



ELMAVAN 3D WAVEFORMS (Measured data sampled at 50 kHz) 51000 packets of 144 samples from 2015-07-08T05:09:49.654.000. Part 102/147

Processed Wed Jul 8 07:16:52 2015 by ELM ver.2012-10-06 from 001__elm20150708_050948__dat00.bin



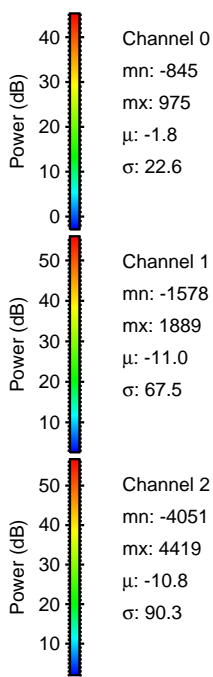
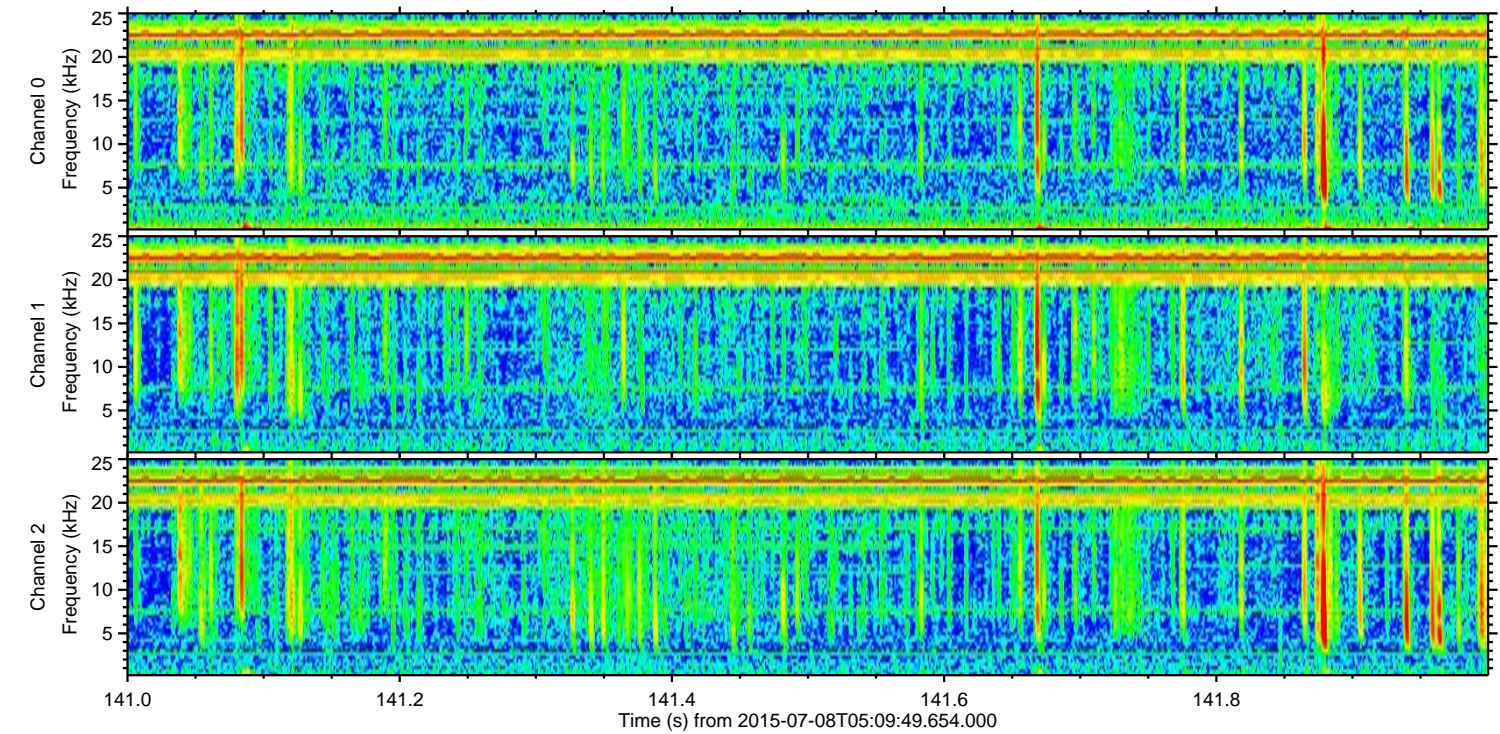
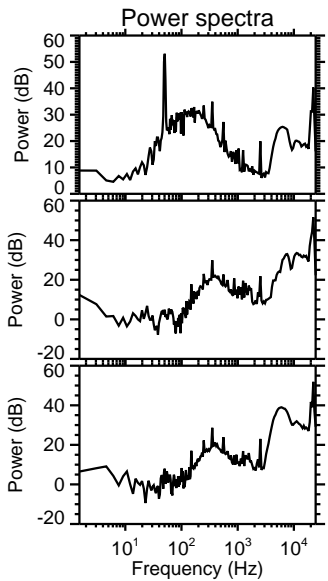
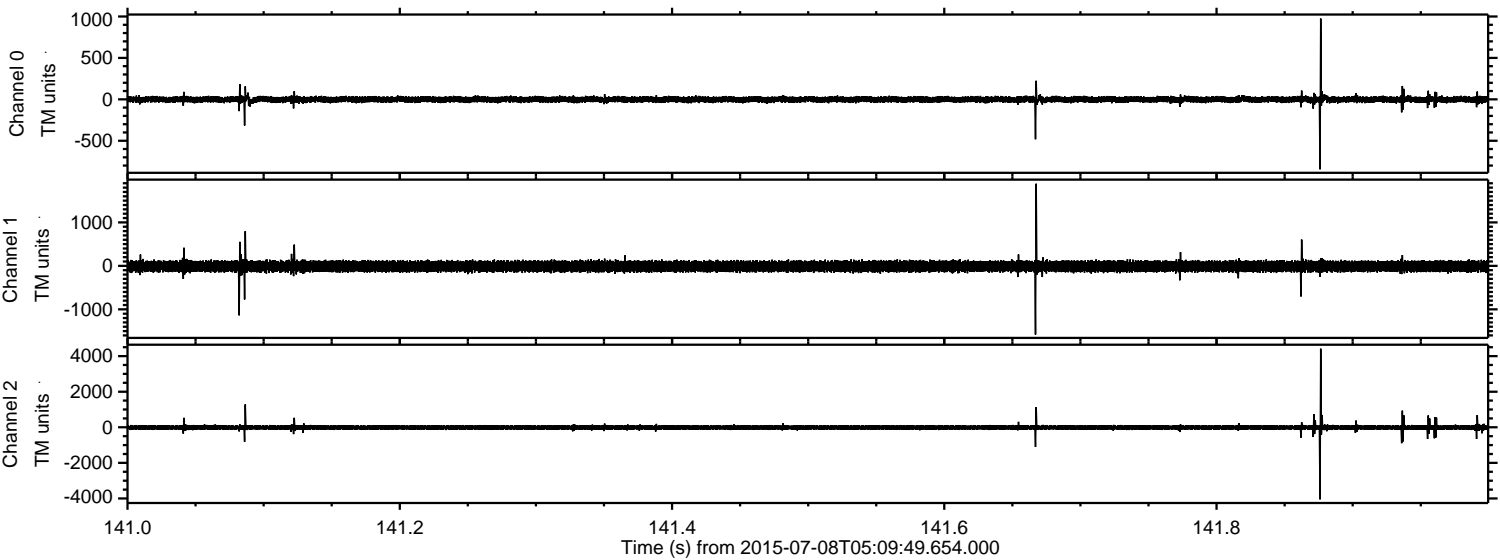
Channel 0
mn: -917
mx: 881
 μ : -1.7
 σ : 21.0

Channel 1
mn: -404
mx: 415
 μ : -11.0
 σ : 64.9

Channel 2
mn: -3834
mx: 4456
 μ : -10.9
 σ : 82.1

ELMAVAN 3D WAVEFORMS (Measured data sampled at 50 kHz) 51000 packets of 144 samples from 2015-07-08T05:09:49.654.000. Part 142/147

Processed Wed Jul 8 07:16:53 2015 by ELM ver.2012-10-06 from 001__elm20150708_050948__dat00.bin



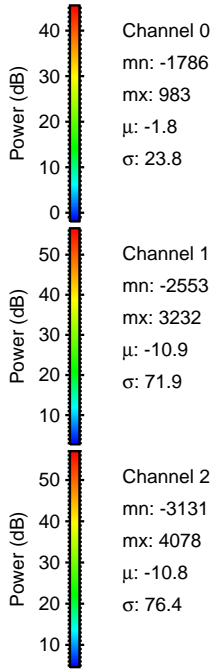
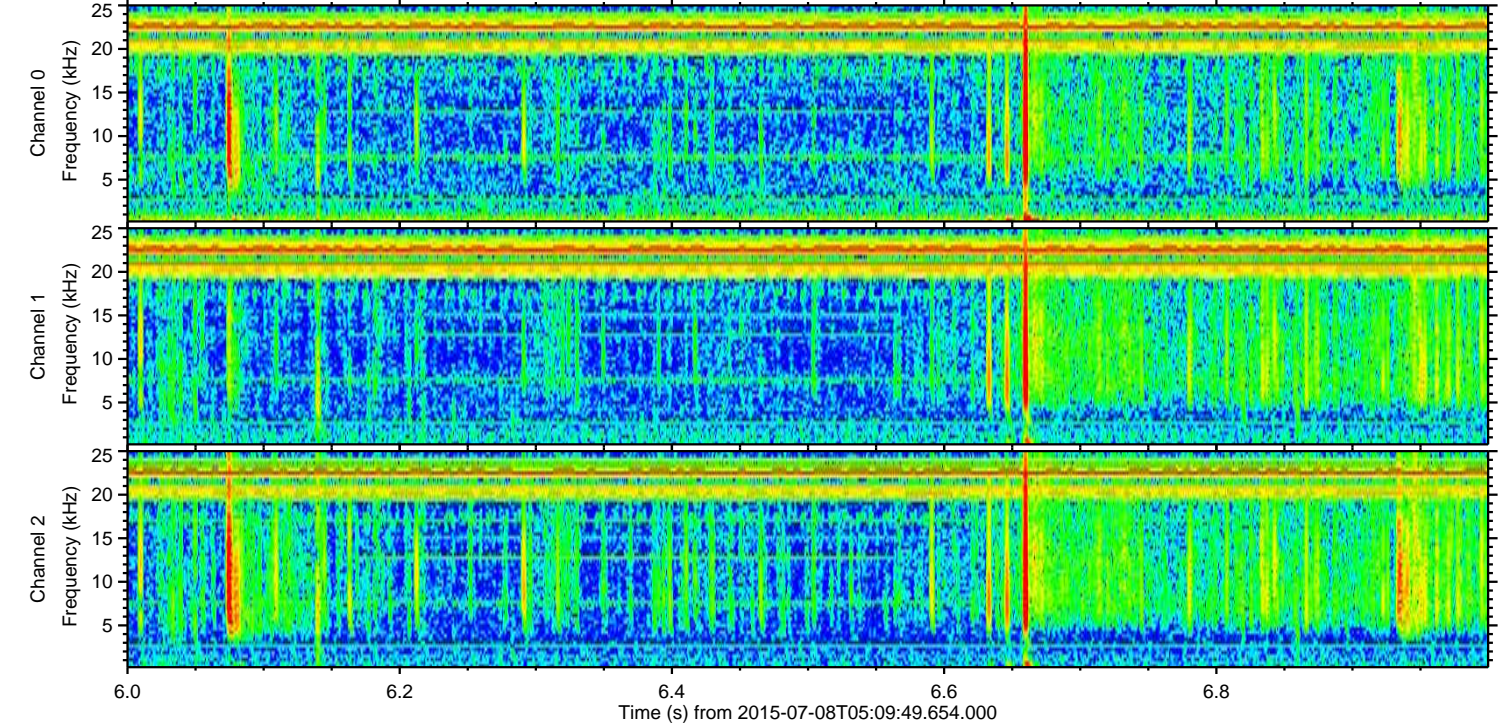
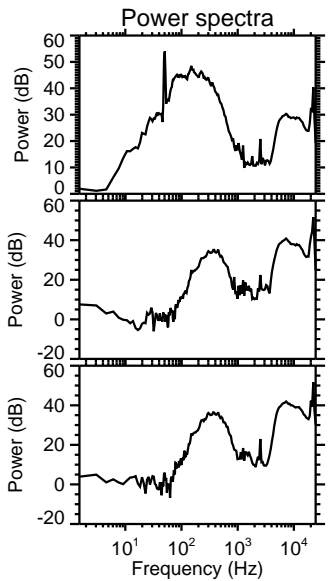
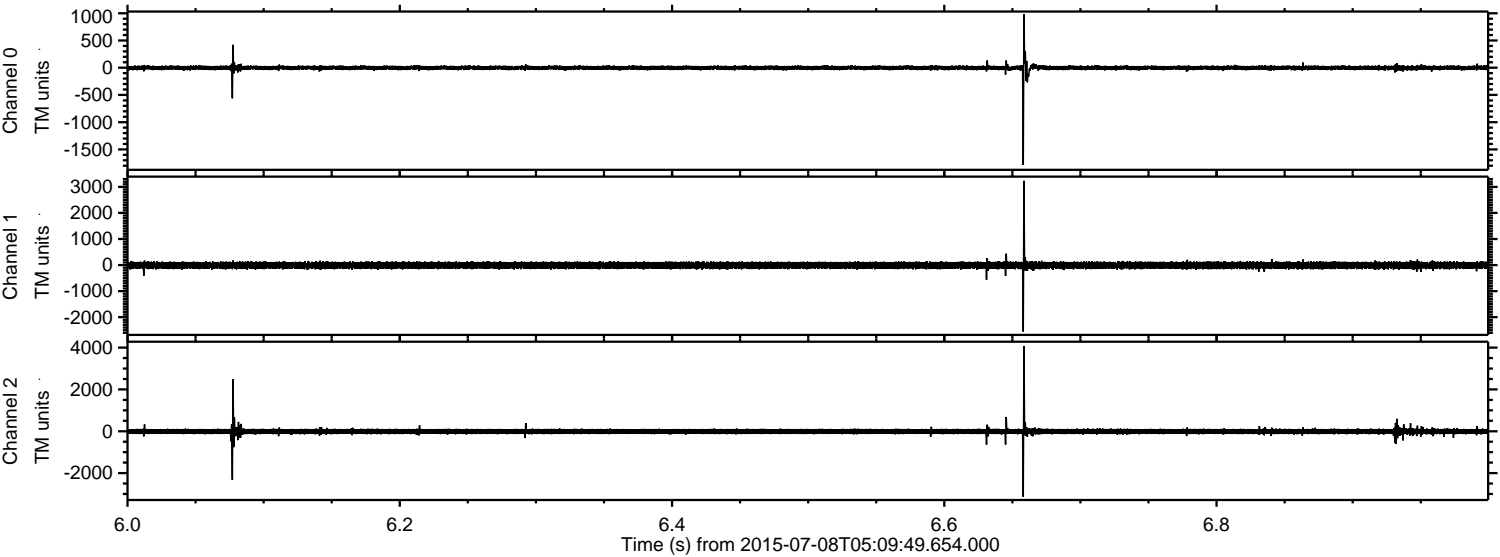
Channel 0
mn: -845
mx: 975
 μ : -1.8
 σ : 22.6

Channel 1
mn: -1578
mx: 1889
 μ : -11.0
 σ : 67.5

Channel 2
mn: -4051
mx: 4419
 μ : -10.8
 σ : 90.3

ELMAVAN 3D WAVEFORMS (Measured data sampled at 50 kHz) 51000 packets of 144 samples from 2015-07-08T05:09:49.654.000. Part 7/147

Processed Wed Jul 8 07:16:54 2015 by ELM ver.2012-10-06 from 001__elm20150708_050948__dat00.bin

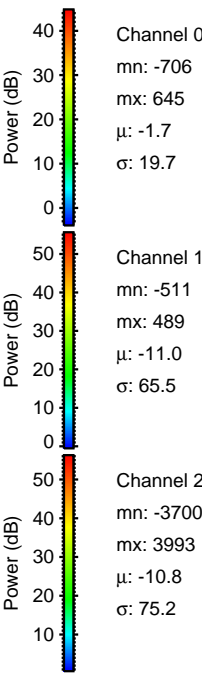
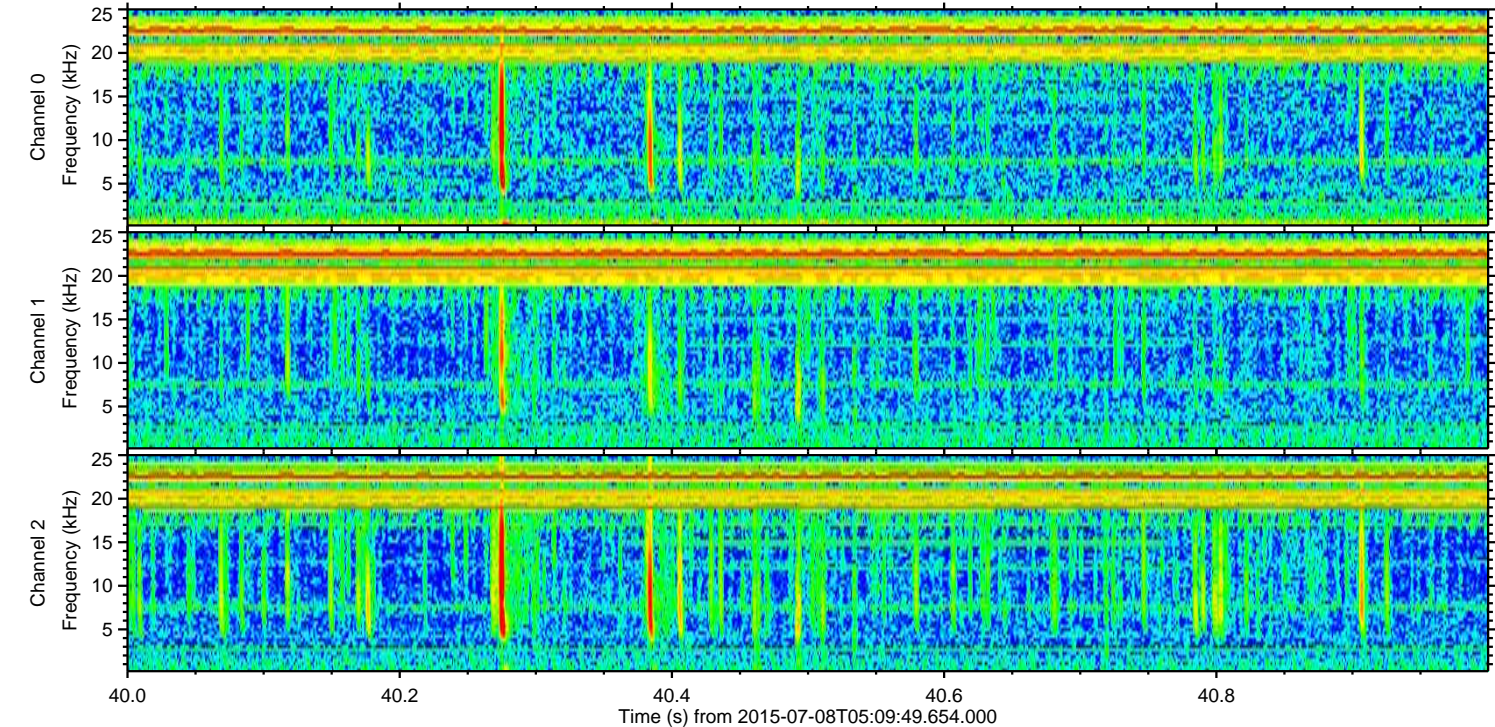
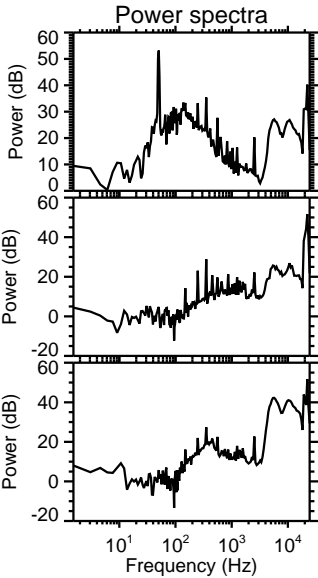
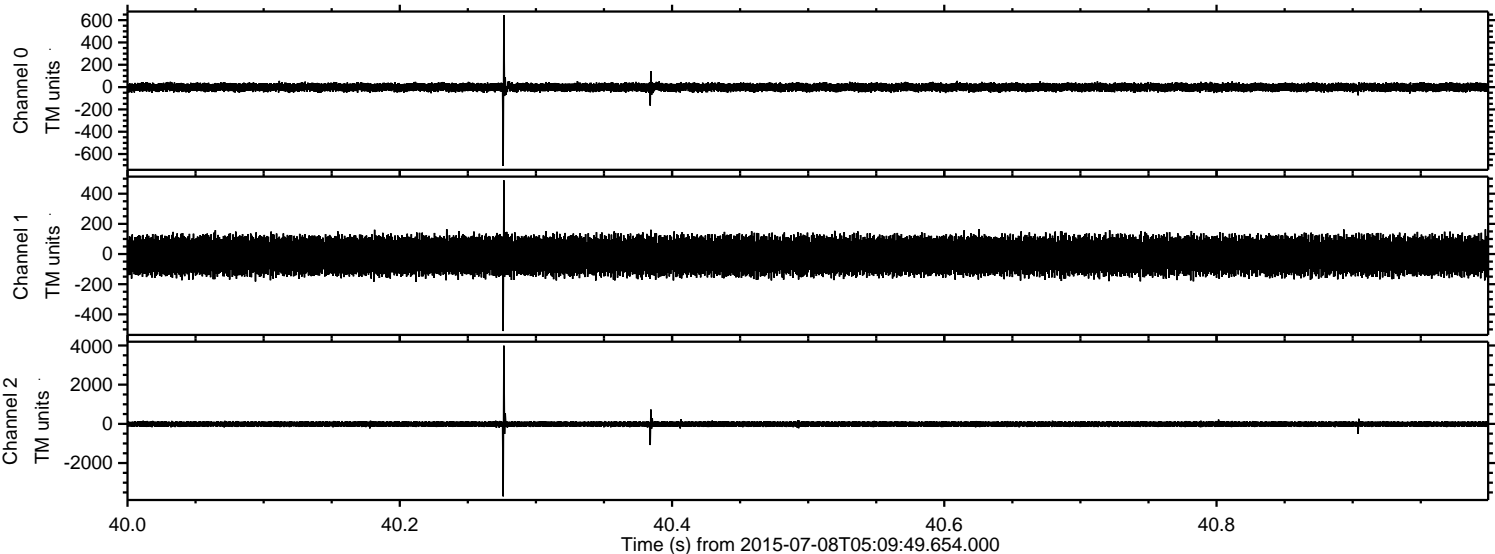


Channel 0
mn: -1786
mx: 983
 μ : -1.8
 σ : 23.8

Channel 1
mn: -2553
mx: 3232
 μ : -10.9
 σ : 71.9

Channel 2
mn: -3131
mx: 4078
 μ : -10.8
 σ : 76.4

Processed Wed Jul 8 07:16:55 2015 by ELM ver.2012-10-06 from 001__elm20150708_050948__dat00.bin

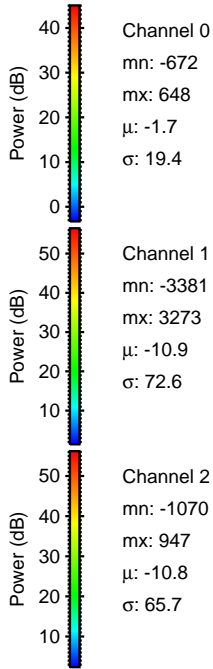
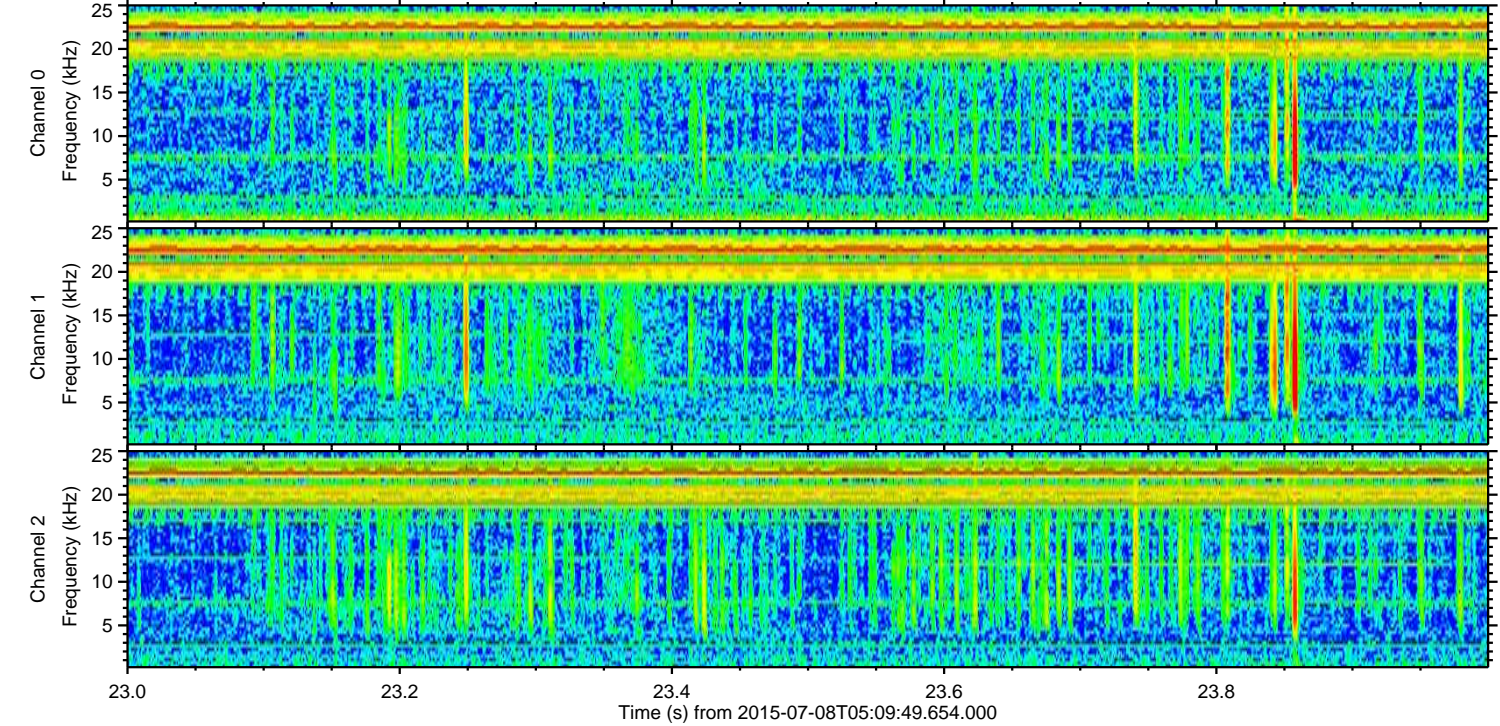
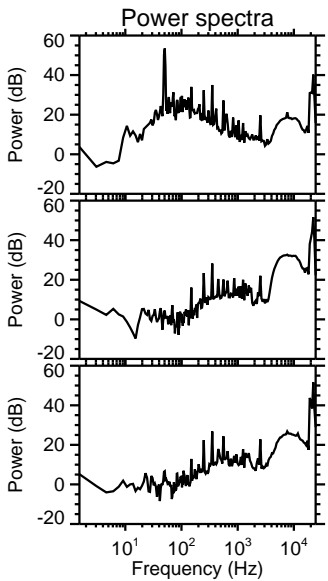
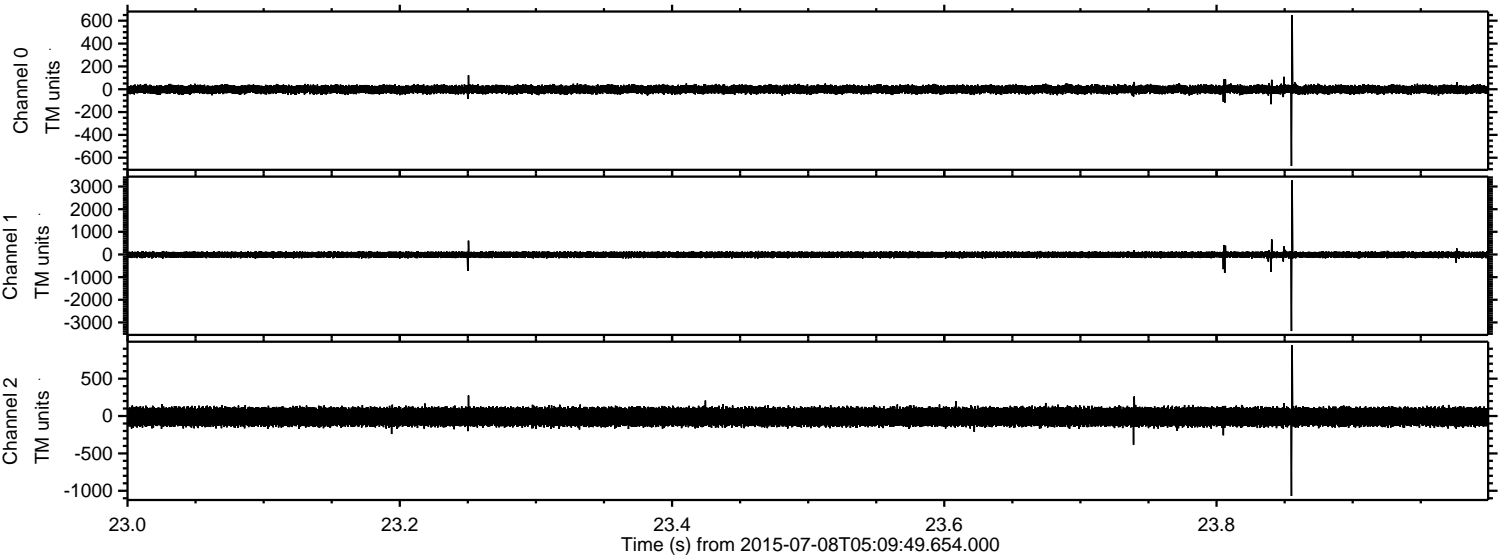


Channel 0
mn: -706
mx: 645
 μ : -1.7
 σ : 19.7

Channel 1
mn: -511
mx: 489
 μ : -11.0
 σ : 65.5

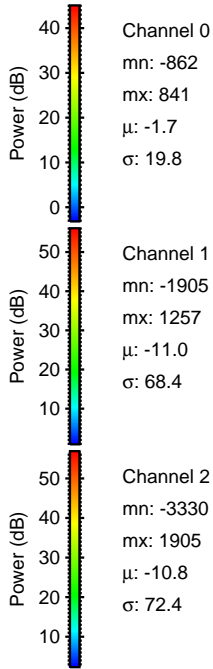
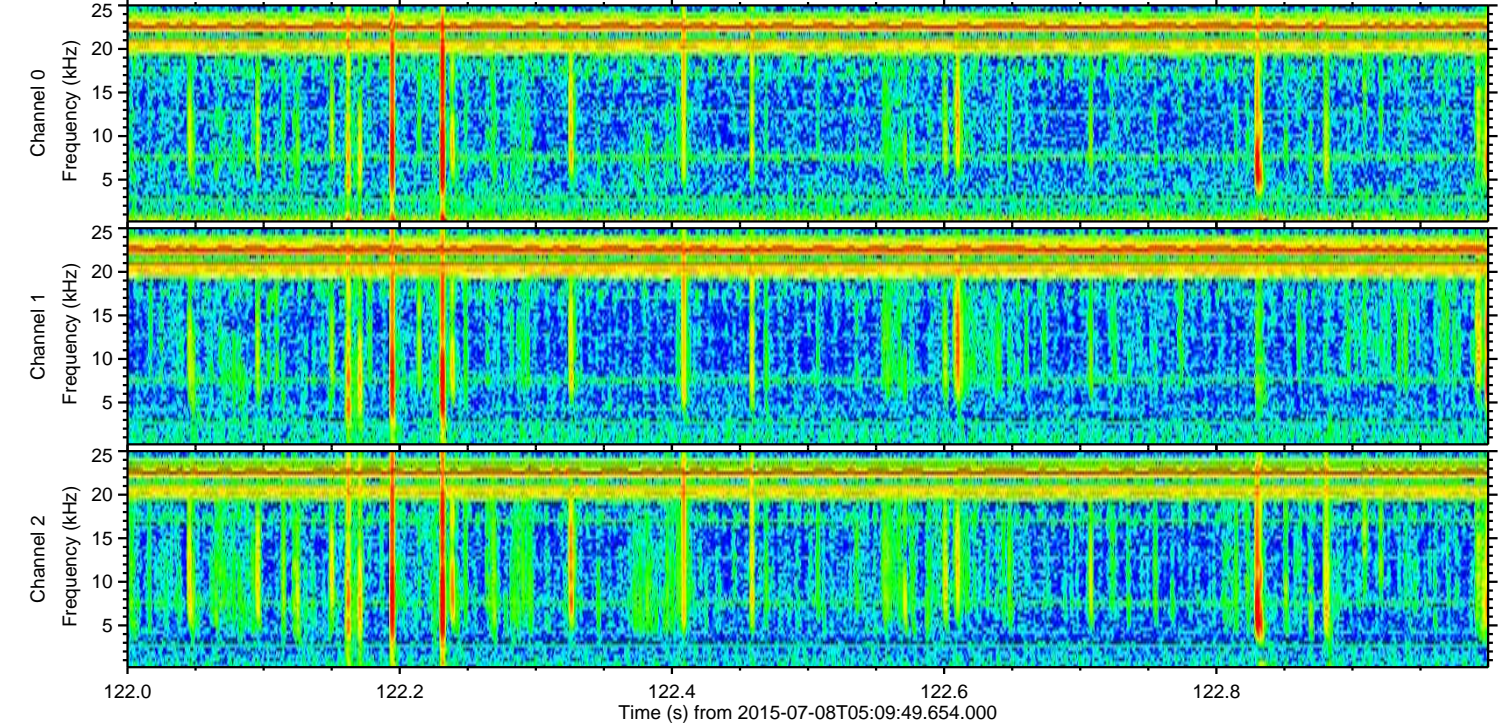
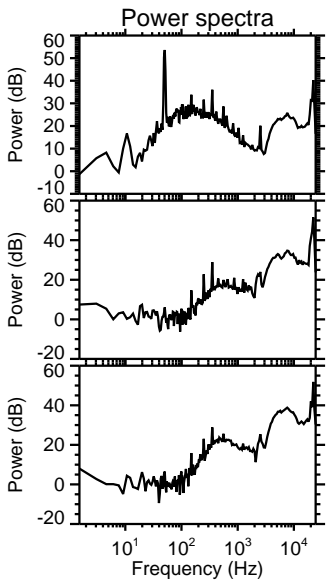
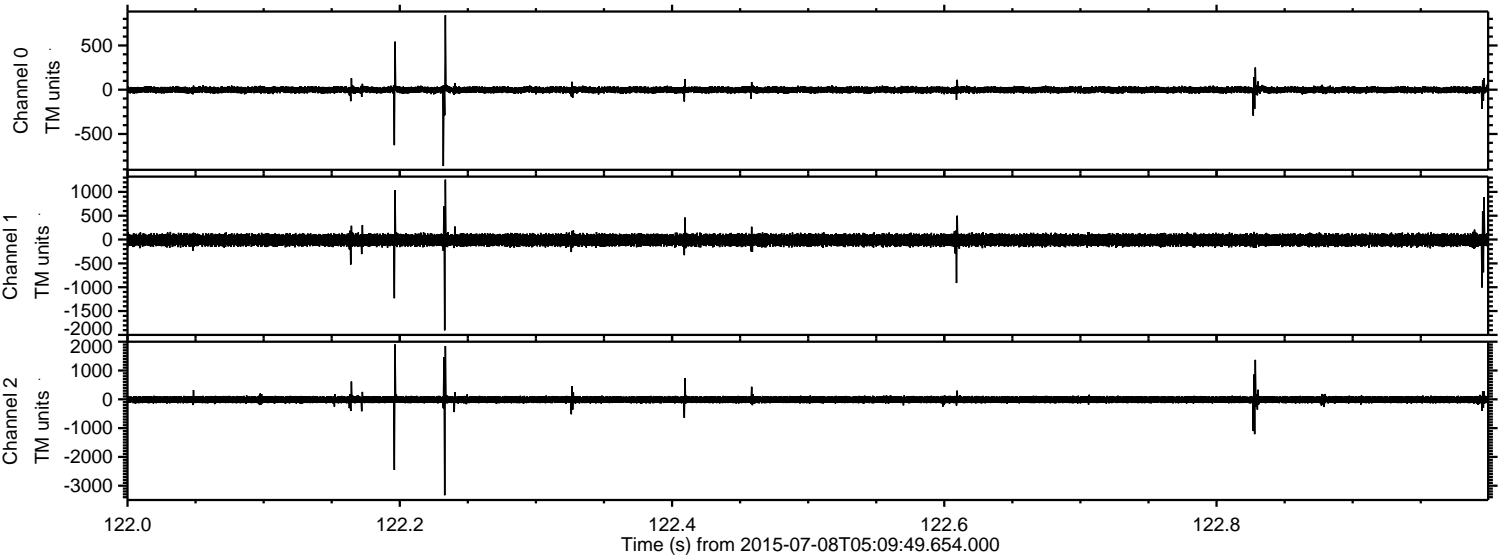
Channel 2
mn: -3700
mx: 3993
 μ : -10.8
 σ : 75.2

Processed Wed Jul 8 07:16:56 2015 by ELM ver.2012-10-06 from 001__elm20150708_050948__dat00.bin



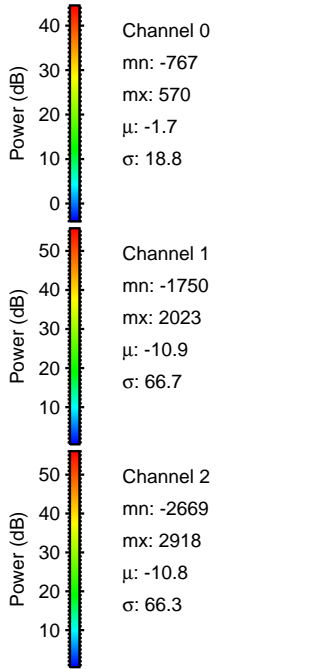
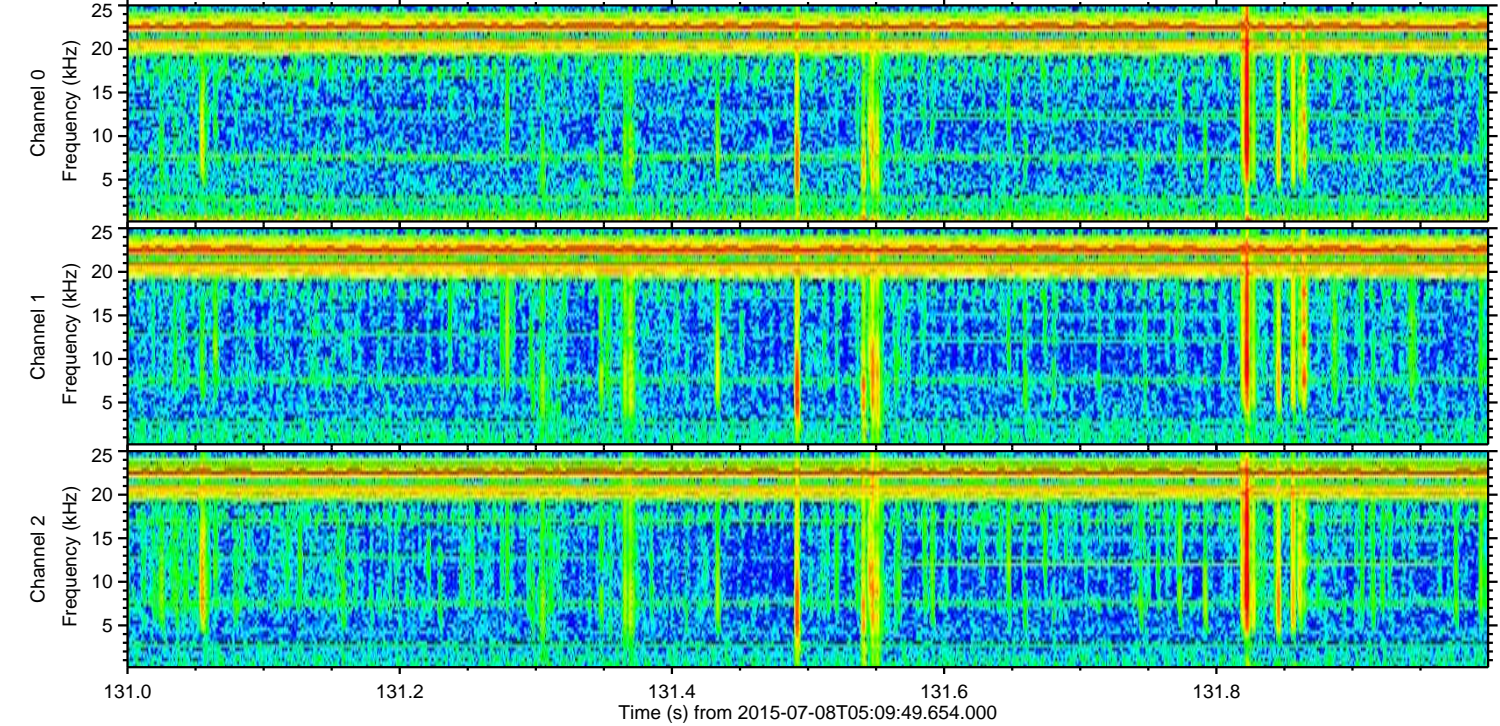
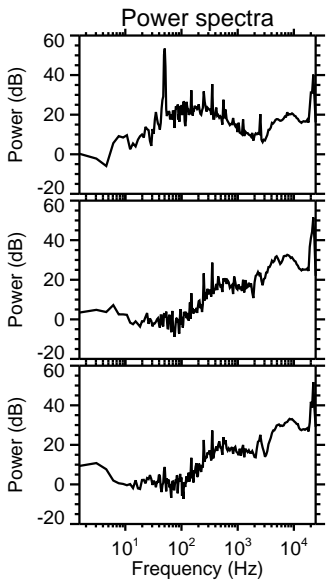
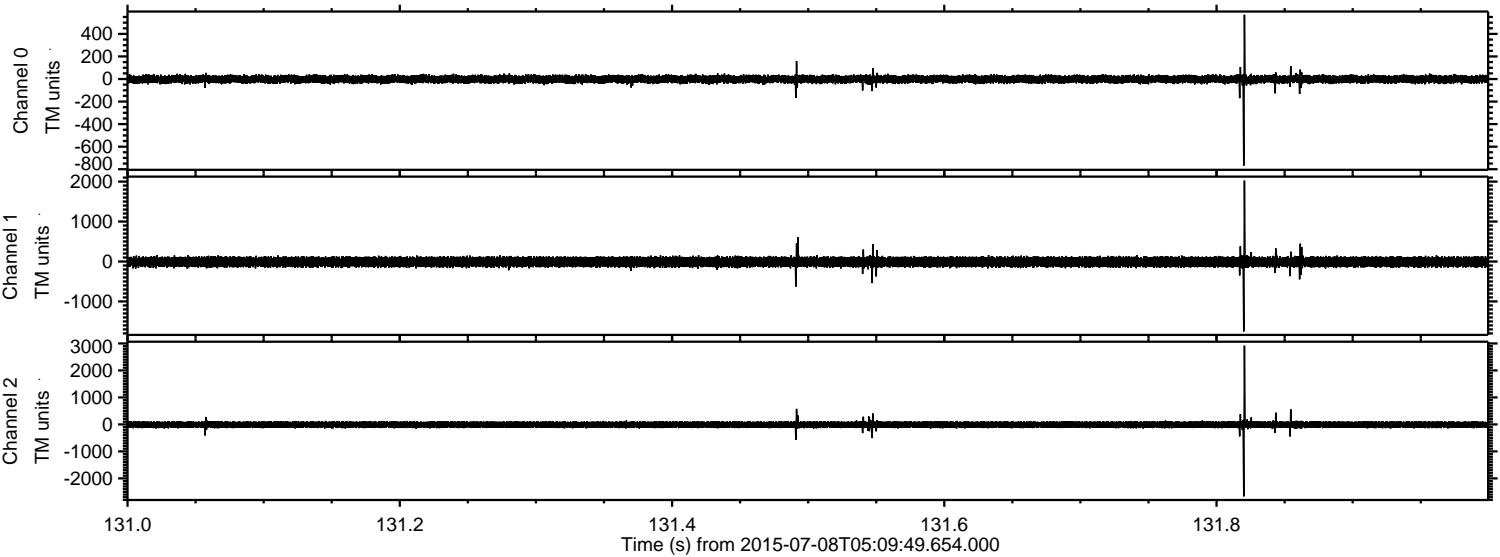
ELMAVAN 3D WAVEFORMS (Measured data sampled at 50 kHz) 51000 packets of 144 samples from 2015-07-08T05:09:49.654.000. Part 123/147

Processed Wed Jul 8 07:16:57 2015 by ELM ver.2012-10-06 from 001__elm20150708_050948__dat00.bin

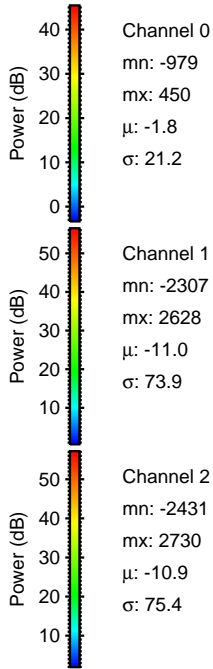
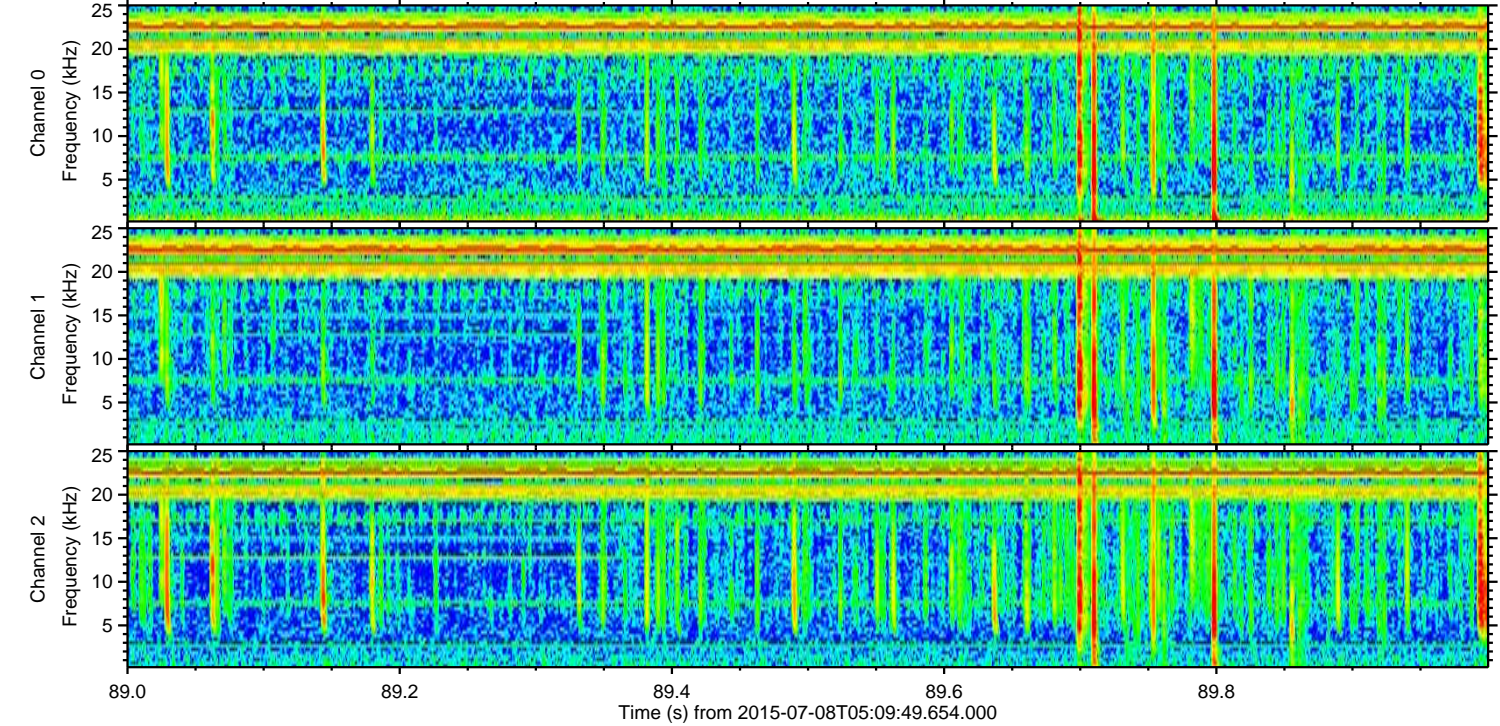
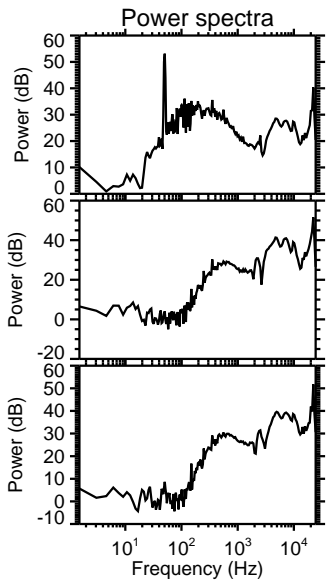
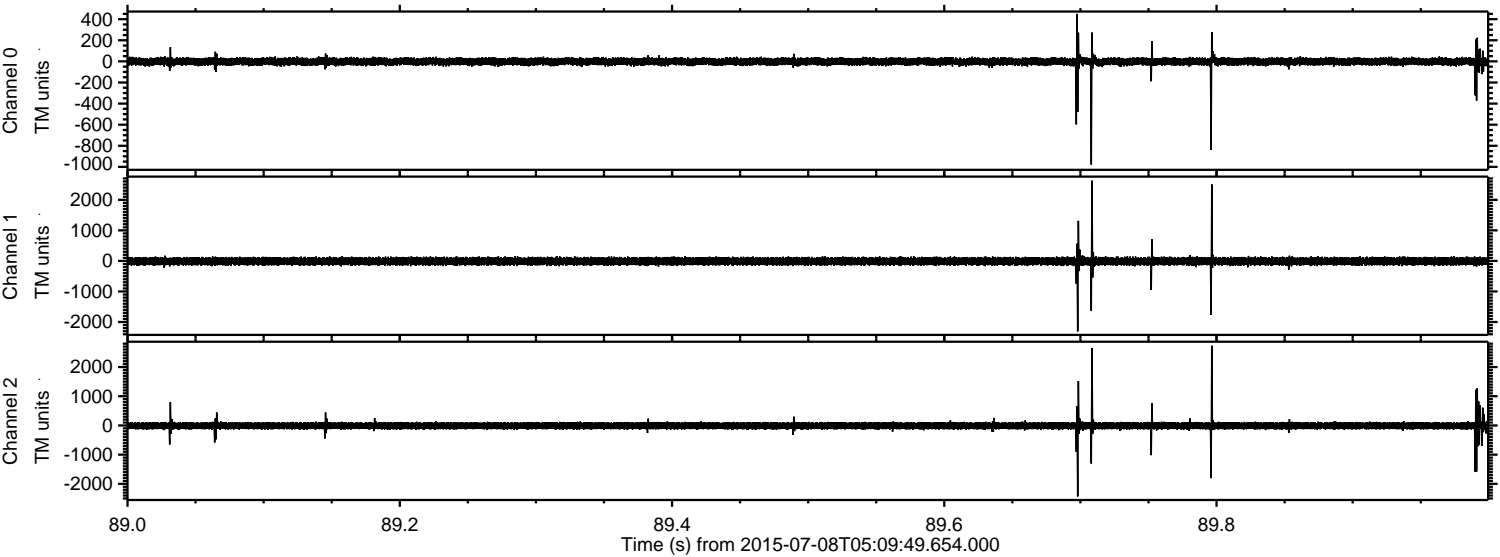


ELMAVAN 3D WAVEFORMS (Measured data sampled at 50 kHz) 51000 packets of 144 samples from 2015-07-08T05:09:49.654.000. Part 132/147

Processed Wed Jul 8 07:16:58 2015 by ELM ver.2012-10-06 from 001__elm20150708_050948__dat00.bin



Processed Wed Jul 8 07:17:00 2015 by ELM ver.2012-10-06 from 001__elm20150708_050948__dat00.bin



ELMAVAN 3D WAVEFORMS (Measured data sampled at 50 kHz) 51000 packets of 144 samples from 2015-07-08T05:09:49.654.000. Part 129/147

