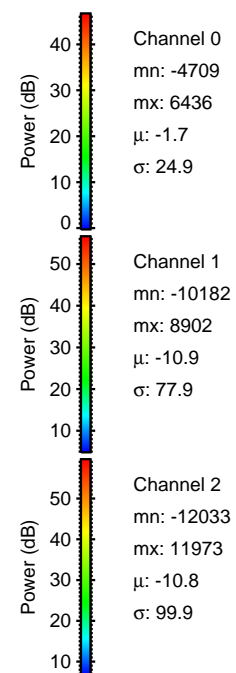
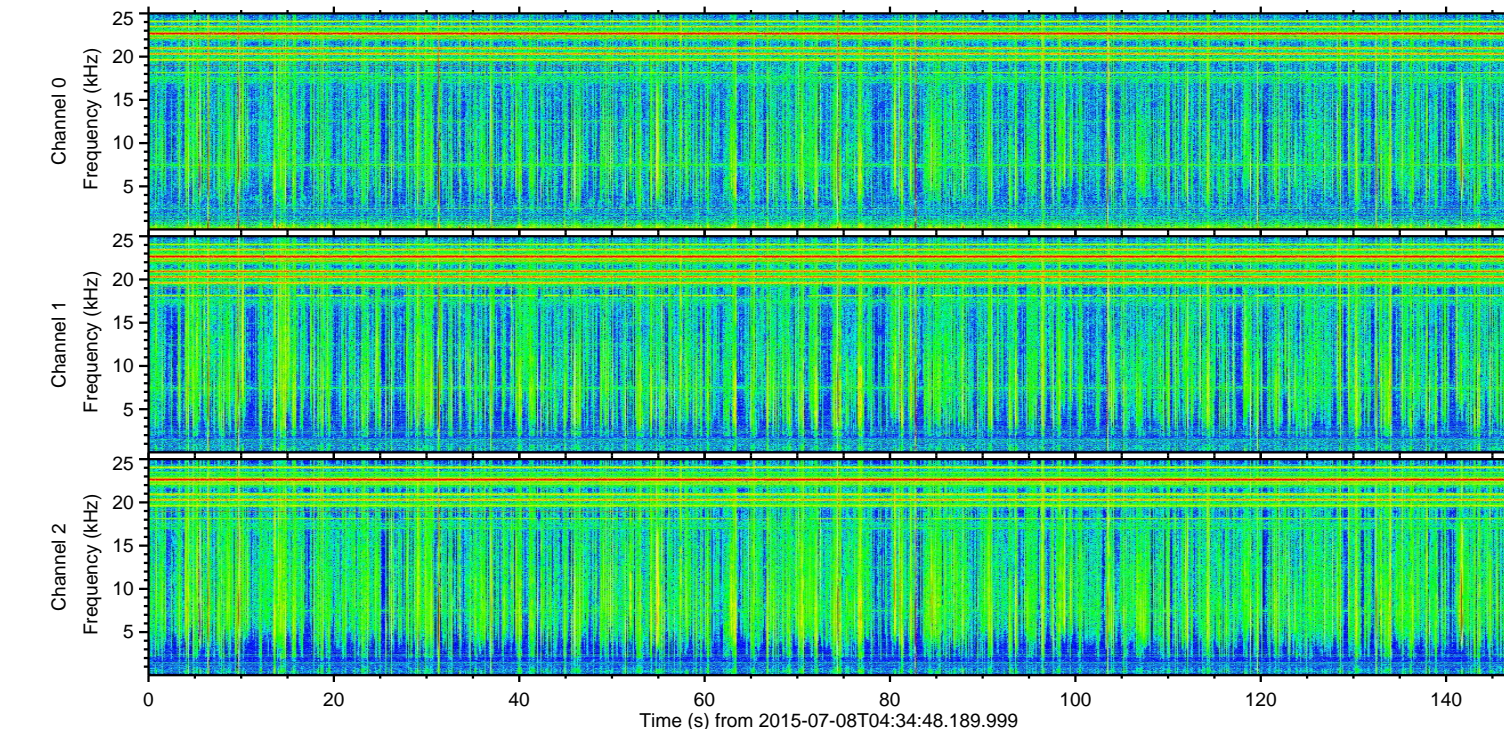
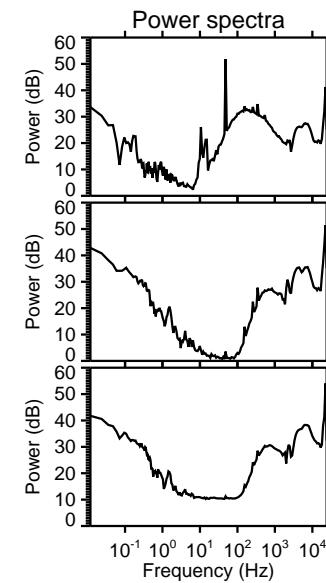
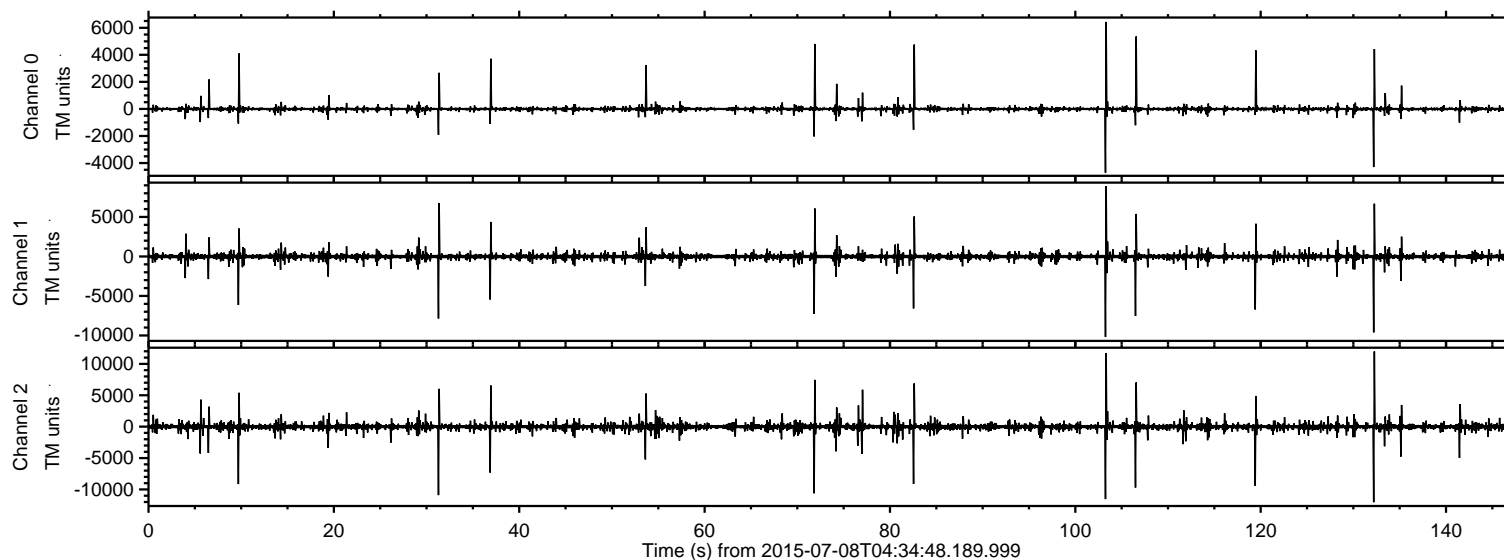


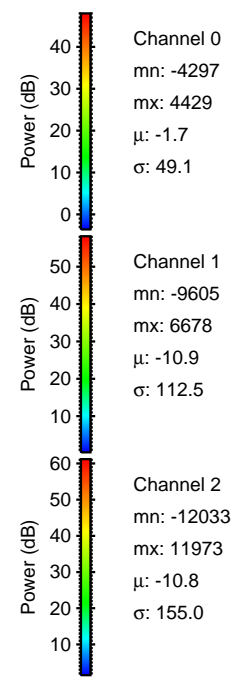
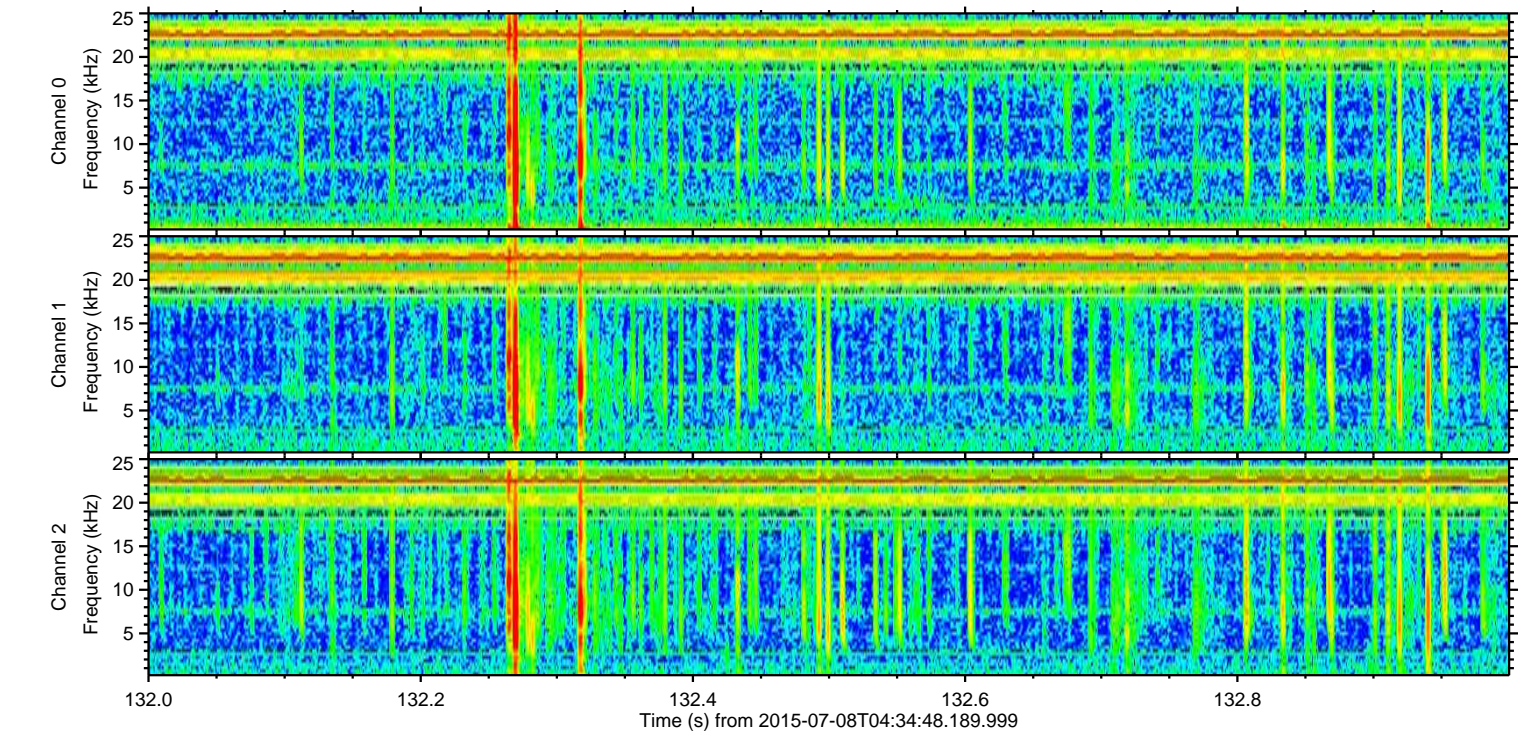
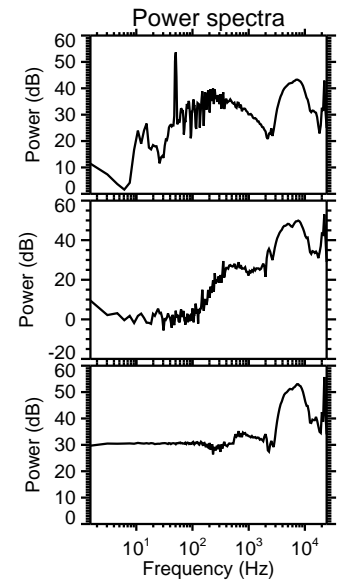
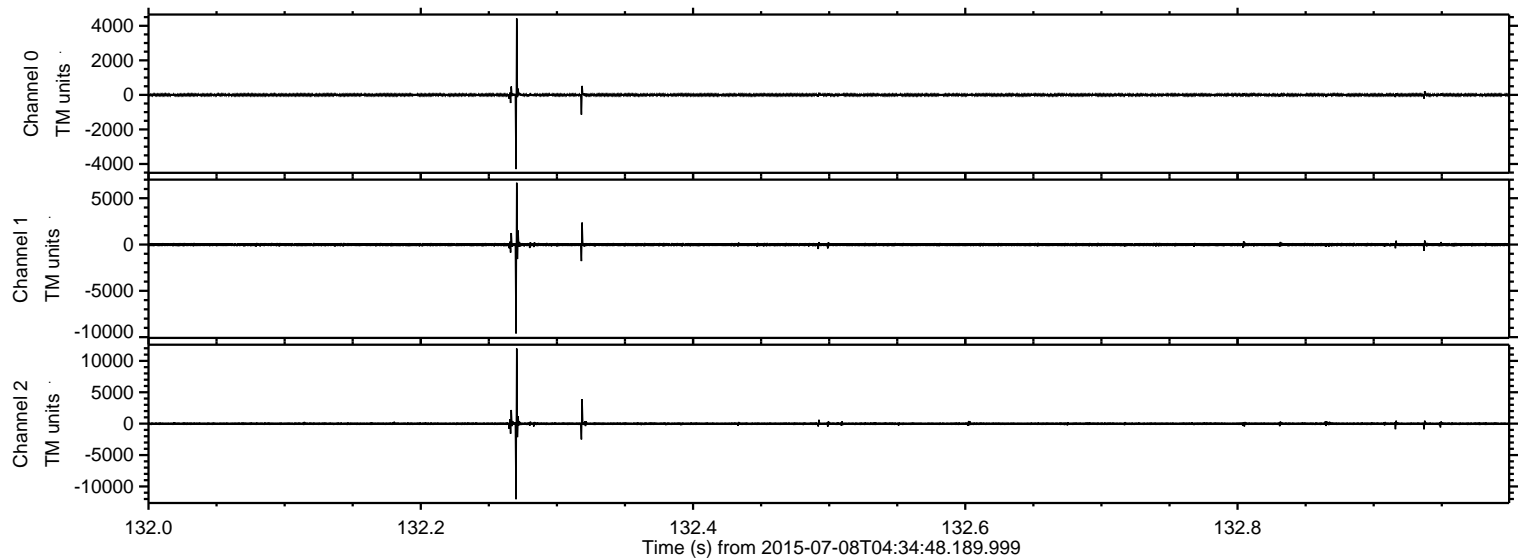
ELMAVAN 3D WAVEFORMS (Measured data sampled at 50 kHz) 51000 packets of 144 samples from 2015-07-08T04:34:48.189.999.

Processed Wed Jul 8 06:41:03 2015 by ELM ver.2012-10-06 from 001__elm20150708_043447__dat00.bin



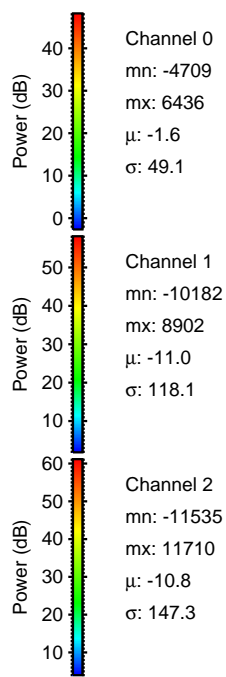
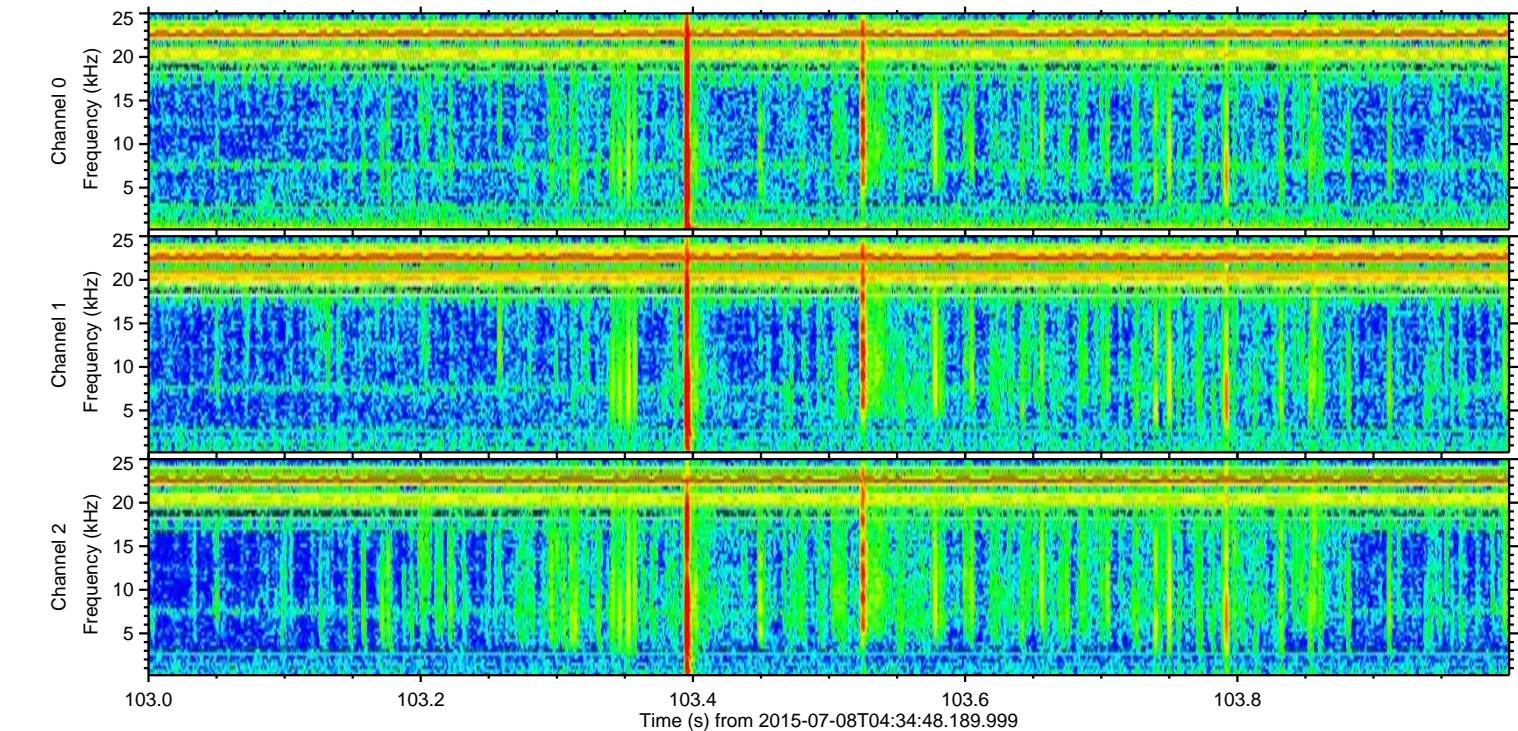
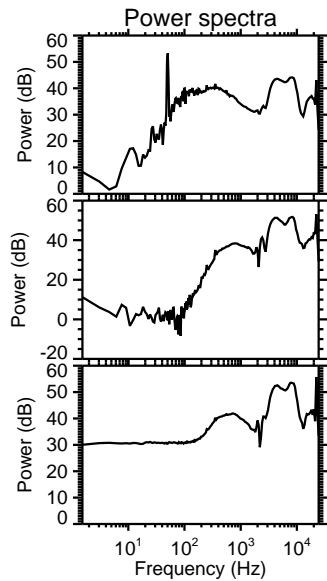
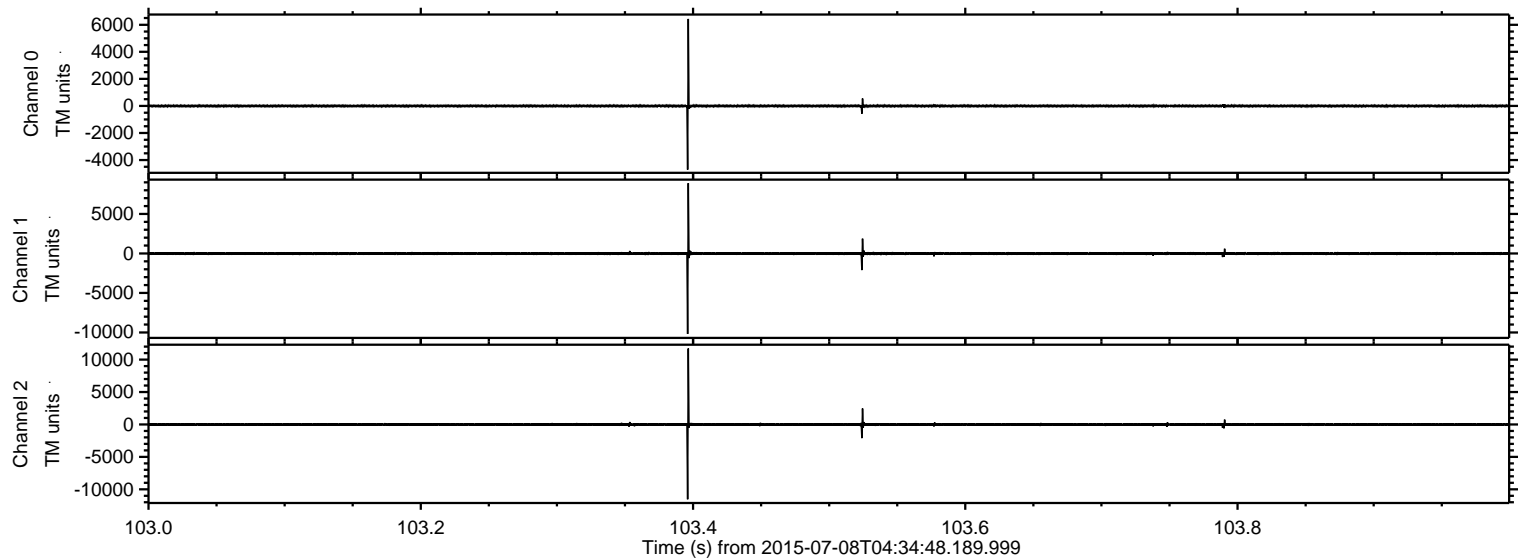
ELMAVAN 3D WAVEFORMS (Measured data sampled at 50 kHz) 51000 packets of 144 samples from 2015-07-08T04:34:48.189.999. Part 133/147

Processed Wed Jul 8 06:41:16 2015 by ELM ver.2012-10-06 from 001__elm20150708_043447__dat00.bin

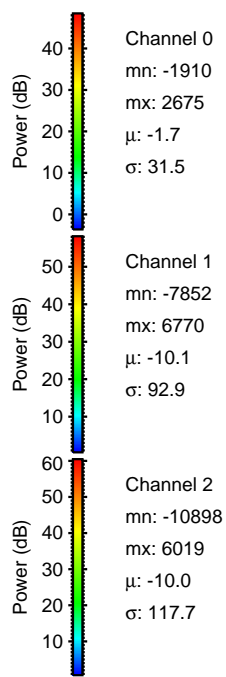
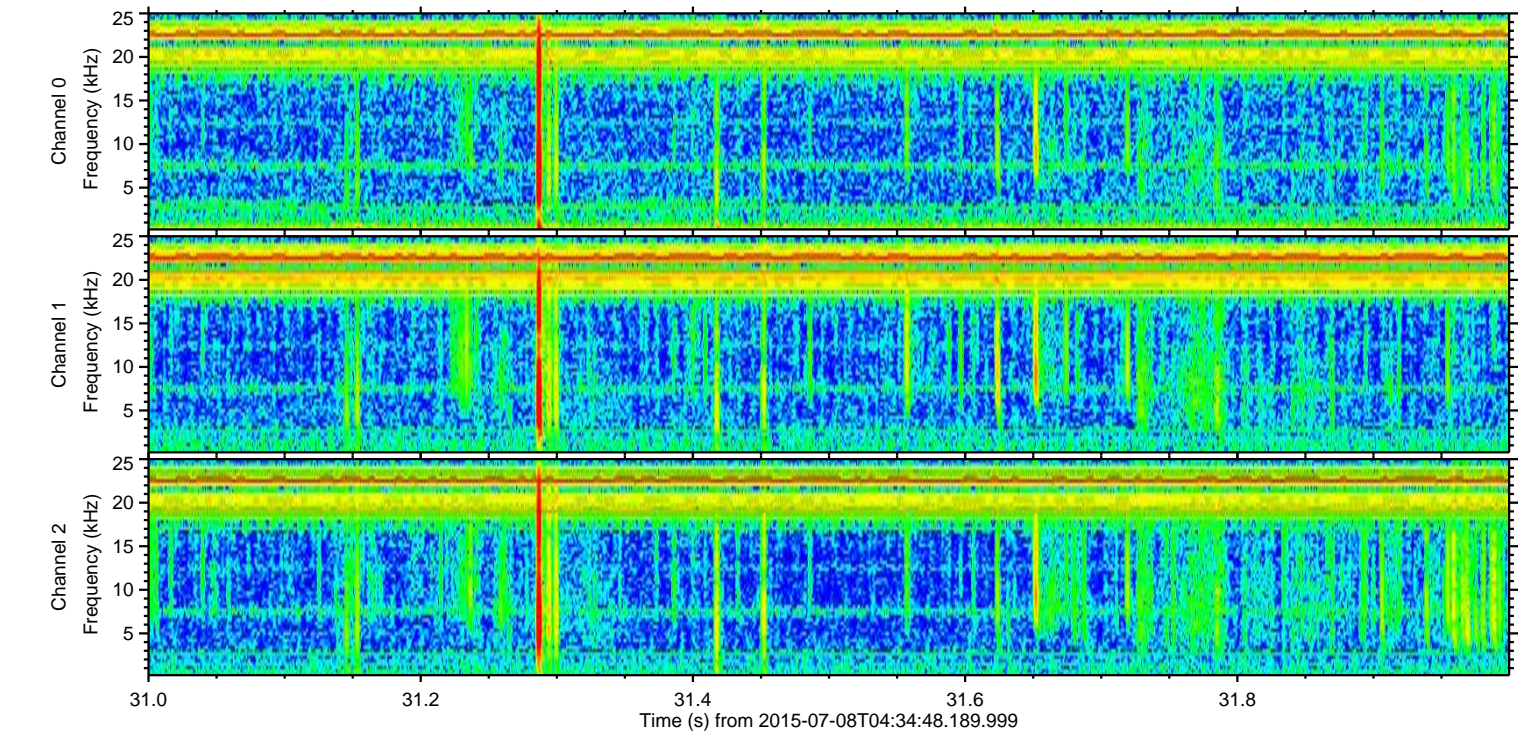
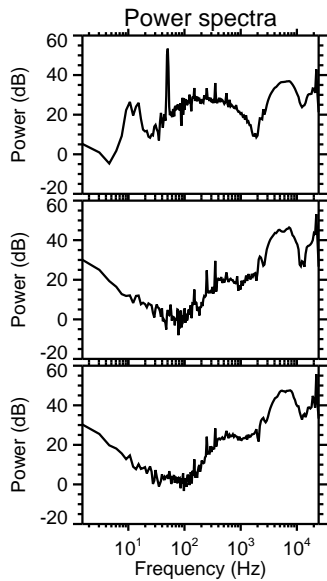
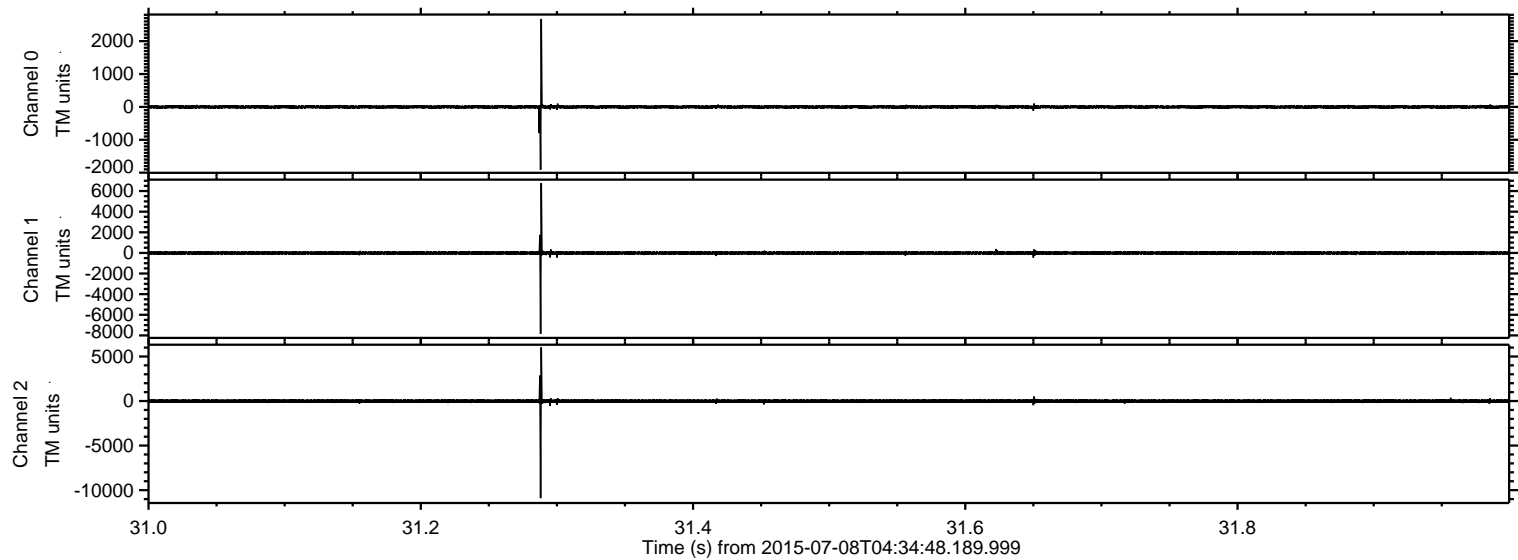


ELMAVAN 3D WAVEFORMS (Measured data sampled at 50 kHz) 51000 packets of 144 samples from 2015-07-08T04:34:48.189.999. Part 104/147

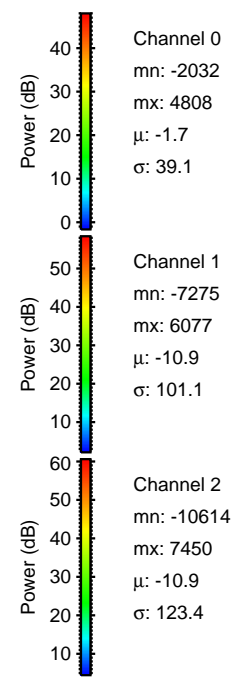
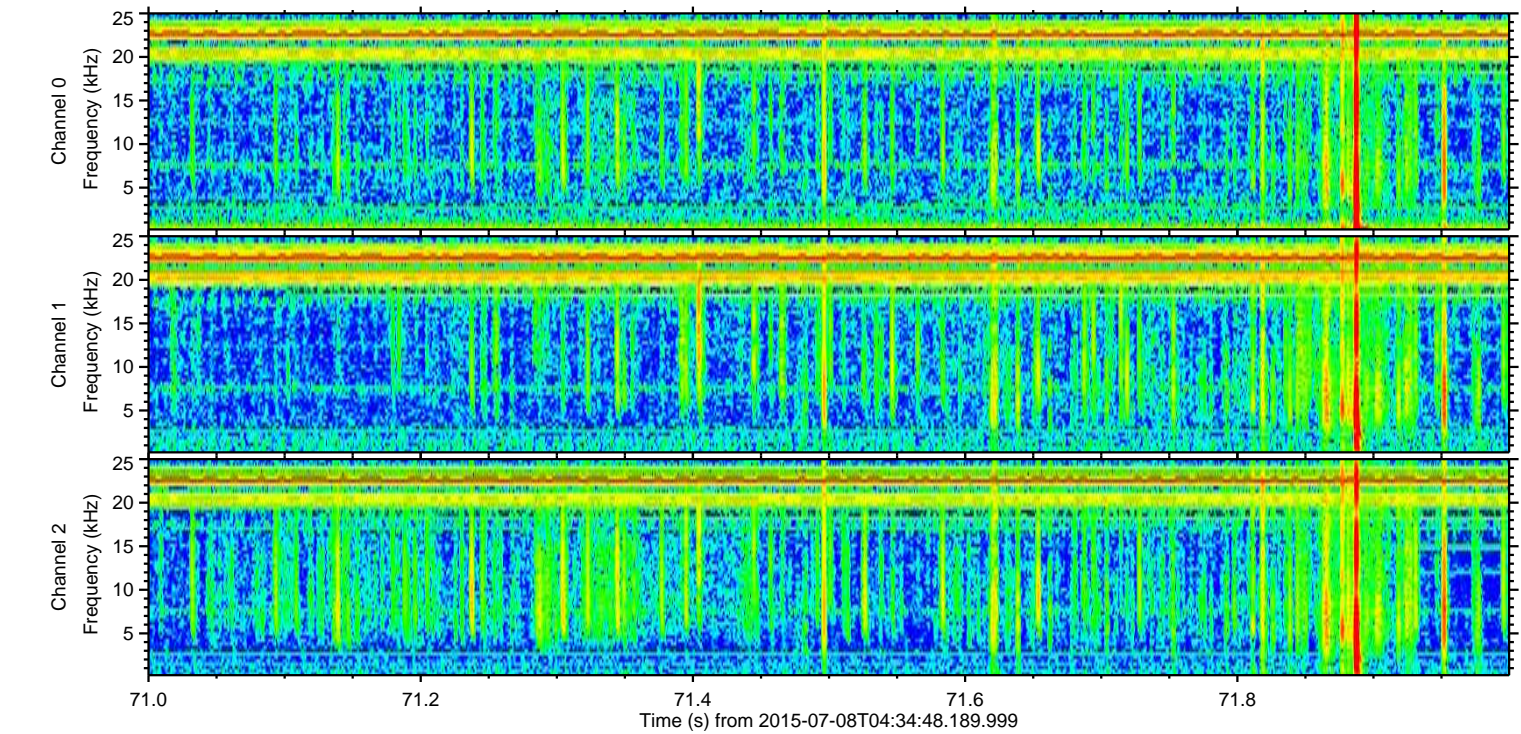
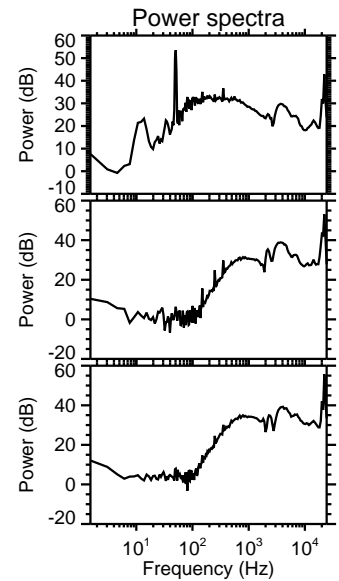
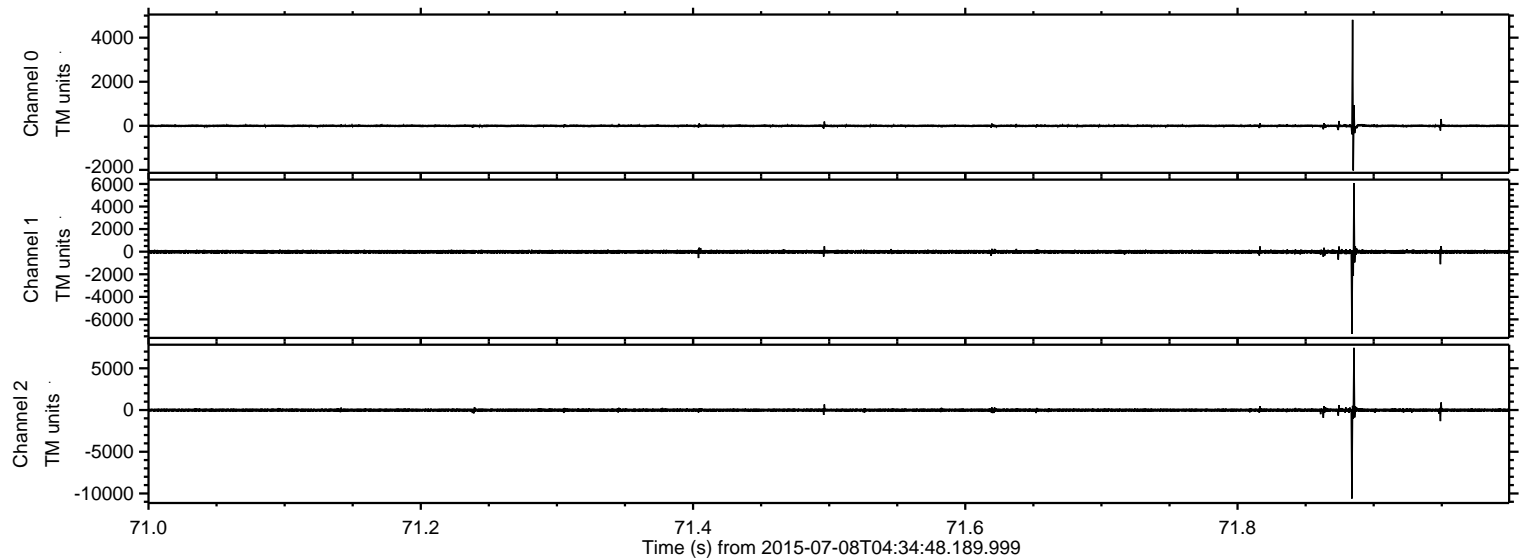
Processed Wed Jul 8 06:41:17 2015 by ELM ver.2012-10-06 from 001__elm20150708_043447__dat00.bin



Processed Wed Jul 8 06:41:19 2015 by ELM ver.2012-10-06 from 001__elm20150708_043447__dat00.bin

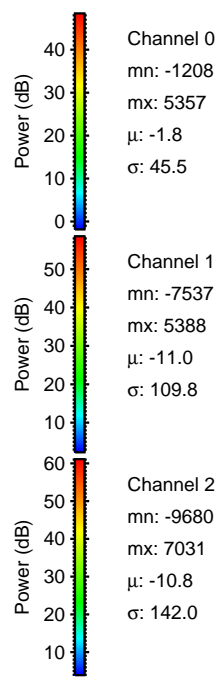
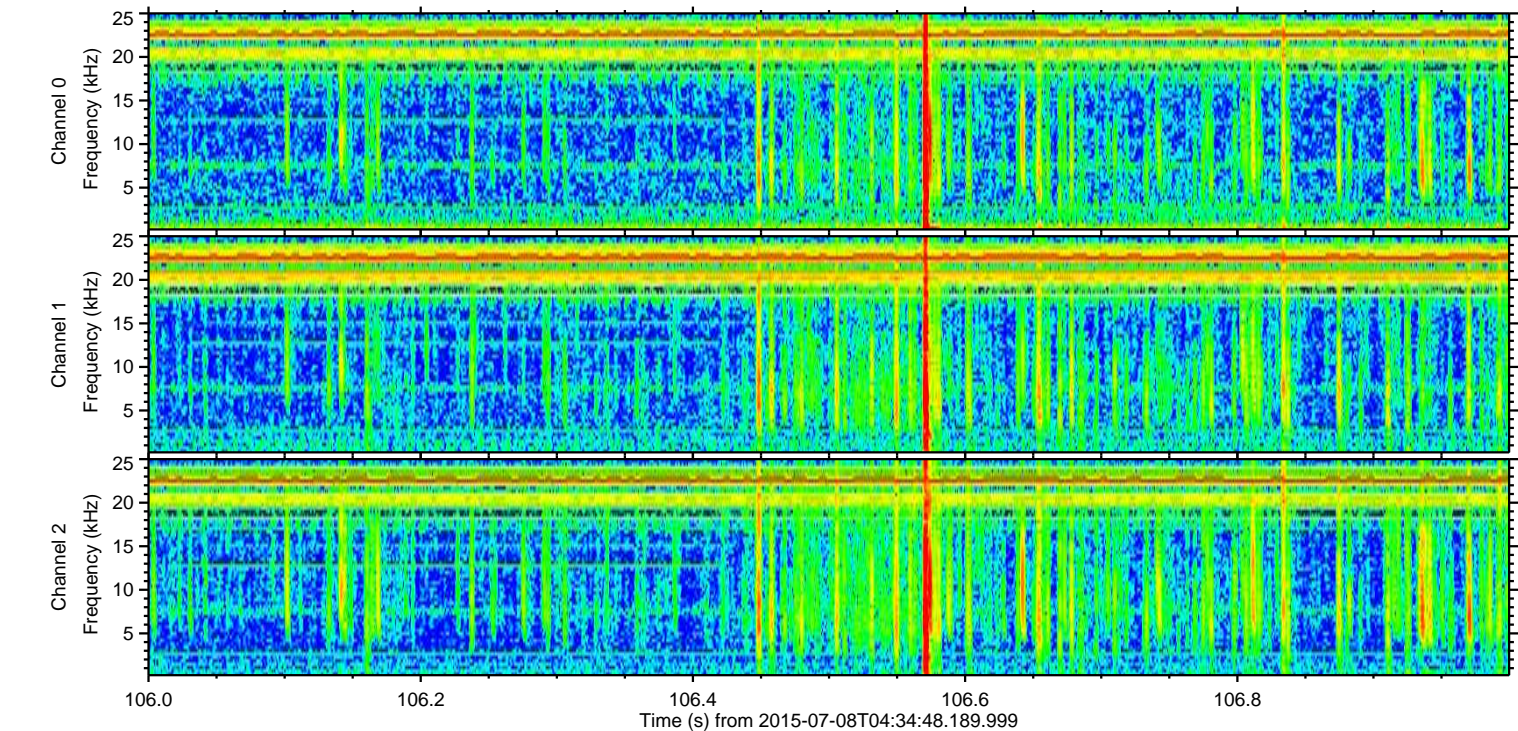
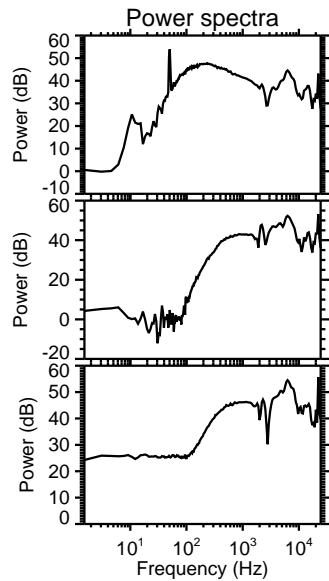
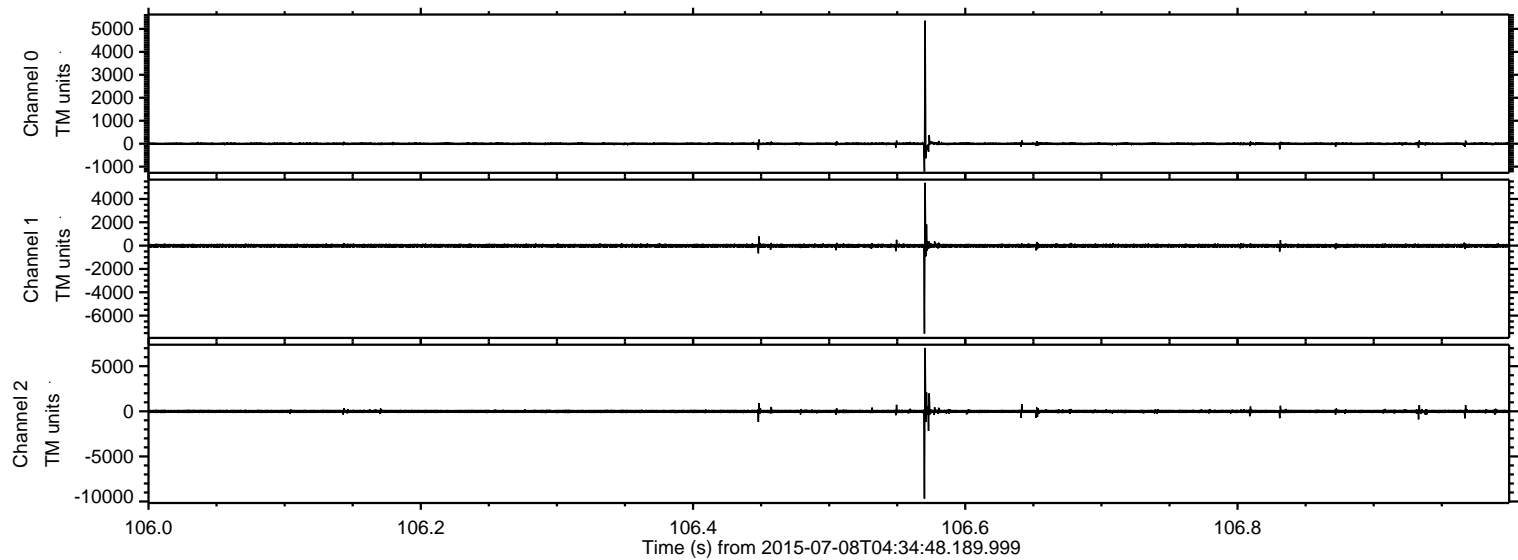


Processed Wed Jul 8 06:41:20 2015 by ELM ver.2012-10-06 from 001__elm20150708_043447__dat00.bin



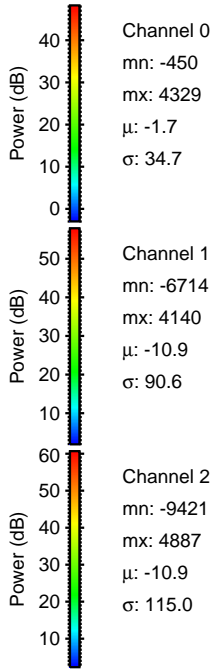
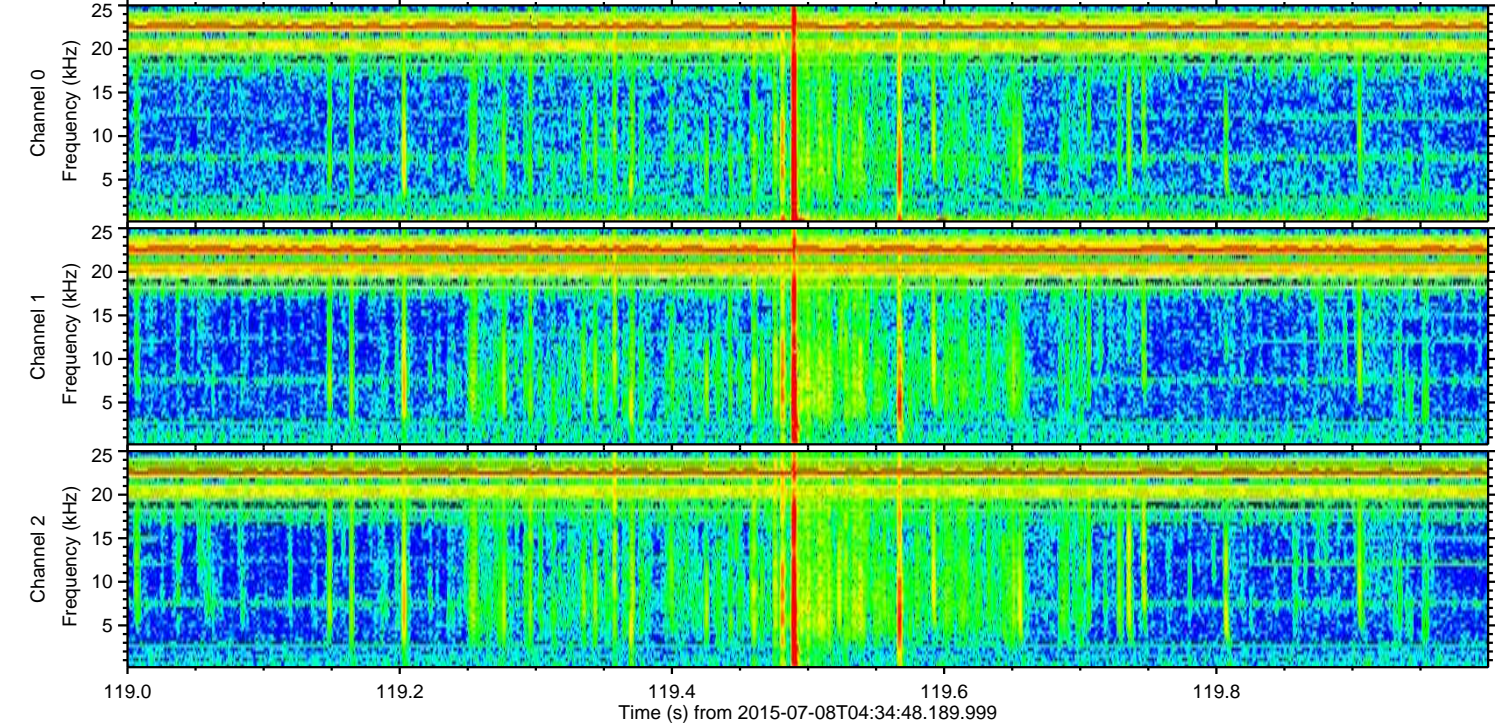
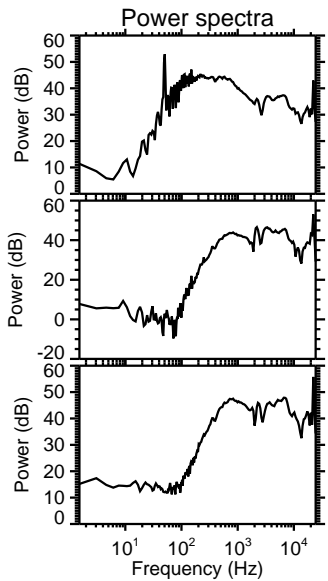
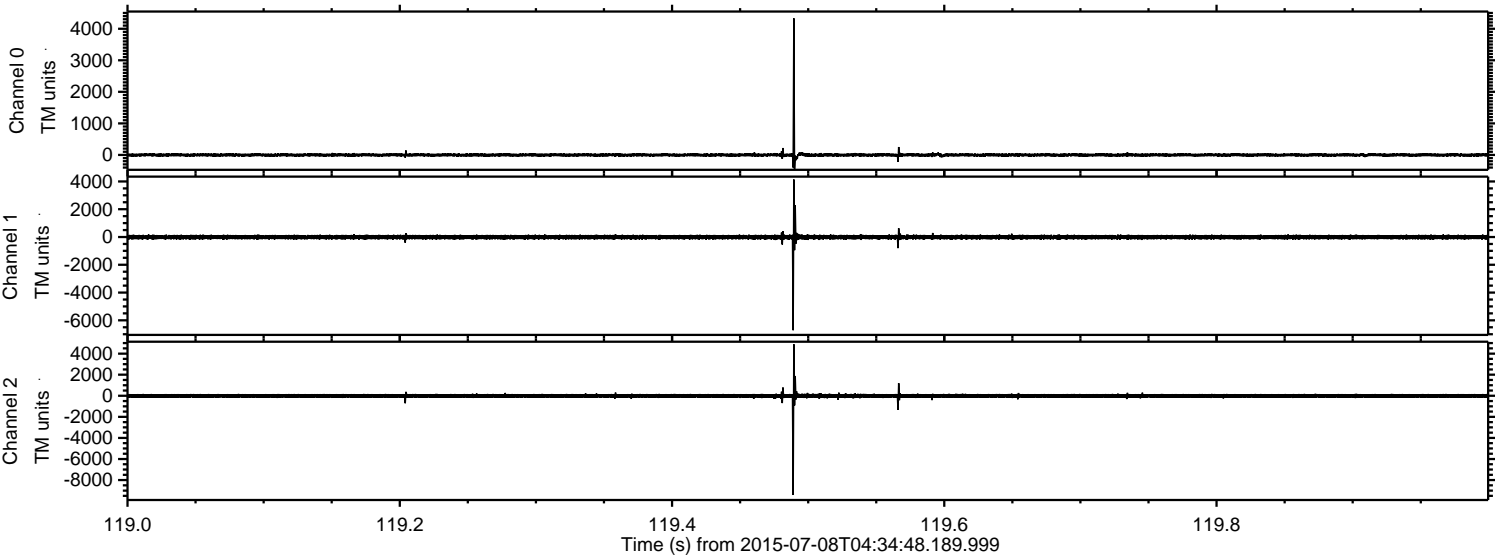
ELMAVAN 3D WAVEFORMS (Measured data sampled at 50 kHz) 51000 packets of 144 samples from 2015-07-08T04:34:48.189.999. Part 107/147

Processed Wed Jul 8 06:41:21 2015 by ELM ver.2012-10-06 from 001__elm20150708_043447__dat00.bin

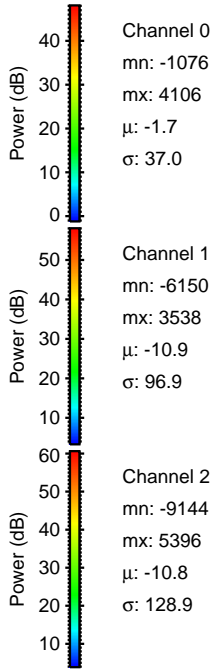
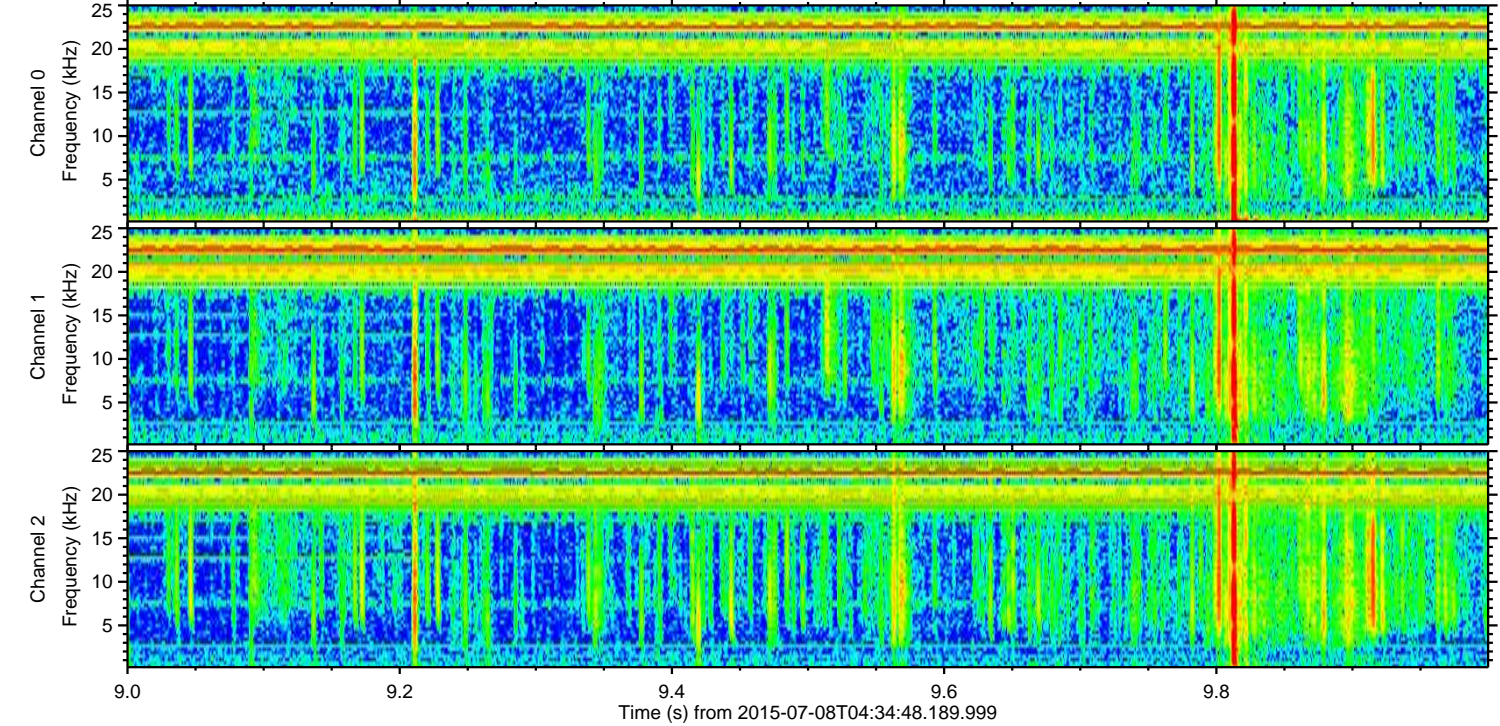
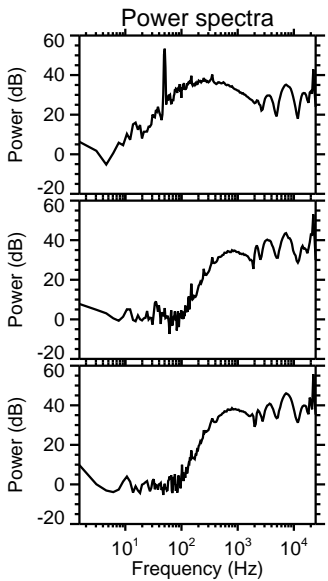
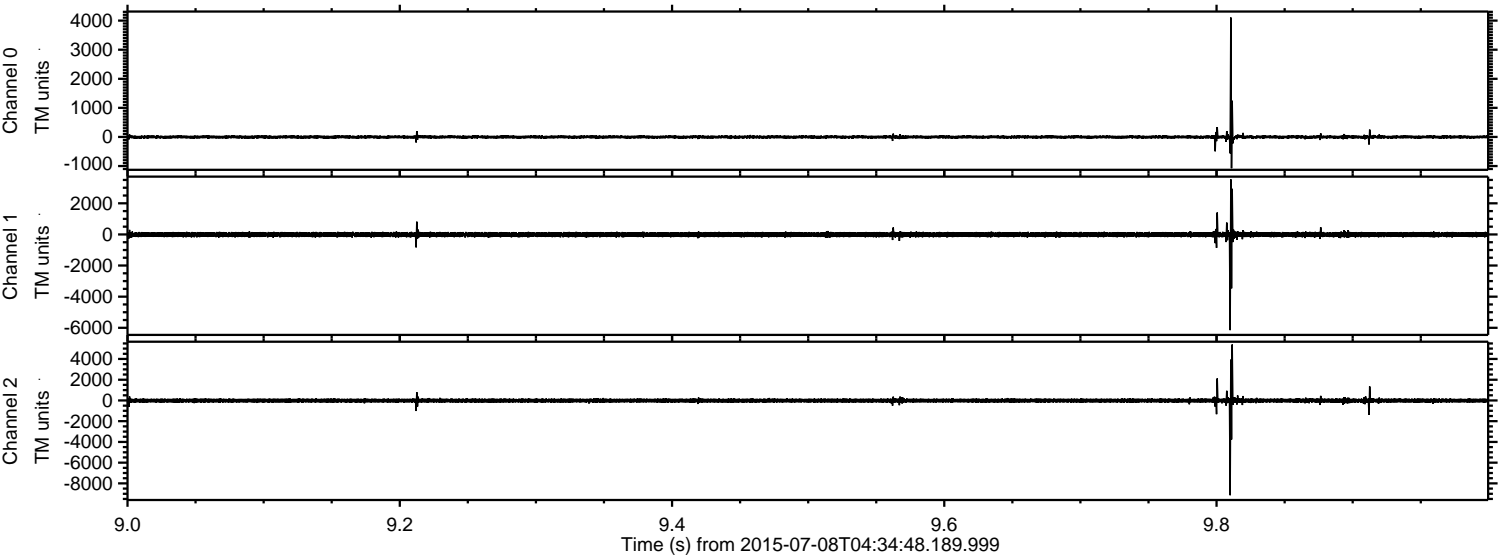


ELMAVAN 3D WAVEFORMS (Measured data sampled at 50 kHz) 51000 packets of 144 samples from 2015-07-08T04:34:48.189.999. Part 120/147

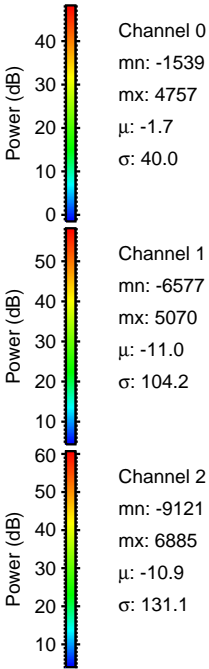
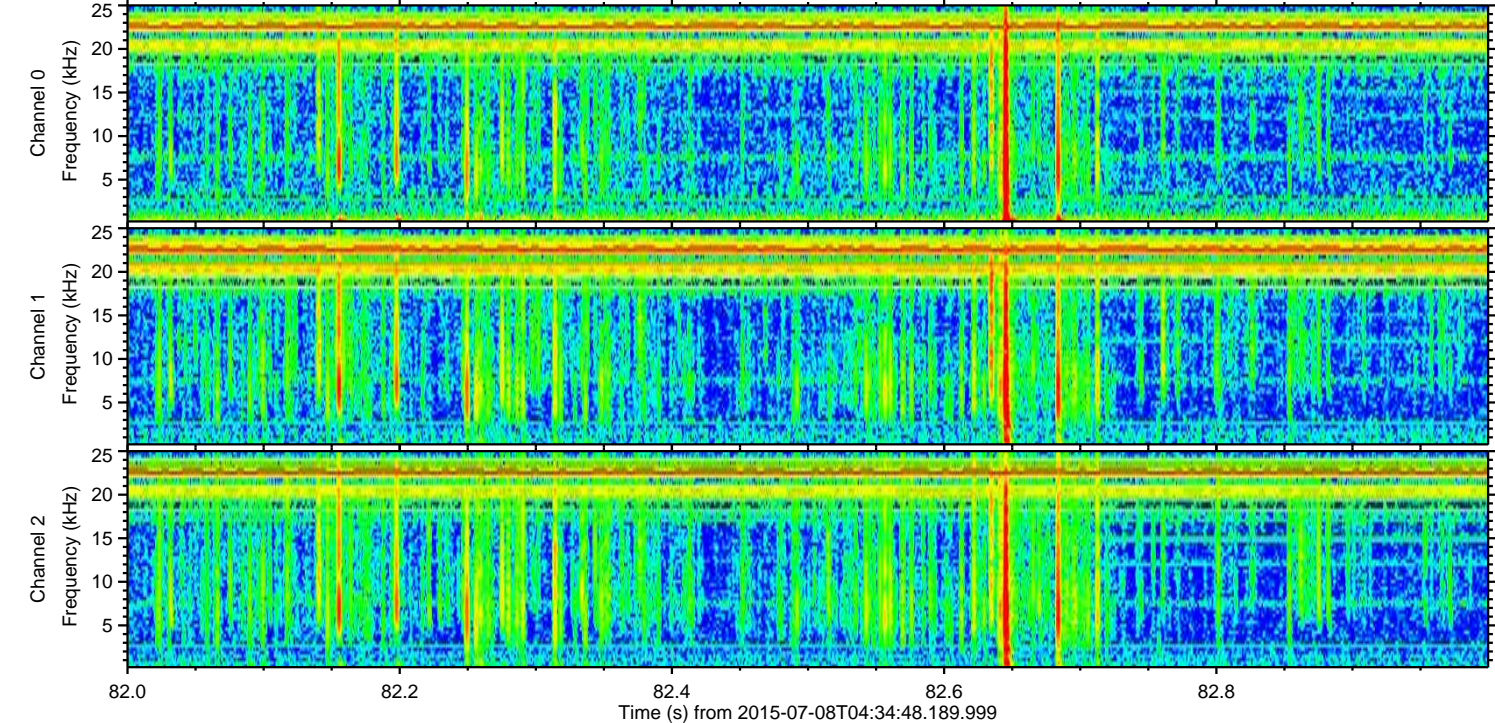
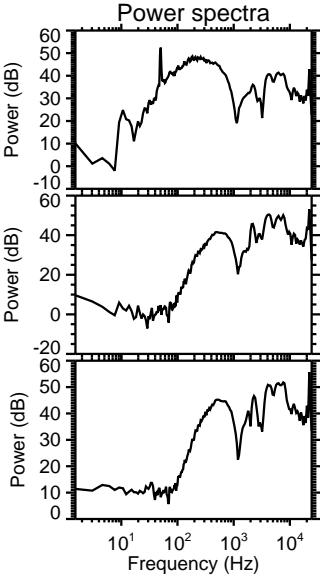
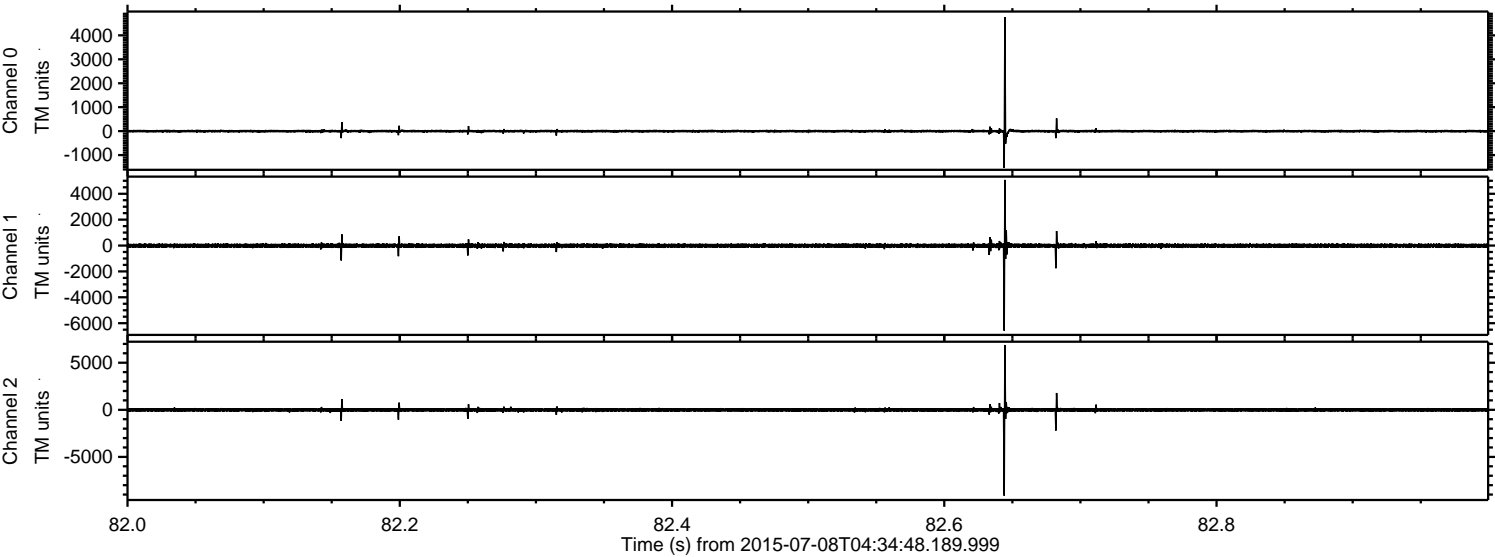
Processed Wed Jul 8 06:41:22 2015 by ELM ver.2012-10-06 from 001__elm20150708_043447__dat00.bin



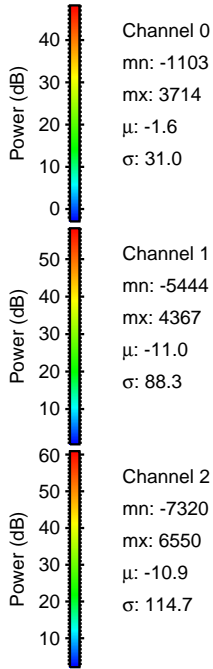
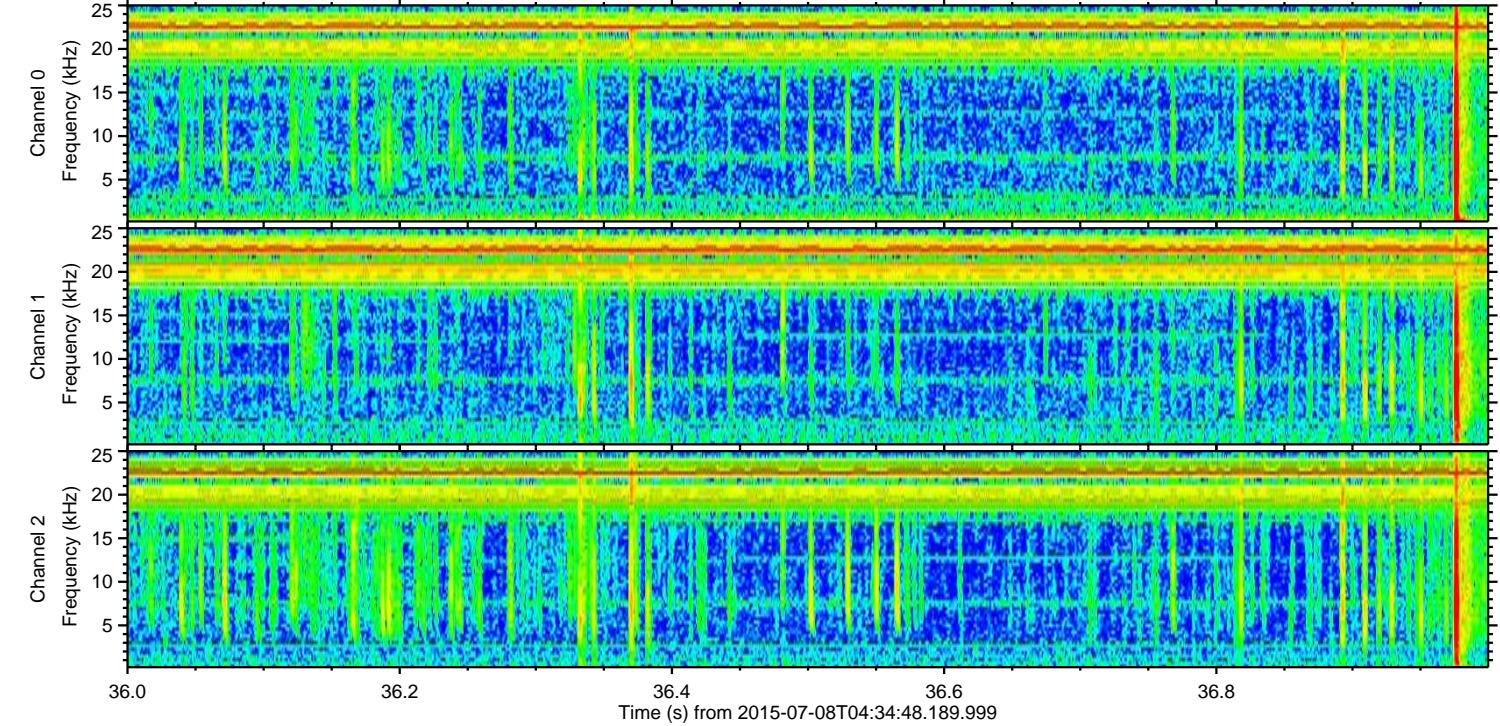
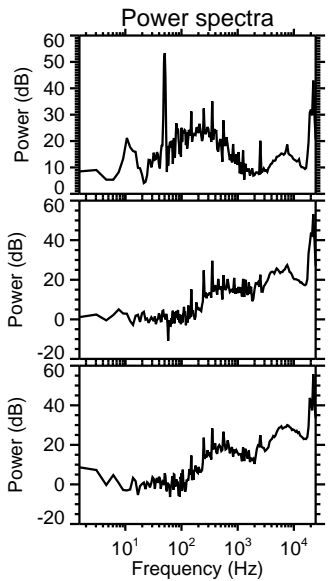
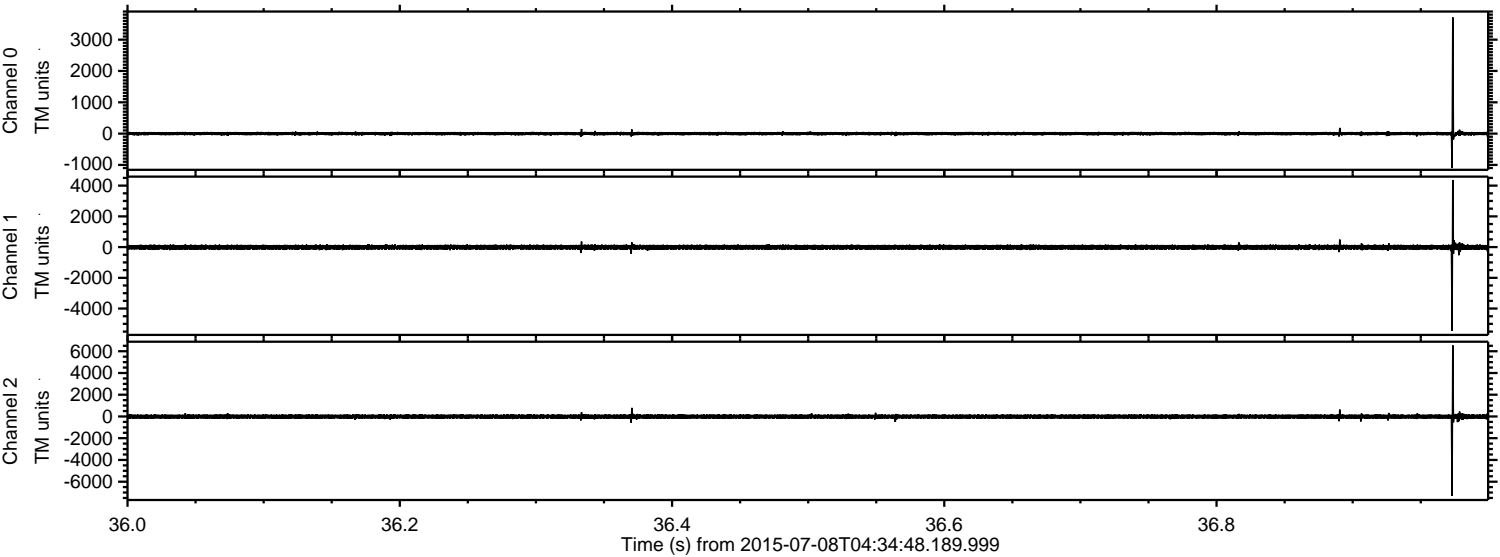
Processed Wed Jul 8 06:41:23 2015 by ELM ver.2012-10-06 from 001__elm20150708_043447__dat00.bin



Processed Wed Jul 8 06:41:24 2015 by ELM ver.2012-10-06 from 001__elm20150708_043447__dat00.bin



Processed Wed Jul 8 06:41:25 2015 by ELM ver.2012-10-06 from 001__elm20150708_043447__dat00.bin



Channel 0
mn: -1103
mx: 3714
 μ : -1.6
 σ : 31.0

Channel 1
mn: -5444
mx: 4367
 μ : -11.0
 σ : 88.3

Channel 2
mn: -7320
mx: 6550
 μ : -10.9
 σ : 114.7

Processed Wed Jul 8 06:41:26 2015 by ELM ver.2012-10-06 from 001__elm20150708_043447__dat00.bin

