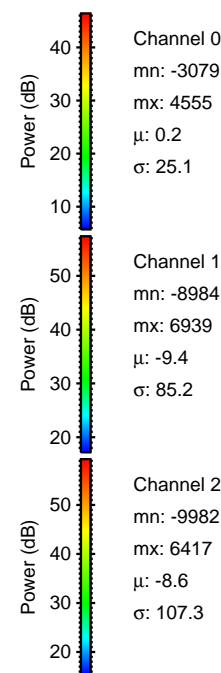
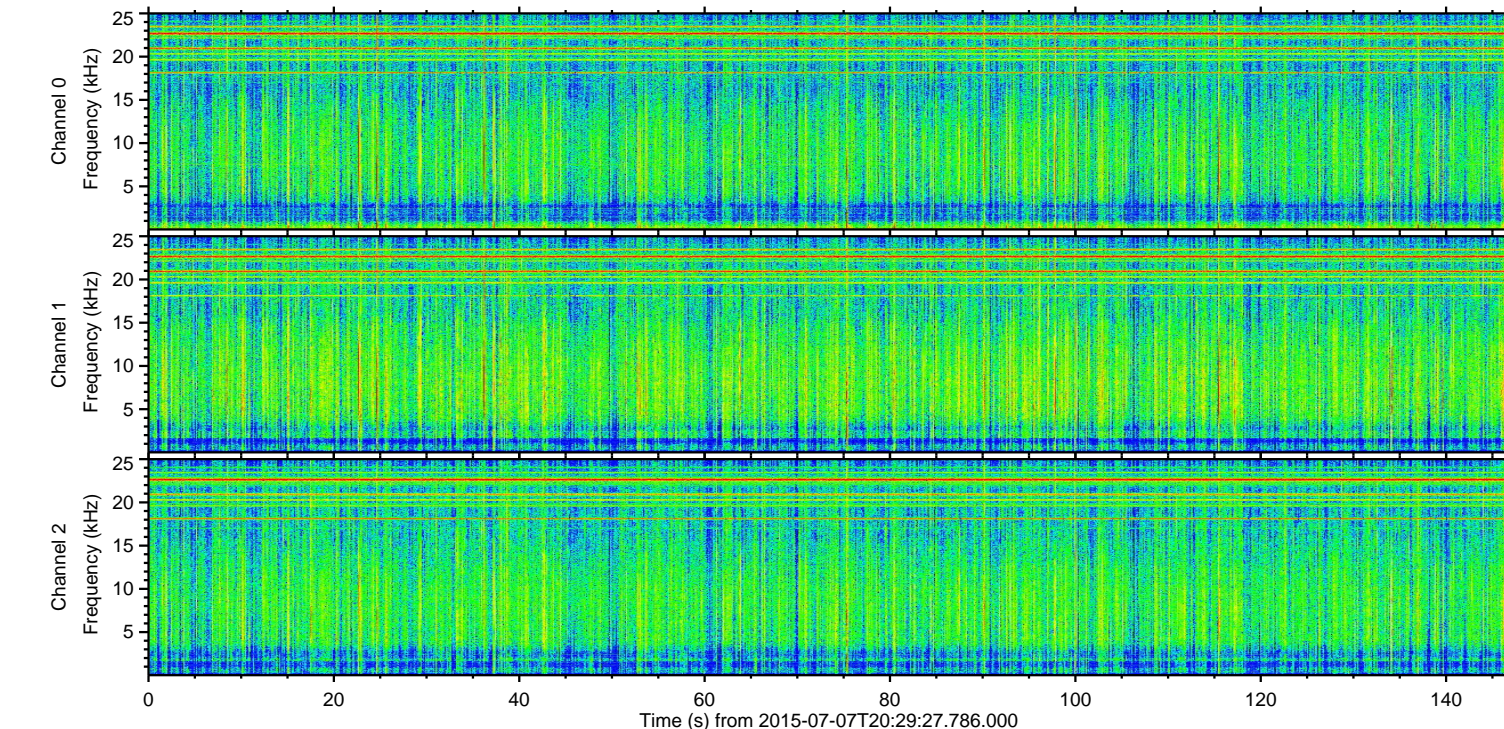
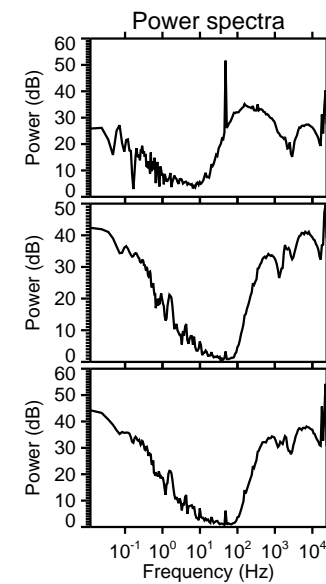
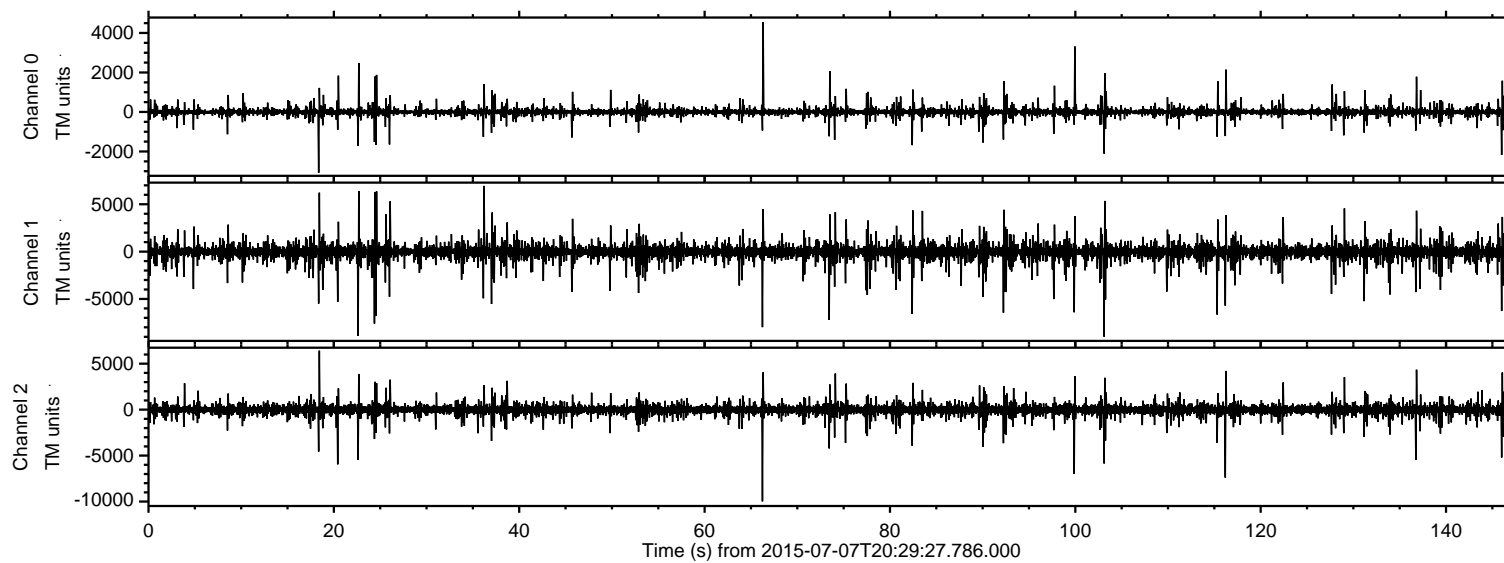


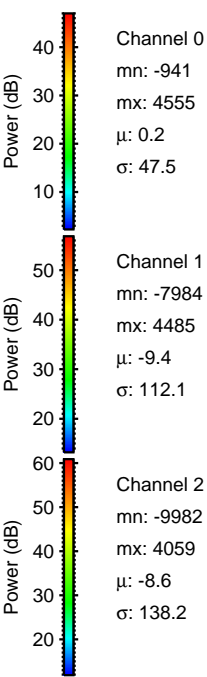
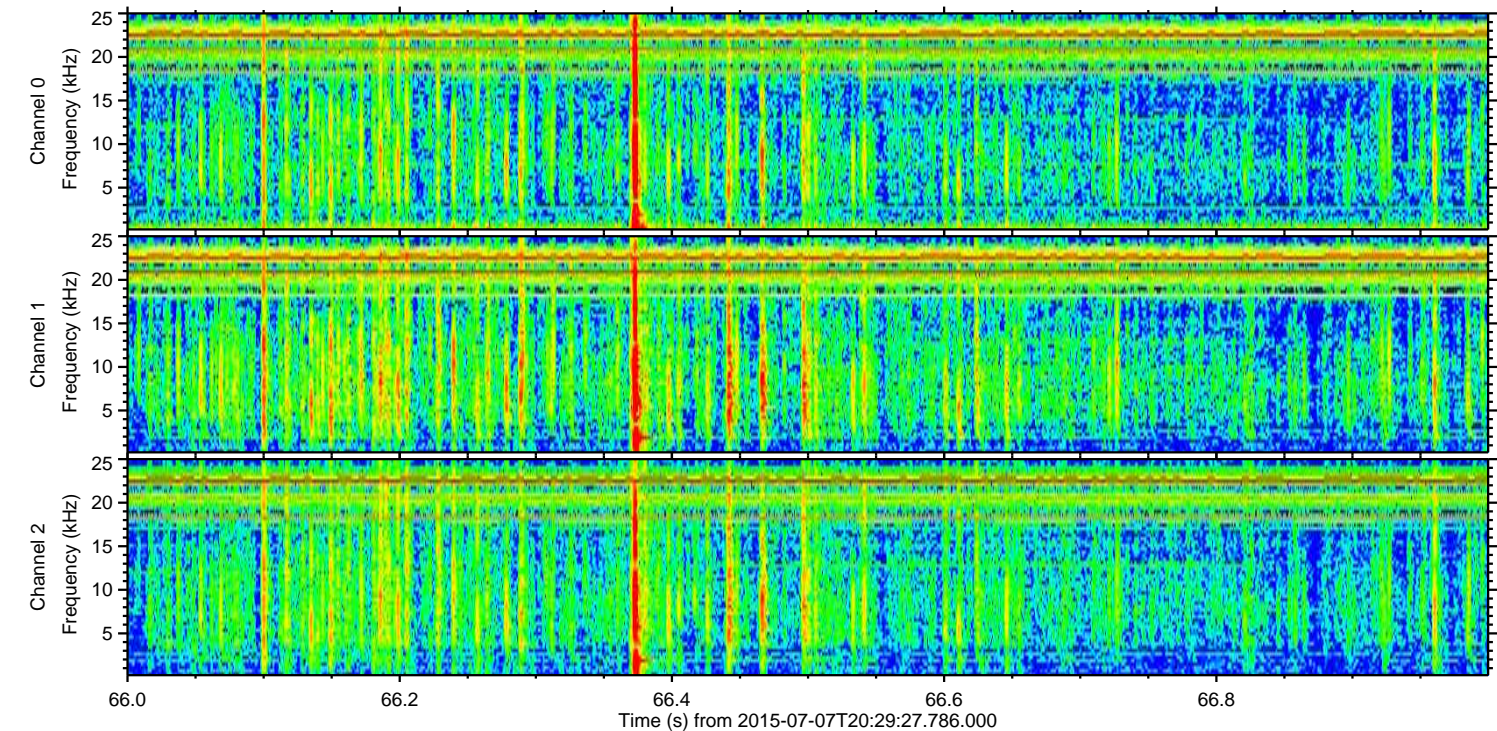
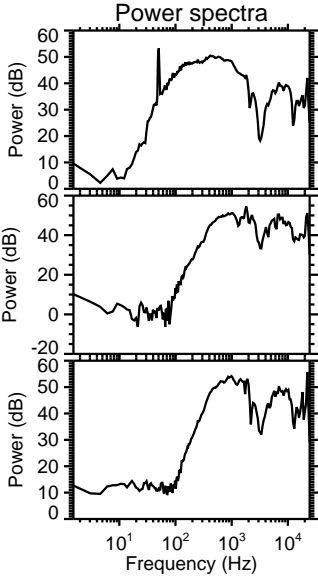
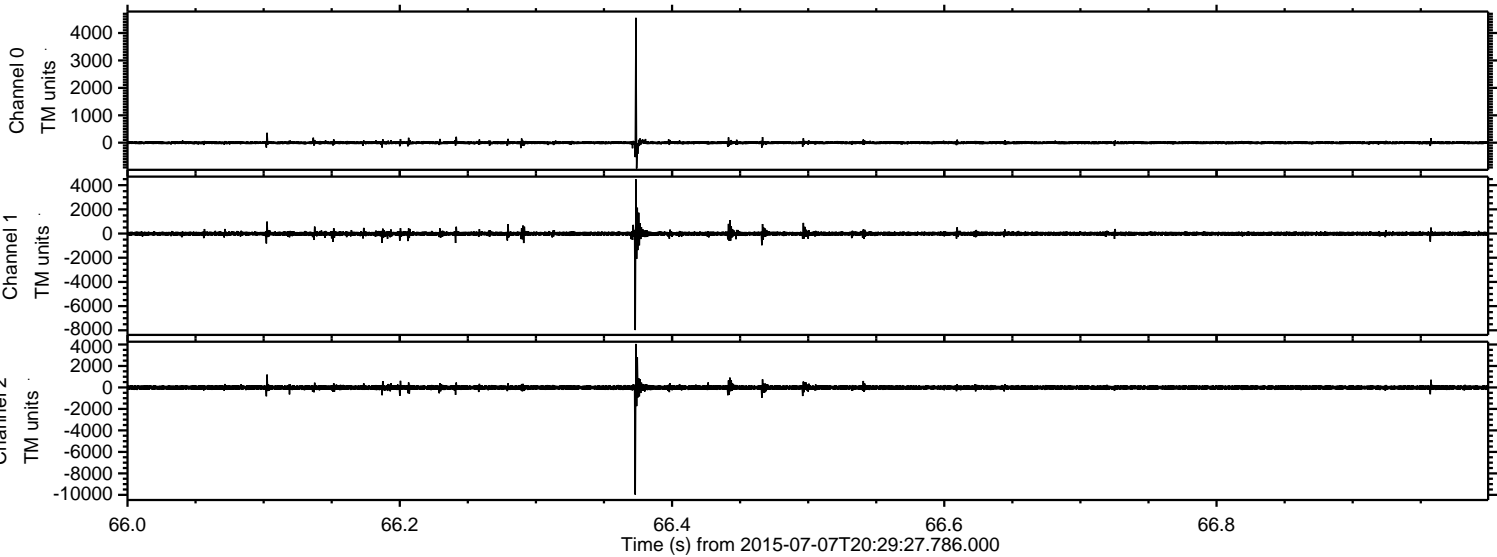
# ELMAVAN 3D WAVEFORMS (Measured data sampled at 50 kHz) 51000 packets of 144 samples from 2015-07-07T20:29:27.786.000.

Processed Tue Jul 7 22:35:58 2015 by ELM ver.2012-10-06 from 001\_\_elm20150707\_202926\_\_dat00.bin





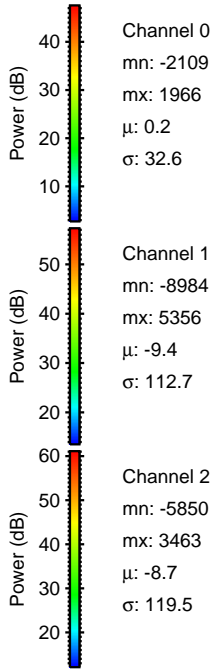
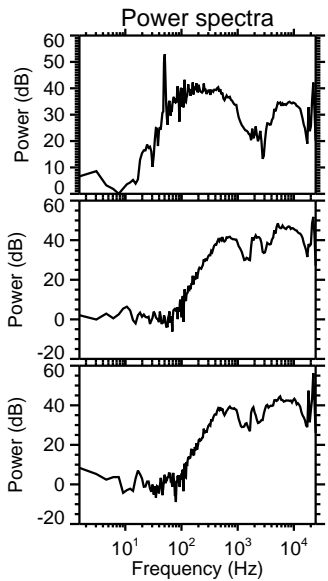
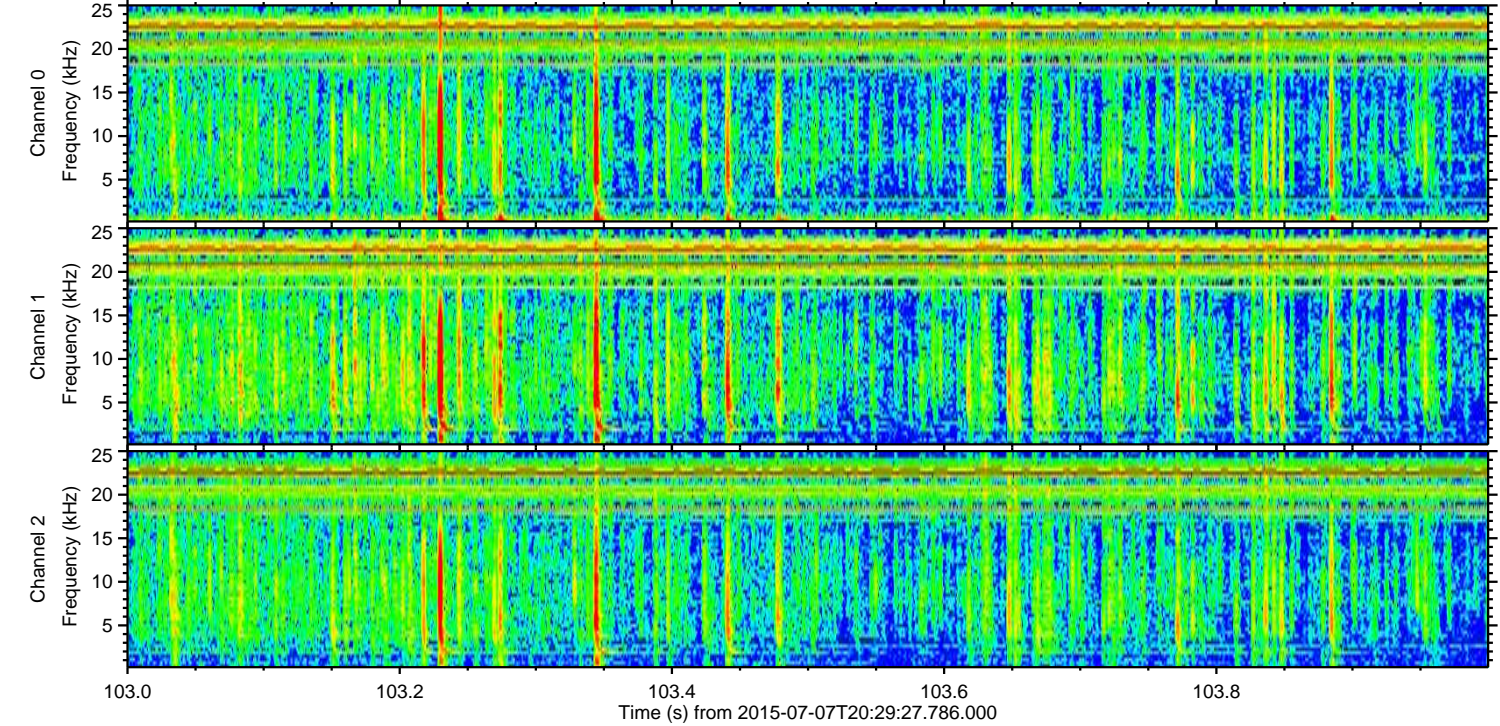
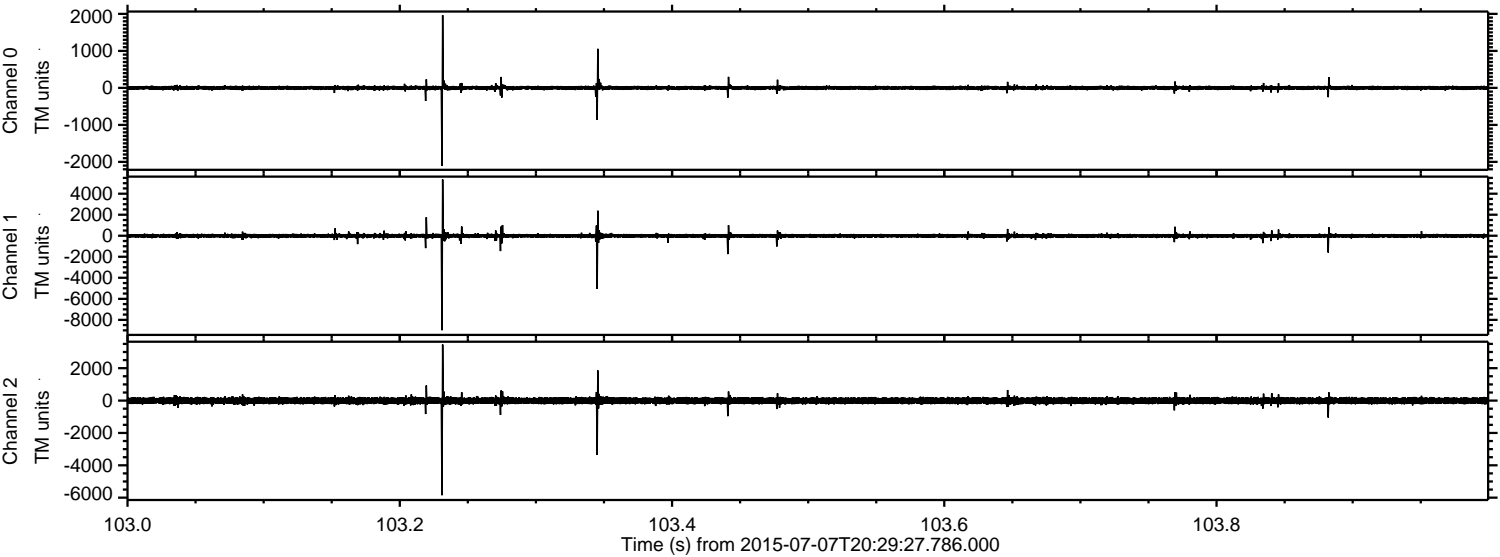
Processed Tue Jul 7 22:36:14 2015 by ELM ver.2012-10-06 from 001\_\_elm20150707\_202926\_\_dat00.bin





ELMAVAN 3D WAVEFORMS (Measured data sampled at 50 kHz) 51000 packets of 144 samples from 2015-07-07T20:29:27.786.000. Part 104/147

Processed Tue Jul 7 22:36:15 2015 by ELM ver.2012-10-06 from 001\_\_elm20150707\_202926\_\_dat00.bin



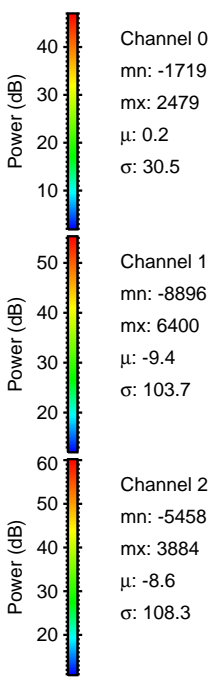
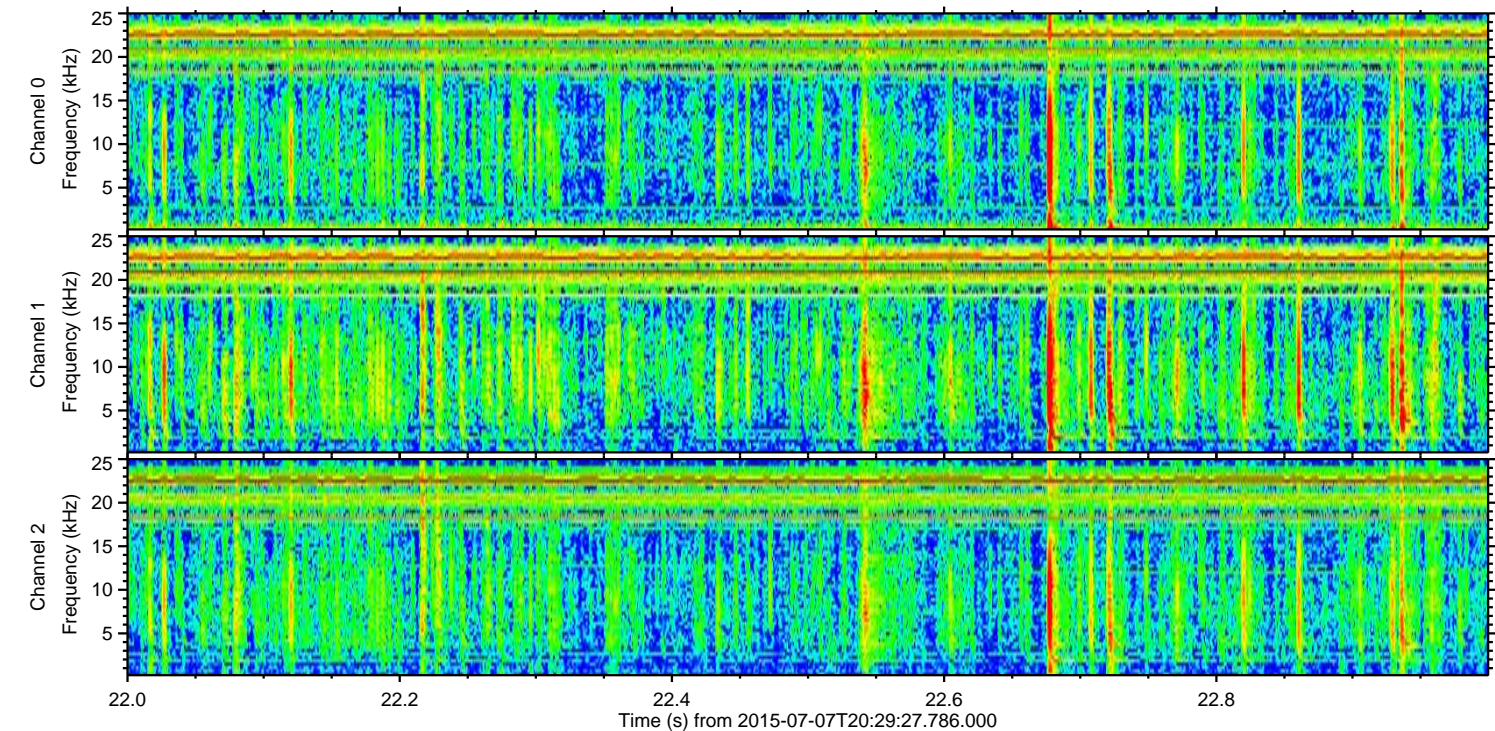
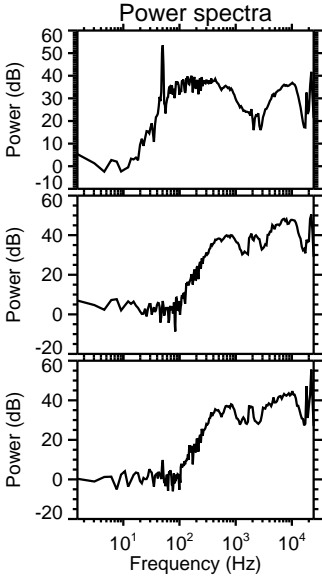
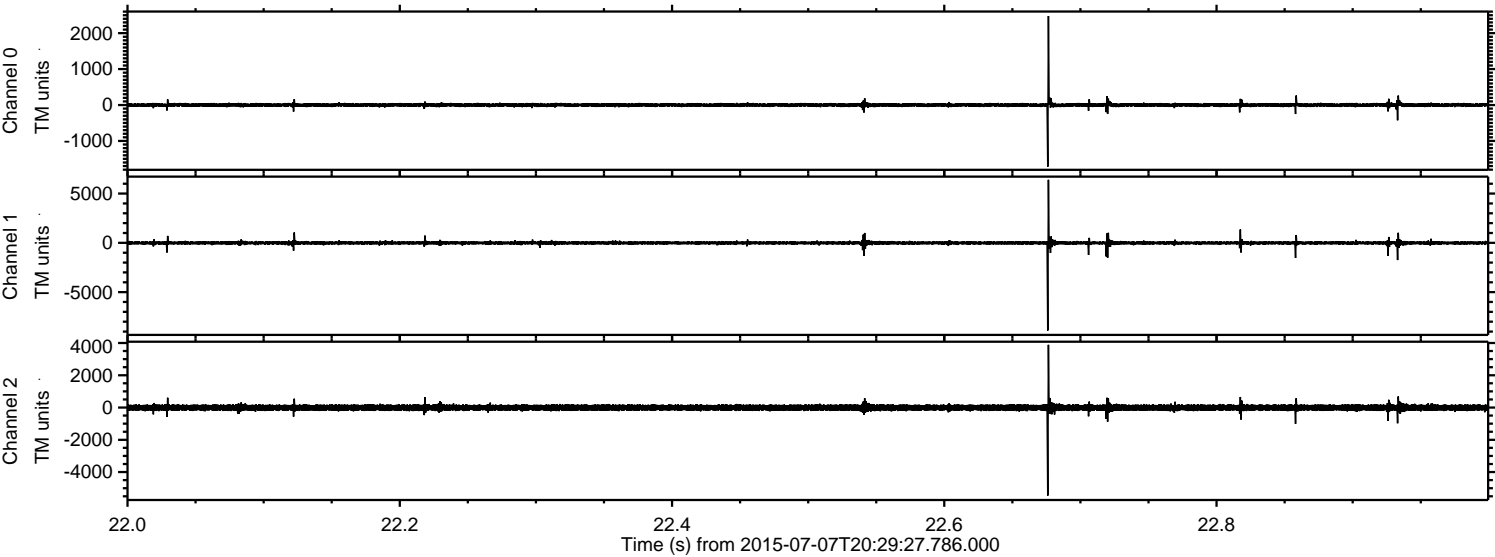
Channel 0  
mn: -2109  
mx: 1966  
 $\mu$ : 0.2  
 $\sigma$ : 32.6

Channel 1  
mn: -8984  
mx: 5356  
 $\mu$ : -9.4  
 $\sigma$ : 112.7

Channel 2  
mn: -5850  
mx: 3463  
 $\mu$ : -8.7  
 $\sigma$ : 119.5

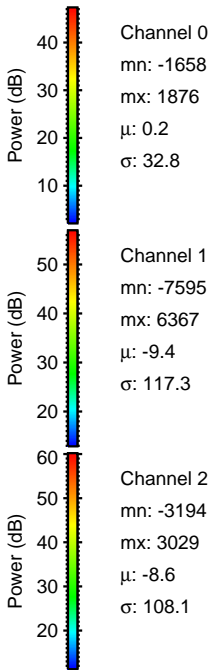
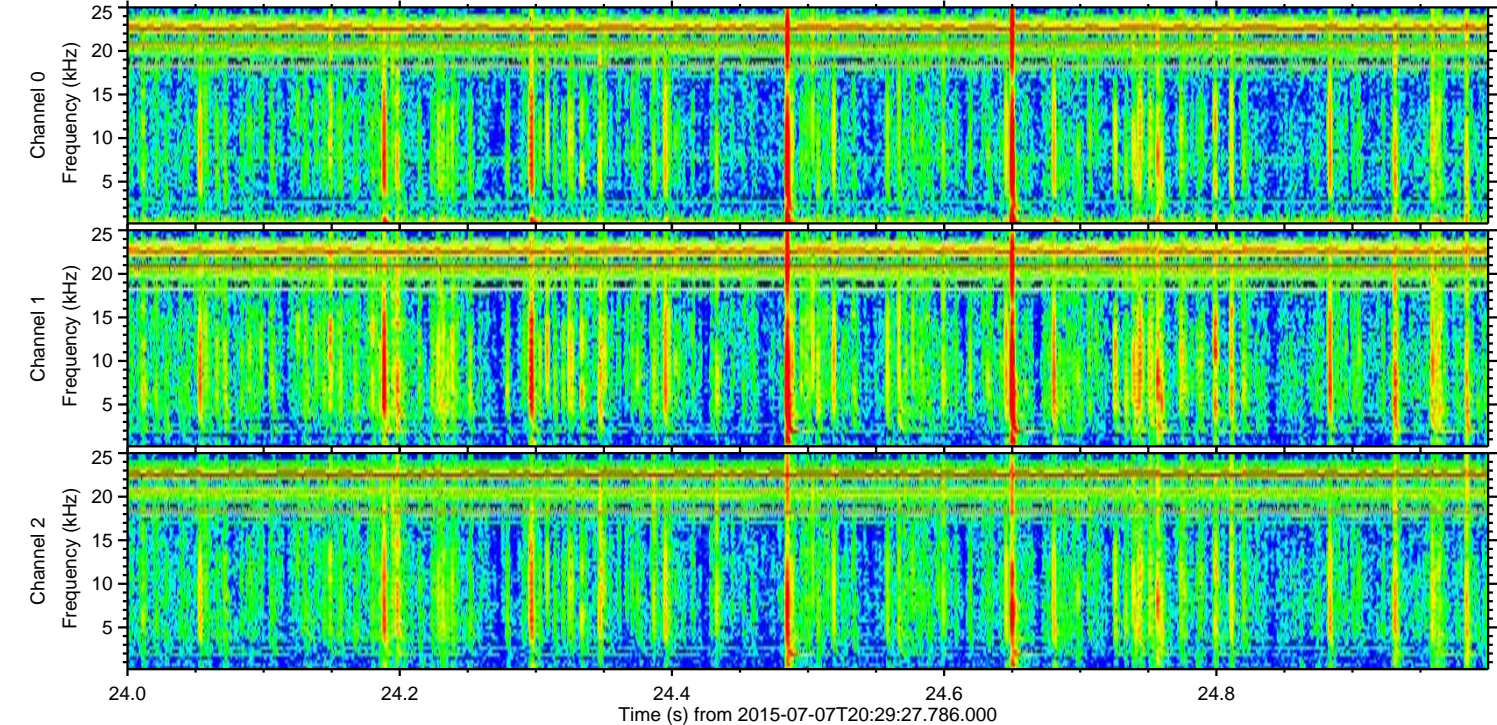
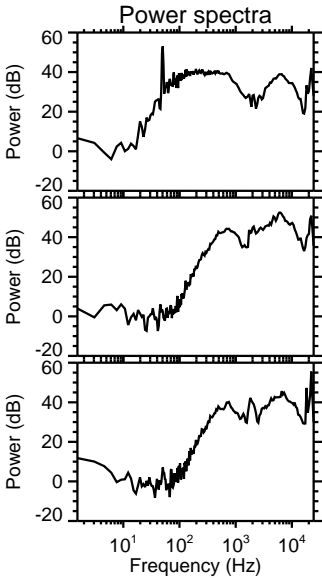
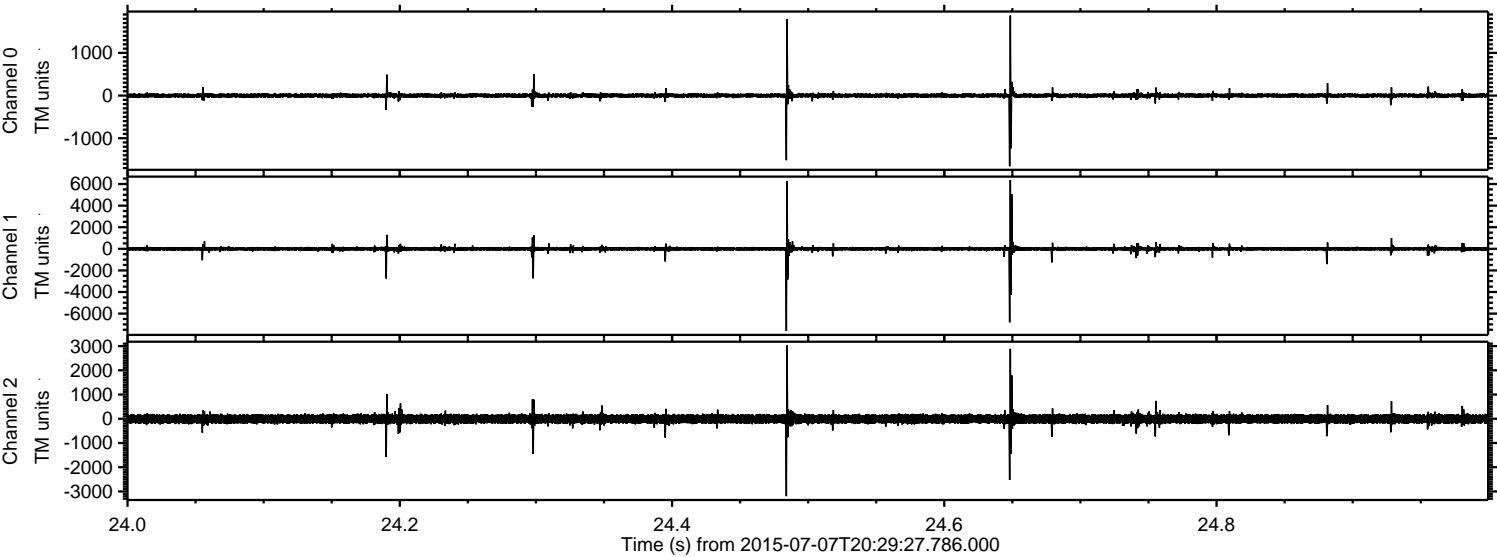


Processed Tue Jul 7 22:36:16 2015 by ELM ver.2012-10-06 from 001\_\_elm20150707\_202926\_\_dat00.bin





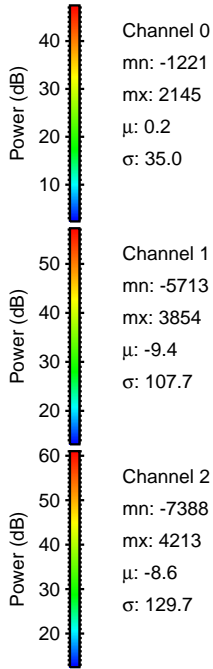
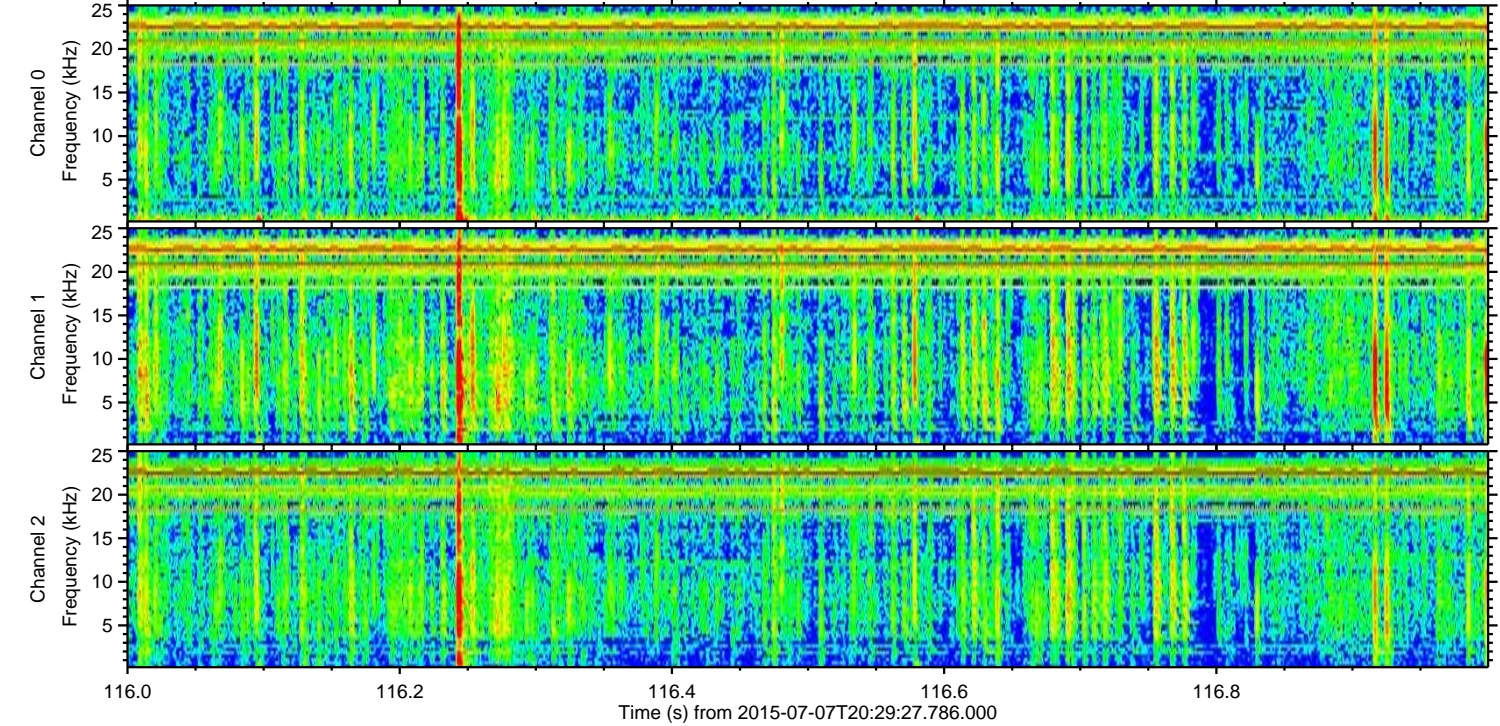
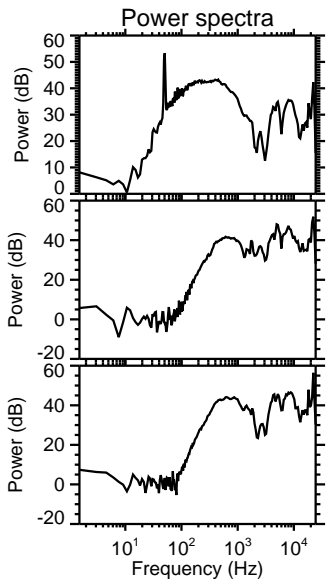
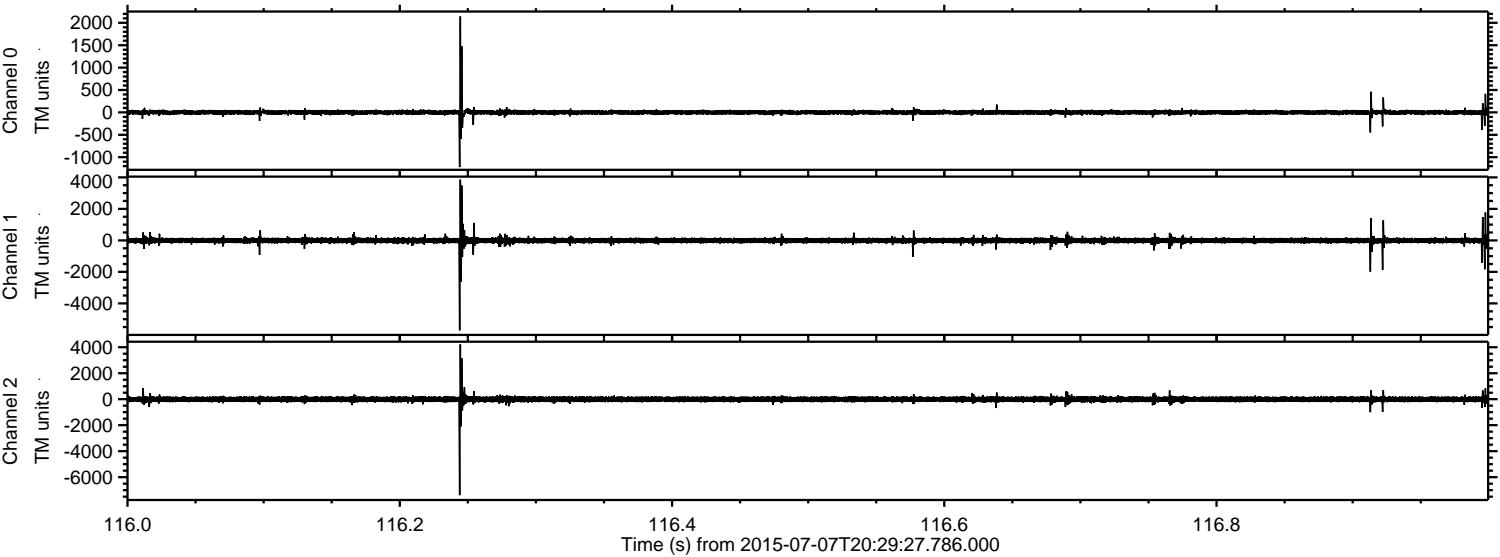
Processed Tue Jul 7 22:36:17 2015 by ELM ver.2012-10-06 from 001\_\_elm20150707\_202926\_\_dat00.bin





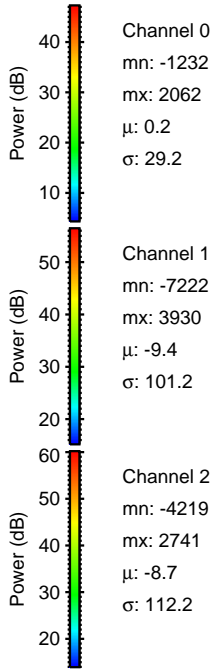
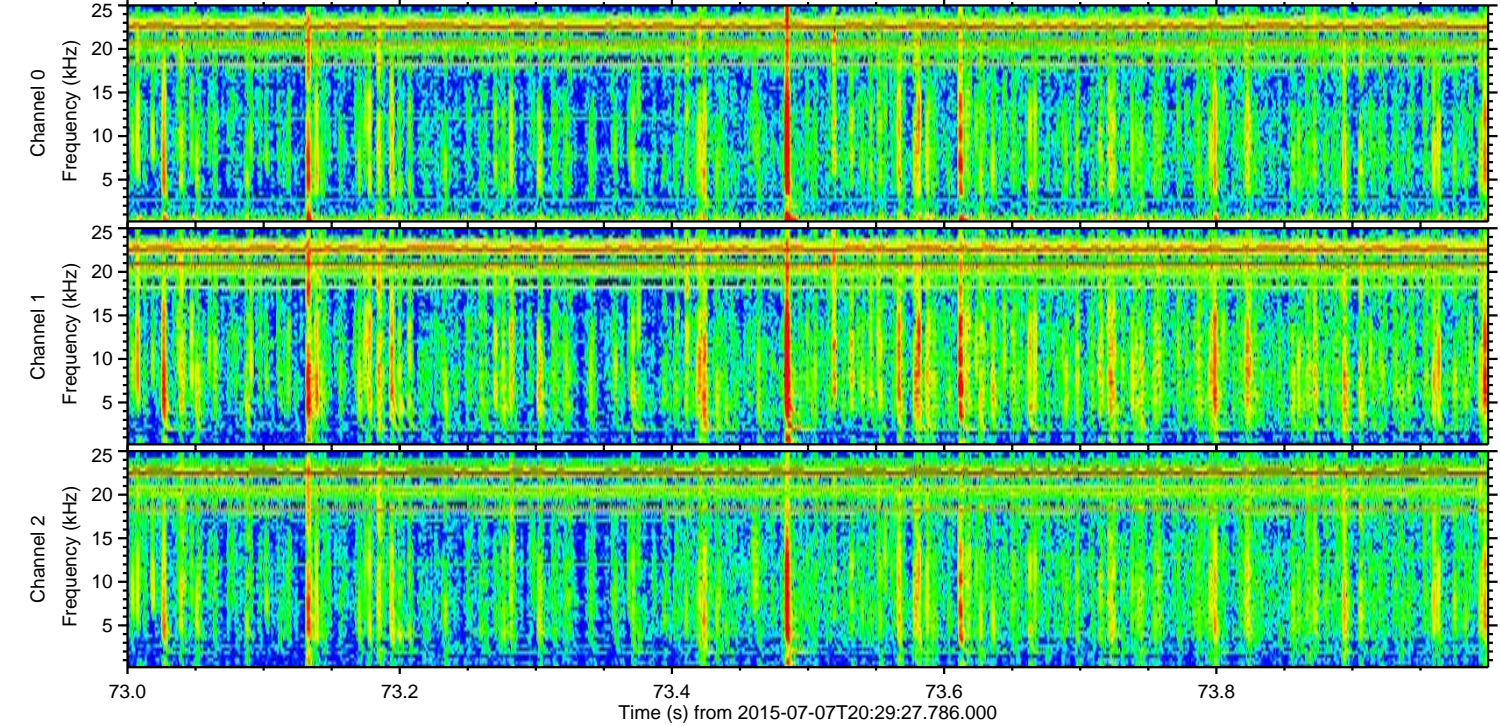
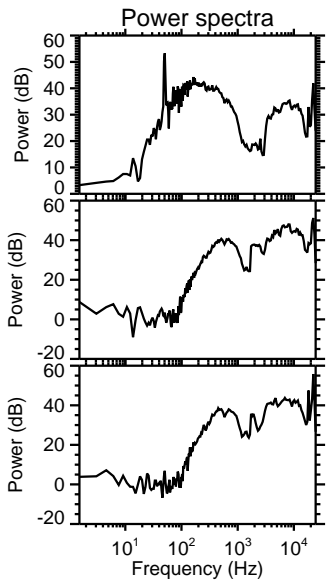
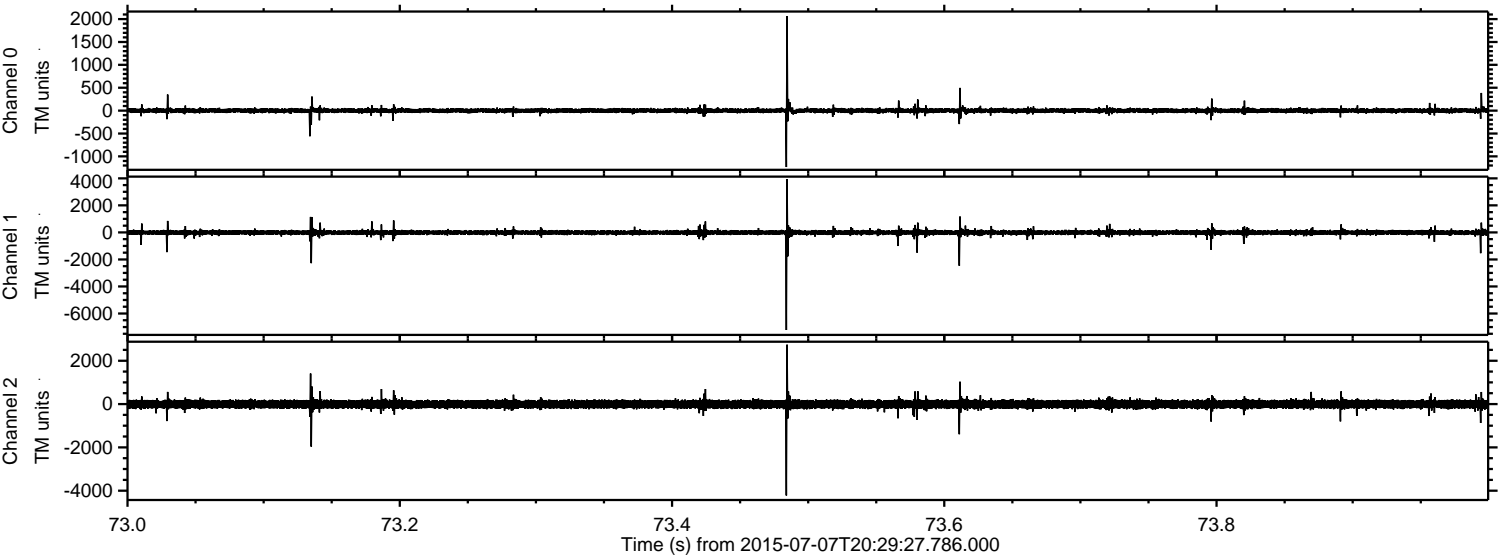
ELMAVAN 3D WAVEFORMS (Measured data sampled at 50 kHz) 51000 packets of 144 samples from 2015-07-07T20:29:27.786.000. Part 117/147

Processed Tue Jul 7 22:36:18 2015 by ELM ver.2012-10-06 from 001\_\_elm20150707\_202926\_\_dat00.bin





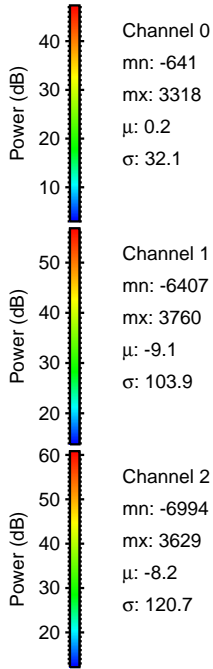
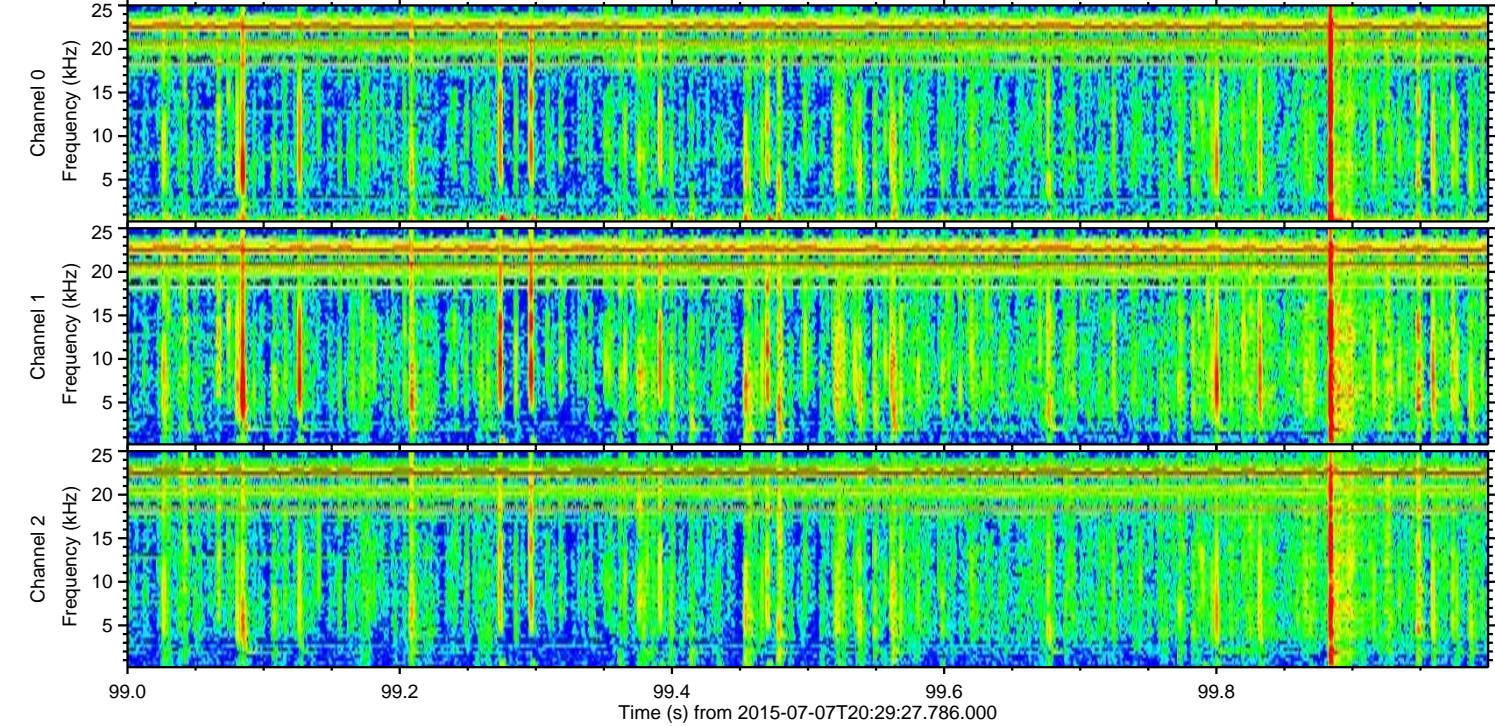
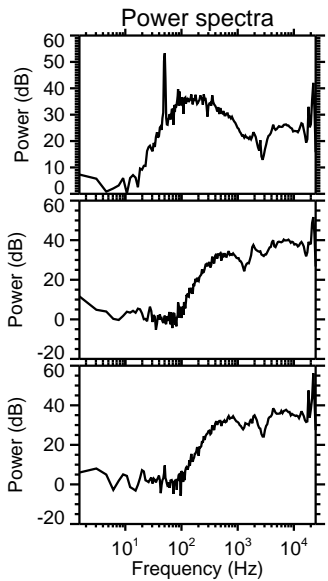
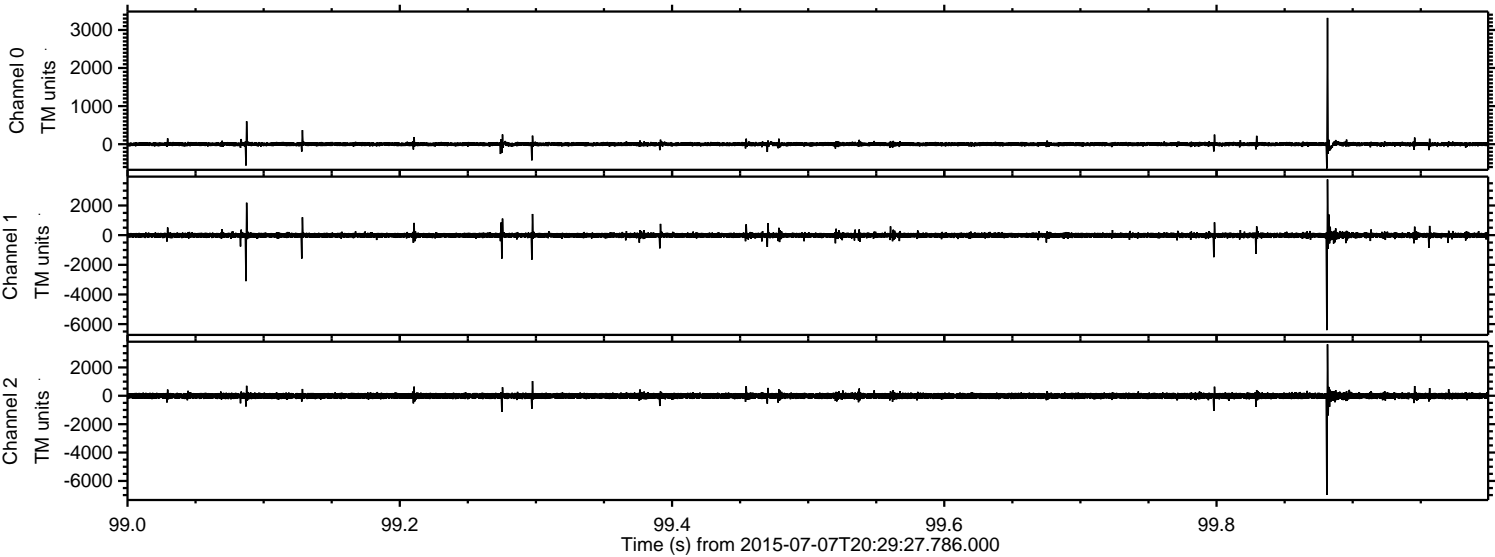
Processed Tue Jul 7 22:36:19 2015 by ELM ver.2012-10-06 from 001\_\_elm20150707\_202926\_\_dat00.bin





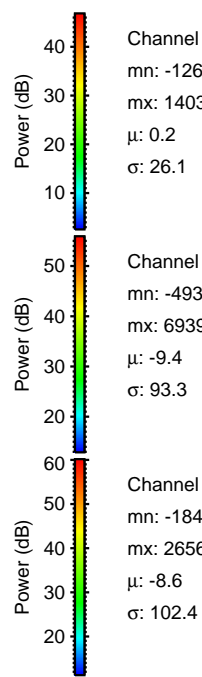
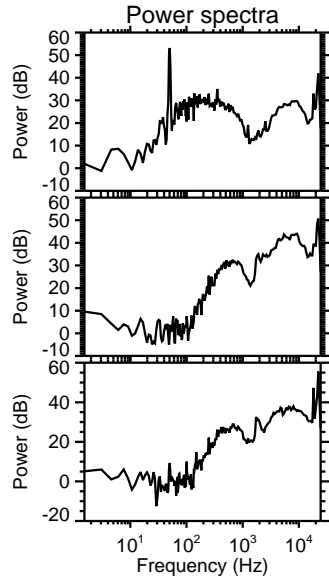
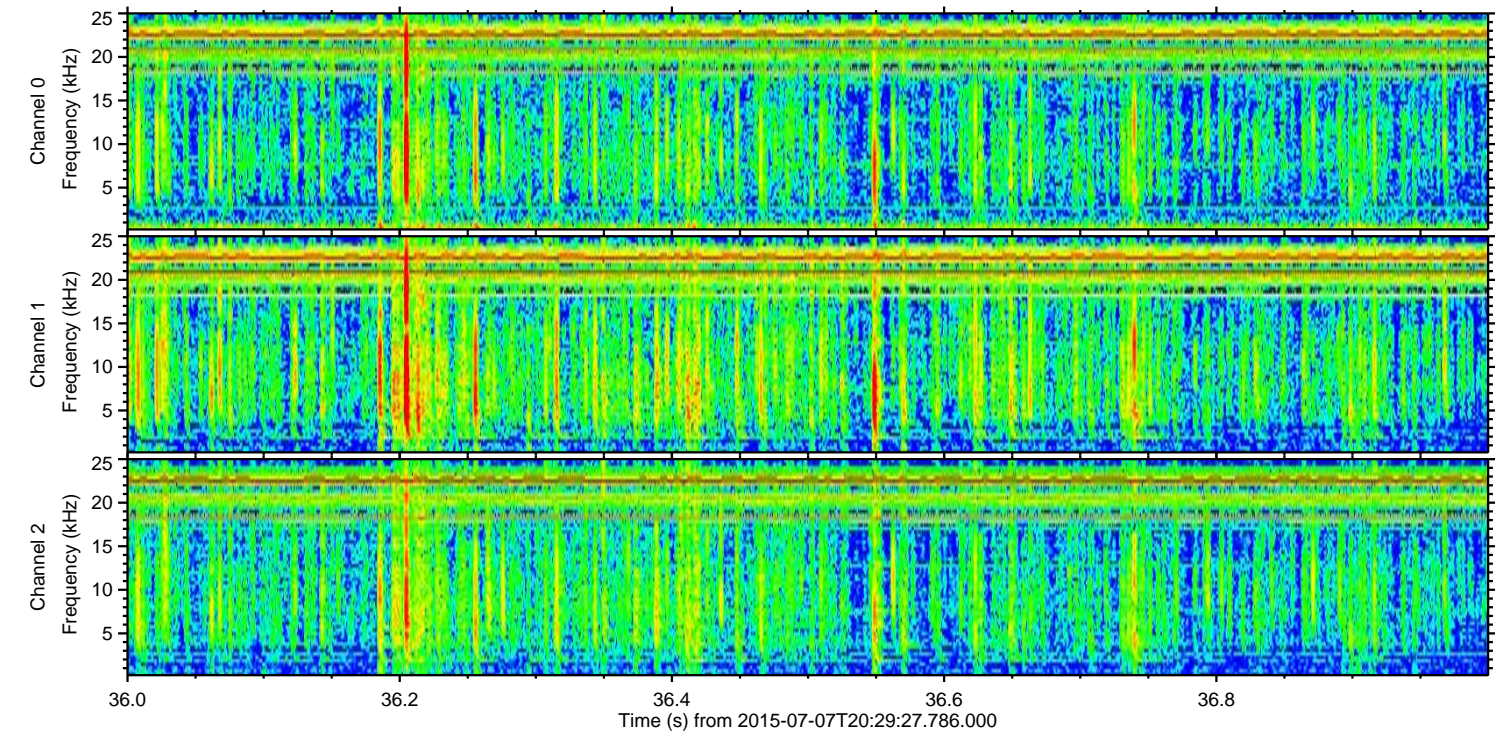
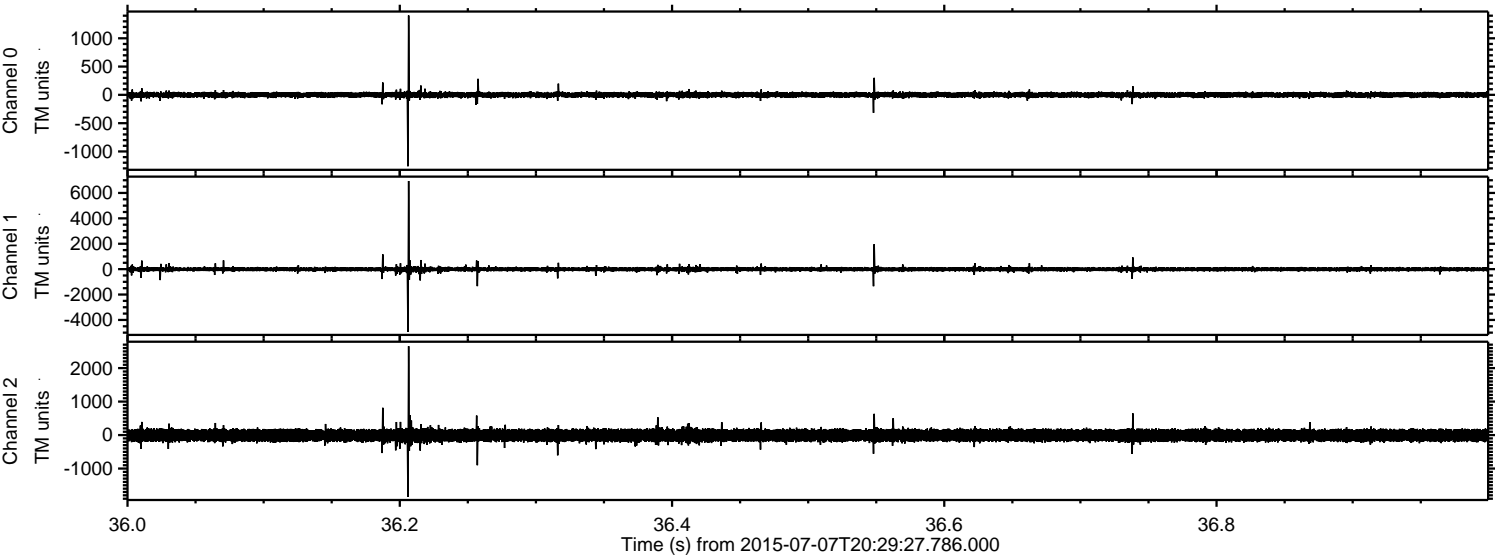
ELMAVAN 3D WAVEFORMS (Measured data sampled at 50 kHz) 51000 packets of 144 samples from 2015-07-07T20:29:27.786.000. Part 100/147

Processed Tue Jul 7 22:36:20 2015 by ELM ver.2012-10-06 from 001\_\_elm20150707\_202926\_\_dat00.bin





Processed Tue Jul 7 22:36:21 2015 by ELM ver.2012-10-06 from 001\_\_elm20150707\_202926\_\_dat00.bin



Channel 0  
mn: -1262  
mx: 1403  
 $\mu$ : 0.2  
 $\sigma$ : 26.1

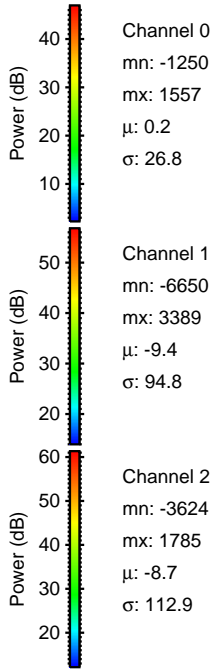
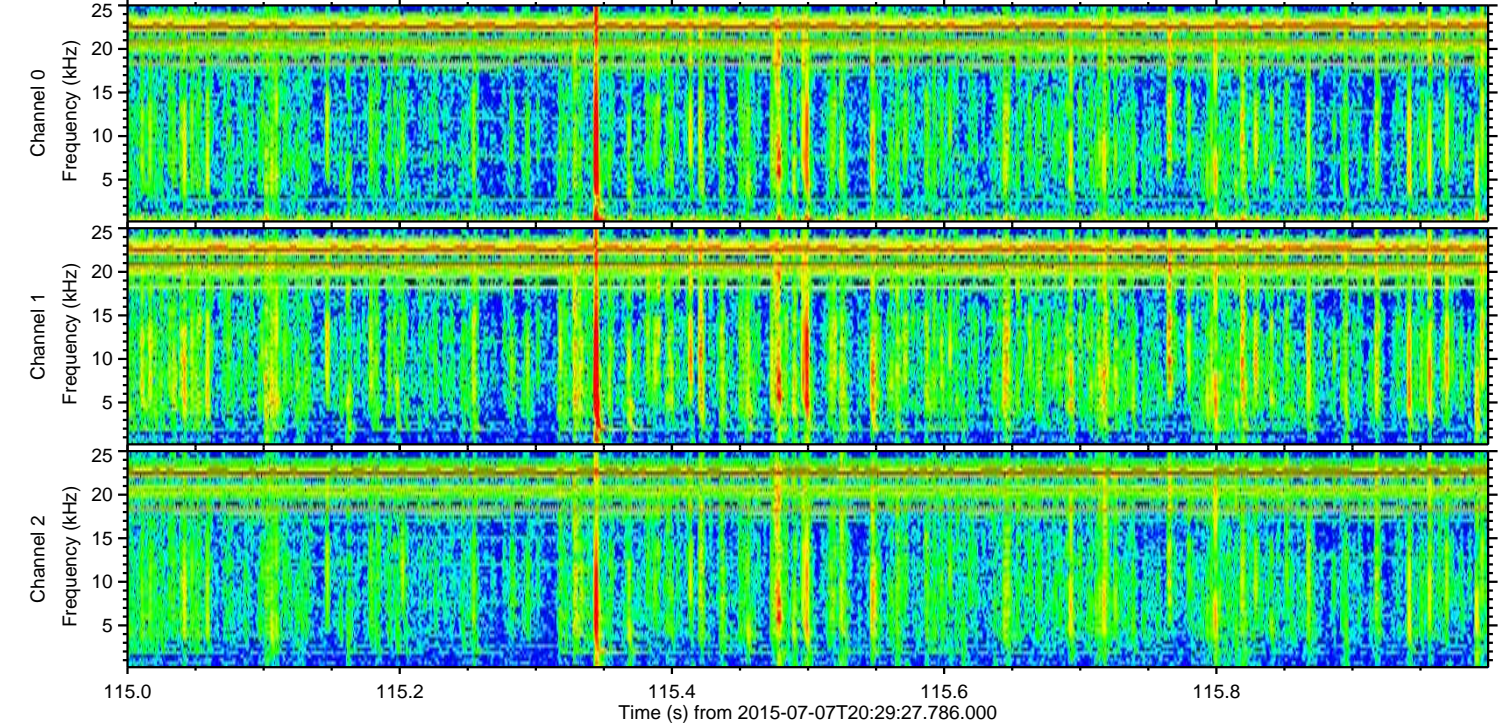
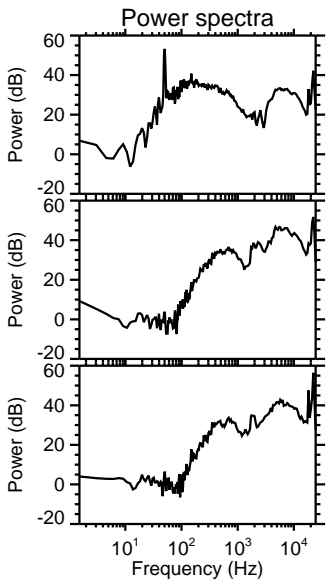
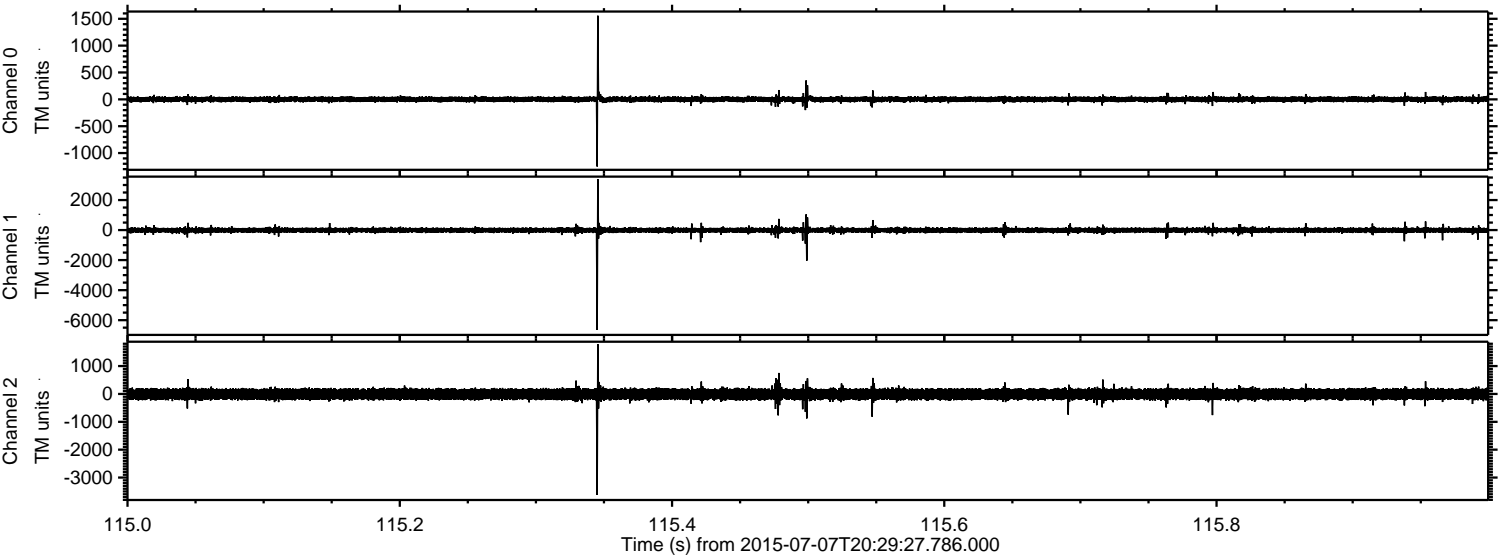
Channel 1  
mn: -4931  
mx: 6939  
 $\mu$ : -9.4  
 $\sigma$ : 93.3

Channel 2  
mn: -1847  
mx: 2656  
 $\mu$ : -8.6  
 $\sigma$ : 102.4



ELMAVAN 3D WAVEFORMS (Measured data sampled at 50 kHz) 51000 packets of 144 samples from 2015-07-07T20:29:27.786.000. Part 116/147

Processed Tue Jul 7 22:36:22 2015 by ELM ver.2012-10-06 from 001\_\_elm20150707\_202926\_\_dat00.bin



Channel 0  
mn: -1250  
mx: 1557  
 $\mu$ : 0.2  
 $\sigma$ : 26.8

Channel 1  
mn: -6650  
mx: 3389  
 $\mu$ : -9.4  
 $\sigma$ : 94.8

Channel 2  
mn: -3624  
mx: 1785  
 $\mu$ : -8.7  
 $\sigma$ : 112.9



ELMAVAN 3D WAVEFORMS (Measured data sampled at 50 kHz) 51000 packets of 144 samples from 2015-07-07T20:29:27.786.000. Part 142/147

