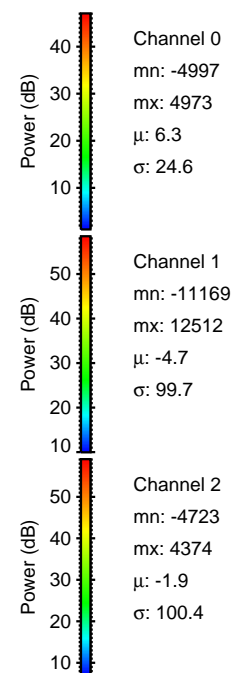
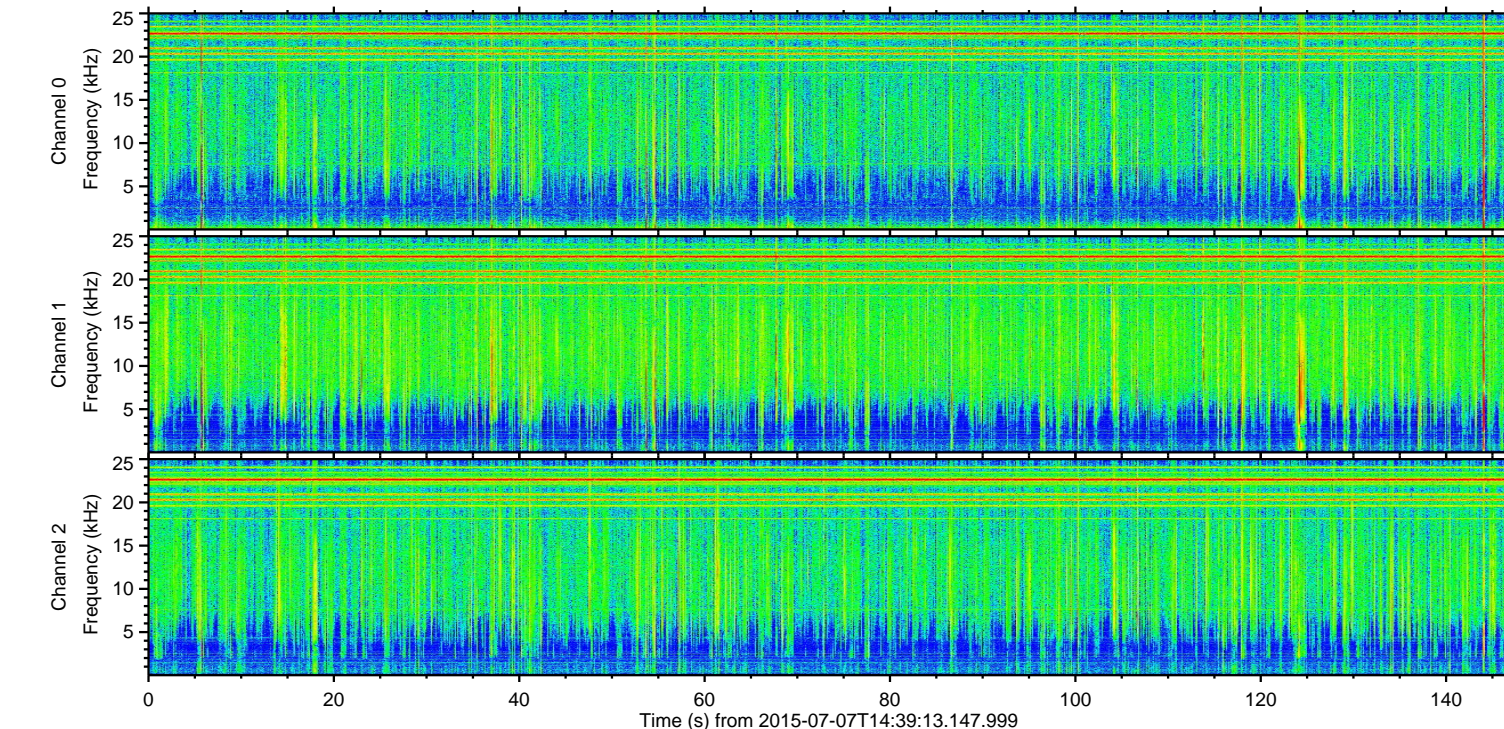
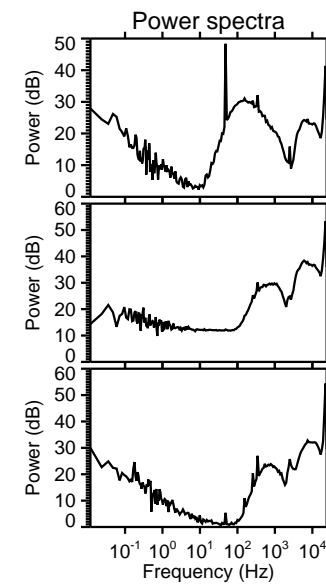
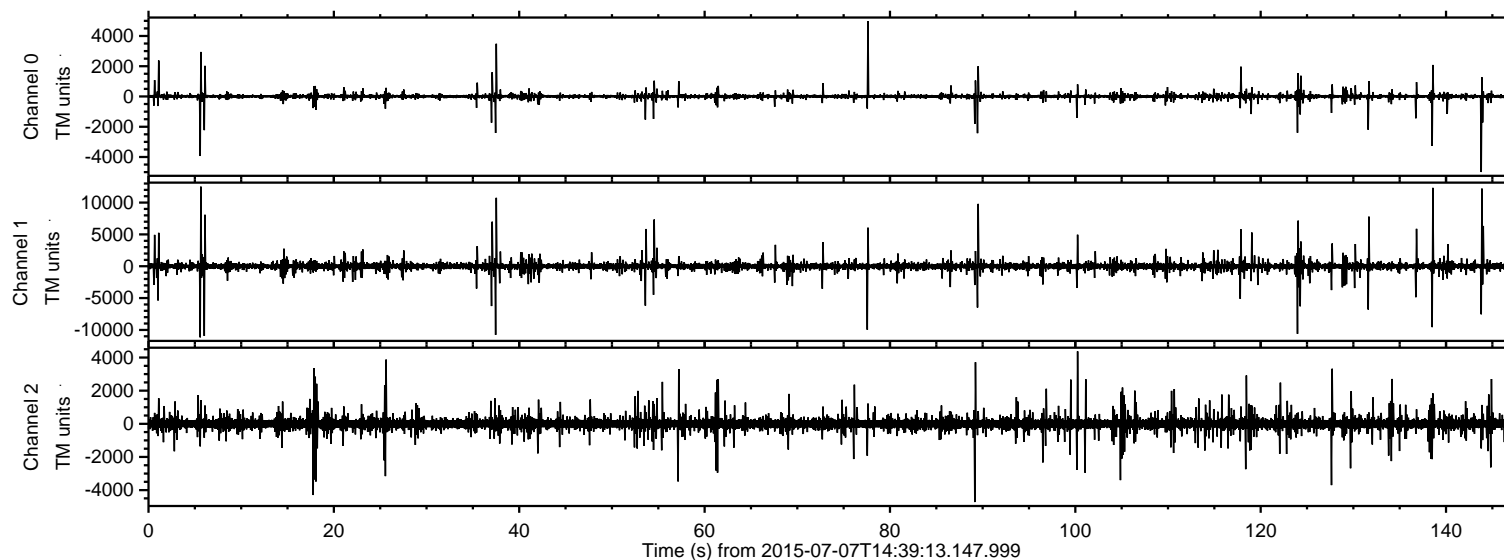


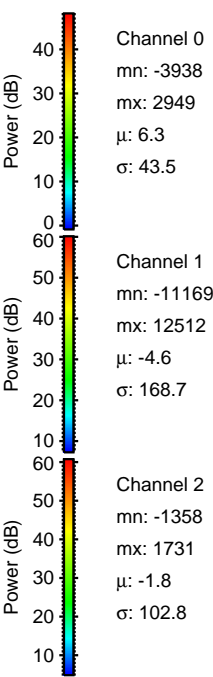
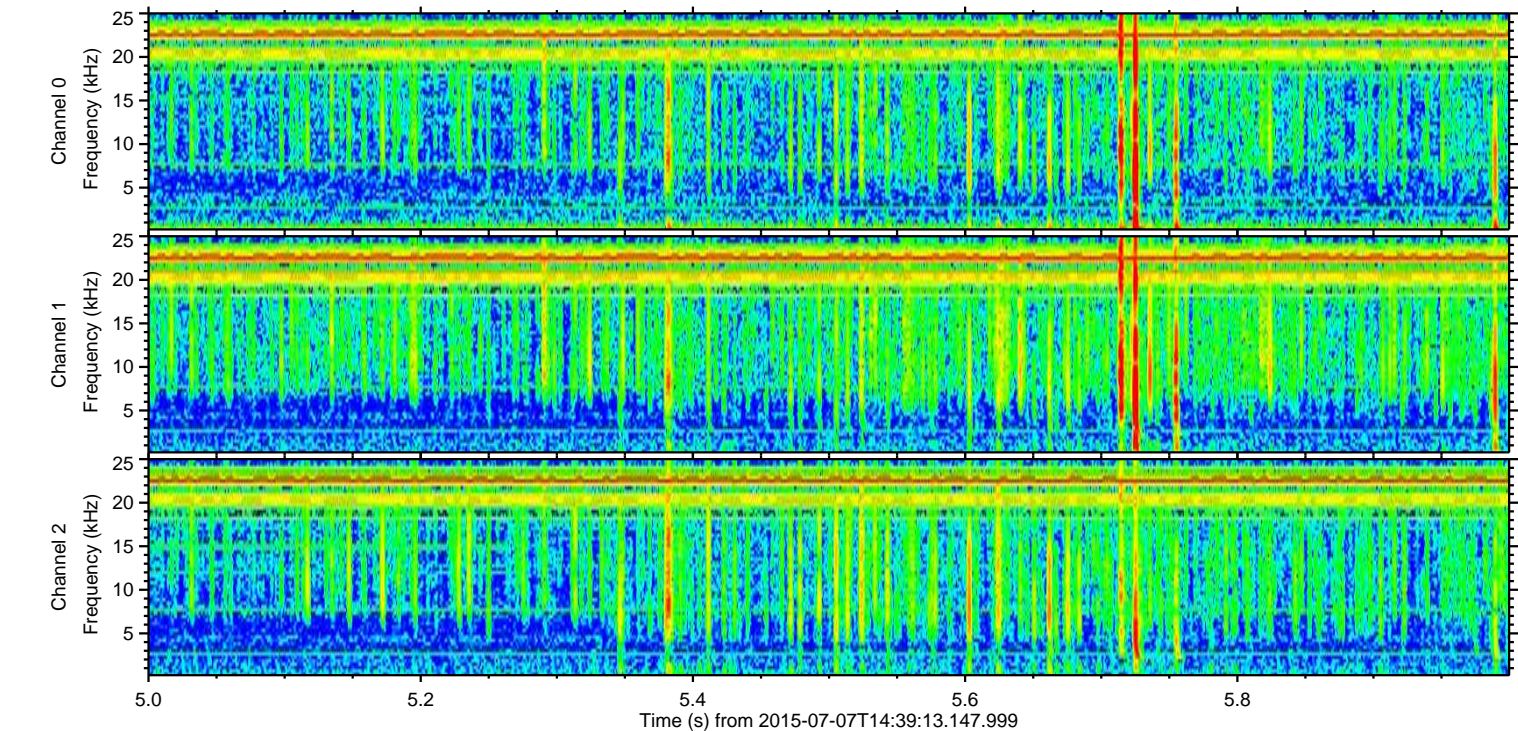
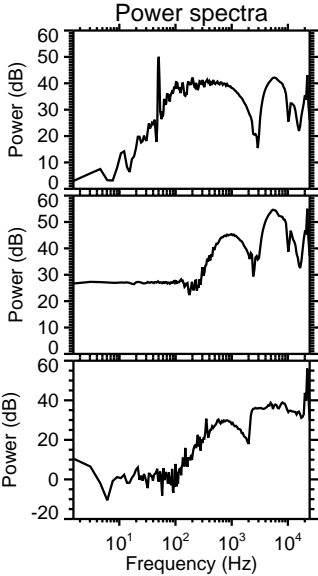
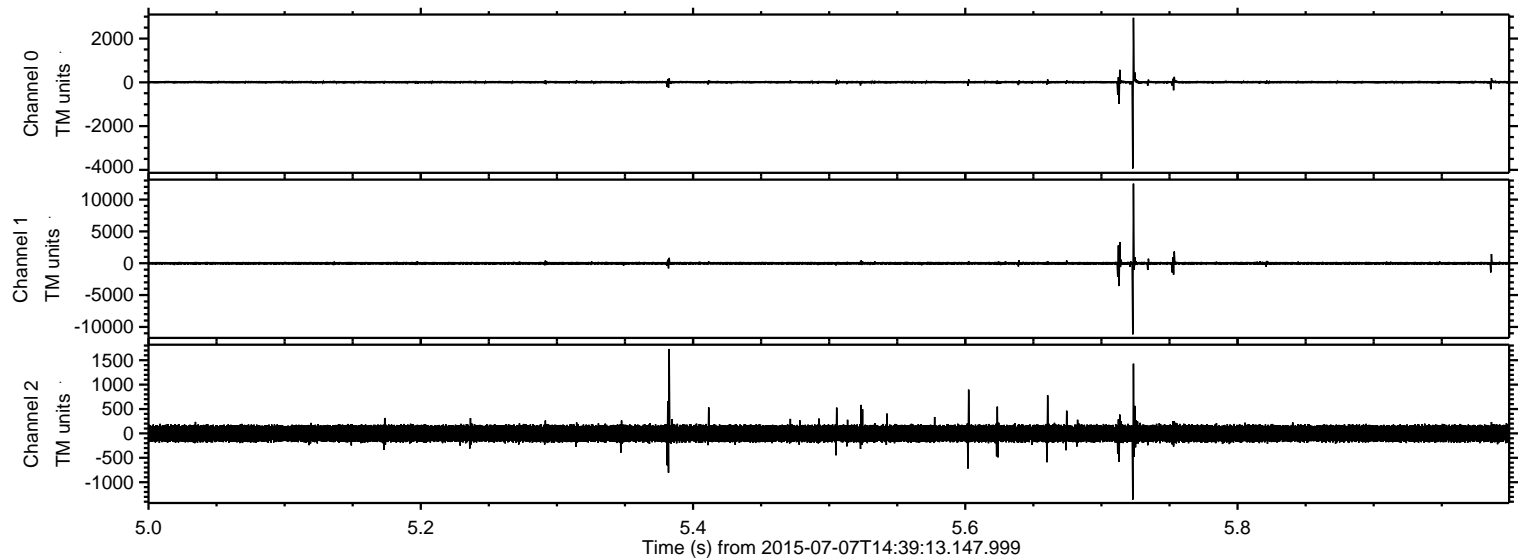
ELMAVAN 3D WAVEFORMS (Measured data sampled at 50 kHz) 51000 packets of 144 samples from 2015-07-07T14:39:13.147.999.

Processed Tue Jul 7 16:45:21 2015 by ELM ver.2012-10-06 from 001__elm20150707_143912__dat00.bin



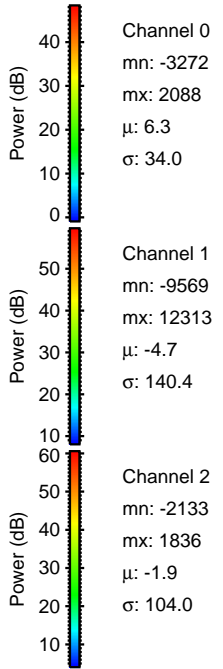
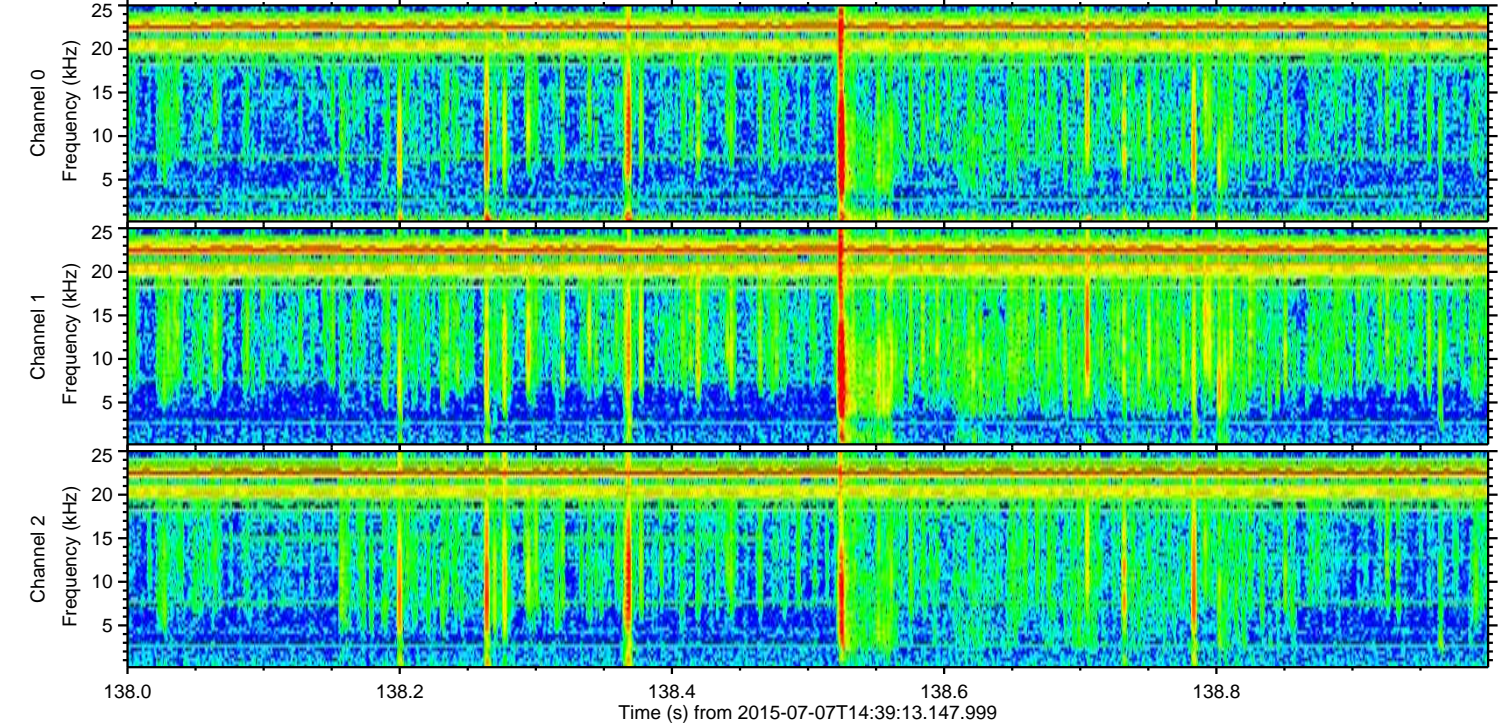
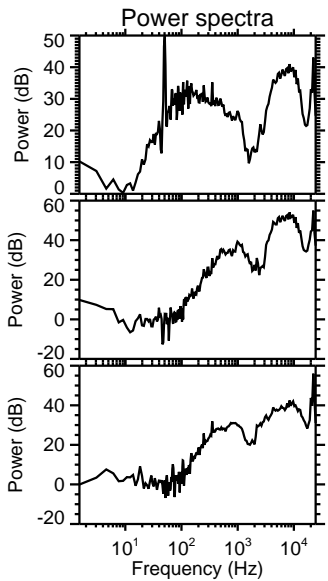
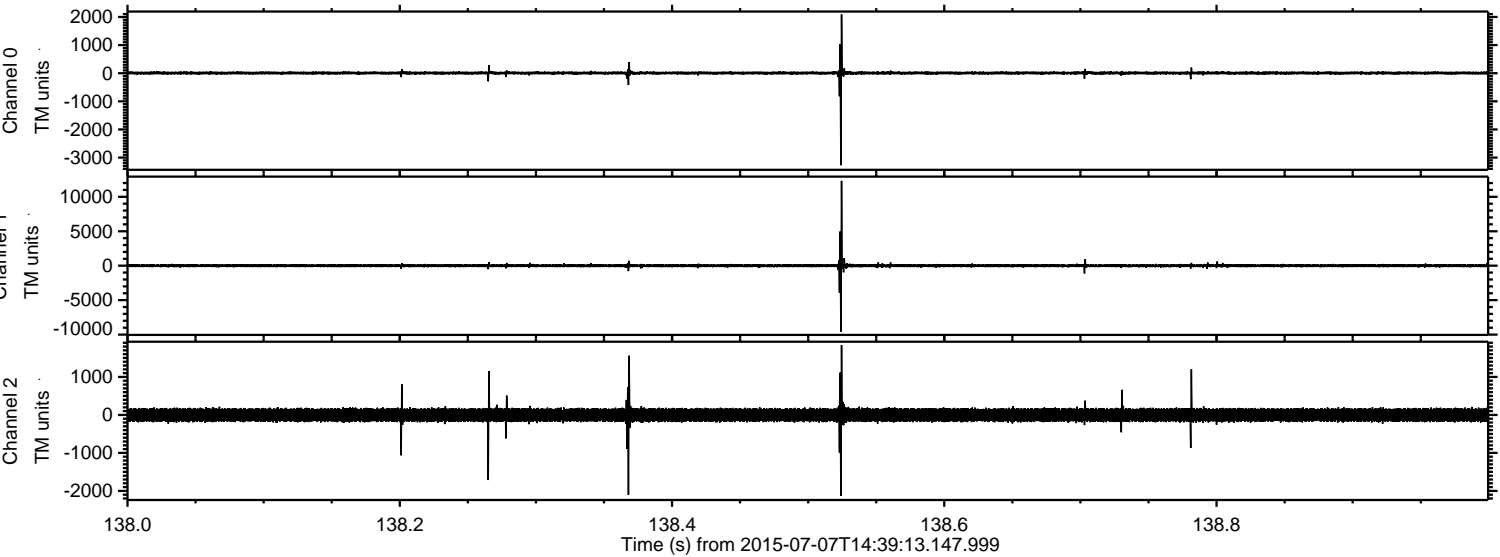
ELMAVAN 3D WAVEFORMS (Measured data sampled at 50 kHz) 51000 packets of 144 samples from 2015-07-07T14:39:13.147.999. Part 6/147

Processed Tue Jul 7 16:45:37 2015 by ELM ver.2012-10-06 from 001__elm20150707_143912__dat00.bin



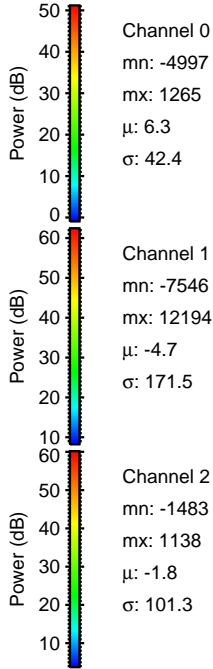
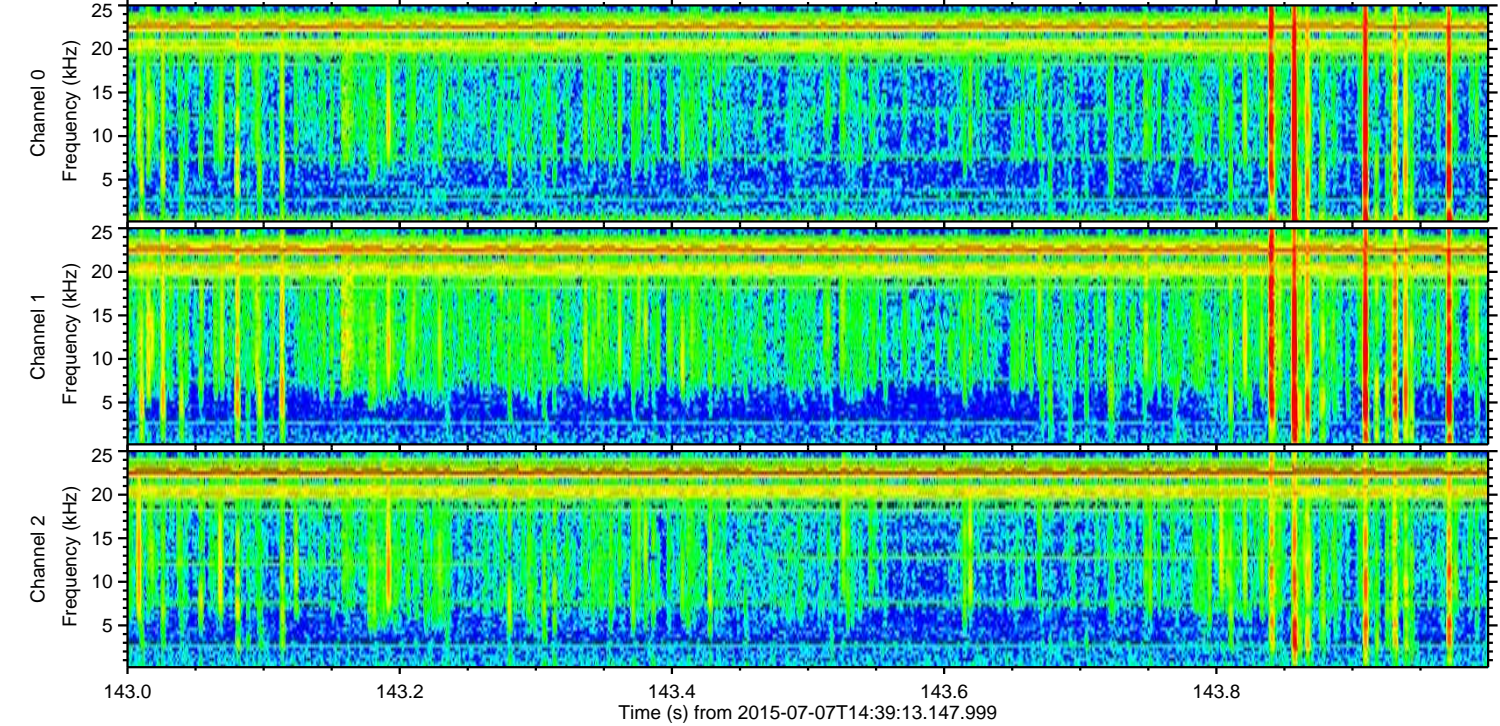
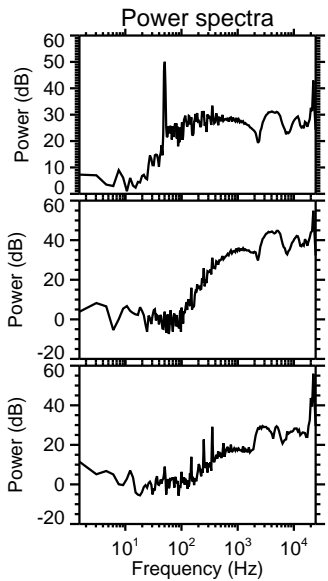
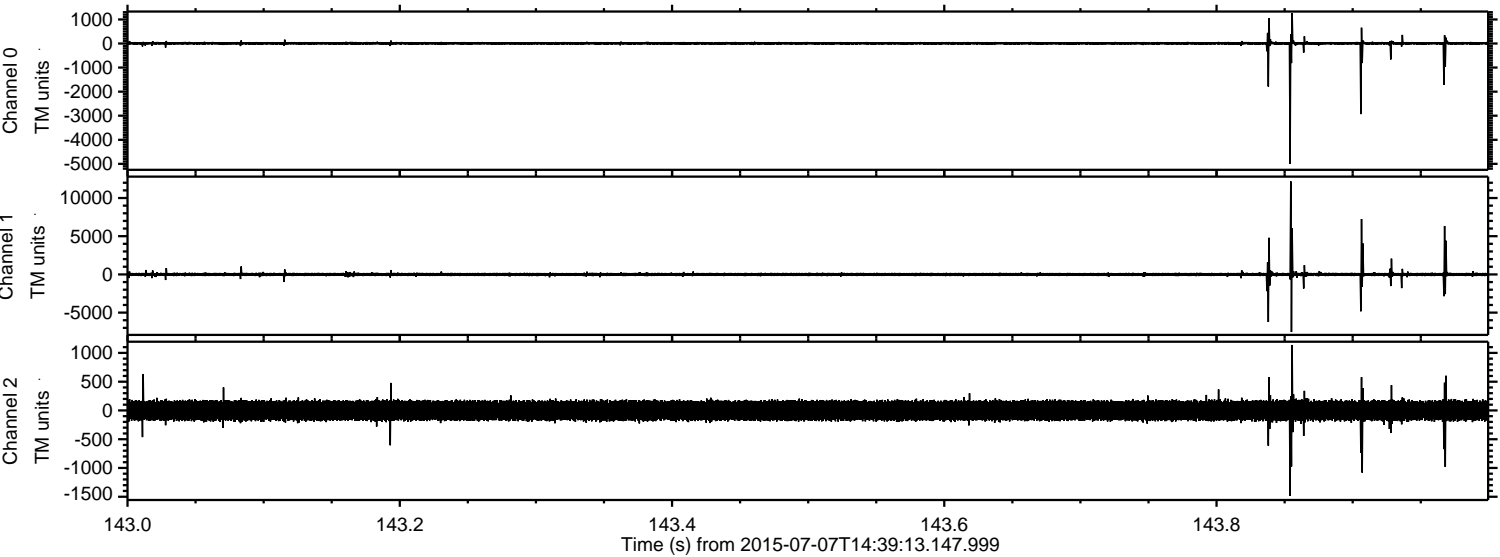
ELMAVAN 3D WAVEFORMS (Measured data sampled at 50 kHz) 51000 packets of 144 samples from 2015-07-07T14:39:13.147.999. Part 139/147

Processed Tue Jul 7 16:45:38 2015 by ELM ver.2012-10-06 from 001__elm20150707_143912__dat00.bin



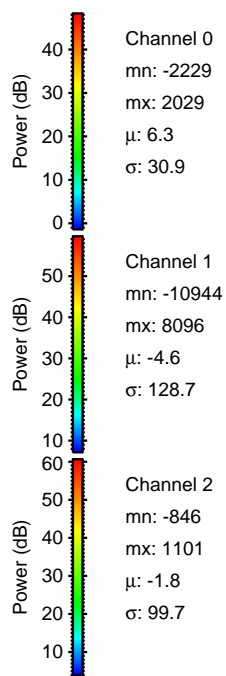
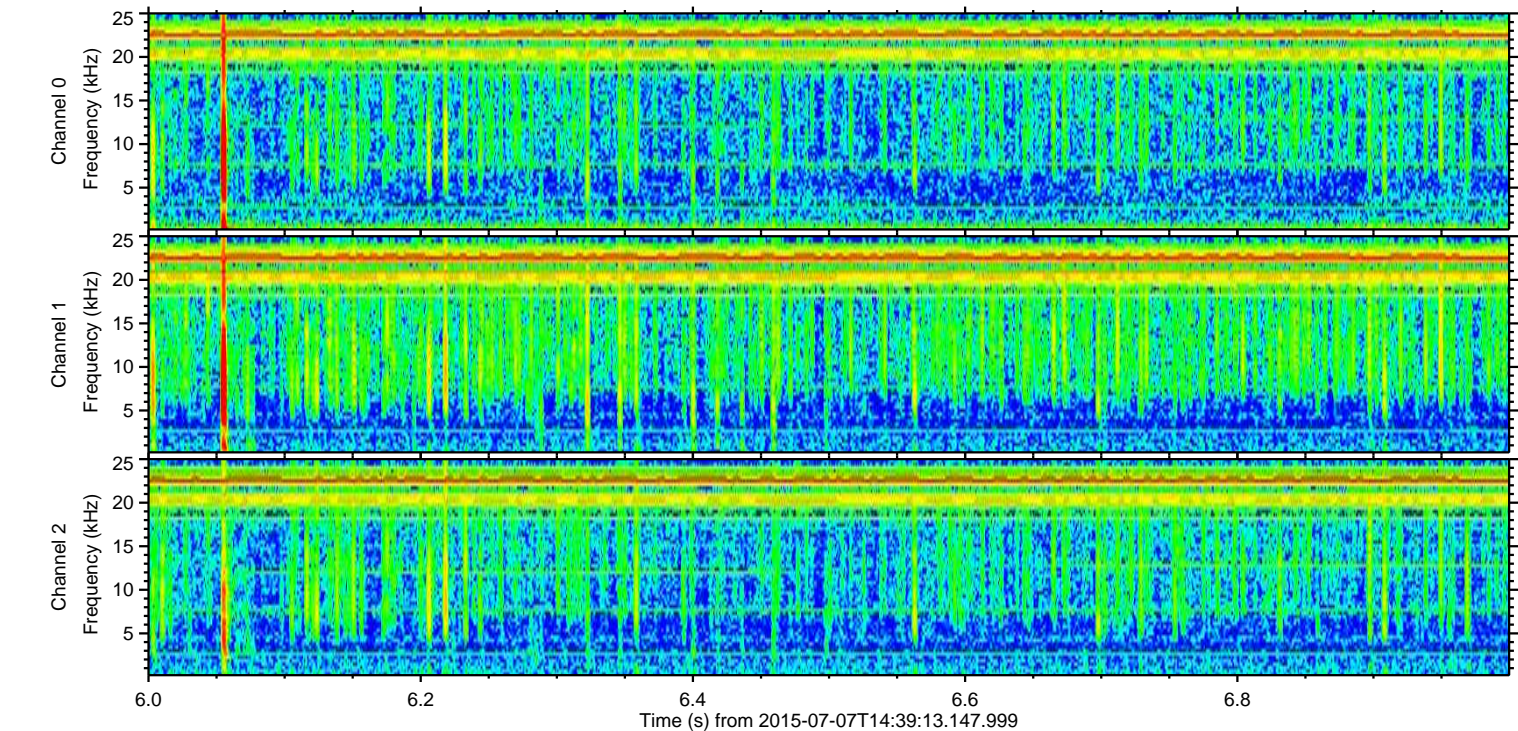
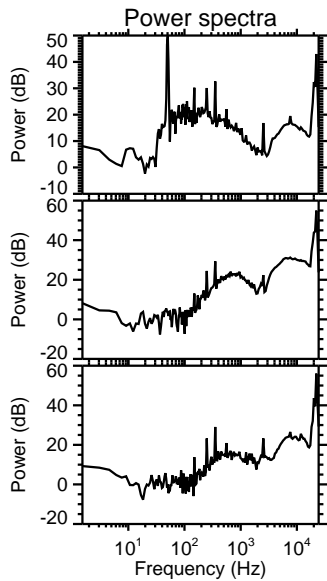
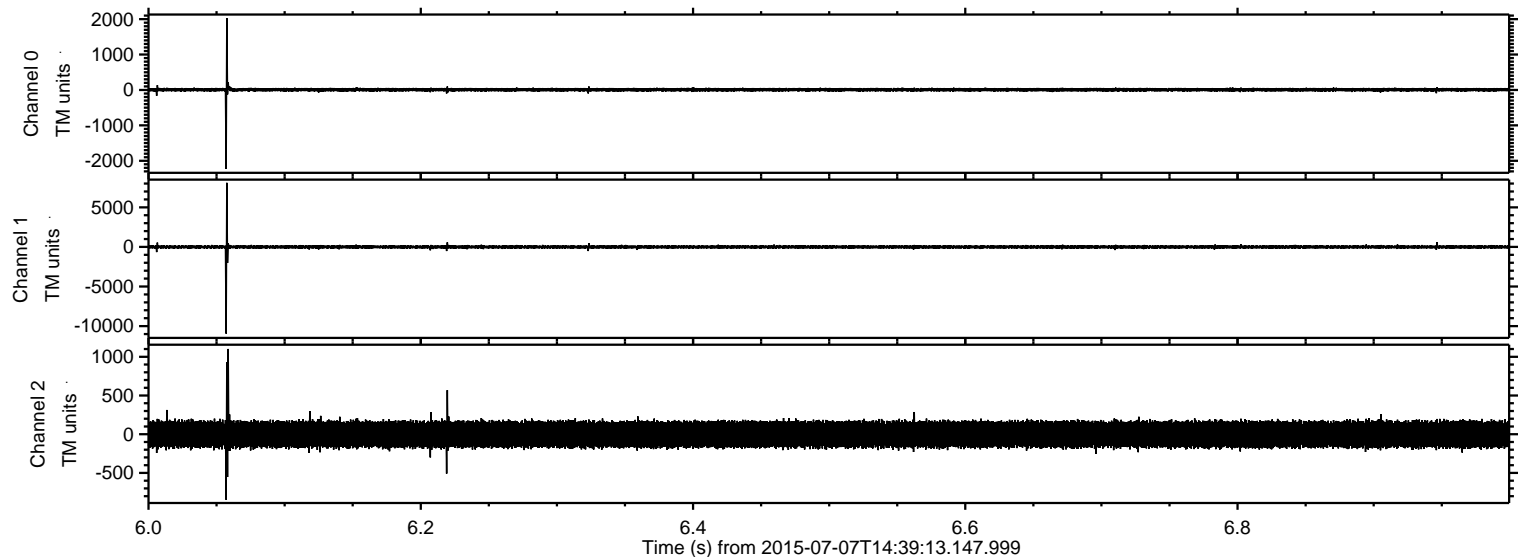
ELMAVAN 3D WAVEFORMS (Measured data sampled at 50 kHz) 51000 packets of 144 samples from 2015-07-07T14:39:13.147.999. Part 144/147

Processed Tue Jul 7 16:45:39 2015 by ELM ver.2012-10-06 from 001__elm20150707_143912__dat00.bin



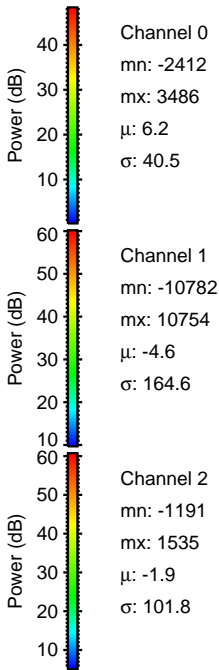
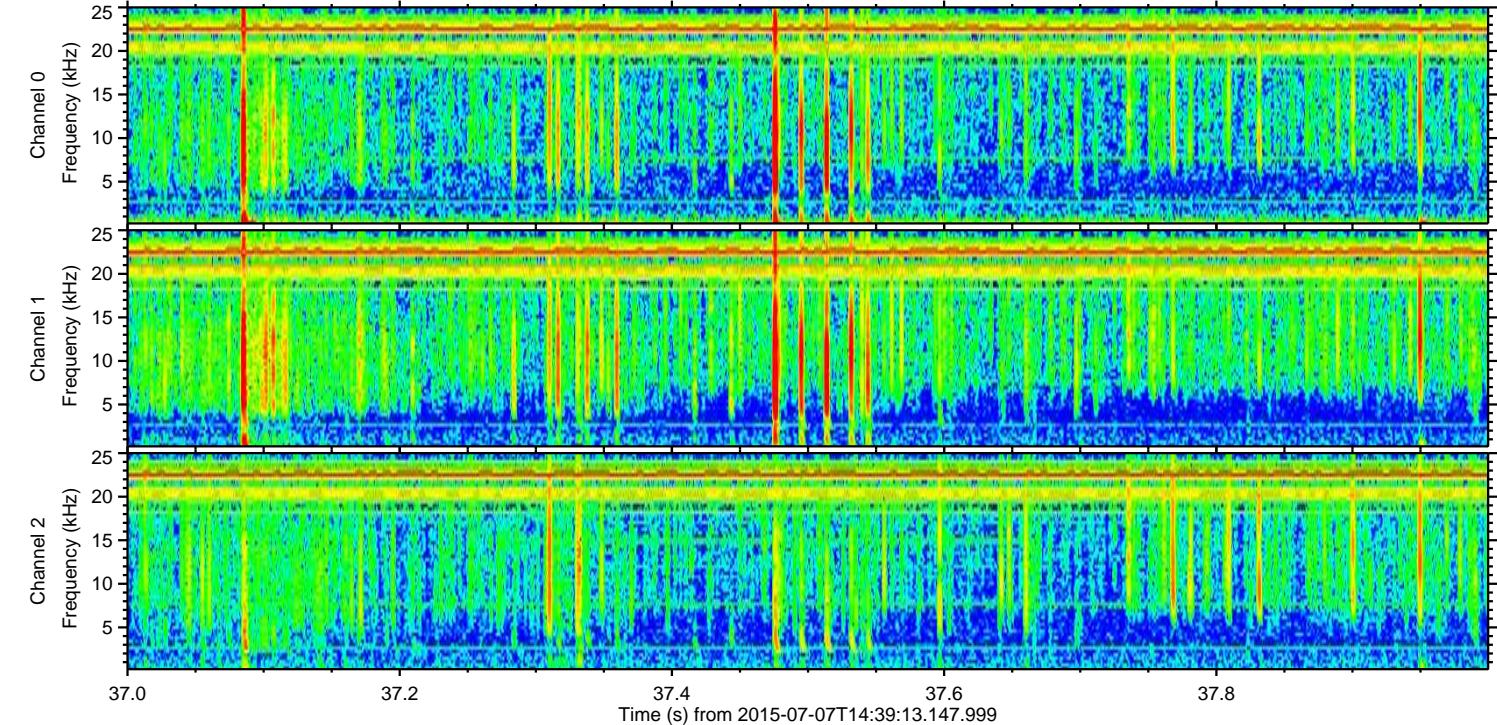
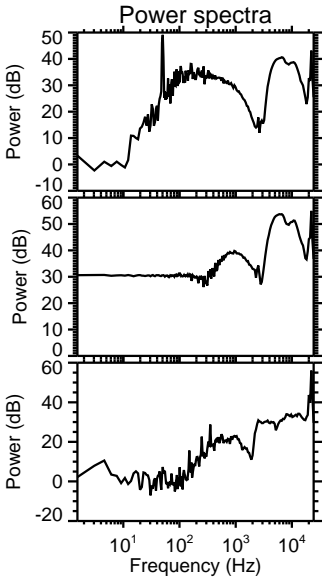
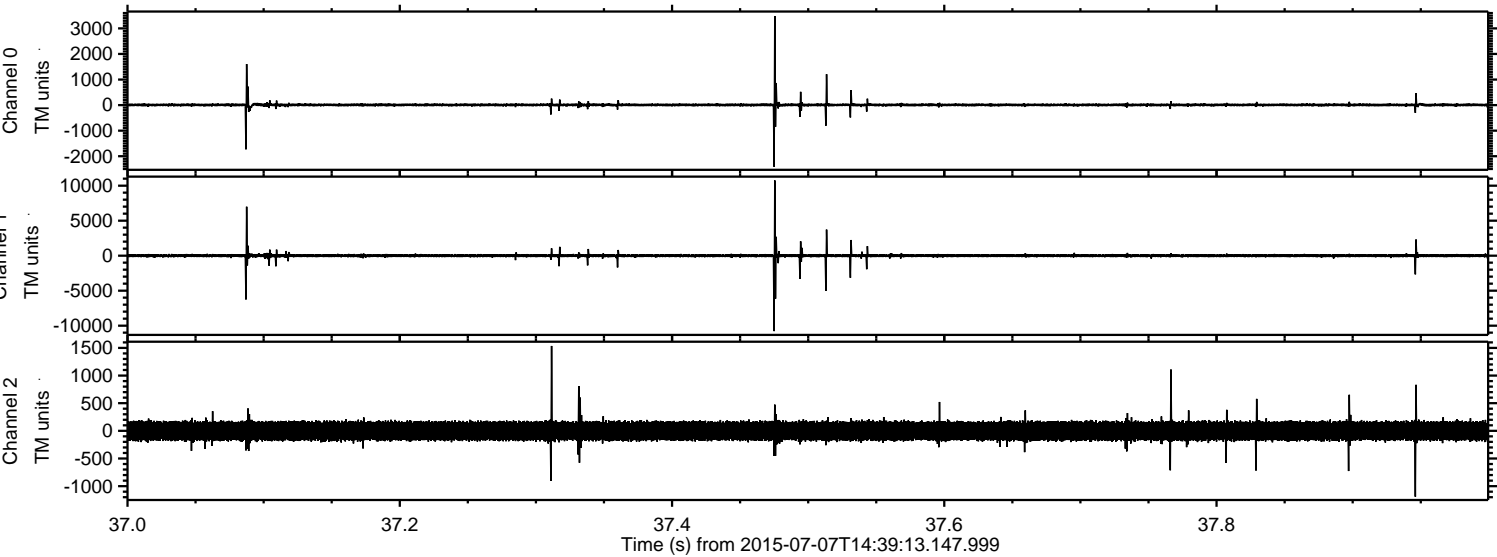
ELMAVAN 3D WAVEFORMS (Measured data sampled at 50 kHz) 51000 packets of 144 samples from 2015-07-07T14:39:13.147.999. Part 7/147

Processed Tue Jul 7 16:45:40 2015 by ELM ver.2012-10-06 from 001__elm20150707_143912__dat00.bin



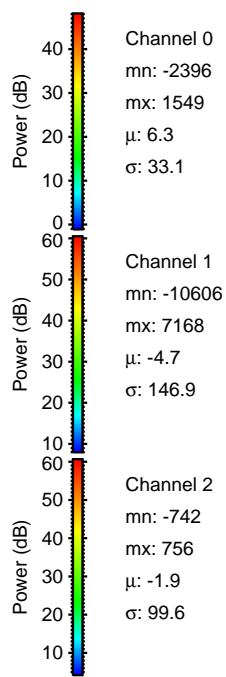
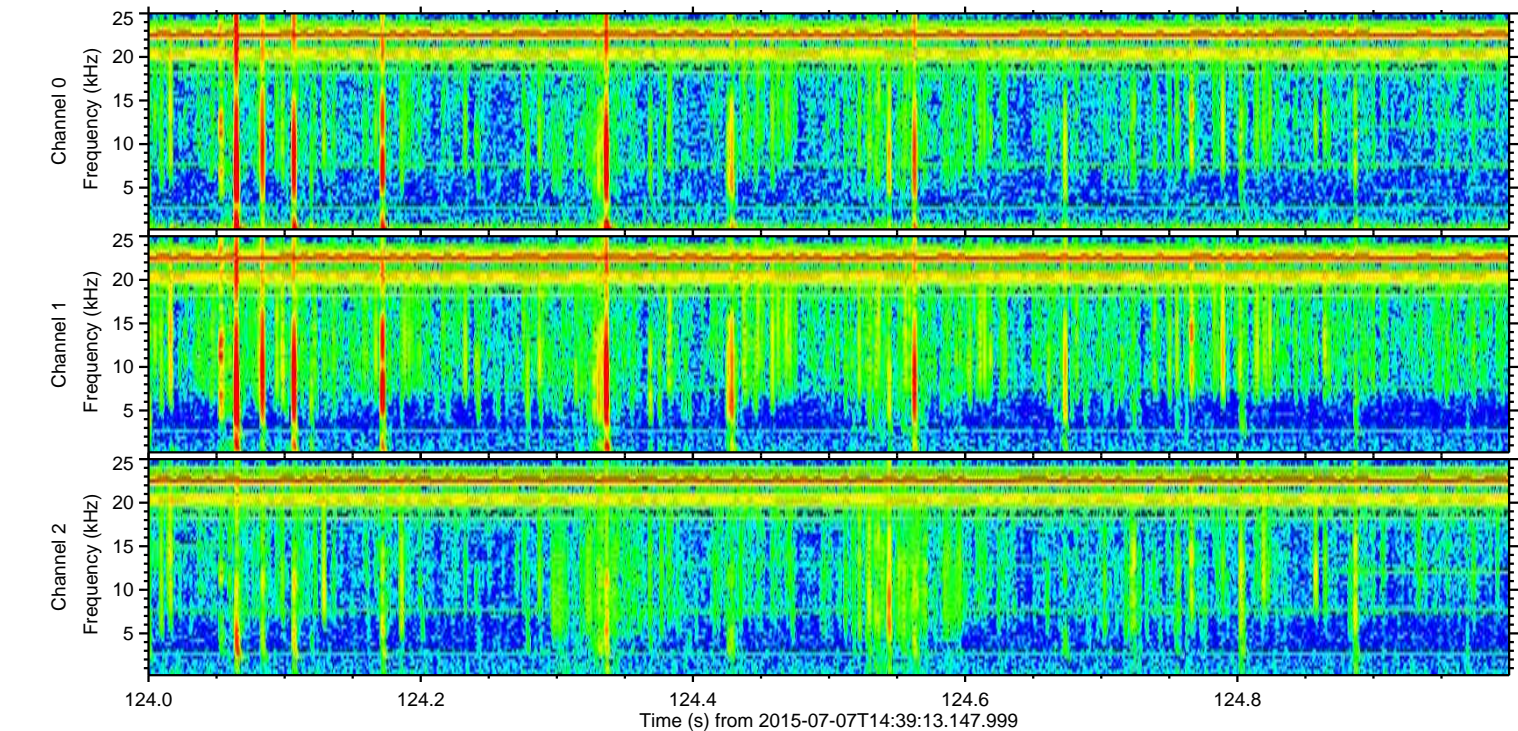
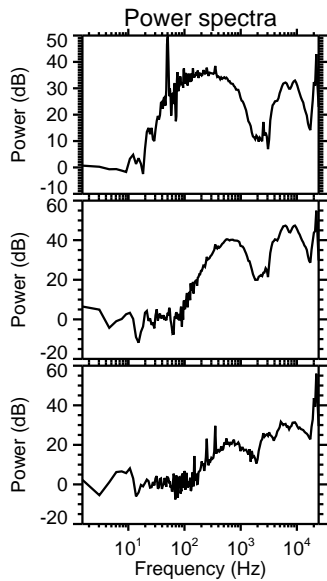
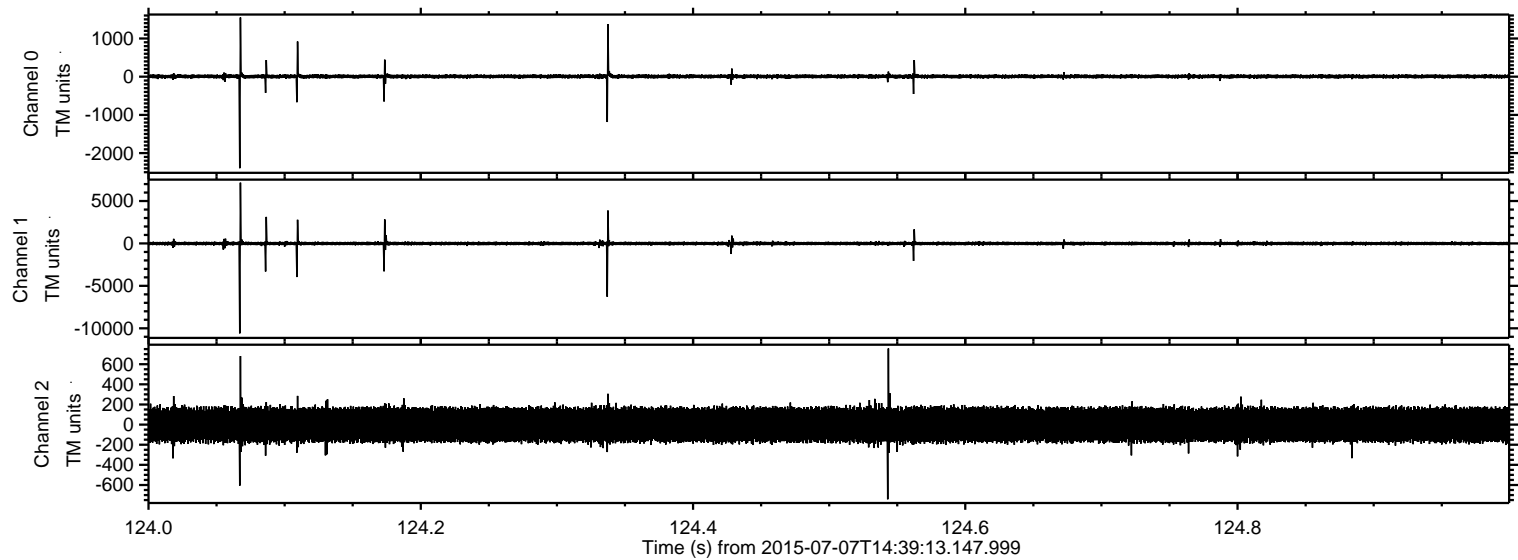
ELMAVAN 3D WAVEFORMS (Measured data sampled at 50 kHz) 51000 packets of 144 samples from 2015-07-07T14:39:13.147.999. Part 38/147

Processed Tue Jul 7 16:45:41 2015 by ELM ver.2012-10-06 from 001__elm20150707_143912__dat00.bin

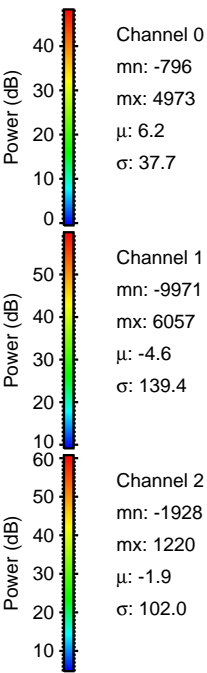
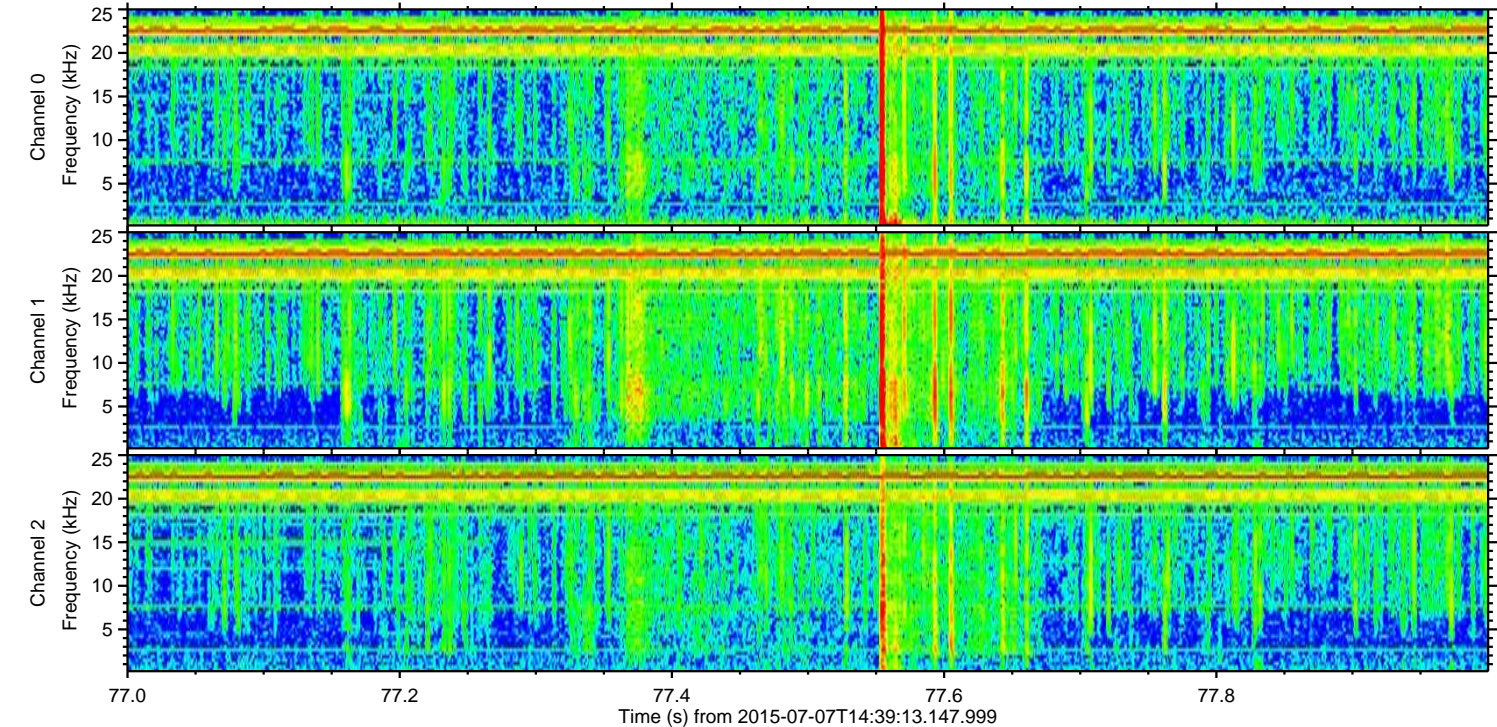
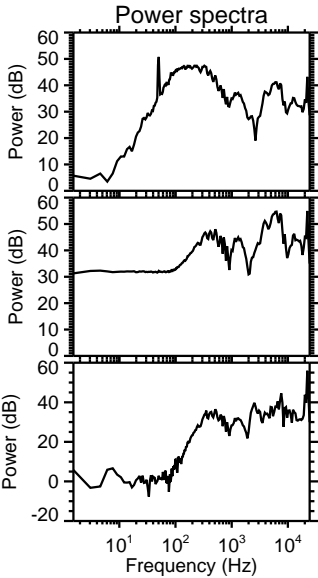
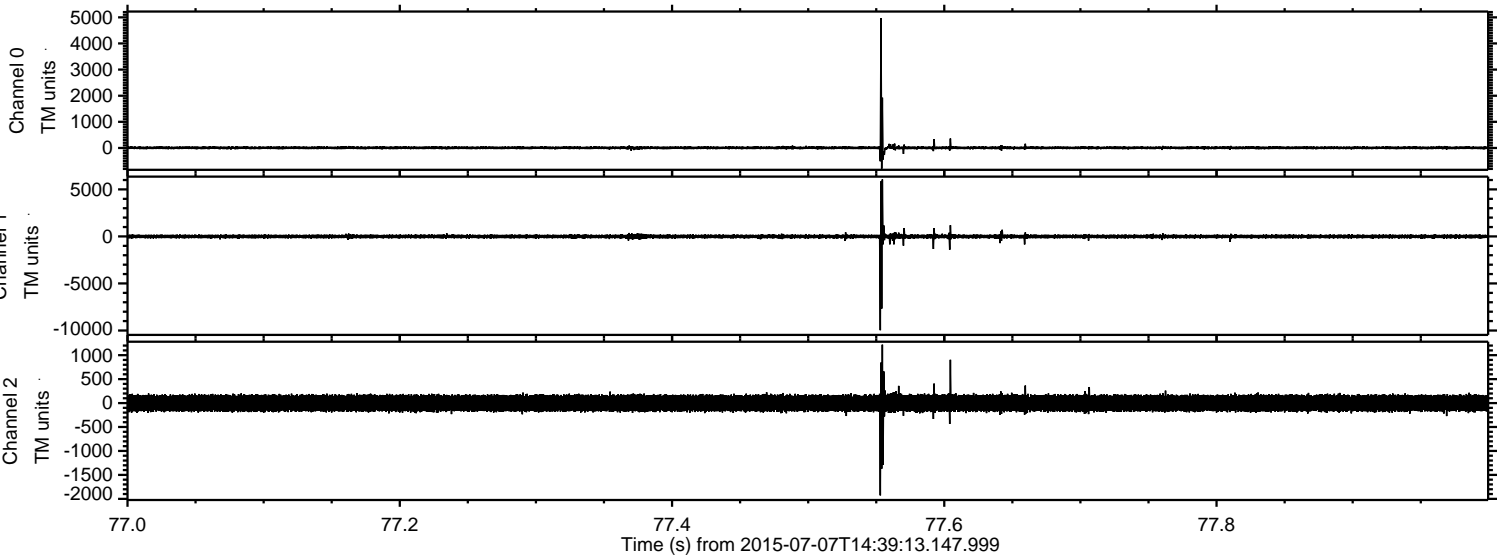


ELMAVAN 3D WAVEFORMS (Measured data sampled at 50 kHz) 51000 packets of 144 samples from 2015-07-07T14:39:13.147.999. Part 125/147

Processed Tue Jul 7 16:45:42 2015 by ELM ver.2012-10-06 from 001__elm20150707_143912__dat00.bin



Processed Tue Jul 7 16:45:43 2015 by ELM ver.2012-10-06 from 001__elm20150707_143912__dat00.bin

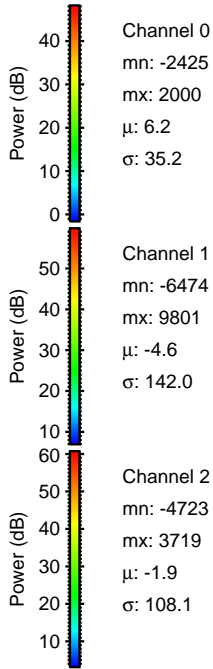
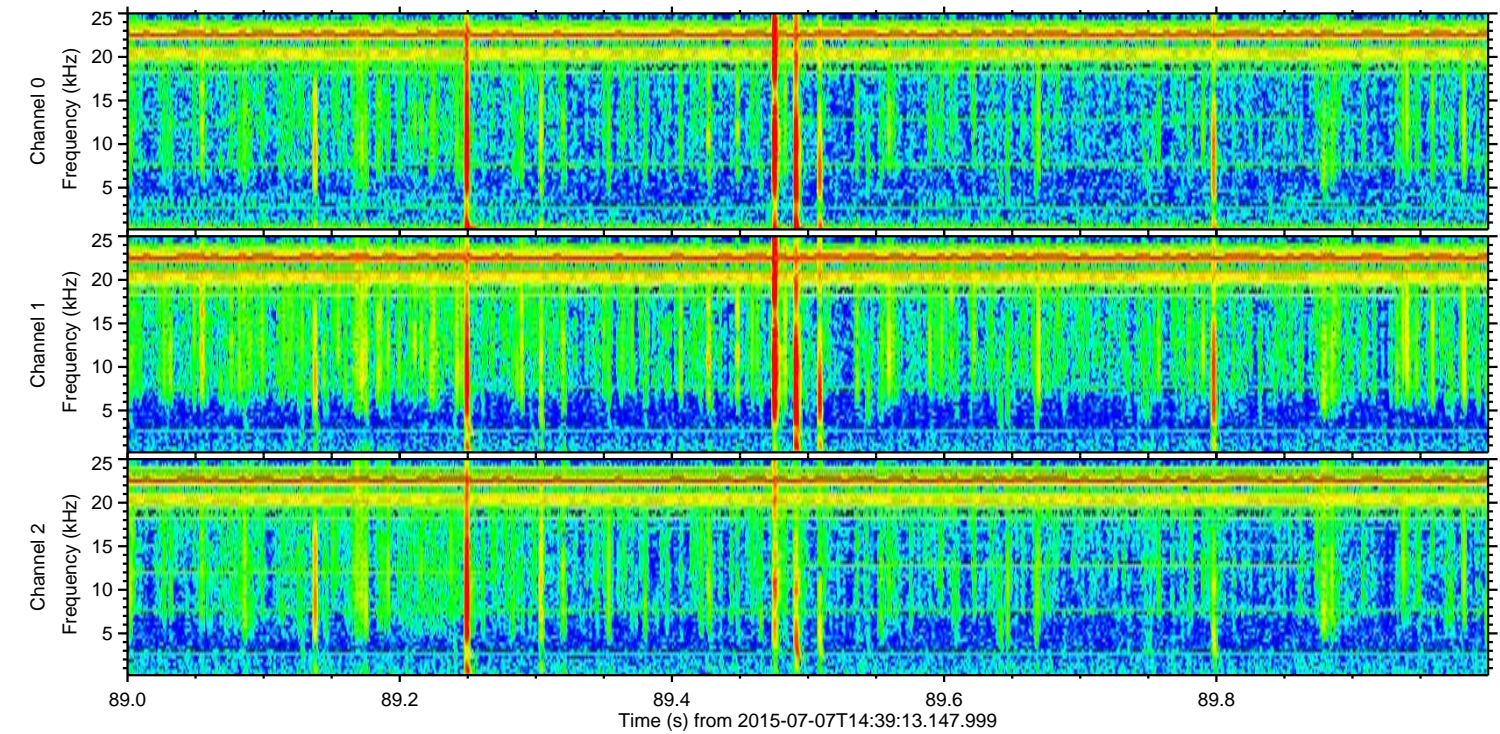
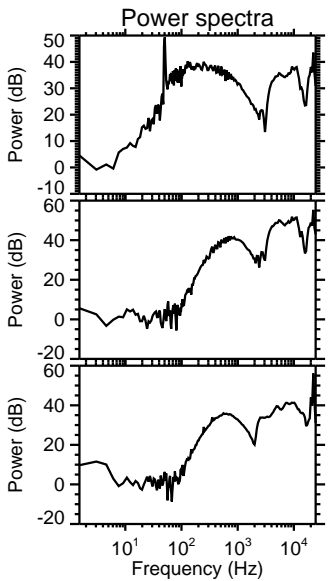
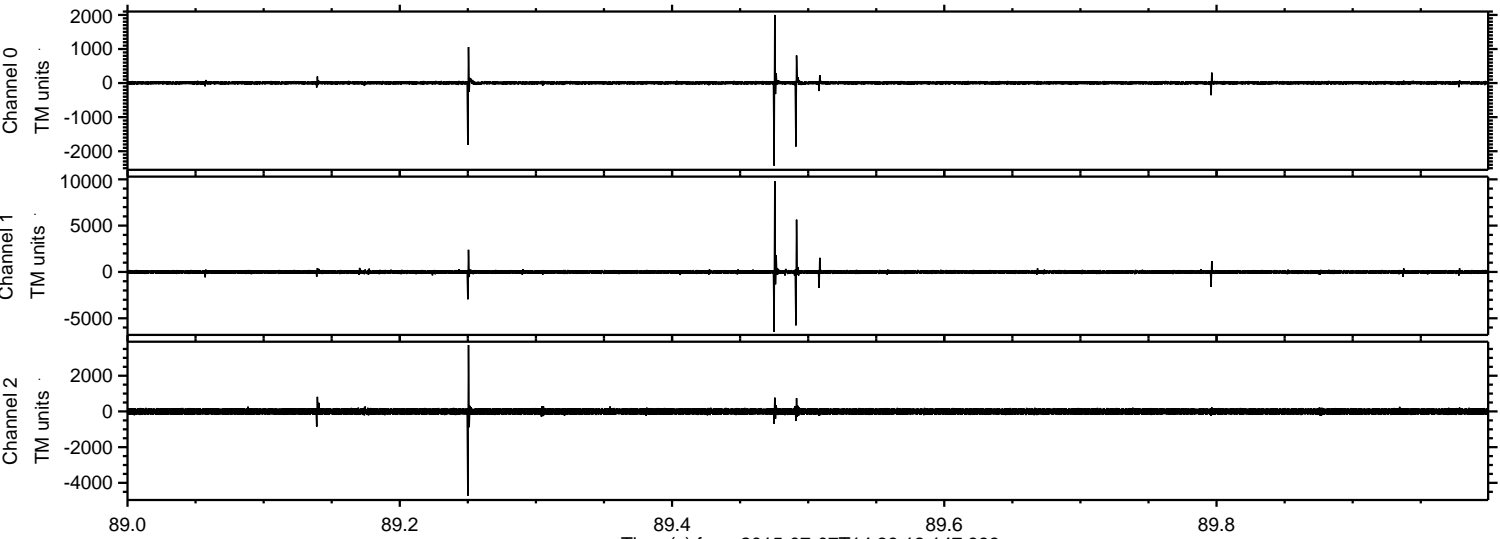


Channel 0
mn: -796
mx: 4973
 μ : 6.2
 σ : 37.7

Channel 1
mn: -9971
mx: 6057
 μ : -4.6
 σ : 139.4

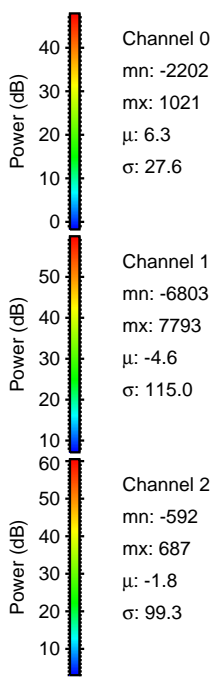
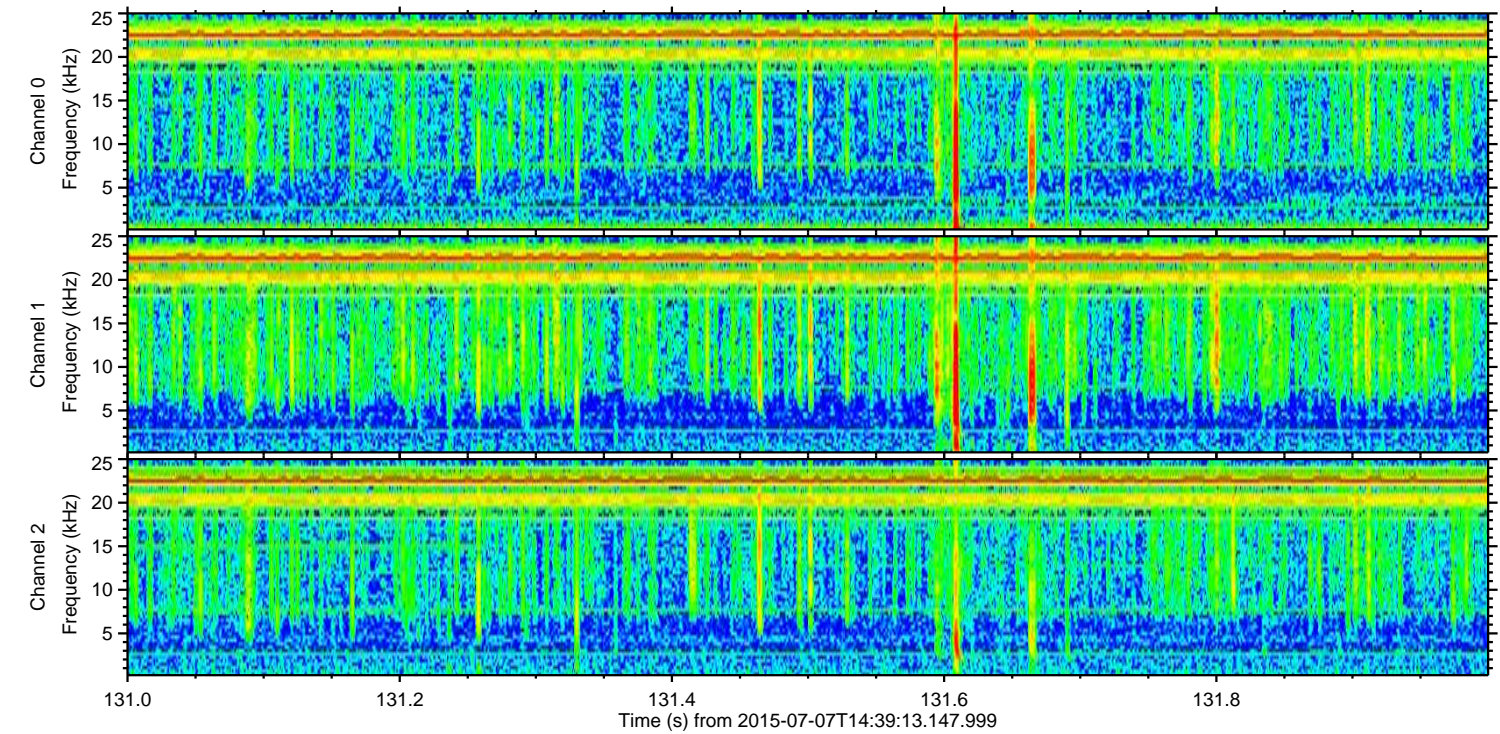
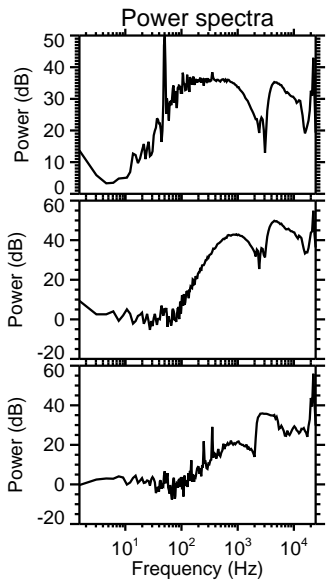
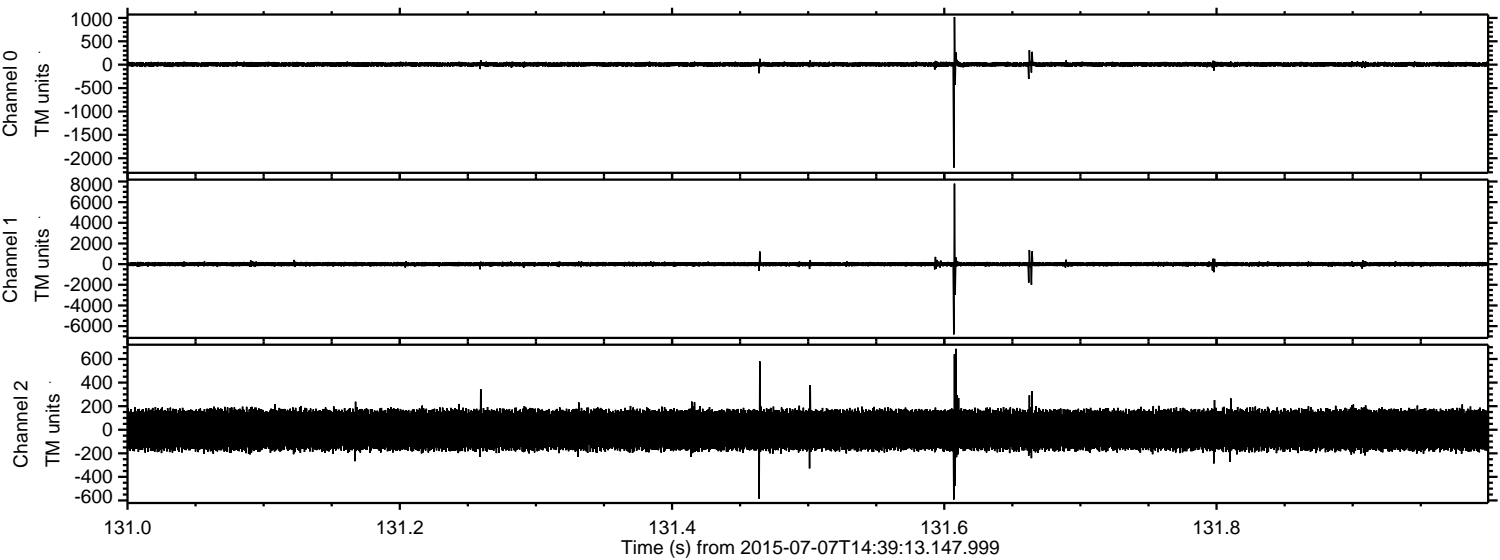
Channel 2
mn: -1928
mx: 1220
 μ : -1.9
 σ : 102.0

Processed Tue Jul 7 16:45:44 2015 by ELM ver.2012-10-06 from 001__elm20150707_143912__dat00.bin



ELMAVAN 3D WAVEFORMS (Measured data sampled at 50 kHz) 51000 packets of 144 samples from 2015-07-07T14:39:13.147.999. Part 132/147

Processed Tue Jul 7 16:45:45 2015 by ELM ver.2012-10-06 from 001__elm20150707_143912__dat00.bin



Channel 0
mn: -2202
mx: 1021
 μ : 6.3
 σ : 27.6

Channel 1
mn: -6803
mx: 7793
 μ : -4.6
 σ : 115.0

Channel 2
mn: -592
mx: 687
 μ : -1.8
 σ : 99.3

ELMAVAN 3D WAVEFORMS (Measured data sampled at 50 kHz) 51000 packets of 144 samples from 2015-07-07T14:39:13.147.999. Part 44/147

Processed Tue Jul 7 16:45:46 2015 by ELM ver.2012-10-06 from 001__elm20150707_143912__dat00.bin

