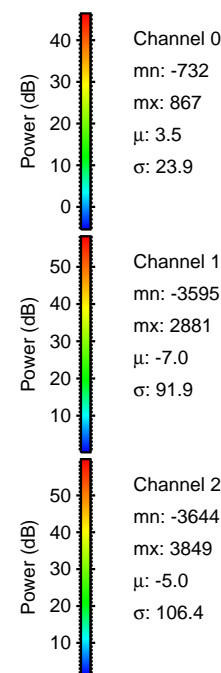
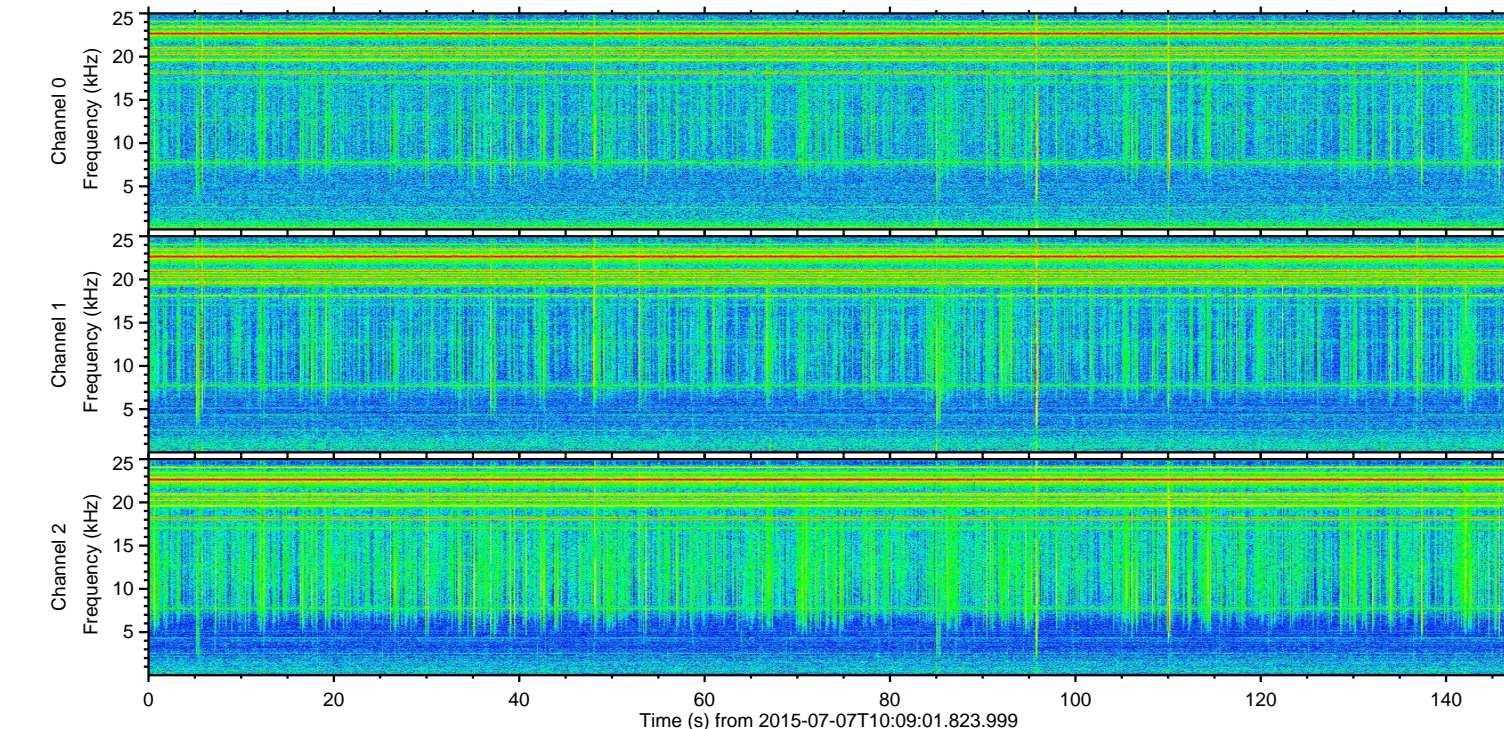
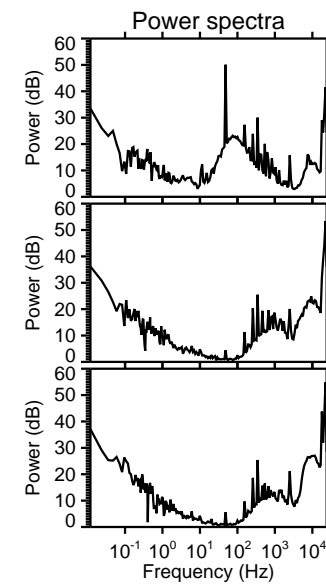
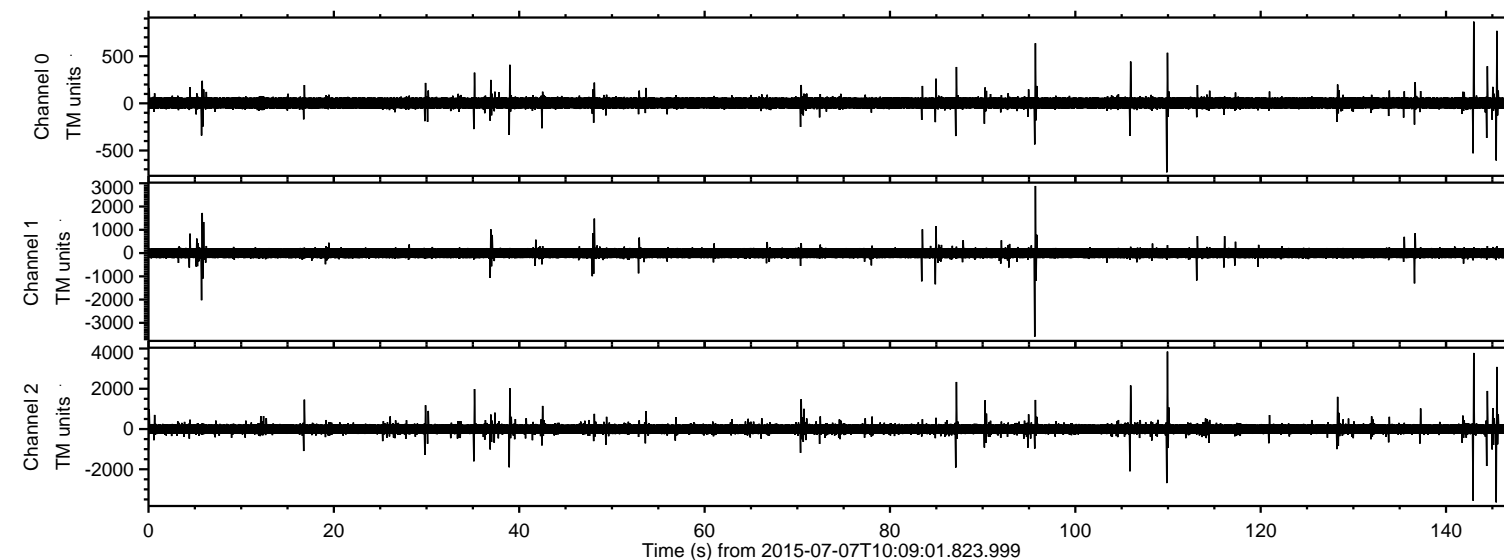


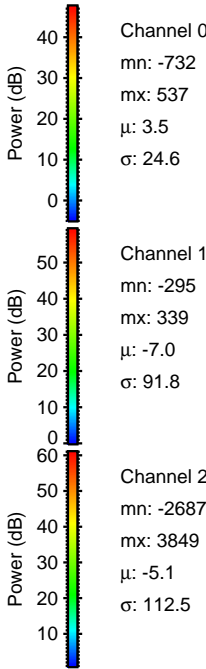
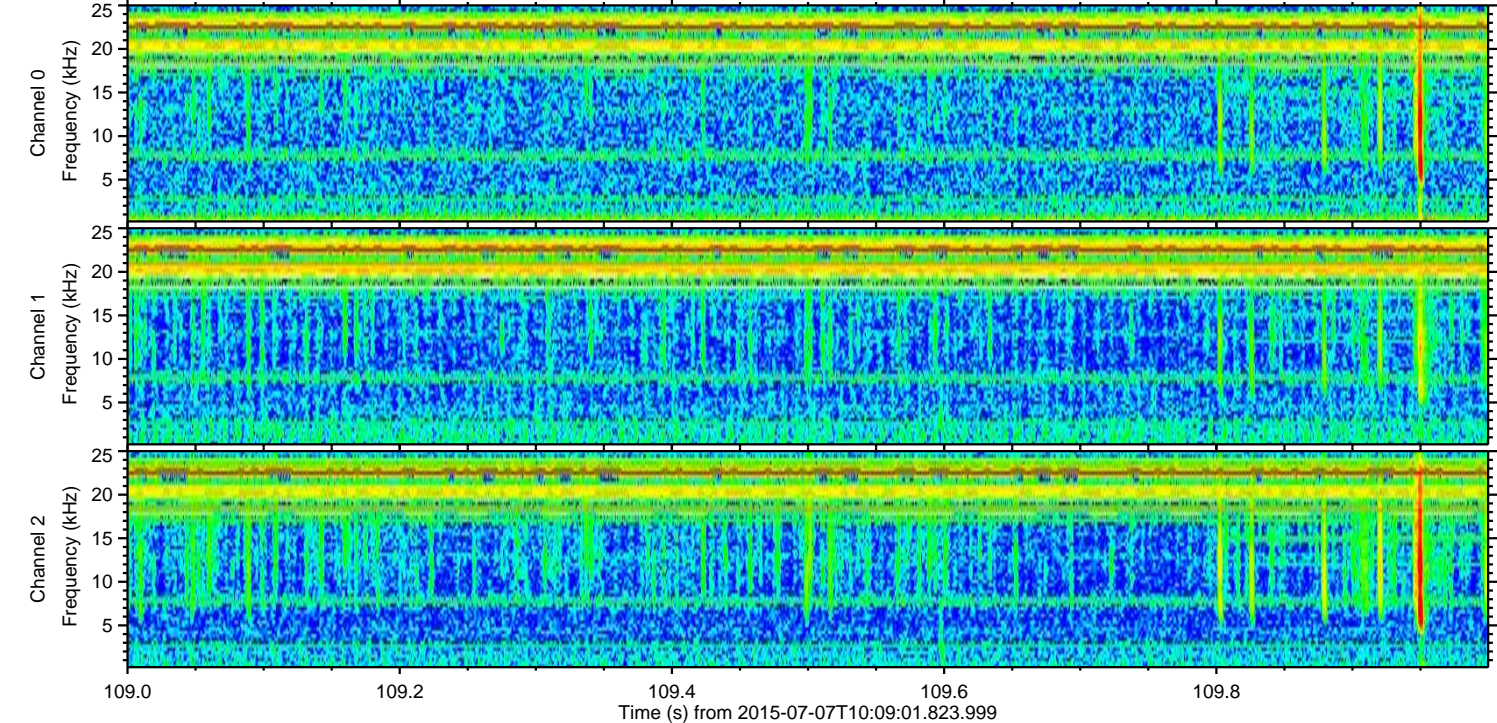
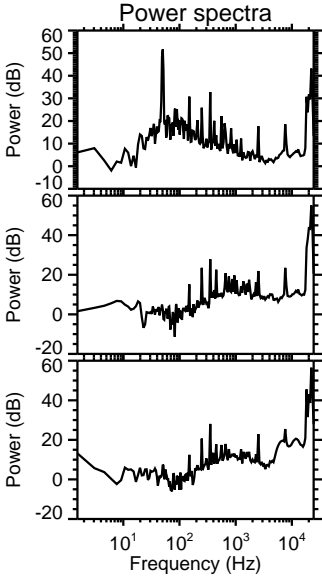
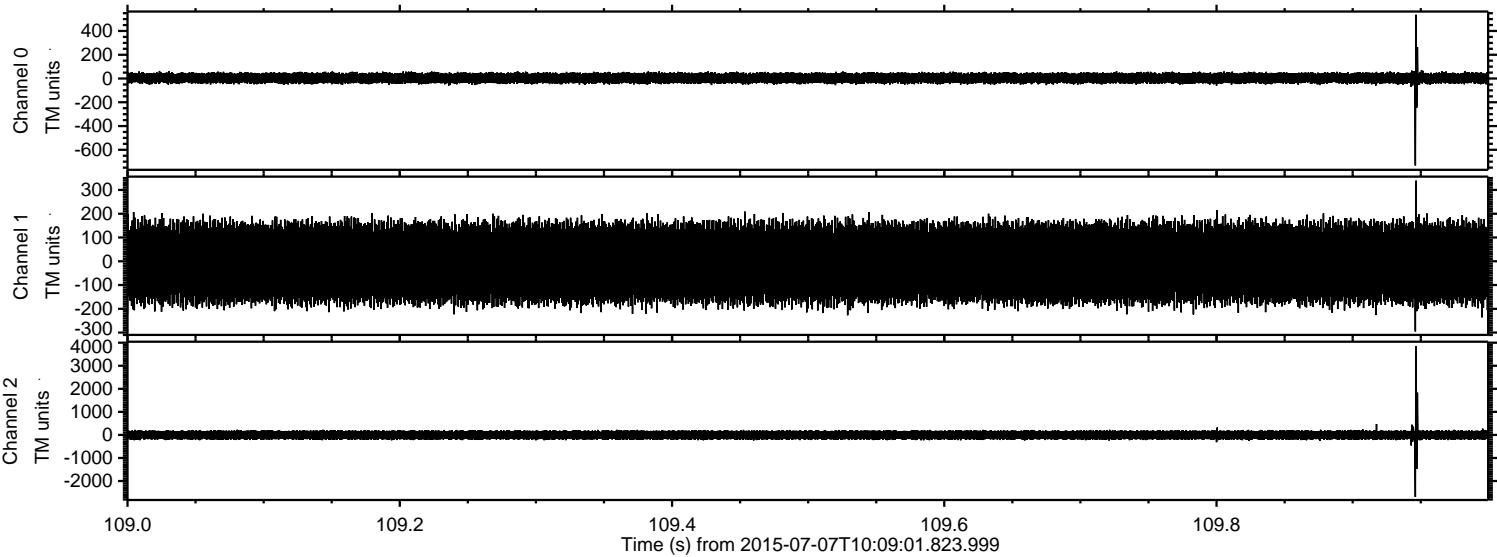
ELMAVAN 3D WAVEFORMS (Measured data sampled at 50 kHz) 51000 packets of 144 samples from 2015-07-07T10:09:01.823.999.

Processed Tue Jul 7 12:15:10 2015 by ELM ver.2012-10-06 from 001__elm20150707_100900__dat00.bin



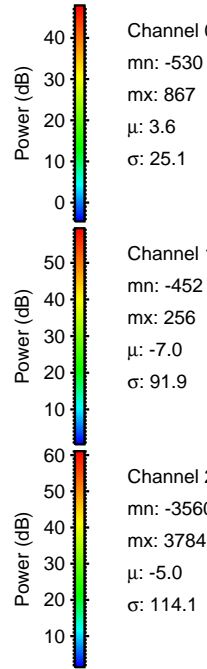
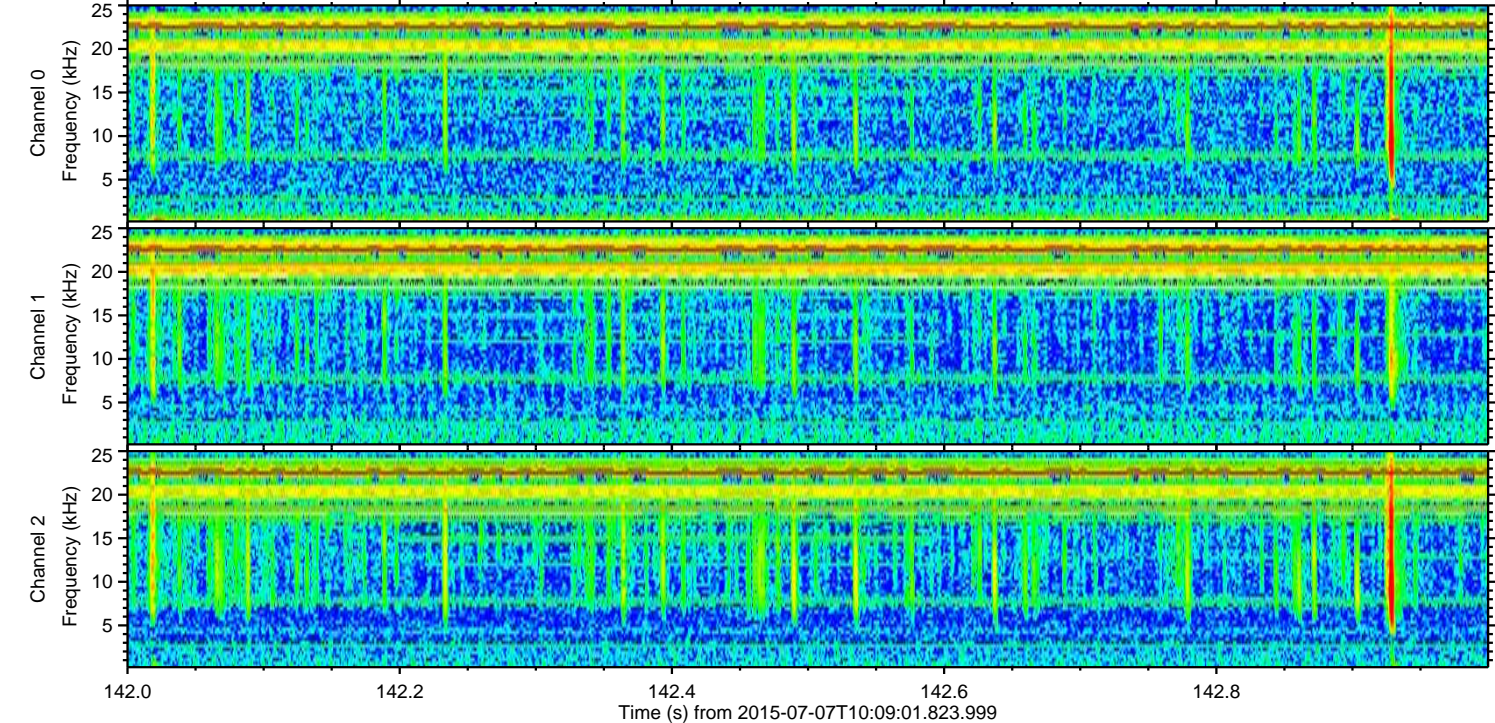
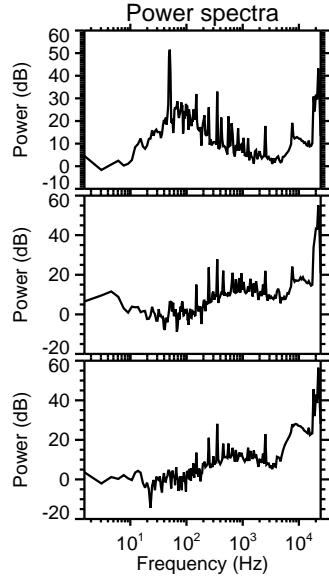
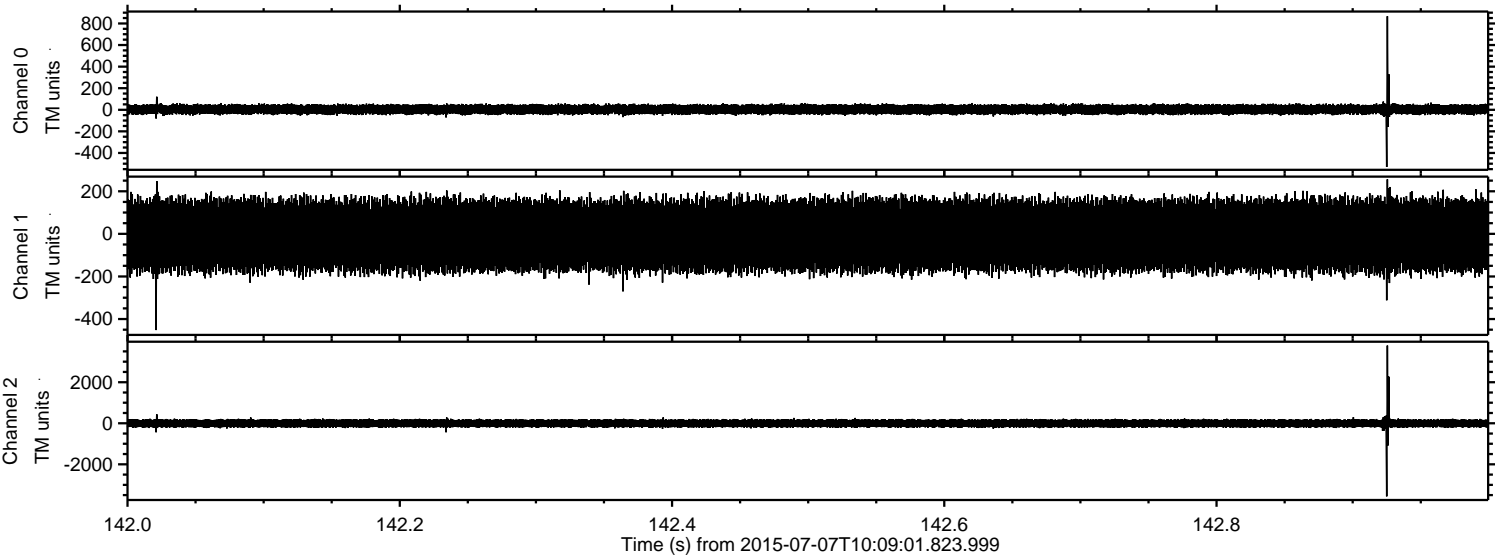
ELMAVAN 3D WAVEFORMS (Measured data sampled at 50 kHz) 51000 packets of 144 samples from 2015-07-07T10:09:01.823.999. Part 110/147

Processed Tue Jul 7 12:15:25 2015 by ELM ver.2012-10-06 from 001__elm20150707_100900__dat00.bin



ELMAVAN 3D WAVEFORMS (Measured data sampled at 50 kHz) 51000 packets of 144 samples from 2015-07-07T10:09:01.823.999. Part 143/147

Processed Tue Jul 7 12:15:26 2015 by ELM ver.2012-10-06 from 001__elm20150707_100900__dat00.bin



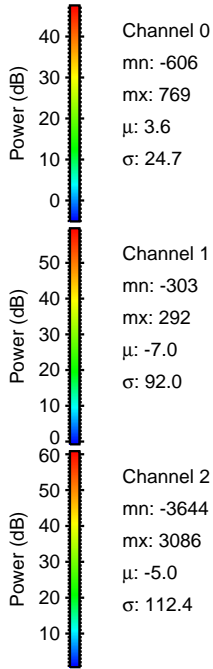
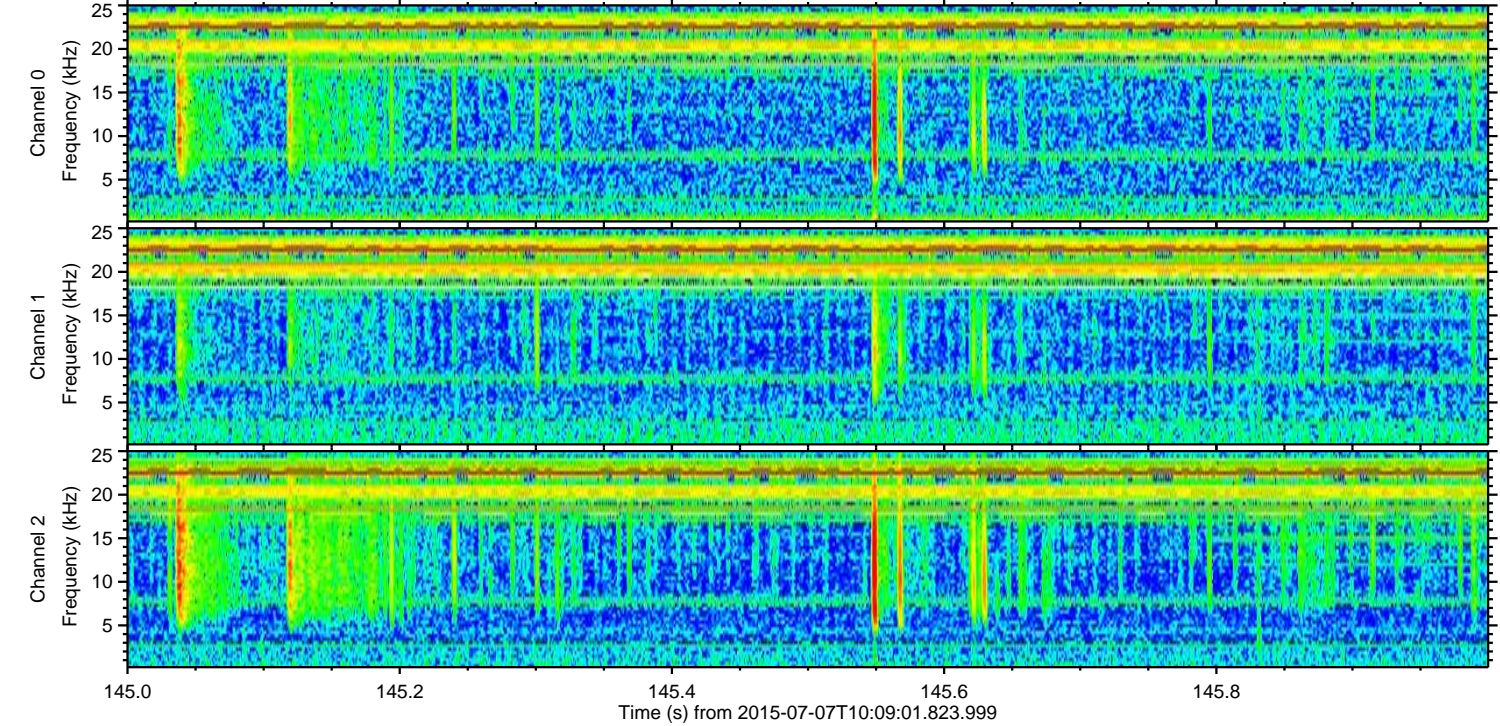
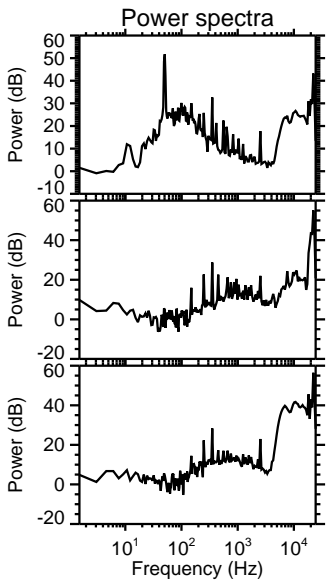
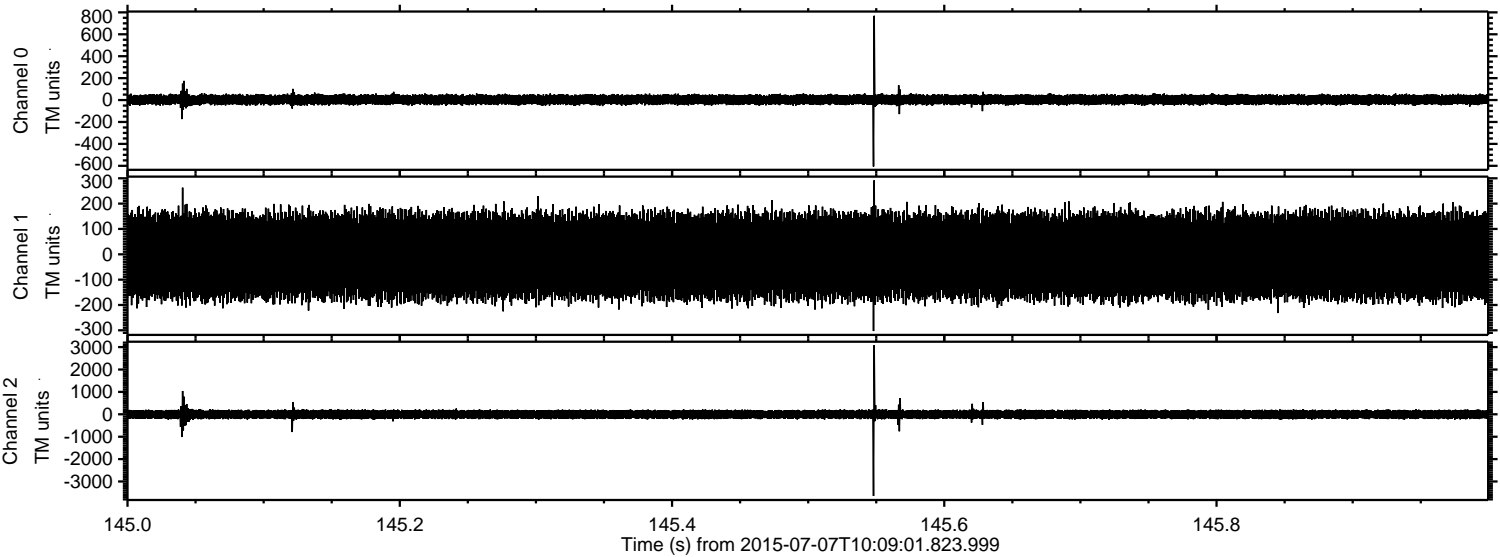
Channel 0
mn: -530
mx: 867
 μ : 3.6
 σ : 25.1

Channel 1
mn: -452
mx: 256
 μ : -7.0
 σ : 91.9

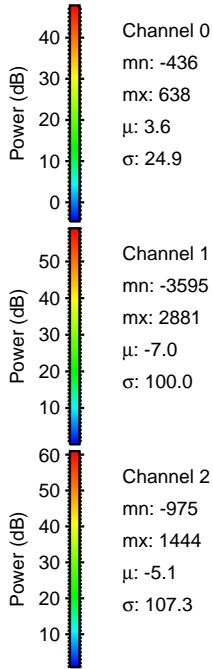
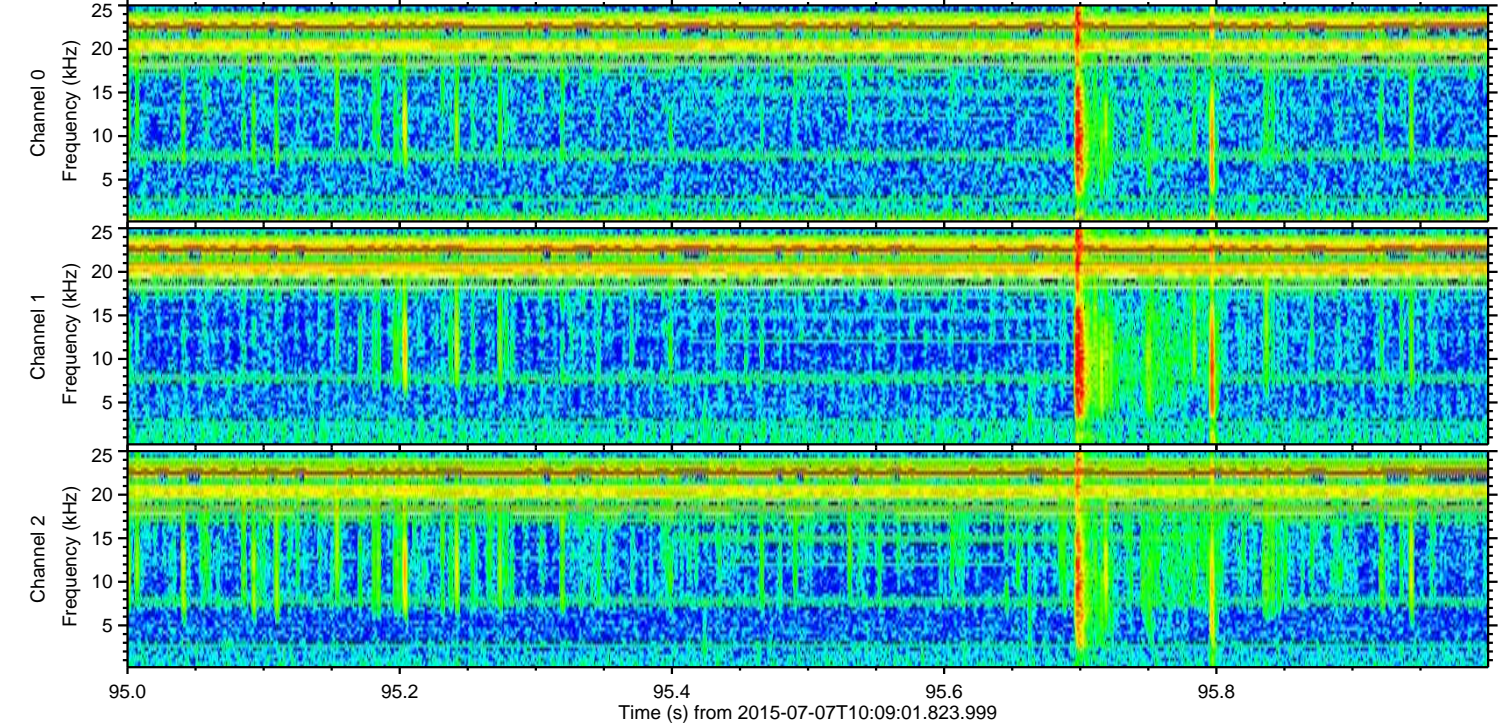
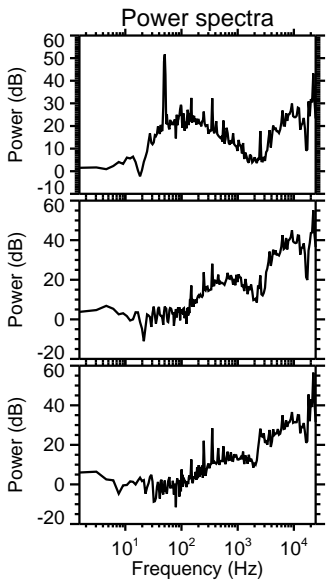
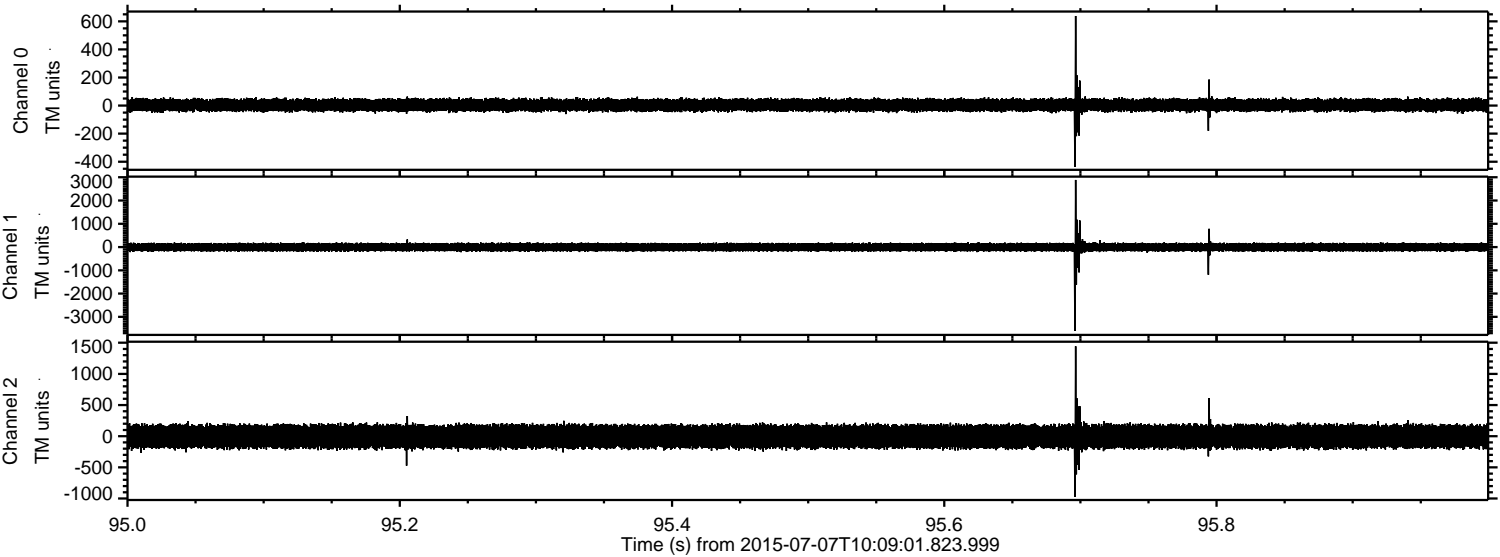
Channel 2
mn: -3560
mx: 3784
 μ : -5.0
 σ : 114.1

ELMAVAN 3D WAVEFORMS (Measured data sampled at 50 kHz) 51000 packets of 144 samples from 2015-07-07T10:09:01.823.999. Part 146/147

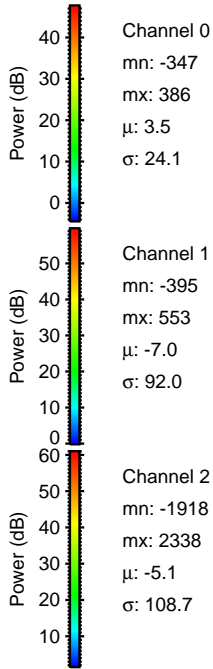
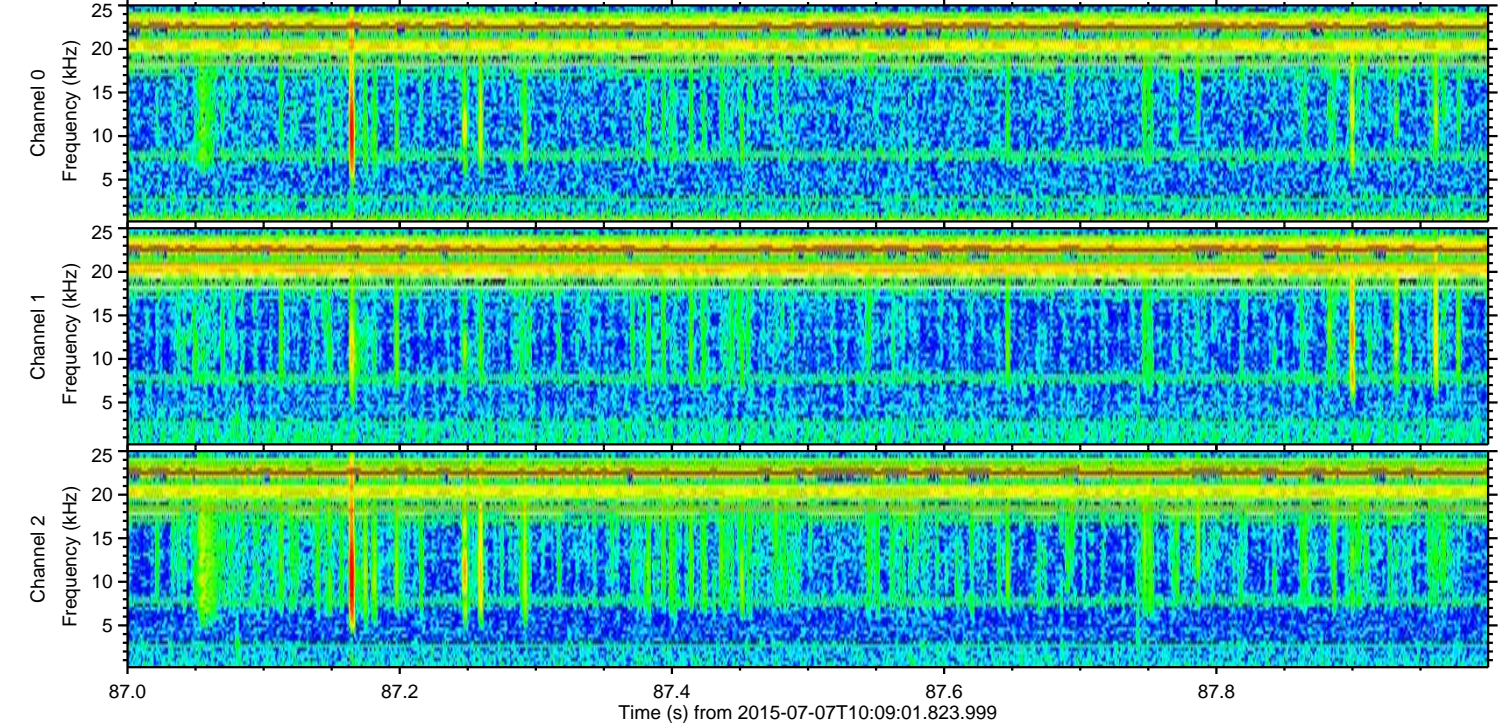
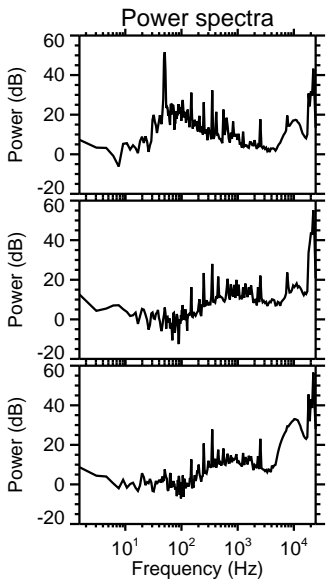
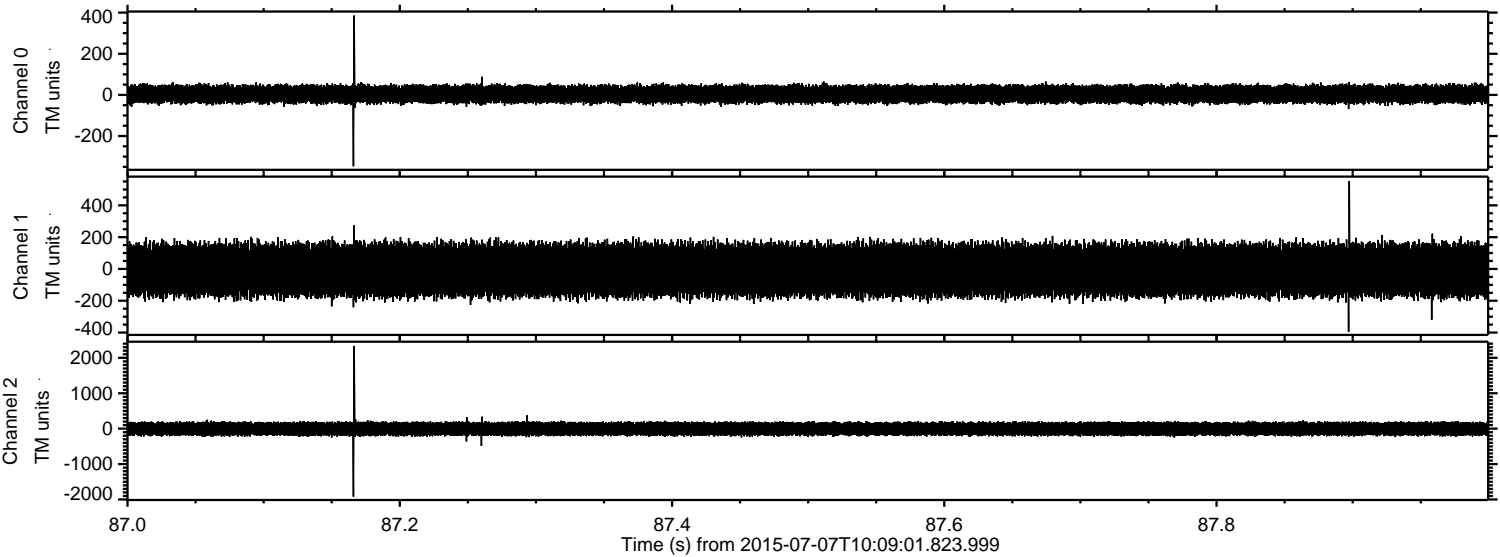
Processed Tue Jul 7 12:15:27 2015 by ELM ver.2012-10-06 from 001__elm20150707_100900__dat00.bin



Processed Tue Jul 7 12:15:28 2015 by ELM ver.2012-10-06 from 001__elm20150707_100900__dat00.bin

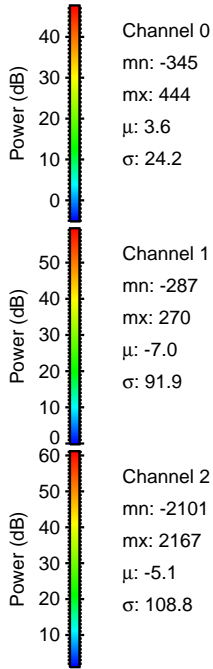
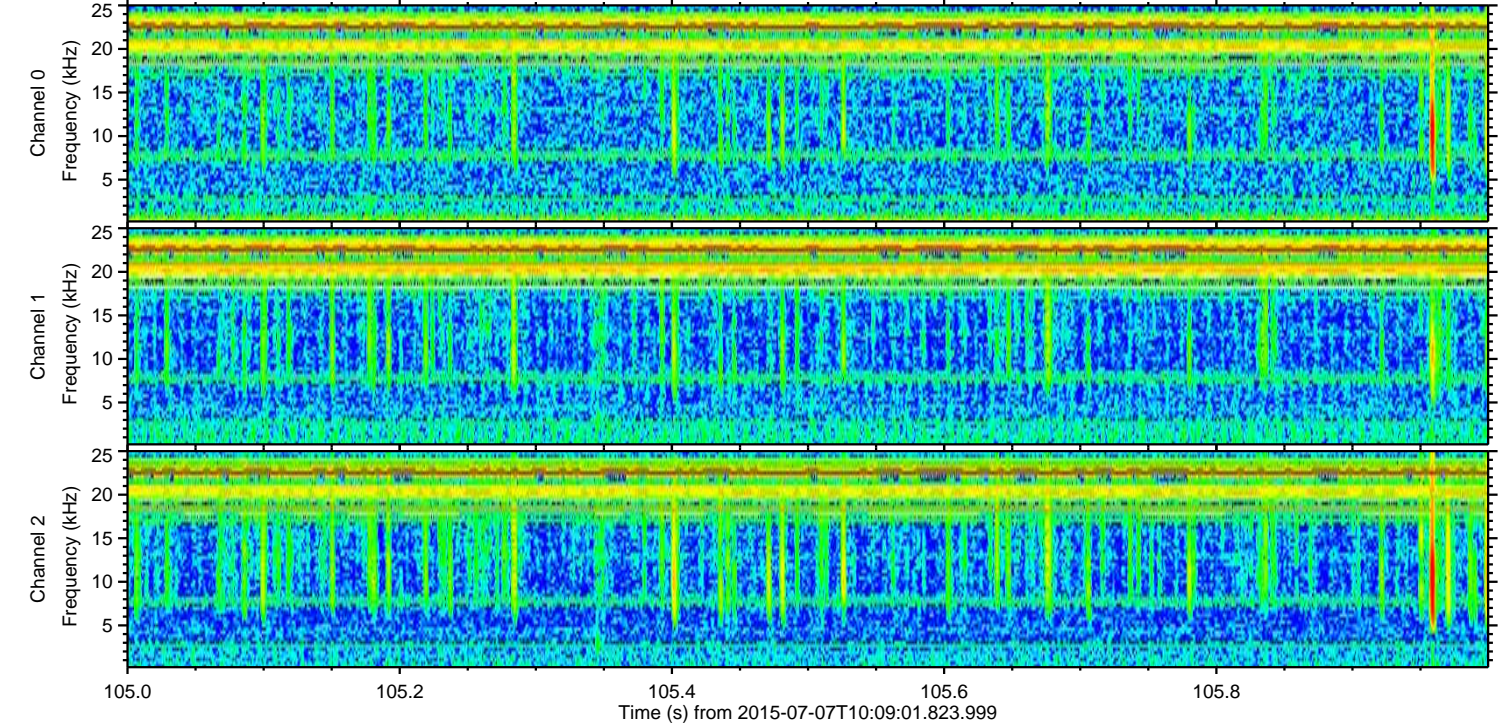
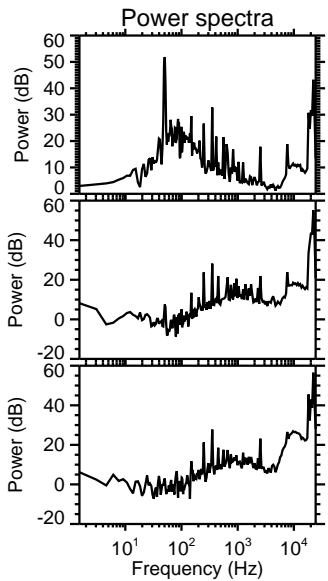
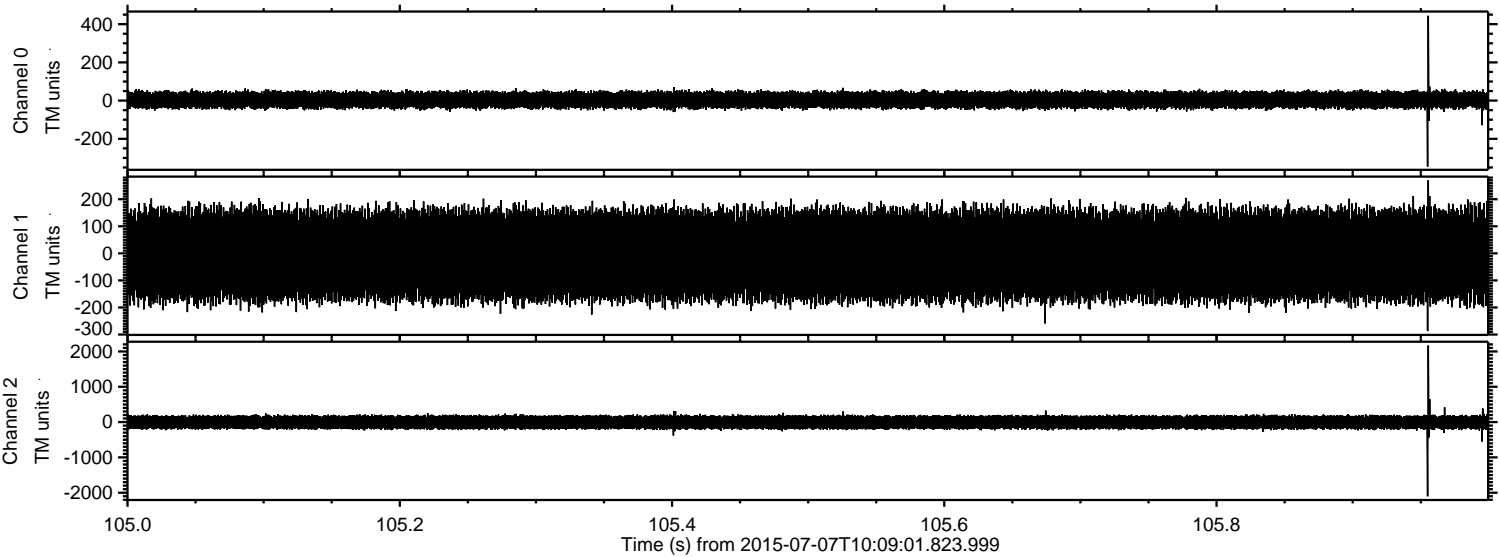


Processed Tue Jul 7 12:15:30 2015 by ELM ver.2012-10-06 from 001__elm20150707_100900__dat00.bin

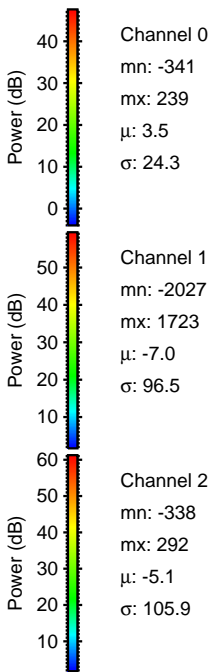
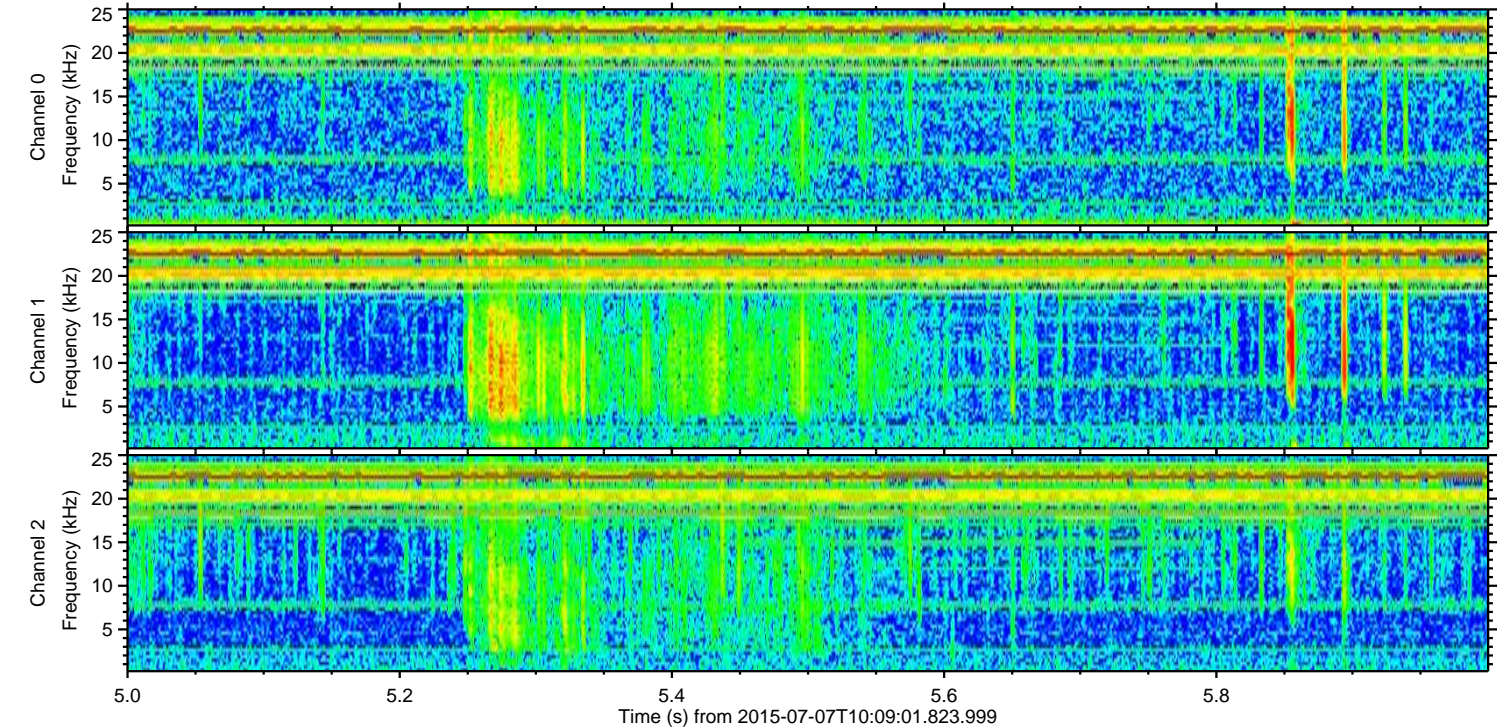
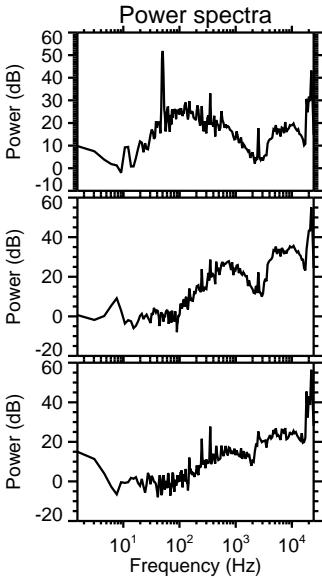
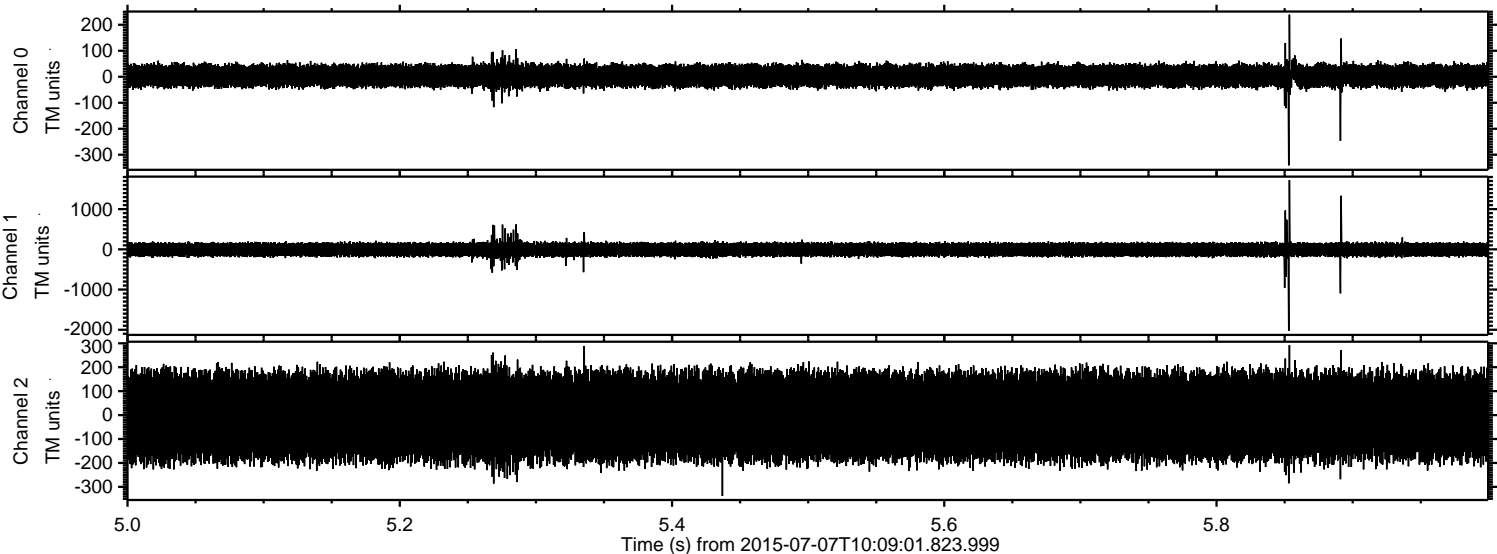


ELMAVAN 3D WAVEFORMS (Measured data sampled at 50 kHz) 51000 packets of 144 samples from 2015-07-07T10:09:01.823.999. Part 106/147

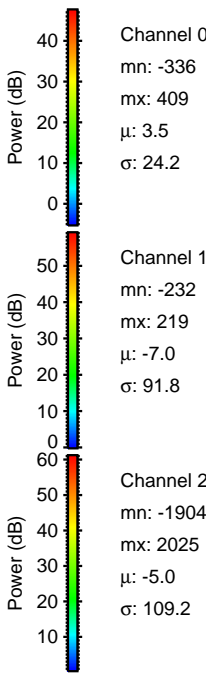
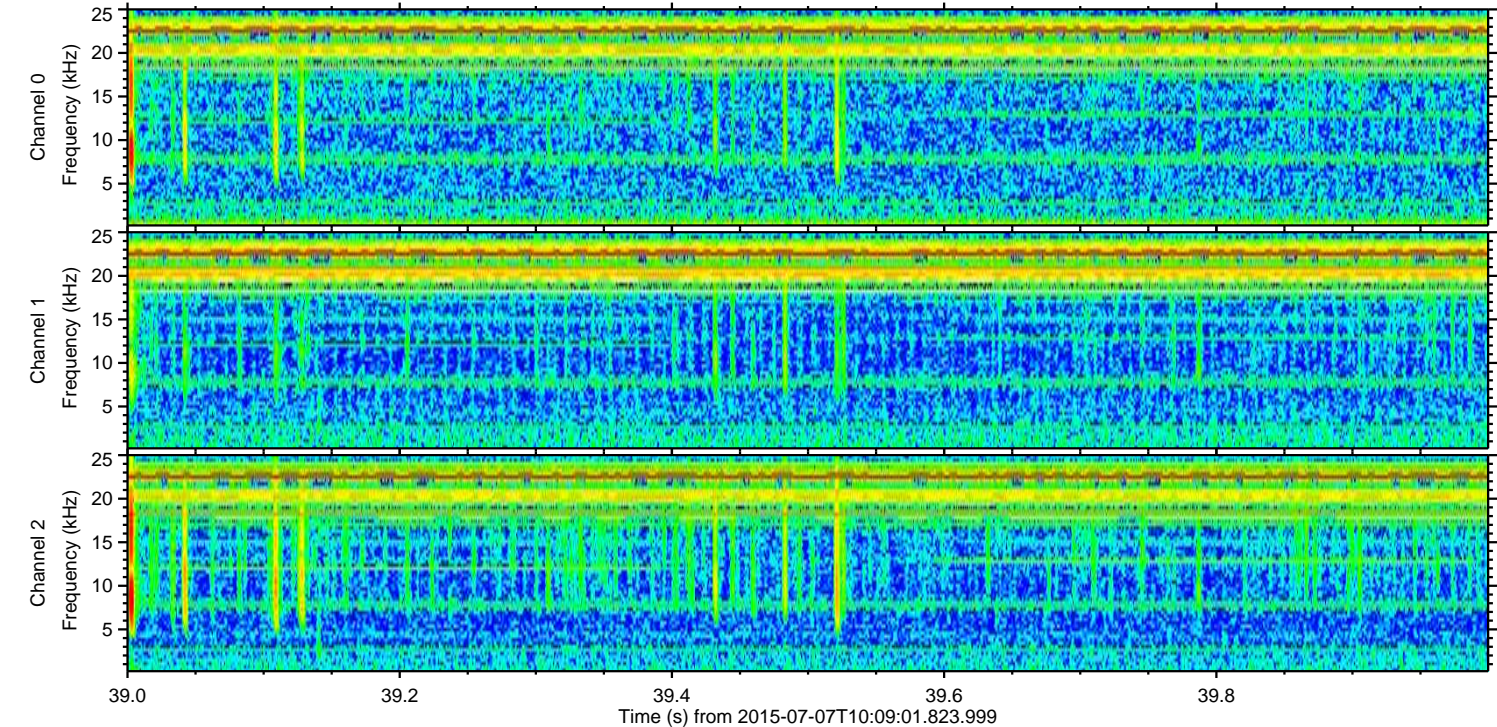
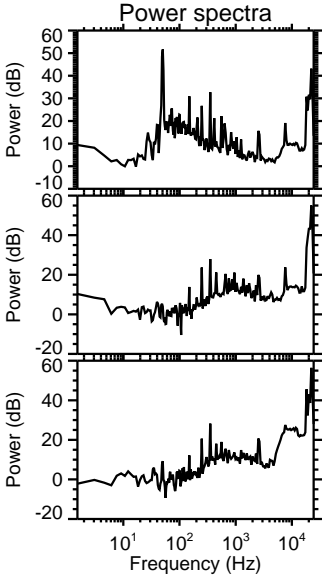
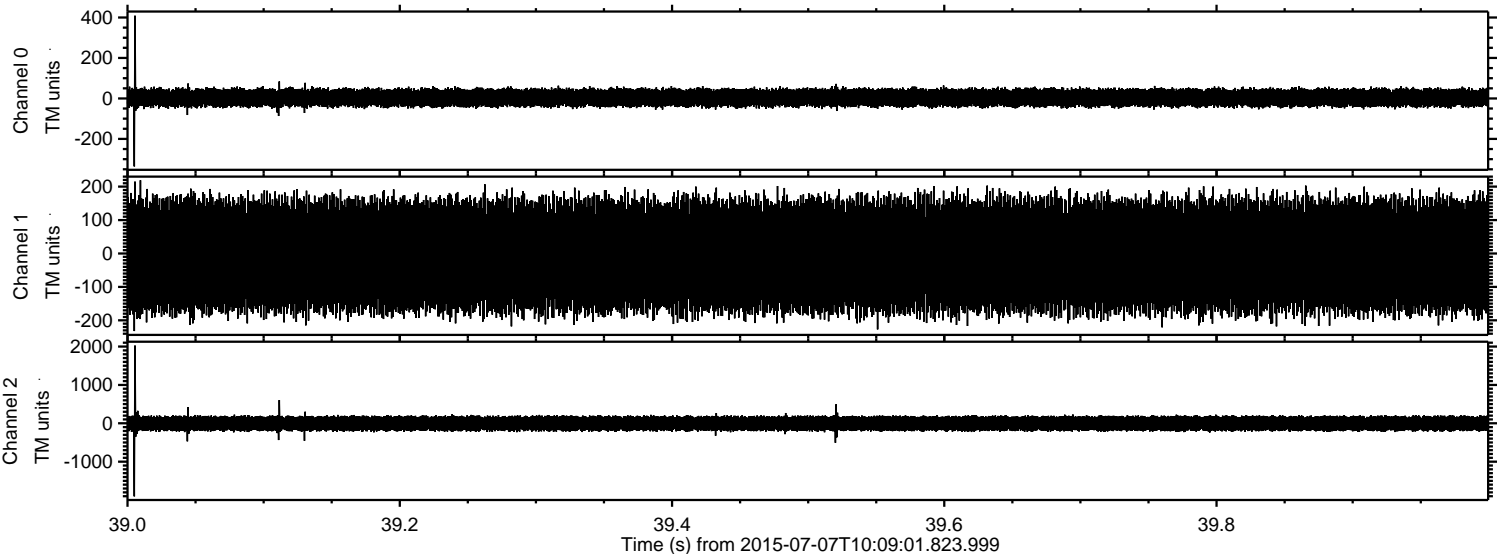
Processed Tue Jul 7 12:15:31 2015 by ELM ver.2012-10-06 from 001__elm20150707_100900__dat00.bin



Processed Tue Jul 7 12:15:32 2015 by ELM ver.2012-10-06 from 001__elm20150707_100900__dat00.bin



Processed Tue Jul 7 12:15:32 2015 by ELM ver.2012-10-06 from 001__elm20150707_100900__dat00.bin



Processed Tue Jul 7 12:15:33 2015 by ELM ver.2012-10-06 from 001__elm20150707_100900__dat00.bin

