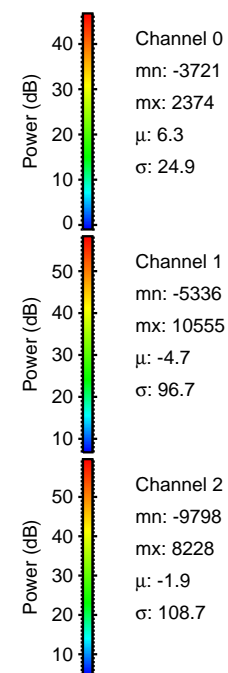
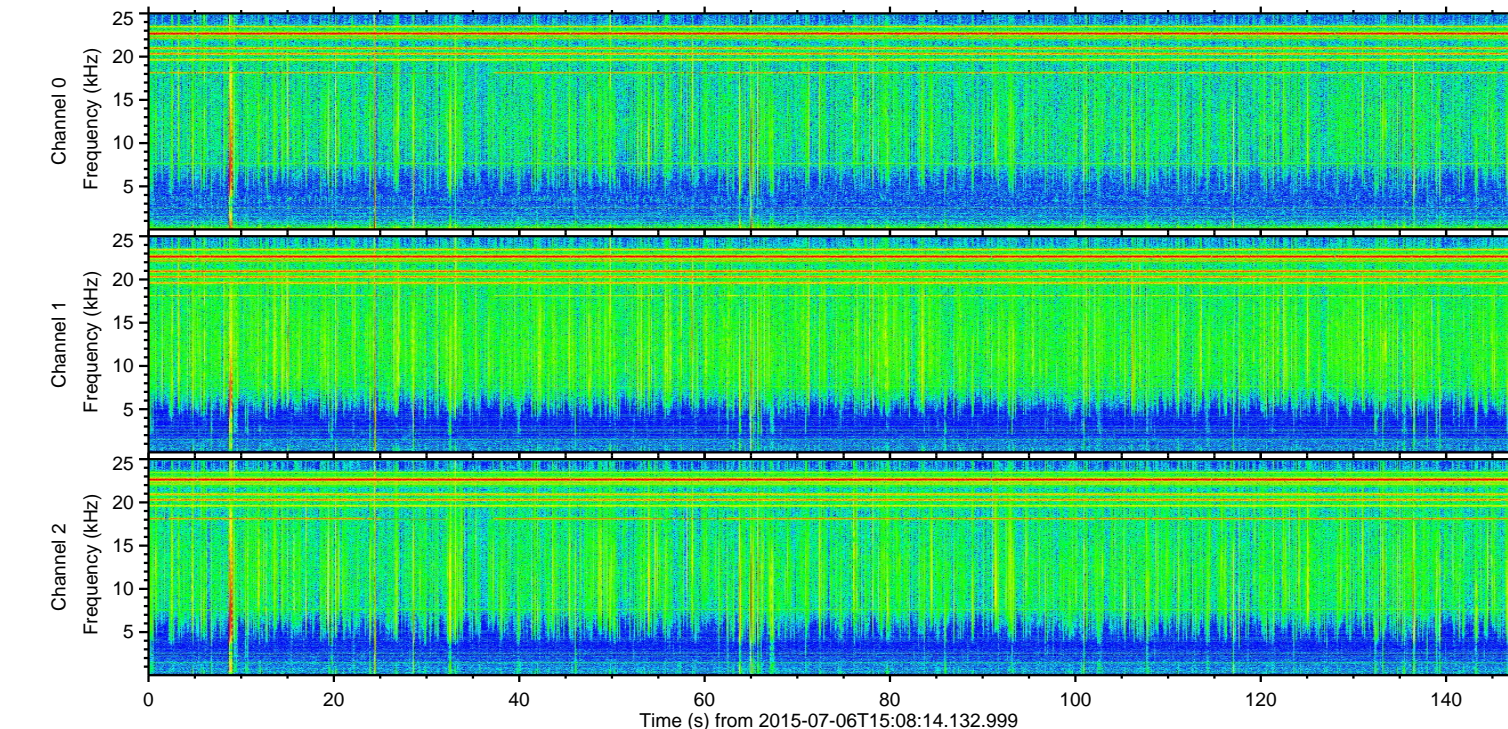
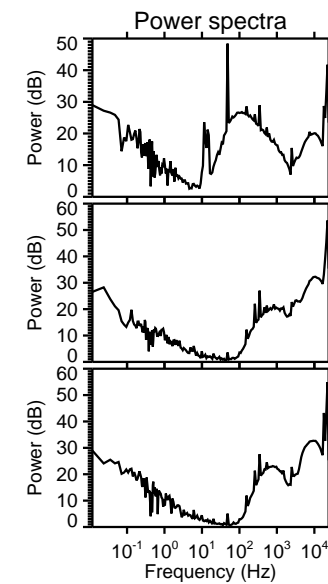
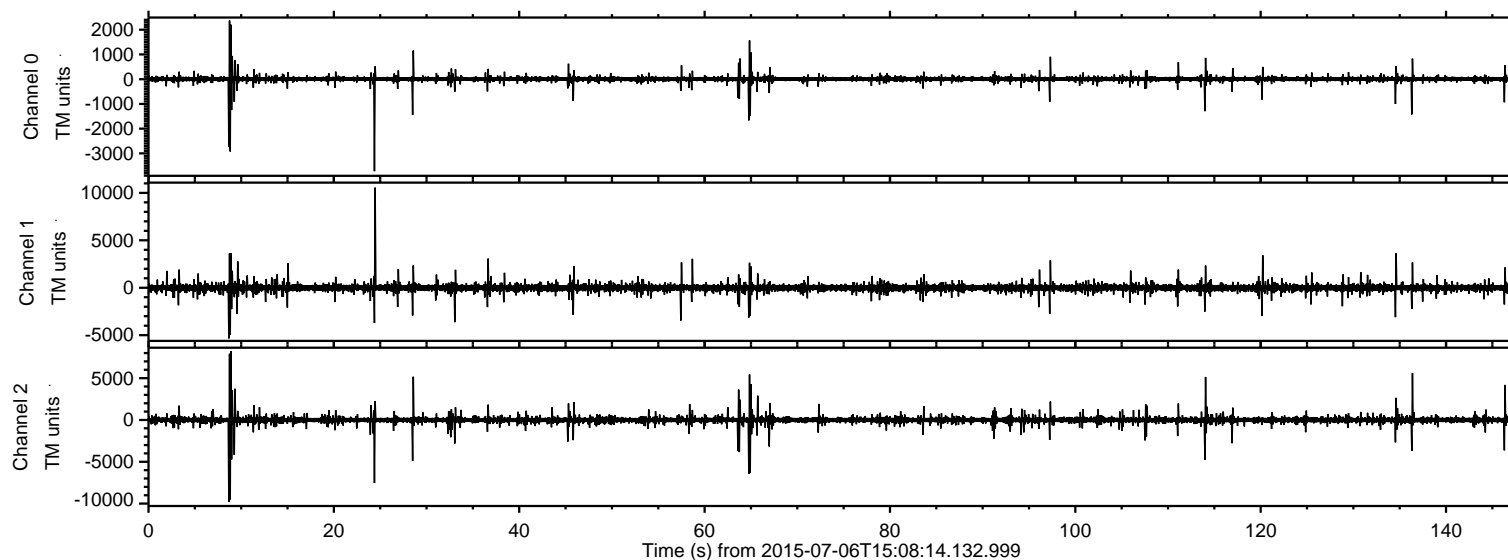
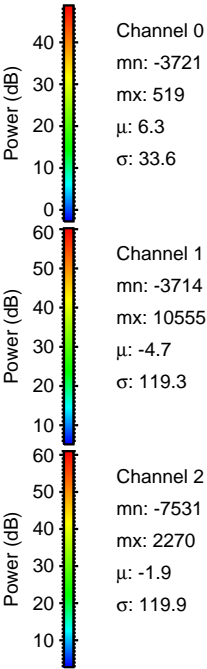
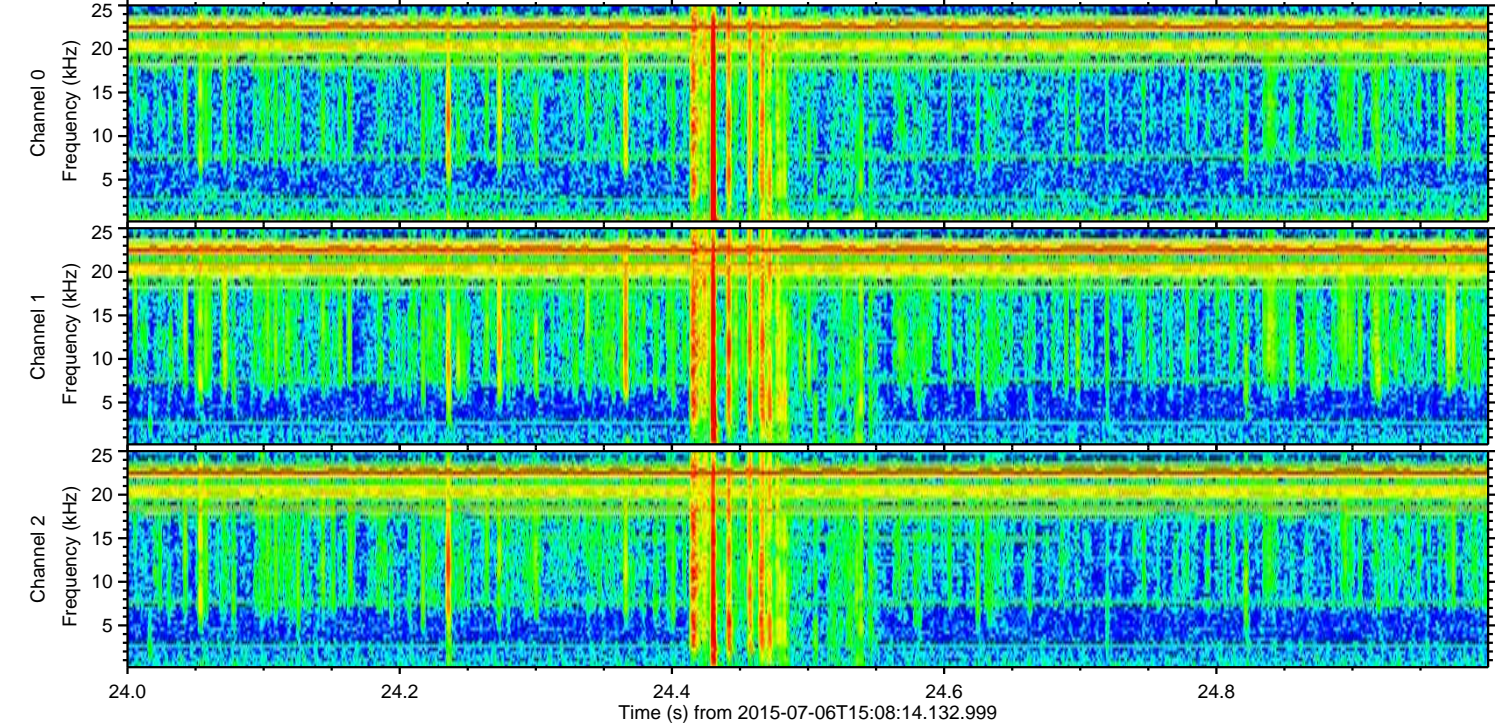
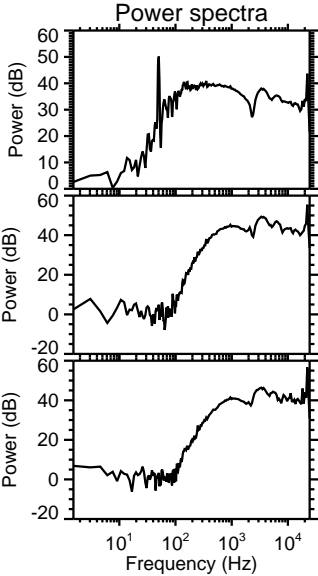
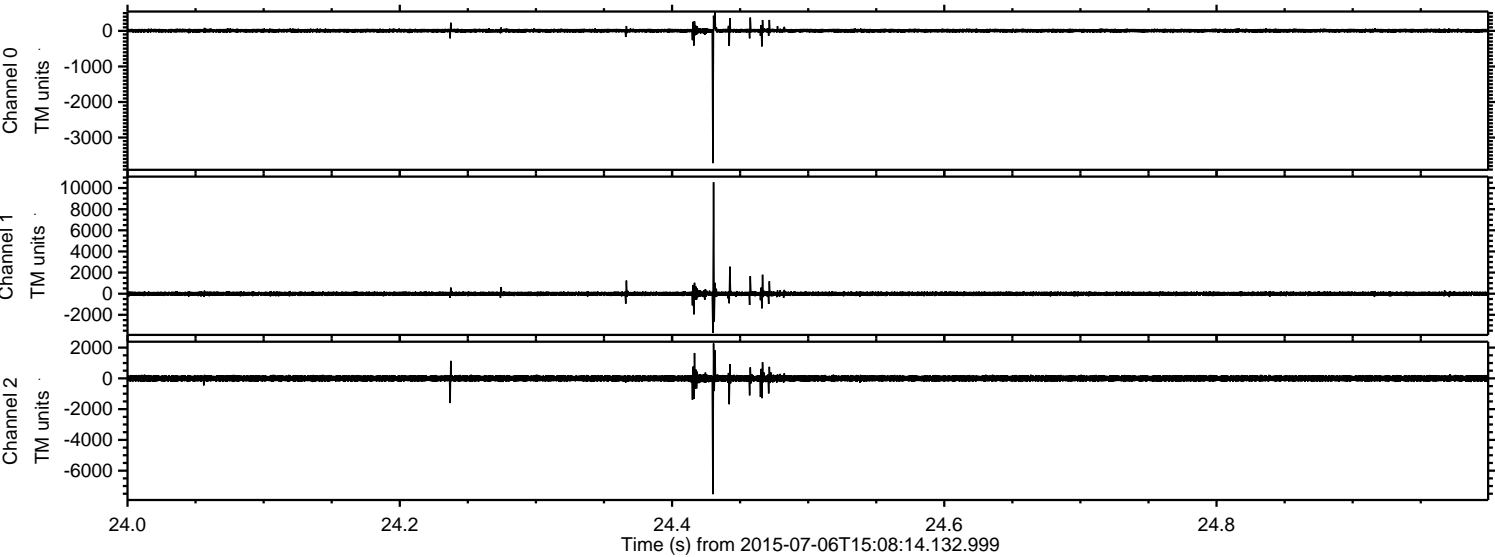


ELMAVAN 3D WAVEFORMS (Measured data sampled at 50 kHz) 51000 packets of 144 samples from 2015-07-06T15:08:14.132.999.

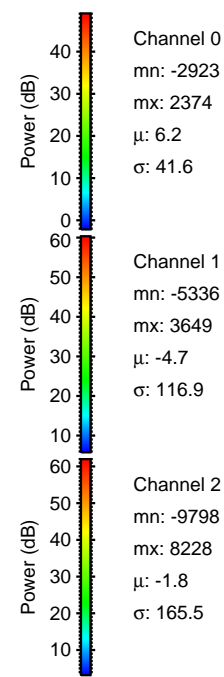
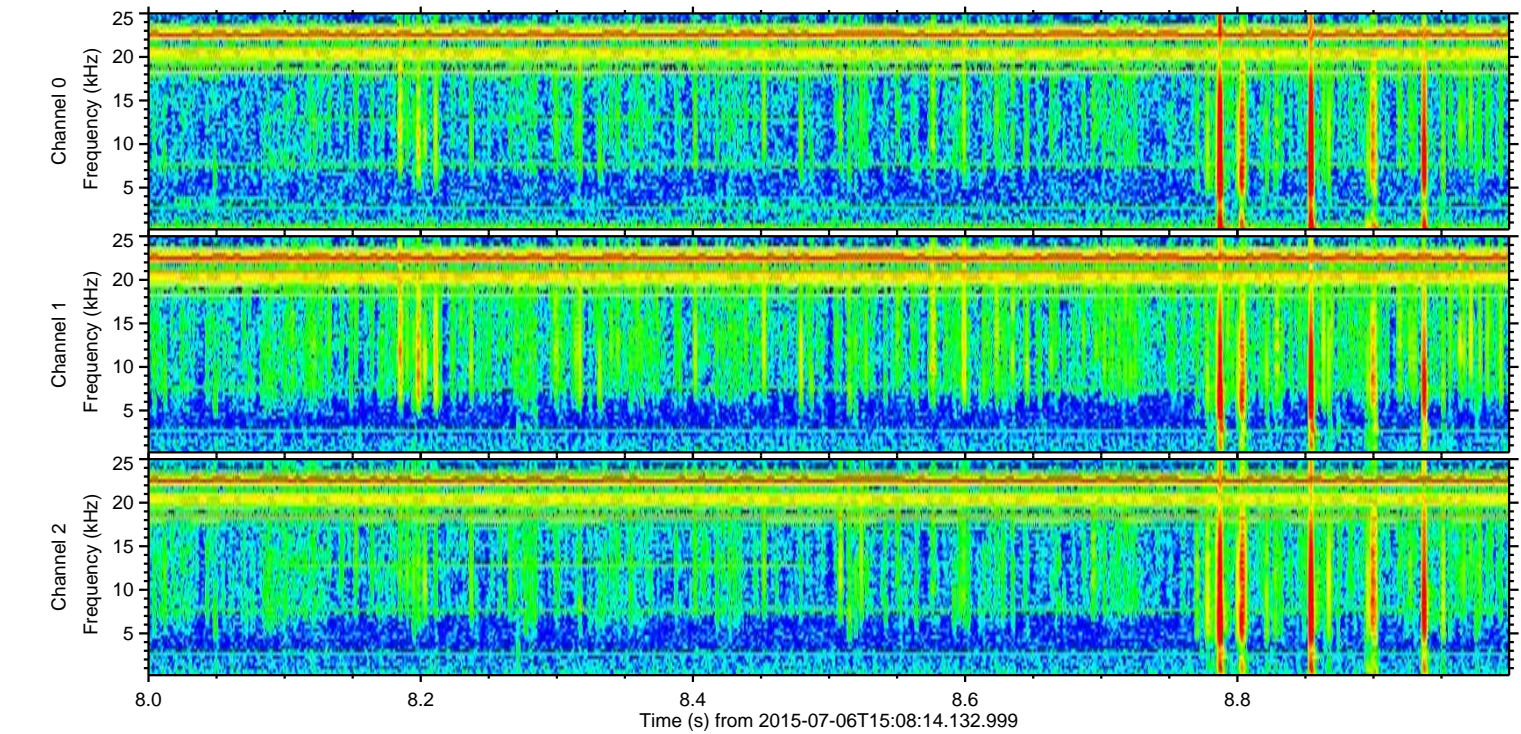
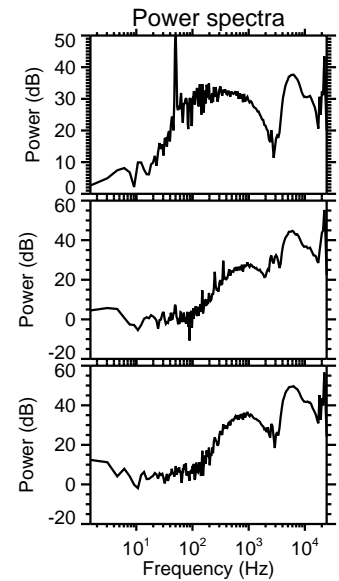
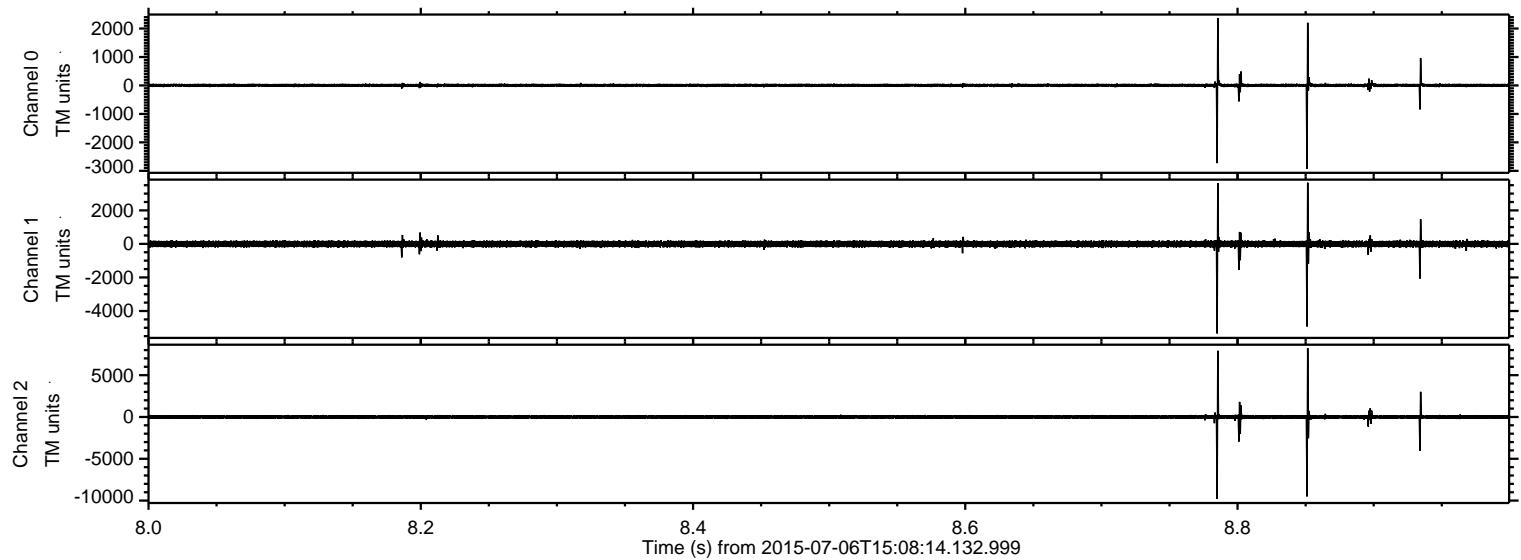
Processed Mon Jul 6 17:14:51 2015 by ELM ver.2012-10-06 from 001__elm20150706_150813__dat00.bin



Processed Mon Jul 6 17:15:04 2015 by ELM ver.2012-10-06 from 001__elm20150706_150813__dat00.bin



Processed Mon Jul 6 17:15:05 2015 by ELM ver.2012-10-06 from 001__elm20150706_150813__dat00.bin

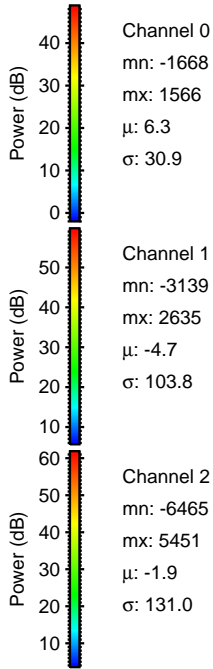
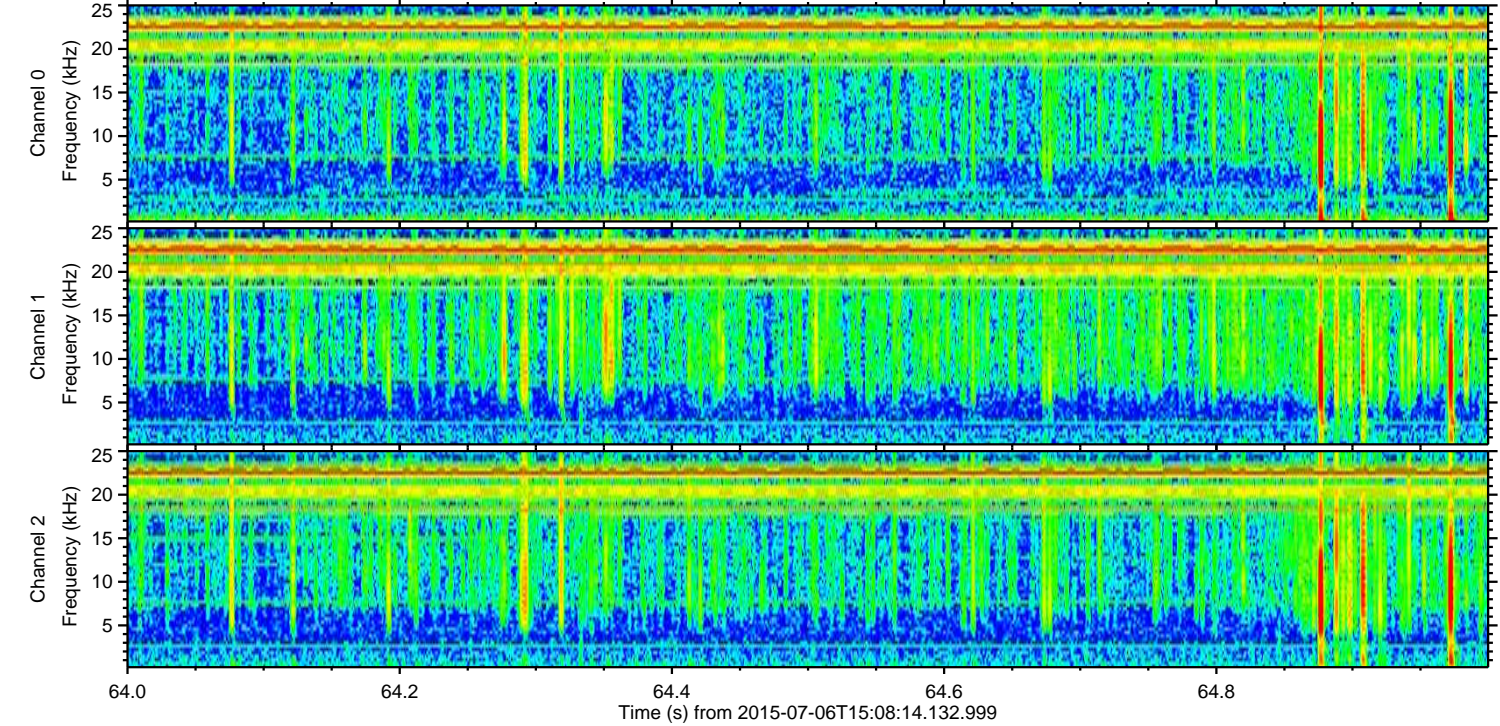
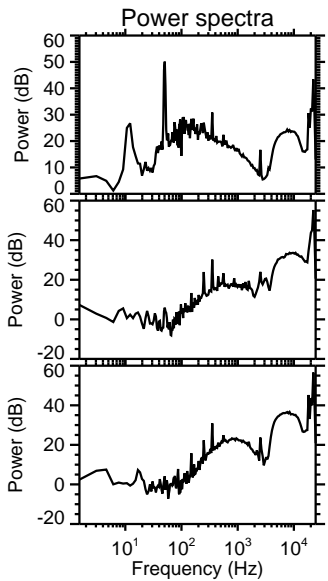
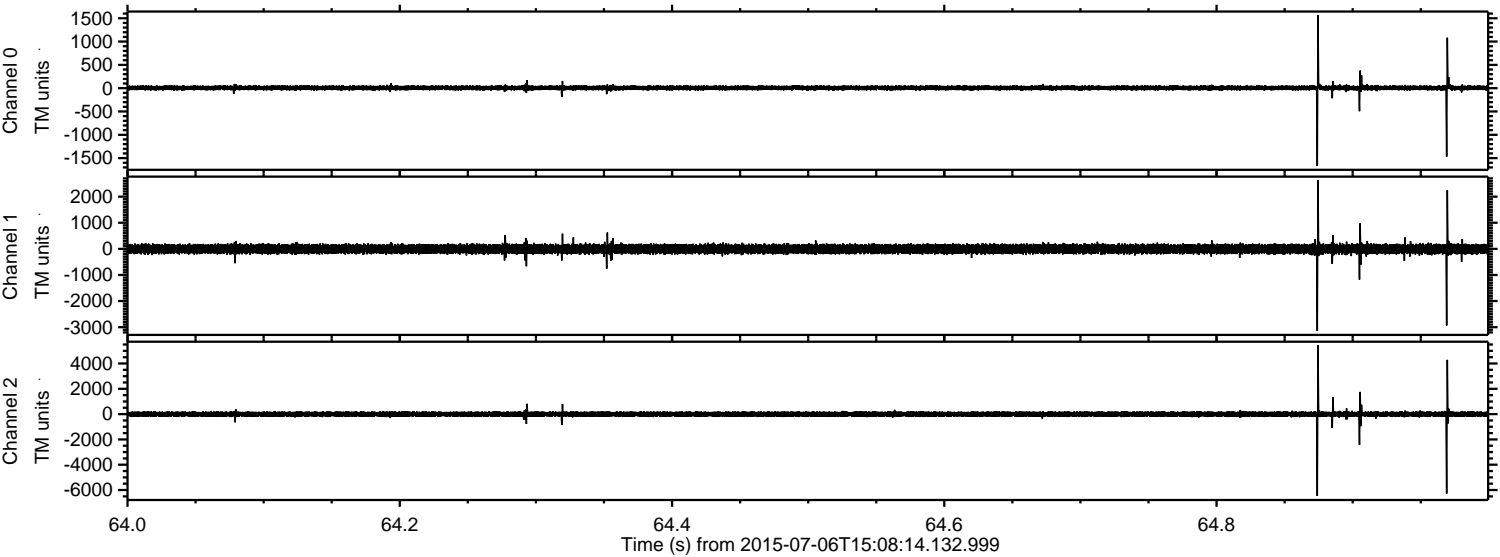


Channel 0
mn: -2923
mx: 2374
 μ : 6.2
 σ : 41.6

Channel 1
mn: -5336
mx: 3649
 μ : -4.7
 σ : 116.9

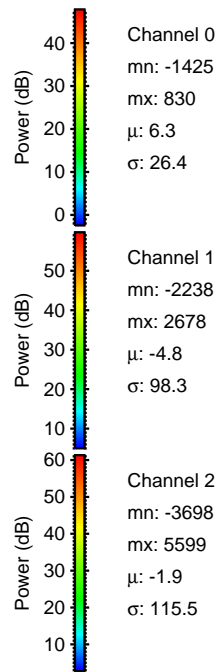
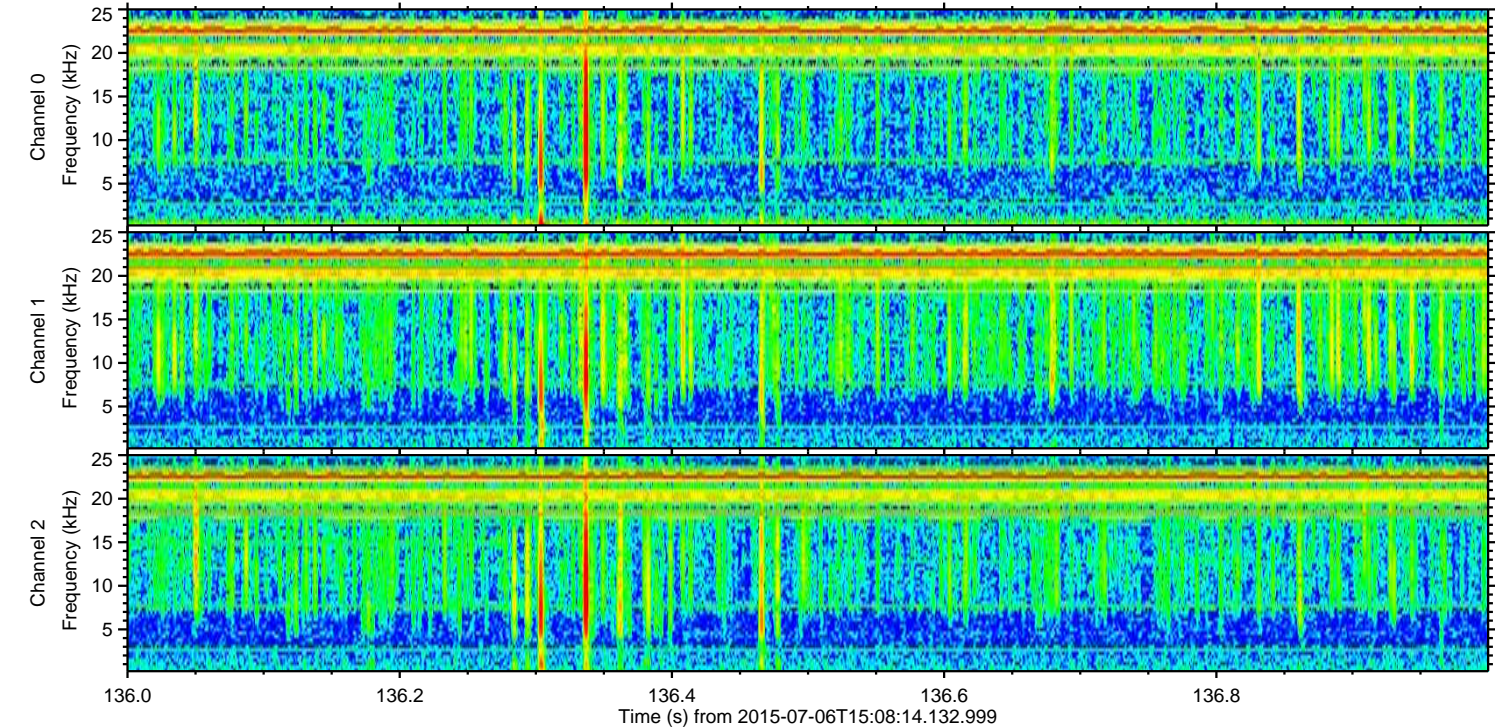
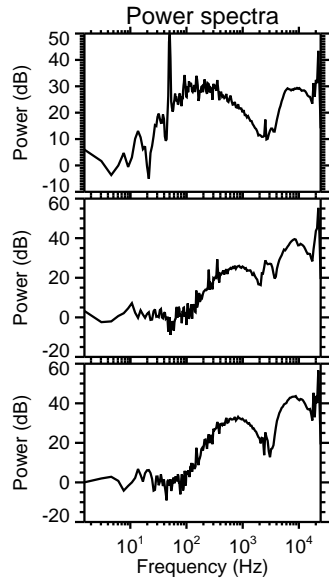
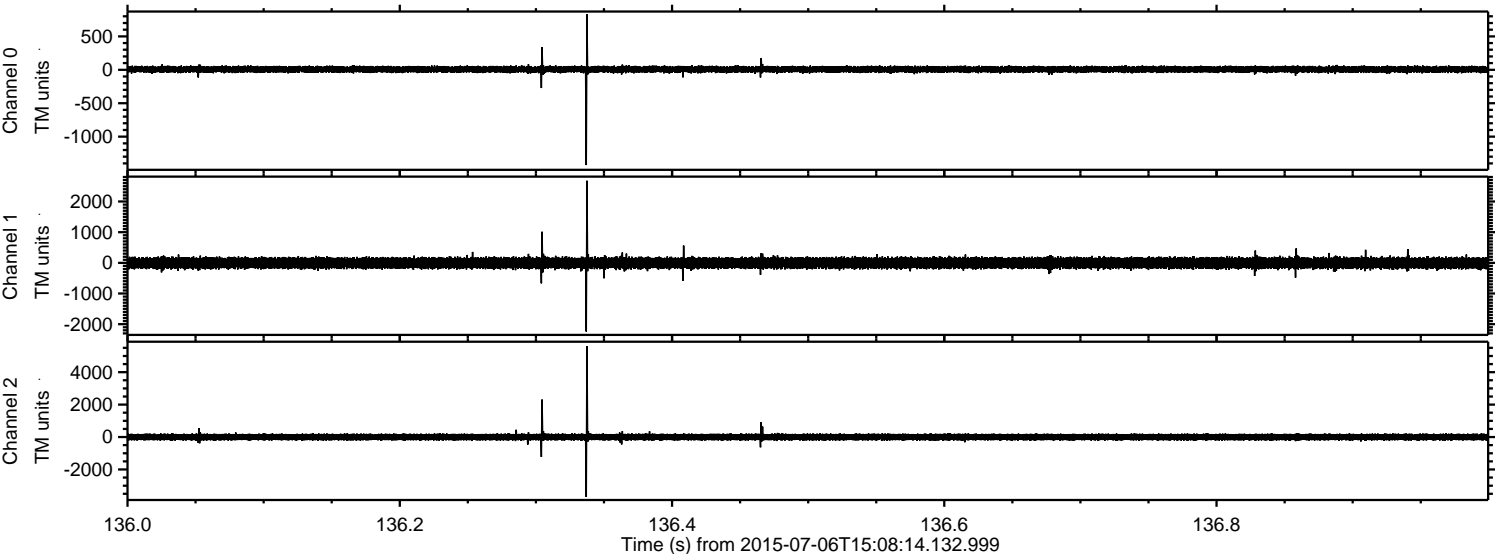
Channel 2
mn: -9798
mx: 8228
 μ : -1.8
 σ : 165.5

Processed Mon Jul 6 17:15:06 2015 by ELM ver.2012-10-06 from 001__elm20150706_150813__dat00.bin

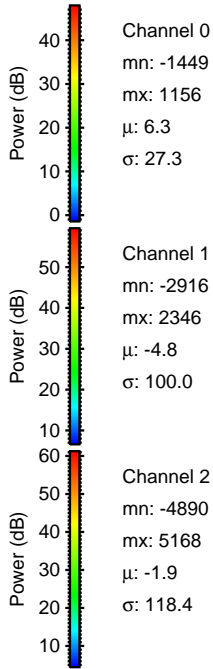
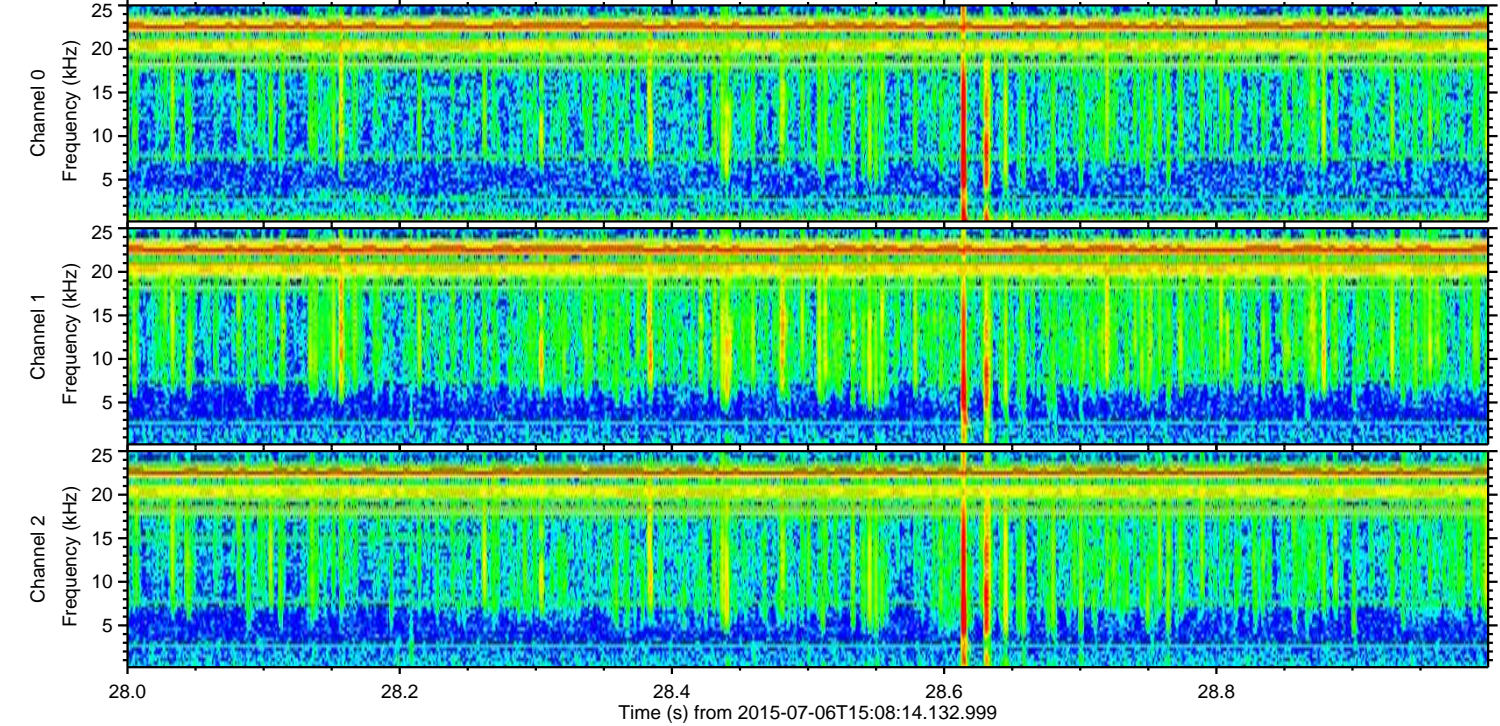
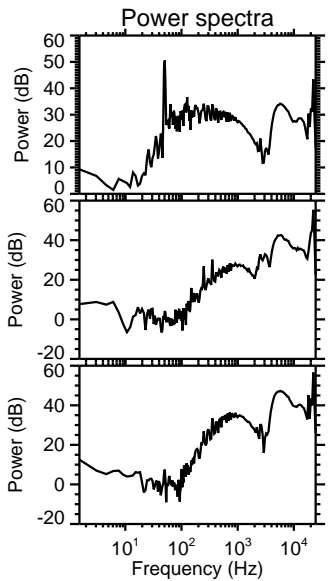
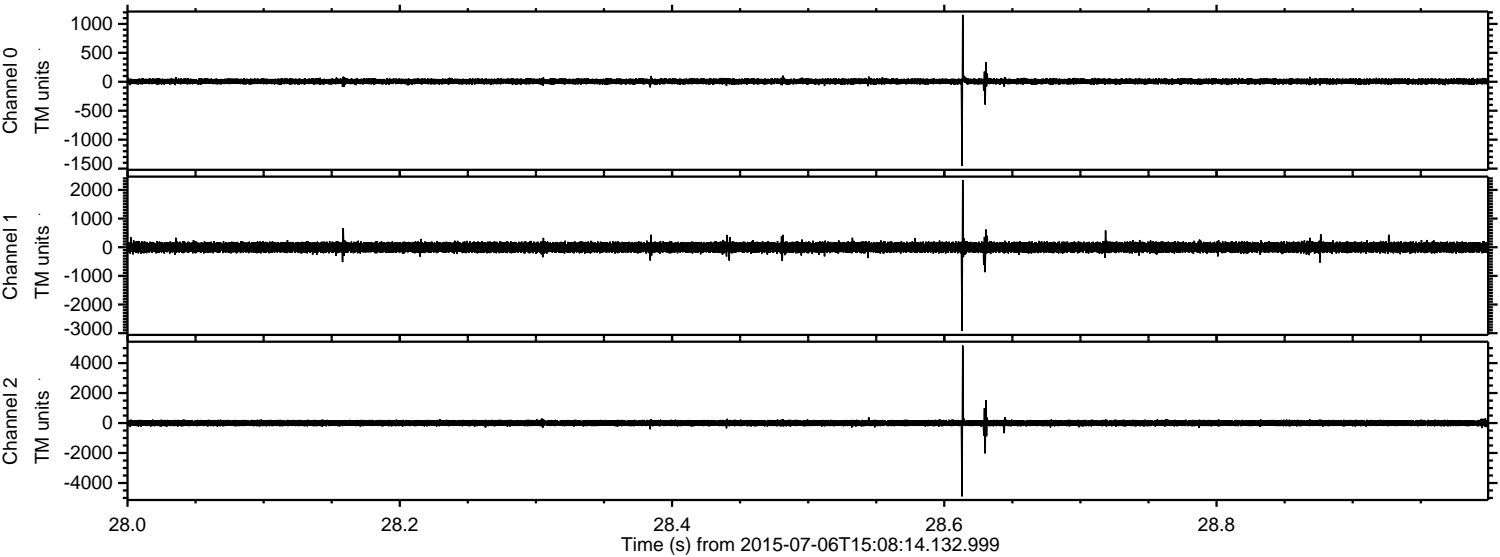


ELMAVAN 3D WAVEFORMS (Measured data sampled at 50 kHz) 51000 packets of 144 samples from 2015-07-06T15:08:14.132.999. Part 137/147

Processed Mon Jul 6 17:15:07 2015 by ELM ver.2012-10-06 from 001__elm20150706_150813__dat00.bin

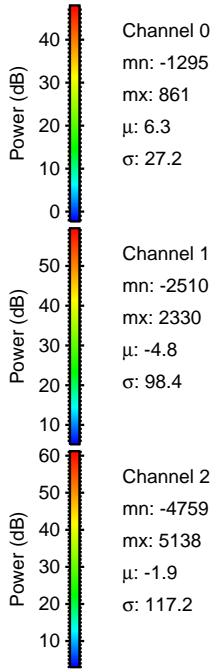
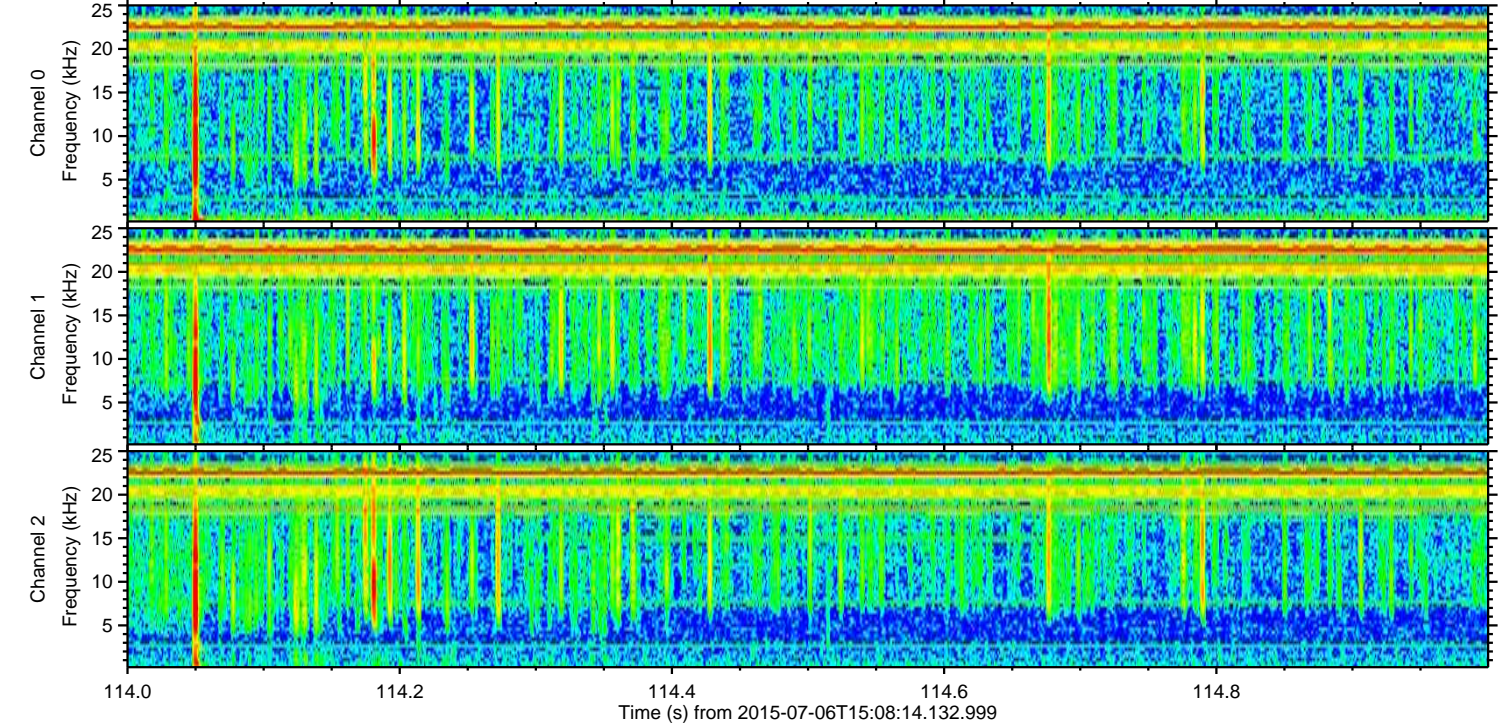
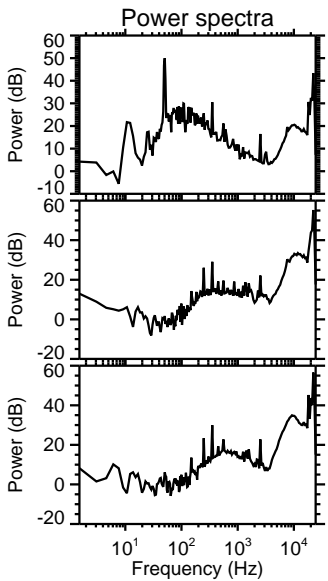
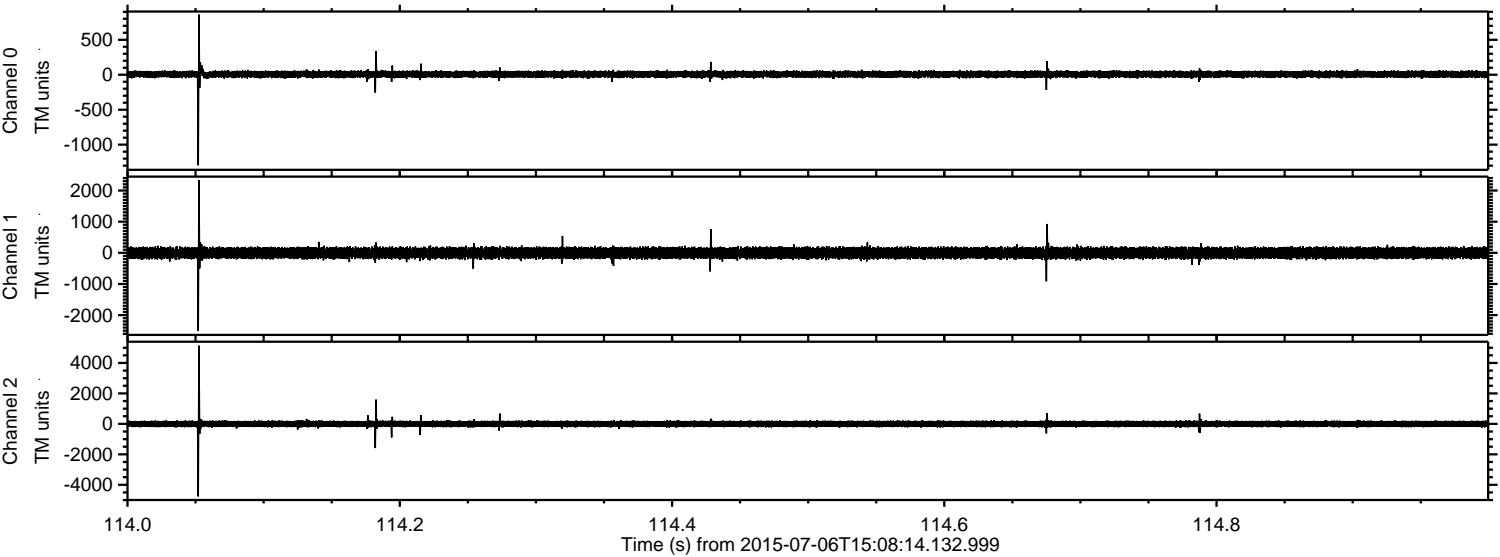


Processed Mon Jul 6 17:15:08 2015 by ELM ver.2012-10-06 from 001__elm20150706_150813__dat00.bin



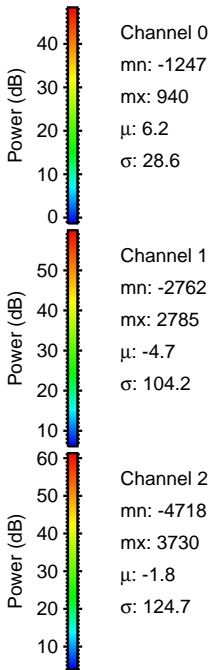
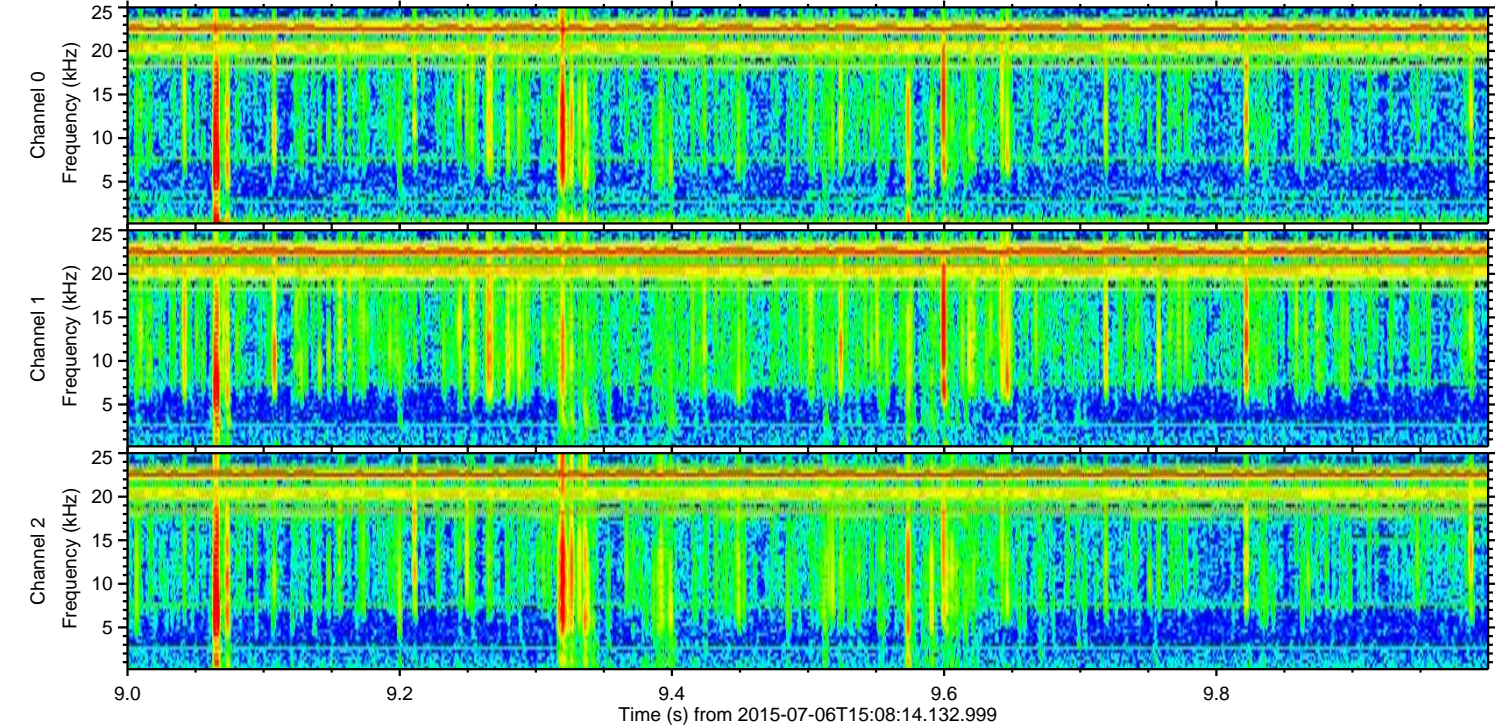
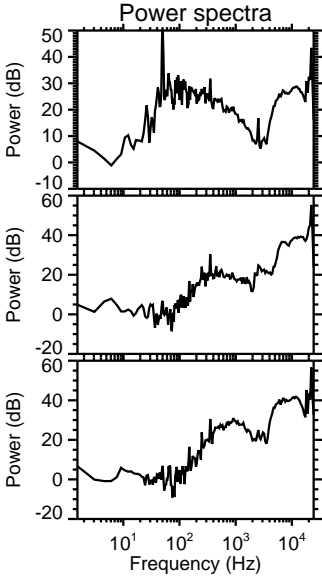
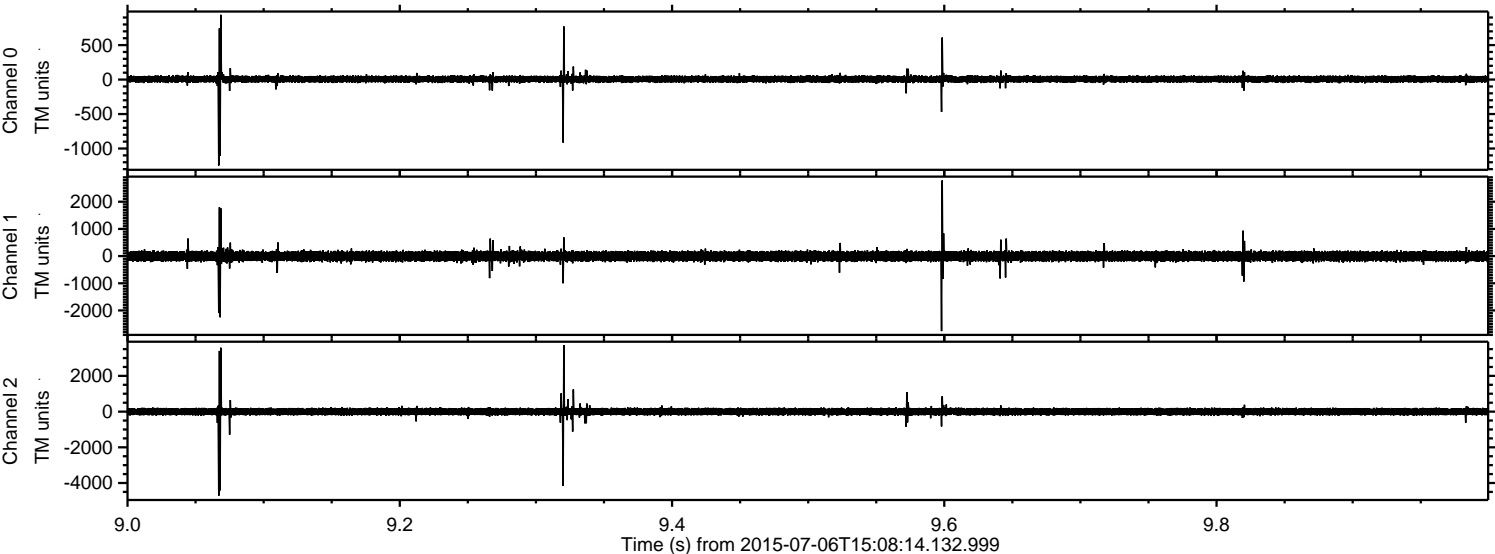
ELMAVAN 3D WAVEFORMS (Measured data sampled at 50 kHz) 51000 packets of 144 samples from 2015-07-06T15:08:14.132.999. Part 115/147

Processed Mon Jul 6 17:15:09 2015 by ELM ver.2012-10-06 from 001__elm20150706_150813__dat00.bin

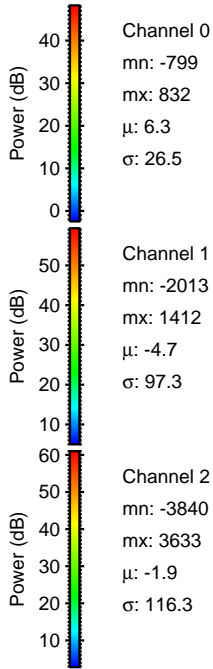
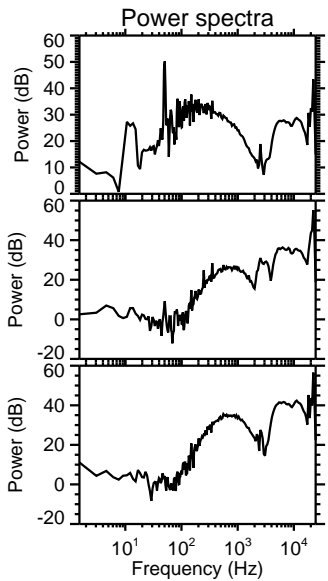
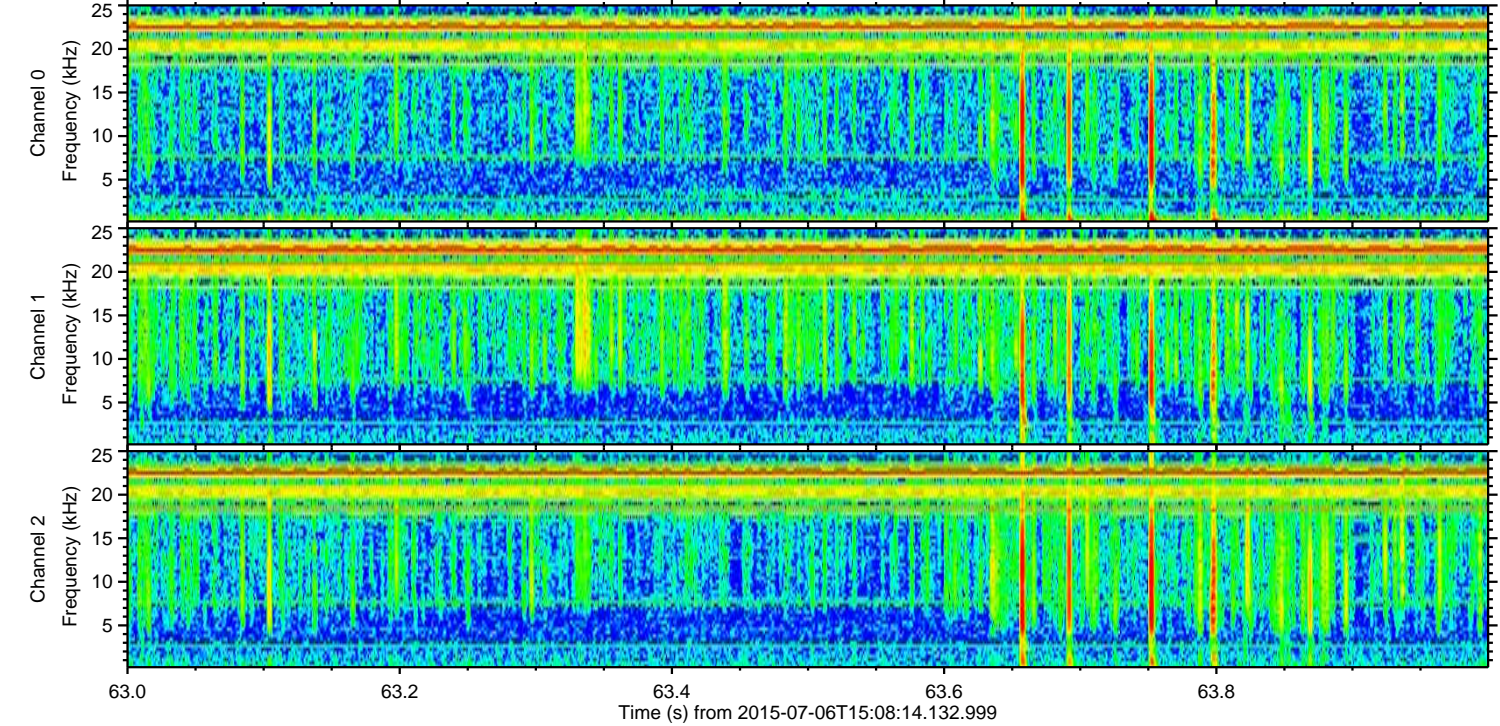
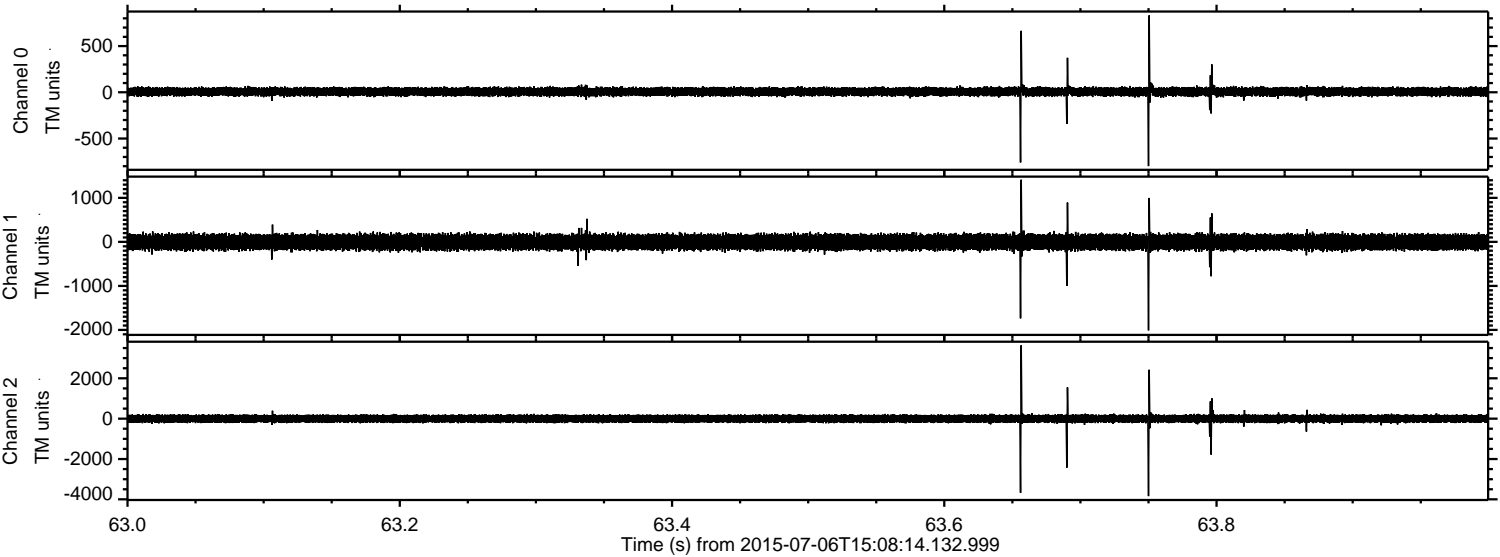


ELMAVAN 3D WAVEFORMS (Measured data sampled at 50 kHz) 51000 packets of 144 samples from 2015-07-06T15:08:14.132.999. Part 10/147

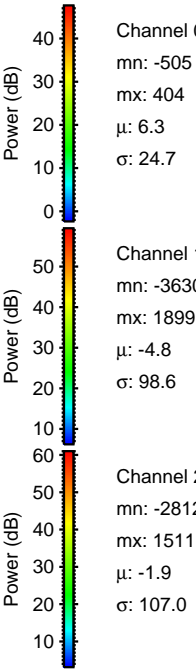
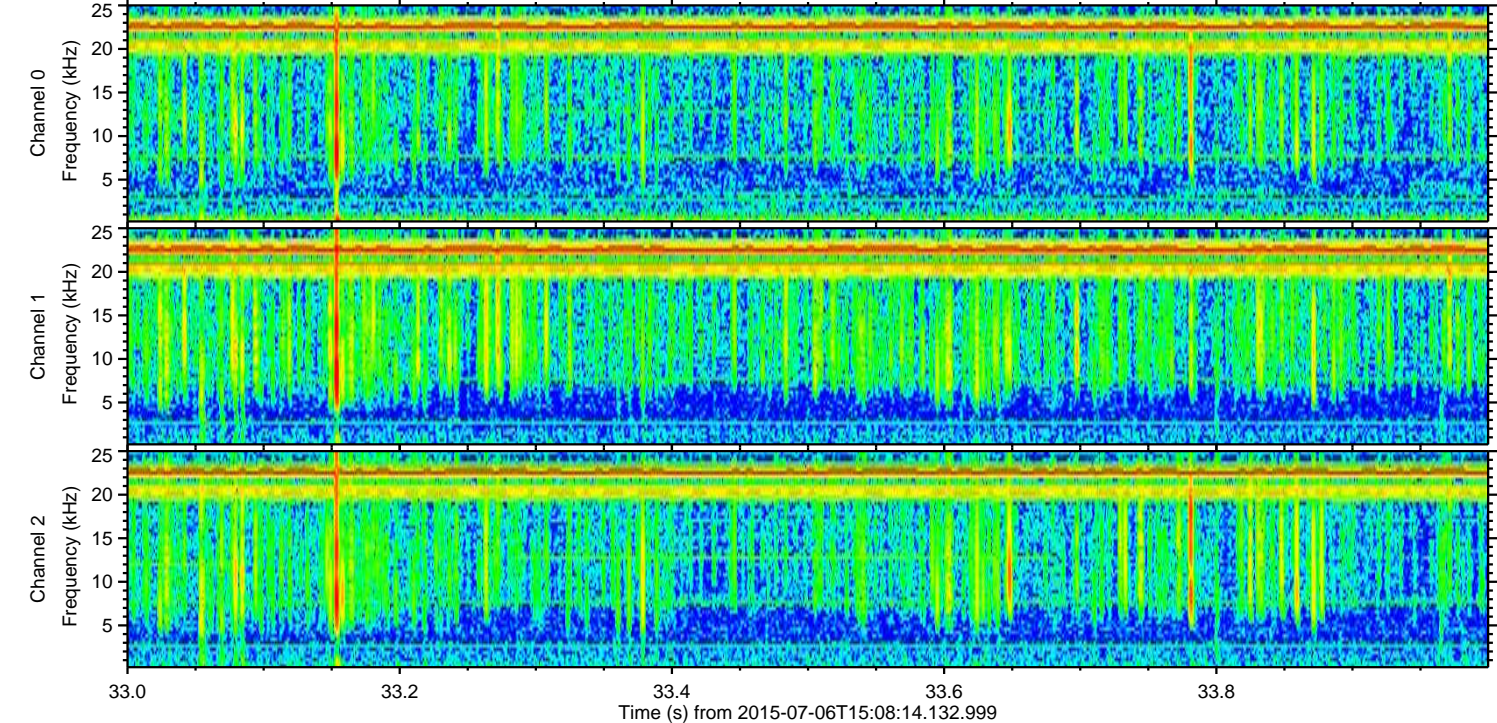
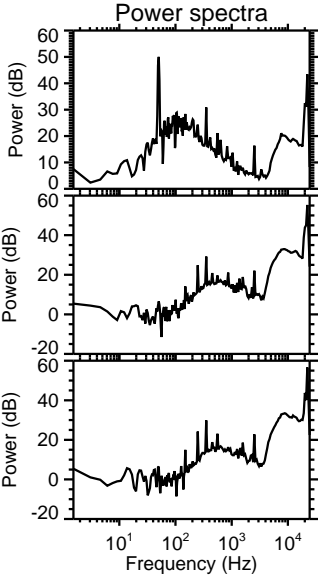
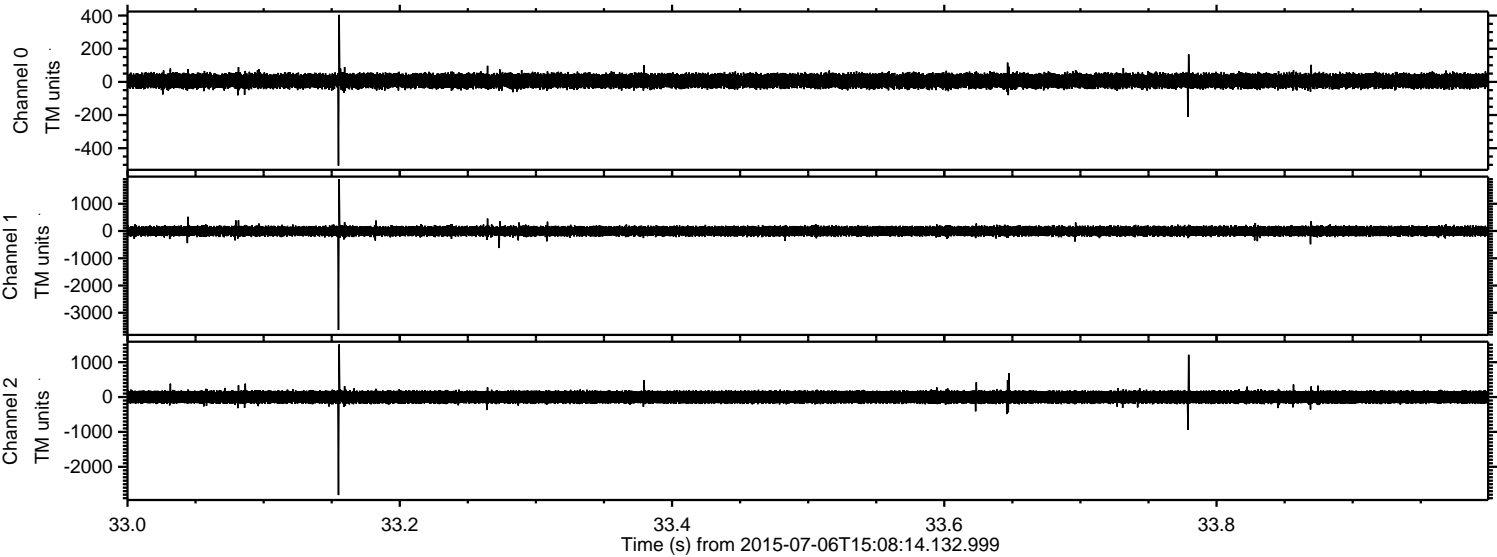
Processed Mon Jul 6 17:15:10 2015 by ELM ver.2012-10-06 from 001__elm20150706_150813__dat00.bin



Processed Mon Jul 6 17:15:11 2015 by ELM ver.2012-10-06 from 001__elm20150706_150813__dat00.bin



Processed Mon Jul 6 17:15:12 2015 by ELM ver.2012-10-06 from 001__elm20150706_150813__dat00.bin



Channel 0
mn: -505
mx: 404
 μ : 6.3
 σ : 24.7

Channel 1
mn: -3630
mx: 1899
 μ : -4.8
 σ : 98.6

Channel 2
mn: -2812
mx: 1511
 μ : -1.9
 σ : 107.0

Processed Mon Jul 6 17:15:13 2015 by ELM ver.2012-10-06 from 001__elm20150706_150813__dat00.bin

