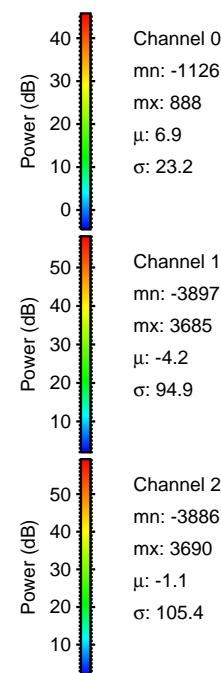
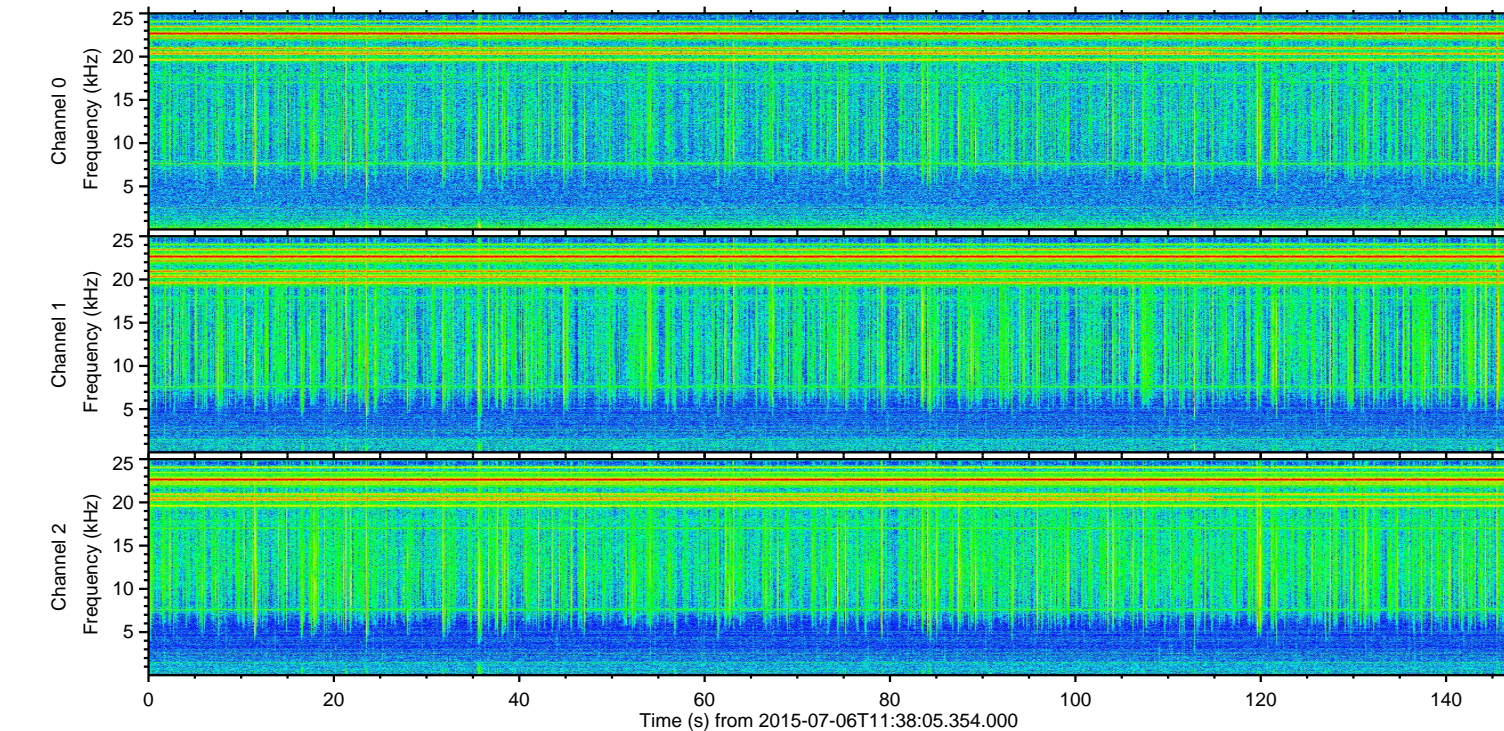
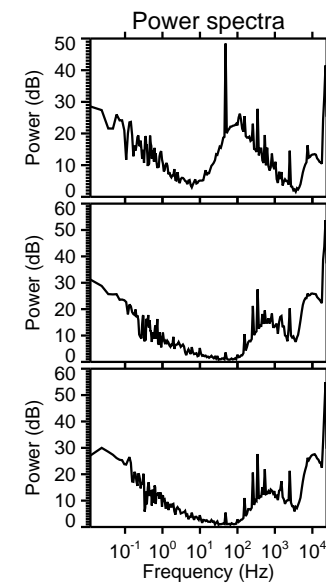
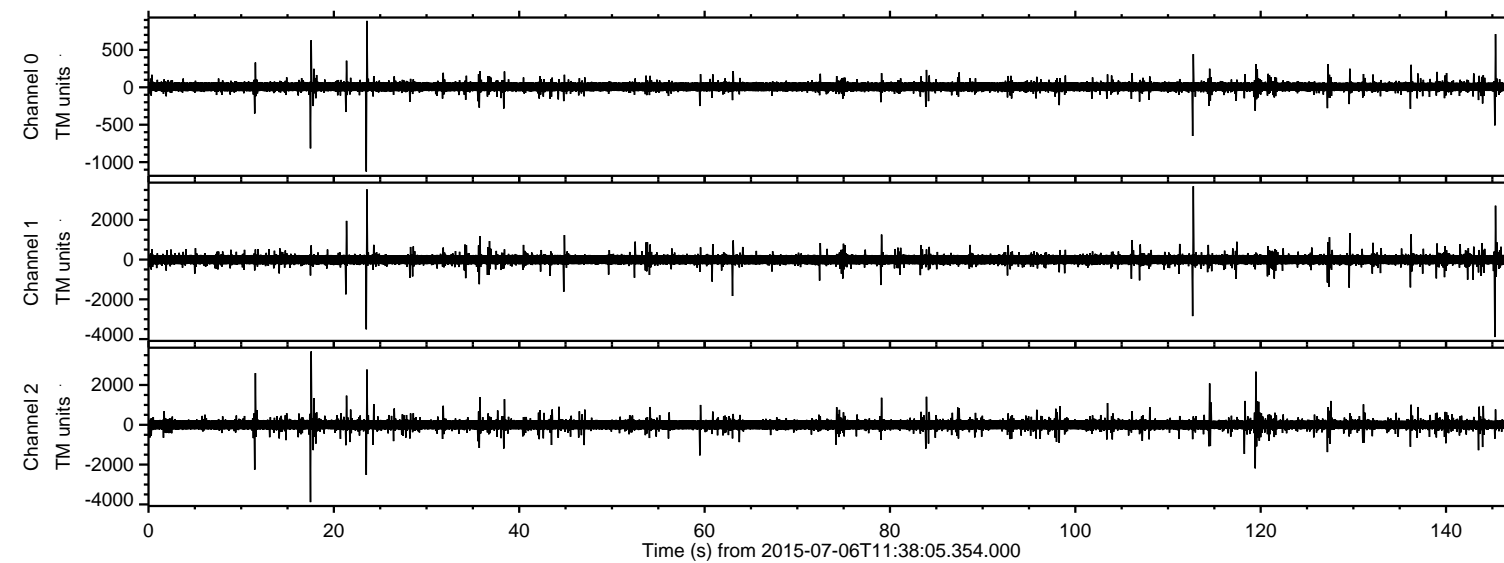


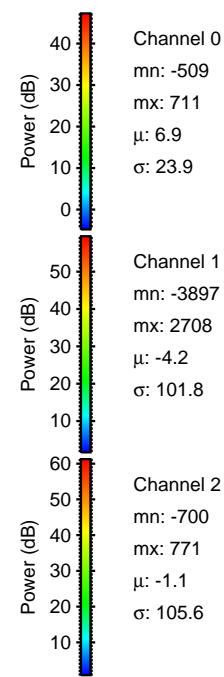
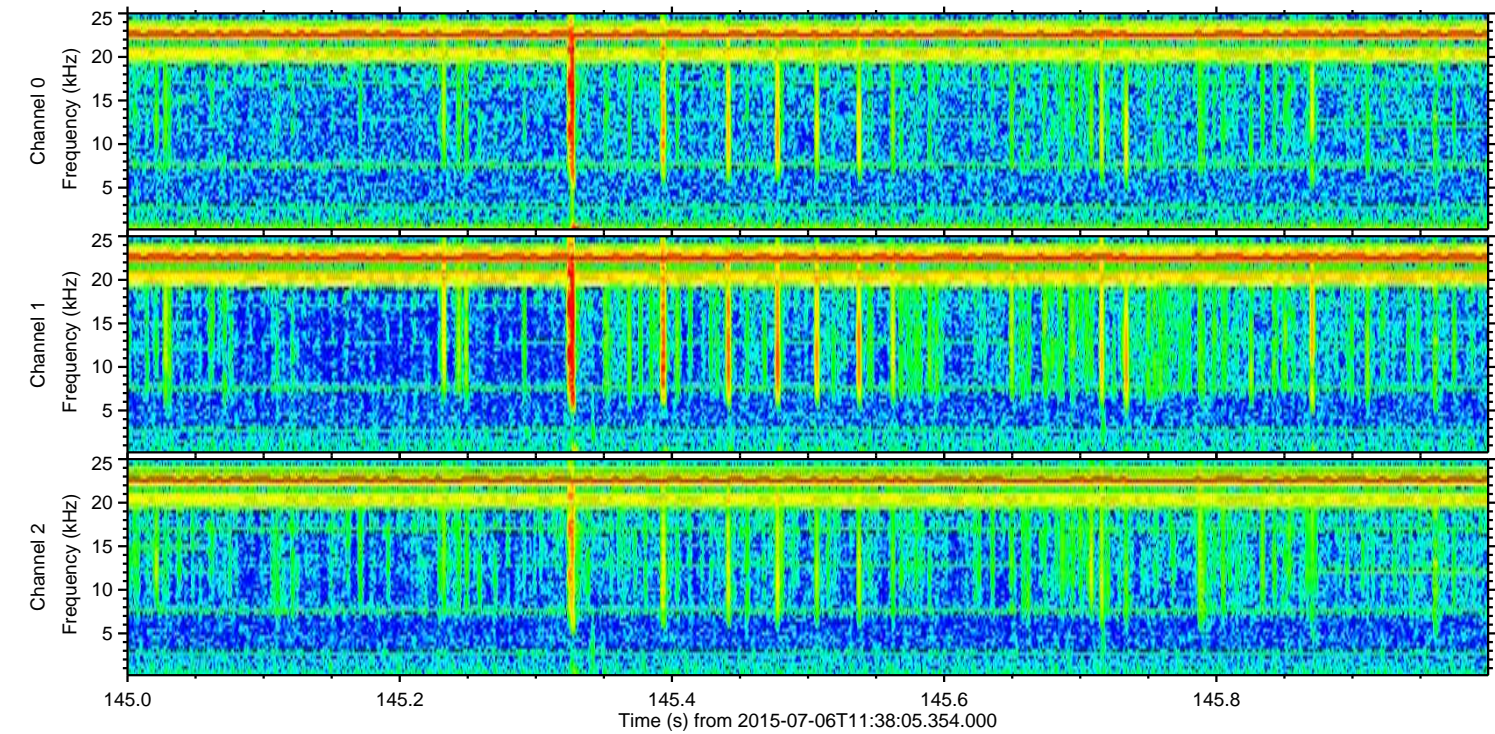
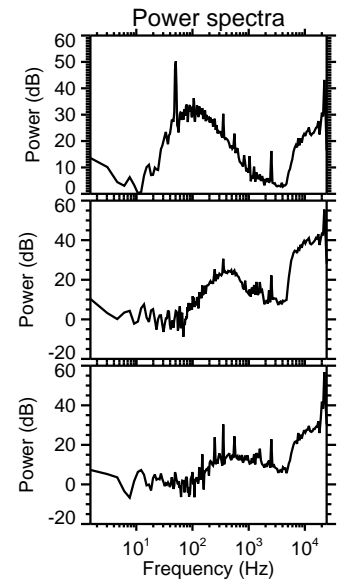
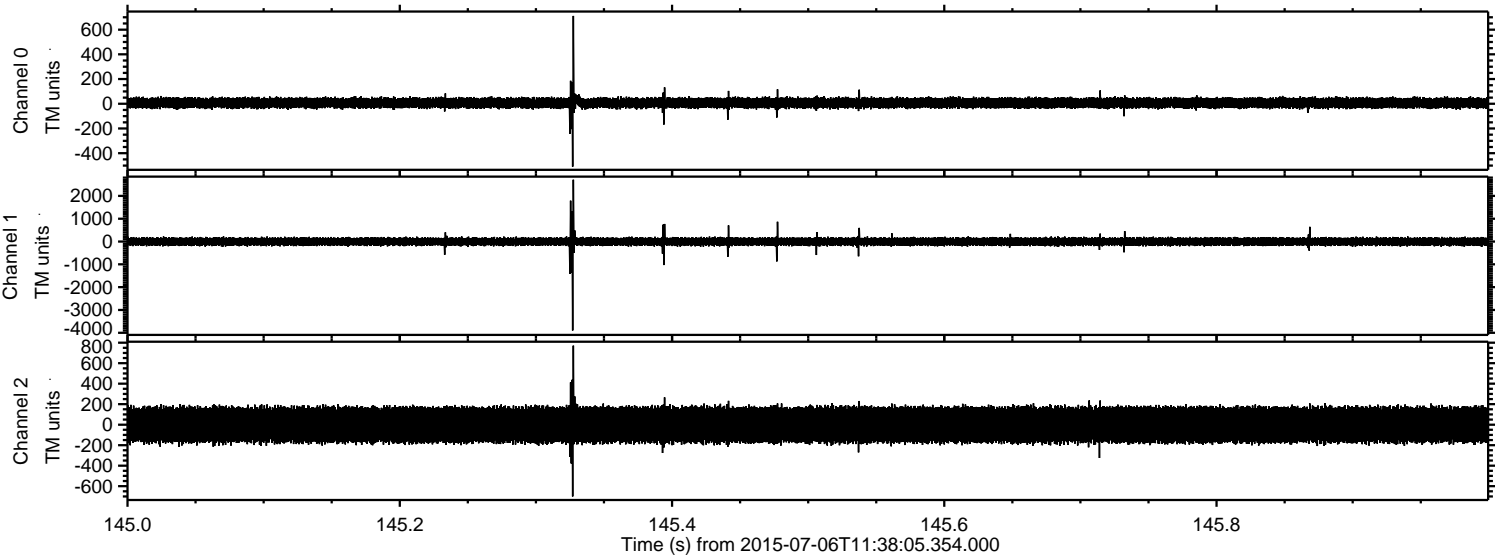
ELMAVAN 3D WAVEFORMS (Measured data sampled at 50 kHz) 51000 packets of 144 samples from 2015-07-06T11:38:05.354.000.

Processed Mon Jul 6 13:44:07 2015 by ELM ver.2012-10-06 from 001__elm20150706_113804__dat00.bin

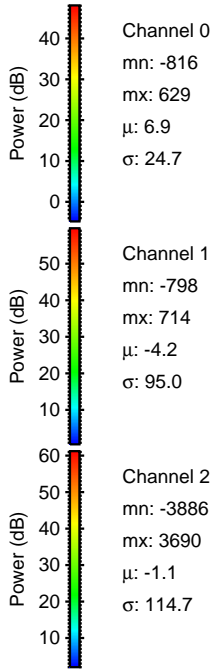
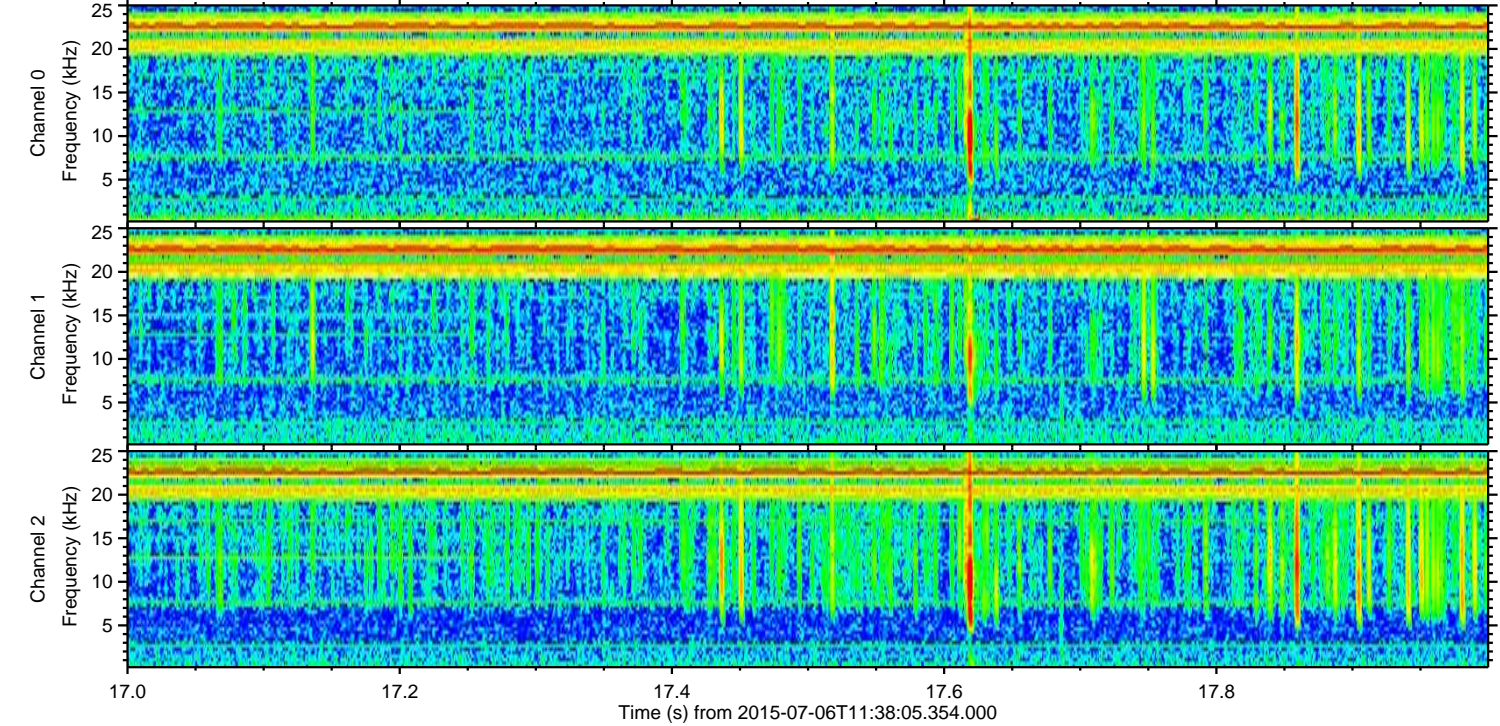
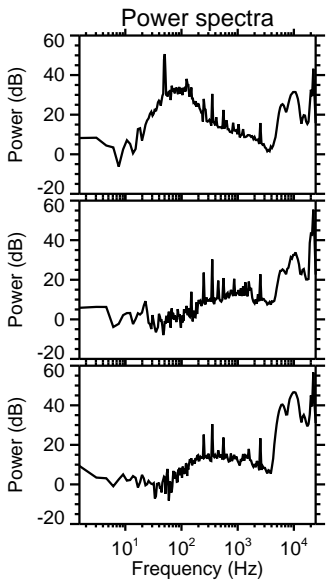
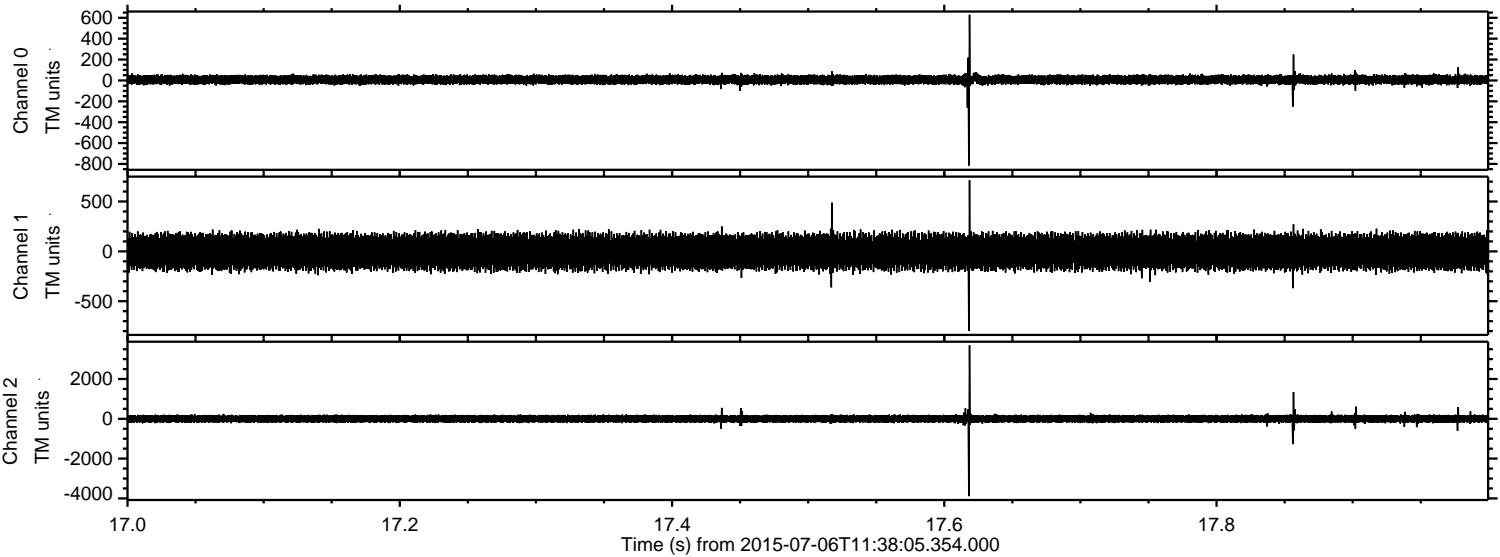


ELMAVAN 3D WAVEFORMS (Measured data sampled at 50 kHz) 51000 packets of 144 samples from 2015-07-06T11:38:05.354.000. Part 146/147

Processed Mon Jul 6 13:44:21 2015 by ELM ver.2012-10-06 from 001__elm20150706_113804__dat00.bin

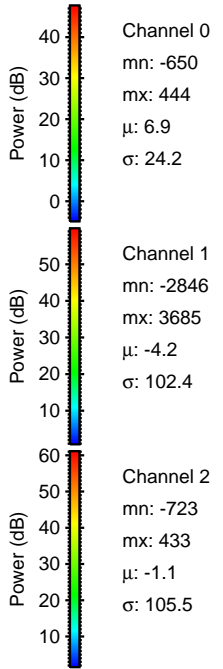
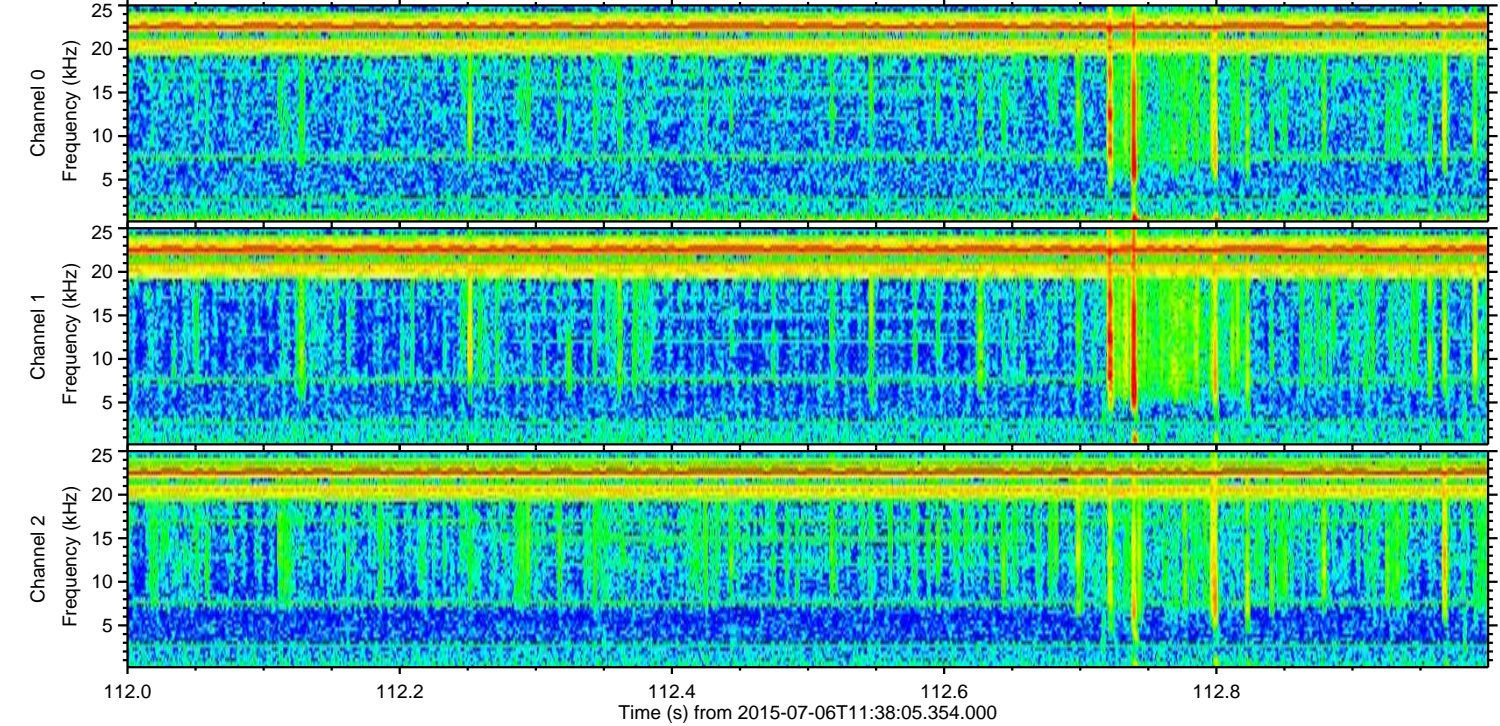
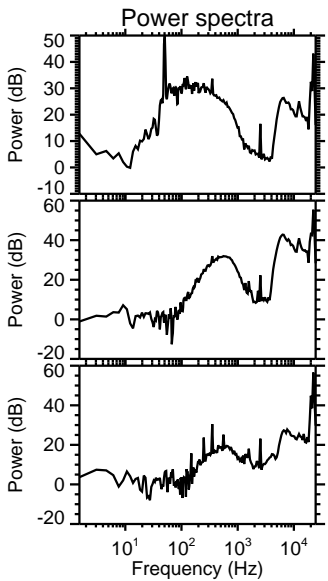
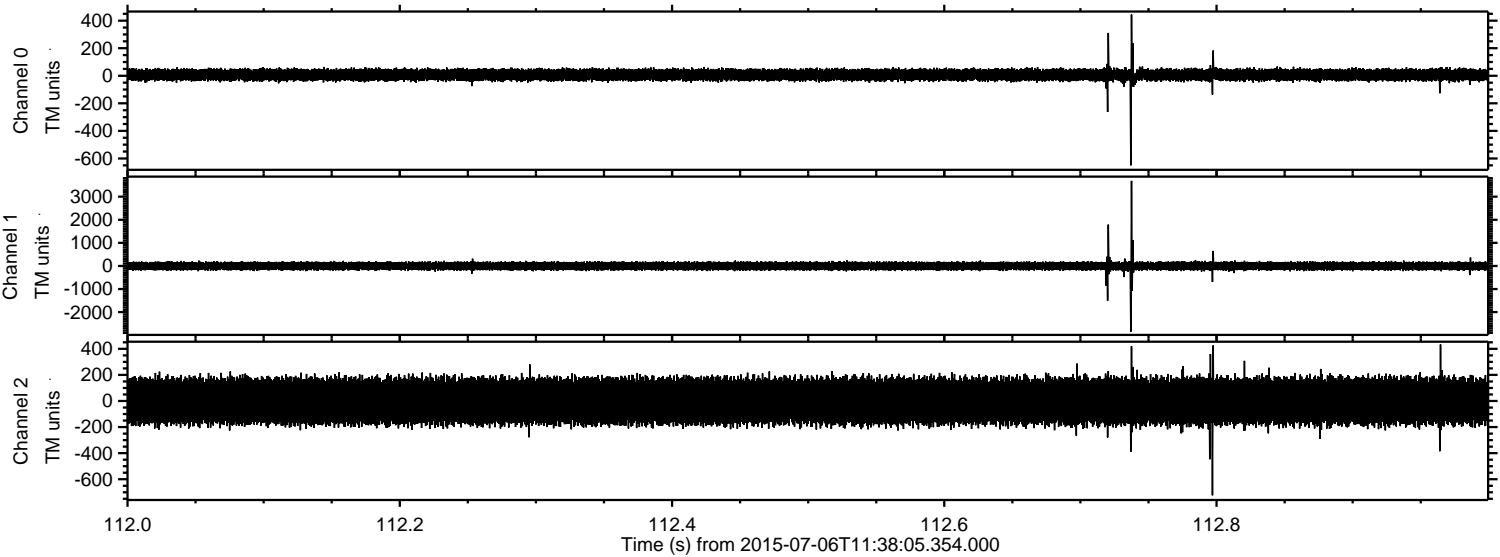


Processed Mon Jul 6 13:44:22 2015 by ELM ver.2012-10-06 from 001__elm20150706_113804__dat00.bin

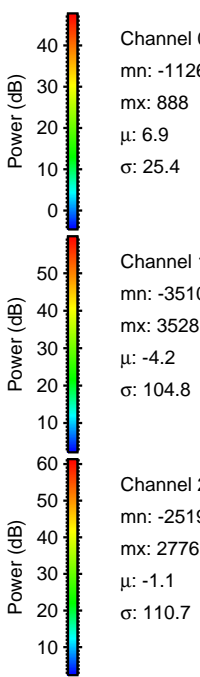
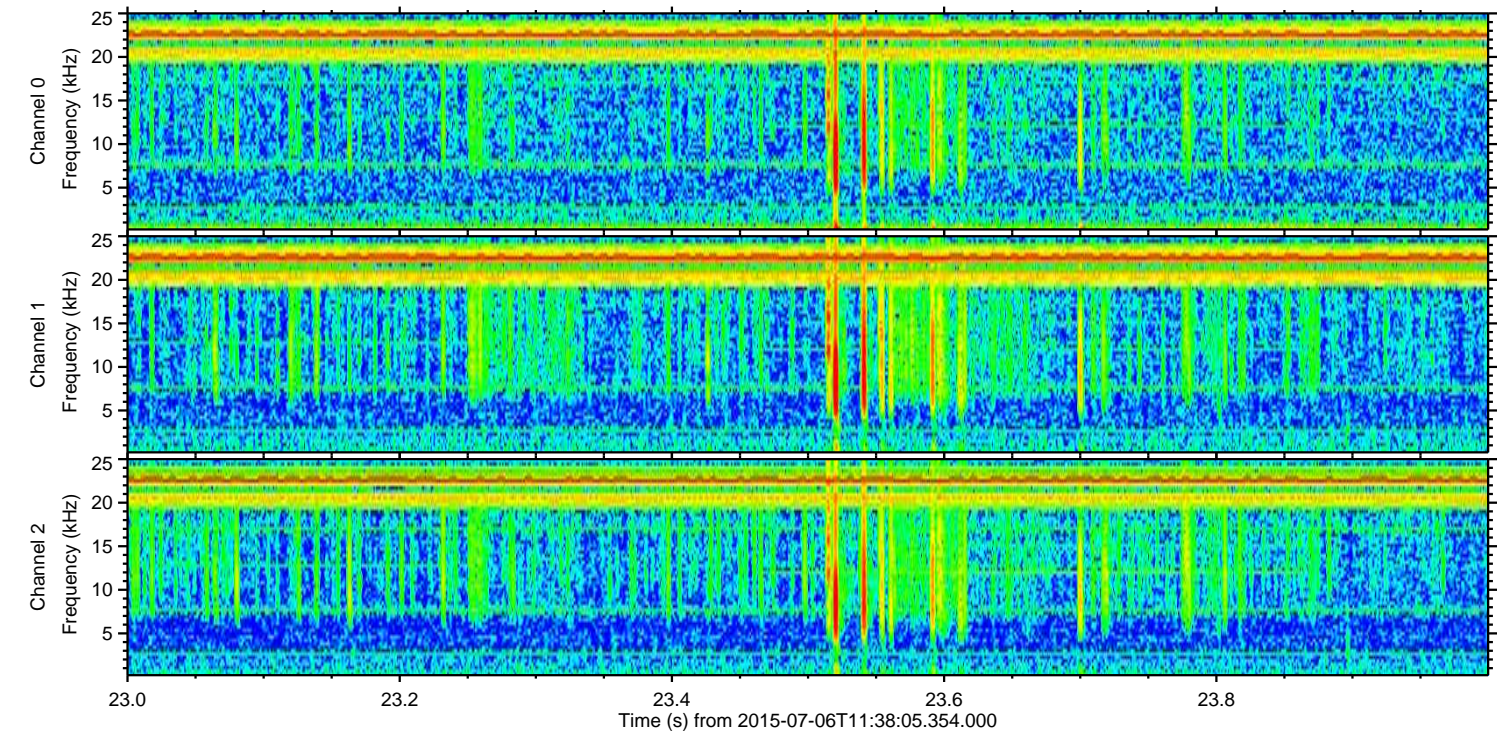
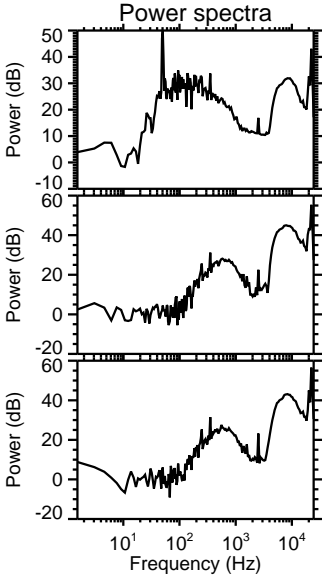
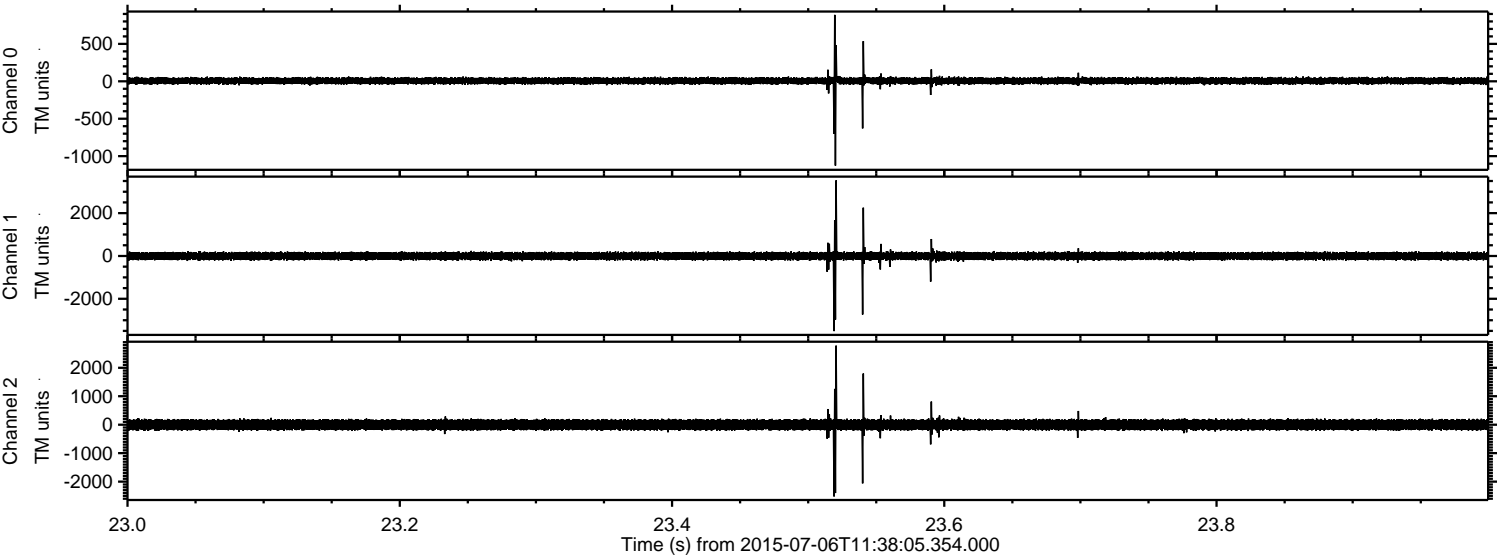


ELMAVAN 3D WAVEFORMS (Measured data sampled at 50 kHz) 51000 packets of 144 samples from 2015-07-06T11:38:05.354.000. Part 113/147

Processed Mon Jul 6 13:44:23 2015 by ELM ver.2012-10-06 from 001__elm20150706_113804__dat00.bin



Processed Mon Jul 6 13:44:24 2015 by ELM ver.2012-10-06 from 001__elm20150706_113804__dat00.bin

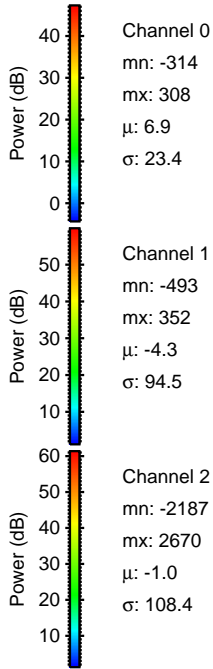
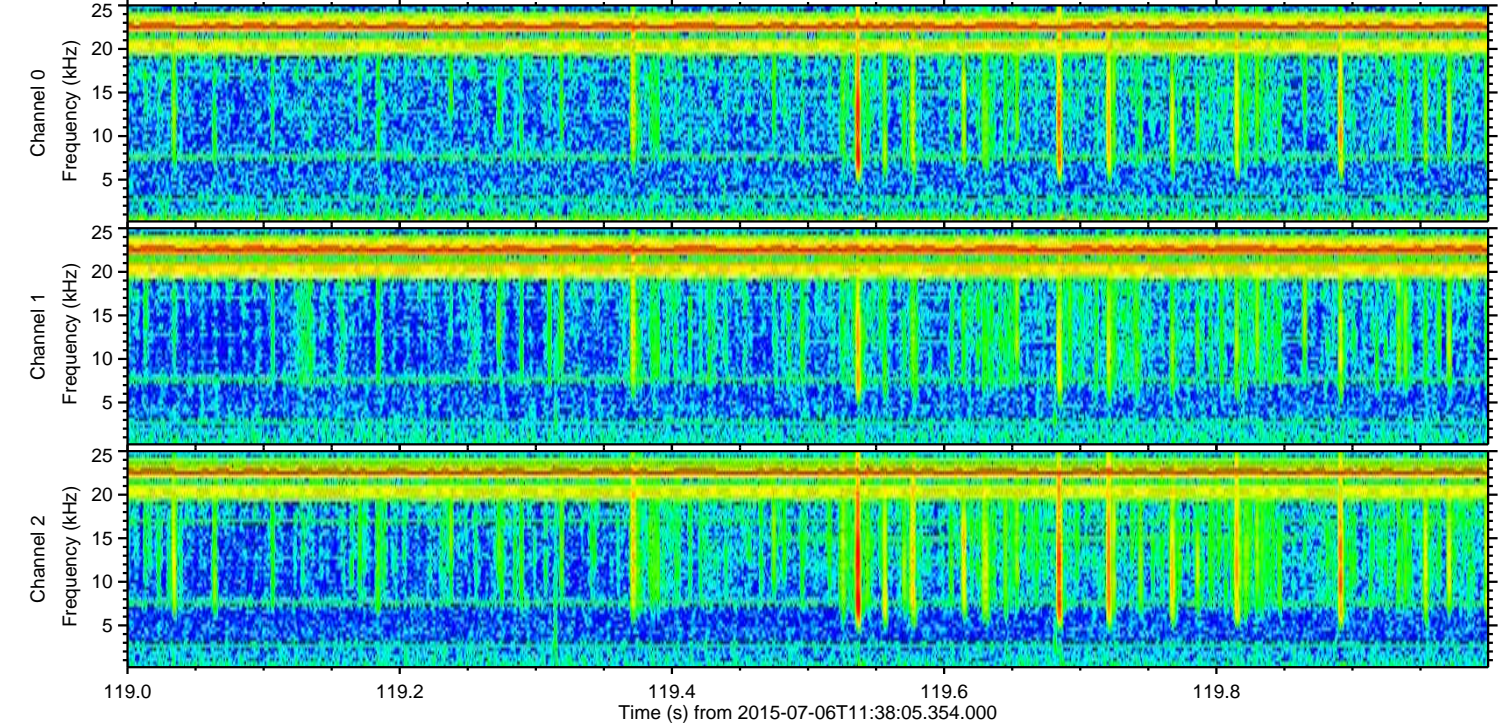
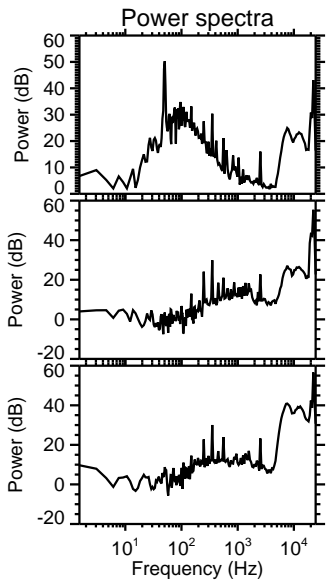
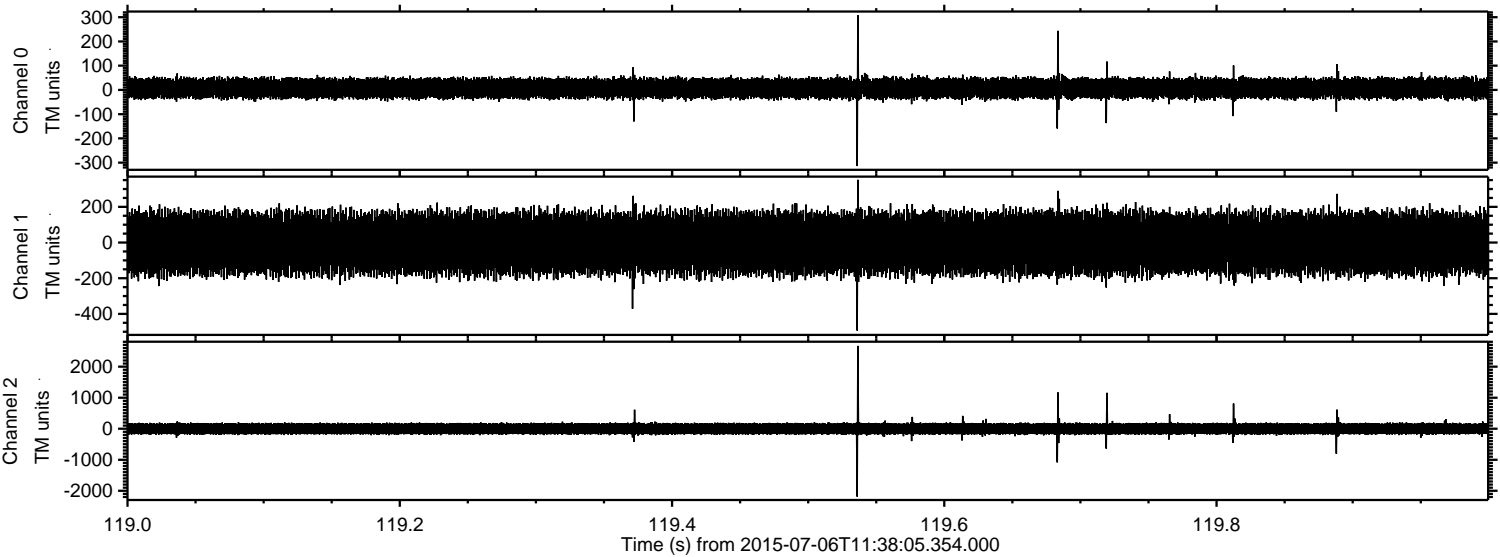


Channel 0
mn: -1126
mx: 888
 μ : 6.9
 σ : 25.4

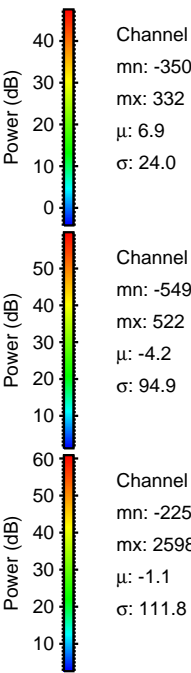
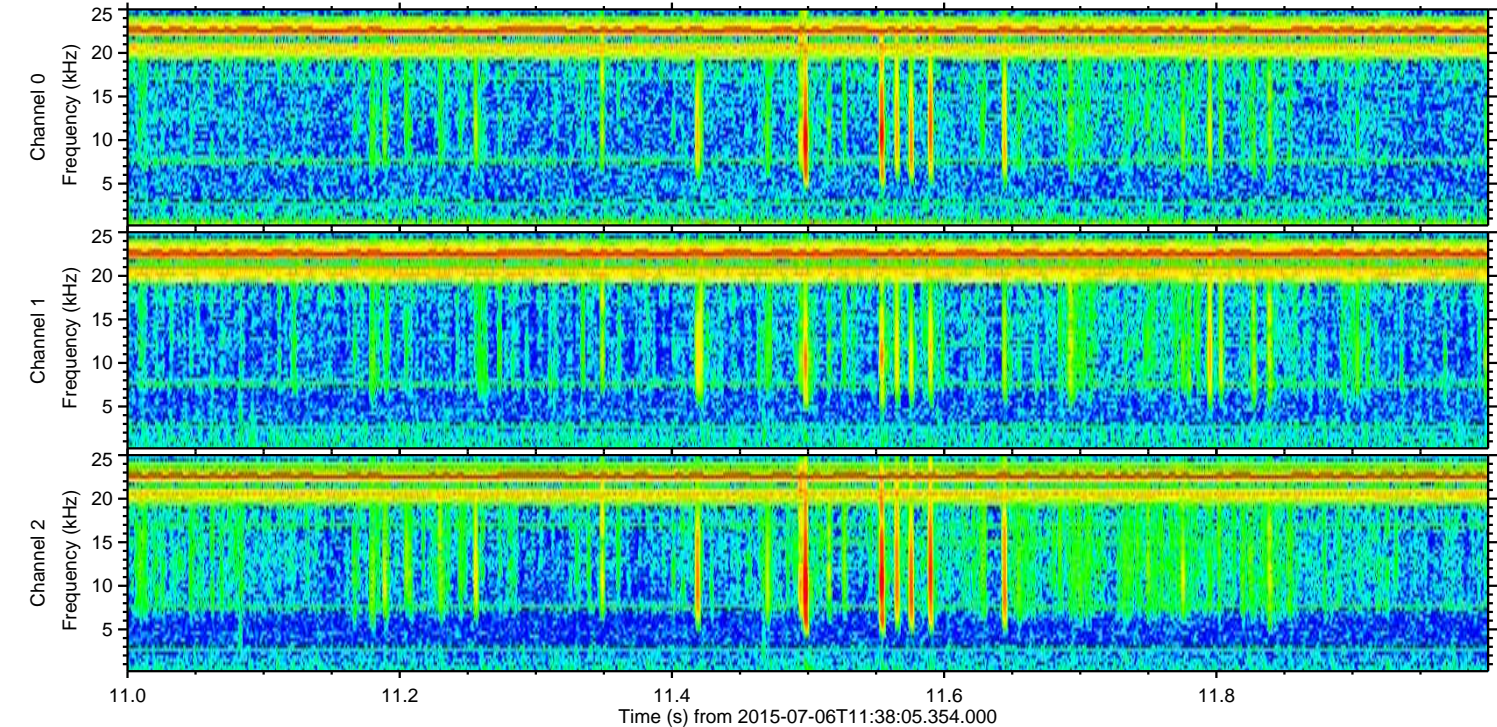
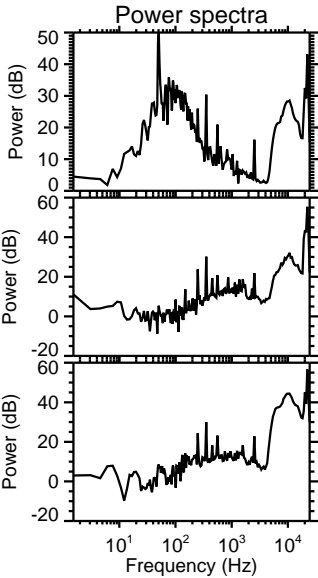
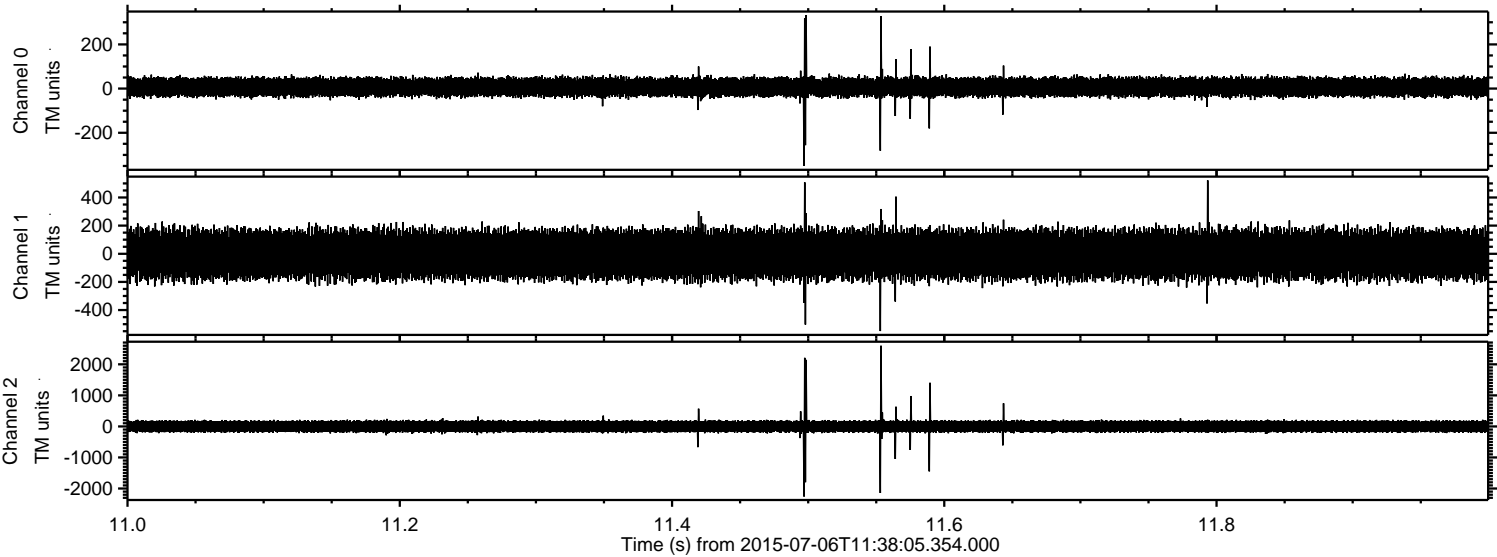
Channel 1
mn: -3510
mx: 3528
 μ : -4.2
 σ : 104.8

Channel 2
mn: -2519
mx: 2776
 μ : -1.1
 σ : 110.7

Processed Mon Jul 6 13:44:25 2015 by ELM ver.2012-10-06 from 001__elm20150706_113804__dat00.bin

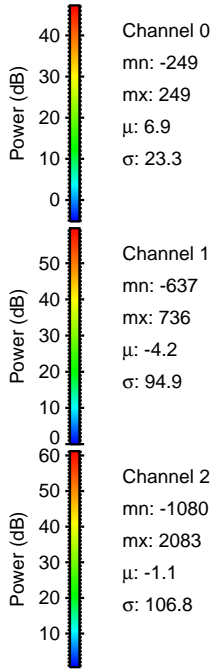
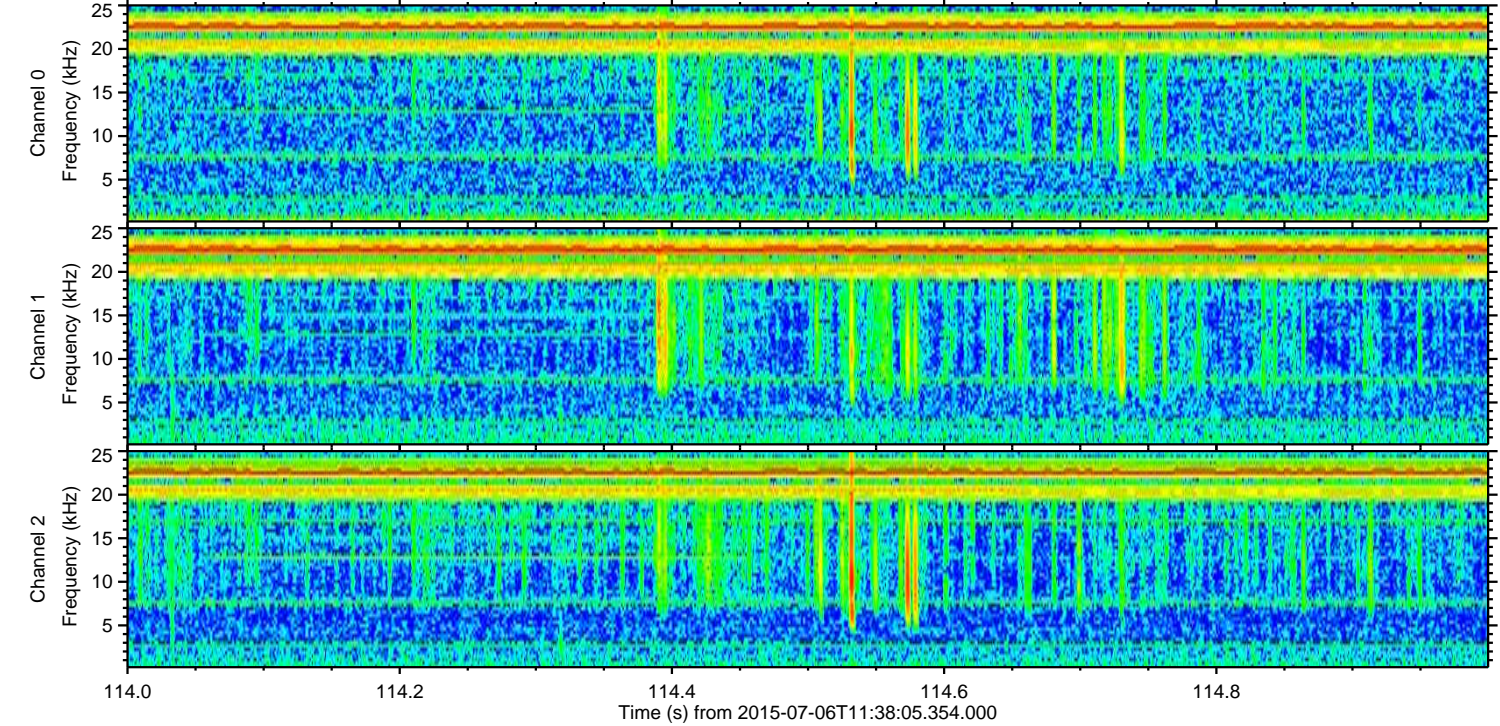
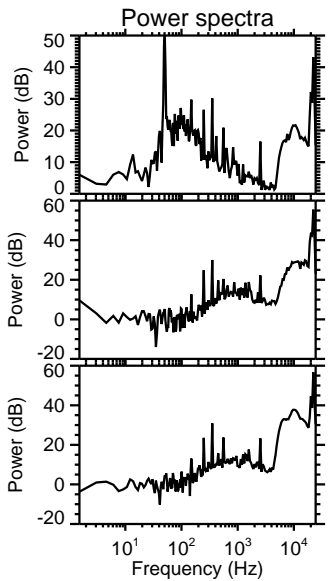
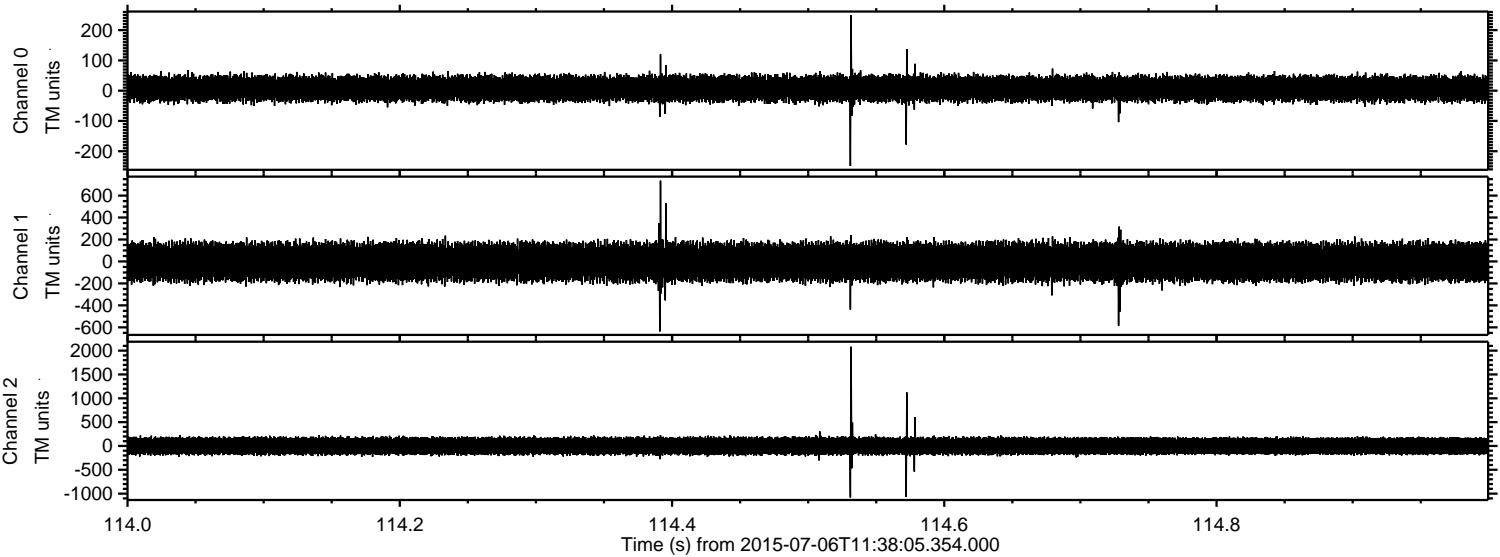


Processed Mon Jul 6 13:44:26 2015 by ELM ver.2012-10-06 from 001__elm20150706_113804__dat00.bin

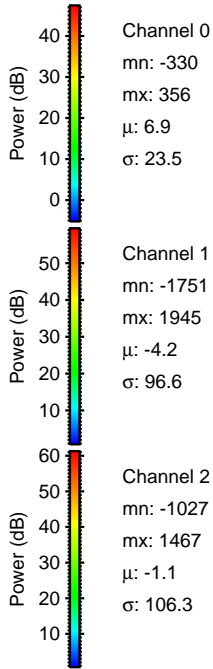
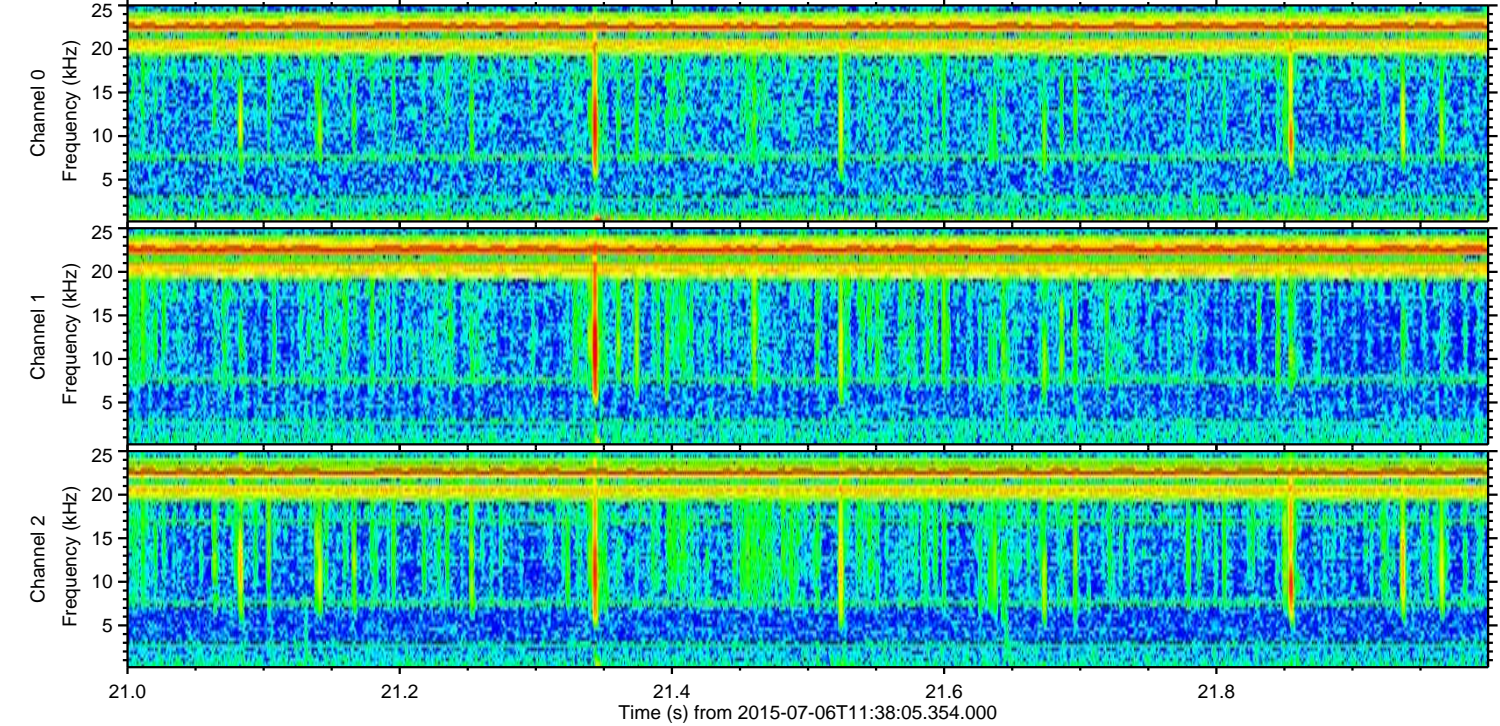
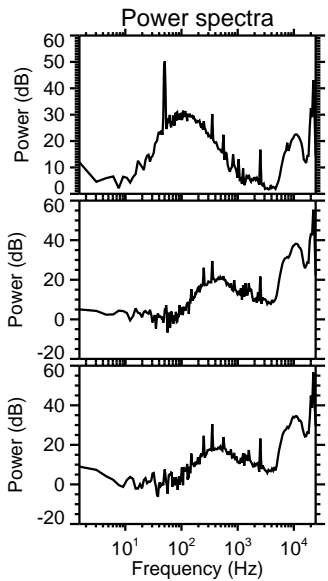
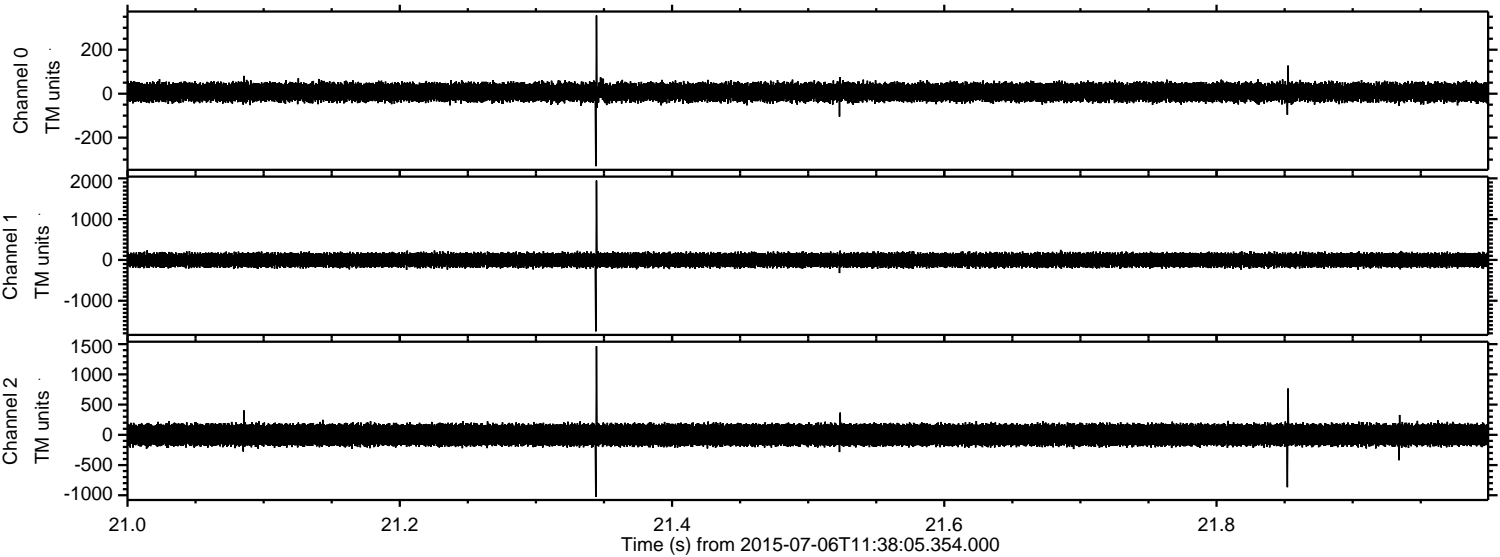


ELMAVAN 3D WAVEFORMS (Measured data sampled at 50 kHz) 51000 packets of 144 samples from 2015-07-06T11:38:05.354.000. Part 115/147

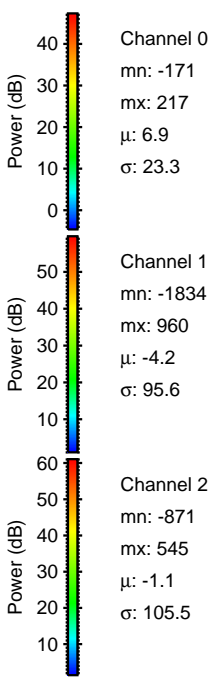
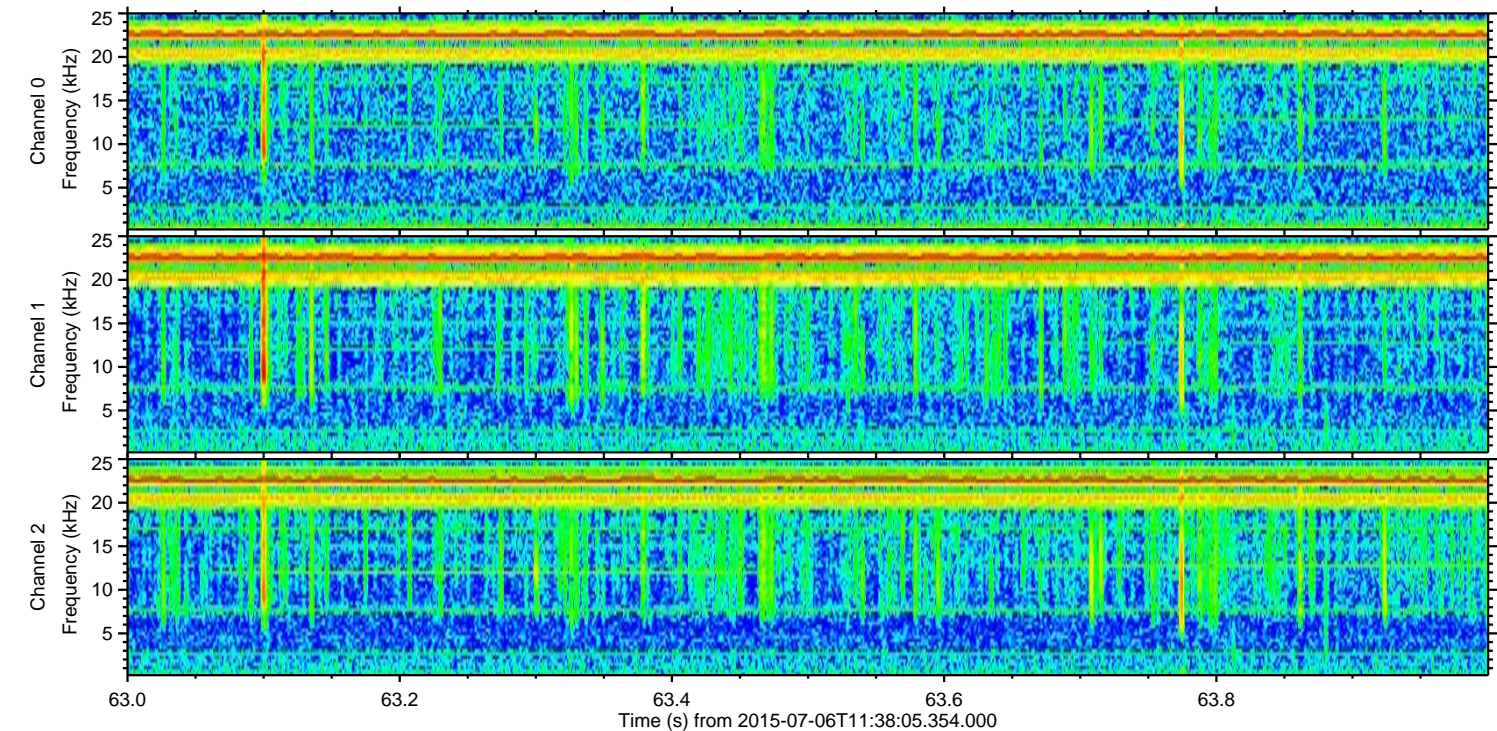
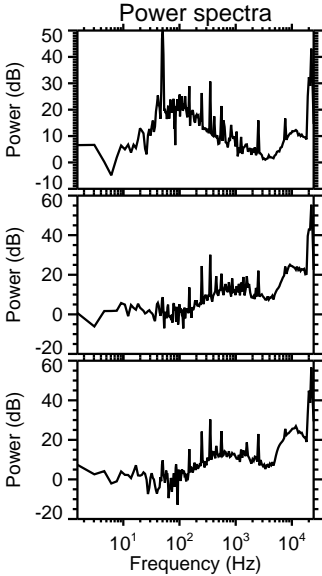
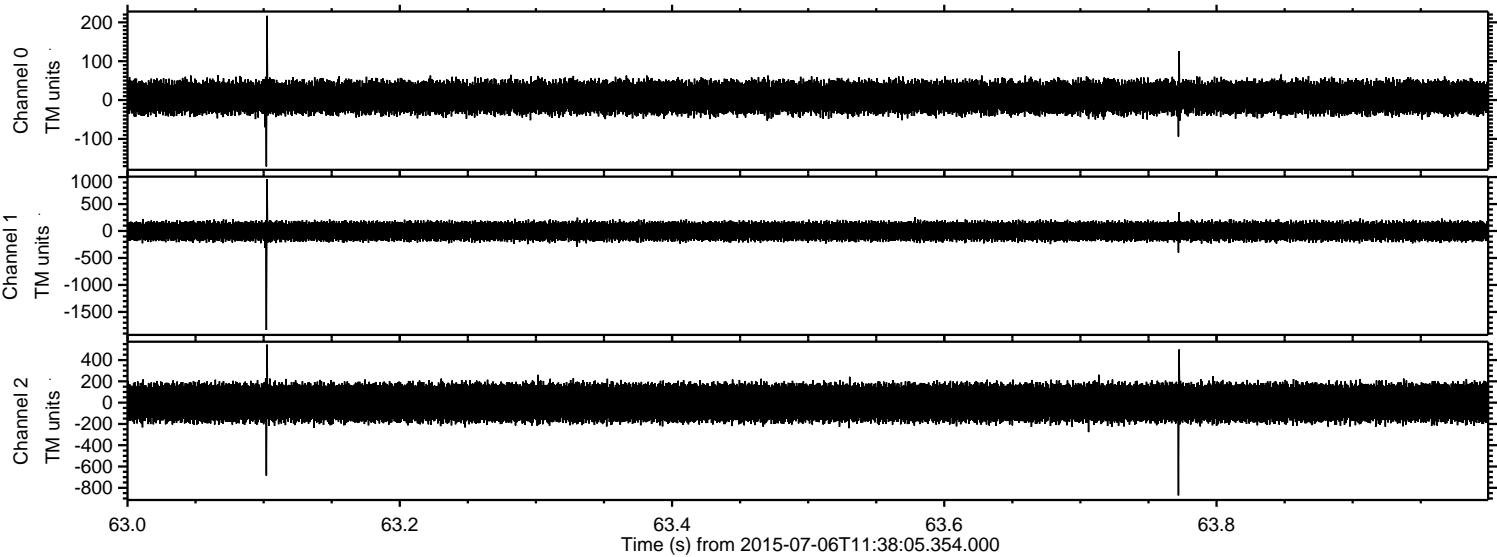
Processed Mon Jul 6 13:44:27 2015 by ELM ver.2012-10-06 from 001__elm20150706_113804__dat00.bin



Processed Mon Jul 6 13:44:28 2015 by ELM ver.2012-10-06 from 001__elm20150706_113804__dat00.bin



Processed Mon Jul 6 13:44:29 2015 by ELM ver.2012-10-06 from 001__elm20150706_113804__dat00.bin



Processed Mon Jul 6 13:44:30 2015 by ELM ver.2012-10-06 from 001__elm20150706_113804__dat00.bin

