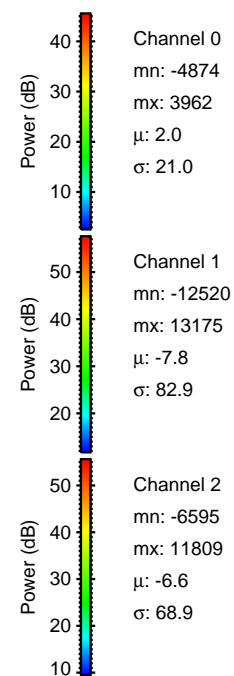
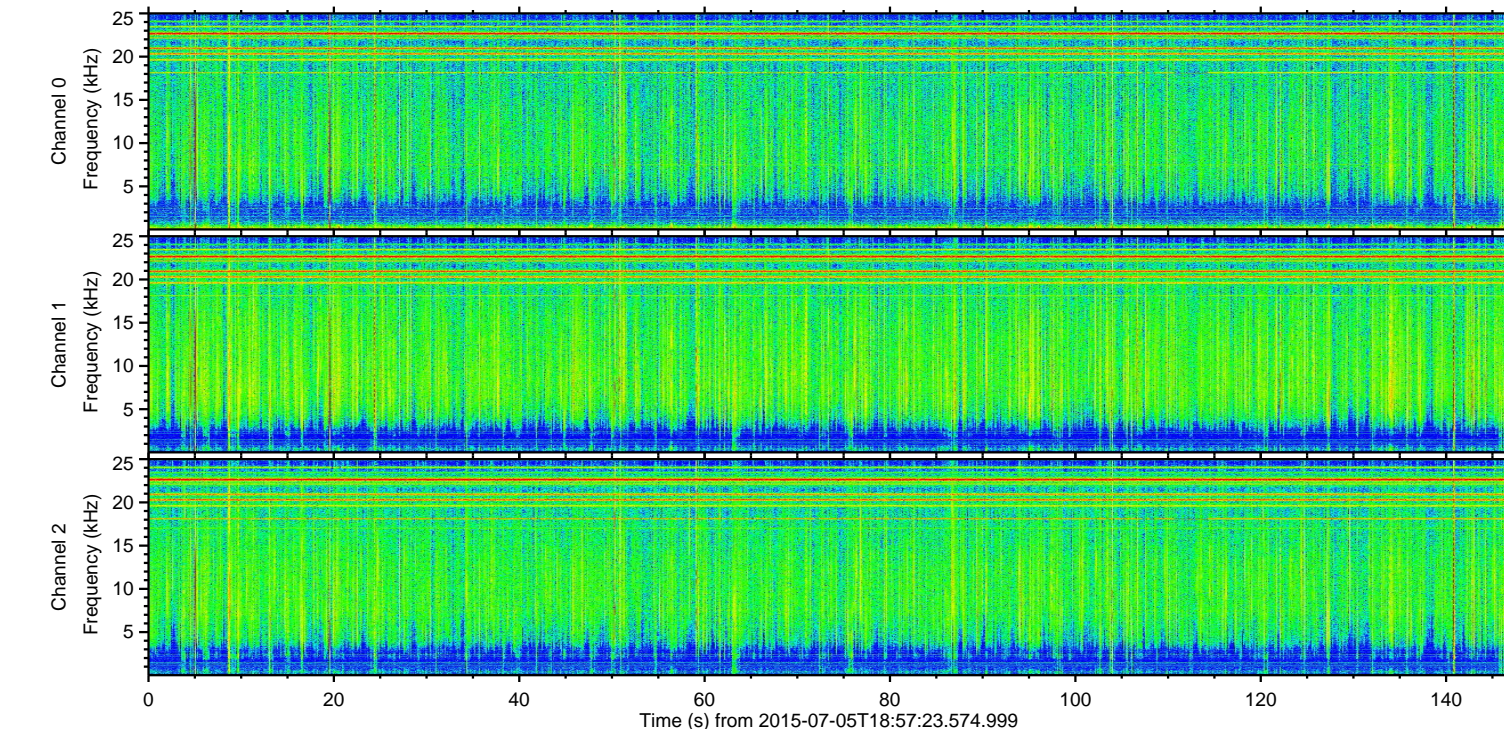
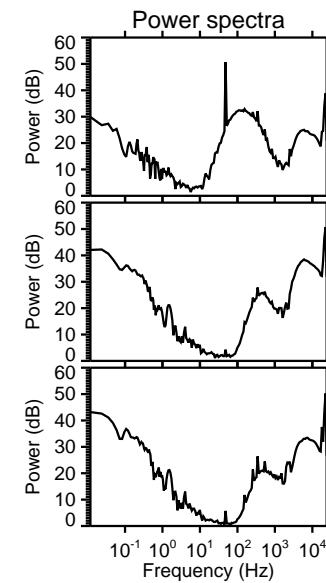
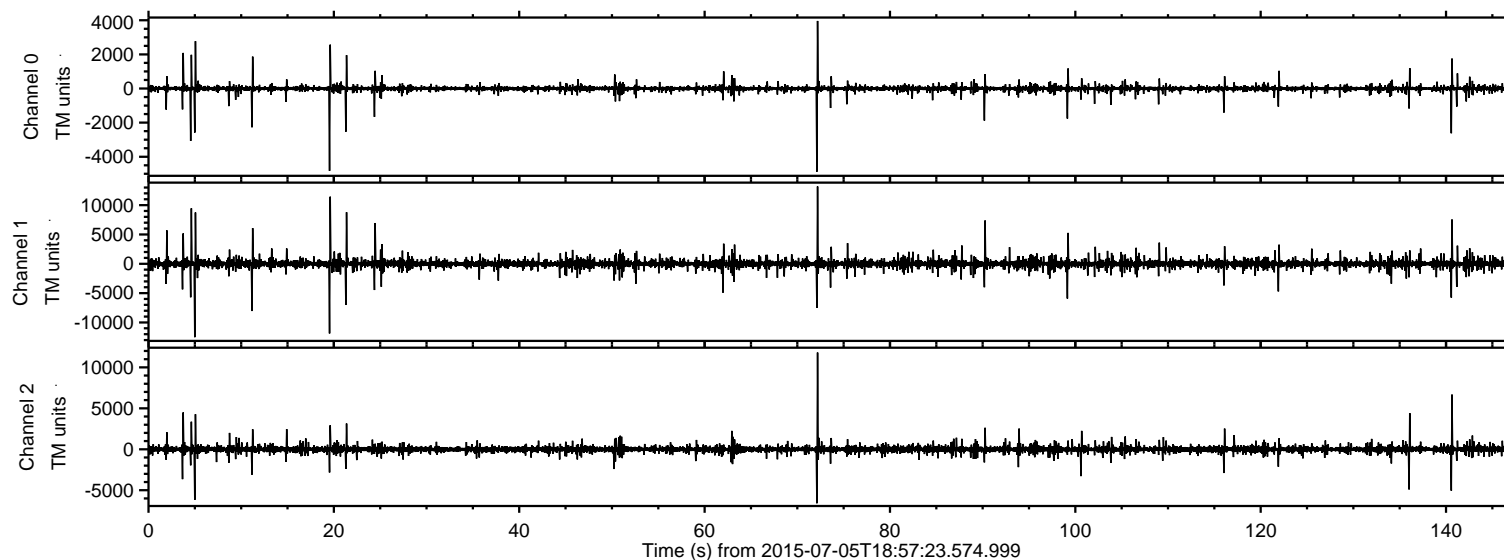


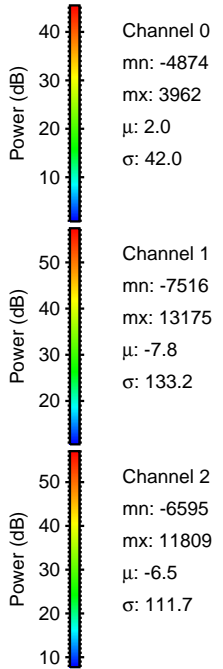
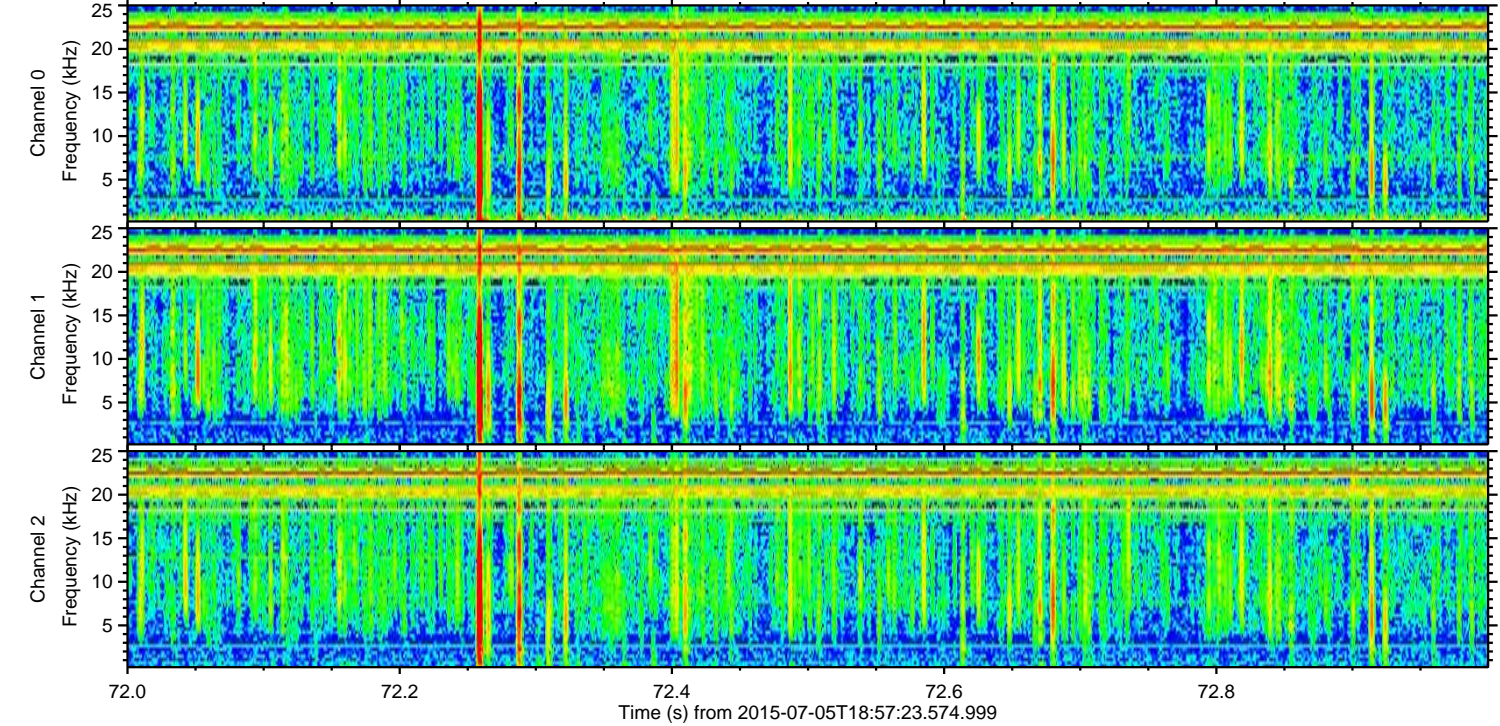
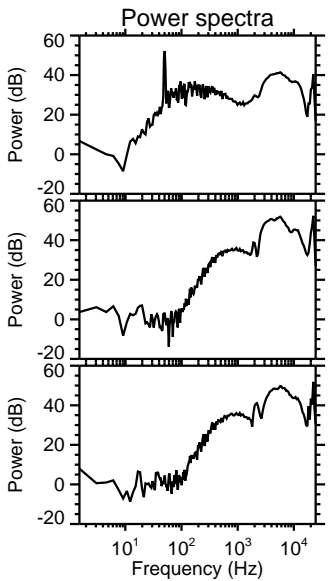
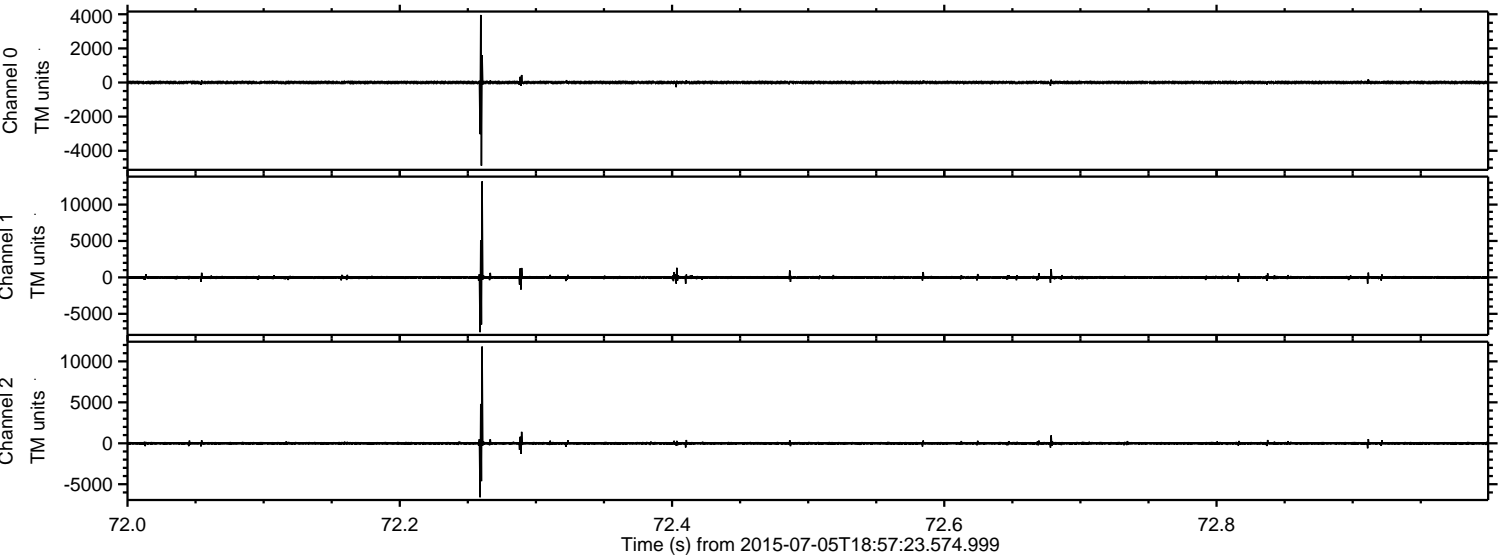
ELMAVAN 3D WAVEFORMS (Measured data sampled at 50 kHz) 51000 packets of 144 samples from 2015-07-05T18:57:23.574.999.

Processed Sun Jul 5 21:03:33 2015 by ELM ver.2012-10-06 from 001__elm20150705_185722__dat00.bin

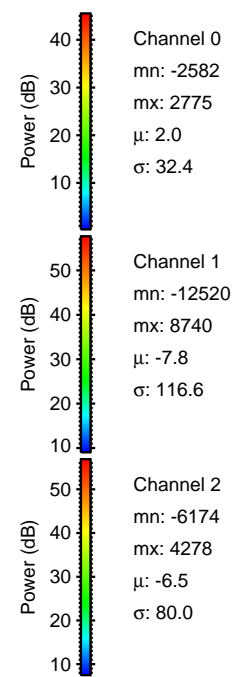
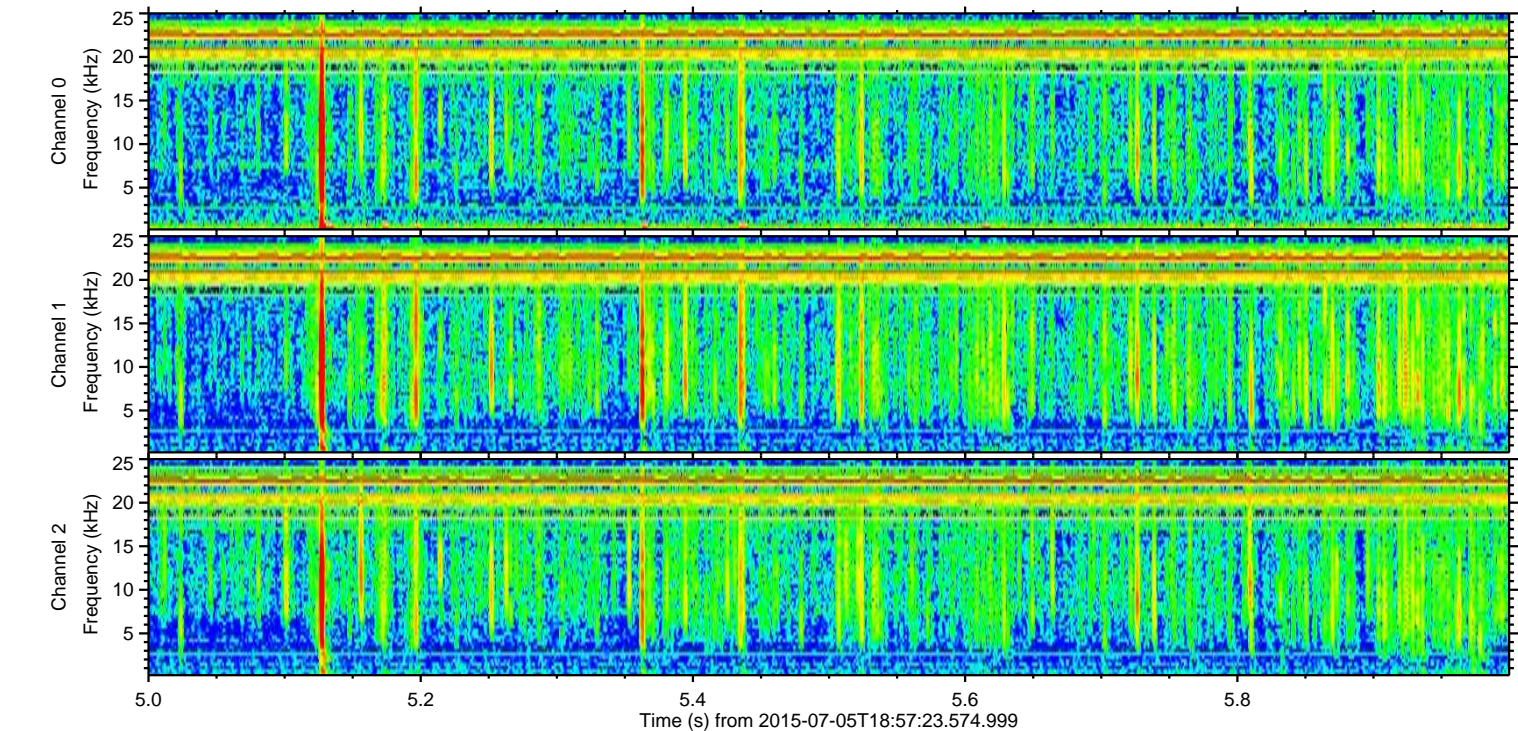
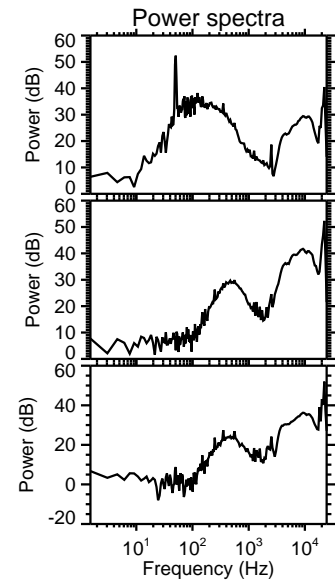
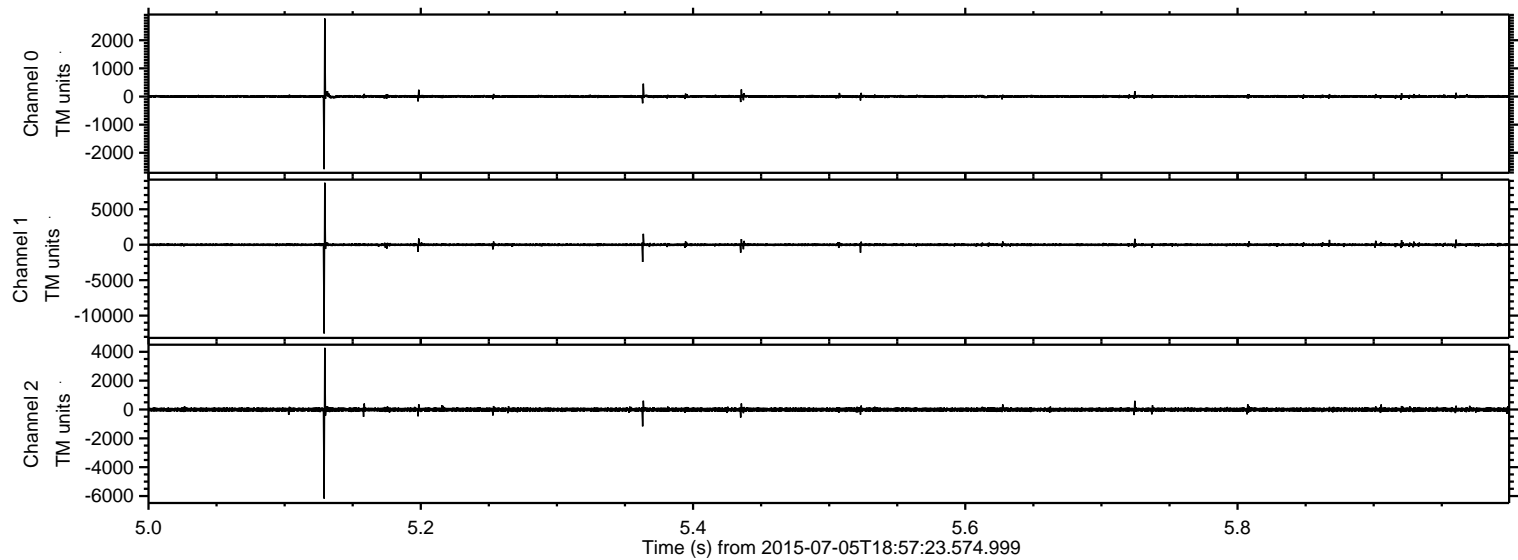


ELMAVAN 3D WAVEFORMS (Measured data sampled at 50 kHz) 51000 packets of 144 samples from 2015-07-05T18:57:23.574.999. Part 73/147

Processed Sun Jul 5 21:03:49 2015 by ELM ver.2012-10-06 from 001__elm20150705_185722__dat00.bin

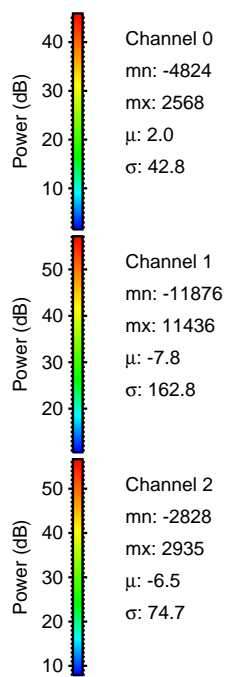
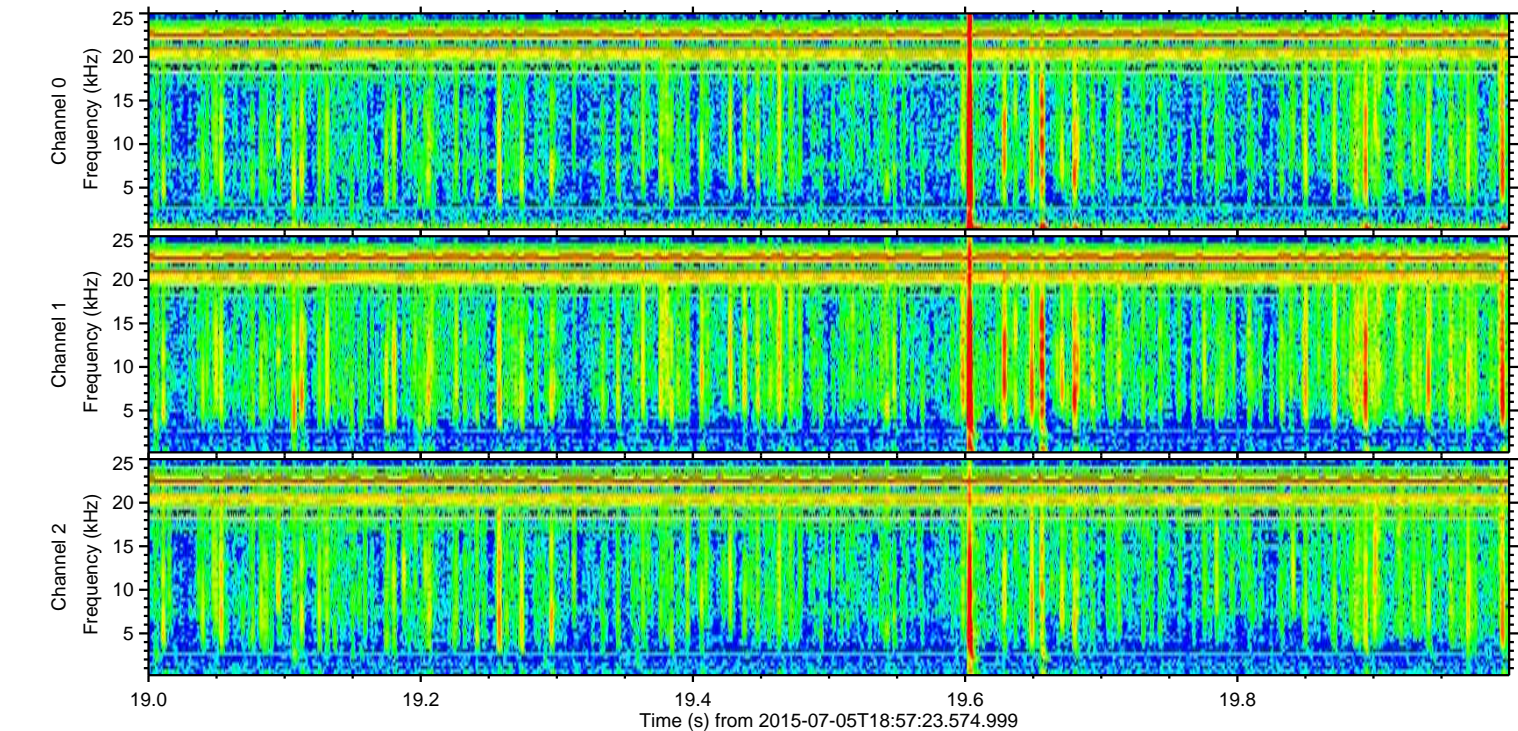
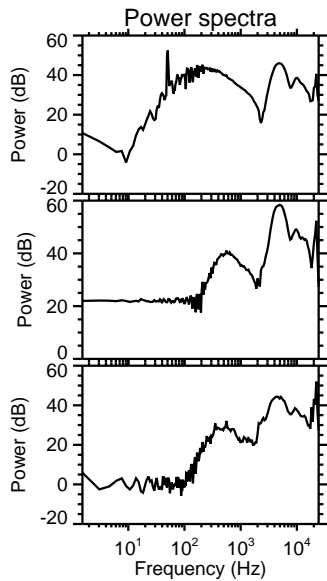
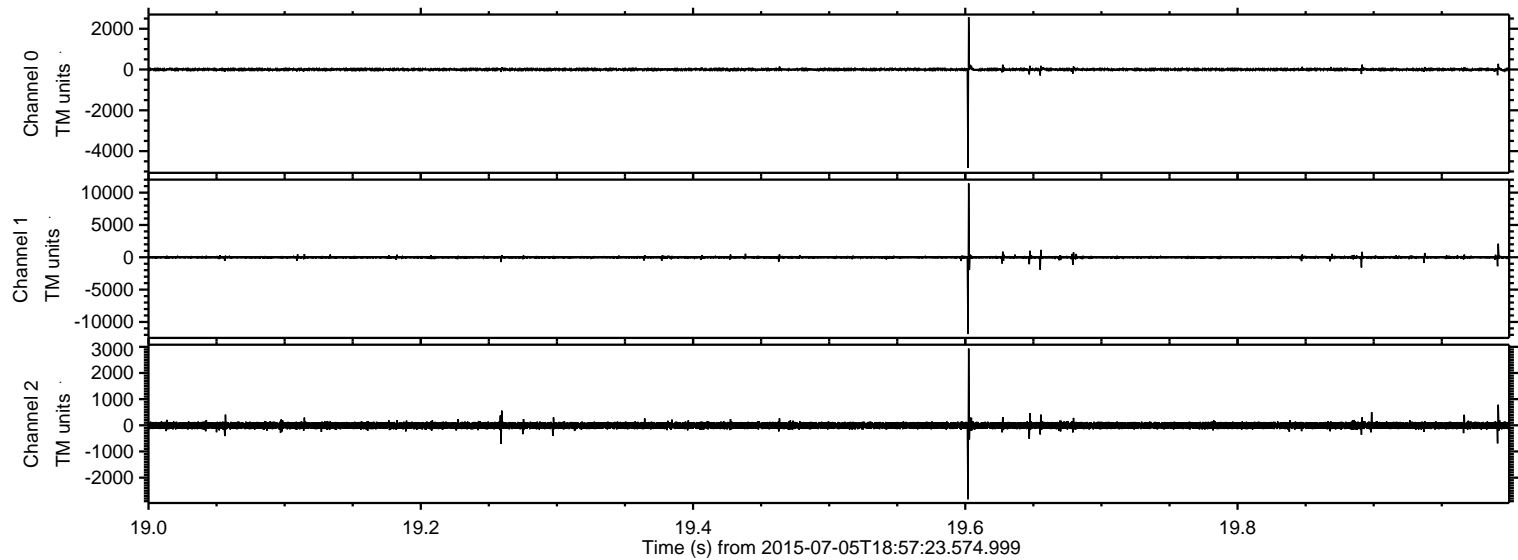


Processed Sun Jul 5 21:03:50 2015 by ELM ver.2012-10-06 from 001__elm20150705_185722__dat00.bin

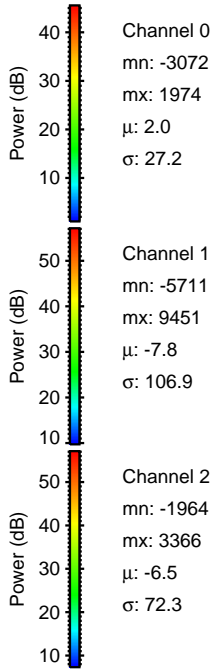
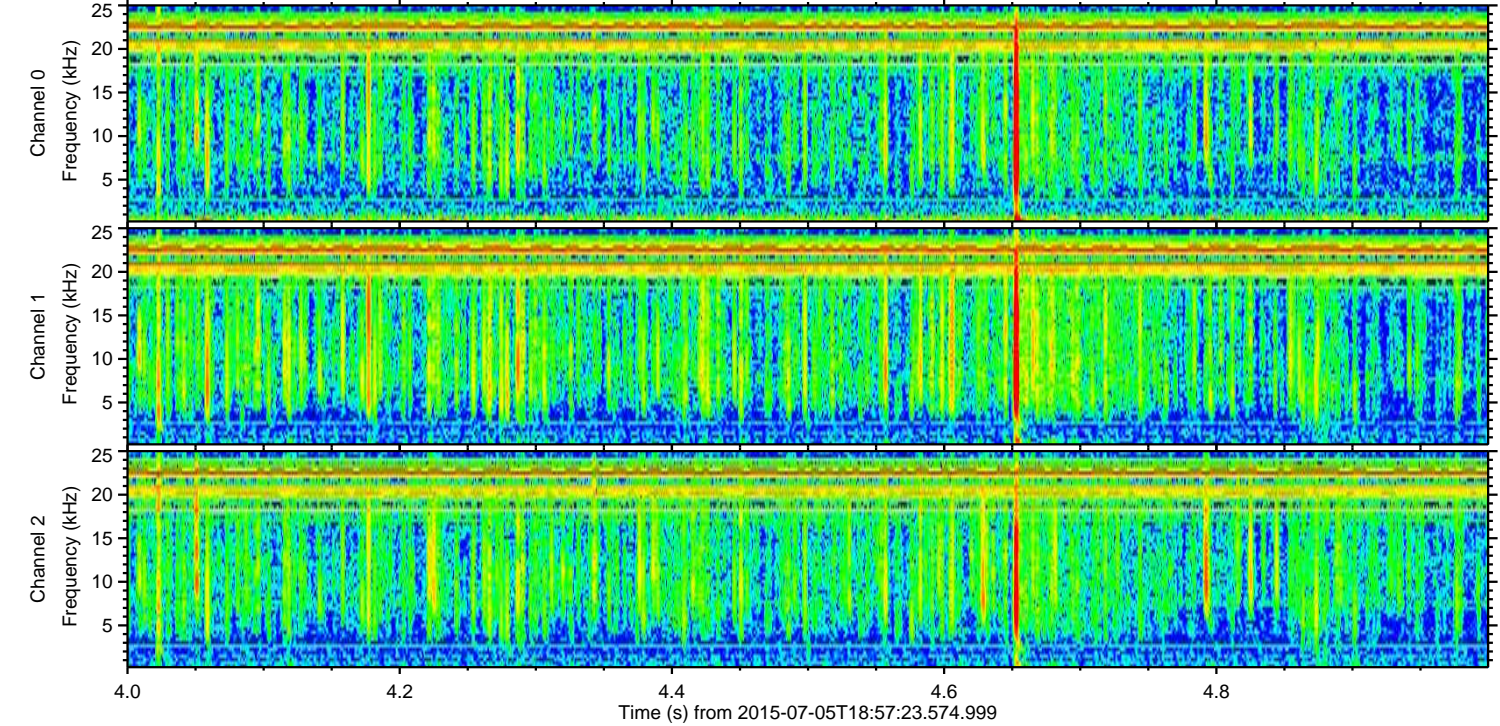
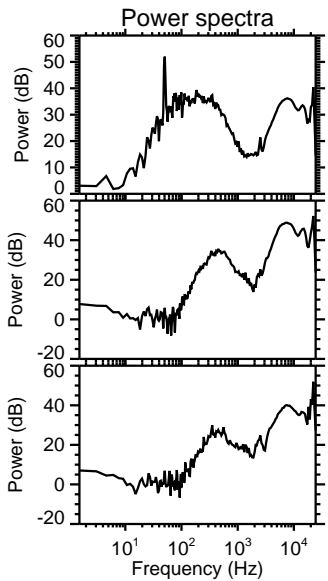
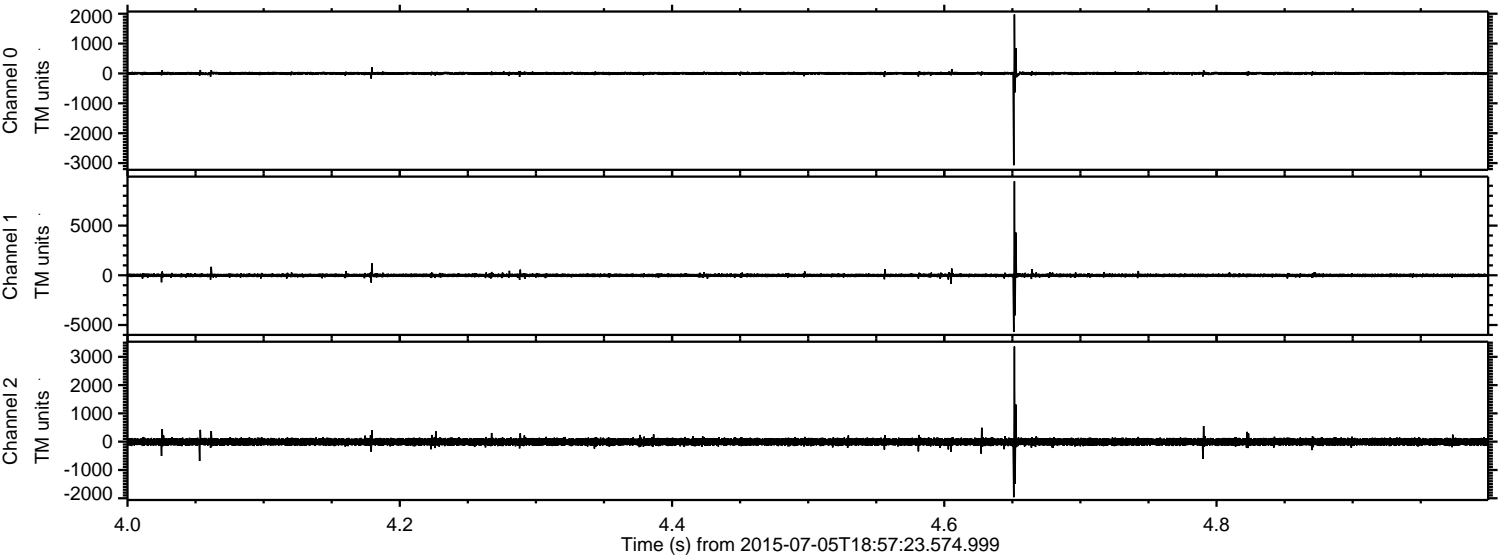


ELMAVAN 3D WAVEFORMS (Measured data sampled at 50 kHz) 51000 packets of 144 samples from 2015-07-05T18:57:23.574.999. Part 20/147

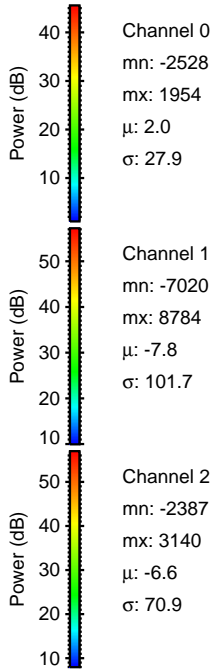
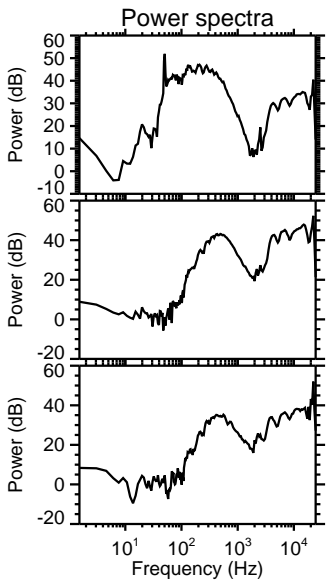
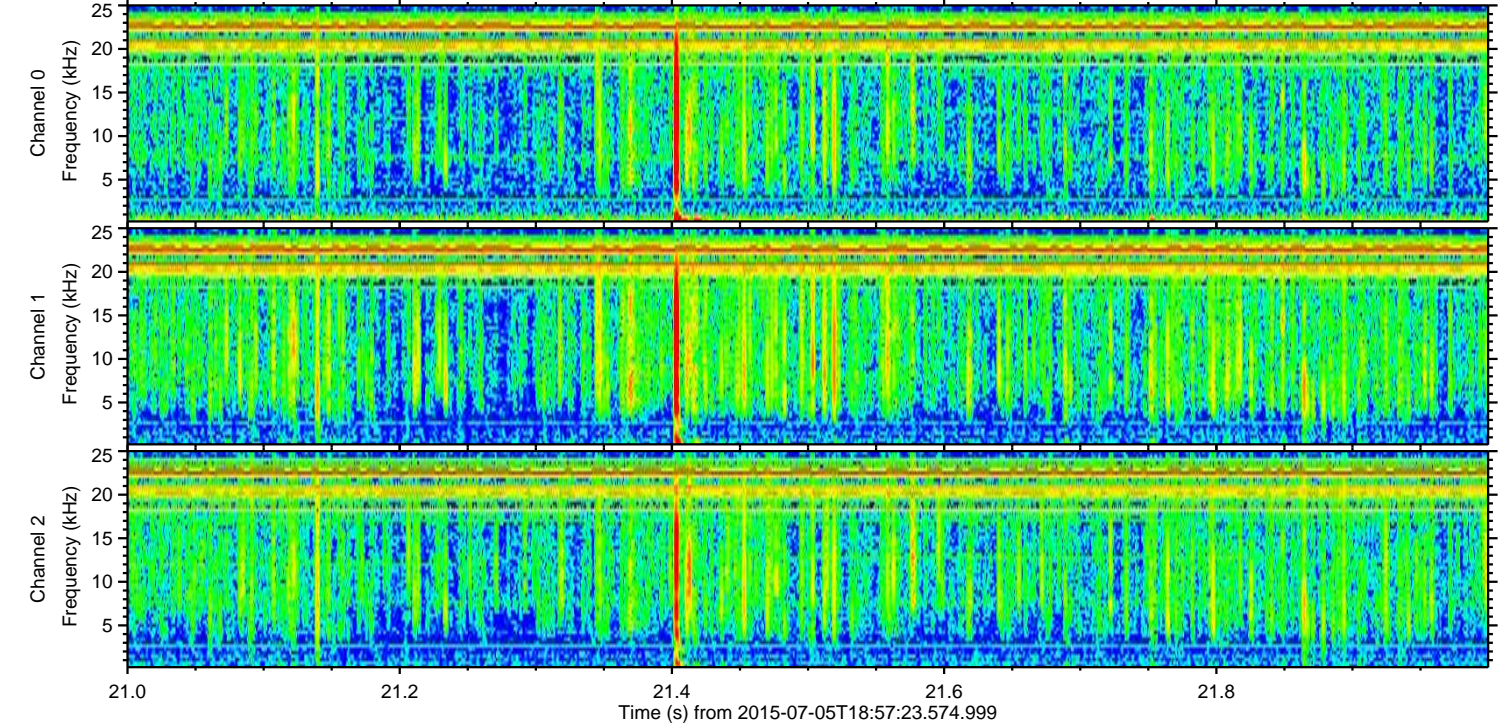
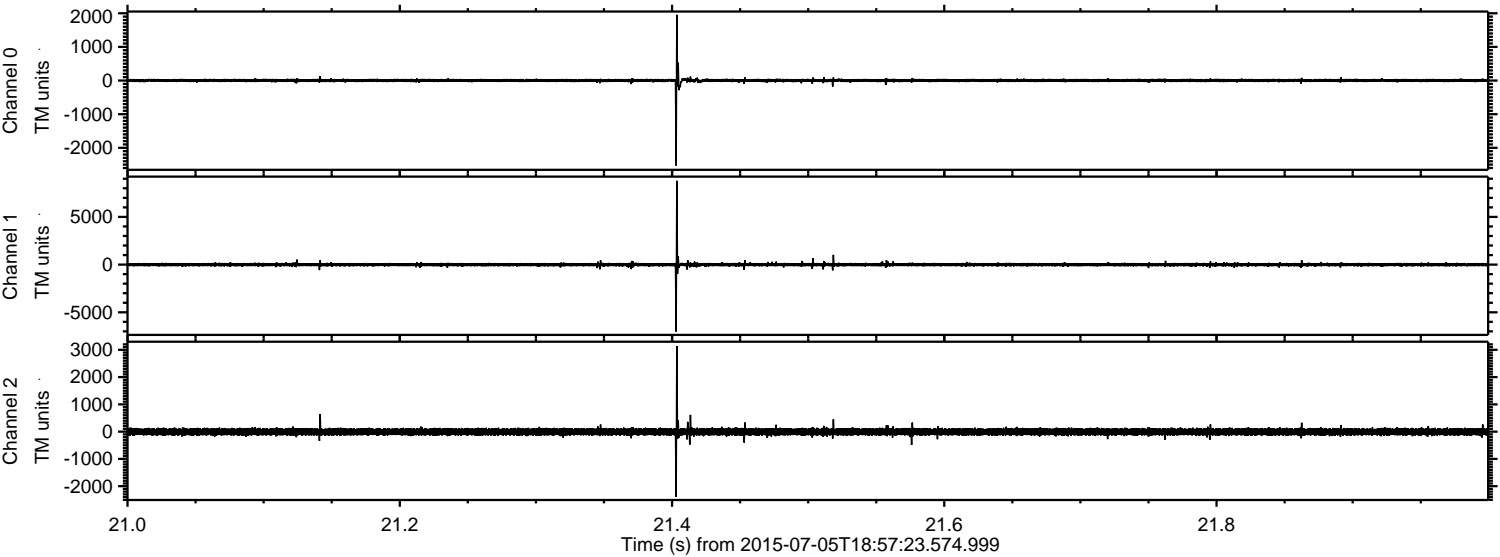
Processed Sun Jul 5 21:03:51 2015 by ELM ver.2012-10-06 from 001__elm20150705_185722__dat00.bin



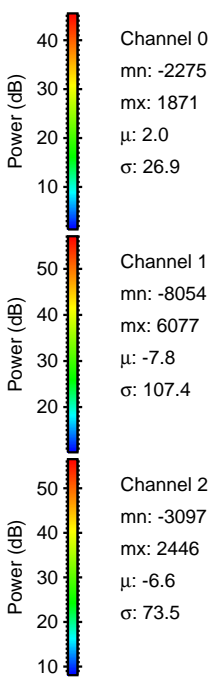
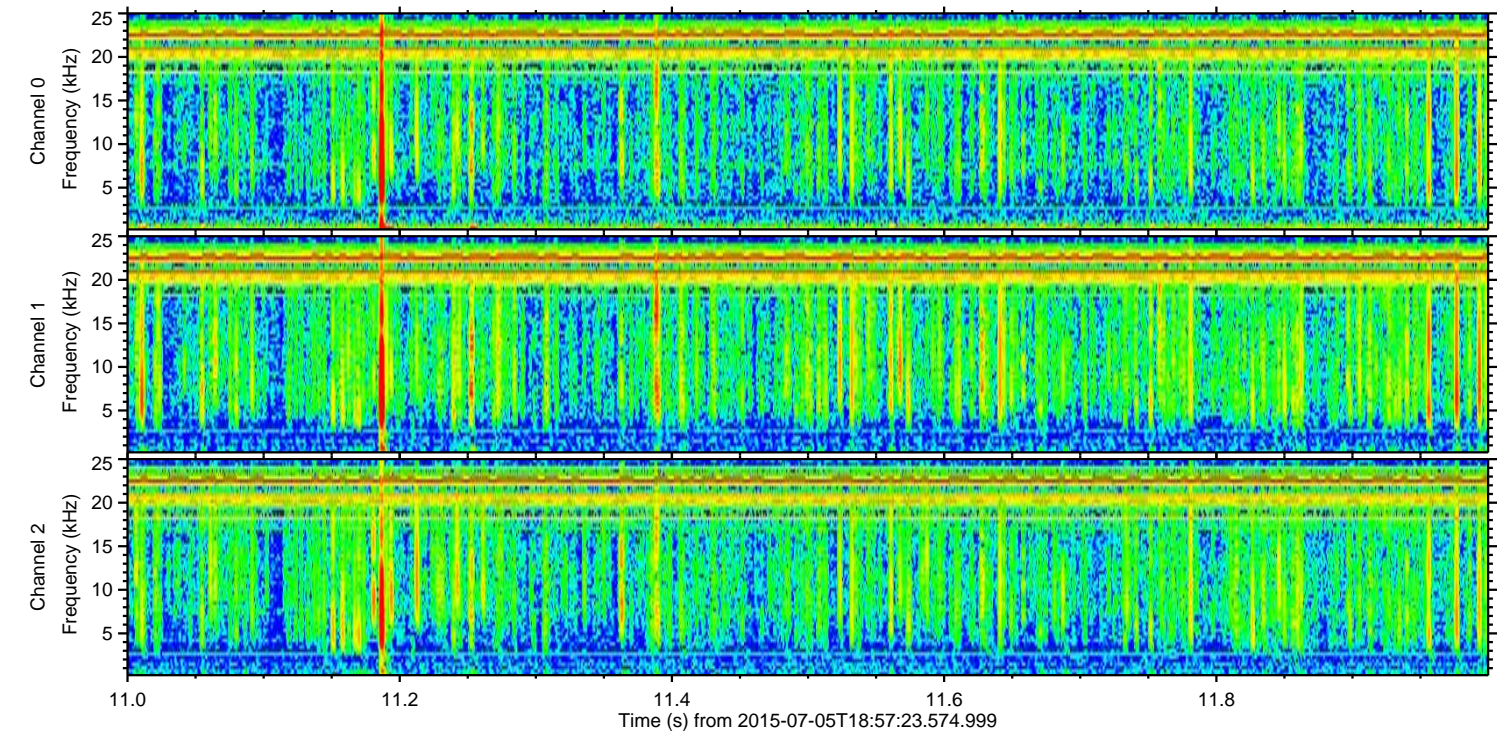
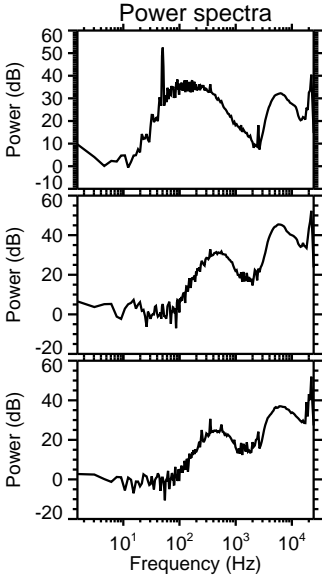
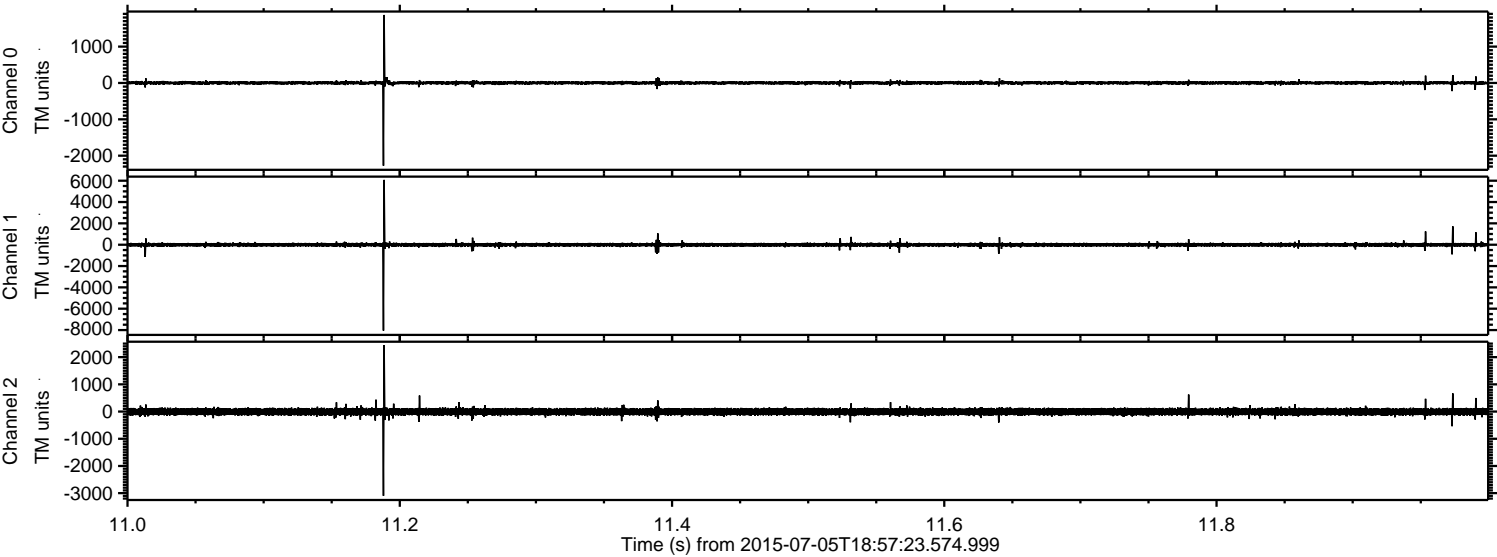
Processed Sun Jul 5 21:03:53 2015 by ELM ver.2012-10-06 from 001__elm20150705_185722__dat00.bin



Processed Sun Jul 5 21:03:54 2015 by ELM ver.2012-10-06 from 001__elm20150705_185722__dat00.bin

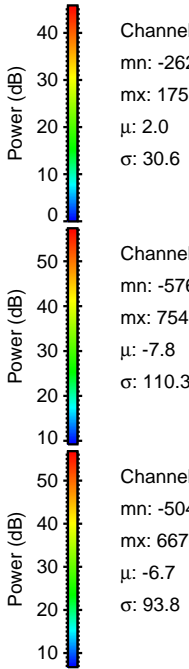
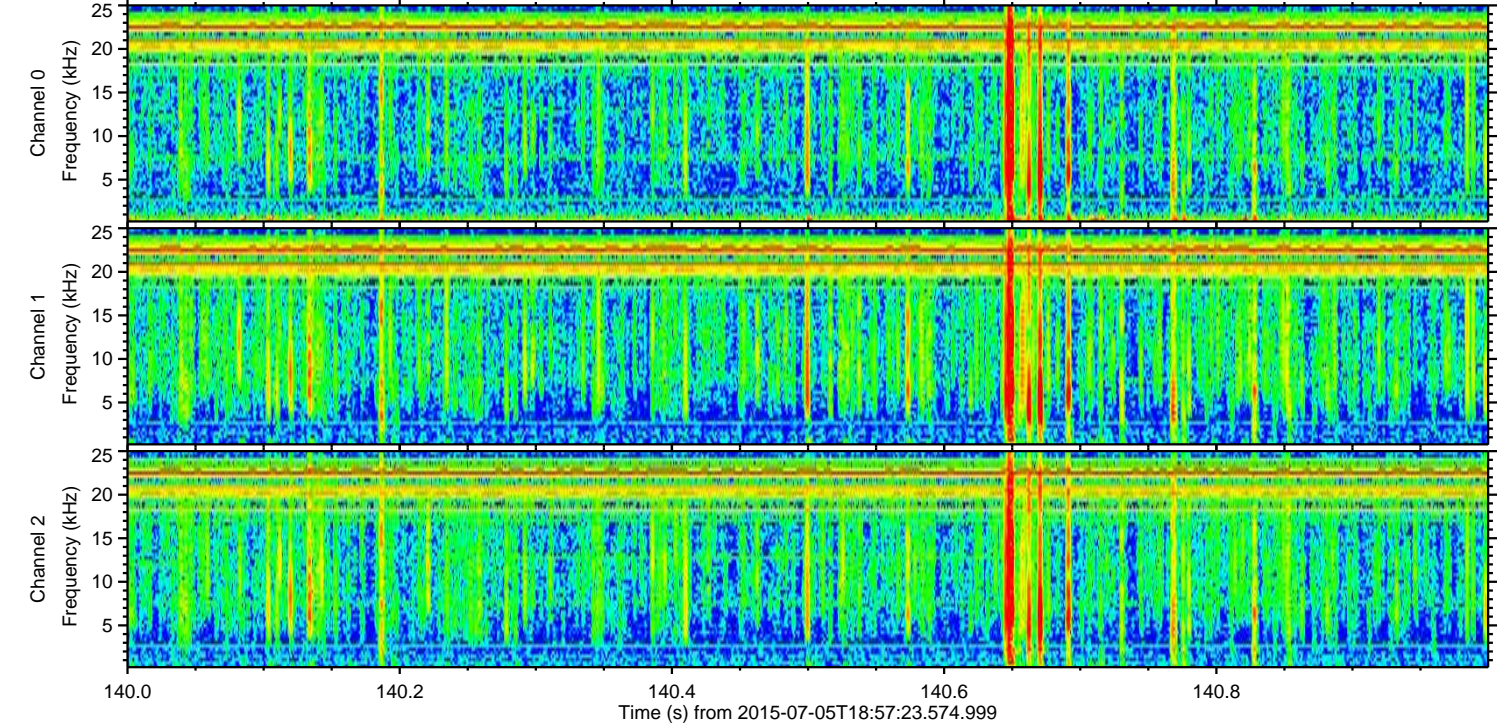
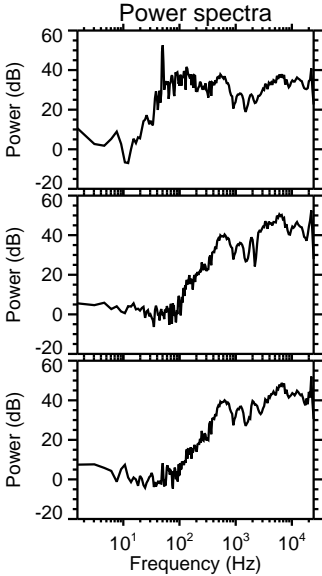
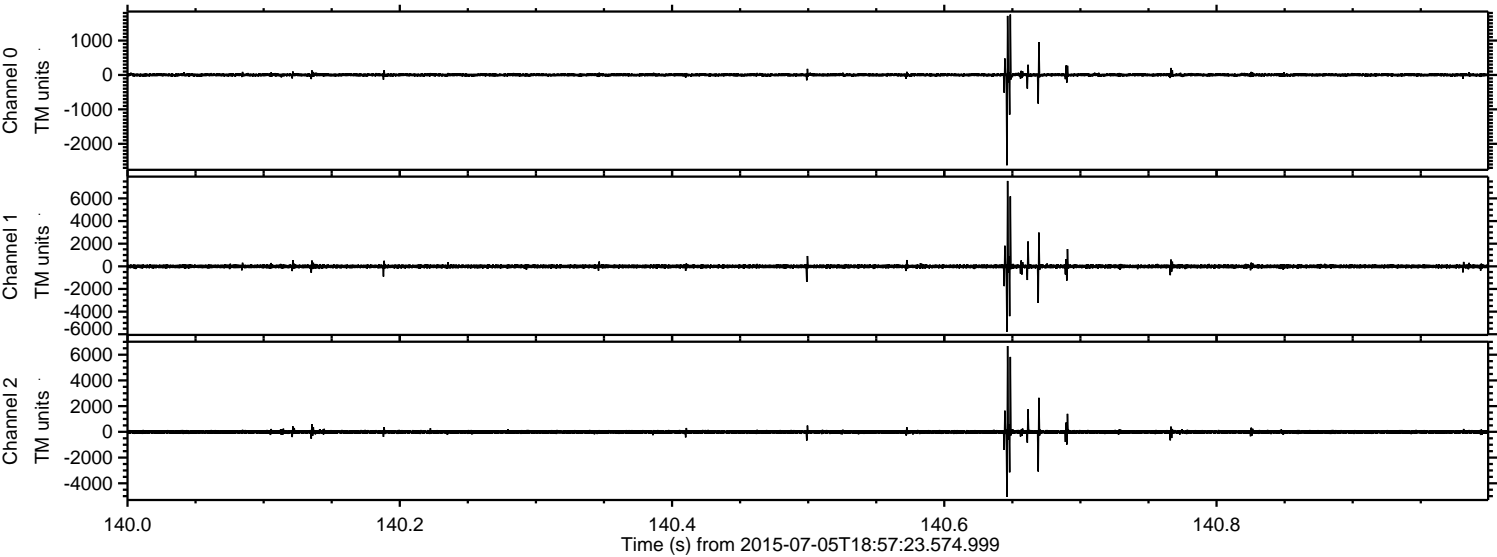


Processed Sun Jul 5 21:03:55 2015 by ELM ver.2012-10-06 from 001__elm20150705_185722__dat00.bin

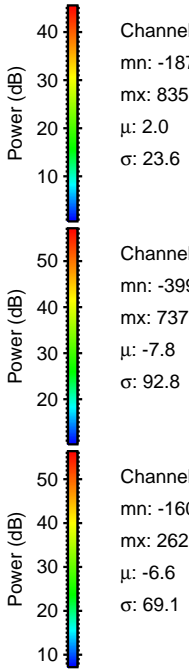
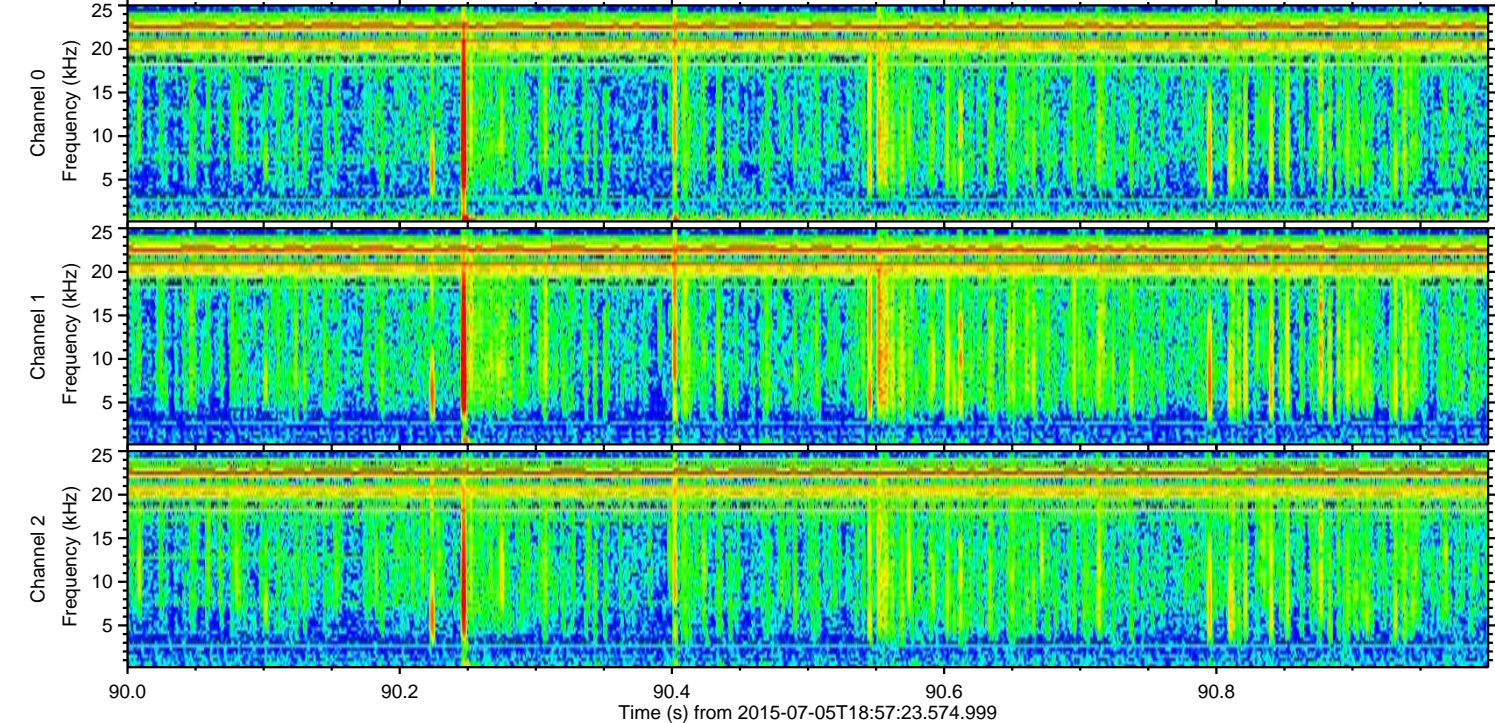
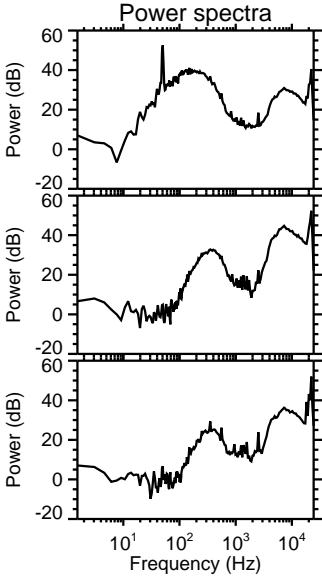
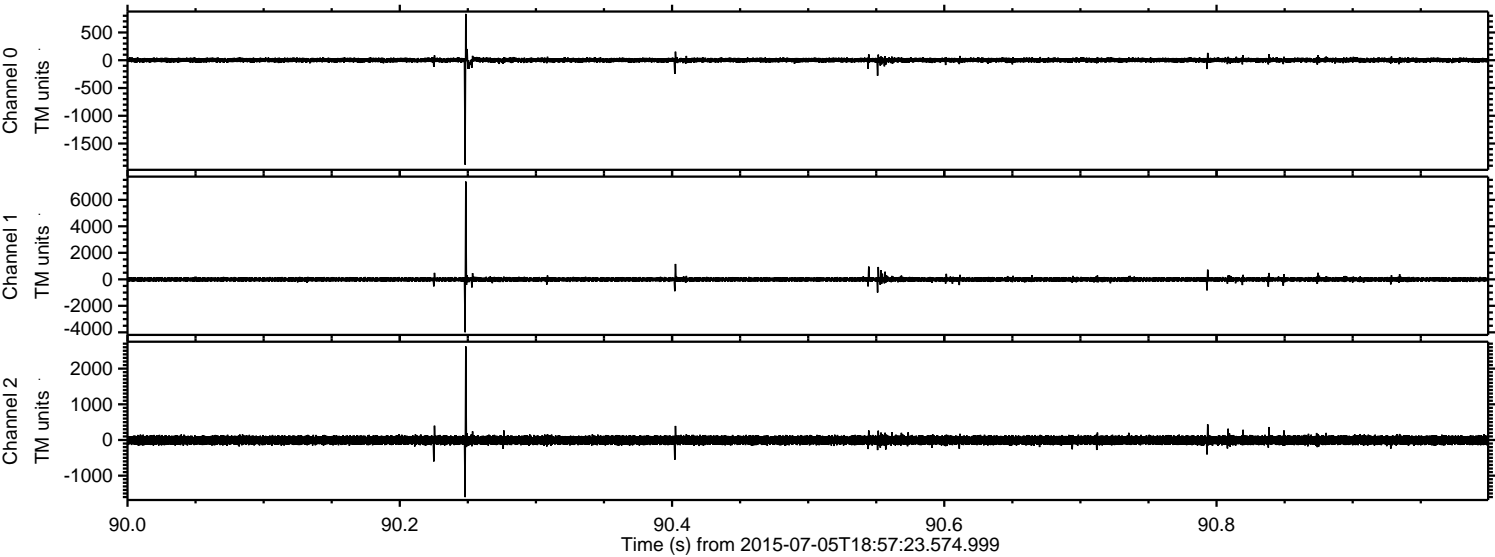


ELMAVAN 3D WAVEFORMS (Measured data sampled at 50 kHz) 51000 packets of 144 samples from 2015-07-05T18:57:23.574.999. Part 141/147

Processed Sun Jul 5 21:03:56 2015 by ELM ver.2012-10-06 from 001__elm20150705_185722__dat00.bin



Processed Sun Jul 5 21:03:57 2015 by ELM ver.2012-10-06 from 001__elm20150705_185722__dat00.bin

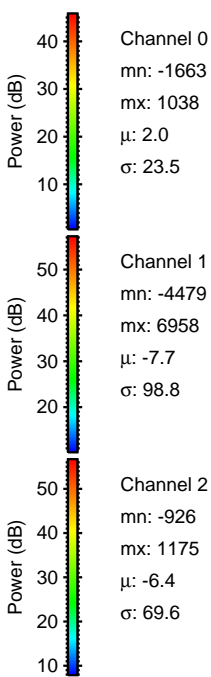
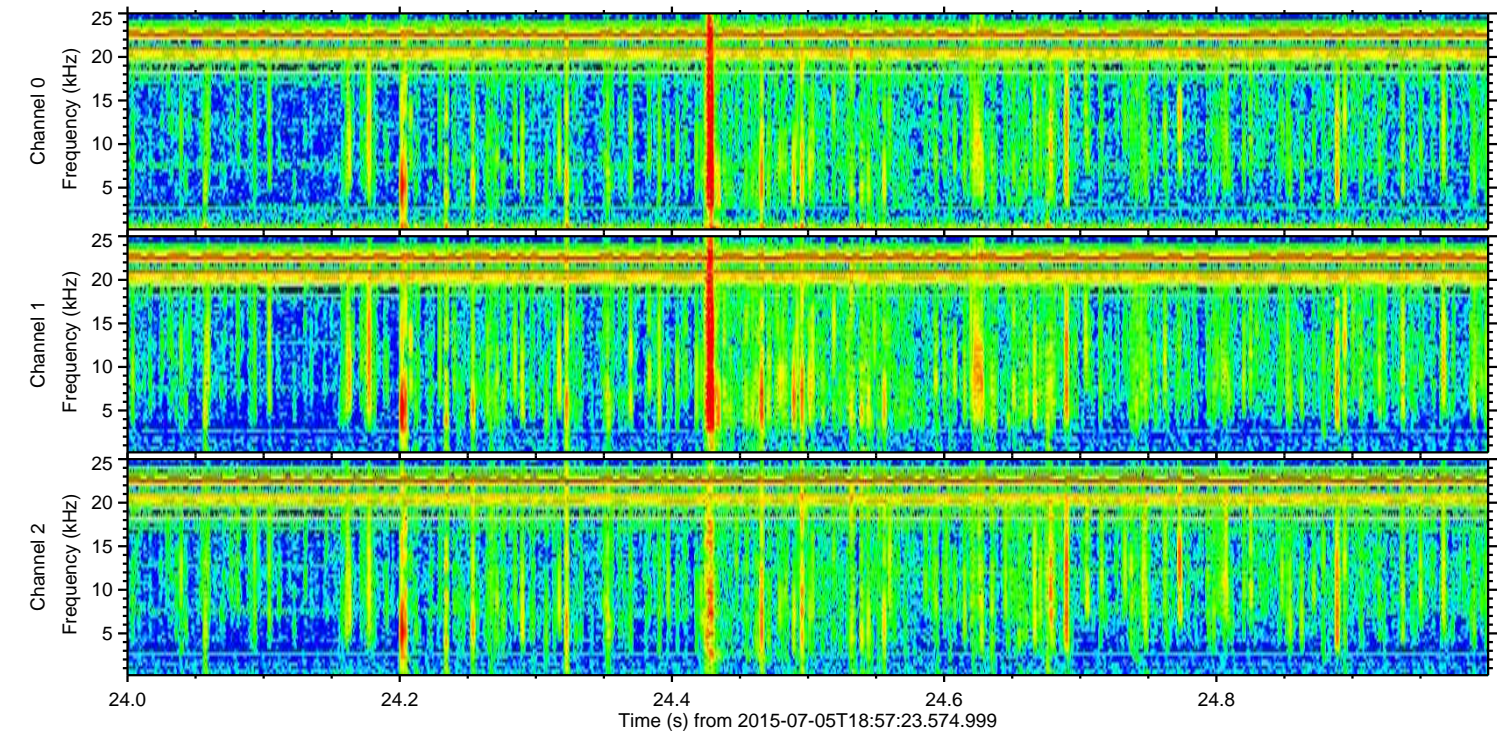
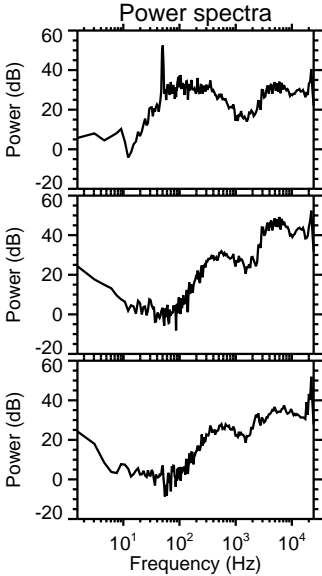
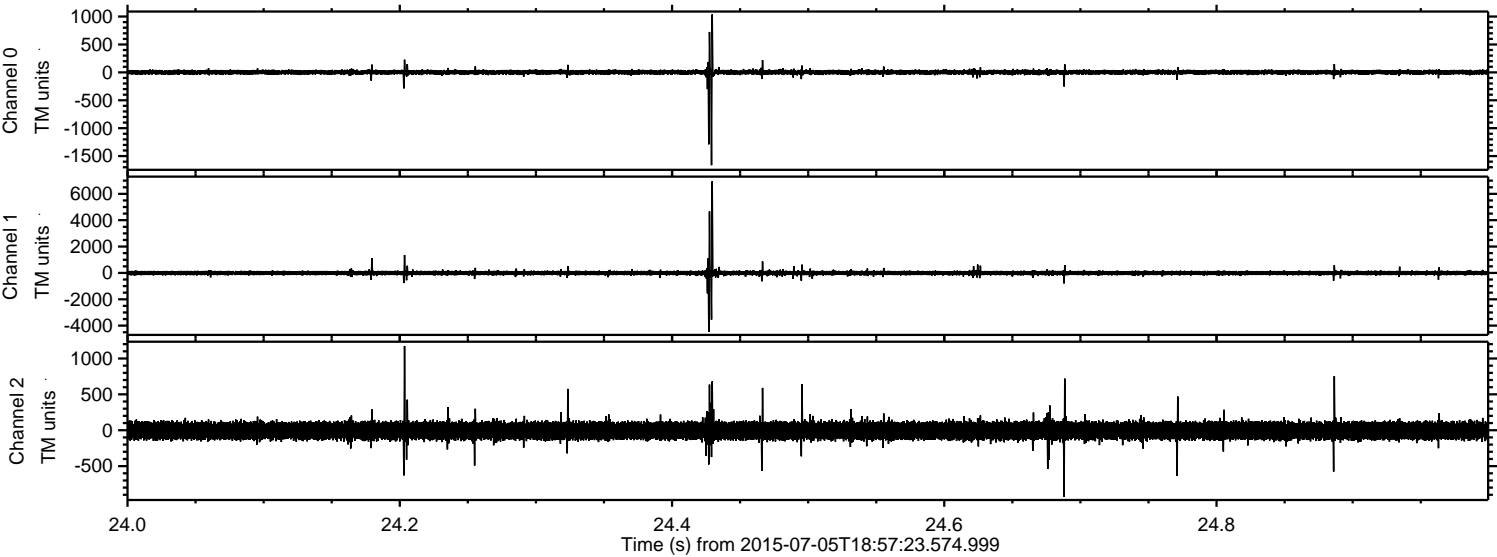


Channel 0
mn: -1879
mx: 835
 μ : 2.0
 σ : 23.6

Channel 1
mn: -3993
mx: 7379
 μ : -7.8
 σ : 92.8

Channel 2
mn: -1602
mx: 2623
 μ : -6.6
 σ : 69.1

Processed Sun Jul 5 21:03:58 2015 by ELM ver.2012-10-06 from 001__elm20150705_185722__dat00.bin



Processed Sun Jul 5 21:03:59 2015 by ELM ver.2012-10-06 from 001__elm20150705_185722__dat00.bin

