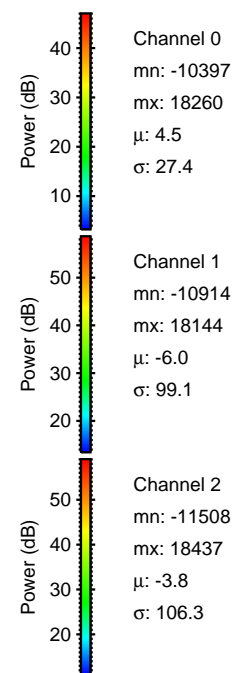
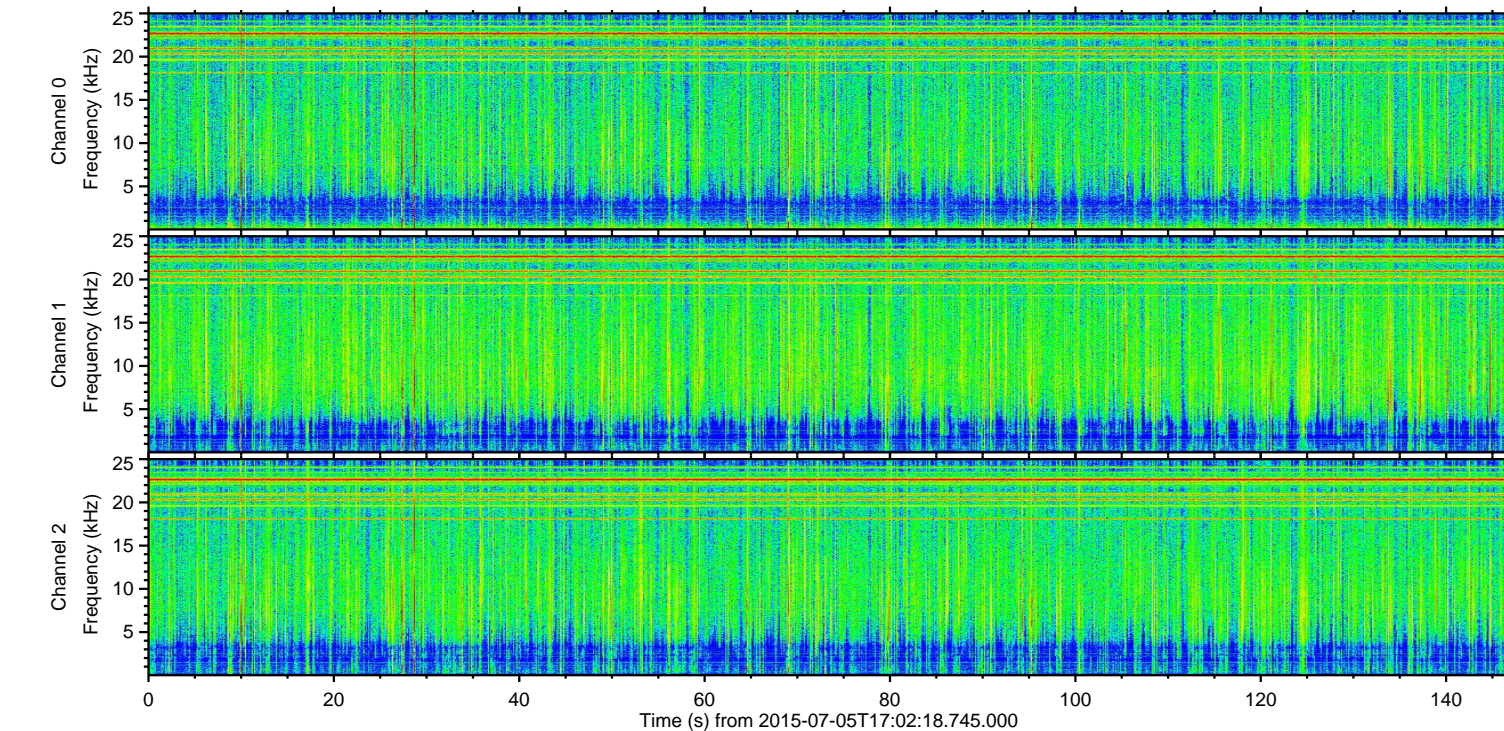
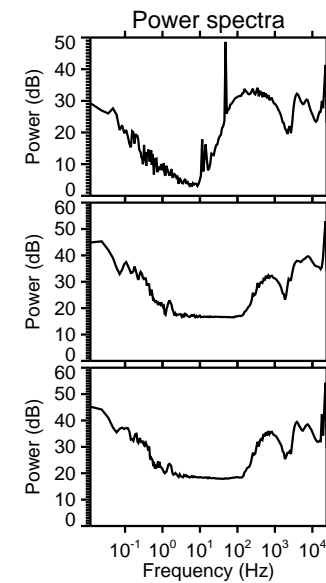
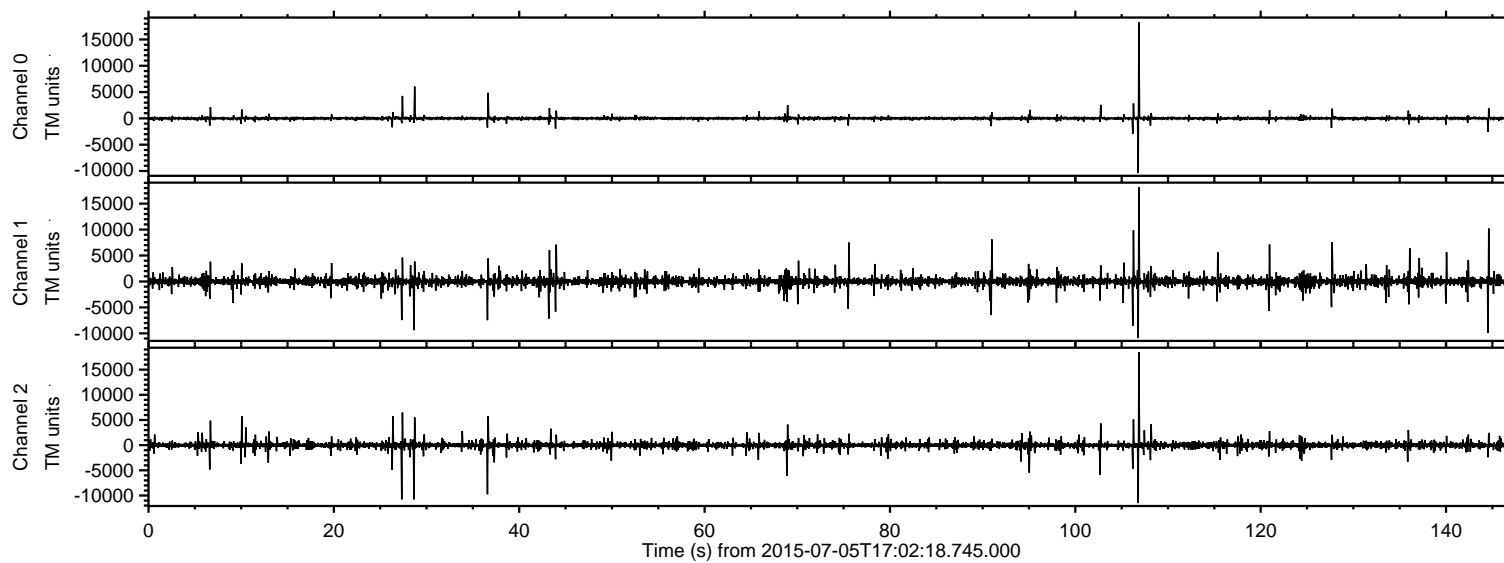


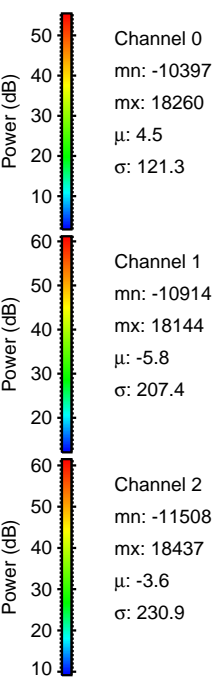
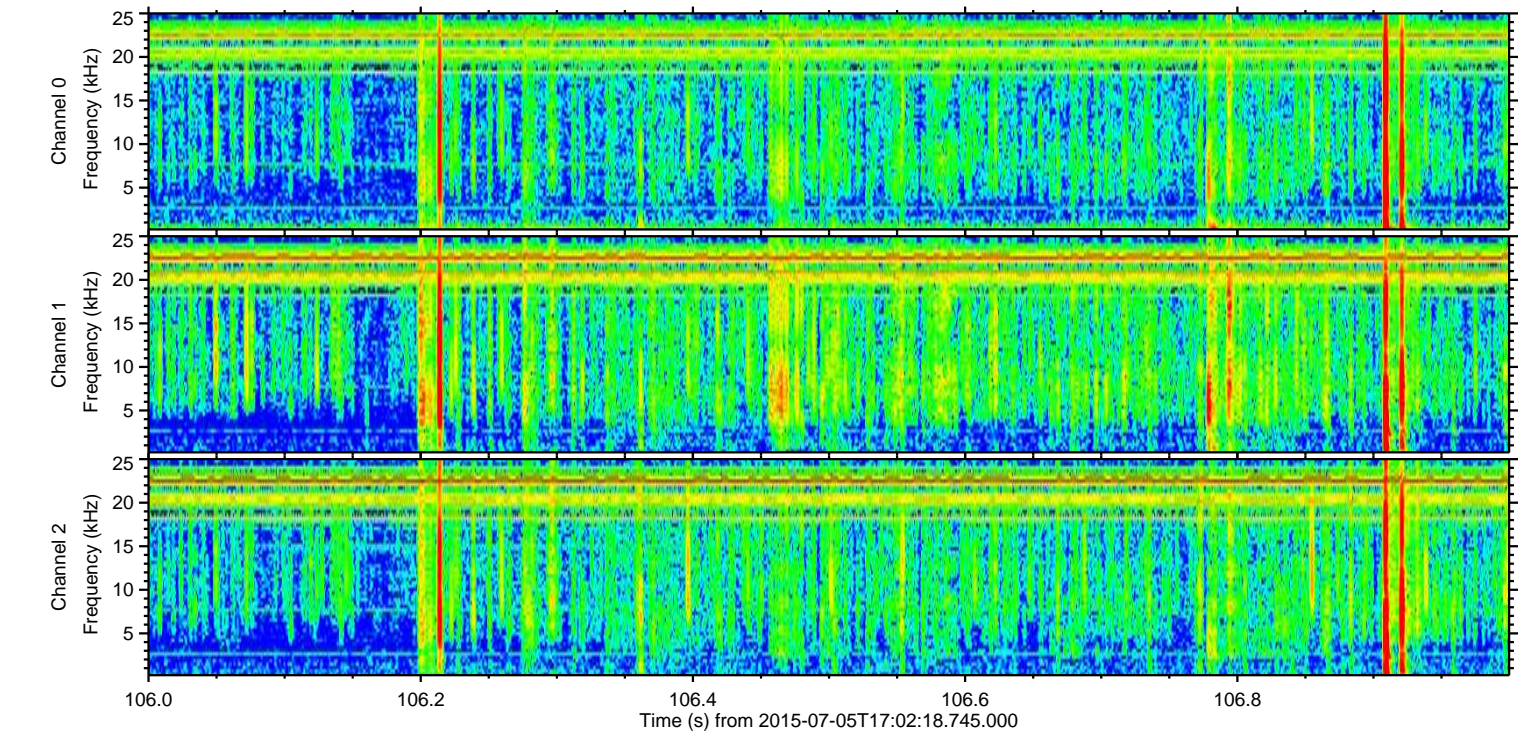
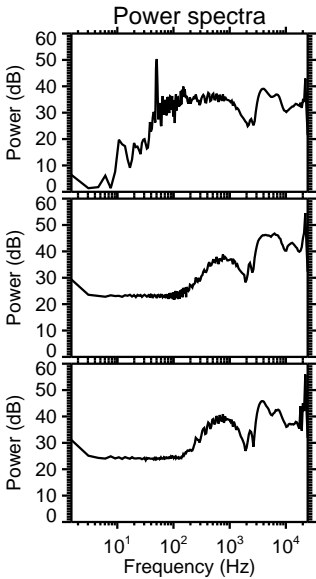
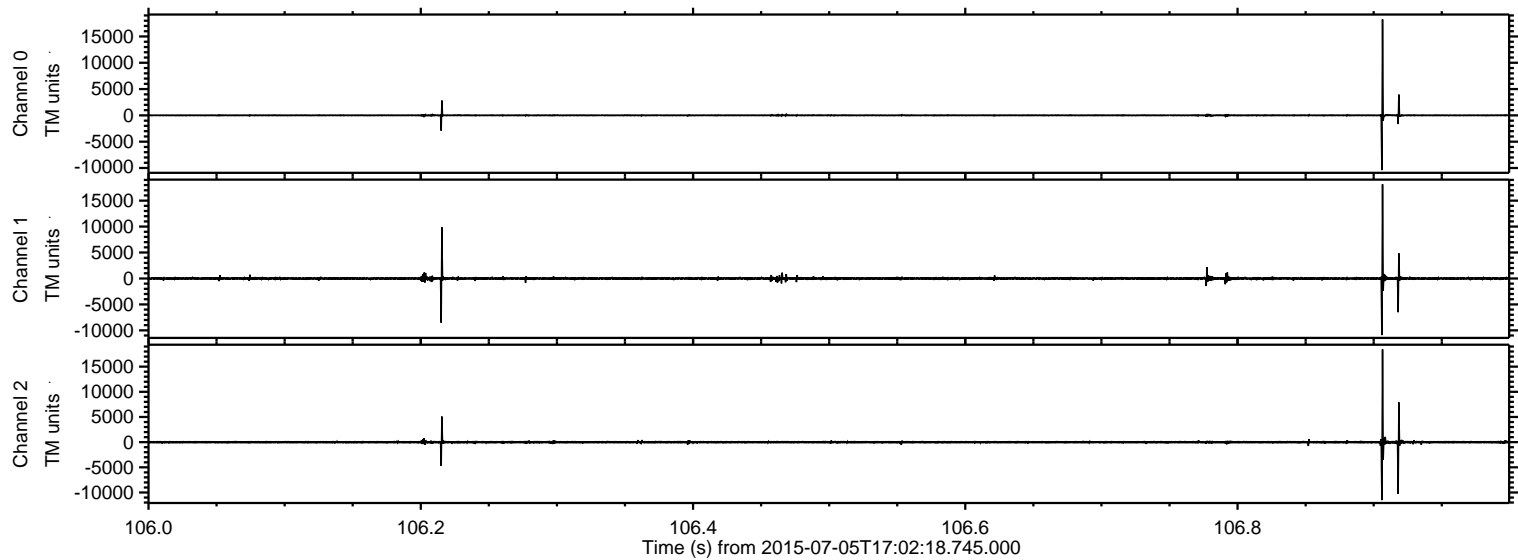
ELMAVAN 3D WAVEFORMS (Measured data sampled at 50 kHz) 51000 packets of 144 samples from 2015-07-05T17:02:18.745.000.

Processed Sun Jul 5 19:08:55 2015 by ELM ver.2012-10-06 from 001__elm20150705_170217__dat00.bin

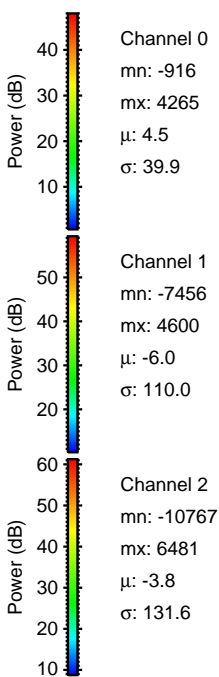
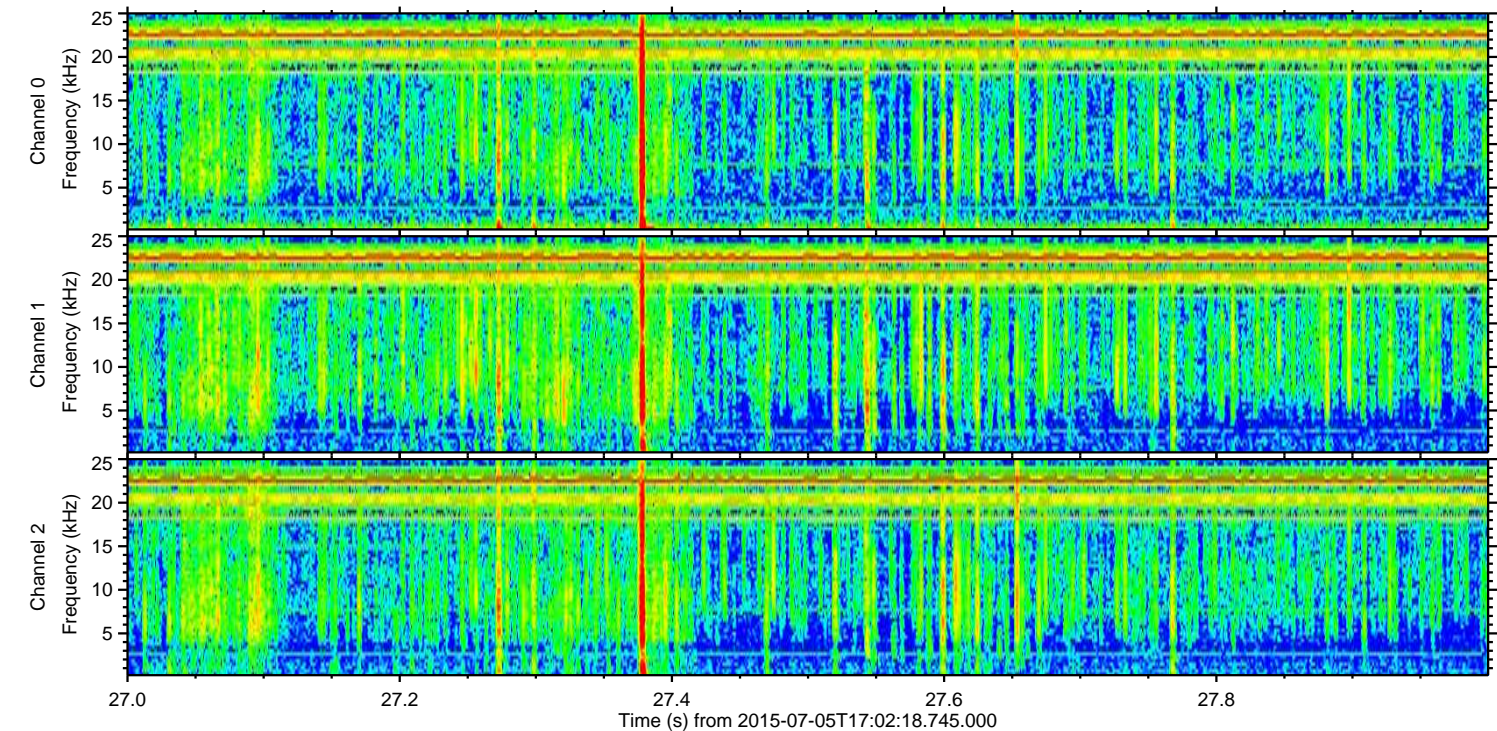
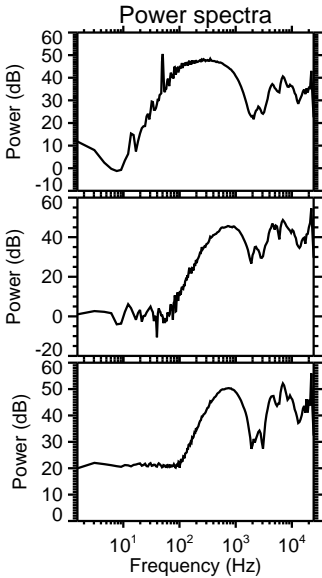
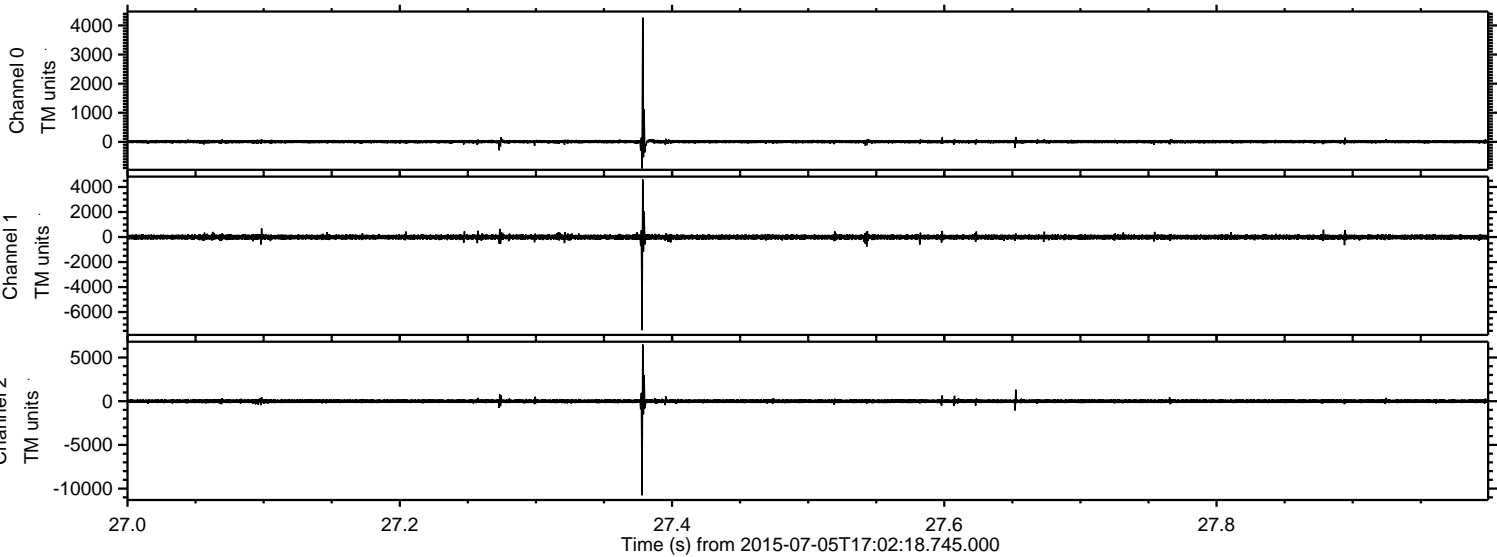


ELMAVAN 3D WAVEFORMS (Measured data sampled at 50 kHz) 51000 packets of 144 samples from 2015-07-05T17:02:18.745.000. Part 107/147

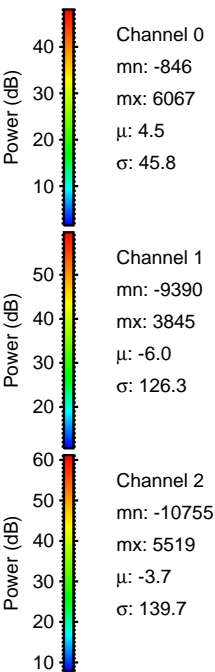
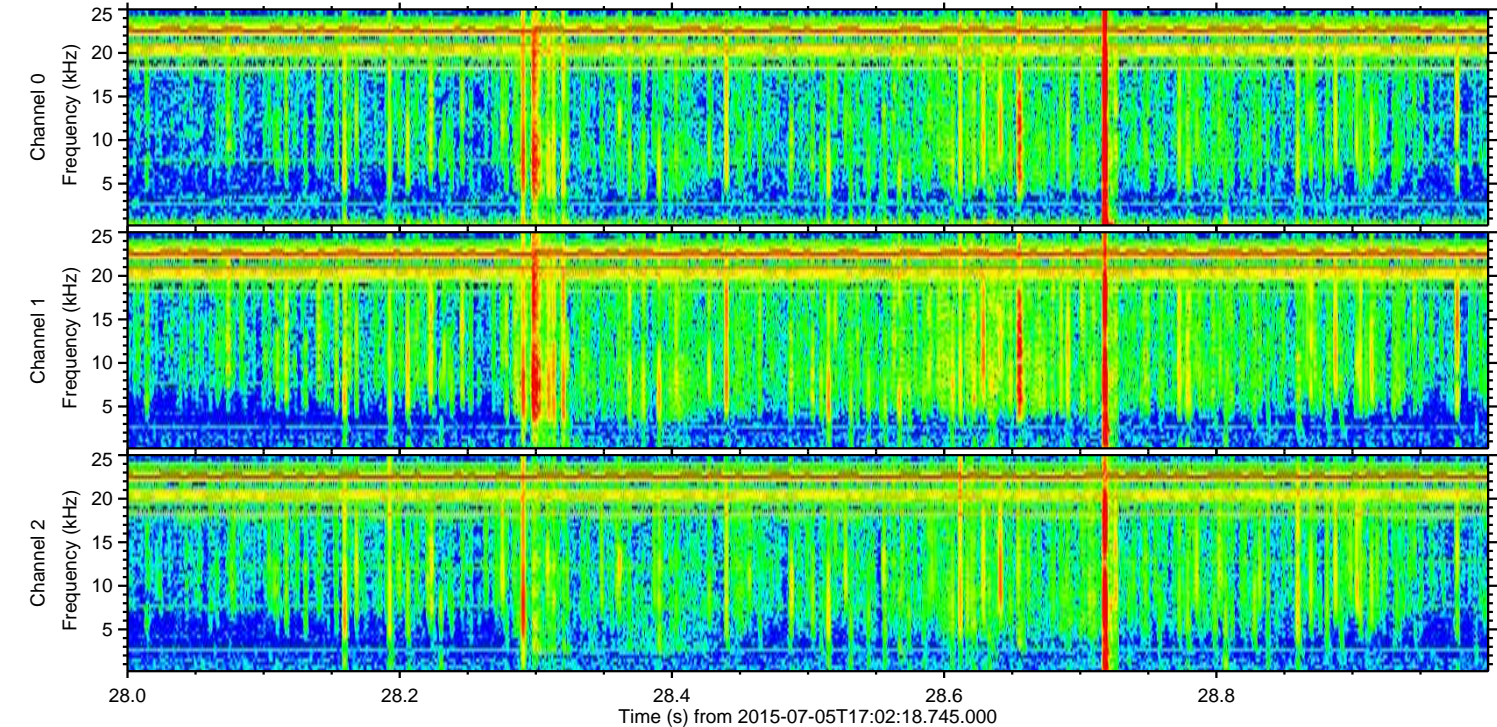
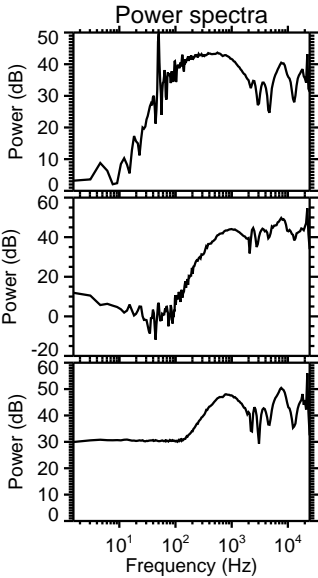
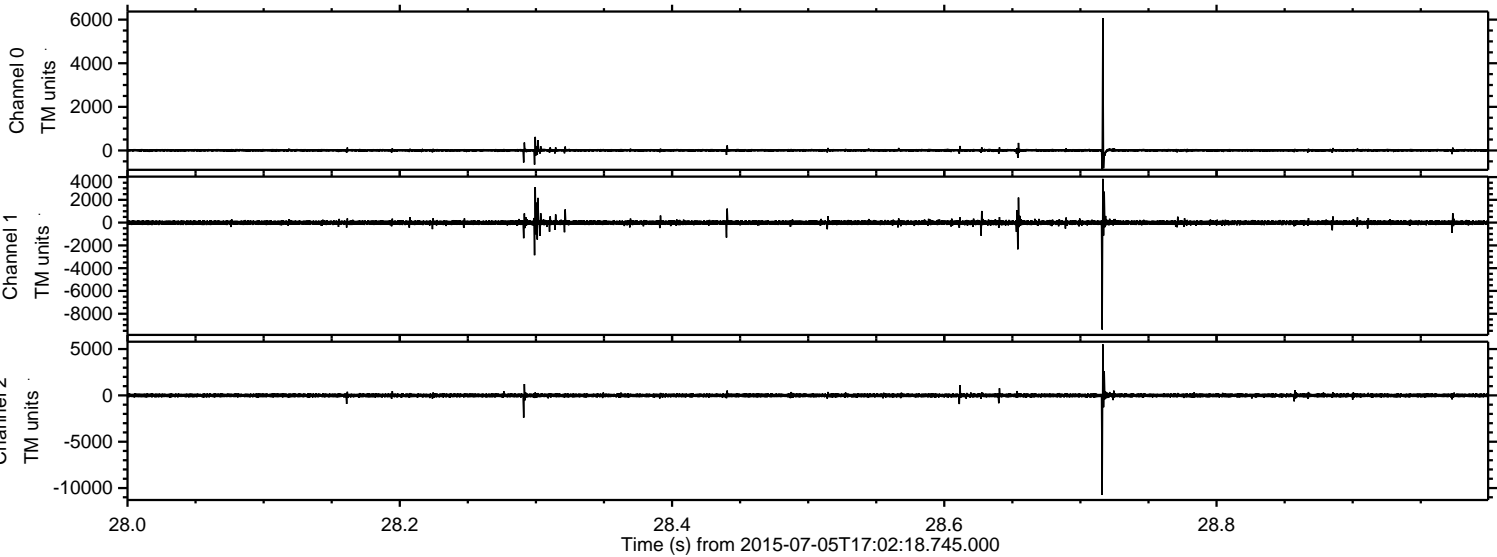
Processed Sun Jul 5 19:09:11 2015 by ELM ver.2012-10-06 from 001__elm20150705_170217__dat00.bin



Processed Sun Jul 5 19:09:12 2015 by ELM ver.2012-10-06 from 001__elm20150705_170217__dat00.bin

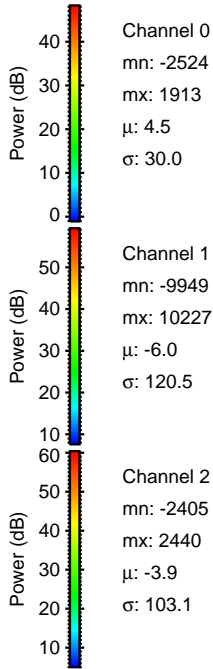
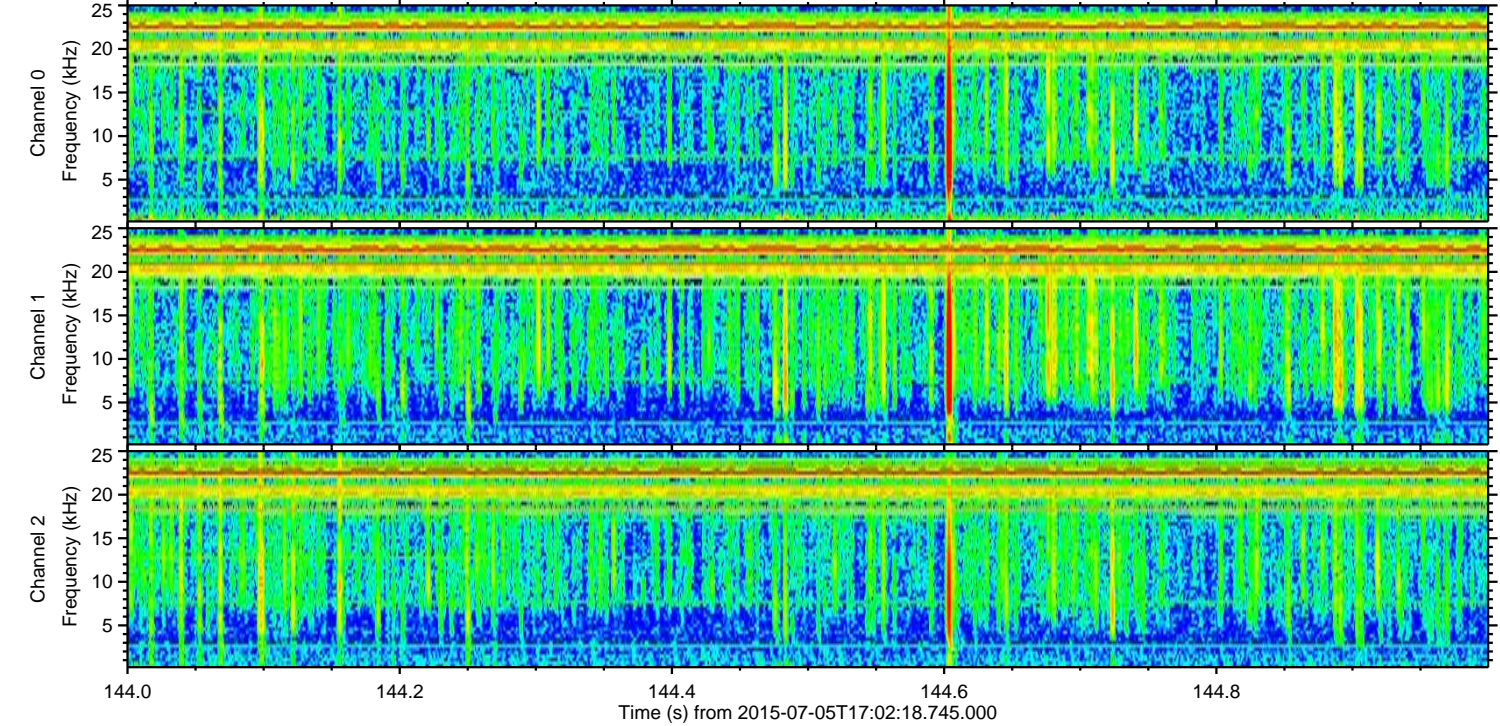
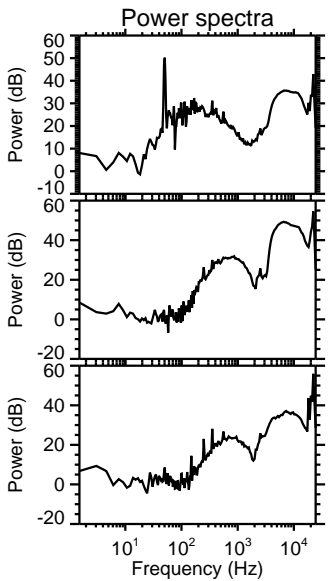
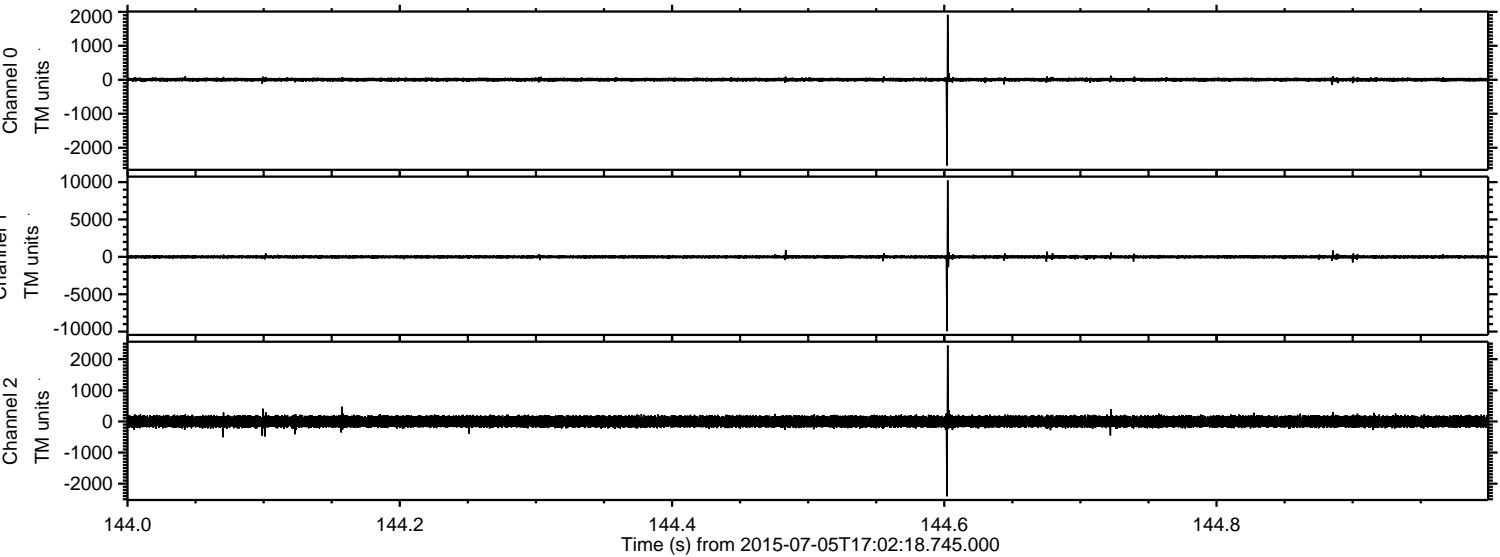


Processed Sun Jul 5 19:09:13 2015 by ELM ver.2012-10-06 from 001__elm20150705_170217__dat00.bin



ELMAVAN 3D WAVEFORMS (Measured data sampled at 50 kHz) 51000 packets of 144 samples from 2015-07-05T17:02:18.745.000. Part 145/147

Processed Sun Jul 5 19:09:14 2015 by ELM ver.2012-10-06 from 001__elm20150705_170217__dat00.bin

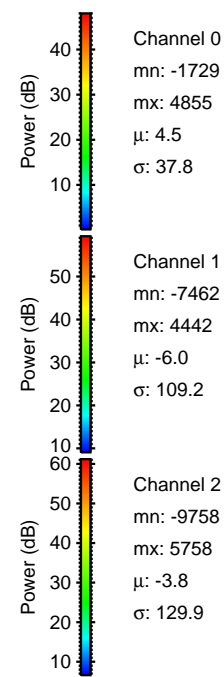
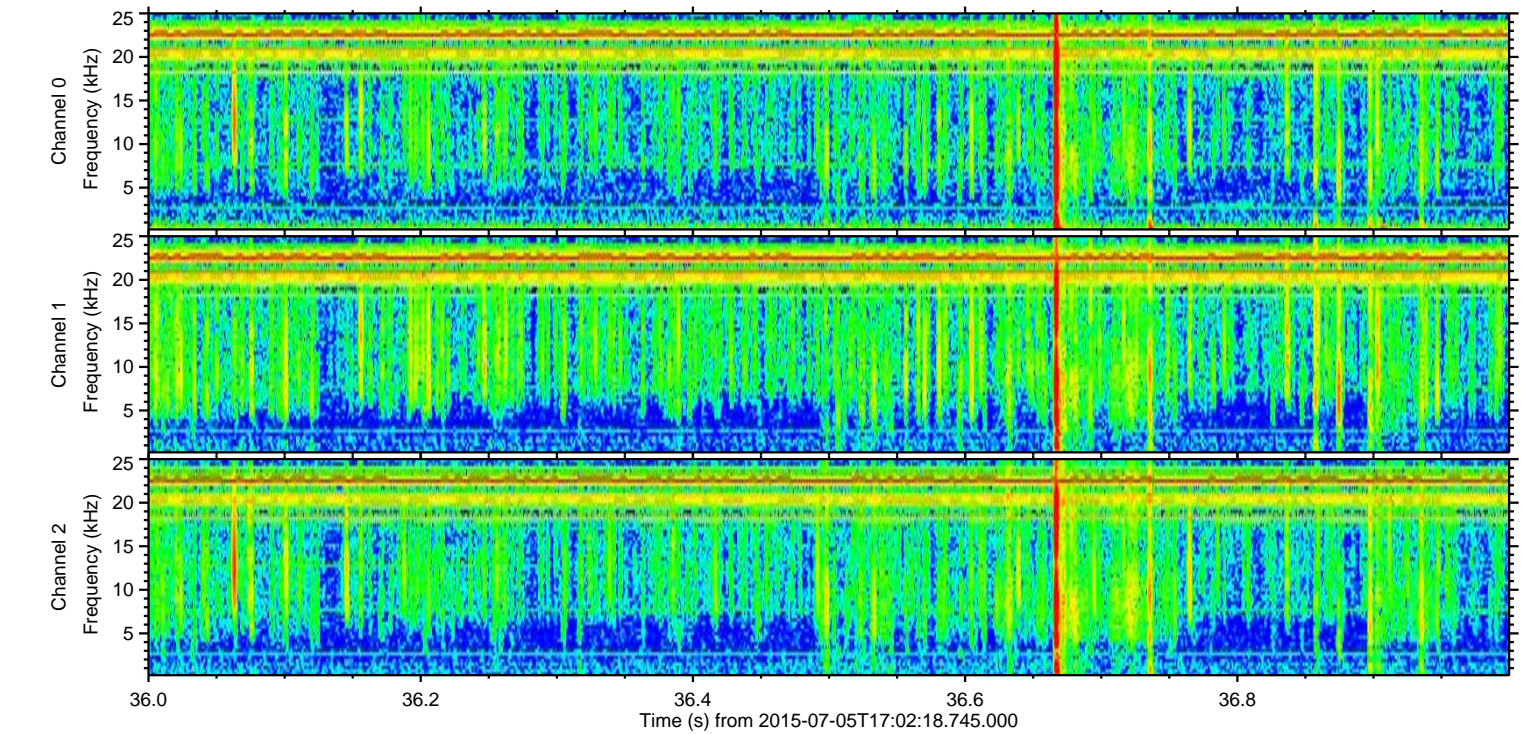
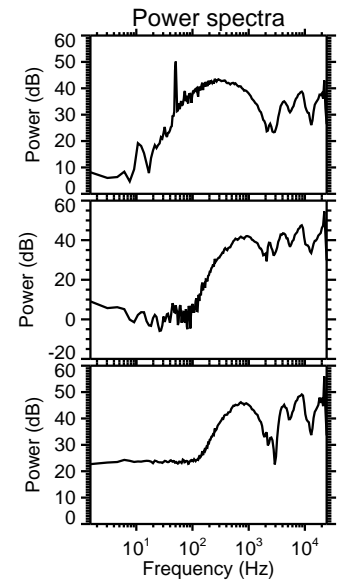
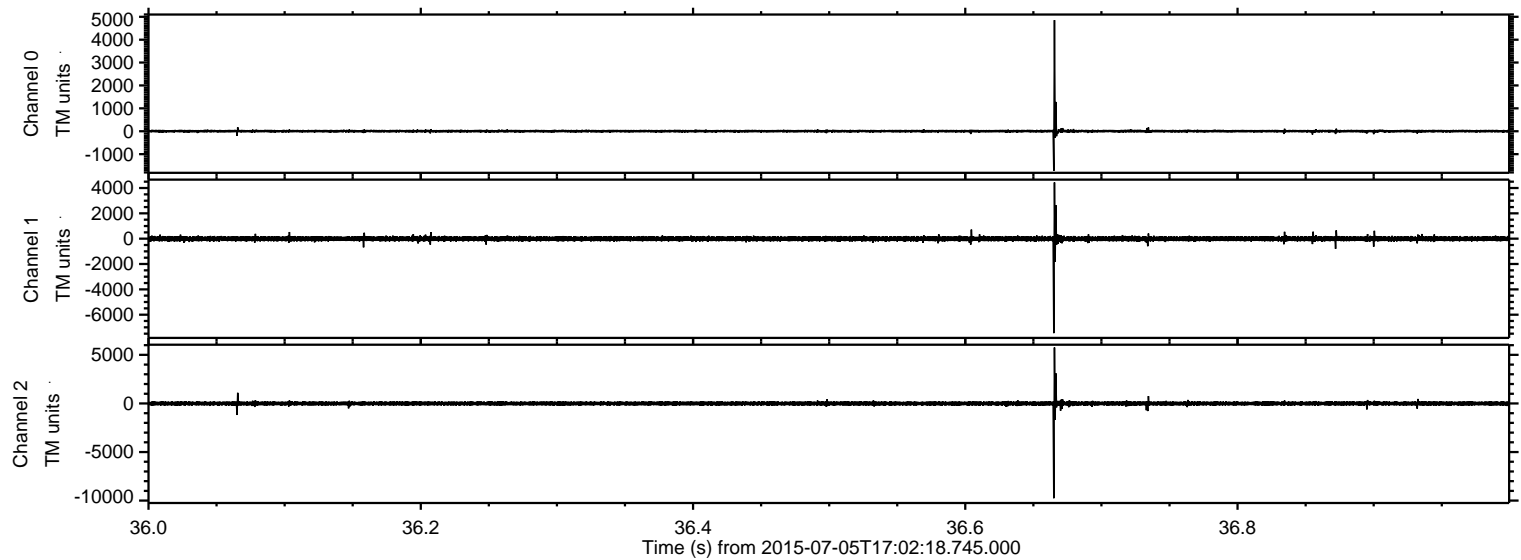


Channel 0
mn: -2524
mx: 1913
 μ : 4.5
 σ : 30.0

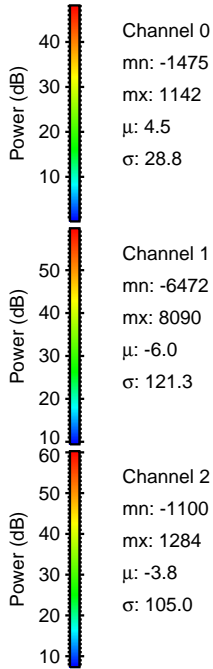
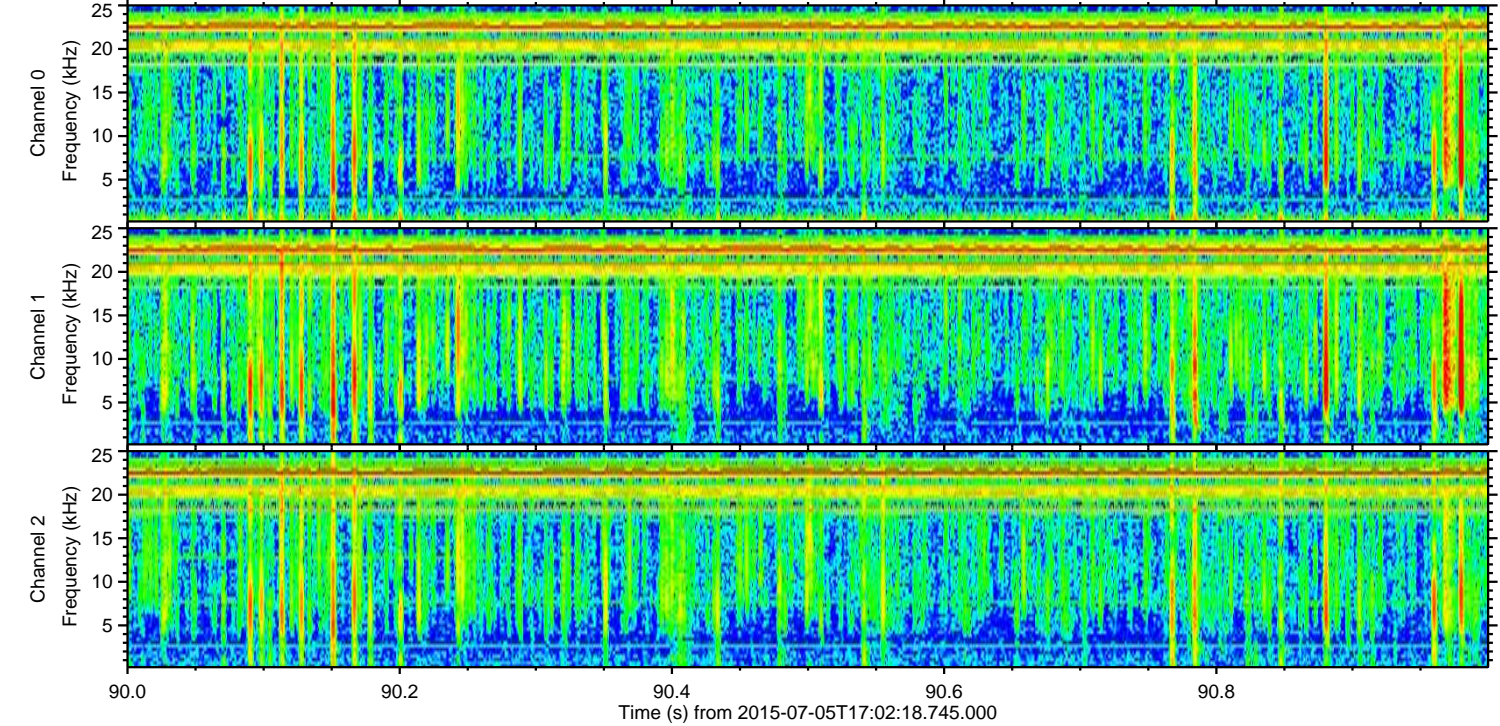
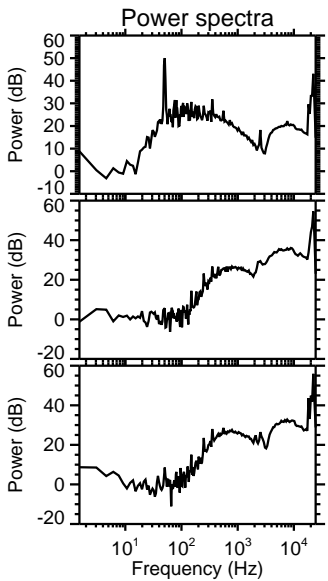
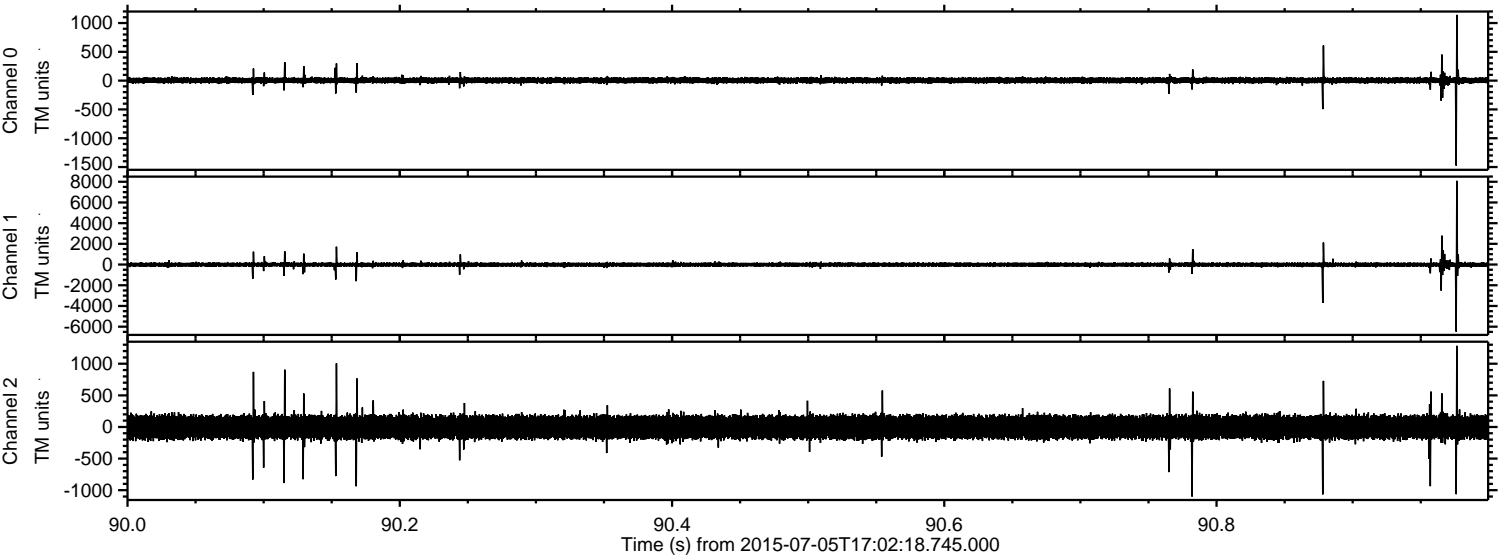
Channel 1
mn: -9949
mx: 10227
 μ : -6.0
 σ : 120.5

Channel 2
mn: -2405
mx: 2440
 μ : -3.9
 σ : 103.1

Processed Sun Jul 5 19:09:15 2015 by ELM ver.2012-10-06 from 001__elm20150705_170217__dat00.bin

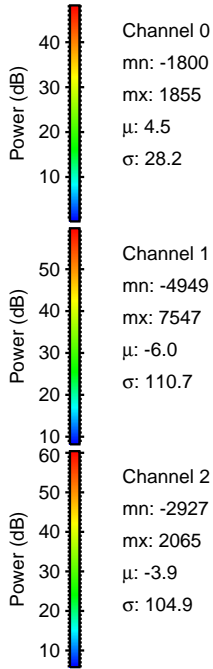
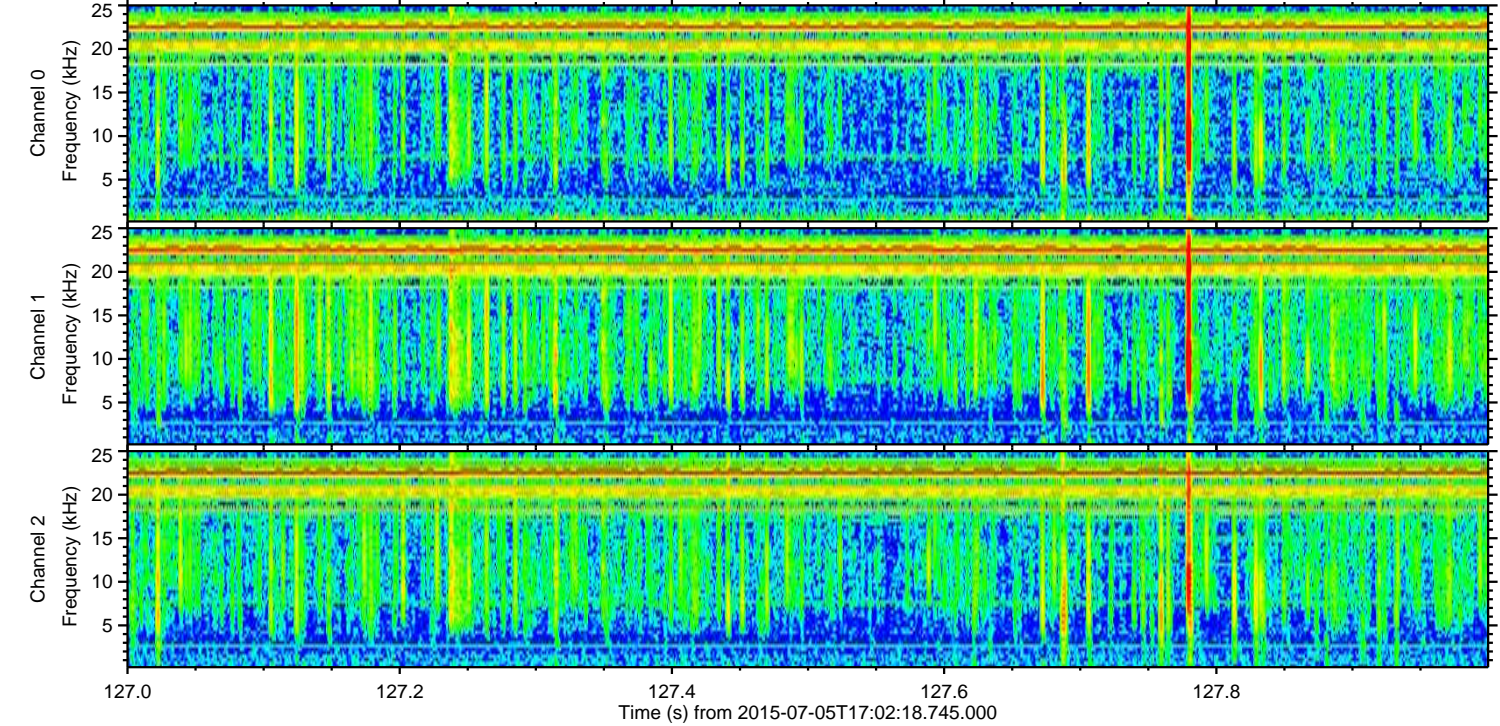
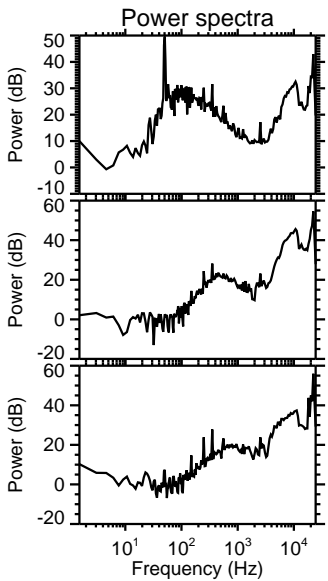
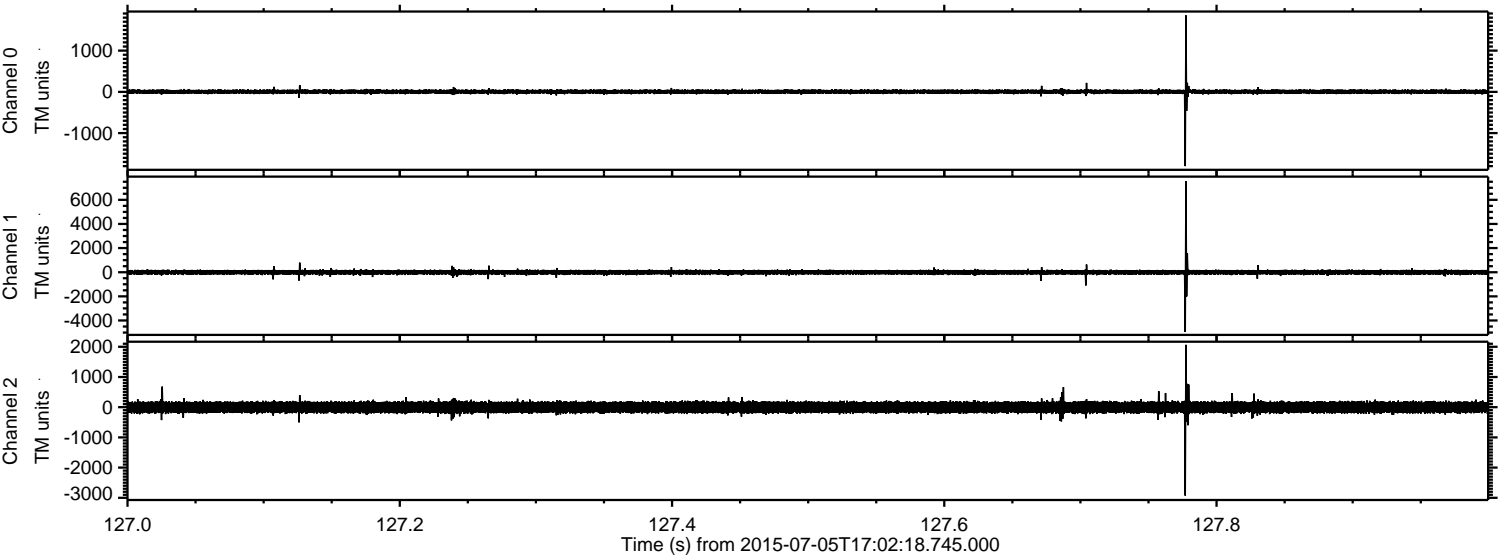


Processed Sun Jul 5 19:09:16 2015 by ELM ver.2012-10-06 from 001__elm20150705_170217__dat00.bin

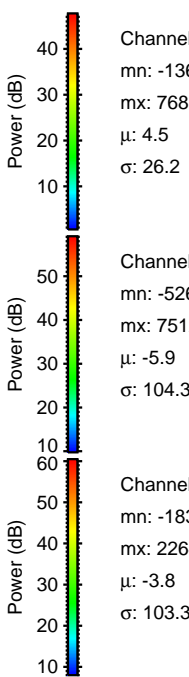
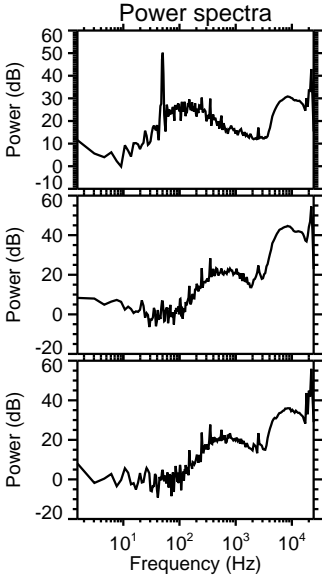
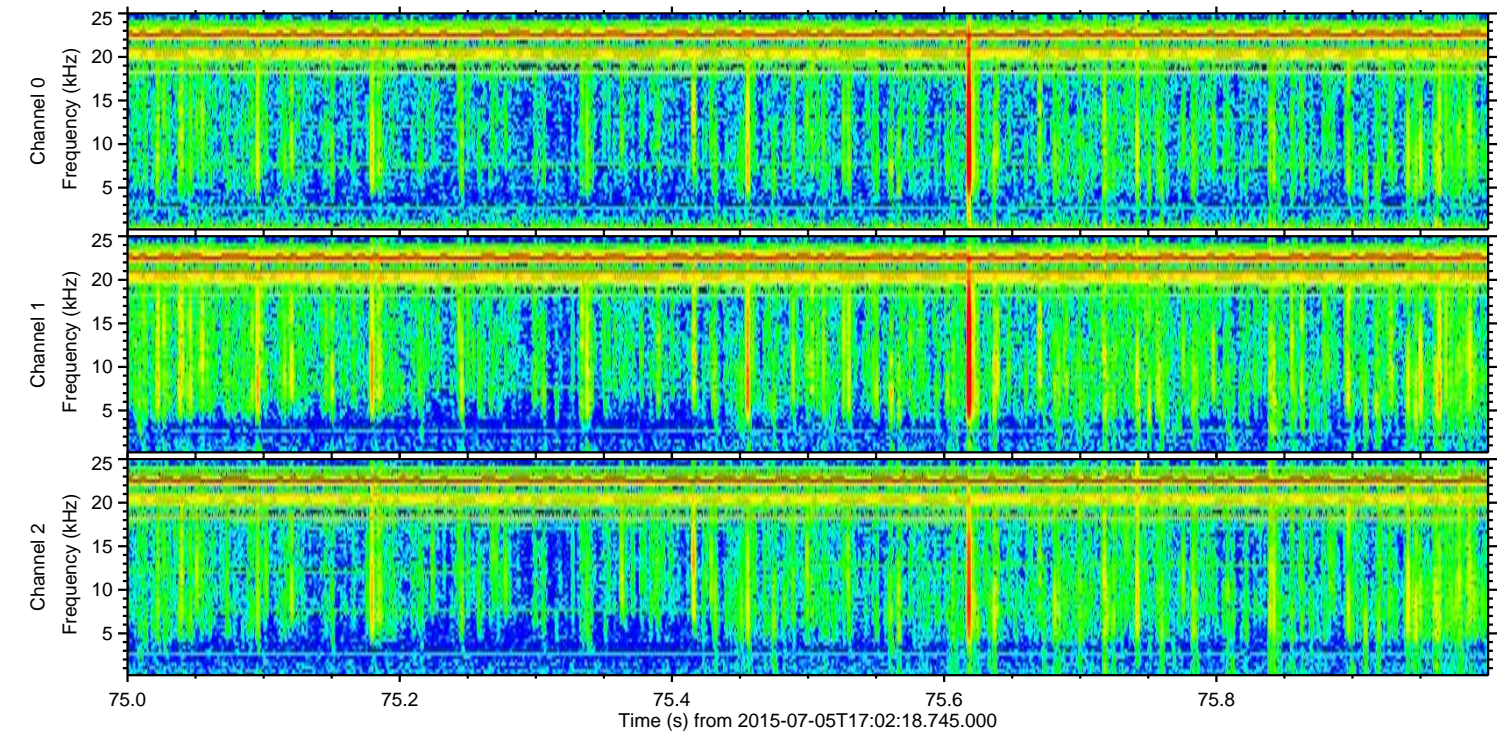
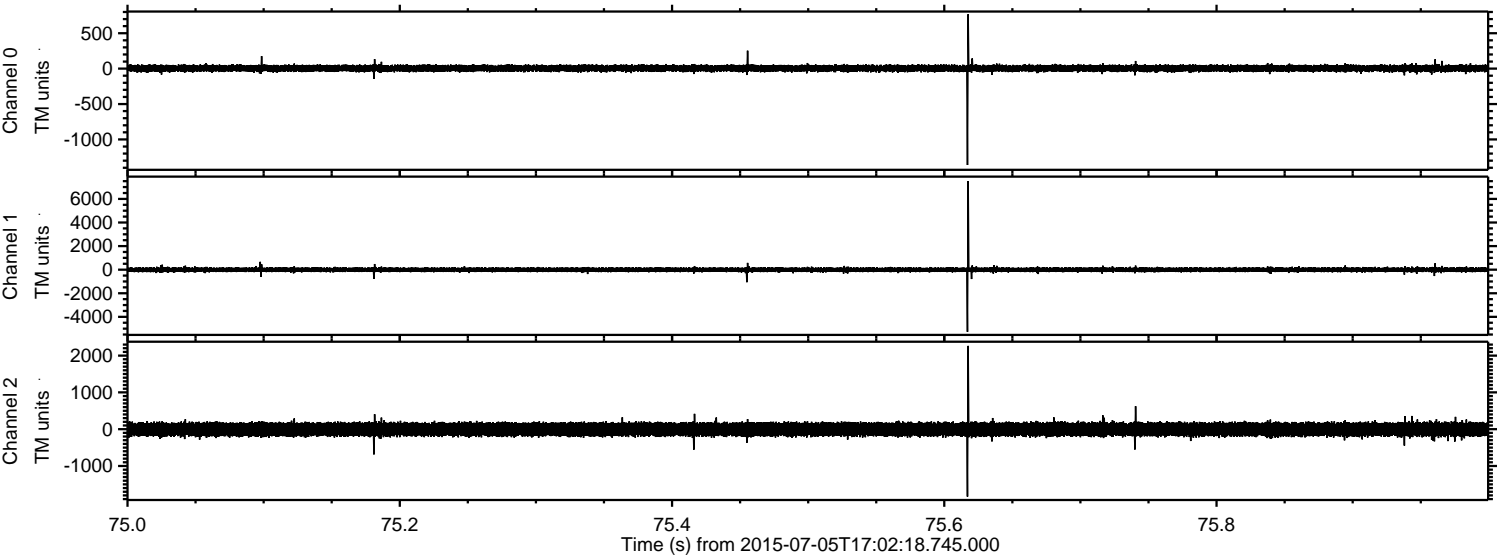


ELMAVAN 3D WAVEFORMS (Measured data sampled at 50 kHz) 51000 packets of 144 samples from 2015-07-05T17:02:18.745.000. Part 128/147

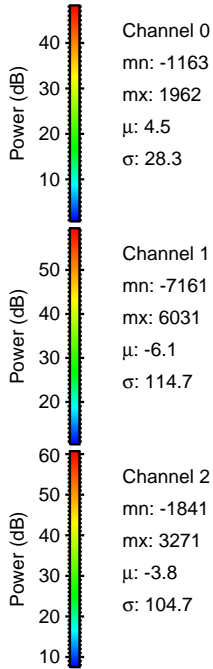
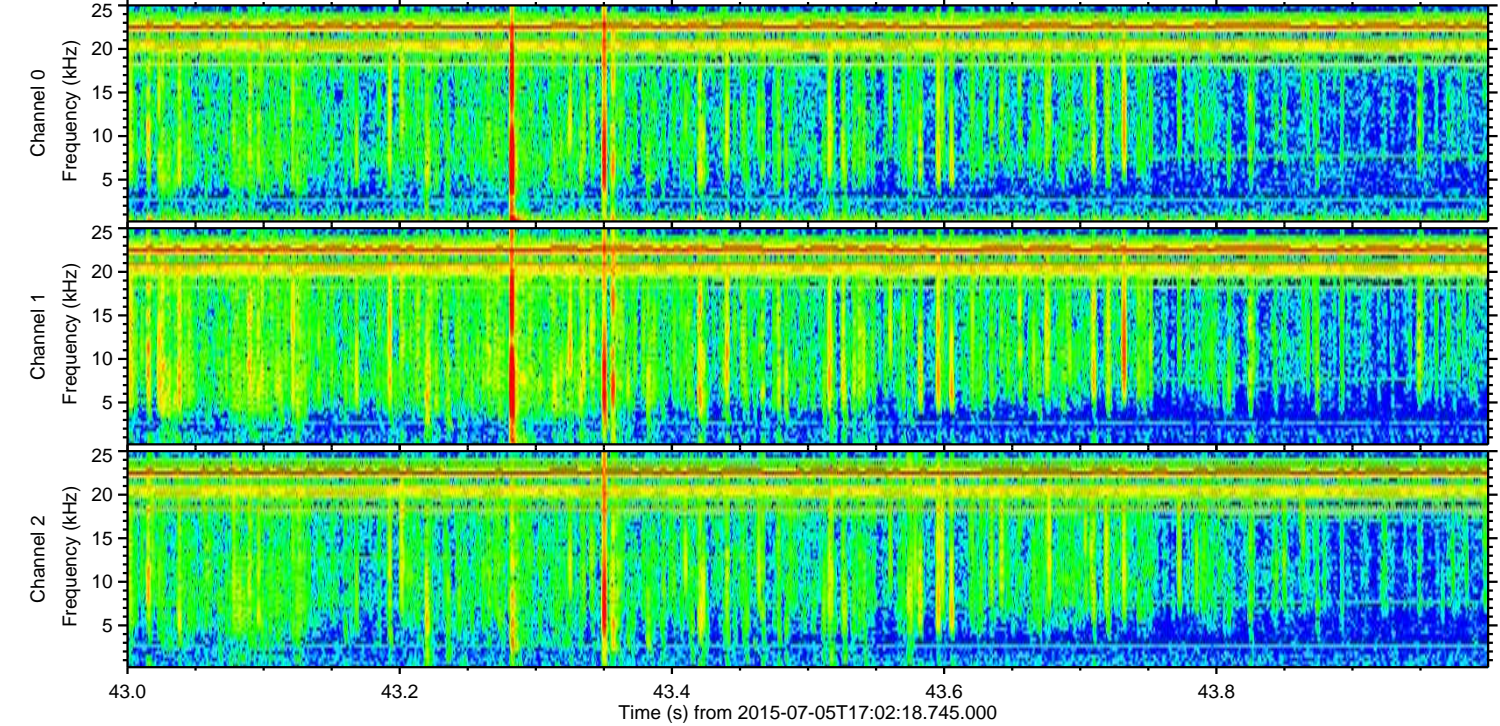
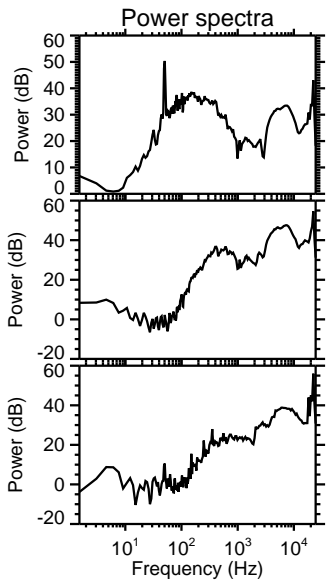
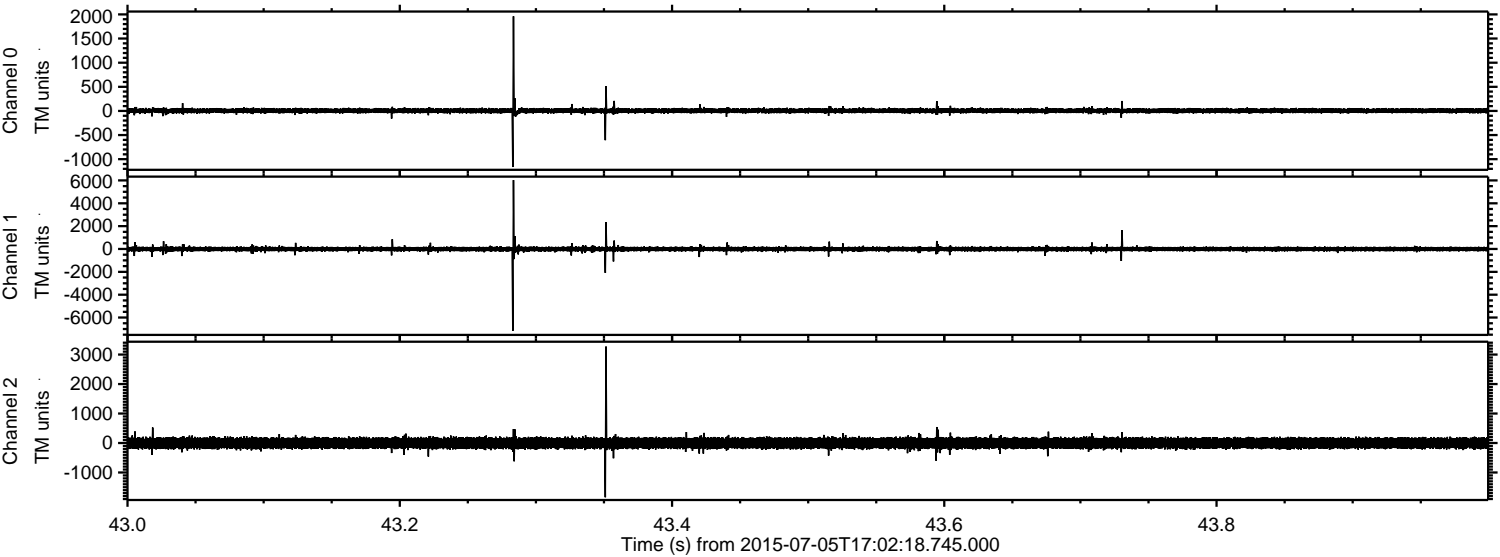
Processed Sun Jul 5 19:09:17 2015 by ELM ver.2012-10-06 from 001__elm20150705_170217__dat00.bin



Processed Sun Jul 5 19:09:18 2015 by ELM ver.2012-10-06 from 001__elm20150705_170217__dat00.bin



Processed Sun Jul 5 19:09:19 2015 by ELM ver.2012-10-06 from 001__elm20150705_170217__dat00.bin



Processed Sun Jul 5 19:09:21 2015 by ELM ver.2012-10-06 from 001__elm20150705_170217__dat00.bin

