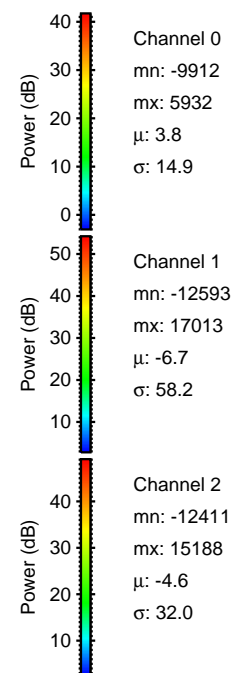
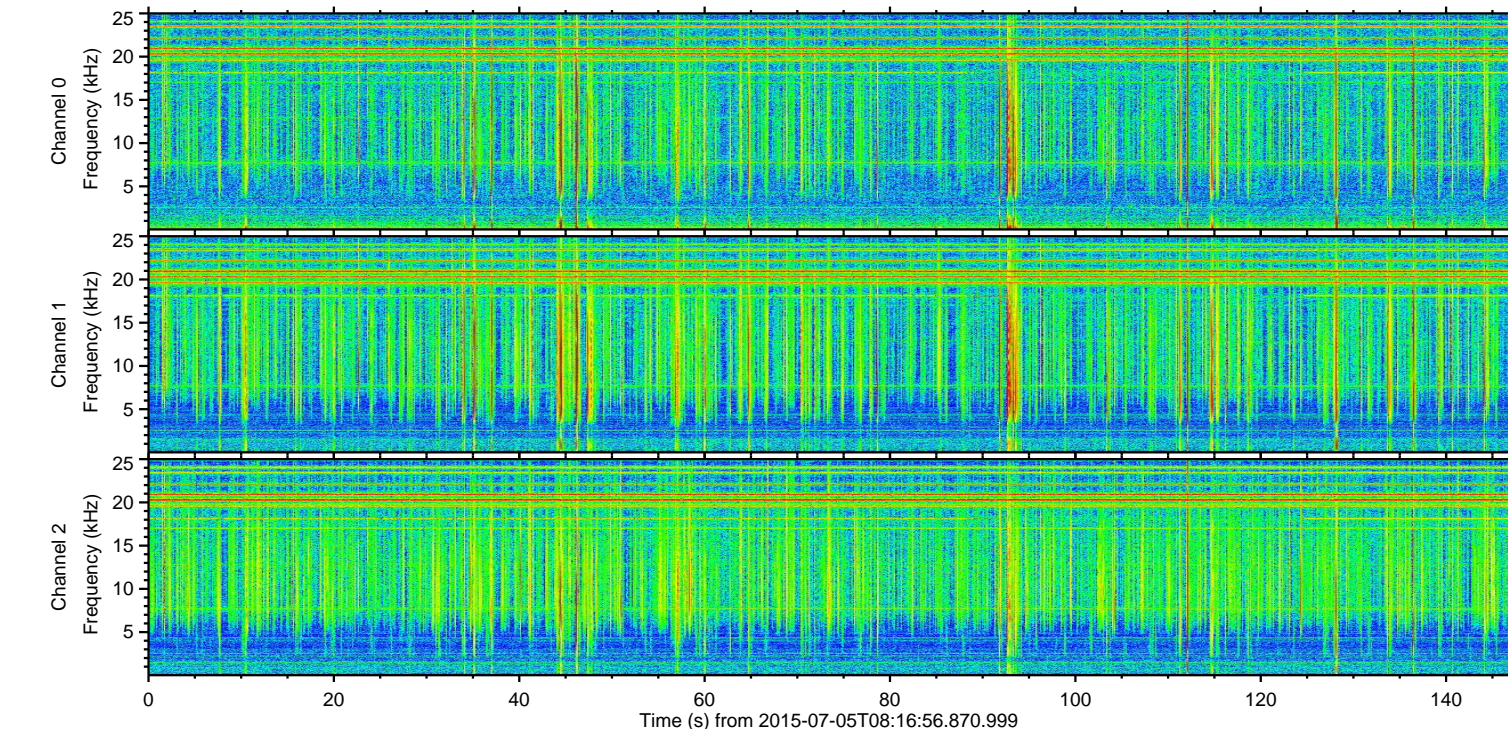
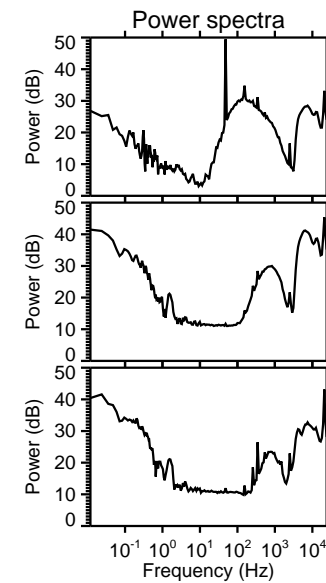
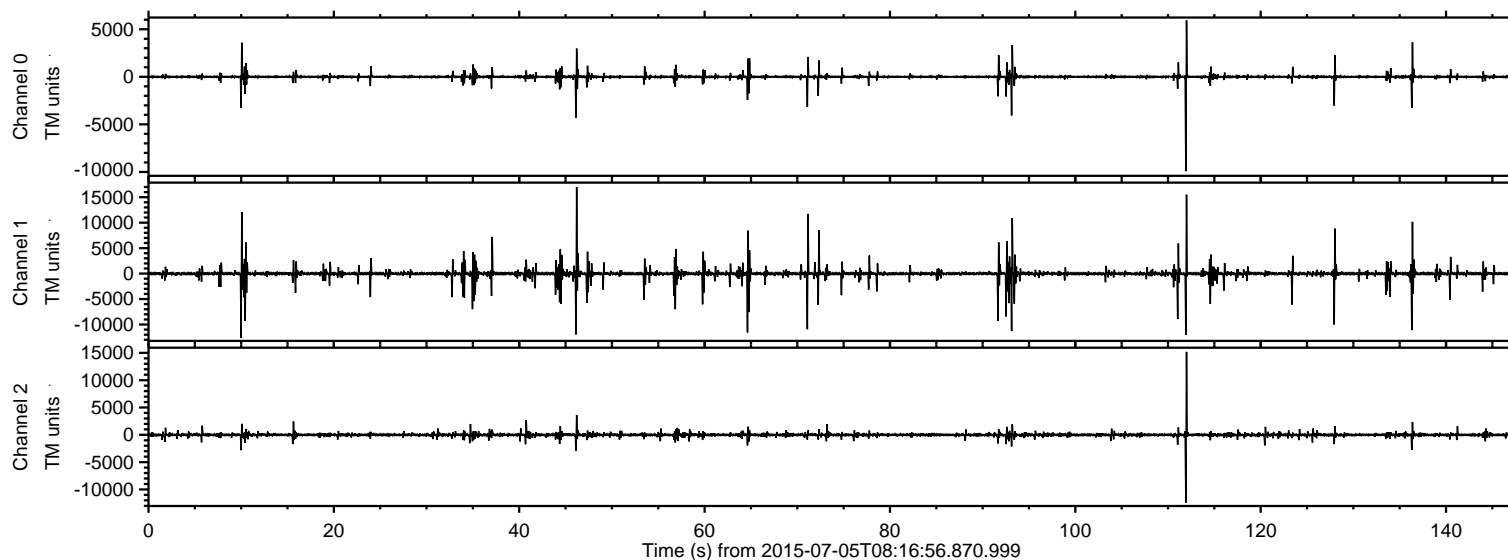
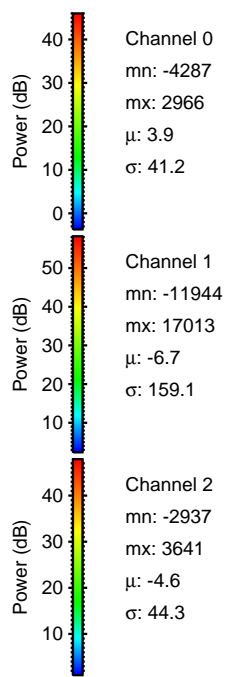
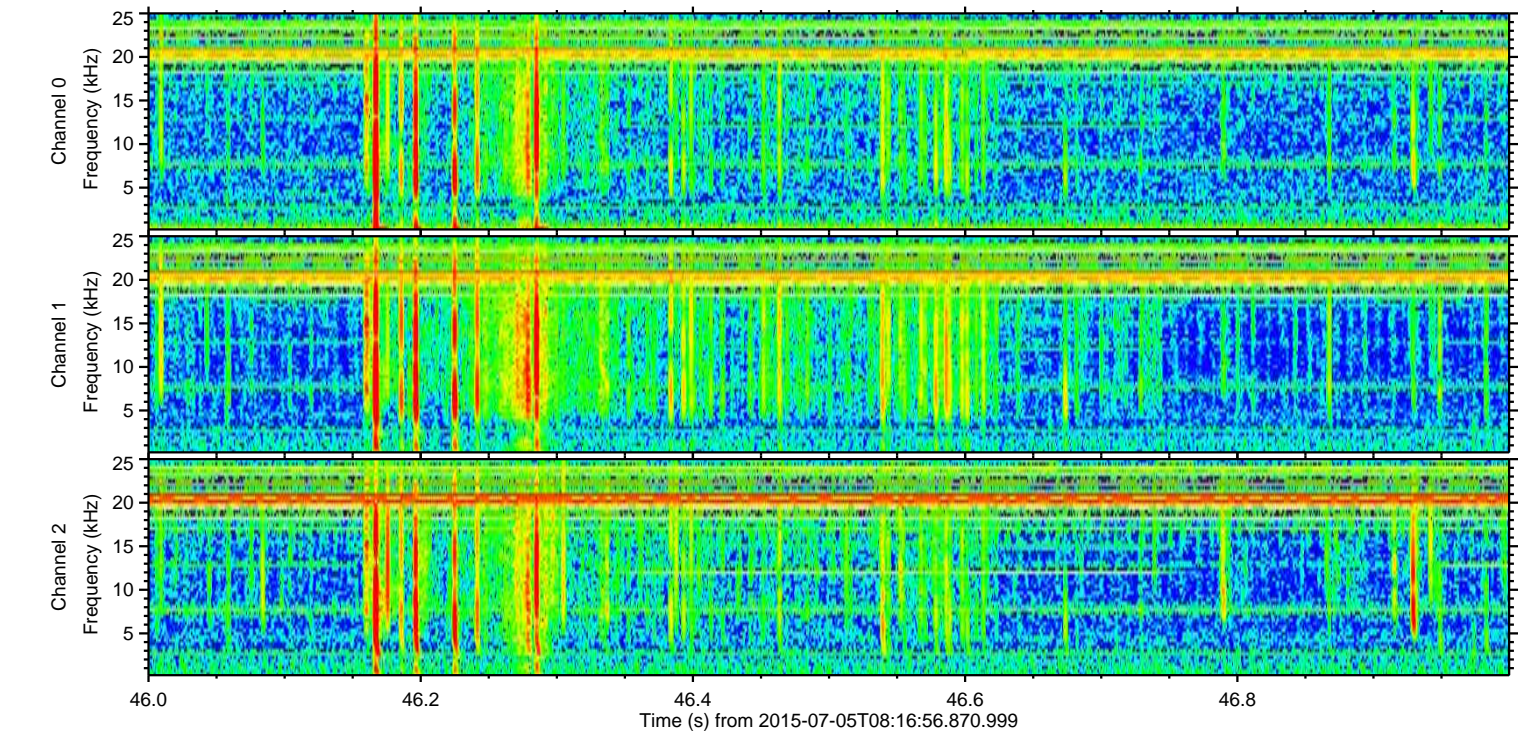
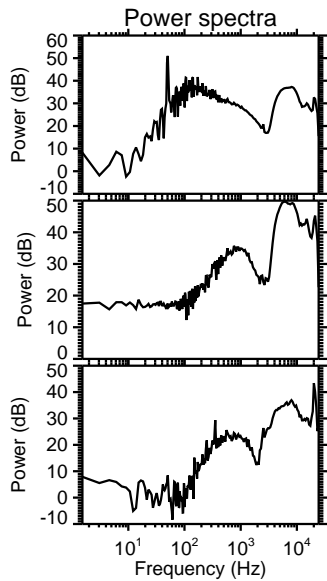
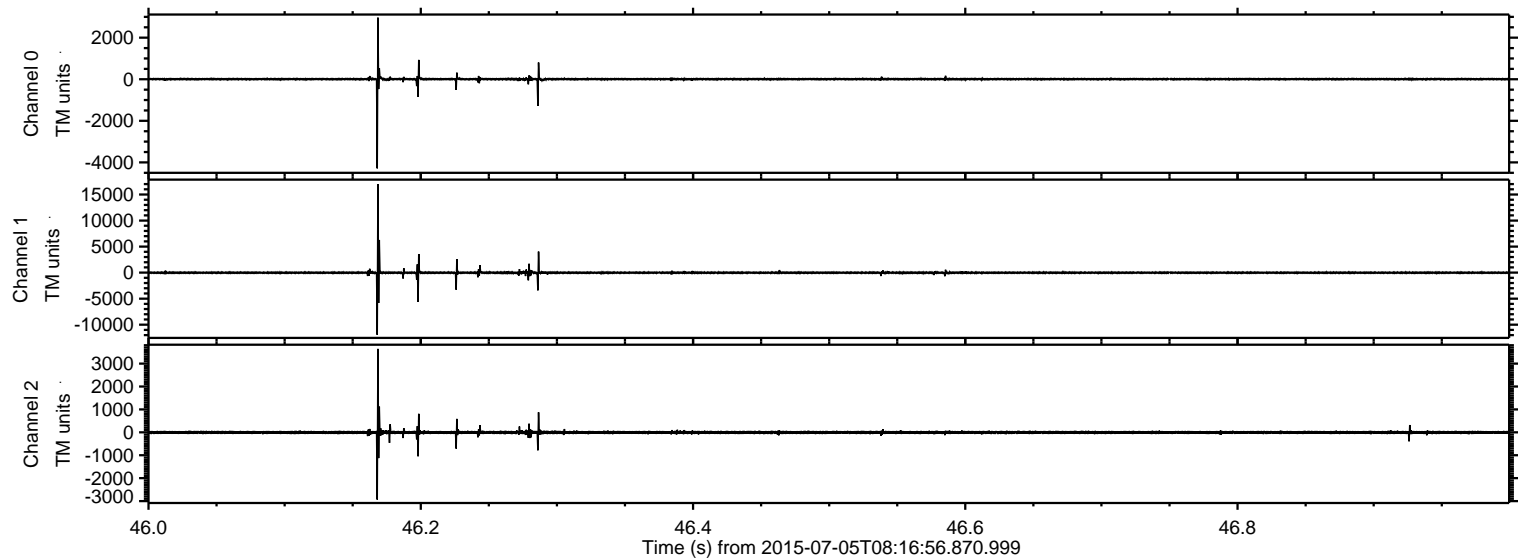


ELMAVAN 3D WAVEFORMS (Measured data sampled at 50 kHz) 51000 packets of 144 samples from 2015-07-05T08:16:56.870.999.

Processed Sun Jul 5 10:23:21 2015 by ELM ver.2012-10-06 from 001__elm20150705_081655__dat00.bin

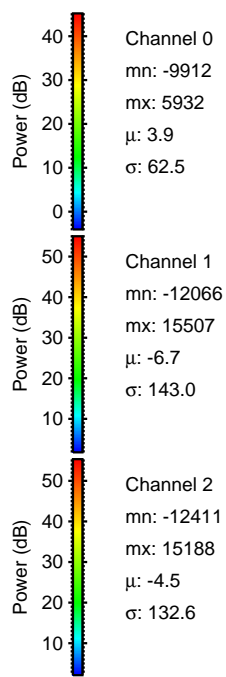
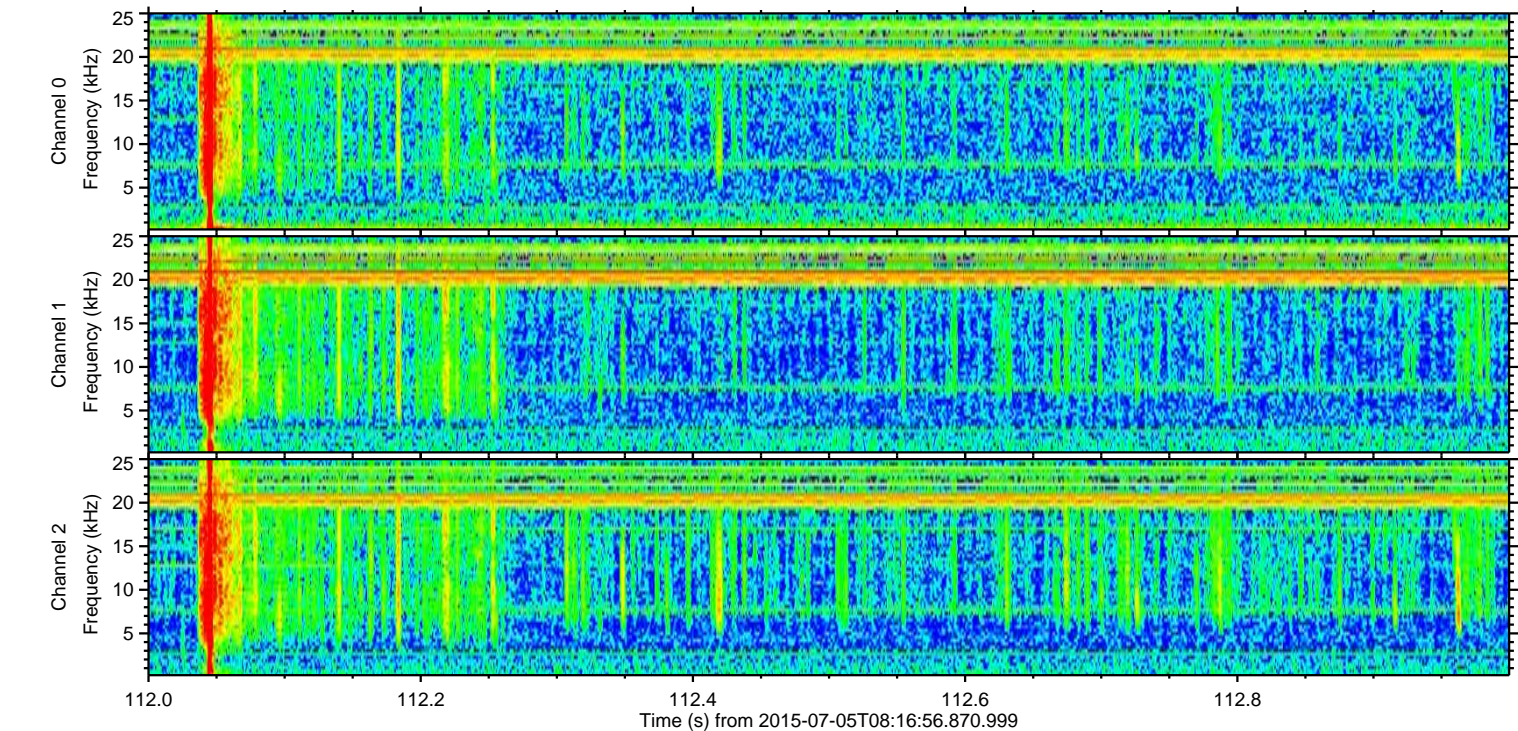
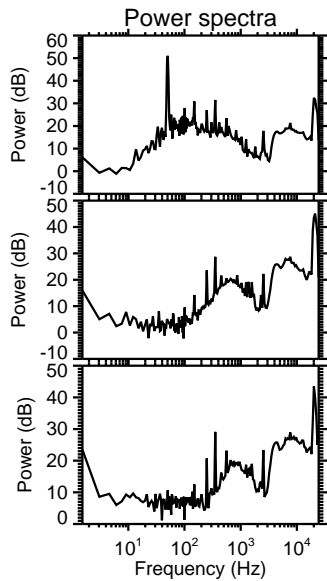
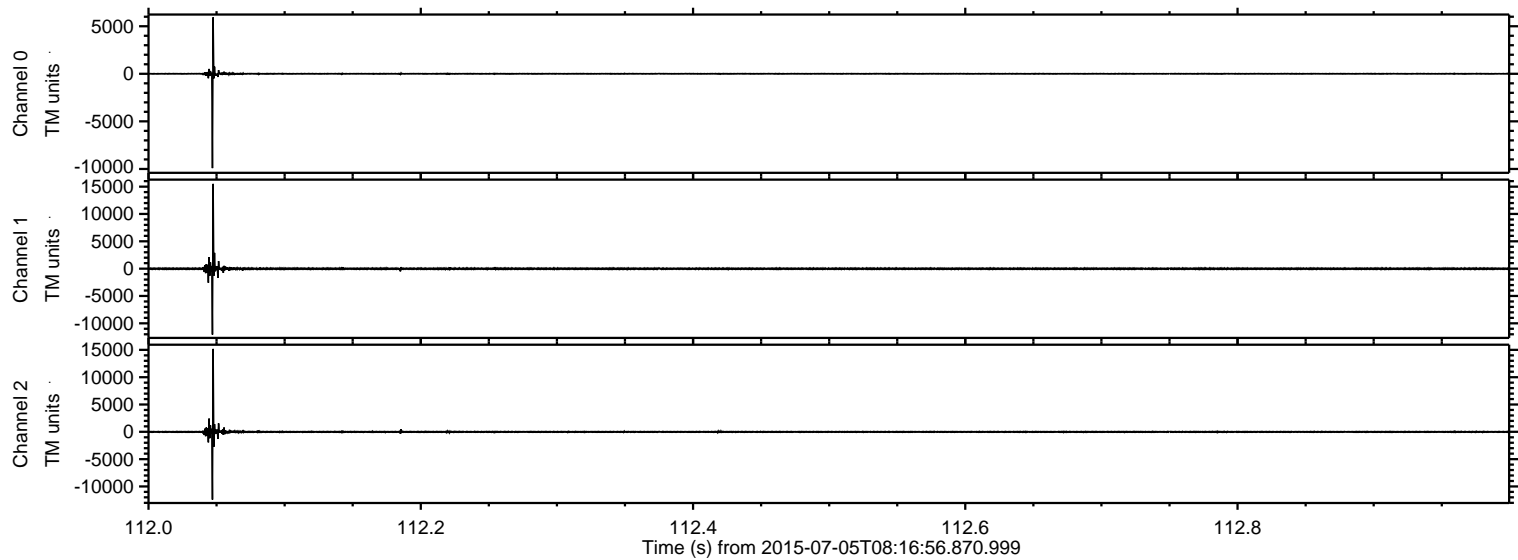


Processed Sun Jul 5 10:23:35 2015 by ELM ver.2012-10-06 from 001__elm20150705_081655__dat00.bin

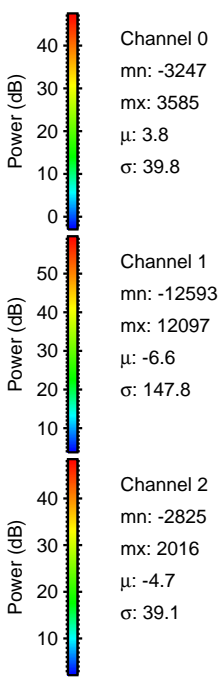
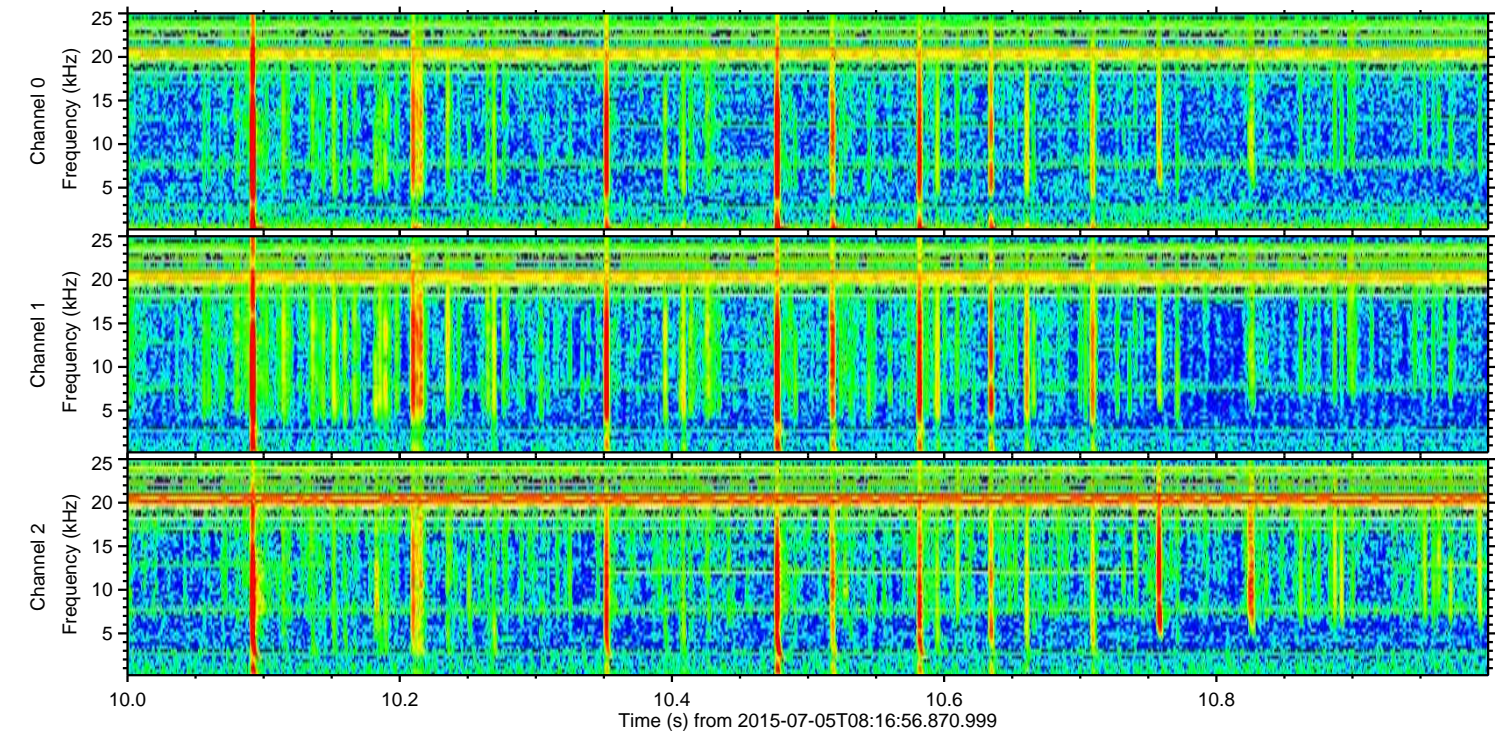
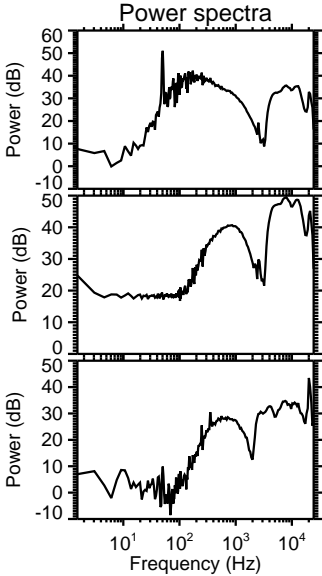
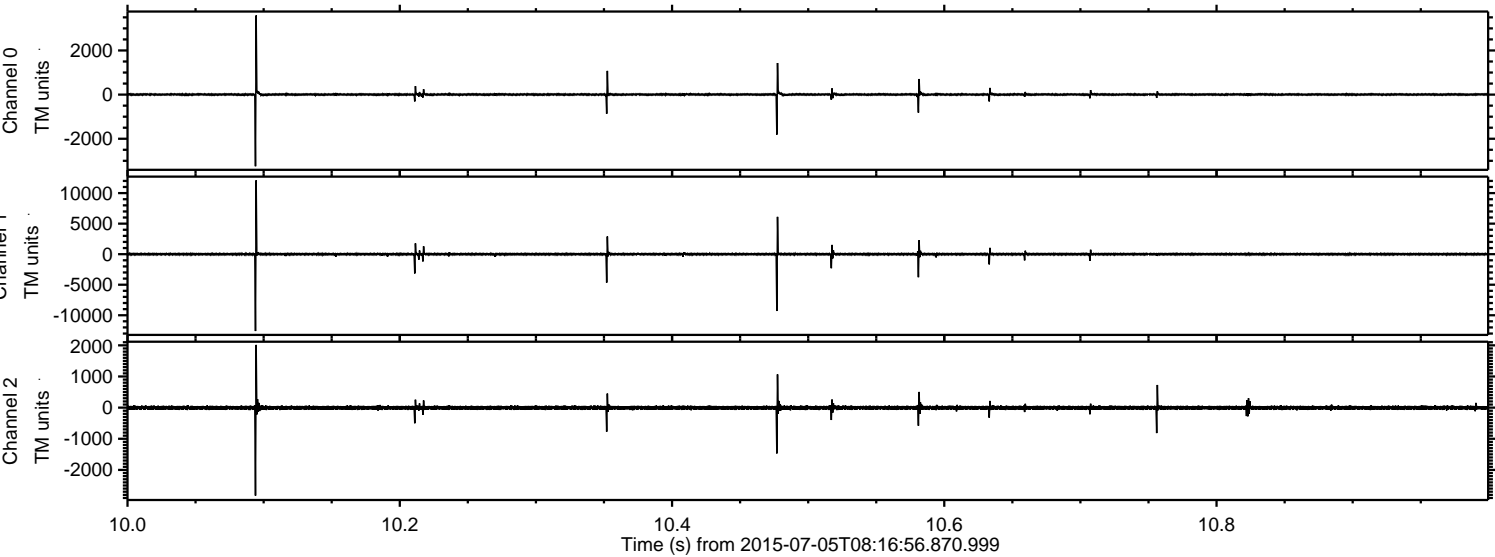


ELMAVAN 3D WAVEFORMS (Measured data sampled at 50 kHz) 51000 packets of 144 samples from 2015-07-05T08:16:56.870.999. Part 113/147

Processed Sun Jul 5 10:23:36 2015 by ELM ver.2012-10-06 from 001__elm20150705_081655__dat00.bin

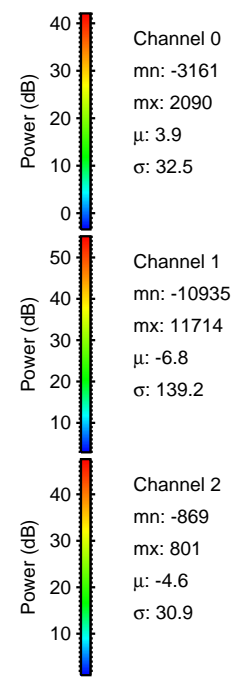
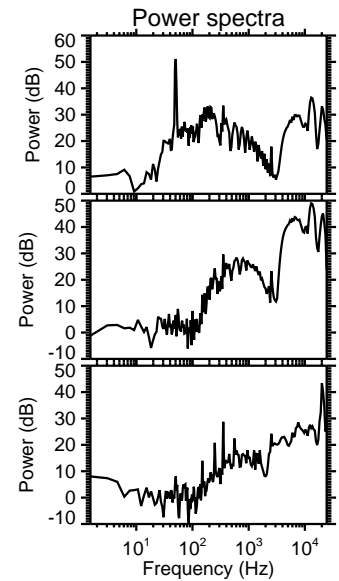
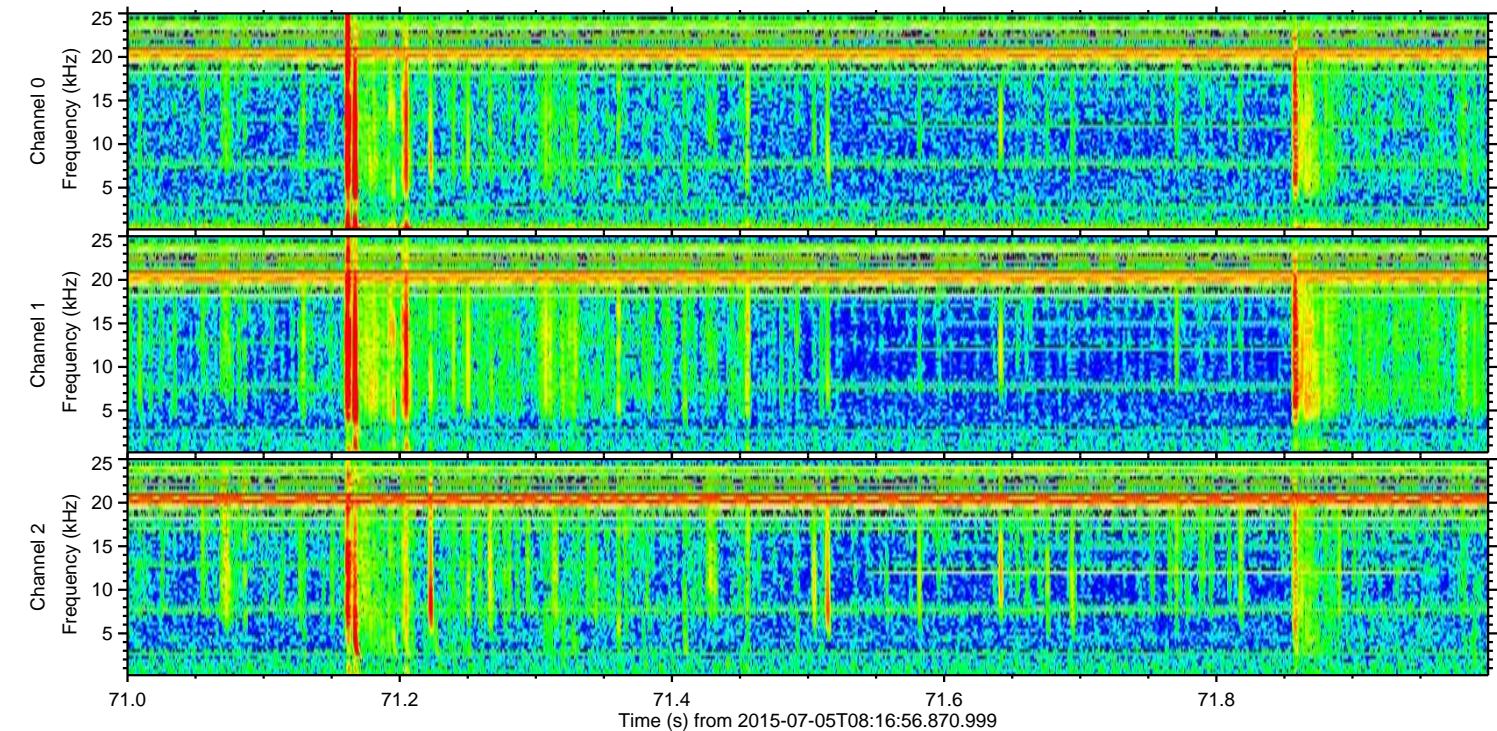
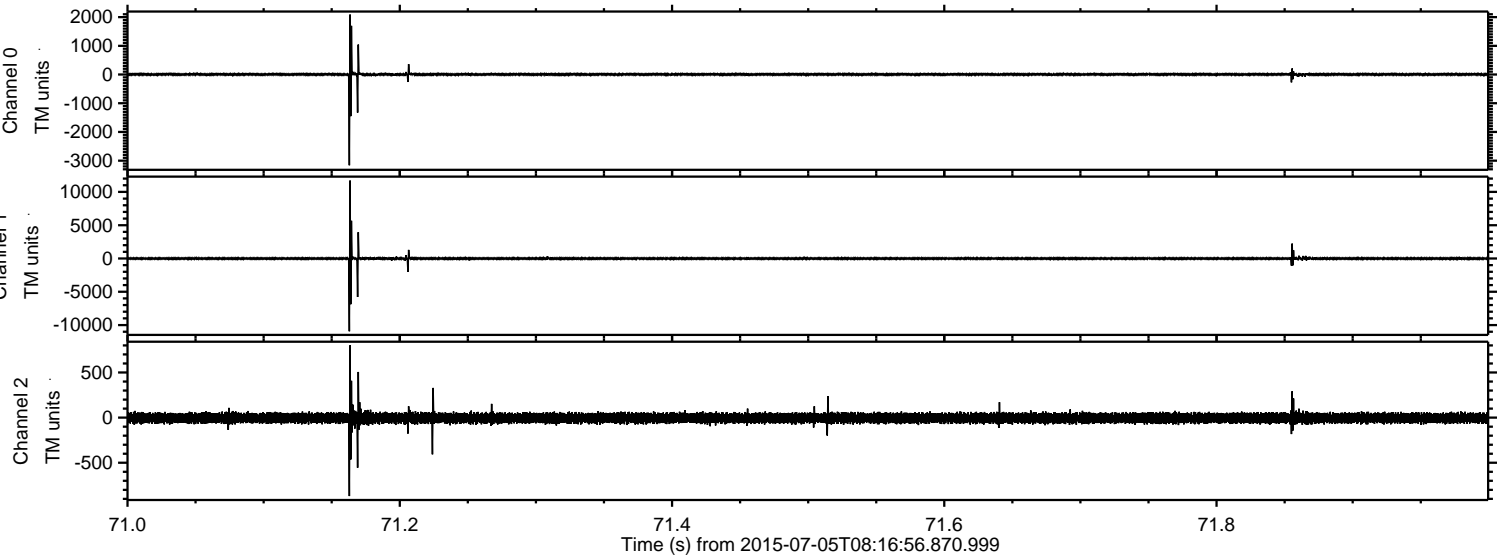


Processed Sun Jul 5 10:23:37 2015 by ELM ver.2012-10-06 from 001__elm20150705_081655__dat00.bin

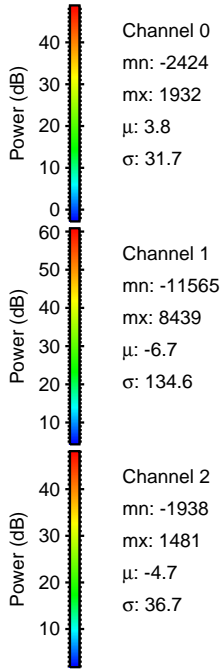
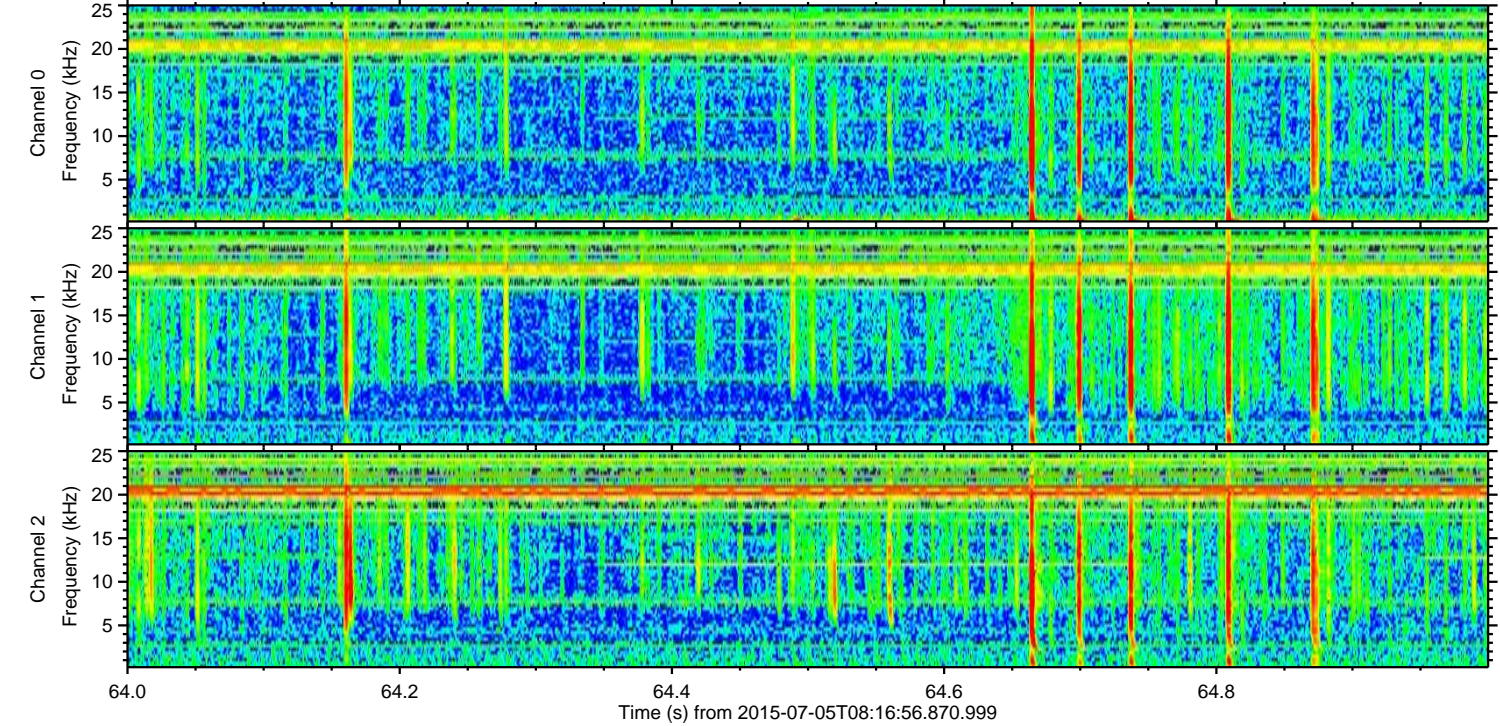
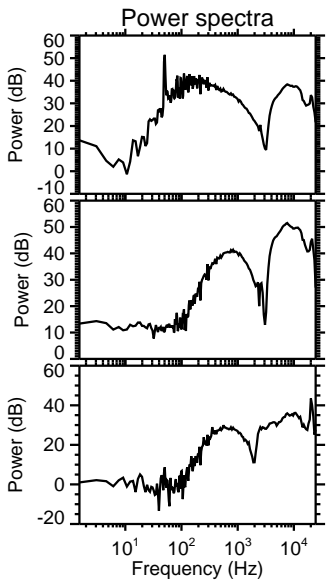
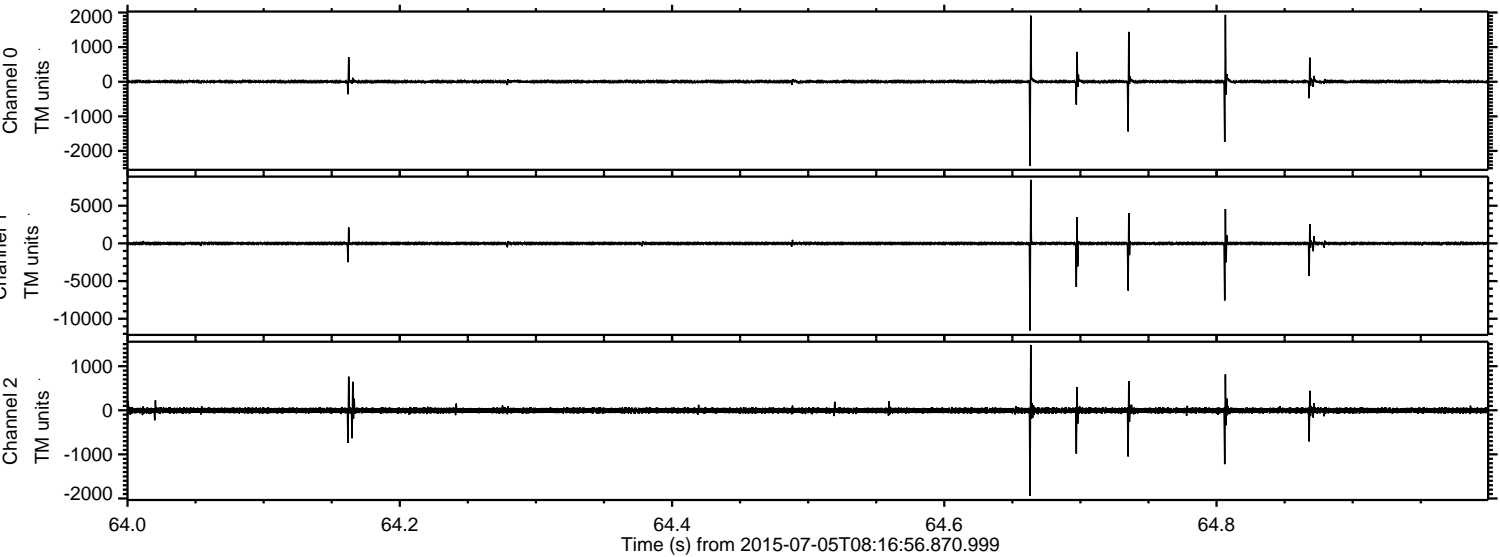


ELMAVAN 3D WAVEFORMS (Measured data sampled at 50 kHz) 51000 packets of 144 samples from 2015-07-05T08:16:56.870.999. Part 72/147

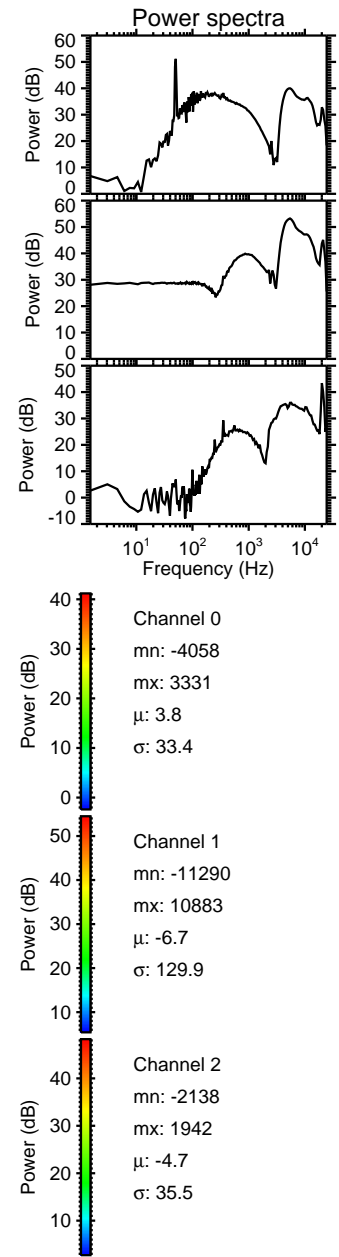
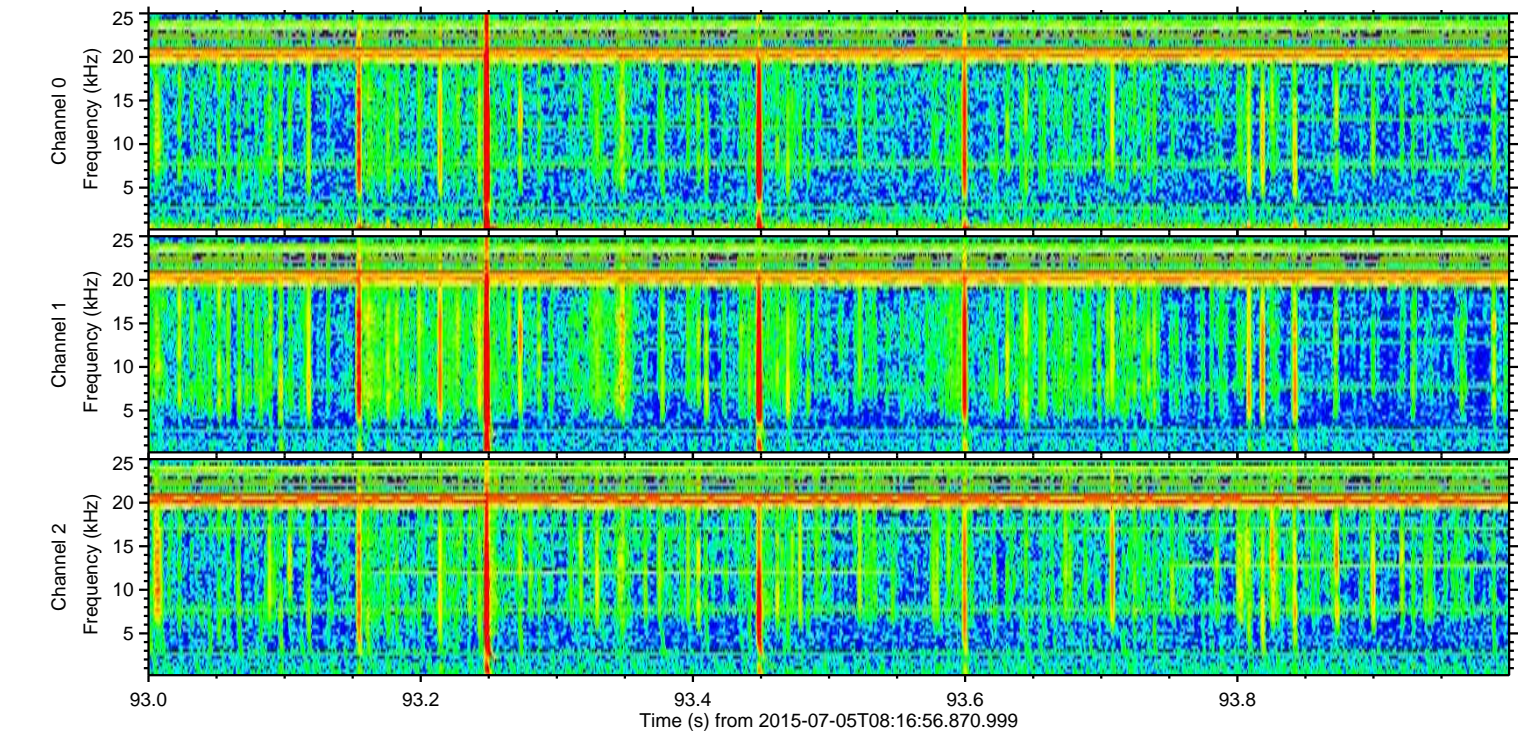
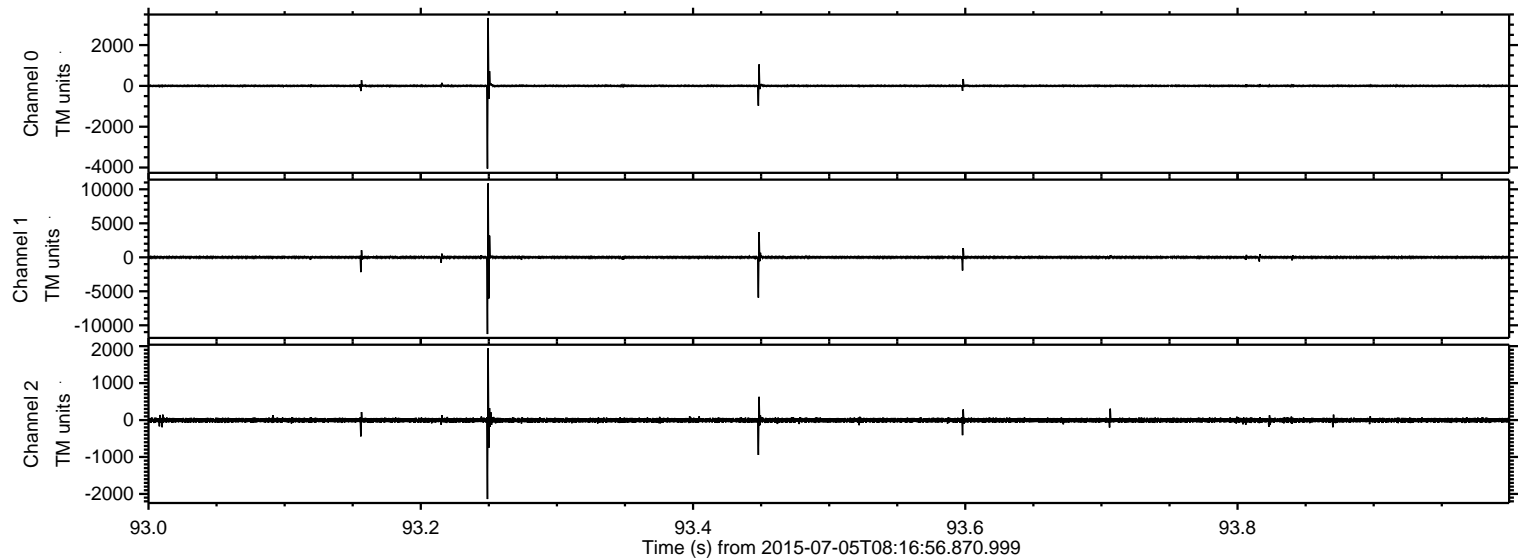
Processed Sun Jul 5 10:23:38 2015 by ELM ver.2012-10-06 from 001__elm20150705_081655__dat00.bin



Processed Sun Jul 5 10:23:39 2015 by ELM ver.2012-10-06 from 001__elm20150705_081655__dat00.bin

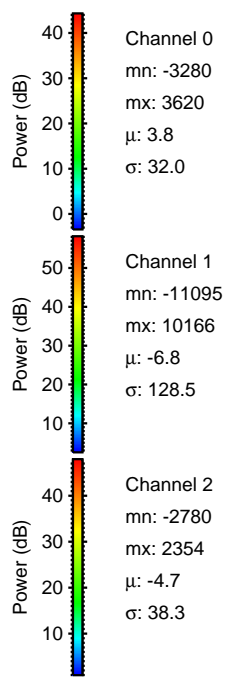
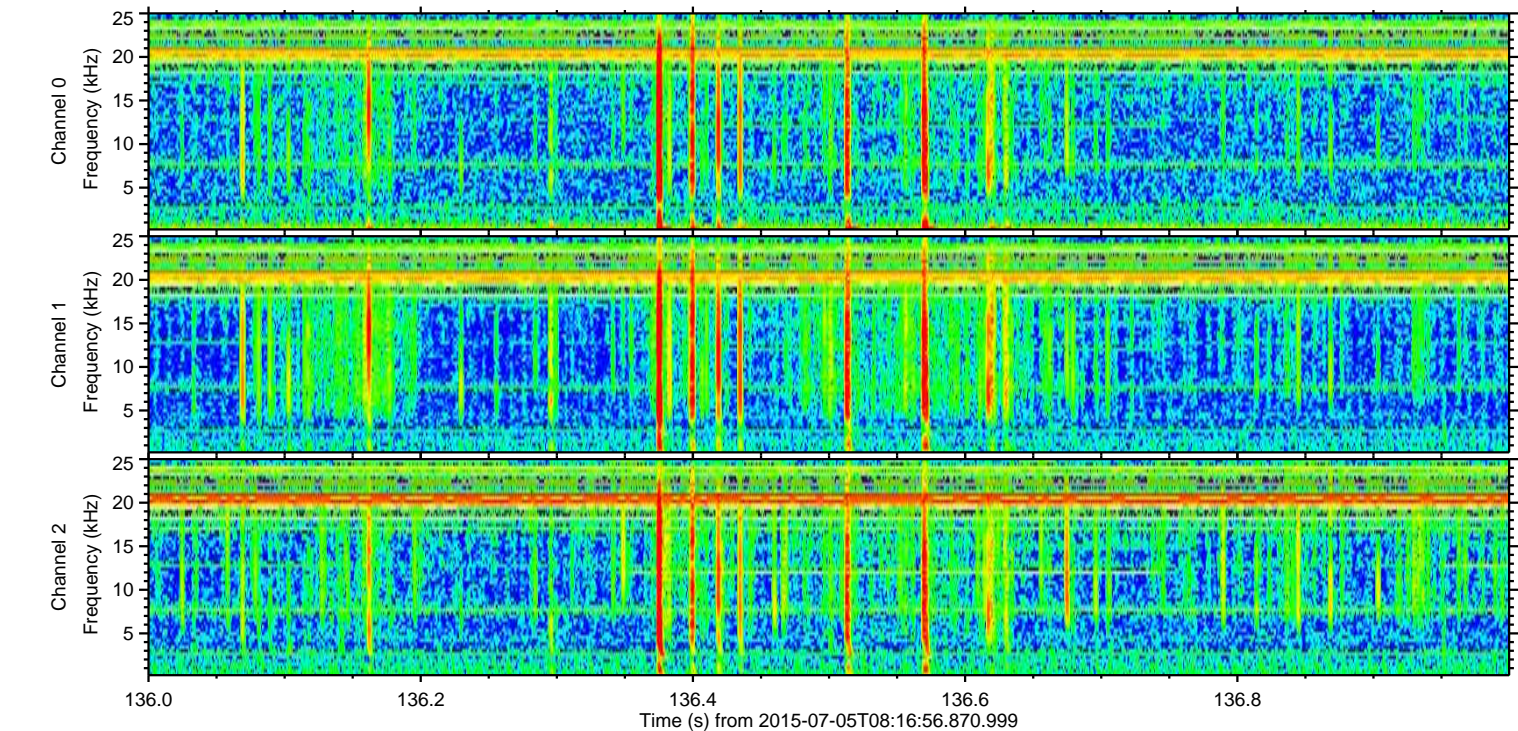
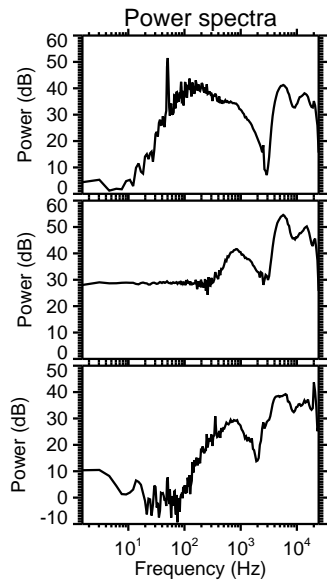
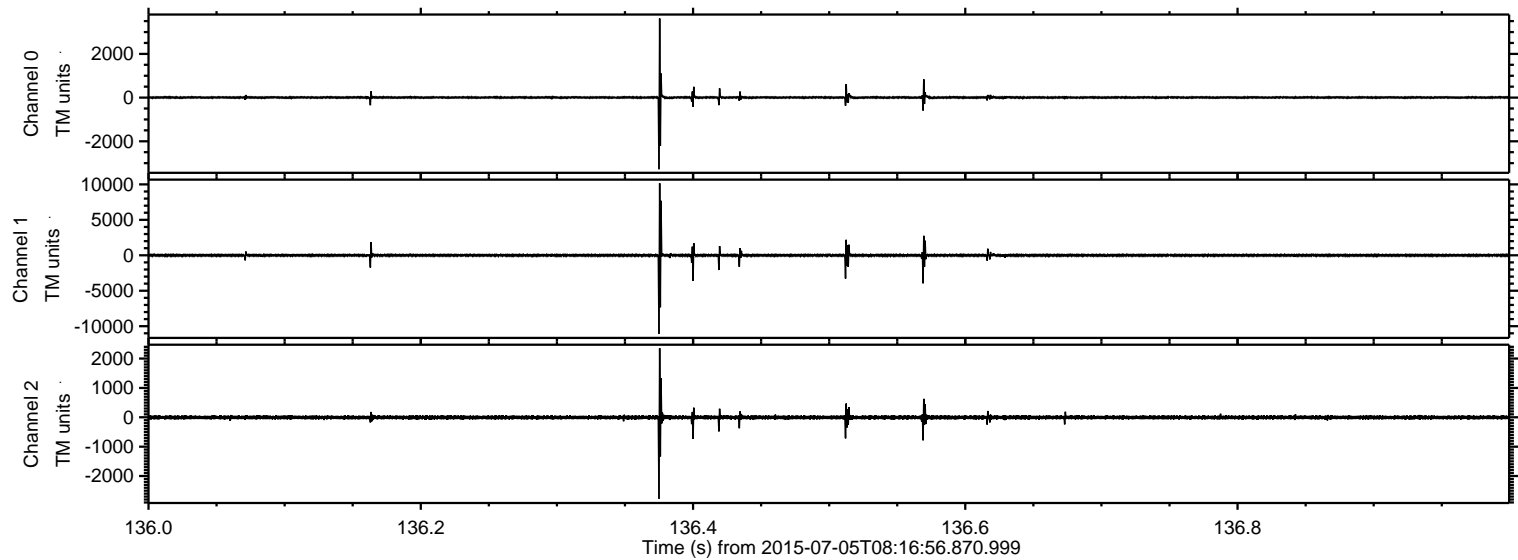


Processed Sun Jul 5 10:23:40 2015 by ELM ver.2012-10-06 from 001__elm20150705_081655__dat00.bin



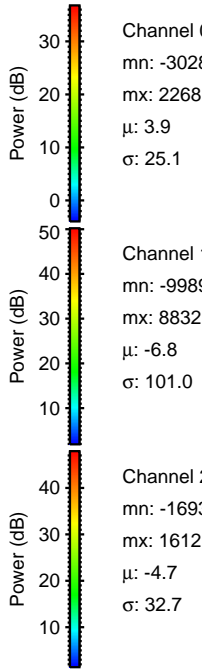
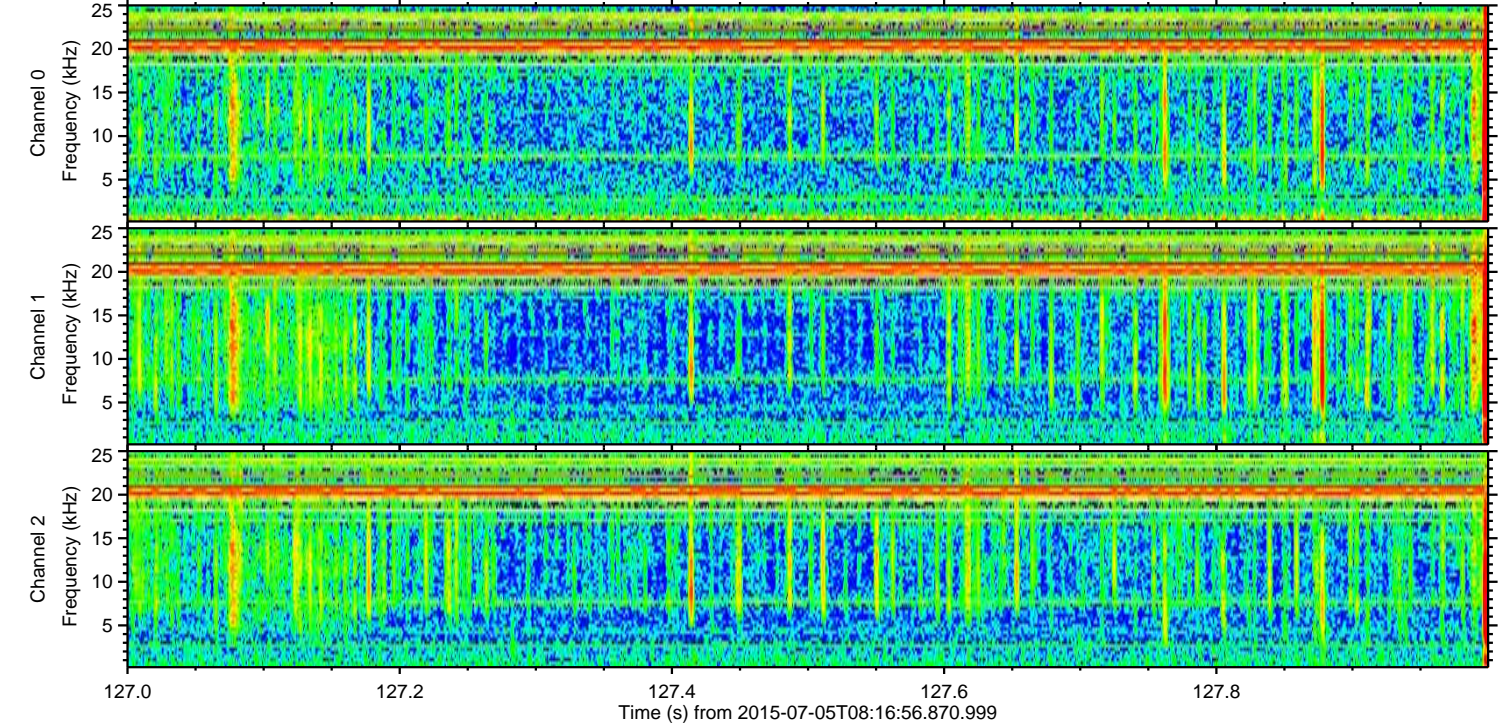
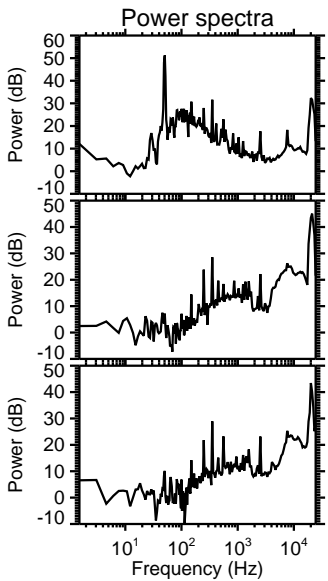
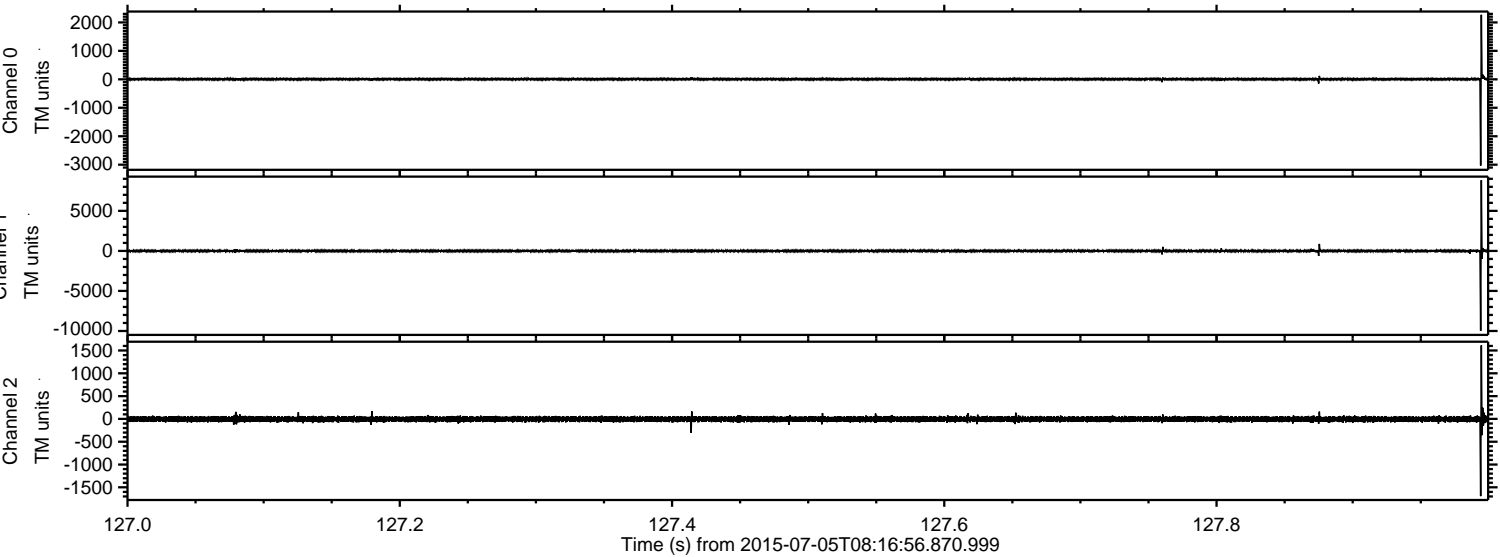
ELMAVAN 3D WAVEFORMS (Measured data sampled at 50 kHz) 51000 packets of 144 samples from 2015-07-05T08:16:56.870.999. Part 137/147

Processed Sun Jul 5 10:23:41 2015 by ELM ver.2012-10-06 from 001__elm20150705_081655__dat00.bin

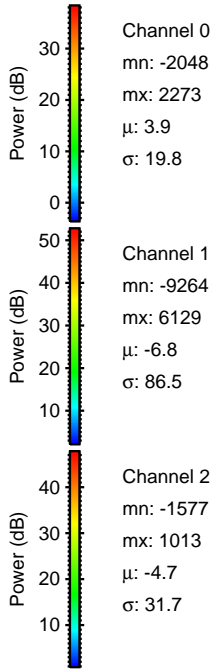
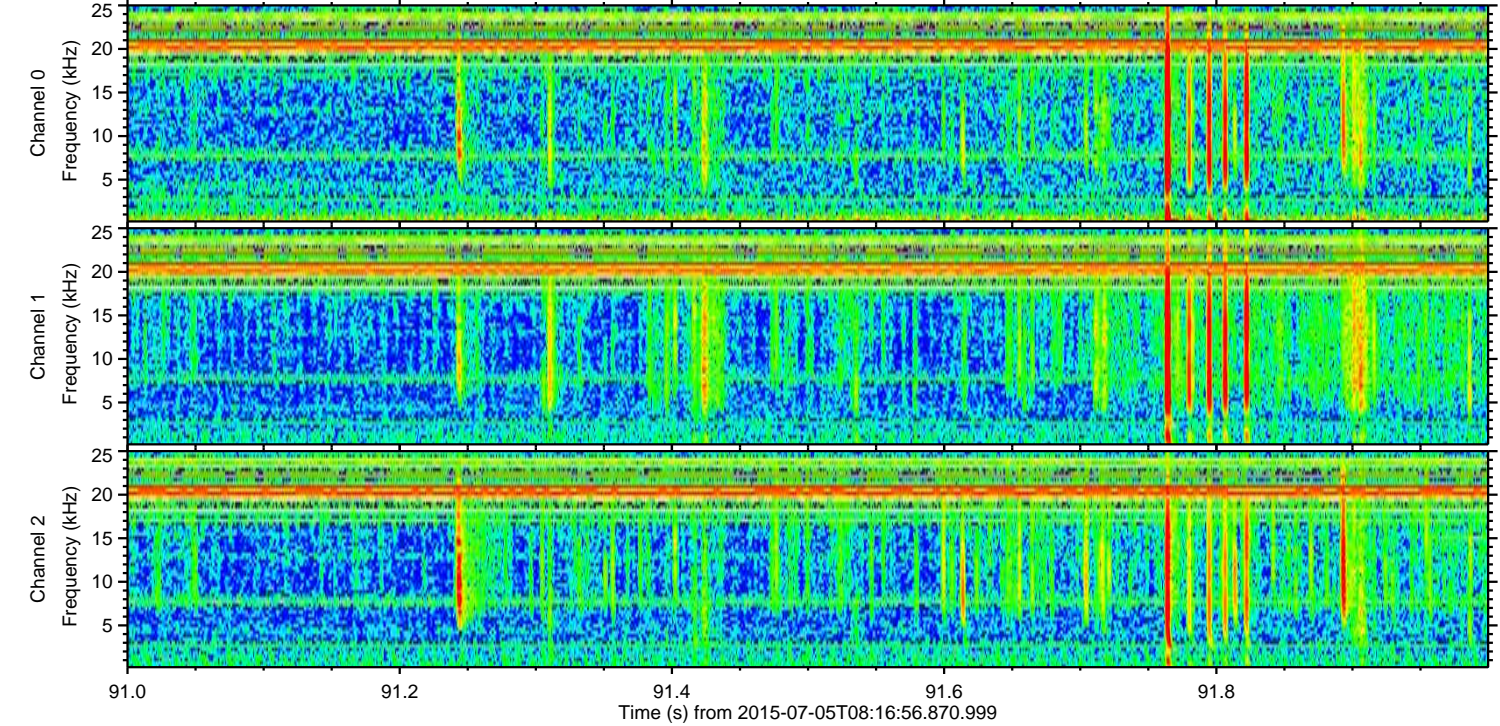
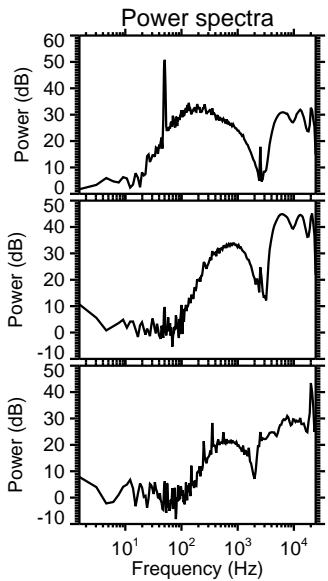
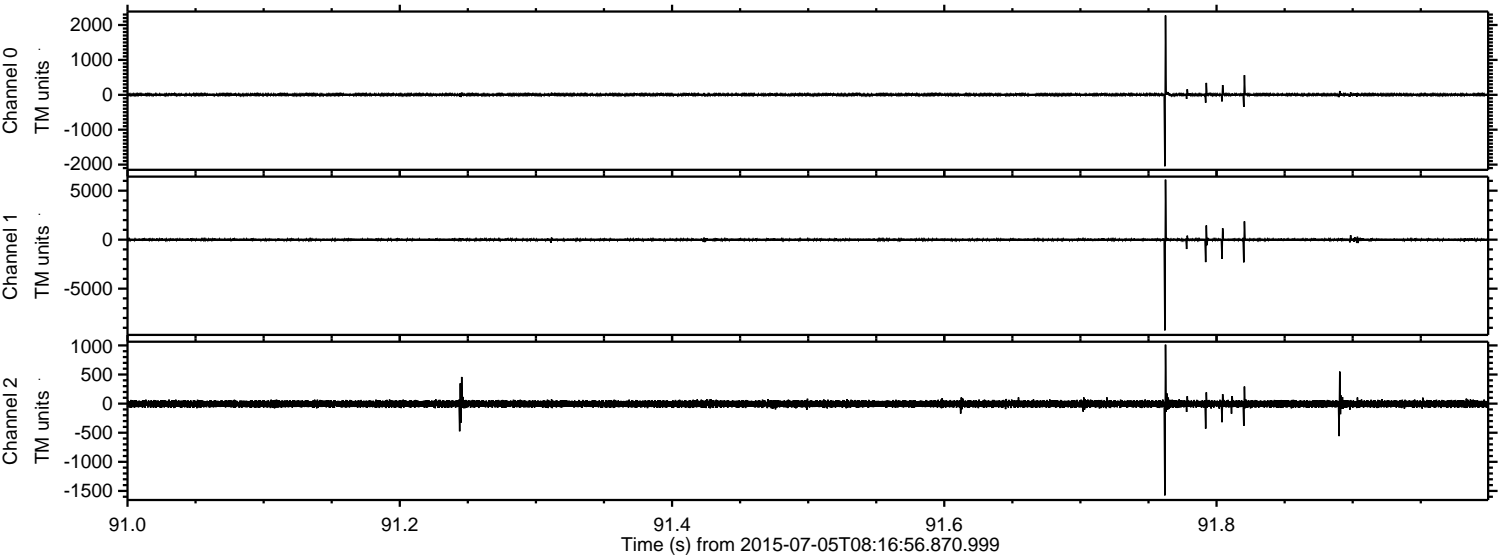


ELMAVAN 3D WAVEFORMS (Measured data sampled at 50 kHz) 51000 packets of 144 samples from 2015-07-05T08:16:56.870.999. Part 128/147

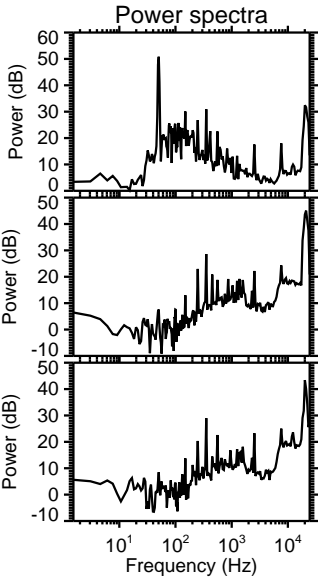
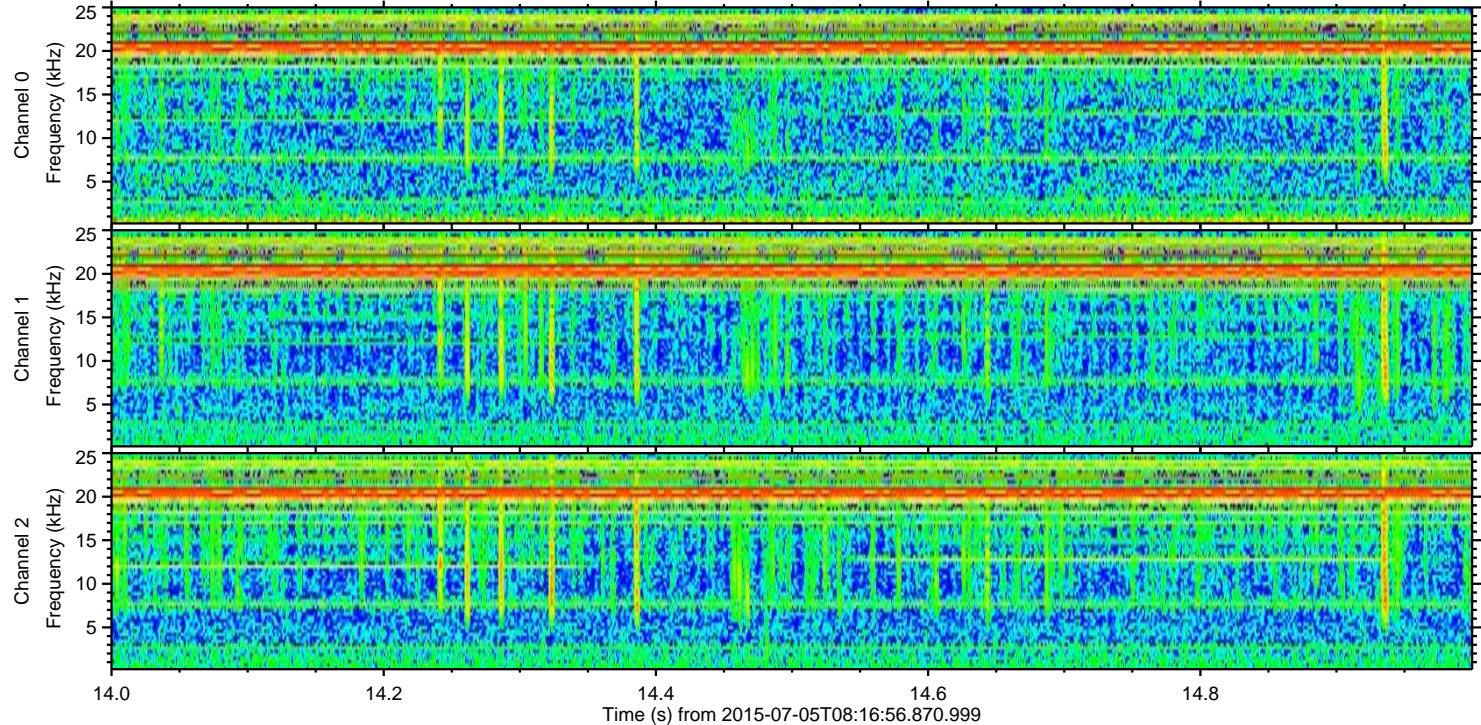
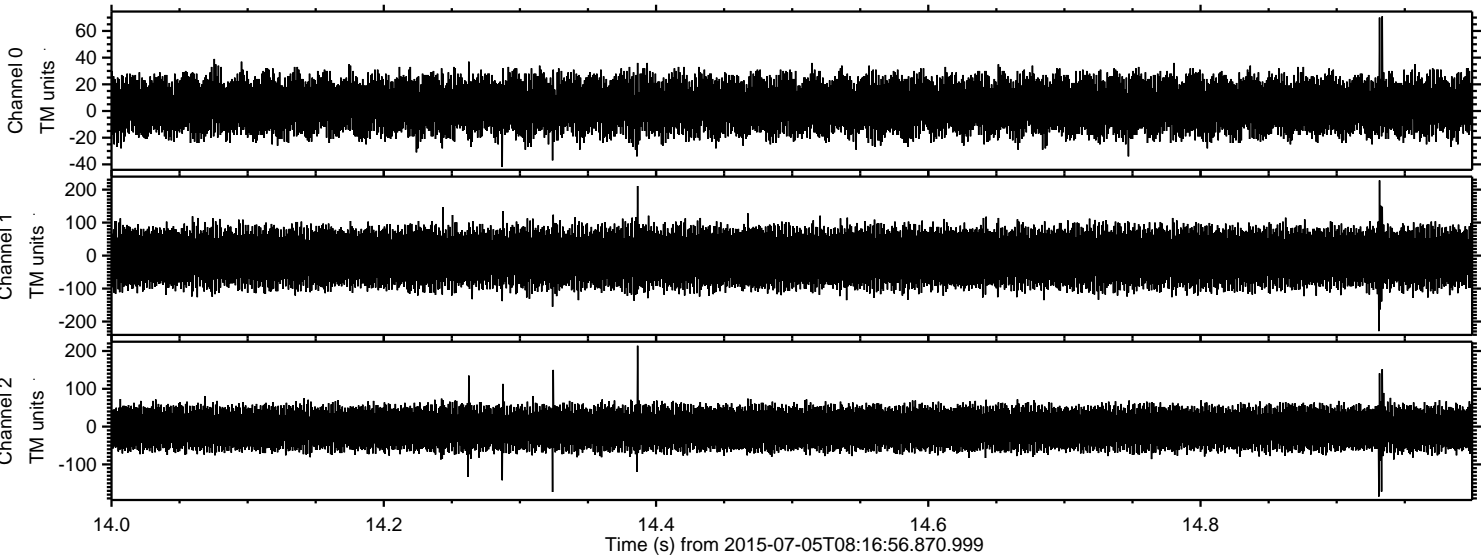
Processed Sun Jul 5 10:23:42 2015 by ELM ver.2012-10-06 from 001__elm20150705_081655__dat00.bin



Processed Sun Jul 5 10:23:43 2015 by ELM ver.2012-10-06 from 001__elm20150705_081655__dat00.bin



Processed Sun Jul 5 10:23:44 2015 by ELM ver.2012-10-06 from 001__elm20150705_081655__dat00.bin



Channel 0
mn: -42
mx: 71
 μ : 3.8
 σ : 10.2

Channel 1
mn: -229
mx: 228
 μ : -6.8
 σ : 41.4

Channel 2
mn: -185
mx: 214
 μ : -4.7
 σ : 27.9