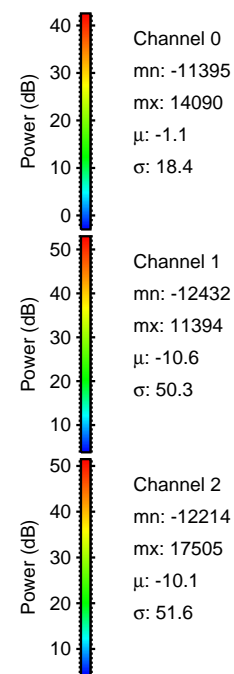
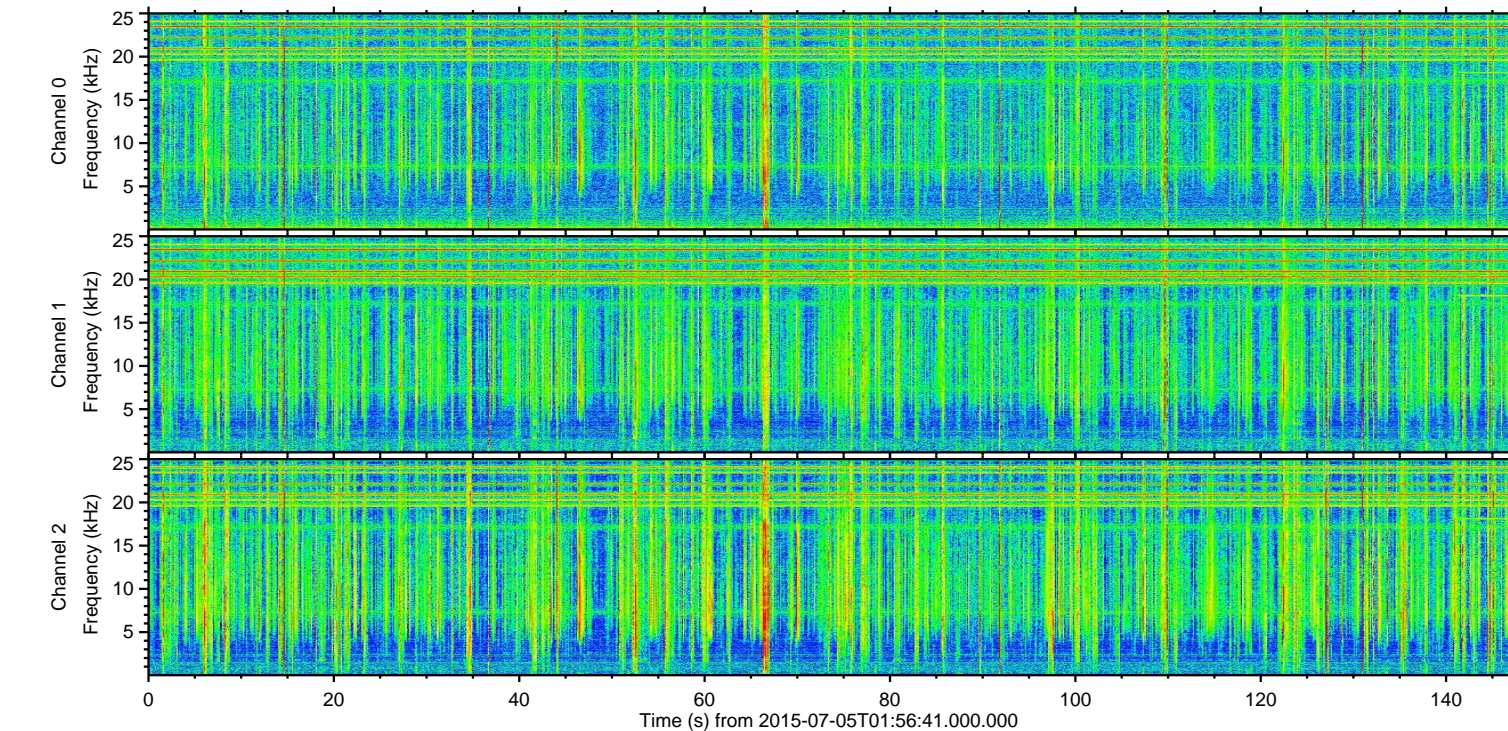
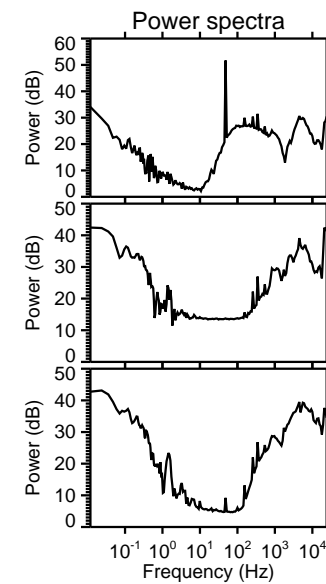
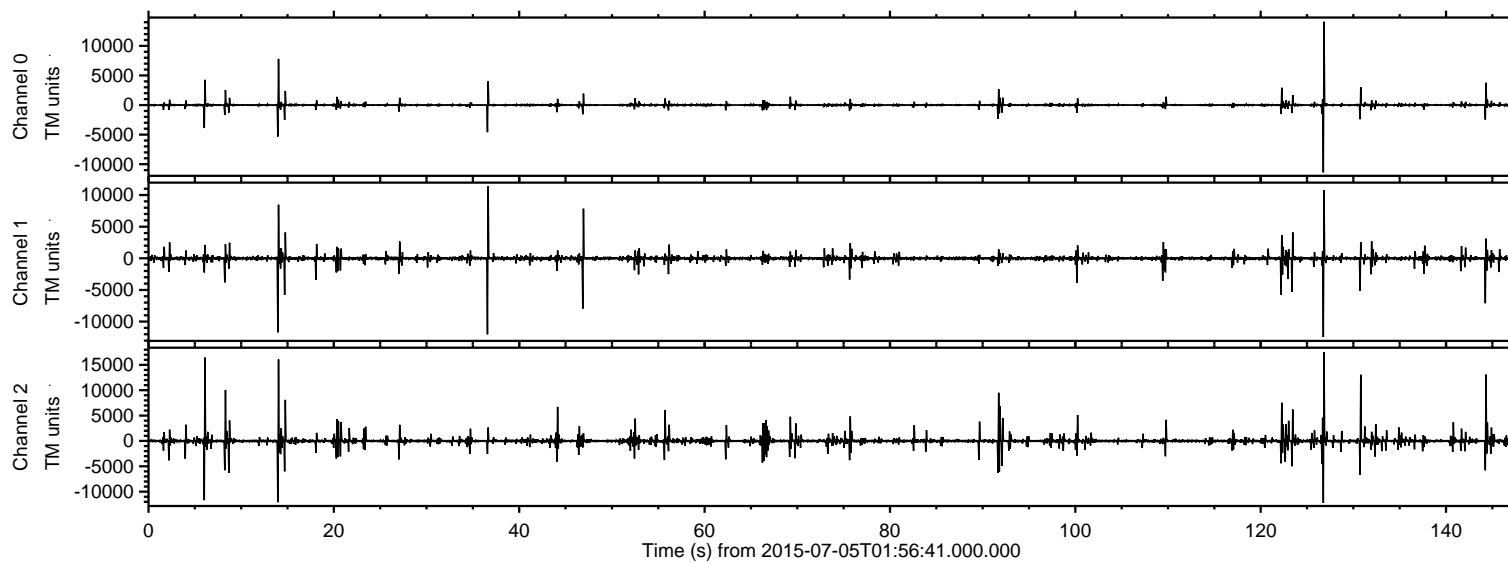


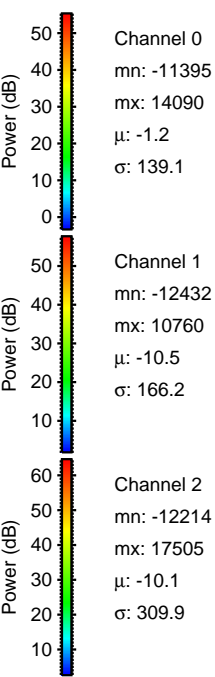
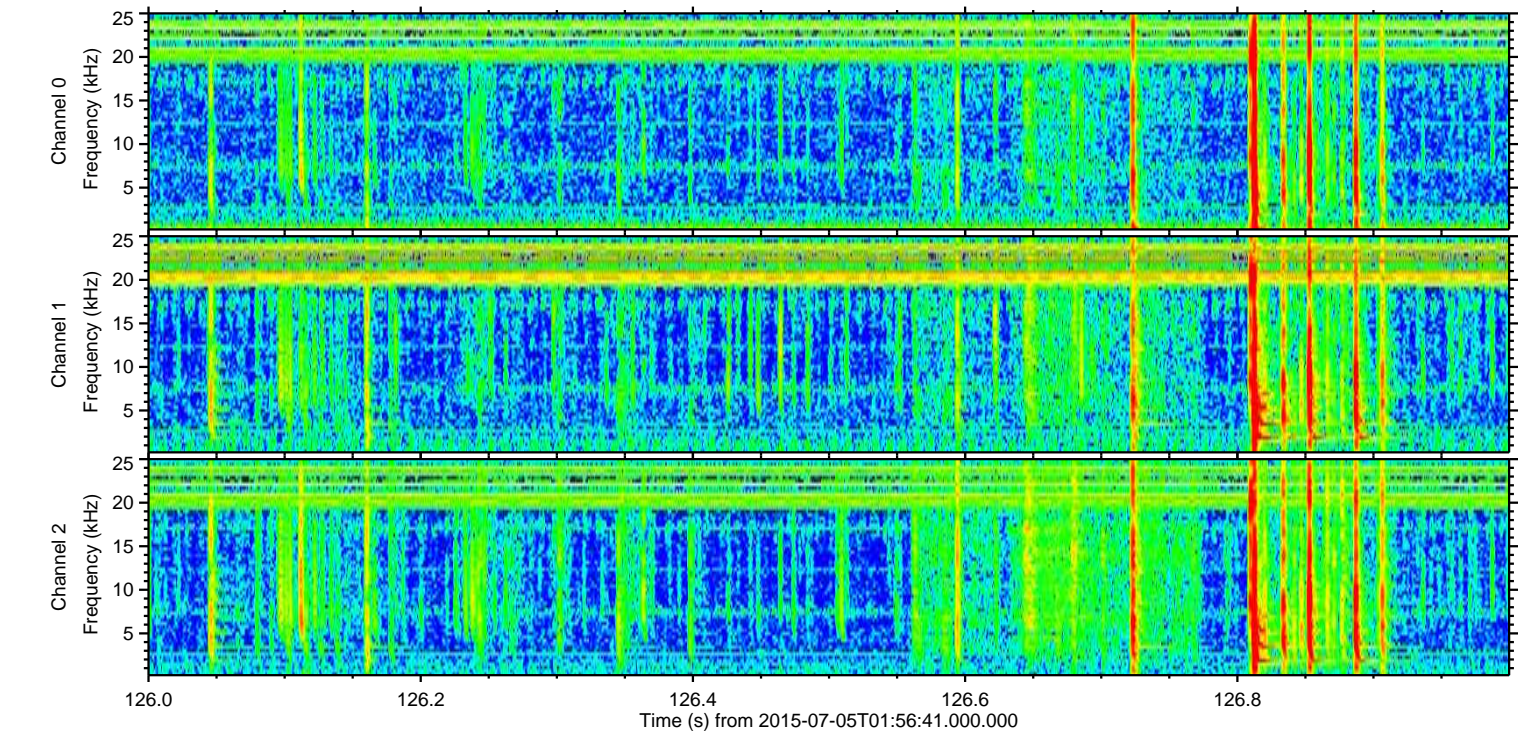
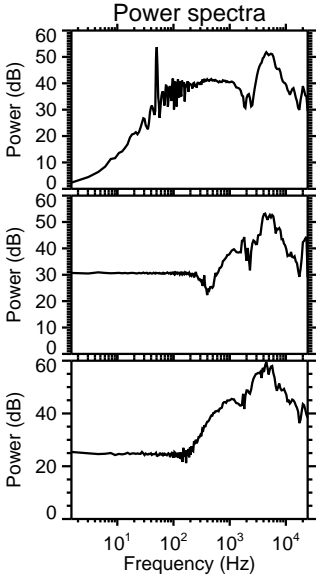
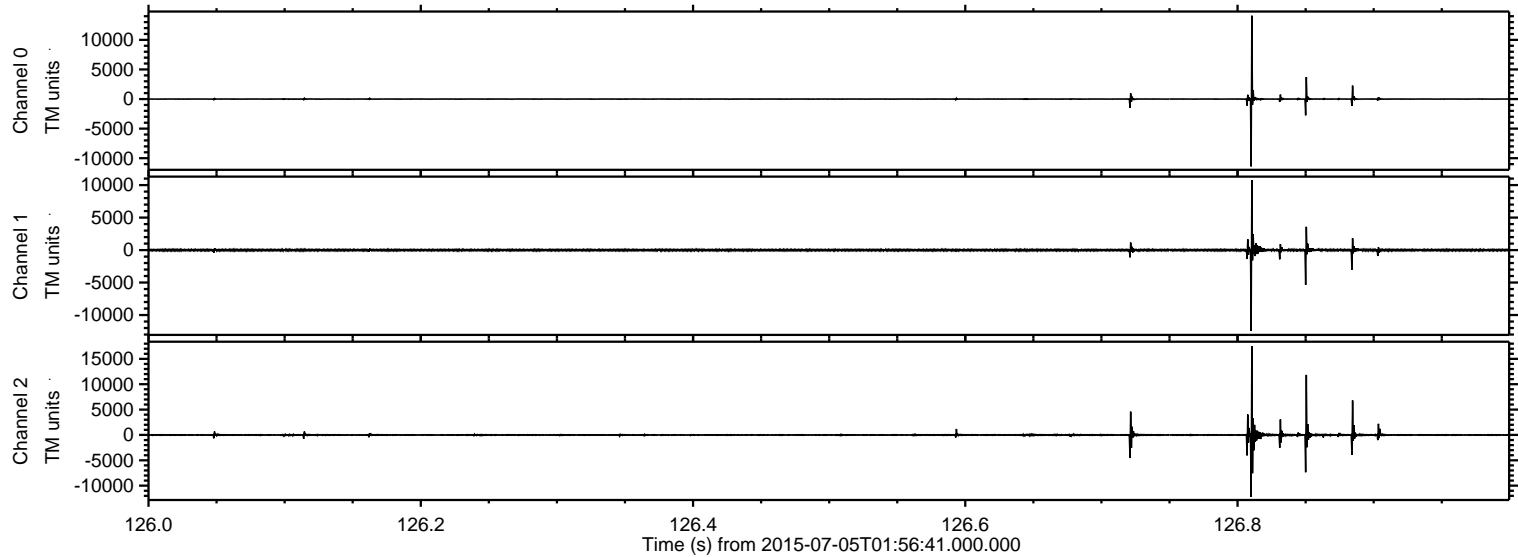
ELMAVAN 3D WAVEFORMS (Measured data sampled at 50 kHz) 51000 packets of 144 samples from 2015-07-05T01:56:41.000.000.

Processed Sun Jul 5 04:03:25 2015 by ELM ver.2012-10-06 from 001__elm20150705_015639__dat00.bin

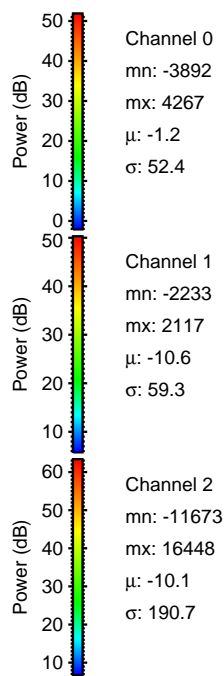
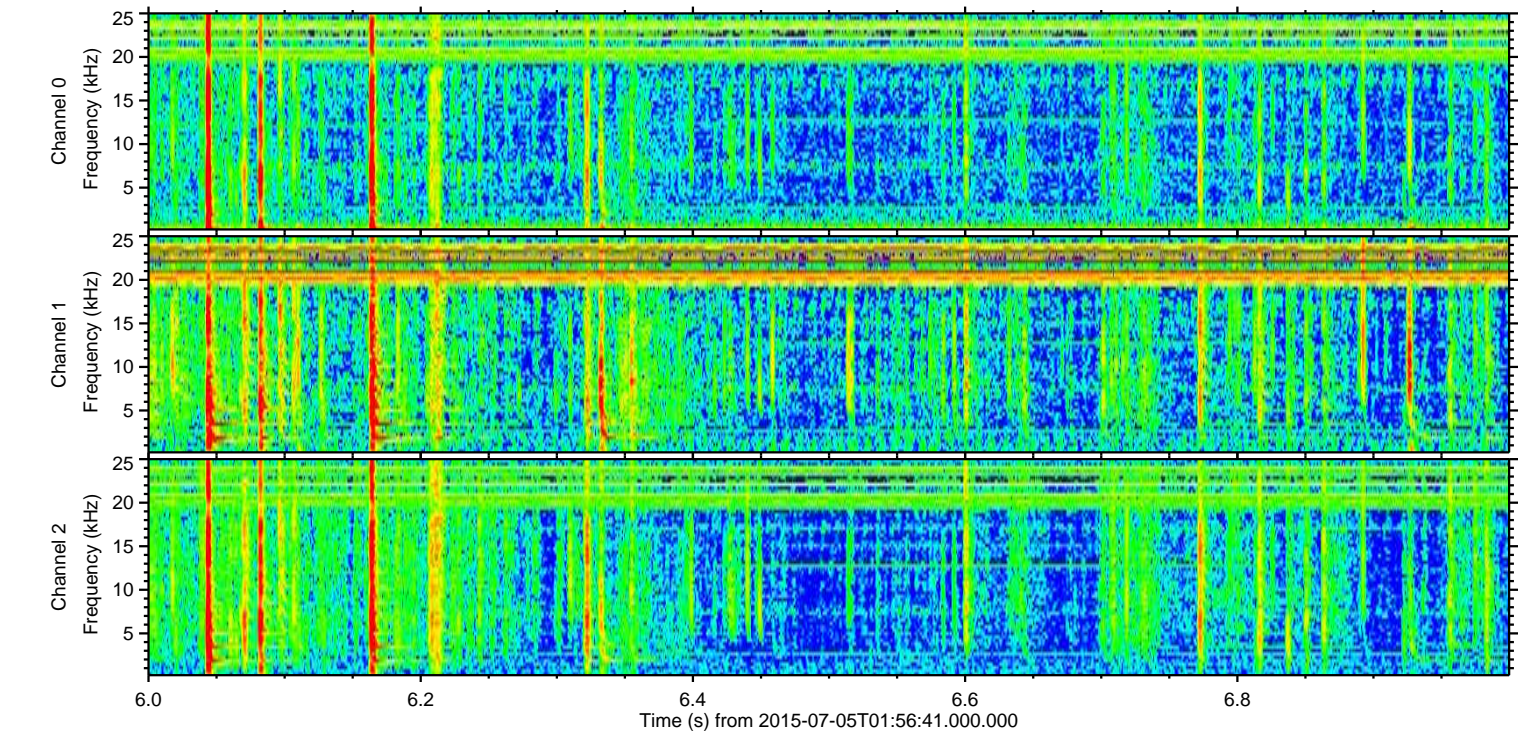
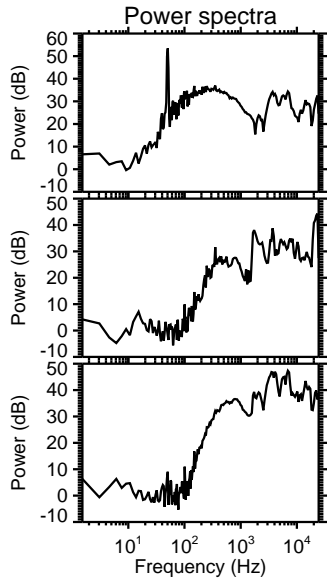
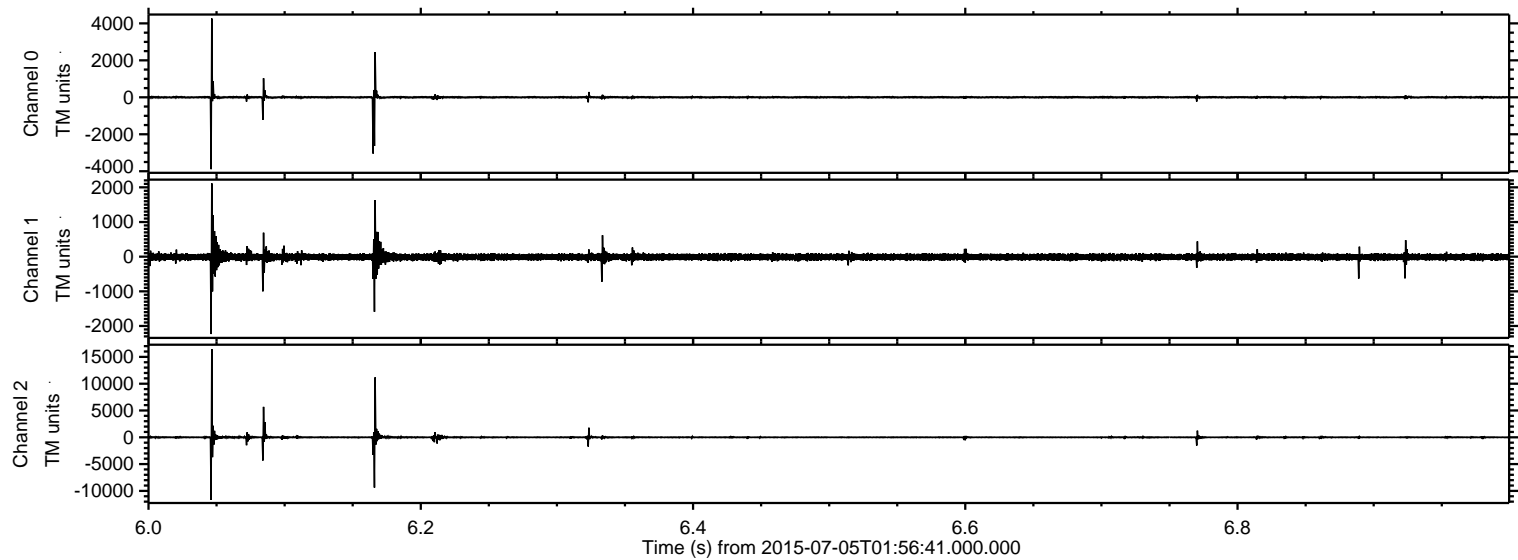


ELMAVAN 3D WAVEFORMS (Measured data sampled at 50 kHz) 51000 packets of 144 samples from 2015-07-05T01:56:41.000.000. Part 127/147

Processed Sun Jul 5 04:03:40 2015 by ELM ver.2012-10-06 from 001__elm20150705_015639__dat00.bin

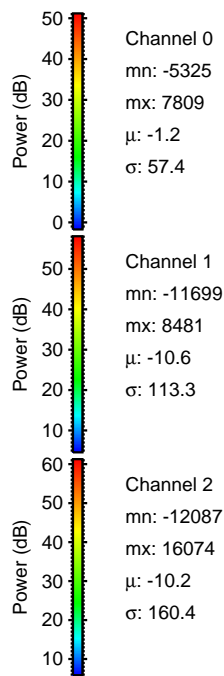
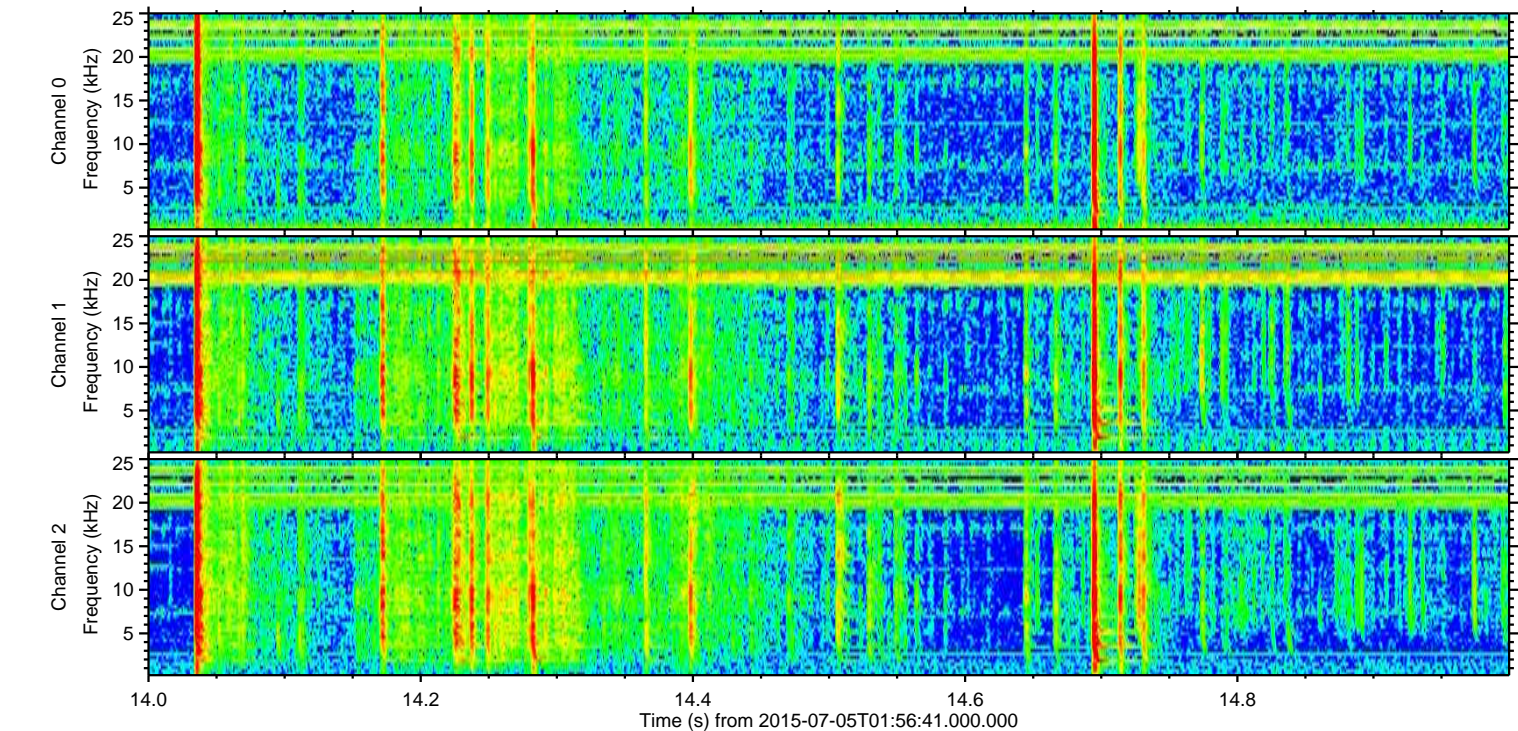
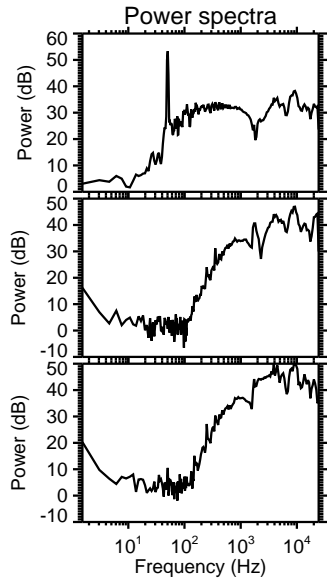
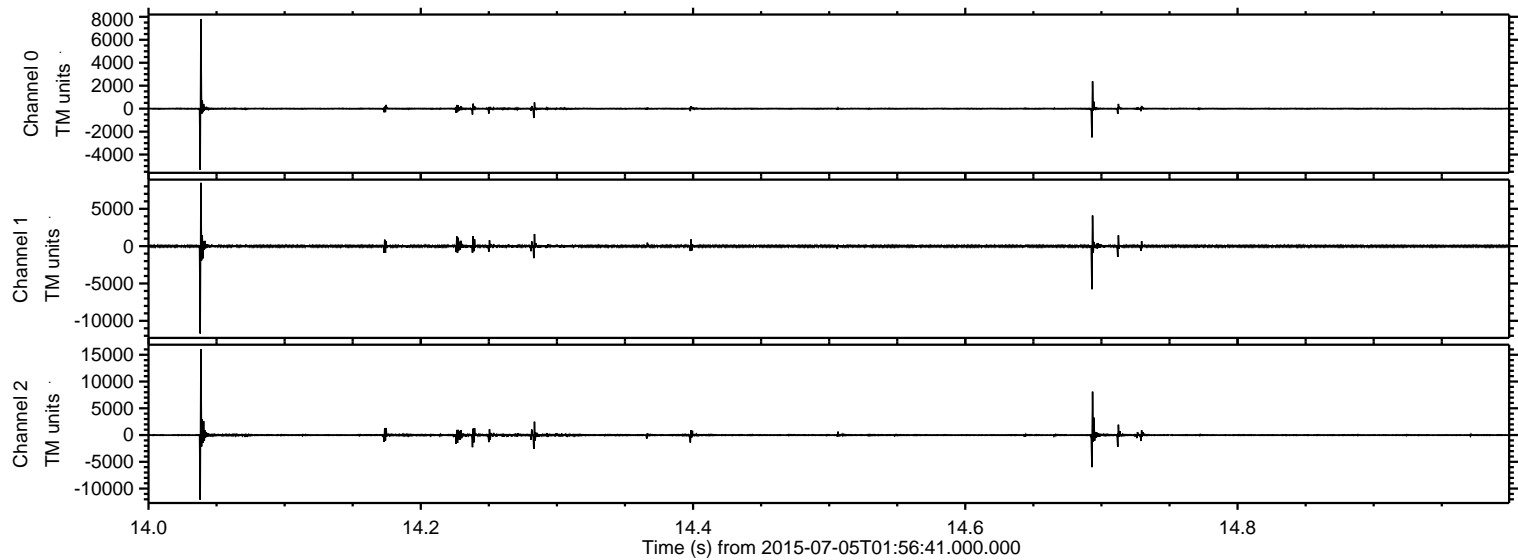


Processed Sun Jul 5 04:03:41 2015 by ELM ver.2012-10-06 from 001__elm20150705_015639__dat00.bin



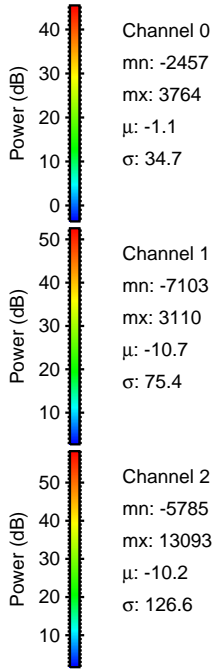
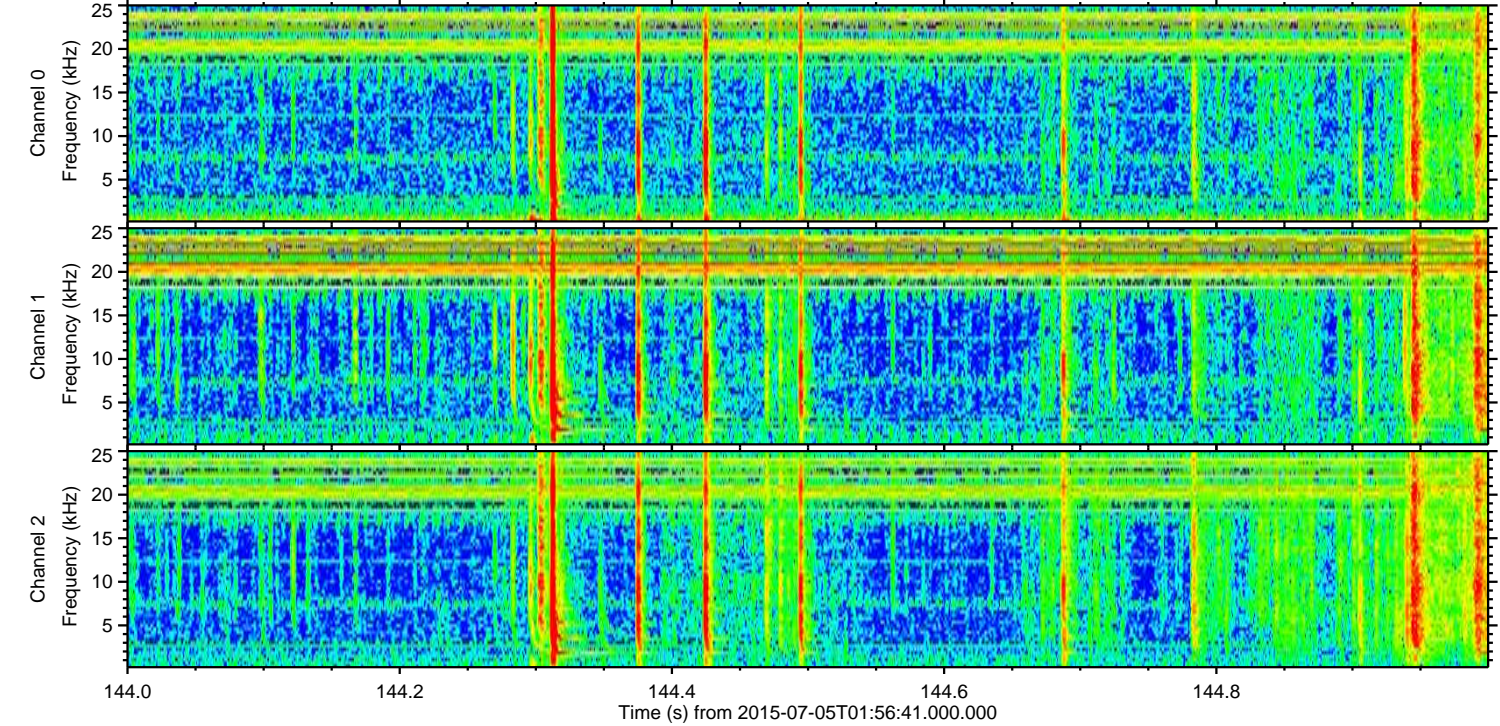
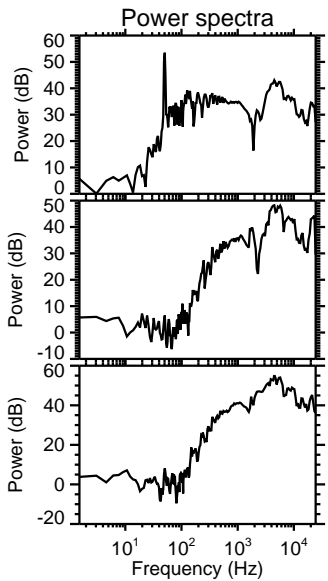
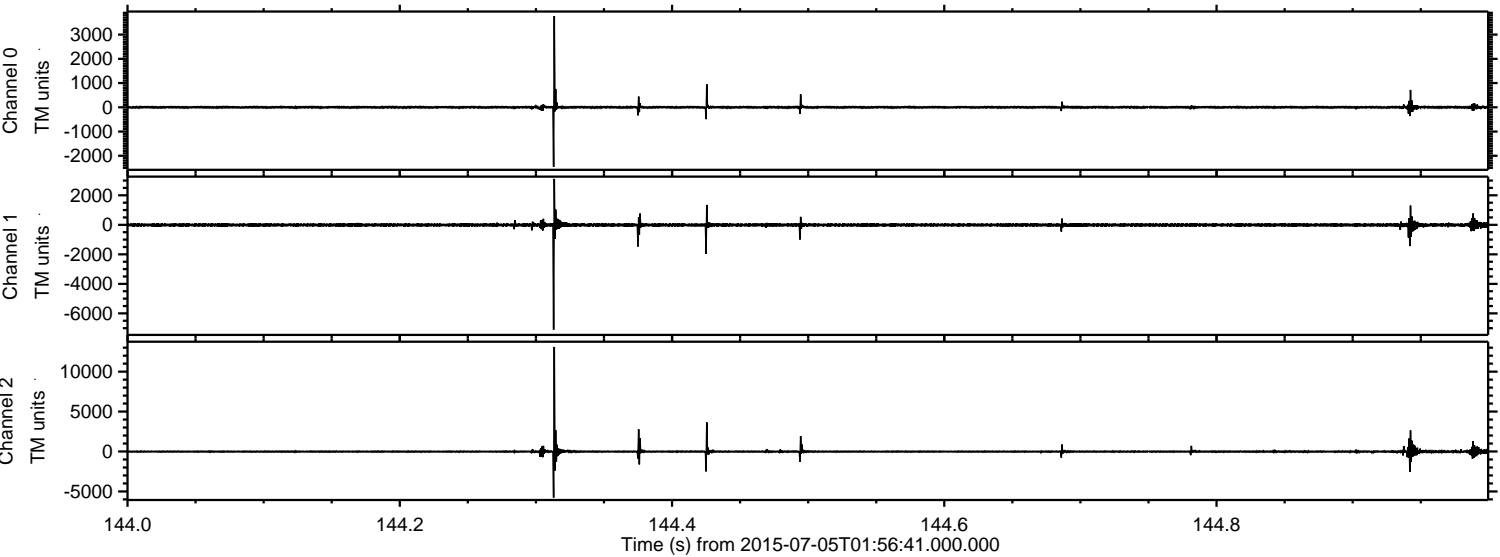
ELMAVAN 3D WAVEFORMS (Measured data sampled at 50 kHz) 51000 packets of 144 samples from 2015-07-05T01:56:41.000.000. Part 15/147

Processed Sun Jul 5 04:03:42 2015 by ELM ver.2012-10-06 from 001__elm20150705_015639__dat00.bin



ELMAVAN 3D WAVEFORMS (Measured data sampled at 50 kHz) 51000 packets of 144 samples from 2015-07-05T01:56:41.000.000. Part 145/147

Processed Sun Jul 5 04:03:43 2015 by ELM ver.2012-10-06 from 001__elm20150705_015639__dat00.bin



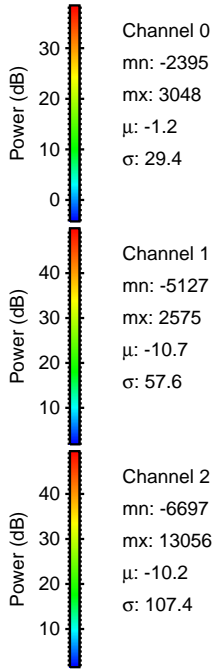
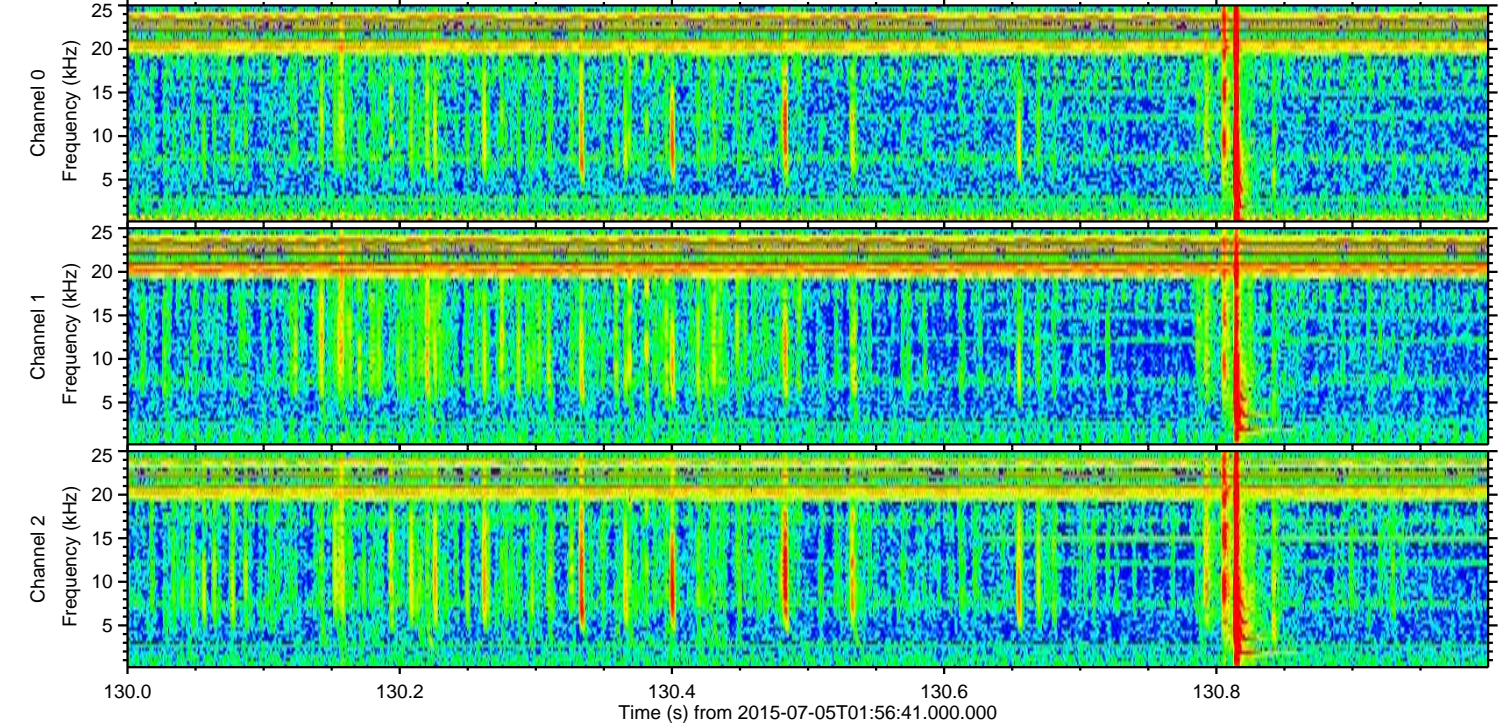
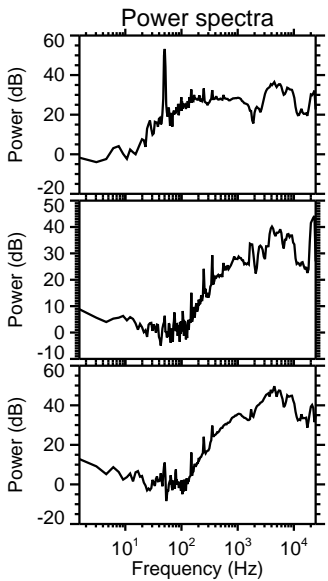
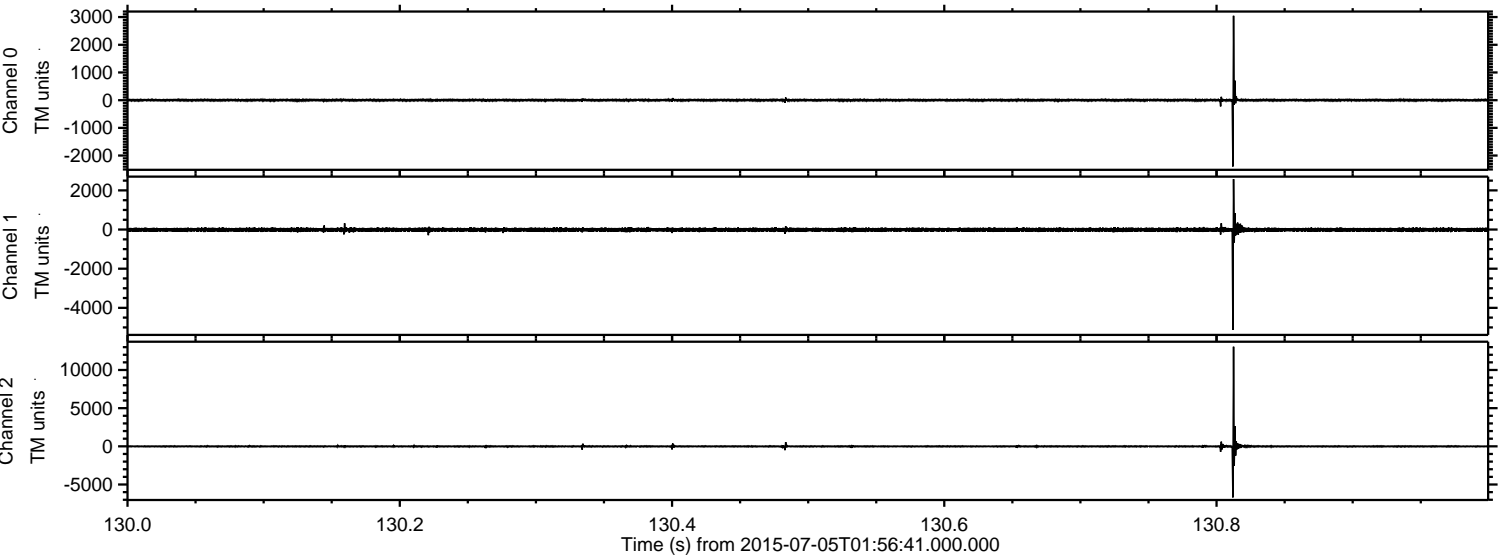
Channel 0
mn: -2457
mx: 3764
 μ : -1.1
 σ : 34.7

Channel 1
mn: -7103
mx: 3110
 μ : -10.7
 σ : 75.4

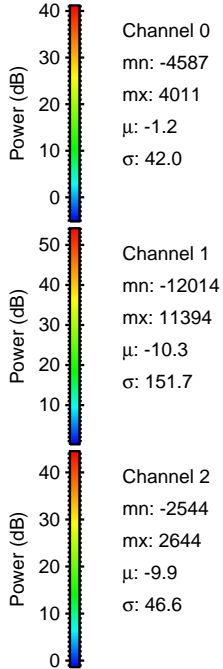
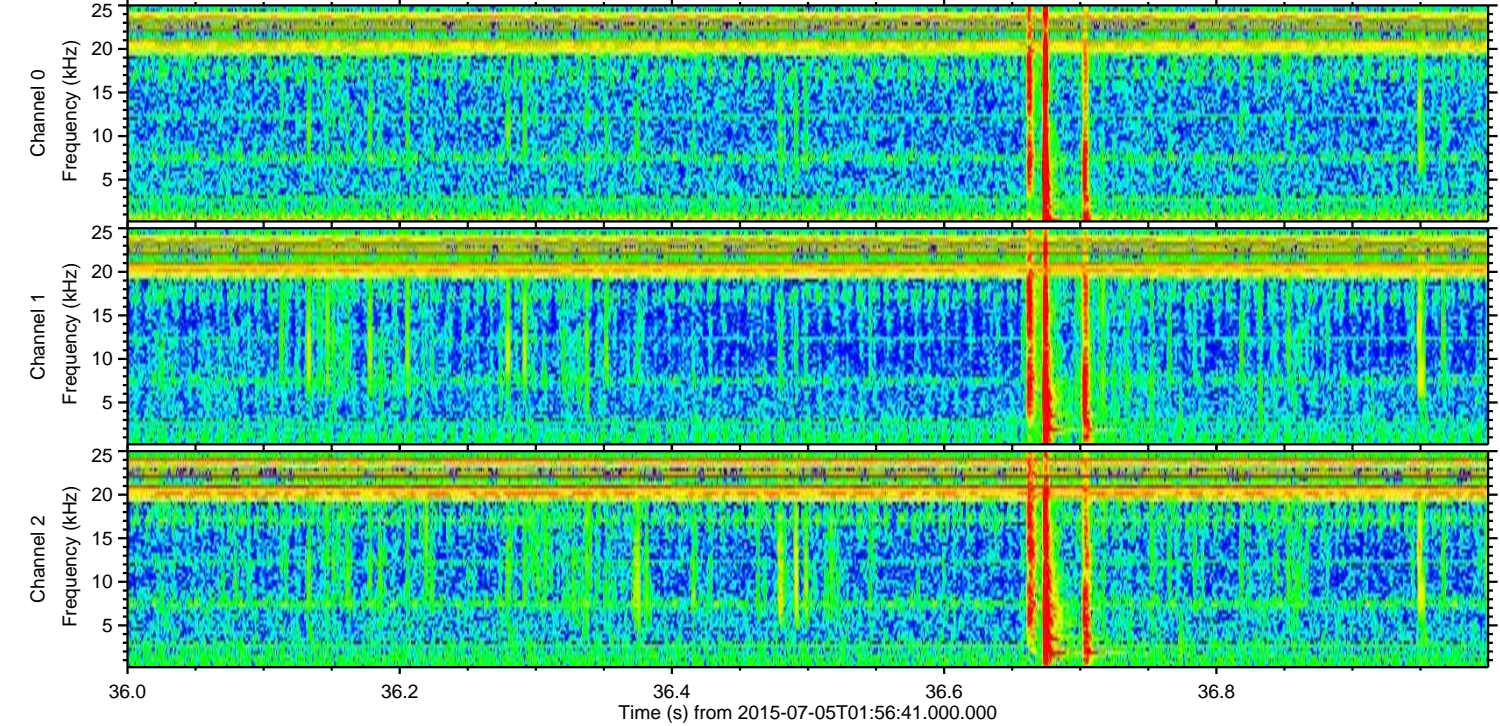
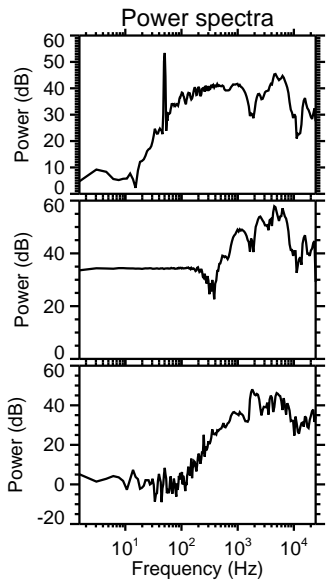
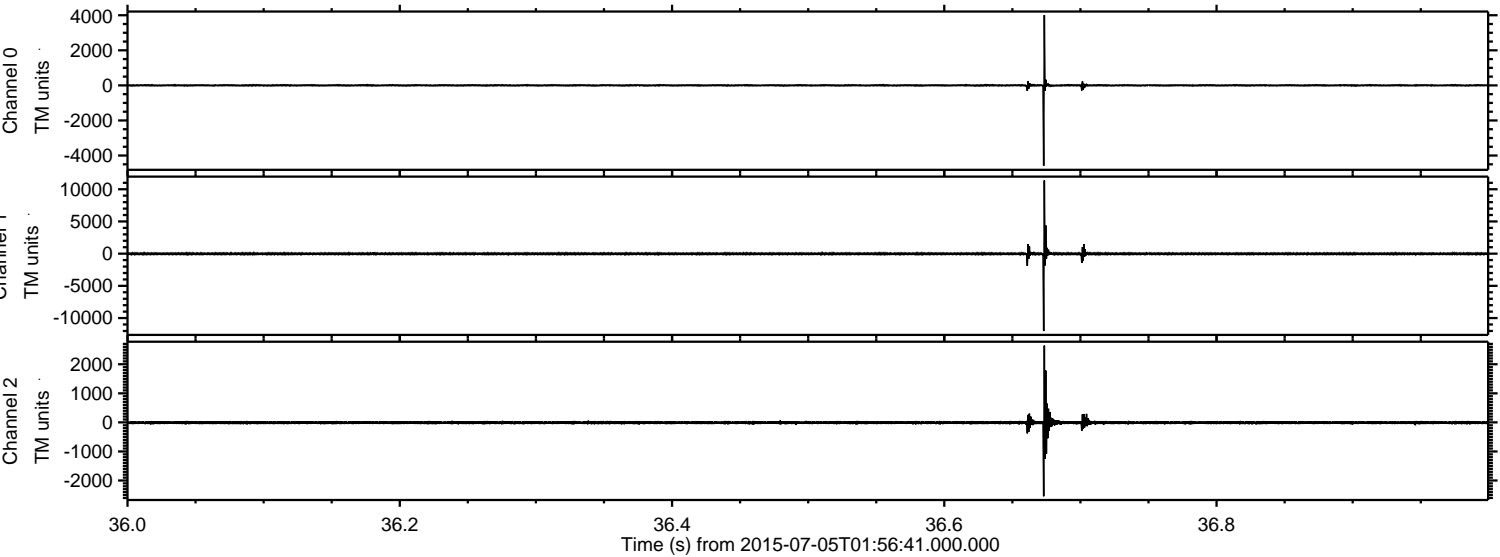
Channel 2
mn: -5785
mx: 13093
 μ : -10.2
 σ : 126.6

ELMAVAN 3D WAVEFORMS (Measured data sampled at 50 kHz) 51000 packets of 144 samples from 2015-07-05T01:56:41.000.000. Part 131/147

Processed Sun Jul 5 04:03:44 2015 by ELM ver.2012-10-06 from 001__elm20150705_015639__dat00.bin



Processed Sun Jul 5 04:03:45 2015 by ELM ver.2012-10-06 from 001__elm20150705_015639__dat00.bin

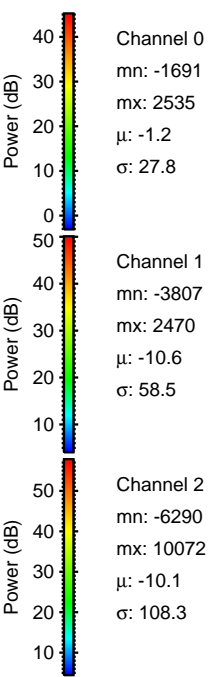
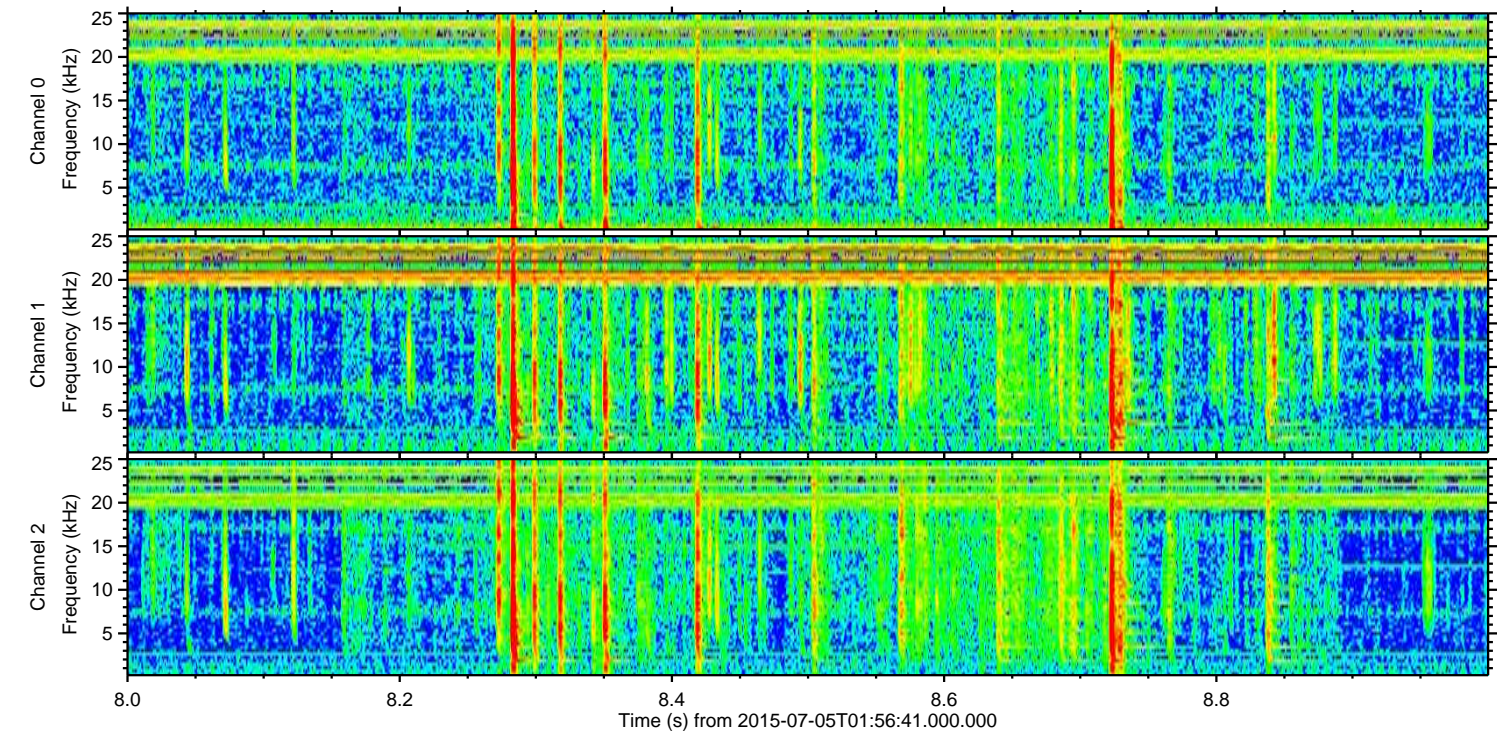
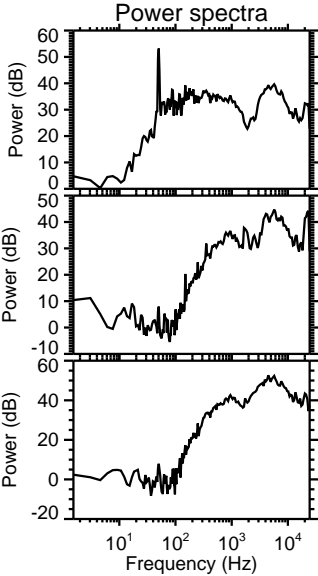
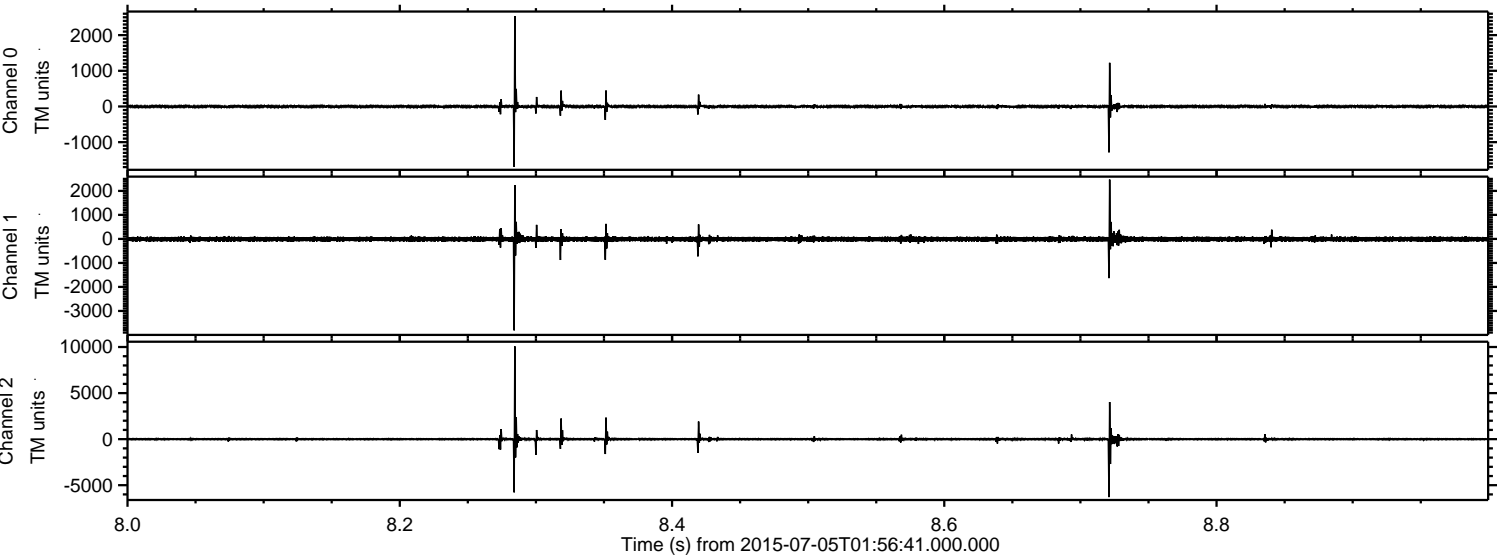


Channel 0
mn: -4587
mx: 4011
 μ : -1.2
 σ : 42.0

Channel 1
mn: -12014
mx: 11394
 μ : -10.3
 σ : 151.7

Channel 2
mn: -2544
mx: 2644
 μ : -9.9
 σ : 46.6

Processed Sun Jul 5 04:03:46 2015 by ELM ver.2012-10-06 from 001__elm20150705_015639__dat00.bin

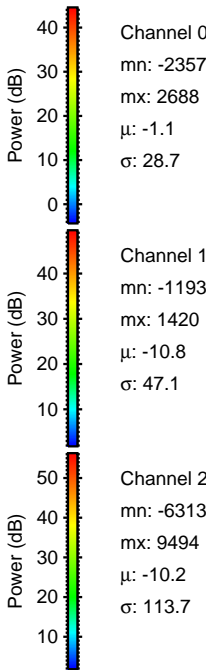
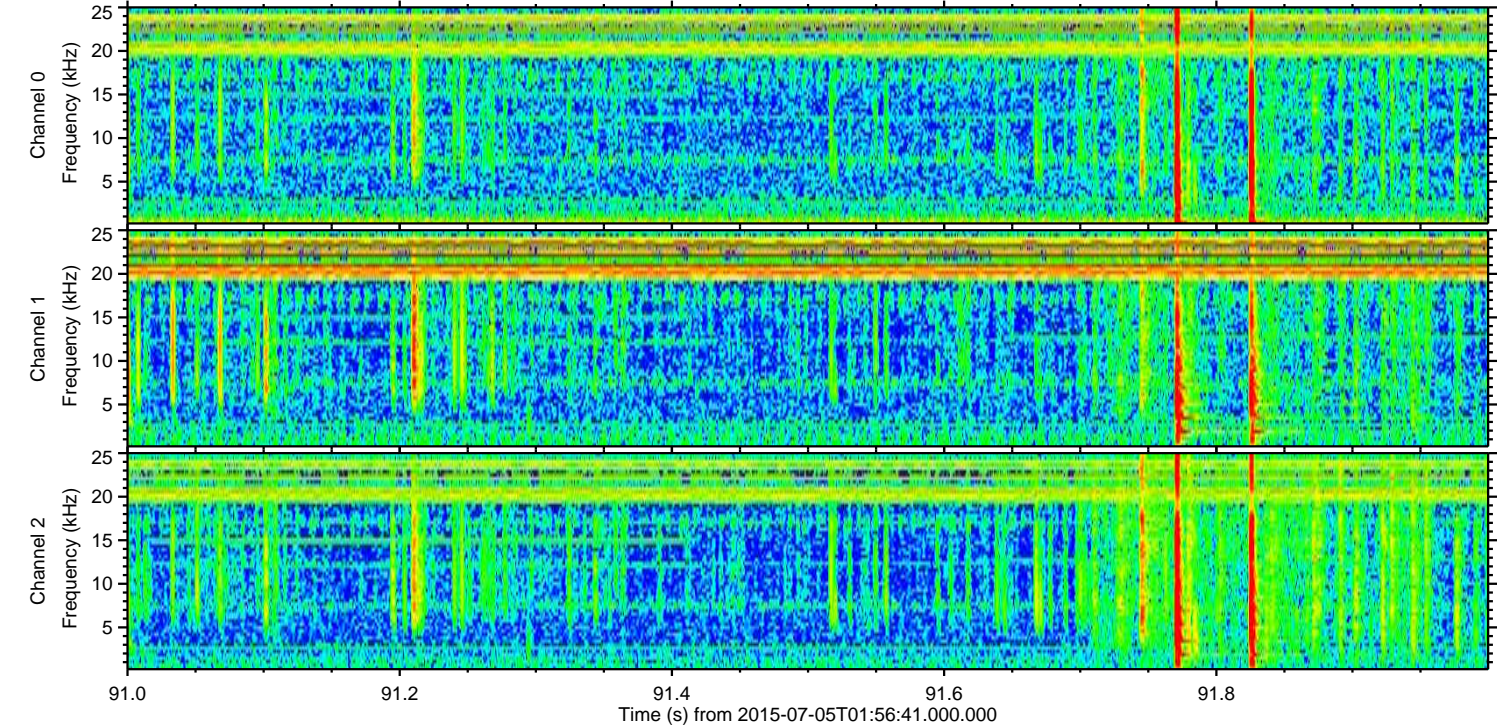
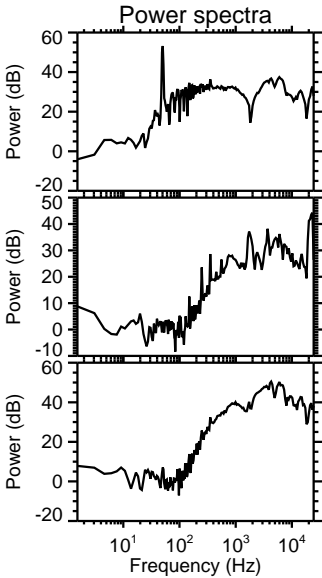
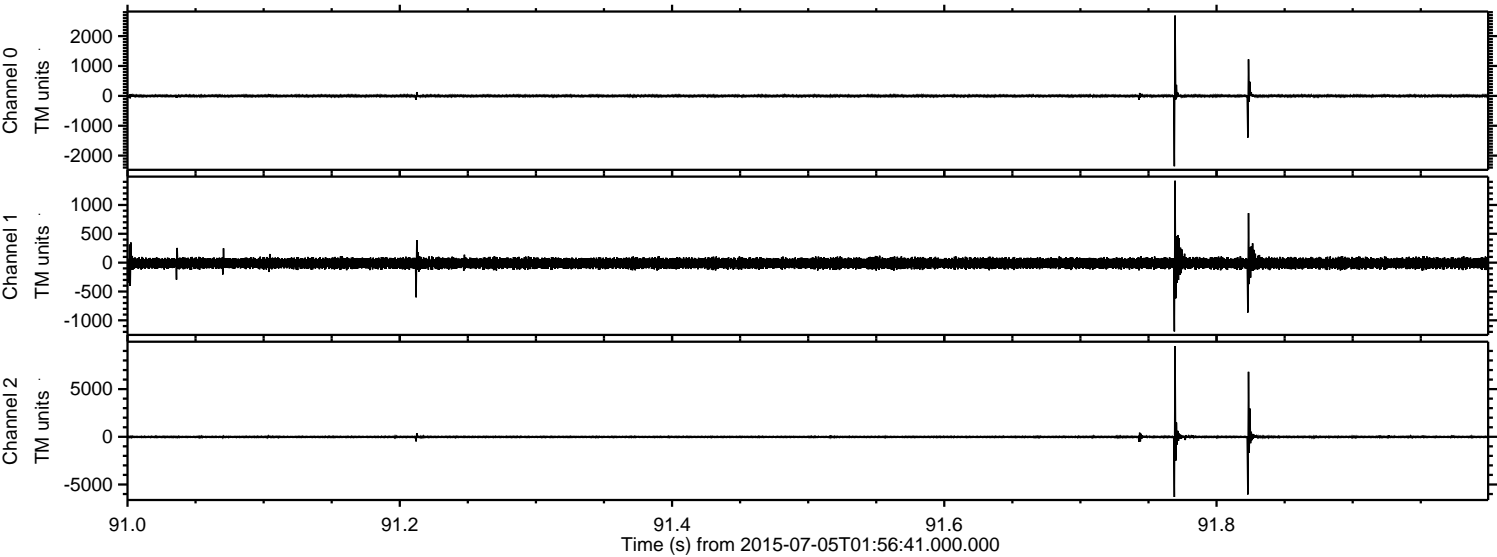


Channel 0
mn: -1691
mx: 2535
 μ : -1.2
 σ : 27.8

Channel 1
mn: -3807
mx: 2470
 μ : -10.6
 σ : 58.5

Channel 2
mn: -6290
mx: 10072
 μ : -10.1
 σ : 108.3

Processed Sun Jul 5 04:03:47 2015 by ELM ver.2012-10-06 from 001__elm20150705_015639__dat00.bin



Channel 0
mn: -2357
mx: 2688
 μ : -1.1
 σ : 28.7

Channel 1
mn: -1193
mx: 1420
 μ : -10.8
 σ : 47.1

Channel 2
mn: -6313
mx: 9494
 μ : -10.2
 σ : 113.7

Processed Sun Jul 5 04:03:48 2015 by ELM ver.2012-10-06 from 001__elm20150705_015639__dat00.bin

