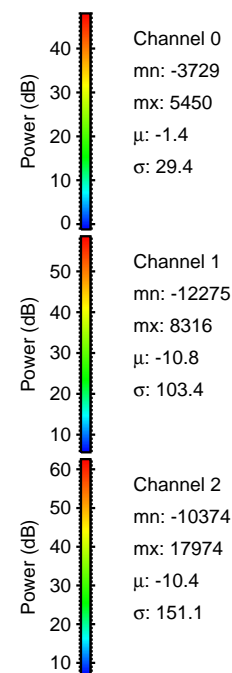
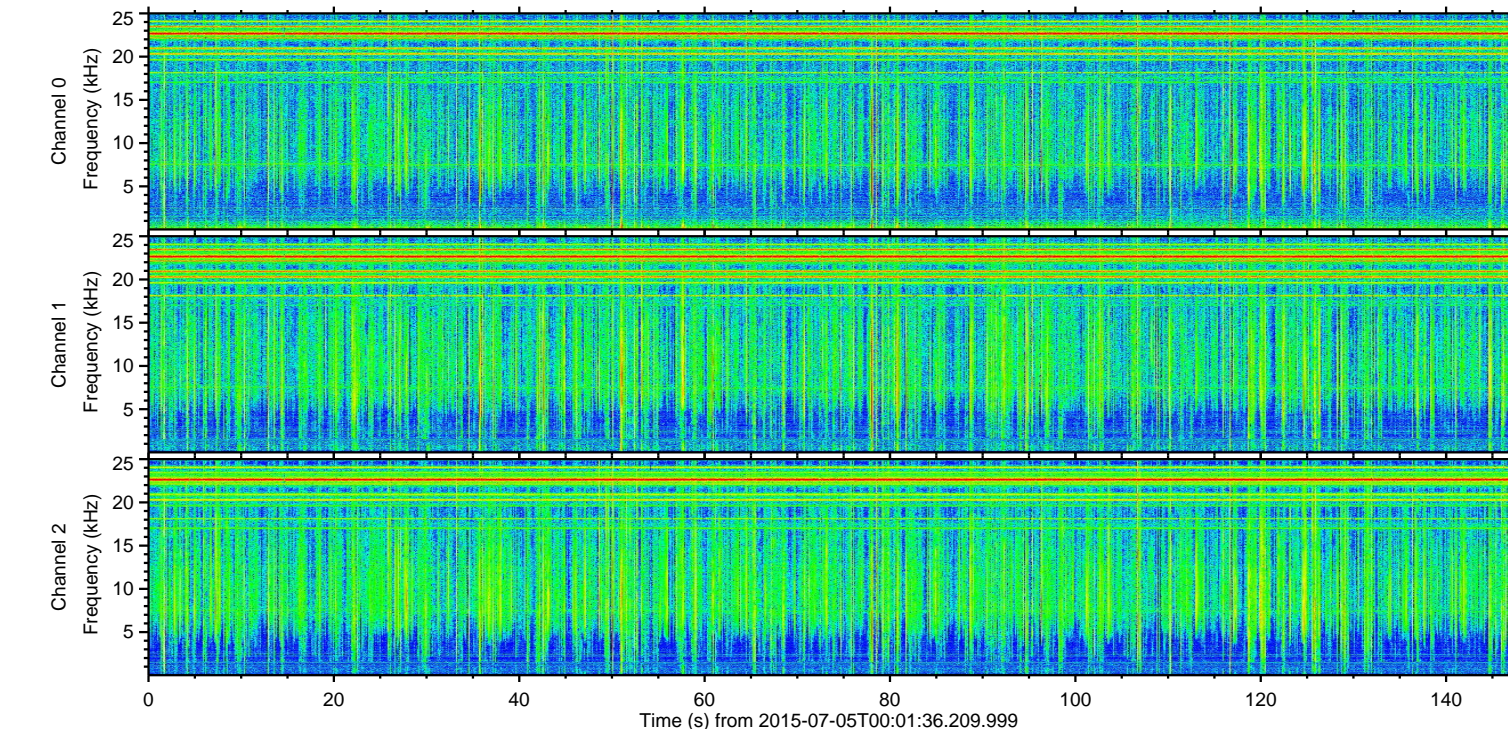
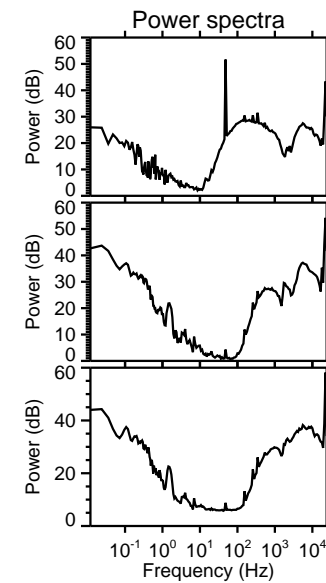
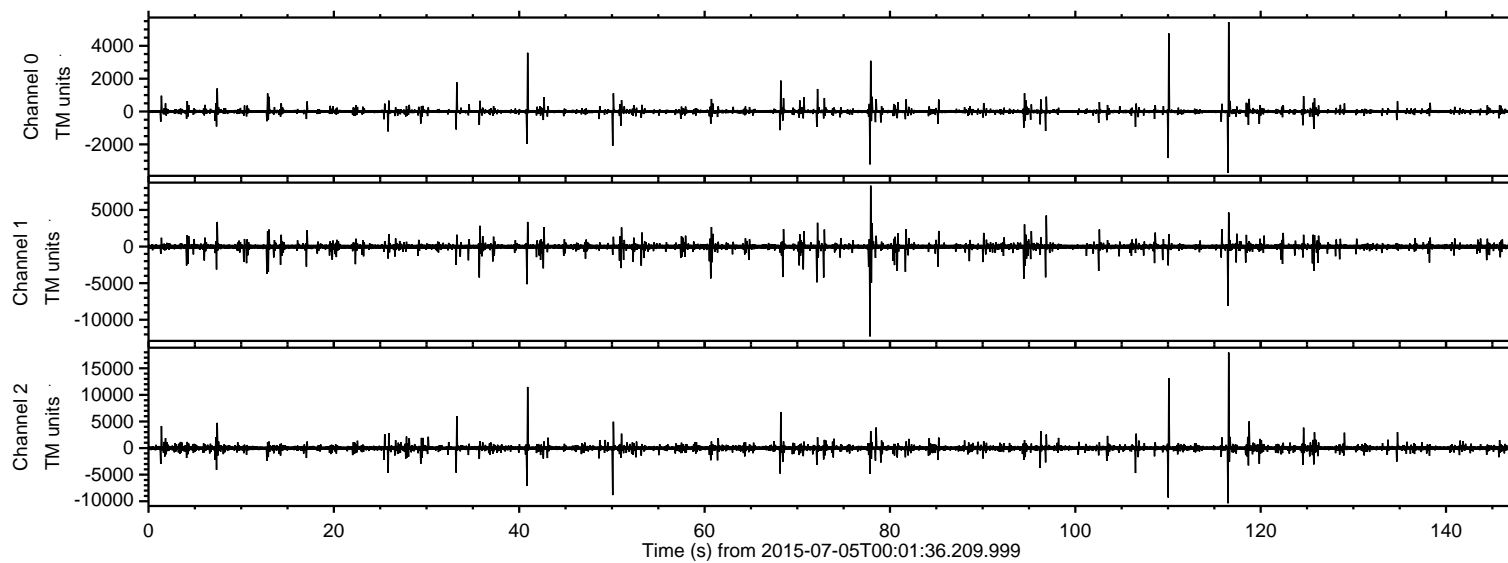


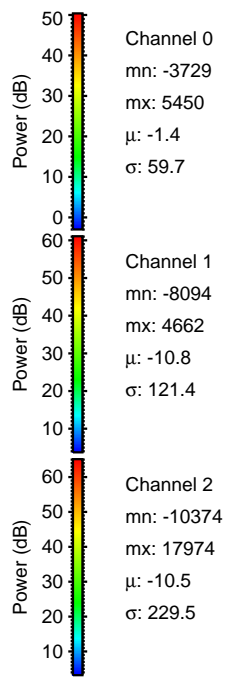
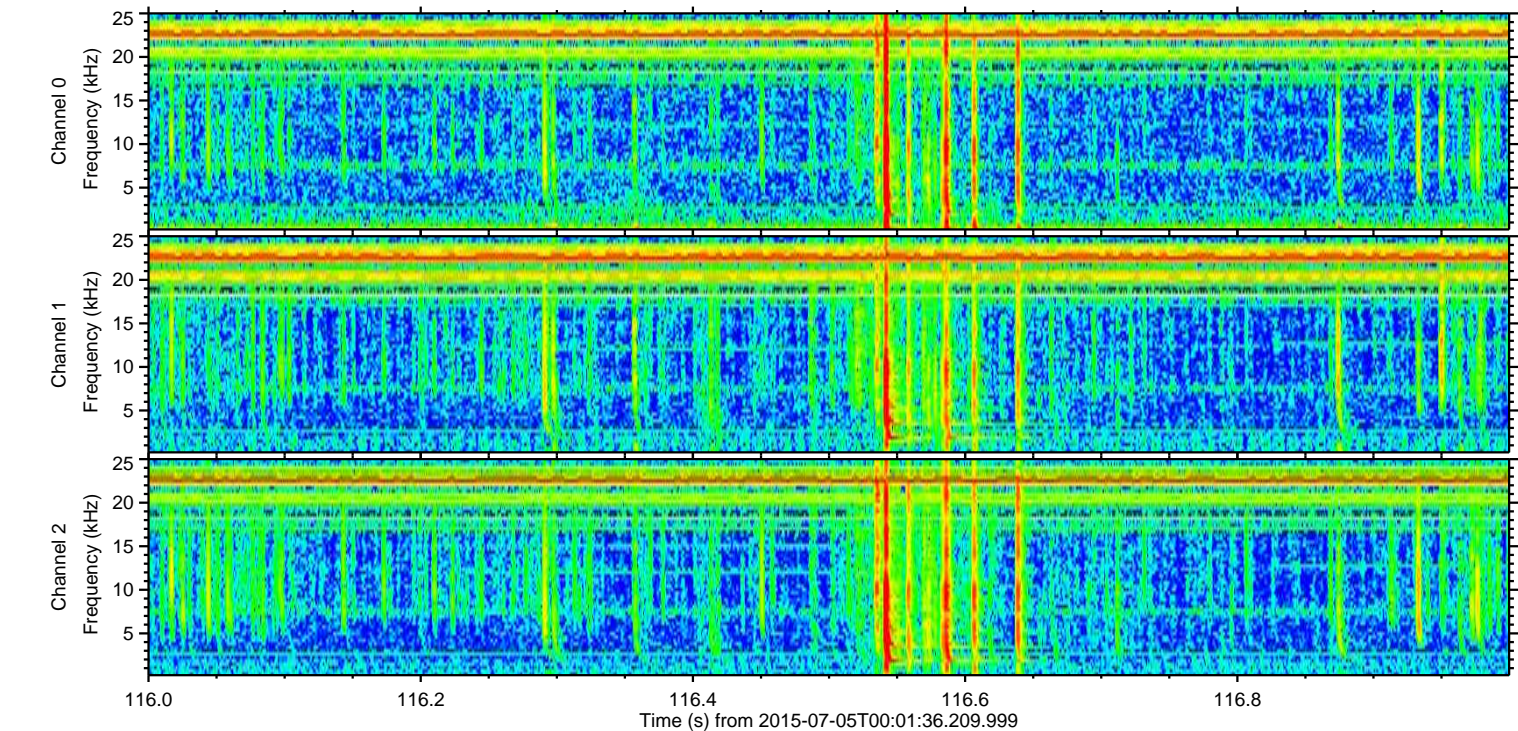
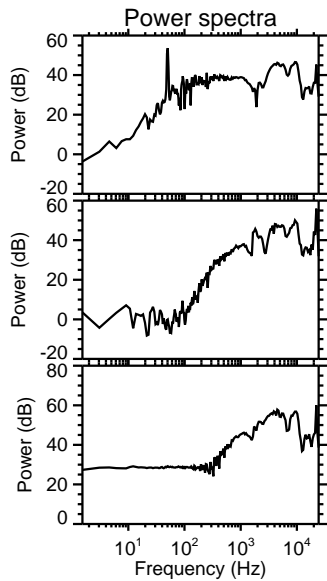
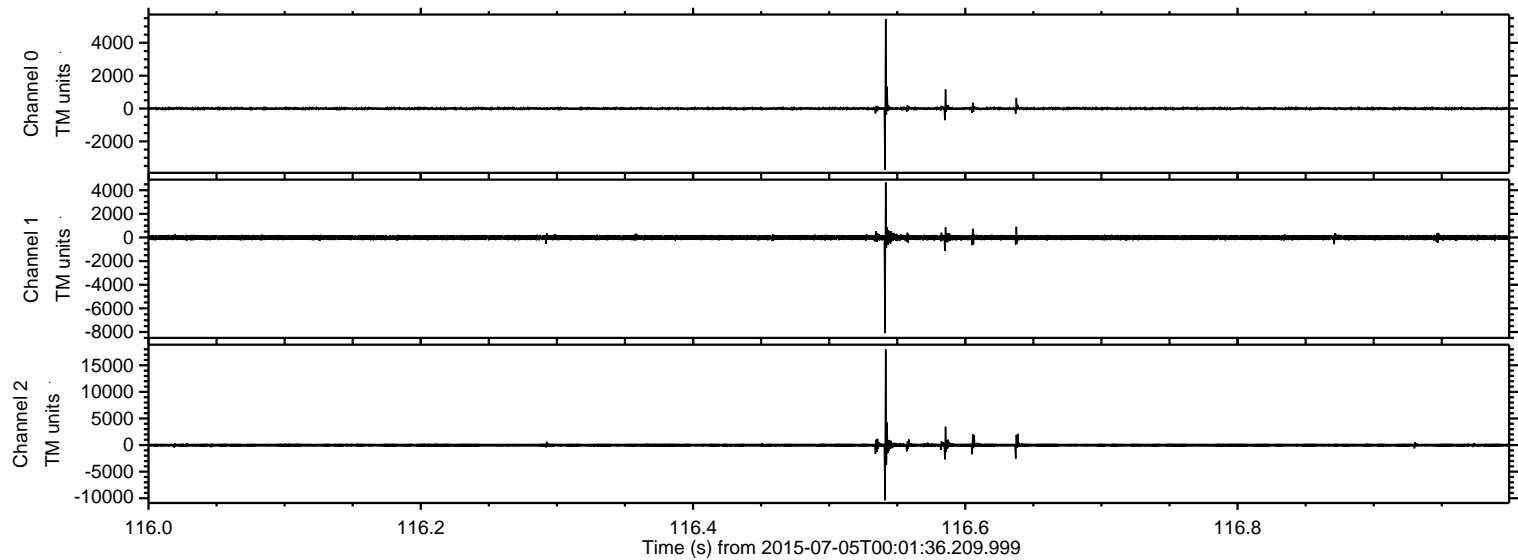
# ELMAVAN 3D WAVEFORMS (Measured data sampled at 50 kHz) 51000 packets of 144 samples from 2015-07-05T00:01:36.209.999.

Processed Sun Jul 5 02:07:39 2015 by ELM ver.2012-10-06 from 001\_\_elm20150705\_000135\_\_dat00.bin



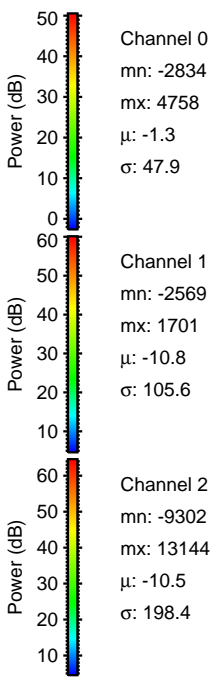
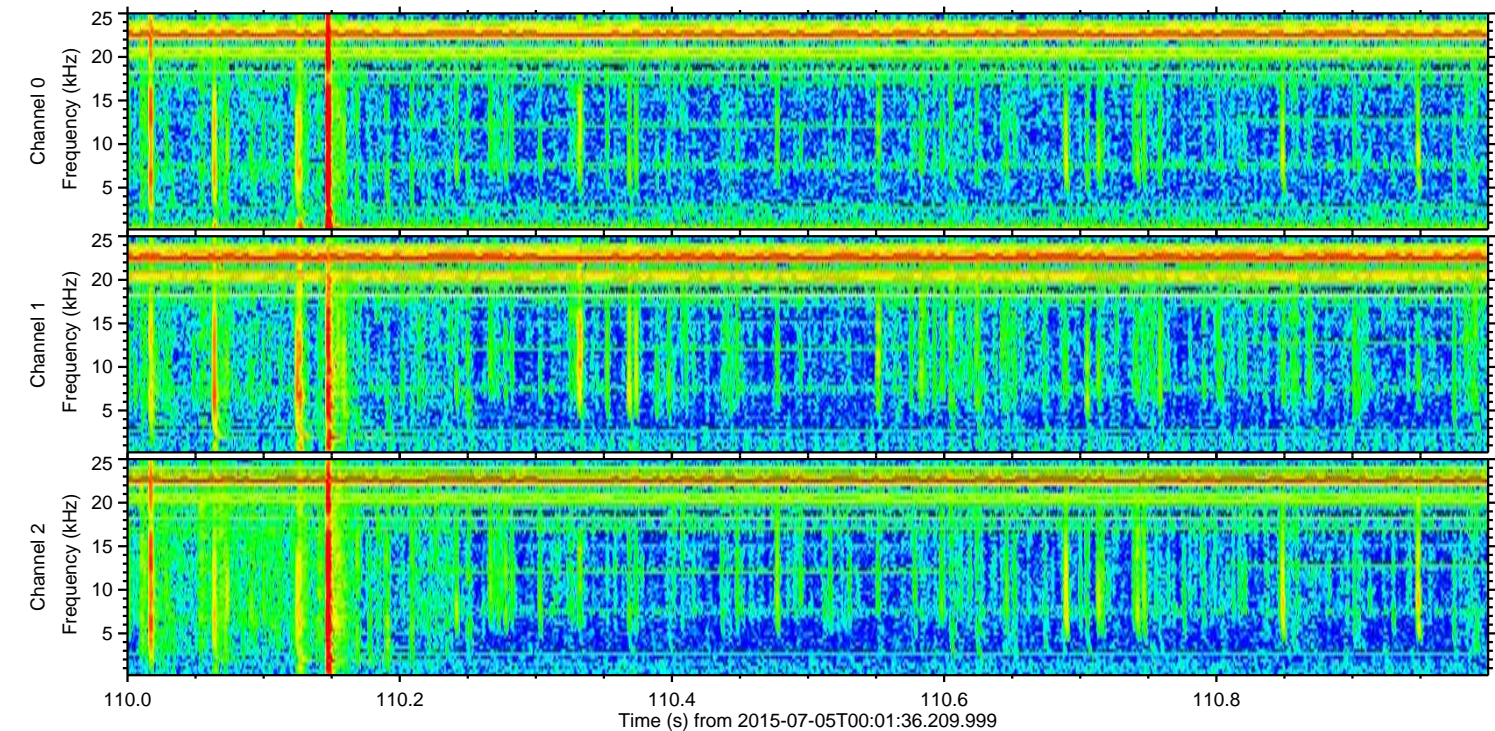
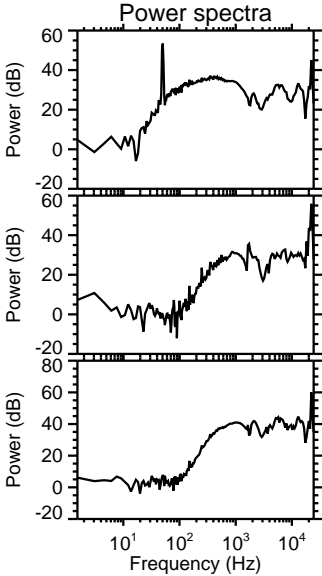
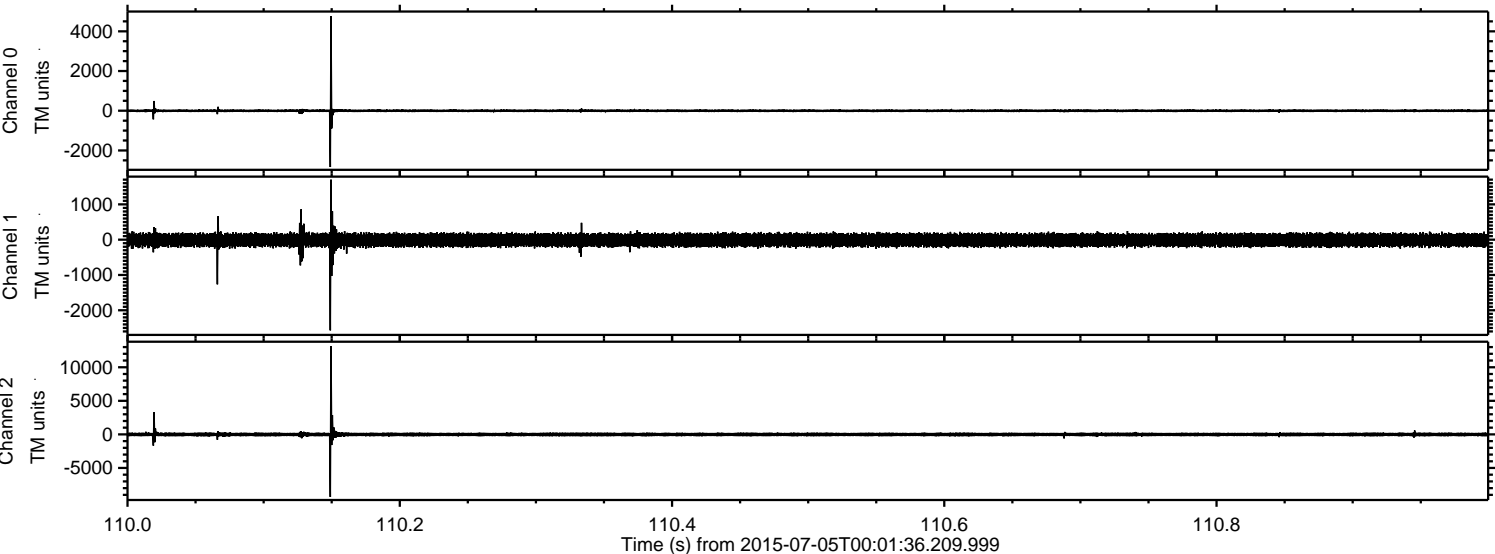
ELMAVAN 3D WAVEFORMS (Measured data sampled at 50 kHz) 51000 packets of 144 samples from 2015-07-05T00:01:36.209.999. Part 117/147

Processed Sun Jul 5 02:07:54 2015 by ELM ver.2012-10-06 from 001\_\_elm20150705\_000135\_\_dat00.bin



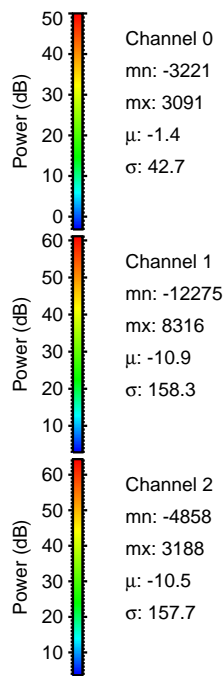
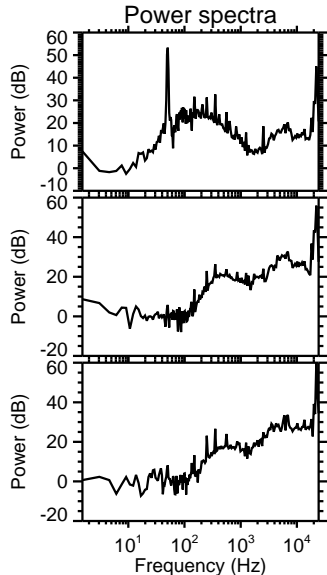
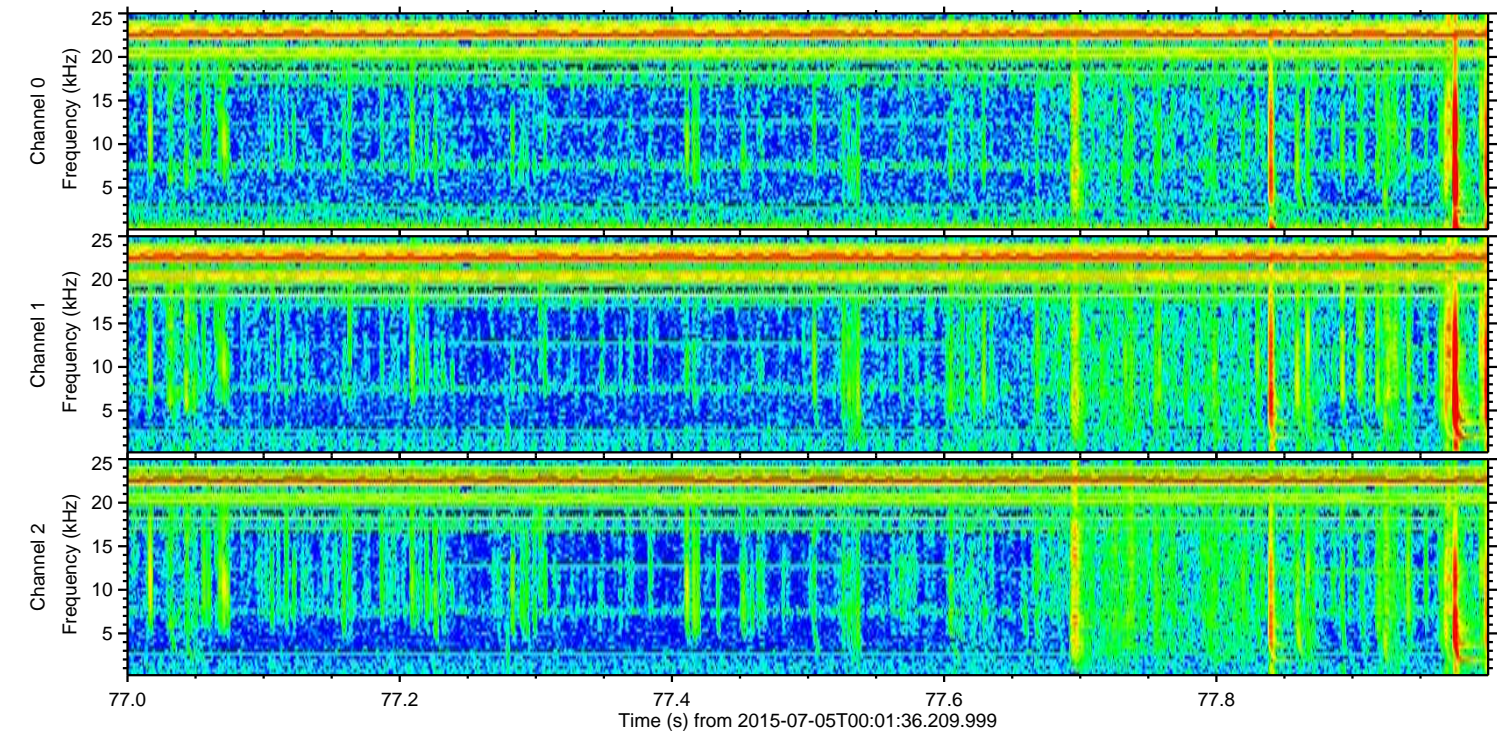
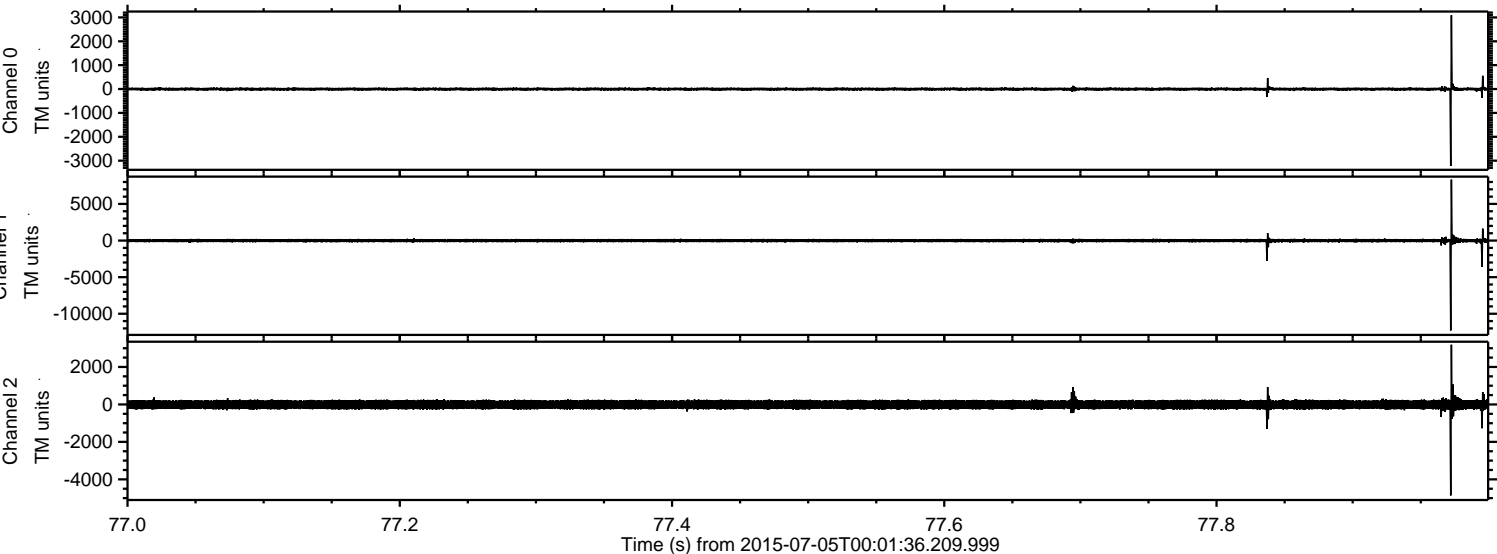
ELMAVAN 3D WAVEFORMS (Measured data sampled at 50 kHz) 51000 packets of 144 samples from 2015-07-05T00:01:36.209.999. Part 111/147

Processed Sun Jul 5 02:07:55 2015 by ELM ver.2012-10-06 from 001\_\_elm20150705\_000135\_\_dat00.bin



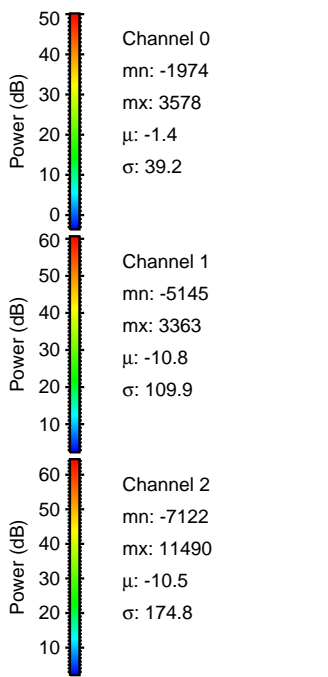
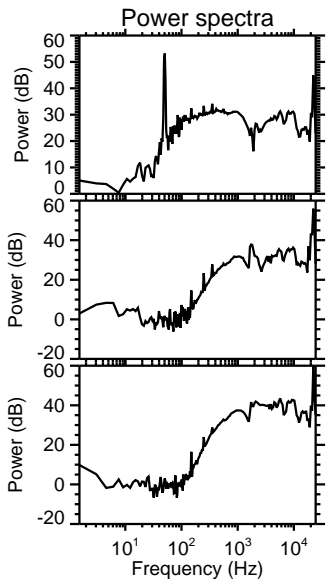
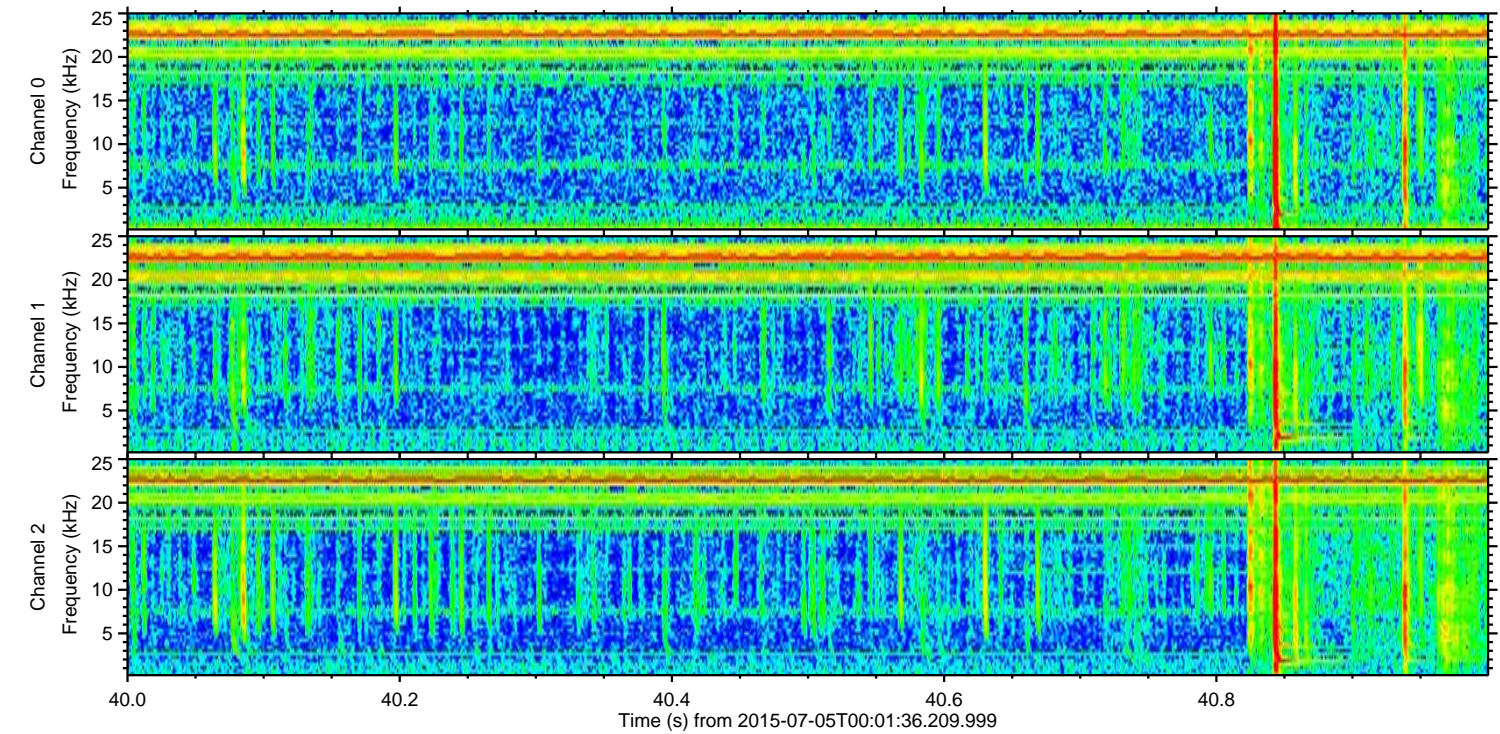
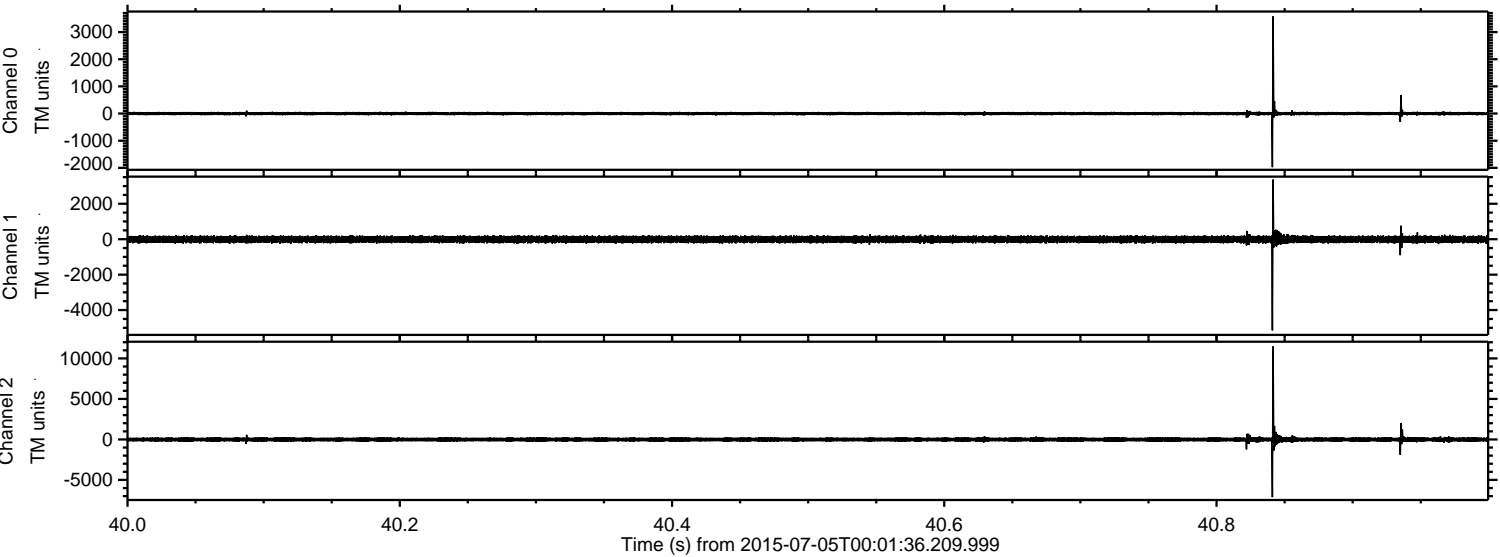
ELMAVAN 3D WAVEFORMS (Measured data sampled at 50 kHz) 51000 packets of 144 samples from 2015-07-05T00:01:36.209.999. Part 78/147

Processed Sun Jul 5 02:07:56 2015 by ELM ver.2012-10-06 from 001\_\_elm20150705\_000135\_\_dat00.bin



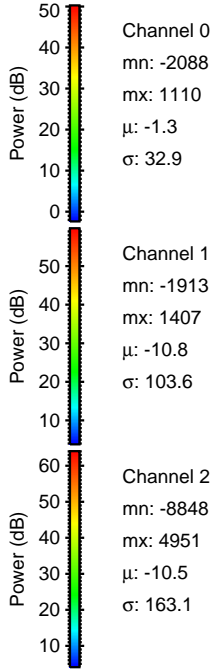
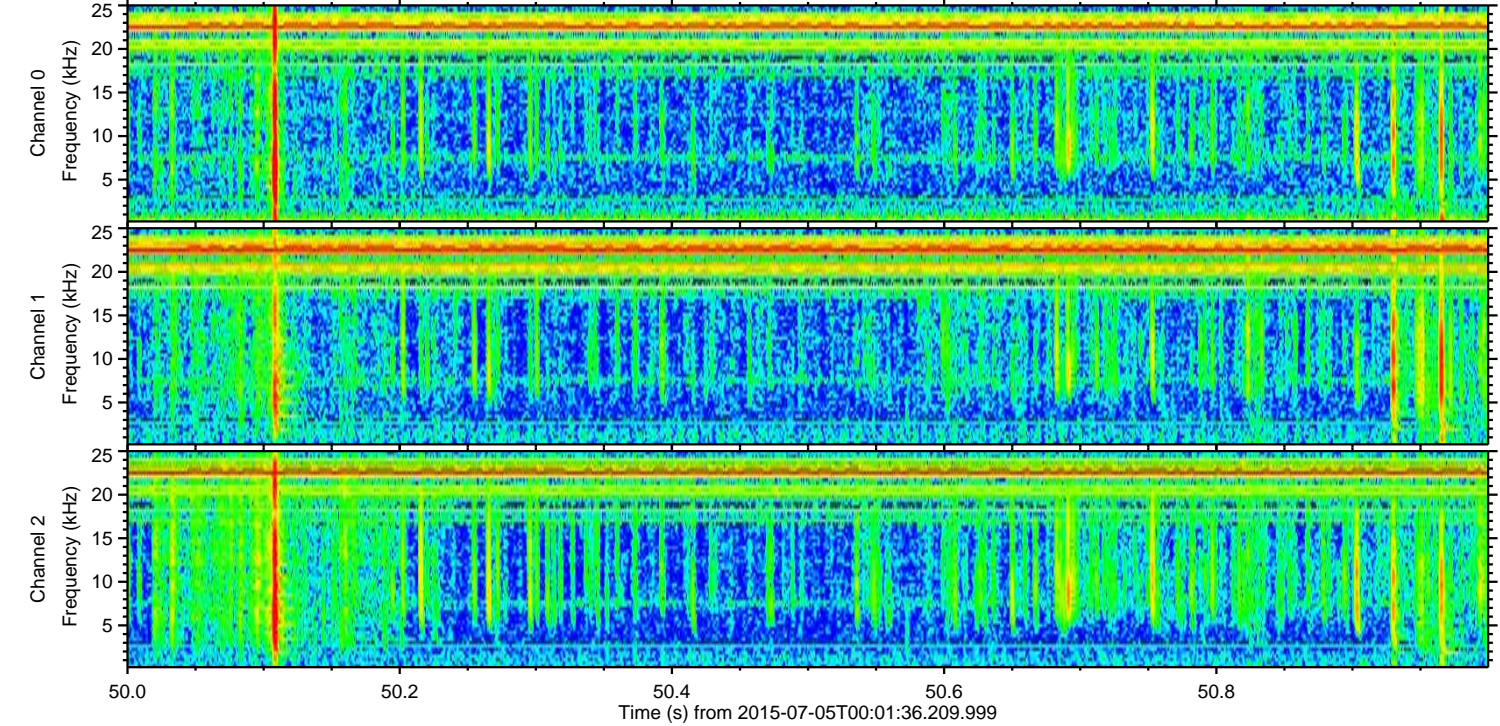
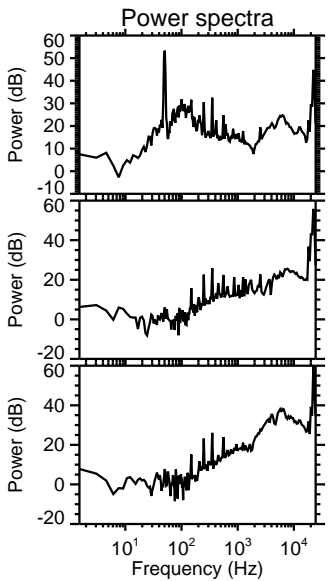
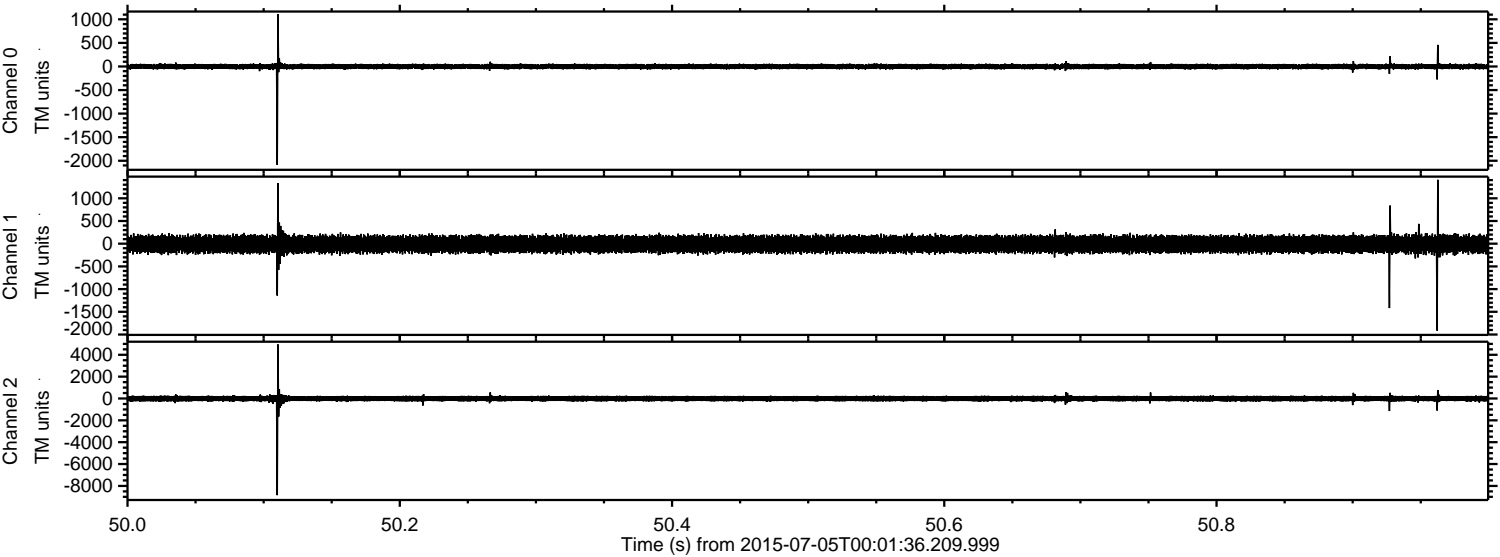
ELMAVAN 3D WAVEFORMS (Measured data sampled at 50 kHz) 51000 packets of 144 samples from 2015-07-05T00:01:36.209.999. Part 41/147

Processed Sun Jul 5 02:07:57 2015 by ELM ver.2012-10-06 from 001\_\_elm20150705\_000135\_\_dat00.bin



ELMAVAN 3D WAVEFORMS (Measured data sampled at 50 kHz) 51000 packets of 144 samples from 2015-07-05T00:01:36.209.999. Part 51/147

Processed Sun Jul 5 02:07:58 2015 by ELM ver.2012-10-06 from 001\_\_elm20150705\_000135\_\_dat00.bin

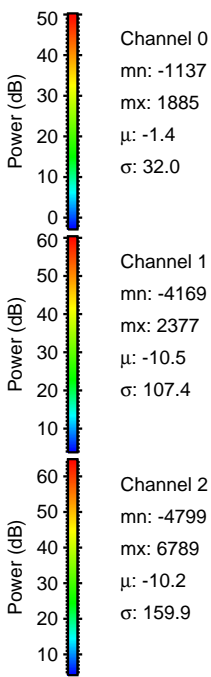
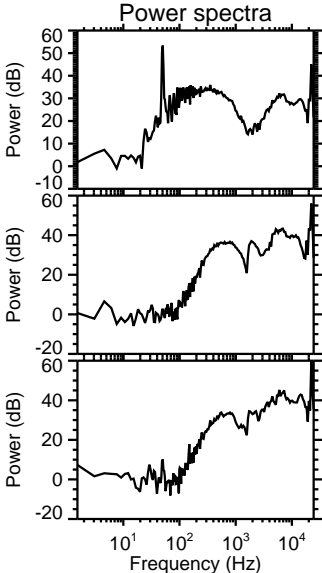
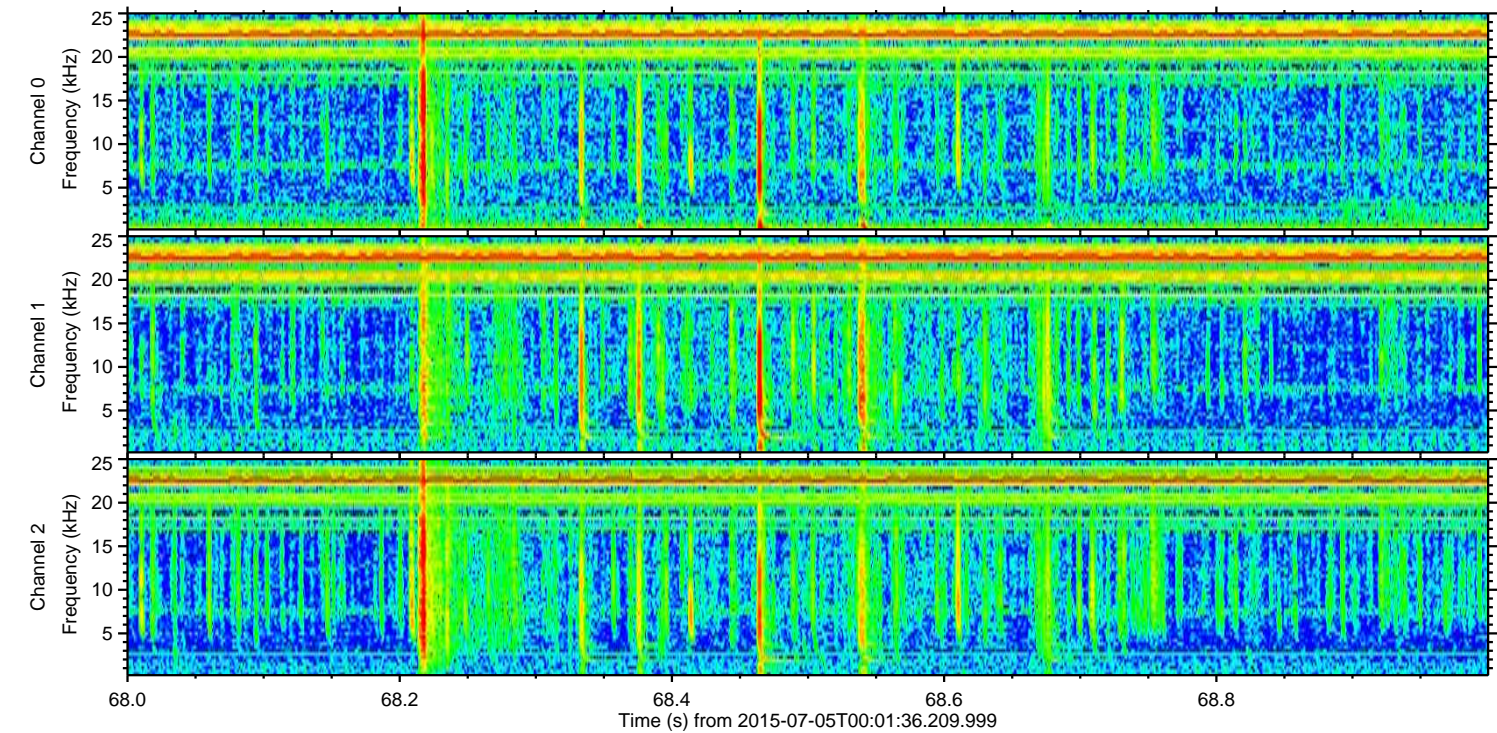
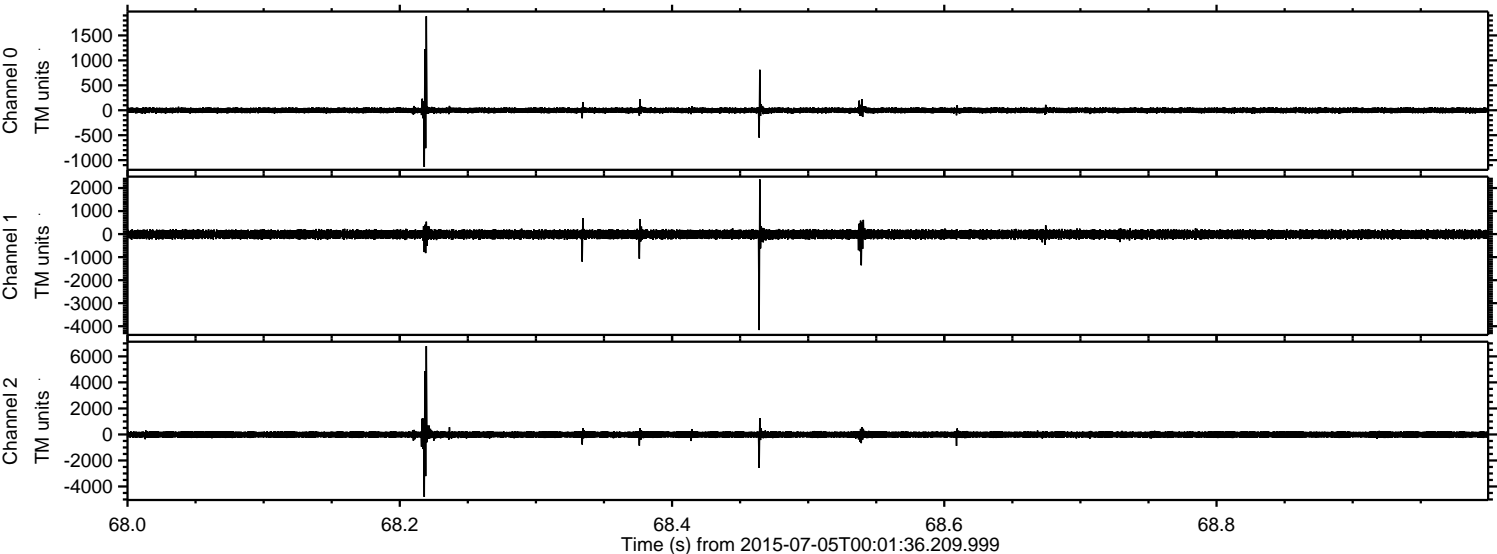


Channel 0  
mn: -2088  
mx: 1110  
 $\mu$ : -1.3  
 $\sigma$ : 32.9

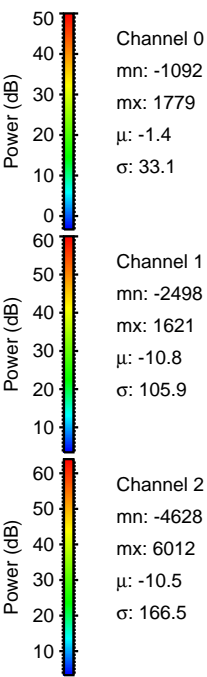
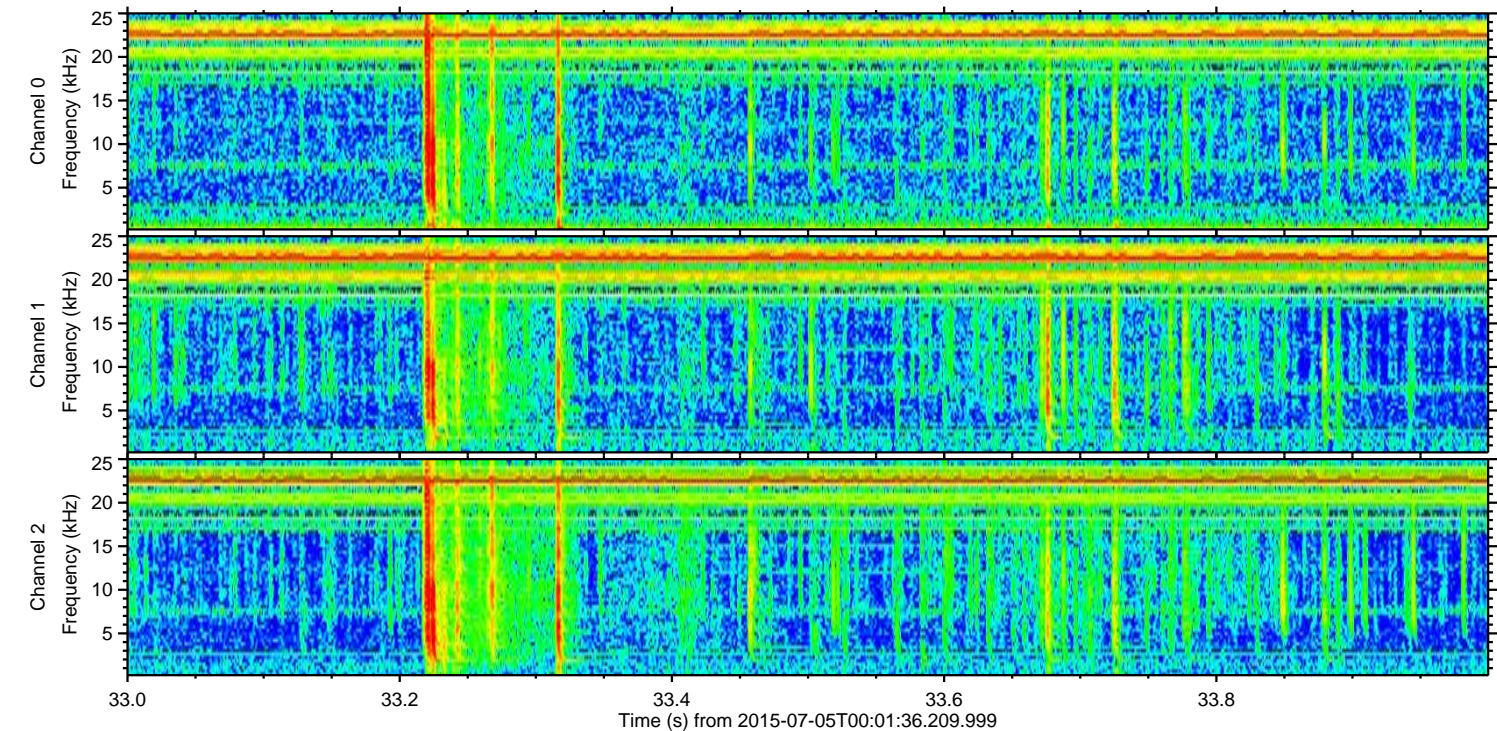
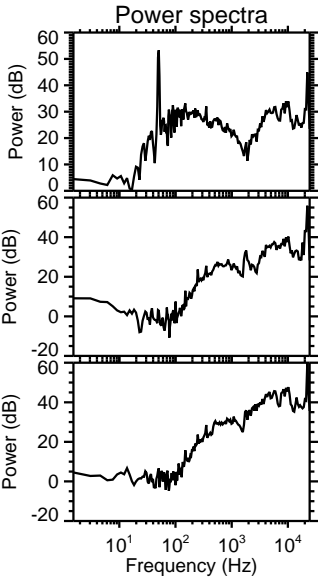
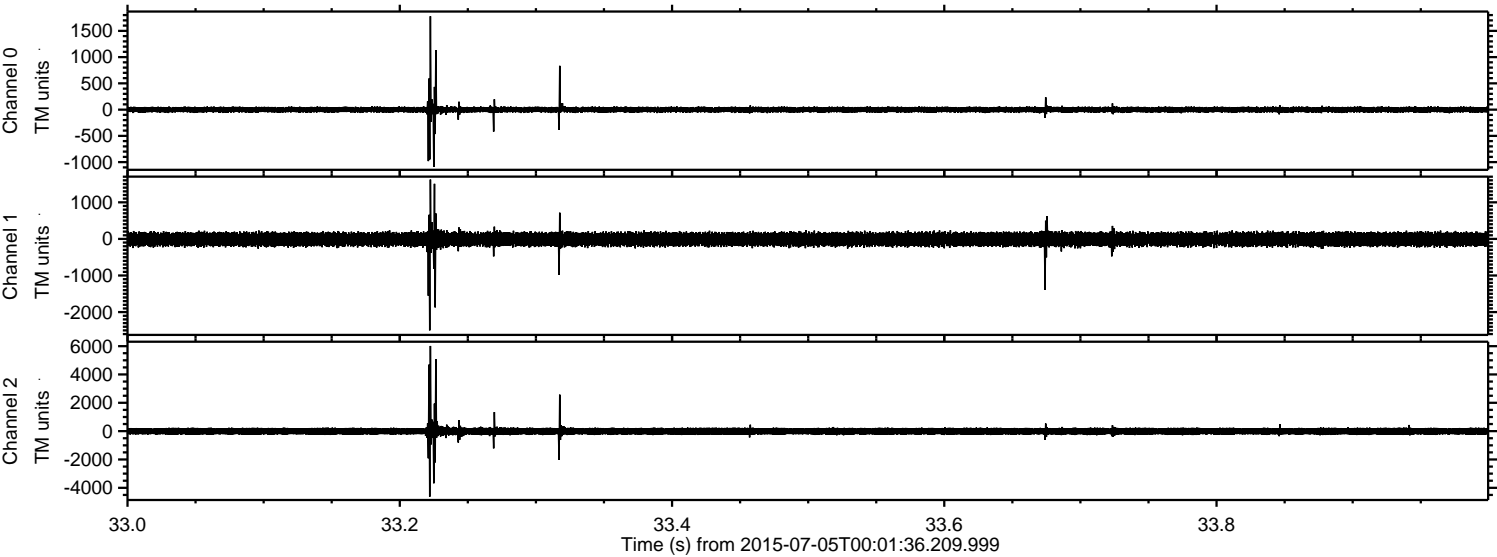
Channel 1  
mn: -1913  
mx: 1407  
 $\mu$ : -10.8  
 $\sigma$ : 103.6

Channel 2  
mn: -8848  
mx: 4951  
 $\mu$ : -10.5  
 $\sigma$ : 163.1

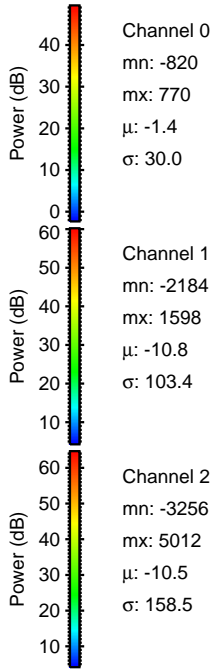
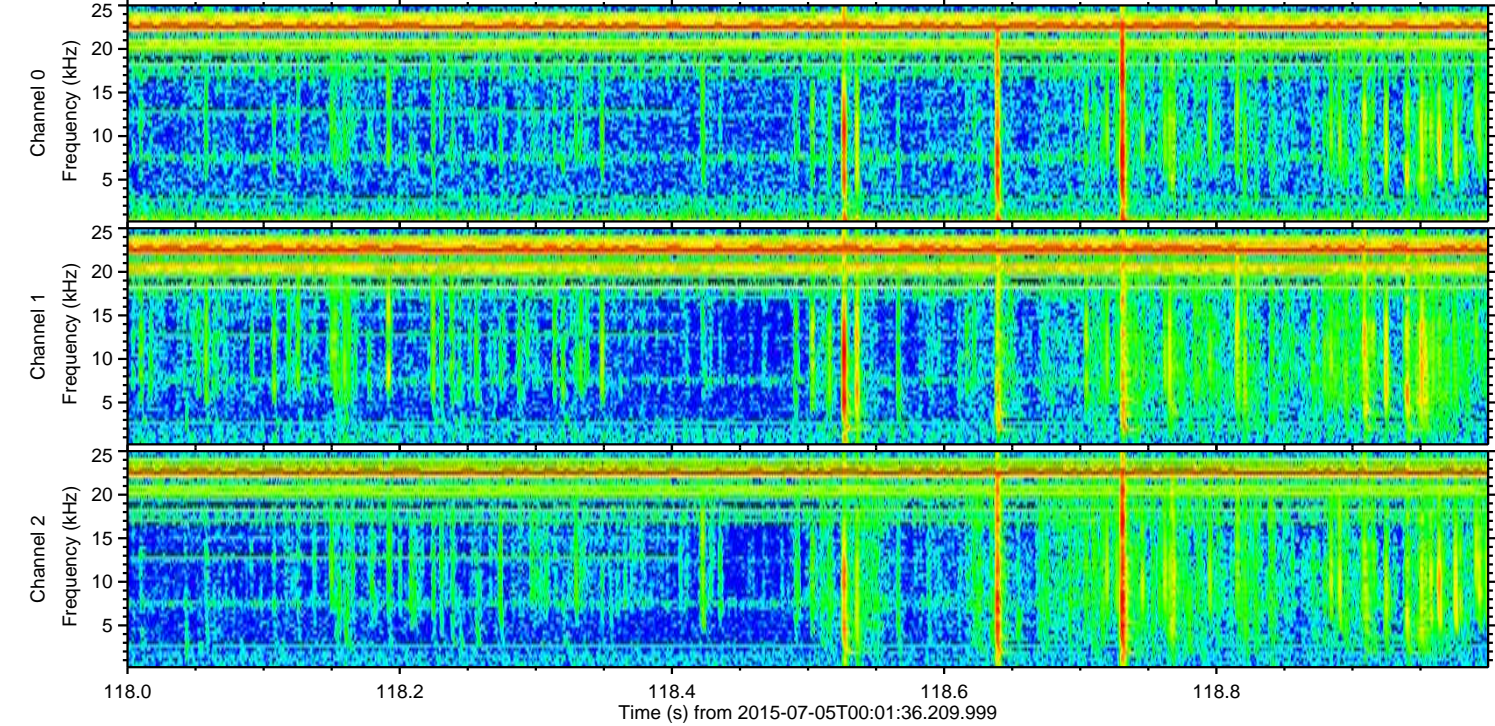
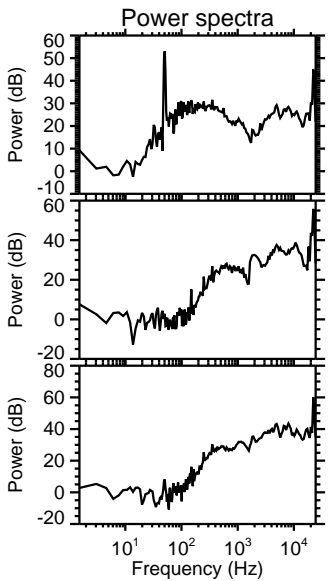
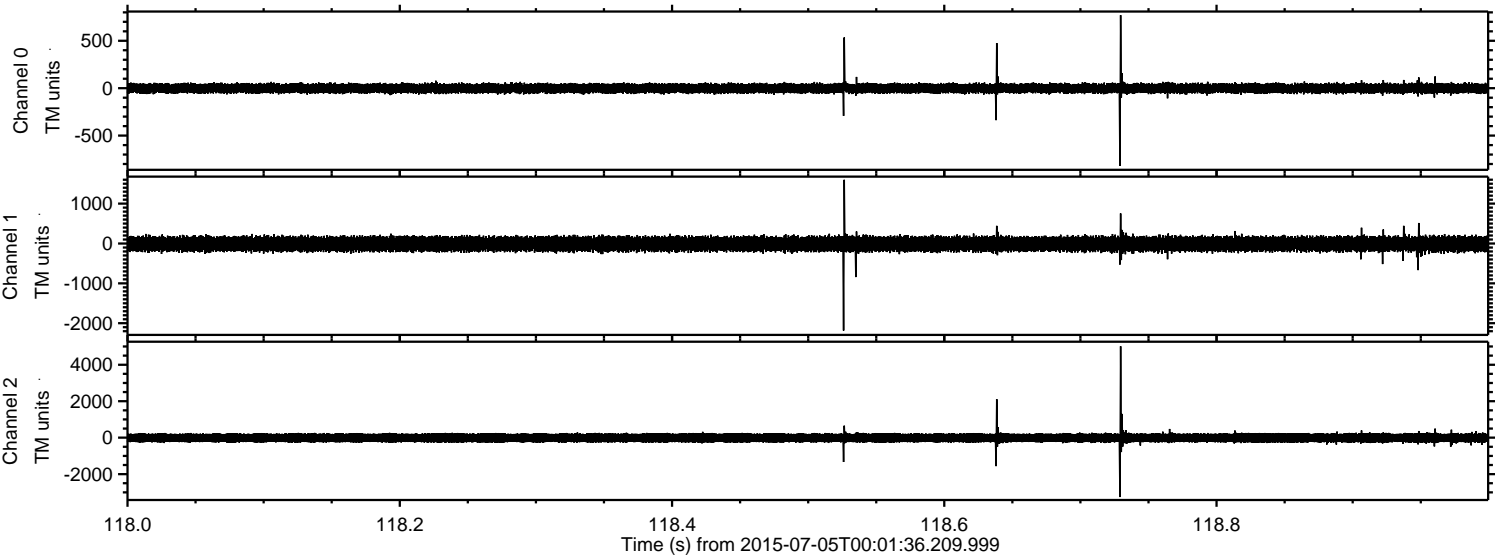
Processed Sun Jul 5 02:07:59 2015 by ELM ver.2012-10-06 from 001\_\_elm20150705\_000135\_\_dat00.bin



Processed Sun Jul 5 02:08:01 2015 by ELM ver.2012-10-06 from 001\_\_elm20150705\_000135\_\_dat00.bin



Processed Sun Jul 5 02:08:02 2015 by ELM ver.2012-10-06 from 001\_\_elm20150705\_000135\_\_dat00.bin



Channel 0  
mn: -820  
mx: 770  
 $\mu$ : -1.4  
 $\sigma$ : 30.0

Channel 1  
mn: -2184  
mx: 1598  
 $\mu$ : -10.8  
 $\sigma$ : 103.4

Channel 2  
mn: -3256  
mx: 5012  
 $\mu$ : -10.5  
 $\sigma$ : 158.5

Processed Sun Jul 5 02:08:03 2015 by ELM ver.2012-10-06 from 001\_\_elm20150705\_000135\_\_dat00.bin

