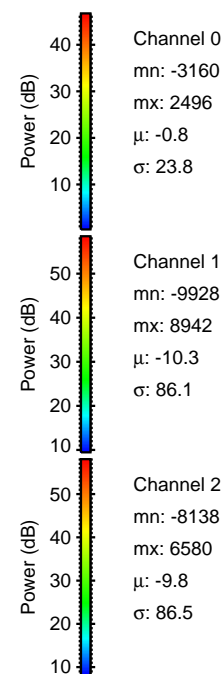
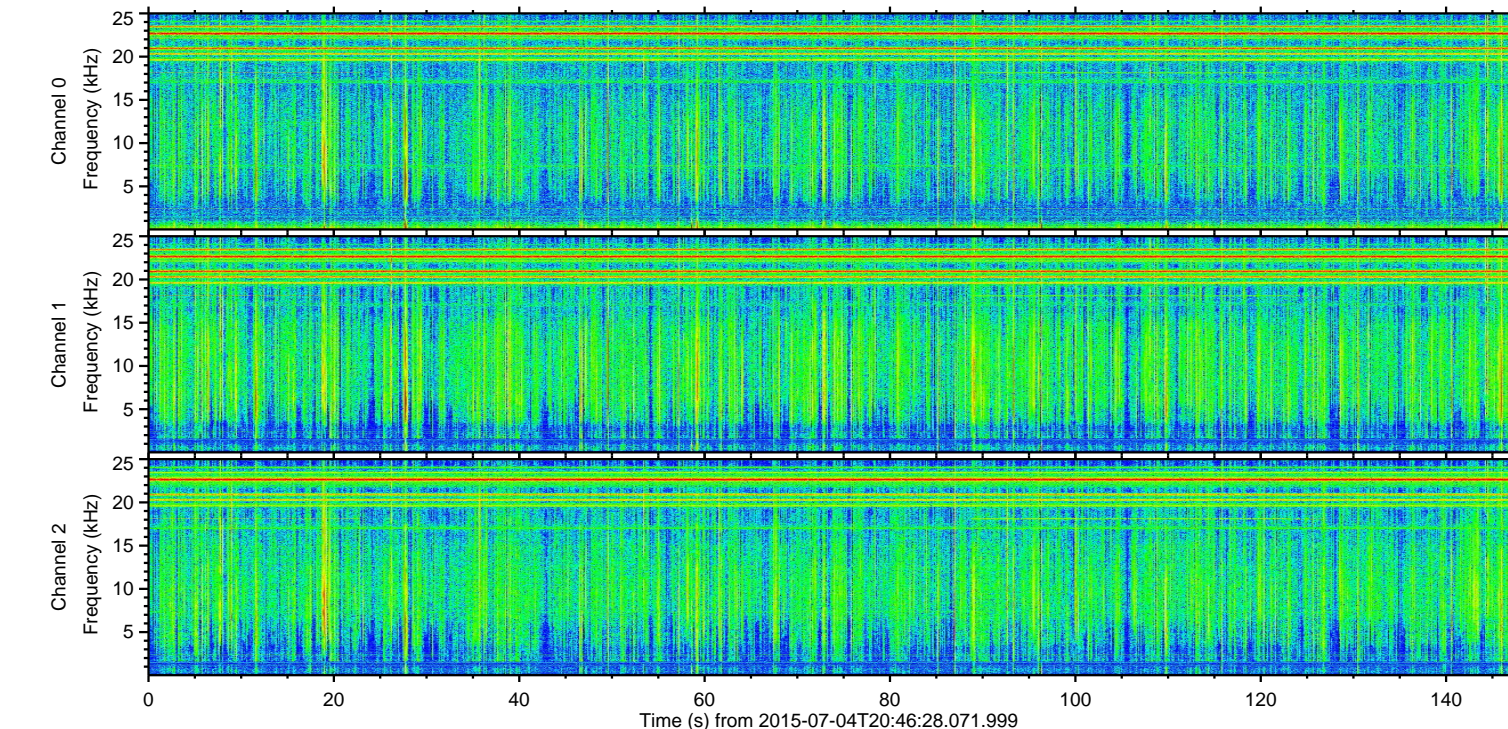
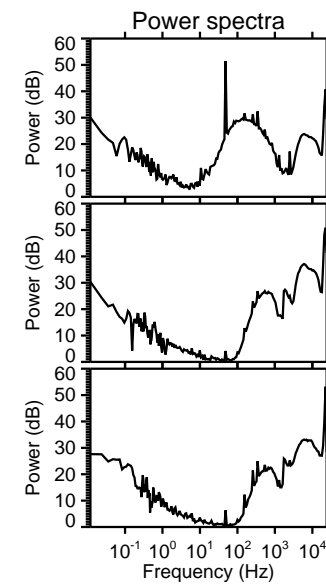
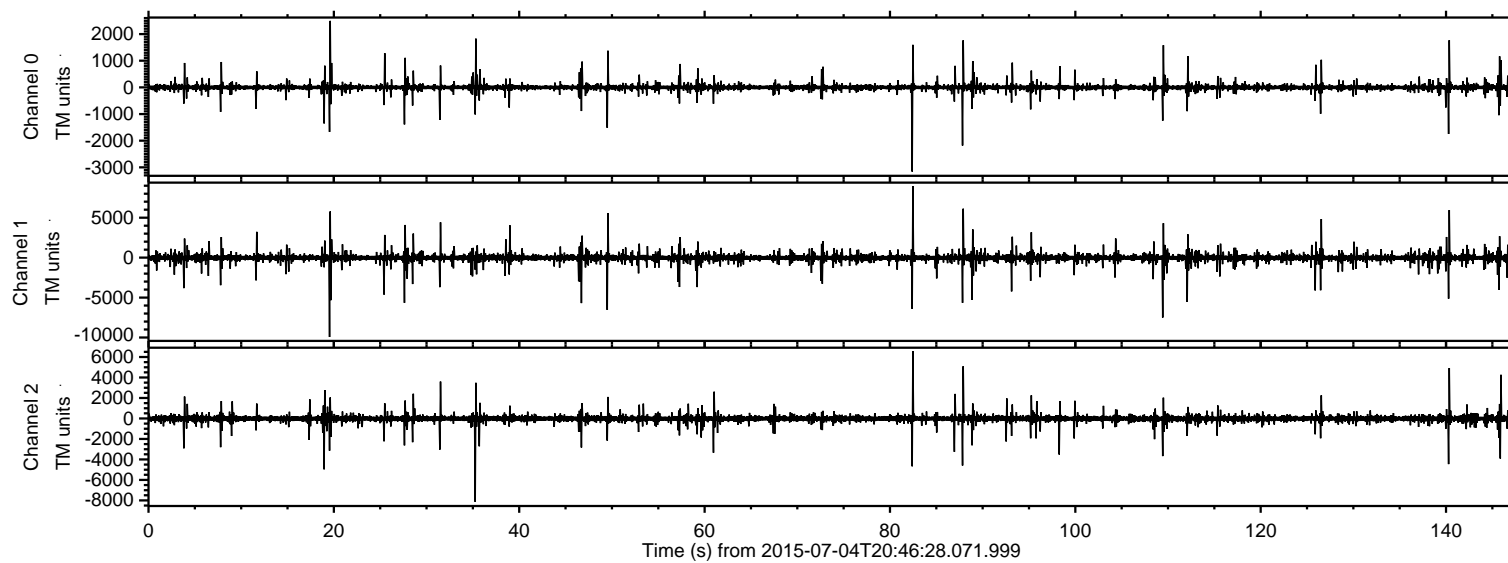


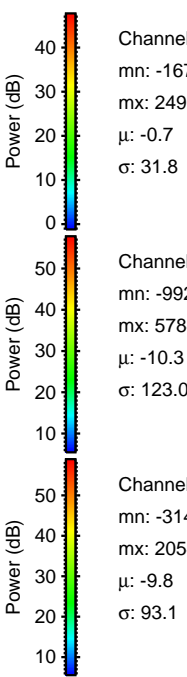
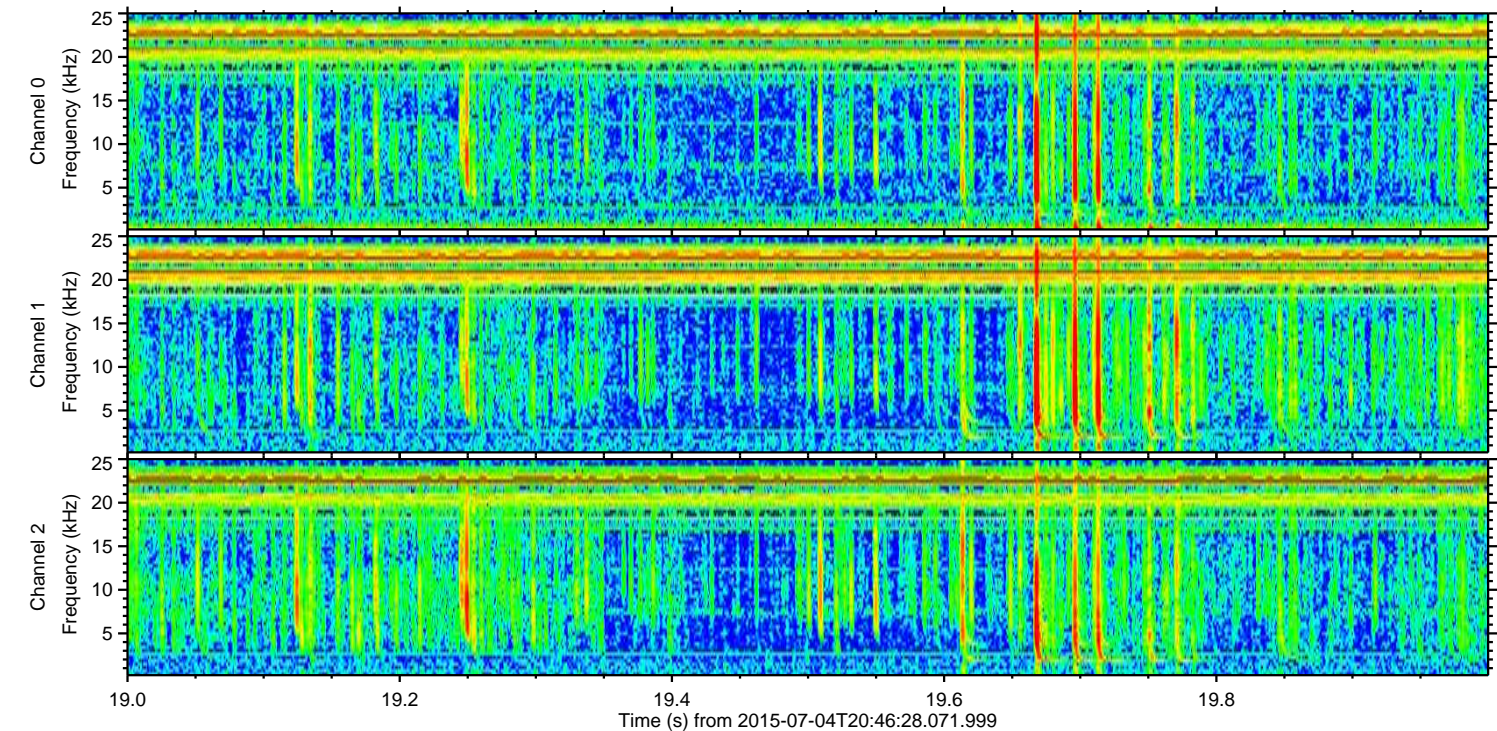
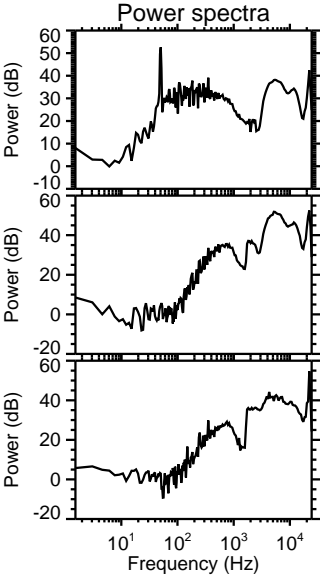
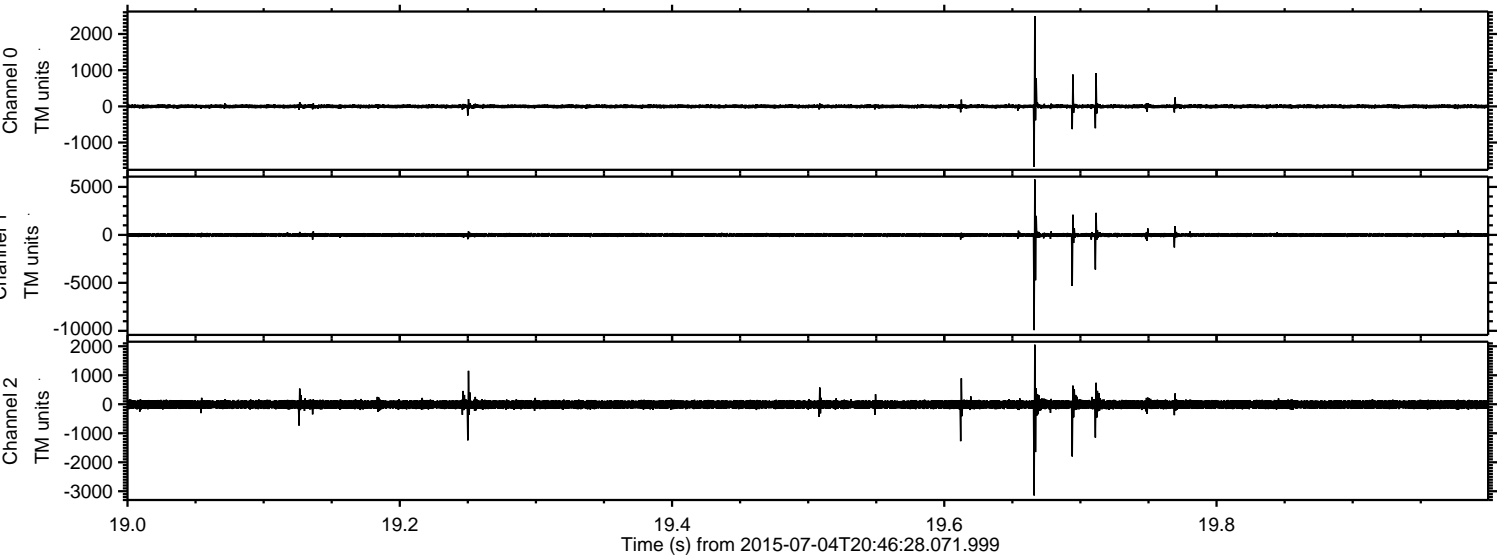
ELMAVAN 3D WAVEFORMS (Measured data sampled at 50 kHz) 51000 packets of 144 samples from 2015-07-04T20:46:28.071.999.

Processed Sat Jul 4 22:52:22 2015 by ELM ver.2012-10-06 from 001\_\_elm20150704\_204627\_\_dat00.bin



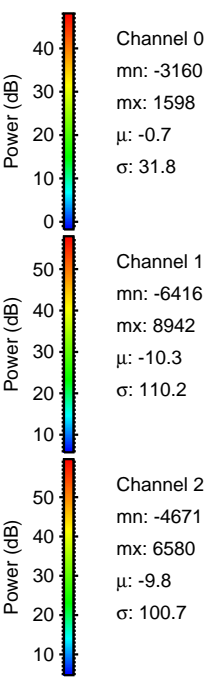
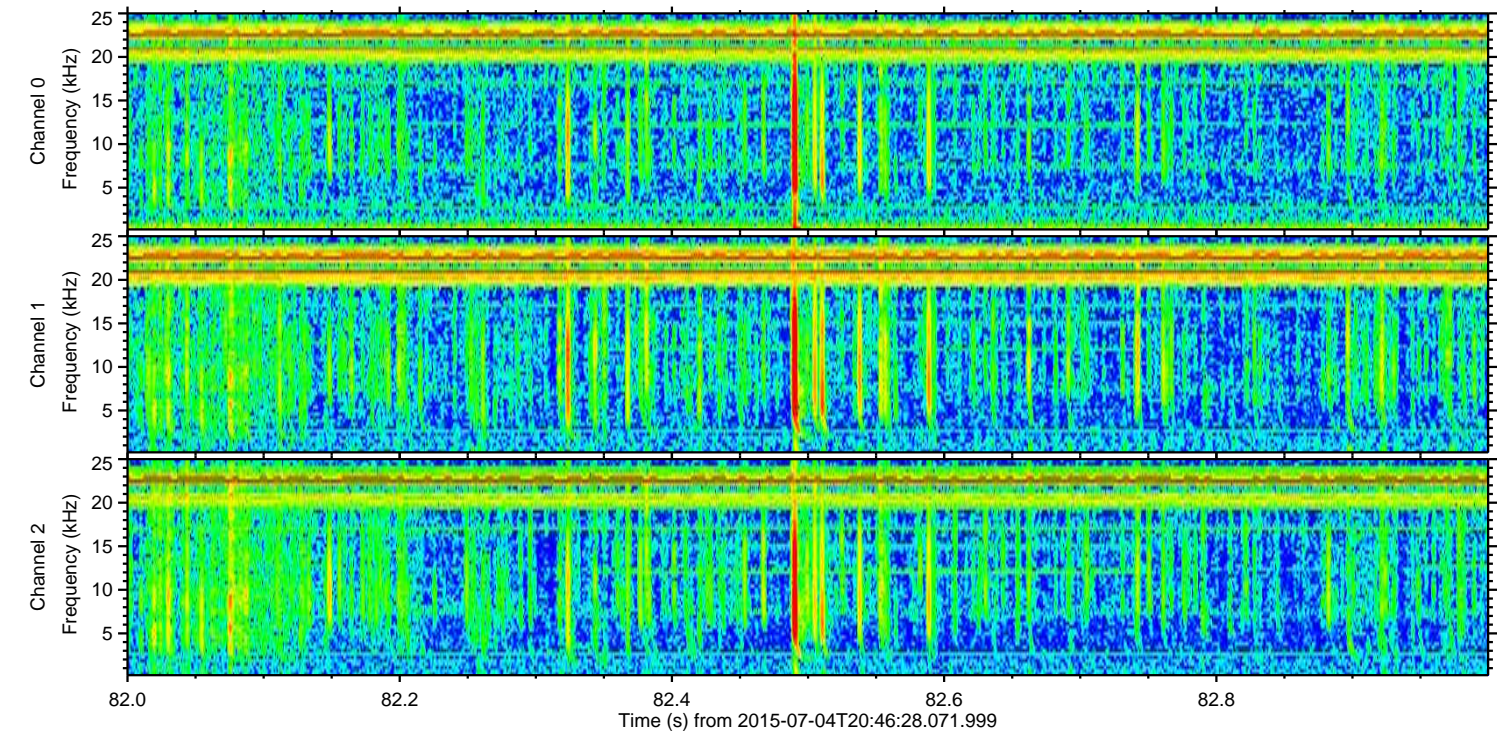
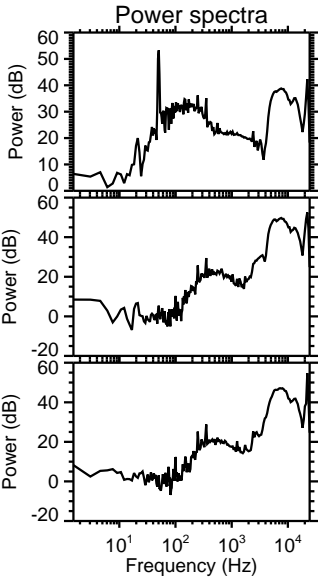
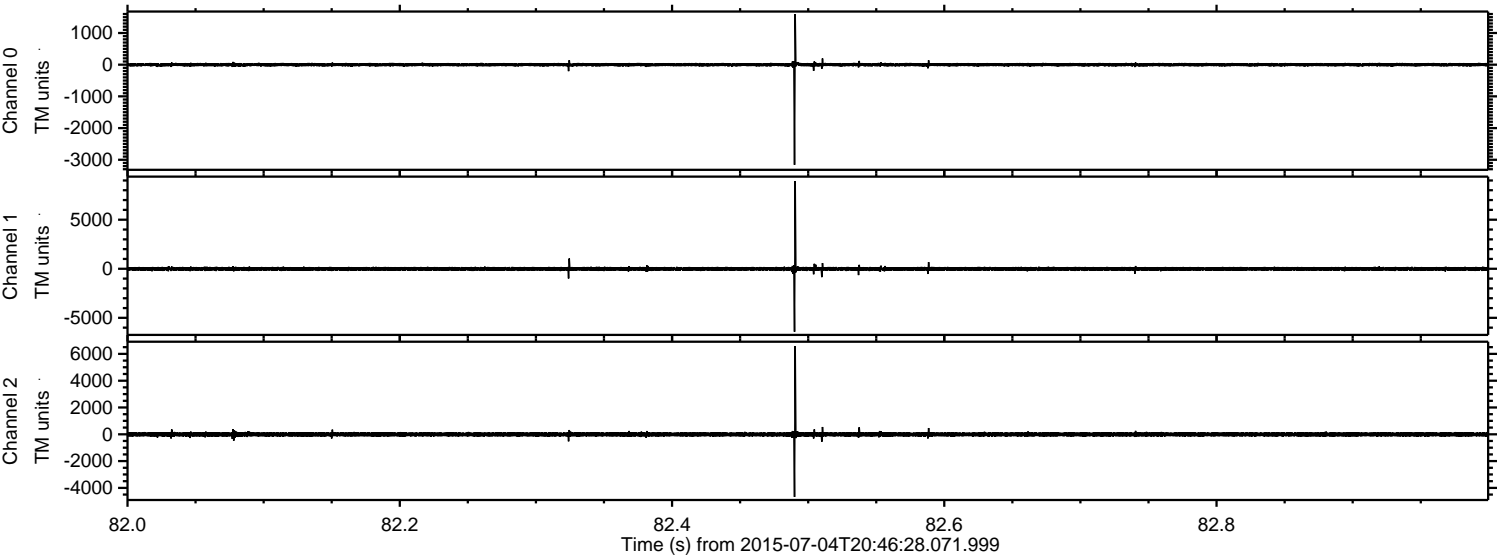


Processed Sat Jul 4 22:52:38 2015 by ELM ver.2012-10-06 from 001\_\_elm20150704\_204627\_\_dat00.bin



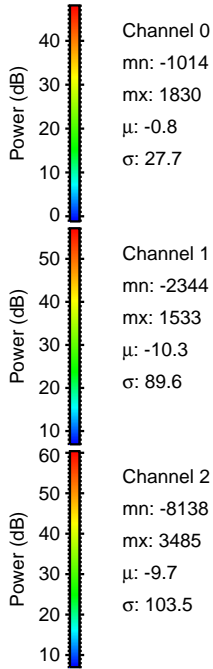
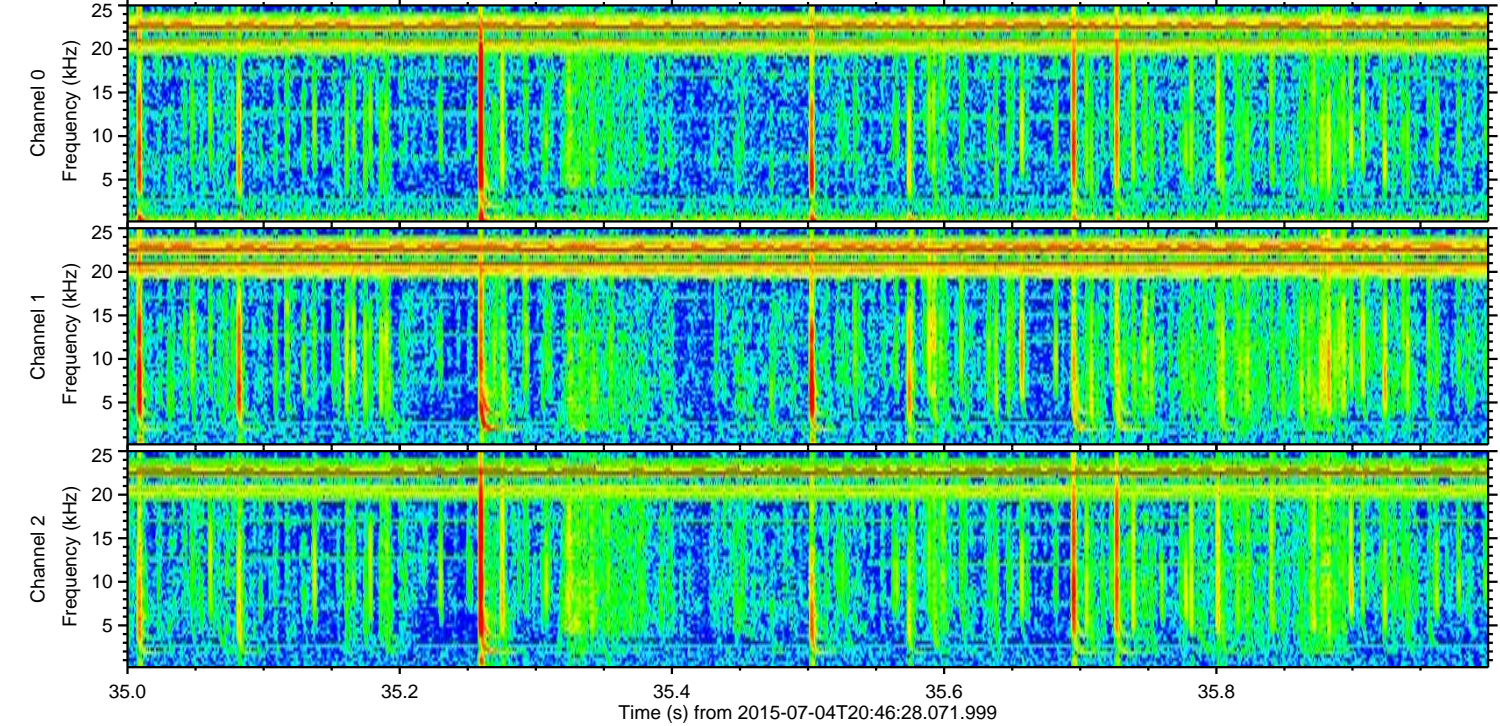
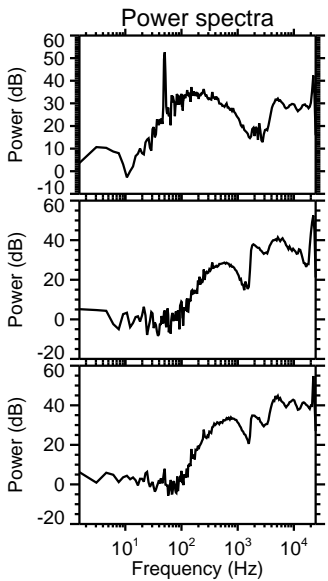
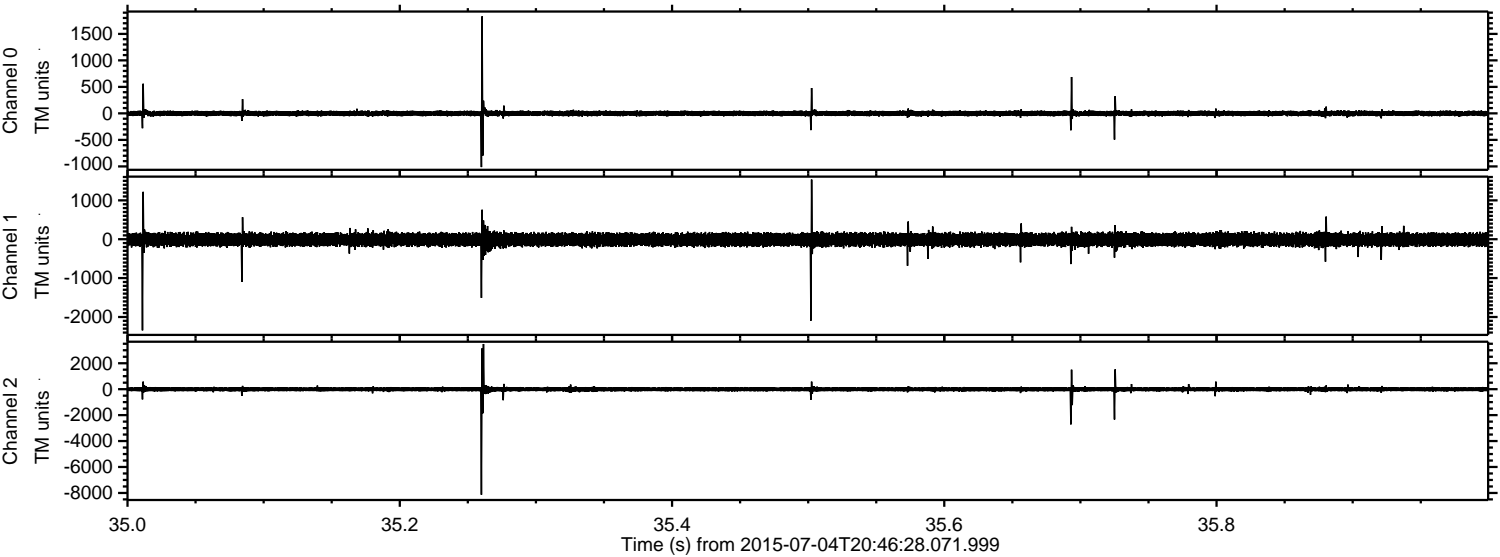


Processed Sat Jul 4 22:52:39 2015 by ELM ver.2012-10-06 from 001\_\_elm20150704\_204627\_\_dat00.bin





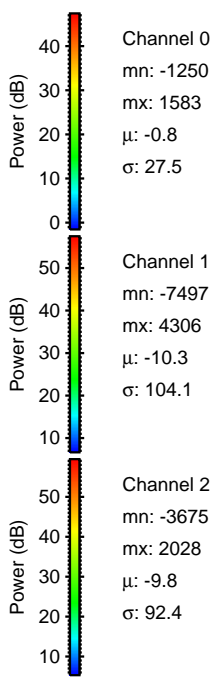
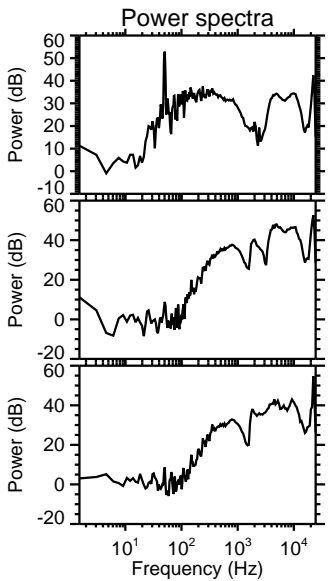
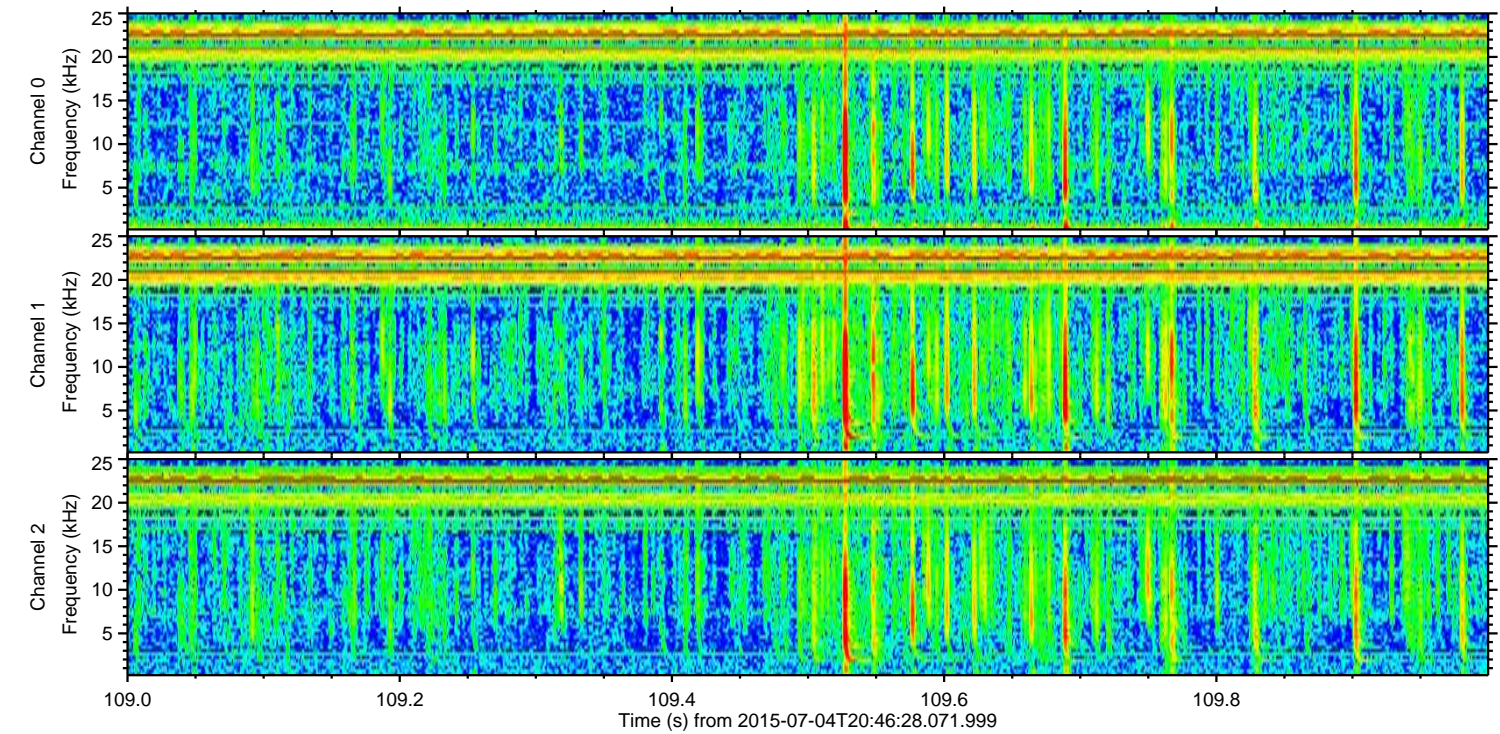
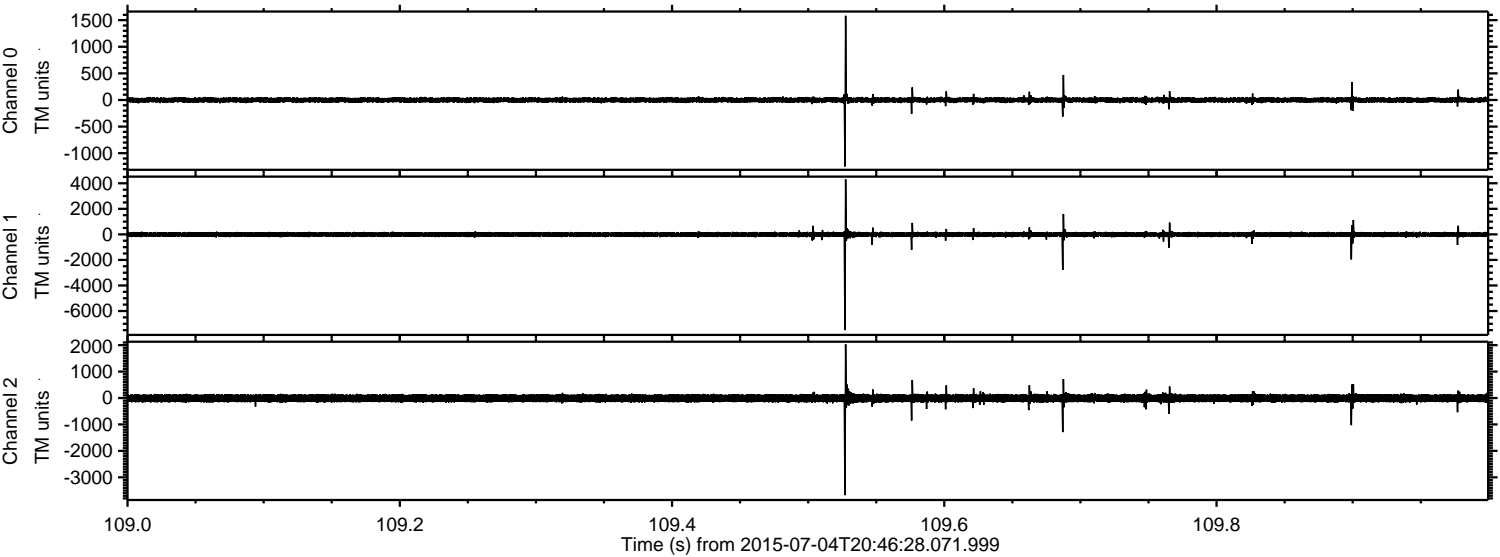
Processed Sat Jul 4 22:52:40 2015 by ELM ver.2012-10-06 from 001\_\_elm20150704\_204627\_\_dat00.bin





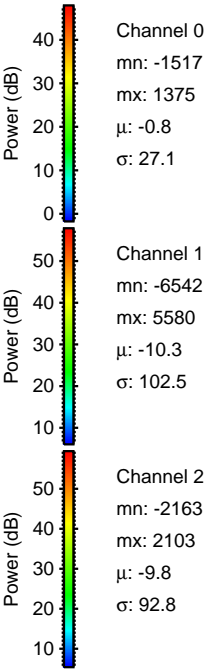
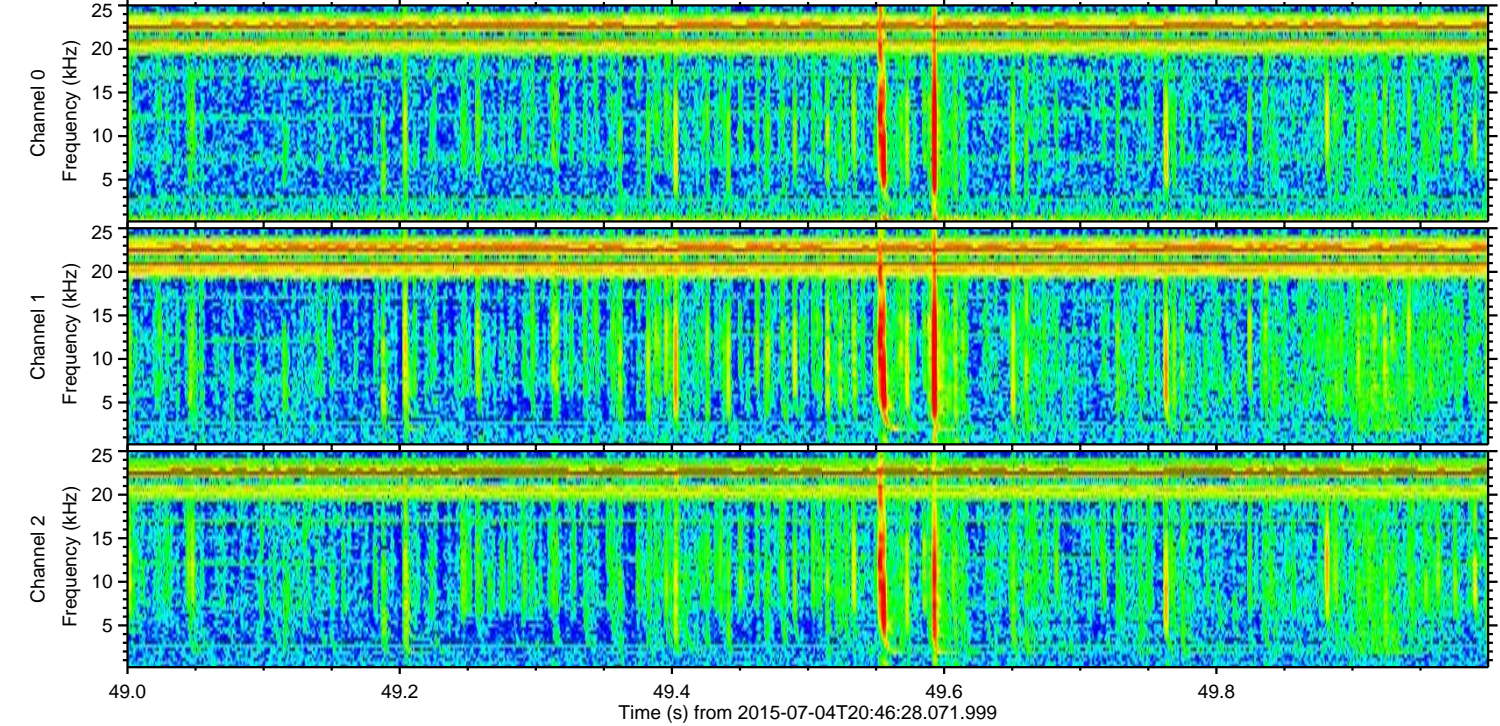
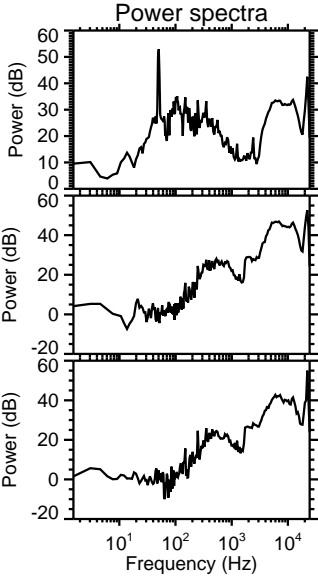
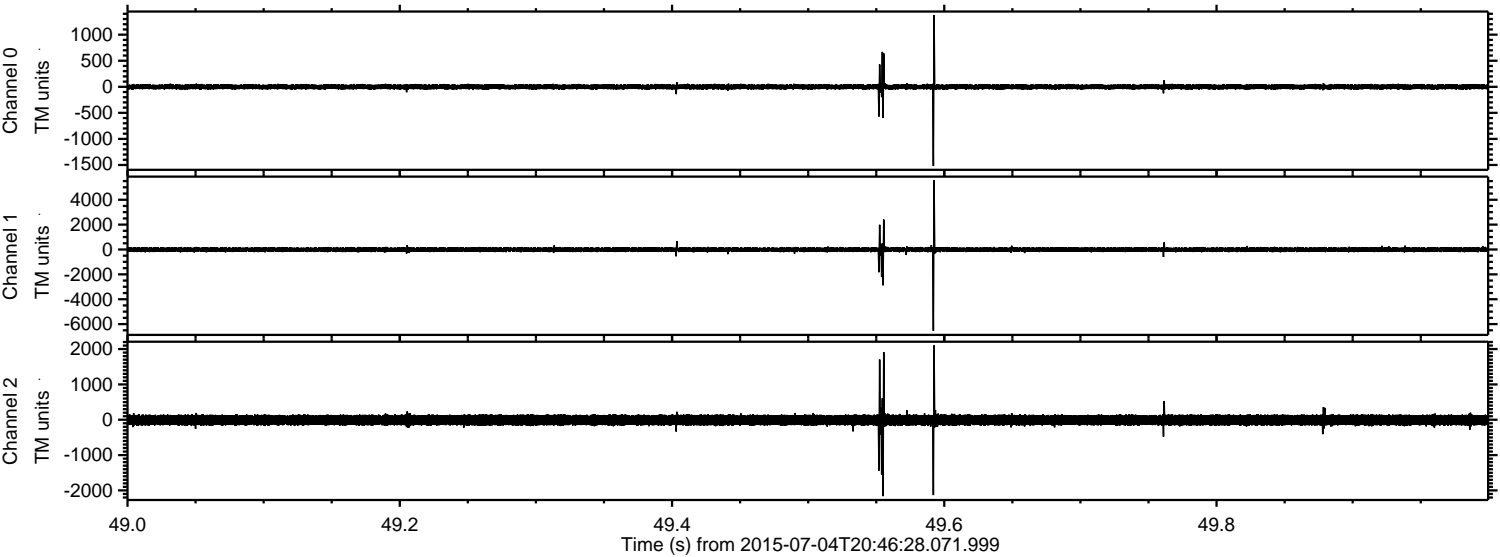
ELMAVAN 3D WAVEFORMS (Measured data sampled at 50 kHz) 51000 packets of 144 samples from 2015-07-04T20:46:28.071.999. Part 110/147

Processed Sat Jul 4 22:52:41 2015 by ELM ver.2012-10-06 from 001\_\_elm20150704\_204627\_\_dat00.bin



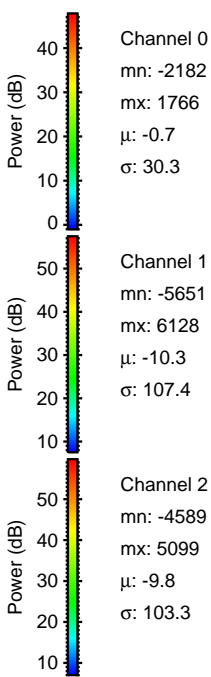
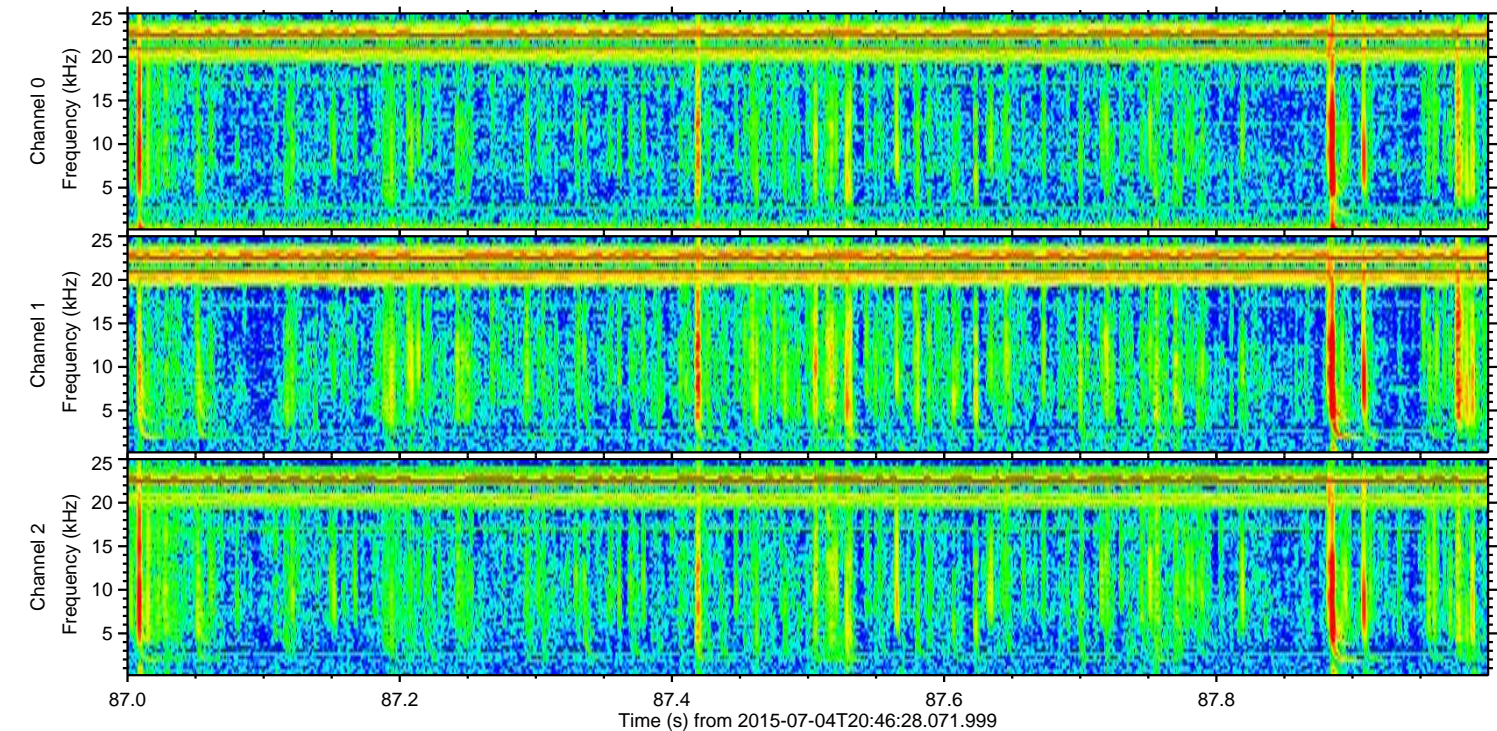
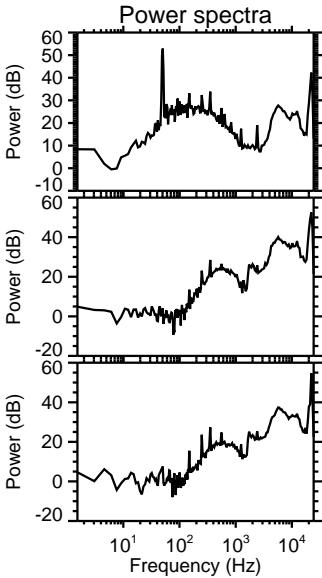
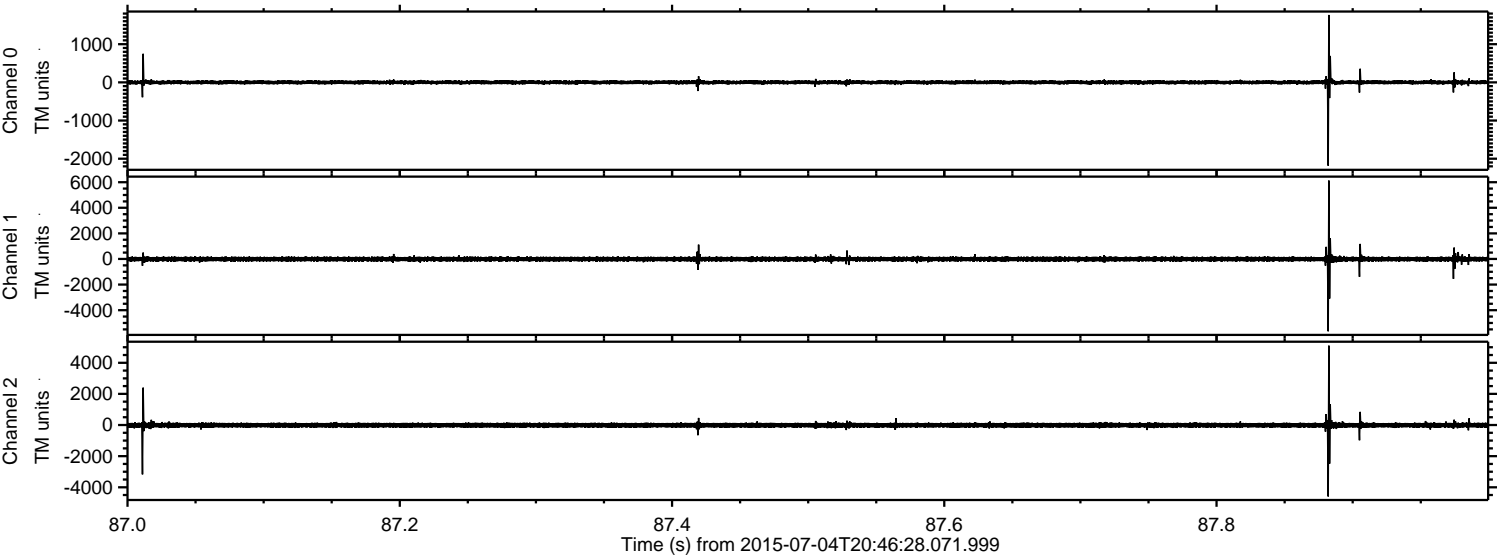


Processed Sat Jul 4 22:52:42 2015 by ELM ver.2012-10-06 from 001\_\_elm20150704\_204627\_\_dat00.bin





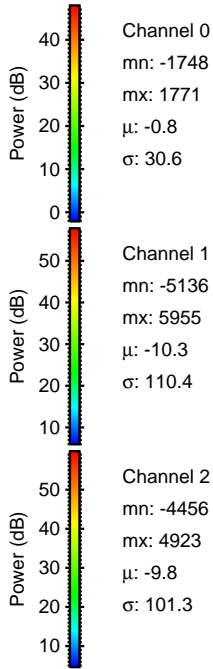
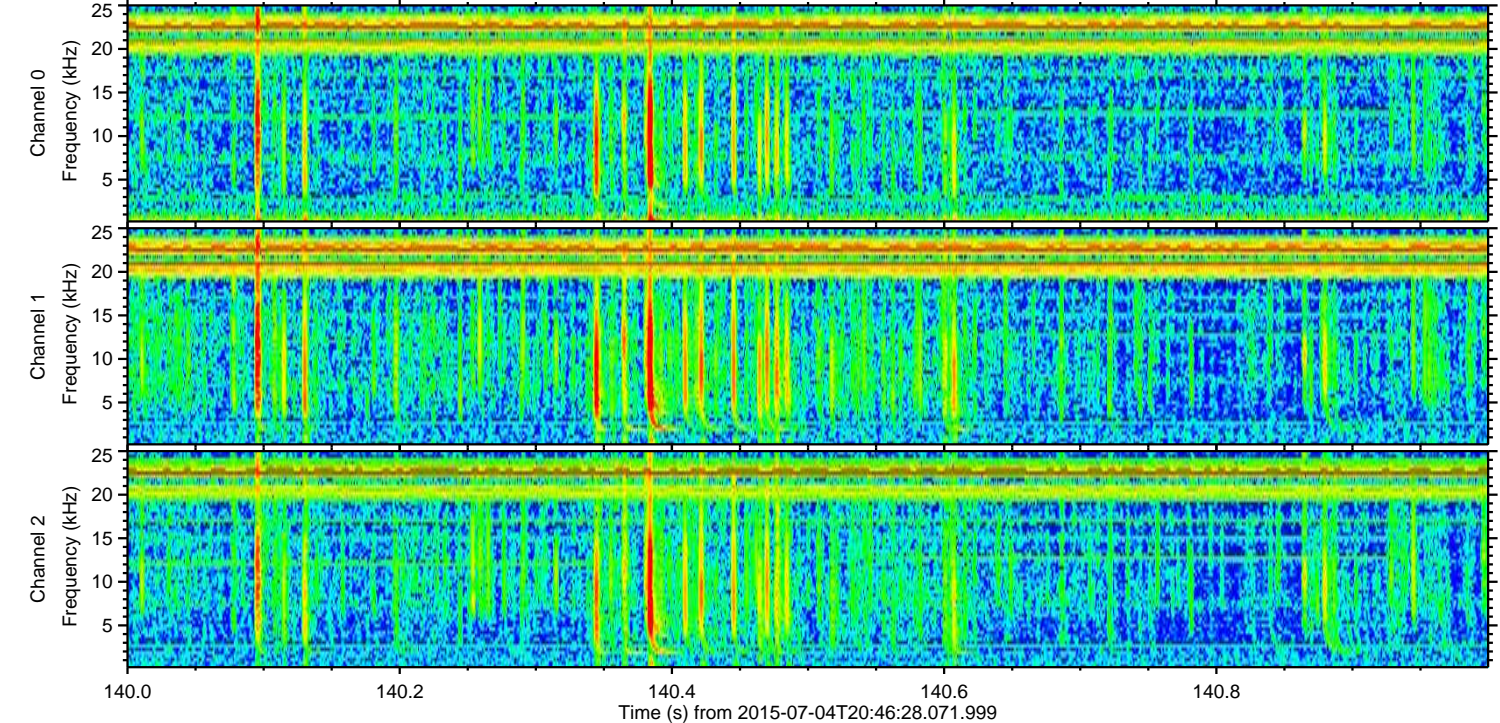
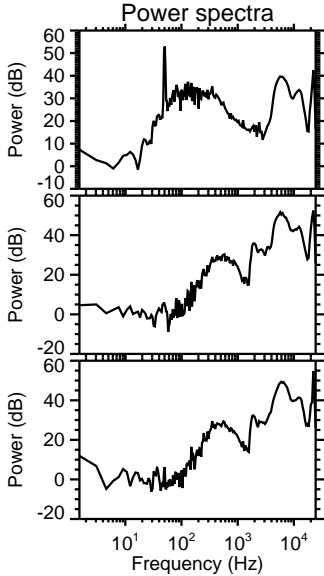
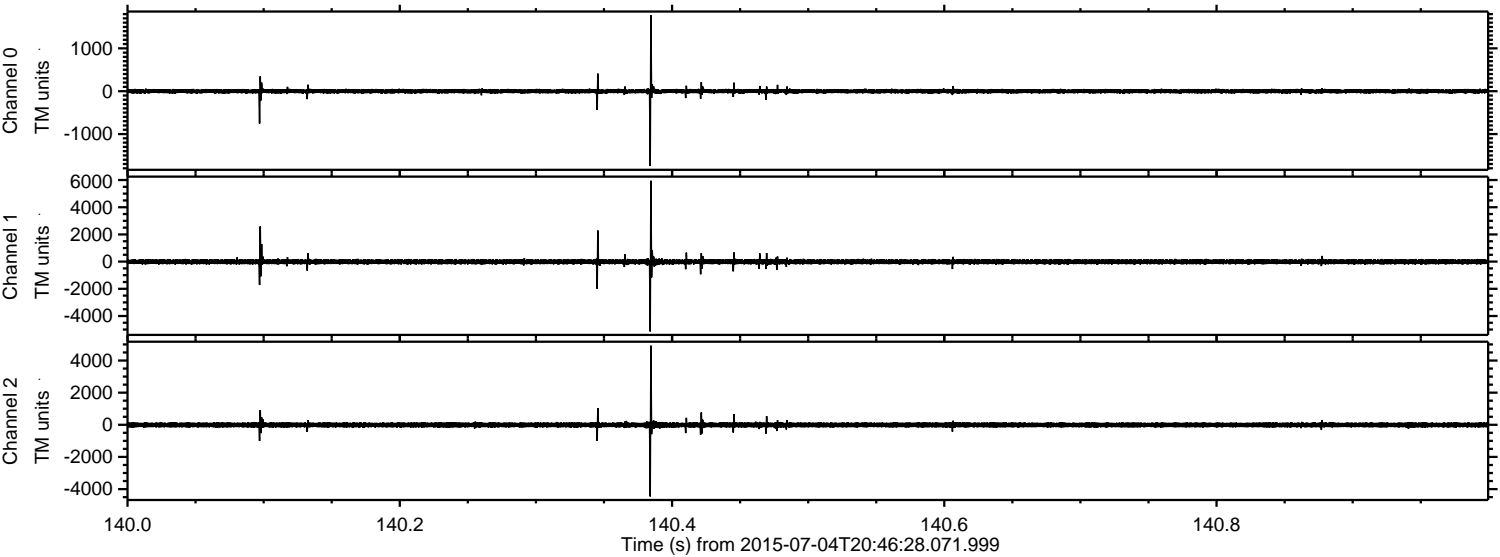
Processed Sat Jul 4 22:52:43 2015 by ELM ver.2012-10-06 from 001\_\_elm20150704\_204627\_\_dat00.bin





ELMAVAN 3D WAVEFORMS (Measured data sampled at 50 kHz) 51000 packets of 144 samples from 2015-07-04T20:46:28.071.999. Part 141/147

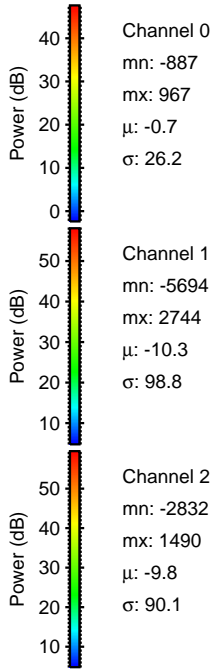
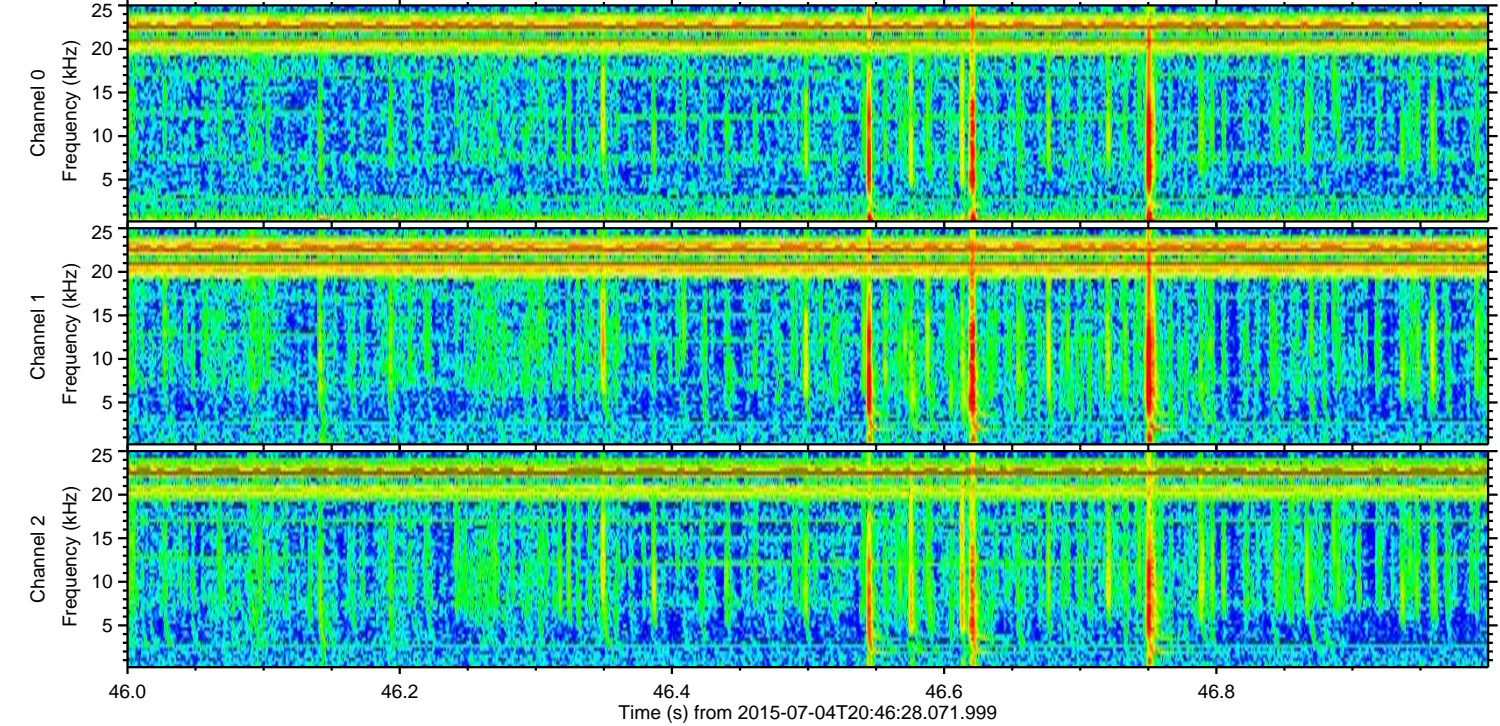
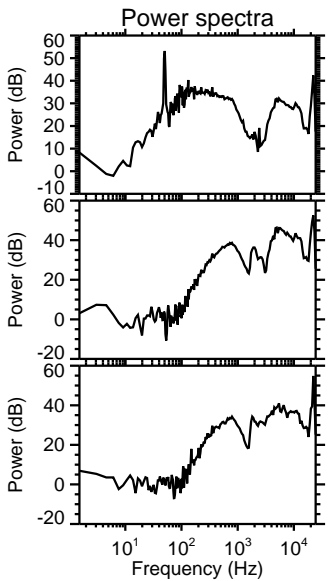
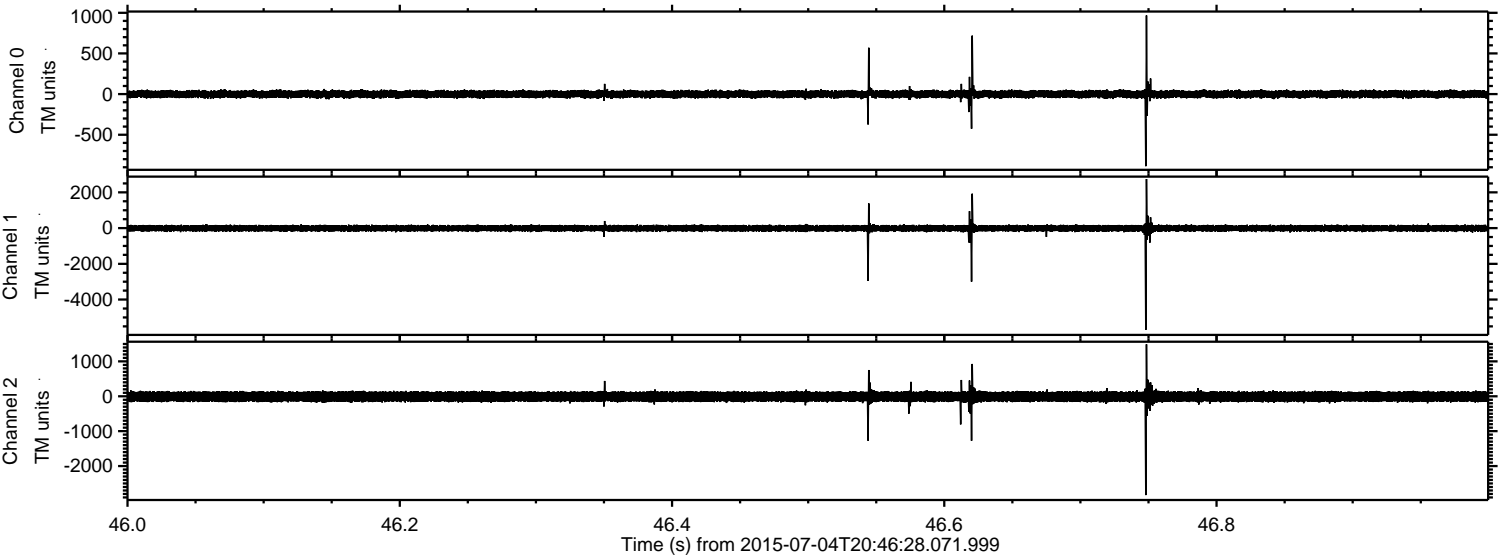
Processed Sat Jul 4 22:52:44 2015 by ELM ver.2012-10-06 from 001\_\_elm20150704\_204627\_\_dat00.bin





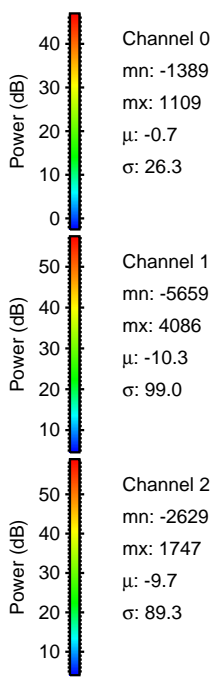
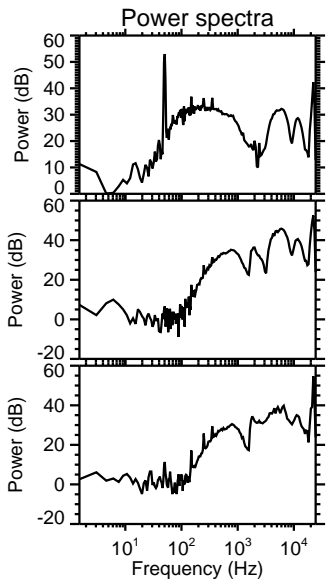
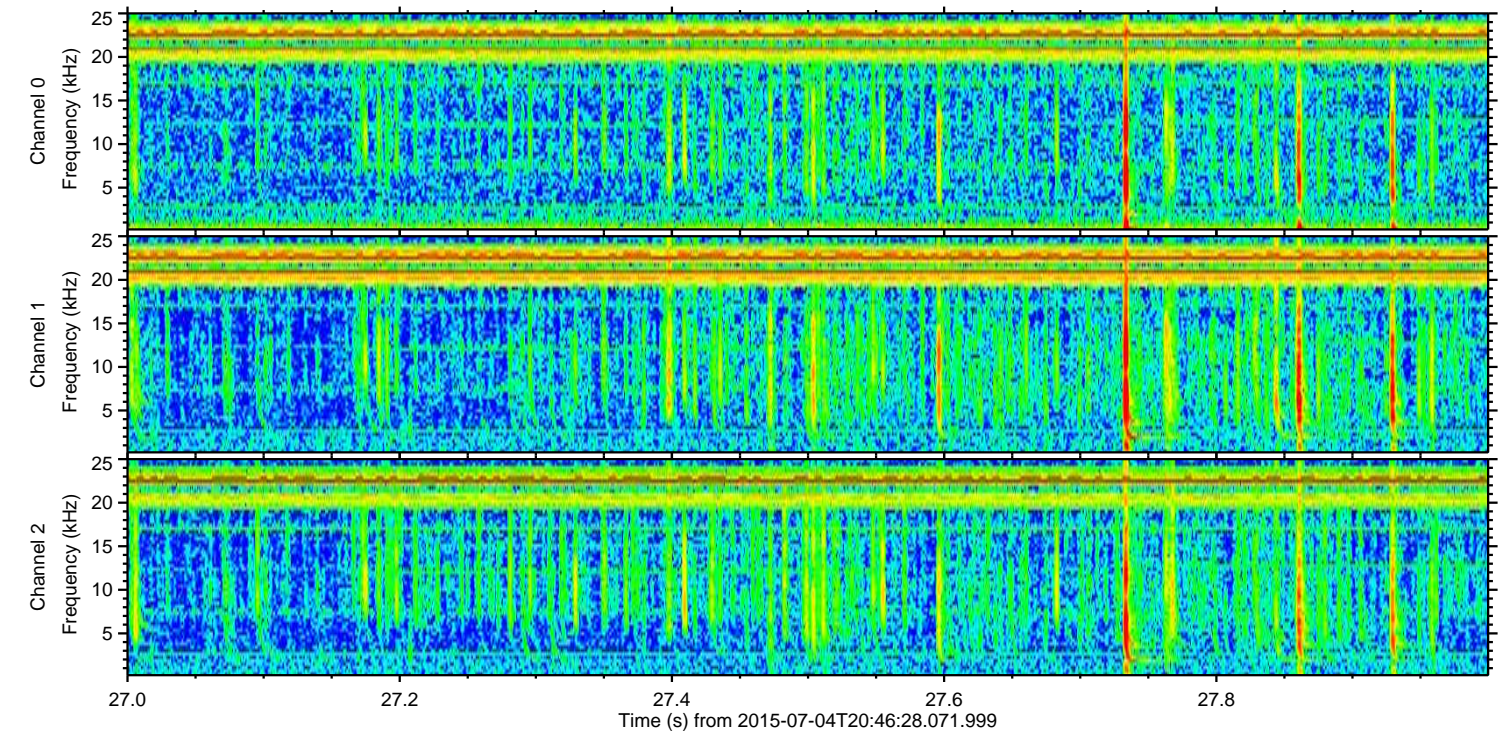
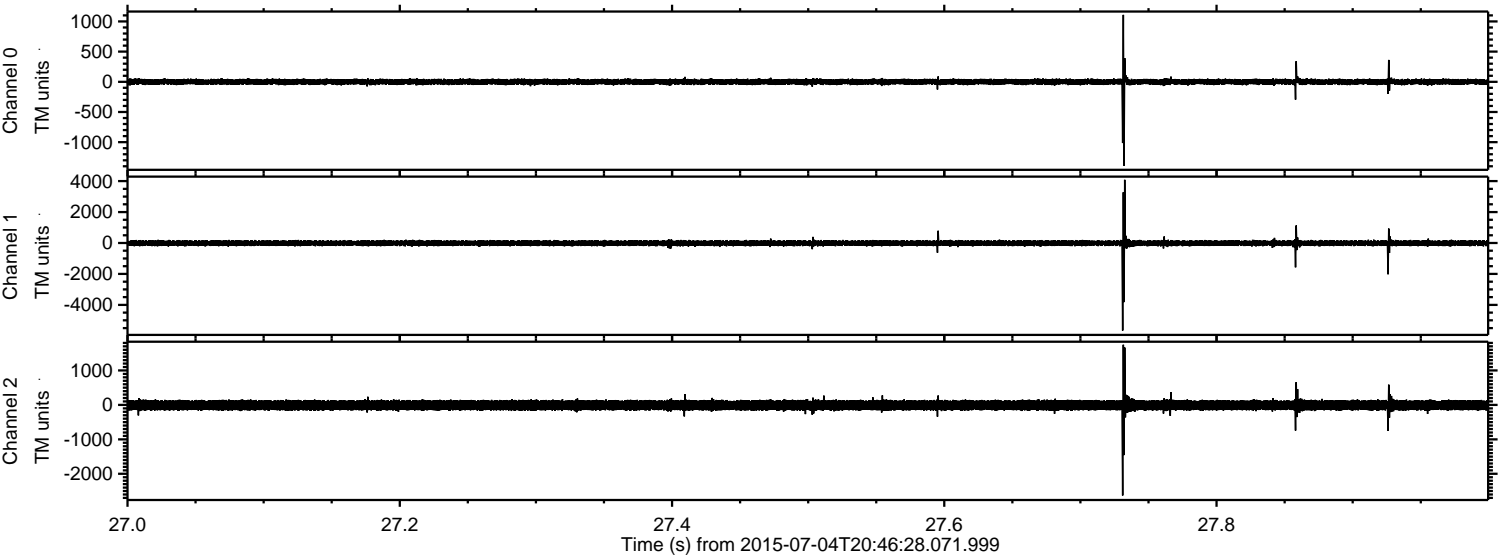
ELMAVAN 3D WAVEFORMS (Measured data sampled at 50 kHz) 51000 packets of 144 samples from 2015-07-04T20:46:28.071.999. Part 47/147

Processed Sat Jul 4 22:52:45 2015 by ELM ver.2012-10-06 from 001\_\_elm20150704\_204627\_\_dat00.bin





Processed Sat Jul 4 22:52:46 2015 by ELM ver.2012-10-06 from 001\_\_elm20150704\_204627\_\_dat00.bin



Channel 0  
mn: -1389  
mx: 1109  
 $\mu$ : -0.7  
 $\sigma$ : 26.3

Channel 1  
mn: -5659  
mx: 4086  
 $\mu$ : -10.3  
 $\sigma$ : 99.0

Channel 2  
mn: -2629  
mx: 1747  
 $\mu$ : -9.7  
 $\sigma$ : 89.3



