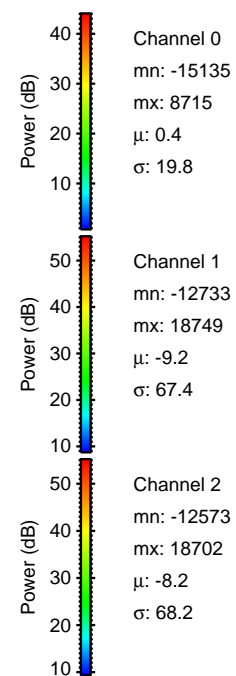
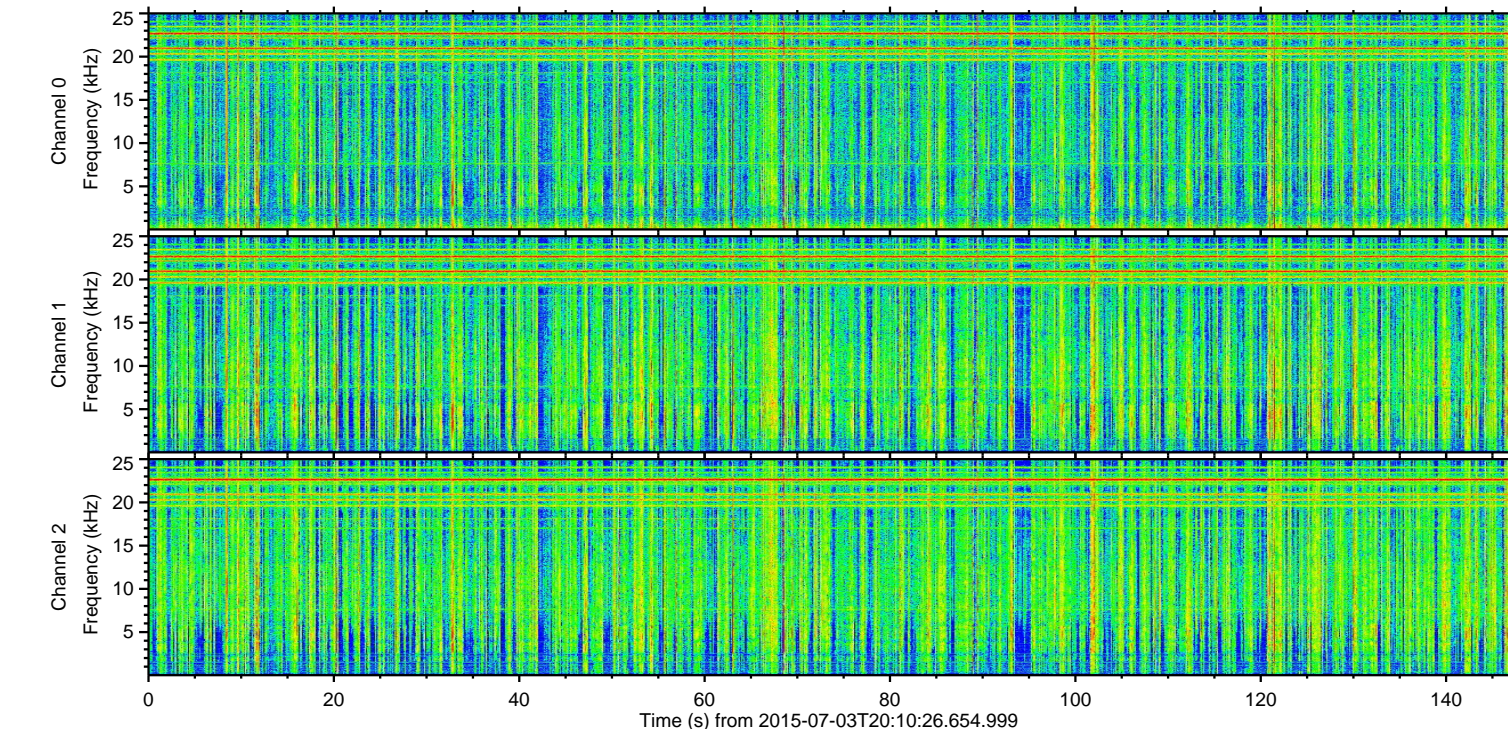
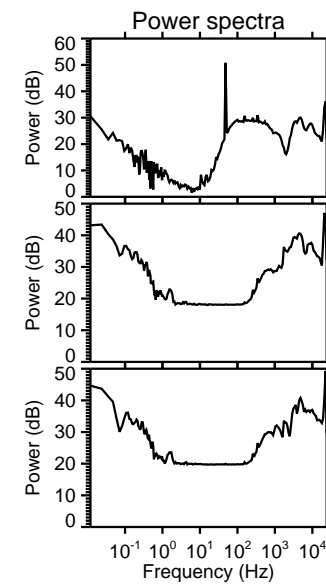
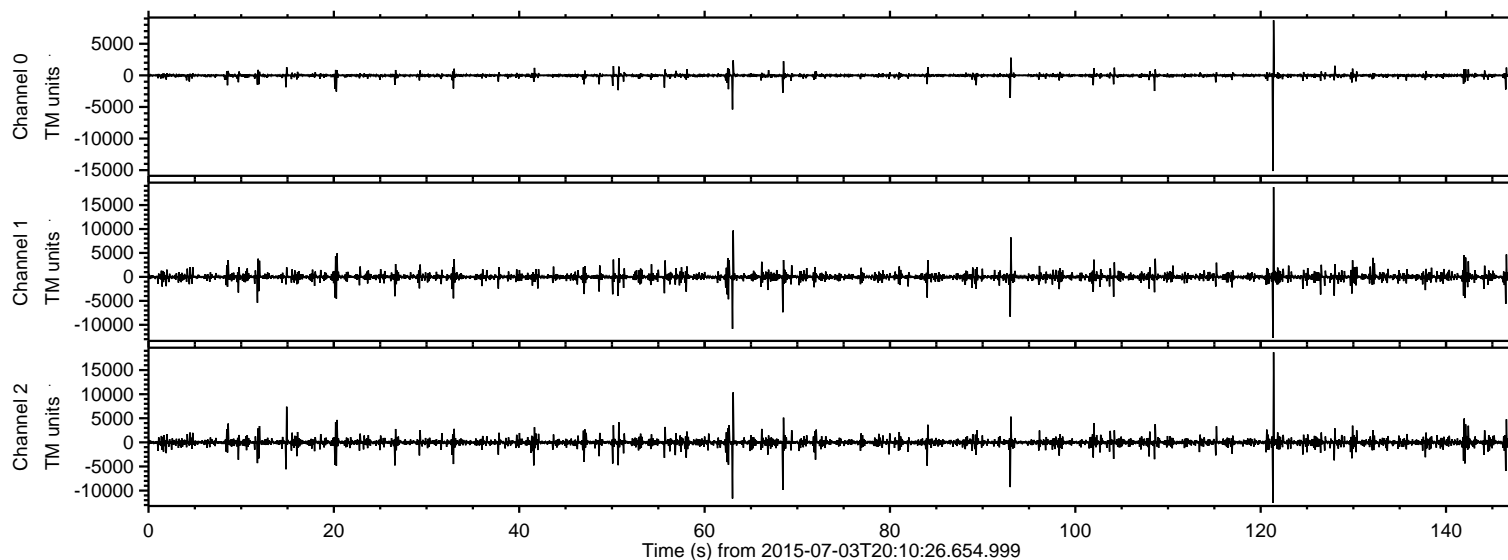


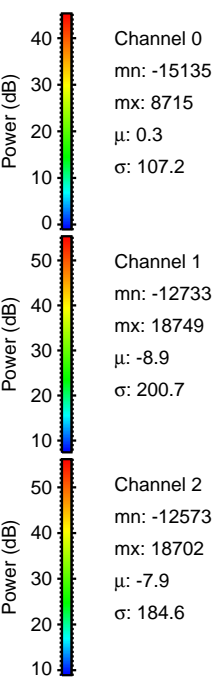
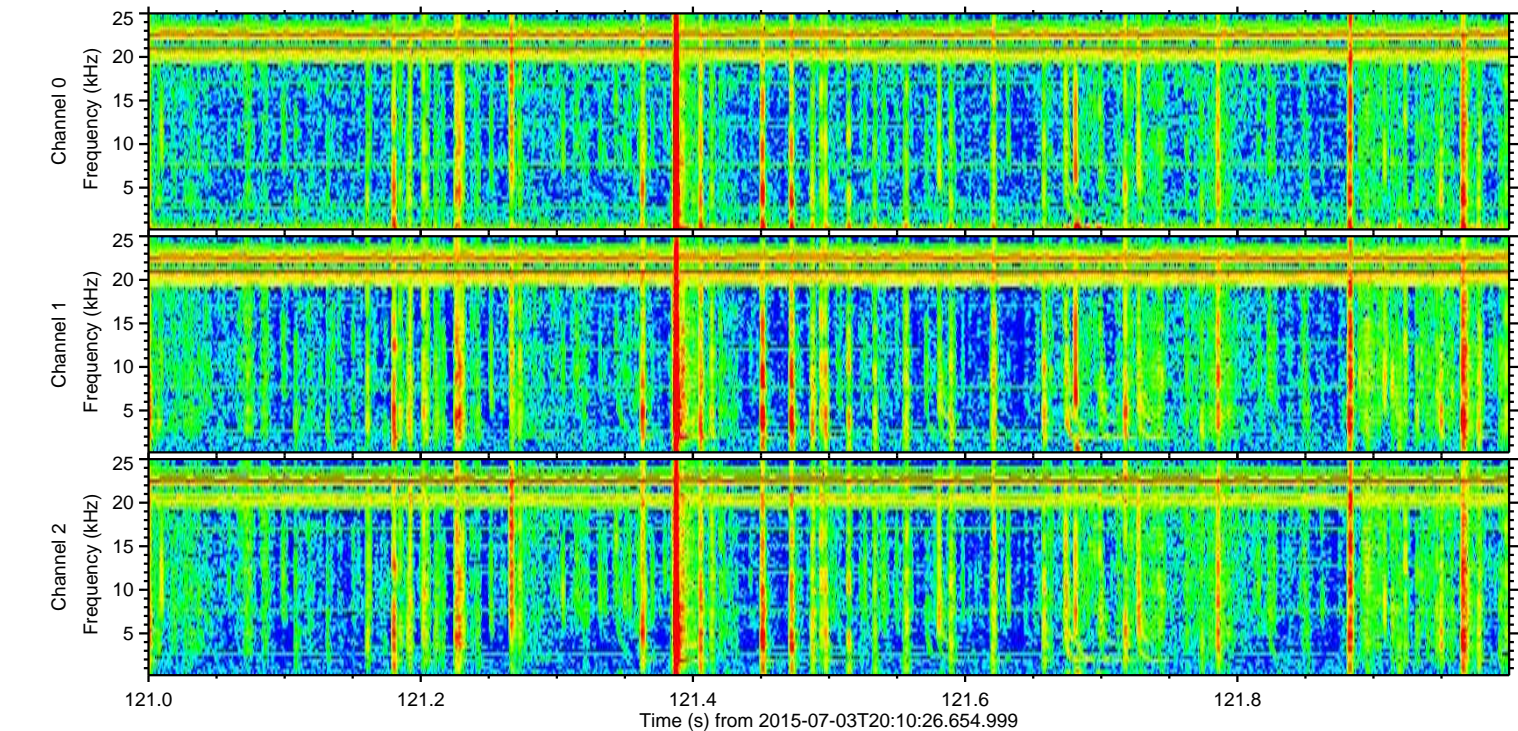
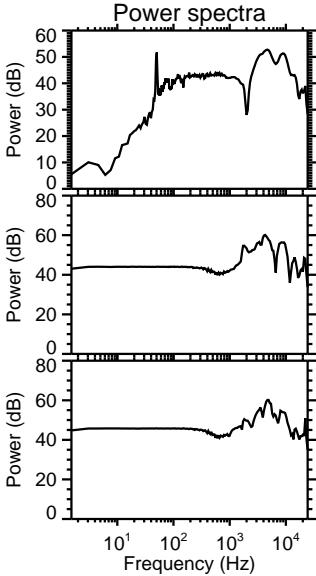
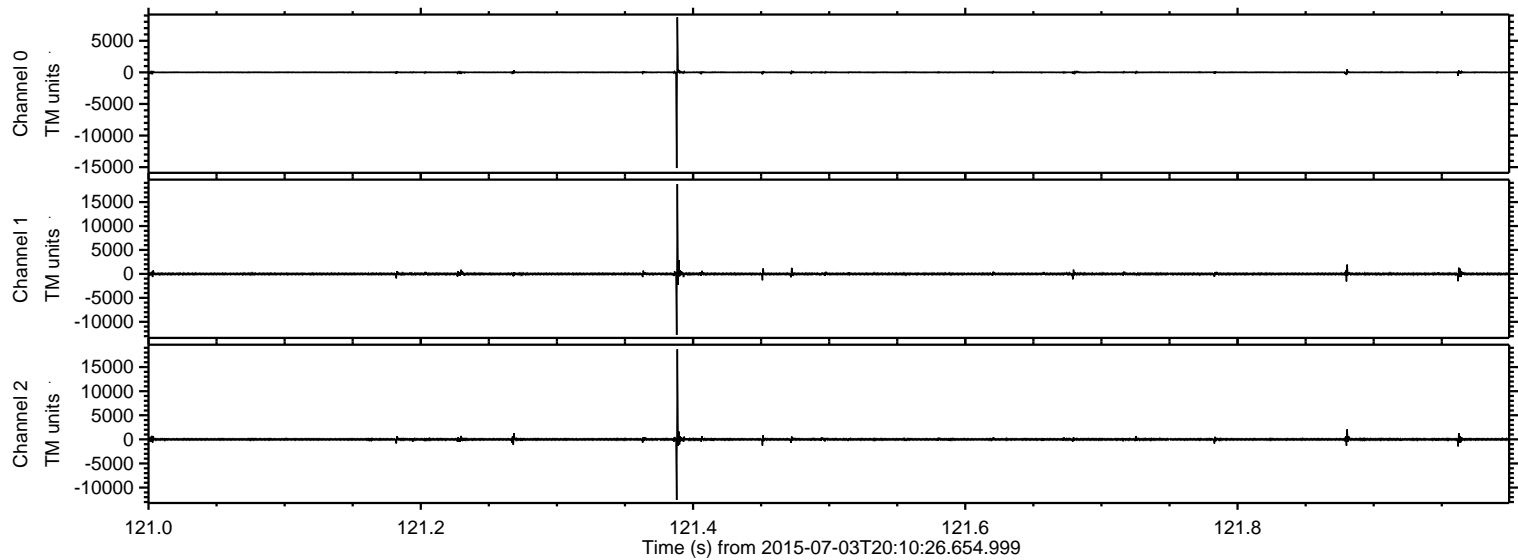
ELMAVAN 3D WAVEFORMS (Measured data sampled at 50 kHz) 51000 packets of 144 samples from 2015-07-03T20:10:26.654.999.

Processed Sat Jul 4 00:46:27 2015 by ELM ver.2012-10-06 from 001__elm20150703_201025__dat00.bin

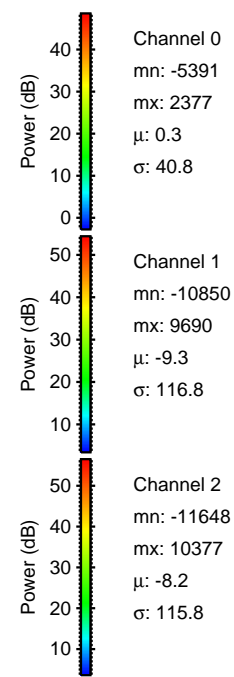
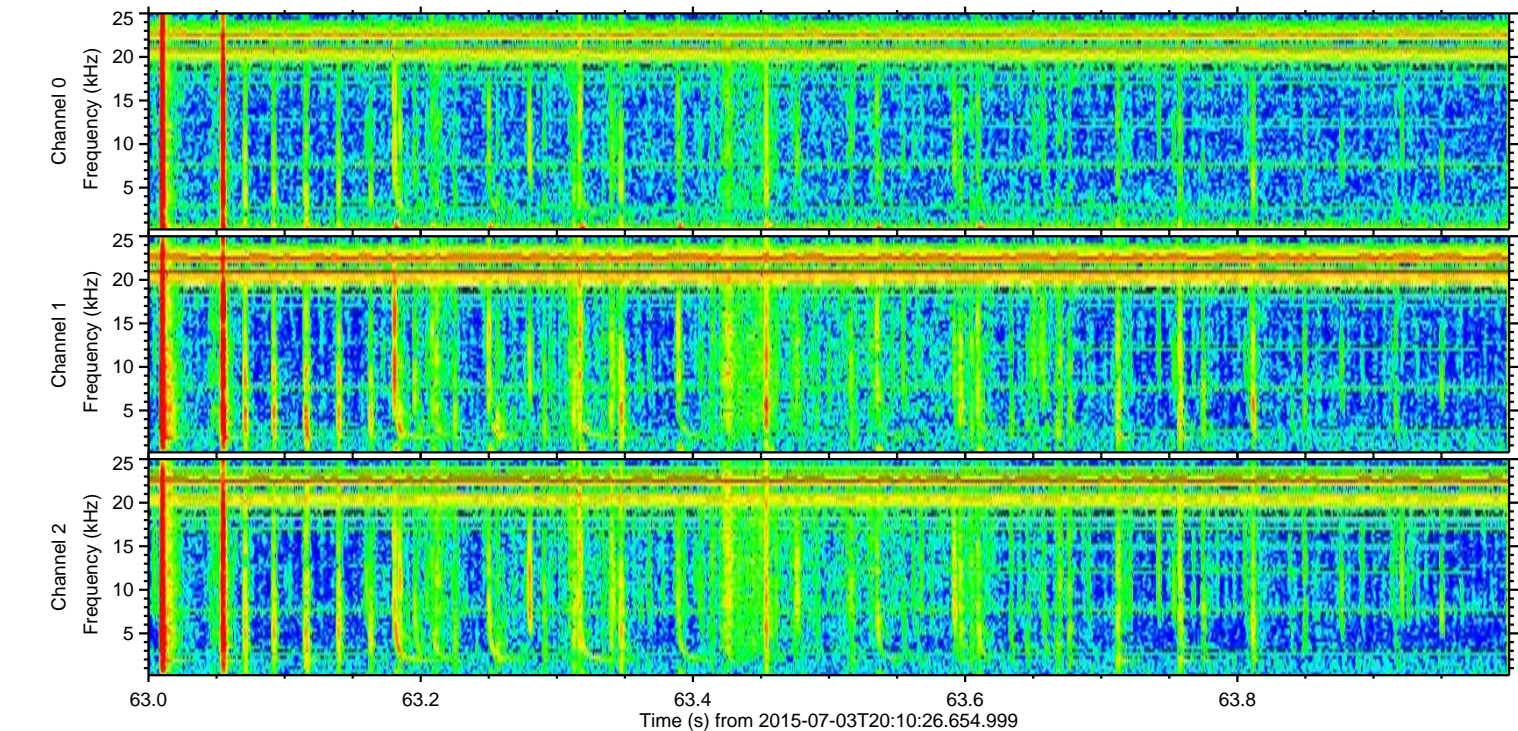
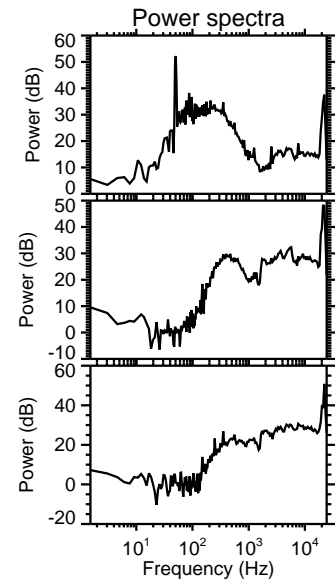
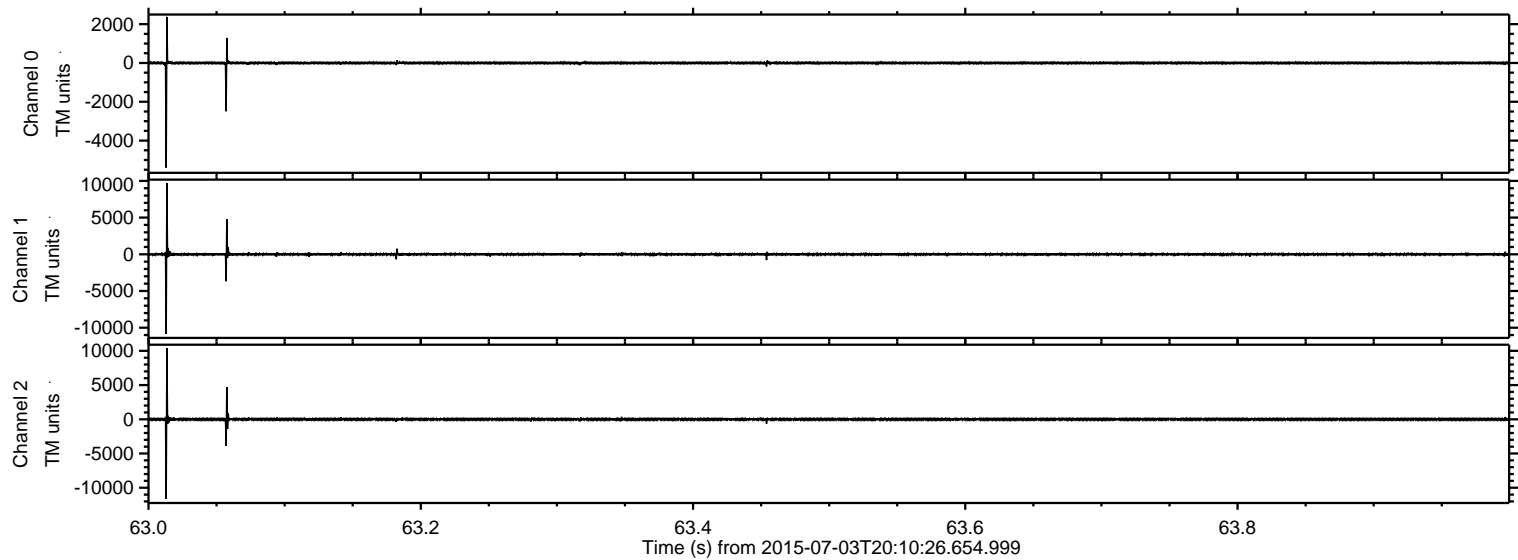


ELMAVAN 3D WAVEFORMS (Measured data sampled at 50 kHz) 51000 packets of 144 samples from 2015-07-03T20:10:26.654.999. Part 122/147

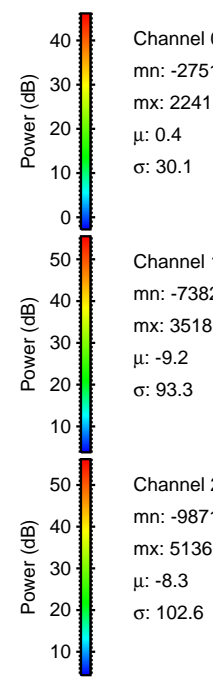
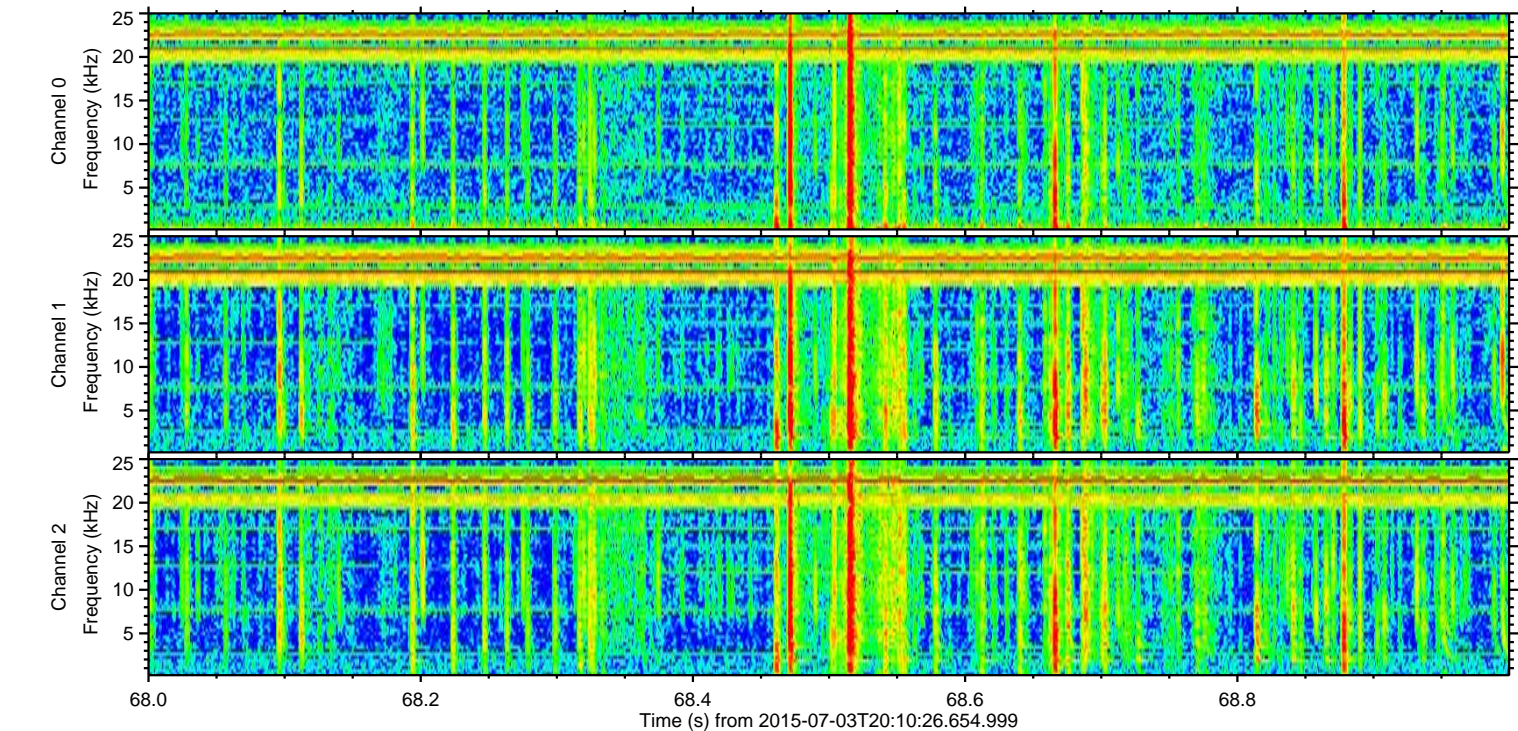
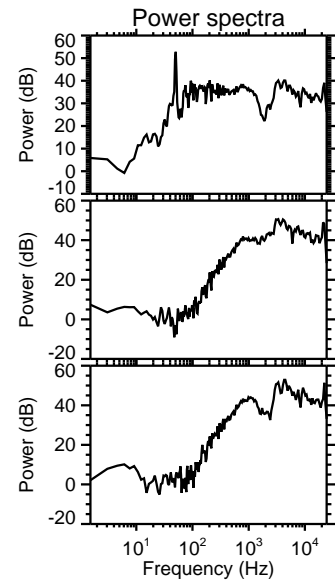
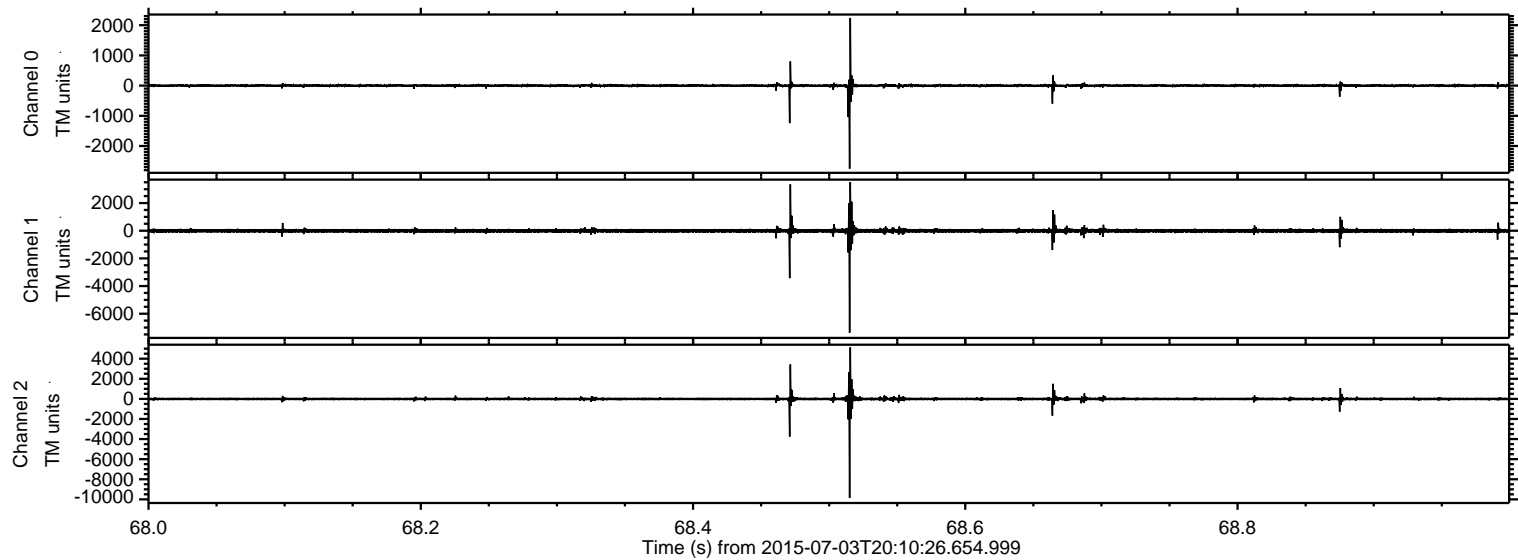
Processed Sat Jul 4 00:46:40 2015 by ELM ver.2012-10-06 from 001__elm20150703_201025__dat00.bin



Processed Sat Jul 4 00:46:42 2015 by ELM ver.2012-10-06 from 001__elm20150703_201025__dat00.bin



Processed Sat Jul 4 00:46:43 2015 by ELM ver.2012-10-06 from 001__elm20150703_201025__dat00.bin

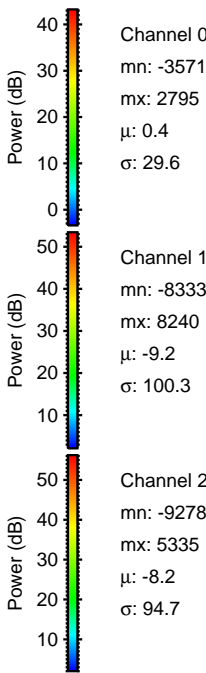
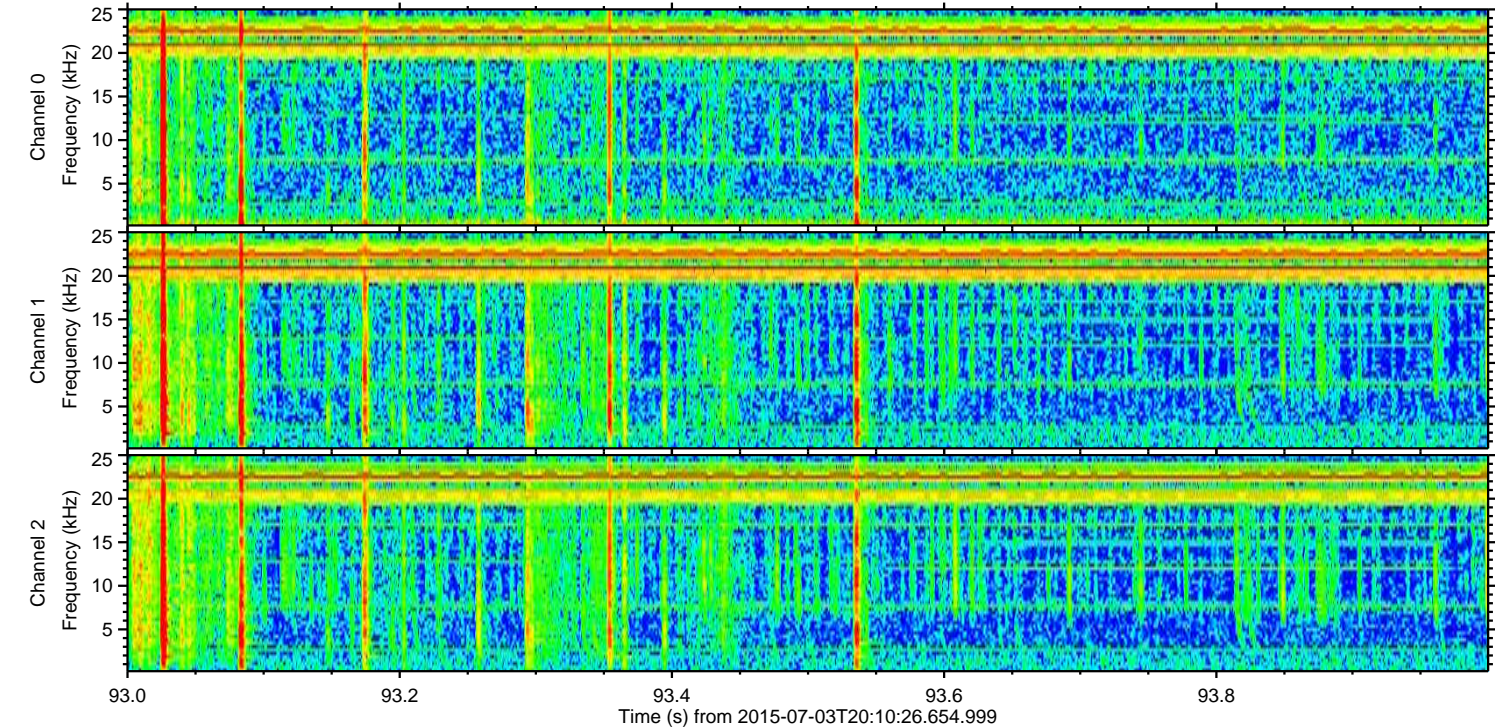
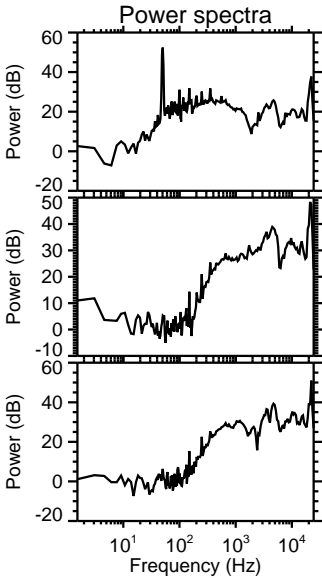
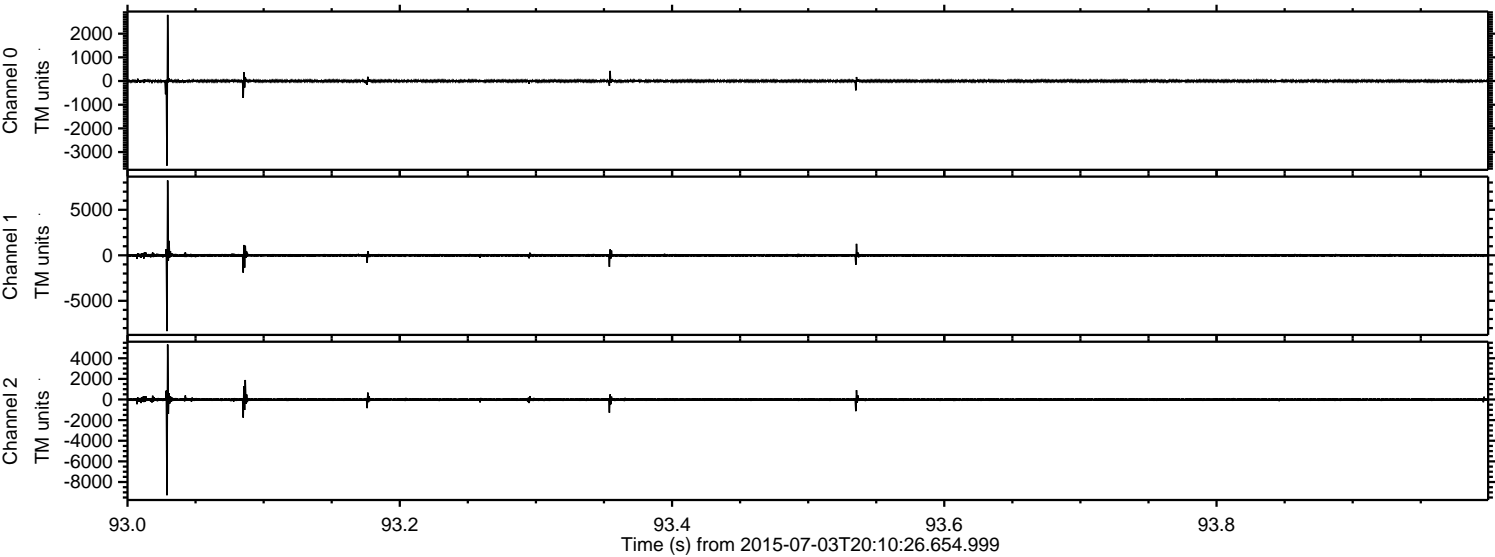


Channel 0
mn: -2751
mx: 2241
 μ : 0.4
 σ : 30.1

Channel 1
mn: -7382
mx: 3518
 μ : -9.2
 σ : 93.3

Channel 2
mn: -9871
mx: 5136
 μ : -8.3
 σ : 102.6

Processed Sat Jul 4 00:46:44 2015 by ELM ver.2012-10-06 from 001__elm20150703_201025__dat00.bin

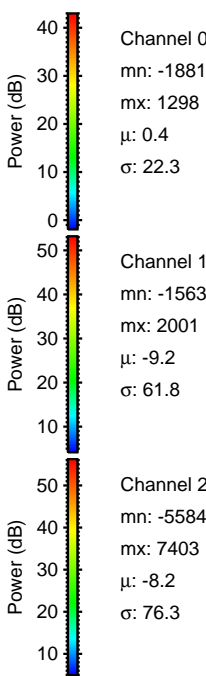
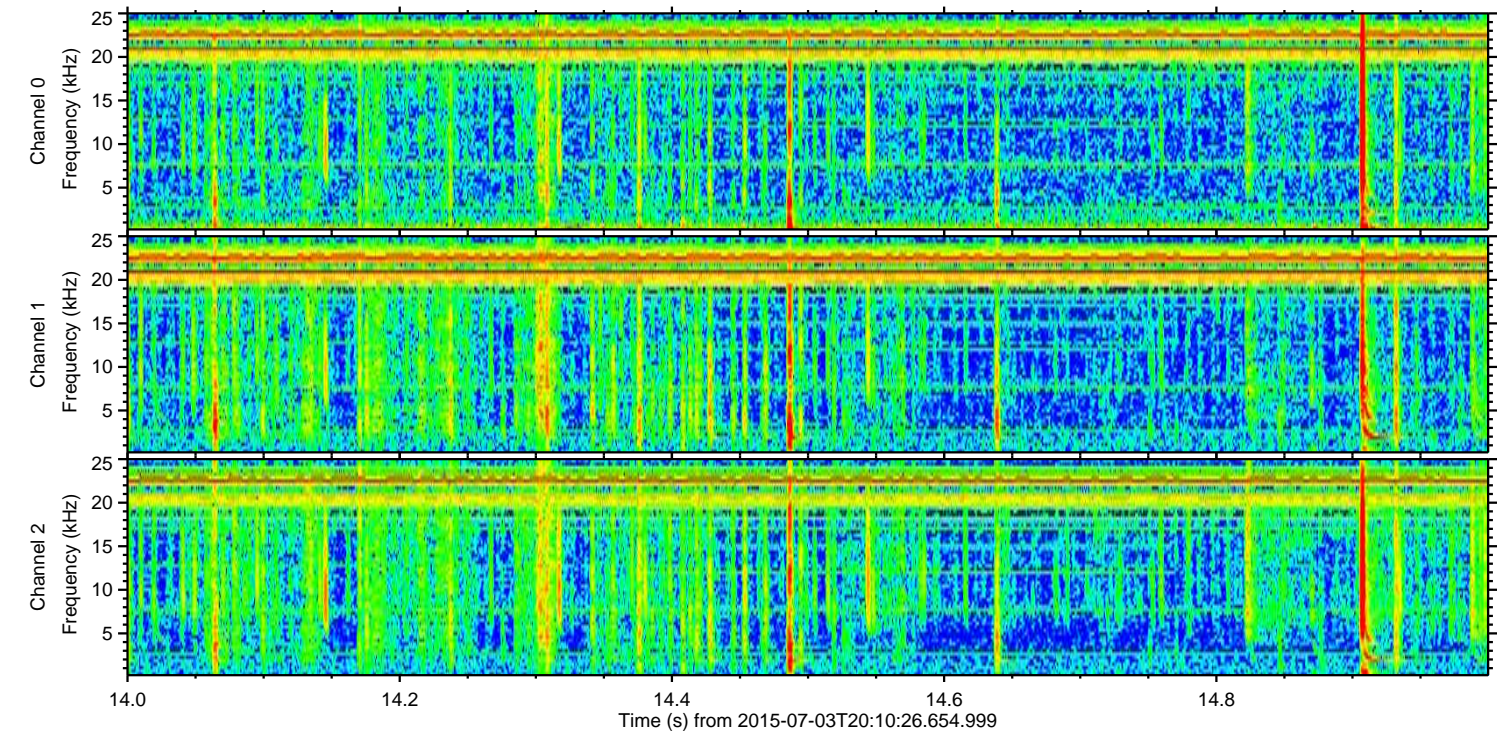
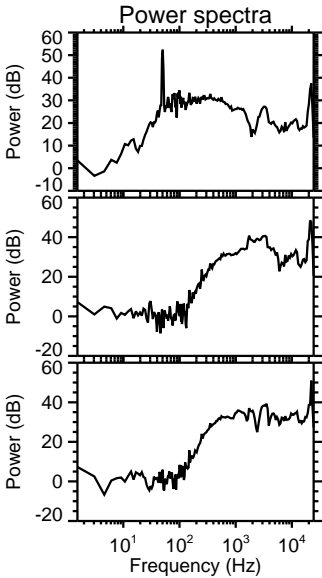
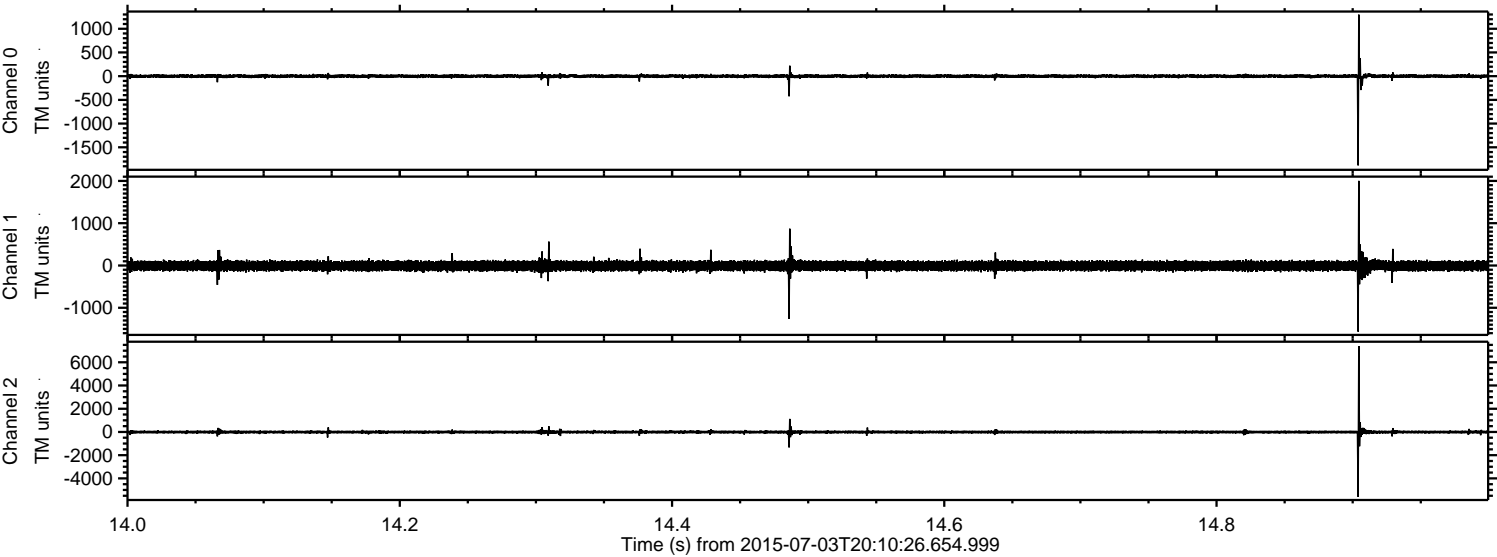


Channel 0
mn: -3571
mx: 2795
 μ : 0.4
 σ : 29.6

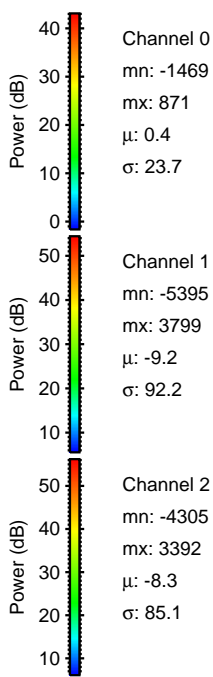
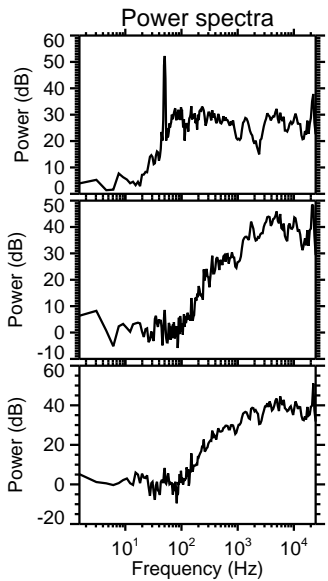
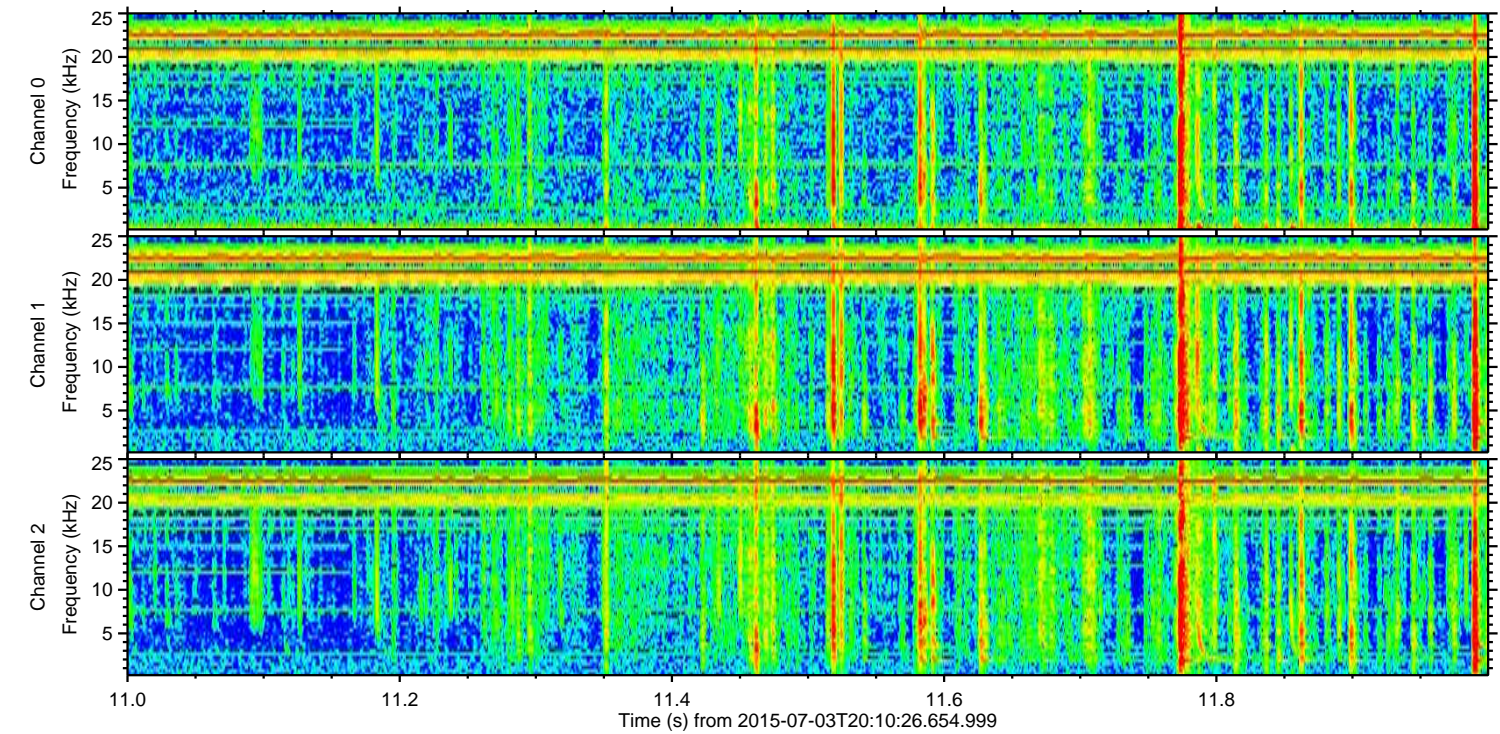
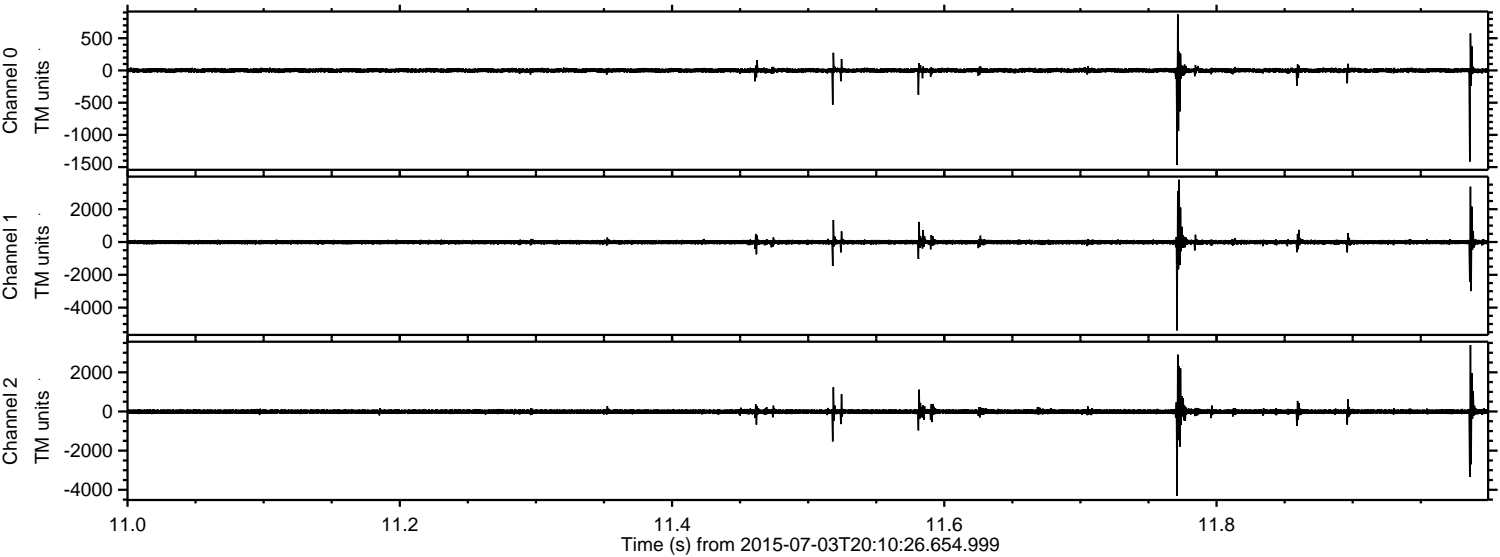
Channel 1
mn: -8333
mx: 8240
 μ : -9.2
 σ : 100.3

Channel 2
mn: -9278
mx: 5335
 μ : -8.2
 σ : 94.7

Processed Sat Jul 4 00:46:45 2015 by ELM ver.2012-10-06 from 001__elm20150703_201025__dat00.bin

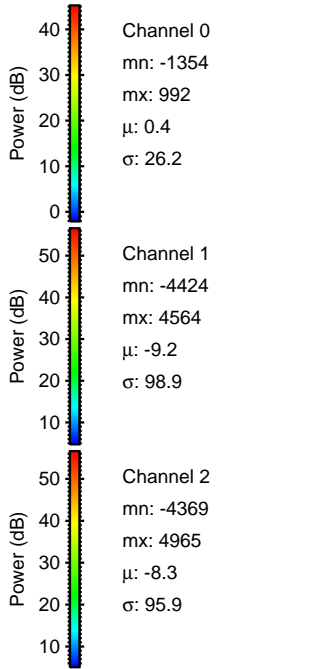
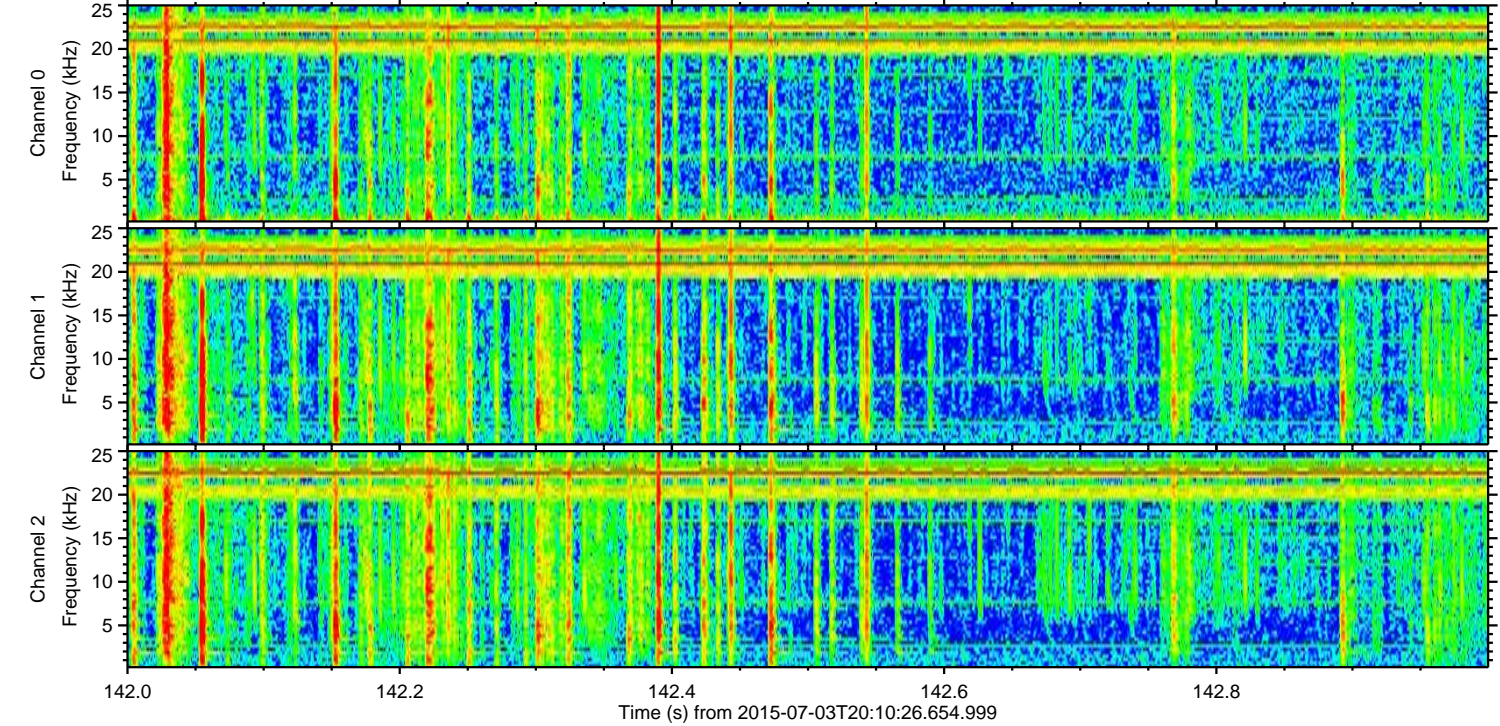
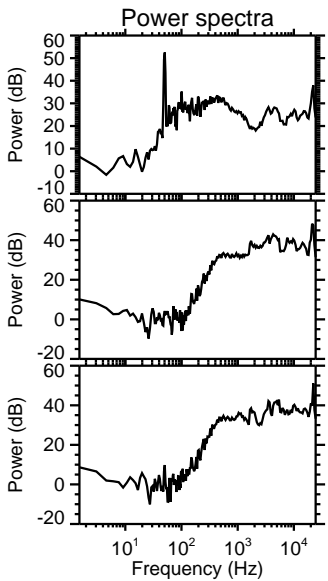
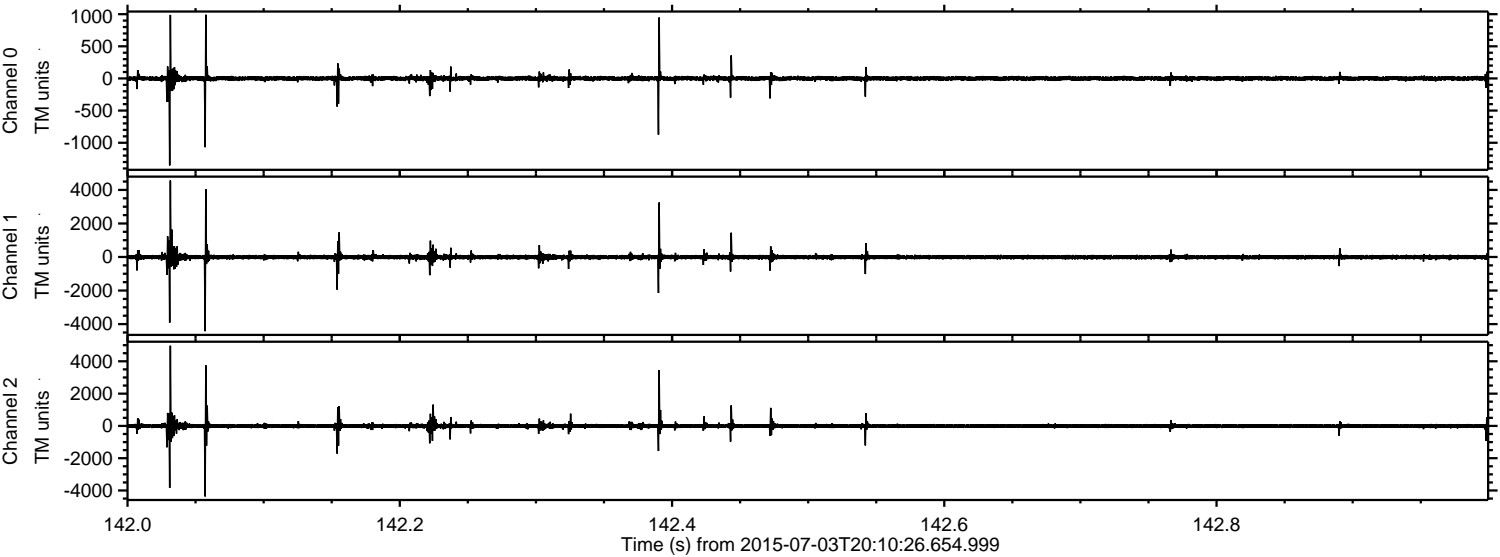


Processed Sat Jul 4 00:46:46 2015 by ELM ver.2012-10-06 from 001__elm20150703_201025__dat00.bin

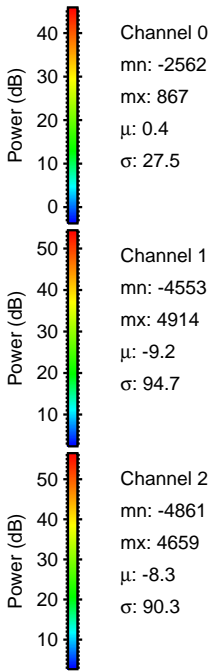
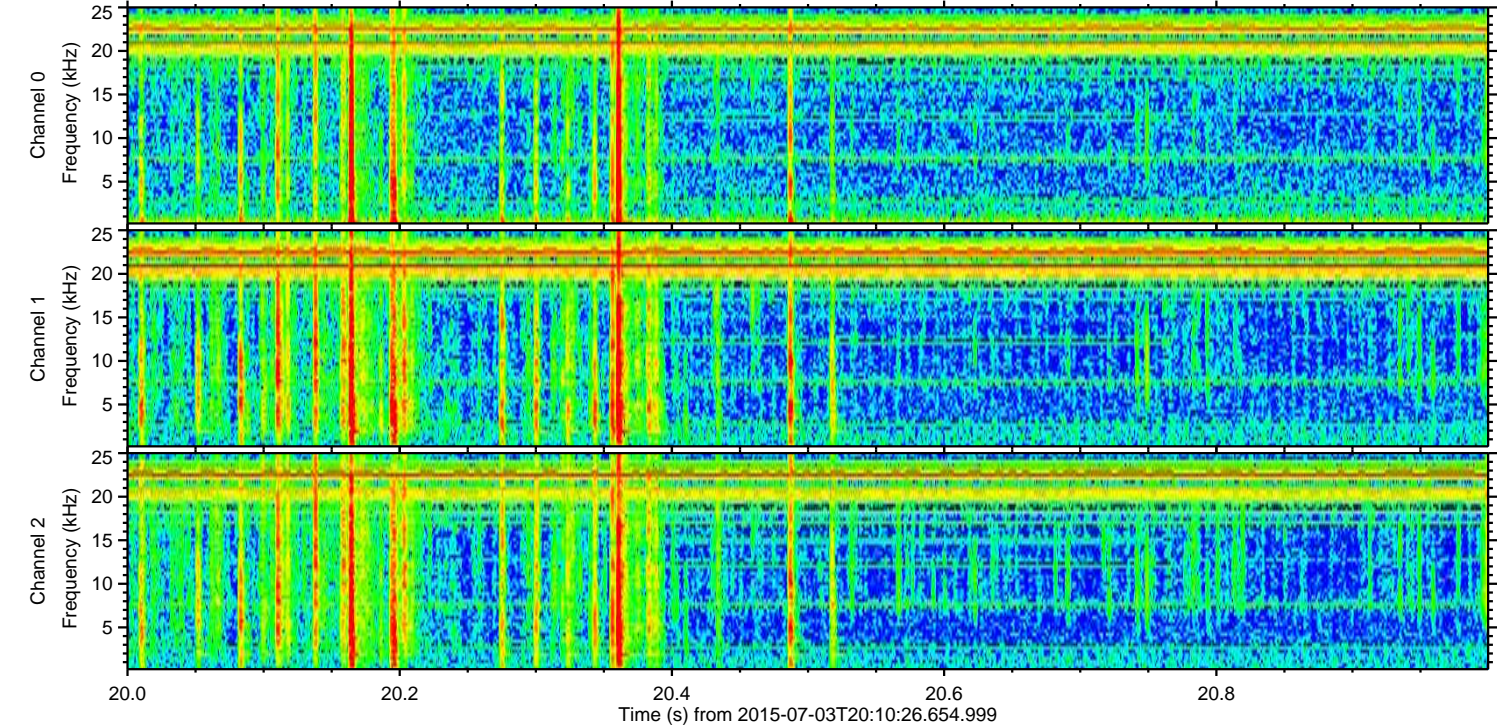
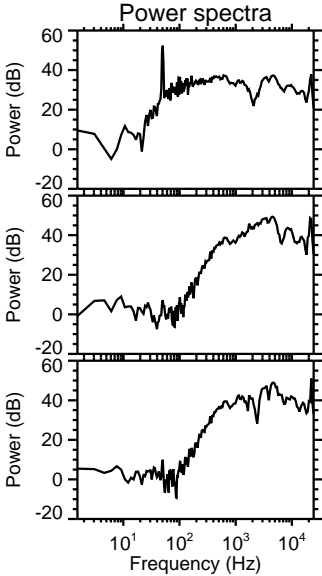
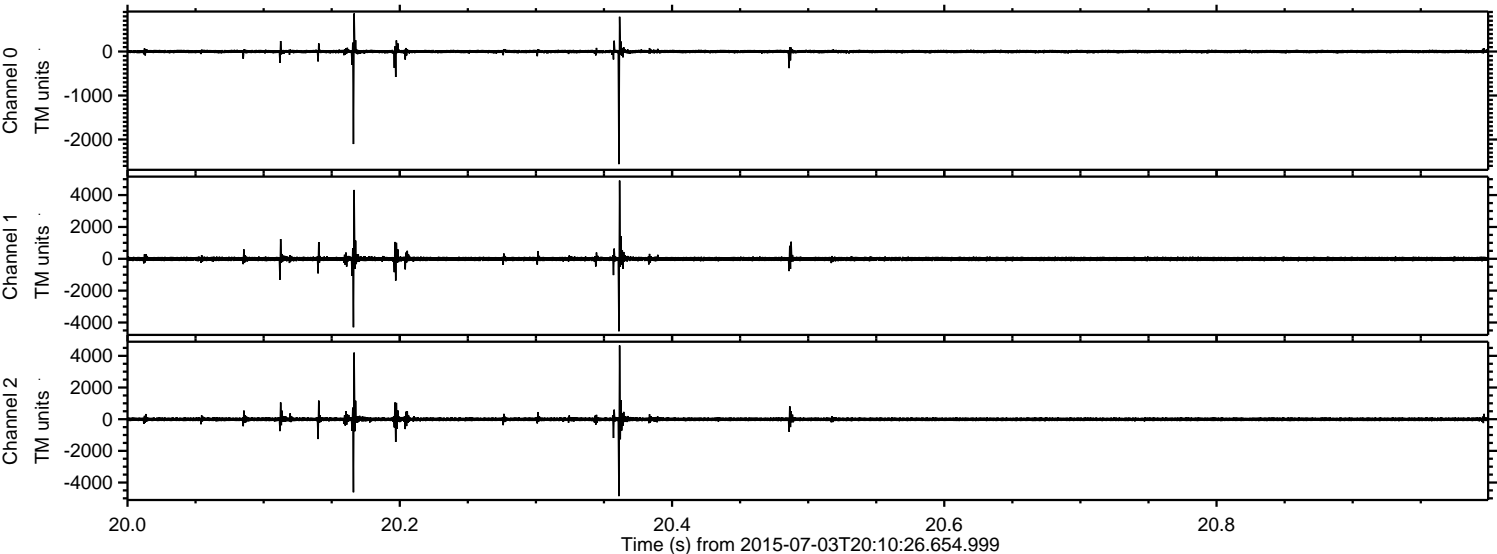


ELMAVAN 3D WAVEFORMS (Measured data sampled at 50 kHz) 51000 packets of 144 samples from 2015-07-03T20:10:26.654.999. Part 143/147

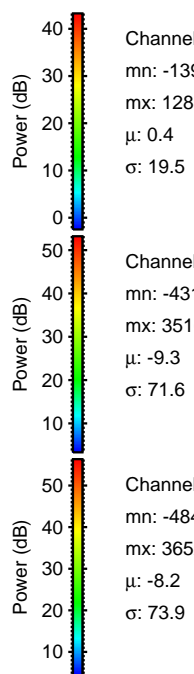
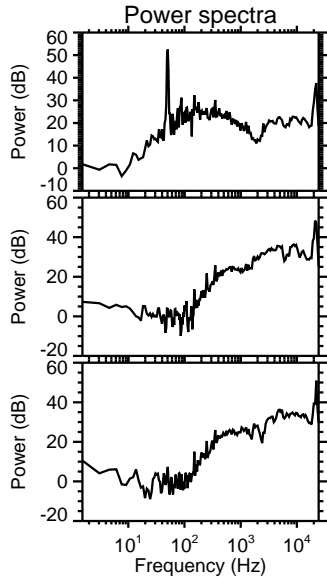
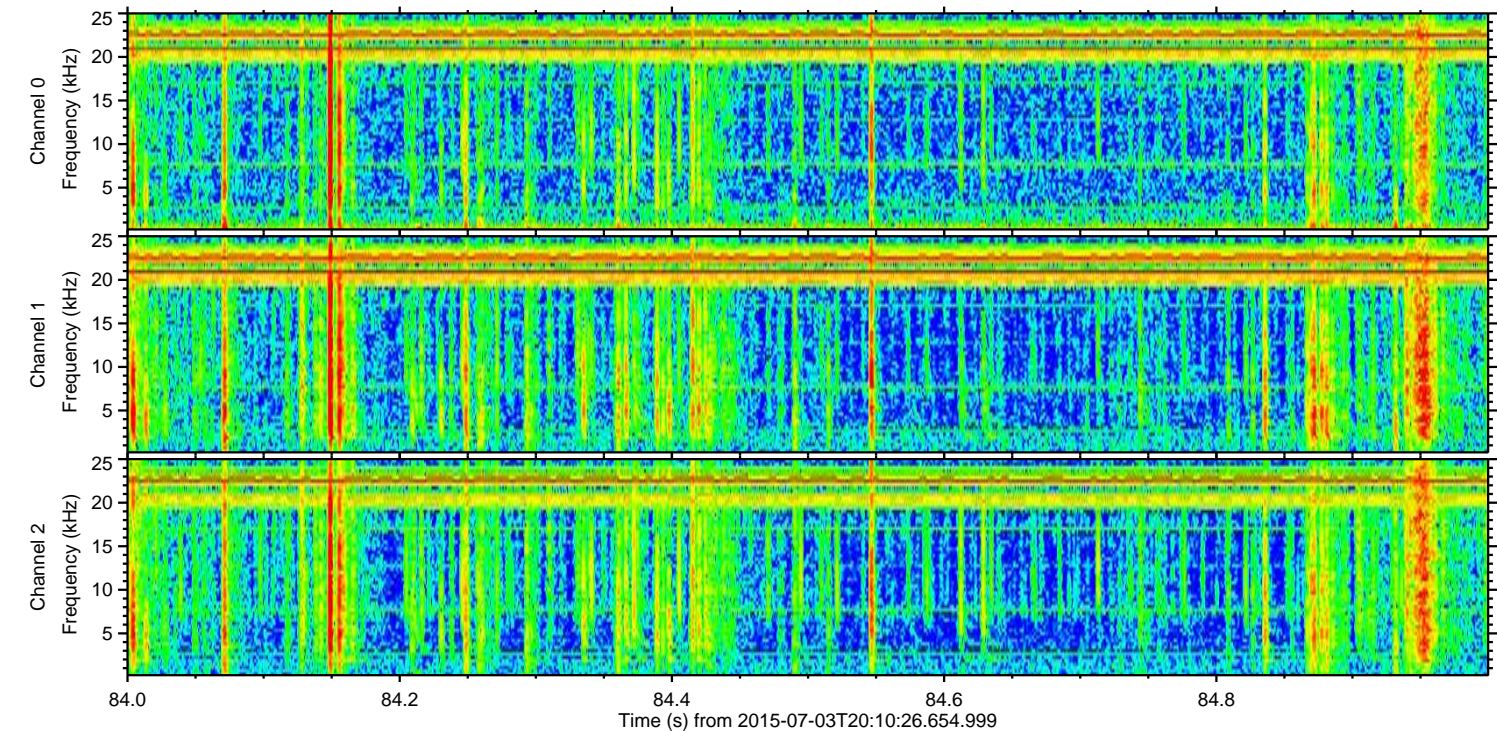
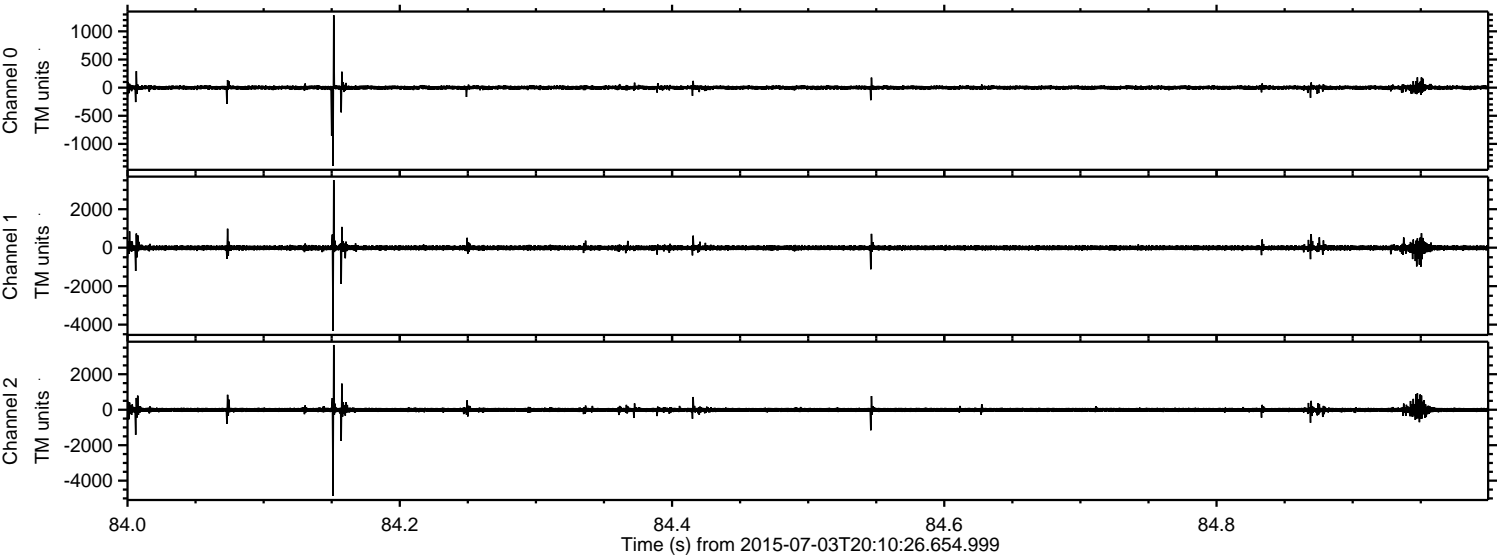
Processed Sat Jul 4 00:46:47 2015 by ELM ver.2012-10-06 from 001__elm20150703_201025__dat00.bin



Processed Sat Jul 4 00:46:48 2015 by ELM ver.2012-10-06 from 001__elm20150703_201025__dat00.bin



Processed Sat Jul 4 00:46:49 2015 by ELM ver.2012-10-06 from 001__elm20150703_201025__dat00.bin



Channel 0
mn: -1391
mx: 1288
 μ : 0.4
 σ : 19.5

Channel 1
mn: -4318
mx: 3516
 μ : -9.3
 σ : 71.6

Channel 2
mn: -4847
mx: 3652
 μ : -8.2
 σ : 73.9

