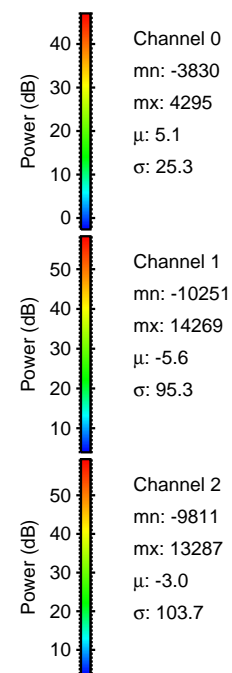
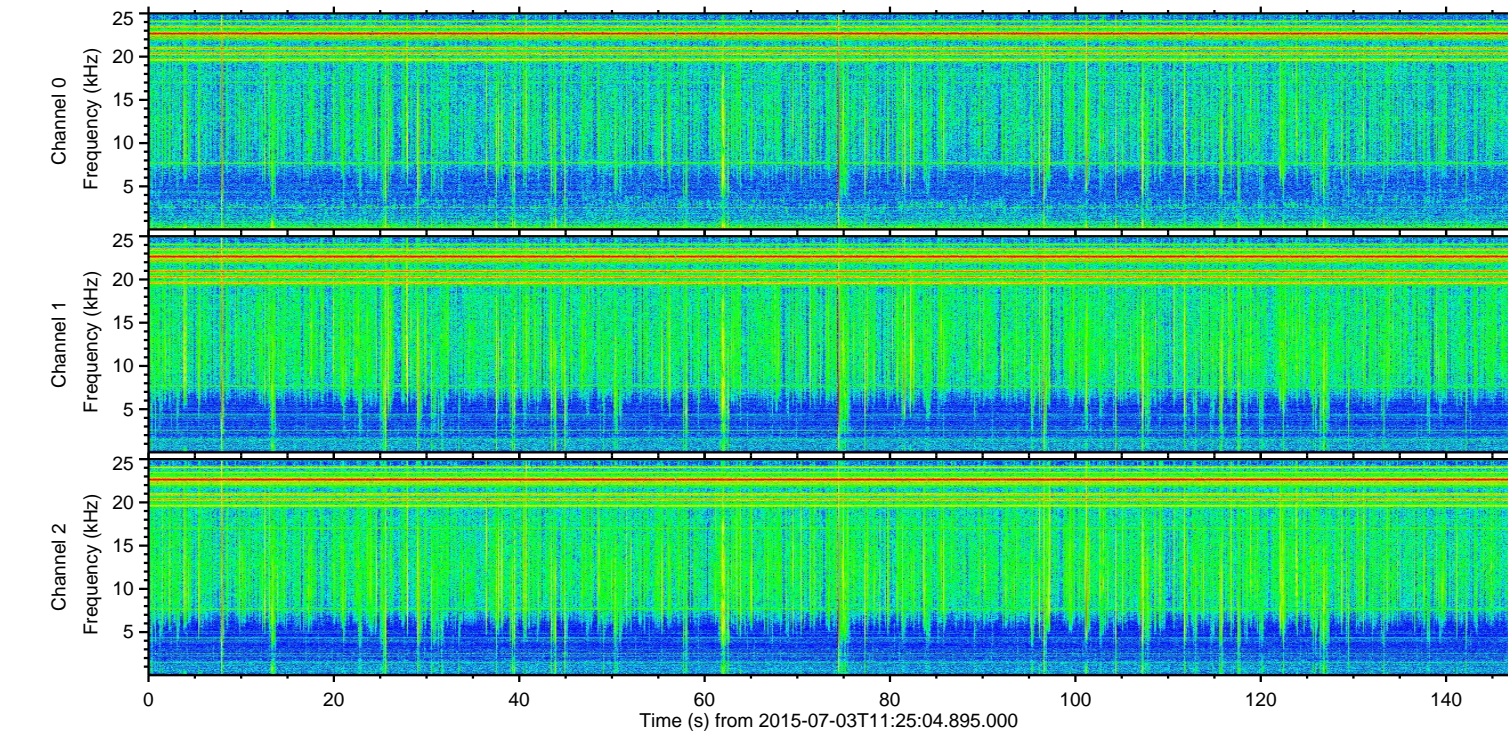
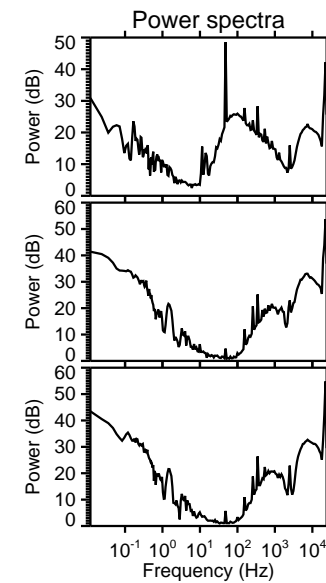
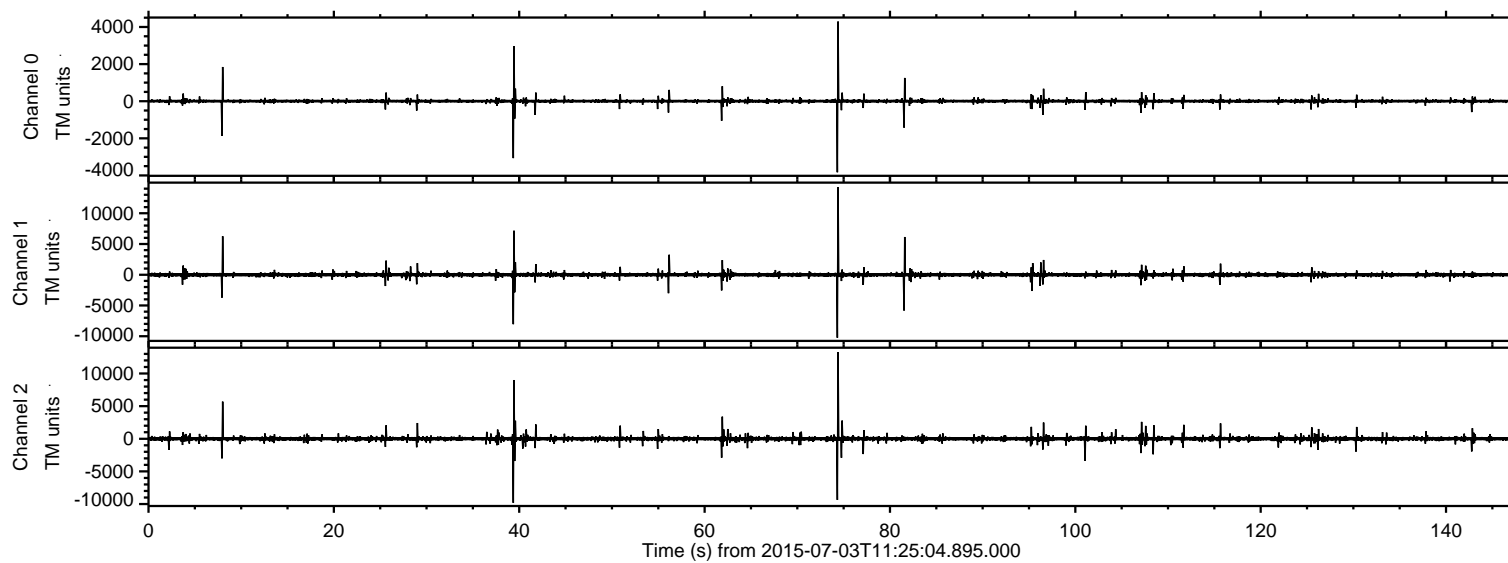
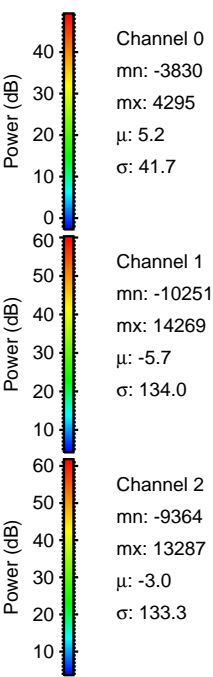
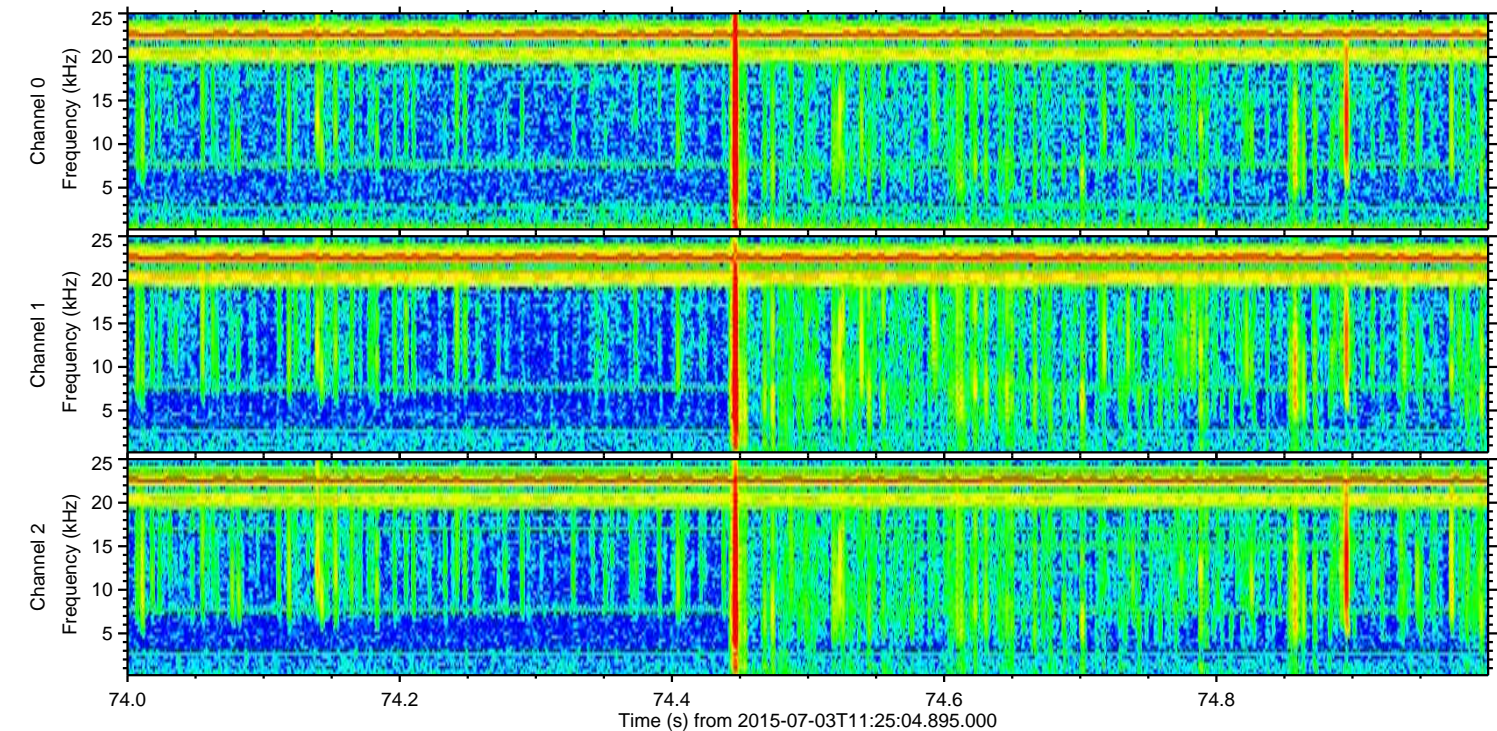
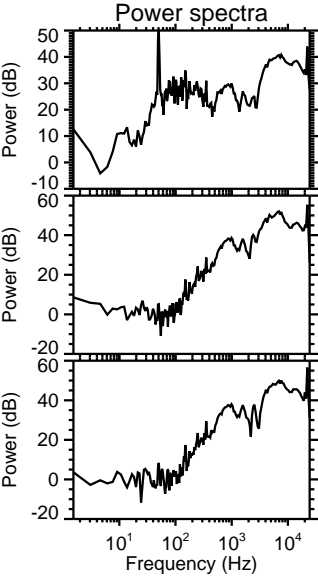
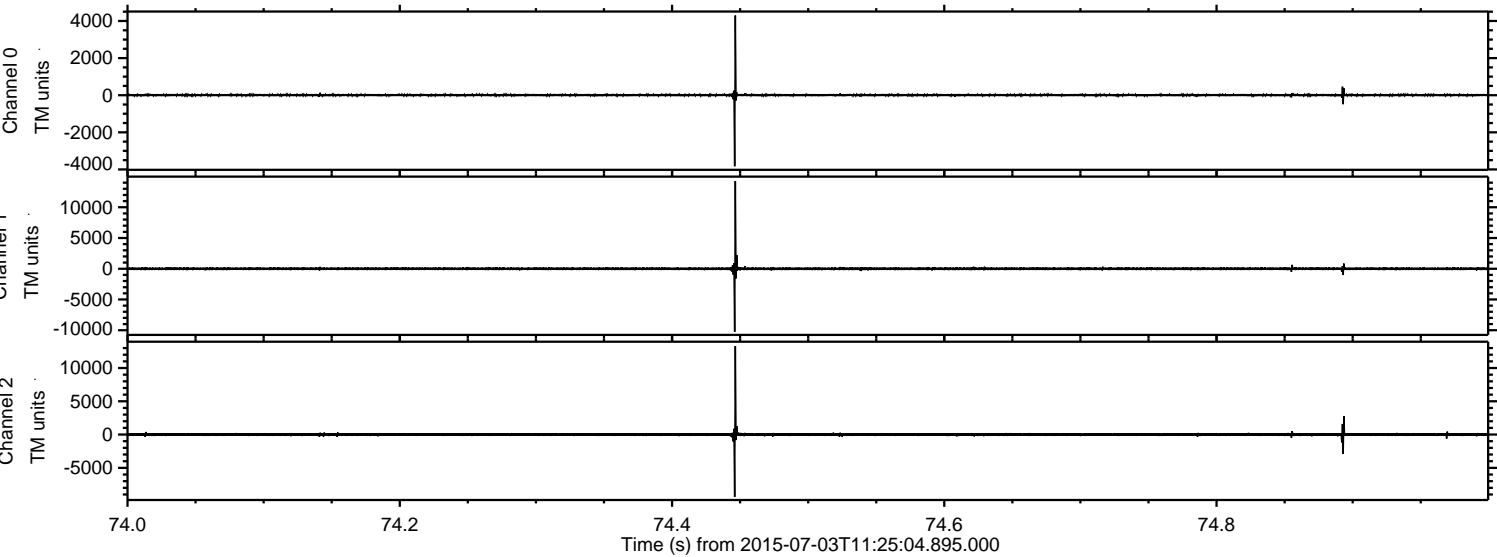


# ELMAVAN 3D WAVEFORMS (Measured data sampled at 50 kHz) 51000 packets of 144 samples from 2015-07-03T11:25:04.895.000.

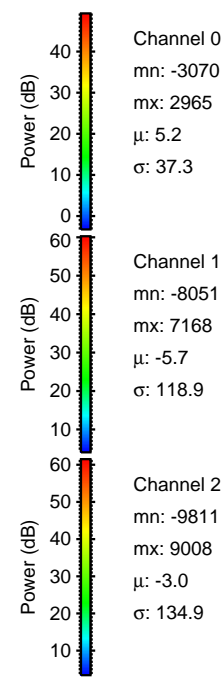
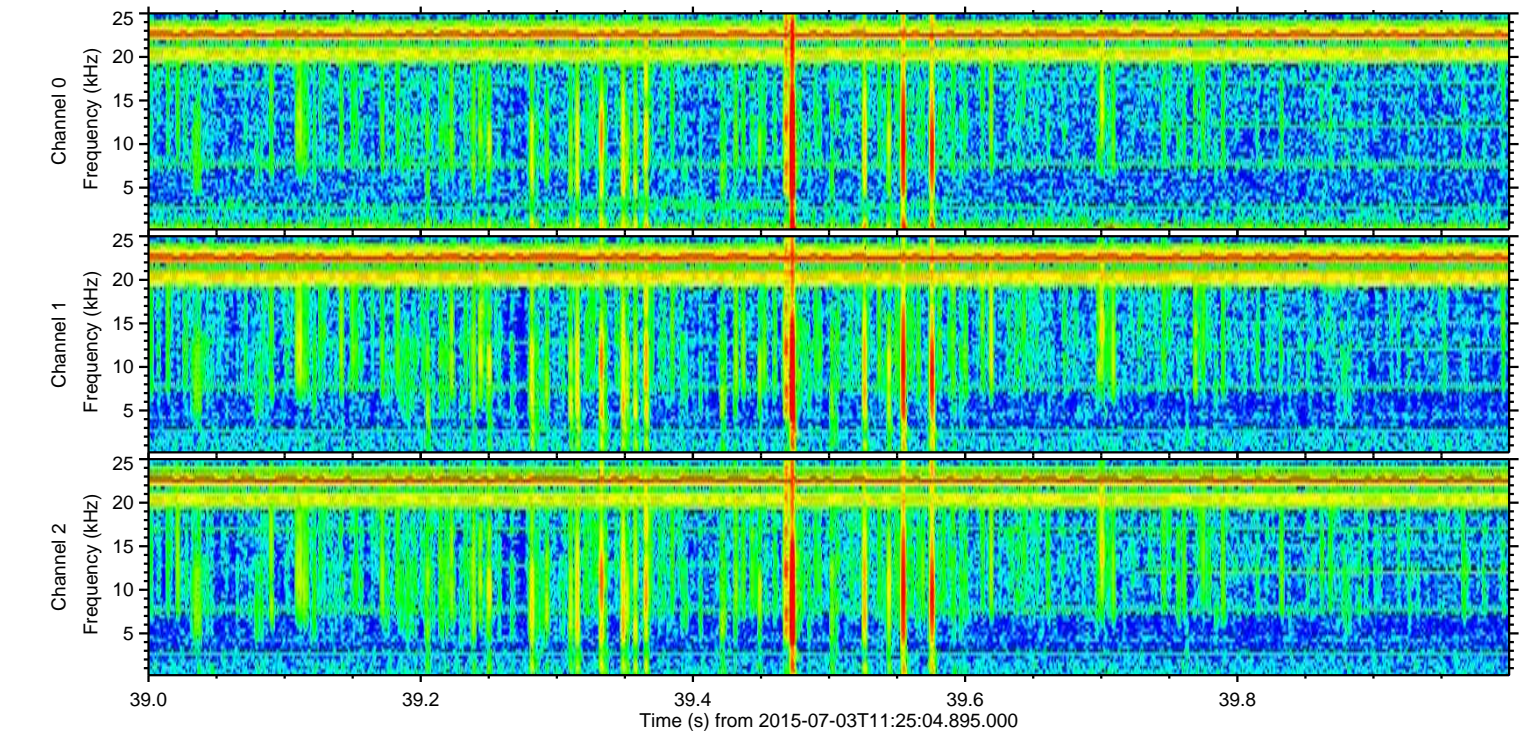
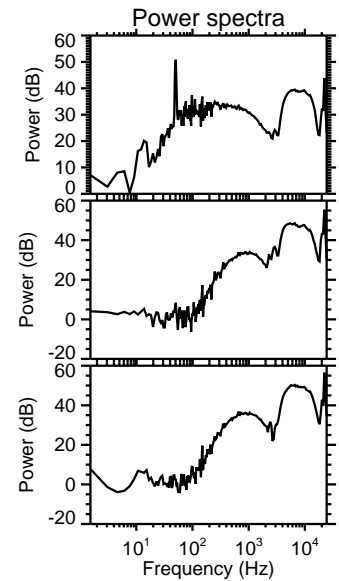
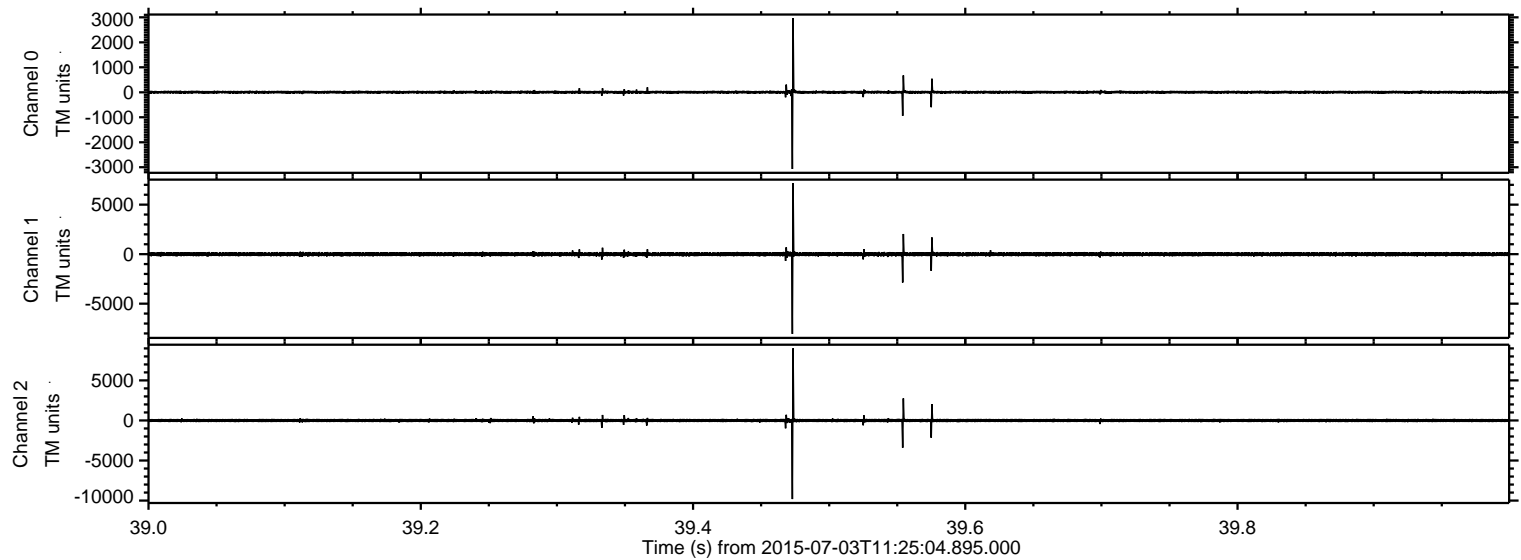
Processed Fri Jul 3 13:31:03 2015 by ELM ver.2012-10-06 from 001\_\_elm20150703\_112503\_\_dat00.bin



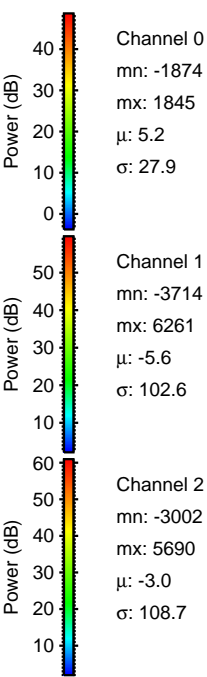
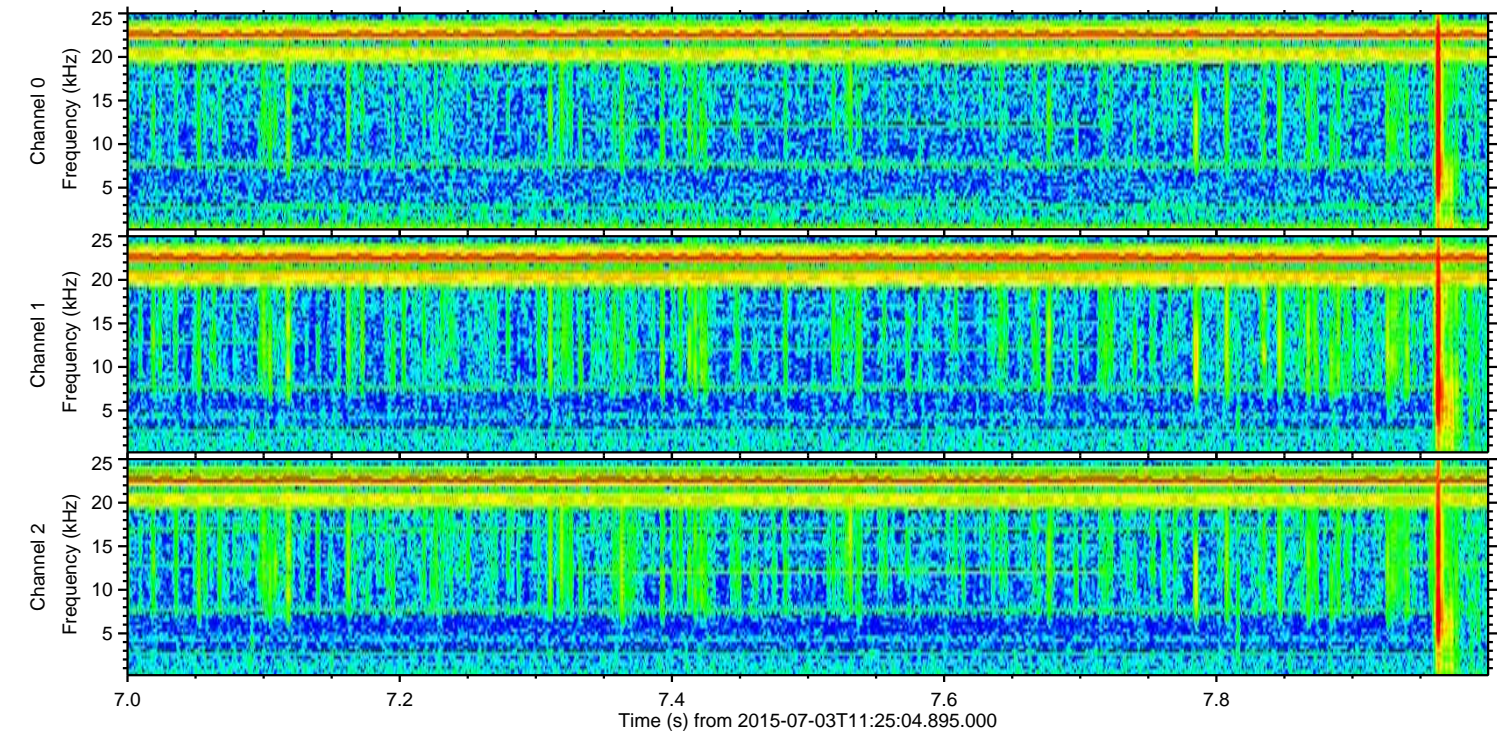
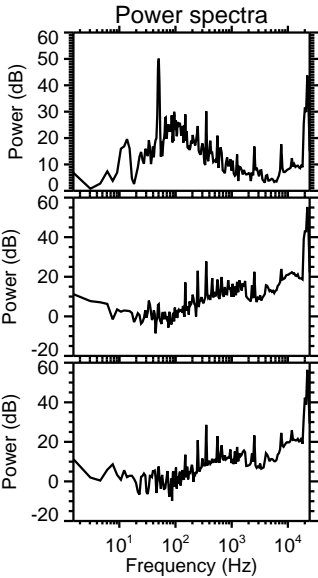
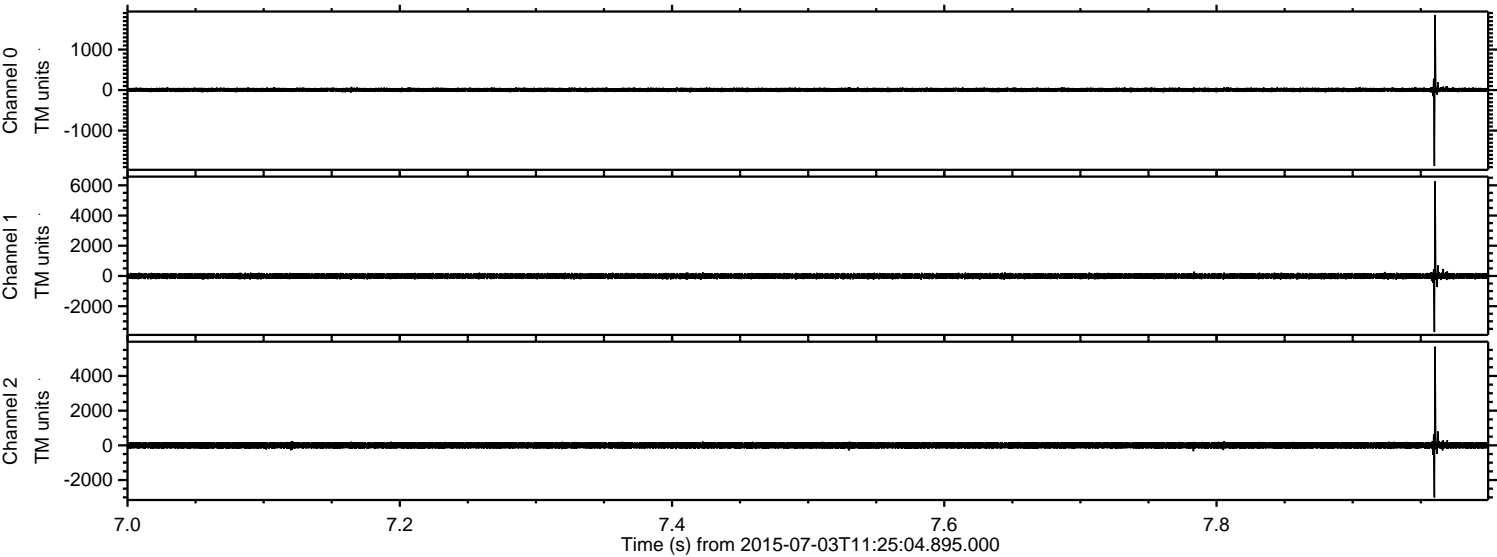
Processed Fri Jul 3 13:31:18 2015 by ELM ver.2012-10-06 from 001\_\_elm20150703\_112503\_\_dat00.bin



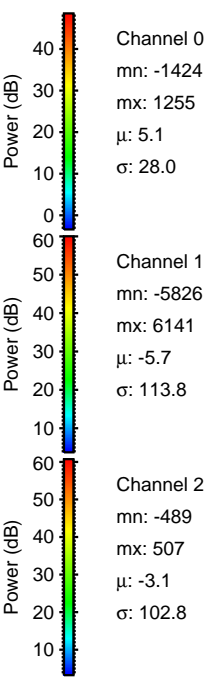
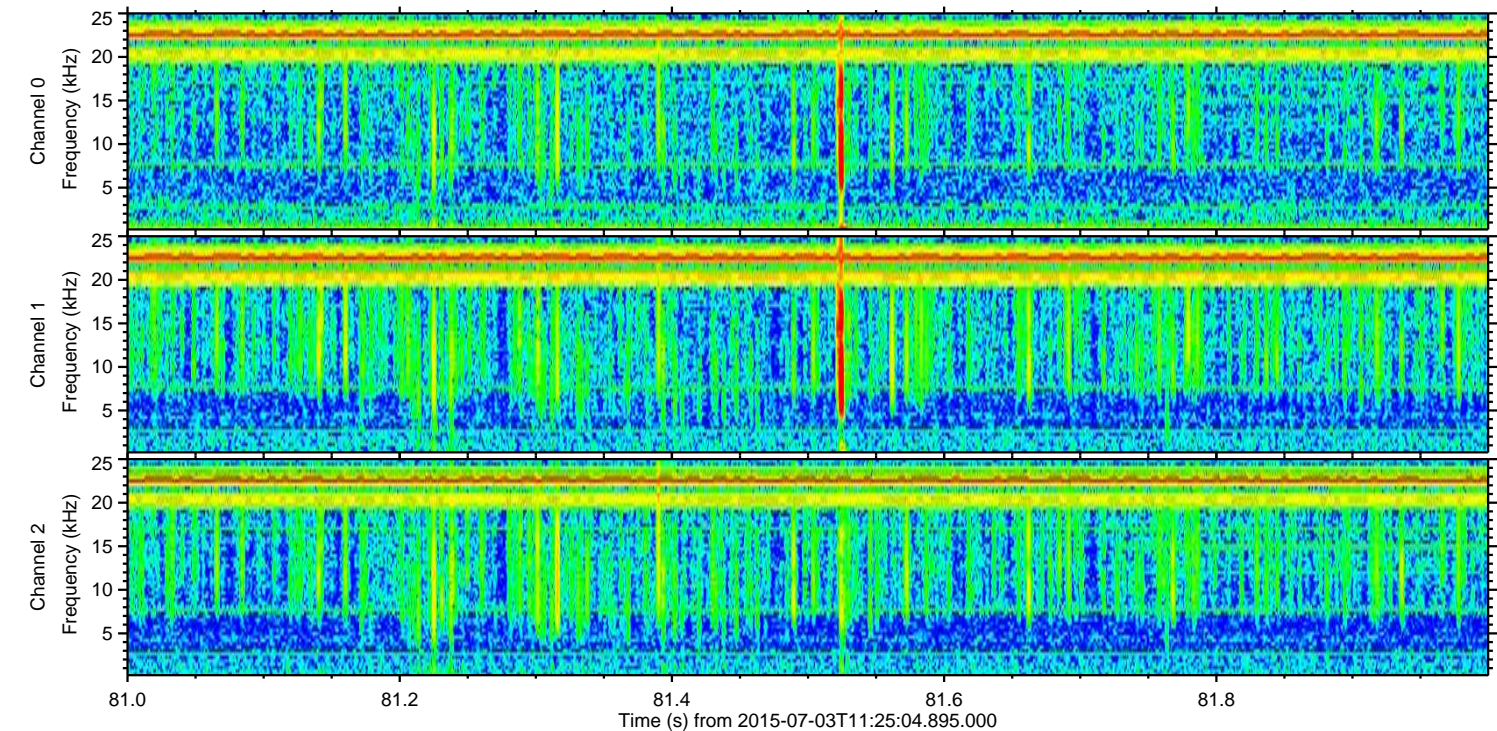
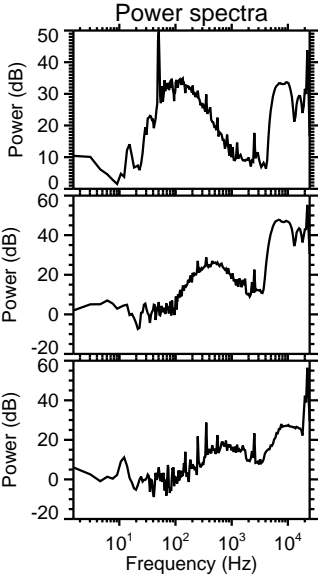
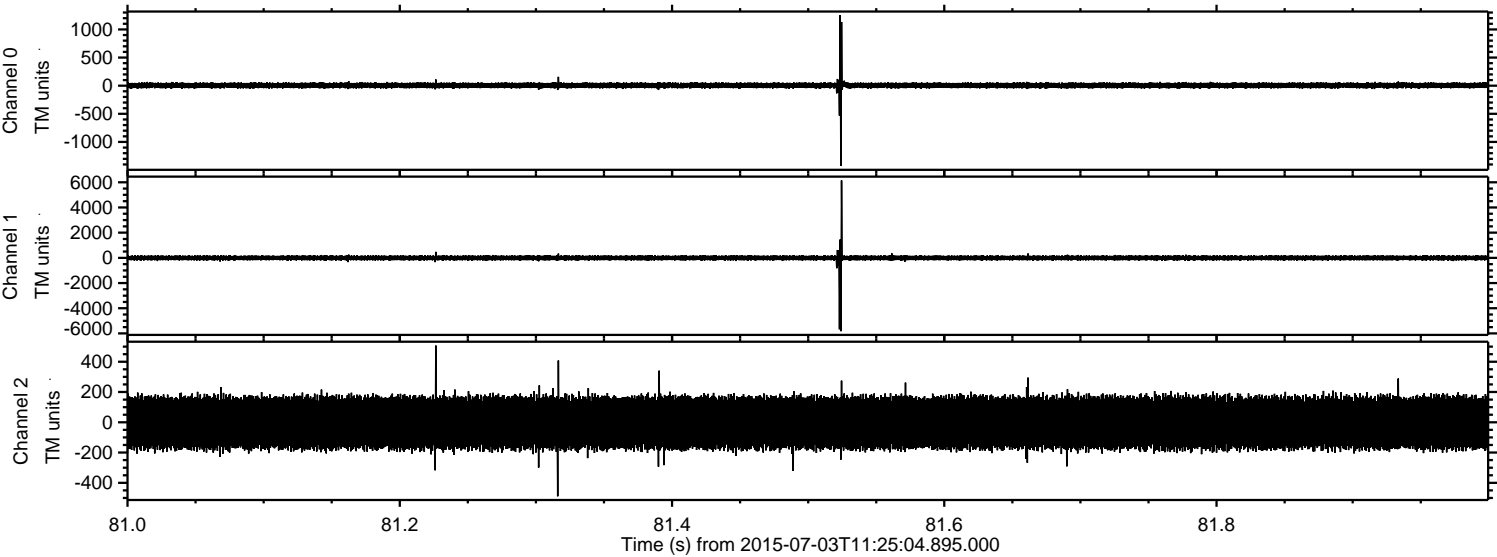
Processed Fri Jul 3 13:31:19 2015 by ELM ver.2012-10-06 from 001\_\_elm20150703\_112503\_\_dat00.bin



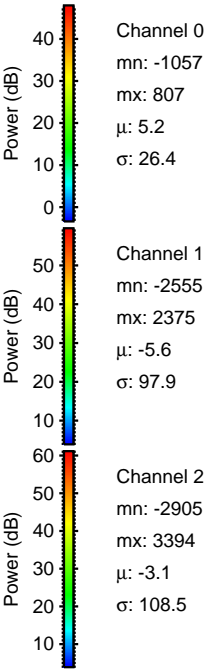
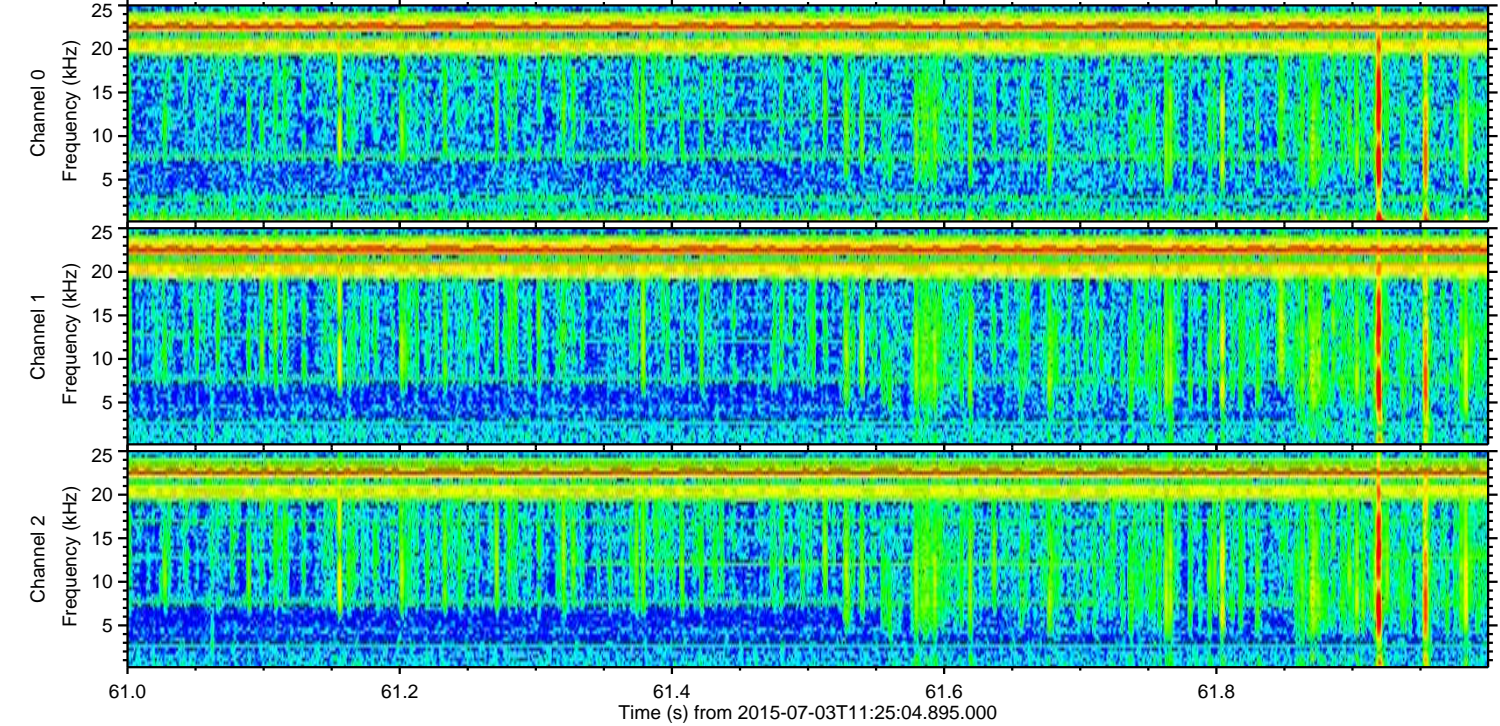
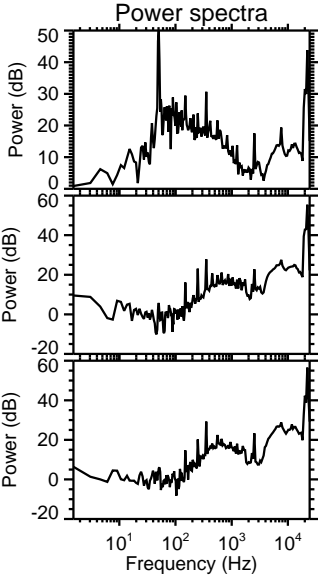
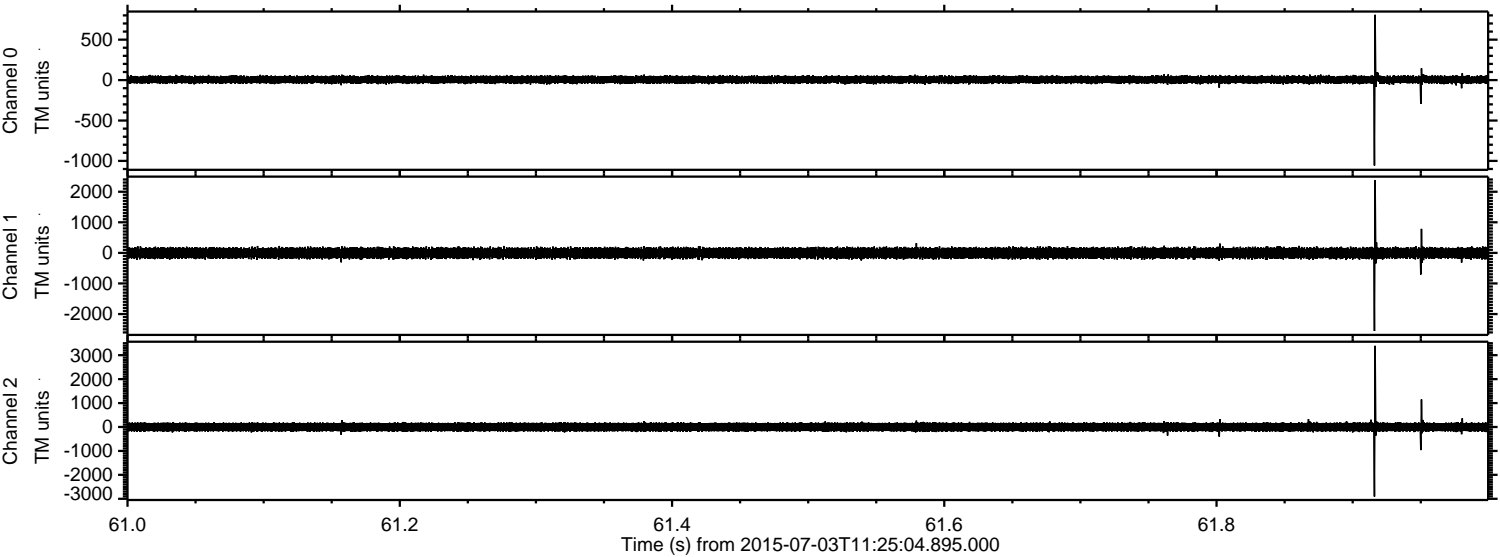
Processed Fri Jul 3 13:31:20 2015 by ELM ver.2012-10-06 from 001\_\_elm20150703\_112503\_\_dat00.bin



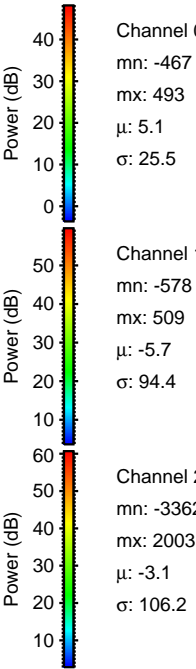
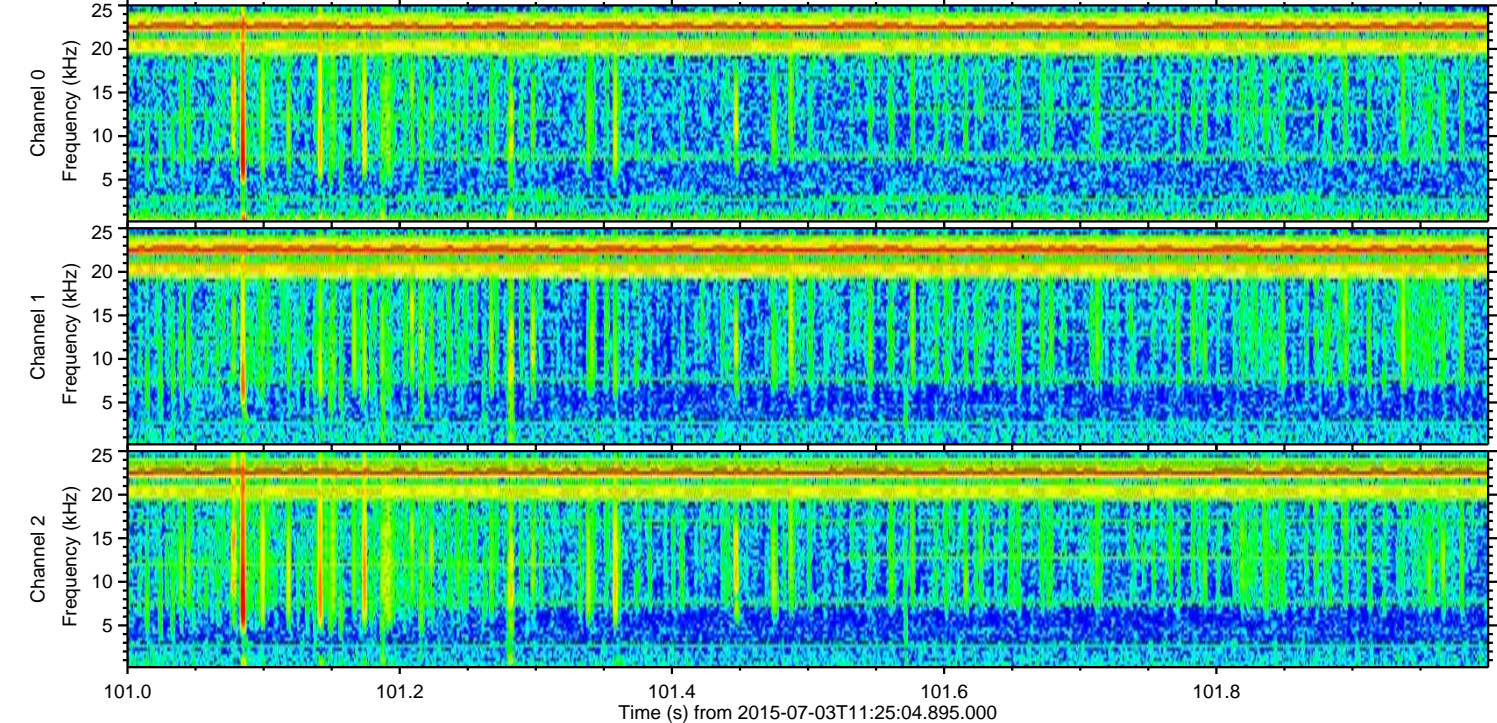
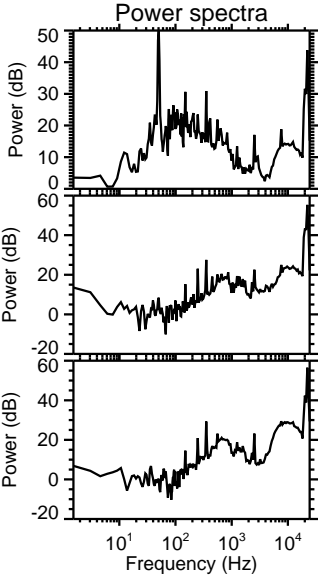
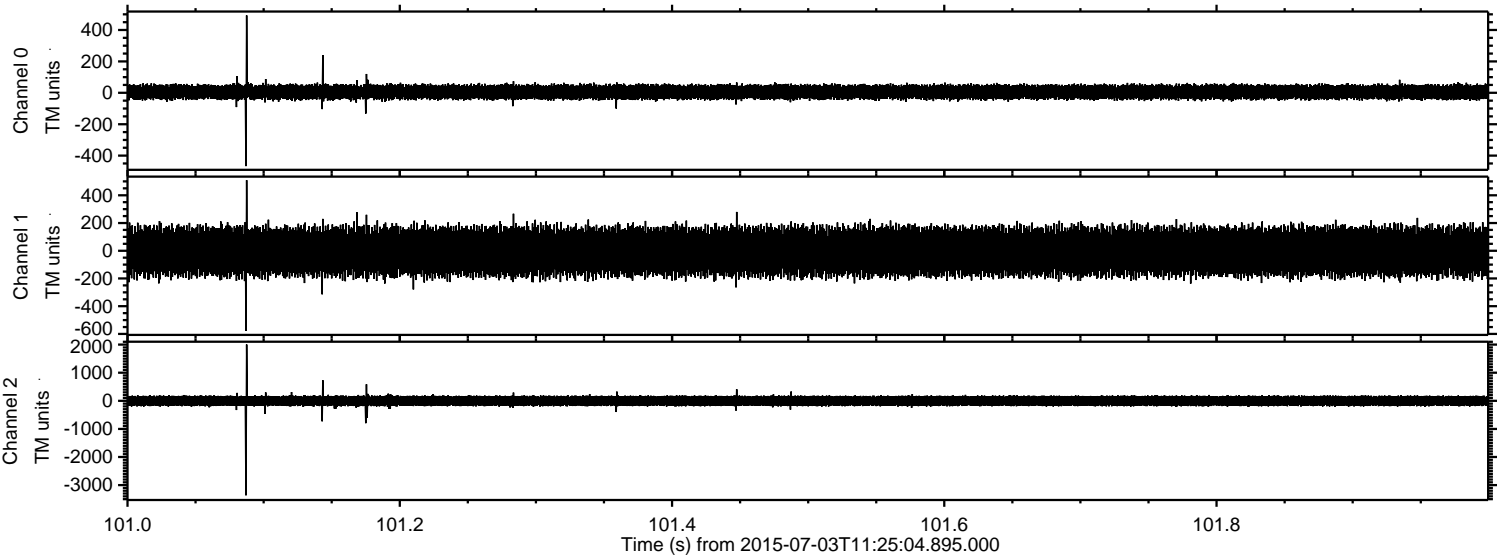
Processed Fri Jul 3 13:31:21 2015 by ELM ver.2012-10-06 from 001\_\_elm20150703\_112503\_\_dat00.bin



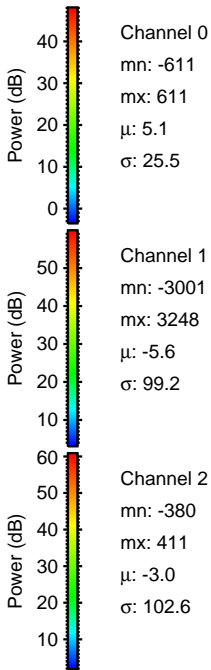
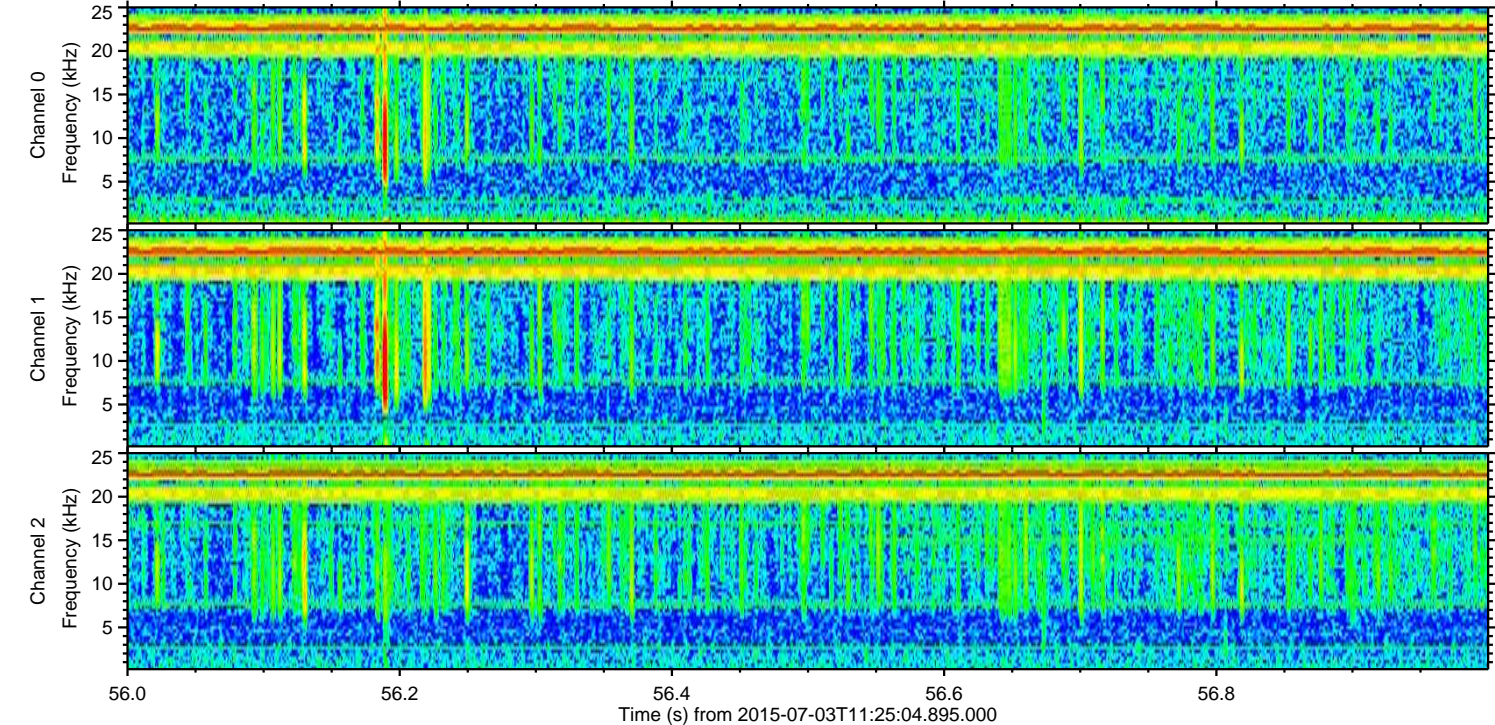
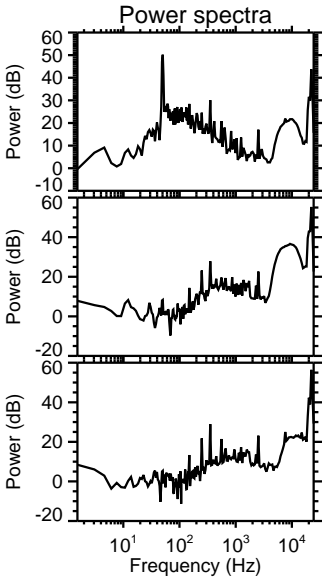
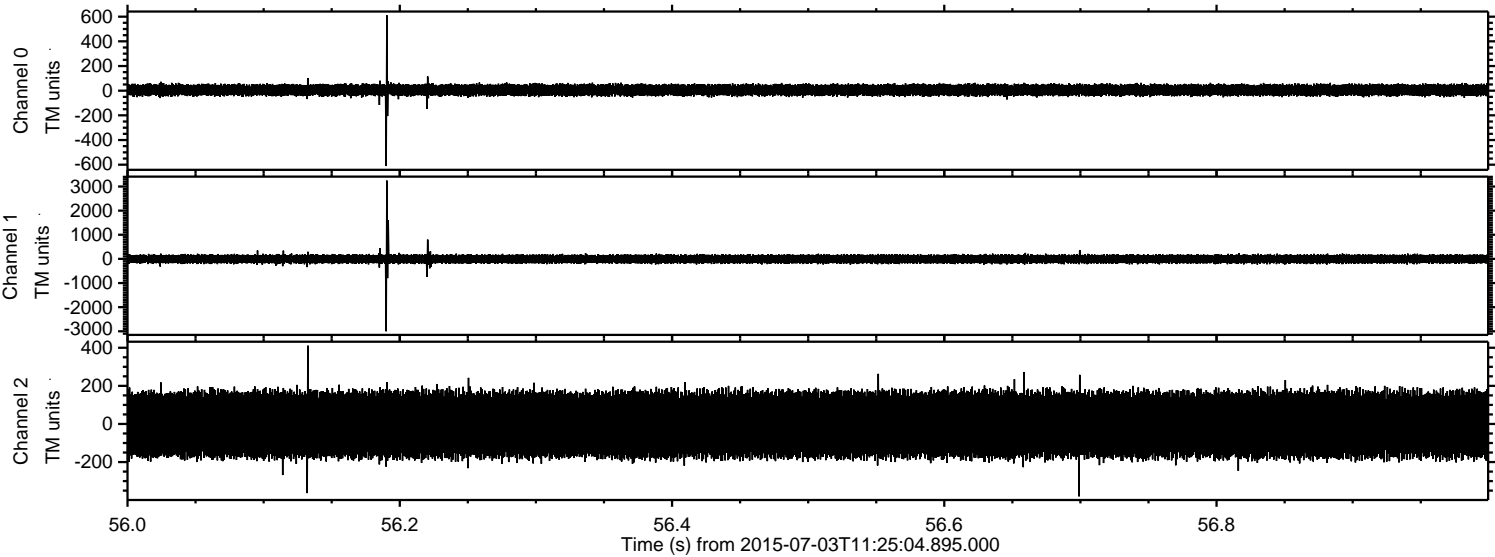
Processed Fri Jul 3 13:31:22 2015 by ELM ver.2012-10-06 from 001\_\_elm20150703\_112503\_\_dat00.bin



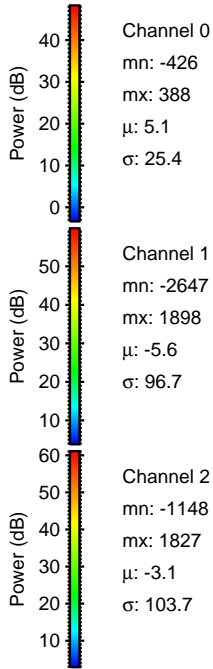
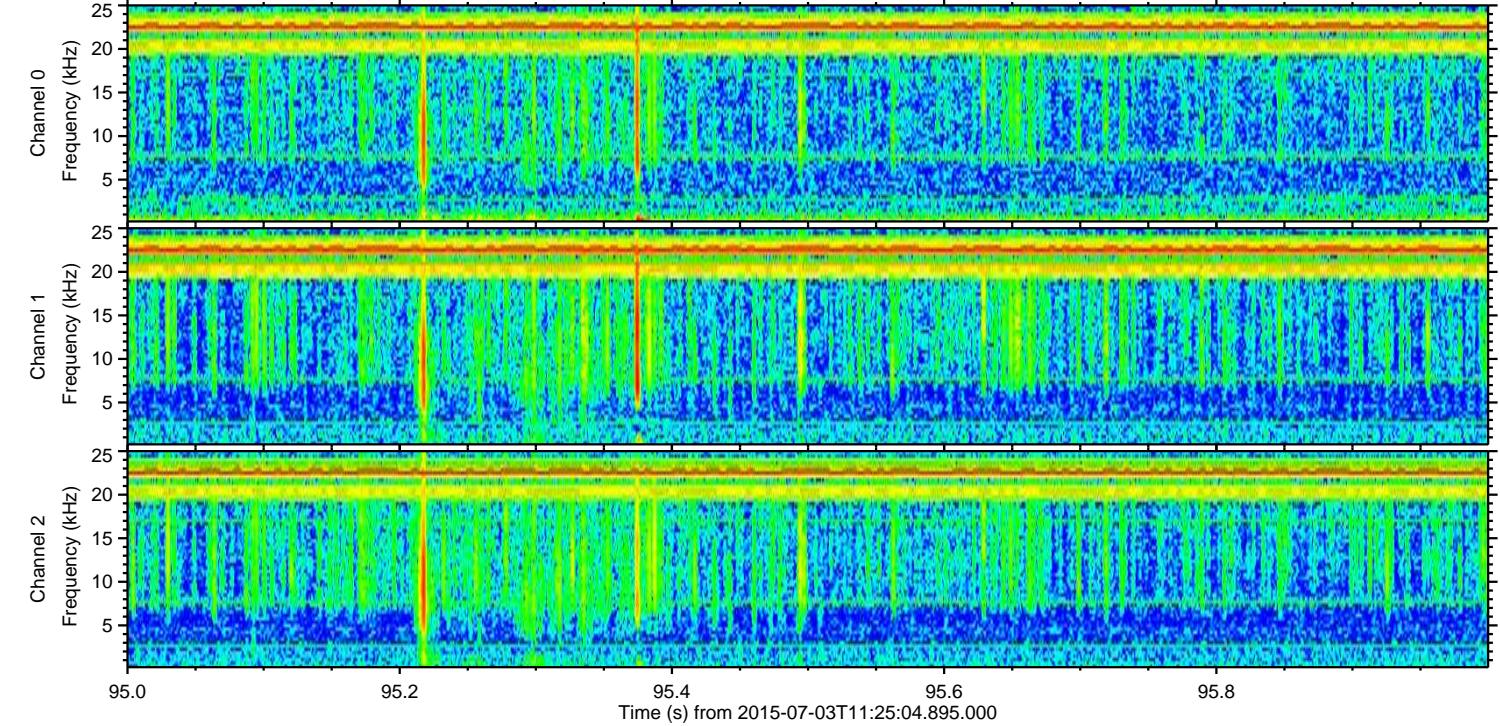
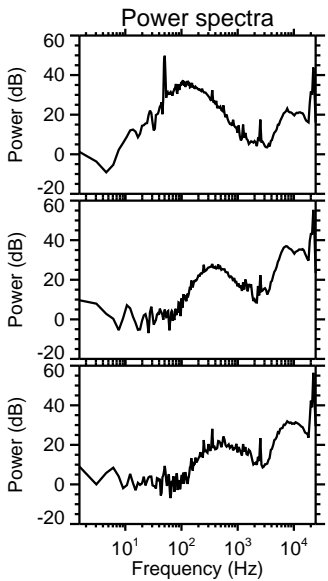
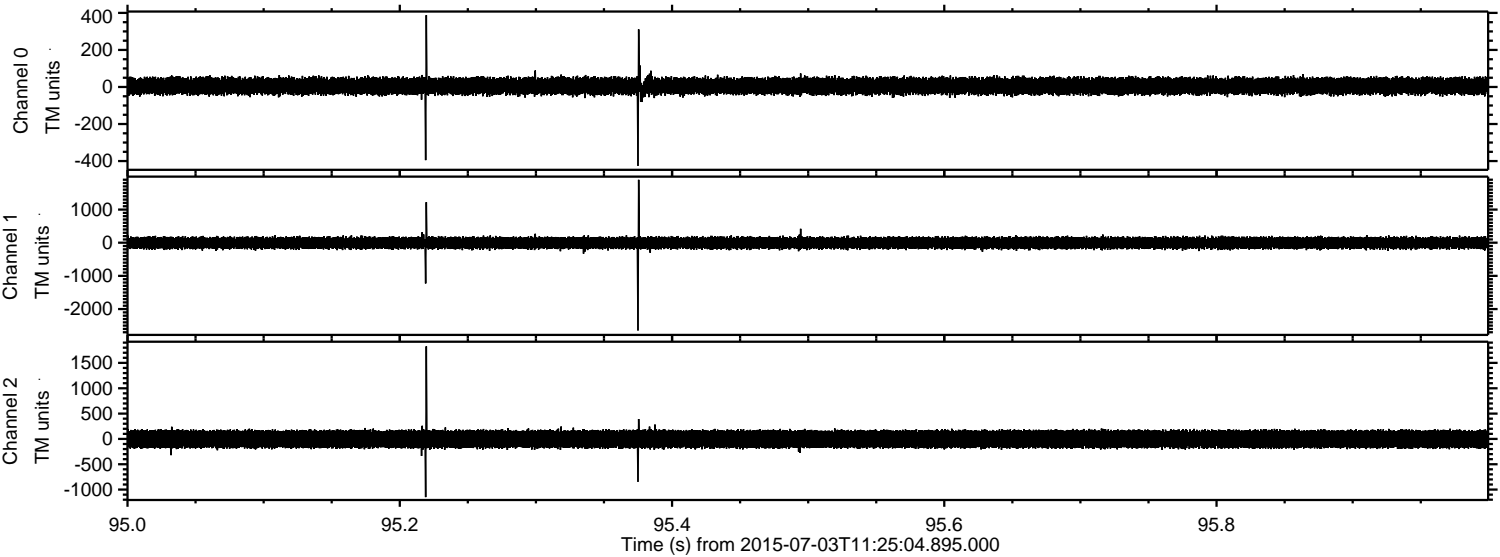
Processed Fri Jul 3 13:31:23 2015 by ELM ver.2012-10-06 from 001\_\_elm20150703\_112503\_\_dat00.bin



Processed Fri Jul 3 13:31:24 2015 by ELM ver.2012-10-06 from 001\_\_elm20150703\_112503\_\_dat00.bin



Processed Fri Jul 3 13:31:25 2015 by ELM ver.2012-10-06 from 001\_\_elm20150703\_112503\_\_dat00.bin

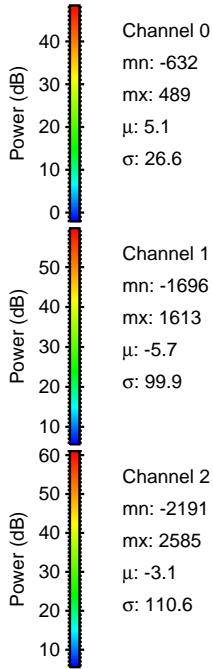
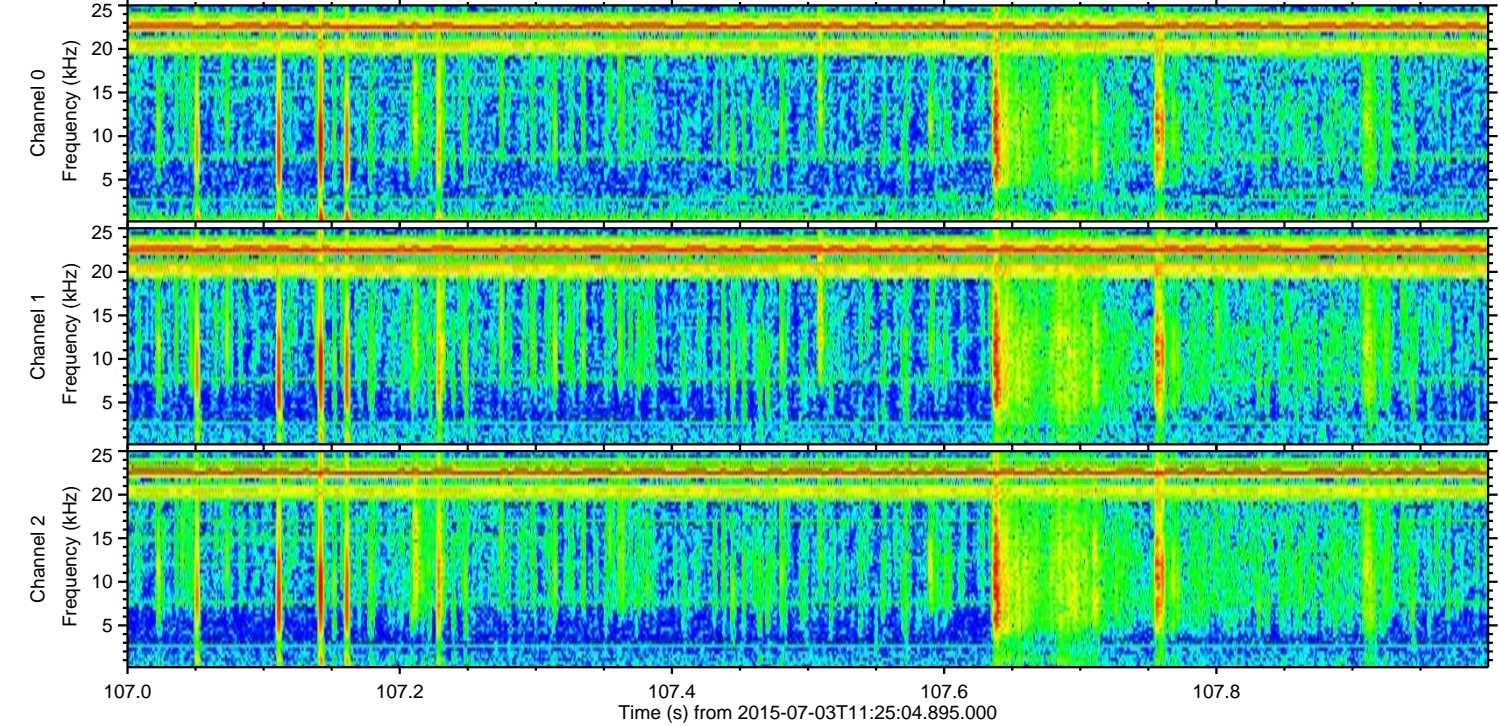
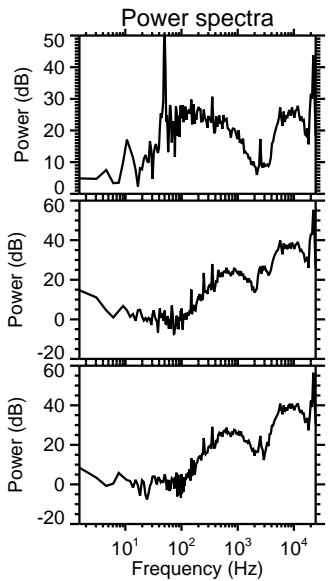
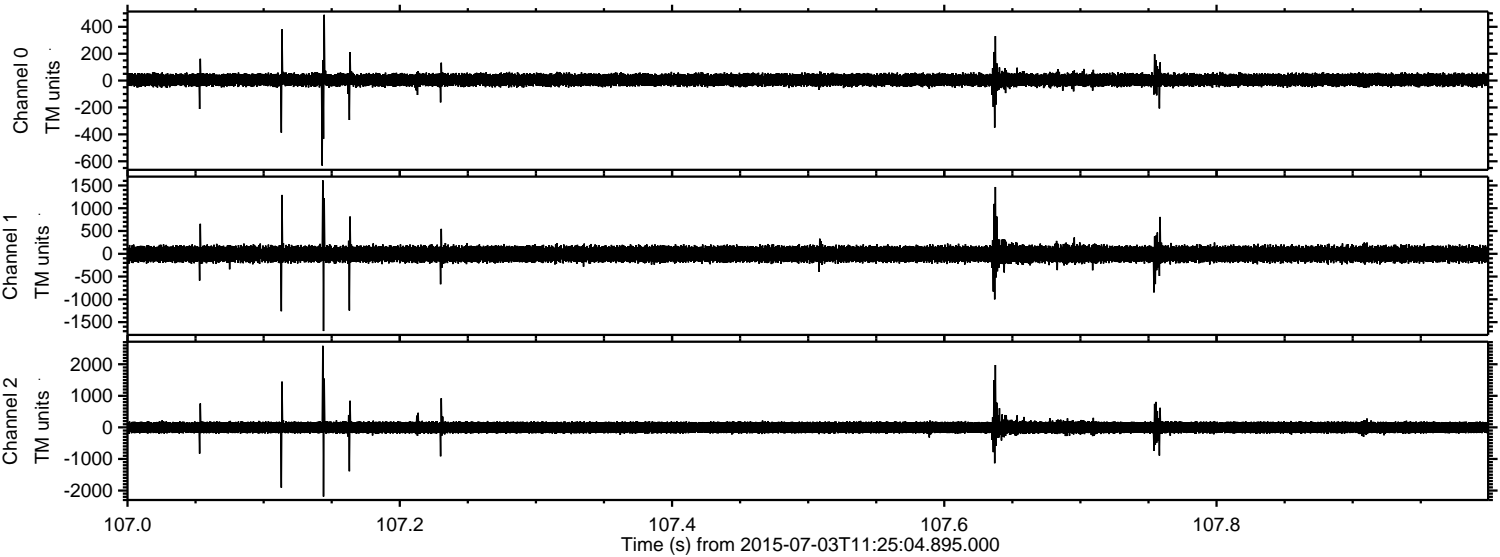


Channel 0  
mn: -426  
mx: 388  
 $\mu$ : 5.1  
 $\sigma$ : 25.4

Channel 1  
mn: -2647  
mx: 1898  
 $\mu$ : -5.6  
 $\sigma$ : 96.7

Channel 2  
mn: -1148  
mx: 1827  
 $\mu$ : -3.1  
 $\sigma$ : 103.7

Processed Fri Jul 3 13:31:26 2015 by ELM ver.2012-10-06 from 001\_\_elm20150703\_112503\_\_dat00.bin



Channel 0  
mn: -632  
mx: 489  
 $\mu$ : 5.1  
 $\sigma$ : 26.6

Channel 1  
mn: -1696  
mx: 1613  
 $\mu$ : -5.7  
 $\sigma$ : 99.9

Channel 2  
mn: -2191  
mx: 2585  
 $\mu$ : -3.1  
 $\sigma$ : 110.6

Processed Fri Jul 3 13:31:27 2015 by ELM ver.2012-10-06 from 001\_\_elm20150703\_112503\_\_dat00.bin

