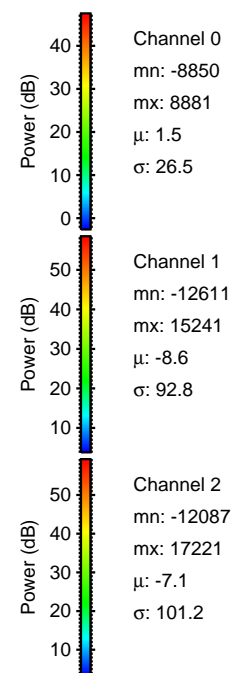
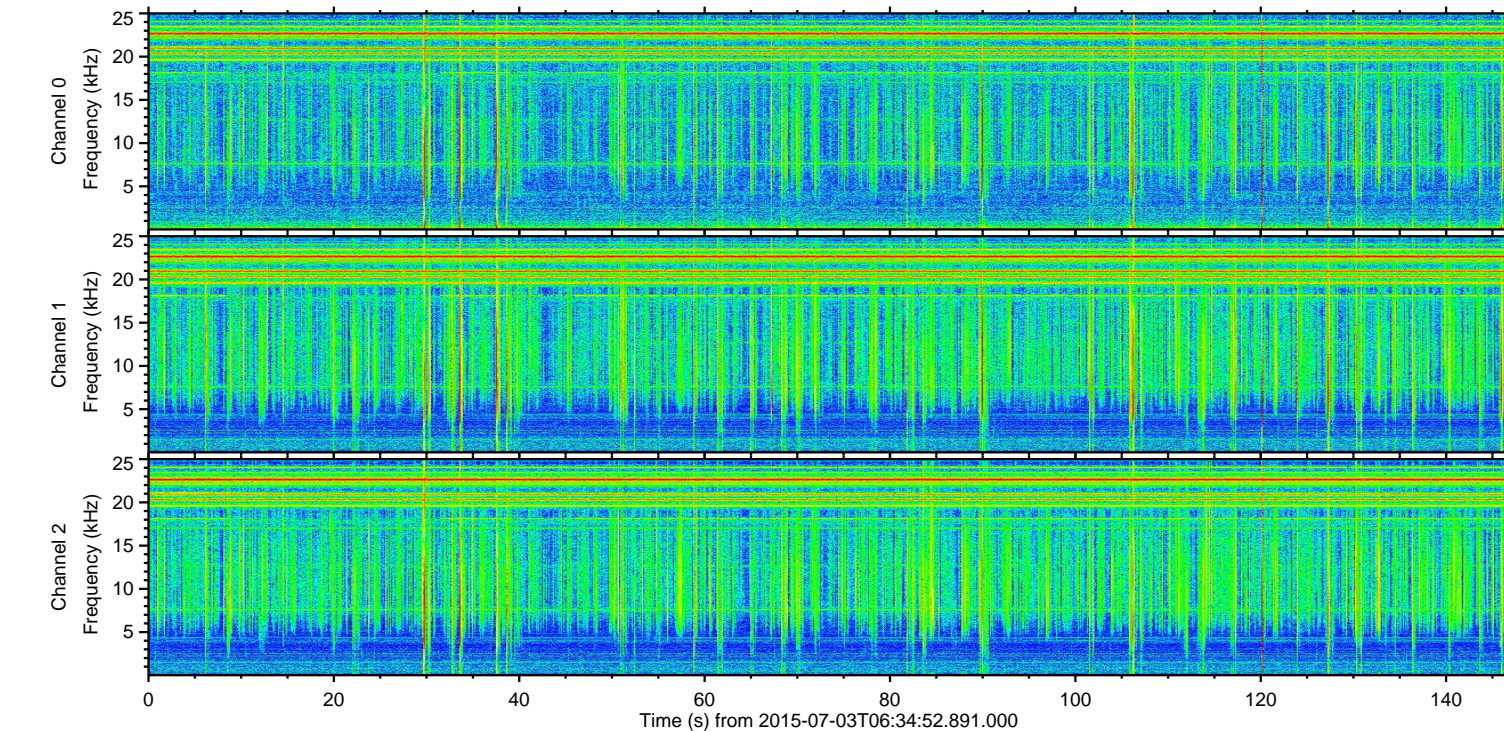
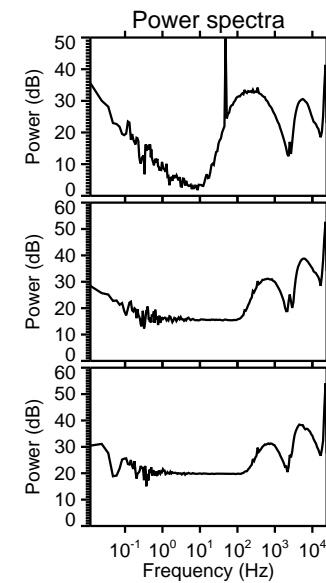
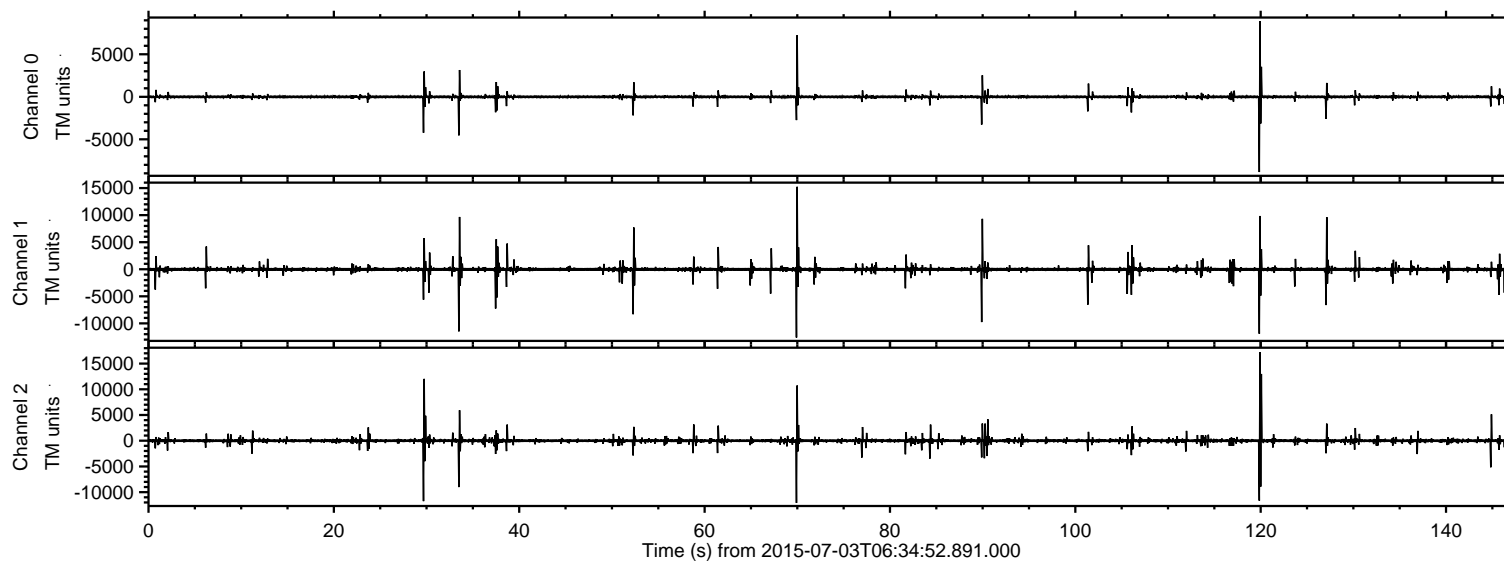


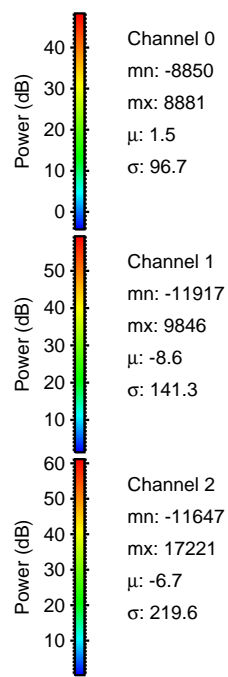
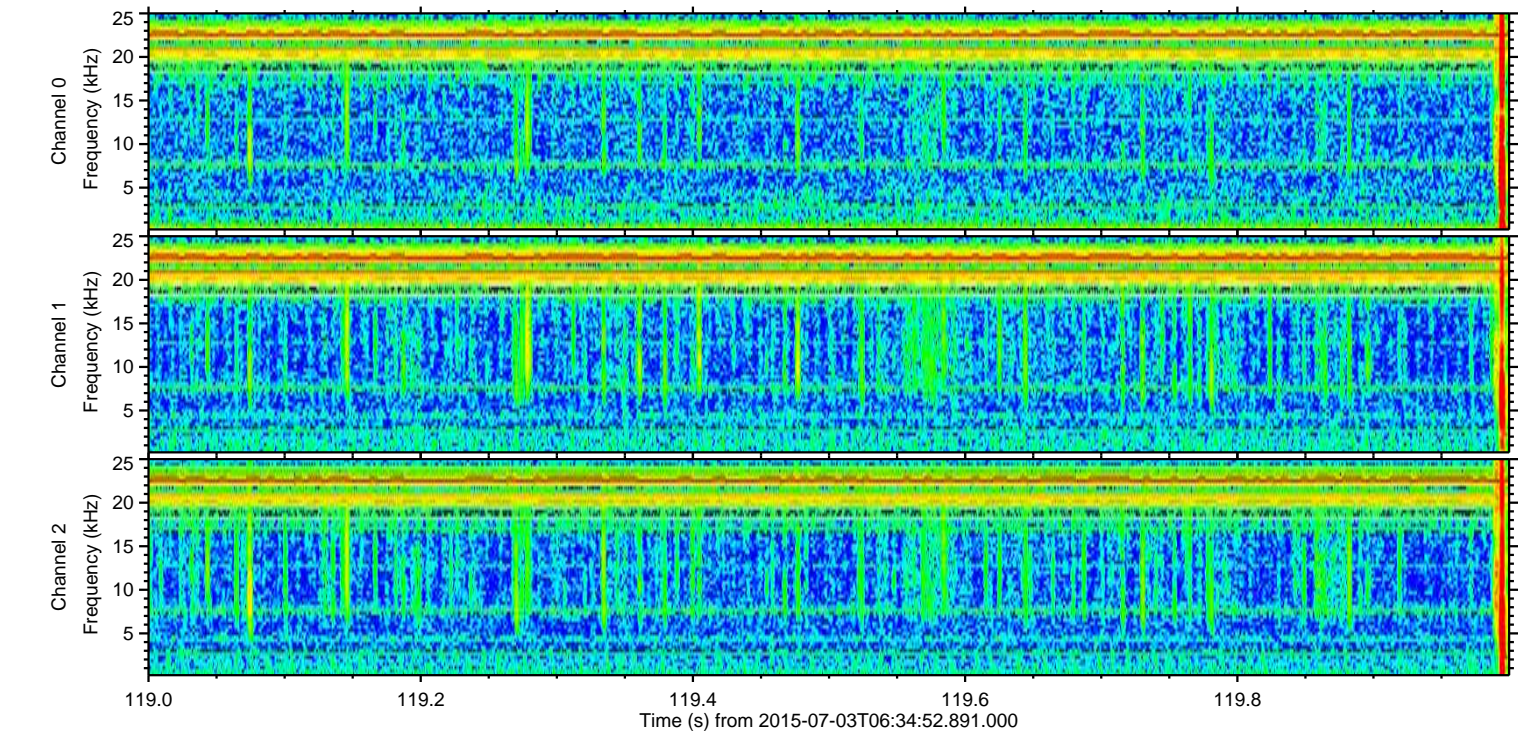
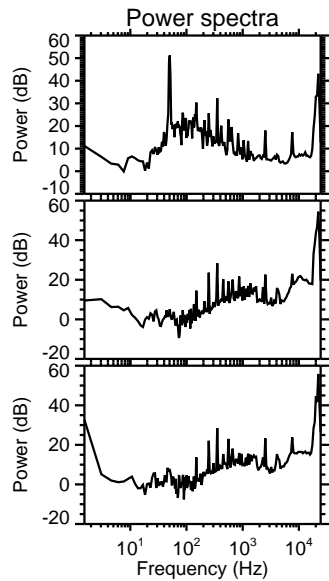
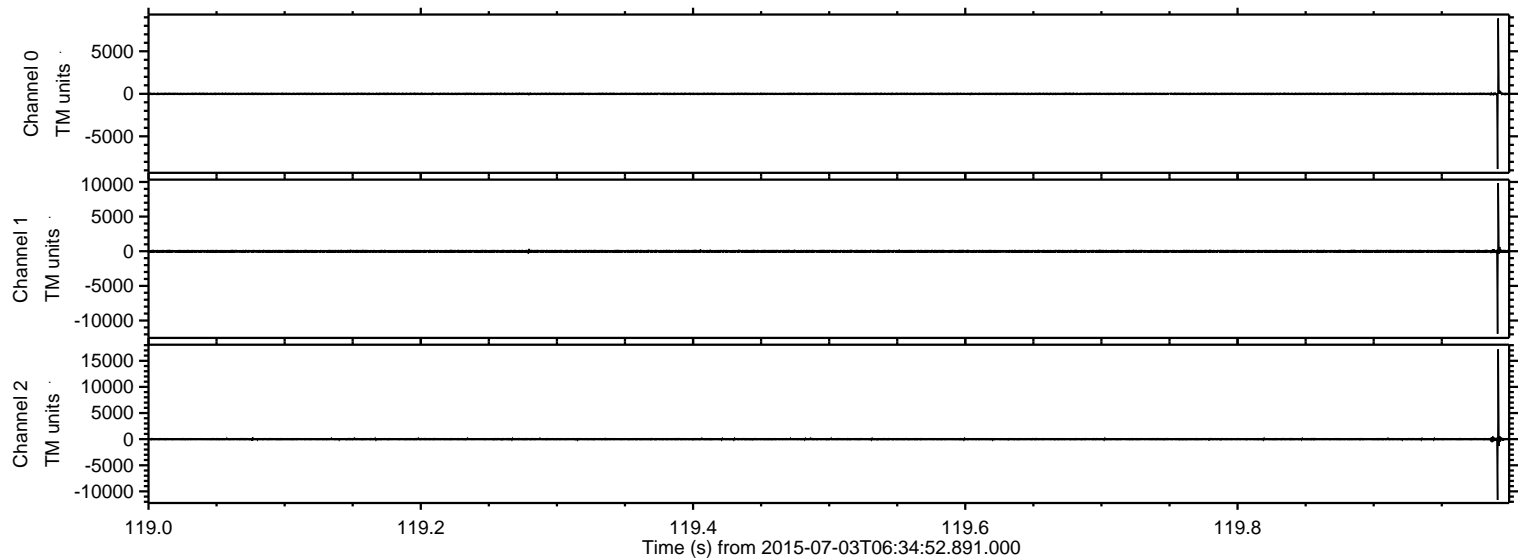
ELMAVAN 3D WAVEFORMS (Measured data sampled at 50 kHz) 51000 packets of 144 samples from 2015-07-03T06:34:52.891.000.

Processed Fri Jul 3 08:41:37 2015 by ELM ver.2012-10-06 from 001__elm20150703_063451__dat00.bin

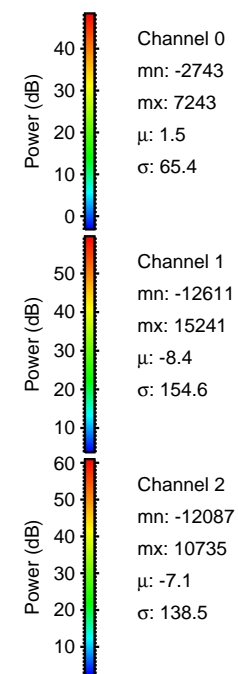
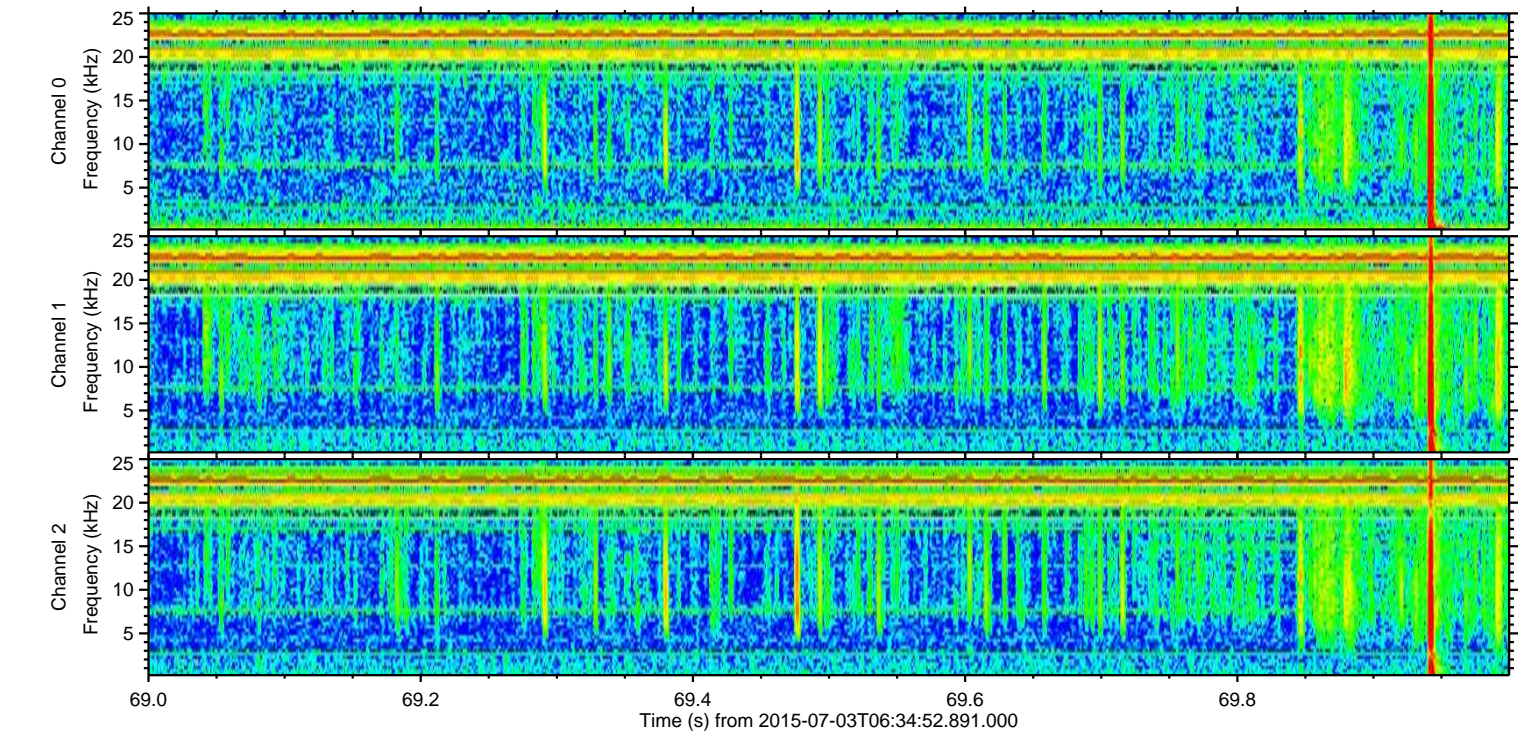
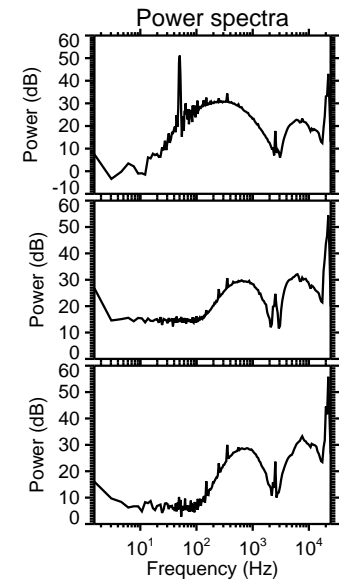
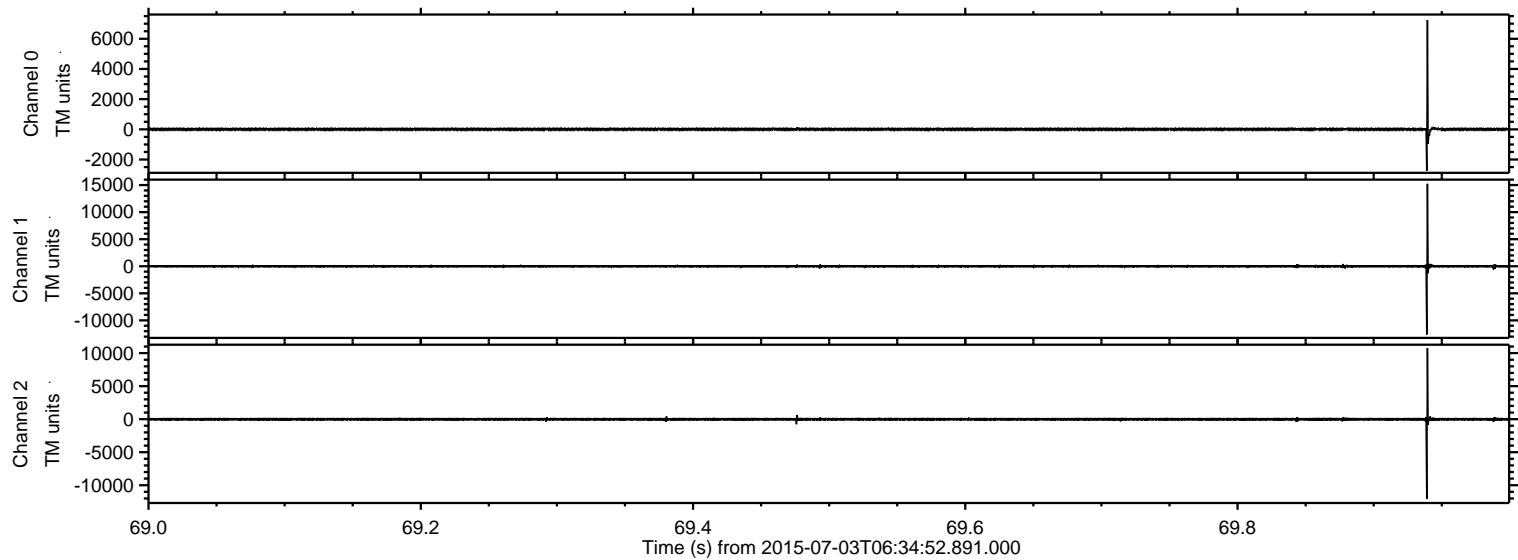


ELMAVAN 3D WAVEFORMS (Measured data sampled at 50 kHz) 51000 packets of 144 samples from 2015-07-03T06:34:52.891.000. Part 120/147

Processed Fri Jul 3 08:41:52 2015 by ELM ver.2012-10-06 from 001__elm20150703_063451__dat00.bin

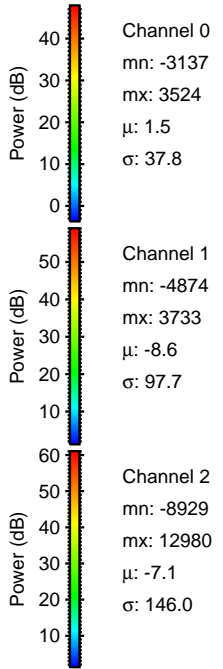
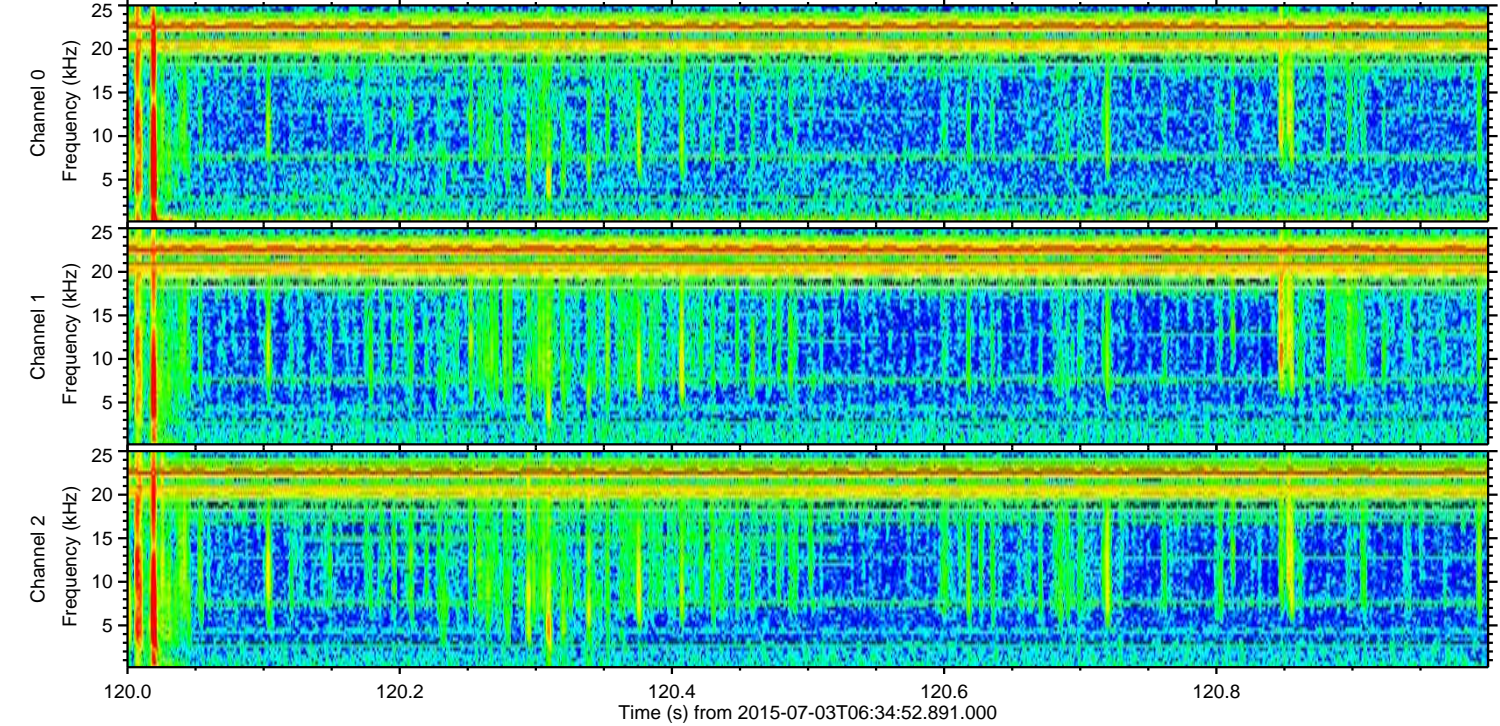
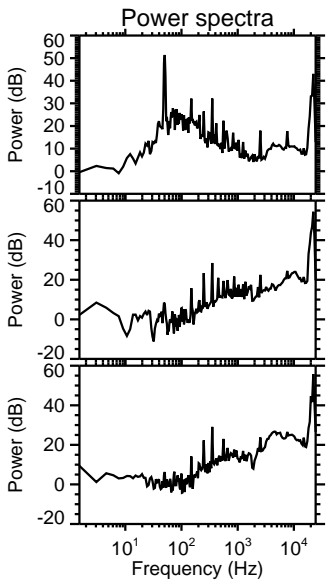
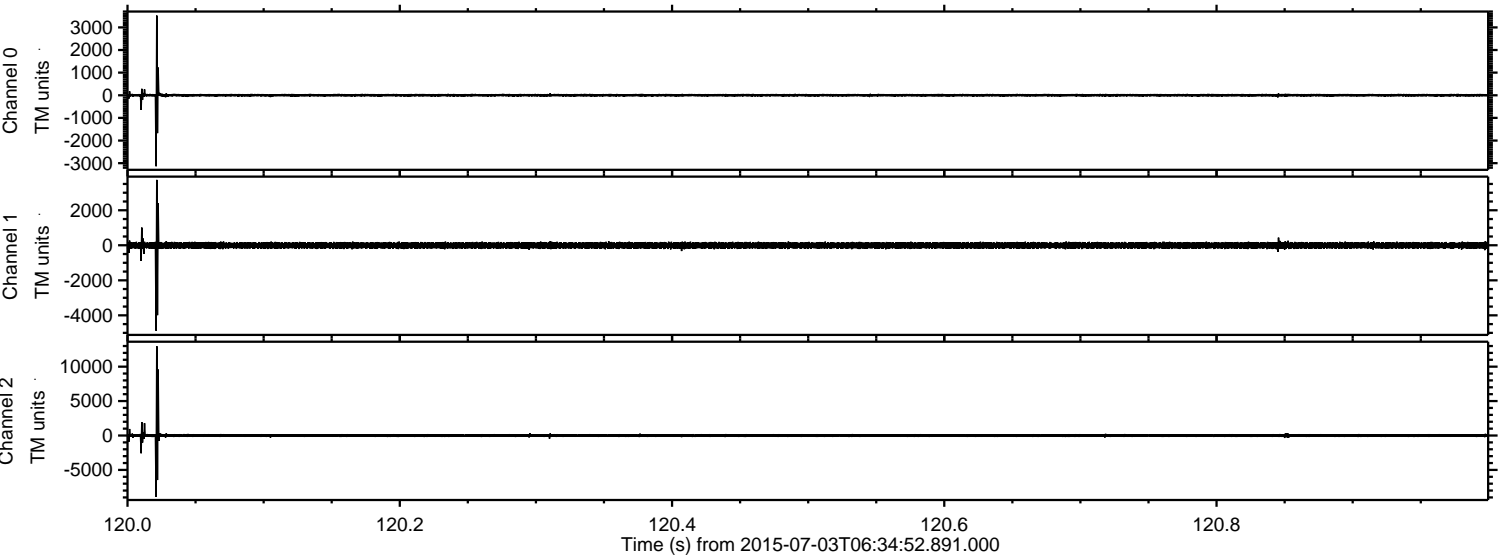


Processed Fri Jul 3 08:41:54 2015 by ELM ver.2012-10-06 from 001__elm20150703_063451__dat00.bin

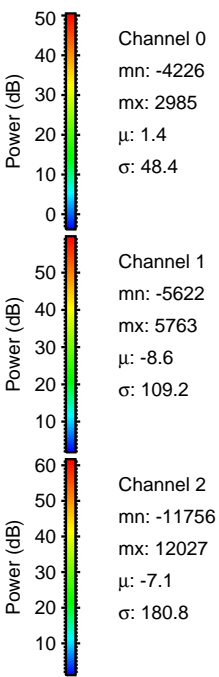
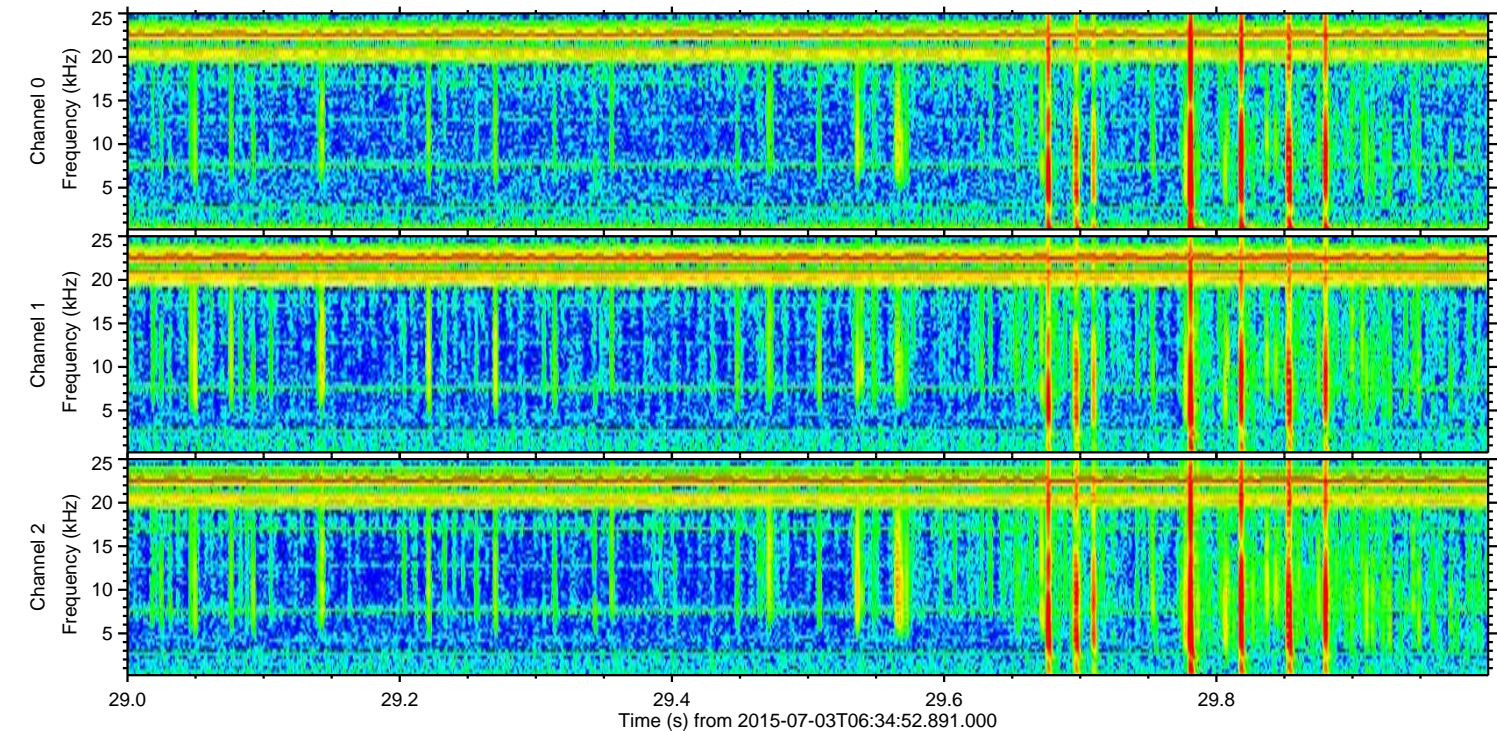
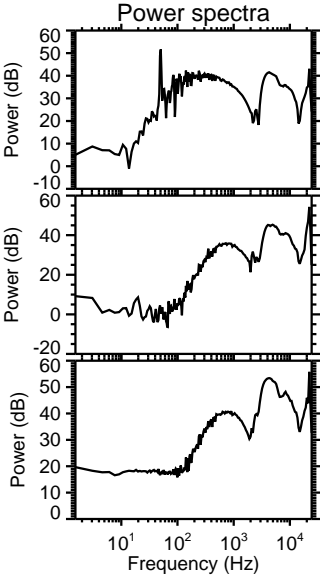
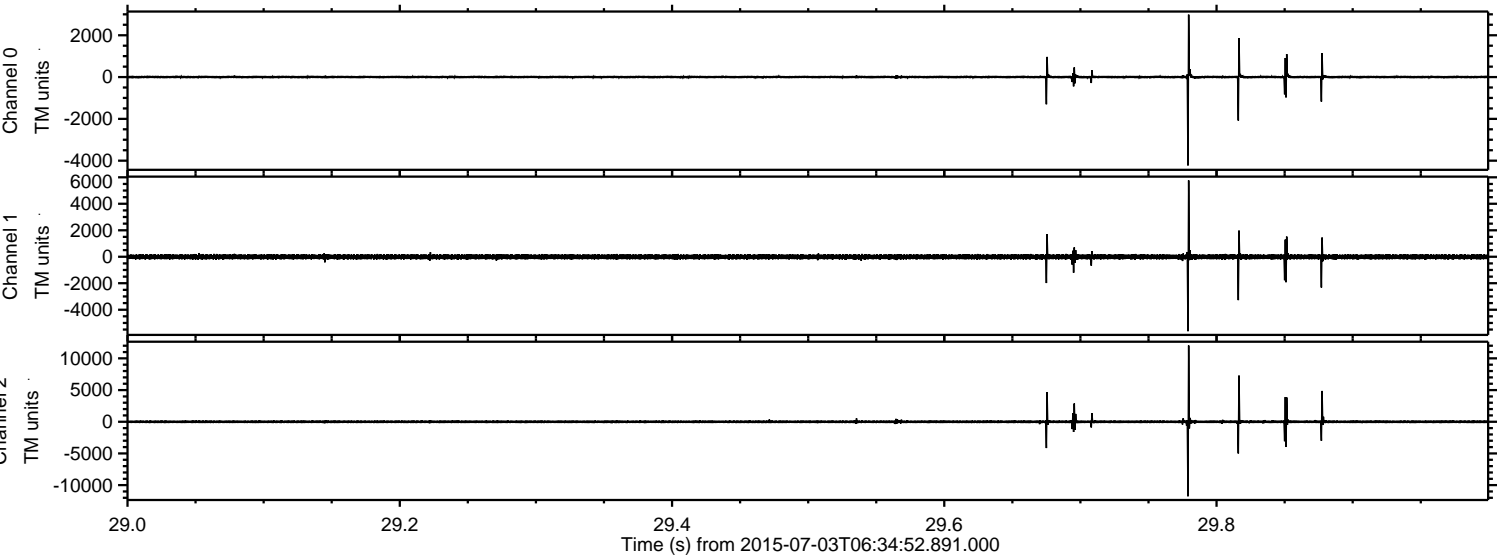


ELMAVAN 3D WAVEFORMS (Measured data sampled at 50 kHz) 51000 packets of 144 samples from 2015-07-03T06:34:52.891.000. Part 121/147

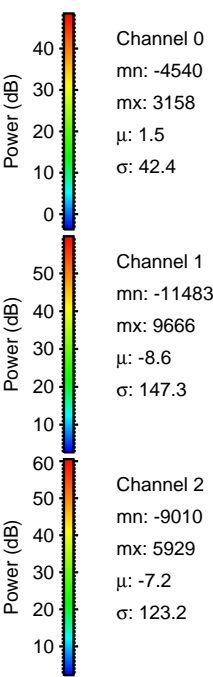
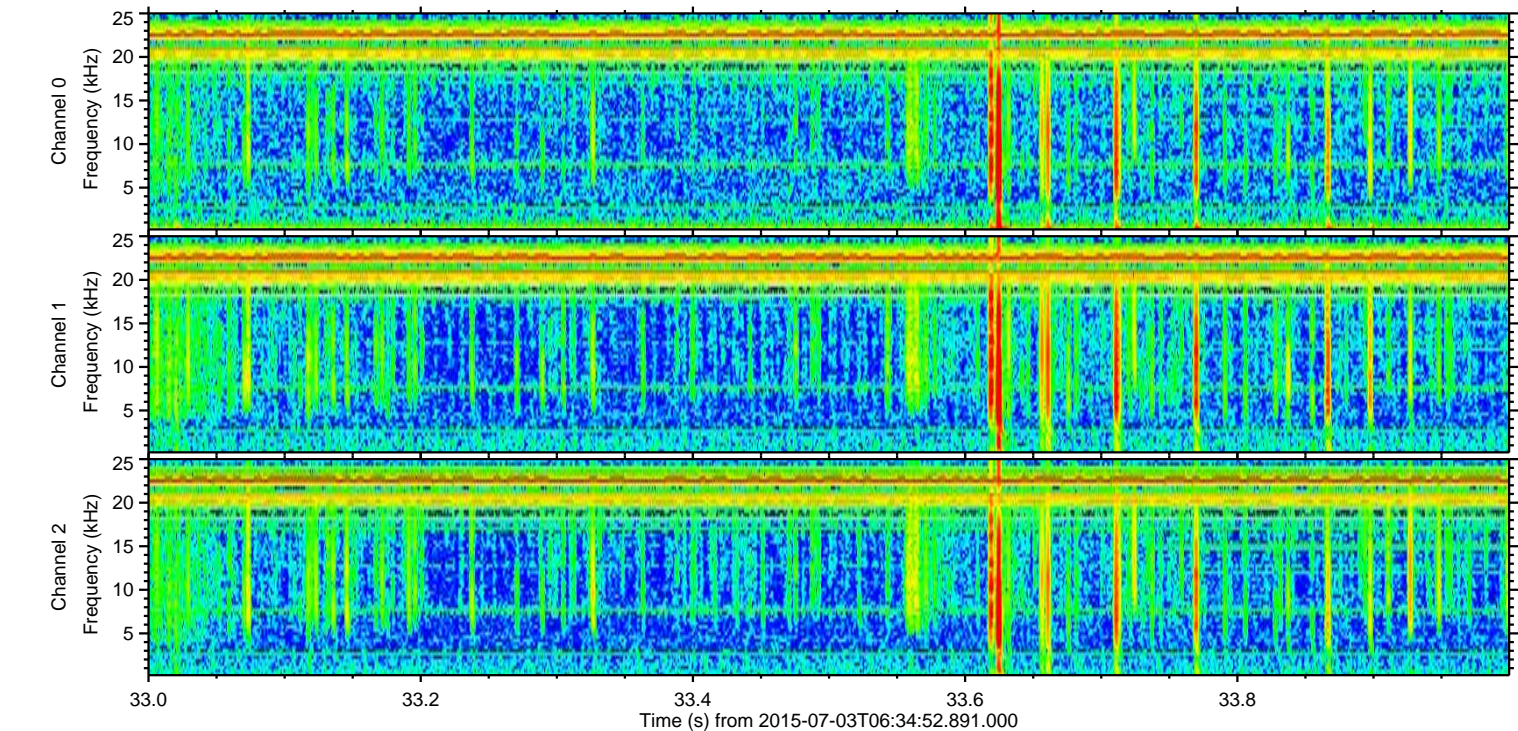
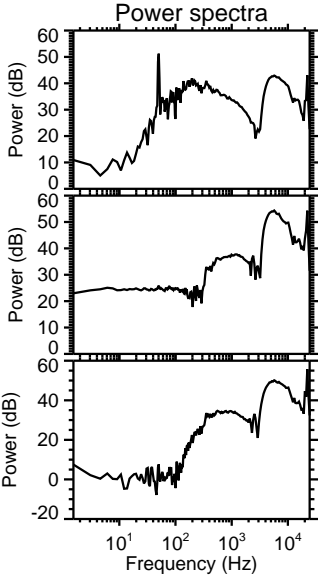
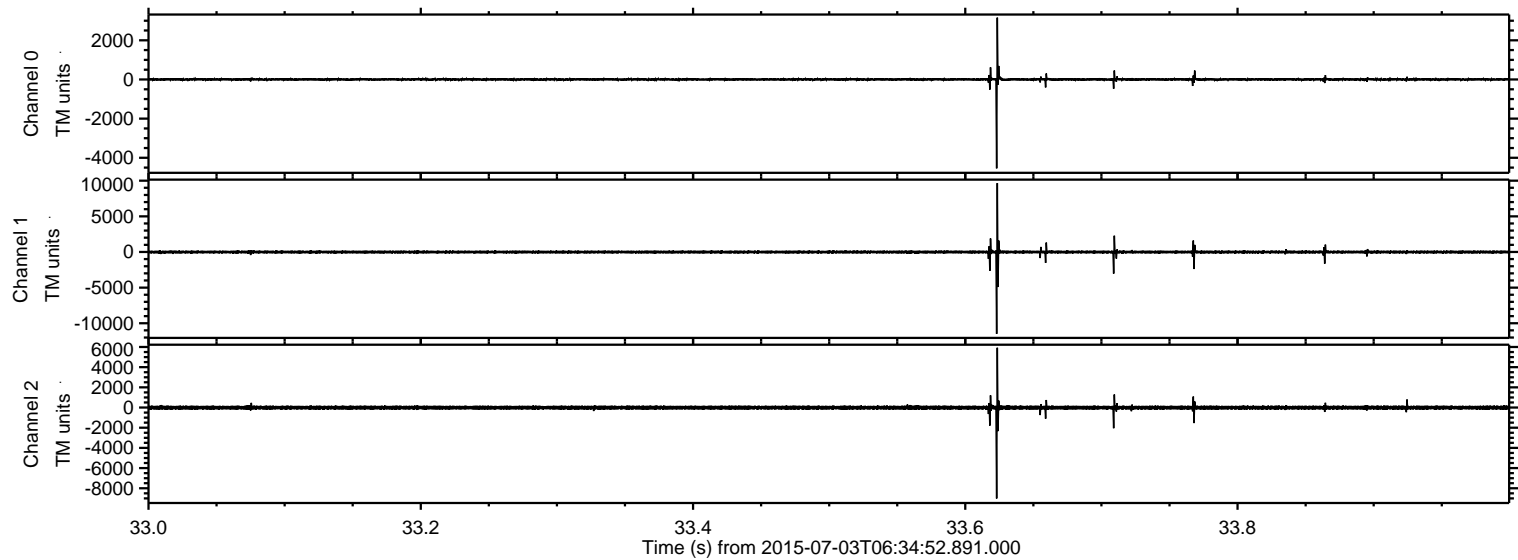
Processed Fri Jul 3 08:41:55 2015 by ELM ver.2012-10-06 from 001__elm20150703_063451__dat00.bin



Processed Fri Jul 3 08:41:56 2015 by ELM ver.2012-10-06 from 001__elm20150703_063451__dat00.bin

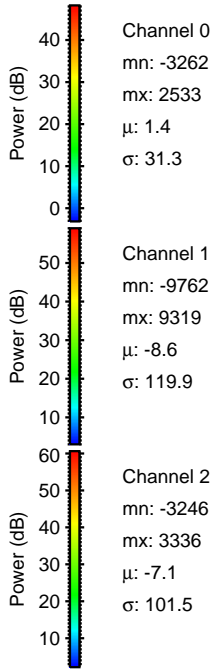
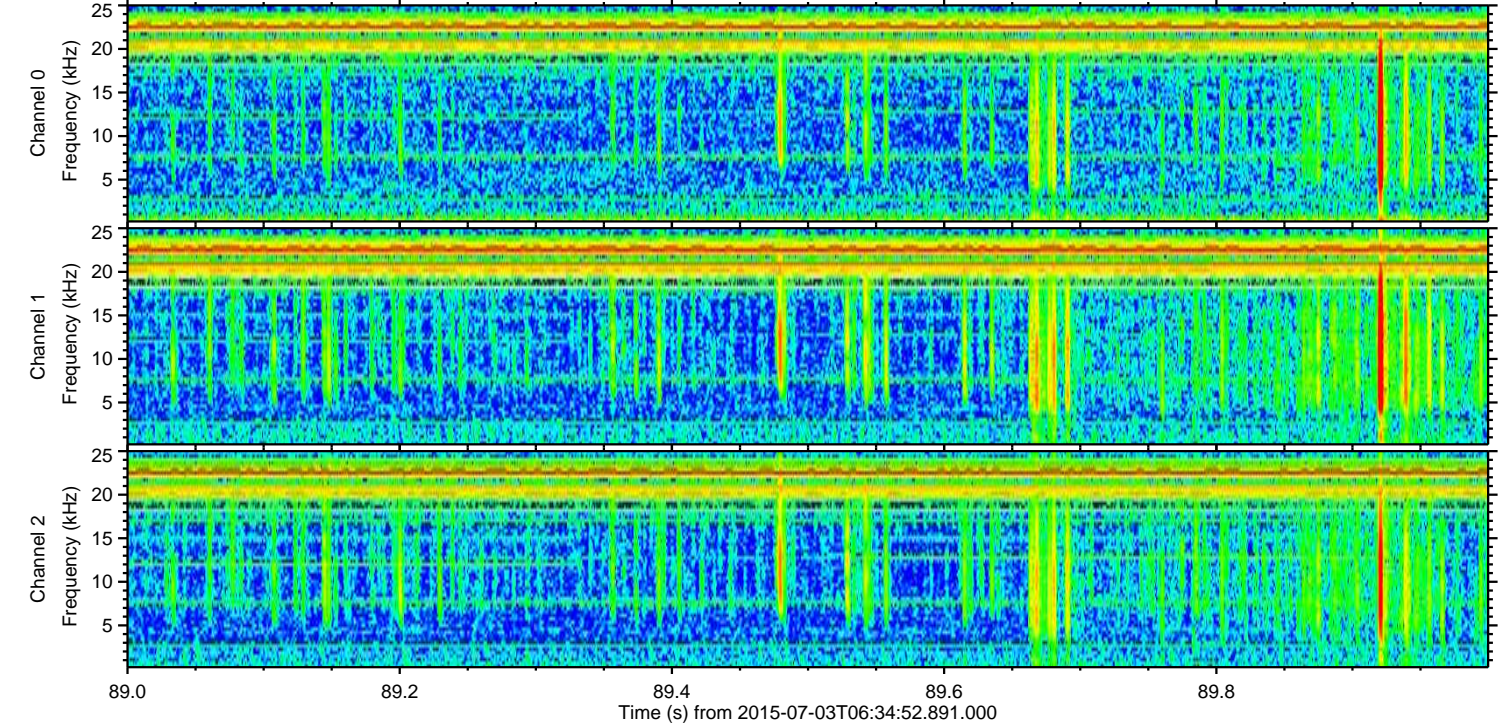
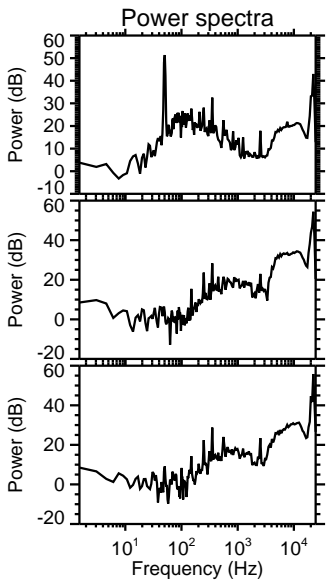
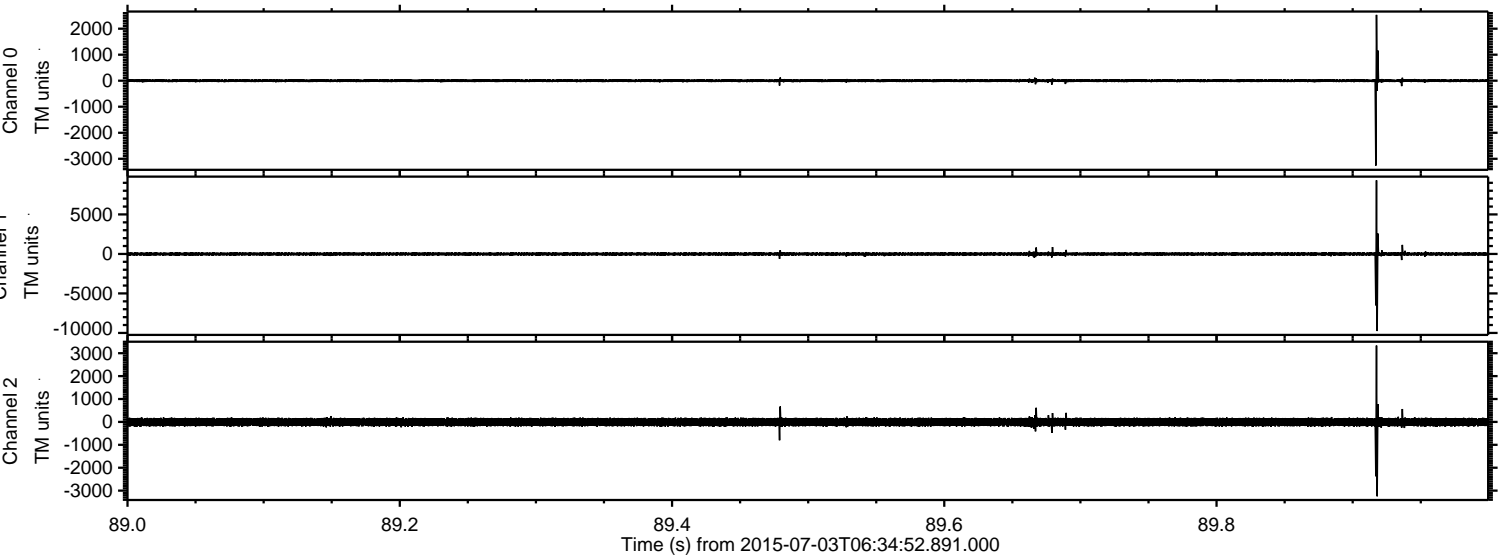


Processed Fri Jul 3 08:41:57 2015 by ELM ver.2012-10-06 from 001__elm20150703_063451__dat00.bin



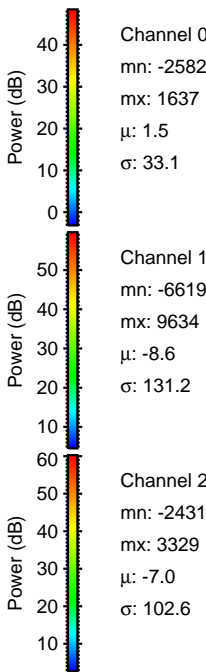
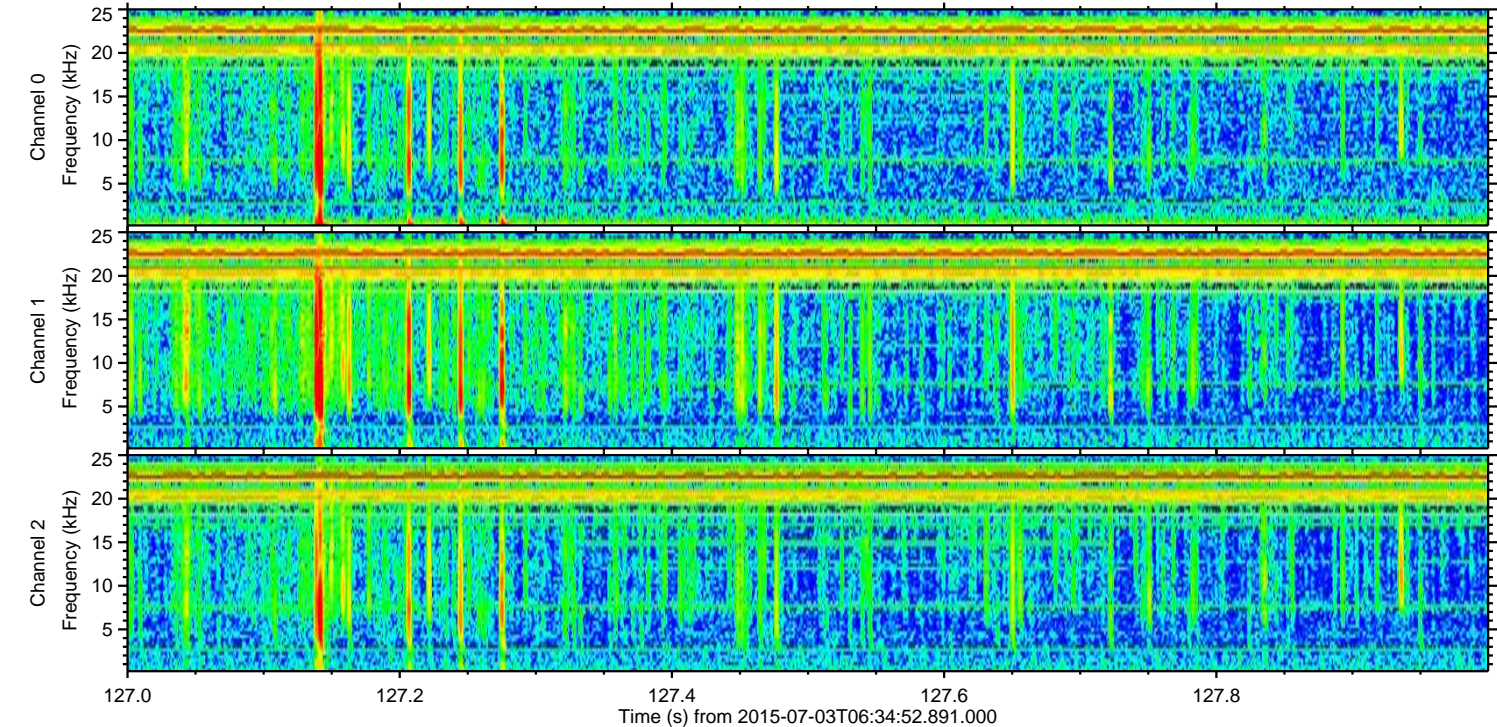
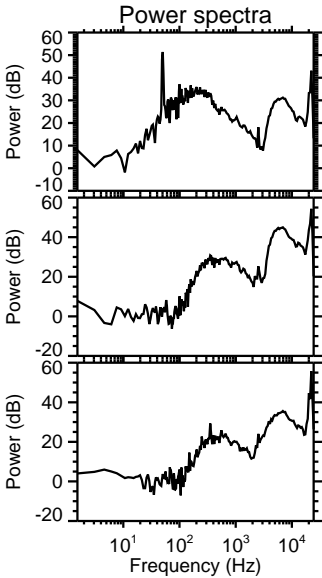
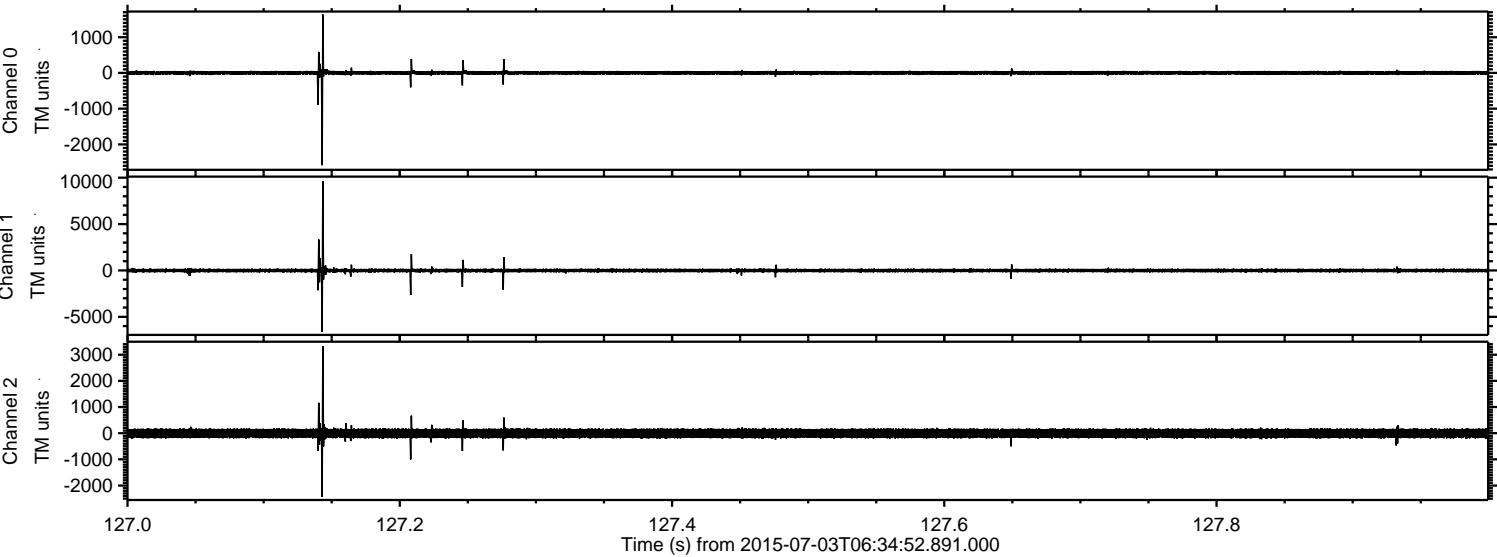
ELMAVAN 3D WAVEFORMS (Measured data sampled at 50 kHz) 51000 packets of 144 samples from 2015-07-03T06:34:52.891.000. Part 90/147

Processed Fri Jul 3 08:41:58 2015 by ELM ver.2012-10-06 from 001__elm20150703_063451__dat00.bin

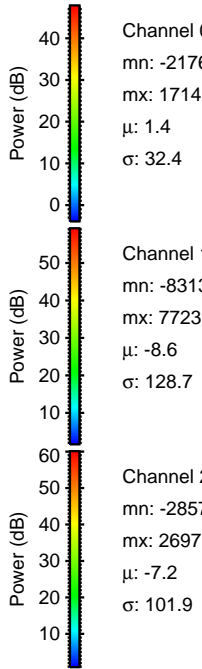
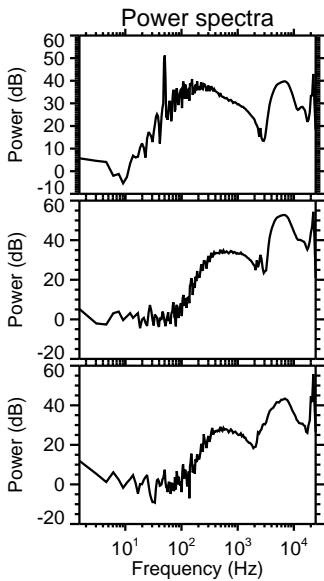
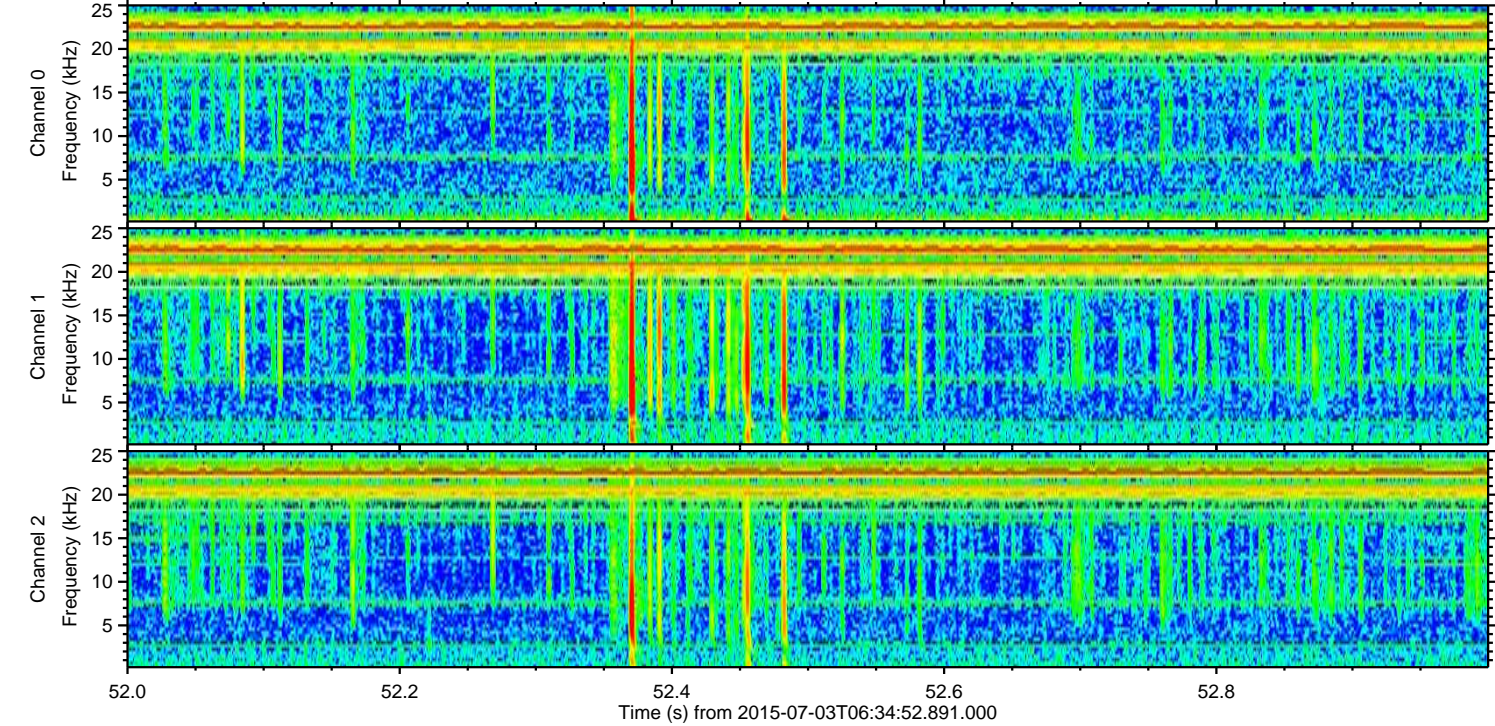
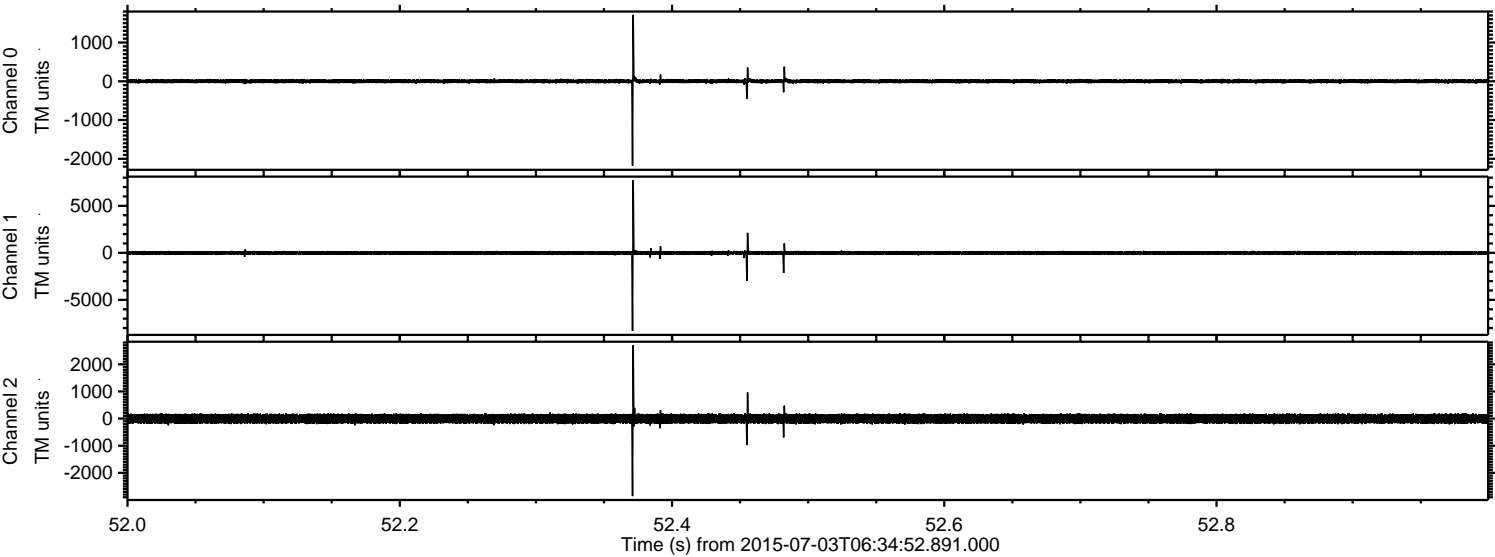


ELMAVAN 3D WAVEFORMS (Measured data sampled at 50 kHz) 51000 packets of 144 samples from 2015-07-03T06:34:52.891.000. Part 128/147

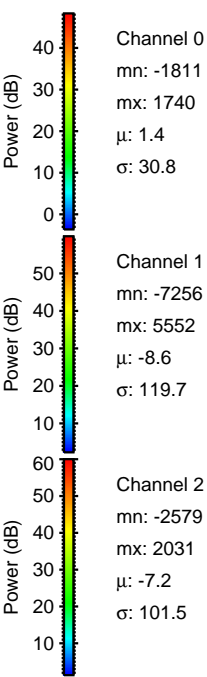
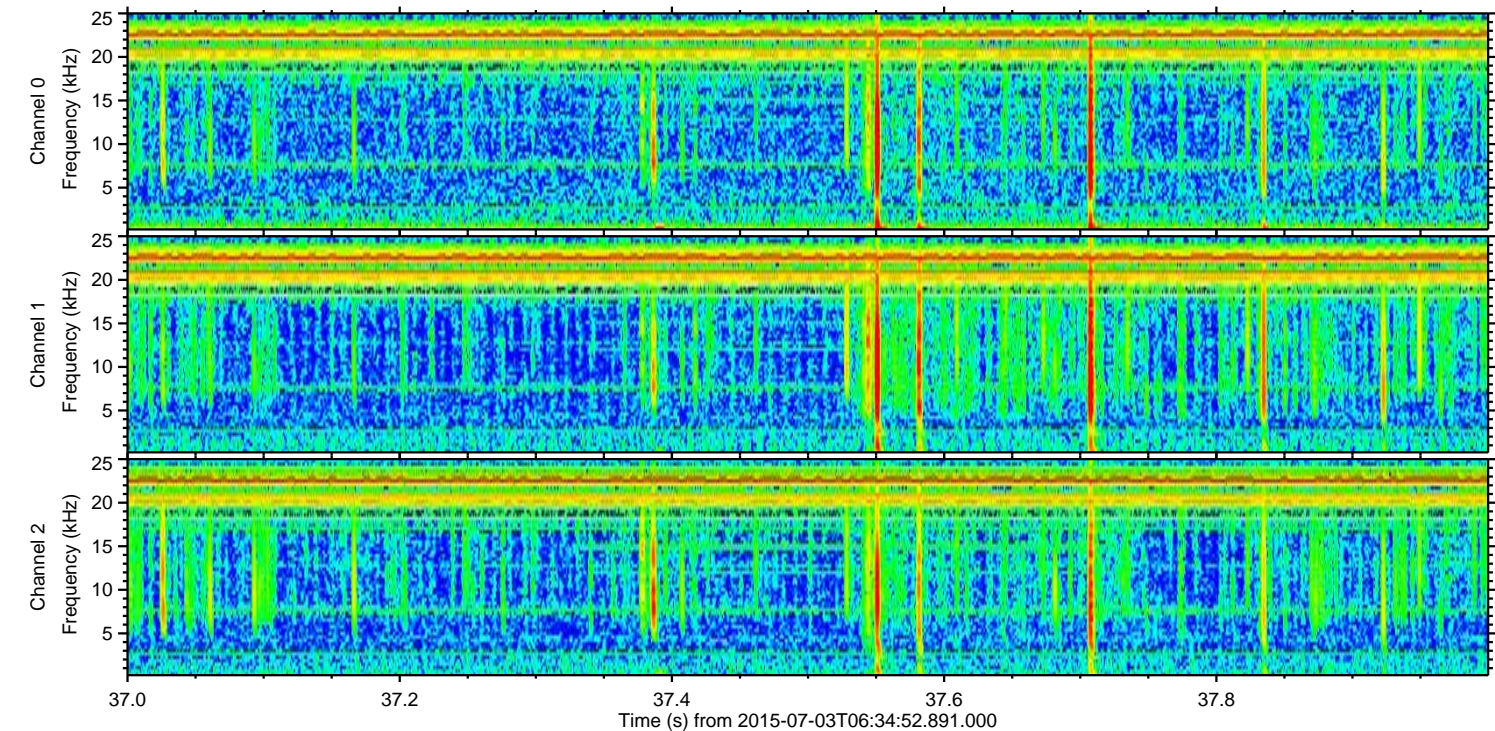
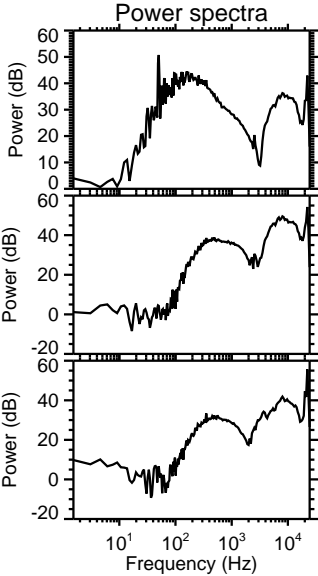
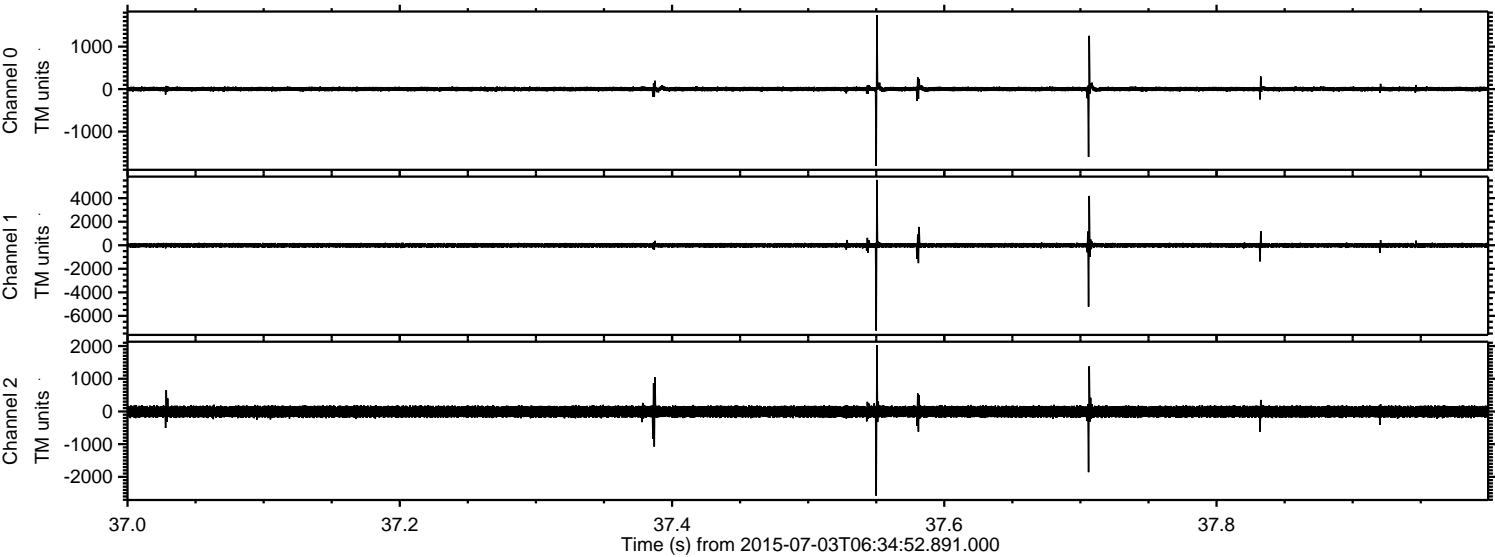
Processed Fri Jul 3 08:41:59 2015 by ELM ver.2012-10-06 from 001__elm20150703_063451__dat00.bin



Processed Fri Jul 3 08:42:00 2015 by ELM ver.2012-10-06 from 001__elm20150703_063451__dat00.bin



Processed Fri Jul 3 08:42:02 2015 by ELM ver.2012-10-06 from 001__elm20150703_063451__dat00.bin



Channel 0
mn: -1811
mx: 1740
 μ : 1.4
 σ : 30.8

Channel 1
mn: -7256
mx: 5552
 μ : -8.6
 σ : 119.7

Channel 2
mn: -2579
mx: 2031
 μ : -7.2
 σ : 101.5

