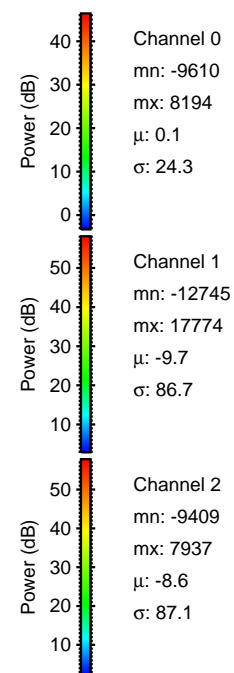
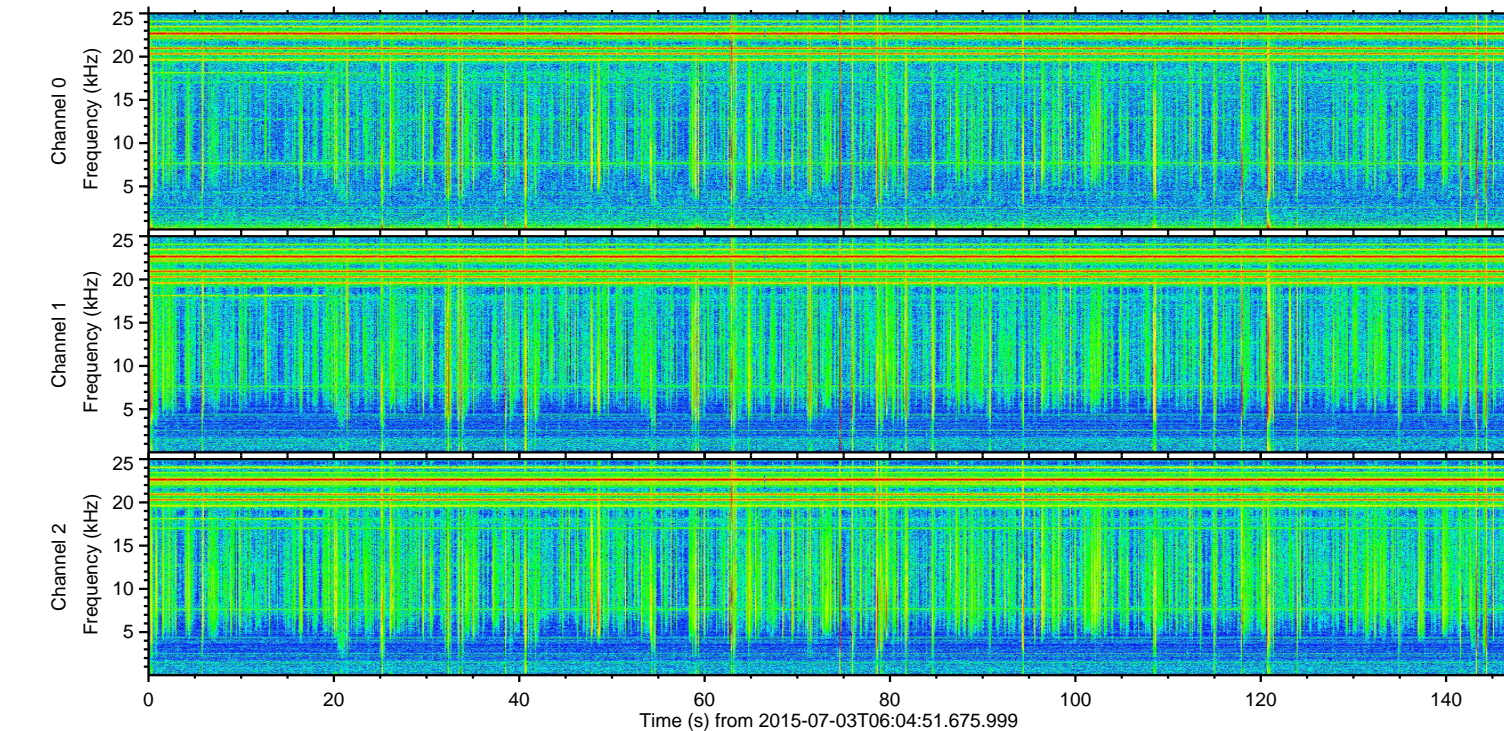
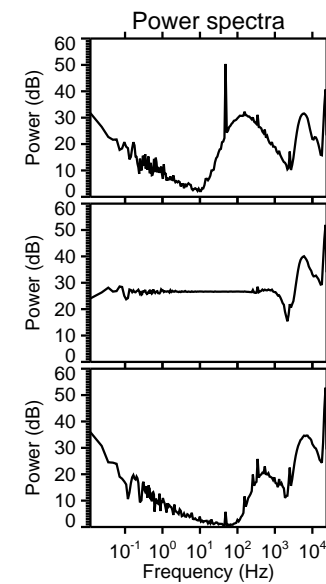
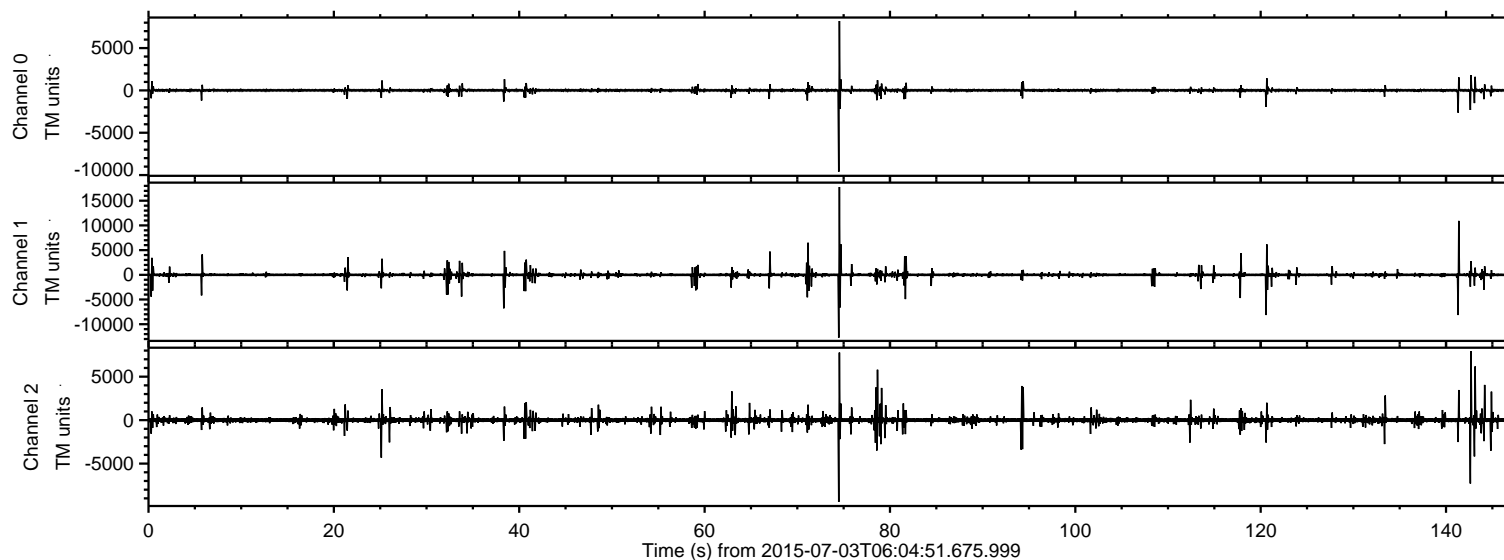
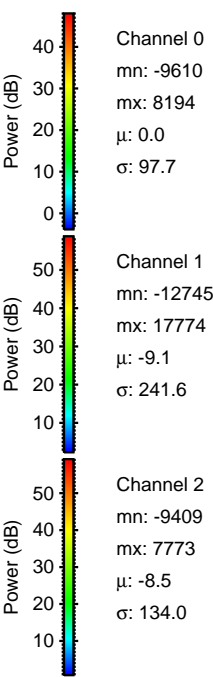
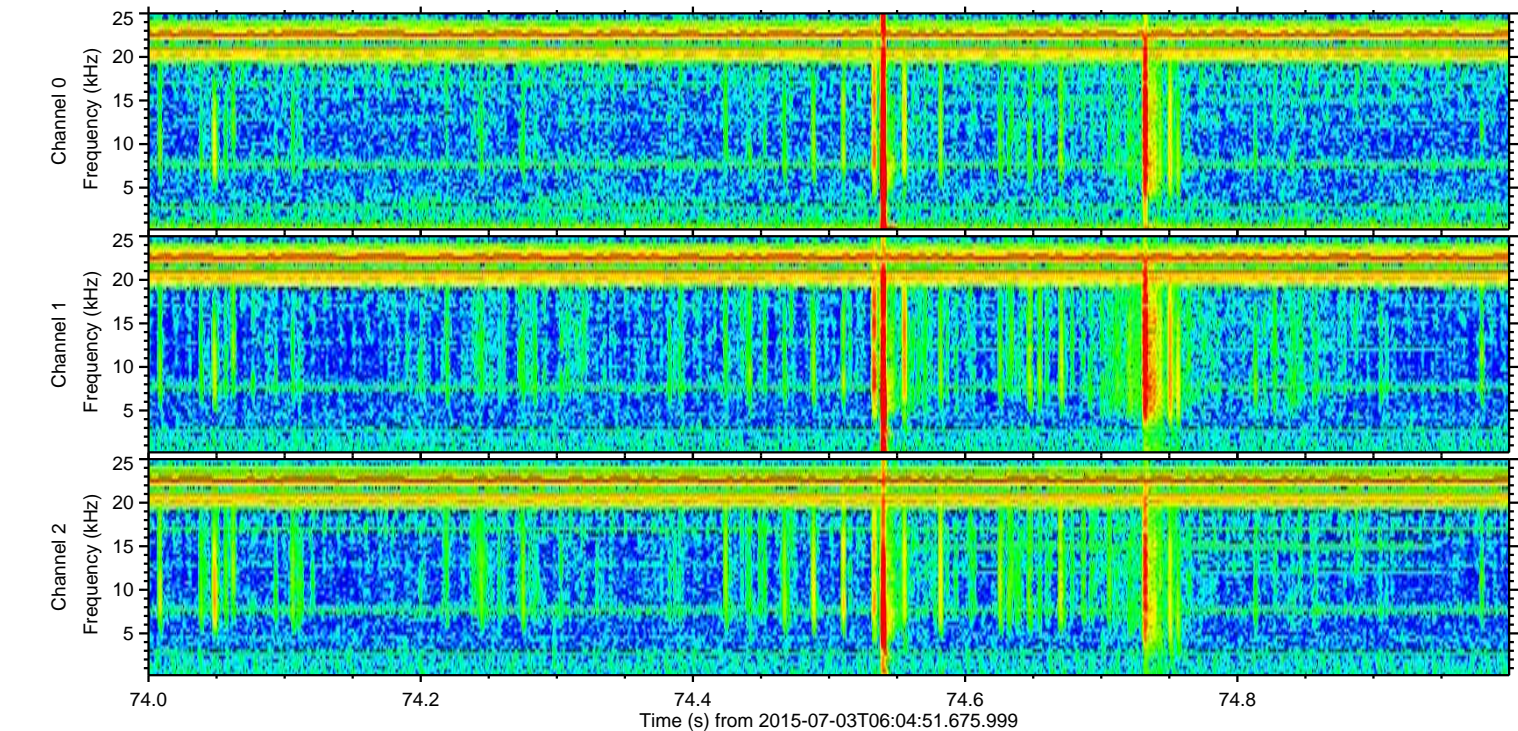
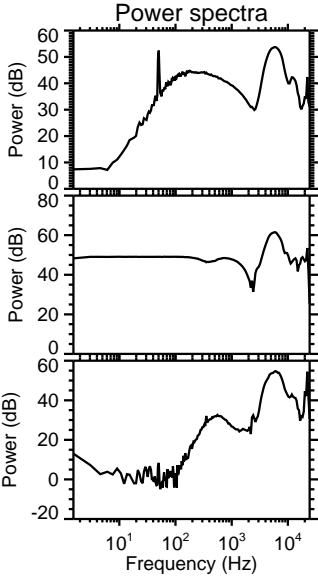
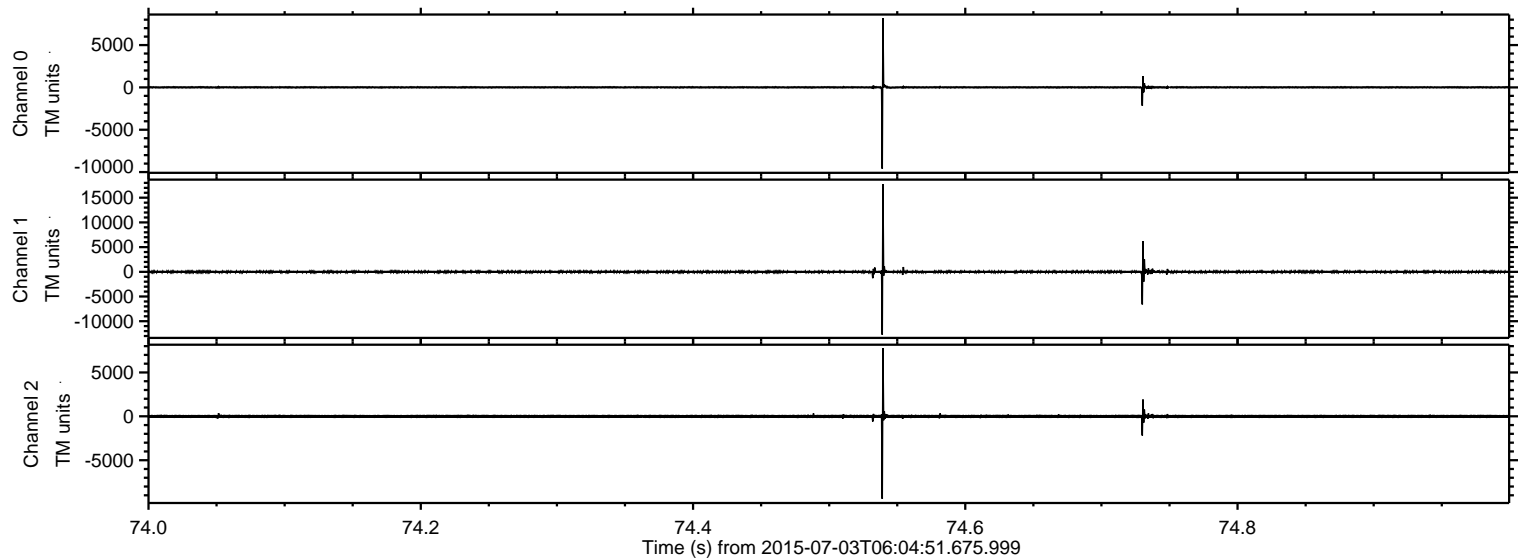


ELMAVAN 3D WAVEFORMS (Measured data sampled at 50 kHz) 51000 packets of 144 samples from 2015-07-03T06:04:51.675.999.

Processed Fri Jul 3 08:10:47 2015 by ELM ver.2012-10-06 from 001__elm20150703_060450__dat00.bin

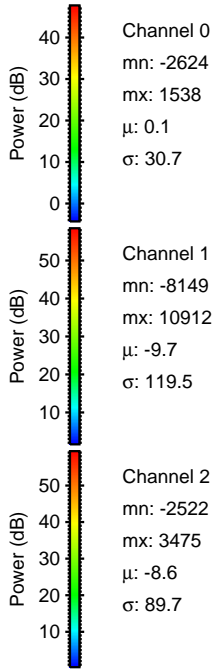
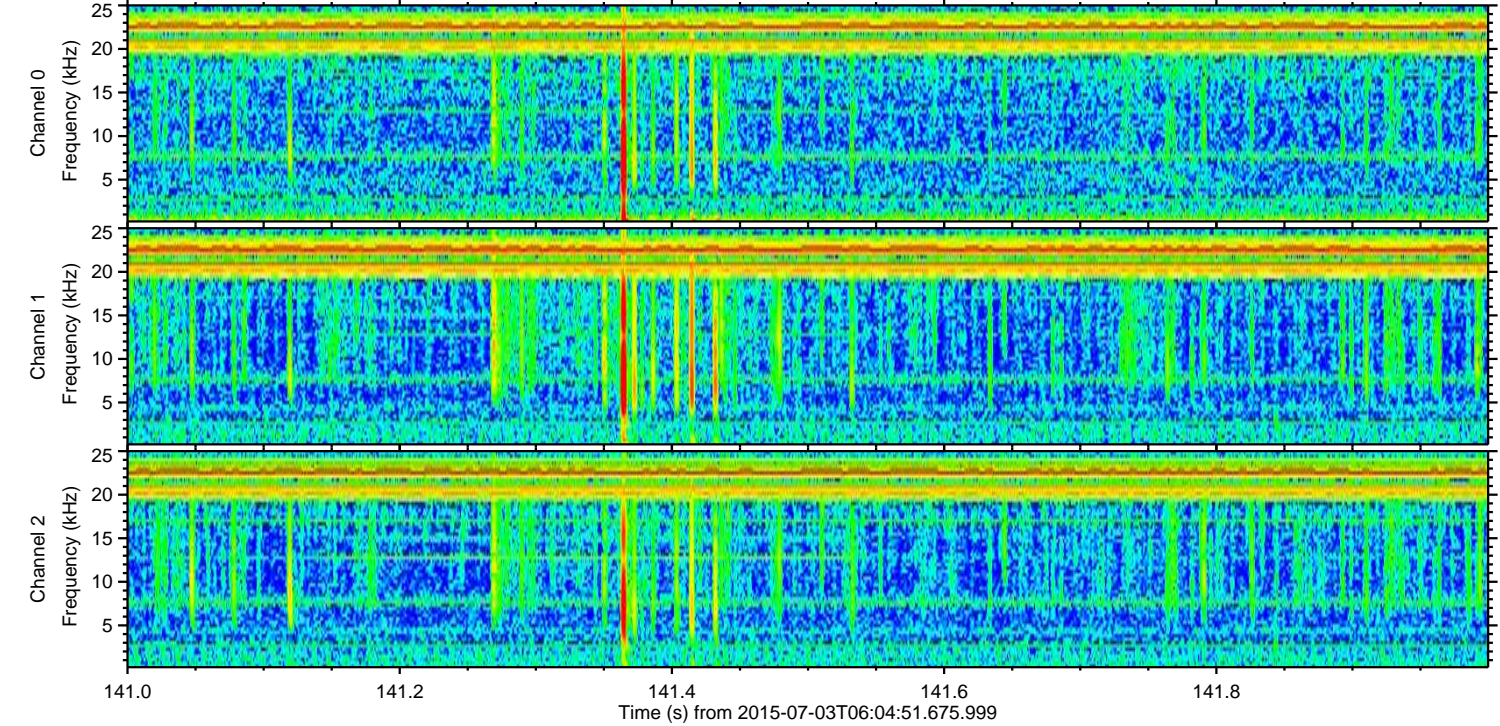
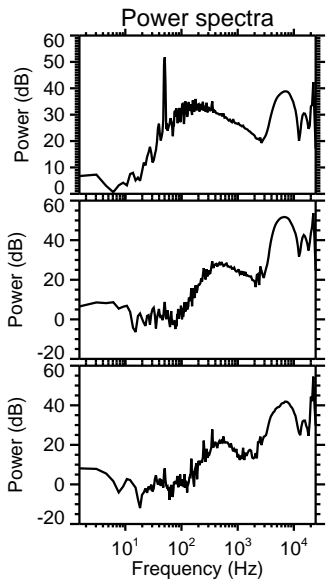
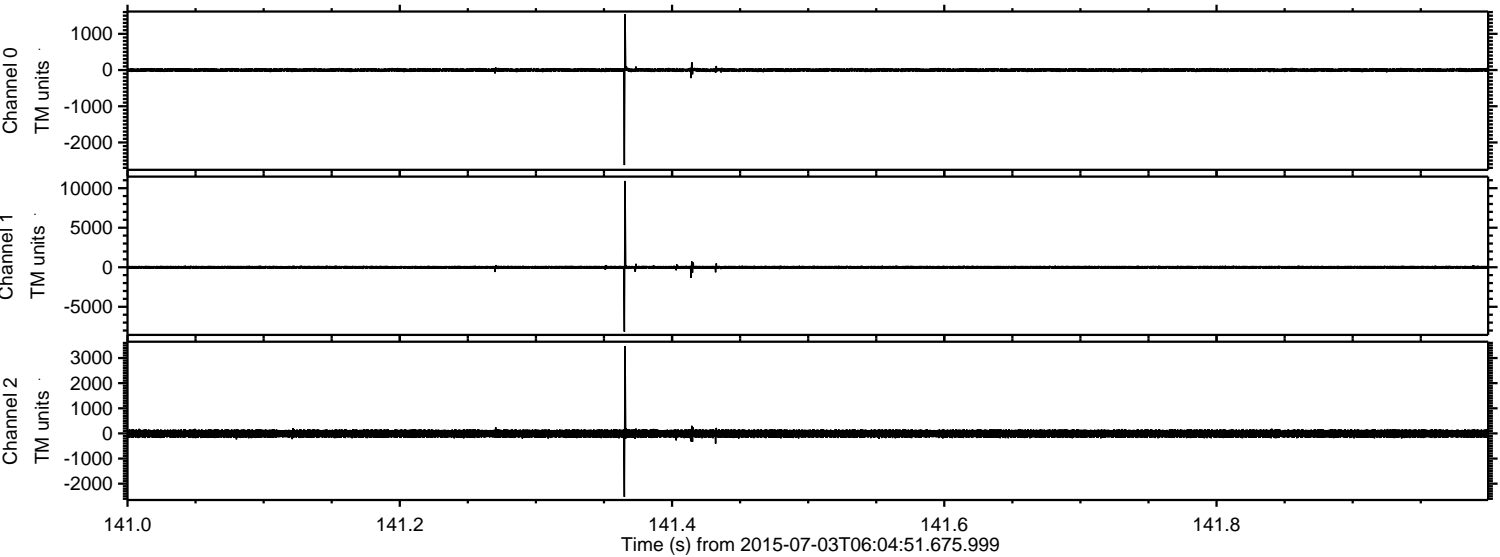


Processed Fri Jul 3 08:11:01 2015 by ELM ver.2012-10-06 from 001__elm20150703_060450__dat00.bin



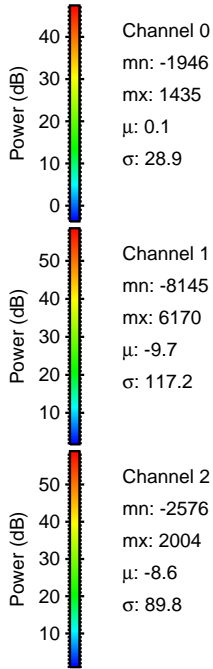
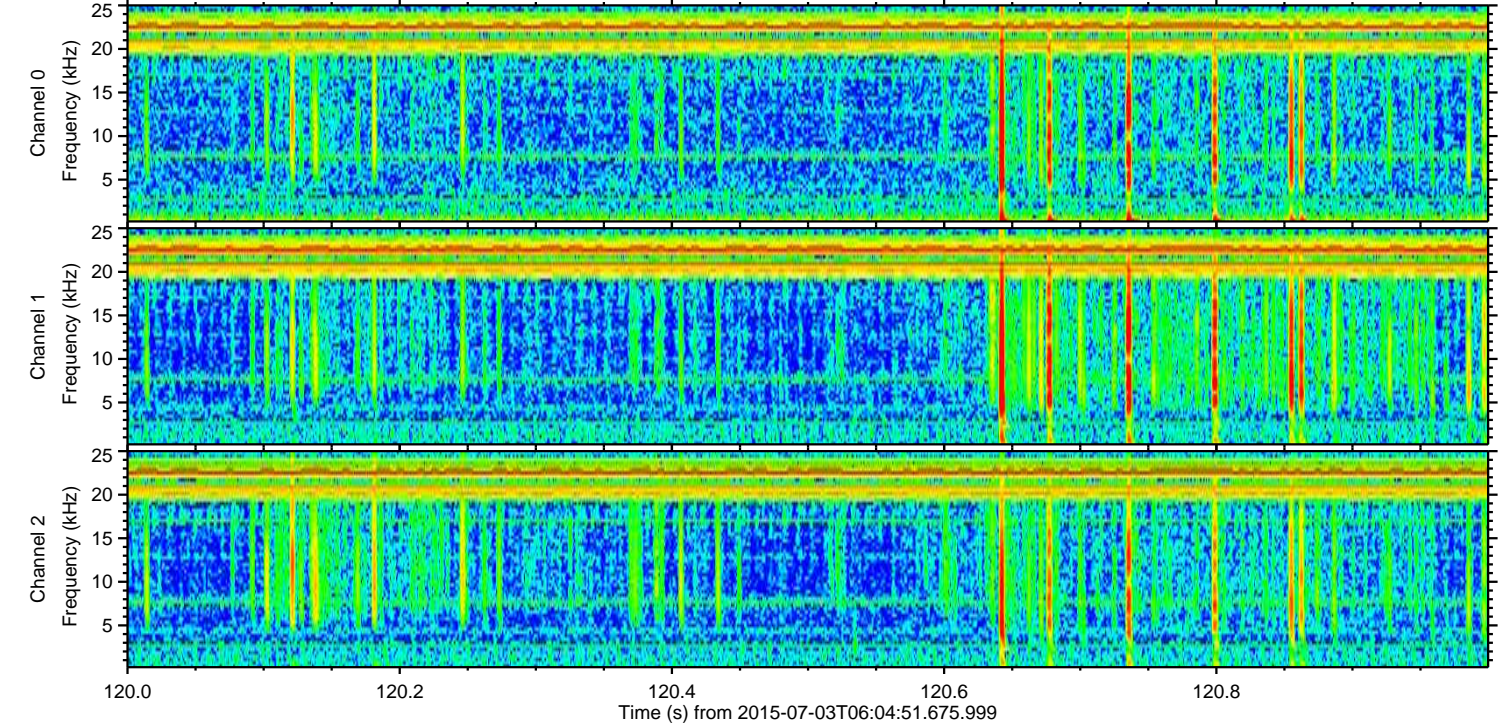
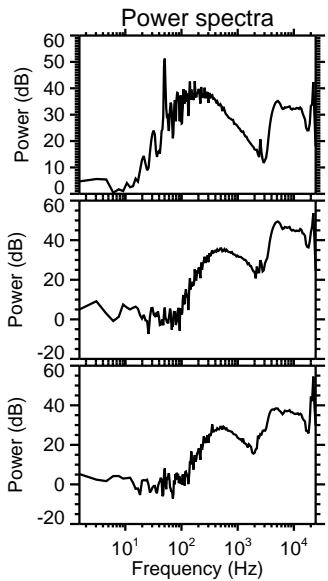
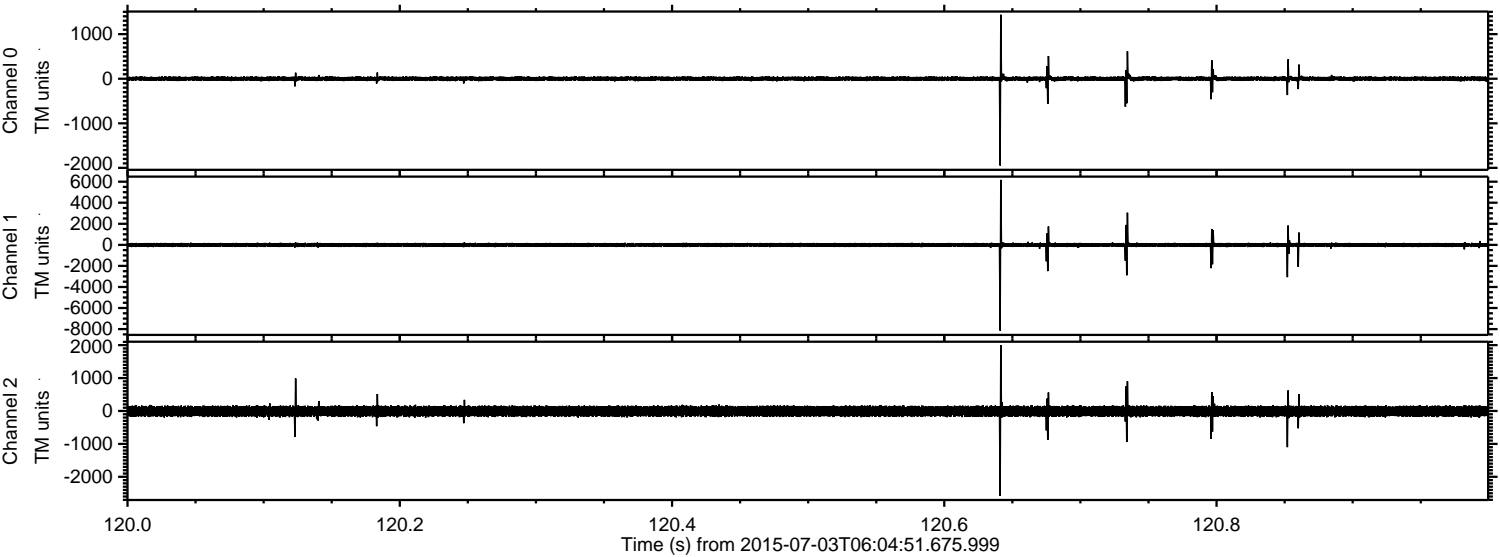
ELMAVAN 3D WAVEFORMS (Measured data sampled at 50 kHz) 51000 packets of 144 samples from 2015-07-03T06:04:51.675.999. Part 142/147

Processed Fri Jul 3 08:11:02 2015 by ELM ver.2012-10-06 from 001__elm20150703_060450__dat00.bin



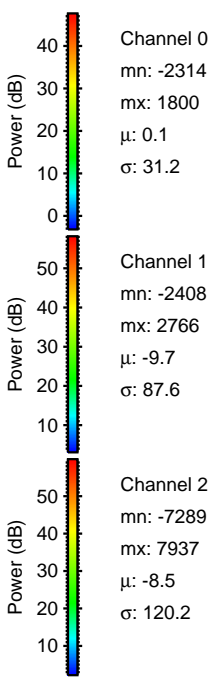
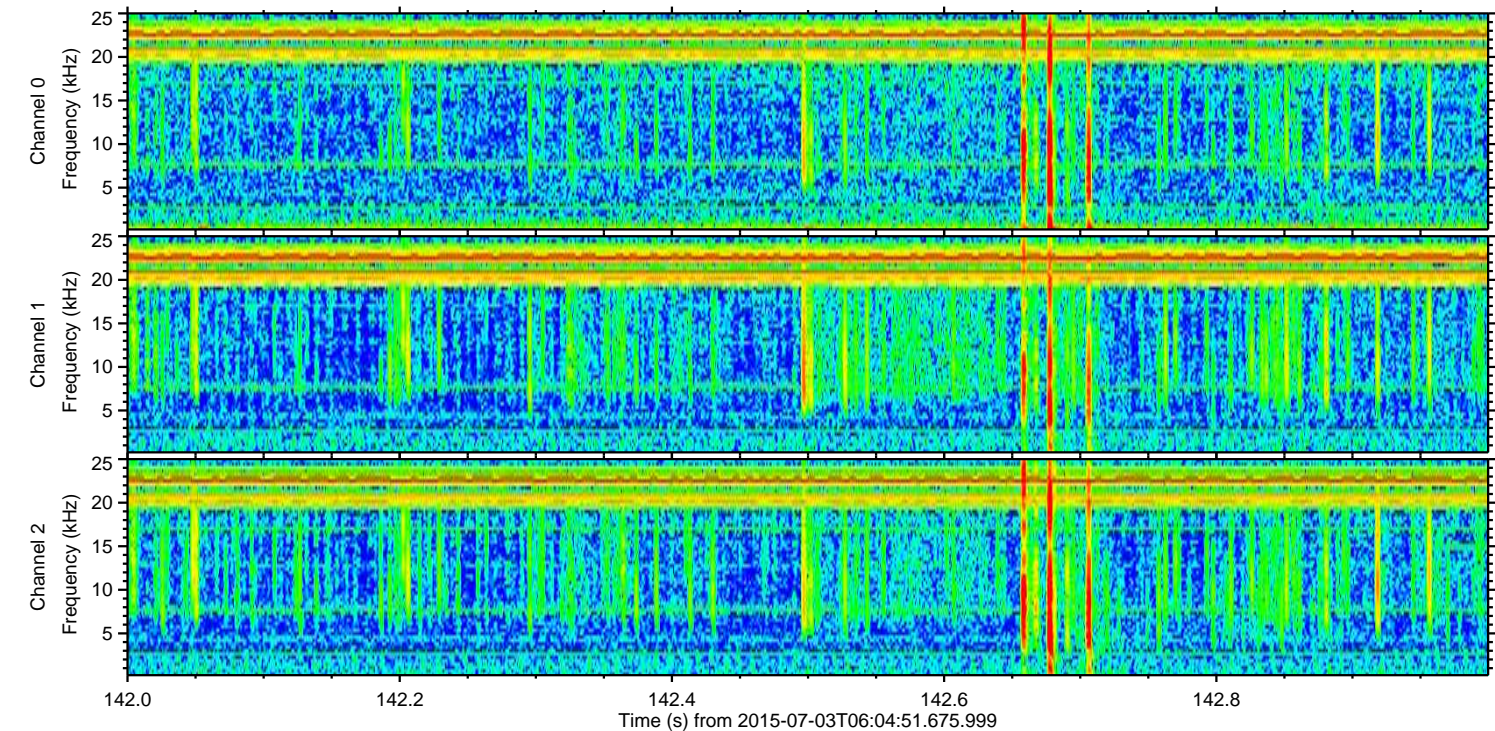
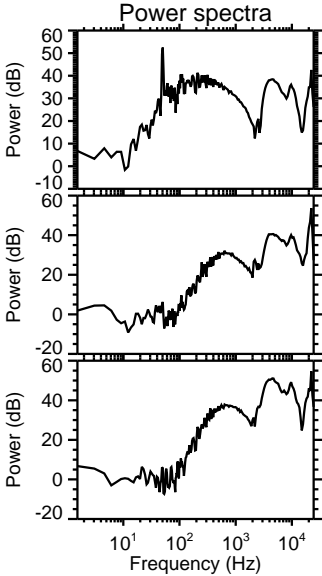
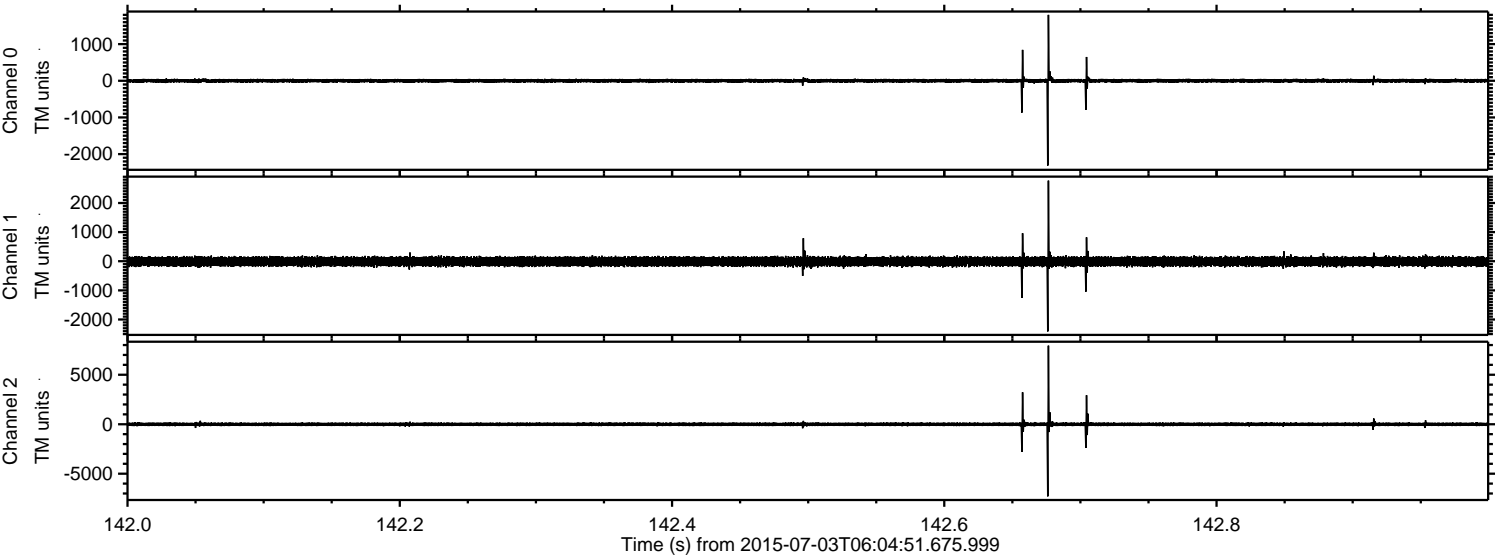
ELMAVAN 3D WAVEFORMS (Measured data sampled at 50 kHz) 51000 packets of 144 samples from 2015-07-03T06:04:51.675.999. Part 121/147

Processed Fri Jul 3 08:11:03 2015 by ELM ver.2012-10-06 from 001__elm20150703_060450__dat00.bin

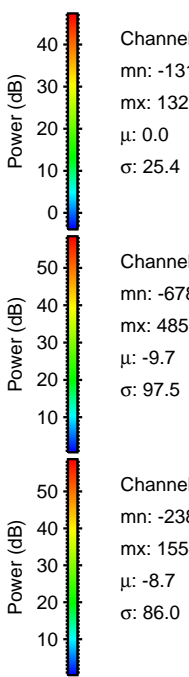
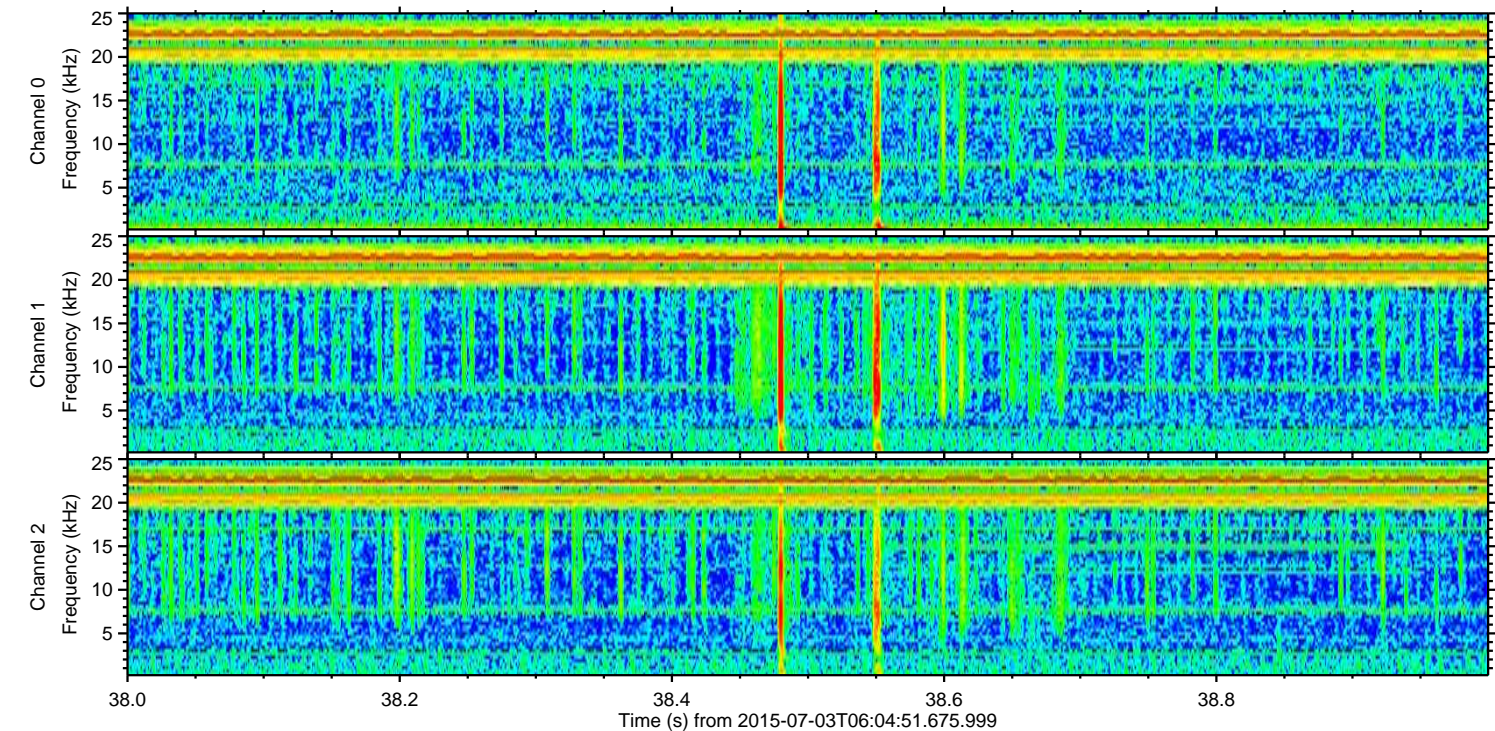
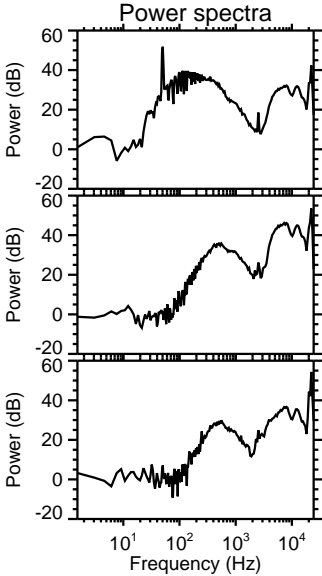
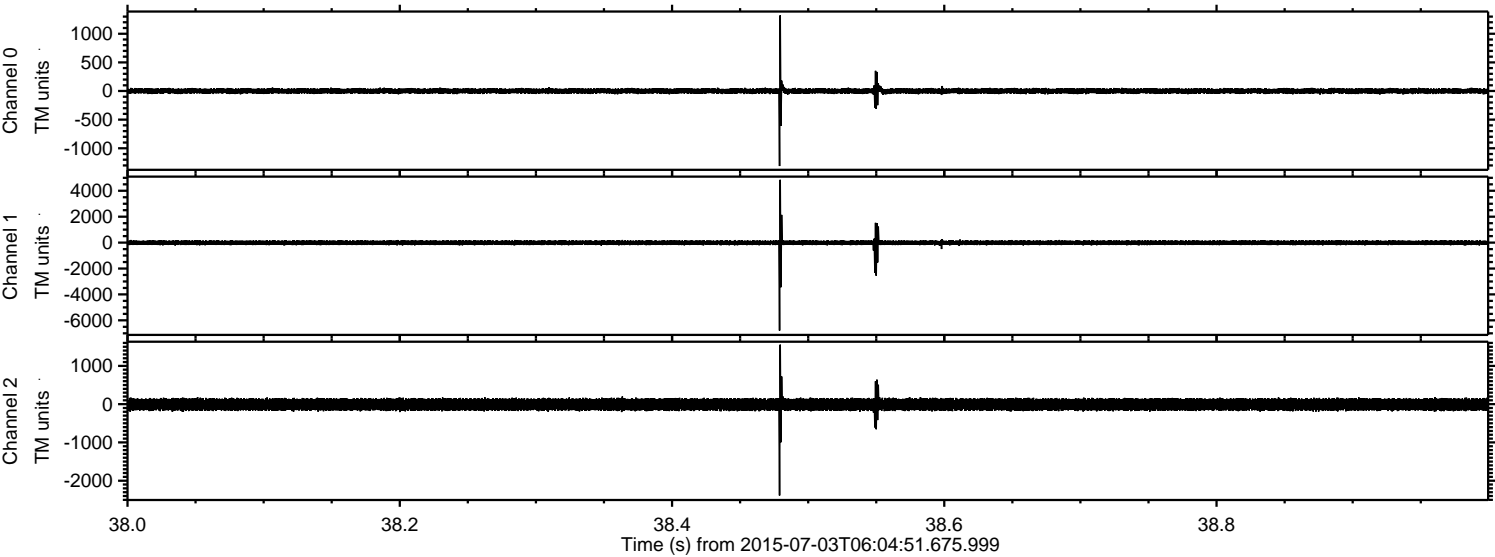


ELMAVAN 3D WAVEFORMS (Measured data sampled at 50 kHz) 51000 packets of 144 samples from 2015-07-03T06:04:51.675.999. Part 143/147

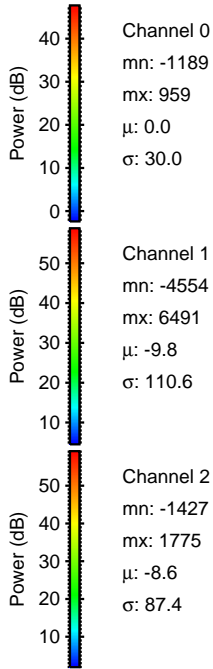
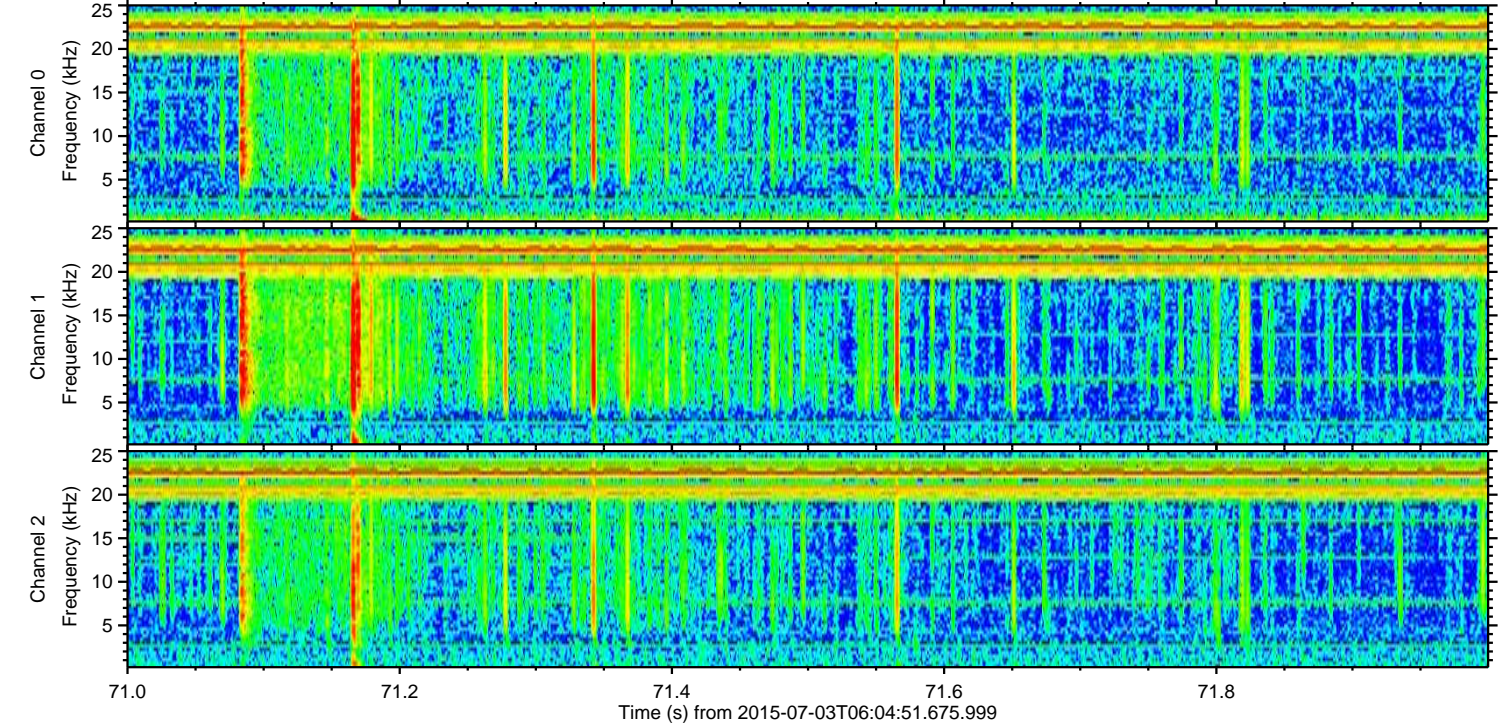
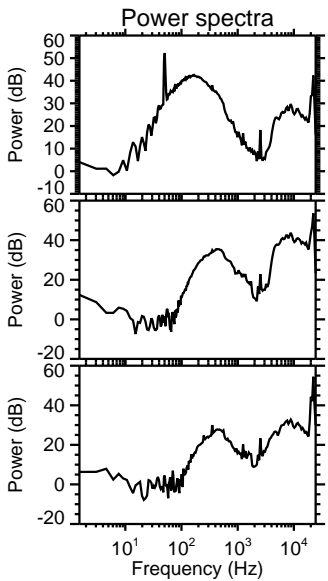
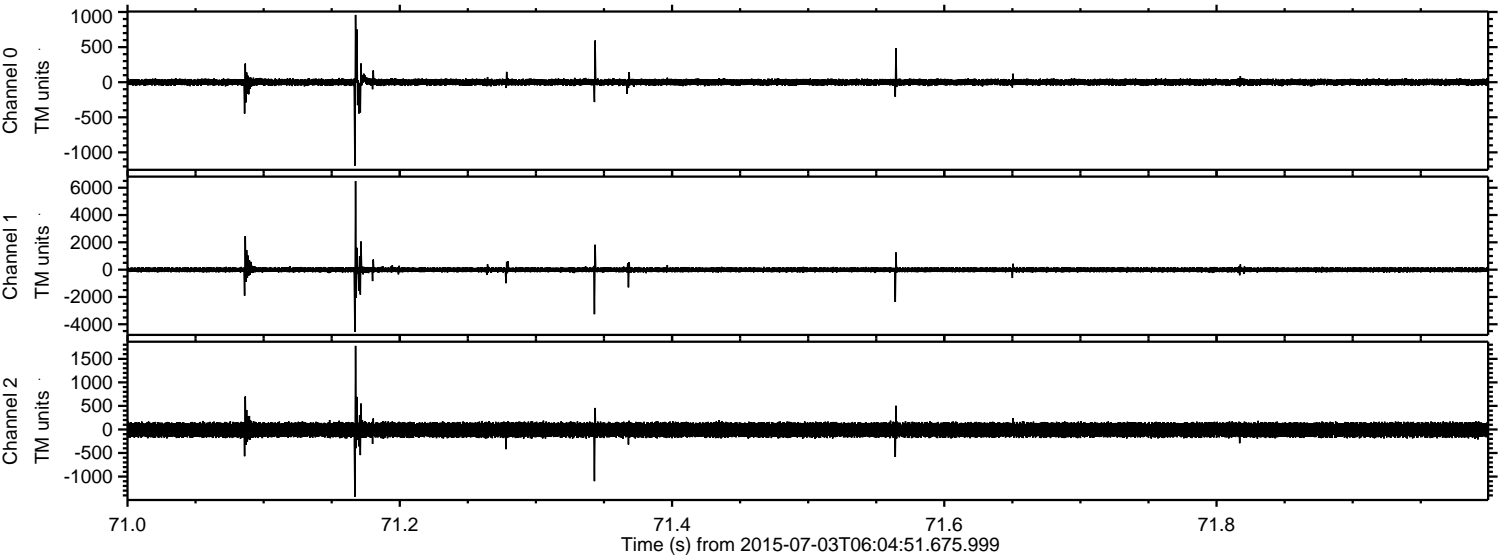
Processed Fri Jul 3 08:11:04 2015 by ELM ver.2012-10-06 from 001__elm20150703_060450__dat00.bin



Processed Fri Jul 3 08:11:05 2015 by ELM ver.2012-10-06 from 001__elm20150703_060450__dat00.bin

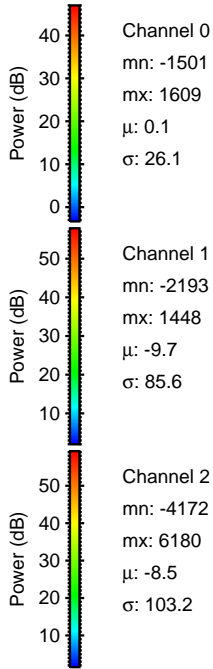
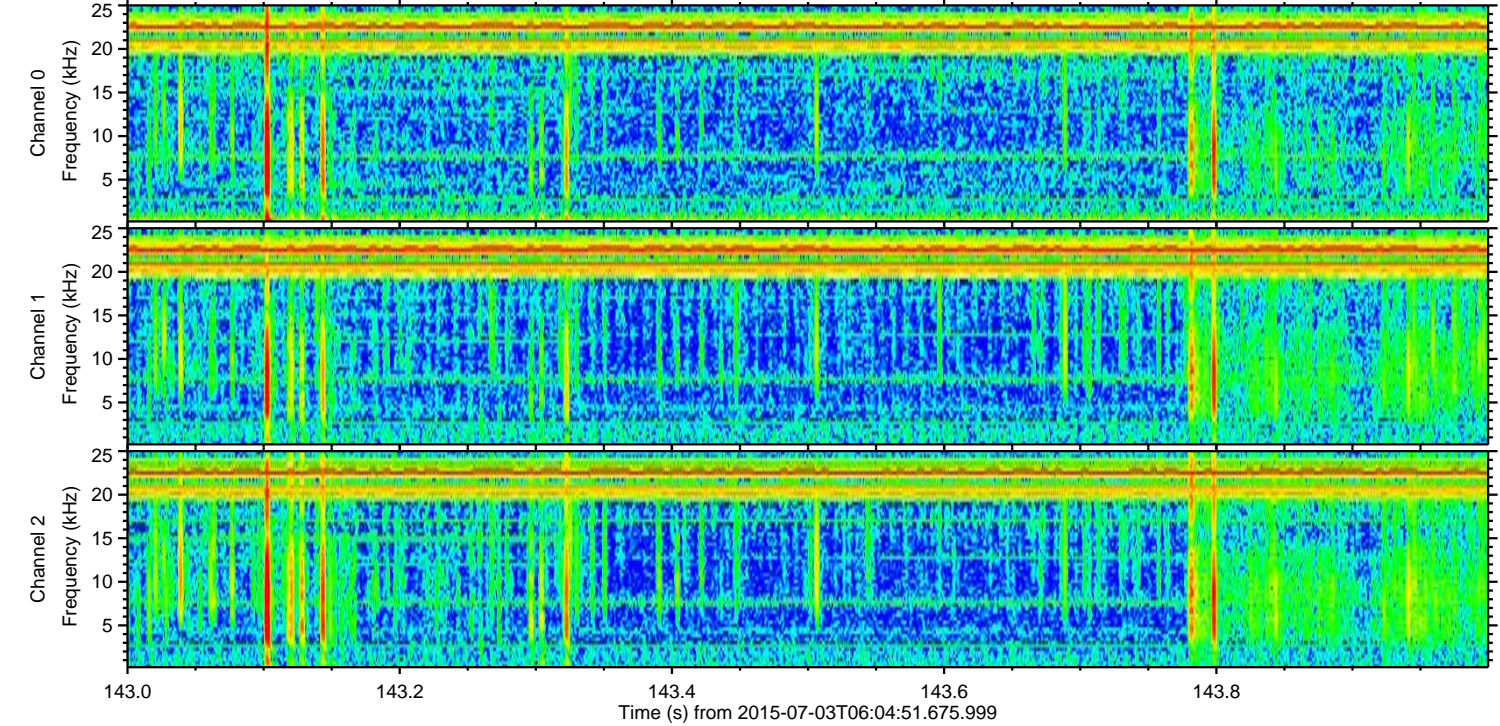
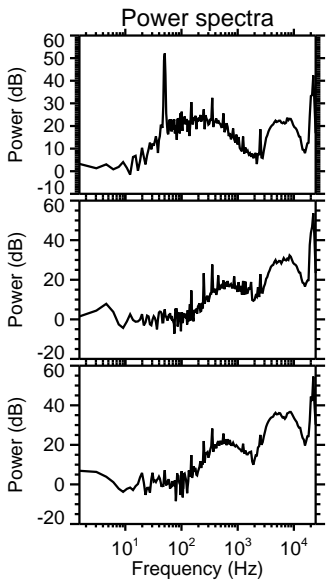
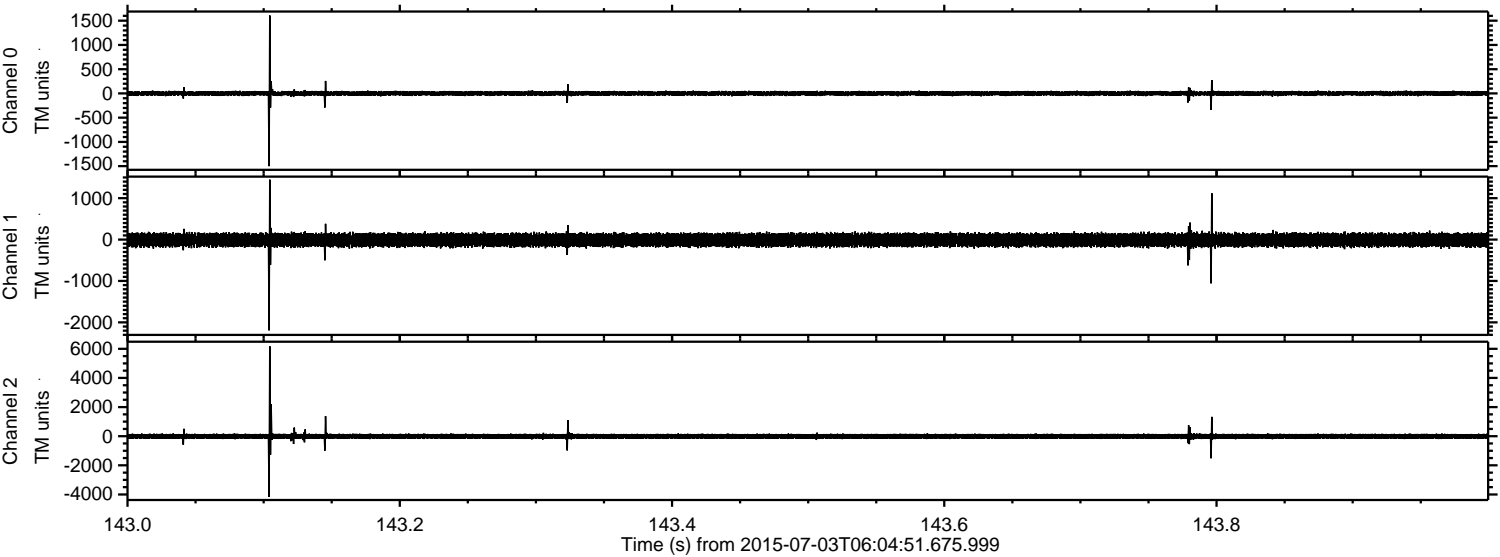


Processed Fri Jul 3 08:11:06 2015 by ELM ver.2012-10-06 from 001__elm20150703_060450__dat00.bin

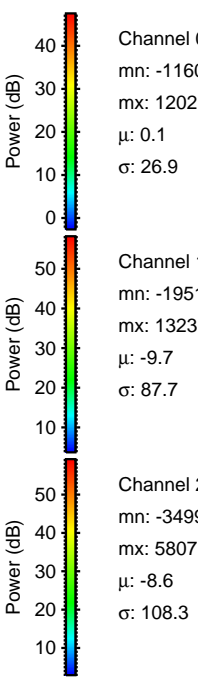
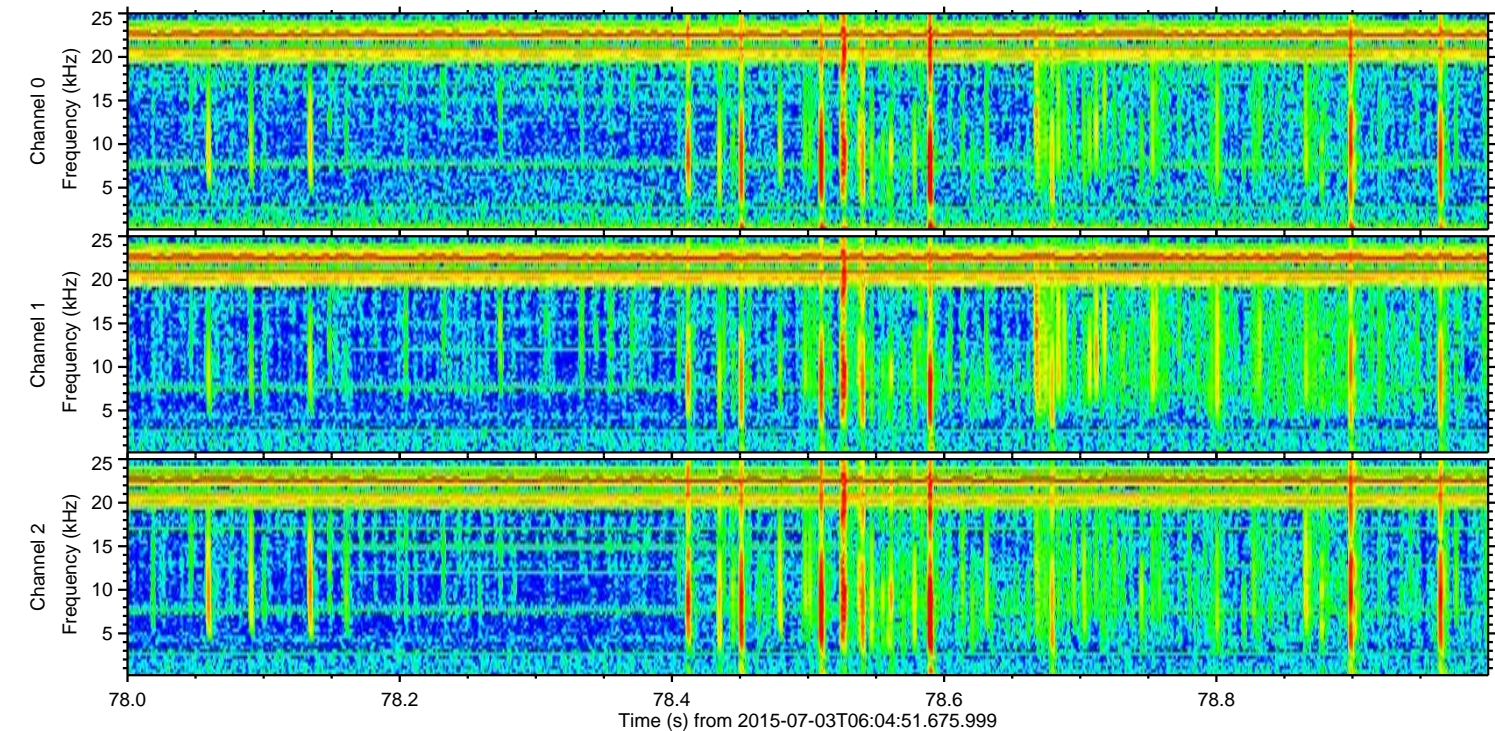
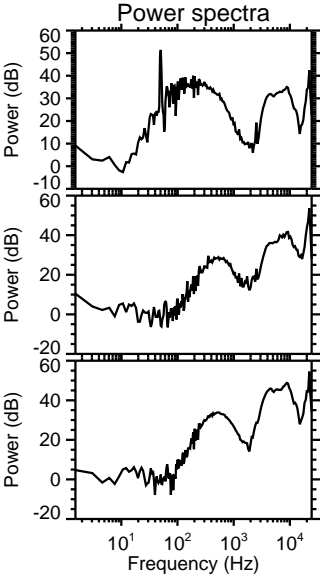
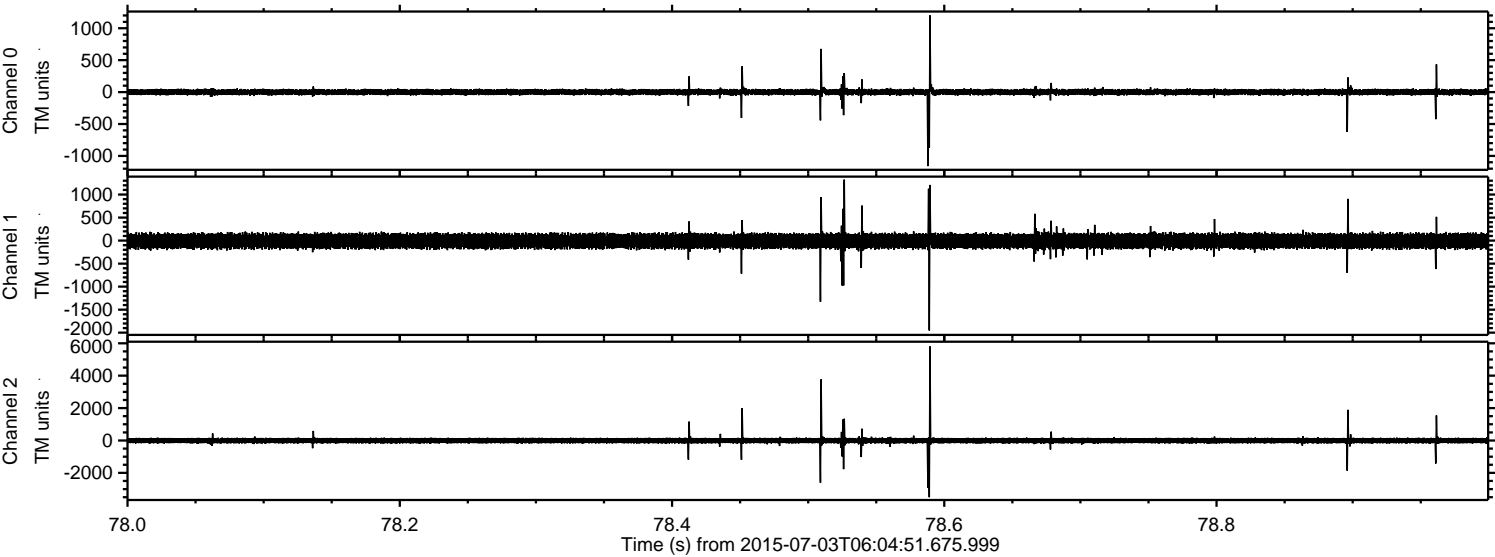


ELMAVAN 3D WAVEFORMS (Measured data sampled at 50 kHz) 51000 packets of 144 samples from 2015-07-03T06:04:51.675.999. Part 144/147

Processed Fri Jul 3 08:11:07 2015 by ELM ver.2012-10-06 from 001__elm20150703_060450__dat00.bin



Processed Fri Jul 3 08:11:08 2015 by ELM ver.2012-10-06 from 001__elm20150703_060450__dat00.bin



Channel 0
mn: -1160
mx: 1202
 μ : 0.1
 σ : 26.9

Channel 1
mn: -1951
mx: 1323
 μ : -9.7
 σ : 87.7

Channel 2
mn: -3499
mx: 5807
 μ : -8.6
 σ : 108.3

Processed Fri Jul 3 08:11:10 2015 by ELM ver.2012-10-06 from 001__elm20150703_060450__dat00.bin

