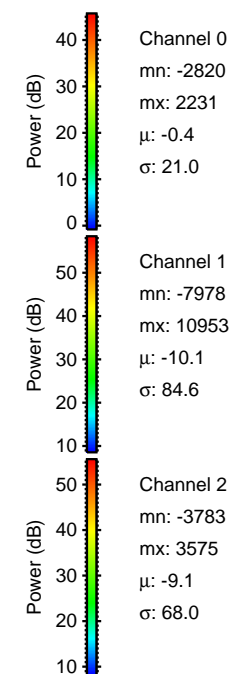
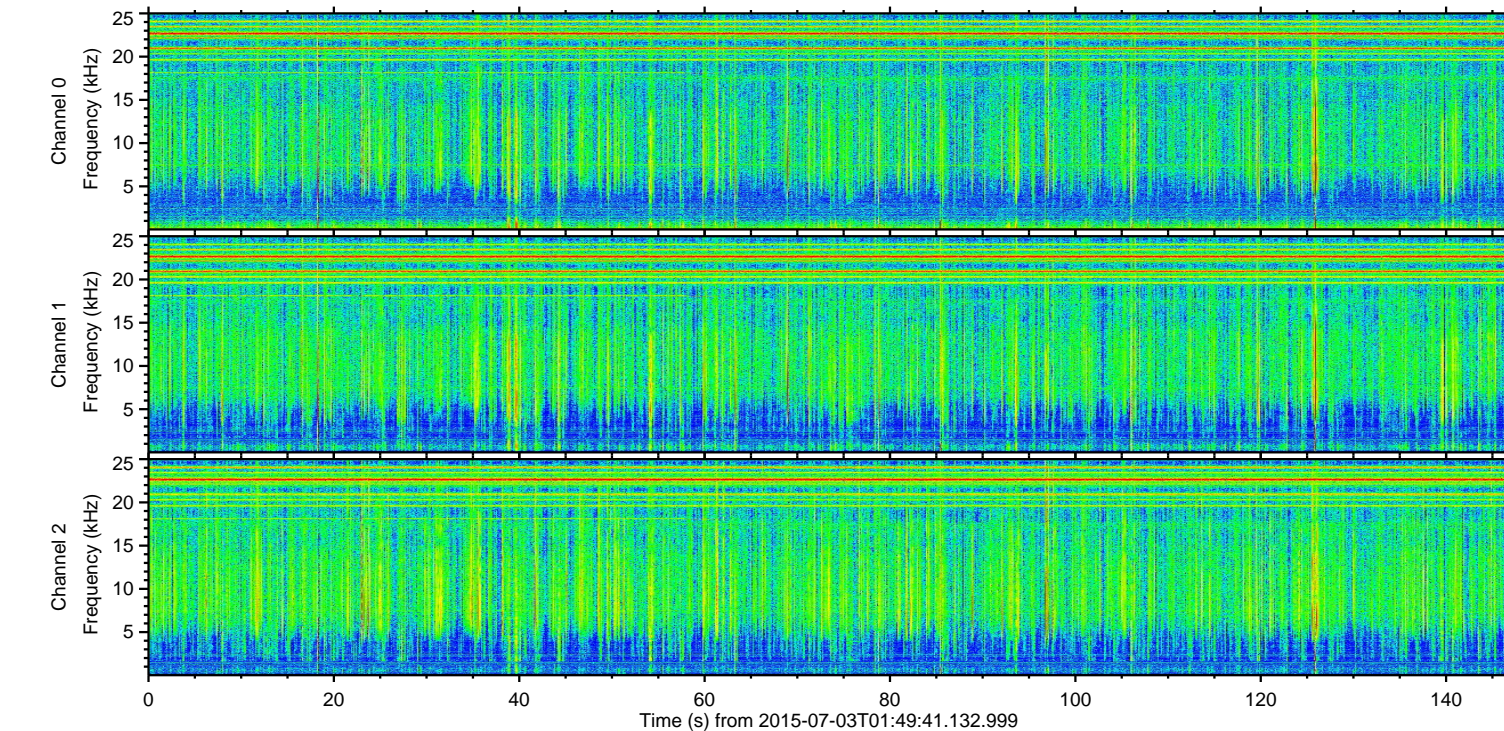
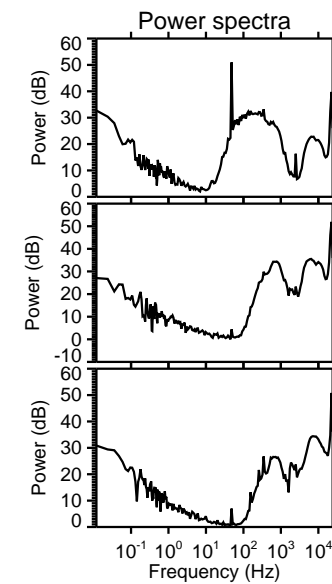
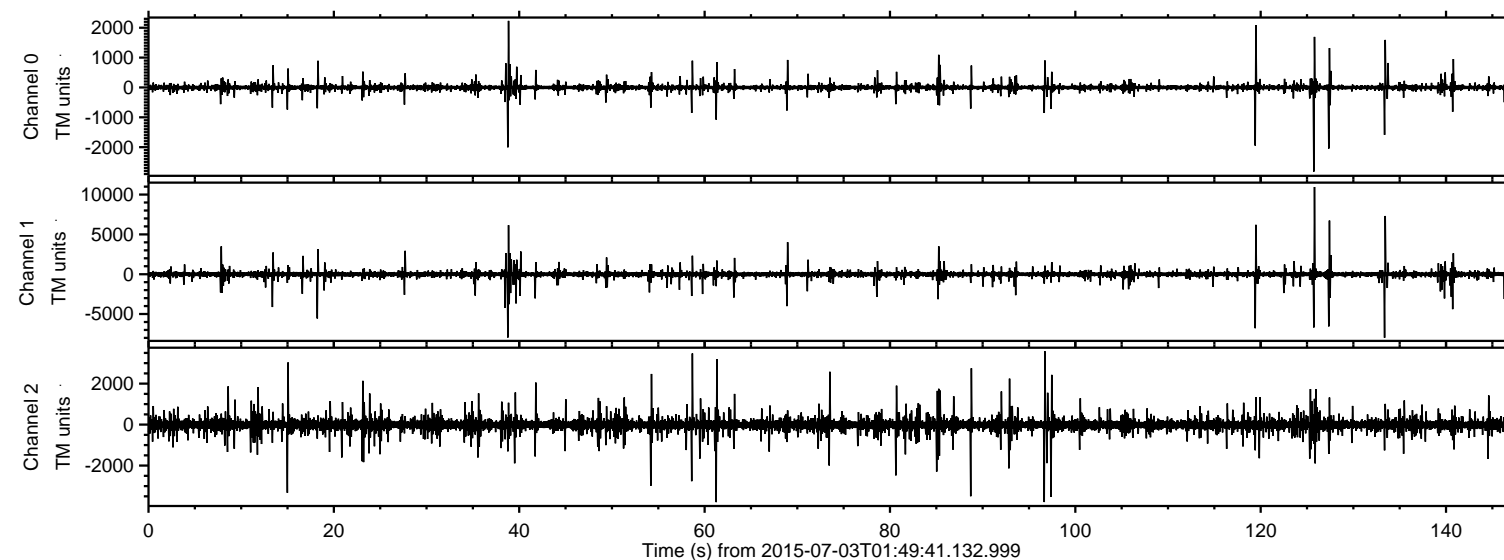


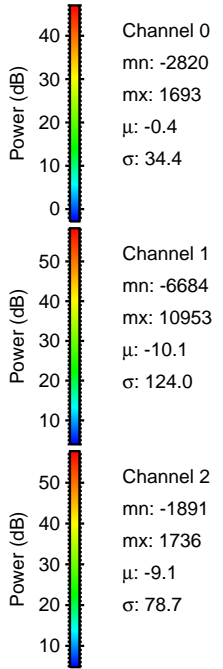
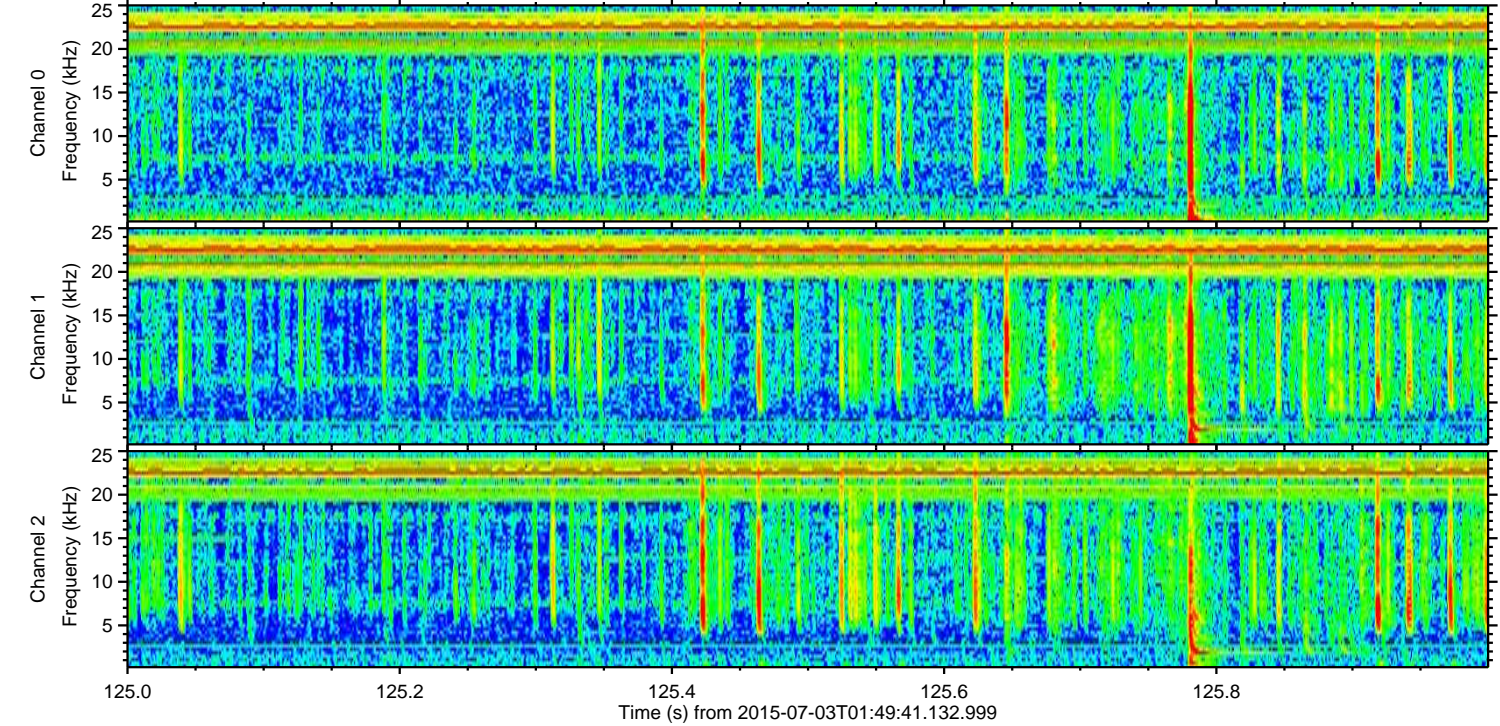
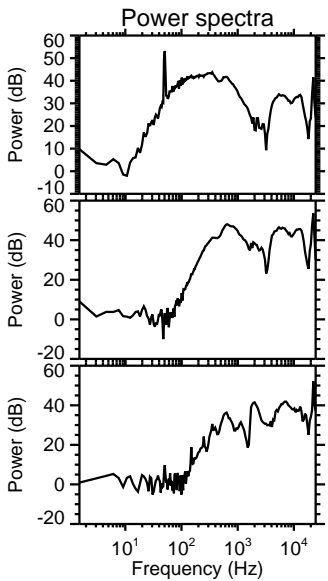
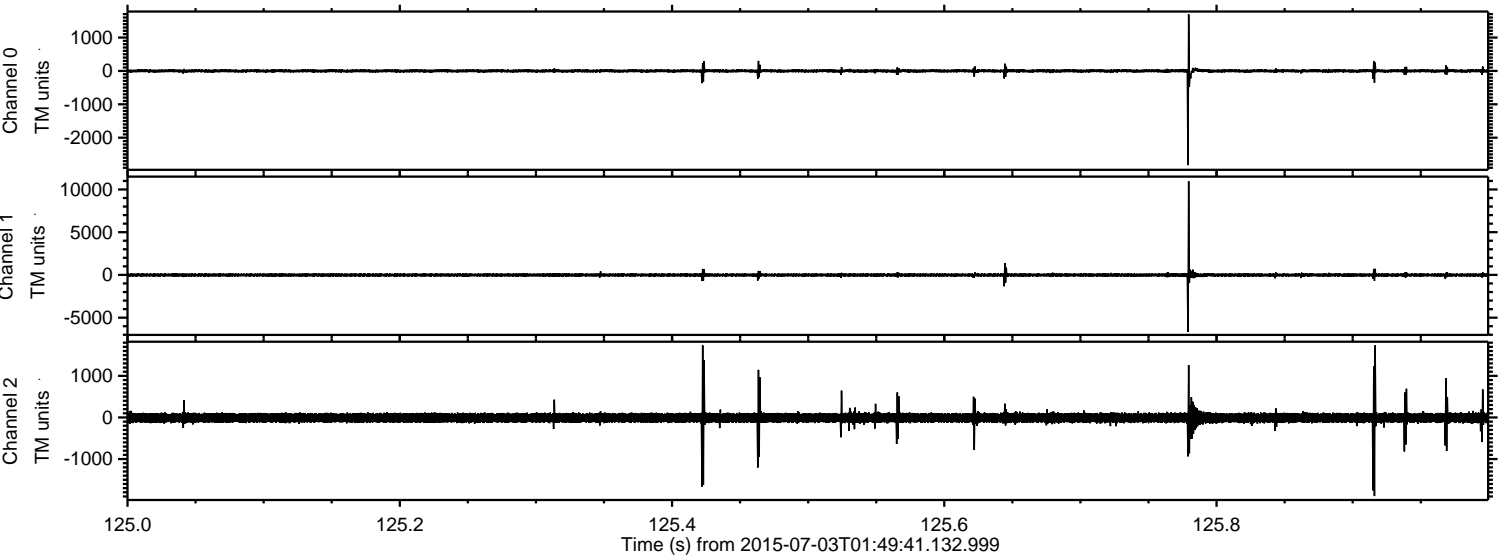
ELMAVAN 3D WAVEFORMS (Measured data sampled at 50 kHz) 51000 packets of 144 samples from 2015-07-03T01:49:41.132.999.

Processed Fri Jul 3 03:56:26 2015 by ELM ver.2012-10-06 from 001__elm20150703_014940__dat00.bin



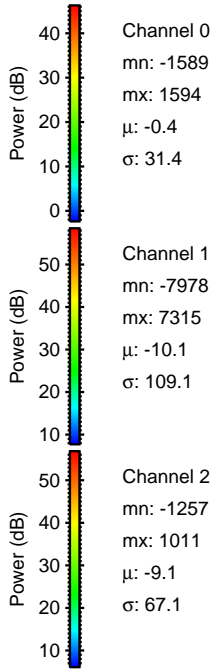
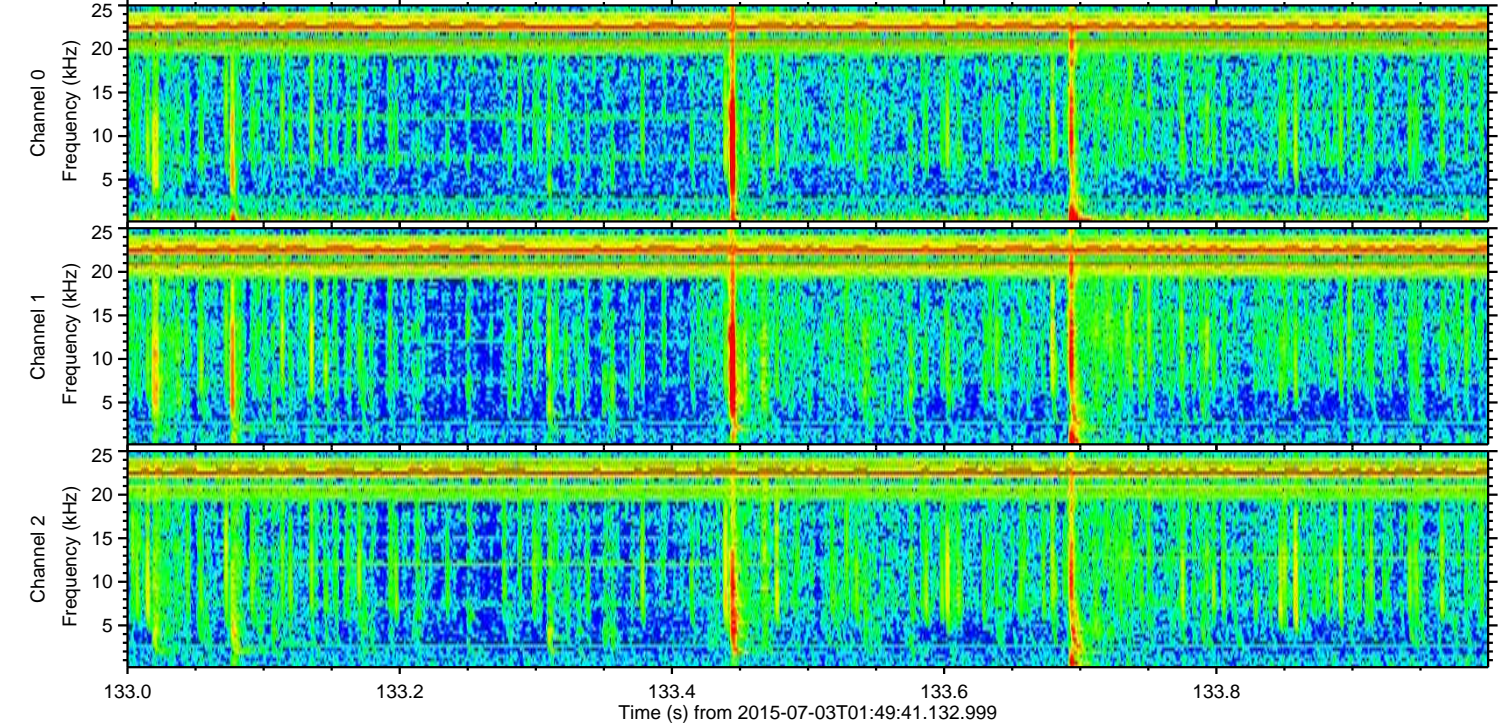
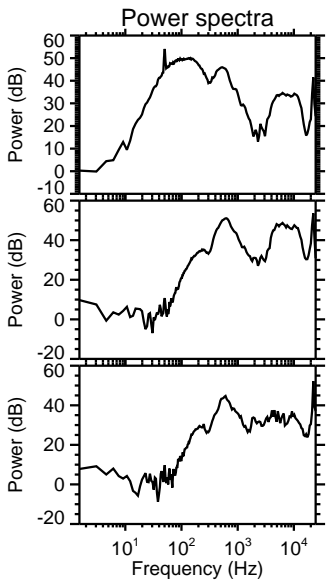
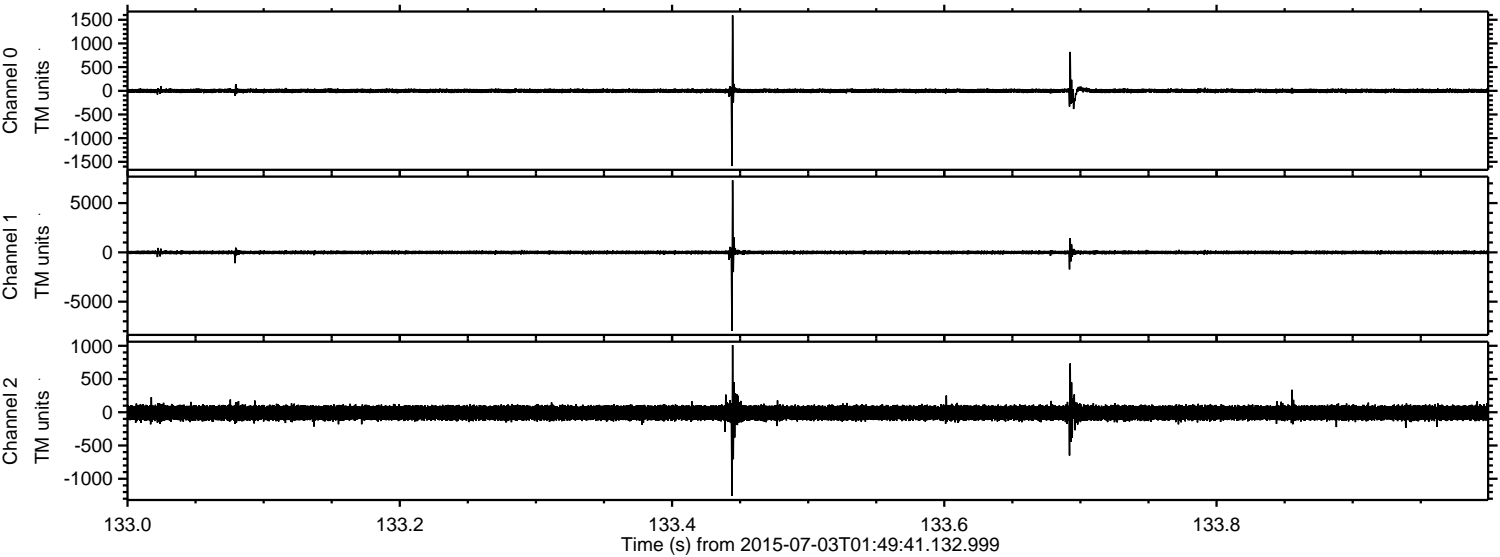
ELMAVAN 3D WAVEFORMS (Measured data sampled at 50 kHz) 51000 packets of 144 samples from 2015-07-03T01:49:41.132.999. Part 126/147

Processed Fri Jul 3 03:56:40 2015 by ELM ver.2012-10-06 from 001__elm20150703_014940__dat00.bin



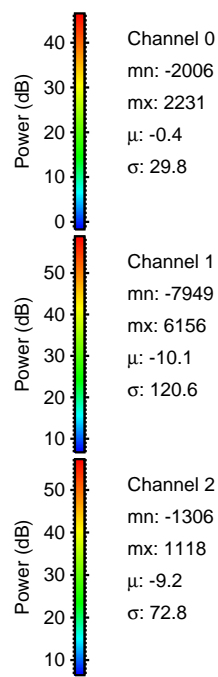
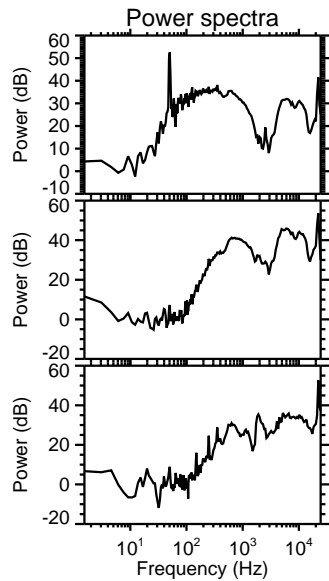
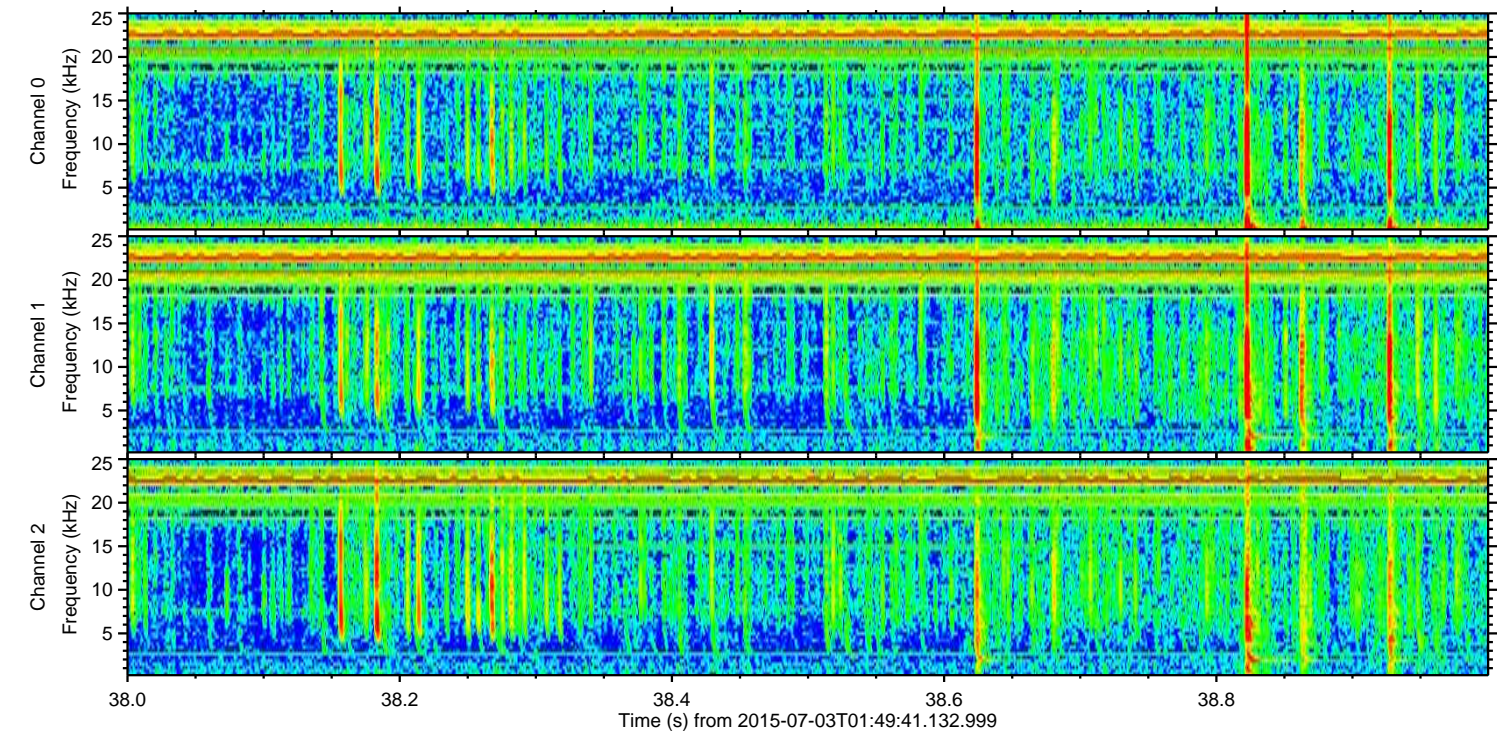
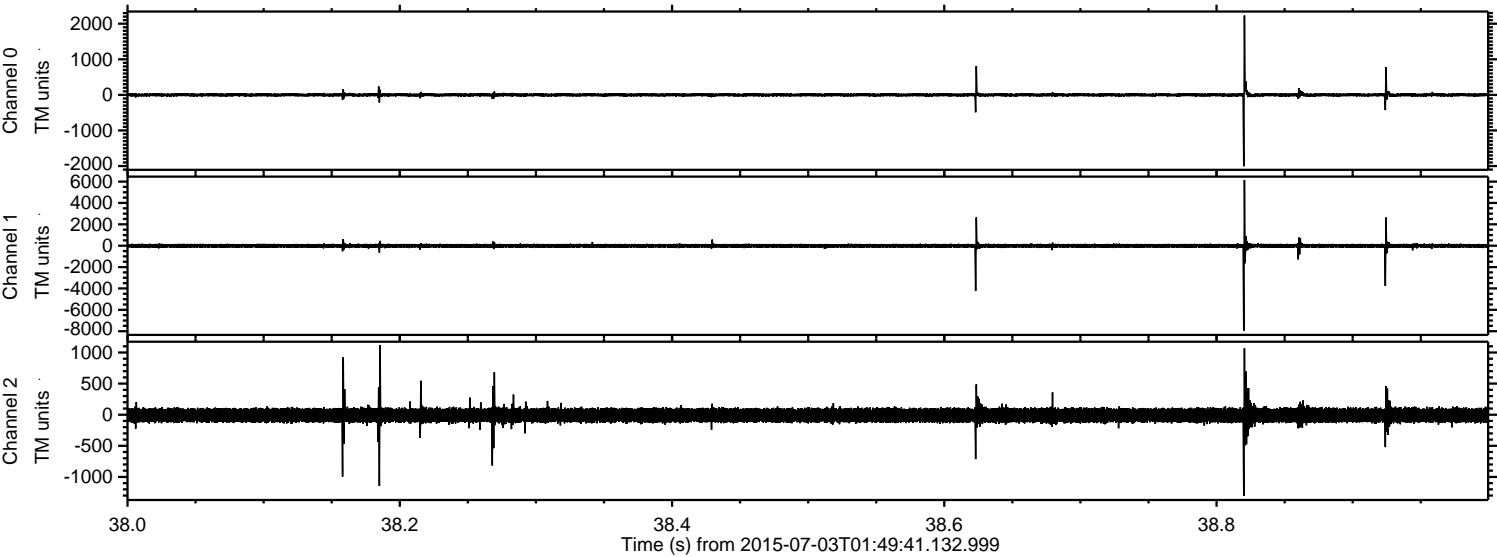
ELMAVAN 3D WAVEFORMS (Measured data sampled at 50 kHz) 51000 packets of 144 samples from 2015-07-03T01:49:41.132.999. Part 134/147

Processed Fri Jul 3 03:56:41 2015 by ELM ver.2012-10-06 from 001__elm20150703_014940__dat00.bin



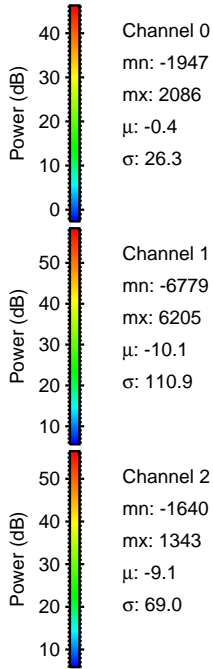
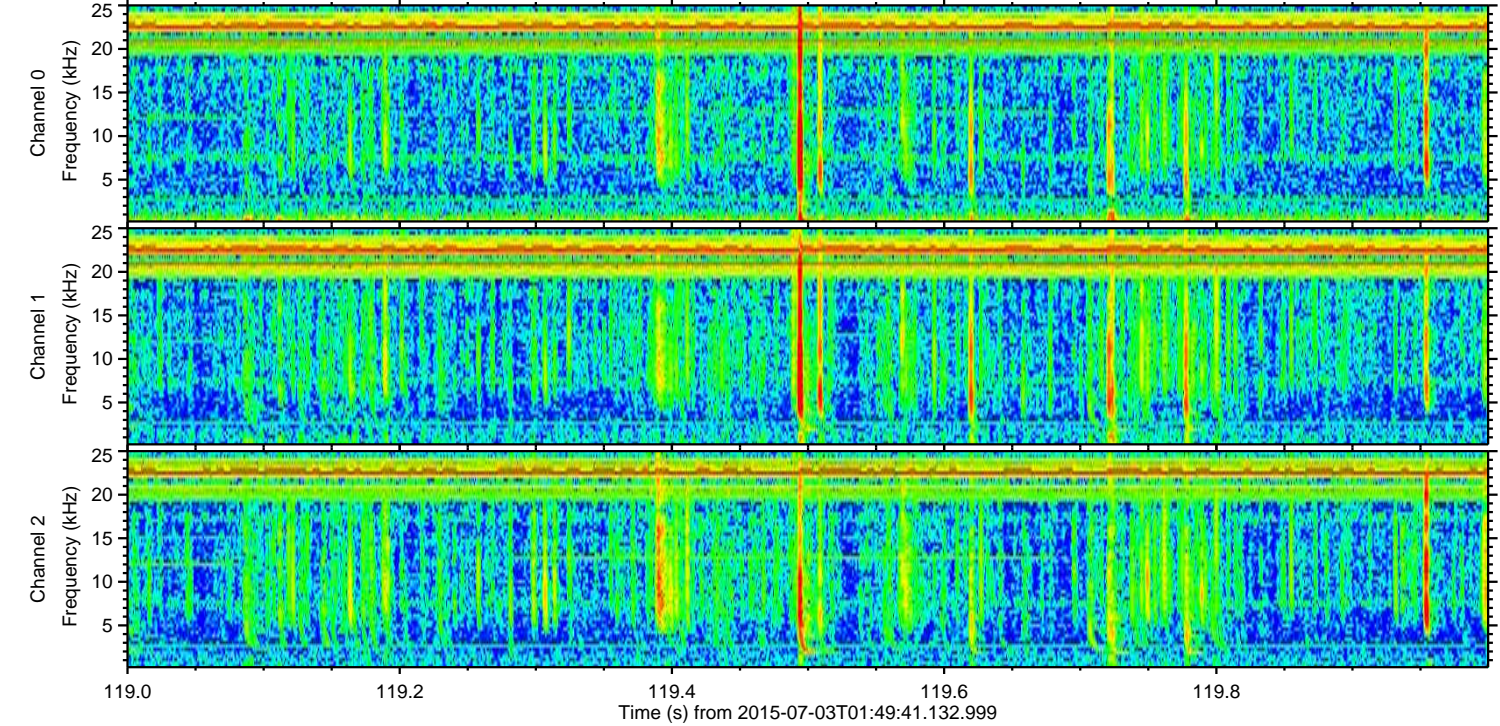
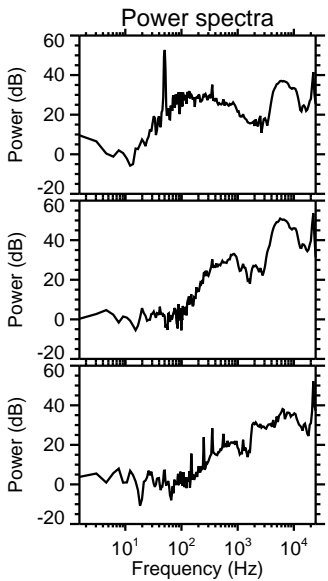
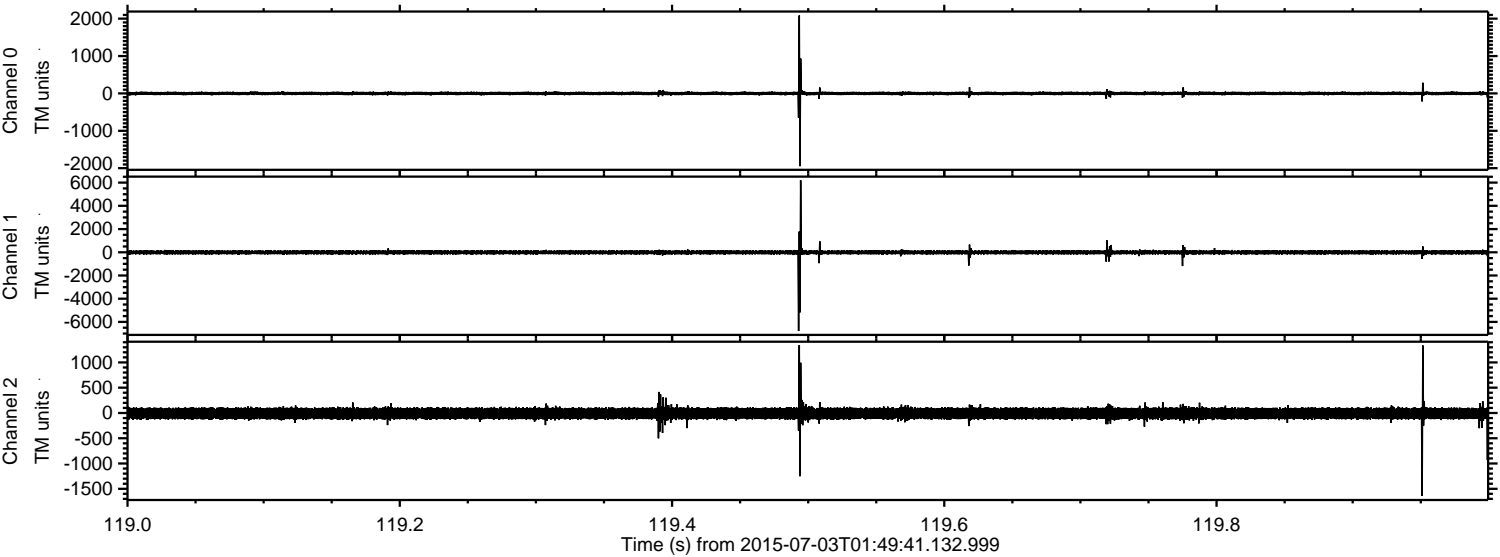
ELMAVAN 3D WAVEFORMS (Measured data sampled at 50 kHz) 51000 packets of 144 samples from 2015-07-03T01:49:41.132.999. Part 39/147

Processed Fri Jul 3 03:56:42 2015 by ELM ver.2012-10-06 from 001__elm20150703_014940__dat00.bin



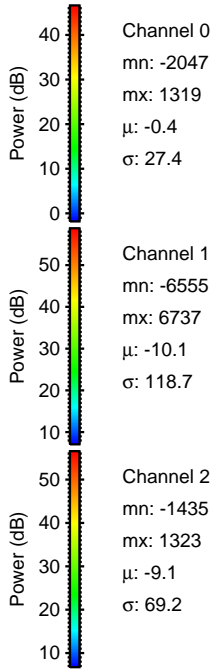
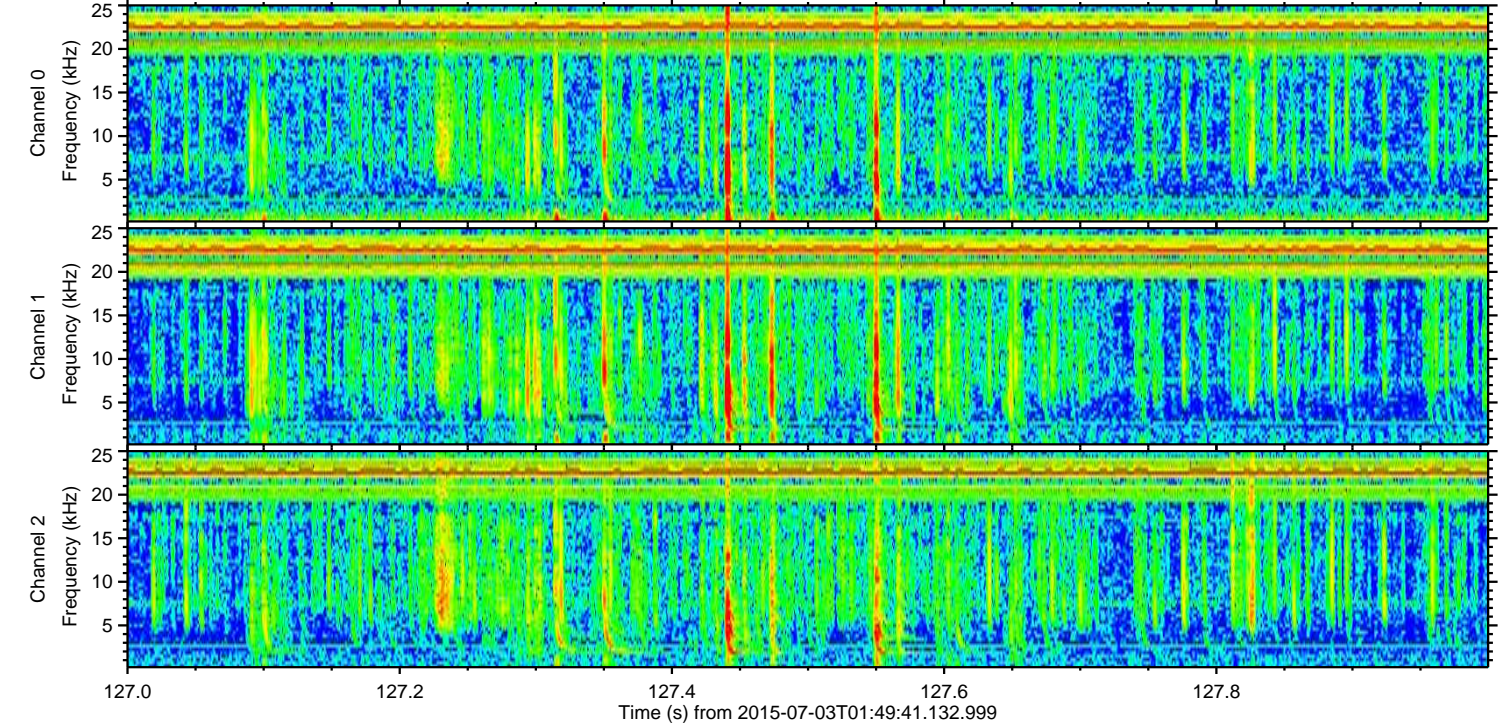
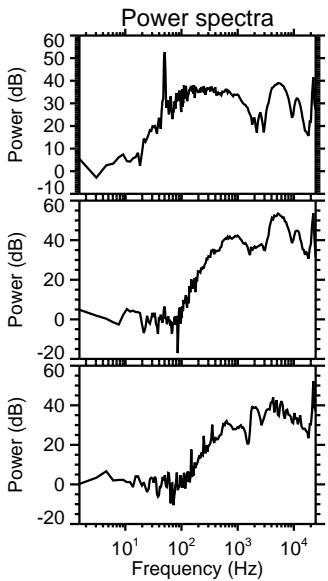
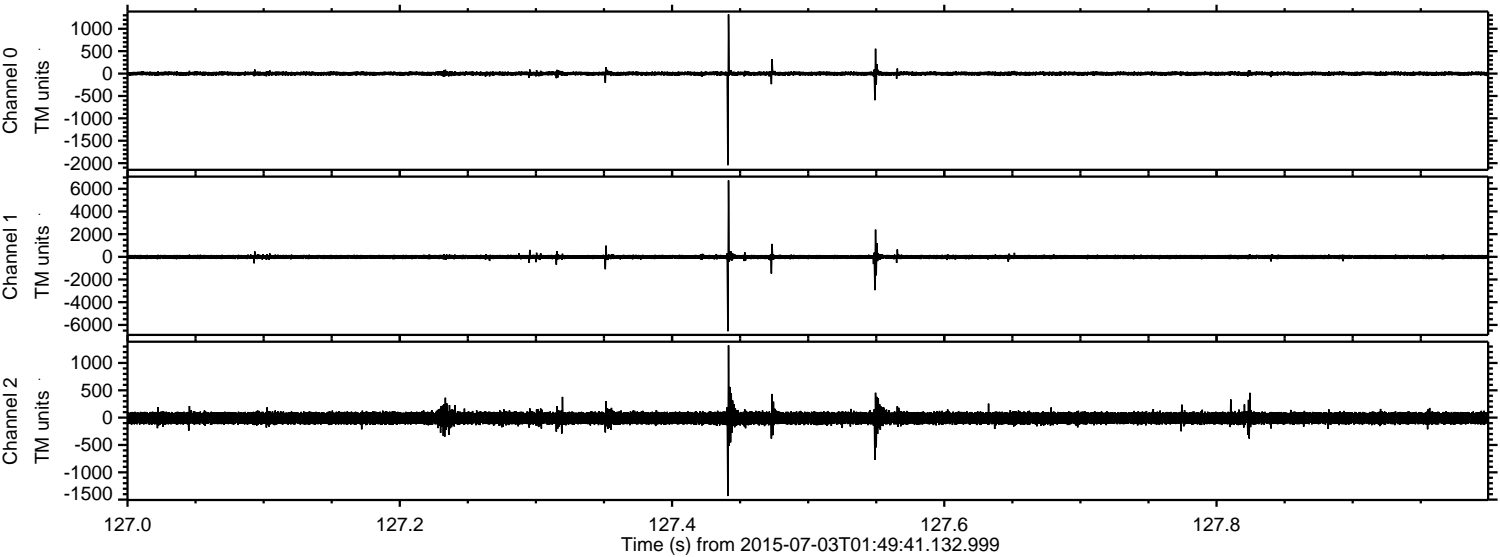
ELMAVAN 3D WAVEFORMS (Measured data sampled at 50 kHz) 51000 packets of 144 samples from 2015-07-03T01:49:41.132.999. Part 120/147

Processed Fri Jul 3 03:56:43 2015 by ELM ver.2012-10-06 from 001__elm20150703_014940__dat00.bin



ELMAVAN 3D WAVEFORMS (Measured data sampled at 50 kHz) 51000 packets of 144 samples from 2015-07-03T01:49:41.132.999. Part 128/147

Processed Fri Jul 3 03:56:44 2015 by ELM ver.2012-10-06 from 001__elm20150703_014940__dat00.bin

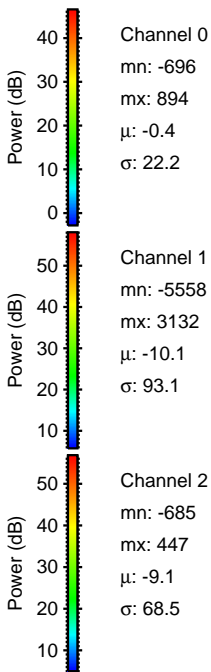
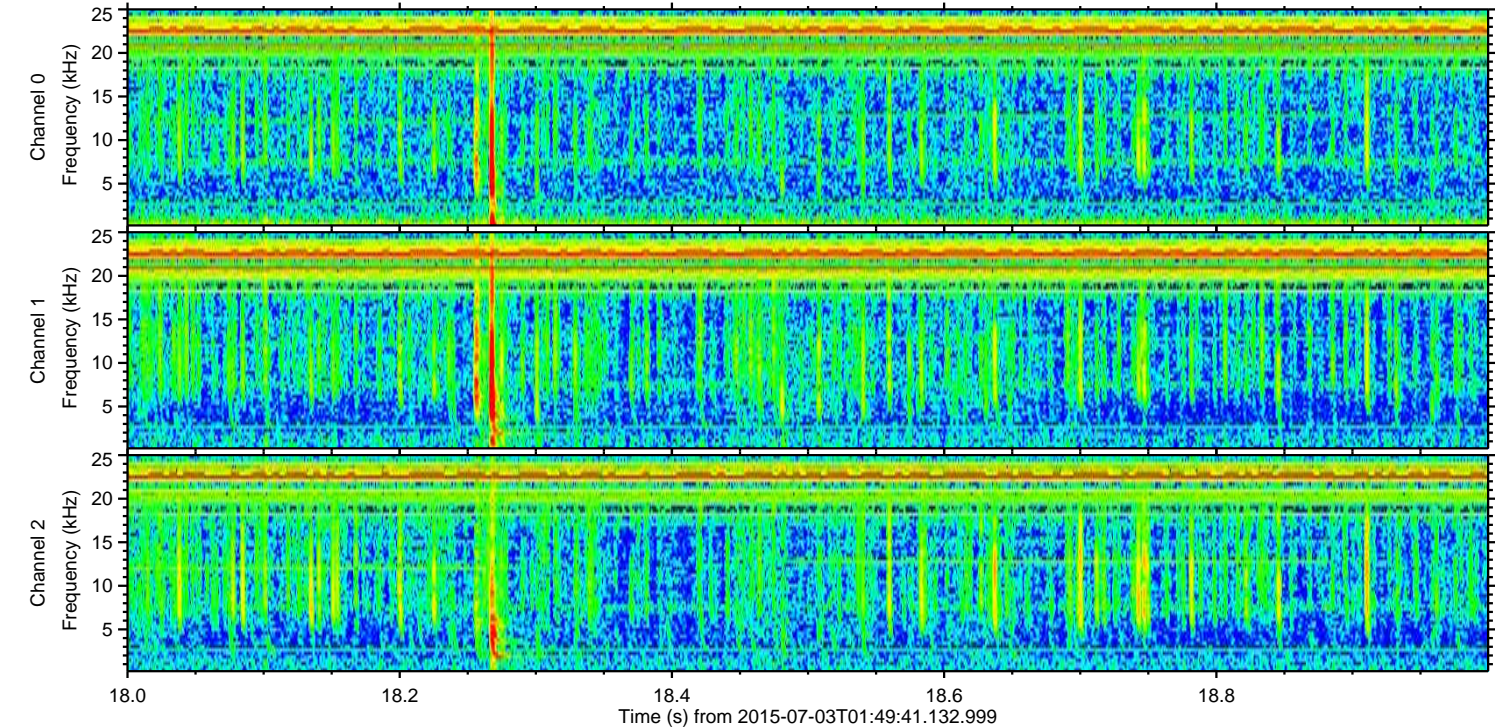
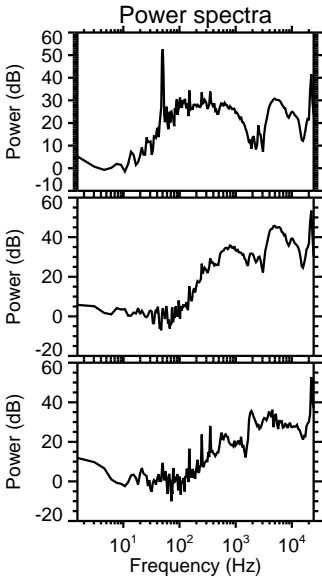
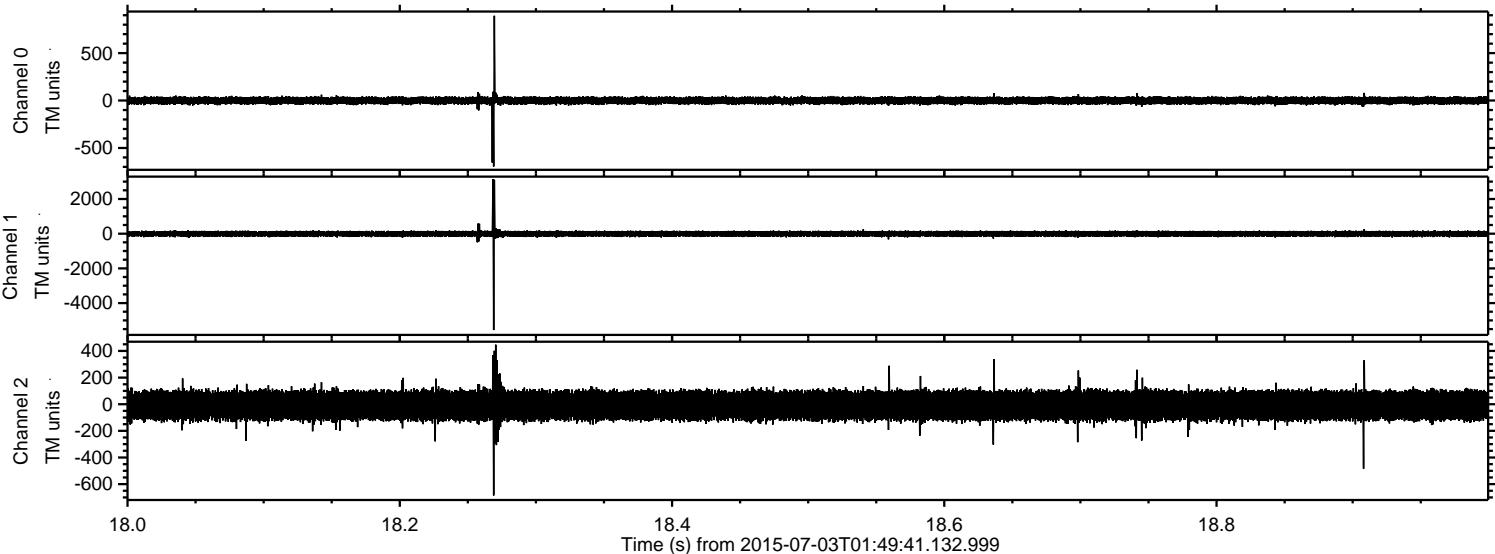


Channel 0
mn: -2047
mx: 1319
 μ : -0.4
 σ : 27.4

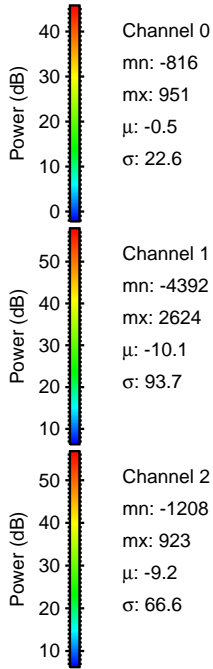
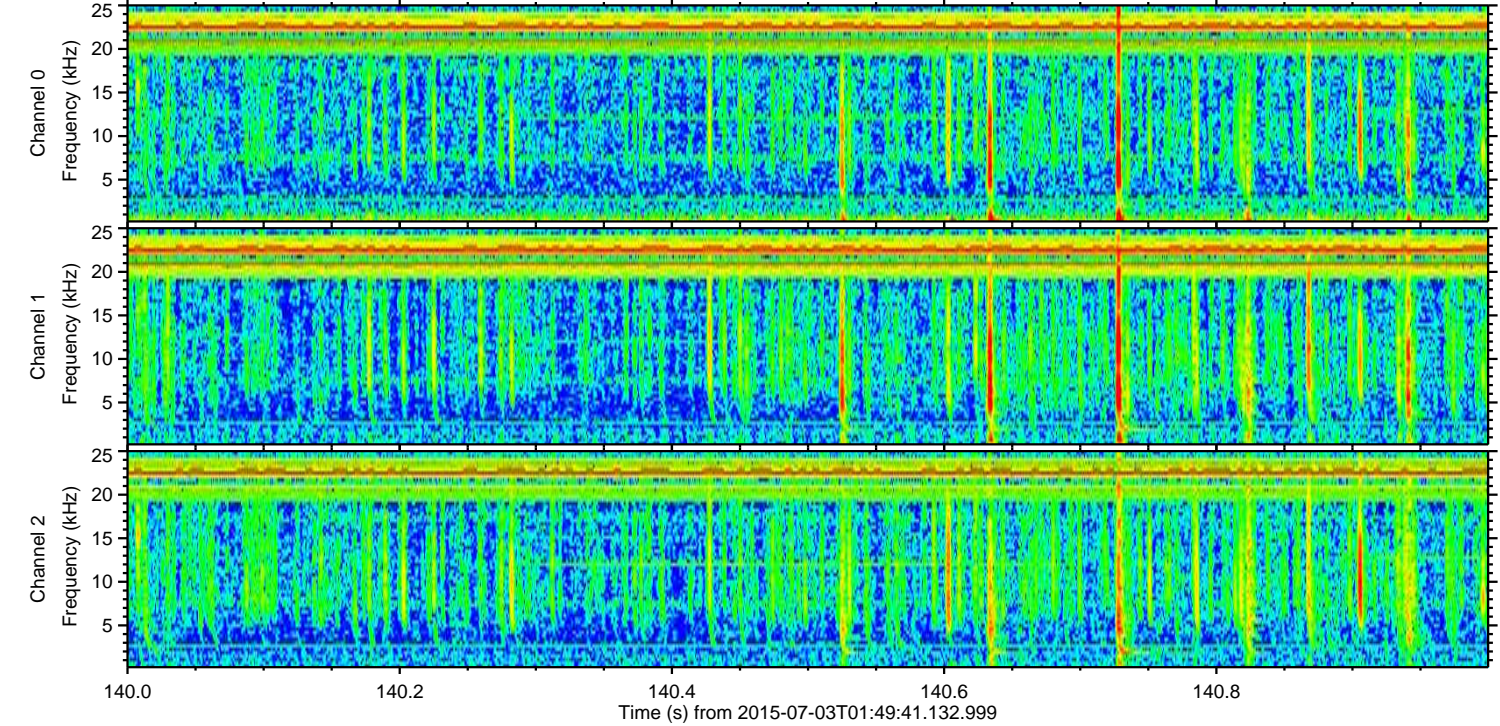
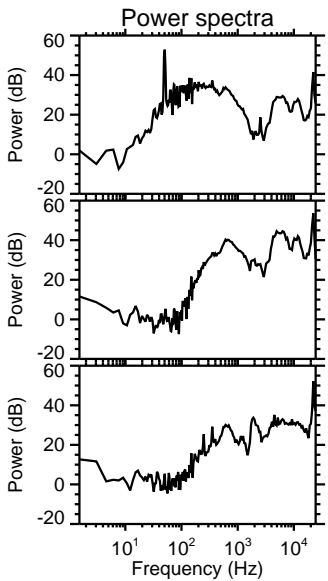
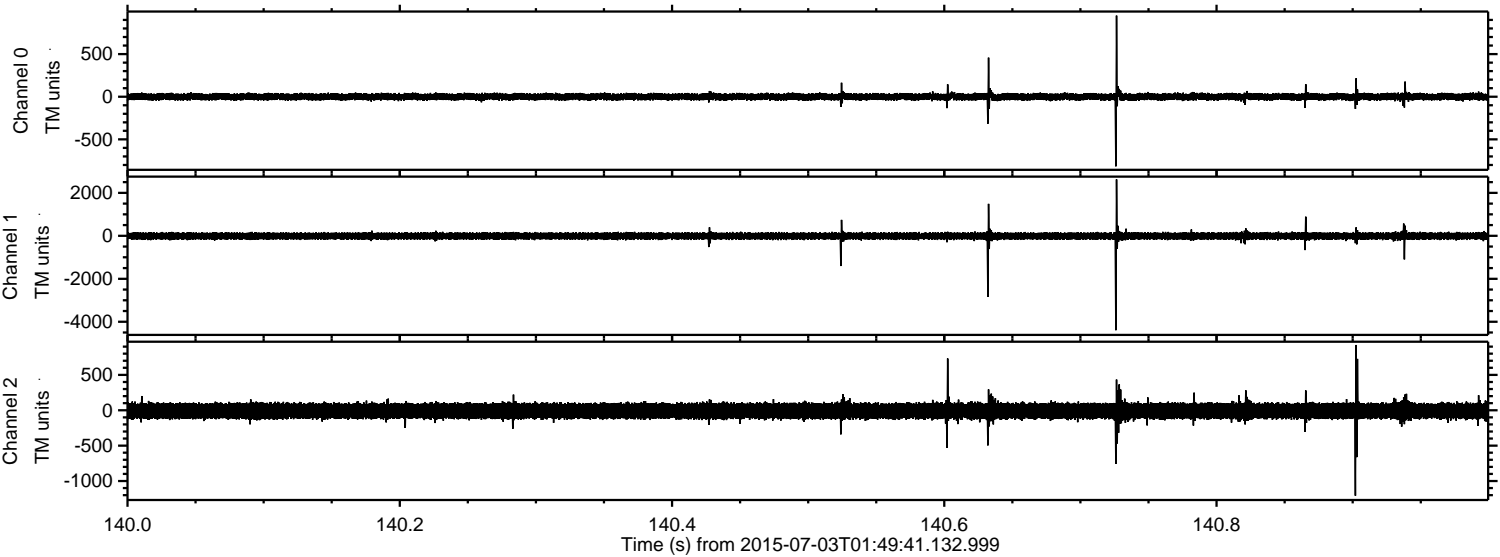
Channel 1
mn: -6555
mx: 6737
 μ : -10.1
 σ : 118.7

Channel 2
mn: -1435
mx: 1323
 μ : -9.1
 σ : 69.2

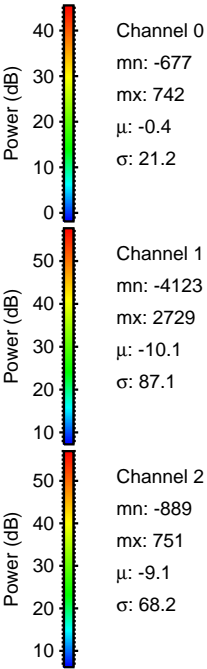
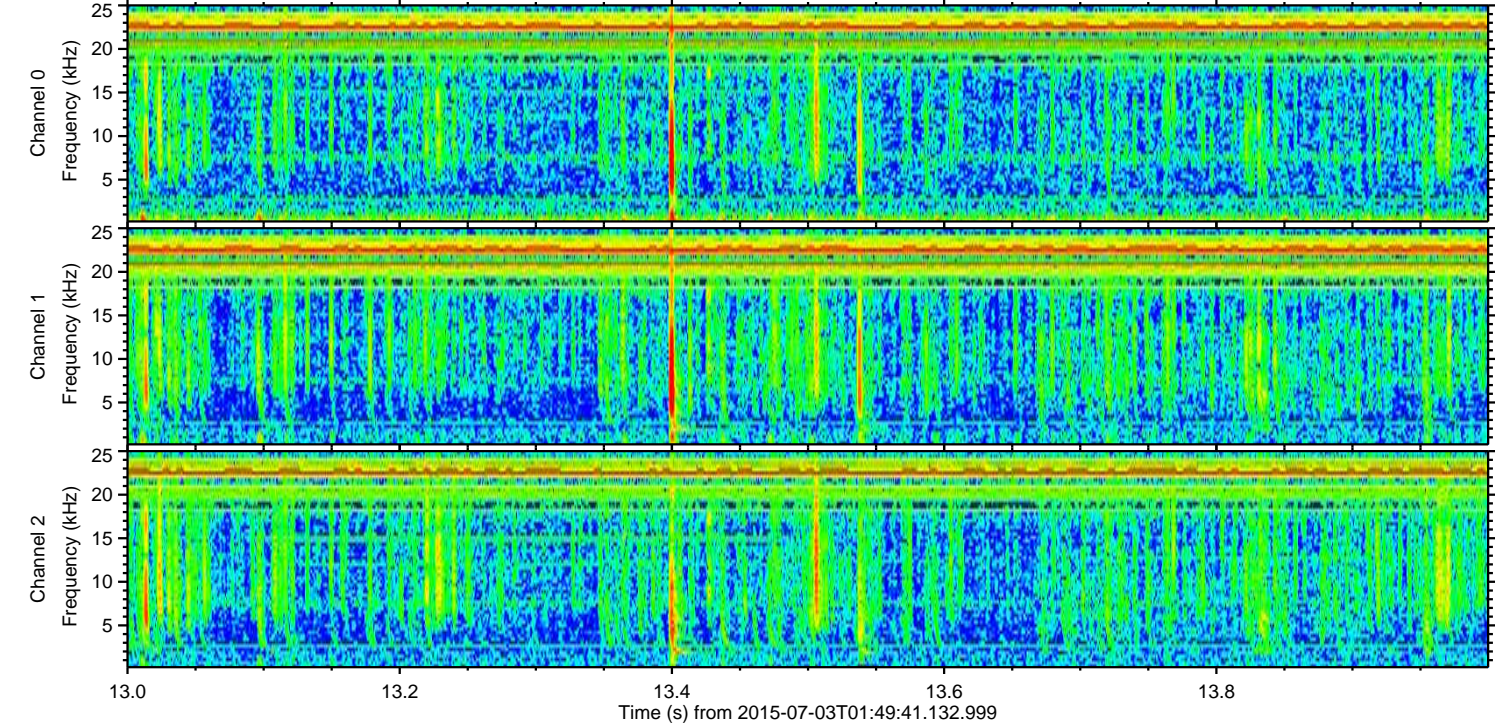
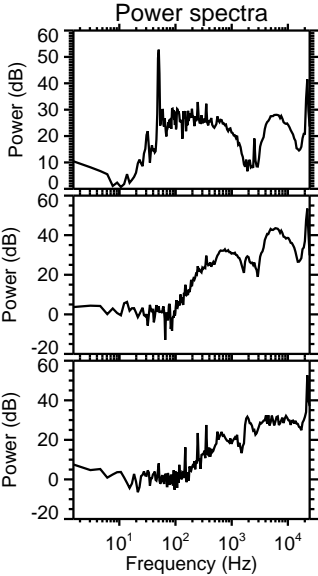
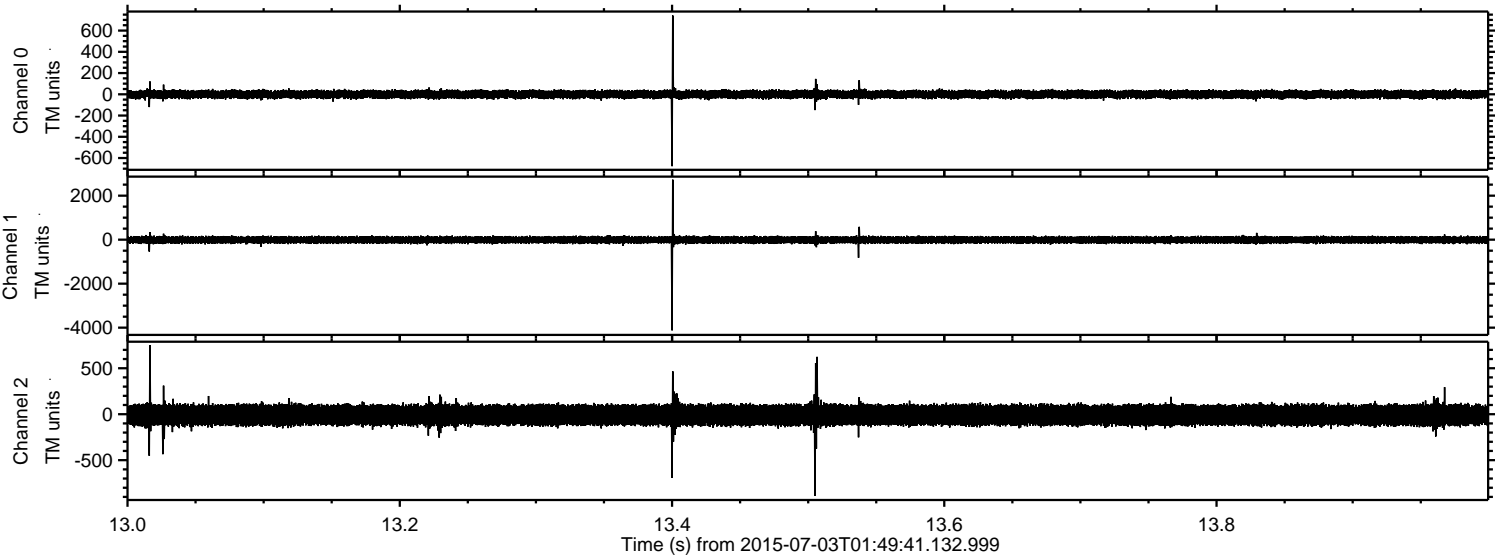
Processed Fri Jul 3 03:56:45 2015 by ELM ver.2012-10-06 from 001__elm20150703_014940__dat00.bin



Processed Fri Jul 3 03:56:46 2015 by ELM ver.2012-10-06 from 001__elm20150703_014940__dat00.bin



Processed Fri Jul 3 03:56:47 2015 by ELM ver.2012-10-06 from 001__elm20150703_014940__dat00.bin

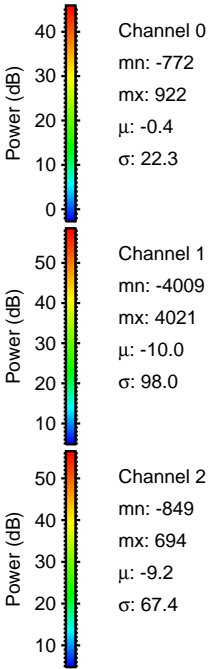
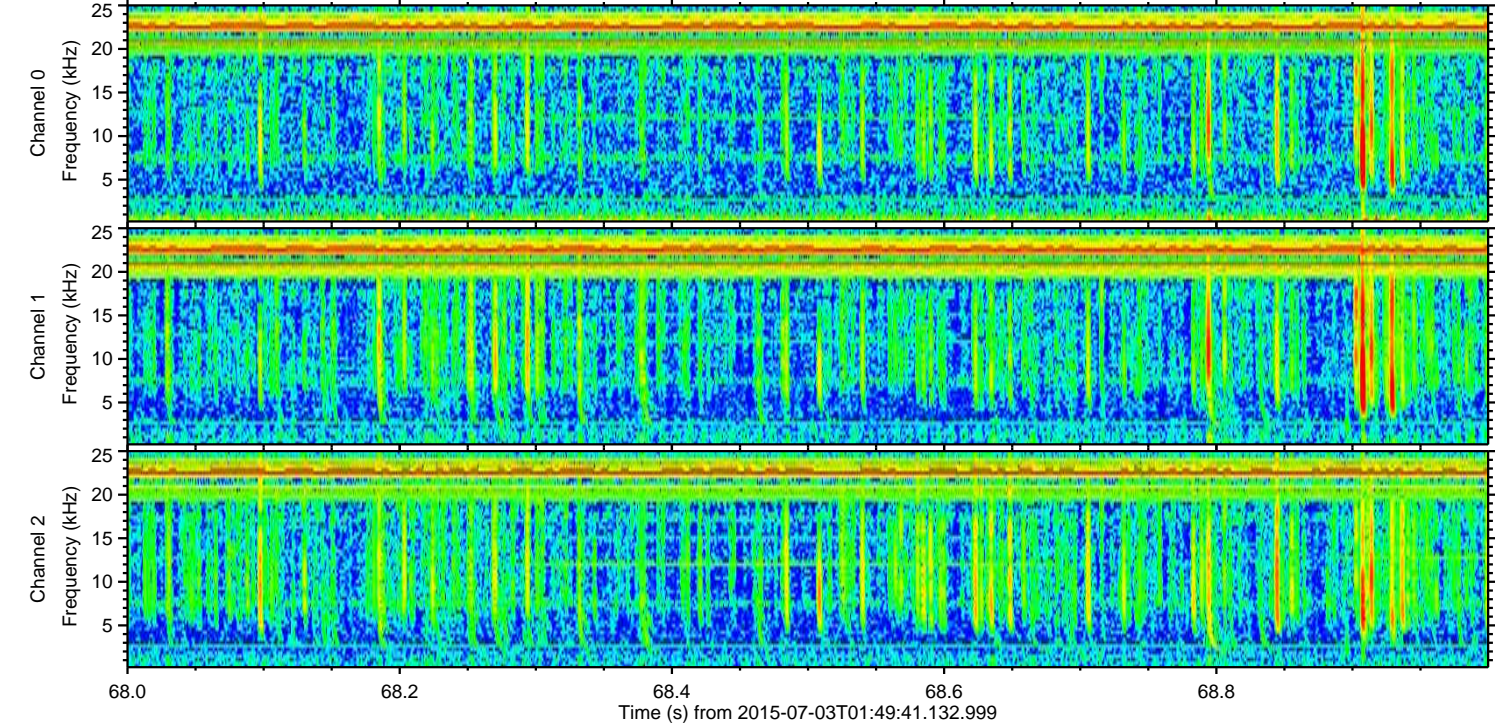
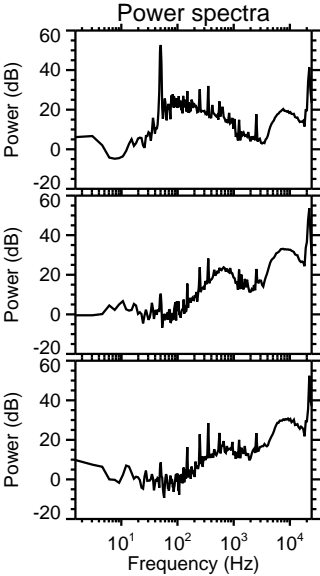
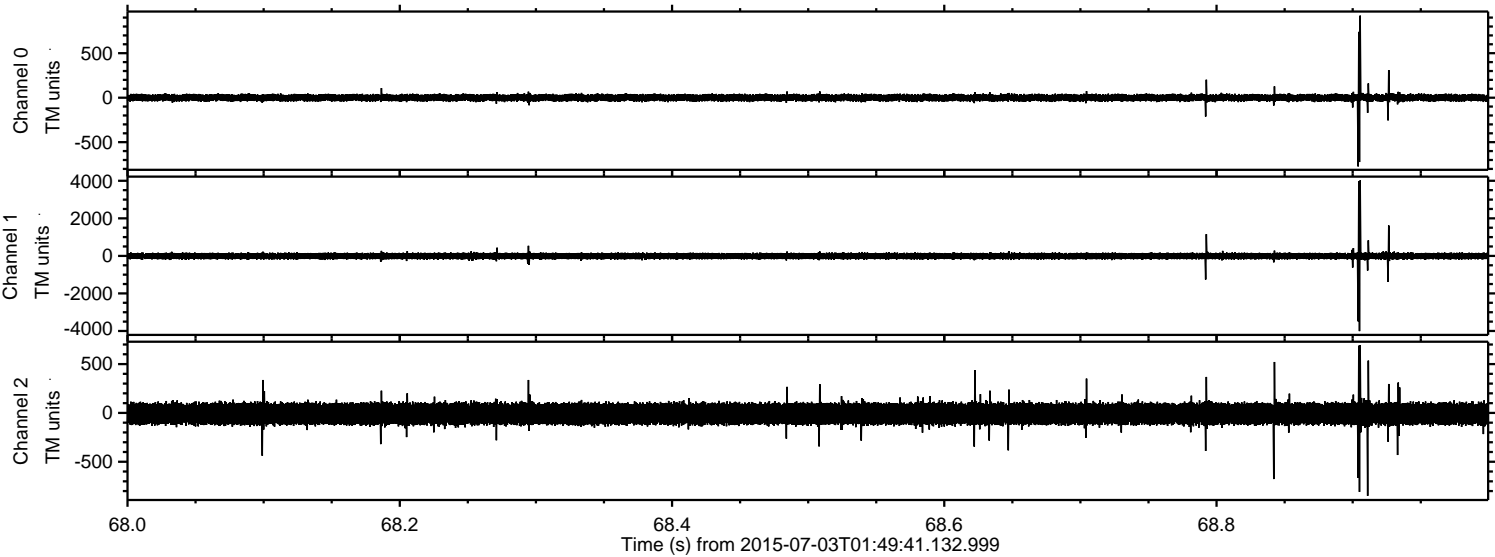


Channel 0
mn: -677
mx: 742
 μ : -0.4
 σ : 21.2

Channel 1
mn: -4123
mx: 2729
 μ : -10.1
 σ : 87.1

Channel 2
mn: -889
mx: 751
 μ : -9.1
 σ : 68.2

Processed Fri Jul 3 03:56:48 2015 by ELM ver.2012-10-06 from 001__elm20150703_014940__dat00.bin



Processed Fri Jul 3 03:56:50 2015 by ELM ver.2012-10-06 from 001__elm20150703_014940__dat00.bin

