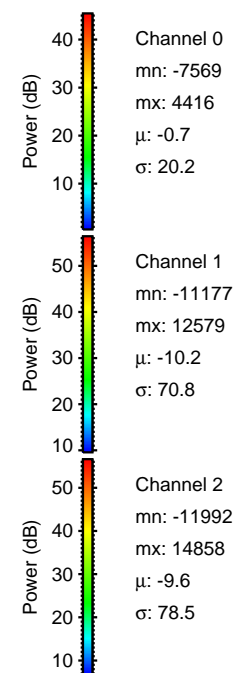
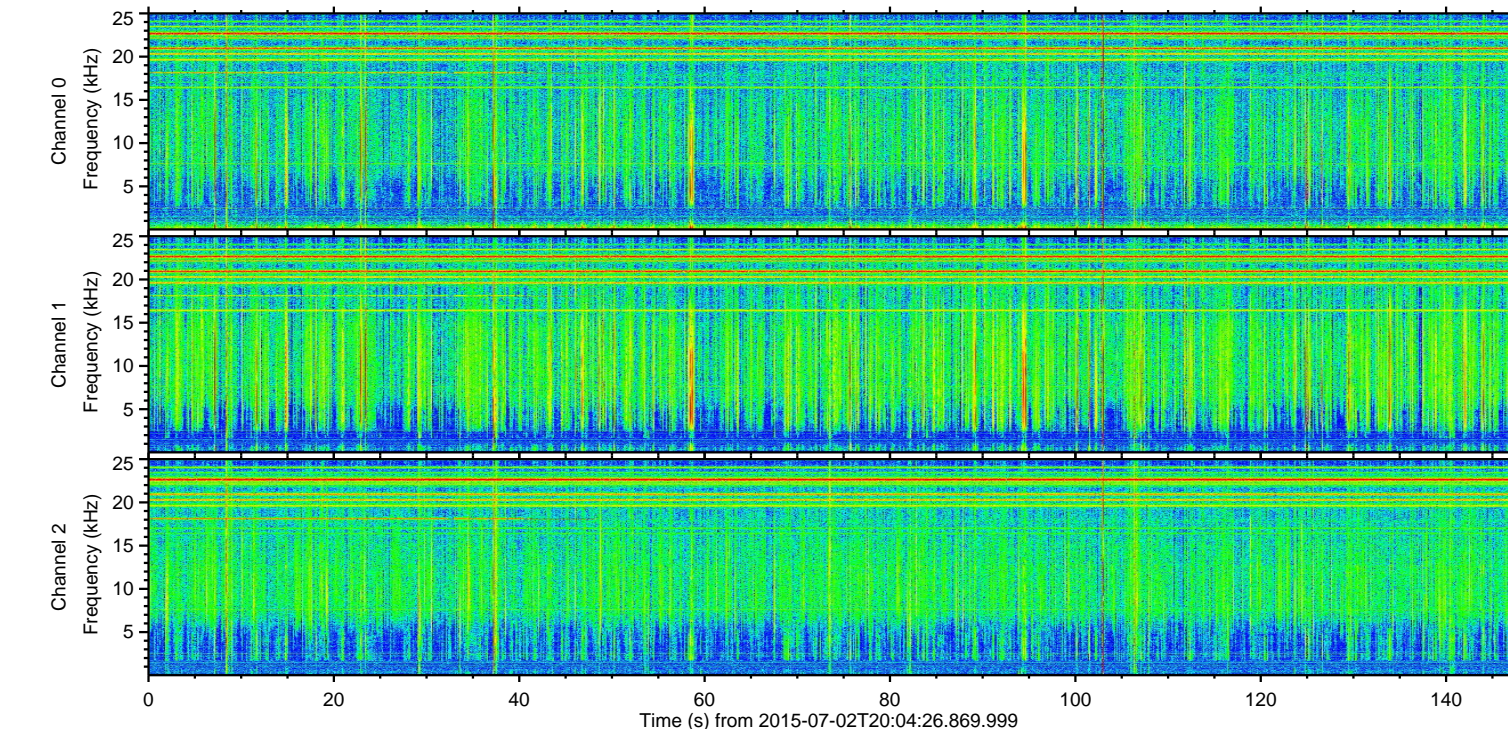
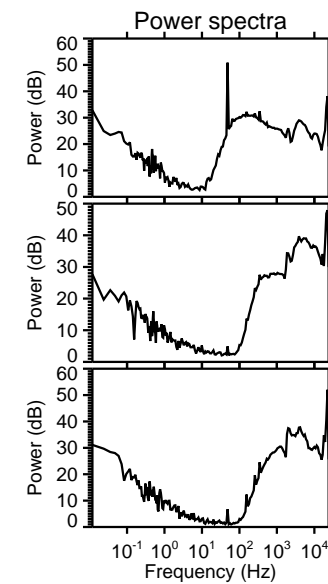
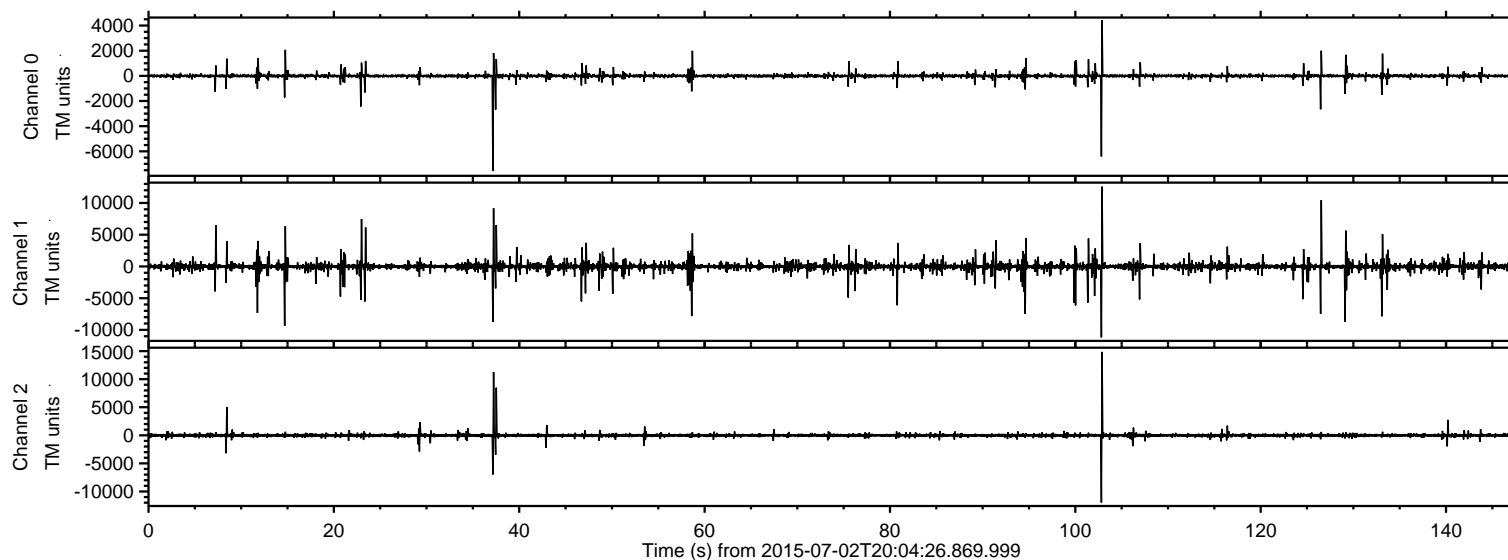


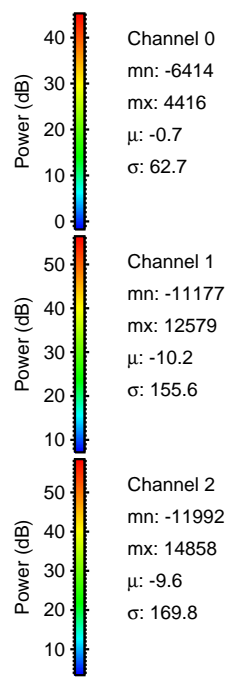
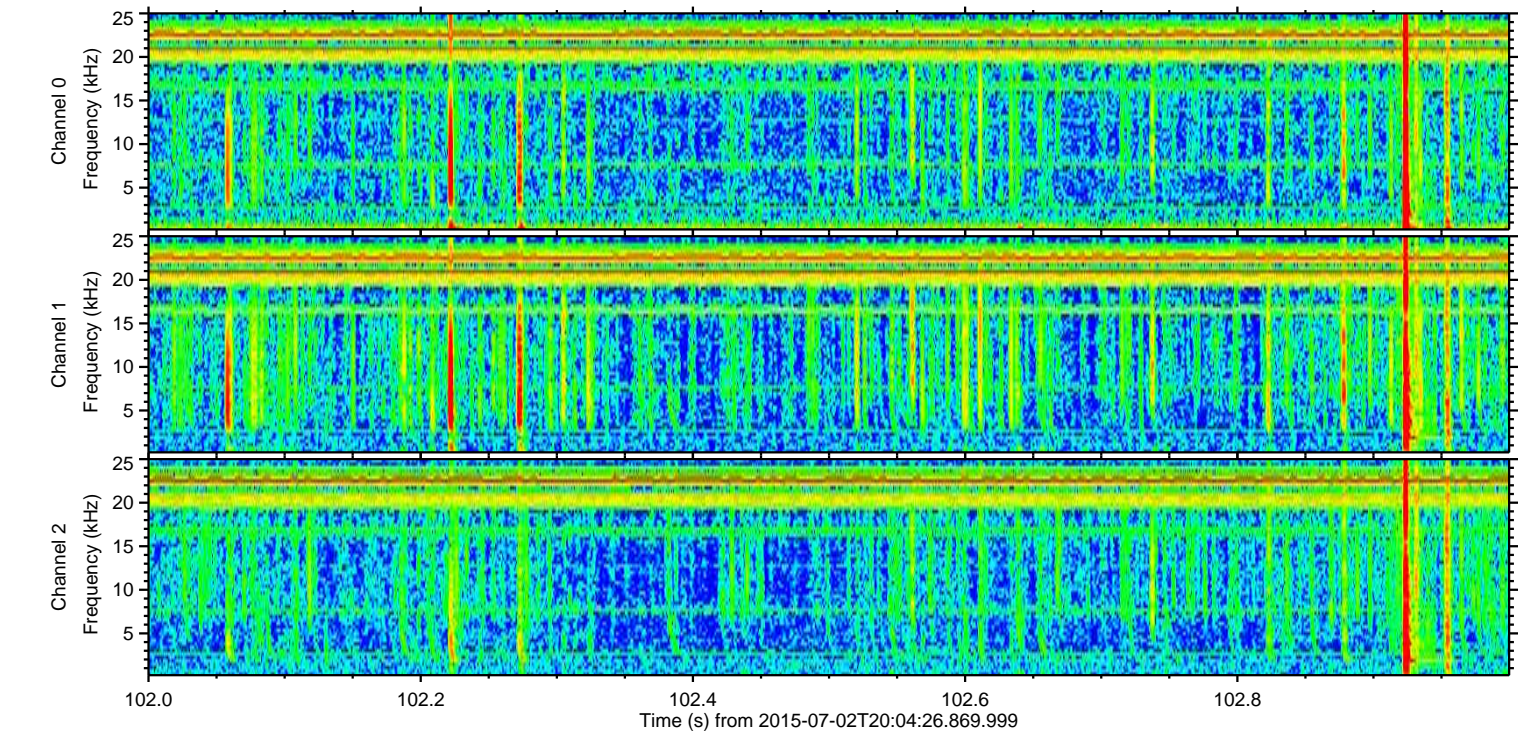
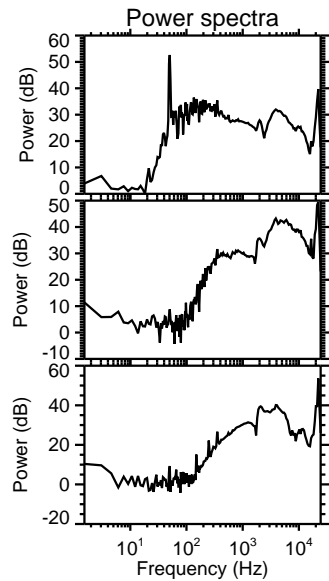
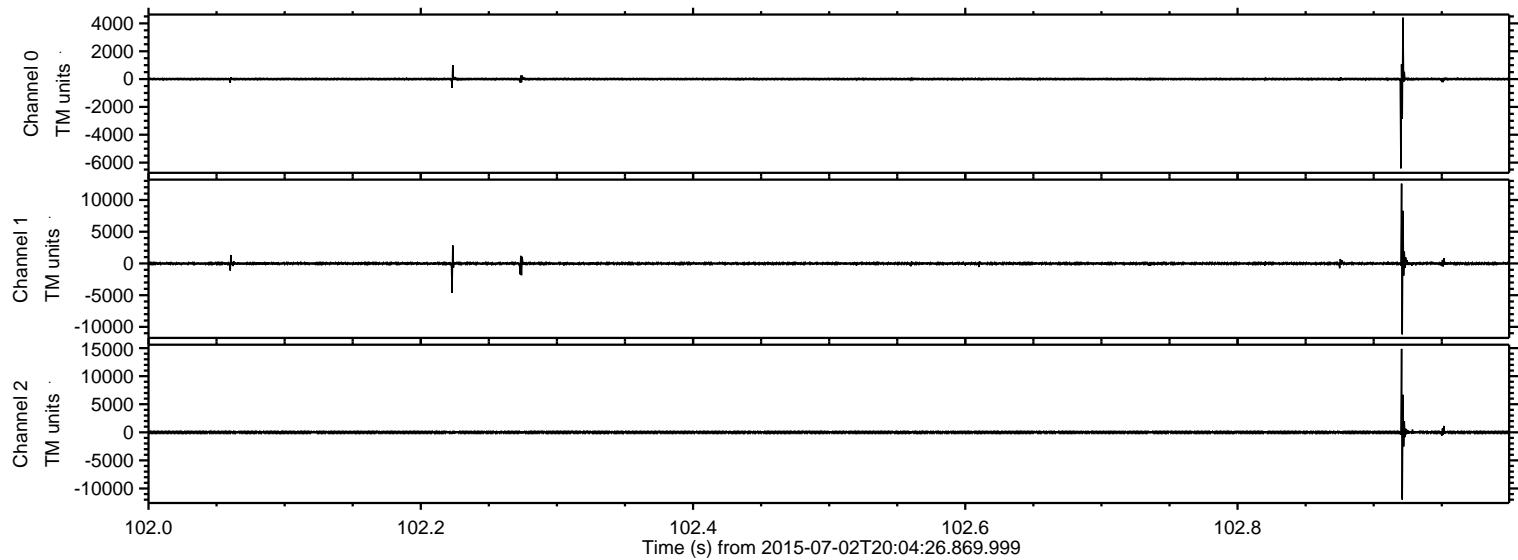
ELMAVAN 3D WAVEFORMS (Measured data sampled at 50 kHz) 51000 packets of 144 samples from 2015-07-02T20:04:26.869.999.

Processed Thu Jul 2 22:11:09 2015 by ELM ver.2012-10-06 from 001__elm20150702_200425__dat00.bin

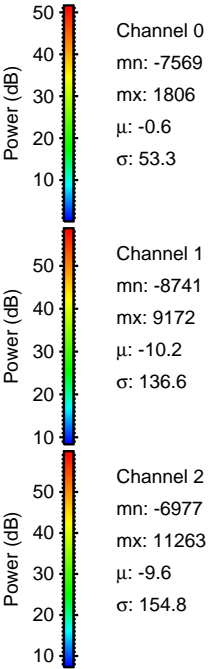
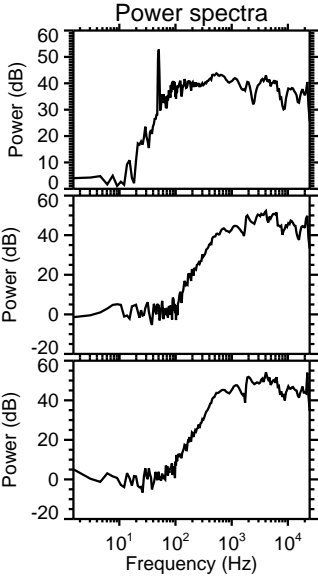
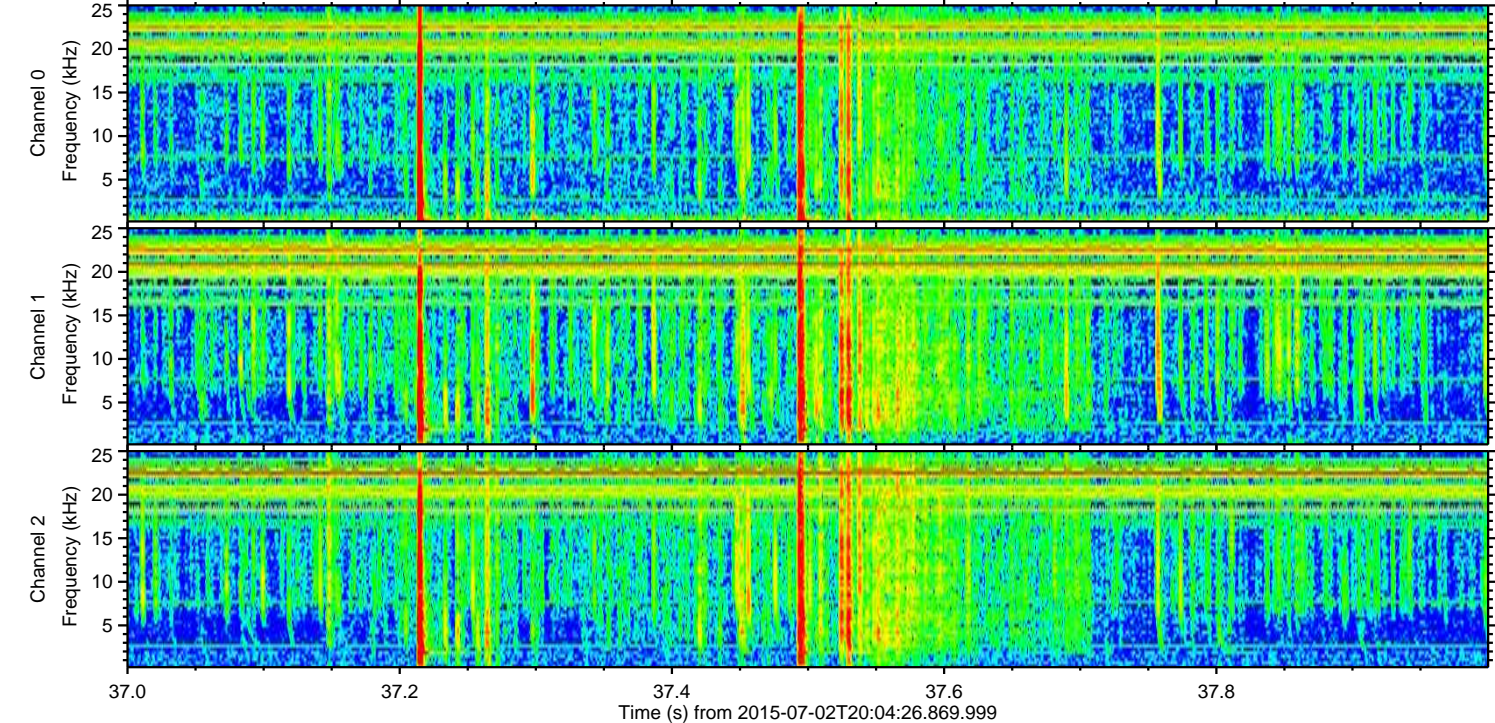
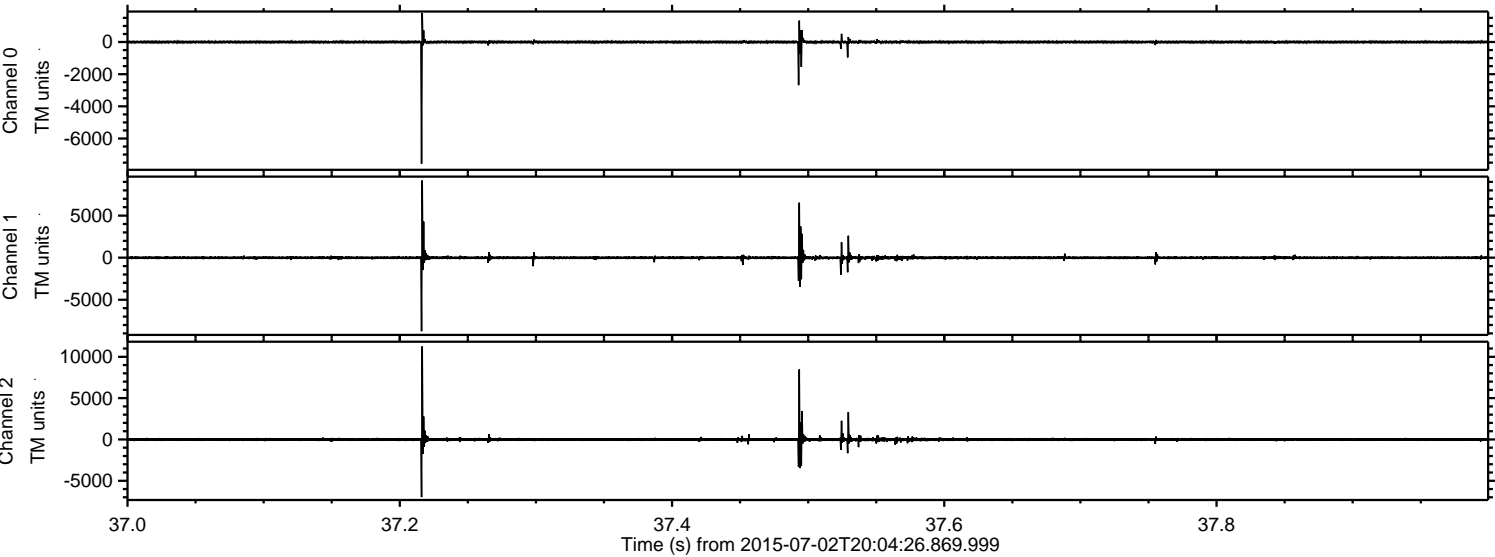


ELMAVAN 3D WAVEFORMS (Measured data sampled at 50 kHz) 51000 packets of 144 samples from 2015-07-02T20:04:26.869.999. Part 103/147

Processed Thu Jul 2 22:11:24 2015 by ELM ver.2012-10-06 from 001__elm20150702_200425__dat00.bin

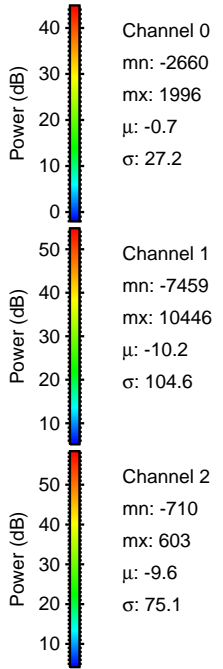
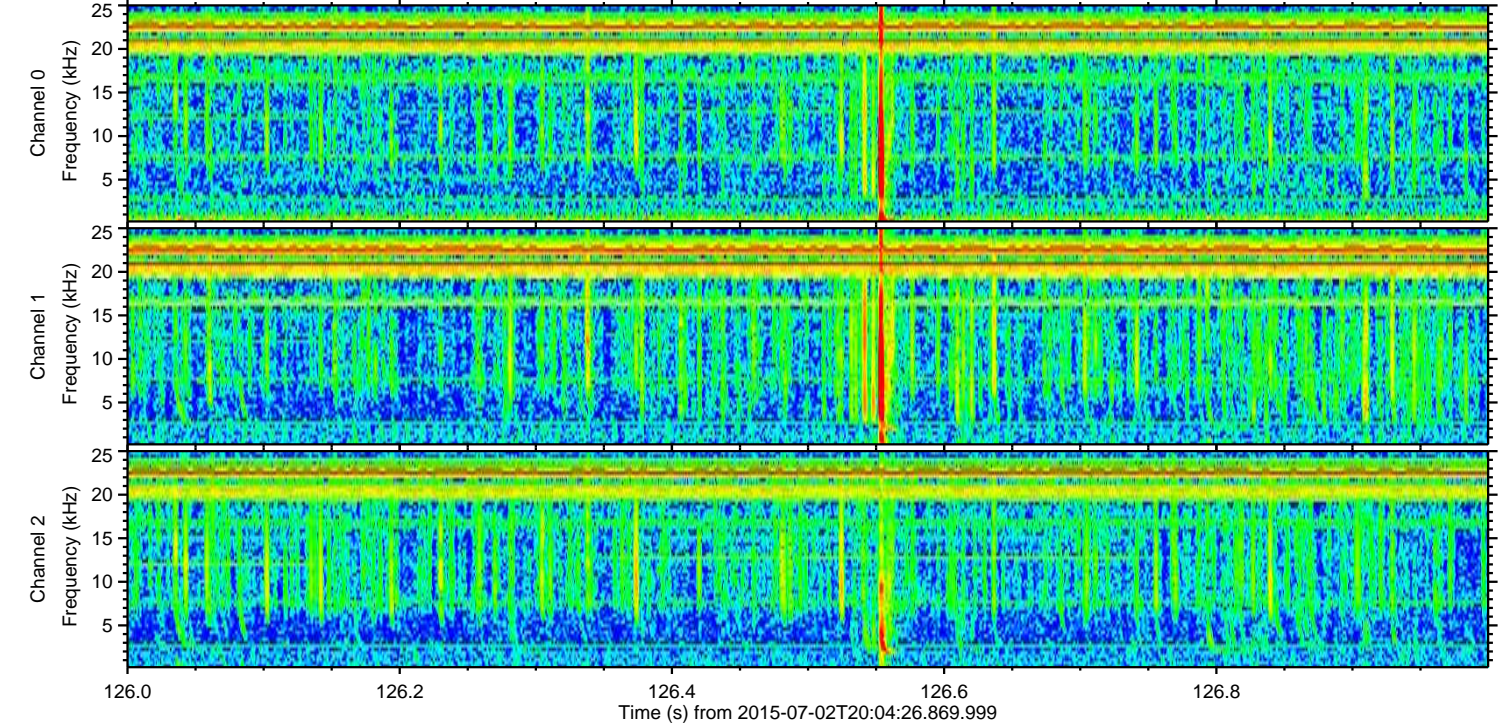
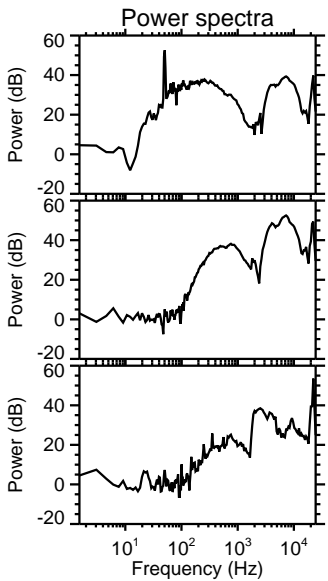
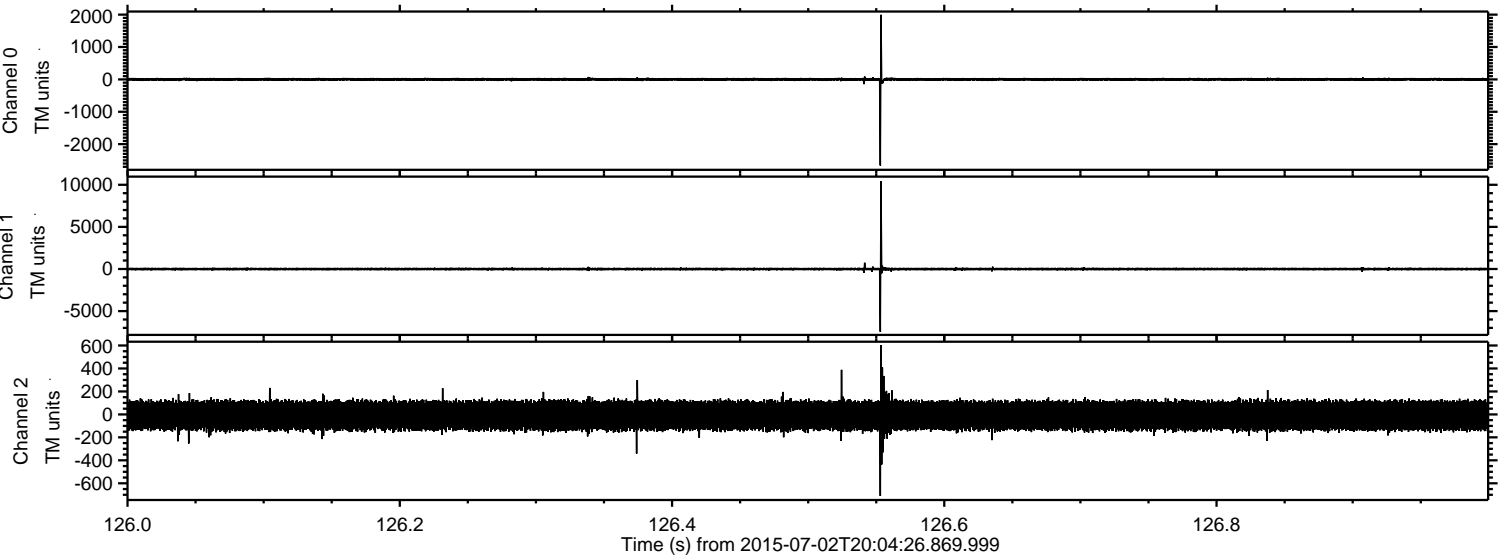


Processed Thu Jul 2 22:11:25 2015 by ELM ver.2012-10-06 from 001__elm20150702_200425__dat00.bin

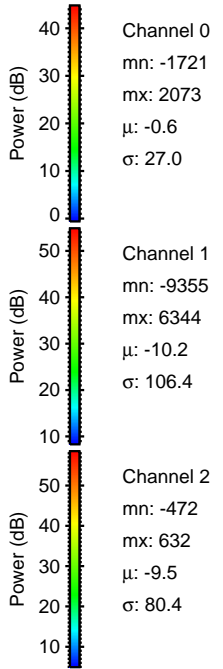
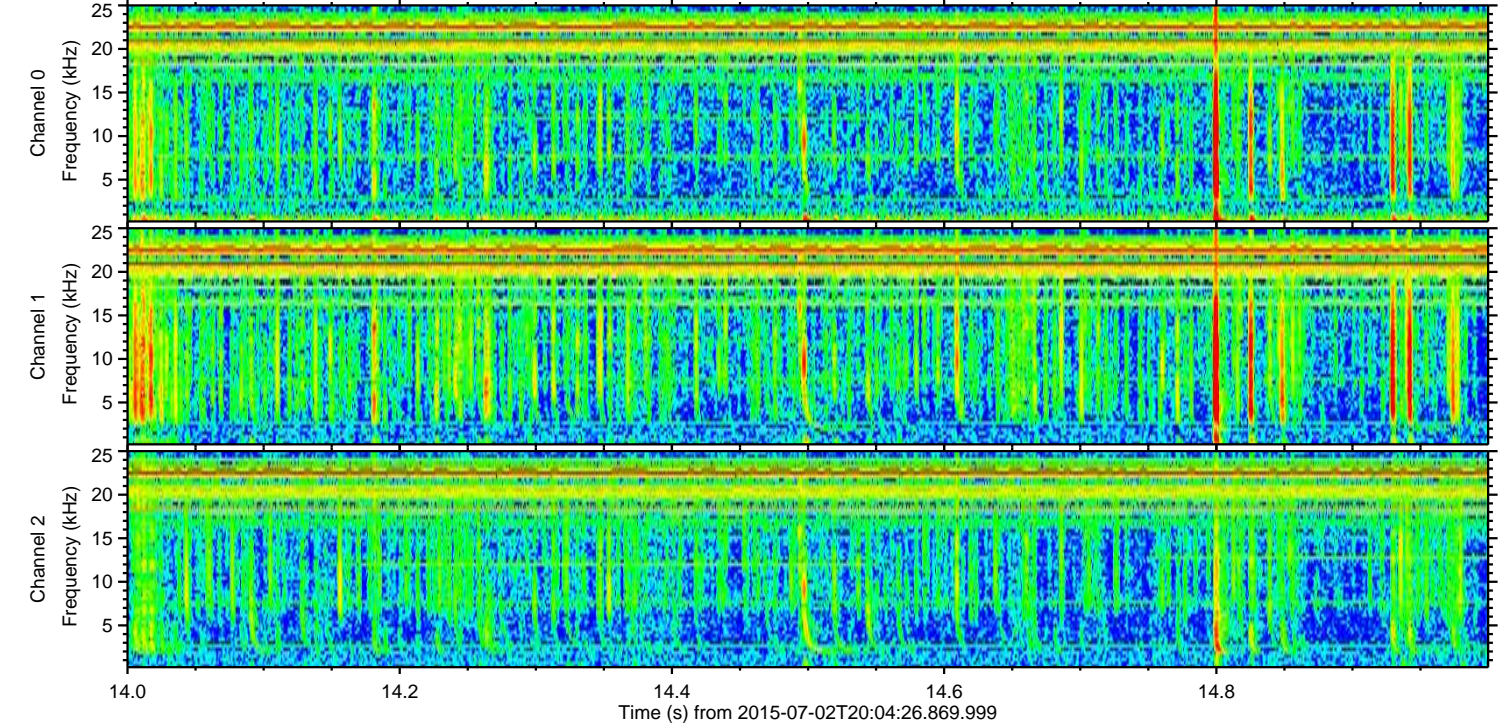
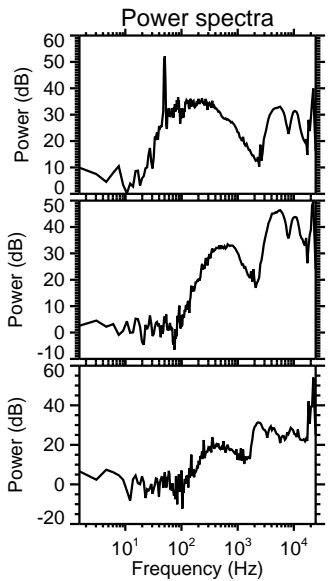
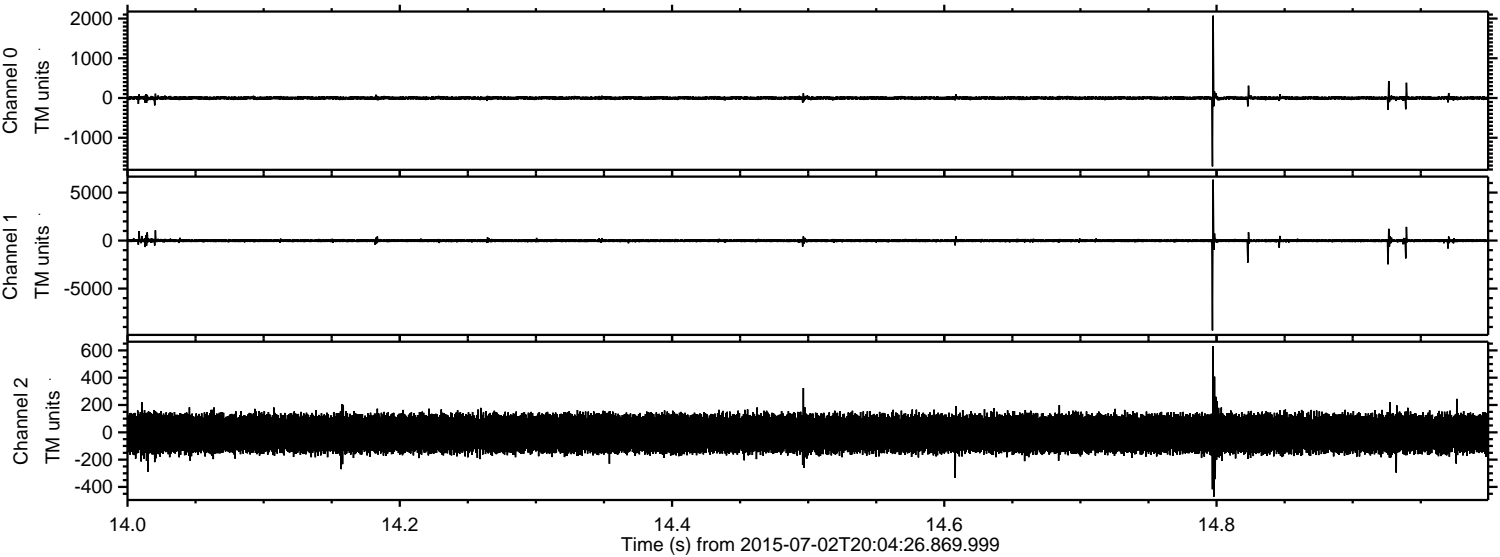


ELMAVAN 3D WAVEFORMS (Measured data sampled at 50 kHz) 51000 packets of 144 samples from 2015-07-02T20:04:26.869.999. Part 127/147

Processed Thu Jul 2 22:11:26 2015 by ELM ver.2012-10-06 from 001__elm20150702_200425__dat00.bin

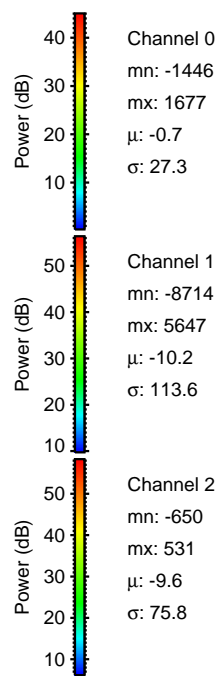
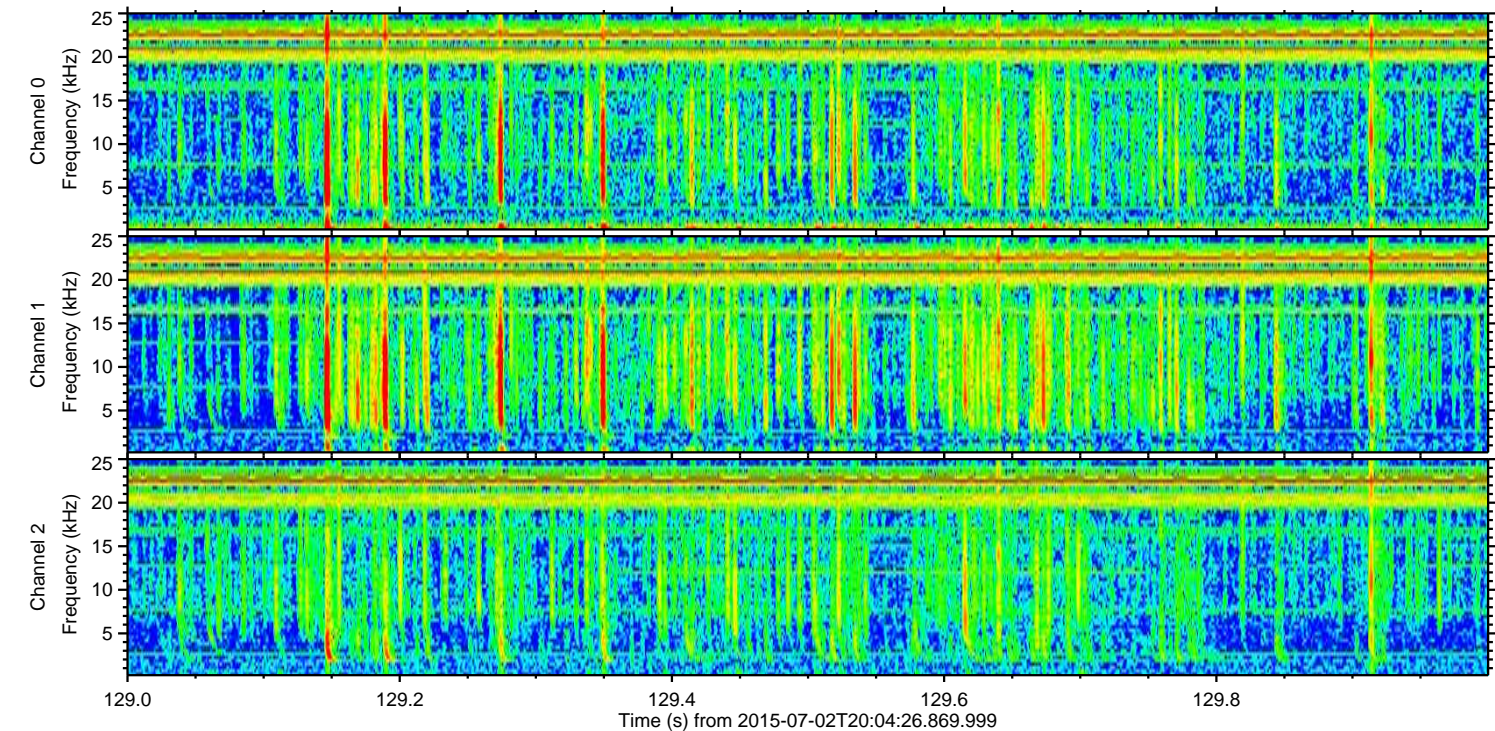
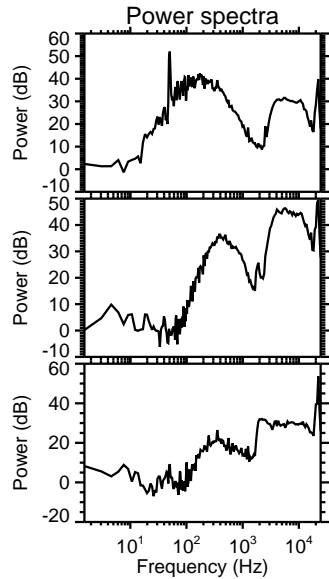
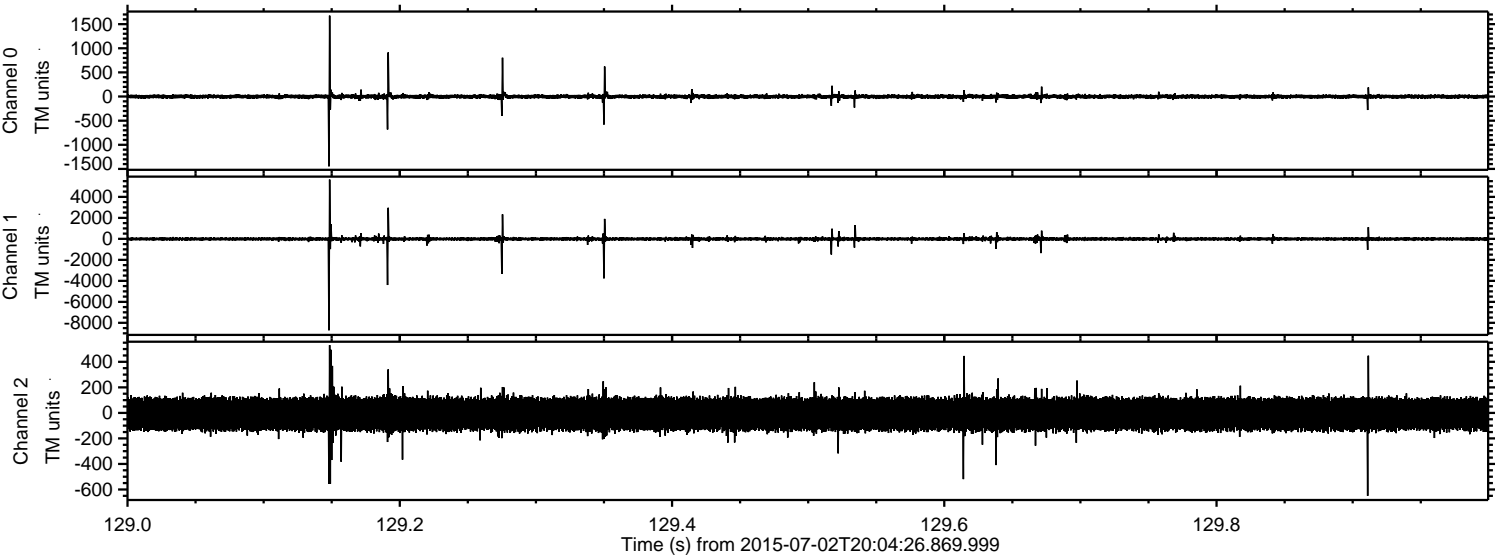


Processed Thu Jul 2 22:11:27 2015 by ELM ver.2012-10-06 from 001__elm20150702_200425__dat00.bin



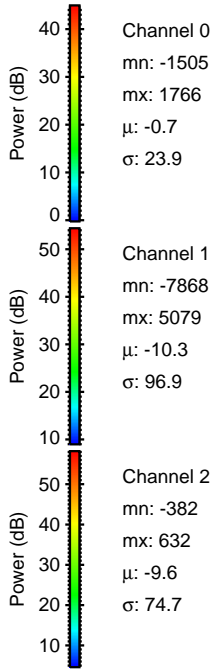
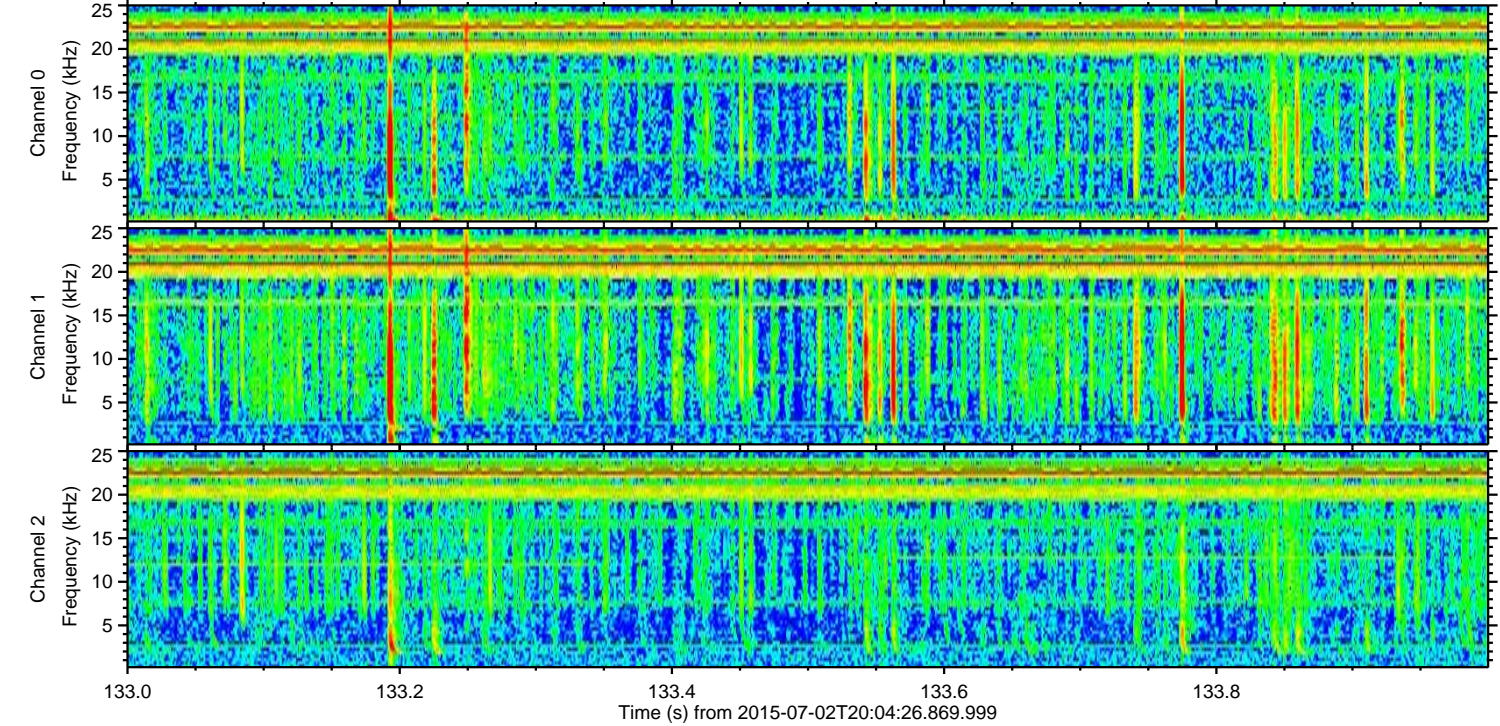
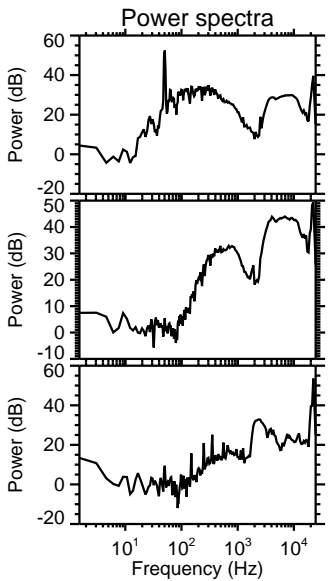
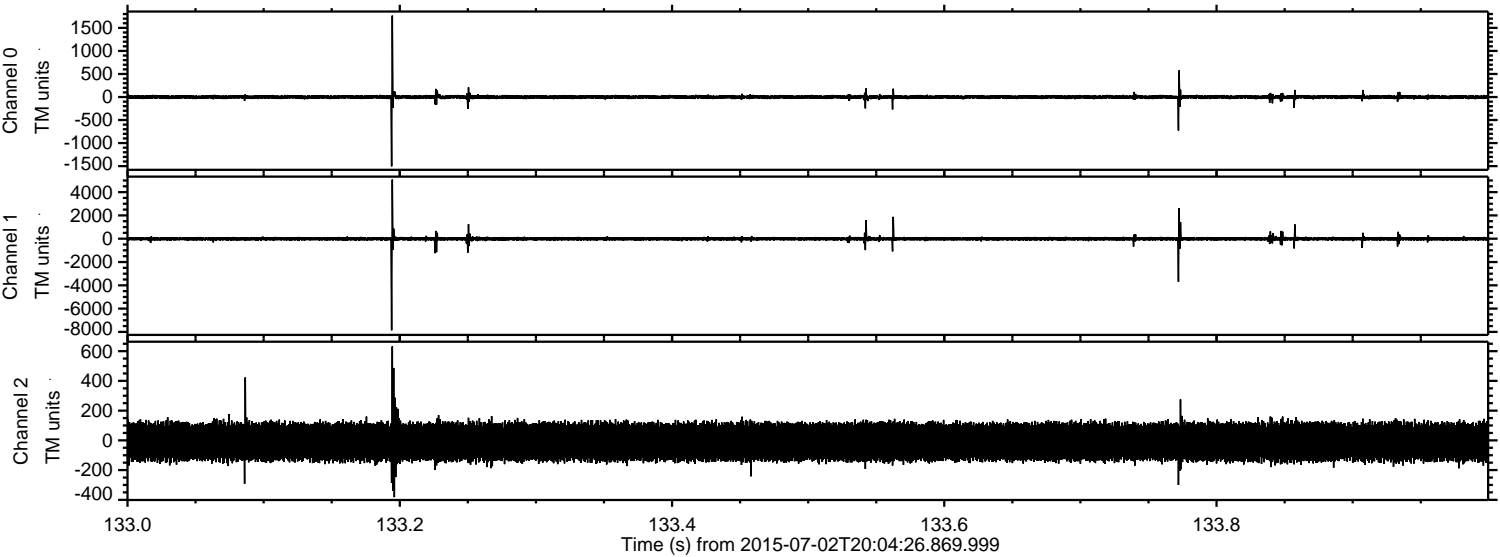
ELMAVAN 3D WAVEFORMS (Measured data sampled at 50 kHz) 51000 packets of 144 samples from 2015-07-02T20:04:26.869.999. Part 130/147

Processed Thu Jul 2 22:11:28 2015 by ELM ver.2012-10-06 from 001__elm20150702_200425__dat00.bin

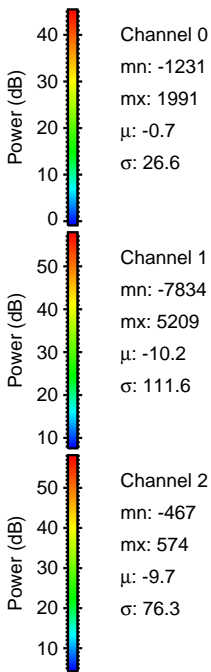
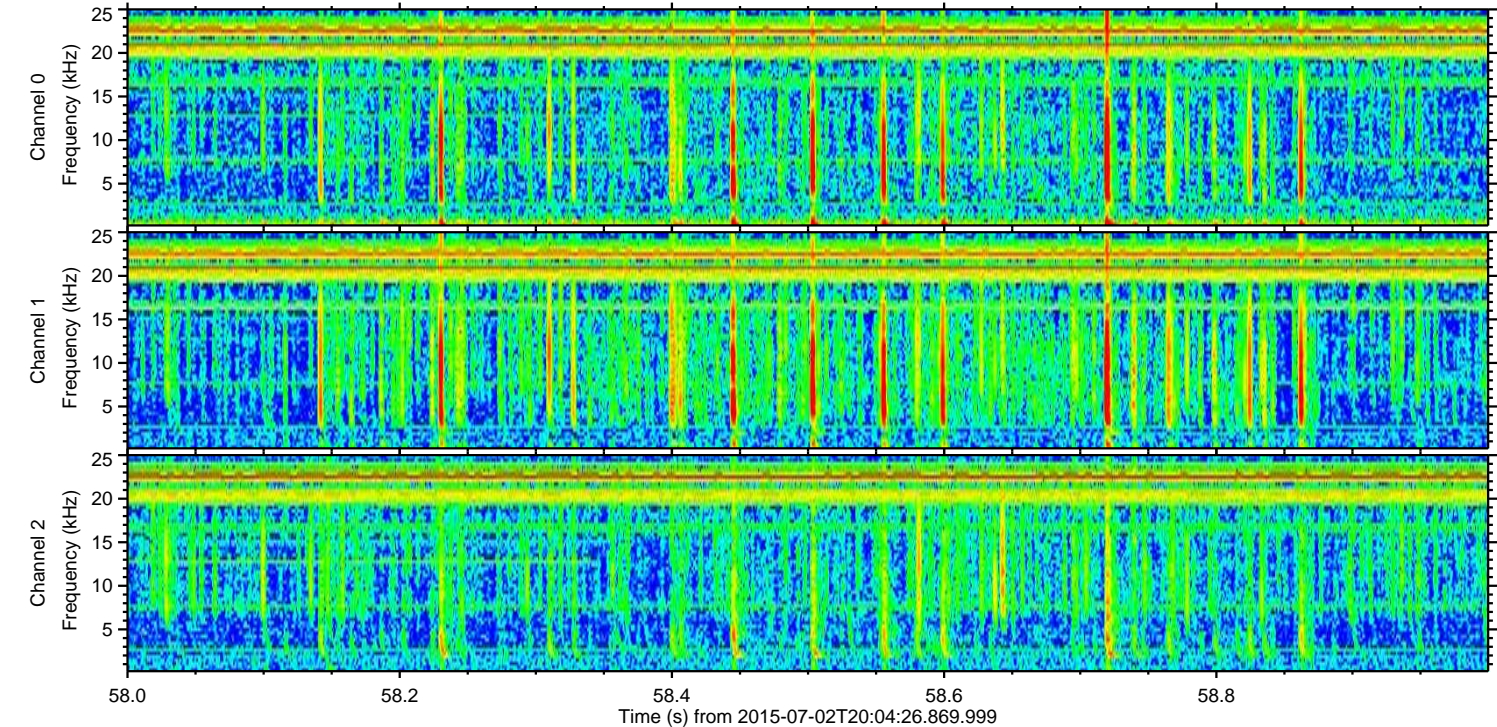
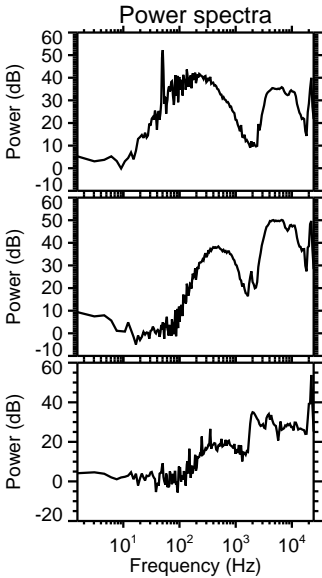
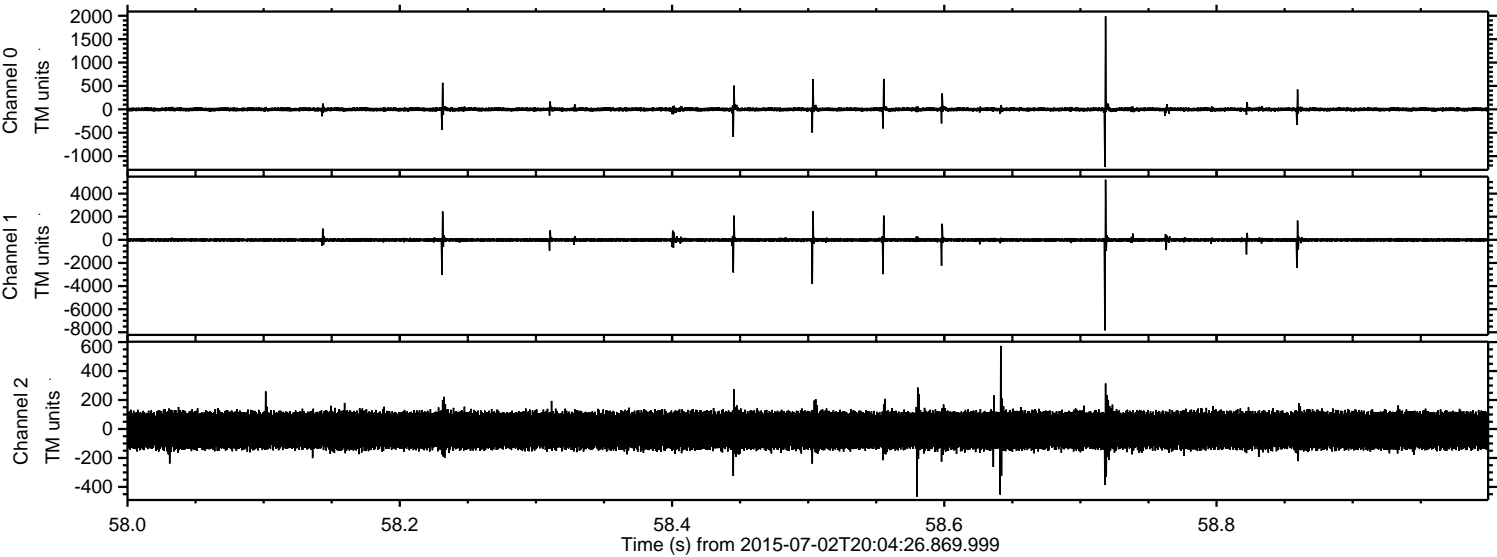


ELMAVAN 3D WAVEFORMS (Measured data sampled at 50 kHz) 51000 packets of 144 samples from 2015-07-02T20:04:26.869.999. Part 134/147

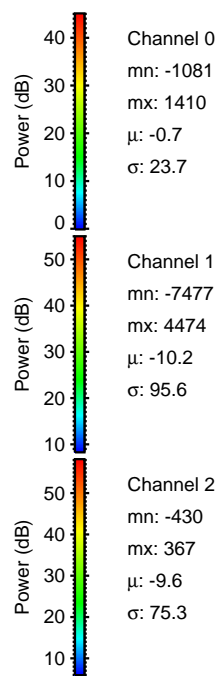
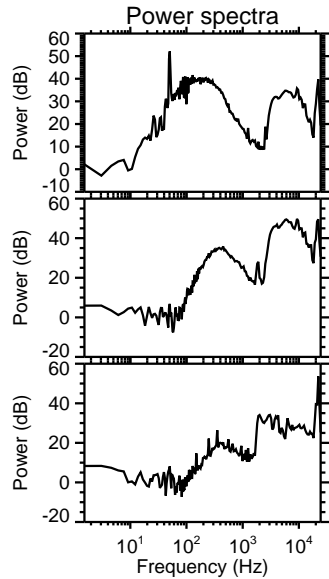
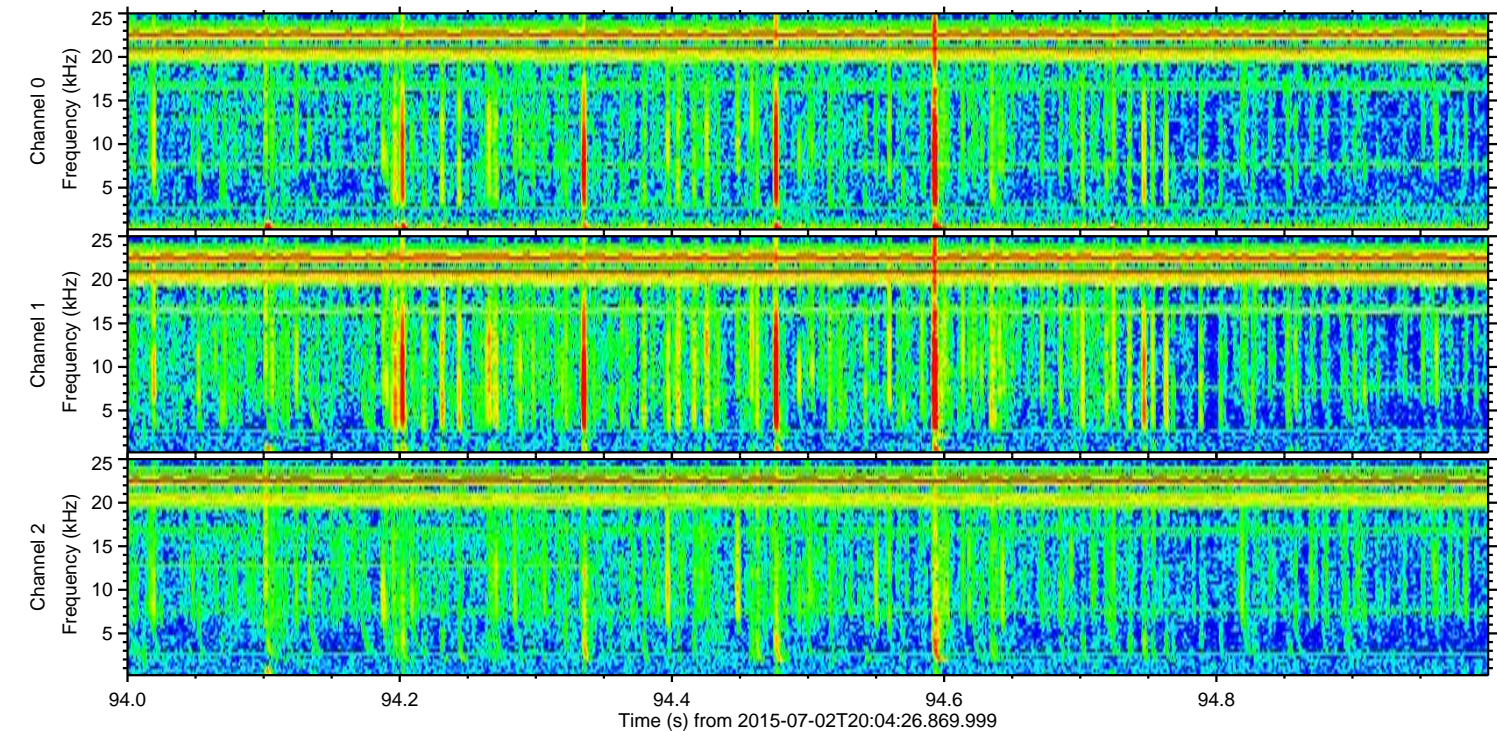
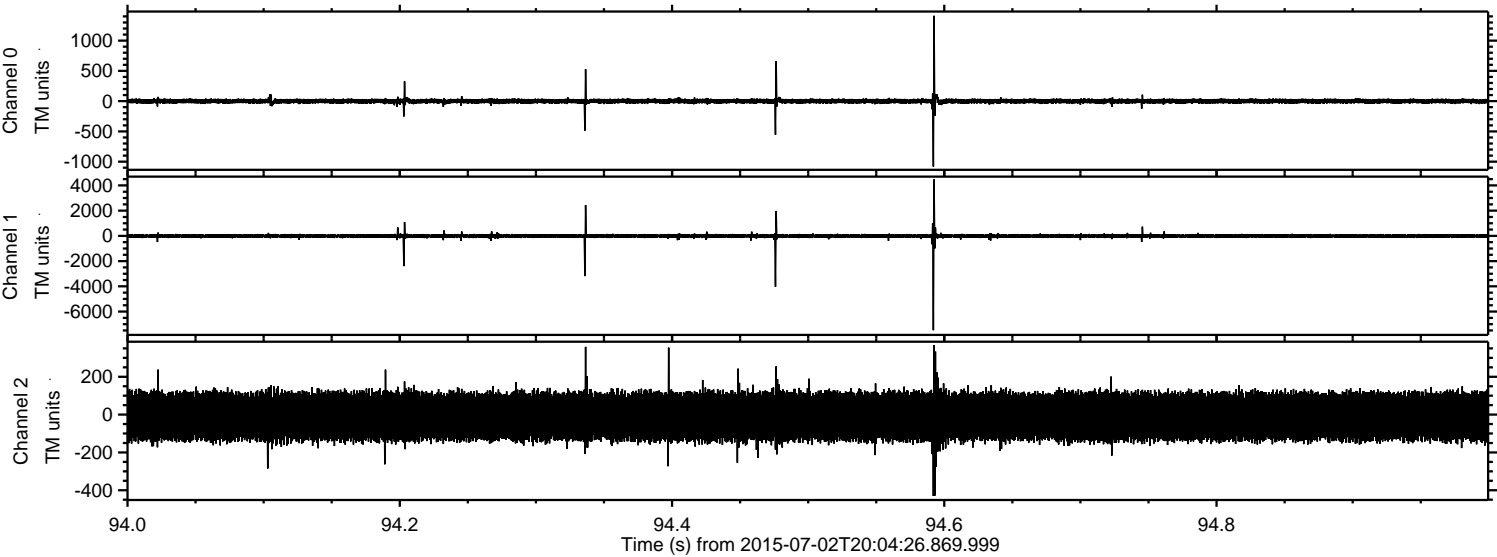
Processed Thu Jul 2 22:11:29 2015 by ELM ver.2012-10-06 from 001__elm20150702_200425__dat00.bin



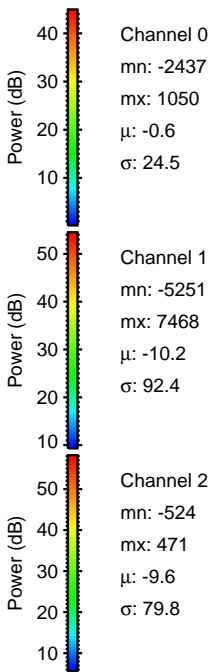
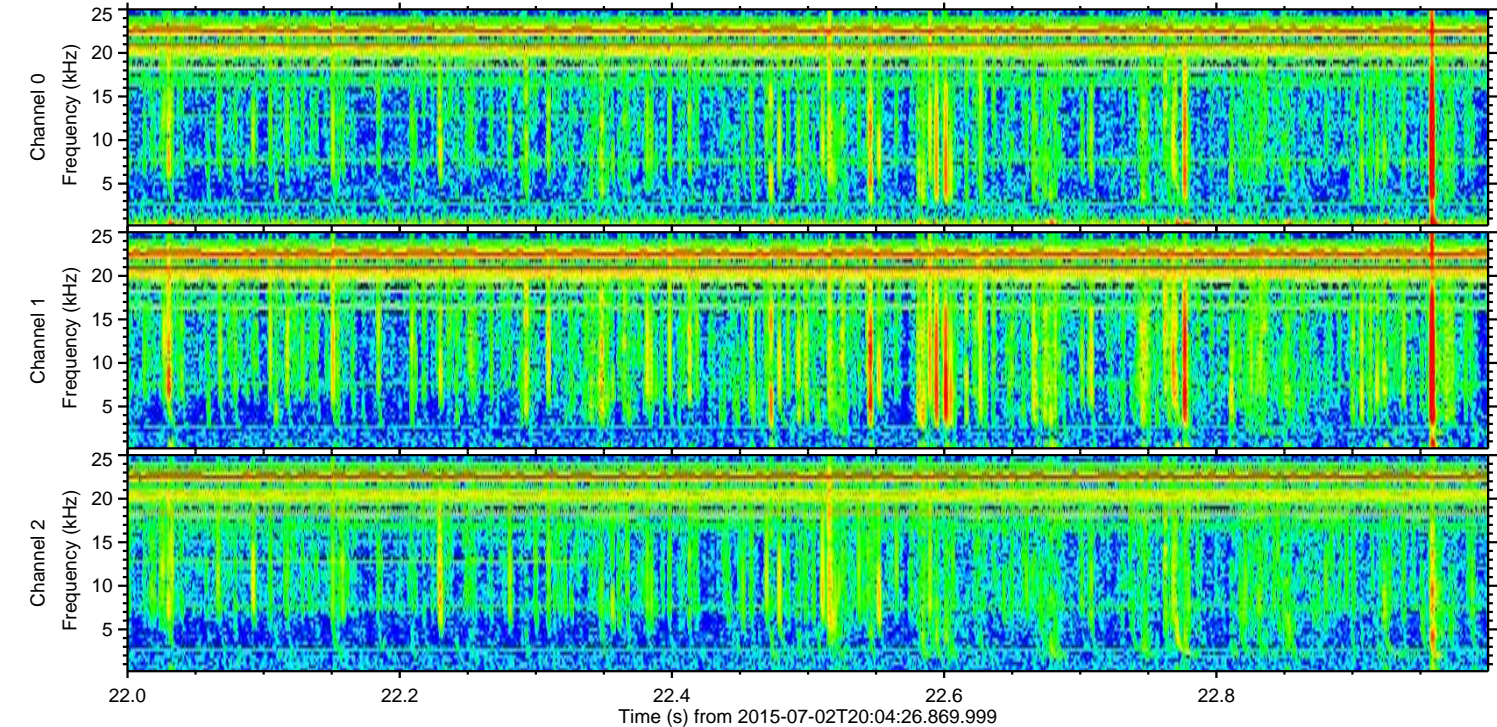
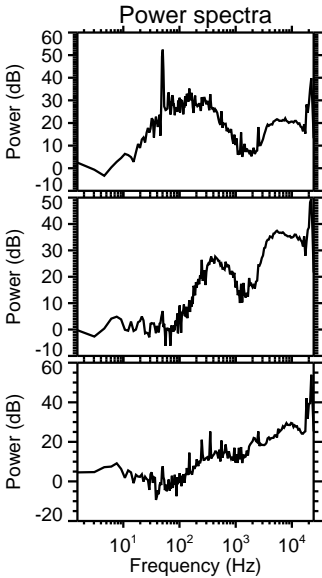
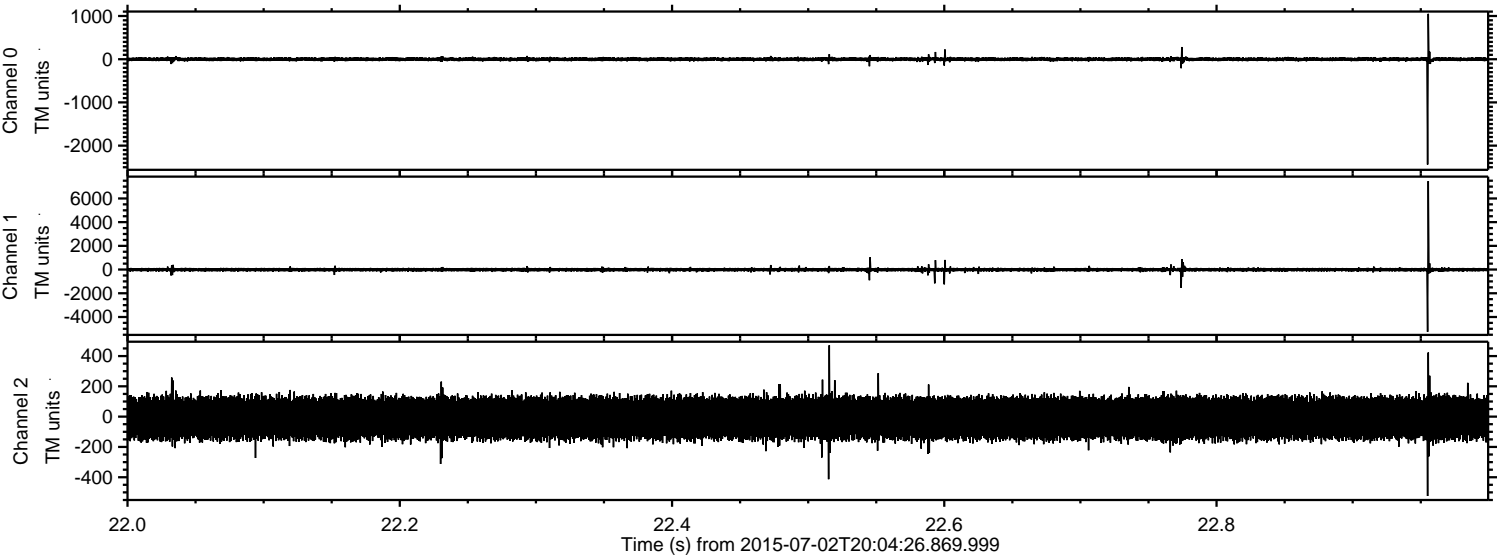
Processed Thu Jul 2 22:11:30 2015 by ELM ver.2012-10-06 from 001__elm20150702_200425__dat00.bin



Processed Thu Jul 2 22:11:31 2015 by ELM ver.2012-10-06 from 001__elm20150702_200425__dat00.bin



Processed Thu Jul 2 22:11:32 2015 by ELM ver.2012-10-06 from 001__elm20150702_200425__dat00.bin



Processed Thu Jul 2 22:11:33 2015 by ELM ver.2012-10-06 from 001__elm20150702_200425__dat00.bin

