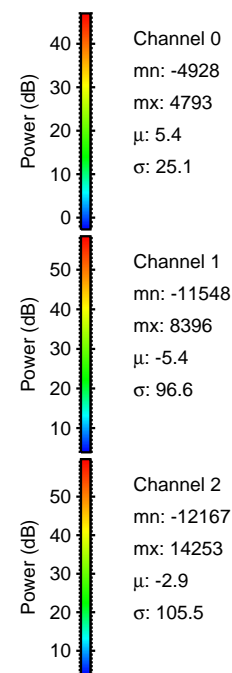
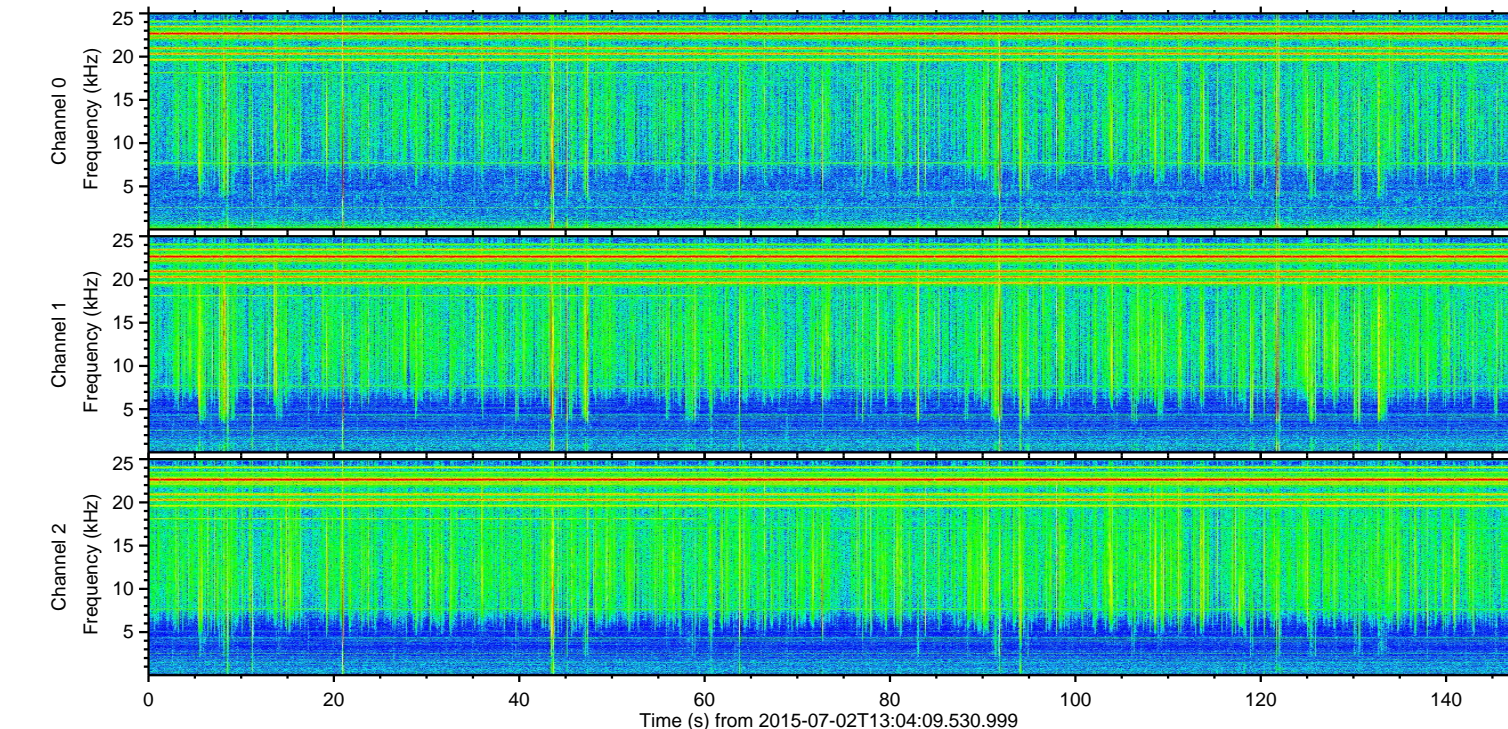
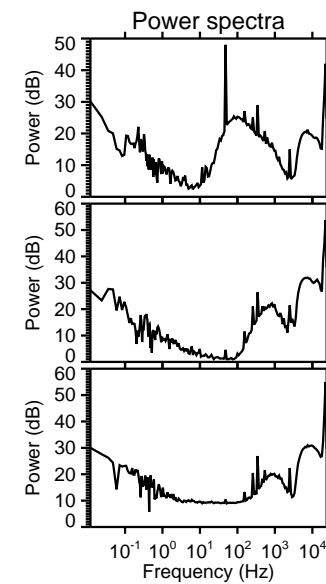
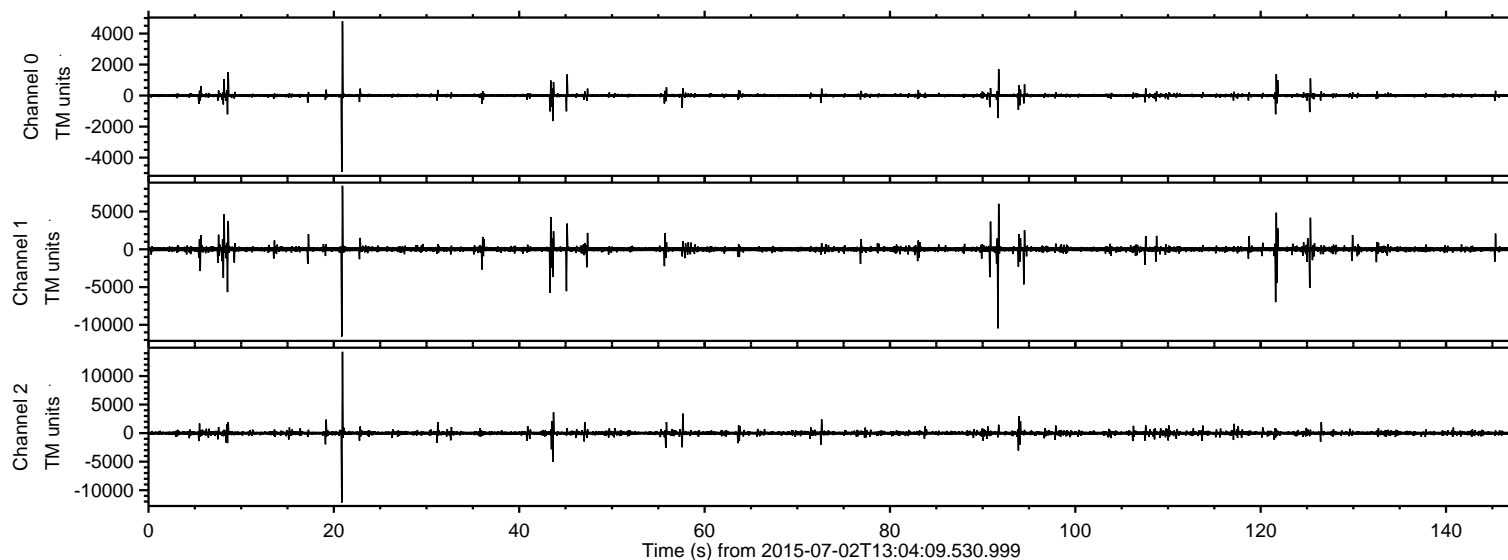
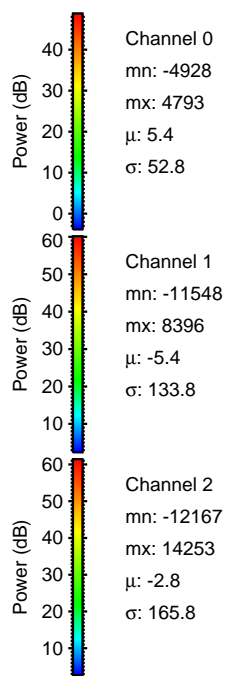
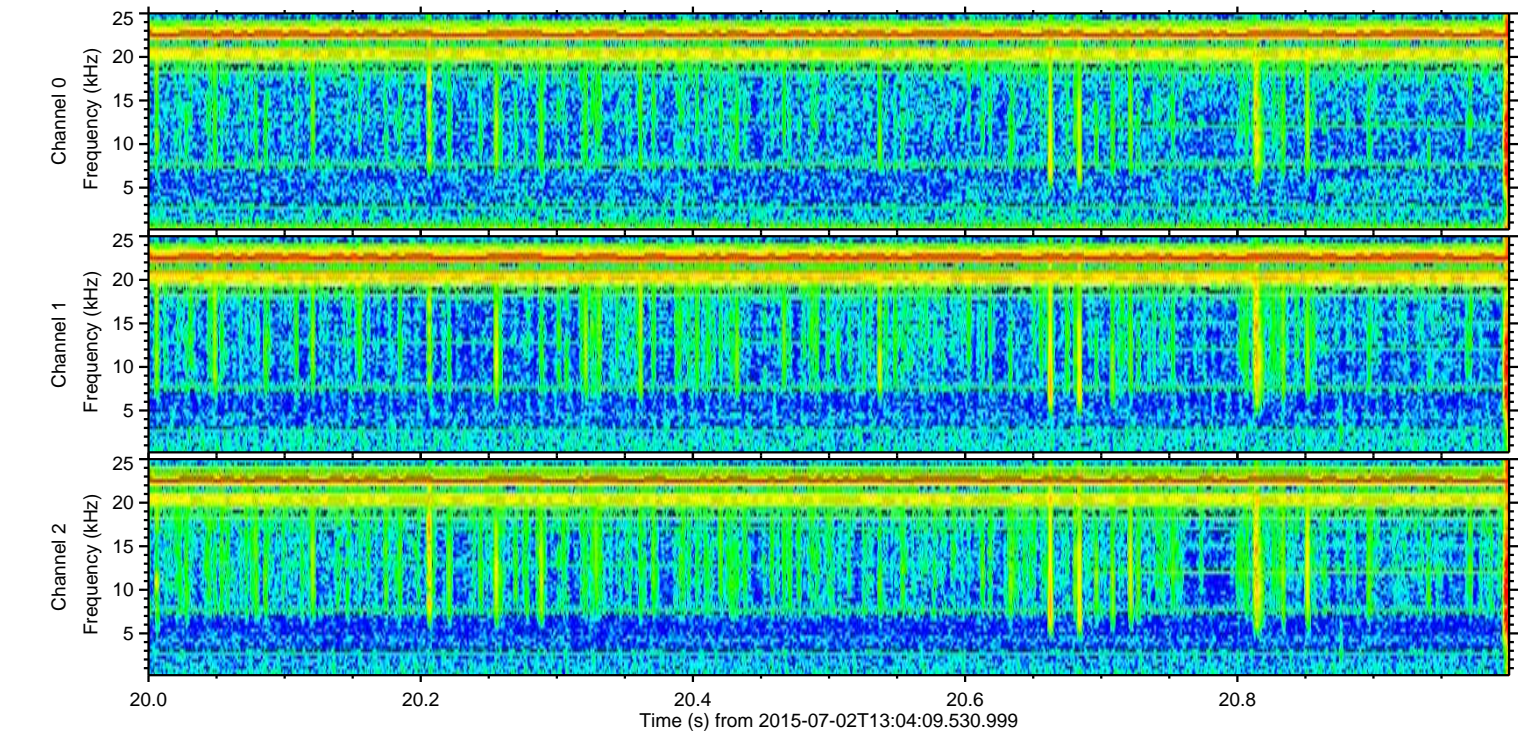
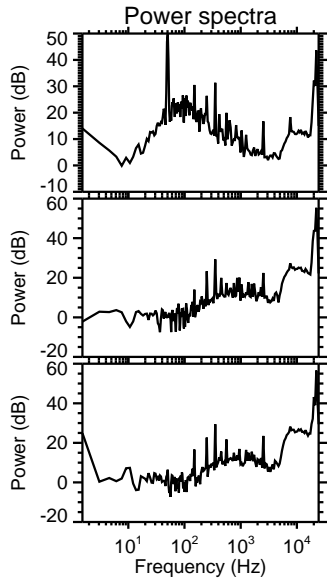
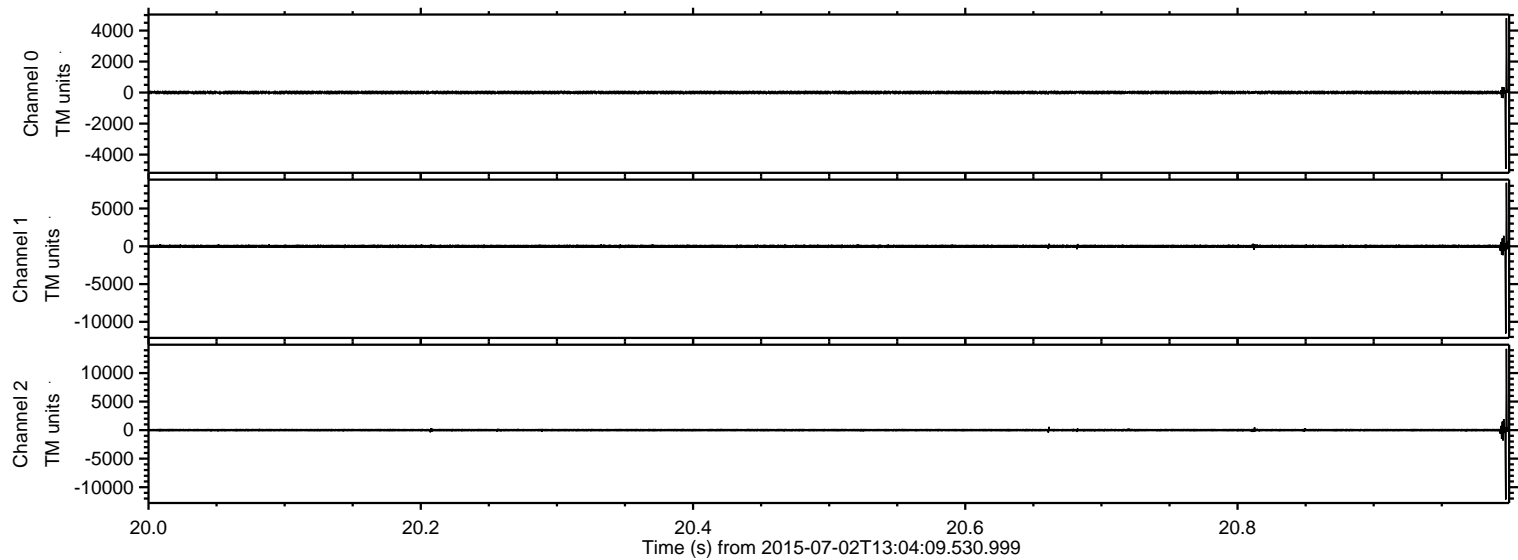


ELMAVAN 3D WAVEFORMS (Measured data sampled at 50 kHz) 51000 packets of 144 samples from 2015-07-02T13:04:09.530.999.

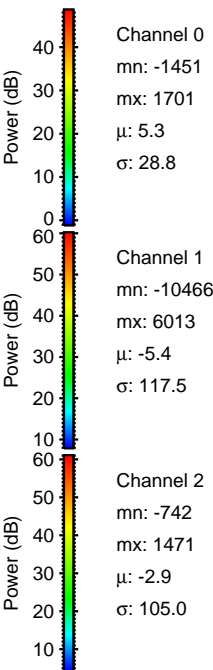
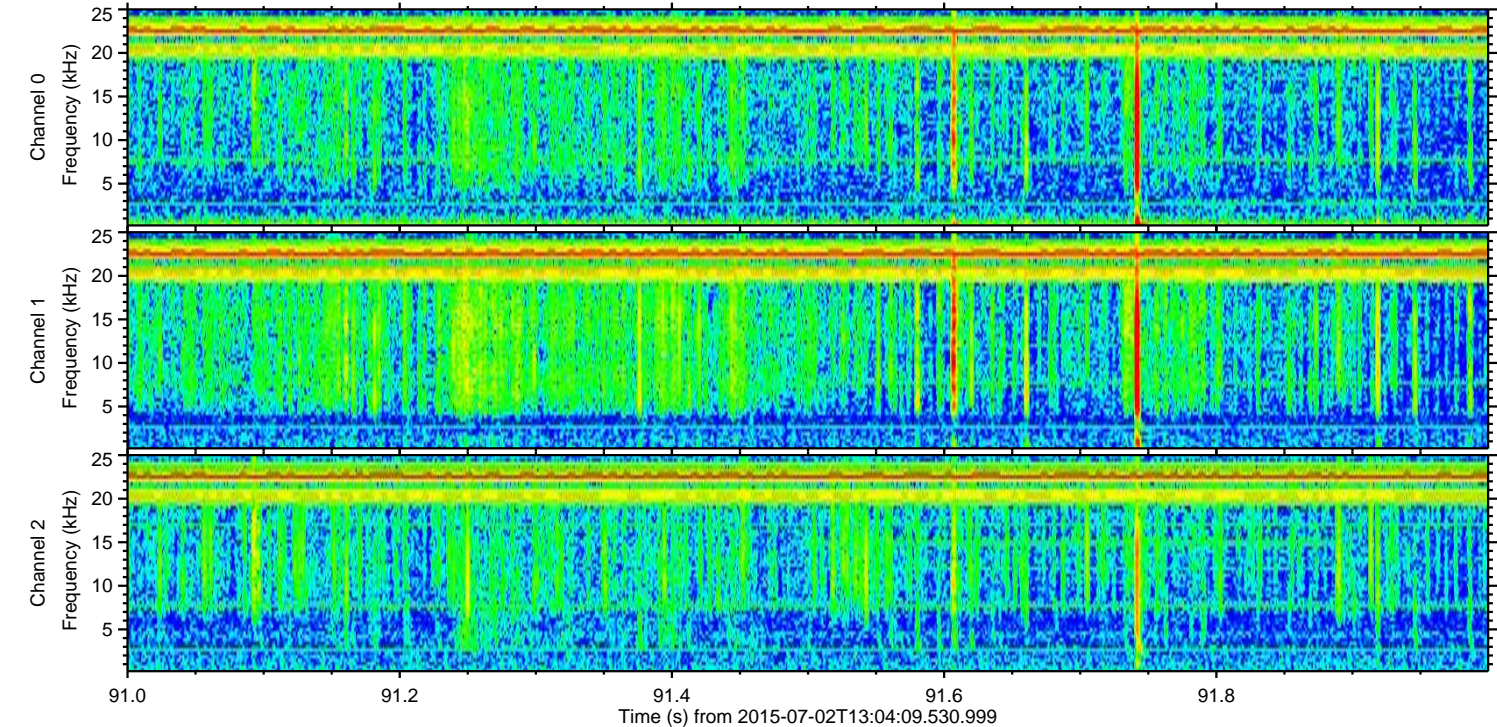
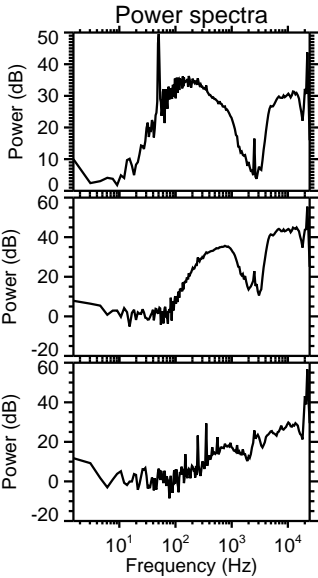
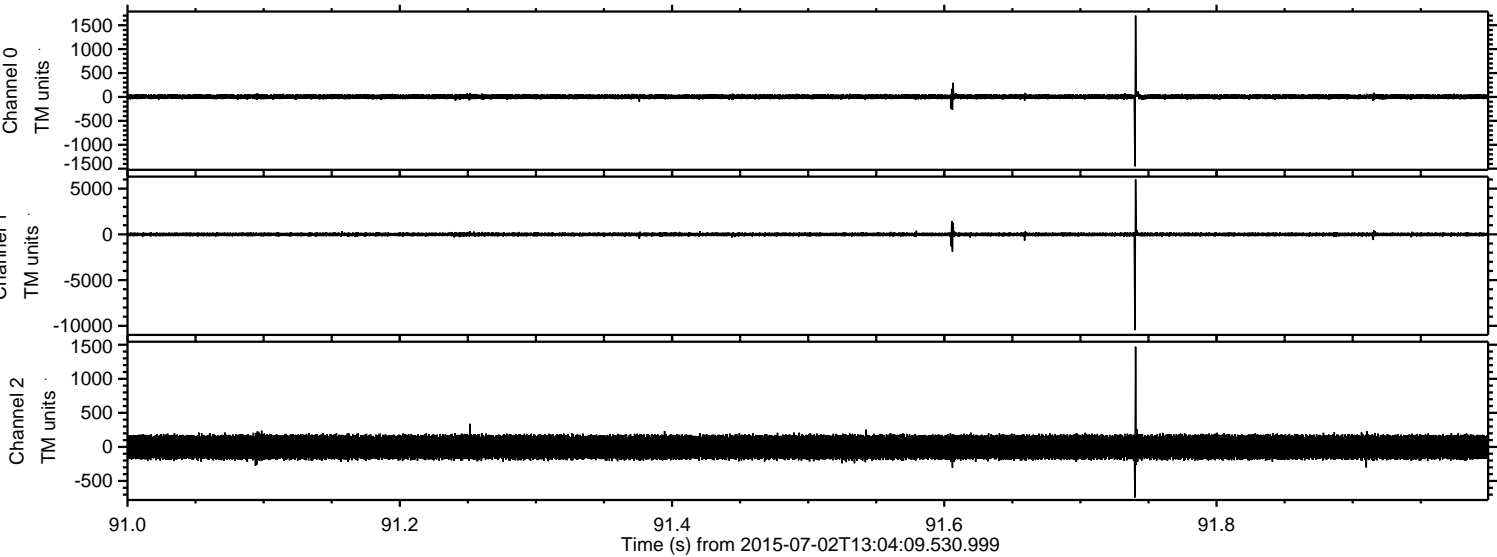
Processed Thu Jul 2 15:10:43 2015 by ELM ver.2012-10-06 from 001__elm20150702_130408__dat00.bin



Processed Thu Jul 2 15:10:59 2015 by ELM ver.2012-10-06 from 001__elm20150702_130408__dat00.bin

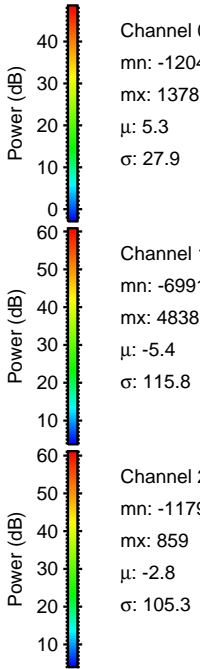
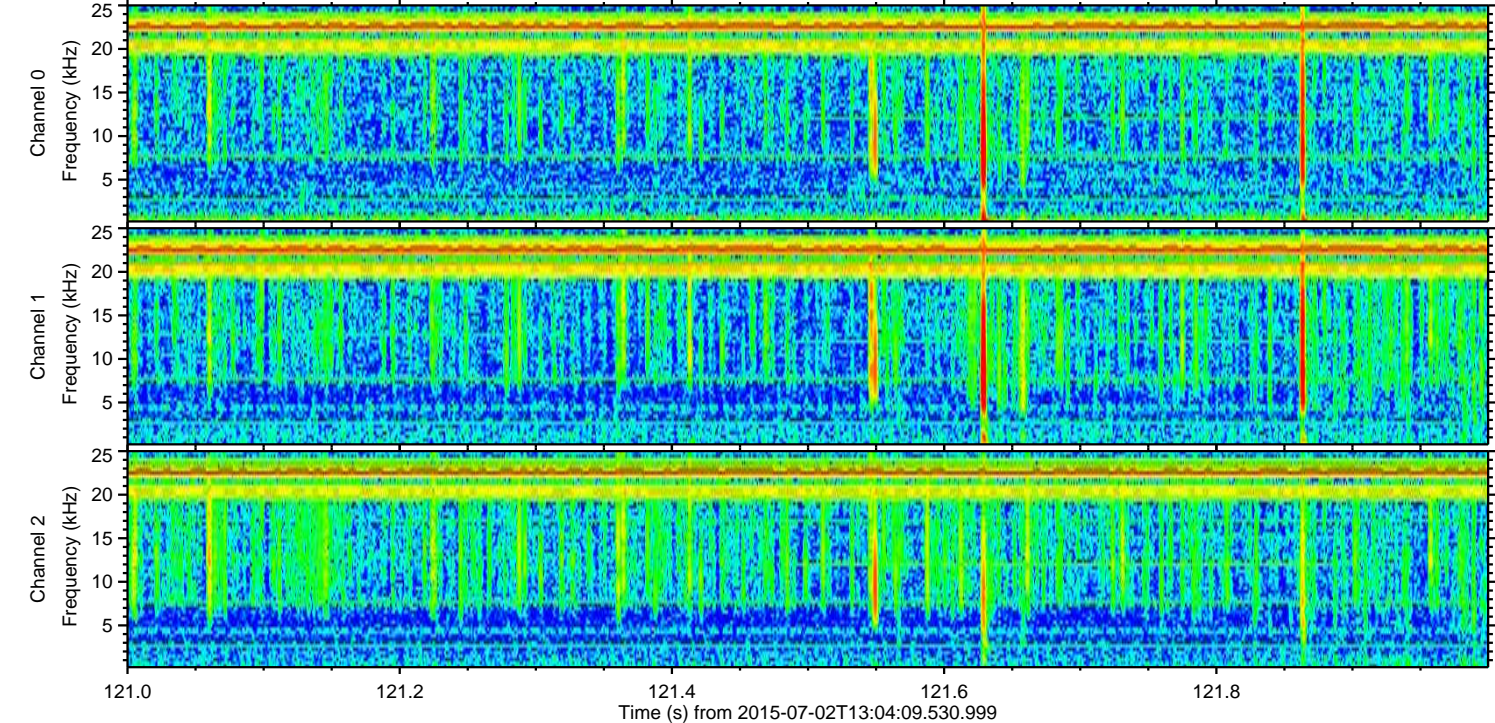
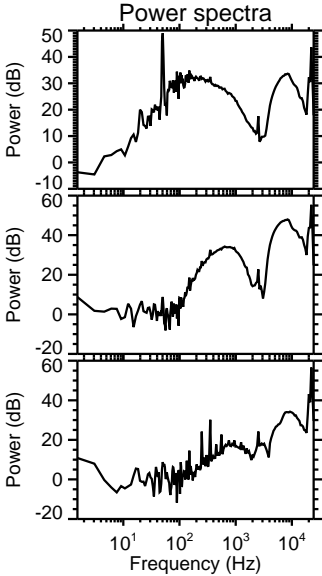
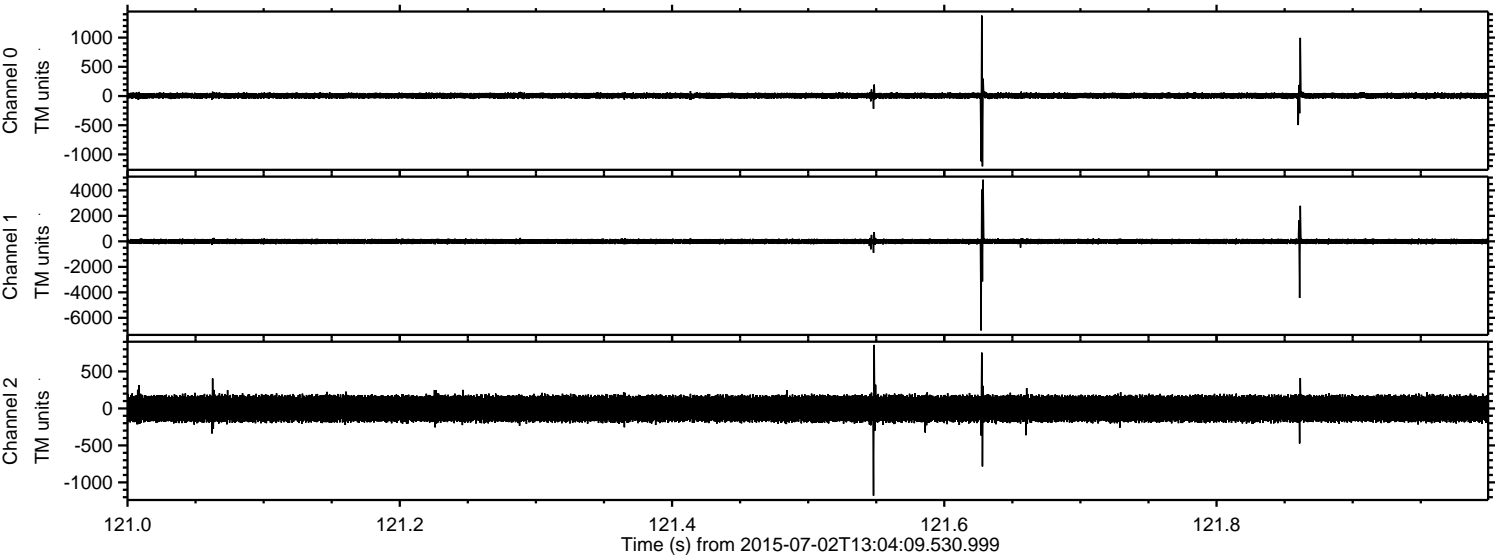


Processed Thu Jul 2 15:11:00 2015 by ELM ver.2012-10-06 from 001__elm20150702_130408__dat00.bin

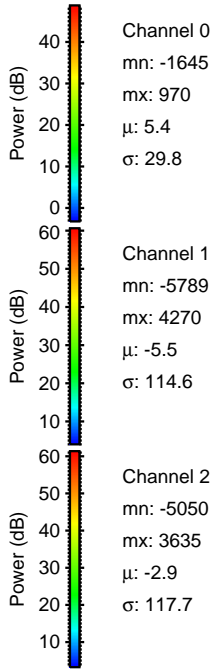
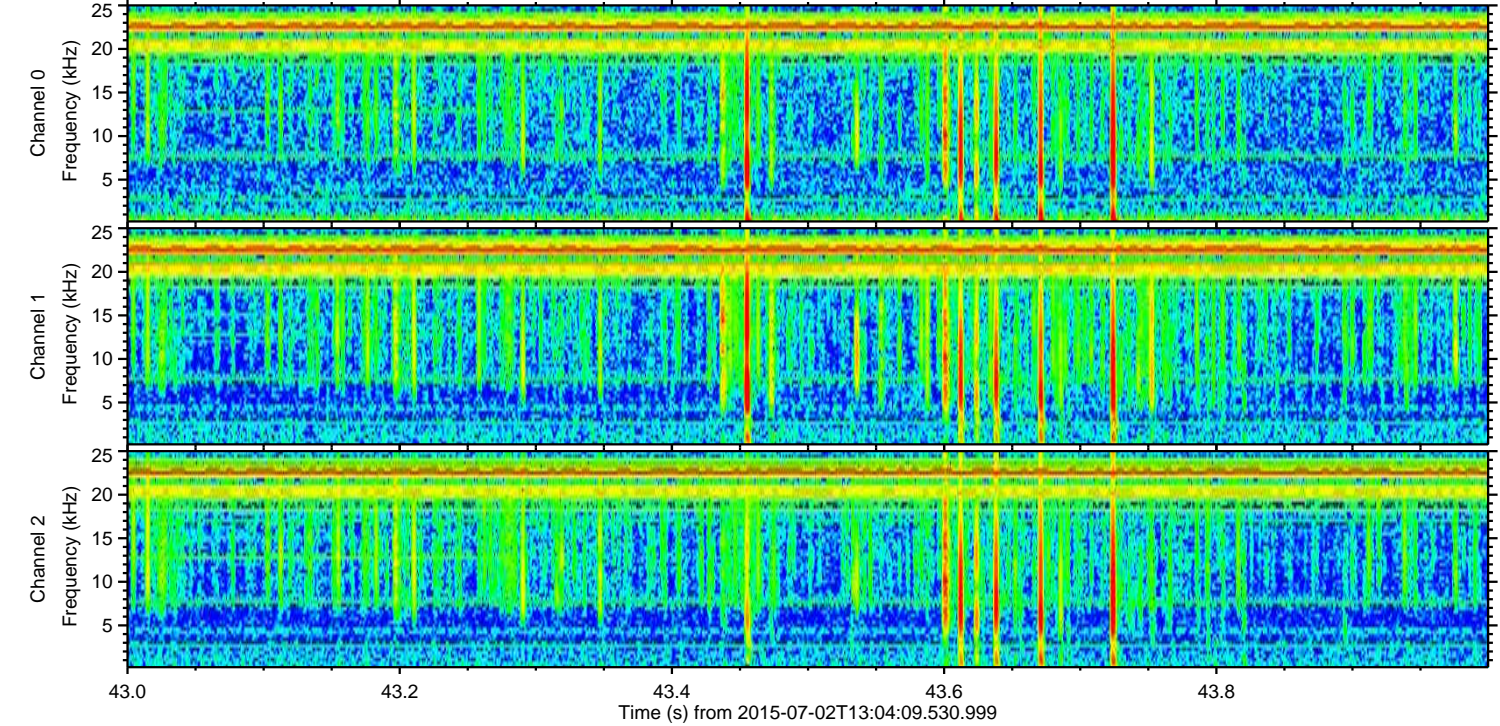
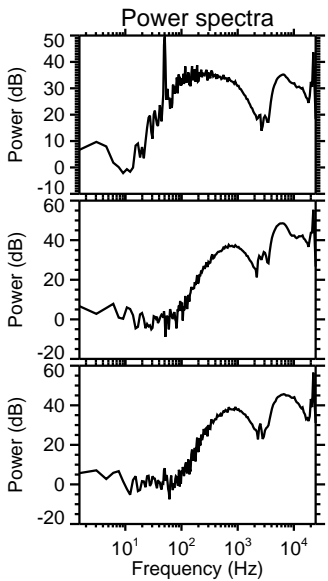
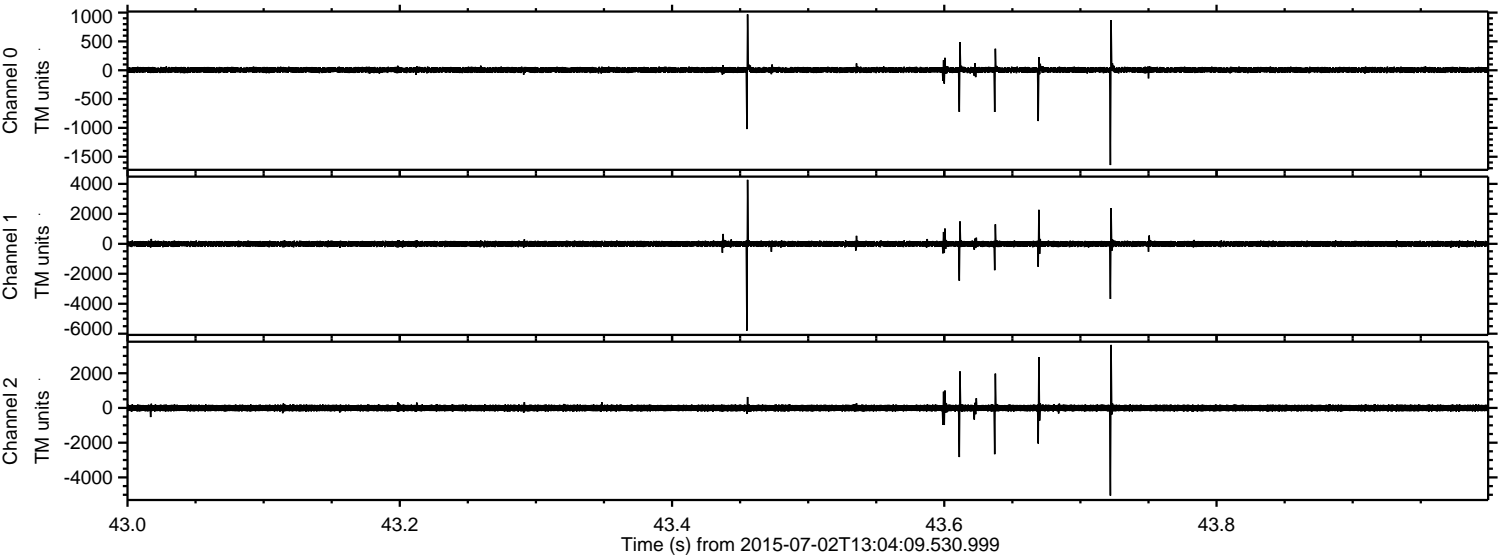


ELMAVAN 3D WAVEFORMS (Measured data sampled at 50 kHz) 51000 packets of 144 samples from 2015-07-02T13:04:09.530.999. Part 122/147

Processed Thu Jul 2 15:11:01 2015 by ELM ver.2012-10-06 from 001__elm20150702_130408__dat00.bin



Processed Thu Jul 2 15:11:02 2015 by ELM ver.2012-10-06 from 001__elm20150702_130408__dat00.bin

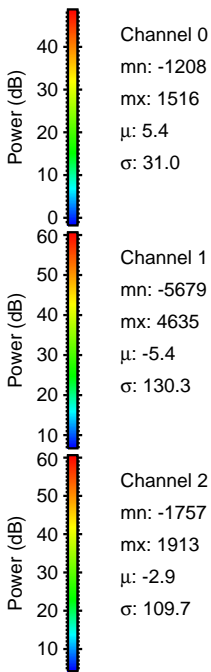
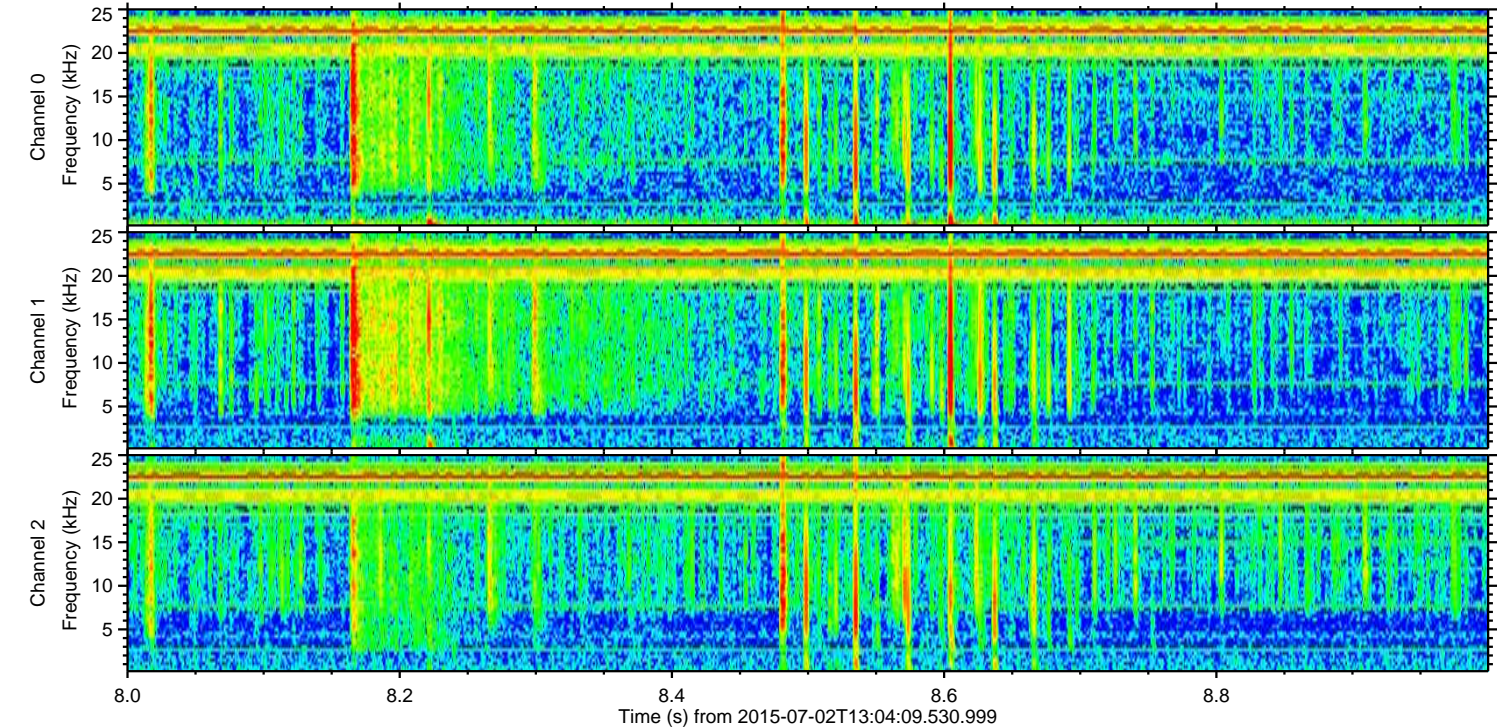
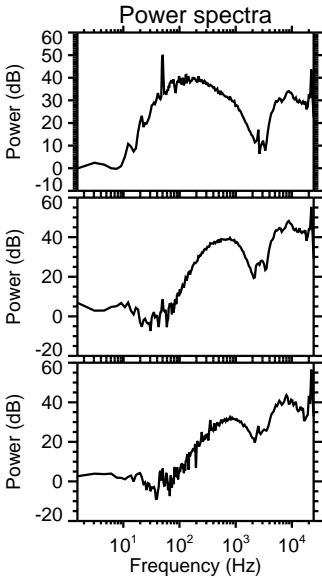
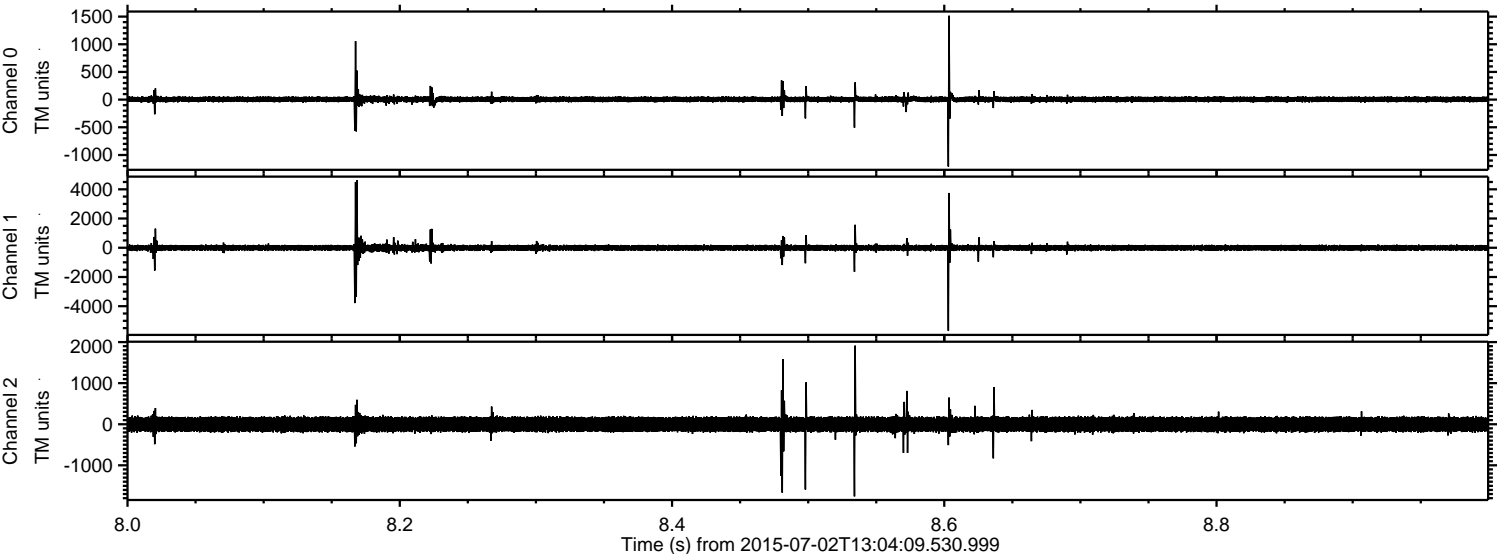


Channel 0
mn: -1645
mx: 970
 μ : 5.4
 σ : 29.8

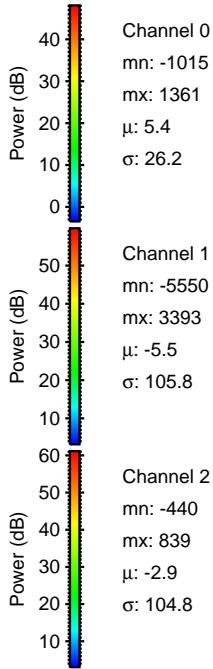
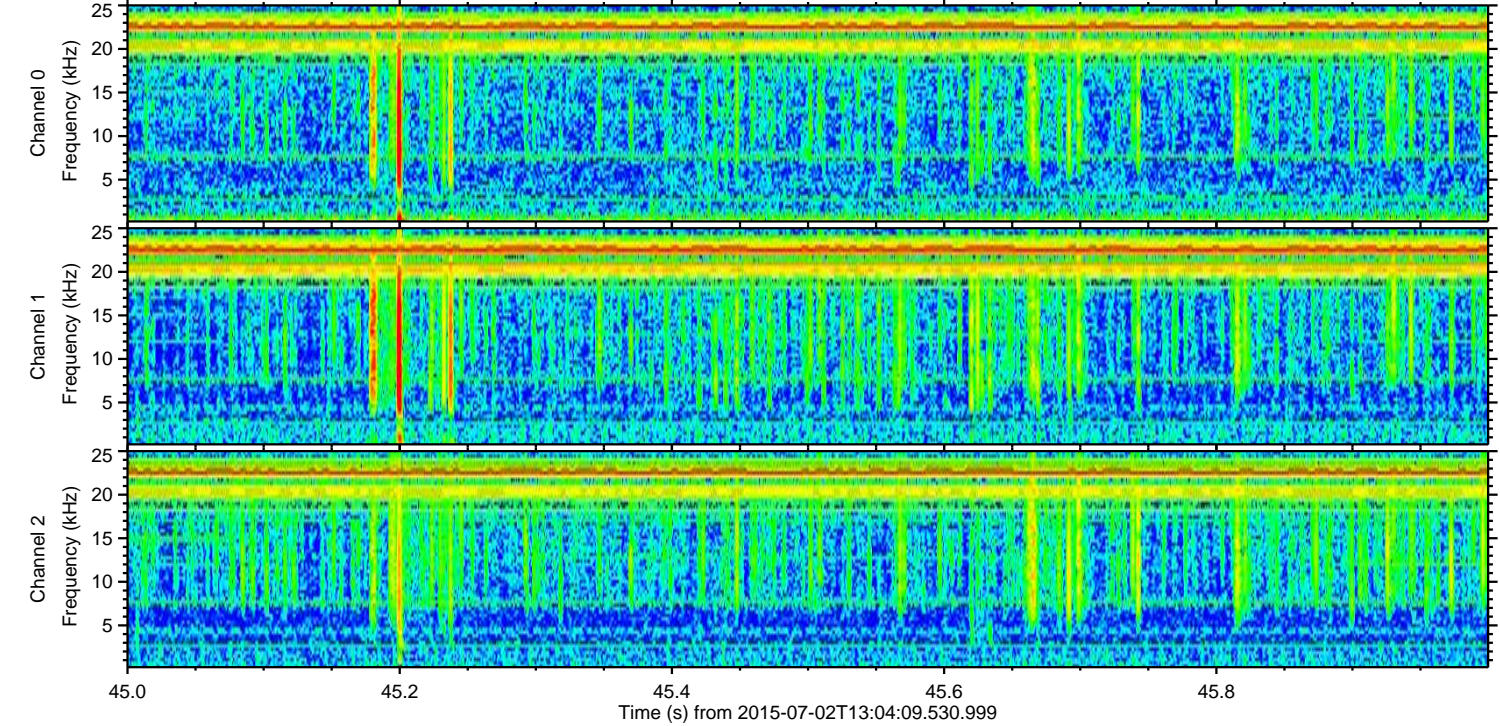
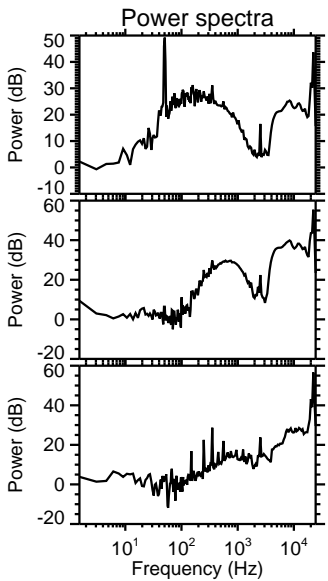
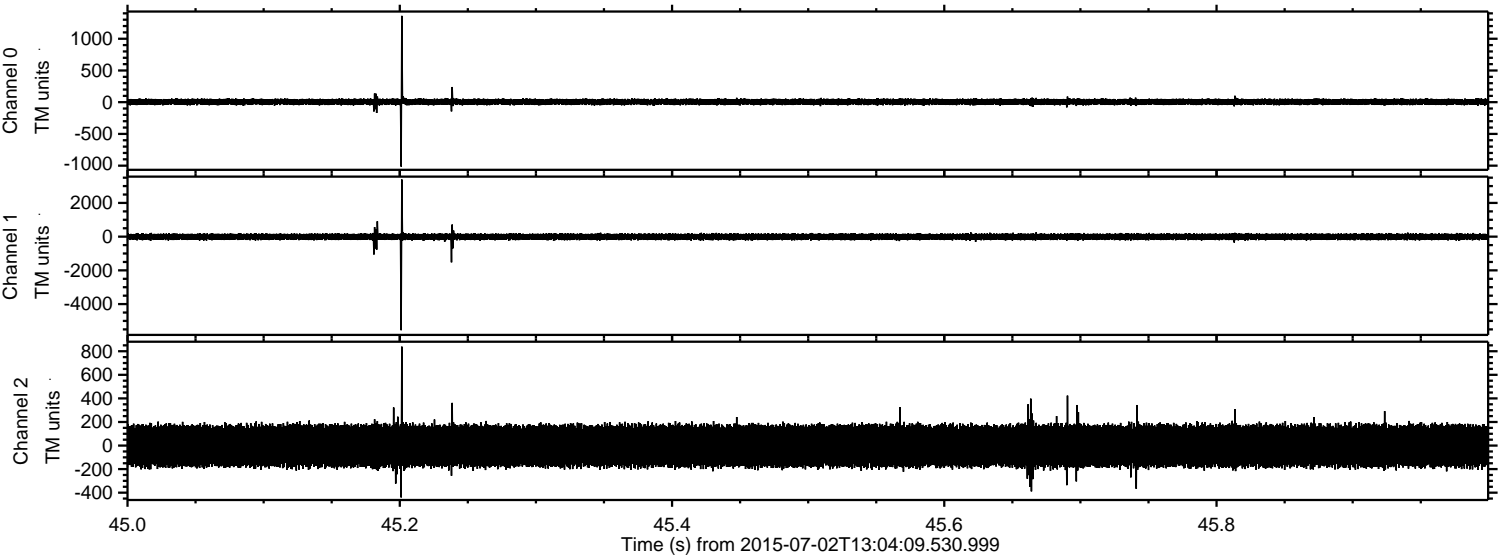
Channel 1
mn: -5789
mx: 4270
 μ : -5.5
 σ : 114.6

Channel 2
mn: -5050
mx: 3635
 μ : -2.9
 σ : 117.7

Processed Thu Jul 2 15:11:03 2015 by ELM ver.2012-10-06 from 001__elm20150702_130408__dat00.bin



Processed Thu Jul 2 15:11:04 2015 by ELM ver.2012-10-06 from 001__elm20150702_130408__dat00.bin



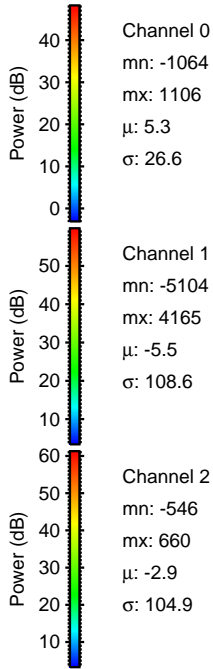
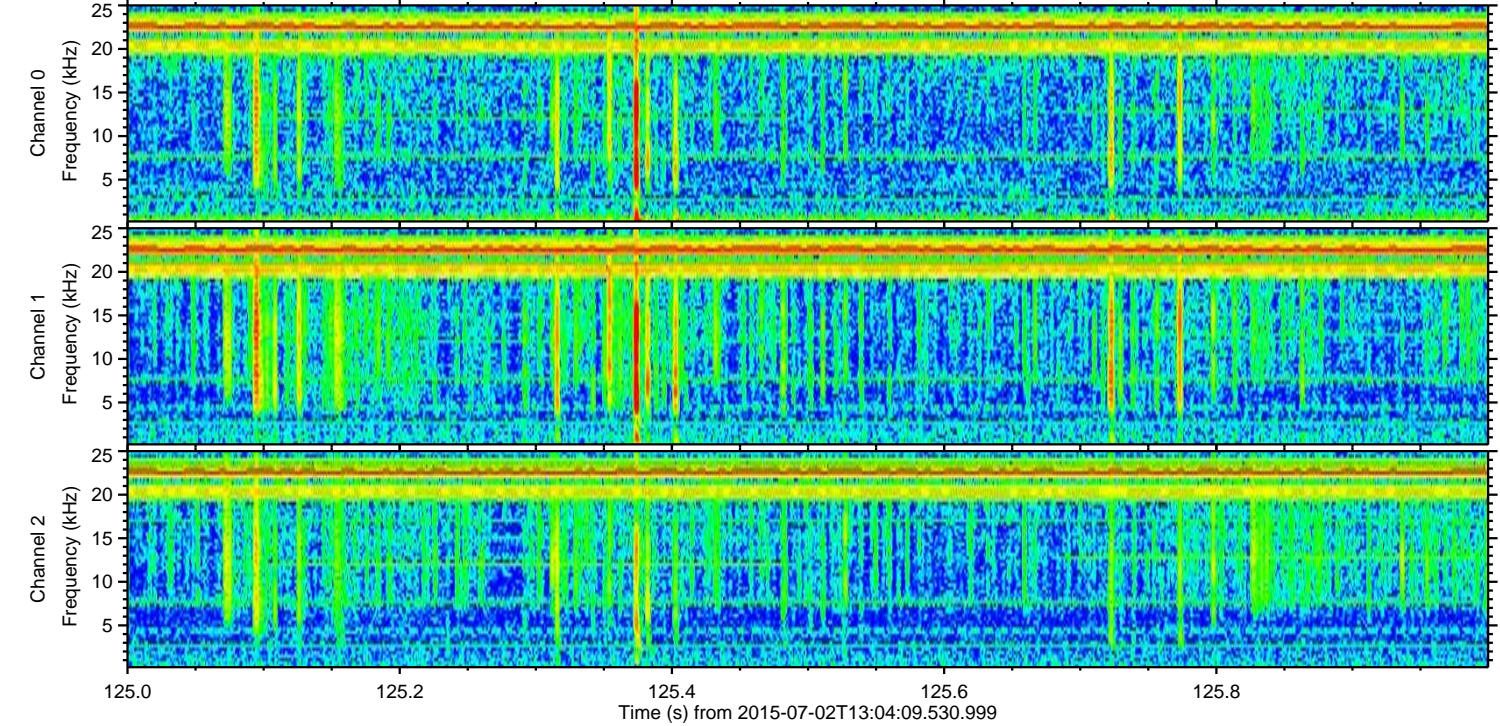
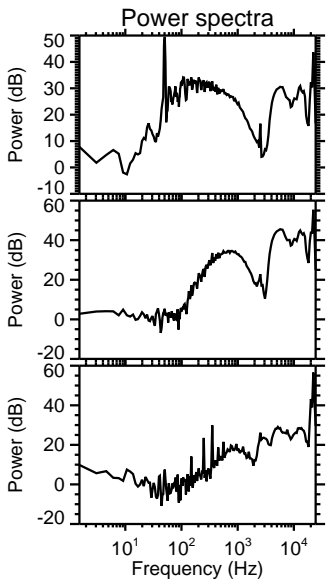
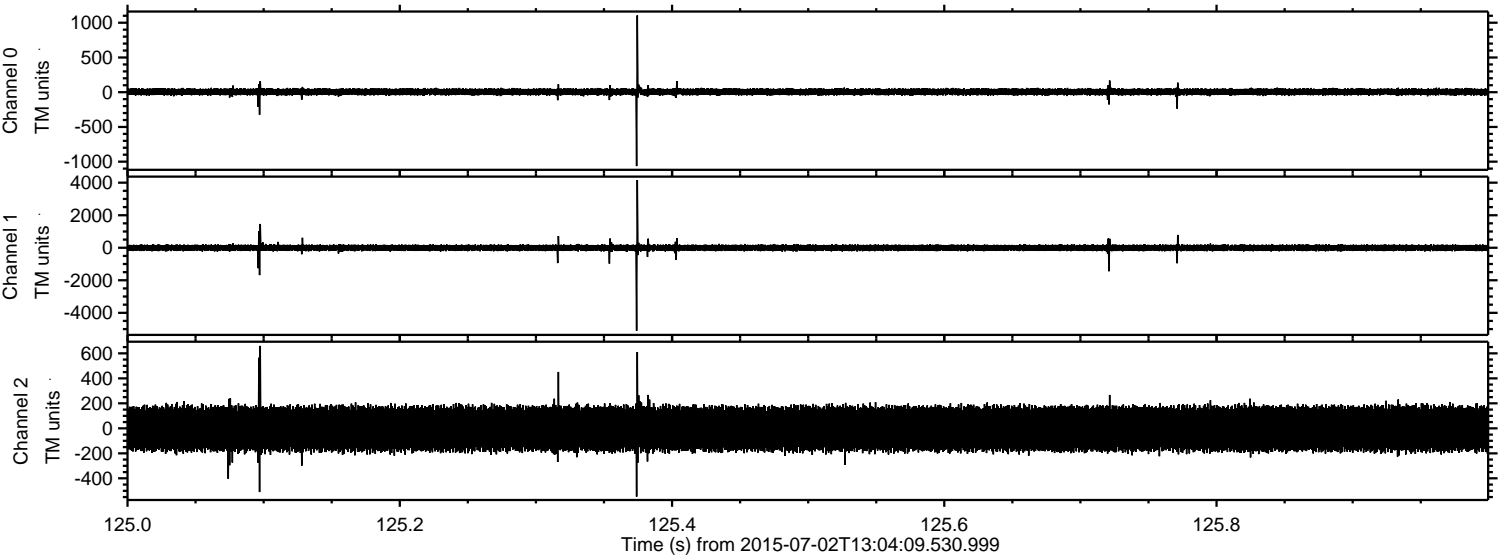
Channel 0
mn: -1015
mx: 1361
 μ : 5.4
 σ : 26.2

Channel 1
mn: -5550
mx: 3393
 μ : -5.5
 σ : 105.8

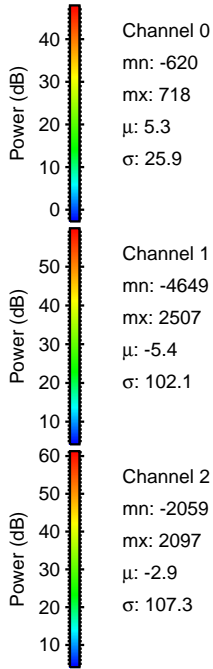
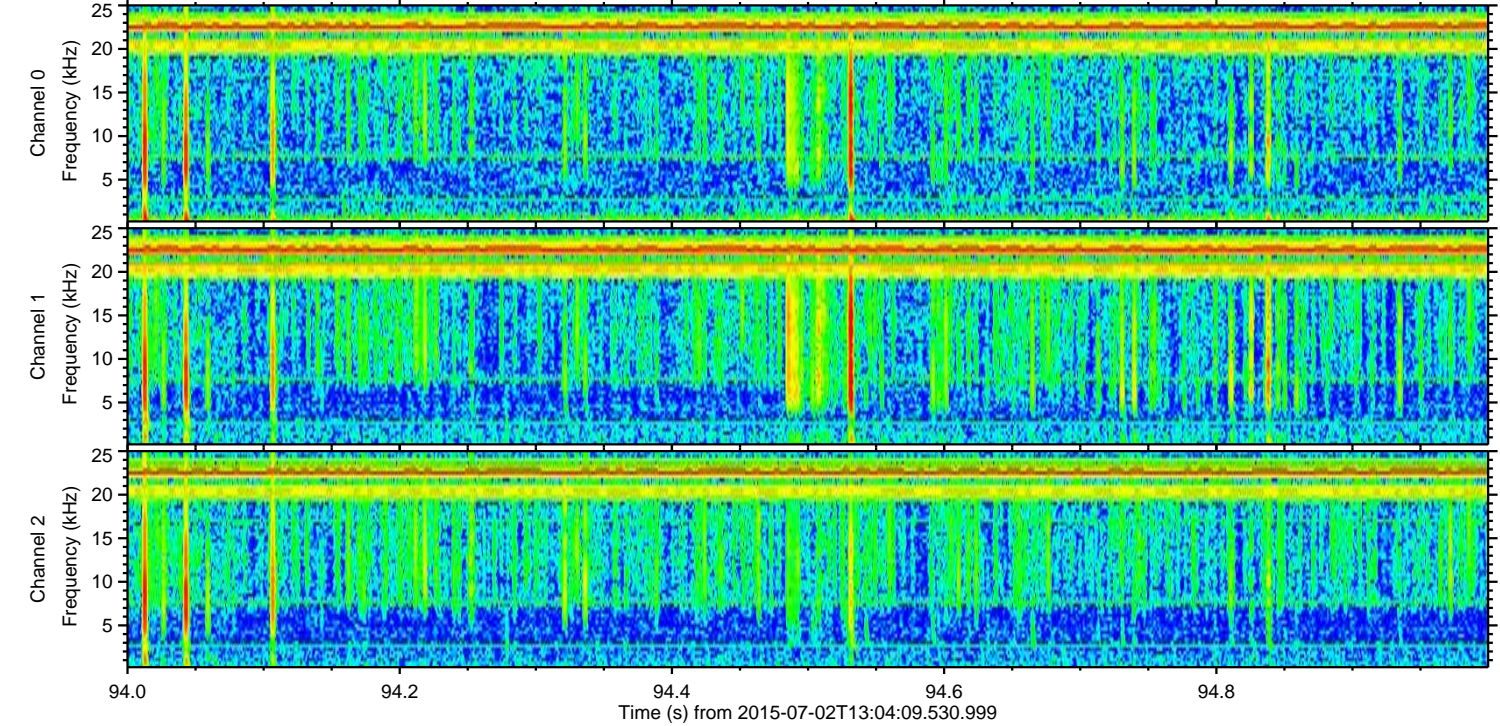
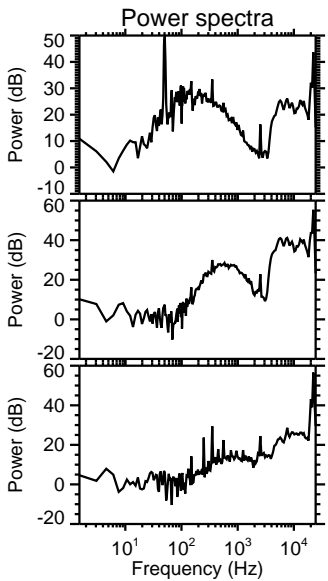
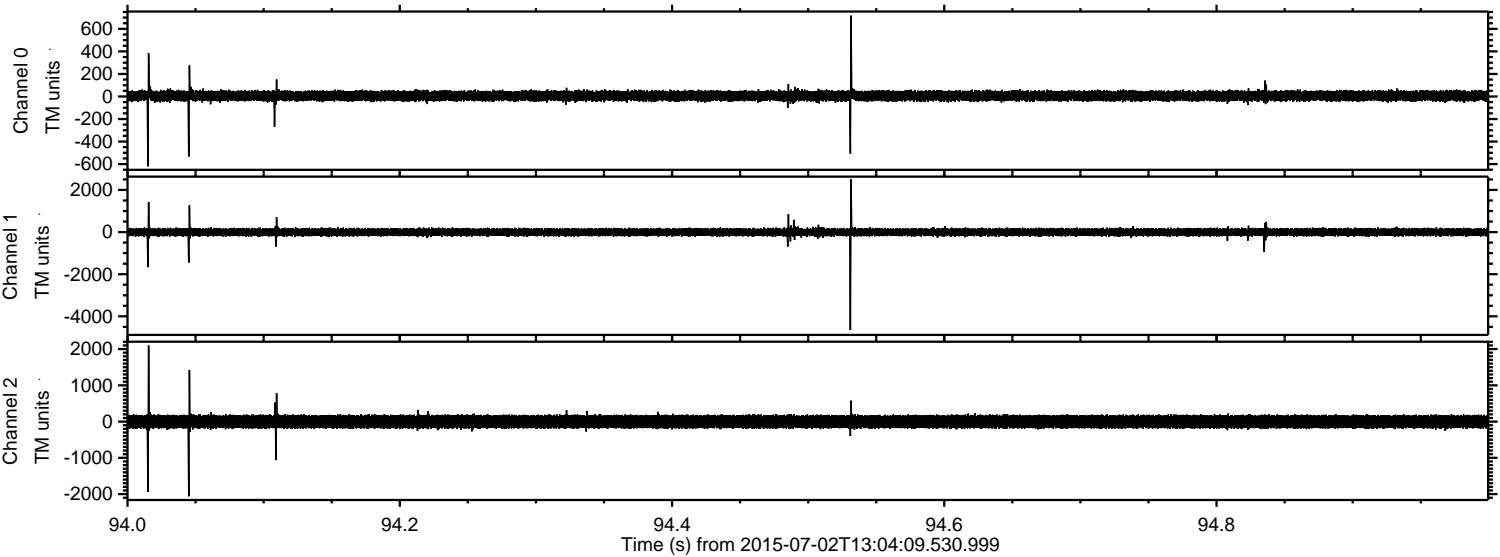
Channel 2
mn: -440
mx: 839
 μ : -2.9
 σ : 104.8

ELMAVAN 3D WAVEFORMS (Measured data sampled at 50 kHz) 51000 packets of 144 samples from 2015-07-02T13:04:09.530.999. Part 126/147

Processed Thu Jul 2 15:11:05 2015 by ELM ver.2012-10-06 from 001__elm20150702_130408__dat00.bin



Processed Thu Jul 2 15:11:06 2015 by ELM ver.2012-10-06 from 001__elm20150702_130408__dat00.bin



Channel 0
mn: -620
mx: 718
 μ : 5.3
 σ : 25.9

Channel 1
mn: -4649
mx: 2507
 μ : -5.4
 σ : 102.1

Channel 2
mn: -2059
mx: 2097
 μ : -2.9
 σ : 107.3

Processed Thu Jul 2 15:11:07 2015 by ELM ver.2012-10-06 from 001__elm20150702_130408__dat00.bin

