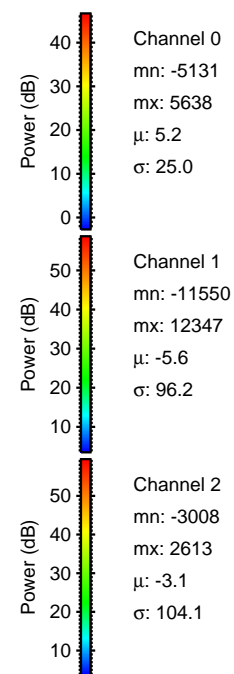
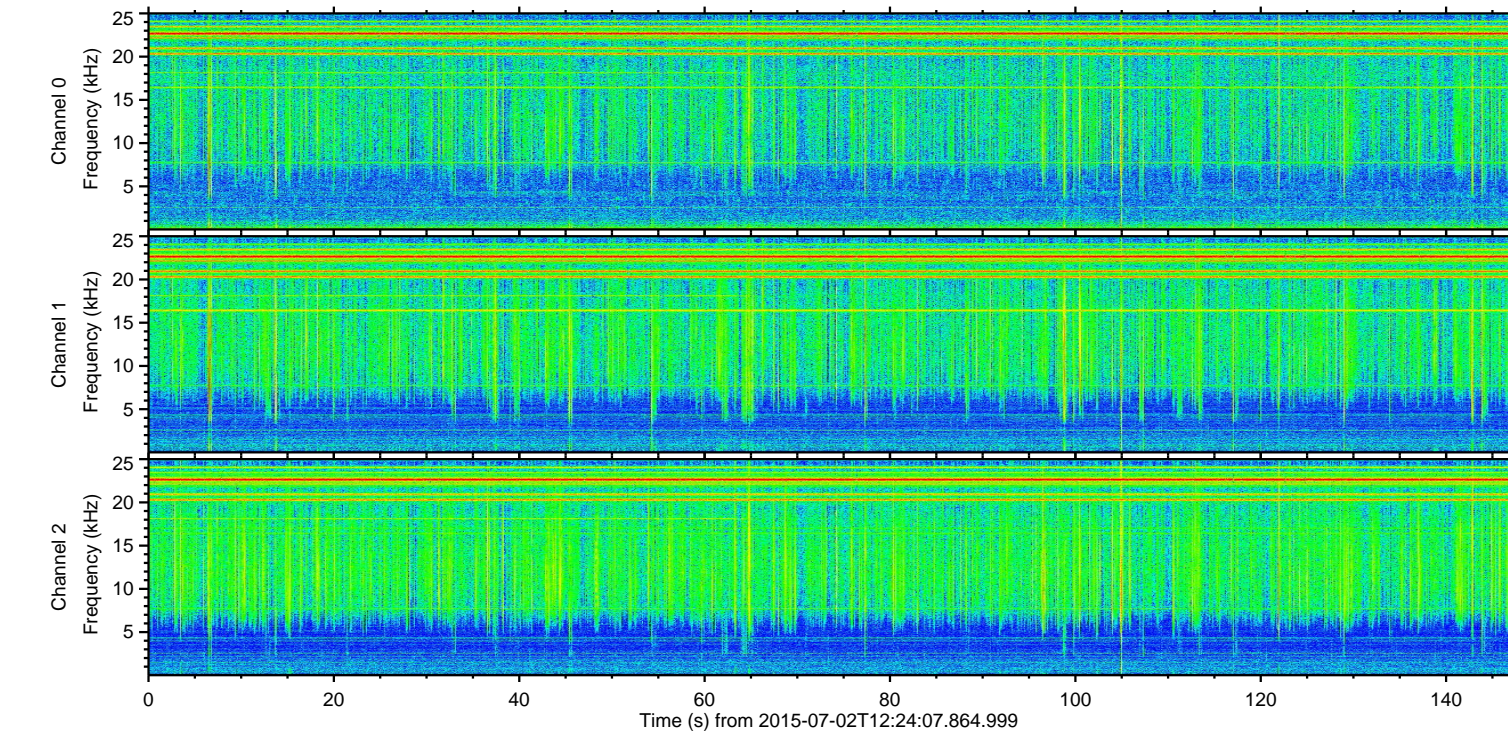
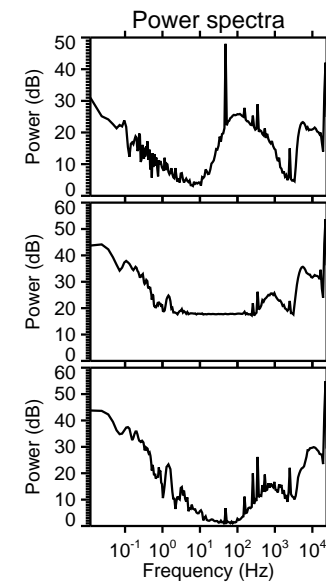
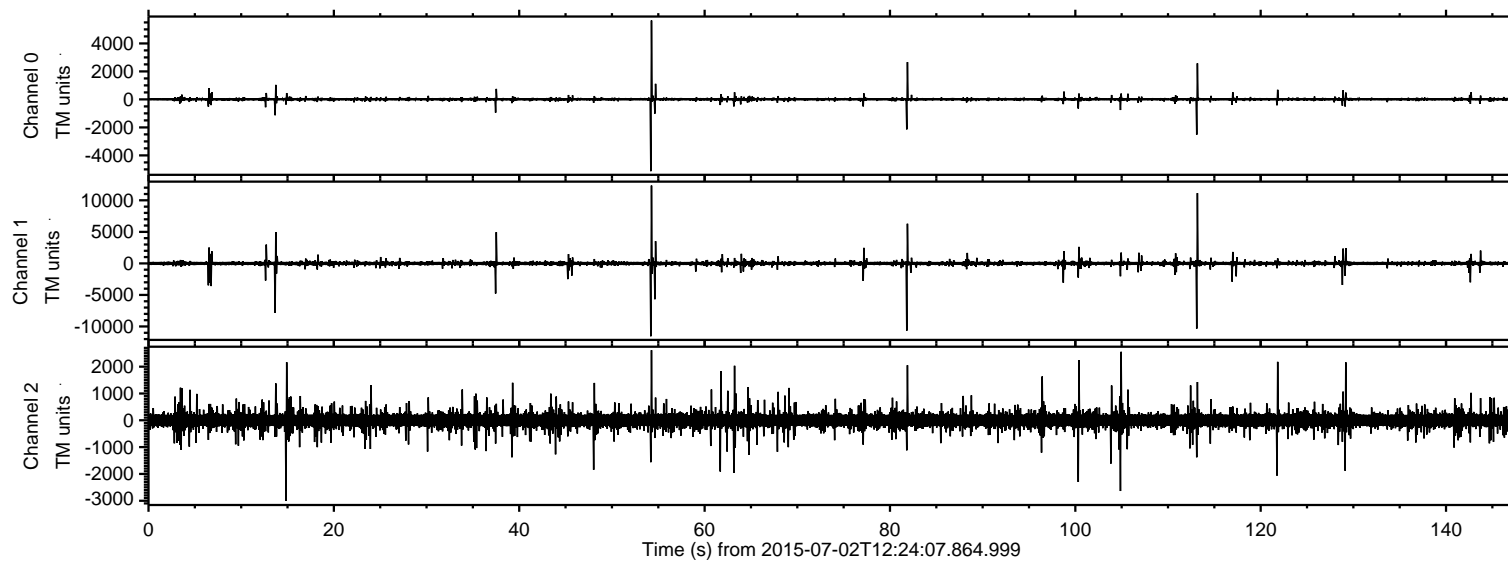
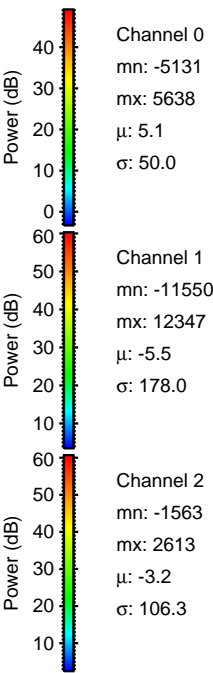
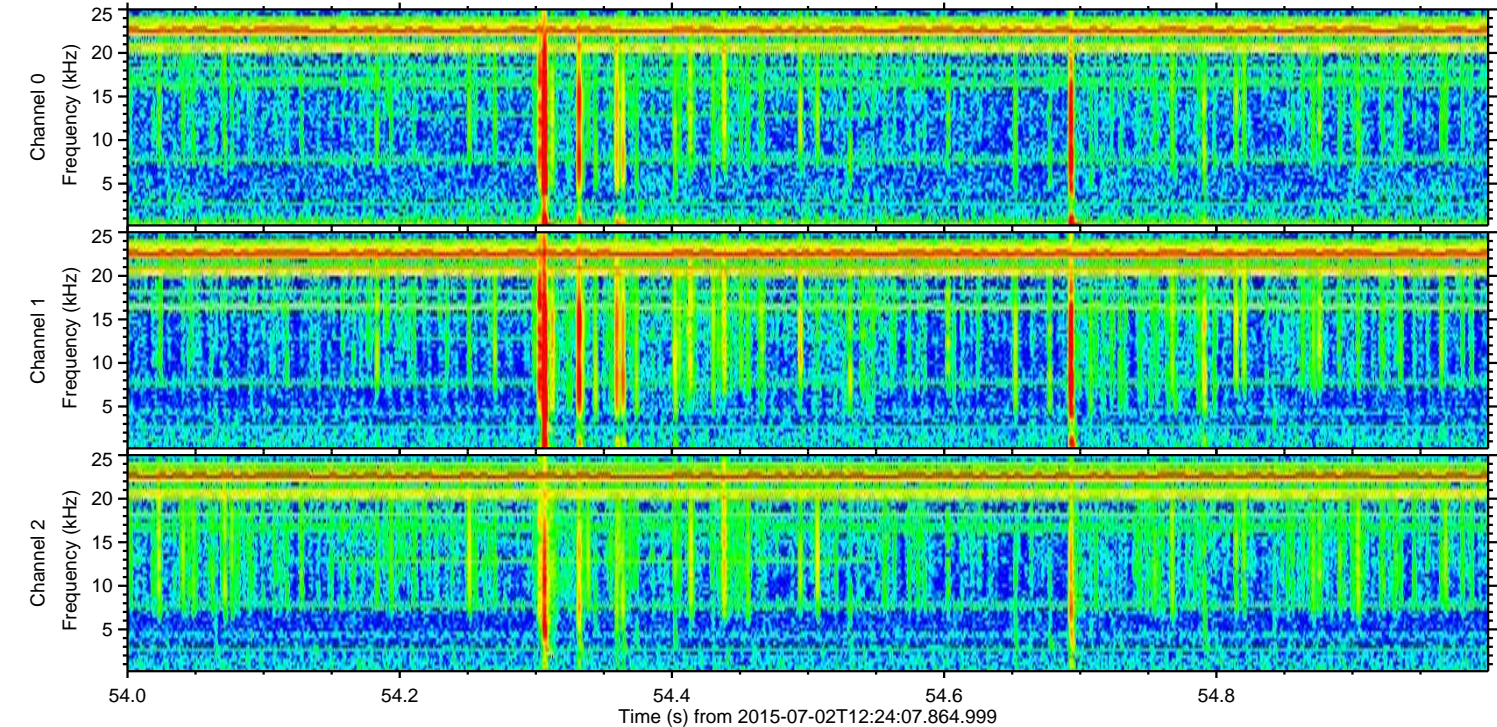
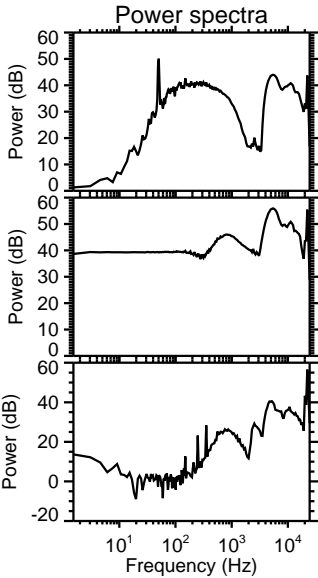
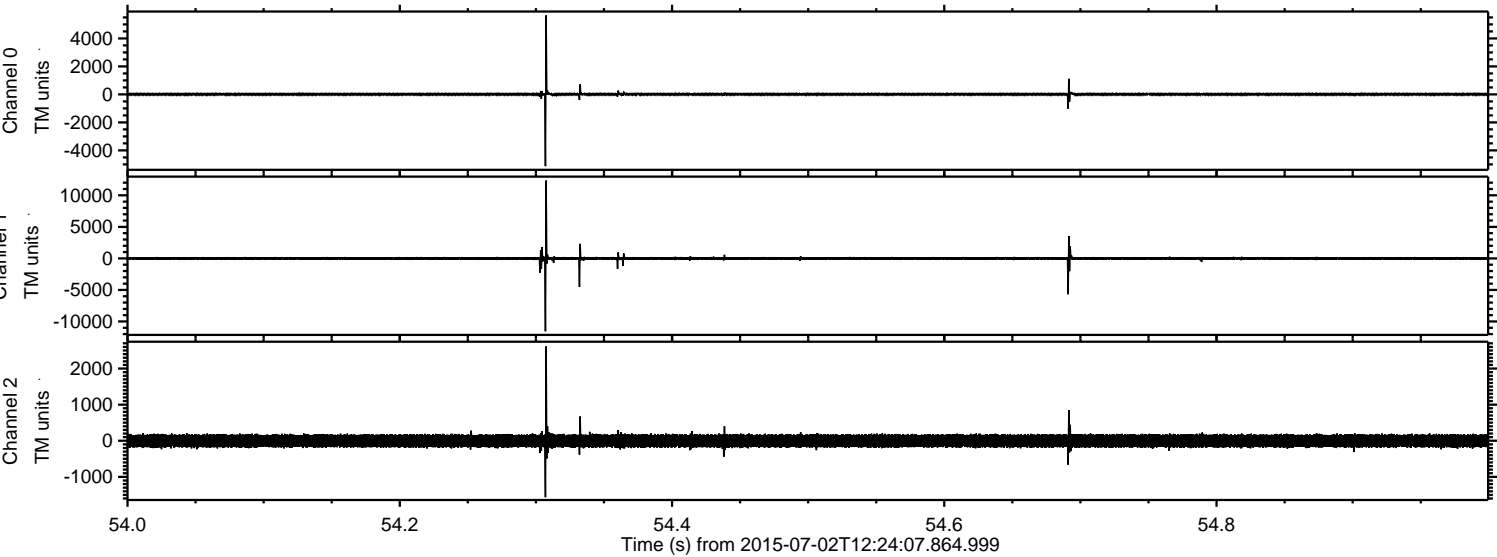


ELMAVAN 3D WAVEFORMS (Measured data sampled at 50 kHz) 51000 packets of 144 samples from 2015-07-02T12:24:07.864.999.

Processed Thu Jul 2 14:30:41 2015 by ELM ver.2012-10-06 from 001__elm20150702_122406__dat00.bin

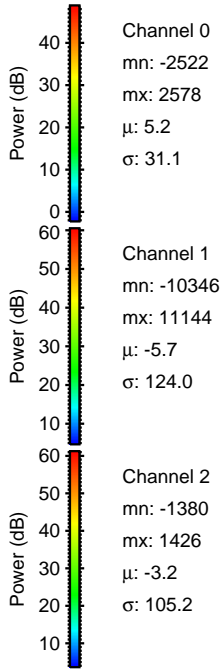
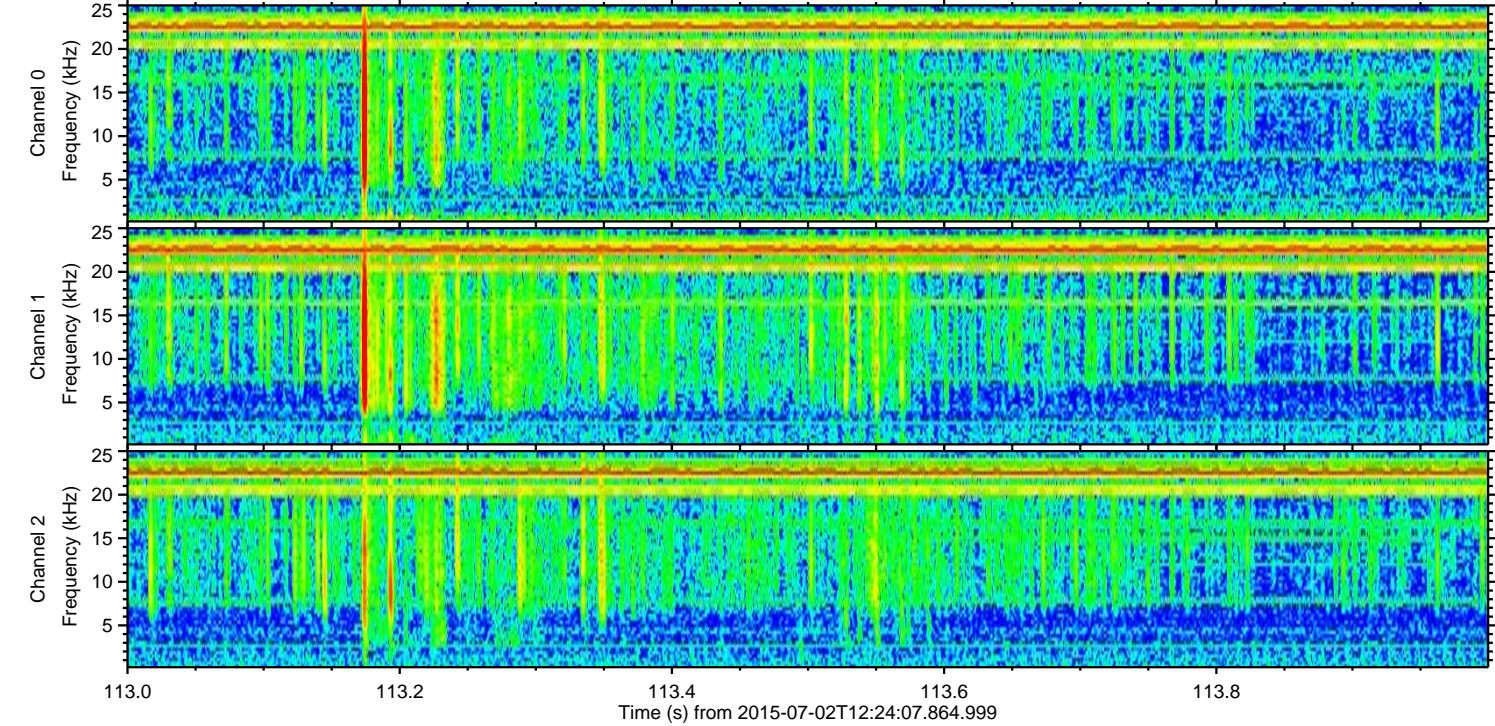
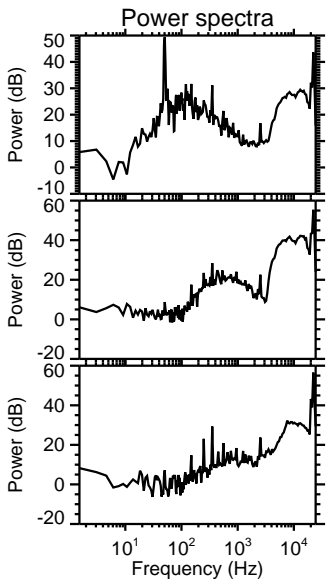
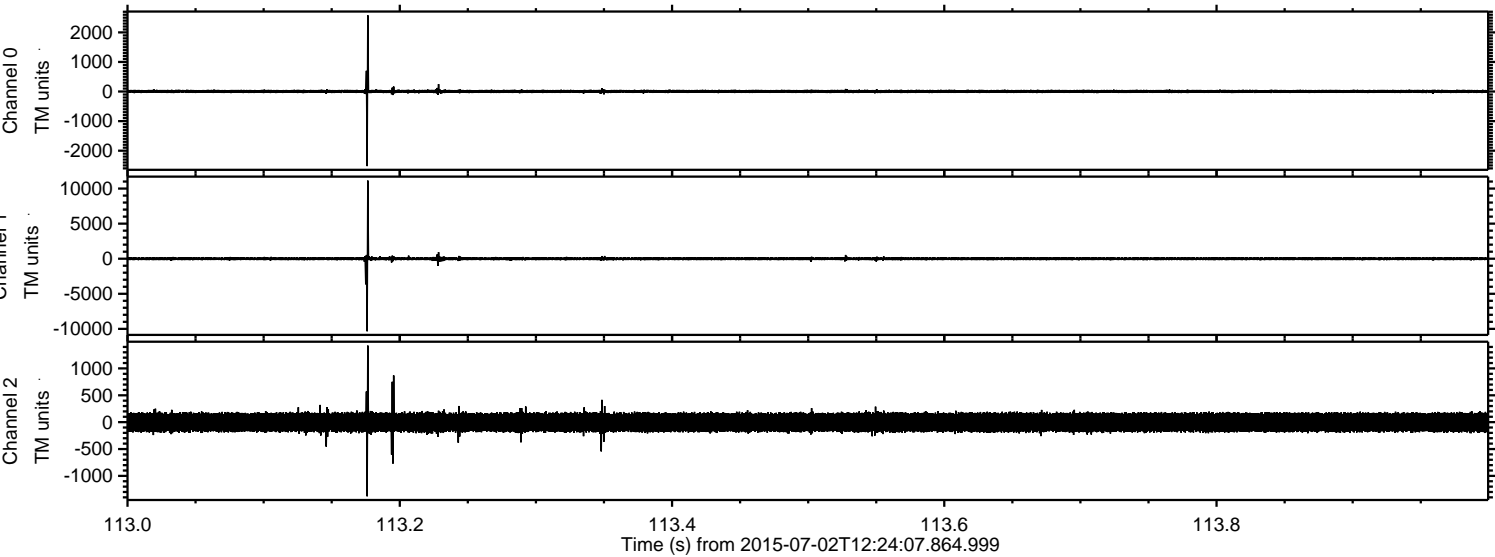


Processed Thu Jul 2 14:30:56 2015 by ELM ver.2012-10-06 from 001__elm20150702_122406__dat00.bin

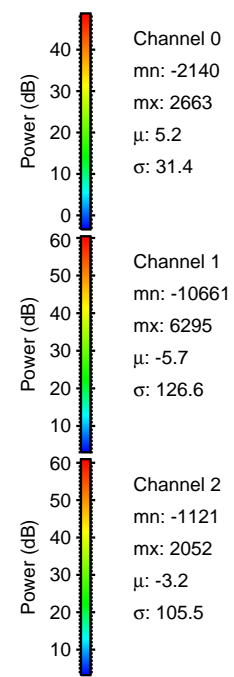
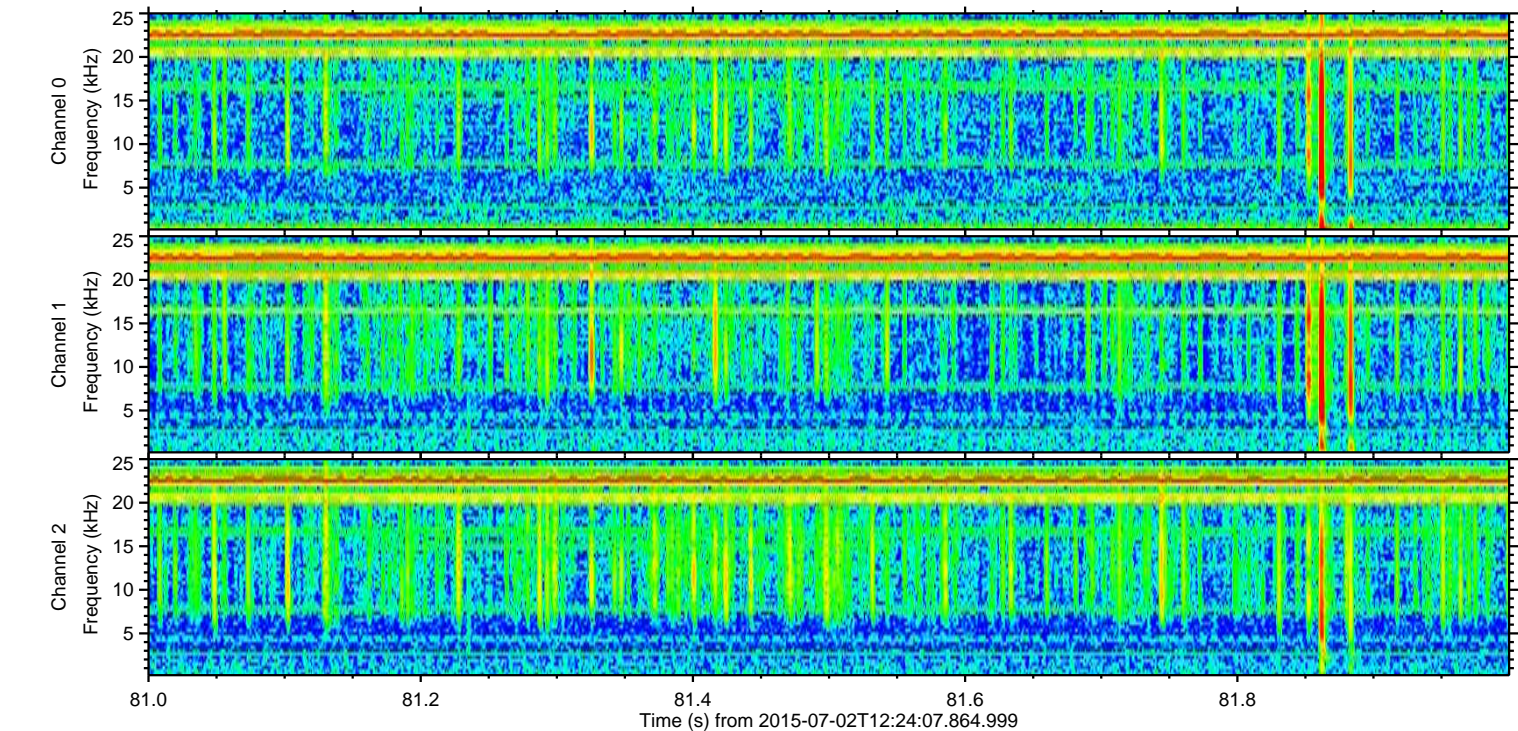
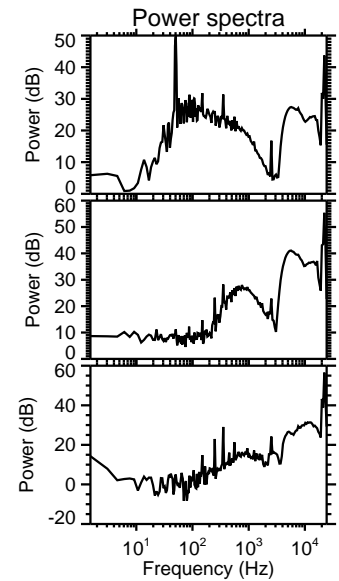
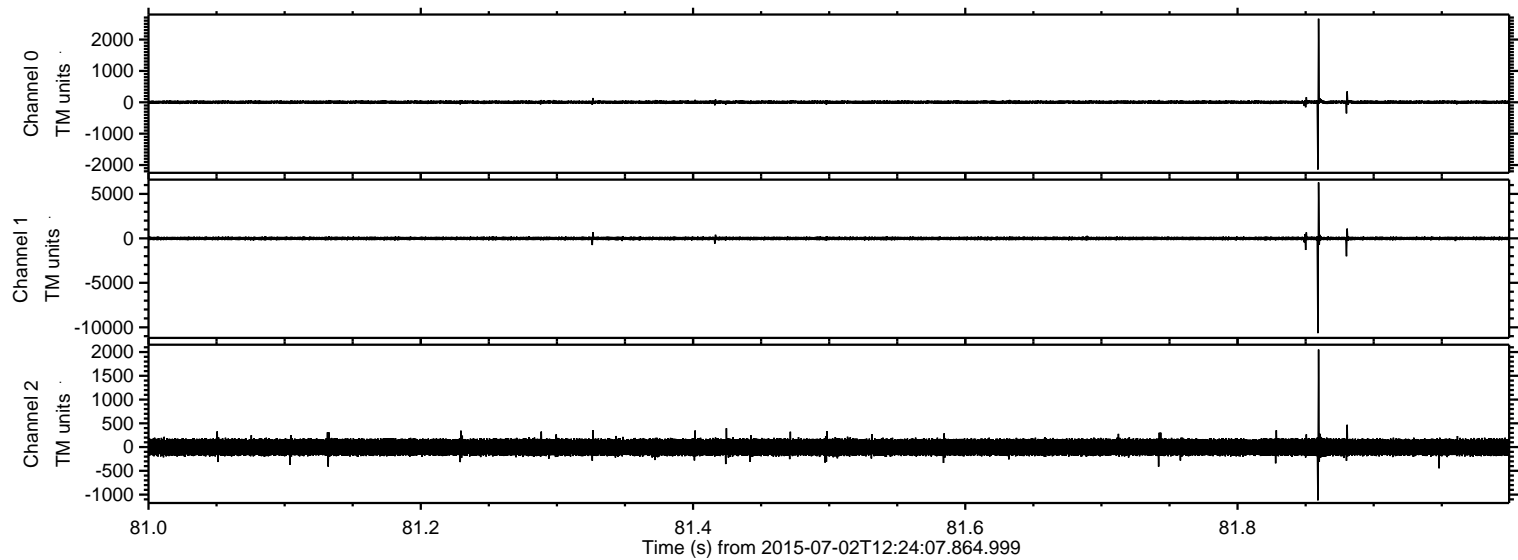


ELMAVAN 3D WAVEFORMS (Measured data sampled at 50 kHz) 51000 packets of 144 samples from 2015-07-02T12:24:07.864.999. Part 114/147

Processed Thu Jul 2 14:30:57 2015 by ELM ver.2012-10-06 from 001__elm20150702_122406__dat00.bin

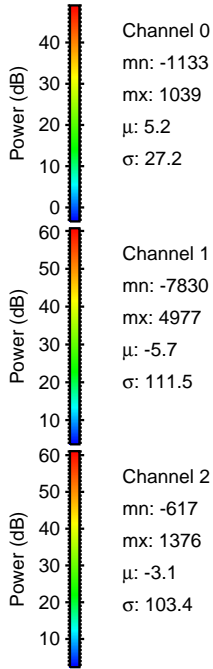
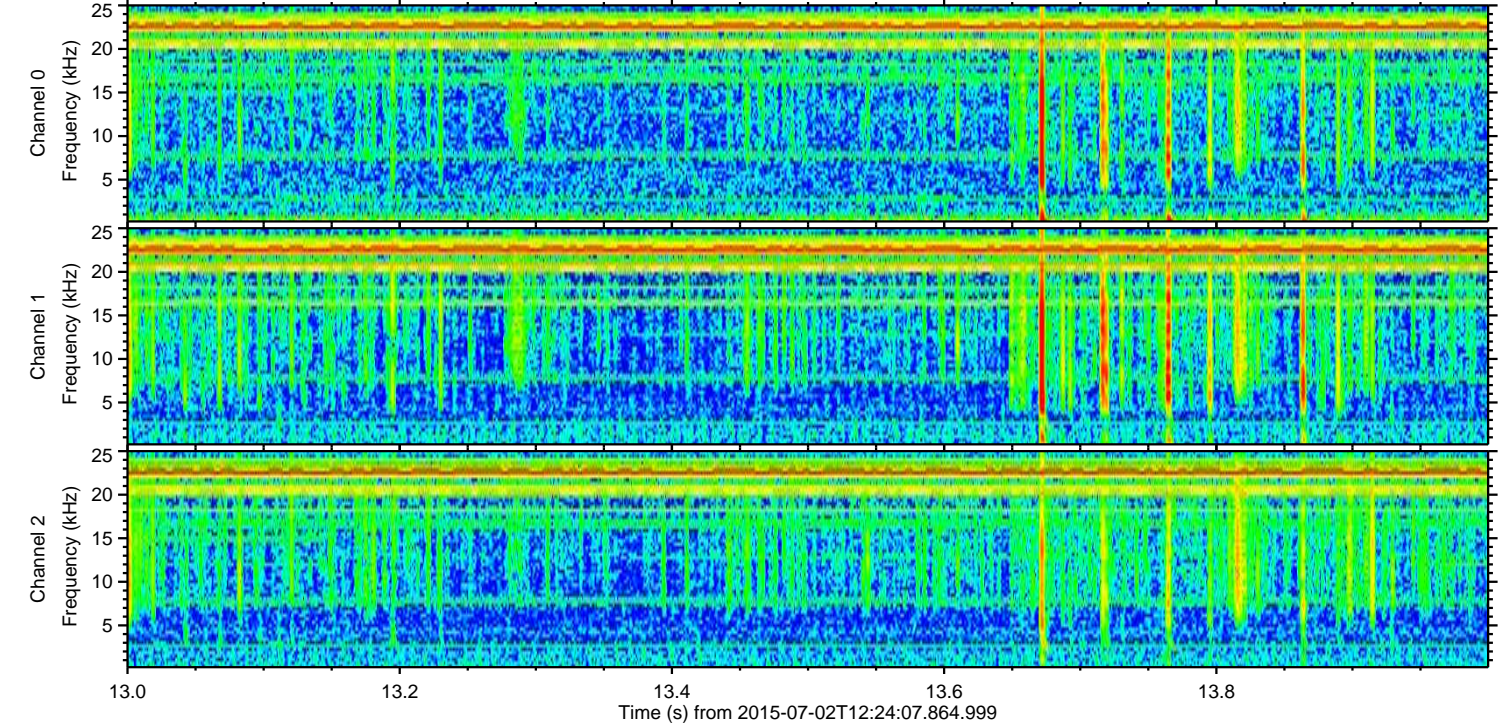
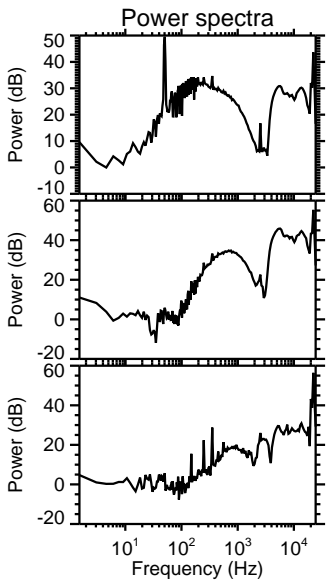
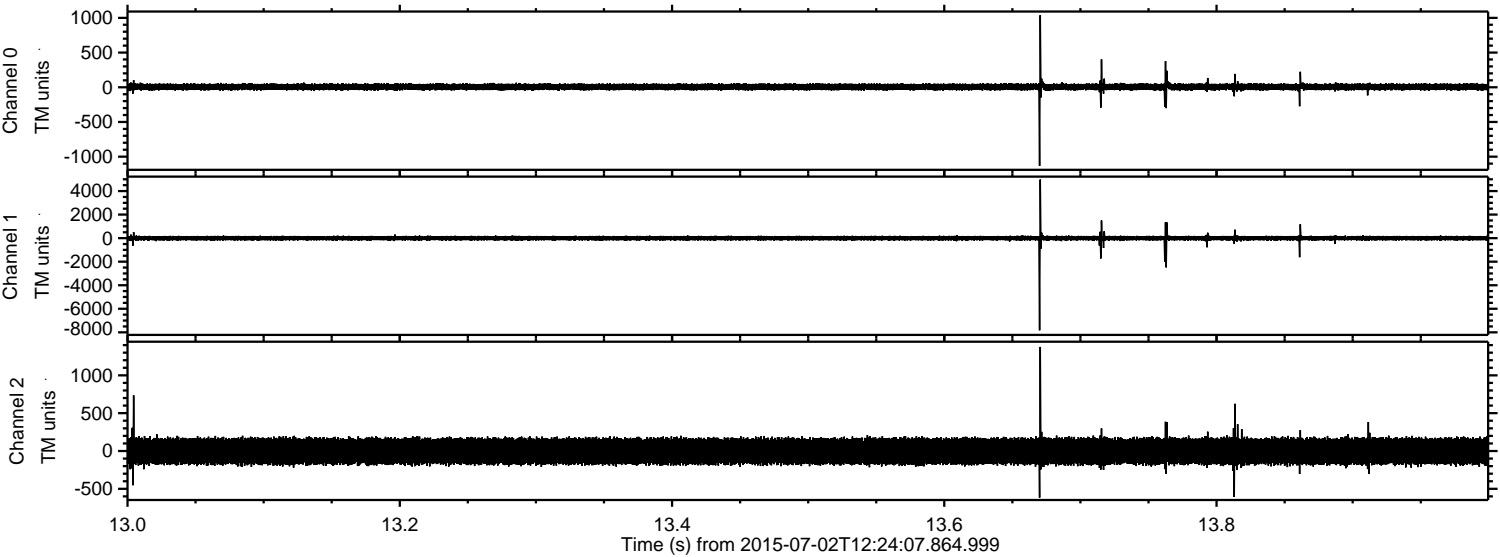


Processed Thu Jul 2 14:30:58 2015 by ELM ver.2012-10-06 from 001__elm20150702_122406__dat00.bin

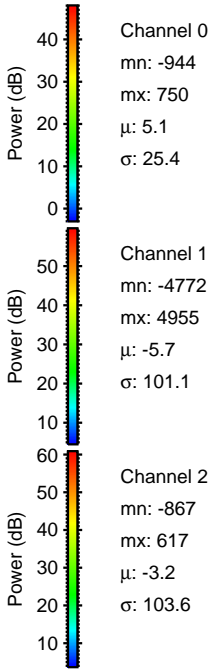
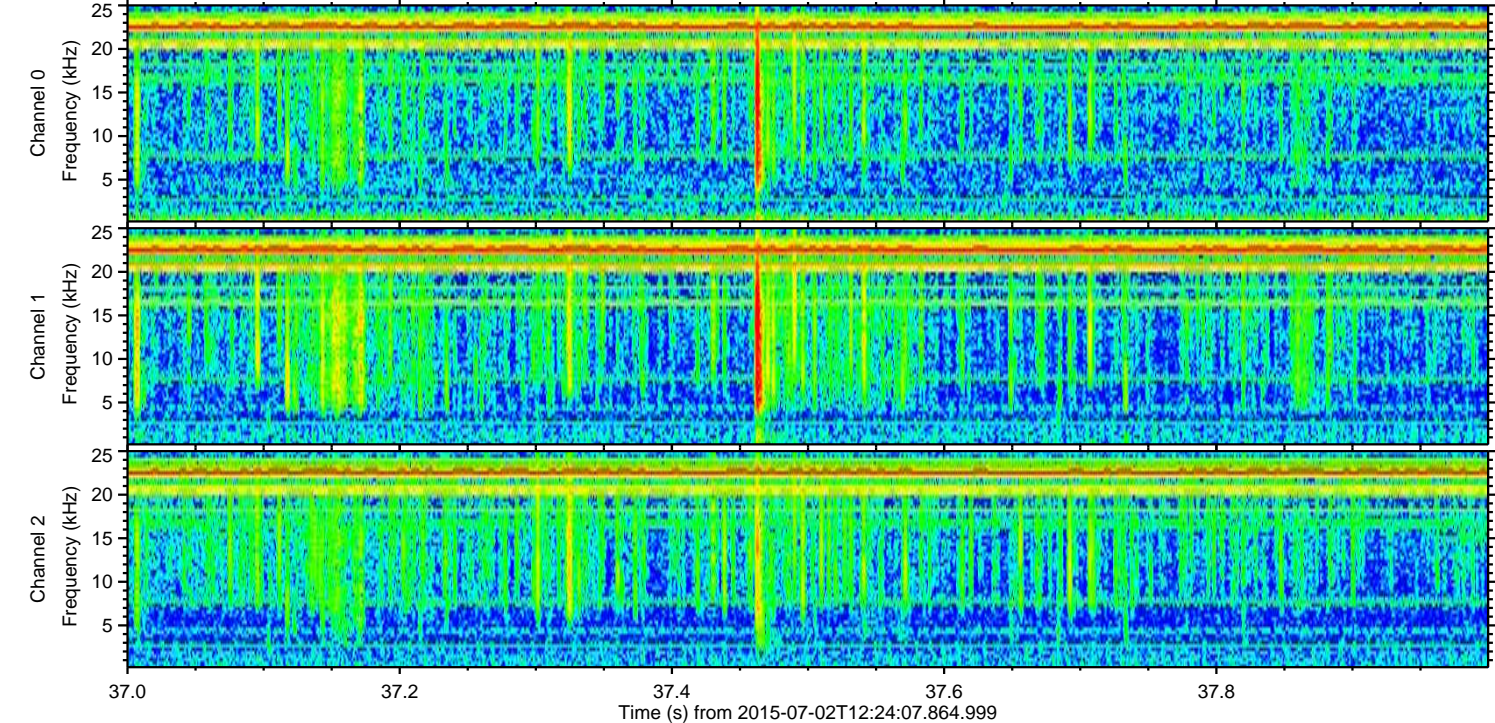
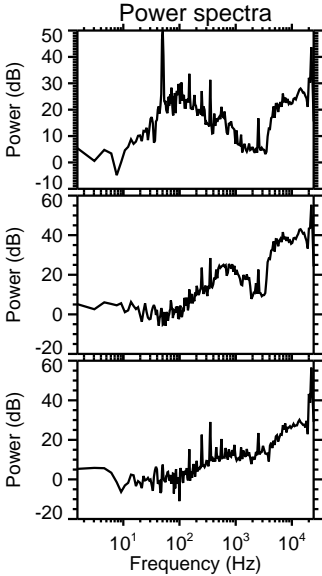
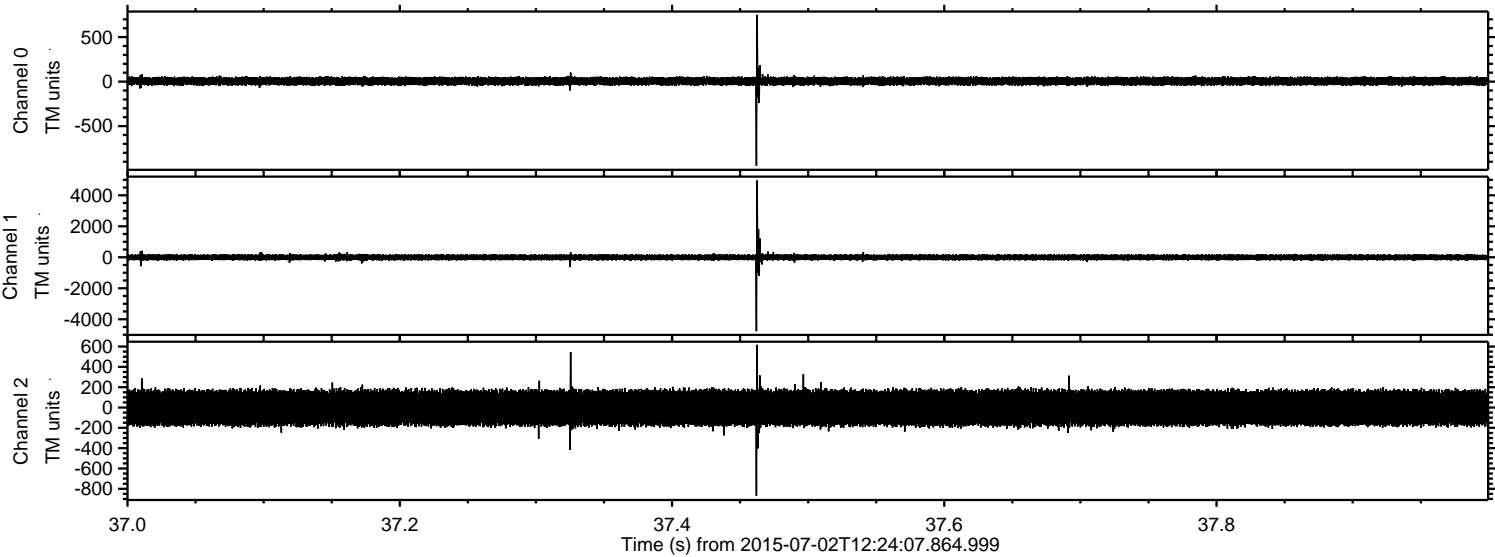


ELMAVAN 3D WAVEFORMS (Measured data sampled at 50 kHz) 51000 packets of 144 samples from 2015-07-02T12:24:07.864.999. Part 14/147

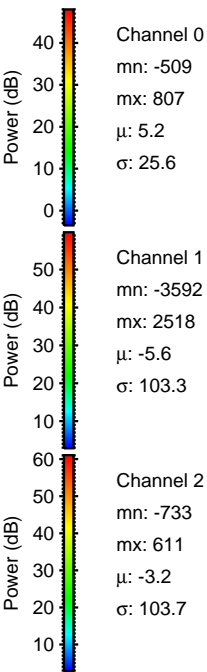
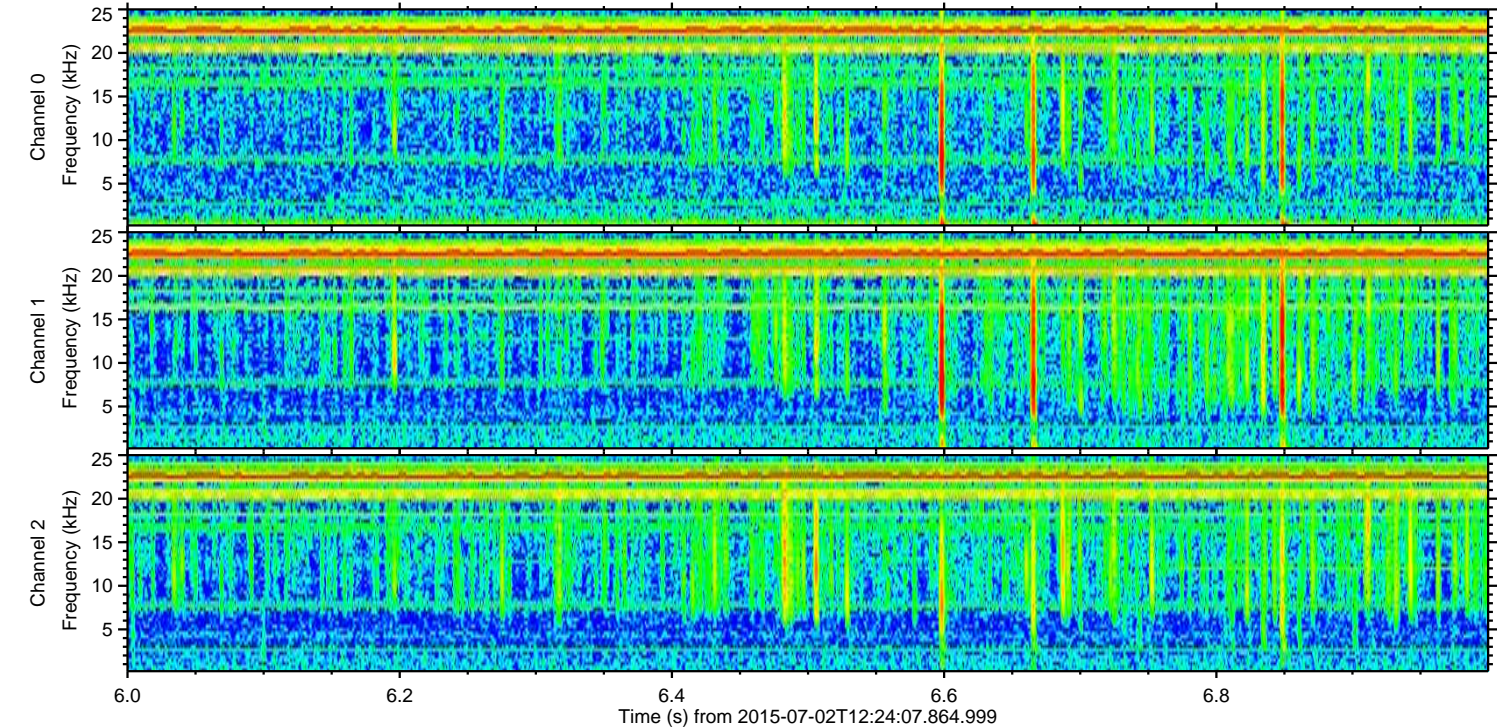
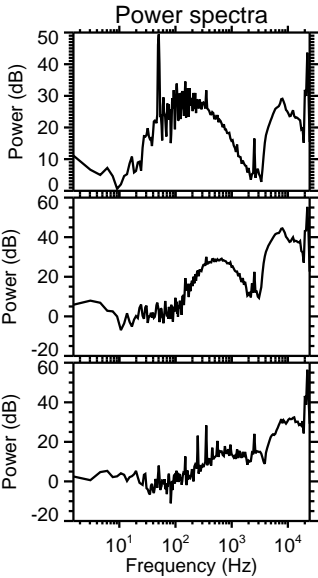
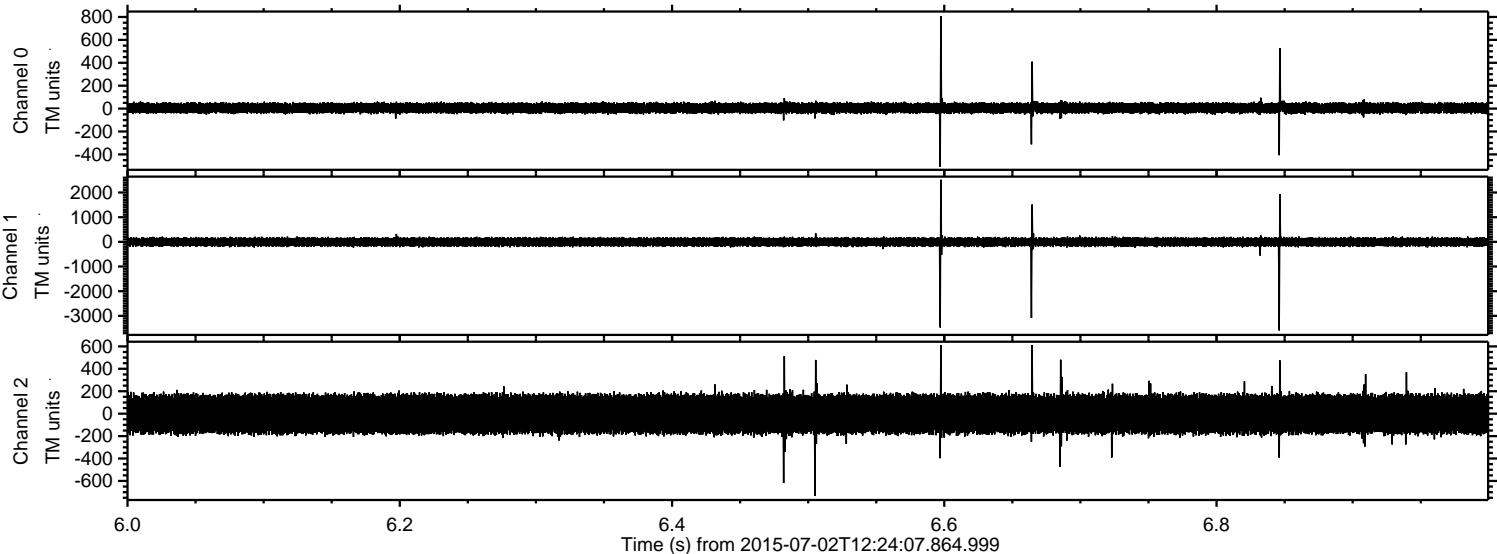
Processed Thu Jul 2 14:30:59 2015 by ELM ver.2012-10-06 from 001__elm20150702_122406__dat00.bin



Processed Thu Jul 2 14:31:00 2015 by ELM ver.2012-10-06 from 001__elm20150702_122406__dat00.bin

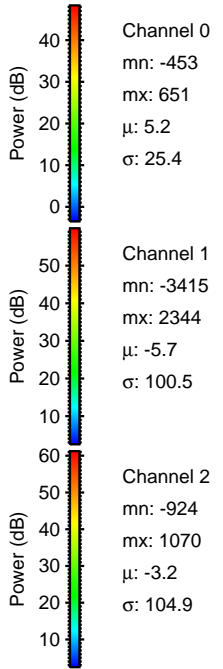
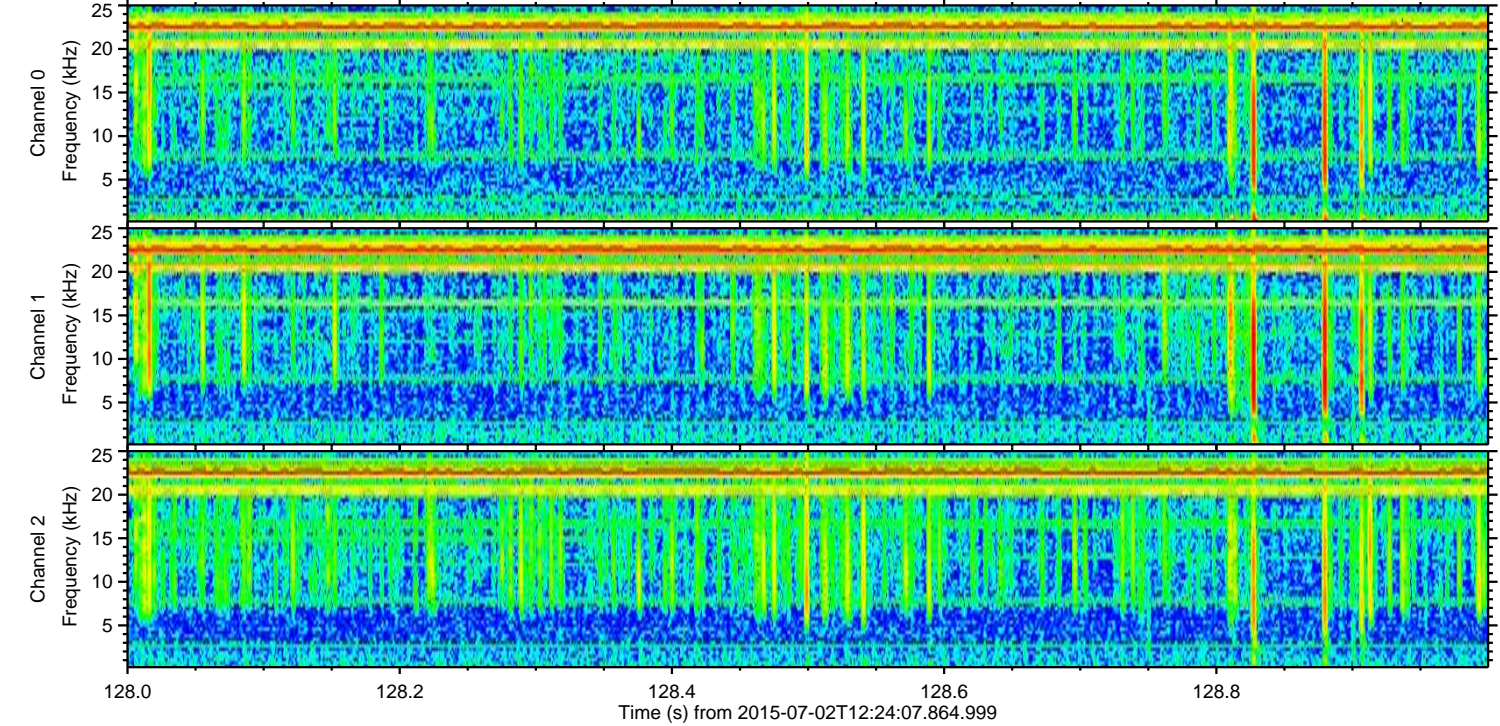
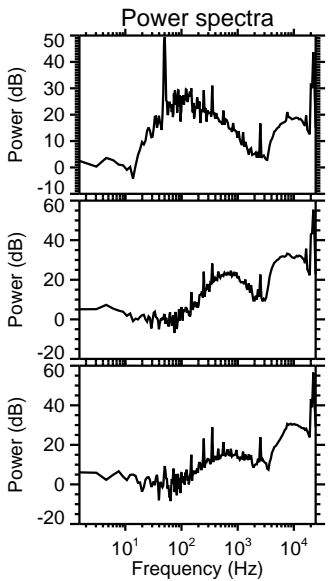
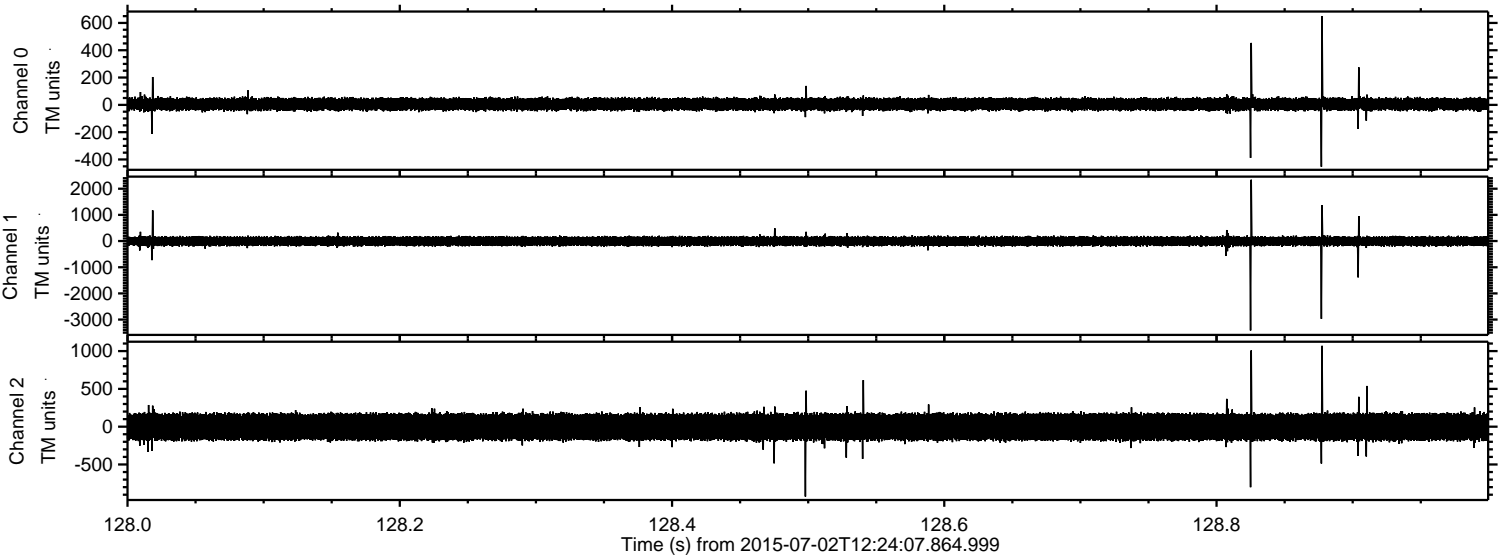


Processed Thu Jul 2 14:31:01 2015 by ELM ver.2012-10-06 from 001__elm20150702_122406__dat00.bin

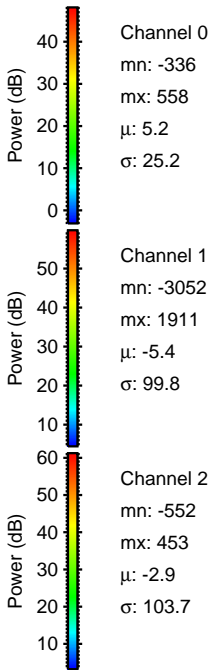
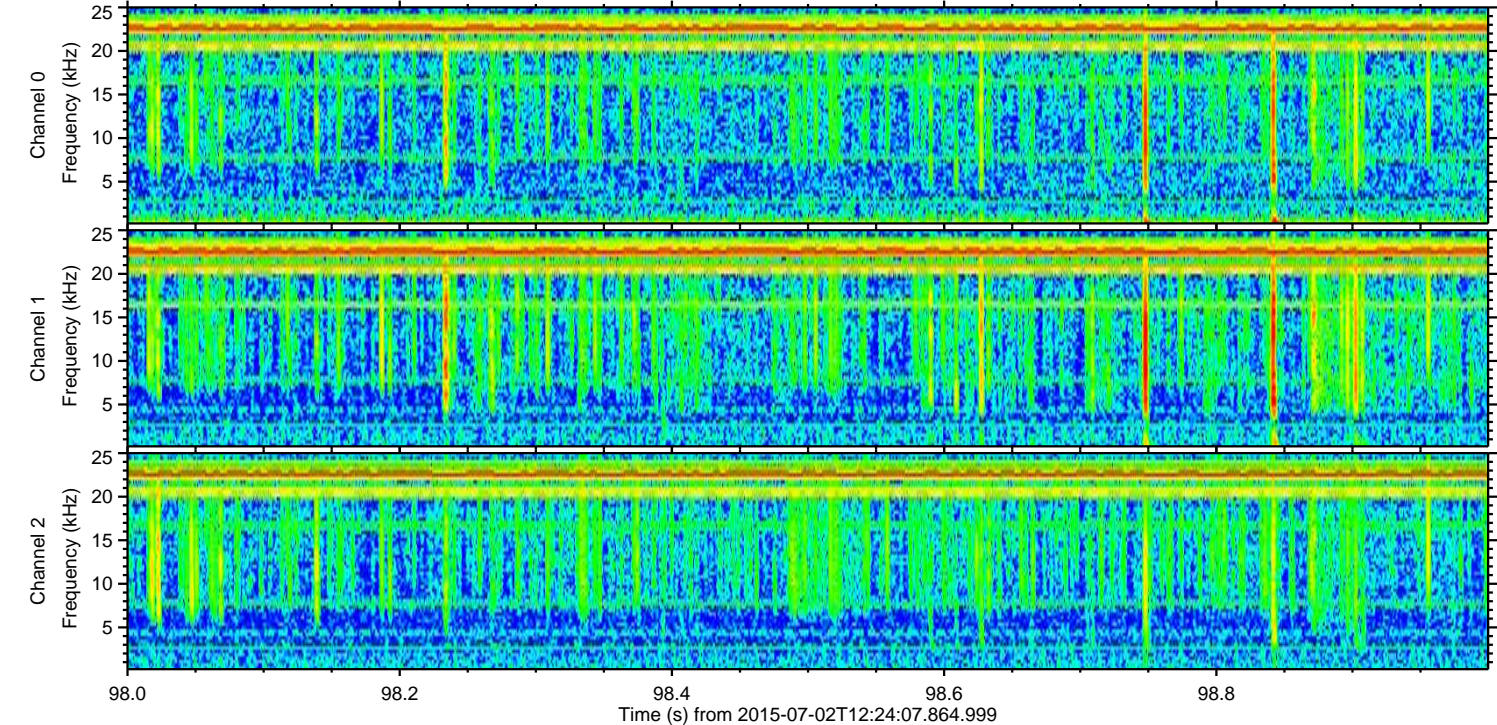
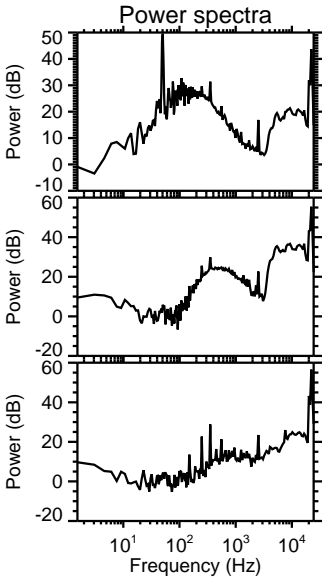
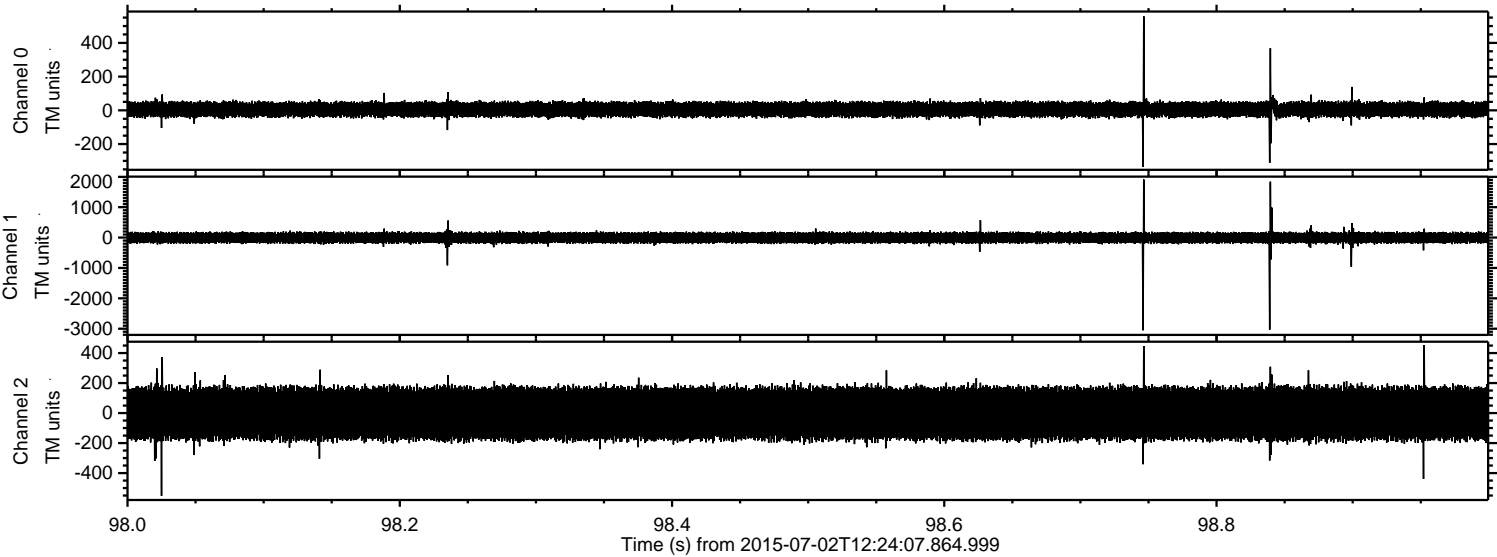


ELMAVAN 3D WAVEFORMS (Measured data sampled at 50 kHz) 51000 packets of 144 samples from 2015-07-02T12:24:07.864.999. Part 129/147

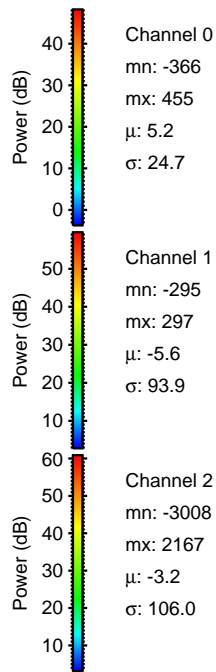
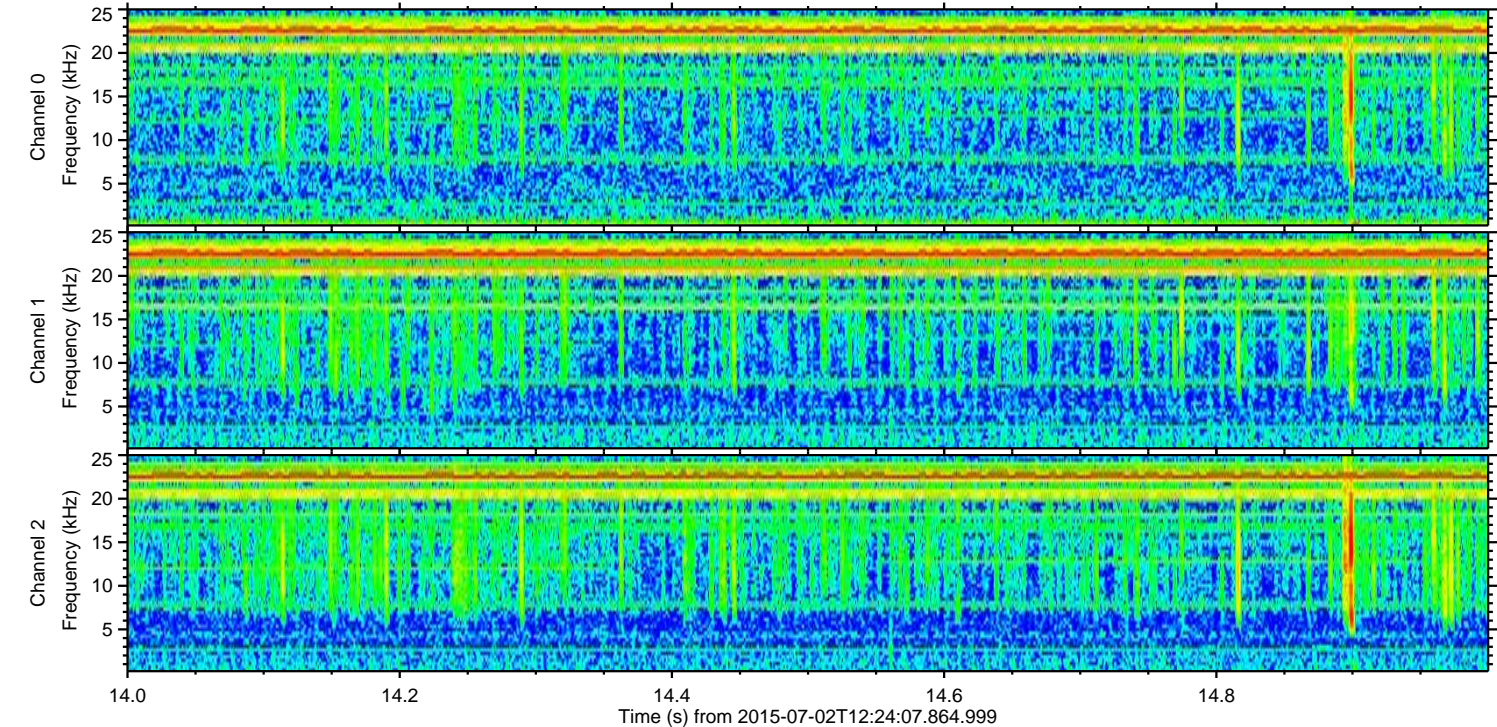
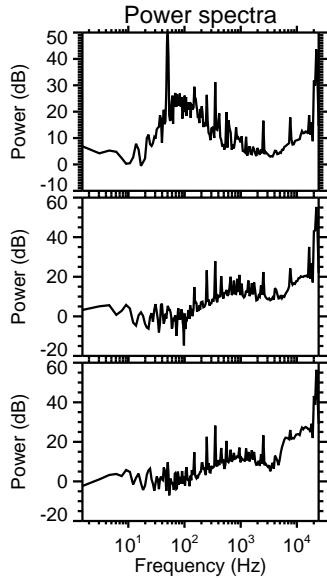
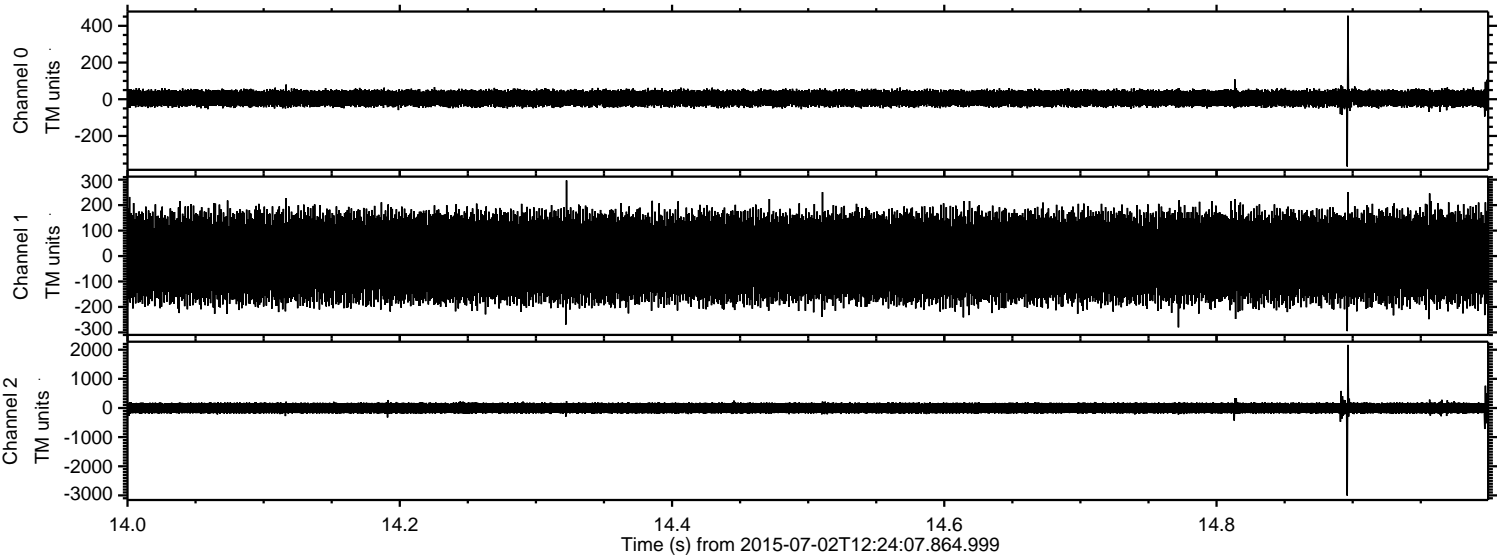
Processed Thu Jul 2 14:31:02 2015 by ELM ver.2012-10-06 from 001__elm20150702_122406__dat00.bin



Processed Thu Jul 2 14:31:04 2015 by ELM ver.2012-10-06 from 001__elm20150702_122406__dat00.bin



Processed Thu Jul 2 14:31:05 2015 by ELM ver.2012-10-06 from 001__elm20150702_122406__dat00.bin



Channel 0
mn: -366
mx: 455
 μ : 5.2
 σ : 24.7

Channel 1
mn: -295
mx: 297
 μ : -5.6
 σ : 93.9

Channel 2
mn: -3008
mx: 2167
 μ : -3.2
 σ : 106.0

