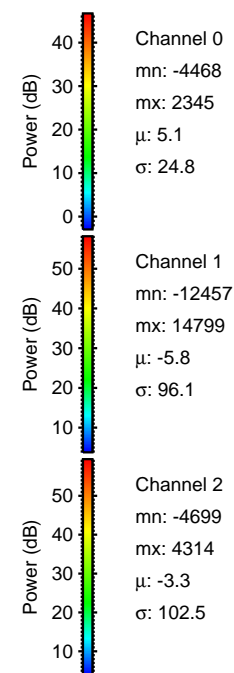
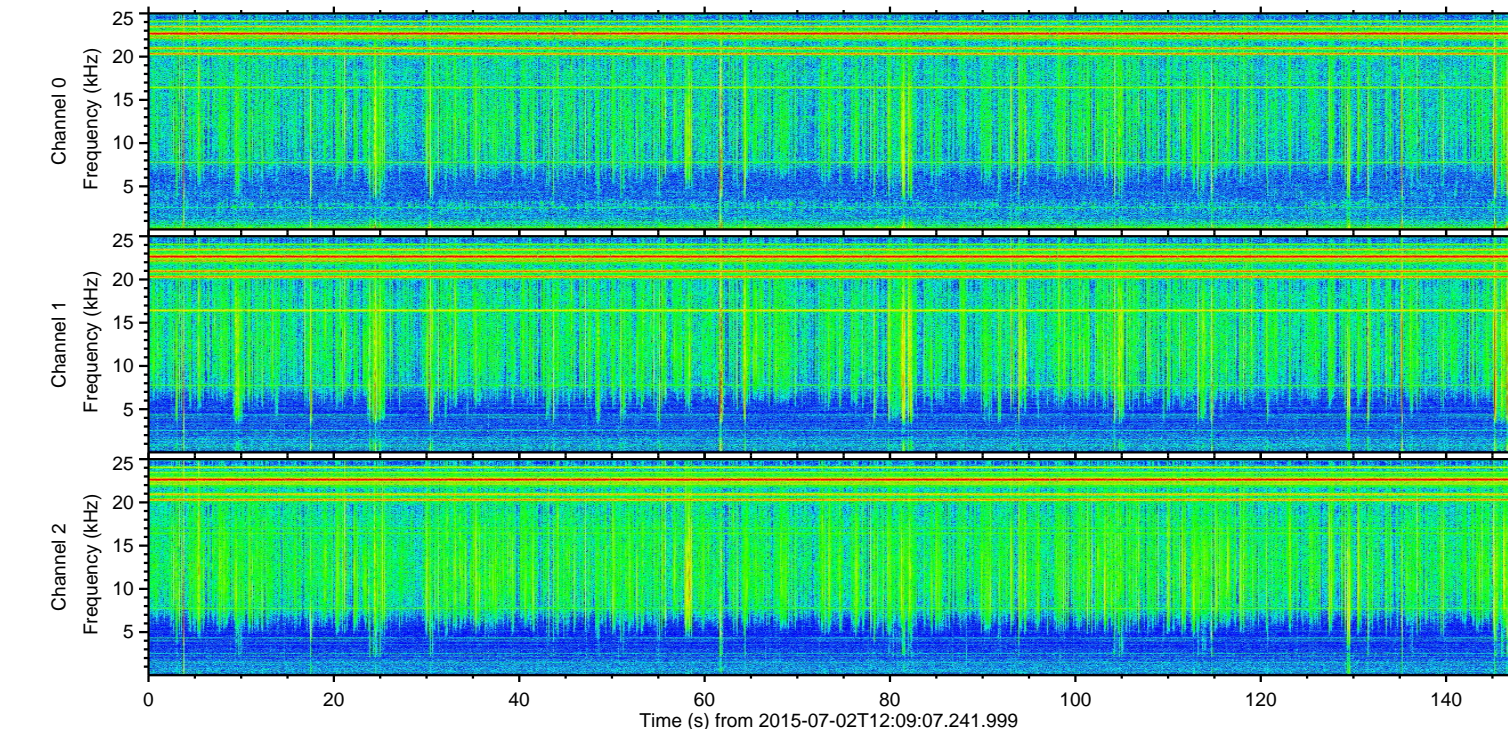
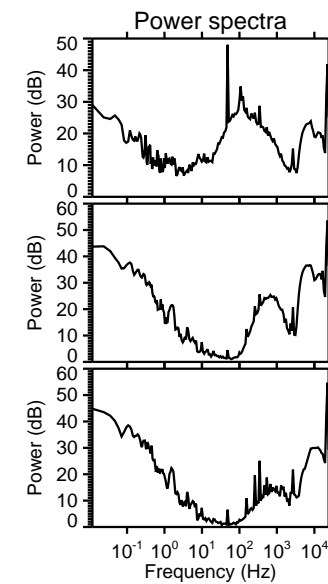
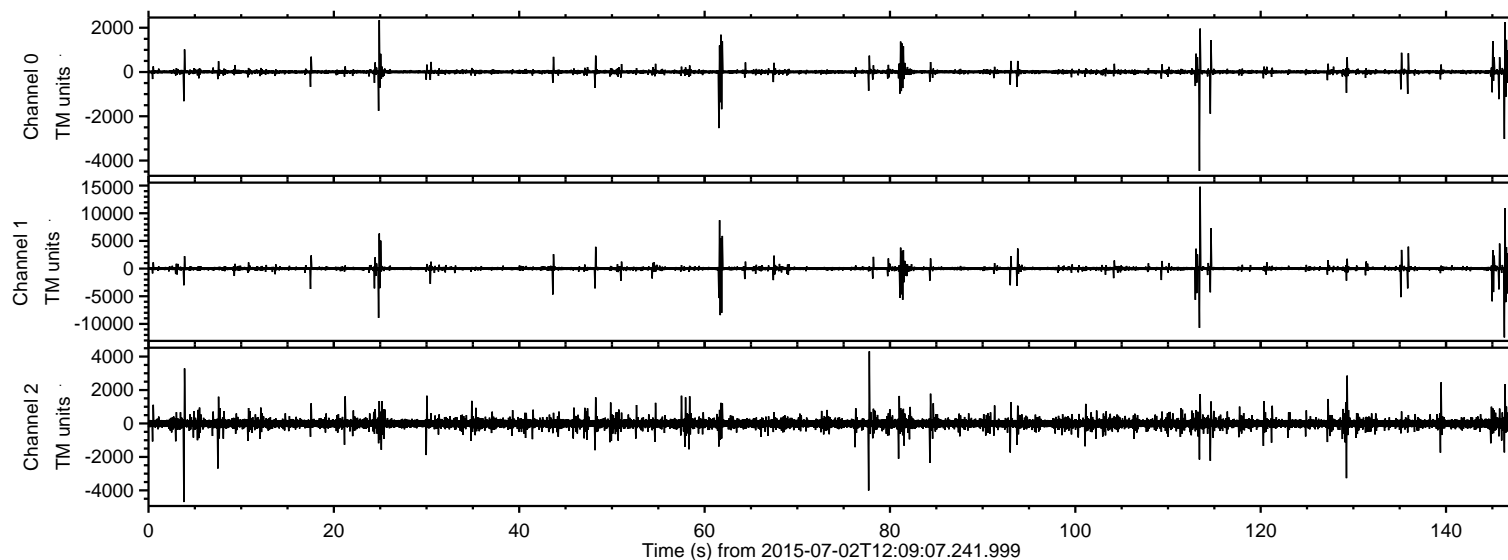


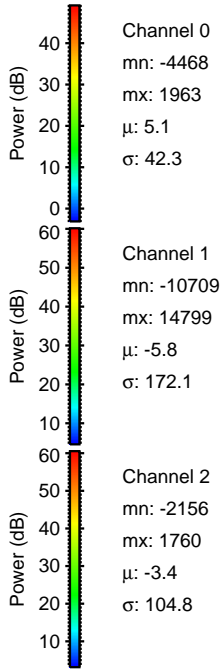
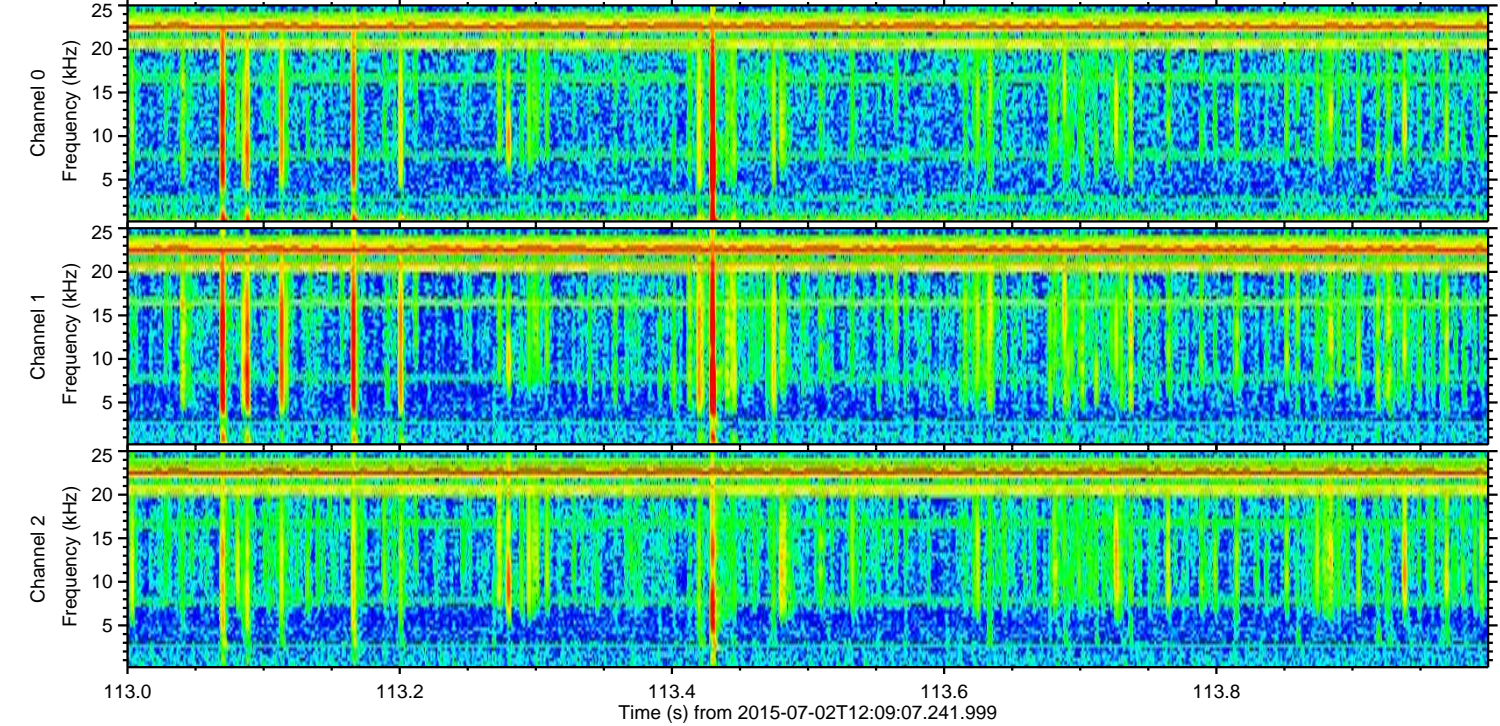
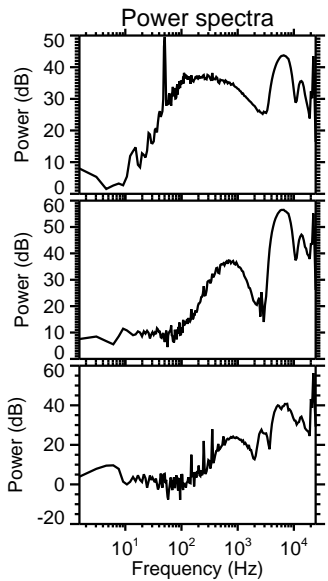
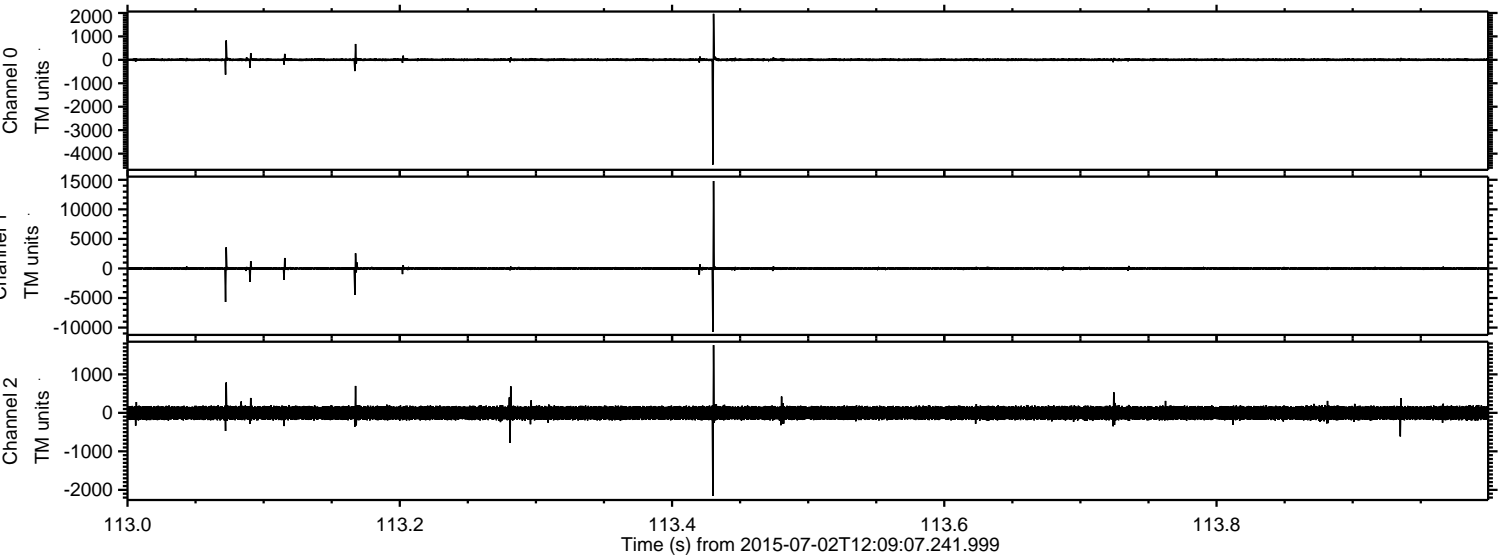
ELMAVAN 3D WAVEFORMS (Measured data sampled at 50 kHz) 51000 packets of 144 samples from 2015-07-02T12:09:07.241.999.

Processed Thu Jul 2 14:15:52 2015 by ELM ver.2012-10-06 from 001__elm20150702_120906__dat00.bin

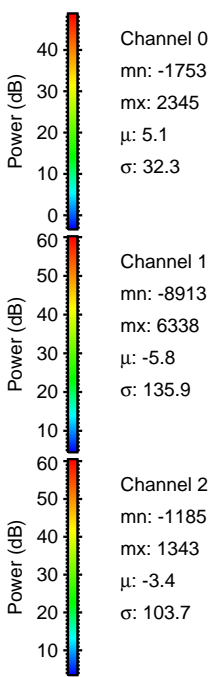
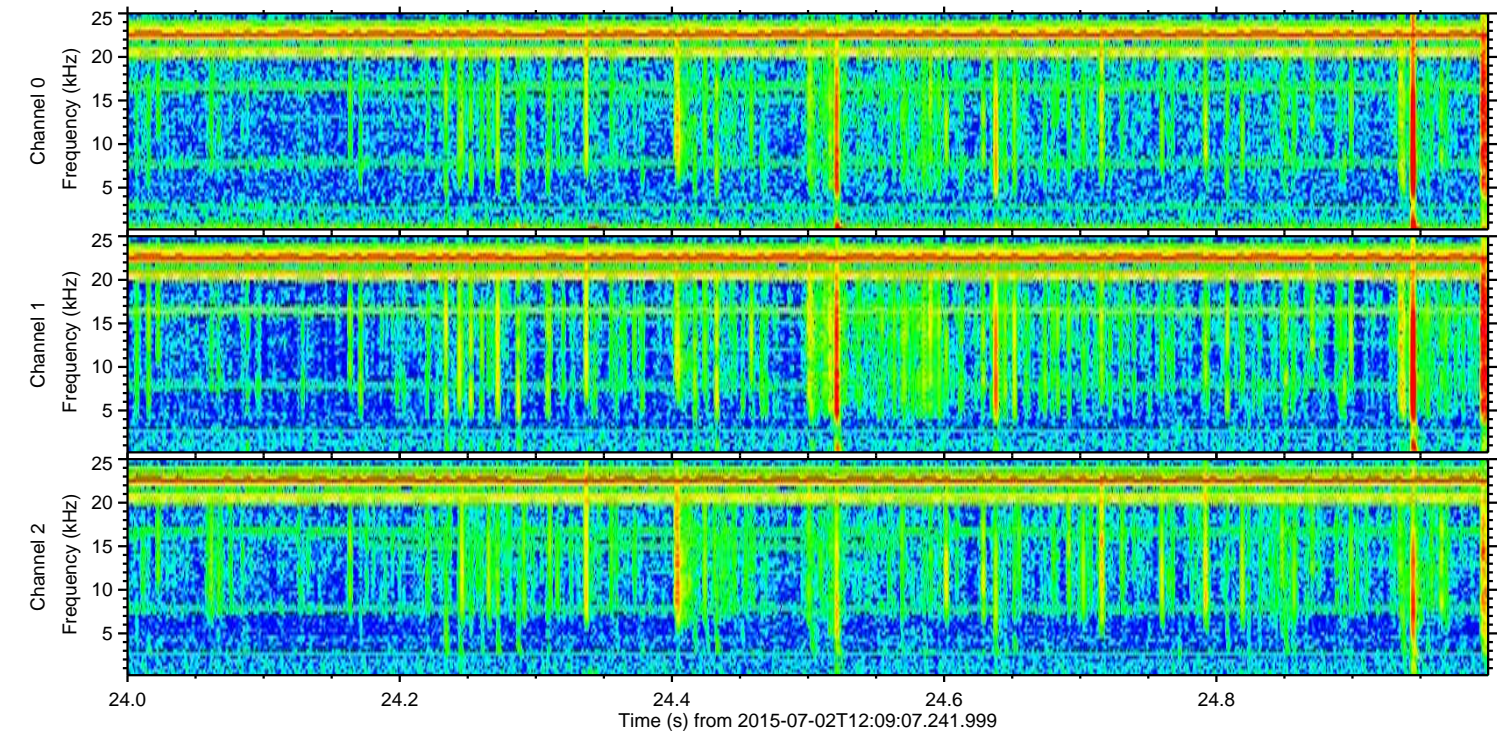
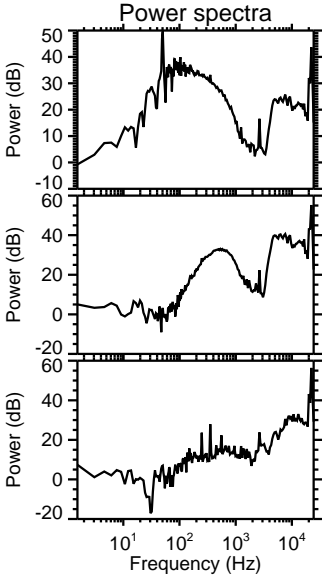
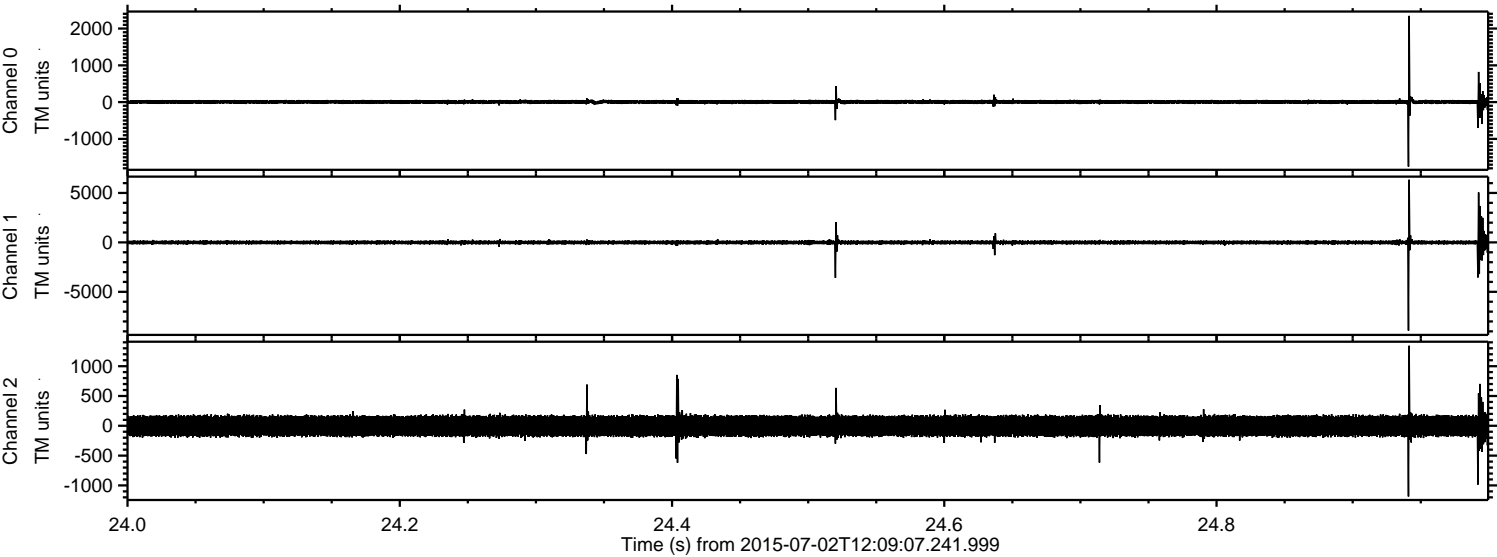


ELMAVAN 3D WAVEFORMS (Measured data sampled at 50 kHz) 51000 packets of 144 samples from 2015-07-02T12:09:07.241.999. Part 114/147

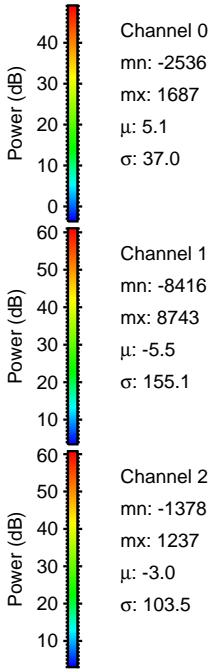
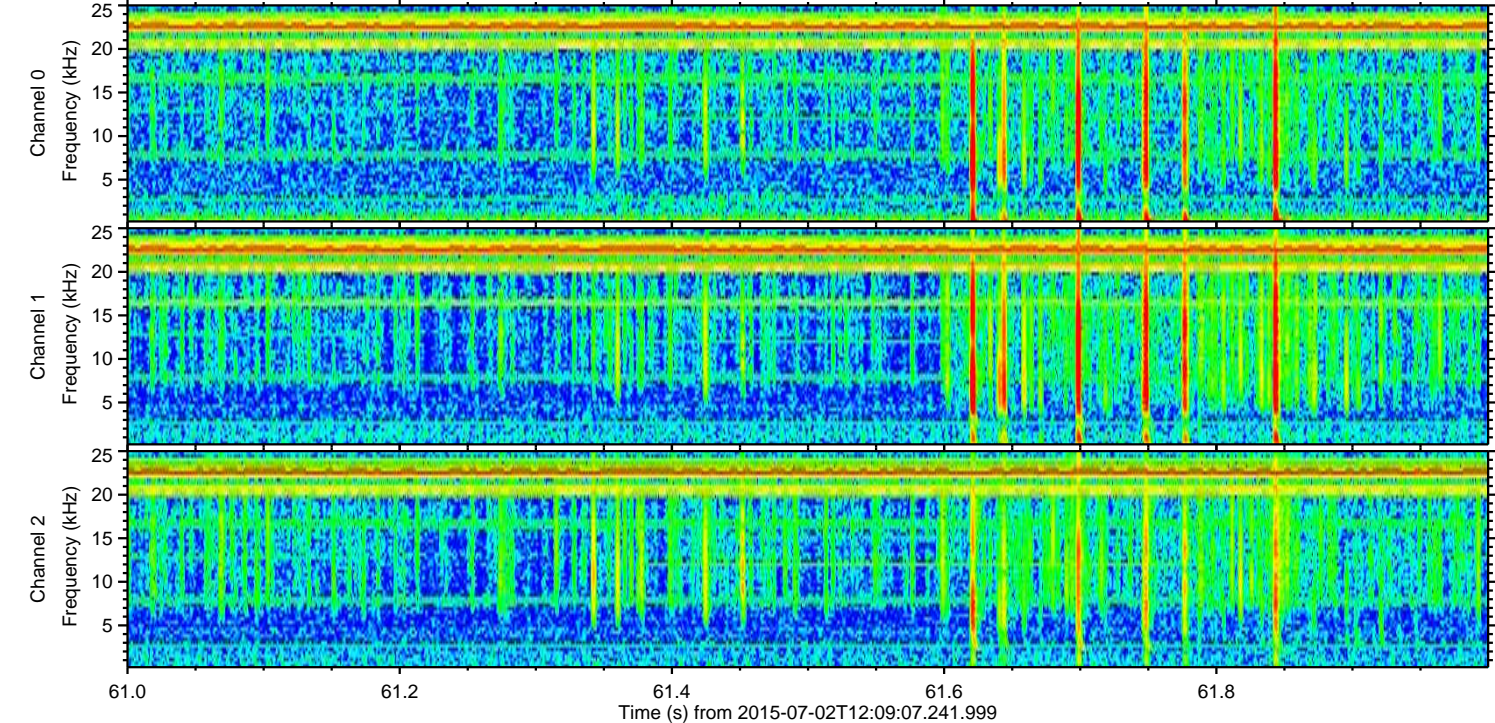
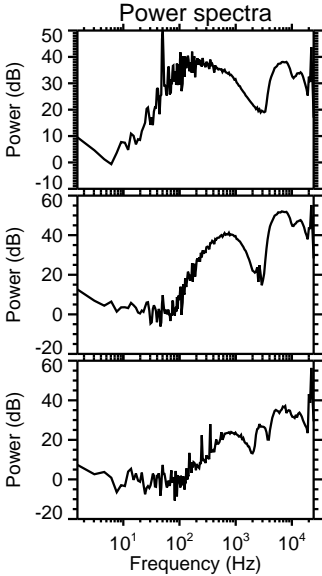
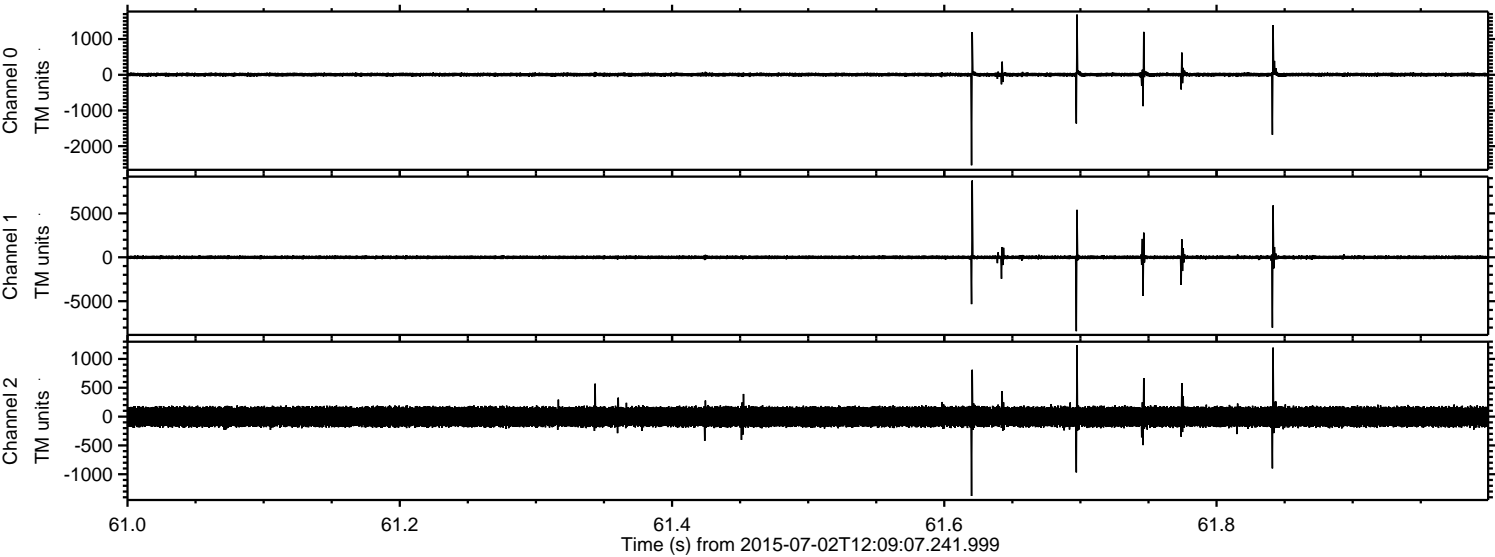
Processed Thu Jul 2 14:16:07 2015 by ELM ver.2012-10-06 from 001__elm20150702_120906__dat00.bin



Processed Thu Jul 2 14:16:08 2015 by ELM ver.2012-10-06 from 001__elm20150702_120906__dat00.bin

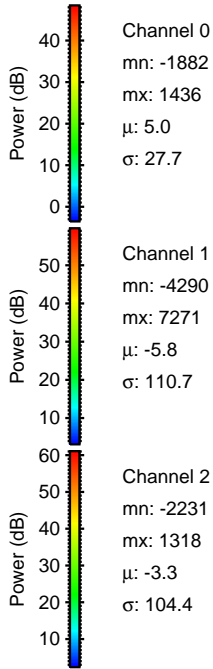
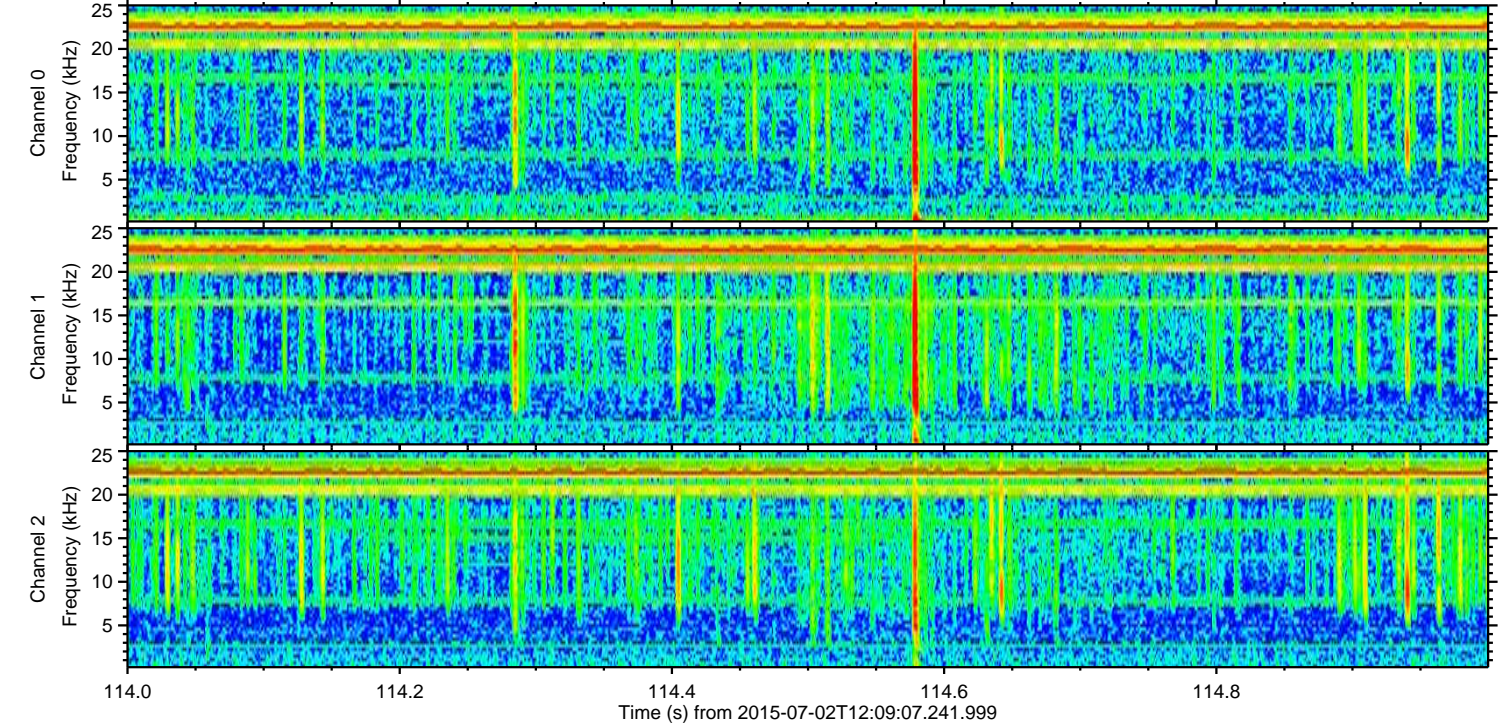
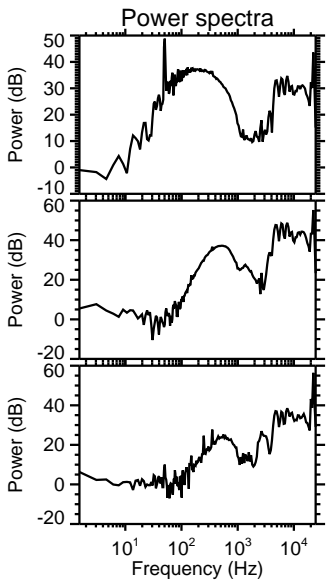
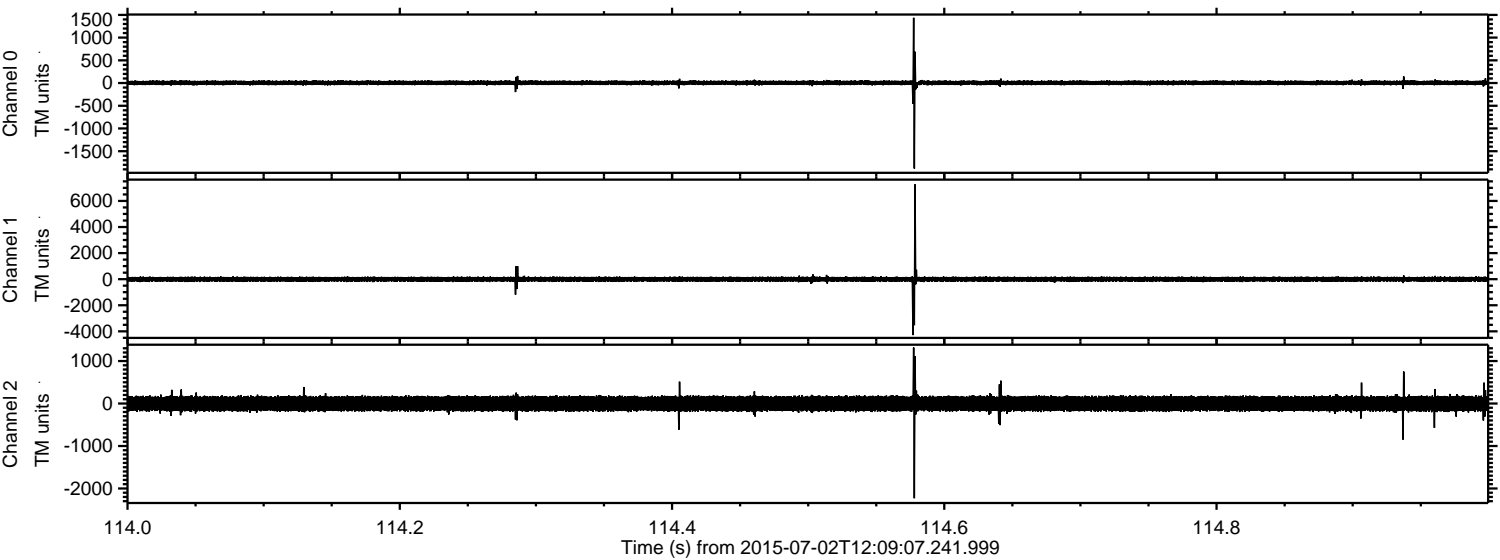


Processed Thu Jul 2 14:16:09 2015 by ELM ver.2012-10-06 from 001__elm20150702_120906__dat00.bin



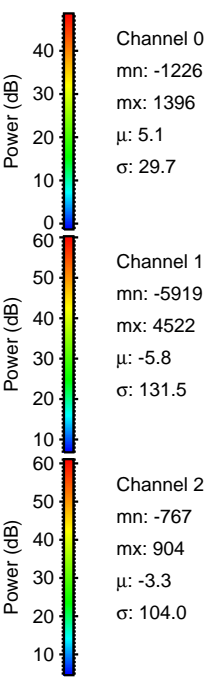
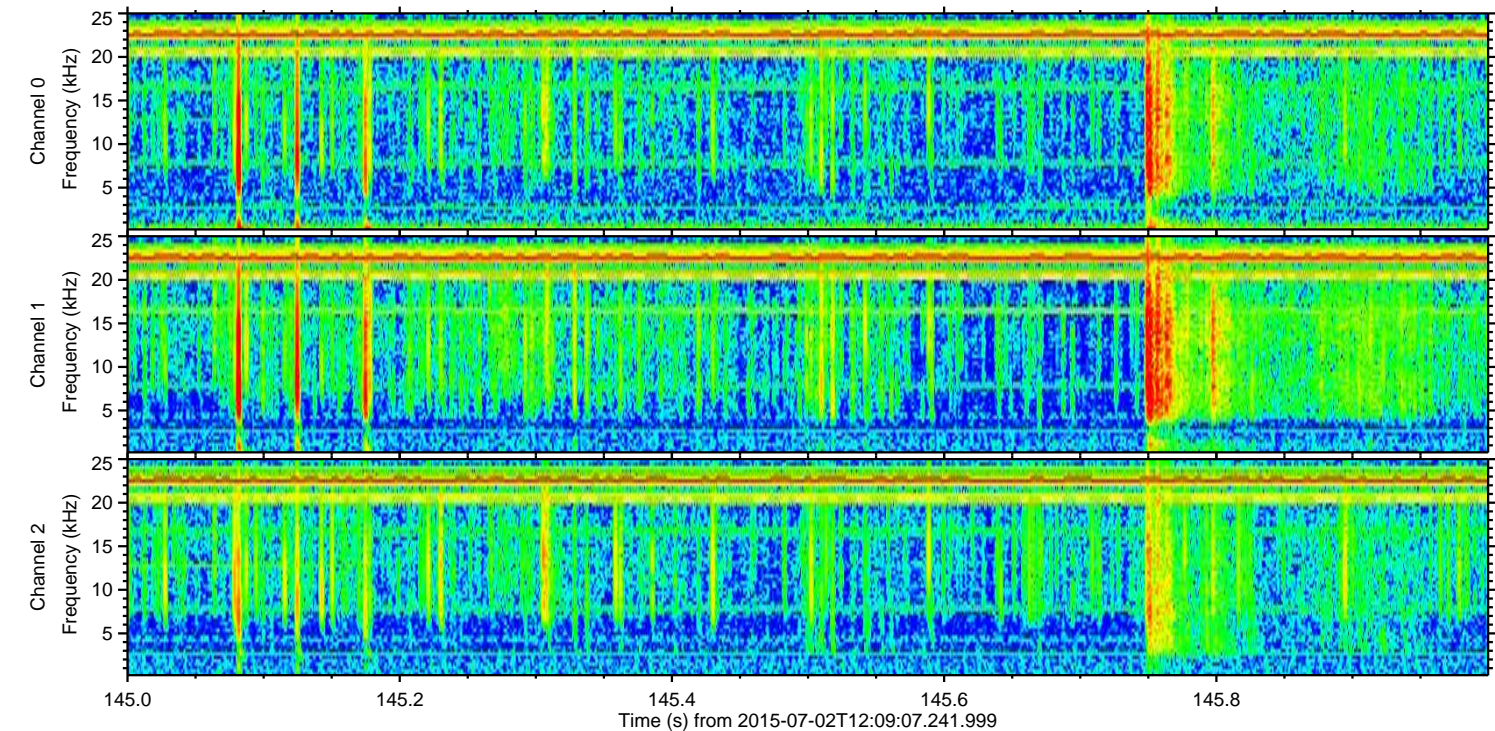
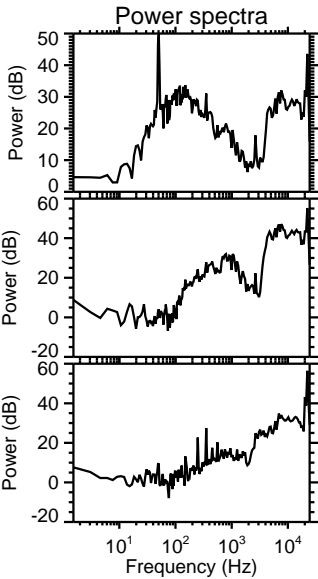
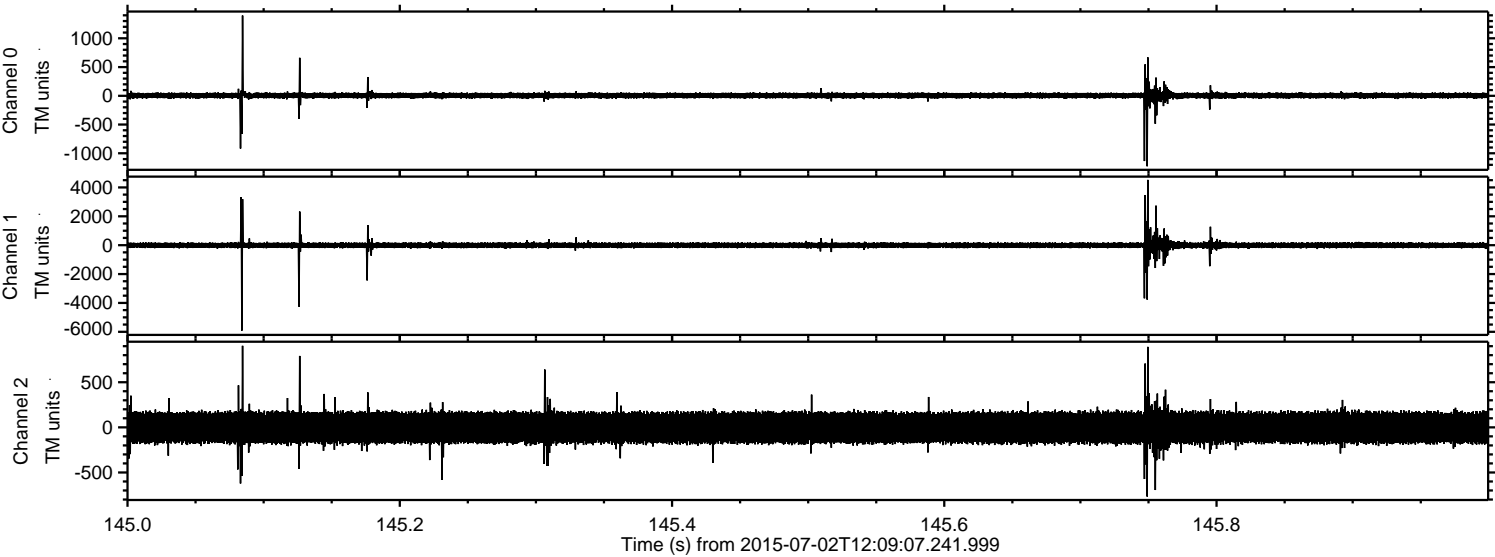
ELMAVAN 3D WAVEFORMS (Measured data sampled at 50 kHz) 51000 packets of 144 samples from 2015-07-02T12:09:07.241.999. Part 115/147

Processed Thu Jul 2 14:16:10 2015 by ELM ver.2012-10-06 from 001__elm20150702_120906__dat00.bin



ELMAVAN 3D WAVEFORMS (Measured data sampled at 50 kHz) 51000 packets of 144 samples from 2015-07-02T12:09:07.241.999. Part 146/147

Processed Thu Jul 2 14:16:11 2015 by ELM ver.2012-10-06 from 001__elm20150702_120906__dat00.bin

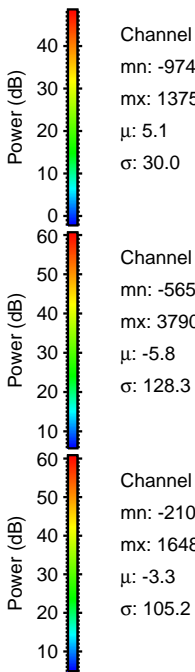
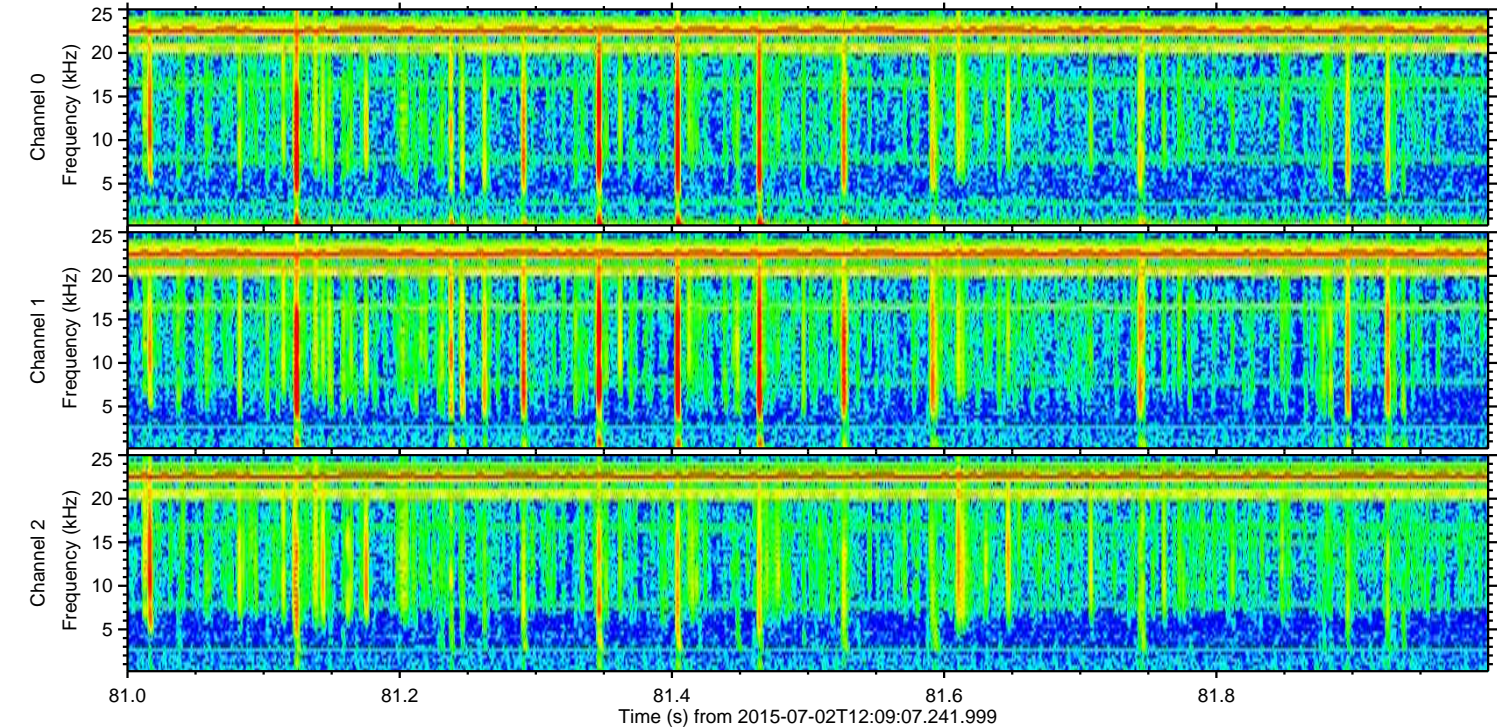
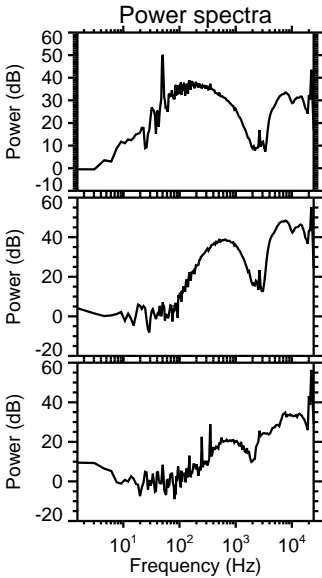
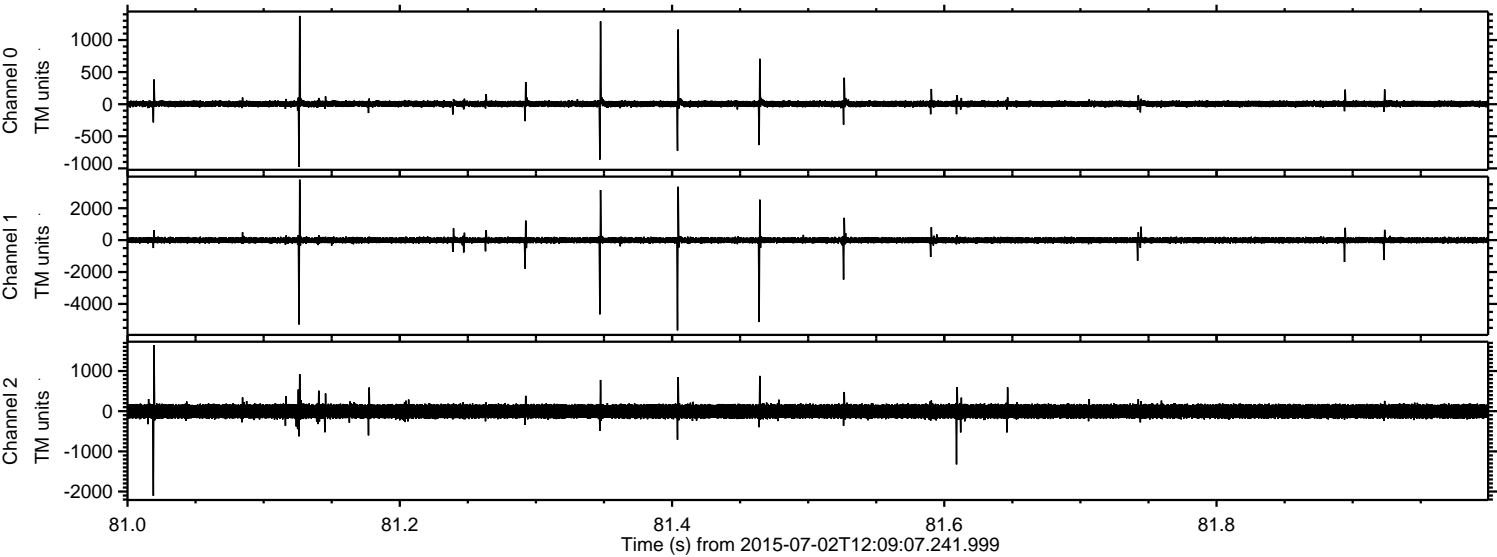


Channel 0
mn: -1226
mx: 1396
 μ : 5.1
 σ : 29.7

Channel 1
mn: -5919
mx: 4522
 μ : -5.8
 σ : 131.5

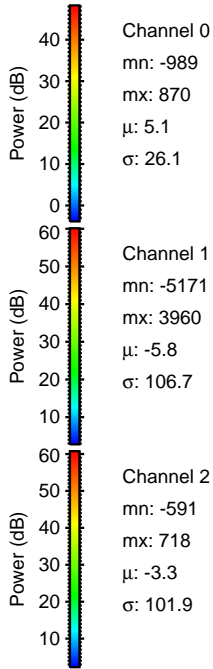
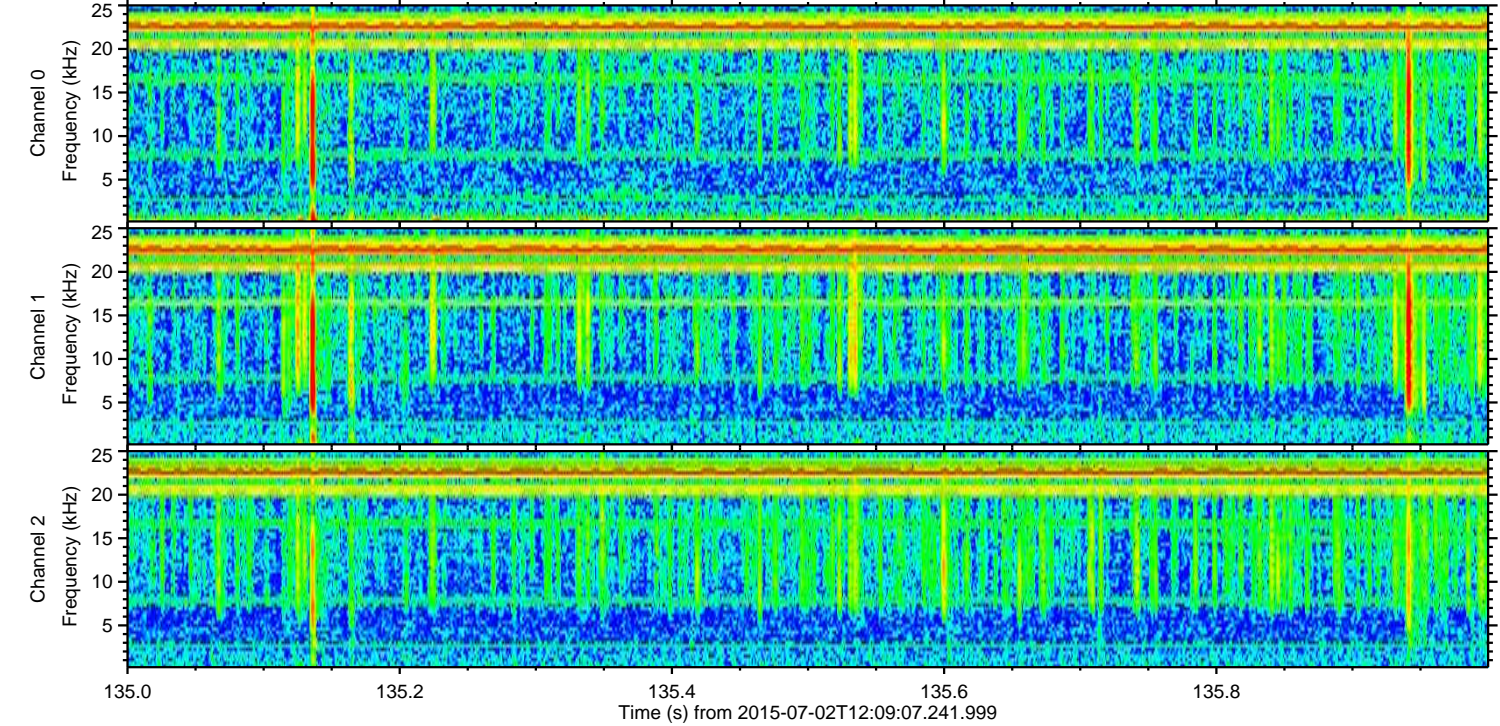
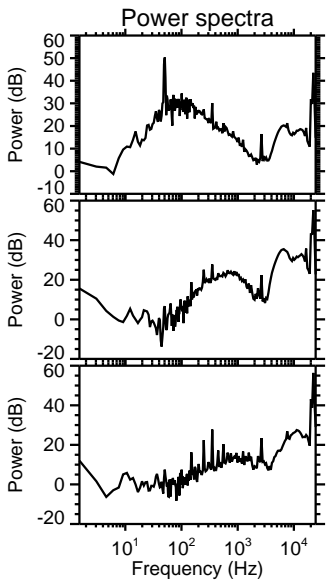
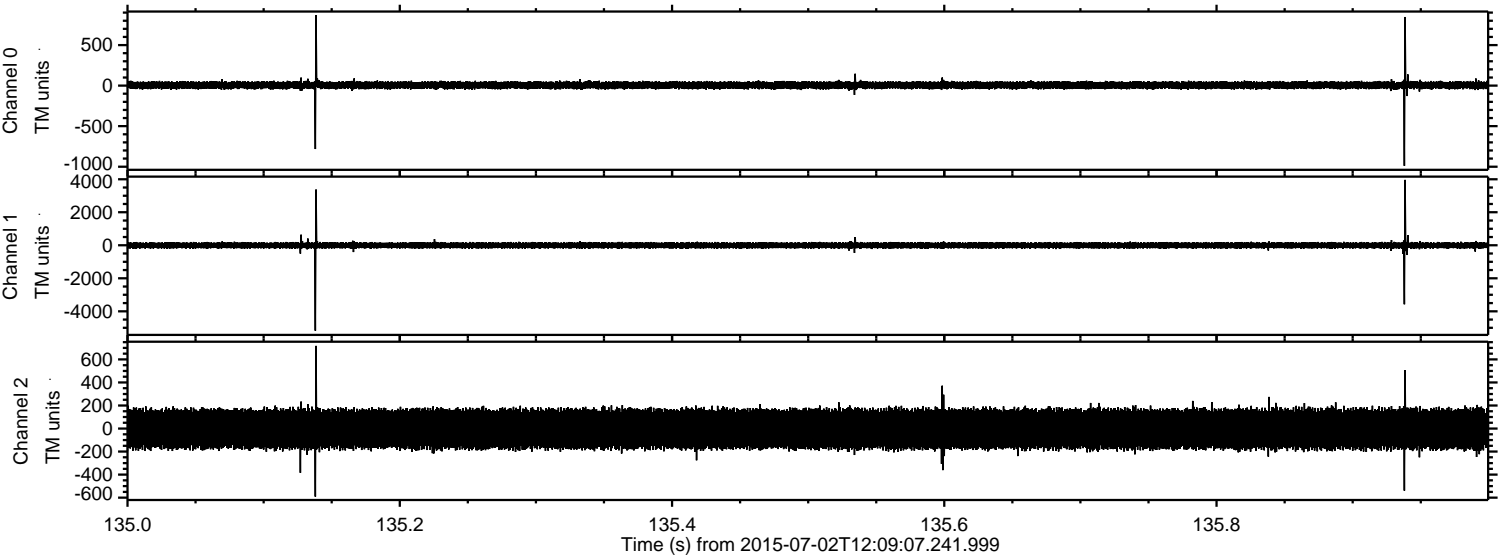
Channel 2
mn: -767
mx: 904
 μ : -3.3
 σ : 104.0

Processed Thu Jul 2 14:16:12 2015 by ELM ver.2012-10-06 from 001__elm20150702_120906__dat00.bin

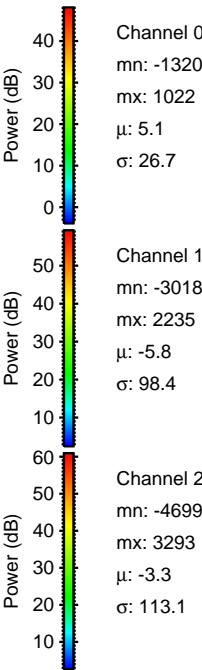
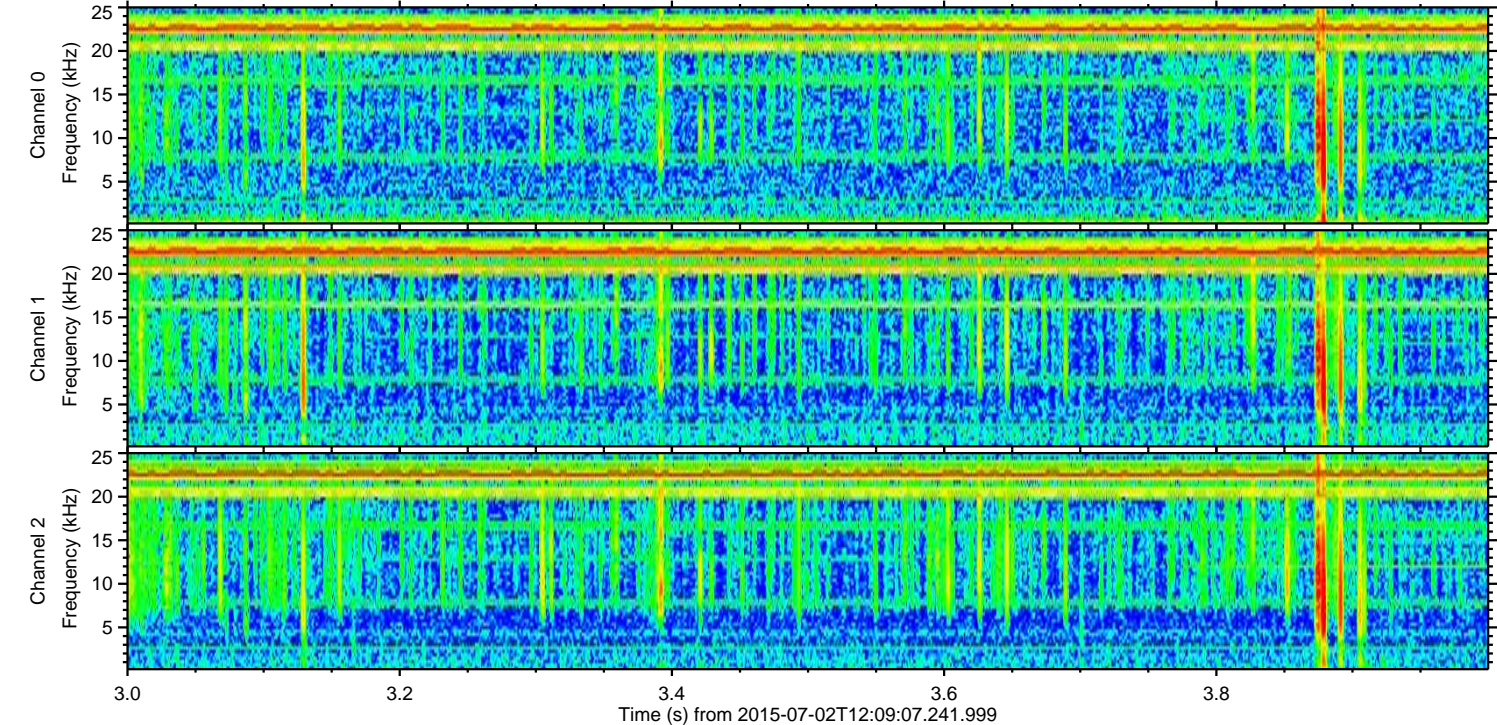
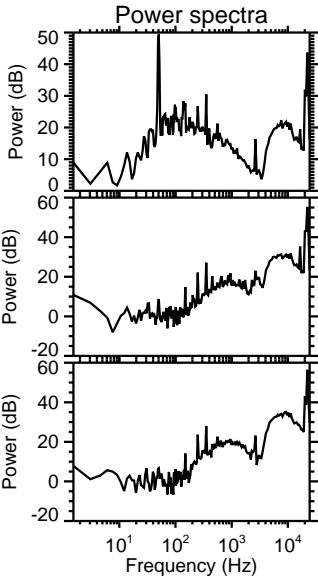
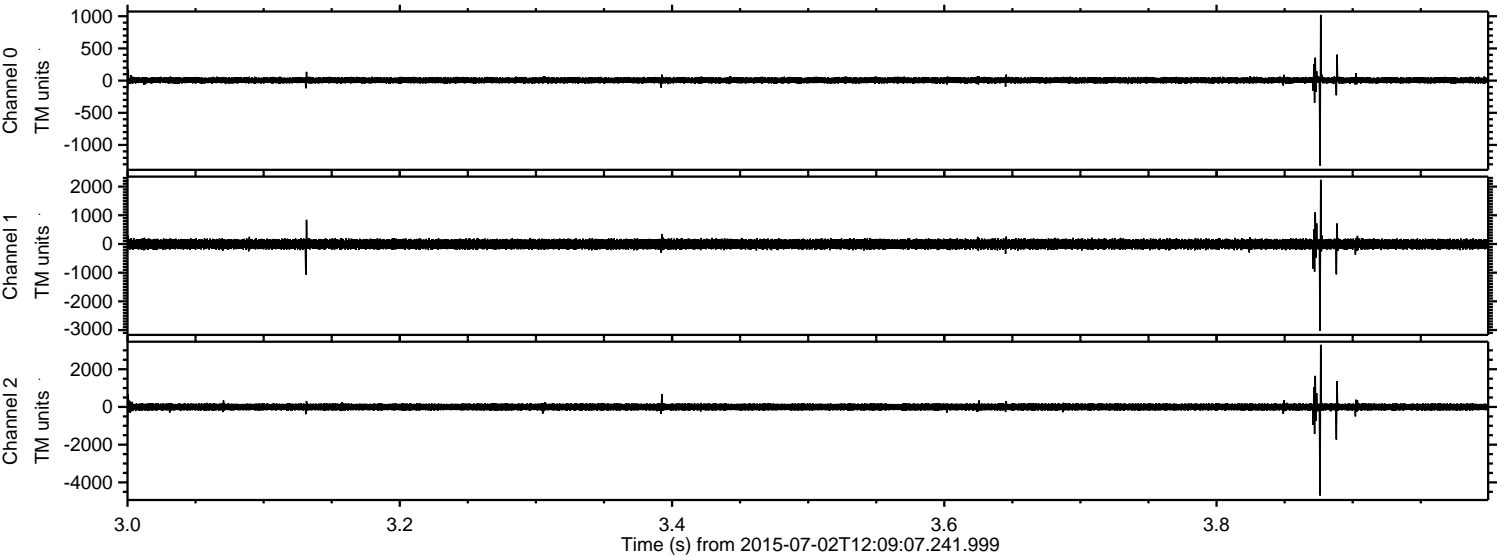


ELMAVAN 3D WAVEFORMS (Measured data sampled at 50 kHz) 51000 packets of 144 samples from 2015-07-02T12:09:07.241.999. Part 136/147

Processed Thu Jul 2 14:16:13 2015 by ELM ver.2012-10-06 from 001__elm20150702_120906__dat00.bin



Processed Thu Jul 2 14:16:14 2015 by ELM ver.2012-10-06 from 001__elm20150702_120906__dat00.bin



Processed Thu Jul 2 14:16:15 2015 by ELM ver.2012-10-06 from 001__elm20150702_120906__dat00.bin

