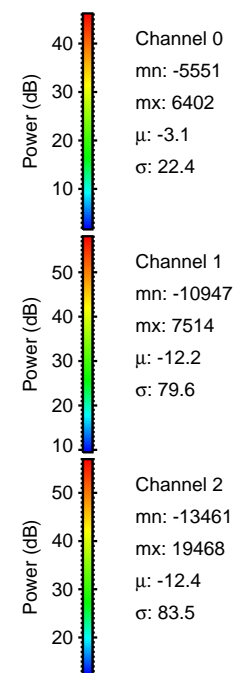
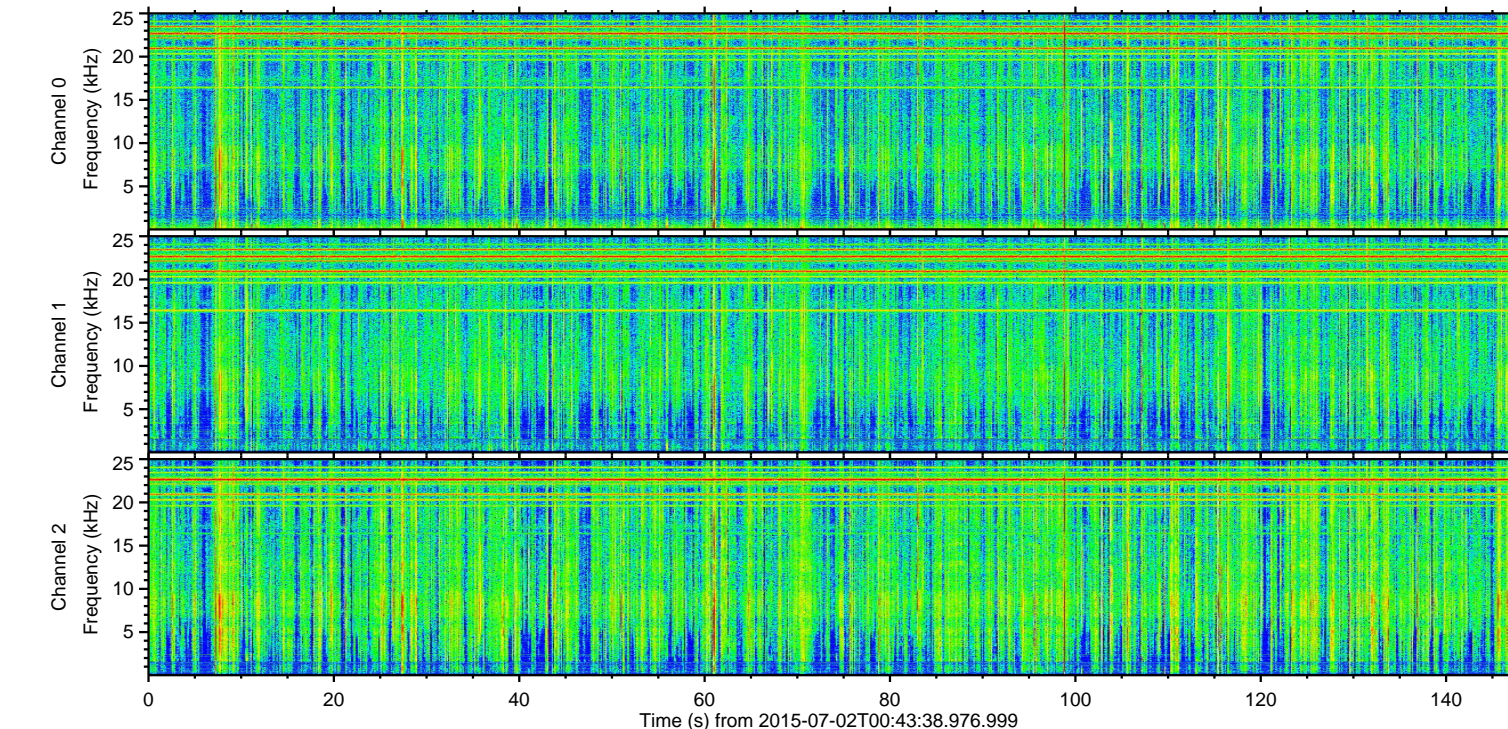
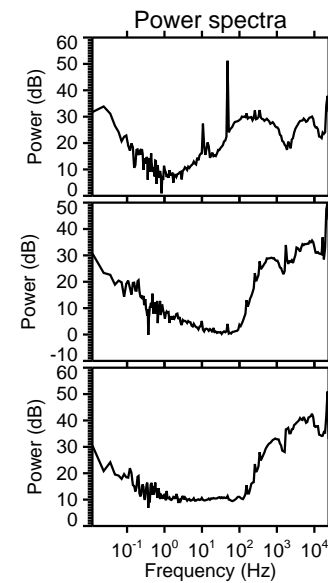
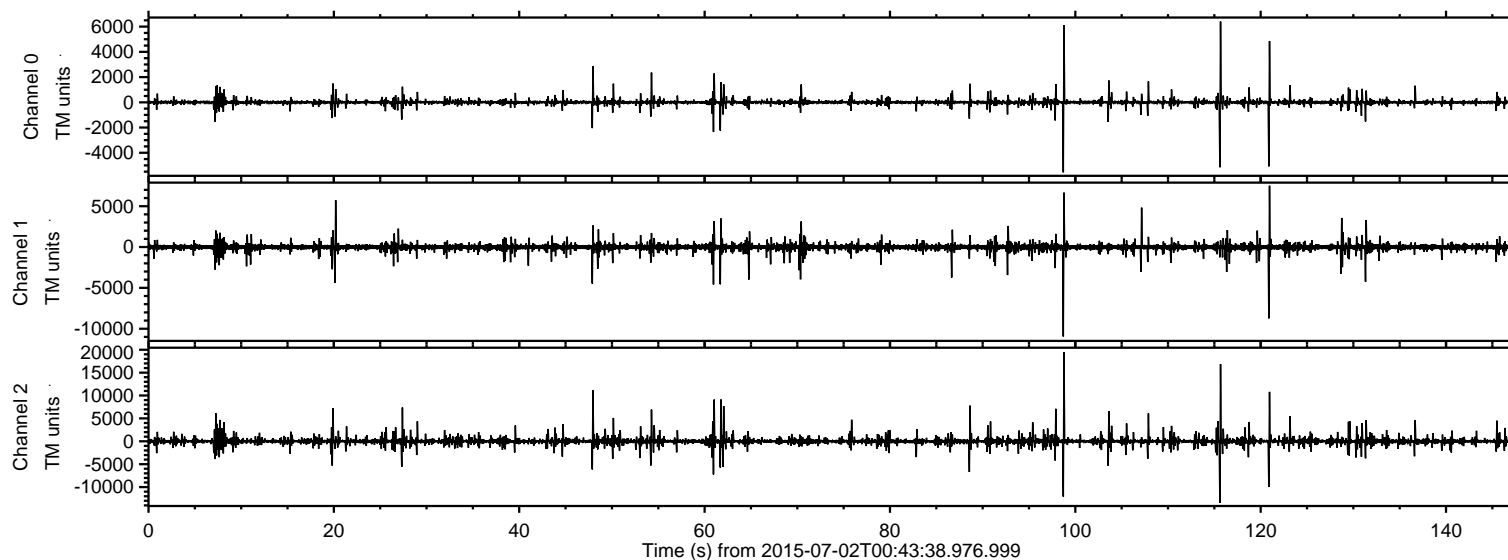


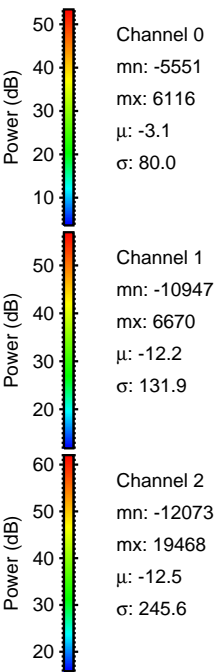
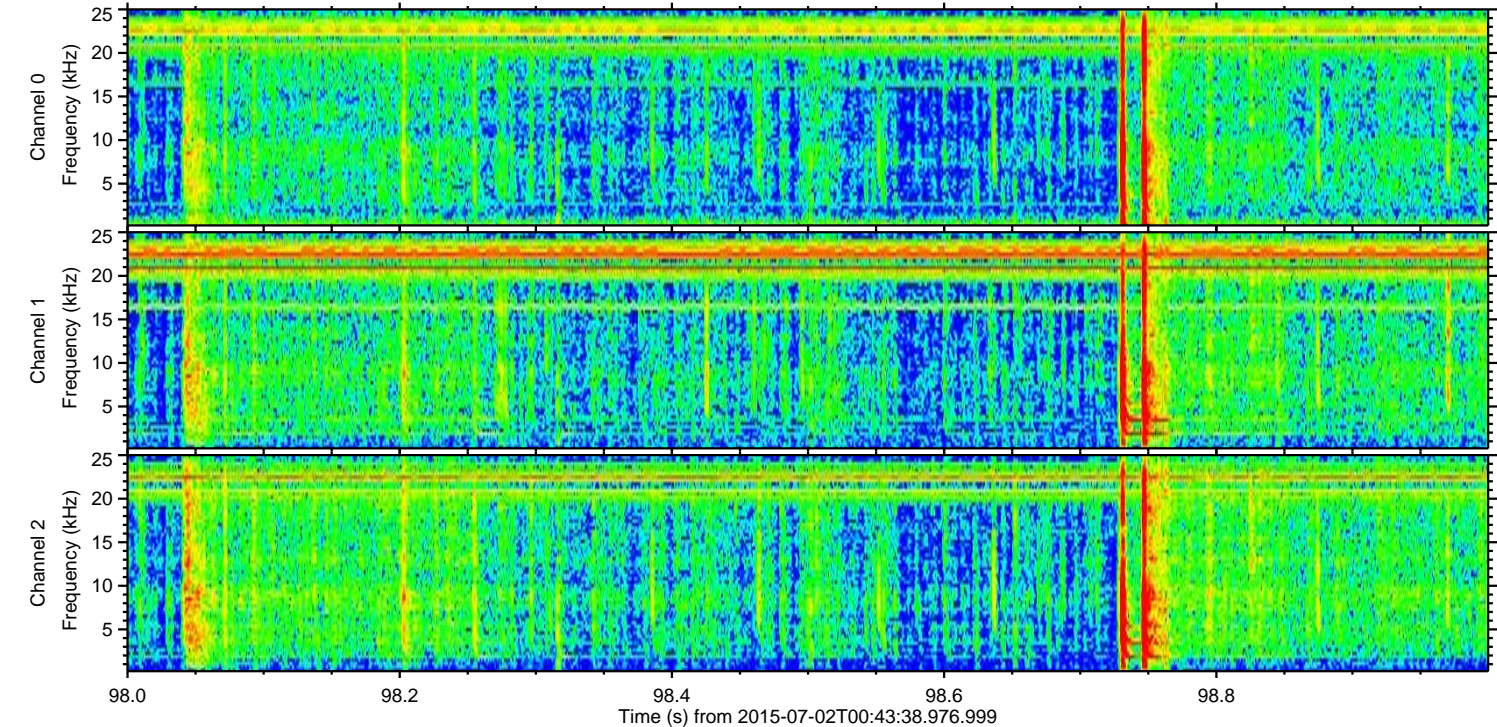
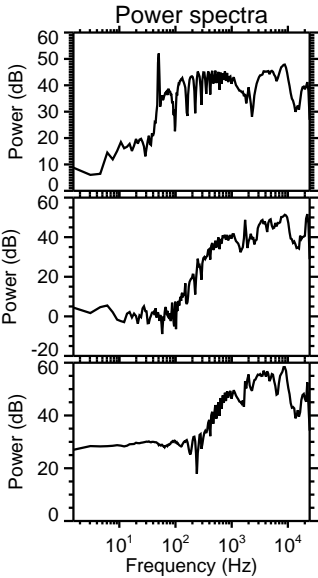
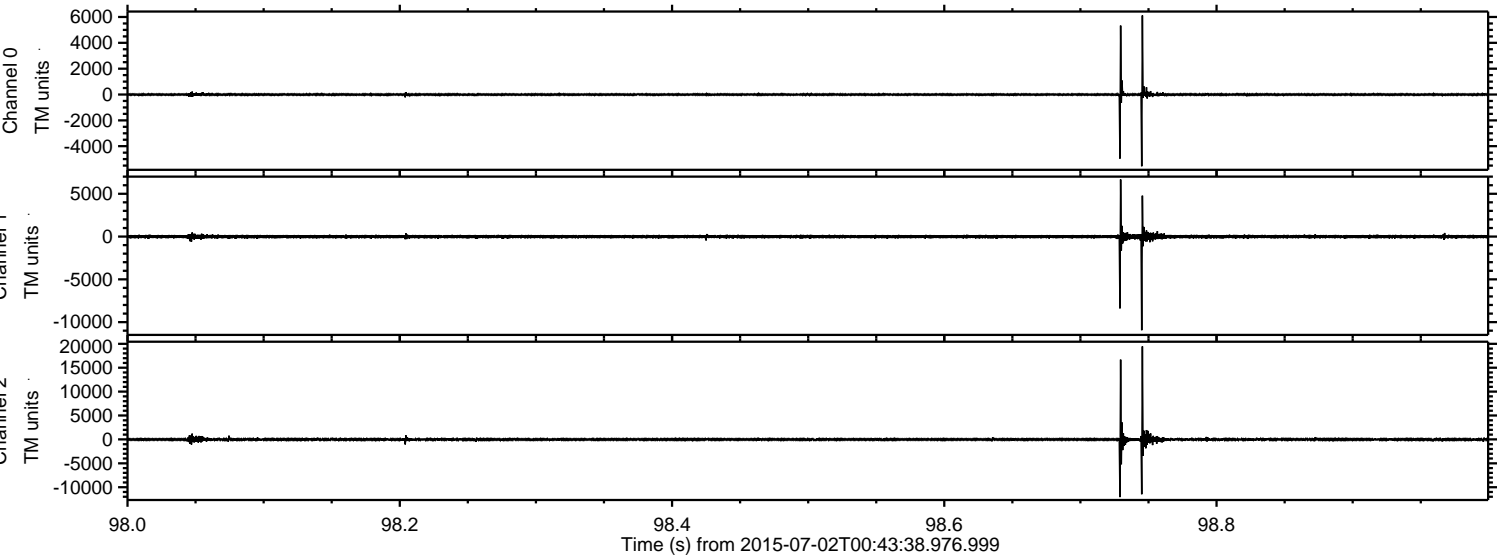
# ELMAVAN 3D WAVEFORMS (Measured data sampled at 50 kHz) 51000 packets of 144 samples from 2015-07-02T00:43:38.976.999.

Processed Thu Jul 2 02:50:06 2015 by ELM ver.2012-10-06 from 001\_\_elm20150702\_004337\_\_dat00.bin





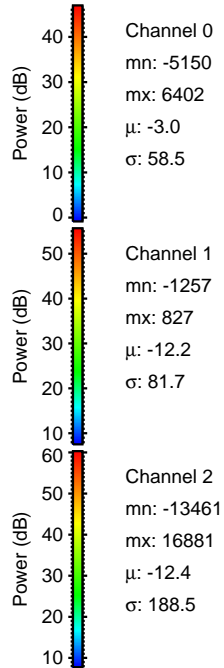
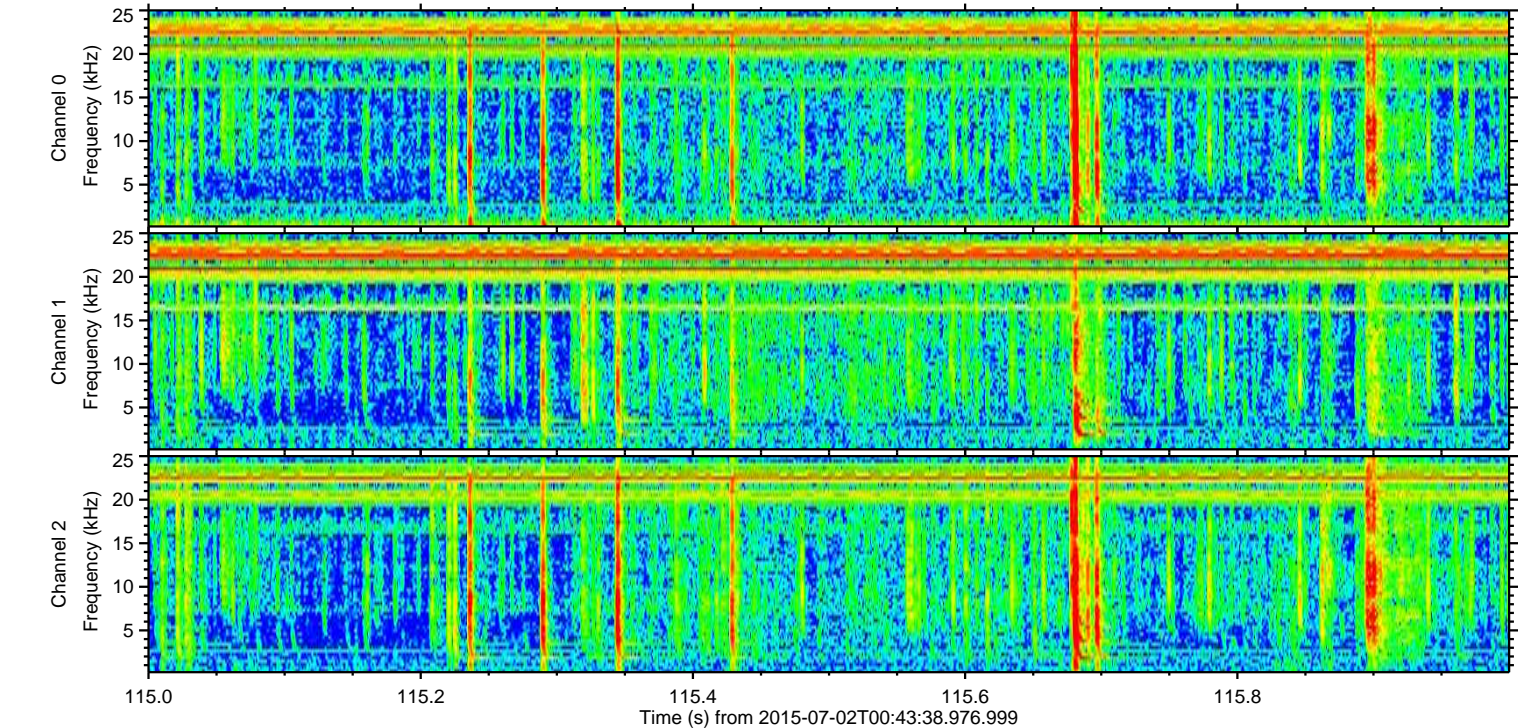
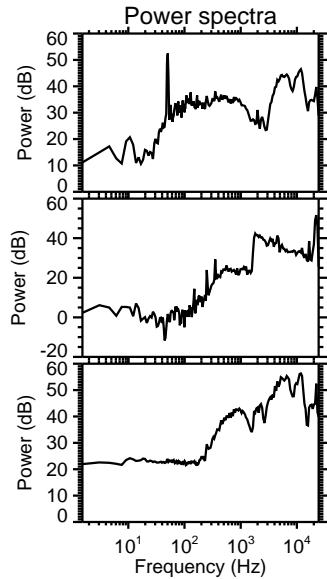
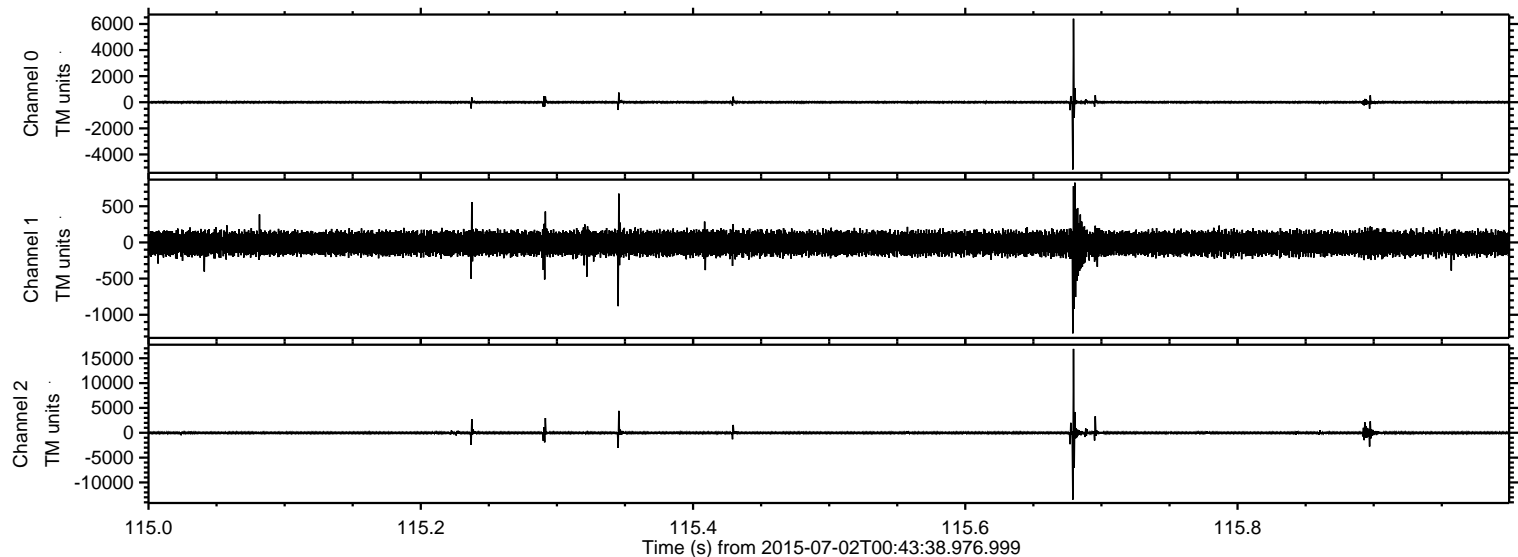
Processed Thu Jul 2 02:50:19 2015 by ELM ver.2012-10-06 from 001\_\_elm20150702\_004337\_\_dat00.bin





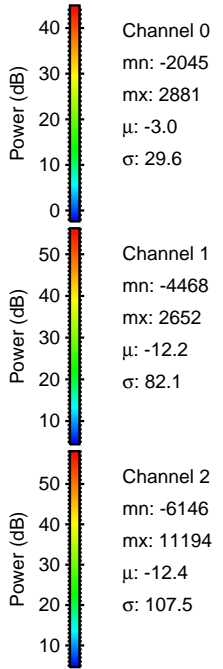
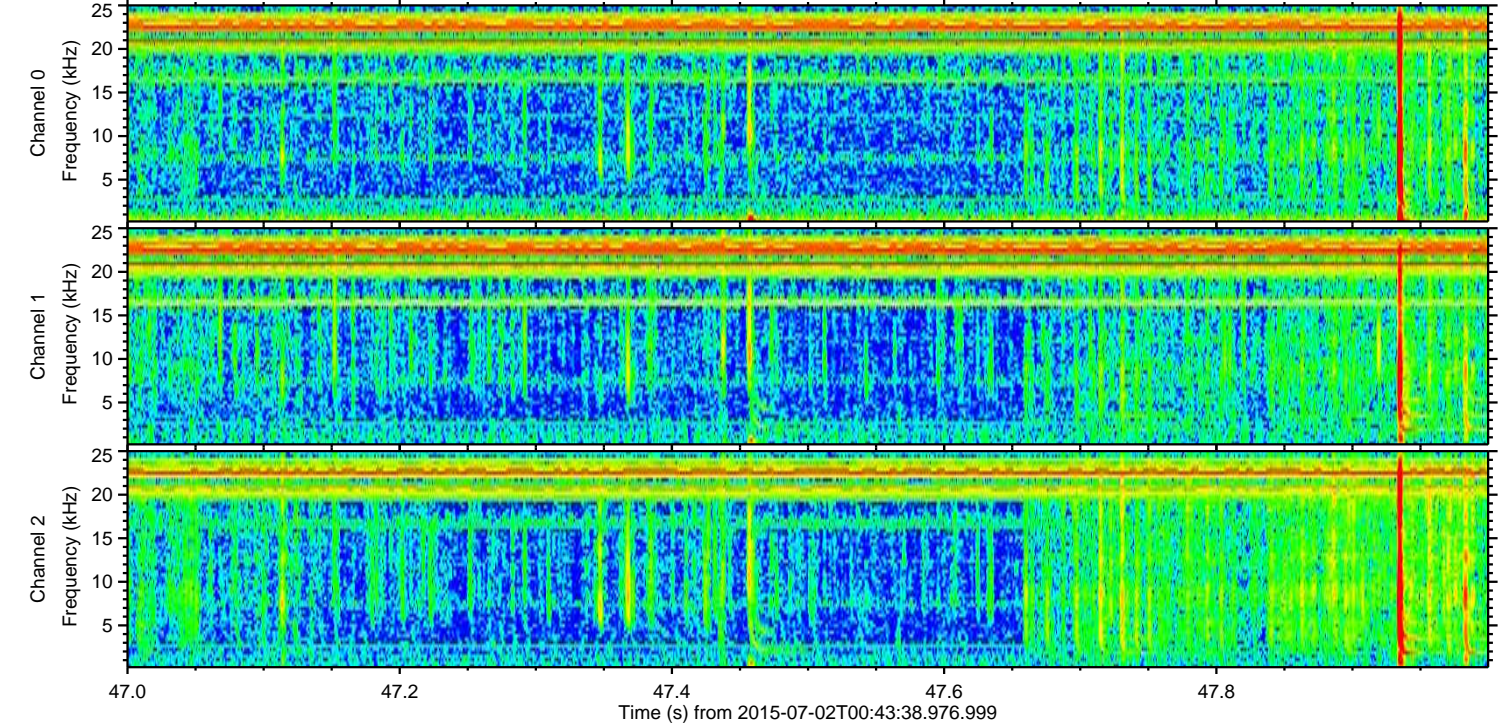
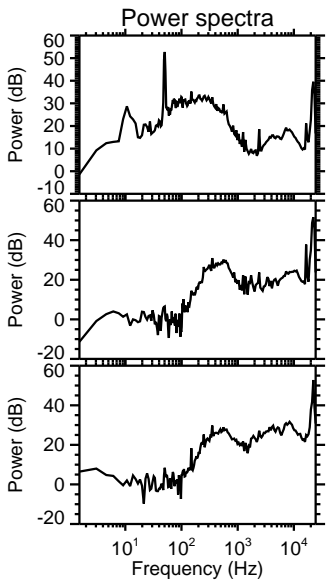
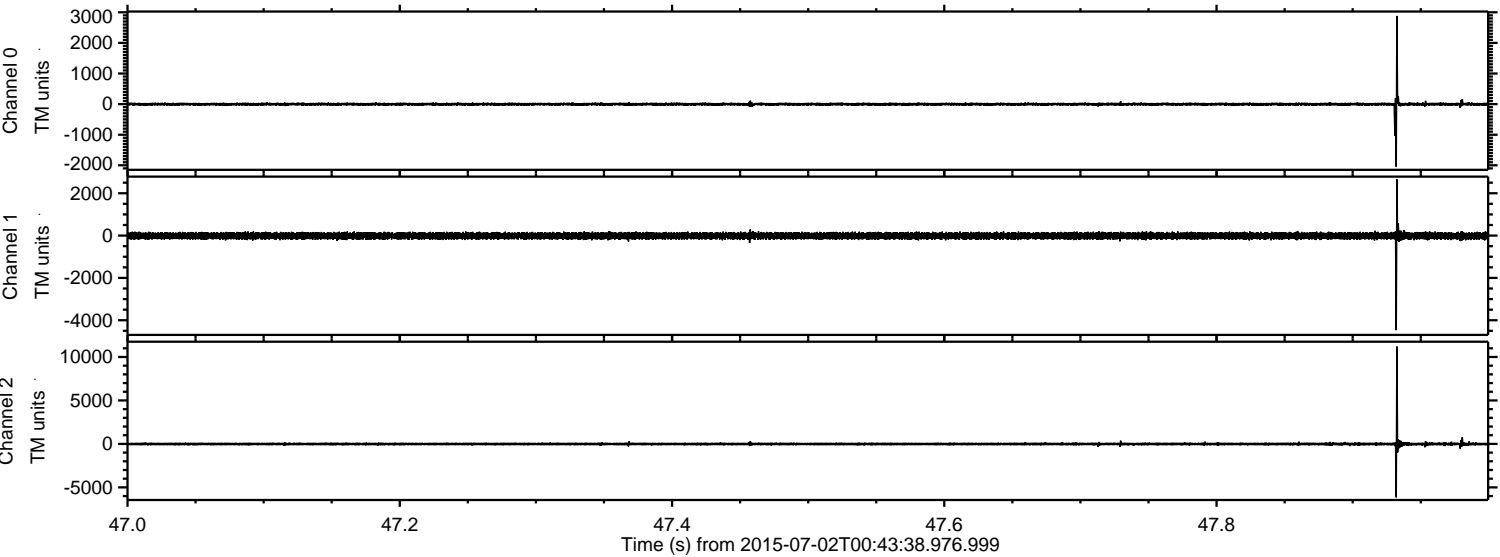
ELMAVAN 3D WAVEFORMS (Measured data sampled at 50 kHz) 51000 packets of 144 samples from 2015-07-02T00:43:38.976.999. Part 116/147

Processed Thu Jul 2 02:50:20 2015 by ELM ver.2012-10-06 from 001\_\_elm20150702\_004337\_\_dat00.bin





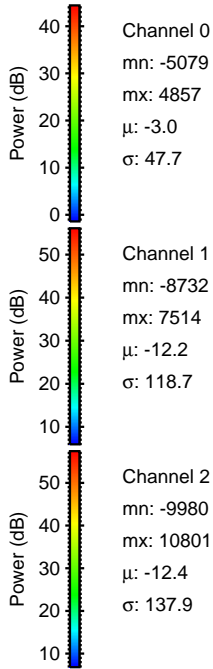
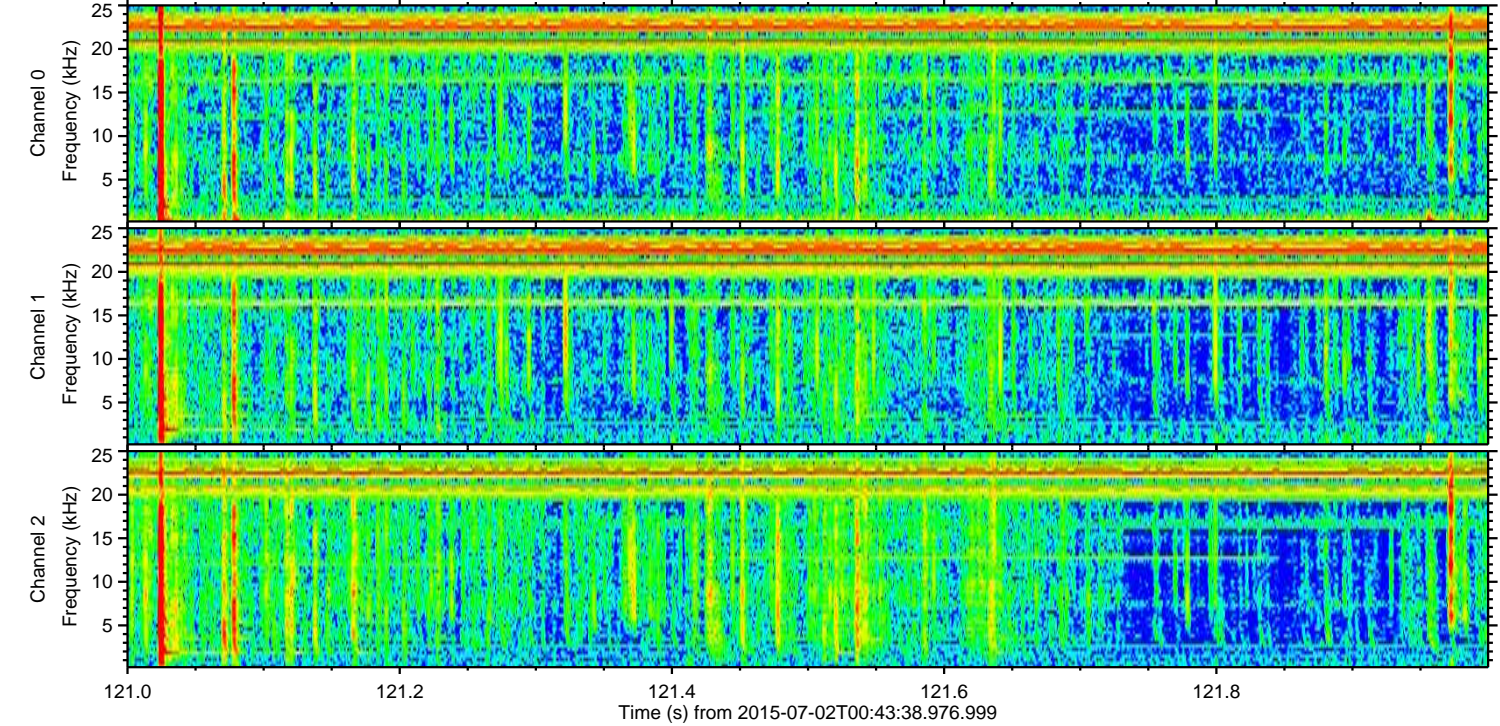
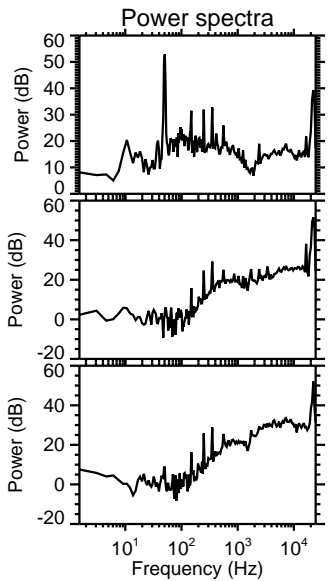
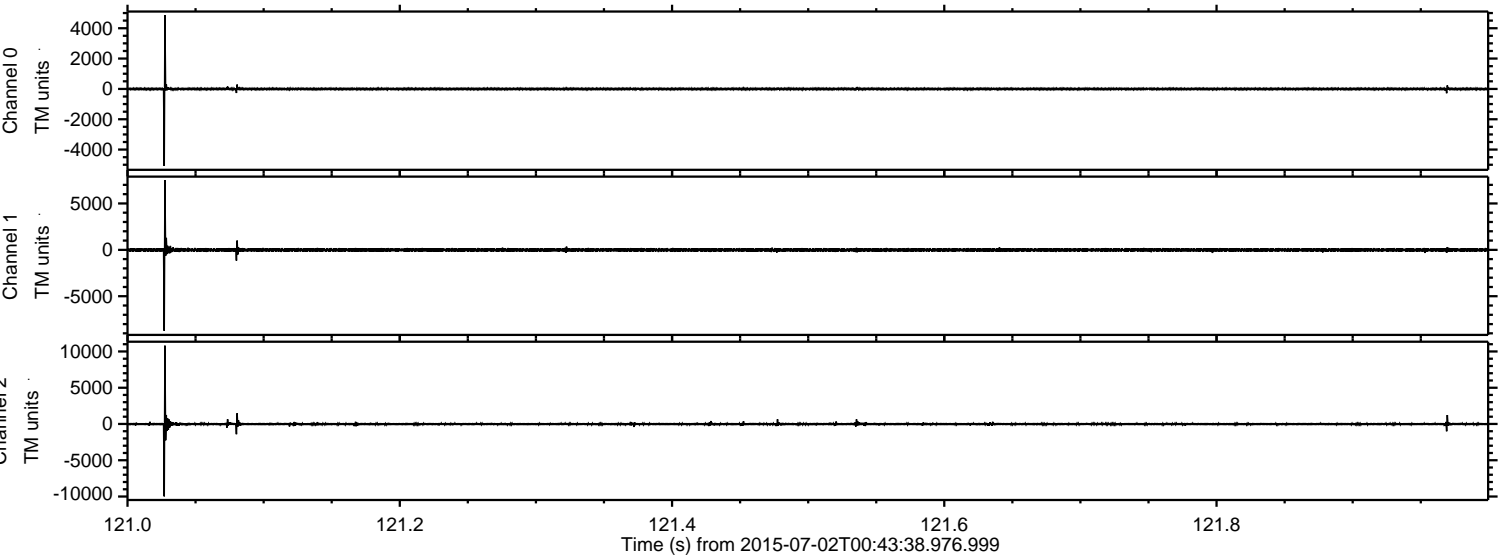
Processed Thu Jul 2 02:50:21 2015 by ELM ver.2012-10-06 from 001\_\_elm20150702\_004337\_\_dat00.bin



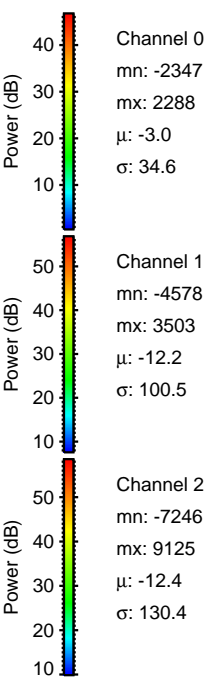
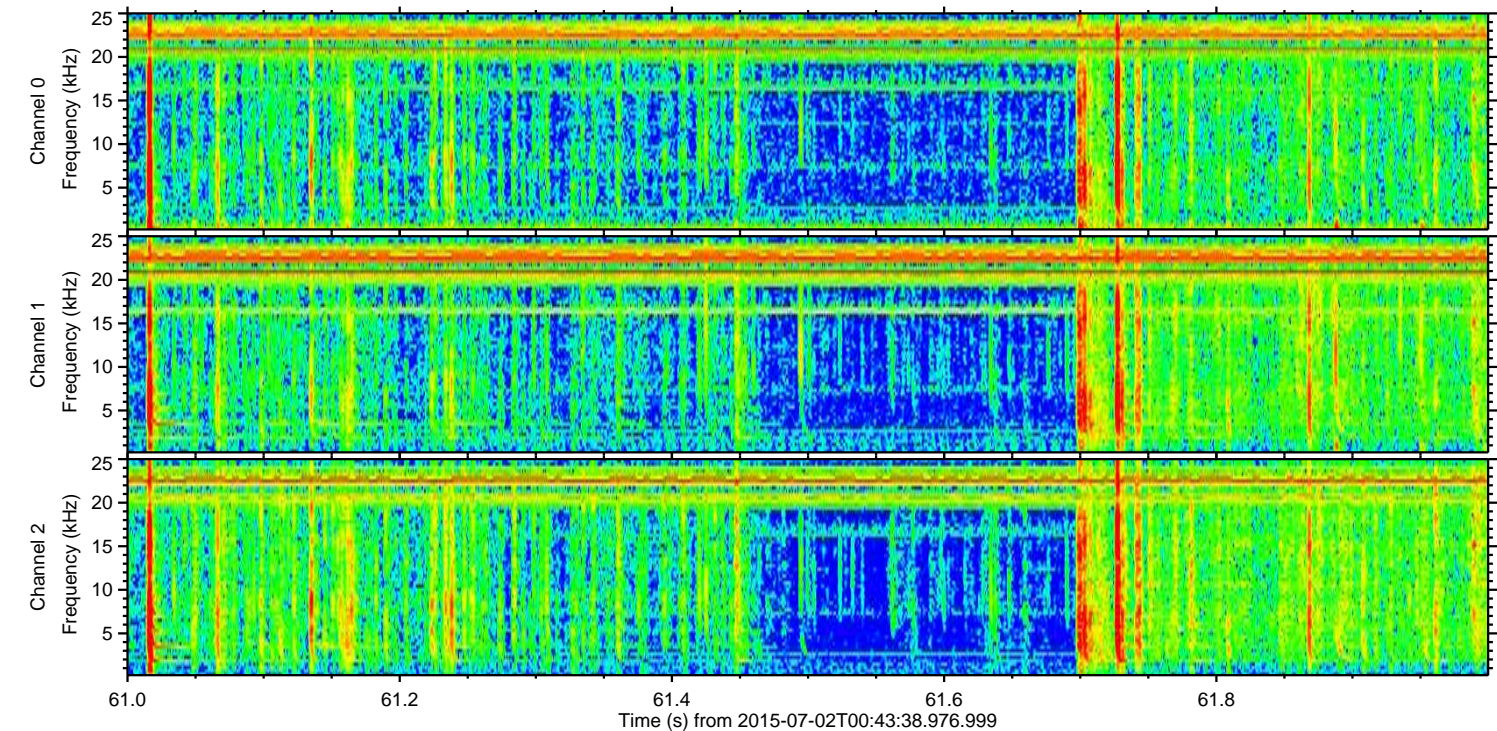
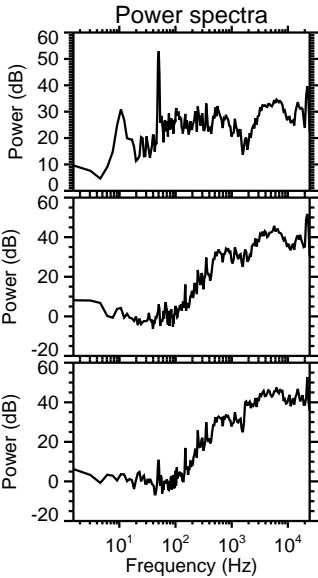
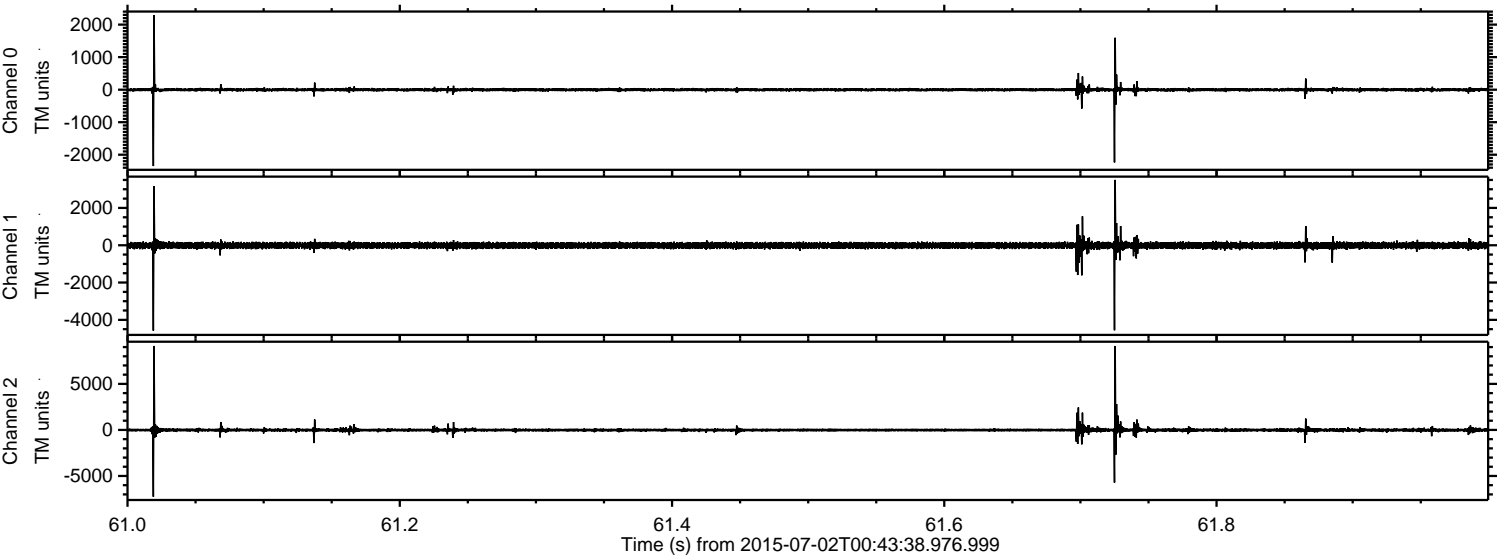


ELMAVAN 3D WAVEFORMS (Measured data sampled at 50 kHz) 51000 packets of 144 samples from 2015-07-02T00:43:38.976.999. Part 122/147

Processed Thu Jul 2 02:50:22 2015 by ELM ver.2012-10-06 from 001\_\_elm20150702\_004337\_\_dat00.bin

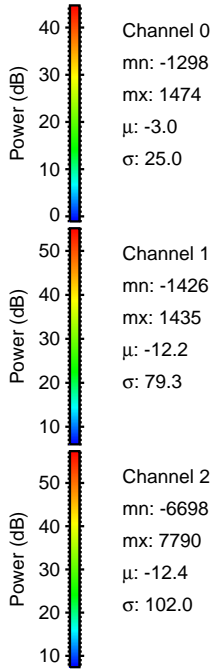
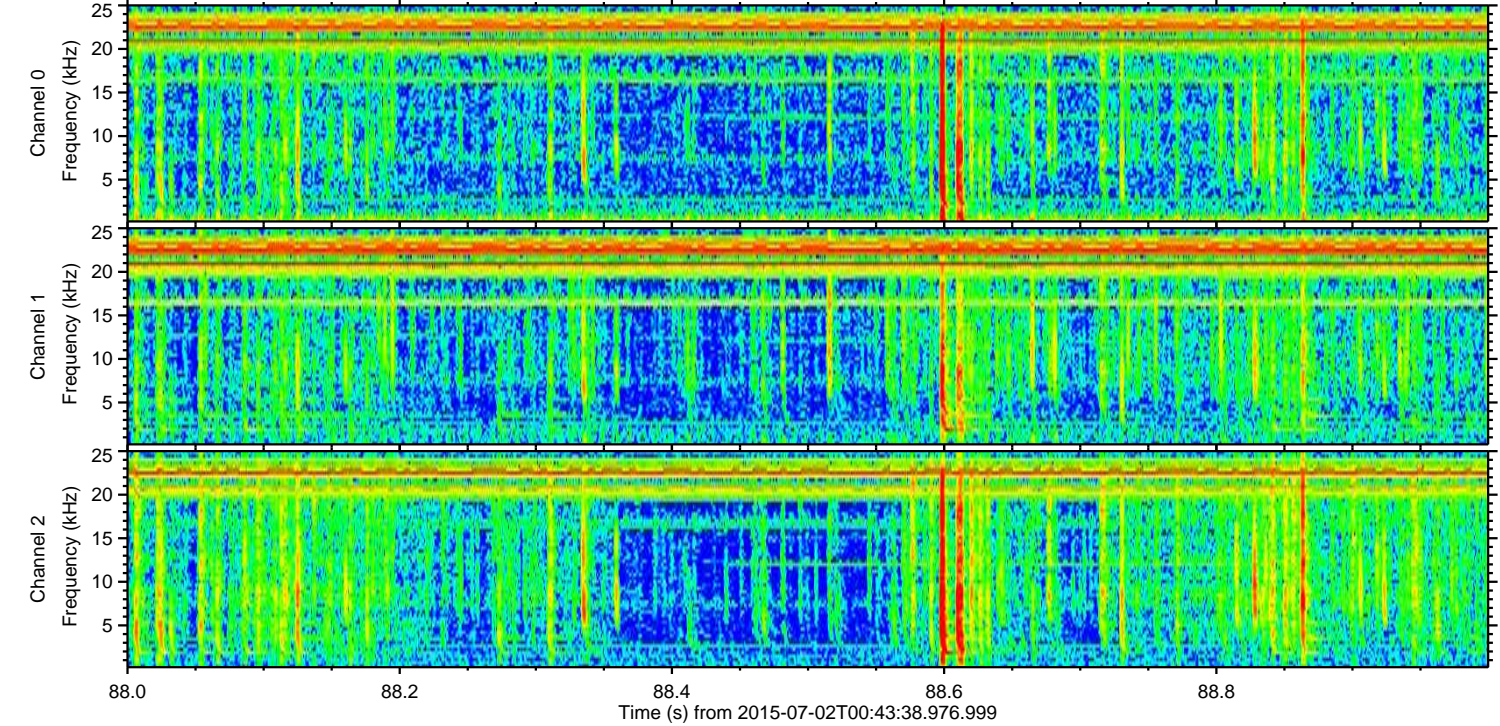
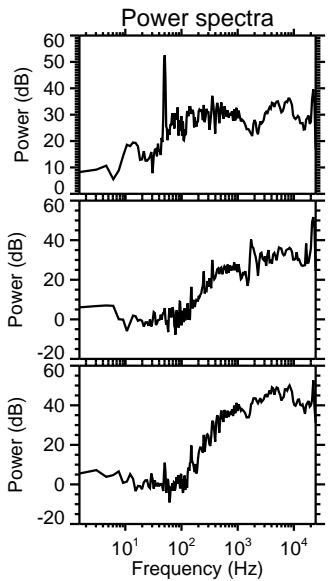
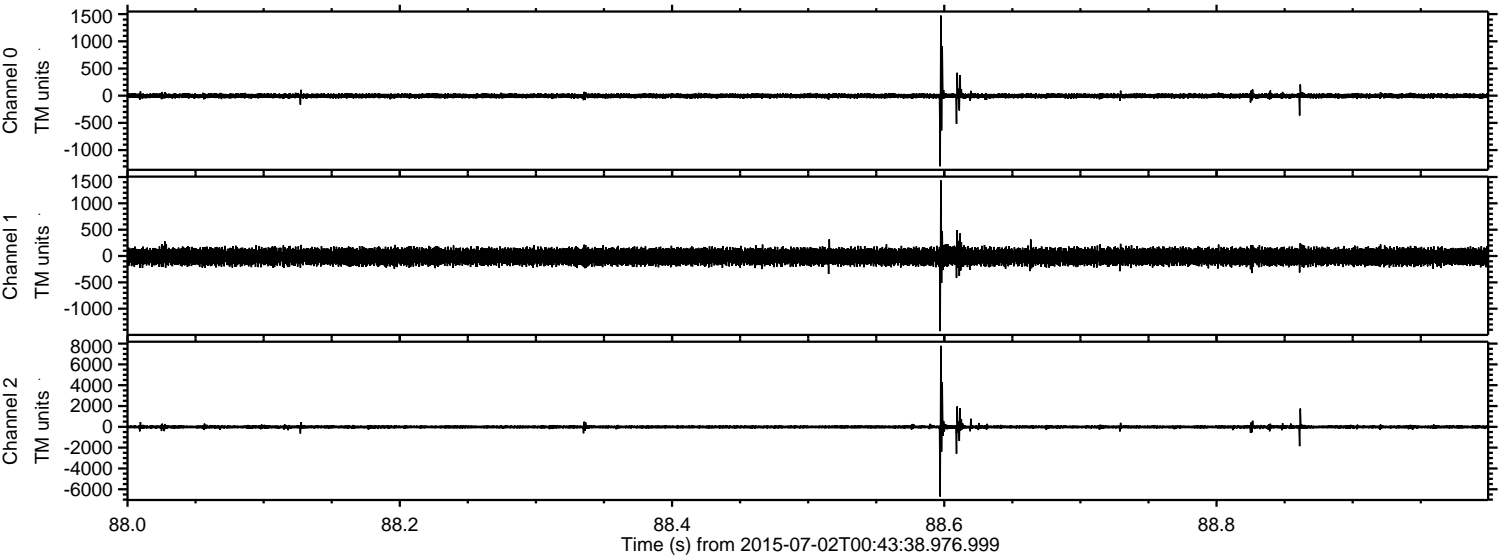


Processed Thu Jul 2 02:50:23 2015 by ELM ver.2012-10-06 from 001\_\_elm20150702\_004337\_\_dat00.bin



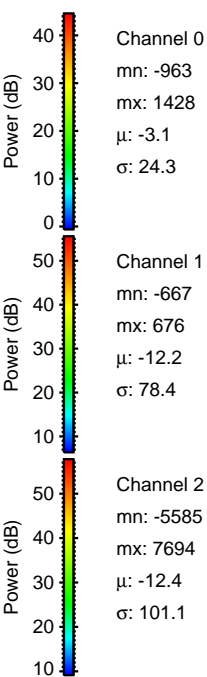
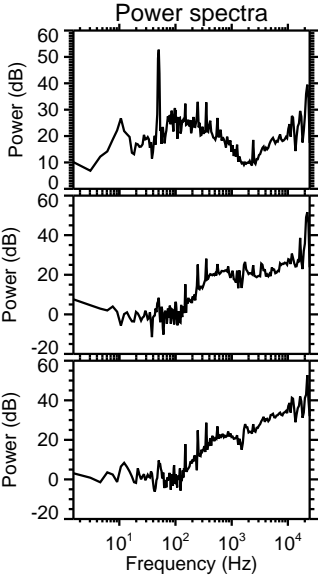
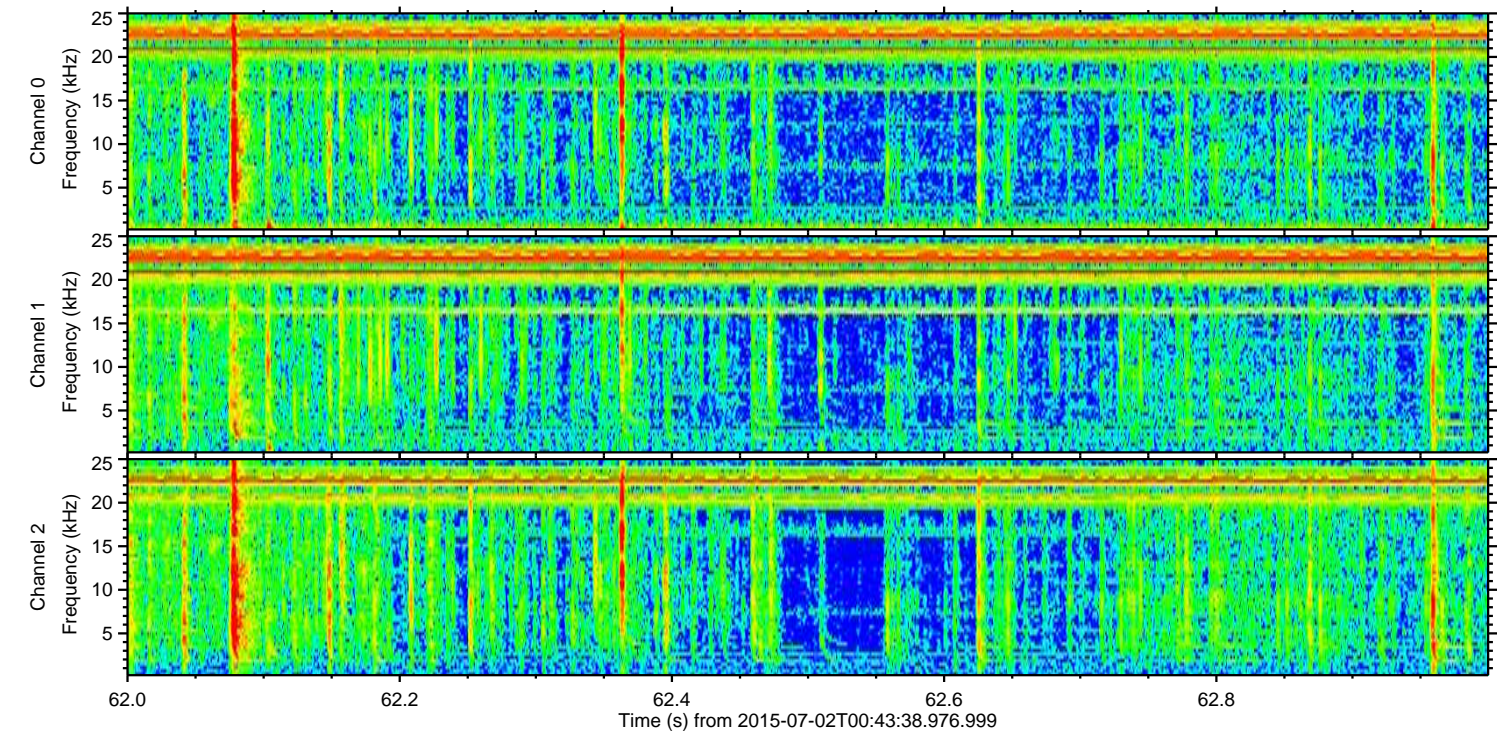
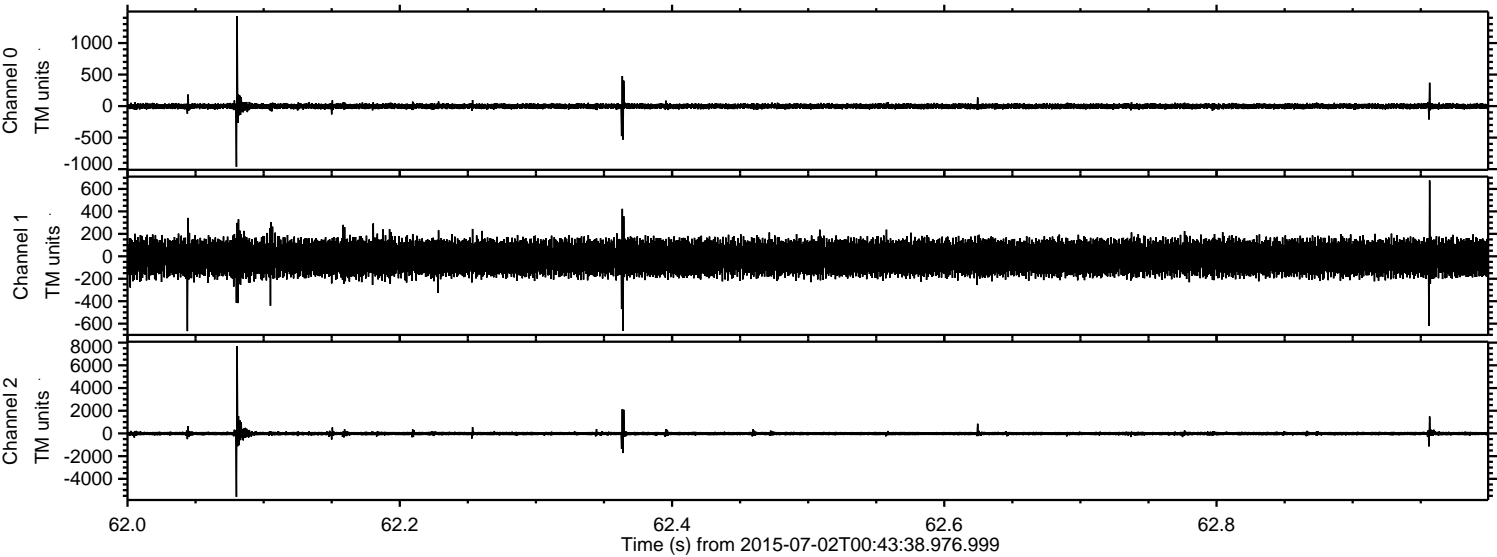


Processed Thu Jul 2 02:50:24 2015 by ELM ver.2012-10-06 from 001\_\_elm20150702\_004337\_\_dat00.bin



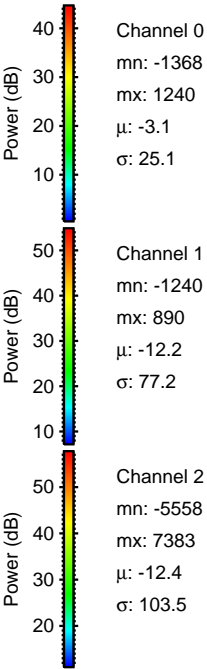
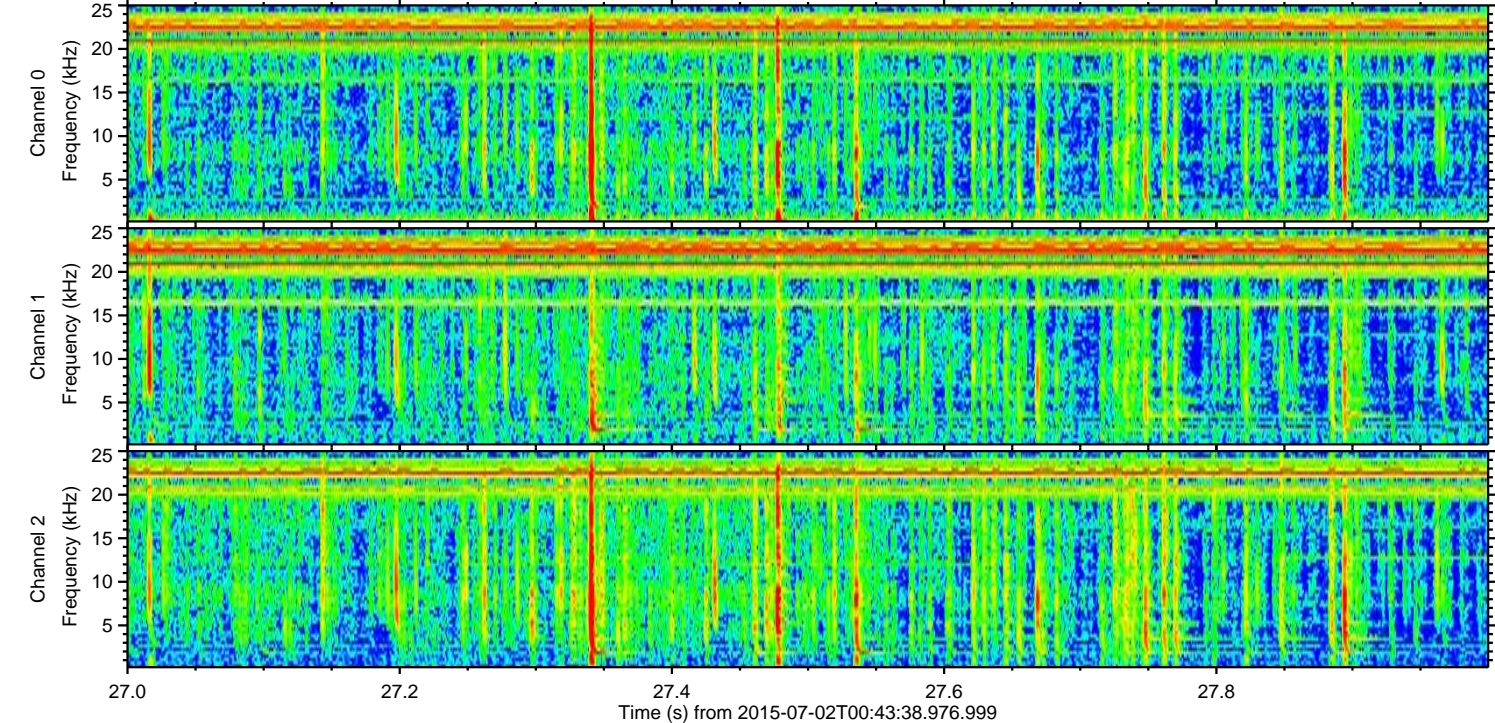
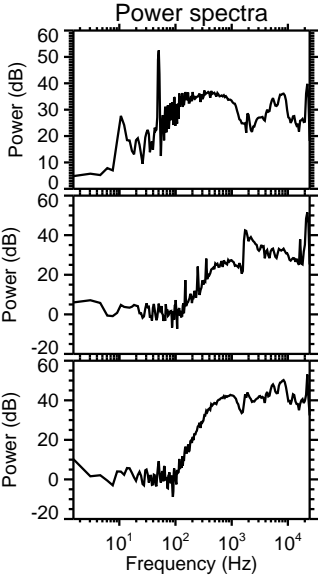
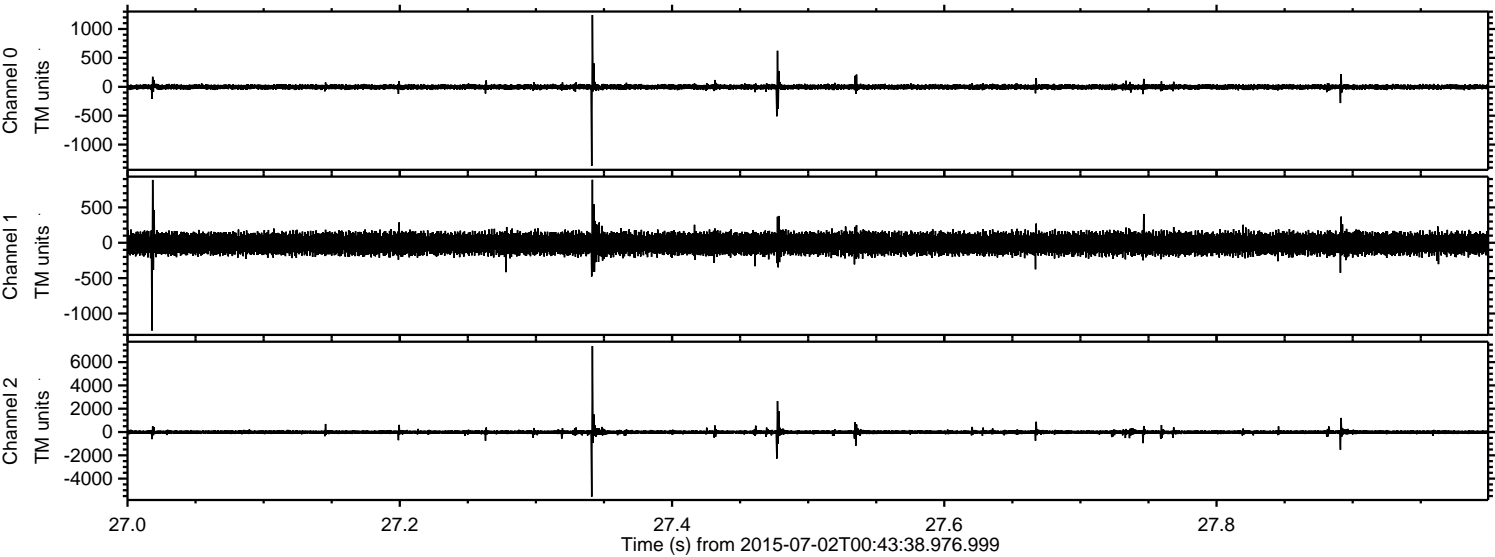


Processed Thu Jul 2 02:50:25 2015 by ELM ver.2012-10-06 from 001\_\_elm20150702\_004337\_\_dat00.bin





Processed Thu Jul 2 02:50:26 2015 by ELM ver.2012-10-06 from 001\_\_elm20150702\_004337\_\_dat00.bin





Processed Thu Jul 2 02:50:27 2015 by ELM ver.2012-10-06 from 001\_\_elm20150702\_004337\_\_dat00.bin

