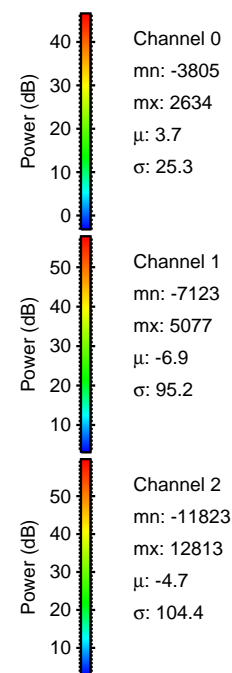
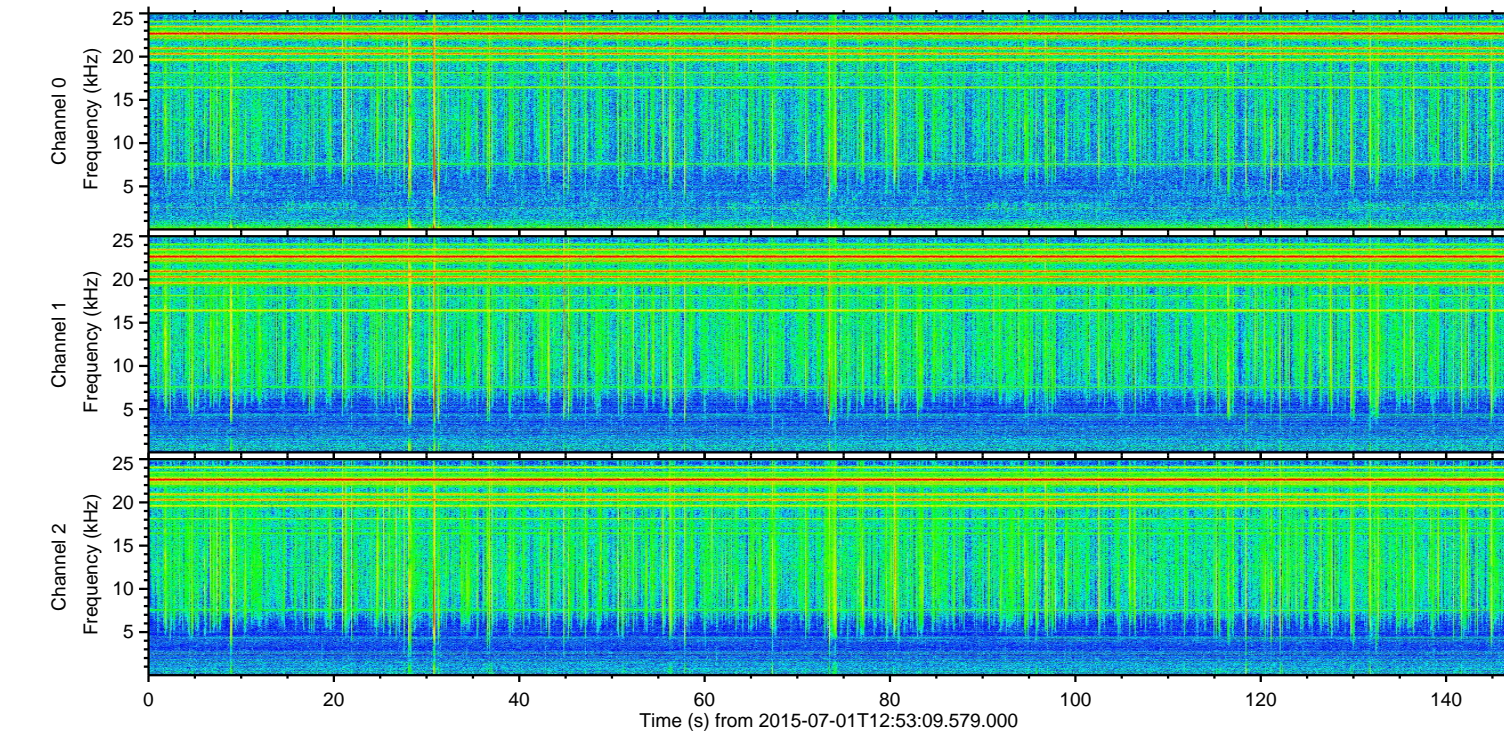
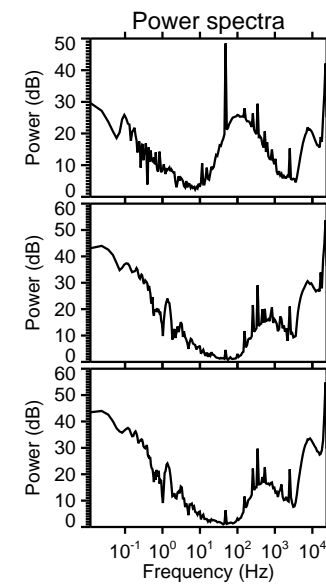
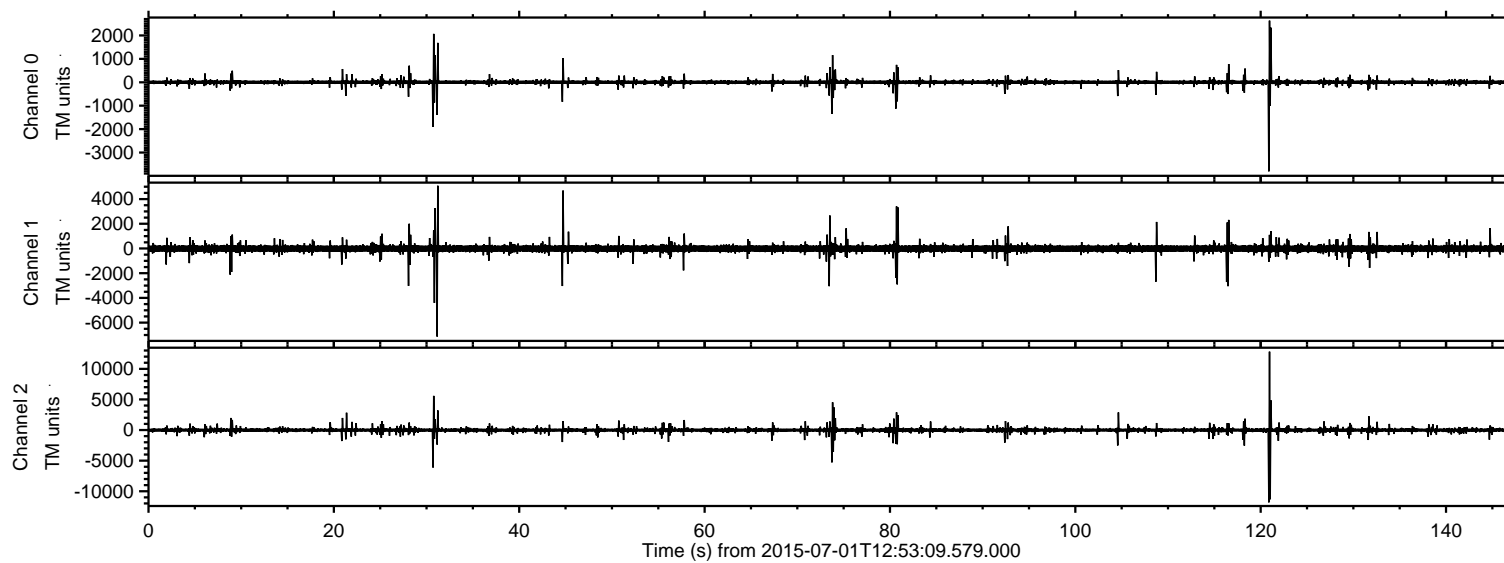


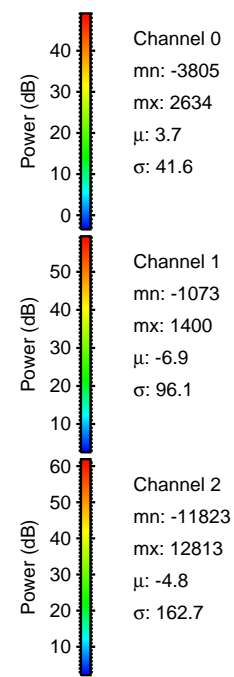
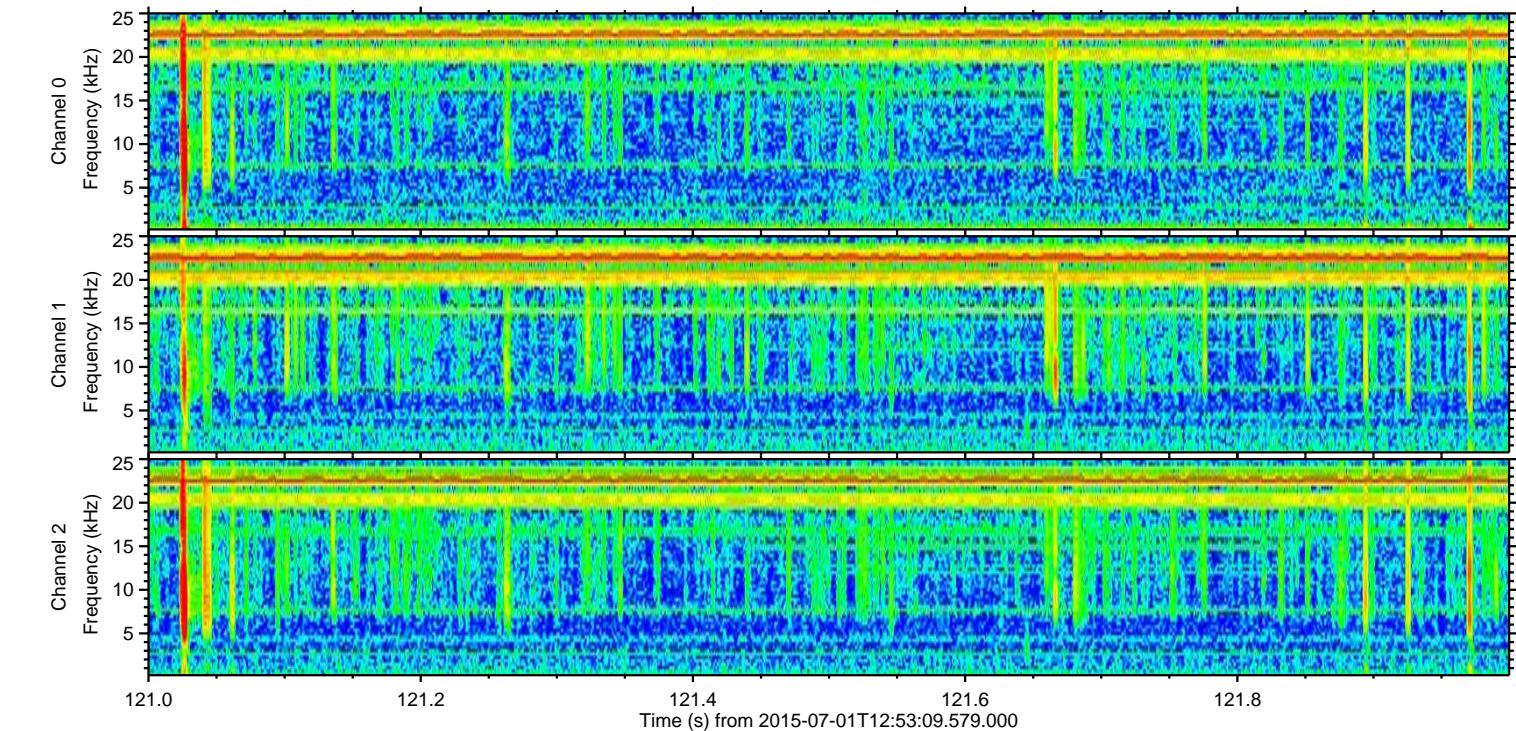
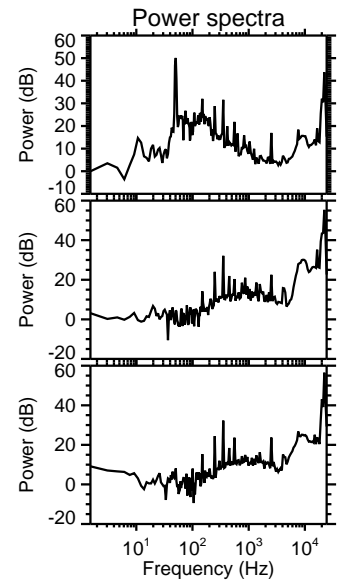
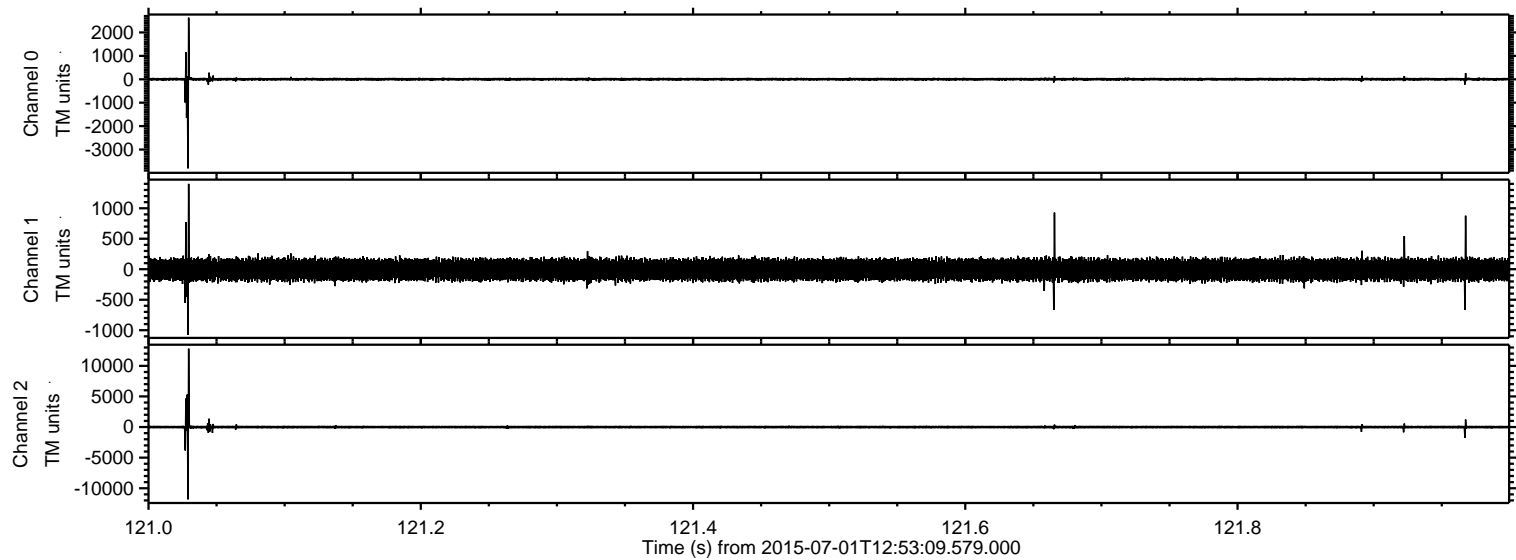
ELMAVAN 3D WAVEFORMS (Measured data sampled at 50 kHz) 51000 packets of 144 samples from 2015-07-01T12:53:09.579.000.

Processed Wed Jul 1 14:59:22 2015 by ELM ver.2012-10-06 from 001__elm20150701_125308__dat00.bin



ELMAVAN 3D WAVEFORMS (Measured data sampled at 50 kHz) 51000 packets of 144 samples from 2015-07-01T12:53:09.579.000. Part 122/147

Processed Wed Jul 1 14:59:38 2015 by ELM ver.2012-10-06 from 001__elm20150701_125308__dat00.bin



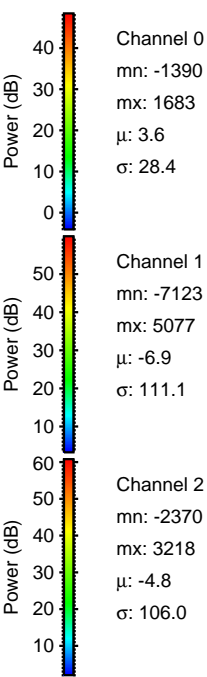
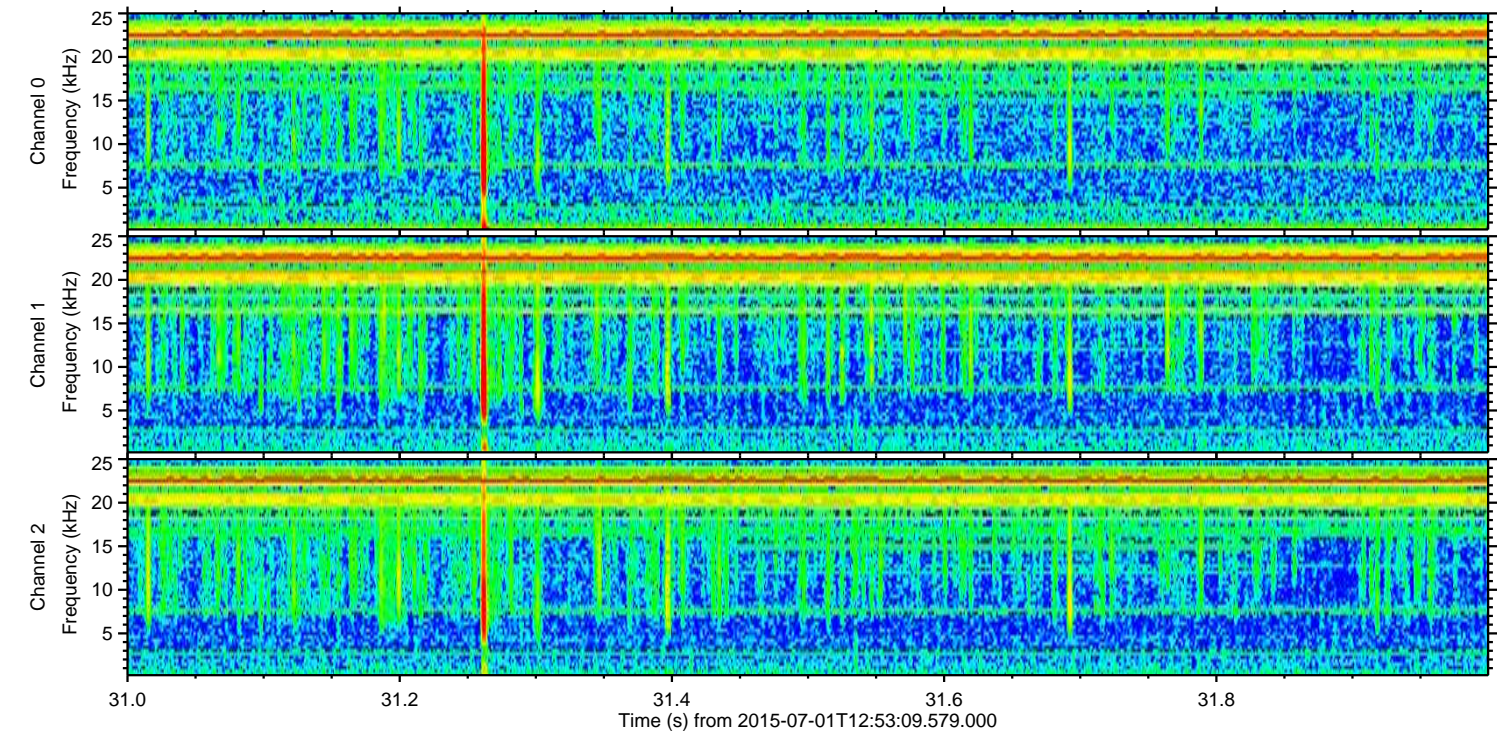
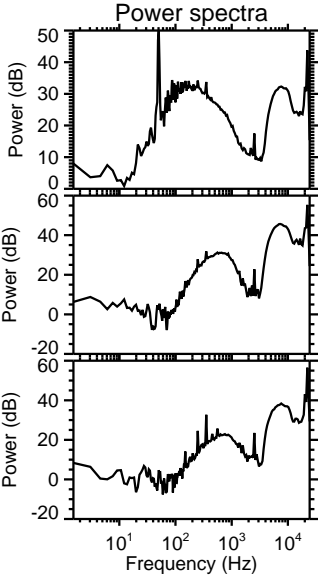
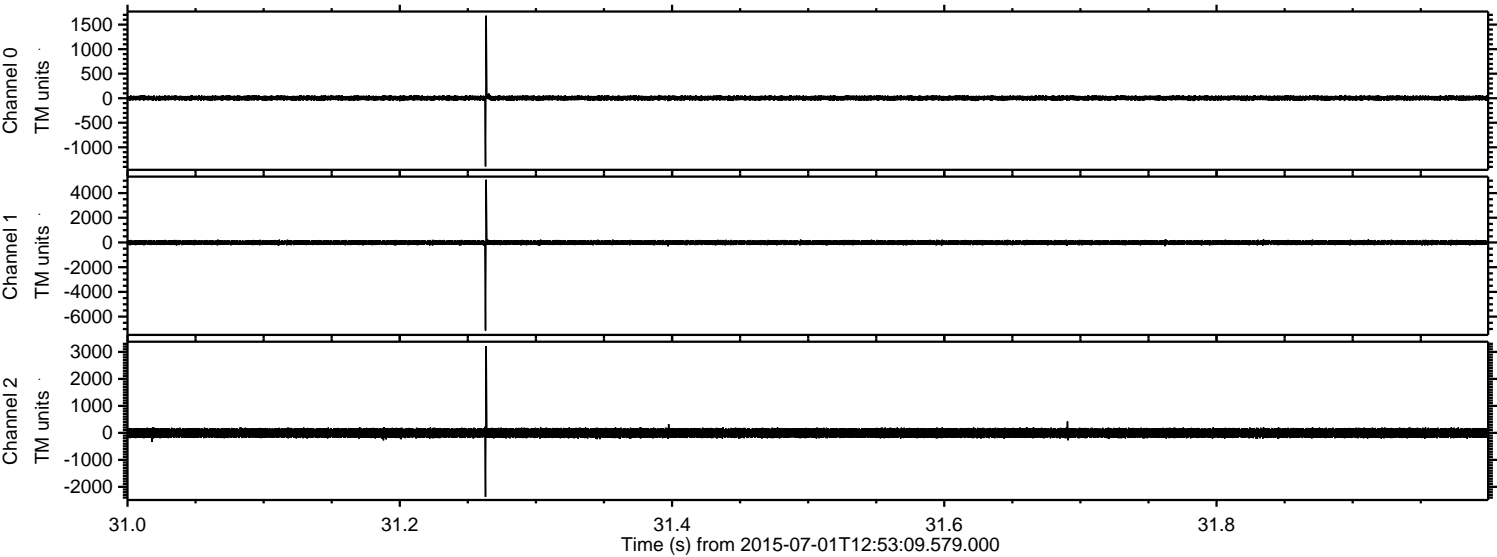
Channel 0
mn: -3805
mx: 2634
 μ : 3.7
 σ : 41.6

Channel 1
mn: -1073
mx: 1400
 μ : -6.9
 σ : 96.1

Channel 2
mn: -11823
mx: 12813
 μ : -4.8
 σ : 162.7

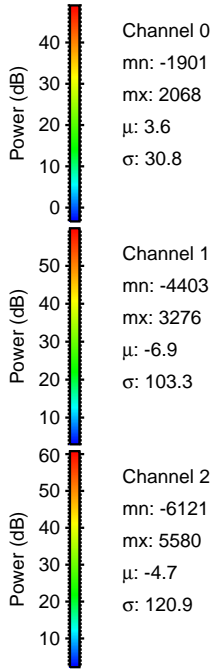
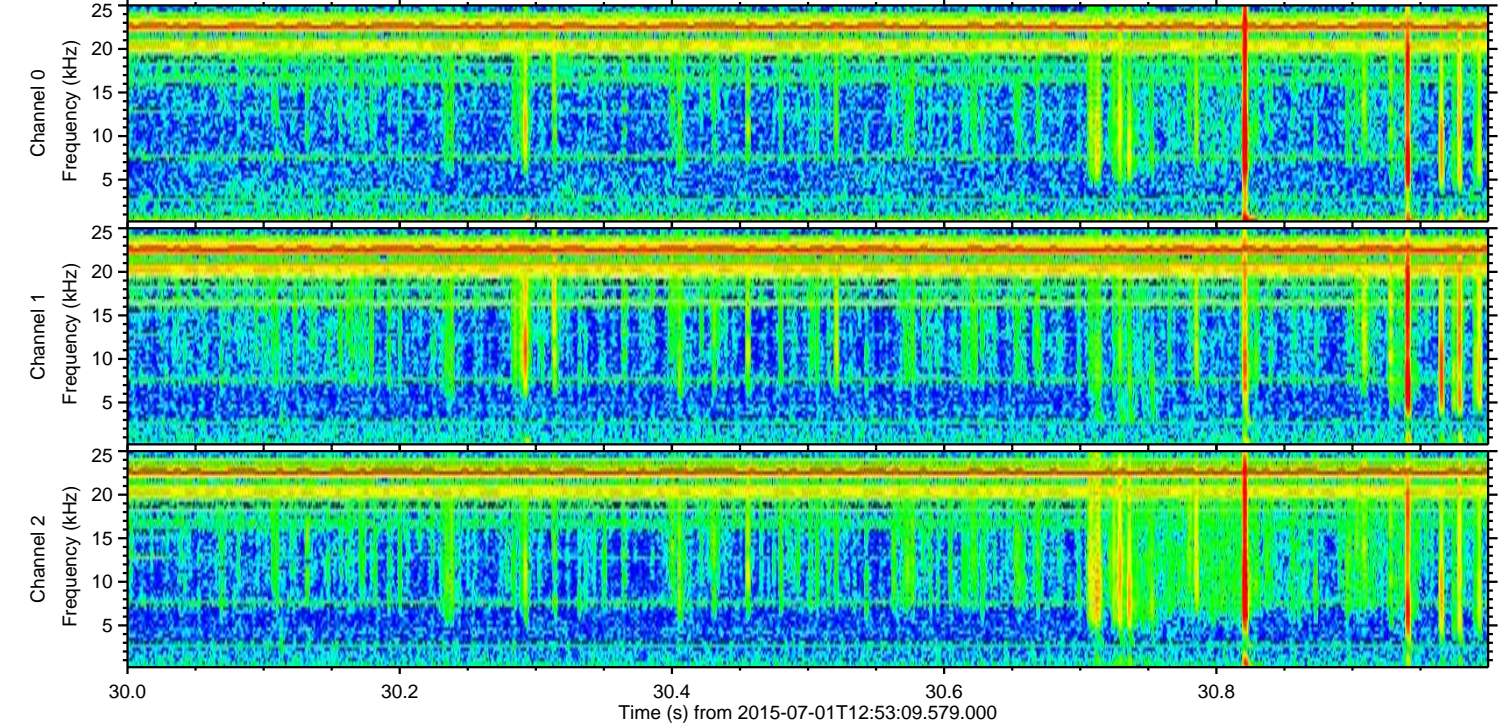
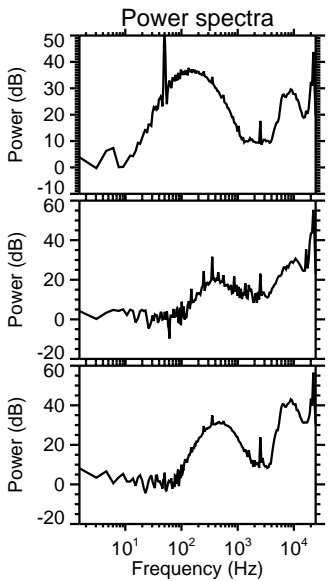
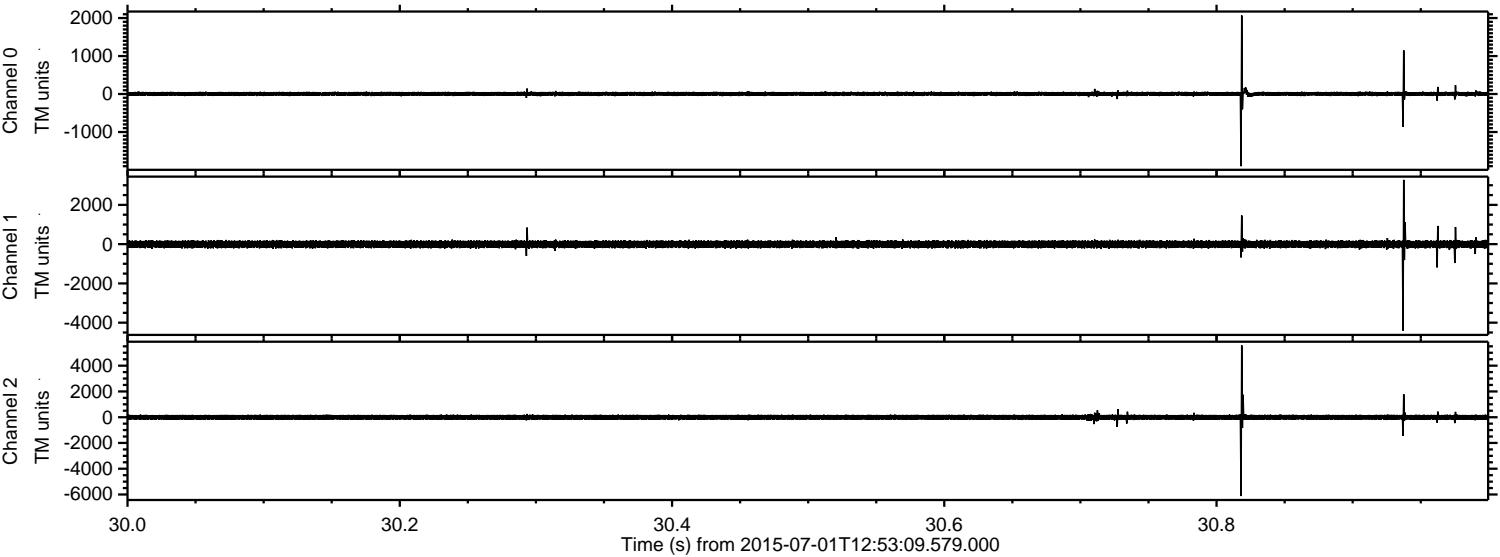
ELMAVAN 3D WAVEFORMS (Measured data sampled at 50 kHz) 51000 packets of 144 samples from 2015-07-01T12:53:09.579.000. Part 32/147

Processed Wed Jul 1 14:59:39 2015 by ELM ver.2012-10-06 from 001__elm20150701_125308__dat00.bin



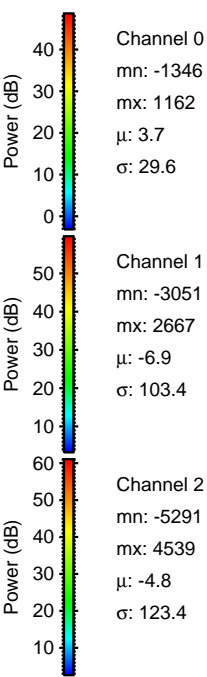
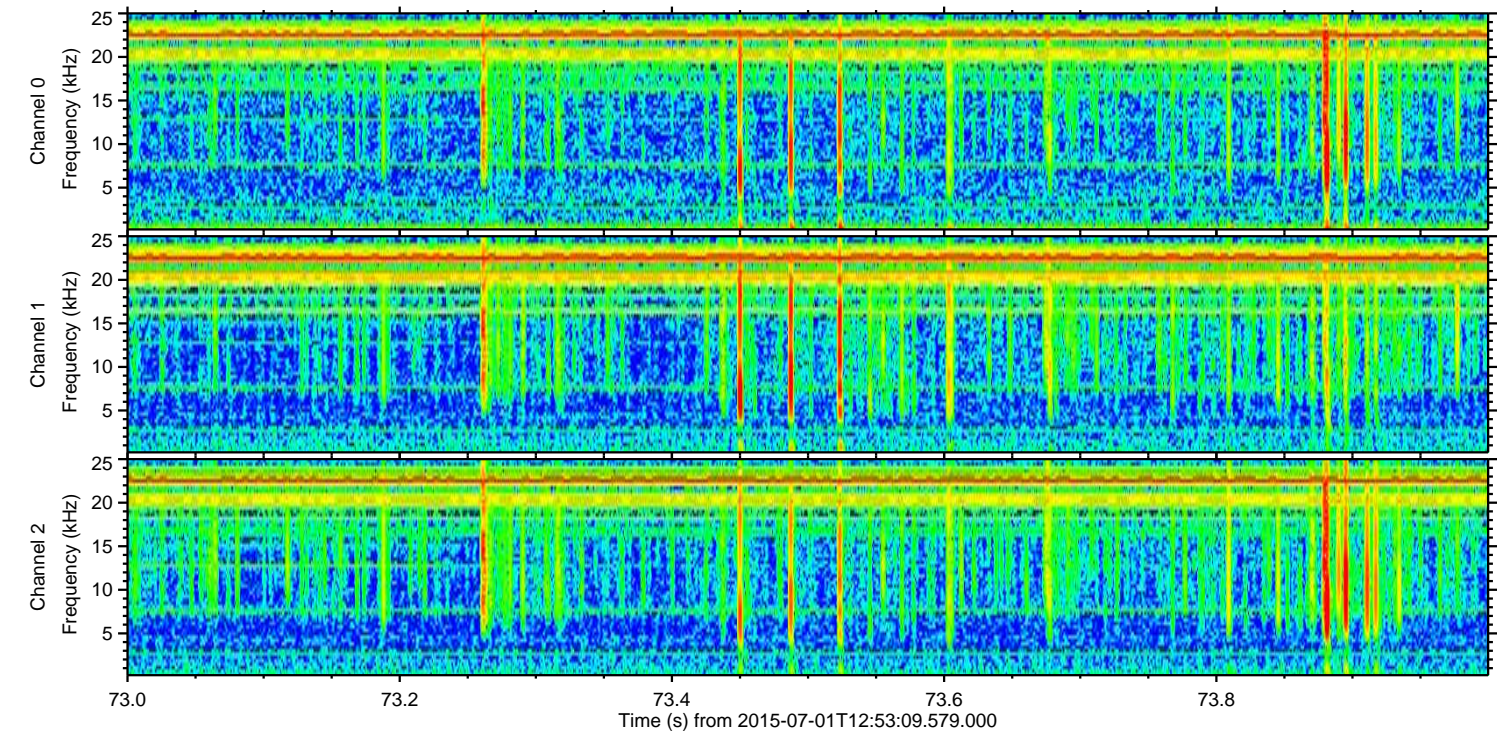
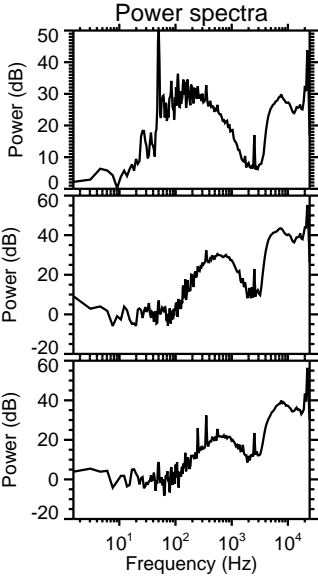
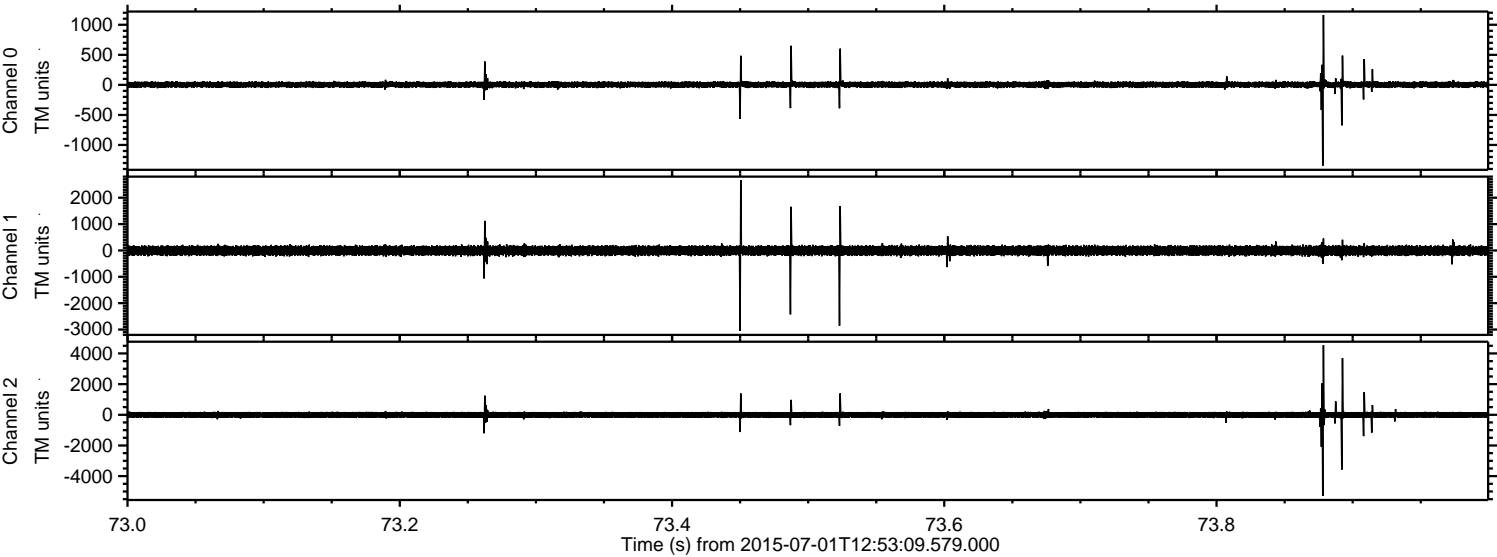
ELMAVAN 3D WAVEFORMS (Measured data sampled at 50 kHz) 51000 packets of 144 samples from 2015-07-01T12:53:09.579.000. Part 31/147

Processed Wed Jul 1 14:59:40 2015 by ELM ver.2012-10-06 from 001__elm20150701_125308__dat00.bin

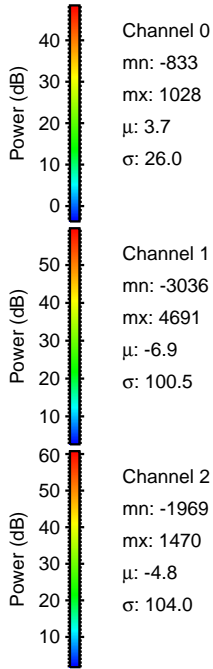
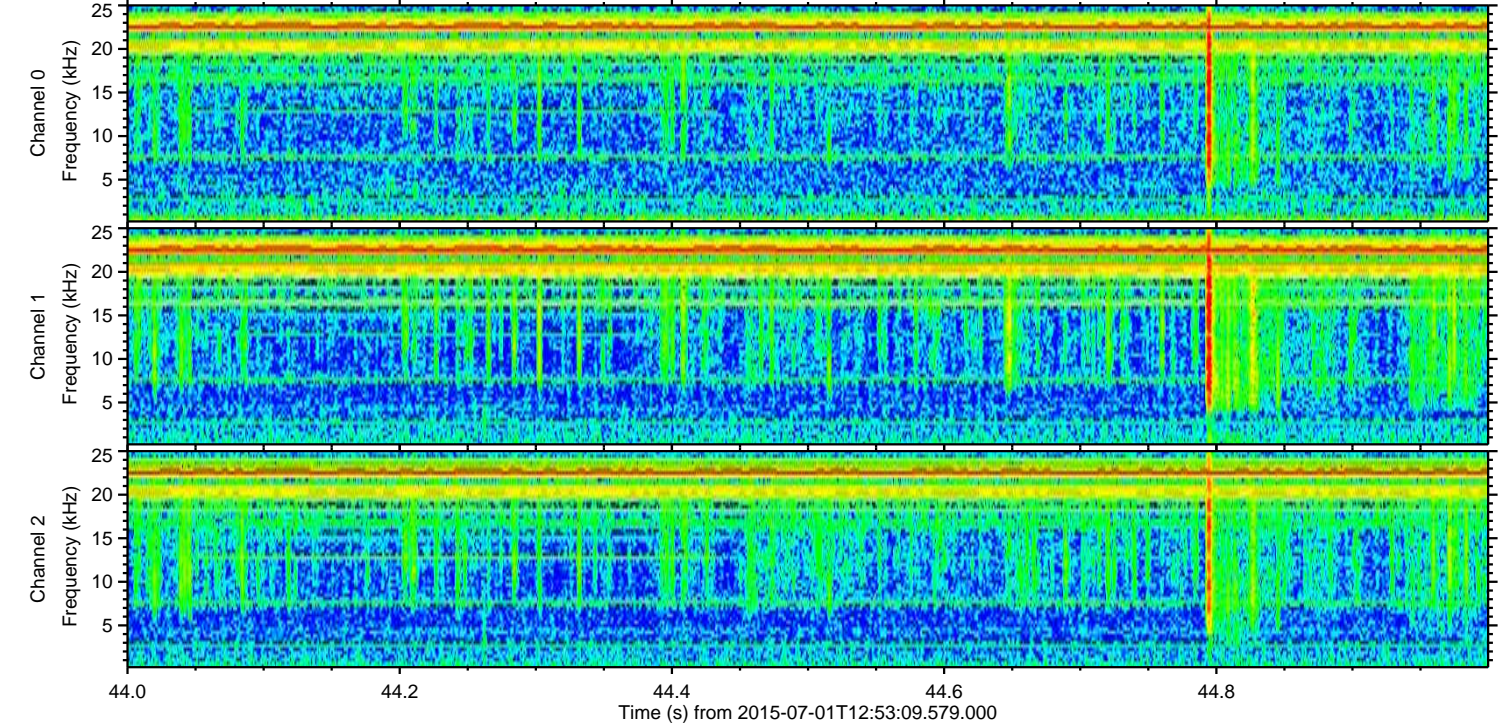
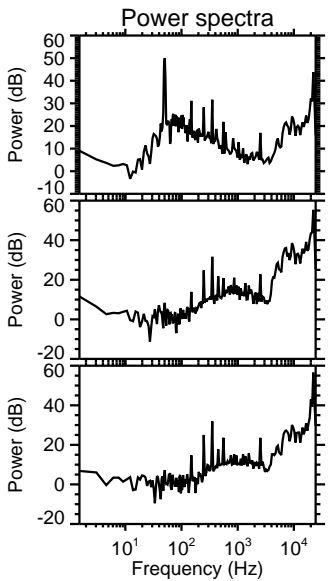
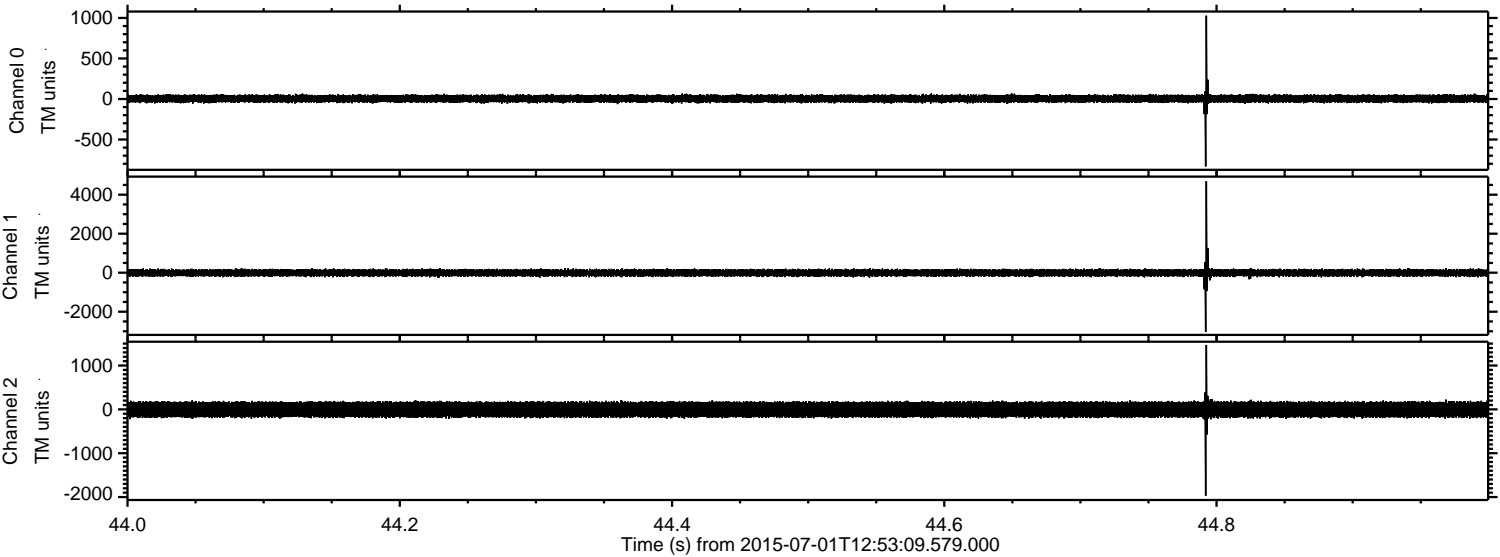


ELMAVAN 3D WAVEFORMS (Measured data sampled at 50 kHz) 51000 packets of 144 samples from 2015-07-01T12:53:09.579.000. Part 74/147

Processed Wed Jul 1 14:59:41 2015 by ELM ver.2012-10-06 from 001__elm20150701_125308__dat00.bin



Processed Wed Jul 1 14:59:42 2015 by ELM ver.2012-10-06 from 001__elm20150701_125308__dat00.bin

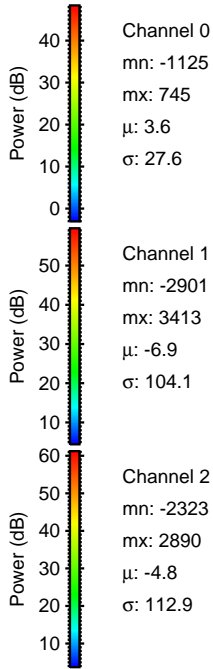
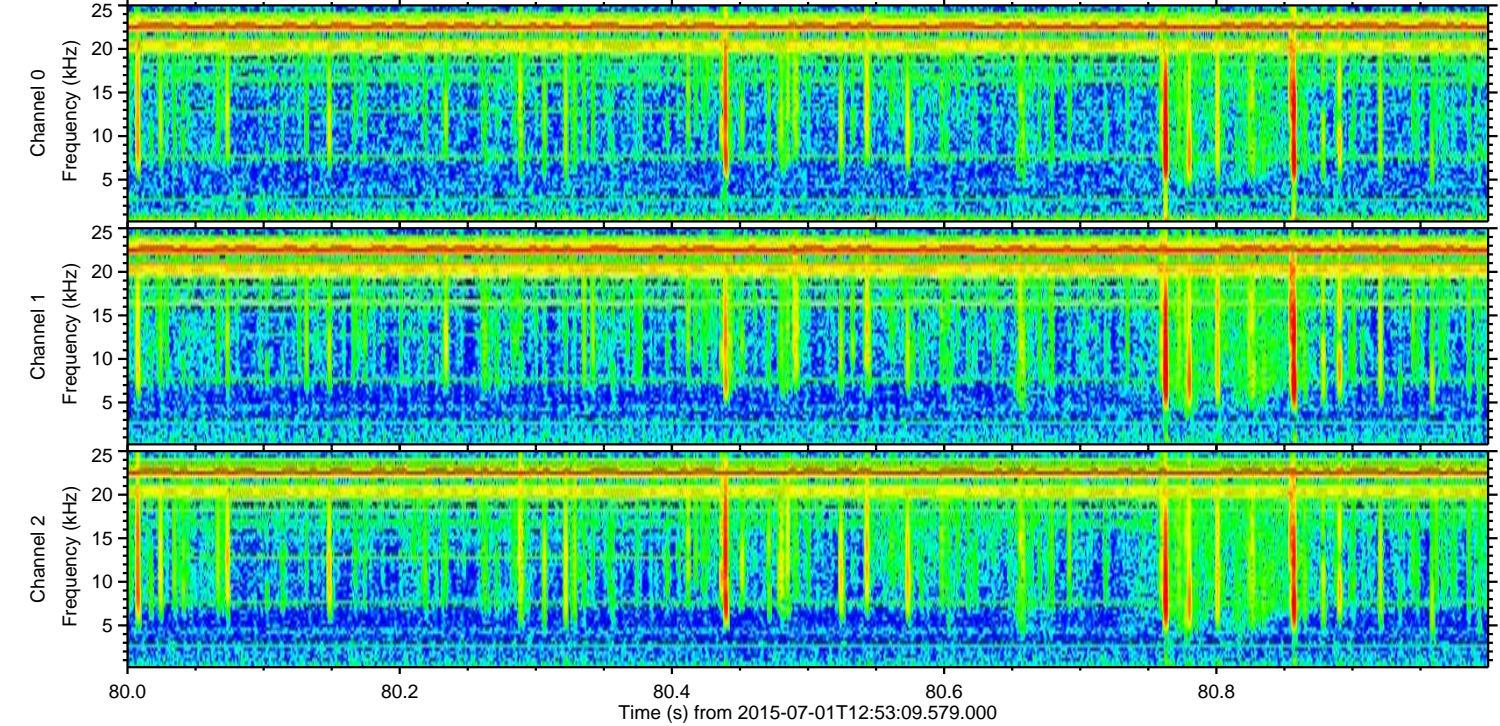
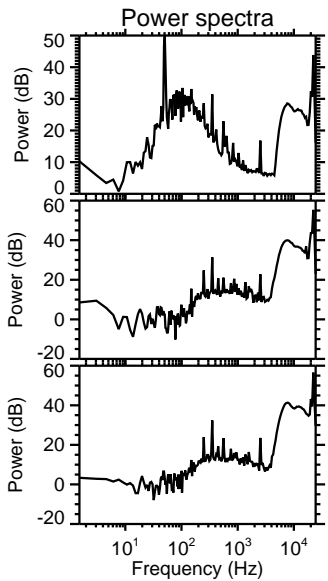
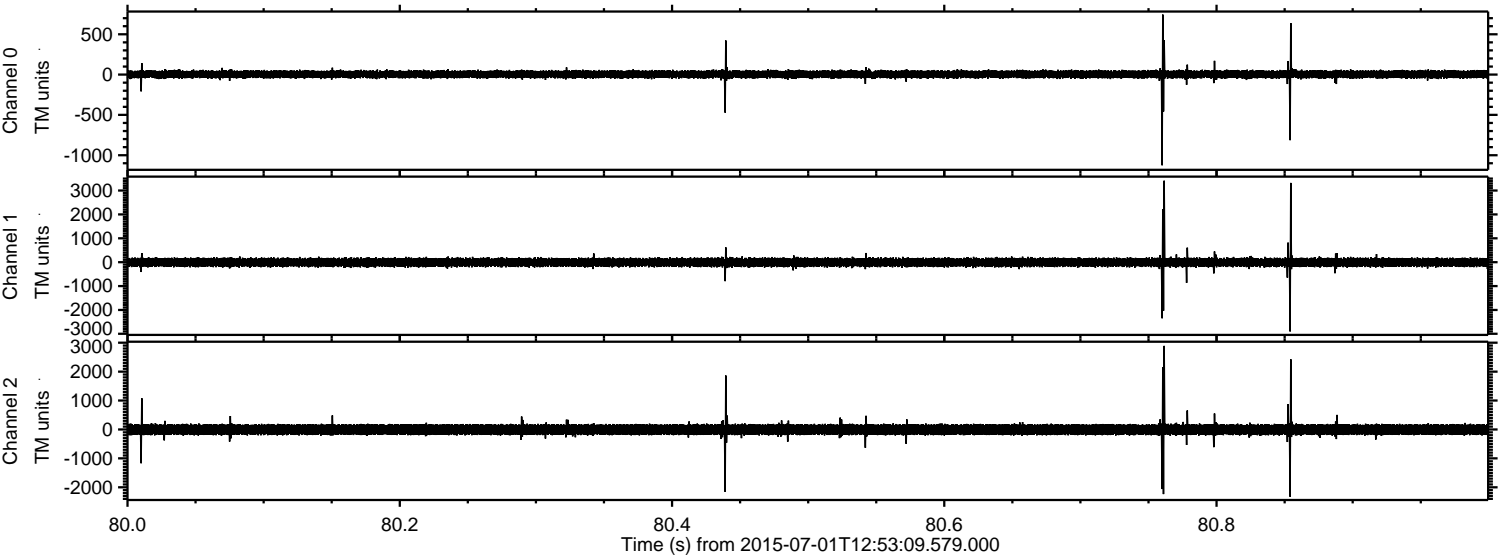


Channel 0
mn: -833
mx: 1028
 μ : 3.7
 σ : 26.0

Channel 1
mn: -3036
mx: 4691
 μ : -6.9
 σ : 100.5

Channel 2
mn: -1969
mx: 1470
 μ : -4.8
 σ : 104.0

Processed Wed Jul 1 14:59:43 2015 by ELM ver.2012-10-06 from 001__elm20150701_125308__dat00.bin



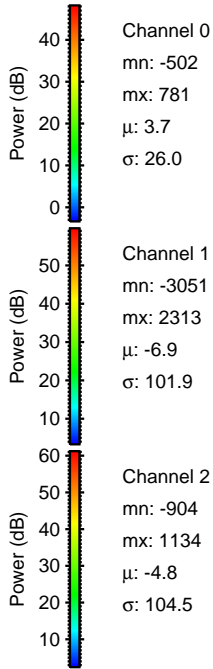
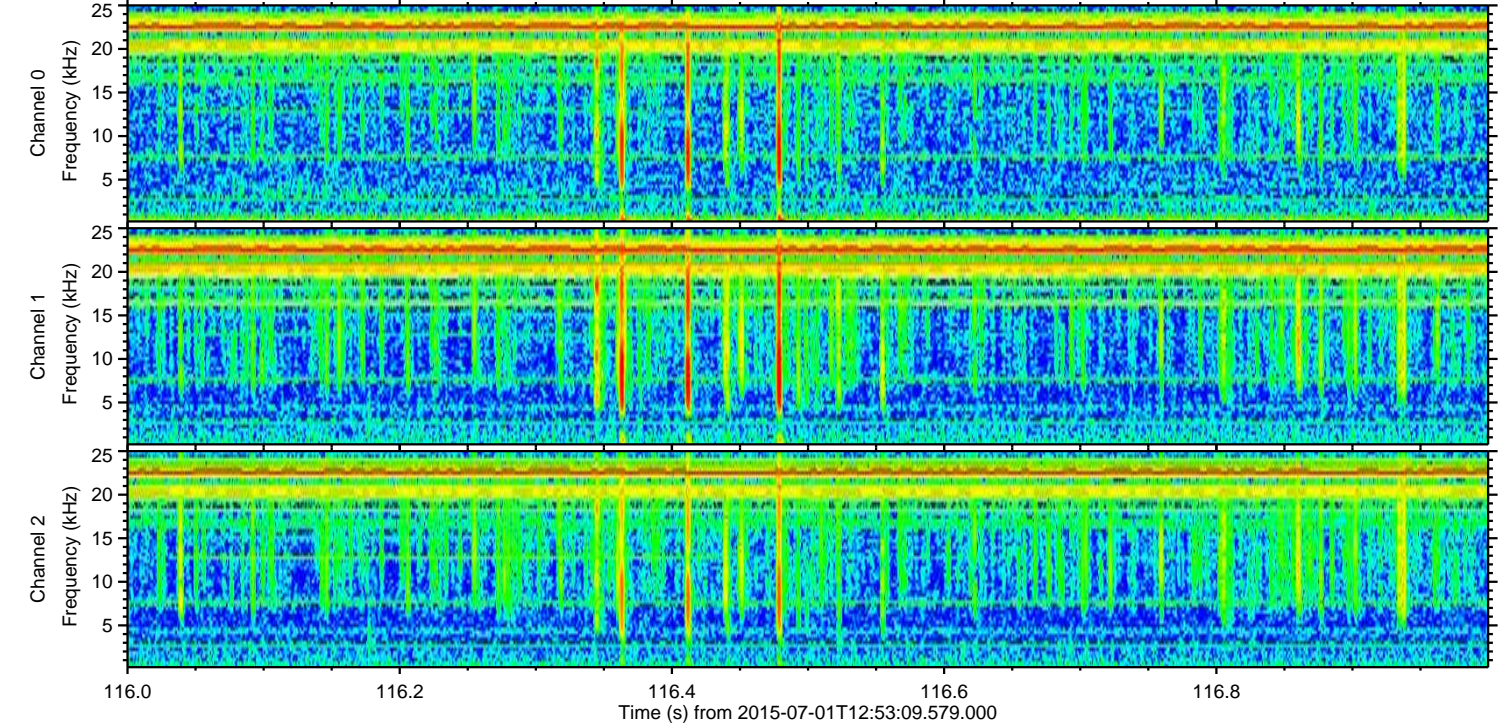
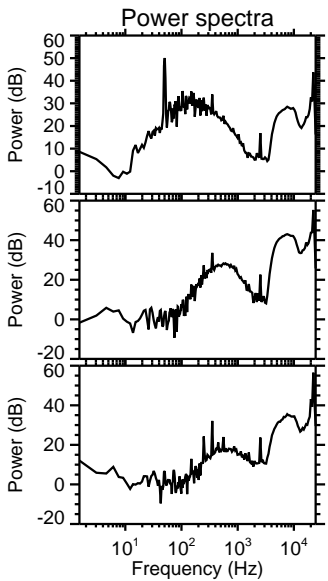
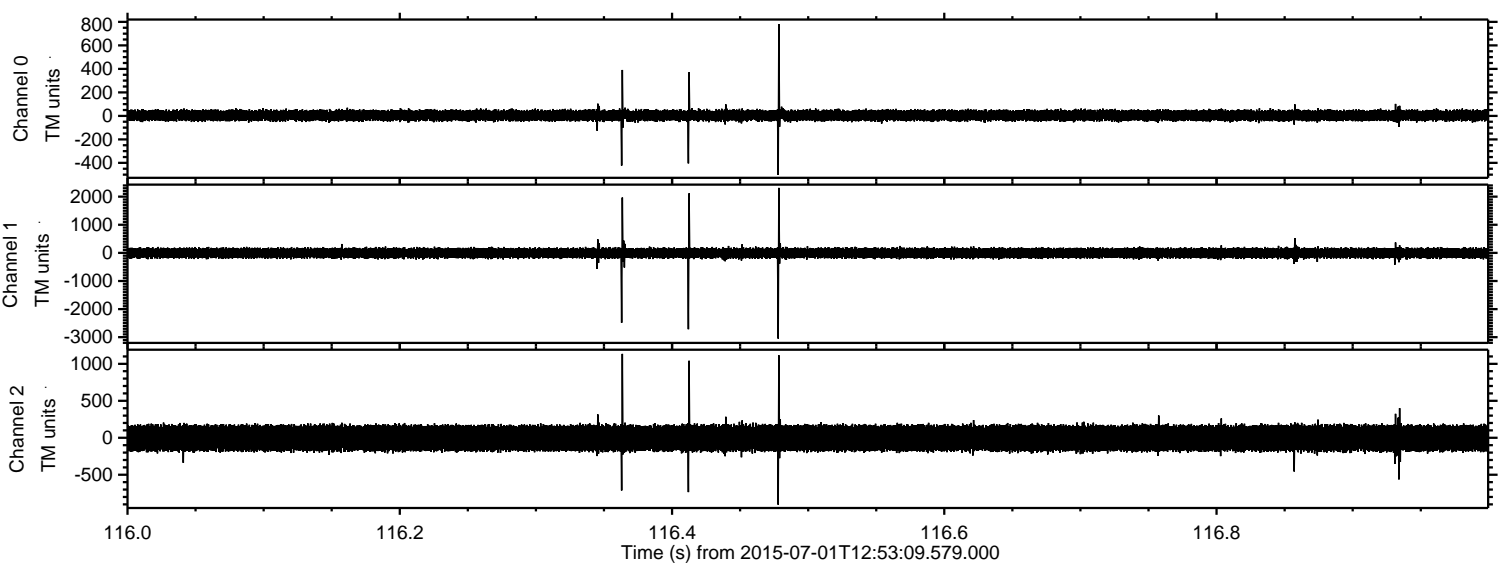
Channel 0
mn: -1125
mx: 745
 μ : 3.6
 σ : 27.6

Channel 1
mn: -2901
mx: 3413
 μ : -6.9
 σ : 104.1

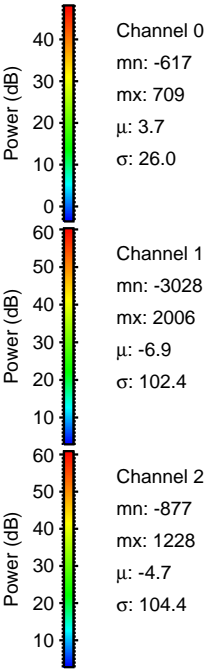
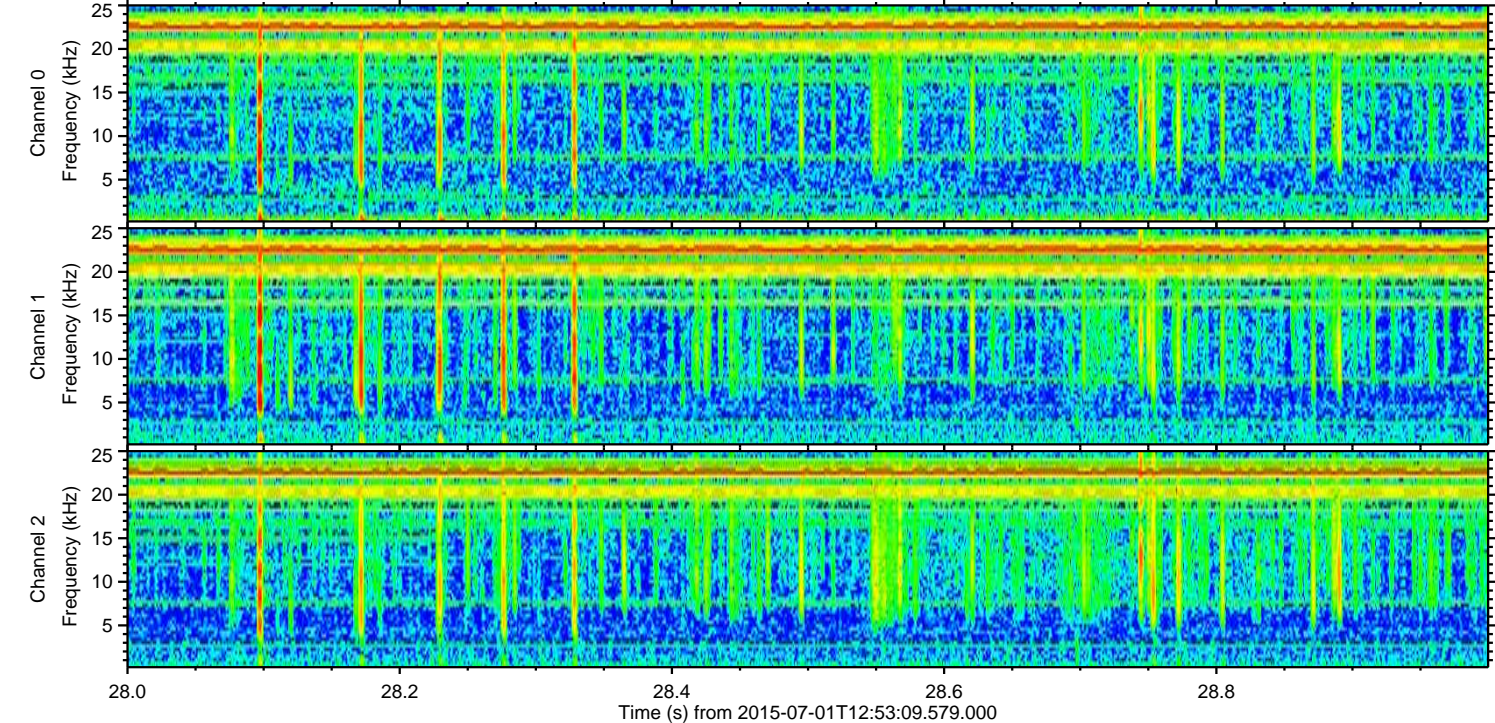
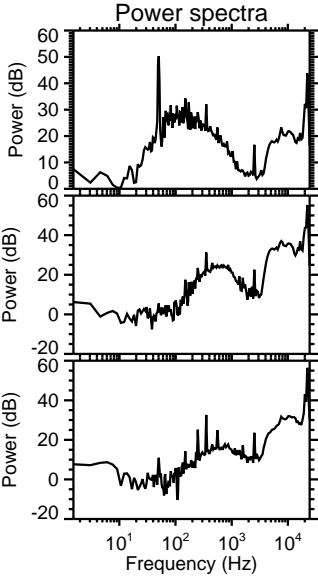
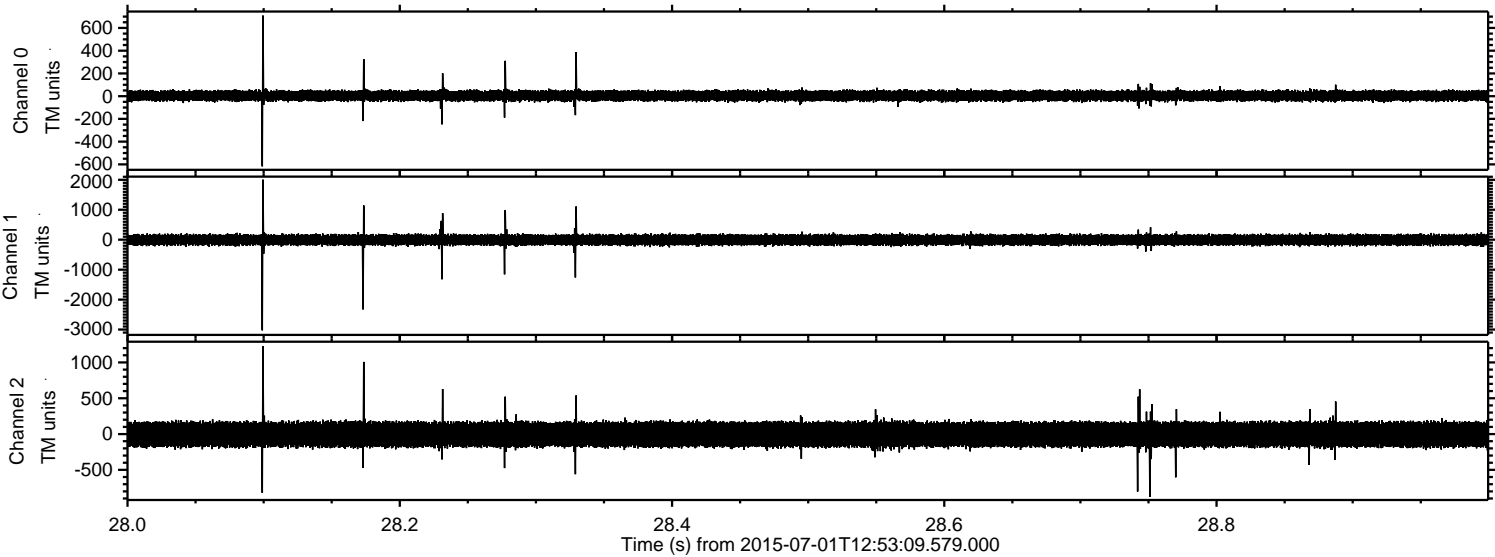
Channel 2
mn: -2323
mx: 2890
 μ : -4.8
 σ : 112.9

ELMAVAN 3D WAVEFORMS (Measured data sampled at 50 kHz) 51000 packets of 144 samples from 2015-07-01T12:53:09.579.000. Part 117/147

Processed Wed Jul 1 14:59:44 2015 by ELM ver.2012-10-06 from 001__elm20150701_125308__dat00.bin

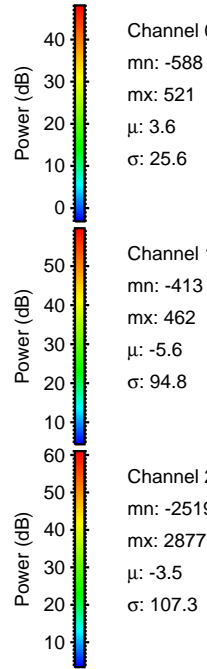
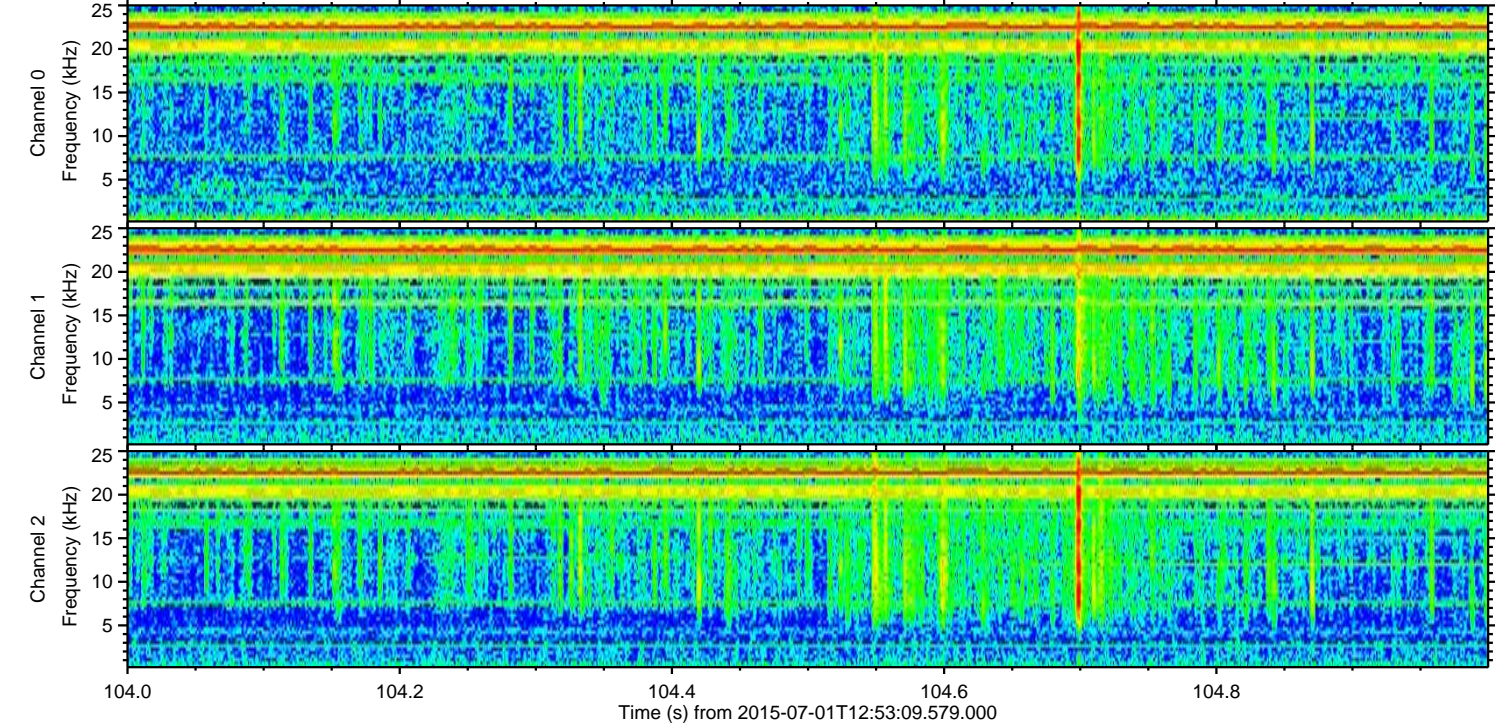
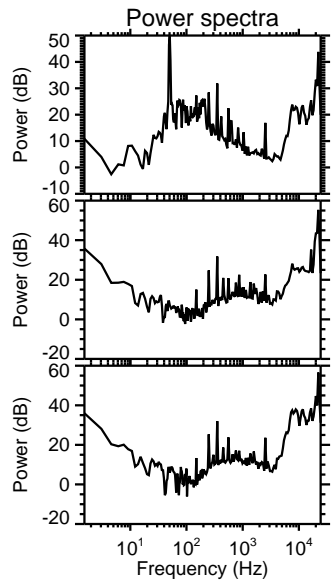
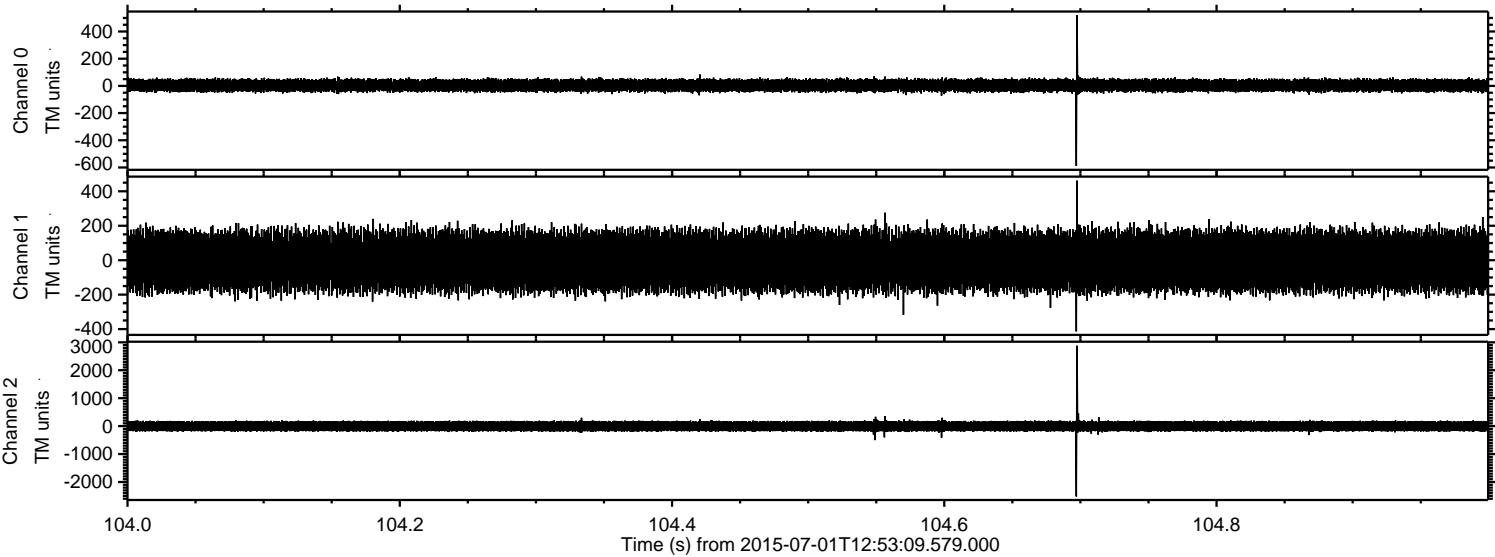


Processed Wed Jul 1 14:59:45 2015 by ELM ver.2012-10-06 from 001__elm20150701_125308__dat00.bin



ELMAVAN 3D WAVEFORMS (Measured data sampled at 50 kHz) 51000 packets of 144 samples from 2015-07-01T12:53:09.579.000. Part 105/147

Processed Wed Jul 1 14:59:46 2015 by ELM ver.2012-10-06 from 001__elm20150701_125308__dat00.bin



Channel 0
mn: -588
mx: 521
 μ : 3.6
 σ : 25.6

Channel 1
mn: -413
mx: 462
 μ : -5.6
 σ : 94.8

Channel 2
mn: -2519
mx: 2877
 μ : -3.5
 σ : 107.3

ELMAVAN 3D WAVEFORMS (Measured data sampled at 50 kHz) 51000 packets of 144 samples from 2015-07-01T12:53:09.579.000. Part 111/147

Processed Wed Jul 1 14:59:47 2015 by ELM ver.2012-10-06 from 001__elm20150701_125308__dat00.bin

