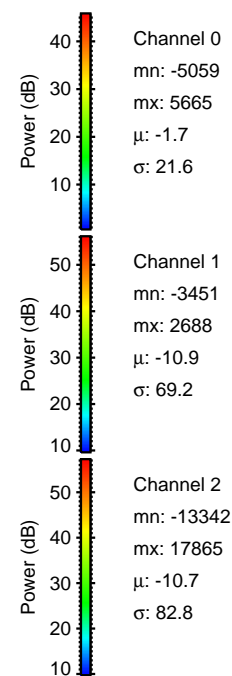
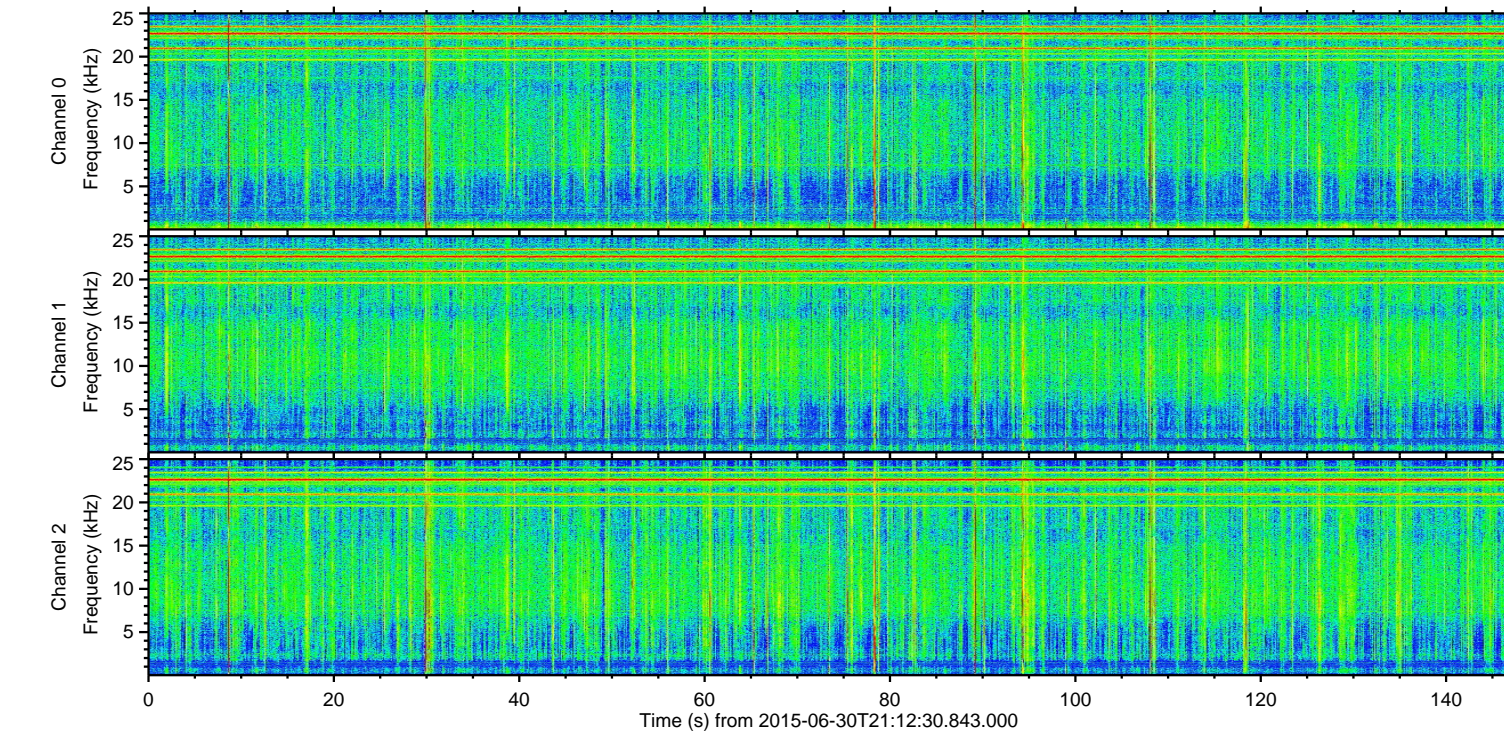
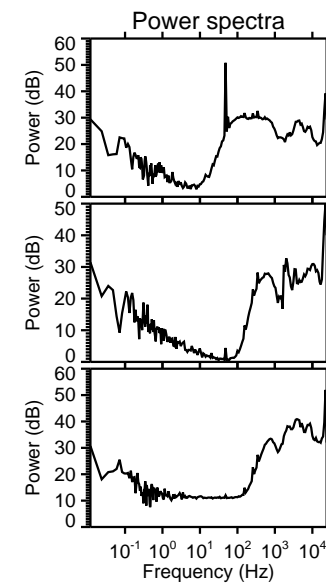
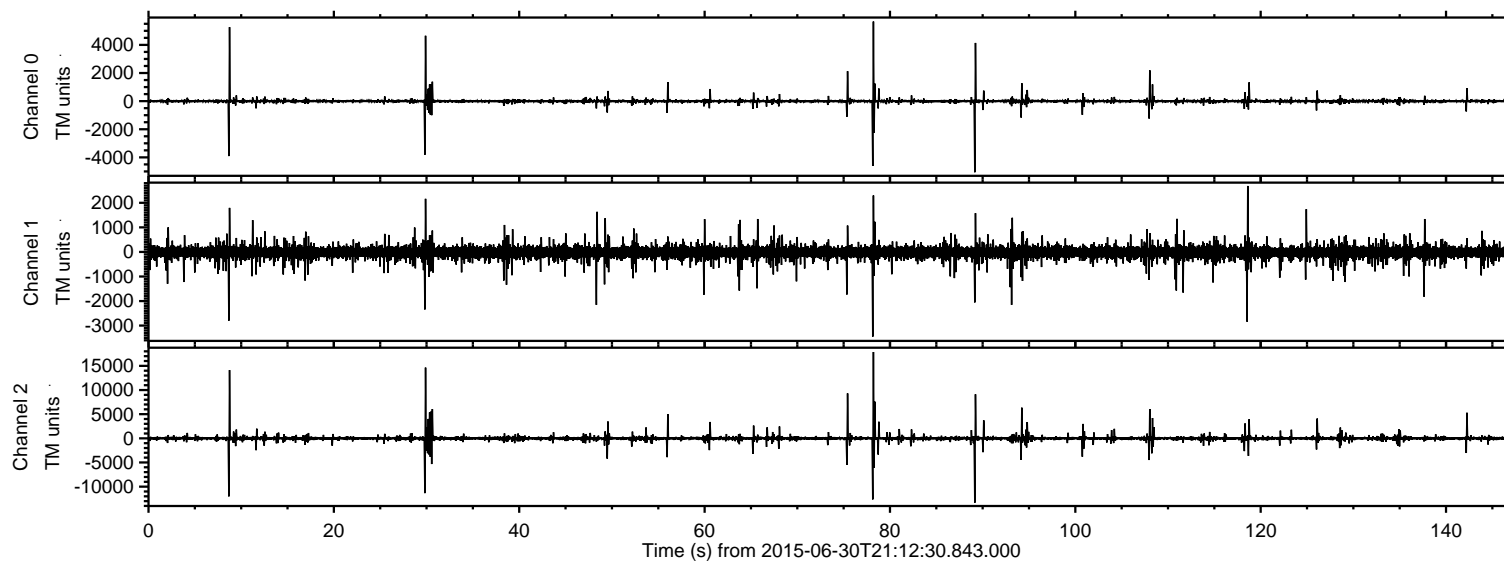
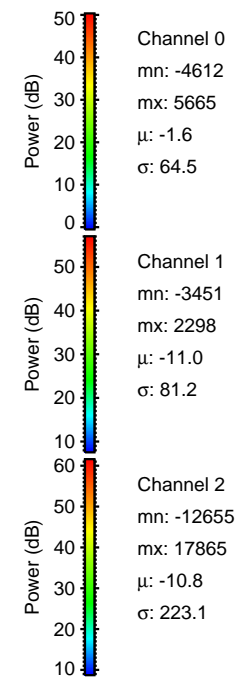
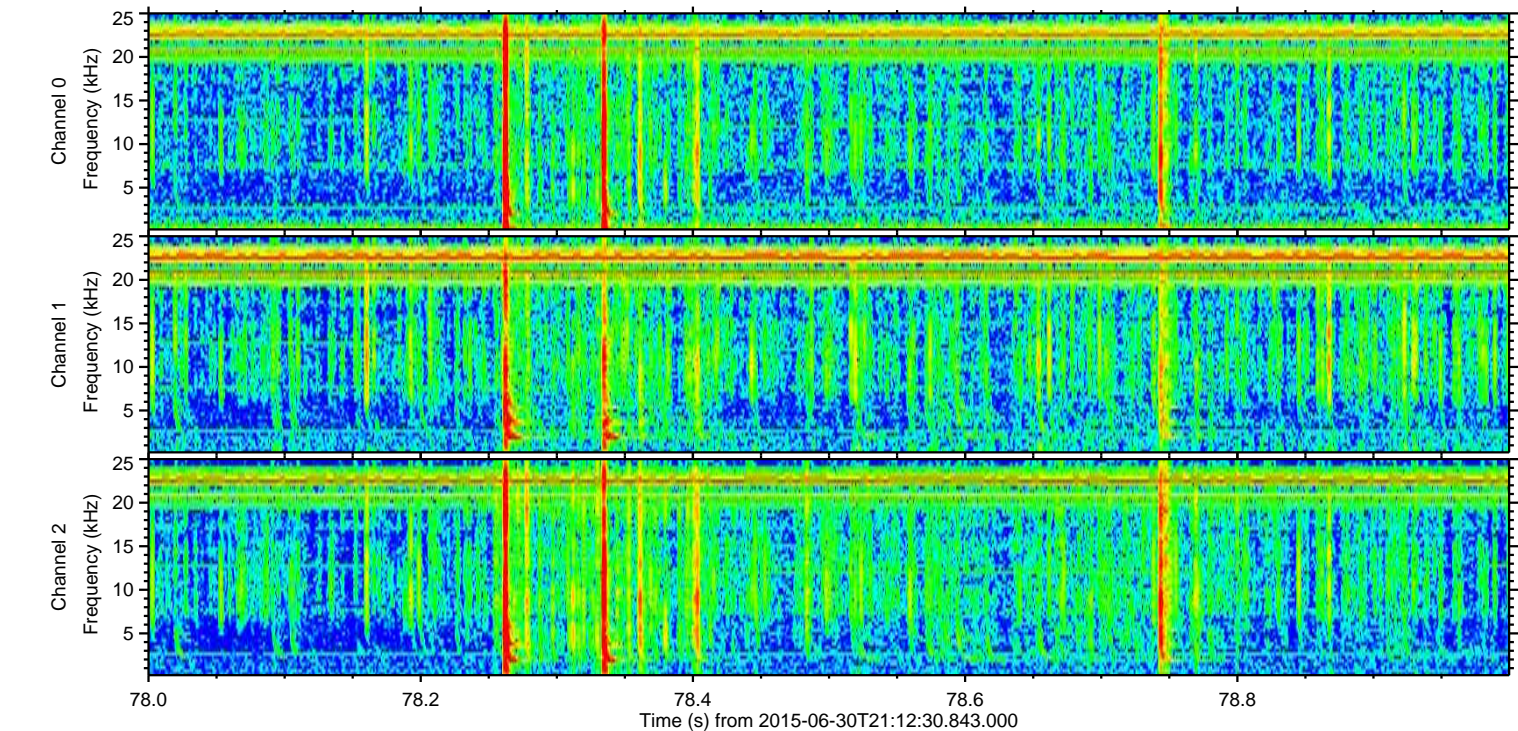
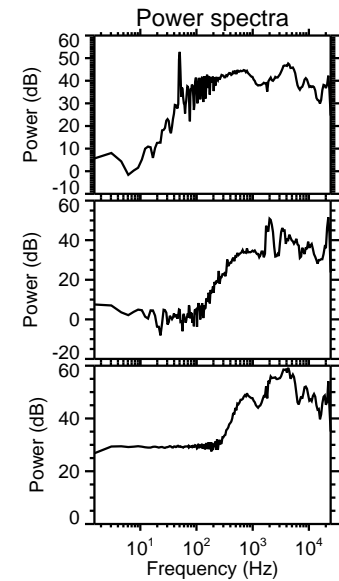
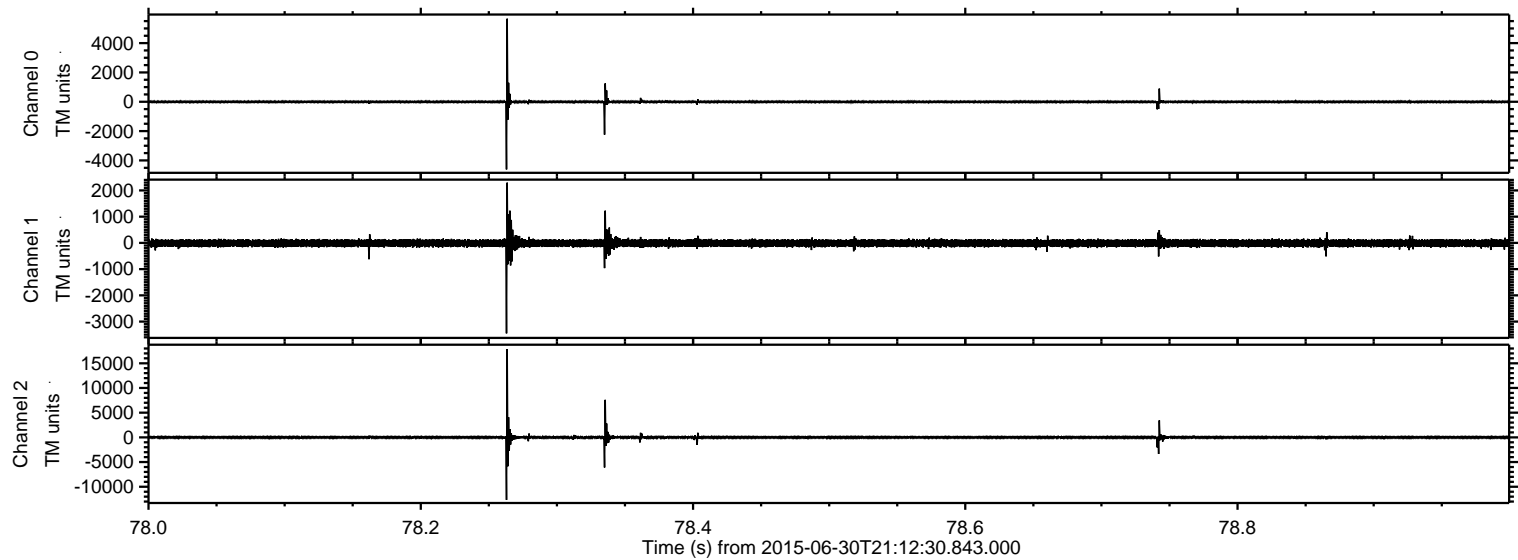


ELMAVAN 3D WAVEFORMS (Measured data sampled at 50 kHz) 51000 packets of 144 samples from 2015-06-30T21:12:30.843.000.

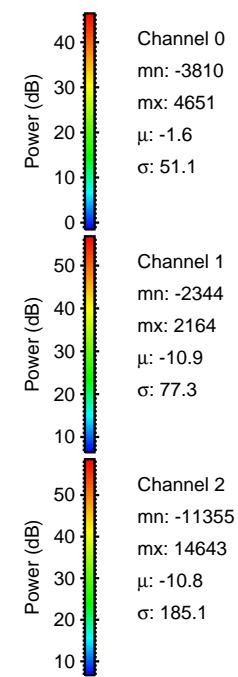
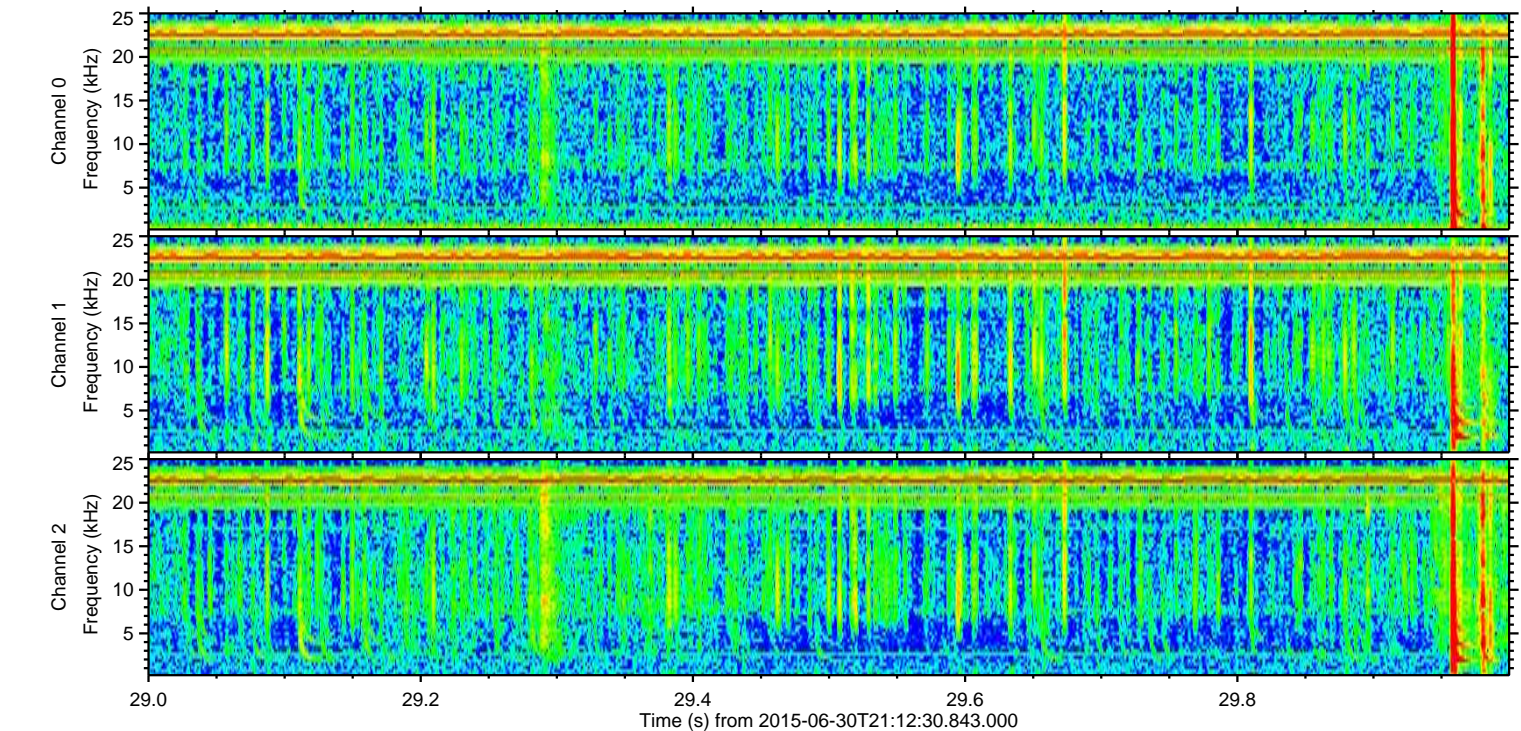
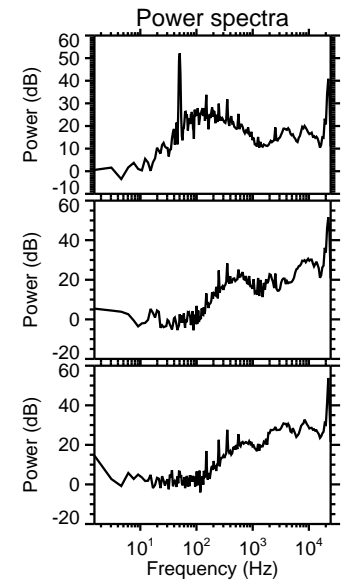
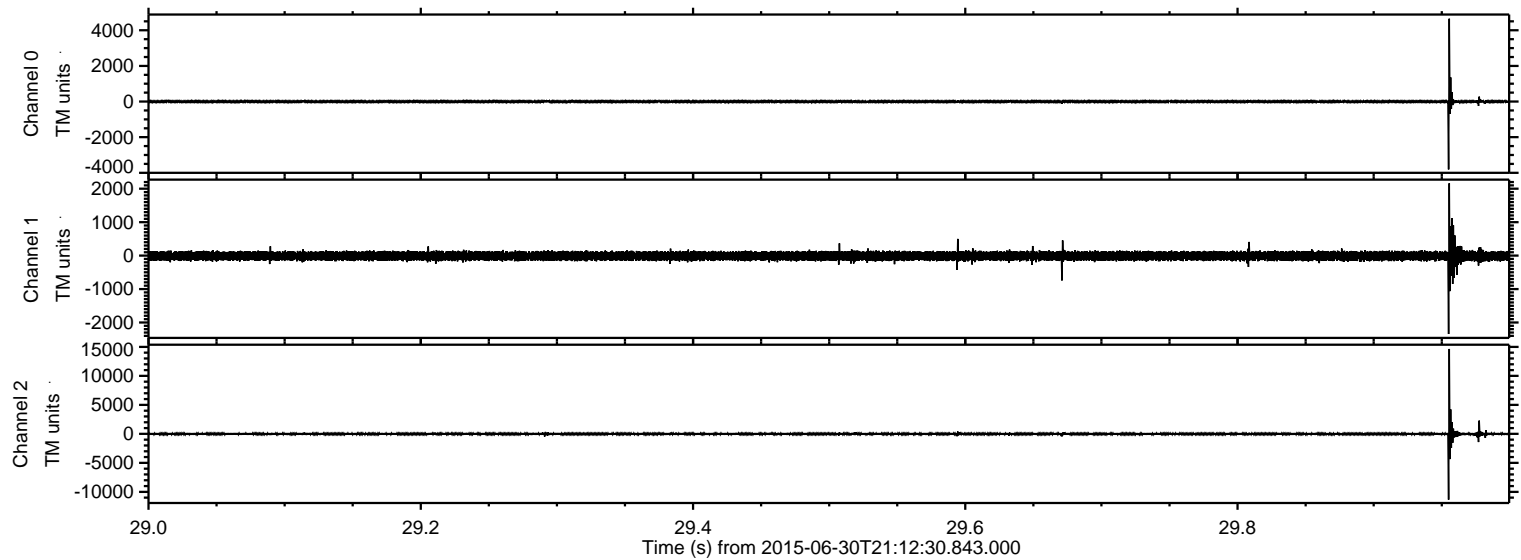
Processed Tue Jun 30 23:18:31 2015 by ELM ver.2012-10-06 from 001__elm20150630_211229__dat00.bin



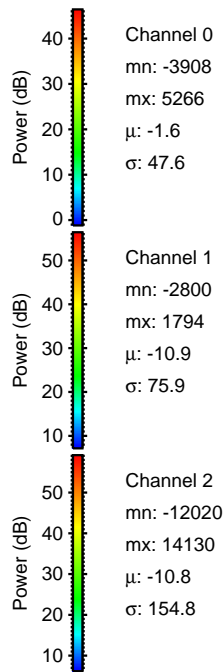
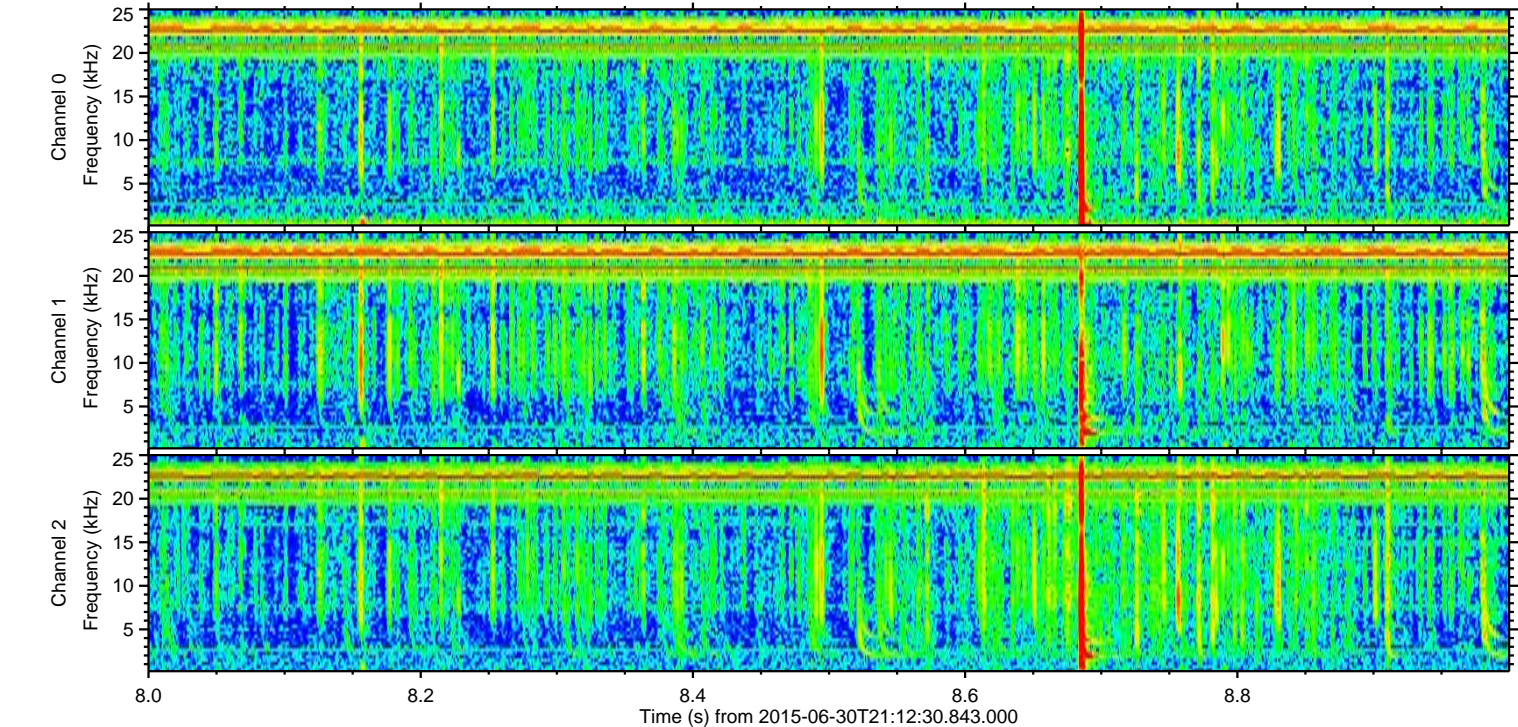
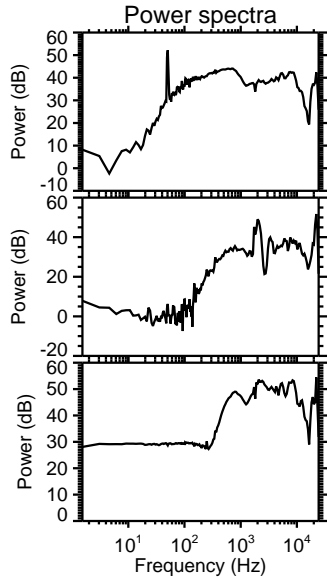
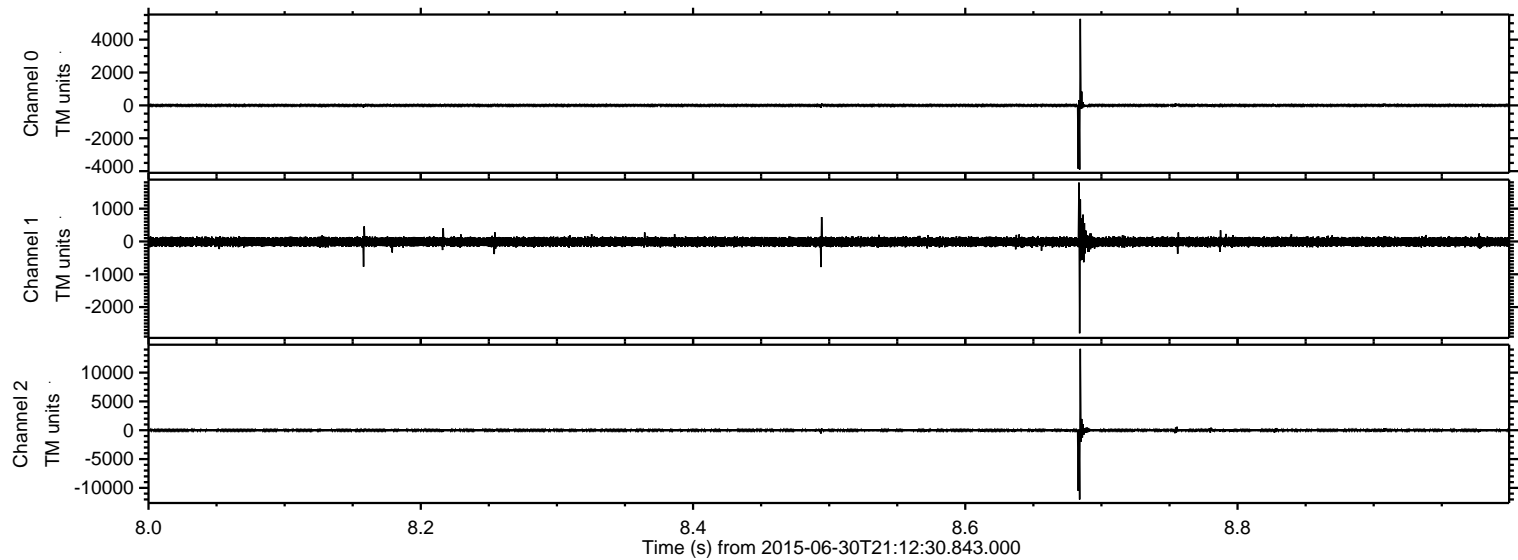
Processed Tue Jun 30 23:18:46 2015 by ELM ver.2012-10-06 from 001__elm20150630_211229__dat00.bin



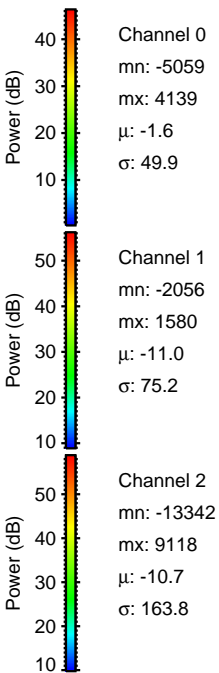
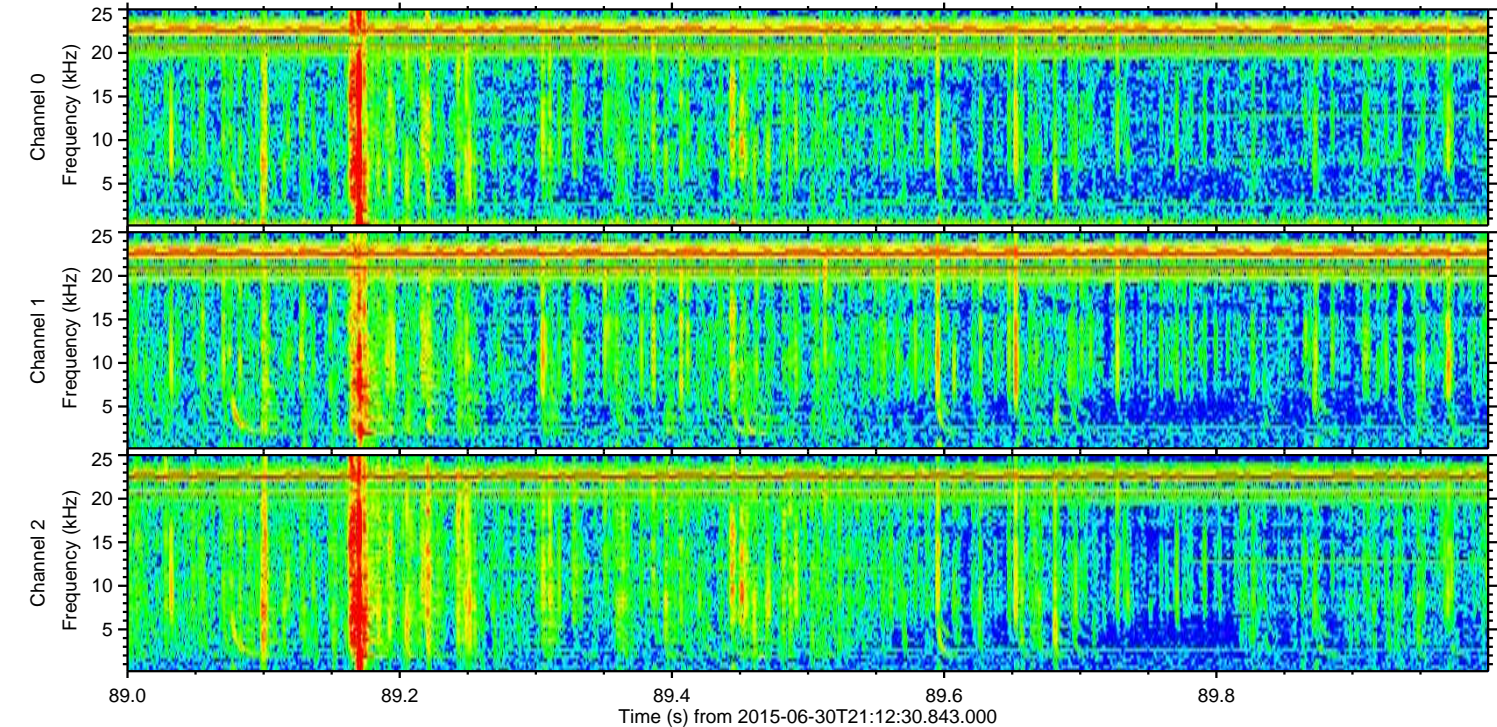
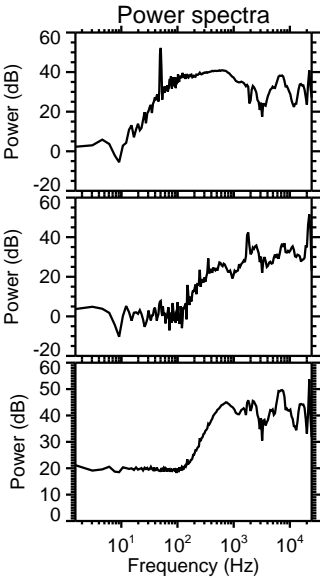
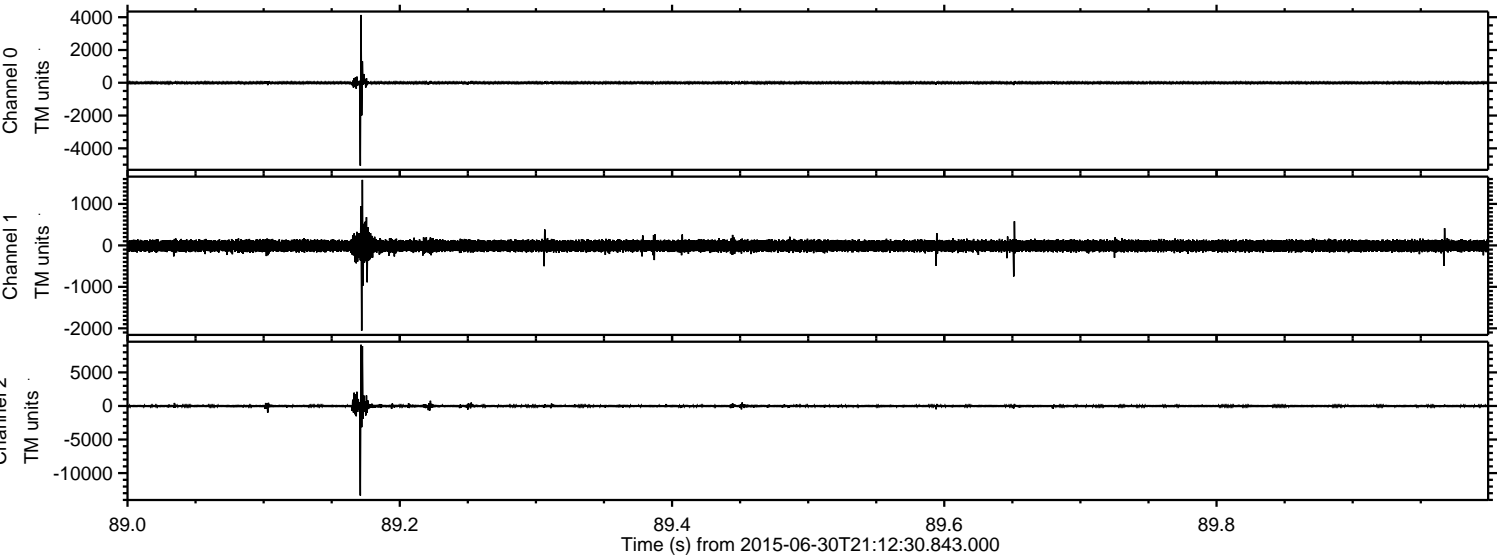
Processed Tue Jun 30 23:18:47 2015 by ELM ver.2012-10-06 from 001__elm20150630_211229__dat00.bin



Processed Tue Jun 30 23:18:48 2015 by ELM ver.2012-10-06 from 001__elm20150630_211229__dat00.bin

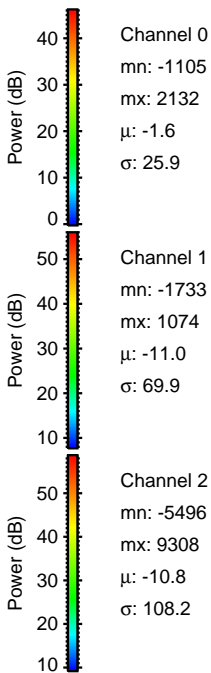
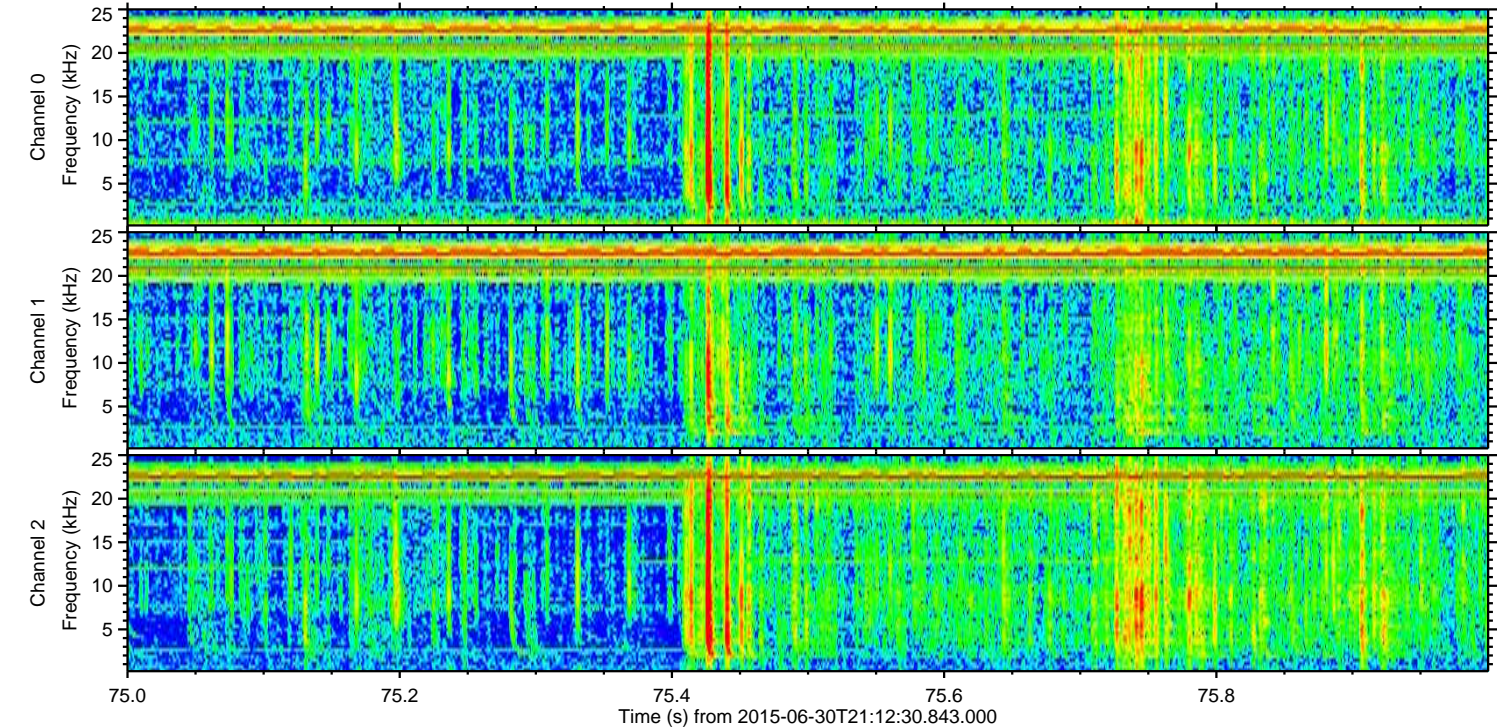
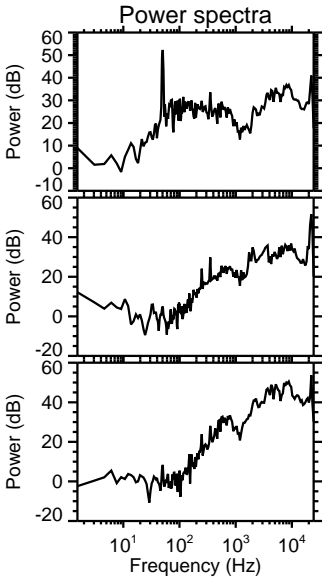
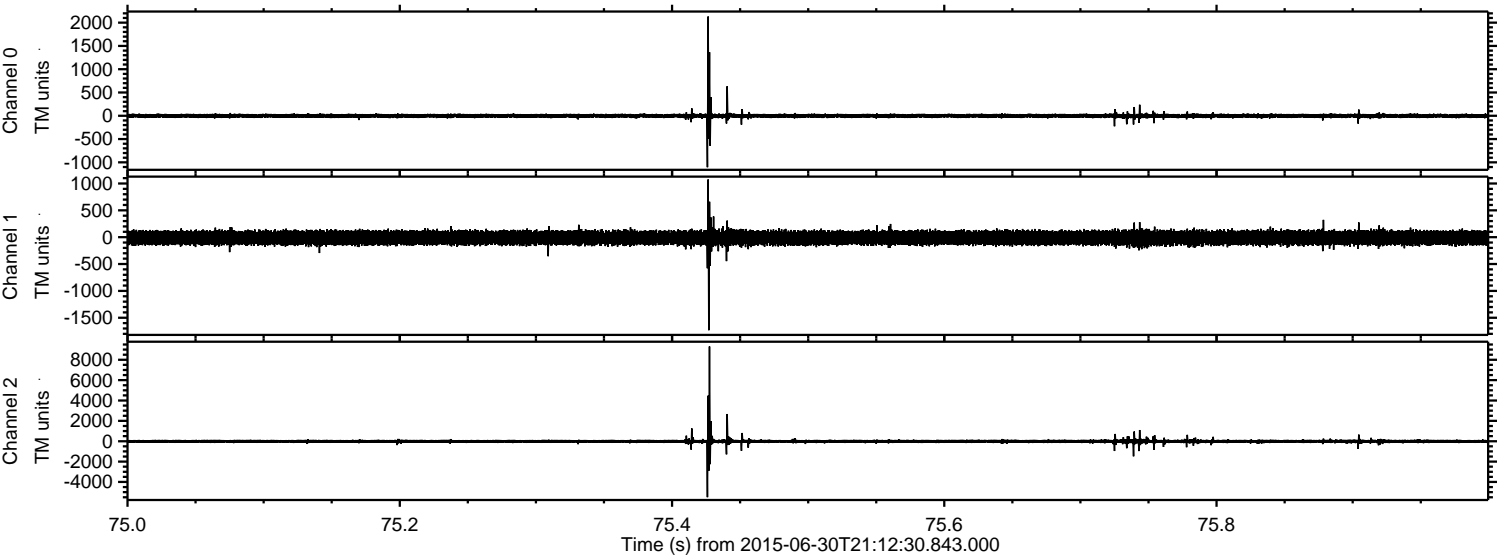


Processed Tue Jun 30 23:18:49 2015 by ELM ver.2012-10-06 from 001__elm20150630_211229__dat00.bin

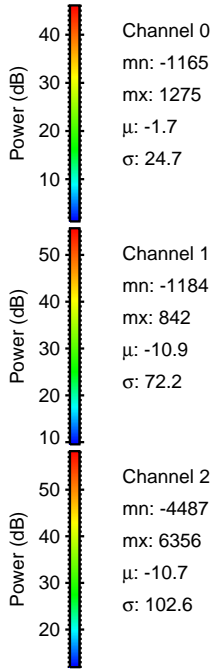
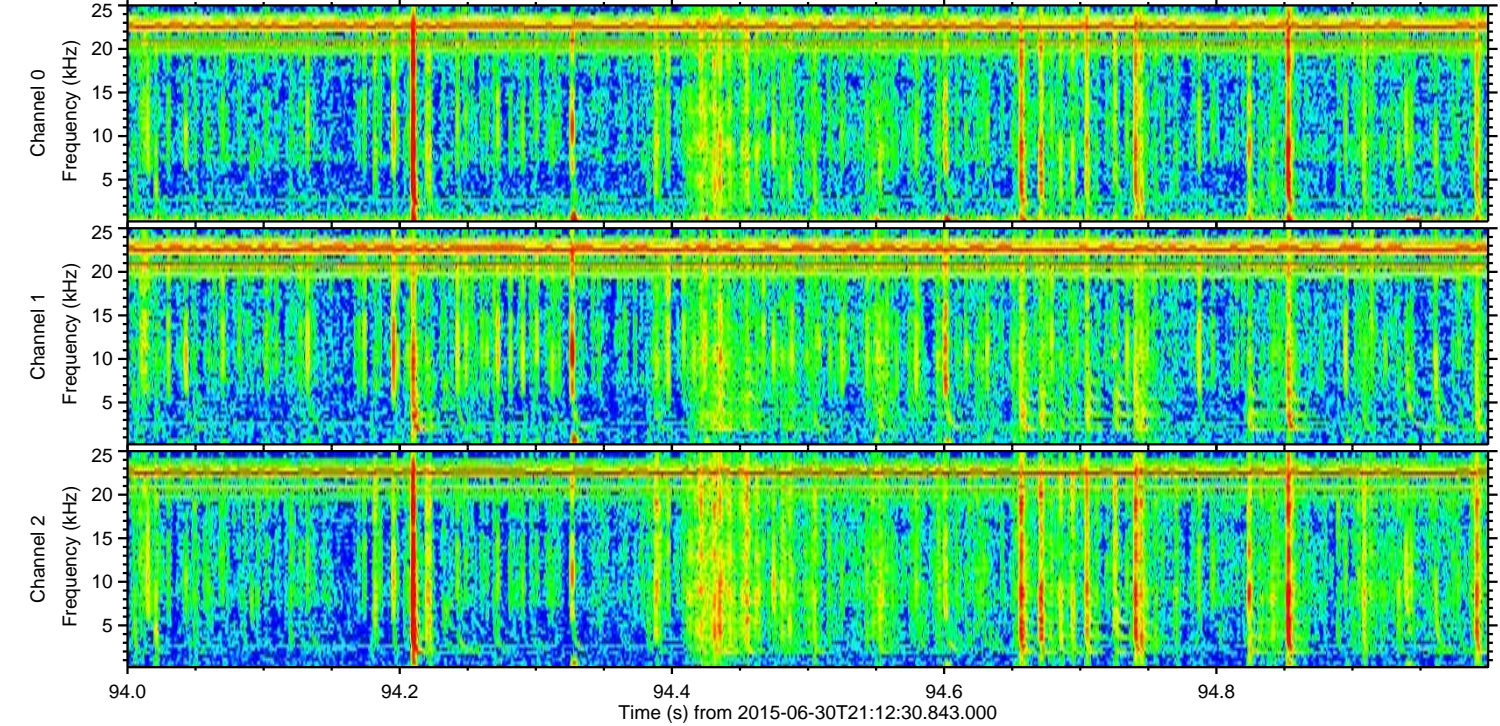
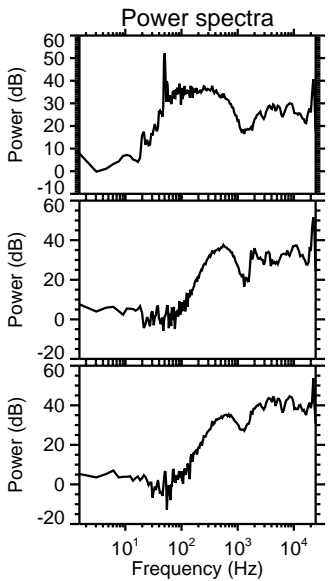
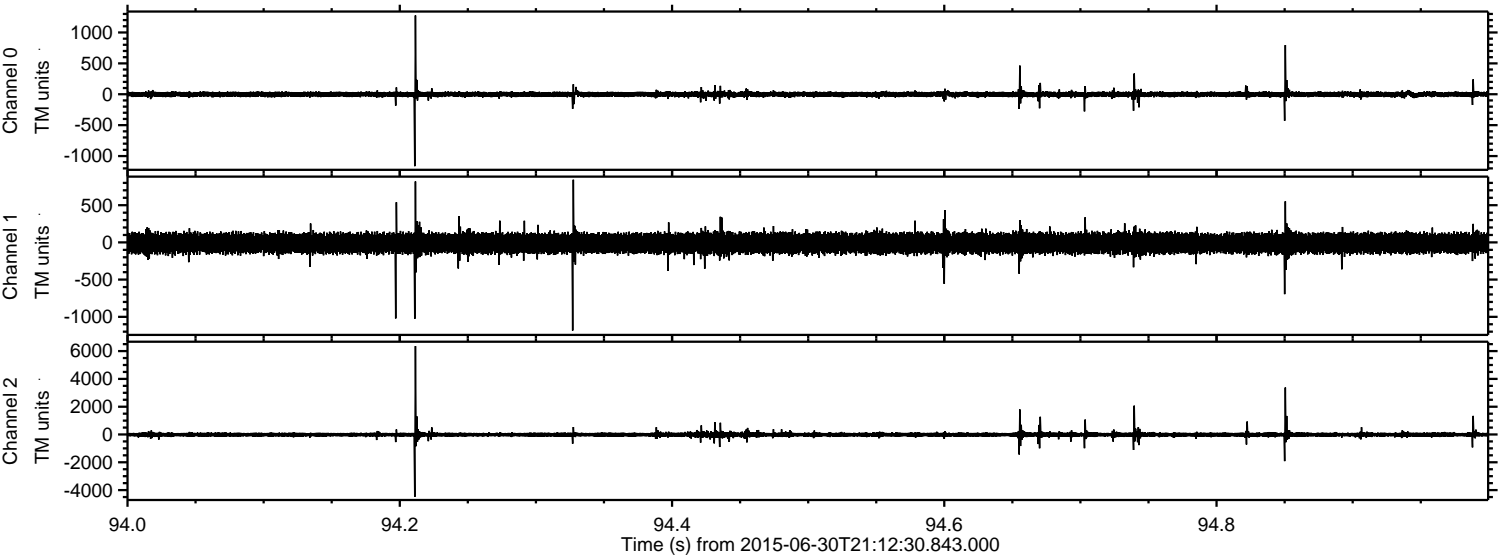


ELMAVAN 3D WAVEFORMS (Measured data sampled at 50 kHz) 51000 packets of 144 samples from 2015-06-30T21:12:30.843.000. Part 76/147

Processed Tue Jun 30 23:18:50 2015 by ELM ver.2012-10-06 from 001__elm20150630_211229__dat00.bin

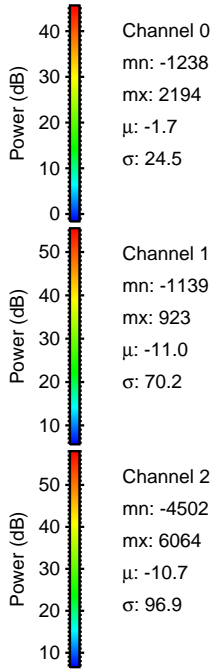
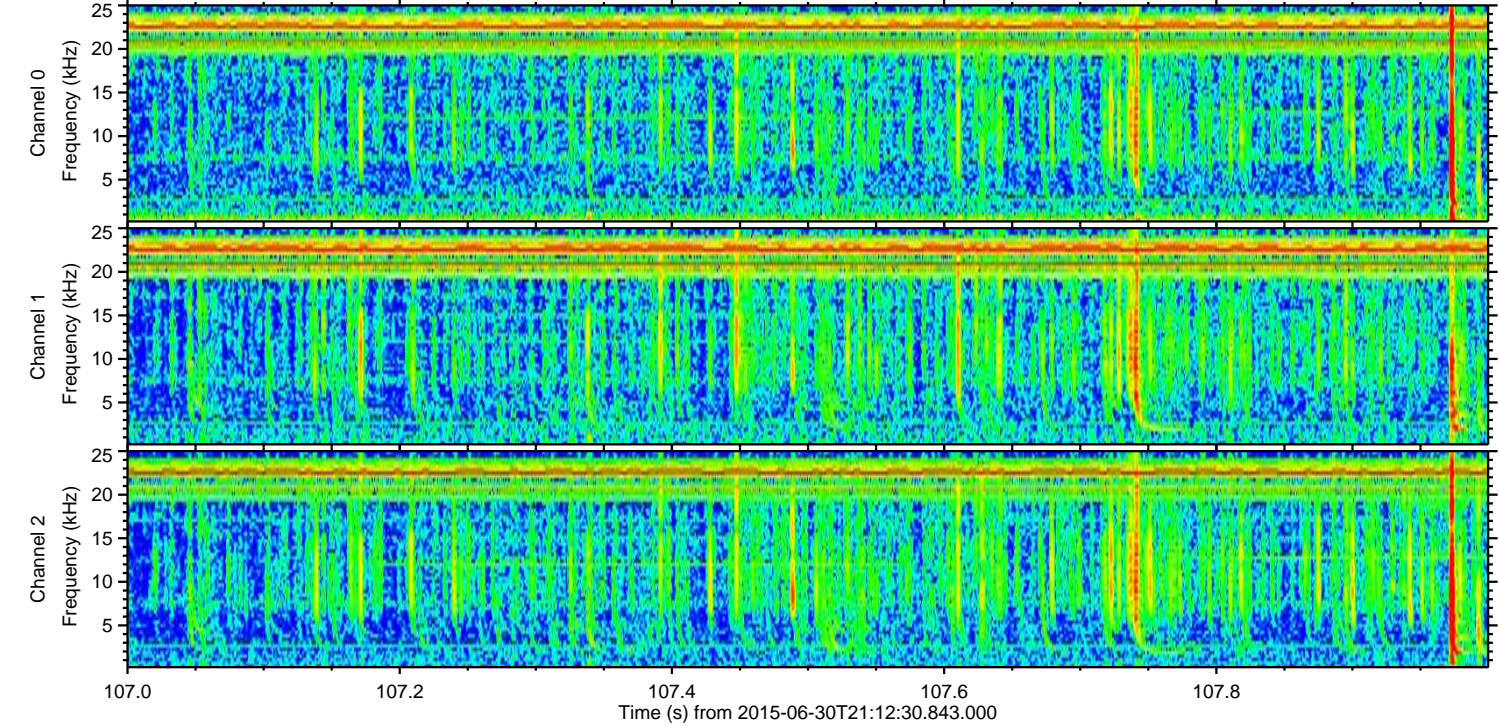
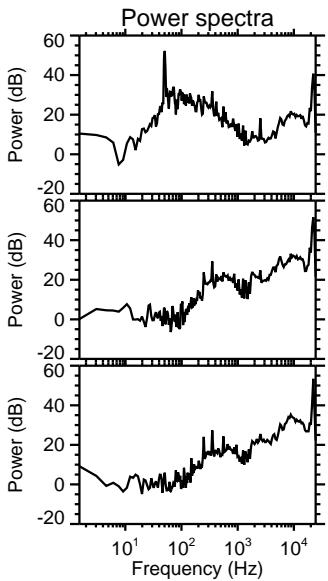
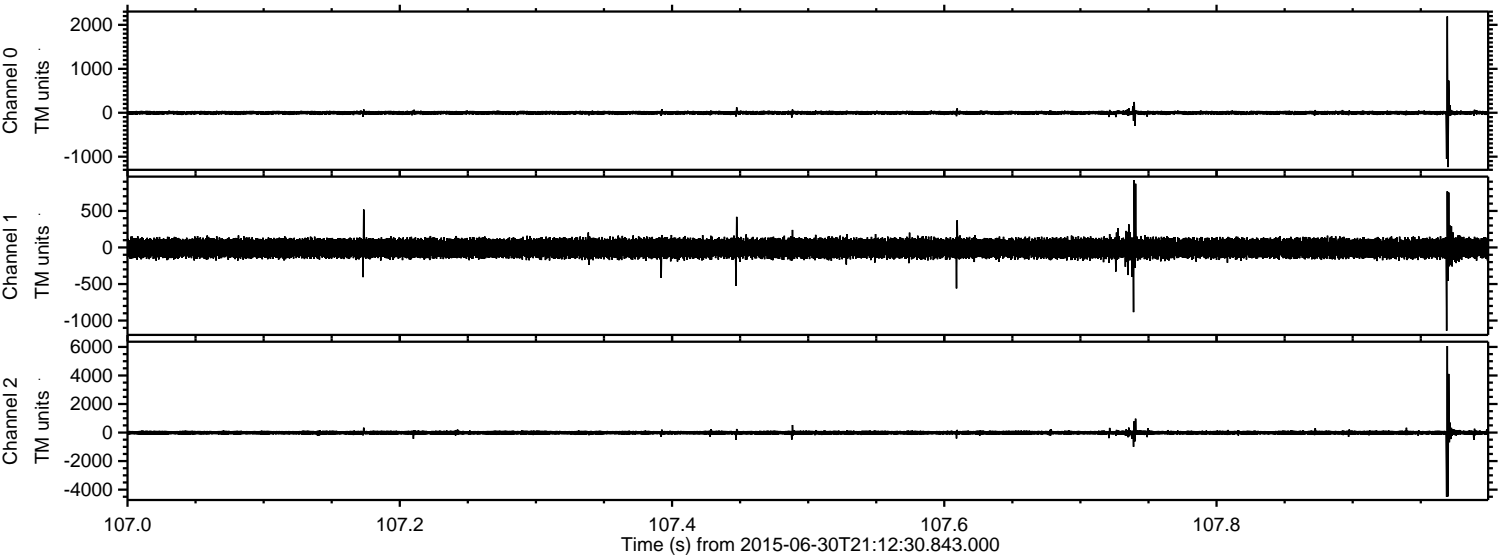


Processed Tue Jun 30 23:18:51 2015 by ELM ver.2012-10-06 from 001__elm20150630_211229__dat00.bin

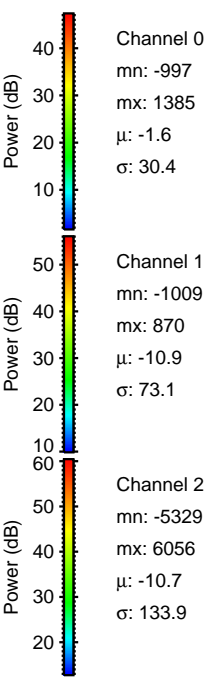
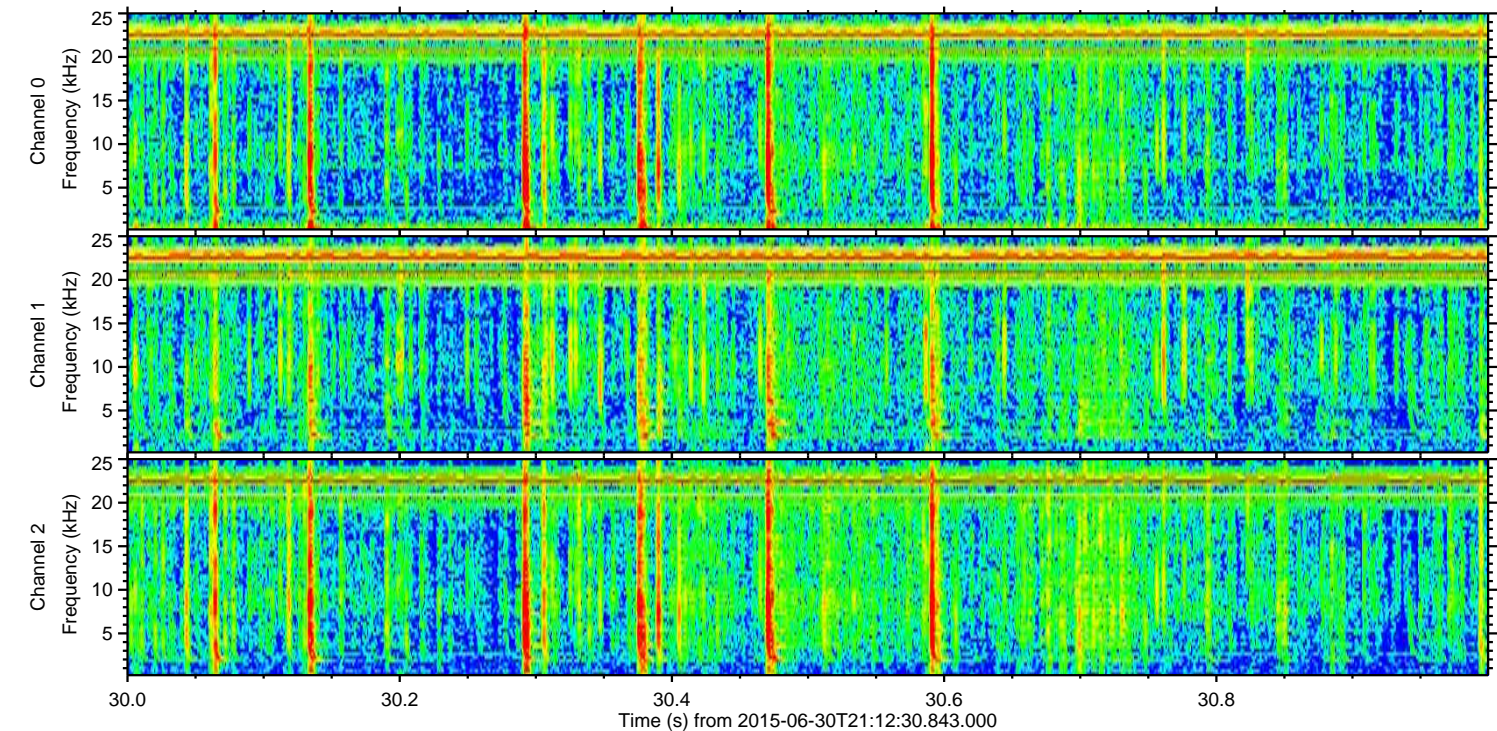
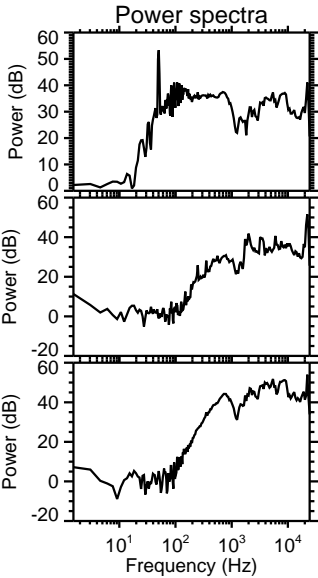
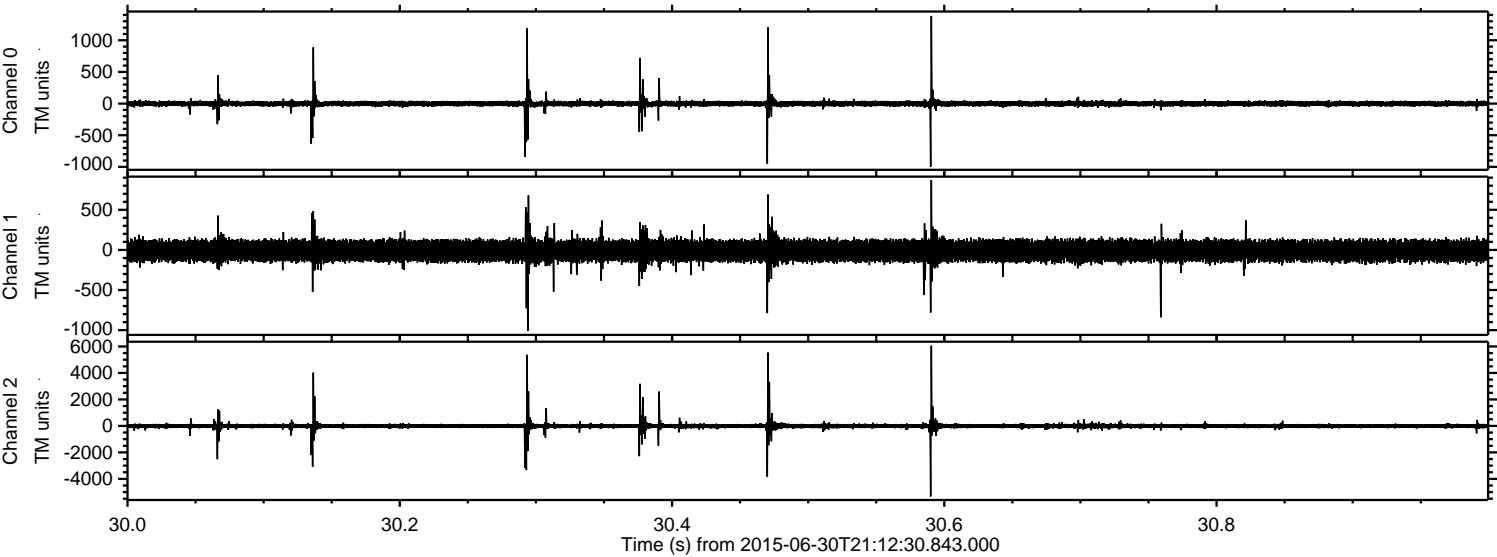


ELMAVAN 3D WAVEFORMS (Measured data sampled at 50 kHz) 51000 packets of 144 samples from 2015-06-30T21:12:30.843.000. Part 108/147

Processed Tue Jun 30 23:18:52 2015 by ELM ver.2012-10-06 from 001__elm20150630_211229__dat00.bin

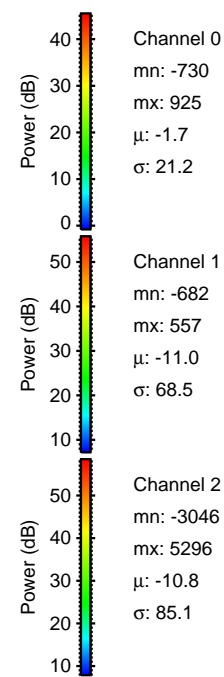
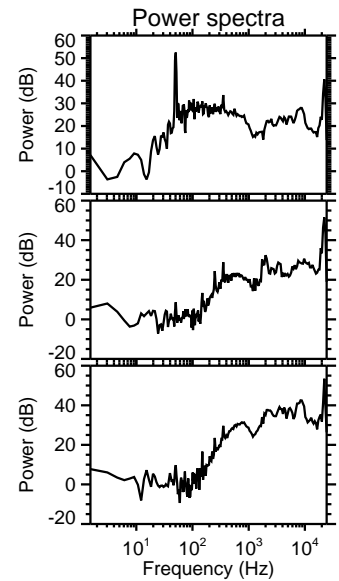
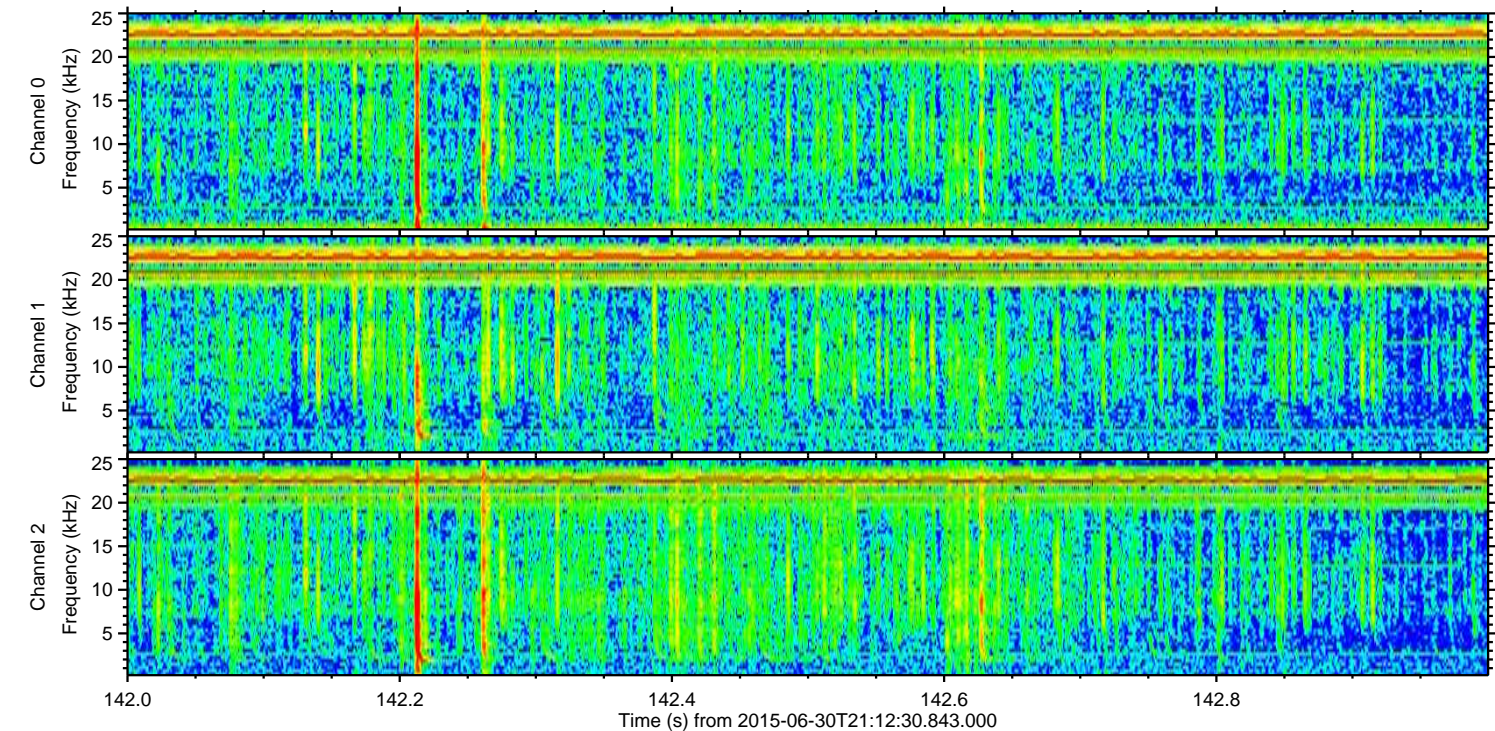
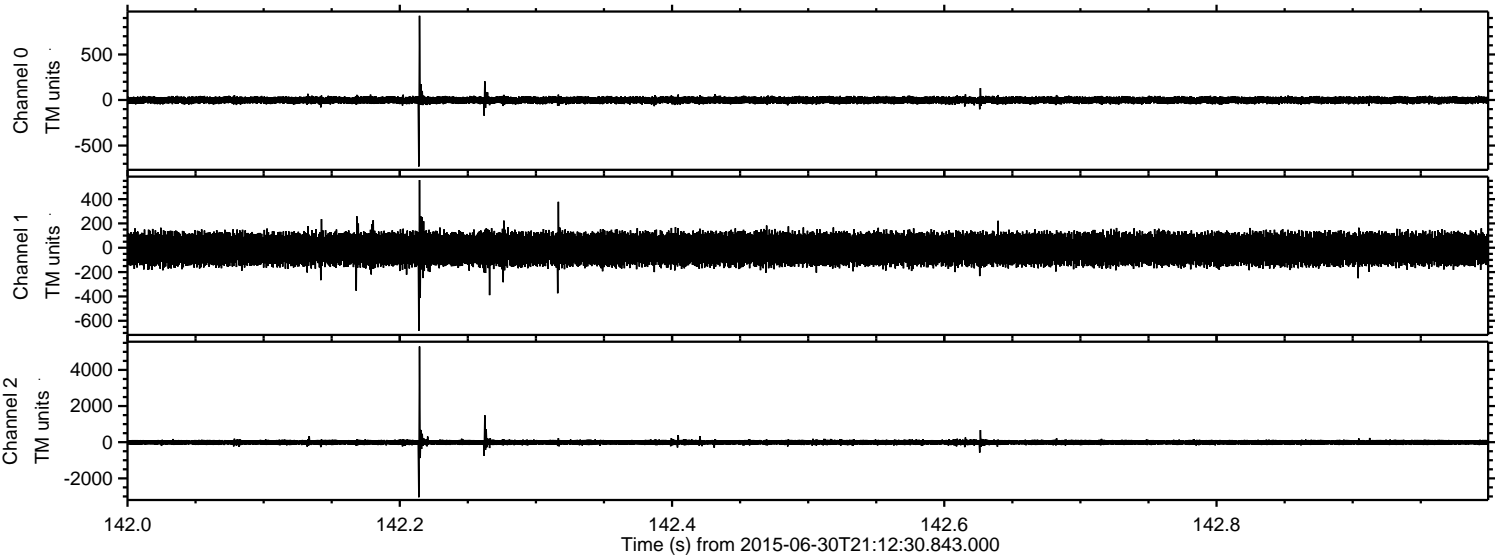


Processed Tue Jun 30 23:18:53 2015 by ELM ver.2012-10-06 from 001__elm20150630_211229__dat00.bin



ELMAVAN 3D WAVEFORMS (Measured data sampled at 50 kHz) 51000 packets of 144 samples from 2015-06-30T21:12:30.843.000. Part 143/147

Processed Tue Jun 30 23:18:54 2015 by ELM ver.2012-10-06 from 001__elm20150630_211229__dat00.bin



Channel 0
mn: -730
mx: 925
 μ : -1.7
 σ : 21.2

Channel 1
mn: -682
mx: 557
 μ : -11.0
 σ : 68.5

Channel 2
mn: -3046
mx: 5296
 μ : -10.8
 σ : 85.1

Processed Tue Jun 30 23:18:55 2015 by ELM ver.2012-10-06 from 001__elm20150630_211229__dat00.bin

