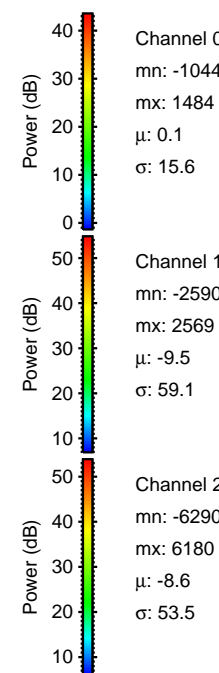
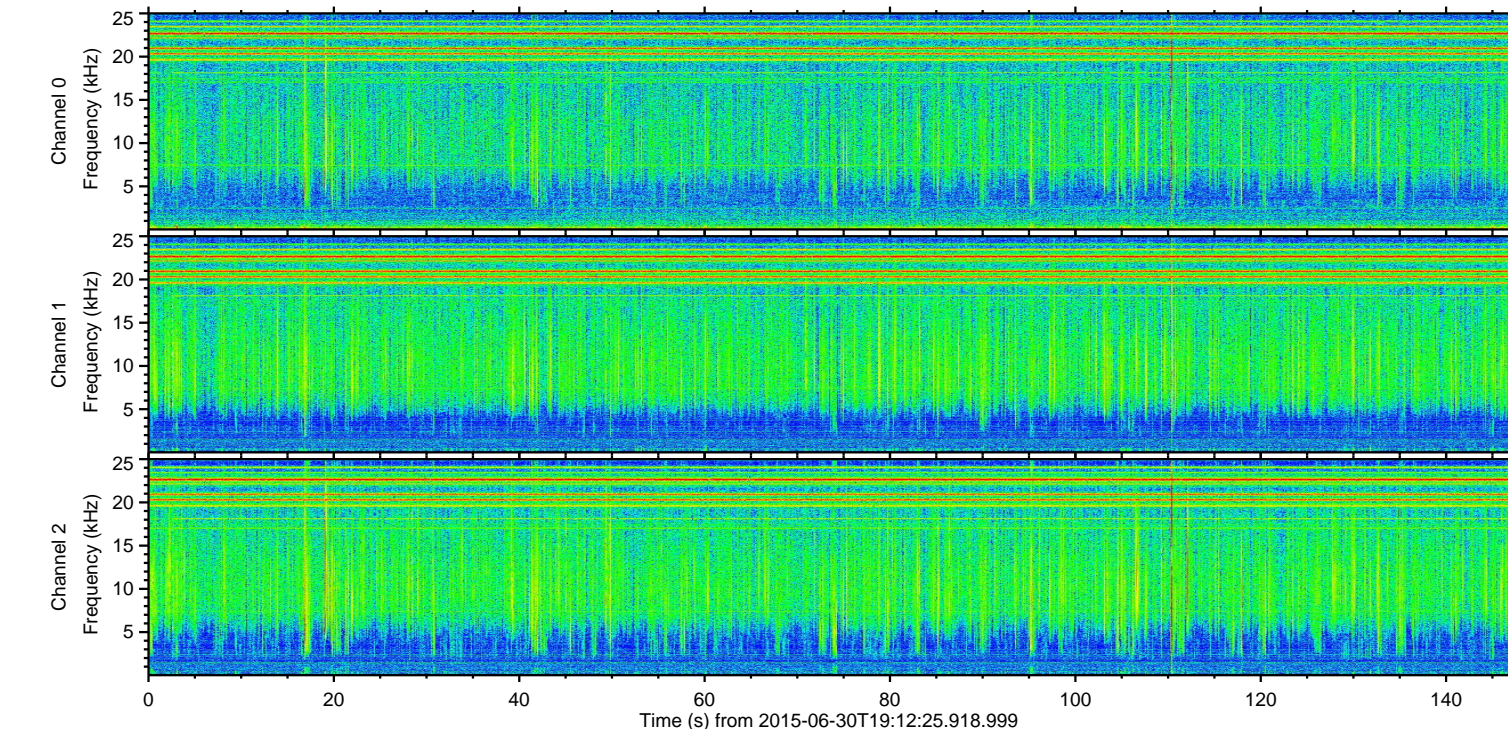
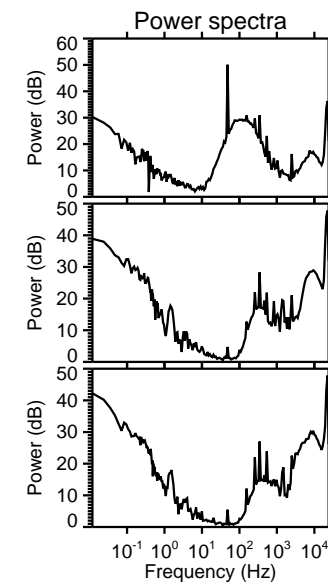
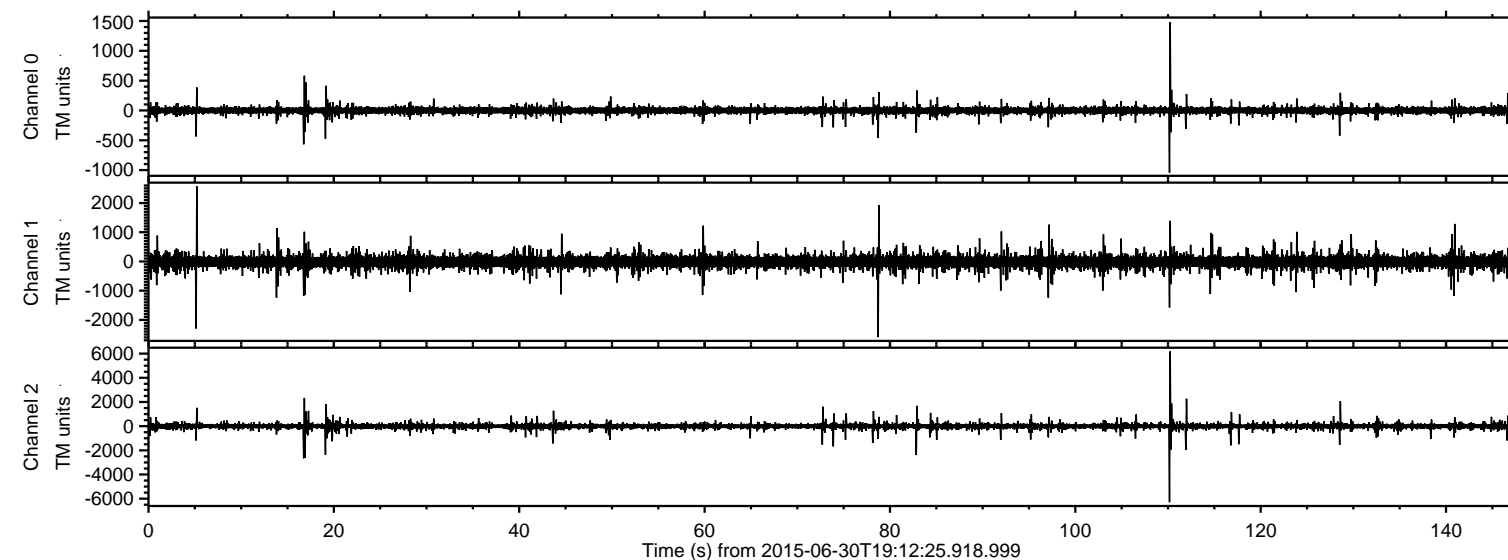


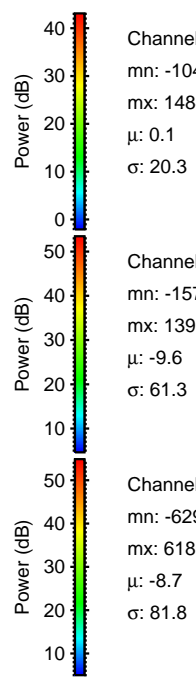
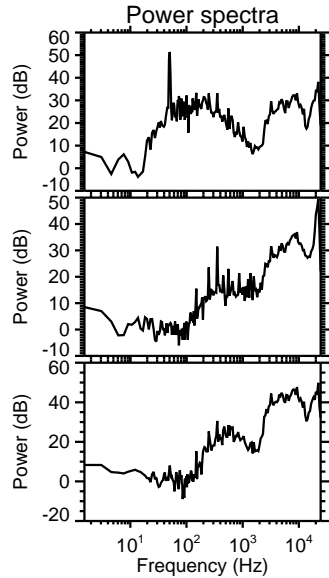
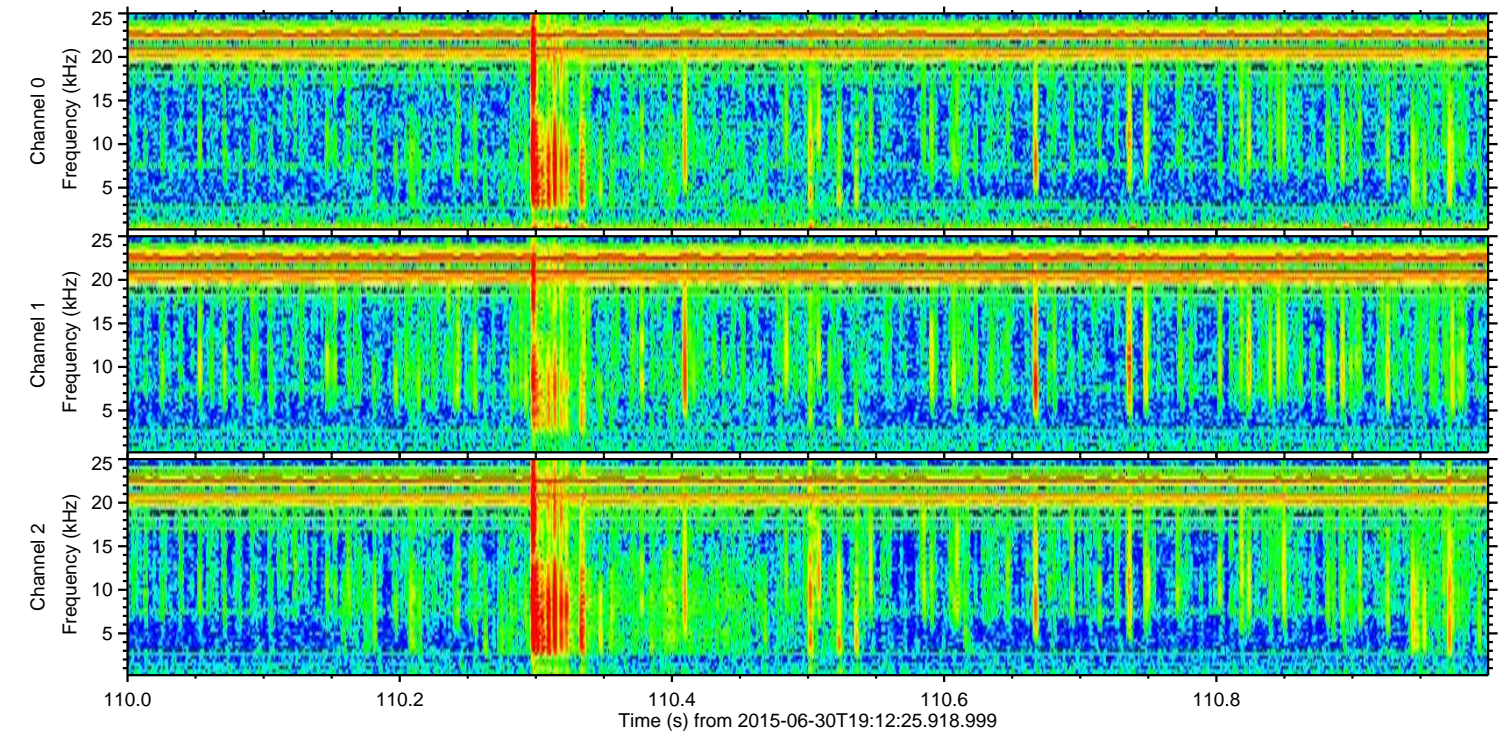
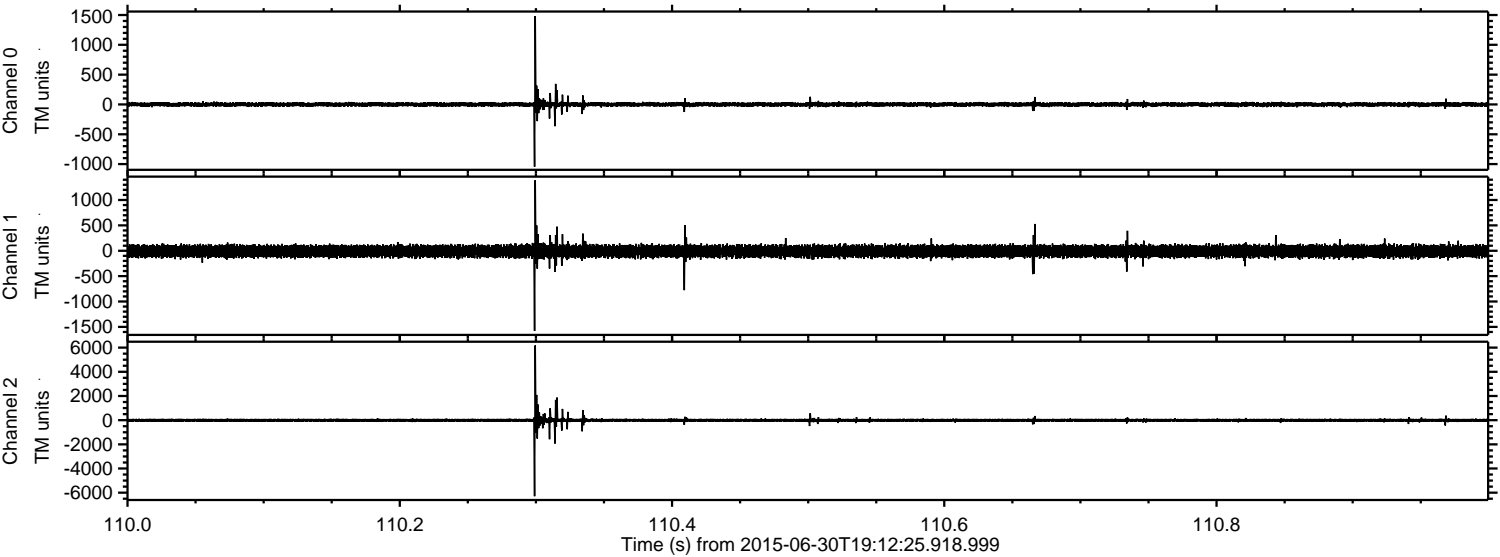
ELMAVAN 3D WAVEFORMS (Measured data sampled at 50 kHz) 51000 packets of 144 samples from 2015-06-30T19:12:25.918.999.

Processed Tue Jun 30 21:18:27 2015 by ELM ver.2012-10-06 from 001__elm20150630_191224__dat00.bin



ELMAVAN 3D WAVEFORMS (Measured data sampled at 50 kHz) 51000 packets of 144 samples from 2015-06-30T19:12:25.918.999. Part 111/147

Processed Tue Jun 30 21:18:42 2015 by ELM ver.2012-10-06 from 001__elm20150630_191224__dat00.bin



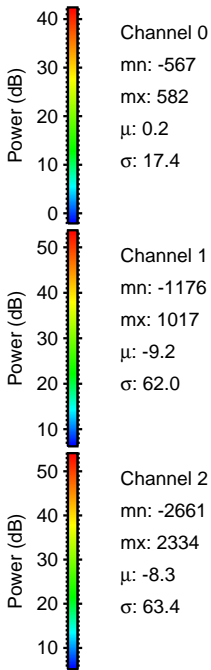
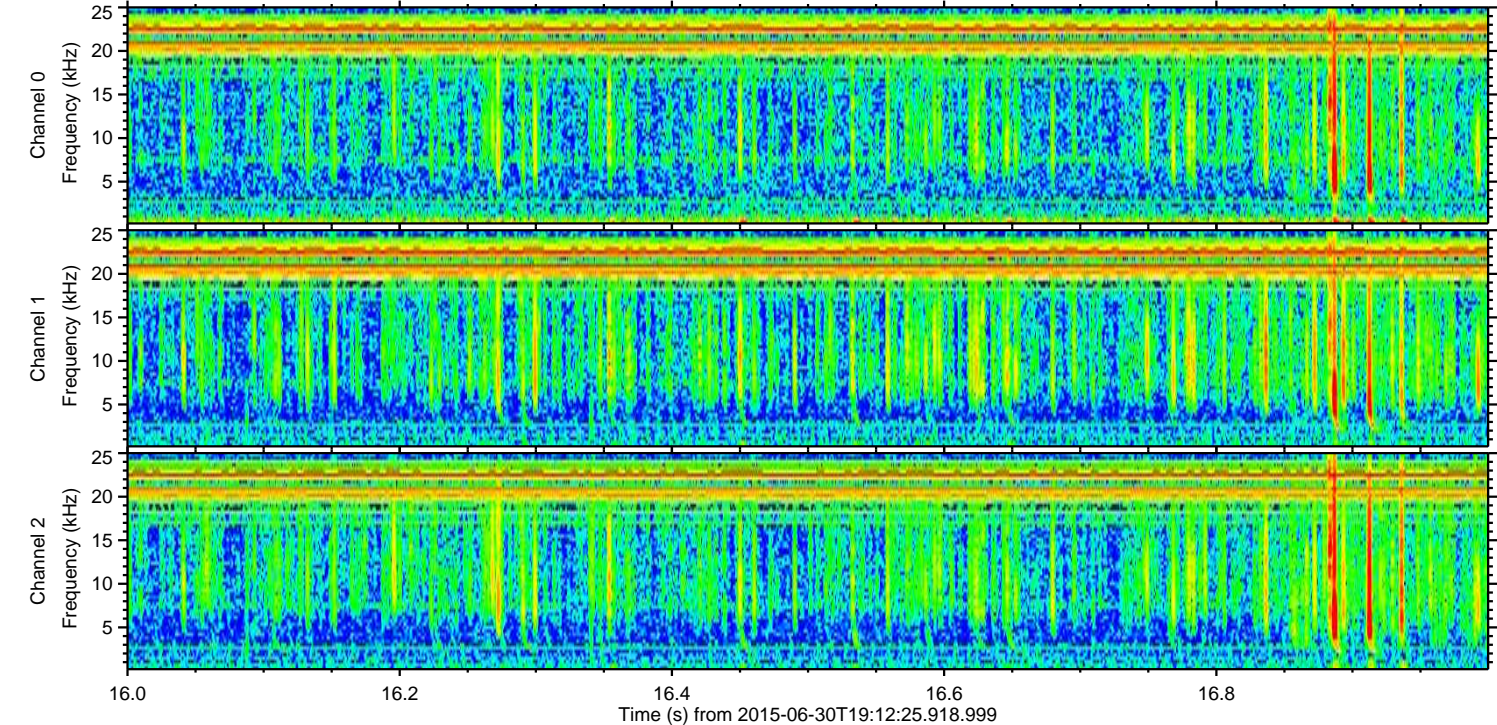
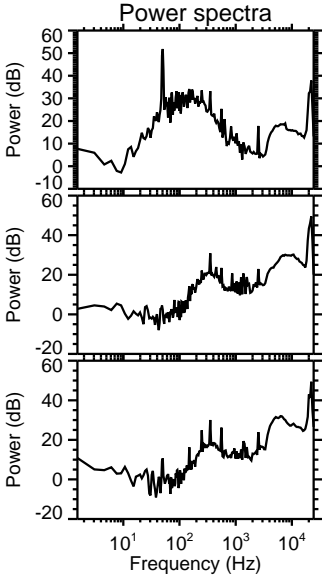
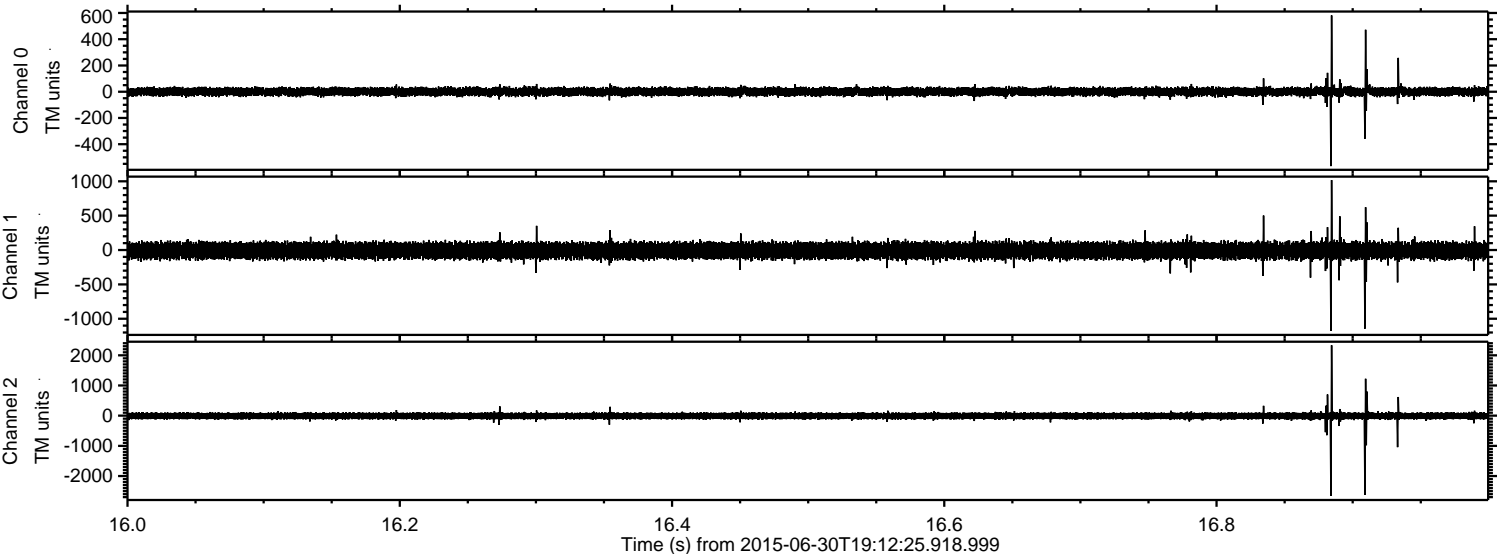
Channel 0
mn: -1044
mx: 1484
 μ : 0.1
 σ : 20.3

Channel 1
mn: -1579
mx: 1391
 μ : -9.6
 σ : 61.3

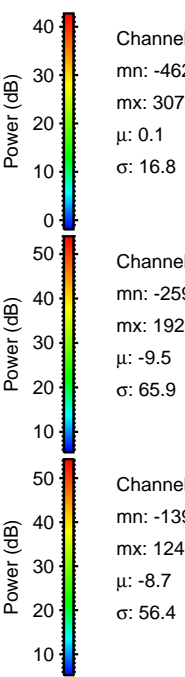
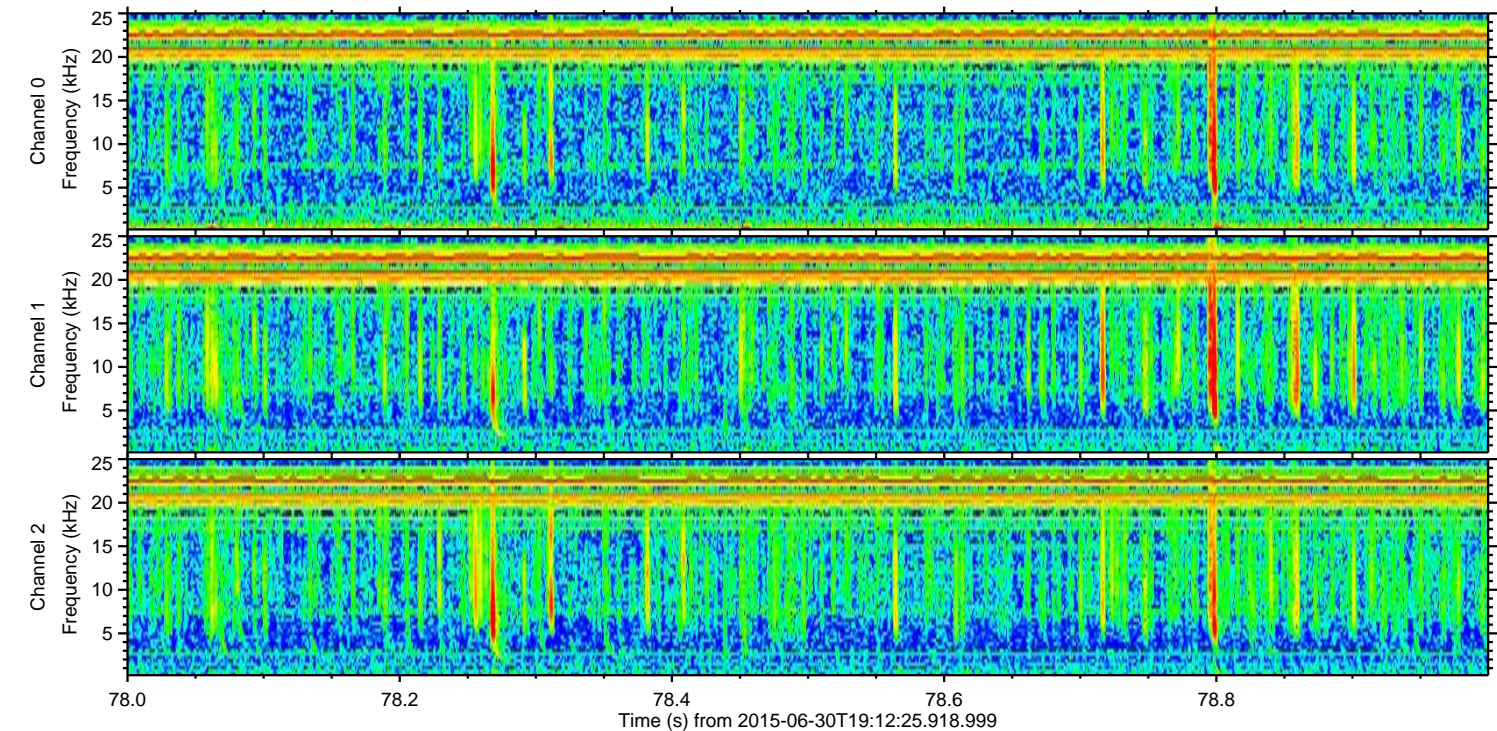
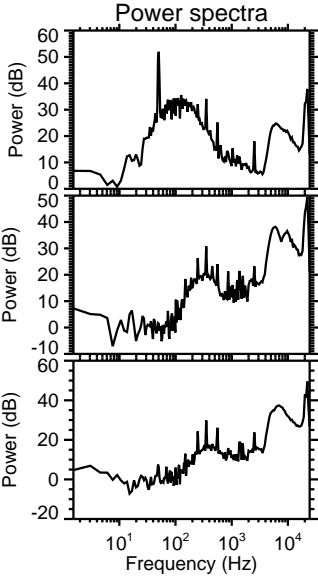
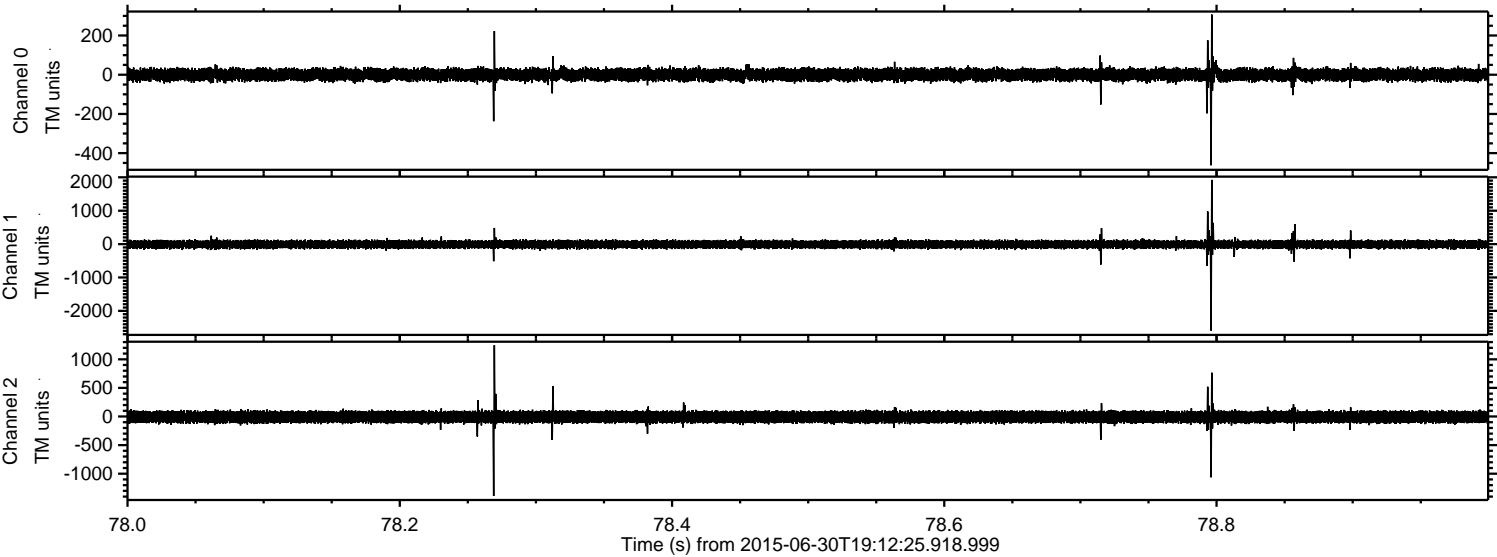
Channel 2
mn: -6290
mx: 6180
 μ : -8.7
 σ : 81.8

ELMAVAN 3D WAVEFORMS (Measured data sampled at 50 kHz) 51000 packets of 144 samples from 2015-06-30T19:12:25.918.999. Part 17/147

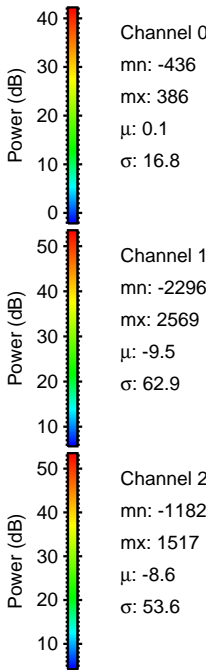
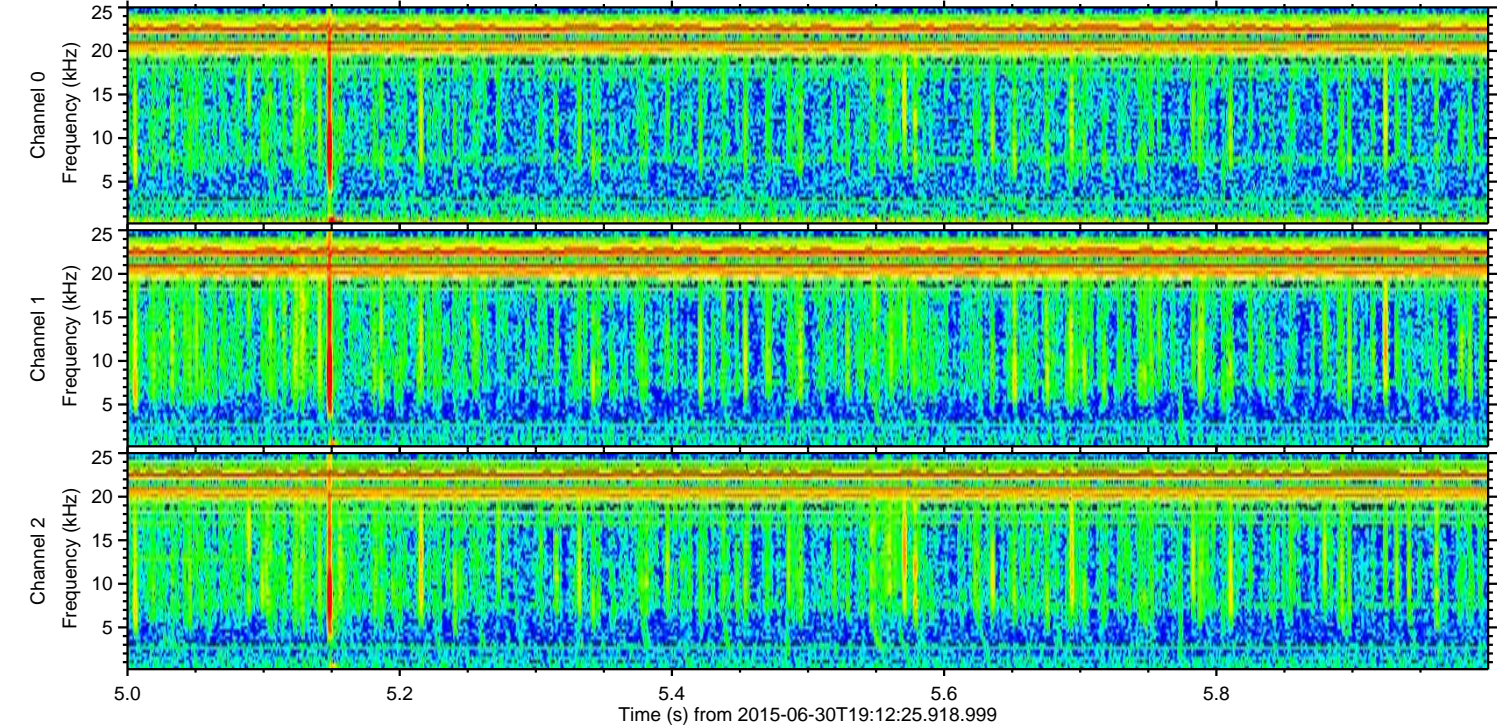
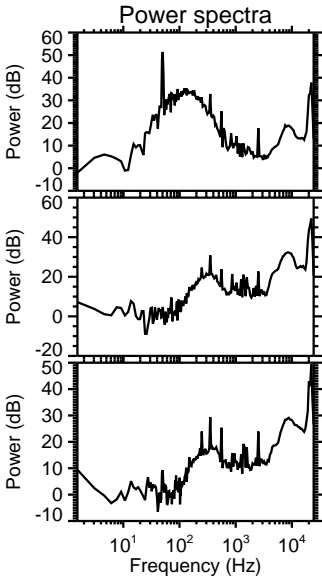
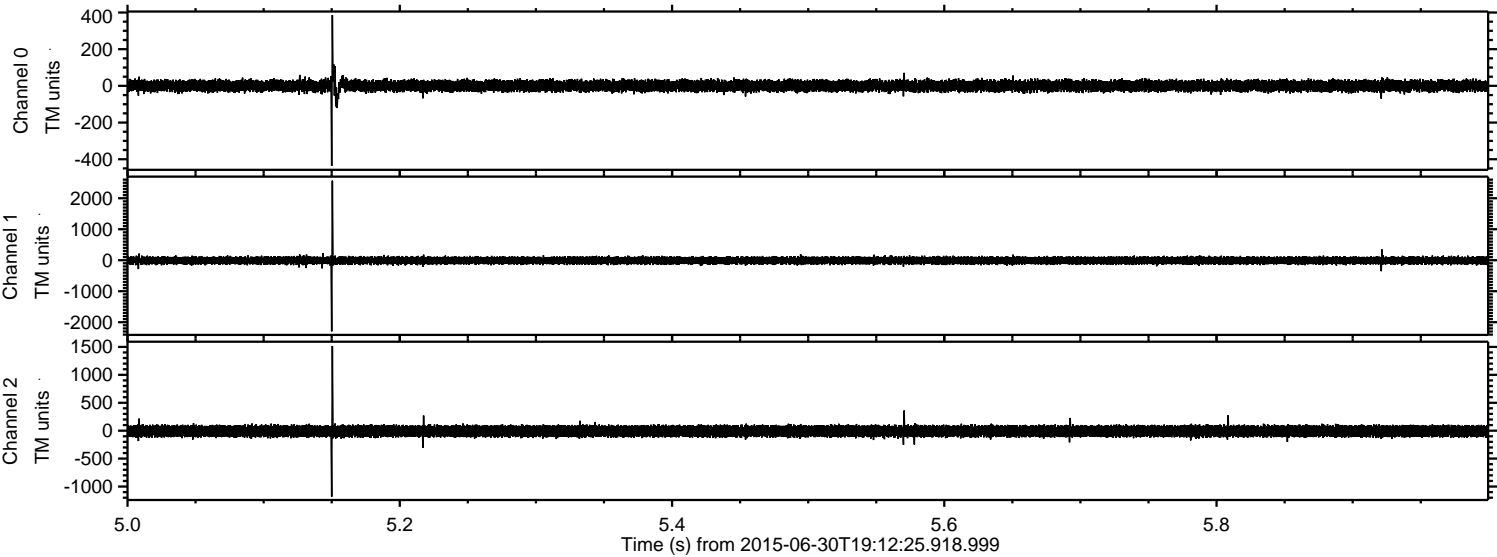
Processed Tue Jun 30 21:18:44 2015 by ELM ver.2012-10-06 from 001__elm20150630_191224__dat00.bin



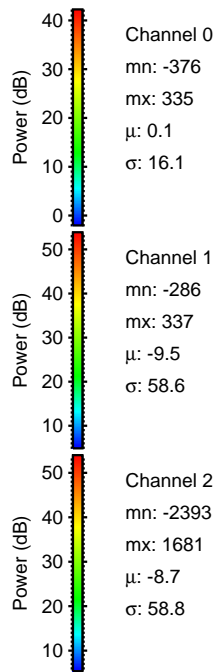
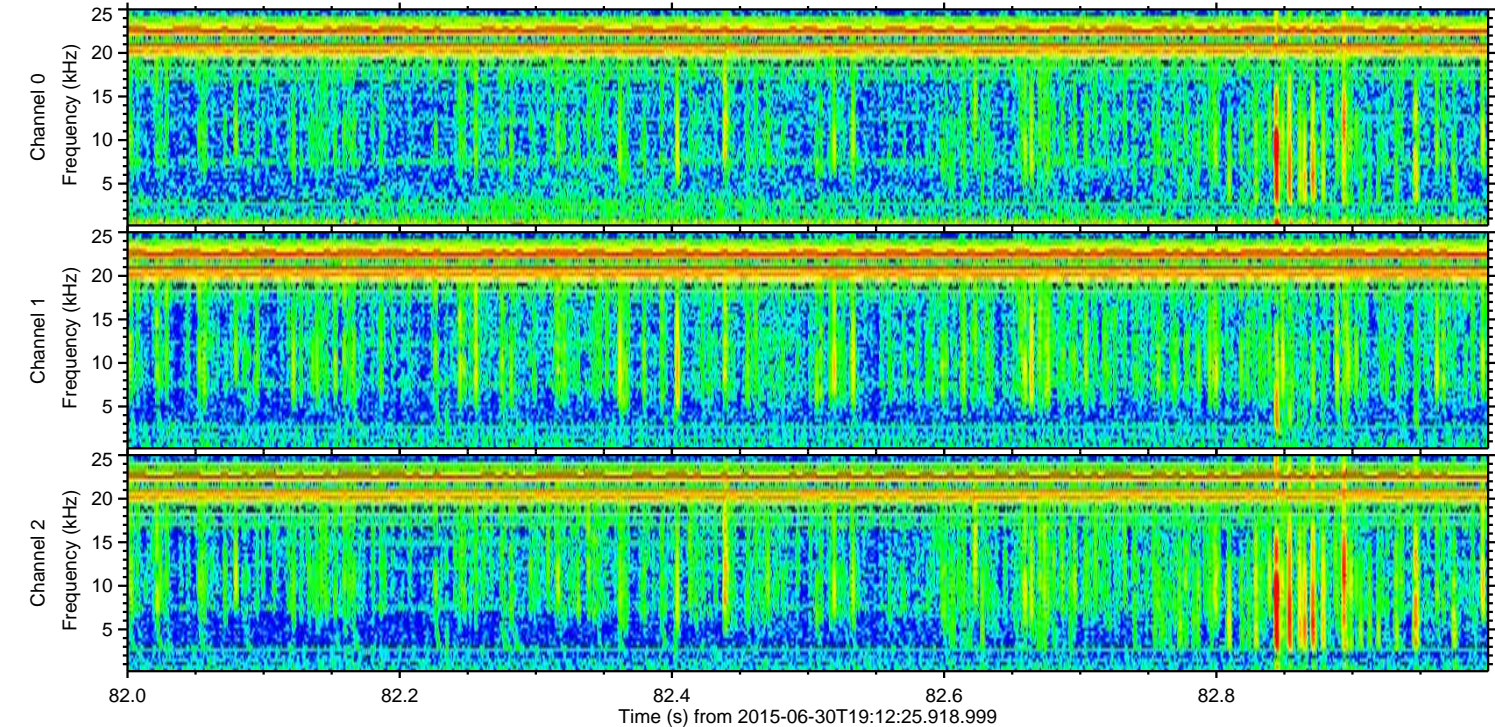
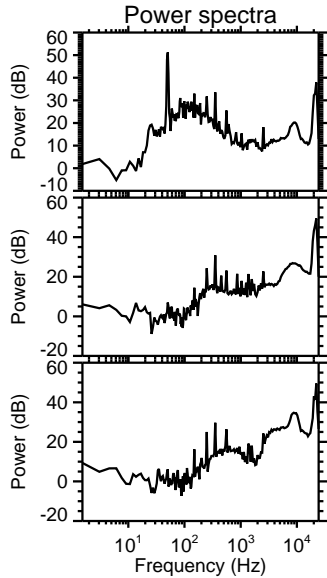
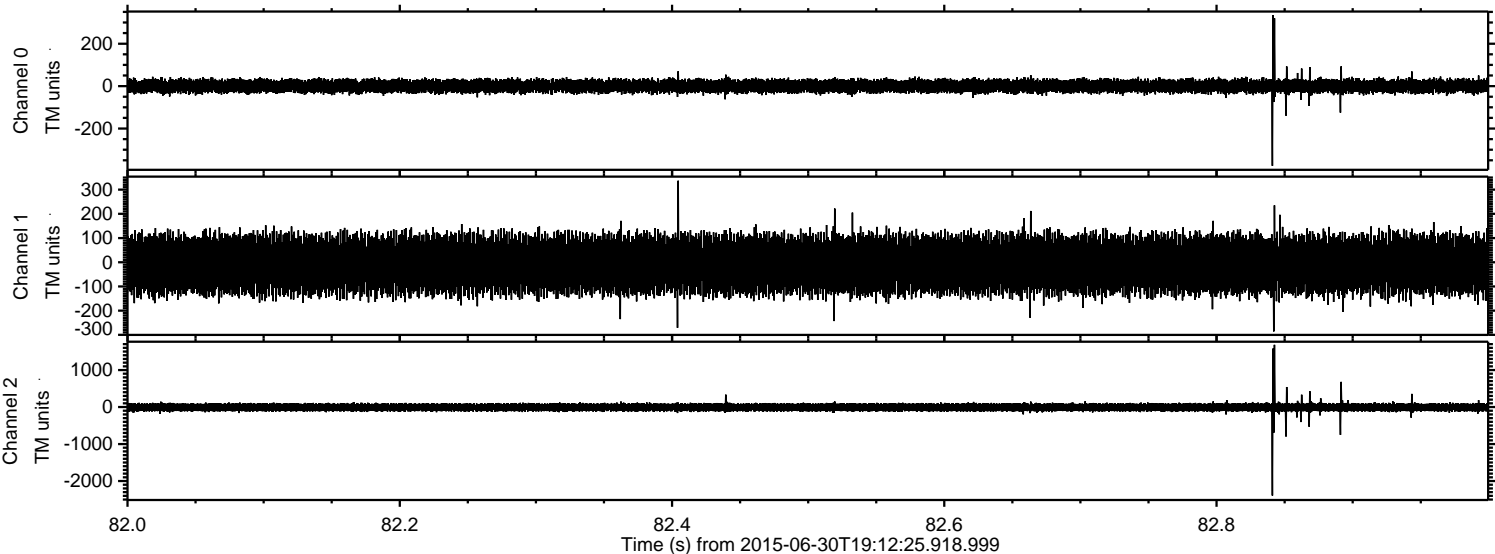
Processed Tue Jun 30 21:18:45 2015 by ELM ver.2012-10-06 from 001__elm20150630_191224__dat00.bin



Processed Tue Jun 30 21:18:46 2015 by ELM ver.2012-10-06 from 001__elm20150630_191224__dat00.bin

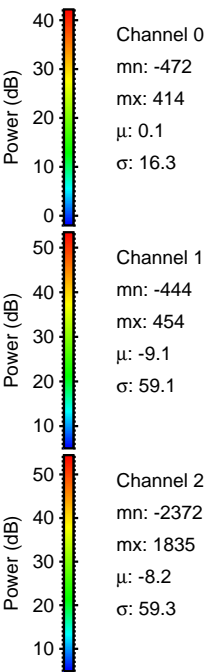
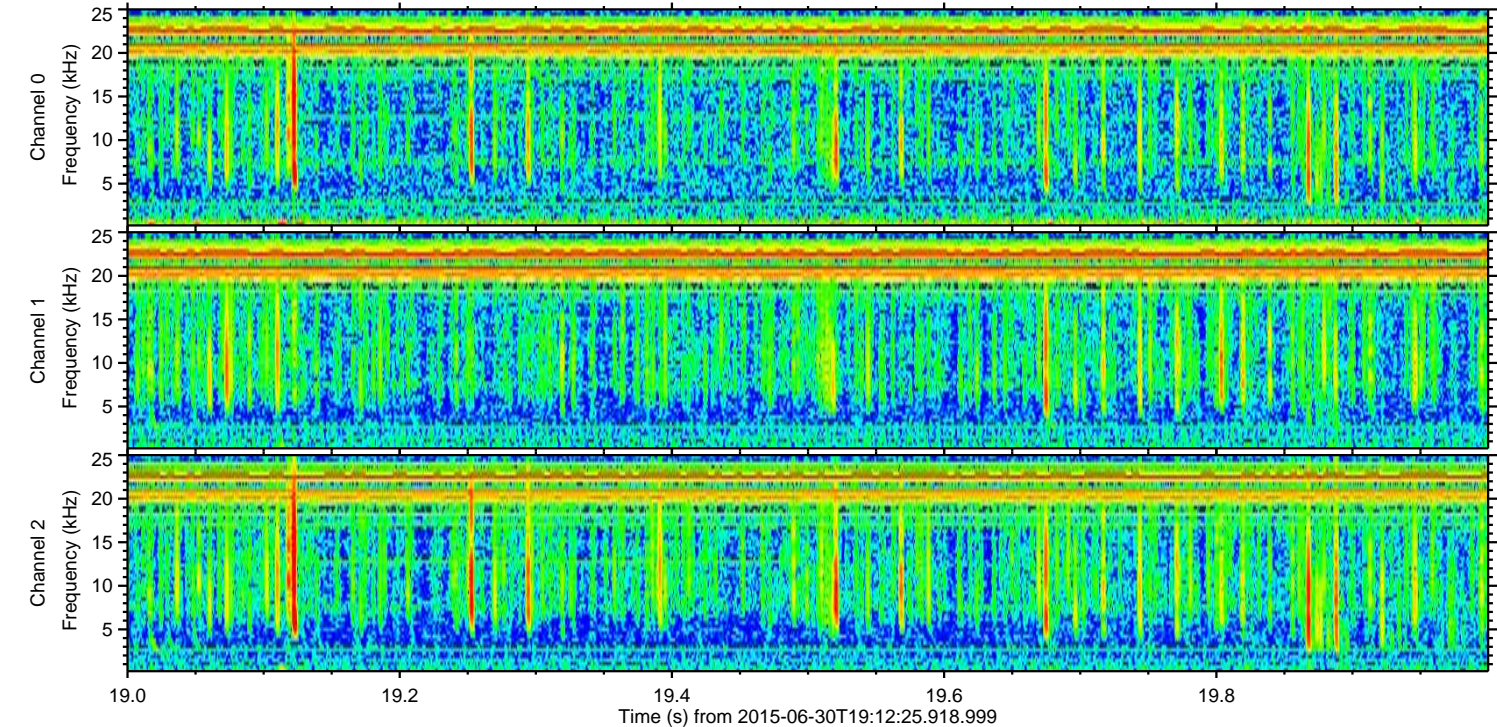
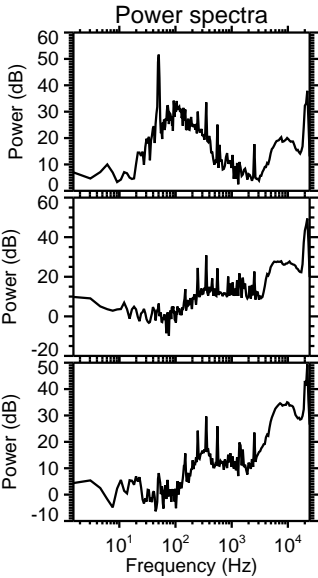
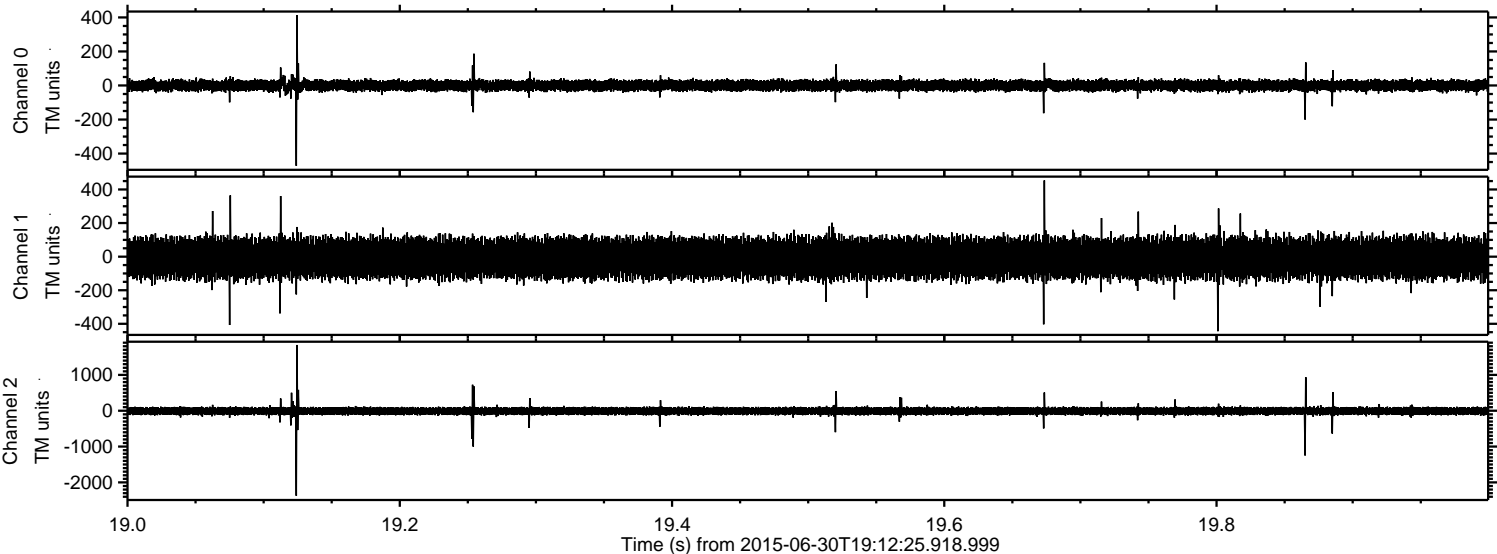


Processed Tue Jun 30 21:18:47 2015 by ELM ver.2012-10-06 from 001__elm20150630_191224__dat00.bin



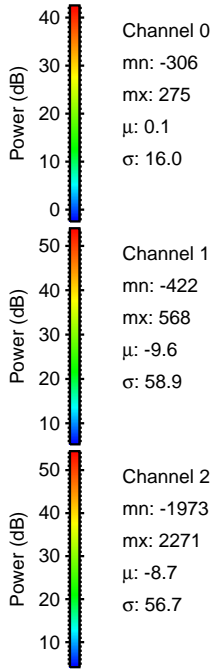
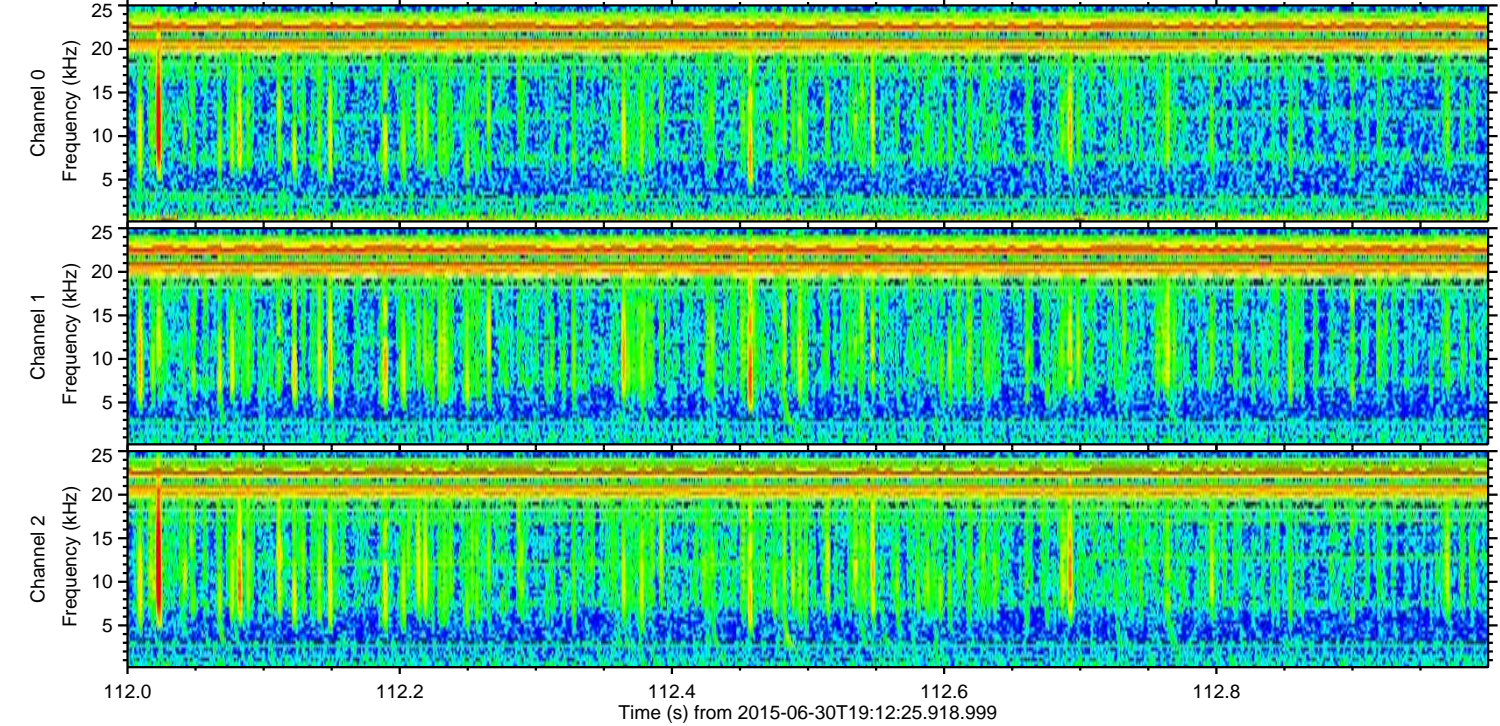
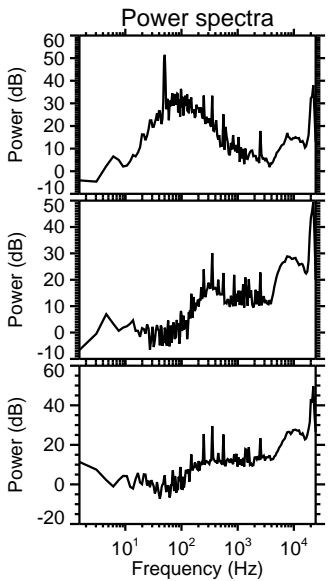
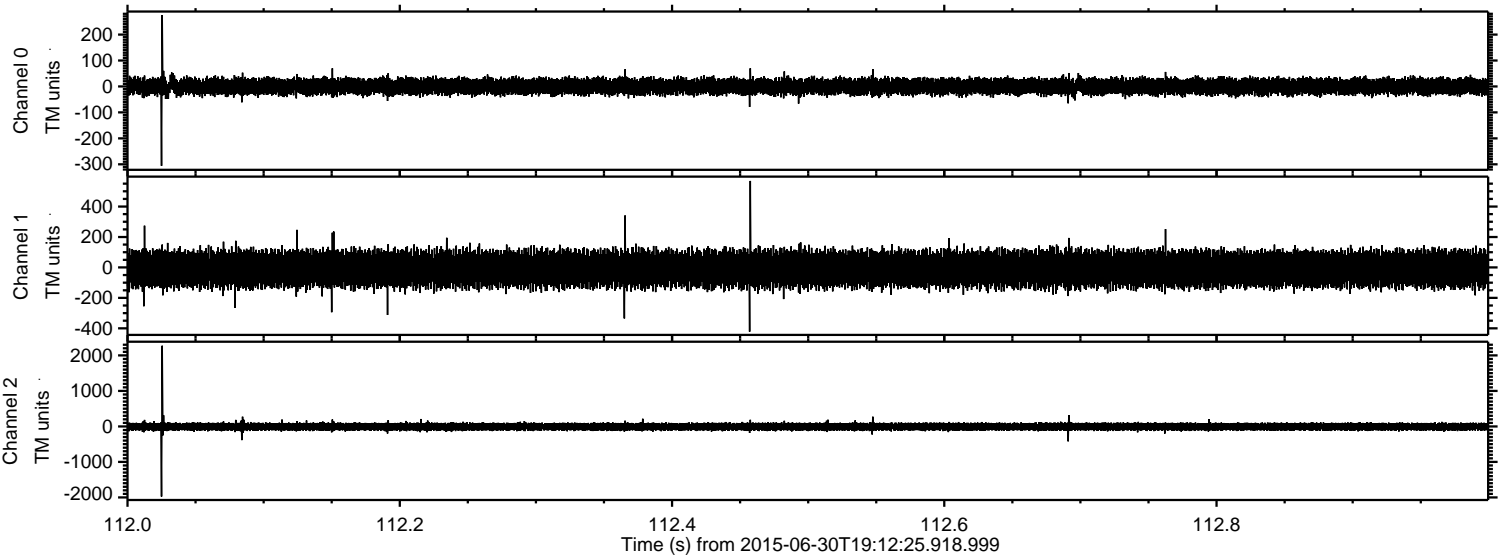
ELMAVAN 3D WAVEFORMS (Measured data sampled at 50 kHz) 51000 packets of 144 samples from 2015-06-30T19:12:25.918.999. Part 20/147

Processed Tue Jun 30 21:18:48 2015 by ELM ver.2012-10-06 from 001__elm20150630_191224__dat00.bin



ELMAVAN 3D WAVEFORMS (Measured data sampled at 50 kHz) 51000 packets of 144 samples from 2015-06-30T19:12:25.918.999. Part 113/147

Processed Tue Jun 30 21:18:49 2015 by ELM ver.2012-10-06 from 001__elm20150630_191224__dat00.bin



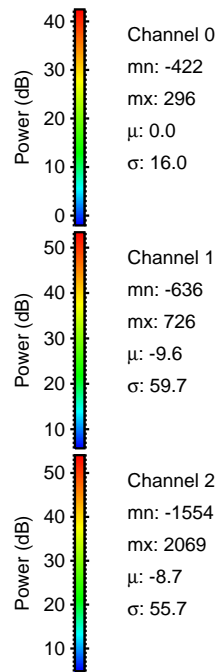
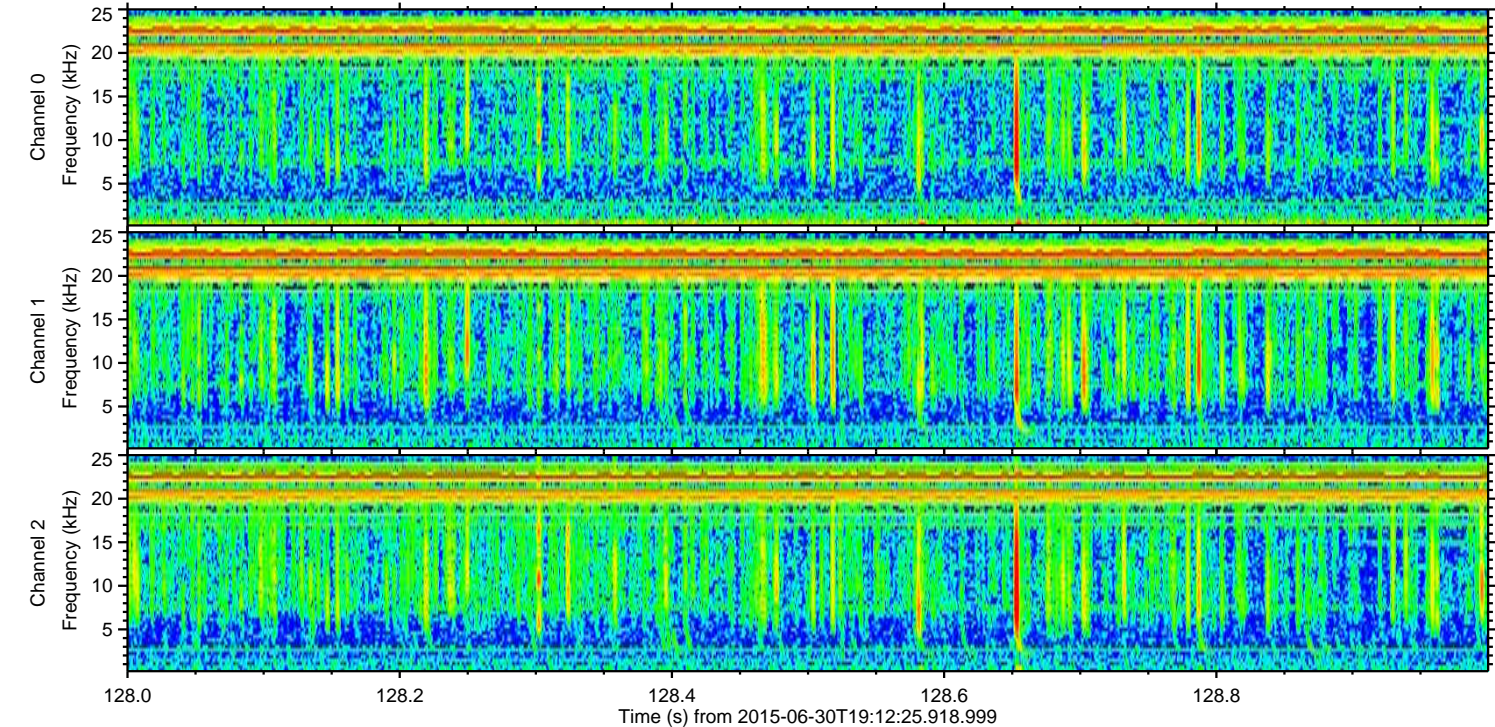
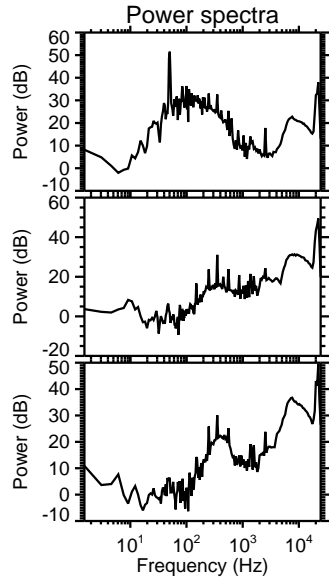
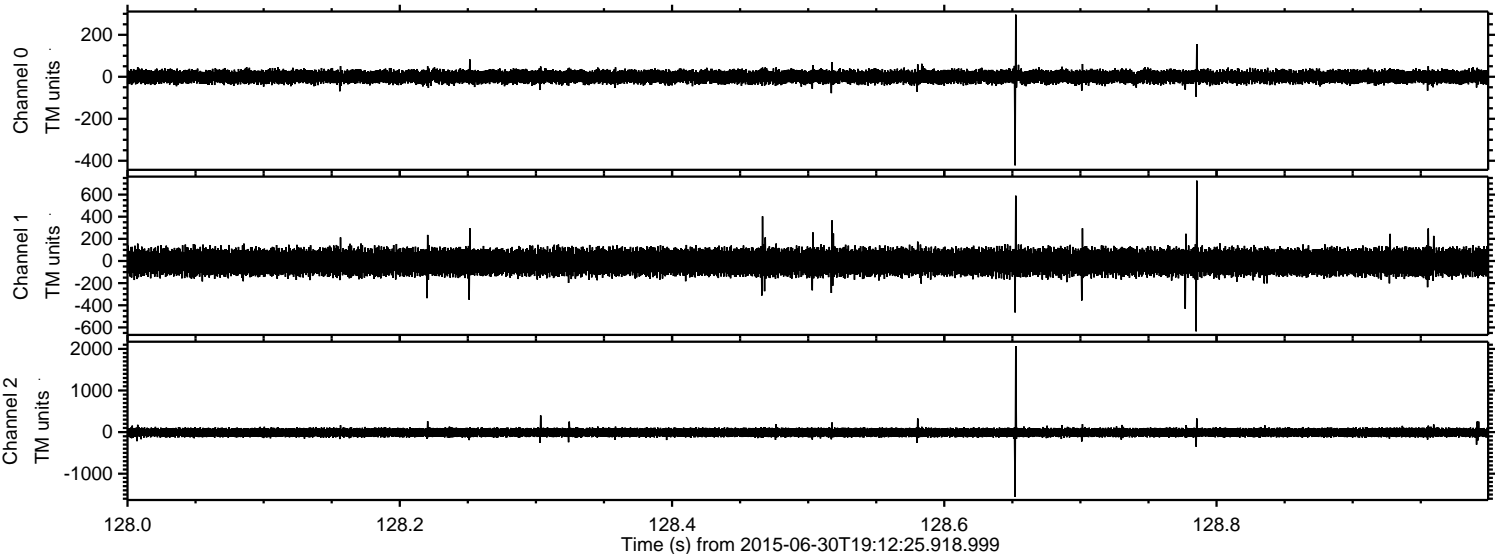
Channel 0
mn: -306
mx: 275
 μ : 0.1
 σ : 16.0

Channel 1
mn: -422
mx: 568
 μ : -9.6
 σ : 58.9

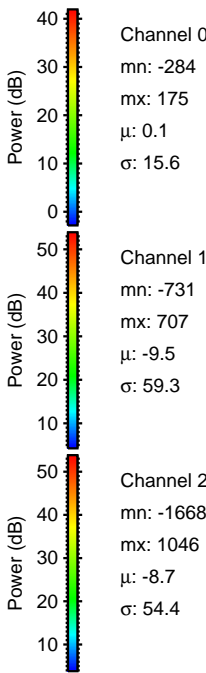
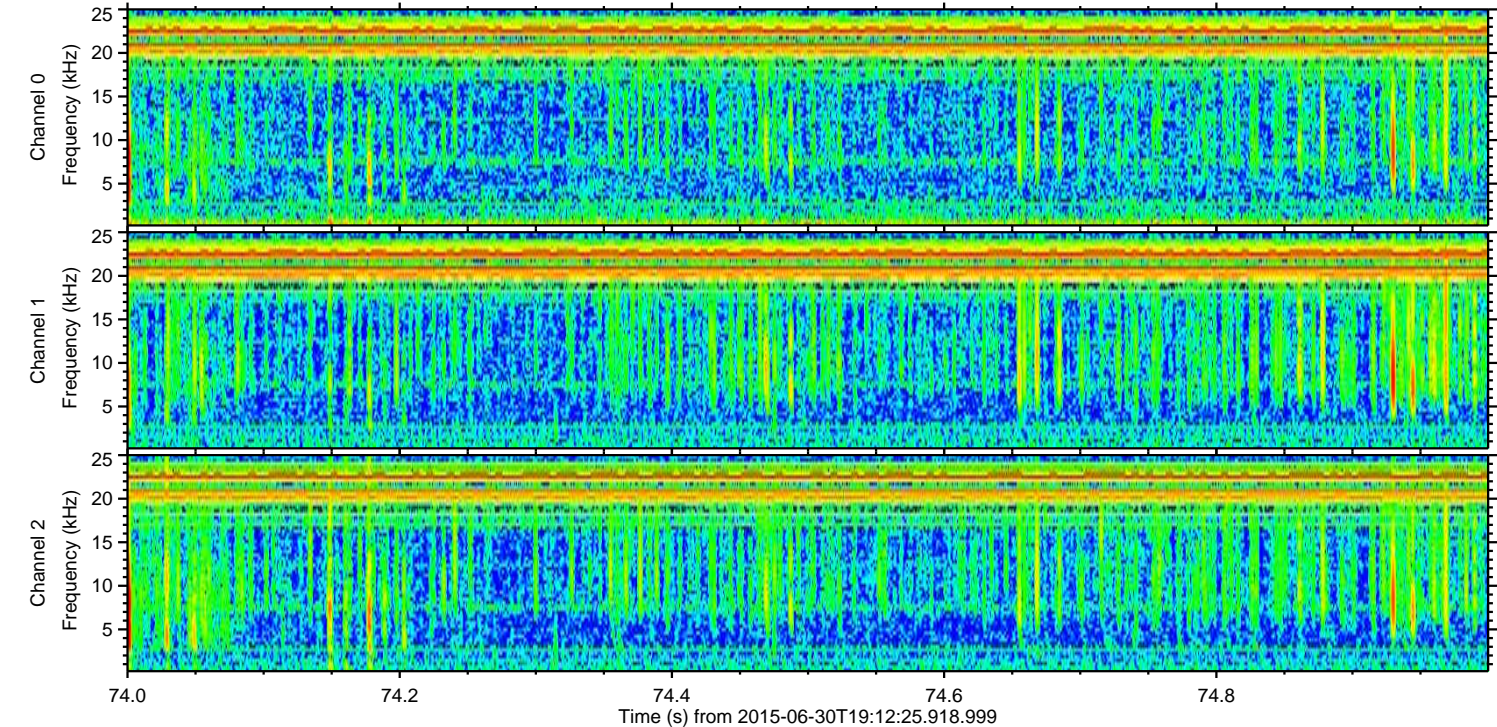
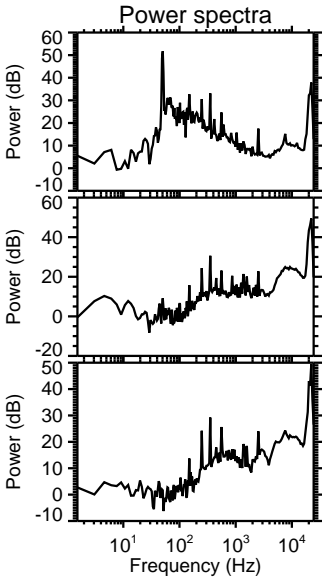
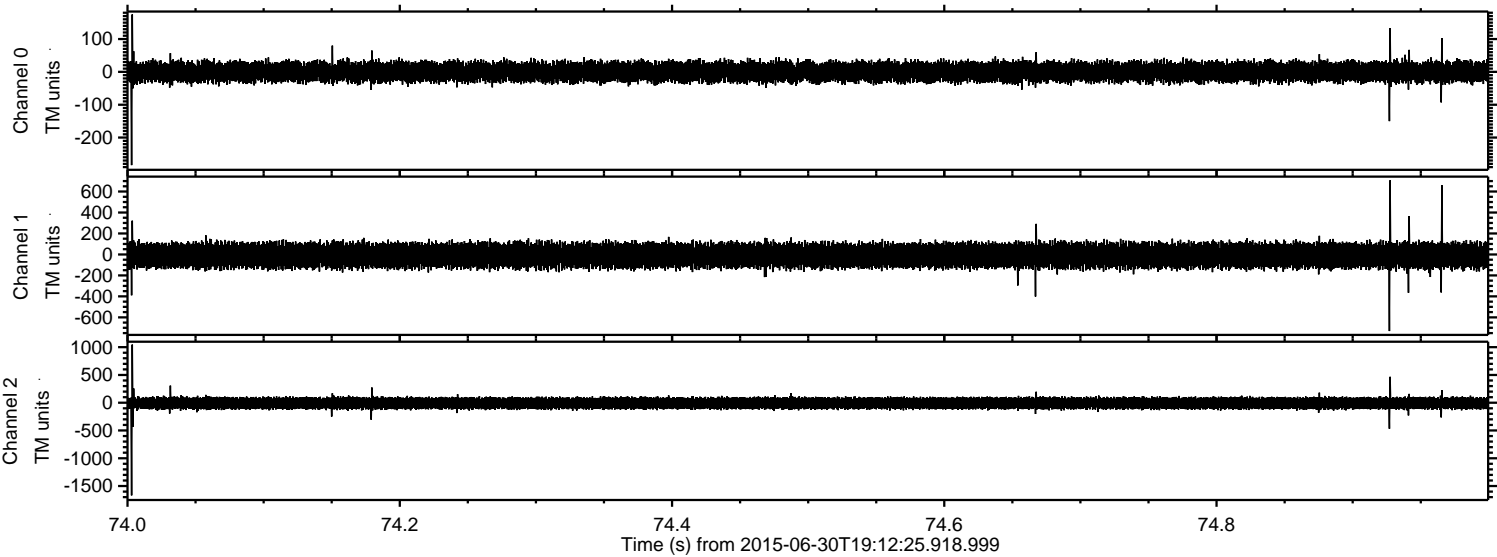
Channel 2
mn: -1973
mx: 2271
 μ : -8.7
 σ : 56.7

ELMAVAN 3D WAVEFORMS (Measured data sampled at 50 kHz) 51000 packets of 144 samples from 2015-06-30T19:12:25.918.999. Part 129/147

Processed Tue Jun 30 21:18:50 2015 by ELM ver.2012-10-06 from 001__elm20150630_191224__dat00.bin



Processed Tue Jun 30 21:18:51 2015 by ELM ver.2012-10-06 from 001__elm20150630_191224__dat00.bin



Channel 0
mn: -284
mx: 175
 μ : 0.1
 σ : 15.6

Channel 1
mn: -731
mx: 707
 μ : -9.5
 σ : 59.3

Channel 2
mn: -1668
mx: 1046
 μ : -8.7
 σ : 54.4

ELMAVAN 3D WAVEFORMS (Measured data sampled at 50 kHz) 51000 packets of 144 samples from 2015-06-30T19:12:25.918.999. Part 57/147

Processed Tue Jun 30 21:18:52 2015 by ELM ver.2012-10-06 from 001__elm20150630_191224__dat00.bin

