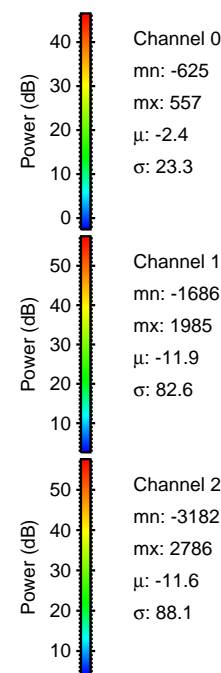
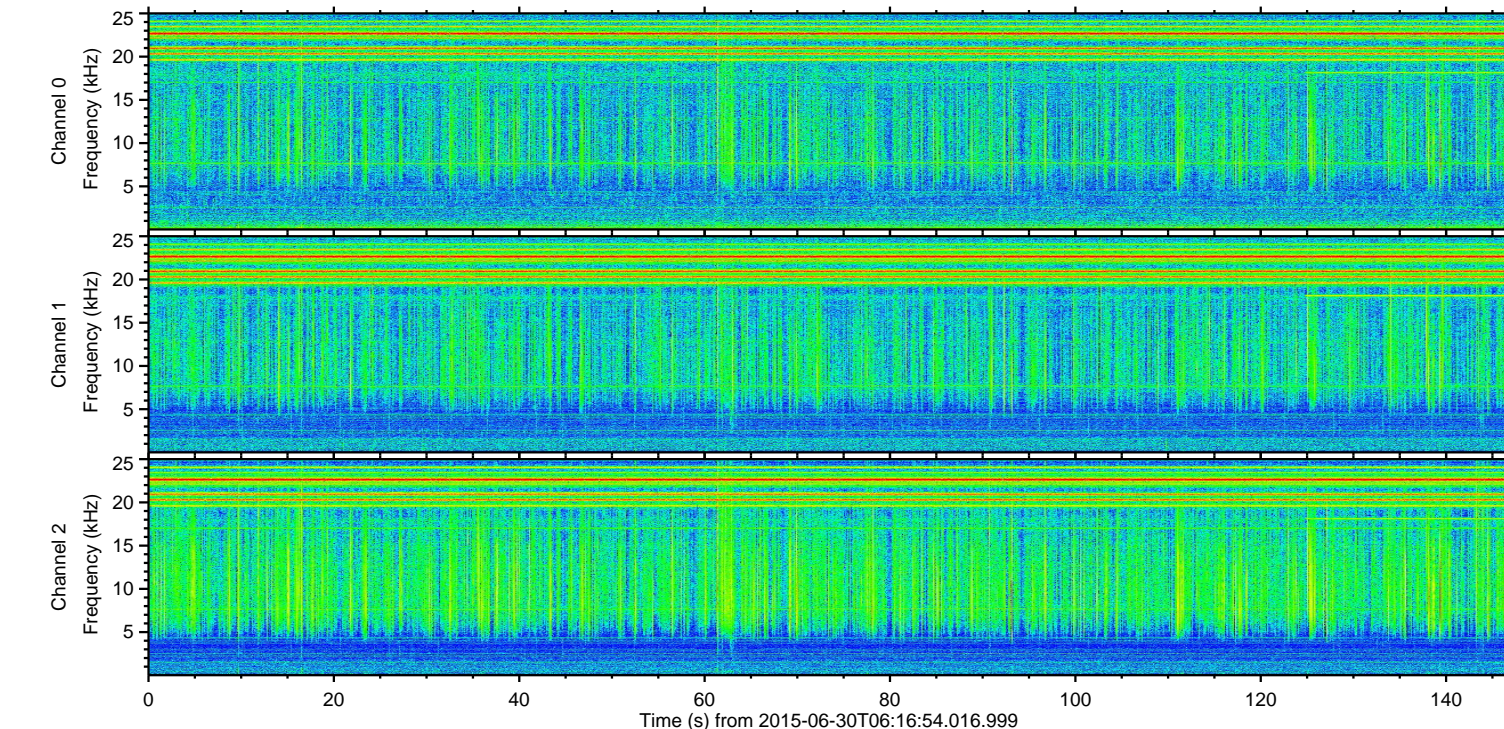
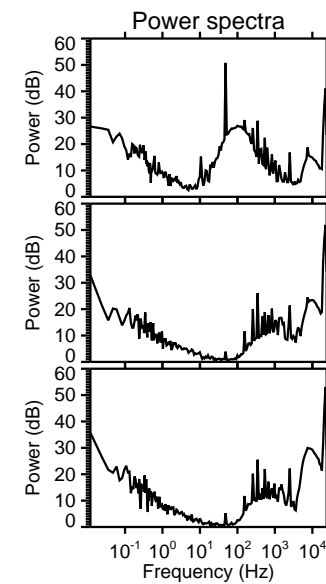
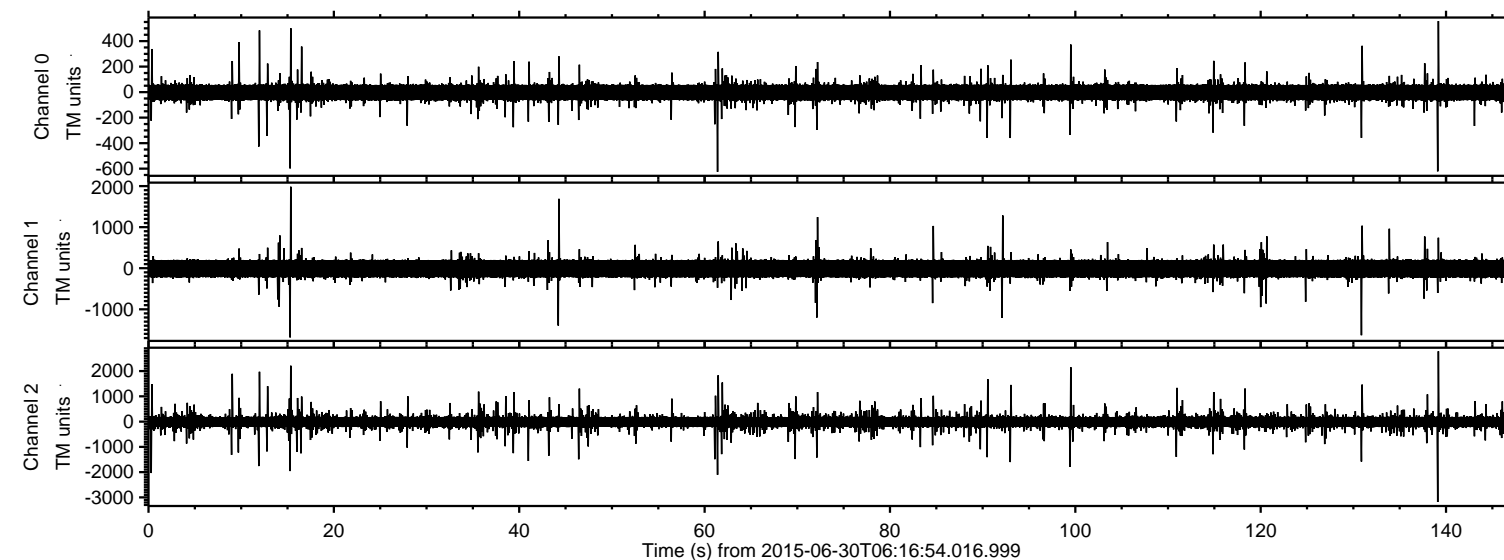


# ELMAVAN 3D WAVEFORMS (Measured data sampled at 50 kHz) 51000 packets of 144 samples from 2015-06-30T06:16:54.016.999.

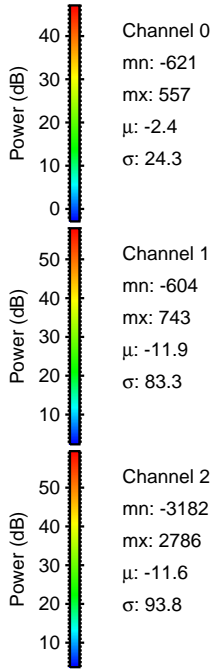
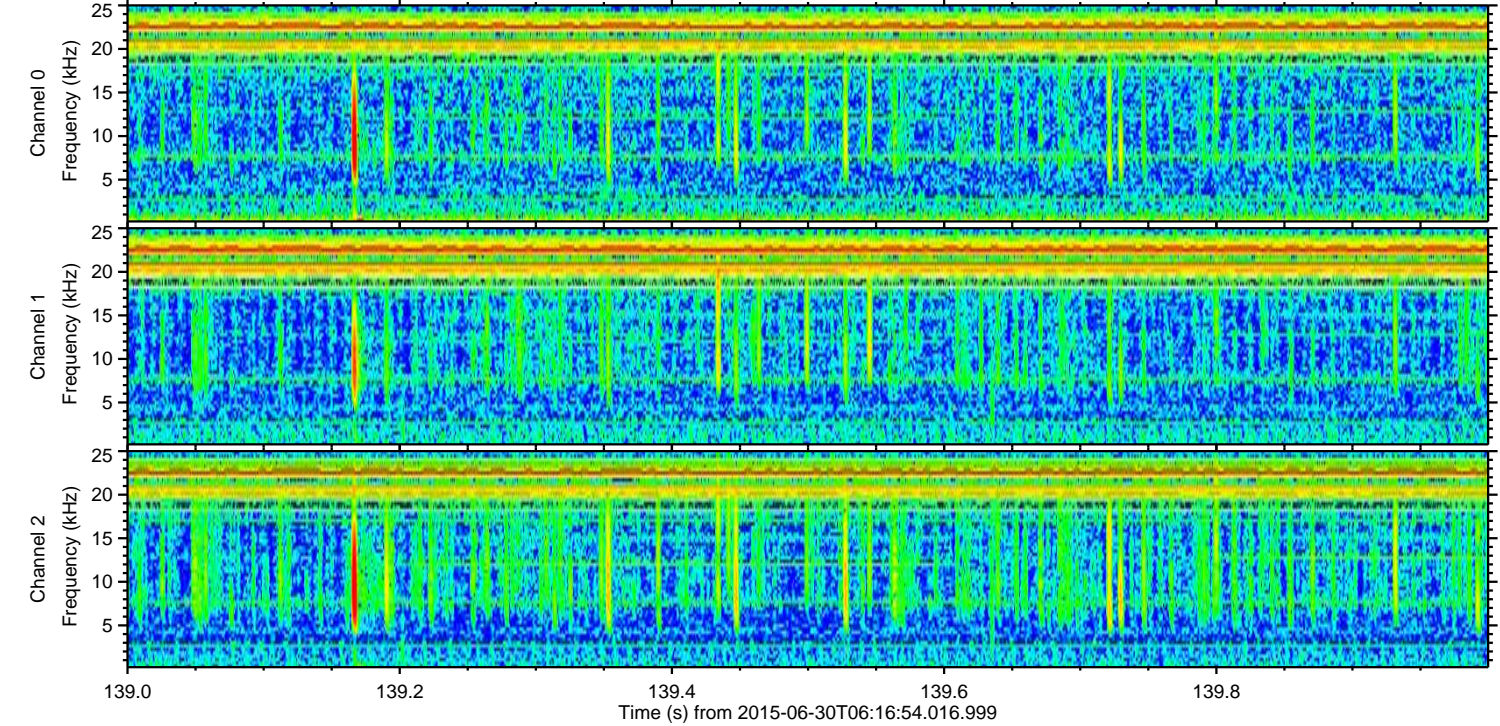
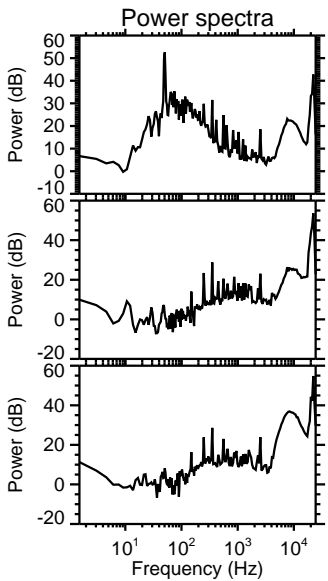
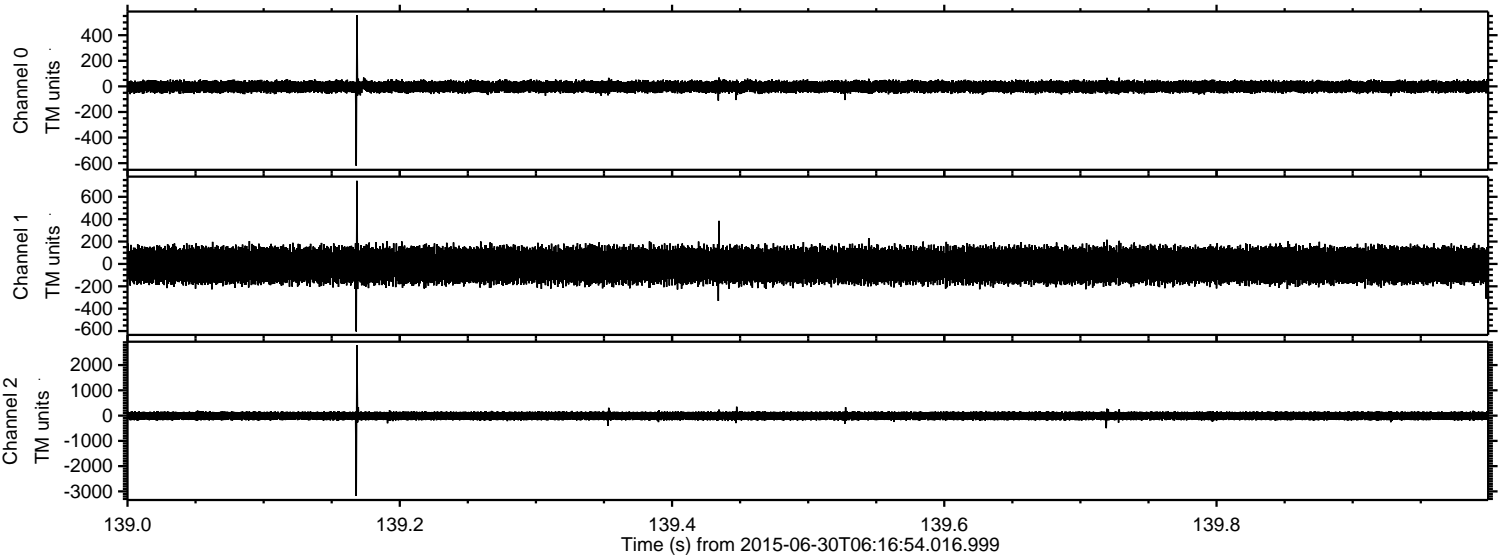
Processed Tue Jun 30 08:23:19 2015 by ELM ver.2012-10-06 from 001\_\_elm20150630\_061653\_\_dat00.bin





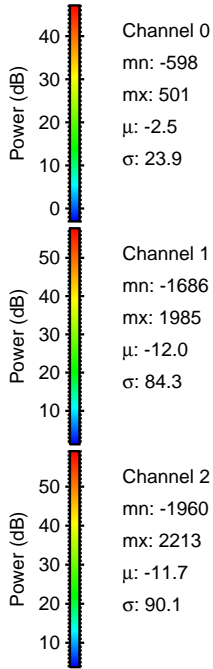
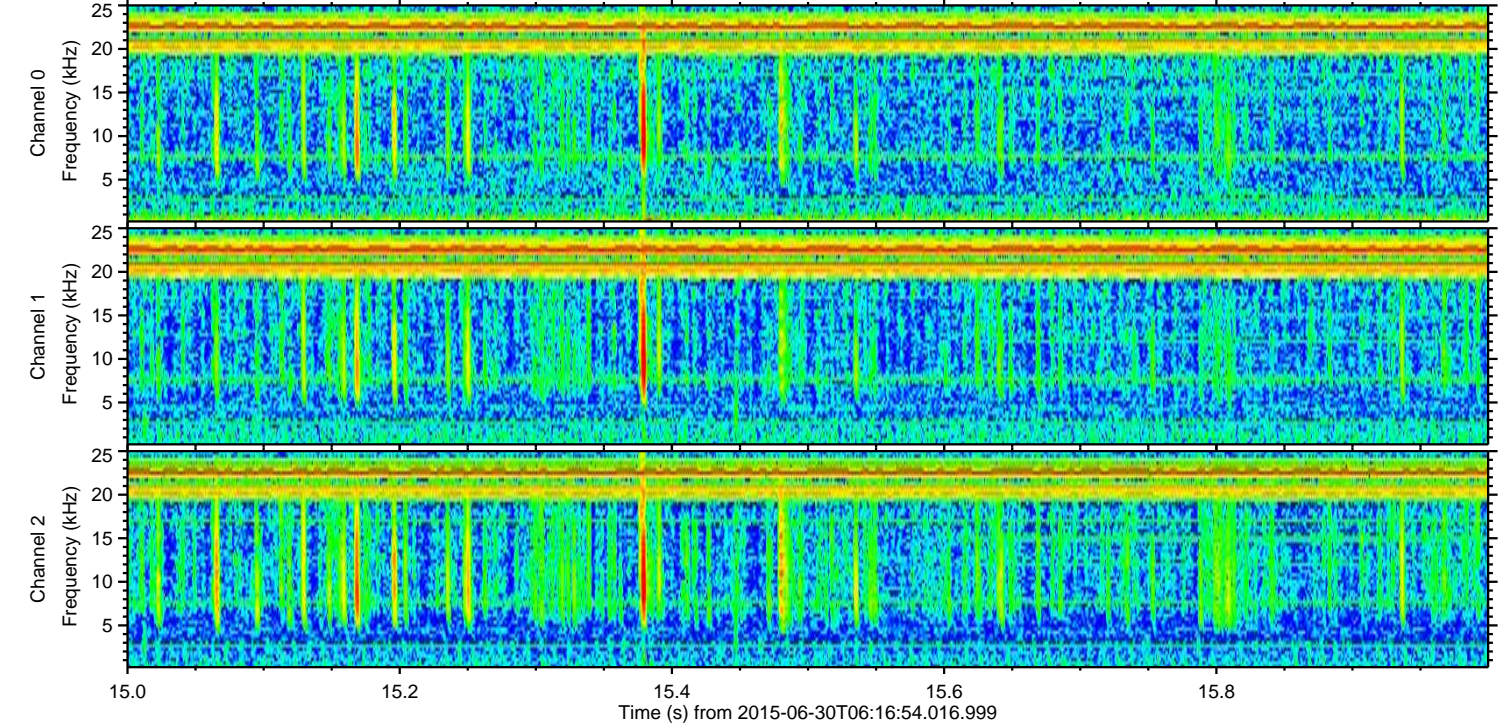
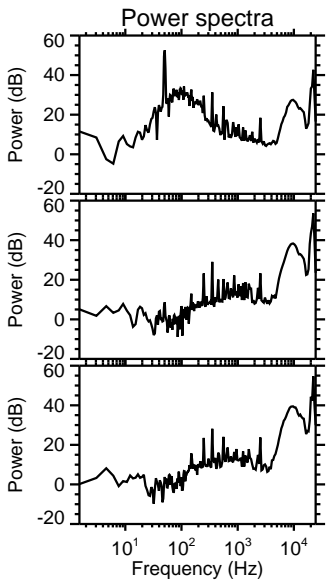
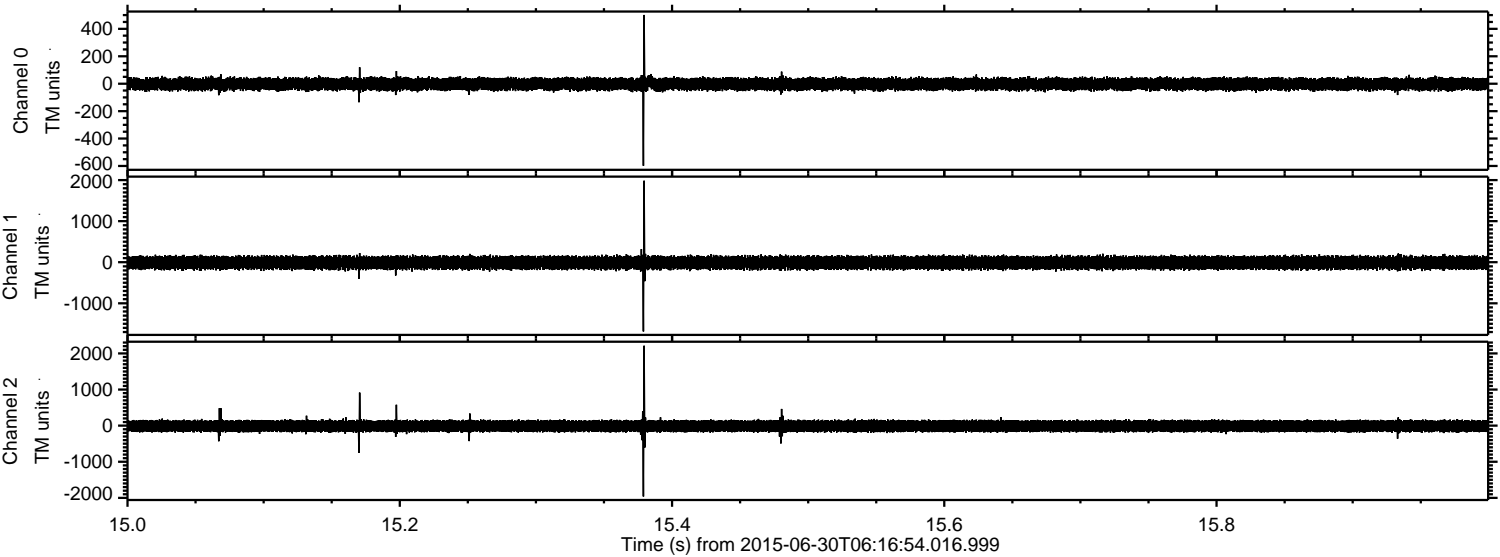
ELMAVAN 3D WAVEFORMS (Measured data sampled at 50 kHz) 51000 packets of 144 samples from 2015-06-30T06:16:54.016.999. Part 140/147

Processed Tue Jun 30 08:23:30 2015 by ELM ver.2012-10-06 from 001\_\_elm20150630\_061653\_\_dat00.bin





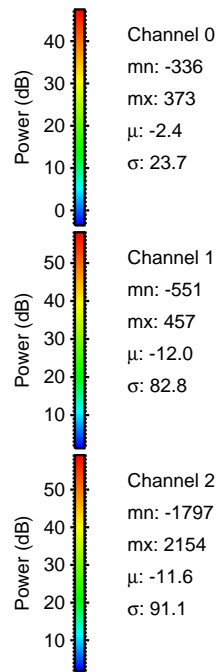
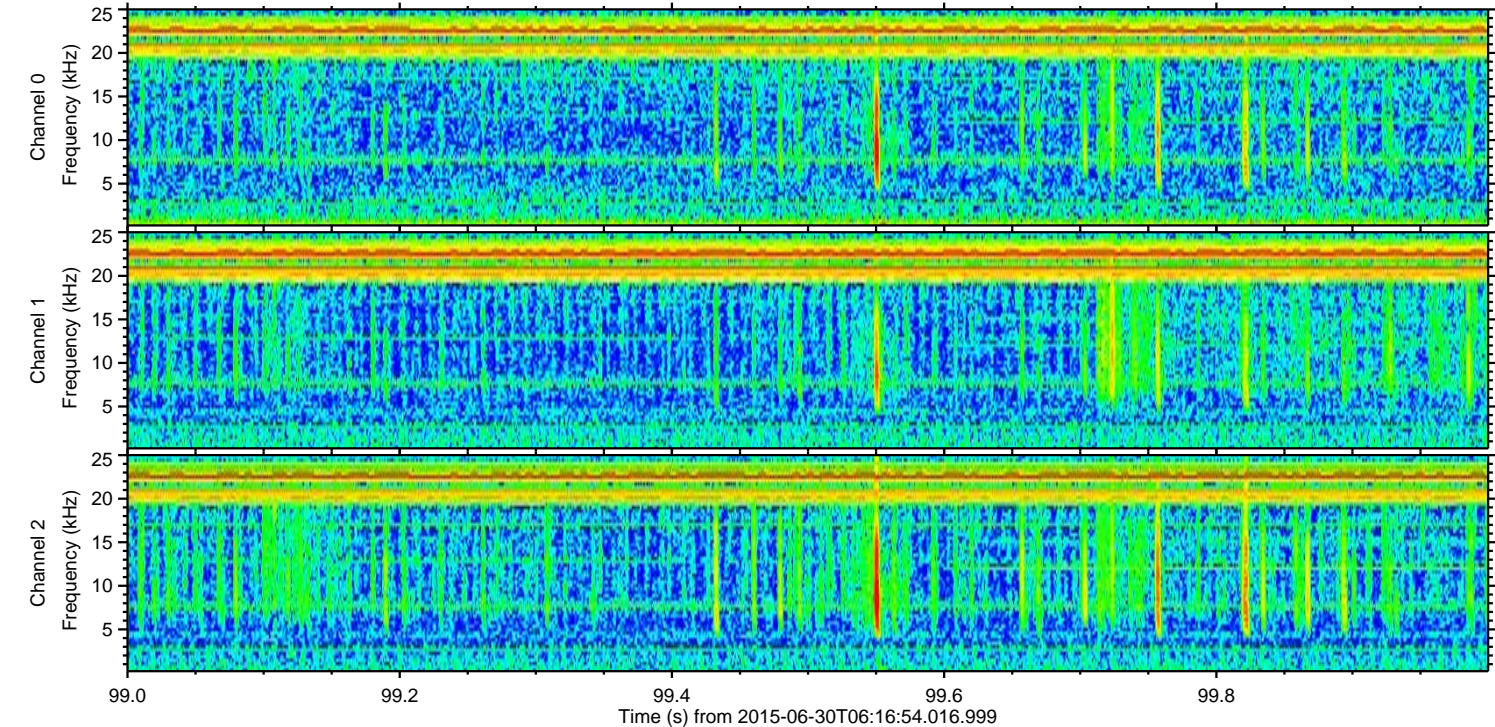
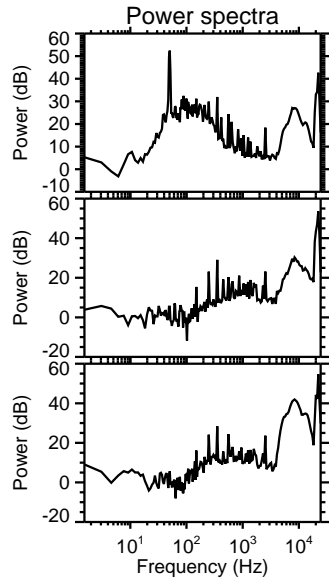
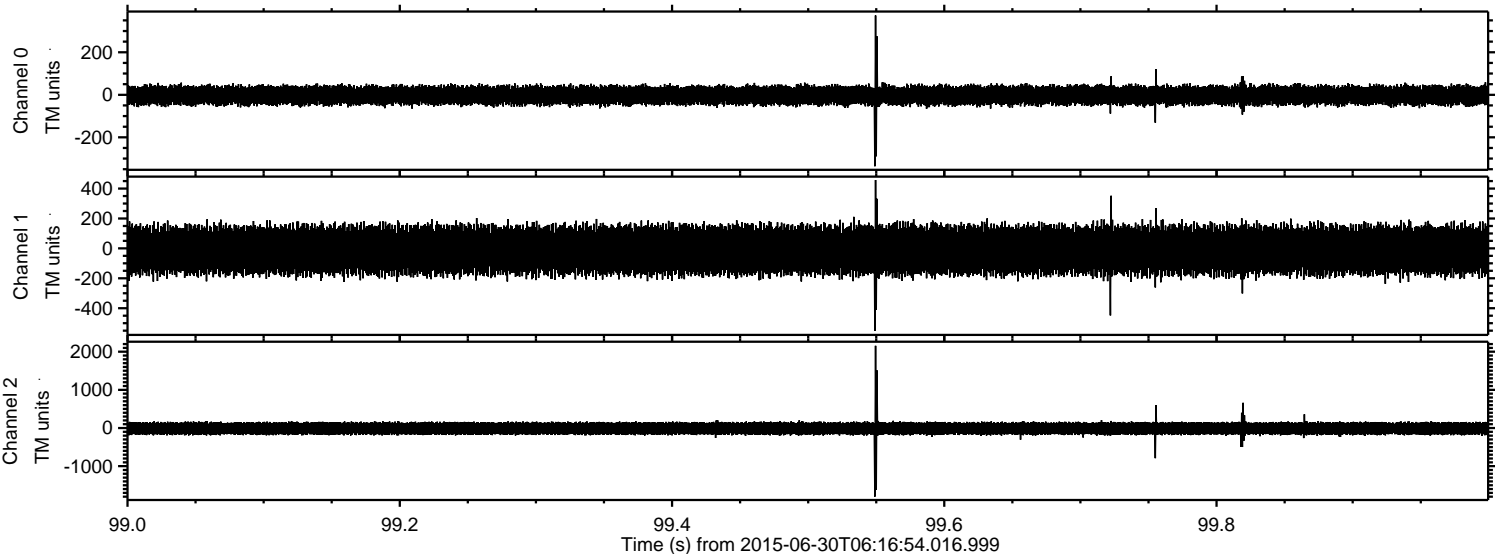
Processed Tue Jun 30 08:23:31 2015 by ELM ver.2012-10-06 from 001\_\_elm20150630\_061653\_\_dat00.bin





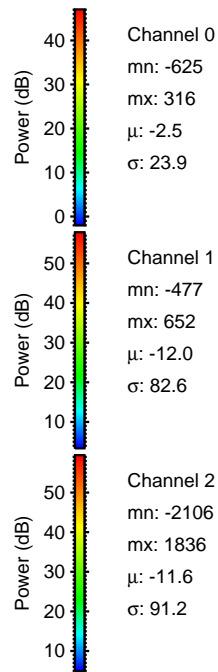
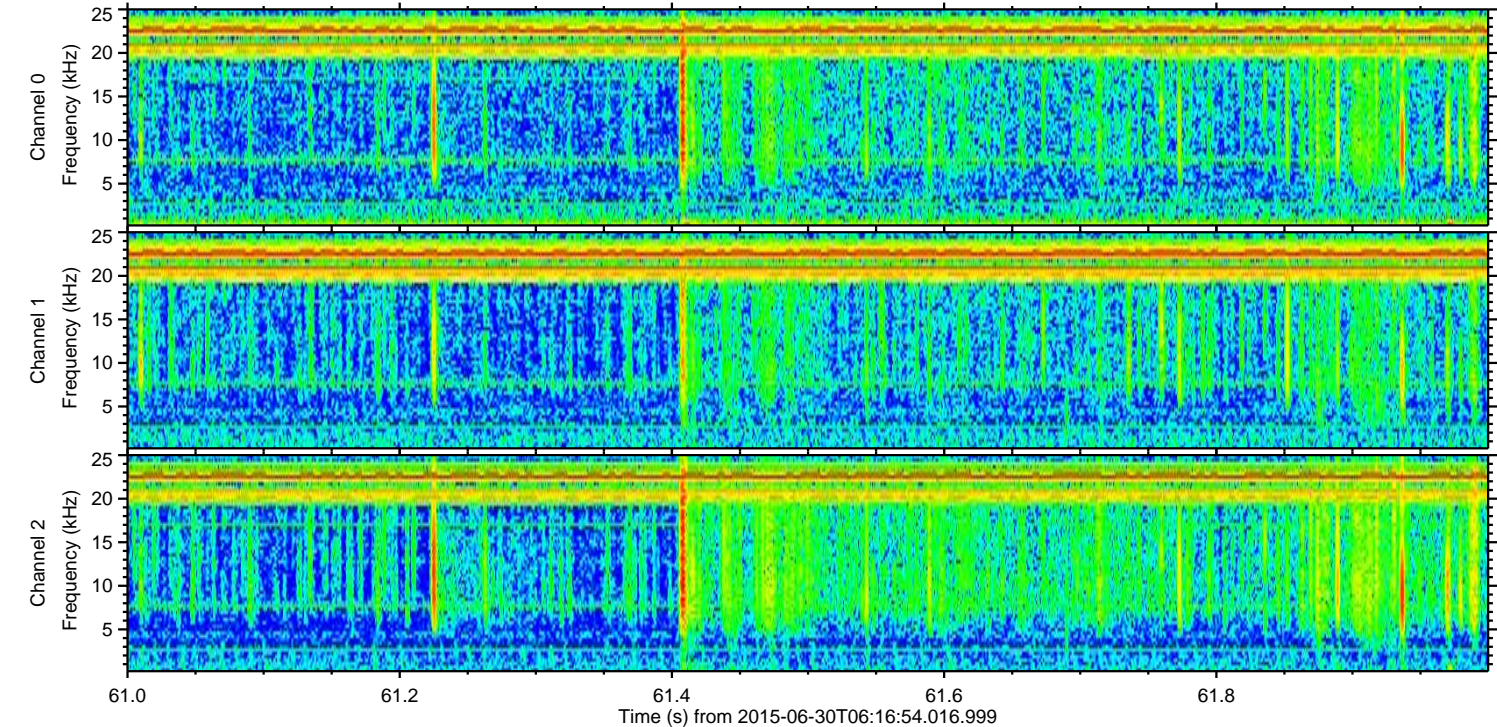
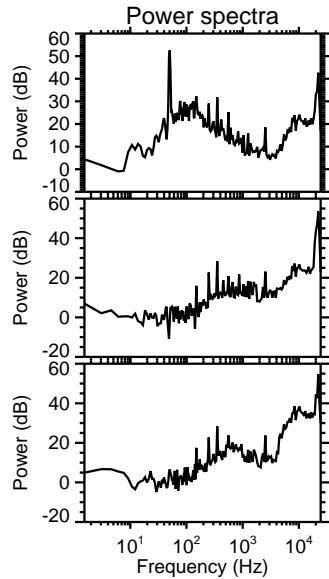
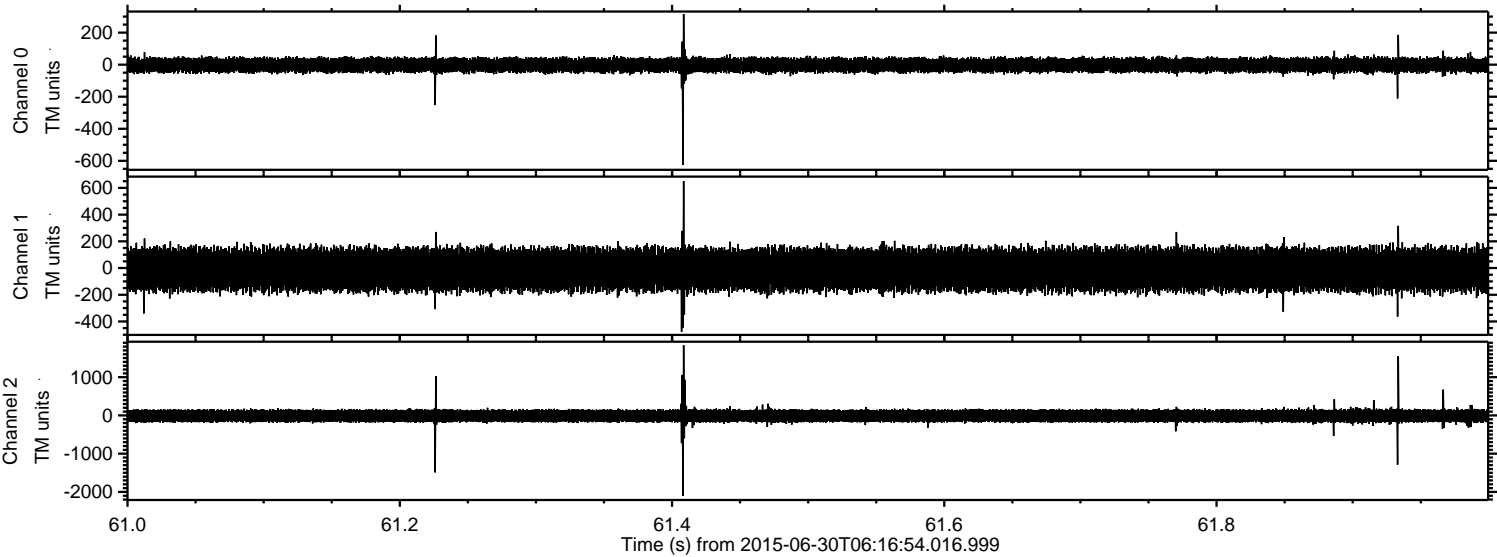
ELMAVAN 3D WAVEFORMS (Measured data sampled at 50 kHz) 51000 packets of 144 samples from 2015-06-30T06:16:54.016.999. Part 100/147

Processed Tue Jun 30 08:23:32 2015 by ELM ver.2012-10-06 from 001\_\_elm20150630\_061653\_\_dat00.bin



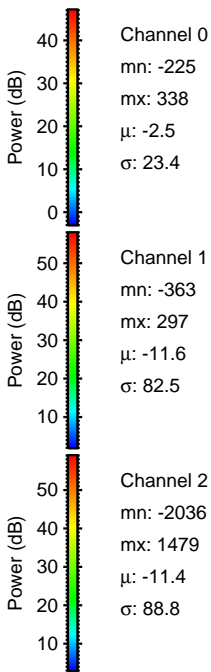
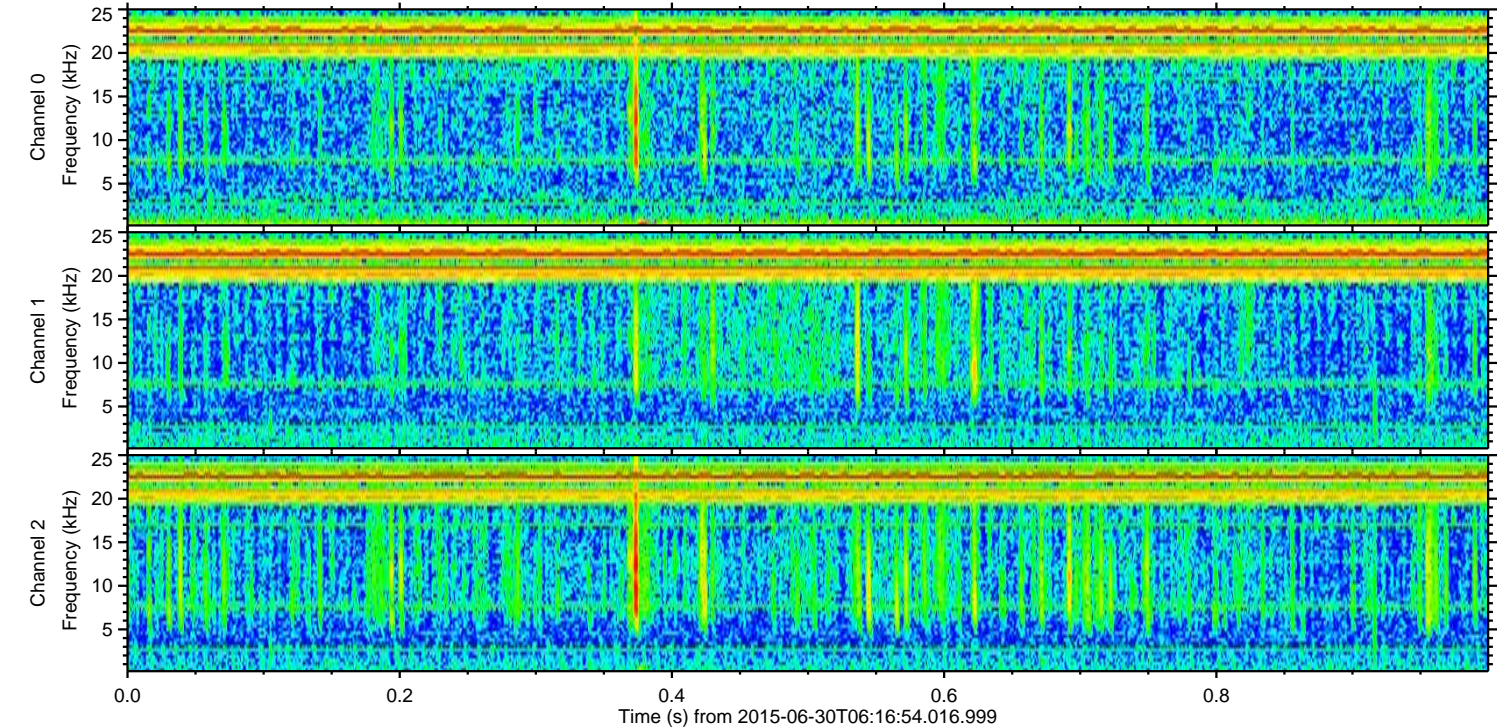
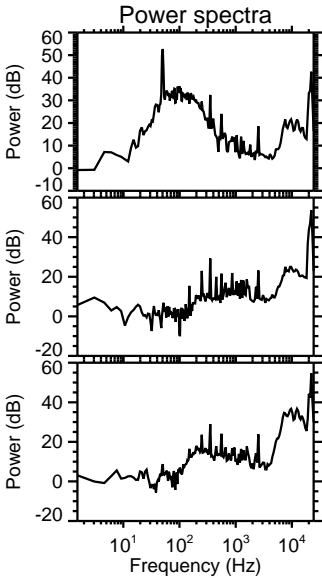
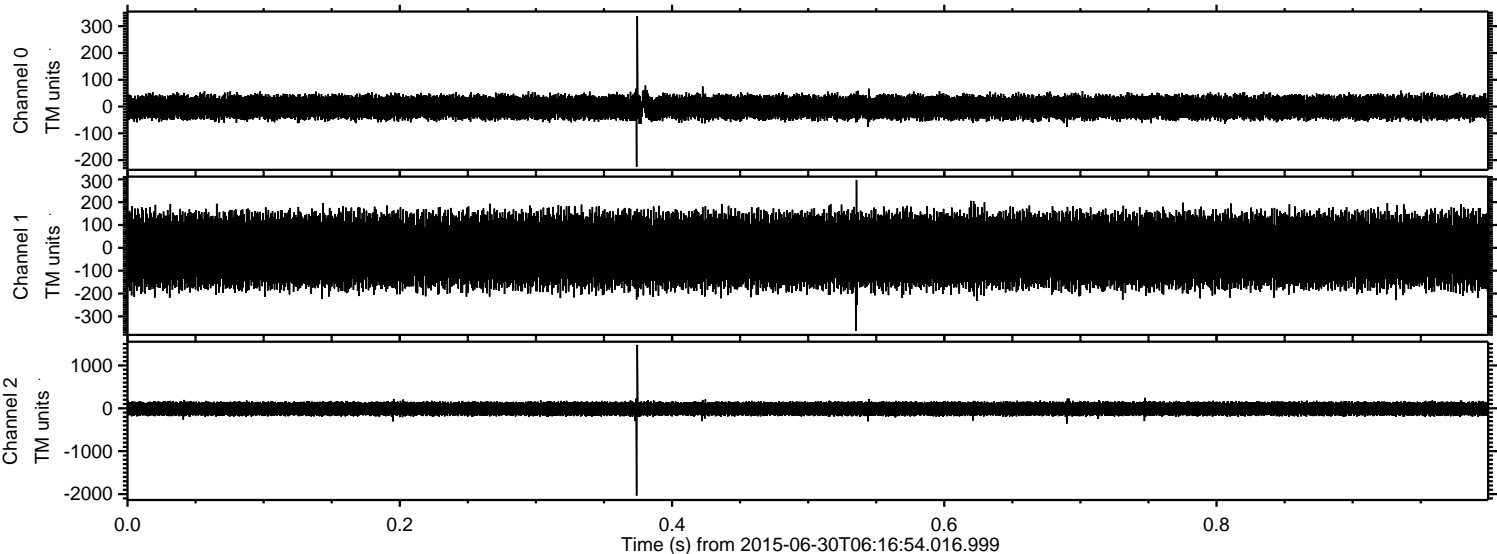


Processed Tue Jun 30 08:23:33 2015 by ELM ver.2012-10-06 from 001\_\_elm20150630\_061653\_\_dat00.bin



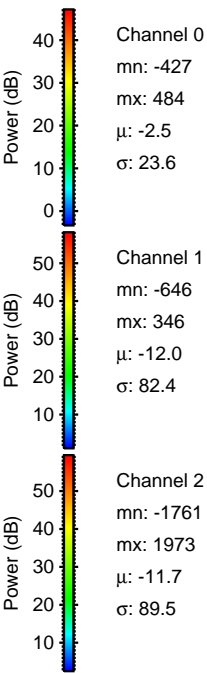
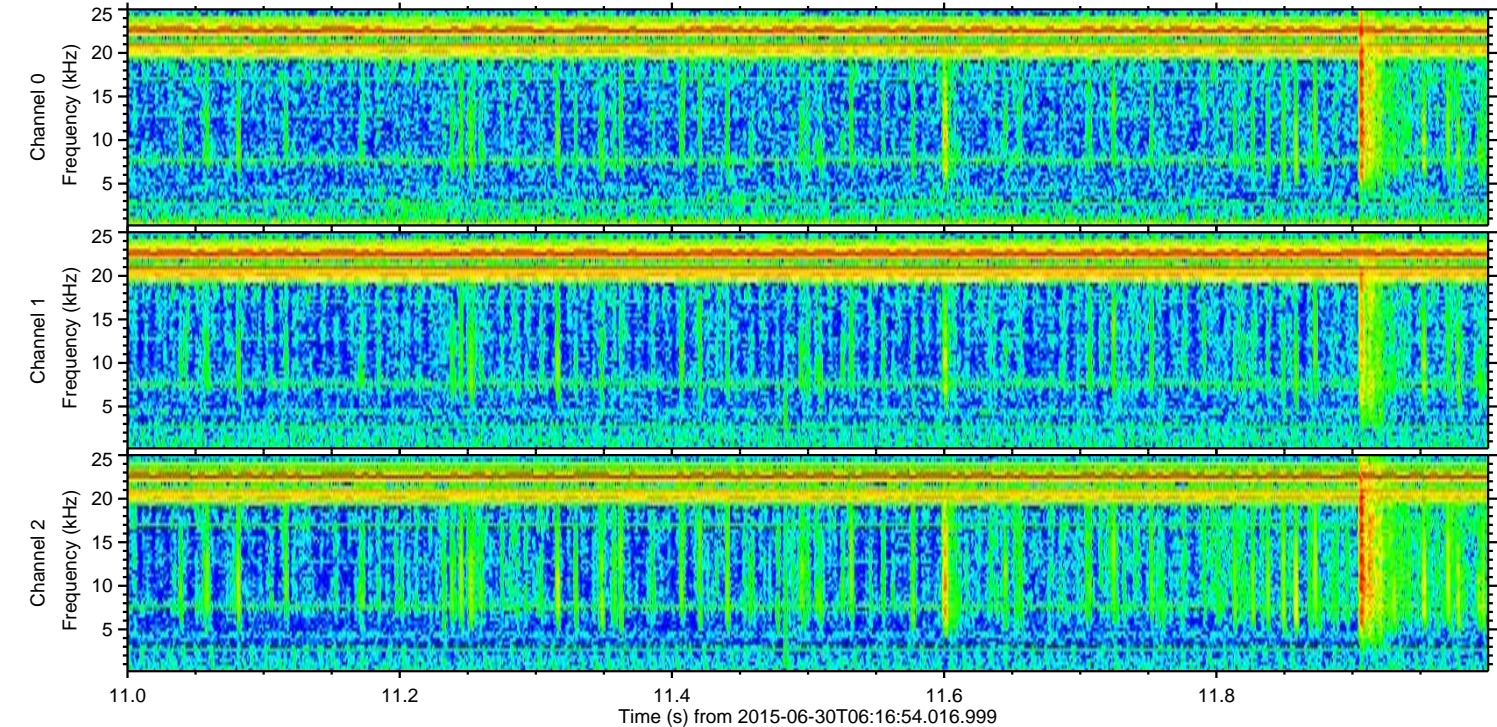
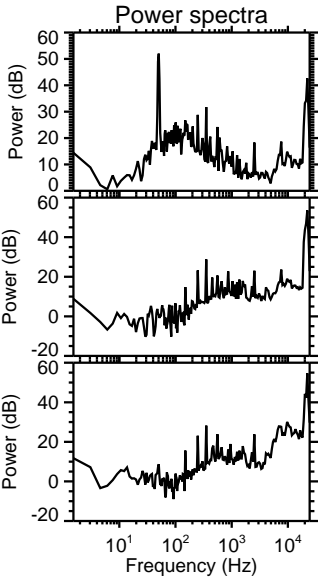
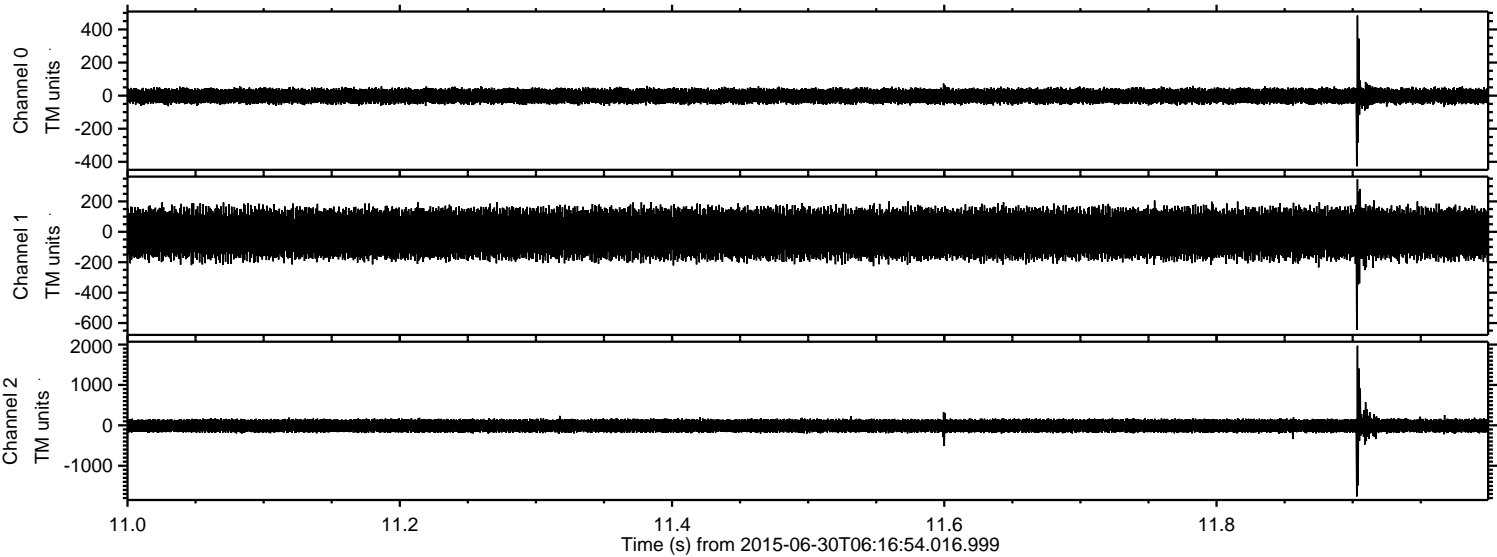


Processed Tue Jun 30 08:23:34 2015 by ELM ver.2012-10-06 from 001\_\_elm20150630\_061653\_\_dat00.bin



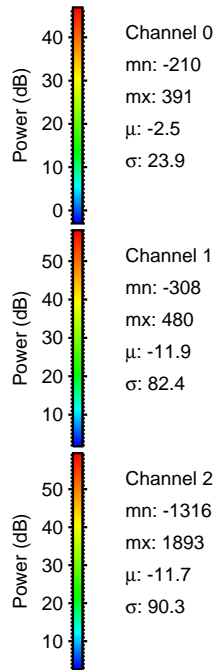
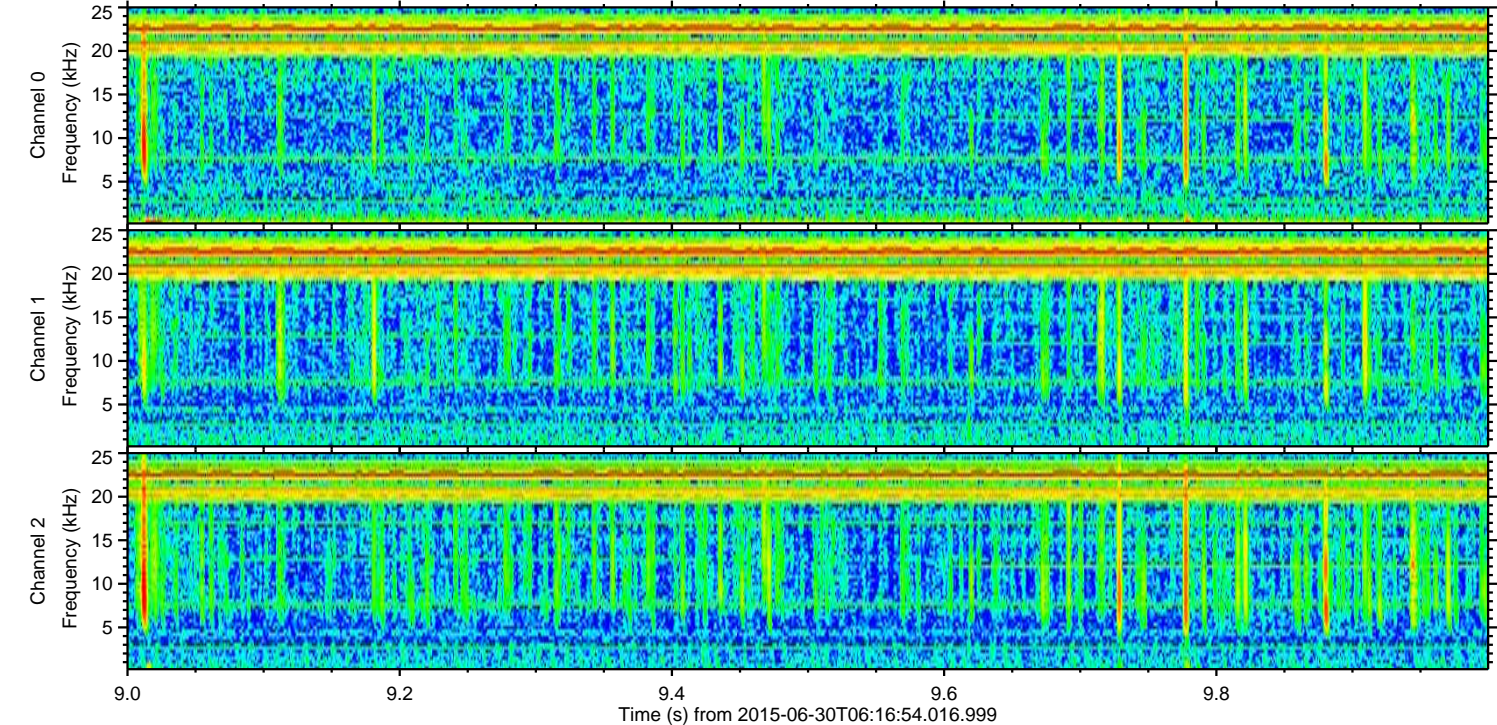
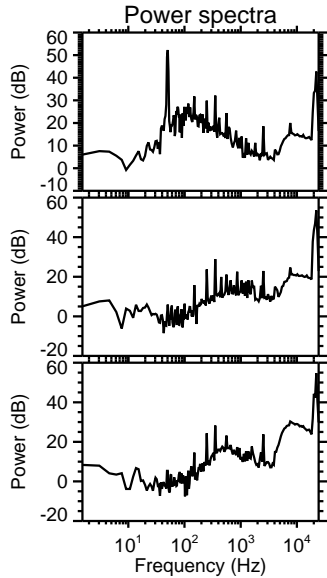
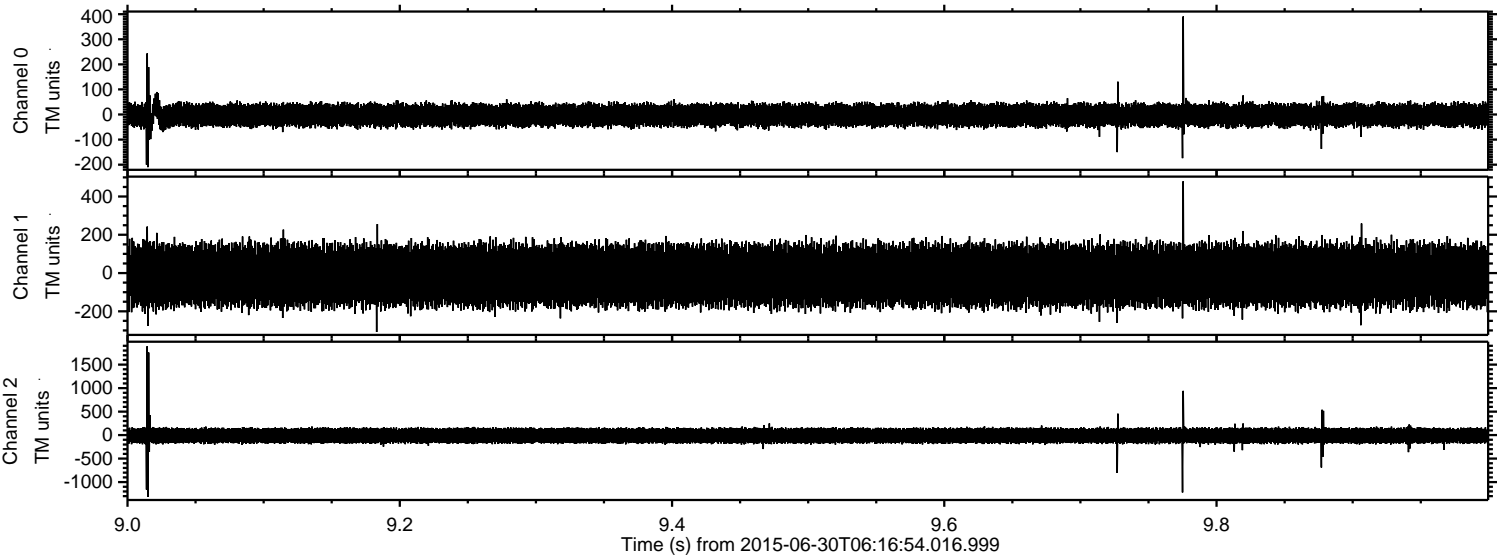


Processed Tue Jun 30 08:23:35 2015 by ELM ver.2012-10-06 from 001\_\_elm20150630\_061653\_\_dat00.bin



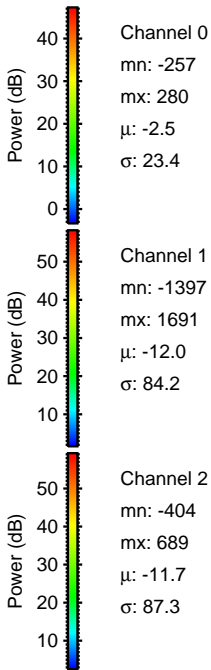
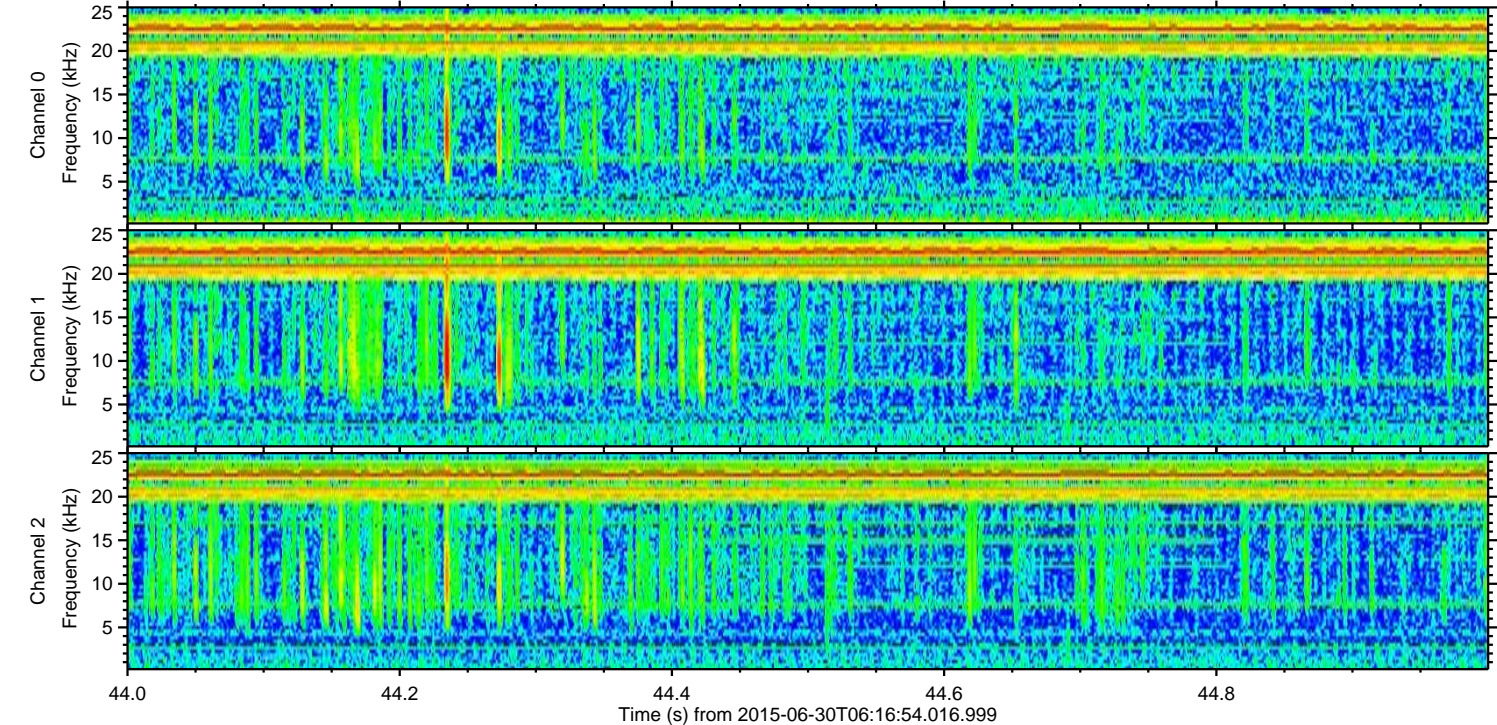
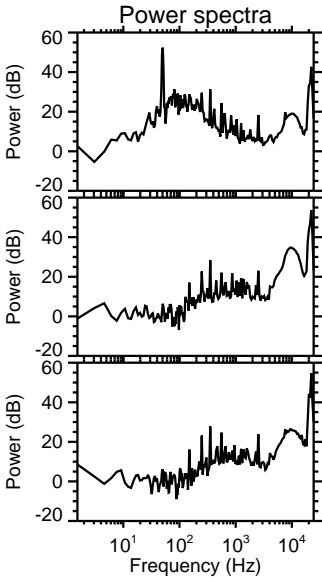
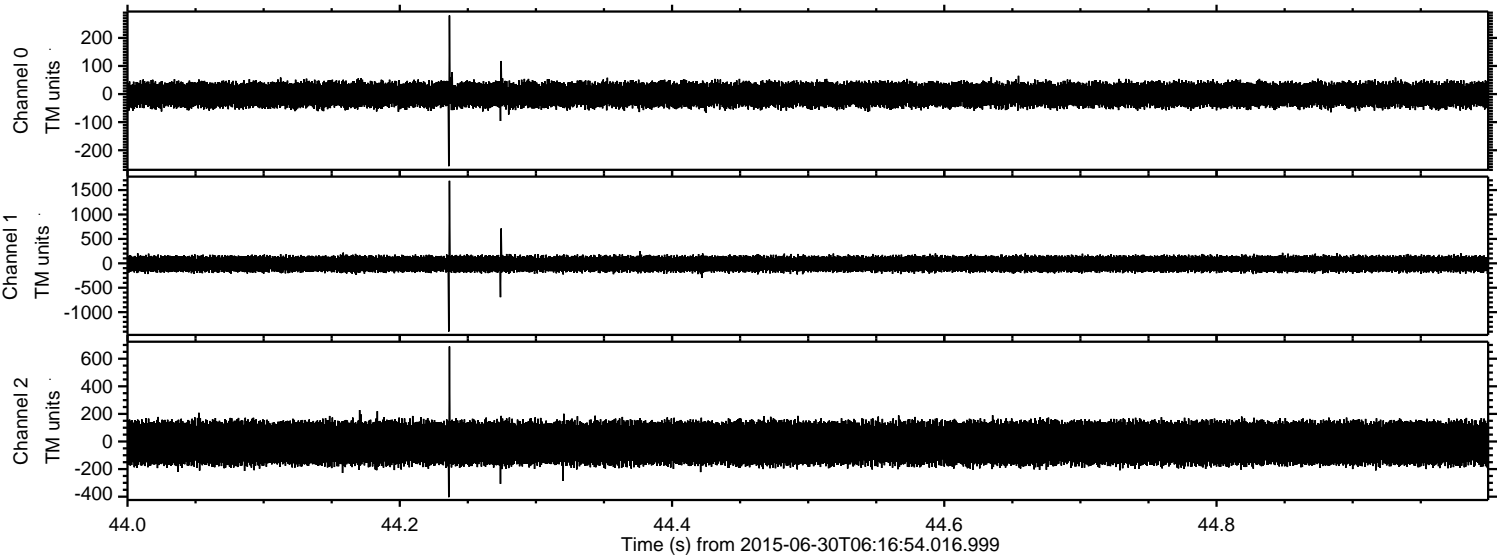


Processed Tue Jun 30 08:23:36 2015 by ELM ver.2012-10-06 from 001\_\_elm20150630\_061653\_\_dat00.bin





Processed Tue Jun 30 08:23:37 2015 by ELM ver.2012-10-06 from 001\_\_elm20150630\_061653\_\_dat00.bin



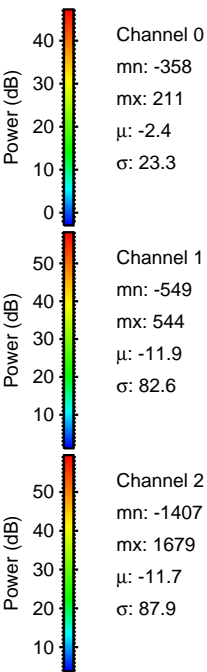
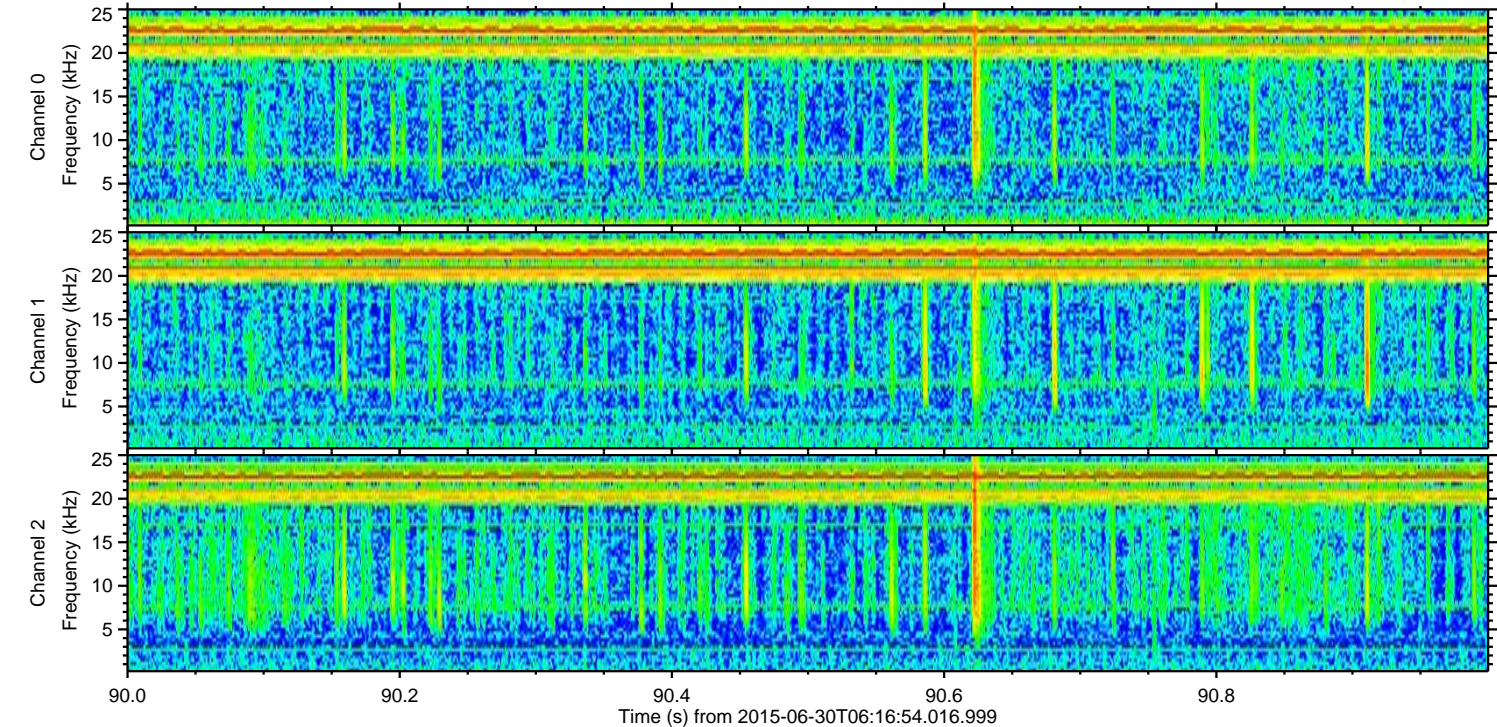
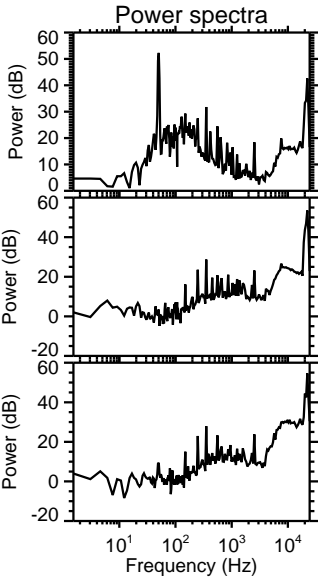
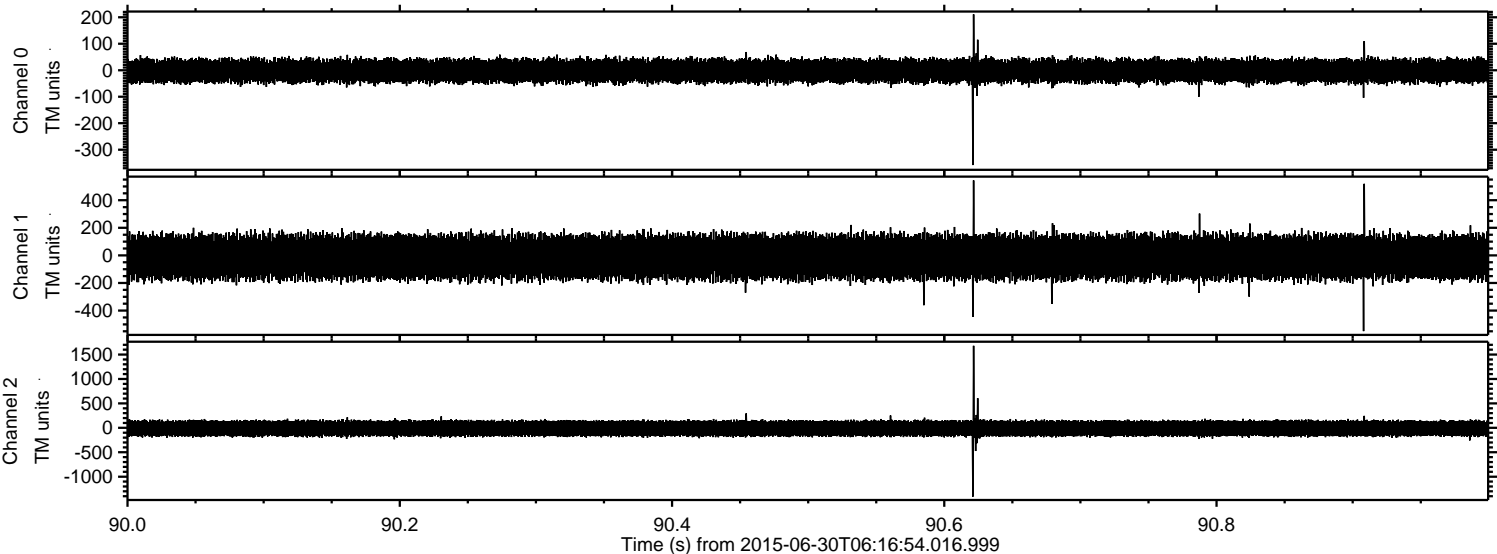
Channel 0  
mn: -257  
mx: 280  
 $\mu$ : -2.5  
 $\sigma$ : 23.4

Channel 1  
mn: -1397  
mx: 1691  
 $\mu$ : -12.0  
 $\sigma$ : 84.2

Channel 2  
mn: -404  
mx: 689  
 $\mu$ : -11.7  
 $\sigma$ : 87.3



Processed Tue Jun 30 08:23:38 2015 by ELM ver.2012-10-06 from 001\_\_elm20150630\_061653\_\_dat00.bin





Processed Tue Jun 30 08:23:39 2015 by ELM ver.2012-10-06 from 001\_\_elm20150630\_061653\_\_dat00.bin

