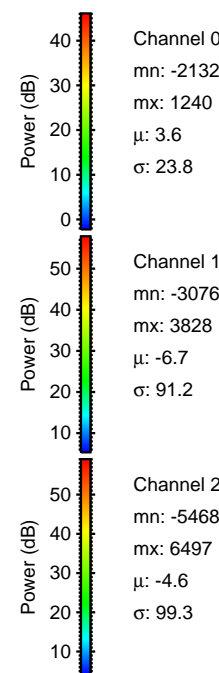
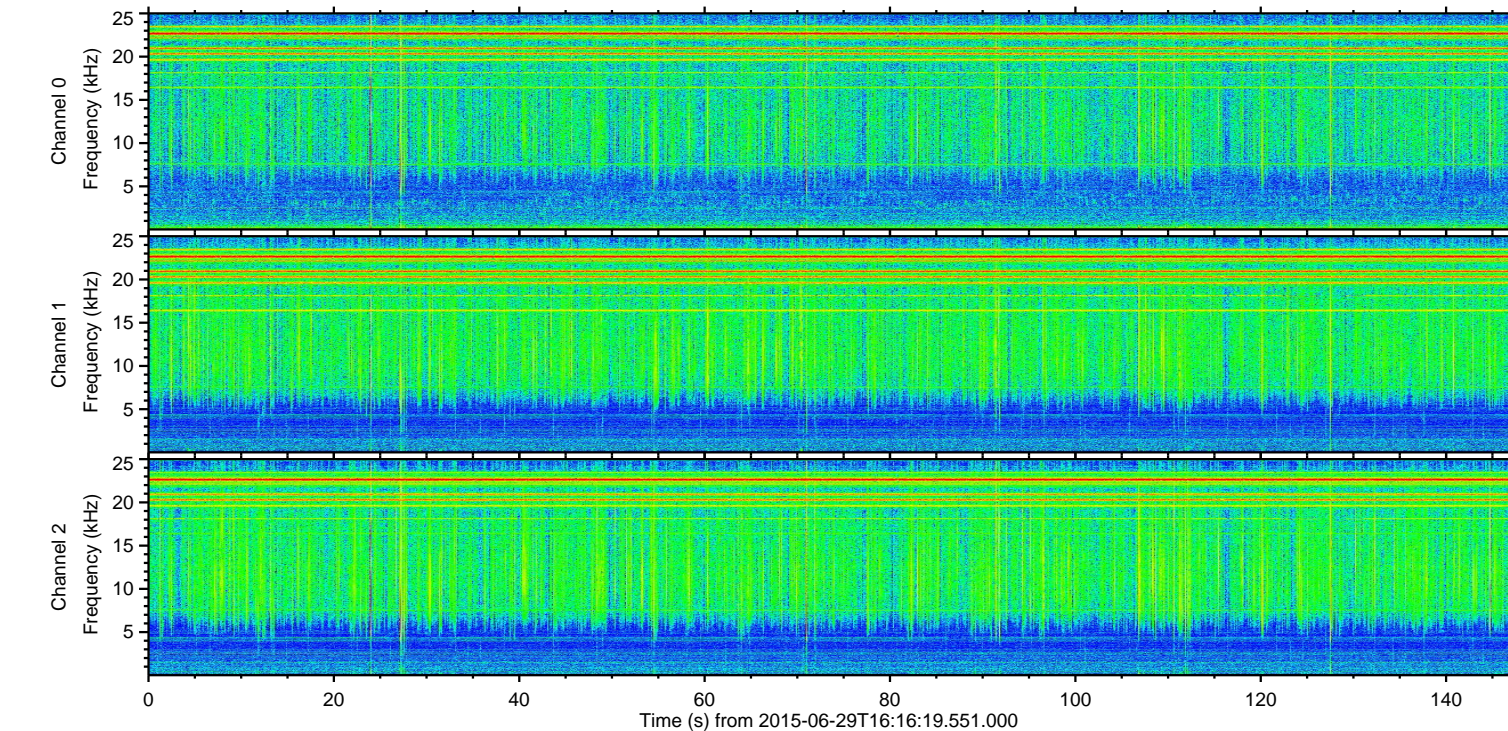
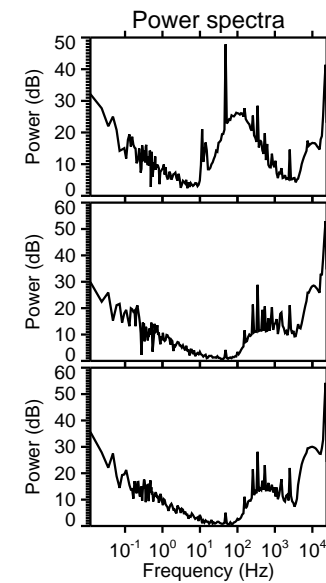
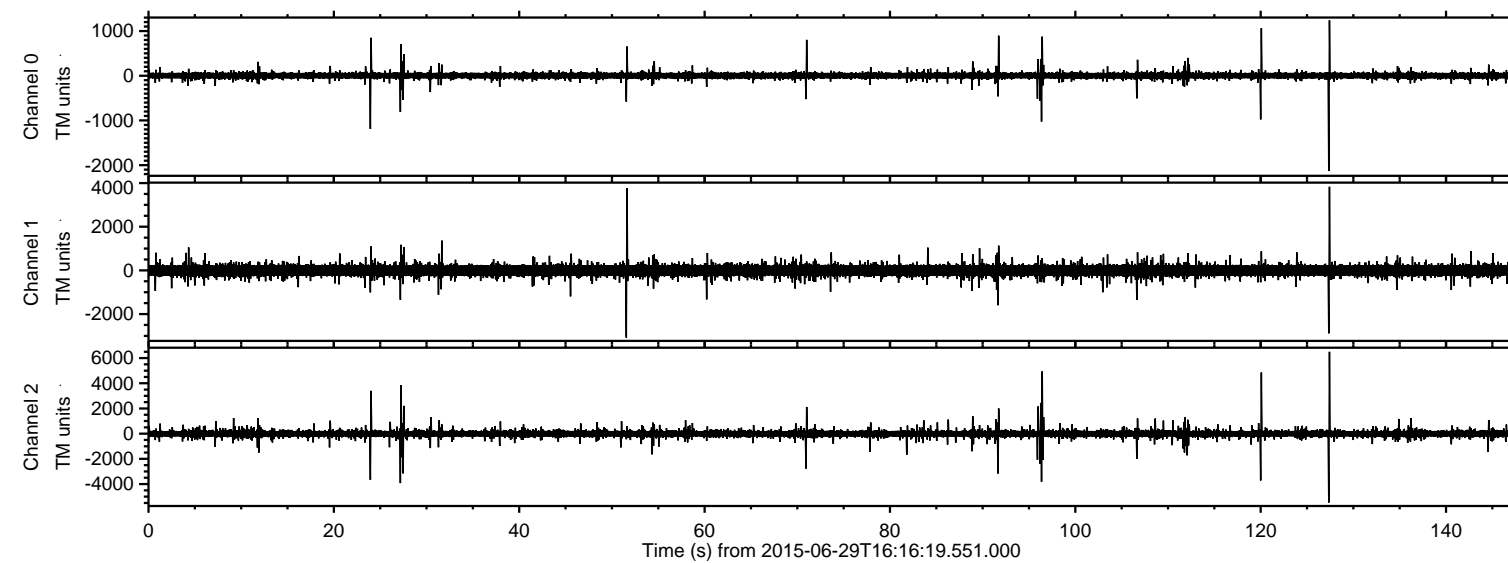


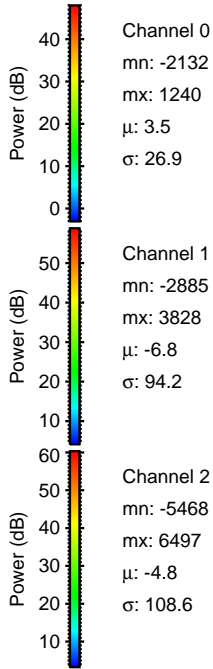
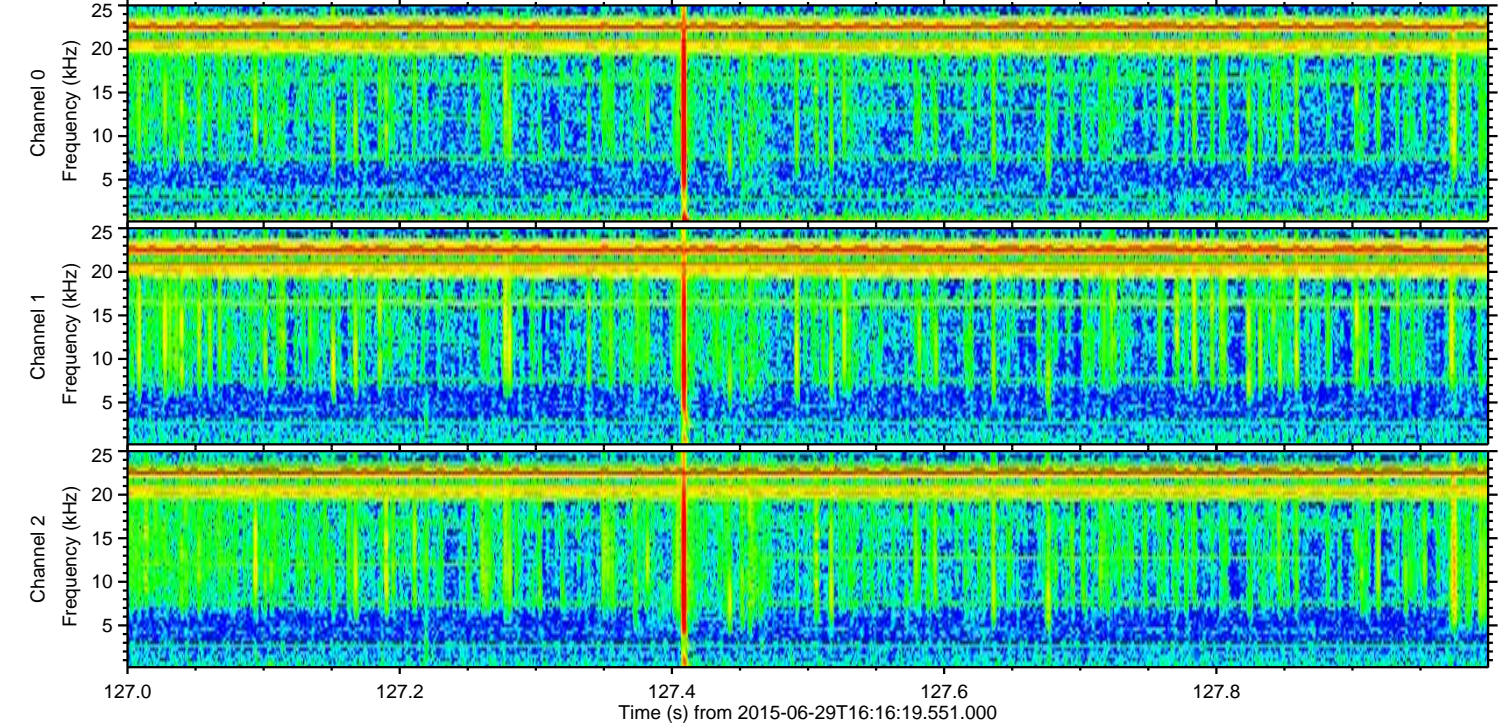
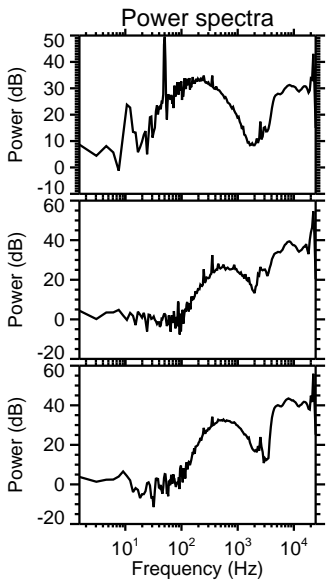
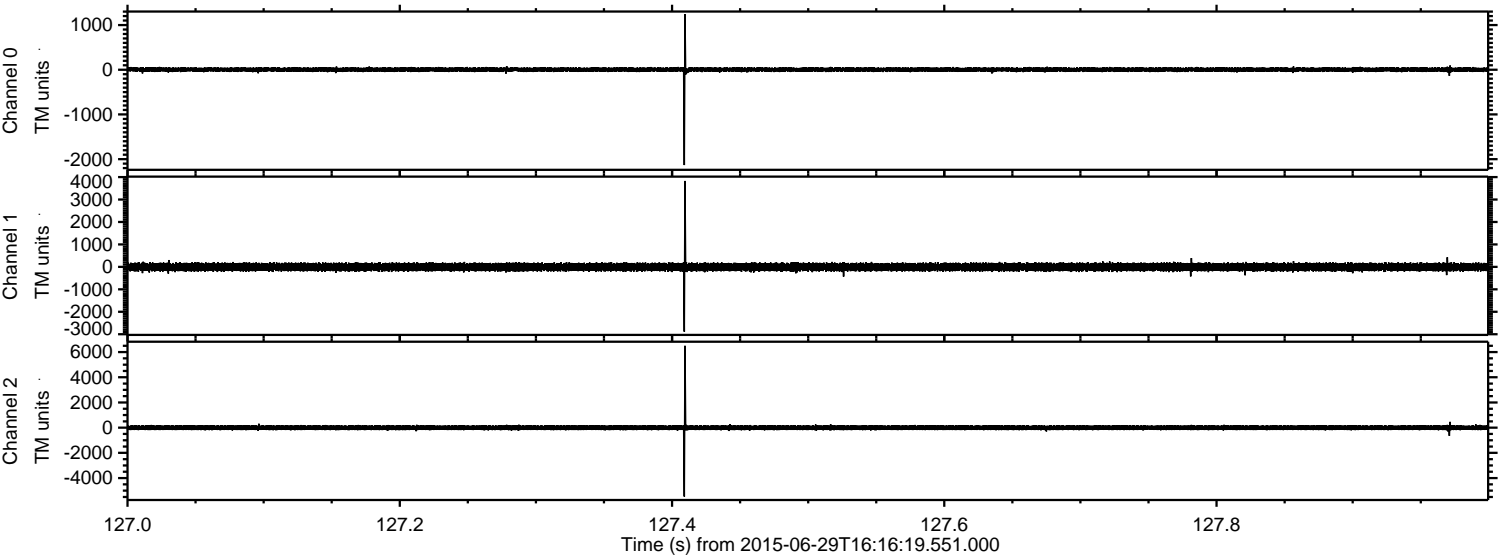
ELMAVAN 3D WAVEFORMS (Measured data sampled at 50 kHz) 51000 packets of 144 samples from 2015-06-29T16:16:19.551.000.

Processed Mon Jun 29 18:22:21 2015 by ELM ver.2012-10-06 from 001__elm20150629_161618__dat00.bin

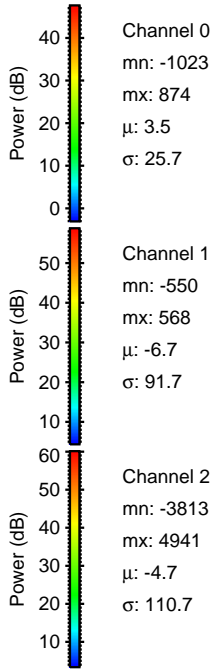
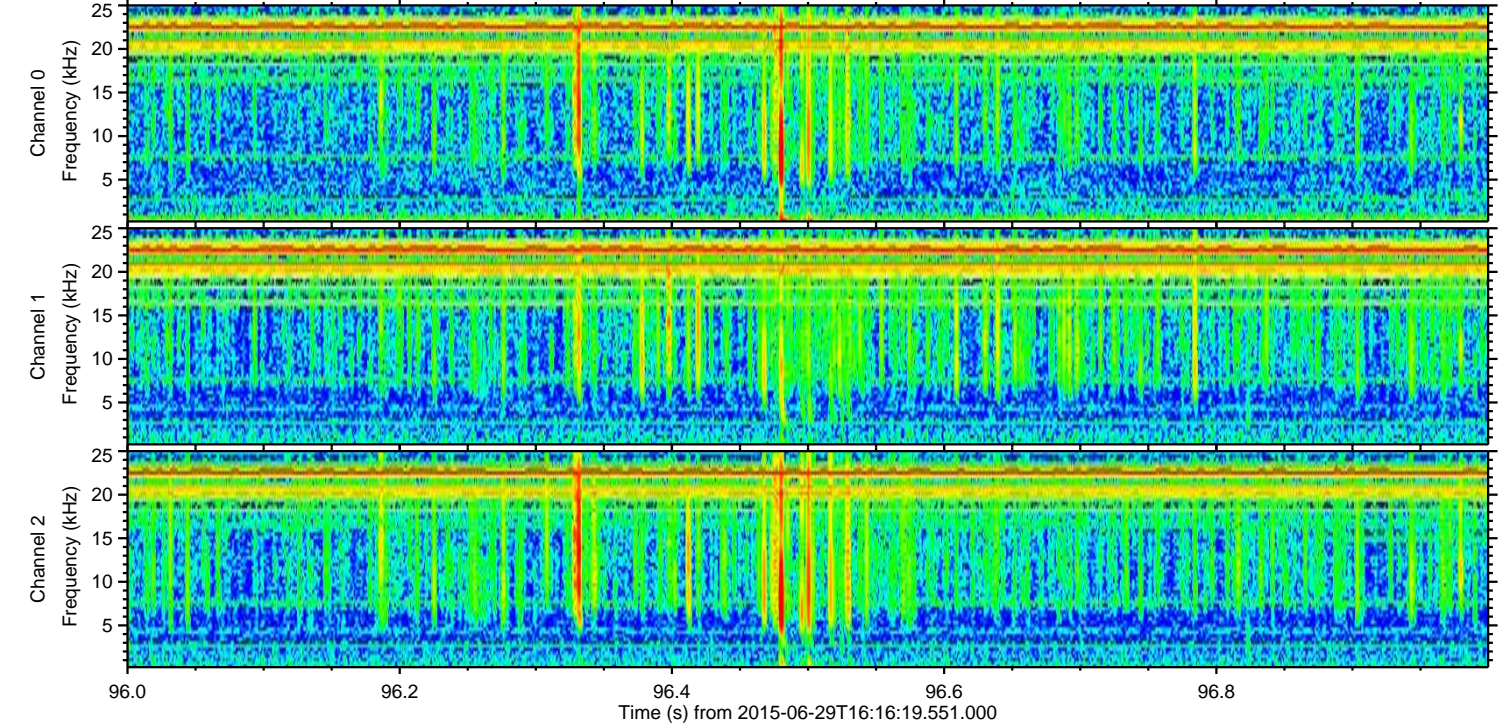
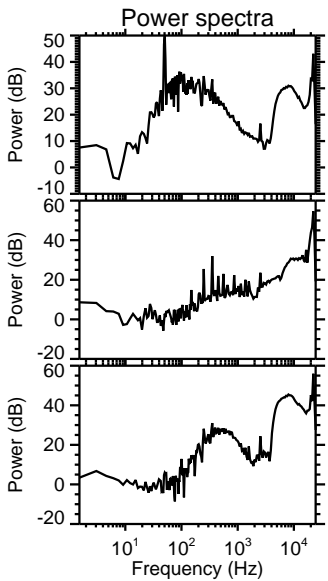
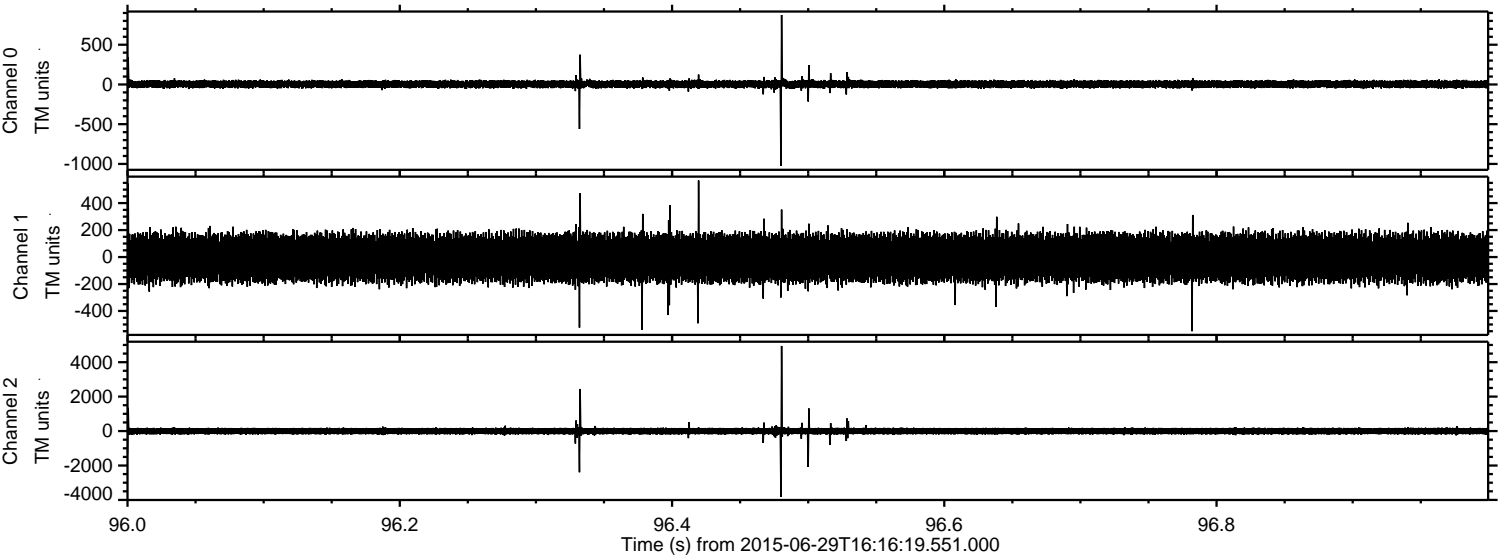


ELMAVAN 3D WAVEFORMS (Measured data sampled at 50 kHz) 51000 packets of 144 samples from 2015-06-29T16:16:19.551.000. Part 128/147

Processed Mon Jun 29 18:22:32 2015 by ELM ver.2012-10-06 from 001__elm20150629_161618__dat00.bin



Processed Mon Jun 29 18:22:33 2015 by ELM ver.2012-10-06 from 001__elm20150629_161618__dat00.bin



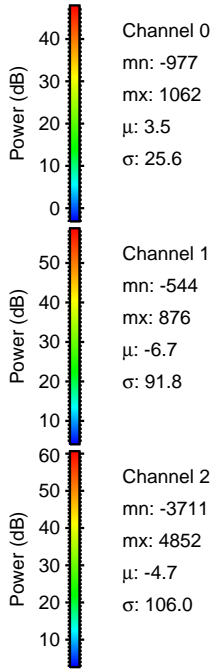
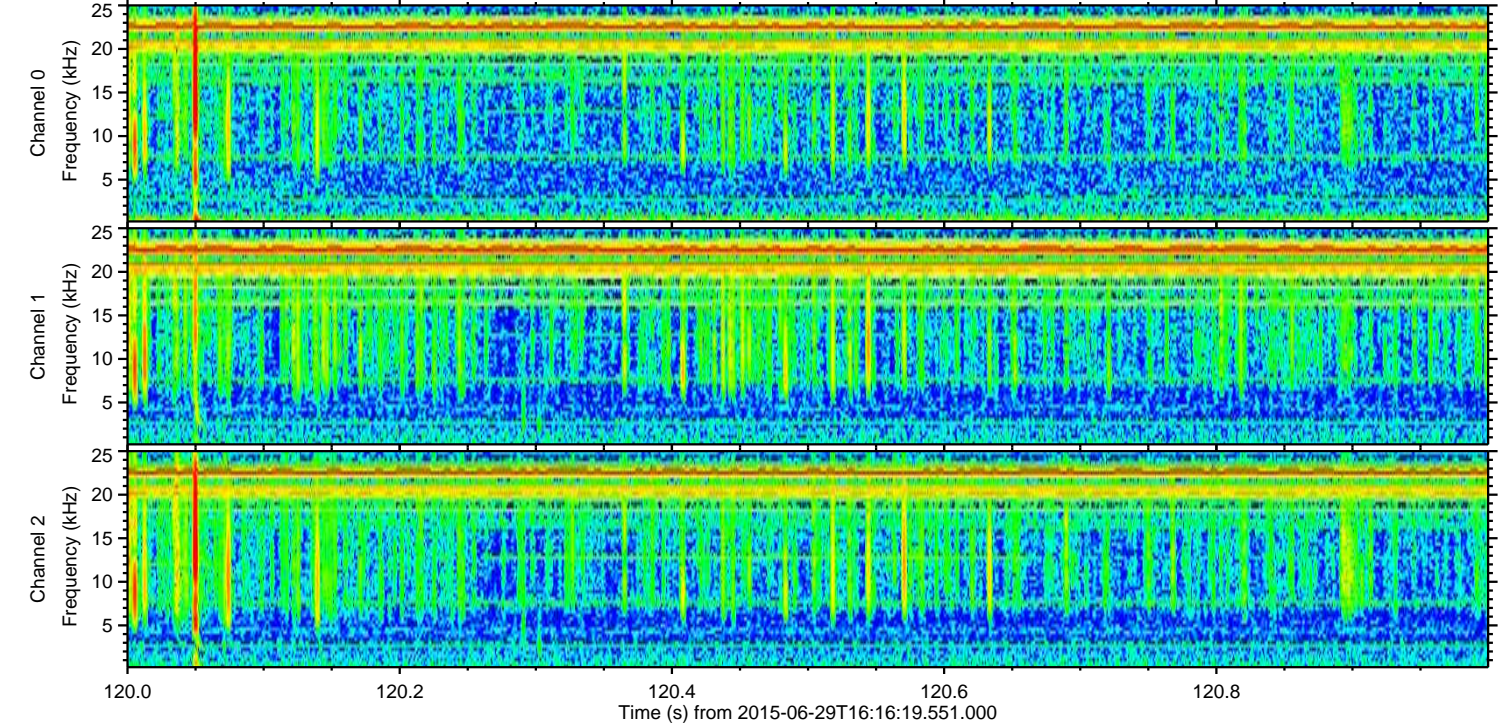
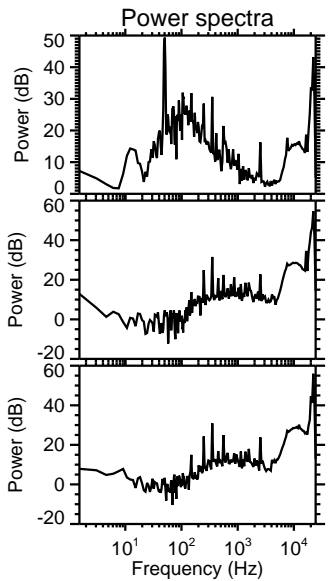
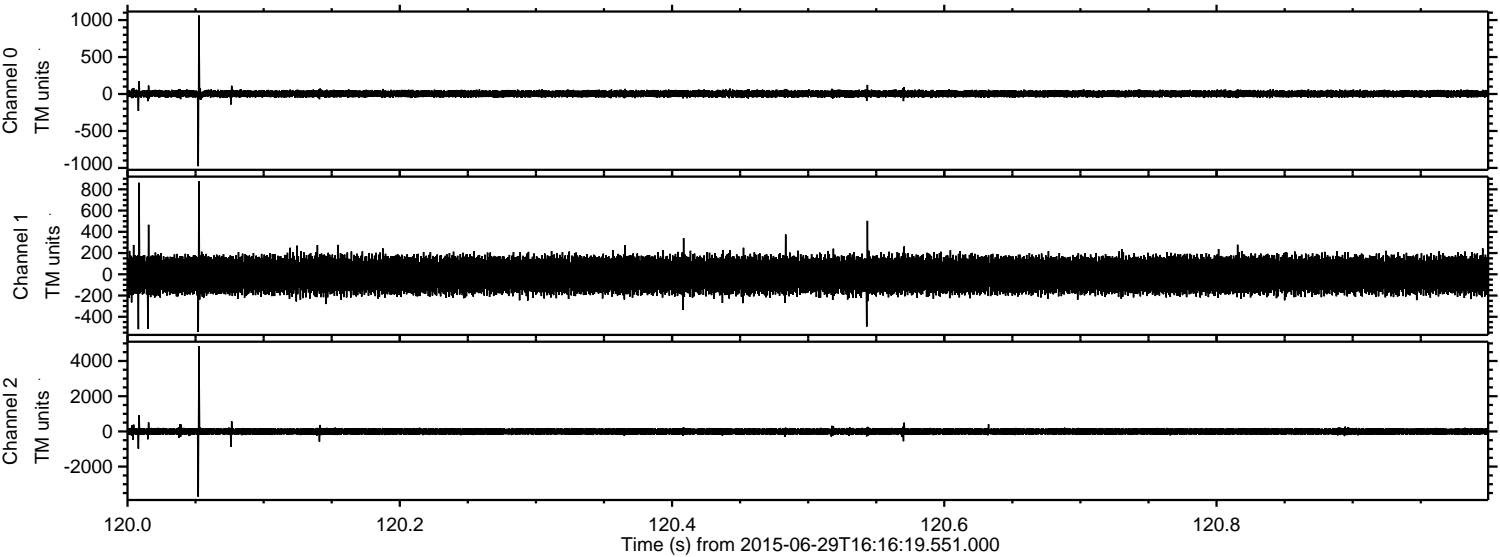
Channel 0
mn: -1023
mx: 874
 μ : 3.5
 σ : 25.7

Channel 1
mn: -550
mx: 568
 μ : -6.7
 σ : 91.7

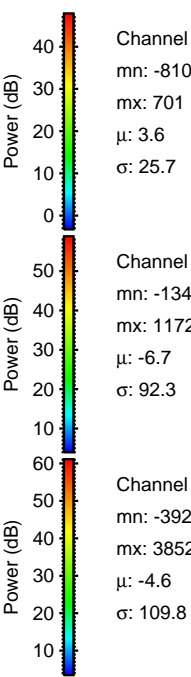
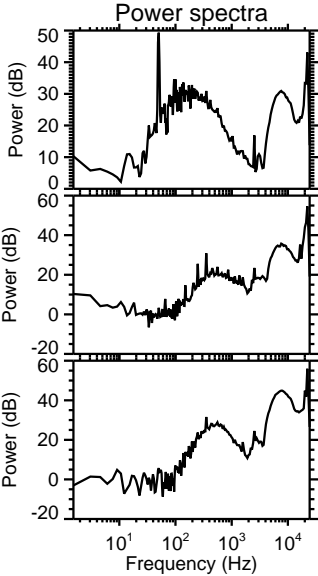
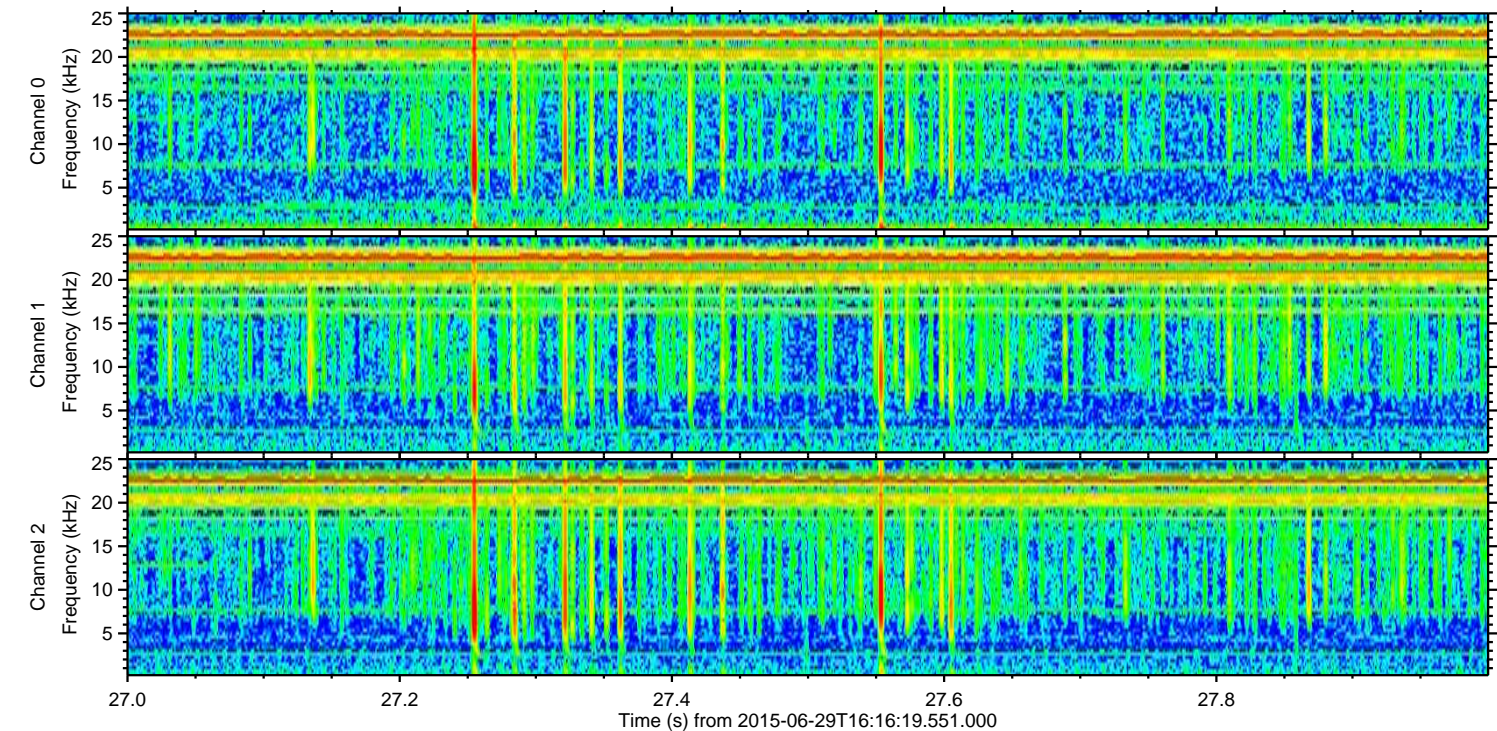
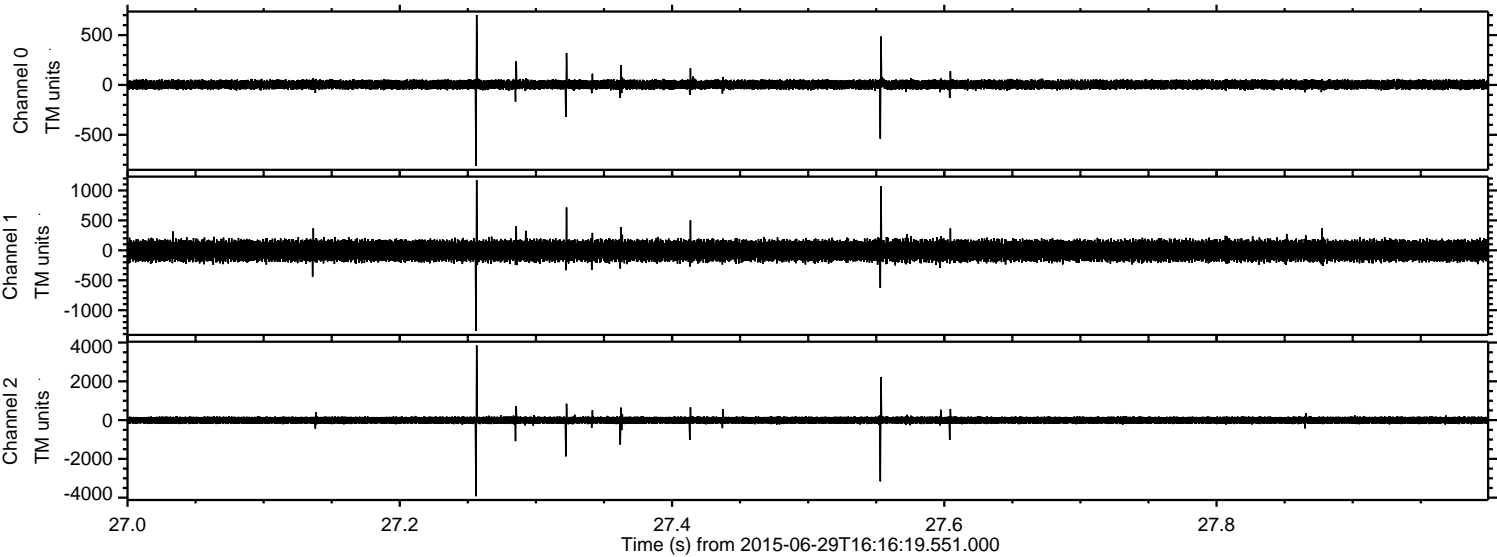
Channel 2
mn: -3813
mx: 4941
 μ : -4.7
 σ : 110.7

ELMAVAN 3D WAVEFORMS (Measured data sampled at 50 kHz) 51000 packets of 144 samples from 2015-06-29T16:16:19.551.000. Part 121/147

Processed Mon Jun 29 18:22:34 2015 by ELM ver.2012-10-06 from 001__elm20150629_161618__dat00.bin



Processed Mon Jun 29 18:22:35 2015 by ELM ver.2012-10-06 from 001__elm20150629_161618__dat00.bin

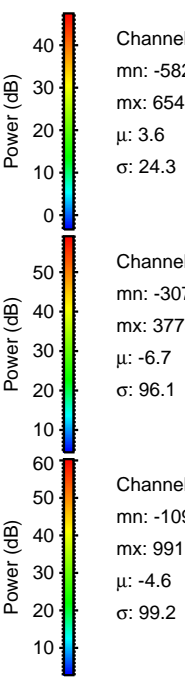
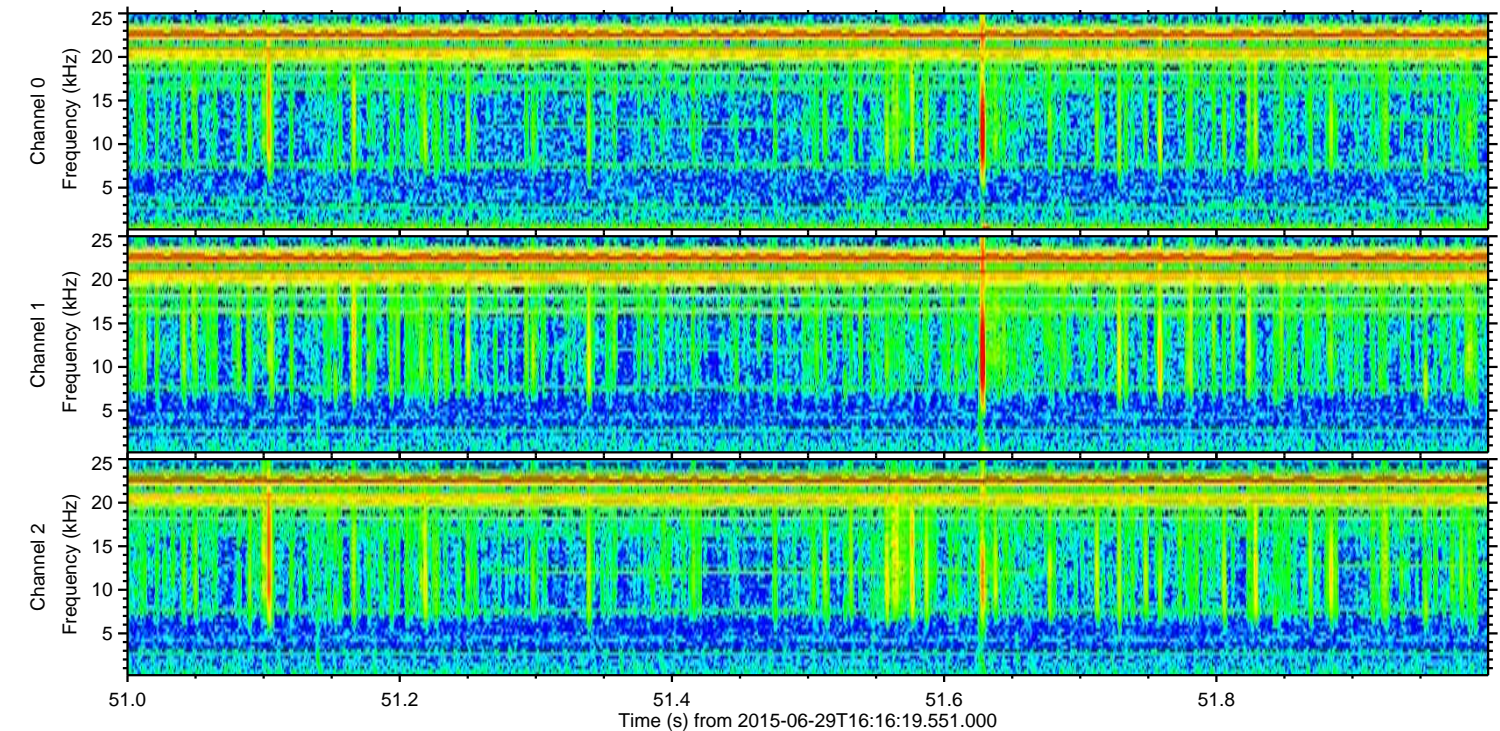
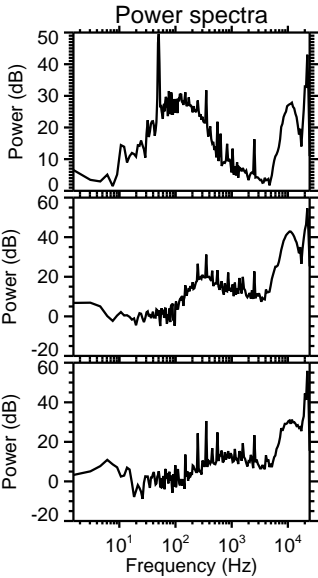
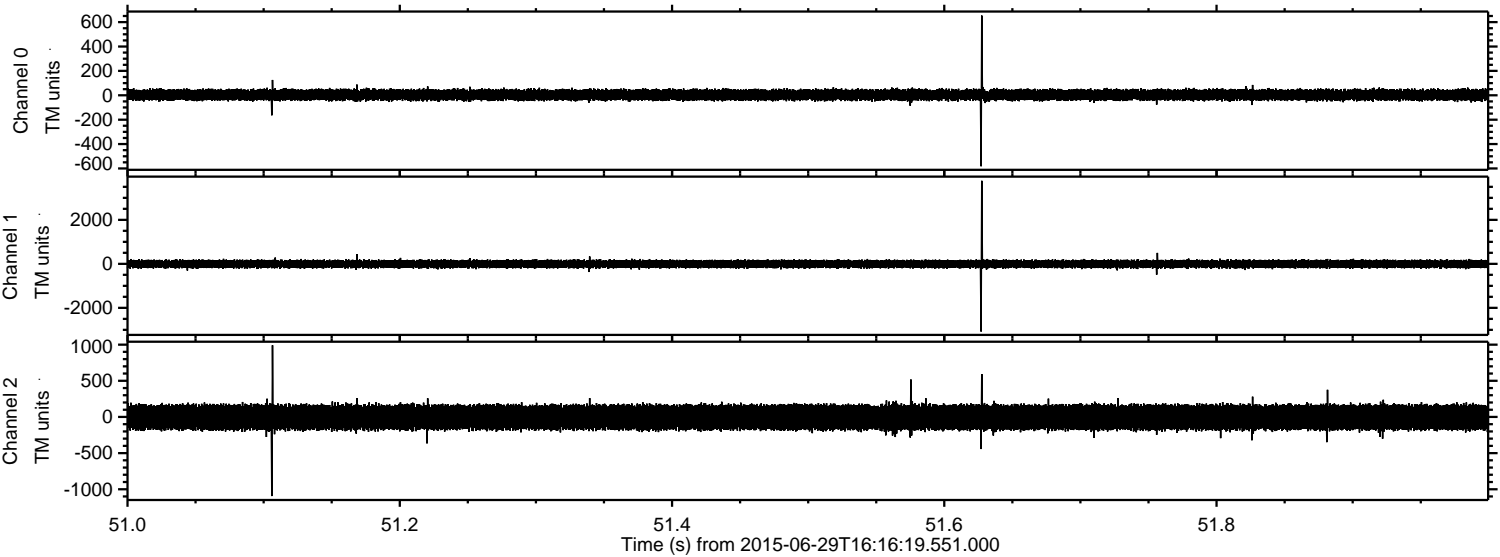


Channel 0
mn: -810
mx: 701
 μ : 3.6
 σ : 25.7

Channel 1
mn: -1346
mx: 1172
 μ : -6.7
 σ : 92.3

Channel 2
mn: -3923
mx: 3852
 μ : -4.6
 σ : 109.8

Processed Mon Jun 29 18:22:36 2015 by ELM ver.2012-10-06 from 001__elm20150629_161618__dat00.bin



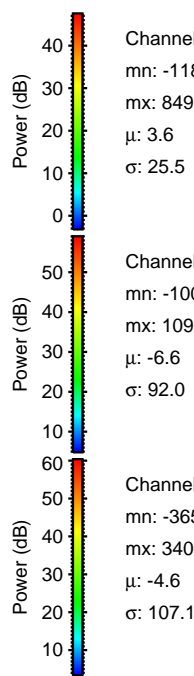
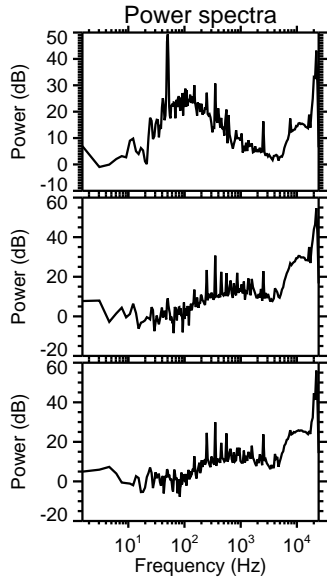
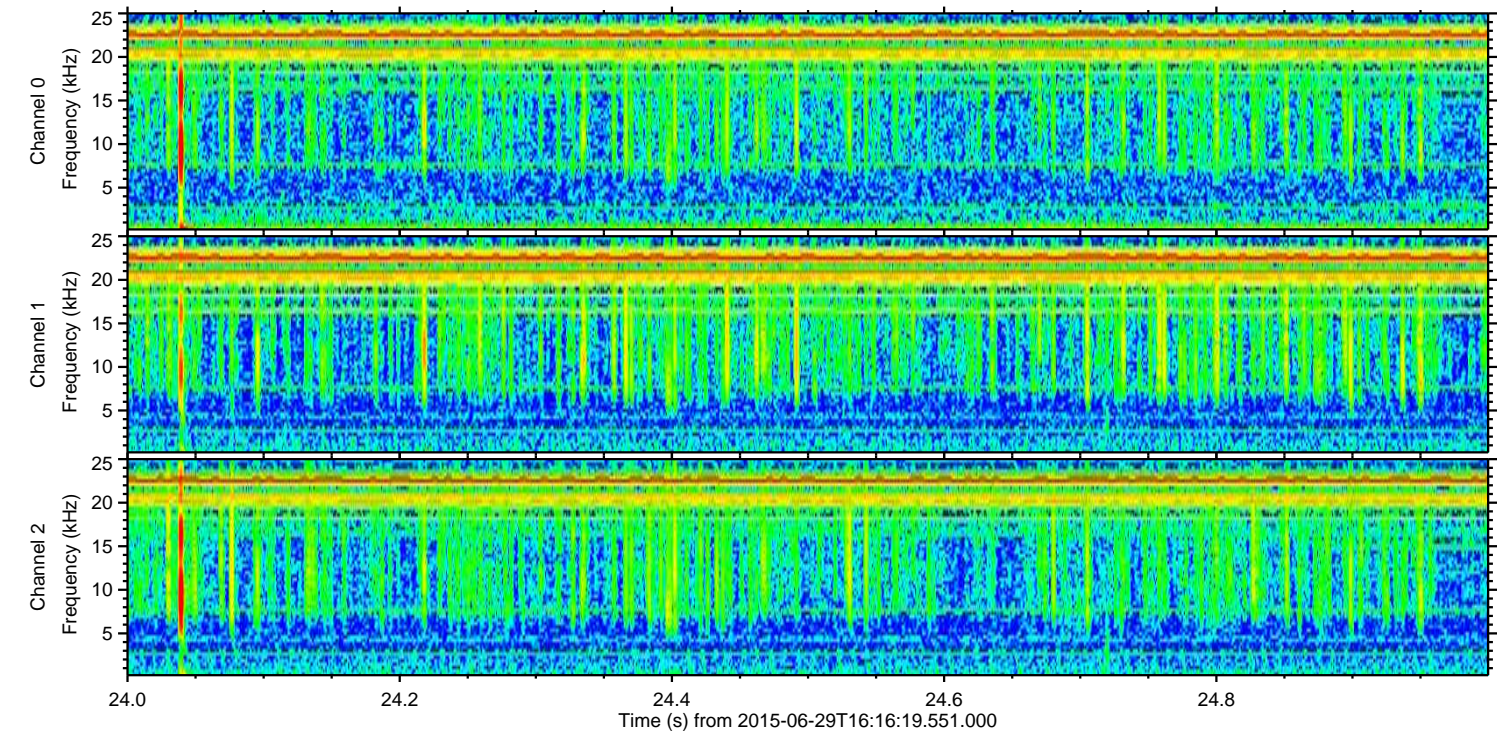
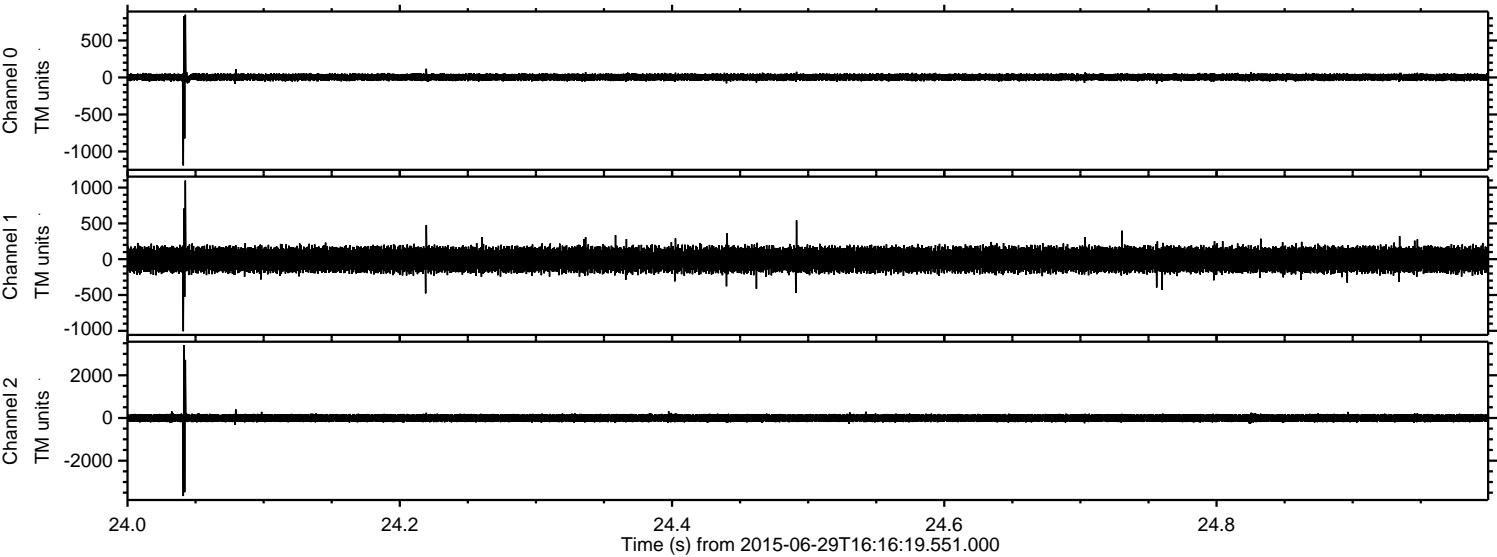
Channel 0
mn: -582
mx: 654
 μ : 3.6
 σ : 24.3

Channel 1
mn: -3076
mx: 3775
 μ : -6.7
 σ : 96.1

Channel 2
mn: -1094
mx: 991
 μ : -4.6
 σ : 99.2

ELMAVAN 3D WAVEFORMS (Measured data sampled at 50 kHz) 51000 packets of 144 samples from 2015-06-29T16:16:19.551.000. Part 25/147

Processed Mon Jun 29 18:22:37 2015 by ELM ver.2012-10-06 from 001__elm20150629_161618__dat00.bin

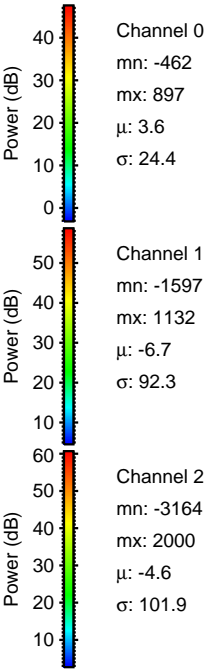
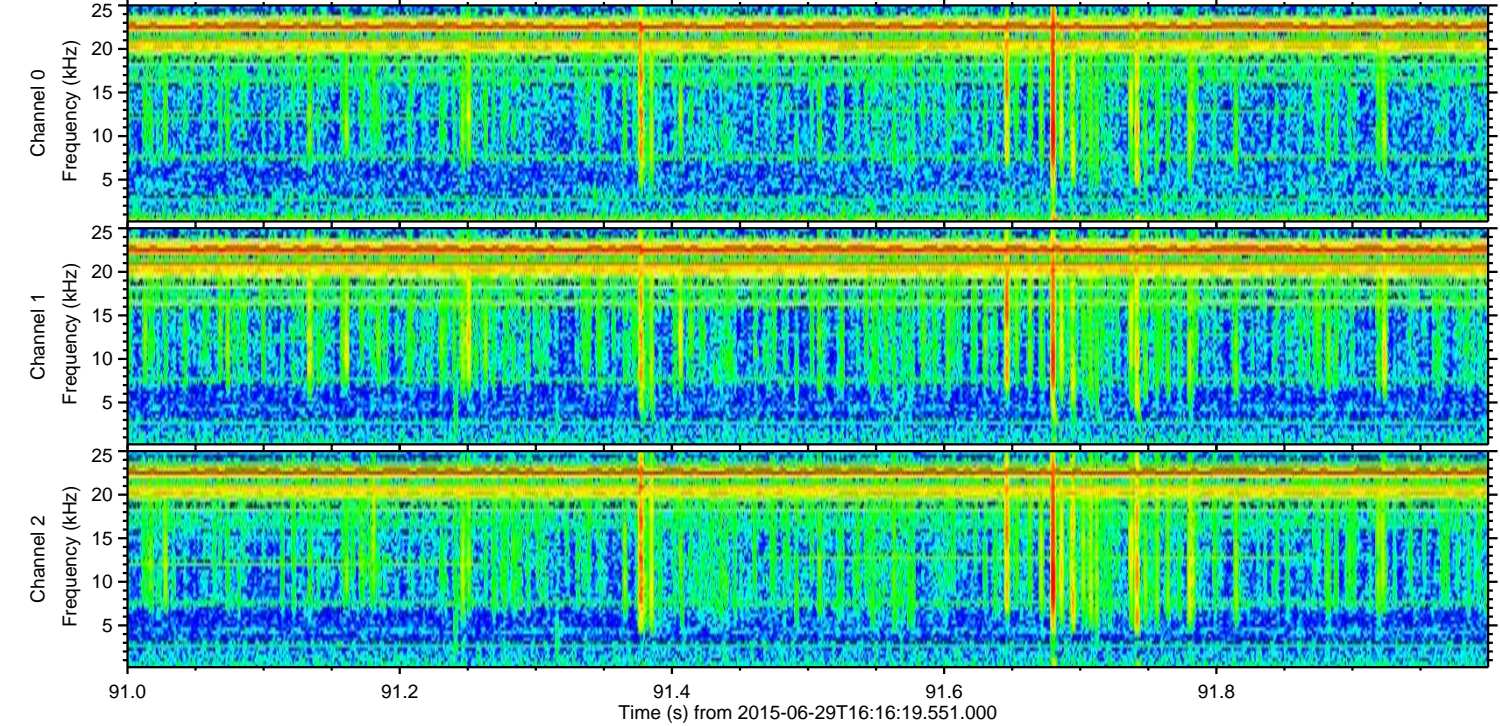
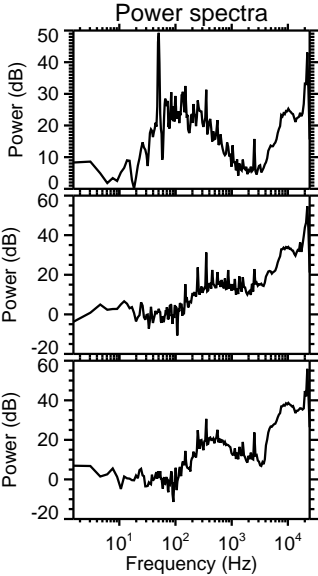
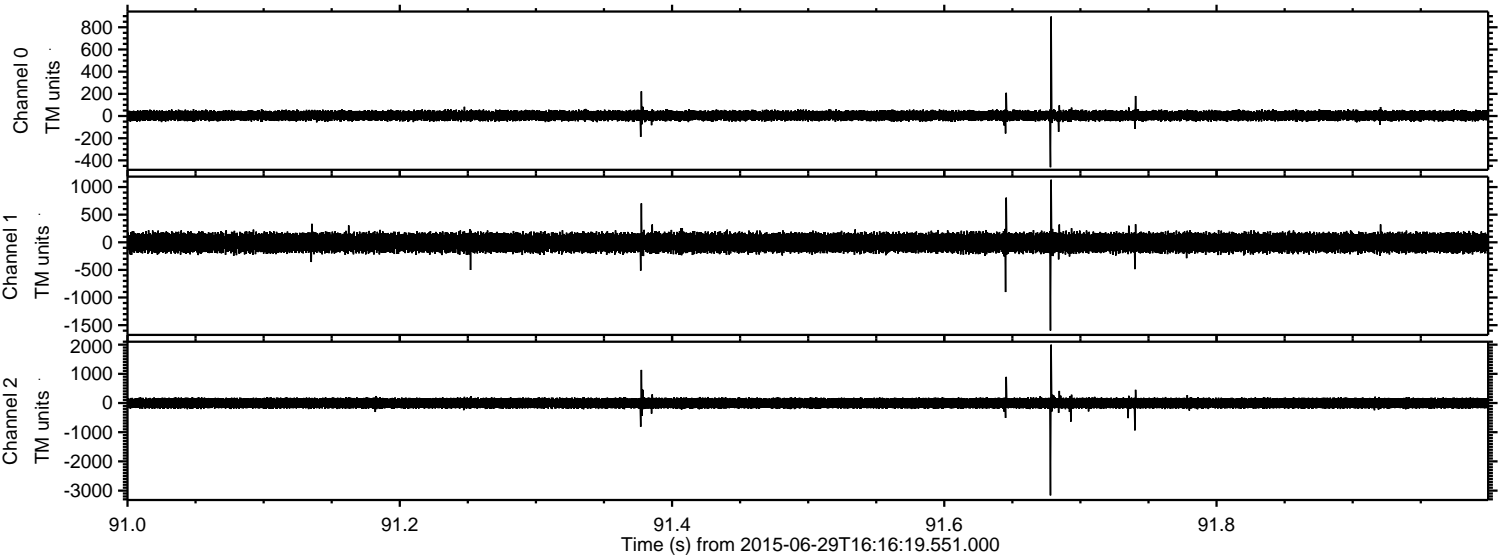


Channel 0
mn: -1189
mx: 849
 μ : 3.6
 σ : 25.5

Channel 1
mn: -1007
mx: 1098
 μ : -6.6
 σ : 92.0

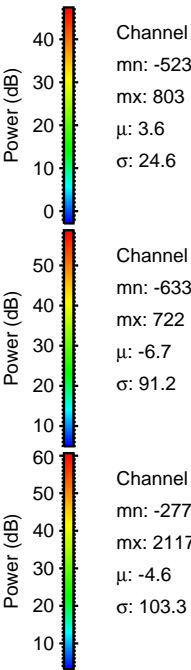
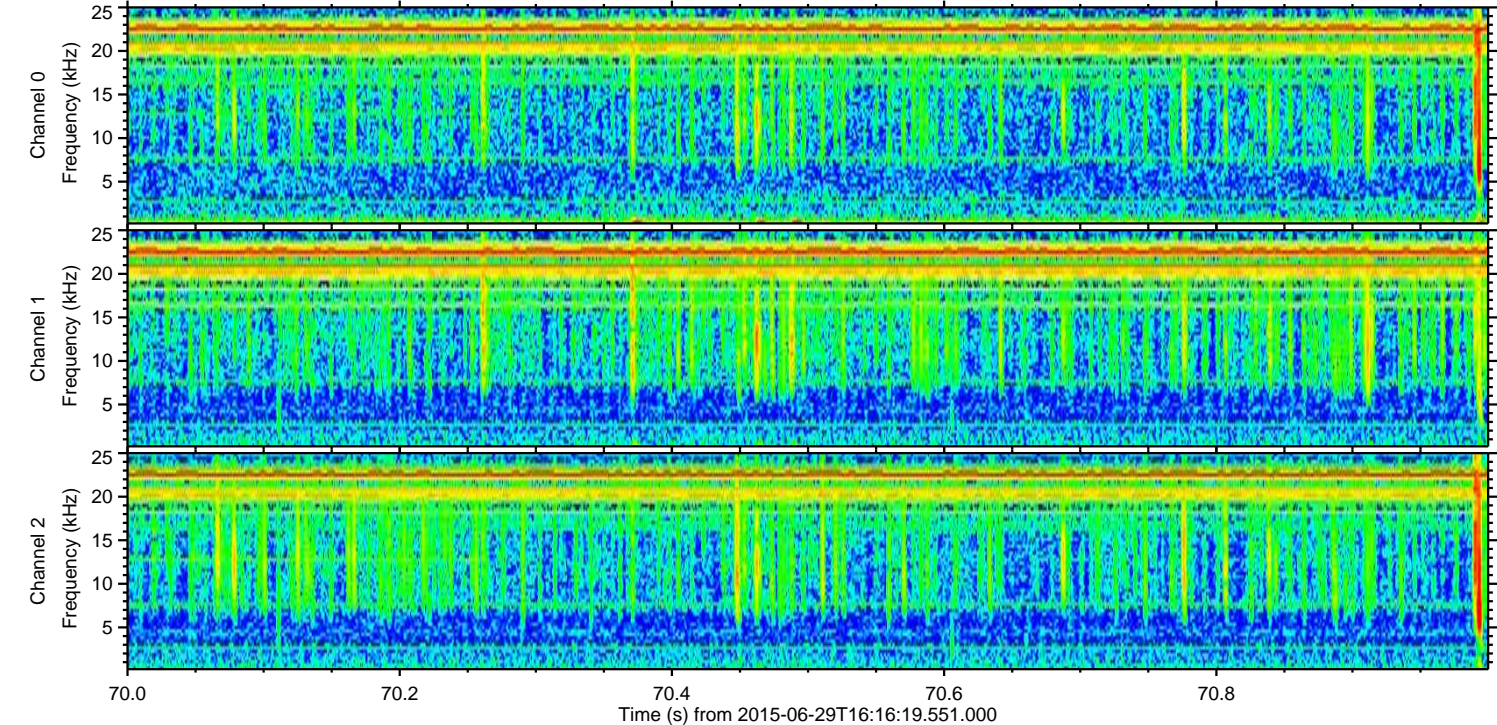
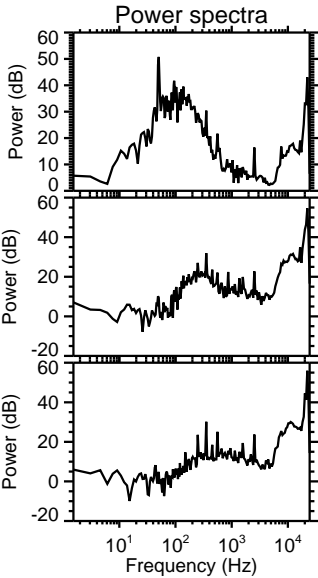
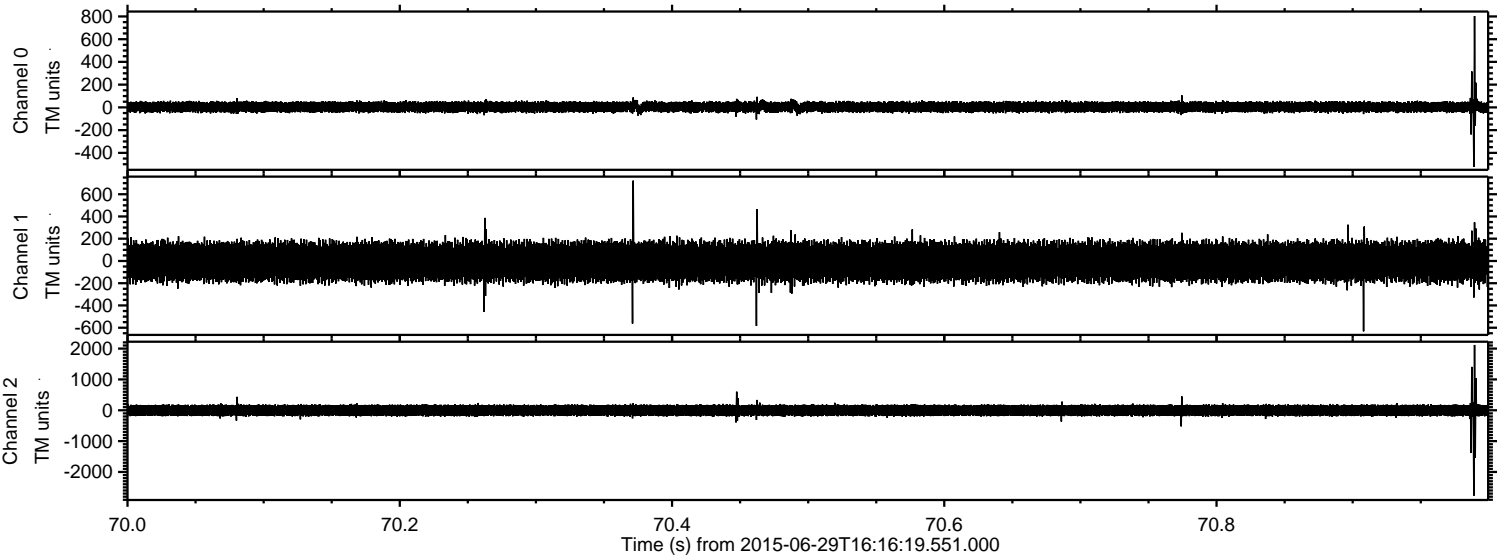
Channel 2
mn: -3659
mx: 3400
 μ : -4.6
 σ : 107.1

Processed Mon Jun 29 18:22:38 2015 by ELM ver.2012-10-06 from 001__elm20150629_161618__dat00.bin

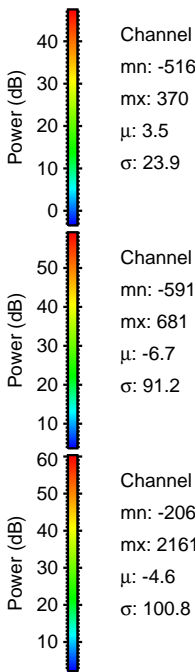
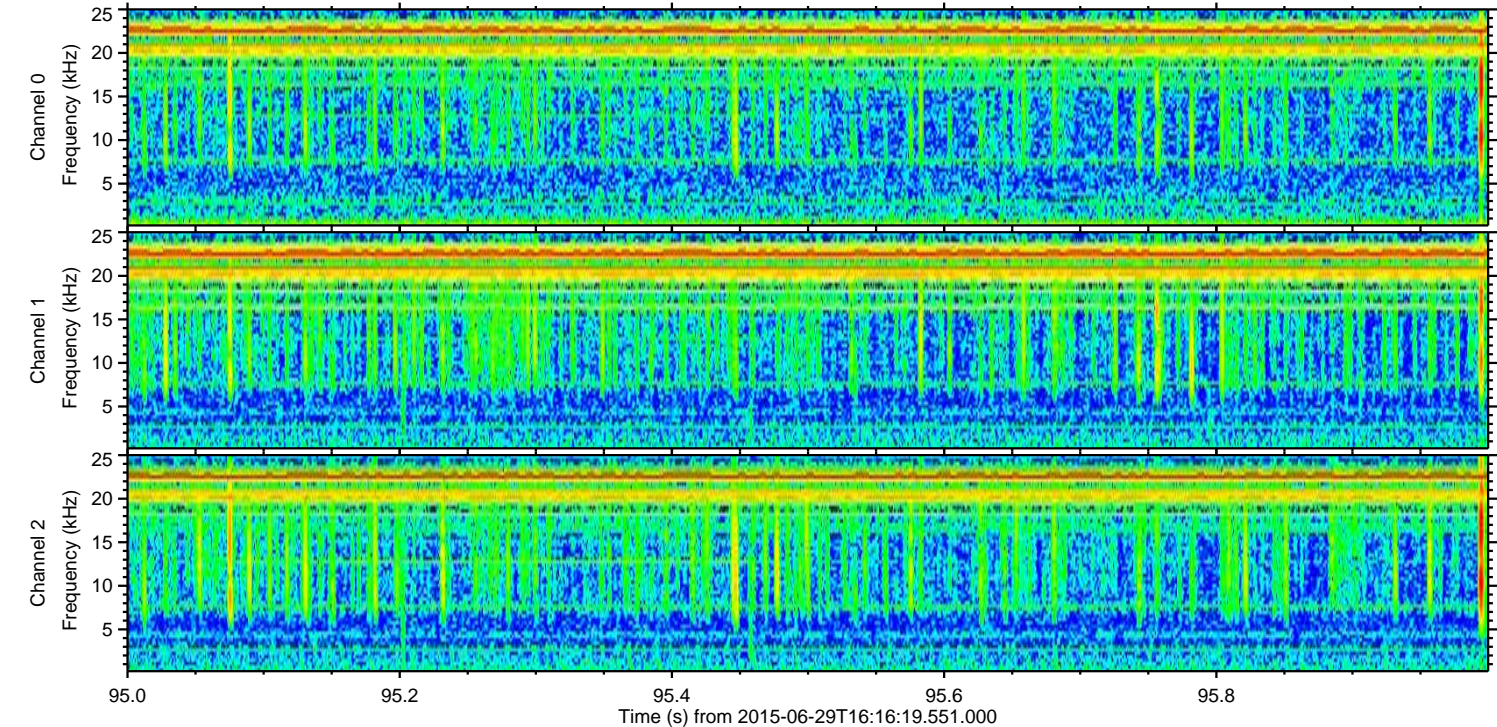
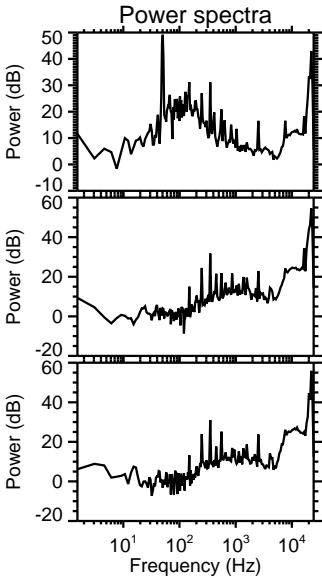
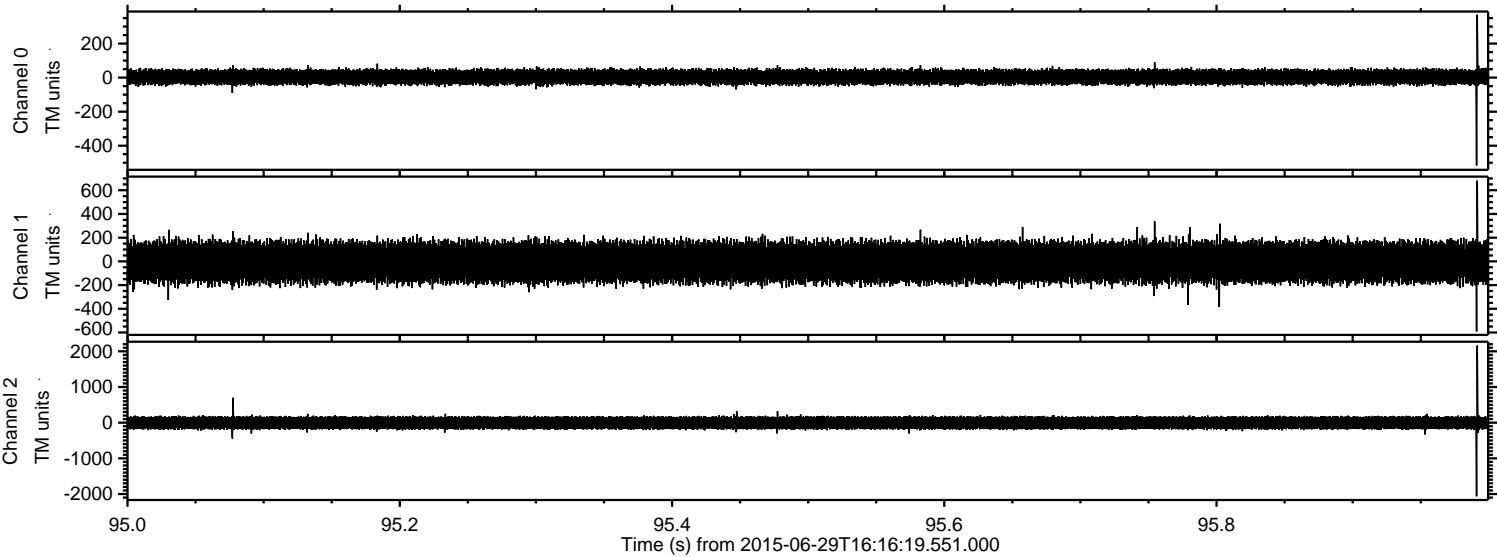


ELMAVAN 3D WAVEFORMS (Measured data sampled at 50 kHz) 51000 packets of 144 samples from 2015-06-29T16:16:19.551.000. Part 71/147

Processed Mon Jun 29 18:22:39 2015 by ELM ver.2012-10-06 from 001__elm20150629_161618__dat00.bin



Processed Mon Jun 29 18:22:40 2015 by ELM ver.2012-10-06 from 001__elm20150629_161618__dat00.bin



Processed Mon Jun 29 18:22:41 2015 by ELM ver.2012-10-06 from 001__elm20150629_161618__dat00.bin

