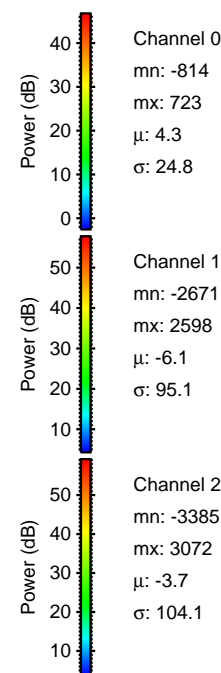
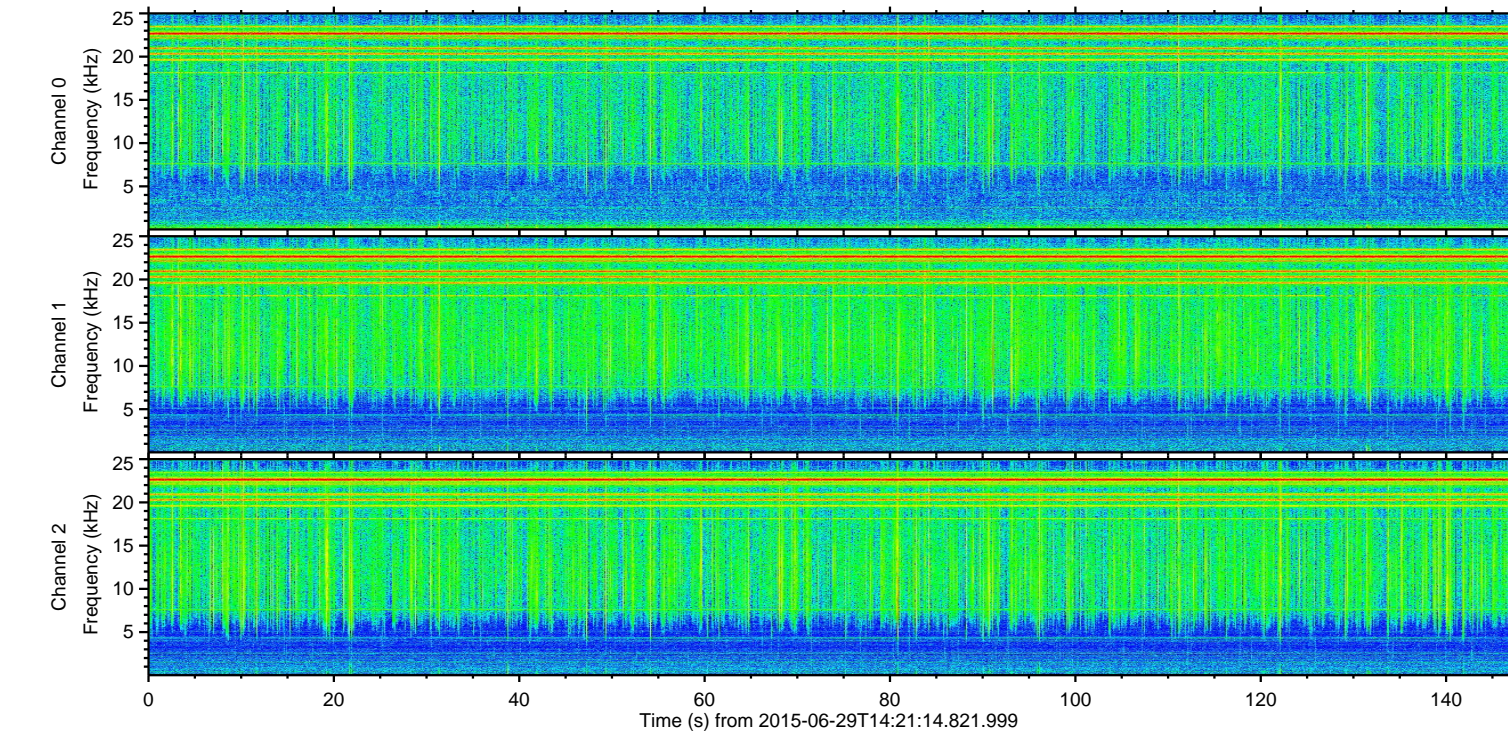
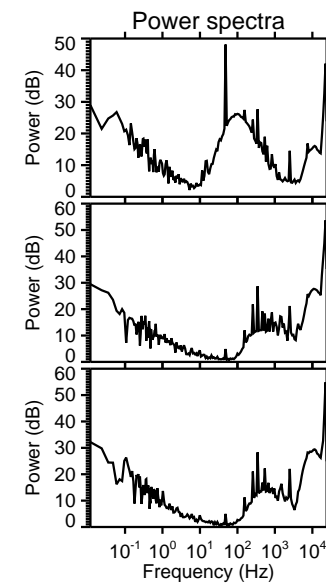
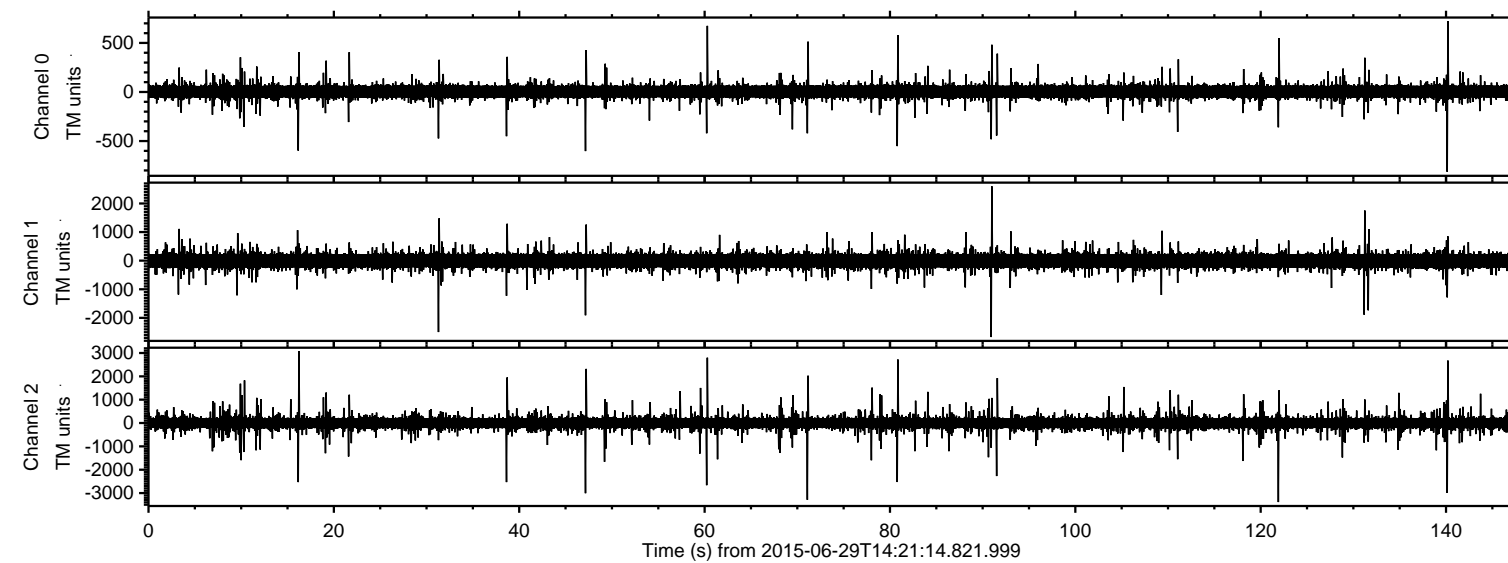


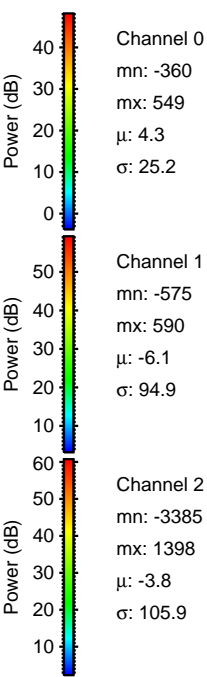
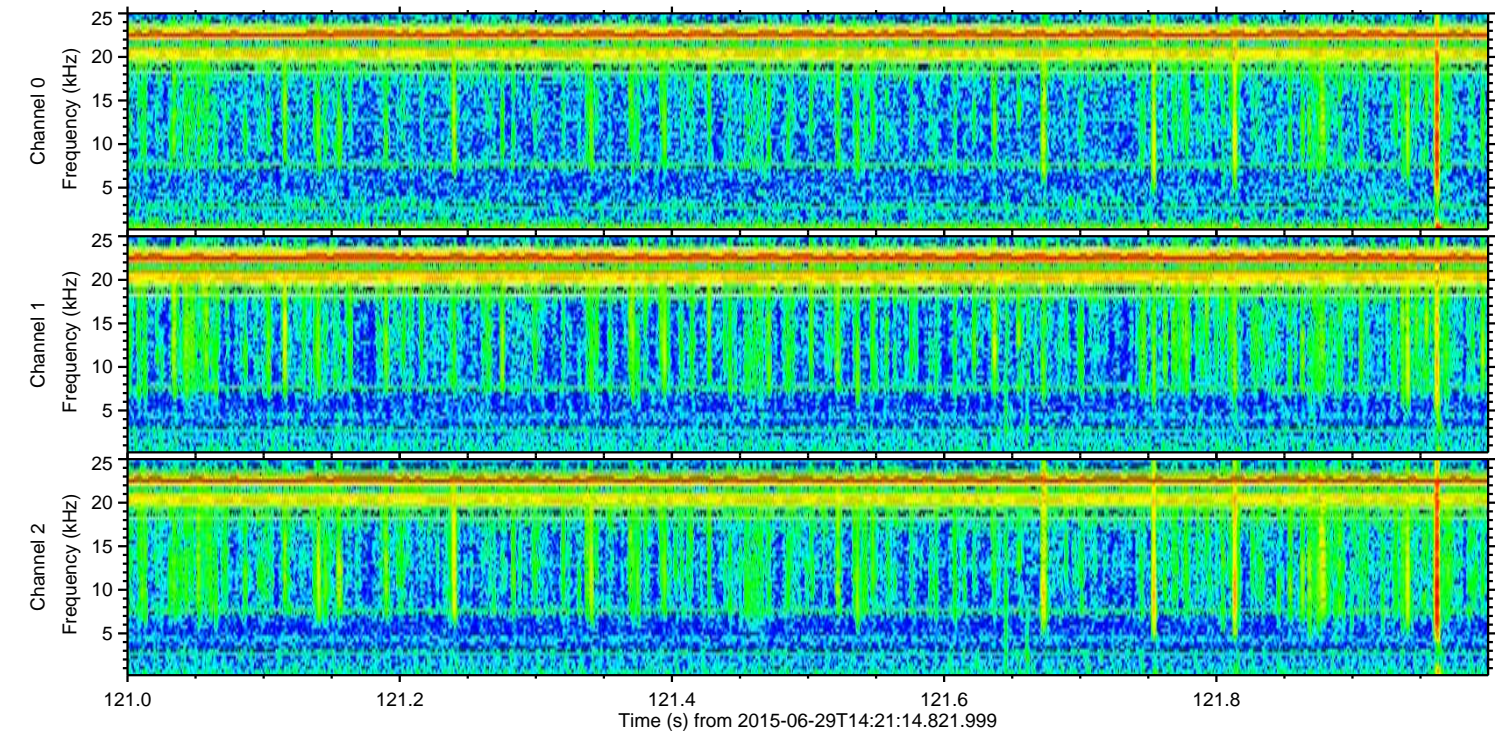
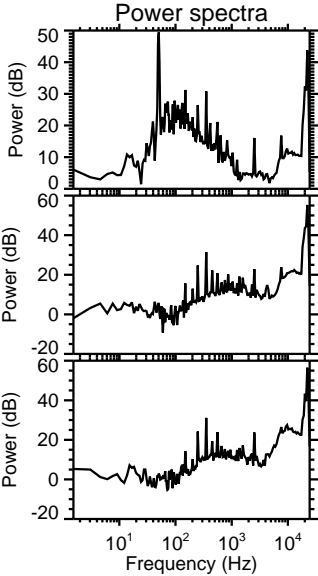
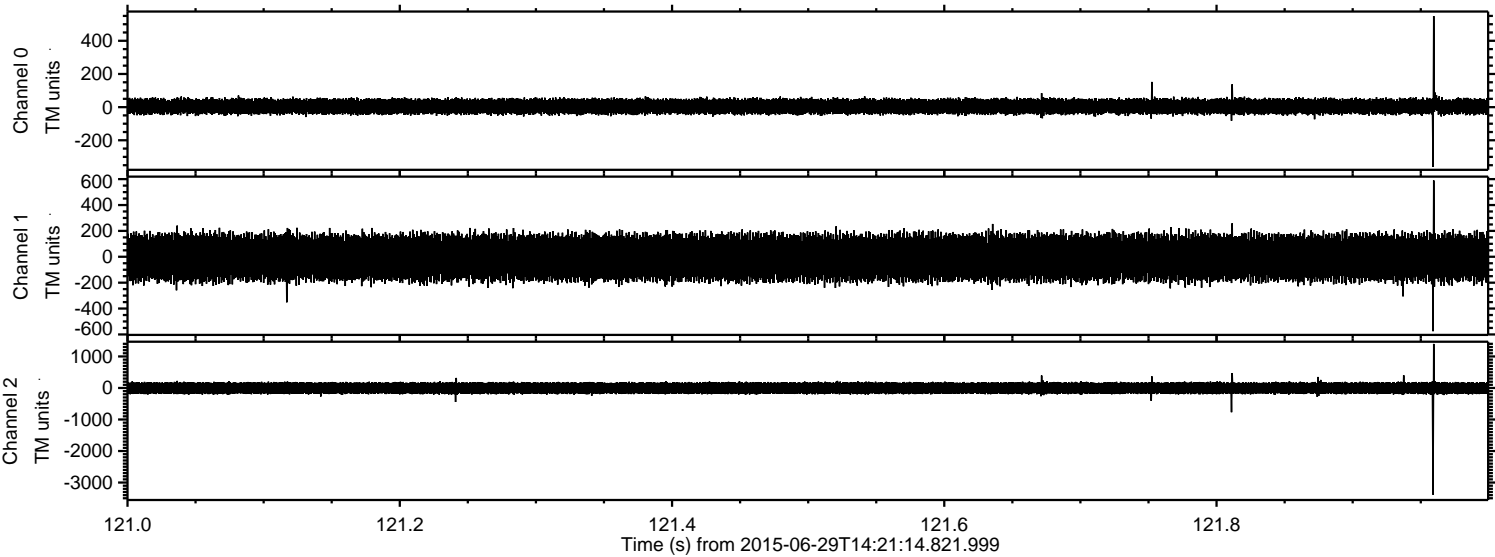
ELMAVAN 3D WAVEFORMS (Measured data sampled at 50 kHz) 51000 packets of 144 samples from 2015-06-29T14:21:14.821.999.

Processed Mon Jun 29 16:27:40 2015 by ELM ver.2012-10-06 from 001__elm20150629_142113__dat00.bin



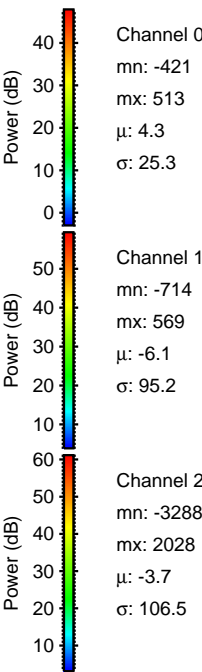
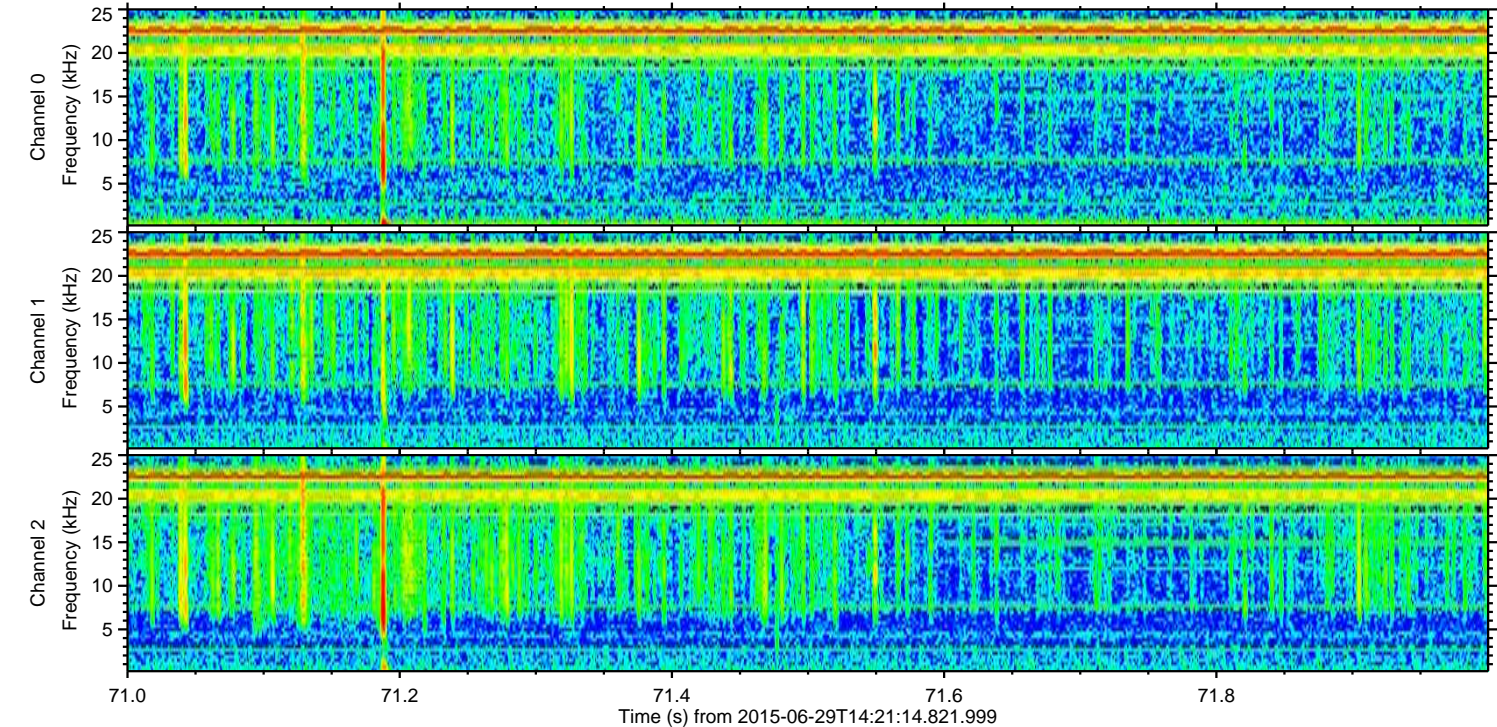
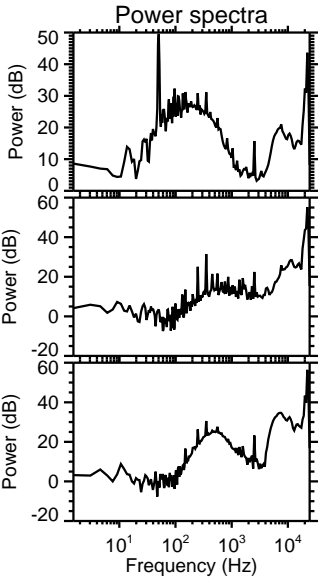
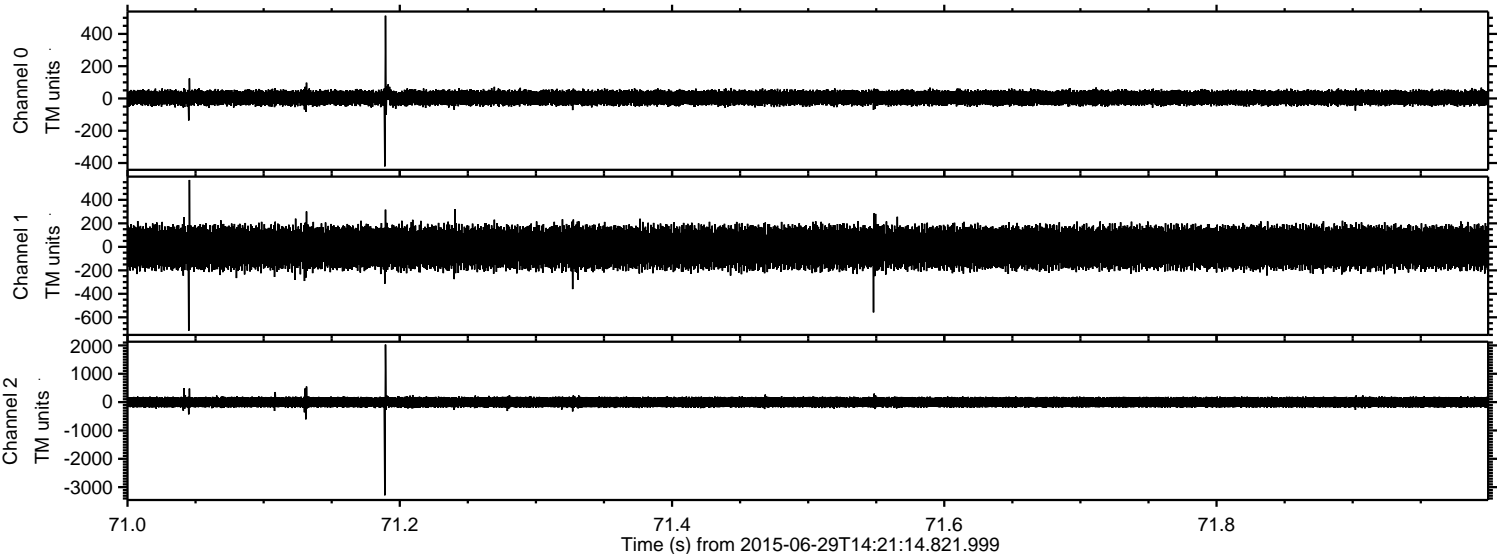
ELMAVAN 3D WAVEFORMS (Measured data sampled at 50 kHz) 51000 packets of 144 samples from 2015-06-29T14:21:14.821.999. Part 122/147

Processed Mon Jun 29 16:27:52 2015 by ELM ver.2012-10-06 from 001__elm20150629_142113__dat00.bin



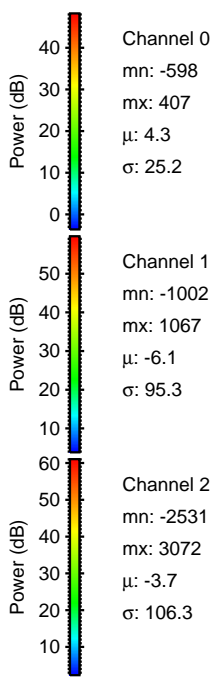
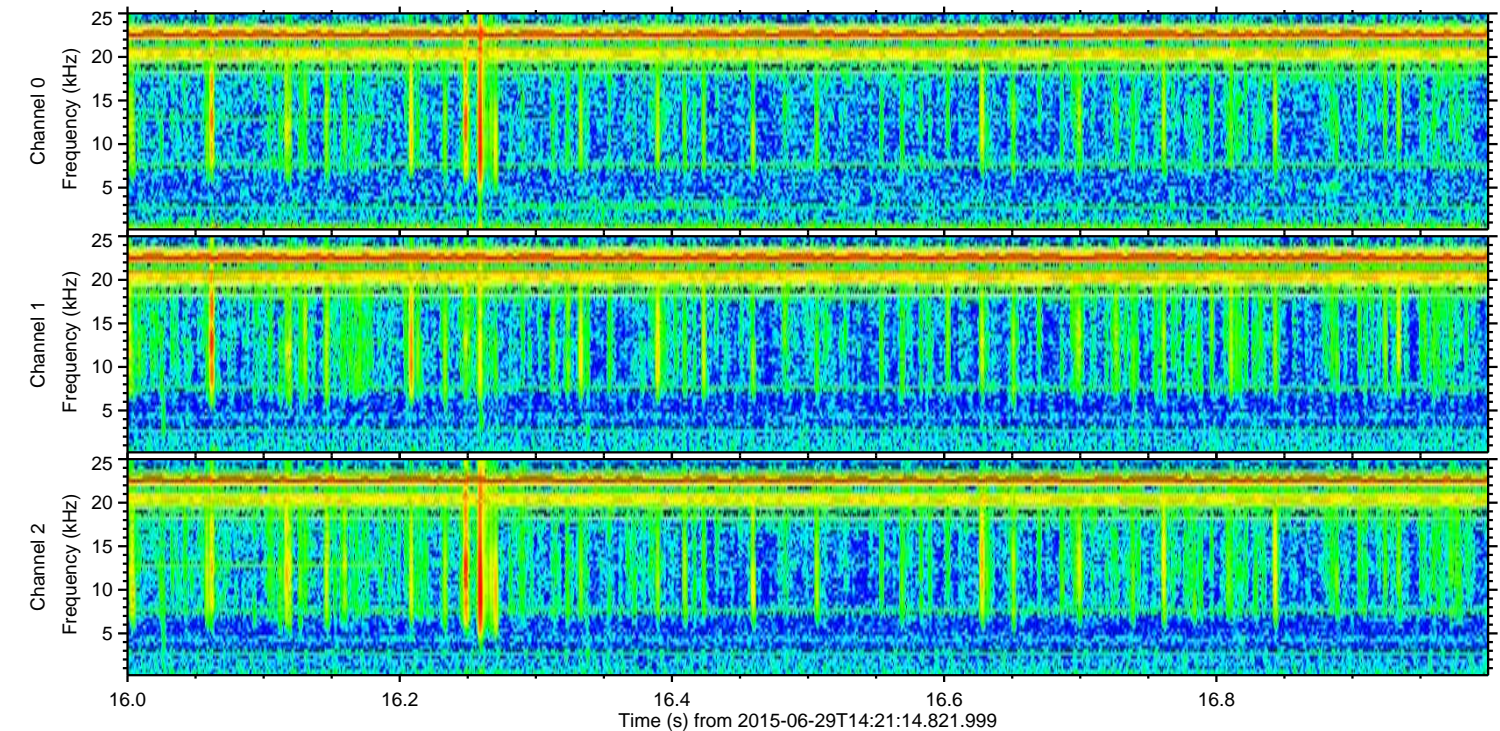
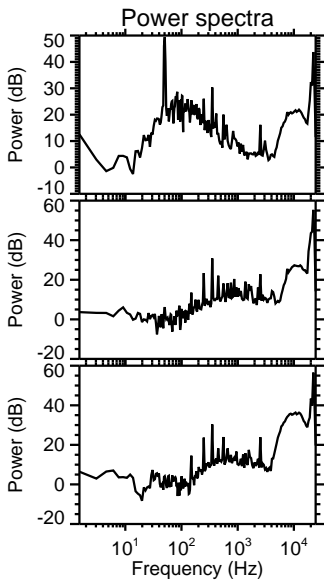
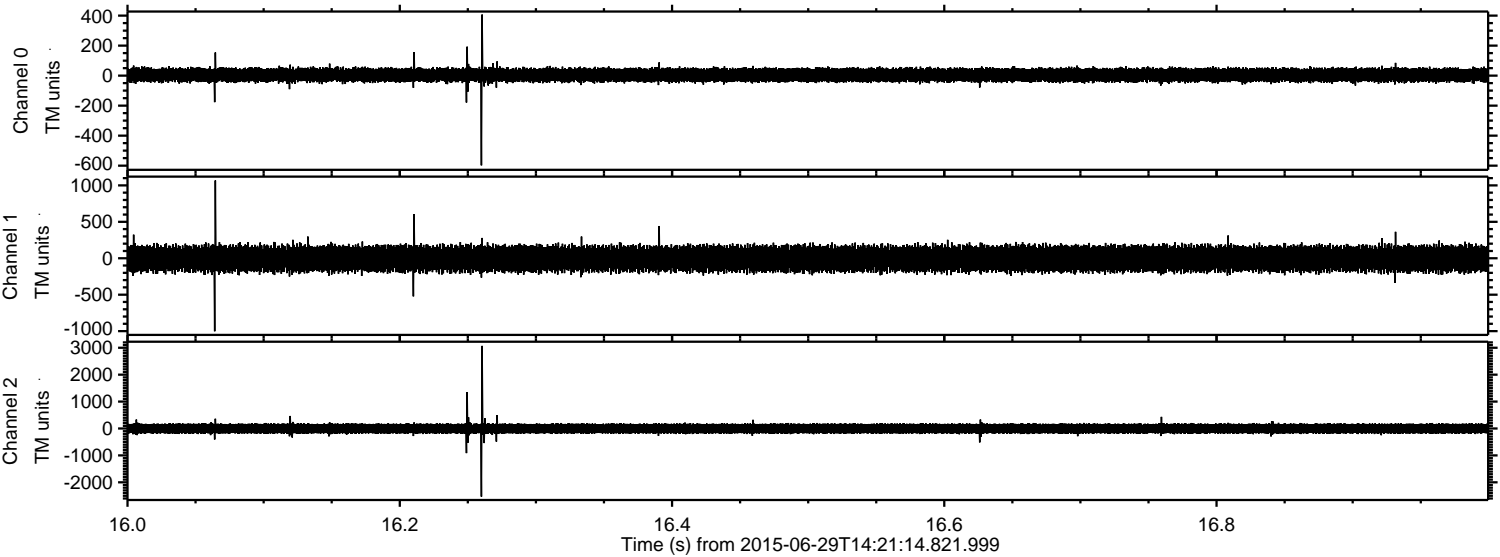
ELMAVAN 3D WAVEFORMS (Measured data sampled at 50 kHz) 51000 packets of 144 samples from 2015-06-29T14:21:14.821.999. Part 72/147

Processed Mon Jun 29 16:27:53 2015 by ELM ver.2012-10-06 from 001__elm20150629_142113__dat00.bin

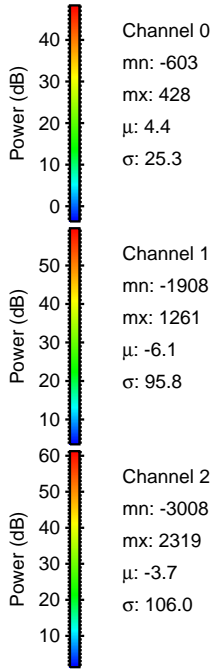
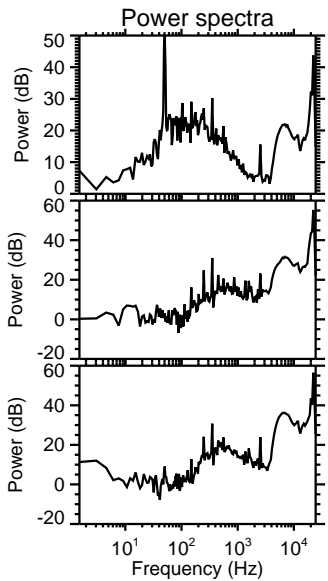
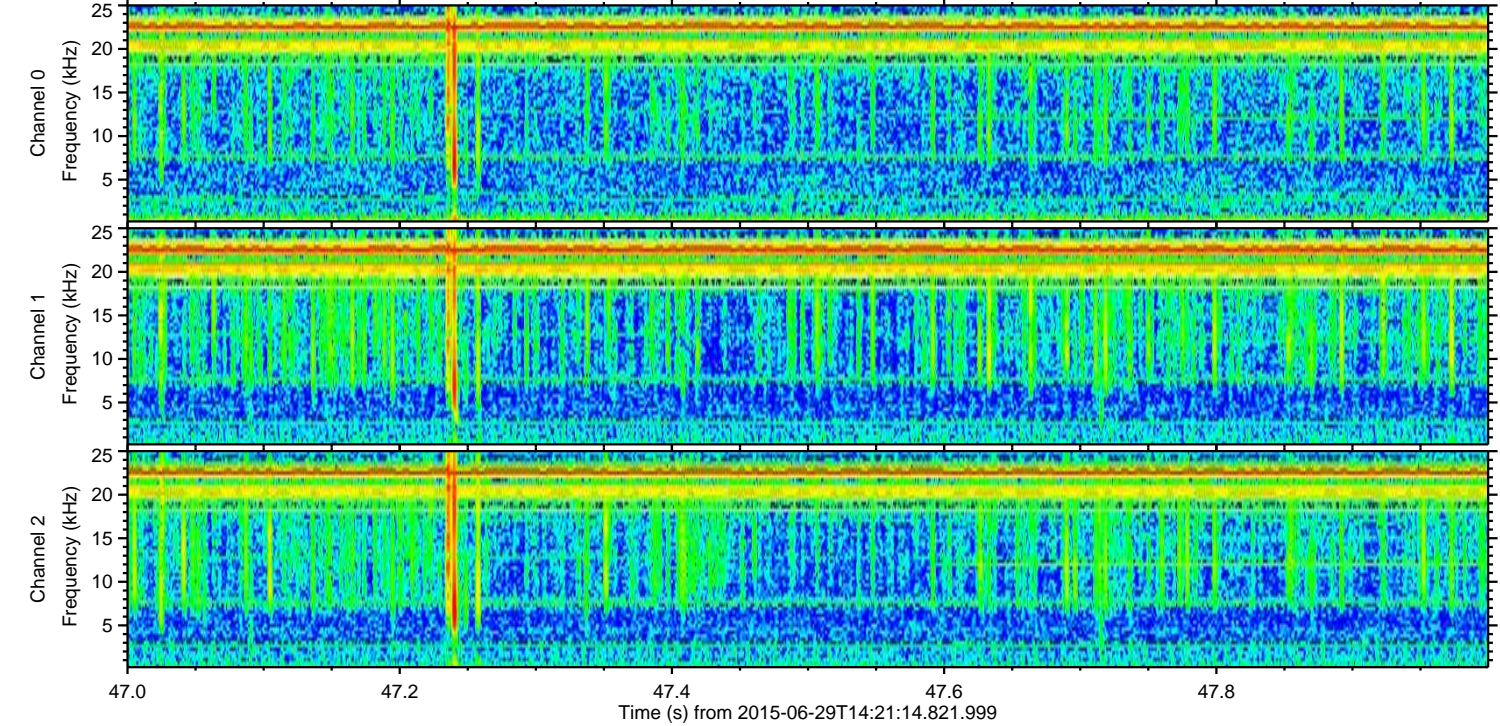
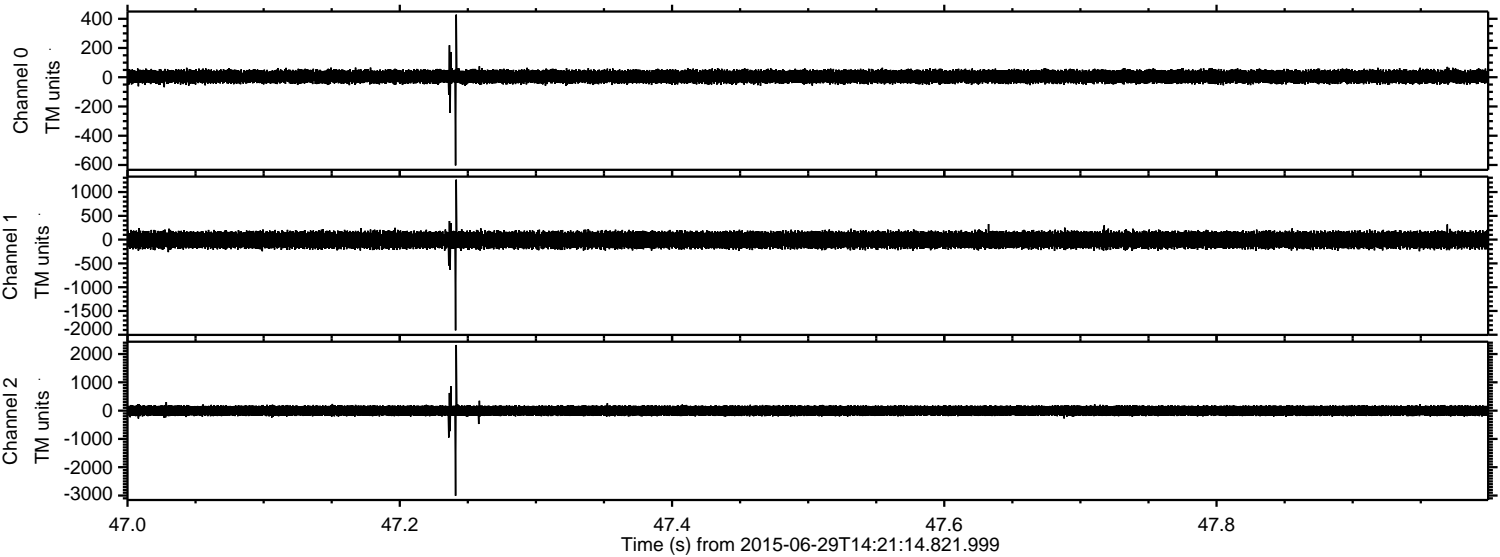


ELMAVAN 3D WAVEFORMS (Measured data sampled at 50 kHz) 51000 packets of 144 samples from 2015-06-29T14:21:14.821.999. Part 17/147

Processed Mon Jun 29 16:27:54 2015 by ELM ver.2012-10-06 from 001__elm20150629_142113__dat00.bin

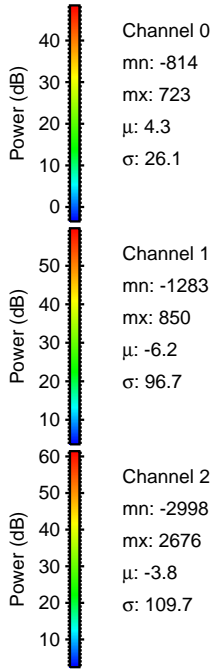
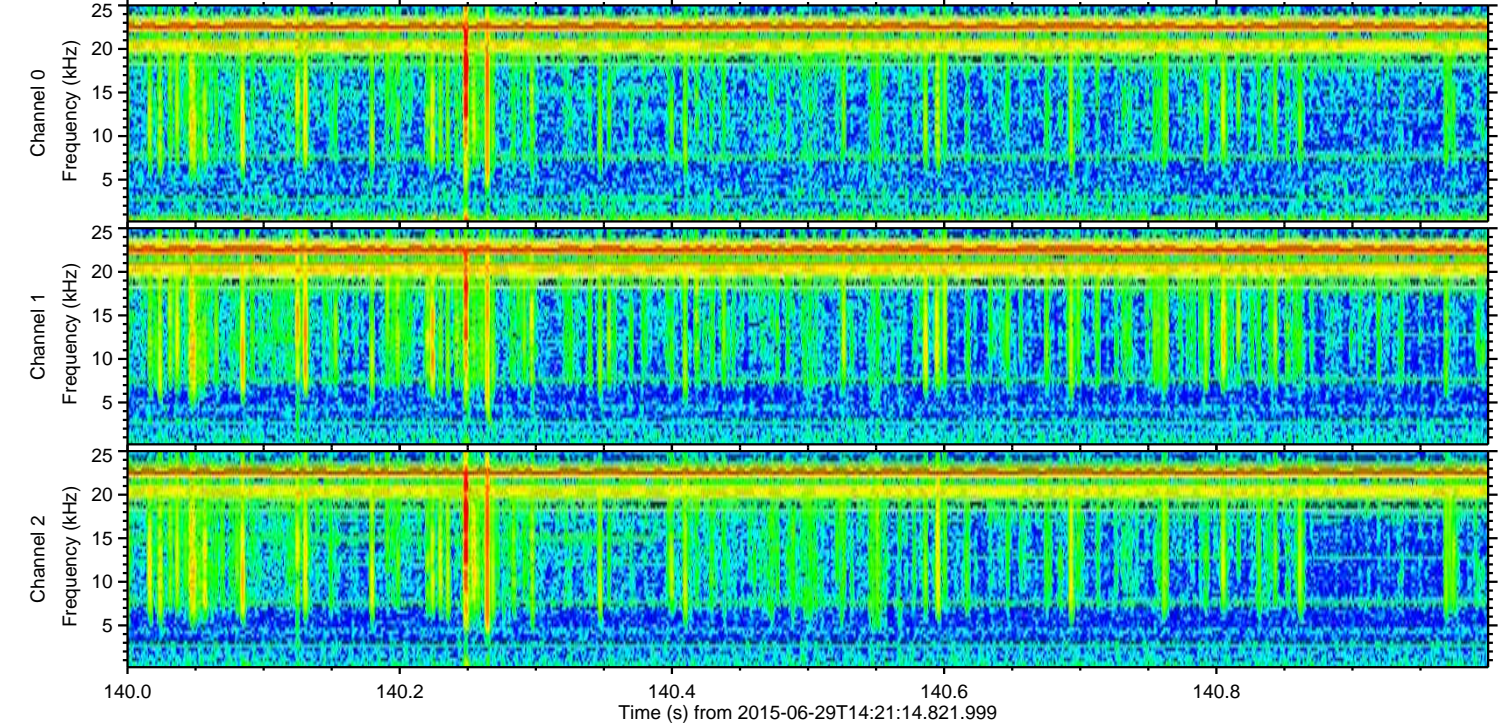
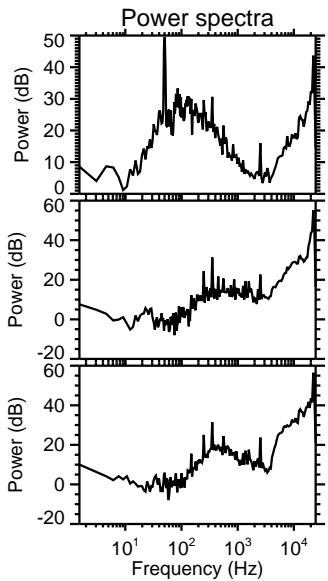
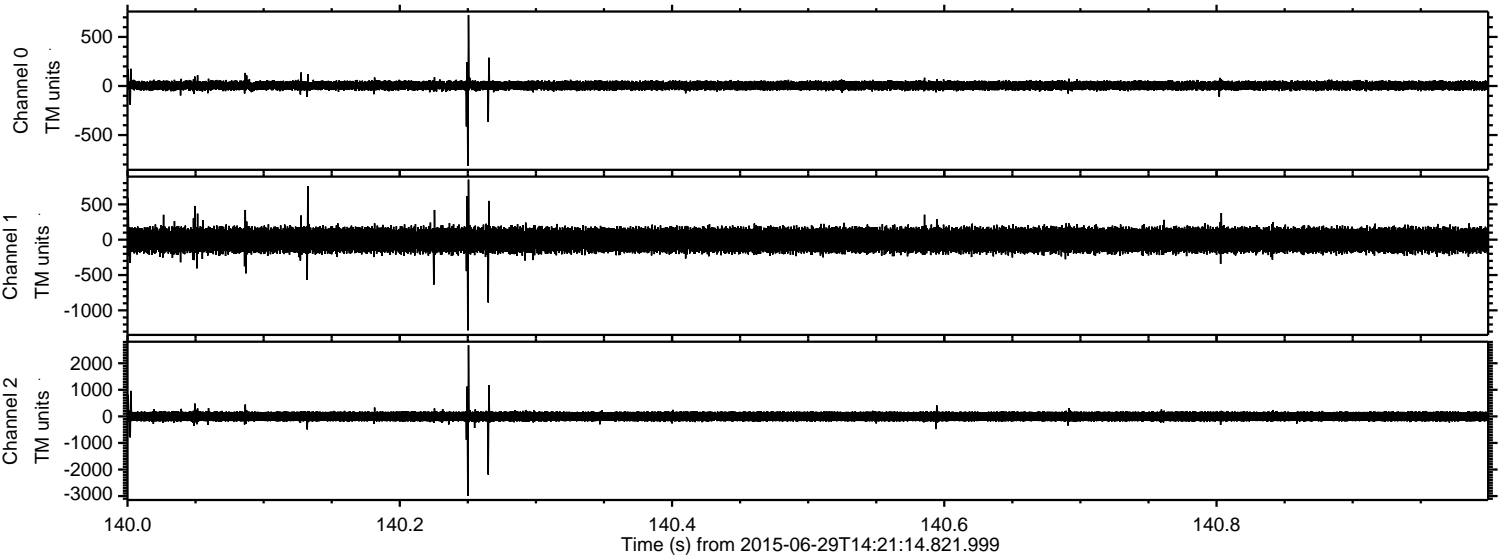


Processed Mon Jun 29 16:27:55 2015 by ELM ver.2012-10-06 from 001__elm20150629_142113__dat00.bin



ELMAVAN 3D WAVEFORMS (Measured data sampled at 50 kHz) 51000 packets of 144 samples from 2015-06-29T14:21:14.821.999. Part 141/147

Processed Mon Jun 29 16:27:56 2015 by ELM ver.2012-10-06 from 001__elm20150629_142113__dat00.bin

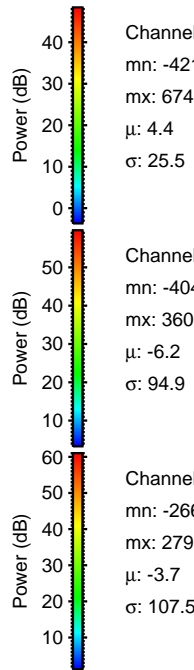
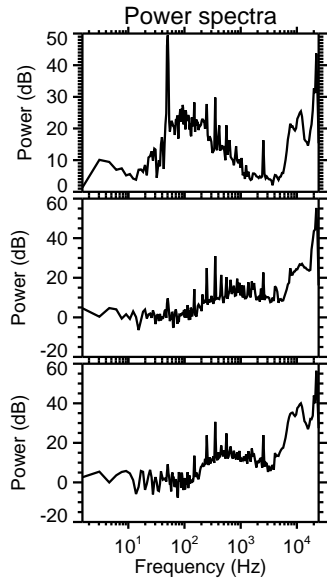
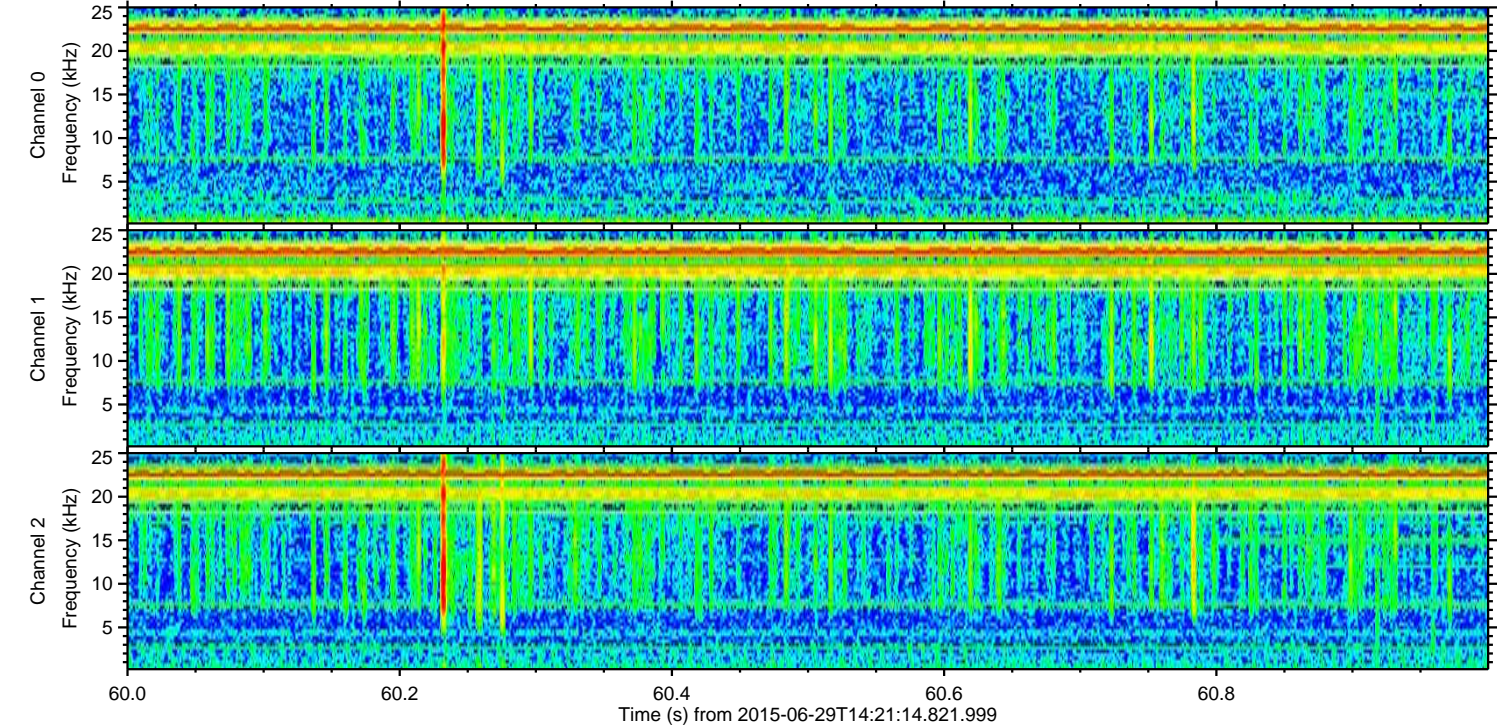
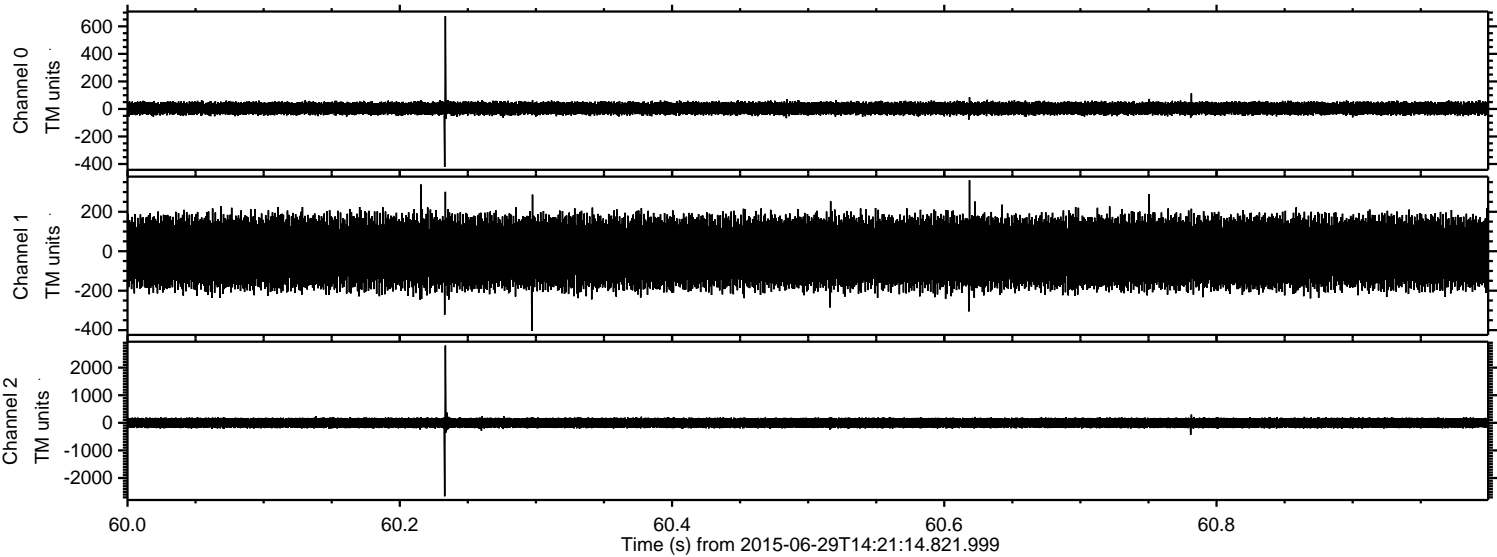


Channel 0
mn: -814
mx: 723
 μ : 4.3
 σ : 26.1

Channel 1
mn: -1283
mx: 850
 μ : -6.2
 σ : 96.7

Channel 2
mn: -2998
mx: 2676
 μ : -3.8
 σ : 109.7

Processed Mon Jun 29 16:27:57 2015 by ELM ver.2012-10-06 from 001__elm20150629_142113__dat00.bin

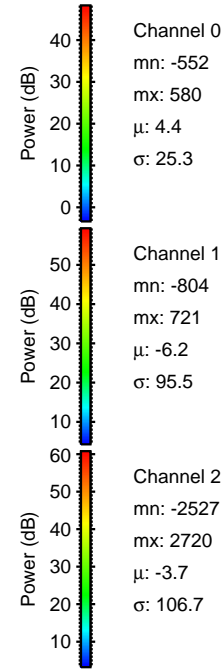
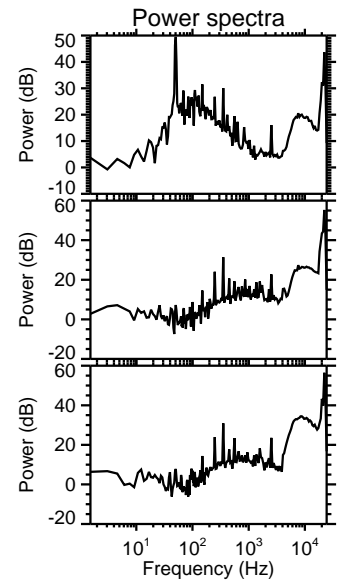
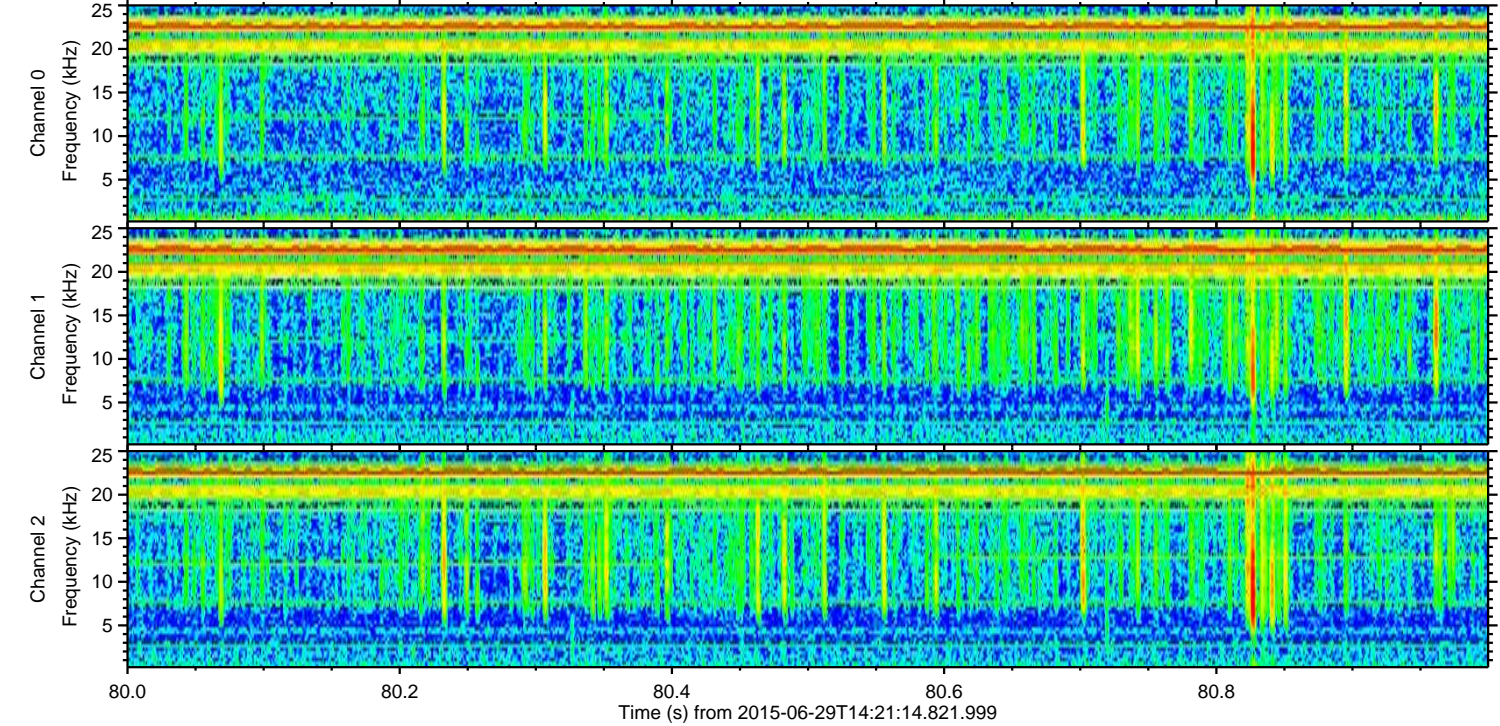
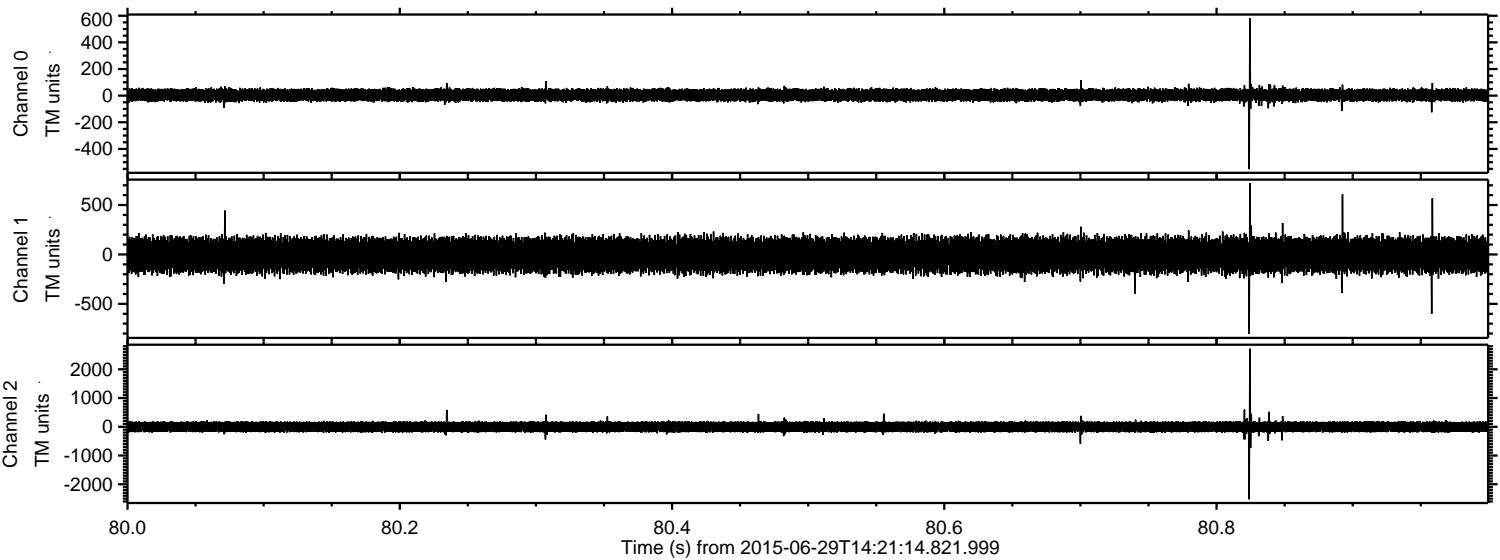


Channel 0
mn: -421
mx: 674
 μ : 4.4
 σ : 25.5

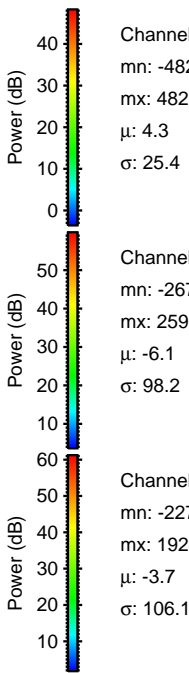
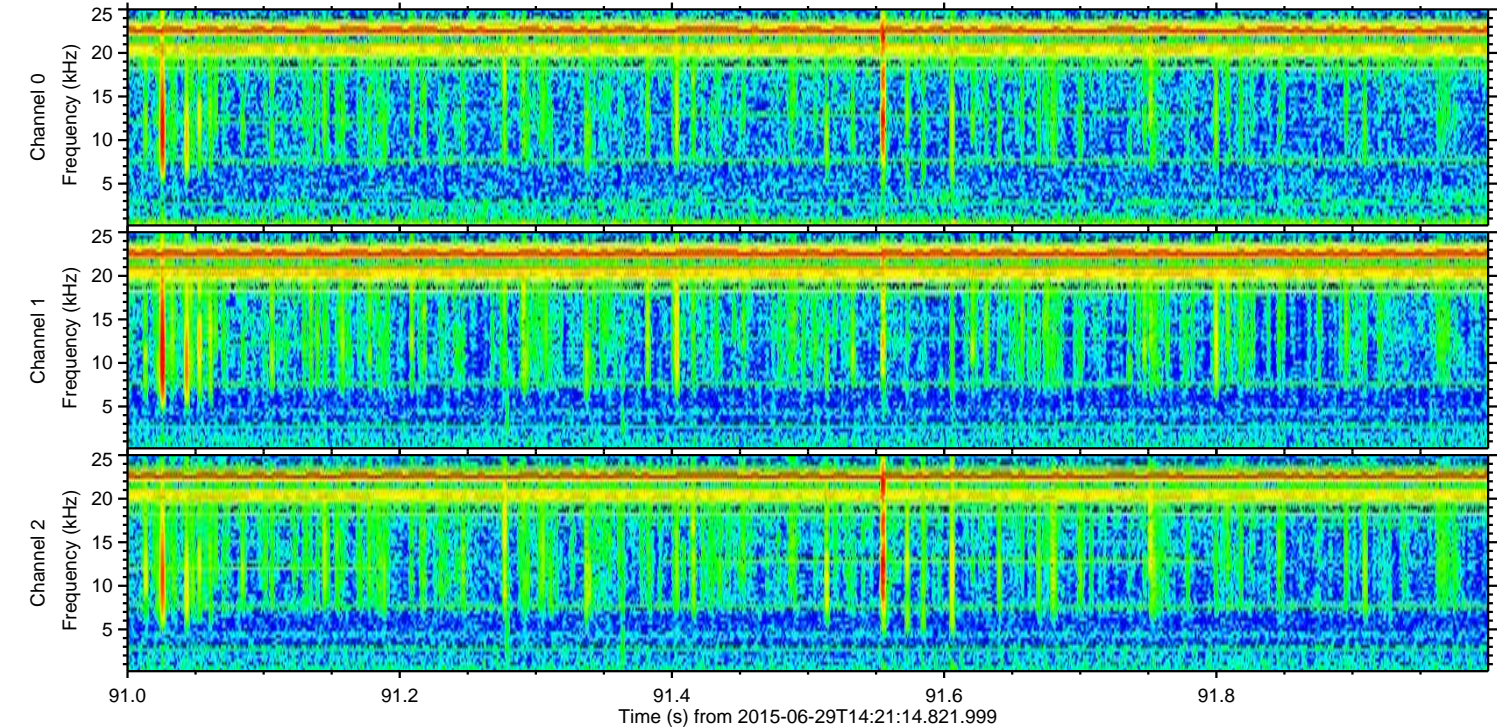
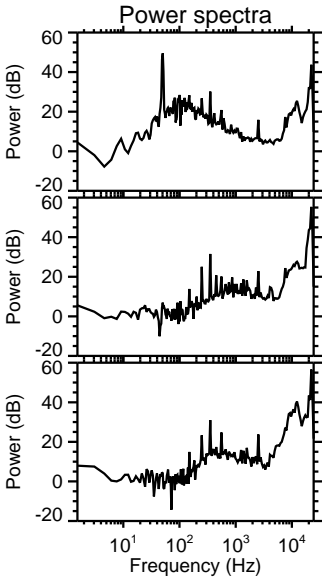
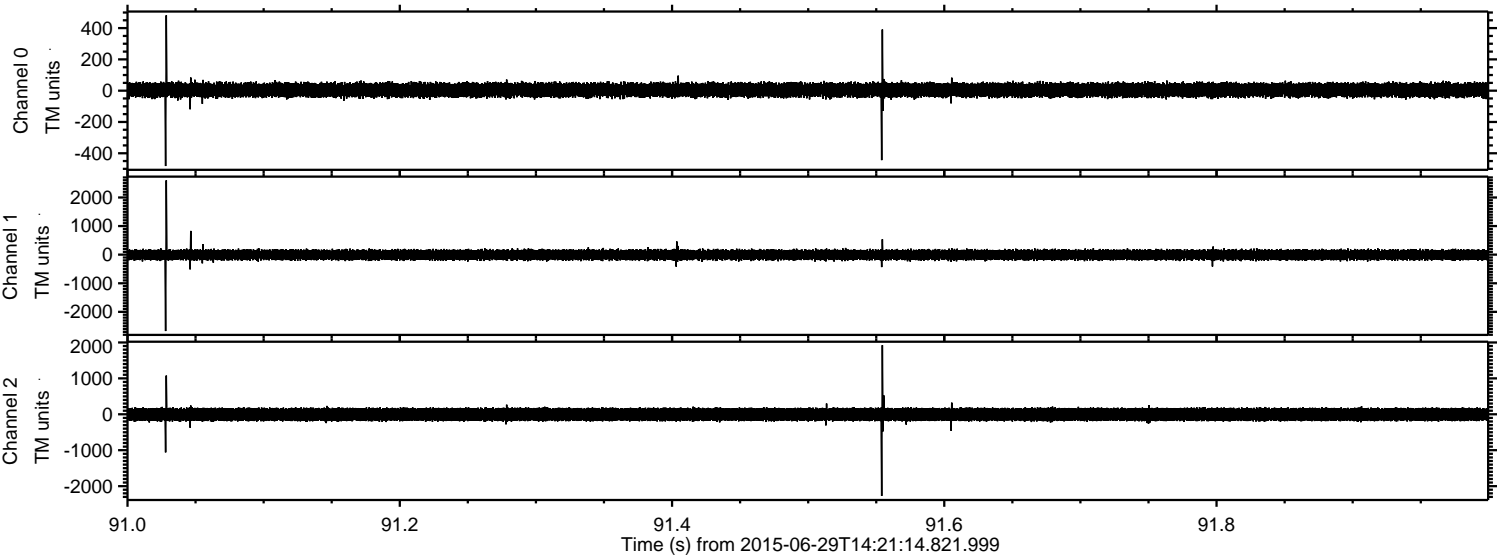
Channel 1
mn: -404
mx: 360
 μ : -6.2
 σ : 94.9

Channel 2
mn: -2664
mx: 2799
 μ : -3.7
 σ : 107.5

Processed Mon Jun 29 16:27:57 2015 by ELM ver.2012-10-06 from 001__elm20150629_142113__dat00.bin



Processed Mon Jun 29 16:27:58 2015 by ELM ver.2012-10-06 from 001__elm20150629_142113__dat00.bin

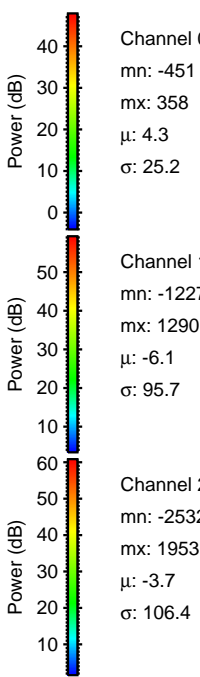
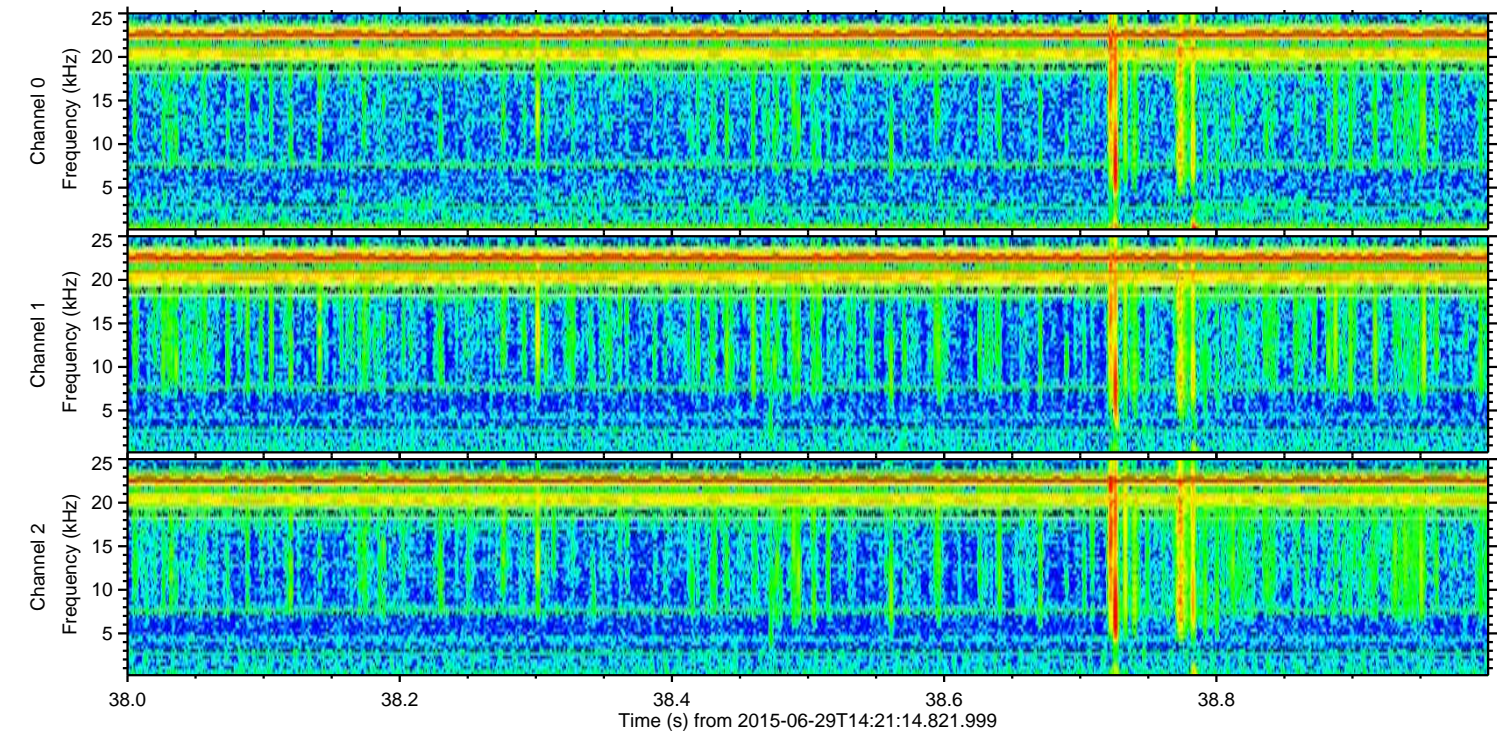
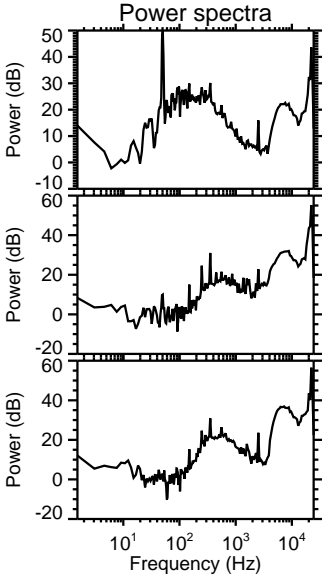
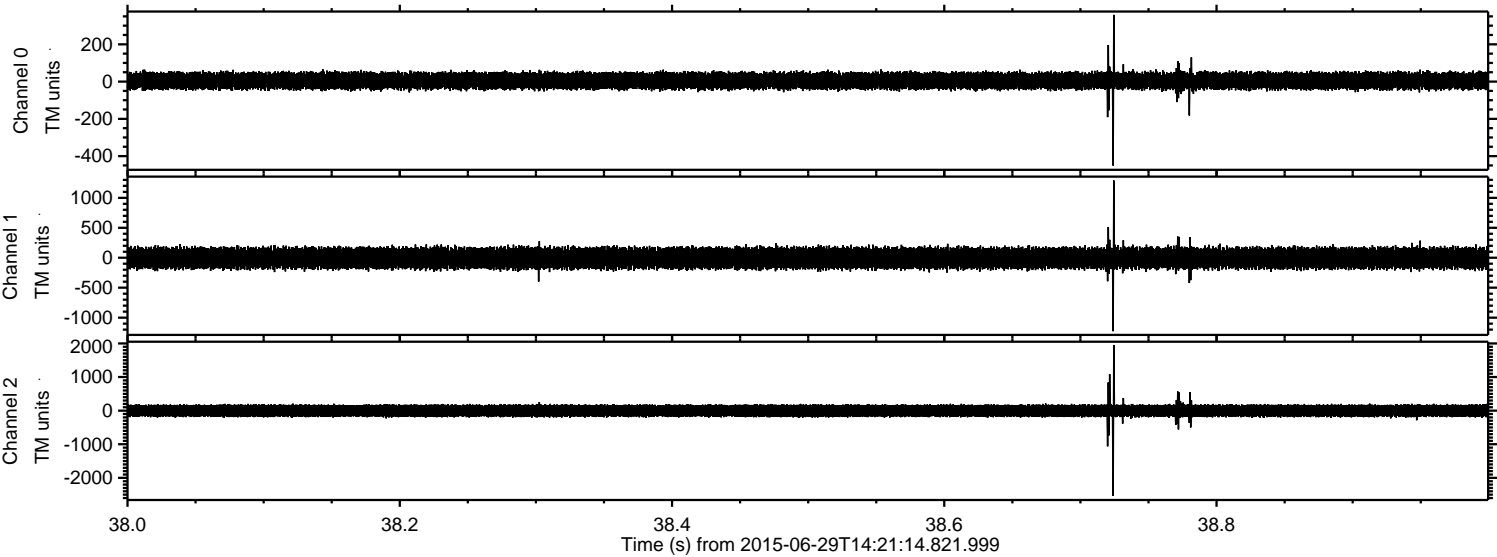


Channel 0
mn: -482
mx: 482
 μ : 4.3
 σ : 25.4

Channel 1
mn: -2671
mx: 2598
 μ : -6.1
 σ : 98.2

Channel 2
mn: -2272
mx: 1924
 μ : -3.7
 σ : 106.1

Processed Mon Jun 29 16:27:59 2015 by ELM ver.2012-10-06 from 001__elm20150629_142113__dat00.bin



Channel 0
mn: -451
mx: 358
 μ : 4.3
 σ : 25.2

Channel 1
mn: -1227
mx: 1290
 μ : -6.1
 σ : 95.7

Channel 2
mn: -2532
mx: 1953
 μ : -3.7
 σ : 106.4

ELMAVAN 3D WAVEFORMS (Measured data sampled at 50 kHz) 51000 packets of 144 samples from 2015-06-29T14:21:14.821.999. Part 124/147

Processed Mon Jun 29 16:28:00 2015 by ELM ver.2012-10-06 from 001__elm20150629_142113__dat00.bin

