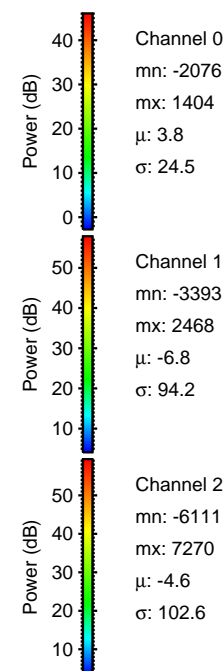
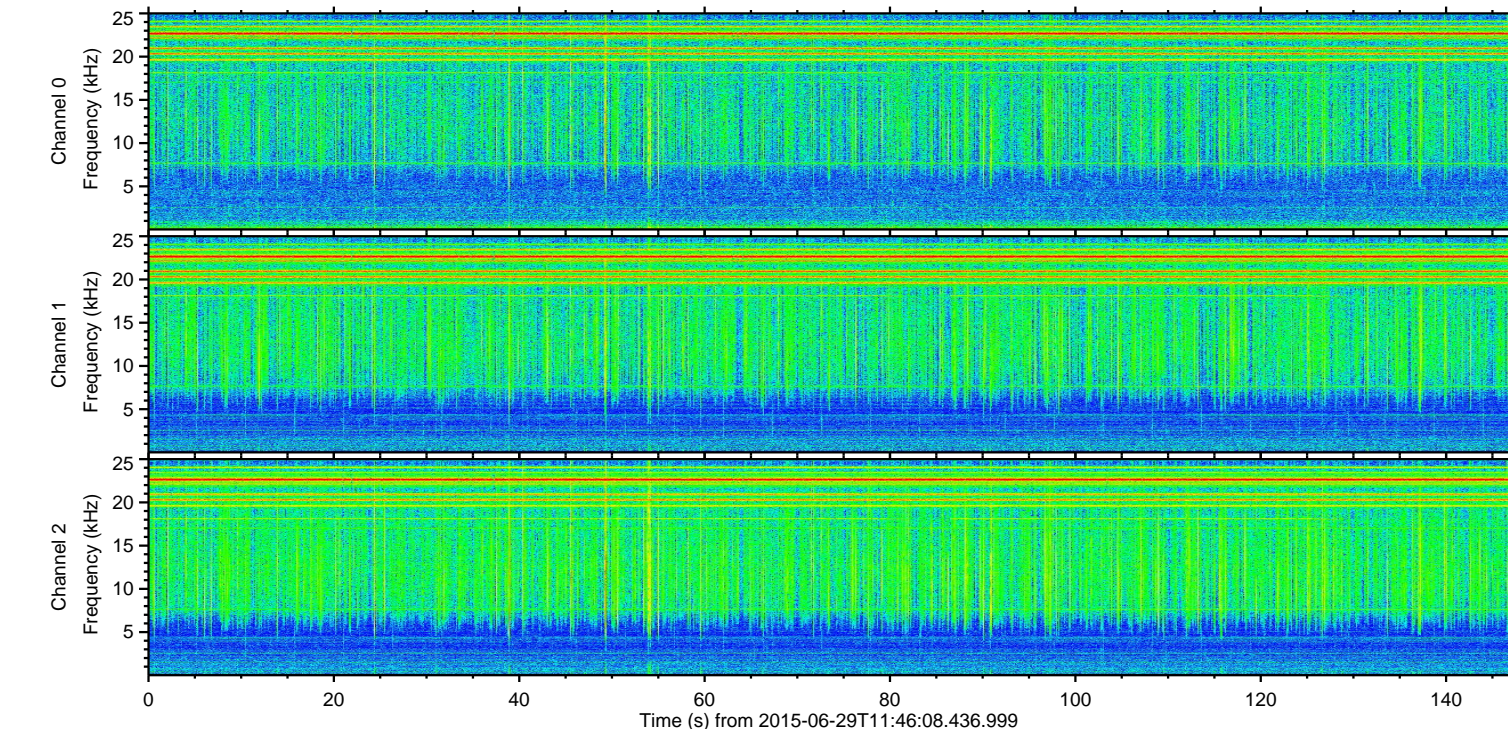
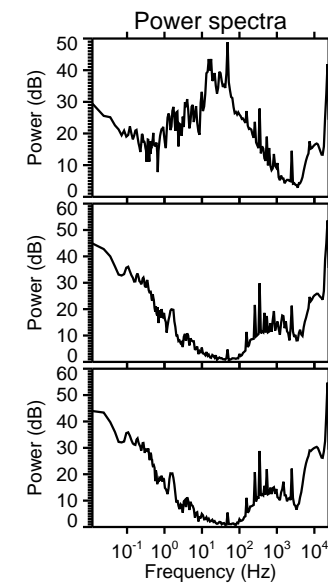
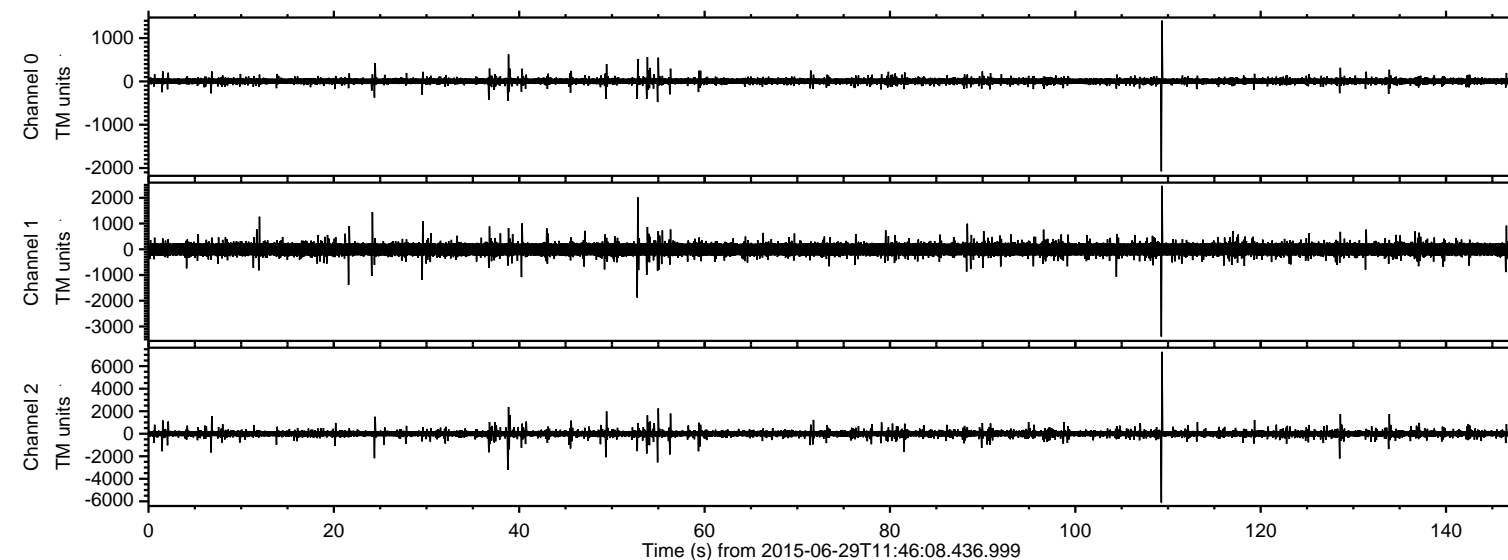


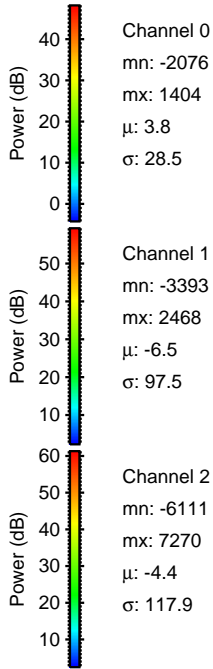
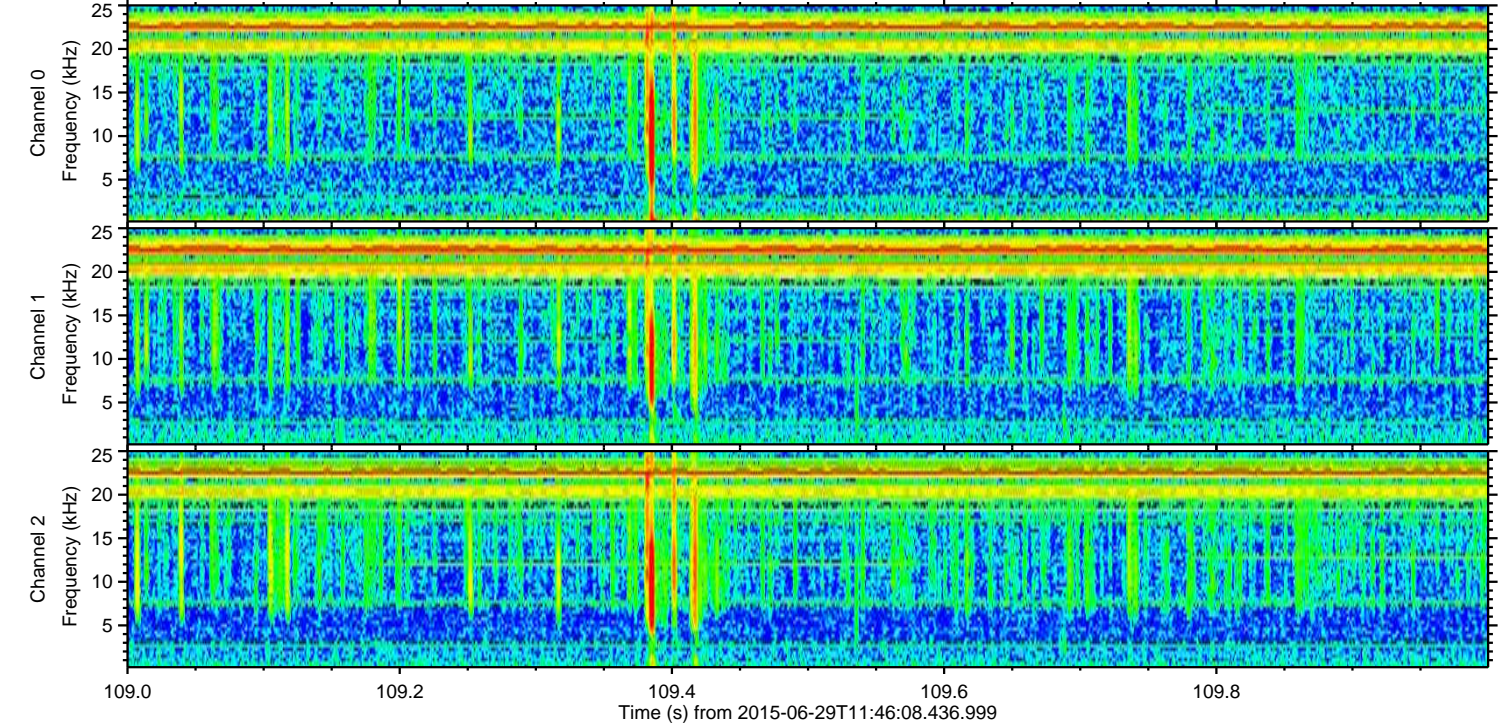
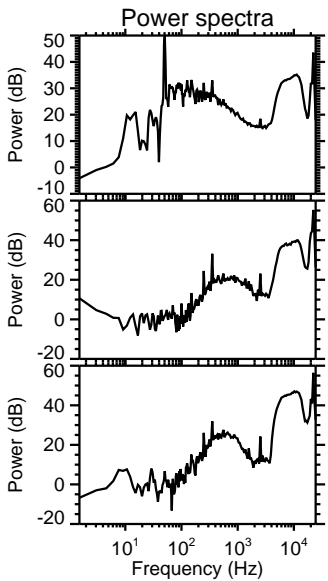
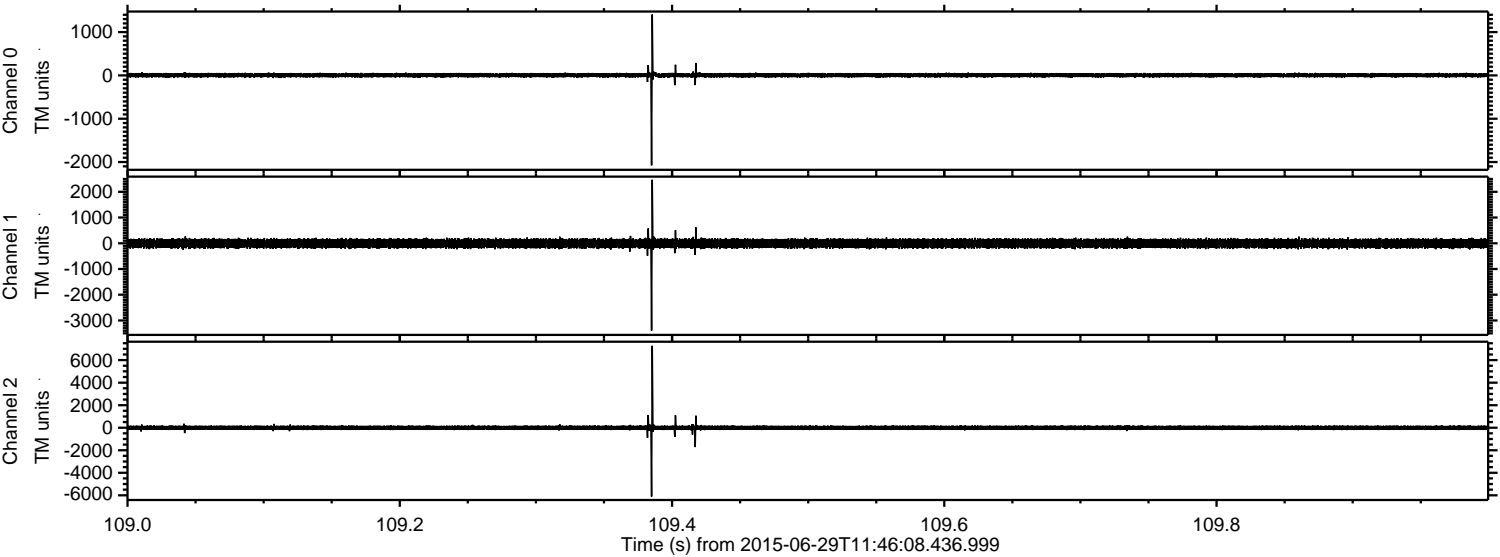
ELMAVAN 3D WAVEFORMS (Measured data sampled at 50 kHz) 51000 packets of 144 samples from 2015-06-29T11:46:08.436.999.

Processed Mon Jun 29 13:52:37 2015 by ELM ver.2012-10-06 from 001__elm20150629_114607__dat00.bin

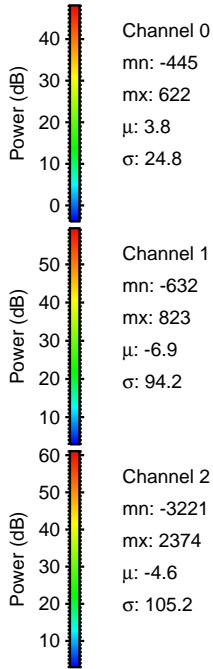
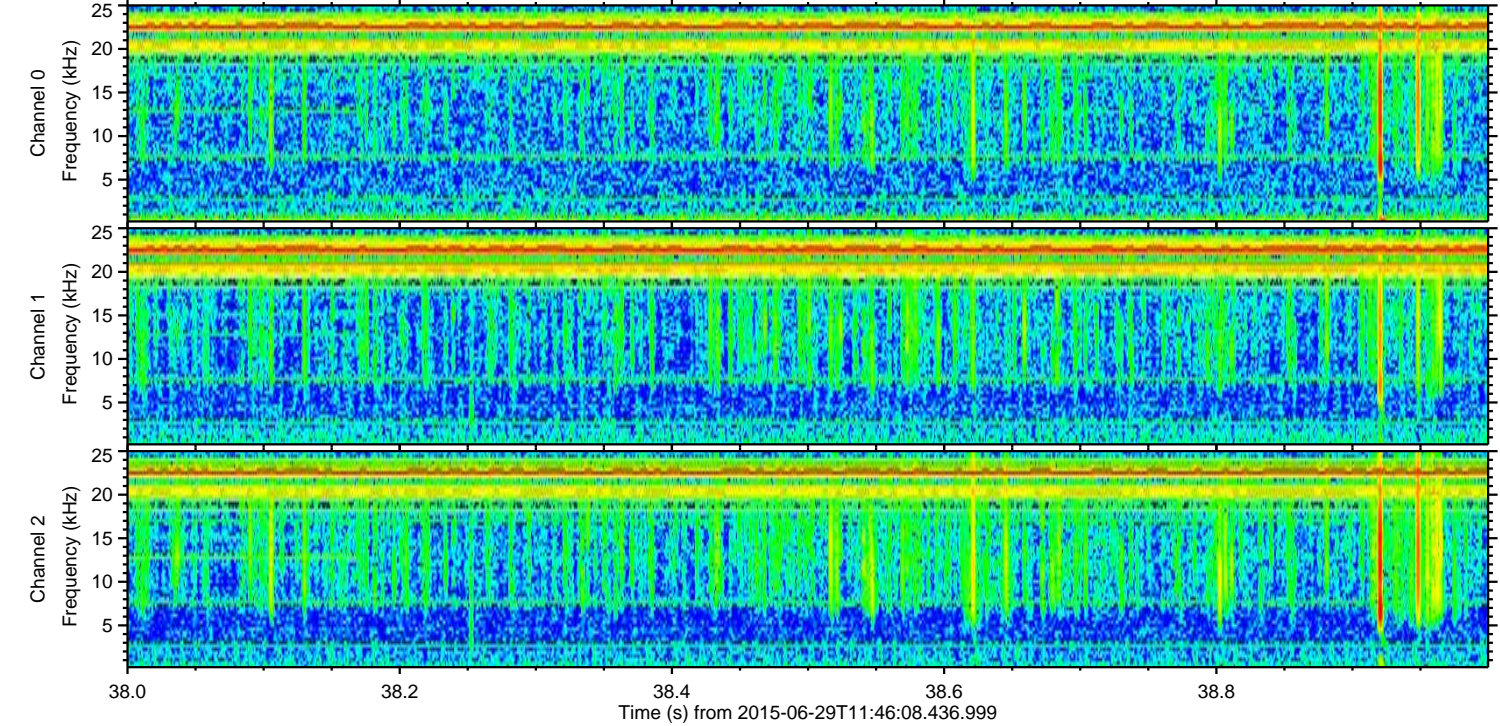
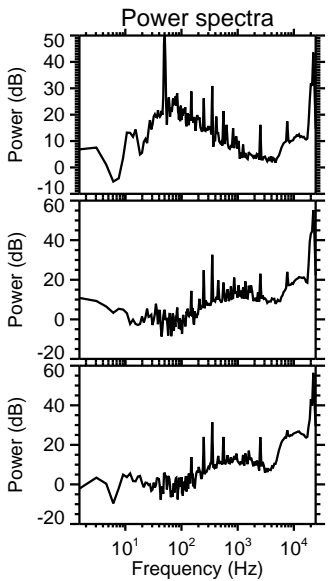
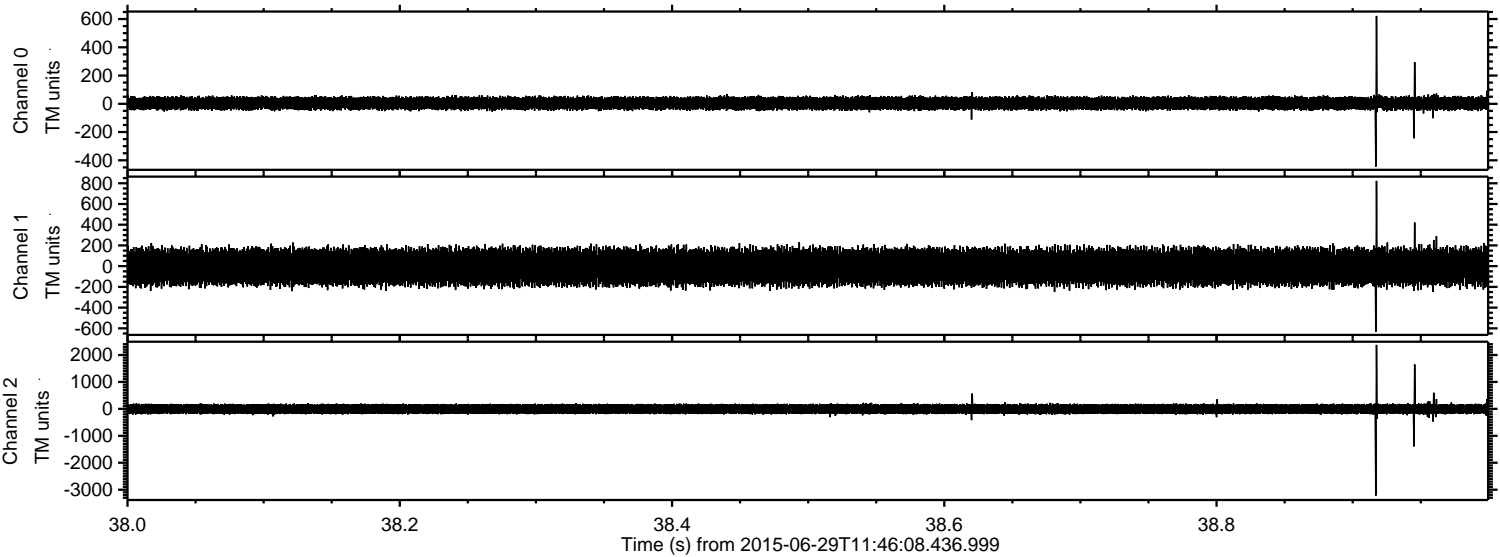


ELMAVAN 3D WAVEFORMS (Measured data sampled at 50 kHz) 51000 packets of 144 samples from 2015-06-29T11:46:08.436.999. Part 110/147

Processed Mon Jun 29 13:52:52 2015 by ELM ver.2012-10-06 from 001__elm20150629_114607__dat00.bin

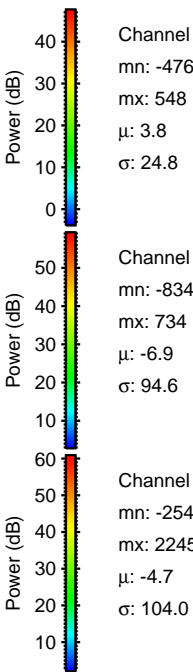
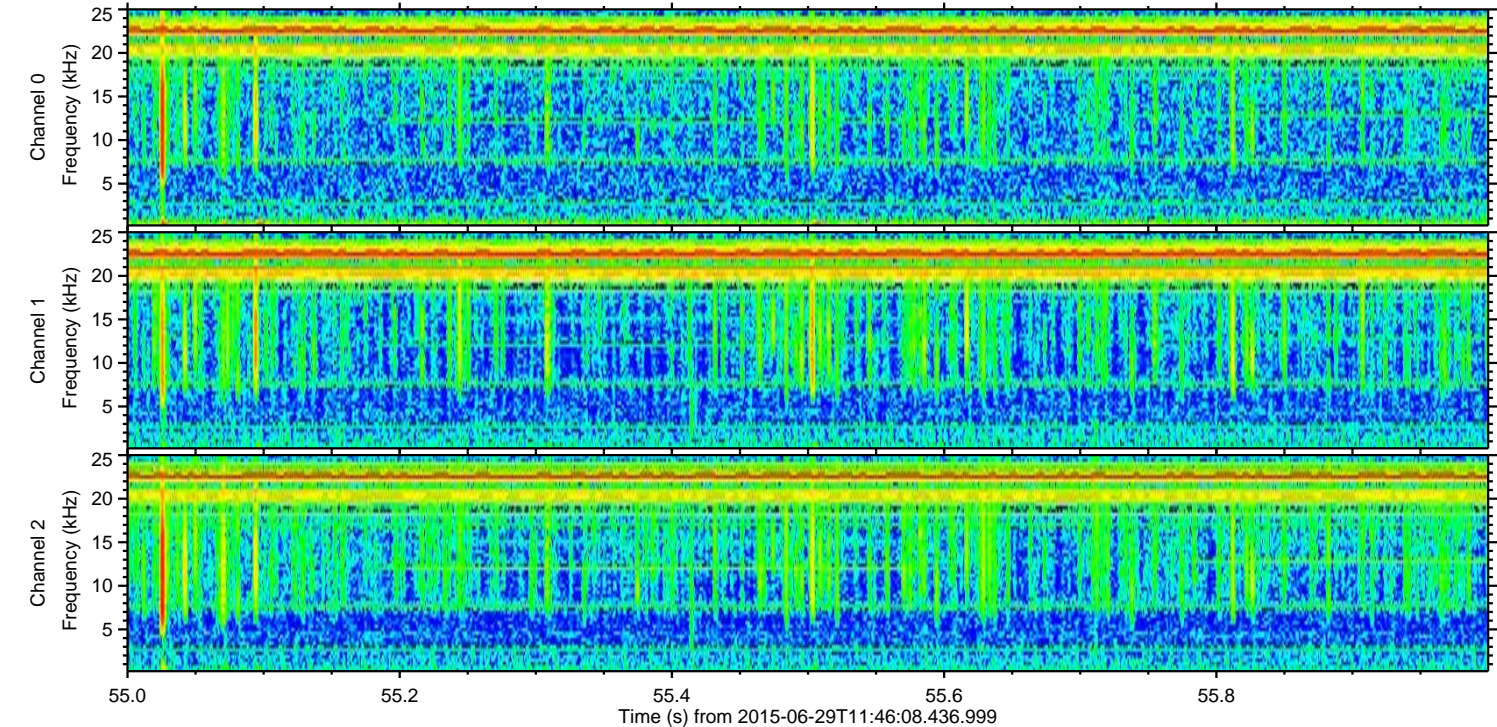
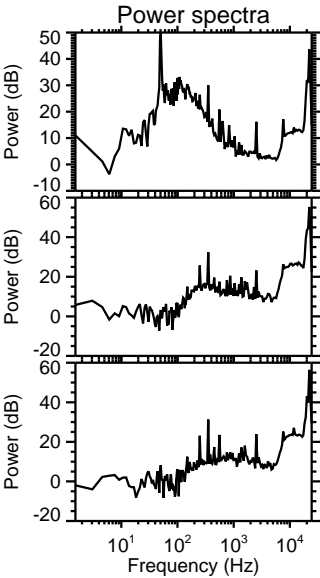
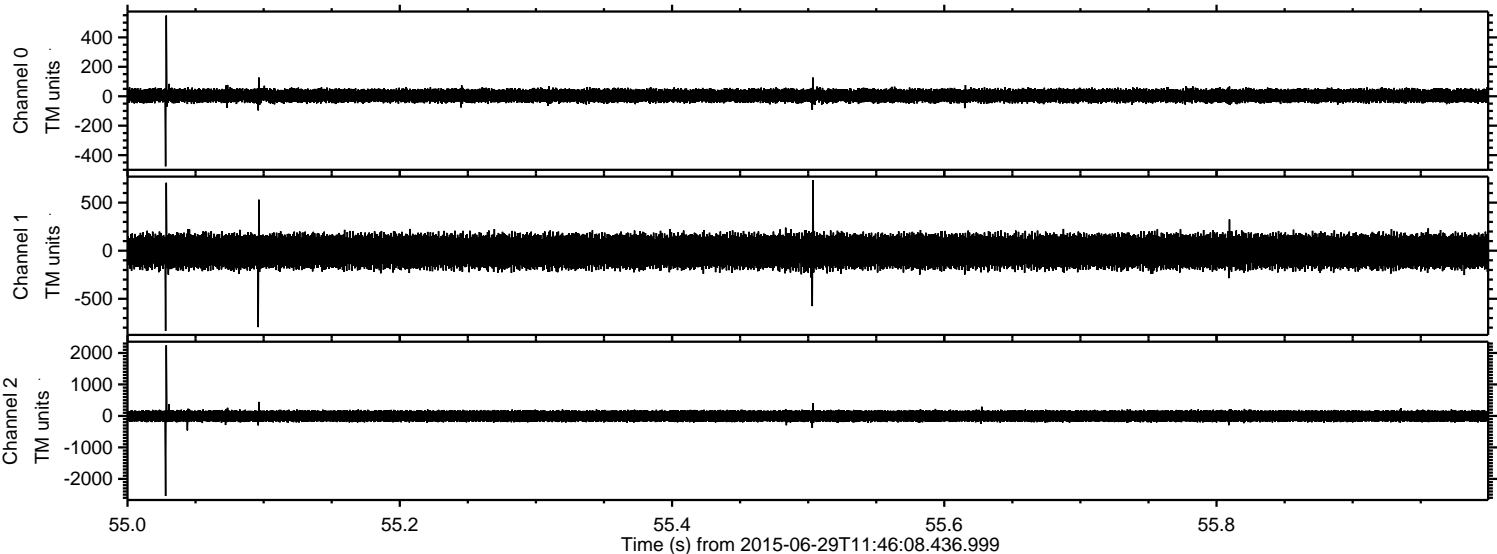


Processed Mon Jun 29 13:52:54 2015 by ELM ver.2012-10-06 from 001__elm20150629_114607__dat00.bin



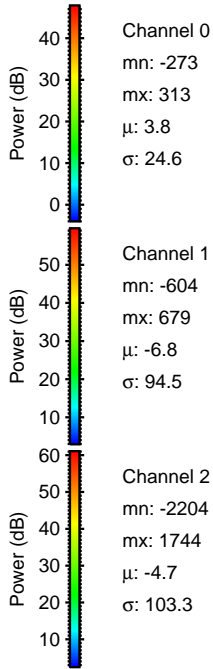
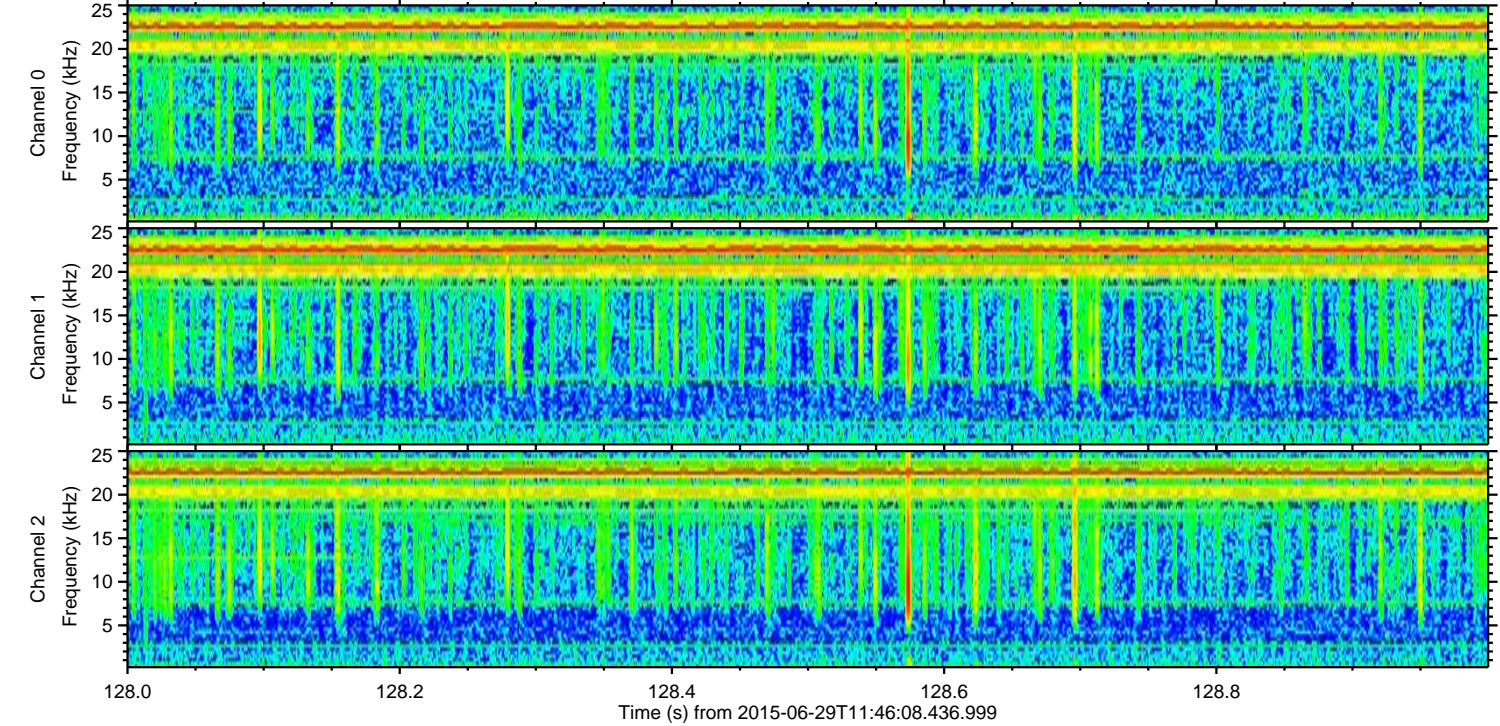
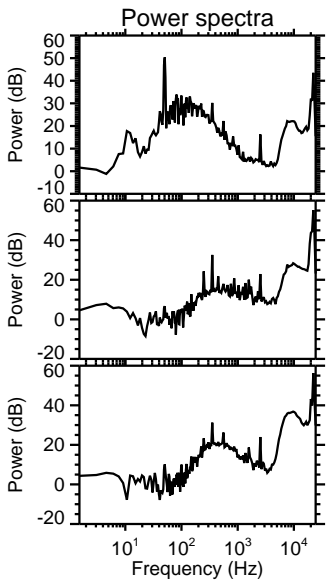
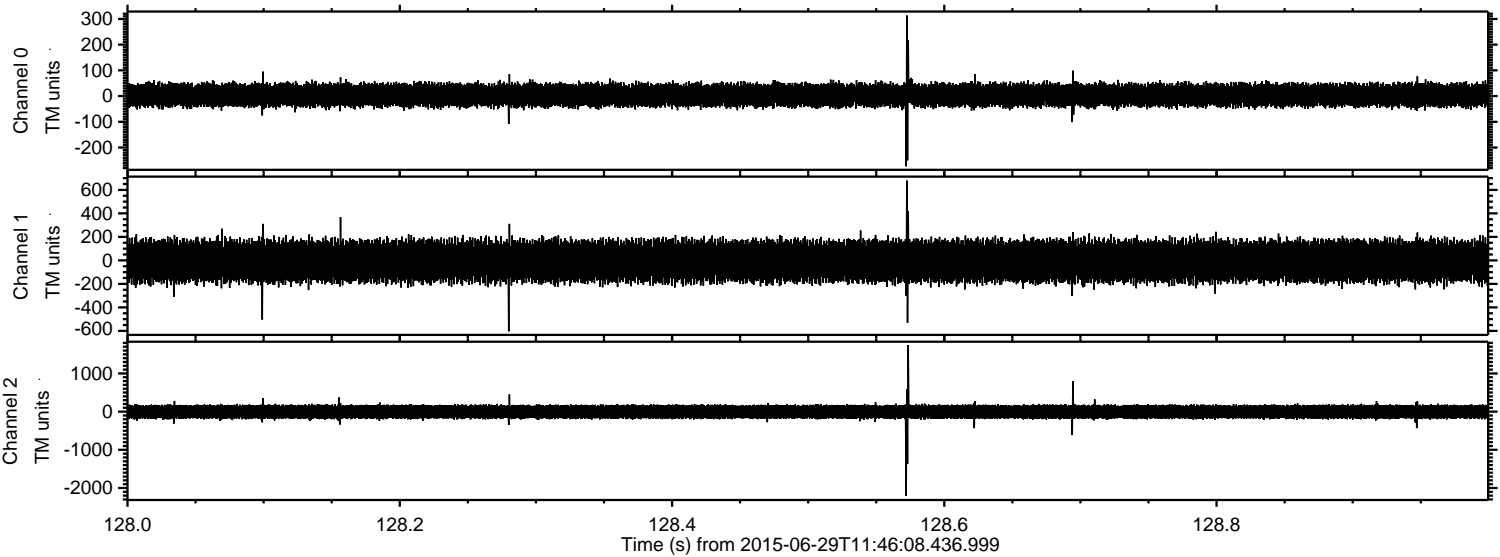
ELMAVAN 3D WAVEFORMS (Measured data sampled at 50 kHz) 51000 packets of 144 samples from 2015-06-29T11:46:08.436.999. Part 56/147

Processed Mon Jun 29 13:52:55 2015 by ELM ver.2012-10-06 from 001__elm20150629_114607__dat00.bin



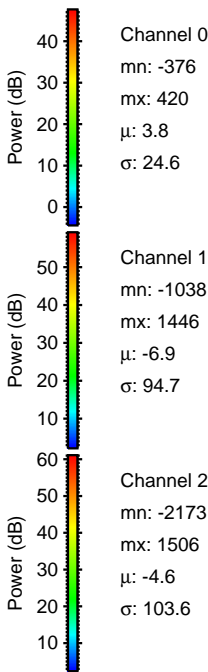
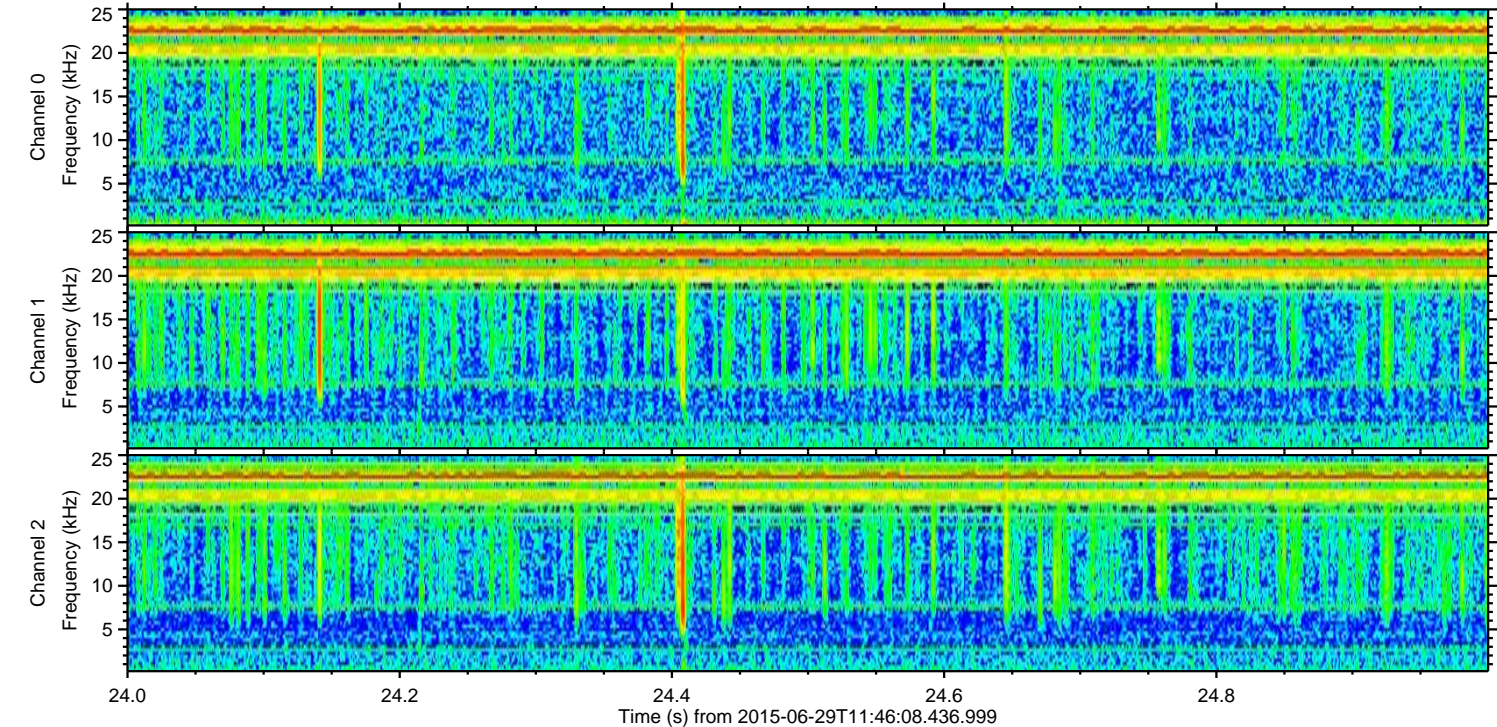
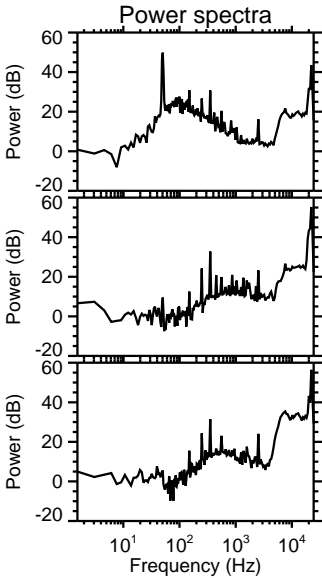
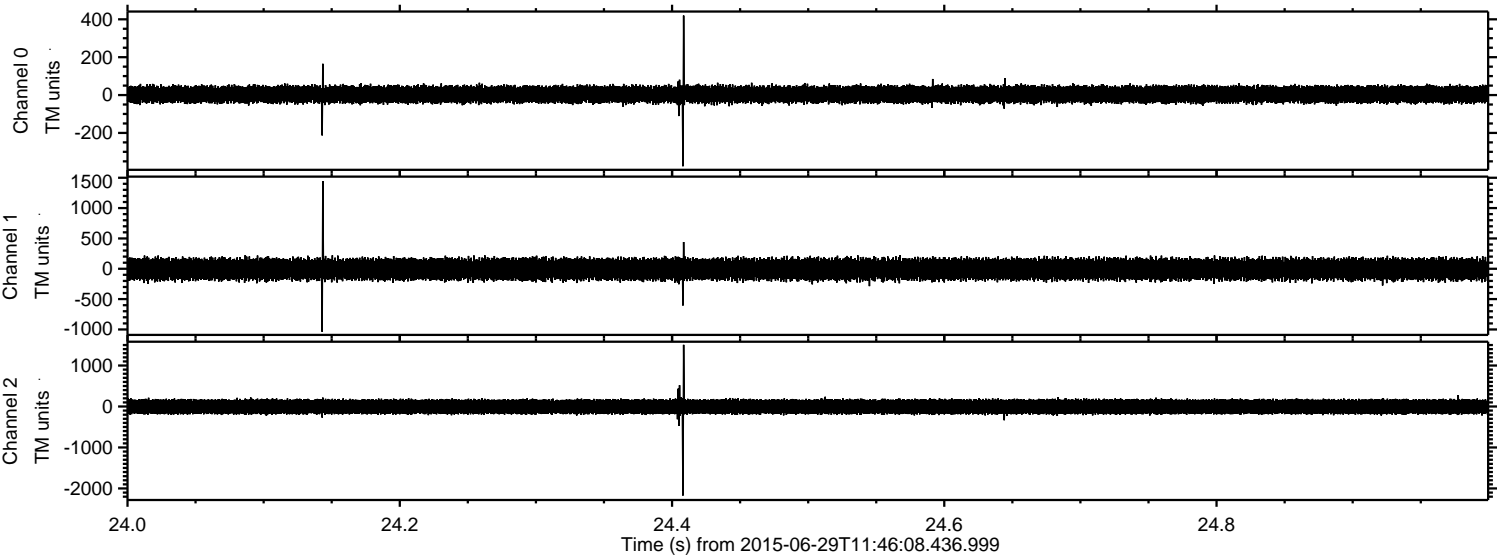
ELMAVAN 3D WAVEFORMS (Measured data sampled at 50 kHz) 51000 packets of 144 samples from 2015-06-29T11:46:08.436.999. Part 129/147

Processed Mon Jun 29 13:52:56 2015 by ELM ver.2012-10-06 from 001__elm20150629_114607__dat00.bin

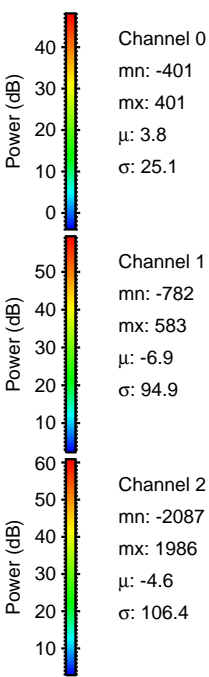
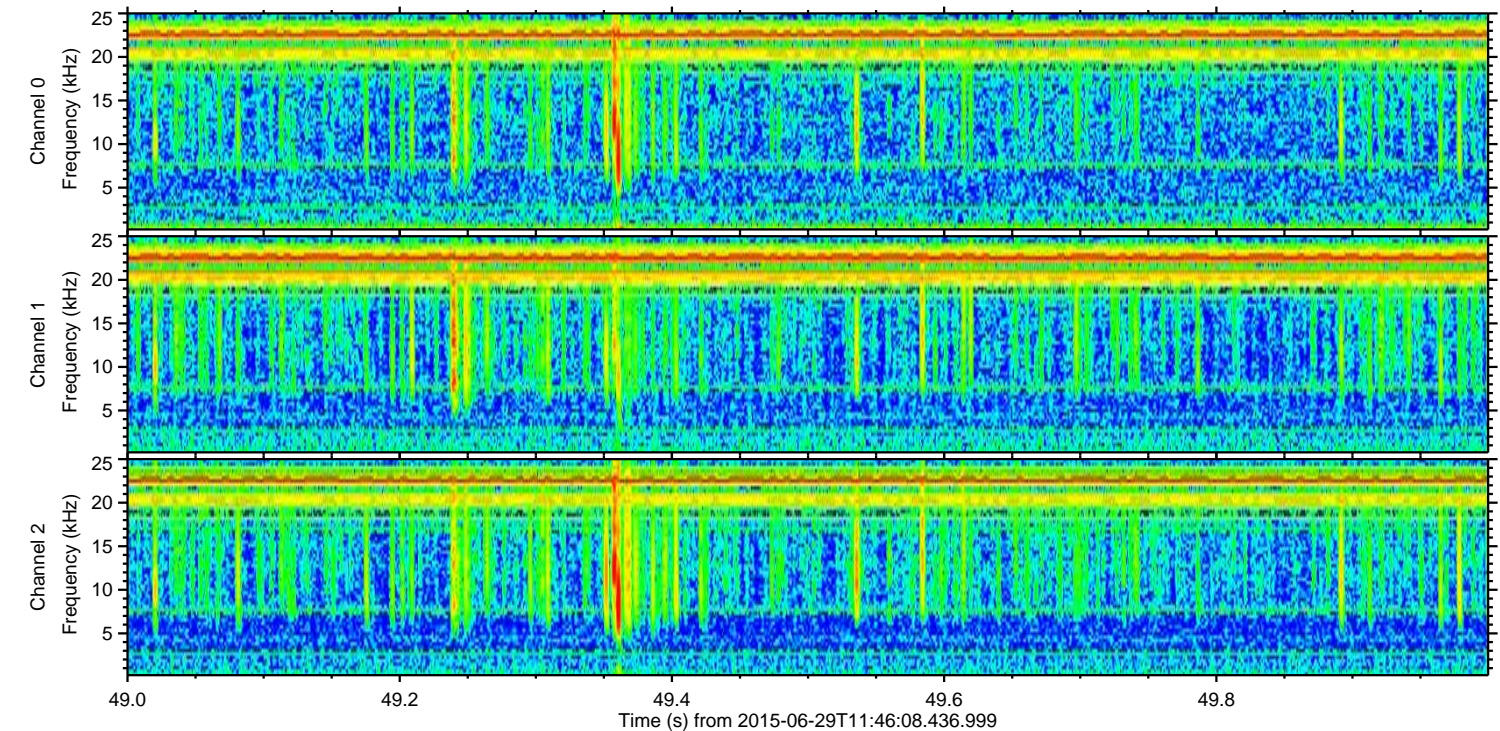
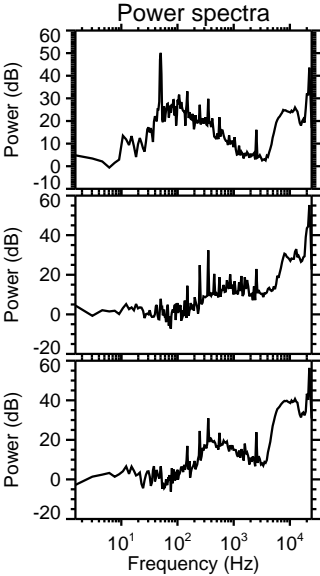
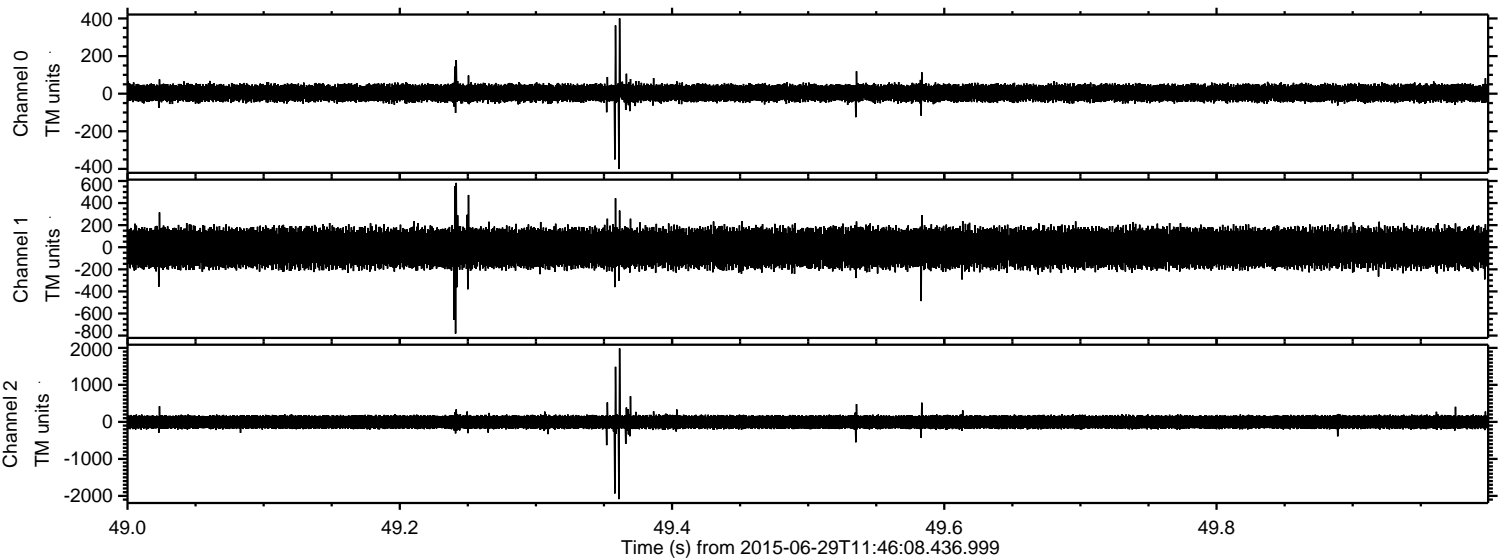


ELMAVAN 3D WAVEFORMS (Measured data sampled at 50 kHz) 51000 packets of 144 samples from 2015-06-29T11:46:08.436.999. Part 25/147

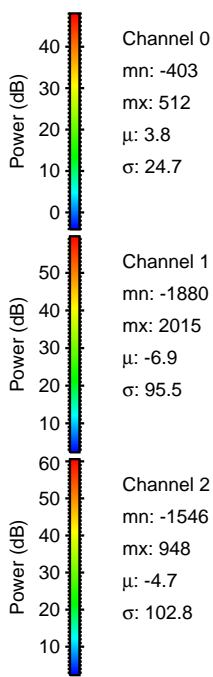
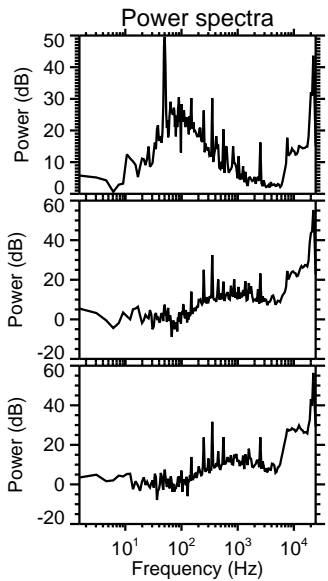
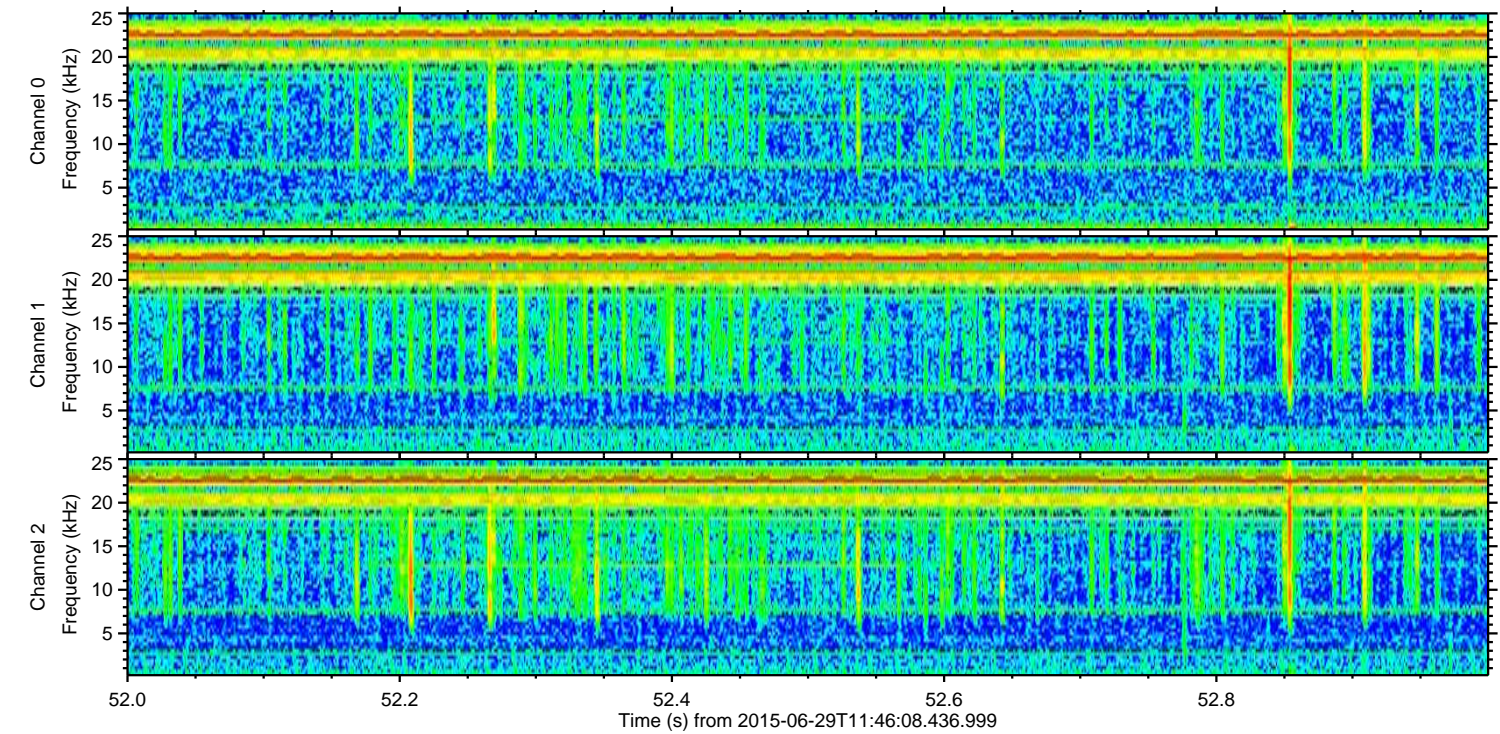
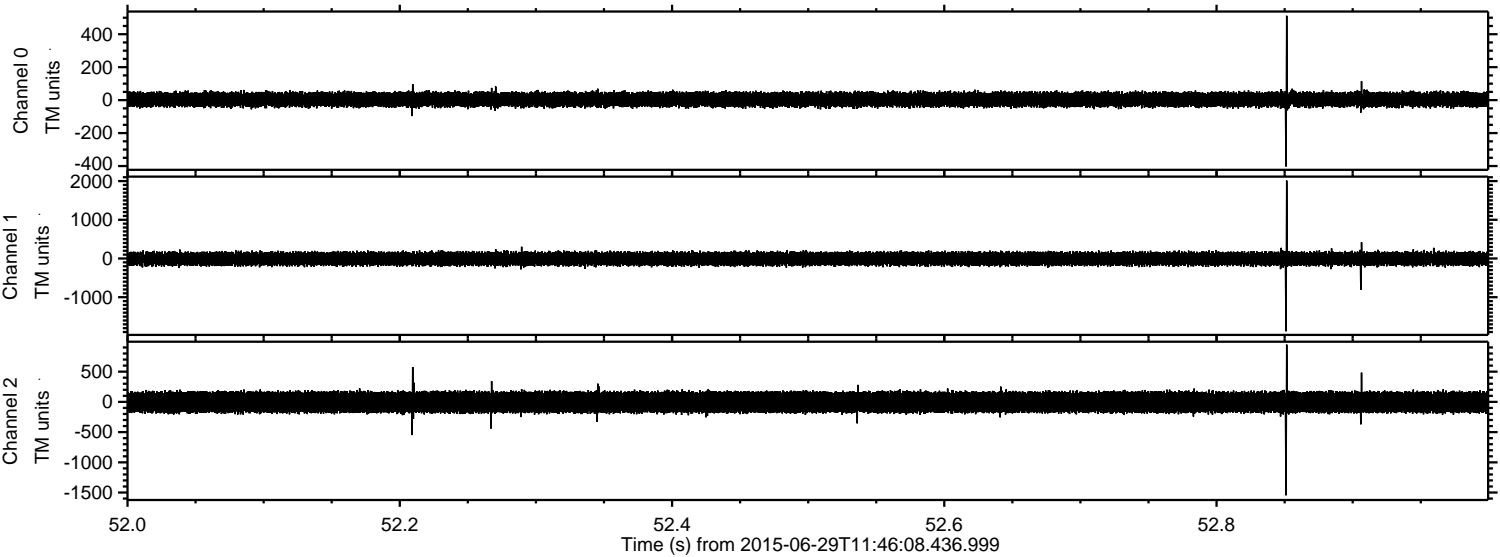
Processed Mon Jun 29 13:52:57 2015 by ELM ver.2012-10-06 from 001__elm20150629_114607__dat00.bin



Processed Mon Jun 29 13:52:58 2015 by ELM ver.2012-10-06 from 001__elm20150629_114607__dat00.bin



Processed Mon Jun 29 13:52:59 2015 by ELM ver.2012-10-06 from 001__elm20150629_114607__dat00.bin

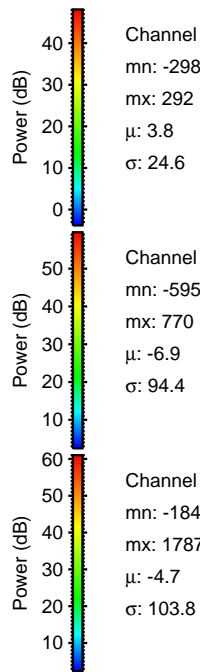
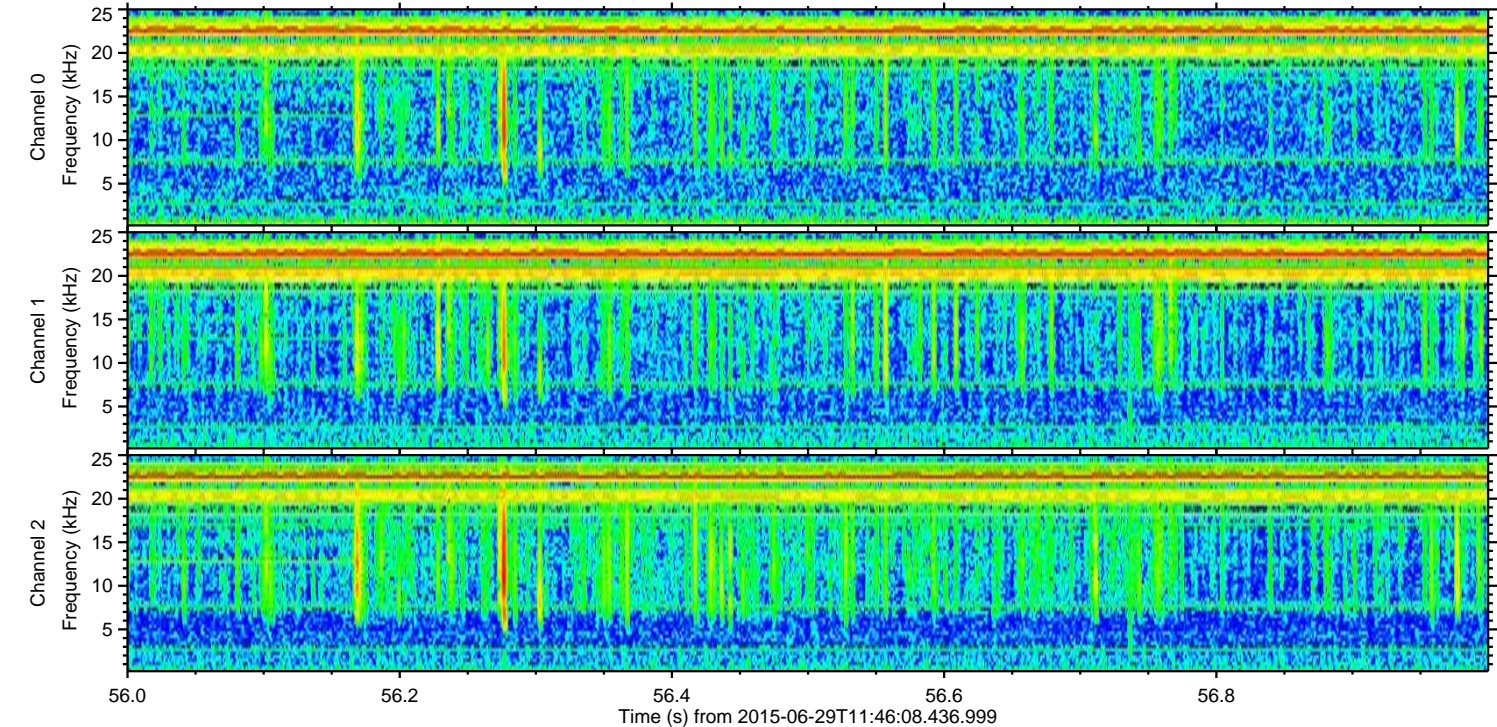
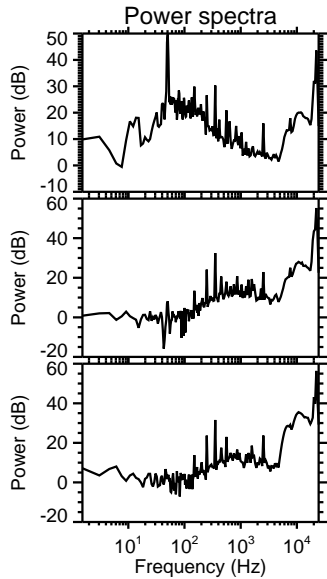
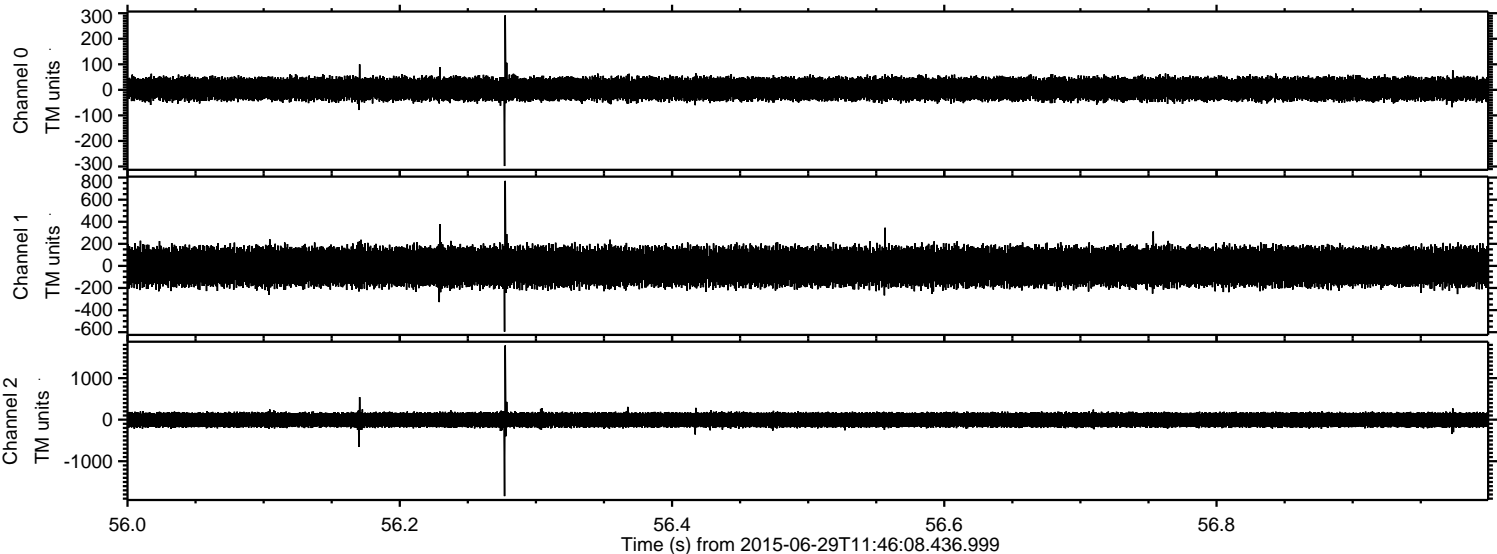


Channel 0
mn: -403
mx: 512
 μ : 3.8
 σ : 24.7

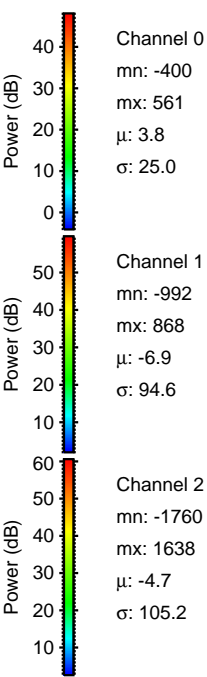
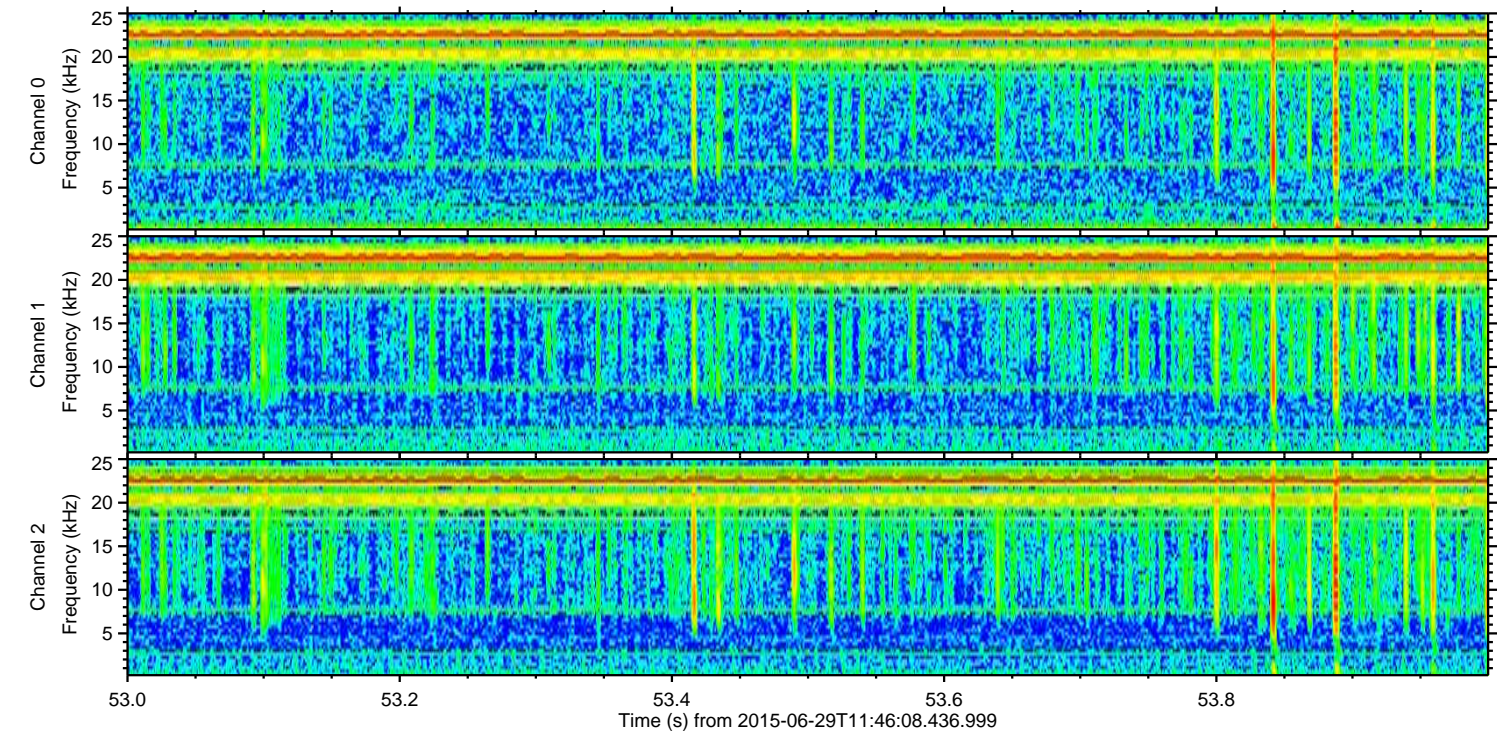
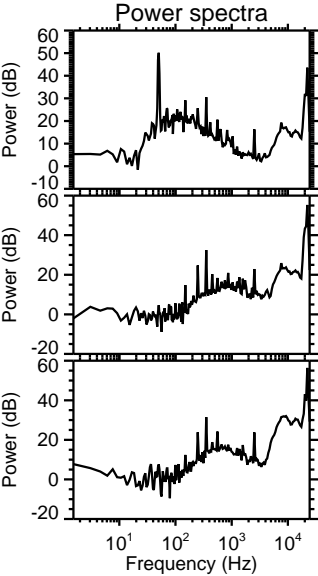
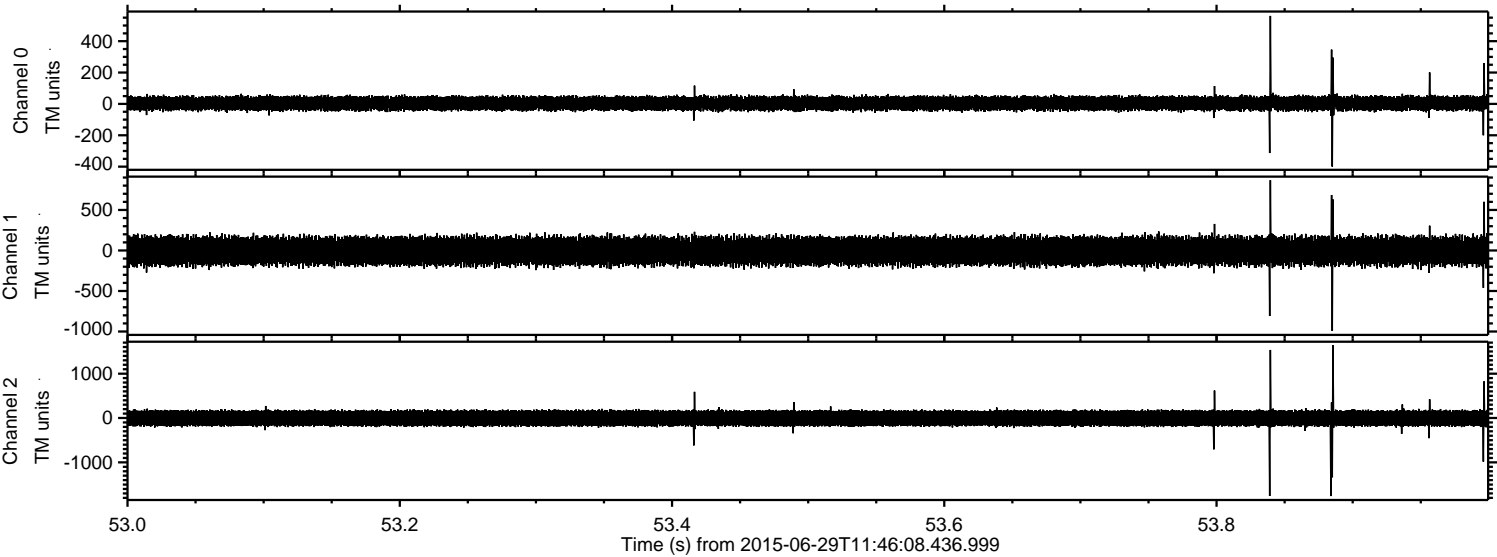
Channel 1
mn: -1880
mx: 2015
 μ : -6.9
 σ : 95.5

Channel 2
mn: -1546
mx: 948
 μ : -4.7
 σ : 102.8

Processed Mon Jun 29 13:53:00 2015 by ELM ver.2012-10-06 from 001__elm20150629_114607__dat00.bin



Processed Mon Jun 29 13:53:01 2015 by ELM ver.2012-10-06 from 001__elm20150629_114607__dat00.bin



Processed Mon Jun 29 13:53:02 2015 by ELM ver.2012-10-06 from 001__elm20150629_114607__dat00.bin

