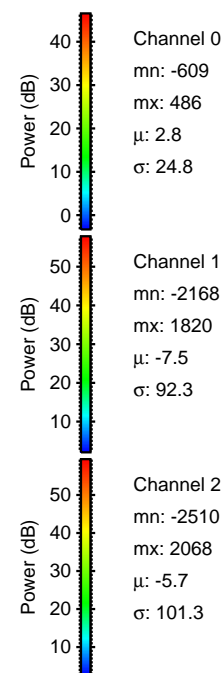
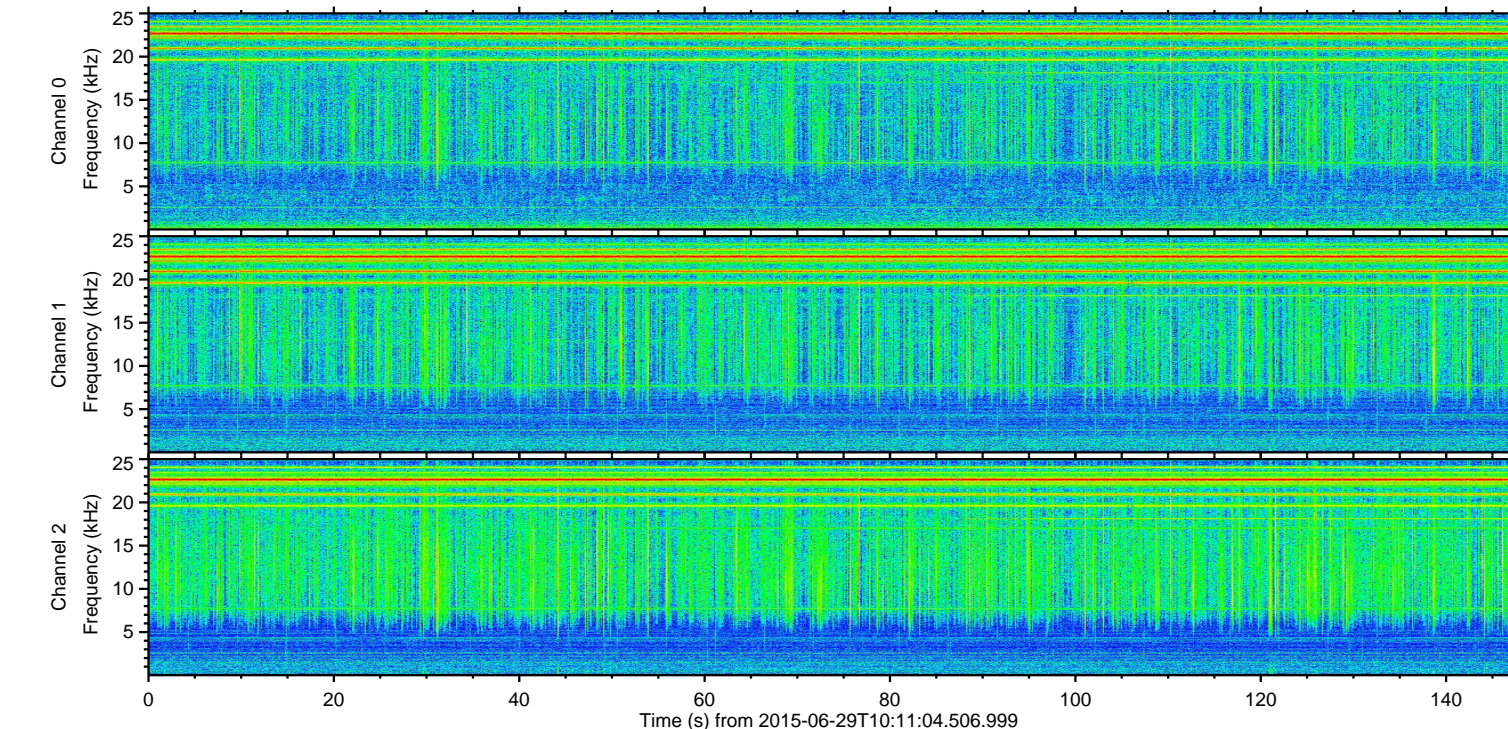
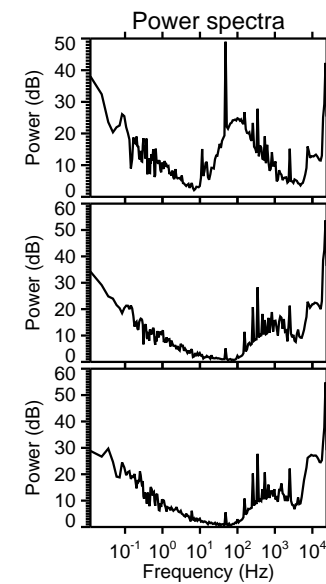
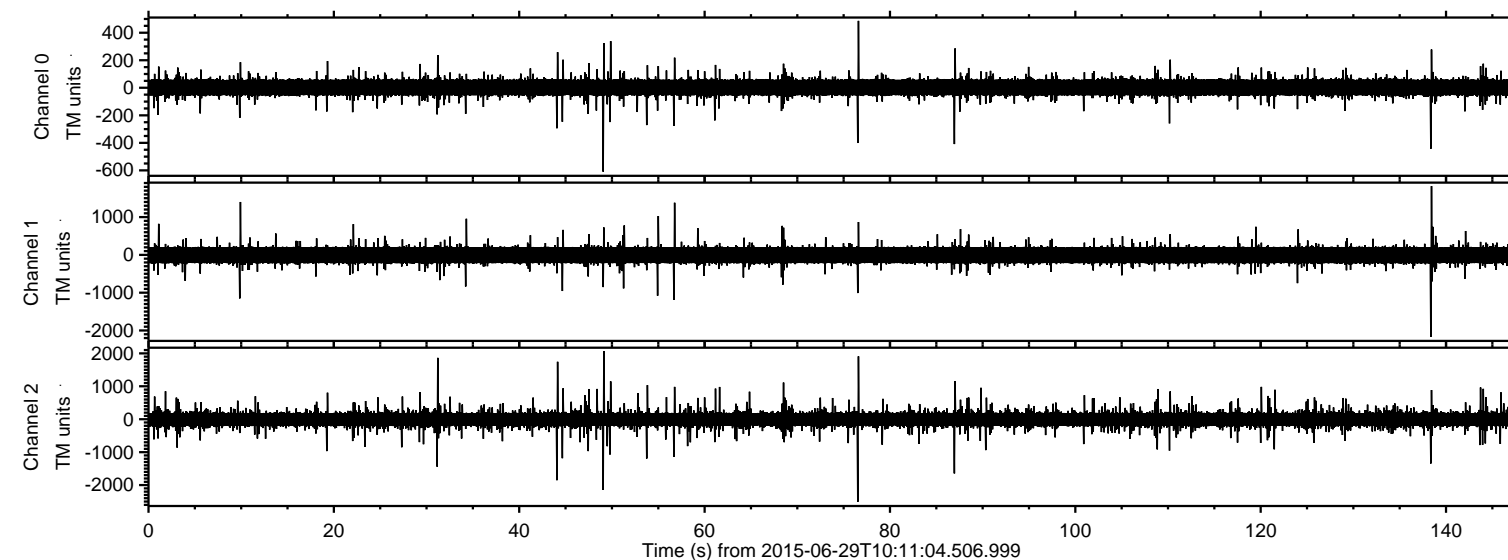
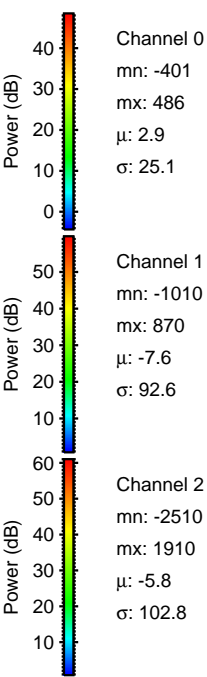
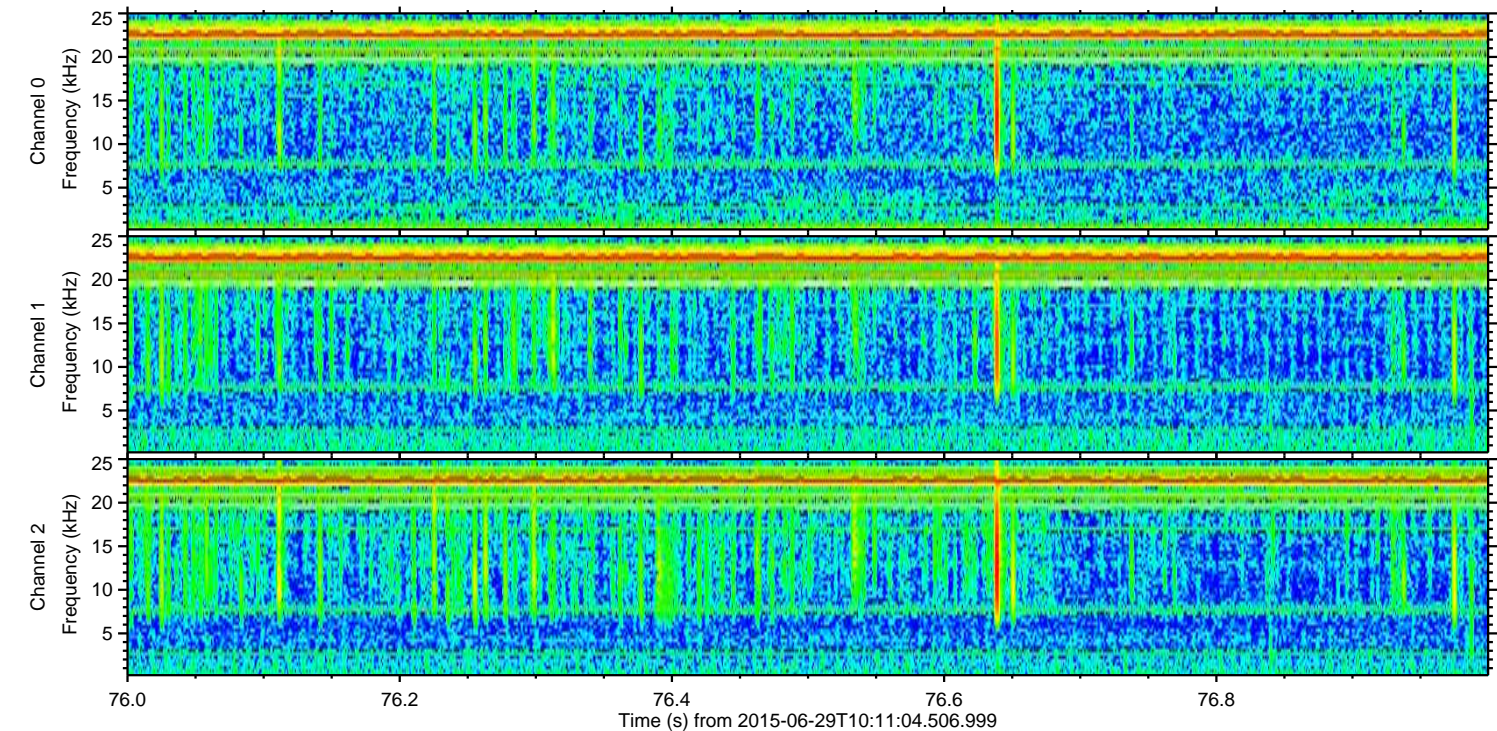
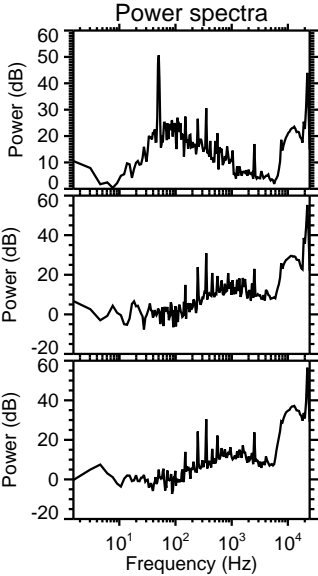
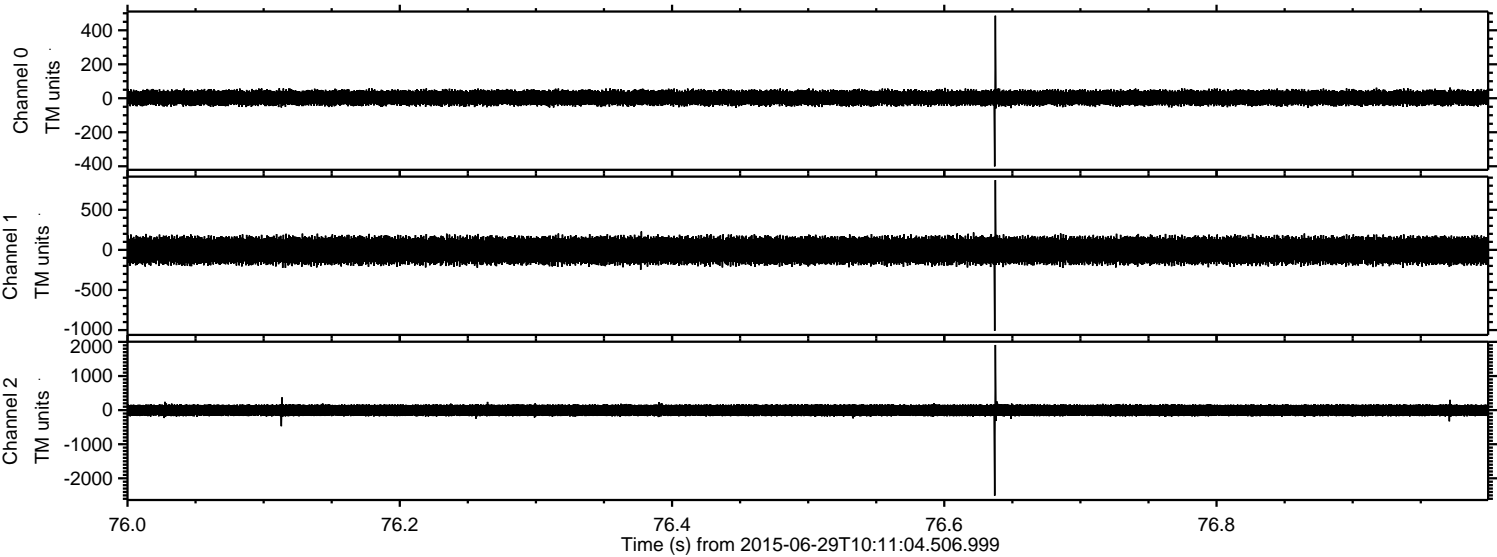


ELMAVAN 3D WAVEFORMS (Measured data sampled at 50 kHz) 51000 packets of 144 samples from 2015-06-29T10:11:04.506.999.

Processed Mon Jun 29 12:17:07 2015 by ELM ver.2012-10-06 from 001__elm20150629_101103__dat00.bin

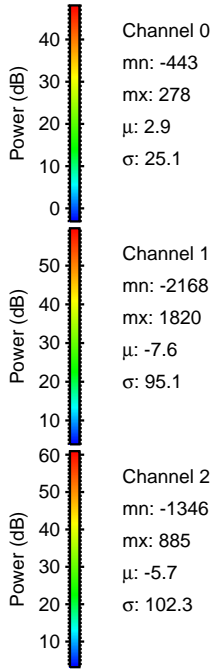
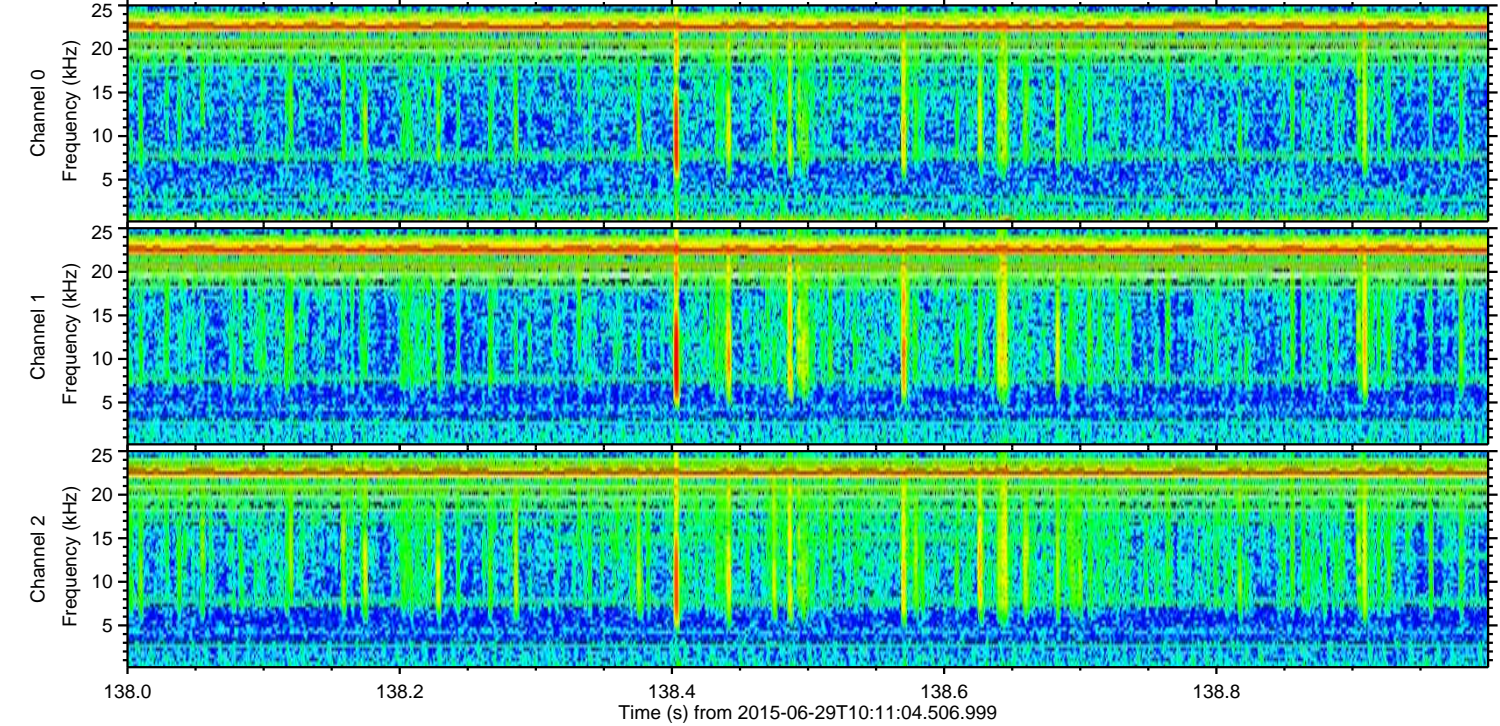
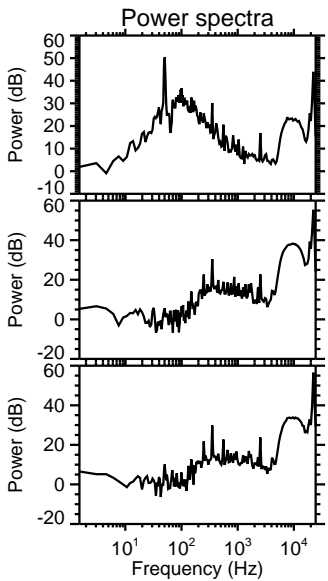
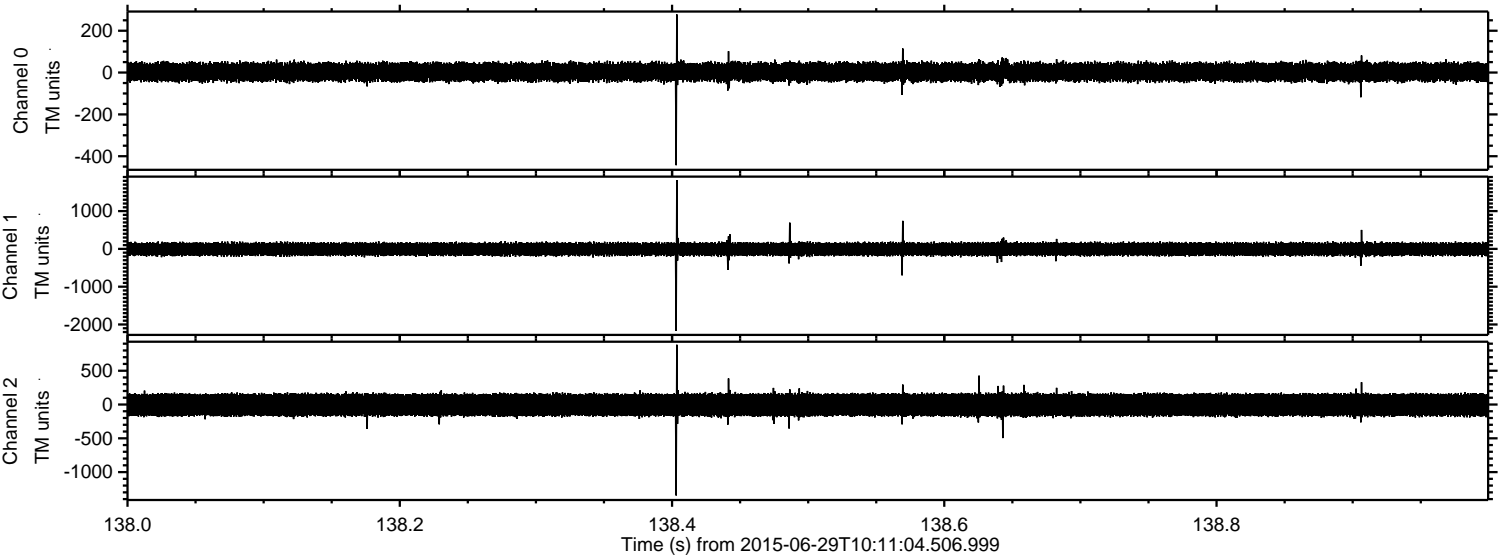


Processed Mon Jun 29 12:17:23 2015 by ELM ver.2012-10-06 from 001__elm20150629_101103__dat00.bin

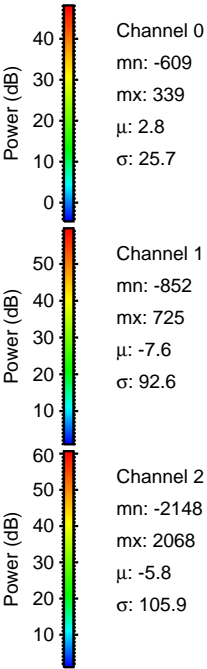
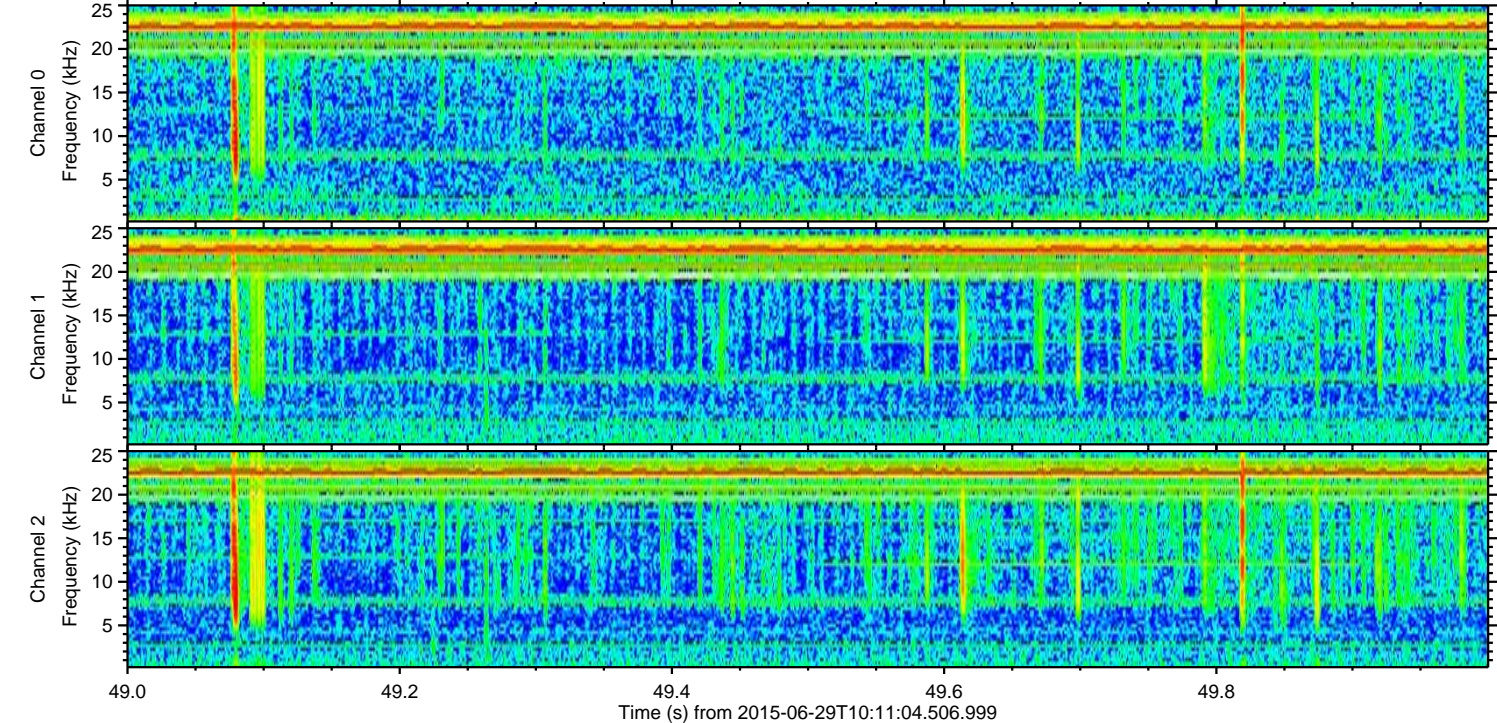
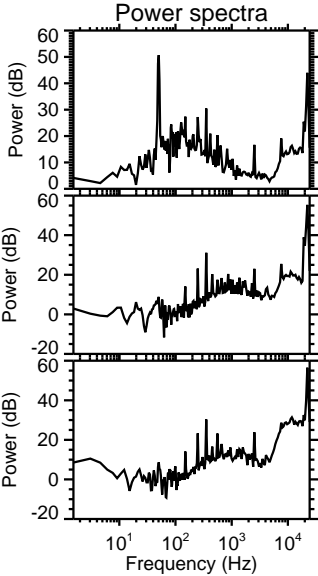
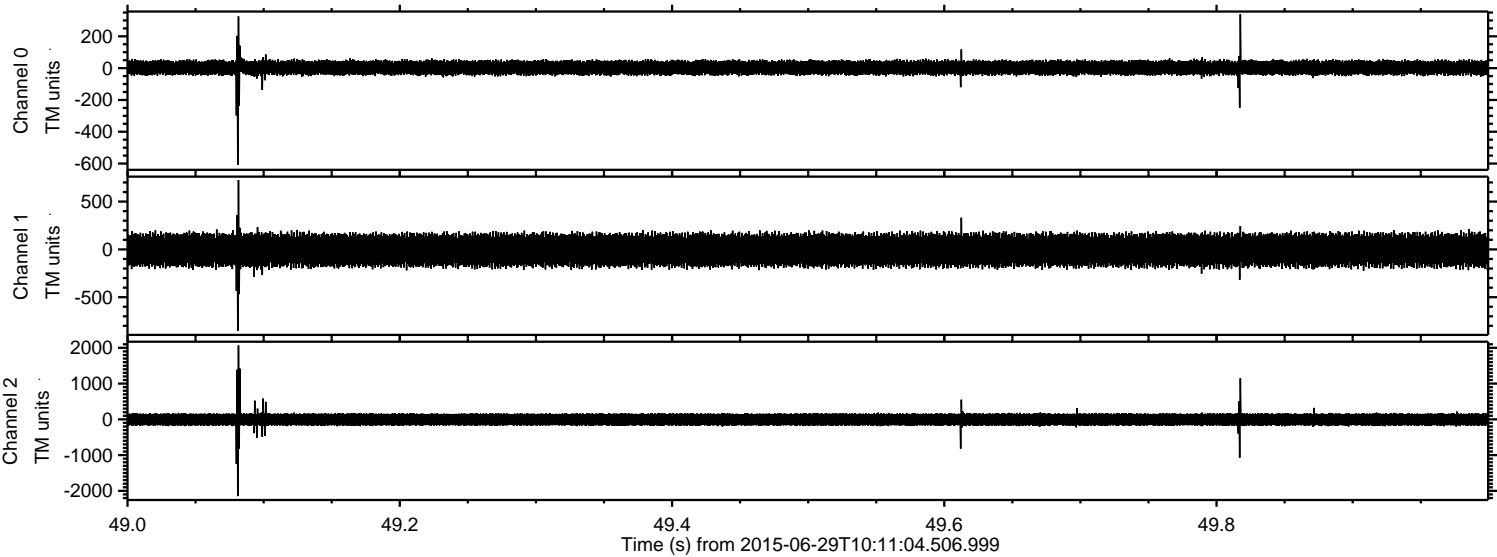


ELMAVAN 3D WAVEFORMS (Measured data sampled at 50 kHz) 51000 packets of 144 samples from 2015-06-29T10:11:04.506.999. Part 139/147

Processed Mon Jun 29 12:17:24 2015 by ELM ver.2012-10-06 from 001__elm20150629_101103__dat00.bin

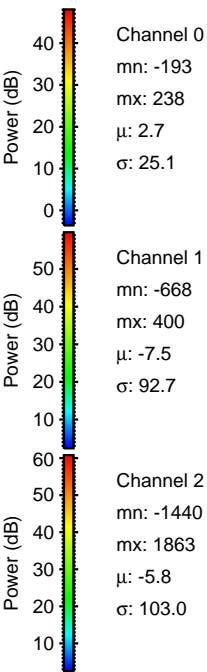
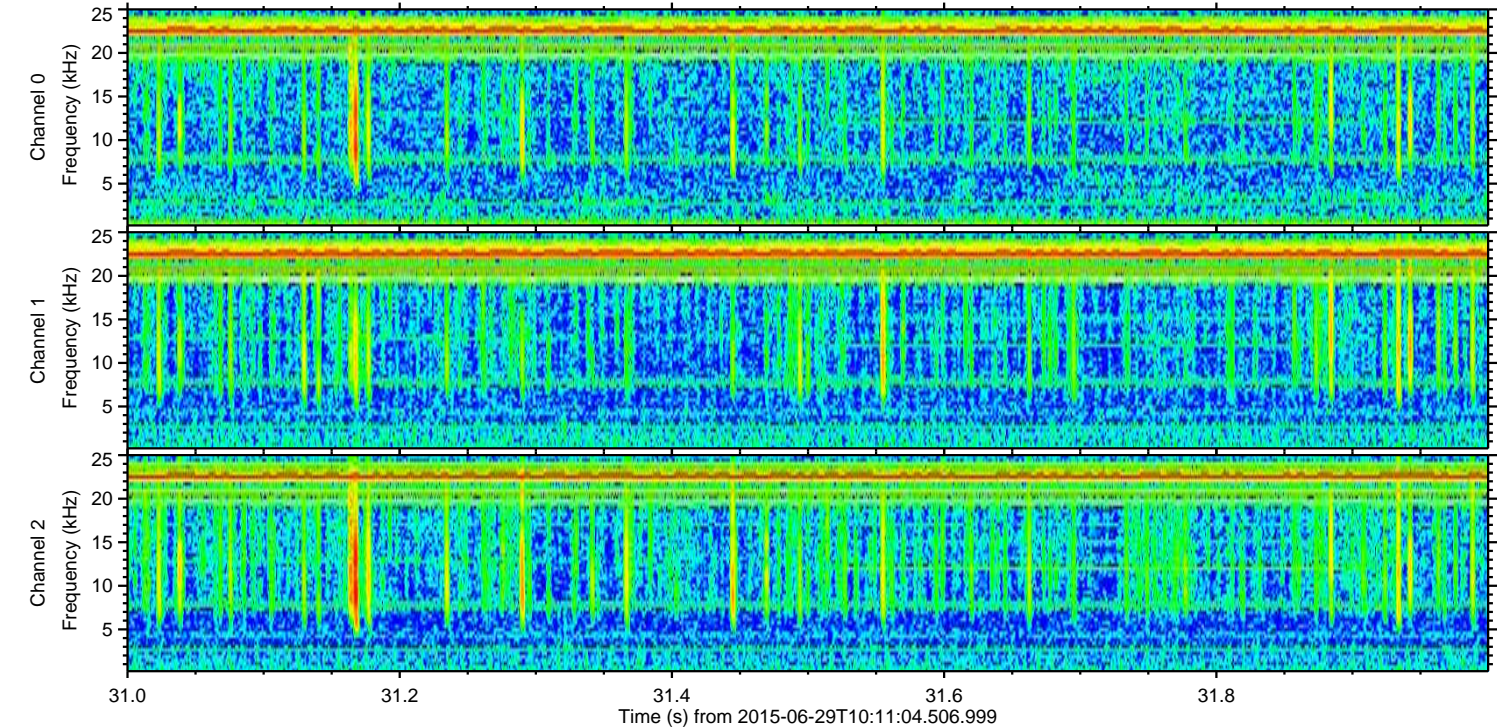
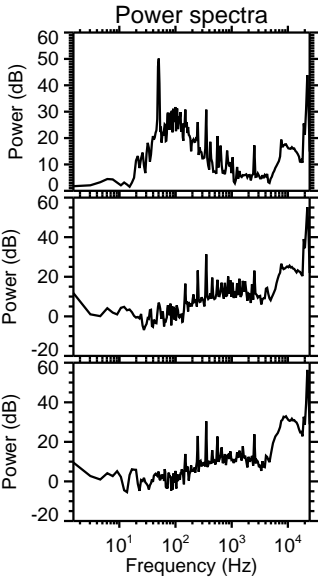
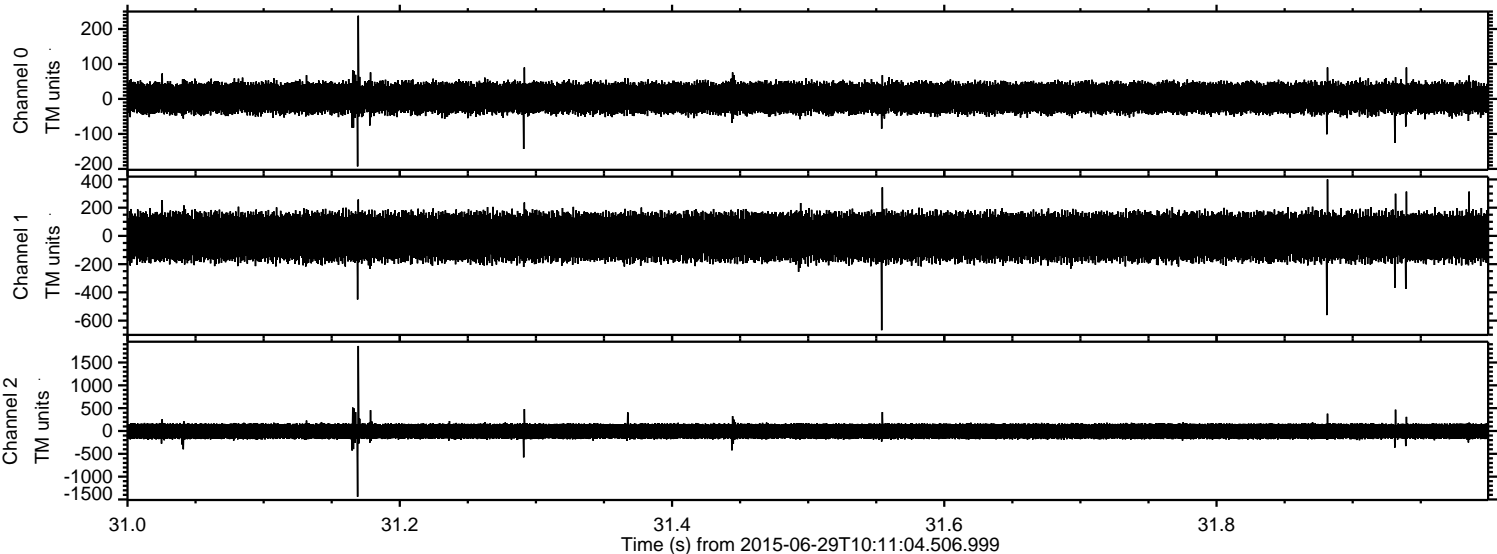


Processed Mon Jun 29 12:17:25 2015 by ELM ver.2012-10-06 from 001__elm20150629_101103__dat00.bin

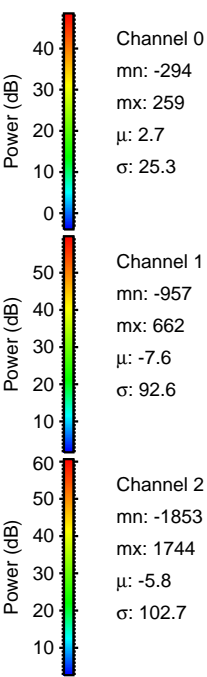
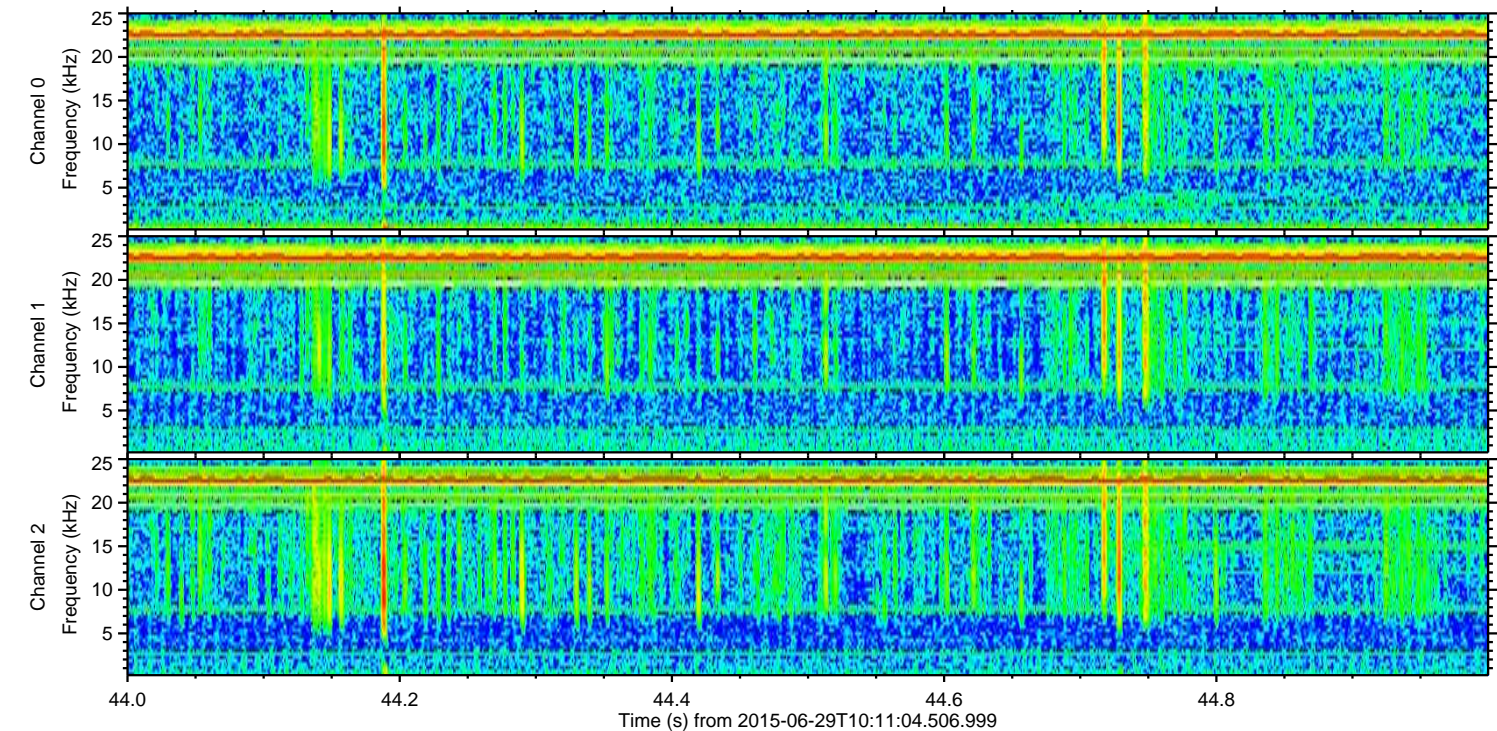
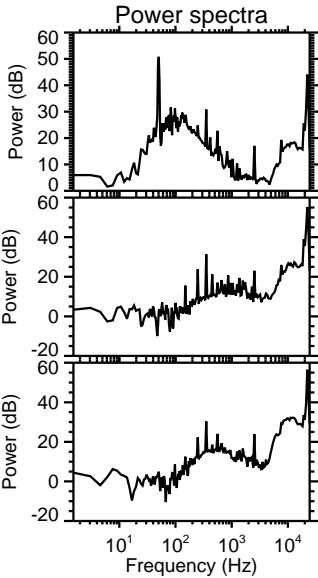
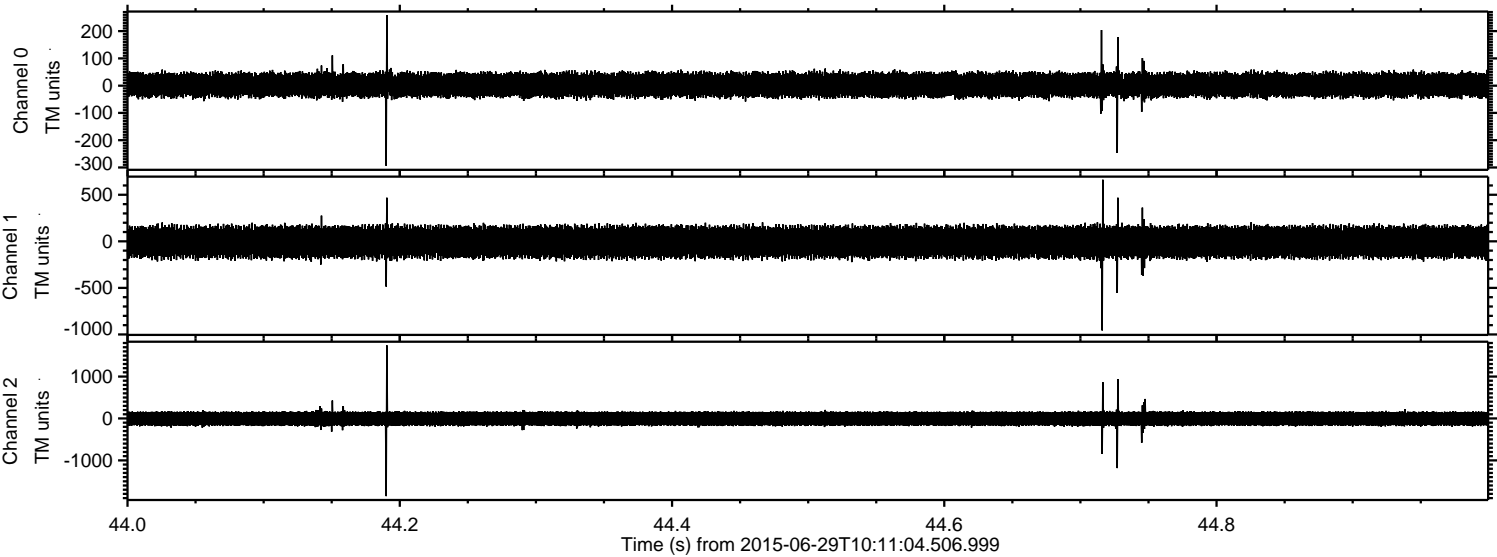


ELMAVAN 3D WAVEFORMS (Measured data sampled at 50 kHz) 51000 packets of 144 samples from 2015-06-29T10:11:04.506.999. Part 32/147

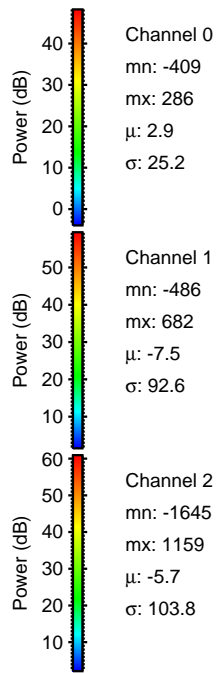
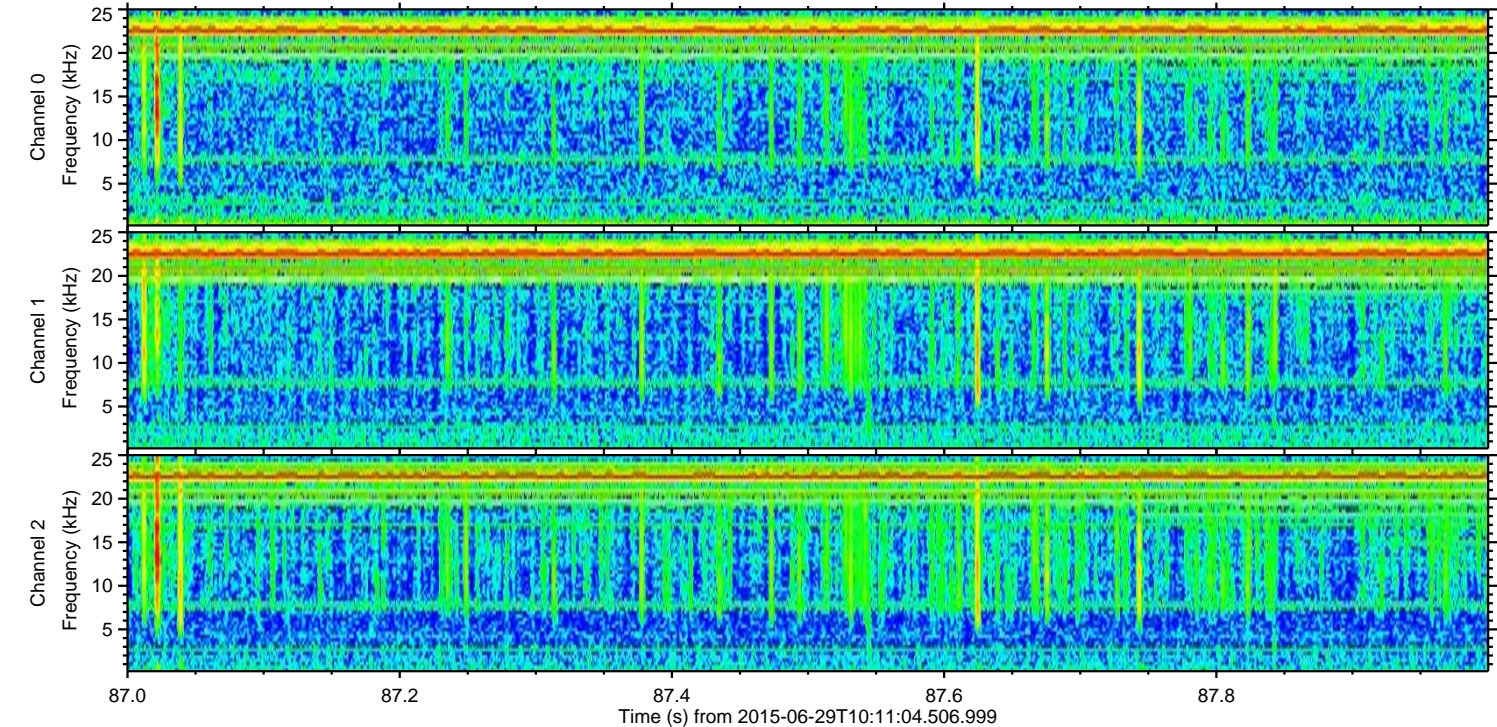
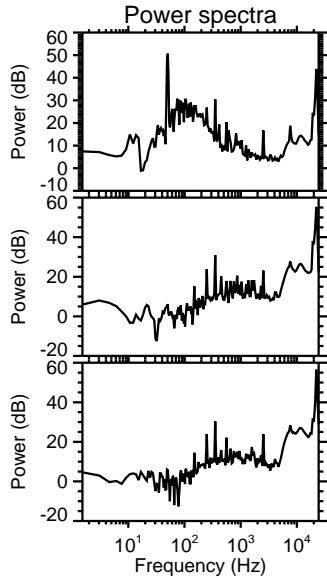
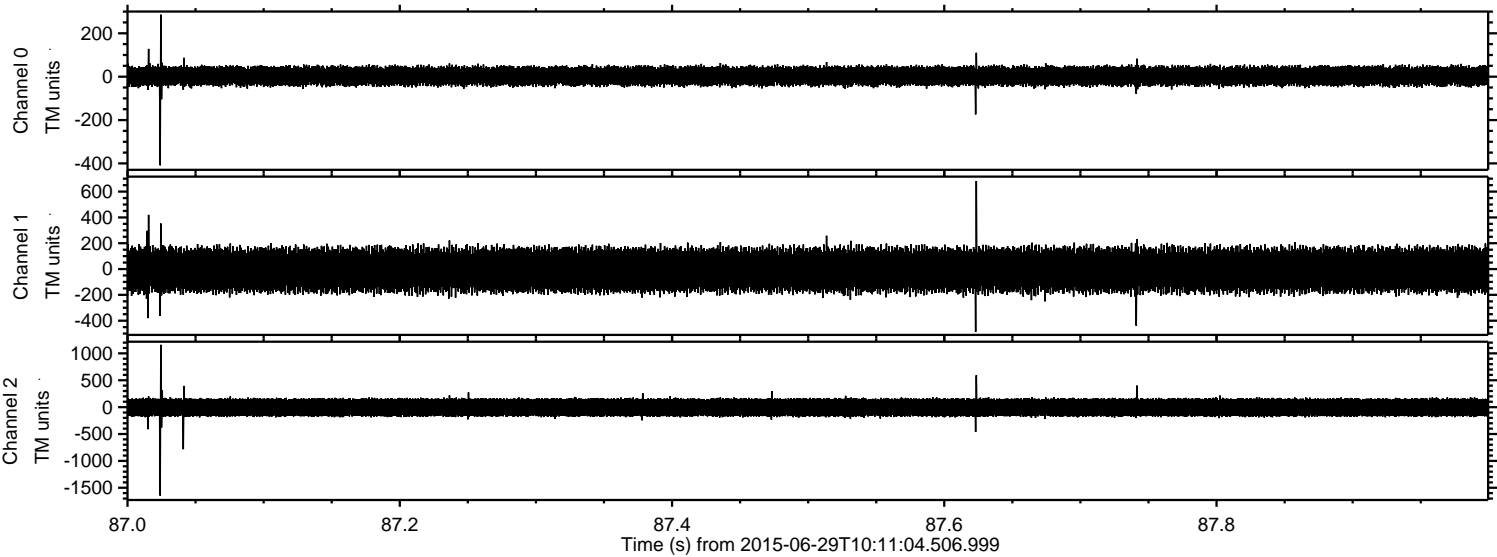
Processed Mon Jun 29 12:17:26 2015 by ELM ver.2012-10-06 from 001__elm20150629_101103__dat00.bin



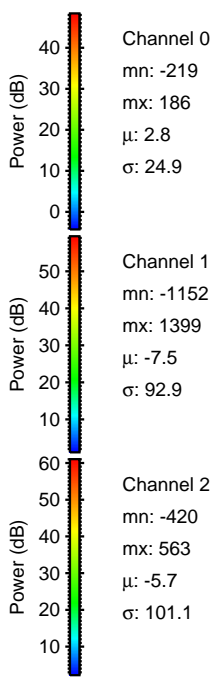
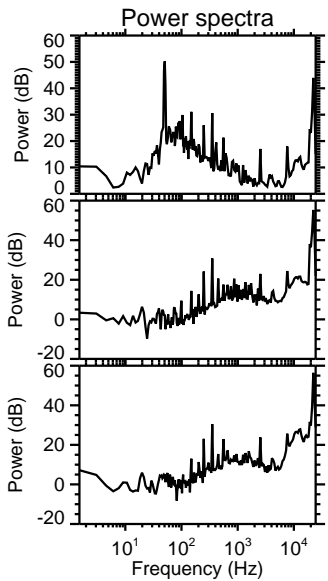
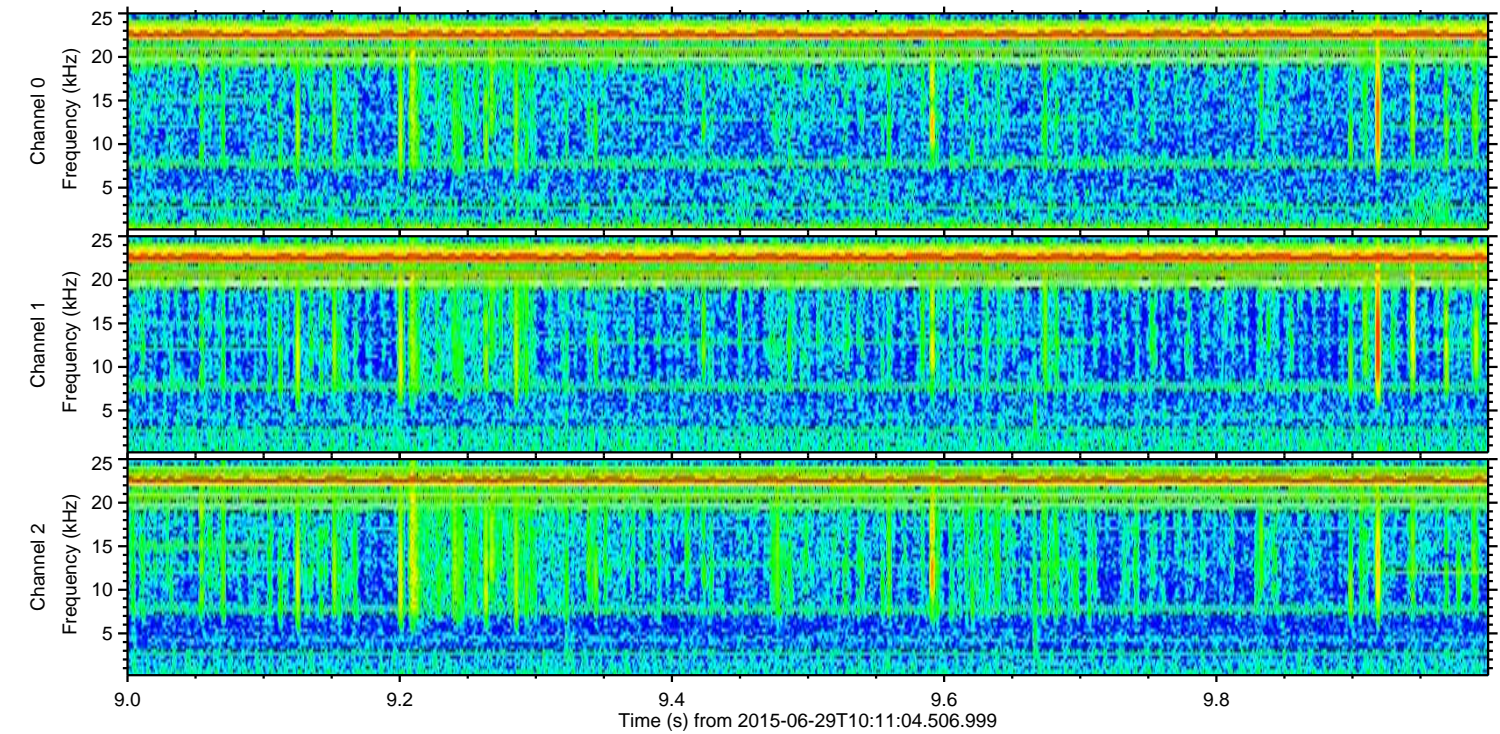
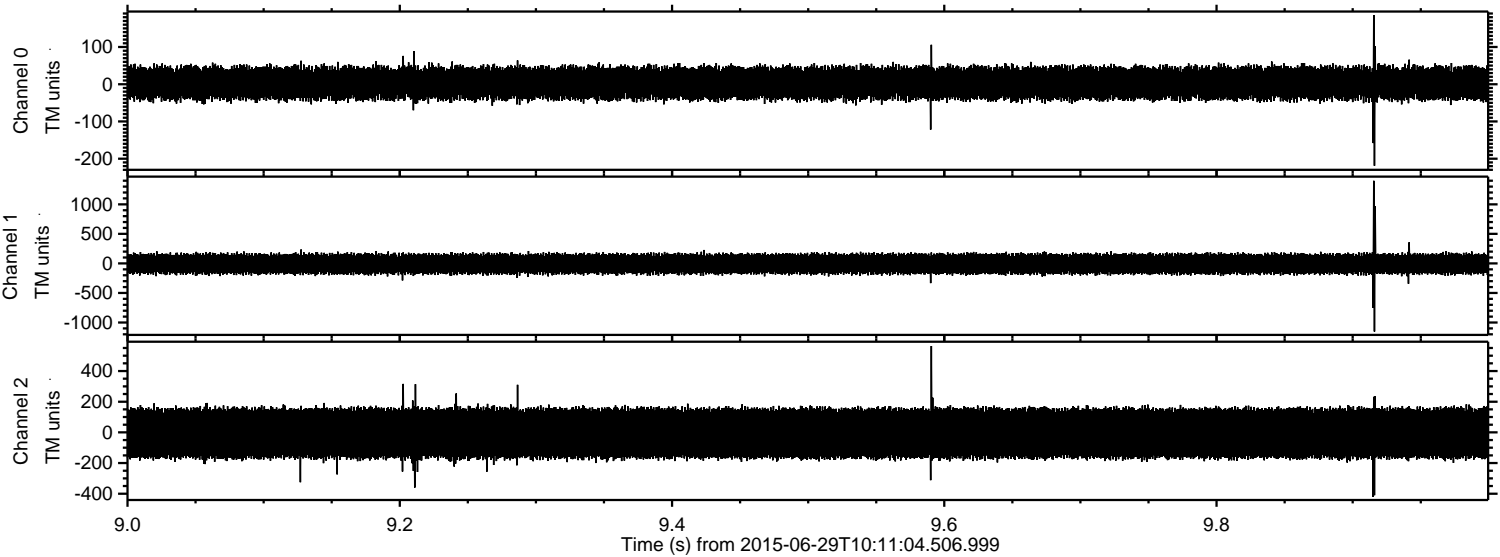
Processed Mon Jun 29 12:17:27 2015 by ELM ver.2012-10-06 from 001__elm20150629_101103__dat00.bin



Processed Mon Jun 29 12:17:28 2015 by ELM ver.2012-10-06 from 001__elm20150629_101103__dat00.bin



Processed Mon Jun 29 12:17:29 2015 by ELM ver.2012-10-06 from 001__elm20150629_101103__dat00.bin

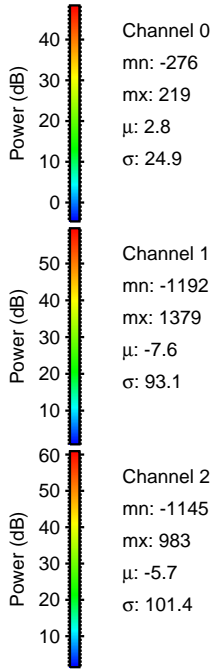
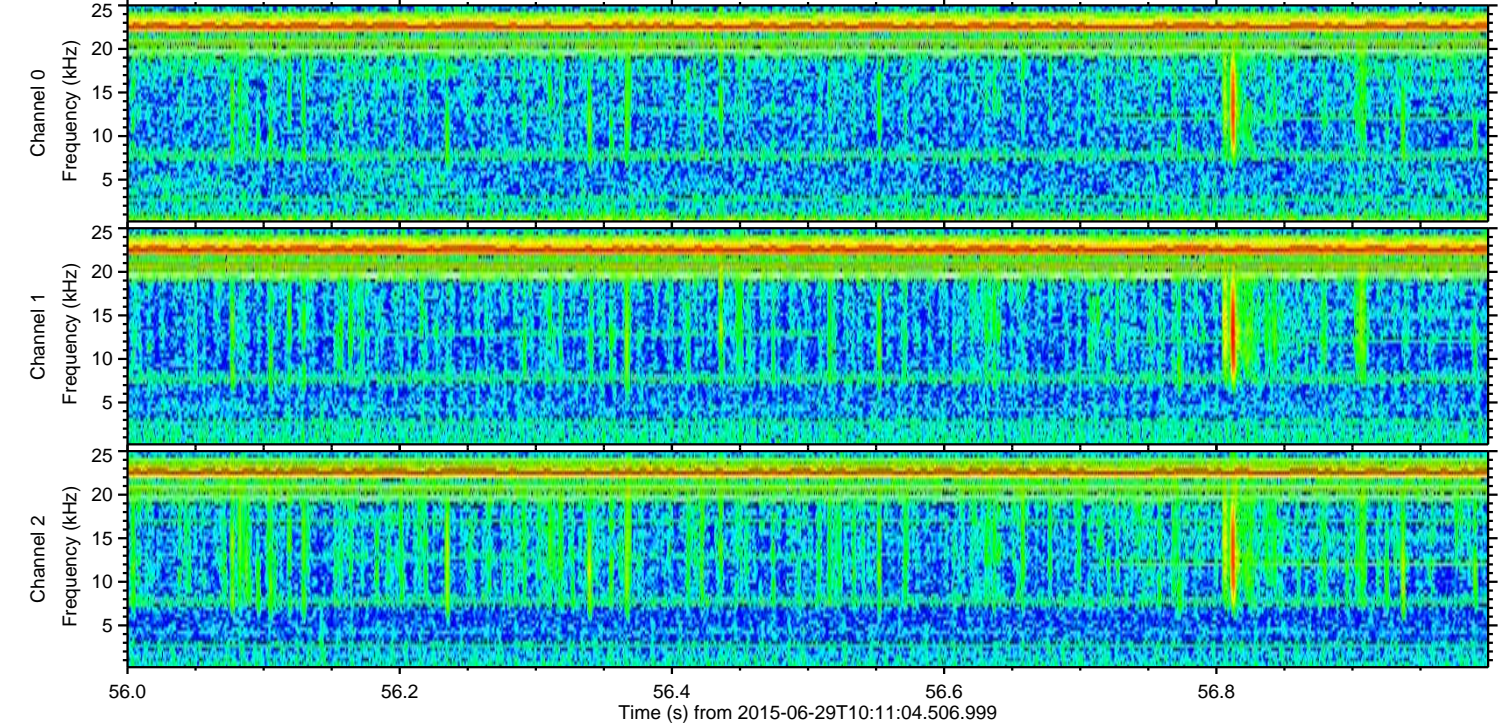
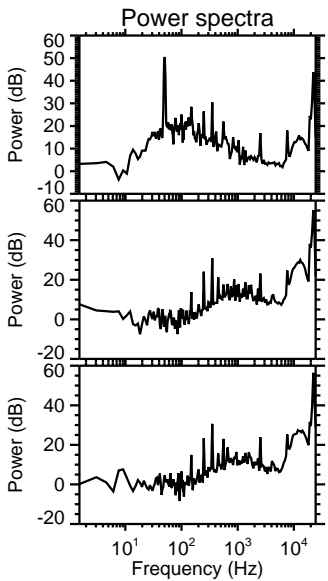
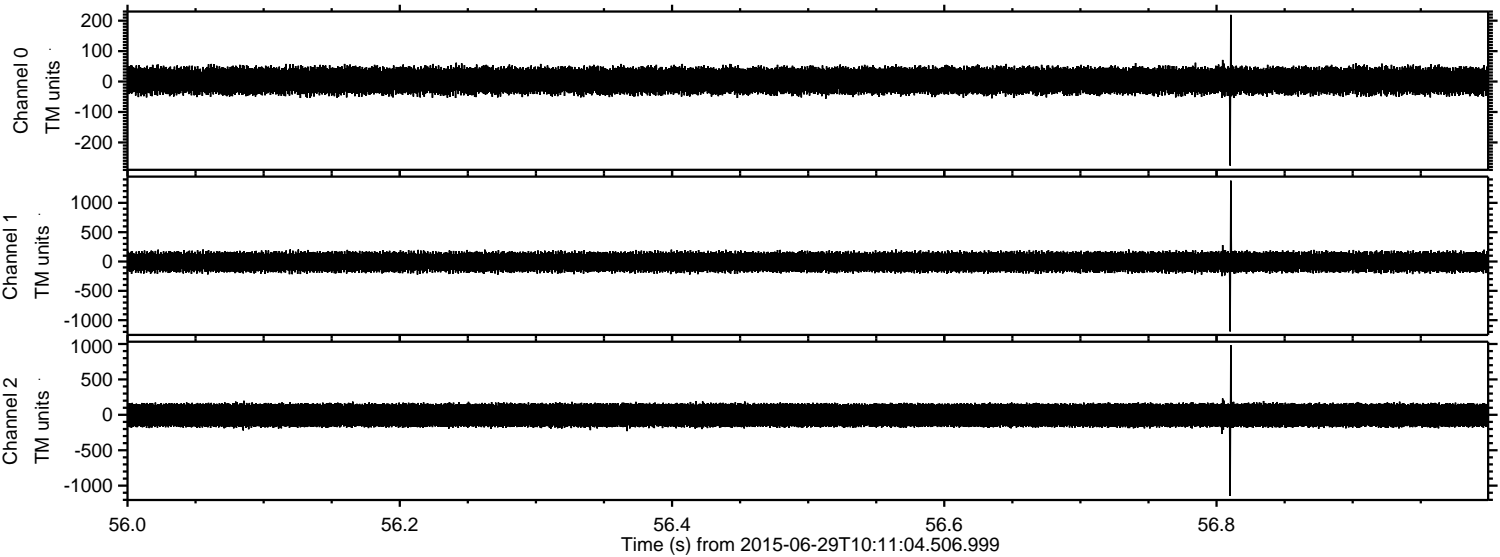


Channel 0
mn: -219
mx: 186
 μ : 2.8
 σ : 24.9

Channel 1
mn: -1152
mx: 1399
 μ : -7.5
 σ : 92.9

Channel 2
mn: -420
mx: 563
 μ : -5.7
 σ : 101.1

Processed Mon Jun 29 12:17:30 2015 by ELM ver.2012-10-06 from 001__elm20150629_101103__dat00.bin

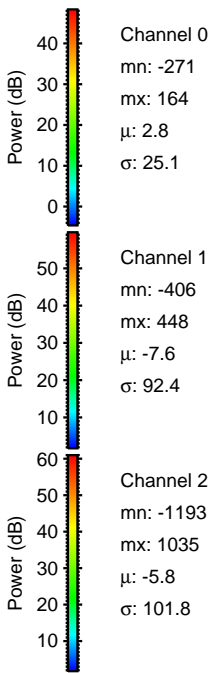
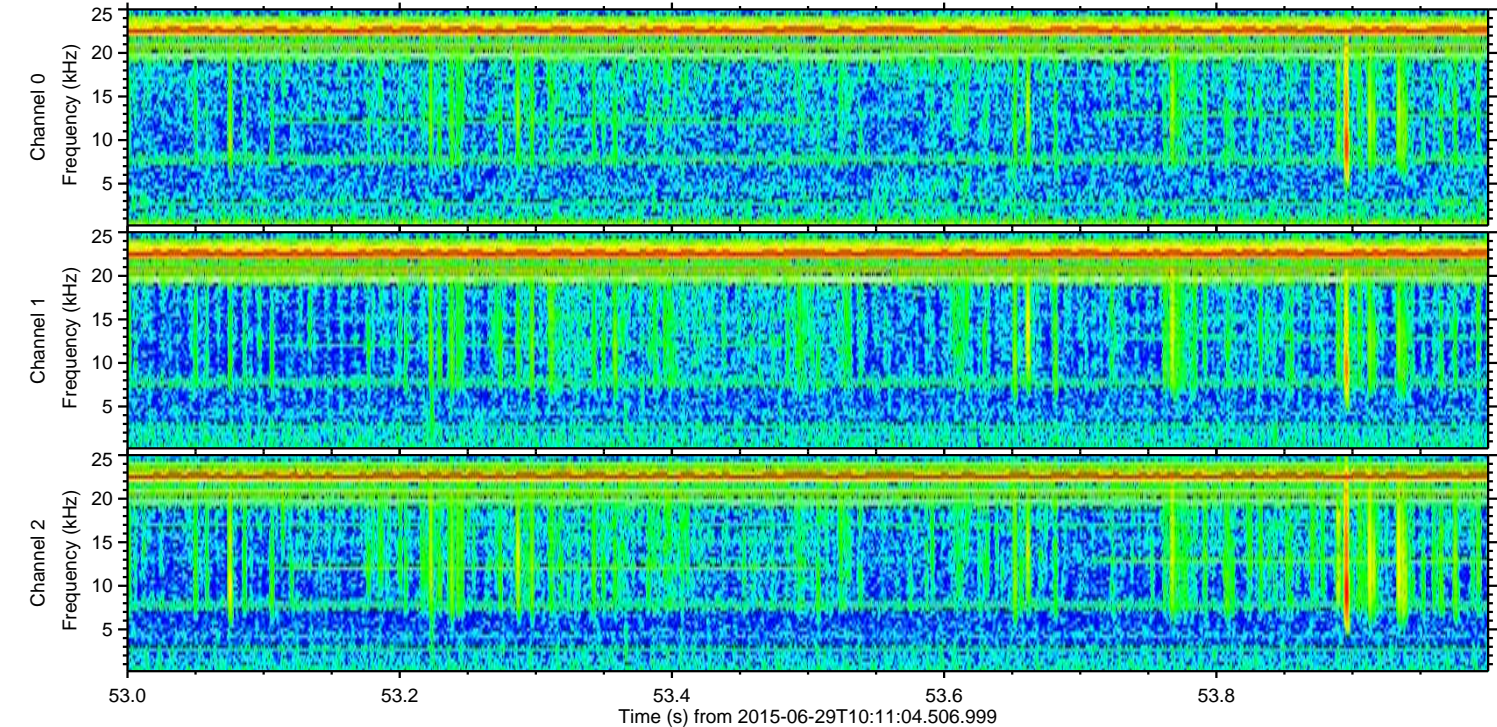
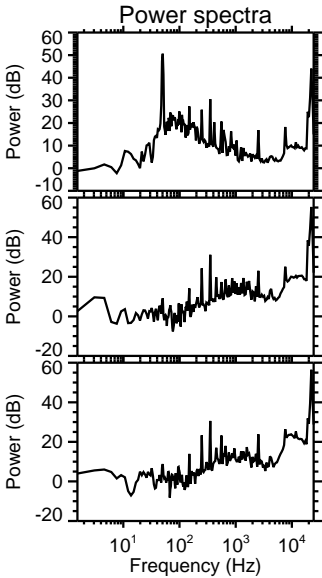
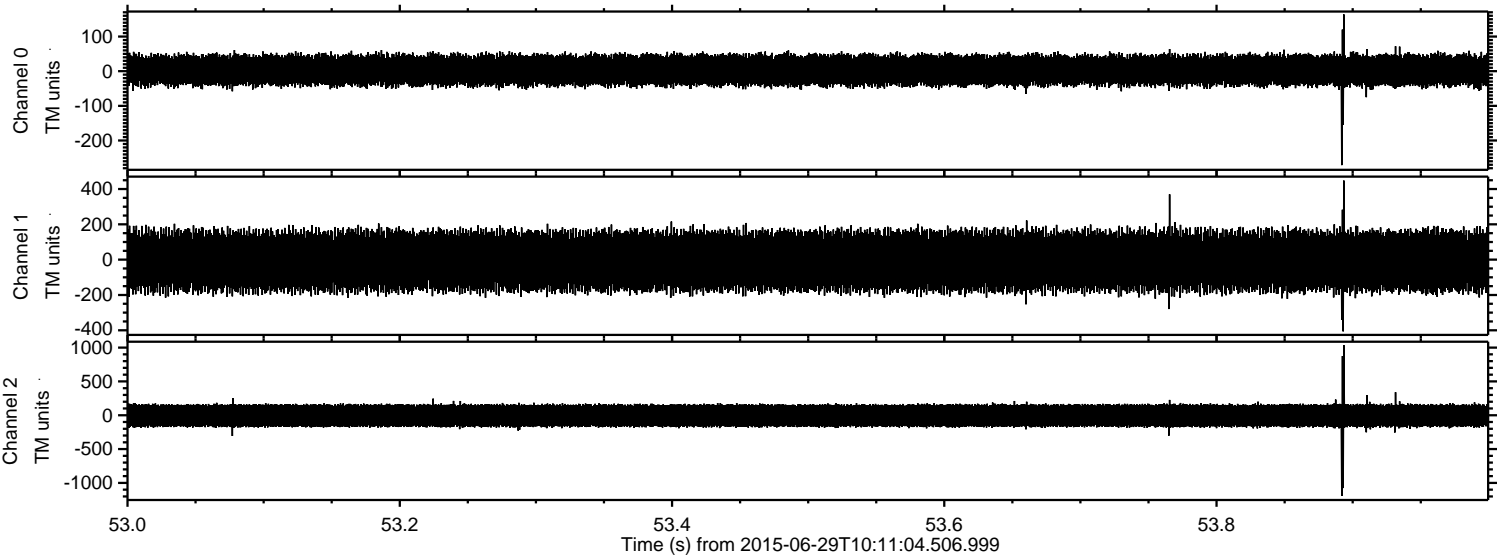


Channel 0
mn: -276
mx: 219
 μ : 2.8
 σ : 24.9

Channel 1
mn: -1192
mx: 1379
 μ : -7.6
 σ : 93.1

Channel 2
mn: -1145
mx: 983
 μ : -5.7
 σ : 101.4

Processed Mon Jun 29 12:17:31 2015 by ELM ver.2012-10-06 from 001__elm20150629_101103__dat00.bin



Processed Mon Jun 29 12:17:32 2015 by ELM ver.2012-10-06 from 001__elm20150629_101103__dat00.bin

