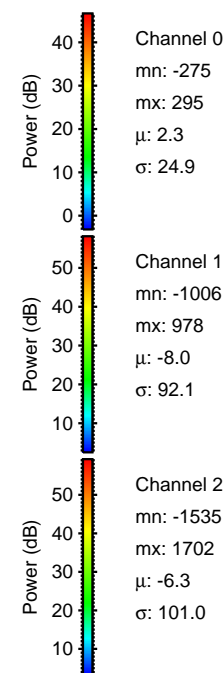
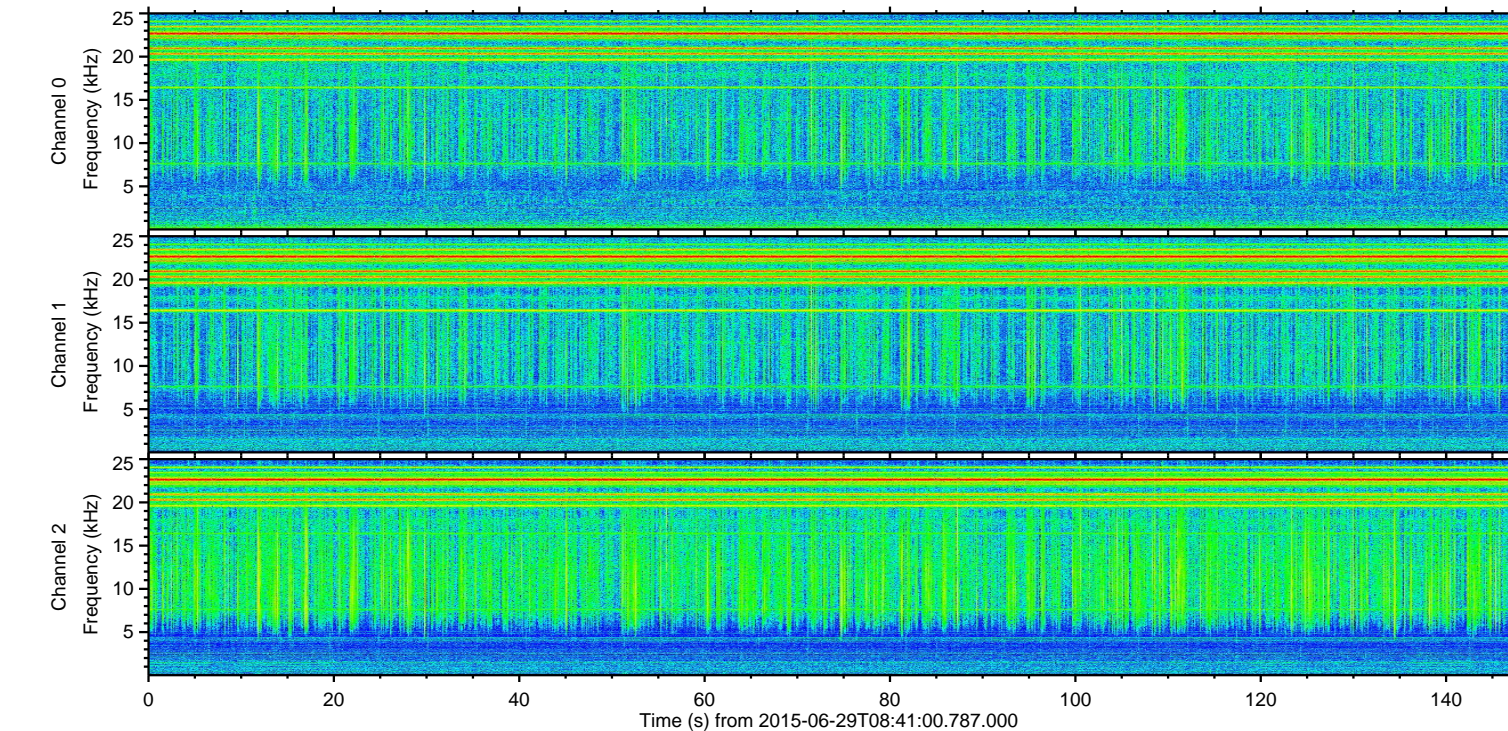
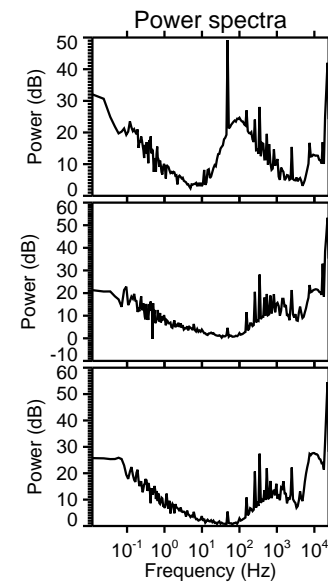
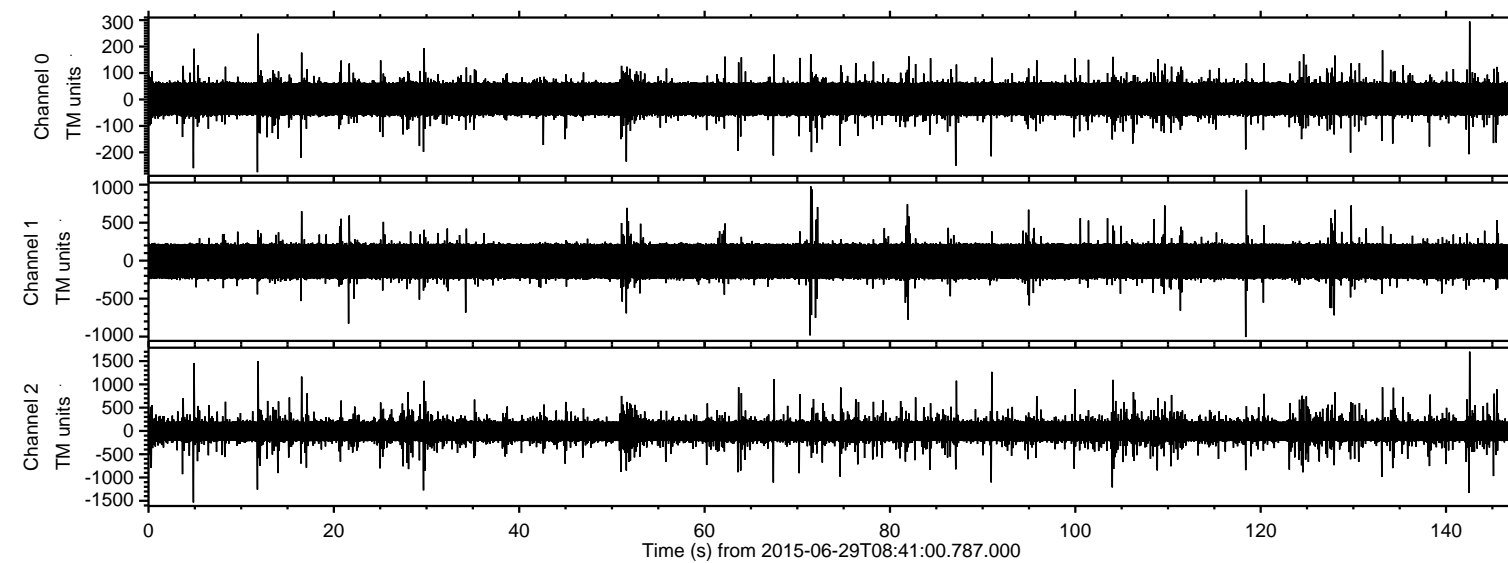


# ELMAVAN 3D WAVEFORMS (Measured data sampled at 50 kHz) 51000 packets of 144 samples from 2015-06-29T08:41:00.787.000.

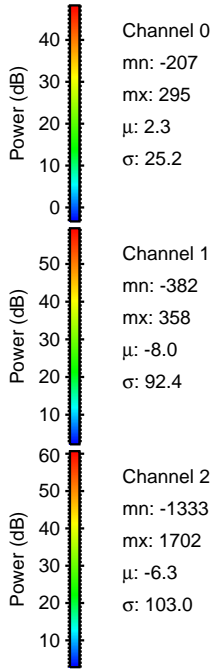
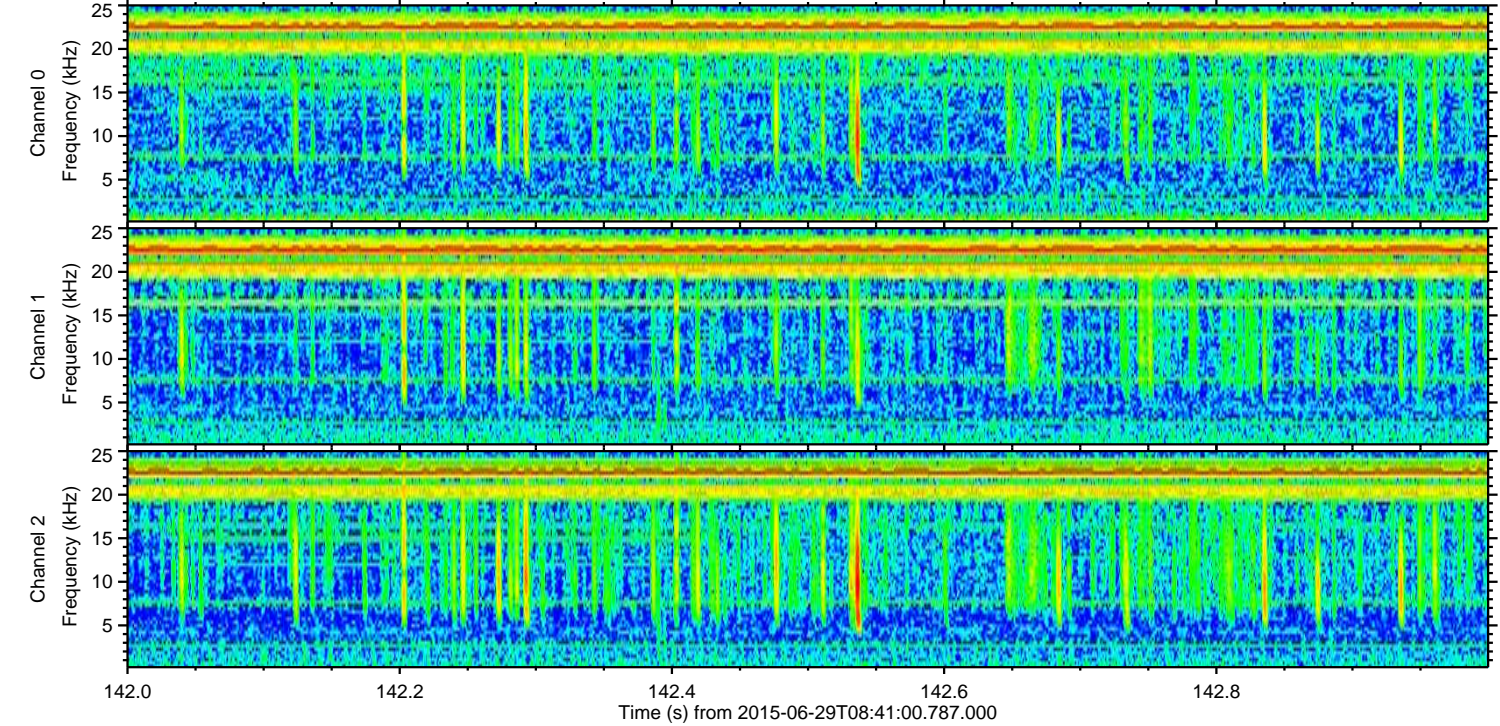
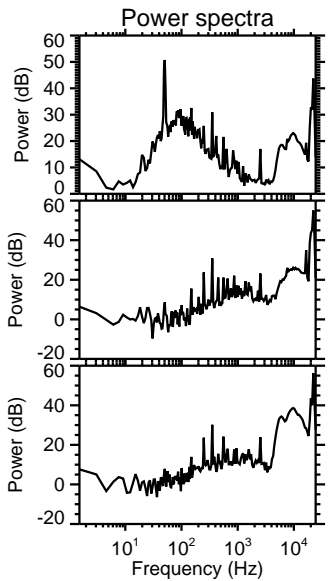
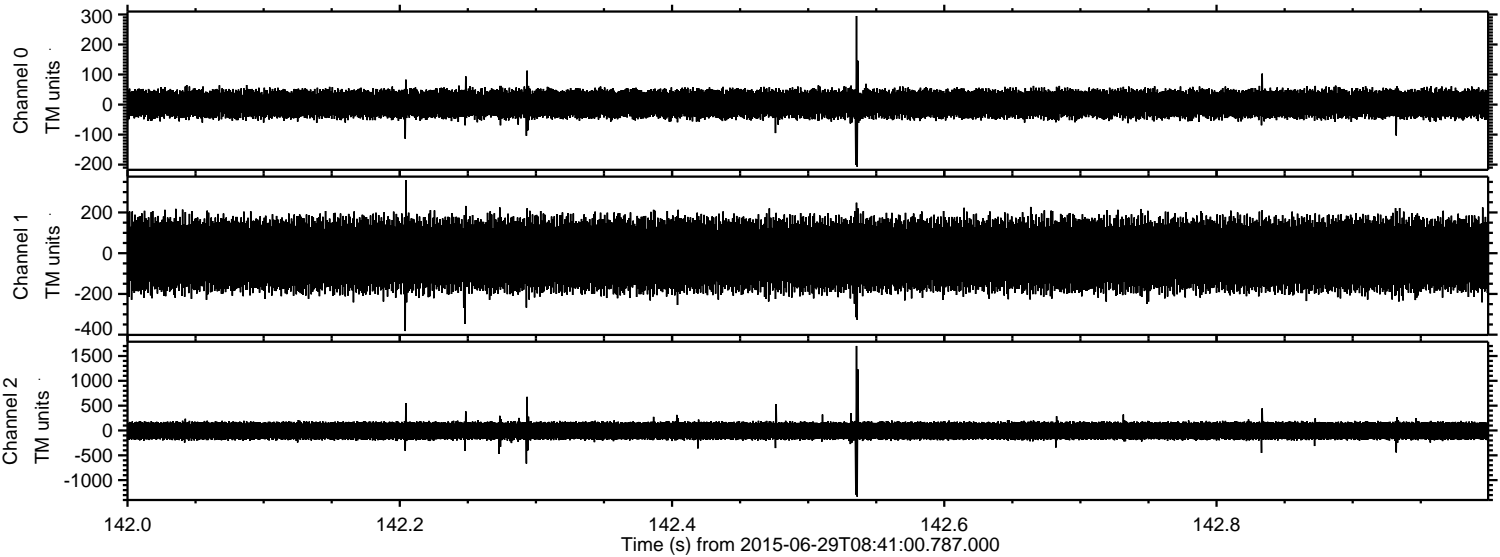
Processed Mon Jun 29 10:47:07 2015 by ELM ver.2012-10-06 from 001\_\_elm20150629\_084059\_\_dat00.bin





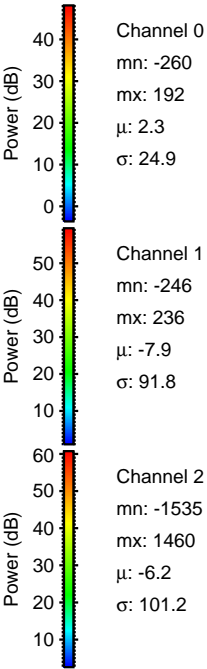
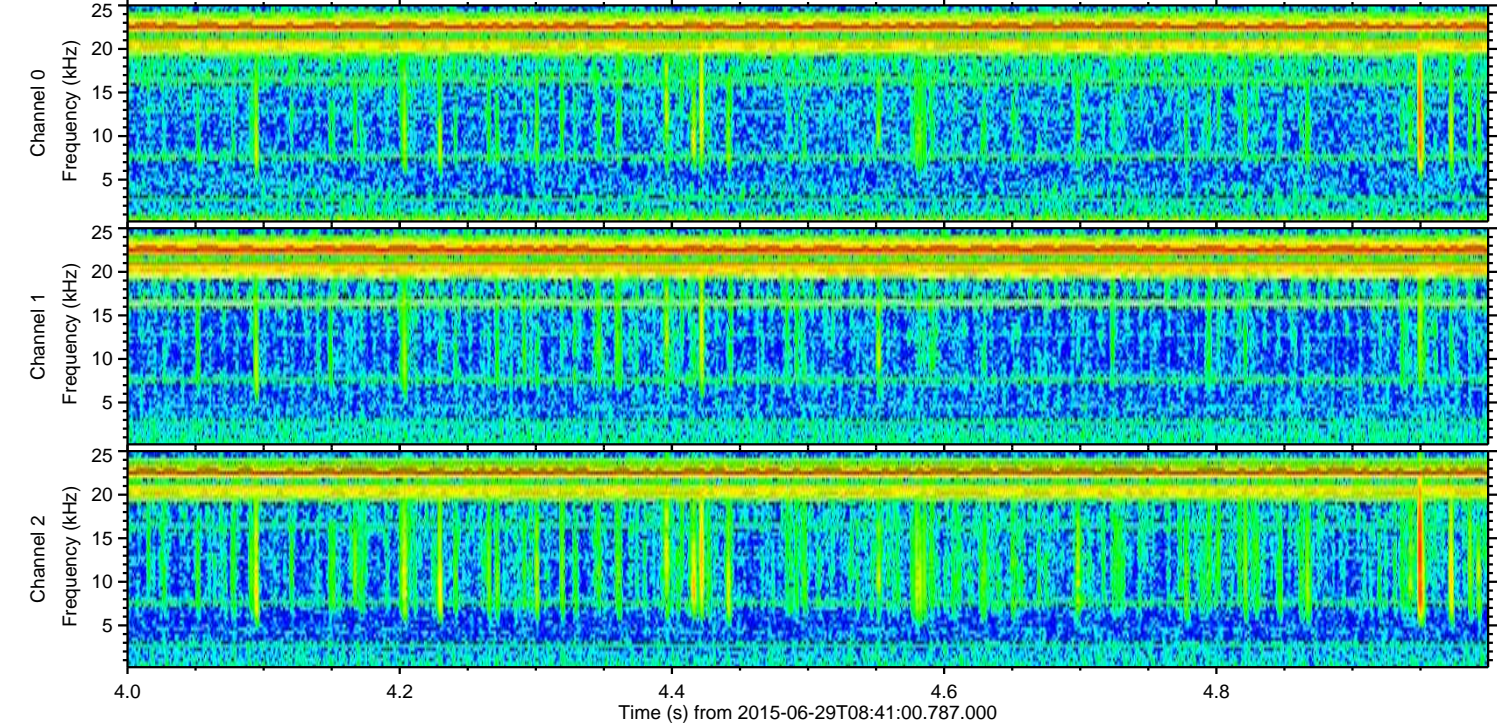
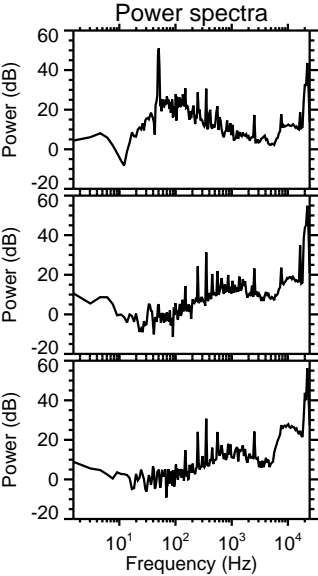
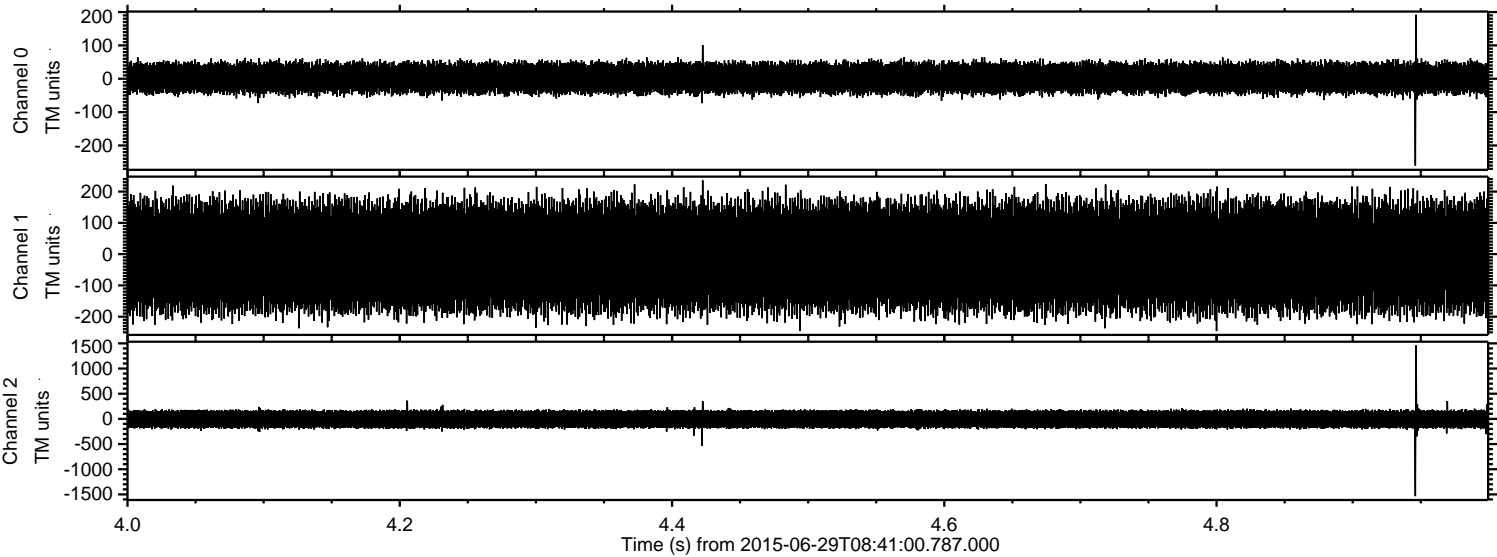
ELMAVAN 3D WAVEFORMS (Measured data sampled at 50 kHz) 51000 packets of 144 samples from 2015-06-29T08:41:00.787.000. Part 143/147

Processed Mon Jun 29 10:47:23 2015 by ELM ver.2012-10-06 from 001\_\_elm20150629\_084059\_\_dat00.bin





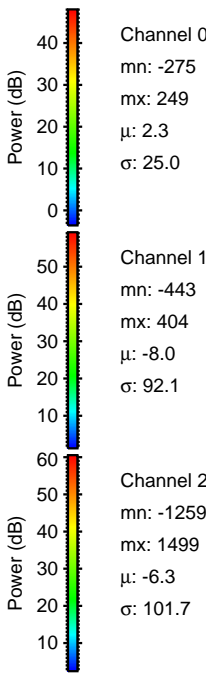
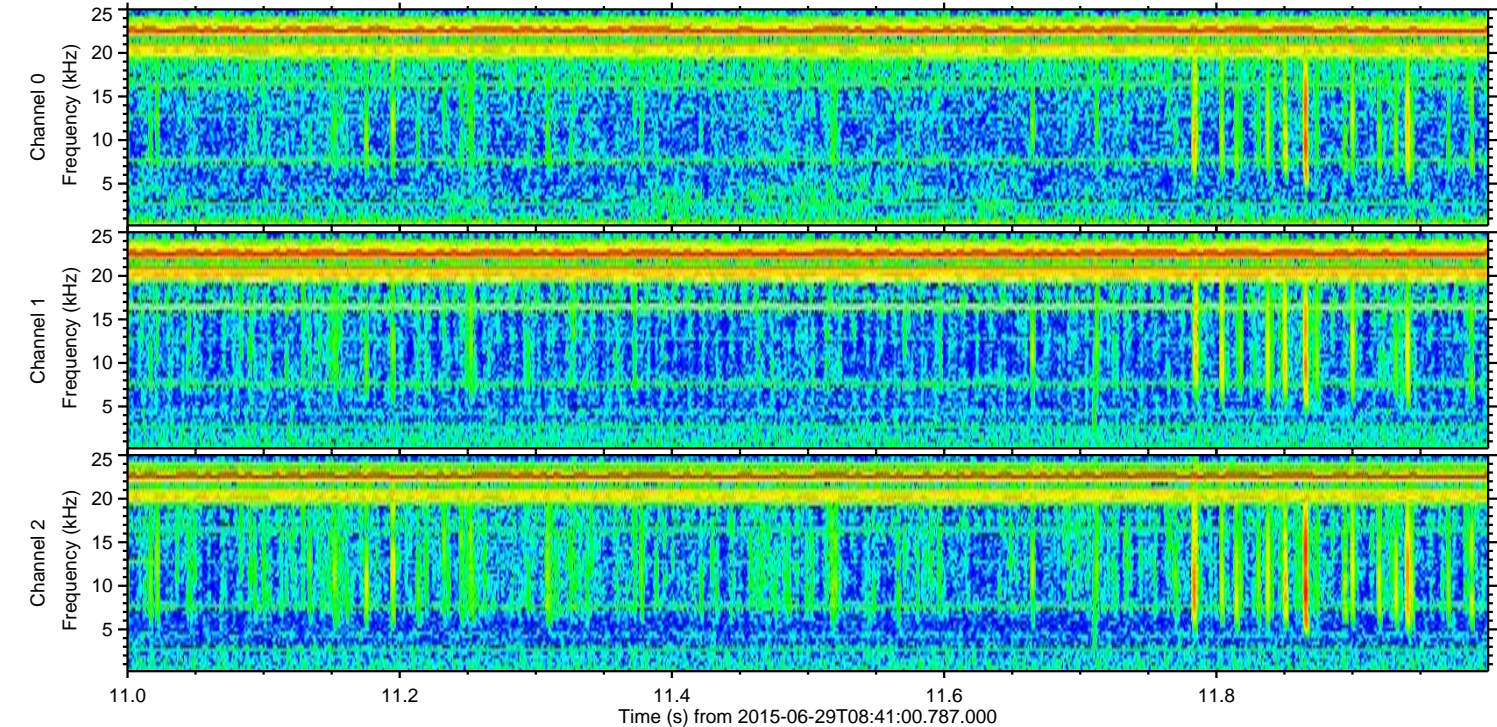
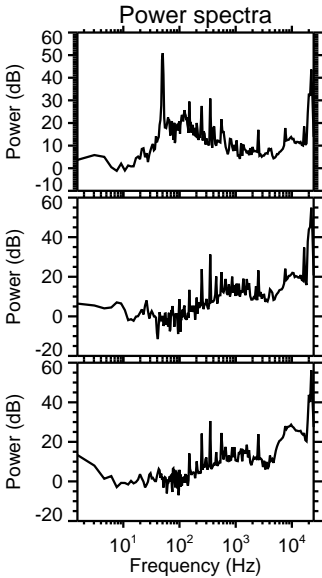
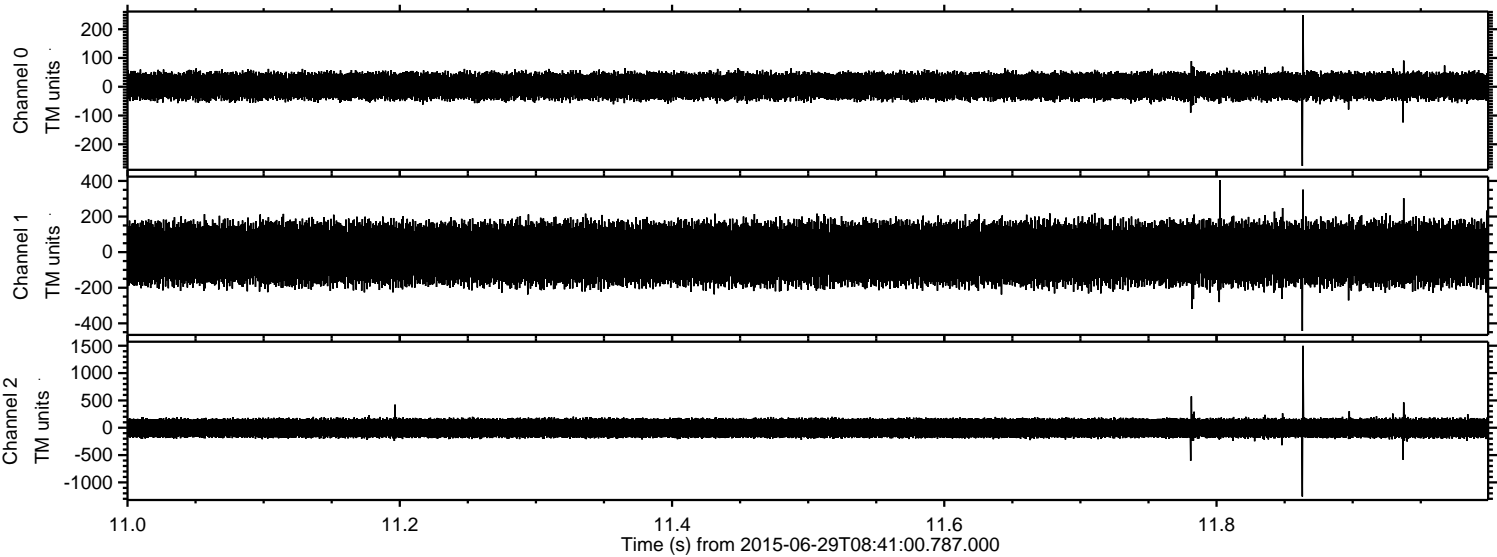
Processed Mon Jun 29 10:47:24 2015 by ELM ver.2012-10-06 from 001\_\_elm20150629\_084059\_\_dat00.bin





ELMAVAN 3D WAVEFORMS (Measured data sampled at 50 kHz) 51000 packets of 144 samples from 2015-06-29T08:41:00.787.000. Part 12/147

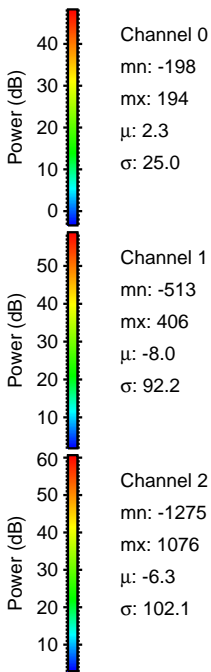
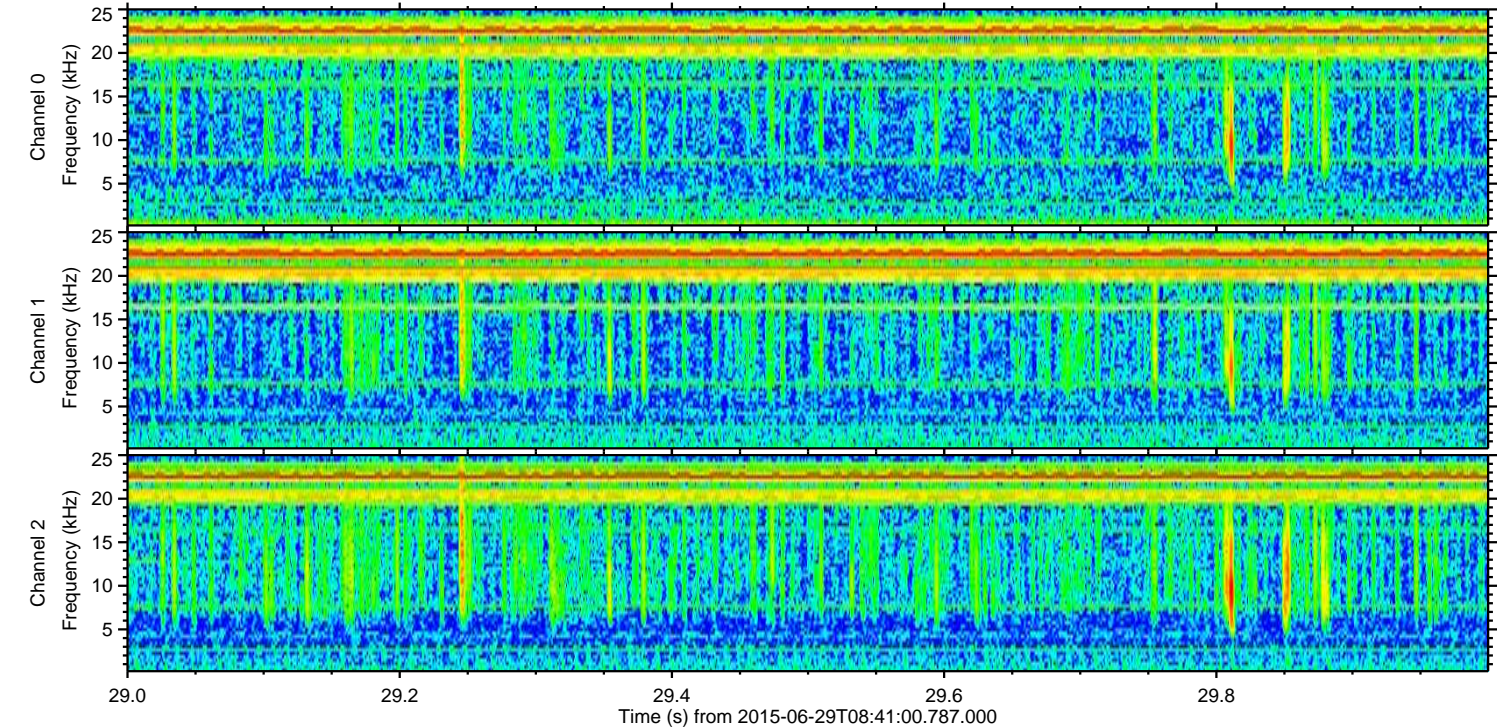
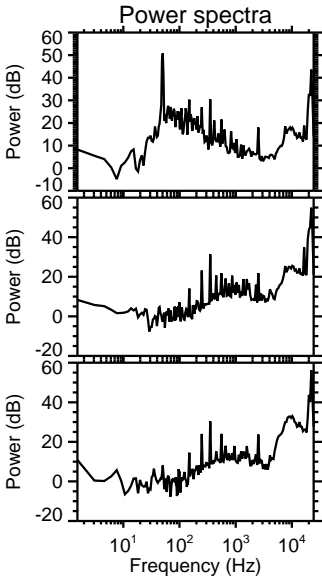
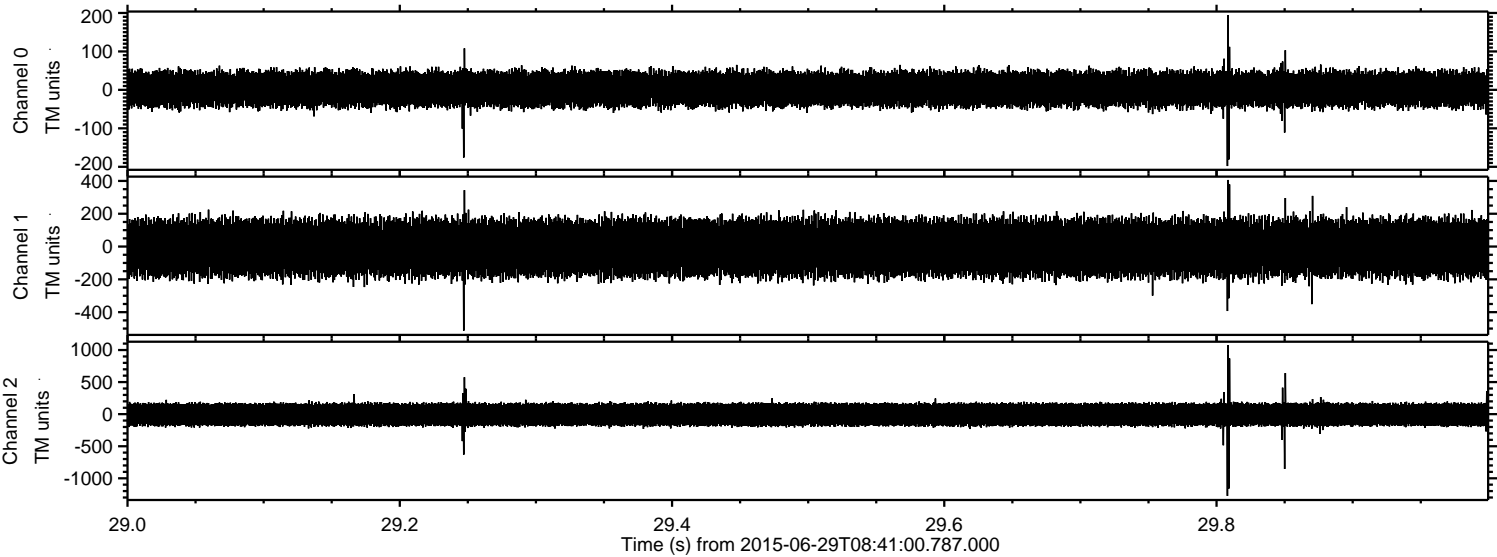
Processed Mon Jun 29 10:47:25 2015 by ELM ver.2012-10-06 from 001\_\_elm20150629\_084059\_\_dat00.bin





ELMAVAN 3D WAVEFORMS (Measured data sampled at 50 kHz) 51000 packets of 144 samples from 2015-06-29T08:41:00.787.000. Part 30/147

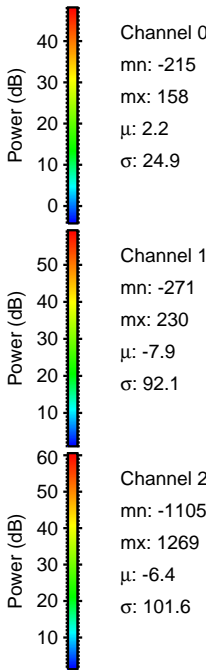
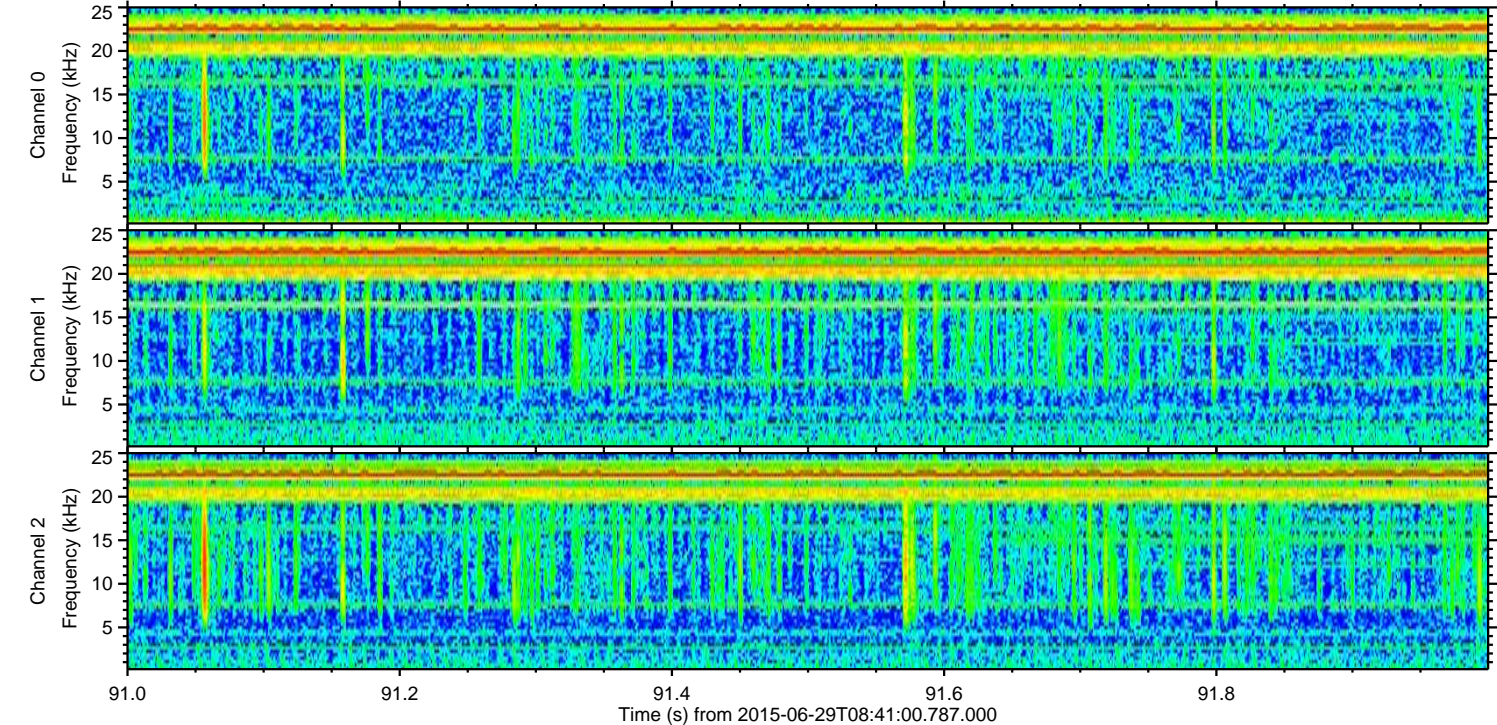
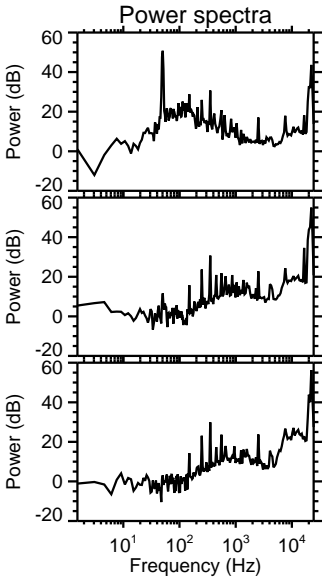
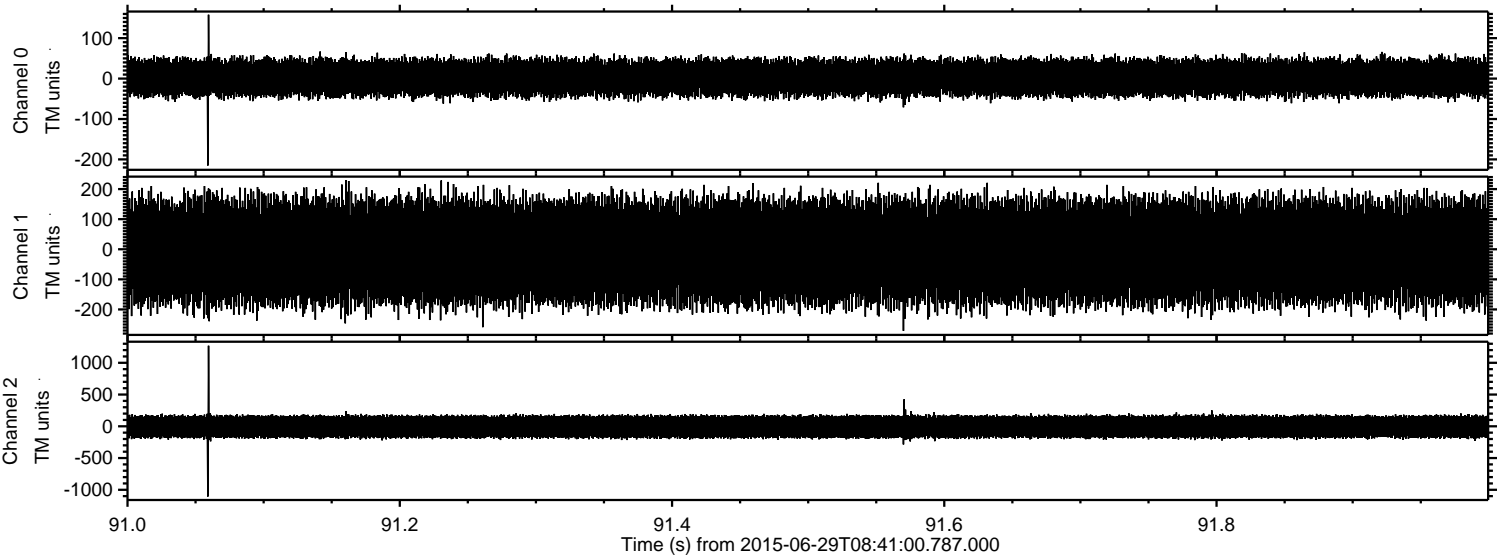
Processed Mon Jun 29 10:47:27 2015 by ELM ver.2012-10-06 from 001\_\_elm20150629\_084059\_\_dat00.bin





ELMAVAN 3D WAVEFORMS (Measured data sampled at 50 kHz) 51000 packets of 144 samples from 2015-06-29T08:41:00.787.000. Part 92/147

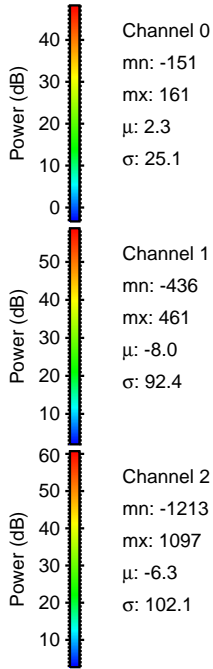
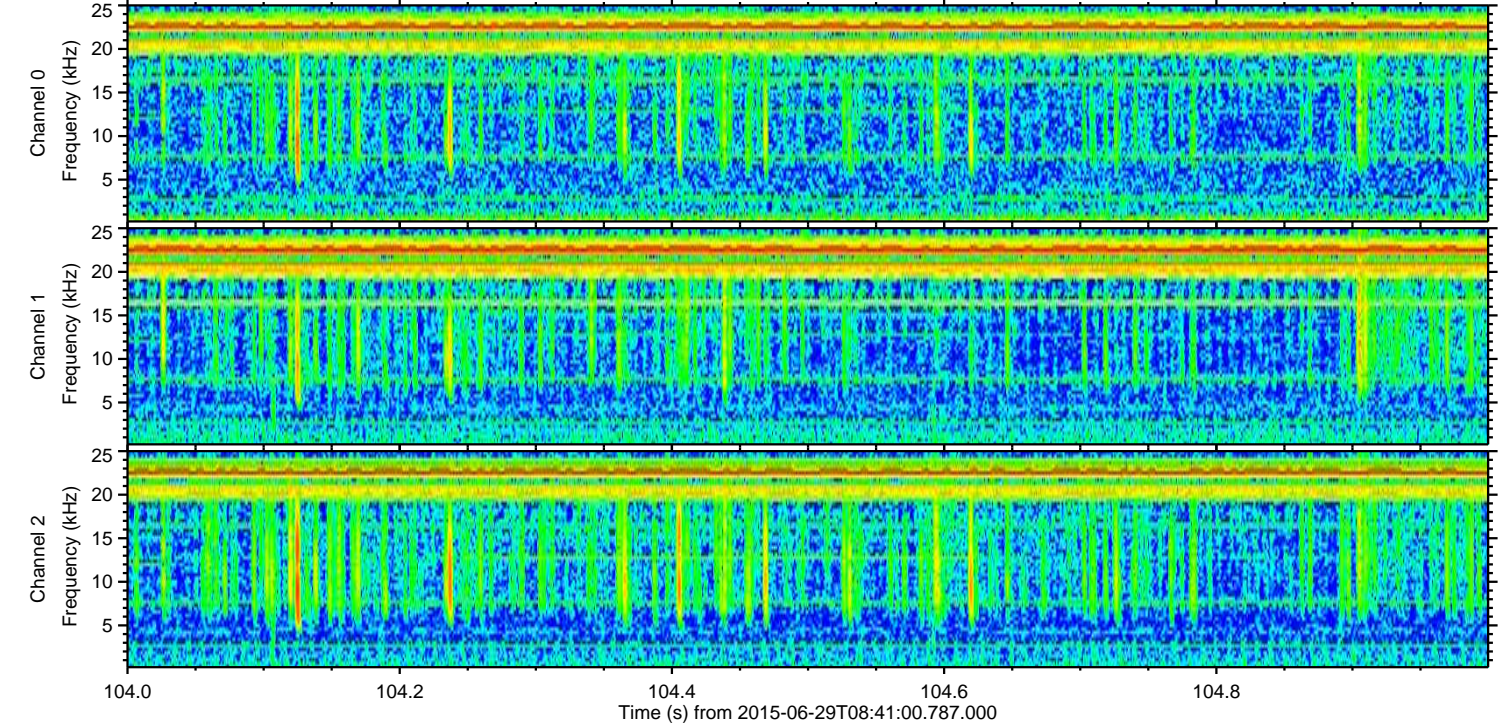
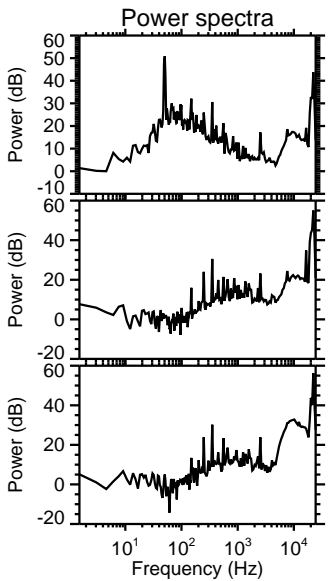
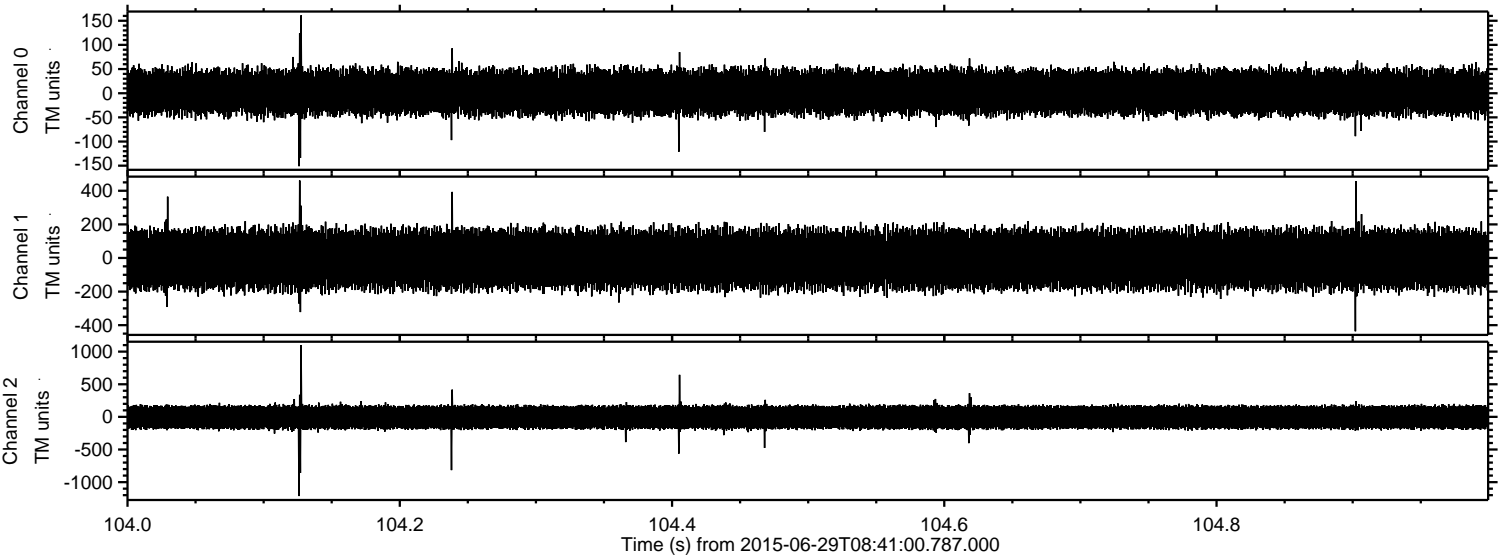
Processed Mon Jun 29 10:47:28 2015 by ELM ver.2012-10-06 from 001\_\_elm20150629\_084059\_\_dat00.bin





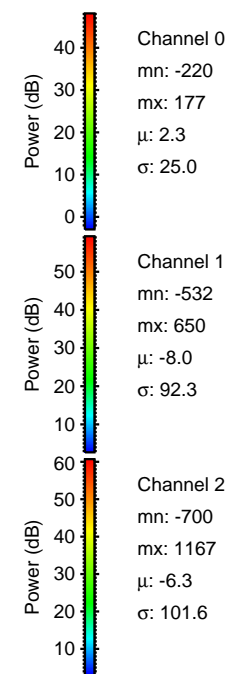
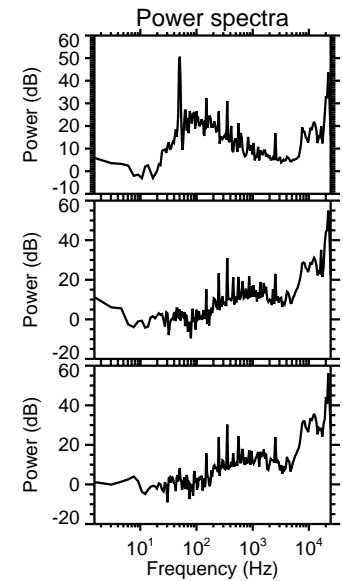
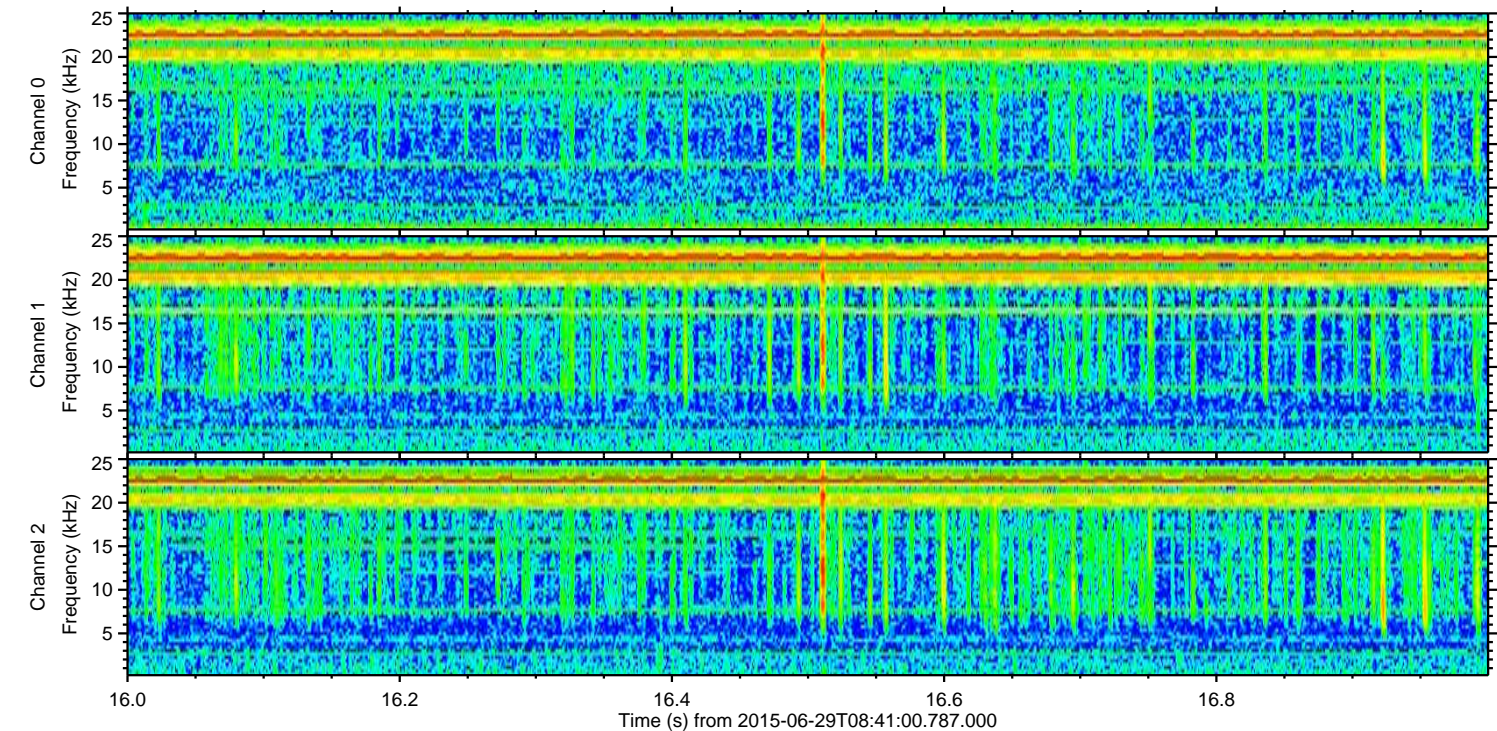
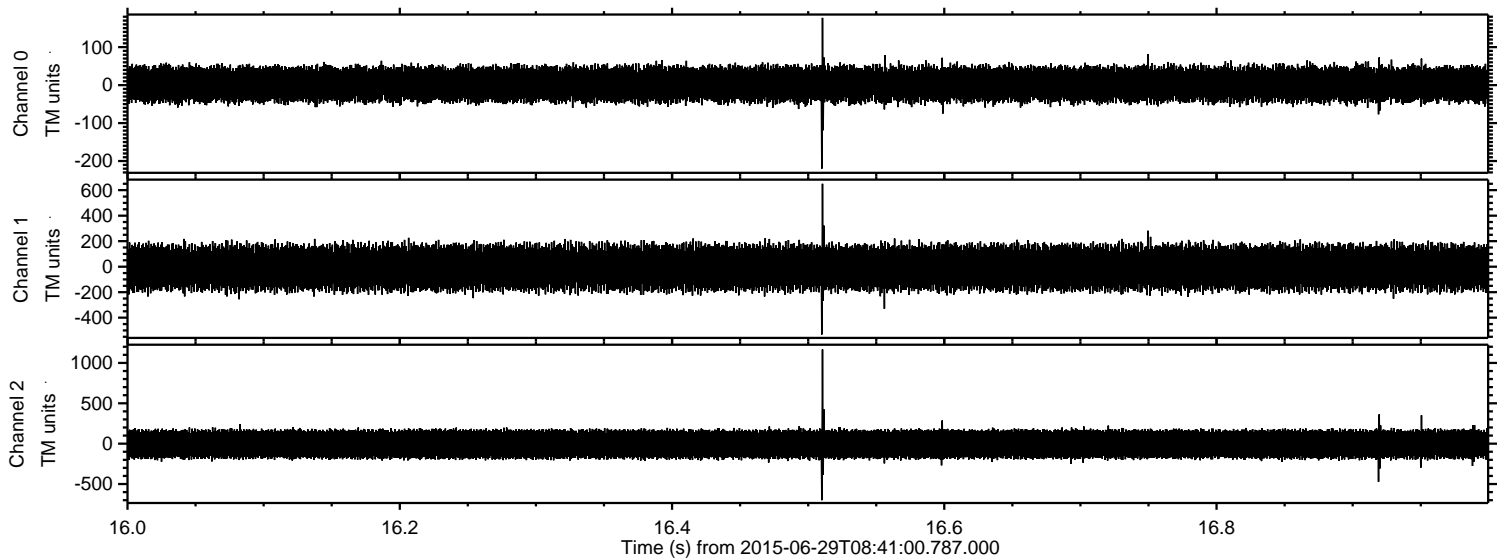
ELMAVAN 3D WAVEFORMS (Measured data sampled at 50 kHz) 51000 packets of 144 samples from 2015-06-29T08:41:00.787.000. Part 105/147

Processed Mon Jun 29 10:47:29 2015 by ELM ver.2012-10-06 from 001\_\_elm20150629\_084059\_\_dat00.bin





Processed Mon Jun 29 10:47:30 2015 by ELM ver.2012-10-06 from 001\_\_elm20150629\_084059\_\_dat00.bin



Power spectra

Channel 0

mn: -220  
mx: 177  
 $\mu$ : 2.3  
 $\sigma$ : 25.0

Channel 1

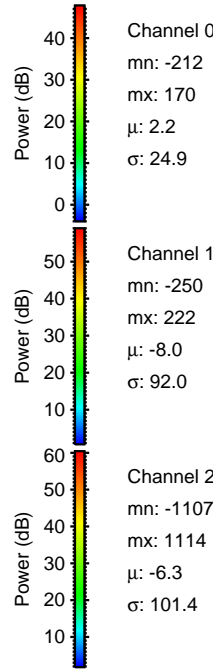
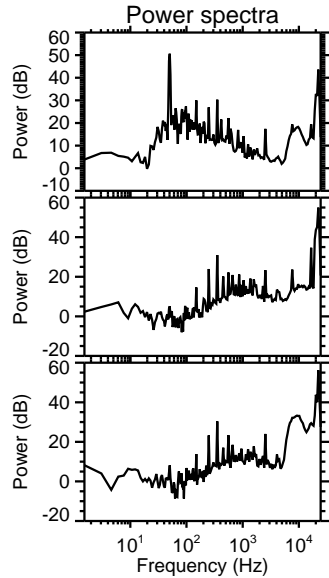
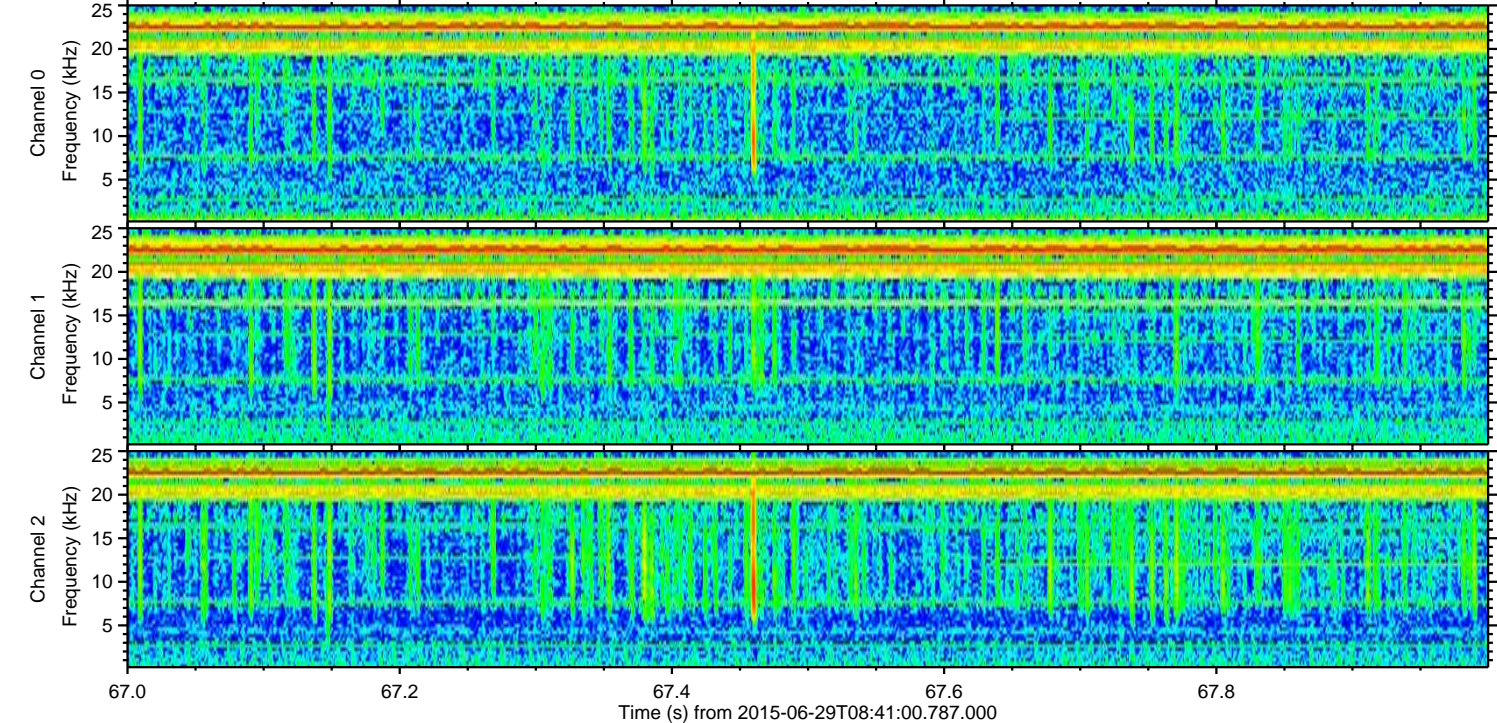
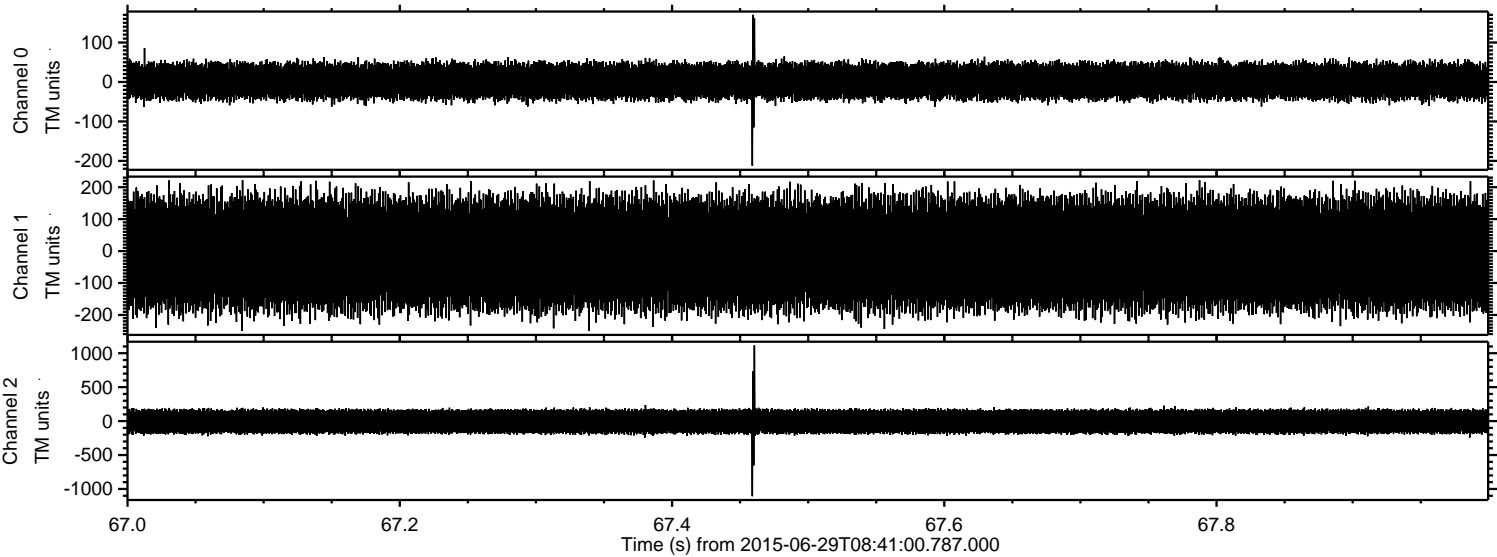
mn: -532  
mx: 650  
 $\mu$ : -8.0  
 $\sigma$ : 92.3

Channel 2

mn: -700  
mx: 1167  
 $\mu$ : -6.3  
 $\sigma$ : 101.6



Processed Mon Jun 29 10:47:31 2015 by ELM ver.2012-10-06 from 001\_\_elm20150629\_084059\_\_dat00.bin



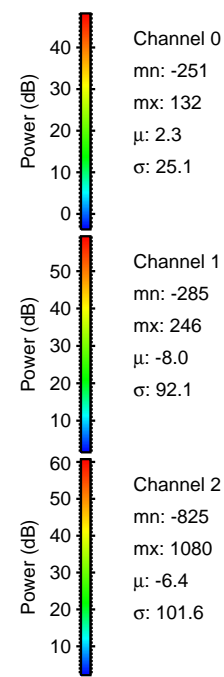
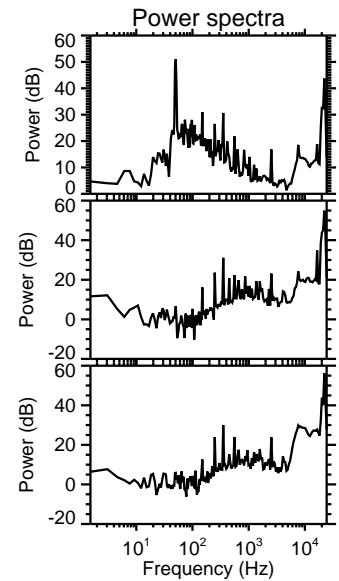
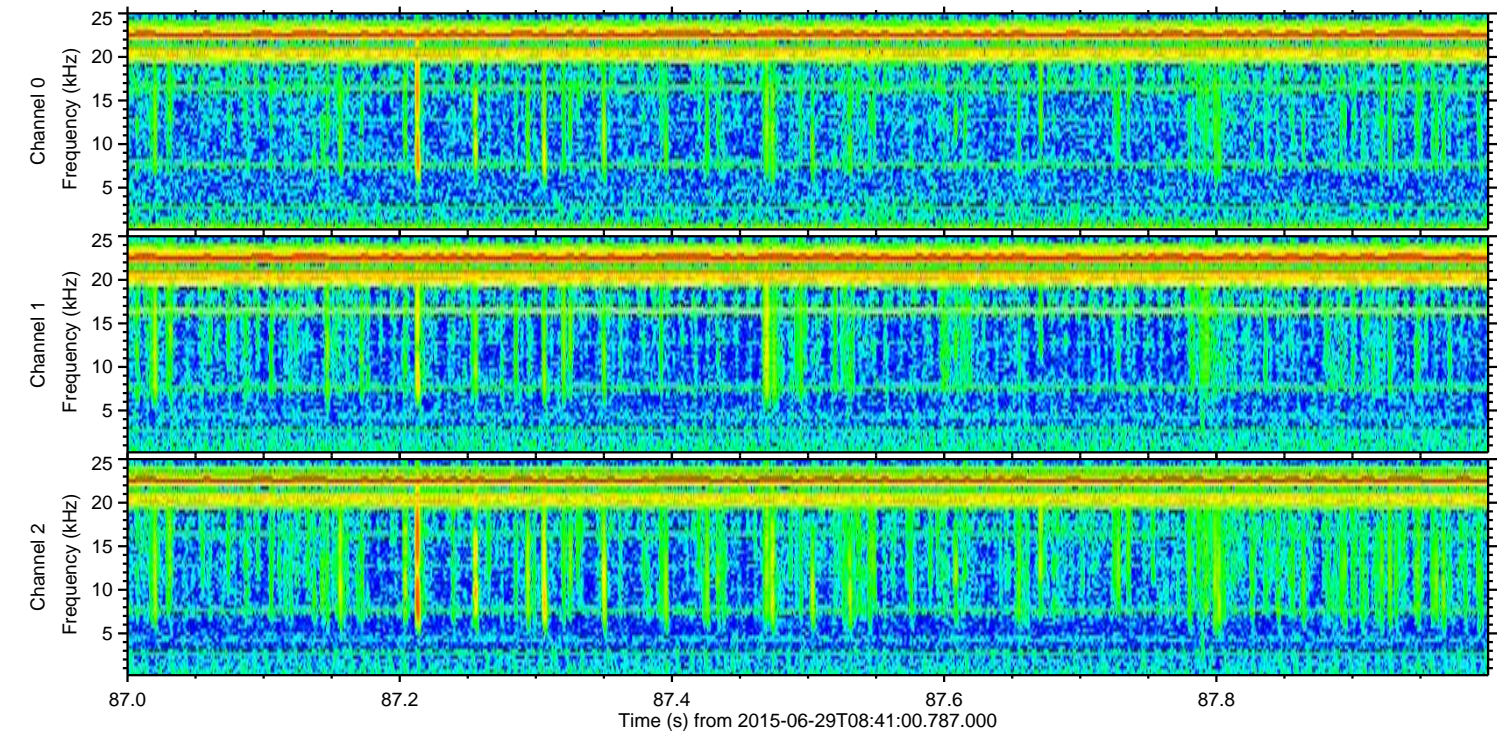
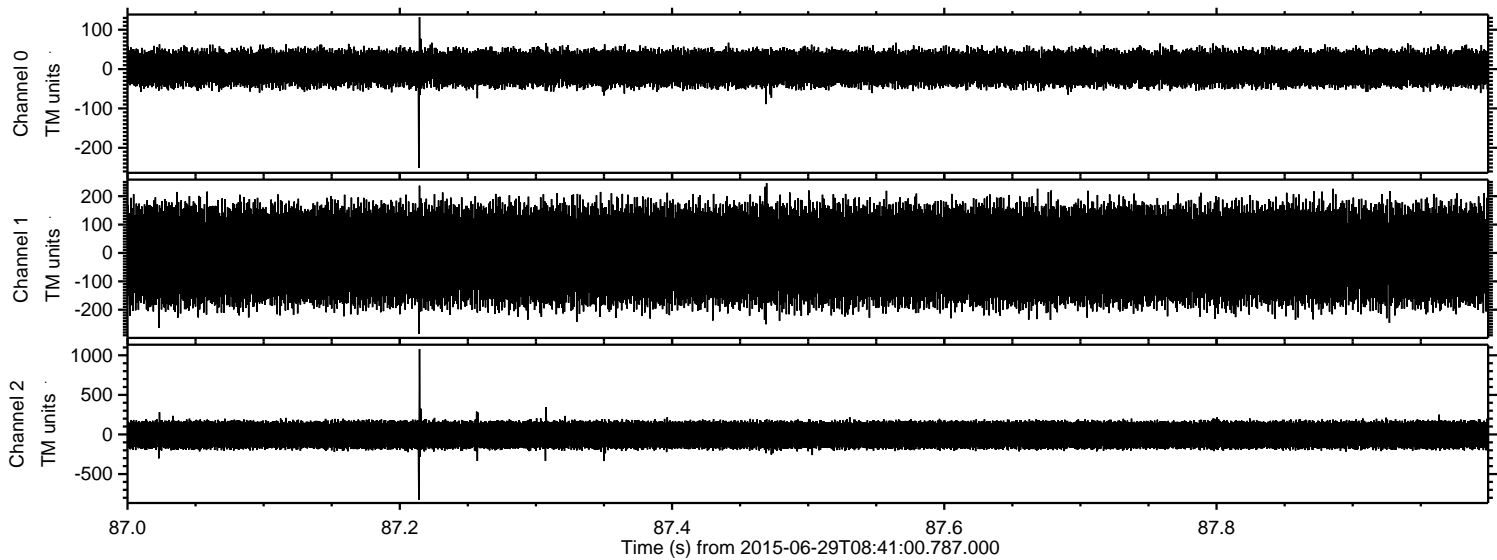
Channel 0  
mn: -212  
mx: 170  
 $\mu$ : 2.2  
 $\sigma$ : 24.9

Channel 1  
mn: -250  
mx: 222  
 $\mu$ : -8.0  
 $\sigma$ : 92.0

Channel 2  
mn: -1107  
mx: 1114  
 $\mu$ : -6.3  
 $\sigma$ : 101.4



Processed Mon Jun 29 10:47:32 2015 by ELM ver.2012-10-06 from 001\_\_elm20150629\_084059\_\_dat00.bin





Processed Mon Jun 29 10:47:33 2015 by ELM ver.2012-10-06 from 001\_\_elm20150629\_084059\_\_dat00.bin

