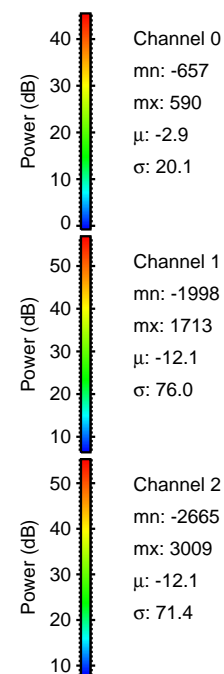
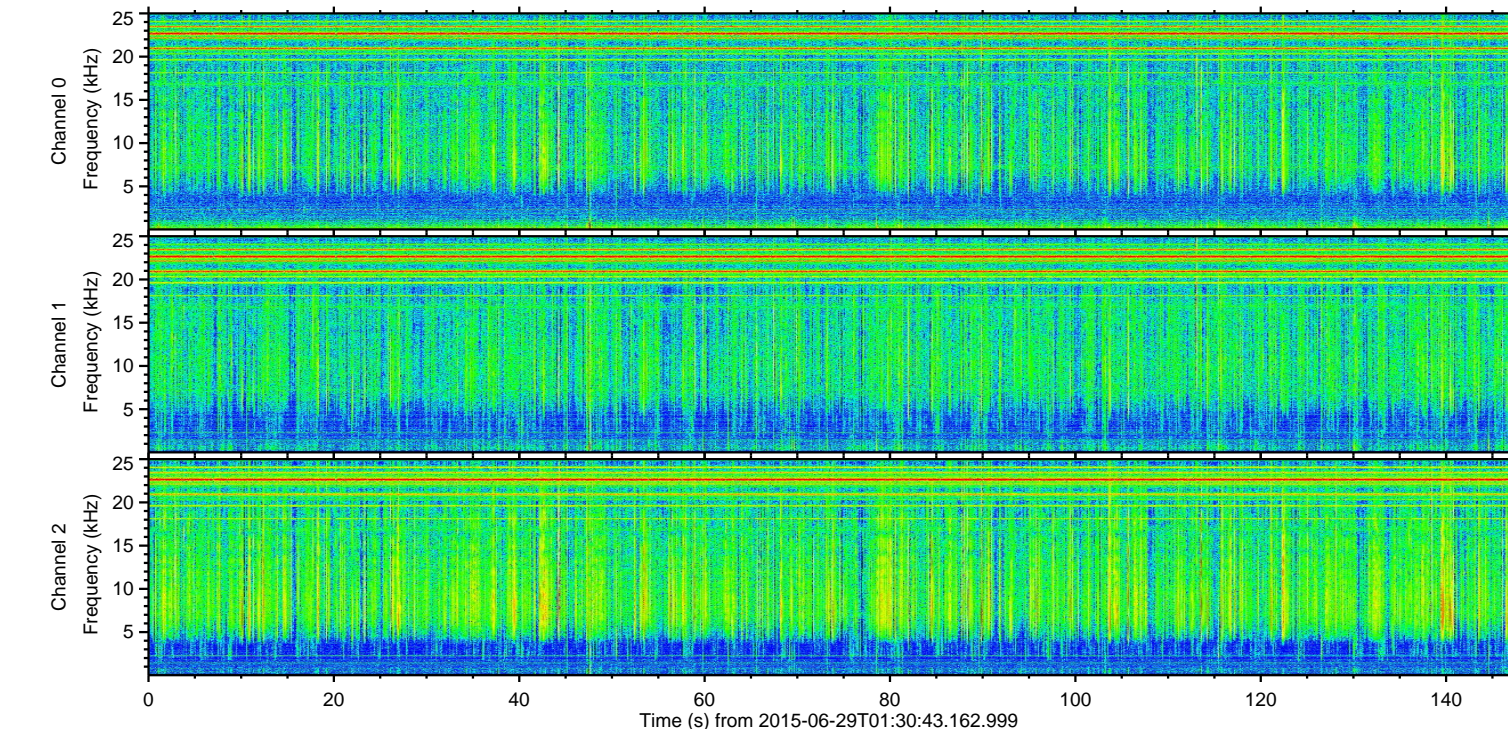
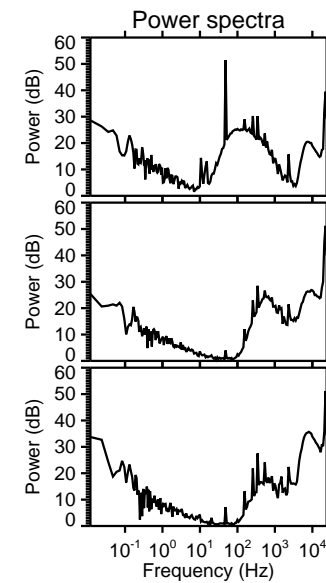
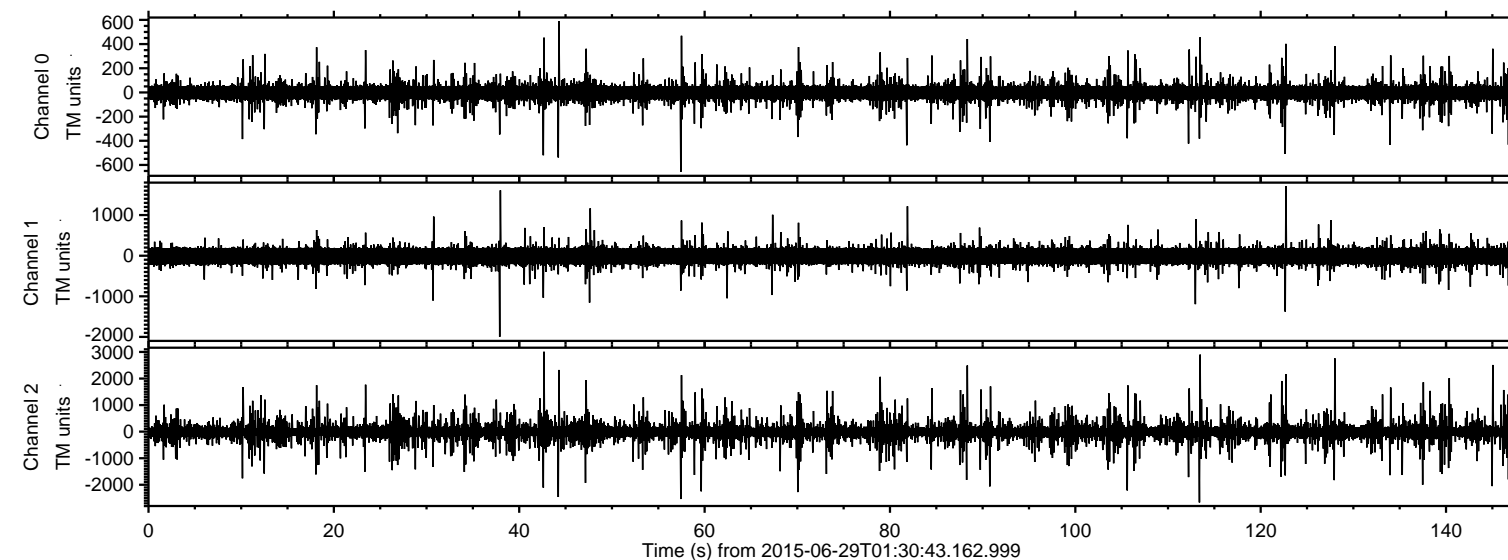


# ELMAVAN 3D WAVEFORMS (Measured data sampled at 50 kHz) 51000 packets of 144 samples from 2015-06-29T01:30:43.162.999.

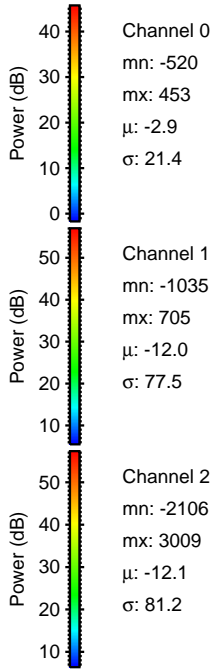
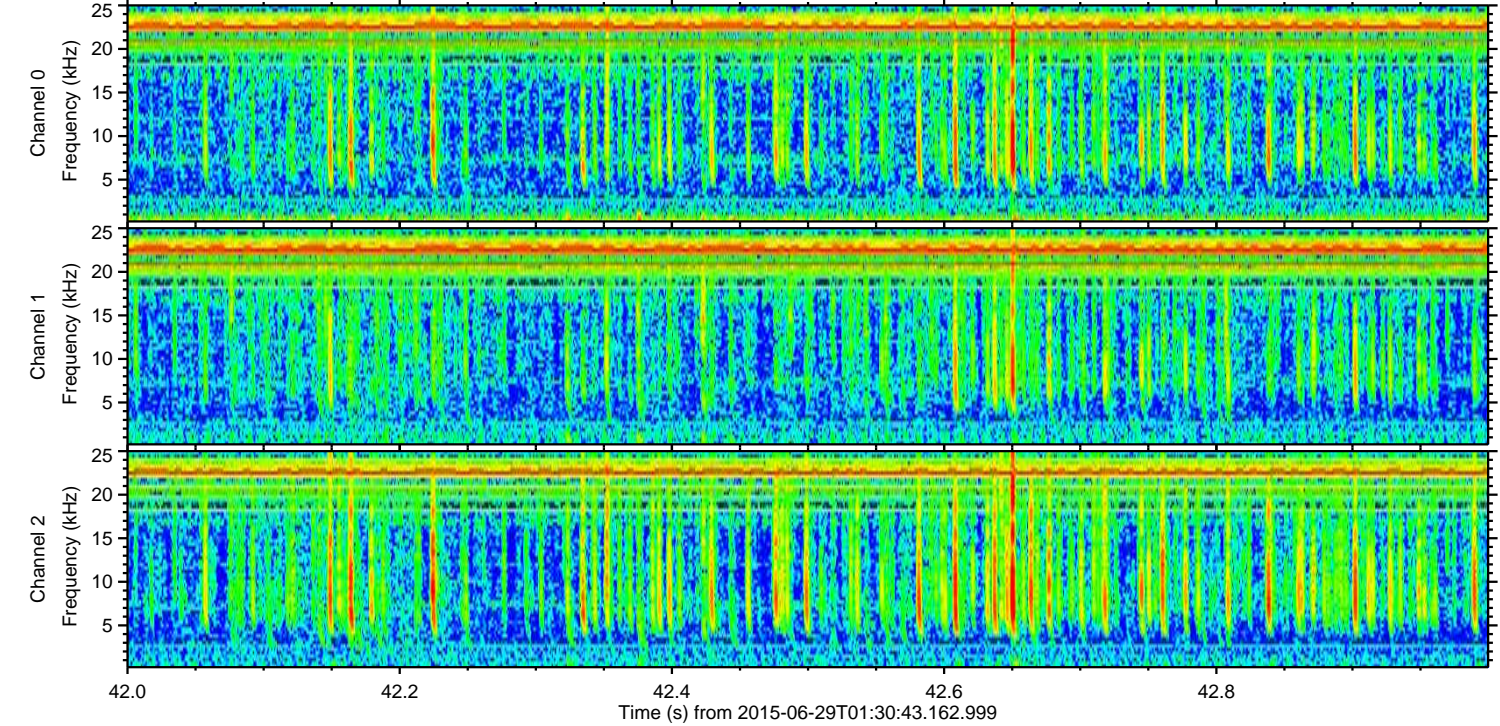
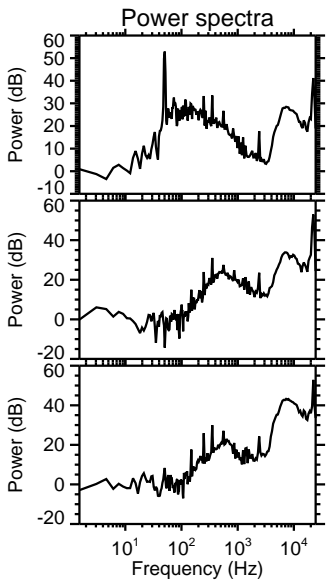
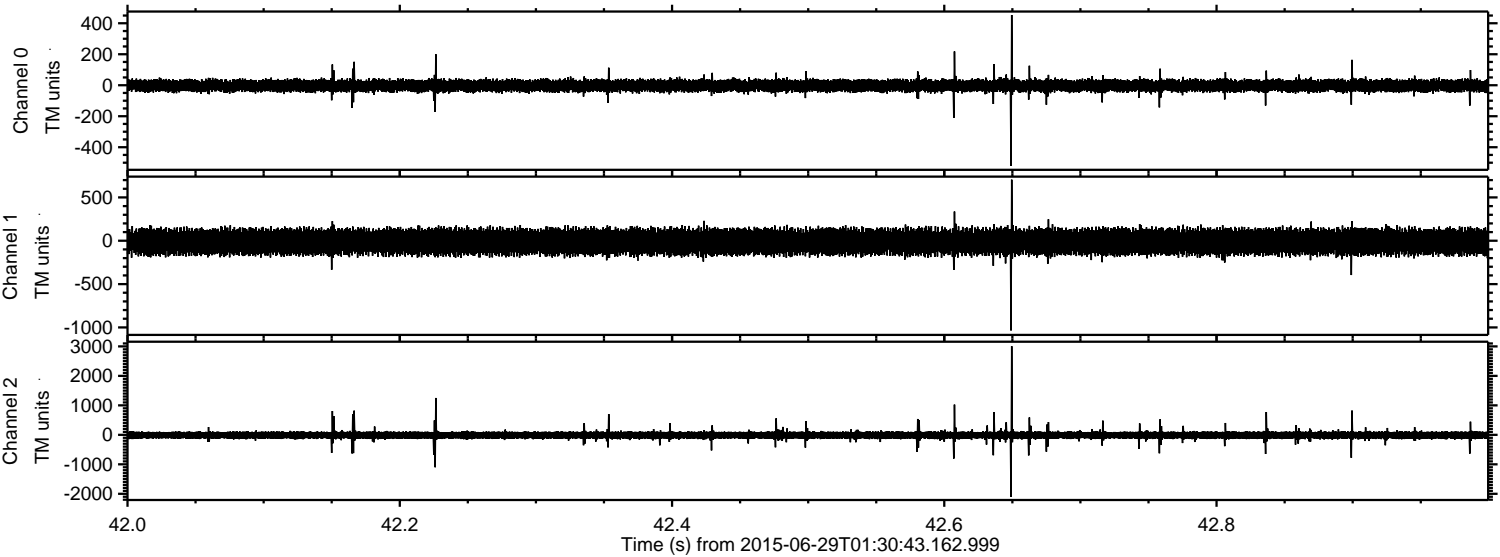
Processed Mon Jun 29 03:37:33 2015 by ELM ver.2012-10-06 from 001\_\_elm20150629\_013042\_\_dat00.bin





ELMAVAN 3D WAVEFORMS (Measured data sampled at 50 kHz) 51000 packets of 144 samples from 2015-06-29T01:30:43.162.999. Part 43/147

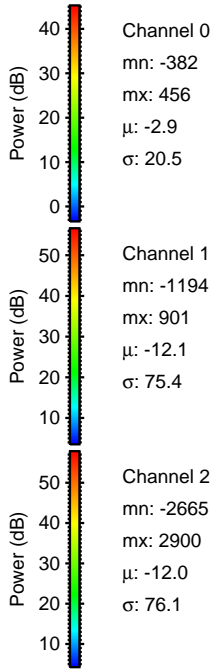
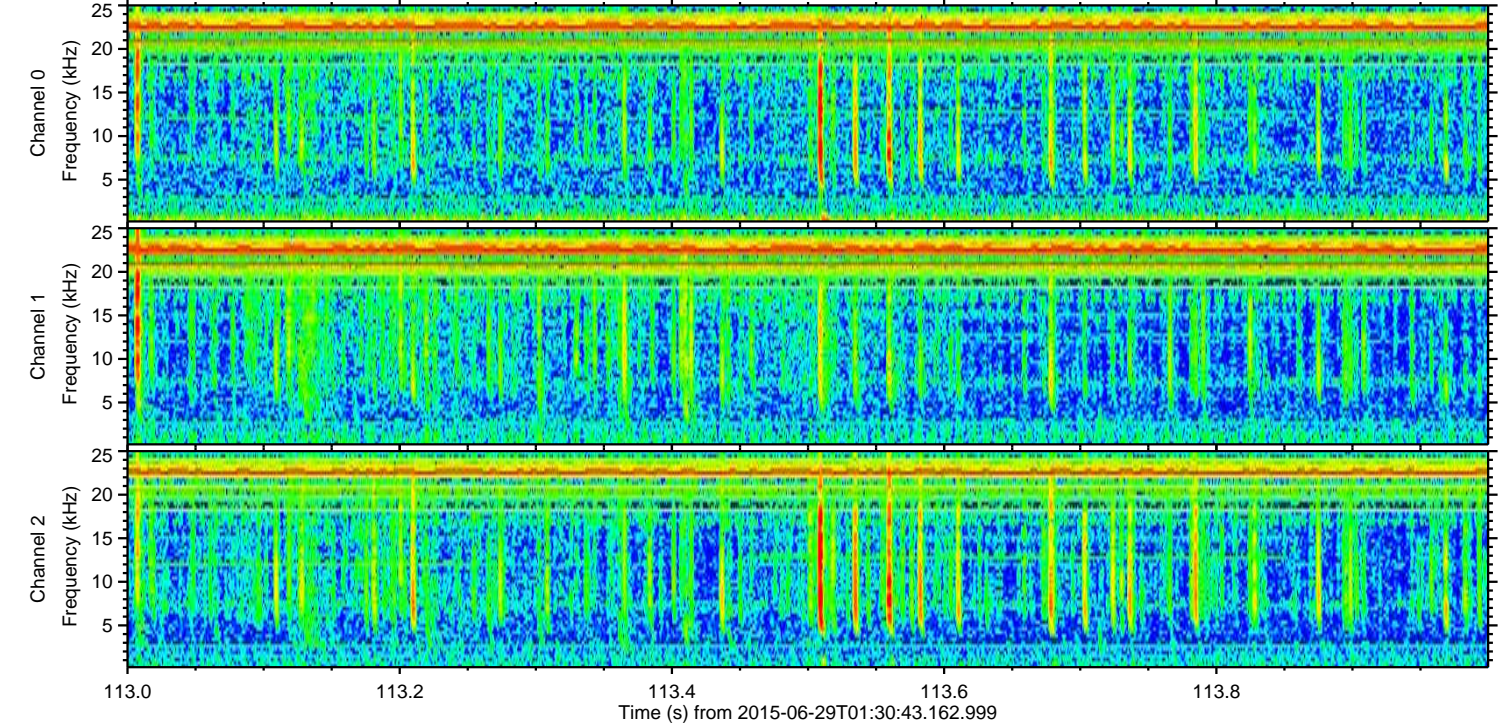
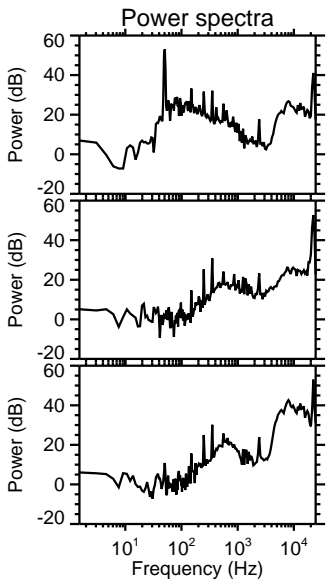
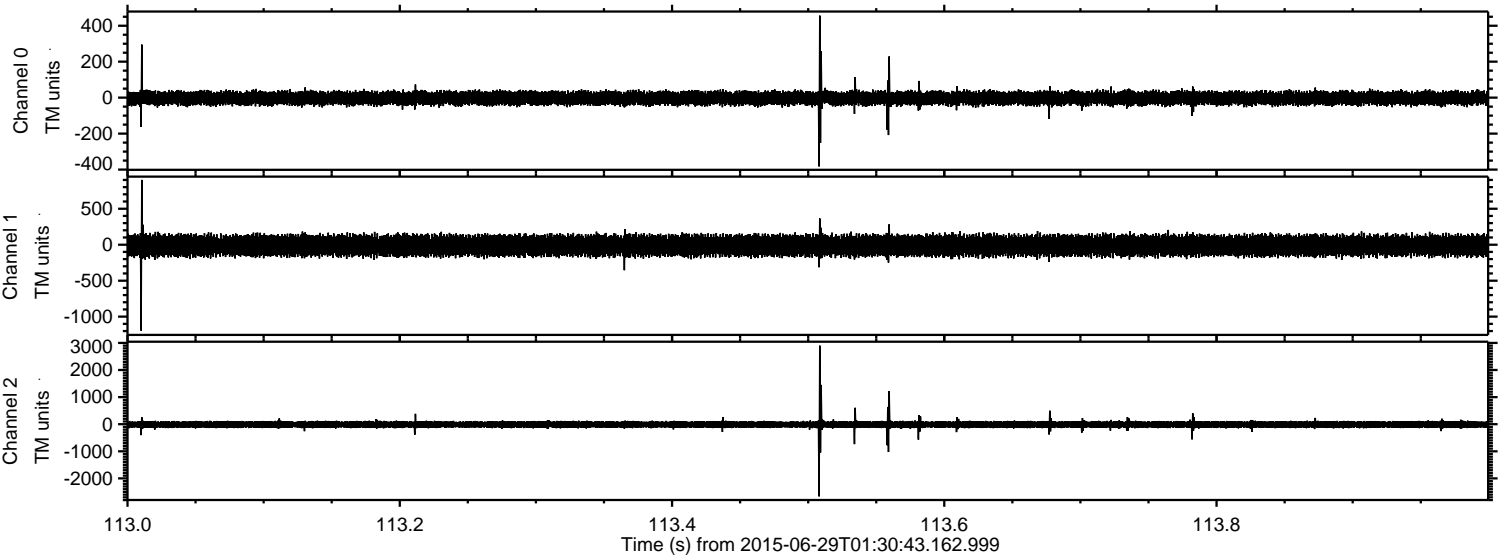
Processed Mon Jun 29 03:37:48 2015 by ELM ver.2012-10-06 from 001\_\_elm20150629\_013042\_\_dat00.bin





ELMAVAN 3D WAVEFORMS (Measured data sampled at 50 kHz) 51000 packets of 144 samples from 2015-06-29T01:30:43.162.999. Part 114/147

Processed Mon Jun 29 03:37:49 2015 by ELM ver.2012-10-06 from 001\_\_elm20150629\_013042\_\_dat00.bin



Channel 0  
mn: -382  
mx: 456  
 $\mu$ : -2.9  
 $\sigma$ : 20.5

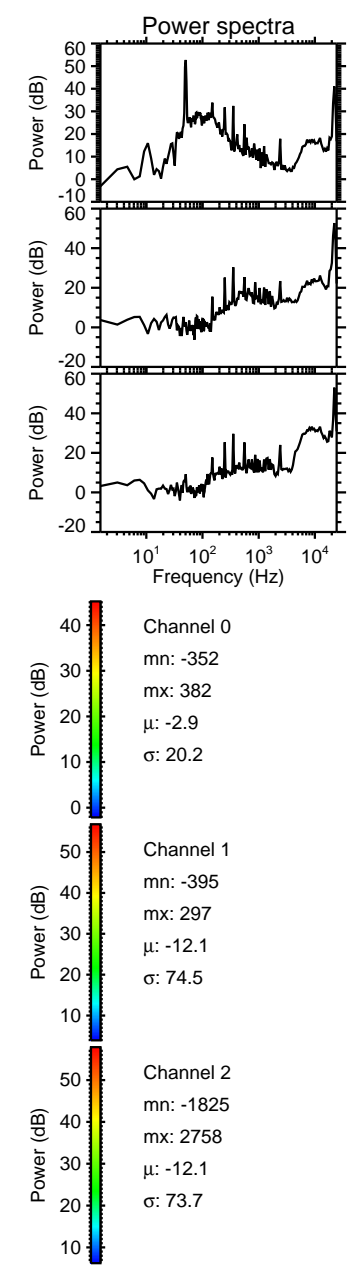
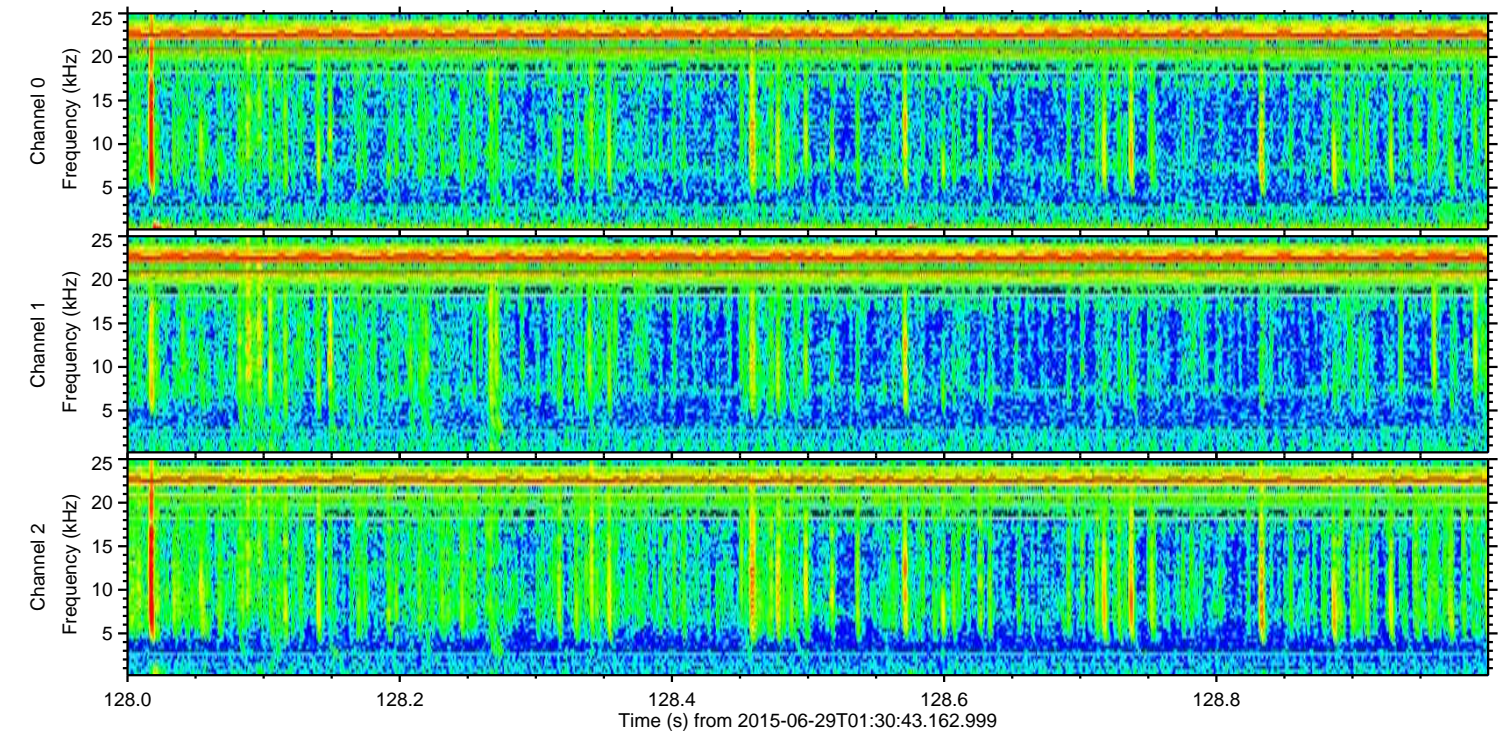
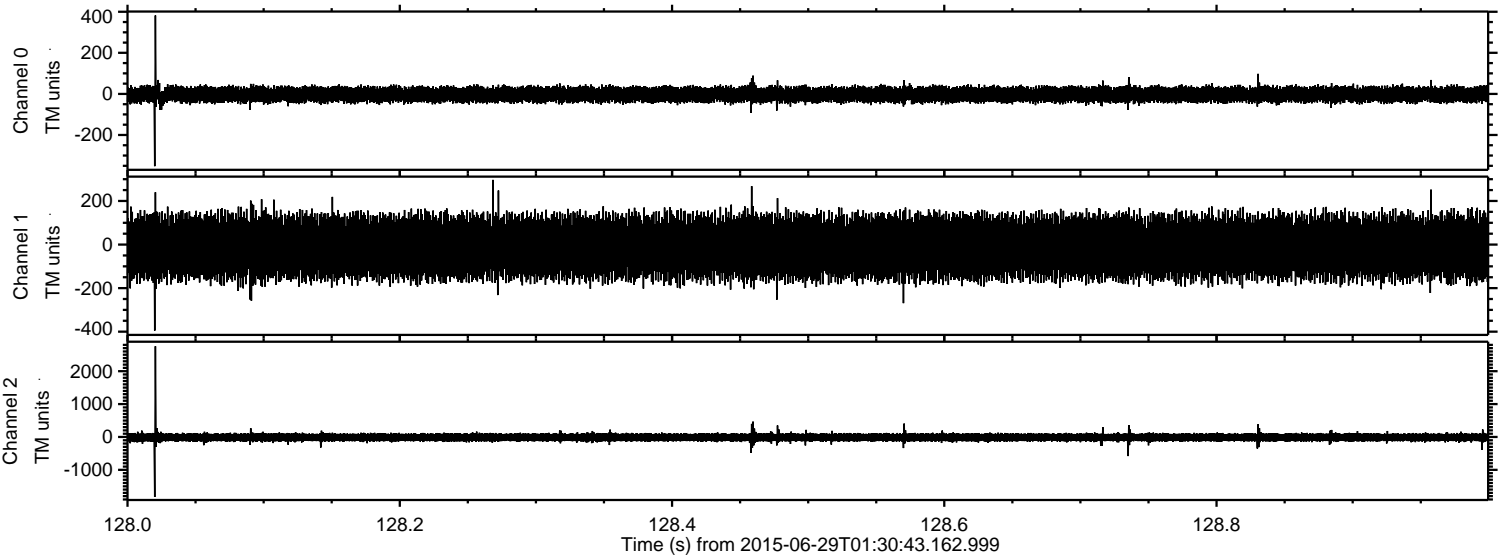
Channel 1  
mn: -1194  
mx: 901  
 $\mu$ : -12.1  
 $\sigma$ : 75.4

Channel 2  
mn: -2665  
mx: 2900  
 $\mu$ : -12.0  
 $\sigma$ : 76.1



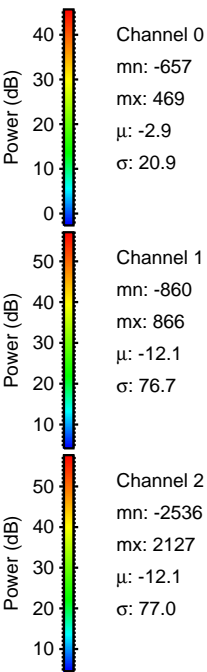
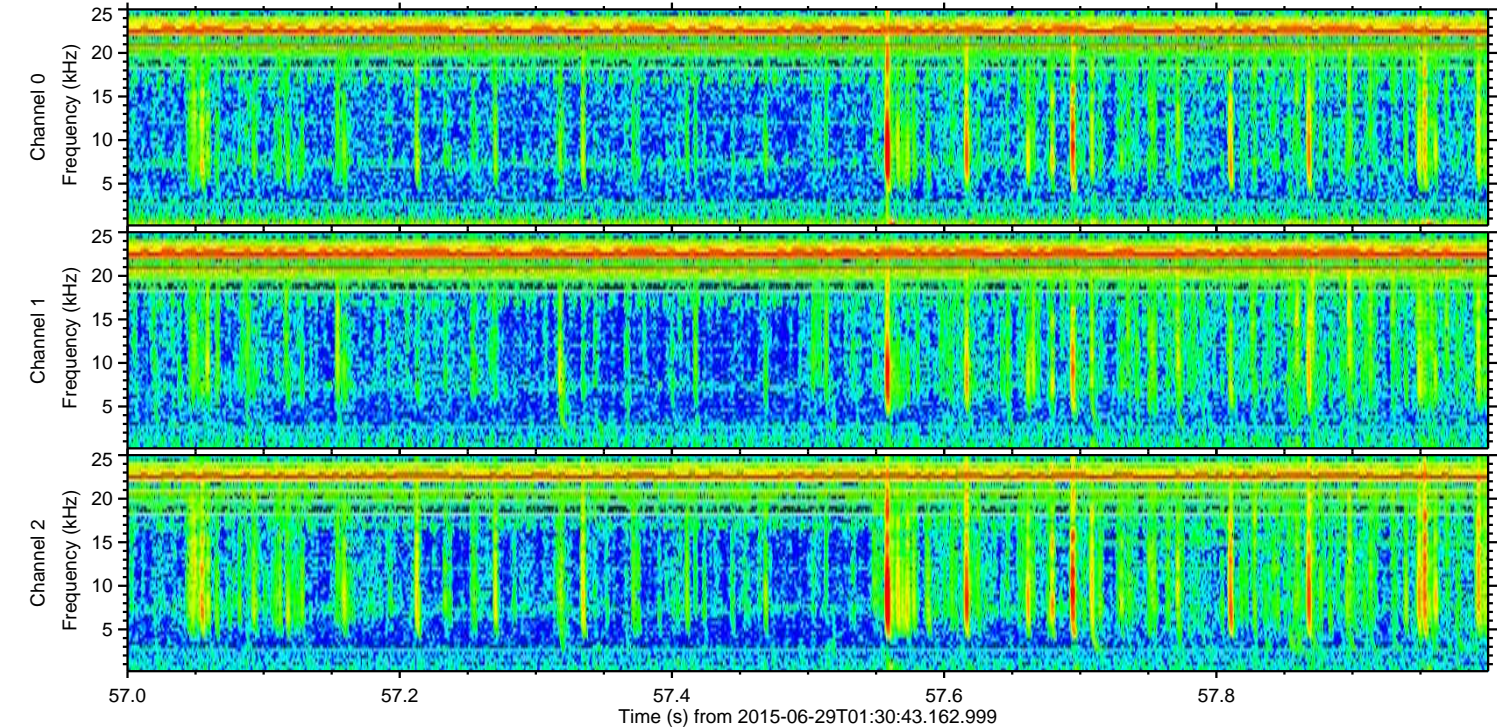
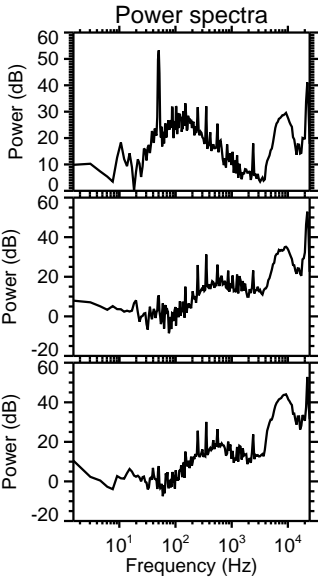
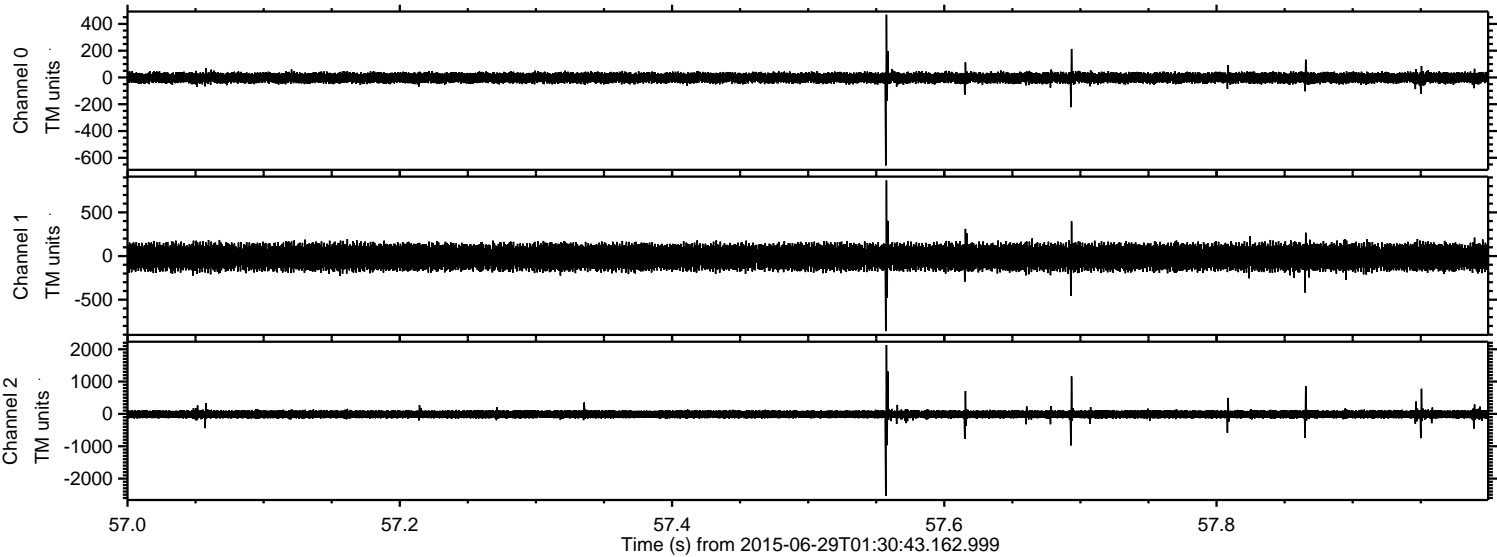
ELMAVAN 3D WAVEFORMS (Measured data sampled at 50 kHz) 51000 packets of 144 samples from 2015-06-29T01:30:43.162.999. Part 129/147

Processed Mon Jun 29 03:37:50 2015 by ELM ver.2012-10-06 from 001\_\_elm20150629\_013042\_\_dat00.bin





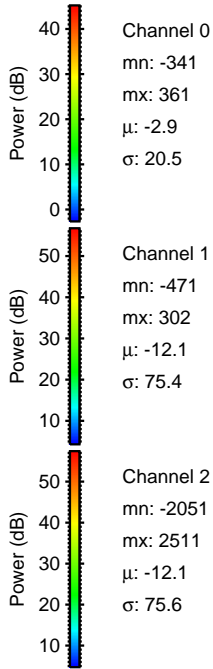
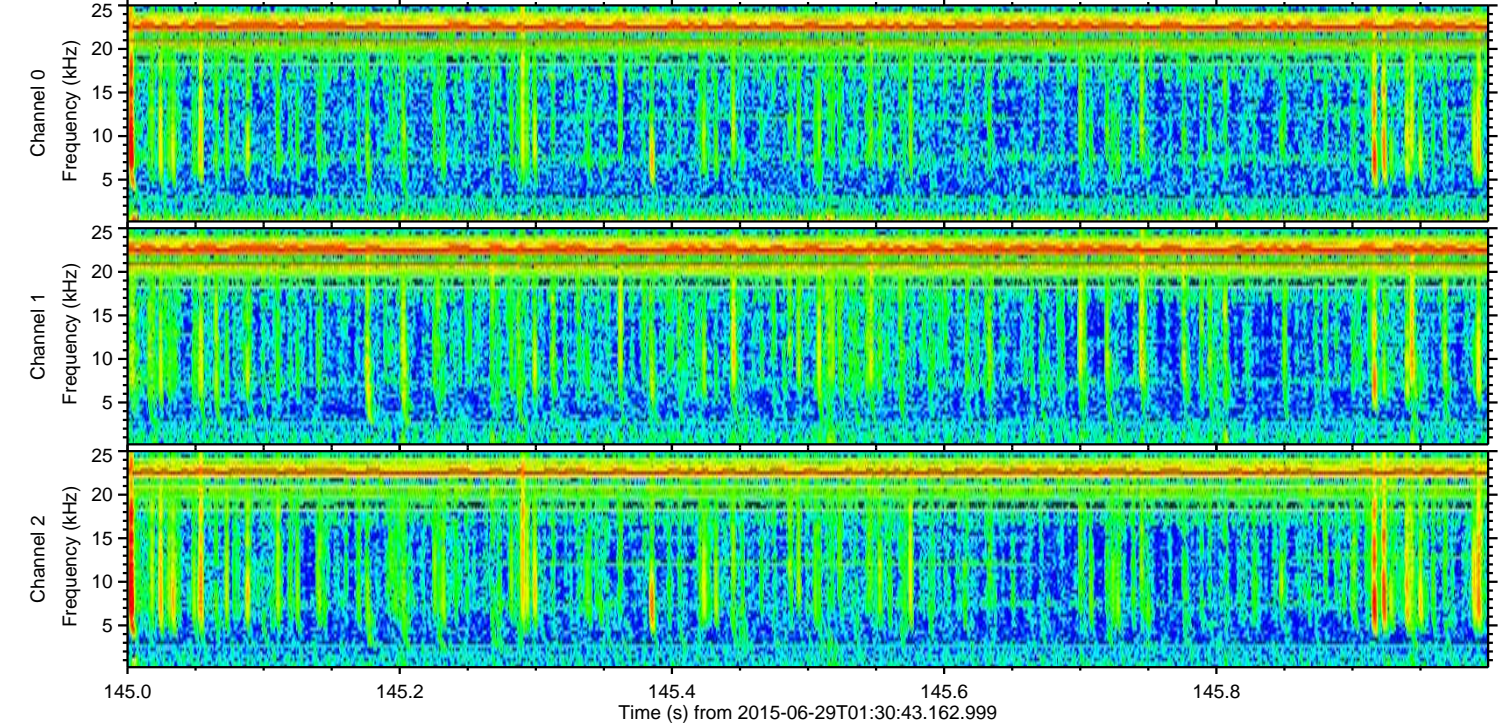
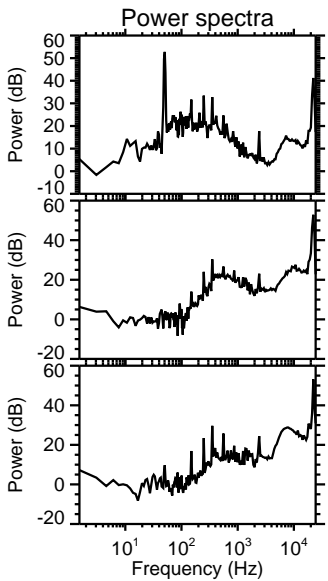
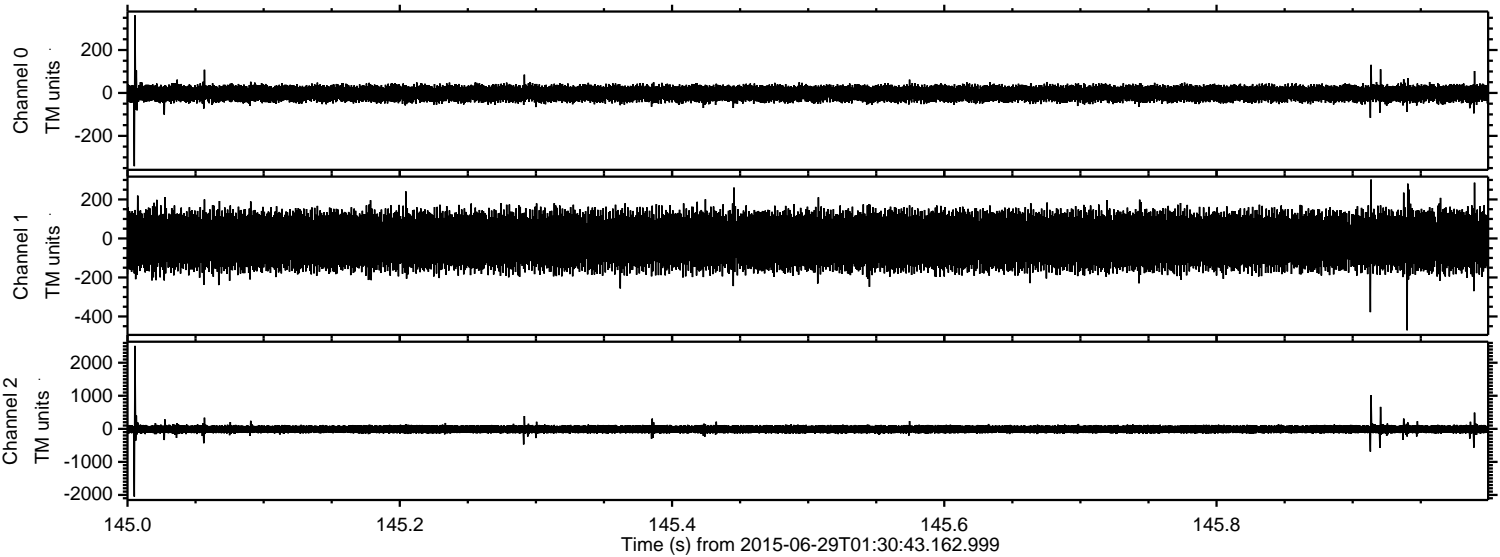
Processed Mon Jun 29 03:37:52 2015 by ELM ver.2012-10-06 from 001\_\_elm20150629\_013042\_\_dat00.bin





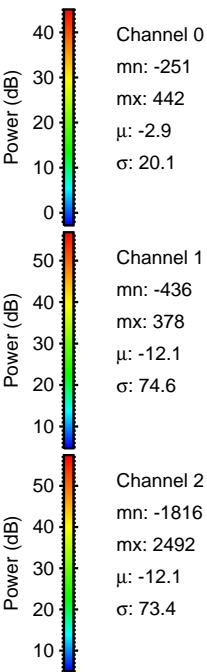
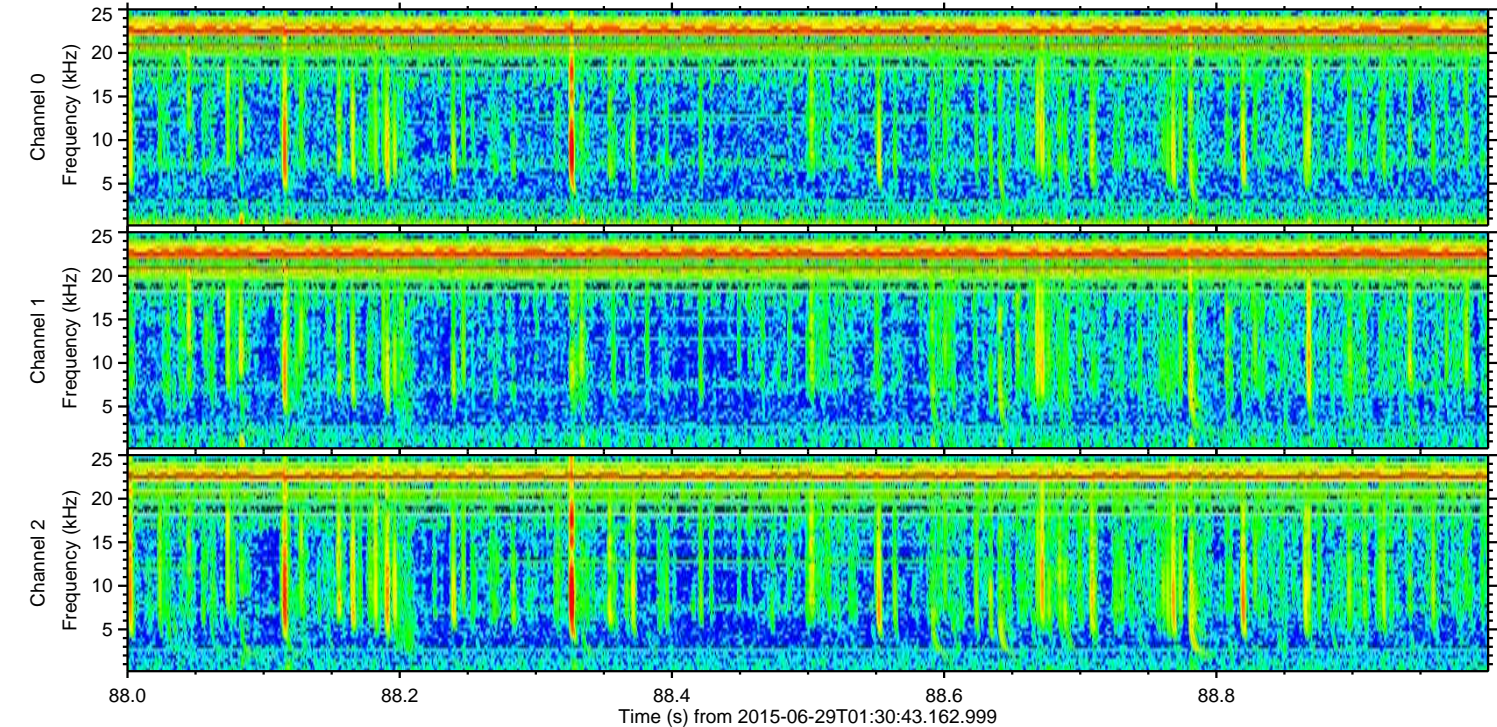
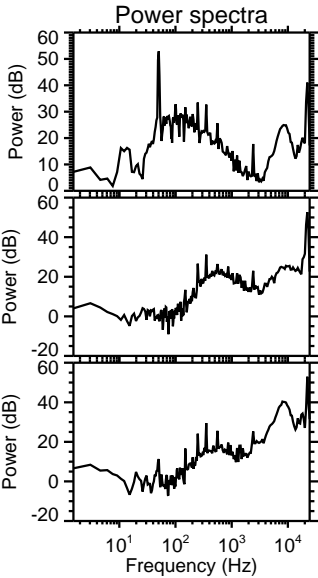
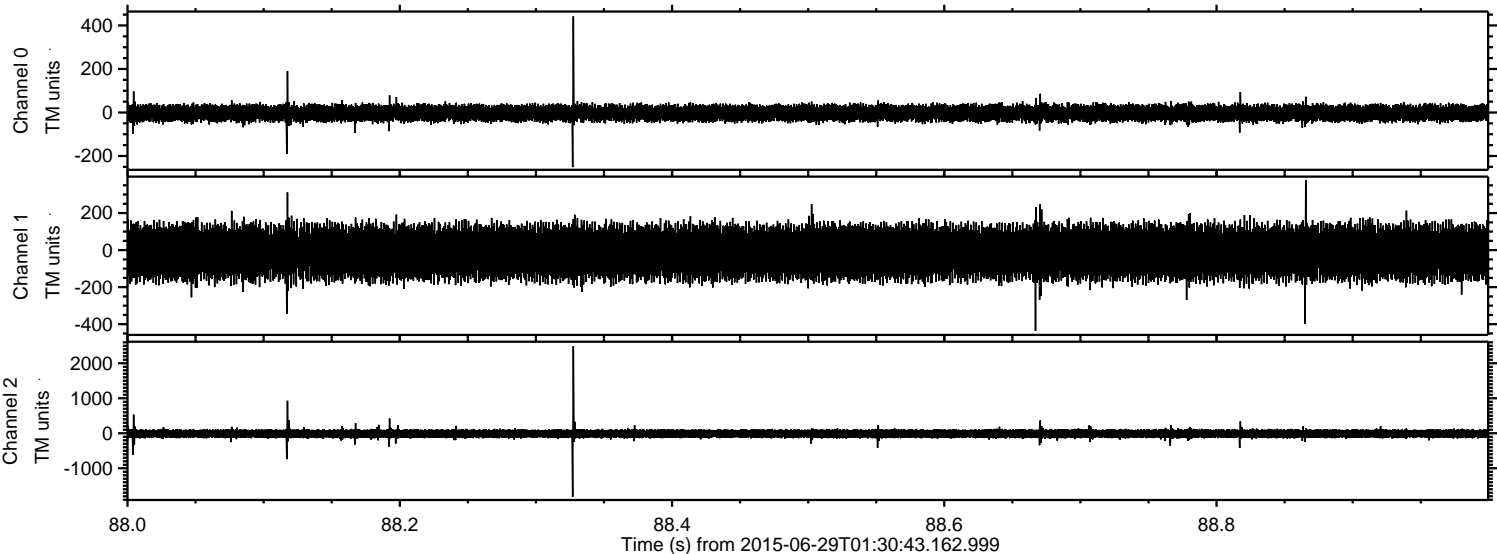
ELMAVAN 3D WAVEFORMS (Measured data sampled at 50 kHz) 51000 packets of 144 samples from 2015-06-29T01:30:43.162.999. Part 146/147

Processed Mon Jun 29 03:37:53 2015 by ELM ver.2012-10-06 from 001\_\_elm20150629\_013042\_\_dat00.bin



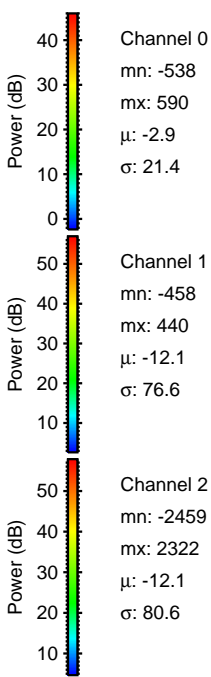
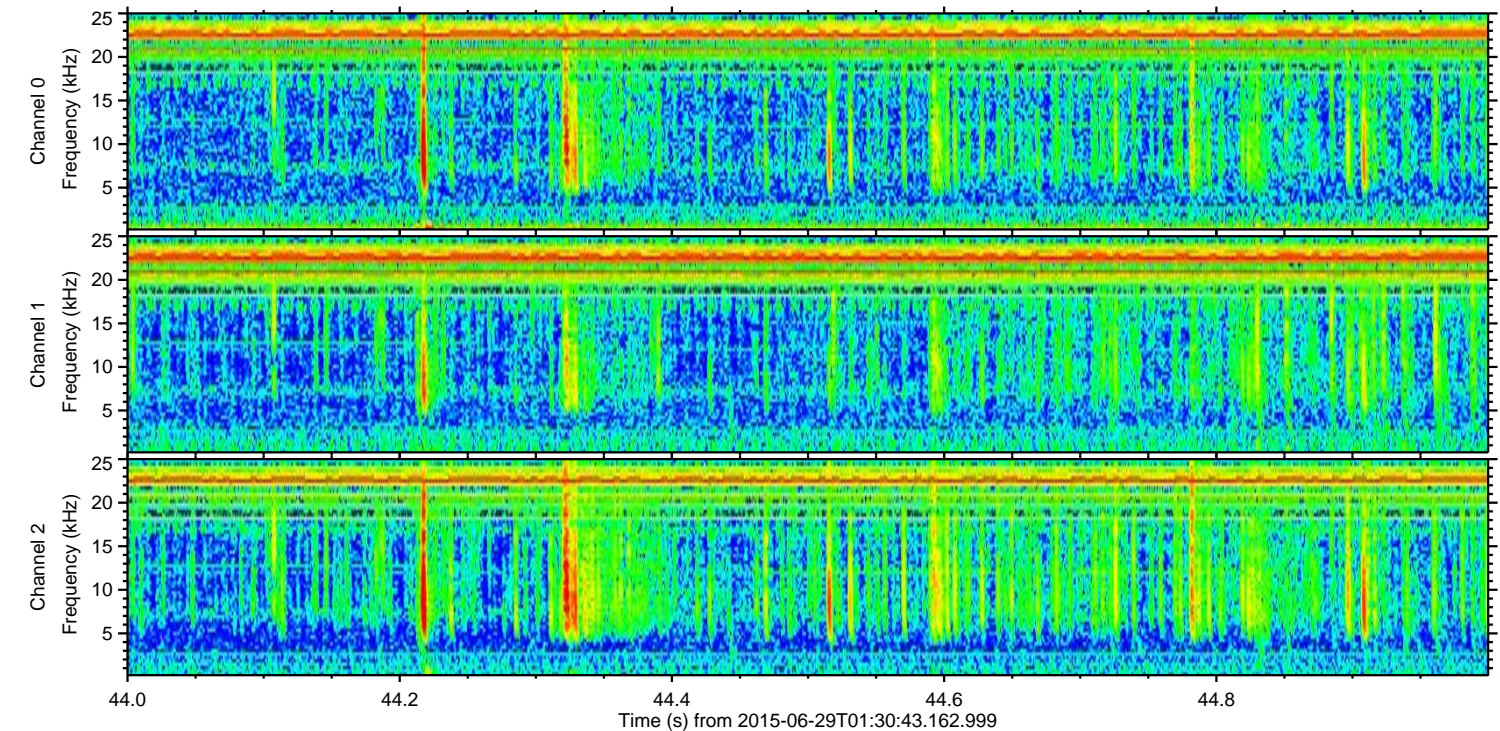
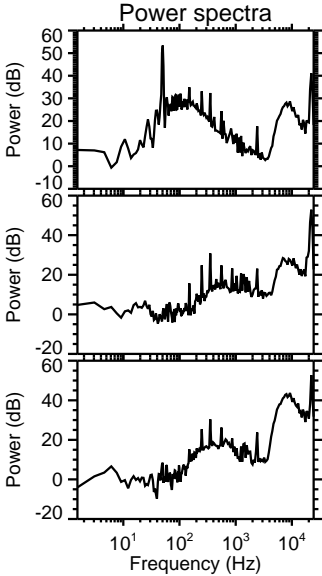
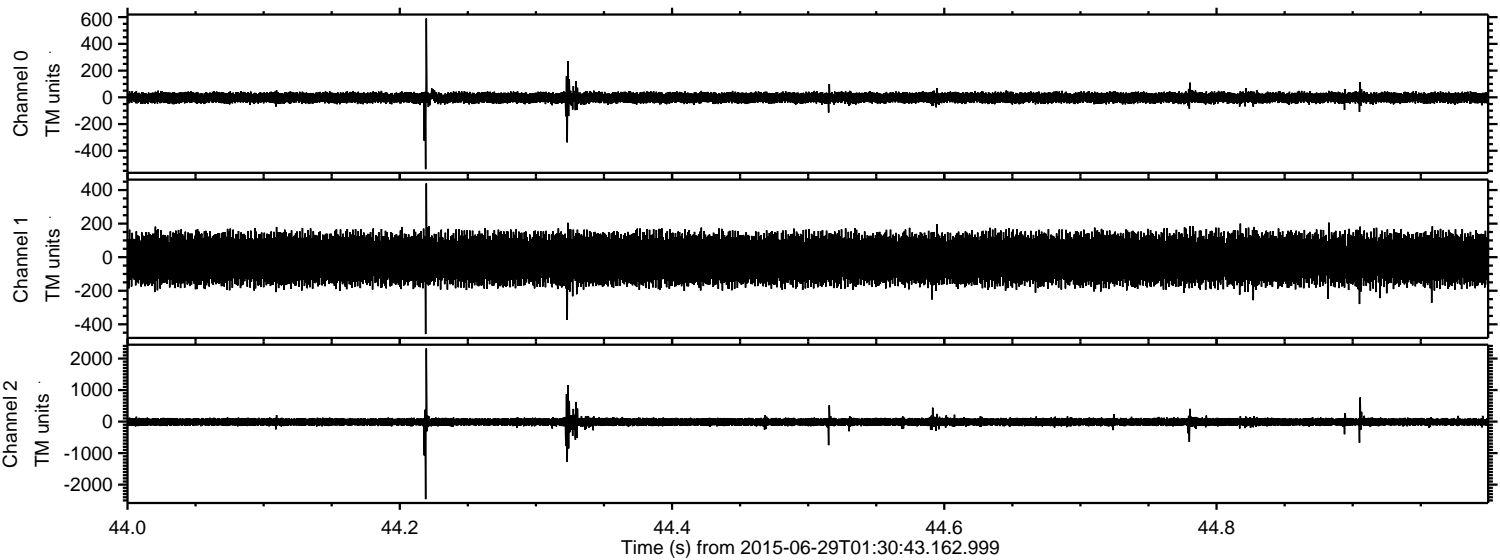


Processed Mon Jun 29 03:37:54 2015 by ELM ver.2012-10-06 from 001\_\_elm20150629\_013042\_\_dat00.bin



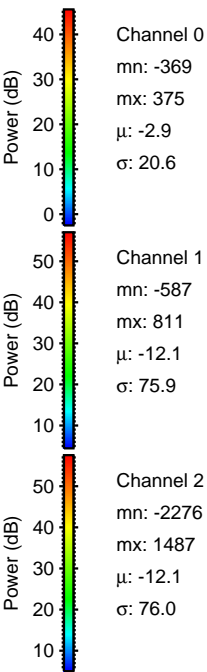
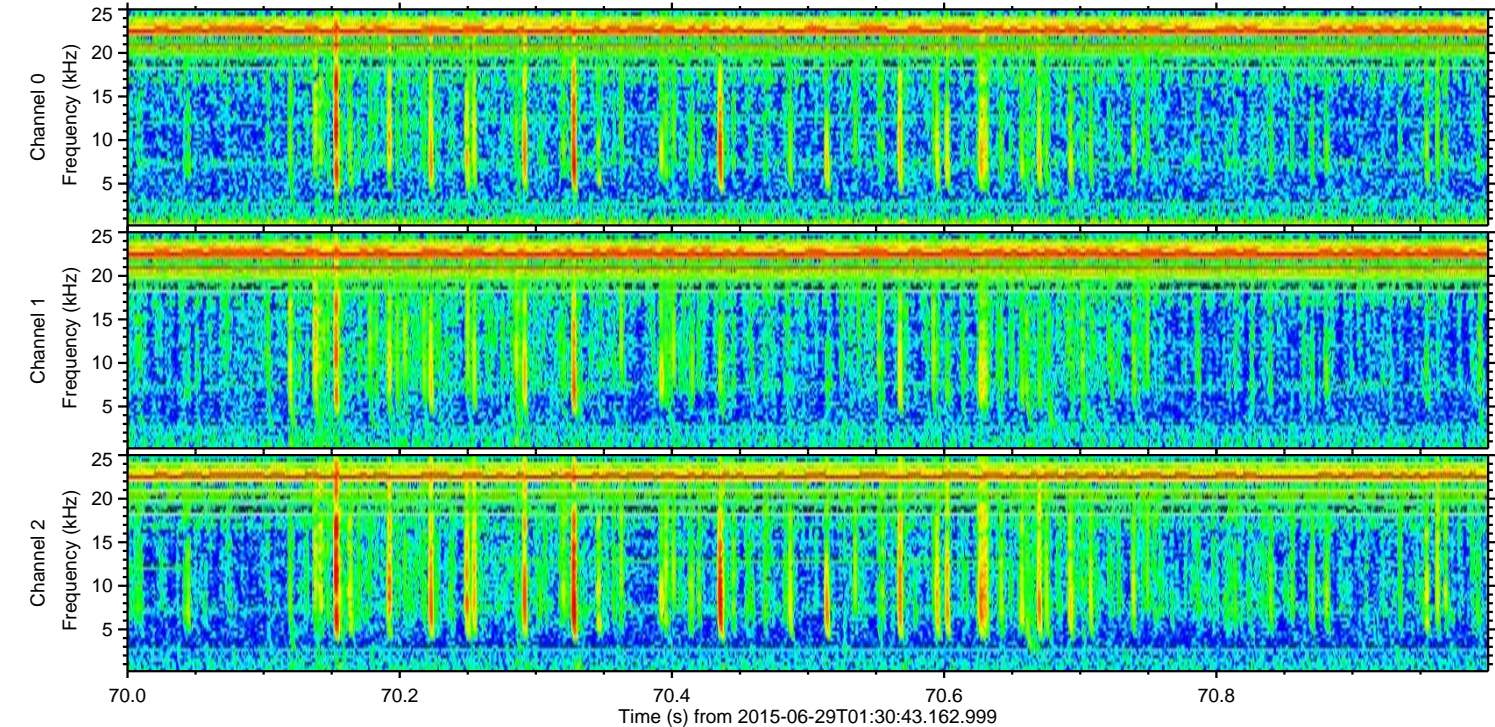
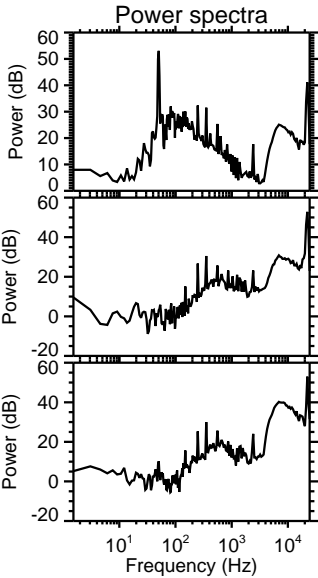
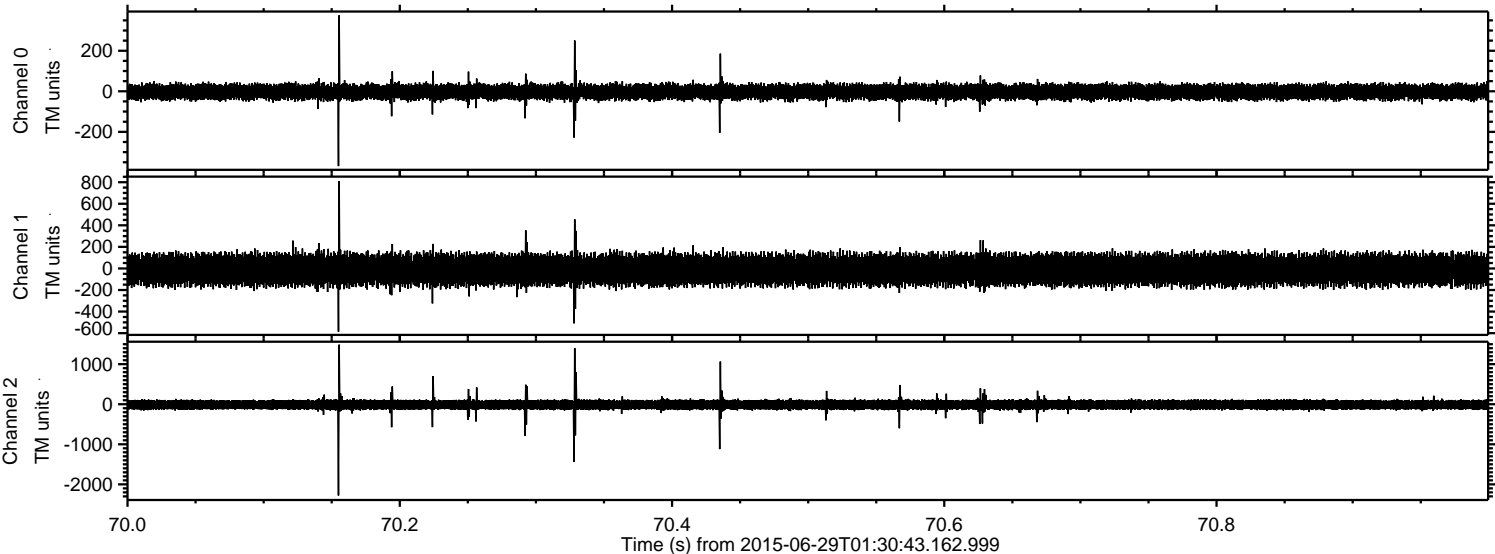


Processed Mon Jun 29 03:37:55 2015 by ELM ver.2012-10-06 from 001\_\_elm20150629\_013042\_\_dat00.bin



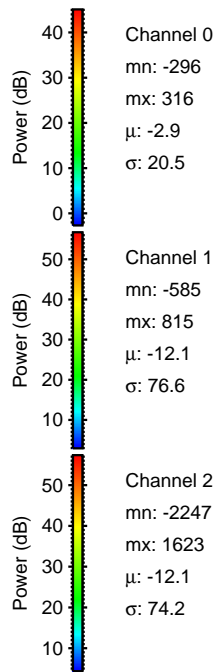
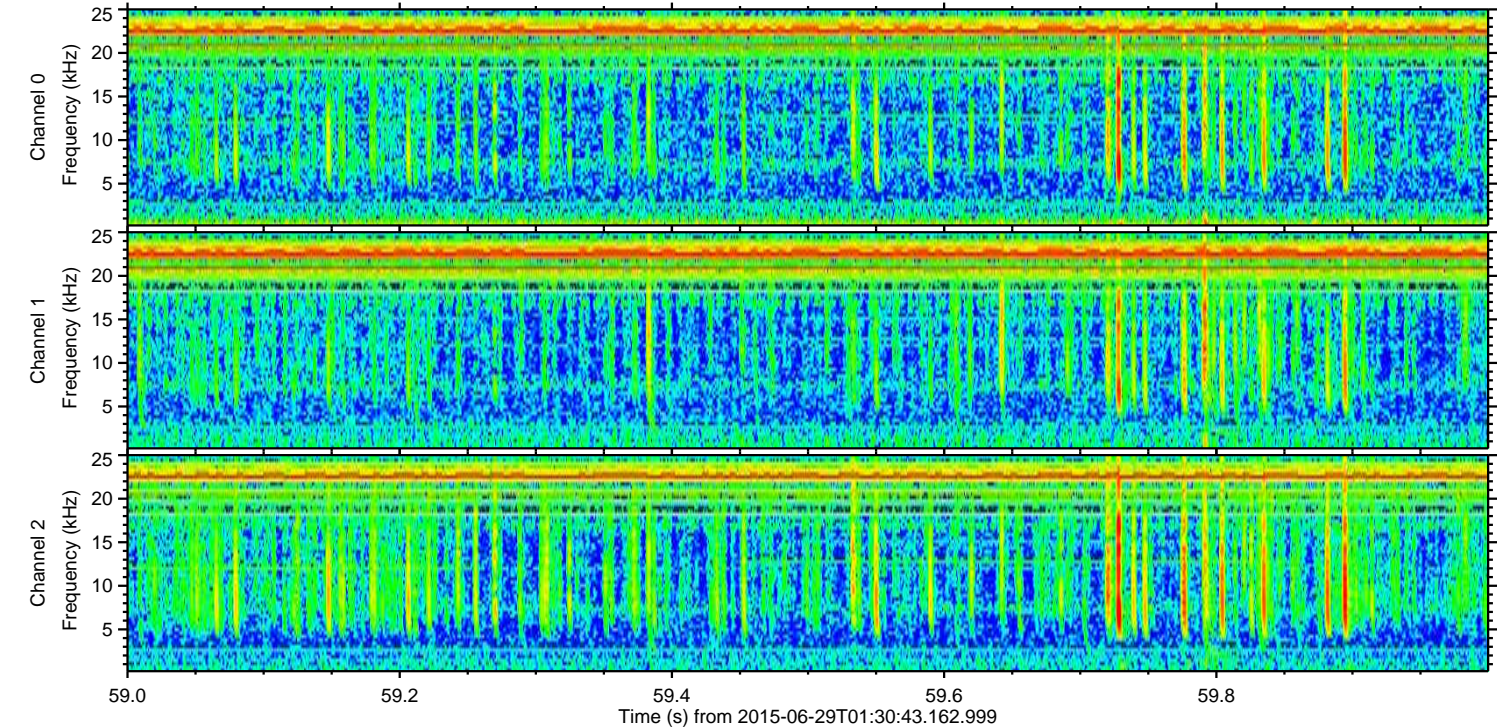
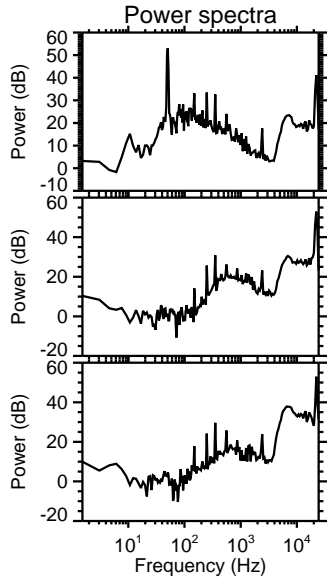
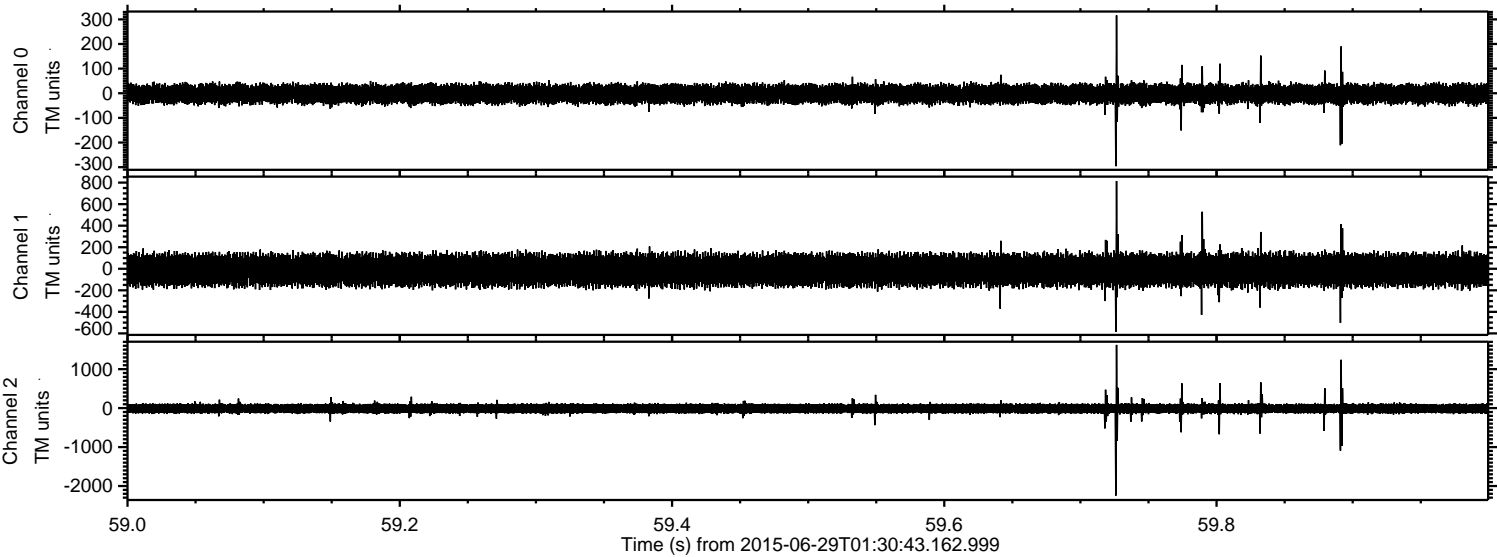


Processed Mon Jun 29 03:37:56 2015 by ELM ver.2012-10-06 from 001\_\_elm20150629\_013042\_\_dat00.bin





Processed Mon Jun 29 03:37:57 2015 by ELM ver.2012-10-06 from 001\_\_elm20150629\_013042\_\_dat00.bin





Processed Mon Jun 29 03:37:58 2015 by ELM ver.2012-10-06 from 001\_\_elm20150629\_013042\_\_dat00.bin

