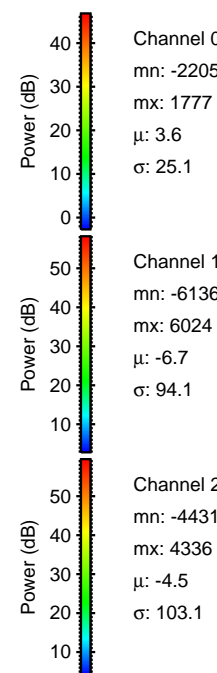
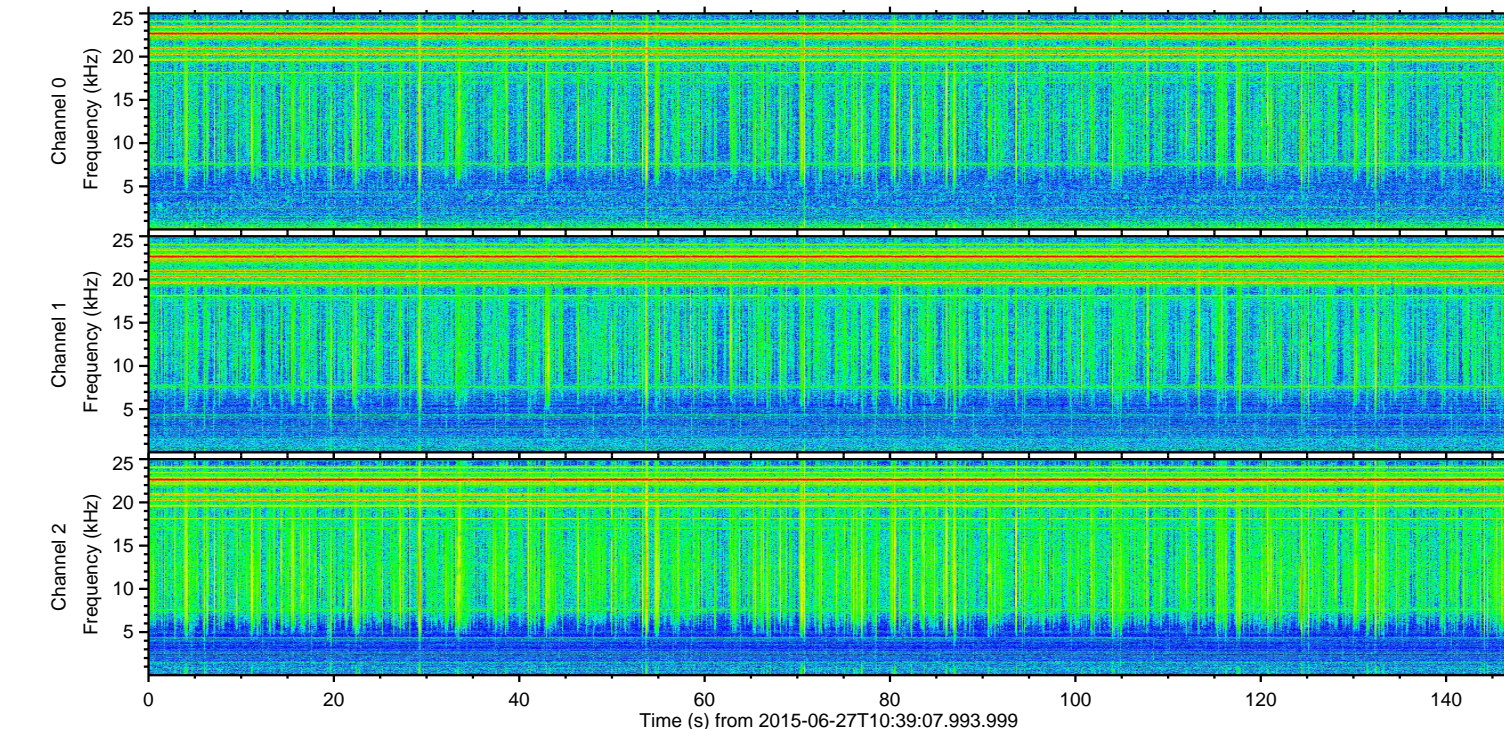
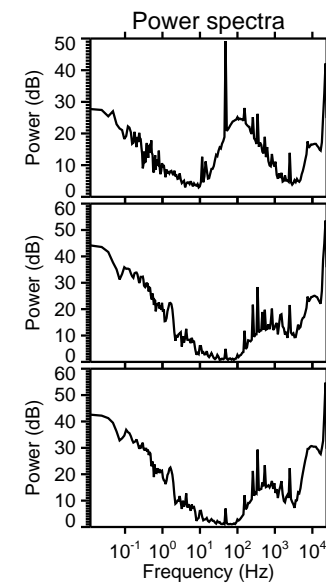
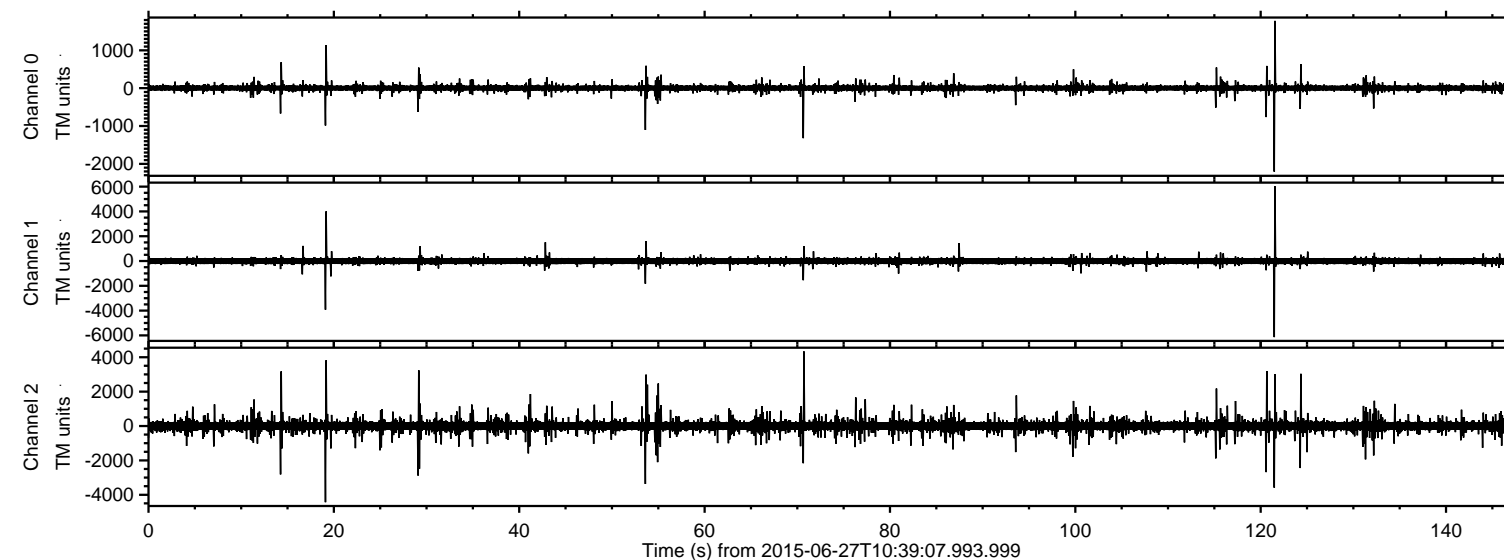


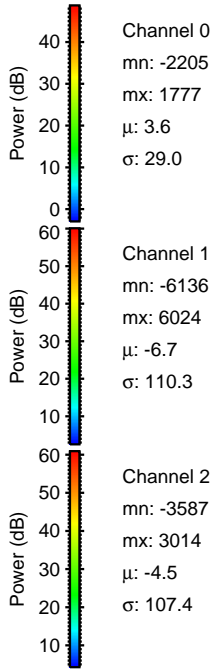
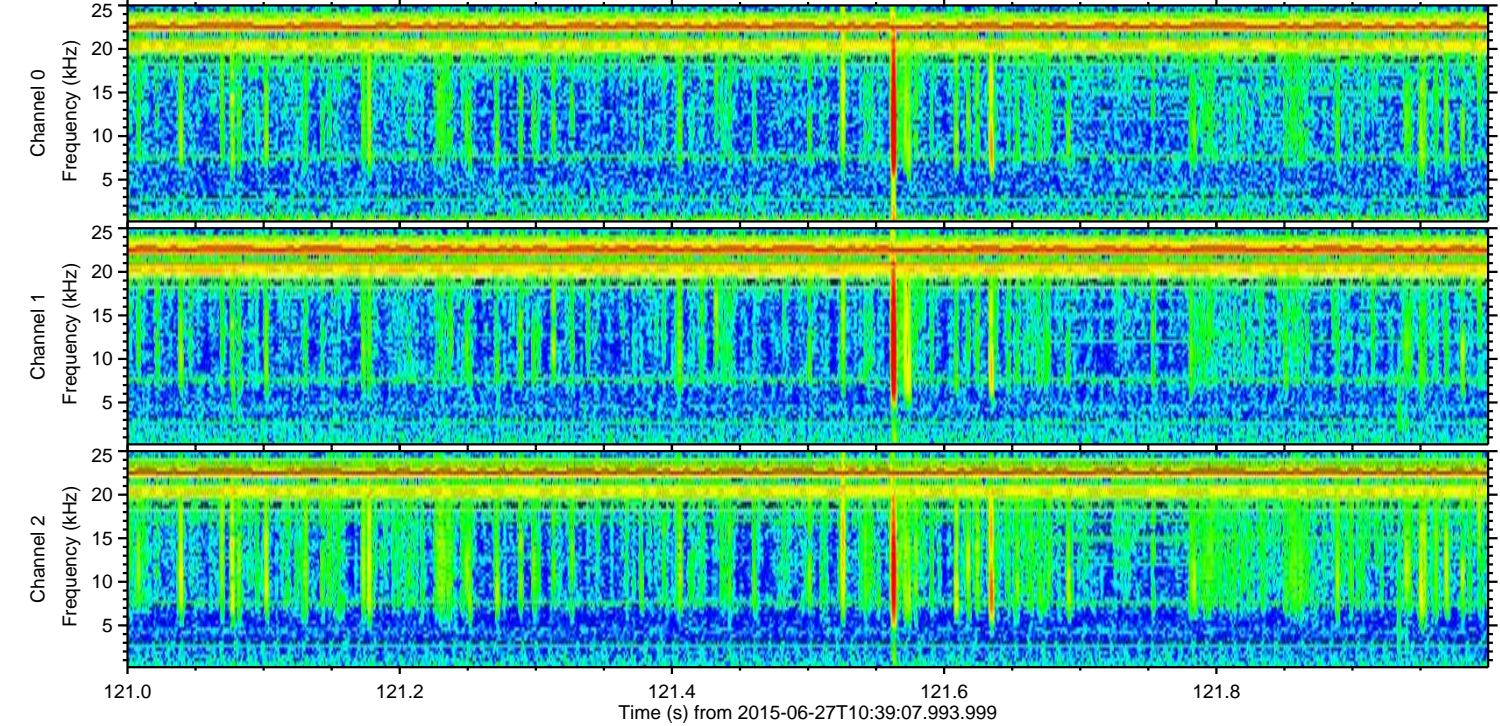
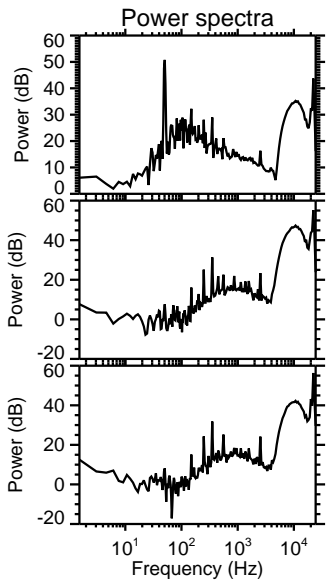
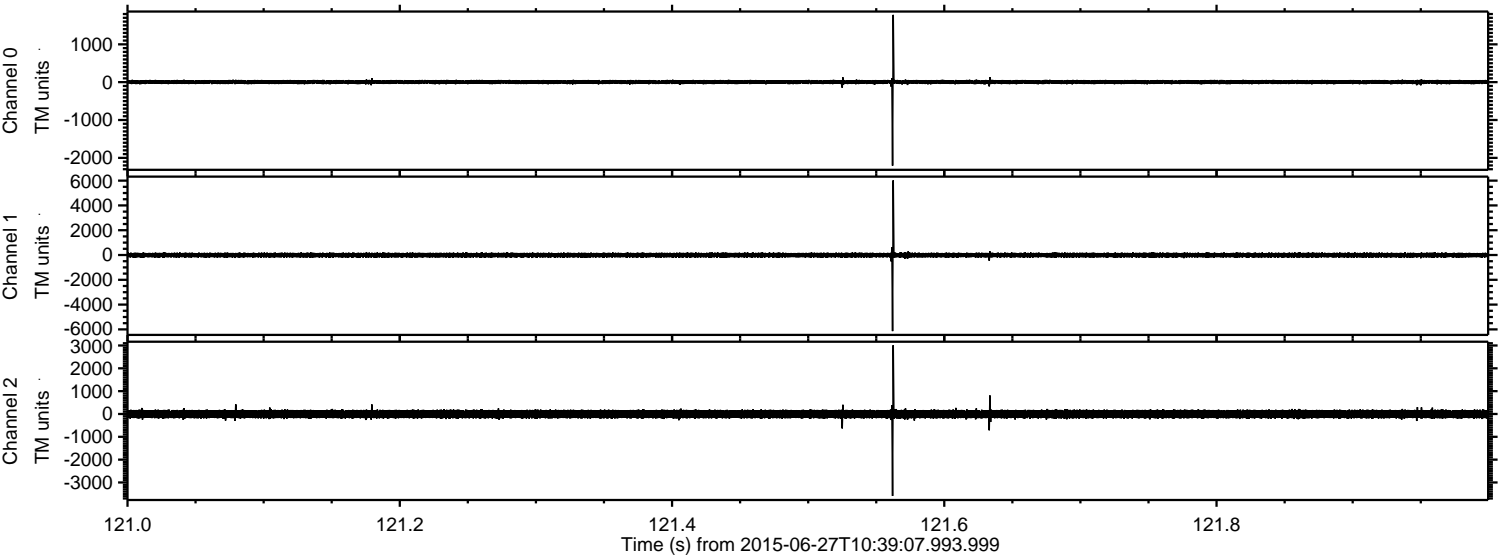
ELMAVAN 3D WAVEFORMS (Measured data sampled at 50 kHz) 51000 packets of 144 samples from 2015-06-27T10:39:07.993.999.

Processed Sat Jun 27 12:45:41 2015 by ELM ver.2012-10-06 from 001__elm20150627_103906__dat00.bin



ELMAVAN 3D WAVEFORMS (Measured data sampled at 50 kHz) 51000 packets of 144 samples from 2015-06-27T10:39:07.993.999. Part 122/147

Processed Sat Jun 27 12:45:56 2015 by ELM ver.2012-10-06 from 001__elm20150627_103906__dat00.bin



Power spectra

Channel 0

mn: -2205
mx: 1777
 μ : 3.6
 σ : 29.0

Channel 1

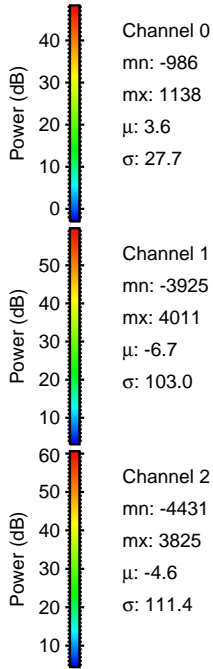
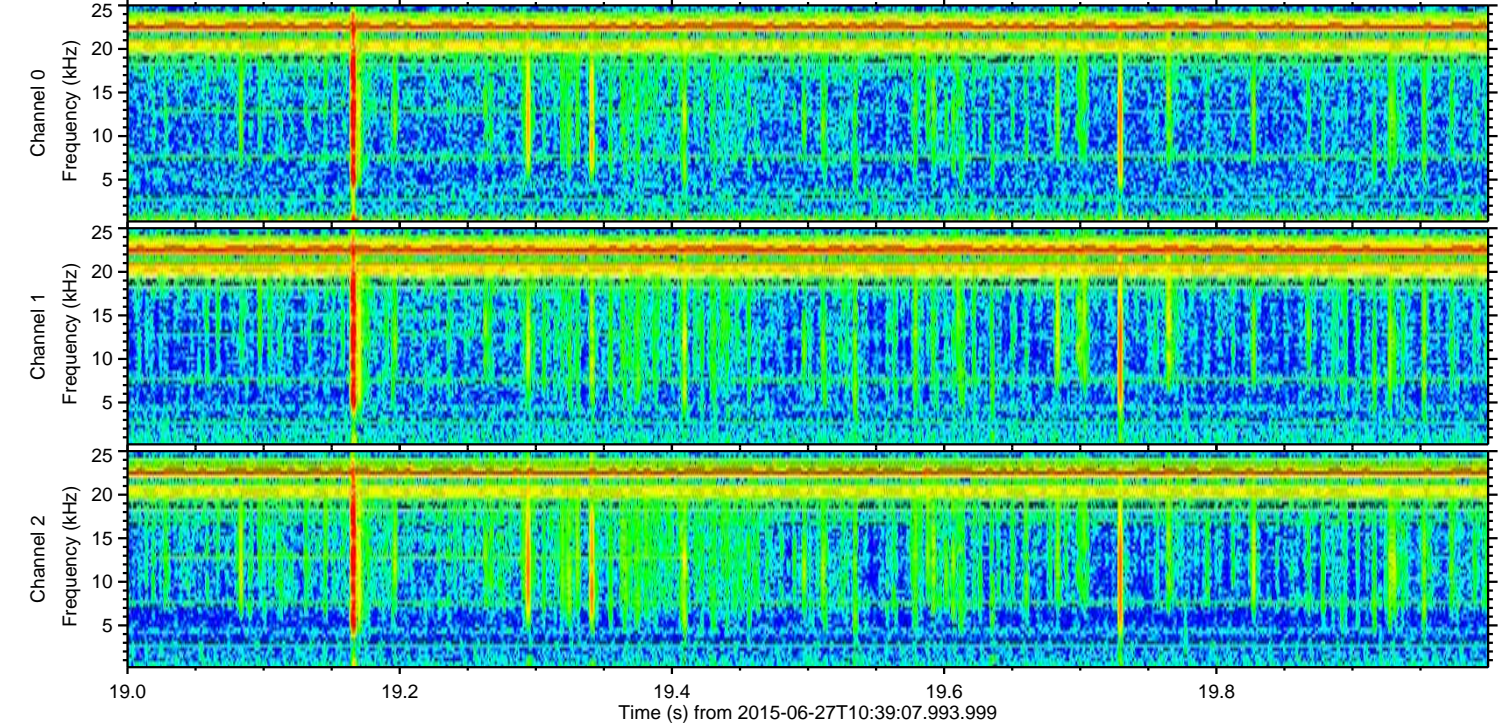
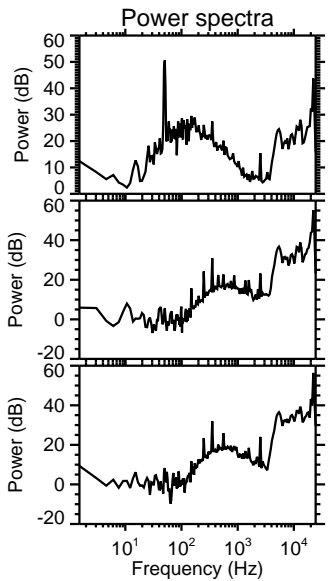
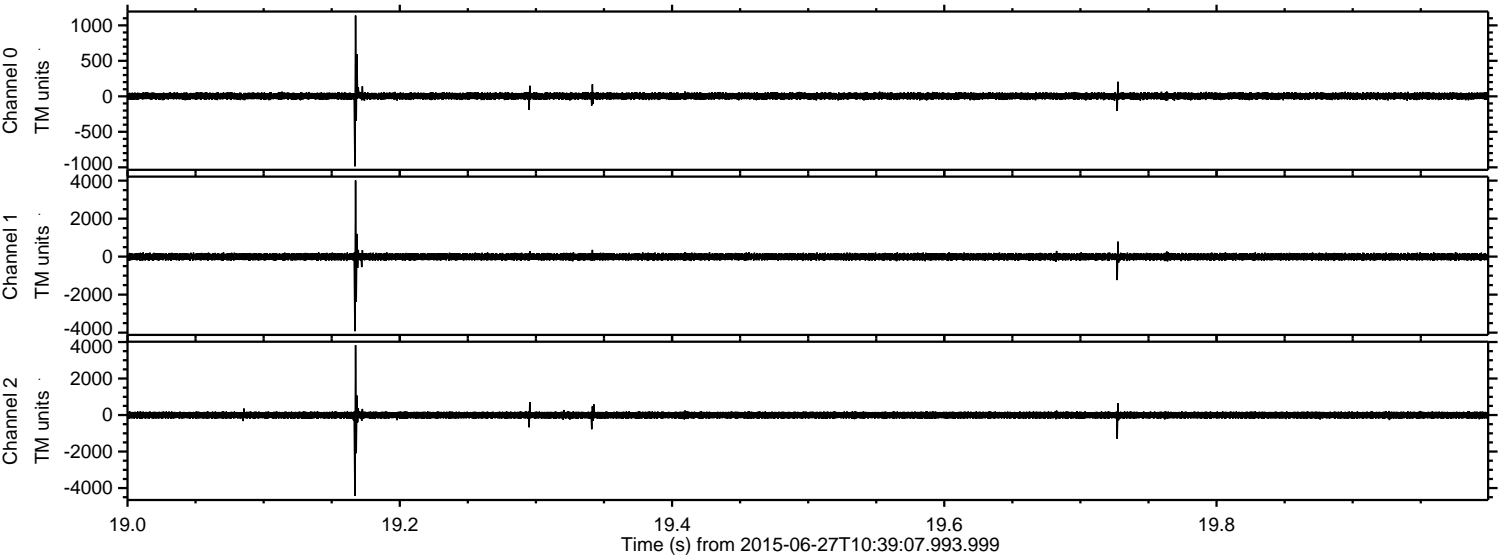
mn: -6136
mx: 6024
 μ : -6.7
 σ : 110.3

Channel 2

mn: -3587
mx: 3014
 μ : -4.5
 σ : 107.4

ELMAVAN 3D WAVEFORMS (Measured data sampled at 50 kHz) 51000 packets of 144 samples from 2015-06-27T10:39:07.993.999. Part 20/147

Processed Sat Jun 27 12:45:57 2015 by ELM ver.2012-10-06 from 001__elm20150627_103906__dat00.bin

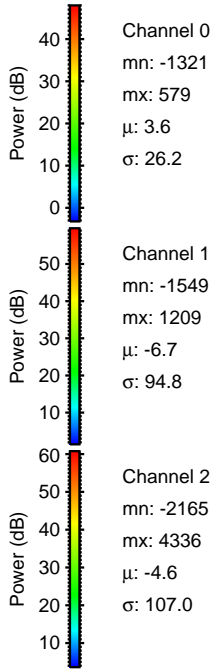
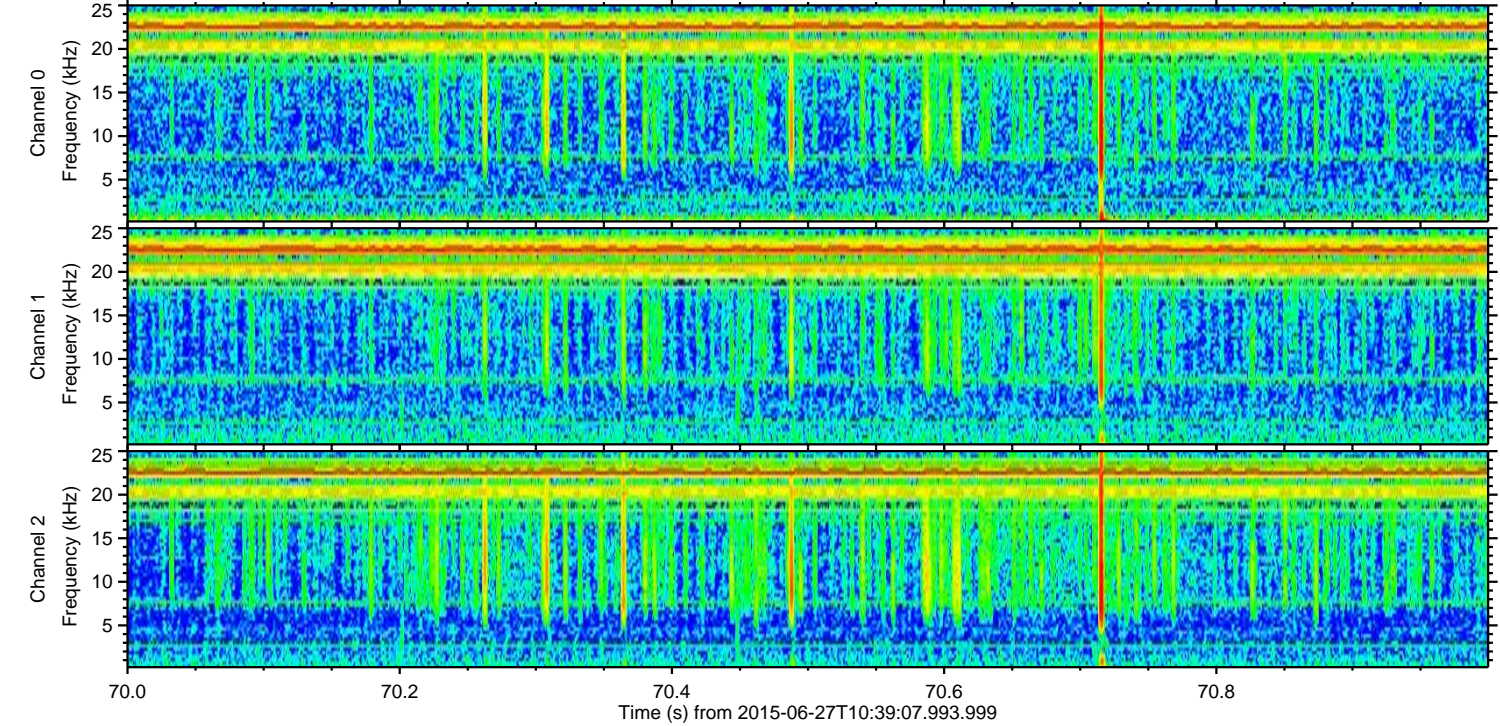
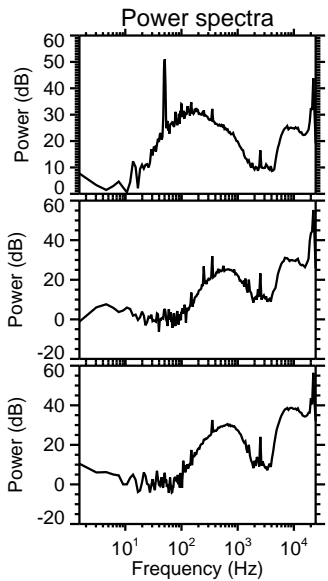
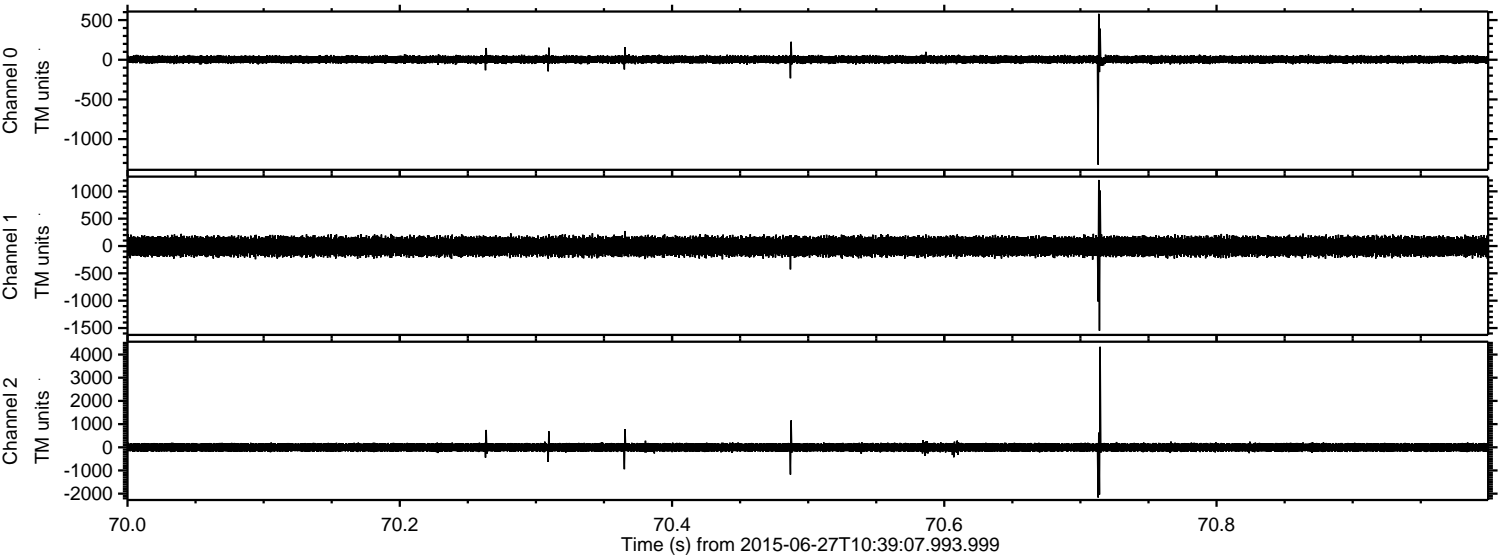


Channel 0
mn: -986
mx: 1138
 μ : 3.6
 σ : 27.7

Channel 1
mn: -3925
mx: 4011
 μ : -6.7
 σ : 103.0

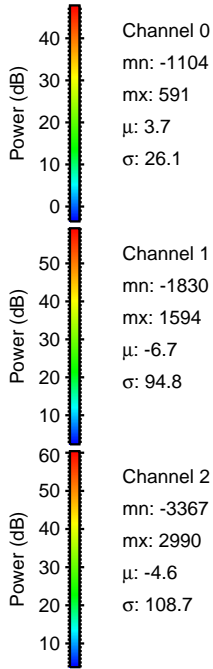
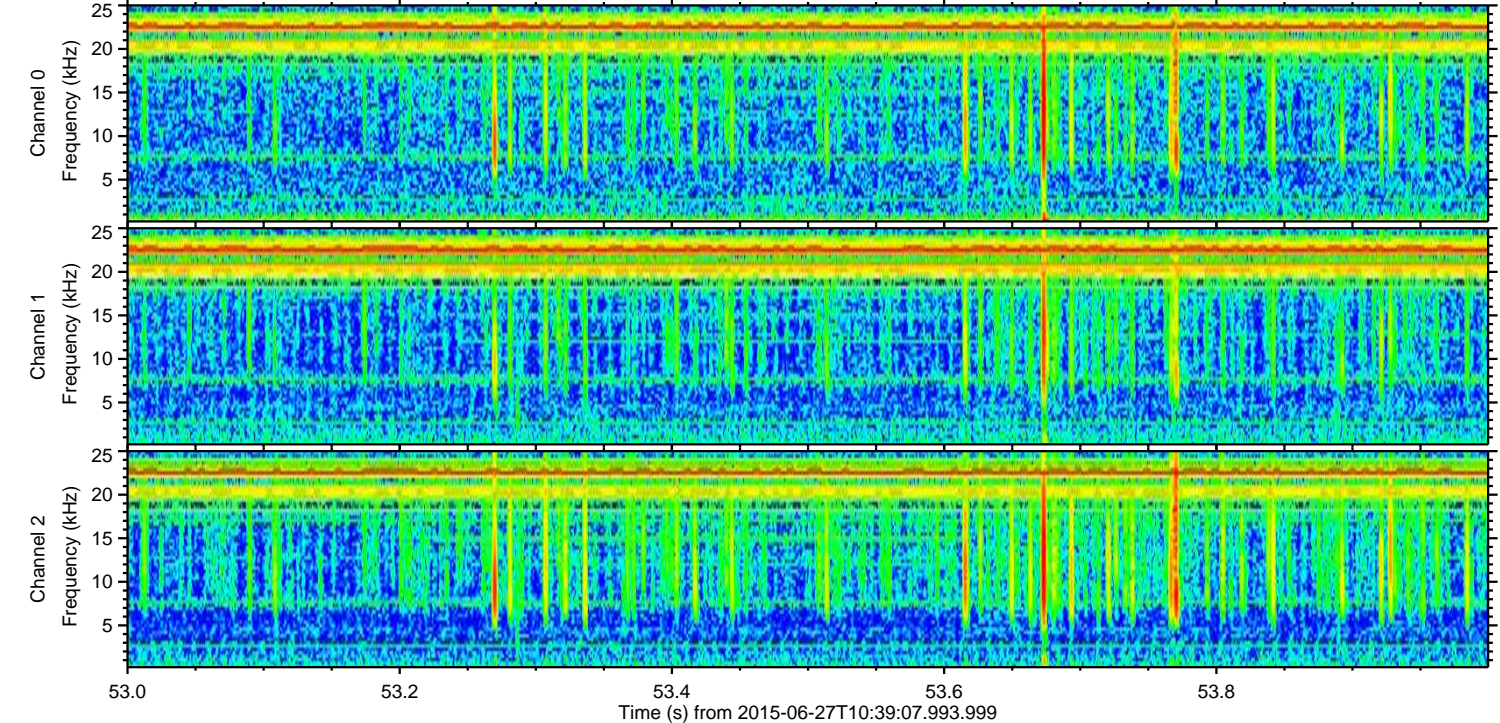
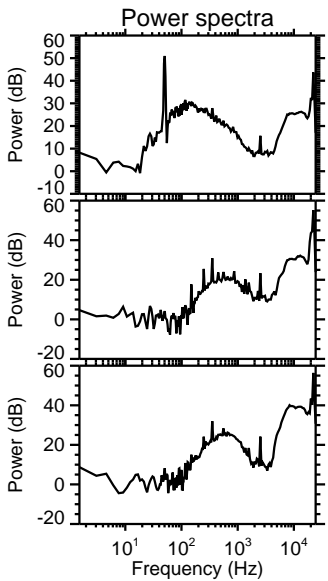
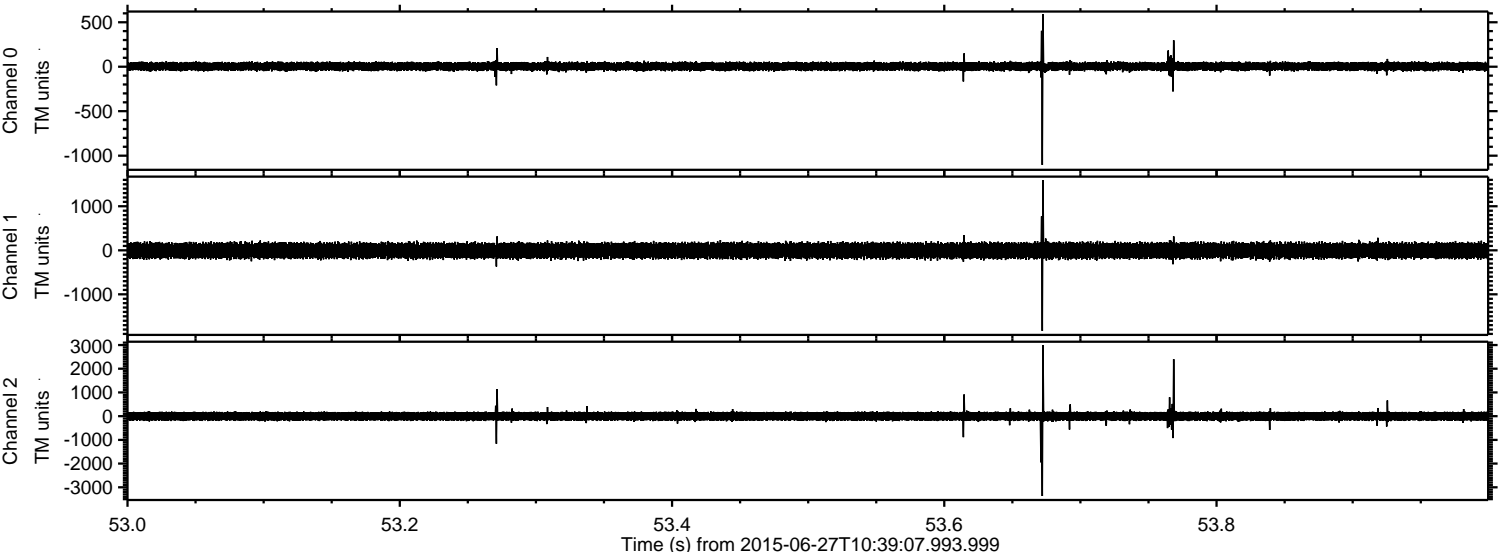
Channel 2
mn: -4431
mx: 3825
 μ : -4.6
 σ : 111.4

Processed Sat Jun 27 12:45:58 2015 by ELM ver.2012-10-06 from 001__elm20150627_103906__dat00.bin

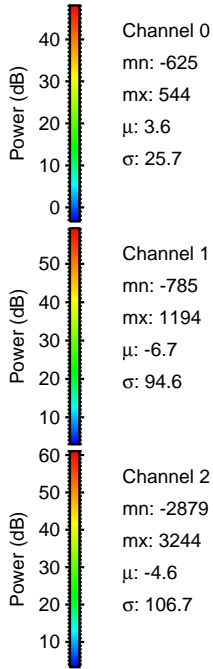
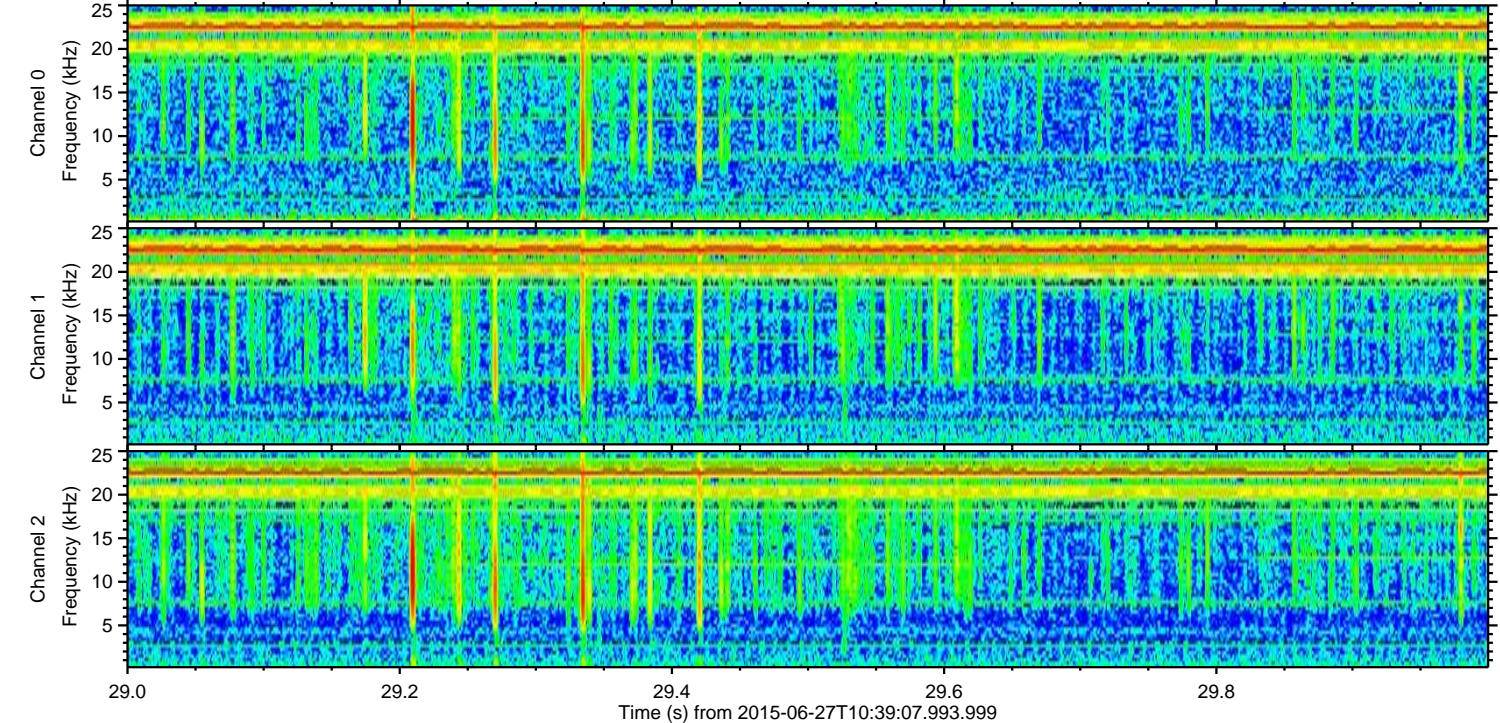
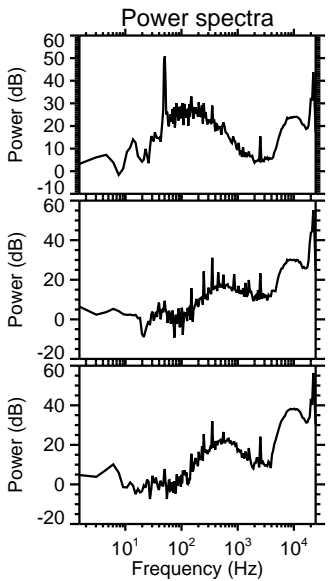
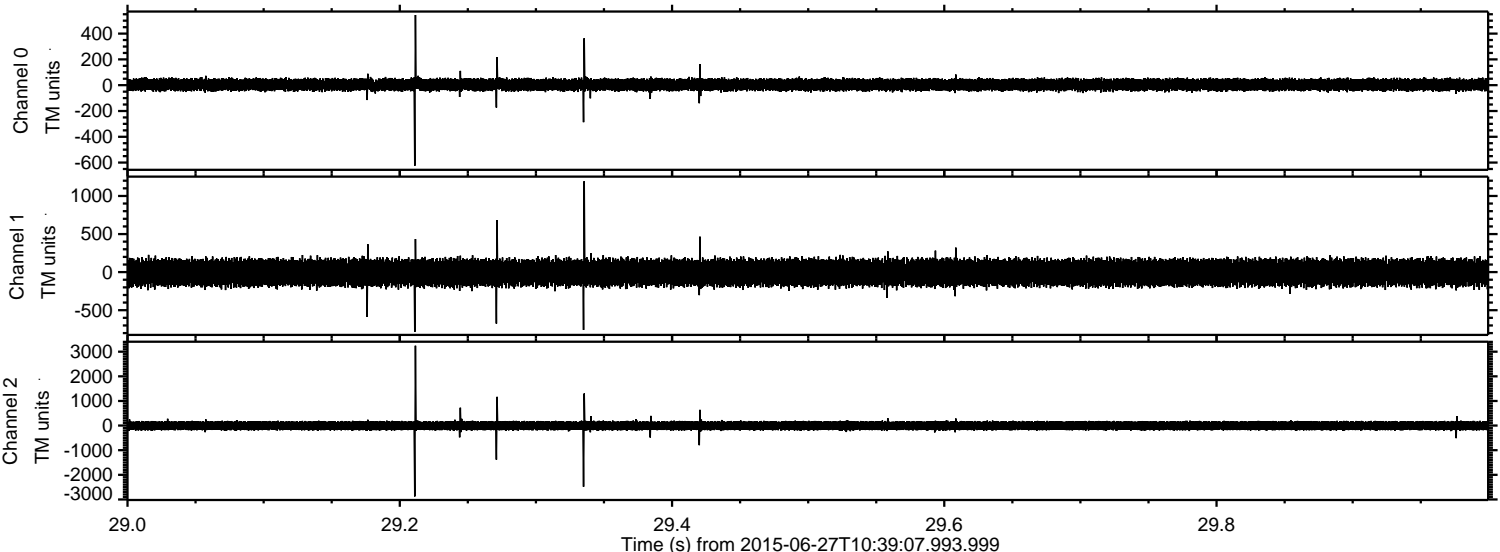


ELMAVAN 3D WAVEFORMS (Measured data sampled at 50 kHz) 51000 packets of 144 samples from 2015-06-27T10:39:07.993.999. Part 54/147

Processed Sat Jun 27 12:45:59 2015 by ELM ver.2012-10-06 from 001__elm20150627_103906__dat00.bin

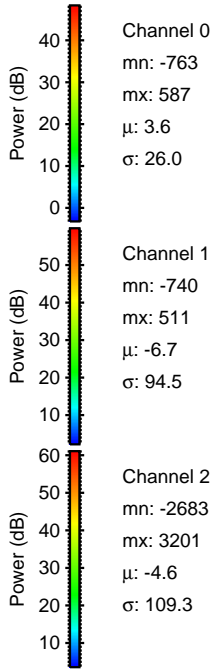
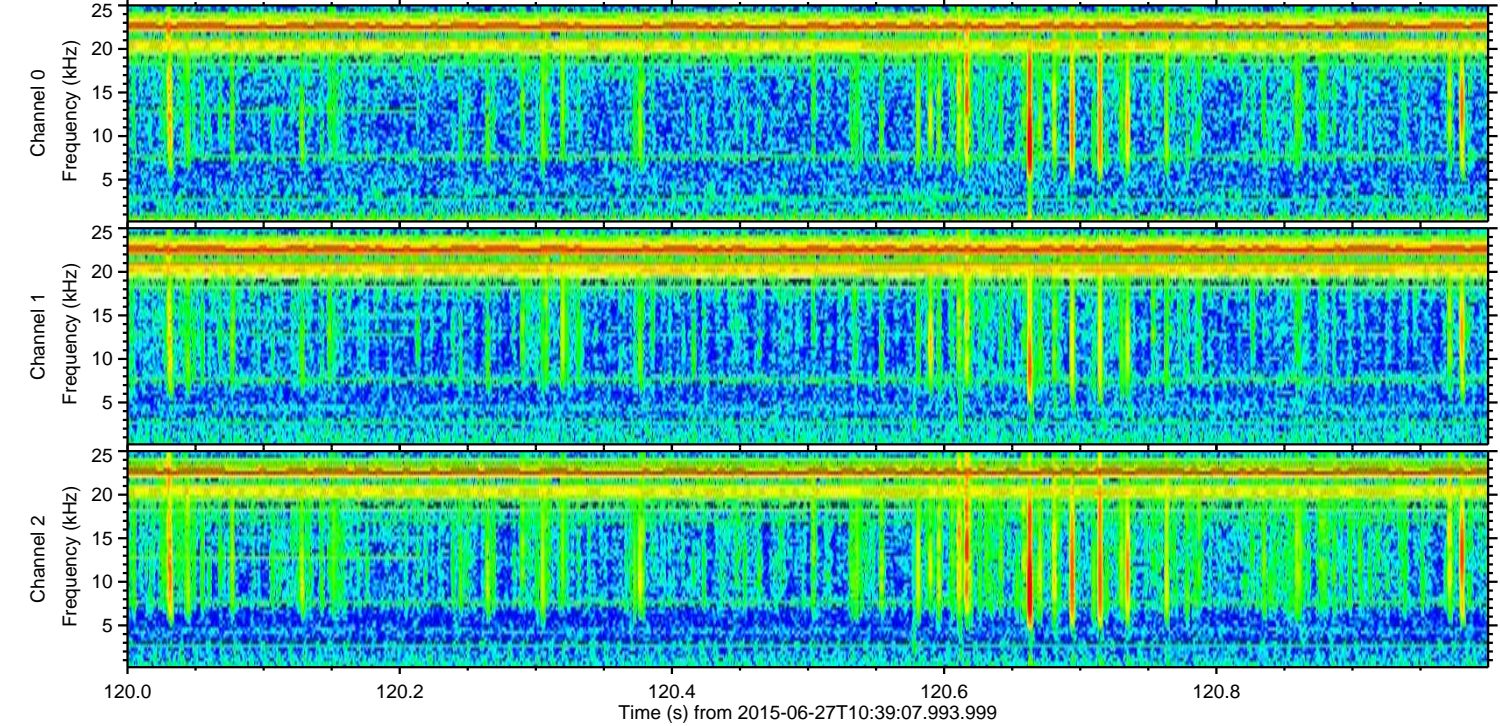
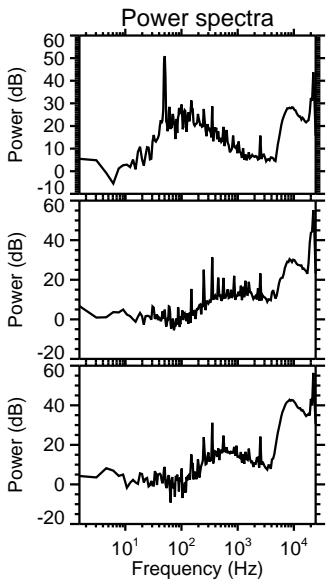
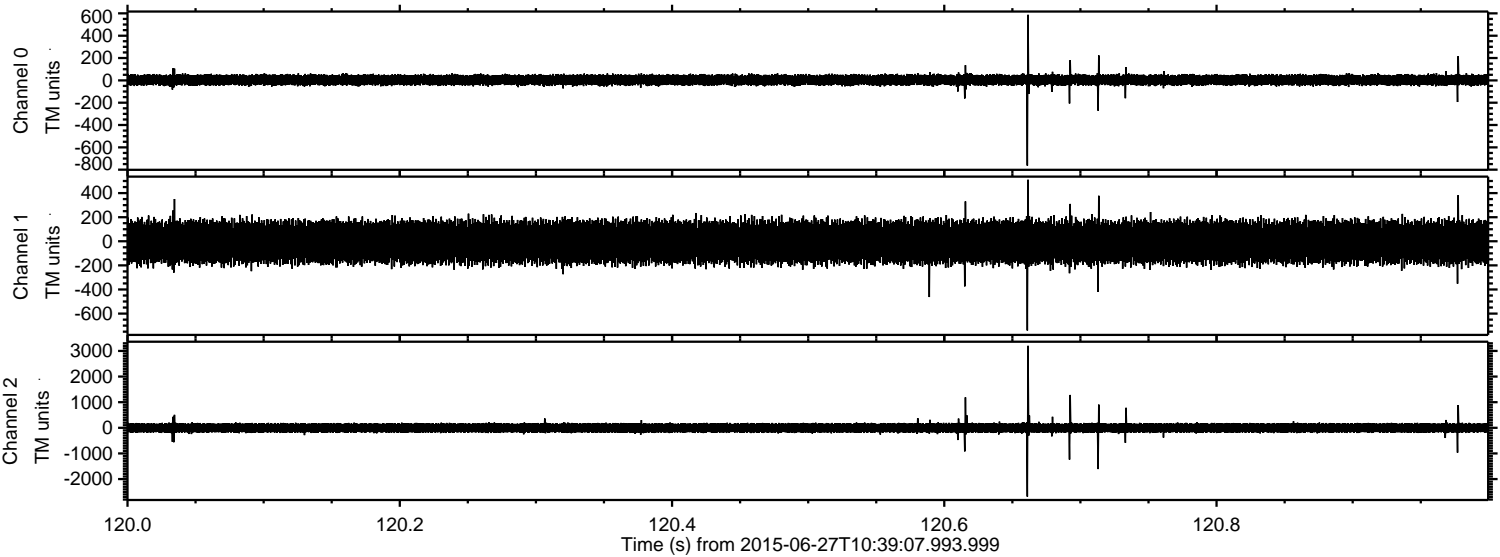


Processed Sat Jun 27 12:46:00 2015 by ELM ver.2012-10-06 from 001__elm20150627_103906__dat00.bin



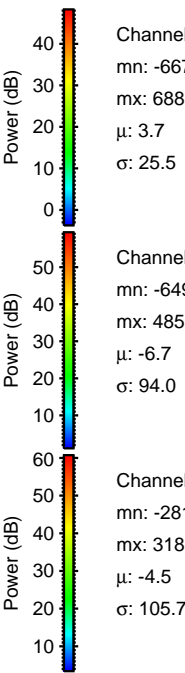
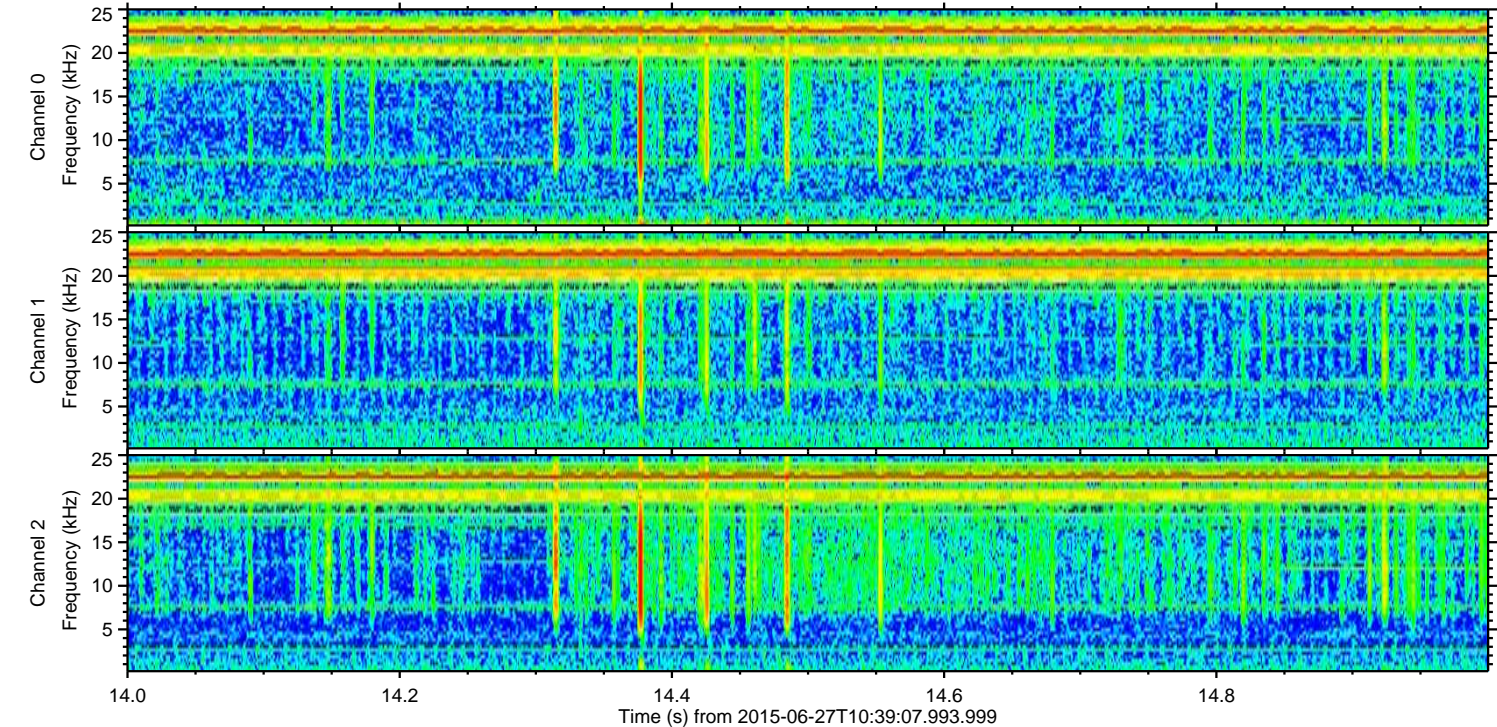
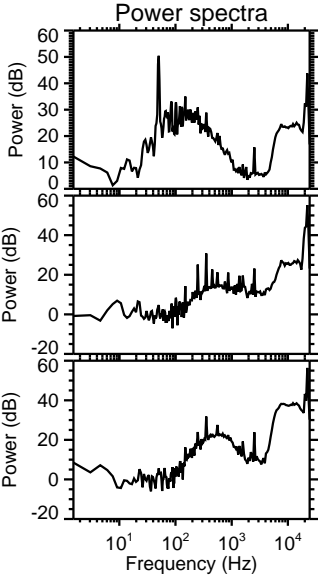
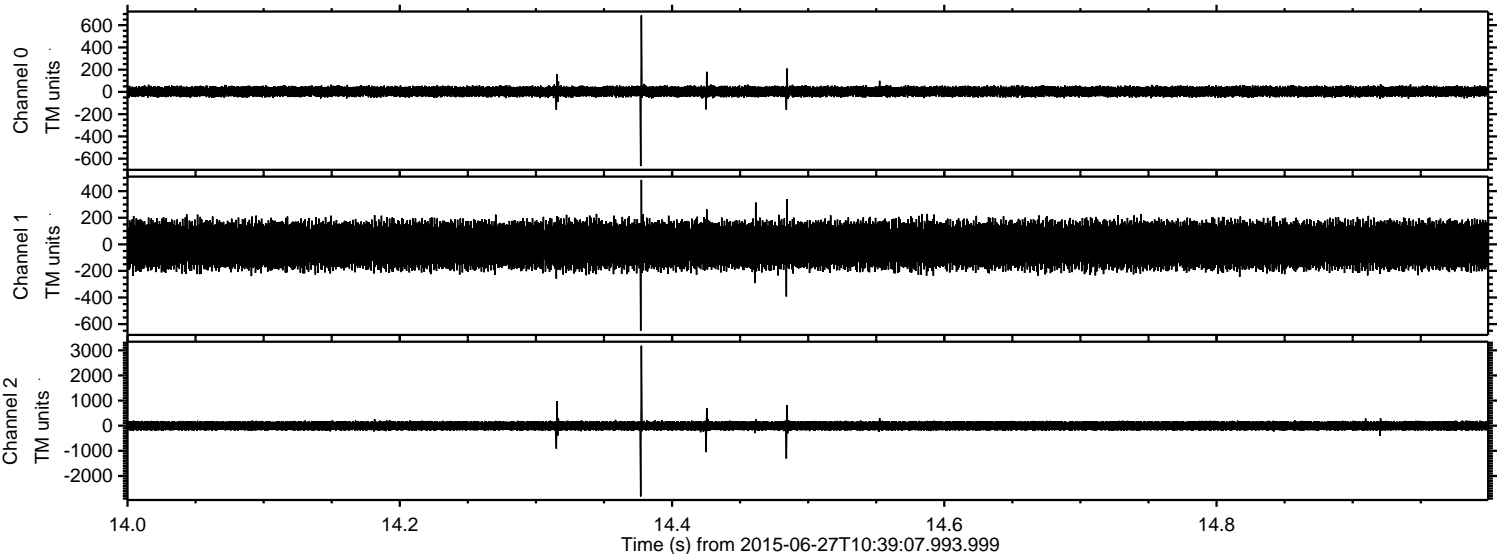
ELMAVAN 3D WAVEFORMS (Measured data sampled at 50 kHz) 51000 packets of 144 samples from 2015-06-27T10:39:07.993.999. Part 121/147

Processed Sat Jun 27 12:46:01 2015 by ELM ver.2012-10-06 from 001__elm20150627_103906__dat00.bin



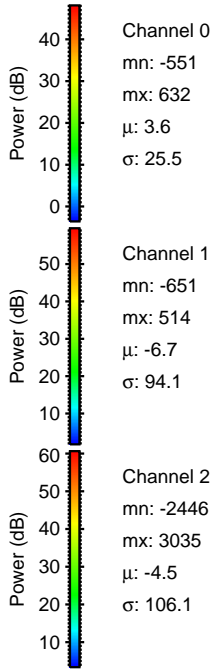
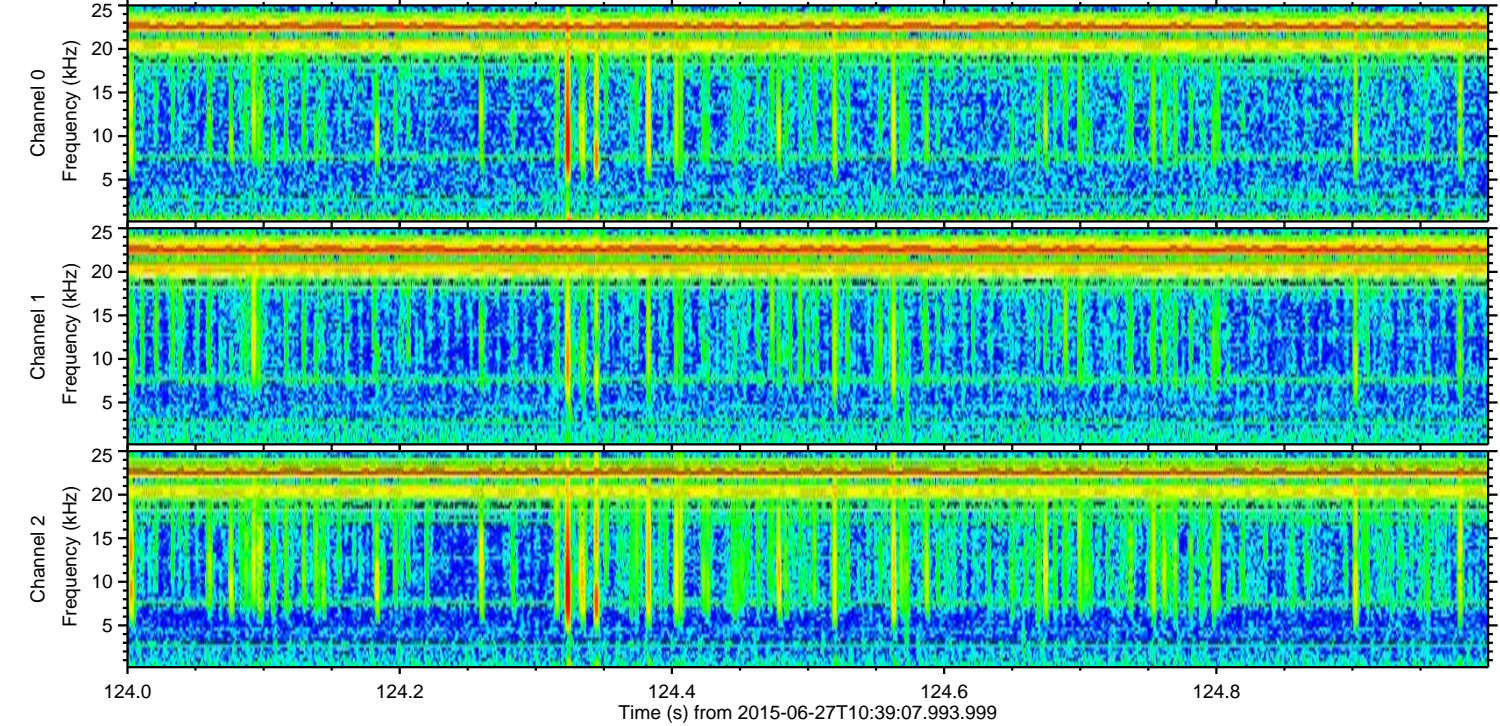
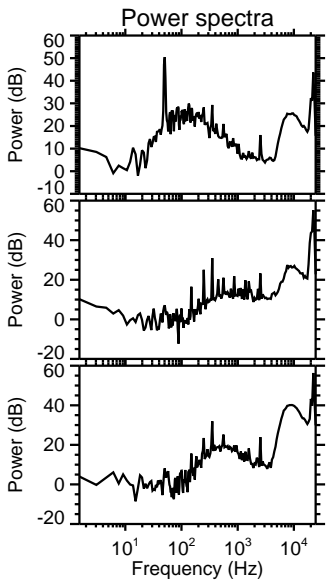
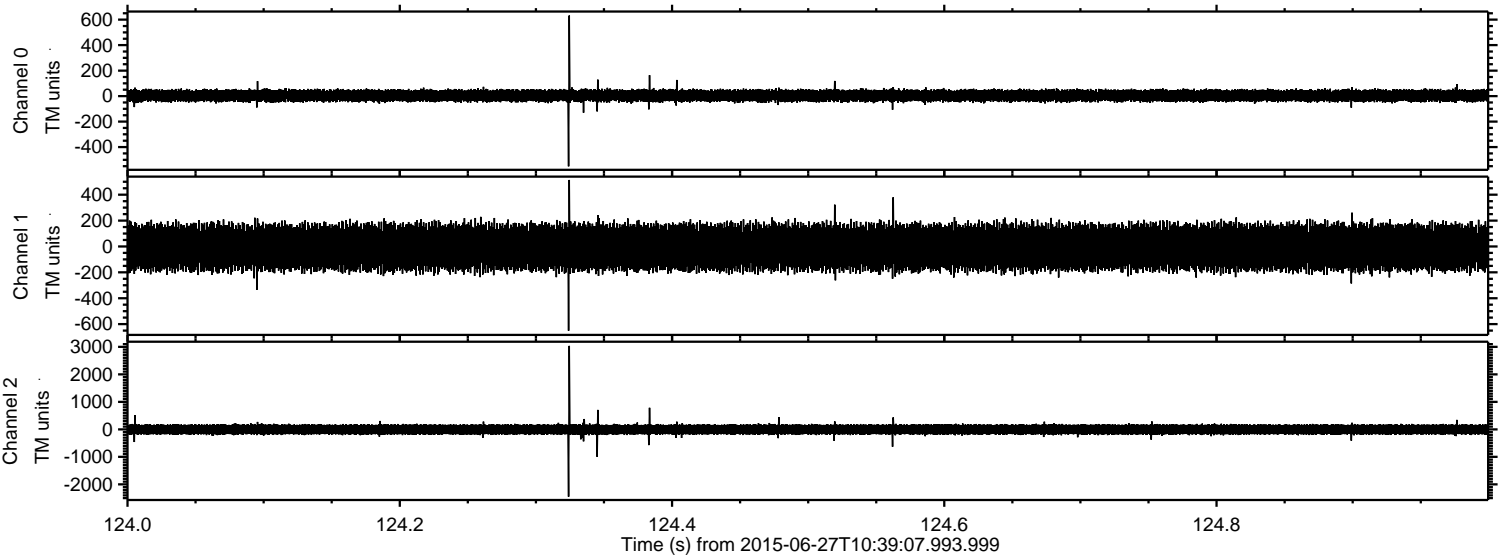
ELMAVAN 3D WAVEFORMS (Measured data sampled at 50 kHz) 51000 packets of 144 samples from 2015-06-27T10:39:07.993.999. Part 15/147

Processed Sat Jun 27 12:46:02 2015 by ELM ver.2012-10-06 from 001__elm20150627_103906__dat00.bin



ELMAVAN 3D WAVEFORMS (Measured data sampled at 50 kHz) 51000 packets of 144 samples from 2015-06-27T10:39:07.993.999. Part 125/147

Processed Sat Jun 27 12:46:03 2015 by ELM ver.2012-10-06 from 001__elm20150627_103906__dat00.bin



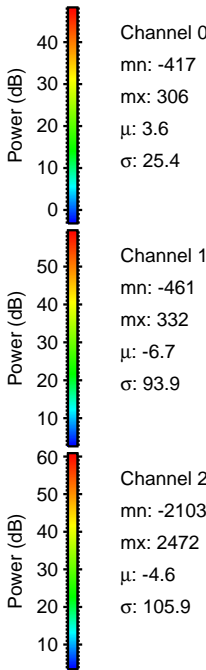
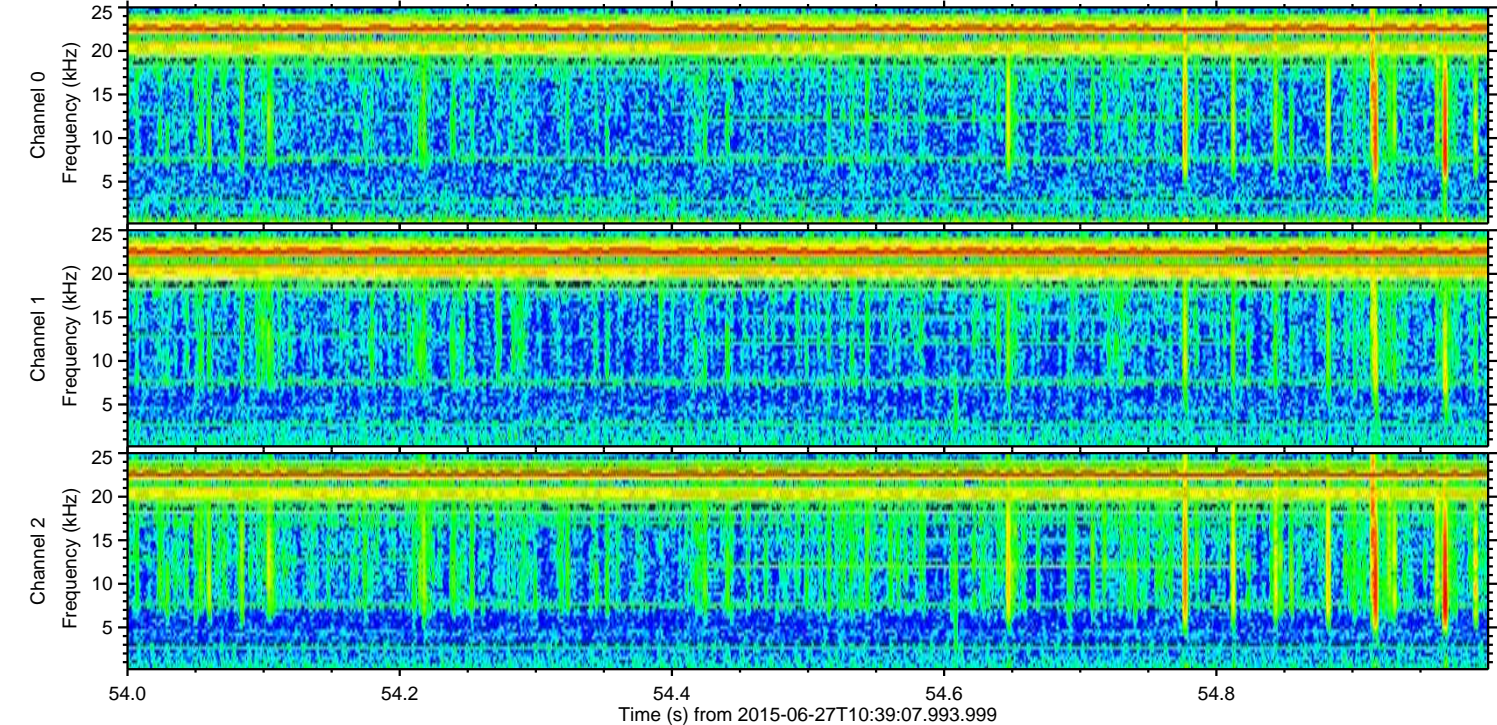
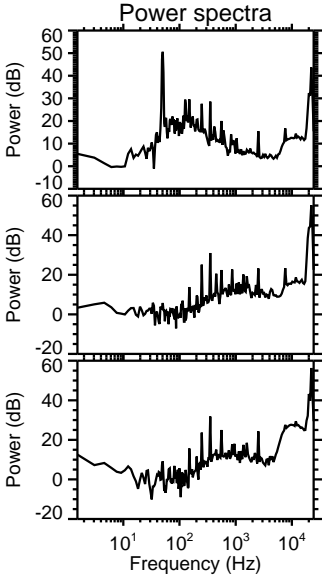
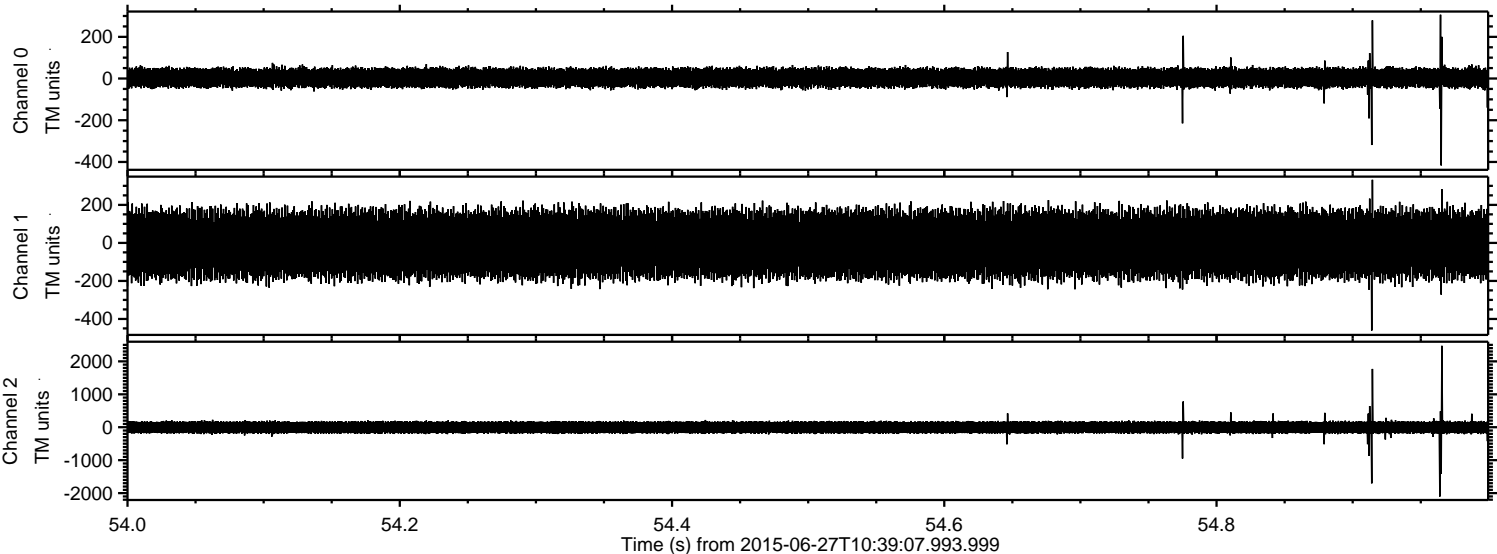
Channel 0
mn: -551
mx: 632
 μ : 3.6
 σ : 25.5

Channel 1
mn: -651
mx: 514
 μ : -6.7
 σ : 94.1

Channel 2
mn: -2446
mx: 3035
 μ : -4.5
 σ : 106.1

ELMAVAN 3D WAVEFORMS (Measured data sampled at 50 kHz) 51000 packets of 144 samples from 2015-06-27T10:39:07.993.999. Part 55/147

Processed Sat Jun 27 12:46:04 2015 by ELM ver.2012-10-06 from 001__elm20150627_103906__dat00.bin



ELMAVAN 3D WAVEFORMS (Measured data sampled at 50 kHz) 51000 packets of 144 samples from 2015-06-27T10:39:07.993.999. Part 137/147

