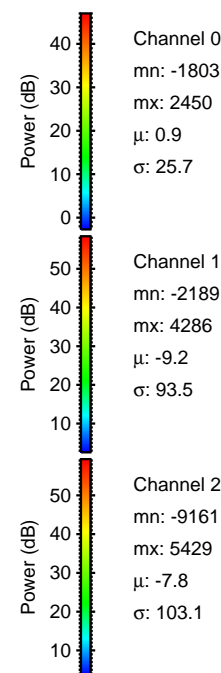
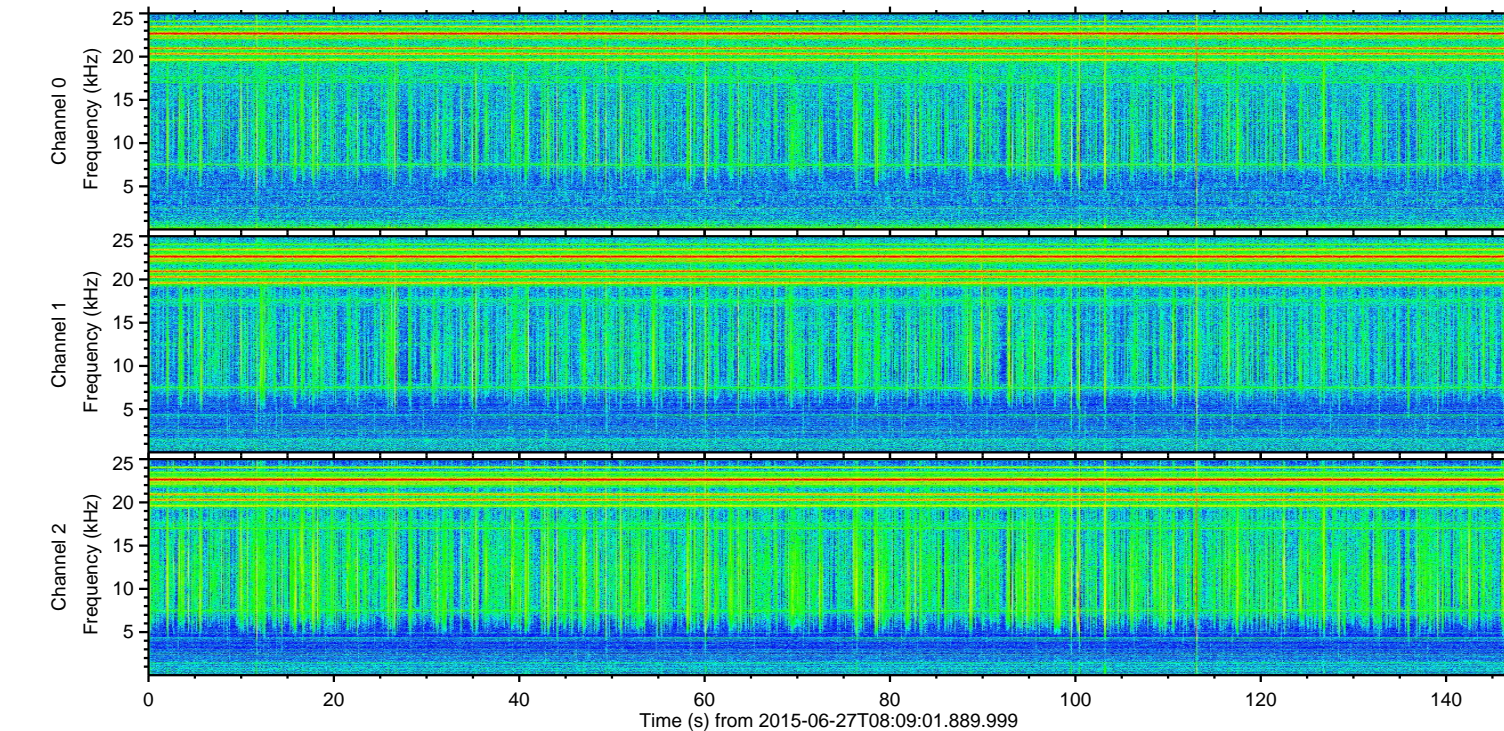
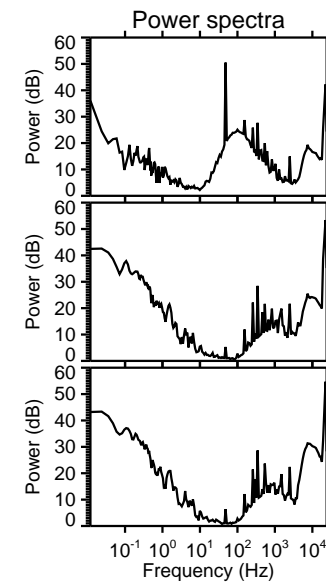
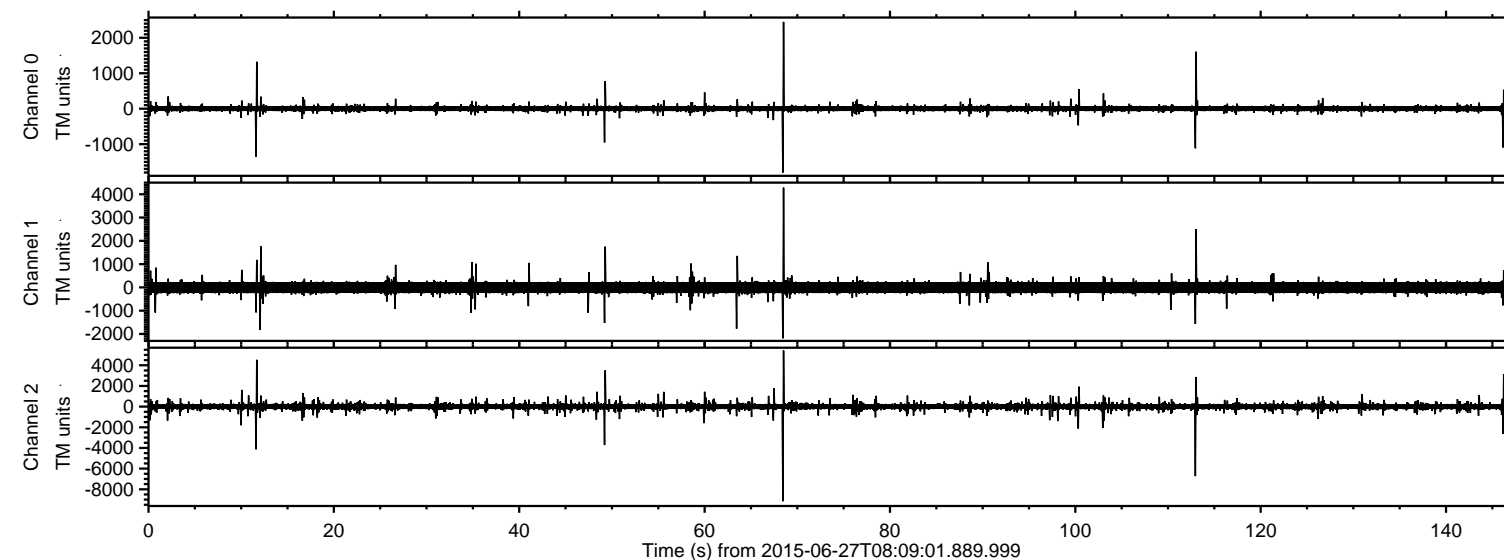
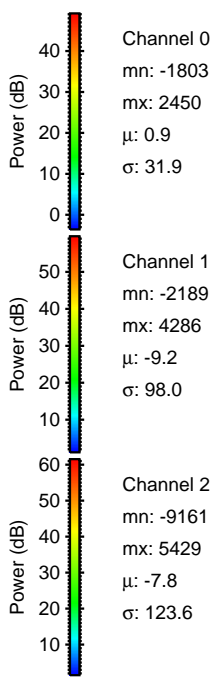
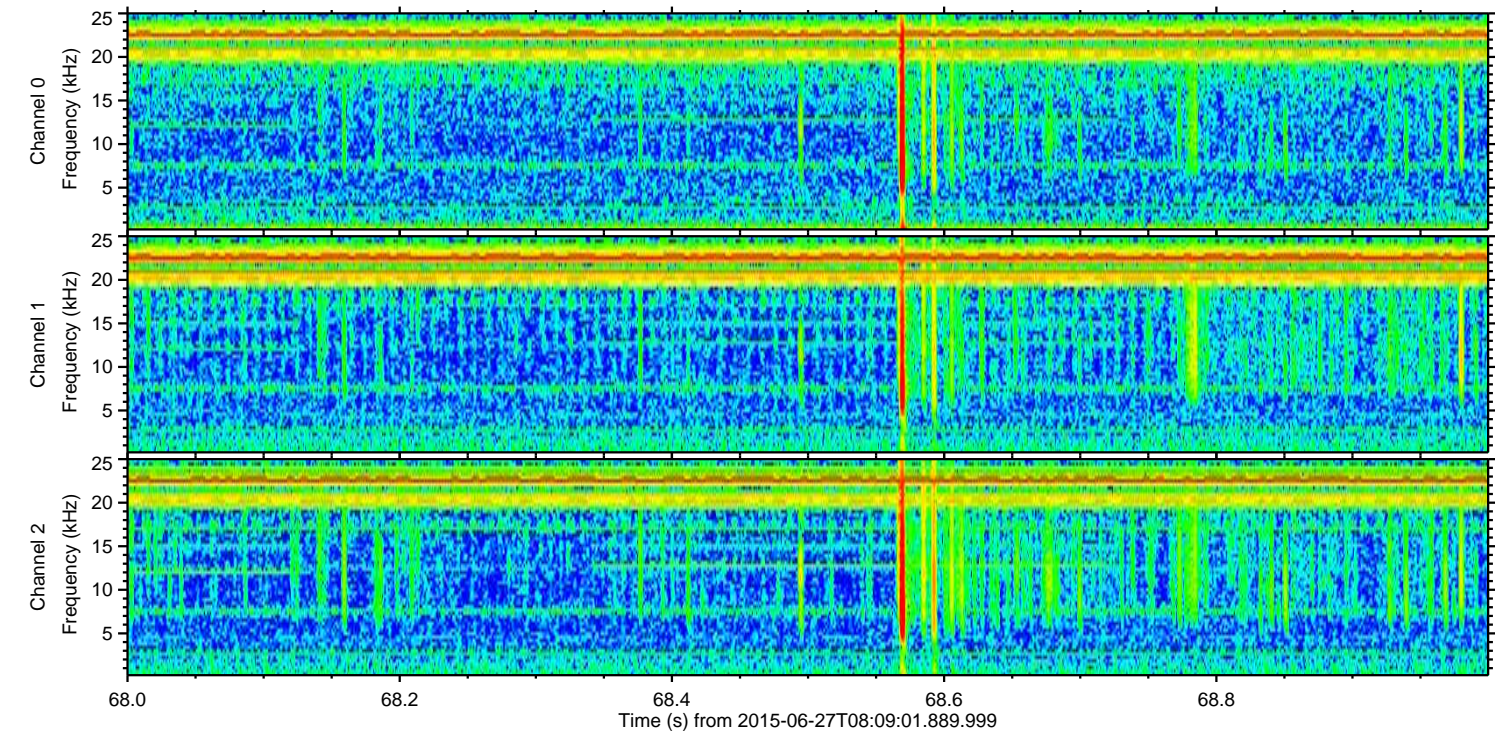
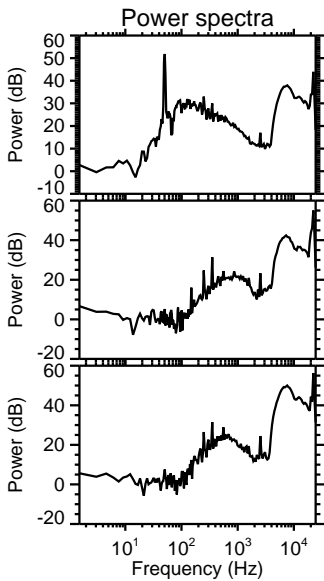
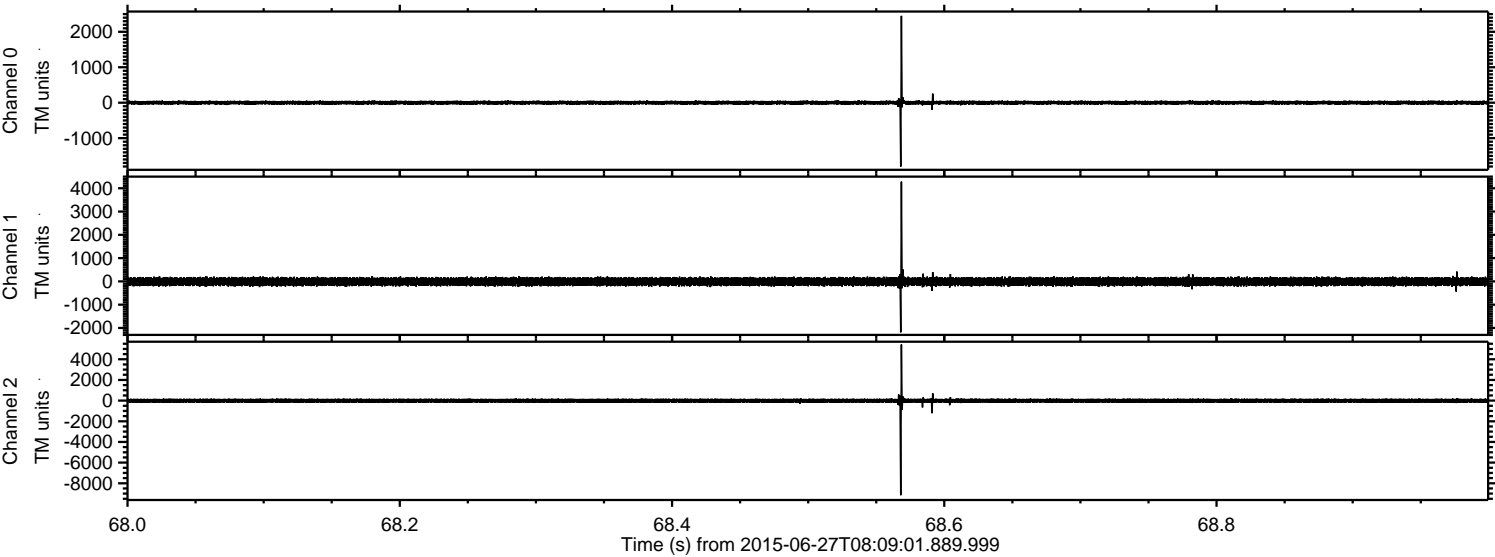


ELMAVAN 3D WAVEFORMS (Measured data sampled at 50 kHz) 51000 packets of 144 samples from 2015-06-27T08:09:01.889.999.

Processed Sat Jun 27 10:15:40 2015 by ELM ver.2012-10-06 from 001__elm20150627_080900__dat00.bin

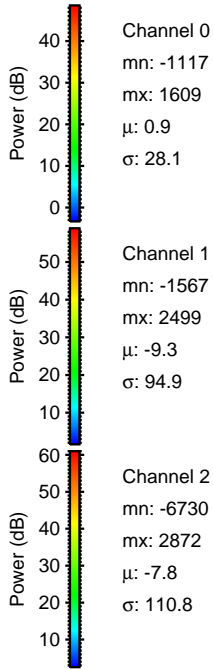
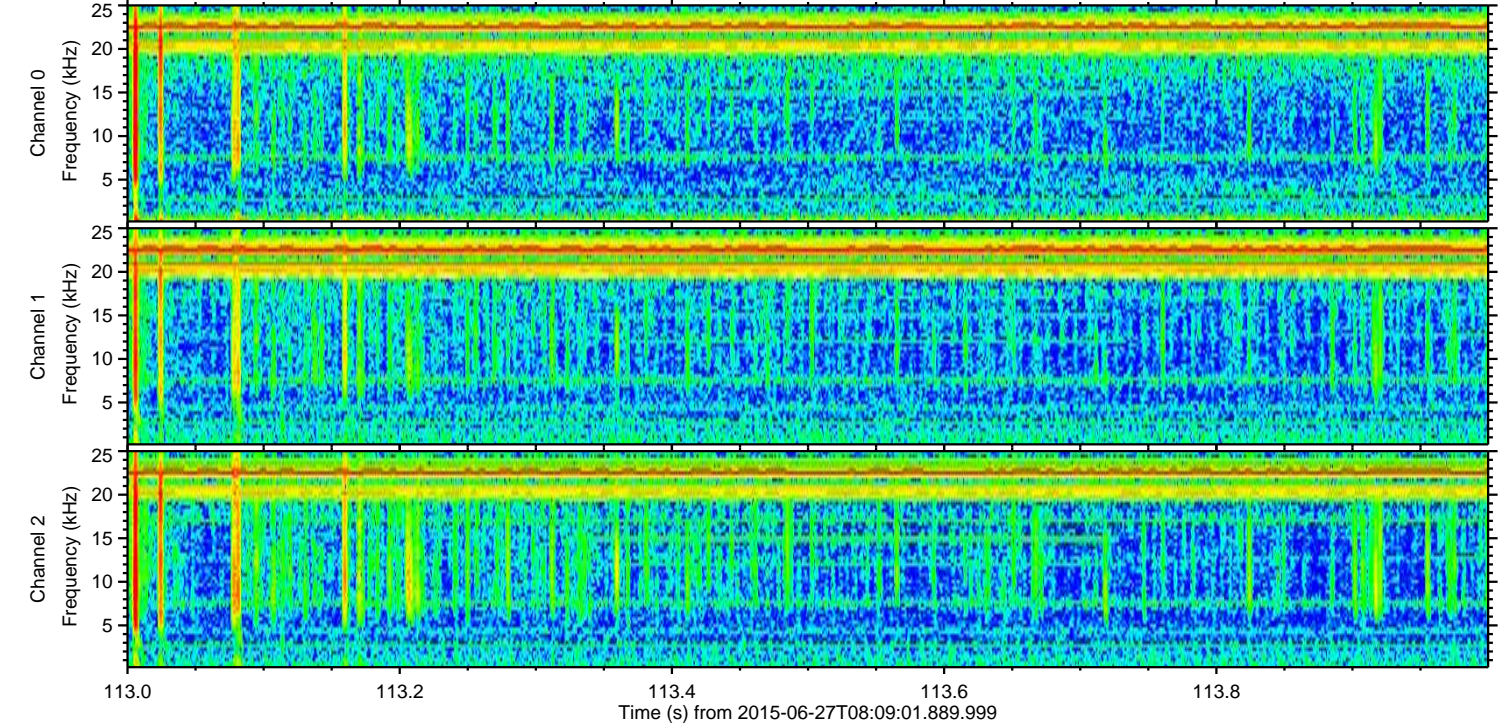
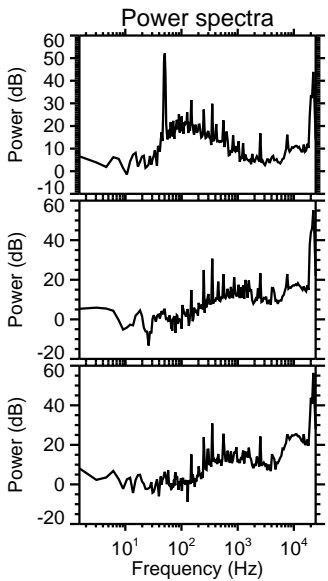
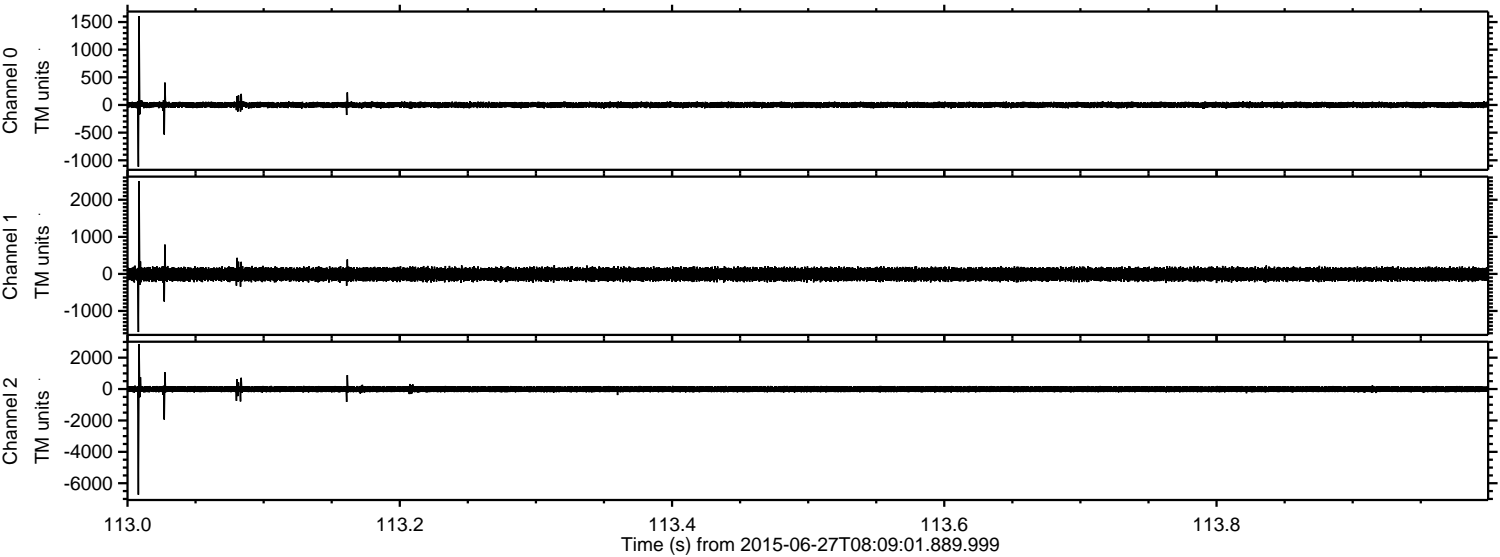


Processed Sat Jun 27 10:15:55 2015 by ELM ver.2012-10-06 from 001__elm20150627_080900__dat00.bin

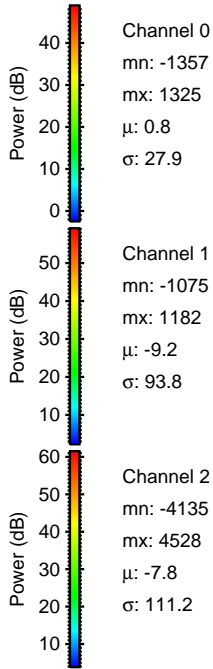
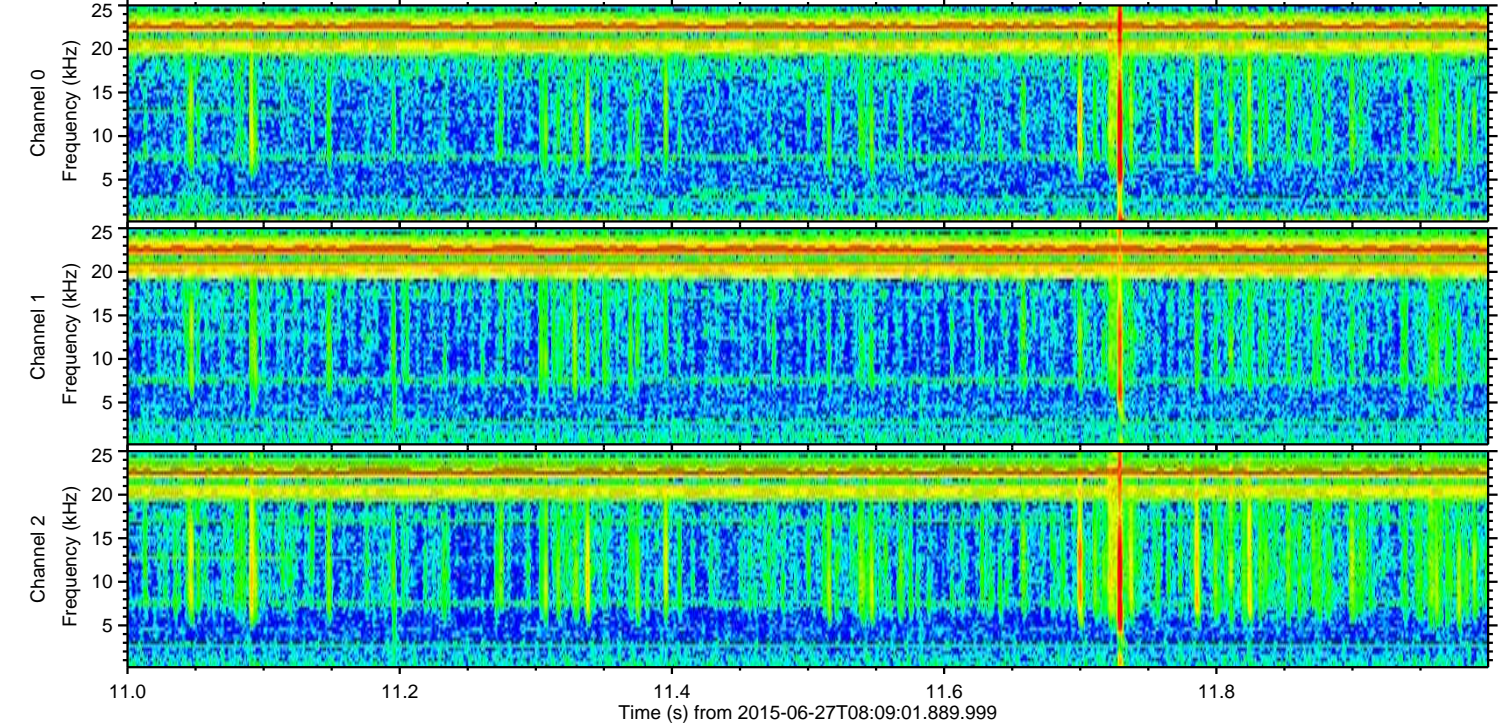
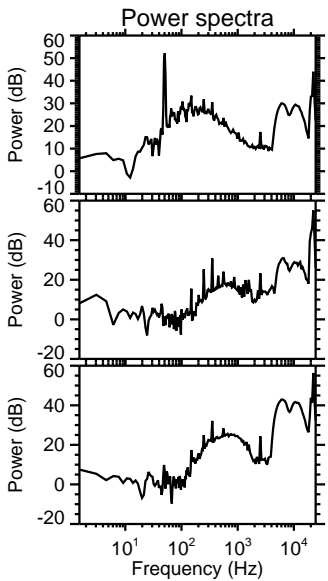
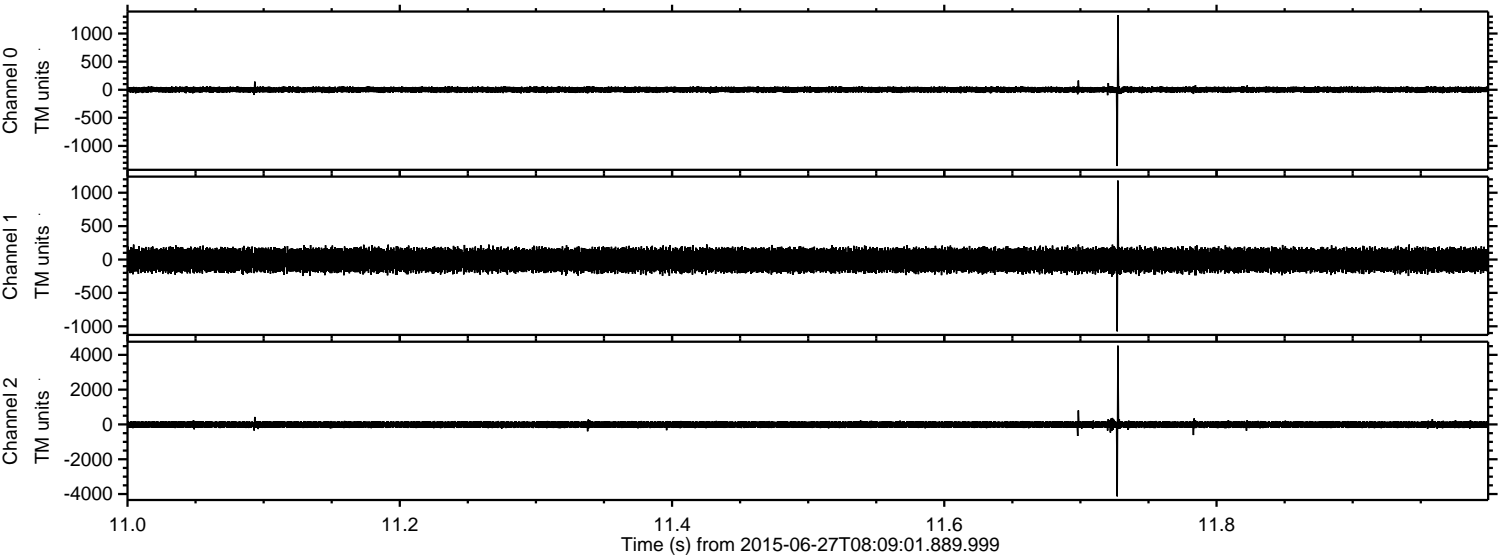


ELMAVAN 3D WAVEFORMS (Measured data sampled at 50 kHz) 51000 packets of 144 samples from 2015-06-27T08:09:01.889.999. Part 114/147

Processed Sat Jun 27 10:15:56 2015 by ELM ver.2012-10-06 from 001__elm20150627_080900__dat00.bin



Processed Sat Jun 27 10:15:57 2015 by ELM ver.2012-10-06 from 001__elm20150627_080900__dat00.bin

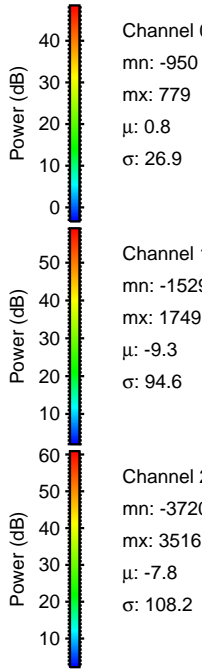
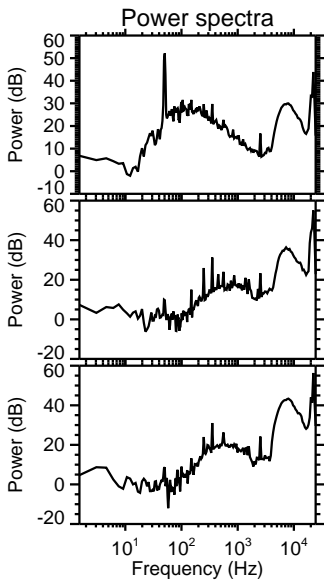
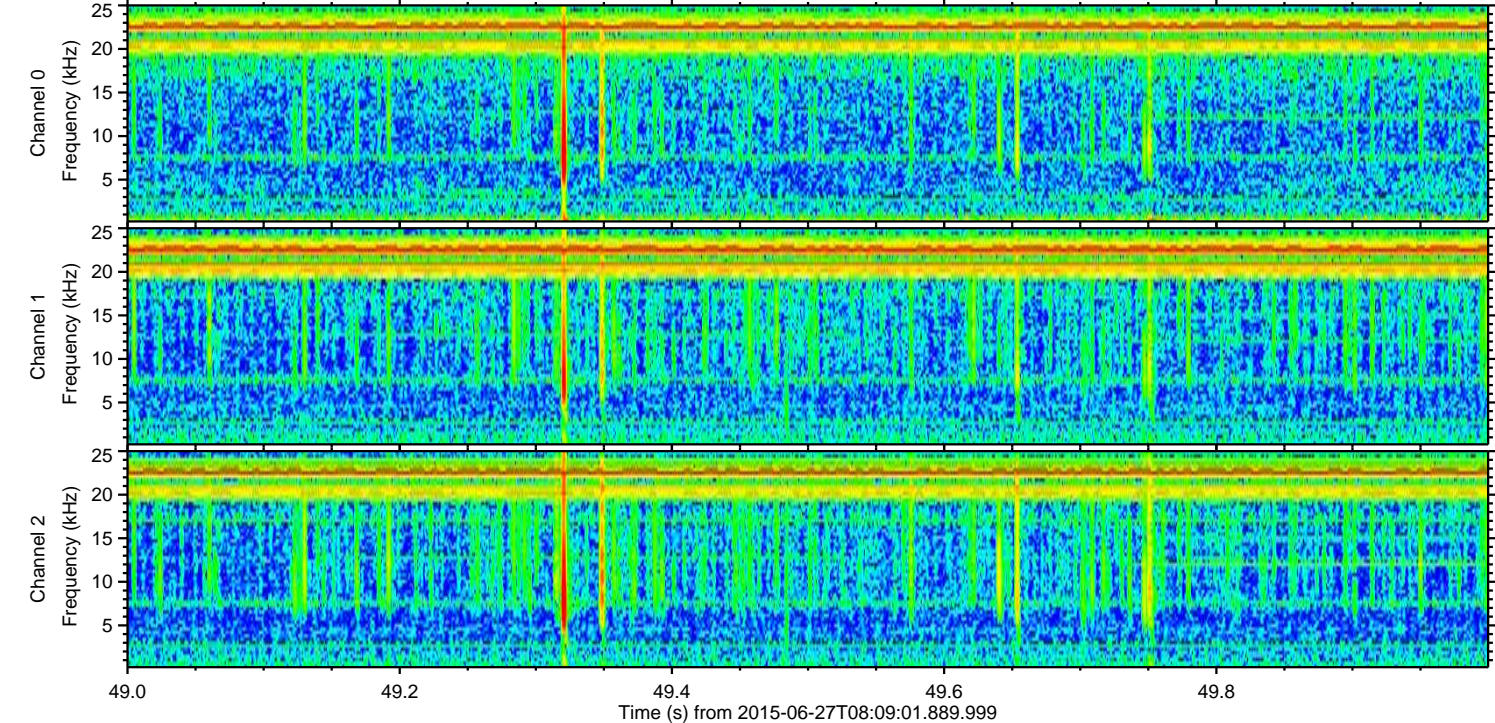
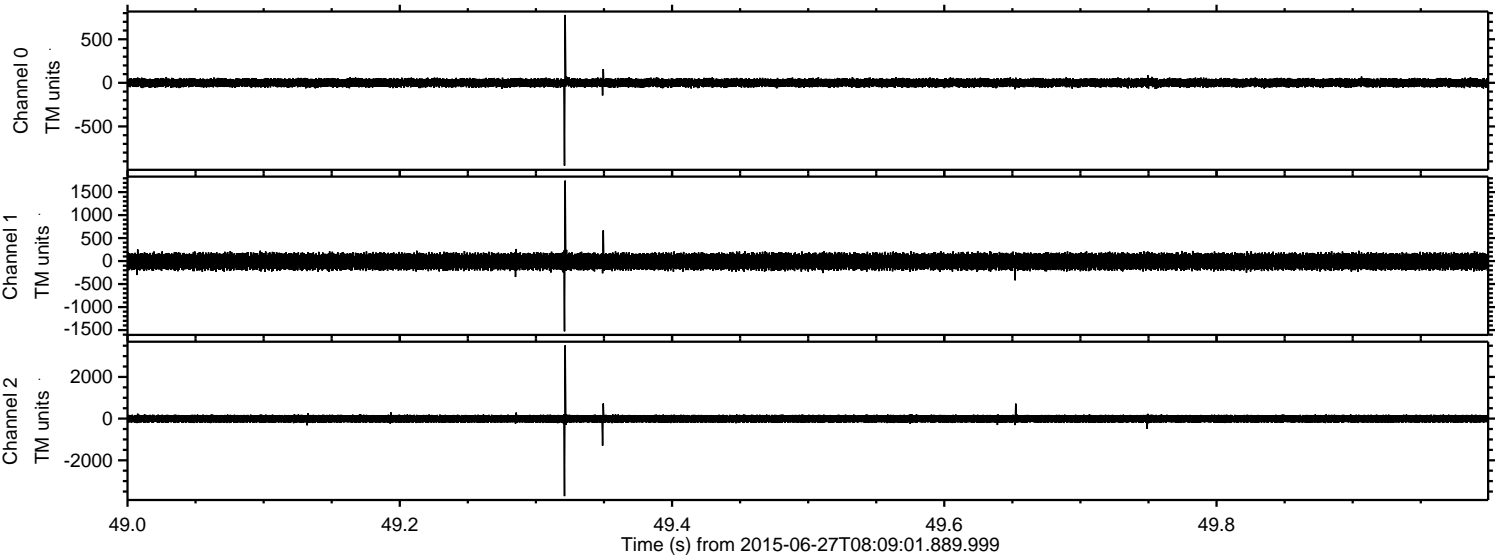


Channel 0
mn: -1357
mx: 1325
 μ : 0.8
 σ : 27.9

Channel 1
mn: -1075
mx: 1182
 μ : -9.2
 σ : 93.8

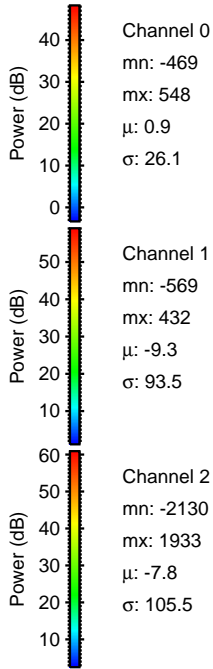
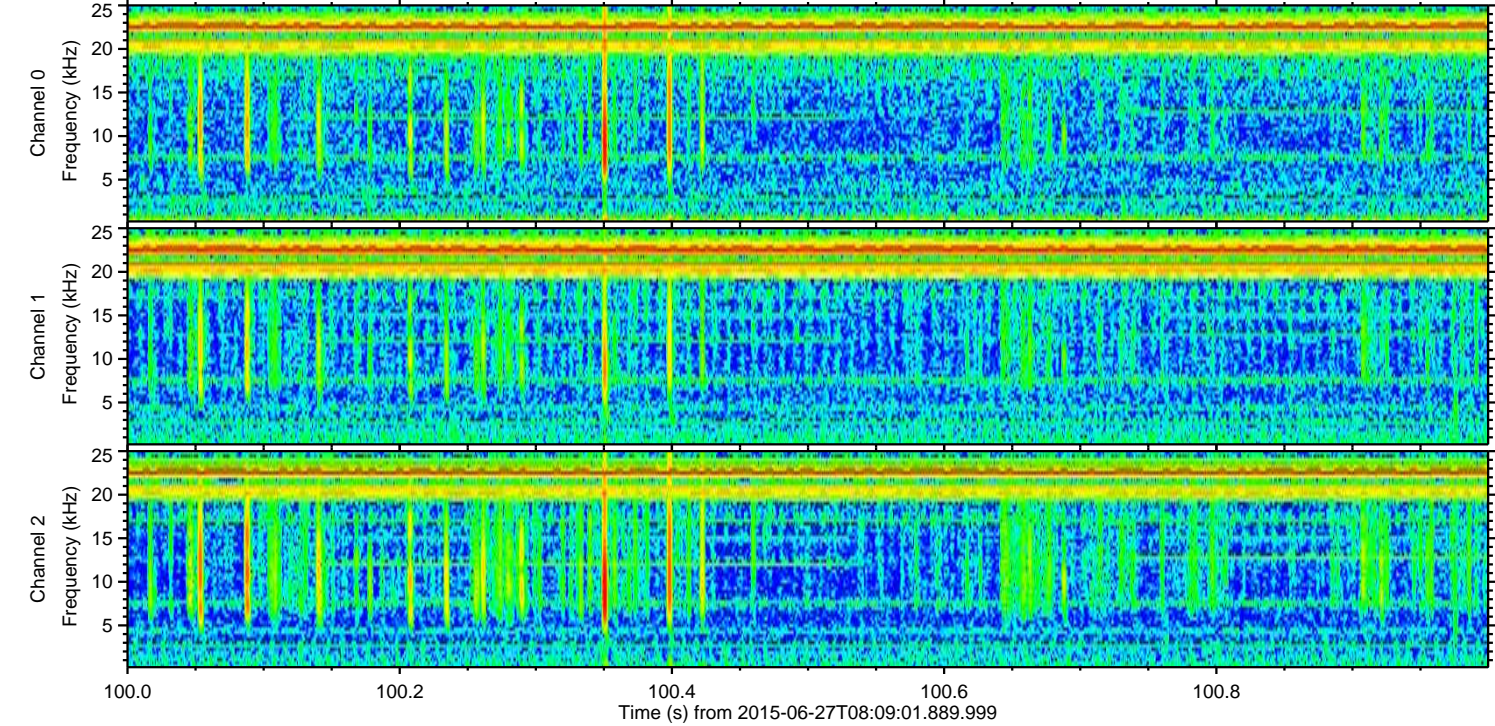
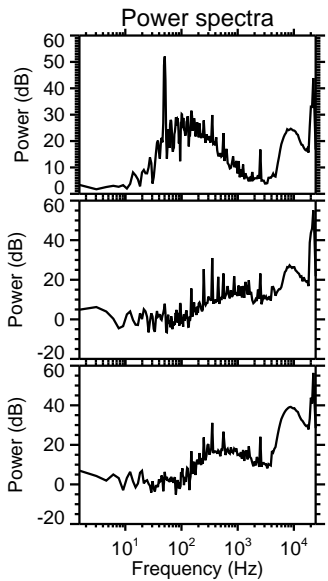
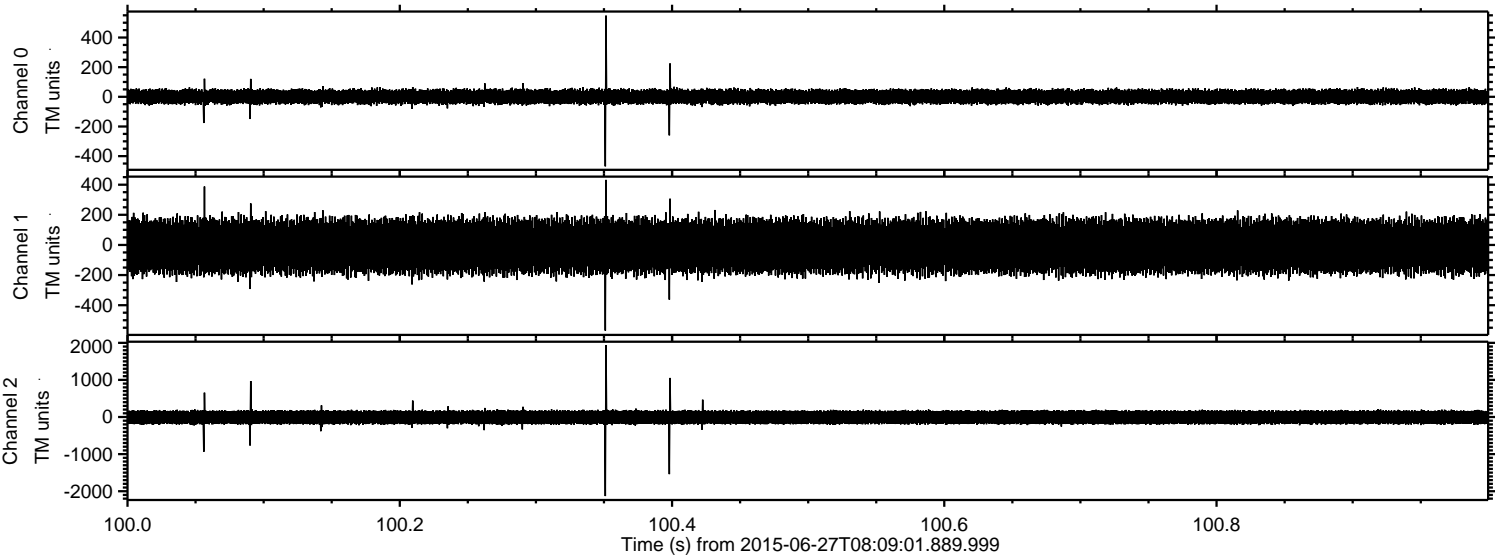
Channel 2
mn: -4135
mx: 4528
 μ : -7.8
 σ : 111.2

Processed Sat Jun 27 10:15:58 2015 by ELM ver.2012-10-06 from 001__elm20150627_080900__dat00.bin



ELMAVAN 3D WAVEFORMS (Measured data sampled at 50 kHz) 51000 packets of 144 samples from 2015-06-27T08:09:01.889.999. Part 101/147

Processed Sat Jun 27 10:15:59 2015 by ELM ver.2012-10-06 from 001__elm20150627_080900__dat00.bin



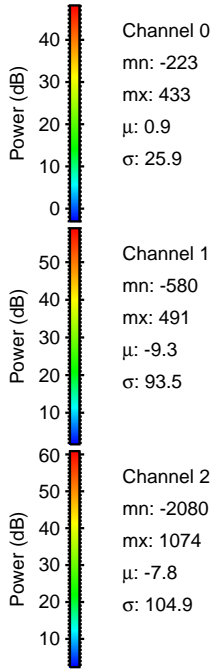
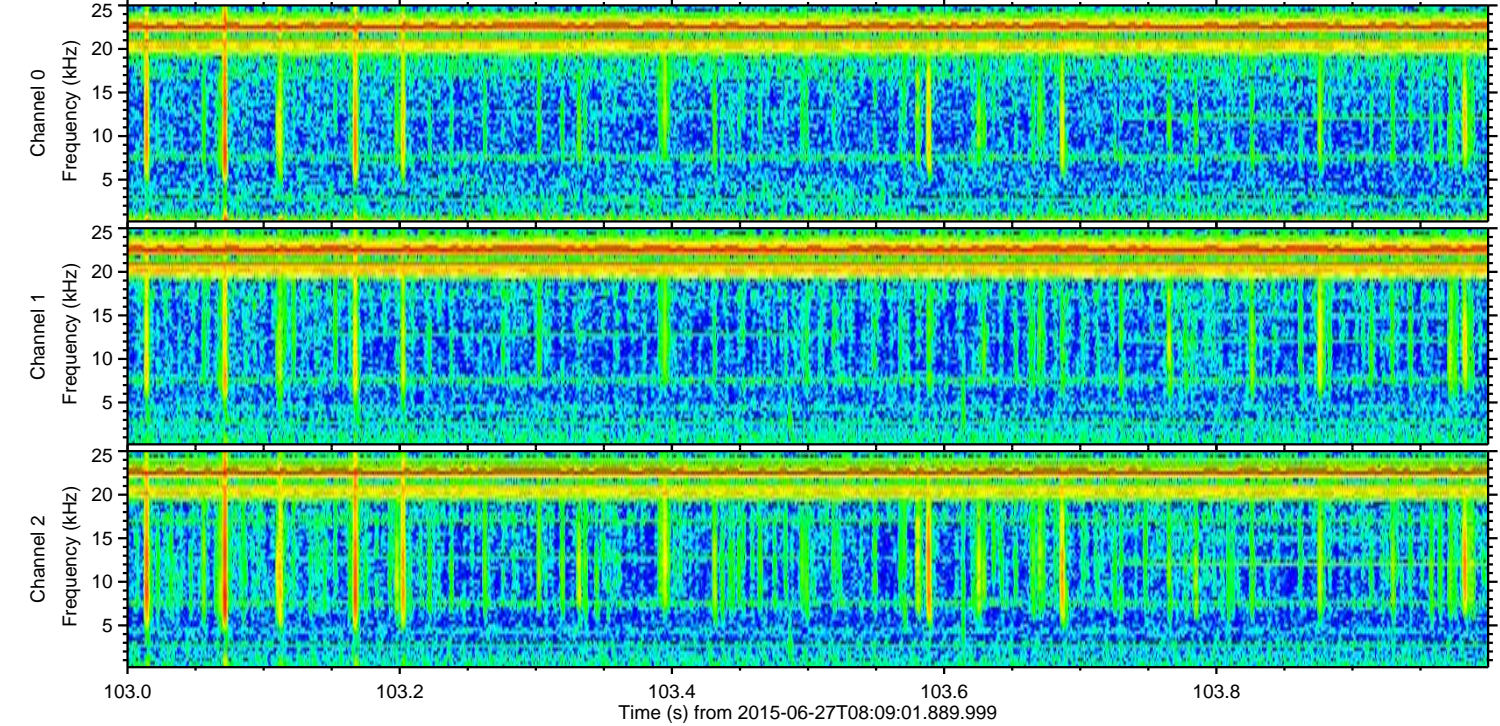
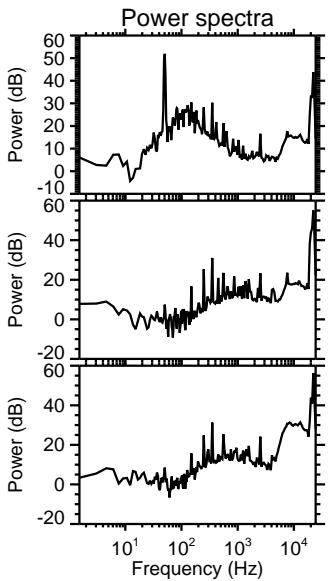
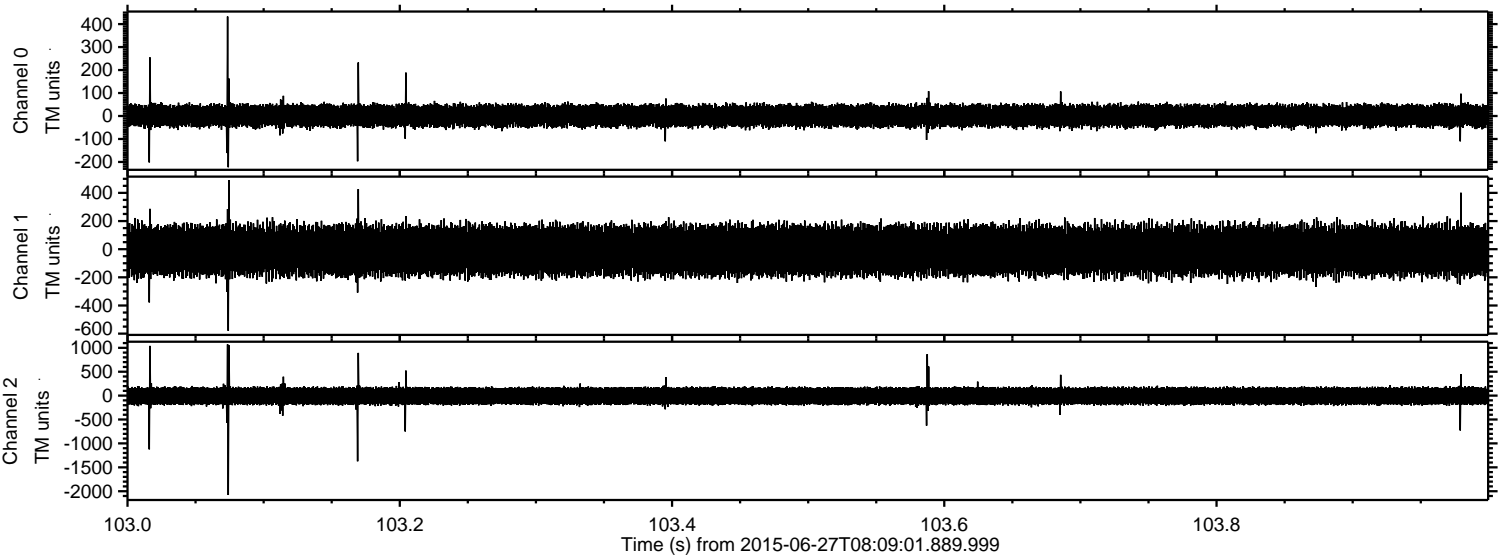
Channel 0
mn: -469
mx: 548
 μ : 0.9
 σ : 26.1

Channel 1
mn: -569
mx: 432
 μ : -9.3
 σ : 93.5

Channel 2
mn: -2130
mx: 1933
 μ : -7.8
 σ : 105.5

ELMAVAN 3D WAVEFORMS (Measured data sampled at 50 kHz) 51000 packets of 144 samples from 2015-06-27T08:09:01.889.999. Part 104/147

Processed Sat Jun 27 10:16:00 2015 by ELM ver.2012-10-06 from 001__elm20150627_080900__dat00.bin

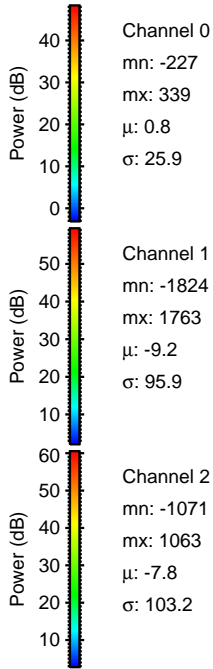
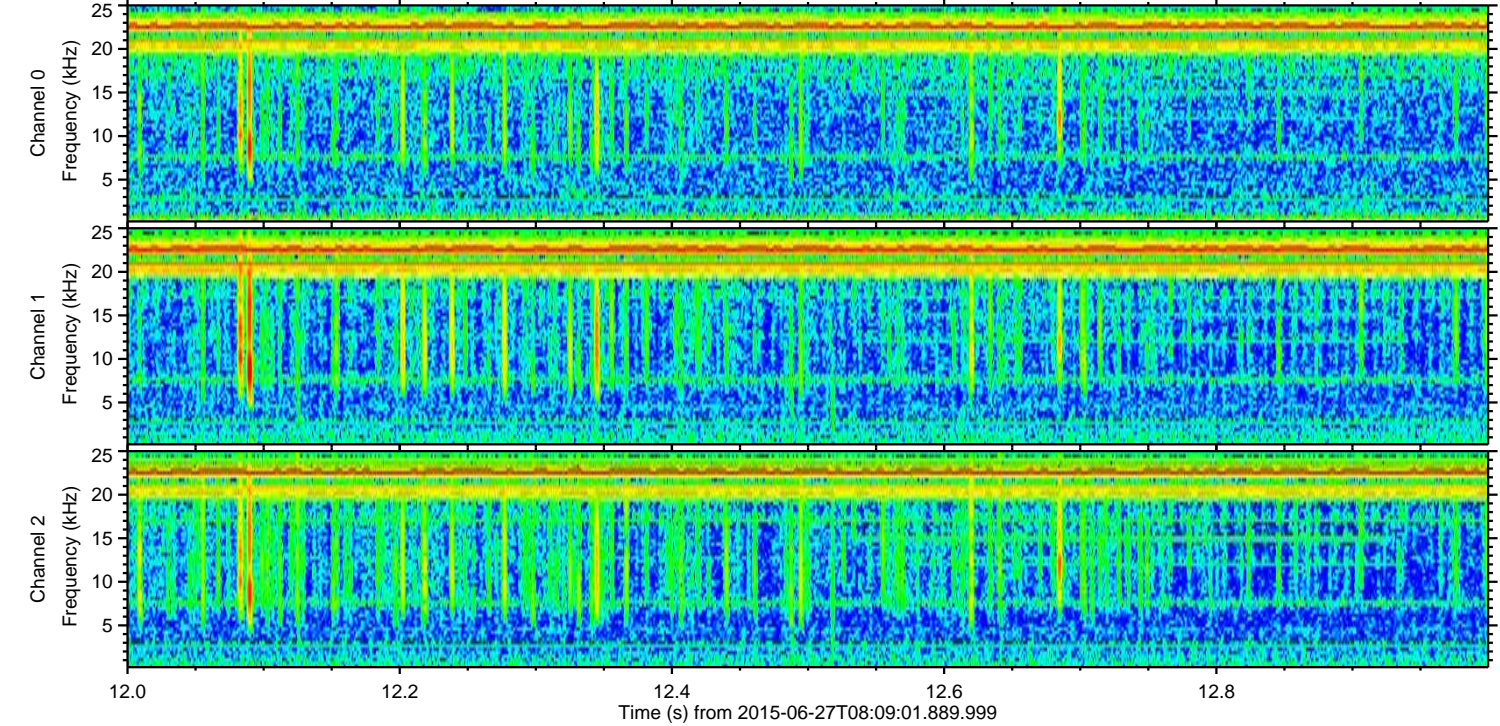
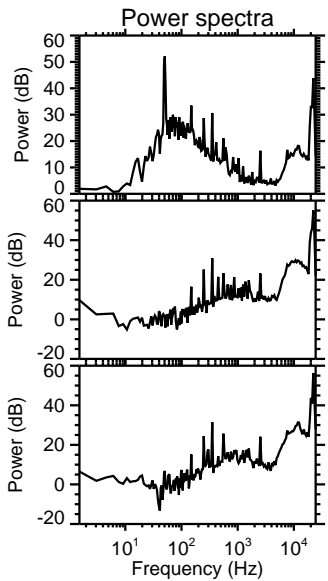
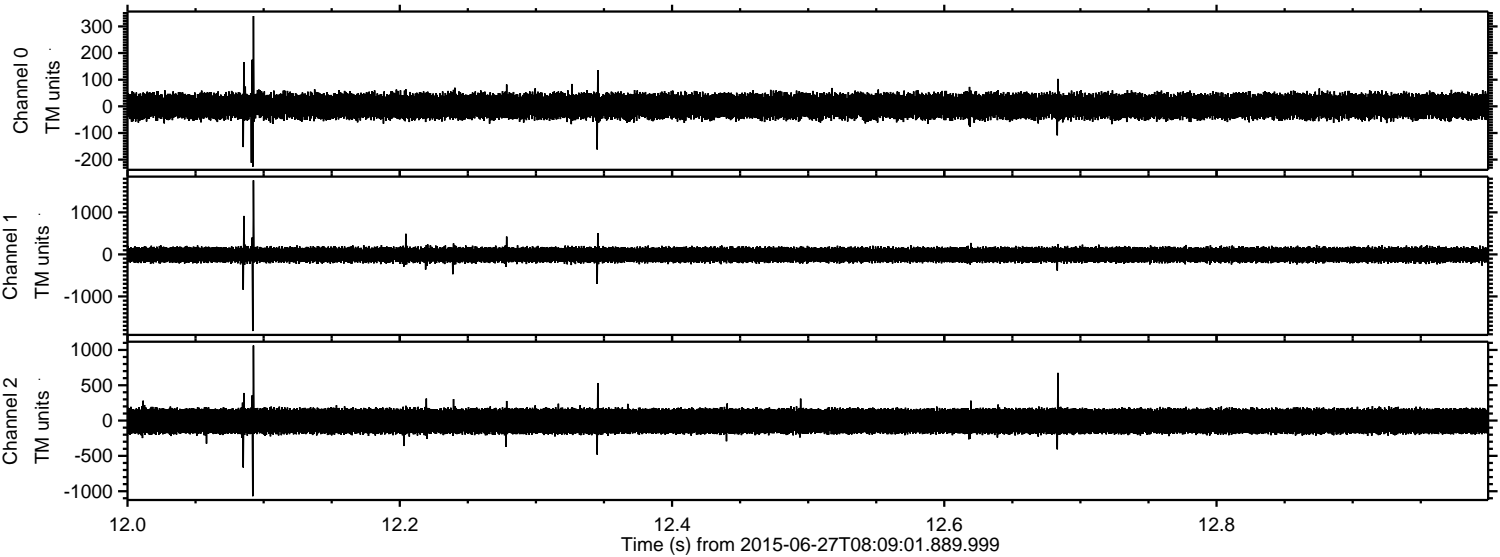


Channel 0
mn: -223
mx: 433
 μ : 0.9
 σ : 25.9

Channel 1
mn: -580
mx: 491
 μ : -9.3
 σ : 93.5

Channel 2
mn: -2080
mx: 1074
 μ : -7.8
 σ : 104.9

Processed Sat Jun 27 10:16:02 2015 by ELM ver.2012-10-06 from 001__elm20150627_080900__dat00.bin

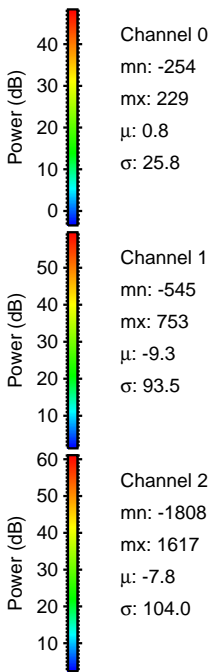
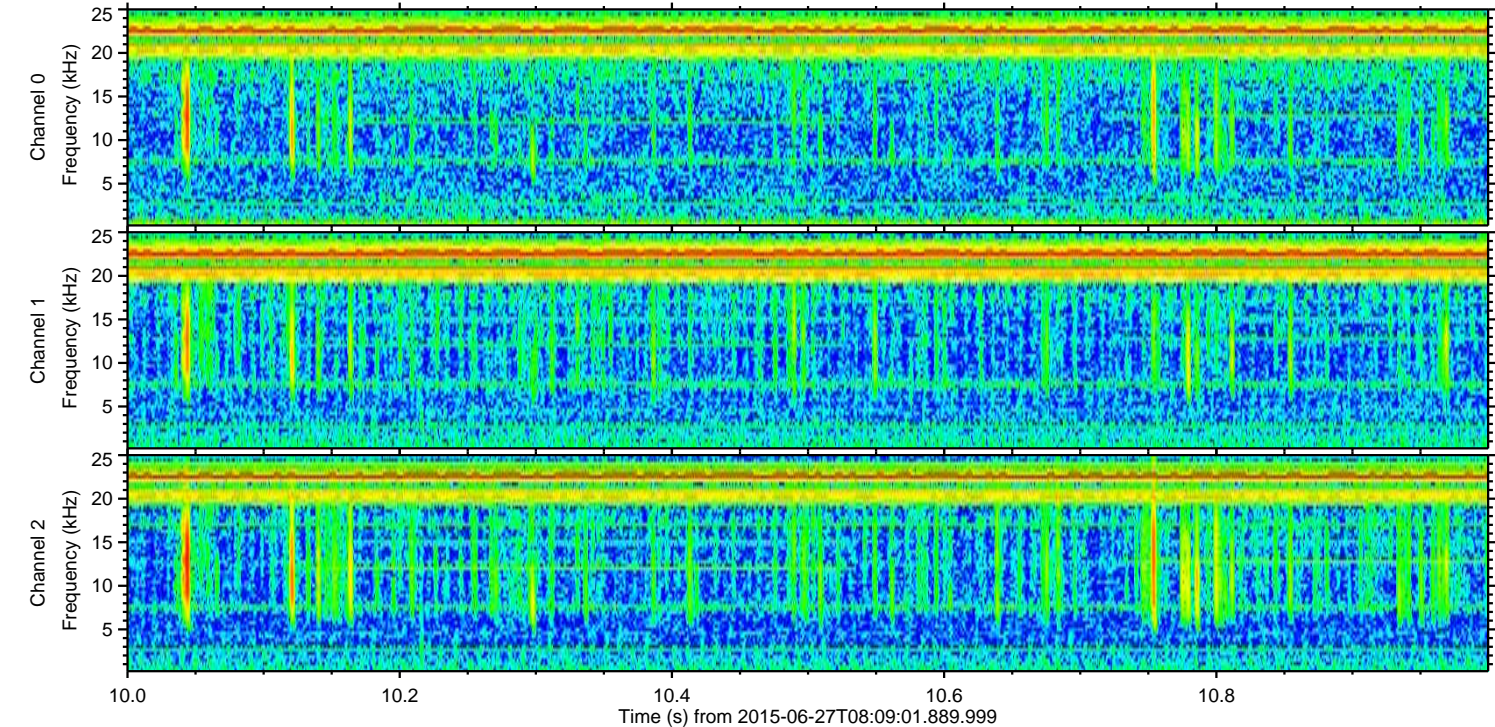
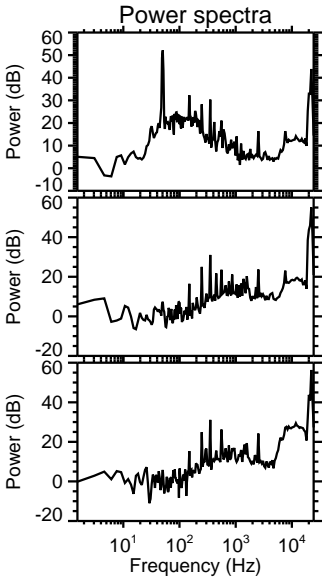
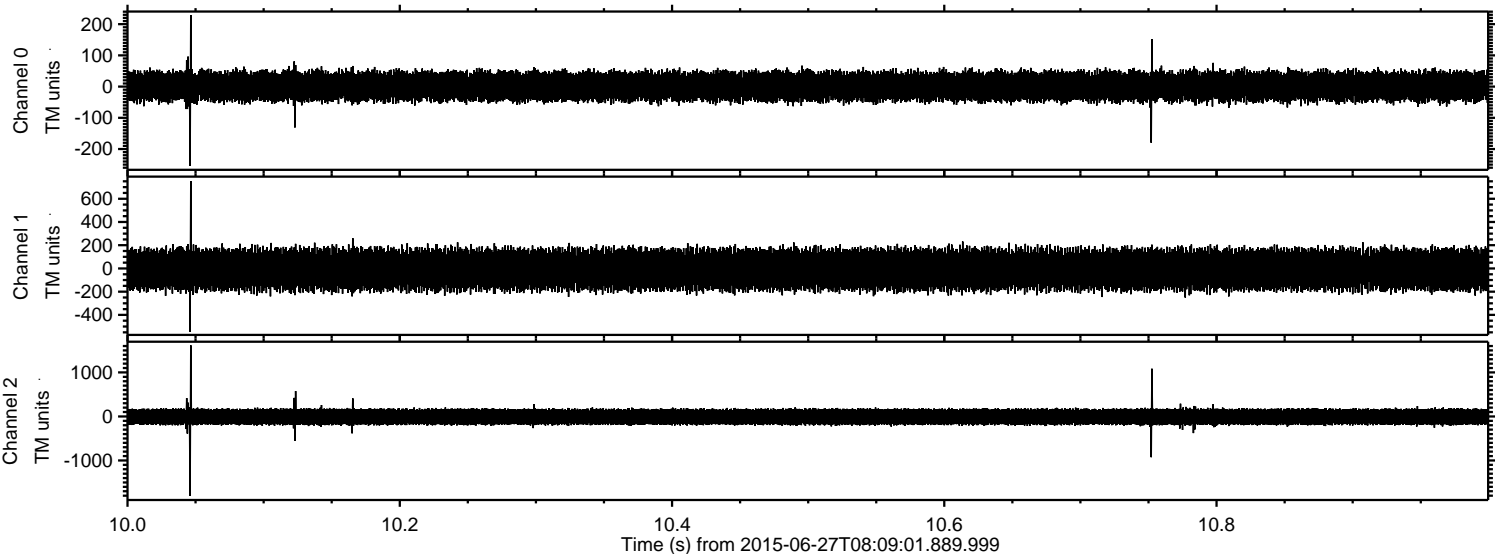


Channel 0
mn: -227
mx: 339
 μ : 0.8
 σ : 25.9

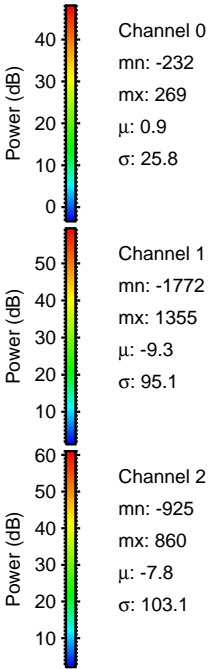
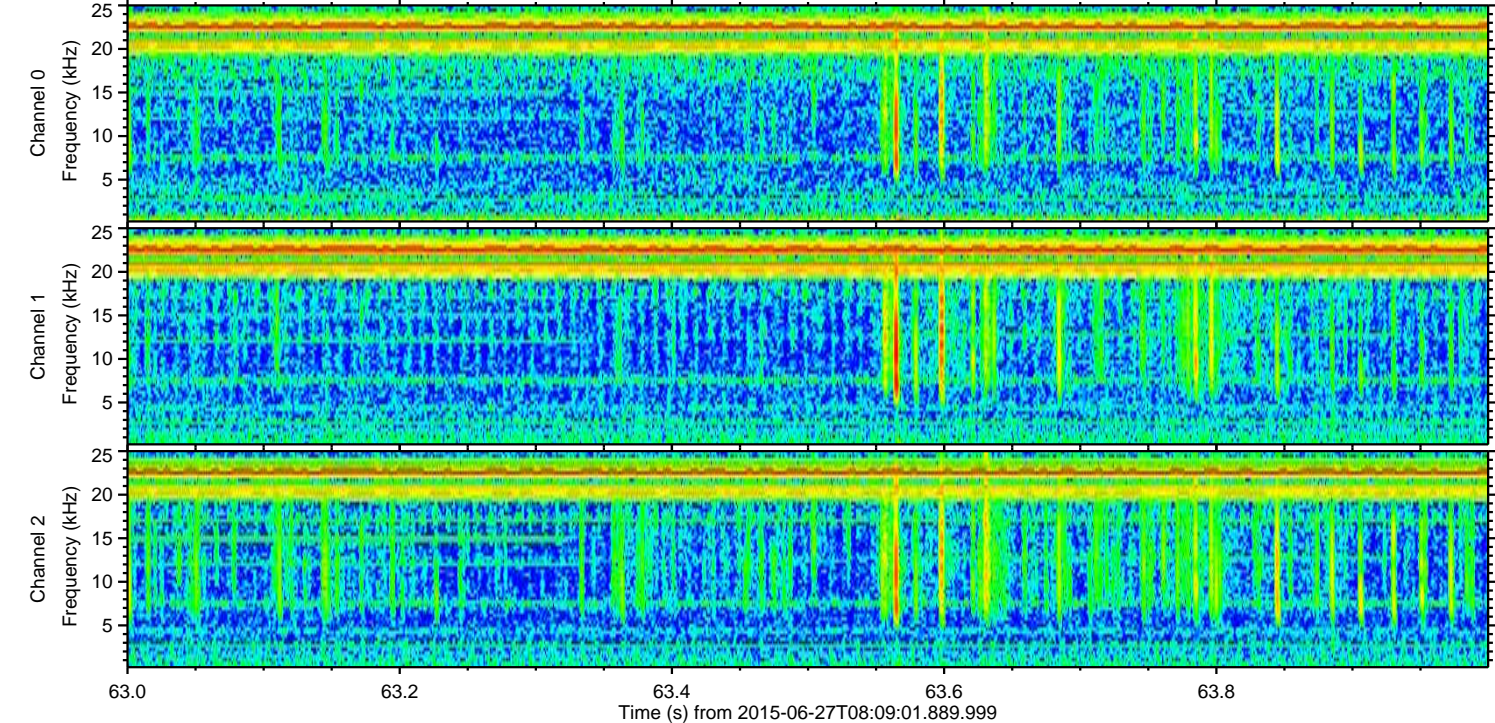
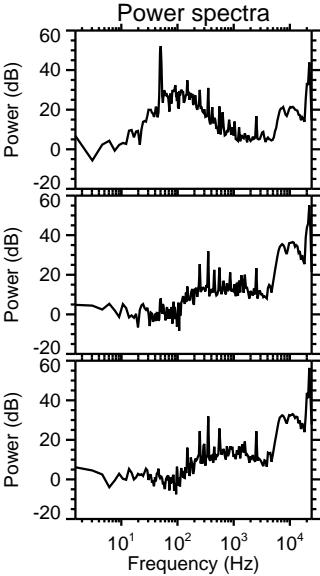
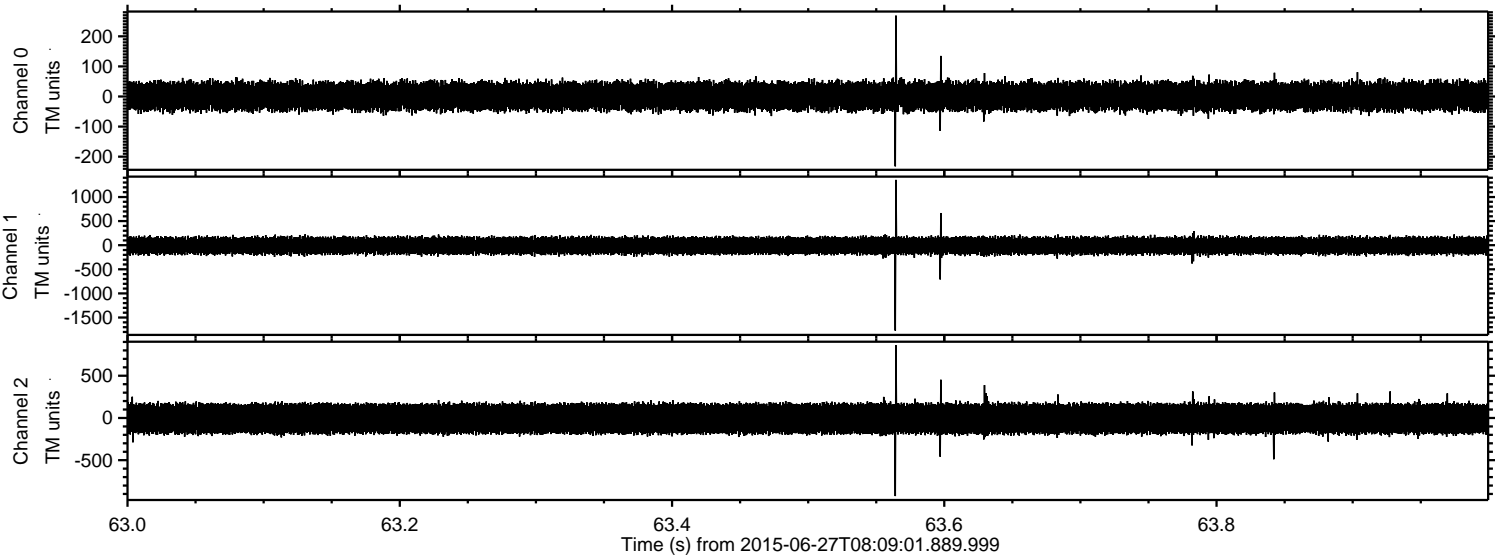
Channel 1
mn: -1824
mx: 1763
 μ : -9.2
 σ : 95.9

Channel 2
mn: -1071
mx: 1063
 μ : -7.8
 σ : 103.2

Processed Sat Jun 27 10:16:03 2015 by ELM ver.2012-10-06 from 001__elm20150627_080900__dat00.bin



Processed Sat Jun 27 10:16:04 2015 by ELM ver.2012-10-06 from 001__elm20150627_080900__dat00.bin



Processed Sat Jun 27 10:16:05 2015 by ELM ver.2012-10-06 from 001__elm20150627_080900__dat00.bin

