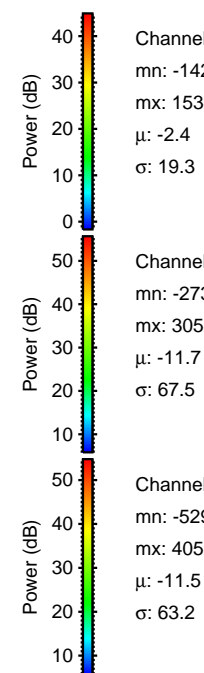
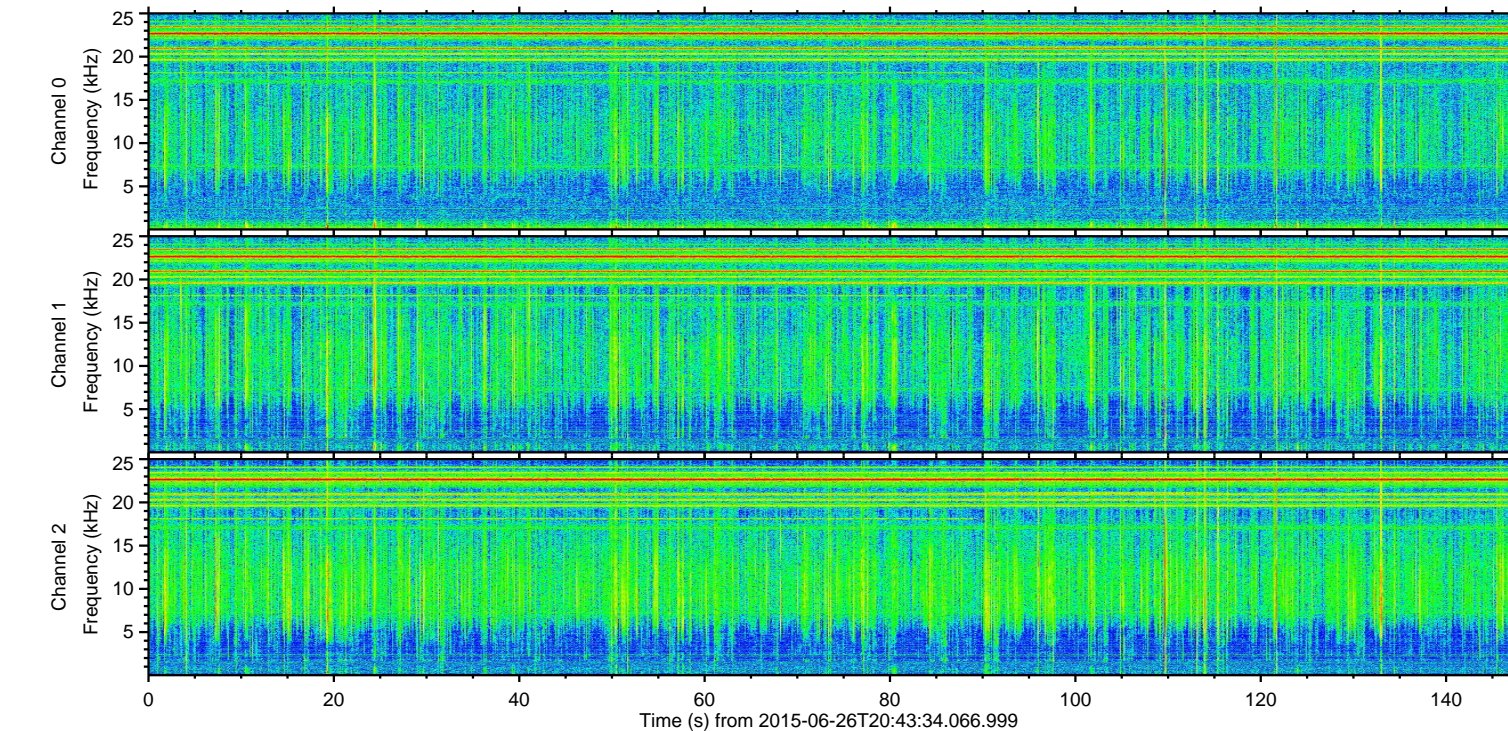
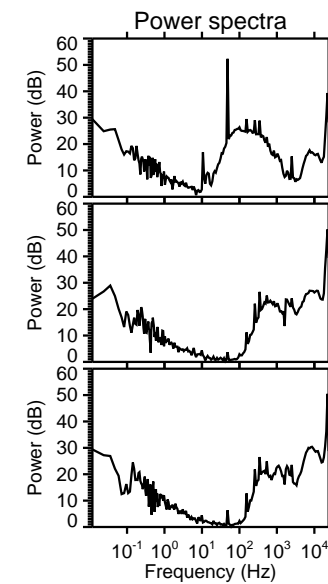
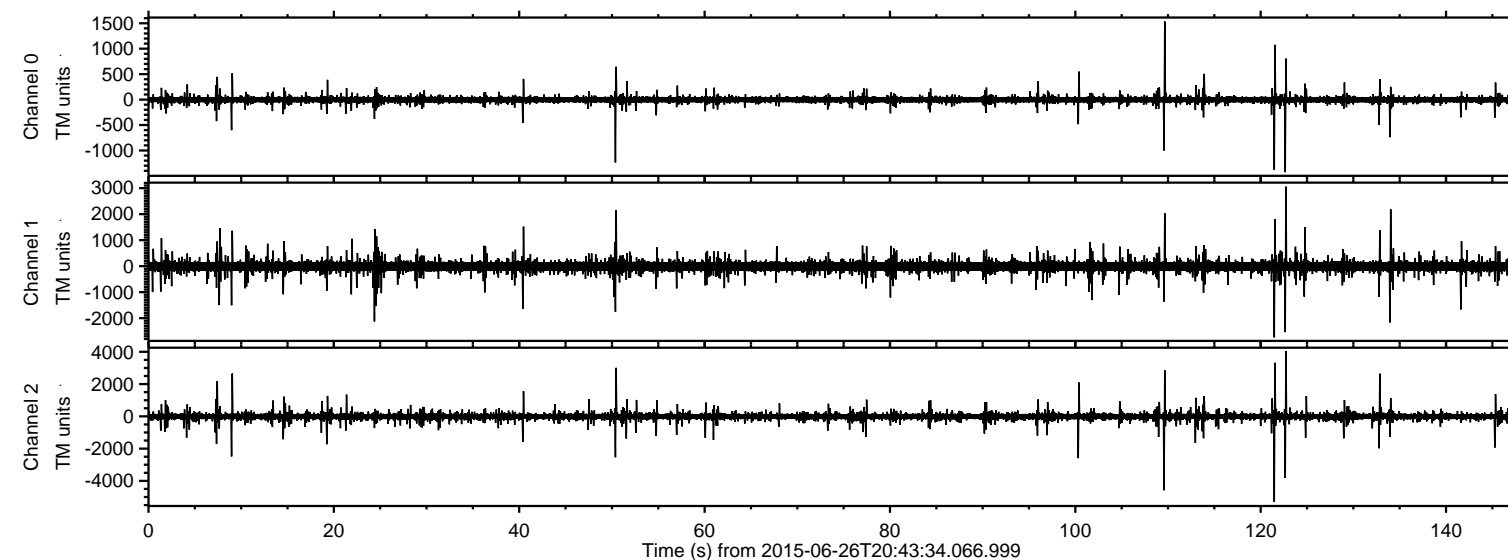


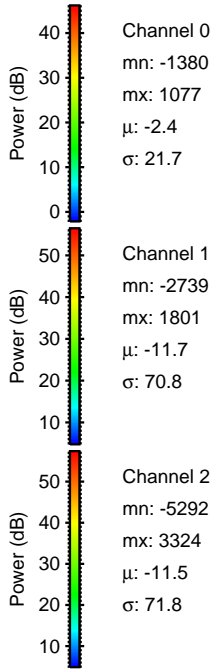
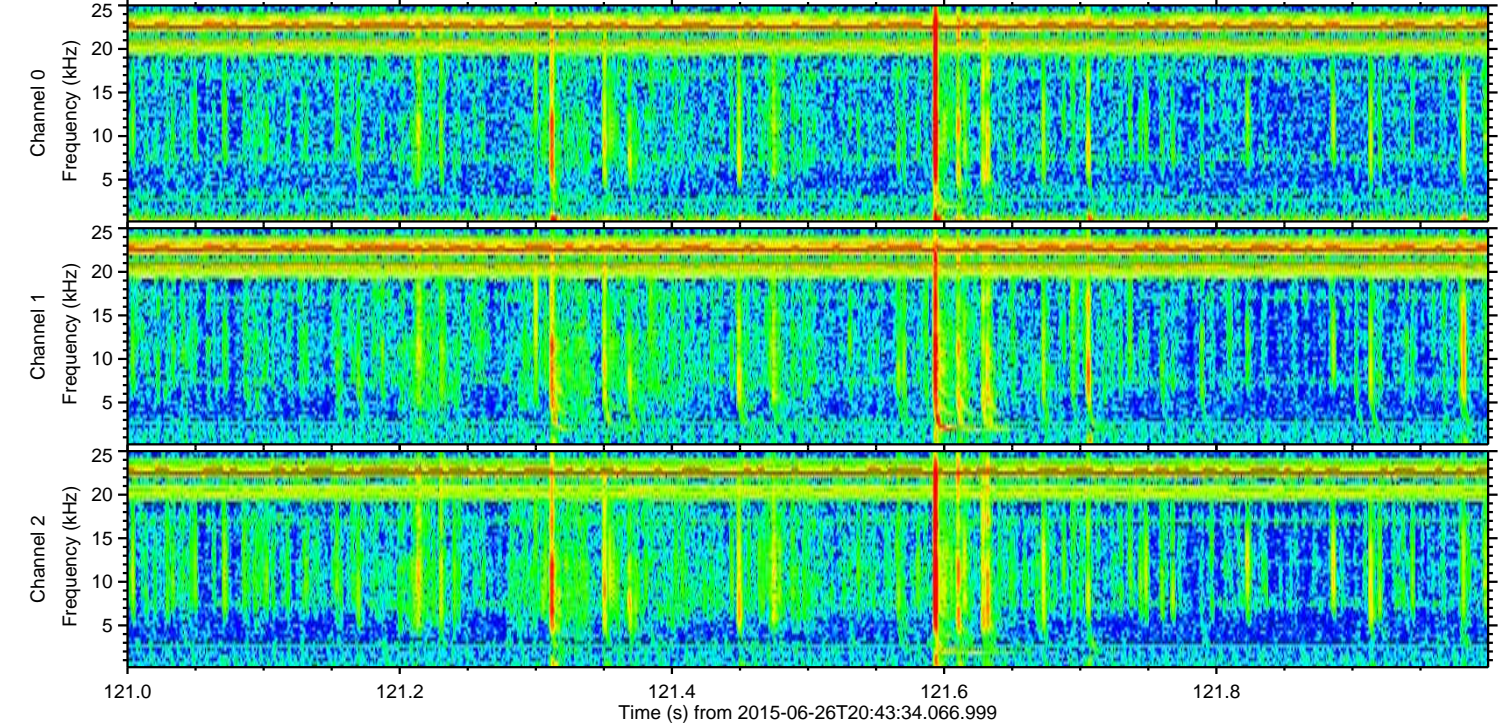
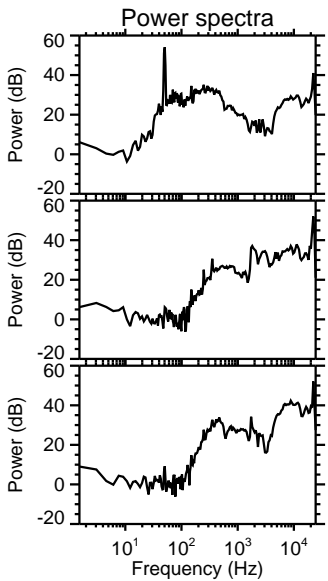
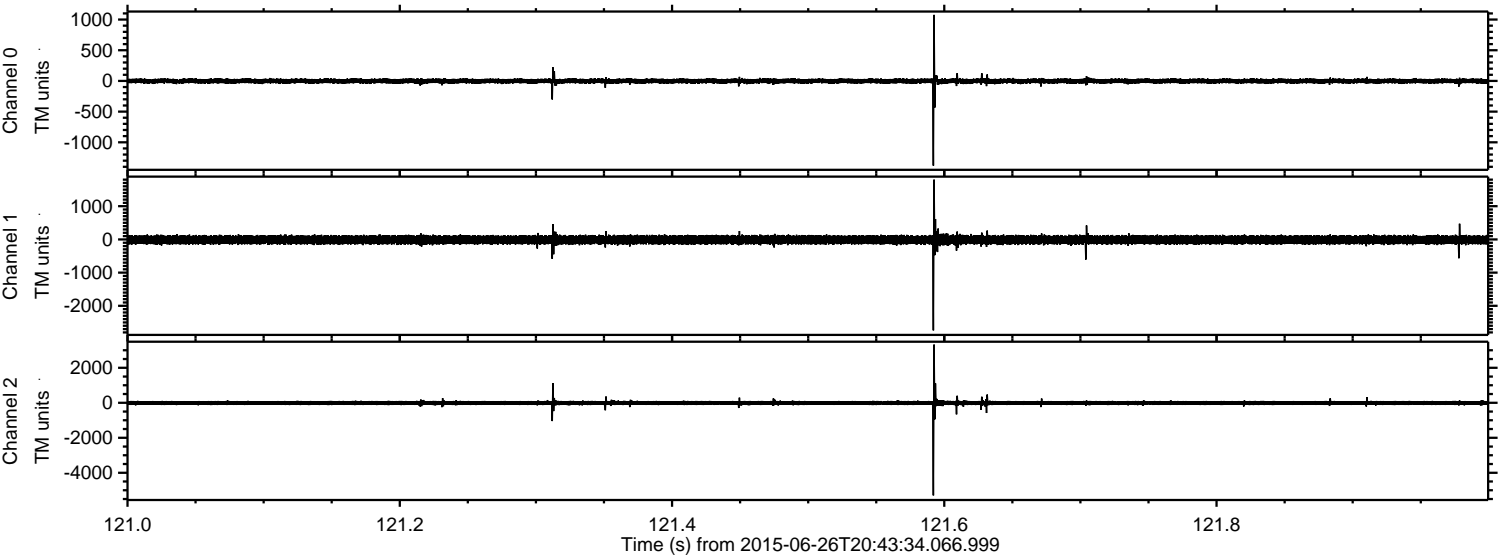
ELMAVAN 3D WAVEFORMS (Measured data sampled at 50 kHz) 51000 packets of 144 samples from 2015-06-26T20:43:34.066.999.

Processed Fri Jun 26 22:50:11 2015 by ELM ver.2012-10-06 from 001__elm20150626_204333__dat00.bin



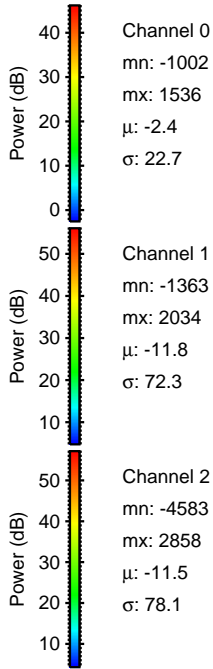
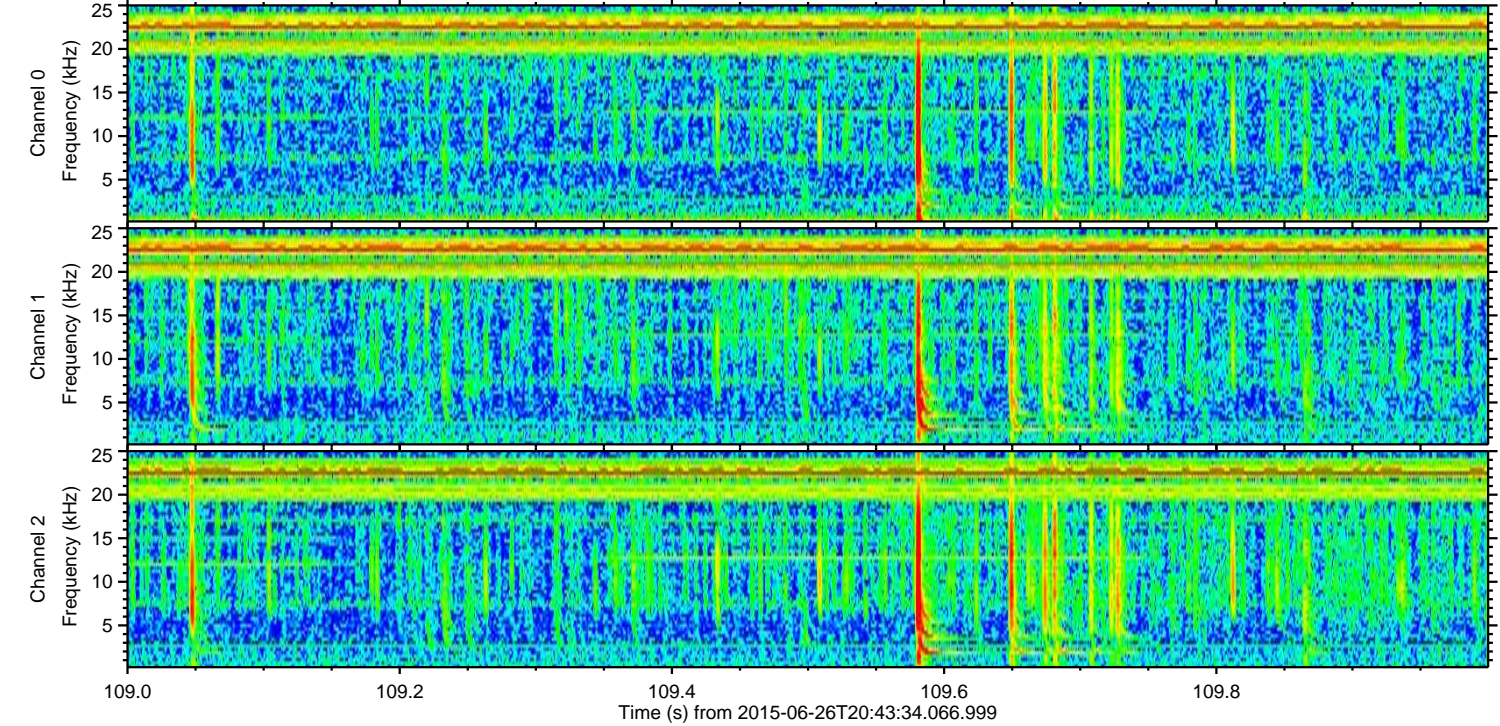
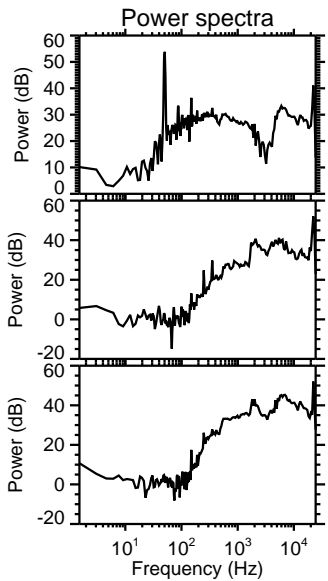
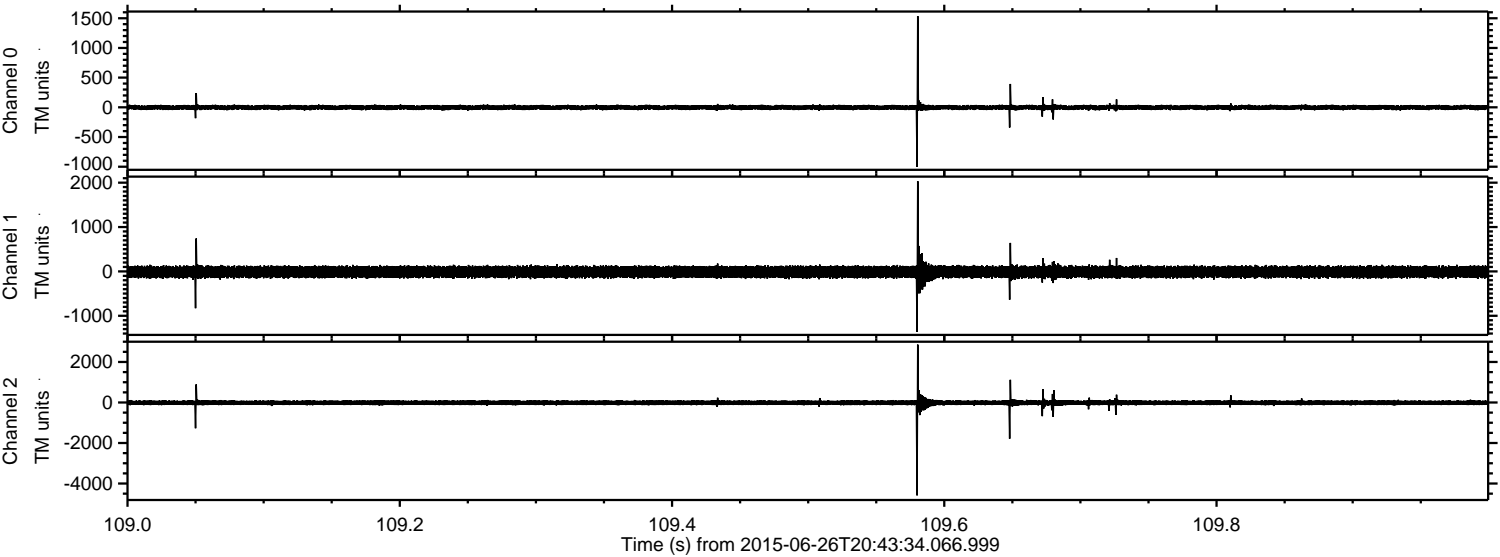
ELMAVAN 3D WAVEFORMS (Measured data sampled at 50 kHz) 51000 packets of 144 samples from 2015-06-26T20:43:34.066.999. Part 122/147

Processed Fri Jun 26 22:50:27 2015 by ELM ver.2012-10-06 from 001__elm20150626_204333__dat00.bin



ELMAVAN 3D WAVEFORMS (Measured data sampled at 50 kHz) 51000 packets of 144 samples from 2015-06-26T20:43:34.066.999. Part 110/147

Processed Fri Jun 26 22:50:28 2015 by ELM ver.2012-10-06 from 001__elm20150626_204333__dat00.bin



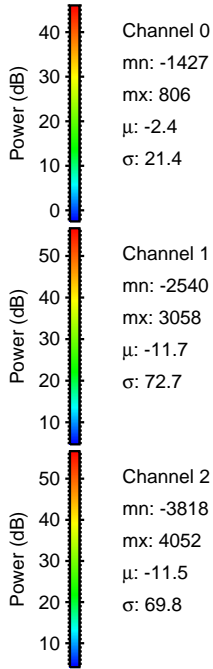
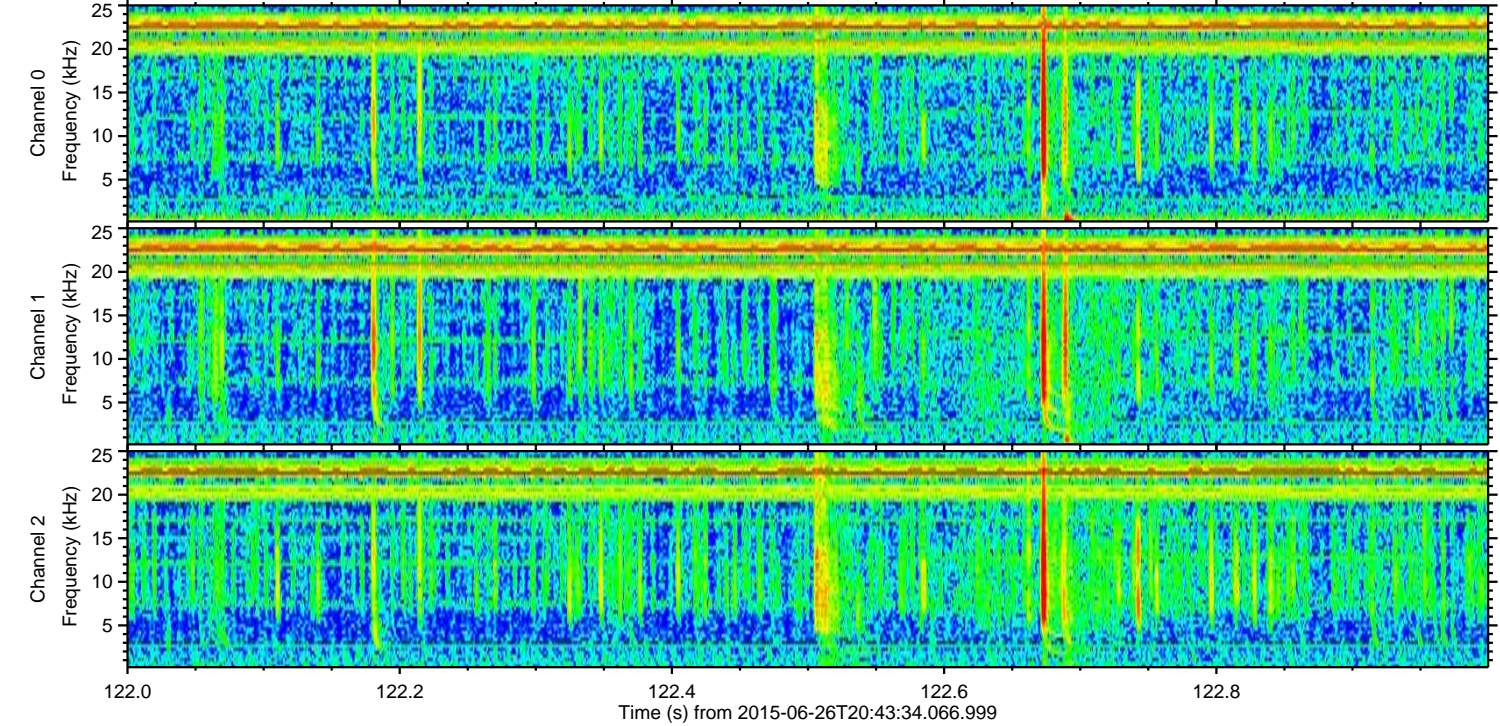
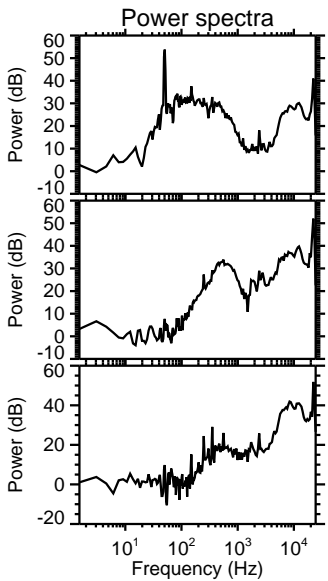
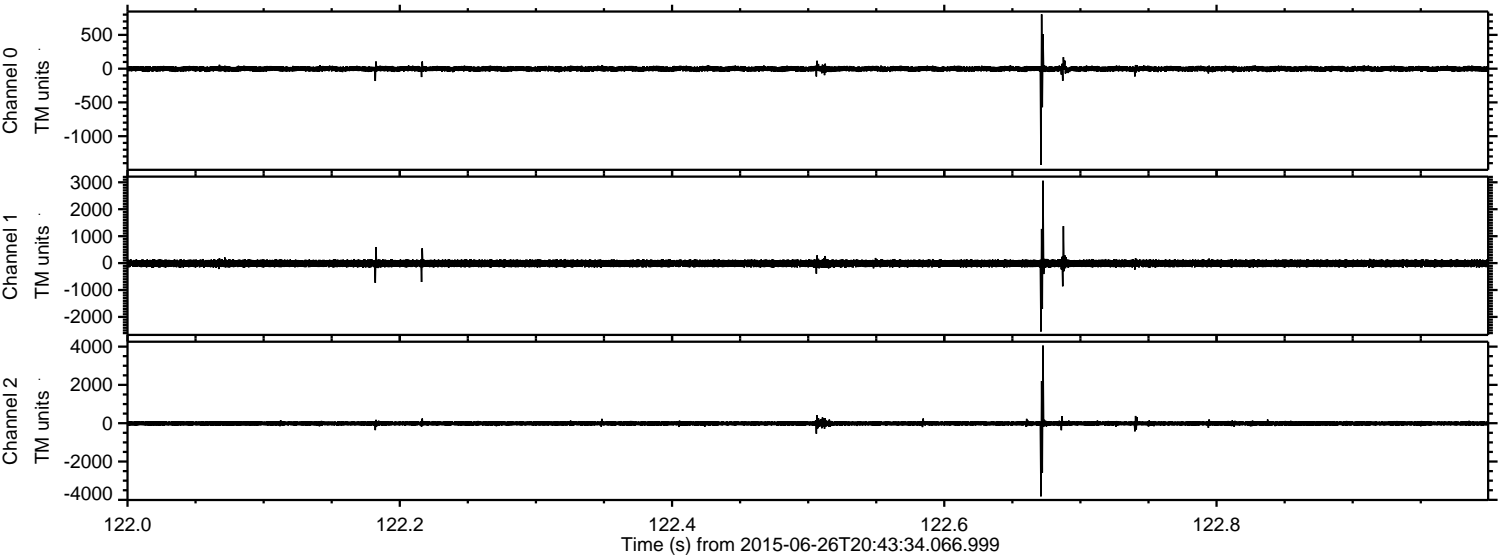
Channel 0
mn: -1002
mx: 1536
 μ : -2.4
 σ : 22.7

Channel 1
mn: -1363
mx: 2034
 μ : -11.8
 σ : 72.3

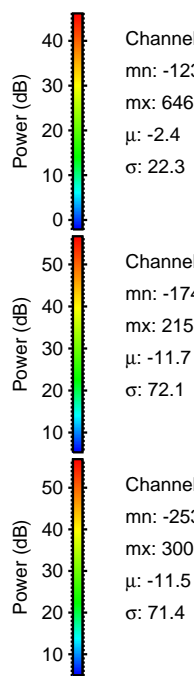
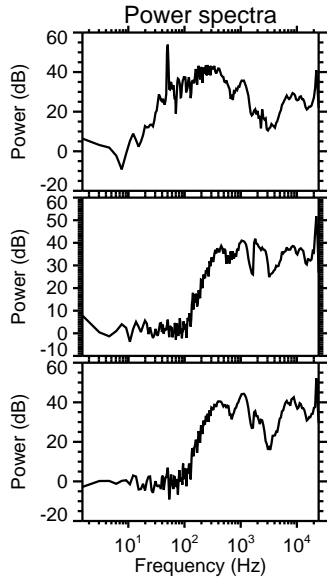
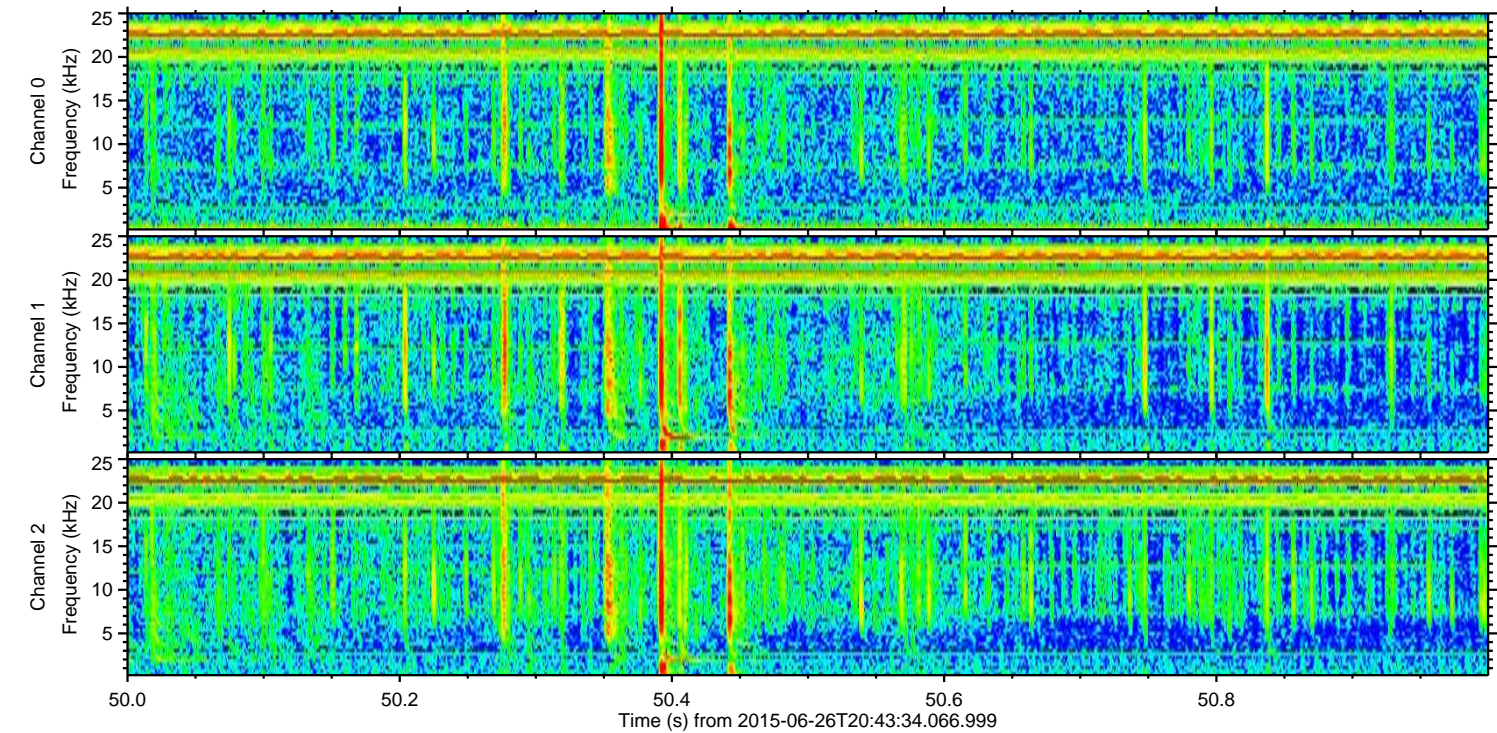
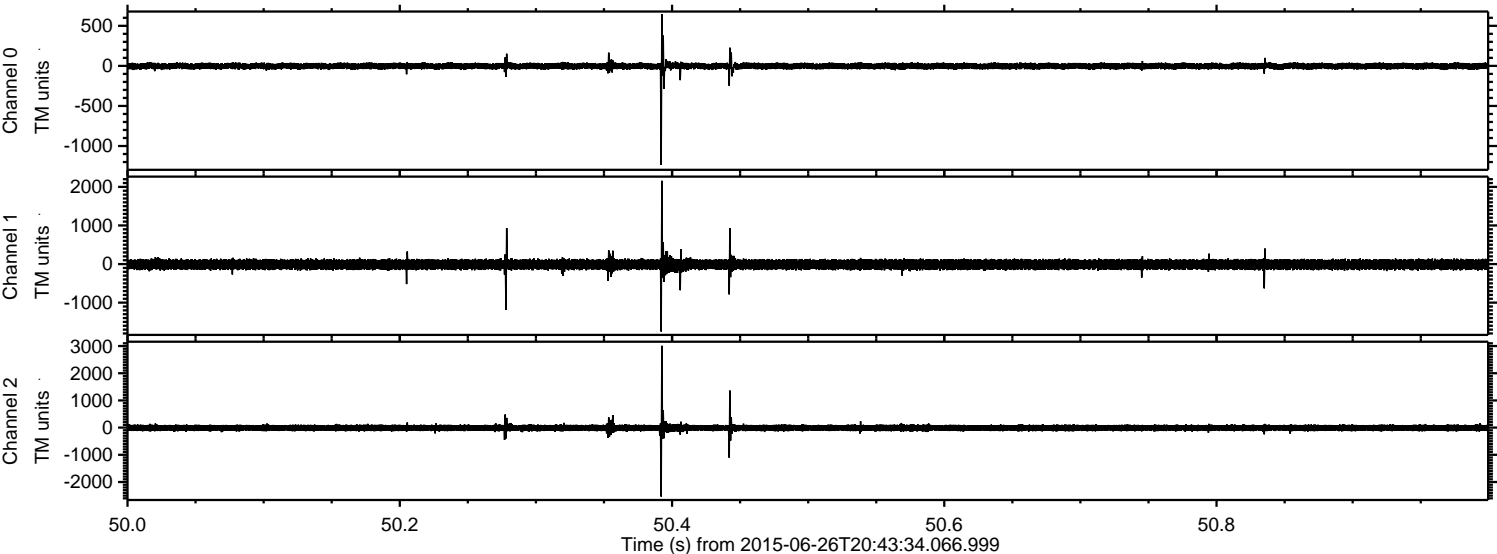
Channel 2
mn: -4583
mx: 2858
 μ : -11.5
 σ : 78.1

ELMAVAN 3D WAVEFORMS (Measured data sampled at 50 kHz) 51000 packets of 144 samples from 2015-06-26T20:43:34.066.999. Part 123/147

Processed Fri Jun 26 22:50:29 2015 by ELM ver.2012-10-06 from 001__elm20150626_204333__dat00.bin



Processed Fri Jun 26 22:50:30 2015 by ELM ver.2012-10-06 from 001__elm20150626_204333__dat00.bin

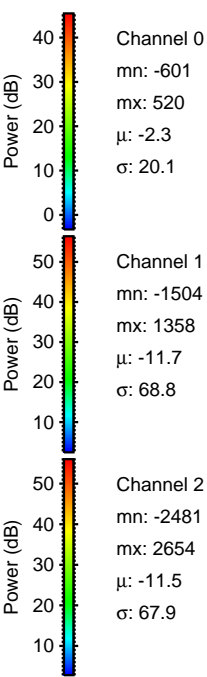
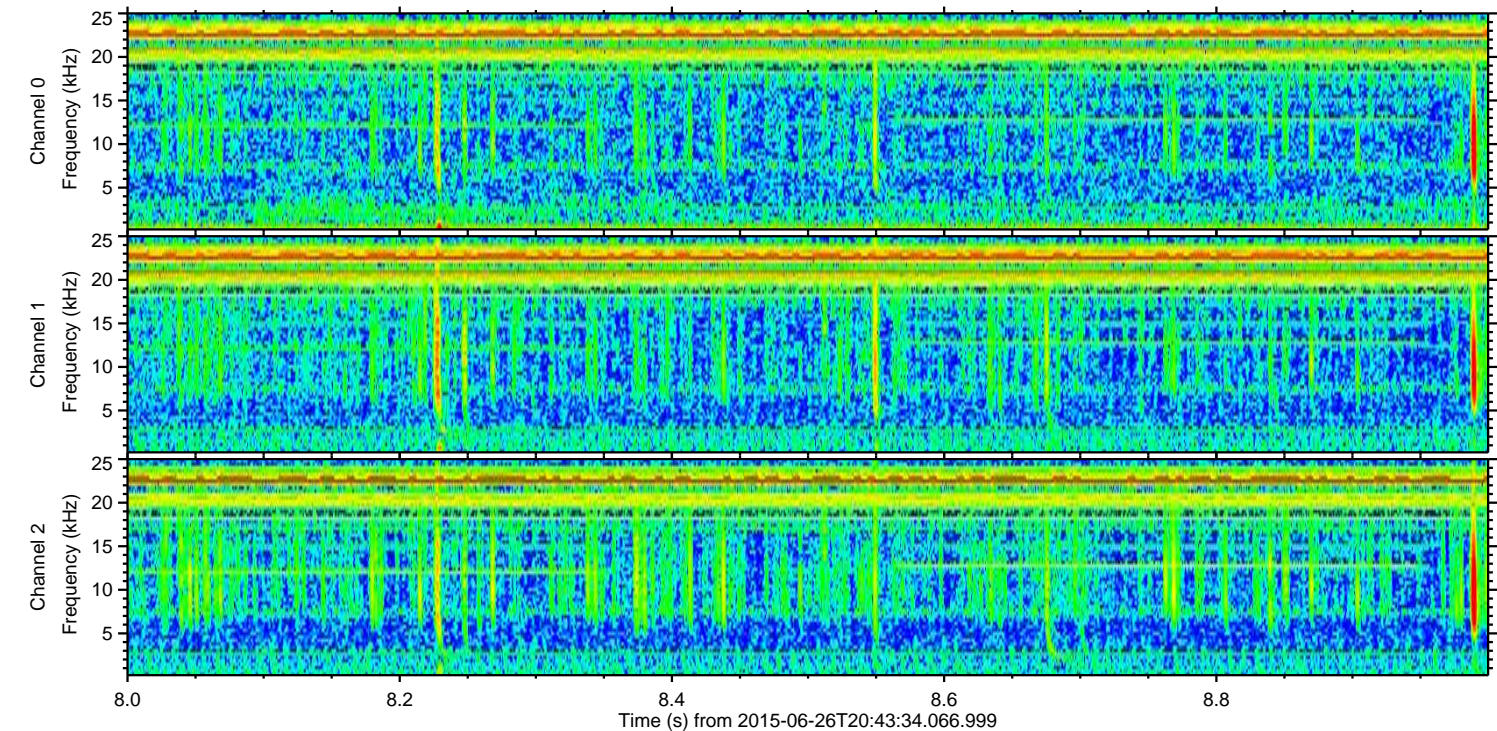
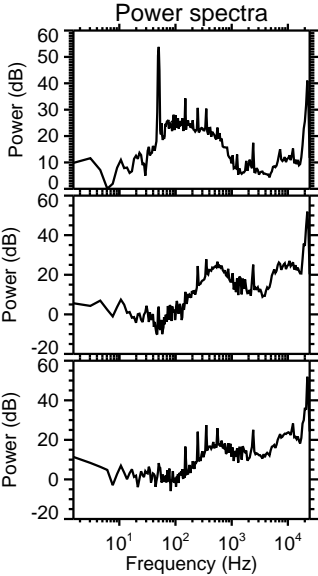
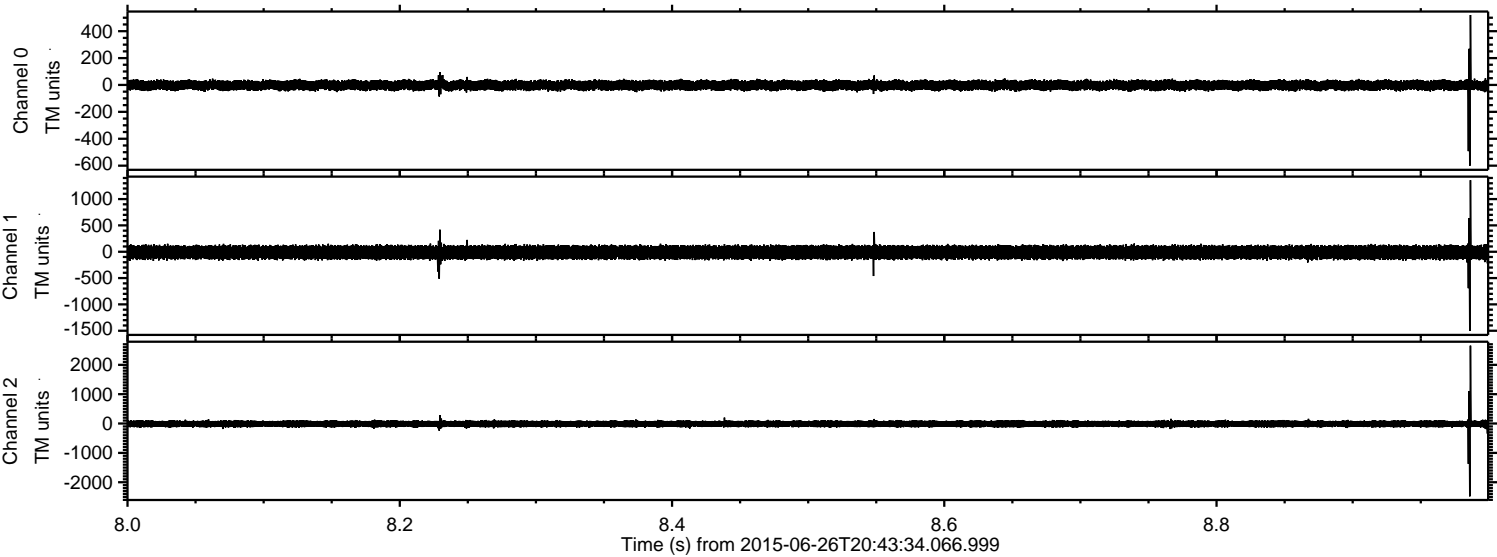


Channel 0
mn: -1235
mx: 646
 μ : -2.4
 σ : 22.3

Channel 1
mn: -1749
mx: 2158
 μ : -11.7
 σ : 72.1

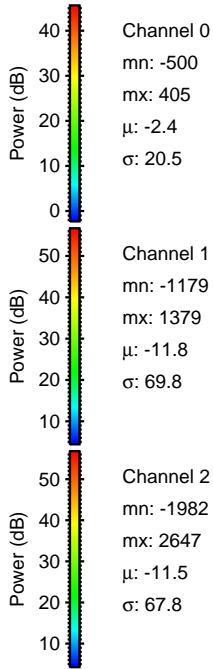
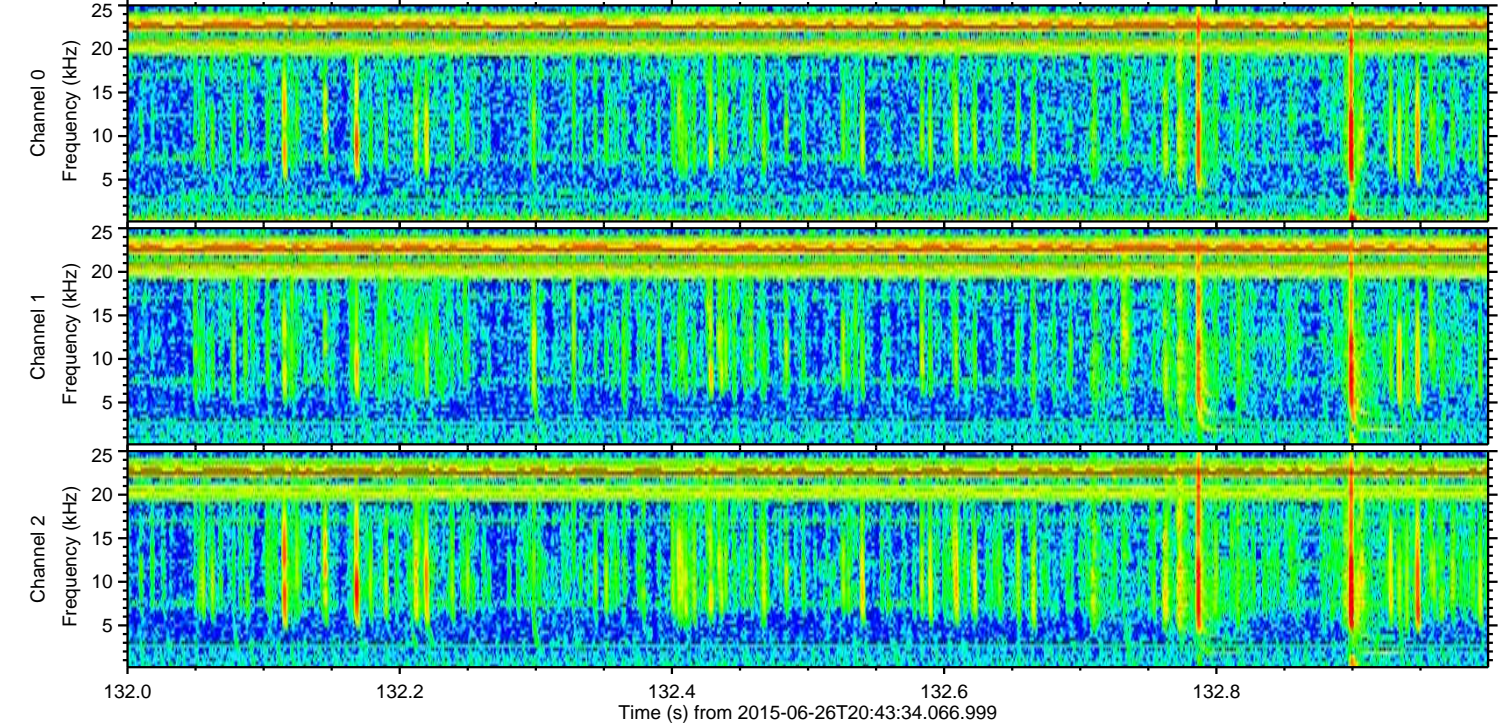
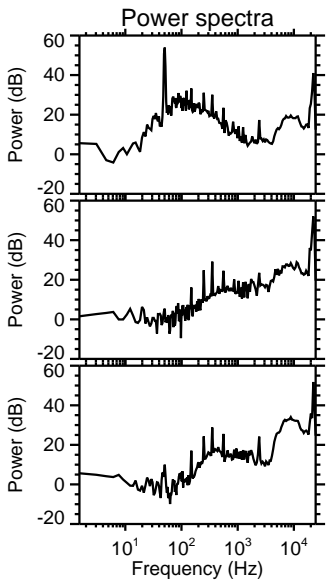
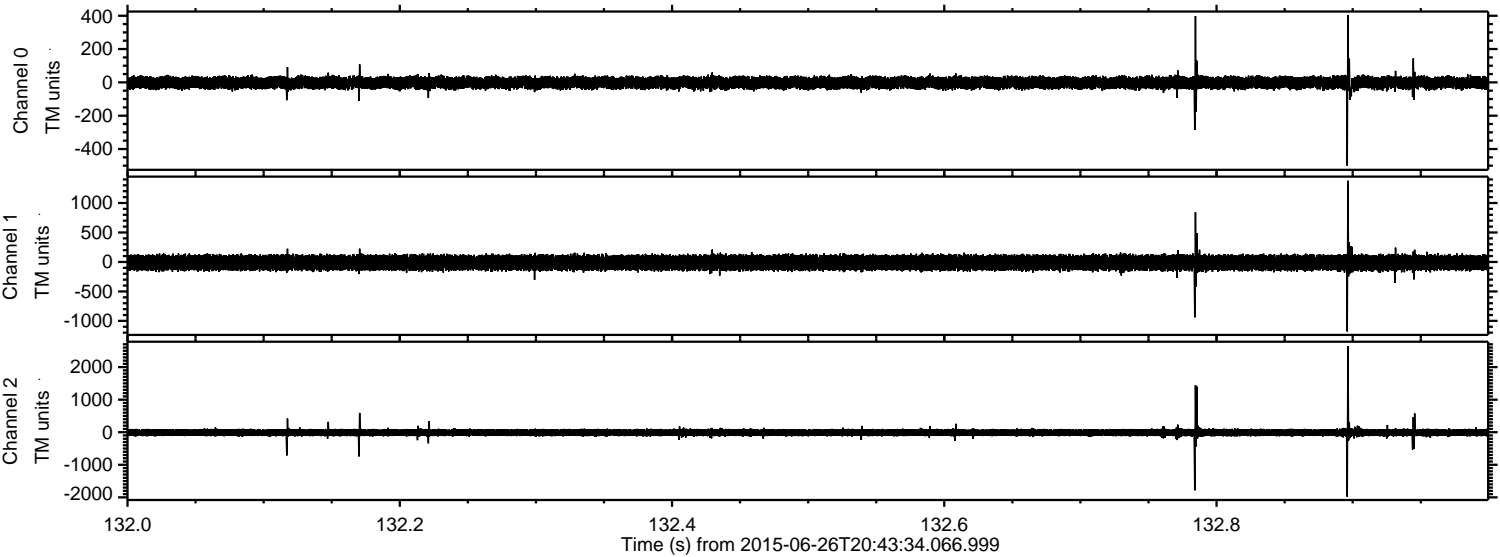
Channel 2
mn: -2535
mx: 3008
 μ : -11.5
 σ : 71.4

Processed Fri Jun 26 22:50:31 2015 by ELM ver.2012-10-06 from 001__elm20150626_204333__dat00.bin



ELMAVAN 3D WAVEFORMS (Measured data sampled at 50 kHz) 51000 packets of 144 samples from 2015-06-26T20:43:34.066.999. Part 133/147

Processed Fri Jun 26 22:50:32 2015 by ELM ver.2012-10-06 from 001__elm20150626_204333__dat00.bin



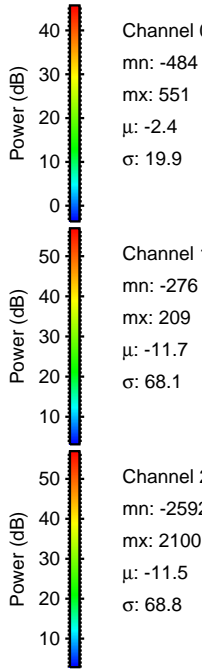
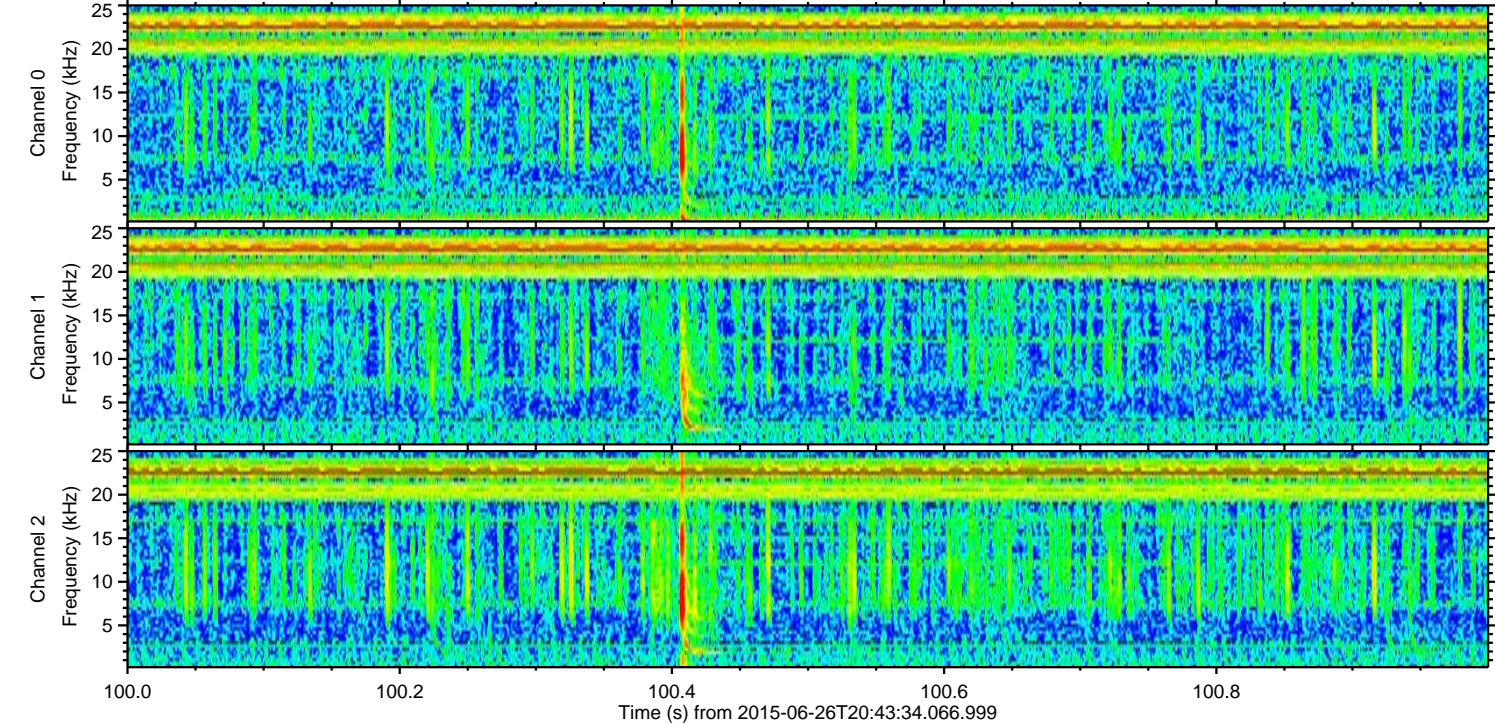
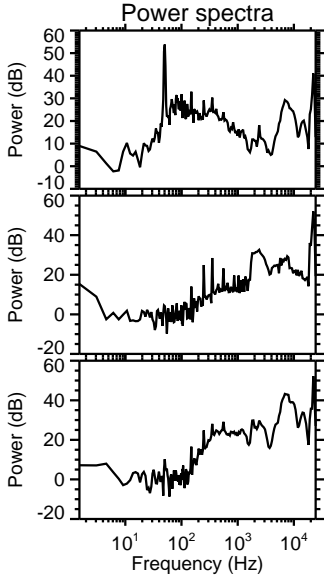
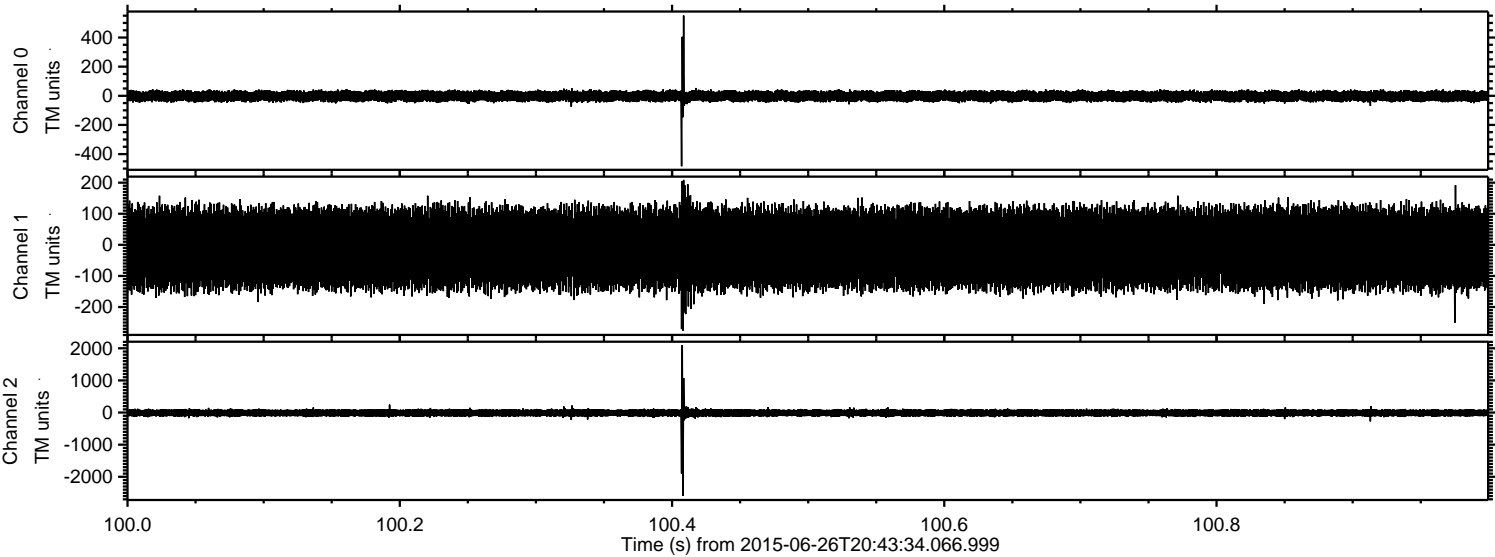
Channel 0
mn: -500
mx: 405
 μ : -2.4
 σ : 20.5

Channel 1
mn: -1179
mx: 1379
 μ : -11.8
 σ : 69.8

Channel 2
mn: -1982
mx: 2647
 μ : -11.5
 σ : 67.8

ELMAVAN 3D WAVEFORMS (Measured data sampled at 50 kHz) 51000 packets of 144 samples from 2015-06-26T20:43:34.066.999. Part 101/147

Processed Fri Jun 26 22:50:33 2015 by ELM ver.2012-10-06 from 001__elm20150626_204333__dat00.bin

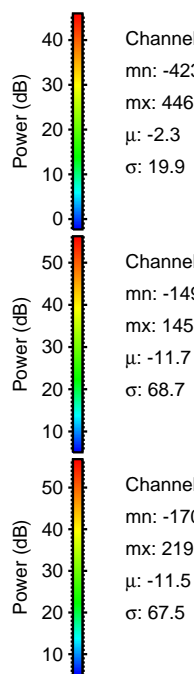
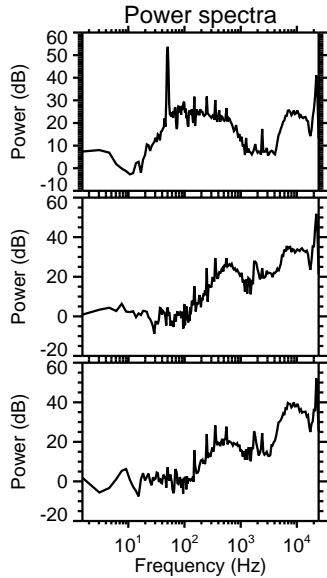
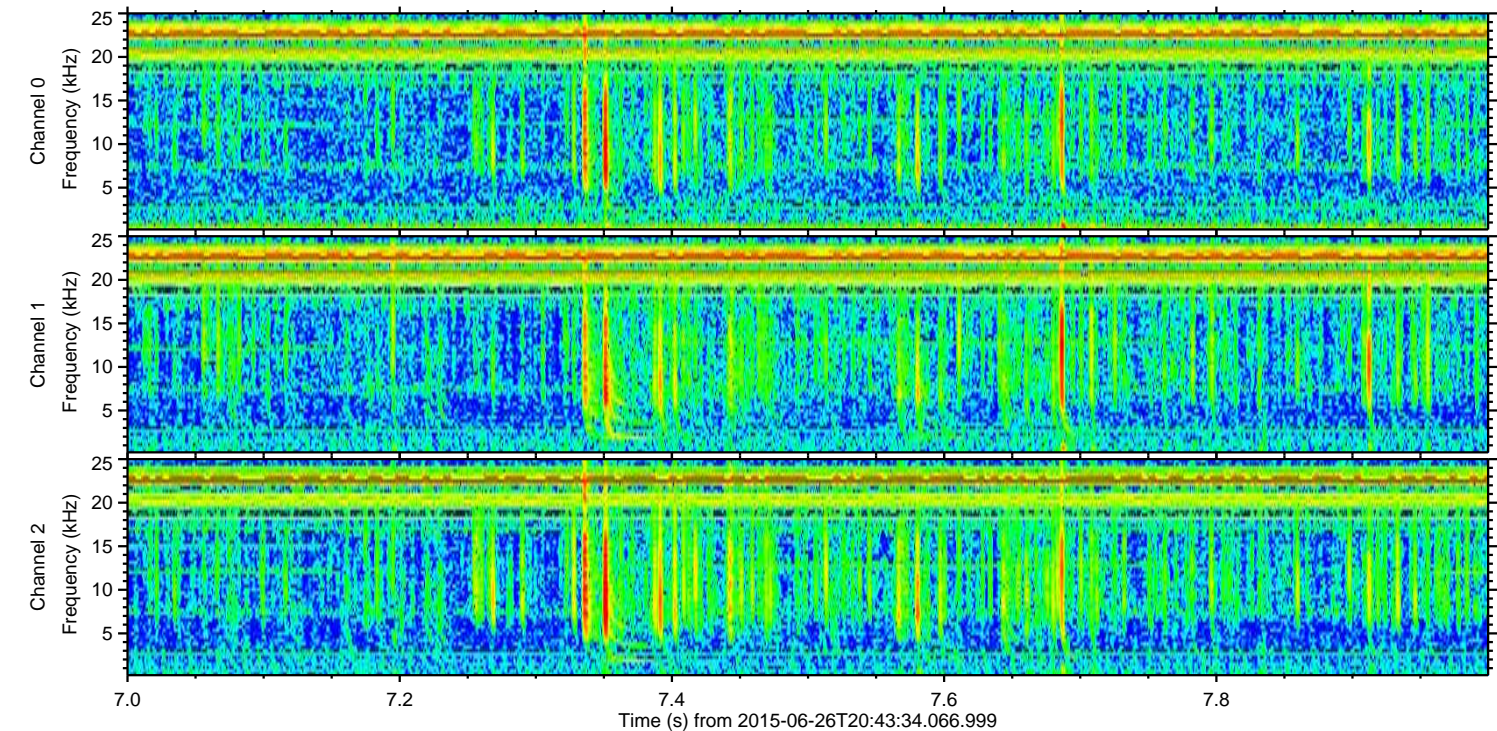
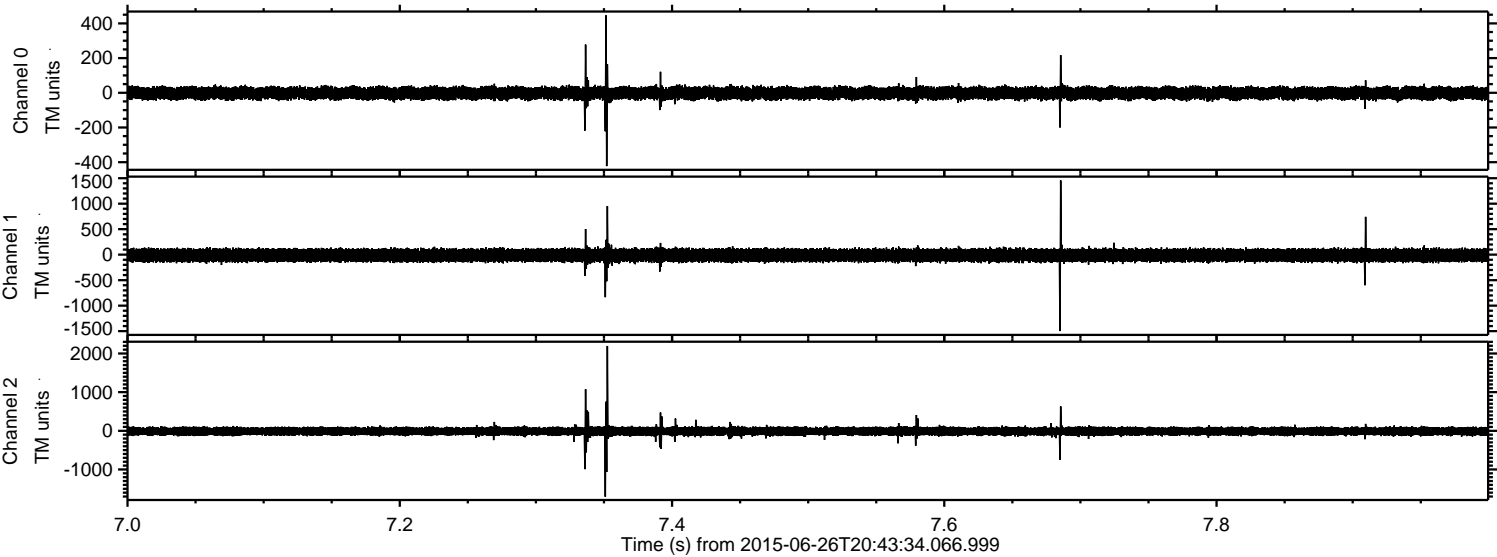


Channel 0
mn: -484
mx: 551
 μ : -2.4
 σ : 19.9

Channel 1
mn: -276
mx: 209
 μ : -11.7
 σ : 68.1

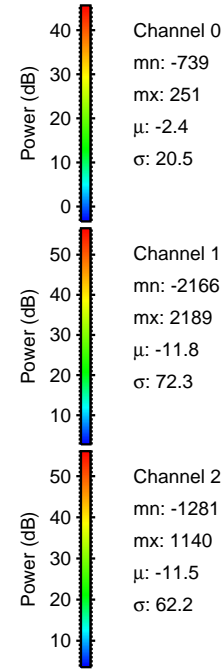
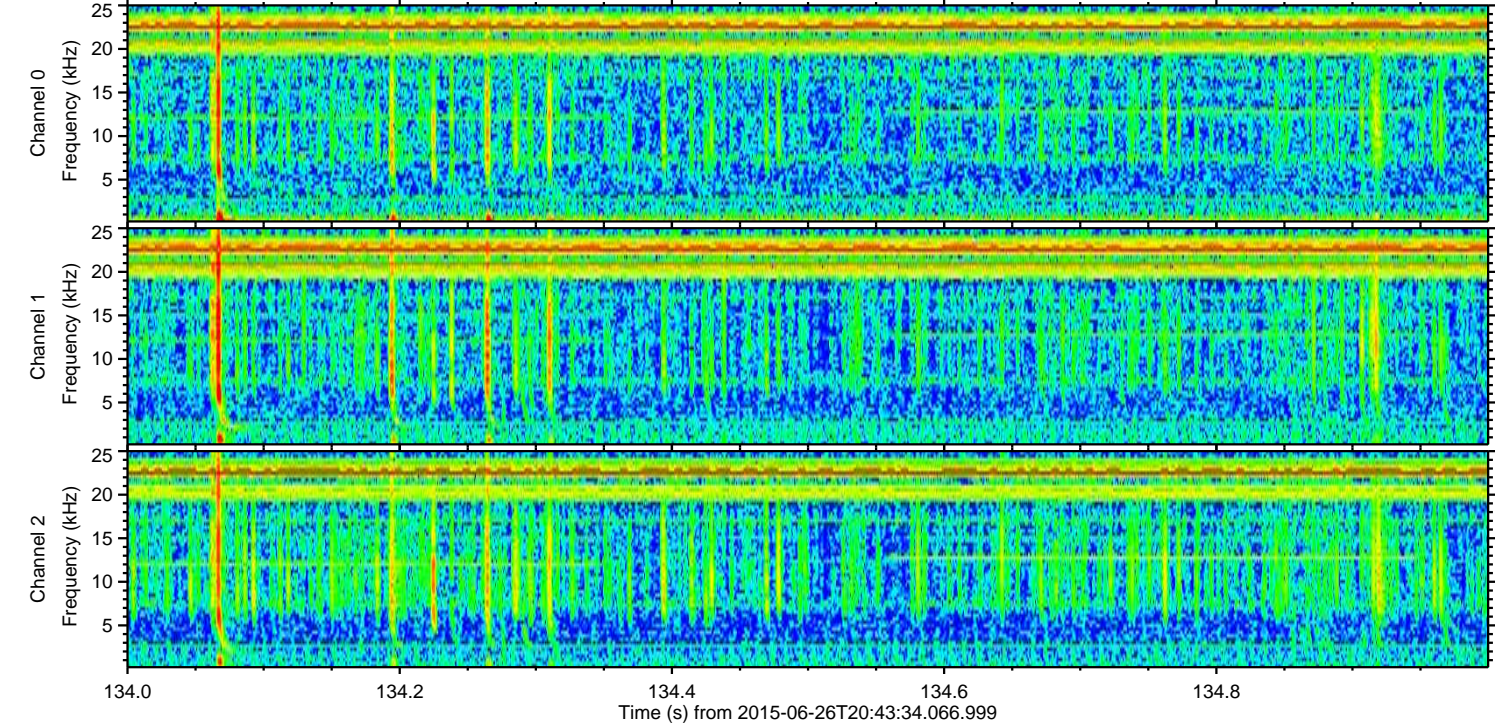
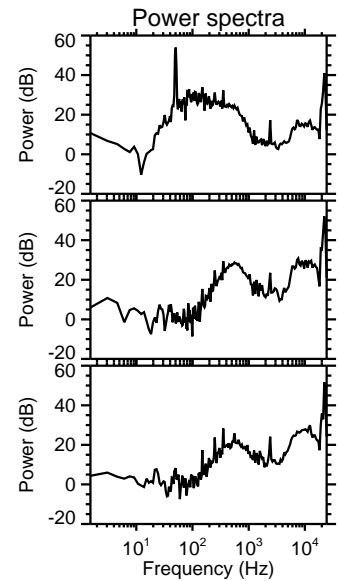
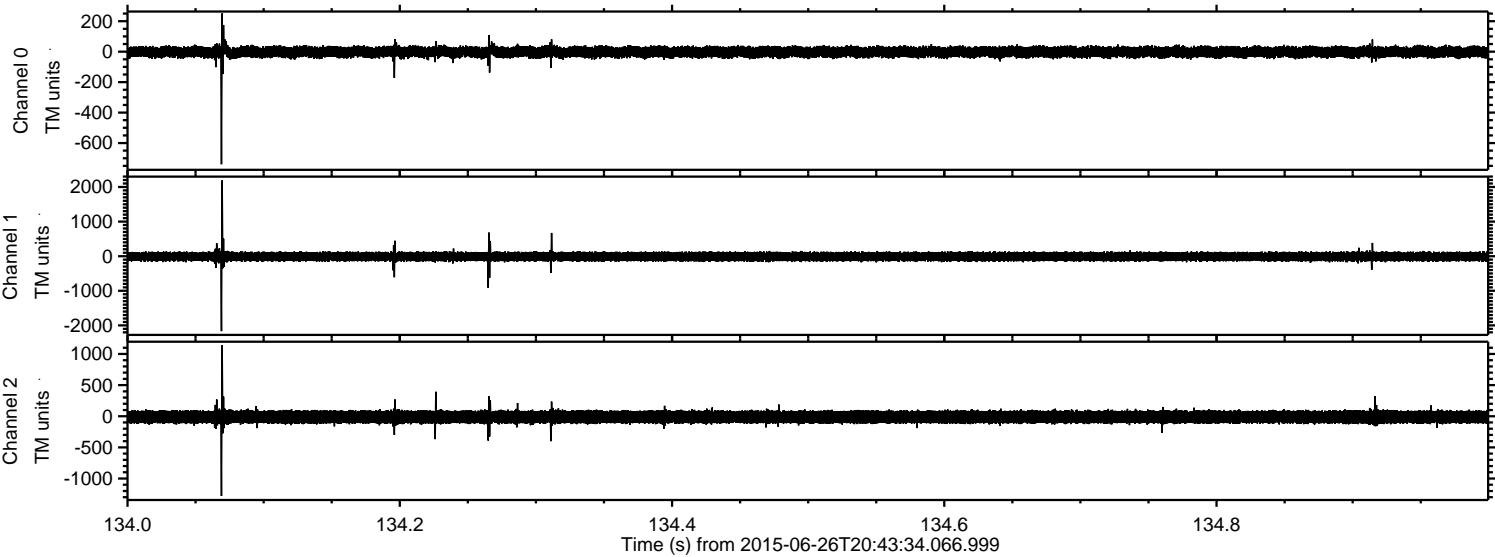
Channel 2
mn: -2592
mx: 2100
 μ : -11.5
 σ : 68.8

Processed Fri Jun 26 22:50:34 2015 by ELM ver.2012-10-06 from 001__elm20150626_204333__dat00.bin



ELMAVAN 3D WAVEFORMS (Measured data sampled at 50 kHz) 51000 packets of 144 samples from 2015-06-26T20:43:34.066.999. Part 135/147

Processed Fri Jun 26 22:50:35 2015 by ELM ver.2012-10-06 from 001__elm20150626_204333__dat00.bin



Processed Fri Jun 26 22:50:36 2015 by ELM ver.2012-10-06 from 001__elm20150626_204333__dat00.bin

