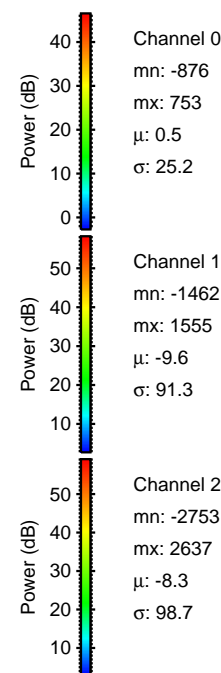
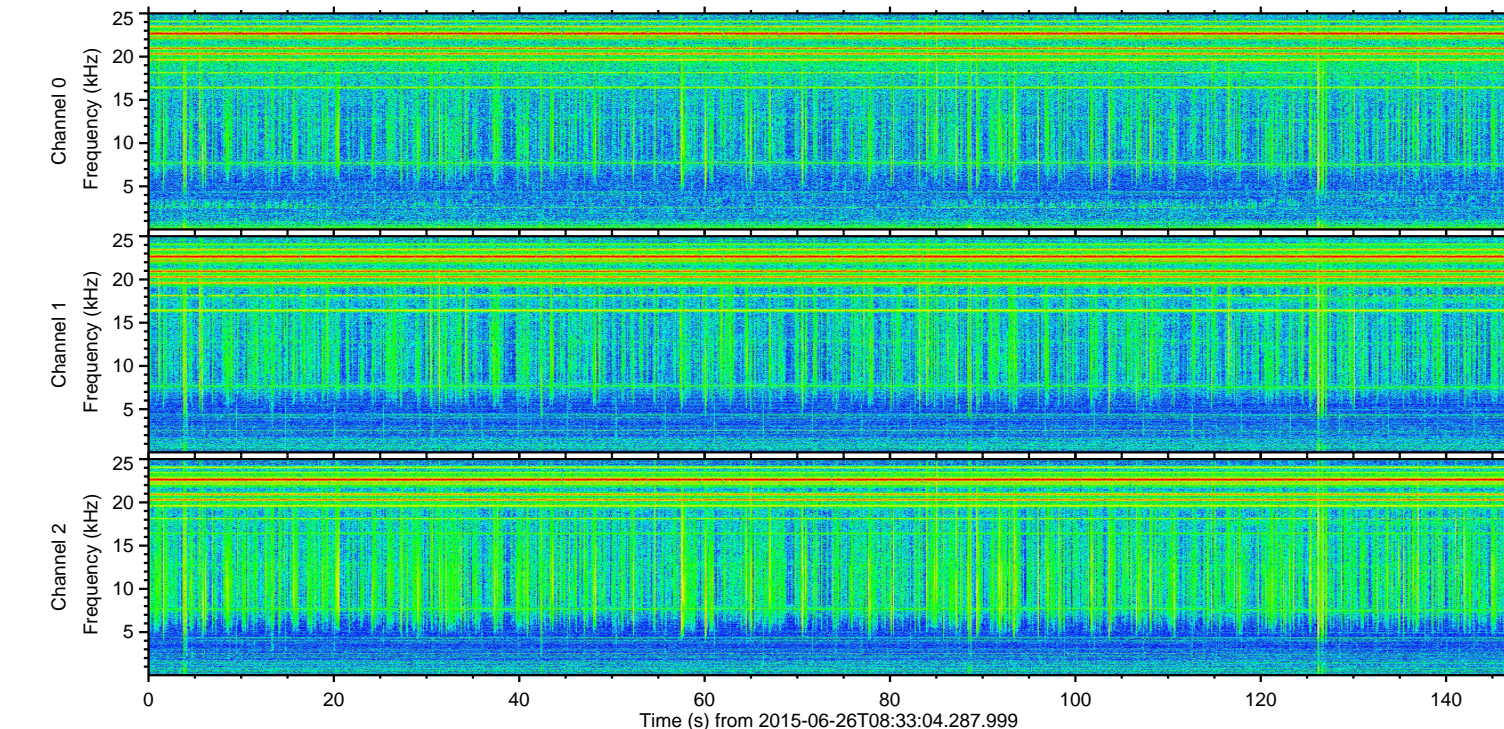
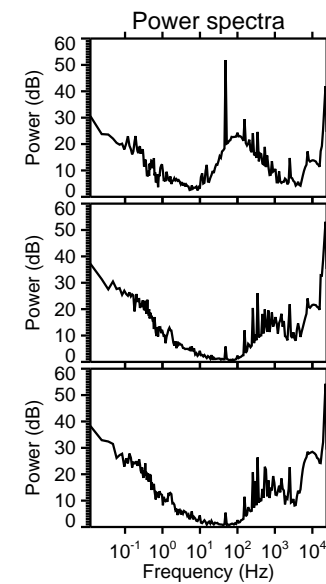
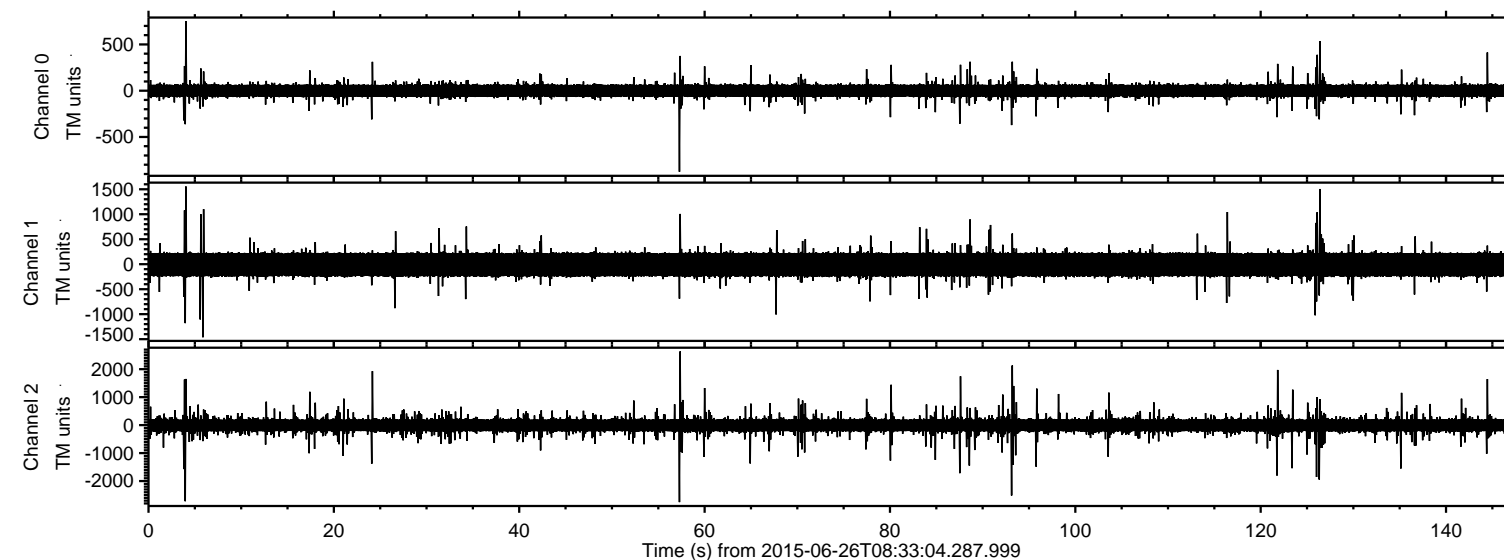
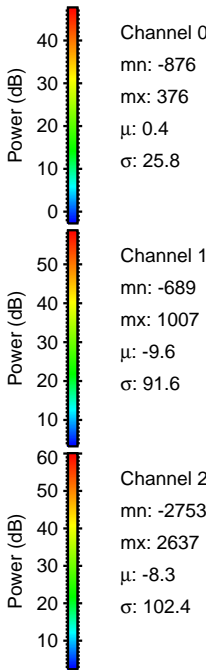
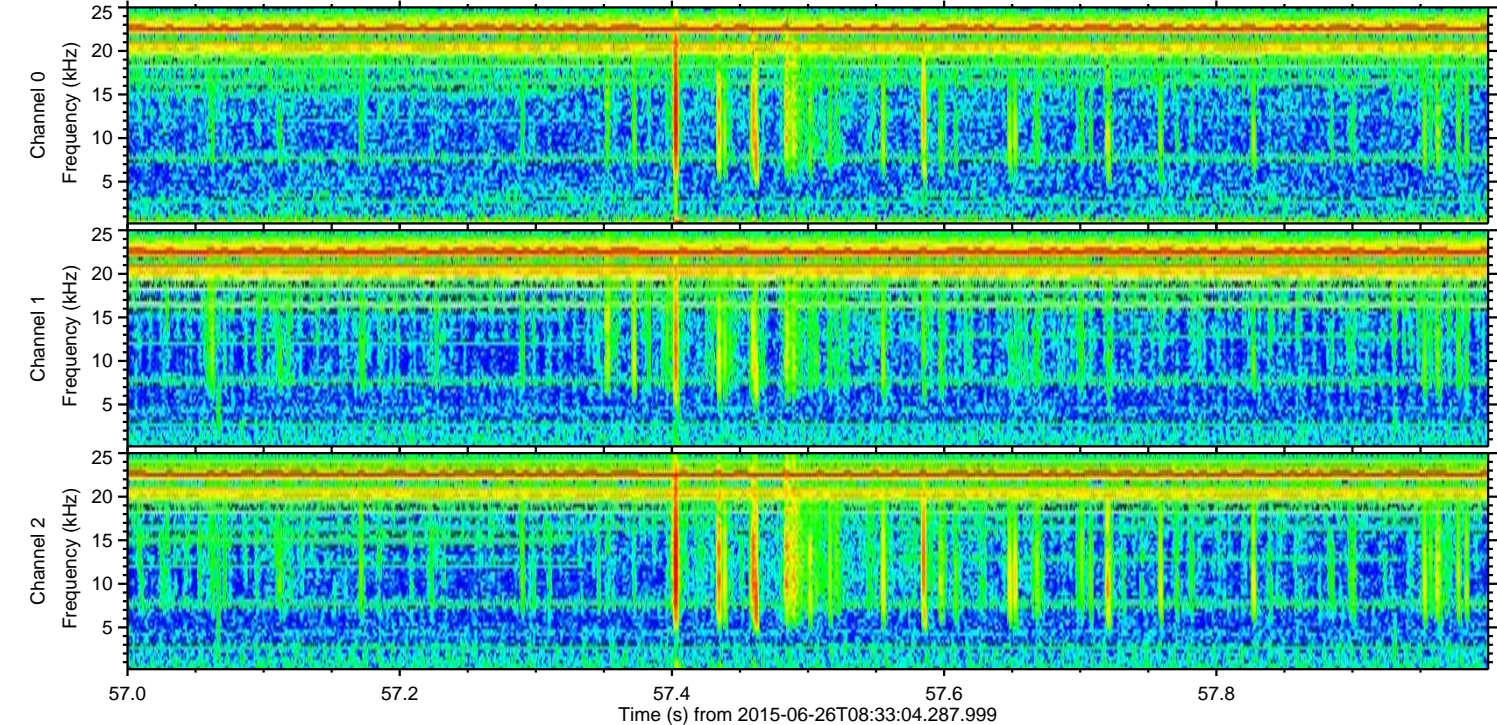
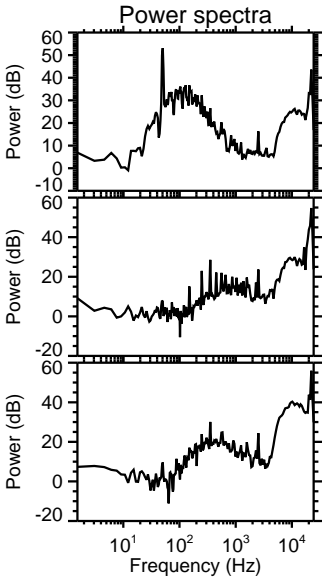
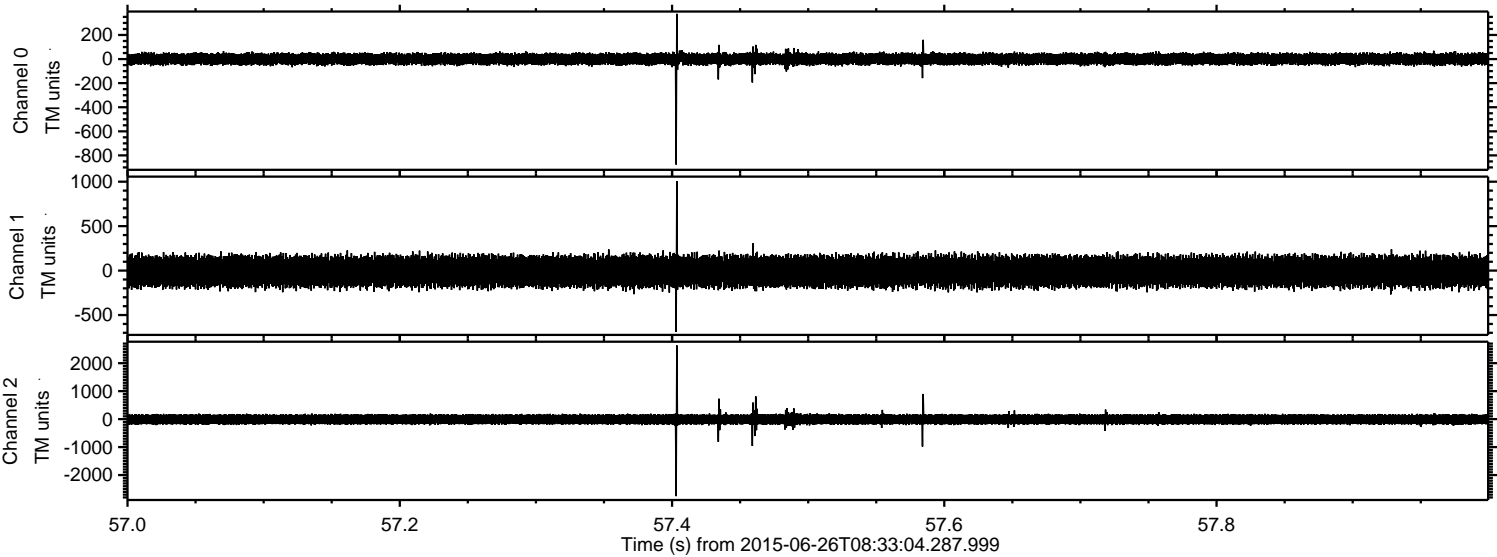


ELMAVAN 3D WAVEFORMS (Measured data sampled at 50 kHz) 51000 packets of 144 samples from 2015-06-26T08:33:04.287.999.

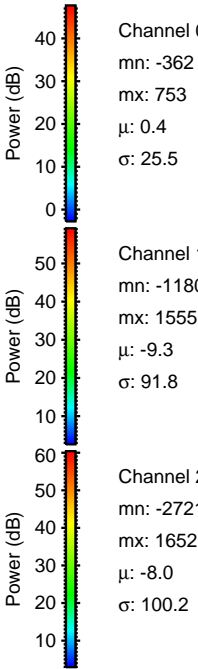
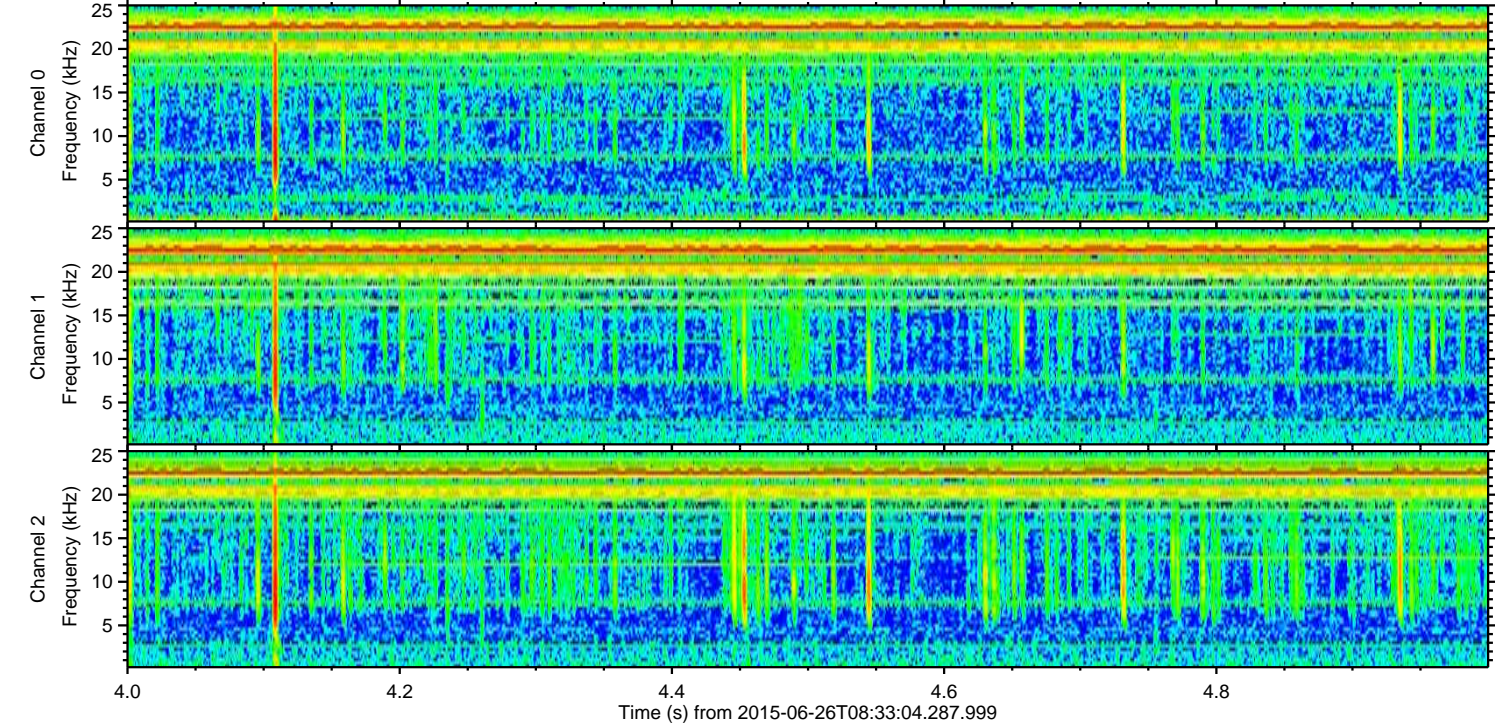
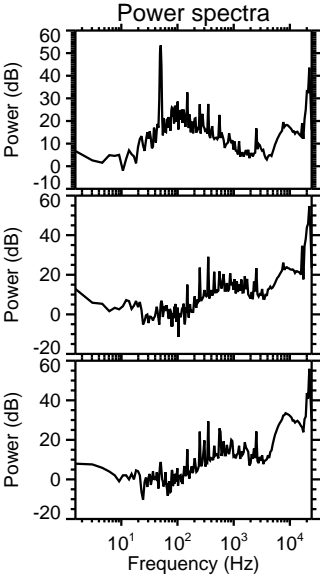
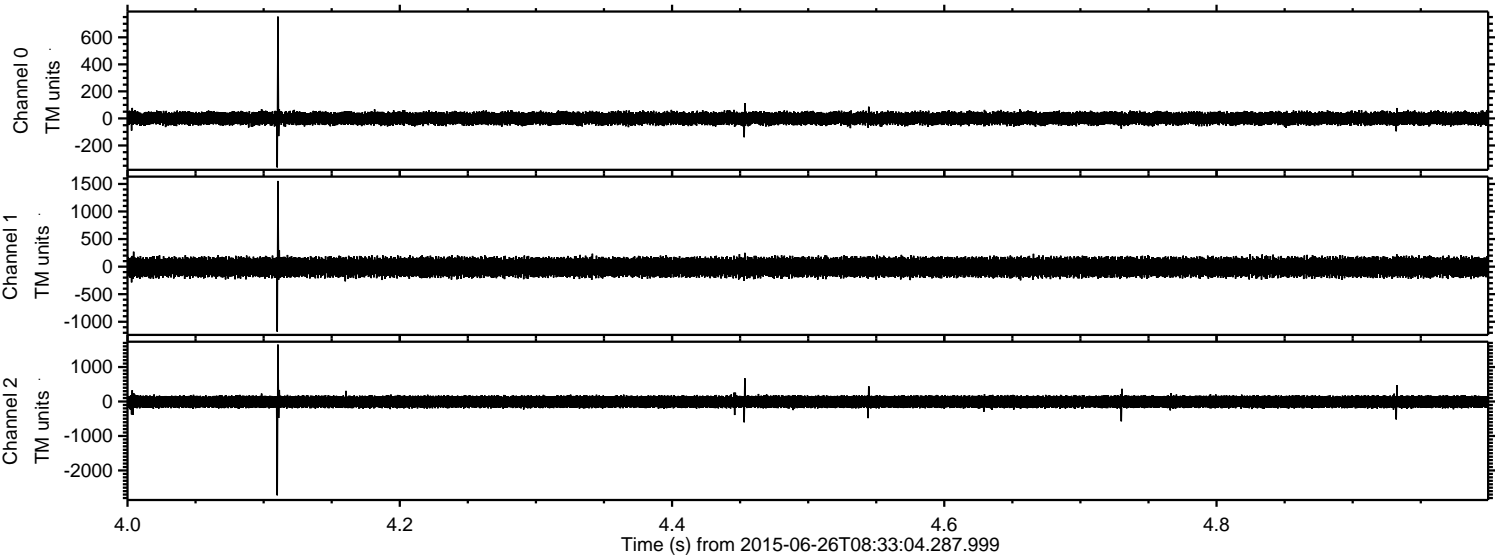
Processed Fri Jun 26 10:39:47 2015 by ELM ver.2012-10-06 from 001__elm20150626_083303__dat00.bin



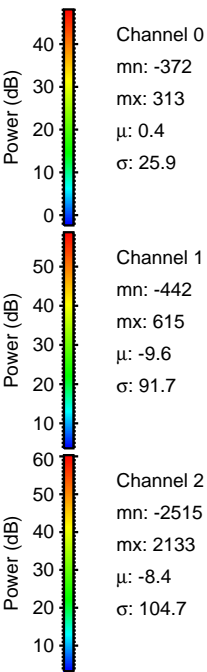
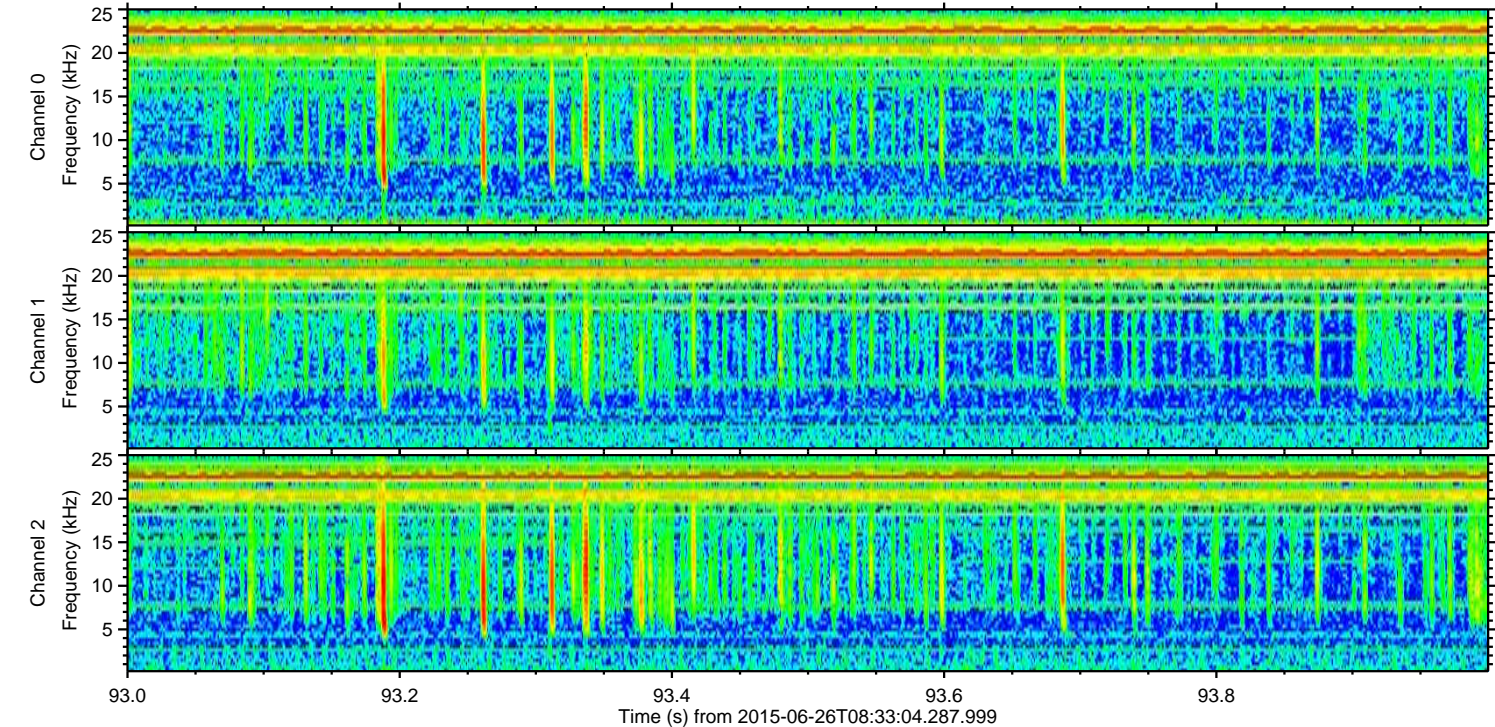
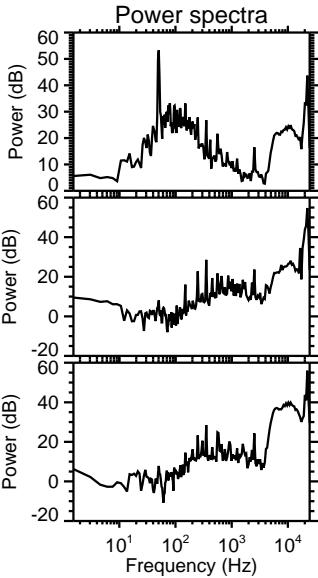
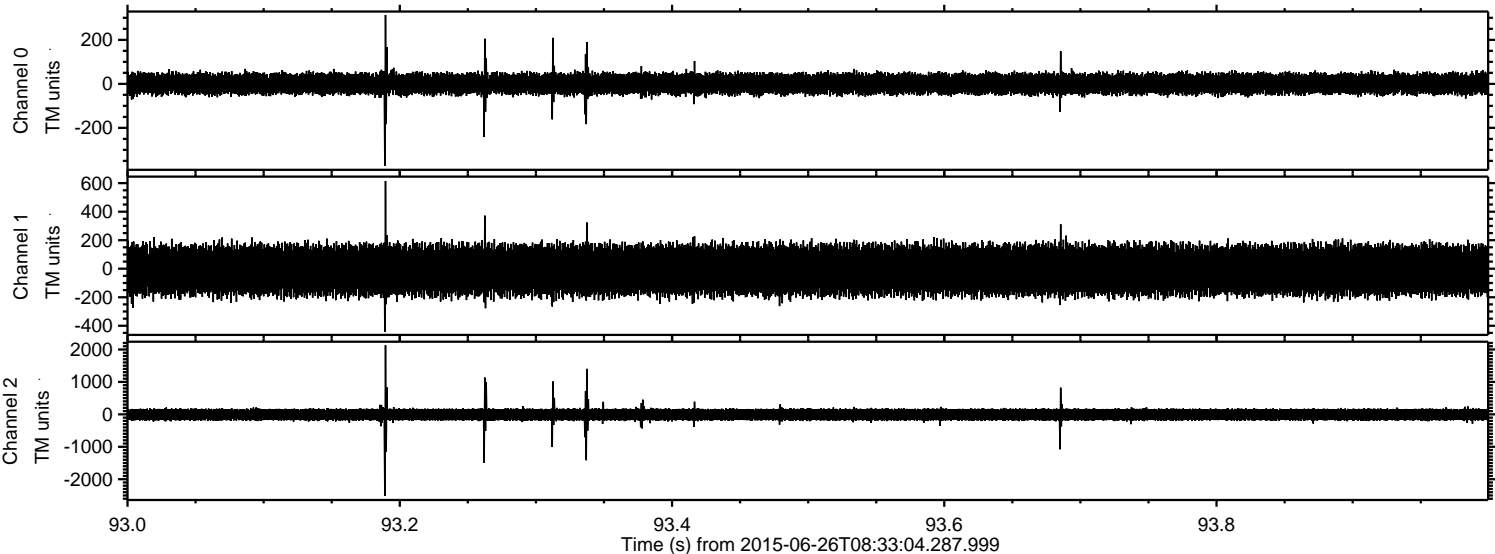
Processed Fri Jun 26 10:40:04 2015 by ELM ver.2012-10-06 from 001__elm20150626_083303__dat00.bin



Processed Fri Jun 26 10:40:05 2015 by ELM ver.2012-10-06 from 001__elm20150626_083303__dat00.bin

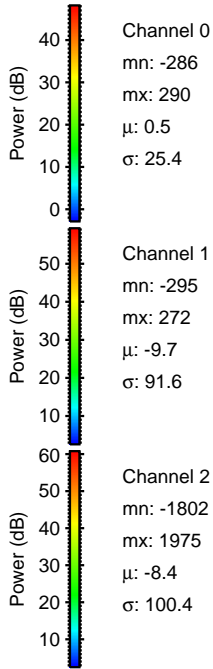
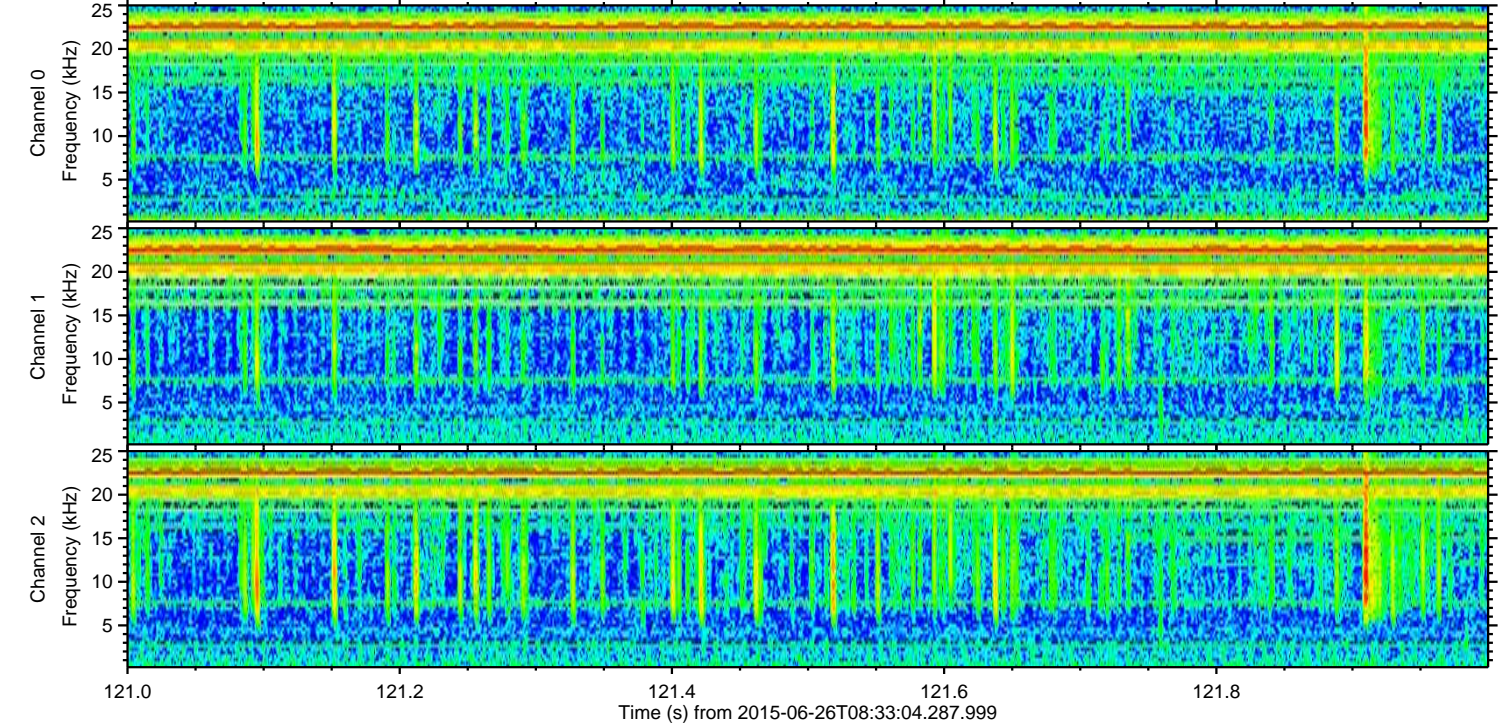
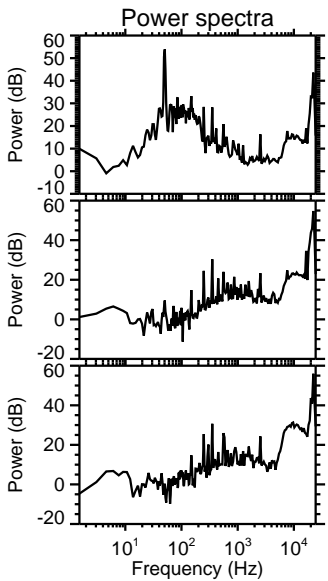
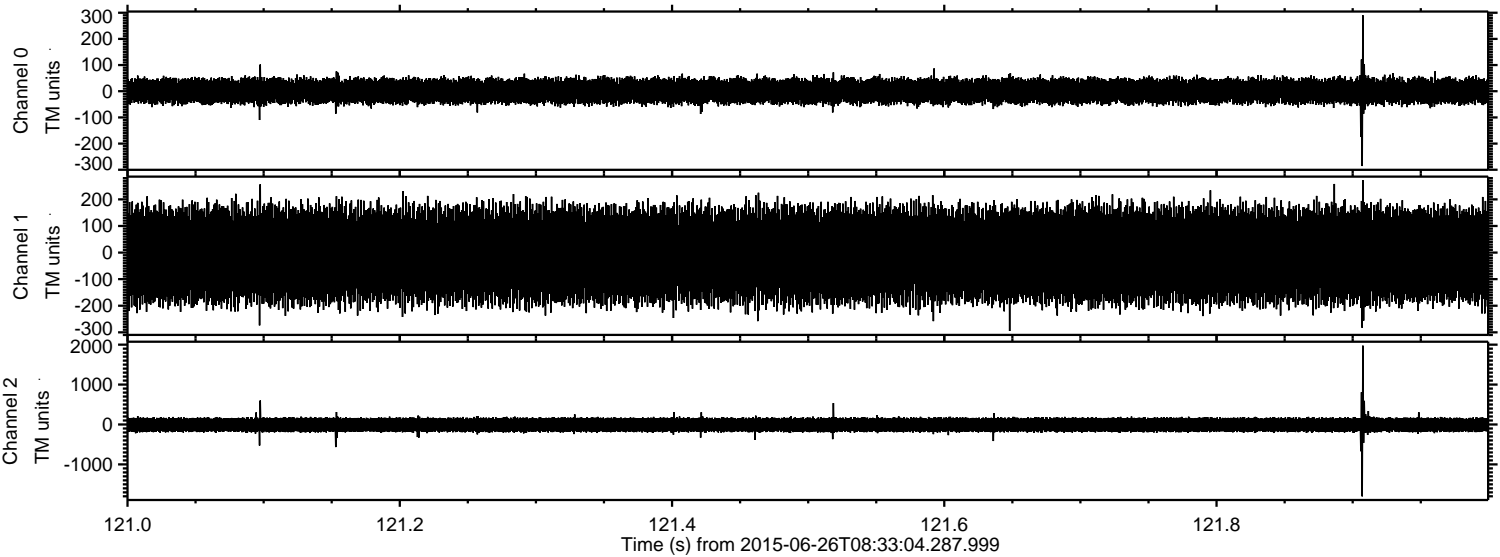


Processed Fri Jun 26 10:40:06 2015 by ELM ver.2012-10-06 from 001__elm20150626_083303__dat00.bin



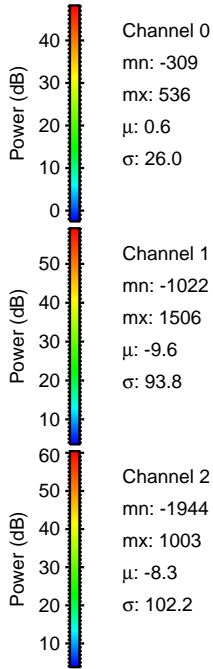
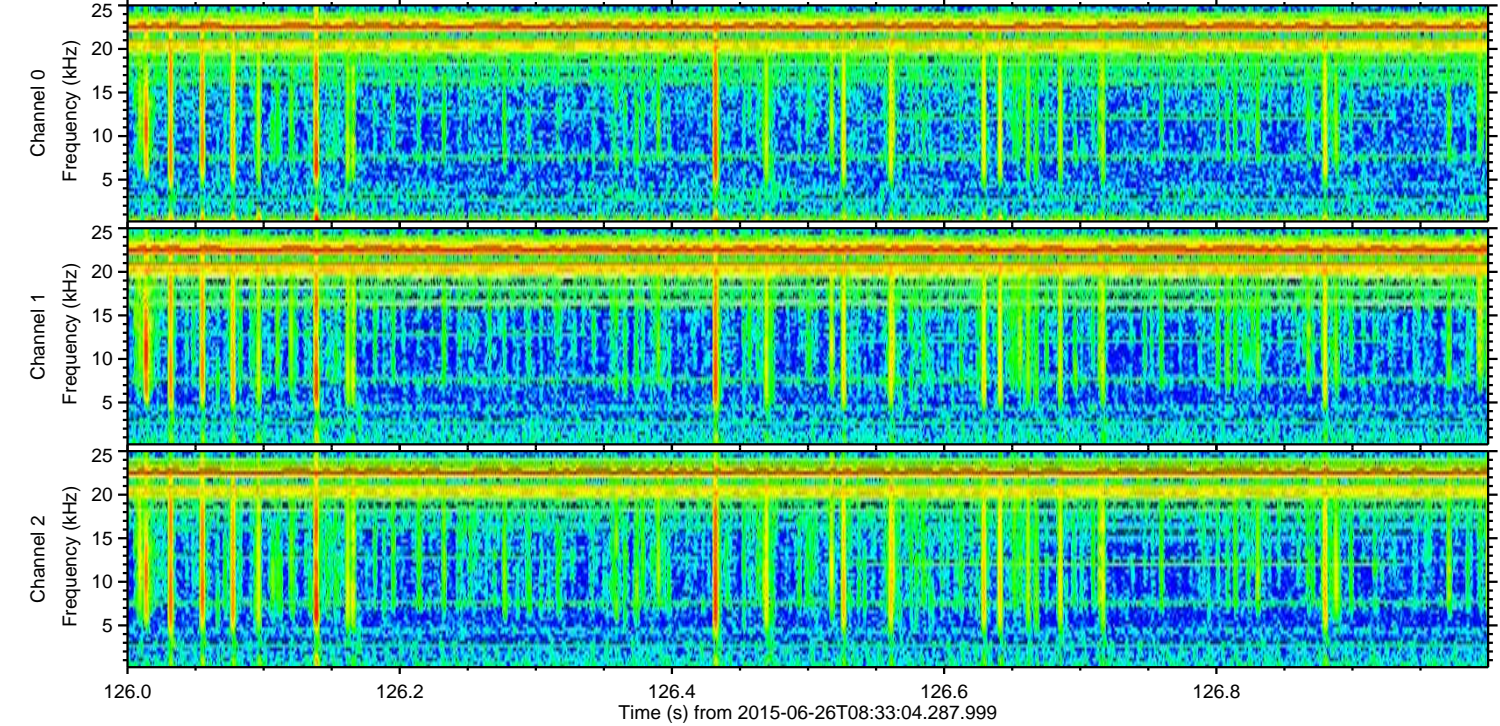
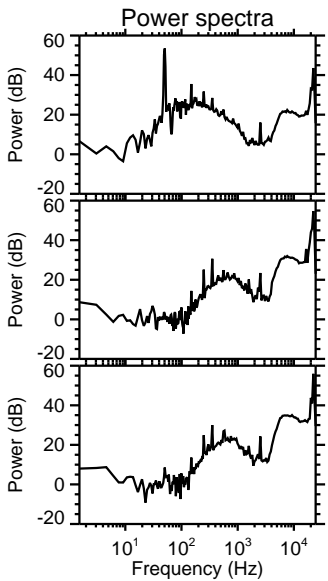
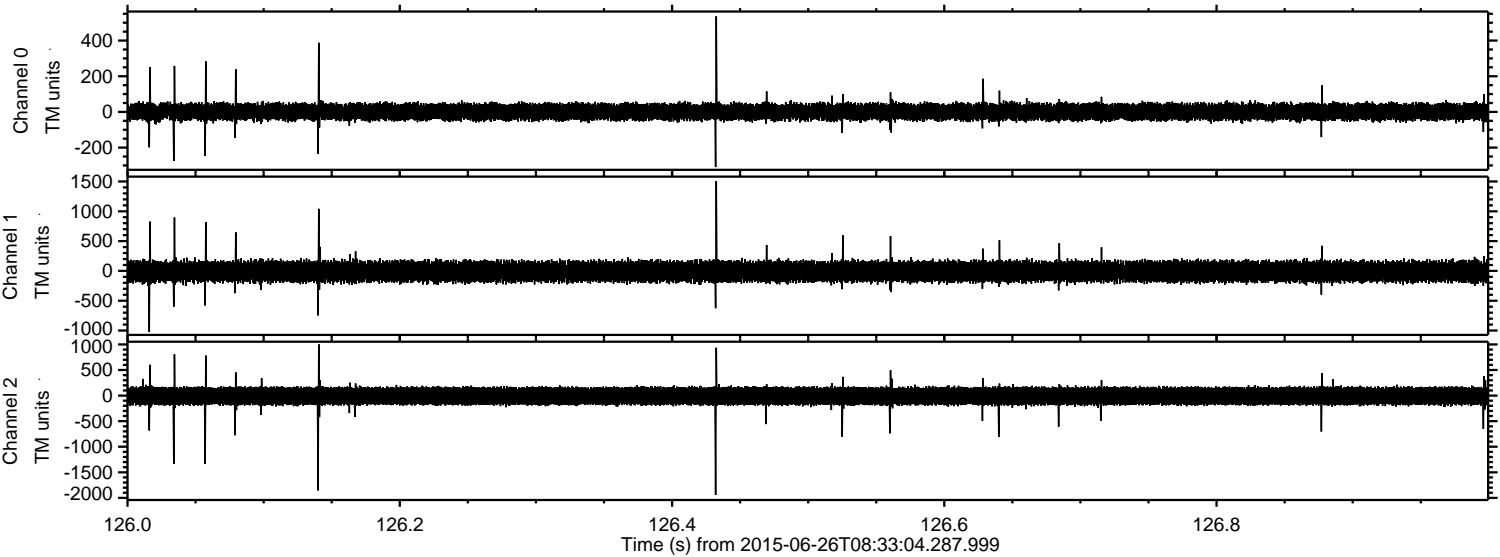
ELMAVAN 3D WAVEFORMS (Measured data sampled at 50 kHz) 51000 packets of 144 samples from 2015-06-26T08:33:04.287.999. Part 122/147

Processed Fri Jun 26 10:40:07 2015 by ELM ver.2012-10-06 from 001__elm20150626_083303__dat00.bin

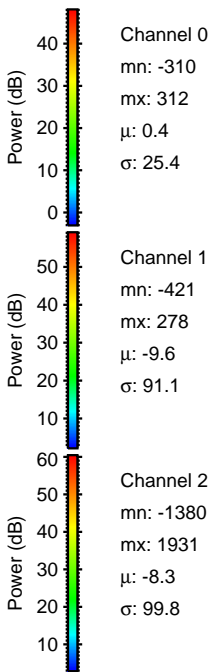
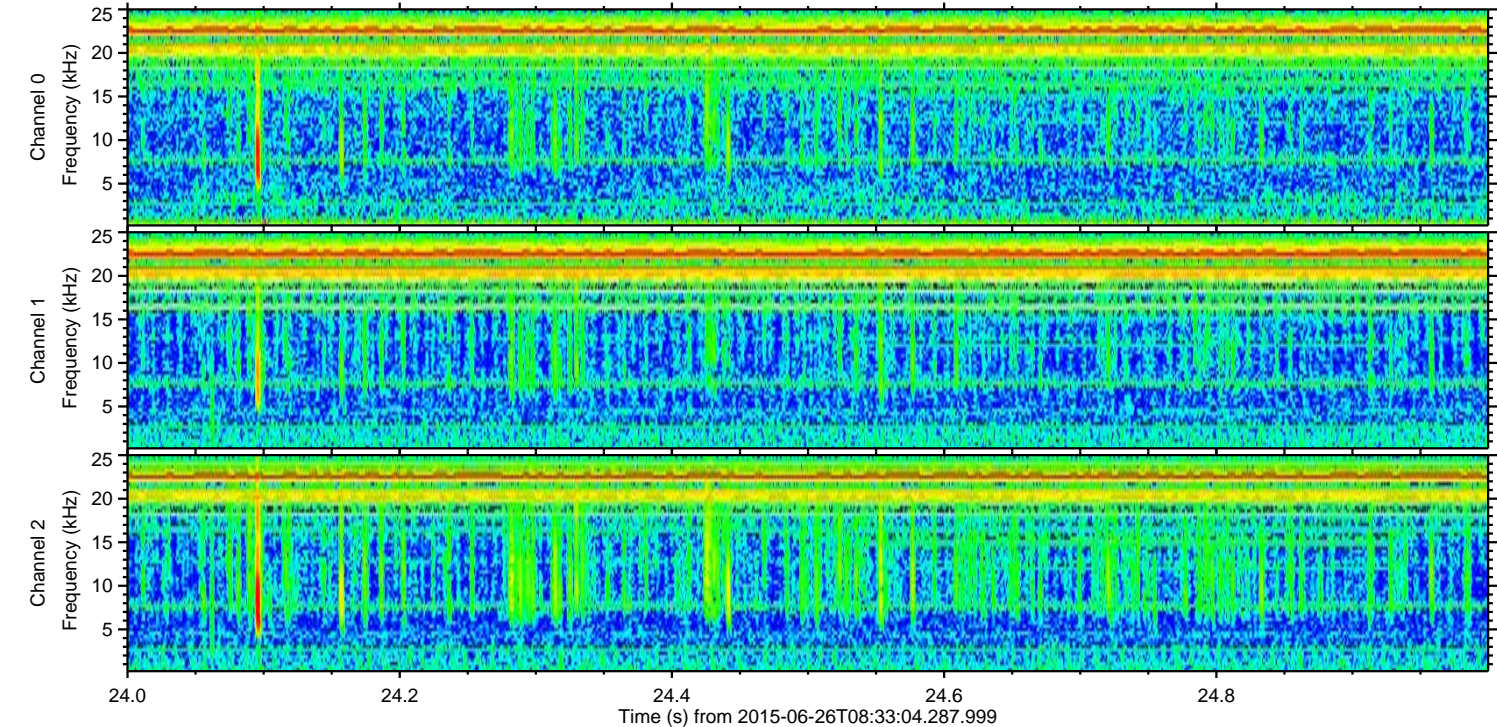
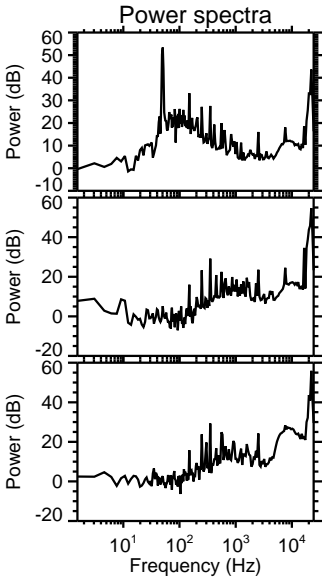
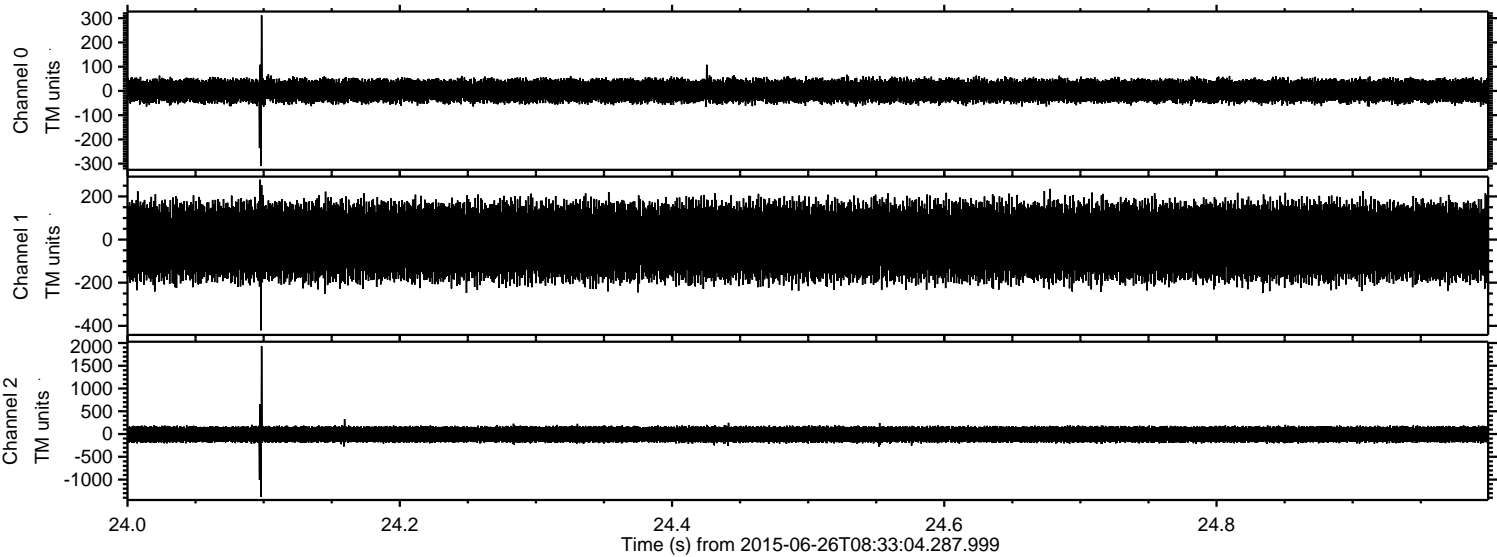


ELMAVAN 3D WAVEFORMS (Measured data sampled at 50 kHz) 51000 packets of 144 samples from 2015-06-26T08:33:04.287.999. Part 127/147

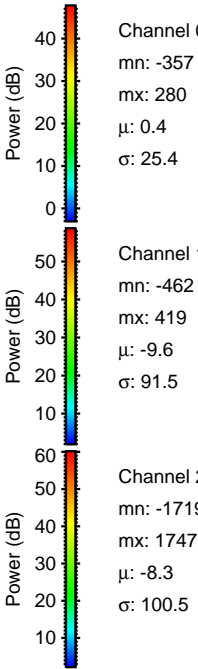
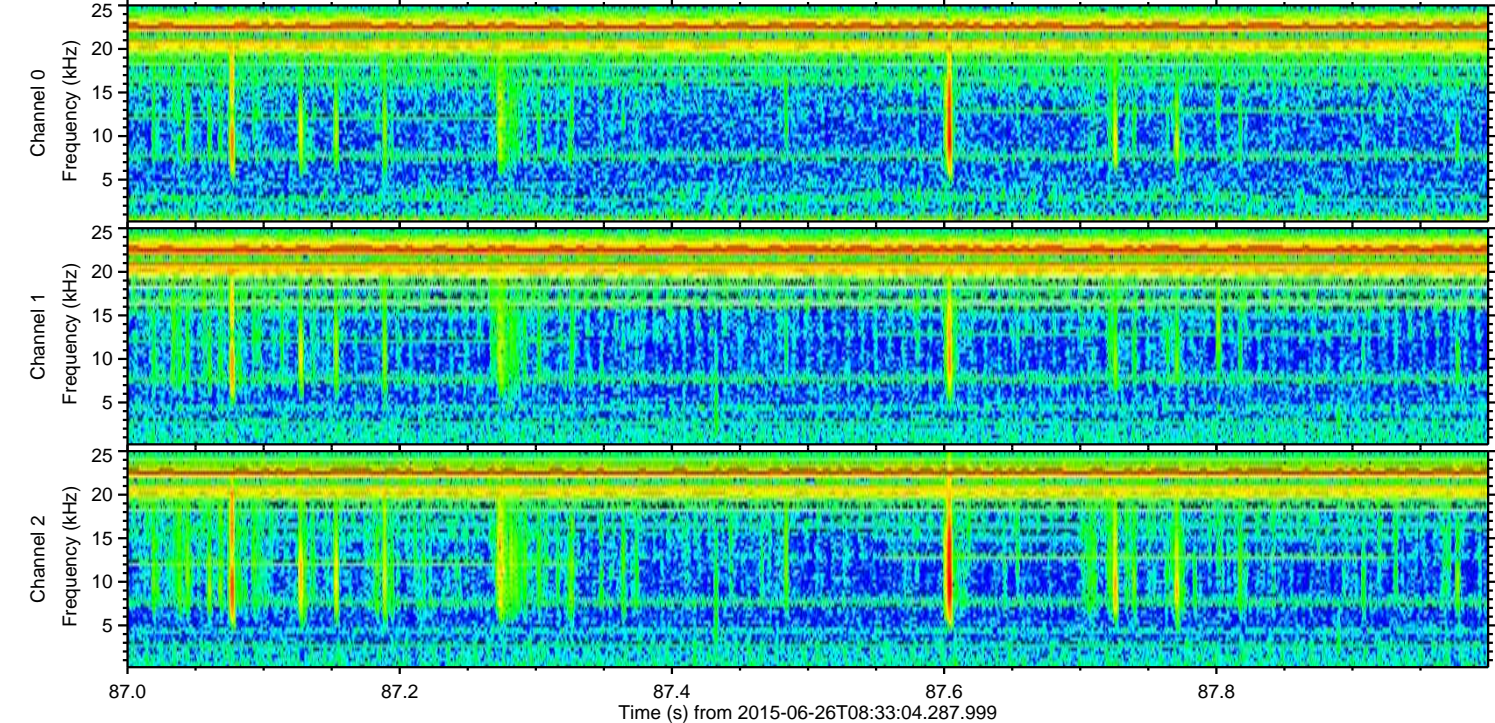
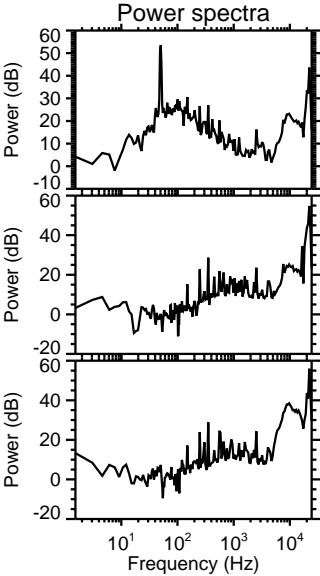
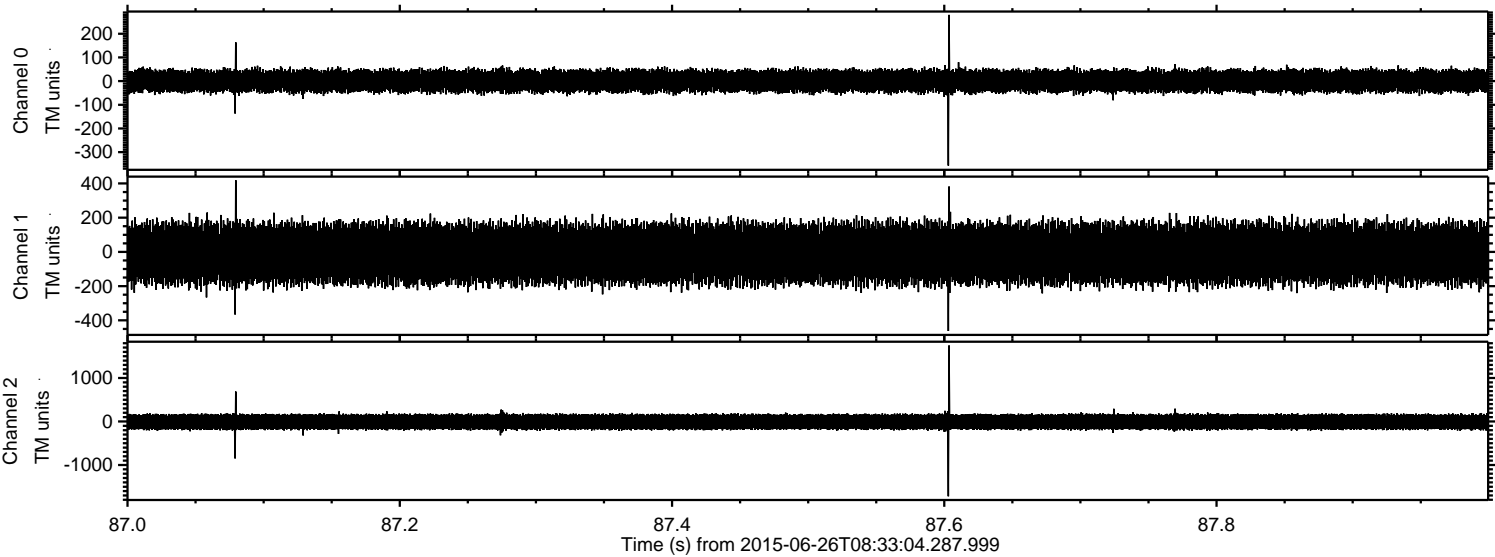
Processed Fri Jun 26 10:40:08 2015 by ELM ver.2012-10-06 from 001__elm20150626_083303__dat00.bin



Processed Fri Jun 26 10:40:09 2015 by ELM ver.2012-10-06 from 001__elm20150626_083303__dat00.bin

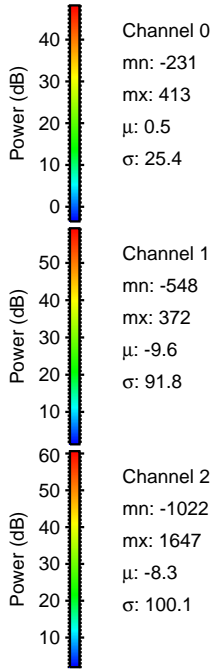
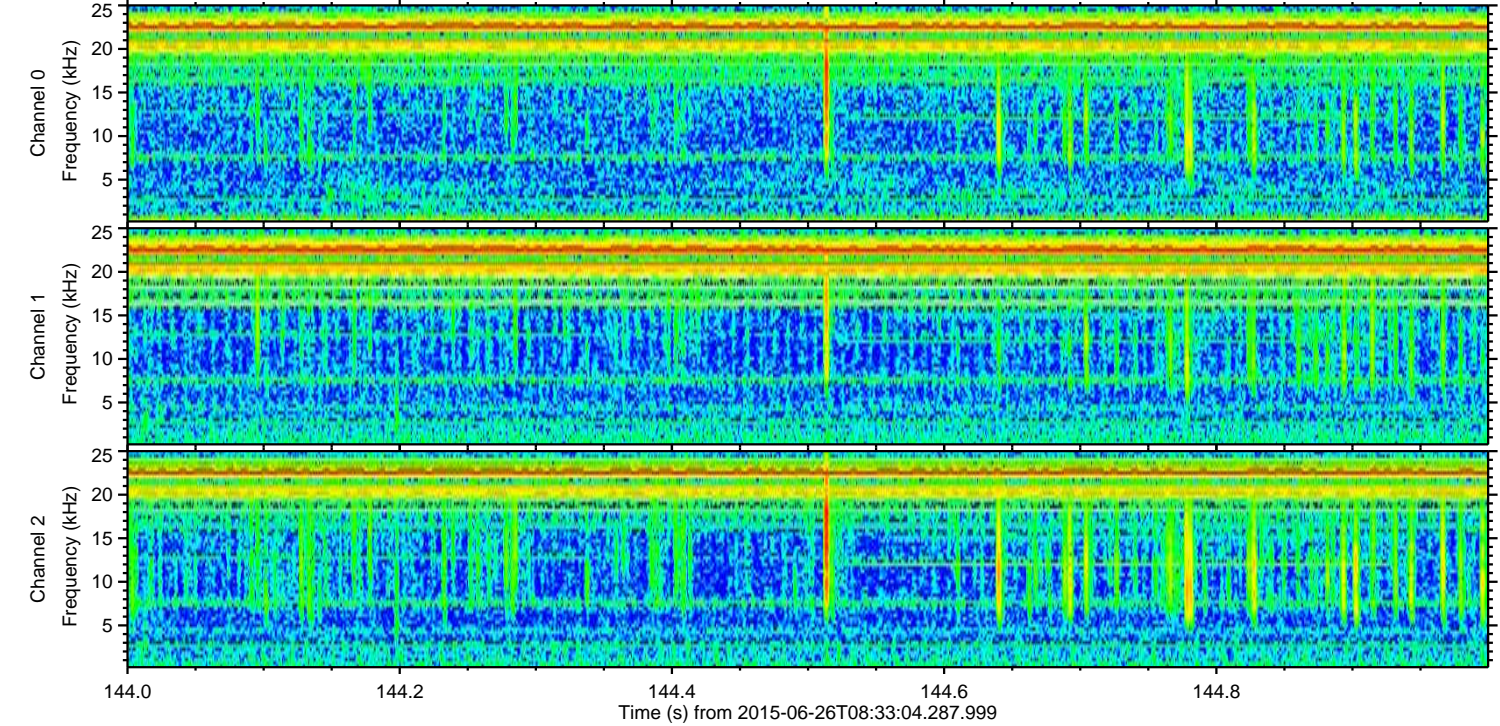
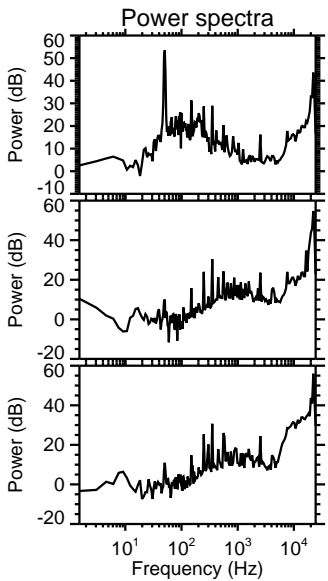
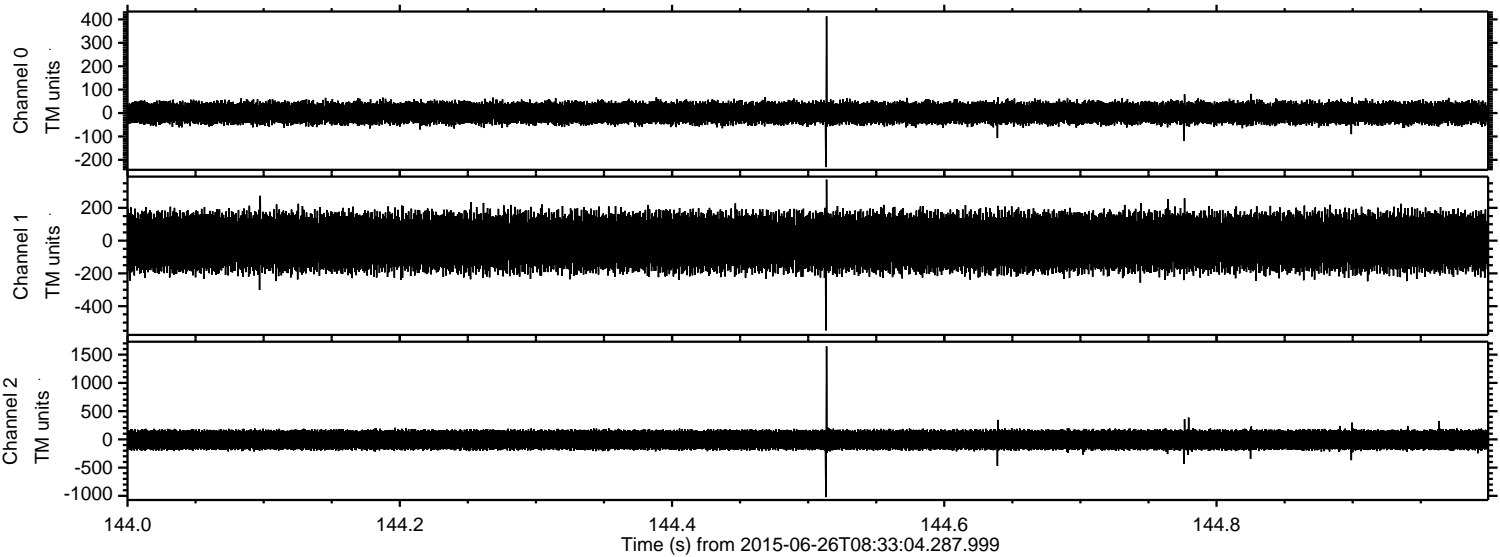


Processed Fri Jun 26 10:40:10 2015 by ELM ver.2012-10-06 from 001__elm20150626_083303__dat00.bin

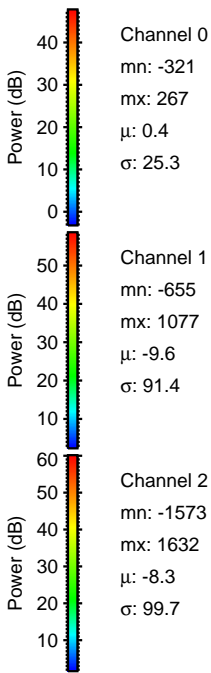
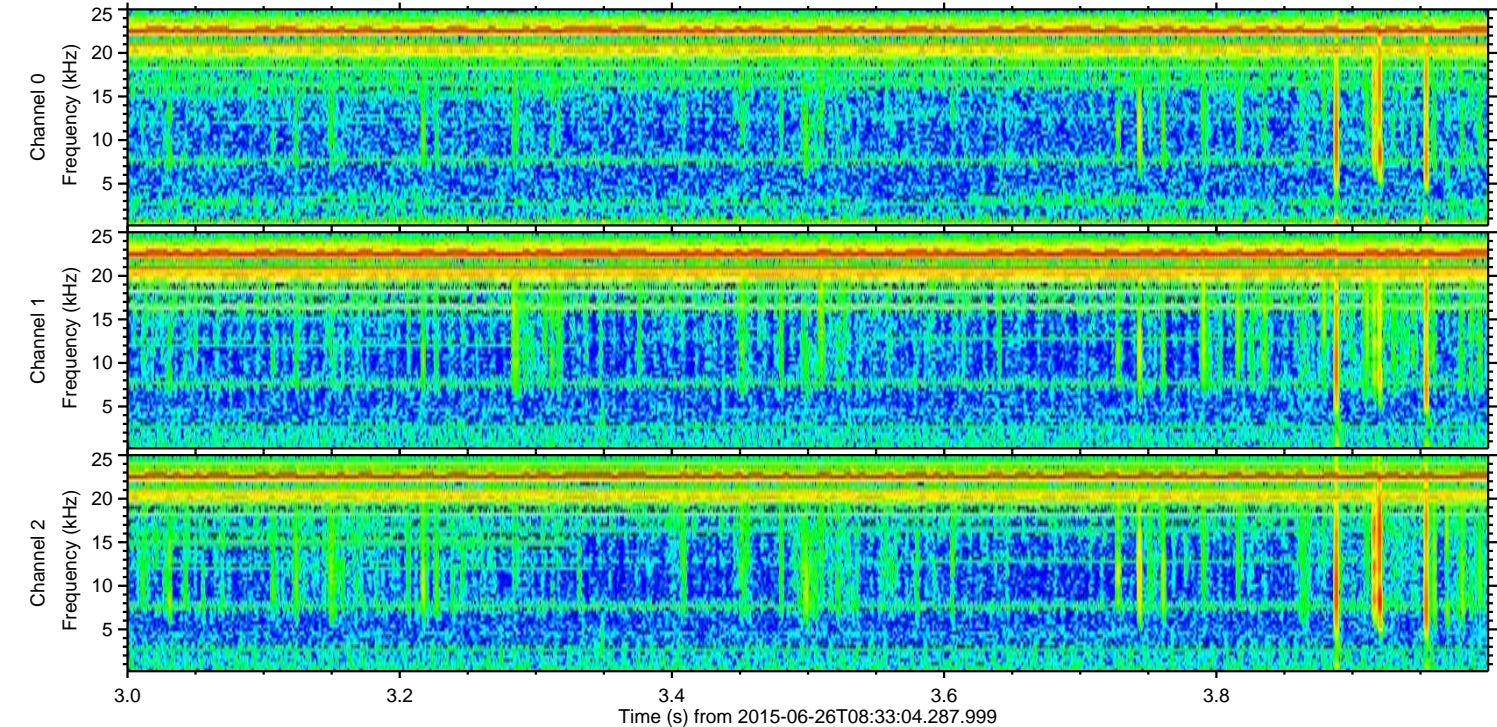
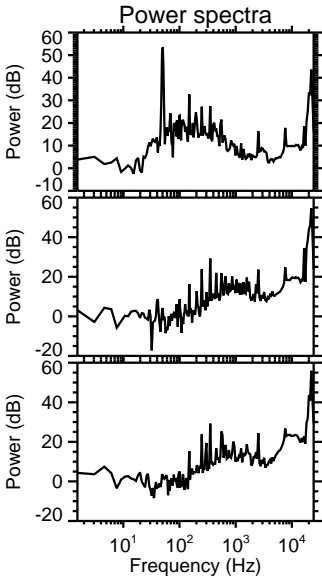
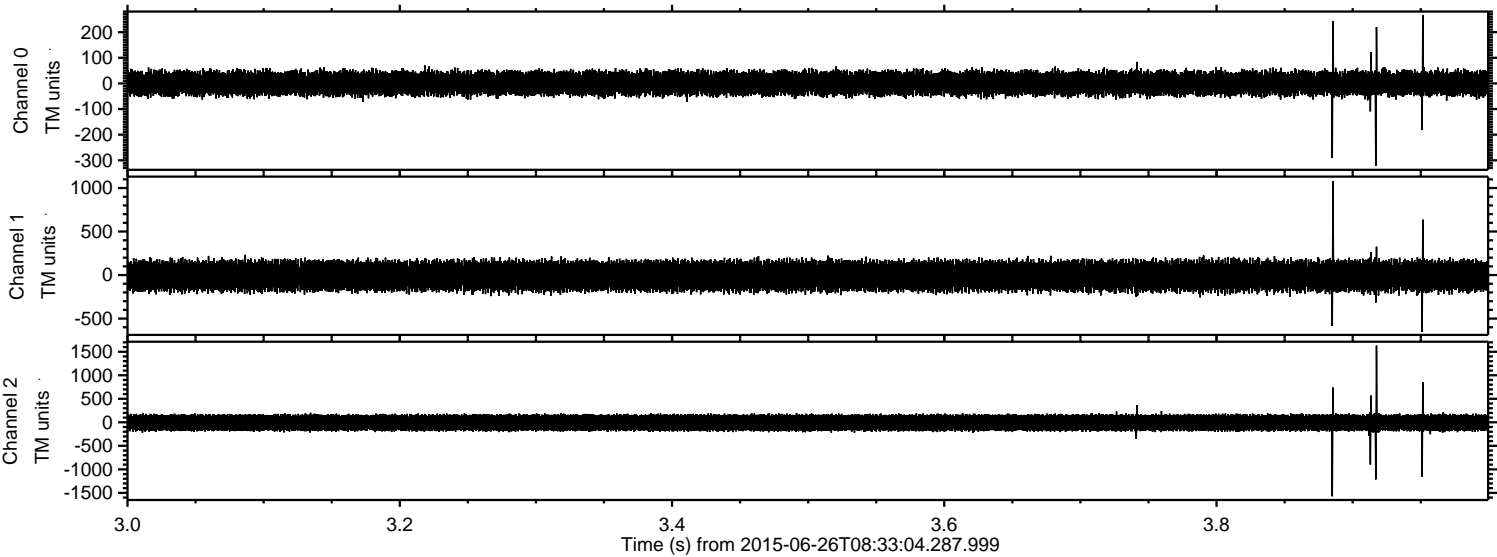


ELMAVAN 3D WAVEFORMS (Measured data sampled at 50 kHz) 51000 packets of 144 samples from 2015-06-26T08:33:04.287.999. Part 145/147

Processed Fri Jun 26 10:40:11 2015 by ELM ver.2012-10-06 from 001__elm20150626_083303__dat00.bin



Processed Fri Jun 26 10:40:12 2015 by ELM ver.2012-10-06 from 001__elm20150626_083303__dat00.bin



Channel 0
mn: -321
mx: 267
 μ : 0.4
 σ : 25.3

Channel 1
mn: -655
mx: 1077
 μ : -9.6
 σ : 91.4

Channel 2
mn: -1573
mx: 1632
 μ : -8.3
 σ : 99.7

