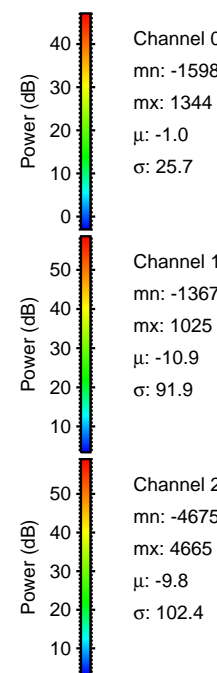
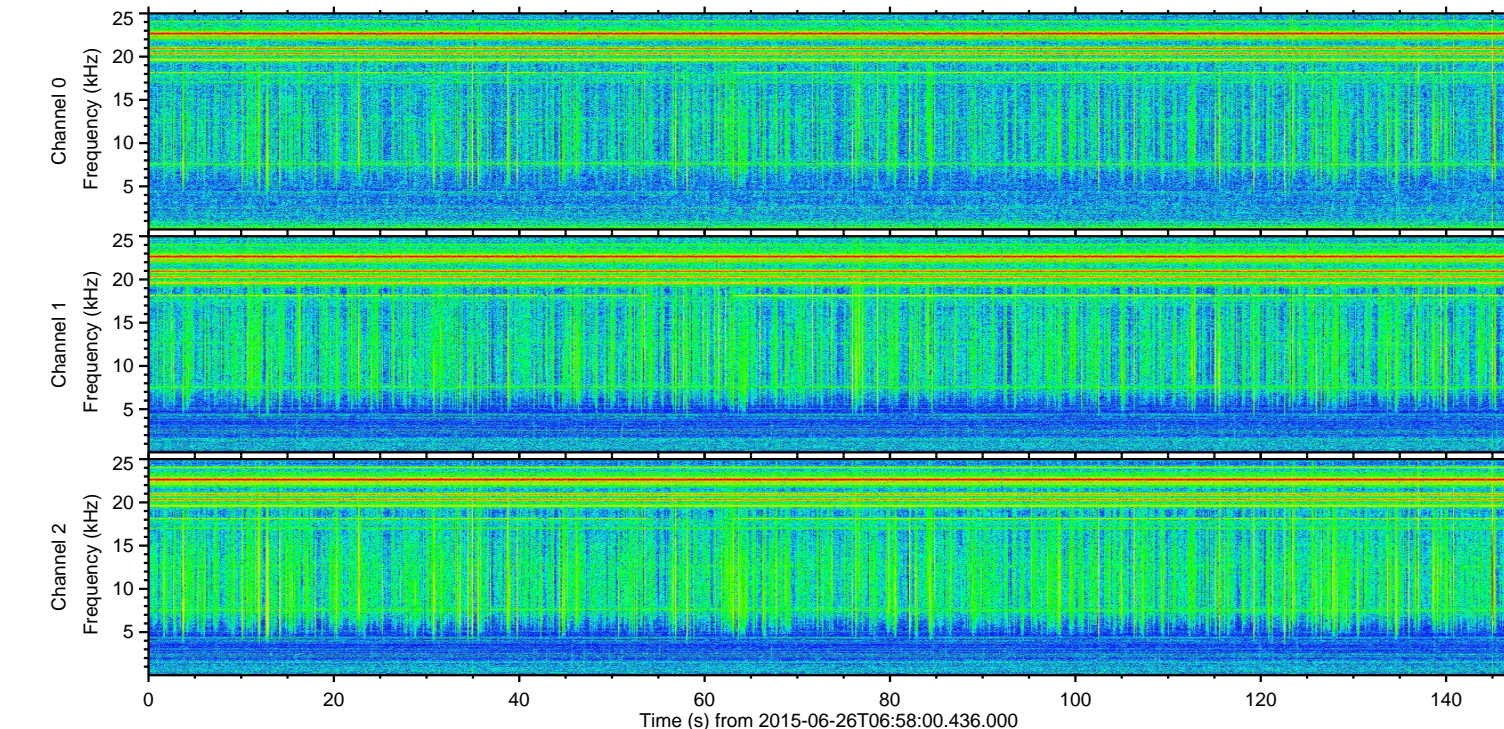
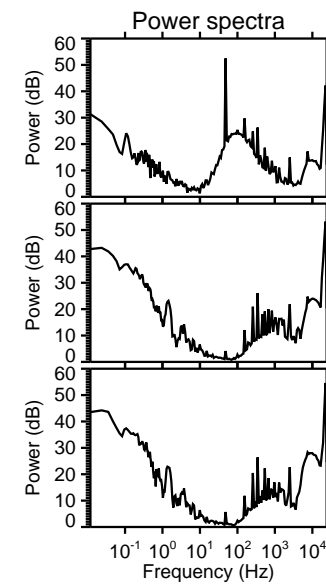
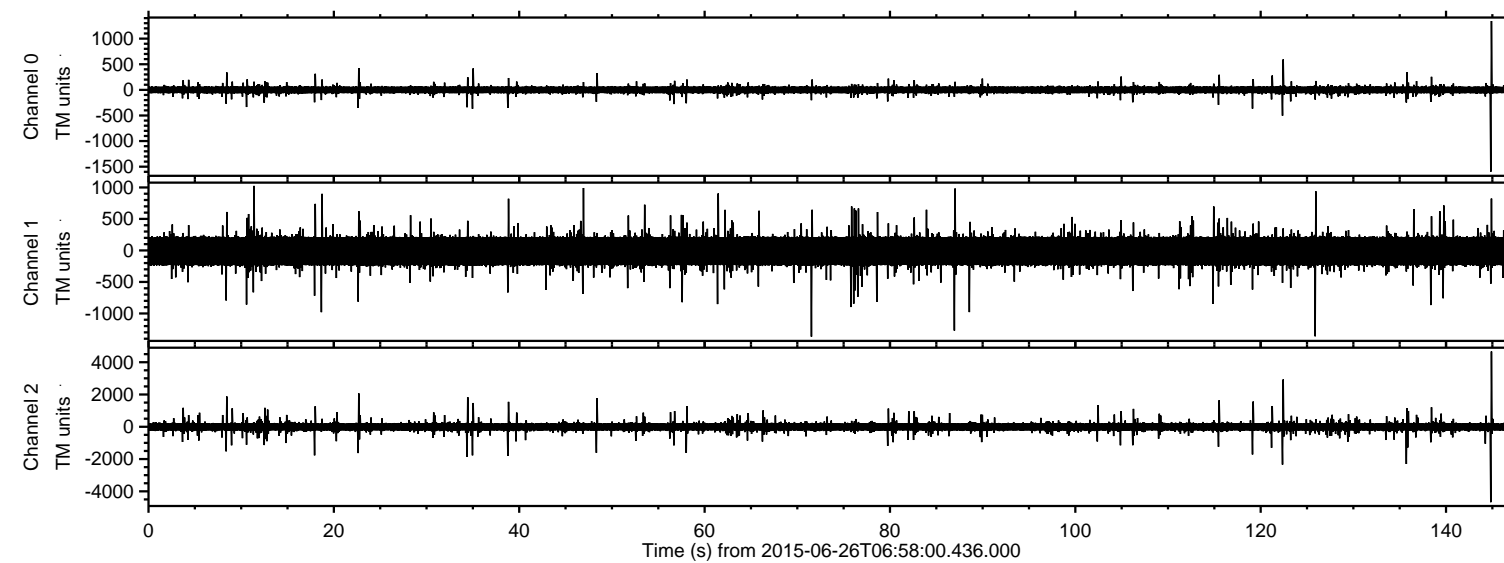


# ELMAVAN 3D WAVEFORMS (Measured data sampled at 50 kHz) 51000 packets of 144 samples from 2015-06-26T06:58:00.436.000.

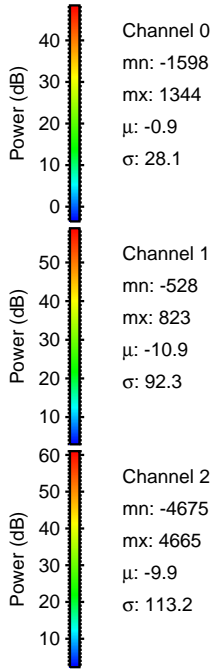
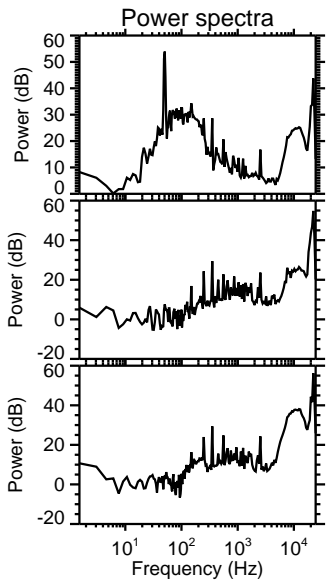
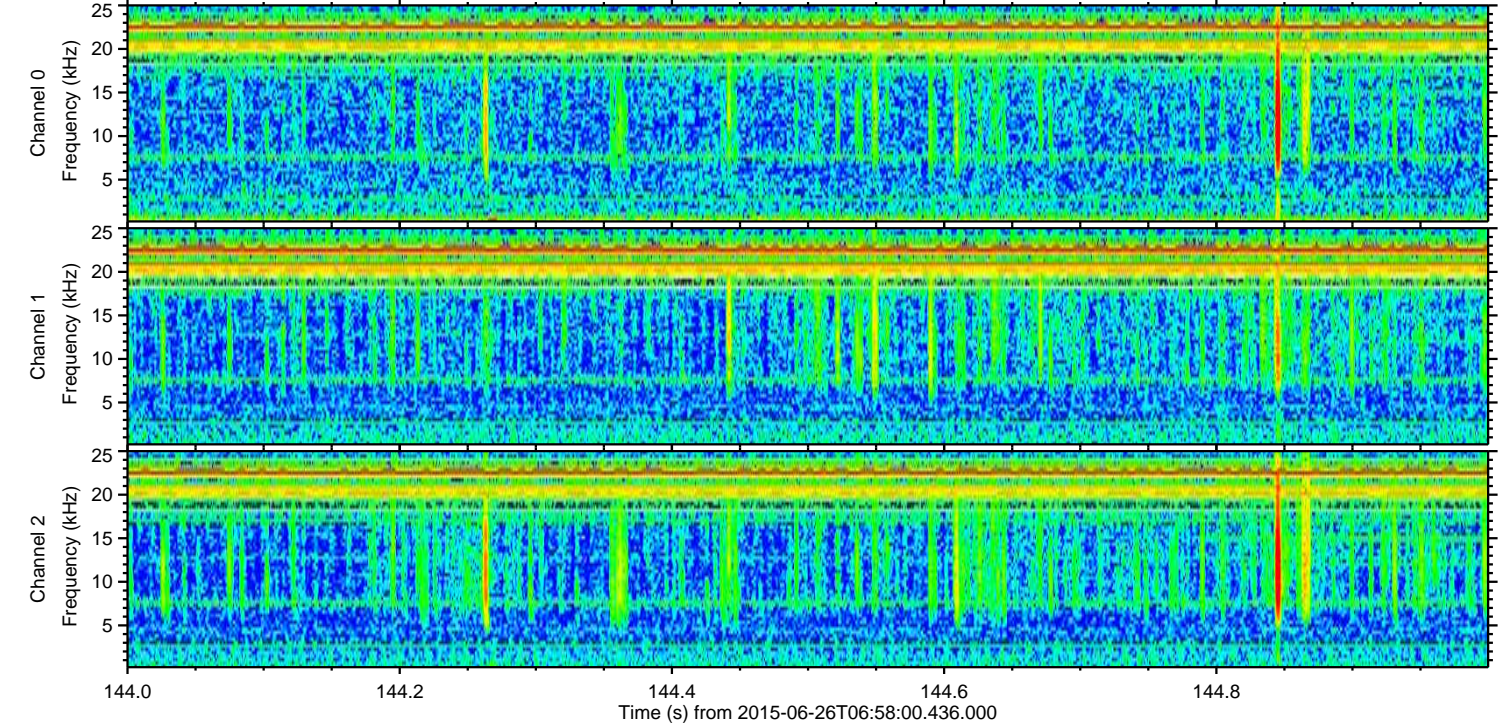
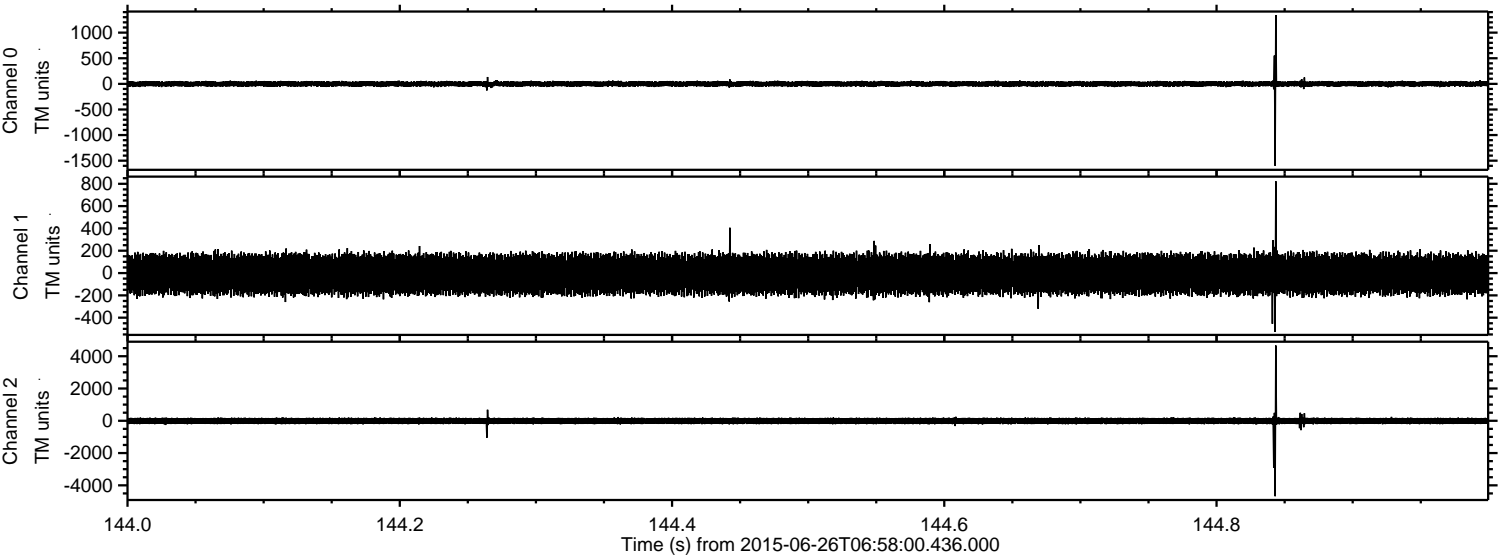
Processed Fri Jun 26 09:04:30 2015 by ELM ver.2012-10-06 from 001\_\_elm20150626\_065759\_\_dat00.bin





ELMAVAN 3D WAVEFORMS (Measured data sampled at 50 kHz) 51000 packets of 144 samples from 2015-06-26T06:58:00.436.000. Part 145/147

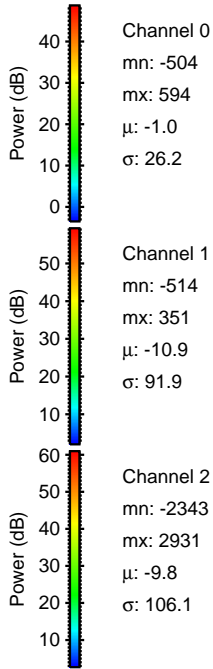
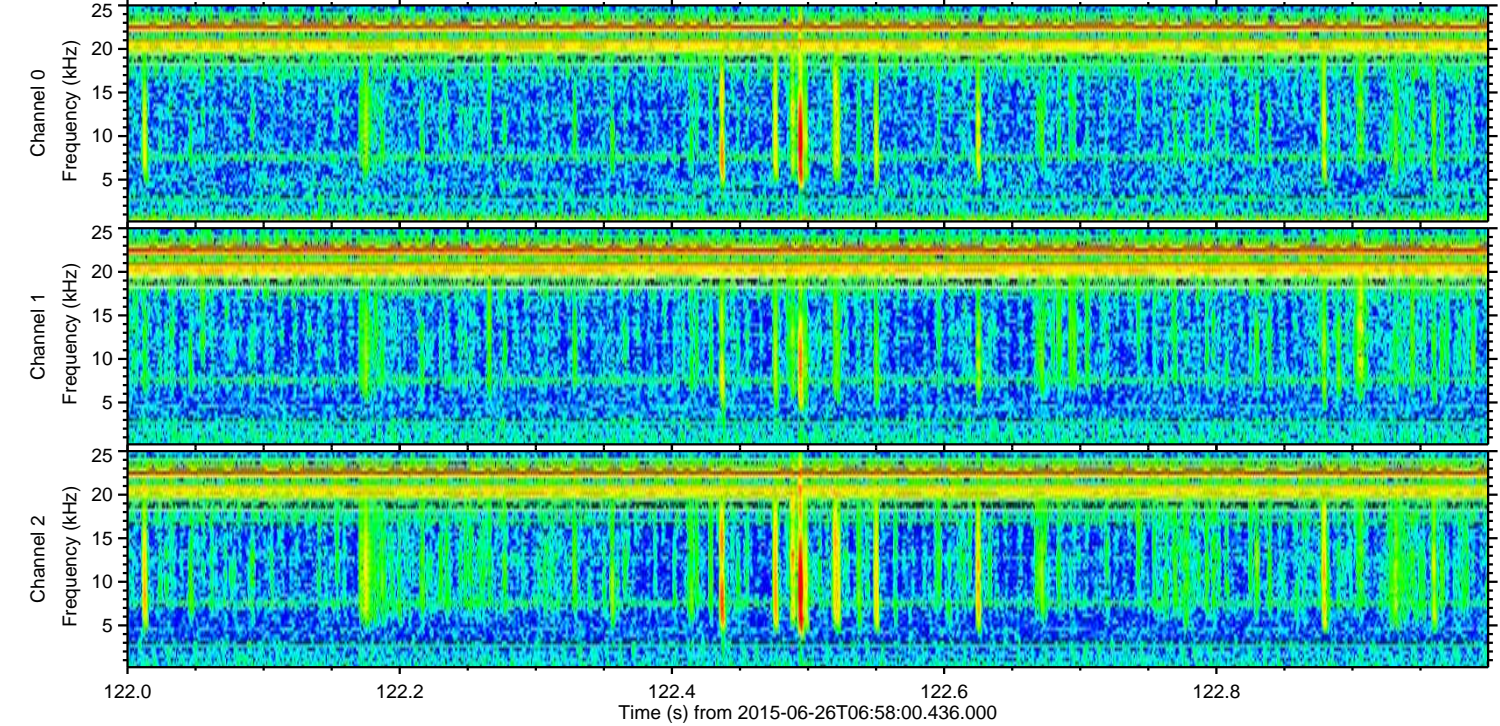
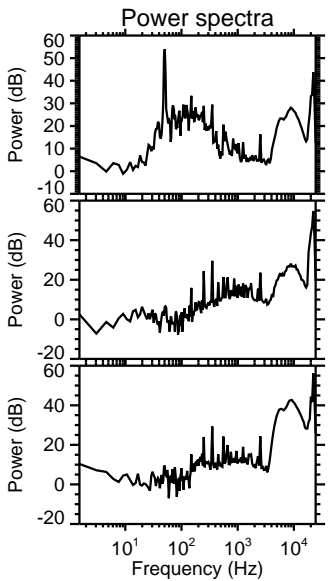
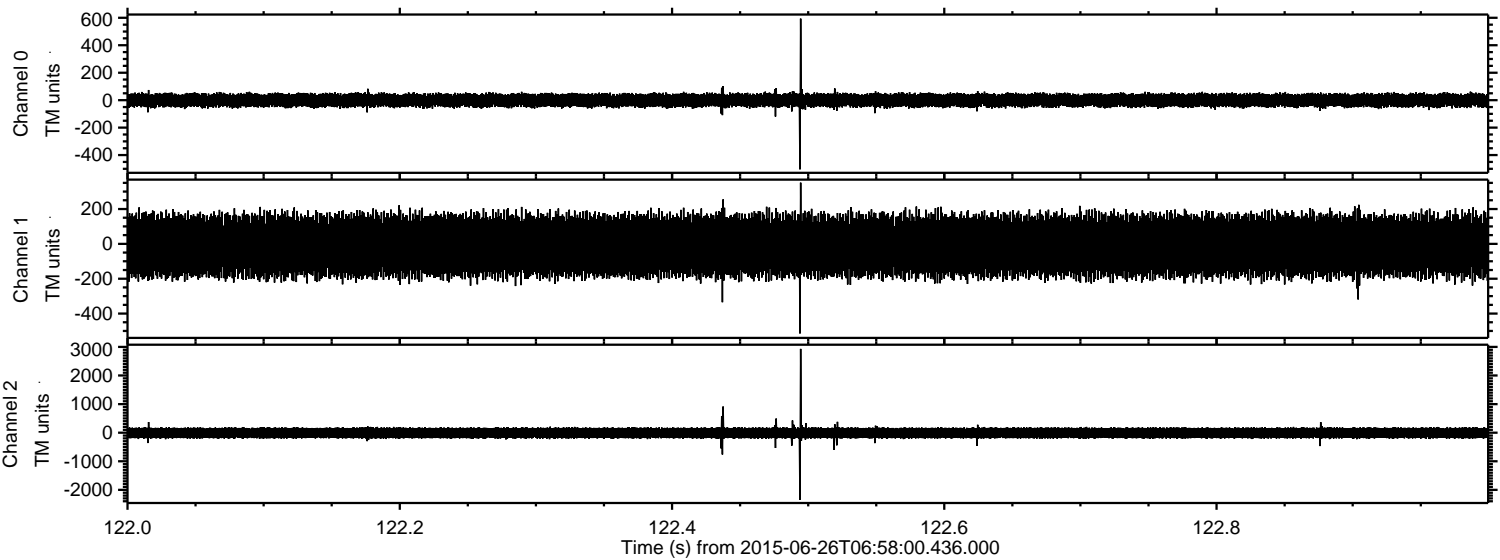
Processed Fri Jun 26 09:04:45 2015 by ELM ver.2012-10-06 from 001\_\_elm20150626\_065759\_\_dat00.bin





ELMAVAN 3D WAVEFORMS (Measured data sampled at 50 kHz) 51000 packets of 144 samples from 2015-06-26T06:58:00.436.000. Part 123/147

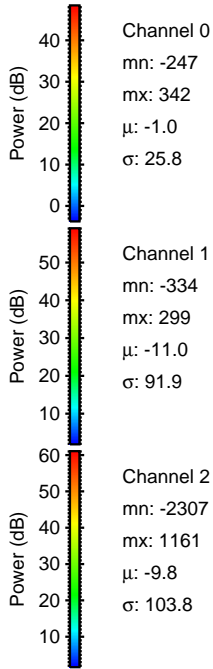
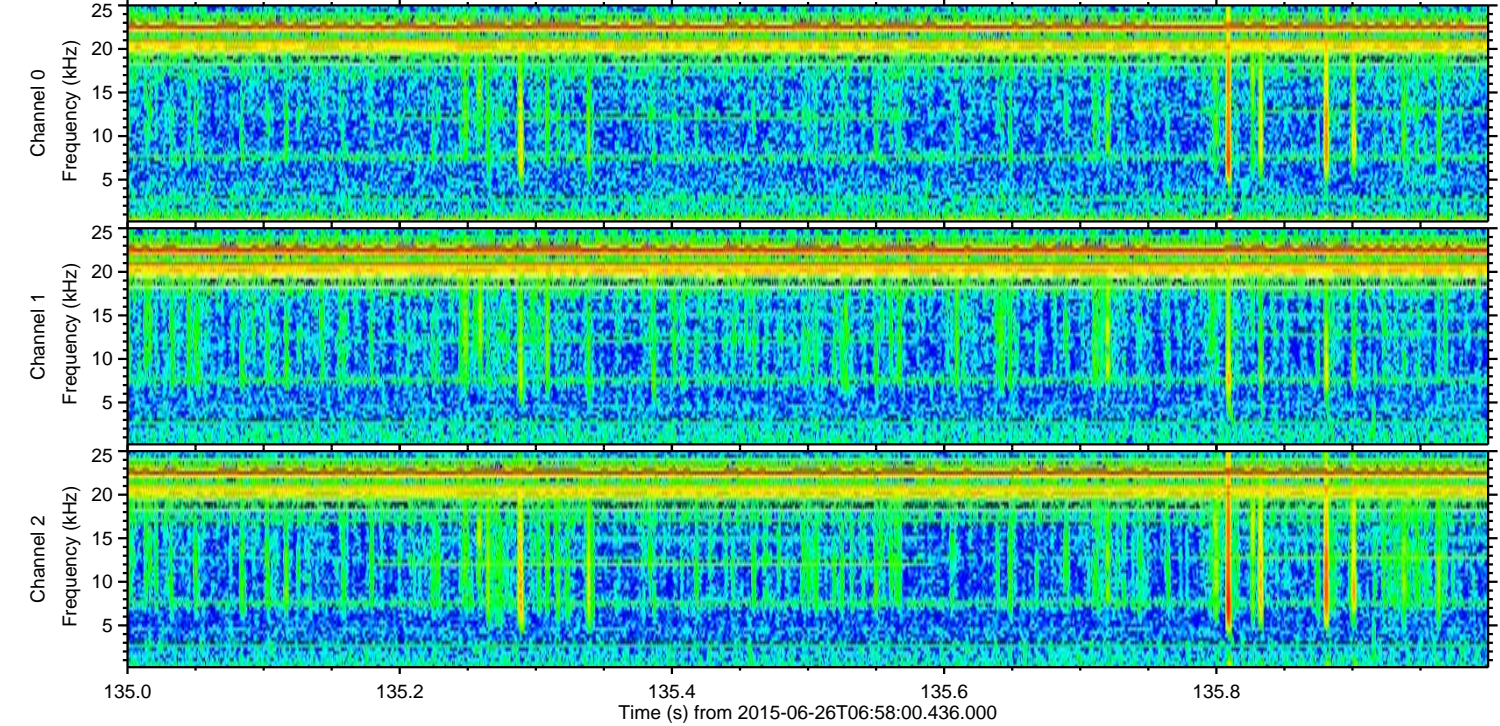
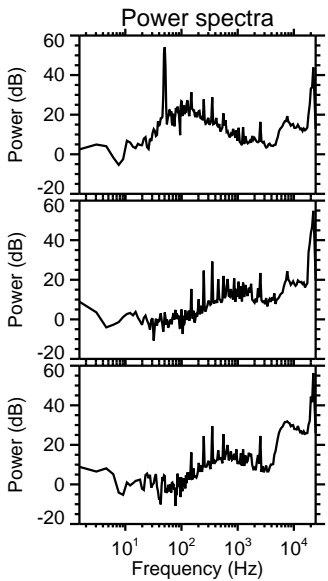
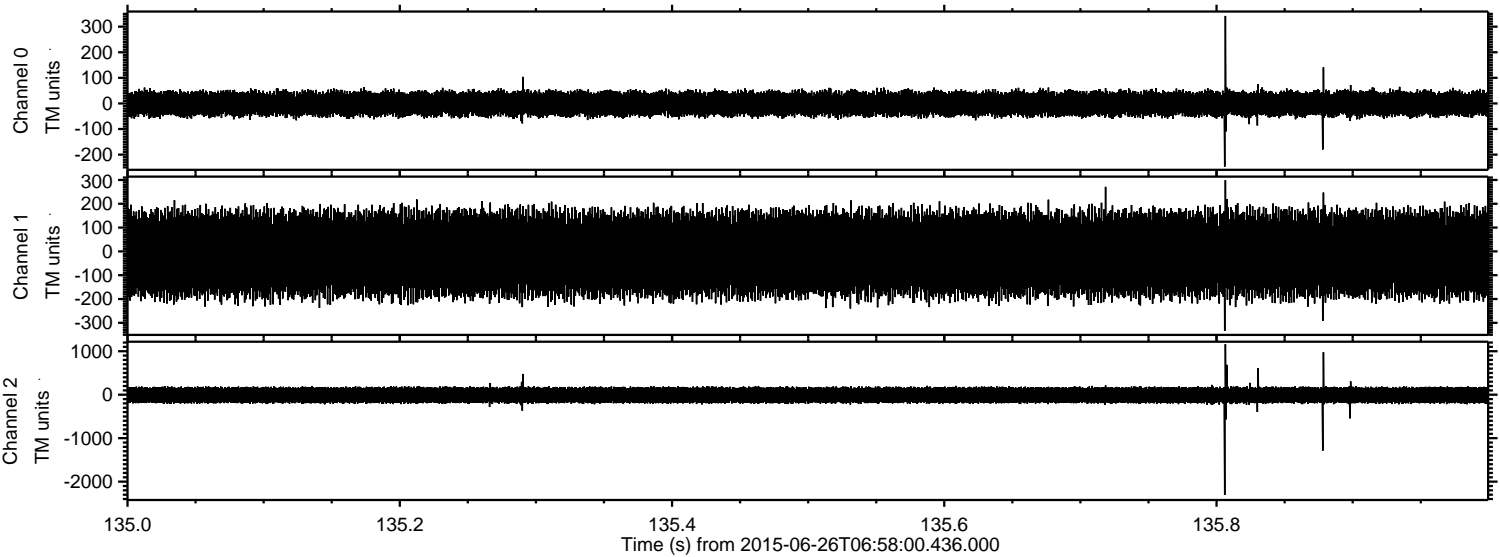
Processed Fri Jun 26 09:04:47 2015 by ELM ver.2012-10-06 from 001\_\_elm20150626\_065759\_\_dat00.bin





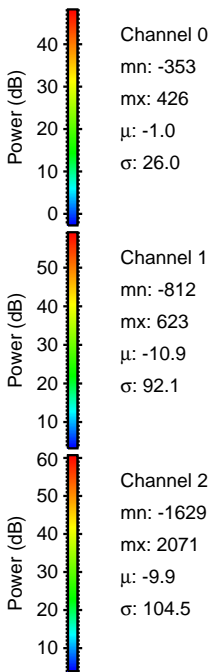
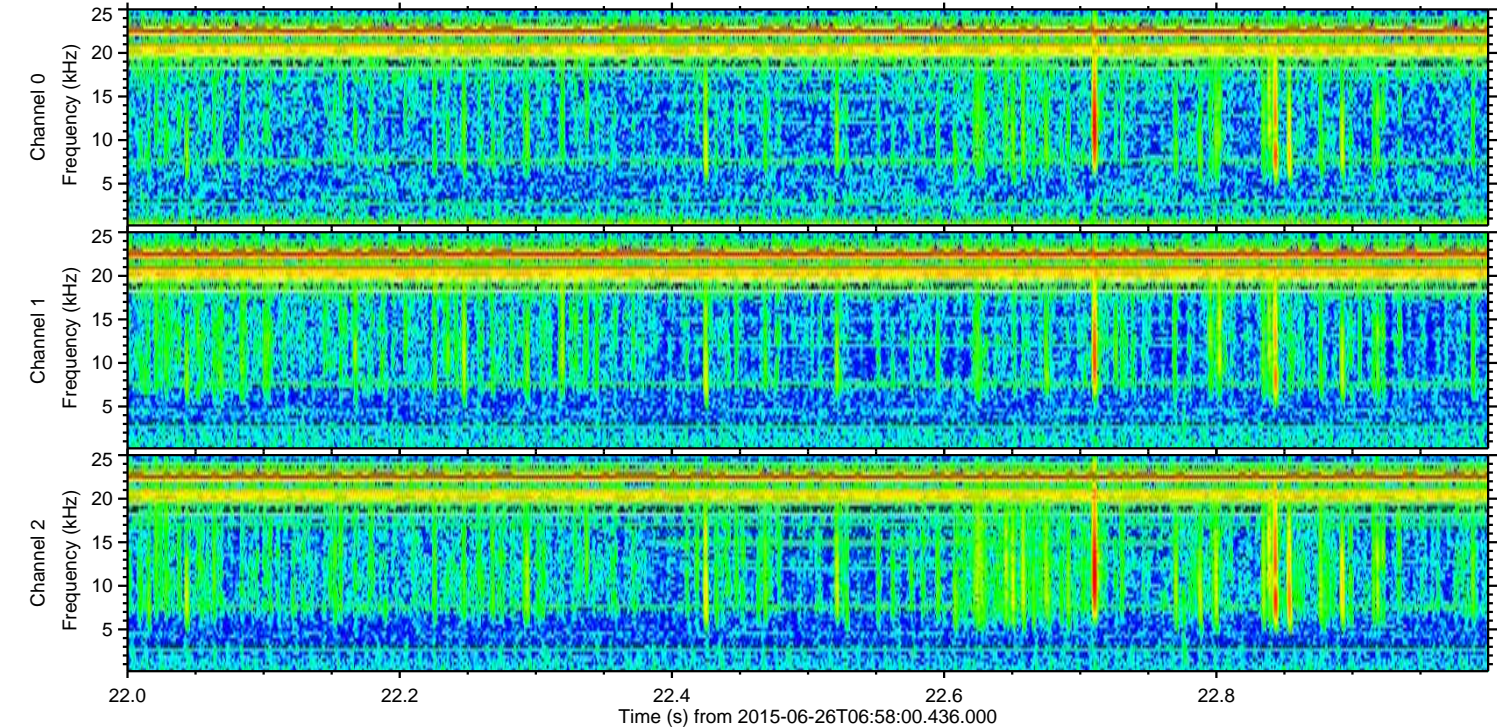
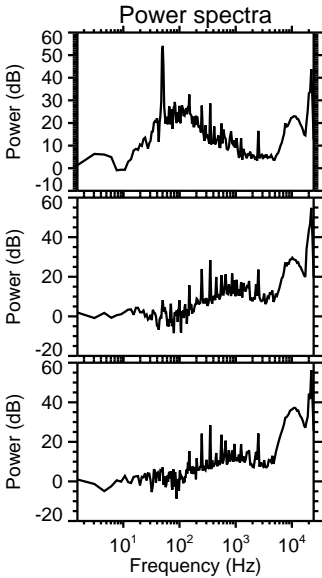
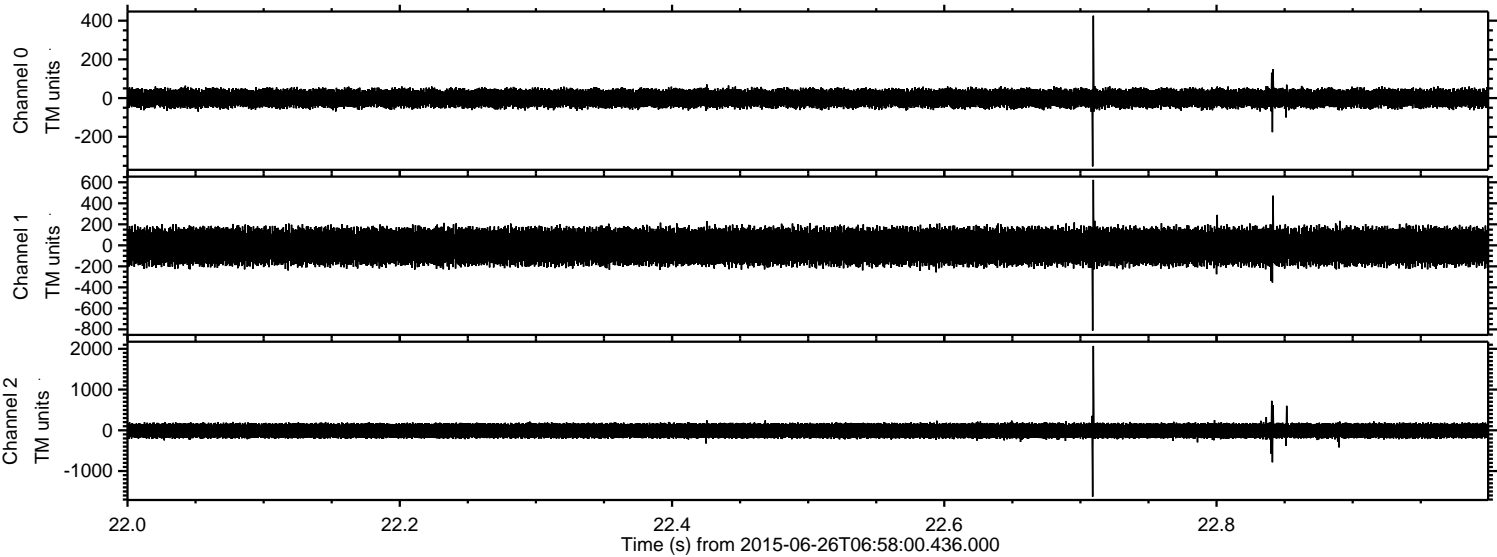
ELMAVAN 3D WAVEFORMS (Measured data sampled at 50 kHz) 51000 packets of 144 samples from 2015-06-26T06:58:00.436.000. Part 136/147

Processed Fri Jun 26 09:04:48 2015 by ELM ver.2012-10-06 from 001\_\_elm20150626\_065759\_\_dat00.bin



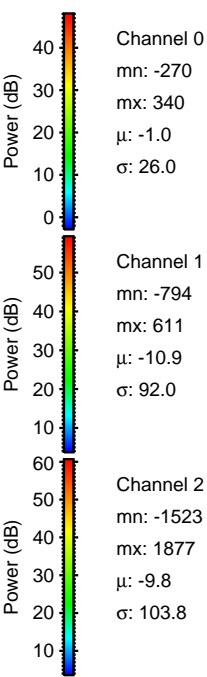
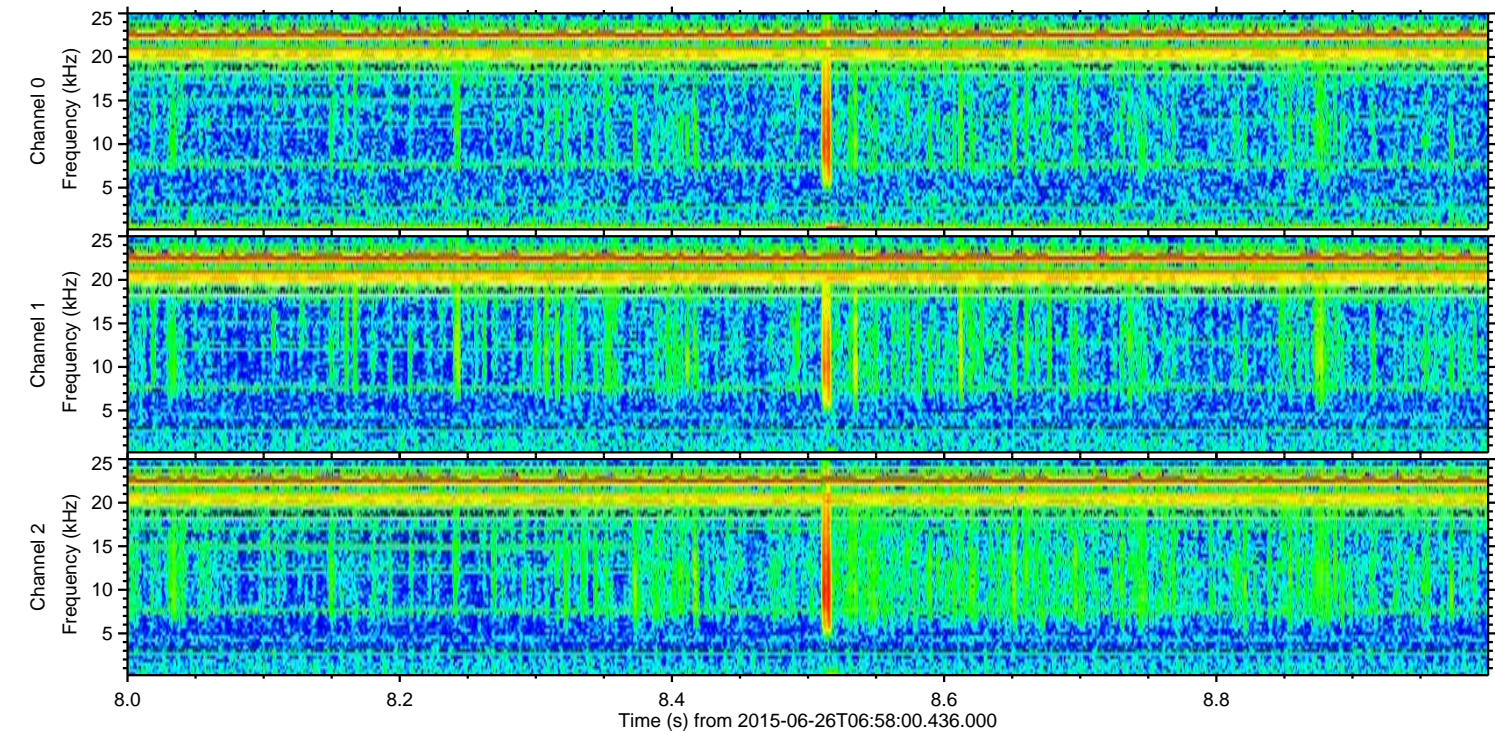
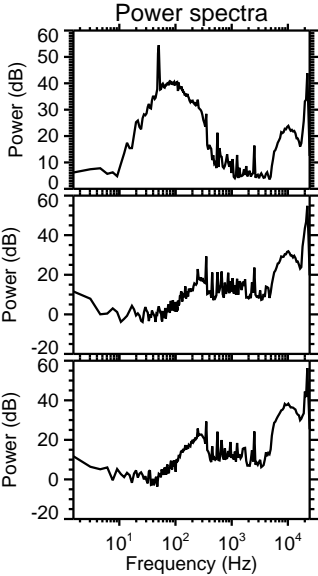
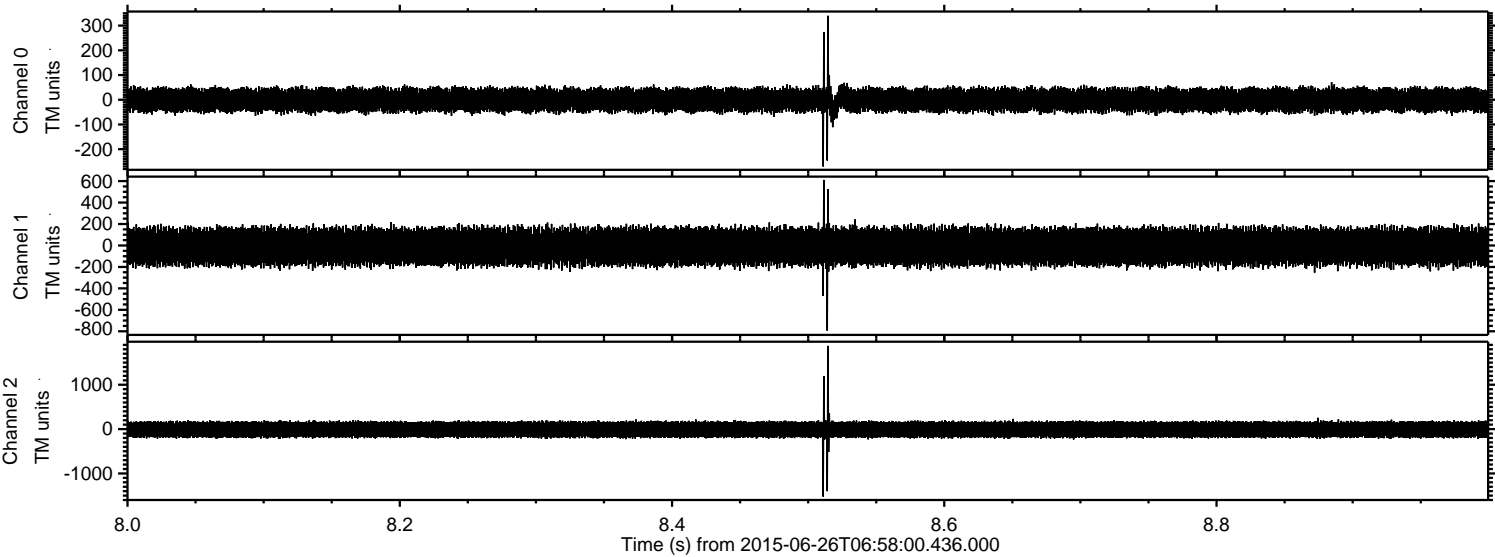


Processed Fri Jun 26 09:04:49 2015 by ELM ver.2012-10-06 from 001\_\_elm20150626\_065759\_\_dat00.bin



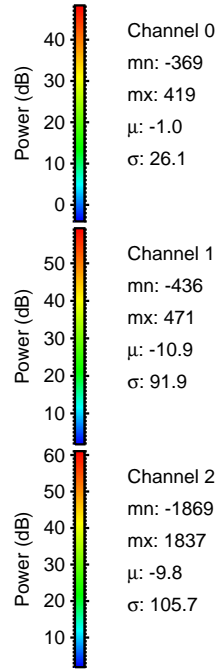
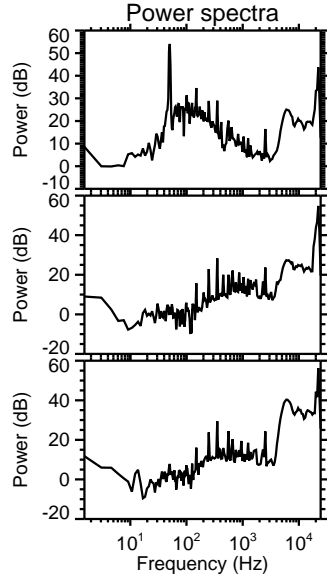
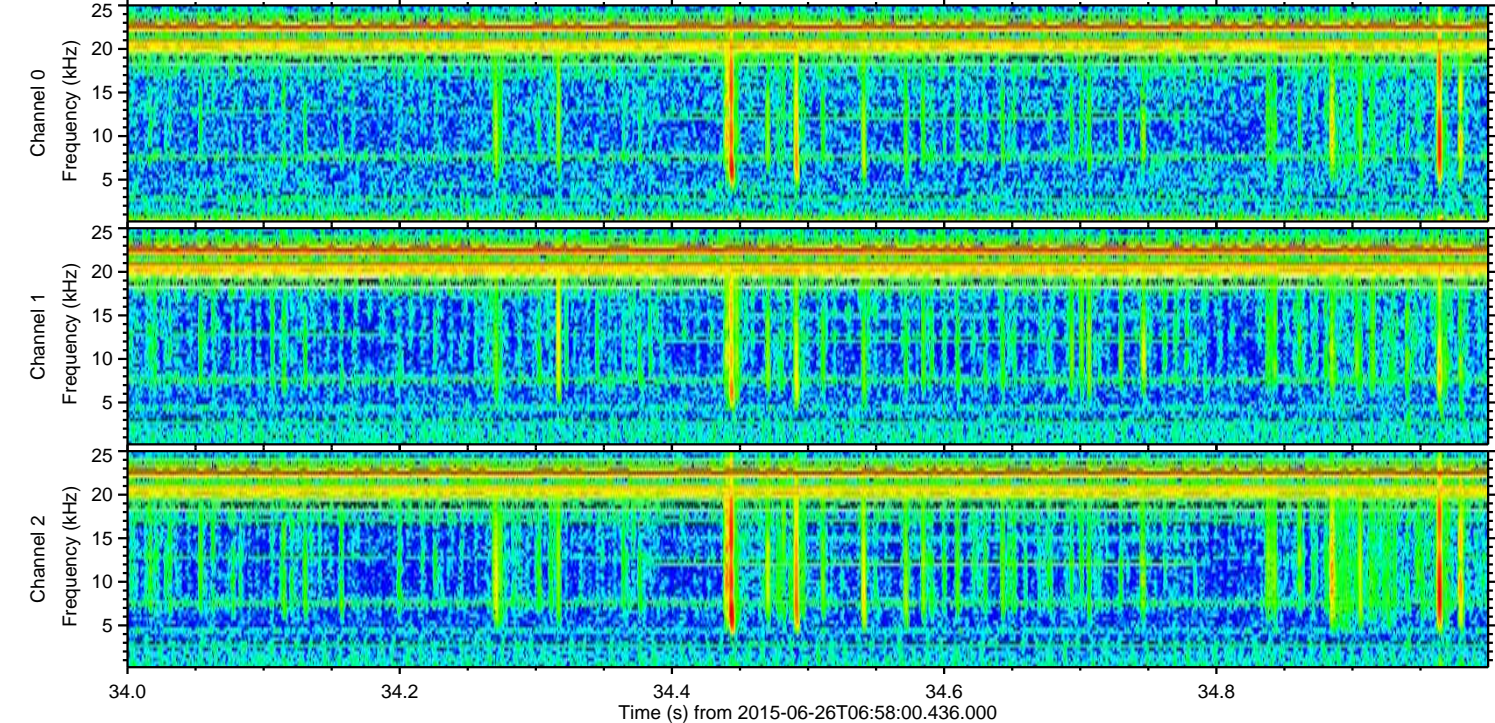
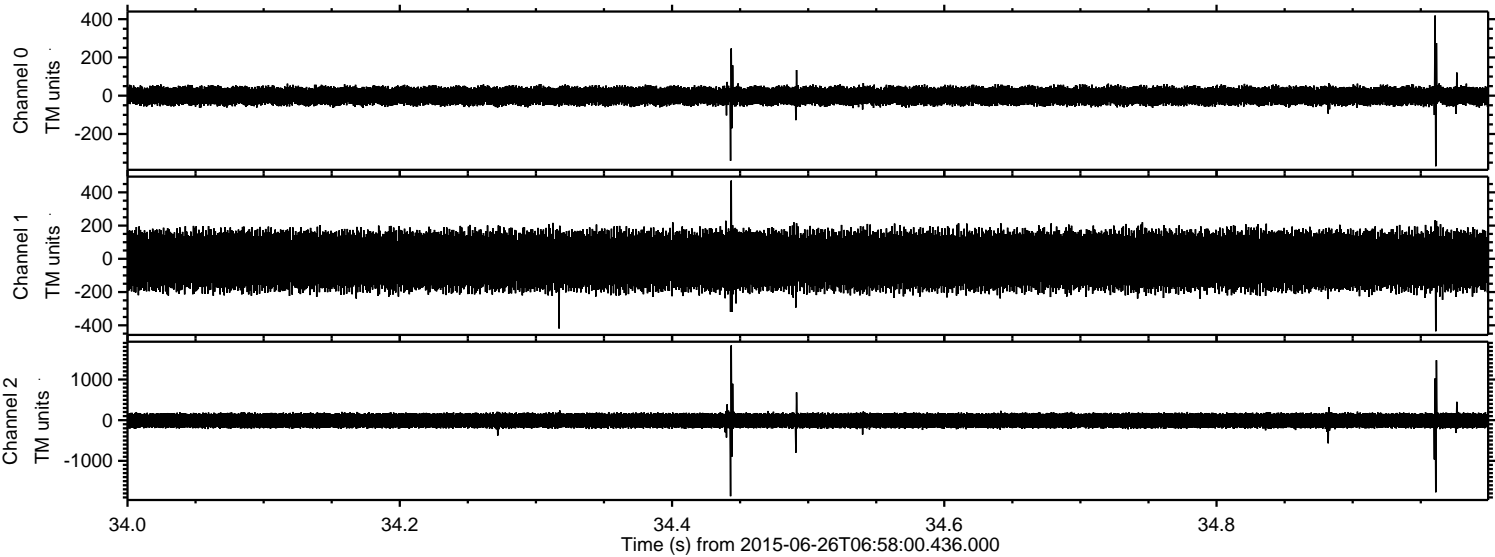


Processed Fri Jun 26 09:04:50 2015 by ELM ver.2012-10-06 from 001\_\_elm20150626\_065759\_\_dat00.bin



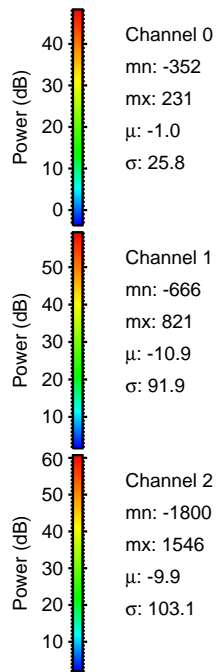
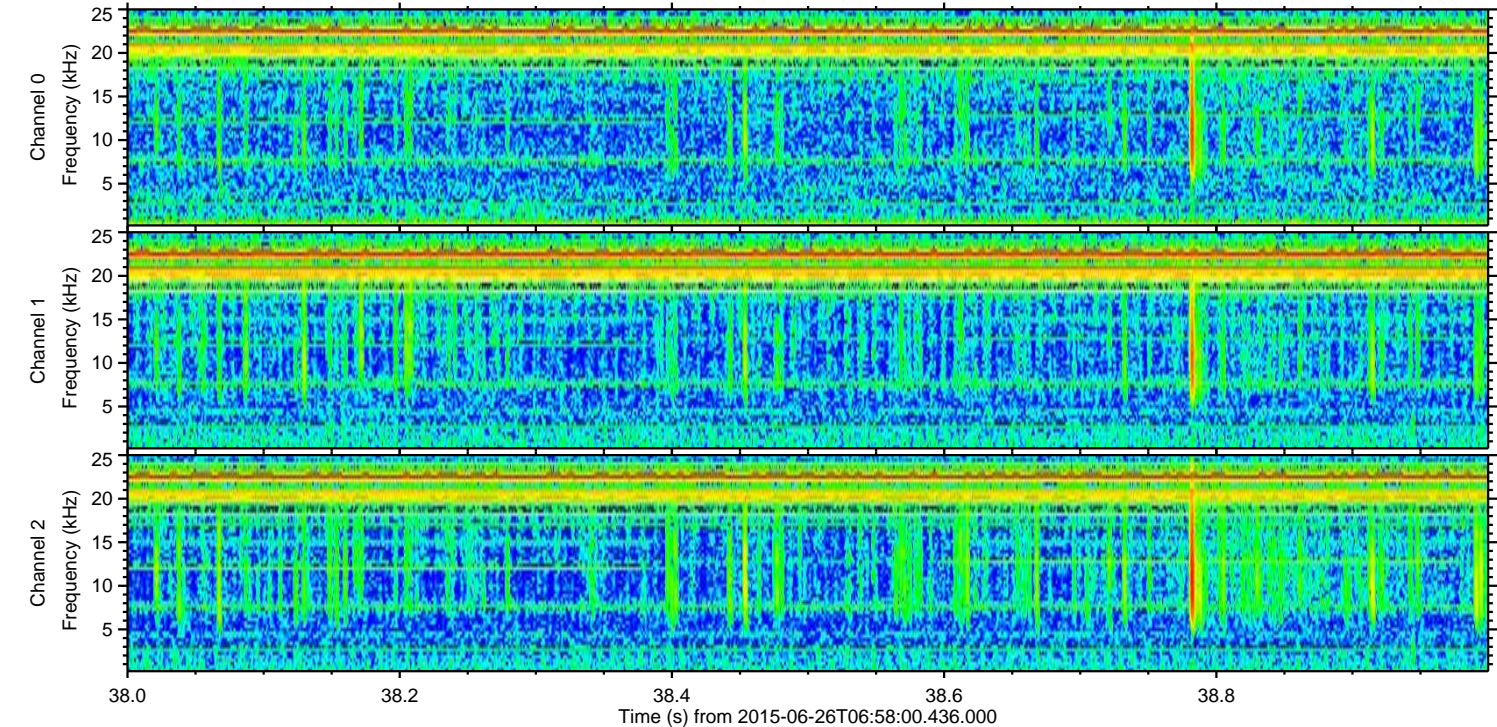
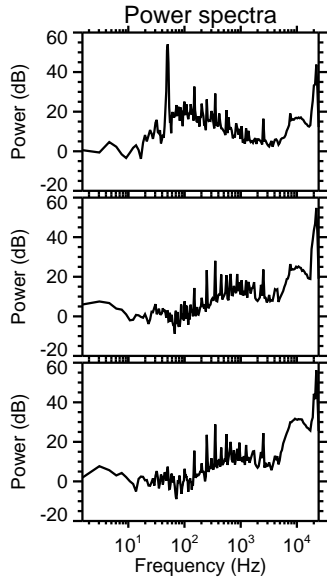
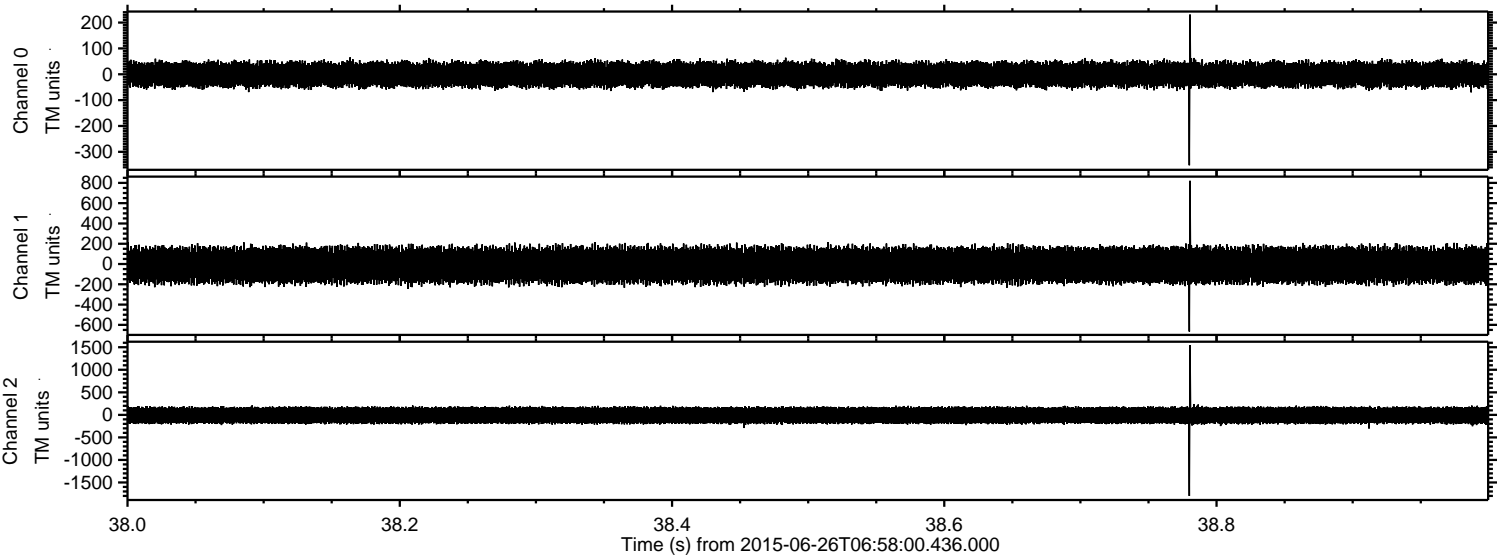


Processed Fri Jun 26 09:04:51 2015 by ELM ver.2012-10-06 from 001\_\_elm20150626\_065759\_\_dat00.bin





Processed Fri Jun 26 09:04:52 2015 by ELM ver.2012-10-06 from 001\_\_elm20150626\_065759\_\_dat00.bin



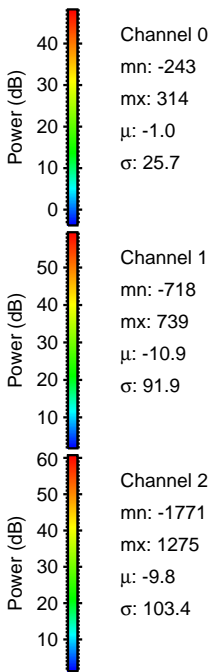
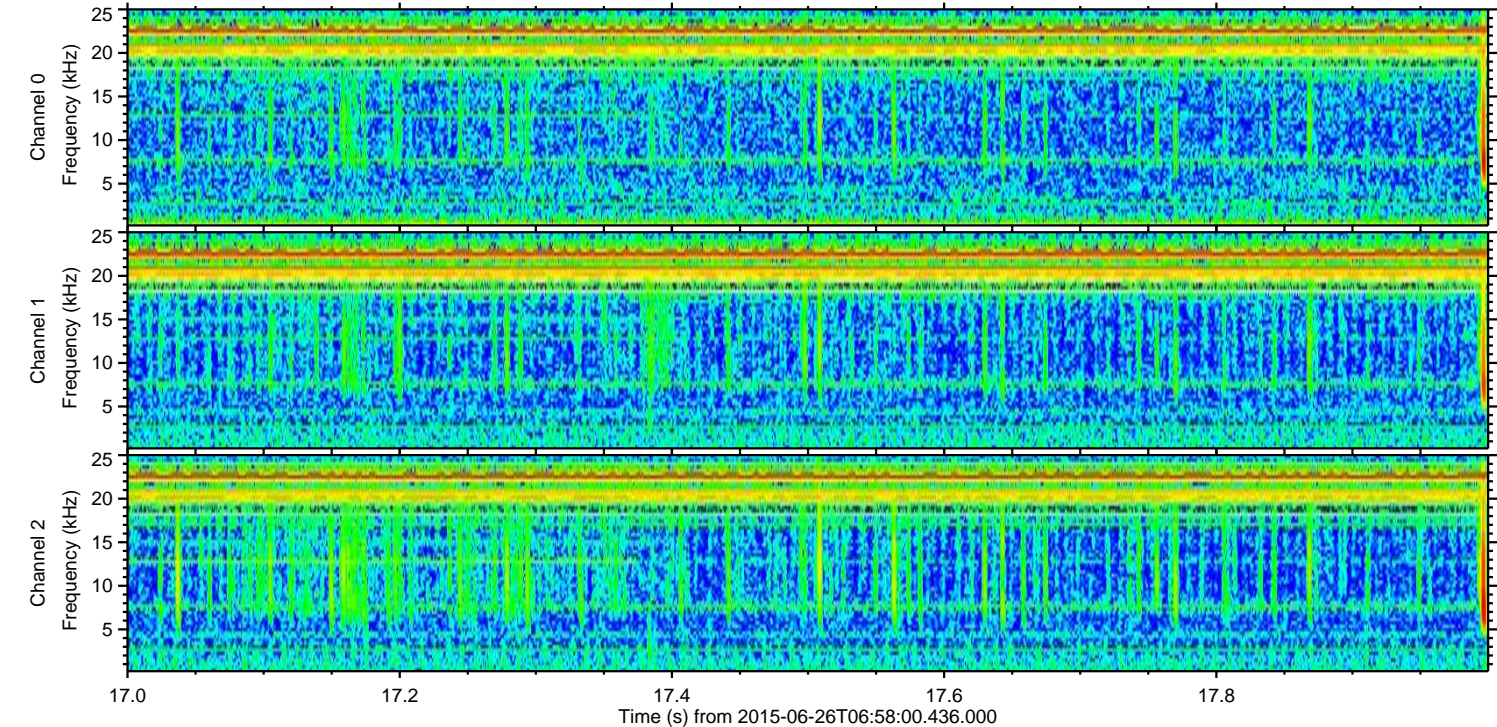
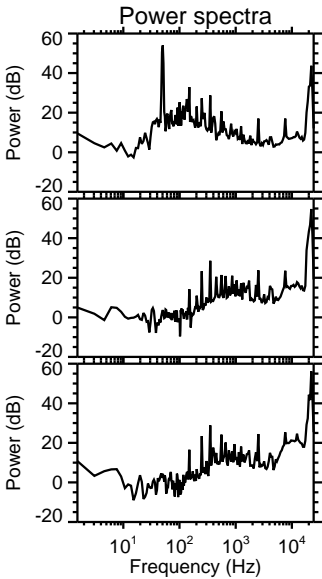
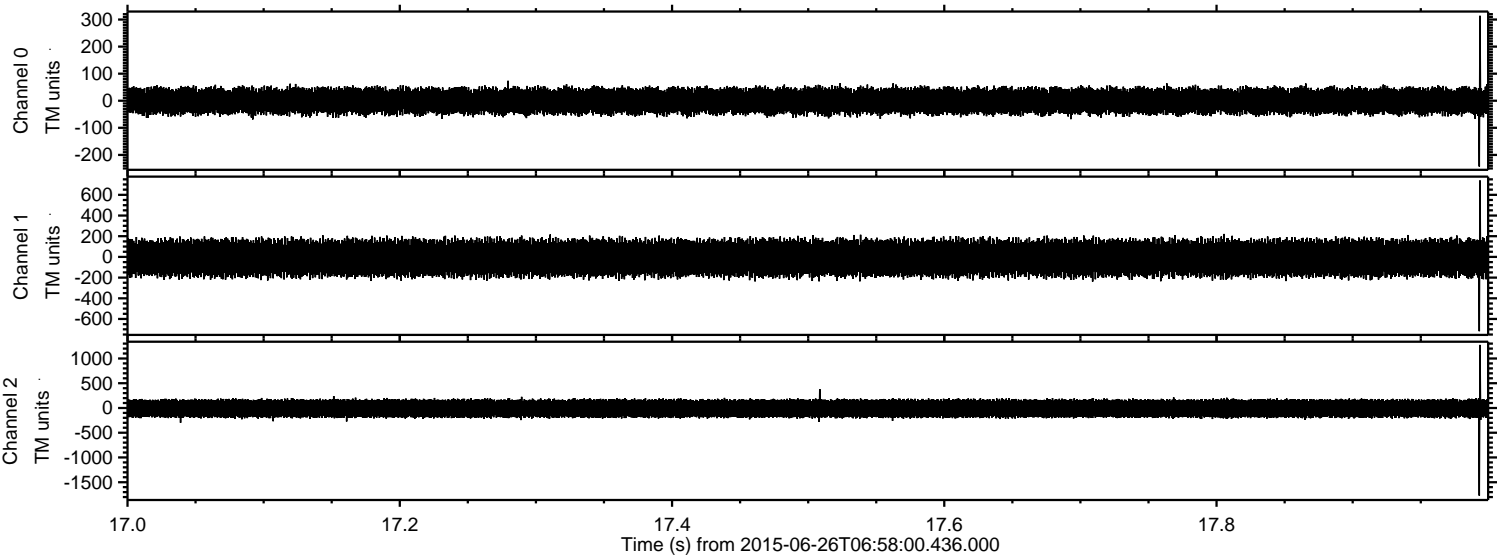
Channel 0  
mn: -352  
mx: 231  
 $\mu$ : -1.0  
 $\sigma$ : 25.8

Channel 1  
mn: -666  
mx: 821  
 $\mu$ : -10.9  
 $\sigma$ : 91.9

Channel 2  
mn: -1800  
mx: 1546  
 $\mu$ : -9.9  
 $\sigma$ : 103.1

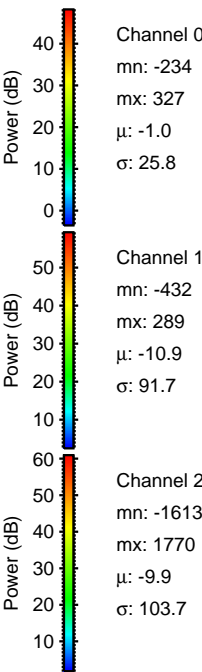
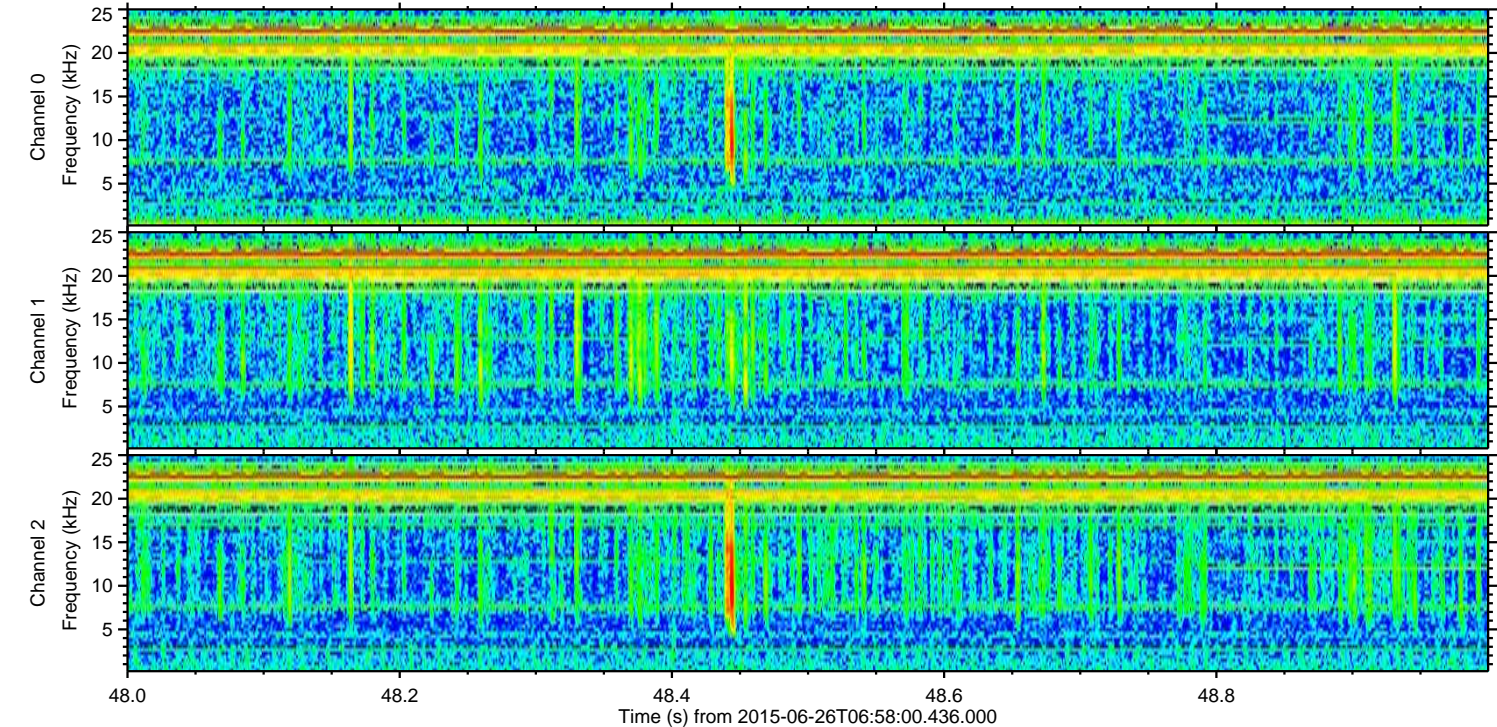
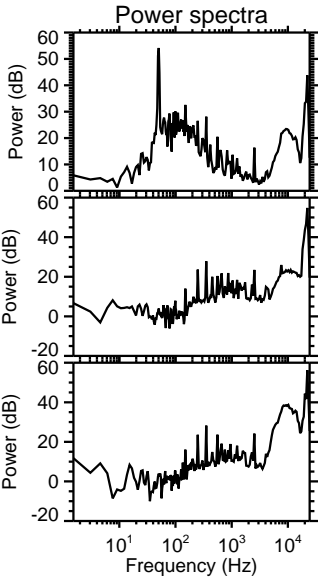
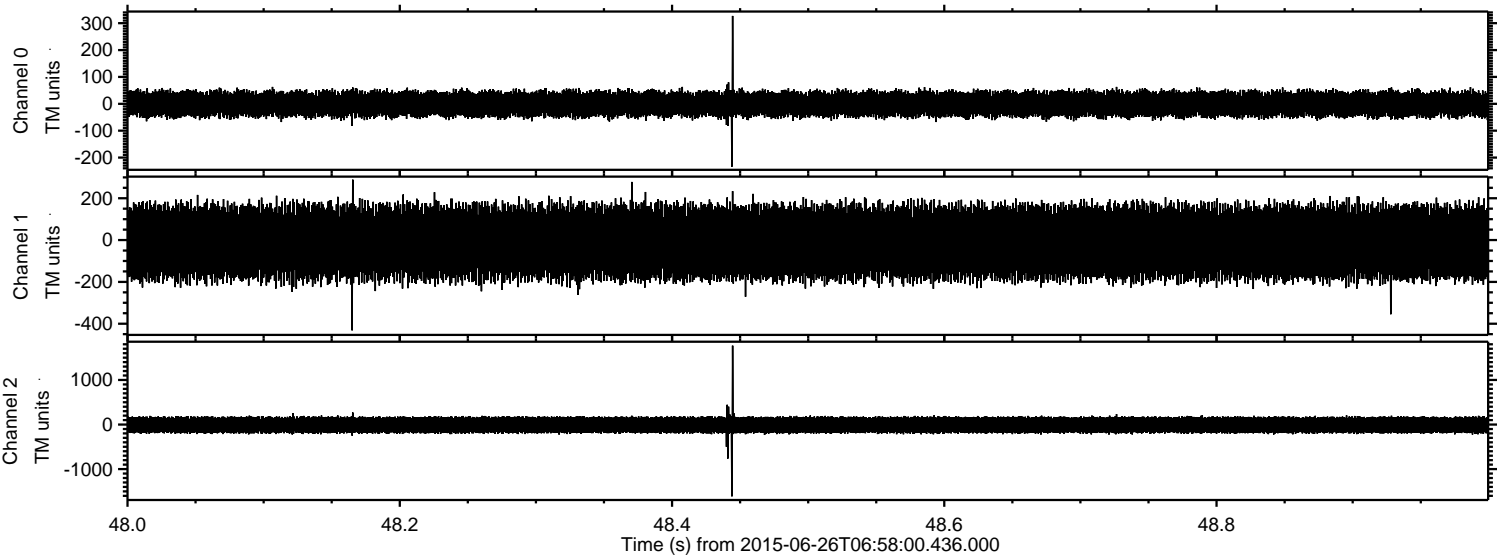


Processed Fri Jun 26 09:04:53 2015 by ELM ver.2012-10-06 from 001\_\_elm20150626\_065759\_\_dat00.bin





Processed Fri Jun 26 09:04:54 2015 by ELM ver.2012-10-06 from 001\_\_elm20150626\_065759\_\_dat00.bin





Processed Fri Jun 26 09:04:55 2015 by ELM ver.2012-10-06 from 001\_\_elm20150626\_065759\_\_dat00.bin

